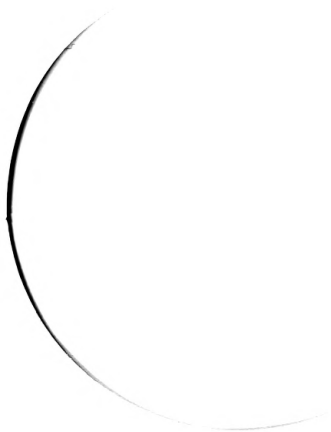


Maryland
LD
31
.A3
1967/68

book



U-5555 OF 1971



University of Maryland
M-Book

Published for
The Class of 1971





29829174

A Welcome To The Class of 1971:

It is a pleasure to extend a cordial welcome to each of you. Although the University is large, we are interested in you as an individual. You will find that your welfare and achievements are the concerns of many people here. They are ready to help you achieve whatever your goals may be.

You have indicated that you are ready to do college work. If this is correct, the most important factor in your success will be self-discipline. It will play an important part in your progress as you are called on to make many choices. Self-discipline is not an easy thing, but it can be developed and it will pay valuable dividends.

The University of Maryland has a rich heritage and is proud to be among the nation's leading institutions of higher education. Your performance in accordance with your ability is expected to be a source of satisfaction both to you and to the University. I urge you to make the most of the opportunities which are available to you.

Sincerely yours,



WILSON H. ELKINS
President

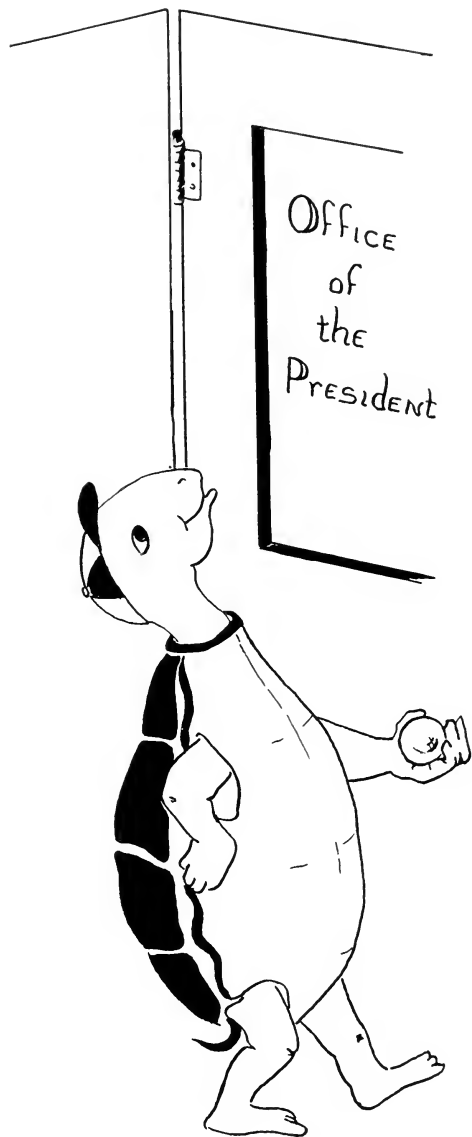
Archives
UPUB
\$30.001
1971

29329174

TABLE OF CONTENTS

	<i>Page</i>
Your University	1
Something to Strive For	11
Student Services	17
Student Union	29
Student Government	33
Activities	47
Athletics	65
Appendix	73

Archives
LD
31
.A3
1967/1968



Y
O
U
R
U
N
I
V
E
R
S
I
T
Y

Historical Background

The historical background of the University of Maryland reflects the impressive growth of one of the oldest and largest educational institutions in the United States. In each stage of its development the University has striven to achieve new goals which would distinguish it from other institutions, and in many phases the accomplishments have been outstanding. Today, the University of Maryland still aims to improve every aspect of its educational structure in order to make the thousands of men and women who have dedicated a part of their lives to the institution justly proud.

In 1807 the idea of a University of Maryland became a reality with the establishment of the University of Baltimore and the College of Medicine, the sixth such institute in America. The College of Medicine, striving to achieve new goals, was the first medical school to place dissection as a compulsory part of the curriculum and to create an independent chair of feminine diseases. The second phase in the growth of the University came in 1871 when the Maryland College of Pharmacy was added to the University of Baltimore, and a chair of analytical chemistry was placed in the curriculum. The Maryland School of Law, the fourth law school in the United States, was added to the Baltimore campus in 1882. During the same year, the School of Dentistry was founded, the first dental college to be established in the world and the first institution dedicated to the only profession that is distinctly American. In 1889 the Maryland School of Nursing was founded by Louisa Parson with the cooperation of Florence Nightingale.

The College Park campus of the University of Maryland began in 1856 as the Maryland Agricultural College after a group of southern Maryland farmers purchased the estate of Charles B. Calvert, Esquire. The Maryland Agricultural College became the third such institution established in the western hemisphere. Then in 1862 Congress passed the Morrill Land Grant Act which provided the Maryland Agricultural College an opportunity to be one of the first to benefit from federal aid to education. After a disastrous fire in 1912 and a tragic decrease in enrollment due to World War I, the

Agricultural College found it necessary to apply for further state aid. Maryland State College officially began in 1914 when the Maryland State Legislature bought all the stock in the College.

The next major phase in the growth occurred in 1920 when Maryland State College and the University of Baltimore were united to form the University of Maryland. The College of Special and Continuation Studies was established in 1940 to provide an overseas program for servicemen and dependents of government employees. This program has continued to grow and it now serves twenty-five countries on four continents.

Both the Baltimore campus and the College Park campus have grown immensely in the past few years. Recently a new four-year division was established at Catonsville which is now in its second academic year. The College Park campus has also experienced recent additions with the opening in 1965 of the Adult Education Center, the Fine Arts Building which houses the J. Millard Tawes Theater, the Education Building, and the Computer Science Center. In 1966 the first portion of the Ellicott City Complex was completed including a dining hall; the additions to H. J. Patterson Hall and the Physical Sciences Building were also finished. With this fall will come the opening of the Space Science Center and an addition to the Physics-Astronomy Building, including the unveiling of the Cyclotron. Another addition to the College Park campus is in the area of the curriculum: the College of Architecture and the College of Library Science have been formally established with the new deans to be named this fall.

The University of Maryland continues to grow in all areas of educational achievement. The University ranked eighth in the nation this year in total enrollment, which is proof that the University is growing physically as well. Over 130,000 men and women have received degrees from the University and the number is rapidly increasing. The University of Maryland is truly a vital part of higher education in the United States.

History of the Colleges

College of Agriculture

This college, the oldest division of the University of Maryland, headed by Dean Gordon M. Cairns, was originally founded in 1856 as the Maryland Agriculture College. Graduates of the College of Agriculture enter a wide variety of careers in the field of agricultural science, technology, and business. Symons Hall is the headquarters of the College of Agriculture.

College of Arts and Sciences

The College of Arts and Sciences through its seventeen departments offers majors in most of the basic academic fields in the humanities, social sciences, biological and physical sciences, mathematics and the fine arts. The College was founded in 1921 when the School of Liberal Arts and the School of Chemistry were merged.

College of Business and Public Administration

Dr. Donald W. O'Connell is Dean of the College of Business and Public Administration. The College offers degree programs through its six departments: Business Administration, Economics, Geography, Government and Politics, Journalism and Information Systems Management. Within the Department of Business Administration eight different fields of concentration are offered, ranging from accounting to transportation. The Departments of Geography, Government and Politics and Journalism also offer alternative programs, including, for example, specializations in urban geography, public administration and news-editorial work.

College of Education

Preparing young men and women to teach is the main goal of the College of Education. Under the direction of Dean Vernon Anderson the College offers courses in early childhood, elementary, secondary, and industrial education.

College of Engineering

Since 1898, the College of Engineering has offered over 5000 baccalaureate degrees. Presently, under Dean Robert B. Beckmann, the school offers degrees in: aeronautical engineering, chemical engineering, civil engineering, electrical engineering, mechanical engineering and fire protection.

College of Home Economics

In commemoration of its fiftieth anniversary, the College of Home Economics is renaming its present building in honor of its first dean. A plaque with the new name, Marie Mount Hall, will be placed on the building by Dean Erna Chapman in a special ceremony on October 21, 1967.

College of Physical Education

The College of Physical Education was founded by Dean Lester M. Fraley eighteen years ago. A Bachelor of Science degree is given to the students who successfully complete course work in one of these fields: physical education, recreation, health, dance, and physical therapy.

University Traditions

In an institution so deeply rooted in the past, there will naturally be a number of long established customs and events that have become a traditional part of life at a university and the University of Maryland is no exception.

The most reknown of these customs is the terrapin mascot, "Testudo," who watches over all University students from his pedestal in front of McKeldin Library. Rubbing the bronze terrapin's nose is said to bring special luck to any student. In 1965 Testudo II, a mechanical counterpart to Testudo I, was added and can be seen at sport events.

From the steeple of the University Chapel, the chimes ring out the strains of "Maryland, My Maryland" every hour on the hour to warn all late students. At Christmas time the alma mater is replaced by traditional carols.

No account of the University's traditions would be complete without mentioning the Kissing Tunnel. This secluded spot may be found under Chapel Drive in front of the Chapel and is especially popular in early fall and in late spring.

Band Day

Sponsored by the SGA, Maryland high school bands combine their talents and perform during the half-time of an October football game.

Homecoming

Highlighting the football season is Homecoming. On the eve of the Homecoming game, organizations and residence halls construct elaborate floats which are viewed and judged in the pre-game parade. During half-time the Homecoming queen is crowned. Concluding the day's events is the Homecoming Dance in Reckord Armory.



Away Weekend

This event, sponsored by the SGA, provides an opportunity for University of Maryland students to attend an away football game. Arrangements for transportation and tickets are planned in advance.

Parents' Day

Sponsored by the SGA and held in the early fall, Parents' Day is a special day dedicated to the parents who are invited to attend the football game and visit residences having open house. Special recognition is given to the parents at this time through a variety of campus-wide programs.

Class Proms

Each year the Freshmen, Sophomore and Junior Proms are held at Indian Springs Country Club. The social events of the year are culminated by the Senior Prom, a formal dinner dance, which is held at the Sheraton Park Hotel.

Campus Chest Week

In the spring, Campus Chest sponsors this fund-raising project for charity. During this two-week period penny votes are cast in the Ugly Man and Miss Campus Chest Queen contests. On Friday night, College Casino brings legal gambling to campus for the benefit of charity.

Spring Weekend

In the spring the SGA provides top flight talent at the Spring Weekend Dance and a series of other events. This week-end last year on campus featured Smokey Robinson and the Miracles as well as Ian and Sylvia and Simon and Garfunkel.

Orientation Week

Orientation Week is designed to introduce new students to the University. Among the week's activities are the President's Convocation, the Dink Debut mixer, and a cultural event during which a nationally known entertainer will perform in an outdoor concert. A series of individual group meetings designed to familiarize the new students with campus activities and University life are also planned. The Freshmen Orientation Board urges all new students to attend these activities in order to gain a better understanding of the University, its organizations and its facilities.

President's Convocation

Each semester, the President of the University addresses the student body in Cole Field House on current policies of the University. President Elkins' address is comparable to the President's State of the Union Address. Classes are dismissed for this event in order to enable all to attend.



Administration

Freshmen should be familiar with the members of the Administration and their responsibilities, for they coordinate and direct all phases of University life. They are always anxious to meet students, listen to their views, and help them with their problems.

President of the University

Dr. Wilson H. Elkins was named the twenty-first President of the University in 1954 after serving as President of Texas Western College. Earlier, he had filled the presidency at San Angelo Junior College and had taught history at the University of Texas.

Dr. Elkins is a graduate of the University of Texas where he earned both B.A. and M.A. degrees and eight varsity letters in football, basketball and track. A member of Sigma Nu fraternity, he served as President of the Student Association and was also selected for membership in Phi Beta Kappa, Omicron Delta Kappa, Phi Alpha Theta, Tau Kappa Alpha, and Alpha Phi Omega. He was a Rhodes Scholar at Oxford University and earned his Bachelor of Letters and Doctor of Philosophy degrees there.

In addition to serving as President of the Middle States Association of Colleges and Secondary Schools, Dr. Elkins is a member of the executive committee of the Southern Regional Education Board, the Board of Visitors of the United States Naval Academy, the Boards of Trustees of the Washington Center for Metropolitan Studies and the Greater Washington Educational Television Association. He has been a Director of the Federal Reserve Bank of Richmond since 1963 and is currently deputy chairman.

University Administrative Officers

Dr. Albin O. Kuhn	<i>Vice President for the Baltimore Campus</i>
Dr. R. Lee Hornbake	<i>Vice President for Academic Affairs</i>
Dr. Walter B. Waetjen	<i>Vice President for Administrative Affairs</i>
Dr. Michael J. Pelczer, Jr.	<i>Vice President for Graduate Studies and Research</i>
Dr. Frank L. Bentz, Jr.	<i>Vice President for Agricultural Affairs</i>
Mr. Robert A. Beach	<i>Assistant to the President for University Relations</i>

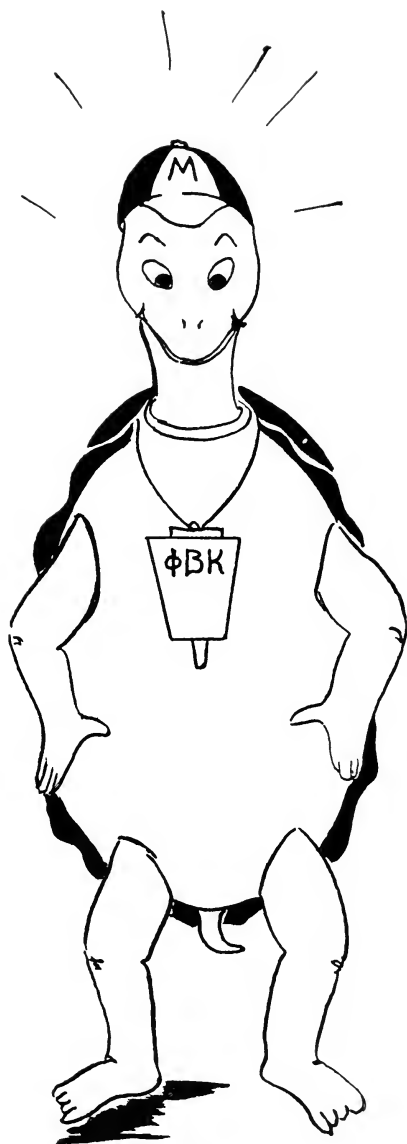
Board of Regents

The Governor of Maryland appoints the eleven members of the Board of Regents for a seven year term. The Board establishes policies and guidelines within which framework the University is operated. In addition, the Board makes appointments and names all new buildings on campus.

Standing committees have been created to handle such matters as University expansion, buildings, governmental relations, agriculture, athletics, and endowments.

Charles P. McCormick is the present chairman of the Board. President Elkins acts as the main Executive Officer. The other members of the Board are:

Edward F. Holter, <i>Vice Chairman</i>	William B. Long
E. Herbert Brown, <i>Secretary</i>	Harold A. Boswell, Jr.
Harry H. Nuttle, <i>Treasurer</i>	Thomas B. Symons
Louis L. Kaplan, <i>Assistant Secretary</i>	William C. Walsh
Richard W. Case, <i>Assistant Treasurer</i>	Mrs. Gerald D. Morgan



SOMETHING TO STRIVE FOR

Something to Strive For

Robert Frost once said, "The world is full of working people, some willing to work and the rest willing to let them." For those who are willing to work and strive beyond average achievement in leadership and academics, there are well over 50 honoraries at the University. A very few of these include *Alpha Lambda Delta*, *Diadem*, *Diamond*, *Kalegethos*, *Mortor Board*, *Omicron Delta Kappa*, *Phi Eta Sigma*, *Phi Beta Kappa-Gamma of Maryland* and *Phi Kappa Phi*.

To promote high scholastic achievement among freshmen women and to expand the cultural and intellectual atmosphere of the University is the main goal of *ALPHA LAMBDA DELTA*. Founded in 1932, it is a national honorary sorority for freshmen women who have achieved a 3.5 average in their first or second semesters. Alpha Lambda Delta, along with the freshmen men's honorary, *PHI ETA SIGMA* sponsors a tutorial service for freshmen students. The girls also serve as hostesses at University cultural activities.

Outstanding junior women who have attained a 2.5 average and who have performed service to the University are eligible for membership in *DIADEM*. Members are tapped in their sophomore year at the Women's Convocation. Diadem members usher and lead tours for visitors to the campus.

Three junior or senior women who have made outstanding contributions to the campus and to their individual chapters are nominated from each sorority for membership in *DIAMOND*. Tapping is held twice a year: in the fall at Harmony Hall and in the spring at the Interfraternity Council Sing.

Founded in 1957, *KALEGETHOS* is a Greek men's honorary. To be eligible for tapping, a fraternity man must have junior standing, an overall average above the all men's average, and have excelled in the individual fraternity chapter, the IFC system, and campus activities.

A 3.0 overall average, outstanding leadership in her campus activities, and service to the University are the qualifications for

the senior women's honorary, *MORTAR BOARD*. Mortar Board sponsors the Mum Sale at Homecoming.

OMICRON DELTA KAPPA is one of the highest honors a man can attain at the university. Members are chosen on the basis of leadership and scholarship. To be eligible, one must have attained junior standing and at least a 2.5 academic overall average.

Freshmen men who have achieved a 3.5 average in their first or second semesters are eligible for membership in *PHI ETA SIGMA*. Members tutor freshmen students and give two banquets each year to induct new initiates. The chapter was founded in 1940.



Undergraduates who have achieved outstanding scholastic excellence are eligible for membership in *PHI BETA KAPPA*, a national honor society. Membership is extended to any junior with a cumulative average of 3.75 or any senior with an overall average of 3.5 in the College of Arts and Sciences. Gamma of Maryland is also allowed to nominate alumni of exceptional achievement.

The motto "The Love of Learning Rules the World" guides the ideals of the members of *PHI KAPPA PHI*. Its members, who are elected from all schools, rank in the upper 10% of the graduating class.

Other University Honoraries are as follows:

**Alpha Delta Sigma* National professional advertising and marketing fraternity.

Alpha Kappa Delta National honor society in sociology open to selected undergraduates and to graduate students who are doing their major work in sociology.

Alpha Sigma Mu Metallurgy honorary whose members are selected on the basis of high scholastic, scientific and professional attainment in the study, experimental investigation, treatment, design, selection and use of metals and engineering materials.

**Alpha Zeta* Agriculture honorary whose members are chosen on the basis of high levels of scholastic achievement.

**Beta Alpha Psi* Accounting honorary whose members must have overall average of 3.0 and a 3.5 average in all accounting courses. All candidates for membership must submit a 1,000 word research paper and pass a four hour written exam on accounting.

Beta Gamma Sigma Business administration fraternity open to selected juniors and seniors, graduates and faculty.

**Chi Epsilon* Civil engineering honorary fraternity. For Civil Engineering students with a 2.6 average as a junior.

**Delta Nu Alpha* Transportation honorary whose members must have completed at least one year at an accredited college.

*Also members of the Council of Professional Organizations.

- **Delta Sigma Pi* Men's business honorary fraternity whose membership is open to male BPA students who have completed at least 15 credits and have made the all-men's BPA average.
- Eta Beta Rho* National honorary for the Hebrew language and culture, whose members must have completed 12 credits in Hebrew with a 3.0 average or better.
- **Eta Kappa Nu* Electrical engineering honorary fraternity.
- Gamma Alpha Chi* Advertising honorary whose members must have an interest in advertising or closely related fields. GAC taps members who have achieved an academic overall average of at least 2.2.
- **Gamma Theta Upsilon* Geography honorary open to students with a 2.5 average and 9 credits of geography.
- Iota Lambda Sigma* Industrial education honorary whose members must be recommended by a member and must have a minimum of a 3.0 average.
- **Kappa Alpha Mu* Honorary in photo-journalism and the student affiliate of the National Press Photographers Association.
- **Kappa Delta Pi* Education honorary for students with a 3.1 overall average. Members receive an invitation to join the National Education Honorary.
- Kappa Kappa Psi* Music honorary for men whose aim is to develop an appreciation of music and stimulate interest in the University Band. Requirements for membership stress proficiency in musical ability and outstanding service to the band.
- **Omicron Nu* Honorary for majors in Home economics with outstanding scholarship (3.0 academic average), leadership and research in home economics. Only seniors and second semester juniors are eligible.
- Phi Alpha Epsilon* Honorary for members of the College of Physical Education.
- **Phi Alpha Theta* History honorary whose objective is to stimulate interest in history and academic achievement.
- *Also members of the Council of Professional Organizations.

**Phi Chi Theta* Honorary business fraternity for women. Who must have a 2.2 overall average.

Phi Delta Epsilon National collegiate communications honorary.

Phi Delta Kappa Education honorary for practicing teachers, graduate students and people in education who have started a masters degree in education, or have served in the education field for three years.

**Phi Mu Alpha* Music fraternity.

Phi Sigma Biological sciences honorary.

Pi Alpha Xi Floriculture and ornamental horticulture society.

Pi Mu Epsilon Math honorary whose membership is based on a good record and interest in math.

Pi Sigma Alpha Government and politics honorary.

**Pi Tau Sigma* Mechanical engineering honorary.

**Psi Chi* National honorary psychology fraternity.

**Sigma Alpha Eta* Honorary for students majoring in speech therapy and audiology.

Sigma Alpha Iota Music honorary. Whose members must have a 3.0 in music courses, a 2.5 overall average, and musical ability.

Sigma Alpha Omicron Honorary for outstanding students in microbiology.

**Sigma Delta Chi* National journalism society.

**Sigma Gamma Tau* National honorary for students in aerospace engineering.

**Sigma Pi Sigma* Physics honorary.

Sigma Tau Epsilon Recognizes and honors women of outstanding leadership in Women's Recreation Association.

**Tau Beta Pi* Honorary engineering fraternity.

Tau Beta Sigma Music honorary for women whose aim is to develop an appreciation of music and stimulate interest in the University Band. Requirements for membership stress proficiency in musical ability and outstanding service to the band.

Tau Kappa Alpha Forensic honorary encouraging excellence in speech.

*Also members of the Council of Professional Organizations.



**S
T
U
D
E
N
T

S
E
R
V
I
C
E
S**

Books and Supplies:

The *Student Supply Store*, maintained by the University, is located in the Student Union where one may obtain new and used required texts and supplies. Cards, cosmetics and sweatshirts are also sold at the Supply Store. Upon resale of books, the student is given a credit slip which can be used only in the Student Union; no cash refunds are given. The store is open from 8:30 a.m. to 4:30 p.m., Monday through Friday.

Alpha Phi Omega (APO), a service fraternity, sells used texts in the Student Union at the beginning of each semester. They also buy books from students and give cash refunds.

The *Maryland Book Exchange*, on College Avenue, sells new and used texts plus supplies. They too sell many novelties for the student. Cash refunds are given upon resale; during the first week of classes, new books may be resold at original cost. The regular hours for the Maryland Book Exchange are:

Monday - Friday 8:30 a.m. - 6:30 p.m.

Saturday 9:30 a.m. - 5:00 p.m.

The hours for the Maryland Book Exchange are slightly different during the registration week of each semester.

The *Smoke Shop* is located on the main level of the Student Union just off the main lobby. Cigarettes, cigars, pipes, and other smoking supplies are sold here as well as candy, newspapers, and magazines. The shop is open Monday through Friday from 8:00 a.m. to 4:00 p.m.

Bulletin Boards:

Bulletin boards may be found at five central locations in the Student Union, the Business and Public Administration Building and the Foreign Languages Building. These boards may be used by students to post notices or advertisements of all kinds. Approval of the Dean's office in that building is required.

Counseling Center:

The Counseling Center assists students in gaining a better understanding of themselves and in developing improved methods of coping with vocational, educational, and personal problems. Both individual and group methods of counseling are used. Where psychological testing is appropriate in the counseling of students, tests of ability, interest and personality are employed.

Through its Reading and Study Skills Laboratory, the Center provides an extensive program for students motivated to improve their reading and listening skills, study methods, vocabulary, and/or spelling.

Students are entitled to the services of the Center without charge since they annually pay an advisory and testing fee at the time of registration. The Counseling Center is located in Shoemaker Building.



Check Cashing:

The Student Union provides a check cashing service at the Main Desk, rm. 132. The hours are from 9 a.m. to 3 p.m. on week days. There is a \$10.00 limit on personal checks and a 10¢ service charge on all checks. Identification is required.

Dairy:

The University Dairy, on Baltimore Boulevard, across from Ritchie Coliseum, serves dairy products and light lunches. They make their own ice cream. The hours are:

Monday - Friday	9:30 a.m. - 6:00 p.m.
Saturday	9:30 a.m. - 6:00 p.m.
Sunday	12:00 p.m. - 6:00 p.m.

Duplicating and Copying Machines:

There are three types of printing processes available at the Student Union for all campus departments, organizations, and individuals: mimeograph, azograph (or "ditto"), and offset. One duplicating machine is available in the Union which reproduces facsimiles on single white sheets with black lettering. The Photocopy duplication is produced at a rate of 10¢ per sheet. This machine is operated by Union employees only. Another duplicating machine which copies single sheets or pages from books can be found in the McKeldin Library on the second floor. The rate for this service is 10¢ per copy.

Escort Service:

The Escort Service conducted by Alpha Phi Omega, a service fraternity, was formed to accompany women students who must walk across campus alone at night. This service which begins at 7 p.m. can be contacted by calling extension 3029.

Financial Aid and Employment:

Students who have demonstrated academic ability and have financial need may apply to the Office of Student Aid for help through scholarships and grants, loans, or part-time employment. All aid granted in September is good for the entire school year. Applications for aid must be filed by August 1st; requests for employment may be filed at any time. More specific information may be obtained in the Office of Student Aid, rm. 222, North Administration Building, on the College Park campus.

Identification Cards:

A new student receives during registration his ID card which will be needed as a general identification card, admission ticket to athletic and SGA events, and as a dining hall card.

The ID is also required for obtaining the yearbook, to vote in student elections, to check out athletic equipment at Cole Field House and the Armory, and to use the golf course, tennis courts, and other facilities.

Loss of an ID card should be reported immediately to the Office of the Executive Dean for Student Life in the North Administration Building. A \$3.00 fee is charged for replacement.

Commencing this semester, each student is being issued a Transaction Plate embossed with his/her name and identification number (Social Security Number). In addition, the latter is also punched into the Transaction Plate. This Plate is to be used when withdrawing books from the McKeldin Library. The Plate may also be used for consummating other transactions throughout the University as new systems are developed and implemented. A \$3.00 fee is also charged for replacement of this card.

Infirmary:

The infirmary is located on Campus Drive across from the Student Union. It is open to all students who pay registration fees. A registered nurse is on duty 24 hours a day, and a doctor is on call for emergencies. Physicians will be present at the infirmary during the following hours:

Monday — Friday	8:00 a.m. - 11:45 a.m.
	1:00 p.m. - 4:45 p.m.
Saturday	9:00 a.m. - 11:00 a.m.
Sunday	10:00 a.m. - 11:00 a.m.
Vacations	8:30 a.m. - 4:30 p.m.

In emergencies, when the infirmary is not open, call the campus police, 454-3555.

Information Services:

Department of Student Activities. Information concerning University clubs and activities can be secured in the Department of Student Activities, rm. 140, Student Union Building.

Information Desk in North Administration Building. Questions regarding academic or non-academic affairs will be answered at the information desk on the second floor of the North Administration Building.

General and Academic Regulations. Information on areas such as women's curfews, parking regulations, residence hall regulations, social regulations and disciplinary actions will be found in this publication.

Student Union Desk. The Main Desk of the Student Union located outside room 132 is the center of information for Student Union programs, facilities, services and for campus-wide events.

University of Maryland Catalog. Academic information concerning class attendance, warning slips, exams, the marking system and college requirements will be found in Volume I of the *University of Maryland Catalog, Graduate and Undergraduate Programs.*

Lost and Found

All lost articles should be turned over to the Campus Police Office in the General Services Building where they can be claimed. A receipt should be requested upon surrender of such items. If the article is unclaimed after a short waiting period, the finder can then take possession. After 90 days, all unclaimed articles are turned over to charity. The loss of textbooks should be reported to both bookstores at once. It is recommended that students put their names in their textbooks. Administrative offices on campus receiving lost articles forward them to Campus Police for reclaiming.

Office of Intermediate Registration

The Office of Intermediate Registration was instituted to serve students who have made a basic error in their choice of college, who are not progressing satisfactorily in their chosen programs, and who have decided on a change of goal.

By registering in the OIR program, a student not meeting the academic requirement for changing colleges is able to begin immediate study in his new program pending approval by the Director of OIR. The program works through the use of intensive and broadly gauged advisement facilities. It provides advisors who have an interest in the individual and a reliable knowledge of the inner workings of every college within the University.

Post Offices

The University operates a post office in the General Services Building for the reception and dispatch of U. S. mail, including parcel post items and inter-office communications. This office is not a part of the U. S. postal system; consequently, no facilities are available for the reception or transmission of postal orders. All registered mail must be picked up at the U. S. Post Office in College Park on Baltimore Boulevard.

Job Placement Service:

A student may register with the Placement Service if he is seeking a job, planning military service, or preparing for further study. The Service is especially helpful to underclassmen who have any questions regarding career decisions, summer employment, etc. The Placement Service, located in Shoemaker Building receives thousands of job listings each year from employers seeking candidates from all academic fields. Currently most materials in the Placement Library are "give aways" with the exception of certain clearly labeled reference materials which must be used in the building.

Libraries:

The McKeldin Library is a depository of information on many subjects. It contains four main floors, three mezzanines, several reading rooms, and many special studies rooms. Books and records may be checked out upon presentation of the ID card. Books must be returned to the loan desk. The fine on overdue books is \$.50 a day. During the regular school year, the McKeldin Library hours are:

Monday — Friday	8:00 a.m. - 12:00 midnight
Saturday	8:00 a.m. - 12:00 midnight
Sunday	2:00 p.m. - 12:00 midnight

Maryland & Reference Book Rooms close at 10:00 p.m.

The Math Library is maintained by the Math department in that building. The hours for this library are:

Monday — Thursday	8:00 a.m. - 2:00 a.m.
Friday — Saturday	8:00 a.m. - 12:00 midnight
Sunday	1:00 p.m. - 12:00 midnight

The Chemistry Library, found in this building, is open

Monday — Friday	8:00 a.m. - 10:00 p.m.
Saturday	8:00 a.m. - 5:00 p.m.
Sunday	2:00 p.m. - 10:00 p.m.



Recreational Facilities

The University offers many recreational facilities, supplemented by local community activities. Bowling alleys may be found in the Student Union as well as in areas near the campus.

There are no movie theatres in the College Park area, but movies are shown in the Student Union on Friday, Saturday, and Sunday evenings. Classical films are shown Tuesday afternoons. Other theatres may be found in the Metropolitan Washington area.

Swimming is available for women only in Preinkert Fieldhouse, and for men and women at Cole Field House. The University also offers archery targets and tennis courts at no charge.

The Fine Arts Room in the McKeldin Library offers listening booths and record rooms with records and record players. The Student Union has televisions, a billiard room, and a hi-fi and stereo room. Campus-wide dances are also held at least twice a month in the Student Union Ballroom.

Sign and Poster Service

Students may have signs and posters made for a small charge at the Student Union Desk. The Student Union offers embosograf, hand-letter press, and plastic engraving. Any sign or poster placed in the Student Union must be dated at the Main Desk.

Room Reservations

There are various rooms available in the Student Union which may be reserved for meetings and other activities. The Main Office rm. 132, handles all reservations for rooms in the Student Union. Reservations for other facilities on campus may be secured at the Physical Plant Office in the basement of the North Administration Building.



Study Facilities

Lounges. The Union has two large lounges. One is located on the first floor inside the front lobby across the hallway from the front entrance. The second, equipped with desks and lounge chairs, is located on the second floor adjacent to the Ballroom.

Commuters' Den. An area sponsored by the University Commuters Association, the Den of the Commuters is a place where day students meet to study and chat.

Telephone Centers

Telephones are available at three locations in the Union building: (1) Sub-basement level, the bowling lanes area. (2) Basement level, in the corridors near the Commuters' Den. (3) Main level, in the front lobby near the Smoke Shop. This last area is equipped with pay phones as well as campus phones for dormitory conversations.

Ticket Booth

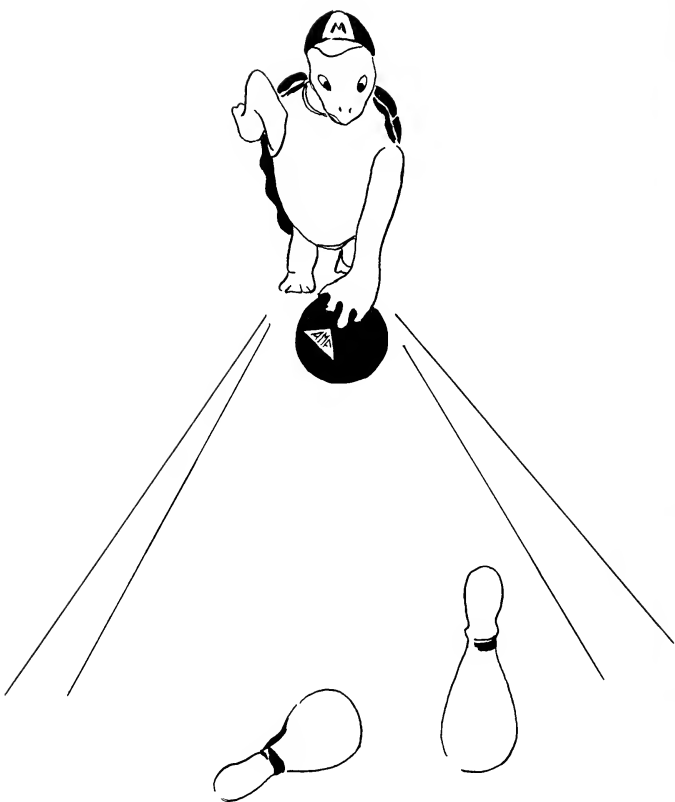
The ticket booth is located in the main lobby. It is here that students obtain tickets and information for many Student Union and campus events.

Transportation

Greyhound's Baltimore-Washington buses pass through College Park. Greyhound and Trailways both have terminals on New York Avenue in Washington, D. C. All major East Coast airlines and many small ones serve the Washington National and Dulles International Airports. Trains come into Union Station in Washington and there is a B. & O. terminal in Silver Spring. Local cab service is available and listed in the phone book.

Tutoring Services

Tutoring services can be obtained through Alpha Lambda Delta or Phi Eta Sigma, the freshmen women's and men's scholastic honoraries. To apply for aid one should fill out one of the slips available at the dorm desks or the SGA office and turn it in to the SGA office. Help can also be obtained through Cambridge A, the men's honor dorm. For information concerning Cambridge A, call any floor of the dorm.



S
T
U
D
E
N
T
-
U
N
-
I
O
N

What is a Union ?

A Union could best be characterized as the living room of the campus. It is the focal point of cultural and social activity for the University community. Its purpose is to provide the University "family" with the programs and facilities to satisfy many out-of-classroom tastes and needs. The activities and services offered by the Student Union are for the enjoyment of all the members of the University and are utilized according to individual interests in such areas as meetings, lectures, dances and receptions, music, movies, or simply relaxing over a cup of coffee or in a casual conversation with friends. The Union is an important contributor in the development of the student with respect to building sound citizenship and acting as a workshop in human relations.

Building Hours:

Monday — Thursday 7:00 a.m. - 11:00 p.m.

Friday — Saturday 7:00 a.m. - 12:00 midnight

Sunday 2:00 p.m. - 10:00 p.m.

Special holiday hours are announced during the year.

Food Services:

Food services in the Union include the operation of a cafeteria and a snack bar, as well as a catering service for private functions in the building and several vending machines. There are three dining rooms, each offering its own individual atmosphere.

Cafeteria and Snack Bar:

Hours of Operation	Cafeteria	Snack Bar
Monday - Friday	11 a.m. - 10 p.m.	7 a.m. - 2 p.m.
Saturday	closed	7 a.m. - 10 p.m.
Sunday	4:30 p.m. - 7 p.m. (buffet only)	closed

Catering: The Student Union facilities permit banquet service for groups as large as 350 people. All ordering can be done through the catering office of the Union.

Amusements:

Billiards: There are twelve billiard tables available during the general Union hours. The tables are located next to the bowling lanes in the sub-basement and can be rented for \$1.00 per table per hour.

Bowling: There are sixteen tenpin bowling lanes in the sub-basement of the Union. The entire area is air conditioned, and has all the conveniences of modern commercial establishments. The Games Area Manager is available for instructions to improve bowling techniques. Before 6 p.m. the lanes may be rented for 40¢ per game; after 6 p.m. the cost is 45¢ per game. Shoes and locker may be rented and bowling equipment is sold. The lanes are also open during the summer months.



Fine Arts Room: The Fine Arts Room is located on the second floor, rm. 235. It is open from 2:00 to 5:00 p.m. and 7:00 to 9:00 p.m. when art exhibits are displayed. The Student Union Board plans a varied schedule of exhibits of student and professional art work.

Game Room: All kinds of table games are available in the Game Room, located in the basement near the Student Supply Store. Bridge tournaments are often held here.

Movies: Every weekend, motion pictures are shown in the Auditorium or the Student Union Ballroom. The price is 35¢ per person. Hours:

Friday - Saturday 7:00 p.m. and 9:00 p.m.
Sunday 7:30 p.m. only

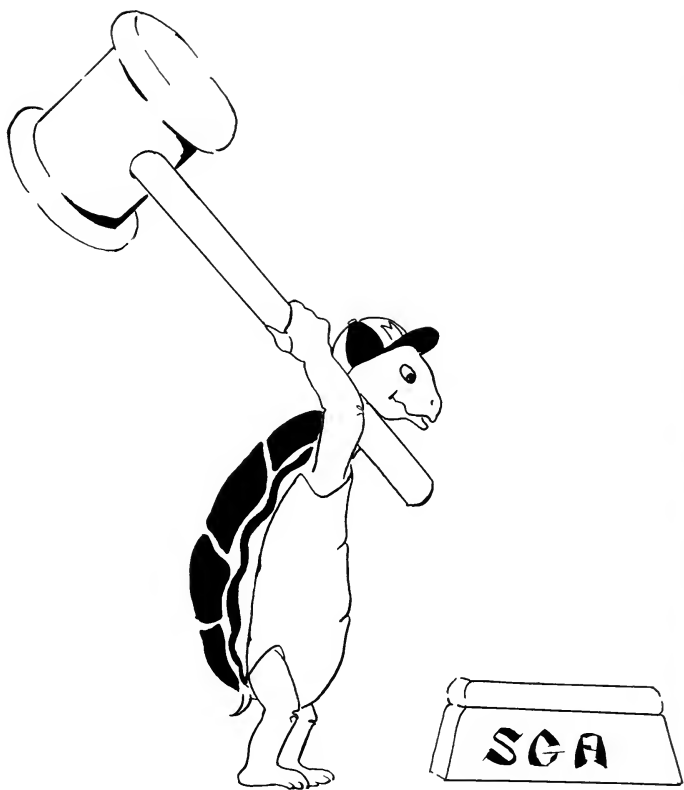
Music Rooms: Stereo music for listening is piped into one of the music rooms on the second floor. The other rooms contain four pianos which may be played by students for their own enjoyment. A student may obtain a key to a piano room by depositing his ID at the main desk, rm. 132.

Student Union Playpen: The SU Playpen is Maryland's first coffee house. Held every Sunday evening in rm. 17 from 6:45 to 10:00 p.m., it provides anyone with the opportunity to display his or her talent without first auditioning. Admission is free and coffee is served.

Television Room: The television is located on the main floor, rm. 115, on the east side of the building. This is the main viewing room.

Student Union Board

The activities and events which take place in the Union are under the leadership of the Student Union Board and its various committees. Applications for committee membership are accepted at the beginning of each semester and are available in rm. 105 of the Union.



S
T
U
D
E
N
T
G
O
V
E
R
N
M
E
N
T

Student Government Association

The SGA is the governing body for all University students. It protects their rights and interests and coordinates student activities and services.

The individual student plays a most important role in the proper functioning of the SGA: he pays a student activity fee during registration which provides the working capital for SGA; he elects the people who represent him as officers; and through these officers he decides on the allocation of money as well as on many other policies.

Like the national government, the SGA is composed of executive, legislative, and judicial branches.

Executive Branch

Serving as a liaison with the student body, the faculty and the administration of the University, the executive branch of the Cabinet, is responsible for determining student policies. It acts on motions passed by the legislature and appoints and supervises SGA committees.

1967-68 Members of the Cabinet

President	Tom Hendrickson
Vice-President	Bill Landes
Secretary	Bunny McKenna
Treasurer	Jerry Fleischer
Senior Class President	Tom Aaron
Junior Class President	Ricky Lamb
Sophomore Class President	Steve McGrath
Freshman Class President	to be elected
AWS Representative	Elaine Ewing
Men's League Representative	Dick Perry
Commuter's Representative	Tom Dove
IFC President	Bob Fine
Panhel President	Jeanne Pelecanos
RHC President	Chuck Woods
RHC Executive Vice-President	Trish Courchen



SGA Secretary
VOTE HALL
TODAY
the

IDENT

EBA
ERE

CONNIE CHUNG
FOR SOPH
FRESHMAN

BLO
WITH
BLUMENTHAL

KEY

PRESIDENT
Class

CONNIE CHUNG

Legislative Branch

The primary function of the Legislature is to act on proposed legislation and submit bills to the cabinet for further action. Most bills are concerned with the allocation of money and the planning of the annual budget for student organizations submit their budgets to the Legislature. Meetings are open to all members of the student body and suggestions are welcomed.

Legislature Members

SENIOR

Trish Deming
Jean Messer
Sara Podgur
Linda Van Grack

JUNIOR

Beverly Bondy
Cathy Callahan
George Dunsten
Sue Myerberg

SOPHOMORE

Dennis Buntz
Sue Gordon
Judy Knox
Lynn Reichel

GREEK

Ed Fry
Christie Carrick
Bruce Hinkel
Sherry Montgomery
Carole Hock

COMMUTER

Marilyn Acken
Doug Clark
Mike Gold

HILL AREA

Russ Karpook
Andy Medeiros
Gail Maxwell
Alice Speizman

ELLCOTT COMPLEX

Miles English

DENTON COMPLEX

Sandy Levin

MOBILE UNITS

Jack Dryden

CAMBRIDGE COMPLEX

Peter Chapin
Paula Katz
Janice Rada

Judicial Branch

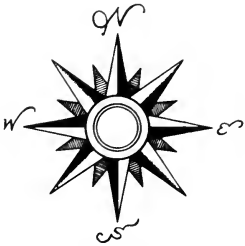
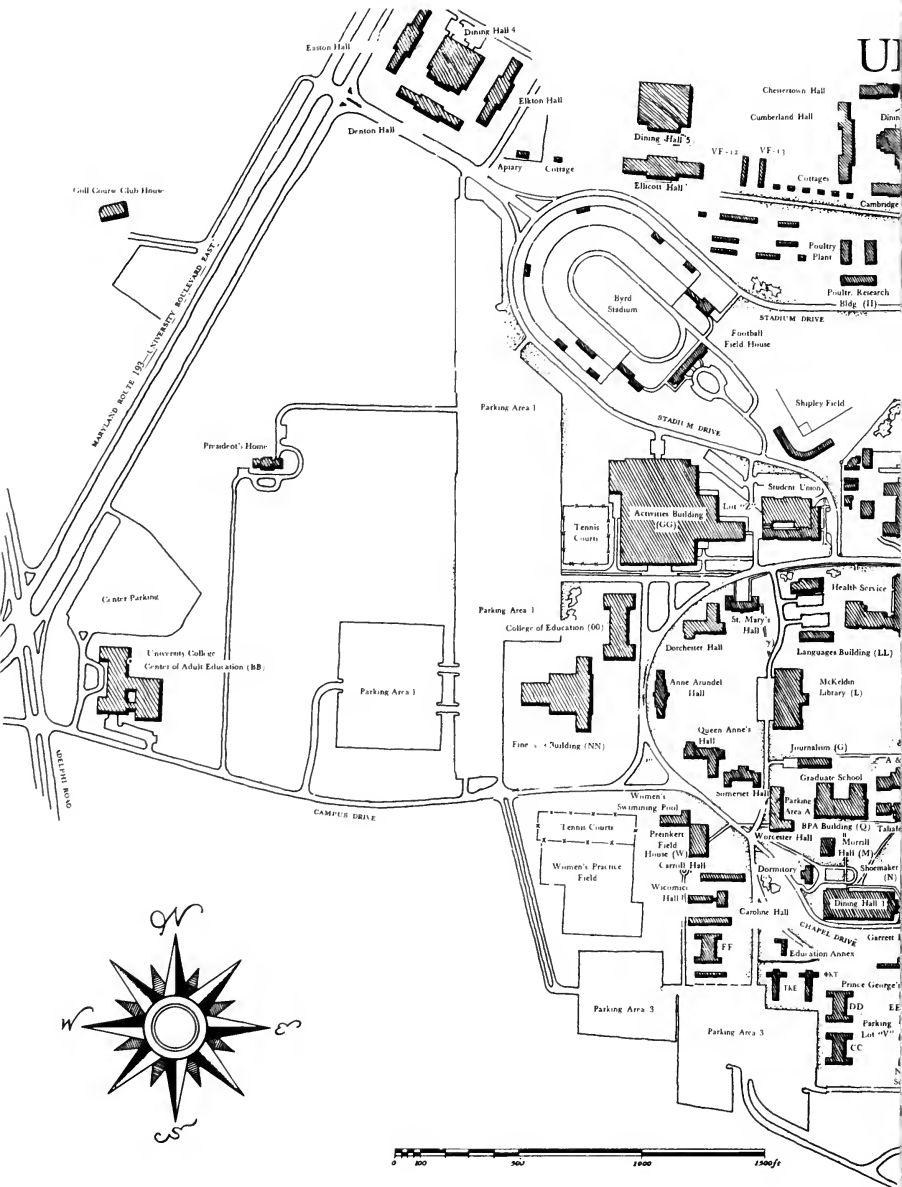
Judicial power which is granted by the Faculty Senate Committee on Student Discipline is vested in six campus judicial boards. The Judiciary Office refers cases to the various student Judiciary boards according to the jurisdictional area of the student Judiciary boards and the seriousness and nature of the offense. The student Judiciary boards in turn make recommendations to the Judiciary Office for disciplinary action, if any, to be taken. The student judiciaries operate upon the basis of fundamental fairness during their hearing procedures; they strive to consider each case individually rather than matching penalties for specific offenses, and are more rehabilitative than punitive in their philosophy. Each student has an opportunity to appeal the decision reached to the next highest student Judicial board. Appeals of Central Student Court cases are heard by the Faculty Senate Committee on Student Discipline.

CENTRAL STUDENT COURT is an appellate board holding jurisdictional power over other student judicial groups. The nine justices hear appeals of decisions of other boards. They also may hear cases involving violations of University regulations by student organizations or groups of students. Members must have at least sophomore standing and a minimum of a 2.5 cumulative grade-point-average.

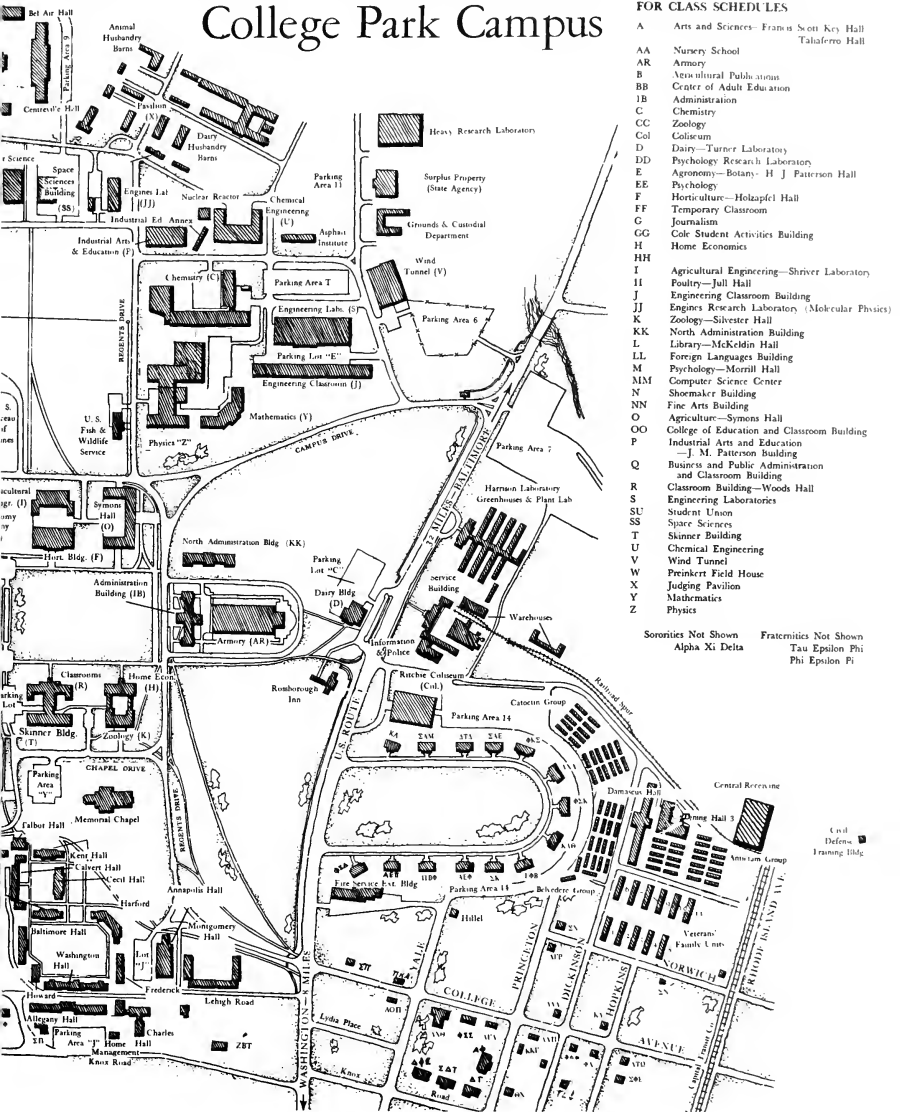
STUDENT TRAFFIC COURT is composed of nine members who render decisions on cases concerning violation of campus traffic rules and regulations or other offenses involving the use of an automobile.

THE ASSOCIATED WOMEN STUDENTS JUDICIAL BOARD is comprised of eight women, representing residence hall, sorority, and commuter women. Its jurisdiction includes major violations of University regulations by women students and appellate cases from residence hall judicial boards.

MEN'S LEAGUE JUDICIAL BOARD is responsible for hearing serious violations of University regulations and cases involving repeated incidents of socially unacceptable conduct on the part of



UNIVERSITY OF MARYLAND College Park Campus



BUILDING CODE LETTERS FOR CLASS SCHEDULES

- A Arts and Sciences—Francis Scott Key Hall
Talaferro Hall
- AA Nursery School
- AR Armory
- B Agricultural Publications
- BB Center of Adult Education
- 1B Administration
- C Chemistry
- CC Zoology
- Col Coliseum
- D Dairy—Turner Laboratory
- DD Psychology Research Laboratory
- E Agronomy—Botany—H J Patterson Hall
- EE Psychology
- F Horticulture—Holzapfel Hall
- FF Temporary Classroom
- G Journalism
- GG Cole Student Activities Building
- H Home Economics
- HH
- II Agricultural Engineering—Shriver Laboratory
- J Poultry—Jull Hall
- JJ Engineering Classroom Building
- JJ Engineers Research Laboratory (Molecular Physics)
- K Zoology—Silvester Hall
- KK North Administration Building
- LL Library—McKeldin Hall
- LL Foreign Languages Building
- M Psychology—Morrill Hall
- NIM Computer Science Center
- N Shoemaker Building
- NN Fine Arts Building
- O Agriculture—Symons Hall
- OO College of Education and Classroom Building
- P Industrial Arts and Education
—J. M. Patterson Building
- Q Business and Public Administration
and Classroom Building
- R Classroom Building—Woods Hall
- S Engineering Laboratories
- SU Student Union
- SS Spare Sciences
- T Skinner Building
- U Chemical Engineering
- V Wind Tunnel
- W Preckert Field House
- X Judging Pavilion
- Y Mathematics
- Z Physics

Sororities Not Shown Fraternities Not Shown
Alpha Xi Delta Tau Epsilon Phi
Phi Epsilon Pi

male students. It also serves as a board of appeals for men's residence hall judicial boards. Membership is gained through application. The nine members must have attained sophomore standing and have achieved a cumulative grade-point-average of 2.5.

PANHELLENIC JUDICIAL BOARD is made up of the executive officers of the Panhellenic Council. This board has jurisdiction over sororities in cases involving infraction of Panhellenic rules.

THE INTER-FRATERNITY COUNCIL JUDICIAL BOARD deals with infraction of Inter-fraternity Council rules. They may also be delegated responsibility by Central Student Court for investigating and ruling on violations of University regulations by a fraternity. Sitting on the board are five fraternity men.

Student Government Committees

The Student Government Association operates through committees which are open to all students interested. Students may secure applications from the SGA office in rm. 114 of the Student Union. Notices of specific openings are announced in the *Diamond-back*.

CULTURAL COMMITTEE: Throughout the year numerous cultural events are planned and coordinated by the Cultural Committee. The committee includes in its calendar well-known entertainers, symphony concerts, operas, University Theater, Gymkana and Flying Follies.

ELECTIONS BOARD: Members of the Elections Board supervise all campus elections. The Board controls balloting at the polls, handles the complaints registered against illegal practices of candidates, and supervises the IBM counting of ballots.

FINANCE COMMITTEE: Members of this committee are selected by the SGA Treasurer. Its purpose is to investigate campus organizations requesting funds, to recommend allocations to the SGA, and ultimately to investigate organizational spending.

FRESHMAN ORIENTATION BOARD: FOB guides freshmen through their first week on campus, helping them to become familiar with the campus and to feel a part of it. FOB coordinates and schedules all activities during New Student Orientation Week, including lectures, tours, assemblies, dances, a pep assembly, and big name entertainment.

PEOPLE-TO-PEOPLE: Members play an important role in helping to orient foreign students to university life in the United States. The committee sponsors the Big Sister-Brother program and social and cultural events, all of which are designed to bring foreign students into meaningful relationships with Maryland students. Participation in this group offers rewarding and memorable experiences.



Panhellenic Council

The Panhellenic Council which operates as the governing body for the entire sorority system organizes various inter-sorority projects. Panhell, in conjunction with the faculty and administration, make rules concerning sorority membership, selection, pledging and initiation. Two delegates from each of the eighteen sorority houses on campus comprise the Panhell organization.

Sorority rush is divided into several rounds of parties. Each rushee is required to visit each sorority during the initial open houses. After attending the Set of Eight and Set of Four parties, the rushee limits her selection to two houses in the preference Teas. Rushing culminates in a period of pledging during which the student strives for the 2.2 average required for initiation.

Inter-Fraternity Council

Each fraternity house has one delegate to IFC, the coordinating body of the fraternity system. The function of the Council is to coordinate the activities of the 24 houses and to promote the welfare of fraternities as a group. Stag and dated parties comprise much of the fraternity system's formal rush. Rush ends in pledging, a period during which the new member learns about the fraternity and works to earn the 2.0 academic average required for initiation. While only a few sororities hold informal rush in the spring, the fraternity system holds both an informal and a formal rush at this time.

Residence Hall Council

Residence Hall Council, the governing system coordinating the many campus residence halls, serves as the link between dorm residents and the SGA.

Each dormitory sends a representative to its particular Area Council. The president and vice-president of the Area Councils sit on the RHC Executive Council. In turn, the president and vice-president of RCH hold positions on the SGA cabinet.

Some of the activities of RHC include a workshop for new officers, *Variety Night* and a *Presents* featuring nationally known entertainment. Freshmen can join its various committees by getting in contact with the dorm president or representative to the Area Council.



Simon and Garfunkel appeared as part of the RHC *Presents* last spring.

Men's League

Representing the male students at the University, the Men's League handles regulations pertaining to all men and promotes the educational, cultural, social, and athletic welfare of all undergraduate men. Like AWS, its female counterpart, Men's League coordinates various activities such as the intramural program and the *Senior Awards Banquet*.

Associated Women Students

Better known as AWS, this organization was established to unify all women students. It functions throughout the year to promote self-government in women's residence halls and sororities. It fosters academic excellence and community service programs as well as other special activities like the Christmas Choral Program in the Chapel, the Big Sister and Commuter Affiliation Programs, the Women's Seminar Series, and the Bridal Fair.

The Women's Seminar Series is a week long symposium of lectures, films, discussions and other programs devoted to contemporary controversial topics.

The organization of AWS is based upon election and appointment. The officers and class representatives are elected in the spring by a vote of all women students. Later, in the fall, the officers appoint the chairman of the individual committees. These students make up the AWS Executive Council—the actual representative government of AWS.

The first activity sponsored by AWS in the fall is the *Big Sister Program*. Each freshman woman and transfer student receives her own Big Sister, a specially chosen upper-classman who introduces and explains the problems, privileges, and opportunities, that are associated with the University.

In the spring AWS sponsors its newest event, *The Women's Seminar Series*.



In addition, for the prospective bride, AWS in conjunction with *Bride and Home Magazine* presents the *Bridal Fair*. Displays of household and personal items such as trousseau fashions, china, crystal, silver, and kitchenware are presented. The fashion show is the highlight of the evening featuring clothes for the mother of the bride, attendants, and that all-important gown and trousseau for the bride herself.

University Commuters' Association

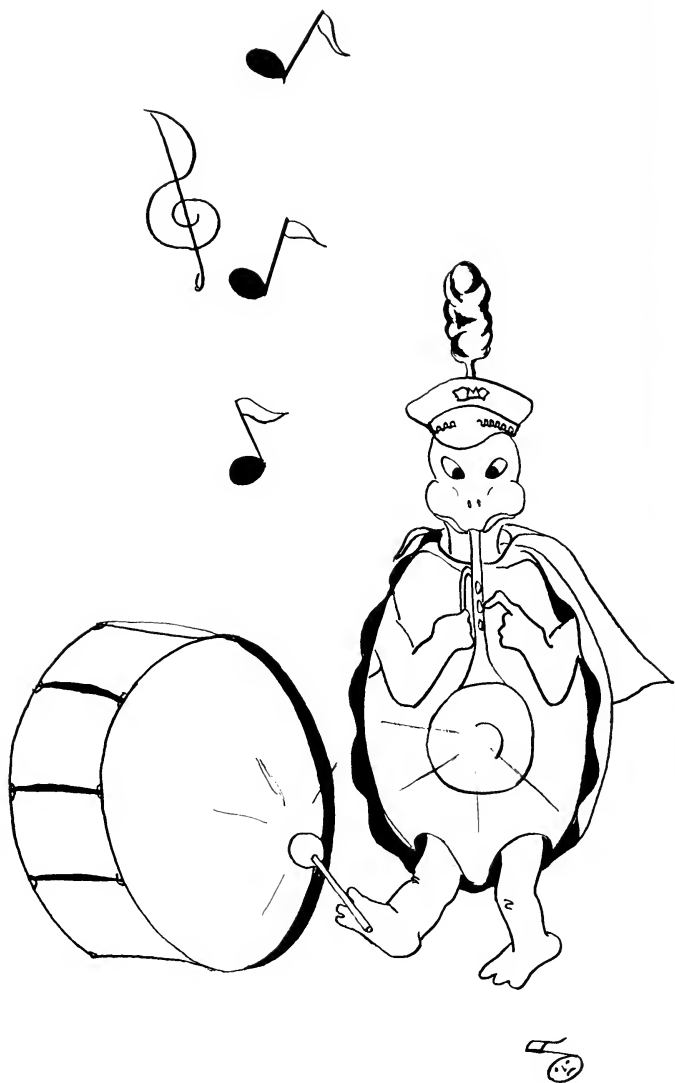
The University Commuters' Association offers the commuter many opportunities to become involved in campus life. The UCA serves as a link between the commuter and residents of dorms and Greek houses as well as enabling him to become active in student government, campus politics, and student organizations.

The Commuters' Den and the UCA Office are located in the basement of the Student Union. The Den provides a convenient place for commuters to meet and relax between classes.

The UCA sponsors many social and cultural events throughout the year. The annual Playboy Ball is the most important dance of the fall semester. Other activities include casual dances, Friday afternoon coke dates, and the annual Homecoming float-building party. The Spring Banquet for installation of officers is a highlight of the spring semester.

Carpools for commuters are arranged at the beginning of each semester in the Den. The UCA also sponsors a Weekend Trip Service for students wishing to share expenses or driving with others.

The UCA is involved in all facets of University life. Not only does the UCA offer social events, intramural teams, tutoring services, and exam files, it also offers the many friendships formed with other commuters in the Den.



A
C
T
I
V
I
T
I
E
S

. . . A Word To The Wise

Now you're in. Your classes are scheduled and your books are bought. But to feel a true part of the University community, there is one subject yet to be considered—extracurricular activities.

To the members of the Class of 1971 who will be quick to take advantage of the diversified program of activities, "on the hill" assimilation into campus life will come easy.

In the fall semester, all organizations send out a campus-wide search for enthusiastic newcomers. Publications, professional groups, special interest clubs, and student government committees extend a hearty welcome to all freshmen seeking activities.

Activities must be approached from the beginning of the college career and should be geared to the student's own particular interests. By becoming active in one or two activities in the freshman year, a student lays the foundation for key positions as an upperclassman.

You're here, of course, "to concentrate on the books" but delaying your participation in activities will only hinder any chances for advancement later on in your college career. Statistics have proved "that the students who find college the most difficult are not those with too many activities, but those with too much inactivity."

. . . If You Like Politics

Political Parties on Campus

There are two University political parties: *Old Line* and *Free State*. Each party holds a convention to nominate and support candidates for SGA, AWS, Men's League, and class offices. Dormitories, Greek houses and commuters have representation in each party.

Any individual may become an active non-voting member of either party. Meetings which are announced in the *Diamondback* are open to all those who are interested. The various committees within the party may be joined merely by signing up.

Also on campus are chapters of the national political parties: the Young Republicans and Young Democrats.

Young Republicans

The Young Republicans is comprised of Republicans who may or may not be of voting age. The purpose of this group is to support state and national Republican candidates. Last year the members helped Governor Agnew's campaign in the College Park area. Formal membership may be obtained by paying a \$2.00 fee. Meetings are open and include such guest speakers as Gov. Agnew and other political figures.

Young Democrats

The Young Democrats is the student organization that supports Democratic candidates in various elections. Like the Young Republicans, this group is the campus chapter of the national Young Democrats. Its aim is to foster greater interest and participation in Democratic party policies and candidates. Here too, open meetings are held and membership is available to any interested student.

. . . For the Creative

Diamondback

The *Diamondback*, holder of numerous "All American Ratings," is the campus daily newspaper. Published Monday through Friday, a separate daily staff directs the copyreading, editing, and typing of stories two days in advance of publication. No experience is necessary for freshmen wishing to work on the paper. The business, editorial, and sports staffs offer freshmen fine opportunities in all phases of newspaper work. *Diamondback* offices are located on the main floor of the Journalism building.

Terrapin

The *Terrapin* is the school yearbook which pictorially summarizes campus life. Incoming freshmen interested in yearbook work may apply in the *Terrapin* office in the Journalism building or watch the daily paper for application deadlines.

M-Book

The *M-Book* serves as the freshman's handbook by organizing essential information about the University. *M-Book* applications are accepted in the fall semester with actual work beginning in the spring semester.

Argus

The *Argus* serves as the University's feature-humor magazine and is published twice a semester. Aside from three key editorial positions filled in the spring, all other *Argus* staff positions are open to anyone in the fall. Copy readers, cartoonists, writers and photographers are annually sought after in the first semester.

Calvert Review

The *Calvert Review*, the literary publication, appears in the fall and spring semesters featuring prose, poetry, literary criticism, and occasionally student art work. Students may submit original work to the English office, Francis Scott Key Hall, rm 152, where further information about the magazine may be obtained.

Course Guide

The *Course Guide* is published in the spring semester to aid students in evaluating courses. Utilizing the Computer Center, the *Course Guide* appears as a synthesis of students' comments on many University courses. Freshmen may join the staff as interviewers, typists, or simply as information gatherers.

The Greek

The Greek, whose name gives away its composition and function, is issued several times each year. The newspaper relates the latest happenings in the Greek world: Social events sponsored by Greeks, activities of IFC and Panhell, contributions of outstanding Greeks, and pinnings.

WMUC

WMUC, the student operated radio station, is dedicated to serving the University community 24 hours a day. Located at 650 kc. on the AM radio dial, the station features campus, local, and national news. Freshmen interested in working on WMUC can visit the station's studios in temporary class room building FF. Auditions are held in the fall and no particular qualifications are necessary.

. . . For the Musically Inclined

Maryland Marching Band

This group adds color and spirit to all of the University's home football games by exhibiting their intricate marching routines during half-time. Each year the Marching Band attends and performs at two away games. Tryouts for freshmen through seniors are held early in the year.

Women's Glee Club and Men's Glee Club

Although there are two separate glee clubs, they often perform together. Their exceptional voices are heard at the President's convocation and at graduation. The Glee Clubs also entertain at local high schools. This summer they performed at Expo '67 in Canada.

Chapel Choir

This mixed choir gives numerous religious programs throughout the year, on campus and in the community. In past years they have performed for Governors Tawes and Agnew. Chapel Choir members receive one music credit and meet during regular class periods. Tryouts for freshmen and upperclassmen alike are held at the beginning of the year.

Orchestra

Students from freshmen to senior status are invited to try out for the University's orchestral group. The members give numerous concerts on the campus throughout the year and may volunteer to perform in operas. With a repertoire ranging from light to classical music, last year the Orchestra presented a Pops Concert. Participants meet twice a week for practice and they receive one music credit.

Madrigal Singers

All interested individuals are invited to try out for this small group of outstanding singers. The Madrigal Singers perform music of the Renaissance period, displaying their talent both on and off campus. In recent years, the group has toured the Mediterranean countries and has appeared in a White House Christmas program before the President and Chancellor Erhart.



. . . If You Like to Perform

Flying Follies

Flying Follies is a self-supported group of musical and variety entertainers who present an annual campus show every spring and perform regularly for army bases and hospitals in the area. Each spring and fall, auditions are held for any student interested in the performing or technical side of Follies. Full recognition is given to individuals in all programs at home and on the road. Mr. Alfred Danegger advises the troupe.

Drama Wing

Presenting "plays for better living" is a small group of students who perform for PTA meetings in the community. Membership in this traveling dramatic society is acquired after the group's director, Mr. Starcher, approves the individual reading of a prospective candidate.

Modern Dance Club

The Modern Dance Club consists of beginning, intermediate, and advance dance groups each working independently. Freshmen may join the beginners' group which meets every Thursday evening to practice basic dance skills and exercises. Beginners become intermediates and eventually reach advanced status upon invitation from the advanced group. It is this advance group which stages "An Evening in Modern Dance" and the numerous campus dance demonstrations throughout the year.

Aqualiners

Aqualiners is a co-ed synchronized swimming group which seeks new members in the second week of October. The fall semester is devoted to teaching new members basic swimming skills while the spring semester emphasizes specific routines for the annual April show.

Gymkana

Gymkana is a non-competitive, exhibition group supported by the SGA. Freshmen with willingness to learn and stamina may join the troupe by completing a six-month pledgeship and regularly attending the daily work-out run sessions from 4 to 6 p.m., Monday through Friday except on Wednesday when practice is from 7 to 9 p.m. Interested students may contact the director, Mr. George Kramer, or the president, Russ Rhinehart.

University Theatre

Hard-working students whose talents lie in singing, dancing, acting, choreography, directing and staging comprise the members of University Theatre. This large organization conducts at least six shows a year. The most notable show fall semester was "Annie Get Your Gun." Spring semester UT featured the opera, "La Boheme," and the play, "The Visit." The season ended with "The Time of Your Life." All UT productions are performed in the new Tawes Auditorium in the Fine Arts Building.

Experimental Theatre

Upperclassmen and graduate students comprise the membership of Experimental Theatre which produces full length plays for seminar course credit or for additional experience.

Laboratory Theatre

Laboratory Theatre is a joint workshop group conducted by the acting and directing classes. Tryouts for productions are open to all students.

. . . If You'd Like to Serve

Campus Chest

The Campus Chest is an organization comprised of representatives of many University groups. These groups collect money through numerous activities and contribute it to the Campus Chest who in turn disperses these funds to various charitable causes.

Gamma Sigma Sigma

A national service sorority of women assembled in the spirit of service to humanity, Gamma Sigma Sigmas' usher at cultural committee presentations, sell cokes at political conventions, and build the Queen's Float with Alpha Phi Omega for Homecoming. Community service projects include visits to Andrew's Air Force Base Hospital and toy and doll workshops for orphanages. Rush is held the third week of the spring semester.

Alpha Phi Omega

APO is a service organization, based on the laws and ideals of the Boy Scout tradition. Its activities include social affairs, community work and campus service projects. On campus, members work as ushers, operate coke sales, and sponsor the APO Book Store in the Student Union. Rush is held the second week of each semester.

Community Services Coordinating Center

The Community Services Coordinating Center is an organization which gathers information on community service projects and coordinates the activities of those students involved in tutorial projects and work in mental institutions and hospitals. Its headquarters are located in Annapolis Hall where interested students can sign up for a variety of community service projects as well as affiliate with organizations such as Volunteers for Mental Health and Upward Bound.

. . . To Be a Greek

During one's stay at the University of Maryland, it becomes important to identify with some group. This identification gives the student a feeling of belonging. Fraternity men and sorority women play an active part in sports, student government, publications, honoraries, clubs and all facets of college life. Besides campus activities, Greek organizations also serve the community with their philanthropic projects.

Among the annual events sponsored by the IFC are IFC Presents, Harmony Hall, IFC Ball, and Greek Week. Well known entertainment is provided by the IFC in the fall. In past years, Presents has featured such stars as Harry Belafonte and Sammy Davis, Jr. Harmony Hall, which is sponsored by Phi Kappa Tau fraternity, is a revival of barbershop quartet competition. During the course of the evening in which the event is held, new members are tapped for Diamond and Kalethos. Outstanding scholarship, athletic and service trophies are presented to deserving individuals and fraternities at an awards dinner which precedes the IFC Ball. Attending this formal are the fraternity men and their dates.

The IFC in conjunction with Panhel sponsors two Greek Weeks, one in the fall and one in the spring. Greek Week in the fall is of a more serious nature, opening with the rededication program in the chapel. It also includes Skit Night and the Pledge Formal. Spring Greek Week is of a lighter nature. In the past years it has included chariot races, phone booth stuffing contests, tug-of-wars, bike races and pie eating contests. Highlighting the week are Sorority Olympics sponsored by Lambda Chi Alpha and the IFC Sing, sponsored by Delta Delta Delta.

Greeks strive in all areas of University activities. If you think that you might like "to be a Greek," watch for publicity in the fall which will explain the mechanics of rush.

. . . For Those in Maryland ROTC

Air Force ROTC

The AFROTC objective is to place on active duty lieutenants who demonstrate dedication to their assignments, willing acceptance of responsibility, critical and creative thinking and the ability to speak and write effectively. All men have an opportunity to participate in the Air Force ROTC program and become members of the aerospace team. A two-year program is planned for the junior and senior years; freshmen may enter the four-year program. Both programs are preceded by a summer Field Training Course in which cadets get their first exposure to Air Force life and activities and work with cadets from all over the United States. Men entering the four-year program may compete for a full financial assistance grant. Qualified cadets from both programs may take the Flight Instruction Program and earn their private pilot license. All cadets are entitled to many of the benefits offered to regular Air Force personnel.

Arnold Air Society

“The Arnold Air Society is an honorary professional organization of AFROTC cadets which promotes the interests and ideals of the United States Air Force, and provides opportunities for these young men to better prepare themselves for future leadership positions in the USAF.” Every semester, second semester freshmen through seniors rush the society and are welcomed into a six week pledge program. These men, in addition to University and civic activities, sponsor the ROTC Military Ball and the Angel Flight-Arnold Air Force football game.

Vandenberg Guard

Each semester any qualified ROTC member may pledge this service and military fraternity. Pledges are initiated at a banquet

held at the end of the semester. In addition to participation in intercollegiate competitions in which the team displays its trick drilling with sabres, the men in the Guard take part in varied charitable, civic, and social functions.

Pershing Rifles

Members of this national military honorary fraternity and service organization serve as the University's honor guard. The two drill teams perform both precision and trick drilling using bayonets. PR represents the University and AFROTC at intercollegiate drill competitions. All qualified men, from first semester freshmen through seniors, may participate in the one-semester pledge program.

Angel Flight

The women in Angel Flight serve as the official hostesses for the University and for the Corps of Cadets. This national service organization works closely with the men of the Arnold Air Society, serving as secretaries for cadets and officers. Their community, university, social and charity projects cover a wide scope. All interested women from second semester freshmen through first semester juniors may sign up for Angel Flight each semester.



. . . For the Professional Future

Professional organizations are helpful both to those who have and those who have not decided on their career. Professional groups provide the opportunity to meet other students with similar vocational interests. They also provide the opportunity to gain an additional dimension of education. By showing the various facets involved in a career choice the members of the professional groups are helped to decide at an early stage of their career development, exactly which aspect of a particular profession they prefer.

For those who do not have a definite career in mind the meetings sponsored by professional groups offer the opportunity to learn about various professional areas of interest, as well as the best method of preparation for future career success. While the professional organizations differ in degrees of activity, national affiliation and academic requirements, their professional orientation and academic emphasis provide a firm basis for their usefulness in career planning.

Listed below are professional fraternities, sororities and clubs that are members of the Council of Professional Organizations. The Council was formed to strive for a unified body of professional groups, to act as a channel of communication between these groups and to improve the academic and professional climate of the University. Those students who wish further information on any of the following groups may contact the SGA Office (ext. 2801).

AGRICULTURAL STUDENT COUNCIL coordinates the activities of the various clubs and organizations of the College of Agriculture.

AMERICAN INSTITUTE OF AERONAUTICS AND ASTRO-NAUTICS stimulates interest in the aerospace field.

AMERICAN INSTITUTE OF CHEMICAL ENGINEERS is a professional society which brings guest speakers to the campus and conducts plant trips to local chemical industries.

AMERICAN MARKETING ASSOCIATION features a monthly speaker program presenting prominent businessmen in the metropolitan area.

- AMERICAN SOCIETY OF CIVIL ENGINEERS** encourages the enrichment of the civil engineering curriculum and the establishment of future professional contacts and associates in its field.
- AMERICAN SOCIETY OF MECHANICAL ENGINEERS** strives to acquaint its members with life as an engineer. It sponsors films, discussions and forums.
- AMERICAN SOCIETY OF TOOL AND MANUFACTURING ENGINEERS** is a professional society to help increase knowledge of tool and manufacturing techniques.
- ECONOMICS DISCUSSION CLUB** discusses topics of an economic nature and sponsors speakers who lecture on various aspects of economics.
- FOUR H CLUB** maintains interest in 4-H club work and activities on the Maryland campus.
- HOME ECONOMICS CLUB** cooperates with state and national home economics groups to provide social, business, and professional experience through club activities.
- NATIONAL SOCIETY OF INTERIOR DESIGNERS** welcomes students majoring in interior decorating upon recommendation of the faculty sponsor. The purpose of this organization is to gain insight into the professional aspects of interior design.
- LOUISA PARSONS NURSING CLUB** encourages young women in the nursing field to learn to grow professionally and culturally through the many planned activities.
- PRE-DENT SOCIETY** assists pre-dental students to become knowledgeable in the field of dentistry and to aid them when applying to dental school.
- PHARMACY CLUB** was founded to enlighten the pharmacy student on the many career opportunities in the field of pharmacy.
- RECREATION AND PARKS SOCIETY** advances the profession of recreation and aids the recreation major at the University.
- SOCIETY FOR THE ADVANCEMENT OF MANAGEMENT** is a professional organization which presents frequent lectures by outstanding speakers in the field of management and conducts tours to nearby industrial plants.

SOCIETY OF FIRE PROTECTION ENGINEERS promotes the role of science and engineering in fire protection. Student affiliate of American Chemical Society.

STUDENT NATIONAL EDUCATION ASSOCIATION is the pre-professional organization for students who plan to enter the field of teaching.

. . . Something For Everyone

AGRICULTURAL ECONOMICS CLUB promotes interest in the study of agricultural economics and supplements class studies on the subject.

AGRONOMY CLUB furthers the interest and activities of students in crop and soil science.

AMATEUR RADIO CLUB is composed of University students interested in building and operating amateur radios.

ANTHROPOLOGY SOCIETY provides its members with the opportunity to further their interests in the field of anthropology by presenting lectures and other educational projects.

ARCHERY CLUB provides students with an opportunity to safely practice archery and provides facilities for learning the fundamentals of archery and improving their skills.

BLOCK AND BRIDLE promotes closer relations between the students and the professional field of dairy-animal science.

BRIDGE CLUB furthers the participation of contract and duplicate bridge playing, and offers contract bridge instruction to any member of this organization.

CALVERT DEBATE SOCIETY represents the University in inter-collegiate debate competition.

CHINESE STUDENTS CLUB aims to explain Oriental culture to the American people.

COUNCIL FOR EXCEPTIONAL CHILDREN encourages purposeful education of teachers of exceptional children.

ESPERANTO SOCIETY promotes the study and use of the international language Esperanto and promotes understanding of the value and aims of Esperanto in the minds of the public.

FENCING CLUB promotes the educational, athletic, and social aspects of fencing and offers the students an opportunity to enjoy its benefits.

FUTURE FARMERS OF AMERICA is a club for prospective teachers of vocational agriculture which seeks to develop leadership, citizenship and a spirit of cooperation.

INSTITUTE FOR ELECTRICAL AND ELECTRONICS ENGINEERS plans field trips to private and government laboratories and invites electrical engineering speakers.

INTERNATIONAL CLUB sponsors social and cultural gatherings for foreign students and students from the USA. Customs of particular countries are presented to the entire club at these events.

IRANIAN STUDENTS' CLUB fosters a close relationship among the Iranian students and promotes knowledge of Iranian culture within the University community.



TERRAPIN TRAIL CLUB brings together people with an active interest in outdoor activities such as canoeing, hiking, spelunking, rock climbing, and camping.

- MODERN DANCE CLUB whose membership attempts to maintain a high level of technical ability in the dance emphasizes creativity as well as performance ability.
- PEACE CORPS SUPPORT GROUP helps the University community understand what the Peace Corps is all about, stimulates campus interest in the Peace Corps, and attracts prospective volunteers.
- PEP COMMITTEE provides an organized basis for encouraging school spirit by publicizing sports events and running the card section.
- PHILOSOPHY CLUB is designed to provide undergraduate majors and other undergraduates with the opportunity to hear and discuss papers on a wide variety of topics. Topics range from academic philosophy to those of general interest.
- PHYSICAL EDUCATION MAJORS CLUB serves to stimulate a wider and more professional interest in physical education, recreation, and health.
- PHYSICS CLUB was established to create an effective means of communication between undergraduate students in physics and the current work being done in the field.
- POLITICAL SCIENCE CLUB was formed as a medium through which to communicate political attitudes and ideas to the student body.
- SKI CLUB offers its members films, lectures and demonstrations on the techniques and equipment of skiing at weekly meetings.
- SOCIOLOGY CLUB conducts special discussions and serves the area mental health organizations.
- STUDENT AFFILIATES OF THE AMERICAN CHEMICAL SOCIETY is composed of students interested in chemistry and related fields.
- UKRANIAN CLUB plans presentations of folk dances, talks on European tours, and displays characteristic of Ukranian culture.
- UNDERWATER DIVING TERRAPINS provide activities, training, programs, fellowship, and information related to skin and scuba diving.
- VETERANS CLUB is a social and service group for veterans which stresses friendship and service.



A
T
H
L
E
T
I
C
S

Maryland Athletics

Football

Bob Ward is the new football coach at Maryland but Coach Ward is not new to Maryland football. Maryland's first All-American, he hopes to instill this same winning spirit in his players. One of his first orders of business was to move the football team under one roof which will hopefully mean higher grades and stronger unity. Al Pastrana who set passing records last season will be leading the Terp attack this year aided by an improved running game. The first home game of the year will be on October 7 against Syracuse at Byrd Stadium.



Cross Country and Track

In cross country, Coach Jim Kehoe (22nd season) had another undefeated season in dual meets (6-0) and won the ACC Championship for the third straight year with Milt Mathews showing outstanding running form. In indoor track, Maryland was undefeated in dual meet competition, earning an ACC Championship for the twelfth straight year. Jim Lee, spring star, was the IC4A Champion in the 60 yard dash. In outdoor track, Maryland was also undefeated in dual meets making them ACC Champions for the eleventh straight year and IC4A Champions. Coach Kehoe named Frank Costello as a "world class performer" after his record 7'1" high jump mark. He again cited Jim Lee as outstanding due to his performance in the 220 yard event in which he took third place in the NCAA.

Wrestling

William "Sully" Krouse, leader of the "Krousemen," has guided his wrestling team to a perfect record. In Maryland's fourteen years in the ACC the Grapplers have been champions every year. This year should be no exception as last year's star-studded team was dominated by many underclassmen. Outstanding last year and returning for more action are Keith Billotte (130), Gobel Kline (152), Garry Blood (167) and Howard Zachmann (HVW). This year Maryland will be trying to regain national ranking as it meets some of the nation's top teams.

Soccer

Last year, as in the past 22 years, Maryland was named Conference Champion in soccer. Especially interesting was the fact that the entire starting team was composed of sophomores. Coach Doyle Royal expects an even stronger team next year due to the return of Guy Fraiture who missed last year and three outstanding freshmen: Laurence L. Ruhs, Peter Milhado, and Ali Kadaster. The two big men to watch this year will be All-American Alvaro Bittencourt and Rufus Wallace as Maryland hopes to keep its stranglehold on the ACC Championship.

Lacrosse

Under the tutelage of offensive Coach John Howard and defensive Coach Rennie Smith, the Maryland Stickmen hope to rank among the top three teams in the nation if not to capture outright the National Championship. This year's team should have an exceptionally strong mid-field since twelve returning lettermen will fill these positions. The attack positions were hurt by the loss of All-Americans Jack Heim and Allen Lowe but still figure to be formidable with returning lettermen Steve La Vaute and Jerry Breslee. Starring defensively are Norman "Hutch" Vander Schuyt and Jack Dailey. Maryland expects stiff competition from always strong Army, Navy, and Johns Hopkins.



Swimming

“Mr. Swimming” is Coach Bill Campbell who last year coached the Swimming Terps to a fine 11-2 record and third place in the ACC Championships. This year’s team will be led by seniors Bruce Alston (Freestyle), Doug Springer (Breaststroke) and Wayne Pawlowski (Breaststroke). Maryland also has four outstanding juniors returning; Morris Spitzer (Freestyle), Mike Golub (Freestyle), Dave Heim (Distance Freestyle) and Jim Martin (Butterfly). Two outstanding freshmen, Jack Levenson and Joe Reid (co-captains), will be valuable additions to the team. The high point of last season came when Maryland beat Navy for the fifth straight year. This was Coach Campbell’s 100th victory and he celebrated it by doing a one and one-half front flip with a one-half twist off the high board, fully clothed!

Basketball

When H. “Bud” Millikan stepped down from his post as varsity basketball coach at the end of last season, it marked the end of a seventeen-year era. Frank Fellows, the man named to succeed Millikan, is expected to preserve some of the Millikan brand of basketball. A hot-shot guard under Millikan during his playing days, and, for the last seven years his right-hand man as assistant coach, Fellows will take over a varsity squad with a 11-14 record. While he will depend on returnees Pete Johnson, Bill Jones, and Rick Drescher, holdovers from Millikan’s last varsity squad, his “biggest” help should come from his sophomores. At 6’7”, sophomore Will Hetzel will be the tallest member of the squad. Hetzel led his freshman team in scoring and rebounding and could be the best at Maryland since the days of Gary Ward. Along with Hetzel, Tom Milroy and Homer Warren will move up from last year’s undefeated frosh team to fight for starting spots.

Baseball

Led by the hitting of all-ACC outfielder Jack Hetrick plus one of the toughest pitching staffs in the conference, Coach Jack Jackson's varsity baseball team will be strong contenders for the conference pennant this spring. Tom Bradley, Mark Harris, George Manz, Mike Herson and Phil Corddry compose a mound corps outstanding in speed, control and experience.

Tennis

The last time Maryland won the ACC Championship was in 1964, but Coach Doyle Royal thinks this year's team is capable of winning the title because of returning lettermen Rich Harrington, Frank Kready, John Sheaffer, and Dave Werchen. Coach Royal expects good performances as well from Fulton Liss and Ray Buckluw, both ineligible last year. The ACC Championships will be played here on the 4, 5, and 6th of May. Maryland will also co-host the Annual Cherry Blossom Tournament held here in March.

Golf

The golf team, under the excellent coaching of Mr. Frank Cronin has never had a losing season since its formation in 1946. Teams faced by the squad include Duke, North Carolina, North Carolina State, Virginia, Clemson, Dartmouth, Princeton, and Georgetown. Terp squads of previous years have received recognition as ACC Champions and have placed players on the All-American teams.

Intramurals

The intramurals program offers everyone an opportunity to participate in athletics and to develop sportsmanship, leadership, and team spirit.

Coach Jim Kehoe coordinates one of the largest intramural programs in the country. Last year, over 10,000 people participated in team sports such as basketball, bowling, football, softball, swimming, and volleyball. Individual sports including badminton, and wrestling are also available.

Intramurals are open to Greeks and independents in three respective leagues—the fraternity, open, and dorm league.

Women's Recreational Association

The Women's Recreational Association is composed of all undergraduate women who automatically become members when they matriculate. This student organization is governed by elected officers and representatives from the dormitories, sororities, and the commuters. Although organized for the purpose of sports, the WRA provides an opportunity for leadership through committee chairmanships and group participation.

Any freshman who loves sports but has little spare time should participate in the intramural program. The WRA offers archery, badminton, tennis, pingpong, volleyball, basketball, and a swimming marathon at various times throughout the year. Women also compete against various colleges in such sports as hockey, basketball, tennis, lacrosse, swimming, and volley ball. Some of the schools in the competition are American, George Washington, Trinity, Marymount, and Gallaudet.

Interest groups sponsored by WRA provide instruction in tennis, ice skating, self-defense, and horseback riding. Affiliated clubs of WRA include: Aqualiners, Modern Dance, and Fencing. WRA also sponsors other events, the Freshman Picnic held during Freshman Orientation Week which attempts to interest the freshmen women in the WRA program, the Hockey, Tennis, Golf Sports Day held in the fall, and Spring Banquet during which trophies are given to the intramural winners and new members are inducted into Sigma Tau Epsilon, the WRA honorary.

Cheerleaders

The cheerleaders always perform at home football and basketball games as well as at some lacrosse and baseball games. Tryouts which are open to everyone except seniors are held the week preceding the last home football game.

Color Guard

Spirited and high-stepping describes the eight girls who form the color guard of the University marching band. These girls, complimented by four alternates, carry the Maryland flag as well as those of Atlantic Coast Conference rivals: Clemson, Duke, North Carolina, North Carolina State, South Carolina, Virginia, and Wake Forest. Tryouts for a position on the color guard are held in the spring.

M-Club

The M-Club honors Maryland athletes who have shown outstanding skill in their particular sport and have earned varsity letters. M-Club sponsors the Outstanding Intramural Athlete of the Year Award and several athletic scholarships.



A
P
P
E
N
D
I
X

Religion

Baptist

Meetings—meetings of Baptist Student Union, chapel rm. 252, and in Student Union. Evening Dialogues at advisor's home Tuesday evenings.

Services—11:00 a.m.; Sunday evening worship at 7:30 p.m.

Church—Second Baptist Church, 3515 Campus Drive.

Advisor—Mr. John Jamison, 3617 Campus Dr., 454-3334.

Brethren

Meetings—Youth Group - 6:30 p.m. Sunday at the church.

Services—10:45 a.m.

Church—University Park Church of the Brethren.

Pastor—Rev. J. Bentley Peters, 345-8825 - UN 4-4328.

Christian Science

Meetings—Christian Science Organization - Tuesday, 5:00 to 5:15, west chapel of Memorial Chapel.

Church—First Church of Christ Scientist, 8300 Adelphi Rd., Hyattsville, Md.

Services—11:00 a.m. Sunday, 8:15 to 9:15 p.m. Wednesday

Advisor—Dr. James Shanks, 935-0577 or ext. 3609.

Church of Christ

Meetings—Church of Christ Fellowship rm. 32 of chapel, 3:00 to 5:00 p.m. Thursdays.

Church—University Park Church of Christ, 6420 Adelphi Rd., Hyattsville, Md.

Advisor—Mr. William D. Medearis, WA 7-7277.

Eastern Orthodox

Meetings—Ethos, organization for Russian, Greek, and Syrian

Orthodox faiths. Meetings as announced.

Services—Divine Liturgy celebrated Sundays in St. Sophia. Cathedral, 36th & Massachusetts Ave., Washington, D. C., 10:10 to 11:30.

Advisors—Rev. John Tavlarides, Cathedral FE 3-4730.

Episcopal

Meetings—Discussion and Forum at 6:00 p.m. Sundays in chapel.

Services—Celebration of Holy Communion daily at noon and 9:00 a.m. on Sundays in West Chapel.

Chaplains—Rev. Wofford K. Smith, 277-6685; Rev. William Flanders, 454-2347.

Friends

Meetings—Devotional meeting and forum 7:00 p.m. Wednesdays, rm. 213, Student Union.

Church—Adelphi Friends Meeting, 2303 Metzert Road.

Services—11:00 and 10:00 a.m.

Advisor—Dr. Alan De Silvo, 3316 or 474-4258.

Jewish

Programs—B'nai B'rith Hillel Foundation, Wednesday evenings, 6:30. Hillel House open daily until 10:00 p.m. Library, Kosher dining club, game room, lounge, study rooms, 7505 Yale Ave.

Services—Sabbath services, Friday evenings, 6:30, followed by Oneg Shabbat; at 7:30, and Saturday Mornings at 9:30. Daily Minyan, 7:00 a.m. and 6:15 p.m.

Director—Rabbi Meyer Greenberg, 277-8961 - 779-7370.

Lutheran

Meetings—Student Discussion Group and Coffee Hours, 9:45 a.m. Sundays and Supper Program, 5:30 p.m.

Services—8:45 and 11:00 a.m.; Communion on first Sundays (11:00 a.m.) and third (8:45 a.m.)

Church—Hope Church and Student Center, Guilford Dr. and Knox Rd.

Pastor—Rev. Ted Caspar, rm. 251, Chapel, Ext. 3317, Beth Platz, associate.

Methodist

Meetings—Wesley Foundation Sundays at 5:30 p.m. at the University Methodist Church.

Services—11:00 a.m., East Chapel; 9:30 and 11:00 a.m. at the University Methodist Church.

Church—University Methodist Church, west of campus on Campus Drive.

Chaplain—James Harrell; Rev. Joe S. Rainey, Assoc., ext. 2348.

Roman Catholic

Meetings—Newman Foundation as announced.

Services—Daily Mass at noon and 5:00 p.m. in East Chapel; Sunday Masses at 8:00, 9:30, 12:30 p.m. in East Chapel. 11:15 in Auditorum. Confession Saturdays 4:00 to 5:30; 7:00 to 8:00, daily 11:00 to 11:45 in Blessed Sacred Chapel. Church of the Blessed Sacrament always open for prayer.

Chaplain—Father William J. Kane, 864-6223. Father John Wentermeyer, Chief of Chaplains.

United Campus Christian Fellowship

United Campus Christian Fellowship includes Church of the Brethren, Disciples, E.U.B., Presbyterian and United Church of Christ.

Services—Sunday: 11 a.m. East Chapel.

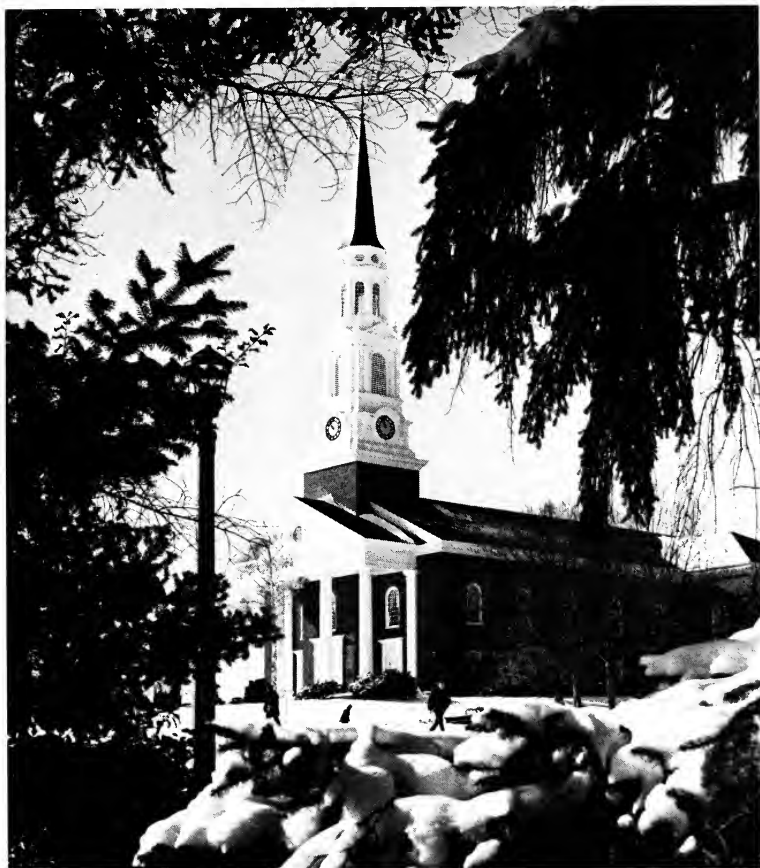
Chaplains—(U.C.C.F.): David Loomis. Assoc. J. Bentley Peters.
Assoc. Wendell Turner, 454-2346.

Unitarian

Services—9:00 a.m. and 11:00 a.m. Sunday.

Church—Paint Branch Unitarian Church, 3215 Powder Mill Rd.,
Adelphi.

Chaplain—Dr. Gordon Atkinson, 434-4860 or Ext. 2635.



Terms

- “AFROTC”—Rotcy— An Air science military program which is conducted by the United States Air Force Department.
- “Angels and Cherubs”—A service organization of active and pledging members of Angel Flight. This group of women, affiliated with the Arnold Air Society, promotes the AFROTC among college men.
- “AWS”—Associated Women Students is an elected body which represents all women on campus. This organization sponsors many activities and events as well as working to further the interests of women students.
- “BABY TERP”—A nickname given to freshmen athletes in competition.
- “CALL CLASS”—Term used when a teacher does not hold class.
- “CENTRAL STUDENT COURT”—The judicial organization which tries cases of major violation of university standards.
- “COMMUTERS’ DEN”—A lounge used by commuters which is located in the Student Union.
- “COMPLEX”—A grouping of interrelated dorms containing a dining room for the use of all persons living in that area.
- “DESSERT”—A mixer usually held after the supper hour when dorms or Greek houses meet for a social hour.
- “DUCK POND”—A geographical area located on University Boulevard—thickly populated after sunset.
- “FIRESIDE CHAT”—A group meeting or discussion on a specified topic, usually featuring a knowledgeable speaker.
- “GR”—A graduate staff member living in a residence hall.
- “GA” (Grad Assistant) A graduate student who teaches or assists a professor.
- “GIGIF”—(“Gee I’m Glad it’s Friday”) Off campus social functions which usually are attended by many University students.
- “GRAHAM CRACKER”—The block of Greek houses between College and Knox Avenues.

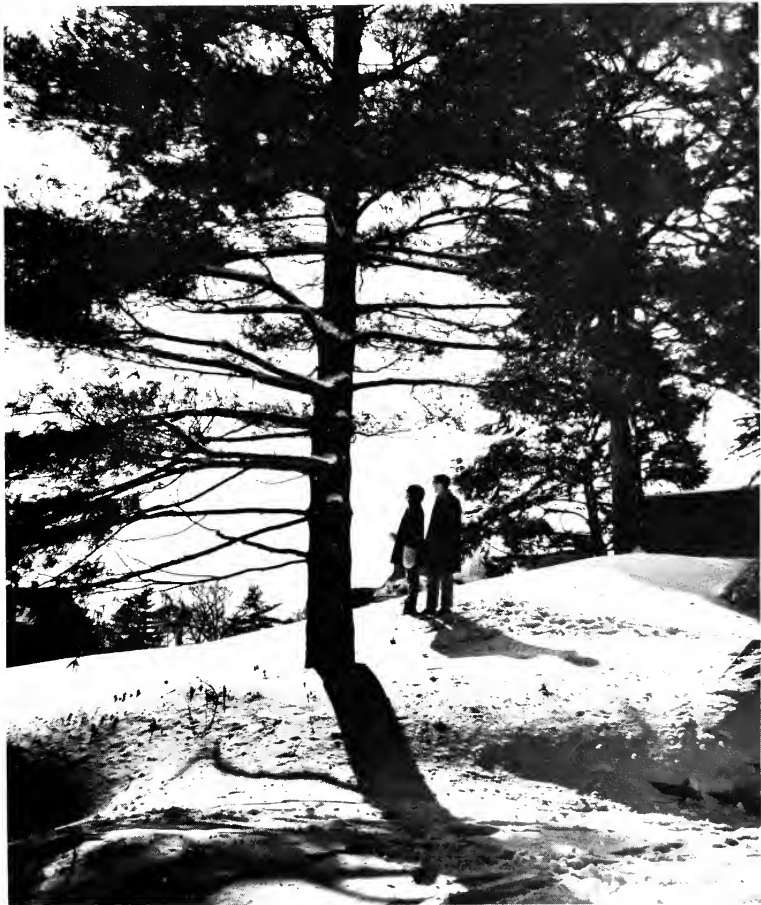
“GREEK”—Those students who are affiliated with a fraternity or a sorority.

“GRILL”—The Varsity Grill “restaurant” located on Route #1.

“GULCH”—The geographical area surrounding the temporary classroom buildings and parking lot #3.

“HALL”—The Town Hall, “restaurant” located on Route #1.

“THE HILL”—The area in the center of campus: either the dorm area, or the administrative area.



- “HOURLY”—Major tests in a course during the semester.
- “IFC”—(Inter-Fraternity Council) The Greek organization which coordinates the men’s fraternities.
- “INDEPENDENT”—Any person who is not affiliated with a Greek system.
- “MACKE ROOM”—Areas in buildings where vending machines have been installed.
- “THE MALL”—Area which extends from McKeldin Library to the North Administration buildings.
- “PAN HELL”—(Panhellenic Council) The organization which serves to coordinate women’s sororities.
- “PLEDGE”—A person in the process of receiving training in an organization before being initiated as a full or an active member.
- “RHC”—(Residence Hall Council) Organization representing the dorms; works with the administration to improve living conditions on campus.
- “THE ROW”—The area, in the shape of a horseshoe, where fourteen Greek houses are situated.
- “RUSH”—The period of time in which many social functions are held with the aim of attracting new members into the Greek organizations.
- “SDS”—(Students for a Democratic Society) A left wing political organization on campus.
- “SU”—Abbreviation for the Student Union Building, the center of student activities.
- “TRAILERS”—The mobile units used as dormitories which are located behind Ritchie Coliseum.
- “UCA”—(University Commuters Association.) Organization representing commuting students.
- “UT”—(University Theater) A campus play producing organization.
- “VOUS”—The Rendevous “restaurant” located on Route #1.

Editors-in-Chief

Business Manager

Layout Editor

Copy Editor

Art Editor

Photography Editor

Your University

Administration

Colleges

Services For You

Something to Strive For

Student Union

Government

Activities

Athletics

Appendix

Advisors

SUZANNE LANDRIEU

A. HOWARD METRO

BARBARA KESSLER

ELAINE DAVIDSON

MICHELE MYERSON

BETTE DENT

DORA LIGHT

KAREN HANSEN

EILEEN BOMSTEIN

SUE CERVENY

CATHY SACKS

ANN MARIE CATRAMBONE

STEVE VAN GRACK

KARLA BERLIN

CAROL TAYLOR

MARY LOU MEEHAN

AILLEN SMITH

CRAIG EVERHART

GEORGE DUNSTEN

MELANIE BERIS

LORA SILVESTER

ELLEN LAWLESS

HOWARD BOMSTEIN

JUDY ASKIN

CINDY PLACHTA

SHARON YEYZEROFF

JANIS DAVIS

MARY WILLIAMS

DAVID EISNER

SUE WIERENGA

NANCY HERCHANROEDER

HONEY LORING

SHERRY MONTGOMERY

MISS MARY ELYN GREGORY

MR. JIM TSCHECHETELIN

