

The

**M
C
K
E
N
D
R
E
A
N**

1955



HOLMAN LIBRARY / MCKENDREE COLLEGE



3 4011 00098 0372

McKendree College
Library
Lebanon, Illinois

R
378.773
M19 Mc
1955

McKendree College
Lebanon, IL 62254

Digitized by the Internet Archive
in 2010 with funding from
CARLI: Consortium of Academic and Research Libraries in Illinois

21087

OUR McKendree

WORDS by
L. MURICK and A.E. WILKINSON

MUSIC
DREAM of the U.S.A.

a COL-lege mid plains is stand-ing stand-ing there from old-en

days The Pi-O-neer of LEARNING FIRST in un-trod-den

ways FOR SERVICE SCIENTIFIC CULTURE FOR ef-ficien-cy she STANDS - HER

sons and daughters praise her with voices hearts and hands

"HER SONS AND DAUGHTERS

PRaise HER.....!"



21087 - 10/6/55





MCKENDREAN STAFF



Virgil R. Wadsack Editor

Inis Adams Associate Editor

James Adair Assistant Editor

Gene Brinkman Business Manager

David Hyatt Makeup Editor

Lucille Pritchard Feature Editor

Joyce Perotka Art Editor

Bob Mayfield Advertising Manager

Tom Gensler Assistants
 Kay Clark
 Tom Holderby
 Dean Heitman
 Edward Koch
 Gary Pomeroy
 Bill Bohbrink
 Louis Kampmeyer

Jim Spickard Sports Editor

Bob Dosier Assistant

Don Wood Layout Editor

Pat Hunter Faculty Editor

Fred Beck Senior Editor

Jim Adair Junior Editor

Nel Switzer Sophomore Editor

Rae Smith Freshman Editor

Leddrew Johnson Picture Editor

**"CHRISTIAN WITHOUT APOLOGY
METHODIST WITH PRIDE"**

1955

**M
C
K
E
N
D
R
E
E
A
N**



MCKENDREE COLLEGE LEBANON, ILLINOIS



DR. RUSSELL GROW AT HIS



STEVENSON HOUSE DESK

THE STAFF OF THE 1955 McKENDREAN

Dedicates

This Volume

To The Spirit of McKendree College

As Embodied in our President

Russell Grow

A Man of
unbounded energy in selfless giving of time and strength to the churches of the
Southern Illinois Conference of the Methodist Church.

A Man of
practical common sense in viewing the problems of the college realistically without
the distortion either of worry over details or of blind optimism

A Man of
logical thought in basing his teachings, his actions, his religion on a solid foundation
of facts and intelligent reasoning

A Man of
persevering courage in facing possible failure with equanimity and earned success
with humility, and in taking the far look

A Man of
warm friendliness in knowing each student, in personal interest in his welfare,
in following the careers of students after they leave college, in being a real
father to the whole student body

A Man of
clear vision in seeing that the only real future for our college, our country, our
world lies in freedom for each individual in every phase of life

A Man of
mystical insight in trusting simply in the guidance of the Spirit immanent in all
men, regardless of race, color, creed, or nationality, in implicit faith in a
God of goodness and love

The Man whom we respectfully and affectionately know as "Uncle Russ."



THE PRESIDENT'S FAMILY

LEFT TO RIGHT: Mrs. Richard Taylor, Mrs. D. D. Grow, Dr. Russell Grow, Mary Eugena Taylor, Mrs. Russell Grow, Marilyn Sue Taylor, Engel Grow.



THE PRESIDENT'S RECEPTION



DEAN W. N. GRANDY



McKENDREE COLLEGE BOARD OF TRUSTEES



FACULTY WOMEN'S CLUB

FIRST ROW, Seated: Mrs. R. C. Berry, Mrs. Florence Thornley, Mrs. C. J. Stowell, Mrs. Russell Grow, and Mrs. A. A. Brown. SECOND ROW, Standing: Mrs. Delmar Koebel, Mrs. E. R. Spencer, Mrs. St. Clare Flint, Mrs. Fred Fleming, Mrs. Nell Oppitz, Miss Marjorie Warner, Mrs. Wayne Burkey, Mrs. R. C. Sayre, Miss Joan Warner, Mrs. C. E. Chamberlin, Mrs. T. M. Pearson, Miss Alice Classen, and Mrs. Blanche Hertenstein.

Sore feet at overflow presentation of Messiah

DR. W. C. WALTON presenting \$1000 check for Walton Foundation Scholarship

Crowded but comfortable





FACULTY





RAYMOND D. DANIEL, A.M.

Business Manager



W. E. BUSH

Field Representative



RUTH WALTON

Registrar



FRANCIS L. RICHARDSON, M.S.

Director of Student Personnel



W. C. WALTON

Treasurer



JAMES E. SLAGLE

Superintendent of Buildings
and Grounds



BEATRICE GODWIN, A.B., B.S.

Librarian



MARGUERITE GRANDY, A.B.

Librarian



MARJORIE WARNER

Hostess, Pearson's Hall
Housemother, Carnegie Hall



FLORENCE THORNLEY

Kitchen Supervisor



BLANCH HANBAUM

Director of Women,
Clark Hall



JEAN COLLIE

Hostess, Student
Lounge



JAMES E. COLLIE, PeD.



FRED A. FLEMING, M.S.



CYCLONE COVEY, Ph.D.



MARY GIVENS, Ph.D.



WAYNE ARTIS, B.S.,
B.D., M.R.E.



DORAH GROW, M. Com.Ed.



HELMUT GUTEKUNST, M.S



T. M. PEARSON, A.M.



WILSON L. MISER, Ph.D.



THEODORE PITTENGER
Director of Music Education



NELL OPPITZ, A.M.



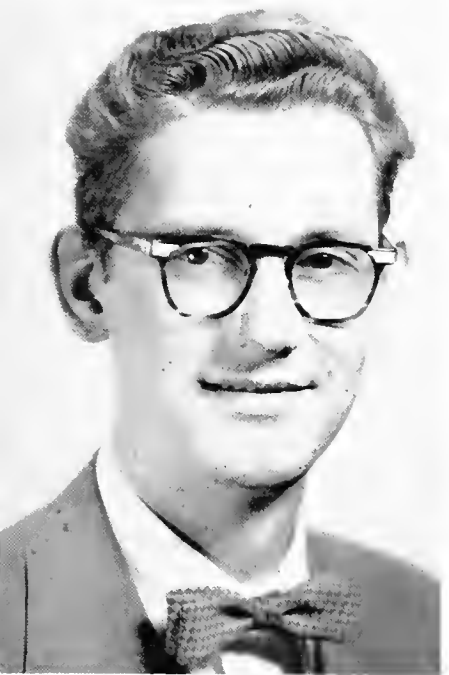
R. C. SAYRE, A.M.



MILDRED SILVER, Ph. D.



CHARLES J. STOWELL, Ph.D.



GLENN FREINER, A.B., M.M.



JOAN WARNER, A.B.



STIMSON R. SMALLEY, Ph.D.



NORMIN W. BECK



TOLBERT BELCHER



THOMAS D. EVANS, M.S.



HOWARD BUNDY, B.D.



LAURA ROSE JUPIN



WAYNE BURKEY, B.D.



MURRAY KOVNAR



R. W. PATTERSON



JOHN GODWIN



MARTIN ROPER, A.B.



JAMES SIMMS, B.D.



VIRGIL SEYMOUR, M.S.



EMERIAL L. OWEN, A.B.



JAMES L. NETTLETON



DELMAR KOEBEL, LL. B.



JEAN LAUGEAY, M. A.



ETHEL KAUMP, Ph. D.





"THAT AIN'T
NO BAD
BUNCH



TO HANG
AROUND
WITH"



WHO'S WHO
STUDENTS
IN AMERICAN UNIVERSITIES
AND COLLEGS





GARY POMEROY



FRED BECK



LOY DALE CRUSE



MARLENE (SIMMS) CUMMINS



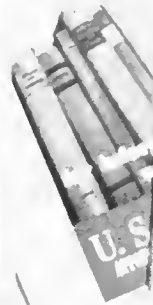
ROBERT MAYFIELD



JUNE 1955

1 2 :
6 7 8 9 1
13 14 15 16 1
20 21 22 23

AMERICAN
HERITAGE



SENIORS





GARY POMEROY
President
Lebanon, Illinois

BUSINESS: Plato '51-'55; President;
McKendree Staff '55; Chorus '51-'55;
Choir '55; Quartet '55; Who's Who '55.

PHIL ADAMS
Vice-President
Cincinnati, Ohio

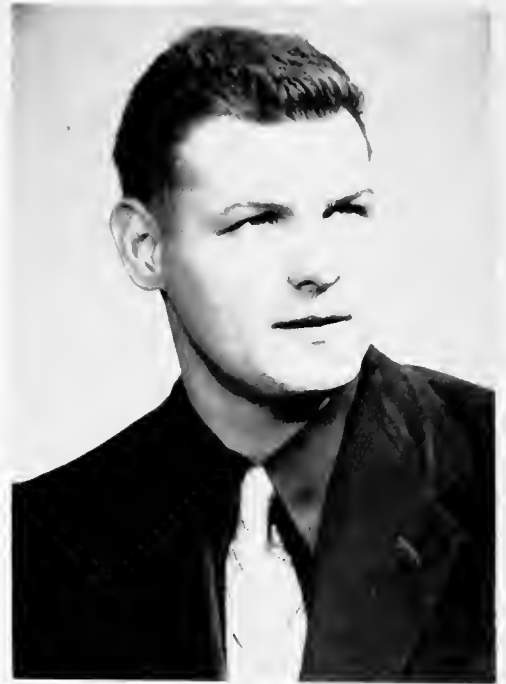
HISTORY: Plato '50-'51, '53-'55, President, Secretary, Treasurer, First and Second Critic; Sigma Tau Delta '55, Treasurer; McKendree Review Staff '53-'55; McKendree '55; P. A. F. '49-'50, '55; Chorus '49-'51, '54-'55, President; Choir '49-'50.

MATA HESTER
Secretary - Treasurer
Sandoval, Illinois

ELEMENTARY EDUCATION: MSM '51-'55; Clio '53-'55; W A A '51; Girls' Basketball '55; WSCS '51-'55; FTA '53-'55.

CHESTER "BILL" BAILEY
Okawville, Illinois

BUSINESS EDUCATION: McKendean
Staff '54; McKendree Review Staff '54.



FRED BECK
Mt. Carmel, Illinois

PHILOSOPHY: MSM '51-'55; President;
Kappa Chi '51-'55; MCK '54-'55; Sigma
Phi Alpha '54; Student-Faculty Council
'54-'55, President; Philo '51-'55, Presi-
dent, Corresponding Secretary, Sergeant
of Arms, Second Critic; Chorus '51, '55;
Baseball '53; McKendean Staff '55;
"Slave Maid of Israel", The Runner;
Who's Who '55.



ALAN BENSON
Lebanon, Illinois

BUSINESS: Plato '54; McKendree Review
Staff '52; Basketball '51.





HERBERT BIERMAN
Kell, Illinois

SOCIOLOGY: Transfer, Centralia Junior
College, '51; MSM '54-'55; Philo '51,
'55; FTA '51.



BENITA (EMMONS) BLACK
Wayne City, Illinois

EDUCATION: MSM '51-'55; W S C S
'52-'54; F T A '53-'55; W A A '51-'53.



EARL BLACK
Sandoval, Illinois

SPEECH: M S M '50, '52-'55, Song
Leader: Kappa Chi '50; Chorus '50, '52-
'55; Choir '52-'55; "Slave Maid of
Israel", Slave.

GEORGE BUTLER
Fairfield, Illinois

PHYSICAL EDUCATION: Plato; "M"
Club '51-'55; Basketball '51-'55, Letter;
Baseball '53-'55, Letter; Student-
Faculty Council; FTA '55.



JAMES CORBITT
Vienna, Illinois

RELIGION-PHILOSOPHY: Philo '52-'55,
Vice-President, Recording Secretary;
Sigma Phi Alpha '54; Sophomore Class
President; "Deacon Dubbs", Deacon
Dubbs.

LOY DALE CRUSE
Cave-in-Rock, Illinois

PHYSICAL EDUCATION: Philo '52-'55;
Student-Faculty Council '53, '55, Presi-
dent; Basketball '51-'55, Letter; Base-
ball '53-'55, Letter; Track '52; FTA
'53; President Junior Class; Who's Who
'55.





MARLENE (SIMMS) CUMMINS
Belleville, Illinois

RELIGION: MSM '51-'55; Clio '52-'55;
Alpha Psi Omega '53-'55; WAA '53-
'55; Kappa Chi '53-'55; "Slave Maid of
Israel"; "Deacon Dubbs"; Chorus '53-
'55; Choir '53-'55.



DONALD DURALL
Mounds, Illinois

SOCIOLOGY: MSM '51-'53, President;
Kappa Chi '53; Track '51-'53, Letter;
"M" Club '52-'53; Chorus '53-'55.



HARMON DYCUS
Lebanon, Illinois

SOCIOLOGY: MSM '54; Kappa Chi '52;
Chorus '53; Band '53-'55, President;
"Slave Maid of Israel"; "Soldiers' Sweet
Heart"; "Taming of the Shrew", Hor-
tensio; Brass Sextet '55.

HERMAN EDWARDS
Mound City, Illinois

PHYSICAL EDUCATION: Football '51,
Letter.



ERNEST FRANCIS
Vandalia, Illinois

SPEECH: MSM '52-'55; MCK '55; Kappa
Chi '55; "Taming of the Shrew", Gremio.

RONALD HECK
Belleville, Illinois





DEAN HEITMAN
O'Fallon, Illinois

PHYSICAL EDUCATION: Track;Basket-
ball '52-'55, Letter; "M" Club '52-'55;
PAF '54; FTA '53-'55.



PAT HUNTER
South Roxanna, Illinois

BUSINESS EDUCATION: T r a n s f e r
MacMurray; Alpha Omega '55; McKend-
rean Faculty Editor.



DAVID HYATT
Owego, New York

PHILOSOPHY-RELIGION: MSM '53-'55,
Song Leader; Philo '52-'55, President,
Corresponding Secretary, Sergeant of
Arms, Second Critic; Kappa Chi; "Crown
of Thorns", Cornelious; "Taming of the
Shrew", Baptista; Chorus '51-'55; Choir
'52-'55; MCK '53-'55.

CHARLES ICE
Murphysboro, Illinois

SOCIAL STUDIES: MSM '53-'55; Kappa
Chi '53-'55; Band '53-'55.



DONNELL JENKINS
Centralia, Illinois

VOICE: Transfer, Asbury College, '52;
MSM '52-'54, Song Leader; Plato '52-
'54, Chaplain; Kappa Chi '54; "The
Telephone", Ben; Chorus '52-'55, Presi-
dent; Chapel Choir '52-'55, Quartet '52-
'55; PAF '52.



MARILOU (SMITH) JENKINS
Centralia, Illinois

MUSIC: Transfer, Mac Murray '54;
Alpha Omega '55; Choir '55; Chapel
Choir '55; "The Telephone", Accom-
panist.





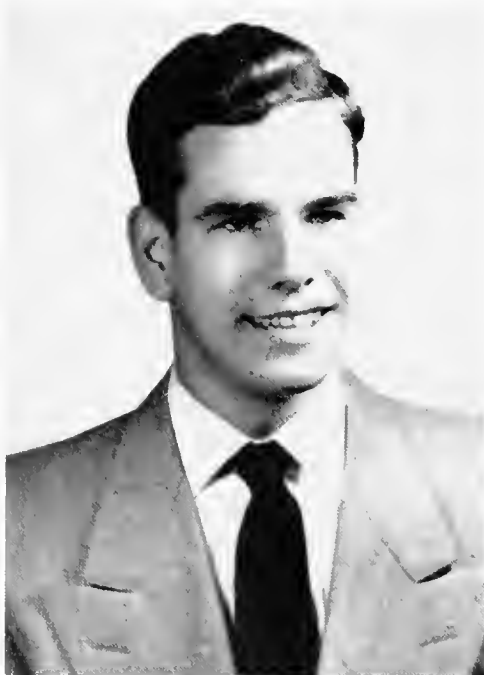
MINNIE JOUETT
East St. Louis, Illinois

EDUCATION: Transfer, Southern, '55.



CHARLES KAMM
Lebanon, Illinois

GERMAN AND HISTORY: McKendreean
'52-'53; PAF '53-'55; FTA '55.



ALLEN KOLMER
Waterloo, Illinois

SOCIOLOGY: Transfer, Elmhurst
College; MSM '55; McKendree Review
Staff '55, Sports Editor; Wrestling '55;
Kappa Chi '55; Chorus '55; Band '55.

CLAUDINE LAUTH
Collinsville, Illinois

ELEMENTARY EDUCATION: Transfer,
Eastern State College.



PHILLIP LEUELLEN
Carmi, Illinois

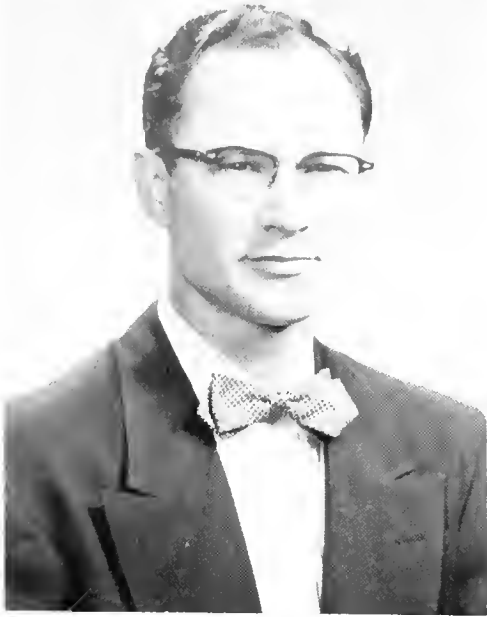
CHEMISTRY: Baseball '53-'55, Letter;
Philo '51-'55; Student-Faculty Council
'54; Basketball '51-'53, Letter; "M"
Club '51-'55; Track '51-'52, Letter;
Vice-President Junior Class.



ROBERT MAYFIELD
Lebanon, Illinois

HISTORY: Plato '53-'55; Sigma Tau
Delta '53-'55; Student-Faculty Council
'53-'55; McKendree Staff '55; PAF '52-
'55; FTA '52-'55; Who's Who '55.





DOWAIN McKIOW
New Athens, Illinois

BUSINESS ADMINISTRATION: Transfer,
Summers College of Commerce, St.
Louis University.



VIRGIL MOTSINGER
Crab Orchard, Illinois

PHYSICAL EDUCATION: MSM '52-'55;
Philo '52-'55, President; Basketball '51-
'55, Letter; Track '52-'53, Letter; FTA
'55; Sophomore Class Vice-President.



SANFORD REEVESMAN
Detroit, Michigan

EDUCATION: Transfer, Wayne Uni-
versity '54.

MARGARET SMITH
Mt. Vernon, Illinois

SOCIAL STUDIES DIVISIONAL: MSM '52-'55, Secretary, Treasurer; Clio '53-'55, Chaplain, Vice - President, President; Sigma Tau Delta '53-'55, Secretary, Treasurer; W S C S '52 - '55, Membership Chairman; President Clark Hall '55.



MARGARET WOOD
Louisville, Illinois

EDUCATION: Transfer, Asbury College, '53; M S M '53-'55; Chorus '53-'55.

NOT SHOWN

RONALD CAIN	East St. Louis, Illinois	PHILLIP PRATT	Belleville, Illinois
FINIS DEW	East St. Louis, Illinois	MARVIN RULL	St. Louis, Illinois
ROBERT DOSIER	Fairfield, Illinois	JEROME SEIPP	O'Fallon, Illinois
PAUL HAEUBER	Belleville, Illinois	MARSHALL SEMINGSON	EauClaire, Wisconsin
ARETA MARTIN	Gillespie, Illinois	BEVERLY SNEDECOR	Collinsville, Illinois

ADDIE YOUNGBLOOD, East St. Louis, Illinois





HOMECOMING



MISS CAROL FRITZ

1955 Basketball Queen of McKendree College
Crowned at the Annual Homecoming Banquet



BEVERLY DRURY
Freshman



DONNA ROPER
Sophomore

MATA HESTER
Senior





WELL, HELLO!

SAME, ONLY DIFFERENT. . .



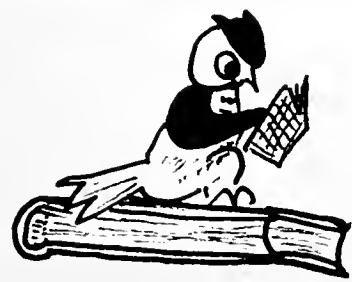
MARCH

1 2

7 8 9

13 14 15 16

20 21 22 23



JUNIORS

DON WOOD
President
Wayne City

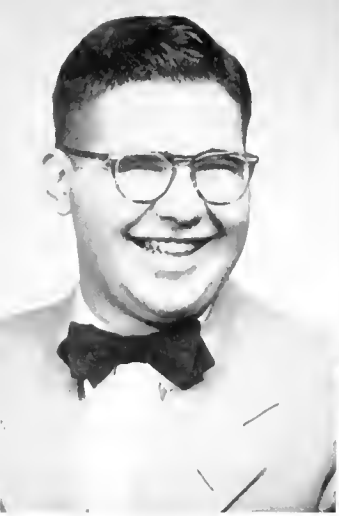


DON FLECK
Vice-President
Enfield



ENLOE KRAUS
Secretary-Treasurer
New Baden





EDDIE ARCHER
Wood River



JIM BIRMINGHAM
Worden



MARVIN BRINKMANN
Carlyle



ROBERT BROWN
Grafton



KEN CASTELLI
Belleville

DARELL CONNER
Burden, Kansas

GLENN CREEK
Palestine

ALBERT ENGLE
Broken Arrow, Oklahoma





LEON FITZGERALD
Hartford



CAROL FRITZ
Lebanon



RUSSELL HENSS
Trenton



RICH HERRIN
Bridgport

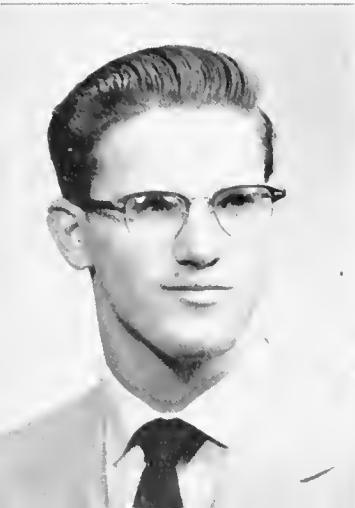


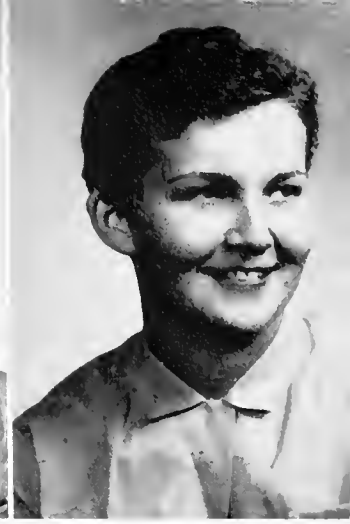
TOM HOLDERBY
Ridgeway

CLETUS HUBBS
Lone Oak, Kentucky

LOIS JOHNSON
Centralia

LOUIE KAMPMEYER
Caseyville





ALICE McPHERSON
Litchfield

RAY RICHARDSON
Mascoutah

JOHN RUCK
East St. Louis

SANDY SCHUPBACH
Percy



RON STOLTZ
Mt. Carmel

WALTER STOREY
Enfield

VIRGIL WADSACK
Burden, Kansas







S P O R T S



1954-55 PCC CHAMPIONS

SECOND PLACE SUNSHINE TOURNAMENT TEAM



FRONT ROW: Rich Stein, Sherrill Tate, Rich Herrin, Tip Butler, Sonny Hubbs, Loy Dale Cruse. BACK ROW: Virgil Motsinger, Kenneth Wildhaber, Arnie Feldt, Dean Heitman, Lloyd Castillo, Coach Collie.



FRONT ROW: Larry Grove, Ron Gregory, Van Munsey, Charles Mitchell, Sherrill Tate. BACK ROW: Coach Collie, Bob Evans, Ed Koch, Jim Spickard, Kenneth Wildhaber, Art Hinrichs.

BEARCATS, 1954-55



DALE CRUSE, No. 21
Cave-in-Rock, Illinois



DEAN HEITMAN, No. 35
O'Fallon, Illinois



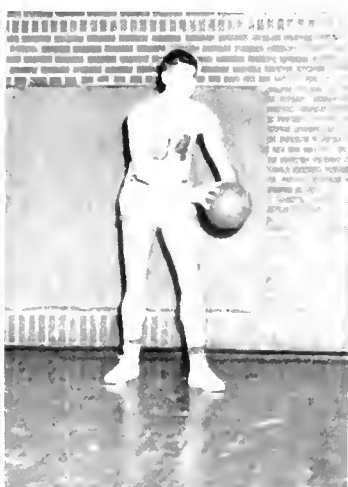
VIRGIL MOTSINGER, No. 31
Crab Orchard, Illinois



RICH HERRIN, No. 33
Bridgport, Illinois



TIP BUTLER, No. 45
Fairfield, Illinois



LLOYD CASTILLO, No. 34
Breese, Illinois



ARNIE FELDT, No. 20
Mascoutah, Illinois



SONNY HUBBS, No. 32
Lone Oak, Kentucky



RICH STEIN, No. 30
New Baden, Illinois



CHARLES MITCHELL, No. 24
Sterling, Illinois



SHERRILL TATE, No. 23
Grayville, Illinois

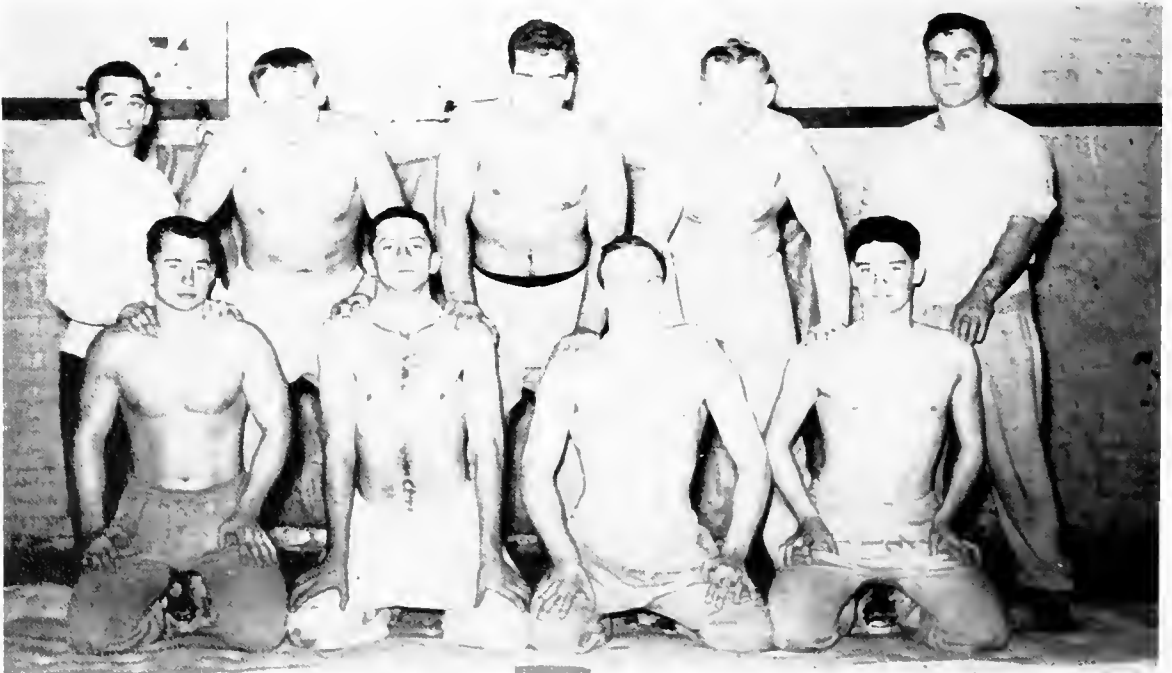


KENNETH WILDHABER, No. 52
Highland, Illinois

1953-54 PCC CHAMPIONS



FRONT ROW: Tip Butler, Rich Stein, Rich Herrin, Charley Waldo, Phil Leullen, Sonny Hubbs, Darrel Conner. BACK ROW: Jim Spickard, Coach Collie, Lloyd Castillo, Charley Brown, Bob Dosier, Arnie Feldt, Van Munsey, Sherrill Tate, Loy Dale Cruse.



FRONT ROW: Kenneth Castelli, Bob Dosier, Milton Hart, Phil Gardner. BACK ROW: Manager, Ron Rodgers; Don Fleck, Al Kolmar, Bob Eadie, Coach Abromovich.

INDIVIDUAL AND TEAM SCORING RECORDS

Player	G	FG	FT	F	%FG	%FT	Reb Ave	TP	Ave
Cruse	29	215	136	80	.402	.673	4.6	566	19.5
Herrin	29	148	186	91	.377	.689	9.4	482	16.6
Castillo	29	147	149	94	.467	.671	18.2	443	15.3
Butler	29	113	54	49	.320	.720	2.8	280	9.7
Feldt	29	76	59	55	.396	.756	3.7	211	7.3
Heitman	29	57	94	106	.305	.560	10.4	208	7.2
Wildhaber	8	14	5	6	.431	.556		33	4.1
Hubbs	23	30	16	18	.417	.667	1.1	76	3.3
Tate	8	10	2	2	.426	.667		22	2.8
Motsinger	12	12	5	6	.686	.500	1.9	29	2.4
Mitchell	12	9	6	8	.228	.667	1.5	24	2.0
Stein	21	15	10	30	.333	.714	1.2	40	1.9



LEAN DEAN gets the tip.

The BULL sinks one.





THE REWARD!



"M" CLUB



FRONT ROW: Rich Stein, Loy Dale Cruse, Herman Edwards, Bob Dosier. SECOND ROW: Virgil Motsinger, Dean Heitman, Jim Spickard, Virgil Wadsack, Tip Butler, Rich Herrin. BACK ROW: Robert Schaefer, Louis Kampmeyer, Coach Collie.

DECEMBER

5 6 7

12 13 14

19 20 21

24

Youth faces
its problems

Knexing / Martin

ATHLETIC
JOURNAL

DEFENSIVE
MARTINS

POPULARITY

REGINA WESTCOTT WIEMAN

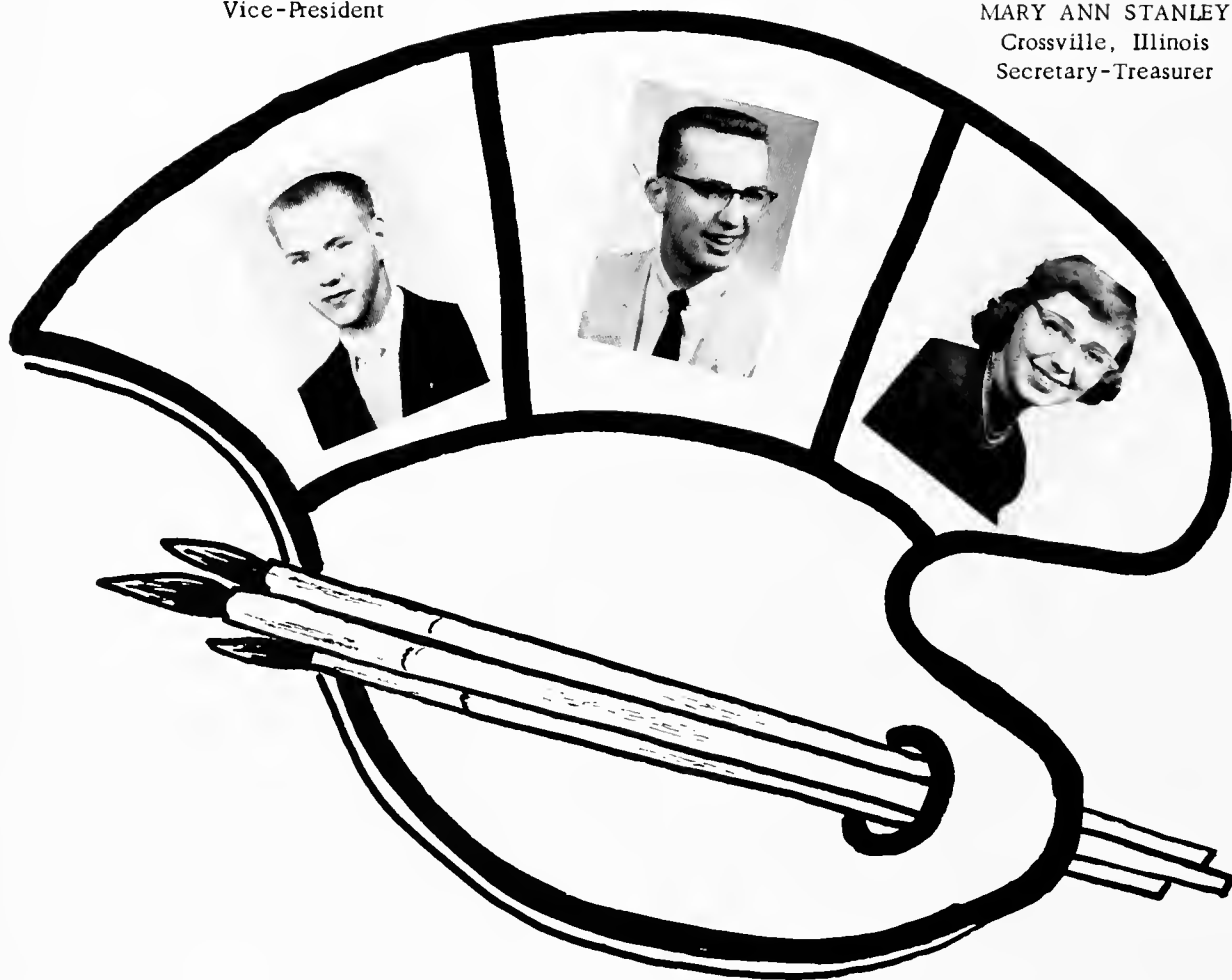
SOPHOMORES



DALE BEST
Worden, Illinois
Vice-President

JIM SPICKARD
East St. Louis, Illinois
President

MARY ANN STANLEY
Crossville, Illinois
Secretary-Treasurer





INIS ADAMS
Centralia, Illinois

WILLIAM BOHRINK
Okawville, Illinois

KAY CLARK
Belleville, Illinois

JOHN CREEK
Herrin, Illinois



WILLIE DOCKERY
East St. Louis, Illinois

ARTHUR HARMS
Lebanon, Illinois

RALPH HILMES
Breese, Illinois

MARY LOIS JOHNSTON
Cisne, Illinois





BERTRAM JONES
Lebanon, Illinois



JANE MASSIE
Trenton, Illinois



MARY MEWES
Highland, Illinois



CHARLES MITCHELL
Sterling, Illinois



PAUL MOTZER
Mt. Vernon, Illinois

ROBERT MUSHRUSH
Benld, Illinois

LEE PARKS
Iuka, Illinois

JOYCE PEROTKA
Caseyville, Illinois





LUCILLE PRITCHARD
East Alton, Illinois



PHILIP RICHARDSON
Mascoutah, Illinois



DONNA FAYE ROPER
Posey, Illinois



DALE SANNER
Hartford, Illinois



MARY SAUER
Murphysboro, Illinois

ROBERT SCHAEFER
Lebanon, Illinois

DICK SCHWOERKE
Highland, Illinois

LOUISE SIMMONS
Carmi, Illinois





MARY SOUDERS
Centralia, Illinois



ANNA MAE STEIN
Enfield, Illinois



RICHARD STEIN
New Baden, Illinois



PAUL STREUTER
Okawville, Illinois



MARSHALL SUTTON
Decatur, Illinois

NELL SWITZER
Mt. Vernon, Illinois

BILL TRAVELSTEAD
East St. Louis, Illinois





ORGANIZATIONS



M
C
K
E
N
D
R
E
A
N



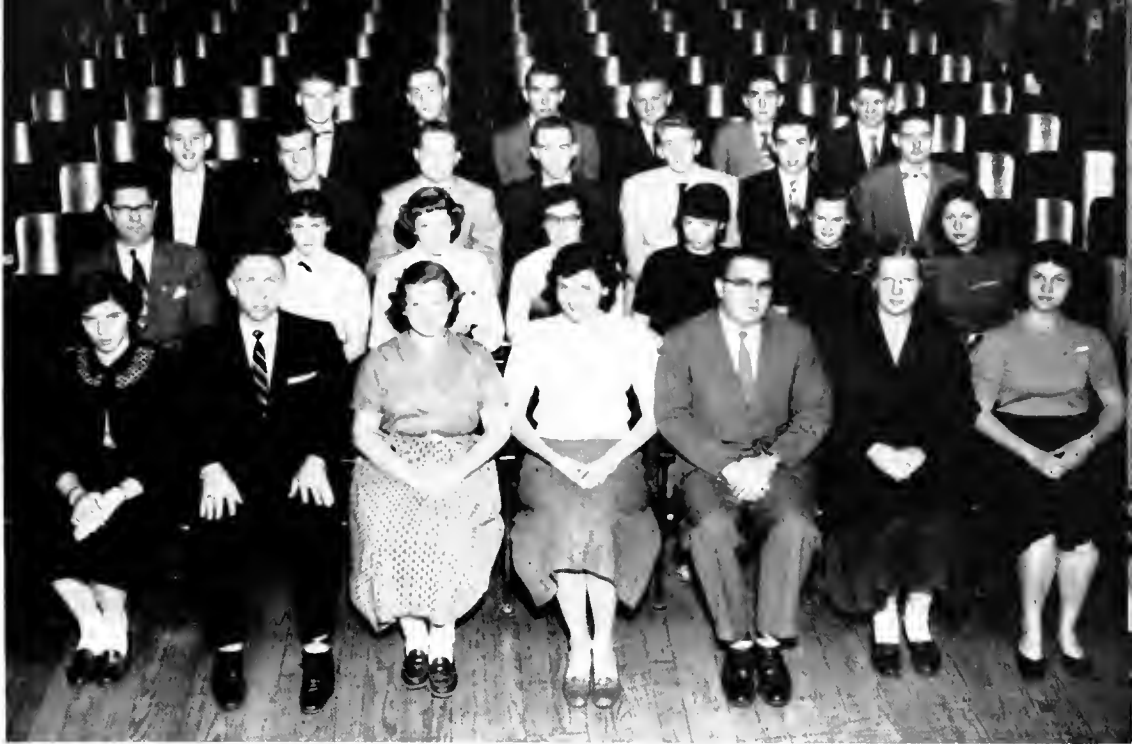
FRONT ROW: Tom Gensler, Bob Mayfield, Inis Adams, Virgil Wadsack, Gene Brinkman, Jim Spickard, Bob Dosier. SECOND ROW: Joyce Perotka, Nel Switzer, Kay Clark, Pat Hunter, Tom Holderby, Gary Pomeroy, Leddrew Johnson, Louis Kampmeyer, Advisor, Joan Warner. BACK ROW: David Hyatt, Lucille Pritchard, Don Wood, Fred Beck, Dean Heitman, Ed Koch, Billy Bohbrink.

FRONT ROW: Marshall Semingson, Leddrew Johnson, Billy Bohbrink, Marlene Cummins, Virgil Wadsack, Advisor, Joan Warner. SECOND ROW: Tom Holderby, Carol Goings, Leon Fitzgerald, Jane Massie, Kay Clark, Pat Fritz. THIRD ROW: Phil Adams, Dweneth Trent, Jim Spickard, Bob Souders, Ed Koch, Bill Fester, Bill Doan, Al Kolmer.

R
E
V
I
E
W



K A P P A C H I



FRONT ROW: Dweneth Trent, David Hyatt, Joyce Perotka, Lucille Pritchard, Glenn Creek, Lois Johnson, Beverly Drury. SECOND ROW: Dr. S. R. Smalley, Rae Smith, Carol Goings, Frances Mitchell, Kaywynne Weiler, Barbara Bradshaw, Mona Wagner. THIRD ROW: Dale Best, Don DuRall, Charles Ice, Walter Storey, Bill Fester, Bill Doan, Dale Sanner. BACK ROW: Fred Beck, Miley Palmer, Bob Edwards, Don Fleck. Carol Miller, Bob Souders.



C O L L E G E C H A P E L

P L A T O



FRONT ROW: Phil Adams, Eddie Archer, Charles Ice, Louis Kampmeyer, Virgil Wad-
sack. SECOND ROW: Billy Bohbrink, Leon Fitzgerald, Gary Pomeroy. BACK ROW:
Bob Mayfield, Oscar Weil, Dean Heitman.

Lucille Pritchard, Mata Hester, Margaret Smith,
Marlene (Simms) Cummins, Nell Switzer, Inis Adams,
Donna Faye Roper.

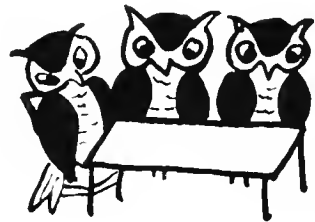
C L I O



STUDENT
FACULTY
COUNCIL



FRONT ROW: Professor Gutekunst, Dean Grandy, Fred Beck. BACK ROW: Don Wood, Bob Mayfield, Virgil Wadsack. NOT SHOWN: Professor Richardson, Alice McPherson.



David Hyatt, Joe Voegeli, Gary Pomeroy, Donnell Jenkins.



M
E
N
S
Q
U
A
R
T
E
T

C H O R U S



FRONT ROW: Professor Glen Freiner, Mary Mewes, Marilou Jenkins, Vannetta Ewing, Margaret Wood, Louise Simmons, Jane Massie, Mona Wagner, Addie Youngblood. SECOND ROW: Mary Lois Johnston, Marlene (Simms) Cummins, Carol Goings, Mary Souders, Willie Dockery, Carol Render, Alice McPherson, Ella Mears, Inis Adams. THIRD ROW: Rae Smith, Marilyn Ragsdale, Beverly Drury, Kaywynne Weiler, Lucille Pritchard, Jean Wallace, Lois Johnson, Dweneth Trent, Anna Mae Stein, Mary Lois Sauer, Alice Chang, Joyce Perotka. FOURTH ROW: Joe Voegeli, Lester Parks, Phil Adams, Fred Beck, Marshall Sutton, Enloe Krausz, Miley Palmer, Dale Best, Dale Sanner, Russell Henss, Walter Storey, Douglas Johnson, Warren Mackey, David Hyatt. BACK ROW: Tom Gensler, James Stevenson, Robert Clark, Tom Holderby, Bob Souders, Bill Fester, Al Kolmer, Bill Doan, Gary Pomeroy, Donnell Jenkins, Earl Black.

Inis Adams, Marilou Jenkins, David Hyatt, Lucille Pritchard, Joe Voegeli, Marshall Sutton, Gary Pomeroy, Donnell Jenkins, Alice McPherson, Earl Black, Ella Marie Mears, Jane Massie.

C H O I R



B A N D



FRONT ROW: Joe Voegeli, Robert Clark, Dale Sanner, Janet Welch, Mary Lois Sauer, Donna Faye Roper, Judith Gutekunst, Carol Render, Tom Gensler, John Creek. BACK ROW: Peter Barnett, Inis Adams, Charles Ice, Dale Best, Al Kolmar, Lucille Pritchard, Gene Brinkman, Dr. S. R. Smalley, Mary Mewes, Ella Marie Mears, Dr. Theodore Pittenger, Director.

FRONT ROW: Judith Gutekunst, Jane Massie, Judy Weir, Kay Clark. BACK ROW: Marshall Sutton, Joe Voegeli, Ed Koch, Tom Tensler, Gary Pomeroy.



D R A M A C L U B

W S C S



FRONT ROW: Lucille Pritchard, Nel Switzer, Mary Souders, Donna Faye Roper, Carol Goings, Mona Wagner, Rae Smith. BACK ROW: Inis Adams, Mary Ann Stanley, Mata Hester, Beverly Drury, Mary Lois Sauer, Mary Lois Johnston, Carol Render, Marilyn Ragsdale, Louise Simmons, Anna Mae Stein, Dweneth Trent, Kaywynne Weiler, Sponsor, Mary Charles Lambeth; Ella Marie Mears.

FRONT ROW: David Hyatt, Lucille Pritchard, Donna Faye Roper, Margaret Smith, Mata Hester, Joyce Perotka, Mary Lois Johnston, Lois Johnson, Fred Beck. SECOND ROW: Ella Marie Mears, Mary Ann Stanley, Dweneth Trent, Rae Smith, Carol Goings, Frances Mitchell, Kaywynne Weiler, Barbara Bradshaw, Mona Wagner, Alice Chang, Marilyn Ragsdale. THIRD ROW: Marlene Cummins, Glenn Creek, Charles Ice, Walter Storey, Bill Fester, Mary Souders, Louise Simmons, Bill Doan, Dale Sanner, Tom Holderby, Ron Stoltz. BACK ROW: Professor Wayne Artis, Mary Lois Sauer, Anna Mae Stein, Dale Best, Miley Palmer, Bob Edwards, Don Fleck, Carol Miller, Bob Souders, Beverly Drury, Dr. S. R. Smalley.

M S M



PHILO



FRONT ROW: Don Fleck, Walter Storey, David Hyatt, Enloe Krausz, Tom Holderby.
SECOND ROW: Don Wood, Fred Beck, Virgil Motsinger, Ron Stoltz. BACK ROW: Dale Sanner, Paul Motzer, Loy Dale Cruse, Jim Corbitt.



Mc K CLUB

FRONT ROW: Bob Edwards, Joyce Perotka, Donna Faye Roper, Mona Wagner. SECOND ROW: Lucille Pritchard, David Hyatt, Dweneth Trent, Frances Mitchell, Kaywynne Weiler, Lois Johnson. THIRD ROW: Bob Souders, Beverly Drury, Bill Fester, Barbara Bradshaw, Anna Mae Stein. FOURTH ROW: Glenn Creek, Bill Doan, Louise Simmons, Walter Storey. BACK ROW: Miley Palmer, Dr. S. R. Smalley, Fred Beck, Carol Miller, Dale Sanner.

ALPHA
OMEGA



FRONT ROW: Anna Mae Stein, Ella Marie Mears, Mary Lois Johnston, Mrs. T. M. Pearson, Mona Wagner, Louise Simmons, Beverly Drury. BACK ROW: Judith Gutekunst, Judy Weir, Pat Hunter, Barbara Bradshaw, Mary Souders, Mary Lois Sauer, Carol Fritz, Kay Clark, Sandra Schupbach, Marilou Jenkins, Carol Goings, Jane Massie.

FRONT ROW: Mary Lois Johnston, Nell Switzer, Margaret Smith, Advisor, Dr. Mildred Silver. BACK ROW: Lucille Pritchard, Don Wood, Sandra Schupbach, Bob Mayfield, Oscar Weil, Carol Fritz, Phil Adams.

SIGMA
TAU
DELTA



F
T
A



FRONT ROW: Marilyn Ragsdale, Carol Render, Donna Faye Roper, Jane Massie, Judith Gutekunst, Rae Smith, Kaywynne Weiler, Dweneth Trent. SECOND ROW: Claudine Lauth, Herman Edwards, Mata Hester, Benita Black, Charles Ice, Leon Fitzgerald, Eddie Archer, Oscar Weil, Don Fleck. BACK ROW: Dean Heitman, Bob Mayfield, Bob Dosier, Virgil Wadsack, Louis Kampmeyer, Charles Kamm.

FRONT ROW: Dean Heitman, Bob Mayfield, Bob Dosier, Virgil Wadsack. BACK ROW: Phil Adams, Charles Kamm, Eddie Archer, Oscar Weil.



P
A
F

L
I
B
R
A
R
Y

A
S
S
I
S
T
A
N
T
S



Benita Black, Carol Goings, Nell Switzer, Lucille Pritchard.

Mary Lois Johnston, Mary Lois Sauer, Ron Stoltz, Mildred Canty, Mrs. Thornley, Bob Souders, Rae Smith, Mary Souders.

K
I
T
C
H
E
N

S
T
A
F
F



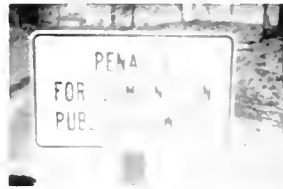
D
I
N
I
N
G

H
A
L
L

S
T
A
F
F



Anna Mae Stein, Louise Simmons, Miss Warner, Donna Faye Roper, Nell Switzer.





SPEECH CLUB



DRAMA CLUB



WRITERS'
CONFERENCE

"TAMING OF THE
SHREW"
CAST



SEPTEMBER

4 6 7 8
11 12 13 14 15
18 19 20 21 22


AMERICAN GOVERNMENT
AND POLITICS


COLLEGE
ENGLISH
VOLUME



FRESHMEN





JOE BROCK, PRESIDENT
East St. Louis, Missouri

TOM GENSLER, VICE-PRESIDENT
Ft. Morgan, Colorado

BEVERLY DRURY, SECRETARY-TREASURER
Marion, Illinois



BARBARA BRADSHAW
Cairo



GENE BRINKMAN
Okawville



BOB BROOKS
Ferguson, Missouri



CHARLIE BROWN
East St. Louis



MARILYN BROWN
Grafton

WALTER CARL
East St. Louis

BILL CUMMINS
Mt. Vernon

BILL DOAN
Centralia





MAX DOMBROWSKI
Yonkers, New York



BOB EADIE
Carmi, Illinois



BOB EDWARDS
Galatia, Illinois



BILL FESTER
Centralia, Illinois



BOB FITTS
Sorento, Illinois

PAT FRITZ
Lebanon, Illinois

CAROL GOINGS
Godfrey, Illinois

LARRY GROVE
Carbondale, Illinois

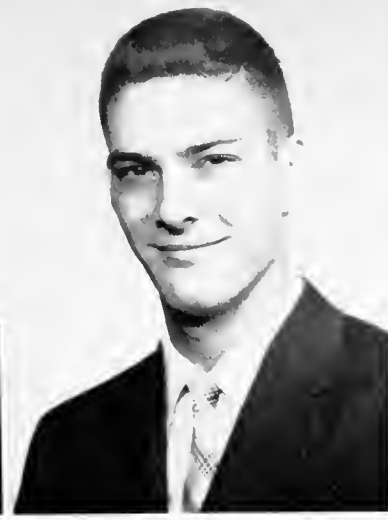




JUDY GUTEKUNST
Lebanon, Illinois



DAVE HECK
Decatur, Illinois



TOM HECK
Decatur, Illinois



ARNETTA HILDRETH
Lake City, Iowa



ED KOCH
Trenton, Illinois

BILL MELINA
New Baden, Illinois

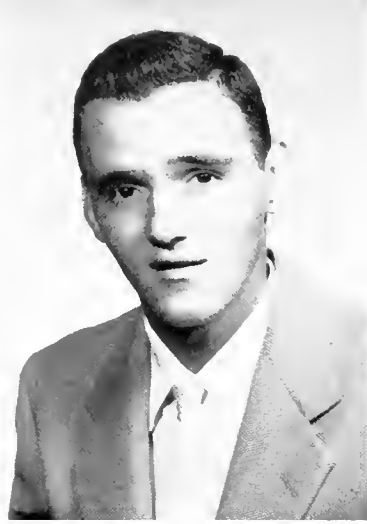
DWIGHT MCGREW
Xenia, Illinois

ELLA MEARS
Carmi, Illinois





FRANCES MITCHELL
Granite City, Illinois



JERRY MITCHELL
New Harmony, Indiana



VAN MUNSEY
Grayville, Illinois



MILEY PALMER
Hartford, Illinois

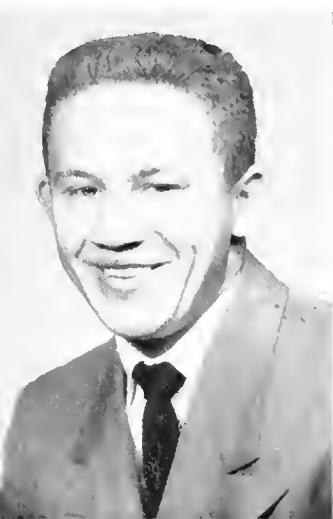


DAVE POTTER
Grayville, Illinois

MARILYN RAGSDALE
Harrisburg, Illinois

CAROL RENDER
Harrisburg, Illinois

HARRY SALE
Okawville, Illinois





BOB SOUDERS
Centralia, Illinois



RAE SMITH
Edwardsville, Illinois



BOB TANDISH
Lebanon, Illinois



JAMES STEVENSON
Lebanon, Illinois



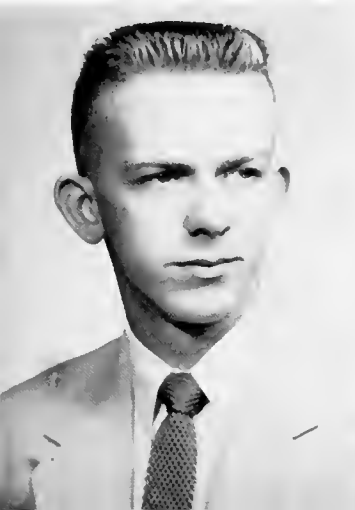
SHERRILL TATE
Grayville, Illinois



DWENETH TRENT
Marine, Illinois



JOE VOEGELI
Collinsville, Illinois



CURT TANNAHILL
Fairfield, Illinois





CHARLES VOGLES
Sorento, Illinois



MONA WAGNER
Olney, Illinois



KAYWYNNE WEILER
Glen Carbon, Illinois

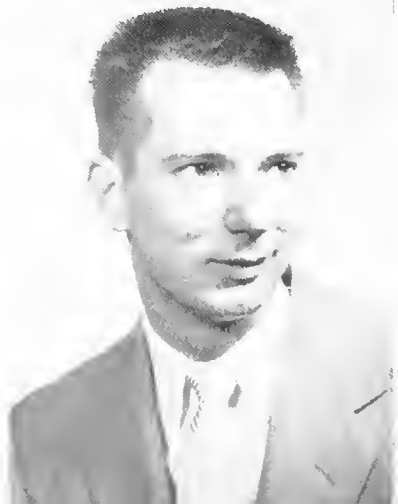


JUDY WEIR
Wichita, Kansas



LORAIN YARBER
Mascoutah, Illinois

ALICE CHANG
Seoul, Korea









We wish to take this space to thank all of our advertisers, page sponsors, patrons, boosters, photographers (Artcraft Studio and Don Brown, free lance), and all of the faculty members and students who submitted snapshots and copy to help make this the best annual yet.

We also wish to express our appreciation to our advisor, Miss Joan Warner for her patience, advice, and long hours of work.

The McKendreaan Staff

PAGE SPONSOR

BETHALDO METHODIST CHURCH

PATRONS

Mrs. Nell Oppitz

Dr. W. C. Walton

Mr. C. B. Morris

Mr. E. S. Owen Jr.

Miss S. Marjorie Warner

Dr. C. J. Stowell

Signal Hill Methodist Church

Mr. Raymond Daniel

Dr. R. C. Berry

Mrs. & Jeanette Thornley

Mr. Homer C. Brown

BOOSTERS

Main St. Methodist Church - Alton

Mr. H. W. Kampe

Mr. C. S. Gentry

Miss Ruth Walton

Mr. A. W. Hendrix

CLARENCE W. BOHM

DANCE STUDIO

CENTRALIA

The Community Center

EDWARDSVILLE

Main and Vandalia

HARRIS LANGENBURG HAT CO.

Manufacturers

Hats - Caps - Straws

1110 - 1114 Washington Avenue

St. Louis (1). U. S. A.

MEYER

Furniture and Undertaking

Established 1894

Lebanon, Illinois

A Most Pleasant Welcome Awaits You At All Times At

BILL'S

For Good Fountain Service
Gifts for all Occasions
Confectionery, Jewelry, Etc.

DAUMUELLER'S

MUSIC and GIFT SHOP

215 - 217 West St. Louis Street

Lebanon, Illinois

**J.H. HARMS
SHOE STORE
and
REPAIR SHOP**

Complete Line of Leather Shoes
House Slippers, and Rubber and
Canvas Footwear for the Entire
Family

225 West St. Louis
Lebanon, Illinois

Compliments
Of Your

KROGER STORE

Fordyce Smith, Mgr.

Compliments
of

**KOLB
MERCANTILE CO.**

226 - 228 West St. Louis Street
Lebanon, Illinois

**LEBANON DRUG
CO.**

College Supplies and
Fountain Pens

“Try Our Soda Fountain”

We Serve Delux Ice Cream
and Toasted Sandwiches

O. C. Freshour, R. Ph.

C. HEER

General Merchandise

The Quality Store

We Give Eagle Stamps

Phone KE 7 - 2980

BATTOE'S

HI-WAY CAFE

Home Made Pie

Good Coffee

Tender Steaks

Short Orders

Lebanon, Illinois

BROOKS

BODY SHOP

Anything in the line of

BODY AND FENDER WORK

We will repair the smallest scratch to the largest dent. We can touch up to match any paint as well as completely repainting your car.

We Give Free Estimates

PLATONIAN

LITERARY

SOCIETY

106 years on the campus

The School's Largest

And Best Society

ARTCRAFT STUDIO

Portrait and Commercial Photographers

11 Public Square, Belleville, Illinois

Phone A 3 - 2253

THE PHILOSOPHIAN LITERARY SOCIETY

CLIONIAN LITERARY SOCIETY

The Oldest Women's Society

On the Campus

Compliments

of

LEBANON CAFE

ROYAL CLEANERS

Licensed Sanitone Plant

Let us dry clean your garments

They'll look and feel like new

when finished with

STA-NU

Phone 7 - 6710

Lebanon, Illinois

When We Make A Business
Transaction

We Aim To Make A Friend
Friends Are As Needful

As

CAPITAL

**FIRST NATIONAL
BANK**

Member Federal Deposit

Insurance Corp.

Lebanon, Illinois

Compliments

of

CITY MARKET

Joe Gregory and Art Fritz

Compliments
of
BEN FRANKLIN

STORE

Otto Kock
Owner

LEBANON MOTOR

CO.

Chevrolet Sales and Service
Wrecker Service

Telephone KE 7 - 2730 Lebanon, Ill.

E. and R. WEBER

HARDWARE

Sheet Metal Work

Plumbing-Heating

Lebanon, Illinois

SINCLAIR

K. and C.

SERVICE

Gas - Oil - Lubrication

Telephone KE 7 - 6703



INTER-COLLEGIATE PRESS

Publishers Cover Manufacturers Book Binders

FACTORY HOME OFFICE

Kansas City

Lebanon, IL 62254

