

Ref.  
LD  
3141  
.M37  
1960  
c. 1

D

# MCKENDREAN

HOLMAN LIBRARY / MCKENDREE COLLEGE  
3 4011 00098 0570





MC  
Lebanon, IL 62254





Digitized by the Internet Archive  
in 2010 with funding from

CARLI: Consortium of Academic and Research Libraries in Illinois

# Mc Kendrean

1960

McKendree College  
Lebanon, Illinois

# Table of Contents

Administration

Faculty

Classes

Organizations

Sports

Activities

Who's Who



## In Dedication . . .

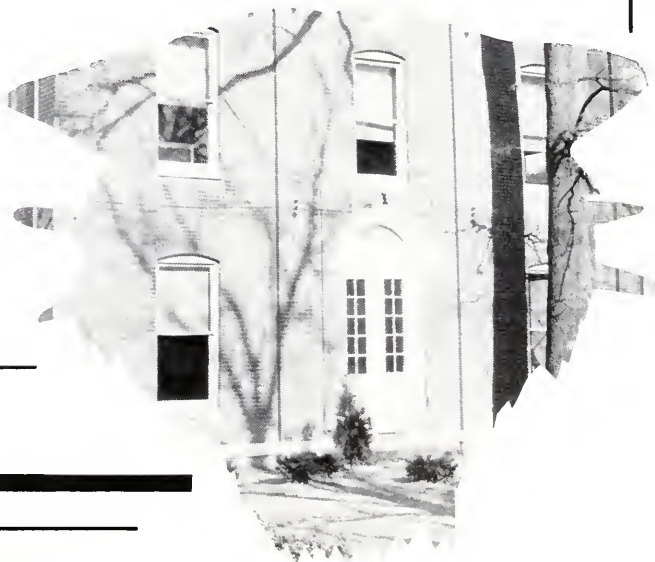
To the memory of MRS. MARY AUDREY DITTEMORE, professor of Languages at McKendree from 1957 to 1958, who passed away September 14, 1959. The 1960 McKendree staff humbly dedicates its efforts to keeping alive the spirit of love and friendship which she displayed to both faculty and students. It is our sincere desire that McKendreans always may find this book a monument to a personality of great integrity, understanding and sincerity, dedicated to the cause of education.

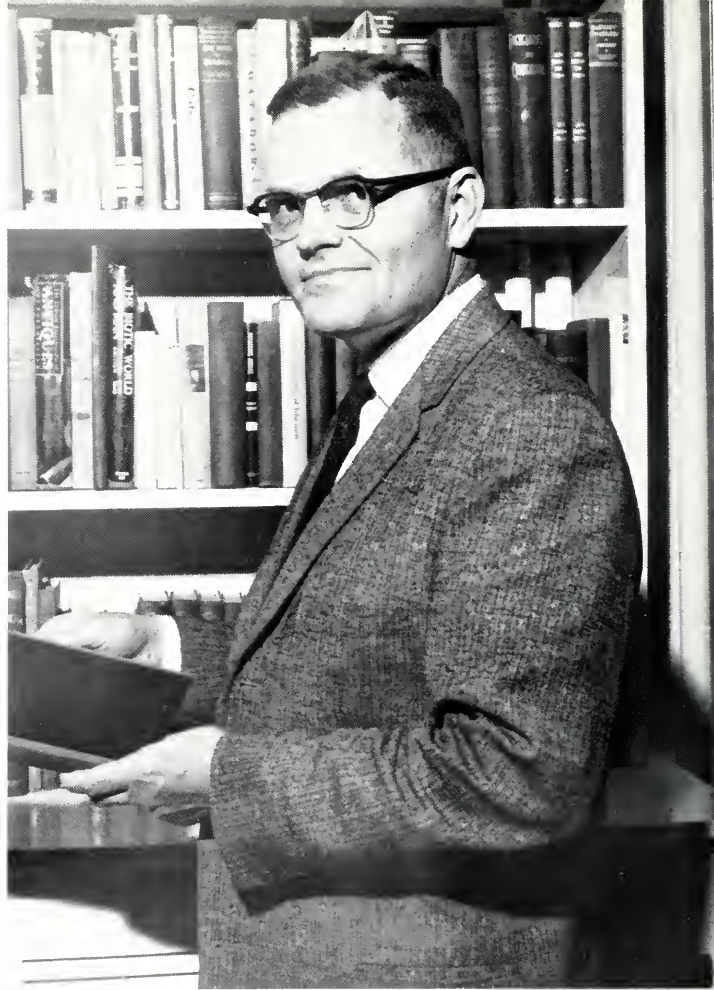
OLD MAIN  
1850



# Administration

SCIENCE HALL





DR. WEBB B. GARRISON  
PRESIDENT

For two and a half years McKendree College and McKendreans were under the able supervision of Dr. Garrison. In January of this year our campus was stunned at his resignation.

After hearing the pros and cons of his resignation discussed by students and faculty all finally came to the realization that perhaps it was a wise decision for all concerned. Immediately before leaving the campus for his new position as a minister in Indianapolis, Indiana, Dr. Garrison spoke in chapel and gave us these four points to interpret and to apply to our lives.

God's mills grind slowly, but exceedingly fine.

Whom the Gods would destroy,  
they first make mad.

The bee that robs the flower also fertilizes it.

When it is dark enough the stars come out.

W. N. GRANDY, *Dean*  
*Acting President*



RAYMOND DANIEL  
*Business Manager*



EMERIAL OWEN  
*Registrar*

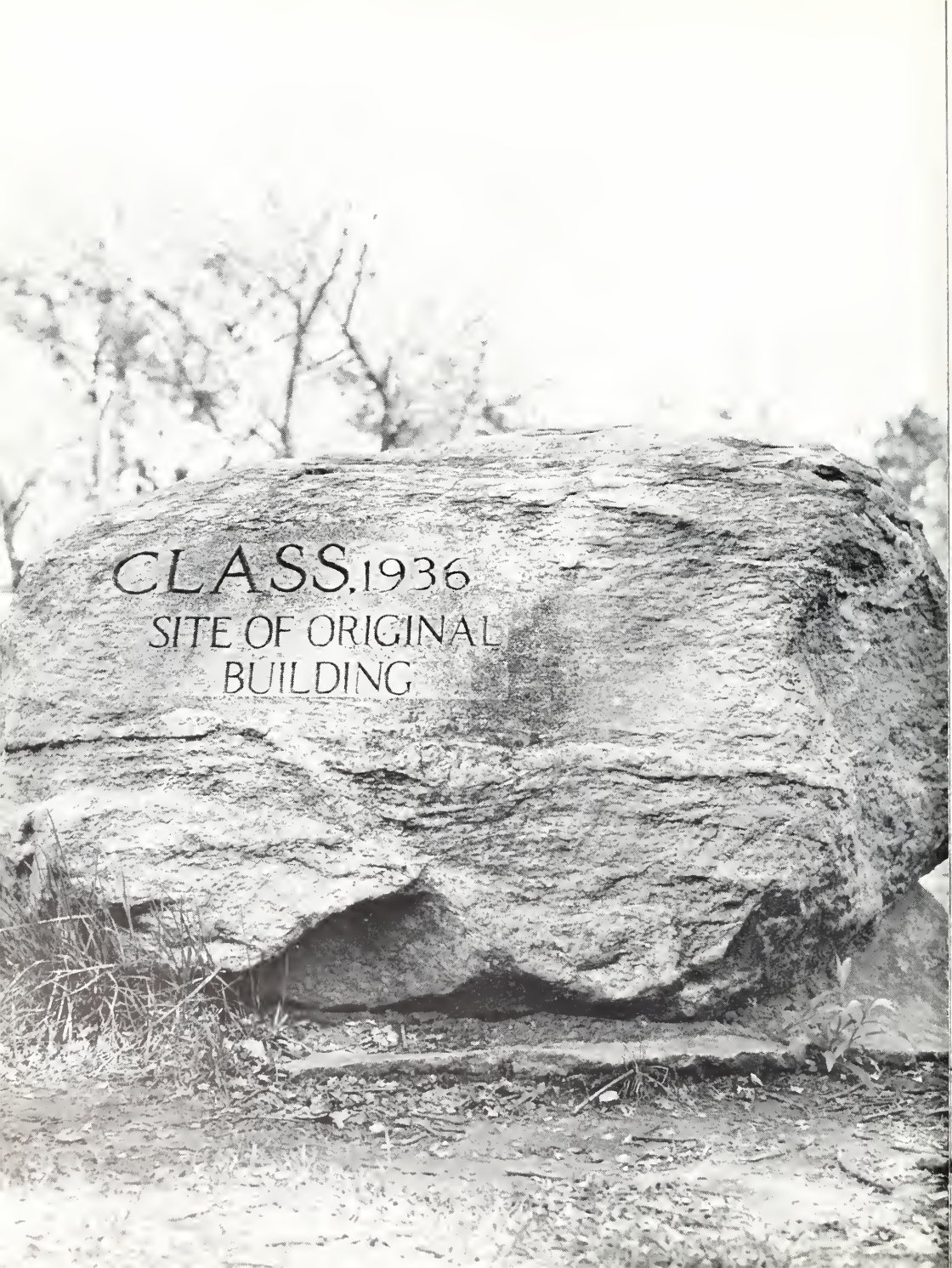
KATHERINE POMEROY  
*Office Manager*



## Office Staff



P. Jordon, S. Daech, L. Kittle, L. Lougeay, K. Meggs,  
D. Lauer, L. Cruse.

A large, layered rock formation, possibly sandstone, with horizontal bedding planes. The rock is weathered and has a rough, textured surface. The text is carved into the rock face. The background shows some bare trees and a bright sky.

CLASS.1936  
SITE OF ORIGINAL  
BUILDING

# Faculty





MR. ROBERT BROWN, M.A.  
*Sociology*, A.B., McKendree College; M.A.,  
George Peabody College.



MR. LOUIS BUTTS, M.Ed.  
*Education*, B.S., McKendree College; M.Ed.  
Washington University.



MRS. MARITA CLARKE  
*German*, Teachers College, Munich, Germany;  
First and Second Examinations German  
Teacher's Training and Orientation Program  
in the U. S.



DR. OTHA CLARK, Ph.D.  
*History*, B.S., Arkansas Polytechnic College;  
B.D., McCormick Seminary; Ph.D., University  
of Chicago.

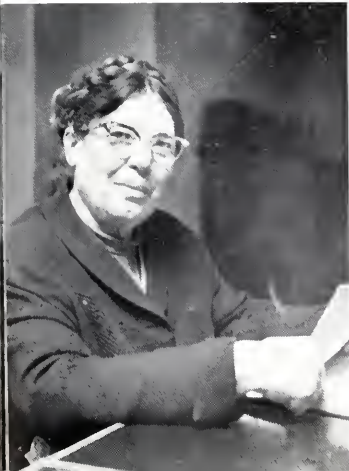


MR. DALE CRUSE, M.S.  
*Physical Education.*  
A.B., McKendree College; M.S., Indiana  
University.



MRS. ZADA DICKSON, M.A.  
*Art*  
A.B., M.A., Texas College for Women.

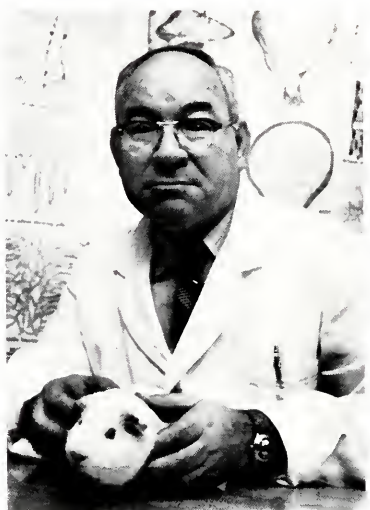
MR. ELDON DITTEMORE, M.S.  
*Business Education.*  
A.B., Central Normal College; M.S., Indiana  
University.



MRS. ELIZABETH DIXON, M.A.  
*English and Journalism.*  
A.B., Monmouth College; M.A., State Uni-  
versity of Iowa.



MISS MARY DONHAM, M.S.  
*Business Education*  
B.S., Indiana State Teachers College; M.S.,  
Illinois State Normal University.



MR. FRED FLEMING, M.S.  
*Biology*  
B.S., Indiana Central Normal University; M.  
S., University of Wyoming.



MR. GLENN FREINER, M.M.  
*Music*  
A.B., McKendree College; M.M., Drake Uni-  
versity.



MR. JOHN GODWIN, M.A.  
*Physics*  
B.S., Indiana State Teachers College; M.A.,  
Washington University.

MR. PHILIP KENNEDY, M.A.  
*History*, A.A., Pasadena City College; A.B.,  
A.M., University of Redlands.



MRS. MARIELLA KERR, B.A.  
*French*, B.A., Sweet Briar, Virginia.

DR. JOHN W. MCCAIN, JR., Ph.D.  
*English*, A.B., Newberry College; M.Ed.,  
Duke University; M.A., Ph.D., University  
of North Carolina; LL.B., Emory University.



MR. PAUL NUGENT, M.A.  
*Mathematics*, A.B., Franklin College; M.A.,  
Miami University.



MR. JAMES OLDFIELD, M.Ed.  
*Psychology and Director of Athletics.*  
B.S., Southern Illinois University; M.Ed.,  
University of Illinois.



DR. ROLAND RICE, Ph.D.  
*Religion.*  
A.B., Hamline University; STB, Harvard  
Divinity School; Ph.D., Boston University.

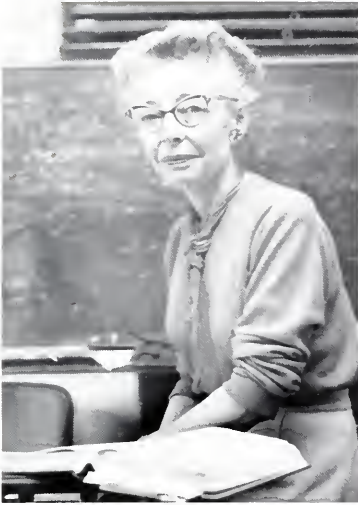


MR. R. C. SAYRE, M.A.  
*Education.*  
B.S., McKendree College; A.B., University  
of Illinois; M. A., University of Wisconsin.



MR. ORVILLE SCHANZ, M.M.E.  
*Music.*  
A.B., McKendree College; M.M.E., Drake  
University.

DR. MILDRED SILVER, Ph. D.  
*English*  
A.B., Lawrence College; M.A., Northwestern  
University; Ph.D. State University of Iowa.

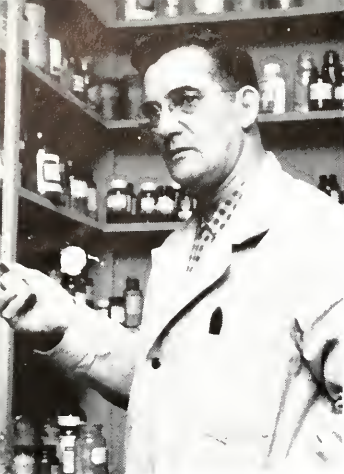


MRS. ELlice SIMMONDS, A.B.  
*English*  
A.B. Smith College

MR. GEORGE TUERCK  
*Music*



MR. KENT WERNER, M.M.  
*Music*  
B.M., Southern Illinois University; M.M.,  
University of Illinois.



DR. LESTER WICKS, Ph.D.

*Chemistry*

B.S., M.A., St. Louis University; Ph.D.,  
Washington University.



MRS. MARY E. WILLIAMS, M.A.

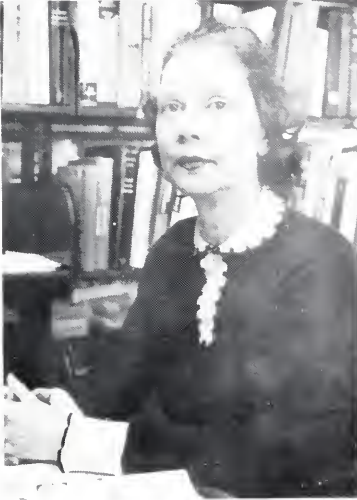
*Speech*

A.A., Grand Rapids Junior College; B.S.S.,  
Northwestern University; M.A., University  
of Illinois.

PART TIME FACULTY

L. D. BAUERSACHS, M.S.  
NORMAN BECK, M.A.  
FREENAM GREER, M.A.  
ARTHUR HORTIN, M.A.  
LOREN JUNG, M.S.  
DELMAR KOEBEL, LL.B.  
CHARLES MILLER, M.S.  
JAMES NETTLETON, B.D.  
FRANK PIRCE, B.D.  
CURTIS TRAINER, ED.D.  
WILBUR R.L. TRIMPE, M.A.  
SUZANNE WICKS, M.A.  
FELIX WILLIAMS, M.S.  
LAWRENCE HORSCH  
CHARLES NICHOLS  
MARVIN STANLEY

Charlie Cox  
*Director of Public Relations*



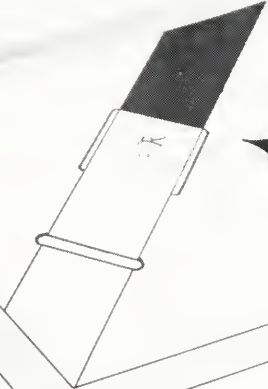
Katherine Daniel  
*Librarian*

Don Metzger  
*Director of Student Recruitment*



Florence Thornley  
*Dietician*

WALDO



ONE BELT TWO LOOK

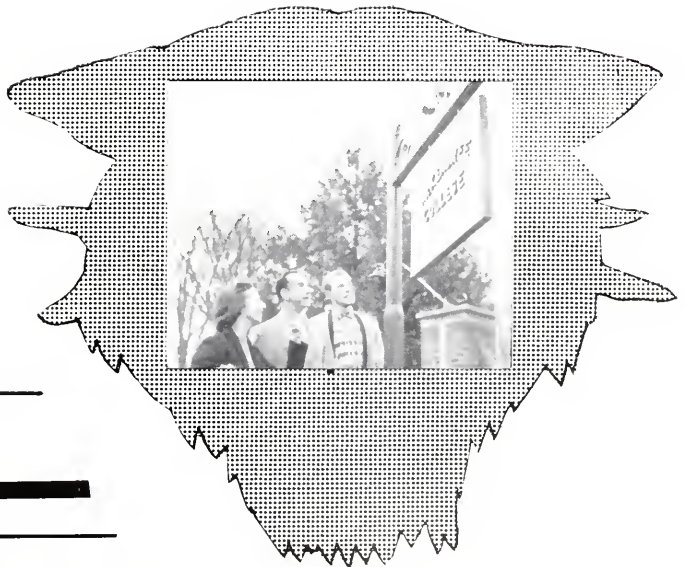


E



# Classes

"JUST THINK — We'll be 81 years old when McKendree reaches its 200th birthday," Mary Lee Zabel, *secretary-treasurer* of the Senior class, remarks to Carl Draper, *president*; and Don Niebel, *vice-president*.





DONALD G. BOAN  
Belleville, Illinois

*Major:* History  
*Minor:* Speech



JOSEPH R. BOGART  
Belleville, Illinois

*Major:* English-Journalism  
*Minor:* Religion-Philosophy

HOWARD BOLLER  
Mascoutah, Illinois  
*Major:* History  
*Minor:* Political Science



WILLIAM BRAMMEIER  
Oakdale, Illinois  
*Major:* English-Journalism  
*Minor:* History



ANGELA BUCHELE  
Shattuc, Illinois  
*Major:* Piano  
*Minor:* Voice-Organ



BARBARA CHAPPLE  
Lebanon, Illinois  
*Major:* Biology  
*Minor:* English





CARRIE CULLISON  
Thebes, Illinois

*Major:* Social Studies Divisional



THEODORE CROMACK  
Trenton, Illinois

*Major:* Business Education  
*Minor:* Psychology

DERWOOD DERICKSON  
Mascoutah, Illinois

*Major:* Physical Education  
*Minor:* Biology



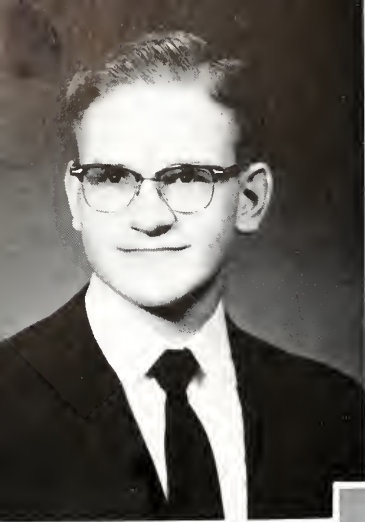
CARL DRAPER  
Hartford, Illinois  
*Major:* Math-Chemistry  
*Minor:* Education



FRED D. EDWARDS  
Galatia, Illinois  
*Major:* Physical Education  
*Minor:* History-Sociology



EARL FISHER  
Collinsville, Illinois  
*Major:* Business  
*Minor:* Psychology



LYNN GROVE  
Castle Rock, Colorado  
*Major:* English-Journalism  
*Minor:* Psychology



WILLIAM GULLICK  
Mulberry Grove, Illinois  
*Major:* English  
*Minor:* History

GERALD HALL  
Harrisburg, Illinois  
*Major:* Business Education  
*Minor:* Psychology



GILDER HARRIS  
O'Fallon, Illinois  
*Major:* Social Science  
*Minor:* Religion



JOHN HARRIS  
East St. Louis, Illinois  
*Major:* Chemistry-Biology  
*Minor:* Business-History



WILLIAM HERBST  
Collinsville, Illinois  
*Major:* Business  
*Minor:* Psychology



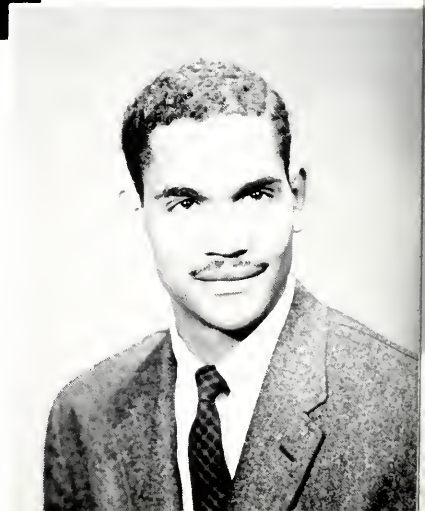


IVAN HORN  
Waterloo, Illinois  
*Major:* Business  
*Minor:* Biology



JOYCE HUDSON  
Crossville, Illinois  
*Major:* Physical Education  
*Minor:* Biology

MAURICE HURST  
East St. Louis, Illinois  
*Major:* History  
*Minor:* Social Studies





ROBERT ISSACS  
West Frankfort, Illinois  
*Major:* Social Studies Divisional



JACQUELINE JOHNSON  
Madison, Illinois  
*Major:* Speech  
*Minor:* Art



EUGENE JUNKER  
Festus, Missouri  
*Major:* Business  
*Minor:* English

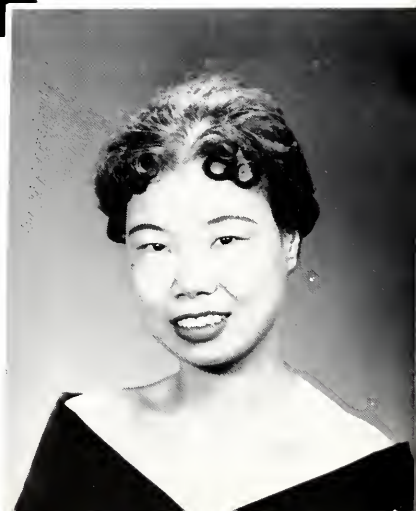


THELMA KILLGORE  
O'Fallon, Illinois  
*Major:* Education  
*Minor:* Art



ALMA KLEINAITIS  
East St. Louis, Illinois  
*Major:* Business  
*Minor:* Psychology

ALICE LEE  
New York City, New York  
*Major:* Psychology  
*Minor:* Education



GERTRUDE MCCAMMOND

Davis Junction, Illinois

*Major:* Biology

*Minor:* Psychology



CHARLES MCKNELLY

Murrayville, Illinois

*Major:* Social Studies Divisional



LINETTE MAEDGE

Marine, Illinois

*Major:* English

*Minor:* Sociology





MARY MALONE  
East St. Louis, Illinois  
*Major:* Education  
*Minor:* Sociology



JOHN MILFORD  
Trenton, Illinois  
*Major:* Mathematics  
*Minor:* English

CAROL MILLER  
Anna, Illinois  
*Major:* Social Studies Divisional



WILMAN MOLSTAD  
Belleville, Illinois  
*Major:* Business-Education  
*Minor:* History



JAMES MONKEN  
Belleville, Illinois  
*Major:* Physical Education  
*Minor:* History



LEO NEFF  
Belleville, Illinois  
*Major:* Business-Education  
*Minor:* History





DONALD NEIBEL  
East St. Louis, Illinois

*Major:* Voice

*Minor:* Piano



ROBERT REHG  
St. Jacob, Illinois

*Major:* Chemistry

*Minor:* Biology

PRICILLA RICE  
Lebanon, Illinois

*Major:* Art

*Minor:* Library Science-English



ROBERT SCHULTE  
Freeburg, Illinois

*Major:* Physical Education  
*Minor:* Biology



ROBERT SMITH  
O'Fallon, Illinois

*Major:* Mathematics  
*Minor:* Physics



ROBERT STANISH  
Lebanon, Illinois

*Major:* History  
*Minor:* German





NANCY SWAN  
Brighton, Illinois  
*Major:* Piano  
*Minor:* Organ



MARTHA VAN AKEN  
Lebanon, Illinois  
*Major:* English  
*Minor:* Speech

JAMES VOGT  
Millstadt, Illinois  
*Major:* Chemistry  
*Minor:* Biology





VICKI WALKER  
Valley Park Missouri  
*Major:* Education  
*Minor:* Art



DON WELLS  
Carlyle, Illinois  
*Major:* Physical Education  
*Minor:* Biology



TOM WHEATLEY  
Percy, Illinois  
*Major:* Biology  
*Minor:* Chemistry





LARRY WHITE  
Jonesboro, Illinois  
*Major:* English  
*Minor:* History



RUTH WITTER  
Fairfield, Illinois  
*Major:* Education  
*Minor:* History

VIRGINIA WOOD  
Louisville, Illinois  
*Major:* Education  
*Minor:* History-Sociology



MARY LEE ZABEL  
O'Fallon, Illinois

*Major:* Voice  
*Minor:* Piano



#### THOSE NOT PICTURED

ALLEN BASSLER  
Trenton, Illinois  
*Major:* Business Education  
*Minor:* History and Economics

BURTON BROWN  
Imperial, Missouri  
*Major:* English  
*Minor:* Philosophy

PATRICIA COX  
Scott A.F.B., Illinois  
*Major:* Speech  
*Minor:* English

BENNIE DONALD  
East St. Louis, Illinois  
*Major:* Elementary Education  
*Minor:* Speech

ALLEN GAEBE  
Addieville, Illinois  
*Major:* Business Education  
*Minor:* Psychology

RAYMOND HOBBS  
Trenton, Illinois  
*Major:* Business  
*Minor:* History

HAROLD KELLERMAN  
Belleville, Illinois  
*Major:* Chemistry  
*Minor:* Mathematics

DON METZGER  
Mt. Vernon, Illinois  
*Major:* Religion  
*Minor:* Journalism

JOHN PLEAS  
East St. Louis, Illinois  
*Major:* Biology  
*Minor:* History

DARNIE SANDERS  
East St. Louis, Illinois  
*Major:* Biology  
*Minor:* History

SHIRLEY SCHAEFFER  
Lebanon, Illinois  
*Major:* Speech  
*Minor:* Business

DELORES SILVERS  
East St. Louis, Illinois  
*Major:* Elementary Education  
*Minor:* History

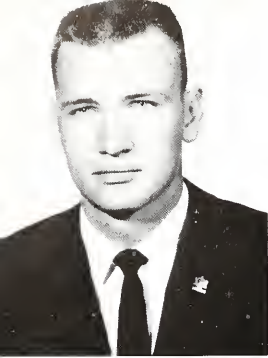
FREDERICK STOKES  
East St. Louis, Illinois  
*Major:* Art  
*Minor:* Psychology

GLORIA SYKES  
East St. Louis, Illinois  
*Major:* Elementary Education  
*Minor:* Art

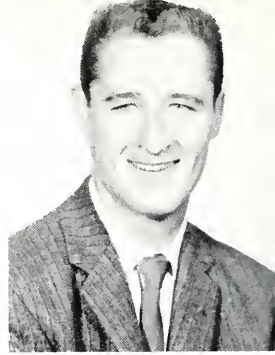
HAROLD WELCH  
Centralia, Illinois  
*Major:* Physical Education  
*Minor:* History

NEAL WELZ  
Trenton, Illinois  
*Major:* Business Education  
*Minor:* History

LAURA WHITLOCK  
Belleville, Illinois  
*Major:* Business Administration  
*Minor:* Psychology



HOWARD ALLEN  
Bluford, Illinois



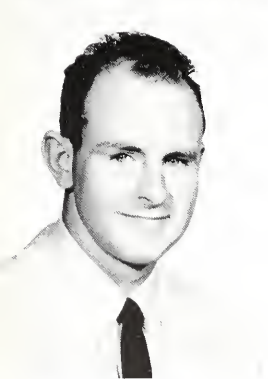
JAMES BEINE  
New Baden, Illinois



JUANITA ANDERS  
Brighton, Illinois



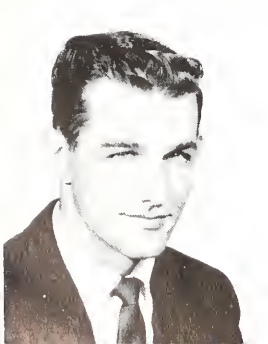
WILLIAM BERNDSEN  
Breese, Illinois



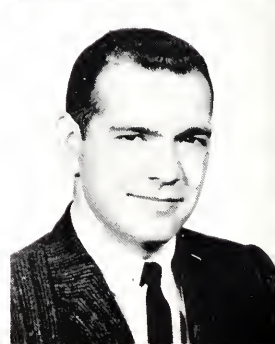
TOM ARRAS  
Maryville, Illinois



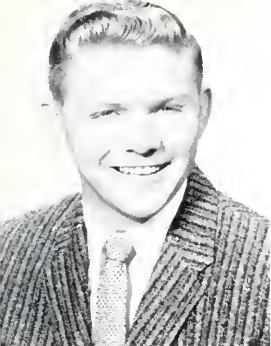
ROGER BOFCKMAN  
Breese, Illinois



CARL BEHRÉNS  
Bunker Hill, Illinois



DENNIS BUTTS  
Collinsville, Illinois



ROBERT CAMPBELL  
Wood River, Illinois



SUSANNE EARLY  
Alhambra, Illinois



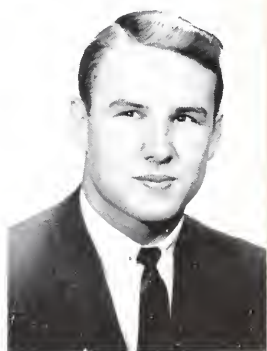
JOHN CHRISTIAN  
Witt, Illinois



HERBERT FORCADE  
Wood River, Illinois



LARRY COOK  
Belleville, Illinois



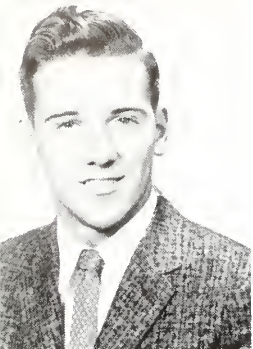
RICHARD GEDNEY  
Valley Park, Missouri



SARA DAECH  
Edwardsville, Illinois



MARTHA HARRIS  
Sumner, Illinois



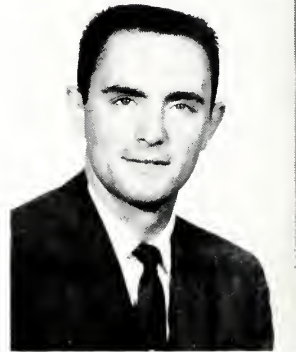
FRED HELEINE  
Marshall, Illinois



RAYMOND JONES  
Benton, Illinois



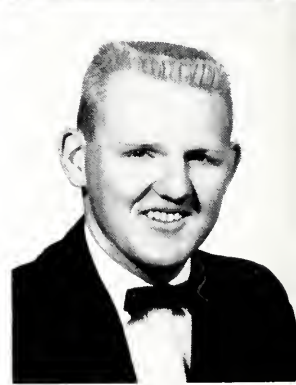
JAMES HIPSHER  
Decatur, Illinois



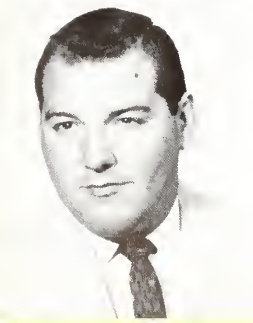
MELVIN JORDAN  
Wayne City, Illinois



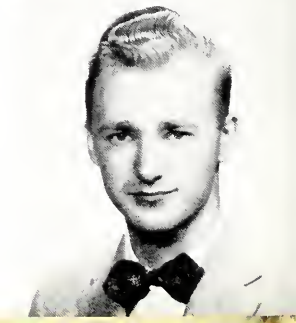
PEGGY JACKSON  
Wayne City, Illinois



LASLEY KIMMELL  
Thompsonville, Illinois



BUDDIE JOHNSON  
East St. Louis, Illinois



CHARLES KORUNKA JR.  
Mt. Olive, Illinois



LARRY LACQUEMENT  
Flora, Illinois



IRVIN OLIVER  
Caseyville, Illinois



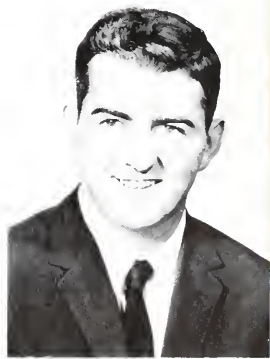
GEORGE LAREAU  
Athol, Massachusetts



GEORGE PENCE  
Evergreen Park, Illinois



THELMA LINDER  
Sims, Illinois



CECIL RABOURN  
Carrier Mills, Illinois



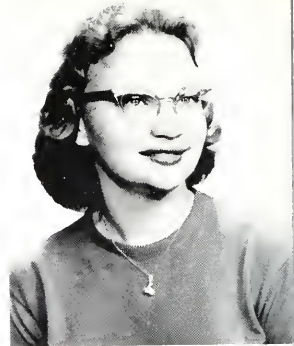
BETTY MORTON  
Centralia, Illinois



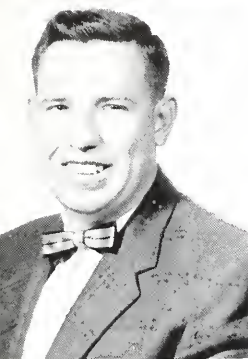
ROBERT RAHE  
Valmeyer, Illinois



WILLIAM ROBERTS  
Argenta, Illinois



JEANETTE WALTHES  
Freeburg, Illinois



EDWARD SADLER  
Palestine, Illinois



KEN WHITTAKER  
Wolf Lake, Illinois



FRDERRICK STEIN  
Dorsey, Illinois



BOBBY ZIFGLER  
Marine, Illinois



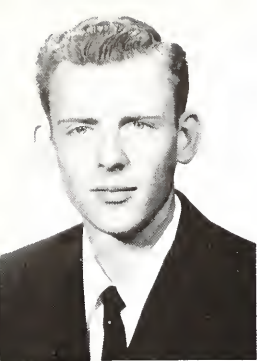
THOSE NOT PICTURED

ROBERT AVERY	DALLAS MELTON
Lebanon, Illinois	Tamalco, Illinois
DAVID BABB	ERNEST PARKER
Sorento, Illinois	Carlyle, Illinois
GARY BEESE	WILLIAM SANDERS
Belleville, Illinois	Trenton, Illinois
MILTON HART	GARY SCHELLER
Milwaukee, Wisconsin	Mt. Olive, Illinois
MARVIN JONES	FRIDERICK SCHWOERKE
E. St. Louis, Illinois	Highland, Illinois
JERRY KURZ	DENNIS SEXTON
Trenton, Illinois	Belleville, Illinois

CLARENCE TRAVIS  
Johnston City, Illinois



THAT'S RIGHT KAY, your diamond goes on your left hand jokes Bob Campbell, president of the Junior class as Vicki Walker, vice-president, chuckles at the seriousness of Kay Linder, secretary-treasurer.



DARRELL ARMISTEAD  
East St. Louis, Illinois



MARY BUCKALOO  
Lebanon, Illinois



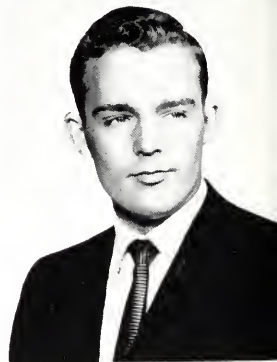
RUTH AUWARTER  
Troy, Illinois



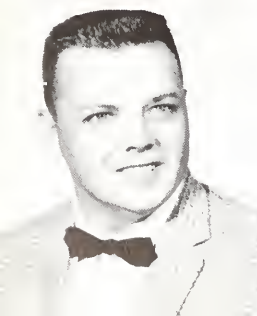
BOYD CARTER  
Collinsville, Illinois



MARTHA AVERY  
Lebanon, Illinois



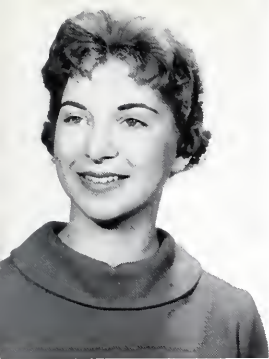
CARL CARTER  
Robinson, Illinois



DON BOWFRS  
Summerfield, Illinois



GARY CARTER  
Divernon, Illinois



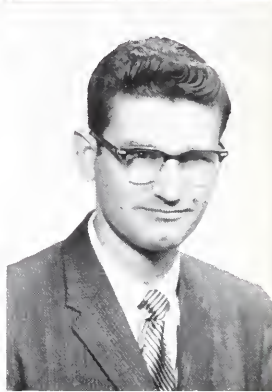
VELERA CASE  
Joppa, Illinois



DELORES CORRIE  
Claremont, Illinois



CLETA COBLE  
Flora, Illinois



DONALD CRESS  
Okawville, Illinois



JUDITH COLEMAN  
Elco, Illinois



PAUL DEVOR  
Kell, Illinois



RONALD COLEMAN  
West Frankfort, Illinois



GARY EAST  
Wood River, Illinois



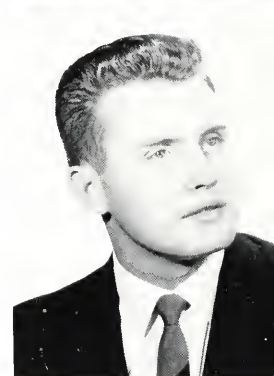
SOFIA GONZALEZ  
Madison, Illinois



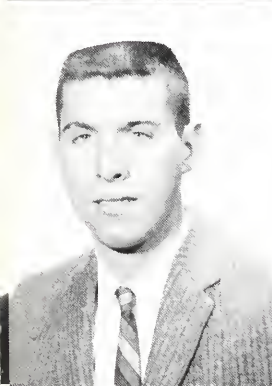
WARREN ITTNER  
Smithton, Illinois



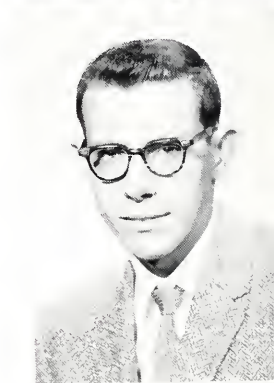
NAOMI HALL  
Eldorado, Illinois



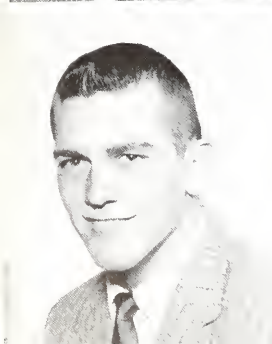
BOB KAMMERMANN  
Pontiac, Illinois



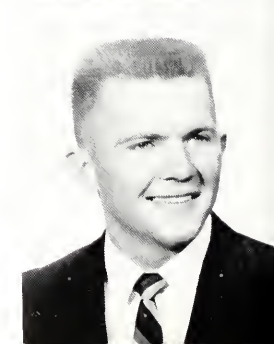
RICHARD HARNIST  
Belleville, Illinois



ORVAL KIMMLE  
O'Fallon, Illinois



WILLIAM HARRIS  
Granite City, Illinois



ROGER KNOX  
Mt. Vernon, Illinois



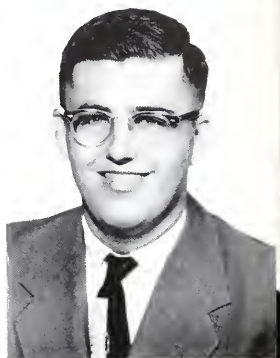
ROBERT KUBACH  
Summit, New Jersey



BEN LENTZ  
Coulterville, Illinois



ALVIN LAPSANSKY  
Witt, Illinois



MELVIN LISCHER  
New Athens, Illinois



MARY FRANCES LECKRONE  
Belleville, Illinois



CAROL LOYET  
Lebanon, Illinois



ROY LEGENDRE  
New Athens, Illinois



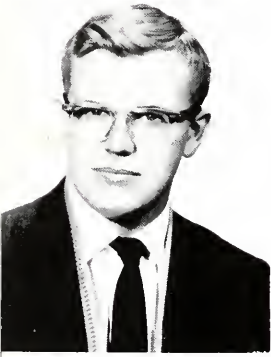
THEO MC CORKLE  
Louisville, Illinois



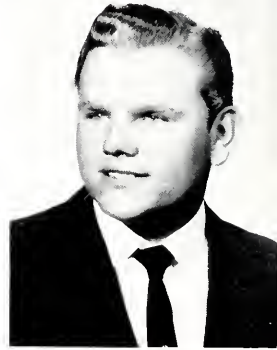
MONICA MCCRACKEN  
Collinsville, Illinois



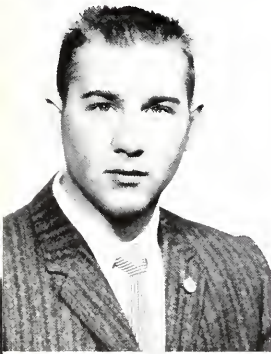
SANDRA OZMENT  
Lebanon, Illinois



RAYMOND MAY  
Nashville, Illinois



DAVID REINHARDT  
New Baden, Illinois



MYRON MUGELE  
New Baden, Illinois



DANIEL RIGGLE  
Flora, Illinois



PHYLLIS NIES  
Trenton, Illinois



BILL RUSHING  
Cutler, Illinois



ELDON SAUERWEIN  
Bunker Hill, Illinois



ANNE WEBB  
Ewing, Illinois



WARREN STIEG  
Okawville, Illinois



SHARON WHITE  
Dupu, Illinois



JACK THARP  
East St. Louis, Illinois



MARY WILLE  
Troy, Illinois



DAN WALKER  
Beckemeyer, Illinois



FLOYD WILLIAMS  
Joppa, Illinois



VIVIAN WORKMAN  
Ingraham, Illinois

THOSE NOT PICTURED

GERALD BROOKS

Lebanon, Illinois

DONALD COLLIER

Scott A. F. B., Illinois

MELVIN GAMBILL

Centralia, Illinois

ELMER HARGIS

Lebanon, Illinois

SAM HIPPLE

Mascoutah, Illinois

KENNETH HARMS

Lebanon, Illinois

ARLINE KELLER

O'Fallon, Illinois

HOWARD KENNEY

East St. Louis, Illinois

MARGARET LEYDA

Lebanon, Illinois

ROBERT LEYDA

Lebanon, Illinois

IRENE MOLITOR

Lebanon, Illinois

BRENT RICHARDSON

Wayne City, Illinois

VICTOR RUSSELL

Ft. Tarrant, Illinois

WILLIE WILLIAMS

Colp, Illinois



"Take a drink! This is the fountain of youth," jokes Roger Knox, Vice-President of the Sophomore class to Carl Carter, President, and Monica McCracken, Secretary-Treasurer.





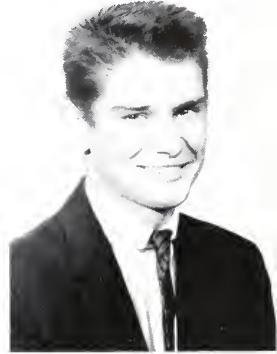
PAUL ALLEN  
Carlyle, Illinois



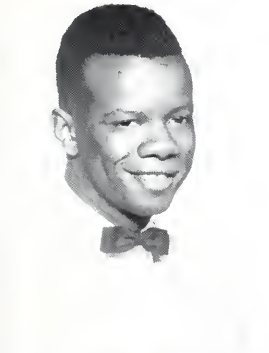
BILL BLYTHE  
Norris City, Illinois



CAROLYN BARNETT  
Equality, Illinois



BRUCE BRITT  
St. Louis, Missouri



ROBERT BEAL  
East St. Louis, Illinois



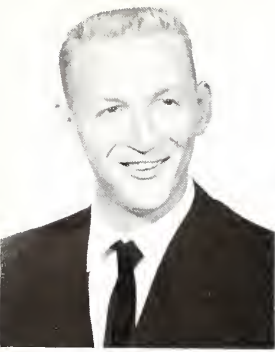
ALONA CAVINS  
O'Fallon, Illinois



MILDRED BECKEMEYER  
Carlyle, Illinois



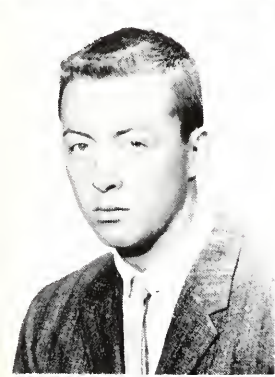
DAVID CLARK  
Martinsville, Illinois



JON COCKREL  
Metropolis, Illinois



RAYDEAN DAVIS  
Carrier Mills, Illinois



JACK COOK  
New Albany, Indiana



JAN DELANEY  
Flora, Illinois



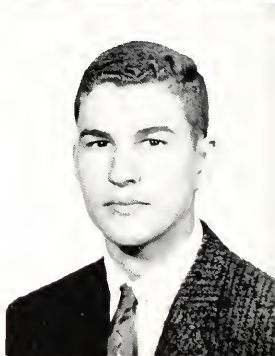
CAROL COPE  
Trenton, Illinois



ROBERT DONOHO  
Fairfield, Illinois



PATSY CREED  
O'Fallon, Illinois



CLYDE DORRIES  
Brees, Illinois



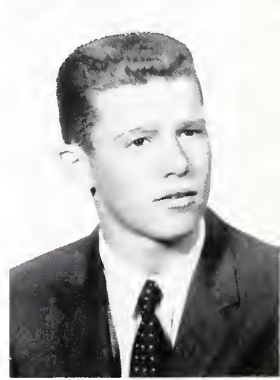
JUDY DRESSEL  
Trenton, Illinois



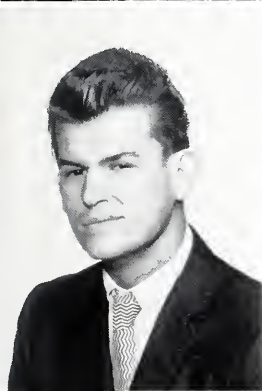
BARBARA HAENGGI  
Olny, Illinois



VIRGINIA DUDE  
O'Fallon, Illinois



TERRY HARRISON  
Clay City, Illinois



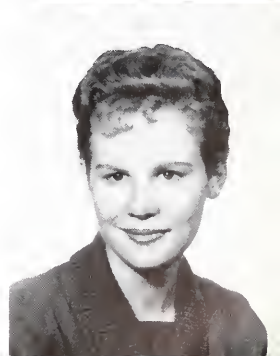
DWIGHT FAITZ  
Trenton, Illinois



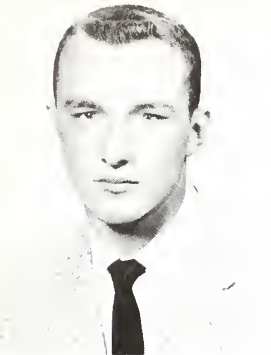
JOEL HILLYARD  
Nashville, Illinois



DARRELL FRANKLIN  
Louisville, Illinois



JUDY JACKSON  
Nashville, Illinois



BOB JOHNSON  
Marion, Illinois



FLORENCE LEPPIN  
Altamont, Illinois



PATSY KITTINGER  
Carmi, Illinois



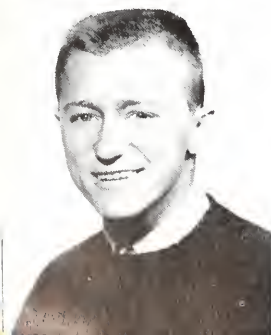
BONNIE MCBRIDE  
New Athens, Illinois



SYLVIA KORTE  
Lebanon, Illinois



ADRIANA MCMURTRY  
Equality, Illinois



NORMAN LANGE  
Waterloo, Illinois



JAMES MALINA  
New Baden, Illinois



CARL MANIER  
Stonefort, Illinois



JOELLEN MINTON  
Aruba, Netherlands Antilles



LARRY MARTIN  
West Frankfort, Illinois



WILLIAM OPPER  
Canton, Illinois



SANDRA MAUCK  
Trenton, Illinois



ANNE PFEFFER  
Lebanon, Illinois



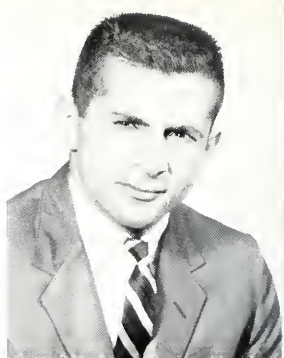
CHARLES MAY  
Nashville, Illinois



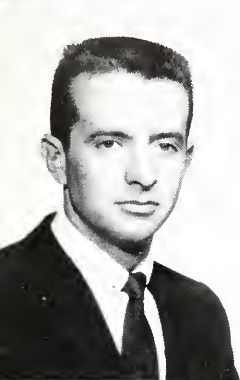
RALPH PHILLIPPE  
Willow Hill, Illinois



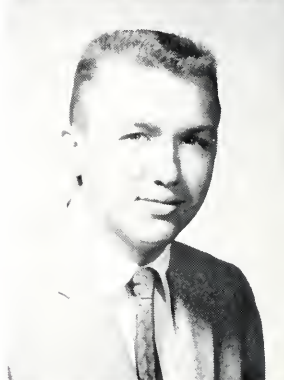
RAYMOND PIERSON  
Louisville, Illinois



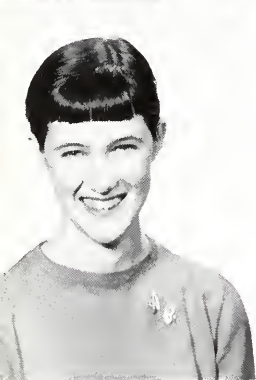
JOHN SCHEPPE  
Summit, New Jersey



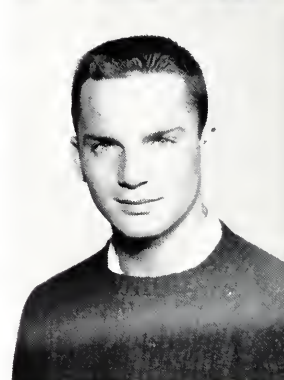
HAROLD RINESMITH  
St. Louis, Missouri



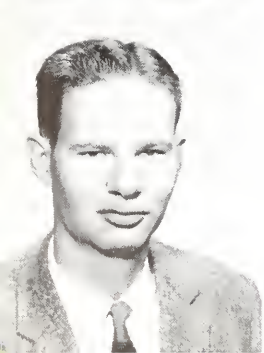
ALLEN SCHOMAKER  
New Baden, Illinois



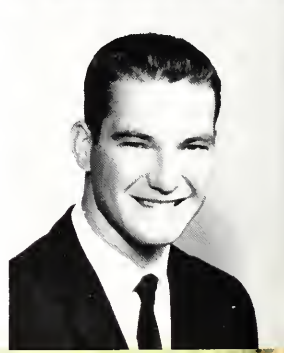
AGNES ROBINSON  
Kane, Illinois



SKIP SCHWTRDTFEGER  
Lombard, Illinois



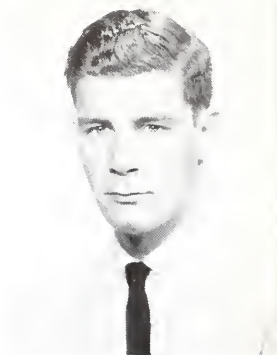
GEORGE ROER  
St. Louis, Missouri



HAROLD SHATFFER  
Lawrenceville, Illinois



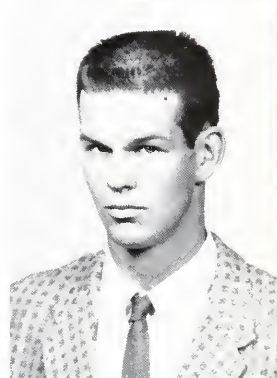
JOYCE SPENCER  
Amboy, Illinois



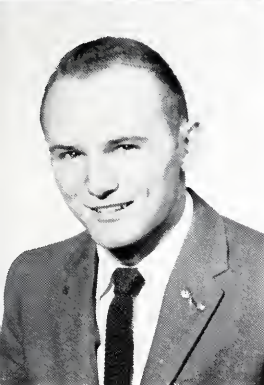
EDDIE WOOD  
Mascoutah, Illinois



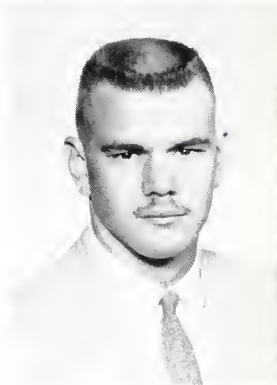
RUDY WILDMAN  
New Athens, Illinois



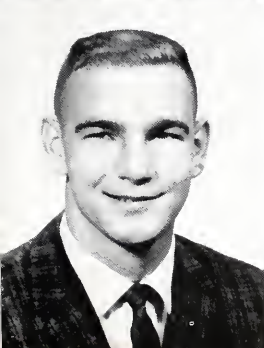
MIKE WOLLCOTT  
Harrisburg, Illinois



JOHN WILDT  
E. Alton, Illinois



TERRY WORMS  
New Athens, Illinois



MIKE WOMACK  
Carbondale, Illinois



ELLEN YOUNGS  
Harrisburg, Illinois

THOSE NOT PICTURED

JIM BURKE	ALVIN KIRKPATRICK
West Frankfort Illinois	Christopher, Illinois
SHERMAN BERRY	KENT LEWIS
Grafton, Illinois	Grayville, Illinois
ORVAL HARRIS	DORIS NICHOLSON
E. St. Louis, Illinois	E. St. Louis, Illinois
MARK HILL	JAMES RABER
Orland Park, Illinois	St. Louis, Missouri
WARREN HUFFMAN	THOMAS RABER
Flora, Illinois	St. Louis, Missouri
JAMES KIRK	DENNY SYMER
New Albany, Indiana	Lebanon, Illinois

CHARLES WITZEL  
Centralia, Illinois



"LET'S GET ORGANIZED, we are going to be here for four years," asserts Jo Ellen Minton, secretary of the Freshman class to John Schieppe, vice-president; Jack Cook, president; and Terry Harrison, treasurer.





## Organizations



N. Swan, A. Buchele, M. Harris, P. Jackson, T. McCammond, J. Coleman, A. Kleinaitis.



**OFFICERS**

T. McCammond, *President*; P. Jackson, *Secretary*; M. Harris, *Treasurer*.

# Alpha Omega

Alpha Omega, the newest society on campus, was chartered in November, 1954. It proposes to establish a perpetual bond of friendship among its members, to develop a stronger and more womanly character, to develop the moral, social, cultural and intellectual life. Among its special campus activities was Christmas caroling.



**PLEDGES**

M. Beckemeyer, P. Kirtinger, S. White, N. Hall, J. Jackson, B. McBride.



R. Auwarter, S. Early, S. Daech, V. Case, M. Zabel, R. Witter, V. Walker, A. Lee, C. Loyet, J. Johnson.



**OFFICERS**

S. Early, *Secretary*; R. Witter, *President*; V. Walker, *Vice-President*.

# Clio

Clio, was chartered in May 1881. They attempt to acquire cultivation of moral, social, and literary refinement; music, both instrumental and vocal, debate, and the acquisition of knowledge. They sponsored monthly movies and Carol Loyet as Homecoming queen candidate.

**PLEDGES**

M. Wille, V. Dude, J. Spencer, V. Wood. *Not Pictured*: E. Youngs, M. Buckaloo, A. Cavins, M. Malone, J. Drussel, and L. Whitlock.





R. Bogart, L. Grove, D. Metzger, *Advisor*; D. Neibel, I. Horn. R. Knox, F. Heleine, B. Gullick, C. Korunka.



**OFFICERS**

F. Heleine, *Vice-President*; L. Grove, *Treasurer*; B. Gullick, *President*; C. Korunka, *Secretary*.

# Philo

Philo, the oldest society on campus, was founded in January 1837. They promote intellectual culture, mutual cooperation of members and social activities. They sponsored the annual hayride, Halloween party, and Joyce Hudson as Homecoming queen candidate; they honored Dr. Garrison with the presentation of McKendree's first fifty star flag.



**PLEDGES**

E. Saddler, R. May, R. Wildman, R. Davis.



J. Beine, D. Boan, R. Gedney, G. Carter, G. Pence, L. Lacquement, J. Hipsber, L. White, F. Stein, B. Herbst, B. Richardson, T. Brammeier, C. Behrens, V. Russell, D. Butts.



#### OFFICERS

G. Pence, *Treasurer*; G. Carter, *Vice-President*; D. Boan, *President*; T. Brammeier, *Secretary*.

## Plato

Plato, founded in April 1849, attempts to promote fraternal brotherhood and at the same time instill a spirit of loyalty to the school and nation. Plato, in addition to sponsoring intersociety parties-Stella-, sponsored a Christmas Party and a Plato Founders Day. Plato increased their membership by presenting honorary membership to eight of the nine distinguished lecturers, to Mr. Amberg of the St. Louis Globe-Democrat, and a lifetime membership to Milburn P. Akers.

#### PLEDGES

J. Hillyard, M. Woolcott, R. Beal, B. Opper, and G. Lareau. *Not Pictured*: B. Johnson, J. Malina, C. Rabourn, and D. Riggle.





H. Forcade, G. Larcue, D. Boan, J. Milford, Dr. Silver, L. Lacquement, L. Grove, R. Bogart, B. Gullik.

B. Chapple, P. Neis, M. Avery, P. Rice, L. Maedje, M. McCracken, R. Auwater, M. Willie, M. VanAtken. *Not pictured*, Dr. McCain.



OFFICERS: J. Milford, *Secretary*; L. Maedje, *President*; R. Bogart, *Vice President*; P. Rice, *Treasurer*.

## Sigma Tau Delta

Sigma Tau Delta, a National Honorary English Society, is represented by the Iota Chapter. It promotes the mastery of written expression, to encourage worthwhile reading and to foster a particular interest in English. Select material of individual members, if qualified, may be published in *The Rectangle*, the organization's national magazine. Among their major activities of the year was sponsoring Clarissa Start of the St. Louis Post Dispatch, as an assembly speaker,





J. Harris, J. Hudson, M. Allen, M. Mateer, Prof. Fleming, R. Gedney, G. Carter, R. Rehg, Dr. Wicks.

K. Linder, B. Chapple, T. McCammond, J. Beine, B. Richardson, D. Sexton.

## Sigma Zeta

Sigma Zeta, a National Honorary Science Society, is represented by the Beta Chapter. The Beta Chapter is the oldest existing chapter, and was chartered in 1926. The purpose of this society is to encourage and foster the attainment of a knowledge of the sciences and to recognize the attainment of high scholarship among those fitted for membership in this society. The organization sponsored monthly speakers in the field of science, field trips and original research.



OFFICERS: B. Chapple, *President*; R. Rehg, *Vice President*; J. Hudson, *Treasurer*; K. Linder, *Secretary*



T. Brammeier, Mrs. M. E. Williams, R. Bogart, Dr. John McCain, M. McCracken.

## Pi Kappa Delta

The purpose of this organization is to stimulate progress in and to further the interests of inter-collegiate speech activities and communication in an effort to provide functional leadership training for life, and at the same time encourage a spirit of fellowship, brotherly cooperation, incentive for achievement.

OFFICERS. L. Grove, *Vice-President*; S. Daech, *Secretary*; B. Campbell, *President*.

## Alpha Psi Omega

The Alpha Psi Omega Fraternity seeks to develop dramatic talent and the art of acting. In order to be qualified for membership a student must have earned a standard amount of points in the fields of acting and stage production.

D. Boan, T. Brammeier, S. Daech, B. Donald, Mrs. Mary E. Williams, D. Metzger, L. Grove, Mr. Orville Schanz, B. Campbell







D. Niebel, A. Buchele, C. Draper, R. Pierson, J. Jackson, G. East, L. Martin, N. Swan, R. Witter, V. Workman, F. Leppin, B. Haengi, M. Donham, P. Kittinger, J. Coleman, D. Corrie, C. Cope, A. McMurtry, A. Lee, J. Johnson, C. McKnelly, T. McCorkle, B. Jordan, B. Johnson, J. Wilt, F. Williams, R. Rahe, C. Coble, M. Leckrone, R. Bogart.



OFFICERS: J. Johnson, *V-President*; R. Boragrt, *President*; R. Rahe, *Treasurer*; C. Cope, *Secretary*.

## M.S.M.

Methodist Student Movement is a national organization of Methodist youth organized for the purpose of fostering a Christian spirit among students. The organization was active in sponsoring a study of Methodist beliefs.

## Kappa Chi

Dr. Rice, R. Davis, T. McCorkle, H. Shaffer, J. Spencer.

B. Campbell, I. Horn, C. Carter, R. Knox, R. Rahe, C. Coble, D. Corrie, L. Cook, V. Case, R. Phillipe.

OFFICERS: R. Knox, *Religious Life Representative*; C. Coble, *Secretary-Treasurer*; C. Carter, *President*; R. Rahe, *Vice President*.





H. Forcade, F. Heleine, A. Lapsansky, R. May, R. Legendre, V. Workman, Mrs. Elizabeth Dixon, T. Brammeier, J. DeLaney.

## McKendree Review

The McKendree Review is published every alternate Tuesday of the school year. The paper was entered as second class matter October 19, 1922. The McKendree Review is published by the McKendree College Journalism classes.



CO-EDITORS  
T. Brammeier, F. Heleine.



G. Harris, Kent Werner, D. Boan, J. Milford, N. Swan, Robert Brown, Mary Williams.

## Student-Faculty Council

The Student Faculty Council is composed of both students and members of the faculty. These persons discuss problems of campus activities and possible solutions. Their meetings are often informal and held during the lunch hour.

## Organizations Council

Organizations Council was formed in the Fall 1959 upon the request of the Student Faculty Council. The Organization Council is composed of representatives from all organizations. The purpose of the Council is to control and direct the activities of both the social and professional organizations.

T. Brammeier, R. Knox, D. Boan, B. Gullick, I. Horn.  
A. Webb, M. Harris, V. Case, K. Linder.





P. Kittinger, B. Morton, N. Hall, A. Buchele, A. Robinson, N. Swan.  
M. McCracken, J. Jackson, Mrs. Louise Gray, M. Harris, A. Lee, J. Coleman.

## W.S.C.S.

The purpose of the Susanna Wesleyan Service Guild is to provide a channel within the local church through which college women may participate in the program of the Woman's Division of Christian Service, a program offering spiritual enrichment, Christian fellowship, and the opportunity to take an active part in developing a world Christian community.

OFFICERS: J. Jackson, *Secretary-Treasurer*; M. McCracken, *Vice-Chairman*; B. Morton, *Membership Chairman*; M. Harris, *Chairman*; J. Coleman, *Program Chairman*.

## Religious Life Council

Religious Life Council is a branch formed by the Student Faculty Council. This organization is composed of all organizations, and it proposes to carry out religious emphasis in a year around program of campus activities.

Dr. Rice, B. Campbell, E. Sandler, C. Rabourn, C. Draper, L. Grove.  
G. McCammond, A. Buchele, R. Knox, N. Swan, J. Monken, J. Johnson, I. Horn





R. Knox, B. Kammermann, C. Rabourn, J. Throp, J. Spencer, I. Horn.  
 L. Grove, B. Donald, T. Brammeier, D. Boan, L. Cook, A. Webb, J. Johnson.  
 L. Lacquement, Mrs. M. E. Williams, S. Daech, M. Willie, B. Campbell.



OFFICERS. L. Lacquement, *Vice-President*; S. Daech, *President*; M. Willie, *Secretary*; B. Campbell, *Treasurer*.

## Stage Crafters

The purpose of Stage Crafters is to create participation and interest in all forms of dramatic art on the campus. Among the major activities of the year was the presentation of *Christ in the Concrete City*.

OFFICERS. A. Webb, *Secretary-Treasurer*; B. Campbell, *Vice-President*; F. Stein, *President*.



## Public Affairs Forum

The Public Affairs Forum seeks to keep the students informed on current events of national and international interest. This measure is obtained through discussions, lectures and tape recordings of lectures.

L. Cook, R. Knox, T. Brammeier, D. Riggle, G. Harris, E. Sadler, Mr. Brown, B. Campbell.  
 F. Stein, J. Minton, J. McCammond, C. Cope, C. Schwerdtfeger.





L. Schulte, C. Kelley, D. Hohrein, G. Deaton, L. Thoder,  
T. Williams, I. Braden, J. Boner.

## Maintenance Staff

Under the direction and assistance of Joe Boner, the maintenance crew makes the many repairs and improvements for the college.

## Book Store Staff

Mrs. Keck with the assistance of Lynn Grove maintains the bookstore. This is the hangout for all students needing books, coffee, and school supplies.

Mrs. Keck, L. Grove.





C. Cullison, V. Case, M. Leckrone, J. Walthes, J. Johnson.

# Kitchen Staff



COOKS: M. Canty, F. Thornley, I. Votrain.

Jeanette Walthes serves Governor Stratton and Joyce Hudson.



D. Corrie, S. Gonzalez, C. Coble, V. Workman.

*Library  
Staff*



Martha Harris



Alma Kleinaitis



Betty Morton

Vicki Walker



Priscilla Rice







F. Williams, D. Niebel, T. Worms, B. Jordan, G. Lareau.  
M. Avery, S. Mauck, M. Leckrone, N. Swan, M. Buckaloo, A. Pfeffer.

## Chapel Choir

## McKendree College Choir

The McKendree Choir is composed of thirty-four students. Twelve students are chosen from this group to form the Chapel Choir. The Chapel Choir sings during Chapel services and special events. The McKendree Choir under the direction of Prof. Freiner presented "Amahl and The Night Visitors," "Requiem," "Invisible Fire," and also the "Festival te Deum" with the Belleville Philharmonic Orchestra.





Rawlings

Rocket

Eddie Matthews  
Personal Model

CUSTOM

Zilt

# Sports





*Kneeling:* Coach Oldfield, H. Welch, W. Derickson, W. Williams, D. Symer, B. Roberts, L. Schulte. *Standing:* F. Edwards, K. Lewis, E. Fischer, S. Hipple, M. Jones, J. Burke, A. Kirkpatrick, C. Witzel. *Below:* Coach Barney Oldfield.

'59

# B A S K E T B A L L





*Kneeling:* Coach Oldfield, L. Kimmel, C. Manier, N. Lange, S. Berry, P. Allen, E. Sauerwein  
*Standing:* L. Travis, D. Clark, B. Johnson, M. Womack, M. Woolcott, D. Collier, J. Cook.

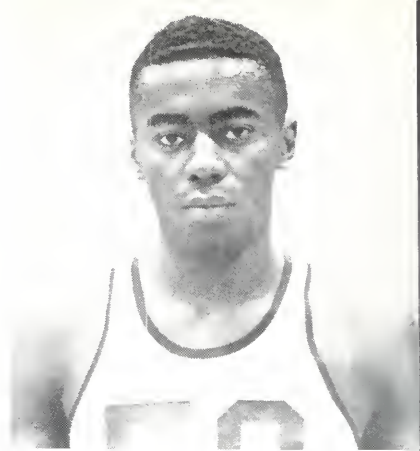
'60

JUNIOR VARSITY





Sam Hipple



Harold Welch



Marvin Jones

Willie Williams

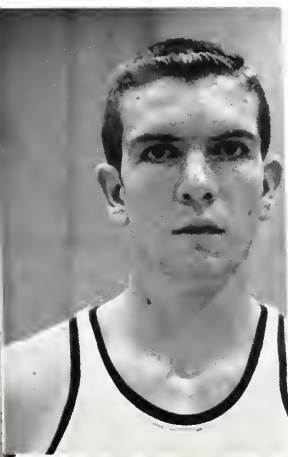
Bill Roberts





Woody Derickson

Lee Schulte









Help!



The Brain Trust!



A lay up for Sam.



Jump ball.



Two more for Roberts.



There's one ball out of the picture!



Fingertip Control!

The Cubkittens had some action too.



Baller of the hands.

It's mine. You can't have it!



Please let it come to me!



"Fifi" Milford with his curly locks.



A part of the capacity homecoming crowd.

It looks like beanies until Thanksgiving from the facial expressions of these poor freshman girls.



Good cheerleading=Good result



*Kneeling:* Coach Cruse, C. Johnson, L. Schulte, B. Roberts, D. Reinhardt, D. Proctor. *Standing:* N. Welz, D. Armistead, G. Brooks, B. Campbell, D. Fizer, W. King, J. Parker, R. Speiser, H. Feldt, W. Ittner, O. Kimmle. *Below:* Coach Dale Cruse.

**S  
P  
R  
I  
N  
G**      **1  
9  
5  
9**



## 1959 Record

McK	12	Friends University	4
McK	9	Friends University	8
McK	13	Friends University	0
McK	4	Friends University	5
McK	4	Principia College	1
McK	4	Harris Teachers College	3
McK	10	Washington University	7
McK	6	Springfield Concordia	4
McK	9	Concordia Seminary	4
McK	7	Rose Poly Tech	1
McK	5	Rose Poly Tech	0
McK	9	Greenville College	8
McK	4	Concordia Seminary	0
McK	18	Univ. of Tennessee	2
McK	13	Harris Teachers College	2
McK	14	Illinois College	3
McK	7	Oakland City College	4
McK	8	Oakland City College	4
McK	14	Illinois College	11
McK	12	Greenville College	1
McK	4	Menard State Penitentiary	0
McK	8	Principia College	1
McK	11	Springfield Concordia	0
McK	6	MacMurray College	3
McK	6	MacMurray College	4

# B A S E B A L L



Highest Batting Average 418



WAYNE KING

Most Hits

38



JACK PARKER

Most Runs Batted In

38



DAN EIZER

## Individual Records

RON SPEISER



Most Games Won

7

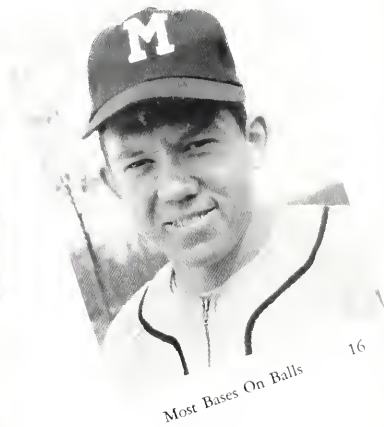
DON PROCTOR



Most At Bats

103

BILL ROBERTS



Most Bases On Balls

16

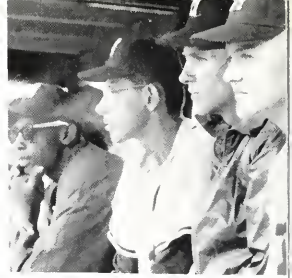


*Kneeling:* L. Schulte, D. Symer, J. Monken, B. Roberts, J. Schieppe, D. Sexton, Coach Cruse  
*Standing:* R. Kirk, G. Brooks, W. Derickson, O. Kimmle, J. Cook, M. Allen, N. Welz.

**F  
A  
L  
L**



**1  
9  
5  
9**



B  
E  
A  
R  
C  
A  
T  
S

I  
N

A  
C  
T  
I  
O  
N







*Kneeling:* R. May, B. Johnson, G. Hall. *Standing:* L. Lacquement, R. Gedney, G. Carter, G. East.

## Tennis

### 1959

I  
N  
T  
R  
A  
M  
U  
R  
A  
L  
S



Determination!



I'll give you the back of my hand!



And they say football is rough!



Get off my back! Will you?

Bowling was new this year.





Oomph!



The ball is behind you, Beaver.



Up, up, and away!

Which of those big round things is the ball?



Just like sweeping the floor Phyllis.

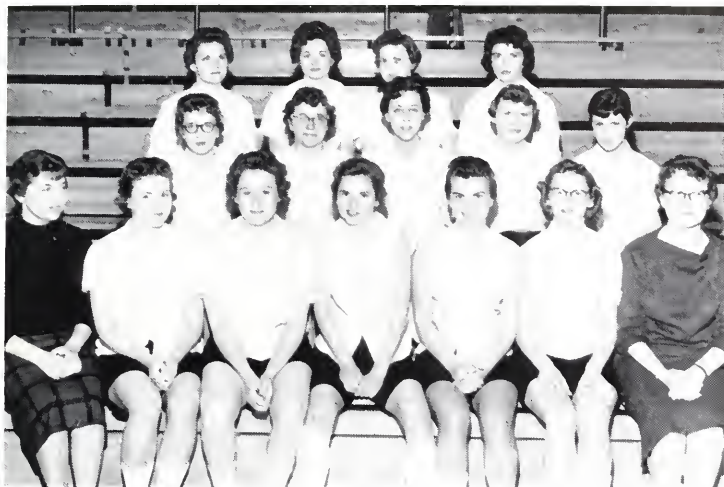


A  
C  
T  
I  
O  
N  
  
S  
H  
O  
T  
S

# The Cubkitten's Story



Although their record wasn't impressive . . .  
Their injuries were!



*First Row:* J. Hudson, V. Dude, C. Barnett, P. Jackson, P. Nies, S. Korte, A. Webb. *Second Row:* K. Linder, F. Leppin, M. Beckemeyer, S. Early, A. Robinson. *Third Row:* P. Wells, A. Pfeiffer, N. Hall, J. Minton.

RECORD

38	McK	Blackburn	56
39	McK	Greenville	68
39	McK	Greenville	54

Coach Joyce Hudson



C  
U  
B  
  
K  
I  
T  
T  
E  
N  
S





CHEERLEADERS





# Activities

CLARK HALL



# May Fete 1959

QUEEN  
MRS. PATRICIA COX



Patricia, who is a Senior, is being crowned by Miss Babs Bowe, retiring queen.



Miss Sandie Beasley sings to the new queen amid the fireworks, which were the highlights of the celebration.



SANDIE BEASLEY  
Senior Maid



MARY LEE ZABEL  
Junior Maid



VICKI WALKER  
Sophomore Maid



PHYLLIS NIES  
Freshman Maid



Mrs. Pritchard, mother of Wanda Pritchard Overton and Lucille Pritchard Stevenson, smiles as she is presented with McKendree's Annual Mother of the Year Award by Dr. Webb Garrison. This award is presented to a mother of an outstanding McKendree student or students on Parents' Day.

## Parents' Day

## Graduation Day

May 31, 1959 — Dr. Webb Garrison and Milburn P. Akers lead the graduation march of the largest graduating class in the history of McKendree College up Centennial Walk.



## President's Reception



Dr. and Mrs. Webb Garrison greet guests Carol Cope and Theo McCorkle at the annual reception held at the Stevenson House.



Mr. Kennedy, Don Boan and Danny Riggle meet at the reception. Just like old times for these intellectuals. Mr. Kent Werner discusses previous receptions held here with Anne Webb and Larry Lacquement.





## Distinguished





## Leaders Series



Due to the ingenuity and foresight of Mr. Richard H. Amberg, Publisher of the St. Louis Globe Democrat, McKendree College students were honored during this school year with the presence of nine distinguished American leader lecturers. Each lecturer was from a different vocational field. First in this series was Dr. Edwin Dahlberg, President of the World Council of Churches. Dr. Dahlberg was followed by Senator Symington of Missouri. The third distinguished lecturer is an all time great in sports, Stan "The Man" Musial. Dr. Wendell G. Scott represented the field of medicine.

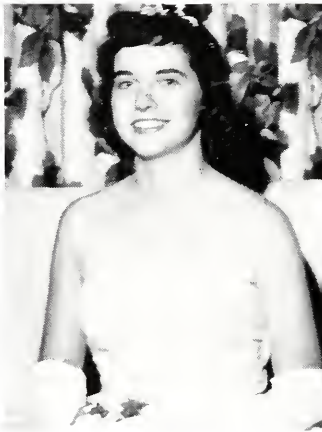
With the beginning of a new semester came the fifth in the series, Governor William Stratton. These leaders were followed by representatives from the fields of law, communication, construction and business finance.

Each lecturer was presented with a silver medallion as a remembrance of his visit to McKendree College.



JOYCE HUDSON, SENIOR  
Sponsored by Philo.

CAROL COPE, FRESHMAN  
Sponsored by the Freshman class.



CAROL LOYET, SOPHOMORE  
Sponsored by Clio.

THE QUEEN and her Court.







HOMECOMING QUEEN 1959-1960

VICKI WALKER

Sponsored by the Junior Class.

Carol Cope and Carol Loyet watch with interest



... as John Milford, student body president, crowns Miss Vicki Walker 1959-60 Homecoming Queen.



Miss Walker receives congratulations from Bob Campbell, Junior Class President, as Joyce Hudson looks on.

Homecoming week was filled with many activities.



... Cheerleaders gather fuel for the bonfire and pep rally.



... John Milford, President of Student Body, presents decoration plaque award to Carl Draper, Senior Class President, for their decoration, Christmas in Alaska.



... Mr. Schanz directs scenery construction for the opera, "Amahl and the Night Visitors."



"What A Relief," sigh members of the receiving line when formalities are almost over.



Retiring Queen, Miss Jackie Johnson.



Queen, Miss Vicki Walker.



Members of the court with their escorts enjoy the homecoming game after walking the length of the gym.

HELLO, HELLO! jabbers John Milford as he reaches around Doris Lauer. Apparently big Don Metzger is not aware of John's intentions.



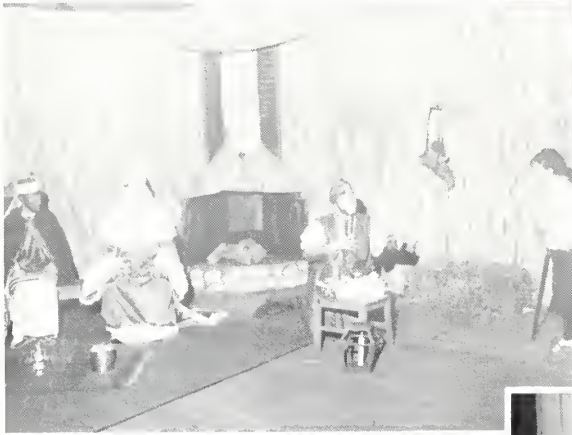
BASEBALL SEASON AGAIN. Warren Ittner, Orval Kimmle and Bob Rehg talk about next year's prospects.

BASKETBALL IS NOT serious all the time. John Milford gets on the floor to help the cheerleaders.



JOELLEN MINTON and Ellen Youngs seem to be enjoying their suckers, but whose dog are they sharing them with?

THE SHEPHERDESSES, Virginia Dude, Sandra Ozment, Mary Wille, Sharon White and Mary Lee Zabel wait patiently to go on set at opera.



IN THIS DRAWER," Bob Kammeiman explains to Amahl, Eddy Epping, "are my magic stones."

"I THOUGHT IT WAS WONDERFUL," Velera Case joyfully remarks to Larry Lacquement, who seems to be more concerned about his stomach. Mary Wille and Herb Forcade also are enjoying the "after the performance" party given by Mary Buckaloo.



VIRGINIA DUDE happily fills her plate while Angie Buchele, Carrie Cullison, Don Neibel, George Lareau, Sandra Ozment and Floyd Williams have a look of bewilderment.



SANDY BEASLEY BEARD, the mother, in "Amahl and the Night Visitors," answers the door to find three kings, Bob Ziegler, Don Neibel and Bob Kammerman, and their page, Don Boan. Her son, played by Eddy Epping, is awe-struck in the background.

AM AHL'S MOTHER makes a plea to the three kings, Don Neibel, Bob Kammerman and Bob Ziegler.



PHYLLIS POORE AND SHARON SCHIENBEIN dance for the three kings.



AM AHL, portrayed by young Eddy Epping, is embraced by his mother, Sandra Beasley Beard.



"TUFFY" ROBERTS has a discouraging moment after falling during the McKendree-Greenville game.



BOB ISSACS spots to help rumbler Robert Beal over Theo McCorkel.

WAITING FOR THE REBOUND during boys' intramural basketball tournament are Gerald Brooks, Bob Donoho and Richard Harnist.



ON THE ARCHERY RANGE Jim Monken pulls arrow from the target with the help of Fred Edwards and Lee Schulte.





ALICE LEE AND NAOMI HALL pose for the camera between badminton matches in front of Clark Hall.



PEGGY JACKSON RUSHES up to grab a loose ball during girls' basketball game against Greenville. Referee Fred Edwards stands back as Greenville player and Sylvia Korte jump.



SOFIA GONZALEZ, Peggy Jackson and Virginia Dude proudly display their awards for archery.



PAT WELLS works out on the trampoline during a PE class while Sylvia Korte and Vicki Walker spot.



LIKE I'M A SQUARE Kennedy and Mr. Werner listen intently to Mrs. Kennedy during the Beatnik party sponsored by members of the choir.

INTERESTING? Paul Devor and Carol Cope watch Bent Lentz express himself at the Beatnik party.



AH! Floyd Williams gets a surprise as Angie Buchele, Carrie Cullison and Don Neibel enjoy the atmosphere.

THIS IS THE WAY Jack Kerouac said his friends did it. Fred Schwoerke exhibits a beatnik pose for Bob Kammetman, Roger Knox and Joellen Minton.



FRESHMAN REGISTRATION perplexes these girls leaving the Old Gym. They are Alona Cavins, Bonnie McBride, Patsy Creed and Virginia Dude.



"WHERE IS THE MAIN COURSE?" asks John Milford during the coffee hour that Dr. Edwin T. Dahlberg attended after his speech which inaugurated the Distinguished Leaders Lecture Series.

NOT MUCH CONSERVATION in Pearsons Hall during lunch hour.



MC KENDREE COLLEGE STUDENTS listen attentively as Senator Stuart Symington speaks at second Distinguished Leaders Lecture Series.



MARY WILLE AND HERB FORCADE stop near Charlie's office to chat between classes.



IT'S NOT LIKE A '70', but it's easier than walking, expresses Anne Pfetter to Mary Metzger and Jim Beine.

WHEW! Prof certainly explained it thoroughly and now to the dorm to translate, Trudy McCammond declares to Kay Linder and Bob Rehg as they exit the Science Hall.



JIM BEINE escorts Carol Loyet to the bookstore for a Pepsi.



FRAU CLARK translates for her German class. Bob Standish and Gloria Miller share a book, while Capt. Scott Williams, next to Bob, studies page.



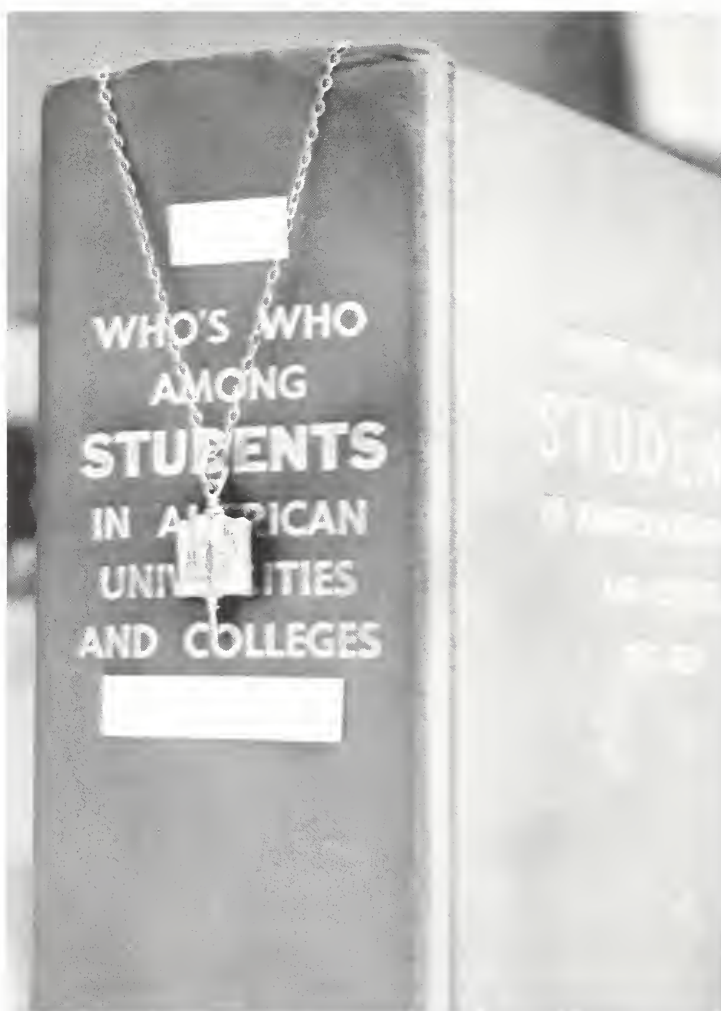
INSTRUCTORS BROWN AND SCHANZ get a break between classes to discuss the article about New York in a Holiday magazine.



PLATO! Mr. Kennedy, philosophy instructor, enthusiastically probes a student, as Don Boan smirks a sly grin.



CARL BEHRENS works hard to meet a deadline in his business courses.



WHO'S WHO  
AMONG  
**STUDENTS**  
IN AMERICAN  
UNIVERSITIES  
AND COLLEGES

STUDENTS  
OF AMERICAN  
UNIVERSITIES  
AND COLLEGES



RON BOGART, B. A

Ron was one of the busiest students of McKendree college M. S. M. and Kappa Chi proved helpful in preparation for the ministry. Many times he spoke at M. S. M. and was leader of the evening prayer service on campus.

Ron was editor of the McKendree Review in 1957. Equally important was his membership in Philo, Sigma Tau Delta, Stage Crafters, and Student Council in the years that followed. In the Homecoming of 1958, Ron portrayed a herald in the court.

The most important single event in the college life of Ron Bogart was getting married during the summer of 1959.



ANGELE BUCHELE, B. A.

Hollywood had nothing on McKendree, for we too had our "Liberace," in the person of "Angie" Buchele. Angie proved her "fingertip control" by giving recitals both her junior and senior year. Being a member of the McKendree choir and pianist at M. S. M., helped her to be elected to the select group of Who's Who Among Colleges and Universities.

Outside of the field of music, Angie had many interests of which she equally gave her time. Among these activities included being Alpha Omega president and secretary-treasurer, and being president of the girls' dorm the first semester of her junior year. She was a member of the German Club, Student-Faculty Council, Religious Life Council and W. S. C. S.

"Where there's a will there's a way," and Angie's way of financing her college education was by teaching piano on the weekends.





BARBARA CHAPPLE, B. A.

Barbara entered McKendree as a Sophomore in 1958, having first attended both Normal and Wesleyan Universities at Bloomington, Illinois. But her quiet and confident manner won her many friends.

Barbara has always been interested in science especially from the biological standpoint. Therefore it is not surprising that we find her an active member of Sigma Zeta, a national honorary science society. During her senior year, she served as President of Sigma Zeta. Barbara was also associated with other campus activities among them are Sigma Tau Delta and Clio.



CARL DRAPER, B. S.

Being small in size did not keep Carl from becoming dynamic in actions. His actions during his college career have been characterized by his extracurricular activities.

Preparing himself for a career in the field of mathematics, Carl spent much of his time in the college library doing math problems. He worked as an assistant in the chemistry department for two years. Working in the chemistry department led to his becoming a member of the Beta chapter of Sigma Zeta.

Outside of the field of math and chemistry, Carl was a member of Philo, and M. S. M. In his senior year he was the class president and worked diligently on the homecoming decorations. He spends his spare moments practicing bowling in which he is already an accomplished bowler.



JOYCE NADINE HUDSON, B.A.

As a member of Clio, M.S.M., W.S.C.S., and the McKendreaan Staff during her freshman year, Joyce began to fulfill the requirements necessary for becoming a member of Who's Who. Throughout college, Joyce had been active in school affairs, taking part in the choir, and being biology laboratory assistant for two years, working every spare moment to help pay her way through college.

In 1958 Joyce won the William Walton Scholarship for being an outstanding student in need of assistance and for being in the upper-fourth of her class.

Her senior year proved to be one packed with activities. Having been editor of the McKendreaan was her most challenging task.

Blowing whistles in two physical education classes and coaching a girls' basketball team helped "Miss Hudson" prepare herself for work in her field of interest — physical education.

Singing "Silent Night" in German was the talent displayed by Joyce in the Homecoming Queen Contest. Sponsored by Philo, she was runner-up in the contest and according to her, "was one of most exciting experiences of my life."



ALMA KLEINAITIS, B.A.

Alma has one of the more familiar faces on campus, especially to those who study in the library, for Alma has worked in the library during her four years at McKendree.

Quietness, beauty, and intelligence have been among her many attributes to McKendree life. Alma served as a maid in May Fete of her Freshman and

Sophomore years; and during her Sophomore year was elected "Miss Witch." She has been active in Campus activities and served as president of Alpha Omega her Junior year. Also during her Junior year, she was Homecoming queen attendant.

Painting has been one of her favorite hobbies, and her plans for the future include "Burch."



GERTRUDE "TRUDY" MCCAMMOND, B.A.

"Trudy, may I have an aspirin." was a familiar question asked of her during her undergraduate studies here on the campus while acting as student body nurse of McKendree College. Before coming to McKendree, Trudy graduated from Rockford Memorial Hospital, receiving her R.N., and was placed in charge of a thirty-five bed ward in the hospital.

Upon entering McKendree, she was quickly put to work as the students' nurse and as time passed, she built a reputation of being a friend to all, a

person who was willing to help at all times, and also was in charge of the infirmary.

Among her many activities included being President of Alpha Omega, a social society, and a member of the Beta Chapter of Sigma Zeta, a science organization. In the spiritual life at McKendree, Trudy served as a member of the reorganized Religious Life Council, and was a nominee for the 1959-60 Homecoming Queen contest.



DON NEIBEL, B. A.

Don's primary interest during his college career was singing. It was evident in that he belonged to both the McKendree Choir and Chapel Choir. During the 1958 spring tour of the choir, Don sang "This Nearly Was Mine," for which he received many fine compliments. As a voice major, Don gave two recitals for the Fine Arts Department, one was his junior and one his senior. He continued to pursue his music career by singing in the McKendree Quartet, and also being song leader at M. S. M. His senior year saw him as one of the three bearded kings of the opera, "Amahl and the Night Visitors."

Music was not Don's only interest. He was the president, vice-president, and secretary of Philo, and was vice-president of his Sophomore and Senior class, a member of the Student-Faculty Council, and German Club. His Sophomore year found him as the vice-president of choir and during his junior and senior years he served as president.



NANCY SWAN, B.A.

Quiet, modest and definite are adjectives that describe Nancy.

Nancy, during her four year stay at McKendree belonged to many organizations and took a very active part in student activities. She was finally persuaded to admit she has served as secretary-treasurer of every organization to which she has belonged. Among these organizations are Alpha Omega, M.S.M., W.S.C.S., German Club and Sigma Tau Delta. She was dormitory president her junior year

in college and representative to the Student-Faculty Council her senior year.

Since an early age Nancy has been interested in music. While at McKendree she sang in both the McKendree Choir and Chapel Choir, and served as assistant pianist for M.S.M. These many activities have helped to prepare her for a career in vocational church music. In addition to playing the piano, Nancy also plays the ukulele for relaxation.

# McKendreaan Staff

Joyce Hudson	Editor
Kay Linder	Assistant Editor
Sue Early	Business Manager
Jackie Johnson	Senior Editor
Charles Korunka	Junior Editor
Phyllis Nies	Sophomore Editor
Sandra Mauck	Freshman Editor
Ivan Horn	Faculty Editor
Mary Lee Zabel, Danny Riggle	Co-Activity Editors
John Milford	Art Director
Mr. Charles Cox	Photographer
Mr. Orville Schanz	Advisor







S  
T  
A  
F  
F



To McKendree and McKendreens:

Thanks . . .  
for the knowledge, instructions, and  
guidance; for homecomings, ballgames, and  
fun-packed activities; for laughter  
and tears; for the friends and enemies;  
for your love and fellowship . . .  
which have been a part of my past  
three and one-half years.

JOYCE HUDSON, *Editor*





INTER-COLLEGIATE PRESS

Publishers — Manufacturers

Yearbooks — Yearbook Covers

Diplomas — Graduation Announcements

Factory — Home Office

Kansas City, Mo.

U.S.A.



Melchiorre College  
Lebanon, IL 62254



