

HARVARD UNIVERSITY



LIBRARY

OF THE

Museum of Comparative Zoölogy

MBS. COMP. ZDEL
LIBRARY

HARVARD
UNIVERSITY

OCT 13 1927

68.729

MEMOIRS

OF THE

MUSEUM OF COMPARATIVE ZOOLOGY

AT

HARVARD COLLEGE.

VOL. XLVIII.

CAMBRIDGE, MASS., U. S. A.

Printed for the Museum.

1919.

MEMOIRS

OF THE

MUSEUM OF COMPARATIVE ZOOLOGY

AT

HARVARD COLLEGE.

VOL. XLVIII.

CAMBRIDGE, MASS., U. S. A.

Printed for the Museum.

1919.
2.

THE COSMOS PRESS:
CAMBRIDGE, MASS., U. S. A.

LC
117
1

Memoirs of the Museum of Comparative Zoölogy

AT HARVARD COLLEGE.

Vol. XLVIII.

REPORTS ON AN EXPLORATION OFF THE WEST COASTS OF MEXICO, CENTRAL AND SOUTH AMERICA, AND OFF THE GALAPAGOS ISLANDS, IN CHARGE OF ALEXANDER AGASSIZ, BY THE U. S. FISH COMMISSION STEAMER "ALBATROSS," DURING 1891, LIEUT. COMMANDER Z. L. TANNER, U. S. N., COMMANDING.

XXXVIII.

REPORTS ON THE SCIENTIFIC RESULTS OF THE EXPEDITION TO THE TROPICAL PACIFIC, IN CHARGE OF ALEXANDER AGASSIZ, BY THE U. S. FISH COMMISSION STEAMER "ALBATROSS," FROM AUGUST, 1899, TO MARCH, 1900, COMMANDER JEFFERSON F. MOSER, U. S. N., COMMANDING.

XX.

REPORTS ON THE SCIENTIFIC RESULTS OF THE EXPEDITION TO THE EASTERN TROPICAL PACIFIC, IN CHARGE OF ALEXANDER AGASSIZ, BY THE U. S. FISH COMMISSION STEAMER "ALBATROSS," FROM OCTOBER, 1904, TO MARCH, 1905, LIEUT.-COMMANDER L. M. GARRETT, U. S. N., COMMANDING.

XXXI.

THE ANNELIDA POLYCHAETA.

By RALPH V. CHAMBERLIN.

WITH EIGHTY PLATES.

PLATES.

[Published by permission of HUGH M. SMITH, U. S. Commissioner of Fish and Fisheries].

CAMBRIDGE, U. S. A.:

Printed for the Museum.

JULY, 1919.

CONTENTS.

REPORTS on an Exploration off the West Coasts of Mexico, Central and South America, and off the Galapagos Islands, in charge of ALEXANDER AGASSIZ, by the U. S. Fish Commission Steamer "Albatross," during 1891, Lieut. Commander Z. L. TANNER, U. S. N., Commanding. XXXVIII. Reports on the Scientific Results of the Expedition to the Tropical Pacific, in charge of ALEXANDER AGASSIZ, by the U. S. Fish Commission Steamer "Albatross," from August, 1899, to March, 1900, Commander JEFFERSON F. MOSER, U. S. N., Commanding. XX. Reports on the Scientific Results of the Expedition to the Eastern Tropical Pacific, in charge of ALEXANDER AGASSIZ, by the U. S. Fish Commission Steamer "Albatross," from October, 1904, to March, 1905, Lieut.-Commander L. M. GARRETT, U. S. N., Commanding. XXXI. THE ANNELIDA POLYCHAETA. By RALPH V. CHAMBERLIN. 514 pp. 80 plates. July, 1919.

EXPLANATION OF THE PLATES.

PLATE 1.

PLATE 1.

Harmothoe mexicana CHAMBERLIN.

Figures 1-9.

- 1.— Anterior end, dorsal view (style of median tentacle broken off; tentacular cirri in outline).
× 27.
- 2.— Twenty second right parapodium, caudal view. × 18.
- 3.— First elytron. × 21.
- 4.— Small portion of same elytron. × 187.
- 5.— Neuropodial seta, common form. × 108.
- 6.— Neuropodial seta, second form. × 108.
- 7.— Small portion of neuropodial seta, common form, viewed from edge. × 1073.
- 8.— The same, viewed from side. × 1073.
- 9.— Notopodial seta, distal portion, side view. × 63.

1

6

2

3

7

4

9

5

8

PLATE 2.

PLATE 2.

Harmothoe mexicana CHAMBERLIN.

Figure 1.

- 1.—Neuropodial seta of most ventral row. $\times 412$.

Harmothoe hirsuta JOHNSON.

Figures 2-8.

- 2.—Prostomium, dorsal view (right palpus and style of median tentacle missing). Setae of peristomial parapodium shown on left side. $\times 64$.
- 3.—Portion of a dorsal cirrus proximad of middle, in outline. $\times 281$.
- 4.—Notopodial seta, ordinary form. $\times 435$.
- 5.—Notopodial seta, stouter intermediate form. $\times 435$.
- 6.—Notopodial seta, short form. $\times 435$.
- 7.—Neuropodial seta, longer form, distal portion. $\times 435$.
- 8.—Neuropodial seta, shorter form, distal portion. $\times 435$.



PLATE 3.

PLATE 3.

Harmothoe hirsuta JOHNSON.

Figure 1.

- 1.— Small portion from middle of notopodial seta. $\times 1073$.

Eunoe eura CHAMBERLIN.

Figures 2-6.

- 2.— Anterior end, dorsal view. $\times 17$.
3.— Cilia of a dorsal cirrus. $\times 280$.
4.— Distal half of neuropodial seta. $\times 93$.
5.— Tip of neuropodial seta of thirteenth somite. $\times 1050$.
6.— Tip of notopodial seta of thirteenth somite. $\times 1050$.



PLATE 4.

PLATE 4.

Lepidonotus nesophilus CHAMBERLIN.

Figures 1-7.

- 1.— Anterior end, dorsal view (first right palpus and first setigerous parapodium and left parapodium of peristomium omitted). × 30.
- 2.— First elytron. × 20.
- 3.— Left tenth elytron. × 20.
- 4.— Large tubercle of first elytron. × 298.
- 5.— Smaller tubercles of first elytron. × 298.
- 6.— Rod from margin of elytron I. × 1232.
- 7.— Part of principal notopodial seta toward tip. × 1232.

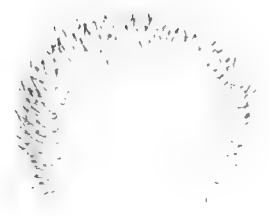


3

5



4



6



1



7

PLATE 5.

PLATE 5.

Lepidonotus nesophilus CHAMBERLIN.

Figures 1-3.

- 1.— Notopodial seta from anterior region. × 278.
- 2.— Neuropodial seta from anterior region. × 278.
- 3.— Neuropodial seta from posterior region. × 278.

Lepidasthenia curta CHAMBERLIN.

Figures 4-9.

- 4.— Anterior end, dorsal view. × 27.
- 5.— First elytron. × 27.
- 6.— Elytron from near forty sixth somite. × 27.
- 7.— Slender neuropodial seta, distal end, from fourteenth somite. × 284.
- 8.— Neuropodial seta, typical form, from twenty first somite. × 284.
- 9.— Neuropodial seta, intermediate form, from fourteenth somite. × 284.

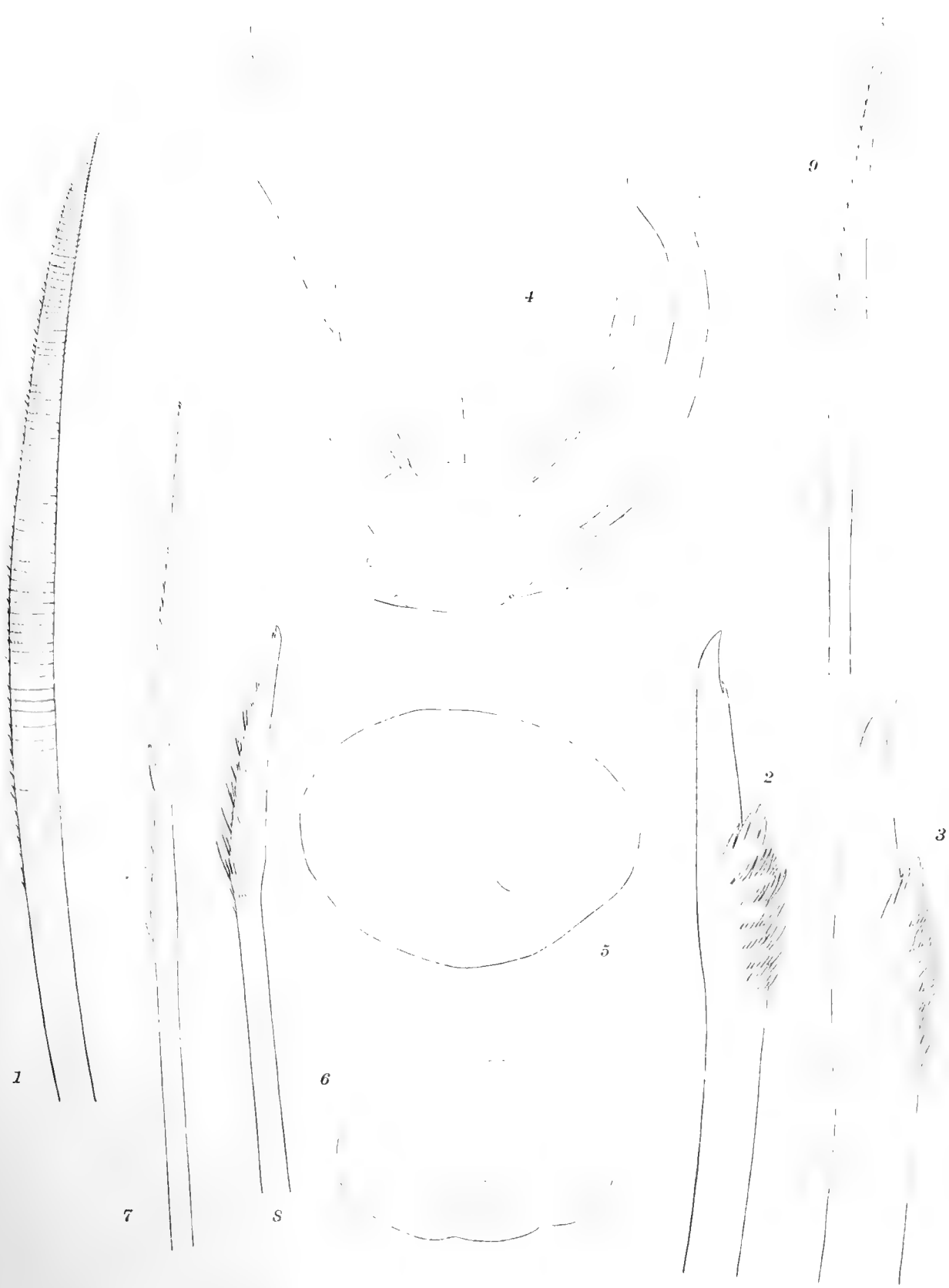


PLATE 6.

PLATE 6.

Harmopsides natans CHAMBERLIN.

Figures 1-5.

- 1.— Anterior end, dorsal view. × 27.
- 2.— Proboscis, ventral view (Paratype, Sta. 4675). × 27.
- 3.— Dorsal neuropodial seta, distal portion. × 281.
- 4.— Dorsal neuropodial seta, intermediate form, distal portion. × 281.
- 5.— Ventral neuropodial seta, distal portion. × 281.

Podarmus ploa CHAMBERLIN.

Figure 6.

- 6.— Distal portion or head of dorsal neuropodial seta. × 1087.



PLATE 7

PLATE 7.

Podarmus ploa CHAMBERLIN.

Figures 1, 2.

- 1.— Ventral neuropodial seta, tip, side view. $\times 1075$.
- 2.— The same, viewed from edge. $\times 1075$.

Plotolepis nans CHAMBERLIN.

Figures 3, 4.

- 3.— Anterior region, dorsal view (all elytra and the notocirri of the sixth somite missing; setae of some of parapodia not shown). $\times 45$.
- 4.— Ventral seta, distal portion. $\times 407$.



PLATE 8.

PLATE 8.

Polynoe innatans CHAMBERLIN.

Figures 1-7.

- 1.— Anterior notopodial seta, free portion. $\times 430$.
- 2.— Notopodial seta, intermediate type, from eighth somite, distal portion. $\times 430$.
- 3.— Portion of notopodial seta of intermediate type from the eighth somite, viewed more from the convex pectinated edge. $\times 1075$.
- 4.— Portion of notopodial seta of third type from eighth somite. $\times 1075$.
- 5.— Shorter form of neuropodial seta, distal portion, from seventh somite. $\times 430$.
- 6.— Larger form of neuropodial seta from sixth somite, distal portion. $\times 430$.
- 7.— The same viewed from the edge. $\times 430$.

Polynoe nesiotes CHAMBERLIN.

Figure 8.

- 8.— Neuropodial seta. $\times 430$.



PLATE 9.

PLATE 9.

Polynoe nesiotēs CHAMBERLIN.

Figures 1-5.

- 1.— Proximal part of pectinate division of a ventral seta. × 1075.
- 2.— The two most distal pectinae of the same seta. × 1075.
- 3.— Elytron from middle region of body. × 27.
- 4.— First elytron. × 27.
- 5.— Second elytron. × 27.

Admetella hastigerens CHAMBERLIN.

Figures 6-8.

- 6.— Prothorax and appendages, dorsal view (tentacles broken off). × 16.
- 7.— Neuropodial seta, exposed portion, viewed from side. × 104.
- 8.— The same, viewed from edge. × 104.



PLATE 10

PLATE 10.

Admetella dolichopus CHAMBERLIN.

Figure 1.

- 1.— Prothorax and appendages (median tentacle broken off). × 16.

Pontogenia curva CHAMBERLIN.

Figures 2-7.

- 2.— Eighth right parapodium, caudal view. × 63.
3.— One of the smaller notopodial setae. × 63.
4.— Tip of coarser ventral seta. × 281.
5.— Exposed portion of slender type of anterior parapodium. × 63.
6.— Distal portion of fine ventral seta of anterior parapodium. × 281.
7.— Smaller seta of ventral fascicle of anterior parapodium. × 281.

1

4



5

6

7



PLATE 11.

PLATE 11.

Pontogenia curva CHAMBERLIN.

Figures 1, 2.

- 1.— Distal end of more slender ventral seta from middle region of body. $\times 281$.
- 2.— Beginning of serrate portion of fine bristle of anterior region showing teeth. $\times 1075$.

Laetmonice wyvillei McIntosh.

Figure 3.

- 3.— Distal end of dorsal seta showing supplementary teeth below main series (Sta. 4675). $\times 189$.

Panthalis panamensis CHAMBERLIN.

Figures 4-8.

- 4.— Anterior end, dorsal view, showing protruded proboscis (left elytra in outline; first two right elytra removed). $\times 18$.
- 5.— Tip of ventral seta of second setigerous somite. $\times 415$.
- 6.— Distal end of median seta, second setigerous somite. $\times 281$.
- 7.— Distal end of dorsal seta, extreme apex broken off. $\times 1036$.
- 8.— Distal end of finer dorsal seta. $\times 1036$.



PLATE 12.

PLATE 12.

Panthalis panamensis CHAMBERLIN.

Figures 1-6.

- 1.— Median seta, distal end, first setigerous parapodium. × 530.
- 2.— Ventral seta, distal end. × 500.
- 3.— Small of median series. × 326.
- 4.— Ordinary type of seta of median series (filament missing). × 31.
- 5.— Elytron from near thirtieth somite. × 31.
- 6.— First right elytron.

Euphrosyne panamica CHAMBERLIN.

Figures 7, 8.

- 7.— Dorsal seta, second type. × 326.
- 8.— Tip of larger form of ventral seta. × 326.



PLATE 13.

PLATE 13.

Euphrosyne panamica CHAMBERLIN.

Figures 1-7.

- 1.— Dorsal clavate seta, distal end, showing the lower lobe in frontal view seen by transmitted light, the other lobe in dotted outline. $\times 1022$.
- 2.— Dorsal clavate seta, distal end, viewed from cleft edge. $\times 1022$.
- 3.— Dorsal seta, distal end. $\times 277$.
- 4.— Smaller dorsal seta. $\times 277$.
- 5.— A ventral seta. $\times 277$.
- 6.— A small ventral seta, distal end. $\times 277$.
- 7.— A branchia from posterior region. $\times 62$.

Chloeia entypa CHAMBERLIN.

Figures 8, 9.

- 8.— Distal end of dorsal seta of anterior region of body. $\times 277$.
- 9.— Distal end of ventral seta of middle region. $\times 277$.



PLATE 14.

PLATE 14.

Chloeia entypa CHAMBERLIN.

Figures 1, 2.

- 1.— Serrulate dorsal seta, distal part, from middle region of body. × 281.
- 2.— Non-serrulate dorsal seta from same fascicle as preceding, view not completely from side. × 281.

Eurythoe complanata (PALLAS).

Figures 3-9.

- 3.— Tip of ventral seta from large specimen from the Galapagos Islands. × 281.
- 4.— Same, from a second, smaller, specimen from the Galapagos Islands. × 281.
- 5.— Same, from specimen from the Tortugas. × 281.
- 6.— Same, from specimen from Fakarava. × 281.
- 7.— Same, from second specimen from Fakarava. × 281.
- 8.— Same, from young specimen from Papeete. × 281.
- 9.— Same, from specimen from Easter Island. × 281.

2

4

3

5



I

7

9

6

8

PLATE 15.

PLATE 15.

Nephtys ectopa CHAMBERLIN.

Figures 1-7.

- 1.— Anterior region, dorsal view. $\times 13.5$.
- 2.— Proboscis, distal view. $\times 13.5$.
- 3.— Right thirty eighth parapodium, anterior view. $\times 63$.
- 4.— Finer anterior neuropodial seta, exposed portion. $\times 40S$.
- 5.— Principal type of neuropodial seta, smaller form. $\times 40S$.
- 6.— Principal type of neuropodial seta, common form. $\times 40S$.
- 7.— Notopodial aciculum, distal portion. $\times 40S$.

Anaitides compsa CHAMBERLIN.

Figures 8, 9.

- 8.— Distal end of seta. $\times 281$.
- 9.— Second setigerous parapodium. $\times 18$.



PLATE 16.

PLATE 16.

Anaitides compsa CHAMBERLIN.

Figures 1-6.

- 1.— Second setigerous parapodium, notocirrus separate. × 18.
- 2.— Fourth setigerous parapodium. × 18.
- 3.— Eleventh setigerous parapodium, anterior view. × 18.
- 4.— Fortieth setigerous parapodium, caudal view. × 18.
- 5.— Parapodium from middle region of body. × 18.
- 6.— Parapodium about thirty somites from caudal end. × 18.

Phyllodoce fakaravana CHAMBERLIN.

Figures 7-12.

- 7.— Prostomium, dorsal view. × 27.
- 8.— Style of notocirrus of second setigerous parapodium. × 27.
- 9.— Third setigerous parapodium, caudal view. × 27.
- 10.— Parapodium from posterior middle region. × 27.
- 11.— Parapodium from about seventieth somite, anterior view. × 27.
- 12.— Seta, distal portion. × 429.



PLATE 17.

PLATE 17.

Lopadorrhynchus nans CHAMBERLIN.

Figures 1-5.

- 1.— Parapodium from middle region. × 45.
- 2.— Compound seta, distal end, from middle region of body. × 281.
- 3.— Simple ventral seta, tip, from middle region of body. × 281.
- 4.— Distal end of shaft of compound seta, viewed from edge, from middle region of body. × 1110.
- 5.— Side view of the same. × 1110.

Lopadorrhynchus parvum CHAMBERLIN.

Figures 6, 7.

- 6.— Seventh left parapodium. × 63.
- 7.— Compound seta, seventh parapodium. × 281.

Mastigethus errans CHAMBERLIN.

Figures 8, 9.

- 8.— Anterior region, dorsal view. × 27.
- 9.— Proboscis, ventral view. × 27.

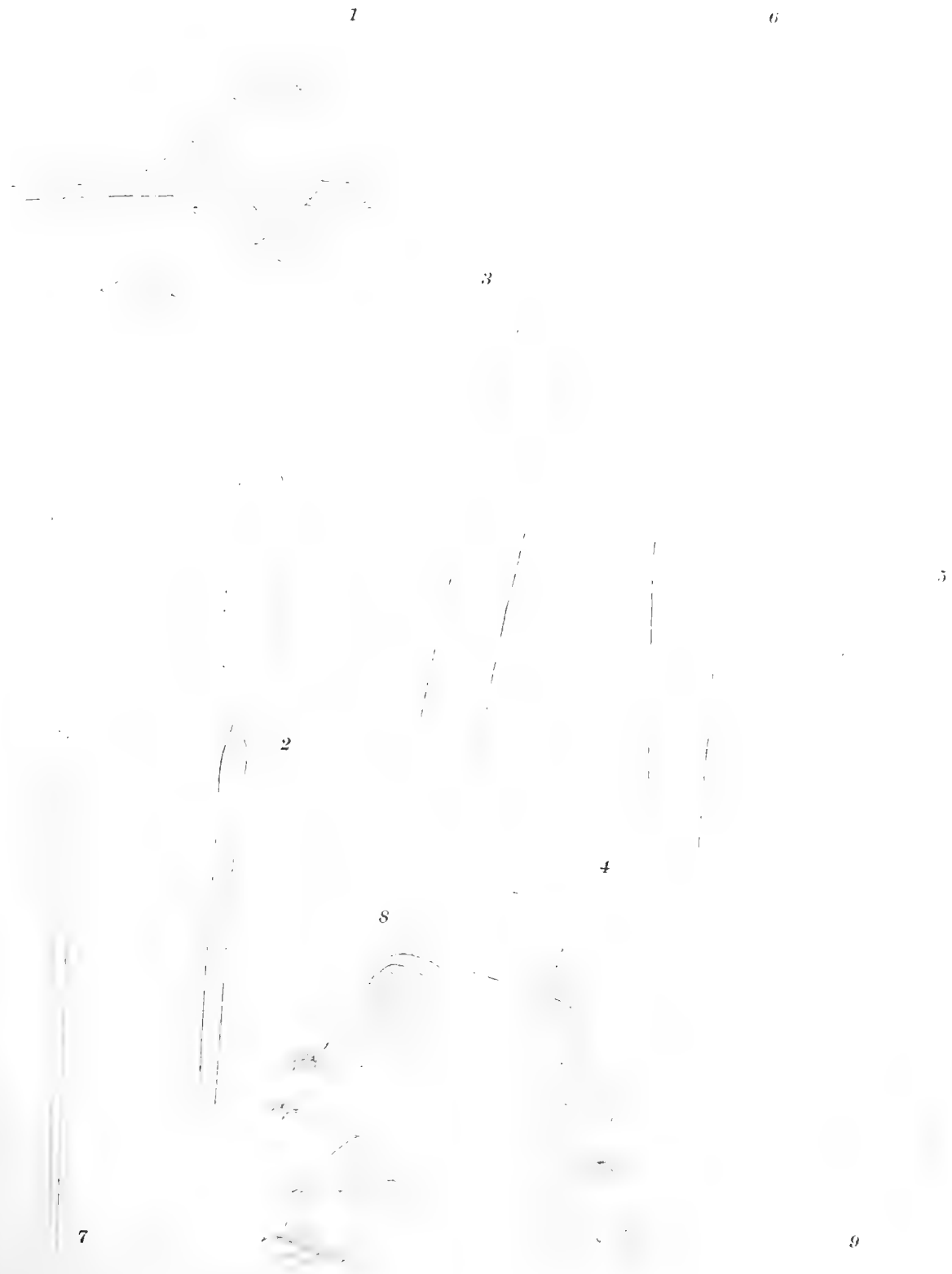


PLATE 18.

PLATE 18.

Mastigethus errans CHAMBERLIN.

Figures 1-6.

- 1.— Parapodium of middle region, caudal view. × 45.
- 2.— Distal end and socket of compound seta, side view. × 1110.
- 3.— The same, frontal view. × 1110.
- 4.— Simple ventral seta, distal end, from middle region of body. × 281.
- 5.— Distal end of compound seta. × 281.
- 6.— Aciculum, distal and proximal ends. × 281.

Nans simplex CHAMBERLIN.

Figures 7, 8.

- 7.— Distal portion of ventral seta, larger form, from middle region of body. × 1075.
- 8.— The same, smaller form of same parapodium. × 1075.



PLATE 19.

PLATE 19.

Nans simplex CHAMBERLIN.

Figures 1-4.

- 1.— Anterior region, dorsal view (upper tentacular cirri and lower tentacles missing). × 64.
- 2.— Posterior region, dorsal view (most of the cirri missing). × 64.
- 3.— Tip of notopodial aciculum. × 1075.
- 4.— Distal portion of notopodial seta, view of broader surface. × 1075.

Autolytus torquens CHAMBERLIN.

Figures 5-7.

- 5.— Anterior parapodium. × 64.
- 6.— Parapodium from middle region of body. × 64.
- 7.— Composite seta from anterior parapodium. × 1637.

Autolytus obliquatus CHAMBERLIN.

Figure 8.

- 8.— Third setigerous parapodium. × 64.



PLATE 20.

PLATE 20.

Autolytus obliquatus CHAMBERLIN (pelagic male).

Figures 1-3.

- 1.— Anterior region, dorsal view. × 63.
- 2.— Anterior region, ventral view. × 63.
- 3.— Compound seta. × 1637.

Autolytus planipalpus CHAMBERLIN (pelagic male).

Figure 4.

- 4.— Fourth left parapodium of second division (eighteenth setigerous). × 63.



PLATE 21.

PLATE 21.

Autolytus planipalpus CHAMBERLIN (pelagic male).

Figures 1, 2.

- 1.— Anterior end and appendages. × 63.
- 2.— Composite setae, middle region of body. × 1637.

Odontosyllis atypica CHAMBERLIN.

Figures 3, 4.

- 3.— Compound seta, distal end. × 1637.
- 4.— Parapodium from middle region of body, anterior view. × 63.

Syllis remex CHAMBERLIN.

Figure 5.

- 5.— Parapodium from middle region of body, caudal view, with notocirrus broken off. × 27.



PLATE 22.

PLATE 22.

Odontosyllis atypica CHAMBERLIN.

Figures 1-3.

- 1.— Anterior end of body with appendages, dorsal view. × 63.
- 2.— Lateral view of eyes of male. × 63.
- 3.— Lateral view of eyes of female. × 63.

Syllis remex CHAMBERLIN.

Figures 4-6.

- 4.— Composite seta, distal end. × 1075.
- 5.— Dorsal seta, distal end, side view. × 1075.
- 6.— Notopodial aciculum, distal end. × 1075.

Hesione genetta GRUBE.

Figures 7, 8.

- 7.— Composite seta, distal end. × 281.
- 8.— Composite seta, distal end of blade, from sixth parapodium. × 1140.

Hesione panamica CHAMBERLIN.

Figures 9, 10.

- 9.— Composite seta from eighth parapodium, distal end. × 281.
- 10.— Tip of same. × 1140.

Hesione splendida SAVIGNY.

Figures 11, 12.

- 11.— Composite seta from eighth parapodium, distal end. From Mediterranean Sea. × 281.
- 12.— Tip of same. × 1140.

Hesione reticulata MARENZELLER.

Figure 13.

- 13.— Tip of composite seta (enlarged from figure by Marenzeller). × 1110.

Hesione ehlersi GRAVIER.

Figure 14.

- 14.— Tip of composite seta (enlarged from figure by Gravier). × 1050.



PLATE 23.

PLATE 23.

Corynocephalus paumotanus CHAMBERLIN.

Figures 1-3.

- 1.— Anterior end, dorsal view. × 27.
- 2.— Anterior end, ventral view. × 27.
- 3.— Parapodium of twentieth somite, anterior view. × 27.

Plotohelmis alata CHAMBERLIN.

Figures 4-10.

- 4.— Prostomium, dorsal view. × 27.
- 5.— Anterior end, ventral view. × 27.
- 6.— Parapodium from middle region of body. × 63.
- 7.— Notocirrus of third (or fourth) parapodium. × 63.
- 8.— Notocirrus of fourth (or fifth) parapodium. × 63.
- 9.— Notocirrus of sixth parapodium. × 63.
- 10.— Notocirrus of twelfth parapodium. × 63.

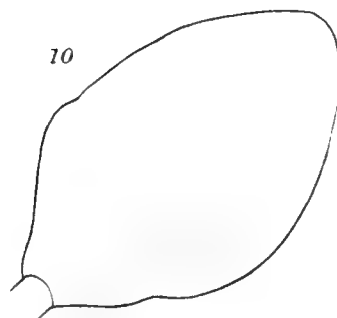
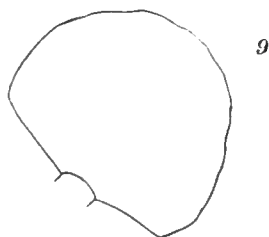
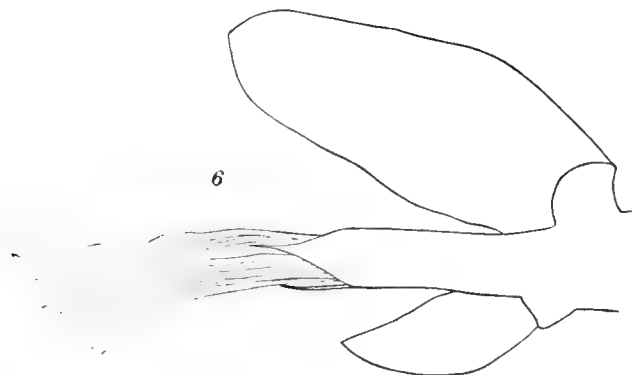
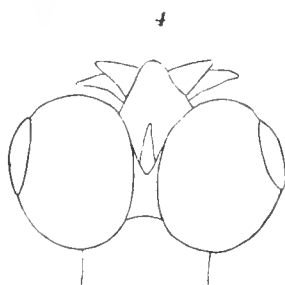


PLATE 24.

PLATE 24.

Plotohelms alata CHAMBERLIN.

Figures 1-3.

- 1.— Notocirrus of eighteenth parapodium. $\times 63$.
- 2.— Notocirrus from near thirtieth somite. $\times 63$.
- 3.— Notocirrus of twenty fifth parapodium. $\times 63$.

Torea pelagica CHAMBERLIN.

Figures 4-9.

- 4.— Anterior end, ventral view (parapodia not shown). $\times 27$.
- 5.— Protopium, dorsal view. $\times 63$.
- 6.— Distal end of seta of fifteenth parapodium. $\times 1075$.
- 7.— Notocirrus of fifteenth parapodium. $\times 63$.
- 8.— Neurocirrus of fifteenth parapodium. $\times 63$.
- 9.— Neurocirrus of fifth parapodium. $\times 63$.

Mauita nans CHAMBERLIN.

Figures 10, 11.

- 10.— Distal portion of aciculum. \times cir. 307.
- 11.— Parapodium of fourth somite (first complete one). $\times 27$.



PLATE 25.

PLATE 25.

Mauita nans CHAMBERLIN.

Figures 1-6.

- 1.— Distal end of seta. $\times 1036$.
- 2.— Anterior end, ventral view (left proboscoidal process broken off). $\times 16$.
- 3.— Prostomium, dorsal view. $\times 16$.
- 4.— Parapodium of eighth somite, anterior view. $\times 27$.
- 5.— Fiftieth parapodium, anterior view. $\times 27$.
- 6.— Eighteenth parapodium, anterior view. $\times 27$.

Rhyncherella pycnocera CHAMBERLIN.

Figures 7, 8.

- 7.— Style of second neurocirrus. $\times 48$.
- 8.— Notocirrus from anterior part of caudal region. $\times 48$.

Rhyncherella parva CHAMBERLIN.

Figures 9, 10.

- 9.— Notocirrus of twenty second parapodium. $\times 96$.
- 10.— Neurocirrus of twenty second parapodium. $\times 96$.

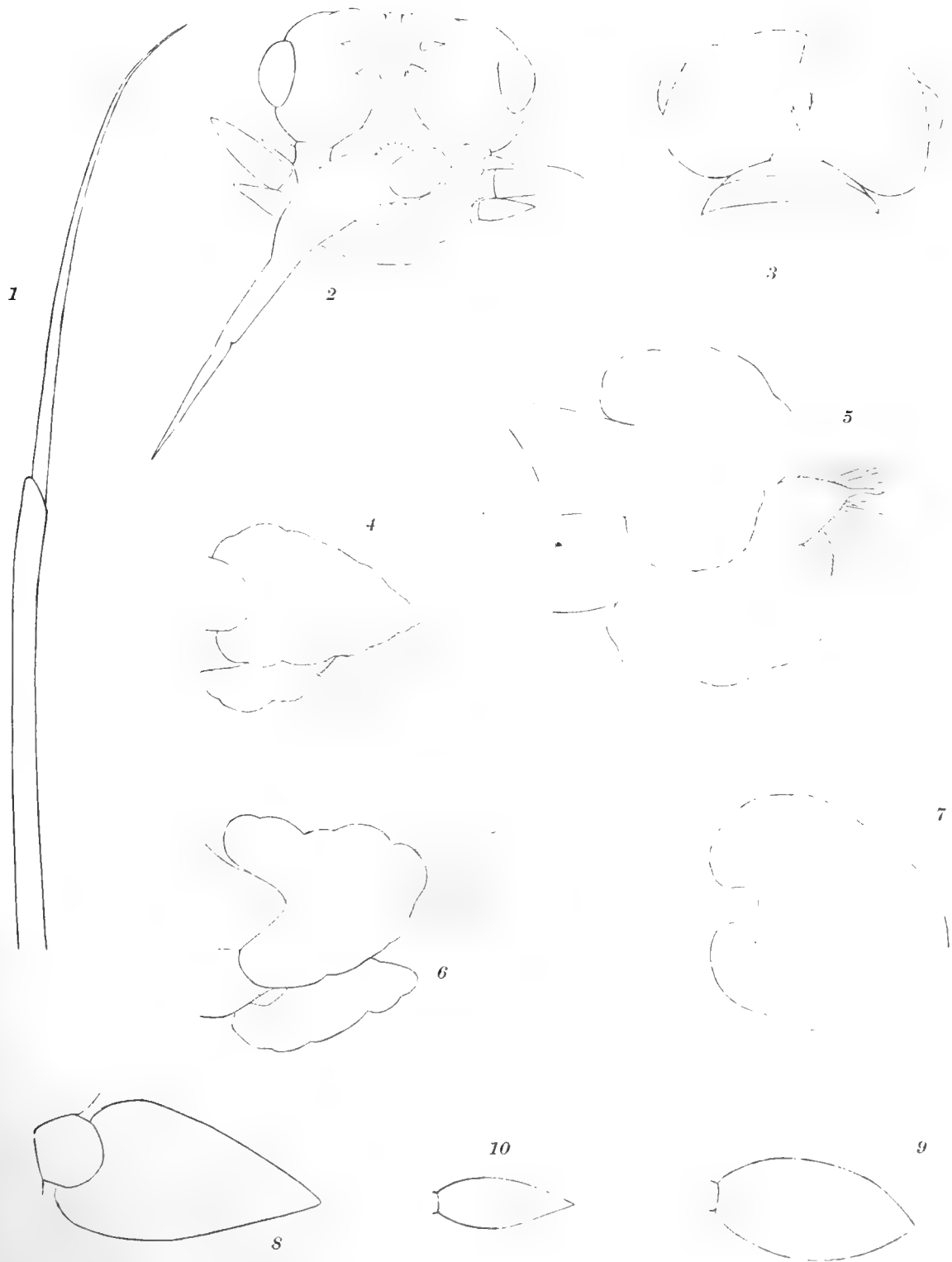


PLATE 26.

PLATE 26.

Rhyncherella pycnocera CHAMBERLIN.

Figures 1-6.

- 1.— Anterior end, dorsal view. × 20.
- 2.— Anterior end, ventral view. × 20.
- 3.— Parapodium, middle region of body. × 48.
- 4.— Parapodium, caudal region of body. × 48.
- 5.— Tip of finer seta of first parapodium. × 1075.
- 6.— Distal end of coarser seta of first parapodium. × 1075.



PLATE 27.

PLATE 27.

Tompoteris eura CHAMBERLIN.

Figures 1, 2.

- 1.— Caudal end, dorsal view. \times cir. 20.
- 2.— First left parapodium, ventral view. \times 63.

Tomopteris innatans CHAMBERLIN.

Figure 3.

- 3.— Brain and eyes in outline.

Tomopteris idiura CHAMBERLIN.

Figures 4-6.

- 4.— Anterior end, ventral view. \times 27.
- 5.— Tenth parapodium, caudal view. \times 63.
- 6.— Seventeenth parapodium (first caudal), ectocephalic view. \times 63.



PLATE 28.

PLATE 28.

Synelmis simplex CHAMBERLIN.

Figures 1-5.

- 1.— Anterior end, view from side. × 45.
- 2.— Anal cirri. × 63.
- 3.— Parapodium from middle region of body. × 96.
- 4.— Tips of notopodial seta (at the right) and aciculum. × 407.
- 5.— Distal portion of neuropodial seta. × 1075.

Kainonereis alata CHAMBERLIN.

Figures 6-9.

- 6.— Anterior end, lateral view. × cir. 52.
- 7.— Pygidium and anal cirri, ventral view. × 96.
- 8.— Falcate neuropodial seta of seventh left parapodium, dorsal view. × 1075.
- 9.— Elytron and cirrus of seventh left parapodium, dorsal view. × 96.



PLATE 29.

PLATE 29.

Kainonereis alata CHAMBERLIN.

Figures 1-8.

- 1.— Fourth left parapodium, anterior view. × 96.
- 2.— Sixth right parapodium, anterior view. × 96.
- 3.— Eleventh right parapodium, caudal view. × 96.
- 4.— Twelfth right parapodium, anterior view. × 96.
- 5.— Left parapodium from middle region, anterior view. × 96.
- 6.— Distal portion of notopodial seta from middle region of body. × 1075.
- 7.— Notopodial seta, sixth parapodium. × 1075.
- 8.— Anterior end of alimentary canal, in outline, showing caeca. × 96.



PLATE 30.

PLATE 30.

Uncinereis subita CHAMBERLIN.

Figures 1-4.

- 1.— Parapodium from middle region of body. × 63.
- 2.— Distal end of neuropodial seta, ordinary long-bladed form. × 1075.
- 3.— Neuropodial seta, short-bladed form, from middle region of body. × 1075.
- 4.— Stout notopodial seta, or crochet, from middle region of body. × 1075.

Platynereis polyscalma CHAMBERLIN.

Figures 5-8.

- 5.— Neuropodial seta (heterogomph of first type) from third parapodium of epitokous female. × 1075.
- 6.— Neuropodial seta (heterogomph of second type) from eighth parapodium of epitokous female, × 1075.
- 7.— Distal portion of natatory seta from middle region of body. × 278.
- 8.— Tip of blade of same. × 1075.



PLATE 31.

PLATE 31.

Platynereis polyscalma CHAMBERLIN.

Figures 1-10.

- 1.— Anterior region of epitokous female, ventral view. × 45.
- 2.— Anterior region of epitokous male, ventral view. × 45.
- 3.— Left maxilla of epitokous female, ventral view. × 45.
- 4.— Left maxilla of epitokous male, ventral view. × 45.
- 5.— Seventh parapodium of epitokous male. × 63.
- 6.— Eighth parapodium of epitokous male. × 63.
- 7.— Penult parapodium of epitokous male. × 96.
- 8.— Ultimate parapodium of epitokous male. × 96.
- 9.— Distal portion or ridged seta from ultimate parapodium (viewed a little obliquely to broad surface).
× 1075.
- 10.— Distal end of shaft of homogomph notopodial seta of epitokous female. × 1075.

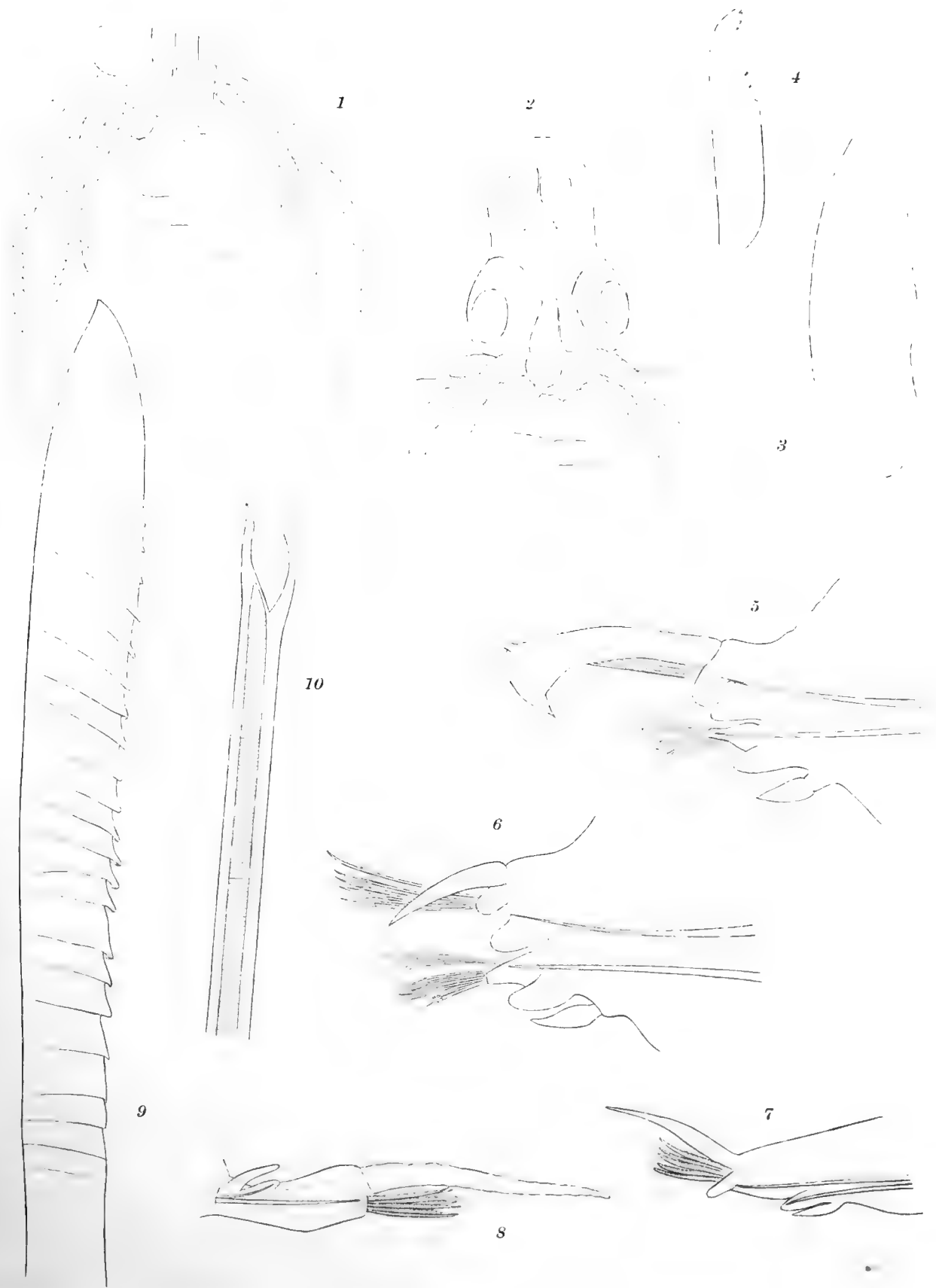


PLATE 32.

PLATE 32.

Platynereis polyscalma CHAMBERLIN.

Figures 1, 2.

- 1.— Parapodium from middle region of epitokous female. × 63.
- 2.— Parapodium from caudal region of epitokous female. × 96.

Nereis segrex CHAMBERLIN.

Figures 3-5.

- 3.— Parapodium. × 27.
- 4.— Socket and adjoining parts of homogomph seta. × 1075.
- 5.— Distal end of neuropodial heterogomph. × 1075.

Nereis leuca CHAMBERLIN.

Figures 6-8.

- 6.— Distal end of falcate neuropodial seta. × 1075.
- 7.— Falcate heterogomph of second type from same preparation as the preceding. × 1075.
- 8.— Natatory notopodial seta from parapodium of middle region. × 278.

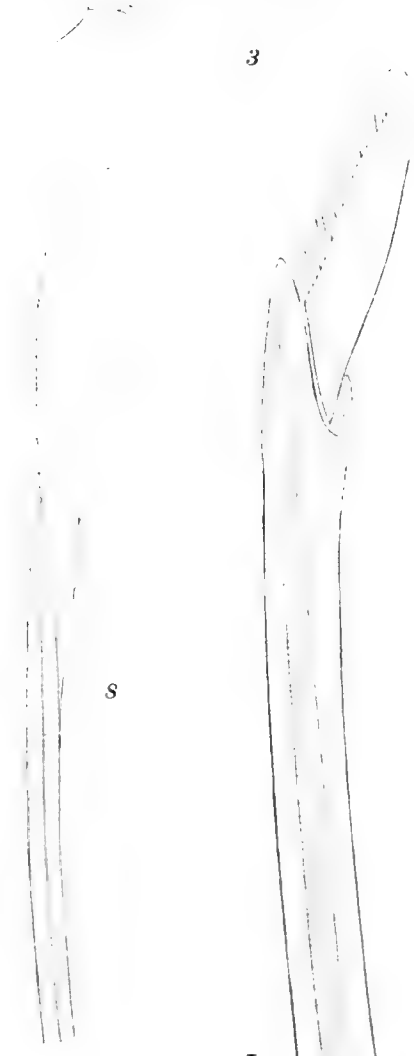
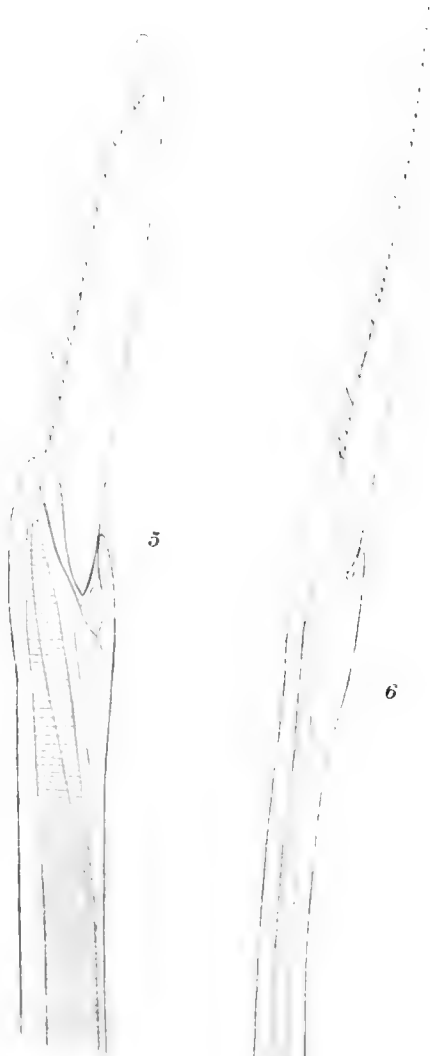


PLATE 33.

PLATE 33.

Nereis leuca CHAMBERLIN.

Figures 1-6.

- 1.— Anterior end, dorsal view. × 45.
- 2.— Fourth parapodium, epitokous male. × 63.
- 3.— Sixth parapodium, epitokous male. × 63.
- 4.— Parapodium from middle region of posterior division of epitokous male. × 63.
- 5.— Notopodial seta, distal end, from sixth parapodium. × 1075.
- 6.— Neuropodial homogomph with tip of the shorter type from fourth parapodium. × 1075.

Nereis caenocirrus CHAMBERLIN.

Figures 7, 8.

- 7.— Falcate seta from fourth parapodium. × 1075.
- 8.— Cirrus of thirtieth parapodium, dorsal view (the papillae are on the anterior side). × 63.



PLATE 34.

PLATE 34.

Nereis caenocirrus CHAMBERLIN.

Figures 1-6.

- 1.— Anterior end, dorsal view, epitokous male. × 45.
- 2.— Thirtieth parapodium of heteronereid division of same, caudal view. × 63.
- 3.— Eleventh parapodium of heteronereid division of same, caudal view. × 63.
- 4.— Notopodial seta. × 1075.
- 5.— Notopodial natatory seta from middle region. × 278.
- 6.— Falcate seta of second type from fourth parapodium. × 1075.



PLATE 35.

PLATE 35.

Nereis caenocirrus CHAMBERLIN.

Figures 1, 2.

- 1.—Fourth right parapodium, anterior view. $\times 73$.
- 2.—Seventh right parapodium, anterior view. $\times 73$.

Pseudonereis atopodon CHAMBERLIN.

Figures 3-5.

- 3.—Parapodium from caudal region. \times cir. 26.
- 4.—Homogomph seta from caudal region. \times cir. 600.
- 5.—Neuropodial heterogomph seta from caudal region. \times cir. 600.

Ceratonereis fakaravae CHAMBERLIN.

Figures 6, 7.

- 6.—Notopodial seta from middle region of body. \times cir. 600.
- 7.—Stouter neuropodial seta (less highly magnified).

Perinereis helleri GRUBE.

Figure 8.

- 8.—Heterogomph seta from anterior region. \times cir. 600.

2

1

6

5

8

4

3

7



PLATE 36.

PLATE 36.

Leptoecia abyssorum CHAMBERLIN.

Figures 1-6.

- 1.— Anterior end, dorsal view. × 27.
- 2.— Anterior end, ventral view. × 27.
- 3.— Maxillae, dorsal view. × 45.
- 4.— Mandibles, ventral view. × 45.
- 5.— Seta from posterior region of body, frontal view. × 429.
- 6.— The same, side view. × 429.



PLATE 37.

PLATE 37.

Leptoecia abyssorum CHAMBERLIN.

Figures 1-8.

- 1.— First parapodium, ectal view. × 45.
- 2.— Second parapodium, ectal view. × 45.
- 3.— Third parapodium, ectal view. × 45.
- 4.— Ninth parapodium. × 45.
- 5.— Pectinate seta from posterior region. × 1075.
- 6.— Distal portion of aciculum from middle region. × 429.
- 7.— Crochet from posterior region of body. × 429.
- 8.— Hooded crochet of parapodium I. × 429.

Hyalinoecia leucacra CHAMBERLIN.

Figures 9, 10.

- 9.— Pectinate seta of sixtieth somite. × 1075.
- 10.— Tip of limbate seta of sixty sixth somite. × 278.



PLATE 38.

PLATE 38.

Hyalinoecia leucacra CHAMBERLIN.

Figures 1-3.

- 1.— End of crochet from sixty sixth somite of paratype. × 278.
- 2.— Hooded crochet of first parapodium. × 278.
- 3.— Mandible of paratype. × 45.

Hyalinoecia tecton CHAMBERLIN.

Figures 4-9.

- 4.— Mandibles, dorsal view. × 27.
- 5.— Maxillae of left side. × 27.
- 6.— Crochet from posterior region, distal portion. × 278.
- 7.— Pectinate seta from anterior parapodium. × 1075.
- 8.— Blade of limbate seta from ventral fascicle of a posterior parapodium. × 278.
- 9.— Blade of limbate seta from dorsal group of same parapodium. × 278.

1

2

7

4

6

5

3

8

9

PLATE 39.

PLATE 39.

Hyalinoecia tecton CHAMBERLIN.

Figures 1, 2.

- 1.— Tips of setae from first parapodium. × 63.
- 2.— Tip of seta from same, more slender form. × 63.

Paronuphis solenotecton CHAMBERLIN.

Figures 3-8.

- 3.— Second left parapodium, caudal view. × 63.
- 4.— First right parapodium, caudal view. × 63.
- 5.— Left mandible, ventral view. × 63.
- 6.— Maxillae I, right blade omitted. × 278.
- 7.— Limbate seta from posterior region of body. × 429.
- 8.— Compound seta of first parapodium. × 429.

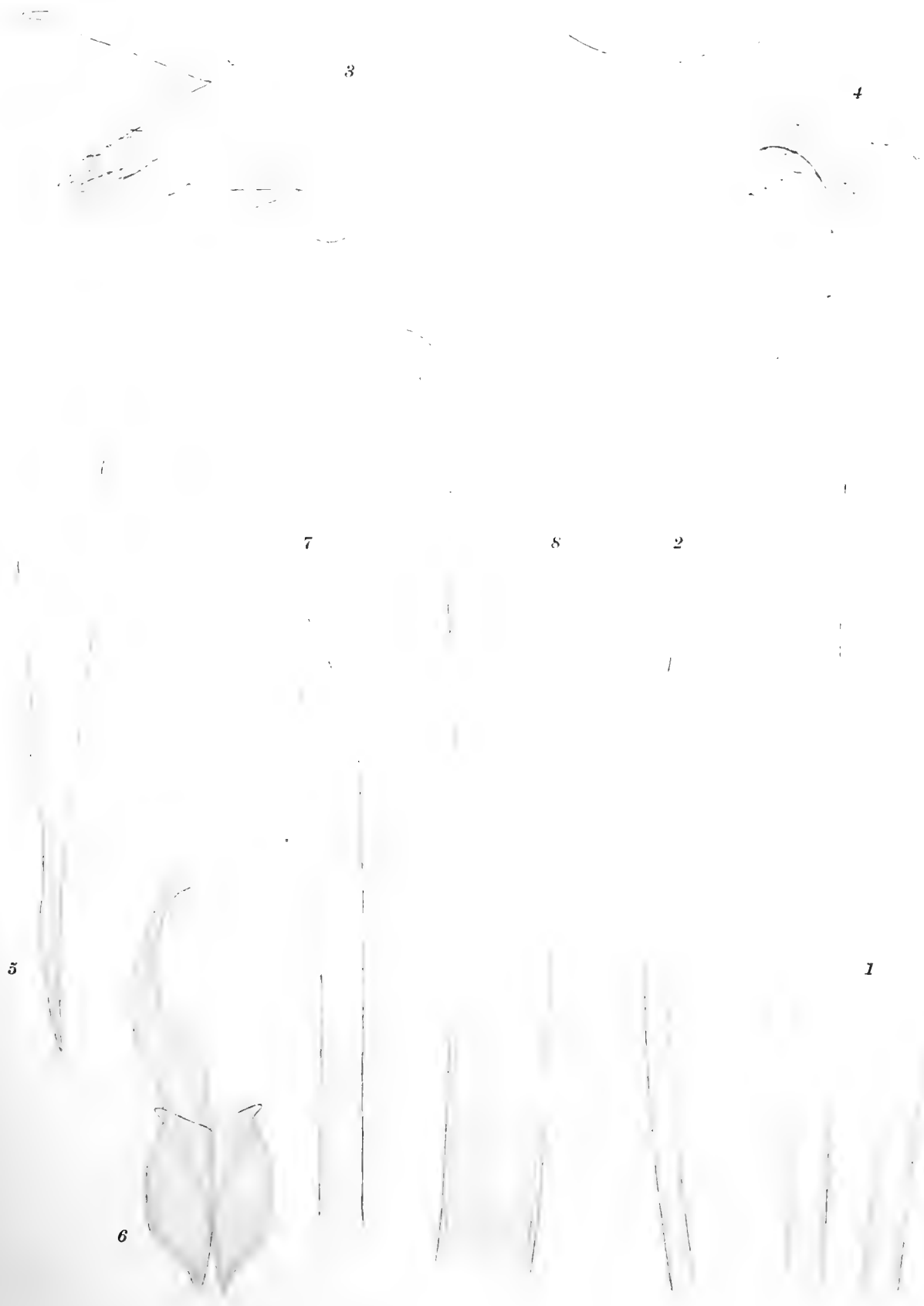


PLATE 40.

PLATE 40.

Paronuphis solenotecton CHAMBERLIN.

Figures 1, 2.

- 1.— Pectinate seta from second parapodium. × 1075.
- 2.— Crochet from posterior region. × 429.

Onuphis proalopus CHAMBERLIN.

Figures 3-8.

- 3.— Prostomium and peristomium and appendages, dorsal view. × 27.
- 4.— Maxillae (left blade of I omitted). × 45.
- 5.— Labium. × 27.
- 6.— Tip of aciculum. × 429.
- 7.— Coarse ventral seta of sixth parapodium. × 429.
- 8.— Crochet, middle region of body. × 429.



PLATE 41.

PLATE 41.

Onuphis proalopus CHAMBERLIN.

Figures 1-10.

- 1.— Compound crochet, fourth parapodium. × 429.
- 2.— Pectinate seta. × 1075.
- 3.— First parapodium, ectal view. × 27.
- 4.— Fourth parapodium, ectoventral view. × 27.
- 5.— Seventh right parapodium, subectal view. × 27.
- 6.— Sixth parapodium, ectoventral view. × 27.
- 7.— First right branchia, with cirrus. × 45.
- 8.— Sixth left branchia, with cirrus. × 45.
- 9.— Ninth right branchia with cirrus. × 45.
- 10.— Twentieth left branchia, with cirrus. × 45.



PLATE 42.

PLATE 42.

Onuphis crassisetosa CHAMBERLIN.

Figures 1-6.

- 1.— Anterior end, dorsal view. × 27.
- 2.— Mandibles. × 45.
- 3.— Maxillae. × 45.
- 4.— Composite crochet of second parapodium. × 429.
- 5.— Limbate seta from middle region of body. × 429.
- 6.— Distal end of aciculum from middle region of body. × 429.



PLATE 43.

PLATE 43.

Onuphis crassisetosa CHAMBERLIN.

Figures 1-7.

- 1.— Pectinate seta from middle region of body. $\times 1075$.
- 2.— Crochet from middle region of body. $\times 429$.
- 3.— First parapodium of type. $\times 45$.
- 4.— Second parapodium, ectal view (paratype). $\times 45$.
- 5.— Third parapodium of type. $\times 45$.
- 6.— Fourth parapodium of type. $\times 45$.
- 7.— Fourth branchia, subectal view. $\times 63$.

Onuphis nannognathus CHAMBERLIN.

Figures 8-11.

- 8.— Maxillae of right side. $\times 27$.
- 9.— Crochet from middle region of body. $\times 429$.
- 10.— Tip of aciculum, middle region of body. \times cir. 175.
- 11.— Pectinate seta, middle region of body. $\times 1075$.



PLATE 44.

PLATE 44.

Onuphis nannognathus CHAMBERLIN.

Figures 1-8.

- 1.— Composite crochet of sixth parapodium. × 429.
- 2.— Distal end of simple, coarser ventral seta from seventh parapodium. × 429.
- 3.— Distal portion of simple dorsal seta of seventh parapodium. × 429.
- 4.— Twentieth branchia, with notocirrus. × 27.
- 5.— Branchia, with cirrus, from near the seventieth somite. × 27.
- 6.— Anterior end, ventral view. × 27.
- 7.— First right parapodium, ectal view. × 27.
- 8.— Fifth right parapodium, ectal view. × 27.



PLATE 45.

PLATE 45.

Onuphis lepta CHAMBERLIN.

Figures 1-7.

- 1.— Anterior end, ventral view (paratype). × 27.
- 2.— Maxillae. × 45.
- 3.— Tip of crochet from middle region of body. × 429.
- 4.— Crochet from second parapodium. × 1075.
- 5.— Pectinate seta from middle region of body. × 1075.
- 6.— Distal end of seta from seventh parapodium. × 429.
- 7.— Distal end of aciculum from middle region of body. × 1075.

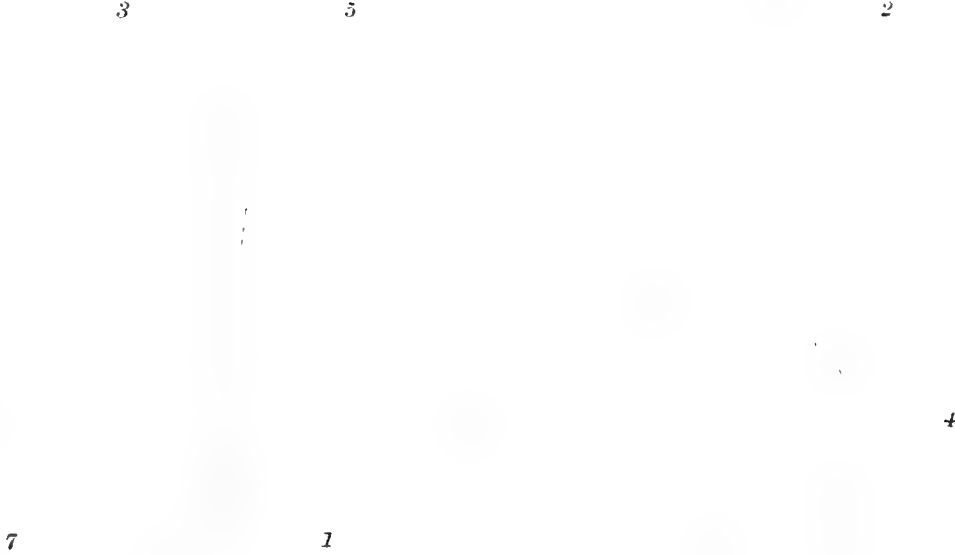
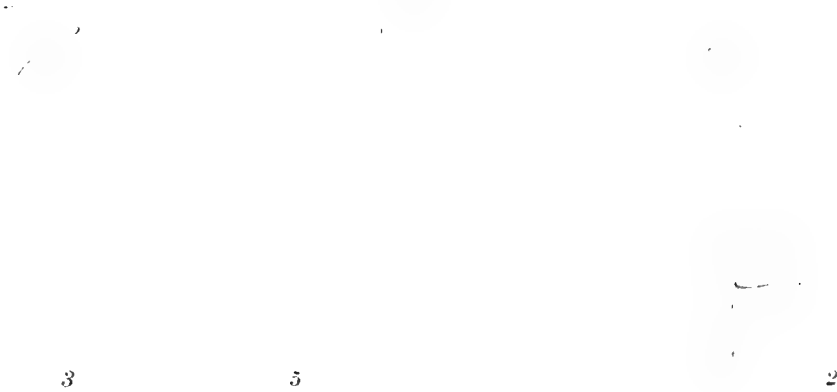


PLATE 46.

PLATE 46.

Onuphis nannognathus CHAMBERLIN.

Figures 1, 2.

- 1.— Seventh parapodium, ectal view. × 27.
- 2.— Ninth parapodium, ectal view. × 27.

Onuphis lepta CHAMBERLIN.

Figures 3-12.

- 3.— First left parapodium, ectal view. × 45.
- 4.— Third right parapodium, ectal view. × 45.
- 5.— Fourth right parapodium, ectal view. × 45.
- 6.— Fifth right parapodium, ectal view. × 45.
- 7.— Sixth right parapodium, ectal view. × 45.
- 8.— Seventh right parapodium, ectal view. × 45.
- 9.— First left branchia, ectodorsal view. × 63.
- 10.— Third left branchia, ectodorsal view. × 63.
- 11.— Seventh right branchia, subdorsal view. × 63.
- 12.— Twenty third right branchia, dorsal view. × 63.



PLATE 47.

PLATE 47.

Onuphis socia CHAMBERLIN.

Figures 1-11.

- 1.— Mandibles. × 27.
- 2.— Right maxillae (carrier-plate of I complete). × 27.
- 3.— Tip of compound crochet of first parapodium. × 1075.
- 4.— Dorsal seta. × 429.
- 5.— Ordinary crochet, distal end. × 429.
- 6.— Distal portion of aciculum. × 429.
- 7.— Second left parapodium, ectal view. × 27.
- 8.— Fourth parapodium, ectal view. × 27.
- 9.— First branchia with cirrus. × 45.
- 10.— Second right branchia with cirrus. × 45.
- 11.— Third branchia with cirrus, dorsal view. × 45.



PLATE 48.

PLATE 48.

Onuphis socia CHAMBERLIN.

Figures 1-4.

- 1.— Fifth branchia, dorsal view. × 45.
- 2.— Eleventh right branchia. × 45.
- 3.— Thirteenth left branchia, dorsal view. × 45.
- 4.— Thirty fourth right branchia, sublateral view. × 45.

Onuphis pachymema CHAMBERLIN.

Figures 5-11.

- 5.— First left parapodium, ectal view. × 27.
- 6.— Second left parapodium, ectal view. × 27.
- 7.— Fourth parapodium, ectal view. × 27.
- 8.— First right branchia, with notocirrus. × 45.
- 9.— Third left branchia, with notocirrus. × 45.
- 10.— Fifth left branchia, with notocirrus. × 45.
- 11.— Last distinct left branchia of type. × 45.



PLATE 49.

PLATE 49.

Onuphis pachymema CHAMBERLIN.

Figures 1-8.

- 1.— Seventh left branchia with cirrus, subdorsal view. × 45.
- 2.— Eighth left branchia with cirrus, subdorsal view. × 45.
- 3.— Twenty second right branchia with cirrus, ectodorsal view. × 45.
- 4.— Twenty fifth right branchia, subdorsal view. × 45.
- 5.— Anterior end, ventral view. × 19.
- 6.— First and second maxillae. × 27.
- 7.— Mandibles. × 27.
- 8.— Distal portion of crochet from middle region of body. × 429.

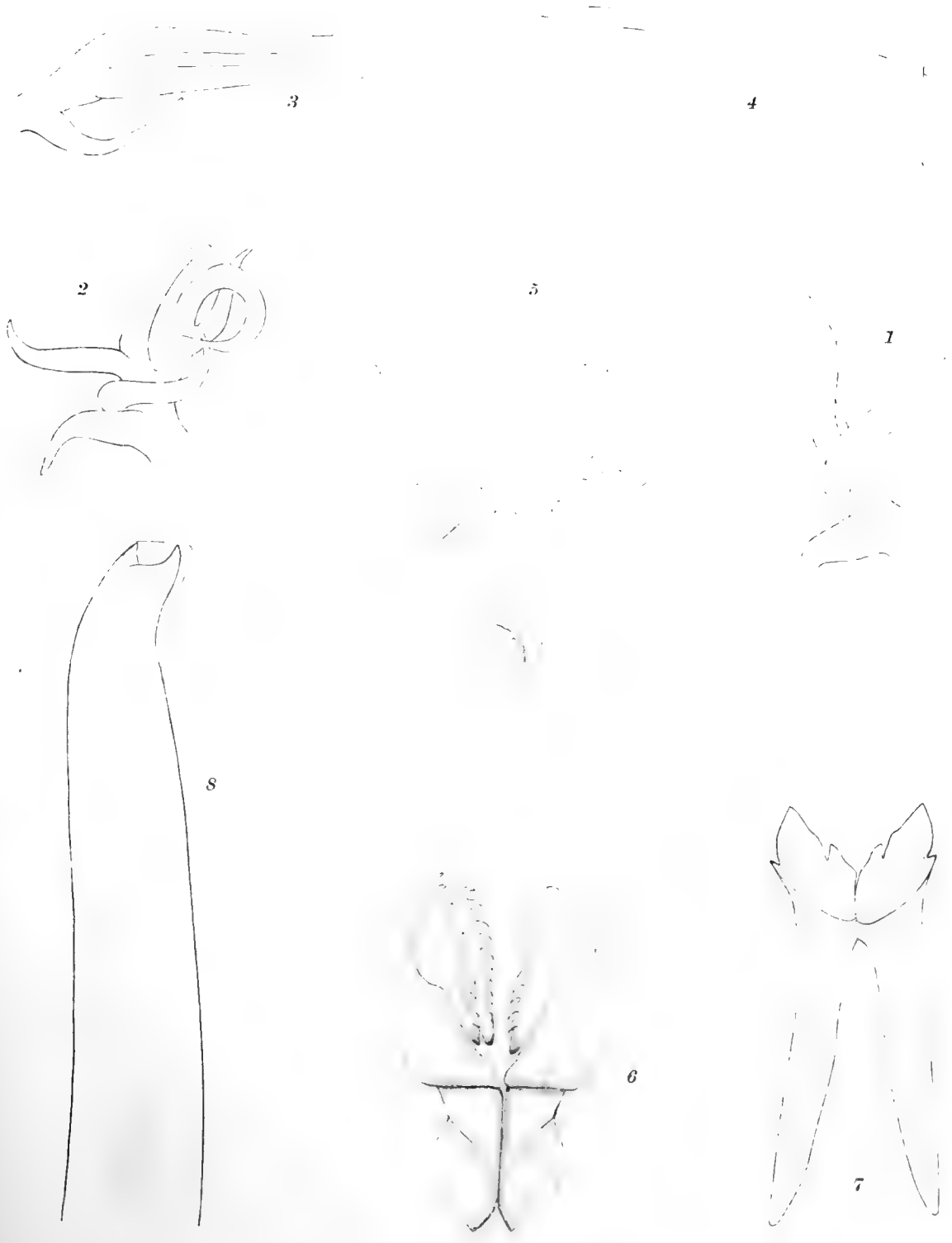


PLATE 50.

PLATE 50.

Onuphis pachymema CHAMBERLIN.

Figures 1-6.

- 1.— Distal end of composite crochet from the second parapodium. $\times 1075$.
- 2.— Tip of coarse ventral seta corresponding to composite crochets of first three parapodia, from fourth parapodium. $\times 1075$.
- 3.— Distal portion of ventral seta from middle region of body. $\times 429$.
- 4.— Dorsal capillary seta from second parapodium. $\times 429$.
- 5.— Pectinate seta from middle region of body. $\times 1075$.
- 6.— Distal portion of aciculum of sixty sixth somite of paratype. $\times 278$.

Onuphis litabanchia CHAMBERLIN.

Figure 7.

- 7.— Maxillae of left side, dorsal view. $\times 45$.



PLATE 51.

PLATE 51.

Onuphis litabanchia CHAMBERLIN.

Figures 1-10.

- 1.— Anterior end, ventral view. × 27.
- 2.— Distal end of aciculum from middle region. × 437.
- 3.— Distal end of limbate seta from middle region. × 437.
- 4.— Distal end of pectinate seta from middle region of body. × 1075.
- 5.— Distal end of crochet from middle region of body. × 437.
- 6.— Distal end of special crochet from second parapodium. × 1075.
- 7.— First parapodium, caudoectal view. × 63.
- 8.— First branchia with notocirrus, subectal view. × 63.
- 9.— Sixth branchia with notocirrus. × 63.
- 10.— Thirteenth right branchia with notocirrus and dorsal setae. × 63.

10

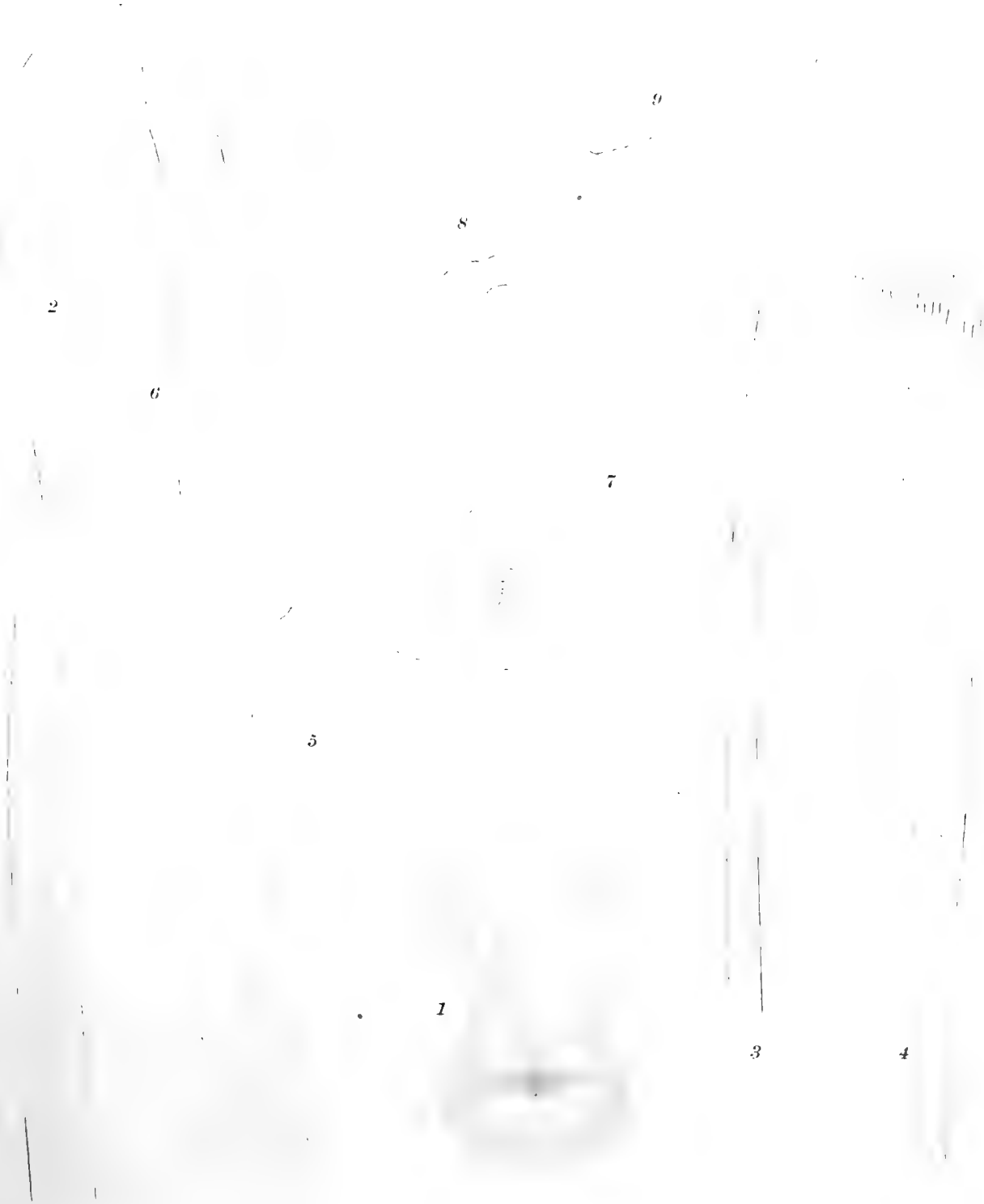


PLATE 52.

PLATE 52.

Onuphis litabanchia CHAMBERLIN.

Figure 1.

- 1.— Branchia with cirrus from anterior middle region. × 63.

Onuphis cobra CHAMBERLIN.

Figures 2-8.

- 2.— Mandibles, with distal portion of masticatory plates broken off. × 27.
3.— Maxillae. × 27.
4.— Distal end of aciculum from posterior region.
5.— Limbate seta of posterior region, not quite full side view. × 429.
6.— Pectinate seta with corners not inflexed. × 429.
7.— Ordinary crochet from posterior region. × 429.
8.— Special crochet from first parapodium, guard broken off. × 429.



PLATE 53.

PLATE 53.

Leodice makemoana CHAMBERLIN.

Figures 1-11.

- 1.— Anterior dorsal region, lateral view. × 51.
- 2.— Mandibles, ventral view. × 72.
- 3.— First maxillae, with left blade incomplete. × 72.
- 4.— Pectinate seta from caudal region. × 1232.
- 5.— Distal portion of composite seta from anterior region. × 1232.
- 6.— Distal end of crochet from posterior region. × 493.
- 7.— First branchia with notocirrus, ectodorsal view. × 72.
- 8.— Tenth branchia with notocirrus, ectodorsal view. × 72.
- 9.— Eighth from last branchia with notocirrus, subanterior view. × 72.
- 10.— Antepenult branchia and notocirrus, anterior view. × 72.
- 11.— Last branchia and notocirrus. × 72.

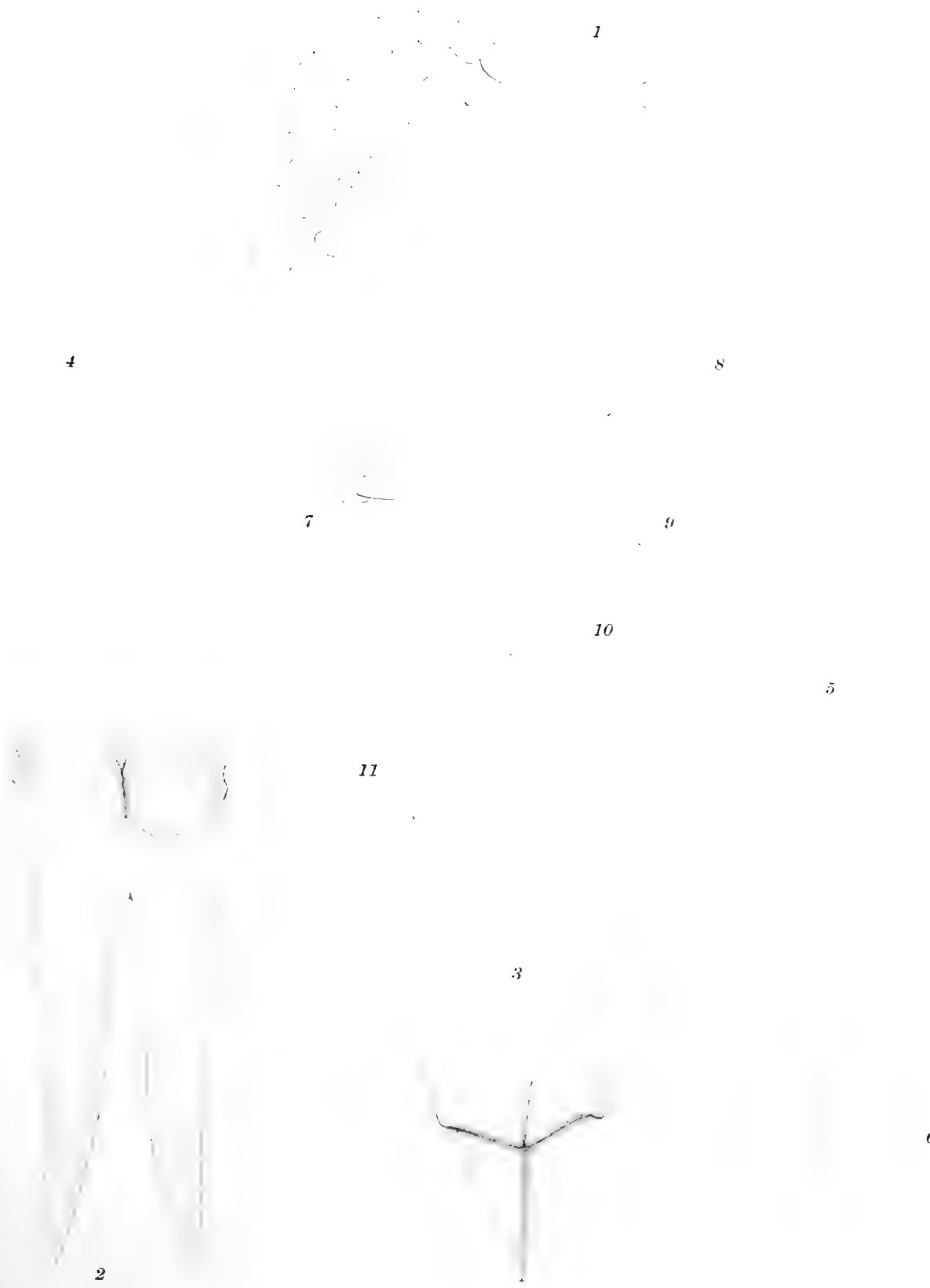


PLATE 54.

PLATE 54.

Leodice segregata CHAMBERLIN.

Figures 1-5.

- 1.— Maxillae I and II of left side. × 25.
- 2.— Pectinate seta. × 1232.
- 3.— Distal end of crochet of posterior region. × 319.
- 4.— Branchia of eleventh somite with notocirrus. × 25.
- 5.— Branchia and notocirrus of second to last branchiferous somite (paratype from Sta. 3417). × 25.

Leodice lita CHAMBERLIN.

Figures 6-10.

- 6.— First branchia, with notocirrus of eighteenth somite. × 72.
- 7.— Third branchia, with notocirrus. × 72.
- 8.— Fifth branchia, with notocirrus. × 72.
- 9.— Tenth branchia, with notocirrus. × 72.
- 10.— Twelfth branchia, with notocirrus. × 72.



PLATE 55.

PLATE 55.

Leodice lita CHAMBERLIN.

Figures 1-7.

- 1.— Thirty first branchia and notocirrus, subdorsal view. × 72.
- 2.— Mandibles, ventral view. × 31.
- 3.— Maxillae I. × 31.
- 4.— Distal portion of aciculum from middle region showing the common form of apex. × 319.
- 5.— Crochet. × 298.
- 6.— Shaft and appendage of composite seta. × 319.
- 7.— Pectinate seta. × 1232.

Leodice oliga papeetensis CHAMBERLIN.

Figures 8-10.

- 8.— First branchia with notocirrus. × 72.
- 9.— Sixth branchia with notocirrus, caudal view. × 72.
- 10.— Nineteenth branchia with notocirrus, anterodorsal view. × 72.

Leodice oliga CHAMBERLIN.

Figure 11.

- 11.— Apical portion of crochet. × 493.

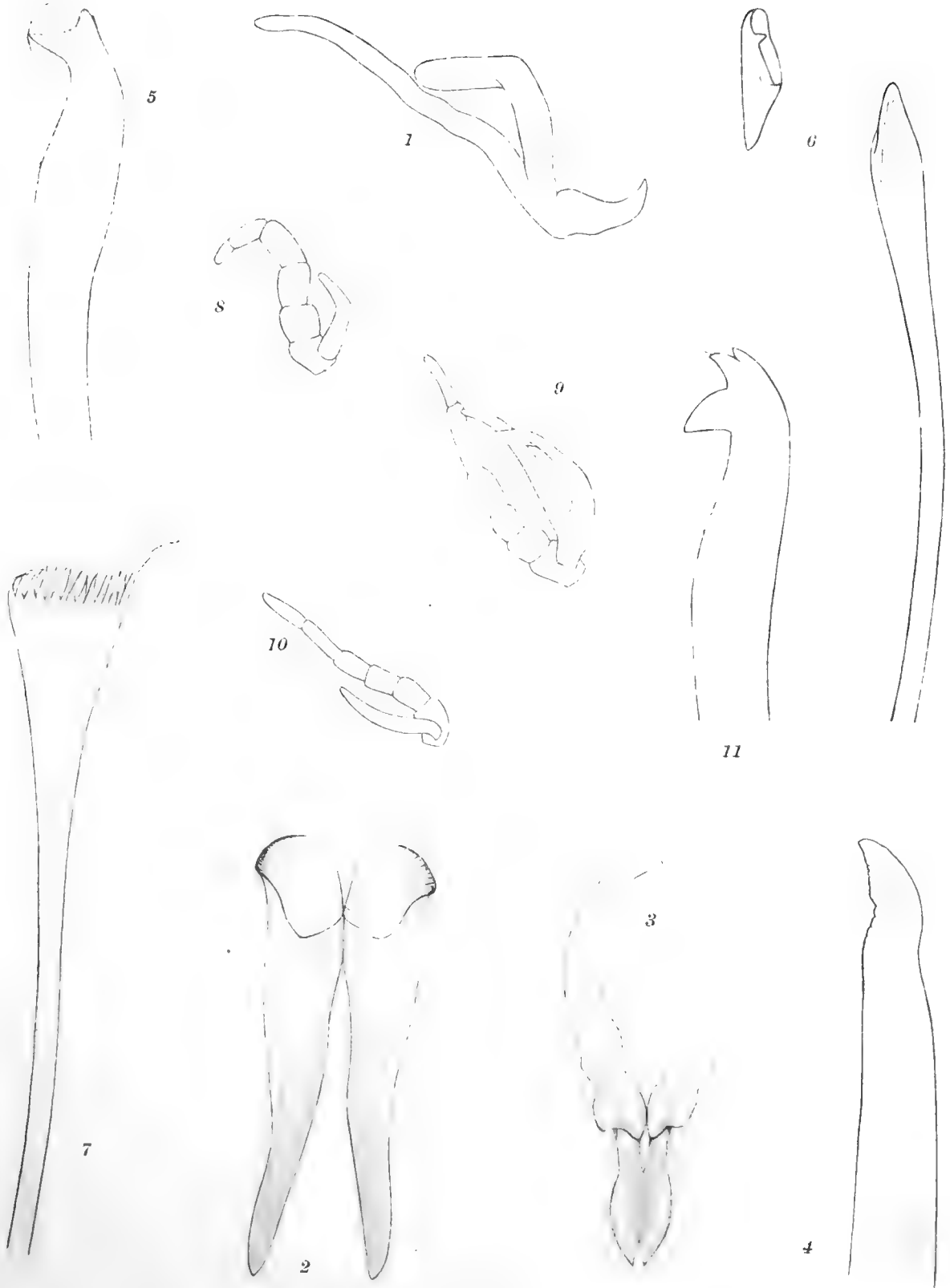


PLATE 56.

PLATE 56.

Leodice oliga papeetensis CHAMBERLIN.

Figure 1.

1.— Twenty sixth branchia. $\times 74$.

Leodice oliga CHAMBERLIN.

Figures 2-9.

2.— Mandibles, ventral view. $\times 74$.

3.— Pectinate seta. $\times 1261$.

4.— Composite seta. $\times 1261$.

5.— First branchia, with notocirrus. $\times 74$.

6.— Second branchia in caudal group, with notocirrus. $\times 74$.

7.— Fourth branchia, with notocirrus, dorsocaudal view. $\times 74$.

8.— Sixth branchia, with notocirrus, subcaudal view. $\times 74$.

9.— Probably eighth branchia, subcaudal view. $\times 74$.

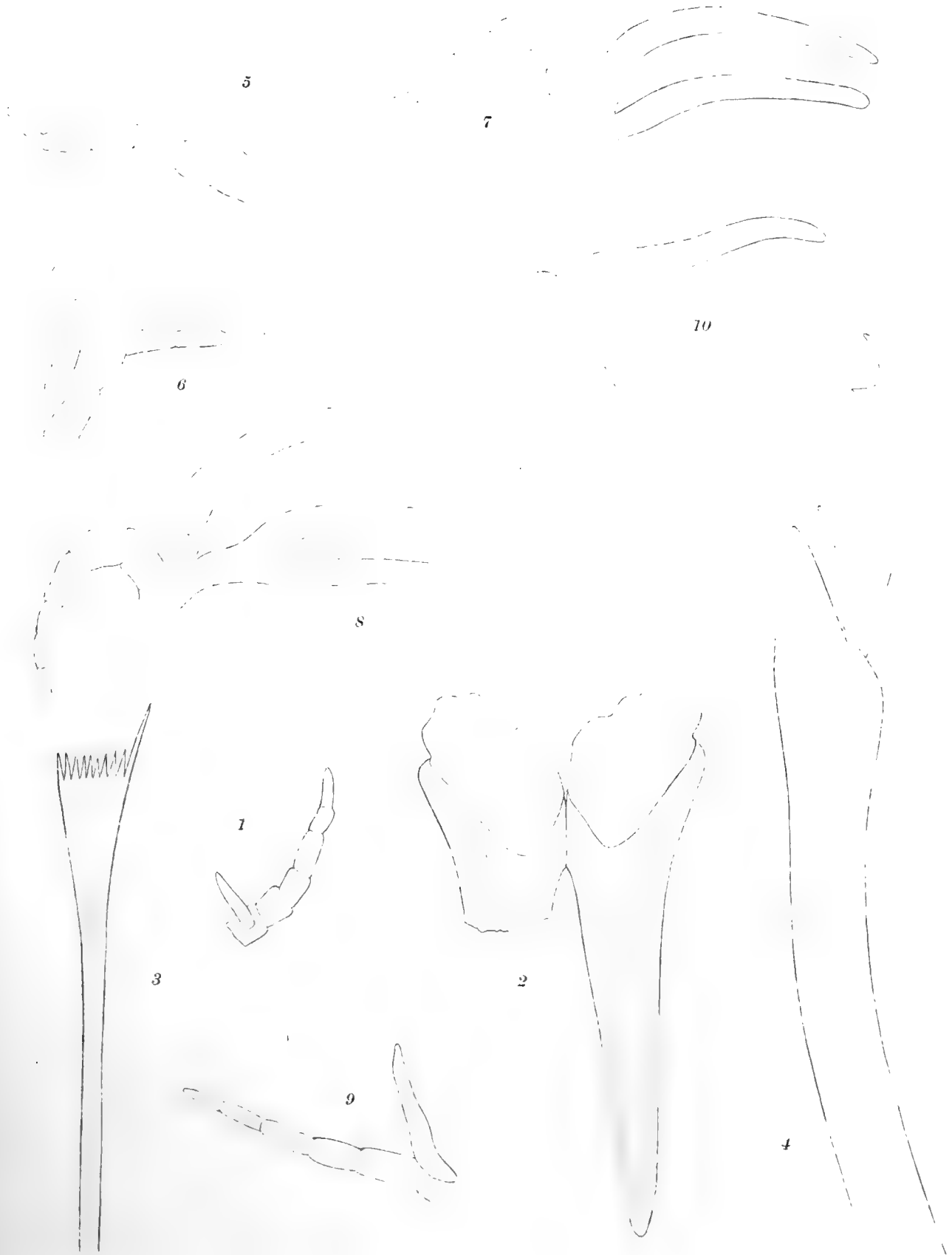


PLATE 57.

PLATE 57.

Leodice contingens CHAMBERLIN.

Figures 1-5.

- 1.— Maxillae I and II, left side, dorsal view. $\times 17$.
- 2.— Right branchia with notocirrus of twenty fourth somite. $\times 24$.
- 3.— Distal portion of dorsal seta. $\times 326$.
- 4.— Distal end of crochet from posterior region. $\times 326$.
- 5.— Composite seta from caudal region. $\times 326$.

Leodice nesiotes CHAMBERLIN.

Figures 6, 7.

- 6.— Right mandible, ventral view. $\times 23$.
- 7.— Composite seta, thirtieth somite. $\times 298$.

Leodice paurneurata CHAMBERLIN.

Figures 8, 9.

- 8.— Pectinate seta. $\times 1261$.
- 9.— Composite seta. $\times 326$.



PLATE 58.

PLATE 53.

Leodice pauroneurata CHAMBERLIN.

Figures 1-9.

- 1.— Crochet from posterior region. × 319.
- 2.— Mandibles. × 26.
- 3.— Right maxilla I. × 26.
- 4.— Maxilla III, dorsal view. × 31.
- 5.— Paired tentacles of right side, lateral view. × 25.
- 6.— Tentacular cirrus. × 46.
- 7.— First left branchia, with notocirrus, caudal view. × 57.
- 8.— Fourth left branchia, with notocirrus, caudal view. × 57.
- 9.— Eleventh left branchia, with notocirrus, caudal view. × 57.



PLATE 59.

PLATE 59.

Leodice pauroneurata CHAMBERLIN.

Figures 1-3.

- 1.— Thirteenth branchia, with notocirrus, caudal view. $\times 58$.
- 2.— Thirty second branchia, with notocirrus, caudal view. $\times 58$.
- 3.— Fifty fourth branchia, with notocirrus, caudal view of sixty third somite. $\times 58$.

Leodice panamena CHAMBERLIN.

Figures 4-8.

- 4.— First right branchia, anterior view. $\times 46$.
- 5.— Second right branchia, subdorsal view. $\times 46$.
- 6.— Sixth right branchia, subdorsal view. $\times 46$.
- 7.— Eleventh right branchia, subdorsal view. $\times 46$.
- 8.— Sixty first right branchia, subdorsal view. $\times 46$.

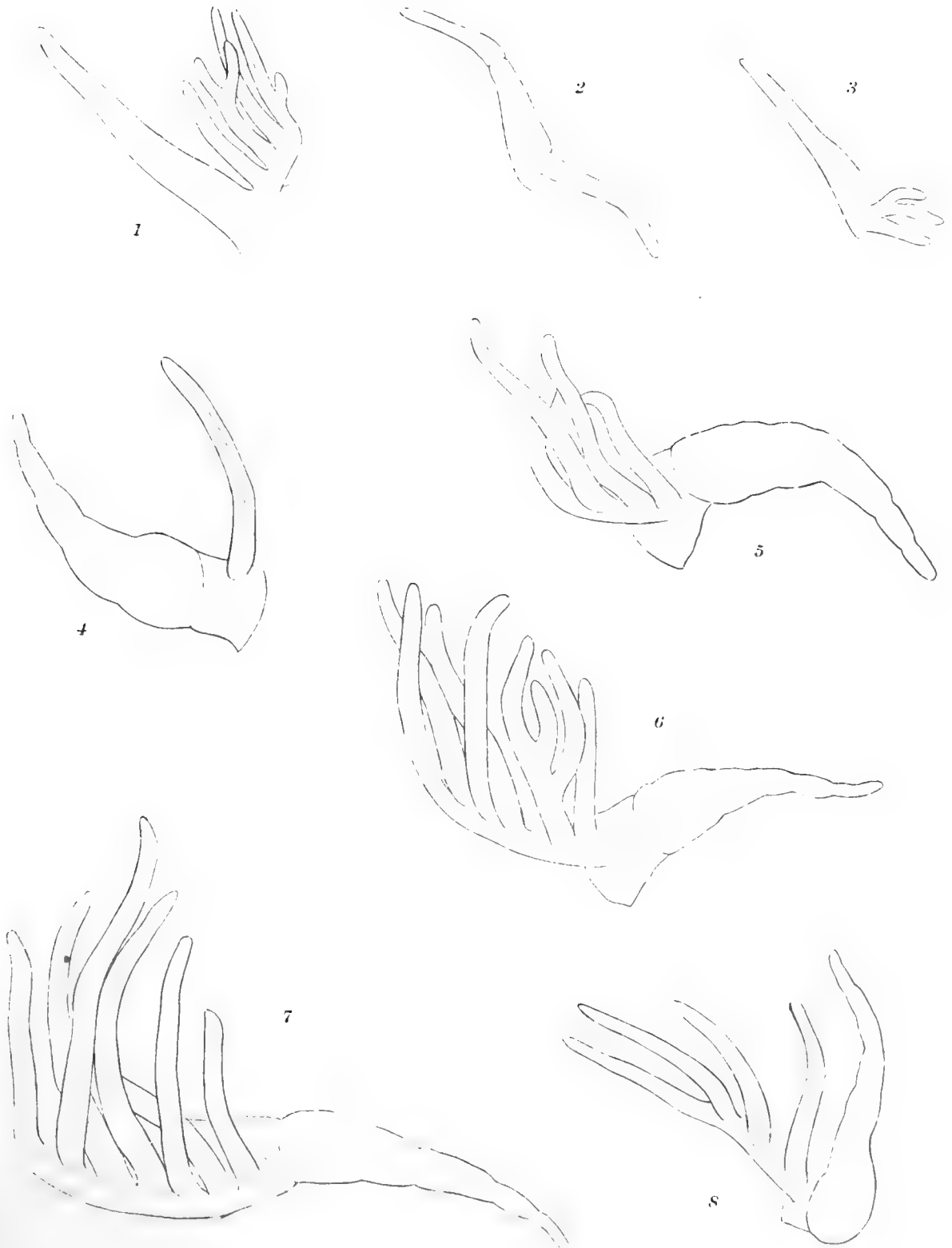


PLATE 60.

PLATE 60.

Leodice panamena CHAMBERLIN.

Figures 1-5.

- 1.— Distal portion of crochet from fifty sixth somite. $\times 504$.
- 2.— Composite seta from fifty sixth somite. $\times 1261$.
- 3.— Pectinate seta from fifty sixth somite. $\times 1261$.
- 4.— Mandibles, ventral view. $\times 31$.
- 5.— Maxillae I, dorsal view. $\times 31$.

Lumbrinereis bifilaris EHLERS.

Figures 6-9.

- 6.— Mandibles, ventral view.
- 7.— Maxillae II, III, and IV.
- 8.— Distal end of limbate seta of fifteenth somite.
- 9.— The same, of another seta of same somite, different view.



PLATE 61.

PLATE 61.

Lumbrinereis bifilaris EILERS.

Figure 1.

1.— Crochet, from caudal region.

Cenothrix mutans CHAMBERLIN.

Figures 2-9.

- 2.— Maxillae, dorsal view. $\times 76$.
- 3.— Mandibles. $\times 76$.
- 4.— Anterior region of body, ventral view. $\times 32$.
- 5.— Dorsal seta and aciculum of middle region. $\times 495$.
- 6.— Crochet, viewed from edge. $\times 495$.
- 7.— Another crochet, side view. $\times 495$.
- 8.— Limbate seta of first type from middle region. $\times 495$.
- 9.— Parapodium from middle region, anterior view. $\times 117$.



PLATE 62.

PLATE 62.

Cenothrix mutans CHAMBERLIN.

Figure 1.

1.—Limbate seta of second type. $\times 412$.

Oenone telura CHAMBERLIN.

Figures 2-5.

2.—Maxillae, dorsal view. $\times 64$.

3.—Anterior end, ventral view (proboscis omitted). $\times 27$.

4.—Parapodium of middle region, caudal view. $\times 64$.

5.—Crochet. $\times 412$.

Dorvillea crassa CHAMBERLIN.

Figures 6, 7.

6.—Mandibles. $\times 27$.

7.—Simple dorsal seta. $\times 1087$.

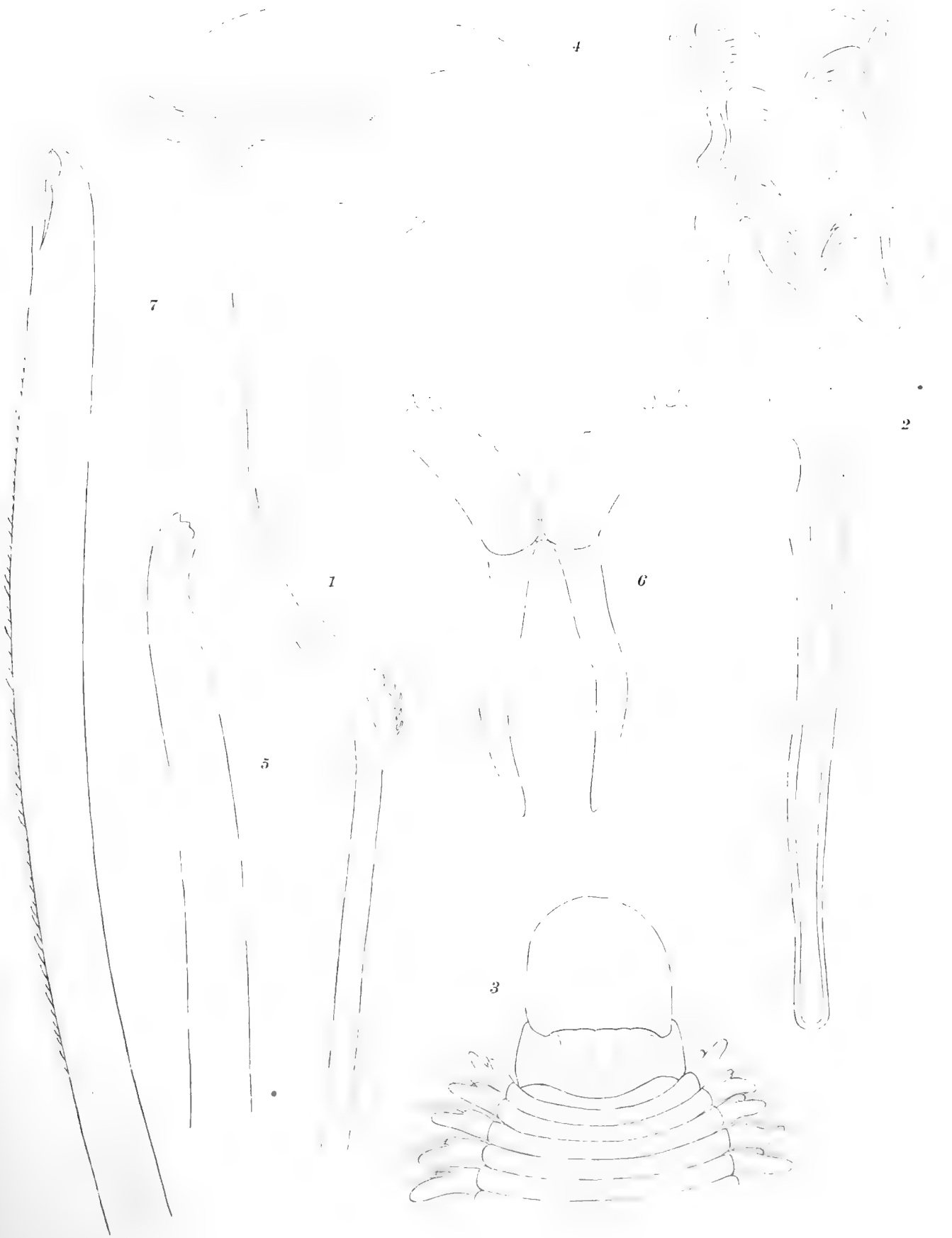


PLATE 63

PLATE 63.

Dorvillea crassa CHAMBERLIN.

Figure 1.

- 1.— Composite seta, distal portion. $\times 1075$.

Hemipodus mexicanus CHAMBERLIN.

Figures 2, 3.

- 2.— Twelfth parapodium, caudal view. $\times 63$.
3.— Composite seta, distal portion. $\times 1075$.

Telake epipolasis CHAMBERLIN.

Figures 4-8.

- 4.— Twenty first parapodium. $\times 63$.
5.— Thirty seventh parapodium. $\times 63$.
6.— Distal portion of notopodial seta of twenty first parapodium. $\times 1075$.
7.— Tip of neuropodial seta of thirty seventh parapodium. $\times 1075$.
8.— Portion of same seta at proximal end of free part. $\times 1075$.



PLATE 64.

PLATE 64.

Telake epipolasis CHAMBERLIN.

Figure 1.

- 1.— Distal portion of ventral seta of twenty first parapodium. × 811.

Glycera profundi CHAMBERLIN.

Figures 2-6.

- 2.— Prostomium. × 26.
3.— Fourth parapodium, caudal view. × 50.
4.— Twentieth parapodium, caudal view. × 50.
5.— Fiftieth parapodium, cephalic view. × 50.
6.— One hundredth parapodium, cephalic view. × 50.

Branchethus latum CHAMBERLIN.

Figures 7-11.

- 7.— Sixth branchia. × 49.
8.— Tenth branchia. × 49.
9.— Basal portion of thirtieth branchia with all filaments broken off near base, subdorsal view. × 49.
10.— Branchia from caudal region. × 49.
11.— Branchia from caudal region, a broader form. × 49.



PLATE 65.

PLATE 65.

Branchethus latum CHAMBERLIN.

Figures 1, 2.

- 1.—Neuropodial seta of anterior parapodium. × 278.
- 2.—Portion of notopodial seta of anterior parapodium. × 278.

Nainereis retusiceps CHAMBERLIN.

Figures 3-5.

- 3.—Tenth parapodium, anterior view. × 63.
- 4.—Ventral neuropodial seta, tenth parapodium. × 278.
- 5.—Ordinary neuropodial seta, tenth parapodium. × 278.

Plotobia simplex CHAMBERLIN.

Figures 6-11.

- 6.—Style of first right notocirrus. × 63.
- 7.—Style of second right notocirrus. × 63.
- 8.—Style of third right notocirrus. × 63.
- 9.—Style of fifteenth right notocirrus. × 63.
- 10.—Style of last right notocirrus. × 63.
- 11.—Style of neurocirrus of about fifteenth setigerous somite. × 63.

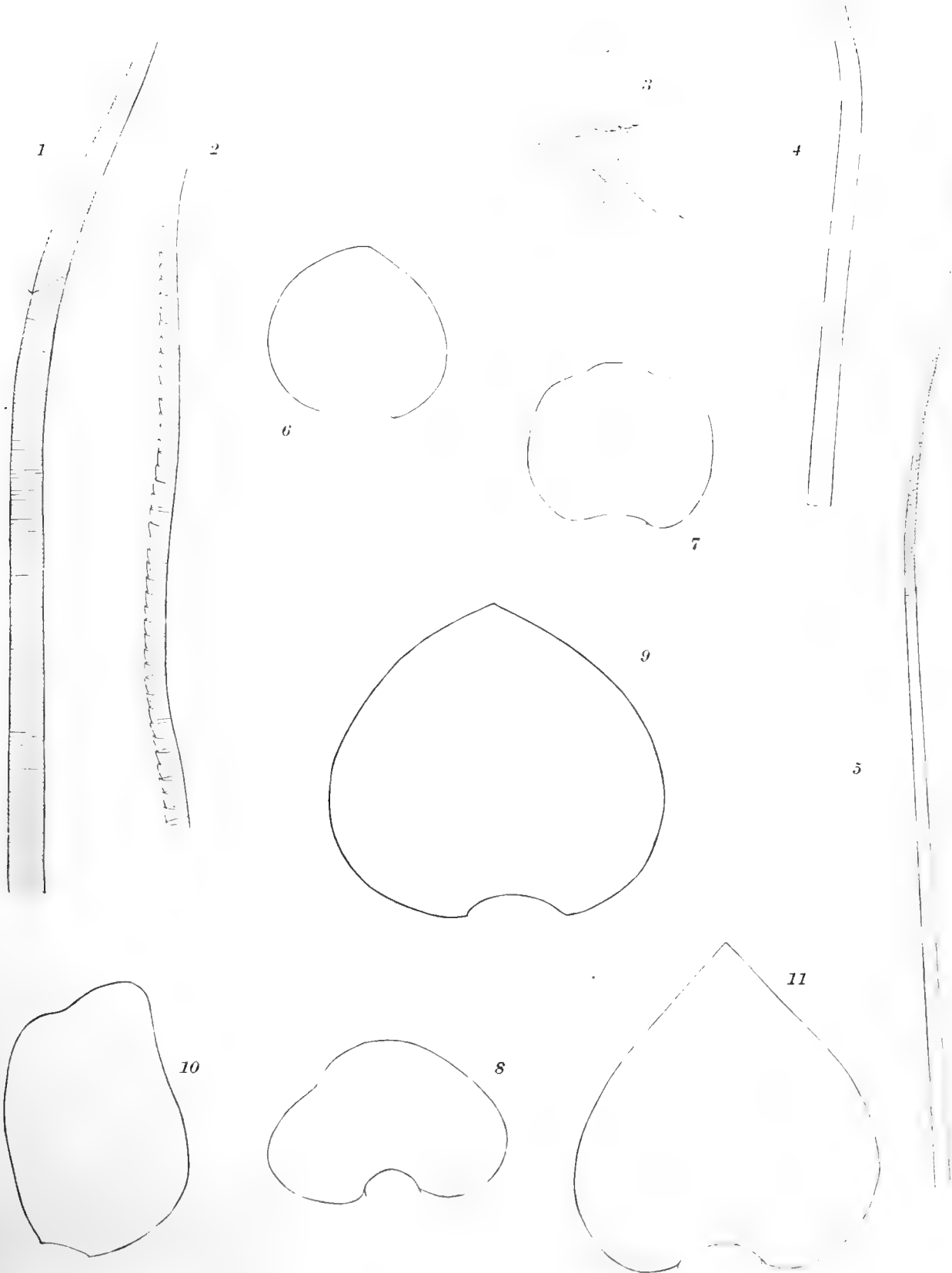


PLATE 66.

PLATE 66.

Plotobia simplex CHAMBERLIN.

Figure 1.

- 1.— Anterior end seen from above and a little to the right (styles of left notocirri, excepting the first one, missing).

Plotobia coniceps CHAMBERLIN.

Figures 2-4.

- 2.— Anterior end, dorsal view (paratype, Sta. 4661). × 32.
3.— Anterior end, lateral view, styles of cirri missing (type). × 32.
4.— Caudal end, dorsal view (paratype). × 32.



PLATE 67.

PLATE 67.

Travisia profunda CHAMBERLIN.

Figures 1-4.

- 1.— Lateral view.
- 2.— Anterior end, ventral view. × 32.
- 3.— Portion of third somite showing first branchia, setae, sensory pit. × 76.
- 4.— Branchia and adjoining structures of eighth somite. × 76.

Kesun fusus CHAMBERLIN.

Figure 5.

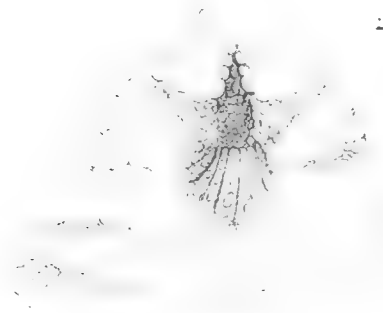
- 5.— Portion of fourth somite showing setae, sensory pit, etc. × 76.



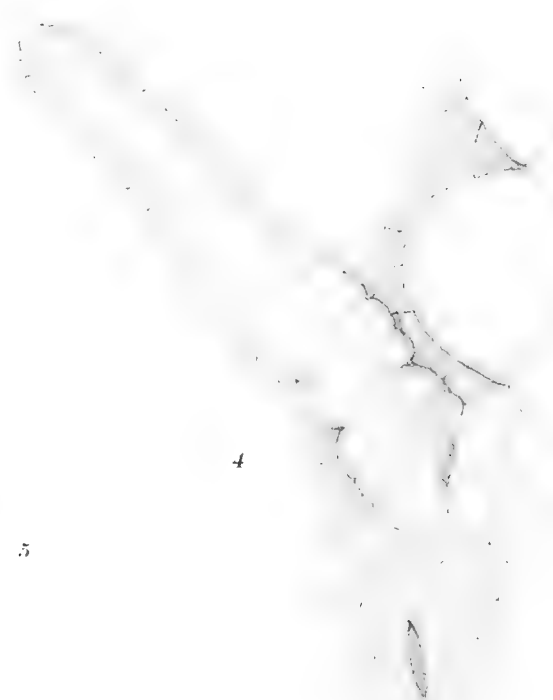
1



3



12



4



5

PLATE 68.

PLATE 68.

Kesun fusus CHAMBERLIN.

Figures 1, 2.

- 1.— Anterior end, ventral view. × 38.
- 2.— Caudal end, lateral view. × 38.

Brada verrucosa CHAMBERLIN.

Figures 3-6.

- 3.— Palpus, ventral view. × 35.
- 4.— Seta of neuropodium of twentieth somite. × 76.
- 5.— Seta of notopodium of eleventh somite. × 76.
- 6.— Notopodial seta of eleventh somite; *a.* base, *b.* toward tip. × 337.

Brada irenaia CHAMBERLIN.

Figures 7-9.

- 7.— Notopodial seta of thirteenth somite. × 76.
- 8.— Portion toward distal end of same seta. × 337.
- 9.— Portion toward base of same seta. × 337.

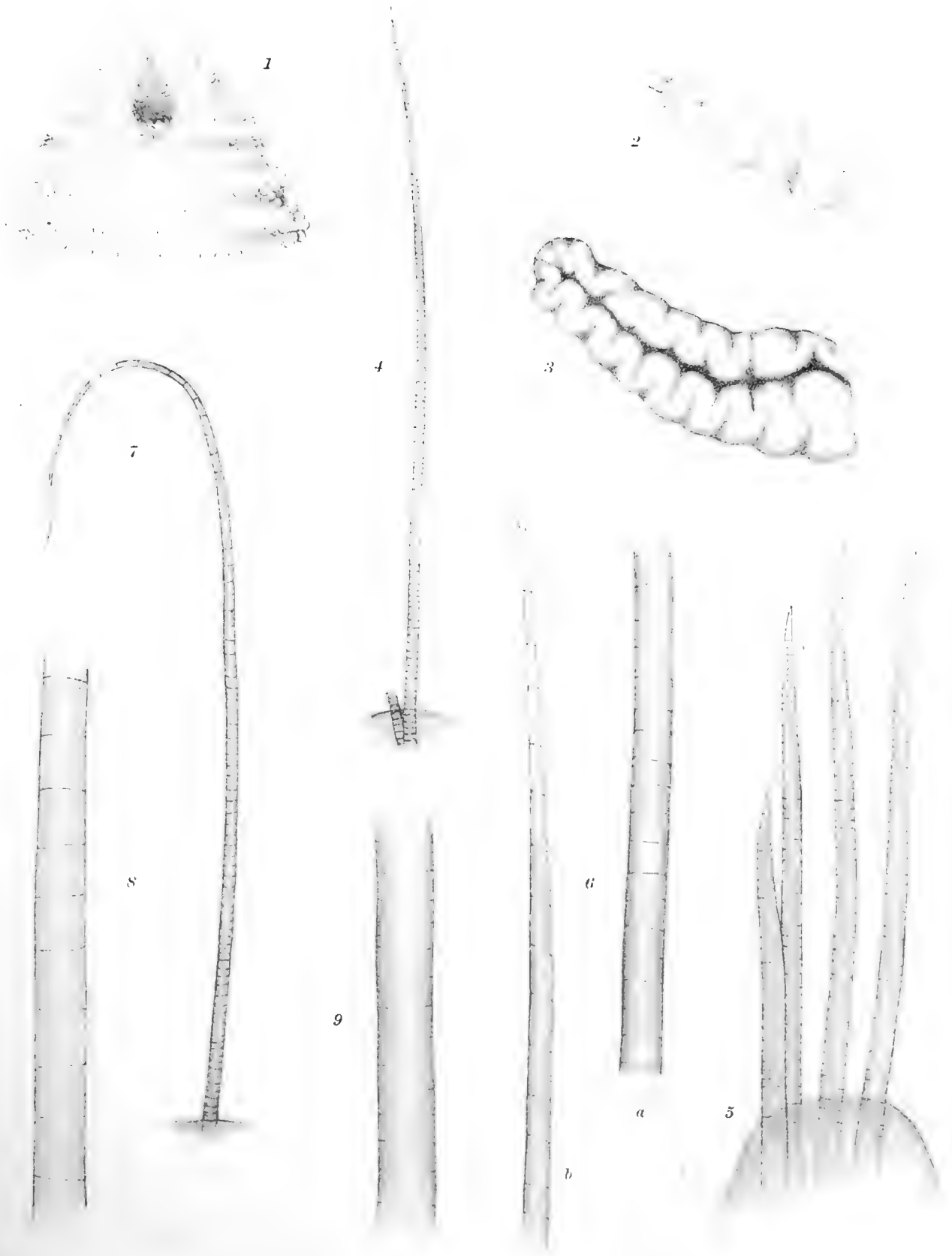


PLATE 69.

PLATE 69.

Brada irenaia CHAMBERLIN.

Figures 1-3.

- 1.— Neuropodial seta from thirteenth somite. $\times 76$.
- 2.— Portion from basal region of neuropodial seta of the more common form, sixteenth somite. $\times 337$.
- 3.— Similar portion from neuropodial seta with exceptionally short annuli. $\times 337$.

Ilyphagus bythincola CHAMBERLIN.

Figures 4-9.

- 4.— Notopodial seta of eleventh somite. $\times 76$.
- 5.— Portion of same toward tip. $\times 337$.
- 6.— Portion of same at base. $\times 337$.
- 7.— Neuropodial seta from eleventh somite. $\times 76$.
- 8.— Portion of same at base. $\times 337$.
- 9.— Portion of neuropodial seta near middle from tenth somite. $\times 337$.



PLATE 70.

PLATE 70.

Cirratulus megalus CHAMBERLIN.

Figures 1-4.

- 1.— Anterior end, dorsal view. $\times 7.5$.
- 2.— Anterior end, ventral view. $\times 7.5$.
- 3.— Two ventral spines and one capillary seta. $\times 63$.
- 4.— Portion of capillary seta. $\times 1036$.

Cirrineris nesiotes CHAMBERLIN.

Figures 5, 6.

- 5.— Ventral spine. $\times 278$.
- 6.— Ventral capillary seta. $\times 278$.

Cirratulus sinicolens CHAMBERLIN.

Figures 7-10.

- 7.— Neuropodial acicula from posterior region, proximal ends not shown. $\times 278$.
- 8.— Distal portion of single ventral spine of same parapodium. $\times 278$.
- 9.— Ordinary seta, anterior region. $\times 278$.
- 10.— Finer dorsal neuropodial seta, posterior region. $\times 278$.



PLATE 71.

PLATE 71.

Sonatsa meridionalis CHAMBERLIN.

Figures 1-8.

- 1.— Anterior end, lateral view. \times cir. 8.5.
- 2.— Anterior region, dorsal view. \times cir. 8.5.
- 3.— Region of fifth, sixth, and seventh somites, lateral view.
- 4.— Uncinus of eighth somite. \times 337.
- 5.— Distal end of uncinus, or crochet, of third setigerous somite. \times 1150.
- 6.— Distal end of crochet of eighth setigerous somite. \times 1150.
- 7.— Beginning of serrate portion of capillary setae from middle region. \times cir. 1150.
- 8.— Limbate seta of third setigerous somite. \times cir. 1300.



PLATE 72.

PLATE 72.

Maldanella fibrillata CHAMBERLIN.

Figures 1-6.

- 1.— Anterior end, lateral view. × cir. 8.5.
- 2.— Anterior end, subdorsal view. × cir. 8.5.
- 3.— Caudal end, lateral view. × 8.5.
- 4.— Uncinus of third setigerous somite. × 337.
- 5.— Distal end of uncinus of normal form, third setigerous somite. × cir. 1150.
- 6.— Distal end of uncinus of occasional form, third setigerous somite. × cir. 1150.



PLATE 73.

PLATE 73.

Maldanella fibrillata CHAMBERLIN.

Figures 1, 2.

- 1.— Distal end of capillary seta of third setigerous somite (fibrillae not shown). × 337.
- 2.— Portion of middle region of same. × 337.

Petaloproctus crenatus CHAMBERLIN.

Figures 3-7.

- 3.— Caudal end, lateral view. × 337.
- 4.— The same, dorsal view. × 337.
- 5.— Distal portion of major capillary seta of eighth somite. × 337.
- 6.— Uncinus of eighth somite. × 337.
- 7.— Distal end of same. × cir. 1150.



PLATE 74.

PLATE 74.

Idanthyrus regalis CHAMBERLIN.

Figures 1-8.

- 1.— Neuropodial seta of second thoracic somite. × 113.
- 2.— Portion of neuropodial seta toward tip, eighth abdominal somite. × 1305.
- 3.— Uncinus in profile. × 1305.
- 4.— Neuropodial paleae, fourth thoracic somite. × 76.
- 5.— Notopodial paleae of same somite. × 76.
- 6.— Inner opercular paleae. × 76.
- 7.— Typical outer paleae. × 76.
- 8.— Anterior outer paleae. × 76.

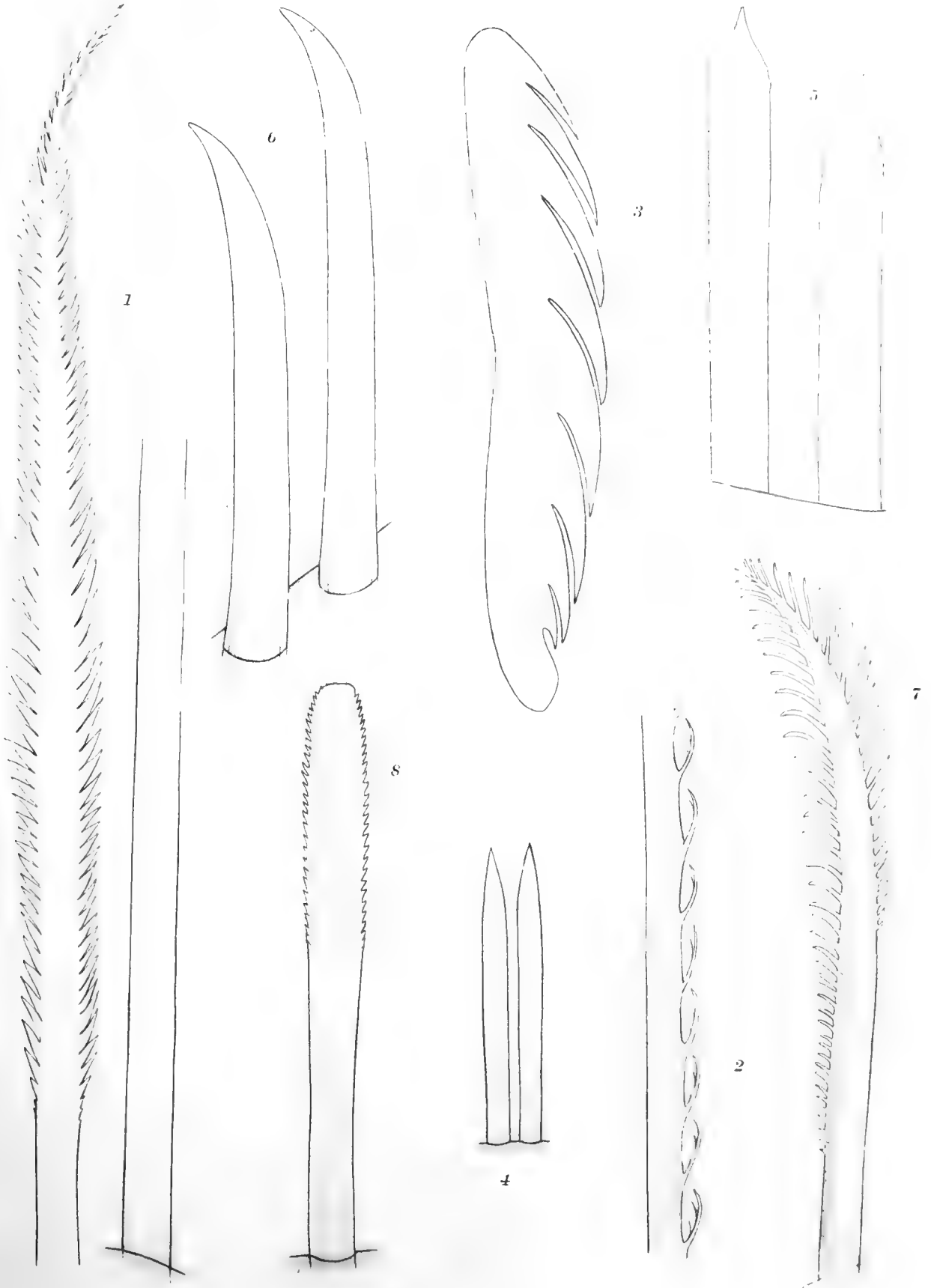


PLATE 75.

PLATE 75.

Tetreres nesiotus CHAMBERLIN.

Figures 1-7.

- 1.— Uncinus. $\times 870$.
- 2.— Seta from thirty fifth abdominal somite, with portion more highly enlarged.
- 3.— Inner opercular paleae from near anterior end of series. $\times 51$.
- 4.— Three outer paleae from near caudal end of series. $\times 51$.
- 5.— Notopodial paleae from last thoracic somite. $\times 75$.
- 6.— Neuropodial paleae from second thoracic somite. $\times 75$.
- 7.— Nuchal hook, with adjacent papilla, in outline. $\times 51$.

Idanthyrus cretus CHAMBERLIN.

Figures 8-15.

- 8.— Notopodial seta, first abdominal somite. $\times 396$.
- 9.— Simple seta from notopodium of second pale-bearing somite. $\times 78$.
- 10.— Uncinus from middle region of body. $\times 870$.
- 11.— Five of the inner opercular paleae. $\times 78$.
- 12.— One of the shorter outer paleae. $\times 78$.
- 13.— Three dorsal thoracic paleae in different aspects from the second pale-bearing somite. $\times 78$.
- 14.— Dorsal thoracic palea from second pale-bearing somite, surface view. $\times 78$.
- 15.— Ventral thoracic palea, first pale-bearing somite. $\times 78$.

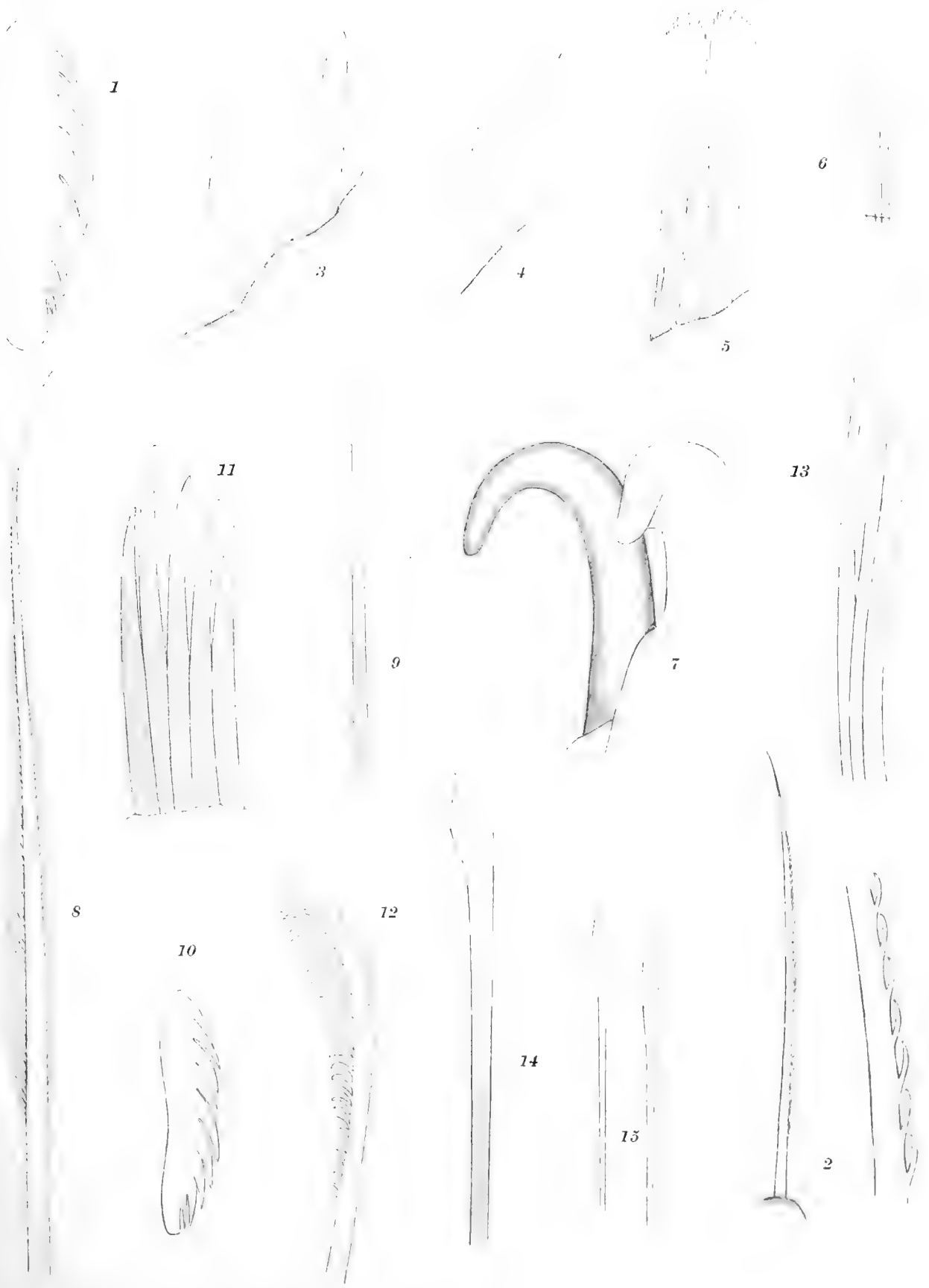


PLATE 76.

PLATE 76.

Amphicteis obscurior CHAMBERLIN.

Figures 1, 2.

- 1.— Anterior region, dorsal view.
- 2.— Same, ventral view.

Amphicteis orphnius CHAMBERLIN.

Figures 3, 4.

- 3.— Anterior region, dorsal view.
- 4.— The same, ventral view.

Amphicteis uncopalea CHAMBERLIN.

Figures 5, 6.

- 5.— Anterior region, dorsal view.
- 6.— Same, ventral view.

Paiwa abyssi CHAMBERLIN.

Figures 7-9.

- 7.— Anterior region, ventral view.
- 8.— Branchia. $\times 11$.
- 9.— Parapodium from median region of abdomen. $\times 34$.



1



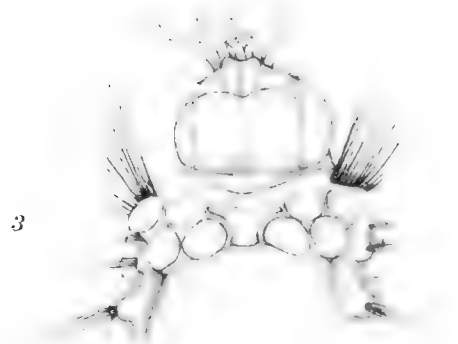
2



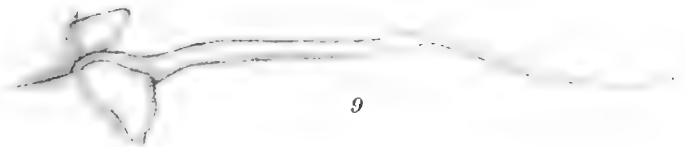
4



8



3



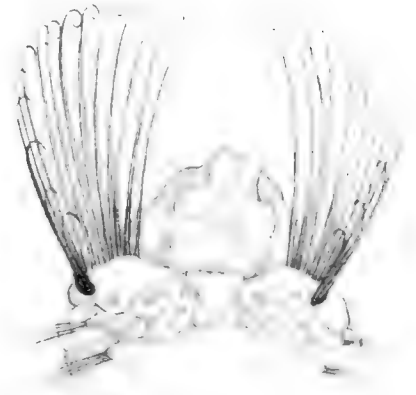
9



7



6



5

PLATE 77.

PLATE 77.

Amphicteis orphnius CHAMBERLIN.

Figures 1, 2.

- 1.— Two of the shorter paleae from above. $\times 67$.
- 2.— Uncinus, seventeenth setigerous somite. $\times 930$.

Amphicteis obscurior CHAMBERLIN.

Figure 3.

- 3.— Uncinus. $\times 930$.

Amphicteis uncopalea CHAMBERLIN.

Figure 4.

- 4.— Uncinus from twelfth somite. $\times 930$.

Pabits deroderus CHAMBERLIN.

Figures 5, 6.

- 5.— Abdominal uncinus, profile view. $\times 1075$.
- 6.— Distal end of thoracic seta. $\times 278$.

Ampharete homa CHAMBERLIN.

Figures 7, 8.

- 7.— Abdominal uncinus. $\times 1075$.
- 8.— Distal end of notopodial thoracic seta. $\times 278$.

Paiwa abyssi CHAMBERLIN.

Figures 9, 10.

- 9.— Ninth parapodium, ventrolateral view. $\times 25$.
- 10.— Uncinus, profile view. $\times 1075$.

Moyanus explorans CHAMBERLIN.

Figures 11, 12.

- 11.— Thoracic uncinus, profile view. $\times 1075$.
- 12.— Distal portion of thoracic seta. $\times 278$.

Sabellides delus CHAMBERLIN.

Figure 13.

- 13.— Uncinus from eleventh setigerous somite. $\times 1075$.



PLATE 78.

PLATE 78.

Paumotella takemoana CHAMBERLIN.

Figures 1-5.

- 1.— Dorsal abdominal seta from caudal region. $\times 260$.
- 2.— Setae of sixth thoracic somite, distal ends. $\times 278$.
- 3.— Abdominal uncinus. $\times 1036$.
- 4.— Dorsal abdominal seta, median region of abdomen. $\times 260$.
- 5.— Portion of branchia in optical section. $\times 58$.

Pomatoceros paumotanus CHAMBERLIN.

Figures 6-9.

- 6.— Portion of thoracic seta, tip broken off. $\times 278$.
- 7.— Thoracic uncinus. $\times 1036$.
- 8.— Lateral view of operculum. $\times 15$.
- 9.— Tip of a branchia. $\times 63$.

Sternaspis maior CHAMBERLIN.

Figure 10.

- 10.— Ventral shield. $\times 3.75$.

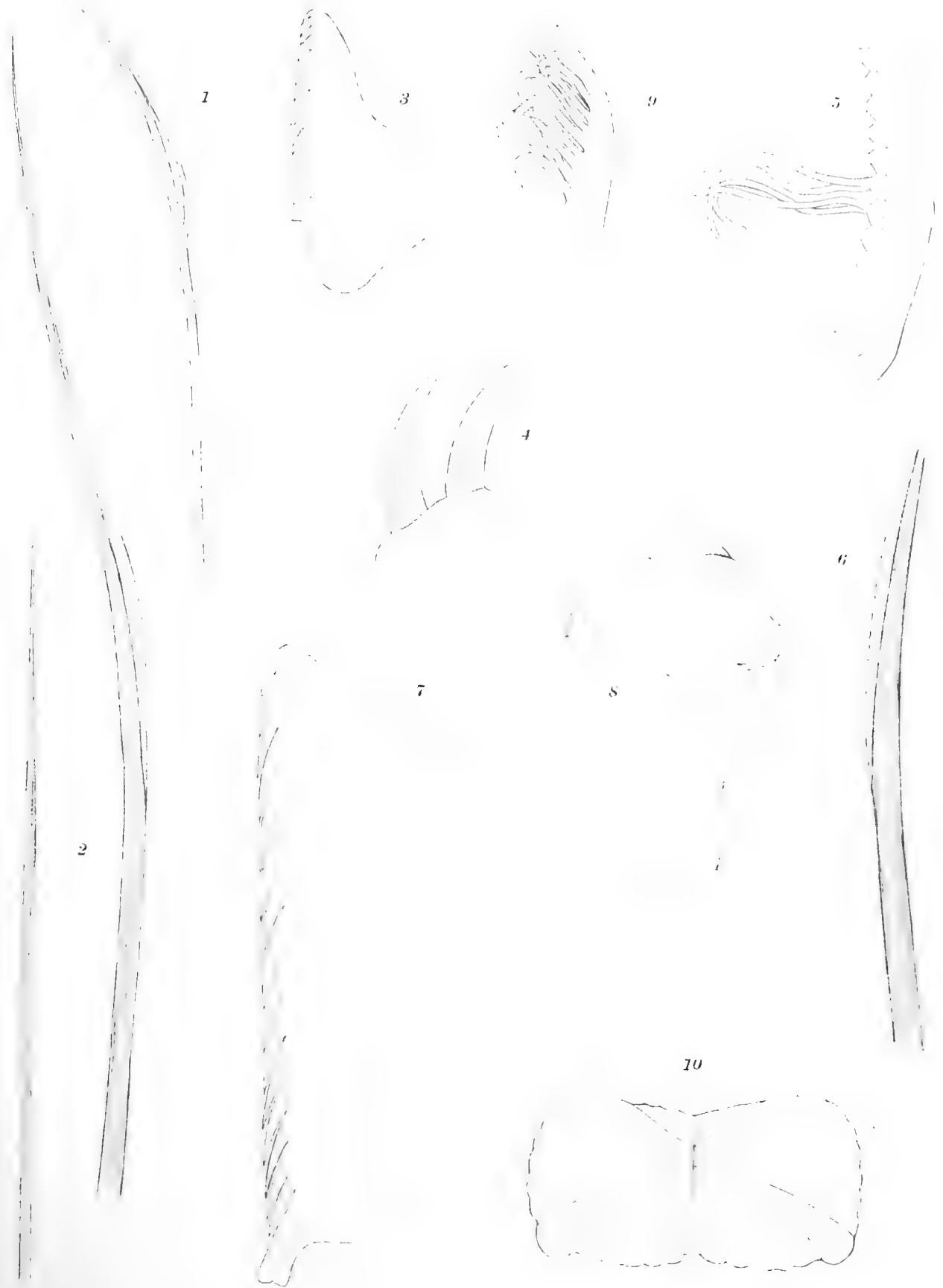


PLATE 79.

PLATE 79.

Eupolymnia regnans CHAMBERLIN.

Figures 1-3.

- 1.— Thoracic seta. $\times 225$.
- 2.— Thoracic uncinus. $\times 830$.
- 3.— Abdominal uncinus. $\times 830$.

Eupolymnia insulana CHAMBERLIN.

Figures 4-6.

- 4.— Thoracic seta. $\times 225$.
- 5.— Thoracic uncinus. $\times 860$.
- 6.— Abdominal uncinus. $\times 860$.

Terebella panamena CHAMBERLIN.

Figures 7, 8.

- 7.— Distal portion of thoracic seta. $\times 830$.
- 8.— Thoracic uncinus. $\times 830$.

Nicolea profundi CHAMBERLIN.

Figure 9.

- 9.— Thoracic uncinus. $\times 830$.

Nicolea latens CHAMBERLIN.

Figures 10, 11.

- 10.— Notopodial seta, distal portion. $\times 225$.
- 11.— Abdominal uncinus. $\times 860$.

Nicolea taboguillae CHAMBERLIN.

Figures 12, 13.

- 12.— Outline of right lateral flap of third somite. $\times 20$.
- 13.— Thoracic uncinus, profile view. $\times 830$.

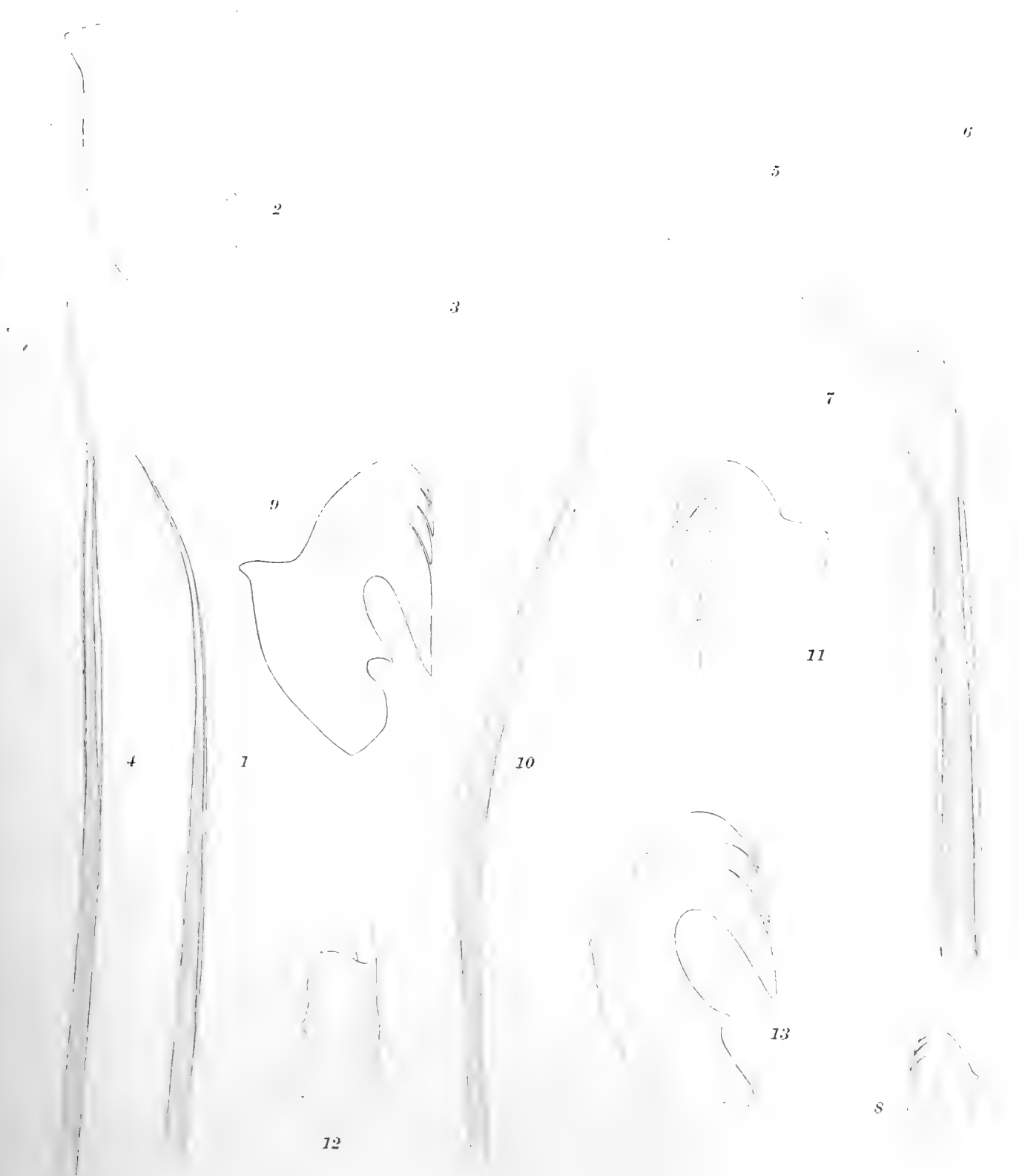


PLATE 80.

PLATE 80.

Nicolea galapagensis CHAMBERLIN.

Figures 1-3.

- 1.— Caudal end, dorsal view. × 20.
- 2.— Outline of right lateral flap of third somite. × 20.
- 3.— Thoracic uncinus. × 860.

Thelepus pericensis CHAMBERLIN.

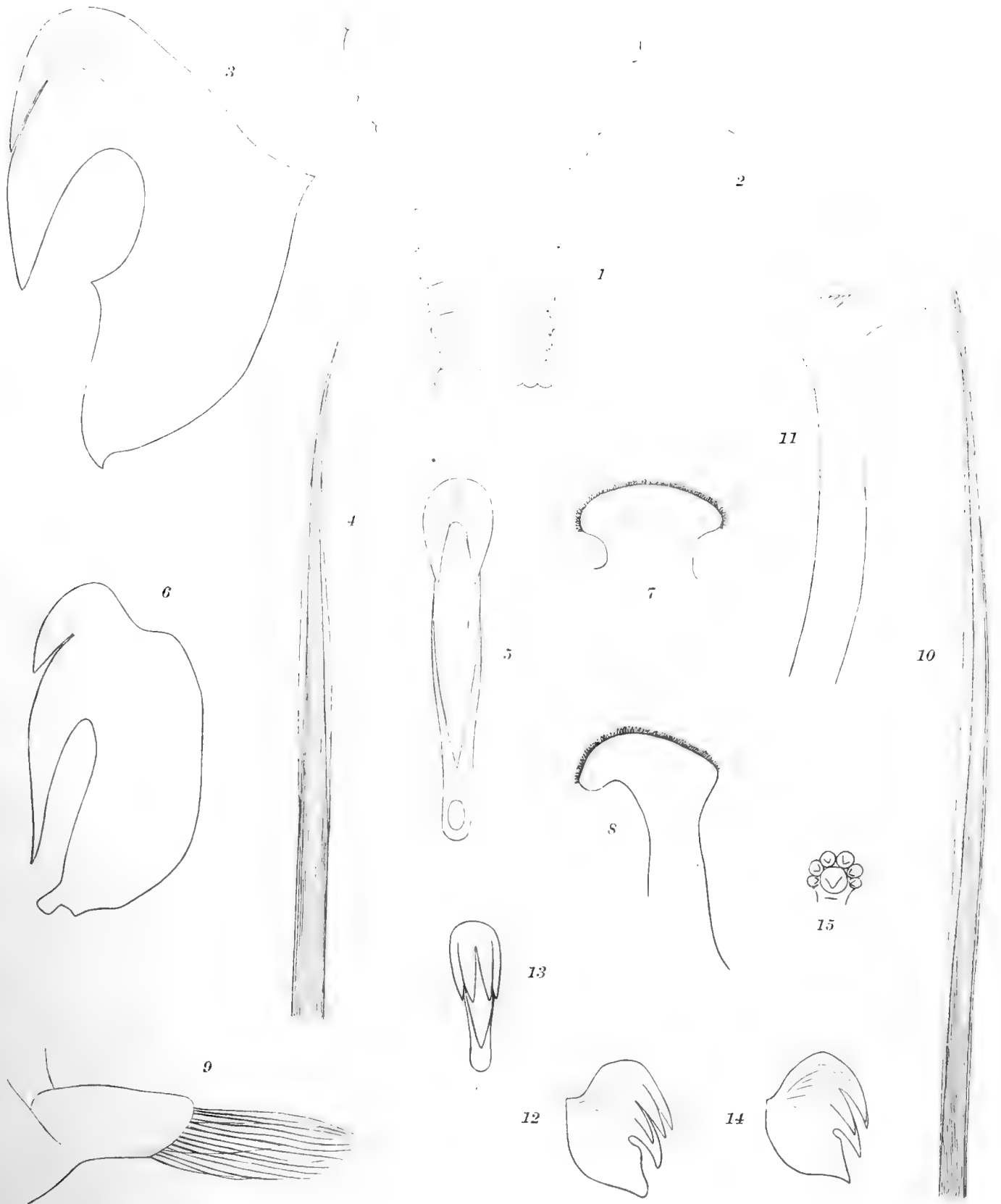
Figures 4-6.

- 4.— Anterior seta, distal portion. × 225.
- 5.— Anterior uncinus, frontal view. × 860.
- 6.— The same, profile. × 860.

Terebellides eurystethus CHAMBERLIN.

Figures 7-15.

- 7.— Pinnula of anterior abdominal region. × 51.
- 8.— Pinnula of posterior abdominal region. × 51.
- 9.— Fourteenth left notopodium, anterior view. × 22.
- 10.— Seta of tenth thoracic somite, extreme tip missing. × 225.
- 11.— Thoracic uncinus. × 860.
- 12.— Abdominal uncinus, profile view. × 860.
- 13.— Abdominal uncinus, frontal view. × 860.
- 14.— Another abdominal uncinus. × 860.
- 15.— Crown of teeth of uncinus viewed nearly from direction of points of teeth. × 860.





PUBLICATIONS
OF THE
MUSEUM OF COMPARATIVE ZOÖLOGY
AT HARVARD COLLEGE.

There have been published of the BULLETIN Vols. I. to LIV., Vols. LVI., and LVIII. to LXII.; of the MEMOIRS, Vols. I. to XXXVIII., and also Vols. XL. to XLII., XLIV. to XLVI., and XLVIII.

Vols. LV., LVII., and LXIII., of the BULLETIN, and Vols. XXXIX., XLIII., XLVII., and XLIX. of the MEMOIRS, are now in course of publication.

A price list of the publications of the Museum will be sent on application to the Director of the Museum of Comparative Zoölogy, Cambridge, Mass.

Date Due



