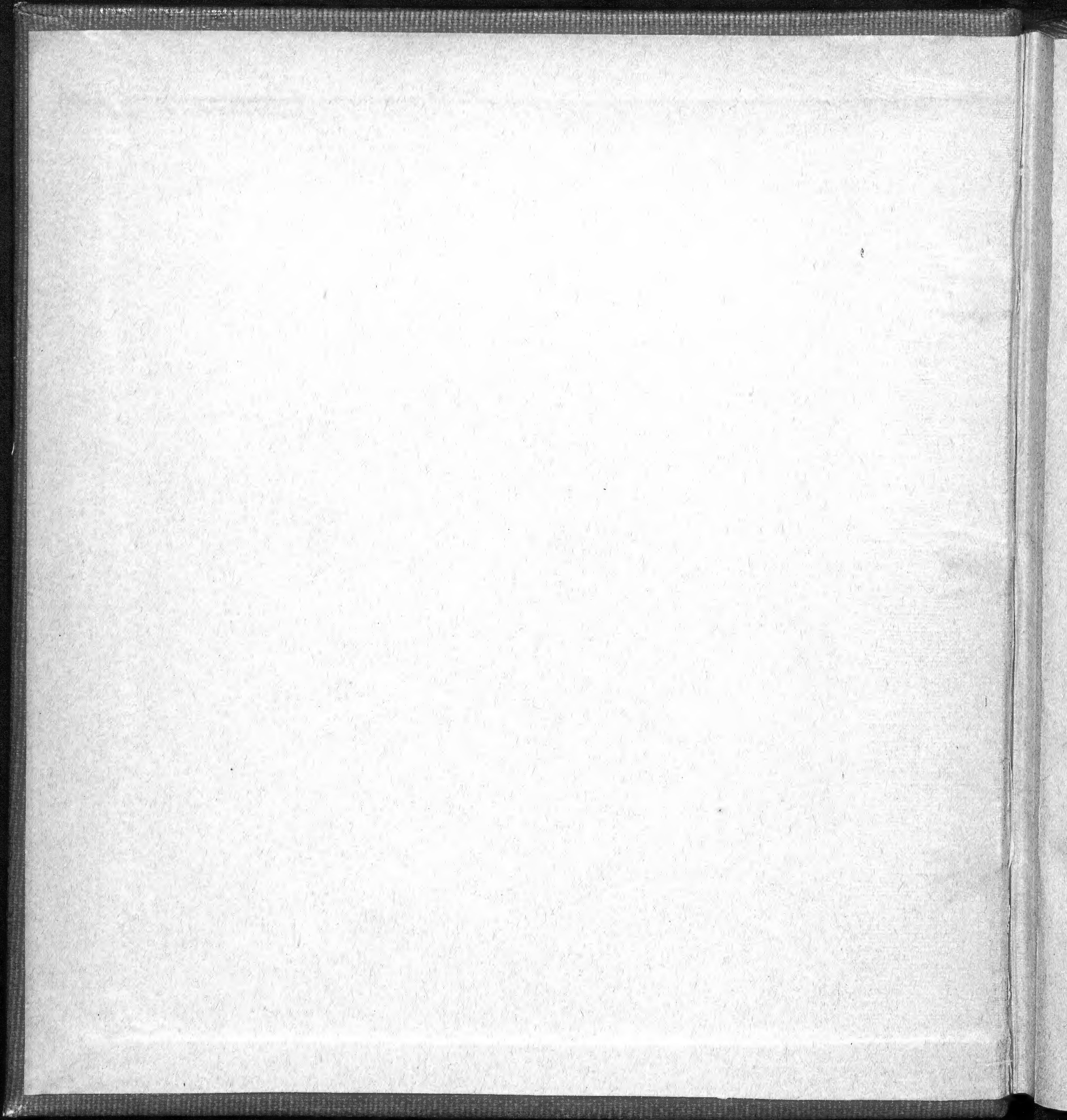


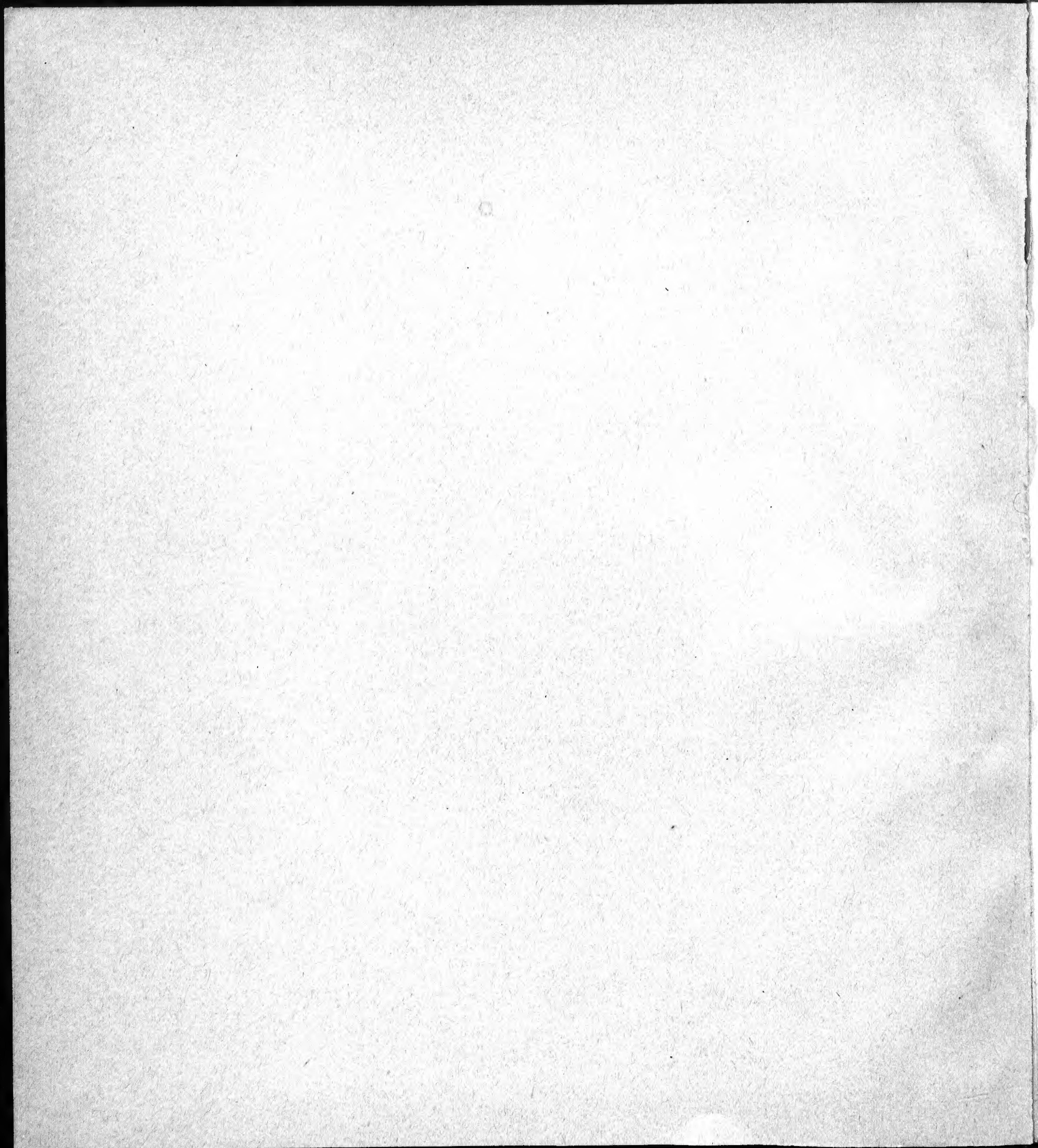
WD

(8)



W.D.

8



Walter Heave -

Record of plants analyzed.

Sept 1st - 1881.

A List of Native or Naturalized Plants found by me -
W.H.

Agalinis paupercula (Gray) Britton (F. W. Pennell, Torrey a.
xix. 205-216, 1919)
" *Gerardia paupercula* (Gray) Britton.

Southboro, Mass.

coll. W. Deane. Aug., 1880.

The nucleus of my herbarium, the first
plant, and the only one collected in 1880.

April
Potentilla pumila Poir. ← Mass
Southboro
Apr. 1881.

Anemone quinquefolia L. ←

Waverly woods. Mass. May 7, 1881

Viola cucullata Nutt. ←

Net field, Fresh Pond Land.

Cambridge. Mass. May, 1881

1881.

March.

Generic & Specific Name.

Common Name.

Where found.

Acer dasycarpum

Cambridge Mass.

April.

Symplocarpus foetidus

Waverly Mass.

Anemone nemorosa

Southboro Mass.

Equisetum arvense ✓

April

Thalictrum anemonoides

"

Houstonia caerulea

"

Acer saccharinum

"

Ulmus Americana

"

Caltha palustris

"

May.

Sanguinaria Canadensis ✓

May

Waverly "

Erythronium Americana

"

Ranunculus fascicularis

"

Lexington "

Lamium amplexicaule ✓ Mr. Ches. Dennis yard

May

Cambridge "

Viola cucullata

Southboro "

" *pectata*

"

Antennaria plantaginifolia

"

I have no journal nor note-books
for 1881. The plants checked in this
book in the 1881 list are in my
herbarium

W. Deane, Jan., 1888.

5
May-

1881

Mass.

Southboro

"

"

May.

Framingham

Cambridge

Southboro

"

May

"

"

"

"

"

"

"

"

"

"

"

"

"

"

"

"

"

Uoularia sessilifolia

Ribes Cynosbati

Cassandra calyculata

Saxifraga Virginensis ✓

Capsella bursa-pastoris

Saxifraga Pennsylvanica

Ranunculus bulbosus

Polygala paucifolia ✓

Aquilegia Canadensis

Trillium cernuum

Acer rubrum

Smilacina bifolia,

var. *Canadensis*

Euphorbia cyparissias

Lupinus perennis ✓ sandy soil

Polygonatum biflorum

Arisaema triphyllum

Cardamine hirsuta

Veronica serpyllifolia

Senecio aureus ✓

Rubus triflorus ✓

Chelidonium majus

Pecticularis Canadensis

Geum rivale

May

May

May

6

June. {

7
May

Amelanchier Botryapium
 " oblongifolia
 Geranium maculatum
 Rumex acetosella
 Leucanthemum vulgare
 Asparagus officinalis
 Aralia nudicaulis
 Nepeta & Leonoma
 Barbarea vulgaris
 Veronica peregrina
 Cynoglossum officinale
 Berberis vulgaris
 Erigeron bellidifolium
 Aesculus hippocastanum
 Trifolium repens
 Juniperus Virginiana
 Sisyrinchium Bermudiana
 Convallaria majalis
 Cercis Canadensis
 Adiantum meadia
 Arctostaphylos bulbosa
 Thalictrum dioicum
 Sarracenia purpurea
 Pinus strobus

Mass.
 Southboro
 "
 "
 Cambridge
 "
 "
 Belmont
 "
 "
 Cambridge
 Waltham
 Cambridge
 Southboro
 Cambridge
 "
 Southboro
 Belmont
 Cambridge
 " (Bot. Gar.)
 "
 "
 Waltham
 Specimen given me
 Belmont
 Cambridge

June.

1881

Mass.
Cambridge

"

"

Belmont
"

Cambridge

"

Belmont
Cambridge

"

Belmont

"

Belmont
Cambridge

"

"

Belmont

"

"

"

Nuphar advena
Iris versicolor
Medicago lupulinus
Tiburnum Lentago
Acorus calamus
Robinia Pseudacacia
Malva rotundifolia
Cornus alternifolia
Robinia hispida
Achillea millefolium
Sedum trinatum
Silene inflata
Lonicera sempervirens
Iris Virginica
Arctostaphylos bulbosa
Smilax herbacea
Tiburnum opulus
Cornus circinata
Rumex crispus
Baptisia australis
Kalmia angustifolia
Myosotis palustris. var. Papa
Tiburnum dentatum
Vitis Labrusca

↳

Swamp - June

Miss Freeman
Garden.

June -

Mass.

| | | | |
|--------------------------------|----------------|---------|--------------------|
| <i>Arenaria lateriflora</i> | | | Belmont |
| <i>Erysimum asperum</i> | | | Cambridge. Trist. |
| <i>Cladonia tinctoria</i> | | | .. (Bot. Gar.) |
| <i>Lepidium Virginicum</i> | v Craigie St. | Nov. 13 | " |
| | v Appleton St. | Nov. 6 | " |
| <i>Oxalis stricta</i> | | | " |
| <i>Pogonia ophioglossoides</i> | v Swamp | June | Waltham |
| <i>Lysimachia nummularia</i> | | | Cambridge |
| <i>Spiraea opulifolia</i> | | | " |
| <i>Oenothera pumila</i> | | | Waltham |
| <i>Hypericum perforatum</i> | | | Belmont |
| <i>Linaria vulgaris</i> | | | Boston. Beacon St. |
| <i>Rhus Toxicodendron</i> | | | Belmont |

July -

| | | | |
|-----------------------------------|--------|------|-----------|
| <i>Asclepias Cornuti</i> | | | Southboro |
| <i>Lysimachia quadrifolia</i> | v | July | " |
| <i>Hypoxis erecta</i> | | | " |
| <i>Sambucus Canadensis</i> | | | " |
| <i>Rudbeckia hirta</i> | | | " |
| <i>Achaea spicata, var. rubra</i> | | | " |
| <i>Eriogonum strigosum</i> | | | " |
| <i>Linaria Canadensis</i> | | | " |
| <i>Calystegia sepium</i> | | | " |
| <i>Utricularia cornuta</i> | Walt L | Boy. | July |

15

July

| | | | | |
|--|---|------------|------|--------------------|
| <i>Senecio elliptica</i> | v | wet, shade | July | Mass. Southboro |
| <i>Plantago lanceolata</i> | | | | " |
| <i>Verbascum Thapsus</i> | | | | " |
| <i>Vaccinium</i> ^{cap} <i>macroporum</i> | | | | " |
| <i>Oxycoccus</i> | | | | " |
| <i>Chimaphila maculata</i> | v | dry woods | July | " |
| <i>Ceanothus Americanus</i> | ! | dry woods | July | " |
| <i>Cornus Canadensis</i> | | | | " |
| <i>Thalictrum Cornuti</i> | | | | " |
| <i>Cornus sericea</i> | | | | " |
| <i>Pontederia cordata</i> | | | | " |
| <i>Solanum dulcamara</i> | | | | " |
| <i>Utricularia vulgaris</i> var. <i>Americana</i> | | | | " |
| <i>Nymphaea odorata</i> | | | | " |
| <i>Chicorium intybus</i> | | | | " |
| <i>Kalmia latifolia</i> | | | | " |
| <i>Castanea vesca</i> | | | | " |
| <i>Comptonia asplenifolia</i> | | | | " |
| <i>Circaea alpina</i> | | | | Shelburne, N.H. |
| <i>Pronia scutellata</i> | | | | " |
| <i>Melampyrum Americanum</i> | | | | " |
| <i>Lilium Philadelphicum</i> | v | dry ground | July | " |
| <i>Cypripedium acaule</i> (In fruit) | | | | " |
| <i>Pyrola rotundifolia</i> | v | woods | July | " |

17
July-

N. F.

| | | | | |
|--|---|---------------------------|------|-----------|
| <i>Moneses uniflora</i> | V | woods | July | Shelburne |
| <i>Linnaea borealis</i> | V | moist wood | July | " |
| <i>Trientalis Americana</i> | | | | " |
| <i>Pyrola secunda</i> | | | | " |
| <i>Oxalis Acetosella</i> | V | woods | | " |
| <i>Viburnum acerifolium</i> | | | | " |
| <i>Sambucus pubens</i> (In fruit) | | | | " |
| <i>Lobelia inflata</i> | | | | " |
| <i>Oenothera biennis</i> | | | | " |
| <i>Hypericum Canadense</i> | | | | " |
| <i>Viburnum nuctum</i> | | | | " |
| <i>Corydalis glauca</i> | | ↳ rocky place, mt. Cabot. | | " |
| <i>Aralia hispida</i> | | | | " |
| <i>Lilium Canadense</i> | | | | " |
| <i>Diplopappus umbellatus</i> | | | | Berlin |
| <i>Calla palustris</i> (In fruit) | | | | Shelburne |
| <i>Drosera rotundifolia</i> | V | Bog. | July | " |
| <i>Rhus copallina</i> <small>typhina</small> | | | | " |
| <i>Polygonum dumetorum</i> | | | | " |
| <i>Cornus stolonifera</i> | | | | " |
| <i>Calopogon pulchellus</i> | V | Bog | July | " |
| <i>Populus tremuloides</i> | | | | " |
| <i>" grandidentata</i> | | | | " |
| <i>Calechis setivata</i> | | | | " |

19 July

N. H.

Shelburne

Gorham
Lead Mine Bridge
Shelburne

Populus canadensis
" ciliolata
" alba

Prinos ^{retruncata} laevigata

Galium asprellum

Habenaria pycnodes

Walibarda repens

Mimulus ringens

Utricularia cornuta

Epilobium coloratum
= E. glandulosum (Michx.) F. var. vancouverianum (H. & A.) F.

✓ roadside July

✓ July

✓ July

✓ wet place July

✓ bog July

✓ wet place July
(see Fl. Can. B., N.H. 251 - 1877)

Erigeron Philadelphicum

Cirsium arvense

Trillium erythrocarpum ^{In fruit}

Lysimachia ciliata

Clematis Virginiana

Agrimonia eupatoria

Vicia cracca

Verbena hastata

Veratrum viride

Rubus hispidus ^{In fruit}

Clodios Virginia

Medeola Virginia ^{In fruit}

Chamaedaphne ^{culata} (L.) Nutt. 503

July

July

July

July

July

July

July

July

July

July

July

Berlin

Shelburne

"

"

"

"

"

"

"

21
July.

1881

N. A.

- Hypericum ellipticum
- Sagittaria variabilis
- Clintonia borealis ^{In fruit.}
- Potamogeton natans
- Chiochloa hispida ^{In fruit.}
- Purus Pennsylvania
- " Virginia
- " serotina
- Rubus strigosus
- Crataegus coccinea
- Pyrus Americana ^{In fruit.}
- Hamamelis Virginia
- Alnus incana
- Betula lutea
- " alba
- " papyracea
- Scutellaria galericulata ✓
- " lateriflora ✓
- Hydrocotyle Americana
- Impatiens fulva
- Galium triflorum var.
- pusillum -
- Crastium piscosum ✓

Shelburne

"

"

"

"

"

"

"

"

"

"

"

"

"

"

"

"

"

"

"

"

"

"

July

July

Field.

July

C. vulgatum L. - J. G. M. 1908 and var. *hirsutum* Fries (Plant. 2:2, 1872, p. 71)

July:

| | | |
|--------------------------------|---|--------------------|
| <i>Acis pennsylvanicum</i> | fruiting open L. Long from Long Point, N.S., July | N. A. Shelburne |
| <i>Symphytum officinale</i> | L. near an S. river. July | Shelburne |
| <i>Habenaria pimbriata</i> | | " |
| <i>Chelone glabra</i> | | " |
| <i>Antennaria margaritacea</i> | | " |
| <i>Aster acuminatus</i> | | " |
| <i>Spiraea tomentosa</i> | | " |
| <i>Viburnum Opulus</i> | | " |
| " <i>lantanoides</i> | In fruit | " |
| <i>Rubus villosus</i> | | " |
| <i>Eupatorium purpureum</i> | | " |
| <i>Gaultheria procumbens</i> | | " |
| <i>Epigaea repens</i> | In fruit | " |
| <i>Hepeta cataria</i> | ✓ July | " |
| <i>Lycopus Virginicus</i> | = ✓ L. uniflorus Mx. minor field July | " |
| " <i>Europaeus</i> , | } ✓ L. americanus humil. wet ground. July | " |
| var. <i>sinuatus</i> | | " |
| <i>Mentha Canadensis</i> | | " |
| <i>Trillium erectum</i> | | " |
| <i>Fagus ferruginea</i> | } In fruit | " |
| <i>Corylus rostrata</i> | | " |
| <i>Andromeda polifolia</i> | L. Bog. Wheeler Pond, July | " |
| <i>Nemophanes (Canadensis)</i> | L. = <i>Nemophanes mucronata</i> (L.) Presl. July Damp woods | " |
| <i>Lonicera ciliata</i> | L. L. Canadensis July | " |

25
July

N. A.

| | | | |
|-------------------------------|---|--|-----------|
| <i>Desmodium Canadense</i> | ✓ | July | Shelburne |
| <i>Ostrya Virginica</i> | | | " |
| <i>Amelanchier oligocarpa</i> | | | " |
| <i>Pinus rigida</i> | | | " |
| " <i>resinosa</i> | | | " |
| <i>Juniperus communis</i> | | Not found here. Tide Bldg. Pool. | " |
| <i>Abies Canadensis</i> | | | " |
| " <i>balsamea</i> | | | " |
| <i>Larix Americana</i> | | | " |
| <i>Thuja occidentalis</i> | | | Berlin |
| <i>Cassandra calyculata</i> | ✓ | (inserted Sept 9/25) in lib. Wet bog. July | Shelburne |

August

Me.

| | | | |
|--|---|-------------------|-----------------|
| <i>Raphanus raphanistrum</i> | | | Biddesford Pool |
| <i>Habenaria lacera</i> | ✓ | wet ground - Aug. | " |
| <i>Rosa lucida</i> | | | " |
| <i>Potentilla tridentata</i> | | | " |
| <i>Plantago maritima</i> , var. <i>juncoides</i> . | | | " |
| <i>Statice Limonium</i> , var. <i>Caroliniana</i> . | | | " |
| <i>Cirsium lanceolatum</i> | | | " |
| <i>Habenaria tridentata</i> | ✓ | wet ground. Aug. | " |
| = <i>H. clavellata</i> (Michx.) Gray. 9th Nov. 1838 | | | |

August.

Me.

| | | |
|--|--|------------------|
| <i>Achillea Millefolium</i> | ✓ Capt. Paul Hursey's yard - Aug. | Biddford Pool |
| <i>Typha latifolia</i> | | Biddford Pool. |
| <i>Pagiana nodosa</i> | ✓ Aug. | " |
| <i>Spergularia rubra,</i> var. <i>campestris.</i> | } = <i>S. rubra</i> J. & C. Presl. ✓ Aug. | " |
| <i>Spergularia salina</i> | L = <i>S. leiosperma</i> } R. L. Moore x 26. 157-163, 1900 } Aug. | " |
| " <i>media</i> | | Rye Beach T.H. |
| <i>Spergula arvensis</i> | ✓ Aug. | Bidd. Pool - Me. |
| <i>Malva moschata</i> | L wayside near rd Aug. | " |
| <i>Myrica cerifera</i> } " <i>Gale</i> } ^{in fruit.} | M. ^{subsp.} <i>carolinensis</i> Mill. M. <i>Gale</i> L., var. <i>subglabra</i> (Chevalier), ^{subsp. nov.} | " |
| <i>Cakile Americana</i> | | " |
| <i>Geum album</i> | | " |
| <i>Teucrium Canadense</i> | = var. <i>altissimum</i> (L.) Benth. Aug. | " |
| <i>Rosa Carolina</i> | K. <i>palustris</i> , <i>laevigata</i> | " |
| <i>Geranium Robertianum</i> | | " Wood Isl. |
| <i>Galeopsis tetrahit</i> | ✓ Aug. | " Tiger " |
| <i>Sonchus oleraceus</i> | | " |
| " <i>asper</i> | | " |
| <i>Lappa officinalis</i> | | " |
| <i>Tanacetum vulgare</i> | | " |
| <i>Polygonum Hydropiper</i> | | " |
| <i>Achillea pulegioides</i> | ✓ open field - Aug. | " |
| <i>Sisymbrium officinale</i> | | " |

The family
... ..

August.

Me.

| | | |
|--|-----------------|-------------------|
| <i>Brassica</i> } <i>nigra</i> | | Biddford Pool. |
| <i>Sinapis</i> } | | " |
| <i>Nasturtium palustre</i> | | " |
| <i>Lathyrus maritimus</i> | | " |
| <i>Ambrosia artemisiifolia</i> | | " |
| <i>Euphorbia polygonifolia</i> | | " |
| <i>Chenopodium album</i> | | " |
| <i>Cuscuta Gronovii</i> | | " |
| <i>Sparganium eurycarpum</i> | | " |
| <i>Cupatorium perfoliatum</i> | | Rye, N.H. |
| <i>Pyrus arbutifolia</i> var? | | No. Hampton, N.H. |
| <i>Raphanus sativus</i> | | Bidd. Pool |
| <i>Maruta cotula</i> | | " |
| <i>Daucus carota</i> | | " |
| <i>Mollugo verticillata</i> | ✓ sandy soil | Quincy |
| <i>Lium lineare</i> | ✓ Swampy places | Quincy |
| <i>Gerardia maritima</i> | ✓ | Quincy |
| <i>Polygonum Persicaria</i> | | " |
| " <i>aviculare</i> | | " |
| <i>Alisma Plantago</i> , var. <i>Americanum</i> | | " |
| <i>Polygonum Sagittatum</i> | | " |

August -

me.

| | | | |
|--|--|------|----------------|
| <i>Spizanthus cernua</i> | | | Birdsford Pool |
| <i>Prinos</i> } <i>reticillata</i> ^{In Fl.} | | | " |
| <i>Glex</i> } <i>reticillata</i> ^{In Fl.} | | | " |
| <i>Polygonum Pennsylvanicum</i> | | | .. Stage 9st. |
| <i>Gnaphalium polycephalum</i> | V | Aug. | .. Wood .. |
| <i>Juncus bufonius</i> | | | " |
| <i>Archangelica Gmelini</i> | | | " |
| <i>Lythrum Hyssopifolia</i> | V marsh. | Aug. | " |
| <i>Polygala sanguinea</i> | L | Aug. | " |
| <i>Salsola Kali</i> | L sand near the sea shore. | Aug. | " |
| <i>Ranunculus Cymbalaria</i> | L | Aug. | " |
| <i>Plant. maritima</i> ^{In Fl.} | var. <i>obtusica</i> ^{In Fl.} | Aug. | " |
| <i>Salicornia herbacea</i> | L ^{europana} salt marsh. | Aug. | " |
| <i>Suaeda maritima</i> ^{In Fl.} | L salt marsh. | Aug. | " |
| <i>Atriplex patula</i> , var. <i>hastata</i> - | L salt marsh. | Aug. | " |
| <i>Leechea intermedia</i> ^{In Fl.} | V | Aug. | " |
| <i>Apios tuberosa</i> | | | " |
| <i>Solidago bicolor</i> | L | Aug. | " |
| " <i>nemoralis</i> | L | Aug. | " |
| " <i>sempervirens</i> | L | Aug. | " |
| <i>Aster Novi-Belgii</i> | L | Aug. | " |
| <i>Xanthium strumarium</i> | <i>echinatum</i> ^{var.} | | " |

August.

Me.

| | | | |
|---|---|------|------------------|
| <i>Brassica campestris</i> , var. <i>napus</i> | = <i>B. campestris</i> L. | Aug. | Biddeford Pool |
| <i>Mulgedium leucophaeum</i> | | | " |
| <i>Juniperus communis</i> | | | " |
| <i>Lobelia cardinalis</i> | ✓ | Aug. | Southboro, Mass. |
| <i>Helianthus strumosus</i> | | | " |
| <i>Inula Helenium</i> | | | " |
| <i>Nesaea reticulata</i> | | | " |
| <i>Mikania scandens</i> | | | " |
| <i>Baptisia tinctoria</i> | | | " |
| <i>Amphicarpaea monoica</i> | ✓ | Aug. | " |
| <i>Phytolacca decandra</i> | = <i>P. americana</i> | | " |
| <i>Corylus Americana</i> | | | " |
| <i>Hieracium scabrum</i> | ✓ | Aug. | " |
| <i>Rhus glabra</i> ^{in fruit} | | | " |
| <i>Ludwigia palustris</i> | | | " |
| <i>Spiranthes gracilis</i> | | | " |
| <i>Gerardia purpurea</i> | | | " |
| <i>Lysimachia lanceolata</i> | ✓ = <i>Sideroxylon angustatum</i> low ground | Aug. | " |
| <i>Penthorum sedoides</i> | | | " |
| <i>Leontodon autumnale</i> | | | " |
| <i>Sporaea purpurea</i> | | | " |
| <i>Alnus serrulata</i> | | | " |

August-

Mass.

| | | | | |
|--|---|----------------------|------|-------------------------|
| <i>Trichostema dichotomum</i> | ✓ | Hipon's me. | Aug. | Southboro |
| <i>Viola tricolor</i> | | | | Cambridge |
| <i>Lespedeza capitata</i> | | | | Southboro |
| <i>Trichostema perfoliatum</i> ^{in fruit} | | | | " |
| <i>Erigeron Canadense</i> | ✓ | | Aug. | " |
| <i>Habalis albus</i> | | | | " |
| " <i>altissimus</i> | | | | " |
| <i>Rhynanthemum muticum</i> | ✓ | Hipon's Lane | | " |
| <i>Cicuta maculata</i> | ✓ | | | " |
| <i>Saponaria officinalis</i> | | | | Cambridge |
| <i>Amarantus retroflexus</i> | | | | " |
| <i>Silene noctiflora</i> | ✓ | | | " College Yard. |
| <i>Cirsium pumilum</i> | | | | Southboro |
| <i>Geanium Carolinicum</i> ^{in fruit} | ✓ | S. Biddellii Britton | Aug. | Biddlesford Pond Me. |

September-

| | | | | |
|-----------------------------|---|--------------------------|-------|-------------|
| <i>Gerardia purpurea</i> | ✓ | | Sept. | Southboro |
| <i>Secum telephium</i> | | | | Southboro |
| <i>Fagopyrum esculentum</i> | | | | " |
| <i>Heloma radicans</i> | | | | " Mrs. Fay. |
| <i>Gentiana Andrewsii</i> | | | | Leominster |
| <i>Thaspium aureum</i> | ✓ | <i>T. aureum</i> Britton | Sept. | " |
| <i>Lycnis respertina</i> | ✓ | <i>Lycnis alba</i> Hill | Sept. | " |
| <i>Bidens cernua</i> | | | | " |

This Polygonum was growing in Mr. J. Burnett's brook near the Southville Road.

I found this Rhus on the Corclaville Road right-hand side, going from the school, a short distance before reaching the Turnpike. It was about 4 ft. high and was in fruit.

37
September.

1881

Mass.

Southboro

Polygonum cere
" *amphibium*,
var. *terrestre*.

Bidens frondosa
Iysanthes gratiolooides
Rhus venenata

Morus rubra
Lespedeza hirta
Polygonum orientale
Natura fatula

V

Sept.

Leominster
Southboro
{My. Alex. Fair yard}
Cambridge
{On the P. & W.
& C. R.R. near
Falpaaiso. Indi-
ana.

Solanum nigrum
Cannabis sativa
Lobelia siphilitica
Gerardia pedicularia
Liatris scariosa
Cirium muticum

V low ground.

Sept.

Ill.
Lincoln Park
Chicago.
Chicago.
{No. of Chicago.
Lake View.

V

Sept.

V dry soil

Sept.

V meadow

Sept.

V damp meadow on bank of the
near burial of - ant.

Sept.

Southboro Mass.

Bidens connata
" *chrysanthemoides*

Celastrus scandens ^{In fruit.}

Lechea major ^{In fruit.}
Sida - in fruit.

V

Sept.

V

Sept.

entire Apr. 17. 1925.

Growing in the small space around a tree
on the brick sidewalk.

In Cedar Swamp. Trees about 60 ft. high.

September

| | | | |
|--------------------------------|---|--------|--|
| <i>Coleopsis trichosperma</i> | = <i>idens trichosperma</i> Michx. var. <i>tenella</i> (Walt.) | S. vt. | Ill. Lake View. a few miles S. of Chicago |
| <i>Euphorbia corollata</i> | | | Chicago |
| " <i>maculata</i> | V outside - - - - - | Sept. | Chicago |
| " <i>hypericifolia</i> | V - - - - - This is <i>E. maculata</i> var. <i>hypericifolia</i> x | Sept. | a few miles S. of Chicago |
| <i>Epilobium coloratum</i> | | | Southboro Mass. |
| <i>Gnaphalium polycephalum</i> | L old fields. | Sept. | " " |
| <i>Ampelodesmos nuneica</i> | L | Sept. | " " |
| <i>Cerium vulgatum</i> L. | L - - - - - Chambers on lawn. Sp. under st. | Oct. | Cambridge, Mass. |

November

| | | | |
|-------------------------|--|---------|--|
| <i>Senecio vulgaris</i> | | Nov. 12 | Nov. 12 th . W. Concord St. Boston. |
|-------------------------|--|---------|--|

1882.

April

| | | | |
|----------------------------------|--|--|------------------|
| <i>Cyperus thyoides</i> | | | Westboro - Mass. |
| <i>Equisetum arvense</i> | | | Southboro " |
| <i>Hepatica triloba</i> | | | Fredham " |
| <i>Lindera Benzoin</i> | | | Waverly " |
| <i>Equisetum hyemale</i> | | | " " |
| <i>Chrysosplenium Americanum</i> | | | " " |

Growing in immense quantities just now.

I found a great quantity all bearing a head of bulbs

collected these specimens in Dr. Wharton's garden
between the barn and the back fence -

Mrs. Hayden's Craigie St.

May -

Viola sagittata
Ranunculus abortivus
Carex Pennsylvanica
Vaccinium Pennsylvanicum
Viola blanda

canina, var. sylvestris.
Equisetum sylvaticum

June -

Potentilla Canadensis, var. *simplex*
Thalictrum dioicum
Ribes floridum
Prunus Virginiana
Osmorhiza longistylis
Allium Canadense
Rhus arbutifolia
Hamamelis americana

Prunus serotina
Medeola Virginica
Equisetum atropurpureum
Negundo aceroides
Rhamnus Catharticus
Aphyllon uniflorum
Cypripedium acaule
Viola lanceolata

Rhus arbutifolia, var. *copallina*

Belmont, Mass.
Lexington ..
" ..
Southboro ..

Waverly, Mass.
Belmont, Mass.

" ..
Waverly ..

" ..
Cambridge ..
Waverly ..
(near Belmont)
Cambridge

" ..
Canton ..

" ..
Milton ..

The *Cacca* is growing in immense quantities in the
 Wheeler's Pond near the house of the owner.

See Note Book for remarks about the color of the *cap*.

Fragaria vesca June
Aspidotria
Aspidotria
Aspidotria Americana
Oryza porcina
Comandra umb.
Galium trifidum var.
~~*Urtica*~~ *tinctorum*
~~*Trasturium officinale*~~
Peltandra Virginica
Lysimachia thysifolia
Ranunculus acris
Ligustrum vulgare
Portulaca oleracea
Vaccinium Vitis-Idaea
Kalmia glauca
Rodora Canadensis
Fragaria Virginiana
Calla palustris
Clintonia borealis
Tabernaemontana Hookeri
Menyanthes trifoliata
Viola cordifolia
Polygonatum giganteum
Fragaria vesca
Cypripedium acaule
Polygonum cilinode
Vaccinium Oxycoccus

1
 Waverly, Man.
 Cambridge Mass.
 Milton, Mass.
 " "
 Rock Meadows.
 Belmont & Waltham
 " "
 " "
 Belmont
 Chas Deane's
 Cambridge
 Belmont
 Cambridge
 Shelburne N.H.

July-

1
 Shelburne N.H.

July. 1882.

- Solidago rigida-aurea, var. hamata
- Pinus Americana
- Geum radiatum var. Beckii
- Betula ^{papyracea} var. minor
- Vaccinium ^{uliginosum} canadense
- Arenaria Pennsylvanica
- Salix Cutleri (juv)
- Rhynchospora Lapponea
- Solidago rigida-aurea, var. alpina
- Empetrum nigrum.
- Lectum latifolium
- Kalmia glauca
- Opuntia trioxia
- Preptopus amplexifolius
- Clintonia borealis
- Pyrola elliptica
- Ranunculus Pennsylvanicus
- Utricularia sessilifolia
- Aralia racemosa
- Lactuca Canadensis
- ...
- ...
- ...

Mt. Wash. N.H.

Shelburne ..

Gorham ..

Panicum
Panicum var. *stricta*
Panicum
Panicum
Panicum
Panicum

Panicum

Clay -

Panicum
Panicum

- Ilex opaca*
- Sarsaparilla officinale*
- Clethra alnifolia*
- Taccinium corymbosum*
- Gaylussacia resinosa*
- Nyssa multiflora*
- Gnaphalium uliginosum*
- Smilax rotundifolia*
- Gerardia flava.*
- Cedum acre.*
- Bornus florida*
- Salicornia Virginica.*
- Rhus copallina*
- Quercus ilicifolia.*
- alba.*
- Smilacina stellata*
- Alectostaphylos Uva-urdi.*

1768. 11e
 1817. 11e
 1818. 11e
 1819. 11e
 1820. 11e
 1821. 11e
 1822. 11e
 1823. 11e
 1824. 11e
 1825. 11e
 1826. 11e
 1827. 11e
 1828. 11e
 1829. 11e
 1830. 11e
 1831. 11e
 1832. 11e
 1833. 11e
 1834. 11e
 1835. 11e
 1836. 11e
 1837. 11e
 1838. 11e
 1839. 11e
 1840. 11e
 1841. 11e
 1842. 11e
 1843. 11e
 1844. 11e
 1845. 11e
 1846. 11e
 1847. 11e
 1848. 11e
 1849. 11e
 1850. 11e
 1851. 11e
 1852. 11e
 1853. 11e
 1854. 11e
 1855. 11e
 1856. 11e
 1857. 11e
 1858. 11e
 1859. 11e
 1860. 11e
 1861. 11e
 1862. 11e
 1863. 11e
 1864. 11e
 1865. 11e
 1866. 11e
 1867. 11e
 1868. 11e
 1869. 11e
 1870. 11e
 1871. 11e
 1872. 11e
 1873. 11e
 1874. 11e
 1875. 11e
 1876. 11e
 1877. 11e
 1878. 11e
 1879. 11e
 1880. 11e
 1881. 11e
 1882. 11e
 1883. 11e
 1884. 11e
 1885. 11e
 1886. 11e
 1887. 11e
 1888. 11e
 1889. 11e
 1890. 11e
 1891. 11e
 1892. 11e
 1893. 11e
 1894. 11e
 1895. 11e
 1896. 11e
 1897. 11e
 1898. 11e
 1899. 11e
 1900. 11e

52

P. Haetwrightii - Gray.

There are 3 trees of this kind inside the fence on
Bond fe: These were probably let out.

Salix cordata, Mill. X sericea, Marshall, (Camb. Mass.)

May - 1883.

| | | |
|--------------------------------|----------------------------------|-------------------|
| <i>Viola pedata</i> | Pedate Violet (Wood-foot Violet) | Belmont, Mass. |
| <i>Juncus campestris</i> | Wood-Rush | " " |
| <i>Viola pubescens</i> | Downy Yellow Violet | Waltham |
| <i>Viola prunifolia</i> | Primrose-leaved Violet | " " |
| <i>Mercurialis perennis</i> | Dwarf Ginseng / Ground Nut | " " |
| <i>Myosotis verna</i> | Forget-me-not | (Middlesex Falls) |
| <i>Cyperus vulgaris</i> Fries. | Sedge | Medford |
| <i>Salix fragilis</i> L. var. | Brittle Willow | Cambridge |
| <i>Salix petiolaris</i> Smith | Petiolar " | " |

June - 1883.

| | | |
|---|----------------------------------|------------------------|
| <i>Callitriche verna</i> | Water-Plantain | Middlesex Falls, Mass. |
| <i>Ranunculus multifidus</i> | Yellow Water-Button | " " |
| <i>Actaea alba</i> | White Baneberry | " " |
| <i>Krigia virginica</i> | Dwarf Dandelion | " " |
| <i>Oxalis violacea</i> | Violet Wood-Sorrel | Belmont - Mass. |
| <i>Houstonia purpurea</i> , var. <i>longifolia</i> | Houstonia | Milton & Quincy |
| <i>Asclepias quadrifolia</i> | Four-leaved Milkweed | " " |
| <i>Erigeron annuus</i> | Daisy Flea-bane / Power Scabious | Cambridge |
| <i>Asclepias physaloides</i> | Poke-Milkweed | Medford |
| <i>Polygonum crispifolium</i> | Halberd-leaved Tear-thumb | " " |
| <i>Tilanthus glandulosa</i> | Tree of Heaven | Cambridge |

July - 1883

| | | |
|--|--|----------------------------------|
| <i>Corallorhiza multiflora</i> | Oral-root | Shelburne N.H. |
| <i>Ranunculus recurvatus</i> | Hooked Crowfoot. | " " |
| <i>Habenaria orbiculata</i> | Large Round-leaved Bellis } Habenaria | " " |
| <i>Microstylis ophioglossoides</i> | Adder's-Mouth | " " |
| <i>Habenaria dilatata</i> | Northern White Orchis | Wild River Valley Me. |
| <i>Laportea Canadensis</i> | Wood-nettle. | " |
| <i>Salix lucida</i> } Found already July, 1882. | Shining Willow | Berlin N.H. |
| <i>Asclepias incarnata</i> | Swamp Milkweed | Shelburne N.H. Shelburne N.H. |
| <i>Carex monile</i> , Tuck. | Edge - - | " " |
| " <i>pallescens</i> , L. | " | " " |
| " <i>tentaculata</i> , Muhl. | " | " " |
| " <i>crinita</i> , Lam. | " | " " |
| " <i>stellulata</i> , var. } <i>scirpoides</i> } | " | " " |
| " <i>intumescens</i> , Rudge. | " | " " |
| " <i>lupulina</i> , Muhl. | " | " " |
| " <i>scabrata</i> , Schw. | " | " " |
| " <i>vulgaris</i> , Fries. | " | " " |
| " <i>stricta</i> , var. <i>stricta</i> . | " | " " |
| " <i>scoparia</i> , Schk. | " | " " |
| <i>Eriophorum gracile</i> , Koch. | | |
| var. <i>paucinerium</i> , Engelm. | Cotton-grass. | " " |
| <i>Cleocharis palustris</i> R. Br. | Spike-Rush | " " |

(1883)

July

| | | |
|---|------------------------------|-----------------------|
| <i>Scirpus atrovirens</i> , Trudl | Bull-Rush, - Club-Rush. | Shelburne Vt. |
| <i>Juncus effusus</i> , L | Soft Rush - | " |
| <i>Eriophorum Virginicum</i> Michx. | Virginia Cotton-Grass | " |
| <i>Setaria viridis</i> , Beauv. | Green Foxtail - Bottle Grass | " |
| " <i>glauca</i> , Beauv. | Foxtail | " |
| <i>Osmorhiza brevistylis</i> . | Hairy Sweet Cicely. | Wild River Valley Me. |
| <i>Godolium repens</i> . | Rattlesnake - Plantain | Shelburne Vt. |
| <i>Habenaria viridis</i> , Michx. | | |
| " <i>bracteata</i> - | Bracted Green Orchis | " |
| <i>Campanula rotundifolia</i> | Harebell or Bluebell | " |
| <i>Habenaria obtusata</i> . | Habenaria - | " |
| <i>Solidago arguta</i> <small>S. juncea, Gray</small> | Golden-rod - | " |
| <i>Glyceria Canadensis</i> , Trin. | Rattlesnake-grass - | " |
| <i>Desmodium acuminatum</i> | Sick-Trefoil - | " |
| <i>Salix rostrata</i> Rich | Livid Willow. | " |
| <i>Panicum xanthophyllum</i> , Gray | Panic-Grass - | " |
| <i>Solidago Canadensis</i> | Golden-rod - | Berlin, N.H. |

August

| | | |
|---|----------------------|----------------|
| <i>Juncus Canadensis</i> var. <i>coarctatus</i> . <small>(Gardens)</small> | Rush - | Shelburne, Vt. |
| <i>Humulus Lupulus</i> . | Hop - | Gotham N.H. |
| <i>Pilea pumila</i> - | Richweed; Clearweed. | Gilead Me. |
| <i>Urtica gracilis</i> - | Tall wild Nettle. | " |
| <i>Lycchnis Fitchii</i> - | Corn Cockle | " |

62

Merlotus alba

August

| | | |
|--|---|----------------|
| <i>Aster macrophyllus</i> | Aster | Shelburne, Vt. |
| <i>Campanula aparinoides</i> | White Bellflower | Shelburne, Vt. |
| <i>Dulichium spathaceum</i> , Des. | Dulichium | " |
| <i>Sagittaria variabilis</i> , var. <i>angustifolia</i> | Arrow-head | " |
| <i>Solidago latifolia</i> | Golden rod | " |
| " <i>lanceolata</i> | " | " |
| <i>Aster puniceus</i> , Kadula | " | " |
| <i>Calamagrostis Canadensis</i> ^{Beauv.} | Blue Joint-Grass | " |
| <i>Phleum pratense</i> , L. | Timothy - Herd's Grass | " |
| <i>Gentiana tinctoria</i> | Gentian | " |
| <i>Sparganium simplex</i> | Bir-seed | " |
| <i>Epiphegus Virginiana</i> | Beech-drops - Cancer-root | " |
| <i>Scirpus eriophorum</i> , Michx. | Wool-Grass | " |
| <i>Agrostis rugans</i> , Michx. | Red sp. | " |
| <i>Bromus ciliatus</i> , L. | Brome-Grass | " |
| <i>Triticum repens</i> , L. | Louch - Litch - Litch or Quack Grass | " |
| <i>Juncus tenuis</i> , Willd. | Bog-Rush | " |
| <i>Glyceria aquatica</i> , Smith | Reed Meadow-Grass | " |
| <i>Panicum capillare</i> , L. | Old-Witch Grass | (Camb. Mass) |
| " <i>sanguinale</i> , L. | Common Crab- or Finger-Grass | " |
| " <i>crus-galli</i> , L. | Barn-yard Grass | " |
| <i>Eragrostis pectinacea</i> , Gray | Eragrostis | " |
| <i>Aspium reticulatum</i> ^{Michx.} | Red, yellow | " |

Prenanthes serpentina Pursh
Sponganeum Simplex, var. androcladum

September -
1883 -

August

| | | |
|--|-------------------------|------------------|
| <i>Panicum glabrum</i> | Panic Grass | Camb. Mass. |
| <i>Panicum dichotomum</i> L. | Panic-Grass. | Camb. Mass. |
| " <i>agrostoides</i> Spreng. | " | " |
| <i>Cyperus filiculmis</i> Vahl | Galingale. | " |
| <i>Eleocharis acicularis</i> , R. Br. | Spike-rush | " |
| <i>Sporobolus serotinus</i> , Gray | Drop-seed Grass. | " |
| <i>Pharusia obtusa</i> Trin. | Tillam. Grass. | " |
| <i>Eragrostis megastachya</i> Gr. | Eragrostis - | " |
| <i>Fimbristylis capillaris</i> Gray. | Fimbristylis - | " |
| <i>Proserpinaca palustris</i> L. | Mermaid-weed. - | " |
| <i>Polygonum ramosissimum</i> | Knot-weed. - | Milton, Mass |
| <i>Solidago odora</i> | Golden-rod. - | " |
| <i>Aster sp.</i> <i>scoparius</i> Michx. | Beard-Grass. | Dorchester, Mass |
| " <i>furcatus</i> , Muhl. | " | Walpole Mass |
| <i>Phaseolus diversifolius</i> | Wild Bean. | Dorchester Mass |
| <i>Cassia Chamacristus</i> | Partridge Pea. | " |
| <i>Prototaria Sagittalis</i> | Rattle-box. | " |
| <i>Gerardia quercifolia</i> | Smooth False Fox-glove | Milton Mass. |
| <i>Spartina cynosuroides</i> , Willd | Fresh-water Cord Grass. | Dorchester, Mass |
| <i>Aristida dichotoma</i> , Michx. | Poverty Grass. | " |
| <i>Thalictrum purpurascens</i> , var <i>ceriferum</i> . | Meadow Rue - | Walpole, Mass. |
| <i>Diplopappus Linariifolius</i> . | Double-bristles Aster. | " |

This *Datura* is not to be counted - Found in 1881.

November

Datura Tatula. Purple Thorn Apple - Boston, Mass

September

Desmodium nudiflorum
Goodyera pubescens
Galium circaezans

Tick-Trefoil -
Rattlesnake Plantain
Wild Licorice

Sharon, Mass.

" verum

" "

Bedham, Mass.

Oxalis stricta L.
var. limosum }
Myriophyllum ambiguum }

Green or Common Meadow Grass

Sharon, Mass.

Muhlenbergia glomerata Ten.

Wetland

Walpole, Mass.

Triplex arenaria

Flax-seed Grass -

Dorchester, Mass.

Spartina pectinata Rich,
var. glabra, Gray,

Quail

Fall Marsh-Grass.

"

Cyperus virginicus, "

Galium

Cambridge, Mass.

Solidago altissima -

Golden-rod -

Walpole, Mass.

" neglecta -

"

Sharon, Mass.

Aster laevis -

Urtica

Walpole, Mass.

Polygonum tenue -

Knotweed

Bedham

Solidago caesia

Golden-rod

Galium pilosum

Bedstraw - Cleavers.

Helianthus tuberosus.

Jerusalem Artichoke.

Cambridge

Aster undulatus -

Wavy Aster -

Milton

" miser

Dwarf

"

October

Artemisia biennis. Biennial Wormwood. Camb. port.

1884-

May

| | | |
|----------------------------------|---------------------|---------------|
| <i>Veronica arvensis</i> | Corn Speedwell. | Waltham Mass. |
| <i>Silene Pennsylvanica</i> | Wild Pink. | " |
| <i>Anthoxanthum odoratum</i> | Sweet Fernal-Grass. | Belmont, " |
| <i>Alopecurus pratensis</i> , L. | Meadow Foxtail. | Cambridge " |
| " <i>periculatus</i> , L. | Floating Foxtail. | " |
| <i>Triglochin maritimum</i> , L. | Arrowgrass. | " |

June

| | | |
|--|----------------------|-------------|
| <i>Potentilla palustris</i> , Scop | Marsh Five Finger. | Needham. |
| <i>Viola cucullata</i> , L. var. <i>palmata</i> , M. | Hand-leaf Tulst. | " |
| <i>Dactylis glomerata</i> L. | Orchard Grass. | Cambridge - |
| <i>Festuca ovina</i> L. <small>var. <i>divinus</i> <i>cula</i>. Gr</small> | Sheep's Fescue | " |
| <i>Bromus racemosus</i> , L. | Upright Chess - | " |
| <i>Glyceria fluitans</i> , S. & Br. | Manna-Grass. | " |
| " <i>nervata</i> , Trin. | Fowl-Meadow Grass. | " |
| <i>Carex spicata</i> , Muhl. | Sedge | " |
| <i>Phalaris Canariensis</i> L. | Canary-Grass. | " |
| <i>Bupleurum rotundifolium</i> , L. | Thorough-wax. | " |
| <i>Poa alodes</i> , Gray. | Meadow-Grass. | " |
| <i>Chenopodium glaucum</i> , L. | Oak-leafed Goosefoot | Boston, May |

72

July -

- - 1884 - -

- June -

| | | |
|--|-------------------------|------------------|
| <i>Galium Aparine</i> , L. | Cleavers - Goose-Grass. | Watertown, Mass. |
| <i>Panicum pauciflorum</i> Ell. | Panic-Grass. | Waltham, " |
| " <i>depauperatum</i> , Muhl. | " | " |
| <i>Juncus jerardi</i> , Loisel. | Black-Grass. | Cambridge, " |
| <i>Scirpus maritimus</i> , L. | Sea Club-Rush. | " |
| <i>Glyceria maritima</i> , Wahl. | Sea Spear-Grass. | " |
| <i>Carex vulpinoidea</i> , Michx. | Sedge - | " |
| " <i>lagopodioides</i> , Schk. | " | " |
| " <i>straminea</i> Schk. | " | " |
| var. <i>alata</i> , L. ^{C. alata Torr} H. Bailey's. | " | " |
| <i>Poa compressa</i> , L. | Wire-Grass. | " |
| <i>Bromus</i> ^{tectorum} <i>sterilis</i> L. | Brome-Grass - | " |
| <i>Rasturtium officinale</i> , L. Bro. | True Water-Cress. | Belmont, .. |
| <i>Urtica dioica</i> , L. | Common Nettle | Watertown, .. |
| <i>Geum Virginianum</i> , L. | Ox-eye | Belmont, .. |
| <i>Silene Armeria</i> , L. | Sweet-William Catchfly | Cambridge - |
| <i>Geum urbanum</i> , L. | Ox-eye | " |
| <i>Leucanthemum Parthenium</i> Godron | Feverfew. | " |
| <i>Sericocarpus comyzoides</i> , Raf. | White-topped Aster | Ashland, .. |
| <i>Festuca tenella</i> , Willd. | Fescue-grass. | " |
| <i>Asclepias obtusifolia</i> , Michx. | Milkweed. | " |

62

June, 27th →

1884

| | | |
|--|------------------------------------|---------------|
| <i>Panicum latifolium</i> L. | Panic-Grass. | Ashland, Mass |
| <i>clandestinum</i> L. | " | " |
| <i>Silene antirrhina</i> L. | Sleepy Catchfly. | " |
| <i>Specularia perfoliata</i> , A. DC. | Venus's Looking Glass. | Framingham .. |
| <i>Eriogonum strigosum</i> , Muhl. | | |
| var. <i>discoideum</i> Robbins | Dairy Fleabane. | Ashland, S. |
| <i>Lythrum Salicaria</i> , L. | Spiked Loosestrife | " |
| <i>Gaylussacia frondosa</i> , Torr. & G. | Blue Tangle - Dangleberry. | " |
| <i>Trifolium hybridum</i> | Alfalfa. | " |
| <i>Bromus tectorum</i> , L. | Cheat or Chess. | " |
| <i>Carex cephalophora</i> , Muhl. | Ledge. | " |
| " <i>acuta</i> , Boott. | " | " |
| " <i>straminea</i> , Schk. | " | " |
| <i>Danthonia spicata</i> , Beauv. | Wild Out-Grass. | " |
| <i>Poa serotina</i> , Ehrhart. | False Red-Top - Fowl Meadow Grass. | Cambridge .. |
| <i>Eleocharis obtusa</i> , Schultes. | Spike-Rush | Cambridge .. |
| <i>Circaea lutetiana</i> , L. | Euchant's Nightshade | Belmont .. |
| <i>Hudsonia ericoides</i> , L. | Hudsonia | Wentucket .. |
| " <i>tomentosa</i> , Nutt. | " | " |
| <i>Holcus lanatus</i> , L. | Velvet-Grass | " |
| <i>Polygala polygamia</i> , Wac. | Polygala | " |
| <i>Chrysopsis falcata</i> , Ell. | Golden Aster. | " |
| <i>Aira caryophylla</i> , L. | Hair-Grass. | " |
| <i>Festuca Myurus</i> , L. | Fescue-Grass. | " |

1884

July -

| | | |
|---|----------------------------|-----------------------|
| <i>Aletris farinosa</i> , L. | Colic-root Star-grass. | Plain tree-hat-grass. |
| <i>Typha angustifolia</i> , L. | Reed or Small Cut-tail | " |
| <i>Glyceria pallida</i> , Tur. | Manna-grass. | " |
| <i>Urena scopulifolia</i> , L. | Thyme-leaved Sandwort | " |
| " <i>peperoides</i> , L. | Sandwort. | " |
| <i>Epilobium hirsutum</i> , L. | Willow-hat | " |
| <i>arex foenea</i> Willd. var. <i>sabulorum</i> Brot. | Sedge. | " |
| <i>Rumex verticillatus</i> , L. | Swamp Dock. | " |
| <i>Aira flexuosa</i> , L. | Common Hair-grass. | " |
| <i>Stipa avenacea</i> , L. | Black Cat-grass. | " |
| <i>Onosmodium virginianum</i> Db. | False Groundwell. | " |
| <i>Limnoloba aquatica</i> , L. | | " |
| var. <i>tennifolia</i> , Hoffm. | Mudwort. | " |
| <i>Agrostis scabra</i> , Willd. | Hair-grass. | " |
| " <i>alba</i> , L. | Flour or White Bent-grass. | " |
| <i>Rumex salicifolius</i> , Drum. | White Dock. | " |
| <i>Carex comosa</i> , Brot. | Sedge. | " |
| <i>Viburnum molle</i> , Myx. | Arise-wood - Laurestinus. | " |
| <i>Heracleum tenatum</i> Dup. | Cod-Parasit. | " |
| <i>Verticillium maritima</i> , Don. | Sea Lungwort | " |
| <i>Opuntia vulgaris</i> , Mill. | Prickly Pear - Indian Fig | " |
| <i>Polygonum hydropiperoides</i> , Myx. | Mild (Water) Pepper | " |

1884

July.

| | | |
|---|---------------------------------|------------------|
| <i>Glyceria acutiflora</i> , Torr. | Manna-grass. | at Tuckee, Mass. |
| <i>Cirsium horridulum</i> Michx. | Green Thistle. | " |
| <i>Spartina stricta</i> , Roth. | | |
| var. <i>alternifolia</i> , Gray. | Field Sparrow-grass. | " |
| <i>Genista tinctoria</i> , L. | Wood Wagon - Dyer's Green-weed. | Cambridge, |
| <i>Festuca elatior</i> , L. var. <i>pratensis</i> , Gr. | Meadow Fescue. | " |
| <i>Lysimachia lanceolata</i> Walt. | Loosestrife. | Wilmington. |
| <i>Boehmeria cylindrica</i> , Willd. | False Nettle. | " |
| <i>Spartina juncea</i> , Willd. | Rush Salt-grass. | Cambridge. |
| <i>Cornus sericea</i> , L. | Silky Cornel. Kinnikinnick | Wilton. |
| <i>Asclepias purpurascens</i> , L. | Purple Milkweed | " |
| <i>Scirpus validus</i> , Vahl. | Great Bulrush. | Nahant. |
| <i>Glyceria elongata</i> , Trin. | Manna-grass. | Shelburne N.H. |
| <i>Aira caespitosa</i> , L. | Hair-grass | " |
| <i>Juncus tripidus</i> , L. | Rush | Inc. Washington. |
| <i>Castilleja pallida</i> Kunth. | Painted Cup. | " |
| <i>Rhododendron Lapponicum</i> , Walt. | Lapland Rose-bay. | " |
| <i>Luzula parviflora</i> , Desv. | | |
| var. <i>melanocarpa</i> , Gray. | Wood-Rush. | " |
| <i>Luzula spicata</i> , Desv. | " | " |
| <i>Nabalus ramosus</i> , DC. | Rattlesnake-Root. | " |
| " <i>Boottii</i> , DC. | " | " |

Lactuca hisuta Mull. →

79
1884

July ~

| | | |
|--|--------------------------|----------------------|
| <i>Carex canescens</i> , L. | Ledge | Mt. Washington, N.H. |
| " <i>canescens</i> , L. var. <i>utilis</i> Carey | " | " |
| " <i>vulgaris</i> Fries. var. <i>hyperborea</i> , Boott. | " | " |
| <i>Agrostis carina</i> L. var. <i>alpina</i> , Baker. | Brown Bent Grass. | " |
| <i>Vacc. Penn.</i> var. <i>angustifolium</i> Gr. | Dwarf Blueberry. | " |
| <i>Scirpus caespitosus</i> , L. | Bull Rush - | " |
| <i>Lycopodium annotinum</i> , L. | | |
| var. <i>pungens</i> ; Spring. | Club-Moss. | " |
| <i>Equisetum limosum</i> , L. | Horsetail - Sewing Rush. | Shelburne, N.H. |
| <i>Scheuchzeria palustris</i> , L. | Scheuchzeria. | " |
| <i>Viola rotundifolia</i> , Mx. | Round-leaved Violet. | " |
| <i>Equisetum scirpoides</i> , Mx. | Horsetail. | " |
| <i>Cinna arundinacea</i> , L. | | |
| var. <i>pendula</i> , Gray. | Wood Reed-grass. | " |

~ August ~

| | | |
|--|---------------------|-----------|
| <i>Botrychium matricariaefolium</i> A. Br. | Moonwort. | " |
| " <i>lunarioides</i> Swartz. | " | " |
| <i>Salix cordata</i> , Muhl. | Heart leaved Willow | " |
| <i>Arnica mollis</i> , Herb. | Arnica | " |
| <i>Ribes lacustre</i> Poir. | Gooseberry | Gorham, " |
| <i>Trisetum subspicatum</i> Beauv. | Trisetum | " |
| var. <i>molle</i> , Gray. | | |

- 1884 -

- August -

| | | |
|---|-------------------------------|-----------------|
| <i>Aspidium fragrans</i> , Swartz. | Shield Fern - Wood Fern | Shelburne, N.H. |
| " <i>marginalis</i> " | " " | " " |
| <i>Ascia glabella</i> , R. Brown | (Wood) " | " " |
| " <i>glauca</i> " | " " | " " |
| <i>Asplenium Felix-foemina</i> Bernh. | Spleenwort - | Shelburne " |
| <i>Mitella nuda</i> , L. | Mitre-wort, Bishop's-cap | " " |
| <i>Leersia oryzoides</i> , Swartz. | Rice Cut-Grass. | " " |
| <i>Achillea pedatum</i> L. | Maidenhair | " " |
| <i>Botrychium virginicum</i> , Swartz. | Moonwort. | " " |
| <i>Caulophyllum thalictroides</i> , Mx. | Blue Cohosh Pappoose-root. | " " |
| <i>Trichia quinquefolia</i> , Gray | Ginseng. | " " |
| <i>Aster purpureus</i> L. | Aster | " " |
| <i>Brachyelytrum aristatum</i> Beauv. | Brachyelytrum | Gotham, " |
| <i>Solidago squarrosa</i> , Mill. | Golden-rod. | " " |
| <i>Rhynchospora alba</i> , Vahl | Beak-rush. | " " |
| <i>Potamogeton Cloustonii</i> , Tuck. | Pondweed. | " " |
| " <i>Oakesianus</i> Robbins | " | Shelburne. |
| <i>Sagittaria variabilis</i> Engelm. | | |
| var. <i>gracilis</i> , Engelm. | Arrow-head. | " " |
| <i>Sagittaria arifolia</i> , Mx. | " | " " |
| <i>Brassica alba</i> , Gray. | White Mustard. | " " |

- 1884 -

August.

- Solidago gigantea*, ^{of Manual.} Nutt. Golden Rod. Shelburne, N.H.
 " *arguta* Nutt. (Syn. Flo. N.H.) " " "
Oryzopsis melanocephala, Muhl. Mountain Rice. " "
Salix cordata, Muhl. Heart-leaved Willow " "
Botrychium lanceolatum, ^{ingstium} Lamour. Lanceolate Grape Fern. " "

- September -

- Solidago puberula*, Nutt. Golden-rod. Garmouth Junction, Me.
Achillea (canadensis), L. Sickle-pod. Keever, Mass.
Aster linifolius, L. Aster " "
Coffinonia (canadensis), L. Rich-weed - Stone-root. Horse-balm. " "
Lophanthus scrophulariaefolius (Rostk) Sims. Hyssop " "
Brizopyrum spicatum, Hook. Spike-Grass. " "
Elymus striatus, Willd. Lyme-Grass. Wild Rye. " "
Gymnostichum Hystrix Schreb. Bottle-Brush Grass " "
Panicum virgatum, L. Panic-Grass. " "
 " " " " " "
Achillea (canadensis), L. Wormwood. " "
Scrophularia nodosa, L. Figwort. " "
Polygonum articulatum, L. Jointweed. " "
Scirpus pungens, Vahl Bulrush - Club-Rush. " "

1884

September

Calamagrostis arenaria Roth Sea Sand-Need. Newell, Mass.

Echinum vulgare L. Tipi's Bay - London - Cambridge

Nicaena physaloides, Sardinia Jameson wood - Thorn Apple.

Asclepias tuberosa L. Tipi's Bay of Peru

Stramonium L. Jameson wood - Thorn Apple.

Physalis Philadelphia Lam. Ground Cherry.

viscosa L.

Heliotropium Europaeum L. Heliotrope

Nasturtium amphibium R.Br. var *auriculatum*, Reichb.

October Cress

Heliotropium Indicum, L. Heliotrope

Solanum sisymbriifolium, Lam. Nightshade.

Portulaca Cavendishii, Sweet Indian Mallow - Velvet Leaf.

Malva borealis, Wallman Mallow.

36
Carex conoidea, Schuk (Cambridge, Mass
" *aperta*, Boott. Belmont "

1885

May

Eleocharis borealis R. & S. | *Vanilla* or Seneca Grass | Medford, Mass.

June

| | | |
|---|--------------------------------|------------------|
| <i>Stellaria graminea</i> , L. | Chickweed. | Cambridge, Mass. |
| <i>Carex riparia</i> , Curtis. | Sedge | " |
| " <i>flava</i> , L. | " | " |
| " <i>debilis</i> , Mx | " | " |
| " <i>filiformis</i> L. | " | " |
| " " var <i>latifolia</i> , Boek. | " | " |
| " <i>Muhlenbergii</i> , Peck. | " | Medford, " |
| " <i>virescens</i> , Muhl. | " | Acton, Mass. |
| " <i>capitata</i> , Lam. var. <i>latifolia</i> Boek. nunc, opp. <i>blanda</i> , Bost. | " | " |
| <i>Lobelia spicata</i> , Lam. | <i>Lobelia</i> | " |
| <i>Xanthoxylon Americanum</i> , Mill. | Prickly Ash. | " |
| <i>Cypripedium parviflorum</i> , Pall. | Smaller yellow Lady's Slipper. | " |
| <i>Monarda perfoliata</i> , L. | Bellwort. | " |
| <i>Galium lanceolatum</i> Torr. | Wild Ligonia. | " |
| <i>Drosera intermedia</i> Desv. & Hapke. | " | " |
| var. <i>Americana</i> , D.C. | Sundew | Watick, Mass. |
| <i>Gaylussacia dumosa</i> , Torr & G. | Dwarf Hackberry. | " |
| <i>Lemna polyrrhiza</i> , L. | Duckweed. | " |

Potamogeton zosteracefolius, Schum.

1885

| | | |
|--|--|---------------|
| <i>Eriophorum vaginatum</i> , L. | Cotton-Grass - | Natick, Mass. |
| <i>Carex ripperma</i> Desv. | -edge | " |
| " <i>utriculata</i> Boott. | " | " |
| " <i>tullata</i> Lchb. | " | " |
| - July - | | |
| <i>Festuca nutans</i> Willd. | Flour-Grass. | Keene, Mass. |
| <i>Lolium perenne</i> , L. | Common Darnel - <small>Rye & Rye Grass.</small> | " |
| <i>Artemisia stellariana</i> Ben. | Wormwood. | Nahant, Mass. |
| <i>Ranunculus sceleratus</i> , L. | Cursed Crowfoot. | " |
| <i>Vincetoxicum nigrum</i> Moench. | Black Vincetoxicum | Cambridge - |
| <i>Actium Lappa</i> , L. var. <i>tomentosum</i> Gray | Isardock. | " |
| <i>Centaurea benedicta</i> , L. | Blessed Thistle | " |
| <i>Vicia sativa</i> , L. | Common Vetch or Tare | " |
| <i>Rubus odoratus</i> , L. | Purple Flower; Raspberry | Westmore, Vt. |
| <i>Secum strictum</i> Ait. | Owens | " |
| <i>Arabis petraea</i> , Lam. | Rock Cress | " |
| <i>Hedysarum boreale</i> Nutt. | Hedysarum. | " |
| <i>Potentilla fruticosa</i> , L. | Shrubby Cinque-foil | " |
| <i>Saxifraga oppositifolia</i> , L. | Mountain Saxifrage | " |
| " <i>aizoides</i> , L. | Yellow " " | " |
| <i>Erigeron hyssopifolius</i> , Mx. | Flu-bane - | " |
| <i>Primula mistassinica</i> Mx. | Primrose | " |

1885

| | | |
|---|----------------------------------|---------------|
| <i>Carex scirpoides</i> Mx | Ledge | Westmore, Vt. |
| <i>Calamagrostis stricta</i> Trin. | Reed Ben-Grass. | " |
| <i>Monotropa hypopitys</i> L. | Pine Sap | " |
| <i>Allium tricoccum</i> Ait | False Reed, Dup. } Wild Leek. | " |
| <i>Astragalus alpinus</i> L | Milk-Vetch | " |
| <i>Carex Cederi</i> , Ehrh. | Ledge | " |
| <i>Draba arabisans</i> Mx. | Willow Grass | " |
| Carex | | " |
| <i>Pellaea gracilis</i> , Hook. | Cleft-Blake. | " |
| <i>Aspidium aculeatum</i> Swartz var. <i>Braunii</i> , Hook. | | " |
| <i>Struthopteris Germanica</i> , Willd | | " |
| <i>Woodsia glabella</i> , R. Brown. | | " |
| <i>Carex retrorsa</i> , Schw | Ledge | " |
| <i>Viola Canadensis</i> L. | Canada Violet | " |
| <i>Carex rosen</i> Selk. var. <i>radiata</i> , Desv. | Ledge | " |
| " <i>Tenuella</i> , Selk. | " | " |
| <i>Aspidium Goldianum</i> Hook. | Shield-Fern. | " |
| <i>Cystopteris bulbifera</i> Bernh. | Bladder-Fern | " |
| <i>Clematis verticillaris</i> DC. | Virgin Bower. | " |
| <i>Microstylis monophylos</i> Lindl. | Adair's Mouth. | " |
| <i>Impatiens pallida</i> , Nutt. | Pale Touch-me-not. | " |
| <i>Carex burnea</i> , Bortt | Ledge | " |
| " <i>polytrichoides</i> , Muhl. | " | " |

Carex cristata, Schw. var. *mirabilis* Boott } Edge } Vermont Vt }
 " *hystericina*, Muhl. " " " " }
 " *echinata*, Muhl. var. *microcarpa* Boeck. " " " " }
 " *lagopodioides*, Schk. var. *moniliformis* Olney " " " " }
 " *Tuckermanni* Boott " " " " }
 " *cristata* Schw. " " " " }
 " *depressa*, Schk. var. *minima* Boott " " " " }
 " *boecklinii*, pygmaea, " var. " " " " }

| | | |
|--------------------------------------|----------------------|---------------|
| <i>Draba incana</i> , L. | Whitlow-Grass. | Westmore, Vt. |
| <i>Viola pubescens</i> Ait. | Downy Yellow Violet | " |
| var. <i>ericae</i> Nutt. | | |
| <i>Carex plantaginifolia</i> Lam. | Sedge | " |
| " <i>aurca</i> , Nutt. | " | " |
| <i>Eatonia Pennsylvanica</i> Gr. | Eatonia | " |
| <i>Milium effusum</i> L. | Milley-Grass | " |
| <i>Lobelia Kalmii</i> L. | Lobelia | " |
| <i>Aspidium cristatum</i> , Swartz. | Shield or Word-Fern. | " |
| <i>Asplenium Filix femina</i> Bernh. | Spleenwort. | " |
| <i>Phalaris arundinacea</i> L. | Reed Canary-Grass. | " |
| <i>Habenaria hyperborea</i> , R.Br. | Queen-Orchid | " |
| <i>Teromium Americana</i> , Schwein. | American Brooklime | " |
| <i>Eleocharis tenuis</i> , Schultes. | Spike-Rush. | " |
| " <i>pauciflora</i> , Link. | " | " |
| <i>Eriophorum polystachyon</i> L. | Button-Grass | " |
| var. <i>latifolium</i> , Gr. | | |
| <i>Ribes rubrum</i> , L. | Red Currant | " |
| <i>Leparis Loeselii</i> Richard. | 7 way blade | " |
| <i>Listera convallarioides</i> Hook. | " | " |
| <i>Juncus nodosus</i> , L. | Rush-Bog-Rush. | " |
| " <i>articulatus</i> , L. | " | " |
| <i>Cladium mariscoides</i> , Torr. | Twig-Rush | " |
| <i>Rhamnus alnifolia</i> L'Hec. | Buckthorn | " |

August -



1885

| | | |
|---|----------------------------------|-----------------|
| <i>Coralorhiza innata</i> , R. Brown | Coral-root | Westmore, N.H. |
| <i>Senecio aureus</i> L. var. <i>Balsamita</i> , Torr. & Gray | Golden-Road-weed, Square-weed | " |
| <i>Sparganium simplex</i> Hudson | Blue-reed | " |
| var. <i>angustifolium</i> , Engelm. | Common Mugwort | " |
| <i>Artemisia vulgaris</i> , L. | Beak-Ruch | " |
| <i>Rhynchospora capillacea</i> Torr. | Drop-seed Grass | " |
| <i>Muhlenbergia mexicana</i> Trin | Lyme Grass - Wild Rye | " |
| <i>Elymus Canadensis</i> , L. | Early Wild-Rose | " |
| <i>Rosa blanda</i> , Nutt. | Cow-Heb. | " |
| <i>Vaccaria vulgaris</i> , Host. | | " |
| <i>Solidago bicolor</i> , L. | | " |
| var. <i>concolor</i> , Torr. & Gray | Golden-Rod | " |
| <i>Najas flexilis</i> Rostk | Naiad. | " |
| <i>Aspidium spinulosum</i> Swz. var. | | " |
| <i>delicatulum</i> Duran. | | " |
| <i>Asplenium Trichomanes</i> , L. | Spleenwort | Shelburne, N.H. |
| <i>Centa bulbifera</i> , L. | Water-Scumlock | " |
| <i>Polygonum incanatum</i> Ell | Knotweed | " |
| <i>Potamogeton gramineus</i> , L. | Pondweed. | " |
| var. <i>maximus</i> Murrill | | |
| Sept - | | |
| <i>Tricuspis purpurea</i> , Gray | Land-Grass | " |
| <i>Gnaphalium Gronovii</i> , L. | Hairy Hawkweed | " |
| <i>Verbascum Statiana</i> , L. | Moth Mullen | " |
| <i>Andropogon virginicus</i> , L. | Beard Grass | " |

Nantucket, Mass.

| | | |
|---|--------------------------|------------------|
| <i>Aristida purpurascens</i> , Boiss | Triple-crowned Grass | Nantucket, Mass. |
| <i>Zizania aquatica</i> , L. | Indian Rice - Water Oats | " |
| <i>Solidago tenuifolia</i> , Pursh | Golden Rod | " |
| <i>Cyperus diandrus</i> , Torr. | Galangall | " |
| <i>Juncus Canadensis</i> J. Gray | | |
| var. <i>longicaudatus</i> Engelm. | Kush - Bog rush. | " |
| <i>Cyperus phymatodes</i> , Muhl. | Galangall | " |
| <i>Eriocaulon septangulare</i> , Withering | Pipewort | " |
| <i>Discopleura capillacea</i> , DC. | Mock Bishop-weed. | " |
| <i>Phragmites communis</i> Trin. | Reed | " |
| <i>Hydrocotyle umbellata</i> | Water Pennywort | " |
| <i>Spiranthes simplex</i> , Gray | Ladies Tresses | " |
| <i>Aster concolor</i> , L. | Stemwort - Aster | " |
| " <i>dumosus</i> L. | " | " |
| " <i>spectabilis</i> Nutt. | " | " |
| " <i>patens</i> | " | " |
| <i>Xyris flexuosa</i> , Muhl. <small>var. <i>pubilla</i>, Gray.</small> | Yellow-eyed Grass. | " |
| <i>Gratiola aurea</i> , Muhl. | Hedge-Hyssop | " |
| <i>Juncus pedicularis</i> E. Meyer | Kush - Bog-rush. | " |
| <i>Cyperus dentatus</i> , Torr. | Galangall | " |
| " <i>Nuttallii</i> , Torr. | " | " |
| <i>Limnanthemum lacunosum</i> Griseb. | Floating Heart. | " |
| <i>Bartonia cuculla</i> , Muhl. | Bartonia | " |
| <i>Linum Virginicum</i> L. | Flax | " |

Stachys arvensis L. }
Dorchester Mass }

Euphorbia Esula L. ~~-----~~
Cambridge Mass. (Spurge)

| | | |
|---------------------------------------|--------------------------|--------------------|
| <i>Polygonum maritimum</i> L. | Coast Knotgrass. | Nantuxet, Mass. |
| <i>Solidago Canadensis</i> Michx. | | |
| var. <i>proserna</i> , Torr. & Gray | Golden Rod - | " |
| <i>Panicum proliferum</i> , Lam. | Panic-Grass. | " |
| <i>Datura metel</i> L. | Stammonum - Thorn-apple. | Cambridge, Mass. |
| <i>Conium maculatum</i> L. | Toxicaria d'Egypte | " |
| <i>Eupatorium maculatum</i> Lam. | Thoroughwort - | Milton, Mass. |
| <i>Aster caryophyllus</i> , Nutt. | Starwort, "Aster. | " |
| <i>Pyrenanthemum luisfolium</i> Pursh | Mt. Main. Bas. l. | " |
| <i>Cassia Marylandica</i> , L. | Wild Senna - | Readville, Mass. |
| <i>Quercus prinus</i> , L. | Chestnut oak. | Milton, Mass. |
| <i>Aster Novae-Angliae</i> L. | Starwort, "Aster | Roxbury, Mass. |
| <i>Solidago speciosa</i> Nutt. | Golden Rod | Brookline, Mass. |
| " <i>pecotina</i> Nutt. | | |
| var. <i>gigantea</i> , Gray | " | " |
| <i>Solidago neglecta</i> Torr. & Gray | | |
| var. <i>linoides</i> Gray. | " | " |
| <i>Salvia tiliaefolia</i> Vahl. | Sage | Cambridge - |
| <i>Pennisetum glaberrimum</i> , Kunth | Millet - Bengal Grass. | " |
| - Oct - | | |
| <i>Ballota nigra</i> L. | Black, forehound | " |
| <i>Urtica gracilis</i> , Nutt. | Nettle. | Beverly - |
| - Dec - | | |
| <i>Selaginella rupestris</i> , Spr. | Selaginella - | Blue Hill, Milton. |

1886

April

| | | |
|---------------------------------------|-----------------------|---------------------|
| <i>Tussilago farfara</i> L. | 30 ft foot | Somerville, Mass. |
| <i>Utricularia aluminifolia</i> L. | Water-lily | near Woburn, etc |
| <i>Draba verna</i> L. | Whitlow-Grass | " |
| <i>Symphoricarpos Thalictrum</i> Gray | Moose-Ear Cress | " |
| <i>Utricularia triloba</i> L. | Common Papaw | Natural Bridge Va. |
| <i>Viola tricolor</i> L. var. | | |
| var. <i>arvensis</i> , Gray | Downy | " |
| <i>Silene acaulis</i> L. | Stone (Cushion) | " |
| <i>Mitella diphylla</i> L. | Bishop's Cap | " |
| <i>Quercus muhlenbergii</i> Muhl. | Yellow Chestnut Oak | " |
| <i>Prunella angustifolia</i> L. | Prunella | " |
| <i>Pellaea atropurpurea</i> Link. | Cliff Brake | " |
| <i>Camptopogon virginicus</i> L. | Walking-leaf | " |
| <i>Muscicapa borealis</i> , Muhl. | Grape Hyacinth | Rapidan Va. |
| <i>Draba cuneifolia</i> Poir. | Kock-Cress. | Natural Bridge Va. |
| <i>Draba cuneifolia</i> Desv. | Whitlow Grass | " |
| <i>Viola cucullata</i> Nutt. | | |
| var. <i>cordata</i> Gray | Blue Violet | " |
| <i>Silene virginica</i> L. | Fire Pink - Catch Fly | " |
| <i>Staphylea trifolia</i> L. | Amer. Bladder-nut | " |
| <i>Vicia Caroliniana</i> Nutt. | Petch-Tail | " |
| <i>Lonicera canadensis</i> , Benth. | Green Violet | " |

- 1886 -

| | | |
|--|-------------------------|------------------|
| <i>Carex Buxbaumii</i> Wab. | Sedge | Concord - Mass. |
| <i>Rosa nitida</i> Willd. | Rose | " |
| <i>Utricularia inflata</i> Wats. | Inflated Bladderwort. | " |
| <i>Veronica officinalis</i> L. | Common Speedwell. | " |
| <i>Thymus Kalmianus</i> ^{var. lat.} Nash. | Small Yellow Rudbilly. | " |
| <i>Utricularia purpurea</i> Wats. | Black Bladderwort | " |
| <i>Rosa humilis</i> Marsh. | Rose | " |
| <i>Juncus militaris</i> Bigel. | Rush - Bog-Rush. | " |
| <i>Potentilla arguta</i> Pursh. | Cinquifolium Fivefinger | " |
| <i>Ulmus fulva</i> Mx. | Slippery or Red Elm. | " |
| <i>Barbarea perfoliata</i> , Lam. | Tower Mustard. | " |
| <i>Stachys aspera</i> Mx. | Hedge - Nettle | " |
| <i>Hypericum corymbosum</i> Mill. | St. John's - Wort. | " |
| <i>Salix nigra</i> Marsh. var. <i>felcata</i> Gray. | Black Willow. | " |
| <i>Carex oligosperma</i> Mx. | Sedge | " |
| <i>Salix myrtilloides</i> , L. | Myrtle Willow. | " |
| <i>Salvia sclarea</i> , L. | Salvia | Cambridge, Mass. |
| <i>Juncus Greenii</i> (Coker) ^{var. inukermani} Rush. | Bog-Rush. | Wells, Me. |
| " <i>Balticus</i> DeCand. | " | " |
| <i>Carex folliculata</i> , L. | Sedge | " |
| <i>Cnicus pumilus</i> , Torr. | Pasture Thistle | " |
| <i>Ruppia maritima</i> , L. | Ditch Grass | " |
| <i>Dipsacus sylvestris</i> ^{mill.} | Wild Teasel | Cambridge, Mass. |

— Aug —

| | |
|--|--------------------------|
| <i>Bidens</i> <i>Leckii</i> , Torr. - (White) Marigold - | Concord, Mass. |
| <i>P. (Anagyris) Spirillus</i> Tuckerm. - Hurd weed - | " |
| " <i>pulcher</i> " | " |
| " <i>amplifolius</i> " | " |
| " <i>pubellus</i> , L. var. ^{Mertens & Koch} <i>tenissimus</i> } | " |
| " <i>Robinsonii</i> , Oakes. | " |
| <i>Najas flexilis</i> , Rostk. var. <i>distans</i> , Montg. - Maid. | " |
| <i>Scripus</i> <i>terminalis</i> , Torr. - Bull-rush or Club-rush. | " |
| <i>Gama</i> <i>biennis</i> , L. - Gama | Cambridge Mass. |
| " <i>parviflora</i> , Dougl. | " |
| <i>Veronica longifolia</i> L. var. - Speedwell. | " |
| <i>Echinops exaltatus</i> Schrad. | " |
| <i>Aithya officinalis</i> , L. - Common Marsh-Mallow | " |
| <i>Lepachys pinnata</i> Tuckerm. & Gray. - Lepachys - | " |
| <i>Melva</i> <i>hleea</i> , L. - Mallow - | " |
| <i>Potamogeton</i> ^{pectinatus} <i>Robinsonii</i> <i>Oakes</i> - Pond-weed | Rye Beach, N.H. |
| " <i>perfoliatus</i> , L. | " |
| <i>Hordeum jubatum</i> , L. - Quiver-tail Grass. | " |
| <i>Potamogeton sanguinalis</i> , L. - Canadian Burnet | Little Boar's Head, N.H. |
| <i>Juncus marginatus</i> , Rostk. - Bro. Rush - | Rye Beach - N.H. |
| <i>K. (Juncus) glomerata</i> <i>var. Kahl</i> - Beak-rush. | " |
| <i>Sporobolus cryptandrus</i> , Gray. - Drop-seed Grass - | Little Boar's Head, N.H. |

- 1886 -

Sept.

Alupectes patula L.
var. *littoralis*, Gray

Wacker -
- Sept -

Rye Beach, N.H.

Phragmites hexagoplaea Fee. Beech. Fern

N. Quincy, Mass.

Utricularia dichotoma, Gray

var. *capillacea*, Torr. Forked Chickweed -

Leptogon eticulata Pers. Bush-Clover -

Potamogeton gramineus L.

var. *heterophyllus* Robbins. Pond weed

N. Beverly, Mass.

Myriophyllum spicatum L. Water Milfoil.

Utricularia Dortmanna L. Water Utricularia.

Callium bifidum, L. Tape-Grass. Eel-Grass.

Myriophyllum tenellum Bigel. Lesser Water Milfoil

Utricularia candensis, Planchon - Water Weed

Cambridge, Mass.

Potamogeton zizii, M. & K. Pond Weed

" *Lucens*, L. "

" *paniculatus*, Buch. "

Utricularia gibba L. Bladderwort

Ash Land "

" *intermedia*, Hayne "

Asplenium Filipponia Beaub. Spleenwort

Whiney, Mass.

var. *angustum*, D. & C. Water-Milfoil

Bonnet Mass.

Myriophyllum ambiguum Nutt. Pinweed

Milton, "

var. *capillaceum*, Torr. & Gray

Lechea minor, Lam.

- 1887 -

Apr.

Ptelea trifoliata L. Shrubby Trefoil - Hop Tree Chicago, Ill.

May -

Poa annua L. Low Spear-Grass - Cambridge, Mass.

Platanus occidentalis L. American Plane or Sycamore. Wrentham "

Carya amara Nutt. Bitter-Nut or Swamp Hickory. So. Abington, Mass.

Quercus tinctoria Benth

June -

Pogonia verticillata Nutt. Pogonia. Milton "

Carex straminea Schk

Carex Sedge.

var. *aperta*, Benth.

Cambridge "

Oryzopsis asperifolia Mx. Mountain Rice. Manchester "

Carex varia, Muhl.

Sedge -

Populus balsamifera L.

var. *candicans* G.

Balm of Gilead.

July -

Habenaria virens, Spreng. Rein. Orchid. Concord, Mass.

Ceratophyllum demersum L. Hornwort. Nantucket "

Bromus sterilis, L. Brome-Grass "

Erica tetralix L. Heather "

Chara crinita

var. *leptocarpa*

Brasenia peltata, Nutt. Water-Shield "

Zostera marina, L. Eel Grass. "

Schinus molle American L. Chaff-seed. "

Juncus acuminatus, Mx

var. *legitimus* Engelm. Rush -

1887 - 110
 July

| | | |
|--|-----------------------------------|----------------------|
| <i>Rumex maritimus</i> L. | Golden Dock | Nantucket, Mass. |
| <i>Quercus obtusiloba</i> Mx | Post Oak | " |
| <i>Marrubium vulgare</i> , L. | Common Horehound. | " |
| <i>Gilia cinobifolia</i> , Des. | Cypress Gilia | Montague, Mass. |
| <i>Anemone cylindrica</i> Gray. | Long fruited Anemone. | " |
| <i>Bromus Kalmii</i> , Gray | Wild Chess. | " |
| <i>Calamintha Clinopodium</i> , Benth. | Basil | " |
| <i>Desmodium rotundifolium</i> , DC. | Tick-Trefoil. | " |
| <i>Leersia Virginica</i> , Willd. | White-Grass | Deerfield, Mass. |
| <i>Habenaria elvestra</i> R.Br. | Yellow Grass | Montague, Mass. |
| <i>Cenchrus tuberosus</i> L. | Hedge Hog - Bur-Grass. | " |
| <i>Asclepias tuberosa</i> L. | Butterfl. Weed. Pleurisy Root. | " |
| <i>Crabgrass hirsuta</i> Scop. | Rock Grass. | Leverett, Mass. |
| <i>Betula lenta</i> , L. | Cherry Sweet Birch Black Birch | Montague " |
| <i>Desmodium paniculatum</i> , DC. | Tick Trefoil. | " |
| " <i>Marylandicum</i> , Benth. | " | " |
| <i>Phytolacca leptostachya</i> L. | Lopseed- | " |
| <i>Panicum Pennsylvanicum</i> Mill. | Pellitory | " |
| <i>Elymus canadensis</i> L. | | |
| var. <i>glaucofolius</i> , Gray. | Wild Rye - Lyme-Grass. | " |
| <i>Agrostis perennans</i> , Turck. | Thin Grass. | " |
| <i>Setaria alternifolia</i> L. | | So: Deerfield, Mass. |
| <i>Rudbeckia laciniata</i> L. | | Deerfield, Mass. |
| <i>Ambrosia trifida</i> , L. | Great-Rag weed | " |

- Aug -

| | | |
|---|---|-------------------|
| <i>Nicotiana Tabacum</i> , L. | - Tobacco - | Hensfield Mass. |
| <i>Polygonum Virginianum</i> , L. | Knot weed. | Montague, Mass |
| <i>Desmodium rigidum</i>, DC | Fick Trefoil. | " |
| <i>Idemna cirrosa</i> , Raf | (Kind of Fumitory. | Underland, Mass |
| <i>Chenopodium</i> | | " |
| <i>Hibiscus Trionum</i> , L. | Bladder Ketmia. | Montague, Mass |
| " <i>Syriacus</i> L. | Shrubby Althaea | " |
| <i>Polygala verticillata</i> , L. | Milkwort | " |
| <i>Hibiscus militaris</i> , Cav. | Halberd leaved ^{Rose-} _{Mallow} | (Cambridge, Mass. |

-1880-

Agaxinis (Gerardia) pumpecola (Gray) Britton
Southborough, Mass.

First specimen in my herbarium and
the only one collected & pressed in 1880.

-1881-

Plants collected in 1881 and in my
herbarium - arranged systematically.

Equisetum arvense L. Worcester Co.,
Southborough, Mass.
April, 1881.

Lilium philadelphicum L.
dry ground, Shelburne Co., N. H.,
July, 1881.

Habenaria cravertata (Lamour.) Gray
wet ground, Biddeford Pool, York Co., Maine
August, 1881.

Andropogon furcatus (Michx.) K. Br.
wet ground, Biddeford Pool, York Co., Maine
August, 1881.

1881

Arvenaria psycopsis (L.) Sw.
Shelburne, Coos Co., N.H.
July, 1881.

Pogonia spurioglossoides (L.) Ker.
Swamp, Waltham, Middlesex Co., Mass.
June, 1881.

Cucopogon pulchellus (Sw.) R. Br.
Bog, Shelburne, Coos Co., N.H.
July, 1881.

Arctostaphylos bulbosa L.
Swamp, Waltham, Middlesex Co., Mass.
June, 1881.

Atriplex patula L., var. *vestitata* (L.) Gray.
Salt marsh, Biddeford Pool, York Co., Maine.
Aug., 1881

Salicornia europaea L.
Salt marsh, Biddeford Pool, York Co., Maine
Aug., 1881

1881

Suaeda maritima (L.) Dumort

Salt marsh, Biddeford Pt., York Co., Maine.
Aug., 1881.

Sasson Hall R.

Sand near the sea-shore

Biddeford Pt., York Co., Maine.
Aug. 1881.

Spergularia arvensis L.

Biddeford Pt., York Co., Maine.
Aug. 1881.

Mollugo verticillata L.

Sandy soil, Biddeford Pt., York Co., Maine.
Aug. 1881.

Sperularia rubra (L.) L. & C. Presl.

Biddeford Pt., York Co., Maine
Aug. 1881.

Spergularia leisperma (Rindberg) F. Schmidt.

Biddeford Pt., York Co., Maine.
Aug., 1881.

1881

Suaeda maritima (L.) Dumort
Salt marsh, Biddeford Pt., York Co., Maine,
Aug., 1881.

Suaeda maritima L.
Sand near the sea-shore
Biddeford Pool, York Co., Maine.
Aug. 1881.

Spergularia maritima L.
Biddeford Pool, York Co., Maine,
Aug. 1881.

Mollugo verticillata L.
Sandy soil, Biddeford Pool, York Co., Maine,
Aug. 1881.

Spergularia rubra (L.) T. & G. Pers.
Biddeford Pt., York Co., Maine
Aug. 1881.

Spergularia leisperma (Rindberg) F. Schmidt.
Biddeford Pool, York Co., Maine,
Aug., 1881.

Sagina nodosa (L.) Fensholt.
Bidart Pool, York Co., Me.
Aug., 1881.

"Upper leaves in the axils of reduced
leaves in their axils; petals decidedly
longer than the sepals" Gray Man. 1908, 379.

Cerastium vulgatum L., var. *hirsutum* Fries.
Inelburne, Coös Co., N.H.
Rhodora 22, 1920, 178- July, 1881.

Cerastium vulgatum L., var. *hirsutum* Fries.
Charles Deane's Lawn, Sparks St.,
Cambridge, Middlesex Co., Mass.
Oct., 1881.

Lycnis arba Mill.
Roadside, Coniston, Worcester Co., Mass.
Sept. 1881.

Silene noctiflora L.

College Yard,
Cambridge, Middlesex Co., Mass.
Aug., 1881.

Hamamelis Lymnialurica Pursh.

Bellevue Point, York Co., Maine,
Aug., 1881.

Arnica montana L.

Woods.
Maverick, Middlesex Co., Mass.
May 7, 1881.

Sanguinaria canadensis L.

Maverick, Middlesex Co., Mass.
1881.

Corydalis ... *sp. virens* (L.) Pers.

(= *C. glauca* Pursh) Rocky place, Mt. Cabot
Sudborne, Coös Co., N. H.
—, 1881.

Lepidium virginicum L.

Upper St.
Cambridge, Middlesex Co., Mass.
Nov. 6, 1881.

Lepidium virginicum L.

Craigie St.,
Cambridge, Middlesex Co., Mass.
Nov. 13, 1881.

Drosera rotundifolia L.

Box
Shelburne, Coos Co., N. H.,
July, 1881.

Saxifraga virginiana Michx.

Framingham, Middlesex Co., Mass.
May, 1881.

Potentilla pumila Poir.

Southborough, Worcester Co., Mass.
Apr., 1881.

Lespedeza virginiana (L.) Pers.

Dry sandy soil,
Southborough, Worcester Co., Mass.
July, 1881.

Desmodium canadense (L.) J. K. R.

Steeleburne, Coös Co., N.H.
July, 1881.

Lespedeza hirta (L.) Hornem.

Southborough, Worcester Co., Mass.
Sept., 1881.

Vicia Cracca L.

Open field,
Steeleburne, Coös Co., N.H.
July, 1881.

Ampicarpa monoica (L.) Ell.

Southborough, Worcester Co., Mass.
Aug., 1881.

Oxalis montana Ray.

(= *O. acetosella* L., of Gray's Man., 1908)

Woods -

Selburne, Woods Co., N.H.

July, 1881.

Geranium Beckwithii Britton

Biddeford Pool, York Co., Maine,

Aug., 1881

Polygonum pauciflorum Willd.

Southborough, Worcester Co., Mass.

May, 1881

Polygonum sanguineum L.

Biddeford Pool, York Co., Maine.

Aug., 1881

Euphorbia maculata L.

Ashtabula, Ashtabula Co., Ohio.

By the railroad

Sept. 1881.

Campylobium maculata L.
Roadside
Chicago, Cook Co., Ill.
Sept., 1881.

Temnopentis mucronata (L.) Tvel.
Damp wood -
Shelburne, Coös Co., N.H.
July, 1881.

Acer pennsylvanicum L.
Shelburne, Coös Co., N.H.
July, 1881.

Ceanothus americanus L.
Dry hill.
Southborough, Worcester Co., Mass.
July, 1881.

Maiou moschata L.
Wayside, near old gardens,
Biddleford Pond, York Co., Maine.
Aug., 1881.

Lechea villosa Ell. Fire B.R.
(*L. major* Millx., not *L.*)
Southborough, Worcester Co., Mass.
Sept., 1881.

Lechea intermedia Regeant
Biddleford Pool, York Co., Maine.
Aug., 1881.

Viola cucullata Ait.
Wet field, Fresh Pond Lane,
Cambridge, Middlesex Co., Mass.
May, 1881.

Lythrum hyssopifolia L.
Marsh;
Biddleford Pool, York Co., Maine.
Aug., 1881.

Epilobium himalaicum Lam.,
var. *stolonosum* (Haustrk.) Fern.
(= *E. involucratum* Haustrk. cf. *Phytol.* 1915, 35,
first publ.,
Sudbury, Essex Co., N.H.,
July, 1881.

Oenothera pumila L.,
(= *O. perennis* L., Torr. Bull. 46 (1919) 372).
Southborough, Worcester Co., Mass.
July, 1881.

Cicuta maculata L.
Southborough, Worcester Co., Mass.
Aug., 1881.

Sium suave Walt.
(= *S. cicutifolium* Schrank of Gray's Man., 1908
and = *S. lineare* Michx.)
Swampy land
Biddeford Pool, York Co., Maine.
Aug., 1881.

Lizya aurea (L.) Kuhn.
Leominster, Worcester Co., Mass.
Sept., 1881.

Chimaphila umbellata (L.) Nutt.
(= *C. umbellata* (L.) Nutt, var. *crinitica*
Spreng. (L. nod. 17 (1717), 241-242).
Dry woods.
Southborough, Worcester Co., Mass.
July, 1881.

Chimaphila maculata (L.) Pursh
dry woods.
Southborough, Worcester Co., Mass.
July, 1881.

Mnoses uniflora (L.) Gray
Woods.
Shelburne, Coös Co., N. H.
July, 1881.

Pyrola asarifolia Mill.
Woody hillside,
Southborough, Worcester Co., Mass
July, 1881.

Pyrola americana Sweet.
(= *P. rotundifolia* Man. ed. 6)
(= *P. rotundifolia* L., var. *americana*
(Sweet) Fernald (Rhod. 22 (1920), 122).

Woods.
Sudburne, Cross Co., Vt.,
July, 1881.

Pyrola americana Sweet,
(For synonymy see above.)
Woody hillside.
Southborough, Worcester Co., Mass.
July, 1881.

Rhododendron viscosum (L.) Torr.
Swampy ground.
Southborough, Worcester Co., Mass
July, 1881

Andromeda glaucophylla Link.
Bog, Wheel & Pond,
Shelburne, Coös Co., N. H.
July, 1881.

Chamaedaphne calyculata (L.) Moench.
Wheeler bog,
Shelburne, Coös Co., N. H.
July, 1881.

Chamaedaphne calyculata (L.) Moench.
west bog,
Shelburne, Coös Co., Mass.
July, 1881

Lysimachia quadrifolia v.
Southborough, Worcester Co., Mass.
July, 1881

Lysimachia terrestris (L.) B.S.P.,
(= *L. stricta* Nutt.) Low ground
Southborough, Worcester Co., Mass.
August, 1881.

Steironema ciliatum (n.) Raf.
Shelburne, Essex Co., N.H.
July, 1881

Steironema lanceolatum (Walt.) Gray,
and ground,
- Southborough, Worcester Co., Mass.
August, 1881.

Glaux maritima L., var. *obtusifolia* Fernald,
sand near the sea shore,
Biddeford Pool, York Co., Maine
August, 1881.

Gentiana crinita, Troel.
damp meadow back of the new
burial ground,
Southborough, Worcester Co., Mass.
Sept., 1881

Symplytum officinale, L.
near an old cellar,
Shelburne, Coös Co., N.H.,
July, 1881.

Teucrium canadense L.,
var. *altorale* (Zicknell) Fernald,
Bixscroft Pond, York Co., Maine,
Aug., 1881.

Trichostema dichotomum L.
Hixon's Lane,
Southborough, Worcester Co., Mass.
Aug., 1881.

Scutellaria lateriflora L.
Shelburne, Coös Co., N.H.,
July, 1881

Scutellaria epilobiiifolia Hamilton,
(= *S. yanericulata* Am. authors not L. Rhodora 23 (1921) 86.)
Shelburne, Coös Co., N.H.,
July, 1881,

Nepeta Cataria L.
Sheelburne, Coös Co., N.H.,
July, 1881.

Galeopsis Tetralix L.
Niger Island,
Biddeford Pool, York Co., Maine,
Aug., 1881.

Galeopsis Tetralix L.
roadside,
Sheelburne, Coös Co., N.H.,
July, 1881.

Lamium amplexicaule L.
Mr. Charles Deane's y
Cambridge, Middlesex Co., Mass.,
May, 1881

Medeola pulegioides (L.) Pers.
open field,
Biddeford Pool, York Co., Me.,
Aug., 1881.

Pycnanthemum nuticum (Michx.) Pursh.
Southborough, Worcester Co., Mass.,
Aug., 1881.

Lycopus uniflorus Michx.
moist fields,
Sueburne, Coös Co., N.H.,
July, 1881.

Lycopus americanus Mill.
wet ground,
Sueburne, Coös Co., N.H.,
July, 1881.

Mimulus ringens L.
wet place,
Sueburne, Coös Co., N.H.,
July, 1881.

Agalinis purpurea (L.) Pennell.
(See *Torrey* xix. 205-216, 1919).
Southborough, Worcester Co., Mass.,
Sept., 1881.

Aureolaria pedicularia (K.) Kup.,
var. *ambigua* (Fernald) Farwell,
Lakeview Sta., Niuego, Cook Is., Ill.,
Sept., 1881.

(Rep. Min. Acad. Sci. 20, 187, 1918,
See Kennel, Torrey 17. 205-210, 1917)

Agelalis maritima (Kup.) Kup.,
Biddford Pool, York Co., Maine
(see F.W. Kennel, article in Torrey
xix. 205-210, 1917.)

Aug., 1881

Utricularia cornuta Michx.,
^{Boo}
Shelburne, Coös Co., N.H.,
July, 1881.

Utricularia cornuta Michx.,
^{Boo}
Southborough, Worcester Co., Mass.,
July, 1881.

Galium asperum Michx.,
Roadside,
Sudbury, Foss Hill, N. H.,
July, 1881.

Galium triflorum Michx.,
Southborough, Worcester Co., Mass.,
July, 1881.

Mitchella repens L.,
Southborough, Worcester Co., Mass.,
July, 1881.

Lonicera canadensis Marsh.,
(= *L. citrata* Muhl.),
Shelburne, Coös Co., N. H.,
July, 1881.

Linnaea borealis L., var. *americana* (Forbes) Rehd.,
Moist wood,
Shelburne, Coös Co., N. H.,
July, 1881.

Lobelia cardinalis L.,
Soutuborough, Worcester Co., Mass.,
Aug. 1881.

Lobelia siphilitica L.
Lake View Sta., Chicago, Cook Co., Ill.
Sept., 1881.

Liatris scariosa Willd.,
Lake View Sta., Chicago, Cook Co., Ill.
Sept., 1881.

Solidago bicolor L.,
Biddleford Pool, York Co., Me.
Aug., 1881.

Solidago bicolor L.,
Soutuborough, Worcester Co., Mass.
Sept., 1881.

Solidago sempervirens L.
Biddleford Pool, York Co., Me.,
Aug., 1881.

Solidago nemoralis Nutt.
Biddeford Pool, York Co., Me.,
Aug., 1881

Aster novi-belgii L.,
Biddeford Pool, York Co., Maine,
Aug., 1881.

Erigeron philadelphicus L.
Suelburne, Coös Co., N. H.,
July, 1881.

Erigeron canadensis L.
Southborough, Worcester Co., Mass.,
Aug., 1881.

Gnaphalium obtusifolium L.
(= *S. polycephalum* Nutt. cf. Rhodora 20(1918), 71),
Wood Island,
Biddeford Pool, York Co., Maine.
Aug., 1881.

Gnaphalium obtusifolium L.
(= *G. polycephalum* Michx. ex. *Rhodora* 20 (1918) 71),
Old field,
Southborough, Worcester Co., Mass.,
Sept., 1881.

Baccharis trinervis (Michx.) Britton,
var. *tenuiflora* (Sway) Britton,
(= *Coreopsis trinervis* Michx.),
Lake View Sta., Chicago, Cook Co., Ill.,
Sept., 1881.

Achillea millefolium L.,
Capt. Oakes Huggins' yard,
Bellefleur Cove, York Co., Maine,
Aug., 1881.

Senecio vulgaris L.,
West Concord St.,
Boston, Suffolk Co., Mass.,
Nov. 12, 1881.

Senecio aureus L.,
Southborough, Worcester Co., Mass.,
May, 1881.

Birsium nuticum Michx.,
Meadow,
Lake View Sta., Chicago, Cook Co., Ill.,
Sept., 1881,

Hieracium scabrum Michx.,
Southborough, Worcester Co., Mass.,
Aug., 1881,

