

F566
.P43

LIBRARY OF CONGRESS



0 016 099 169 0

MICHIGAN SUMMER RESORTS



*A Guide to the
Summering Places in the
Lake and River Region
of the State of Michigan*

*Together with a List of Hotels and Boarding Houses,
their Rates; Fishing and Hunting Lodges and
the Laws Respecting Fishing and Hunting, etc.*


Issued by the Passenger Department

PERE MARQUETTE RAILWAY

W. E. Wolfenden, General Passenger Agent, Detroit, Mich.

F566
-3

Michigan—The Summer Land

 **U**NIQUE among the States of America is Michigan. No other commonwealth is comparable to it. Three lakes join hands and compass the state to make it a peninsula and a vast pleasure ground. With one thousand miles of lake—the great unsalted seas—that roll around its shores, Michigan is one of the delightfully cool regions of the North American continent during the heated season. There are accommodations for those who care for the simple outdoor life and accustomed to "roughing it," or all the diversified distractions for those who prefer life at well-appointed summer resorts.

These form an almost unbroken chain that fringes the entire shore line of a thousand miles.

The physical structure of the country is not without its diversity, from forest and meadow, mountain and valley, to lake and moor. Sunshine, gayety and life are never wanting. They who have come to Michigan once seldom fail to visit it again and again.

Rest and comfort are assured in Northern Michigan.

The peculiar topography of Lower Michigan vouches against the possibility of excesses of heat or cold. There is an almost entire absence of humidity. Even at the height of the summer season the sun's rays involve no discomforts. The prevailing winds are from the west and are cooled in their sweep across the bosom of Lake Michigan. Cool nights are common in Northern Michigan, when only a few hundred miles to the southward, the densely populated cities are sweltering. Sound sleep and perfect rest follow naturally in the wake of a stay in this vast country.

Friendly welcome awaits those seeking a real holiday at the hundreds of summer hotels and farm houses that dot this section. From New Buffalo at the southern end of Lake Michigan, and extending to the north as far as the Straits of Mackinac and Sault Ste. Marie, and again southward down the St. Mary's River, Lake Huron, the St. Clair River and Lake St. Clair, these resorts fringe the shore.

Michigan's resorts are readily accessible. From Chicago, St. Louis, Kansas City, Cleveland, Cincinnati, Indianapolis, Pittsburgh, Louisville, Buffalo, Toledo or Detroit, it is but a twelve to a twenty-four-hour ride in a comfortable Pullman sleeping car. For those who live further south close train connections are made at almost every other point.

Brief descriptive sketches of but a small number of the more important resorts are carried in this booklet. Specific detailed information relative to the hotels and other places where accommodations are offered will be found in the last pages of this publication. Accurate detail maps of the resort region are also inserted at the back of the booklet.

A forecast of the schedules of "The Resort Special" to the principal resorts for the season 1917 is given. These train schedules are but tentative or approximate, and consequently should not be accepted as final. Representatives of the Passenger Department of the Pere Marquette Railway, or other lines mentioned in this booklet, will cheerfully lend such assistance and give such information as is necessary to make a complete and well-planned vacation.

For the Lake Michigan East Coast Country, greatly reduced Week-End Fares are offered at Chicago and suburban stations for points from New Buffalo to Pentwater, inclusive, from May 4th to September 30th. These tickets will be sold for all Friday afternoon trains, all Saturday trains and the Sunday morning train. Returning, they will be good until the following Monday. (See note below.)

NOTE—These tickets will not be good northbound on Train No. 5, or southbound on Train No. 4, except when reading to or from points north of Holland. See Time-Table and Schedule of Week-End Fares, Page Thirty-Nine.

FOR APPROXIMATE TRAIN SCHEDULES SEE PAGES
THIRTY-SIX TO THIRTY-NINE, INCLUSIVE

©CLA 162433

MAY -3 1917



Grand Hotel and Grounds, Mackinac Island

Mackinac Island

FRANCIS PARKMAN the historian, has paid tribute to the sovereign beauty of Mackinac Island, in these words: "The Island of Mackinac, owing to its situation, its beauty, and the fish which the surrounding waters supplied, had long been a favorite resort of Indians. It is about three miles wide. So clear are the waters of Lake Huron, which wash its shores, that one may count the pebbles at an incredible depth. The island is fenced round by white limestone cliffs, beautifully contrasting with the green foliage that half covers them, and in the center the land rises in woody heights. The rock which forms its foundation assumes fantastic shapes,—natural bridges, caverns, or sharp pinnacles, which at this day are pointed out as the curiosities of the region. Legends and superstitions attached a mysterious celebrity to the place, and here, it was said the fairies of Indian tradition might often be seen dancing upon the white rocks, or basking in the moonlight."

The Mackinac Island, which Parkman described, is the Mackinac Island of today, for fortunately the despoiling hand of commerce has spared it.

The Island of Mackinac is a well-kept park, maintained by the State of Michigan. Its drives and walks are a delight. The State recently added another memorial to one of Michigan's great men—General Lewis Cass—in the form of a statue. Hotel accommodations are all that could be desired, and the range of price is such as to fit every purse.



A Scene in the Lake Country



A Happy Picnic Party



Terrace Inn, Bay View



The Station at Petoskey — a Pere Marquette Summer Resort Point

The Grand Hotel is the largest one there, and its location is also the most striking. There is a charm that lingers in the memory of all who have witnessed the view from the wide veranda looking across the sparkling waters of the Straits and toward the islands that dot them. Frank A. Nagel, of St. Louis, Mo., president of the Grand Hotel Company, and Charles J. Holden, Mackinac Island, resident manager, in charge of the Grand Hotel since 1910, will again conduct it this year. Under their supervision nearly \$100,000 have been expended in remodeling, redecorating and refinishing the hotel. The improvements also include 100 additional bathrooms and the installation of hot and cold water in every guest room. New electric elevators and a steam-heating system have been installed. A buffet, a barber shop, ten-pin alleys, billiard halls and a casino are maintained also.

The hotel grounds comprise twenty acres. The building itself, which is of "Old Colonial" style of architecture, is situated on an eminence which overlooks the Straits of Mackinac, giving by day or night an ever-changing and ever-interesting panoramic view of the commerce of the inland seas.

Within one hundred yards of the Grand Hotel there is a golf course, which, because of natural conditions, has been declared one of the sportiest golf links in the North.

The Grand Hotel will open July 1st and will positively remain open until September 20th, thus assuring hay-fever patients accommodation until after the expiration of the season of this malady.

St. Ignace, The Quaint

ON the extreme southern point of the mainland of the Upper Peninsula, which stretches out to what is known as the Straits of Mackinac, lies another spot hallowed in the history of Michigan — St. Ignace. This town was founded by

the great explorer, Pere Marquette, for whom was named the Railway System which serves more than three-fourths of the population of the State. Over the tomb of Father Marquette rises a simple marble shaft. In the little church are a number of interesting relics associated with the explorer and the mission of St. Ignace.

Sault Ste. Marie

INNUMERABLE water trips are offered from Mackinac Island, and for that matter from Petoskey, but few are as interesting in the variety of the scenery unfolded as that to or from the city of Sault Ste. Marie, on the St. Mary's River. Colossal locks and ship canals have been constructed on either side of the river to permit the safe navigation of this stream, where the rapids would make it impossible.

Petoskey

THAT section which encompasses Petoskey and Bay View has the form of a giant amphitheater, of which Little Traverse Bay is the arena. There are those travelers, who, looking upon the blue waters for the first time, have found in them the same iridescent sheen that marks those of the Bay of Naples. Such is the site upon which these two celebrated summer resorts are located.

Petoskey, a progressive city of about 8,000 inhabitants, is usually reinforced by a colony of summer visitors and cottagers of as many more during the summer season. It is the natural center of a prosperous fruit and agricultural district. The city is well paved and maintained with scrupulous care. Few places are more beneficial to hay fever patients.

The country road system is being extended each year and offers many fine automobile drives. Chief among these is one to the Bliss Farm and the "Old Trail Tavern," near Cross Village.



Hotel Cushman, Petoskey



The John M. Hall Auditorium, Bay View

Petoskey has several amusement places, including a large roller skating rink. A nine-hole golf course will be ready for the season's visitors.

The hotels are jointly capable of comfortably accommodating 3,000 guests. In addition, there are many desirable boarding houses, rooming houses and restaurants.

Hotel Cushman is a splendid hostelry, which, while open all the year round, caters particularly to the summer tourists who "go North" each season. It is situated on a rise of ground which overlooks Petoskey's beautiful central public park. Mr. W. L. McManus, Jr., will operate it again this season.

Hotel Perry, N. J. Perry, proprietor, and Clark's Tavern, Mrs. Alexander Clark, owner, are also popular tourist rendezvous.

Three flowing wells, which yield waters rich in their medicinal and curative properties in such maladies as rheumatism, etc., have recently been discovered. The grounds have been beautified into a park, concrete approaches have been laid, and drinking fountains erected, these the gift of the women of Petoskey. Altogether, the beauty of the city has been enhanced considerably thereby.

Bay View

CERTAIN conditions make Bay View unique among all the resorts of the region. During many years of growing popularity it has been the seat of a great assembly and summer university, this with natural beauties and the wide variety of sport provided, making a combination that is a powerful magnet to thousands. Its devotees call it the most beautiful summer town in the world. Wind-ing, shaded streets and hundreds of cottages rise in successive terraces from the very shore of Little

Traverse Bay. Upon a park-like campus face the public buildings of the university, including a \$50,000 auditorium. On the beach below are tennis courts and a handsome casino, where a great swimming pool and fine bowling alleys offer sport. This year is to mark a real forward movement in assembly work. The brilliant program will include musicians, entertainers and lecturers of uncommon distinction. At the same time, the university is at hand with a selected faculty and hundreds of students for summer work. It is this happy blend of cultivation, entertainment and sport in such attractive surroundings that make Bay View a delight to young and old. The university classes begin July 16th, the assembly July 20th, and there is never a dull minute thereafter. A perfect sanitation, water and electric system, 500 cottages, easy access to all Bay resorts and such excellent, well-appointed and moderate-priced hotels as the Bay View House, Terrace Inn and Howard House assure comfort for all. Write to Mr. Thomas Gordon, Jr., Howell, Mich., for Bay View Bulletin.

Roaring Brook and Ramona Park

No more superb view of the beauties of the Little Traverse Bay and its admirable virgin shores than can be obtained from Ramona Park or the Roaring Brook resorts. These resorts are situated on the curve of the bay along the north shore. The communities of cottages are rather exclusive, although Hotel Ramona and Roaring Brook Inn cater to transient visitors. The former is situated on the shore of the bay; the latter is built on a high wooded bluff at some distance inland. The walks to and from these two resorts are through beautiful woodland.



The Inn at Charlevoix-the-Beautiful



A Wequetonsing Home

Wequetonsing

JUST a short distance farther is Wequetonsing—a community of cottages. Many of these homes are built facing the main shore drive, while others are erected on the shelf of land just under the bluff, running along the north shore of Little Traverse Bay. Wequetonsing Hotel, managed by Mrs. F. K. and A. A. Brubaker and Maple Grove Inn, managed by Mrs. C. B. Gray, have proved popular with the tourist.

West Wequetonsing adjoins Wequetonsing, and has a station of the Grand Rapids & Indiana summer suburban service. The Colonial Hotel, Mrs. C. H. Eaton, manager, is located at this point.

Harbor Springs

TRAINS of the Grand Rapids & Indiana Railway maintain a frequent service between Petoskey and Harbor Springs. This latter village is the terminus of this line. The boats of the Little Traverse Bay line touch at all resort docks at hourly intervals. Substantial improvements have been made to the hotel accommodations during the past season. The New Emmet is the chief one. Tourists find much of interest in the Old Mission church which was built in the long ago for the uplifting of the Indians.

Across the little harbor is Harbor Point, which has become the summer home of those of wealth and leisure, who have made it an exclusive residence resort. Many persons of prominence are entertained each



Moonlight on Little Traverse Bay



Entertainment for the Children



A Harbor Point Home



Hotel Belvedere, Belvedere

summer at the Harbor Point Club, which has developed an enviable record under the management of Mr. F. H. Irish.

Forest Beach

DRIVING westward from Harbor Springs station, through woods and over hills, takes the tourist to the Forest Beach Resort and Hotel. This alluring spot, which is on a slight eminence, overlooks Lake Michigan. There is a luxuriant growth of virgin forest consisting chiefly of cedar, beech and birch. The hotel gives excellent service.

Suburban Petoskey

SITUATED in Petoskey's hinterland are numerous pleasant spots which may be reached from this point via The Grand Rapids & Indiana Railway. Walloon Lake, on which are located many desirable hotels, is perhaps the most inviting of all. It lies south of Petoskey and northeast of Charlevoix.

Oden is north and east and has some famous springs. Four miles from Petoskey is Wa-ya-ga-mug and Round Lake. On the shores of the latter the Indian play "Hiawatha" is enacted each summer. Thousands of visitors are attracted by the play. Another throng takes the steamer of the Inland Route from Conway. No more devious trip is known to travelers the world over. The boat passes through Crooked Lake and River into Burt Lake and through Indian River to Mullet Lake and to Topinabee.



"How Passing Sweet is Solitude"



On the Links at Charlevoix



Boat-Houses and Entrance to Pine Lake from Lake Michigan

Here luncheon is served at the Inn, and afterward one may return to Conway, or a change of boats may be made and the trip continued down the Cheboygan River to Cheboygan. Inland Route offices are in Petoskey. From Cheboygan one may go to Bois Blanc Island, where Pointe aux Pins resort is found, and then to Mackinac Island.

Charlevoix - the - Beautiful

AN atmosphere of pure serenity welcomes the traveler alighting from the train at Charlevoix-the-Beautiful. There is none of the characteristics of the smoke-filled battlefields of modern industrial competition. It is a city given over entirely to genuine enjoyment.

Charlevoix-the-Beautiful is built on a series of three natural terraces. Lake Michigan rolls on its westward; Round and Pine Lakes on its eastward wooded shores. All about there is an abundance of virgin wooded growth. On the south side of Round Lake and with Pine Lake to the east, the Charlevoix Homes Association holds a large tract of land. Civic enterprise has anticipated every want. Water is supplied the city by a private system. Drainage and perfect sanitation are assured by a modern and complete sewer system.

Hotel Belvedere, owned by The Resort Association, accommodates 300 guests. The service is of the first order. Mr. R. P. Foley is the manager. The opening date is June 10th.

Across Round Lake, on the other shore, is the Chicago Resort. Transient guests are entertained at the club house when recommended by a member of the Association.

The Pere Marquette's attractive station faces Pine Lake, and from this point there is a broad avenue which leads back from the station to the business district of Charlevoix—a mile away, on the shore of

Lake Michigan. This street runs along the north shore of Round Lake and skirts the upper terrace, while on the left is seen the Chicago Resort. Across the sparkling waters of Round Lake one sees on the farther shore the terraces of the Charlevoix Summer Homes Association. North of the avenue is a large tract owned by the Charlevoix Resort Association, which lies between Pine Lake and Lake Michigan.

The Charlevoix Golf Club, which has been described by an eastern expert as the "Ekwanok of the West," extends northward across a ridge of low hills. It is an eighteen-hole course. The grounds are always well kept and are ever-inviting to the devotees of this outdoor sport. Much money has been expended in improving this course and expert golfers from all over the country come to play upon it.

The Inn, which is one of the best appointed public resort hotels to be found anywhere, will again be under the management of Mr. A. J. Creamer, who also conducts the Highland Pines Inn, Southern Pines, N. C. He will have with him the same efficient organization which has contributed much to the popularity of this resort. Upwards of 350 guests are accommodated here. Recent improvements and enlargements add to the attractiveness of The Inn. There are now sixty private suites, each with bath, while every floor is provided with public baths and lavatories. The date for the opening this year will be June 30th.

The Charlevoix Beach Hotel, owned and managed by Mr. J. S. Baker, has been enlarged since last season, and it is now a seven-story structure. Over \$25,000 have been expended in beautifying the building and the grounds. This hotel is located on the Lake Michigan side of the city.

Other hotels are Hotel Michigan and Hotel Charlevoix, and the Hallett House, on the avenue leading to Belvedere Station.



"The Resort Special" Approaching Charlevoix-the-Beautiful

Good accommodations and moderate prices obtain at the numerous boarding-houses of the city. Detailed information on this subject will be found on the last pages of this booklet.

A picturesque equestrian trail through the virgin forests adjacent to Charlevoix has challenged the admiration of every votary of this outdoor sport who has had the good fortune to ride upon it. A prominent Riding School will be represented. Experienced instructors will have charge of the work.

One of the distinctive features of The Inn is the big swimming pool, which is being patronized by thousands each year. The pool is kept filled with filtered water from Lake Michigan, flowing constantly, and maintained at a temperature that makes a plunge a delight at all times. It is also a safe place for the little ones who are learning how to swim and the mothers have not been slow in appreciating this. Competent instructors are always in attendance.

Attractive furnished houses and cottages, for the month or the season, may be secured in Charlevoix or neighboring resorts. A list of these may be found on the last pages of this book, and any additional information will be gladly given by Mr. F. V. Alexander, Ticket Agent of the Pere Marquette at Charlevoix.

While Charlevoix is in the heart of the Northern Michigan resort country, it is surrounded by a territory honeycombed with other desirable resorts. Sixteen miles north is Petoskey; twelve to twenty-five miles to the south is the Intermediate Lake Region, easily accessible for a day's fishing through the special summer train service of the Pere Marquette; eastward is the Pine Lake Country, where lie Boyne City, East Jordan and Walloon Lake.

During the summer the gas-electric motor service of the Pere Marquette offers resorters frequent trains

during the day and evening between Belvedere, Charlevoix and Petoskey-Bay View. At the last named point connection is made with dummy trains over the Grand Rapids & Indiana Railway for Harbor Springs, Wequetonsing, Roaring Brook, Wa-yaga-mug, Oden and Walloon Lake. Two steamers make daily trips to the head of Pine Lake, and another boat goes frequently to the historic Beaver Islands, lying in Lake Michigan, northwest of Charlevoix.

Resorts of Pine Lake

WHITE-WINGED craft and yachtsmen as well as motor boats and motor boatmen, in countless numbers preempt Pine Lake during the summer months, as magnificent an expanse of blue waters as is to be found in America. This lake stretches eastward from Charlevoix-the-Beautiful. It separates into two arms—the south and east bays. On the former nestles East Jordan; on the latter, Boyne City. East Jordan is reached by the trains of the East Jordan & Southern Railway, which connect with the Pere Marquette Railway at Bellaire, or by daily steamer from Charlevoix.

Restfulness and excellent fishing grounds are among the advantages which both Charlevoix and East Jordan offer. The immediate streams and lakes are the haunts of trout, bass, pike, muskellunge, and other fish. Mr. R. A. Brintnall, Secretary of the East Jordan Board of Trade, will give such information as is required.

Boyne City is reached by boat from Charlevoix. The quiet and peaceful aspect of this place blends well with the beauties of the adjacent country, reminding one of New England.



Summer Homes at Belvedere



Fresh Air for the "Kiddies"



Sunken Gardens, Home of Lewis Rosenbaum, Charlevoix



Beach Hotel and Cottages, Charlevoix-the-Bautiful

Intermediate Lakes

ALMOST parallel to the east shore of Grand Traverse Bay from Williamsburg to Charlevoix, extending at some distance inland, in an almost unbroken chain, are what are known as the Intermediate Lakes. Along the shores of these picturesque bodies of water are hundreds of points of interest to the summer visitor, the angler or the hunter.

Elk Rapids, at the outlet of the Intermediate Lakes—so popular with those who like an extended canoe trip—is situated on the east arm of Grand Traverse Bay. It is in the center of the Grand Traverse fruit region. The land about Elk Rapids is high; the water is pure; the climate is healthful and the fishing is excellent.

Meguzee Point Resort, just south of Elk Rapids, on Elk Lake, is a recent bidder for popular favor among the summer visitors. It is delightfully situated, and is the first "port of call" for the Intermediate Lake steamers.

Boarding the little steamer at Elk Rapids, one sails through Elk Lake and Round Lake, into Torch River stopping at Torch River Bridge where Bingham's Torch Lake Inn, a new and well conducted summer hotel, is situated and then out upon Torch Lake (Old Torch), and across to Alden. On the way from Elk Rapids the boat stops at Rex Terrace and Skegemog Point. These resorts issue booklets descriptive of their advantages. After a pause at Alden (and sometimes a change of boats), the trip up Torch Lake may



Beauty 'neath the Birches



Ready for a Big One

be resumed. The first stop is at Lone Tree Point, three miles from Alden. This attractive resort is a favorite with Chicago people. Beyond Lone Tree is Clam River entrance, and a half mile north of it is the Pere Marquette Beach Hotel, deservedly popular with residents of Chicago, Detroit and Ohio points.

Coming back to Clam River, the steamer once or twice a week continues on into Clam Lake, into Grass River and Grass Lake, and to the end of the trip at Bellaire. There are several fishing camps on Grass Lake where are found good entertainment and excellent sport among the finny tribes.

Lake View Resort, also on the east side of the lake, is a homelike place, and has been improved with new detached bungalows. On the west shore is Miley's Lodge, a new cottage resort.

Hayo-Went-Ha Camp for boys, conducted by the State Committee of the Young Men's Christian Associations and recognized as one of the foremost in the world, begins its fourteenth season with the summer of 1917. The camp is located on Torch Lake, the largest and one of the most beautiful inland bodies of water in Michigan. Mr. F. P. Knapp will again act as camp director and associated with him will be men of national reputation in work with boys. The equipment of the camp is as fine as can be found anywhere, including a clubhouse, spacious dining lodge, tennis courts, baseball diamond, boats, etc. Fifty-five acres of wooded land away from resort influences make it an ideal camping spot.



Hotel Ramona, Ramona Park



Camping in the Great Northland



Cantering on the Sylvan Trail, Charlevoix



"Roughing It" on Torch Lake

Boys have been in attendance from over 150 cities and towns and a large percentage of them return year after year.

Parents desiring to send their boys to Hayo-Went-Ha should write Mr. C. W. Kirkpatrick, Secretary, 411 Association Building, Detroit, Mich.

Beyond Bellaire, the fishing along the Intermediate chain is the delight of the angler. Stopping at Central Lake Station and taking a launch, one is taken to Fisk's Lodge, managed by Mrs. C. B. Fisk. This is a rallying point for fishermen who like the royal sport of bass and muskellunge angling. At the head of the chain of lakes is Ellsworth village. Excellent fishing and competent guides are also found here.

Fisherman's Paradise, near Bellaire, Mich., is a rendezvous of sportsmen. Mr. H. D. Smith, who conducts this family resort, has recently made extensive improvements to his property including the construction of a new and picturesque log and stone bungalow dining room, providing seating accommodations for 200. Ponies have been added to the equipment for the entertainment of the children. The bathing beach is safe.

Good fishing is found at practically all the resorts along the Intermediate Lakes, and the experienced fisherman will travel far before reaching a district which will yield him equal results. There are many trout streams in this region.

Suitable camping sites a-plenty are found along the Intermediate Lakes almost anywhere. Each year sees an ever-increasing number of these lovers of life in the outdoor pitching their camps in the wooded slopes running back from the open water front. Ideal bathing beaches and hundreds of cold springs of crystal water are to be found almost everywhere. In many cases parties of twenty-five to seventy-five are formed in cities miles away to take up some favored

camping spot in the Intermediate Lake section. These camp sites are easily accessible from the railroad.

Steamer and launch facilities enable campers to get to the towns as desired. The steamers Ruth and Mabel perform service between Elk Rapids and Clam River, touching at all intermediate resorts.

Grand Traverse Bay

THAT summerland, known as Northwestern Michigan, has Traverse City for its principal gateway and capital.

Traverse City is situated at the head of beautiful Grand Traverse Bay, a body of water thirty-five miles long and from five to six miles in width. Its beaches are wide, sandy and safe for bathing or boating. In addition, there is all that can be desired by the most exacting artistic temperament. The sunsets have a diversity of coloring that would be declared unreal on an artist's canvas.

No less than thirty-two inland lakes are found within easy distances of the city. On each of these, resorts have been developed. They are accessible by train, boat or automobile. Good roads have been and are still being built. Special drives—seven in number—have been mapped out, making it possible to leave in the morning by automobile, motor all day and return to Traverse City by a different route in the evening.

Near-by streams afford good German brown and rainbow trout fishing. Write the Secretary of the Chamber of Commerce, Traverse City, Mich., for booklet.

The Traverse City Golf and Country Club maintains a nine-hole 3000-yard course and a large, commodious club house which has just been completed. This latter is situated on the brow of a hill and commands a view of Boardman Lake, Traverse City and both arms of Grand Traverse Bay.



Havo-Went-Ha, Boys' Camp, Torch Lake



Fisherman's Paradise

The course has been pronounced by experts one of the most wonderful in the country, as all the hazards are natural and of a kind that challenges the skill of the expert and stimulates the desire of accomplishment in those not so proficient. The drive from the fourth tee, on the brow of the Lake overlooking Boardman Lake, to the fourth hole, over Boot Lake is a drop of 100 feet. Syd. J. Cooper, open golf champion of Indiana, has been secured as professional.

For further information address the secretary, Mr. K. D. Lewis, Traverse City, Mich.

The steamer "Mary Ethel" will make close connections with "The Resort Special" to and from Bowers Harbor, Ne-ah-ta-wanta and Old Mission.

The Pere Marquette and the Traverse City, Leelanau & Manistique Railway operate a through sleeping car service between Chicago and Traverse City. Bowers and Northport during the tourist season. Direct automobile service is provided between Suttons Bay and Leland at reasonable rates.

Ne-ah-ta-wanta, Edgewood and Old Mission resorts are on the peninsula that projects into Grand Traverse Bay. These can be reached also by a drive from Traverse City.

Ne-ah-ta-wanta is a family resort consisting of a number of very attractive cottages. Among the varied attractions of this popular resort are golf, bowling, tennis, boating, fishing and bathing on a safe sandy beach.

Edgewood is a quiet family resort with excellent board and accommodations in rooms and in furnished cottages. Edgewood Cottage Resort, with a central dining hall, is farther south. Miss Lucy D. Lewis is manager.

Old Mission, with its community of cottages and numerous boarding houses, is another delightful point to spend a summer vacation. Omena, which is near by, has also some individual claims as a resort point,

as also the Leelanau Resort, with its hotel and cottages just south of Omena village is Hotel Clovers, a cottage resort of the first order, which is managed by Mr. William W. Foltz.

The Northport Point Cottage Resort lies at the outer entrance to the big bay. Cedar Lodge affords excellent accommodations to the tourists and visitors at Northport Point.

Inland from Traverse City

AMONG the numerous and beautiful lakes found inland from Traverse City, few can compare with Lake Leelanau or Long Lake to the north and west; Green and Duck lakes at Interlochen on the main line of the Pere Marquette; Platte Lakes and Crystal Lake, near the shore of Lake Michigan at Frankfort; and Lake Ann and Traverse Lake Resort, on the Manistee & Northeastern out of Traverse City.

The Glen Lake region has a number of attractive and comfortable homes that afford accommodations for the tourist and the sportsman. Glen Lake is well stocked with bass, lake trout, pickerel and perch. The streams which empty into the lake teem with brook trout. Out in Lake Michigan there is opportunity for deep-water fishing.

Lake Leelanau and Leland

NORTHWEST of Traverse City, twenty miles or thereabouts, on a narrow strip of land lying between Lake Michigan and Lake Leelanau (Carp Lake), lies Leland. This place, which has many natural allurements for the angler and tourist, is reached from Traverse City by the Manistee & Northeastern Railroad to Fouch, and boarding the steamer "Leelanau," of which Capt. J. Ver Snyder is master, for a delightful water trip of two hours' duration. There is an attractive landscape all the way.



A Scene Near Bingham's Torch Lake Inn



An Orchard Scene in the North



The Whispering Pine at Alden



Fishing Resort near Bellaire

Fountain Point

ON the route covered by the steamer "Leelanau," which plies to and from Fouch, are Fountain Point Resort and Provemont. The former is notable for its big mineral springs, which flow steadily. An excellent hotel, cottages, a safe bathing beach and good fishing and outdoor sports, are among the attractions of this resort section. Mr. Albert Meafey, Provemont P. O., is proprietor and manager.

Interlochen and Pine Park

SKIRTING the edge of Green Lake and almost completely surrounding Hotel Pennington, one of the most modern types of summer hostleries to be found in the north country, is a natural pine forest of dense growth. Hotel Pennington is situated near the Pere Marquette station at Interlochen, thirteen miles south of Traverse City. There are several lakes nearby. In front is Green Lake, while half a mile back is Duck Lake.

Hotel Pennington has a capacity of one hundred guests. The Green Lake Resort Association owns a cottage resort here. A descriptive booklet may be had on application to the Interlochen Resort Association, Interlochen, Mich.

Pine Park, another resort similarly situated in a virgin forest, is being developed as a cottage resort. It lies one mile east of Interlochen.



Boys' Camp on Clam Lake



Rex Terrace

Frankfort and Crystal Lake

IN that region adjacent to Frankfort and Crystal Lake, reached by the Pere Marquette Railway to Thompsonville and the Ann Arbor Railroad from that junction point, are a number of attractive outing places. The Congregational Assembly is located on Crystal Lake, near Frankfort, where annual Chautauquas are held. The grounds comprise 125 acres of wooded land, with hotels, cottages and boarding-houses. This resort, as well as Frankfort or Beulah, on Crystal Lake, is an ideal place to spend a summer vacation or a week-end. Write the Congregational Assembly, Frankfort, or G. A. Weller, A. G. F. & P. A., the Ann Arbor Railroad Company, Toledo, Ohio.



A Beauty Spot on Clam Lake

Portage Point

UNIQUE, restful, secluded,—that's Portage Point, the summer resort, point for point, unequalled. Portage Point is unique, primarily in point of location. Situated just ten miles north of progressive Manistee, the portal to the summer resorters' paradise. Portage Point, the golden pine-crested, rugged strand of sand, commands, on the west, the unparalleled scenic splendor of old Lake Michigan in its vari-colored beauty.

The placid, crystal-pure waters of Portage Lake and a channel. 400 feet wide, connecting it with Lake Michigan, bound Portage Point on the east and south.



Bathing is Safe Sport in Northern Michigan



Beach Hotel, Torch Lake



Cottages at Miley's, Bellaire

Completing the picturesqueness of its environs and presenting every known facility for perfect comfort, Portage Point Inn and Annex—Beech Lodge—are adequate assurance that here is all one may desire to make this season the most enjoyable. The Inn and Annex, modern to the last degree, leave naught to be desired. They are the center of all attractions and the golf, tennis, fishing, sailing, ball-room, club house and children's playgrounds are easily accessible. All recreations offered at Portage Point are of a quality commensurate with what you have a right to expect when seeking the best.

On the eastern shore of the lake is Onkama, and all along its 10 or 12 miles of beautiful shores are handsome summer homes and resort colonies.

For information concerning Portage Point, communications should be directed to Mr. R. A. Jewell, Onkama, Mich.

Portage Point and Onkama are reached by the Pere Marquette and the Manistee & Northeastern Railways via Manistee or Kaleva. Write Mr. D. Riely, General Passenger Agent, Manistee & Northeastern Railroad, Manistee, Mich., for detailed information of Portage Lake resorts, cottages for rent, etc.

Ludington and Manistee

A important rendezvous for the summer visitor, a leading port of the east coast of Lake Michigan and also a terminal of the Pere Marquette Railway is the three-fold character of Ludington.

It is also from this city that Michigan's great system of transportation draws its name, for this thriving city was long known as Pere Marquette. Here, too, the Pere Marquette river discharges into Lake Michigan. Ludington is also of importance because of the magnitude of trans-lake shipping which is carried on between this city and Milwaukee, and

also between it and Manitowoc. Two passenger lines are in operation to and from Milwaukee. Other lines make Ludington a port of call.

Good hotels and boarding houses make Ludington a most desirable place to visit during the summer.

Manistee likewise is a thriving port city, sixteen miles north of Ludington, and at the mouth of the Manistee river. Numerous resorts are near at hand, and there is an opportunity for large industrial development, through the power afforded by the river. Both Ludington and Manistee are centers for rich and rapidly developing agricultural and fruit growing sections. Thousands of acres are being planted to fruit trees.

Epworth Heights

CONSTANTLY growing is the Epworth Heights community resort just two miles north of Ludington. New cottages have been erected each year until now the number exceeds 200. For those who do not care to be burdened with "keeping house" there is a good hotel. Of amusements there is a wide range, including tennis, croquet, rowing, canoeing and sailing on both inland and Lake Michigan waters. The golf links are well laid out and the golf club house, which has just been completed, is as attractive a two-story structure as can be found in the North.

The "walking" sand dunes near-by appeal to the curious. An assembly program, which brings speakers and entertainers of national prominence during the last week in July and the first three weeks in August, proves a strong feature of the season's activities.

The Mary Wood Chase School of Musical Arts, of Chicago, holds its Summer School annually during July and August at Epworth Heights. Two new studios will be ready for the opening of the season.

This school attracts professional students from all over the United States and has enrolled also some



Hannah Park at Traverse City



Lone Tree Point

pupils from distant countries. The courses offered comprise Elementary as well as Teachers' Training Classes. The Conservatory, which contains studios for teaching and practicing, is situated in a wooded glen, surrounded by luxuriant foliage and unbroken quiet.

The Ben Greet or the Coburn Woodland Players, in Shakespearean repertoire, are annual visitors at Epworth Heights and also at Lake Harbor. A steam dummy service connects Epworth Heights with Ludington.

Mr. Polemus H. Swift, Secretary, 257 Keystone Avenue, River Forest, Ill., will give particulars as to membership or other privileges at Epworth Heights on request.

Hamlin Lake Resorts

THERE is a distinctive charm that pervades the entire Hamlin Lake Resort region, north of Epworth Heights. This point is also reached by the "dummy" line from Ludington. There are few Michigan inland lakes that surpass this body of water, where the angler's quest is rewarded with a plentiful catch of small-mouth black bass, pickerel, pike and muskellunge. Several trout streams empty into Hamlin Lake. Piney Ridge, Camp Arcadia Resort, Grand View Hotel, Sauble Inn and Forest Hill are among the numerous other resorts. These are all reached by launch from the "dummy" line station.

Inland from Ludington

TROUT streams and lake resorts are to be found inland from Ludington. Oak Openings Resort is situated at Round Lake, near Batcheller Station, on the Manistee Branch of the Pere Marquette. There are also fishing camps on the Pere Marquette river, which can be reached from

Baldwin; and at Big Star Lake, eight miles from Baldwin, is Oak Lodge, where excellent camping and fishing grounds are also located.

Resorts of the Lake Huron Coast

ONLY passing mention of the resorts located south of the Straits of Mackinac, along the west coast of Lake Huron, so well are they known to the American tourist. Cheboygan, Rogers City, Alpena, Harrisville, Au Sable (Oscoda), Tawas Beach, Van Etten Lake and Point Lookout are the principal ones. Then there are Bay Port and Port Austin, on Saginaw Bay; and the Pointe aux Barques resort, at the tip of "The Thumb;" Harbor Beach and surrounding section; Huronia, Gratiot and Edison beaches and St. Clair River and St. Clair Flats section—the "Venice of America."

Recreation-seekers and prospective farmers, too, will find much of interest in the country lying between Bay City and Cheboygan, which is tapped by the Detroit & Mackinac Railway. From Bay City to Alpena the railroad runs along the Lake Huron shore.

A large summer hotel and cottage resort is situated at Tawas Beach on Tawas Bay. Inquiries for cottages, etc., should be directed to Mr. W. G. MacEdward, G. P. A., Detroit & Mackinac Railway, Bay City, Mich.

Several hundred lakes filled with bass and many trout streams are reached via this line.

The better-known are the following: Mullet Lake, reached from Cheboygan and Aloha; Black Lake, reached from Cheboygan and Onaway; Presque Isle County chain of lakes, reached from La Roque and Millersburg; Long Lake and Grand Lake, reached from Alpena; Montmorency County Lakes, reached from Hillman; Hubbard Lake, reached from Ossineke, Alpena, Harrisville and Lincoln; Van Etten Lake, reached from Au Sable (Oscoda) and the Tawas Chain



The Flume, Traverse City



Epworth Heights Woodlands



Fisk's Log Lodge, near Bellaire

of lakes reached from East Tawas, and the Prescott chain of lakes reached from Prescott.

An Adirondack Camp has been planted right down in the heart of Michigan in what is known as Van Etten Reserve, on Van Etten Lake. A splendid hotel of picturesque woodland architecture has been built as well as a number of attractive bungalows. Write Van Etten Lake Reserve, Oscoda, Mich., for reservations, or Mr. Harry B. Parker, 125 Woodward Avenue, Detroit, Mich.

Hackmatack Inn, on Mullet Lake, is reached via Inverness Station; steamers of the Inland Route also stop there. The Inn, a rustic club house, is managed by Watson Beebe, Cheboygan, Mich., and is open from July 1st to October 1st.

The Christian Outing Grounds Association maintains a large resort at Long Lake (Iosco County). Long Lake Station is but a few feet from the water's edge. Write the secretary, Mr. M. N. Cray, 813 Spitzer Building, Toledo, Ohio, for booklet.

The Au Sable River, one of the most noted speckled and rainbow trout streams in America, empties into Lake Huron at Au Sable (Oscoda).

Pointe aux Barques

PICTURESQUE in its ruggedness is the scenery in and around Pointe aux Barques. This is one of the most important of the family resorts on the eastern side of the State of Michigan. Well-to-do families from all parts of America have their own beautiful summer homes there. Many new



On Central Lake



Northport Point Resort



Manistee River, North of Manistee Lake

ones are being erected each year. The Pointe aux Barques Association maintains a splendid club house and a dance hall for the use of the cottagers and their friends. In the club-house are fifteen sleeping rooms, attractively furnished and with private baths, and a dining hall where a high standard of service prevails. The privileges of this club house are extended to friends of the cottagers and others on application. There is also a good nine-hole golf course. The club house opens about June 28th, and the season extends until about September 6th. For detailed information, rental of cottages, rooms at the club house, etc., write Mr. S. T. Crapo, 1525 Ford Building, Detroit, Mich

Harrison

A HEARTY welcome awaits camper and tourist alike at Harrison, one of the most recent places to find favor with the summer visitors. Budd Lake, a picturesque little inland lake that abounds with fish, is situated at the foot of Main street. A beautiful island in the center of the lake, and a city park, comprising fifty acres, where free camping sites are offered, are two distinctive features of this point. Other lakes, trout streams and near-by hills offer inducements for tramping tours. High elevation and pure air make this location desirable to those suffering from asthma and kindred maladies.



A Vista near Leland



Duck Lake, in Grand Traverse County



Picturesque Northport



Traverse Lake—Sugar Loaf in the Distance

Fishing and Hunting in Michigan

DEVOTEES of rod and gun will find that science and nature have been working in harmony in Michigan, for fish hatcheries and game preserves are maintained. For a list of hunting and fishing lodges, see page thirty-three; for the Michigan Fish and Game Laws, see pages thirty-four and thirty-five.

LAKE MICHIGAN EAST COAST

THE economic importance of that section of country from New Buffalo to Pentwater is two-fold. It includes a large part of what is known as the "fruit belt," and it also comprises what is commonly known as the "Lake Michigan East Coast," a great resort and summer playground. Pure air, sunshine, cool breezes, plenty of good water and shade, lakes and streams, sand beaches suitable for surf-bathing and an abundance of fruit—all make for the popularity of this district.

For the Lake Michigan East Coast country, greatly reduced week-end fares are offered at Chicago and suburban stations for points from New Buffalo to Pentwater, inclusive, from May 4th to September 30th. These tickets will be sold for all Friday afternoon trains, all Saturday trains and the Sunday morning train. Returning, they will be good until the following Monday.

Note: These tickets will not be good northbound on train No. 5 or southbound on Train No. 4, except when reading to or from points north of Holland. See time table and schedule of Week-End Fares, page thirty-nine.

Six trains each way provide summer service to and from the Lake Michigan East Coast territory situated south of Holland; three provide service through to and from Lake Harbor, Muskegon, Lakewood, Whitehall (White Lake Resorts), Hart and Pentwater.

Leaving Chicago via the Pere Marquette from the Grand Central Station, Harrison St. and Fifth Ave., trains for the Lake Michigan East Coast country

make stops in Chicago at 63d St. and South Chicago. Some trains stop at Whiting, Indiana Harbor (B. & O. Stations), and Porter, Ind., and all of them at Michigan City.

The first East Coast resort stop is New Buffalo. Here is found Vetterly Park, a cottage resort with good accommodations at moderate prices, also the Chicago hotel and several farm resorts.

At Union Pier accommodations are offered at Oak Grove Inn and at numerous farmhouses and summer cottages. Here begins the famous "Michigan Fruit Belt," and the farmers are good "providers." Seventy-five miles from Chicago is Lakeside, where there are a number of resorts and hotels, most of them on the Lake Michigan shore.

Harbert is seventy-seven miles from Chicago, and is right in the fruit country. A short distance from the station, and on the Lake Michigan shore, is Birchwood Beach Resort, with furnished cottages for rent, a central dining hall, and board and rooms at reasonable rates. Write Mr. Wells Sizer, Harbert, for booklet. There are also farm and cottage resorts.

Three miles north is the fruit shipping station of Sawyer. This is a favorite stopping point for residents of Chicago, a number of whom have built attractive summer houses. Chicago capitalists are improving a tract of forest land, on the Lake Michigan front.

Five miles from St. Joseph, and ninety-two miles from Chicago, is Glenlord. The famed "Lake Shore Drive," running along the Lake Michigan bluffs southward from St. Joseph, passing through the rich vineyard and fruit district of Berrien County, is found here. This drive is lined with handsome summer homes of city folks, and many of them own small pieces of ground where they grow their own fruits and vegetables.

This Lake Shore Drive is like a boulevard, wide and well-graveled. It runs along the lake bluff, and on



Hotel Pennington, Interlochen



Edgewood, Near Traverse City

each side are scores of "gentlemen farmers" with their small fruit farms and flower gardens. There is no more entrancing drive in the West, at the height of the season, than this one through the "Land of Fruit and Flowers."

St. Joseph

ON A plateau overlooking Lake Michigan and directly at the water's edge is the City of St. Joseph, historically one of the most important points in the state, and scenically one of the most beautiful. The city being in the heart of the wonderful southern Michigan Fruit Belt permits of the distribution of Berrien County horticultural products throughout the entire country.

As a summer resort St. Joseph has long enjoyed wide popularity. Lake bathing from its wonderful beaches; lake, pier and river fishing; inviting motor-boating and canoe waters; varied and enchanting scenery, invigorating air, ample hotel accommodations, pure water and a host of other natural or artificial attractions make for the fullest enjoyment of a summer vacation. Berrien County has more miles of good roads for the automobile tourist than any other county in the country.

Benton Harbor

A"SUMMER TOWN" of a reputation established many years ago and a center of industrial prominence that is still flourishing, is Benton Harbor. The mineral bath-house at Benton Harbor was the first to be established on the shore of Lake Michigan.

Just outside the city limits is the Israelite House of David and the Park Springs of Eden. The property of this religious association is closely connected with Benton Harbor and St. Joseph and outside towns by trolley lines, and one car line ends at the front of the grounds. The headquarters buildings are scattered

over about seventy acres, while several hundred acres more are given over to farms of the 400 members of the colony.

Higman Park

ANOTHER rendezvous favored by the tourists is Higman Park Hotel and cottage resort, located on the shore of Lake Michigan and just one mile from Benton Harbor. Transient guests are accommodated at the hotel, while the surrounding resort has built up rapidly with cottages. Information as to lots or cottages may be had of Mr. A. D. Flood, Benton Harbor, Mich.

St. Joseph River

UP the sinuous and picturesque St. Joe River from Benton Harbor the tourist finds numerous farm resorts situated on a number of beautiful inland lakes. Within ten miles from Benton Harbor are Silver, Brown, Crooked, Magician and Pipestone Lakes.

Spring Bluff Resort is on the river, about two miles from St. Joseph. It may be reached by river steamer or by the beautiful river road drive. Spring Bluff is strikingly located on the high river bank, and besides the commodious hotel, there is a community of well-built cottages, some of them for rent furnished. There are excellent roads for driving or automobiling and there is also the recreation provided by the river. Interurban cars pass not far away.

Berrien Springs

SIXTEEN miles from St. Joseph is Berrien Springs, reached by the Buchanan branch of the Pere Marquette from Benton Harbor, or by electric car. The various resorts along the river and inland, on the way to Berrien Springs, as well as in or near the village, are mentioned in the list in this



Baldwin Station Grounds



Leland Beauties



The Silent Canoe, Northport Point



Higman Park, on the Lake Michigan East Coast

booklet. The person seeking quiet and rest on his vacation will find entertainment at many farmhouses along the river. This is a region of prosperous farmers, and their guests usually have the use of a boat on the river and a carriage for drives.

If the country calm begins to pall on the resorter the trolley car quickly whisks him to the gayer life in Benton Harbor, St. Joseph or some near-by resort.

Riverside and Coloma

Six miles north of Benton Harbor, and one hundred and four miles distant from Chicago, is Riverside, one of the important summer resort points on the main line of the Pere Marquette Railway, Pottawatomie Park, a resort section that has much to commend it, lies two miles west of Riverside, on the shore of Lake Michigan. This cottage resort accommodates seventy-five persons comfortably.

Coloma is the key of the Paw Paw Lake resort district, the lake being about a mile north of the town, which is 108 miles from Chicago. Cottages, hotels, pavilions and resort grounds completely encircle Paw Paw Lake, which is visited each summer by 30,000 to 50,000 people. The trolley line from St. Joseph or Benton Harbor circles half-way around the lake, passing close to the resorts on the west and north shores.

Visitors to the east end of the lake get off at Watervliet station, and are taken to the various resorts in buses, which meet all regular trains.



Some of the Craft on Spring Lake, Grand Haven



The Grand River above South Haven

Hartford and Vicinity

AT the junction of the Kalamazoo, Lake Shore & Chicago Line, running to South Haven and Lake Cora, and the Pere Marquette Railway, 116 miles from Chicago, is the prosperous community of Hartford. Reached by a drive from Hartford are a number of small lakes, among them Rush and Van Auken lakes, three to four miles north-west; Duck, Donovan and Dyar lakes, four to five miles north.

The quiet little village of Lawrence lies seven miles east from Hartford, on the Kalamazoo, Lake Shore & Chicago Line. It is in a charming fruit and farming district, and near the Paw Paw River.



Park at Ludington

Lake Cora Resorts

ON the Kalamazoo, Lake Shore & Chicago Line, nine miles east of Hartford, is Lake Cora Station—a point justly popular with summer tourists and week-end holiday parties. On the high ground of the north shore of the lake is a fine tract owned by the Lake Cora Summer Home Association. A good hotel (Lake Cora Inn) has been erected, and a large number of cottages, some of which are for rent. The resort list at the back of this booklet gives further information.

Paw Paw station is thirteen miles from Hartford, on the Kalamazoo, Lake Shore & Chicago Line. Near the pleasant little town are several good fishing lakes.



A Happy Group at Lakeside



Pere Marquette Station and Lake Front Park, St. Joseph



A Pleasant Home at Douglas

The City of South Haven

NORTHWEST of Hartford, also on the Kalamazoo, Lake Shore & Chicago Railroad, seventeen miles from the junction with the Pere Marquette Railway, is South Haven. Easily 100,000 visitors come and go each season. Its regular quota of the summer population is approximately 5,000. South Haven has a score of hotels, with accommodations varying from twenty-five to 300 persons respectively. The South Haven Country Club, with its forty-acre tract devoted to a golf course, is one of numerous attractions upon which South Haven rests its claims for popularity.

For several miles north and south of the town the lake shore is lined with cottages, while there are other cottages and farmhouse resorts up the Black River, which at South Haven finds an outlet in Lake Michigan and also forms a harbor for lake vessels.

One of the striking features at South Haven is the bathing beach, and sometimes as many as a thousand bathers are frolicking in the water at one time.

Few Michigan resorts have more life than South Haven, with its sailing, rowing, bathing, launch rides, concerts, dances, "hay rides", and drives inland and along the shore, as well as many other means of recreation and amusement.

Grand Junction

ANOTHER Pere Marquette Railway main line point, Grand Junction, 131 miles from Chicago, commands the attention of tourists for the variety of amusements offered. This is the crossing of the South Haven branch of the Michigan Central Railroad. Several beautiful lakes are near Grand Junction, among them Silver, Saddle, Osterhout, Lester and Clear Lakes. Cottage resorts are

found at most of these lakes, or board may be obtained at farmhouses.

Bangor and Vicinity

SITUATED between Hartford and Grand Junction are Bangor and Breedsville, likewise important tourist communities. Immense quantities of peaches, pears, berries, muskmelons and watermelons are shipped from the two points each year. In fact that part of Michigan between New Buffalo and Grand Rapids is practically a continuous fruit farm.

Pullman is 136 miles from Chicago. Those visiting it will find excellent black bass fishing in Upper and Lower Scott lakes, which are near the station. There are hotels and farmhouses to care for visitors.

Four miles farther north is Pearle, the stopping place for the resorts at Round and Crooked lakes. Black bass and pickerel of large size are plentiful. Accommodations can be found in cottages and farmhouses.

Fennville and New Richmond

FRUIT and Fennville are synonyms in Michigan, since this station is the principal shipping point for the Michigan Fruit Belt. Over a thousand carloads of peaches, plums, grapes, apples and pears are shipped out each year. The tourist may know what to expect here. Fennville is also noted for its beautiful homes, which reflect the prosperity of the community.

New Richmond— a small village on the Kalamazoo river—is 148 miles from Chicago. Fishing in this section is good. One of many pleasant diversions offered is a boat ride down the river to Saugatuck and Douglas.



Idlewild, White Lake



Hotel Whitcomb, St. Joseph

Saugatuck and Douglas

PICTURESQUE hills, forest-covered, almost completely enfold the cities of Saugatuck and Douglas, which are situated on opposite sides of the Kalamazoo River, near its point of discharge into Lake Michigan. Here the river expansion forms almost a still lake and one of the distinctive delights of the residents and tourists is to drift idly in a boat out to Lake Michigan. As the crow flies, it is but a mile away, but following the sinuous course of the river stretches the journey to nearly four miles. The hills tower on either side, while snowy water lilies decorate the river's edge and exhale their delicate perfume. It is an experience—this drifting down the stream—that causes one to forget the cares and vicissitudes of a humdrum existence.

There are several good hotels and cottage resorts, as well as cottage communities, on the Lake Michigan shore. An immense new pavilion in Saugatuck, with music by a Chicago orchestra, provides recreation for those who are fond of dancing.

The Chicago School of Physical Education will hold sessions at Saugatuck in June, August and September. In addition, a summer camp for adults who desire instruction, and for young people will be maintained. Write Mrs. Laura Orvis Parson, President, 430-432 South Wabash Avenue, Chicago, Ill., for booklet. Camp Gray is another Saugatuck entertainment enterprise.

Holland, Macatawa Park-Ottawa Beach

SUGGESTING its best Dutch patrial ideals, and yet thoroughly permeated with the spirit and energy of American progressiveness is Holland—gateway to Macatawa Park-Ottawa Beach, and other resorts situated on Black Lake. Holland is 159 miles distant from Chicago. It lies at the upper end of Black Lake, the shores of which for six miles

form an almost continuous chain of summer cottages and tourist resorts.

Nature-lovers will find a veritable fairyland of their dreams in Macatawa Park, with its thickly wooded hills covered with flowers; its winding, concrete paths and drives in the great forest and the adjoining public parks, and its varied bird life which adds infinite interest. Macatawa Park is a family resort which is open all the year. It is owned and operated by the cottagers, who have four hotels and 350 other buildings. The district is lighted with electricity. Twenty stores supply the wants of cottagers and tourists. An inclined railway performs service to the pavilion on Lookout Mountain. The regular amusements include nightly hops, tennis and other games, fishing, bathing and boating. There is one mile of bathing beach on the Lake Michigan side of Macatawa Park, the beach being of clear white sand.

For information, reservations or booklets, etc., write Mr. S. A. Miller, Manager, Macatawa Park.

Ottawa Beach, which is the site of Hotel Ottawa, is immediately opposite Macatawa Park, on the north side of Macatawa Bay. Hotel Ottawa has accommodations for upwards of 600 guests and it is at once one of the largest and best summer resort hotels on the American continent. It is a modern three-story structure. The dining-room and a number of guest rooms are located on the first floor. Over one hundred of the suites are with baths. The dining-room has a capacity of over 800 and the service maintained is of a metropolitan standard.

Over \$30,000 were laid out in 1915 in various improvements, chief of which were the enlarging of the dining-room and the ball-room, the installation of a grill-room, and the addition of a sun parlor with a fireplace, on the office floor, which proves a popular gathering place on the few stormy days that may



Sylvan Beach



Cottage at White Lake, near Whitehall



A Modern Explorer

obtrude in the otherwise usually cheerful summer season. Hotel Ottawa is under new management.

Recreation at Ottawa Beach in its many forms is not neglected here.

Pere Marquette passengers destined to Black Lake resorts must transfer at Holland to the Michigan Railway. Baggage checks should be taken to the interurban station at Holland, where they will be exchanged for checks to destination.

Resorts of Grand Haven

CATERING to the summer tourists and manufacturing are combined in the civic ambitions of Grand Haven—one of the important resort points on the Pere Marquette Railway—situated at the mouth of the Grand River. It is a city of 7,000 inhabitants and the seat of Ottawa County. Grand Haven has long been noted for its delicious smoked whitefish.

The resorts surrounding Grand Haven are Highland Park, on Lake Michigan, which has a fine hotel, 150 cottages, a dancing pavilion, and one of the finest bathing beaches on the Great Lakes.

"Spring Lake, where Nature Smiles for Seven Miles," is a trim little expanse of pure crystal water, which offers good fishing, bathing and boating. Other attractions include a dancing pavilion, a motor-boat club and a golf course.

Grand River, the largest water-course in Michigan, is noted for its bass and pickerel fishing. A street car



Akeley Hall, School for Girls, Grand Haven



Park at St. Joseph



Lake Michigan Beach and Lighthouse, Portage Point

line and a good county road system connect all the points of interest mentioned above. Write the Chamber of Commerce, Grand Haven, Mich., for booklet.

Akeley Hall, a school for girls and young women, is situated on the Lake Michigan shore. Write Miss Mary Helen Yerkes, resident principal, for booklet.

The Spring Lake Yacht Club holds annual regattas, which attract yachtsmen from the four points of the compass.

Muskegon

PROSPEROUS, in all the word implies, is the largest city on the east shore of Lake Michigan—Muskegon. To the north lies Muskegon Lake, which is perhaps the safest harbor of the Great Lakes system. On the north shore of this lake is the park-like suburban city of North Muskegon. Beautiful Lake Harbor is only a short distance from the southern limits of Muskegon Heights, the manufacturing suburb of Muskegon. The summer parks of Lake Michigan and Lake Mona Park are reached by street car lines. Boats connect the Lake Harbor Hotel and other points on the lake with the street car lines and the Pere Marquette trains.

North of Muskegon Lake is Bear Lake, which has several miles of wooded banks. Near-by are also Wolf and Twin Lakes and other pretty bodies of water. The lakes and streams are all well stocked with all varieties of game fish. Varied attractions afford opportunity alike for those who want the dis-



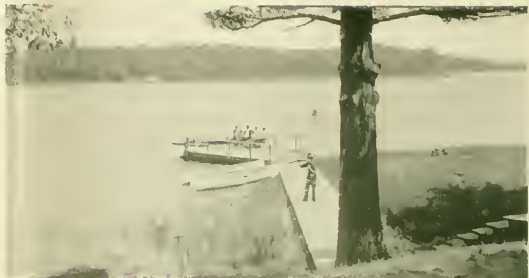
Portage Point Inn, Portage Point



Van Etten Lake Lodge, Northeastern Michigan



Michellinda Pines from Golf Links



Lake Harbor

tractions of hotel life, or for those who prefer to "rough it" in tent or cabin. Thousands visit Muskegon each year.

The splendid gifts of the late Charles H. Hackley, which include among others a public library, an art gallery, a public park embellished with statues to the nation's heroes, make for the renown of the city. The Country Club, with its golf course and its spacious grounds and the Yacht Club add to the attractiveness of Muskegon life. Write the Muskegon Chamber of Commerce's Resort Bureau for booklet.

Lake Harbor

VARIED are the forms of entertainment the visitor finds at Lake Harbor Hotel, for these include fishing, boating, yachting, tennis, golf on an eighteen-hole course, bathing in the surf, etc. Lake Harbor is at once one of the largest and also one of the most attractive watering-places in Michigan. This resort is situated five miles south of Muskegon, on a stretch of land between Lake Harbor and Lake Michigan. All trains of the Pere Marquette Railway stop to leave or to pick up passengers for or from this point. A steam ferry boat to the Lake Harbor Hotel, six miles distant, meets all trains.

This inviting summer hotel is efficiently managed by Mr. Edward R. Swett, who also operates the Occidental Hotel at Muskegon. Lake Harbor, as a resort, is popular with summer tourists from Chicago and the Southern States. Bellevue Hotel is also an inviting place to while away the holidays.

Fremont

FREMONT, named for the great "Pathfinder" John C. Fremont—is situated on the Big Rapids division of the Pere Marquette. Fremont and Pickerel lakes are two inland bodies of water near-by. Hotel St. Byno, which is located on the

shore of the former, is about a mile from town, while Basseta Resort is found at Pickerel Lake, about six miles distant. Black bass, pickerel and other members of the finny tribe, prized by anglers, abound in the lakes and streams.

Newaygo

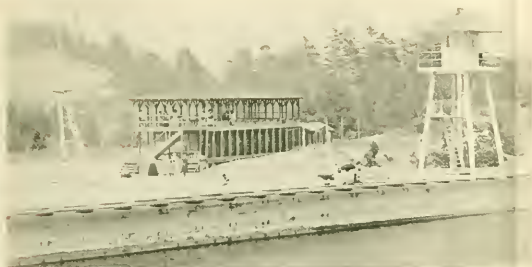
RUGGED, fascinating scenery is one of the distinctions of the Muskegon River, in the vicinity of Newaygo, on the Petoskey division of the Pere Marquette Railway. Newaygo has a population of 1,500 inhabitants. The river, which gives the village the advantage of a splendid water power, abounds in fish.

Two and a half miles east of Newaygo lies the Hess Lake summer resort. This resort is still growing steadily. Its shores are lined with cottages, and good hotel accommodations are available. There is an abundance of perch and bass fishing here.

The Newaygo Lakes resort (Drew Station) lies three miles northwest of Newaygo. There are sixty cottages in this community, chiefly Chicago people. This resort is on a chain of four lakes, which are navigable by launch. A low, uneven shore line, contrasting with the steep hills, gives an unusual effect to the scenery. Other resorts are found near White Cloud.

Whitehall and Montague

THOSE farmhouses and summer resorts which are situated in the White Lake section provide excellent accommodations, and this fact has come to be well known. This district is reached by way of Whitehall station, which is fourteen miles north of Muskegon, on the Pentwater branch of the



Public Bathing Pavilion, Pentwater



Lake Harbor Hotel

Pere Marquette Railway. White Lake is an expansion of the White River. It is six miles long and about a mile wide. Sylvan Beach, which is a strip of high ground which separates Lake Michigan from White Lake, is perhaps the favorite resort of this section. Over fifty cottages and a hotel are comprised in this community. At Whitehall is the Hotel Mears, where fifty guests can find accommodation.

To the south of Sylvan Beach is Michillinda, a cottage resort located on Lake Michigan. The Michillinda Pines and the Fernwood are two splendid hotels which cater to the summer tourist trade.

Three miles south of Whitehall is Duck Lake Resort, on the shore of Duck Lake.

North of Whitehall, and on the north shore of White Lake, is the sister village of Montague. The chief hotels and summer resorts are: The Franklin House, Sylvan Beach Hotel, Murray's Inn, The Catalpas and The Fernwood. Other resorts nearby are Johnson's and Idlewild, also located on White Lake.

Eleven miles north of Whitehall, and half a mile east of Lake Michigan, is Stony Lake, whose waters are deep and always cold. This lake is reached by the Pere Marquette to Shelby, and a drive of six miles west to the lake.

Pentwater

PINE-CLAD hills surround Pentwater, a delightful holiday point on Lake Michigan. Pentwater Lake is a near-by inland expanse of blue waters.

This latter body of water, which is about two miles long, and connected with Lake Michigan by a broad channel, has a heavily wooded shore, where innumerable sites for summer homes and camps are to be found.

Pentwater is a progressive city of 1,500 people, situated in Oceana County, one of the leading farming and fruit counties in the United States. There is an excellent harbor, Government piers, a lighthouse and life-saving station, all of which add to the picturesqueness of the place. Near by are numerous cottage resorts, of which Oceana, Pentwater Beach, Campbell and Garrison Park resorts are the principal ones. Pentwater is the terminus of the Allegan-Pentwater branch of the Pere Marquette Railway.

The civic spirit of Pentwater is exemplified by the Boosters' Club, of which V. P. Weidensee is corresponding secretary. Communications directed to him for literature, etc., will receive prompt attention.

Pere Marquette steamer No. 7 will make trips between Pentwater and Ludington and Manistee twice daily.

Bass Lake Park is situated five miles from Pentwater. This resort community, situated on Bass Lake, has two good hotels which give the best of service at moderate prices.

St. Joseph Mineral Baths

WITH a \$65,000 structure, the Hotel Whitcomb Mineral Baths, which adjoin the hotel itself, are situated on an eminence which commands a view of Lake Michigan. Absolutely sanitary conditions prevail throughout. Special structural glass has been used for the floors, walls and partitions. The system of ventilation is the most perfect known. There are two distinct departments, one for men and one for women.

Hotel Whitcomb has a capacity of accommodating 400 guests. Both institutions are open the year round. Write Mr. E. S. Richardson, Hotel Whitcomb, St. Joseph, Mich. for booklet.



Hotel Ottawa at Ottawa Beach



Hotel Macatawa, Macatawa Park



A Touch of the Colonial at Black Lake



New Wayne Mineral Bath House, Detroit

Benton Harbor Baths

IN the heart of the city of Benton Harbor are the Premier Mineral Baths and hotel. The waters are widely known for the curative powers in cases of rheumatism, etc. Write R. T. Laughery, Manager.

Hotel Saltzman has also a well-equipped bath-house. The baths are under the direction of Dr. W. E. Saltzman, and patients have the advantage of the care of a specialist in rheumatic and nervous diseases.

Eastman Park Springs offer hotel accommodations, and its new mud baths in addition to the usual mineral baths and the waters from the curative springs in the forty-acre park, owned by the Eastman Springs Company.

Detroit Mineral Baths

MINERAL water of wonderful curative properties was discovered about four years ago on the property owned by J. R. Hayes, adjoining the Wayne Hotel, Detroit, Mich. The water is of a sulpho-saline nature and its efficacy is demonstrated in cases of rheumatism, blood and skin diseases, nervous troubles, dyspepsia, gout, neuritis, etc.

Located right on the river front, the Wayne Hotel and Mineral Baths are especially attractive to people who wish to visit Detroit solely for pleasure and recreation or to regain their health through hydro-therapeutic measures.

Mr. J. R. Hayes, proprietor, will gladly mail you an illustrated booklet on request.

MICHIGAN SUMMER RESORTS

RAILROAD STATION AND RESORT	MANAGER	CAPACITY	PER DAY	PER WEEK
ALDEN				
Lone Tree Point	Wm. Amerson	50	\$2.00	\$10.00 to 12.00
Chapelle's Home Resort	Mrs. P. J. Chapelle	45	On application	
Ree Terrace	Mrs. Ella M. King	100	2.50	10.00 to 14.00
Crystal Beach Inn	D. F. Barnes	40	2.00	10.00 to 12.00
Pere Marquette Beach	E. A. Weiss	125	2.50	12.50
Skegemog Point	John R. Eisenberg	100	2.00 up	12.00 up
BAY VIEW				
Bay View House	Geo. W. Childs	150	2.50 to 5.00	14.00 to 35.00
Hotel Howard	Mrs. Jane Martin	300	3.00 to 5.00	14.00 to 25.00
Terrace Inn	W. J. DeVol	100	2.25 to 4.00	15.00 to 25.00
Florence Cottages	Charles A. Lewis	40	2.00	10.00 to 14.00
The Auto Inn	Emma R. Lewis	75	On Application	
BELLAIRE				
Fisherman's Paradise	H. D. Smith	100	2.50	13.50 to 15.00
Lake View Resort	A. T. Schoolcraft	40	2.00	12.00 to 15.00
The Maples	C. C. Green	50	2.00	12.50
Niles's Lodge	Dale J. Miller	25	2.00	10.00 to 14.00
Recreation Point	J. E. Dickinson	25	2.00	10.00 to 12.00
BELLIN				
The Crystal Inn	Mrs. Gertrude Ross	125	2.00 to 2.50	12.00 to 15.00
Platte Lake Hotel	William Thompson	50	1.50	10.00
CENTRAL LAKE				
Fish Lodge	Mrs. C. B. Fisk	50	2.00 to 2.50	12.00 to 15.00
CHARLEVOIX				
The Inn	A. I. Creamer	350	3.00 up	21.00 up
Reveliere Hotel	R. P. Foley	300	3.00 up	21.00 up
Charlevoix Beach	J. S. Baker	400	4.00 to 6.00	25.00 to 42.00
Hotel Hallett	J. J. Hallett	100	3.00 to 3.50	15.00 to 21.00
Linda Vista	J. M. Saunders	50	2.50	12.00 to 15.00
Hotel Charlevoix	Frank T. Blossat	75	2.25 to 2.75	10.00 to 15.00
Hotel Michican	Frank T. Blossat	100	2.50 to 3.50	15.00 up
CHEBOYGAN				
New Cheboygan	New Cheboygan Hot. Co.	150	2.00 to 3.00	10.50 to 12.00
CLARK RAPIDS				
Village Hotel	L. Vallier	100	2.00	7.00 to 9.00
Meigun Point Hotel	Culman & Hahner	60	2.00 up	12.00 up
ELLERIE	Spitzer Bros., Toledo, O.	300	2.00	12.00
Christian Outing Grds	Wm. N. Cray	300	2.00	12.00
ELLSWORTH				
The New Crest	L. Van Skiver	40	2.00	10.00
FRANKFORT				
Cold Brook Inn	Geo. R. Robinson	60	2.00	12.00
Three Pines Inn	W. L. Davis	75	2.00	11.00 to 14.00
HARBOR SPRINGS				
Harbor Point C. L. Hs.	(Via Bay View)	400	4.00 to 8.00	28.00 to 50.00
New Emmet	F. H. Irish	200	2.00 to 2.50	14.00 to 17.50
Forrest Beach Inn	W. H. Cartwright	150	2.50 up	15.00 up
INTERLOCHEN				
The Pennington	A. Leuel	100	2.00 to 3.00	12.00 to 17.50
LELAND				
Birchcroft	Interlochen Resort Ass'n (Via Traverse City)	75	4.00	17.50
Swiss Inn	F. H. Linchinger	75	2.00 up	12.00 up
The Nicholas	John Rury	30	2.00 to 2.50	12.00 to 14.00
Hotel Leelanau	H. S. Anderson	75	2.00	12.00
Riverside Inn	Jacob Schwartz	80	2.00	12.00 to 14.00
LUDINGTON				
Camp Arcadia Resort	I. O. Harsh	100	2.00	9.00 to 12.00
Southern Inn	Fred Coleman	150	2.00	11.00 to 15.00
Stearns Hotel	G. W. Woodcock	200	2.50 to 3.00	14.00 to 20.00
Hotel Epworth	Mrs. Minnie L. Coolidge	200	2.50 to 3.00	14.00 to 20.00
Piney Ridge Resort	John Belle Gallagher	150	2.50 to 3.00	14.00 to 20.00
Grisswold Inn	Florence N. Jones	75	3.00	Special
The Bayou Inn	Florence N. Jones	75	On application	
MACKINAC ISL.				
Graod Hotel	Frank A. Nagel	800	4.00 up	American Plan
Island House	Chas. H. Holden	275	3.00 up	Special
Chippewa Hotel	Geo. T. Arnold	250	1.50 up	European
Windsor Hotel	Mrs. Belle Gallagher	75	2.50 to 3.00	12.00 to 15.00
New Murray	D. Murray	200	2.50 to 3.00	Special
Doud Cottages	Miss Mary Doud	75	2.50 to 3.00	17.50 to 25.00
NORTHPORT				
Cedar Lodge	Orlo A. Ward	100	2.50 to 3.00	12.00 to 15.00
ONEAMA				
Hotel Clovers	W. W. Foltz	60	2.50	12.00 to 15.00
Hotel Leelanau	G. G. Mayfield	150	2.00	10.00 to 14.00
ONEKAMA				
Portage Point Inn	Geo. E. Bond	300	2.50 to 5.00	17.00 to 25.00
PETOSKEY				
Hotel Cushman	W. L. McManus, Jr.	300	2.50 to 4.00	15.00 up
Hotel Perry	N. J. Perry	150	2.25 up	14.00 up
Peters House	C. J. Denmore	100	1.50	10.00 up
Parke House	Wm. O'Neal	75	1.50	8.00 to 8.75
The Grand Hotel	Henry Harrell	100	2.00	8.00 to 12.00
Clark's Tavern	Geo. C. Parks	50	1.25 to 2.00	8.75 to 10.00
New Central Hotel	Geo. C. Parks	50	1.25 to 2.00	8.75 to 10.00
The New Petoskey	Geo. W. Van Ness	75	2.50 to 3.00	12.00 to 15.00
La Crose	Mrs. M. M. Cross	R	50	50 to 1.50
Henderson Farm	Boht. C. Henderson	R	25	75 up
Hotel Franklin	J. E. Bremner	R	25	75 up
PORT HURON				
The Windermere	Windermere Hotel Co.	100	3.00 up	18.00 up
Four Gabies	(Via Traverse City)	100	3.00 up	15.00 to 20.00
PROVE MONT				
Fountain Point House	Albert Mayday	125	2.00	10.00 to 14.00
Lakeview Farm Resort	Martin Warner	125	1.50 to 2.00	8.00 to 12.00

RAILROAD STATION AND RESORT	MANAGER	CAPS CITY	RATE	
			PER DAY	PER WEEK
RAPID CITY				
Torch Lake Conn. Inn	H. J. Blincham	40	\$2.00	\$9.00 to 12.00
ROARING BROOK				
Roaring Brook Inn	Thomas J. Leahy	150	3.00 to 3.50	18.00 to 23.00
Harbor Springs P. O.	(Harbor Springs P. O.)	200	3.00 up	20.00 up
RAMSEY CITY				
Hotel Ramon	W. O. Holden	250	2.50 to 3.00	17.00 to 21.00
White Hotel	I. P. Oberlin	150	2.00 to 2.50	Special
Hotel Columbia	P. H. Gordin	40	1.50	5.00 to 7.00
Hotel Shilton	T. G. Shilton	25	On application	
Traverse Lake Resort	Fred Atkinson	40	1.50	10.00
Edgewood Cottage	Miss Lucy D. Lewis	100	On application	
The Lismore	Miss Lucy D. Lewis	100	On application	
The Timbers	Ethel S. Platt	25	3.00	20.00
WALLOON LAKE				
New Walloon	(Via Petoskey)	125	2.00	10.00 to 14.00
Wagon Toning	H. Gerling	25	2.00	10.00 to 14.00
WEQUETONSING				
Hotel Wequetonsing	Mrs. F. K. & A. Brubaker	300	3.00 to 5.00	17.50 to 23.00
Colonial Hotel	Mrs. C. H. Eaton	175	2.50 up	15.00 to 25.00

* Rapid City P. O. * Elk Rapids * Long Lake, Traverse City
 ** Helena P. O. * Gratiot Beach * Maple City P. O. R Rooms only.

List of additional boarding houses and cottages to rent appears on page thirty-two.

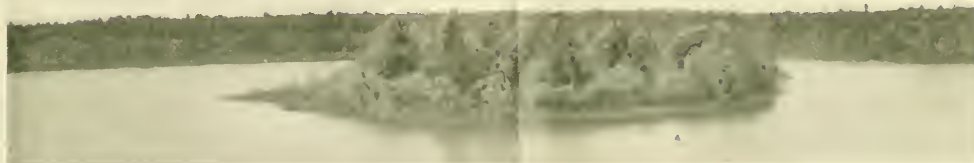
LAKE MICHIGAN EAST COAST RESORTS

RAILROAD STATION AND RESORT	MANAGER	CAPS	RATE	
			PER DAY	PER WEEK
ALLEGAN				
The Lakeside	Dell Lay	25	2.00	10.00
BALDWIN				
Whitenshet Farm	Geo. N. West	12	1.50	10.00
Oak Lodge	Ed. Smith	50	2.00	9.00
Harve Camp	Mrs. H. C. Crosby	50	2.50	14.00
BENJAMIN HARBOR				
Hickory Grove Farm	Mrs. Richard Leedy	25	1.00	6.00
Lakeside Fruit Farm	J. L. Mitchell	25	2.50	15.00
BENTON				
Hotel Benton	E. S. Richardson	225	3.00 to 3.50	17.50 up
Higman Park Inn	R. D. Flood	100	3.50	Special
Eastman Springs Res.	W. H. Woodruff	100	1.75	10.00
Saltzman Mineral	Dr. W. E. Saltzman	125	1.00	European
Bath and Hotel	Hamill & Cupp	100	1.00 up	7.00 to 12.00
Hotel Dwan	C. F. & C. D. Coombs	80	1.50 to 2.00	10.00 to 12.00
Emery's Fruit Farm	A. H. Edgumbe	20	2.50	10.00 to 15.00
The Solingbrook	A. E. Granger	60	2.00	10.00
Granger Farm Resort	Mrs. Wm. Moessner	15	1.50	10.00
Paw Paw View Resort	Mrs. Wm. Moessner	15	1.50	10.00
BERRIEN SPRINGS				
Urick's Summer Home	Mrs. L. Urick	20	1.00	6.00
BREDSVILLE				
Jepp Lake Farm Res	Mrs. N. Cameron	25	1.50	8.00
The Elms	I. O. Zipperman	50	1.50	8.00
BUDGAM				
Forest House	Carl Von Wolfseck	35	1.50	10.00 to 14.00
COLOMA				
Woodward Hotel	O. W. Woodward	200	2.00 up	9.00 to 14.00
Summer Home Resort	J. W. Lee	70	1.50 to 2.00	8.00 to 12.00
North Park Resort	Alfred Korden	75	2.00	9.00 to 10.00
The Ravine	Jennie Mayer	100	2.00	10.00 to 14.00
North Park Cottages	Mrs. O. Hasso	35	2.00	9.00 to 15.00
Jenk's Pleasant View	C. Jenks	75	2.00	10.00 to 12.00
May-Bell Hotel	Mrs. J. A. Fleming	40	1.50 to 2.00	9.00 to 12.00
The Colonial	Arthur Driver	75	2.00	8.00 to 12.00
The Florence	F. Hennessy	100	1.50	7.00 to 9.00
Rattray's Orch. Home	Mrs. R. Rattray	50	2.00	10.00 to 12.00
Hotel London Zimmer	Mrs. London Zimmer	50	1.50	8.00
Leoust Beach	C. L. Newton	40	1.50 to 2.00	8.00 to 10.00
The Douglas View Res.	Dr. P. E. Douglas	75	2.00	10.00 up
Hyde Park Cottages	Sidney Schram	50	1.50	9.00
Strongs Farm House	George Strong	40	1.50 to 2.00	8.00 to 12.00
Genoar's Resort	Mrs. C. J. Genoar	40	1.50 to 2.00	9.00 to 10.00
The Marlboro	Miss Dagmar E. Due	20	1.50 to 2.00	8.00 to 12.00
Adolphus Beach	W. A. Peterson	80	1.50	9.00 to 10.00
COVERT				
Sturtevant Hotel	A. C. Quickst	125	1.50 to 2.00	8.00 to 10.00
DOUGLAS				
Beachmont Resort	W. C. McVea	60	2.00	12.00 to 14.00
EAST SAUGATUCK				
Oak Grove	Gebhardt J. Johnson	25	1.50	8.00
FRANCON				
Rassetta Resort	Charles Cattanach	25	1.50	8.00
Hotel St. Hyvo.	Thos. Mullins	30	1.50	9.00
GLEN				
Willow Brook Fruit Fr	A. H. Stevens	30	1.50	8.00
GRAND HAVEN				
Highland Park Hotel	Robinson Farm Resort	100	2.50 to 3.00	20.00 to 35.00
Robinson Farm Resort	Mrs. H. Weber	30	2.00	10.00
Gilroy	Geo. Gilroy	150	2.50 to 3.00	Special
Arbutus Bank		50	1.00	14.00

LAKE MICHIGAN EAST COAST RESORTS

RAILROAD STATION AND RESORT	MANAGER	CAPACITY	RATE		RAILROAD STATION AND RESORT	MANAGER	CAPACITY	RATE	
			PER DAY	PER WEEK				PER DAY	PER WEEK
GRAND JUNCTION					SOUTH HAVEN				
North Shore Resort	Landrus Bros.	50	\$2.00	\$10.00	The John	J. Van De Carr	20	\$2.00	\$10.00
Willow Creek Farm	H. Goebel	10	1.25	7.00	Liberty Hall	Mrs. W. Hallack	40	1.50	7.50 to 8.50
North Lake Hotel	A. Reynolds	40	1.50	8.00	Linwood Farm	Agnes S. Shaffer	30	1.50	8.00 to 10.00
Lawrence Hotel	Wm. Samuel Davis	30	1.50	8.00	Lawrence Hotel	Agnes S. Shaffer	30	1.50 to 2.00	8.00 to 10.00
Clark Grove Resort	Emily Goodrich	25	2.00	10.00	Evergreen Hall	Allen I. Chesbro	70	1.50 to 2.50	8.00 to 15.00
Waukegan Hotel	Wm. J. Kneass	50	10.00 to 12.00		Waukegan Hotel	E. J. Davis	100	1.50	8.00 to 15.00
Silver Lake Fruit Farm	Ziegen J. Wind	20	1.00	9.00	The Pine		150	2.50 to 3.00	15.00 to 21.00
Woolley's Resort	F. H. Woolley	40	1.50	8.00	Ashley Heights		40	2.00	10.00 to 12.00
Waukegan Grove Res.	Mrs. H. C. Johnson	30	1.50	8.00	The Retreat		40	2.00	10.00 to 12.00
Lake View Farm	A. L. Dalrymple	25	2.00	8.00	The Retreat		40	2.00	10.00 to 12.00
Silver Lake Hotel	Louis D. Penz	75	2.00	10.00					
HARBERT					SPRING LAKE				
Birchwood Beach	Wells Sizer	100	on appl. caton		Spring Lake Hotel	J. G. Strong	300	2.50 to 3.00	10.00 to 18.00
North Shore Hotel	Mrs. N. A. Stanley	30	1.50	10.00	The Prospect Point		40	2.00	10.00 to 12.00
HARTFORD									
Waukegan Hotel	Mrs. Lucy Kemp & Son	30	1.50	8.00 to 10.00	Goose Bay Resort	Geo. L. Putnam	100	1.50	10.00
Dean's Summer Home	Frank W. Dean	15	1.00	8.00	Lake Grove Hotel	T. M. Johnson	40	1.25	Special
HOLLAND					UPPER				
Waukegan Hotel	John C. Everett	150	2.50 to 5.00	15.00 to 25.00	Dreamland	E. J. Campbell	30	2.50	10.00 up
Beach House	E. Frodin	75	2.00	10.00 to 12.00	Waukegan Hotel	Edward A. Kellogg	30	2.50	10.00 up
Gulick Farm	Wm. J. McAllister	20	1.00	10.00	WALHALLA				
The Lodge	Henry B. Baker	20	2.00	10.00	Wolverine Cabin	Mrs. H. H. Ortel	50	1.50	6.00 to 7.00
LAKE CO.					WATERVILLE				
Oak Lake Hotel	Frederick Engelhard	75	1.50	9.00	Waukegan Hotel	F. F. Gross, Pres.	250	2.00 to 2.50	10.00 to 14.00
Lake Curs Inn	W. Engelhard	120	on appl. caton		Winnetka Hotel	Wm. J. Kneass	75	1.50	7.00 to 10.00
LAKE HARBOR					Waukegan Hotel	F. E. Rowland	150	7.00 to 10.00	
Lake Harbor Hotel	Edward R. Sweet	500	4.00	21.00 up	Waukegan Hotel	Mrs. S. Raynham	150	9.00 to 11.00	
LAKESIDE					Waukegan Hotel	Mrs. S. Raynham	150	9.00 to 11.00	
Chickadee Club	Members Only				Waukegan Hotel	Mrs. S. Raynham	150	9.00 to 11.00	
MACATAWA					Waukegan Hotel	Mrs. S. Raynham	150	9.00 to 11.00	
Hotel Macatawa	Macatawa Resort Co.	350	2.50 to 2.75	14.00 up	Waukegan Hotel	Mrs. S. Raynham	150	9.00 to 11.00	
Grand Hotel	Mrs. J. F. Hurlbut	100	1.00 to 1.50	12.00 to 15.00	Waukegan Hotel	Mrs. S. Raynham	150	9.00 to 11.00	
Bay View Hotel	Mrs. S. A. Leath	90	2.50 to 3.50	10.00 up	Waukegan Hotel	Mrs. S. Raynham	150	9.00 to 11.00	
MILLVILLE					Waukegan Hotel	Mrs. S. Raynham	150	9.00 to 11.00	
Millville Pines	Mrs. John R. Austin	70	2.00 to 2.50	11.00 to 14.00	Waukegan Hotel	Mrs. S. Raynham	150	9.00 to 11.00	
Lakeside Inn	Geo. Mason & Co.	50	2.50	10.00 to 12.00	Waukegan Hotel	Mrs. S. Raynham	150	9.00 to 11.00	
MONTAGUE					Waukegan Hotel	Mrs. S. Raynham	150	9.00 to 11.00	
White Lake Inn	Carver & Hayes	50	2.00	10.00	Waukegan Hotel	Mrs. S. Raynham	150	9.00 to 11.00	
Franklin House	William Peck & Son	100	2.00	12.00 to 14.00	Waukegan Hotel	Mrs. S. Raynham	150	9.00 to 11.00	
Harney House	John Capen	35	1.50 to 2.00	9.00 to 12.00	Waukegan Hotel	Mrs. S. Raynham	150	9.00 to 11.00	
The Terrace	Wm. J. Kneass	50	2.00	10.00 to 12.00	Waukegan Hotel	Mrs. S. Raynham	150	9.00 to 11.00	
Maplehurst	Mrs. A. Webb	25	2.00	12.00	Waukegan Hotel	Mrs. S. Raynham	150	9.00 to 11.00	
Waukegan Inn	J. Kneass	50	2.00	12.00	Waukegan Hotel	Mrs. S. Raynham	150	9.00 to 11.00	
Murray's Inn	Wm. Murray	25	2.00 to 2.50	12.00 to 16.00	Waukegan Hotel	Mrs. S. Raynham	150	9.00 to 11.00	
Sylvan Beach Hotel	J. F. Whelan	50	1.00 to 1.50	11.00 to 16.00	Waukegan Hotel	Mrs. S. Raynham	150	9.00 to 11.00	
MUSKEGON					Waukegan Hotel	Mrs. S. Raynham	150	9.00 to 11.00	
Hotel Muskegon	Edward R. Sweet	250	1.00 up	Special	Waukegan Hotel	Mrs. S. Raynham	150	9.00 to 11.00	
Pen Bryn Hotel	J. D. Koenig	200	1.00 to 2.50	14.00 up	Waukegan Hotel	Mrs. S. Raynham	150	9.00 to 11.00	
Hotel Bryn Hotel	Mrs. Cora H. Jackson	100	2.50	14.00 up	Waukegan Hotel	Mrs. S. Raynham	150	9.00 to 11.00	
Lake View Hotel	Legg Koenig	80	1.50 to 2.00	10.00 to 12.00	Waukegan Hotel	Mrs. S. Raynham	150	9.00 to 11.00	
Waukegan Hotel	Wm. J. Kneass	50	2.00	10.00 to 12.00	Waukegan Hotel	Mrs. S. Raynham	150	9.00 to 11.00	
Ranzi's Resort	Mrs. H. Mavys	30	1.50	10.00 to 12.00	Waukegan Hotel	Mrs. S. Raynham	150	9.00 to 11.00	
Artville House	J. O. Antislade R. F. D. 1	50	2.00	15.00 to 17.50	Waukegan Hotel	Mrs. S. Raynham	150	9.00 to 11.00	
NEW BUFFALO					Waukegan Hotel	Mrs. S. Raynham	150	9.00 to 11.00	
Hotel New Buffalo	Thomas J. O'Donnell	50	2.00	10.00 to 12.00	Waukegan Hotel	Mrs. S. Raynham	150	9.00 to 11.00	
Veterin' Park	Mac V. Johnston	20	2.00	10.00	Waukegan Hotel	Mrs. S. Raynham	150	9.00 to 11.00	
NEW RICHMOND					Waukegan Hotel	Mrs. S. Raynham	150	9.00 to 11.00	
Eureka Resort	Mrs. Ward Close	20	1.25	7.00	Waukegan Hotel	Mrs. S. Raynham	150	9.00 to 11.00	
New Richmond	Mrs. Charles Dalley	20	1.00	7.00	Waukegan Hotel	Mrs. S. Raynham	150	9.00 to 11.00	
NEW WYGO					Waukegan Hotel	Mrs. S. Raynham	150	9.00 to 11.00	
Parkwood Lodge	Mrs. L. C. Campbell	40	2.00	9.00 to 10.00	Waukegan Hotel	Mrs. S. Raynham	150	9.00 to 11.00	
Riverside Farm	Homer Truesdell & Son	30	1.50	8.75	Waukegan Hotel	Mrs. S. Raynham	150	9.00 to 11.00	
White Birch Hotel	Wm. J. Kneass	20	1.50	9.00	Waukegan Hotel	Mrs. S. Raynham	150	9.00 to 11.00	
OTTAWA BEACH					Waukegan Hotel	Mrs. S. Raynham	150	9.00 to 11.00	
Hotel Ottawa	Thomas J. O'Donnell	600	3.50 up	21.00 up	Waukegan Hotel	Mrs. S. Raynham	150	9.00 to 11.00	
PELWATER					Waukegan Hotel	Mrs. S. Raynham	150	9.00 to 11.00	
Oceana Beach Club	Oceana Beach Association	35	2.25	12.00 to 18.00	Waukegan Hotel	Mrs. S. Raynham	150	9.00 to 11.00	
Verbeek Tavern	Frank S. Verbeek	60	2.00 to 2.50	8.00 to 12.00	Waukegan Hotel	Mrs. S. Raynham	150	9.00 to 11.00	
Bass Lake Hotel	Geo. C. McKee	40	2.00	9.00 to 10.00	Waukegan Hotel	Mrs. S. Raynham	150	9.00 to 11.00	
Waukegan Hotel	Wm. J. Kneass	50	2.00	8.00 to 10.00	Waukegan Hotel	Mrs. S. Raynham	150	9.00 to 11.00	
Glendon	J. J. Hunt	50	2.00	Special	Waukegan Hotel	Mrs. S. Raynham	150	9.00 to 11.00	
The Jackson	Mrs. J. McKerson	50	2.00	Special	Waukegan Hotel	Mrs. S. Raynham	150	9.00 to 11.00	
The Imus	Mrs. E. McDonald	40	2.00	Special	Waukegan Hotel	Mrs. S. Raynham	150	9.00 to 11.00	
PULLMAN					Waukegan Hotel	Mrs. S. Raynham	150	9.00 to 11.00	
Uppertown Lake Hot	Charles Horn	80	1.25 up	7.50	Waukegan Hotel	Mrs. S. Raynham	150	9.00 to 11.00	
RIVERSIDE					Waukegan Hotel	Mrs. S. Raynham	150	9.00 to 11.00	
Pottamatic Park	Joseph J. Barnes	75	1.50	10.00	Waukegan Hotel	Mrs. S. Raynham	150	9.00 to 11.00	
Hotel Calvaryhurst	Pratt's Lake View Park	125	on appl. caton		Waukegan Hotel	Mrs. S. Raynham	150	9.00 to 11.00	
Pratt's Lake View Park	Oscar M. Pratt	100	2.00 to 2.50	10.00 to 12.00	Waukegan Hotel	Mrs. S. Raynham	150	9.00 to 11.00	
ST. JOSEPH					Waukegan Hotel	Mrs. S. Raynham	150	9.00 to 11.00	
Edgewater Club	W. S. Richardson	125	1.00 to 6.00	25.00 to 28.00	Waukegan Hotel	Mrs. S. Raynham	150	9.00 to 11.00	
Lake View Hotel	En. Walker	100	2.00	13.00 to 17.50	Waukegan Hotel	Mrs. S. Raynham	150	9.00 to 11.00	
Hotel May	F. N. Abshalom	30	1.50	7.00	Waukegan Hotel	Mrs. S. Raynham	150	9.00 to 11.00	
ST. LOUIS					Waukegan Hotel	Mrs. S. Raynham	150	9.00 to 11.00	
Blind Creek	T. B. Dates	60	2.00	9.00 to 14.00	Waukegan Hotel	Mrs. S. Raynham	150	9.00 to 11.00	
Rose Cottage	Mrs. W. H. Manning	30	1.50	9.00 to 10.00	Waukegan Hotel	Mrs. S. Raynham	150	9.00 to 11.00	
Hotel Butler	Mrs. W. G. Phelps	150	2.00	15.00 to 17.00	Waukegan Hotel	Mrs. S. Raynham	150	9.00 to 11.00	
Althaus Hotel	Miss E. A. Runk	40	2.00	9.00 to 10.00	Waukegan Hotel	Mrs. S. Raynham	150	9.00 to 11.00	
SAWYER					Waukegan Hotel	Mrs. S. Raynham	150	9.00 to 11.00	
Beaver Beach Assem-	Mrs. B. V. Anderson	90	1.00	7.00	Waukegan Hotel	Mrs. S. Raynham	150	9.00 to 11.00	
bly Association					Waukegan Hotel	Mrs. S. Raynham	150	9.00 to 11.00	
SOUTH HAVEN					Waukegan Hotel	Mrs. S. Raynham	150	9.00 to 11.00	
Williams & Trip	Williams & Trip	150	2.50 to 3.00	15.00	Waukegan Hotel	Mrs. S. Raynham	150	9.00 to 11.00	
Carland Hotel	M. B. Carr & Son	100	2.00	10.00	Waukegan Hotel	Mrs. S. Raynham	150	9.00 to 11.00	
The Dewey	Mrs. Emily H. Snyder	150	3.00	15.00 to 20.00	Waukegan Hotel	Mrs. S. Raynham	150	9.00 to 11.00	
Mrs. Bertha H. Blake	Mrs. Bertha H. Blake	30	1.50	8.00 to 10.00	Waukegan Hotel	Mrs. S. Raynham	150	9.00 to 11.00	
Belvedere Beach	R. E. Husted	75	2.00 to 2.50	8.50 to 10.00	Waukegan Hotel	Mrs. S. Raynham	150	9.00 to 11.00	

FISHING AND HUNTING LODGES IN MICHIGAN



Island Camp Grounds, Budd Lake, Harrison

Manager	Hotel, Lodge, Etc.	Post Office	Varieties of Fish	Varieties of Game
ANTRIM COUNTY				
Mrs. C. B. Fisk	The Lodge	Central Lake	Muskellunge, German brown and rainbow trout	Quail, partridge, ducks, woodcock, rabbits, etc.
Culman & Hahner	Meguzee Point Lodge	Elk Rapids	Muskellunge, bass, trout, pickerel, perch, etc.	Ducks, rabbits, partridge, etc.
J. E. Dickinson	Recreation Point Hotel	Bellaire	Muskellunge, bass, pickerel, perch, etc.	Partridge, rabbits, fox, etc.
David Denney	Denny Lodge	Ellsworth	Muskellunge, bass, pike, etc.	Partridge, ducks, rabbits, etc.
A. T. Schoolcraft	Lakeview Resort	Bellaire	Muskellunge, pickerel, bass, brook trout, etc.	Deer, partridge, fox, rabbits, etc.
H. D. Smith	Fisherman's Paradise	Bellaire	Muskellunge, bass, trout, pickerel, etc.	Partridge, ducks, rabbits, etc.
W. C. Green	The Maples	Bellaire	Muskellunge, bass, trout, pike, etc.	Partridge, rabbits, etc.
Bellaire Rod and Gun Club	A. B. Wooton, Sec'y	Bellaire	Bass, Mackinac trout, pike, etc.	Partridge, quail, ducks, rabbits, etc.
BENZIE COUNTY				
M. L. Lake	Sportsman's Home	Lake Ann	Bass, trout, wall-eyed pike, perch, etc.	Partridge, rabbits, quail and small fur-bearing animals, etc.
Mrs. Mary Tyler		Lake Ann	Speckled trout, black bass, pickerel, small fish, etc.	Partridge, quail, rabbits.
CLARE COUNTY				
J. H. Osterader	Houghton Lake Tavern	Houghton Lake*	Bass, wall-eyed pike, perch, etc.	Partridge, ducks, deer, bear, etc.
Clare County Gun Club		Clare	Brook and rainbow trout	Deer, partridge, rabbits.
C. E. Pettit		Clare	Brook and rainbow trout, etc.	Deer, partridge, rabbits.
CHARLEVOIX COUNTY				
Ralph Davis	Countryside	Phelps	Bass, pike, etc.	Ducks, pheasants, rabbits, etc.
GRAND TRAVERSE COUNTY				
Interlochen Resort Association	The Pennington	Interlochen	Bass, pike, pickerel, etc.	Ducks, partridge, rabbits, etc.
F. H. Vinton		Williamsburg	Bass, trout, pike, etc.	Partridge, rabbits, etc.
KALKASKA COUNTY				
William Watson	Grand View Hotel	Rapid City R. F. D. 1	Speckled trout, bass	Partridge, rabbits, etc.
R. W. Douglas	Manistee Lake Resort	Darrah P. O. 2	Black bass, brook trout, pike, perch, etc.	Deer, rabbits, black bear, etc.
E. F. Sherwood		Kalkaska	Brook trout, bass, pike, etc.	Birds, ducks, rabbits, black bear, etc.
LAKE COUNTY				
W. F. Jones	Farm Home Resort	Peacock	Black bass, pickerel etc.	Partridge, rabbits, deer, bear, small game, etc.
Mrs. Henry Crosby	Harve Camp	Baldwin	Trout, bass, blue gills	Deer, bear, rabbits, etc.
Elmer G. Smith	Oak Lodge	Baldwin	Bass, pike, perch, blue gills	Deer, bear, rabbits, etc.
L. A. Carpenter		Baldwin	Trout and other game fish	Partridge, small game, etc.
Matthew		Baldwin	Rainbow and brook trout	Deer, rabbits, birds, fox.
Fred W. Syers	White Pine Lodge	Peacock	Bass, trout, etc.	Deer, partridge, etc.
Anton Watson		Peacock	Black bass, perch, etc.	Deer, partridge, quail, rabbits
Edward Cassida		Peacock	Bass, perch, snubb, pike	Partridge, deer, rabbits, etc.
William Litter	Log Cabin Resort	Peacock	Black bass, brook trout, pickerel, blue gills, etc.	Squirrel, grouse, ducks, fox, partridge
C. W. Florence	Florence Cottage	Baldwin	Black bass, trout, etc.	Partridge, deer, etc.
G. N. West	Wintersmeet Farm	Baldwin	Black bass, trout, etc.	Partridge, deer, etc.
M. A. Freeman	Lakeside Ridge	Baldwin	Bass, wall-eyed pike, perch, etc.	Partridge, deer, rabbits, etc.
Rouse & Houseman	Little South Camp	Baldwin	Rainbow, brook and German brown trout	Partridge, woodcock, ducks, rabbits, deer fox
G. B. Cronkite	Crescent View	Peacock	Black bass, trout, etc.	Partridge, deer, rabbits, etc.
Walter MacDougall	MacDougall Camp	Baldwin	Brook and rainbow trout	Deer, birds of all kinds, rabbits, etc.
LEELANAU COUNTY				
W. C. Ray	Gleu Ray Hotel	Empire	Bass, trout, pickerel, perch, etc.	Partridge, rabbits, black squirrel, etc.
B. L. Burke	Cedar Springs Lodge	Empire	Bass, brook trout, pickerel, perch, etc.	Partridge, rabbit, fox, etc.
M. M. Ocker	Cold Spring Inn	Empire	Bass, trout, pike, perch, etc.	Partridge, rabbits, ducks, squirrel, etc.
MASON COUNTY				
Ernest Jasper	Emerson Lake Club	Walhalla	Bass, trout, pickerel, etc.	Partridge, quail, ducks, deer, rabbits, etc.
Geo. Brant		Bass, trout, etc.		Partridge, deer, etc.
Fay Parmelee		Scotts Hill, R. F. D. 4	Trout, bass, etc.	Partridge, deer, etc.
Mrs. H. H. Orle	Wolverine Cabin	Walhalla	Trout, bass, etc.	Partridge, deer, etc.
MIDLAND COUNTY				
Russell Beaumish		North Bradley	Bass, pickerel, pike, etc.	Partridge, rabbits, etc.
NEWAYGO COUNTY				
R. O. Bullis		Newaygo	Brook trout, black bass, etc.	Small game, etc.
Wilkinson & Shaddock		Birely	Bass, trout, pickerel, blue gills	Partridge, ducks, rabbits, deer, bear, etc.
C. C. Wilkinson		Birely	Trout, bass, pickerel	Deer and small game
White River Club House		White Cloud	Speckled trout, etc.	Partridge.
Homey Truesdell	Riverside Farm	Newaygo		Partridge, ducks, rabbits.
M. H. Whitmore	Whitmore's Pavilion	Newaygo	Bass, pickerel, pike.	
OCEANA COUNTY				
Shelby Fish and Gun Club		Shelby	Brook and rainbow trout, black bass, pickerel, etc.	Partridge, bear, fox, rabbits, etc.
Robert L. Fuchs	Twain Lake Farm	Irons	Trout, bass, blue-gills, perch	Partridge, woodcock, deer, small birds, etc.

*Via Harrison and Leota †Via Traverse City ‡Via Kalkaska

RÉSUMÉ OF MICHIGAN FISHING AND HUNTING LAWS



A Likely Stream

CAMPING IN MICHIGAN

Baldwin is the mecca of sportsmen. Within easy access are no less than twenty-seven small lakes and trout streams, innumerable camping spots and one of the most delightful waterways that offer attractions for the canoeist—the Pere Marquette River. Baldwin annually entertains a number of Outing Clubs. It is one of the highest spots in western Michigan. The Baldwin Commercial Club, an organization of business men of the community, provides free camping sites on any of the lakes and arranges accommodations for visitors. Write Mr. H. W. Davis, Secretary, Baldwin, Mich.



Pere Marquette River, near Baldwin



Telling About the Big One He Caught

FISH

Non-Residents of State Must Have License

Non-resident license fee, \$3.00, to take all kinds of fish, including brook trout.
Non-resident license fee, \$1.00, to take all kinds of fish, excepting brook trout.

SPECIES	OPEN SEASON	NUMBER, SIZE AND POSSESSION	REGULATIONS
Trout and salmon, all kinds.	May 1st, to September 1st, inclusive	Seven inches in length. Thirty-five in one day Fifty in possession at any one time	With hook and line only. Unlawful to buy or sell at any time or have in possession during closed season.
Black bass—large and small mouth	June 16th to last day of February, inclusive.	Ten inches in length. Ten in possession at any one time.	With hook and line only. Unlawful to buy or sell at any time, or have in possession during closed season.
Wall-eyed pike.	June 16th to last day of February, inclusive.	Ten inches in length. Twenty-five in one day. Twenty-five in possession at any one time.	With hook and line only. Unlawful to buy or sell at any time or have in possession during closed season.
White bass, calico bass and rock bass.	May be caught during any season of the year.	Six inches in length. Twenty-five in one day. Twenty-five in possession at any one time.	With hook and line only. Unlawful to buy or sell at any time.
Blue gills, sunfish, perch and crappies.	May be caught during any season of the year.	Five inches in length. Twenty-five in one day. Twenty-five in possession at any one time.	With hook and line only. Unlawful to buy or sell at any time.
Suckers, mullet, red-sides and grass pike.	May be caught during any season of the year.	Number and size unlimited	With hook and line, also spear and dip net in streams during March and April and spear through the ice January and February, without artificial light.
All other kinds of fish, except brook trout, black bass and wall-eyed pike.	May be caught during any season of the year.	Number and size unlimited.	With hook and line only.
Frogs.	June 1st to October 31st, inclusive.	Number and size unlimited Possession unlawful March 15th to May 31st, inclusive, except for scientific purposes.	Unlawful to spear with artificial light. Lawful to have in possession imported frogs November 1st to March 14th, inclusive.
Clams, mollusks and pearls.	July 1st to March 31st, inclusive.	Size and number unlimited.	Must secure license. Resident fee, \$1.00; non-resident fee, \$3.00.

One day's legal catch of fish may be taken or shipped out of the State by licensed fisherman. Coupon from license must be attached to package.

GAME AND FUR BEARING ANIMALS

Game laws subject to change in August, 1917, as legislature is in session. Write State Game and Fish Commissioner, Lansing, Mich.

Unlawful to Hunt or Trap Without License.

Resident Fee	Non-Resident Fee	Alien Fee
Small game. \$1 00	Small game. \$10 00	Small game. \$10 00
Deer. 1 50	Deer. 25 00	Deer. 25 00

Residents in this State and their minor children exempt from license while hunting on their own enclosed lands upon which they are regularly domiciled.

KIND OF ANIMAL	OPEN SEASON	NUMBER AND POSSESSION	REGULATIONS
Moose, elk and caribou.	Unlawful to kill at any time.		Unlawful to have in possession at any time.
Deer.	November 10th to November 30th, inclusive.	One. Unlawful to have in possession more than thirty days after close of season.	Unlawful to use artificial light or dogs in hunting, or to kill deer in red coat or fawn in spotted coat or while in the water.
Rabbits and hares.	October 1st to March 1st, inclusive.	Unlimited Legally killed may be transported and sold.	Unlawful to use ferrets or other rodents in hunting. Farmers and fruit growers may use ferrets to hunt rabbits on their own lands.
Squirrel (fox, black and gray)	Unlawful to kill until 1920		Unlawful to have in possession at any time

RÉSUMÉ OF MICHIGAN FISHING AND HUNTING LAWS



"Brad" on the Pere Marquette

CANOE TRIPS IN MICHIGAN

One glance at a topographical map of the State of Michigan reveals innumerable chains of lakes and streams that offer short, safe, enjoyable canoe trips. For the more ambitious ones none perhaps can surpass in the variety of scenery and experiences that are offered on such a trip as that which is known as the Intermediate Lakes.

Recently a number of places in northern Michigan have been bidding for the summer tourist who prefers life "under canvas" as an outing, consequently free camp sites are provided. Write Pere Marquette Passenger Department representatives for particulars.



Muskellunge Caught near Ellsworth

GAME AND FUR-BEARING ANIMALS—Continued Unlawful to Hunt or Trap Without License

KIND OF ANIMAL	OPEN SEASON	NUMBER AND POSSESSION	REGULATIONS
Beaver.	November 1st, to November 15th, inclusive.	Fifteen under one special license, costing \$10. Additional licenses may be issued at same price.	Unlawful to destroy houses, or dams, or to have in possession without license seal attached.
Otter, fisher, martin, fox, mink, raccoon, and skunk.	November 1st to March 31st, inclusive.	Unlimited.	Unlawful to have in possession during closed season.
Muskrats.	November 1st to April 14th, inclusive.	Unlimited.	Unlawful to destroy houses or set trap within six feet of same. Unlawful to use firearms in killing.
Wolf, lynx and wild-cat.	May be killed at any time.	Unlimited. Bounty on wolf, over six months old, \$25; under six, \$10. Bounty on lynx, \$5.00. Bounty on wildcat, \$3.00.	Bounty paid by county clerks on presentation of scalp.
Bears and other animals not protected by laws of this State.	May be killed at any time.		

Unlawful for residents to ship out of the State game animals or any part thereof.

Non-resident deer hunters may ship one deer or part thereof out of State when properly tagged.

GAME BIRDS

All Persons Must Secure License to Hunt

Resident Fee, \$1.00

Non-Resident Fee, \$10

Alien Resident Fee, \$10

Residents of this State and their minor children exempt from license fee while hunting on their own enclosed lands upon which they are regularly domiciled.

KIND OF BIRDS	OPEN SEASON	BAG LIMITS	REGULATIONS
Mongolian or English pheasants, quail, black fowl, capercaillie, hazel grouse, spruce hens, or Canada grouse, prairie chicken, wild turkey, killdeer, wading, shore and meadow birds.	Unlawful to kill before 1920.		Unlawful to have in possession at any time.
Homing pigeons and mourning doves.	Unlawful to kill at any time.		Unlawful to have in possession at any time.
Partridge (ruffed grouse).	October 1st to November 30th, inclusive.	Six in one day. Fifteen in possession at any one time. Twenty-five in one season.	Unlawful to have in possession more than thirty days after season closes.
Geese, brant and ducks (except woodduck).	September 15th to December 31st, inclusive. Woodduck, unlawful to kill until 1918.	Twenty-five in all in one day. Fifty in one calendar week.	Unlawful to have in possession more than thirty days after season closes.
Woodcock.	October 1st to November 30th, inclusive.	Six in one day. Twenty in possession at any one time. Twenty-five in one season.	Unlawful to have in possession more than thirty days after season closes.
Wilson or jack-snipe, black-breasted and golden plover and yellow legs.	September 15th to December 31st, inclusive. Other shore birds protected until 1920.	Ten in one day. Twenty in possession at any one time. Twenty-five in one season.	Unlawful to have in possession more than thirty days after season closes.
*Rails, coots and gallinules.	September 15th to December 31st, inclusive.		Unlawful to have in possession more than thirty days after season closes.
Blue heron, shell-drake, terns and mergansers.	May be killed at any time by securing permit to do so from State Game, Fish and Forest Fire Commissioner.		

One day's legal bag limit may be carried out of the State by non-resident licensed hunter as open hand baggage without cover in such manner as to be easily inspected.

*Federal law on rails, coots and gallinules, open season September 16th to November 30th, inclusive.

Condensed Through Time of Connecting Lines

Chicago Great Western				T. & P. I. & G. N., St. L., I. M. & S., Missouri Pacific System							
AM	PM			PM	AM	PM	AM				
* 3 50 Lv		Omaha	Ar	* 9 00	* 7 15	6 15 Lv	San Antonio	Ar	8 05	7 00	6 00
7 20	9 00	Des Moines	12 10	7 20	9 20		Austin	Ar	5 35	4 15	3 00
9 30	10 35	Marshalltown	10 00	4 50	6 50		Galveston		8 25	6 55	5 40
3 05	5 00	Dubuque	4 14	11 35	1 31		Fort Worth		1 30	8 45	8 50
9 00	7 50 Ar	Chicago	Lv	* 11 30	* 6 30	8 00	Dallas		12 35	7 15	7 20
PM	AM			PM	AM		Hot Springs				9 35
8 35	* 1 20 Lv	Chicago and Northwestern					Little Rock		7 25	3 15	7 25
4 35	8 25	Omaha	Ar	11 59	7 20		St. Louis	Lv	* 6 25	* 4 45	* 1 05
7 00	10 20	Cedar Rapids	4 15	11 45							
11 00	2 00 Ar	Clinton	2 15	9 45							
PM	PM	Chicago	Lv	* 10 30	* 6 05						
PM	AM			PM	AM						
* 7 50	* 6 05	* 7 10 Lv	C. M. & St. P.	Ar	3 25	12 15	11 05				
8 50	9 10	10 35	Omaha	10 35	1 25	7 50					
8 50	7 45	* 9 05 Ar	Des Moines	Lv	* 10 30	* 10 05	6 58				
* 9 05	* 5 15		Chicago	Ar	8 17	6 25					
5 17	11 40		Kansas City	Ar	2 10	10 30					
7 35	8 20 Ar		Ottumwa	Ar	10 12	3 55					
PM	AM		Chicago	Lv	* 6 00	* 10 30					
PM	AM			PM	AM						
* 7 05	* 3 45	* 6 30 Lv	Chicago, Burlington & Quincy	Ar	12 01	8 00					
9 00	7 00	09 Ar	Omaha	Lv	* 10 05	* 6 15					
* 7 30	* 6 20 Lv		Chicago	Ar	8 00	4 00					
5 45	4 28		Kansas City	Ar	9 27	6 19					
8 15	6 50		Leavenworth	Ar	7 20	3 15					
10 00	1 16		St. Joseph	Ar	12 55	7 35					
12 30	3 55		Quincy	Ar	10 12	3 55					
6 50	8 00 Ar		Galesburg	Ar	10 12	3 55					
PM	AM		Chicago	Lv	* 6 10	* 10 30					
PM	AM			PM	AM						
* 1 00		Lv	Chicago, Rock Island & Pacific	Ar	3 55						
3 10			Hot Springs	Ar	13 30						
10 45			Little Rock	Lv	* 6 35	2 40					
* 3 15	* 8 50 Lv		Chicago	Ar	12 20	1 45					
5 55	11 00		Topeka	Ar	8 50	11 20					
2 55	9 00		Kansas City	Ar	10 15	1 35					
12 45	8 00		Rock Island	Ar	9 55	1 40					
* 8 30	1 45 Ar		Peoria	Ar	11 05	8 15					
* 6 08	* 2 00 Lv		Chicago	Lv	* 6 00	* 9 00					
10 20	6 20		Omaha	Ar	11 05	8 15					
8 30	4 40 Ar		Des Moines	Ar	6 42	3 40					
PM	AM		Chicago	Lv	* 10 00	* 6 00					
PM	AM			PM	AM						
* 7 45	* 6 00 Lv		Sante Fe Lines	Ar	9 25	10 15					
9 30	8 15		Galveston	Ar	7 30	7 50					
8 30	8 25		Houston	Ar	7 55	7 50					
10 30	11 05		Fort Worth	Ar	7 55	5 20					
4 35	4 55		Wichita	Ar	11 59	11 10					
7 00	7 00		Topeka	Ar	10 00	9 10					
10 07	4 03		Kansas City	Ar	2 05	11 05					
9 00	9 15 Ar		Galesburg	Ar	* 9 50	* 6 00					
PM	AM			PM	AM						
* 10 45	* 11 55 Lv		Kansas City Southern	Ar	5 45	7 00					
12 01	7 55		Beaumont	Ar	10 10	10 35					
3 40	12 05		Shreveport	Ar	5 25	4 30					
8 00	5 00 Ar		Pittsburg	Ar	* 5 00	* 11 35					
PM	AM			PM	AM						
* 8 10	* 7 05 Lv		St. Louis Southwestern	Ar	7 50	8 50					
8 00	7 40		Fort Worth	Ar	7 25	8 45					
6 00	5 30		Shreveport	Ar	10 55						
7 00	6 55		Texarkana	Ar	8 55	9 50					
7 11	7 00 Ar		St. Louis	Lv	* 9 50	* 1 16					
PM	AM			PM	AM						
* 8 15	* 4 45 Lv		Mobile & Ohio	Ar	9 40	9 05					
9 10	7 45		New Orleans	Ar	8 20	7 45					
7 55	6 21 Ar		Mobile	Lv	* 8 34	* 8 40					
PM	AM			PM	AM						
			St. Louis	Lv	* 8 34	* 8 40					

* Daily. † Daily except Sunday. Time between midnight and noon is shown in light figures, between noon and midnight in black face figures.

The above schedules are approximate only. Ask Your Local Agent for schedules to St. Louis and Chicago. See schedule of The Resort Special from Chicago to the Northern Michigan Resorts, pages thirty-seven and thirty-eight.

Approximate Schedules of the Resort Special

AND OTHER TRAINS

With Connections from St. Louis, Cincinnati and Other Southern and Western Points

SEASON OF 1917—EFFECTIVE JUNE 18th

No. 1	No. 9	No. 5	No. 3	STATIONS	No. 4	No. 6	No. 8	No. 10	
PM	AM	PM	PM	Via Chicago & Alton	AM	AM	PM	PM	
*12 05	9 00	*11 57	*9 00	St. Louis	Ar	7 01	7 49	6 00	6 00
2 45	11 45		12 20	Springfield		3 15	4 50	3 00	3 00
4 20	1 20		2 25	Bloomington		1 10		1 25	1 25
5 45	2 45		4 20	Dwight		11 15			
6 35	3 35		5 35	Juliet		10 07			
7 45	4 45	7 45	7 00	Chicago	Lv	*9 00	11 59	*10 15	*10 15
	PM	PM	PM	Via C. & E. I.	AM	AM	PM	PM	
	9 04	*11 59	*9 03	St. Louis	Ar	6 55	7 37	7 49	
	12 06		12 40	Sullivan		2 58		4 36	
	12 40		1 14	Tuscola		2 22		4 03	
* 6 51	2 32		4 02	Watseka		11 40		2 01	2 49
9 15	4 50	7 40	6 55	Chicago	Lv	*9 05	11 59	*11 55	*12 45
	PM	AM	PM	Via Illinois Central	AM	PM	PM	PM	
	8 57		*10 15	St. Louis	Ar	7 48	1 00	5 46	5 46
* 2 50	11 45	5 40	1 25	Springfield		4 10	8 58	5 54	5 54
4 20	12 58	7 00	2 45	Clinton		2 45	7 25	1 48	1 48
8 50	4 37	*12 10	a. 6.50	63rd Street Station, Chicago		10 46		10 17	10 17
9 10	4 37		7 15	Chicago	Lv	*10 30	* 2 10	*10 02	*10 02
PM	AM	PM	PM	Via Wabash	AM	AM	PM	PM	
*12 05	9 01	*11 55	*9 17	St. Louis	Ar	7 05	7 40	7 05	5 55
3 04	12 06	2 55	1 10	Decatur		2 45	4 30	4 35	2 20
7 45	4 53	7 40	7 00	Chicago	Lv	* 9 17	11 55	*12 02	* 9 00
	PM	N'S	AM	Via Pere Marquette	PM	PM	AM	AM	
*11 50	6 30	*12 00	* 7 30	Chicago (Grand Central Sta.)	Ar	5 00	10 30	7 20	8 00
12 15	6 55	12 25	7 55	Chicago, 63rd St. (B. & O. Sta.)		4 30	10 00	6 50	7 25
12 40	7 20	12 50	8 20	South Chicago		4 05	9 35	6 24	6 55
1 40	8 14	1 38	9 14	Miehigau City		3 08	8 35	5 19	5 58
2 46	9 08	2 35	10 08	St. Joseph		2 18	7 33	3 40	5 06
3 05	9 15	2 40	10 16	Benton Harbor		2 12	7 33	3 25	5 00
5 05	10 48	4 20	11 56	Holland		12 42	5 42	1 05	3 08
6 25	11 35	5 00	12 40	Grand Rapids	Lv	*12 00	* 5 00	*11 55	* 2 25
	PM	PM	PM	Via C. H. & D.	N'S	PM	PM	PM	
*12 45		* 9 45	Lv	Cincinnati	Ar	7 45	4 20	4 20	
1 29	10 35			Hamilton		6 50	3 30	3 30	
2 20	11 45			Dayton		5 30	2 32	2 32	
2 52	12 24			Troy		4 47	1 50	1 50	
3 10	12 45			Piqua		4 26	1 30	1 30	
3 24	1 03			Sidney		4 07	1 14	1 14	
4 30	2 18			Lima		3 00	12 10	12 10	
5 31	3 40			Deshler		1 58	11 11	11 11	
6 35	4 40	Ar		Toledo	Lv	12 55	10 10	10 10	
PM	AM	PM	PM	Via Pere Marquette	PM	PM	PM	PM	
* 6 55	*11 30		Lv	Toledo	Ar	6 00	7 20	7 20	
* 7 40	* 1 00	7 00	Lv	Detroit	Ar	4 35	9 35	6 30	6 30
7 35	1 40	7 45		Plymouth		3 55	8 53	5 50	5 50
10 10	3 10	10 00		Lansing		2 25	6 52	4 11	4 11
11 45	4 50	11 55	Ar	Grand Rapids	Lv	*12 45	* 5 10	* 2 25	* 2 25
* 7 10	*11 55	* 6 00	1 25	Grand Rapids	Ar	*11 20	* 4 25	*10 30	* 2 15
12 10	12 39	10 20	5 35	Thompsonville	Lv	6 27	12 10	5 35	10 12
6 35	* 7 55		6 35	Frankfort, via Ann Arbor	Lv		9 50		6 10
* 1 05	4 50	11 20	6 30	Traverse City	Lv	* 5 40	11 20	* 4 30	9 30
PM	AM	PM	PM	Via Traverse City, Leelanau & Manistique Ry.	AM	AM	PM	PM	
* 3 30	* 7 15		Lv	Traverse City	Ar	9 20	* 3 00	7 25	
4 25	8 00			Suttons Bay		9 20	2 20	6 43	
4 55	8 15			Omena		8 55	2 00	6 25	
* 5 05	* 8 25		Ar	Northport	Lv	* 8 45	* 1 50	* 6 15	
	PM	PM	PM	Via Pere Marquette	PM	PM	PM	PM	
* 1 25	5 00		6 50	Traverse City	Ar	11 10	4 25	9 20	
2 18	5 51		7 46	Alden		10 14	3 15	8 30	
2 40	6 12		8 09	Bellaire		9 53	2 51	8 12	
2 55	6 27		8 30	Central Lake		9 37	2 34	7 52	
3 45	7 00		9 12	Charlevoix		9 02	2 00	e 7 10	
4 05			9 30	Bay Shore		8 47	1 44		
4 25	7 50		9 45	Petoskey		8 35	1 30	6 40	
* 4 30	* 8 00	* 9 50	Ar	Bay View	Lv	* 8 25	* 1 20	* 6 35	

* Daily. * Week days. Daily, except Monday. † Daily, except Saturday. a Transfer to Pere Marquette Railroad by street car from Woodlawn (63rd Street) to 63rd Street (B. & O. Station). d Stop to leave passengers from Grand Rapids or beyond. e Stop to take passengers for Grand Rapids or beyond. f Stop on flag to take on or to land passengers.

* Daily. † Week days. Daily, except Monday. ‡ Daily, except Saturday. § Transfer to Pere Marquette Railroad by street car from Woodlawn (63rd Street) to 63rd Street (B. & O. Station). † Stop to leave passengers from Grand Rapids or beyond. ‡ Stop to take passengers from Grand Rapids or beyond. § Stop on flag to take on or to land passengers.

Unrivalled Train Service TO THE Summer Resorts OF

Northern Michigan

"The Resort Special" from Chicago, Toledo and Detroit to Traverse City, Suttons Bay, Omena, Northport, Charlevoix, Petoskey and Bay View will go into commission June 18th.

Chicago—Bay View

This train will carry a Club Car between Chicago and Bay View. In addition, the equipment will comprise modern high-grade Ten-Section-One-Drawing - Room - Two Compartment and Sixteen-Section Sleeping Cars, through Coaches and Baggage Cars.

Chicago—Traverse City—Northport

Twelve-Section - Drawing - Room-Compartment Sleeping Car between Chicago and Traverse City-Suttons Bay - Omena - Northport, via Traverse City, Leelanau & Manistique Railway from Traverse City. New feature—direct auto service between Sutton's Bay and Leland.

(Traverse City passengers may occupy berths until 7.10 a. m.)

Twelve - Section Drawing - Room Sleeping Car between Chicago and Frankfort, northbound, Fridays, commencing June 29th; southbound, Sundays, commencing July 1st. Passengers destined for Frankfort on other days may take sleeper to Thompsonville.

Dining Car, serving meals a la carte, will be attached to this train between Chicago and Benton Harbor.

Buffet service will be provided in Club Car between Traverse City and Bay View.

Toledo—Detroit—Bay View

Twelve-Section - Drawing - Room Sleeping Car between Toledo and Bay View and Detroit and Bay View; also a Twelve-Section-Drawing-Room Sleeping Car between Detroit and Traverse City.

(Passengers may occupy berths until 7.30 a. m. at Traverse City.)

The time given herein is approximate only. Figures should be verified before being accepted as final.

Schedule of Advance Season trains appears on page thirty-eight.

Ask about Tourist Rates of Fare

Through Sleeping Car Routes for the Season of 1917

For this season the train service from the terminals mentioned in *Through Sleeping Car Routes* will be about as was maintained during the 1916 season, including the line operating between Chicago and Traverse City, which will again extend service to **Suttons Bay, Omena and Northport** via Traverse City, Leelanau & Manistique Railway from Traverse City. The time of departure of trains, as given in the schedules appended, is approximate only, and should not be depended upon absolutely. The summer train service will become effective June 18, 1917. Complete and correct schedules of these trains will be sent to any address on request.

Advance Season Special Train Service from St. Louis, Chicago, Toledo and Detroit.

For the accommodation of the large number of passengers who desire to go north in advance of the regular summer season, *special train service* will be operated this year on the following dates:

From St. Louis and Chicago

		Ar Traverse City 4.50 a. m.			
Lv St. Louis 9.00 a. m. (via Chicago & Alton)	FRIDAY, June 1	June 1 June 5 June 8 June 12 June 15	Lv Traverse City	Via	a7.15 a.m.
	TUESDAY, June 5		Ar Suttons Bay	T. C.,	a8.00 a.m.
	FRIDAY, June 8		Ar Omena	L. & M.	a8.15 a.m.
	TUESDAY, June 12		Ar Northport		a8.25 a.m.
Lv Chicago 6.30 p. m. (via Pere Marquette)	FRIDAY, June 15		Ar Charlevoix		7.00 a.m.
			Ar Petoskey		7.50 a.m.
			Ar Bay View		8.00 a.m.

the
following
day

a Service effective June 19th, via Traverse City, Leelanau & Manistique Railway from Traverse City.

Ten-Section-Compartment-Drawing-Room Sleeping Car, St. Louis to Bay View. Ten-Section-One-Drawing-Room-Two-Compartment Sleeping Car, Sixteen-Section Sleeping Car, Club Car, Coaches and Baggage Car, Chicago to Bay View. Twelve-Section-Drawing-Room-Compartment Sleeping Car, Chicago to Traverse City, Suttons Bay, Omena and Northport. New feature—Direct auto service between Suttons Bay and Leland (*Traverse City passengers may occupy berths until 7:10 a. m.*) Twelve-Section-Drawing-Room Sleeping Car between Chicago and Frankfort, northbound, Fridays, commencing June 29th; southbound, Sundays, commencing July 1st. Dining Car, Chicago to Benton Harbor. (*Buffet Service in Club Car between Traverse City and Bay View.*)

Advance season service returning: Leave Bay View June 3, 6, 10, 13, 17.

From Toledo and Detroit

Lv Toledo . . . 6.55 p. m.	FRIDAY, June 15	Ar Traverse City . . 4.50 a. m.	the following day
Lv Detroit . . . 7.40 p. m.		Ar Bay View 8.00 a. m.	

Sleeping Cars, Toledo to Bay View; Detroit to Traverse City and Detroit to Bay View.

Advance season service returning: Leave Bay View June 17. (*Toledo car on June 17 will run via Detroit.*)

AFTER SEASON SERVICE—Following the close of the season (regular service being discontinued September 22nd) Special Service will be given as follows:

Northbound

Lv Chicago 6.30 p. m.	THURSDAY, Sept. 27	Arrive Bay View at 8.00 a. m. the following day
	SATURDAY, Sept. 29	

Southbound

Lv Bay View 6.35 p. m.	Via T. C., L. & M.	SUNDAY, Sept. 23	Ar Chicago 8.00 a.m.
Lv Petoskey 6.40 p. m.		TUESDAY, Sept. 25	St. Louis (via C. & A.) 6.00 p.m.
Lv Charlevoix 7.10 p. m.		FRIDAY, Sept. 28	Toledo/Union Station 7.20 a.m.
Lv Northport 6.15 p. m.		SUNDAY, Sept. 30	Detroit 6.30 a.m.
Lv Omena 6.25 p. m.			
Lv Suttons Bay 6.43 p. m.			
Ar Traverse City 7.25 p. m.			
Lv Traverse City 9.30 p. m.			

Additional information will be gladly given by any of the representatives of the Passenger Department of the Pere Marquette Railway. (See page forty.)

EFFECTIVE JUNE 17th

e Stop to land passengers only.
f Stop to land passengers or, on signal, to take on passengers
g Runs daily, except Saturday; on Sunday leaves 5 00 p. m.
h Stop, Friday only, to land passengers from Chicago

Thirty-Nine



the features that make for the Comfort of the Traveling Public—
Room Sleeping Cars, Club Car, Dining Cars and modern Day Coaches.



INTERIOR OF CLUB CAR

Golf Links Situated On or Reached By Pere Marquette Ry.

LOCATION	NAME OF COURSE OR CLUB	NO. OF HOLES	LENGTH IN YARDS
Bay City	Bay City Country Club	9	3,260
Beaumont Harbor-St. Joseph	Beaumont Country Club	9	3,600
Charlevoix	Charlevoix Golf Association	18	5,812
Conway	Hastings Heights Course	9	3,175
Detroit	Red Run Golf Club	18	6,788
"	Country Club	18	6,615
"	Detroit Golf Club	18	6,482
"	Phoenix Golf Club	9	3,730
Flint	Flint Country Club	9	2,942
Frankfort	Frankfort Golf Club	9	2,905
Grand Haven	Spring Lake Country Club	9	2,960
Grand Rapids	Kent Country Club	18	6,439
"	Richtland Country Club	18	6,450
Harbor Springs	Harbor Point Golf Club	18	4,760
Lake Harbor	Lake Harbor Hotel Golf Club	18	5,262
Lakeside	Lakeside Golf Club	9	2,765
Lansing	Lansing Golf Club	9	3,000
Leland	Leland Country Club	9	2,931
Ludington	Epworth Golf Association	9	2,490
Marquette Island	The Grand Hotel Golf Course	9	3,315
Manistee	Manistee Country Club	9	2,800
Michigan City	Michigan City Country Club	9	3,180
Oden	Oden Golf Club	9	2,160
Ottawa Beach	Ottawa Beach Country Club	9	2,000
Potoskey	Potoskey Golf Club (New)	9	2,500
Pointe aux Barques	Pointe aux Barques Club	9	2,475
Portage Point	Portage Park Golf Club	18	6,186
Saginaw	Saginaw Country Club	18	3,560
South Haven	South Haven Country Club	18	6,400
Toledo	Toledo Country Club	18	6,240
"	Bay View (Public)	18	6,240
"	Ottawa Park (Public)	18	6,240
Traverse City	Traverse City Golf & Country Club	9	3,300
Waukegon	Paw Paw Lake Golf Club	18	5,460
Waukegon	Waukegon Golf Club	18	2,300
Waukegon	Waukegon Golf Club	9	2,300
Waukegon	Waukegon Lake Golf Club	9	2,300

* Under construction

Sleeping Car Lower Berth Rates

Published for information only and subject to change without notice.
Two transportation tickets are required for the exclusive occupancy of a Drawing-Room, and one and one-half tickets for a Compartment.

TO AND FROM	Traverse City	Frankfort	Northport	Alden	Charlevoix Potoskey Bay View
St. Louis	\$3 75	\$3 50	\$4 00	\$4 00	\$4 00
Springfield	3 25	3 00		3 50	3 50
Chicago	2 00	2 00	\$2 50	2 25	2 50
Toledo	2 00			2 00	2 00
Detroit	2 00			2 00	2 00
Lansing	1 75			2 00	2 00
Grand Rapids	1 50	1 50	1 50	1 50	1 50

BASIS FOR OTHER SLEEPING CAR RATES	Rate for Upper berths	Rate for Section berths	Rate for Compartment berths	Rate for Drawing- Room
When lower berth rate is \$1 50	\$1 25	\$2 00	\$3 00	\$4 00
" " " " " 1 75	1 40	2 15	3 15	4 15
" " " " " 2 00	1 60	2 30	3 30	4 30
" " " " " 2 25	1 80	2 45	3 45	4 45
" " " " " 2 50	2 00	2 60	3 60	4 60
" " " " " 2 75	2 20	2 85	3 85	4 85
" " " " " 3 00	2 40	3 00	4 00	5 00
" " " " " 3 25	2 60	3 15	4 15	5 15
" " " " " 3 50	2 80	3 30	4 30	5 30
" " " " " 3 75	3 00	3 45	4 45	5 45
" " " " " 4 00	3 20	3 60	4 60	5 60

For further particulars of the Train Service, Pullman Car Reservations, etc.,
call upon your nearest Pere Marquette Railway Representative.

CHICAGO—City Office, 226 South Canal Street—Phone Canal 5200
General Western Passenger Agent
City Passenger Agent
City Ticket Agent
Traveling Passenger Agent
Traveling Passenger Agent

DETROIT—City Office, 26 Fort Street West—Phones: Main 368 and 2790.
District Passenger Agent
City Ticket Agent
L. E. VAIR

GRAND RAPIDS—City Office, Morton House Block—Either Phone, 1168.
District Passenger Agent
City Passenger and Ticket Agent

SAGINAW—Potter Street Station—Phone No. 336.
F. A. YOUNG, District Passenger Agent

TOLEDO—City Office, 628-9 Ohio Building—Phone Main 3836.
J. K. COOPER, District Passenger Agent

JOHN DUNPHY, A. G. P. A. DETROIT, MICH.

W. E. WOLFENDEN, G. P. A., DETROIT, MICH.

PÈRE
MARQUETTE

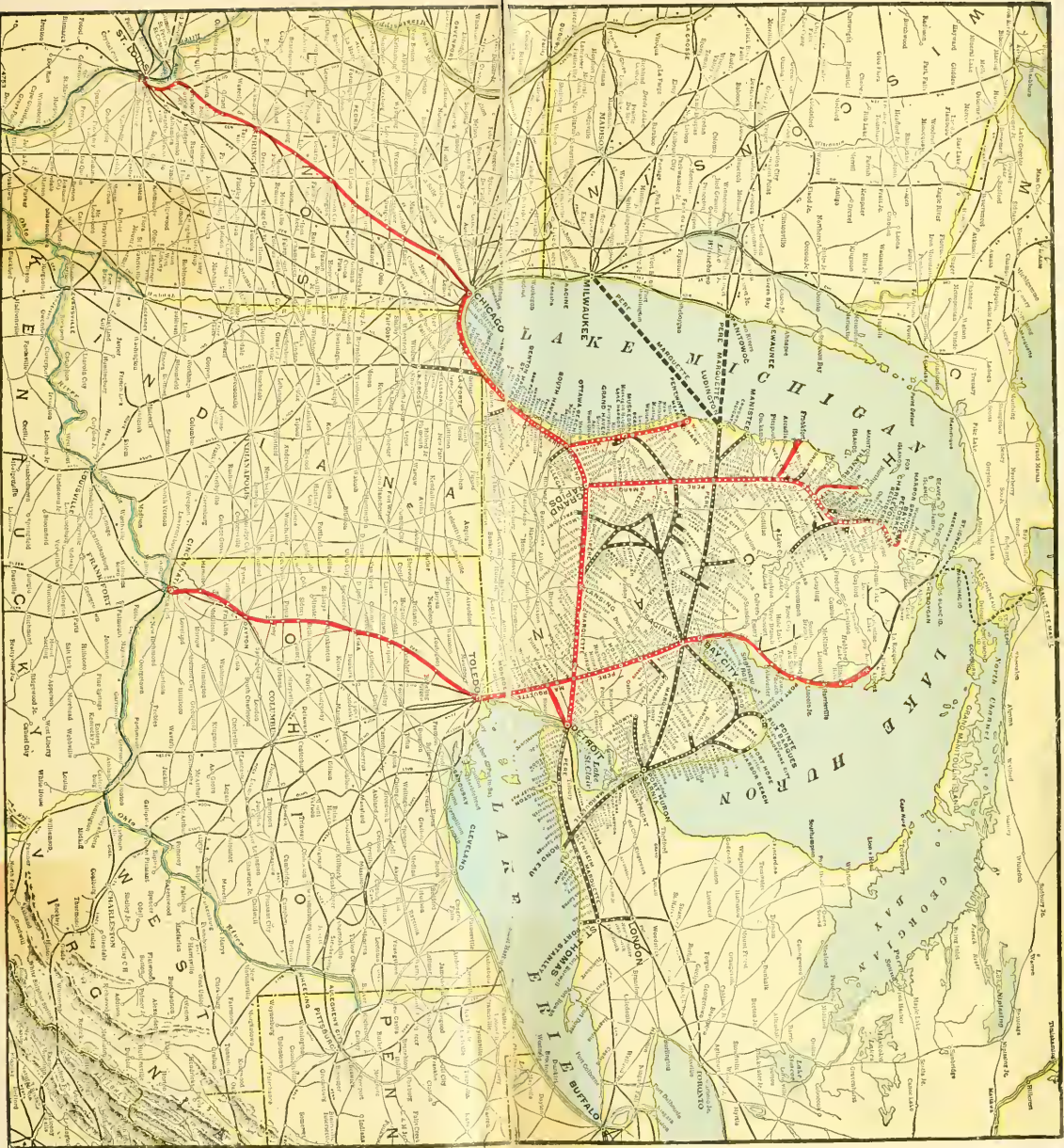


MICHIGAN SUMMER RESORTS

The Apple Blossom Land

“**H**ER mighty lakes, like oceans of liquid silver; her mountains with their bright aerial tints; her valleys teeming with wild fertility; her tremendous cataracts thundering in their solitudes; her boundless plains, waving with spontaneous verdure; her broad deep rivers, rolling in solemn silence to the ocean; her trackless forests, where vegetation puts forth all its magnificence; her skies, kindling with the magic of summer clouds and glorious sunshine;—no, never need an American look beyond his country for the sublime and beautiful in natural scenery.”

—Washington Irving—
“*The Sketch Book*”



MAP OF PERE MARQUETTE RAILWAY AND CONNECTING LINES

SLEEPING CAR LINES INDICATED IN RED



F 566
.P43
Copy 1



MICHIGAN
SUMMER
RESORTS

In Apple Blossom Land

MICHIGAN
SUMMER
RESORTS

In Apple Blossom Land

LIBRARY OF CONGRESS



0 016 099 169 0