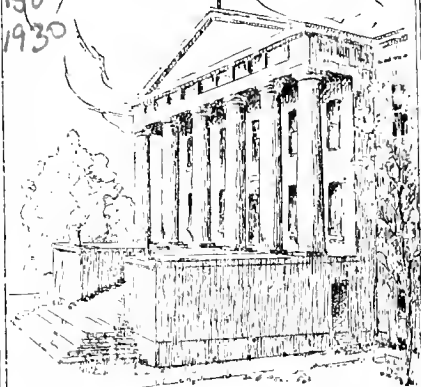


The
MILESTONE
1930

LD
1741
E463
MSO
1930

Kentuckiana
John Wilson Townsend Library



EASTERN TEACHERS COLLEGE

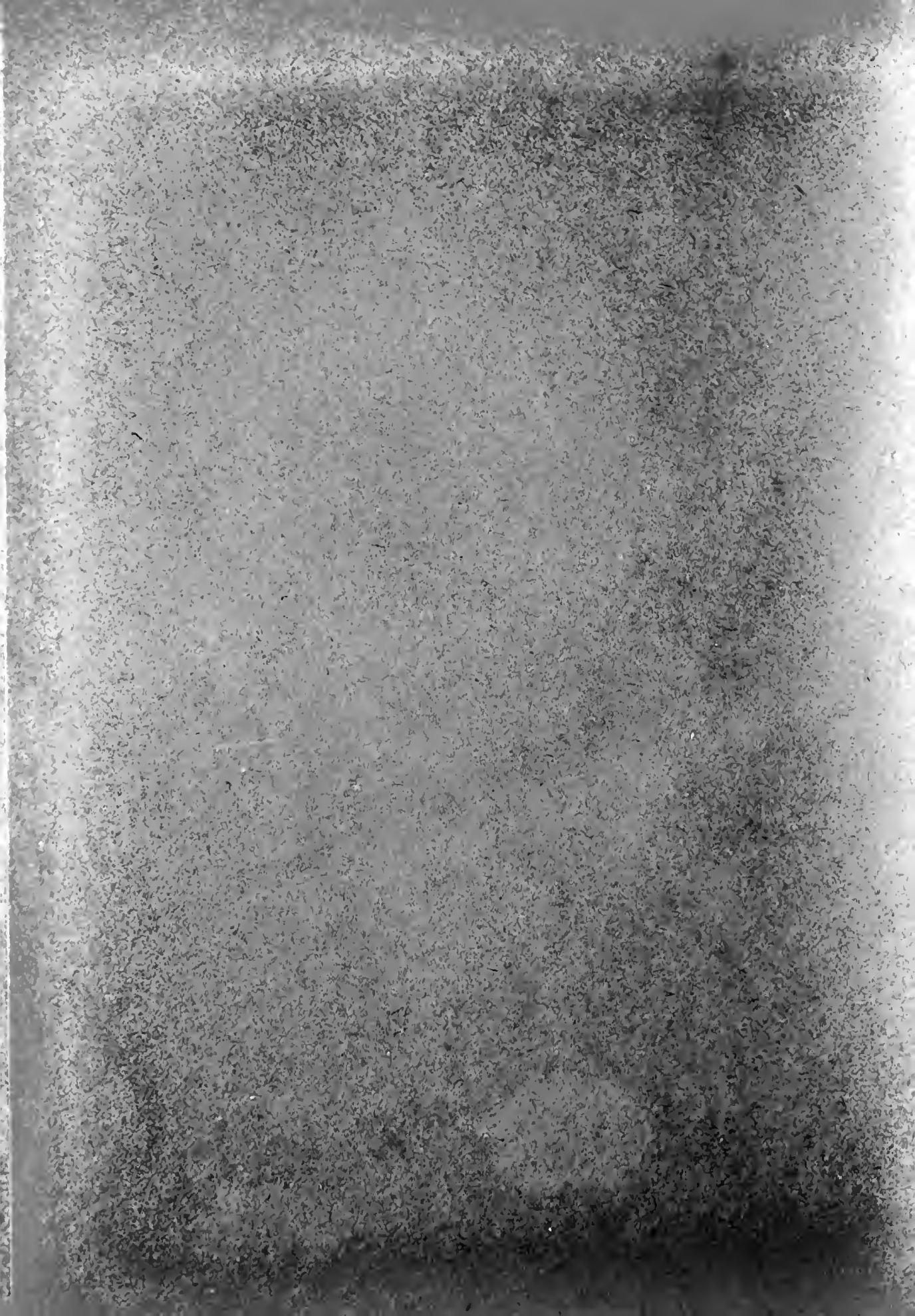
RICHMOND

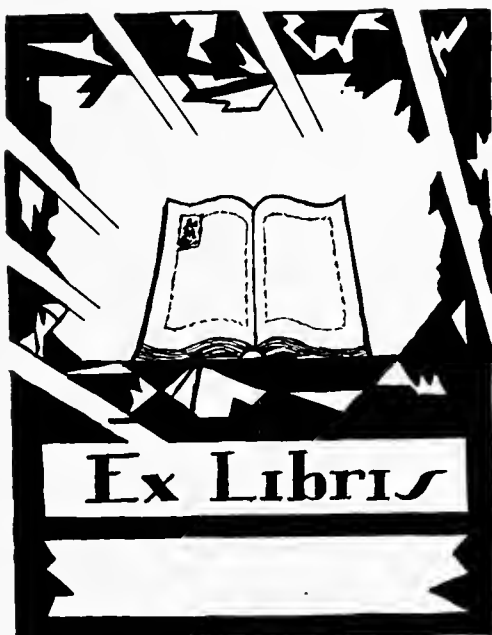
1070-759
512
500

KENTUCKY

S.S.







COPYRIGHT



HAZEL BROADDUS
Editor-in-Chief

FRED DIAL
Business Manager

KENNETH MARSHALL
Art Editor

N. G. DENISTON
Faculty Adviser



1930

The
MILESTONE
1930

Volume Nine

Published by the
SENIOR CLASS
of the
Eastern Kentucky State Teachers College
RICHMOND, KENTUCKY



T-1111
11111
11111
M50

HELLO!





In Memoriam

MARY ESTELLE REID
Died August 23, 1929.

ISAAC H. BOOTHE
Died October 27, 1929.



Dedication

To

MISS PEARL BUCHANAN

whose loyalty and devotion to the school and its activities, and whose kindly sympathy, un-failing enthusiasm, and charming personality have endeared her to the hearts of all the students, with gratitude and affectionate respect we dedicate this volume of the MILESTONE.

MILE STONE



PEARL L. BUCHANAN, A. B., A. M.

1930



CONTENTS

Book I

THE SCHOOL

Book II

ATHLETICS

Book III

ORGANIZATIONS

Book IV

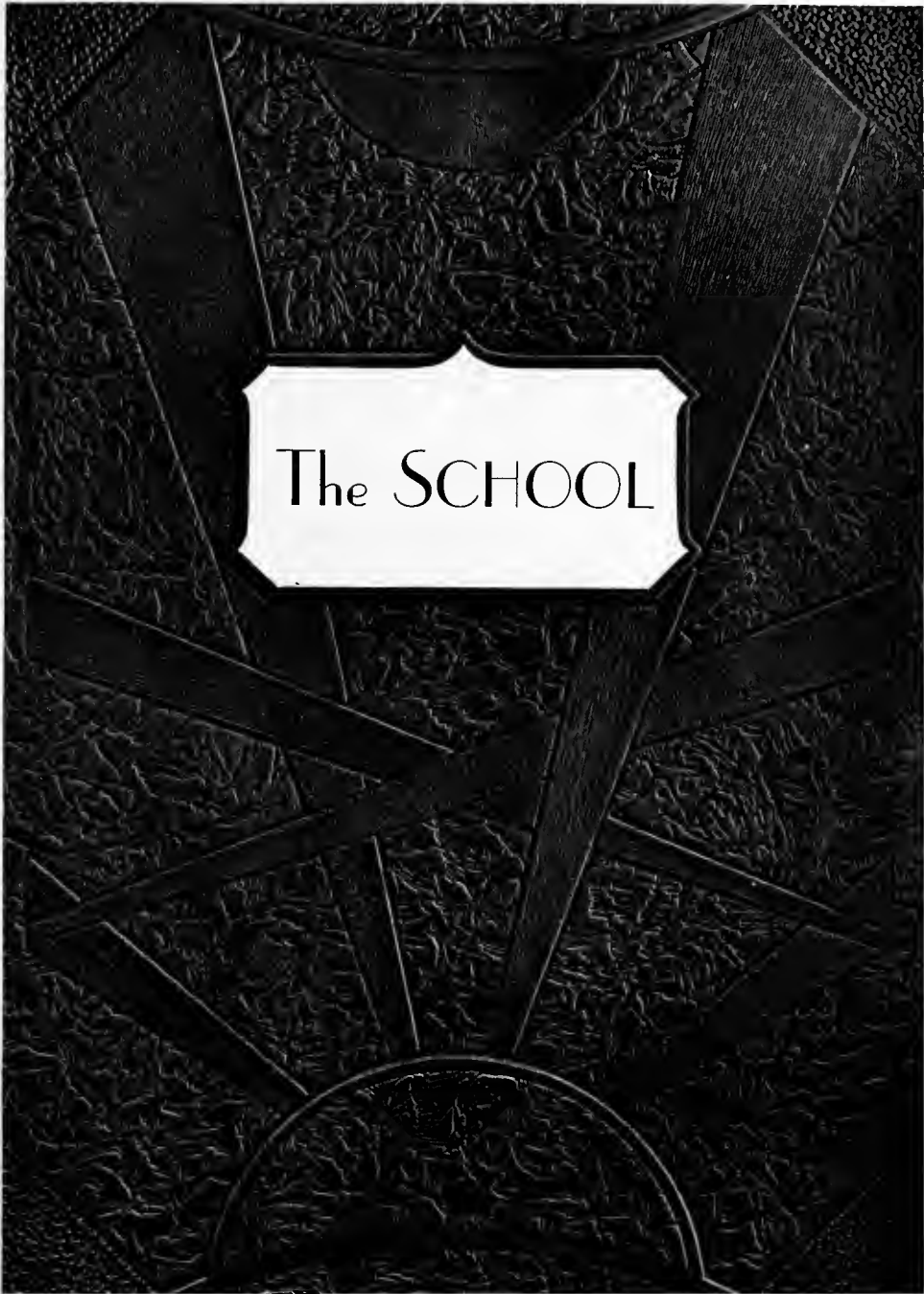
FEATURES

Book V

ADS



Eight



The SCHOOL

WILSON
FIRESTONE



WILSON
FIRESTONE

WESTON



WESTON



MILESTONE



1930

MILESTONE

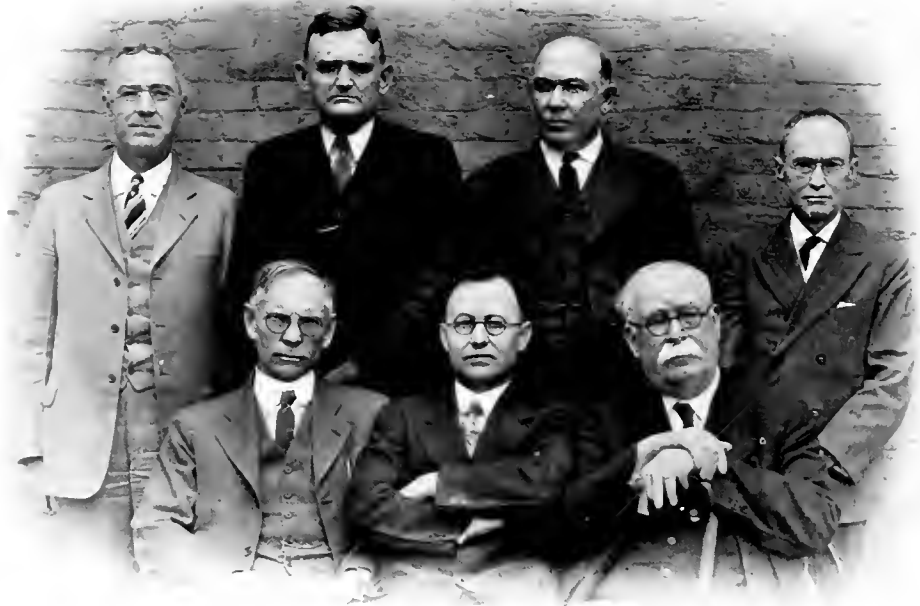


1930

MILESTONE



1930



Board of Regents

Hon. W. C. Bell, Frankfort, Kentucky, *State Superintendent of Public Instruction, Ex-Officio Chairman.*

Hon. J. W. Cammack, Owenton, Kentucky.

Hon. C. F. Weaver, Ashland, Kentucky.

Hon. H. M. Brock, Harlan, Kentucky.

Hon. J. A. Sullivan, Richmond, Kentucky.

Pres. H. L. Donovan, Richmond, Kentucky.

Dean Homer E. Cooper, Richmond, Kentucky.



MILSTONE

FACULTY



DEPT. OF



HERMAN LEE DONOVAN, A. B., A. M., Ph. D.
President

HOMER E. COOPER, A. B., A. M., Ph. D.
Dean of the Faculty

MARIE L. ROBERTS
Graduate Western College for Women,
Oxford, Ohio
Dean of Women

CHARLES A. KEITH, A. B., A. M., Ped. D.
Dean of Men
Social Science

MELVIN E. MATTOX, B. S., A. M.
Registrar
Education

RICHARD A. EDWARDS, A. B., A. M.
Director of Training School

KERNEY M. ADAMS, A. B., A. M.
Director of Extension

SAMUEL WALKER, A. B., A. M.
Principal of the Normal School



JACOB D. FARRIS, A. M., M. D.
College Physician and Teacher of Health

J. T. DORRIS, A. B., A. M., Ph. D.
History and Government

GLADYS PERRY TYNG, B. S.
Education

EDITH G. FORD, B. C. S., A. B.
Commercial Education

WILLIAM C. JONES, B. S., A. M.
Mathematics

MEREDITH J. COX, B. S., A. M.
Chemistry

WILLIAM L. KEENE, B. S., A. M.
English

MAY C. HANSEN, B. S.
Critic, First Grade

ELIZABETH WILSON, B. S., M. A.
Critic, Third Grade





DEAN W. RUMBOLD, B. S., Ph. D.
Biology

MABEL H. POLLITT, A. B., A. M.
Latin

MRS. JANET MURBACH, A. B., A. M.
French

THOMAS E. McDONOUGH, B. S., A. M.
Physical Education

ROY B. CLARK, A. B., A. M., Ph. D.
English

NOLL B. CUFF, B. S., A. M., Ph. D.
Psychology

EDNA ZELHOFER, A. B., A. M.
English

G. M. GUMBERT, B. S.
Agriculture
Freshman Coach

GERTRUDE M. HOOD, A. B., A. M.
Physical Welfare

1930 MILESTONE

C. E. CALDWELL, A. B., A. M.
Mathematics

VIRGINIA F. STORY, B. S.
Critic, Second Grade

JAMES E. VAN PEURSEM, A. B., Mus. D.
Music

ANNA D. GILL, A. B.
Commercial Education, Normal School

H. H. BROCK, A. B.
Correspondence Department

MRS. EMMA YOUNG CASE, A. B.
Principal, Rural Practice School

BROWN E. TELFORD
Piano

BESS MOORE
Assistant Librarian

VIRGIL BURNS, A. B., A. M.
History, Normal School





R. R. RICHARDS, A. B.
Commercial Education

PEARL L. BUCHANAN, A. B., A. M.
English

MARY FLOYD, A. B., A. M.
Acting Librarian

N. G. DENISTON, B. S.
Industrial Arts

NORMA PEARSON, A. B., A. M., Ph. D.
Biology

EVELYN SLATER, B. S.
Home Economics, Normal School

L. G. KENNAMER, A. B., B. S., A. M., Ph. D.
Geography and Geology

MARGARET LINGENFELSER, A. B., A. M.
Critic, First Grade

MARY FRANCES MCKINNEY, B. S., A. M.
Geography

CHARLES T. HUGHES, A. B.
Coach

MARY KING BURRIER, B. S., M. S.
Home Economics

ELIZABETH SIMKINS, A. B., B. S.
Assistant Librarian

ASHBY B. CARTER, B. S.
Agriculture and Sanitary Science

RUTH DIX, B. S., A. M.
Home Economics

LOUISE T. LOWRY, B. S., A. M.
Mathematics

WILLIAM J. MOORE, A. B., A. M.
Economics

HALLIE DAY BACH, A. B., B. S.
Assistant Librarian

WINNIE DAVIS NEELEY, B. S., A. M.
English





FRED A. ENGLE, A. B., A. M.
Education

MAUDE GIBSON
Art

MRS. STANTON B. HUME
Industrial Arts

L. G. WESLEY, A. B.
Correspondence Department

MABLE MADDUX, B. S.
Home Economics, Training School

GERMANIA WINGO, B. S.
Critic, Fourth Grade

D. THOMAS FERRELL, A. B., A. M.
Education

P. M. GRISE, A. B., A. M.
Critic, Junior High

KATIE CARPENTER, A. B.
Principal, Rural Practice School

ARNIM DEAN HUMMELL, B. S., M. S., Ph. D.
Physics

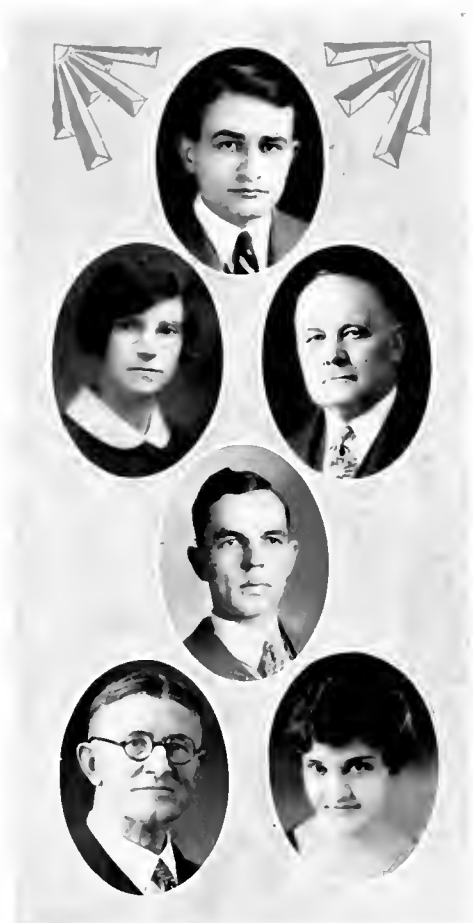
CORA LEE, B. S., A. M.
Critic, Junior High School

G. O. BRYANT, A. B., A. M.
Mathematics, Normal School

SMITH PARK, B. S., M. S.
Mathematics

G. D. SMITH, A. B., B. S., M. A.
Nature Study, Normal

MAURINE MAYE BRONSON, B. Mus.
Voice





MAIMIE COOPER
Secy. to Director of
Extension



HELEN PERRY
Secy. to Bus. Agt.



KATHERINE MORGAN
Secy. to President



MAYE M. WALTZ
Secy. to Dean



LOIS COLLEY
Stenographer
Extension Dept.



G.M. BROCK
Business Agent

ADMINISTRATIVE FORCE



EARL P. MCCONNELL
Bookkeeper



FRED BALLDU
Book Store Clerk



INEZ MCKINLEY
Asst. Bookkeeper



AUGUSTA DAUGHEERTY
Cashier



HOLLIS MATHERLY
Cafeteria Asst.



FRANKIE DEBOE
Stenographer
Business Office



MILDEED QUIZENBERRY
Secy. to Principal
of Normal



ELIZABETH DUNIGAN
Secy. to Registrar



MRS. BESSIE GRIGGS
Information Clerk



MARJORIE COATES
Stenographer
Registrar's Office



EUNICE WINGO
Secy. to Dean of Women



EDYTH MELVAINE
Cafeteria Supervisor



EDNA WHITE
Nurse



MARY SULLIVAN
House Mother of
Sullivan Hall




MRS. CHAS. KEITH
House Mother of
Memorial Hall

WILD STONE

SENIORS





The Senior Class

Time flies and we are old ere we are aware of it. However, we do not feel as old as the word senior implies. We are just at the beginning of our journey through life. Our period of usefulness has only started.

It would take the wisdom of Solomon, with the wit of our own Prowler (who, by the way, is a member of our class), and added to that, the good common sense of Abraham Lincoln to give a fair estimate of what these four years at Eastern have meant to this Senior Class, and of what it has accomplished in the past and may attain in the future. We have had four long happy years in which to emerge from the grub stage to the butterfly. Our wings are fully developed now, and we are ready to fly. We go forward into our chosen field of teaching, holding high the standards of Eastern, ever striving to serve the childhood of the state to the best of our ability. We can never forget our college days and the debt we owe to old Eastern.

*Old Eastern, dear, old Eastern, dear,
We all will praise thy name.
Where'er we be, o'er land and sea,
Thy honor is our aim.*

SENIOR OFFICERS



MASCOT





WILLIE GRIGGS MOORES, A. B.

Wilmore, Kentucky

"Griggs"

Major: English

Sigma Lambda

Canterbury Club

With Great Merit





ESTELLA BURNAM ESTRIDGE, A. B.
Paint Lick, Kentucky

"Sam"

Major: Social Science

Y. W. C. A.

Sigma Tau Pi

Every Bit Energetic





LENA BEGLEY REYNOLDS, A. B.

London, Kentucky

"Nud"

Major: Social Science

Canterbury Club

Y. W. C. A.

Little Bit Restless





THELMA SLUSHER, A. B.
Barbourville, Kentucky

"Thel"

Major: English
Upper Cumberland Club
Canterbury Club
Home Ec. Club
Thoroughly Sweet



MILESTONE



FRED W. DIAL, A. B.
Branchland, West Virginia
"Deal"

Major: Commerce
Associate Editor Progress, '27, '29
Editor Progress, '28, '30
Sigma Tau Pi
Open Forum
Football
Baseball
Bus. Mgr. Milestone
Funny While Dutiful



1930

MILESTONE



JESSIE BELL PLETCHER, A. B.
Sanborn, New York

"Jezzebel"

Major: Social Science

Secretary Senior Class

Band Sponsor

Little Theatre Club

Sigma Lambda

Y. W. C. A.

Progress Staff

Milestone Staff

Just Be Pleasant





IRENE J. ELLIOTT, A. B.
McKinney, Kentucky
"Elliott"

Major: English
Canterbury Club
Y. W. C. A.
Ideal, Just Educator





ALMA REGENSTEIN, B. S.
Richmond, Kentucky
"Alma"
Major: Home Economics
Home Economics Club
Little Theatre Club
Always Ready





FRANCES MASON, A. B.
Richmond, Kentucky
"Frank"

Major: English

Little Theatre Club

Vice President Canterbury Club

Friendly Maiden





COLONEL HAMMONS, A. B.
Paint Lick, Kentucky

"Jeff"

Major: Social Science

Horace Mann Literary Society

Y. M. C. A.

Baseball

Close Heaven





CECIL WASHBURN, A. B.

Paris, Kentucky

"Shorty"

Major: Commerce

President Sigma Tau Pi

Y. M. C. A.

Neon Krypton

Concealed Wit



MILESTONE



MARY CASWELL DANIELS, B. S.

Stanton, Kentucky

"Dill"

Major: Mathematics

Sigma Lambda

Home Economics Club

Little Theatre Club

Mary Cooks Devotedly





JOHN MASTERS, A. B.

Paris Crossing, Indiana

"Curly"

Major: Mathematics

Band

Glee Club

Y. M. C. A.

Just Mischievous





MAUDE S. BOWEN, A. B.

Shade, Kentucky

"Maude"

Major: Commerce

Y. W. C. A.

Home Economics Club

Horace Mann Literary Society

Miss Sunshine Bright





JAMES MURPHY, A. B.

Liberty, Kentucky

"Jimmy"

Major: Education

Rural Life Club

President Casey County Club

Y. M. C. A.

Jolly Mixer





SARA JONES SMITH, A. B.
Waco, Kentucky

"Sara"

Major: English

Canterbury Club

Little Theatre Club

Treasurer, Senior Class

Sara Just Sings





MARGARET MOORE TELFORD, A. B.

Richmond, Kentucky

"Jimmy"

Major: French

Canterbury Club

French Club

Sigma Lambda

Many Marvelous Talents





OSCAR J. GRAHAM, B. S.
Springdale, Kentucky

"Graham"

Major: Chemistry

Little Theatre Club

Football

President Neon Krypton

Oscar Just Grins





JULIA MAE GOODPASTER, A. B.

Owingsville, Kentucky

"Goody"

Major: Social Science

President Y. W. C. A.

Home Economics Club

Horace Mann Literary Society

Just Married! Gosh!





MARY ELIZABETH WASHINGTON, B. S.
Russell, Kentucky
"Martha"
Major: Mathematics
Horace Mann Literary Society
Y. W. C. A.
Associate Editor Milestone
Much Effort Wins





MOSSIE STOCKER, A. B.
Richmond, Kentucky
"Moss"

Major: French
French Club
President Sigma Lambda
Canterbury Club
Mighty Studios





JAMES ALVIN ROE, A. B.
Beechy, Kentucky

"A"

- Major: Social Science
- Horace Mann Literary Society
- Men's Glee Club
- Y. M. C. A.
- Jovial and Reliable





HERMAN HORTON, A. B.
John's Run, Kentucky
"Horton"

Major: Social Science
President Senior Class
Horace Mann Literary Society
Y. M. C. A.
Men's Glee Club
Heaven's His





MABLE DUDLEY, A. B.
Richmond, Kentucky
"Mickey"
Major: English
Canterbury Club
Sigma Lambda
Vice President Senior Class
Orchestra
Masters Difficulties





CLYDE WILSON HUMPHREY, A. B.

Lancaster, Kentucky

"Red"

Major: Commerce

Sigma Tau Pi

Horace Mann Literary Society

Progress Staff

Student Instructor

Can't Work Harder





CHARLES W. HART, B. S.
Bardstown, Kentucky

"Hart"

Major: Agriculture

Football

Sigma Tau Pi

Horace Mann Literary Society

Calmly Wins Honor





CYRUS E. GREENE, B. S.
Beechwood, Kentucky
"Cy"

Major: Physical Science
Vice Pres. Little Theatre Club, '29
Advertising Mgr. Progress, '29
Advertising Mgr. Milestone
Baseball
Capable Energetic Gentleman



MILESTONE



L. C. FARLEY, A. B.
Pikeville, Ky.

"Fuzzy"

Major: Commerce

Y. M. C. A.

Canterbury Club

Men's Glee Club

Progress Staff

Sigma Tau Pi

Loves Collegiate Fun



MILESTONE



E. HAZEL BROADDUS, B. S.
Lancaster, Kentucky

"Haze"

Major: Mathematics

Editor Milestone

Sigma Lambda

Y. W. C. A.

Editor, Hard Boiled





WILLIE CORNETT, B. S.
Larue, Kentucky
"Bill"
Major: Agriculture
Baseball
Horace Mann Literary Society
Sigma Tau Pi
Y. M. C. A.
Wisely Conscientious





JAMES CORNETT, A. B.
Paint Lick, Kentucky
"Jimmie"

Major: Commerce
Little Theatre Club
Sigma Tau Pi
Horace Mann Literary Society
Orchestra
Baseball
Just Clever



MILESTONE



VIRGIL K. TARTER, B. S.
Mintonville, Kentucky

"V. K."

Major: Mathematics

President Freshman Class, '26

Male Quartet

Men's Club

Horace Mann Literary Society

President Y. M. C. A., '28

Very Kind Teacher



1935 STONE



OSCAR PARMAN, A. B.
London, Kentucky
"Oscar"

Major; Social Science
Ordinarily Punctual



1930



GENERAL STACEY, A. B.
Ary, Kentucky

"Stacey"

Major: English

Canterbury Club

Good Student





DAVID MUNDAY, A. B.

Richmond, Kentucky

"Dav"

Major: English

Diligent Minded



MILESTONE



GARLAND STRATTON, B. S.

Mayflower, Kentucky

"Heavy"

Major: Chemistry

Greatly Superior



1930



FLORA TATE, B. S.
Midway, Kentucky
"Red"

Major: Chemistry
Home Economics Club
Few Truer



MILESTONE



CHARLES PLUMMER, A. B.

Paris, Kentucky

"Plum"

Major: English

Y. M. C. A.

Horace Mann Literary Society

Cordially Pleasant





HENRY TRIPLET, B. S.

Corbin, Kentucky

"Trip"

Major: Chemistry

Pres. Junior Class, '29

Bus. Mgr. Little Theatre Club

Captain Football Team

Captain Basketball Team

Baseball, '29

Hurrah! Touchdown!





VINA SILER HELTON, A. B.

Gray, Kentucky

"Vina"

Major: Social Science

Upper Cumberland Club

Very Sweet Habits





MRS. GLADYS MILLER, A. B.

Parkville, Kentucky

"Tucker"

Major: Education

Canterbury Club

Washington Literary Society

Gracious Manner



MILESTONE

JUNIORS



1930

Junior Class History

To Eastern we came
Determined for fame,
How well we remember
Three years last September
Four hundred and seven
Just dropped down from Heaven
But Sophomores said, "No!
They came from below."

The next year we showed
The Freshmen the road
To Sophomore Day
That's intended for play.
Miss Floyd was a peach—
She put in our reach
Ideals and schemes
That still fill our dreams.

Now Juniors we are—
The best class by far,
And if we are few
Just look what we do!
A tea-dance last fall
The first program of all
On the Brock Chapel Stage
And a Prom that's the rage.
A visitor's book
Where people may look
At the names of the great
Who have passed through our gate.
Our officers they
We easily say
Are right up to now.
And work! We'll say how!
With Taulbee to guide
Miss Pollitt to chide
And Durr to collect
And all to inspect.

Shall Eastern prevail?
We say that she shall.
And our part we'll do
To push her on through
To glorious heights
Through shadow and lights.
Thou, Alma Mater, Dear,
The Juniors all revere.



Junior Class Officers

CALLOWAY TAULBEE, President

MISS MABLE POLLITT, Faculty Sponsor

HALDON DURR, Secretary and Treasurer



MILESTONE



ELMER CLAY WHITEHOUSE

Waddy, Kentucky

Y. M. C. A.; Horace Mann; Men's
Glee Club.

CORINNE GIBSON
Pikeville, Kentucky

Sigma Tau Pi.

RILEY REES
Foster, Kentucky

Y. M. C. A.

LILLIE D. OWENS
Maysville, Kentucky

Sigma Lambda, Y. W. C. A.; Horace
Mann.

LUCILE DERRICK

Bellevue, Kentucky

Sigma Lambda; Y. W. C. A.

JESSE T. BAXTER
Richmond, Kentucky

Little Theatre Club; Progress Staff.

SUE MAE CHRISMAN
Danville, Kentucky

Horace Mann; Sigma Tau Pi; Sigma
Lambda; Y. W. C. A.

MAYNARD STAMPER

Waynesburg, Kentucky

Pres. Y. M. C. A.; Men's Glee Club.



MILESTONE



ADA HOOD
Ashland, Kentucky

LILLIAN BLAKEMAN
Lawrenceburg, Kentucky
Home Economics Club.

FOSTER M. HAYES
Waynesburgh, Kentucky
Men's Glee Club.

ALLINGTON CRACE
Elsie, Kentucky
Little Theatre Club; Football.

LANA LAMN
Verona, Kentucky
Y. W. C. A.

DORA RITCHIE
Vest, Kentucky
Y. W. C. A.

WILLIAM MCGIBNEY
Owenton, Kentucky

VIRGIL FRYMAN
Mt. Olivet, Kentucky
Baseball; Basketball.



MILESTONE



CHARLES WORK
Covington, Kentucky

VIVIAN ACKLEY
Saint Olive, Ohio
Sigma Lambda.

HAROLD HIERONYMUS
Richmond, Kentucky
Little Theatre Club; Y. M. C. A.;
Sigma Tau Pi; Baseball.

THELMA CLAY
Ewing, Kentucky
Sigma Tau Pi.

CALLOWAY TAULBEE
Jackson, Kentucky
Pres. Junior Class; Little Theatre
Club.

FANNIE MAE CASTLE
Catlettsburg, Kentucky
Pres. Home Ec. Club.

CLAUDE C. WALDROP
Owenton, Kentucky
Mgr. Basketball Team; Football; Base-
ball.

ALLIE GORDON PARK
Richmond, Kentucky
Sigma Lambda; Canterbury Club.



MILESTONE



KENNETH T. MARSHALL

Corinth, Kentucky

Sigma Tau Pi; Associate Editor Progress; Art Editor Milestone; Y. M. C. A.; Men's Glee Club.

CHARLES PETTIT

Dry Ridge, Kentucky

Y. M. C. A.; Horace Mann; Canterbury Club.

ROXIE BISHOP

Ashland, Kentucky

Canterbury Club; We Love 'Em Club.

FRANCES COX

Lawrenceburg, Kentucky

Y. W. C. A.

SUE GILLIS

Lawrenceburg, Kentucky

Y. W. C. A.

CLARISSA HICKS

Hindman, Kentucky

Home Ec. Club.

HALDON DURR

Harrodsburg, Kentucky

Sigma Tau Pi; Y. M. C. A.; Band; Little Theatre Club; Woman Haters Club.

LILLIAN LEA

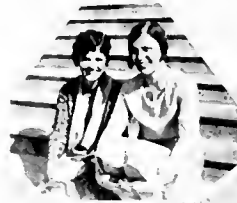
Brookville, Kentucky

Home Ec. Club; Y. W. C. A.



WILSON

JUST US



1930

MILESTONE

SOPHOMORES



1930



Sophomore Class

HERSHEL T. MCKINLEY *President*

MISS MARY FLOYD *Faculty Sponsor*

Only the great are recorded in historical writings—the Sophomore class takes its place with becoming modesty. We thank you! Even in our freshman year, flashes of our now scintillating brilliance pierced through the thick clouds of underclassman obscurity, and we managed to precipitate ourselves into the consciousness of all surrounding seekers of knowledge.

Those of us, who, in the later months of our apprenticeship year, were fortunate enough to make the discovery that only freshmen study and all sensible people bluff it through, returned in the fall of '29 to try our hand at the great game of education. We elected Hershel McKinley, President; Zelda Hale, Vice President; and Emma Lee Fleming, Secretary; then we proceeded to subtly inject into the minds of our fellow thinkers, by means of the year's first student-conducted chapel program, the fact that we were a power to be reckoned with. As is natural, we have been doing very well ever since.

However, in no way have we neglected outside activities for classes. We are endowed with a basketball team composed almost entirely of sophomores, a team of which all Eastern is proud, and which boasts the only Kentucky member on the All-Southern. Give the "little" boys a hand! We are again enumerating the already famous names of Bill Melton, Bill Insko, Zeldy Hale, Ben Adams, Herman Hale, Virgil Fryman, and H. L. Spurlock for the benefit of posterity, and those not in the sophomore class.

We are now nearing the close of our second year of collegiate work. For some, this will mark the close of our scholastic endeavors; others of us shall return. But all of us wish to express the sincerity of our appreciation for the helpful association and kindness extended to us by an understanding faculty and the comradere of a great student body.



MILESTONE

MILDRED THOMPSON
Kings Mountain, Kentucky

MARY D. FORMAN
Mayslick, Kentucky

DORA FREDERICK
Kings Mountain, Kentucky

MARIE GRAVES
Springfield, Kentucky

GREEN HAMBLIN
Brutus, Kentucky

NELL FAIRCHILD
Monticello, Kentucky

LILLIAN GOODPASTER
Owingsville, Kentucky

SALLIE HUFFAKER
Monticello, Kentucky



MILESTONE

MILESTONE



SARA JANE HAMBLIN
Brutus, Kentucky

EUNICE DUNN
Paris, Kentucky



MRS. ELIZABETH GRAHAM
Cherokee, Kentucky

FRED FOLMER
Independence, Kentucky



SUEANNA CHEATHAM
Springfield, Kentucky

MRS. GRACE PATTON
Kerine, Kentucky



LYDIA MAE HOFFMAN
Russell, Kentucky

ESTELLE ILES
California, Kentucky



CORA HINKSTON
Paris, Kentucky



LYDIA KUSTER
Paris, Kentucky

EVA MAE GARRETT
Noland, Kentucky



EDITH DENTON
Somerset, Kentucky

CARLO HENSLEY
Sibert, Kentucky



BONNIE BIRT
Pulaski, Kentucky

ERNESTINE HAGINS
Corbin, Kentucky



GLADYS WASH
Eminence, Kentucky

MILESTONE



MARGARET BROCK
Richmond, Kentucky

GAY NELL BODKIN
Paris, Kentucky

WILLIAM HAND
Dayton, Kentucky

NANCY BURGESS
Louisa, Kentucky

EDITH ALLEY
Louisa, Kentucky

EUNICE SMITH
Canada, Kentucky

ALENE HENDREN
Richmond, Kentucky

ANN CHRISTIE
Brodhead, Kentucky



MILESTONE

GERTRUDE COAKLEY
Hodgenville, Kentucky



GEORGIA BUSH
Waco, Kentucky

LEXIE OLIVE COMBS
Richmond, Kentucky



SADIE TINSLEY
Lawrenceburg, Kentucky

JACK BAYER
Richmond, Kentucky



MRS. WILLIAM CORNETT
Fagertown, Kentucky

PAULINE CRUSE
Winchester, Kentucky



RUBY DAVIS
Barlow, Kentucky

1930

MILESTONE



ESSIE RITCHIE
Vest, Kentucky

MARY EVELYN ALLEN
Somerset, Kentucky



HETTIE PITMAN
Liberty, Kentucky

JULIA PHILIPS
Silver Grove, Kentucky



HARRY COBB
Owenton, Kentucky

HAZEL MEGEE
Harrodsburg, Kentucky



MILDRED STONE
Waco, Kentucky

MILDRED MAYES
Bondville, Kentucky

1930



ROBERTA McDONALD
Pineville, Kentucky



MADGE SMITH
Ida, Kentucky

LUCILE ROWLETTE
Richmond, Kentucky



MARIE HUBBLE
Kirksville, Kentucky

ROMEO BENNETT
Dayton, Kentucky



IDA ROSS
Eriline, Kentucky

MINNIE STEVENSON
Maysville, Kentucky



MARGARET MOBERLEY
Richmond, Kentucky



MILESTONE



SARA LAND
Cynthiana, Kentucky

MARGARET BAKER
Alexandria, Kentucky



MARY FRANCES CHILDERS
Campton, Kentucky

ROBERT B. DAVIDSON
Cynthiana, Kentucky



FLORA MERCER
Monticello, Kentucky

MARGARET HIERONYMUS
Richmond, Kentucky



MARY LOU BRANHAM
Louisa, Kentucky

J. GAY BRADLEY
Yatesville, Kentucky

MILESTONE

BESSIE YANKEY
Lebanon, Kentucky



MINNIE GIBBS
Salvisa, Kentucky

LUCY CURTIS ARBUCKLE
Kirksville, Kentucky



LUCILLE CLARK
Pulaski, Kentucky

H. L. SPURLOCK
Bar Creek, Kentucky



NANCY WALKER GUYN
Paint Lick, Kentucky

GLADYS THOMPSON
Brodhead, Kentucky



HAZEL MAYES
Bondville, Kentucky



LEONA THACKSTON
Dover, Kentucky

RAWDY WHITTAKER
Crawford, Kentucky



JULIA WALKER
Flat Lick, Kentucky

AMANDA COTTONGIM
Cottongim, Kentucky



CURTIS DEMAREE
Bondville, Kentucky

MAE GRIGSBY
Vest, Kentucky



FLORENCE MORE
Middleburg, Kentucky

OTA WARFIELD
Gatliff, Kentucky

LORRAINE CHINN
Wurtland, Kentucky



MARTHA DAVENPORT
Corinth, Kentucky

GILBERT CARTER
Harrodsburg, Kentucky



LESTER MCHARGUE
Pine Hill, Kentucky

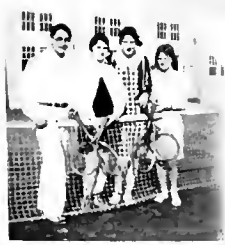
LOUISE TIPTON
Irvine, Kentucky



VIVIAN CORNETT
Daisy, Kentucky

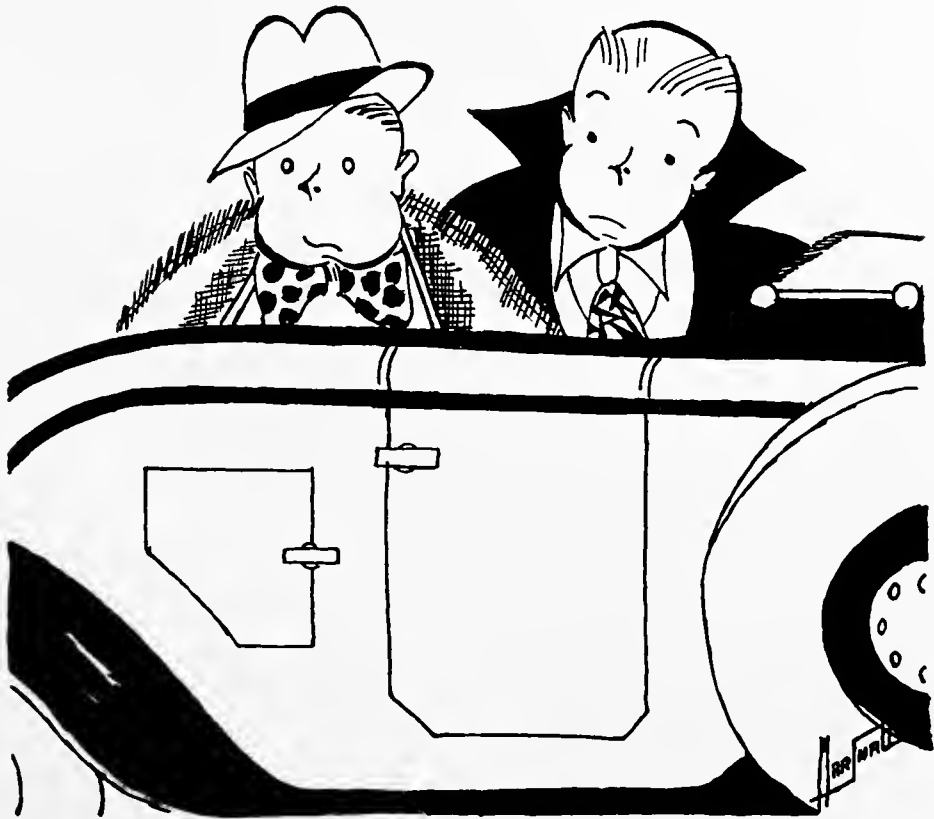


WHOOPEE!




PIILSTONE

FRESHMEN



PIILSTONE



The Freshman Class

And there came forth from the Mountains and Bluegrass Region of Kentucky a multitude,—475 strong. This multitude came to be the group known as Eastern Freshmen, the largest and best class in the history of the institution.

The first semester found these green little freshmen growing (as all green things should), arranging social events, and taking part in all extra-curricular activities for which they were eligible. The upperclassmen were hard pressed to prevent them from constituting more than half the football squad. The Little Theatre Club, Sigma Tau Pi, and many other organizations found that they must have some green rations, so they immediately imbibed several of this group. Even the Woman Haters and the We Love 'Ems had to draft a few of them. One organization chose a freshman as its president. The freshman basketball squad made a splendid record, showing promise of fine material for next year's varsity.

The second semester was a repetition of the first: Freshmen, Freshmen, everywhere, nor any one half bad. So far, so good, but from all indications, the farther the better. Judging from this year's Freshman Class, we'll say that next year's Sophomore Class will be a "wow".



Freshman Officers

CYRIL O. FIELDS *President*
SAM ROUTENBERG *Vice-President*
LILLIAN COX *Secretary*
NOEL LEA *Treasurer*



MILESTONE



WILLIAM RICHARDS
Russell Springs, Kentucky

GARNET ELKINS
Louisa, Kentucky



ANNIE LAURIE FORSYTHE
Paris, Kentucky



DESSIE CUNDIFF
Science Hill, Kentucky

FLORENCE HAMILTON
Richmond, Kentucky



HELEN B. GOODWIN
Maysville, Kentucky



NARAETTA FOWLER
Germantown, Kentucky

ZELMA CORUM
Sonora, Kentucky



BEULAH BLACK
Livingston, Kentucky



LILLIAN HALCOMB
Richmond, Kentucky

JOHN TARTER
Mintonville, Kentucky





ERNEST HAMMONDS
Hardburly, Kentucky

NELLE CARD
Pineville, Kentucky

WILLA MAE WELLS
Stanford, Kentucky

KATHLEEN ALLEN
Liberty, Kentucky

THELMA LITRELL
Owenton, Kentucky

KATHERINE WARREN
Somerset, Kentucky

GEORGIA LEE PARKER
Lynch, Kentucky

ELIZABETH STEWART
Richmond, Kentucky

EVELYN COLYER
Somerset, Kentucky

GERTRUDE CALLAHAN
Ashland, Kentucky

SILAS MINTER
Richmond, Kentucky





NAZARETTA HAYES
Whitesburg, Kentucky

MABLE BLAIR
Whitesburg, Kentucky

OMER HENSLEY
Oneida, Kentucky

BERYL KENNEY
Augusta, Kentucky

PAULINE GOOCH
Lynch, Kentucky

MOLLIE HAYES
Louisa, Kentucky

HAZEL MILLER
Ashland, Kentucky

DORIS DAVIS
Lexington, Kentucky

ELOISE WOMACK
Oldtown, Kentucky

JUNE FORBES
Richmond, Kentucky

VIRGINIA MOODY
Kingston, Kentucky

MILESTONE

GLENDORA HENSON
Maysville, Kentucky

DENVER QUALLS
Benham, Kentucky

BLANCHE WHITTAKER
Richmond, Kentucky

EVADAN SQUIRES
Whitesburg, Kentucky

CELLA HARDESTY
Mt. Eden, Kentucky

BEULAH HAMM
Somerset, Kentucky

VIRGINIA STONE
Shelbyville, Kentucky

EMILY HARRISON
Winchester, Kentucky

MONA DANIELS
London, Kentucky

EDNA TOMES
Yosemite, Kentucky

ARTHUR W. CORNS
Tollesboro, Kentucky





CURTIS HOWARD
Cumberland, Kentucky

MARTHA CULTON
Corbin, Kentucky



EDYTH WHEELDON
Waynesburg, Kentucky



MELCENA TUCKER
Merrimac, Kentucky

ELIZABETH HUMBLE
Covington, Kentucky



MILDRED BAKER
Alexandria, Kentucky



BERTHA HIBBARD
Corbin, Kentucky

HARRIET TURNER
Kirksville, Kentucky



SARAH RAMEY
Carrollton, Kentucky



EDWIN HOLDER
Vanceburg, Kentucky

VIRGINIA HATCHER
Lackey, Kentucky

HENRY LUTES
Berea, Kentucky

IVALEE PARRISH
Kirksville, Kentucky

MARTHA JANE LOCK
Kettle Island, Kentucky

LUCY MITCHELL
Paris, Kentucky

MARY E. SMITH
Berea, Kentucky

BENNETT ROSE
Richmond, Kentucky

HAZEL WESLEY
Yocemite, Kentucky

ANN RUSSELL OATTS
Somerset, Kentucky

GLADYS HINCHEY
Barlow, Kentucky

MARGARET McANINCH
Middleburg, Kentucky

NANCY LYKINS
West Liberty, Kentucky



MILESTONE



ROBERT J. MOBERLEY
Red House, Kentucky

GENEVA RENAKER
Cynthiana, Kentucky

ZYLPHIA PETERS
Marydell, Kentucky

ILA NICKELL
Hutchinson, Kentucky

BILLIE GOVER
Somerset, Kentucky

BILL GARRETT
Pebworth, Kentucky

GLADYS WHITAKER
Middlesboro, Kentucky

PAULINE McDOWELL
Maysville, Kentucky

LILLIAN JENKINS
Corbin, Kentucky

ESTIL LUCAS
Middleburg, Kentucky

FANNIE JASPER
Hague, Kentucky

1930

THE MILESTONES

NORMAL SCHOOL



THE MILESTONES



SHARON WILLIAMS
Georgetown, Kentucky

HAZEL WATSON
Argyle, Kentucky

RALPH D. POWERS
Pamleysville, Kentucky

MARIE STEPHENS
Danville, Kentucky

LLOYD WILSON
Goldbug, Kentucky

CYRIL WILLIAMS
Wayland, Kentucky

GLENN FAULKNER
Williamsburg, Kentucky

FANNIE HAMMACK
Paint Lick, Kentucky

GEORGE CARRELL
Louisville, Kentucky

OSCAR ALLEY
Louisa, Kentucky

SULA GILREATH
Whitley City, Kentucky

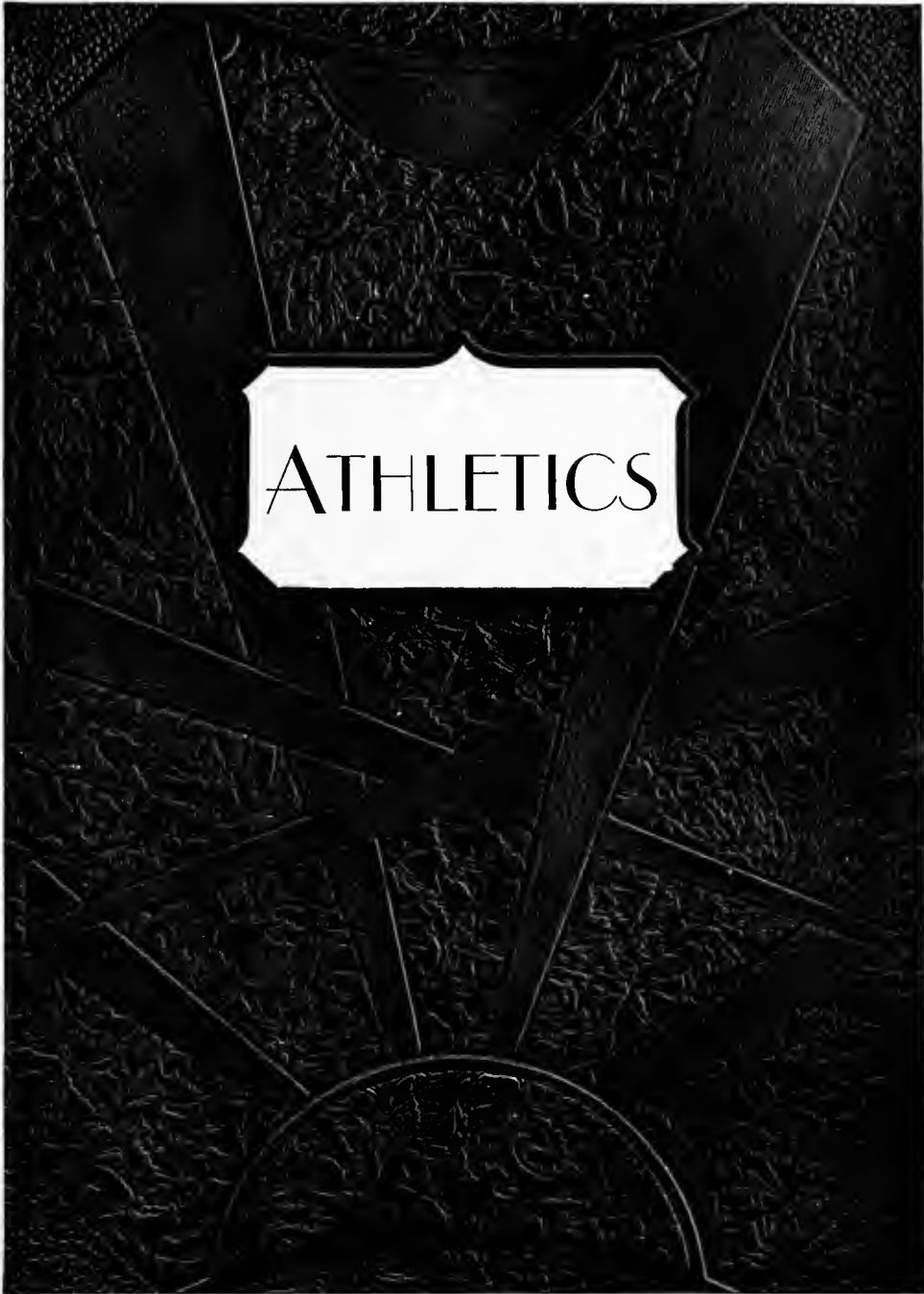
OSCAR DAVIDSON
Ingram, Kentucky

LENA REDMON
Nancy, Kentucky

ARAH DENISMORE
Woodbine, Kentucky

DELLA BAILEY
Pineville, Kentucky





ATHLETICS

Football

The fall of twenty-nine was Eastern's second year to play football as a member of the Southern Intercollegiate Athletic Association and the Maroons were still very much handicapped from a shortage of material from which to build a team. It was necessary to ask the officials of the Association for the privilege of using freshmen with the varsity men. This request was granted.

This was the first year for "Turkey" Hughes to serve as head coach at Eastern and with the help of Frank Phipps he was able to turn out a fighting team altho they were not able to win but one of the eight games scheduled.

The season opened by meeting four non-association teams with Union College coming here for the opening game. Union was able to take the game by a comfortable margin. The next week found the Maroons facing the Sue Bennett team at London. They were able to take the Sue Bennett boys measure. Then came the long trip to Murray to meet the Teachers of Murray State Teachers College and then back home to meet Morehead and the last non-conference foe.

Then the Association games opened with Transylvania, Georgetown, Wesleyan, University of Louisville and Western all coming in a row. Probably the best game in this group was against Georgetown. The Maroons were able to outplay the Tigers from start to finish and only for a break or two that came partly because of the inexperienced men on the field the game would have ended in a scoreless tie.

The Turkey Day game was played at Bowling Green with the Hilltoppers offering the opposition. The Western lads were able to handle the Maroons at will and piled up a comfortable margin.

The outstanding player for the entire season was Canfield, plunging full-back. Hart, Triplett, Combs, Johnson and Qualls, the last three being freshmen, played a strong game in the line. Rice was able to play during the later half of the season and added much strength to the backfield.



Football Squad

SEASON'S RESULTS

Eastern	2	Union	19
Eastern	8	Sue Bennett	14
Eastern	0	Murray	46
Eastern	6	Morehead	13
Eastern	0	Transy	36
Eastern	0	Georgetown	38
Eastern	6	U. of L.	19
Eastern	0	Wesleyan	26
Eastern	0	Western	35



Basketball

The Maroon's basketball season was much more of a success than the football season. The other seven Association teams of the state were met twice each and the Maroons were returned winners in ten of the fourteen encounters.

Wesleyan, Western and Georgetown were met and defeated twice each during the regular playing season. Centre, Berea, University of Louisville and Transylvania were able to take the Maroons' measure once each. Of the four games lost during the regular playing season and the two lost in tournaments not one was lost by more than four points. In fact only one was lost by four points, one by three, two by two and two by one point each.

Transylvania was met in the first game of the State Tournament at Winchester and disposed of without a lot of trouble. But Wesleyan, a team that the Maroons had defeated decisively during the regular season, was able to take a one-point win in the second game of the tournament. A week later the Maroons met Erskine, the South Carolina team that had not lost a game, and after a hard fight eliminated them in an overtime period in the meet at Jackson, Mississippi. The second game at Jackson found the Maroons facing the Panthers of Wesleyan again. History repeated itself. Wesleyan won, but by a two-point margin this time.

Melton and Herman Hale at the forward post, Ben Adams at center, Zelda Hale and Triplett at the guard position formed the first string combination. All of these men played wonderful ball thruout the season. Adams was high point man with H. Hale, Melton, Z. Hale and Triplett coming along in order.

In ko, the old reliable back guard, was the most often used substitute while Fryman, Spurlock, Lea and Cornett saw considerable action. These men worked together as did the first five named and when at all possible the whole five were substituted instead of one or two at a time.



Basketball Squad

SEASON'S RESULTS

Eastern	24—34	Centre	30—23
Eastern	20—28	Georgetown	19—16
Eastern	32—29	Berea	29—32
Eastern	26—13	U. of L.	15—14
Eastern	30—46	Western	26—24
Eastern	25—26	Wesleyan	16—15
Eastern	32—19	Transy	22—23

TOURNAMENT RESULTS


Winchester

Eastern	32	Transy	18
Eastern	18	Wesleyan	19

Jackson, Mississippi

Eastern	34	Erskine	32
Eastern	24	Wesleyan	26





Basketball (frosh)

Altho Coach Gumbert was not quite as fortunate in the material he had to work with as was Coach McDonough the year before, his Little Maroons, freshmen basketball players, showed some exceptional ability and were able to win four of the eight association games played.

Centre and Transylvania were met and defeated on two different occasions while two games each were lost to Georgetown and Wesleyan. Whitesburg High School, coached by a former Maroon star, came down and defeated the Little Maroons in their last game of the season. Waco High had been met earlier and defeated by the Gumbert coached machine. Sue Bennett Memorial, a junior college, defeated the freshmen on two different occasions.

Qualls, Howard, Hensley, Jackson and Hoard formed the mainstay during the most of the season while Lea, Minter, Jones and Richards saw some action at one time or another during the season.



Freshman Basketball Squad

CURTIS HOWARD*Captain*

MENDELL PARSONS*Manager*

G. M. GUMBERT*Coach*

Silas Minter
Denver Qualls
Jennings Jackson

Omer Hensley
Ben Hoard
Davis Lea



Baseball

The Maroons' baseball season in the spring of twenty-nine was a little above the average as far as all around playing was concerned.

Western was the only team able to take two games from the Hembree coached nine while the Maroons were able to take Centre and Transy on two different occasions. Games were split with Wesleyan and the University of Louisville with one of the three games with Transylvania going to the Pioneers.

Clyde Hatter, now the property of the Louisville Colonels of the American Association, was the whole works as far as pitching was concerned. Clyde served them up from the left side and did a right creditable job of it. He did not get going quite so well in the early games but the last half of the season found him going strong. In the last three games of the season, in which the University of Louisville, Centre and Wesleyan were met, he allowed only seven hits. Four of the hits went to the University of Louisville while three went to the Centre boys and the Panthers had to be satisfied with a no hit 2-0 game.

Lea caught during the entire season. Dial at first, Deaton at second, Staton at short and Waldrop at third formed the rest of the inner defense. Gilbert, Cornett and Guy formed the first string defense in the outer garden while Combs and Hammends saw some action as well as Hacker and Hieronymous.

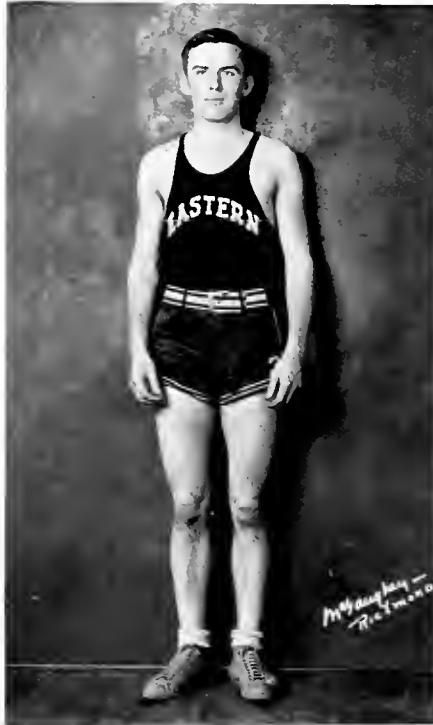
Gilbert lead with the willow, pounding them out to the tune of about .350. Dial and Cornett came next with an average just a little above the three hundred mark while the rest of the team was pretty well scattered thru the two hundred section.



Baseball Squad

SEASON'S RESULTS

Eastern	3	Centre	0
Eastern	4	Centre	3
Eastern	8	Transy	7
Eastern	4	Transy	1
Eastern	3	Transy	5
Eastern	2	Wesleyan	0
Eastern	0	Wesleyan	3
Eastern	3	U. of L.	0
Eastern	1	U. of L.	2
Eastern	3	Western	14
Eastern	8	Western	9



Zelda Hale

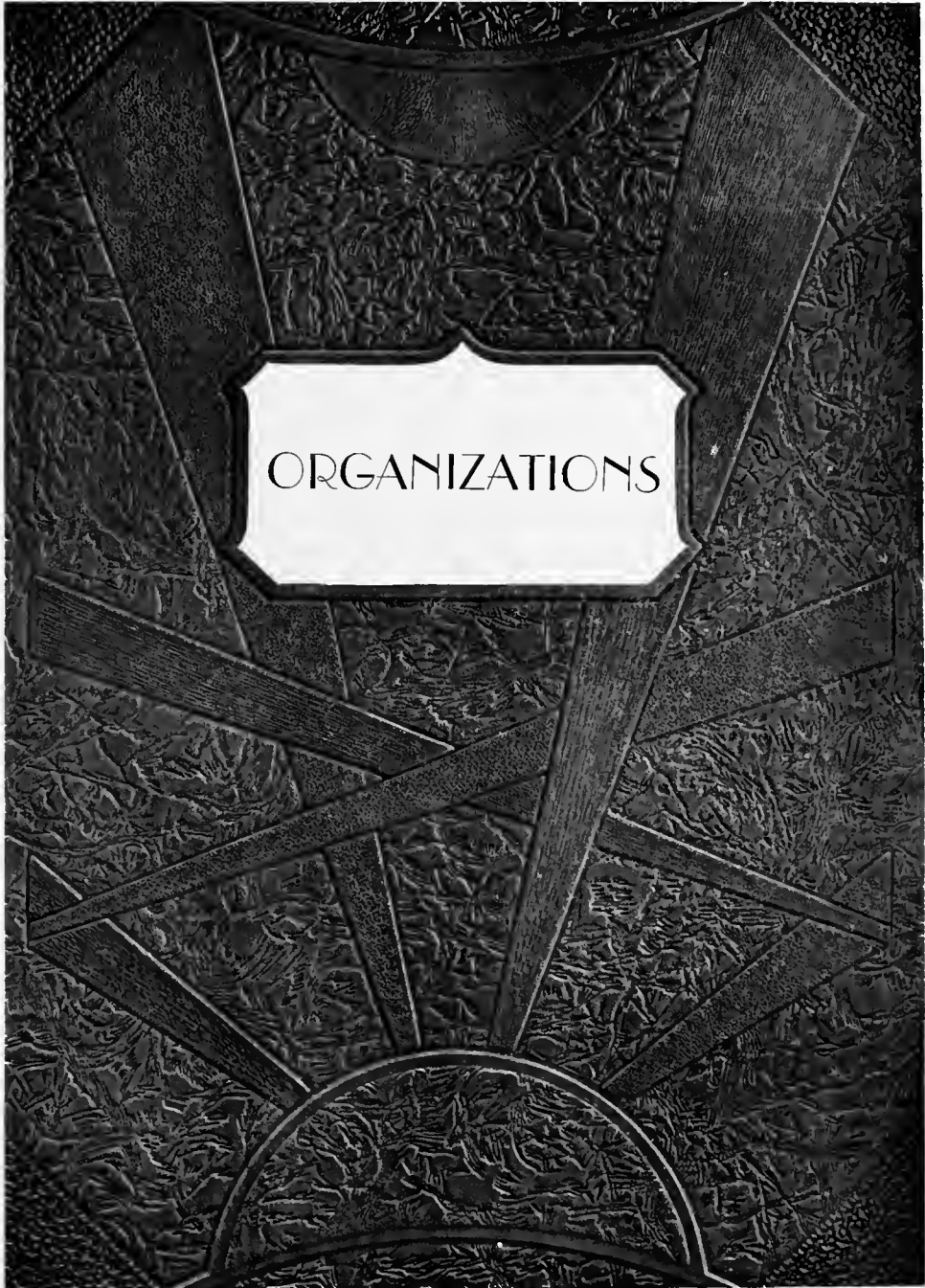
Zelda Hale, former Carr Creeker, and now Maroon basketball star extraordinary, was the only unanimous selection for a position on the All-Southern Intercollegiate Athletic Association Team at Jackson, Mississippi, where the Maroons took part in the S. I. A. A. tournament last winter.

Zelda made his first try at college basketball a little more than a year ago when he and his team-mates brought to Eastern the state Freshman S. I. A. A. championship.

This year found Zelda and Ben Adams co-captains of the varsity team in their first attempt at college basketball. By the end of the regular playing season, Zelda had the hearts of every basketball fan that had seen him in action as well as the respect and admiration of opponents.

Next year will find Zelda playing as a junior, and judging future playing from past performances, it is hard to say just how far he will go in his next two years out.





ORGANIZATIONS

MILESTONE



1930 MILESTONE



TABITHA TUDOR
Secretary



CECIL WASHBURN
President



PAULINE CRUISE
Vice Pres.



R. R. RICHARDS W. J. MOORE
Faculty Sponsors



1930 MILESTONE

PALESTINE



1918





Milestone Staff

HAZEL BROADDUS	<i>Editor-in-Chief</i>
MARY WASHINGTON	<i>Associate Editor</i>
FRED DIAL	<i>Business Manager</i>
KENNETH T. MARSHALL	<i>Art Editor</i>
WILLIAM G. HAND	<i>Sales Manager</i>
CYRUS E. GREENE	<i>Advertising Manager</i>
THELMA CLAY	<i>Sports Editor</i>
JESSIE BELL PLETCHER	<i>Snap Shot Editor</i>
GEORGE CARRELL	<i>Normal School Editor</i>
N. G. DENISTON	<i>Faculty Adviser</i>





MILESTONE STAFF



WILESTONE



CANTERBURY CLUB





Women's Glee Club

FLORENCE MORE *President*

MAURINE MAYE BRONSON *Director*

Edith Alley
 Mary Evelyn Allen
 Margaret Baker
 Imogene Bennett
 Frances Blackwell
 Gertrude Caudill
 Grace Champion
 Millie Davis
 Bonnie Dillingham
 Garnet Elkins
 Lathia Faller
 Margaret Fish
 Jeanette Gabbard
 Celia Hardesty

Virginia Hatcher
 Lena Henry
 Sara Land
 Margaret Manning
 Margaret May
 Mildred Ann Mayes
 Alta Mae McGill
 Audrey Pippin
 Geneva Renaker
 Betty Fae Reynolds
 Audrey Rice
 Elizabeth Simkins
 Lydia Stephenson
 Gladys Thompson





Progress Staff

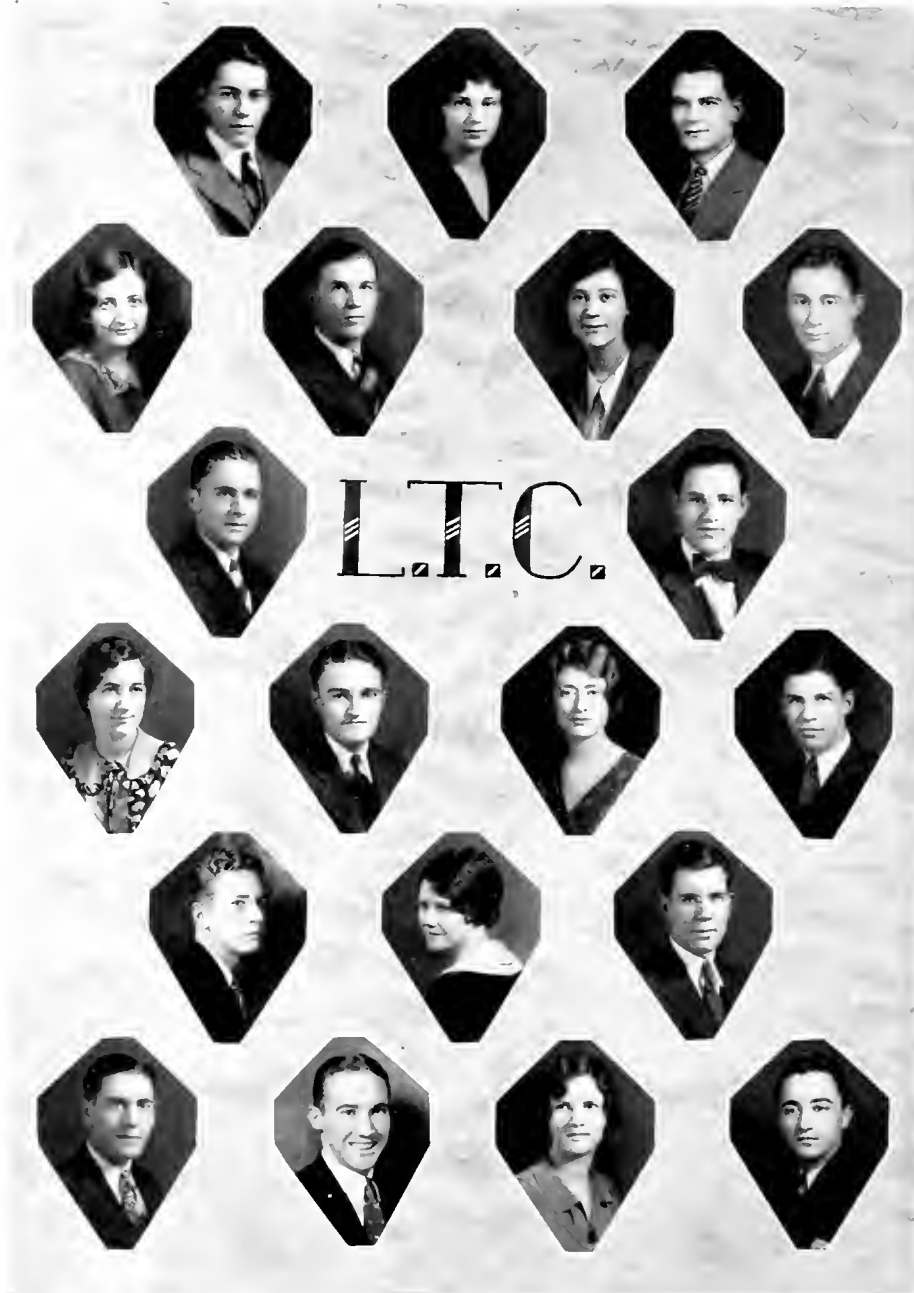
FRED DIAL	<i>Editor-in-Chief</i>
KENNETH T. MARSHALL	<i>Associate Editor</i>
JESSE T. BAXTER	<i>Advertising Manager</i>
CYRIL O. FIELDS	<i>Advertising Manager</i>
JESSIE BELL PLETCHER	<i>Social Editor</i>
GEORGIA LEE PARKER	<i>Exchange Manager</i>
MILDRED QUISENBERRY	<i>Reporter</i>
L. C. FARLEY	<i>Reporter</i>
LUCILLE CLARK	<i>Reporter</i>
EDNA ZELHOFER	<i>Faculty Adviser</i>



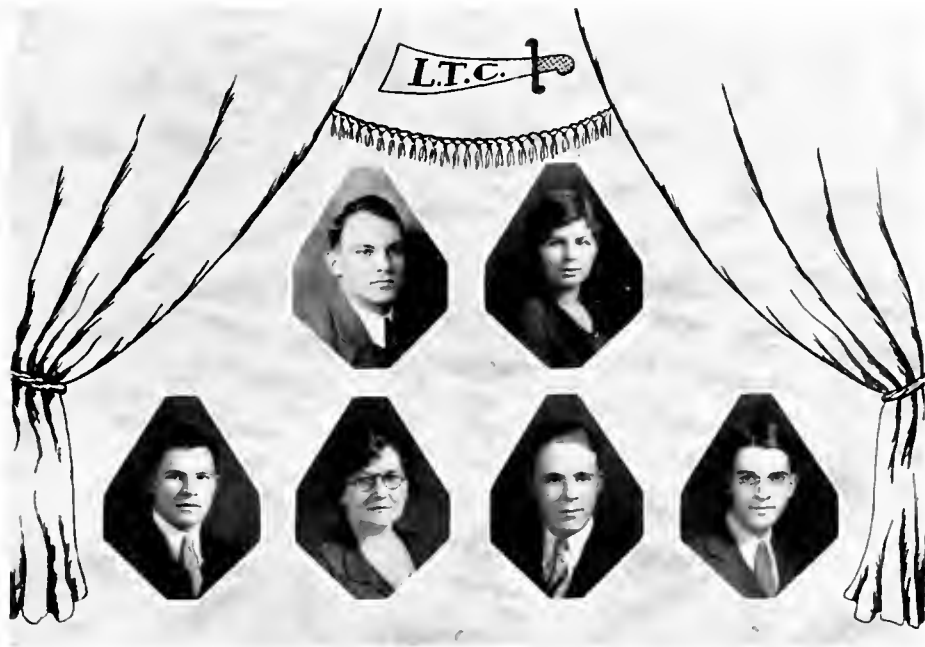
PROGRESS
STAFF



MILESTONE



LOC 21



JACK BAYER *President*
 MARGIE HIERONYMUS *Secretary*
 HENRY TRIPLETT *Business Manager*
 HENRY LUTES *Electrician*
 WILLIAM HAND *Stage Manager*
 PEARL L. BUCHANAN *Faculty Adviser*

James Ault
 Jesse T. Baxter
 Thompson Bennett
 Sarah Jones Smith
 Jessie Bell Pletcher
 Allington Crace
 Mary Daniels
 Jesse Kennedy
 Calloway Taulbee
 Oscar Graham
 Jack Bayer
 Georgiana McGlosson
 Henry Triplett

Margaret Hieronymus
 Olive Terrill
 Sam Routenberg
 Della Marie Coates
 Louise Rutledge
 Robert Davidson
 Lorana Young
 Jesse Hagan
 Henry Lutes
 Mary Evelyn Allen
 William G. Hand
 Mary K. Burns
 James Cornett

Cyrus E. Greene
 Harold Hieronymus
 Evadean Squires
 William Ramsey
 Edwin Holder
 Curtis Howard
 Waller B. Thacker
 Mollie Hayes
 Harvey Blanton
 Hazel Miller
 Hershel McKinley
 Ben Adams
 Frances Mason





Casey County Club

JAMES W. MURPHY *President* NANCY LEE ELLIOTT *Secretary*
 CHARLES LAWHORN *Vice-President* ELEANOR YOUNG *Treasurer*
 G. O. BRYANT *Faculty Adviser*

Joshua Price
 Hazel Wesley
 Edna Tomes
 Eleanor Young
 Ruby Wells
 Paul Elliott
 Nancy Lee Elliott
 Mildred Ashley
 Alton McAnelly
 James W. Murphy
 Mrs. Joshua Price
 Mrs. Charles Lawhorn
 Sadie Tarter
 Hettie Pitman
 Mrs. Edgar Gilpin
 Melcena Tucker
 Kathleen Allen

Charles Lawhorn
 Delbert Hatter
 Talitha Lawhorn
 Carl Allen
 Hazel Watson
 Hazel Woodrum
 Faustine Bates
 Dora Frederick
 Mary Jeter
 Elizabeth Hall
 Flossie Ellis
 Johnnie Zachary
 Gora Godsey
 Richard Price
 Bonn'e Ponder
 Wade Walters
 Margaret McAninch

Mary Young
 Howard Moore
 Edward Cundiff
 Estil Lucas
 Raymond Puteet
 E:hrage Carrier
 Stanley Watson
 Jason Moore
 Lester Short
 Lillard Rogers
 John Tarter
 Oris Aaron
 Edgar Gilpin
 M. K. Stevens
 Maxine Aaron
 Mable Kirkland





Home Economics Club

FANNIE MAE CASTLE *President* NANNIE SHELTON *Secretary*
 ALMA REGENSTEIN . . . *Vice-President* RUTH DIX *Faculty Sponsor*
 EDWIN ASHBY CARTER *Mascot*

Marie Armstrong
 Maude S. Bowen
 Margaret Brock
 Nancy Burgess
 Lillian Blakeman
 Fannie Mae Castle
 Mary Francis Childers
 Mrs. William Cornett
 Christine Coppage
 Mary Daniels
 Edith Denton
 Ha el Evans
 Julia Goodpaster
 Beulah Gross
 Eva Mae Garrett
 Florence Hamilton
 Gladys Hinchey

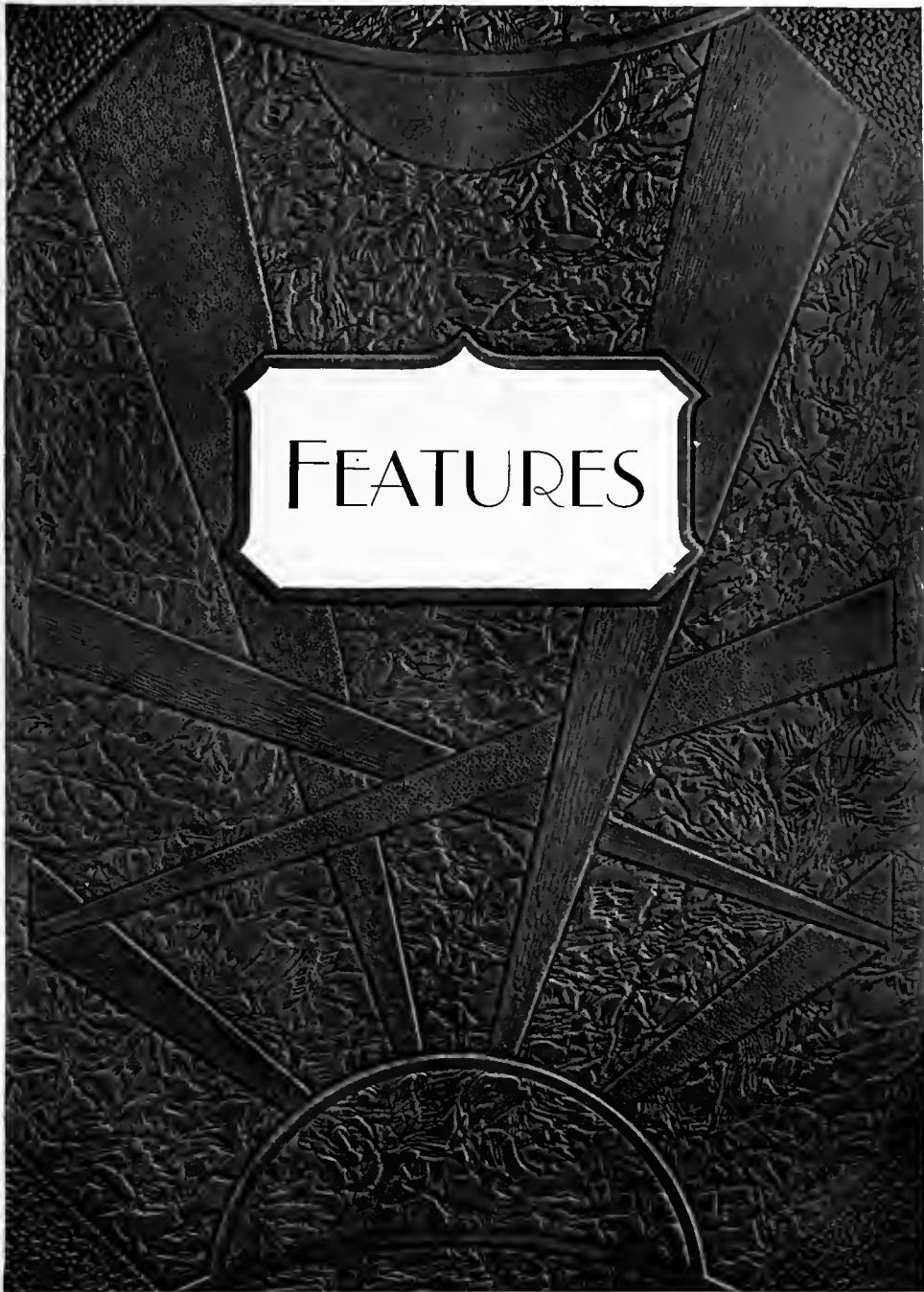
Juanita Osborne
 Clarissa Hicks
 Marie Hubble
 Cleo Hicks
 Alene Hendren
 Cora Hinkston
 Kathyne Keeney
 Mable Kirkland
 Louise Lapsley
 Lillian Lea
 Mable M. Maddux
 Margaret Manning
 Mrs. Eugene May
 Otie Mae Manius
 Roberta McDonald
 Virginia Moody
 Hazel Tevis Megee

Lorraine O'Donnell
 Ernestine Price
 Nell Pelphrey
 Zylphia Peters
 Alma Regenstein
 Elizabeth Rich
 Thelma Slusher
 Elizabeth Stewart
 Nannie Shelton
 Harriet Turner
 Flora Tate
 Eva Mae Tudor
 Irene Thomas
 Mary Frances Watts
 Mary Rose Williams

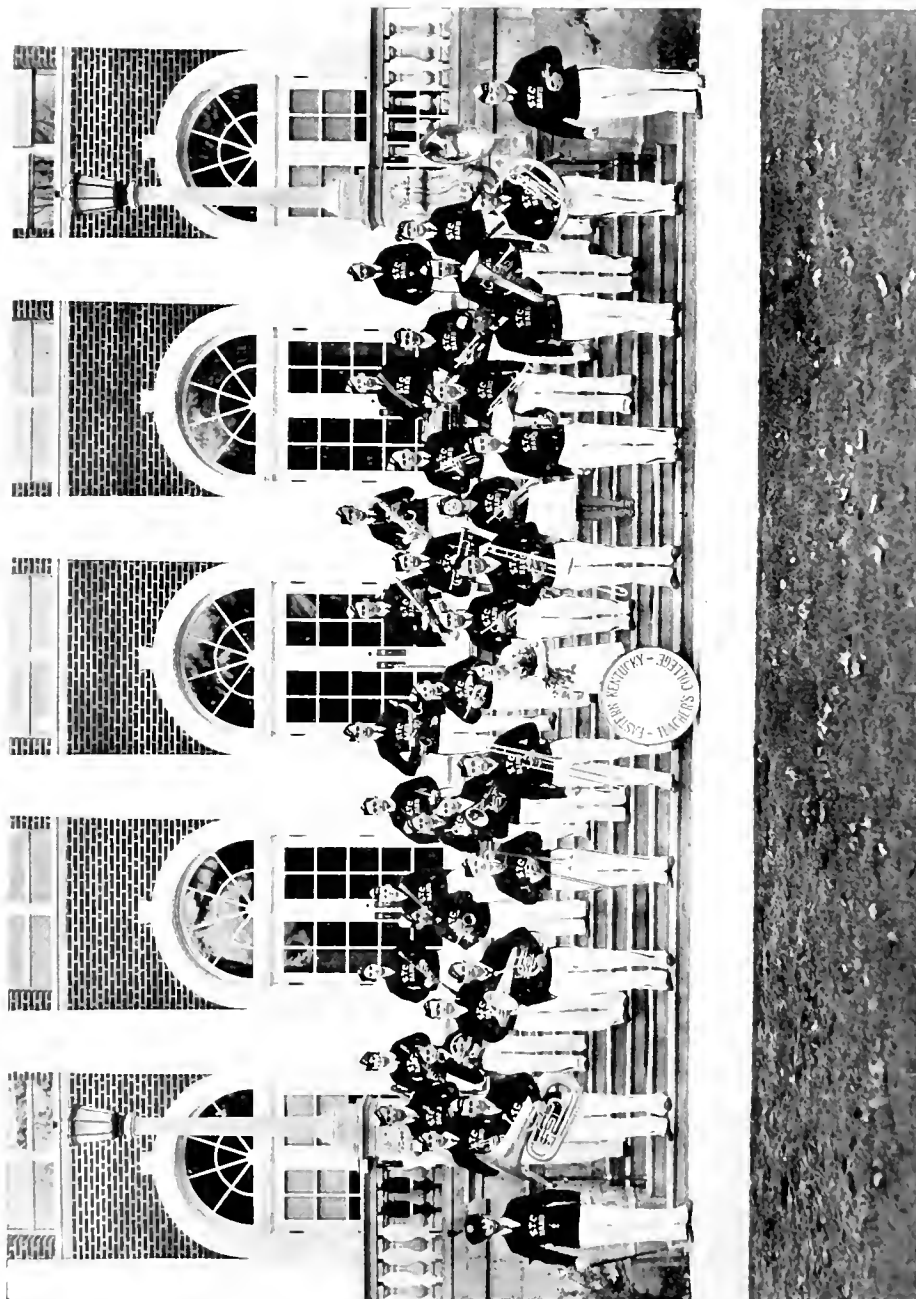


WESTON





FEATURES



EASTERN'S BAND



McLaughlin-Photo

"THE ART OF BEING BORED"



FACULTY SNAPS



1930

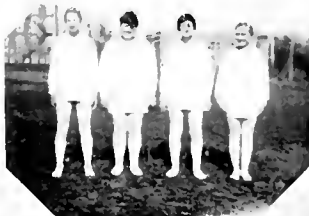


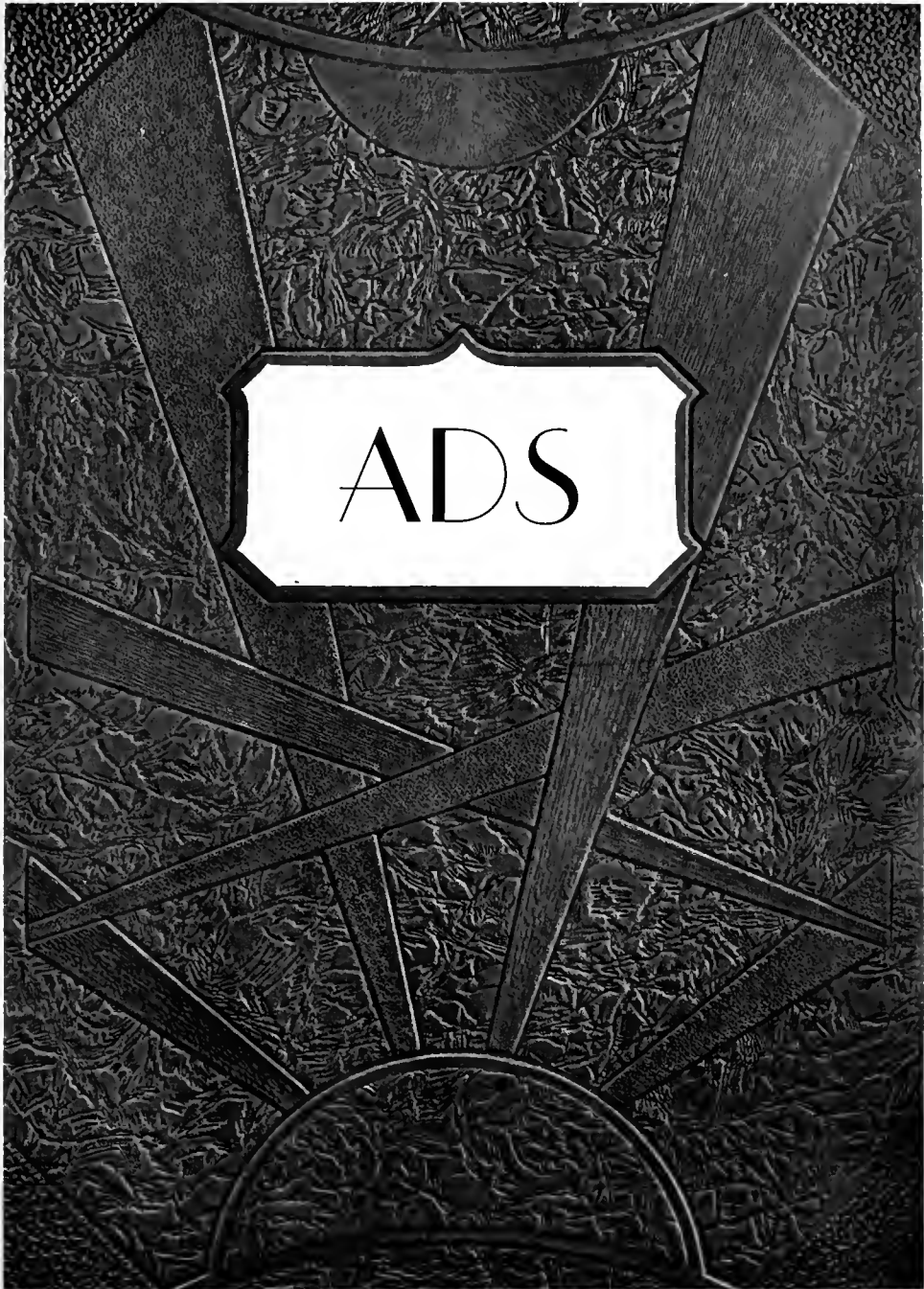
ON PARADE



1930

LET'S PLAY





E. V. ELDER

RICHMOND, KY.

The Main Store of Main Street

Richmond's Leading
Department Store

WE CLOTHE THE WHOLE
FAMILY



Photographs For This
Annual Made By

The
Bradley Studio

GEORGETOWN, KY.



Additional Prints of These
Pictures May Be Gotten At
Any Time

*Everything Eatable
and Ices*

AT

JOE'S CORNER

Phone 58

There is more news about Eastern
Teachers' College and its student
body published in

THE RICHMOND DAILY
REGISTER

than in any other newspaper. Read
it while in Richmond; let it follow
you when you leave.

High Quality Commercial Printing
Reasonably Done.

Students' Service Station



The College
Book Store

Books, Stationery

Parker Fountain Pens

Emblem Jewelry



GOLDSMITH'S

Where Better
Merchandise
Is Always
Lowest-Priced!

*Popular Shopping
Headquarters
for Everyone*

Goldsmith's

*Second & Main Sts.
Richmond - Kentucky*

COMPLIMENTS OF

**Stockton's
Drug Store**

Kodaks, Drugs and
School Supplies

RICHMOND, - - KENTUCKY

THE ELITE SHOPPE

The Place To Find The Newest In Ladies', Misses and
Children's Apparel.

QUALITY BEST

PRICES LOWEST

A Gallery of Feminine Fashions to be found in
Munsing Wear Rayon.

OWEN McKEE

A NATION-WIDE INSTITUTION



J. C. PENNEY COMPANY

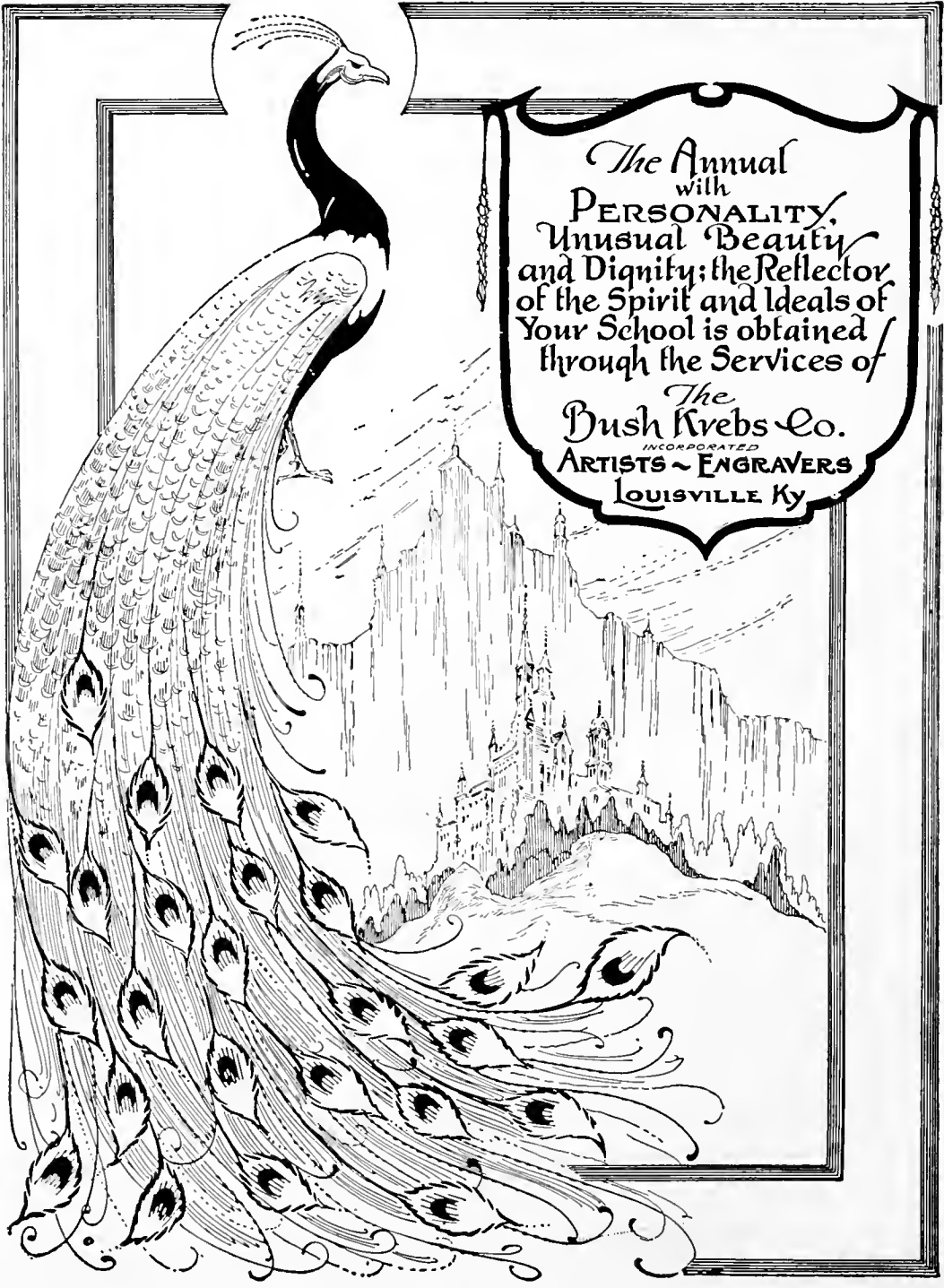
"Where Savings Are Greatest"

MAIN STREET

RICHMOND, KENTUCKY

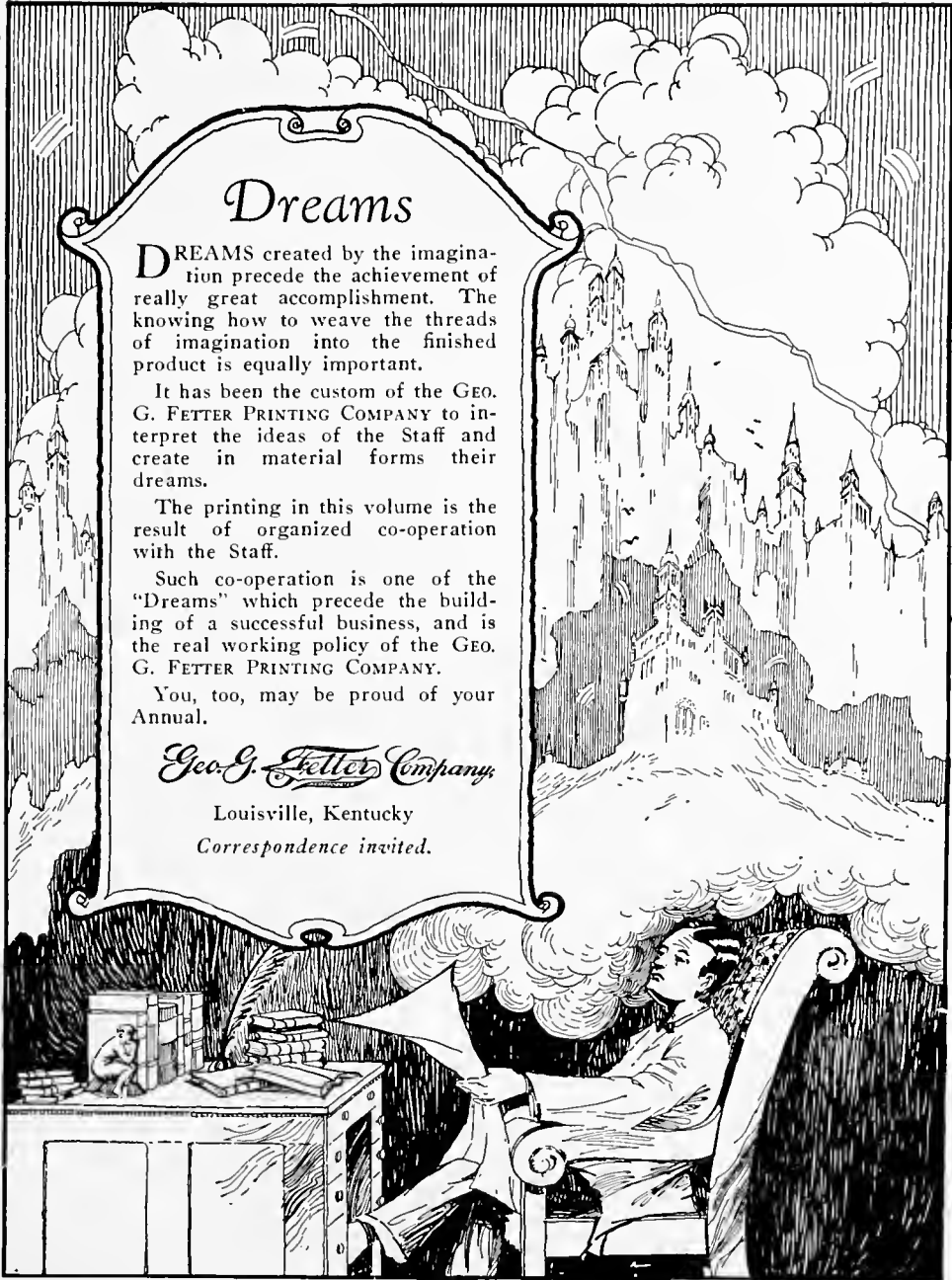
The Friendly Homey Store Where Students Shop.

PILESTONE



The Annual
with
PERSONALITY,
Unusual Beauty
and Dignity; the Reflector
of the Spirit and Ideals of
Your School is obtained
through the Services of
The
Bush Krebs Co.
INCORPORATED
ARTISTS ~ ENGRAVERS
LOUISVILLE Ky

1930



Dreams

DREAMS created by the imagination precede the achievement of really great accomplishment. The knowing how to weave the threads of imagination into the finished product is equally important.

It has been the custom of the GEO. G. FETTER PRINTING COMPANY to interpret the ideas of the Staff and create in material forms their dreams.

The printing in this volume is the result of organized co-operation with the Staff.

Such co-operation is one of the "Dreams" which precede the building of a successful business, and is the real working policy of the GEO. G. FETTER PRINTING COMPANY.

You, too, may be proud of your Annual.

Geo. G. Fetter Company

Louisville, Kentucky

Correspondence invited.

Autographs

Autographs

MILESTONE



1930

