



# **Bennett College,**

Greensboro, North Carolina.

**S. A. PEELER, A. M., B. D., President.**

A Christian institution for both sexes. Gives instruction in the following courses:

**Collegiate,**

**Academic,**

**Normal,**

**English,**

**Musical and**

**Domestic Science.**

Strong faculty—graduates from the best institutions of our country. Healthful location. Wholesome board. Expenses the lowest possible. Opens September 25, 1907. Write for catalogue.

MINUTES OF THE  
NORTH CAROLINA

# Annual Conference

---



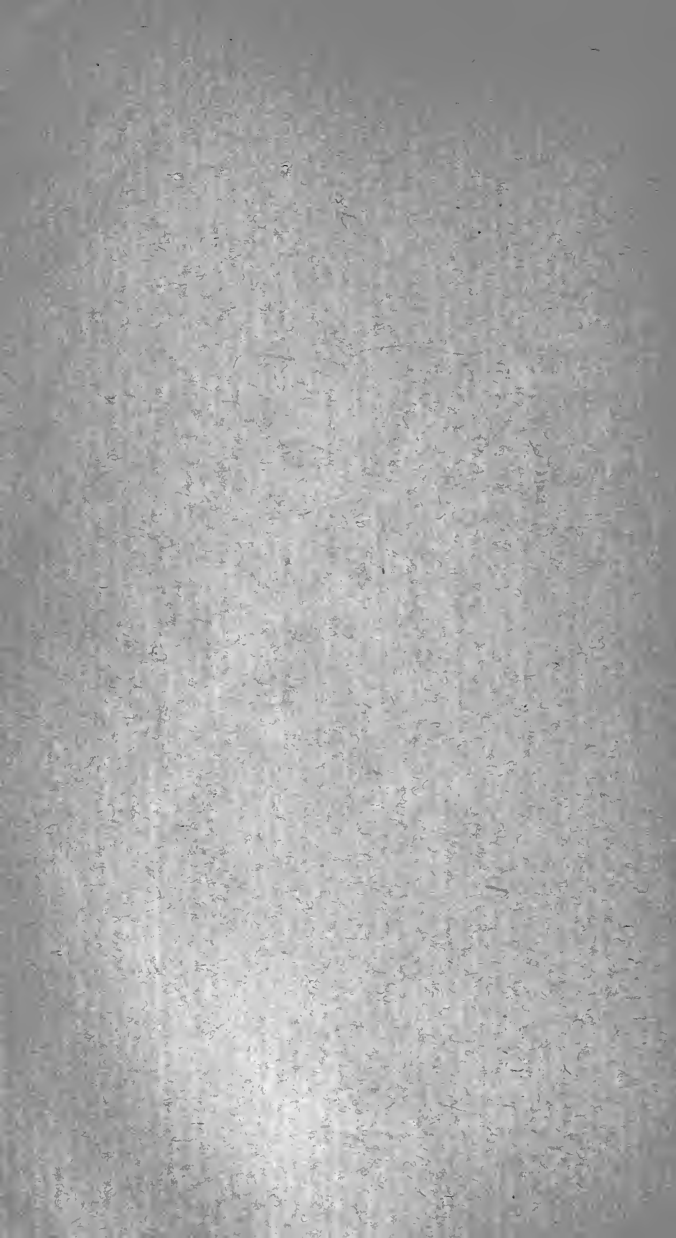
1 9 0 7

---

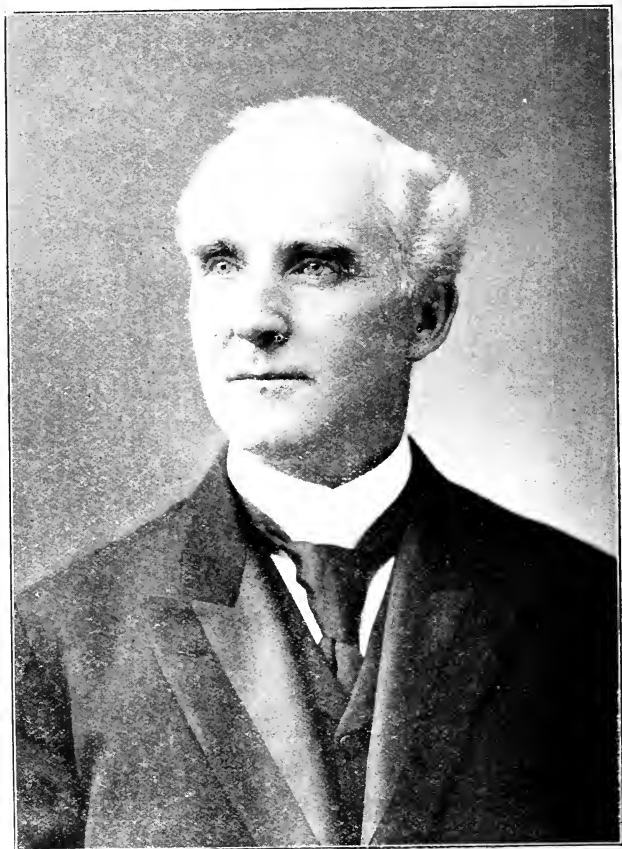
OFFICIAL JOURNAL

---

PRICE FIFTEEN CENTS



Digitized by the Internet Archive  
in 2010 with funding from  
North Carolina Conference, United Methodist Conference



**HENRY SPELLMEYER, BISHOP**

MINUTES  
OF THE  
North Carolina  
Annual Conference

OF THE  
METHODIST EPISCOPAL CHURCH  
HELD IN ST. PAUL  
METHODIST EPISCOPAL CHURCH

---

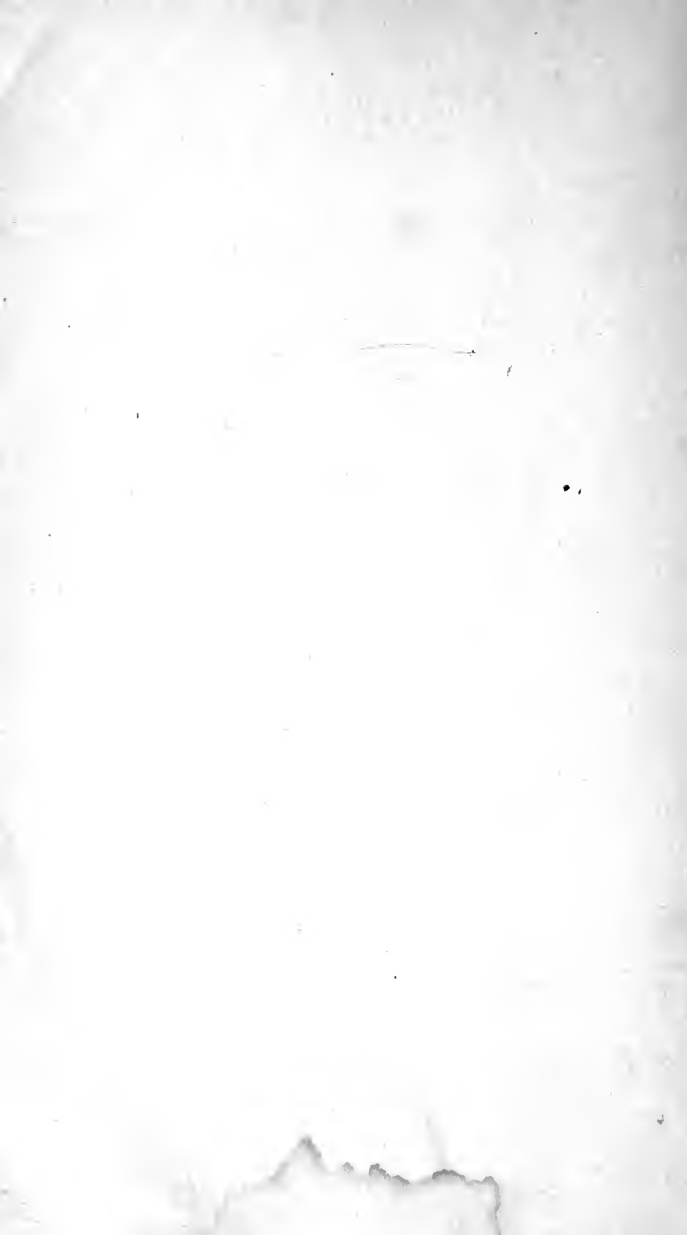
Winston-Salem, N. C., October 17-21, 1907.

---

OFFICIAL JOURNAL  
FORTY-NINTH SESSION  
PRICE FIFTEEN CENTS.

---

GREENSBORO, N. C.  
Stout Brothers, Book and Job Printers,  
1907.





## CONFERENCE ROLL AND DIRECTORY.

Postoffices all in North Carolina unless otherwise indicated.

## Elders.

|                         |                                      |
|-------------------------|--------------------------------------|
| Addie, J. C. ....       | Marion                               |
| Allen, Wm. F. ....      | Randleman                            |
| Ashe, H. L. ....        | Asheville                            |
| Ball, C. E. ....        | Forshee                              |
| Bethea, R. D. ....      | _____                                |
| **Blanton, J. J. ....   | _____                                |
| *Blaylock Chas. W. .... | Greensboro                           |
| Bost, F. L. ....        | Kernersville                         |
| Brooks, Daniel ....     | High Point                           |
| Brower, G. W. ....      | Lenoir                               |
| Bullock, M. J., ....    | 501 Bennett St., Greensboro          |
| Byers, G. W. ....       | Red Springs                          |
| Chavis, Wm. ....        | Machpelah                            |
| **Clark, Alexander .... | _____                                |
| *Connell, David ....    | Greensboro                           |
| Cook, P. J. ....        | Lexington                            |
| Cornelius, S. B. ....   | Old Fort                             |
| Cottingham, A. S. ....  | Leaksville                           |
| Crawford, Wm. C. ....   | Penhook, Va.                         |
| Davis, J. W. ....       | Mount Airy                           |
| **Franklin, J. P. ....  | _____                                |
| Frederick, H. O. ....   | Advance                              |
| *Gibson, Lewis B. ....  | Greensboro                           |
| Gibson, S. A. ....      | Walnut Cove                          |
| Hairston, J. D. ....    | R. F. D. No. 3, Elkton               |
| Hairston, R. P. ....    | 609 Ashe St., Greensboro             |
| Hanes, S. M. ....       | Winston-Salem                        |
| Hayes, Wm. P. ....      | Hamlet                               |
| Hill, G. F. ....        | Stanley                              |
| Hinton, M. H. ....      | Statesville                          |
| *Howard, Elisha ....    | Asheboro                             |
| Hunter, J. H. ....      | Greensboro                           |
| Johnson, P. F. ....     | Salisbury                            |
| Jones, J. W. ....       | R. F. D. No. 1, Guilford             |
| Jones, M. M. ....       | 522 Thomas St., Greensboro           |
| Jones, R. E. ....       | 429 Carondelet St., New Orleans, La. |
| Laughlin, J. A. ....    | Greensboro                           |
| Lomax, W. T. ....       | R. F. D. No. 1, Randleman            |
| Lovell, J. H. ....      | High Point                           |
| May, S. L. ....         | Thomasville                          |

|                         |                                |
|-------------------------|--------------------------------|
| McArthur, E. H. ....    | Greensboro                     |
| McCorkle, S. R. ....    | Greensboro                     |
| McDonald, L. G. ....    | Shelby                         |
| McDonald, Samuel ....   | Lumberton                      |
| McLean, G. B. ....      | Laurinburg                     |
| McMaster, A. W. ....    | Shelby                         |
| McNeill, J. M. ....     | Rowland                        |
| McQueen, A. B. ....     | Newton                         |
| McRea, Dorsey ....      | Thomasville                    |
| Morehead, G. W. ....    | Laurinburg                     |
| Morris, J. P. ....      | Greensboro                     |
| Mundy, Marcus ....      | R. F. D. No. 2, Maxton         |
| Murphy, J. D. ....      | R. F. D. No. 2, Maxton         |
| Newsome, A. H. ....     | Hickory                        |
| Peace, S. F. B. ....    | S. Graham St., Charlotte       |
| Peeler, S. A. ....      | Greensboro                     |
| Pope, Wm. W. ....       | Winston-Salem                  |
| Prince, J. C. ....      | Oxford                         |
| *Pryor, W. A. ....      | High Point                     |
| Robbins, J. C. ....     | Madison                        |
| Scales, Wm. B. ....     | Jonesville                     |
| Shamborguer, N. D. .... | Winston-Salem                  |
| Shipp, R. J. ....       | Sherrill's Ford                |
| Simpson, J. W. ....     | Asheboro                       |
| Smith, Robert ....      | Hickory                        |
| Stancill, O. B. ....    | Wilkesboro                     |
| Thomas, B. F. ....      | Forest City                    |
| Thomas, R. W. S. ....   | Waynesboro, Ga.                |
| Walton, C. W. ....      | R. F. D. No. 100 Rock Bay, Va. |
| Winchester, R. W. ....  | Reidsville                     |
| West, S. P. ....        | West Raleigh                   |
| Wells, J. W. ....       | Maxton                         |
| Wells, William ....     | Johns                          |
| Zeigler, W. R. ....     | Asheville                      |

#### Deacons.

|                      |                        |
|----------------------|------------------------|
| Garrett, J. H. ....  | Forshee                |
| Hayden, S. J. ....   | 201 Oak St., Goldsboro |
| Moser, C. R. ....    | West Asheville         |
| Robinson, A. E. .... | Madison                |
| Thomas, L. W. ....   | Darby                  |

#### Probationers.

|                      |            |
|----------------------|------------|
| Chambers, D. H. .... | Vass       |
| Clapp, W. E. ....    | Townsville |

|                               |                             |
|-------------------------------|-----------------------------|
| Maston, John A. (Deacon)..... | Newport News, Va.           |
| McNair, John R. ....          | R. F. D. No. 3, Red Springs |
| McQueen, Lloyd D. ....        | R. F. D. No. 1, Maxton      |
| Pass, N. J. (Deacon) .....    | Gastonia                    |
| Rhyne, R. B. ....             | Stanley                     |
| Shamborguer, N. S. T. ....    | Winston-Salem               |
| Skeen, David C. ....          | Greensboro                  |
| Williams, David A. ....       | _____                       |

### Supplies.

|                       |                         |
|-----------------------|-------------------------|
| Burton, M. A. ....    | Winston-Salem           |
| Dunn, G. D. ....      | Durham                  |
| Gillias, E. H. ....   | Ramseur                 |
| Joseph, J. T. ....    | Wilmington              |
| King, J. O. ....      | Winston-Salem           |
| Laughlin, M. C. ....  | Greensboro              |
| Leonard, A. B. ....   | Jefferson               |
| Morrison, J. H. ....  | Franklin                |
| Patterson, H. T. .... | R. F. D., No. 2, Maxton |
| Smith, Thomas .....   | Greensboro              |

\* Superannuate.

\*\*Supernumerary.

# Journal of Daily Proceedings.

THURSDAY—DAY ONE.

- Bishop  
Place  
Time** The forty-ninth session of the North Carolina Annual Conference met in St. Paul Methodist Episcopal Church, Winston-Salem, North Carolina, October 17th, 1907, at 9 o'clock a. m., Bishop Henry Spellmeger presiding.
- Devct'onf  
Roll** The Bishop conducted the devotions.  
The Secretary of the last Conference called the roll.
- Organiza-  
tion** S. A. Peeler was elected Secretary. He chose to assist him J. H. Lovell and J. C. Prince.  
J. P. Morris was elected Statistical Secretary. He selected J. W. Wells, W. R. Zeigler, W. T. Lomax, J. C. Robbins and B. F. Thomas as assistants.  
R. P. Hairston was elected treasurer. He chose for his assistants P. J. Cook, J. D. Hairston, A. W. McMaster and S. McDonald.
- Commit-  
tees** The Standing Committees as nominated for 1907 were confirmed. Some changes in the program as printed in the Conference directory were suggested and then it was adopted.
- Time for  
Sessions** It was decided that the Conference begin its sessions at 8:30 in the morning, that the first half hour be given to devotions, and that business begin at 9 o'clock.
- The Bar** The bar of the Conference was made to include that portion of the church lying between the pulpit and the farther edge of the front and rear windows.
- Drafts** The Bishop delivered to the Conference an order on the Methodist Book Concern for \$657 and one on the Chartered Fund for \$22. By vote of the Conference these checks were authorized to be signed and given to J. P. Morris, the chairman of the Board of Stewards.
- Question 13** Question 13, "Was the character of each preacher examined?" was called. M. J. Bullock, Presiding Elder of the Greensboro District, was passed in character, and he made his report.
- Reports** The following pastors of the Greensboro District were passed in character and they made their reports: R. P. Hairston, A.

W. McMaster, A. S. Cottingham, C. E. Ball, S. M. Hanes, J. W. Jones, E. H. McArthur, J. A. Laughlin. R. W. Winchester was absent. His work was reported by Presiding Elder Bullock.

Question 13 was suspended to hear welcome addresses. Hon. E. O. Eaton, mayor of Winston-Salem, gave the Conference a most hearty welcome. On behalf of the A. M. E. Z. Church, Dr. Kyles bade us welcome. Rev. N. D. Shamborguer, pastor of St. Paul Methodist Episcopal Church, made us welcome to the church and parish. Welcome

Responses were given by Rev. W. W. Pope and Bishop Spellmeyer.

Question 13 was resumed. Their characters having been passed the following made reports: M. M. Jones, Presiding Elder of the Raleigh District, J. D. Hairston, H. O. Frederick, C. W. Walton, S. P. West, Wm. Chavis, S. A. Gibson. Question 13 continued

Drs. E. M. Mills, C. C. Jacobs and J. L. Thomas were introduced. They presented our Educational, Sunday School and Church Extension work respectively.

On motion by N. D. Shamborguer the Conference voted to hold the election of General Conference delegates, Friday morning at 11 o'clock; and to have the missionary sermon preached Thursday at 3 p. m. Time for Election and Sermon

The Rev. Mr. Saunders, H. A. Gibson and J. W. Jones were introduced. Introduction

The Conference adjourned with the benediction by Dr. I. L. Thomas. Adjournment

### AFTERNOON.

At 2 o'clock p. m., a statistical session was held, Dr. R. E. Jones presiding. Rev. W. P. Hayes conducted the devotions. Rev. S. F. B. Peace led in prayer. Statistical

P. J. Cook preached the Missionary sermon. Adjournment

Conference adjourned with benediction by P. J. Cook.

### FRIDAY—SECOND DAY—MORNING SESSION.

Devotions were begun at 8.30.

At 9 o'clock business session began.

- Minutes** The Secretary read the minutes of the previous day and with some corrections, they were approved.
- The roll of absentees was called. Delinquents were called upon to report their work.
- Order of day Proposition I** On motion of Dr. R. E. Jones, the Conference decided to make voting on proposition for constitutional changes No. 1, the order of the day Saturday, 10.30 a. m.
- Class for admission** The members of the class for full admission into the Conference were called forward.
- Reports** L. W. Thomas, C. R. Moser, A. E. Robinson, were passed in character, and made their reports.
- Time to meet** On motion of Dr. R. E. Jones that when we adjourn we will do so to meet as a memorial association at 2.30 p. m.
- Propositions II, III IV.** Propositions for constitutional changes No. 2, 3, and 4 were discussed and voted upon.
- The propositions were voted down unanimously, the votes standing 61 to 0.
- Class admitted** L. W. Thomas, A. E. Robinson and C. R. Moser, having passed their examination satisfactorily, were admitted into full membership after being addressed by the Bishop and answering the usual disciplinary questions.
- They were advanced to the studies of the third year.
- Deacons** Calvin R. Moser and A. E. Robinson were elected to Deacon's orders.
- Recognitions of Orders** Oliver B. Stancill's Elder's Orders from the African Methodist Episcopal Church were recognized and, having satisfactorily answered the disciplinary questions, he was admitted into full connection and placed in the studies of the third year.
- Question 13** Question 13 was resumed. H. L. Ashe, Presiding Elder of the Western District, was passed in character and made his report.
- Reports** The following effective elders having been passed in character made their reports: W. R. Zeigler, R. D. Bathea, G. F. Hill, A. H. Newsome, G. W. Brower, M. H. Hinton, B. F. Thomas, L. G. McDonald, J. H. Hunter, A. B. McQuenn, G. W. Byers, R. J. Shipp. J. J. Blanton was passed in character.
- Hunter Estate** On motion by R. E. Jones, the Conference voted to accept the property to be bequeathed by J. H. Hunter and to designate

the fund that shall accrue therefrom as the "Hunter Aid Fund."

A resolution by R. E. Jones, D. D., to memorialize the principal railway systems of the State of North Carolina for better accommodations for the Negro was offered and adopted. Railways Memorialized

E. W. Kinchem, pastor of Hawthorne M. E. Church, of Columbus, Ohio, and Mr. J. R. Stannah, of our Book Concern, were introduced. Introduction

The election of delegates to the General Conference of 1908 was taken up. Delegates Elected

The chair was authorized by the Conference to appoint as tellers, J. C. Prince, B. F. Thomas, J. W. Simpson, G. B. McLean and J. W. Wells.

Seventy ballots were cast. R. E. Jones received 62 votes, M. M. Jones 38, J. P. Morris 23, N. D. Shamborguer 8, S. A. Peeler 7, and Daniel Brooks and S. F. B. Peace 1 each.

Robt. E. Jones and Milton M. Jones were declared elected on the first ballot.

J. P. Morris and S. A. Peeler were elected as reserves. Reserves

Question 13 was resumed. G. W. Morehead, Presiding Elder of the Wilmington District, was passed in character and made his report. Question 13 Reports

The following effective elders of the Wilmington District were passed in character and made their reports: S. F. B. Peace, W. P. Hayes, G. B. McLean, J. D. Murphy, W. W. Pope, J. W. Wells, Marcus Mundy, Wm. Wells, J. M. McNeill, W. F. Allen.

Rev. George F. Trever, D. D., professor of Exegetical Theology of Gamman Theological Seminary, Atlanta, Ga., was introduced and addressed the Conference. Dr. Trever speaks

After the announcements the Conference stood adjourned. Adjournment  
Benediction by Dr. Trever.

### THIRD DAY—MORNING—SATURDAY.

After the devotions which were conducted by Bro. O. B. Stancill, the Bishop called the Conference to order at 9 a. m. Devotions

The Secretary read the minutes of the previous day and they were approved. Minutes

- The Sacra-  
ment      The Bishop, assisted by the Presiding Elders, administered  
the Sacrament of the Lord's Supper.
- Que tion 13      Question 13 was resumed.
- Reports      Robt. Smith was passed in character and made his report.  
The following effective elders of the Winston District were  
passed in character and made their reports: P. F. Johnson,  
J. W. Simpson, J. C. Robbins, P. J. Cook, S. L. May, Dorsey  
McRae, F. L. Bost, J. C. Addie, Daniel Brooks, Samuel Mc-  
Donald.
- The characters of S. A. Peeler, J. P. Morris, R. E. Jones  
and R. W. S. Thomas were passed.
- The committee in the case of S. R. McCorkle reported that  
they found no ground for charges. His character was passed.
- Their characters having been passed, the following pastors  
made their reports: J. W. Wells, A. C. Hill, J. C. Prince, J. A.  
Maston, W. E. Clapp, W. T. Lomax, Wm. Crawford, G. B.  
McLean, S. B. Cornelius, J. H. Garrett, J. H. Lovell, N. S. T.  
Shamborguer and N. D. Shamborguer.
- Elder's  
Order      W. T. Lomax, Wm. B. Scales and John H. Lovell, having  
completed the Conference course of studies, were elected to  
Elder's Orders.
- J. C. Prince was credited as having completed the Confer-  
ence course of studies and elected to Elders' Orders under the  
Seminary Rule.
- Question 9      Question 9, "What members are in the studies of the fourth  
year?" was called.
- J. H. Gar-  
rett elected  
and ad-  
vanced      Conditioned on the studies in which he was not examined,  
J. H. Garrett was advanced to the studies of the fourth year.
- Question 5  
Admission  
on Trial      Question 5, "Who have been continued on trial?" was called.  
W. E. Clapp was continued in the studies of the first year  
and was left without appointment to attend one of our schools.
- N. J. Pass, A. C. Hill, N. T. Shamborguer were continued  
on trial and advanced to the studies of the second year.
- A. J. Jen-  
kins trans-  
ferred      A. J. Jenkins was announced as having transferred to Li-  
beria Annual Conference, Africa.
- Local De  
o n's Or-  
dec      Giles Lewis, Daniel McCollum and H. T. Patterson were  
presented for local Deacon's Orders.



The application to admit them was withdrawn upon the ground that they were not before the examining committee.

Rev. E. W. Randall, D. D., General Secretary of the Epworth League, was introduced and he addressed the Conference. Address

The order of the day, the voting on proposition (1) for constitutional change was taken up. Order of Day Proposition I

It was discussed at some length by the following: R. P. Hairston, H. L. Ashe, G. B. McLean, Samuel McDonald, W. W. Pope, P. J. Cooke, M. M. Jones, S. F. B. Peace, G. W. Morehead, N. D. Shamborgner.

A resolution by Dr. R. E. Jones, that the N. C. Conference refuse to vote upon proposition (one) and memorialize the General Conference of 1908 to recommit said proposition was passed, 35 voting in favor and 24 against it. Resolution

Proposition 1 was then voted upon.

Thirty-four voting against it and none for it.

After some discussions and announcement the Conference adjourned, with the benediction by Dr. R. E. Jones. Adjournment

### SUNDAY.

At 9.30 a. m. the Conference Love Feast was conducted by Rev. David Connell and Daniel Brooks. Love feast

Bishop Spellmeyer preached at 11 a m. Bishop Preaches

At 3 p. m. Dr. Traver preached the Ordination sermon. Bishop Spellmeyer ordained the Deacons and Elders. Ordination

7 o'clock p. m., Memorial services were held, after which Dr. R. E. Jones delivered a sermon. Memorial

### MONDAY MORNING.

After the devotions, the Secretary read the minutes of the previous session and they were approved. Devotions and Journal

Question 23, "Who are the Superannuated Preachers?" was called. C. W. Blaylock, L. B. Gibson, Elisha Howard, W. A. Pryor and David Connell were left in the superannuated relation. Question 23

Question 22, 'Who are Supernumerary Preachers?' was taken up. J. P. Franklin was continued in the supernumerary Question 22

relation for the fourth year. Alexander Clark was continued for the second year. J. J. Blanton was granted the supernumerary relation.

Hayden's  
Character

S. J. Hayden was passed in character.

Question 4

Question 4, "Who have been received on trial?" was called. Robert B. Rhyne, David C. Skeen, John A. Maston, David H. Chambers, Lloyd D. McQuenn, John R. McNair and David A. Williams were received on trial and placed in the studies of the first year.

Deacons  
Elected

Henry T. Patterson, Daniel McCollum and Thomas G. Lewis were elected to Deacon's Orders.

Pass Ad-  
vanced

Norris J. Pass was advanced to the studies of the fourth year.

Davis re-  
admitted

John W. Davis, formerly a member of the Conference, an elder, was readmitted on his credentials.

President's  
Home

The resolution to build a President's Home on the campus of Bennett College was adopted. (See resolutions.)

Question 26

Question 26, "What is the Aggregate of the Benevolent Collections ordered by the General Conference as Reported by the Conference Treasurer?" was taken up. The treasurer reported \$2,539.

Treasurer's  
Report

Introduc-  
tion

Prof. R. B. McCrary and Dr. J. L. Bullock, delegates to the Conference of 1908, were introduced. They both addressed the Conference.

Episcopal  
Residence

A resolution to memorialize the General Conference to fix an Episcopal Residence in New Orleans was offered by Dr. R. E. Jones and adopted by the Conference. (See resolutions.)

Triers of  
Appeals

The following persons were elected triers of appeals by the Conference: W. R. Zeigler, S. P. West, W. W. Pope, A. S. Cottingham and N. D. Shamborguer.

Nomina-  
tions

M. M. Jones made the committee nominations for 1908.

Missionary  
Sermon

R. W. Winchester was appointed to preach the missionary sermon at the next Annual Conference. Samuel McDonald was appointed alternate.

Wells' Ex-  
aminer

J. W. Wells was appointed to take the place of G. W. Morehead on the Board of Examiners.

Question 30

Question 30, "Where shall the next Conference be held?" was considered. Invitations from Charlotte, Oxford and Lumber

ton were presented. Charlotte was chosen. The Conference instructed the Secretary to extend thanks to the places sending invitations.

Prof. S. G. Atkins, Rev. J. W. Davis and Dr. R. E. McLean were introduced. Introduction

The Conference adjourned to meet at 2 o'clock p. m. Adjournment

Benediction was pronounced by Dr. R. E. McLean:

### MONDAY AFTERNOON SESSION.

October 21, 1907.

The Conference met at 2.30 o'clock, Dr. R. E. Jones presiding. Brother Samuel McDonald conducted devotions. Jones Presides

The minutes of the previous meeting were read and adopted. Minutes

The followign standing committees made their reports: Reports

Woman's Work, Conference Stewards, Church Extension, District Conference Journals, Auditing, Education, Freedmen's Aid Society, Bible Cause, Young People's Work, Resolutions.

Daniel Brooks was elected Treasurer of Annual Conference Fund. Treasurer

G. W. Morehead was elected trustee in lieu of Bro. Wells, by ballot. Trustee

Trustees for Bennett College were elected by ballot—S. A. Peeler and W. H. Thomas. Trustees for Bennett College

Question 27, "What are the Claims on the Conference Fund?" was called. Claims amounted to \$911.50; \$910.58 was received. Question 27 Conference Claims

The Statistical Secretary made his report. Statistics

After the announcements were made the Conference adjourned with the benediction by Dr. J. P. Morris. Adjournment

### MONDAY EVENING SESSION.

October 21, 1907.

Conference was called to order at 7.30, Bishop Spellmeyer presiding. Bishop Presides

Bishop Spellmeyer, assisted by Dr. R. E. Jones and Elder Bullock, ordained as Deacons, Thomas G. Lewis, Henry T.

Patterson, Daniel McCollum and John A. Maston, under the Seminary Rule.

Dr. R. McLean speaks      Rev. R. E. McLean, Field Secretary of the Board of Foreign Missions, was introduced by Dr. M. M. Jones and addressed the Conference.

Semi-Centennial      The Conference appointed a Semi-Centennial Committee. (See committees.)

Minutes      On motion by R. E. Jones, Conference voted to adjourn. Secretary read the minutes and they were approved.

Appointments Adjournment      The appointments were read by the Bishop. With the Benediction by Bishop Spellmeyer, the Conference adjourned *sine die*.

## NORTH CAROLINA CONFERENCE.

These appointments are all in North Carolina except as otherwise indicated.

## Greensboro District.

|  |                         |
|--|-------------------------|
| M. J. Bullock, Presiding Elder .....       | P. O. Greensboro, N. C. |
| Central Randolph .....                     | W. T. Lomax             |
| Danville, Va., and Spray .....             | John H. Garrett         |
| East Greensboro and North Greensboro ..... | M. C. Laughlin          |
| Empire .....                               | To be supplied          |
| Greensboro .....                           | R. P. Hairston          |
| High Street and Bass's .....               | David C. Skeen          |
| Jackson .....                              | Thomas Smith            |
| Leaksville .....                           | A. S. Cottingham        |
| Ramseur .....                              | To be supplied.         |
| Reidsville .....                           | R. W. Winchester        |
| Reidsville Circuit .....                   | C. E. Ball              |
| South Greensboro .....                     | S. M. Hanes             |
| Summerfield .....                          | J. W. Jones             |
| Wentworth .....                            | E. H. McArthur          |
| West Greensboro .....                      | J. A. Laughlin          |

## Raleigh District.

|   |                      |
|---|----------------------|
| M. M. Jones, Presiding Elder, P. O. Greensboro, N. C. |                      |
| Dennis and Redbank .....                              | J. O. King           |
| Durham and Creedmore .....                            | J. H. Hunter         |
| Goldsboro .....                                       | Sylvester J. Hayden  |
| Henderson & Louisburg .....                           | G. D. Dunn           |
| Madison and Stoneville .....                          | J. C. Robbins        |
| Madison Circuit .....                                 | Avery E. Robinson... |
| Newbern and Kingston .....                            | To be supplied       |
| Newport News, Va. ....                                | John A. Masten       |
| Oberlin and Raleigh .....                             | S. P. West           |
| Oxford and Bullock .....                              | J. C. Prince         |
| Pleasant Ridge and Norfolk (Va.) .....                | C. W. Walton         |
| Rocky Mount (Va.) .....                               | W. M. Crawford       |
| Townesville and Clarksville (Va.) .....               | William E. Clapp     |
| Walnut Cove .....                                     | S. A. Gibson         |

## Western District.

|  |                    |
|--|--------------------|
| H. L. Ashe, Presiding Elder, P. O. 74 Hill St., Asheville, N. C. |                    |
| Asheville .....  | W. R. Zeigler      |
| Black Mountain .....   | Sandy B. Cornelius |
| Boone .....  | To be supplied     |

|                                      |                 |
|--------------------------------------|-----------------|
| Forest City and Bracket Town .....   | B. F. Thomas    |
| Franklin .....                       | To be supplied  |
| Gastonia and Bessemer City .....     | Norris J. Pass  |
| Hendersonville .....                 | To be supplied  |
| Hickory .....                        | A. H. Newsome   |
| Lawndale and Brooks .....            | A. W. McMaster  |
| Lenoir .....                         | G. W. Brower    |
| Lenoir Circuit .....                 | Robert B. Rhyne |
| Lowesville .....                     | G. F. Hill      |
| Machpelah and Stanley .....          | W. M. Chavis    |
| Marion and Old Fort .....            | J. C. Addie     |
| Newton .....                         | A. B. McQueen   |
| Patterson .....                      | Louis W. Thomas |
| Shelby and Mooresboro .....          | L. G. McDonald  |
| Sherrill's Ford .....                | R. J. Shipp     |
| West Asheville and Waynesville ..... | Calvin R. Moser |

#### Wilmington District.

|  |                 |
|--|-----------------|
| G. W. Morehead, Presiding Elder, P. O. Laurinburg, N. C. |                 |
| Burgaw .....   | J. T. Joseph    |
| Charlotte .....  | S. F. B. Peace  |
| Cool Springs and Beaver Dam .....                        | J. D. Murphy    |
| Concord .....  | H. T. Patterson |
| Elkton .....   | J. D. Hairston  |
| Hamlet .....   | W. P. Hays      |
| Hoffman and Vass .....                                   | To be supplied  |
| Johns and Piney Grove .....                              | W. M. Wells     |
| Laurinburg and Gibson .....                              | G. B. McLean    |
| Lumberton .....  | S. McDonald     |
| Parkton and Prospect Hall .....                          | To be supplied  |
| Maxton .....   | J. W. Wells     |
| Meirose and Hickory Bend .....                           | M. Mundy        |
| Monroe .....   | To be supplied  |
| Red Springs and Beaumont .....                           | G. W. Byers     |
| Rowland and Salem .....                                  | J. M. McNeill   |
| Swann Station .....                                      | To be supplied  |
| Wilmington .....   | Albert C. Hill  |

#### Winston District.

|   |                 |
|---|-----------------|
| R. Smith, Presiding Elder, P. O. Hickory, N. C. |                 |
| Advance, Wesley, and Mocksville .....           | H. O. Frederick |
| Asheboro and Mitchell .....                     | J. W. Simpson   |
| Columbia Heights and Walkertown .....           | Pinkney Wells   |
| High Point .....                                | J. H. Lovell    |
| Jefferson .....                                 | To be supplied  |

|   |                       |
|---|-----------------------|
| Jonesville .....  | W. B. Scales          |
| Kernersville .....  | S. R. McCorkle        |
| Lexington and Thomasville .....   | P. J. Cook            |
| Liberty and Trinity .....   | S. L. May             |
| Mayhew and Mooresville .....  | D. McRae              |
| Midway .....  | F. L. Bost            |
| Mt. Airy .....  | J. W. Davis           |
| Mt. Airy Circuit .....  | To be supplied        |
| Randleman and Fairview .....  | W. F. Allen           |
| Salisbury .....   | P. F. Johnson         |
| Statesville and Philadelphia .....  | M. H. Hinton          |
| South High Point .....  | D. Brooks             |
| Wilkesboro .....  | Oliver B. Stancil     |
| Winston—Boston and St. James .....  | Noe T. S. Shamborguer |
| Mt. Pleasant .....  | W. W. Pope            |
| St. Paul's .....  | N. D. Shamborguer     |
| S. A. Peeler, President Bennett College, member Greensboro Quarterly Conference.              |                       |
| J. P. Morris, Professor in Bennett College, member Greensboro Quarterly Conference.           |                       |
| R. E. Jones, Editor South Western Christian Advocate, member Greensboro Quarterly Conference. |                       |
| R. W. S. Thomas, Principal Haven Normal School, member Greensboro Quarterly Conference.       |                       |
| Rodolphus K. Bethea, left without appointment to attend one of our schools.                   |                       |

---

## Disciplinary Questions.

1. Who have been Received by Transfer, and from what Conference?

None.

2. Who have been Readmitted?

None.

3. Who have been Received on Credentials, and from what Churches?

The credentials of Oliver B. Stancil as an Elder from the African Methodist Episcopal Church were recognized.

4. Who have been Received on Trial?

(a) In Studies of First Year:

Robert B. Phyne, David C. Skeen, John A. Maston, Daniel H. Chambers, Lloyd D. McQueen, John R. McNair, Daniel A. Williams.

(b) In Studies of Third Year.

None.

5. Who have been Continued on Trial?

(a) In Studies of First Year:

William E. Clapp.

(b) In Studies of Second Year:

A. C. Hill, Noah T. Shamborguer.

(c) In Studies of Third Year.

None.

(d) In Studies of Fourth Year:

Norris J. Pass.

6. Who have been Discontinued?

None.

7. Who have been Admitted into Full Membership?

(a) Elected and Ordained Deacons this year:

Calvin R. Moser, Avery E. Robinson.

(b) Elected and Ordained Deacons previously.

Lewis W. Thomas.

8. What Members are in Studies of Third Year?

(a) Admitted into Full Membership this year.

Lewis W. Thomas, Avery E. Robinson, Calvin R. Moser, Oliver B. Stancil.

(b) Admitted into Full Membership previously:

Sandy B. Cornelius.

9. What Members are in Studies of Fourth Year?

James H. Garrett.

10. What Members have Completed the Conference Course of Study?

(a) Elected and Ordained Elders this year.

Walter T. Lomax, William B. Scales, John H. Lovell, Jacob C. Prince.

(b) Elected and Ordained Elders previously.

None.

11. What others have been Elected and Ordained Deacons?

(a) As Local Preachers.

Thomas G. Lewis, Henry T. Patterson, Daniel McCollum.

(b) Under Missionary Rule.

None.

(b) Under Seminary Rule.

John A. Maston.

12. What others have been Elected and Ordained Elders?

(a) As Local Deacons.

None.

(b) Under Missionary Rule.

None.



(c) Under Seminary Rule.

Jacob C. Prince.

13. Was the Character of each Preacher examined?

This was strictly done as the name of each Preacher was called in open Conference.

14. Who have been Transferred, and to what Conferences?

A. G. Jenkins to Liberia Conference.

15. Who have Died?

Isaac Wells, Evander McDaniel.

16. Who have been Located at their own Request?

None.

17. Who have been Located?

None.

18. Who have Withdrawn?

None.

19. Who have been permitted to Withdraw under Charges or Complaints?

None.

20. Who have been Expelled?

None.

21. What other personal Notation should be made?

John W. Davis, formerly a member of the Conference, an elder, was readmitted on his credentials.

22. Who are the Supernumerary Preachers?

J. P. Franklin, Alexander Clark, J. J. Blanton.

23. Who are the Superannuated Preachers?

C. W. Blaylock, L. B. Gibson, Elisha Howard, W. A. Pryor, David Connell.

24. Who are the Triers of Appeals?

W. R. Zeigler, S. P. West, W. W. Pope, A. S. Cottingham, N. D. Shamborger.

25. What is the Statistical Report for this year?

See Statistical Report.

26. What is the Aggregate of the Benevolent Collections ordered by the General Conference, as reported by the Conference Treasurer?

\$2,539.

27. What are the Claims on the Conference Fund?

\$911.

28. What has been Received on these Claims, and how has it been Applied?

\$910.50.

29. Where are the Preachers Stationed?

See appointments.

30. Where shall the Next Conference be held?

Charlotte, North Carolina.

## Reports of Presiding Elders.

### GREENSBORO DISTRICT.

Bishop and Brethren of the North Carolina Conference:

It becomes my privilege and duty under the all-seeing eye of Almighty God to present this my fifth annual report of the work on the Greensboro District this Conference year. We give thanks to our Heavenly Father for his many blessings.

The Lord has blessed each brother in his work. This has been a year of hard work.

The first of the spring we had rain nearly three months. Our Easter collection was cut short, also Children's Day, on account of rain, though the brethren planned and worked hard. Every charge has made some improvement.

We have had some sickness on the District this year. Bro. Winchester has been sick with chills and fever.

Peace and harmony have prevailed over the District. The pastors and presiding elder have tried to sow seeds of truth and kindness, and have done our best to push the work forward in the name of the Lord Jesus. We are sure that His hand has been leading us on to victory.

We have 14 charges with 35 churches and 6 preaching places. We hope to have churches on them soon.

I have looked after all of our church deeds that I could get hold of, and find that most of them are all right. I have visited every church on the District, and 4 of the preaching places. I have urged in all of our quarterly conferences and congregations that the full amount of mission and church extension, and, in fact, all of our benevolence be raised.

An educational sermon has been preached on most of the charges and a canvass made for education.

Children's Day has been observed and collection taken.

The District Conf. was held at Raleigh's Cross Road July 24-28. It was well attended. We had a successful conference. The brethren went to their field of labor with new zeal.

The Sunday School and Epworth League convention was held at Rhode Island. We had a very good meeting, and we trust that it will prove a blessing to our young people. J. H. Moffitt is the president.

Bennett College is our school. We trust that every pastor will send at least one student from his charge. Dr. Peeler and his faculty are doing their best to make the school go. They need our help in money and in kind words. The commencement exercises last May was well attended. Some money was raised for improvement.

Kent Home, under the supervision of Mrs. Colburn, has been en-

larged. Three rooms have been added, and the superintendent is doing her best for our girls. We trust that the Home and Bennett may be filled with students.

The Woman's Home Missionary Convention convened in Reidsville August 29th in their third annual meeting. They had a large delegation and quite a helpful meeting. The Woman's Home Missionary Society of this Conference is supporting two girls in school, one at Kent Home, Greensboro, N. C., and one at Allen Home, Asheville, N. C. Thus we see that the women are ahead of the men in helping our young people.

I have visited some of our districts and graded schools, and find that many of them are not as well attended as we would like to see them. We are encouraging our people to educate their children and buy homes.

#### Spiritual Condition.

We have had good revival meetings on nearly ever charge. Have had many conversions and a number added to the church.

#### Summary of the Work.

Central Randolph, Bro. W. T. Lomax, pastor—The churches at St. Peters, Union Grove, and Julian have been ceiled. Revival meetings were good. Added to the church, 14. Benevolence, \$37. Improvement, \$150.

East and North Greensboro—This charge was supplied by Bro. M. C. Laughlin. The revival spirit has been good. Benevolence, \$41. Number added to the church, 22.

Empire Charge—This charge was supplied by Bro. F. J. Jones. The church at Piney Ridge has been painted. At Pleasant Hill a new roof was put on. Stout's Chapel has been remodeled. Benevolence, \$46. Added to the church, 25. Raised for indebtedness, \$300.

Greensboro, St. Matthew's, Bro. R. P. Hairston, pastor—The pastor and his people are hard at work trying to complete the new church. They are planning to have the church opening the 4th Sunday in November. Bro. Hairston is a faithful worker. Benevolence, \$205. Raised for the church, \$3,000. Number added to the church, 29. Had a glorious revival this fall. It gave much life to the church.

Bass and High Street, Bro. A. W. McMaster, pastor—Benevolence, \$65; added to the church, 17. They have raised for indebtedness, \$310. Total \$793. This work is in good condition.

Jackson, Bro. J. H. Garrett, pastor. Benevolence, \$17. Raised for improvement, \$100. Added to the church, 9. A roof has been put on the church at Jackson. The church at Mt. Olive has been weather-

boarded and covered. Some improvement on the church at Hickory Grove.

Leaksville, Bro. A. S. Cottingham, pastor—Benevolence, . . . . The church raised for indebtedness, . . . . The church has been completed except painting. It is nicely seated with a five-ply seat. The church at Shady Grove has been repaired. Bro. Cottingham and his people have worked hard this year. They went into their new church at Leaksville August 25. This is one of the neatest churches of the kind in the Conference. They ask for their pastor's return.

Ramseur—This charge has been supplied by Bro. O. J. Bethea. Benevolence, . . . . Added to the church.

Reidsville and Danville—Bro. R. W. Winchester, pastor. Benevolence, \$61. Added to the church, 9. Money raised on indebtedness, \$650. \$1,051 all told. The church in Reidsville has been completed, painted inside and out, and lighted with electricity. The indebtedness on this church is about \$125. Revival spirit at Reidsville has been good. The mission at Hickory Grove is getting on nicely. They have 35 Sunday School scholars. Bro. Winchester is a hard worker. He is loved by his people and doing his best.

Reidsville Circuit—Rev. C. E. Ball, pastor. Benevolence, \$56. Added to the church, 28. Improvements, \$60. This work last year raised \$13.00 for benevolence. His people ask for his return.

South Greensboro—Bro. S. M. Hanes, pastor. Benevolence, \$40. Added to the church, 9. The church at Goshen has been painted. Also the church at Holmes Grove. Raised for improvement, \$130.

Summerfield—Bro. J. W. Jones, pastor. Benevolence, \$120.00. Added to the church, 45. The church at Raleigh X Roads has been painted. This work has had a gradual gain for five years. It has been going up every year. Has had a gradual increase with members. Also finance. His people ask for his return.

Wentworth—Bro. E. H. McArthur, pastor. Benevolence, \$50. Added to the church, 24. The church at Chapel Hill has been painted. A new Sunday School has been organized about four miles from Chapel Hill with 35 scholars; \$75 has been raised for improvements. Bro. McArthur is a faithful worker.

West Greensboro—Bro. J. A. Laughlin, pastor. Benevolence, \$75. Added to the church, 11. The church at Mt. Carmel has been seated and finished ceiling. The church at Rhode Island has been painted. Money raised for improvement, \$125.

#### Temporal Work.

The District is in a good building spirit. We have four places that we hope to build on this Conference year. At Jacksonville, Spray, and Hickory Grove. Brother Walker is supplying one of these places now.

We have a temperance committee organized on every charge, and are working to spread the sentiments against strong drink and tobacco. May God bless them in their work.

We have tried to do our best on the District this Conference year, and we trust that the seed we have sown may produce an abundance of fruit in the Master's vineyard.

Respectfully submitted,

M. J. BULLOCK, P. E.

### WESTERN DISTRICT.

Dear Bishop and Brethren of the Conference:

I praise God for the privilege of submitting my first annual report as Presiding Elder of the Western District of the North Carolina Conference, which was assigned to me last annual Conference by Bishop Burt.

This district has 21 appointments, to which I have given the best attention my time and ability would allow. The territory is densely populated with colored people who are in great need of the Gospel of Christ and of Christian education; we have studied their needs and dispositions and tried to apply the remedy that would be of the largest benefit to them. The pastors and myself have worked together and sought to advance the work throughout the district along all lines. A summary of the work and of P. C. report will show just how much has been accomplished, and how successful our efforts have been.

#### Spiritual Condition.

The spiritual life of the church throughout the District is not what it might be, but there are signs of development and progress in many of the charges. Good revivals have been held in most all of the charges, which have resulted in many conversions and accessions to the churches.

#### Education.

We have on this district the Allen Home and Asheville Academy, which stand as intellectual headlights for the extreme western part of the State. They are in the midst of a prosperous year.

The Mason Academy at Hickory numbered over 100 students last year and the outlook is bright for a larger number this year.

Bennett College has not been neglected. Many students from this district are attending there seeking higher education.

#### Summary.

Berry Temple, Asheville, N. C.—Bro. W. R. Zeigler, P. C. The work has gone forward under Bro. Zeigler's administration, good results

have been accomplished along all lines, many added to the church, the indebtedness reduced, and benevolent collection increased.

Boon has been supplied. It is in a remote part of the mountains and difficult to reach. Very little has been done in the way of improvement.

Gastonia and Mount Holly, Bro. G. F. Hill, pastor—Bro. Hill and his people have worked in harmony and accomplished some good results.

Bessemer City and King Mountain—Bro. A. G. Jenkins was assigned to this work and remained there and rendered faithful and efficient service until June, at which time he accepted a call to Liberia, Africa. Bro. Hinton was given his charge to finish the year's work and has rendered faithful service.

Forest City, Bro. R. D. Bethea, pastor—This charge has had a splendid year. Bro. Bethea and his people are in close touch with each other, and are bringing things to pass.

Franklin has been supplied by Bro. J. H. Morrison and he has done good work.

Hickory, A. H. Newsome, P. C.—The work here has gone forward with its usual degree of success.

Mooresboro, L. B. Burge, P. C.—He has done well.

Lincolnton Circuit has had a fairly good year.

Lenoir, G. W. Brower, P. C.—The pastor and people at this place have done a splendid work this year. Their old church became dilapidated in the spring and they pulled it down and erected a new building on a beautiful modern plan, which was enclosed by the first Sunday in September and ready for use.

Marion and Brackettton, J. H. Hunter, P. C.—This church has made some improvement.

Lincolnton Circuit, M. H. Hinton, P. C.—Some improvement has been made on this charge.

Machpelah, L. G. McDonald—This charge has had a splendid year. The camp meeting was discontinued and revival in lieu thereof, and the Lord blessed them with over fifty conversions.

Lowsville, B. F. Thomas, P. C.—Material has been put on the ground to erect a new church at Ebenezer and money raised for indebtedness; at Rock Hill, the benevolent collection was tripled.

Newton, A. B. McQueen—Brother McQueen has worked hard, paid off an old debt at Newton, and erected a new church at Conova.

Old Fort, S. B. Cornelius, P. C.—We have a small membership here, not enough to support a P. C. He has been compelled to work for support, but has held things together.

West Asheville and Waynesville—Bro. J. W. Wells, who was in Gammon Theological Seminary, was assigned to this charge, but later was changed to Maxton, and Bro. J. H. Lovel, who graduated in the same class, was given the work. He has managed things well, taking

charge of the work last April. He has raised more than \$100.00 for improvement, and more than double the Benevolent.

Patterson, J. J. Blanton—Some little improvement has been made on this charge.

Shelby and Falston, G. W. Byers—The pastor has labored with some degree of success.

Sherrill's Ford, R. J. Shipp, pastor—This charge has enjoyed an unusually prosperous year. Good revivals have been held in all the churches on the charge, in which there have been a large number of conversions, the largest in the history of the charge, adding several to the church.

Hendersonville—Left to be supplied. Very little has been done.

Western North Carolina is an inviting field in which to labor for the Master. The crying need is more better prepared and more thoroughly consecrated ministers. With such men we will spread the influence of the Methodist Episcopal church throughout this section of the State.

H. L. ASHE, P. E.

#### RALEIGH DISTRICT.

To the Bishop and Members of the North Carolina Conference:

Dear Fathers and Brethren—In presenting this my first annual report of the work of the Raleigh District, I am constrained first of all to acknowledge my profound gratitude to Almighty God, my Heavenly Father, for his goodness to me in blessing me with an abiding sense of his love and care, thus enabling me to perform the duties of my office. I am also very grateful to the pastors and their families and the laity in general for the cordial reception and kind hospitality everywhere accorded me; and amid the toils, cares, and vicissitudes of the year, I have had the hearty sympathy, confidence, and co-operation of the loyal pastors and people, making the work of the district, while one of incessant labor and travel, yet with the blessing of God both pleasant and successful. Too much credit cannot well be given my worthy and popular predecessor for the excellent condition in which I found the work of the District, as a result of his two years administration.

#### Temperance.

The friends of the saloon and the liquor traffic were perhaps never so well organized and strongly united in their support of their unholy cause and against the cause of temperance reform as now. The liquor power is the greatest foe of the Church of God, the home, and everything that is good. The rum demon ought to be driven out of our land. There is but little hope of justice to all men until the conscience of our American nation is awakened to see the destructiveness of this evil monster. We rejoice over the victory won by the friends of tem-

perance in the State in closing the saloons in a number of the towns in the State.

Let us in the name of God unite and organize all our forces in the cause of temperance reform.

#### Education.

The demand for an educated ministry and for Christian and industrial education for the masses were never so great and urgent as now. Those who are aspiring to be ministers, teachers, leaders of the people, and successful in business, should realize the situation and avail themselves of the advantage of the schools, and thoroughly prepare themselves for their vocation, or expect to fail in their pursuit and soon be relegated to the rear. I have endeavored to stimulate an interest in the education of our young people by distributing catalogues and circulars of our institutions. We point with pride to Bennett College, Greensboro, North Carolina, Rev. S. A. Peeler, D. D., the honored president. And we stand ready to aid in anyway to make the school a power.

#### Young People's Societies.

I have endeavored to emphasize the importance of the Sunday school. Too much attention cannot well be given by the pastor and all who have the moral and Christian training of children and youth at heart. Pastors should regularly, from their pulpits, invite the young people and adults to attend the Sunday schools, urge upon parents to send their children, and as often as possible for the parents to accompany them. The lessons should not only be well studied and taught in the Sunday schools, but pastors, teachers and parents should seek the early conversion and salvation of every child.

The Epworth League, well organized and properly conducted, can be made a great power in any community; and as far as possible the pastor should see that one is organized and maintained in every church.

#### Spiritual Condition.

Believing that the Gospel is the power of God unto salvation to every one that believeth, most of the pastors have worked with intense earnestness for the conversion of sinners and the edification of believers. We are thankful to report that many have professed a hope in Christ and entered the church. There remains, however, much to be done to make our churches thoroughly spiritual. Class meetings can be made more effective by varying the exercises as the Discipline directs. Many of our classes have fallen into formality through the use of a uniform method. We must revive here and make our class meetings more helpful and more spiritual. Faithful pastoral visiting



from house to house, personal contact with people, pressing home upon them the need of present salvation, as well as fervent preaching, is still necessary, if we would fulfill our high calling to glorify God by saving the greatest possible number of souls.

#### Ministerial Support and Benevolence.

Most of the churches underestimate the amount needed to furnish a comfortable support for the pastors and their families, and sometimes do not take into consideration the number and condition of the pastor's family; consequently some of our pastors and their families are compelled to make many sacrifices and sometimes suffer untold privations while they are conscientiously laboring and striving to perform their duties, and to administer to the spiritual comforts and needs of the people they are appointed to serve. They are under sacred obligations to employ all their time in the work of the ministry, and cannot, in keeping with their promises, engage in secular pursuits for a livelihood. Jesus says the laborer is worthy of his hire, therefore the churches should keenly feel it their sacred duty to see that the salary of the pastor is regularly and promptly paid.

If our pastors will lovingly and faithfully teach our members to willingly and truly observe the membership financial obligation: "I will contribute of my earthly substance according to my ability to the support of the Gospel and the various benevolent enterprises of the church," the salary of the pastor and all of the benevolences will be raised. I have endeavored to impress these considerations on the officers and people in my Quarterly Conferences, and a number of the charges will report benevolent apportionment and ministerial support raised in full. All of the benevolent collections have been looked after and the grand total for all benevolent and Conference collections go beyond the high-water mark of last year.

This district is steadily marching on. We have been contending against intemperance, Sabbath desecration and the tide of worldliness. Our forces have been marshalled against evil of every kind. We have lifted up the standard of the Lord and in the spirit of John Wesley, we trust, we have wrought, suffered and triumphed. Both pastors and people have not only co-operated with me, but have also shown me great kindness and bestowed upon me visible and tangible tokens of their appreciation.

Thankful to God for his innumerable blessings, and to ministers and laymen for kindness and co-operation, this, my first annual report of the Raleigh District, is respectfully submitted.

M. M. JONES.

## WILMINGTON DISTRICT.

Dear Bishop and Brethren:

We feel thankful to our Heavenly Father who has watched over us, and has brought us together face to face once more. The Wilmington District was left at the last Annual Conference in the hands of our much-beloved father in the Gospel, the late Rev. Isaac Wells, who was the first Negro preacher to join the North Carolina Conference. This good man, after having many years of hard toil, trials and persecutions in this life fell asleep in Jesus, on the 28th day of last February. On the 14th day of last March I was providentially appointed to take charge of the Wilmington District in the following words by Bishop H. W. Warren, D. D. L.L. D., namely: Rev. G. W. Morehead: "This communication appoints you Presiding Elder of the Wilmington District of the North Carolina Conference." After thanking God and Bishop Warren, I said to the Bishop these words: "God being my helper I will do my best." My brother pastors and laymen of the district and my work will speak for me. We thank God that we are all here, and mean to have our district the banner district of the North Carolina Conference. I am glad to say that we found the district in a good, healthy condition, and received many congratulations from almost all of the Presiding Elders and from many of the pastors of my district and various other parts of our great church. I cannot say too much for my brother pastors and laymen of the Wilmington District who have stood by us all the way through. God bless them for their faithful service. Our aim has been to keep the district spiritually alive. The Lord has wonderfully helped us. In our Epworth League and Sunday School Convention, which was held in Red Springs May 1, the first day we opened there was a gracious outpour of the Holy Spirit.

**Education.**

We have urged upon our young people all through our District to attend some one of our church schools and especially have we worked and have tried to get them to turn their attention to Bennett College in Greensboro, N. C. I am sorry to say that we have searched the charges one by one and thus far we have only found 12 students who attended our Bennett College last year. We are glad to say that we have quite a large number for this school year who have promised us that they would go in school this fall. There is much needed work to be done on this line. With our new president in the person of Dr. S. A. Peeler at the head we expect to succeed by the help of the Lord.

**Sunday Schools and Epworth Leagues.**

We have 32 Sunday Schools on this district and while the most of them are well attended, there is one thing about it that causes sadness, and that is, we do not find our young men in the Sunday Schools

as we used to in years passed. The same is true of our Epworth League work. And to my mind here is the place for us as Presiding Elders and pastors to do our best work in the church. Build up the Sunday Schools and the Epworth League Chapters and we build up the church.

#### **Temperance.**

We have some good temperance workers on the Wilmington District, but we need more. There are so many of our people who are not out and out for the temperance cause. In my travels through the district from Charlotte to Wilmington I have found this to be one of the great hindering causes that keep so many of our young men out of School, League and church.

#### **Temporal Work.**

We have had general improvements all over the District. And some special improvements. My brethren have been faithful and true and have all worked hard to build up the work. And we feel proud of them.

#### **Need of More Churches.**

We need churches in the following towns and cities: Burgaw, Dunn, Lillington, Fayetteville, Parkton, Jonesboro, Sanford, Camron, Vass, Broadway, Southern Pines, Aberdeen, Rockingham, Gibson Station, Wadesboro, Monroe and several more that we have not named. This district has on it 30 local preachers and some of them are good workers and we want to give them a chance to do something for the church.

#### **Summary of the Work.**

We are glad to say that all of the pastors of this district have been faithful workers in the Masters vineyard and have had some success. Some have had more than others. Death has not entered the ranks of the pastors. Though three of them, Brothers Murphy, Peace and McQueen, were each at one time this year very sick. We praise God that they are here today.

Charlotte, Rev. S. F. B. Peace—Here we have one church and one eight room parsonage. This is the best church on the district. It is a neat brick building built on one of our church extension plans with a seating capacity of 700. Amounts collected and expended, \$1,800; benevolence, \$63.

Concord, Rev. H. T. Patterson—There are three churches on this charge. Concord needs special attention. The pastor has worked hard and has been faithful. Benevolence, \$20.

Elkton, Rev. D. H. Chambers—On this charge we have two small churches. At Gum Swamp plans are being laid to build a new church. Benevolence, \$3.

Hamlet and Philadelphia, Rev. W. P. Hayes, pastor—Here we have two good churches with one nice five room parsonage. They have some money on hand at each one of the churches for improvements. They had good revivals. Benevolence, \$127.

Hoffman and Vass, Rev. C. R. Moser, pastor—Benevolence, \$27.

Laurinburg, Rev. G. B. McLean, pastor—This is one of our strongest and best churches on the district. It has two good churches and one parsonage well furnished. The pastor has done good work. Benevolence, \$197.

Laurinburg Circuit, Rev. J. D. Murphy—We have two good churches on this charge. Benevolence, \$70.

Lumberton, Rev. W. W. Pope, pastor. This charge has three churches and one parsonage. Some work has been done on the church at New Zion. The work is spiritually alive. Raised for benevolence, \$254.

Prospect Hall, J. R. McNair—We have only one church on this charge. Benevolence, \$10.

Maxton and Piney Grove—Here we have two nice churches and one parsonage. This charge is in good shape and will make a splendid report. Benevolence, \$131.

Melrose and Hickory Bend, Rev. M. Mundy, pastor—This charge has one church and one parsonage. The charge has two preaching places. The pastor and his people have put up a new church frame and will inclose it soon we hope. Benevolence, \$130.

Red Springs and Bowmore, Rev. W. M. Wells, pastor—There are two churches and one parsonage on this charge. The work at Red Springs is young. The church and parsonage are not completed as yet. At Bowmore we have up a new church frame which we hope to enclose this fall. Our church at Red Springs was blown off of its foundation by a storm last summer. Benevolence, \$61.

Rowland and Salem, Rev. J. M. McNeill, pastor—We have two good churches on this charge and one parsonage. This work is doing well. Benevolence, \$150.

Swann's, L. D. McQueen—This charge has three churches. One is too remote from the other two, being 20 miles from the lower to the upper church. This work is growing. Plans are being laid to build at two of these places. Benevolence, \$10.

Wilmington and Burgaw, Rev. W. F. Allen, pastor—Our growth on this charge is slow. The progress here has been slow. The pastor has not been able to make much headway here, though he has worked hard. The church was \$700 in debt last fall. The debt is now about \$ 00. Benevolence, \$4.

We have not failed to look after all the interest of our great church. Total benevolence for this year, \$1,257.00. We have organized one new Sunday School by the help of Rev. G. B. McLean. We have also opened up a new work at Gibson's.

May we ask your prayers that God may use us to his glory? That at the end of life we may hear him say, "Well done good and faithful servant."

G. W. MOREHEAD, P. E.

### WINSTON DISTRICT.

Dear Bishop and Brethren:

I feel it a great privilege as well as a duty to have the opportunity of reporting to you the condition of the Winston District. We feel grateful to God for having spared our lives and for blessing us with health during the Conference year. Peace and harmony have prevailed within the district.

#### Summary of Work.

Asheboro, Bro. John Simpson, P. C.—Conversions, 8; accessions, 5; benevolence, \$63.

High Point, J. C. Robbins, P. C.—Conversions, 6; accessions, 20; benevolence, \$65.

Jefferson, A. B. Leonard, P. C.—Benevolence, \$41.

Jonesville, W. B. Scales, P. C.—Conversions, 49; accessions, 32; benevolence, \$45.

Kernersville, J. A. Maston, P. C.—Conversions, 18; benevolence, \$62.

Lexington and Thomasville, P. J. Cook, P. C.—Conversions, 67; accessions, 30; benevolence, \$100.

Liberty and Trinity, S. L. May, P. C.—Conversions, 67; accessions, 53; benevolence, \$75.

Mayhew and Mooresville, D. McRae, P. C.—Conversion, 67; accessions, 55; benevolence, \$67.

Midway, F. L. Bost, P. C.—Conversions, 22; accessions, 19; benevolence, \$11.

Mt. Airy Circuit, J. O. King, P. C.—Conversions, 6; accessions, 6; benevolence, \$6.

Salisbury, P. F. Johnson, P. C.—Conversions, 3; accessions, 10; benevolence, \$8.

Statesville and Philadelphia, J. C. Addie, P. C.—Conversions, 20; accessions, 15; benevolence, \$32.

South High Point, D. Brooks, P. C.—Conversions, 57; accessions, 16; benevolence, \$34.

Wilkesboro, D. C. Skeen, P. C.—Conversions, 25; accessions, 22; benevolence, \$25.

Winston, Columbia Heights, W. E. Clapp, P. C.

Winston, Missions, L. W. Thomas, P. C.—Conversions, 5; accessions, 5; benevolence, \$8.

Winston, Mt. Pleasant, S. McDonald, P. C.—Conversions, 4; accessions, 12; benevolence, \$60.

Winston, St. Paul, N. D. Shamborguer, P. C.—Conversions, 14; accessions, 92; benevolence, \$156.

#### Church Improvements.

Ashbero and Randleman have paid \$300 on new parsonage.

High Point church was burned down this spring; the members are rebuilding.

Jefferson—The people have built a church and are worshipping in it.

Jonesville—The members have torn down the old church and have built one after a church extension plan.

Mt. Airy—The remainder of the debt on Mallalieu Temple was canceled.

Salisbury—A lot bought and partly paid for and temporary building erected.

Statesville—Church ceiled and all debts paid.

South High Point—A new church built and in use.

Wilkesboro—A new church built at Northtown and in use.

Winston Mission—Money raised on a new church.

Winston, St. Paul—Raised \$3,977 on church improvements.

#### Education.

I have endeavored to awaken interest in the education of our young people. Quite a number of our young people on the district are preparing to enter Bennett College and Allen Home.

#### Sunday School and Epworth League.

We have on the district 47 Sunday Schools, an addition of 2. They are well organized, and supplied with literature from our book concern. The most of them observe Children's Missionary Day.

The Epworth League Convention held at Mt. Airy was a success.

#### Temperance.

We are urging temperance along all lines, and are praying that the two remaining open bars in our district will soon be no more.

#### General Remarks.

We could organize more new work had we the missionary money with which to operate it.

Respectfully submitted,

ROBERT SMITH.

## REPORT OF CONFERENCE TREASURER HAIRSTON.

## Receipts for all purposes.

| For Missions                             | Cash.      | Vouchers.  | Totals     |
|--|------------|------------|------------|
| Board of Foreign Mission, reg. col ..... | \$ 295.00  | \$ 52.00   | \$ 347.00  |
| Scholarship for Africa .....             |            | 115.00     | 115.00     |
|  | <hr/>      | <hr/>      | <hr/>      |
| Total for Board of Foreign Miss.....     | \$ 295.00  | \$ 167.00  | \$ 462.00  |
| For Sunday School undivided .....        | 113.00     | 50.00      | 163.00     |
| Board of Home Missions and Ch. Ext. .... | 783.00     | 61.00      | 844.00     |
|  | <hr/>      | <hr/>      | <hr/>      |
| Grand Total for Missions .....           | \$1,191.00 | \$ 278.00  | \$1,469.00 |
| For Education.                           |            |            |            |
| Children's Fund for Students' Aid.....   | \$ 368.00  | \$ 180.00  | \$ 448.00  |
| Freedmen's Aid and Sunday School .....   | 345.00     | 86.00      | 431.00     |
| Local Educational Interest .....         | 119.00     | 199.00     | 218.00     |
| For American Bible Society .....         | 55.00      |            | 55.00      |
| For Woman's Foreign Mis. Society.....    | 36.00      |            | 36.00      |
| For Woman's Home Mis. Society .....      | 52.00      | 76.00      | 128.00     |
| General Conference Expenses .....        | 132.00     | 38.00      | 170.00     |
| Conference Claimants .....               | 227.00     |            | 227.00     |
| Episcopal Fund .....                     | 125.00     | 7.00       | 132.00     |
| Epworth League Expenses .....            | 2.00       | 5.00       | 7.00       |
| Other Benevolent Collections .....       |            | 837.00     | 837.00     |
|  | <hr/>      | <hr/>      | <hr/>      |
|  | \$2,652.00 | \$1,706.00 | \$4,138.00 |

## Disbursements.

|   |            |
|---|------------|
| To Board of Foreign Missions .....        | \$ 347.00  |
| Scholarship, Bishop Scott .....           | 115.00     |
| Sunday School S. S. Union .....           | 163.00     |
| To Board of Home Miss. and C. Ext. ....   | 844.00     |
| Children's Fund Board of Educa. ....      | 448.00     |
| Freedmen's Aid and unday School .....     | 431.00     |
| Local Education to S. A. Peeler .....     | 218.00     |
| American Bible Society, J. P. Wragg ..... | 55.00      |
| W. Foreign Missionary Soc. ....           | 36.00      |
| W. H. Mis. Soc., Mrs. R. C. Bearden ..... | 128.00     |
| Genl. Confer. Exp., Oscar Miller .....    | 170.00     |
| Conf. Claim. Conference Stewards .....    | 231.00     |
| Episcopal Fund, Rev. G. P. Mains .....    | 132.00     |
| Epworth League Exp., I. G. Penn .....     | 7.00       |
| Other B. Collections .....                | 837.00     |
|   | <hr/>      |
|   | \$4,162.00 |
| Overdrawn the Treasury .....              | 4.00       |

R. P. HAIRSTON, Treasurer.

REPORT OF THE TREASURER OF THE N. C. CONFERENCE TO  
THE PRESIDENT AND TRUSTEES OF BENNETT  
COLLEGE, BY DISTRICT.

|                           | Cash. | Vouch. | Total |
|---------------------------|-------|--------|-------|
| Greensboro District ..... | \$ 11 | \$107  | \$118 |
| Wilmington District ..... | 56    | 16     | 72    |
| Western District .....    | 15    | 34     | 49    |
| Winston District .....    | 29    | 20     | 49    |
| Raleigh District .....    | 8     | 17     | 25    |
|                           | <hr/> | <hr/>  | <hr/> |
|                           | \$119 | \$194  | \$313 |

R. P. HAIRSTON.

MEMOIRS.

Isaac Wells was born in 1837, in Cleveland county, N. C. From this may be seen the fact that he came up through the dark days of slavery. Although his opportunity to qualify himself for the work of life was very limited and his environment very unwholesome yet he learned the art of true living. He was a man of great power and sound integrity. He was great in spite of the conditions that surrounded him. He was the first Negro minister to join the North Carolina Annual Conference. He won and kept the affections of the entire Conference, which was then composed of white ministers. As the members of his own race came into the Conference they found in him a friend and a helper. Early they learned to regard him as their spiritual father and looked to him for counsel and guidance. Few men were more able and none were more willing to give aid and comfort to those who were struggling to establish Methodism in North Carolina during those stormy days. He was a good example of the men of the old school. As he derived knowledge from his own experience he imparted it to others that they might be helped. He was a preacher of great power. He possessed the ability to see the truth and had the skill to show it to his audience. His sermons were full of illustrations taken from field and road-side and forest, and mountains, his shop, and, in fact, from all nature. In this way he brought his hearers to see the truth as they looked upon the objects about them. He was an acceptable preacher to all classes and it may be said of him as it was said of the Master that the common people heard him gladly.

Evander McDaniel was admitted to the N. C. Conference at Maxton N. C., in 1889, coming to us from the S. C. Conference. He served the following appointments: Reidsville, Newbern, and Kingston, Norfolk and Princess Ann, Townsville and Bullock, Walnut Cove. He was a good preacher, loyal to his church and did a commendable service. His life was a good example of the Christ life, showing the possi-



bility of living that life even to a ripe old age. He died triumphant in faith the 8th day of August, 1907.

Sister Lula Hunter, wife of Rev. J. H. Hunter, was born in Vance county, where she lived until her marriage. She was converted in early life and learned to do service for the Master. She spent some years in Bennett College preparing herself for life's work. Sister Hunter shared the burdens and hardships of life with her husband and was faithful to the end. On October 11th, 1907, she took her leave to be with Jesus.

Sister Dollie McDonald, wife of Rev. S. McDonald, was born Oct. 15, 1855, died October 11, 1906. The Lord blessed them. She was the mother of twelve children. She was a true wife and a faithful mother. Sister McDonald was a great friend to education and helped much in the education of her husband and children. She was always hopeful and full of life. She is no more for the Lord took her from labor to reward.

---

## Reports of Standing Committees.

### COMMITTEE ON MISSIONS.

#### Greensboro District.

|                                   |       |
|-----------------------------------|-------|
| 1 Danville and Spray .....        | \$115 |
| 2 East and North Greensboro ..... | 45    |
| 3 High Street and Bass's .....    | 31    |
| 4 Reidsville .....                | 35    |
| 5 Ramseur .....                   | 20    |
|                                   | <hr/> |
|                                   | \$246 |

#### Raleigh District.

|                              |       |
|------------------------------|-------|
| 1 For the District .....     | \$500 |
| 2 Dennis and Redbank .....   | 25    |
| 3 Durham and Creedmore ..... | 30    |
| 4 Goldsboro .....            | 60    |
| 5 Newport News, Va. ....     | 60    |
| 6 Newbern and Kinston .....  | 40    |
| 7 Oxford and Bullock .....   | 60    |

|   |        |
|---|--------|
| 8 Oberlin and Raleigh .....             | 25     |
| 9 Rocky Mount, Va. ....                 | 60     |
| 10 Pleasant Ridge and Norfolk, Va. .... | 140    |
| 11 Townsville and Clarksville, Va. .... | 60     |
| 12 Henderson and Louisburg .....        | 40     |
|   | <hr/>  |
|   | \$1100 |

## Western District.

|                        |       |
|------------------------|-------|
| 1 Asheville .....      | \$160 |
| 2 Boon .....           | 38    |
| 3 Franklin .....       | 40    |
| 4 Hendersonville ..... | 25    |
| 5 Lenoir Circuit ..... | 25    |
| 6 West Asheville ..... | 60    |
|                        | <hr/> |
|                        | \$348 |

## Wilmington District.

|                    |       |
|--------------------|-------|
| 1 Concord .....    | \$ 28 |
| 2 Elkton .....     | 40    |
| 3 Parkton .....    | 20    |
| 4 Swann's .....    | 25    |
| 5 Hoffman .....    | 20    |
| 6 Wilmington ..... | 155   |
|                    | <hr/> |
|                    | \$288 |

## Winston District.

|                               |       |
|-------------------------------|-------|
| 1 Jefferson .....             | \$ 20 |
| 2 South High Point .....      | 143   |
| 3 Statesville .....           | 20    |
| 4 Salisbury and Spencer ..... | 115   |
| 5 Columbia Heights .....      | 20    |
|                               | <hr/> |
|                               | \$318 |

## Recapitulation.

|                           |        |
|---------------------------|--------|
| Greensboro District ..... | \$ 246 |
| Raleigh District .....    | 1100   |
| Western District .....    | 348    |

|                           |        |
|---------------------------|--------|
| Wilmington District ..... | 288    |
| Winston District .....    | 318    |
|                           | \$2300 |

I concur in the above apportionments.

HENRY SPELLMEYER.

#### DISTRICT CONFERENCE RECORDS.

Dear Brethren: We, the Committee on District Conference Records, have examined them as required by the Annual Conference and found them in good condition.

S. P. WEST,  
W. B. SCALES,  
W. M. WELLS.

#### BIBLE CAUSE.

Dear Brethren of the Conference: There is no work of more importance than the distribution of the Bible, the word of God, throughout the world. And whereas, the American Bible Society is the greatest agency in furnishing the Bible at the greatest advantage to its universal distribution,

Resolved, That every member of the North Carolina Conference stand by this great work that is being done by this society and do all in his power to raise the full apportionment for the same.

Respectfully submitted,

W. R. ZEIGLER,  
W. M. CRAWFORD,  
W. M. WELLS.

#### AUDITING.

We have examined the vouchers of the Presiding Elders and find them correct.

Respectfully submitted,

J. P. MORRIS,  
S. F. B. PEACE,  
A. H. NEWSOME.

#### WOMAN'S WORK.

As ministers and pastors we are constantly reminded of the importance of Woman's Work. Indeed the co-operation of the wives, sisters and daughters of the Methodist ministry is indispensable to a successful operation of our church work. More especially are we constrained to recognize with high appreciation the woman's organized efforts in such as the Ladies' Aid Society, the Woman's Home Mission-

ary Society and the Woman's Christian Temperance Union. These are indeed great agencies in caring for the parsonages and looking after the temporal work of the churches; in the work of giving our girls and young women domestic and Christian training in our excellent Model Home Schools, and in the tremendous task of delivering our land from the dreadful curse of intemperance; therefore be it

Resolved, That we do hereby commend the noble work of our women, and do solemnly pledge them our unstinted co-operation and support in their untiring efforts in their unabated zeal and energy to work for the glory of Christ's Kingdom.

G. W. BYERS,  
C. E. BALL,  
J. H. LOVELL.

#### BOARD OF STEWARDS.

##### Received From

|                            |                 |
|----------------------------|-----------------|
| Book Concern .....         | \$657.00        |
| Chartered Fund .....       | 22.00           |
| Conference Claimants ..... | 231.00          |
| Interest ... ..            | 1.50            |
| Total.....                 | <u>\$911.50</u> |

##### Disbursements.

|  |                 |
|--|-----------------|
| Charles W. Blaylock (J. P. Morris) ..... | \$ 90.00        |
| David Connell (Self) .....               | 60.00           |
| Lewis B. Gibson (Self) .....             | 80.00           |
| Elisha Howard (Self).....                | 90.00           |
| W. A. Pryor (Self).....                  | 41.00           |
| Widow McDaniel (J. C. Prince).....       | 80.00           |
| Widow Harshaw (J. C. Addie).....         | 62.00           |
| Widow Smith (P. J. Cook).....            | 55.00           |
| Widow Gibson (W. P. Hayes).....          | 75.00           |
| Widow Letterloh (Self).....              | 70.00           |
| Widow Rogers (G. W. Morehead).....       | 60.00           |
| Widow Johnson (Self).....                | 55.00           |
| Widow Wells (Self).....                  | 92.00           |
| For envelopes .....                      | 05              |
| Turned over to Treasurer .....           | 45              |
| Total.....                               | <u>\$910.50</u> |

**THE BOARD OF EDUCATION, FREEDMEN'S AID AND SUNDAY SCHOOLS.**

Pursuant to the order of the General Conference and the action of the Commission on the Consolidation of Benevolences, the work hitherto accomplished by the Board of Education, Freedmen's Aid and Southern Education Society and Sunday School Union and Tract Society is henceforth to be carried on under the organization known as The Board of Education, Freedmen's Aid and Sunday Schools, this action taking effect January 1, 1907. It is of the utmost importance that there be a clear understanding concerning the new method of procedure.

The work hitherto done by the Board of Education is largely in the interests of student aid and is vitally related not only to the welfare of these students but also to the best welfare of the educational institutions of the Church. During the year closing with November 30, 1906, 1,926 students were assisted to prepare for a life of usefulness, more than \$108,000 being distributed among the educational institutions for loans to these students. As an institution, Children's Day has become well established and it is to be maintained without interruption. The Discipline provides specifically that the proceeds of Children's Day Collection shall be applied to student aid and shall be sent as promptly as possible to the Board of Education. This provision remains in force. At the first meeting of the new Board—held in Cincinnati, February 26-28, 1907—the members of the new Board, representing the old line of work carried on by the Board of Education, consented to waive all claim for funds other than those received in the Children's Day Collections. It is, therefore, of the utmost importance that the proceeds of Children's Day be devoted to this work. As by action of the new Board this part of the work is to be retained in New York for the present, it will save confusion if remittances be sent to the New York office.

The Board ordered the continuance of the Christian Student which will be sent to all contributors to the fund in amounts of \$1.00 or over.

There can be no question but that one purpose of the General Conference in effecting this consolidation was to secure a hearing of the public benevolence of the Church before each congregation. The new Board in Cincinnati, therefore, urgently requests that one Sunday be taken for the presentation of the claims of the work carried on by the new organization. This collection is to be divided in the ratio of two dollars to one as between the work for Freedmen's Aid and for Sunday Schools. And it was voted that an appeal should be made by the Corresponding Secretaries for the sum of \$500,000 to cover all these interests. We therefore urgently request that a public presentation of these interests, and collection be taken, one Sunday in each congregation.

The observance of Lincoln Day has been growing with increased beneficial results; and Rally Day has become an interesting and profitable institution of the Sunday School, the proceeds of the day being devoted to the work of Sunday Schools. It is earnestly hoped that pastors everywhere will see to it that these days are observed as institutions of the Sunday School. The church now has three great benevolent societies. The missionary cause is strongly entrenched in our Sunday Schools. It is only fair that the work being done in the interests of education among the young in our own land should come in for a full share of sympathy and support. Therefore, the importance of placing emphasis upon Lincoln Day and Rally Day.

Nothing less than the amount asked for will enable the Society to do all the work which is needful in these great fields of endeavor. The Freedmen's Aid, upon limited resources, has been caring for many thousands of students. The solution of the problem in the great South is to be found only in Christian education. This Society pleads that the Church may hold up its hands that it may undertake and carry on a work in some sense adequate to the great need.

The need for increased funds to carry on our Sunday school work in the West and in the South is equally apparent. Methodism has always been potential in the formative period of the different sections of our country; but, owing to lack of funds, we are unable to meet the appeals that are constantly coming. The Presbyterian Church has 152 Field Workers for the organization and propagation of Sunday Schools, the Baptists, 140, the Congregationalists, 40, while we have but four or five men who devote themselves entirely to this work.

This is a time of transition, attended by some danger, not only for these societies, but for the great interests which they seek to serve. It is of the utmost importance that every pastor should co-operate during this experimental period that all these interests may be wisely conserved. The apportionment for the united Society is 40 per cent. of the amount apportioned to the cause of Foreign Missions—Children's Day, Public Collection in the churches, the collections on Lincoln Day and Rally Day all being counted in the total amount.

Gammon Theological Seminary has opened a year of unprecedented prosperity. The registration up to date is larger than in any previous year. President J. W. E. Bowen and his colleagues are working together heartily and with enthusiasm to make Gammon attain highest success in its high mission. We urge all our young ministers not to apply for admission to the Conference until they have taken a course at Gammon Theological Seminary.

Respectfully,

A. S. COTTINGHAM,  
J. W. JONES,  
J. W. SIMPSON.

## RESOLUTIONS.

Be it resolved, That we hereby memorialize the General Conference to fix a bona fide Episcopal Residence in the City of New Orleans.

---

Be it resolved, That we request the Presiding Elders to apportion \$1,200.00 to the charges of the Conference for the purpose of erecting a President's home at Bennett College.

Be it resolved, That we pledge ourselves to raise the amount.

---

Whereas, the laws of the State of North Carolina require a separation of the races in the common carriers, and

Whereas, the law requires equal accommodations, and,

Whereas, in the case of Negroes, this requirement is flagrantly disregarded; the accommodations for Negroes are not only frequently inadequate, but the cars are poorly equipped and poorly kept and in no sense equal in accommodations to those provided for other passengers paying the same fare, and

Whereas, the laws of the State of North Carolina do not provide for separate cars on through trains, and,

Whereas, the railroad authorities persist in forcing Negroes to occupy separate cars on through trains, in violation of the spirit and letter of the law, therefore, be it

Resolved, That we respectfully protest against this discrimination of accommodations on the trains in general, and the discrimination on through trains; be it further

Resolved, That a copy of these resolutions shall be sent to the General Passenger Agent of the Southern Railway, The Seaboard Air Line, Atlantic Coast Line and Interstate Commerce Commission at Washington, D. C.

---

Whereas, the General Conference of 1904 has sent down for our consideration, the proposition seeking amendment to the constitution of the Church so as to provide Bishops for Races and Languages, limiting their jurisdiction thereto, and

Whereas, the Annual Conferences of the Church began voting on the proposition before adequate discussion was had in the Church Press, and,

Whereas, the interpretations of the proposition are many and varied, and at time antagonistic, and,

Whereas, the status of the proposed bishop or bishops is in doubt, legislation on this subject having not been completed, and,

Whereas, the proposition has been assailed in such a language of derision so as to prevent fair and sane discussion, be it

Resolved, That we decline to vote on the proposition submitted; and, be it further

Resolved, That we hereby memorialize the General Conference to resubmit a proposition more clearly defined, freer from objections and which will more nearly meet the demands of the situation.

M. M. JONES,  
R. E. JONES,  
J. P. MORRIS.

Whereas, The Church Extension Society and the Home Missionary Society have been consolidated, and have asked the North Carolina Conference to raise \$2,697;

Resolved, That we do all in our power to raise the full amount, in order to show our appreciation to Dr. I. L. Thomas for his faithful services.

G. F. HILL,  
J. A. LAUGHLIN,  
J. D. HAIRSTON.

1.

Whereas, The Rev. Bishop Spellmeyer has presided over the Conference with unusual dignity, grace, and kindness; and

Whereas, His presence has been an inspiration, and his sermon a great spiritual uplift; therefore

Resolved, That we tender our sincere thanks to him for his kindness toward us; and

Resolved, That we pray that God's blessing may ever rest upon him.

2.

Resolved, That we extend our thanks to the Secretaries and Treasurer for their faithfulness in the performance of their respective duties.

3.

Whereas, The various General Officials have given instructive and interesting addresses, which will make a lasting impression upon the minds of those who listen to them; therefore

Resolved, That we extend to them our thanks for the excellent addresses which have been so helpful to us.

4.

Whereas, The pastors and members of St. Paul, Mt. Pleasant, St. James, and Boston Cottage Methodist Episcopal Churches, assisted by those of other denominations, have so royally entertained this Conference; therefore

Resolved, That we extend to them our thanks for their hospitality.

5.

Whereas, The late immortal Isaac Wells, the first colored minister



of the North Carolina Conference, serving as pastor and presiding elder, is no more;

Resolved, That we appreciate his noble work for the cause of Christ and Methodism, and hold him dear in the innermost recesses of our hearts, and acknowledge our gratitude for his services by greater devotion to our work.

Resolved further, That the bereaved family have our sympathy.

## 6.

Whereas, Rev. S. A. Peeler, President of Bennett College, and his excellent corps of instructors are doing a grand work among us in training not only the head and hand of our youths but the heart as well; therefore

Resolved, That we, in recognition of our appreciation of the faithful services rendered by them, heartily co-operate with them in their efforts to uplift the race.

## 7.

Whereas, The Church Extension and Home Missionary Society are doing a great work for Methodism; therefore, be it

Resolved, That we have sustained a great loss in the death of Dr. James M. King.

Resolved, That in the deaths of Bishops Fitzgerald and McCabe, that not only the church, but the world sustains a great loss.

J. W. WELLS,  
G. B. McLEAN,  
R. D. BETHEA.

Whereas, Dr. Trever, of Gammon Theological Seminary, has been with us; and

Whereas, We have been uplifted by his excellent discourses; therefore

Be it resolved, That we extend to Dr. Trever, by rising, a vote of thanks.

P. J. COOK,  
J. D. HAIRSTON.

Whereas, The Sunday School is of vital importance in the training of our young people; and

Whereas, It has done so much in the distribution of helpful tracts among our people; therefore

Resolved, That we pledge Dr. C. C. Jacobs and the Sunday School Union our hearty support in every possible way.

R. J. SHIPP,  
W. M. WELLS,  
P. J. COOK.

Whereas, The Epworth League has proven the wisdom of its organization by the work it has done; and

Whereas, The work already done in our Conference demonstrates what may be done, if the work be given diligent attention; therefore

Resolved, That we organize an Epworth and a Junior League in each church.

Resolved, That we raise three dollars to send to Dr. I. G. Penn for League Literature; that we endorse the plan of Secretary Penn for a Conference Epworth League Convention during the summer and pledge him our co-operation in interesting our young people in the convention.

Resolved, That we raise, during this year, five cents from each member of the League and one cent from each member of the Junior League as requested by the Board of Control for general Epworth League expenses.

R. J. SHIPP,  
W. M. WELLS,  
P. J. COOK.

---

#### CERTIFICATES.

This is to certify that on Oct. 20, 1907, at Winston, North Carolina, under election by the North Carolina Conference, I ordained as Deacons: Calvin R. Moser and Avery E. Robinson, and at the same time and place I ordained as Elders, assisted by Elders: John H. Lovell, Walter T. Lomax, Jacob C. Prince, William B. Scales.

HENRY SPELLMEYER,  
Presiding Bishop.

---

This is to certify that on October 21st, 1907, at Winston, N. C., on election by the North Carolina Conference, I ordained as Deacons: Henry T. Patterson, Thomas G. Lewis, John A. Maston, Daniel McCollum.

HENRY SPELLMEYER,  
Presiding Bishop.

---

We hereby certify that the foregoing is a correct report of the proceedings of the Forty-ninth Session of the North Carolina Conference.

HENRY SPELLMEYER, President.

S. A. PEELER, Secretary.

Winston-Salem, N. C., October 21, 1907.

MONEY TO BE RAISED.

GREENSBORO DISTRICT

|                           | Foreign Missions | Home Mis. & Church Exten. | Freedmen's Aid and S. S. | Sunday School | Local Ed. for Bennett College | Bible Cause | Conference Claimants | Episcopal Fund | For Libera Africa |
|---------------------------|------------------|---------------------------|--------------------------|---------------|-------------------------------|-------------|----------------------|----------------|-------------------|
| Central Randolph          | \$14             | \$14                      | \$10                     | \$5           | \$10                          | \$2         | \$5                  | \$2            | \$2               |
| Danville, Va.             | 7                | 7                         | 7                        | 3             | 5                             | 1           | 4                    | 1              | 1                 |
| East and North Greensboro | 10               | 10                        | 8                        | 3             | 10                            | 2           | 6                    | 4              | 2                 |
| Empire                    | 16               | 16                        | 5                        | 5             | 10                            | 2           | 6                    | 3              | 2                 |
| Greensboro                | 70               | 70                        | 30                       | 10            | 75                            | 4           | 17                   | 4              | 2                 |
| High St. and Bass's       | 16               | 16                        | 5                        | 5             | 20                            | 2           | 8                    | 5              | 2                 |
| Jackson                   | 6                | 6                         | 2                        | 2             | 10                            | 2           | 5                    | 2              | 2                 |
| Ramseur                   | 7                | 7                         | 4                        | 2             | 10                            | 2           | 3                    | 2              | 2                 |
| Reidsville                | 17               | 17                        | 5                        | 4             | 30                            | 4           | 5                    | 2              | 2                 |
| Reidsville Circuit        | 20               | 20                        | 5                        | 4             | 30                            | 4           | 5                    | 2              | 2                 |
| South Greensboro          | 20               | 20                        | 4                        | 4             | 30                            | 4           | 5                    | 2              | 2                 |
| Summerfield               | 20               | 20                        | 5                        | 4             | 25                            | 5           | 5                    | 2              | 2                 |
| Wentworth Circuit         | 50               | 50                        | 10                       | 5             | 35                            | 5           | 10                   | 3              | 2                 |
| West Greensboro           | 10               | 10                        | 5                        | 5             | 25                            | 4           | 5                    | 2              | 2                 |
| Leaksville                | 16               | 16                        | 10                       | 3             | 20                            | 4           | 5                    | 2              | 2                 |
|                           | 16               | 16                        | 10                       | 3             | 25                            | 4           | 5                    | 2              | 2                 |

WESTERN DISTRICT

|                            | Foreign Missions | Sunday School, not divided | Home Mis. & Ch. Extension | Education, F. A. & S. S. | Children's Fund for S. A. | Col. for F. A. & S. S. | American Bible Society | Episcopal Fund | Conference Claimants | Gen. Conference Expenses | Bennett College |
|----------------------------|------------------|----------------------------|---------------------------|--------------------------|---------------------------|------------------------|------------------------|----------------|----------------------|--------------------------|-----------------|
| Asheville                  | \$15             | \$                         | \$20                      | \$25                     | \$                        | \$                     | \$                     | \$             | \$                   | \$                       | \$              |
| Boone                      | 7                | 5                          | 7                         | 12                       | 2                         | 1                      | 1                      | 1              | 1                    | 2                        | 5               |
| Franklin                   | 7                | 2                          | 9                         | 12                       | 2                         | 1                      | 1                      | 1              | 1                    | 2                        | 3               |
| Forest City                | 15               | 5                          | 20                        | 20                       | 2                         | 1                      | 1                      | 1              | 1                    | 2                        | 6               |
| Gastonia and Bessemer City | 15               | 5                          | 20                        | 30                       | 5                         | 1                      | 1                      | 1              | 1                    | 2                        | 10              |
| Lawndale and Brook Chapel  | 30               | 5                          | 35                        | 35                       | 5                         | 3                      | 2                      | 2              | 2                    | 3                        | 15              |
| Hendersonville             | 5                | 1                          | 5                         | 5                        | 2                         | 1                      | 1                      | 1              | 1                    | 1                        | 1               |
| Hickory                    | 15               | 5                          | 30                        | 30                       | 2                         | 3                      | 3                      | 3              | 3                    | 3                        | 8               |
| Lenoir                     | 20               | 5                          | 30                        | 30                       | 2                         | 3                      | 3                      | 3              | 3                    | 3                        | 8               |
| Lenoir Circuit             | 10               | 5                          | 15                        | 15                       | 2                         | 1                      | 1                      | 1              | 1                    | 1                        | 4               |
| Lowesville                 | 30               | 5                          | 40                        | 35                       | 2                         | 1                      | 1                      | 1              | 1                    | 1                        | 4               |
| Machpelah                  | 15               | 5                          | 30                        | 25                       | 3                         | 2                      | 2                      | 2              | 2                    | 2                        | 10              |
| Marion and Old Fort        | 15               | 3                          | 20                        | 20                       | 3                         | 2                      | 2                      | 2              | 2                    | 2                        | 5               |
| Newton                     | 10               | 3                          | 15                        | 15                       | 2                         | 1                      | 1                      | 1              | 1                    | 1                        | 4               |
| Patterson                  | 6                | 3                          | 12                        | 10                       | 1                         | 1                      | 1                      | 1              | 1                    | 1                        | 4               |
| Shelby and Mooresboro      | 10               | 5                          | 15                        | 20                       | 3                         | 1                      | 1                      | 1              | 1                    | 1                        | 5               |
| Sherrill's Ford            | 15               | 8                          | 30                        | 35                       | 10                        | 3                      | 3                      | 3              | 3                    | 3                        | 5               |
| West Asheville             | 10               | 5                          | 15                        | 15                       | 3                         | 2                      | 2                      | 2              | 2                    | 2                        | 5               |



STATISTICS NO. 1, GREENSBORO DISTRICT, NORTH CAROLINA CONFERENCE, 1907.

NAMES OF CHARGES

| Names of Charges              | Church Membership |                  |                     |            | Baptisms          |                 |             |                      | Sunday Schools |              |                |                | Church Property |   |   |   |
|-------------------------------|-------------------|------------------|---------------------|------------|-------------------|-----------------|-------------|----------------------|----------------|--------------|----------------|----------------|-----------------|---|---|---|
|                               | No. Probationers  | No. Full Members | No. Local Preach'rs | No. Deaths | No. Children Bapt | No. Adults Bapt | No. Schools | No. Officers & Teach | No. Scholars   | No. Churches | Probable Value | No. Parsonages | Probable Value  | Paid for building & improving Churches and Parsonages | P'd on old indebtedness on Ch. property | Present indebtedness on Church property |
| Central Randolph              | 16                | 108              | 1                   | 7          | 14                | 4               | 20          | 150                  | 4              | \$ 2500      | 1              | \$ 1200        | \$ 150          | 58  | 50                                      | 4000                                    |
| East and North Greensboro     | 5                 | 52               | 3                   | 4          | 2                 | 10              | 8           | 65                   | 1              | 1200         | 1              | 150            | 280             | 50  | 500                                     | 4000                                    |
| Empire                        | 19                | 175              | 4                   | 1          | 6                 | 4               | 21          | 120                  | 4              | 2500         | 1              | 2000           | 1800            | 40  | 300                                     | 879                                     |
| Greensboro St. Matthew's      | 35                | 450              | 2                   | 5          | 27                | 3               | 1           | 22                   | 2              | 40000        | 1              | 2000           | 40              | 600   | 800                                     |   |
| High Street and Bass's Chapel | 5                 | 198              | 4                   | 4          | 7                 | 14              | 3           | 18                   | 190            | 2            | 2000           | 1              | 600             | 655   |   |   |
| Leaksville                    | 10                | 150              | 1                   | 3          | 12                | 2               | 2           | 17                   | 145            | 2            | 4              | 00             | 1               | 600   |   |   |
| Ramseur                       | 8                 | 69               | 2                   | 2          | 9                 | 2               | 10          | 72                   | 2              | 1000         | 1              | 600            | 175             | 30  |   |   |
| Jackson                       | 8                 | 62               | 2                   | 2          | 11                | 8               | 2           | 11                   | 95             | 3            | 600            | 1              | 500             | 175   | 30                                      |   |
| Reidsville and Danville       | 11                | 130              | 2                   | 2          | 9                 | 2               | 18          | 170                  | 1              | 3000         | 1              | 500            | 253             | 400   | 150                                     |   |
| Reidsville Circuit            | 23                | 175              | 2                   | 3          | 12                | 3               | 25          | 175                  | 3              | 2500         | 1              | 2500           | 35              | 10  |   |   |
| South Greensboro              | 3                 | 150              | 1                   | 5          | 3                 | 3               | 17          | 101                  | 3              | 2500         | 1              | 2500           | 130             | 10  |   |   |
| Wentworth                     | 18                | 162              | 3                   | 5          | 15                | 4               | 30          | 120                  | 3              | 2000         | 1              | 75             | 75              | 125   |   |   |
| Summerfield                   | 50                | 240              | 2                   | 6          | 20                | 25              | 3           | 21                   | 250            | 3            | 3800           | 1              | 3800            | 125   |   |   |
| West Greensboro               | 11                | 150              | 3                   | 3          | 8                 | 3               | 12          | 150                  | 2              | 1000         | 1              | 1000           | 125             | 38  | 120                                     |   |
|                               | 222               | 2281             | 22                  | 44         | 78                | 129             | 38          | 250                  | 20             | 7835         | 5              | \$3352         | \$3776          | \$1533  | \$6049                                  |   |

STATISTICS NO. 1, RALEIGH DISTRICT, NORTH CAROLINA CONFERENCE, 1907.

NAMES OF CHARGES

| NAMES OF CHARGES         | Church Membership |                  |                     |            | Sunday Schools    |                 |                 |                      | Church Property      |              |                |                |                |  |   |   |                |  |                |  |  |  |   |  |   |  |
|--------------------------|-------------------|------------------|---------------------|------------|-------------------|-----------------|-----------------|----------------------|----------------------|--------------|----------------|----------------|----------------|--|---|---|----------------|--|----------------|--|--|--|---|--|---|--|
|                          | No. Full Members  |                  | No. Local Preachers |            | No. Children bapt |                 | No. Adults Bapt |                      | No. Officers & Teach |              | No. Scholars   |                | No. Churches   |  | Probable Value                          |   | No. Parsonages |  | Probable Value |  | P'd for bldg. & imp. Churs. & Parsonages |  | P'd on old indebtedness on Ch. property |  | Present indebtedness on Church property |  |
|                          | No. Probationers  | No. Full Members | No. Local Preachers | No. Deaths | No. Children bapt | No. Adults Bapt | No. Schools     | No. Officers & Teach | No. Scholars         | No. Churches | Probable Value | No. Parsonages | Probable Value | P'd for bldg. & imp. Churs. & Parsonages | P'd on old indebtedness on Ch. property | Present indebtedness on Church property |                |  |                |  |  |  |   |  |   |  |
| Durham and Creedmore     | 7                 | 26               | 1                   | 1          | 1                 | 2               | 8               | 60                   | 2                    | \$ 1200      | 1              | \$ 1700        | 7              | 13                                       | 8                                       |   |                |  |                |  |  |  |   |  |   |  |
| Madison and Hay's Chapel | 4                 | 164              | 1                   | 1          | 4                 | 3               | 12              | ...                  | 2                    | 1300         | 1              | 150            | ...            | 13                                       | 50                                      |   |                |  |                |  |  |  |   |  |   |  |
| Madison Circuit          | 9                 | 105              | 2                   | 2          | 1                 | 14              | 12              | 100                  | 4                    | 2465         | ...            | ...            | ...            | ...                                      | ...                                     |   |                |  |                |  |  |  |   |  |   |  |
| Goldsboro                | ...               | ...              | ...                 | ...        | ...               | ...             | ...             | ...                  | ...                  | ...          | ...            | ...            | ...            | ...                                      | ...                                     |   |                |  |                |  |  |  |   |  |   |  |
| Newberne and Kingston    | ...               | 5                | ...                 | ...        | ...               | ...             | ...             | ...                  | 1                    | 600          | ...            | 2500           | ...            | ...                                      | ...                                     |   |                |  |                |  |  |  |   |  |   |  |
| Newport News, Va.        | 5                 | 35               | 1                   | ...        | 2                 | ...             | 5               | 60                   | 1                    | 1100         | ...            | ...            | ...            | 200                                      | ...                                     |   |                |  |                |  |  |  |   |  |   |  |
| Oxford and Bullock       | 21                | 130              | 2                   | 5          | 7                 | ...             | 12              | 115                  | 2                    | 3000         | 1              | 350            | 800            | ...                                      | 200                                     |   |                |  |                |  |  |  |   |  |   |  |
| Oberlin and Raleigh      | 21                | 93               | 1                   | 1          | ...               | ...             | 28              | 200                  | 2                    | 4000         | 1              | 500            | 358            | 10                                       | 700                                     |   |                |  |                |  |  |  |   |  |   |  |
| Rocky Mount, Va.         | 2                 | 31               | 1                   | 1          | 22                | 4               | 12              | 95                   | 4                    | 1200         | ...            | ...            | 107            | ...                                      | ...                                     |   |                |  |                |  |  |  |   |  |   |  |
| Townesville              | 5                 | 89               | ...                 | 2          | 2                 | 5               | 8               | 47                   | 1                    | 300          | 1              | 200            | 52             | ...                                      | ...                                     |   |                |  |                |  |  |  |   |  |   |  |
| Walnut Cove              | 54                | 183              | 1                   | 3          | 5                 | 35              | 18              | 225                  | 5                    | 2000         | 1              | 450            | 650            | ...                                      | 30                                      |   |                |  |                |  |  |  |   |  |   |  |
| Dennis                   | ...               | ...              | ...                 | ...        | ...               | ...             | ...             | ...                  | ...                  | ...          | ...            | ...            | ...            | ...                                      | ...                                     |   |                |  |                |  |  |  |   |  |   |  |
| Pleasant Ridge, Va.      | 11                | 21               | 1                   | 1          | ...               | ...             | 7               | 47                   | 1                    | 1000         | ...            | 200            | ...            | ...                                      | 80                                      |   |                |  |                |  |  |  |   |  |   |  |
| Louisburg                | 1                 | 8                | 1                   | ...        | ...               | ...             | ...             | ...                  | ...                  | ...          | ...            | ...            | 6              | ...                                      | ...                                     |   |                |  |                |  |  |  |   |  |   |  |
| Norfolk, Va.             | ...               | 9                | 1                   | ...        | ...               | ...             | 2               | 12                   | 1                    | 3000         | ...            | ...            | 12             | ...                                      | ...                                     |   |                |  |                |  |  |  |   |  |   |  |
| ...                      | 140               | 899              | 11                  | 19         | 23                | 79              | 24              | 124                  | 25                   | \$21165      | 5              | \$6050         | \$1992         | \$ 223                                   | \$1068                                  |   |                |  |                |  |  |  |   |  |   |  |

NAMES OF CHARGES

| Church Property              | Church Membership |                  |                     |            | Sunday Schools      |                 |                   | Church Property      |              |                |                |                |  |   |   |   |        |
|------------------------------|-------------------|------------------|---------------------|------------|---------------------|-----------------|-------------------|----------------------|--------------|----------------|----------------|----------------|--|---|---|---|--------|
|                              | No. Probationers  |                  | No. Full Members    |            | No. Local Preach'rs | No. Deaths      | No. Children Bapt | No. Adults Bapt      | No. Churches | Probable Value | No. Parsonages | Probable Value | P'd for bldg & imp. Churs. & Par'nages | P'd on old indebtedness on Ch. property | Present indebtedness on Church property |   |        |
|                              | No. Probationers  | No. Full Members | No. Local Preach'rs | No. Deaths | No. Children Bapt   | No. Adults Bapt | No. Schools       | No. Officers & Teach | No. Scholars | No. Churches   | Probable Value | No. Parsonages | Probable Value                         | P'd for bldg & imp. Churs. & Par'nages  | P'd on old indebtedness on Ch. property | Present indebtedness on Church property |        |
| Asheville                    | 2                 | 70               | 1                   | 2          | 6                   | 1               | 7                 | 65                   | 1            | \$ 4000        | 1              | \$ 700         | \$                                     | 265                                     | \$ 350                                  |   |        |
| Bessemer and King's Mountain | 2                 | 100              | 2                   | 2          | 2                   | 2               | 6                 | 75                   | 2            | 100            | 1              | 39             |  |   | 148                                     |   |        |
| Boone                        |                   |                  |                     |            |                     |                 |                   |                      |              |                |                |                |  |   |   |   |        |
| Forest City                  |                   |                  |                     |            |                     |                 |                   |                      |              |                |                |                |  |   |   |   |        |
| Franklin                     | 10                | 150              | 4                   | 2          | 5                   | 3               | 15                | 150                  | 3            | 2100           | 1              | 300            | 50                                     |   |   |   |        |
| Gastonia and Mt. Holly       |                   |                  |                     |            |                     |                 |                   |                      |              |                |                |                |  |   |   |   |        |
| Hendersonville               | 9                 | 75               | 1                   | 2          | 2                   | 2               | 8                 | 60                   | 2            | 8000           | 1              | 600            | 60                                     |   |   |   |        |
| Hickory                      |                   |                  |                     |            |                     |                 |                   |                      |              |                |                |                |  |   |   |   |        |
| Lenoir                       | 8                 | 151              | 1                   | 7          | 1                   | 7               | 86                | 1                    | 4500         |                |                |                |  | 125                                     | 305                                     |   |        |
| Lenoir Circuit               | 5                 | 141              | 2                   | 2          | 8                   | 2               | 18                | 125                  | 2            | 3000           | 1              | 1000           | 550                                    |   | 11                                      |   |        |
| Lincolnton Circuit           | 13                | 38               | 1                   | 1          | 2                   | 13              | 30                | 2                    | 700          |                |                |                |  |   |   |   |        |
| Lowesville                   | 18                | 40               | 1                   | 2          | 2                   | 9               | 60                | 4                    | 1000         |                |                |                | 23                                     | 5                                       | 14                                      |   |        |
| Macpelah                     | 30                | 205              | 1                   | 5          | 10                  | 2               | 16                | 200                  | 2            | 1200           |                |                | 150                                    | 40                                      | 50                                      |   |        |
| Marion                       | 33                | 115              | 2                   | 23         | 6                   | 2               | 11                | 65                   | 2            | 800            | 1              | 500            | 35                                     |   |   |   |        |
| Mooresboro and Henrietta     |                   | 54               | 1                   |            | 6                   | 2               | 10                | 35                   | 2            | 1200           | 1              | 200            | 175                                    |   |   |   |        |
| Newton                       | 6                 | 14               |                     |            |                     | 3               | 7                 | 20                   | 2            | 400            |                |                | 20                                     |   |   |   |        |
| Old Fort                     | 19                | 63               | 2                   | 2          | 5                   | 2               | 10                | 46                   | 2            | 1500           |                |                | 89                                     | 81                                      | 98                                      |   |        |
| Patterson                    |                   | 60               | 1                   |            |                     |                 | 12                | 75                   | 2            | 600            |                |                |  |   |   |   |        |
| Shelby and Fallston          |                   | 60               | 1                   |            |                     |                 | 12                | 36                   | 2            | 300            |                |                |  |   |   |   |        |
| Sherrill's Ford              | 17                | 120              | 1                   | 2          | 8                   | 2               | 12                | 92                   | 2            | 1800           | 1              | 250            | 104                                    | 42                                      | 51                                      |   |        |
| West Asheville               | 32                | 272              | 5                   | 1          | 4                   | 2               | 4                 | 20                   | 180          | 4              | 2650           | 1              | 200                                    | 143                                     | 46                                      |   |        |
|                              | 8                 | 70               | 1                   | 5          | 3                   | 3               | 18                | 85                   | 2            | 2250           | 1              | 200            |  |   |   |   |        |
| ...                          | 213               | 1818             | 22                  | 36         | 71                  | 40              | 38                | 213                  | 148          | 5              | 38             | \$27300        | 9                                      | \$3950                                  | \$1478                                  | \$ 615                                  | \$2016 |

STATISTICS NO. 1, WILMINGTON DISTRICT, NORTH CAROLINA CONFERENCE, 1907.

NAMES OF CHARGES

| Names of Charges             | Church Membership |                  |                     | Baptisms   |                   | Sunday Schools  |             |                      | Church Property |              |                |                |                |  |   |   |       |
|------------------------------|-------------------|------------------|---------------------|------------|-------------------|-----------------|-------------|----------------------|-----------------|--------------|----------------|----------------|----------------|--|---|---|-------|
|                              | No. Probationers  | No. Full Members | No. Local Preach'rs | No. Deaths | No. Children Bapt | No. Adults Bapt | No. Schools | No. Officers & Teach | No. Scholars    | No. Churches | Probable Value | No. Parsonages | Probable Value | P'd for bldg. & imp. Churs. & Parsonages | P'd on old indebtedness on Ch. property | Present indebtedness on Church property |       |
|                              |                   |                  |                     |            | No. Children Bapt | No. Adults Bapt | No. Schools | No. Officers & Teach | No. Scholars    | No. Churches | Probable Value | No. Parsonages | Probable Value | P'd for bldg. & imp. Churs. & Parsonages | P'd on old indebtedness on Ch. property | Present indebtedness on Church property |       |
| Advance and St. James        | 20                | 145              | ..                  | 6          | 2                 | ..              | 2           | 12                   | 250             | 2            | \$ 2500        | 1              | \$ 500         | 50                                       | \$.....                                 | \$.....                                 | 325   |
| Asheboro and Randleman       | 10                | 93               | ..                  | 3          | 6                 | 8               | 2           | 7                    | 75              | 2            | 2500           | 1              | 600            | 240                                      | .....                                   | .....                                   | ..... |
| Fairview and Mitchell        | 24                | 100              | ..                  | 1          | 2                 | ..              | 3           | ..                   | ..              | 3            | 1000           | ..             | ..             | ..                                       | ..                                      | ..                                      | ..    |
| High Point                   | 5                 | 165              | 1                   | 8          | ..                | ..              | 3           | 1                    | 140             | 1            | 5000           | 1              | 400            | 1500                                     | 534                                     | 1000                                    | ..    |
| Jefferson                    | 6                 | 63               | ..                  | 6          | 10                | 2               | 3           | 13                   | 76              | 3            | 350            | ..             | ..             | 125                                      | 10                                      | 10                                      | ..    |
| Jonesville                   | 49                | 160              | 1                   | 5          | 7                 | 4               | 20          | 85                   | 3               | 3            | 1800           | ..             | ..             | 190                                      | ..                                      | 45                                      | ..    |
| Kernersville                 | 16                | 164              | 1                   | 1          | 2                 | 4               | 14          | 160                  | 4               | 2            | 1800           | ..             | ..             | 15                                       | 5                                       | 3                                       | ..    |
| Lexington and Thomasville    | ..                | 275              | 3                   | ..         | ..                | ..              | 2           | 19                   | 180             | 2            | 4000           | 1              | 350            | 150                                      | ..                                      | ..                                      | ..    |
| Liberty and Trinity          | 52                | 123              | 1                   | 4          | 4                 | 20              | 4           | 18                   | 150             | 4            | 1700           | ..             | ..             | 25                                       | 25                                      | ..                                      | ..    |
| Mayhew and Mooresville       | 38                | 190              | 3                   | 3          | 27                | 23              | 5           | 25                   | 192             | 4            | 350            | 1              | 25             | 175                                      | 25                                      | 40                                      | ..    |
| Midway                       | 19                | 139              | ..                  | 1          | ..                | 8               | 3           | 18                   | 90              | 3            | 900            | ..             | ..             | 6  | ..                                      | ..                                      | ..    |
| Mt. Airy                     | 22                | 97               | 1                   | 6          | 1                 | 12              | 1           | 9                    | 65              | 1            | 7000           | 1              | 1000           | 250                                      | 350                                     | 250                                     | ..    |
| Mt. Airy Circuit             | 6                 | 24               | ..                  | 1          | ..                | 1               | 3           | 9                    | 60              | 4            | 300            | ..             | ..             | ..                                       | 2                                       | ..                                      | ..    |
| Salisbury                    | 3                 | 25               | ..                  | ..         | 2                 | ..              | 1           | 5                    | 43              | 1            | 200            | ..             | ..             | 200                                      | ..                                      | 140                                     | ..    |
| Statesville and Philadelphia | 15                | 121              | ..                  | 6          | 6                 | 4               | 3           | 16                   | 85              | 3            | 2500           | ..             | ..             | 75                                       | 35                                      | 16                                      | ..    |
| South High Point             | 17                | 32               | 1                   | ..         | ..                | 4               | 1           | 12                   | 65              | 1            | 1600           | ..             | ..             | 298                                      | 26                                      | 650                                     | ..    |
| Wilkesboro                   | 22                | 75               | 2                   | 2          | 5                 | 2               | 2           | 9                    | 96              | 2            | 1800           | ..             | ..             | 300                                      | 55                                      | 160                                     | ..    |
| Winston, Columbia Heights    | 4                 | 12               | ..                  | 2          | ..                | ..              | 1           | 6                    | 18              | 1            | 200            | ..             | ..             | 75                                       | ..                                      | 180                                     | ..    |
| Winston, Mission             | 1                 | 30               | ..                  | 3          | 4                 | ..              | 2           | 6                    | 95              | 1            | 900            | ..             | ..             | 65                                       | 15                                      | ..                                      | ..    |
| Winston, Mt. Pleasant        | ..                | 96               | ..                  | 4          | ..                | ..              | 1           | 10                   | 125             | 1            | 1000           | ..             | ..             | ..                                       | ..                                      | ..                                      | ..    |
| Winston, St. Paul            | 20                | 420              | 1                   | 14         | 1                 | 38              | 1           | 32                   | 397             | 1            | 36000          | 1              | 400            | 2400                                     | 700                                     | 9000                                    | ..    |
| ...                          | 433               | 2549             | 15                  | 68         | 64                | 148             | 48          | 272                  | 2546            | 46           | \$76560        | 7              | \$3275         | \$6139                                   | \$2028                                  | \$9829                                  | ..    |



STATISTICS NO. 1, WINSTON DISTRICT, NORTH CAROLINA CONFERENCE, 1907.

NAMES OF CHARGES

| NAMES OF CHARGES           | Church Membership |                  |                     |            | Sunday Schools     |                 | Church Property |                      |              |              |                |                |                |  |   |   |        |
|----------------------------|-------------------|------------------|---------------------|------------|--------------------|-----------------|-----------------|----------------------|--------------|--------------|----------------|----------------|----------------|--|---|---|--------|
|                            | No. Prebationers  | No. Full Members | No. Local Preach'rs | No. Deaths | No. (Children Bapt | No. Adults Bapt | No. Schools     | No. Officers & Teach | No. Scholars | No. Churches | Probable Value | No. Parsonages | Probable Value | P'd for bldg. & imp. Churs. & Parsonages | P'd on old indebtedness on Ch. property | Present indebtedness on Church Property |        |
| Charlotte                  | 5                 | 140              | 2                   | 6          | 2                  | 1               | 1               | 8                    | 80           | 1            | \$12000        | 1              | \$4000         | \$496                                    | \$                                      | 92                                      | \$ 450 |
| Concord                    | 20                | 67               | 2                   | 3          | 1                  | 1               | 2               | 14                   | 80           | 3            | 1120           | 1              | 20             | 20                                       | 20                                      | 20                                      | 20     |
| Elkton                     | 3                 | 60               | 2                   | 1          | 10                 | 7               | 2               | 8                    | 75           | 2            | 150            | 1              | 100            | 33                                       | 33                                      | 33                                      | 33     |
| Hamlet                     | 20                | 230              | 4                   | 11         | 5                  | 13              | 2               | 25                   | 185          | 2            | 3000           | 1              | 600            | 186                                      | 25                                      | 25                                      | 25     |
| Hoffman and Vass           | 10                | 25               | ..                  | 6          | 2                  | 2               | 2               | 15                   | 65           | 1            | 600            | ..             | 10             | 10                                       | 10                                      | 10                                      | 10     |
| Laurinburg                 | 34                | 485              | 3                   | 7          | 12                 | 14              | 2               | 22                   | 203          | 2            | 4250           | 1              | 600            | ..                                       | 275                                     | 275                                     | 275    |
| Laurinburg Circuit         | 12                | 138              | 4                   | 3          | 6                  | 6               | 2               | 14                   | 160          | 2            | 800            | 2              | 800            | 70                                       | 70                                      | 70                                      | 70     |
| Lumberton                  | 67                | 314              | 11                  | 9          | 7                  | 16              | 4               | 34                   | 280          | 3            | 4600           | 1              | 800            | ..                                       | ..                                      | ..                                      | ..     |
| McNatt's and Prospect Hall | 4                 | 36               | 2                   | ..         | ..                 | ..              | 1               | 4                    | 36           | 1            | 500            | ..             | ..             | 4  | 4                                       | 4                                       | 4      |
| Maxton and Piney Grove     | 40                | 310              | 4                   | 4          | 16                 | 23              | 2               | 23                   | 300          | 2            | 3200           | 1              | 500            | ..                                       | 40                                      | 40                                      | 40     |
| Melrose and Hickory Bend   | 20                | 311              | 7                   | 3          | 9                  | 16              | 2               | 16                   | 154          | 1            | 2000           | 1              | 500            | 121                                      | 121                                     | 121                                     | 121    |
| Red Springs and Beaumont   | 13                | 163              | 1                   | 2          | 6                  | 8               | 2               | 8                    | 160          | 2            | 1800           | 1              | 500            | 260                                      | 80                                      | 80                                      | 80     |
| Rowland and Salem          | 20                | 266              | 2                   | 5          | 12                 | 8               | 2               | 18                   | 170          | 2            | 2500           | 1              | 600            | 70                                       | 70                                      | 70                                      | 70     |
| Swans' Station             | 24                | 85               | 3                   | 1          | ..                 | ..              | 3               | 10                   | 125          | 2            | 550            | ..             | 90             | 90                                       | 90                                      | 90                                      | 90     |
| Wilmington and Burgaw      | 5                 | 45               | 1                   | 1          | 3                  | 1               | 2               | 9                    | 40           | 2            | 2500           | 1              | 500            | 9  | 150                                     | 150                                     | 150    |
| ...                        | 297               | 2675             | 48                  | 54         | 94                 | 115             | 31              | 228                  | 2143         | 28           | \$39570        | 10             | \$5700         | \$5463                                   | \$                                      | 667                                     | \$1227 |



Statistics No. 2, Winston District, N. C. Conference, 1907.

SUNDAY SCHOOLS.

| NAMES OF CHARGES                   | Teachers    |                           | No. Scholars of all Grades | Average Attendance | Members in H. D.                        |   |                                      | Current Expenses |       |
|------------------------------------|-------------|---------------------------|----------------------------|--------------------|---|---|--------------------------------------|------------------|-------|
|                                    | No. Schools | No. Officers and Teachers |                            |                    | No. Officers & Teach. Ch. Mem. or Prob. | No. Schol. At. in H. D. Ch. Mem. or Prob. | No. Mem. S. S. Conv. during the year |                  |       |
| Advance and St. James .....        | 2           | 12                        | 250                        | 75                 | ..                                      | 12  | ..                                   | \$ 45            |       |
| Asheboro and Randleman .....       | 2           | 7                         | 75                         | 40                 | ..                                      | 7   | 60                                   | 4                | 17    |
| Fairview and Mitchell .....        | 3           | ..                        | ..                         | ..                 | ..                                      | ..  | ..                                   | ..               | ..    |
| High Point .....                   | 1           | 12                        | 140                        | 75                 | ..                                      | 12  | ..                                   | ..               | 45    |
| Jefferson .....                    | 2           | 13                        | 76                         | 40                 | ..                                      | 13  | ..                                   | 15               | 5     |
| Jonesville .....                   | 4           | 20                        | 85                         | 60                 | ..                                      | 20  | 40                                   | 21               | 12    |
| Kernersville .....                 | 4           | 14                        | 160                        | 120                | ..                                      | 80  | ..                                   | ..               | 25    |
| Lexington and Thomasville .....    | 2           | 19                        | 180                        | 60                 | ..                                      | ..  | ..                                   | ..               | ..    |
| Liberty and Trinity .....          | 4           | 18                        | 150                        | 101                | ..                                      | 18  | 150                                  | 15               | 30    |
| Mayhew and Mooresville .....       | 5           | 25                        | 192                        | 138                | ..                                      | 25  | 25                                   | 5                | 15    |
| Midway .....                       | 3           | 18                        | 90                         | 60                 | ..                                      | 18  | ..                                   | 22               | 3     |
| Mt. Airy .....                     | 1           | 9                         | 65                         | 50                 | ..                                      | 9   | 40                                   | 8                | 10    |
| Mt. Airy Circuit .....             | 3           | 9                         | 60                         | 90                 | 20                                      | 9   | 8                                    | 6                | 10    |
| Salisbury .....                    | 1           | 5                         | 43                         | 15                 | ..                                      | 5   | 5                                    | ..               | 10    |
| Statesville and Philadelphia ..... | 3           | 16                        | 85                         | 65                 | ..                                      | ..  | ..                                   | 5                | 15    |
| South High Point .....             | 1           | 12                        | 64                         | ..                 | ..                                      | 12  | ..                                   | 6                | 14    |
| Wilkesboro .....                   | 2           | 9                         | 96                         | 80                 | ..                                      | 9   | 60                                   | 15               | 20    |
| Winston, Col. Heights .....        | 1           | 6                         | 18                         | 18                 | 2                                       | ..  | ..                                   | 2                | 12    |
| Winston, Mission .....             | 2           | 6                         | 95                         | 60                 | ..                                      | 6   | 10                                   | ..               | 38    |
| Winston, Mt. Pleasant .....        | 1           | 10                        | 125                        | 100                | ..                                      | ..  | ..                                   | 4                | 92    |
| Winston, St. Paul .....            | 1           | 32                        | 397                        | 300                | ..                                      | 32  | 175                                  | 14               | 165   |
|                                    | 48          | 272                       | 2546                       | 1877               | 22                                      | 298                                       | 828                                  | 158              | \$753 |

Statistics No. 2, Wilmington District, N. C. Conference, 1907.

SUNDAY SCHOOLS.

| NAMES OF CHARGES                 | Teachers    |                           | No. Scholars of all Grades | Average Attendance | Members in H. D.                        |   |                                      | Current Expenses |       |
|----------------------------------|-------------|---------------------------|----------------------------|--------------------|---|---|--------------------------------------|------------------|-------|
|                                  | No. Schools | No. Officers and Teachers |                            |                    | No. Officers & Teach. Ch. Mem. or Prob. | No. Schol. At. in H. D. Ch. Mem. or Prob. | No. Mem. S. S. Conv. during the year |                  |       |
| Charlotte .....                  | 1           | 8                         | 80                         | 55                 | ..                                      | 8   | ..                                   | 2                | ..    |
| Concord .....                    | 2           | 14                        | 80                         | 50                 | ..                                      | 14  | ..                                   | 19               | 30    |
| Elkton .....                     | 2           | 8                         | 75                         | 50                 | 1                                       | 3   | ..                                   | 2                | 5     |
| Hamlet .....                     | 2           | 25                        | 185                        | 155                | ..                                      | 25  | 25                                   | 6                | 39    |
| Hoffman and Vass .....           | 2           | 15                        | 65                         | 40                 | ..                                      | 10  | 35                                   | 4                | 4     |
| Laurinburg .....                 | 2           | 22                        | 203                        | ..                 | ..                                      | 22  | 165                                  | 18               | 42    |
| Laurinburg Circuit .....         | 2           | 14                        | 160                        | 50                 | ..                                      | 14  | 155                                  | 8                | 7     |
| Lumberton .....                  | 4           | 34                        | 280                        | 200                | ..                                      | 34  | ..                                   | 38               | 21    |
| McNatt's and Prospect Hall ..... | 1           | 4                         | 36                         | 16                 | ..                                      | 4   | 36                                   | 4                | 1     |
| Maxton and Piney Grove .....     | 2           | 23                        | 300                        | 160                | ..                                      | 23  | ..                                   | 25               | 20    |
| Melrose and Hickory Bend .....   | 2           | 16                        | 154                        | 56                 | ..                                      | 16  | 105                                  | 19               | 15    |
| Red Springs and Beaumont .....   | 2           | 5                         | 160                        | 50                 | ..                                      | 8   | 120                                  | 7                | 20    |
| Rowland and Salem .....          | 2           | 18                        | 170                        | 80                 | ..                                      | 18  | 120                                  | 12               | 25    |
| Swan's Station .....             | 3           | 10                        | 125                        | 75                 | 30                                      | 10  | 125                                  | 33               | 25    |
| Wilmington and Burgaw .....      | 2           | 9                         | 40                         | 25                 | ..                                      | 9   | 20                                   | 10               | 2     |
|                                  | 31          | 228                       | 2113                       | 1122               | 31                                      | 228                                       | 906                                  | 204              | \$256 |

Statistics No. 2, Raleigh District, N. C. Conference, 1907.

SUNDAY SCHOOLS.

| NAMES OF CHARGES                | No. Schools  |              | No. Officers and Teachers | No. Scholars of all Grades | Average Attendance | No. Members in H. D.                    |                         |                   |                                      | Current Expenses |
|---------------------------------|--------------|--------------|---------------------------|----------------------------|--------------------|---|-------------------------|-------------------|--------------------------------------|------------------|
|                                 | No. Officers | No. Teachers |                           |                            |                    | No. Officers & Teach. Ch. Mem. or Prob. | No. Schol. At. in H. D. | No. Mem. or Prob. | No. Mem. S. S. Conv. during the year |                  |
| Durham and Creedmore .....      | 2            | 8            | 60                        | 80                         | 8                  | 60                                      | 1                       | \$                | 8                                    |                  |
| Madison and Hayes' Chapel ..... | 2            | 12           | 86                        | 66                         | 12                 | 47                                      | 3                       |                   | 15                                   |                  |
| Madison Circuit .....           | 2            | 12           | 100                       | 50                         | 12                 | ...                                     | 6                       |                   | 6                                    |                  |
| Goldsboro .....                 | ..           | ..           | ..                        | ..                         | ..                 | ..                                      | ..                      |                   | ..                                   |                  |
| Newberne and Kingston .....     | ..           | ..           | ..                        | ..                         | ..                 | ..                                      | ..                      |                   | ..                                   |                  |
| Newport News, Va. ....          | 1            | 5            | 60                        | 40                         | 5                  | ...                                     | ...                     |                   | 10                                   |                  |
| Oxford and Bullock .....        | 2            | 12           | 115                       | 80                         | 12                 | 75                                      | 19                      |                   | 30                                   |                  |
| Oberlin and Raleigh .....       | 2            | 28           | 200                       | 150                        | 2                  | 12                                      | ...                     |                   | 50                                   |                  |
| Rocky Mount, Va. ....           | 4            | 12           | 95                        | 50                         | 12                 | ...                                     | 31                      |                   | 7                                    |                  |
| Townesville ..                  | 2            | 8            | 47                        | 16                         | 6                  | 8                                       | 3                       |                   | 2                                    |                  |
| Walnut Cove .....               | 5            | 18           | 225                       | 150                        | 75                 | ...                                     | 25                      |                   | 10                                   |                  |
| Dennis ..                       | ..           | ..           | ..                        | ..                         | ..                 | ..                                      | ..                      |                   | ..                                   |                  |
| Pleasant Ridge, Va. ....        | 1            | 7            | 47                        | 28                         | 7                  | ...                                     | 8                       |                   | 16                                   |                  |
| Louisburg ..                    | ..           | ..           | ..                        | ..                         | ..                 | ..                                      | ..                      |                   | ..                                   |                  |
| Norfolk, Va. ....               | 1            | 2            | 12                        | 9                          | 1                  | 5                                       | 2                       | 1                 | 2                                    |                  |
|                                 | 24           | 124          | 1047                      | 669                        | 19                 | 158                                     | 196                     | 94                | \$156                                |                  |



STATISTICS NO. 3, RALEIGH DISTRICT, NORTH CAROLINA CONFERENCE, 1907.

| NAME OF CHARGE            | NAME OF PASTOR |            |        |          |            | Pastor's Support |              |                    | Support of Presiding Elders |                    | Support of Bishops                                   |                           | Conference Claimants |       | Current Expenses |                          |
|---------------------------|----------------|------------|--------|----------|------------|------------------|--------------|--------------------|-----------------------------|--------------------|--|---------------------------|----------------------|-------|------------------|--------------------------|
|                           | Salary         | House Rent | Total  | Receipts |            | Total            | Deficiencies | Amount Apportioned | Amount Paid                 | Amount Apportioned | Total Support: Pastors, Presiding Elders and Bishops | Received from Collections |                      | Total |                  |                          |
|                           |                |            |        | Salary   | House Rent |                  |              |                    |                             |                    |  | House Rent                | Salary               |       | House Rent       | Rec'd from other Sources |
| Durham and Creedmore      | \$ 150         | ...        | \$ 90  | ...      | \$ 60      | ...              | 25           | 20                 | 1                           | 1                  | 111  | 1                         | 1                    | 8     | ...              |                          |
| Madison and Hayes' Chapel | 500            | 36         | 536    | 300      | 36         | 336              | 60           | 60                 | 1                           | 1                  | 111  | 2                         | 2                    | 30    | 15               |                          |
| Madison Circuit           | 250            | 27         | 277    | 250      | 27         | 277              | 60           | 60                 | 2                           | 2                  | 339  | 1                         | 3                    | 8     | 20               |                          |
| Goldsboro                 | 5              | ...        | 5      | ...      | ...        | ...              | ...          | ...                | ...                         | ...                | ...  | 2                         | ...                  | ...   | ...              |                          |
| Newberne and Kingston     | 400            | 26         | 426    | 400      | 26         | 426              | 40           | 40                 | 2                           | 2                  | 468  | 2                         | 2                    | 25    | 6                |                          |
| Newport News, Va.         | 365            | 48         | 413    | 385      | 48         | 433              | 55           | 55                 | 3                           | 3                  | 491  | 3                         | 3                    | ...   | ...              |                          |
| Oxford and Bullock        | 250            | 36         | 286    | 250      | 36         | 286              | 50           | 55                 | 3                           | 3                  | 339  | 5                         | 5                    | 40    | 30               |                          |
| Oberlin and Raleigh       | 365            | ...        | 365    | ...      | ...        | ...              | 60           | 54                 | 1                           | 1                  | 255  | 1                         | 1                    | 10    | 7                |                          |
| Rocky Mount, Va.          | 200            | ...        | 200    | 89       | ...        | 89               | 40           | 36                 | 1                           | 1                  | 129  | 1                         | ...                  | 17    | 2                |                          |
| Townesville               | 325            | 24         | 349    | 310      | 24         | 334              | 60           | 60                 | 2                           | 2                  | 396  | 4                         | 4                    | 15    | 65               |                          |
| Walnut Cove               | ...            | ...        | ...    | ...      | ...        | ...              | ...          | ...                | ...                         | ...                | ...  | ...                       | ...                  | ...   | ...              |                          |
| Dennis                    | 205            | 50         | 255    | 205      | 50         | 255              | 50           | 50                 | 1                           | 1                  | 306  | 3                         | ...                  | 20    | 20               |                          |
| Pleasant Ridge, Va.       | 9              | ...        | 9      | ...      | ...        | ...              | 1            | ...                | ...                         | ...                | 1  | 1                         | ...                  | ...   | ...              |                          |
| Louisburg                 | 100            | ...        | 100    | 41       | ...        | 41               | 8            | ...                | ...                         | ...                | 48   | 1                         | ...                  | 7     | 13               |                          |
| Norfolk, Va.              | \$3124         | \$247      | \$3321 | \$2320   | \$247      | \$2636           | \$ 610       | \$ 510             | \$498                       | \$16               | \$20   | \$2879                    | \$27                 | \$22  | \$180            | \$178                    |



STATISTICS NO. 3, WILMINGTON DISTRICT, NORTH CAROLINA CONFERENCE, 1907.

| NAME OF CHARGE             | NAME OF PASTOR | Pastor's Support |            |        |          |            |        | Support of Presiding Elders |             | Support of Bishops |             | Total Support: Pastors, Presiding Elders and Bishops | Received from Collectors | Total | Conference Credits                 | Current Expenses                   |              |
|----------------------------|----------------|------------------|------------|--------|----------|------------|--------|-----------------------------|-------------|--------------------|-------------|--|--------------------------|-------|------------------------------------|------------------------------------|--------------|
|                            |                | Claims           |            |        | Receipts |            |        | Amount Apportioned          | Amount Paid | Amount Apportioned | Amount Paid |  |                          |       |                                    |                                    |              |
|                            |                | Salary           | House Rent | Total  | Salary   | House Rent | Total  |                             |             |                    |             |  |                          |       |                                    |                                    | Deficiencies |
| Charlotte                  | S. F. B. Peace | \$ 550           | \$ 80      | \$ 630 | \$ 460   | \$ 80      | \$ 540 | \$ 90                       | \$ 68       | \$ 62              | \$ 2        | \$ 604   | \$ 1                     | \$ 66 | Church: Sexton, Lights, Fuel, etc. | Sunday School: Lesson Leaves, etc. |              |
| Concord                    | H. D. Chambers | 220              | 25         | 220    | 220      | 25         | 220    | 15                          | 20          | 1                  | 1           | 241  | 1                        | 1     |                                    |                                    |              |
| Elkton                     | W. P. Hayes    | 150              | 60         | 175    | 150      | 25         | 175    | 15                          | 20          | 5                  | 5           | 195  | 5                        | 50    |                                    |                                    |              |
| Hamlet                     | C. R. Moser    | 150              | 60         | 150    | 122      | 33         | 122    | 33                          | 12          | 6                  | 1           | 129  | 1                        | 5     |                                    |                                    |              |
| Hoffman and Vass           | G. B. McLean   | 650              | 60         | 710    | 655      | 60         | 710    | 120                         | 120         | 2                  | 2           | 832  | 2                        | 52    |                                    |                                    |              |
| Laurinburg                 | J. D. Murphy   | 370              | 48         | 370    | 370      | 0          | 370    | 0                           | 50          | 55                 | 3           | 428  | 5                        | 4     |                                    |                                    |              |
| Laurinburg Circuit         | W. W. Pope     | 606              | 48         | 654    | 606      | 48         | 654    | 125                         | 125         | 6                  | 6           | 785  | 15                       | 15    |                                    |                                    |              |
| Lumberton                  | John W. Wells  | 100              | 60         | 100    | 61       | 39         | 61     | 18                          | 18          | 7                  | 7           | 68   | 10                       | 4     |                                    |                                    |              |
| McNatt's and Prospect Hall | Marcus Mundy   | 500              | 24         | 560    | 500      | 60         | 560    | 115                         | 115         | 5                  | 5           | 680  | 15                       | 15    |                                    |                                    |              |
| Maxton and Piney Grove     | William Wells  | 570              | 36         | 534    | 448      | 24         | 512    | 22                          | 110         | 110                | 4           | 3  | 625                      | 5     | 30                                 |                                    |              |
| Melrose and Hickory Bend   | J. M. McNeill  | 500              | 60         | 536    | 490      | 36         | 526    | 10                          | 80          | 80                 | 3           | 2  | 608                      | 5     | 30                                 |                                    |              |
| Red Springs and Beaumont   | W. F. Allen    | 450              | 60         | 510    | 450      | 0          | 510    | 65                          | 85          | 85                 | 4           | 4  | 599                      | 8     | 15                                 |                                    |              |
| Rowland and Salem          |                | 200              | 36         | 200    | 135      | 15         | 135    | 65                          | 40          | 25                 | 1           | 1  | 164                      | 1     | 4                                  |                                    |              |
| Swan's Station             |                | 350              | 40         | 386    | 125      | 15         | 40     | 210                         | 20          | 11                 | 2           | 1  | 152                      | 1     | 15                                 |                                    |              |
| Wilmington and Burgaw      |                | \$5856           | \$489      | \$6345 | \$5342   | \$408      | \$5745 | \$ 469                      | \$ 949      | \$929              | \$37        | \$36   | \$6910                   | \$62  | \$ 74                              | \$364                              | \$371        |



| NAME OF CHARGE                  | NAME OF PASTOR    |            |          |            | Pastor's Support |            |        |            | Support of Presiding Elders |                    | Support of Bishops |                    | Conference Claimants |                           | Current Expenses            |       |                                   |   |
|---------------------------------|-------------------|------------|----------|------------|------------------|------------|--------|------------|-----------------------------|--------------------|--------------------|--------------------|----------------------|---------------------------|-----------------------------|-------|-----------------------------------|---|
|                                 | Claims            |            | Receipts |            | Total            | House Rent | Salary | House Rent | Total                       | Amount Apportioned | Amount Paid        | Amount Apportioned | Amount Paid          | Received from Collections | Received from other Sources | Total | Church: Sexton, Light, Fuel, etc. | Sunday School: Lesson Leaves, Books, etc. |
|                                 | Salary            | House Rent | Total    | House Rent |                  |            |        |            |                             |                    |                    |                    |                      |                           |                             |       |                                   |   |
|                                 | Deficiencies      | Total      |          | Total      |                  | 80         | 80     | 21         | 21                          | 2                  | 2                  | 356                | 356                  | 4                         | 4                           | 20    | 20                                |   |
| Advance and St. James.....      | P. F. Johnson     | \$ 375     | \$ 25    | \$ 400     | \$ 250           | \$ 25      | \$ 275 | \$ 150     | \$ 80                       | \$ 80              | \$ 2               | \$ 2               | \$ 356               | \$ 356                    | \$ 4                        | \$ 20 | \$ 12                             |   |
| Asheboro and Randleman.....     | J. W. Simpson     | 400        | 34       | 434        | 400              | 34         | 434    | 128        | 60                          | 56                 | 4                  | 4                  | 494                  | 494                       | 4                           | 50    | 17                                |   |
| Fairview and Mitchell.....      | A. S. Spinks      | 210        | ...      | 210        | 82               | ...        | 292    | 128        | 50                          | 50                 | ...                | ...                | ...                  | ...                       | ...                         | ...   | ...                               |   |
| High Point.....                 | J. C. Robbins     | 450        | 50       | 500        | 400              | 50         | 450    | 50         | 75                          | 75                 | 2                  | 2                  | 528                  | 528                       | 6                           | ...   | 45                                |   |
| Jefferson.....                  | A. B. Leonard     | 200        | ...      | 200        | 117              | ...        | 117    | 83         | 26                          | 13                 | 2                  | 2                  | 131                  | 131                       | 1                           | 10    | ...                               |   |
| Jonesville.....                 | W. B. Scates      | 300        | 30       | 330        | 280              | 20         | 300    | 30         | 50                          | 50                 | 2                  | 2                  | 302                  | 302                       | 3                           | 20    | 12                                |   |
| Kernersville.....               | J. A. Maston      | 350        | 6        | 356        | 222              | 6          | 228    | 128        | 50                          | 29                 | 2                  | 2                  | 238                  | 238                       | 1                           | 26    | 25                                |   |
| Lexington and Thomasville.....  | P. J. Cook        | 500        | ...      | 500        | 500              | ...        | 500    | ...        | 75                          | 75                 | 5                  | 5                  | ...                  | ...                       | 10                          | 80    | 60                                |   |
| Liberty and Trinity.....        | S. L. May         | 440        | 24       | 468        | 365              | 24         | 389    | 92         | 40                          | 40                 | 2                  | 2                  | 431                  | 431                       | 2                           | 23    | 30                                |   |
| McVew and Mooresville.....      | Dorsey McRae      | 450        | ...      | 450        | 450              | ...        | 450    | ...        | 60                          | 60                 | 1                  | 1                  | ...                  | ...                       | 5                           | ...   | 6                                 |   |
| Midway.....                     | F. L. Bost        | 400        | 36       | 436        | 185              | 36         | 221    | ...        | 40                          | 35                 | 2                  | 2                  | 256                  | 256                       | 1                           | 6     | ...                               |   |
| Mt. Airy.....                   | A. C. Hill        | 450        | 50       | 500        | 450              | 50         | 500    | ...        | 70                          | 69                 | 3                  | 2                  | 571                  | 571                       | 1                           | 144   | 8                                 |   |
| Mt. Airy Circuit.....           | A. O. King        | 300        | ...      | 300        | 17               | ...        | 17     | 283        | 20                          | 6                  | ...                | ...                | ...                  | ...                       | ...                         | ...   | ...                               |   |
| Salisbury.....                  | P. F. Johnson     | 150        | ...      | 150        | 150              | ...        | 150    | ...        | 29                          | 29                 | 1                  | 1                  | 180                  | 180                       | 1                           | 50    | 3                                 |   |
| Statville and Philadelphia..... | J. C. Addie       | 290        | 36       | 326        | 290              | 36         | 326    | ...        | 50                          | 50                 | 1                  | 1                  | ...                  | ...                       | 2                           | 12    | 10                                |   |
| South High Point.....           | Daniel Brooks     | ...        | ...      | ...        | ...              | ...        | ...    | ...        | 40                          | 40                 | 2                  | 2                  | 242                  | 242                       | 2                           | 10    | 5                                 |   |
| Winkesboro.....                 | D. C. Skeen       | 200        | ...      | 200        | 200              | ...        | 200    | ...        | 25                          | 18                 | 2                  | 2                  | ...                  | ...                       | 5                           | 5     | 10                                |   |
| Winston, Col. Heights.....      | W. E. Clapp       | 175        | ...      | 175        | 175              | ...        | 175    | ...        | 20                          | 20                 | ...                | ...                | ...                  | ...                       | 1                           | ...   | ...                               |   |
| Winston, Mission.....           | L. W. Thomas      | 150        | 25       | 175        | 110              | 13         | 123    | 52         | 28                          | 21                 | 1                  | 1                  | 145                  | 145                       | 1                           | ...   | ...                               |   |
| Winston, Mt. Pleasant.....      | Samuel McDonald   | 400        | 50       | 450        | ...              | 50         | ...    | ...        | 50                          | 50                 | 2                  | 2                  | ...                  | ...                       | 7                           | 141   | 92                                |   |
| Winston, St. Paul.....          | N. D. Shamburguer | ...        | ...      | ...        | ...              | ...        | ...    | ...        | ...                         | ...                | 6                  | 6                  | ...                  | ...                       | 7                           | ...   | ...                               |   |
|                                 |                   | \$6240     | \$500    | \$7195     | \$4273           | \$488      | \$5532 | \$1141     | \$1089                      | \$892              | \$36               | \$36               | \$4201               | \$539                     | \$59                        | \$884 | \$500                             |   |

STATISTICS NO. 4, GREENSBORO DISTRICT, N. C. CONFERENCE, 1907.

NAMES OF CHARGES

| NAMES OF CHARGES              | BENEVOLENT COLLECTIONS |               |                           |                        |   |                                 |   |  |                    |                                       |                                       |      |                        | General Conference Expenses |                                    |                                      |  |
|-------------------------------|------------------------|---------------|---------------------------|------------------------|---|---------------------------------|---|--|--------------------|---------------------------------------|---------------------------------------|------|------------------------|-----------------------------|------------------------------------|--------------------------------------|--|
|                               | MISSIONS               |               |                           |                        |   |                                 | Board of Education, F. M.                   |  |                    |                                       | Education—Local Educational Interests |      |                        |                             | Total Other Benevolent Collections |                                      |  |
|                               | Board of F. M.         |               |                           | Board of H. M. and Ch. |   |                                 | Children's Fund for Student Aid             |  | Aid & S. S.—Church |                                       | Aid & S. S.—Sun. School               |      | American Bible Society |                             |                                    | Woman's Home Missionary Society—Cash | Woman's Home Missionary Society—Supplies |
|                               | Church                 | Special Gifts | Sunday School not divided | Board of H. M. and Ch. | Board of H. M. and Ch. Exten.—Special Gifts | Children's Fund for Student Aid | Collect'n for Freedmen's Aid & S. S.—Church | Collect'n for Freedmen's Aid & S. S.—Sun. School | Total              | Education—Local Educational Interests | Woman's Foreign Missionary Society    |      |                        |                             |                                    |                                      |  |
| \$                            | 4                      | \$            | 10                        | \$                     | 5   | \$                              | 5   | \$   | 3                  | \$                                    | 3                                     | \$   |                        | \$                          |                                    |                                      |  |
| Central Randolph              | 1                      | 1             | 1                         | 5                      | 3   | 5                               | 5   | 5  | 5                  | 2                                     | 1                                     | 1    | 1                      | 1                           | 1                                  |                                      |  |
| East and North Greensboro     | 2                      | 1             | 1                         | 19                     | 5   | 5                               | 2   | 2  | 10                 | 1                                     | 1                                     | 1    | 1                      | 1                           | 1                                  | 2                                    |  |
| Empire                        | 15                     | 5             | 5                         | 20                     | 5   | 10                              | 2   | 10   | 55                 | 1                                     | 1                                     | 1    | 1                      | 1                           | 1                                  | 4                                    |  |
| Greensboro, St. Matthews      | 2                      | 5             | 5                         | 10                     | 10  | 10                              | 8   | 8  | 10                 | 1                                     | 1                                     | 1    | 1                      | 1                           | 1                                  | 5                                    |  |
| High Street and Bass's Chapel | 2                      | 11            | 9                         | 9                      | 14  | 14                              | 14  | 14   | 10                 | 1                                     | 1                                     | 1    | 1                      | 1                           | 1                                  | 5                                    |  |
| Leaksville                    | 3                      | 10            | 10                        | 10                     | 3   | 3                               | 3   | 3  | 4                  | 1                                     | 1                                     | 1    | 1                      | 1                           | 1                                  | 2                                    |  |
| Ramseur                       | 1                      | 5             | 5                         | 5                      | 1   | 1                               | 1   | 1  | 2                  | 1                                     | 1                                     | 1    | 1                      | 1                           | 1                                  | 2                                    |  |
| Jackson                       | 2                      | 20            | 20                        | 20                     | 15  | 15                              | 1   | 1  | 7                  | 1                                     | 1                                     | 1    | 1                      | 1                           | 1                                  | 3                                    |  |
| Reidsville, and Danville, Va. | 15                     | 5             | 5                         | 5                      | 7   | 10                              | 1   | 10   | 7                  | 1                                     | 1                                     | 1    | 1                      | 1                           | 1                                  | 2                                    |  |
| Reidsville Circuit            | 6                      | 16            | 16                        | 16                     | 8   | 8                               | 4   | 4  | 10                 | 1                                     | 1                                     | 1    | 1                      | 1                           | 1                                  | 4                                    |  |
| South Greensboro              | 4                      | 4             | 4                         | 40                     | 8   | 16                              | 4   | 4  | 16                 | 1                                     | 1                                     | 1    | 1                      | 1                           | 1                                  | 5                                    |  |
| Wentworth                     | 4                      | 2             | 2                         | 25                     | 5   | 19                              | 19  | 19   | 10                 | 1                                     | 1                                     | 1    | 1                      | 1                           | 1                                  | 7                                    |  |
| Summerfield                   | 1                      | 1             | 1                         | 1                      | 5   | 5                               | 5   | 5  | 19                 | 1                                     | 1                                     | 1    | 1                      | 1                           | 1                                  | 4                                    |  |
| West Greensboro               | 1                      | 2             | 2                         | 25                     | 5   | 19                              | 19  | 19   | 10                 | 1                                     | 1                                     | 1    | 1                      | 1                           | 1                                  | 5                                    |  |
|                               | \$62                   | \$24          | \$199                     | ....                   | \$ 62                                       | \$79                            | \$12  | \$ 91  | \$118              | \$10                                  | \$ 3                                  | \$34 | \$44                   | \$180                       | \$54                               |                                      |  |

# NAMES OF CHARGES

## BENEVOLENT COLLECTIONS

| Church                       | MISSIONS                                |                           |                                      |                        |   |               |                                 |  |   |               | Education—Local Education at Interests | American Bible Society | Woman's Foreign Missionary Society | Woman's Home Missionary Society—Cash | Woman's Home Missionary Society—Supplies | Total other Benevolent Collections | General Conference Expenses |
|------------------------------|---|---------------------------|--------------------------------------|------------------------|---|---------------|---------------------------------|--|---|---------------|--|------------------------|------------------------------------|--------------------------------------|--|------------------------------------|-----------------------------|
|                              | Board of Education, F. M.'s Aid & S. S. |                           | Board of H. M. and Ch. Exten.—Church |                        | Board of H. M. and Ch. Exten.—Special Gifts |               | Children's Fund for Student Aid | Collection for Freedmen's Aid & S. S.—Church | Collection for Freedmen's Aid & S. S.—Sun. School | Total         |  |                        |                                    |                                      |  |                                    |                             |
|                              | Special Gifts                           | Sunday School not divided | Board of H. M. and Ch.               | Board of H. M. and Ch. | Special Gifts                               | Special Gifts | Special Gifts                   | Special Gifts                                | Special Gifts                                     | Special Gifts |  |                        |                                    |                                      |  |                                    |                             |
| Asheville                    | \$ 5                                    | \$ 3                      | \$ 8                                 | \$ 5                   | \$ 5  | \$ 5          | \$ 5                            | \$ 5   | \$ 7  | \$ 2          | \$ 3                                   | \$ 3                   | \$ 2                               | \$ 3                                 | \$ 2                                     | \$ 2                               |                             |
| Bessemer and King's Mountain | 1                                       | 2                         | 5                                    | 5                      | 5   | 5             | 5                               | 5  | 1   | 1             | 1                                      | 1                      | 1                                  | 1                                    | 1  | 1                                  |                             |
| Boone                        |   |                           |                                      |                        |   |               |                                 |  |   |               |  |                        |                                    |                                      |  |                                    |                             |
| Forest City                  | 5                                       |                           |                                      | 5                      | 15  | 15            | 15                              | 15   | 15  | 2             | 2                                      | 2                      | 2                                  | 2                                    | 2  | 2                                  |                             |
| Franklin                     | 1                                       |                           | 1                                    | 1                      | 1   | 1             | 1                               | 1  | 1   | 1             | 1                                      | 1                      | 1                                  | 1                                    | 1  | 1                                  |                             |
| Gastonia and Mt. Holly       | 2                                       |                           | 6                                    | 4                      | 4   | 6             | 10                              | 7  | 7   | 1             | 1                                      | 1                      | 1                                  | 1                                    | 1  | 1                                  |                             |
| Hendersonville               |   |                           |                                      |                        |   |               |                                 |  |   |               |  |                        |                                    |                                      |  |                                    |                             |
| Hickory                      | 5                                       | 2                         | 10                                   | 10                     | 11  | 11            | 11                              | 11   | 55  |               |  |                        |                                    |                                      |  |                                    |                             |
| Lenoir                       | 5                                       | 10                        | 10                                   | 9                      | 9   | 9             | 7                               | 7  | 1   | 1             | 1                                      | 1                      | 1                                  | 1                                    | 1  | 1                                  |                             |
| Lenoir Circuit               |   | 2                         | 5                                    | 2                      | 2   | 2             | 2                               | 2  | 1   | 1             | 1                                      | 1                      | 1                                  | 1                                    | 1  | 1                                  |                             |
| Lincolnton Circuit           | 1                                       |                           | 1                                    | 1                      | 1   | 1             | 1                               | 1  | 1   | 1             | 1                                      | 1                      | 1                                  | 1                                    | 1  | 1                                  |                             |
| Lovesville                   | 2                                       |                           | 2                                    | 39                     | 1   | 1             | 1                               | 1  | 1   | 1             | 1                                      | 1                      | 1                                  | 1                                    | 1  | 1                                  |                             |
| Macpelah                     |   |                           |                                      |                        |   |               |                                 |  |   |               |  |                        |                                    |                                      |  |                                    |                             |
| Marion                       | 11                                      | 1                         | 6                                    | 8                      | 8   | 8             | 8                               | 8  | 4   | 1             | 1                                      | 1                      | 1                                  | 1                                    | 1  | 1                                  |                             |
| Mooreville and Henrietta     | 2                                       |                           | 3                                    | 4                      | 4   | 4             | 4                               | 4  | 3   | 3             | 3                                      | 3                      | 3                                  | 3                                    | 3  | 3                                  |                             |
| Newton                       | 3                                       |                           | 3                                    | 3                      | 3   | 3             | 3                               | 3  | 2   | 2             | 2                                      | 2                      | 2                                  | 2                                    | 2  | 2                                  |                             |
| Old Fort                     | 1                                       |                           | 3                                    | 6                      | 3   | 3             | 3                               | 3  | 2   | 1             | 1                                      | 1                      | 1                                  | 1                                    | 1  | 1                                  |                             |
| Patterson                    |   |                           | 3                                    | 1                      | 1   | 2             | 2                               | 2  | 1   | 1             | 1                                      | 1                      | 1                                  | 1                                    | 1  | 1                                  |                             |
| Shelby and Fallston          | 3                                       |                           | 5                                    | 12                     | 5   | 5             | 5                               | 5  | 1   | 1             | 1                                      | 1                      | 1                                  | 1                                    | 1  | 1                                  |                             |
| Sherrill's Ford              | 15                                      | 5                         | 10                                   | 14                     | 11  | 11            | 11                              | 11   | 2   | 2             | 2                                      | 2                      | 2                                  | 2                                    | 2  | 2                                  |                             |
| West Asheville               | 7                                       | 5                         | 5                                    | 8                      | 5   | 5             | 5                               | 5  | 5   | 2             | 2                                      | 2                      | 2                                  | 2                                    | 2  | 2                                  |                             |

\$69 \$30 \$92 \$133 \$70 \$24 \$94 \$104 \$111 \$88 \$16 \$161 \$27  
 \$8 \$16 \$161 \$27

STATISTICS NO. 4, WESTERN DISTRICT, N. C. CONFERENCE, 1907.

| NAMES OF CHARGES          | BENEVOLENT COLLECTIONS |                        |                           |                        |  |                                 |   |  |   |       |                                       |                        |                                    |                                      |  |                              |                             |
|---------------------------|------------------------|------------------------|---------------------------|------------------------|--|---------------------------------|---|--|---|-------|---------------------------------------|------------------------|------------------------------------|--------------------------------------|--|------------------------------|-----------------------------|
|                           | MISSIONS               |                        |                           |                        |  |                                 |   |  |   |       |                                       |                        |                                    |                                      |  |                              |                             |
|                           | Board of P. M.         | Board of Special Gifts | Sunday School not divided | Board of H. M. and Ch. | Board of H. M. and Ch. Exten.—Special Gifts. | Children's Fund for Student Aid | Collect'n for Freedmen's Aid & S. S.—Church | Collect'n for Freedmen's Aid & S. S.—Sun. School | Board of Education, P. M.'s Aid & S. S. | Total | Education—Local Educational Interests | American Bible Society | Woman's Foreign Missionary Society | Woman's Home Missionary Society—Cash | Woman's Home Missionary Society—Supplies | Other Benevolent Collections | General Conference Expenses |
|                           | \$                     | \$                     | \$                        | \$                     | \$   | \$                              | \$  | \$   | \$                                      | \$    | \$                                    | \$                     | \$                                 | \$                                   | \$                                       | \$                           | \$                          |
| Charlotte                 | 15                     | 10                     | 10                        | 10                     | 10   | 5                               | 5   | 5  | 5                                       | 5     | 1                                     | 1                      | 2                                  | 2                                    | 31                                       | 20                           | 31                          |
| Concord                   | 1                      | 10                     | 1                         | 1                      | 1  | 1                               | 1   | 1  | 1                                       | 1     | 1                                     | 1                      | 1                                  | 1                                    | 20                                       | 20                           | 20                          |
| Elkton                    | 1                      | 1                      | 1                         | 1                      | 1  | 1                               | 1   | 1  | 1                                       | 1     | 1                                     | 1                      | 1                                  | 1                                    | 20                                       | 20                           | 20                          |
| Hamlet                    | 14                     | 5                      | 10                        | 10                     | 10   | 12                              | 12  | 12   | 12                                      | 3     | 5                                     | 1                      | 1                                  | 1                                    | 42                                       | 42                           | 42                          |
| Hoffman and Vass          | 2                      | 4                      | 2                         | 4                      | 4  | 5                               | 1   | 1  | 1                                       | 3     | 1                                     | 1                      | 1                                  | 1                                    | 2  | 2                            | 2                           |
| Laurinburg                | 10                     | 30                     | 10                        | 10                     | 10   | 40                              | 12  | 12   | 12                                      | 11    | 11                                    | 11                     | 11                                 | 11                                   | 2  | 2                            | 2                           |
| Laurinburg Circuit        | 8                      | 25                     | 10                        | 10                     | 10   | 5                               | 10  | 10   | 10                                      | 11    | 2                                     | 2                      | 2                                  | 2                                    | 2  | 2                            | 3                           |
| Lumberton                 | 10                     | 55                     | 10                        | 10                     | 10   | 30                              | 20  | 20   | 20                                      | 5     | 5                                     | 2                      | 32                                 | 34                                   | 65                                       | 65                           | 65                          |
| McNatts and Prospect Hall | 2                      | 4                      | 2                         | 4                      | 4  | 1                               | 1   | 1  | 1                                       | 1     | 1                                     | 1                      | 1                                  | 1                                    | 2  | 2                            | 2                           |
| Maxton and Piney Grove    | 2                      | 10                     | 37                        | 10                     | 10   | 12                              | 25  | 25   | 25                                      | 10    | 2                                     | 2                      | 2                                  | 2                                    | 21                                       | 21                           | 21                          |
| Melrose and Hickory Bend  | 2                      | 41                     | 10                        | 10                     | 10   | 10                              | 2   | 2  | 2                                       | 10    | 3                                     | 3                      | 2                                  | 2                                    | 52                                       | 52                           | 52                          |
| Red Springs and Beaumont  | 3                      | 25                     | 2                         | 10                     | 10   | 2                               | 10  | 10   | 10                                      | 5     | 1                                     | 1                      | 2                                  | 2                                    | 30                                       | 30                           | 30                          |
| Rowland and Salem         | 5                      | 20                     | 20                        | 20                     | 20   | 37                              | 12  | 12   | 12                                      | 10    | 4                                     | 4                      | 4                                  | 4                                    | 40                                       | 40                           | 40                          |
| Swans' Station            | 1                      | 5                      | 1                         | 5                      | 5  | 1                               | 1   | 1  | 1                                       | 1     | 1                                     | 1                      | 1                                  | 1                                    | 3  | 3                            | 3                           |
| Wilmington and Burgaw     | 1                      | 1                      | 1                         | 1                      | 1  | 1                               | 1   | 1  | 1                                       | 1     | 1                                     | 1                      | 1                                  | 1                                    | 1  | 1                            | 1                           |
|                           | \$78                   | \$48                   | \$267                     | \$161                  | \$72   | \$41                            | \$113                                       | \$92   | \$16                                    | \$15  | \$61                                  | \$34                   | \$300                              | \$28                                 |  |                              |                             |

STATISTICS NO. 4, WILMINGTON DISTRICT, N. C. CONFERENCE, 1907.

NAMES OF CHARGES

| NAMES OF CHARGES          | BENEVOLENT COLLECTIONS |               |                           |                                      |   |                                 |   |  |                 |                                     |                        |                                    |                                      |  |                                    |
|---------------------------|------------------------|---------------|---------------------------|--------------------------------------|---|---------------------------------|---|--|-----------------|-------------------------------------|------------------------|------------------------------------|--------------------------------------|--|------------------------------------|
|                           | MISSIONS               |               |                           |                                      | Board of Education, Frdm's Aid & S. S.      |                                 |   |  | Other Societies |                                     |                        |                                    |                                      |  |                                    |
|                           | Church                 | Special Gifts | Sunday School not divided | Board of H. M. and Ch. Exten.—Church | Board of H. M. and Ch. Exten.—Special Gifts | Children's Fund for Student Aid | Collect'n for Freedmen's Aid & S. S.—Church | Collect'n for Freedmen's Aid & S. S.—Sun. School | Total           | Education—Local Education Interests | American Bible Society | Woman's Foreign Missionary Society | Woman's Home Missionary Society—Cash | Woman's Home Missionary Society—Supplies | Total other Benevolent Collections |
| Durham and Creedmore      | \$ 1                   | \$ .          | \$ .                      | \$ 1                                 | \$ .  | \$ .                            | \$ 1  | \$ .   | \$ 1            | \$ .                                | \$ .                   | \$ .                               | \$ .                                 | \$ .                                     | \$ .                               |
| Madison and Hayes' Chapel | 1                      | 2             | 25                        | 4                                    | 2   | 4                               | 3   | 5  | 7               | 1                                   | 1                      | 11                                 | 1                                    | 11                                       | 78                                 |
| Madison Circuit           | 1                      | 2             | 10                        | 3                                    | 2   | 3                               | 3   | 5  | 7               | 1                                   | 1                      | 1                                  | 1                                    | 1  | 30                                 |
| Goldsboro                 | 3                      | 2             | 4                         | 3                                    | 4   | 3                               | 3   | 5  | 1               | 1                                   | 1                      | 1                                  | 1                                    | 1  | 1                                  |
| Newberne and Kingston     | 8                      | 1             | 6                         | 2                                    | 6   | 2                               | 12  | 12   | 2               | 2                                   | 1                      | 1                                  | 1                                    | 1  | 37                                 |
| Newport News, Va.         | 5                      | 15            | 15                        | 10                                   | 7   | 20                              | 7   | 7  | 5               | 1                                   | 1                      | 1                                  | 1                                    | 1  | 25                                 |
| Oxford and Bullock        | 5                      | 20            | 20                        | 20                                   | 7   | 20                              | 7   | 7  | 5               | 1                                   | 1                      | 1                                  | 1                                    | 1  | 25                                 |
| Oberlin and Raleigh       | 4                      | 7             | 7                         | 8                                    | 7   | 8                               | 7   | 7  | 5               | 1                                   | 1                      | 2                                  | 1                                    | 1  | 41                                 |
| Rocky Mount, Va.          | 2                      | 1             | 3                         | 5                                    | 3   | 5                               | 3   | 3  | 1               | 1                                   | 1                      | 1                                  | 1                                    | 1  | 3                                  |
| Townesville               | 9                      | 7             | 7                         | 2                                    | 2   | 5                               | 3   | 3  | 5               | 1                                   | 1                      | 1                                  | 1                                    | 1  | 2                                  |
| Walnut Cove               | 2                      | 1             | 3                         | 7                                    | 2   | 2                               | 2   | 2  | 5               | 1                                   | 1                      | 1                                  | 1                                    | 1  | 2                                  |
| Dennis                    | 4                      | 4             | 4                         | 1                                    | 2   | 1                               | 2   | 2  | 1               | 1                                   | 1                      | 1                                  | 1                                    | 1  | 15                                 |
| Pleasant Ridge, Va.       | 1                      | 1             | 1                         | 1                                    | 1   | 1                               | 1   | 2  | 1               | 1                                   | 1                      | 1                                  | 1                                    | 1  | 2                                  |
| Louisburg                 | 2                      | 1             | 1                         | 1                                    | 1   | 1                               | 1   | 2  | 1               | 1                                   | 1                      | 1                                  | 1                                    | 1  | 13                                 |
| Norfolk, Va.              | 1                      | 1             | 1                         | 1                                    | 1   | 1                               | 1   | 2  | 1               | 1                                   | 1                      | 1                                  | 1                                    | 1  | 2                                  |
|                           | \$45                   | \$6           | \$104                     | \$60                                 | \$22  | \$15                            | \$37  | \$25   | \$6             | \$4                                 | \$17                   | \$1                                | \$1                                  | \$1                                      | \$218                              |

STATISTICS NO. 4, WINSTON DISTRICT, N. C. CONFERENCE, 1907.

| NAMES OF CHARGES             | BENEVOLENT COLLECTIONS |   |               |   |               |   |   |                |  |   |  |                        |   |   |   | Total other Benevolent Col-<br>lections | General Conference Expens<br>es |
|------------------------------|------------------------|---|---------------|---|---------------|---|---|----------------|--|---|--|------------------------|---|---|---|---|---------------------------------|
|                              | MISSIONS               |   |               |   |               | Board of Education<br>Frdm's Aid & S. S.              |   |                |  |   | Education—Local Education-<br>al Interests |                        |   |   |   |   |                                 |
|                              | Church<br>of<br>F. M.  | Board of H. M. and Ch.<br>Special Gifts |               | Board of H. M. and Ch.<br>Special Gifts |               | Children's Fund for Sun<br>day School not divid<br>ed | Board of H. M. and Ch.<br>Special Gifts | Children's Aid | Collect'n for Freedmen's<br>Aid & S. S.—Church | Collect'n for Freedmen's<br>Aid & S. S.—Sun. School | Total                                      | American Bible Society | Woman's Foreign Mission-<br>ary Society | Woman's Home Missionary<br>Society—Cash | Woman's Home Missionary<br>Society—Supplies |   |                                 |
|                              |                        | Board of H. M. and Ch.                  | Special Gifts | Board of H. M. and Ch.                  | Special Gifts |   |   |                |  |   |  |                        |   |   |   |   |                                 |
| Advance and St. James        | 13                     | 2                                       | 10            | 10                                      | 16            | 5   | 5                                       | 2              | 2  | 10  | 1  | 1                      | 1                                       | 1                                       | 25  | 2                                       |                                 |
| Asheboro and Randleman       | 4                      | 1                                       | 1             | 1                                       | 1             | 1   | 1                                       | 1              | 1  | 5   | 2  | 1                      | 1                                       | 1                                       | 10  | 4                                       |                                 |
| Fairview and Mitchell        | 1                      | 10                                      | 9             | 9                                       | 5             | 5   | 5                                       | 1              | 1  | 5   | 1  | 1                      | 1                                       | 1                                       | 21  | 2                                       |                                 |
| High Point                   | 1                      | 1                                       | 1             | 1                                       | 1             | 1   | 1                                       | 1              | 1  | 1   | 1  | 1                      | 1                                       | 1                                       | 1   | 1                                       |                                 |
| Jefferson                    | 1                      | 1                                       | 1             | 1                                       | 1             | 1   | 1                                       | 1              | 1  | 1   | 1  | 1                      | 1                                       | 1                                       | 1   | 1                                       |                                 |
| Jonesville                   | 5                      | 9                                       | 9             | 9                                       | 6             | 2   | 2                                       | 2              | 2  | 12  | 1  | 1                      | 1                                       | 1                                       | 14  | 4                                       |                                 |
| Kernersville                 | 12                     | 8                                       | 15            | 15                                      | 5             | 12  | 12                                      | 12             | 12   | 26  | 2  | 1                      | 1                                       | 1                                       | 2   | 5                                       |                                 |
| Lexington and Thomasville    | 8                      | 1                                       | 5             | 5                                       | 2             | 2   | 2                                       | 2              | 2  | 26  | 5  | 1                      | 1                                       | 4                                       | 1   | 4                                       |                                 |
| Liberty and Trinity          | 1                      | 1                                       | 6             | 6                                       | 2             | 2   | 2                                       | 2              | 2  | 2   | 2  | 1                      | 1                                       | 1                                       | 23  | 3                                       |                                 |
| Mayhew and Mooresville       | 2                      | 1                                       | 25            | 25                                      | 16            | 3   | 3                                       | 3              | 3  | 3   | 3  | 1                      | 1                                       | 1                                       | 15  | 2                                       |                                 |
| Midway                       | 3                      | 1                                       | 2             | 2                                       | 3             | 1   | 1                                       | 1              | 1  | 1   | 1  | 1                      | 1                                       | 1                                       | 13  | 2                                       |                                 |
| Mt. Airy                     | 3                      | 4                                       | 4             | 4                                       | 3             | 3   | 3                                       | 3              | 3  | 3   | 3  | 1                      | 1                                       | 1                                       | 24  | 4                                       |                                 |
| Mt. Airy Circuit             | 2                      | 2                                       | 2             | 2                                       | 1             | 1   | 1                                       | 1              | 1  | 1   | 1  | 1                      | 1                                       | 1                                       | 1   | 1                                       |                                 |
| Salisbury                    | 1                      | 1                                       | 1             | 1                                       | 1             | 1   | 1                                       | 1              | 1  | 1   | 1  | 1                      | 1                                       | 1                                       | 1   | 1                                       |                                 |
| Statesville and Philadelphia | 2                      | 2                                       | 5             | 5                                       | 2             | 8   | 8                                       | 8              | 8  | 10  | 10   | 1                      | 1                                       | 1                                       | 16  | 2                                       |                                 |
| South High Point             | 5                      | 4                                       | 6             | 6                                       | 2             | 4   | 4                                       | 4              | 4  | 7   | 7  | 1                      | 1                                       | 1                                       | 6   | 2                                       |                                 |
| Wilkesboro                   | 4                      | 4                                       | 7             | 7                                       | 5             | 5   | 5                                       | 5              | 5  | 1   | 1  | 1                      | 1                                       | 1                                       | 6   | 2                                       |                                 |
| Winston, Col. Heights        | 1                      | 1                                       | 1             | 1                                       | 1             | 1   | 1                                       | 1              | 1  | 1   | 1  | 1                      | 1                                       | 1                                       | 1   | 1                                       |                                 |
| Winston, Mission             | 1                      | 1                                       | 2             | 2                                       | 2             | 1   | 1                                       | 1              | 1  | 1   | 1  | 1                      | 1                                       | 1                                       | 1   | 1                                       |                                 |
| Winston, Mt. Pleasant        | 8                      | 5                                       | 5             | 5                                       | 13            | 15  | 15                                      | 15             | 15   | 3   | 3  | 1                      | 1                                       | 1                                       | 1   | 1                                       |                                 |
| Winston, St. Paul            | 14                     | 1                                       | 30            | 30                                      | 50            | 5   | 5                                       | 5              | 5  | 5   | 2  | 2                      | 2                                       | 2                                       | 78  | 6                                       |                                 |
| <b>Total</b>                 | <b>\$94</b>            | <b>\$45</b>                             | <b>\$132</b>  | <b>\$132</b>                            | <b>\$132</b>  | <b>\$95</b>   | <b>\$70</b>                             | <b>\$95</b>    | <b>\$95</b>                                    | <b>\$49</b>   | <b>\$12</b>                                | <b>\$6</b>             | <b>\$10</b>                             | <b>\$15</b>                             | <b>\$24</b>                                 | <b>\$46</b>                             |                                 |

*We hereby certify that the foregoing is a correct report of the proceedings of the forty-ninth session of the North Carolina Conference.*

*Winston-Salem, N. C., October 21, 1907.*

*Henry Spellmeyer,*

*Bishop.*

*S. B. Peeler,*

*Secretary.*



# Bennett College,

GREENSBORO, NORTH CAROLINA  
S. A. PEELER, A. M., B. D., President

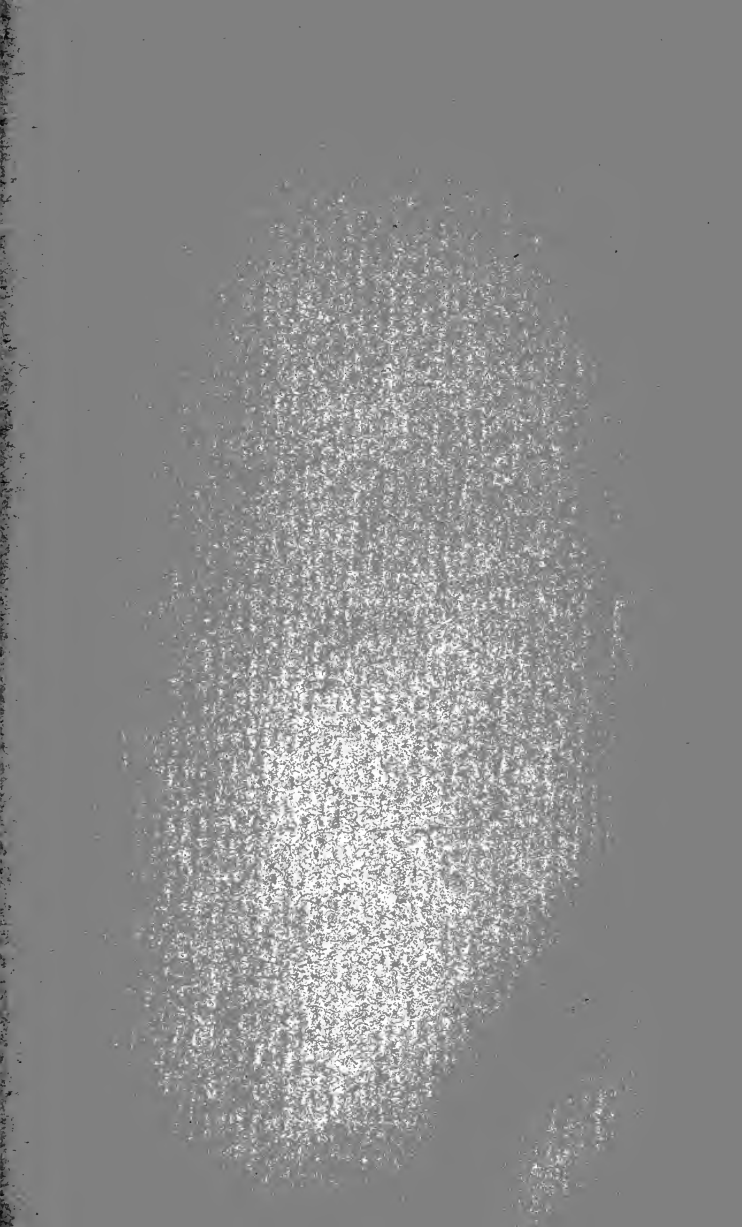
A Christian institution for both sexes. Gives instruction in the following courses:

COLLEGIATE,  
ACADEMIC,  
NORMAL,

ENGLISH,  
MUSICAL, and  
DOMESTIC SCIENCE.

Strong faculty—graduates from the best institutions of our country. Healthful location. Wholesome board. Expenses the lowest possible. Opens Wednesday, September 30th, 1908. Write for catalogue.







D03862152R

Duke University Libraries