

OFFICIAL JOURNAL

OF

The North Carolina Annual Conference

METHODIST EPISCOPAL CHURCH



SEVENTY-SEVENTH SESSION

October 22-27, 1935

Greensboro, N. C.

PRICE TWENTY-FIVE CENTS

Clark University

"Culture for Service"

An Institution for the Training of Colored Young Men and Women.

HIGHLY PROGRESSIVE - BEAUTIFUL LOCATION

Fine Equipment—Excellent Opportunities.

All forms of Athletics and Physical Education.

Terms Moderate.

M. S. Davage, *President*, Atlanta, Ga.

Allen Home High School

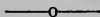
331 COLLEGE STREET

ASHEVILLE, N. C.

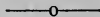
VOGATIONAL COURSES

One Open to Graduates of Standard High Schools

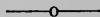
One to Undergraduates



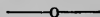
Four Years of Accredited High School Work, Including
COLLEGE PREPARATORY, DOMESTIC SCIENCE,
DOMESTIC ART, MUSIC



ELEMENTARY GRADES



A Limited Number Admitted to Boarding Department



For Further Information Address
LOUISA A. BELL, Superintendent

OFFICIAL JOURNAL

OF

The North Carolina
Annual Conference

METHODIST EPISCOPAL CHURCH



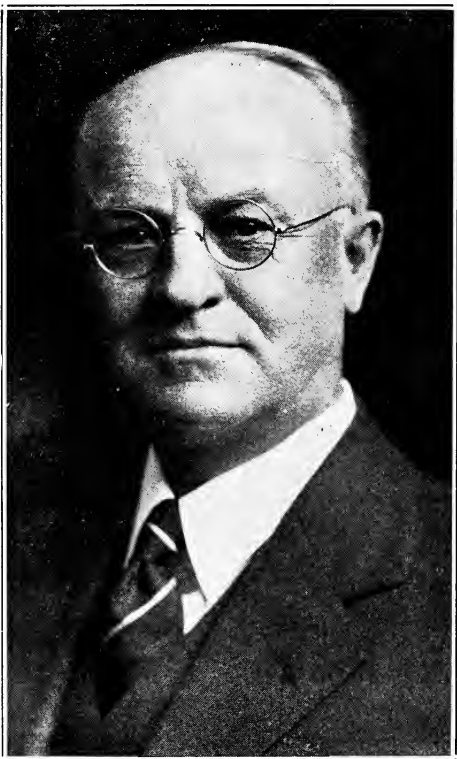
SEVENTY-SEVENTH SESSION

October 22-27, 1935

Greensboro, N. C.

PRICE TWENTY-FIVE CENTS

PRESIDING BISHOP



Wallace E. Brown, D. D., L. L. D.
Resident Bishop, Chattanooga Area

TABLE OF CONTENTS

	Page
1. Conference Officers	4
2. Boards, Commissions and Committees	5
3. Daily Proceedings	7
4. Disciplinary Questions—	
(a) Of the United Sessions of Annual and Lay Conferences	16
(b) Of the Annual Conference	17
5. Appointments	20
6. Reports—	
(a) Miscellaneous Reports	22
(b) District Superintendents	26
(c) Board of Home Missions and Church Extension	28
(d) Board of Trustees	29
(e) Board of Stewards	30
Conference Program	34
7. Conference Roll and Post Office Addresses	36
8. Memoirs	39
9. Roll of the Dead	40
10. Historical View—	
(a) Conference Sessions	42
11. Reports—	
(a) Conference Statistician	45
(b) Conference Treasurer	57

OFFICERS OF THE CONFERENCE

Resident Bishop

WALLACE E. BROWN
370 South Crest Road
Chattanooga, Tennessee

Secretary

CYRUS W. PERRY

ASSISTANT SECRETARIES

W. C. Scarborough L. W. Hedrick P. A. Taylor R. B. McRae

Treasurer

N. J. PASS

ASSISTANT TREASURERS

D. L. Thomas W. S. McLeod P. J. Cook J. W. Hall
L. A. Brown L. W. Hedrick

Statistician

P. I. WELLS

ASSISTANT STATISTICIANS

G. W. Patterson H. C. Ganaway J. B. Meekins E. I. Swann

LAY CONFERENCE

President, J. H. Barnhill Secretary, Mrs. Cora E. Hunter
Treasurer, G. W. Allen

BOARDS, COMMISSIONS AND COMMITTEES

- BOARD OF MINISTERIAL TRAINING—S. A. Peeler, J. C. Rush, C. W. Perry, R. N. Brooks, R. S. Abernethy, P. J. Cook, W. E. Hairston, P. A. Taylor, R. T. Weatherby, L. A. Brown, G. M. Phelps, Robert McRae, L. W. Hedrick, R. F. McCallum, R. W. Winchester.
- BOARD OF TRUSTEES—G. M. Phelps, R. W. Winchester, S. A. Peeler, G. H. Caldwell, P. J. Cook, H. L. Ashe, S. F. B. Peace, J. E. Brower, W. M. Wells.
- BOARD OF STEWARDS—(1936) S. F. B. Peace, C. L. Gidney, P. I. Wells; (1937) L. W. Hedrick, W. S. McLeod, R. N. Brooks; (1938) R. T. Weatherby, R. F. McCallum, W. J. Cameron; (1939) J. C. Rush, W. E. Hairston, B. F. Gleaves.
- BOARD OF CHURCH SCHOOLS—J. A. McRae, W. B. Scales, B. G. Hightower, S. D. Douglas.
- BOARD OF HOME MISSIONS AND CHURCH EXTENSION—D. D. Jones, S. A. Peeler, C. W. Perry, R. B. Rhyne, F. D. Caldwell, T. C. Frazier, L. E. McLeod, Robert McRae, W. H. Phillips, J. B. Little, W. A. Bruce, Frank Tolliver. District Superintendents Ex-Officio.
- BOARD OF TEMPERANCE, PROHIBITION AND PUBLIC MORALS—Greensboro District—W. T. Lomax, R. T. Weatherby, H. L. Ashe; Laurinburg District—W. M. Wells, J. C. Rush, W. E. Hairston; Western District—G. H. Caldwell, J. H. Foy, D. L. Thomas; Winston District—J. E. Brower, R. B. Rhyne, G. M. Phelps.
- BOARD OF CHURCH LOCATION—Greensboro District—W. T. Lomax, J. W. Simpson, W. J. Cameron, W. C. Scarborough, S. G. Turner, A. H. Peeler; Laurinburg District—W. M. Wells, J. C. Rush, P. I. Wells, R. D. Bethea, J. A. McCoy, John Steward; Western District—G. H. Caldwell, B. L. Burge, S. A. Peeler, C. N. Williams, J. H. Barnhill, S. F. Ferguson; Winston District—J. E. Brower, R. B. Rhyne, S. F. B. Peace, J. M. Foust, U. S. Mumford, G. M. Phelps.
- BOARD OF FOREIGN MISSIONS—Miss I. R. Jones, Wessly Allen, C. A. Tarpley, J. A. McCoy, C. A. Williams, Turner Johnson, L. I. Strickland. District Superintendents, Members Ex-Officio.
- TRIFIERS OF APPEALS—S. A. Peeler, G. M. Phelps, N. J. Pass, C. W. Perry, P. I. Wells; Reserves—R. B. Rhyne, B. F. Gleaves.
- COMMITTEE ON CONFERENCE RELATIONS—One Year—R. N. Brooks, W. B. Scales; Two Years—R. T. Weatherby, J. W. Simpson; Three Years—H. L. Ashe, F. D. Caldwell.

COMMISSION—(Conference Claimants Commission for Permanent Fund)—D. D. Jones, J. E. Graham, J. H. Barnhill, T. C. Woodland, J. A. McRae, H. L. Ashe, J. C. Rush, S. A. Peeler, G. M. Phelps.

BENNETT COLLEGE ENDOWMENT—G. M. Phelps, Robert McRae, S. A. Peeler, R. T. Weatherby, R. W. Winchester, J. E. Brower, G. H. Caldwell, W. M. Wells.

TRUSTEES OF BENNETT COLLEGE (1936)—S. A. Peeler, J. A. McRae.

CONFERENCE PROGRAM—R. N. Brooks, S. A. Peeler, The District Superintendents, Pastor of Entertaining Church and Conference Secretary.

STANDING COMMITTEES

WORLD SERVICE—R. S. Abernethy, B. L. Burge, W. J. Hall, J. F. Lee, E. M. McLeod, J. W. Shuford, J. H. Barnhill.

EDUCATION.—P. A. Taylor, T. H. Wooten, P. F. Johnson, J. B. Meekins, E. I. S. Swan, G. W. Patterson, W. A. Copening.

EVANGELISM.—L. A. Brown, R. B. Rhyne, R. D. Bethea, F. D. Caldwell, M. M. Patrick, H. A. Davis.

SOCIAL SERVICE.—W. S. McLeod, W. C. Scarborough, J. H. Foye, C. G. Bynum, W. J. Cameron, S. T. Brooks.

PENSIONS AND RELIEF—A. M. Erwin, C. N. Williams, D. C. Skeen, Henry Jones, W. M. Chavis, Murry Davis.

MEMOIRS—S. F. B. Peace, J. C. Rush, W. B. Scales, D. L. Thomas, J. W. Simpson, B. F. Gleaves.

RESOLUTIONS.—W. E. Hairston, Robert McRae, C. L. Gidney.

GRADUATE WORK.—R. N. Brooks, R. T. Weatherby, J. B. Meekins, L. W. Hedrick.

NOMINATIONS.—G. M. Phelps, R. F. McCallum, P. I. Wells.

WORSHIP AND MUSIC.—H. C. Ganaway, B. F. Gleaves, S. F. B. Peace, J. H. Ledwell, L. A. Watson, S. H. Pressley, E. M. McLeod.

SUMMER SCHOOL.—R. N. Brooks, C. W. Perry, N. J. Pass, G. M. Phelps, S. A. Peeler, H. C. Woodland.

District Superintendents—Ex.-Officio.

NOTE.—The above standing committees are to meet on the first and second days of the Conference and have reports ready to present, Saturday at the Annual Conference.

DAILY PROCEEDINGS

The Seventy-seventh session of the North Carolina Annual Conference convened in St. Matthew Methodist Episcopal Church, Greensboro, North Carolina, Wednesday, October 23, 1935, at 9:00 A. M., Bishop Wallace E. Brown, Resident Bishop of the Chattanooga area, presiding. Hymn 330, "My Hope is Built on Nothing Less" was sung, after which H. L. Ashe led the Conference in prayer.

The Bishop delivered an exceedingly thoughtful and inspiring Communion Meditation, and led in singing "There is a fountain filled with blood," after which the Bishop administered the Holy Communion, assisted by the District Superintendents and the Pastor of St. Matthews Church. The service was deeply impressive and the spiritual, "Were you there when they crucified my Lord?" led by Mrs. R. A. Perry was particularly fitting.

By request of the Bishop, W. E. Hairston, Secretary of the last Conference session, called the roll. The names of the deceased J. H. Garrett and W. R. Zeigler were called first. The Conference stood while J. C. Rush offered a comforting prayer.

Resuming the roll, the following were recorded as present:

RETIRED ELDERS: J. J. Blanton, G. W. Byers, G. W. Morehead, Marcus Mundy and L. W. Thomas.

EFFECTIVE ELDERS: R. S. Abernethy, H. L. Ashe, R. D. Bethea, R. N. Brooks, J. E. Brower, L. A. Brown, B. L. Burge, F. D. Caldwell, G. H. Caldwell, W. J. Cameron, P. J. Cook, H. A. Davis, A. M. Erwin, J. H. Foye, T. C. Frazier, H. C. Ganaway, C. L. Gidney, B. F. Gleaves, J. E. Green, W. E. Hairston, L. W. Hedrick, D. A. Hill, G. E. Hogue, P. F. Johnson, Henry Jones, W. T. Lomax, R. F. McCallum, E. M. McLeod, Robert McRae, J. W. Meekins, N. J. Pass, G. W. Patterson, S. F. B. Peace, S. A. Peeler, C. W. Perry, G. M. Phelps, S. H. Pressley, R. B. Rhyne, J. C. Rush, W. B. Scales, W. C. Scarborough, J. W. Simpson, D. C. Skeens, J. W. Shuford, B. E. Staton, E. I. S. Swan, P. A. Taylor, B. F. Thomas, D. L. Thomas, L. A. Watson, R. T. Weatherby, P. I. Wells, W. M. Wells, R. W. Winchester, and T. H. Wooten.

SUPERNUMERARY: A. M. Robertson.

PROBATIONERS: W. S. McLeod, J. W. Mickle, and R. C. Sharpe.

ACCEPTED SUPPLY PASTORS: J. L. Alford, W. H. Blackman, S. E. Dunham, Ira Friend, E. Frost, G. Hoover, J. M. Joyce, B. C. Littlejohn, S. B. McBrayer, H. M. McNair, J. H. Meeks, and E. A. Rush.

CONFERENCE ORGANIZATION: On motion of R. N. Brooks, C. W. Perry was elected Secretary, and, on his nomination, W. C. Scarborough, L. W. Hedrick, P. A. Taylor and Robert McRae were elected Assistant Secretaries.

N. J. Pass, elected Treasurer at the session of 1934, for this year, nominated the following as his assistants, and they were elected: D. L. Thomas, L. A. Brown, P. J. Cook, L. W. Hedrick, W. S. McLeod, and J. W. Hall.

P. I. Wells, Statistician elected at the session of 1934, for this year, nominated G. W. Patterson, H. C. Ganaway, J. B. Meekins, and E. I. Swan as assistants, and they were elected.

WEDNESDAY MORNING SESSION

On motion of W. M. Wells the Election of the Ministerial Delegate to the General Conference was made the Order of the Day for Thursday at eleven o'clock.

On motion of R. W. Winchester, the bar of the Conference was fixed to include the first seven rows of seats from the chancel.

R. W. Winchester moved that the printed program, with such changes as may be necessary, be the official program of the Conference. The motion prevailed.

On motion of G. H. Caldwell, R. T. Weatherby was elected Postmaster.

On motion of R. W. Winchester, L. W. Hedrick was elected Reporter to the Daily press and the Church papers.

Bishop Brown announced the receipt of a sixty dollar draft from the Chartered Fund. It was ordered turned over to the Board Stewards for distribution.

The Bishop presented Dr. W. S. Boyard, Assistant Secretary of the Promotional Activities of the World Service Commission, who ably presented the World Service interests.

In the Welcome Services Bishop Brown introduced the following persons for addresses: On behalf of the City, Mayor Roger W. Harrison; On behalf of the Ministerial Association, Rev. J. A. Vache; On

behalf of the Ministerial Alliance, Rev. F. A. Hargett; On behalf of the Local Church, Professor J. A. Tarply. Reverend R. S. Abernethy and Professor J. F. Gunn made timely responses.

After the announcements by the pastor and the singing of the Doxology the Reverend J. A. Vache pronounced the benediction.

WEDNESDAY AFTERNOON SESSION

The Conference met at 2:30 P. M. Bishop Brown presiding. The devotional service was conducted by W. S. McLeod and L. A. Brown.

In the Statistical session the Statistician and Treasurer received in open Conference the statistics from the Pastors.

Bishop Brown introduced Dr. Mark A. Dawber of the Board of Home Missions and Church Extension, who made an ardent appeal for the "Larger Life."

After some announcements R. N. Brooks pronounced the benediction and the Conference stood adjourned.

THURSDAY MORNING SESSION

Bishop Brown called the Conference to order at 9:00 A. M. P. A. Taylor conducted the devotional period.

The Journal of Wednesday was read and approved.

The Twenty-seventh question was taken up: "Was the character of each preacher examined?"

The Bishop called the names of District Superintendents: G. H. Caldwell, of the Western District; J. E. Brower, of the Winston District; W. M. Wells, of the Laurinburg District; R. W. Winchester, of the Greensboro District, and their characters were passed.

To the inquiry of the Bishop, each District Superintendent stated that there was nothing against the character of any Effective Elder on his District, and in turn made his report.

On recommendation of the Committee on Conference Relations, A. H. Newsome and B. F. Thomas were granted the retired relation.

Under Question Forty, the retired Elders: J. J. Blanton, G. W. Byers, S. B. Cornelius, H. O. Frederick, D. H. Kearsse, S. L. May, J. R. McNair, A. B. McQueen, Dorsey McRae, G. W. Morehead,

Marcus Munday, A. E. Robinson, R. J. Shipp, and L. W. Thomas were passed in character and continued in the retired relation.

On the Recommendation of the Board of Ministerial Training, Ira Friend was received on Trial and placed in the studies of the First Year. William Hairston was received on Trial under the Seminary Rule, placed in the studies of the Third Year, and elected to Deacon's Orders to be ordained elsewhere. Willis S. Winston was advanced to the studies of the Second Year. Horace C. Woodland was advanced to the studies of the Fourth Year. Joshua W. Mickle and Robert C. Sharpe were advanced to the studies of the Third Year and admitted into full membership. Charles G. Bynum, W. J. Cameron, and Coy N. Williams were advanced to the studies of the Fourth Year. M. S. Laughlin and William S. McLeod were graduated from the Course of Study, elected to Elders Orders and full membership. Le Mon Mayfiled was elected to Deacons Orders, to be ordained elsewhere. H. H. Houston and Hattie L. Parker were elected to Deacons Orders as Local Preachers.

Bishop Brown delivered the address to the class for full admission, and having received affirmative answers to the prescribed questions, received Joshua Mickle, Robert C. Sharpe, W. S. McLeod and M. S. Laughlin into full membership.

Election of Delegate: Pursuant to a previous order, the hour of 11:00 had arrived, when the ministerial delegate to the General Conference was to be elected. The Bar of the Conference was cleared. Bishop Brown gave full instructions as to the method of procedure.

The tellers were named as follows: S. A. Peeler, Chairman; R. T. Weartherby, G. M. Phelps, and J. C. Rush. W. C. Scarborough was requested to represent the Secretary in making the record for the tellers. The first ballot was cast.

While the ballot was being counted, the Roll Call for the Minute Fund was ordered and each District Superintendent answered with his full quota.

The result of the first ballot was announced. No one having received the necessary 40 votes, there was no election.

A second ballot was immediately taken.

The Roll Call for incidental expenses of the Secretary, Treasurer, and Statistician was made, and thirty-five dollars was received.

The result of the second ballot follows: Ballots cast, 79; necessary to a choice, 40; R. N. Brooks, having received 40 votes, was declared elected.

A ballot for election of Reserve Delegate to the General Conference was taken.

Bishop Brown presented Dr. E. C. Paustian, president of Morristown College, Morristown, Tenn., who spoke in the interest of his school.

The report of the first ballot for Reserve Delegate was made, and no election was declared.

The second ballot for reserve delegate was taken.

The Bishop presented Dr. Mark A. Dawber of the Board of Home Missions and Church Extension, who spoke convincingly on the theme: "The Task of the Christian Minister."

The session adjourned, with benediction by N. J. Crolley.

THURSDAY AFTERNOON SESSION

The United Session of the Conference was called to order at 2:30 P. M. by Bishop Brown. Ira Friend led in prayer.

The Disciplinary Questions of the United Session were called.

J. A. McRae, president of the Lay Conference presided during the rendition of the following program:

LAYMAN'S PROGRAM

THEME: "Veteran's Hour—What He Has Done"

1. Hymn No. 415 (*Methodist Hymnal*).
2. Invocation *T. R. Adams*
3. Remarks *Presiding Officer*
4. "The Veterans Contribution to the State"..... *W. R. Maness*
5. "The Veterans Contribution to our Schools"..... *Mrs. Cora E. Hunter*
6. "The Veterans Contribution to the Church"..... *Prof. J. A. Tarpley*
7. Solo—"Does Jesus Care"..... *Mrs. R. A. Perry*
8. Perfecting Organization for 1935-1936 Endowment Drive.

The Bishop commended the Laymen for their fine work in making possible an endowment for the Retired Minister.

After general announcements Bishop Brown pronounced the benediction.

FRIDAY MORNING SESSION

The devotional period was conducted by G. W. Patterson and R. B. Rhyne.

The Journal of Thursday was read and approved.

On motion of G. H. Caldwell, a contested camp ground site on the Western District was referred to the Conference Board of Trustees.

The result of the fourth ballot for a Reserve Delegate to the General Conference was announced and no election declared.

The fifth ballot was taken.

Bishop Brown presented Dr. W. S. Bovard, who addressed the Conference on the Theme: "The Proper Attitude Toward the Bible."

The fifth ballot for Reserve Delegate to the General Conference was reported and G. H. Caldwell was declared elected.

To Questions 19, 20, 25, 26, 30, 32, 33, 34, 35, 36, 37, 38, 39, 41, the Conference answered, "None."

The Thirty-second Question was taken up: "Who have been located at their own request?"

A. M. Robertson was so located.

Under Question 42. The Triers of Appeal were named as follows: S. A. Peeler, G. M. Phelps, N. J. Pass, P. I. Wells, C. W. Perry. Reserves: R. B. Rhyne, B. F. Gleaves.

Under Question 49. "Where shall the next Conference be held?"

Robert McRae invited the Conference to hold its next Session in Hamlet.

W. E. Hairston extended an invitation from Lumberton.

By vote the Conference accepted the invitation from Hamlet and gave a vote of thanks to the invitation from Lumberton.

A Roll Call for an Offering for Gammon Seminary was ordered and fifty-three dollars was received.

Warren G. Scott of Bennett College was presented to the Conference and proposed a Conference Epworth League and Church School Institute to be held at Bennett at the same time of the summer School for Town and Rural Pastors. The proposal was approved.

The session adjourned, with benediction by T. L. Scott.

FRIDAY AFTERNOON SESSION

In the Devotional Period the Conference sang Hymns Nos. 185 and 50, from the Methodist Hymnal. T. C. Frazeir and J. H. Ledwell led in prayer.

The following standing committees made their reports: World Service, Education, Worship and Music, Evangelism, Social Service, Pensions and Relief, Graduate Work, Nominations, and Summer Schools. They were adopted.

The Boards, Commissions and Committees were named by the Secretary of the Cabinet and approved by the Conference.

R. W. Winchester was appointed to the Board of Ministerial Training.

The Board of Stewards made their report. It was adopted.

MEMORIAL SERVICE

S. F. B. Peace, Chairman of the Committee on Memoirs, presided.

Services were conducted for J. H. Garrett, W. R. Ziegler, and Mrs. F. L. Bost, by addresses by J. W. Simpson, J. C. Rush and D. L. Thomas, respectively.

G. H. Caldwell reported the condition of A. H. Newsome. An offering of \$19.00 was taken for him.

After the Benediction by Bishop Brown, the session stood adjourned.

SATURDAY MORNING SESSION

The Devotional period was led by F. D. Caldwell and T. H. Wooten.

The Journal of the previous day was read and approved.

Reports of the Board of Trustees, Board of Home Missions and Church Extension, Treasurer and Statistician were read and approved.

R. N. Brooks, G. H. Caldwell, J. E. Brower, W. M. Wells, D. D. Jones and R. W. Winchester presented the following resolutions regarding Bishop Brown, which was adopted by a rising vote:

Whereas, The General Conference of 1932 assigned Bishop Wallace E. Brown as Resident Bishop of the Chattanooga Area; and

Whereas, During these four years Bishop Brown has won our

love and respect by his diligence in administration, his wisdom in counsel, his unfailing courtesy, and his brotherliness to every one seeking his aid and advice; and

Whereas, His Christian statesmanship throughout the Area and his contribution to the Spiirtual life of the Church at large have advanced the kingdom of God and brought prestige to the Church we love; therefore, be it

Resolved, That we, the members of the North Carolina Conference, earnestly request the General Conference of Methodist Episcopal Church, meeting at Columbus in May, 1936, to return Bishop Brown to the Chattanooga Area.

And by the adoption of these resolutions, we do hereby express to Bishop Brown our personal affection and our appreciation for his leadership and life among us.

On motion of R. N. Brooks, N. J. Pass was elected Treasurer for the ensuing year.

On motion of L. W. Hedrick, P. I. Wells was elected Statistician for the ensuing year.

On motion of C. W. Perry, S. A. Peeler, the Cabinet and Secretary constitute the Publishing Committee.

G. H. Caldwell moved that the Journal be made the official record of the Conference, and the Publishing Committee ordered to print 1200 copies. The motion was adopted.

A motion by G. H. Caldwell prevailed, that after Sunday morning service Ordination service, the reading of the Complimentary Resolutions and reading of Appointments, the Seventy-seventh session of the Conference stand adjourned, sine die.

Benediction by W. T. Lomax.

During the sessions of the Conference the following visitors were introduced: N. D. Shamborguer, L. P. Whitten of the East Tennessee Conference; A. D. Avery, T. L. Scott, of the A. M. E. Church; T. D. Hairston of the Baptist Church; and M. McCallum of the South Carolina Conference.

SUNDAY SESSION

At 10:00 o'clock Love Feast services were conducted by G. M. Byers and Marcus Mundy.

Ordination Service: The Secretary presented the following can-

didates for ordination as Deacons—H. H. Houston and Hattie L. Parker. They were ordained by Bishop Brown.

The Secretary presented the following candidates for ordination as Elders—M. S. Laughlin and W. S. McLeod. They were ordained by Bishop Brown, assisted by several Elders.

Complimentary Resolutions were read by T. H. Wooten.

At 11:00 o'clock Bishop Brown stirred his audience on a theme taken from the parables of the lost coin, the lost sheep, and the lost son. He showed us plainly the three ways men may be lost, and the course men must take if they are to be saved. Bishop Brown has delivered many messages to North Carolina audiences. It is doubtful whether he ever appeared to better advantage.

Following the singing of "Listen to the Lambs" and a soul-stirring prayer by the Bishop, the appointments were read, the benediction pronounced and Conference adjourned.

This is to certify that the foregoing is a complete and correct report of the proceedings of the 77th session of the North Carolina Conference of the Methodist Episcopal Church, held in St. Matthews Methodist Episcopal Church, Greensboro, North Carolina, October 22-27, 1935, and as such, together with the accompanying reports, has been adopted as its official Journal.

WALLACE E. BROWN, President.

CYRUS W. PERRY, Secretary.

CERTIFICATE OF ORDINATION

This is to certify that at St. Matthews Methodist Episcopal Church, Greensboro, N. C., on Sunday, October 27, 1935, pursuant to the election of the North Carolina Annual Conference of the Methodist Episcopal Church, I ordained as Deacons: Holton H. Houston, Hattie L. Parker, and assisted by several Elders, I ordained as Elders, M. S. Laughlin, William S. McLeod.

WALLACE E. BROWN,

Presiding Bishop.

DISCIPLINARY QUESTIONS

The Seventy-Seventh North Carolina Conference of the Methodist Episcopal Church, held in Greensboro, N. C., from October 22 to October 27, 1935. Bishop Wallace E. Brown, Presiding; Secretary, Cyrus W. Perry, Hickory, N. C.; Statistician, P. I. Wells, Maxton, N. C.; Treasurer, N. J. Pass, Shelby, N. C.; Registrar, J. C. Rush, Charlotte, N. C.

A. UNITED SESSION

1. Who are the members of the Lay Conference present, and who are its officers? President: J. H. Barnhill, Hickory, N. C.; Secretary: Mrs. Cora E. Hunter, Charlotte, N. C.; Treasurer: George W. Allen, Leaksville, N. C.
2. Is the Annual Conference Incorporated According to the Requirements of the Discipline? A Board of Trustees as Required by State Law.
3. What Officers and Persons holding Moneys, Funds, etc., are Bonded, and in what Amounts, According to the Requirements of the Discipline? S. A. Peeler, Treasurer Board of Trustees, \$1,000.00; N. J. Pass, Conference Treasurer, \$1,000.00.
4. What are the Statistical and Financial Reports for the year? See Reports.
5. What are the Items and Aggregate of General Conference Benevolences apportioned to this Conference and approved by this body for the ensuing year? World Service, \$4,500.00.
6. What reports and Exhibits are presented by Conference Boards and Institutions? See Reports.
7. What are the Items and Aggregate of Annual Conference Benevolences approved by this body for the ensuing year? \$4,000.00 Bennett College.
8. What approved financial campaigns are to be carried on in this Conference during the ensuing year, and for what amounts? Endowment Fund for Retired Ministers, \$500.00.
9. What is the schedule of Minimum Support? None.
10. What are the approved claims for the support of the District Superintendents, Bishops, and Conference Claimants for the ensuing year? District Superintendents, Referred to Respective Board of District Stewards; Bishops, 2½%; Conference Claimants, 5%.
11. What shall be the Evangelistic and Religious Educational Plan for the ensuing year? Revivals and Religious Education.
12. What Standing Committees shall be appointed by this body? See List.
13. What other items of business shall be considered by this United

Session? Endowment Fund for Retired Ministers; Endowment Fund for Bennett College.

B. ANNUAL CONFERENCE SESSION

14. Who have been Received by Transfer, and from what Conferences? None.
15. Who have been Readmitted? None.
16. Who have been received on Credentials, and from what Churches? None.
17. Who have been Received on Trial?
 - (a) In Studies of First Year. Ira Friend.
 - (b) In Studies of Third Year under Seminary Rule. William Hairston.
18. Who have been Continued on Trial?
 - (a) In Studies of First Year. None.
 - (b) In Studies of Second Year. Willis S. Winston.
 - (c) In Studies of Third Year. None.
 - (d) In Studies of Fourth Year. Horace C. Woodland.
19. Who have been Discontinued? None.
20. Who have been admitted into Full Membership?
 - (a) Elected and Ordained Deacons this year. None.
 - (b) Elected and Ordained Deacons previously. None.
 - (c) Elected to be Ordained elsewhere. None.
 - (d) Ordained Deacon, having been previously elected by Conference. None.
21. What Members are in Studies of Third Year?
 - (a) Admitted into Full Membership this year. Joshua W. Mickle and Robert C. Sharpe.
 - (b) Admitted into Full Membership previously. J. H. Ledwell.
22. What Members are in Studies of Fourth Year? Charles G. Bynum, W. J. Cameron, Cory N. Williams.
23. What Members have Completed the Conference Course of Study?
 - (a) Elected and Ordained Elders this year. M. S. Laughlin, William S. McLeod.
 - (b) Elected and Ordained Elders previously. None.
 - (c) Elected and Ordained Elders under the Seminary Rule. None.
 - (d) Elected to be Ordained elsewhere. None.
 - (e) Ordained Elder, having been previously Elected by Conference. None.
 - (f) Ordained Elder elsewhere under our Election. None.
24. What others have been Elected and Ordained Deacons?
 - (a) As Local Preachers. None.
 - (b) Under Missionary Rule. None.
 - (c) Under the Seminary Rule. William Hairston, Le Mon Mayfield.
 - (d) Elected by this Conference and Ordained elsewhere: William Hairston, Le Mon Mayfield.

25. What others have been Elected and Ordained Elders?
 (a) As Local Deacons. None.
 (b) Under Missionary Rule. None.
 (c) Elected by this Conference and Ordained elsewhere. None.
26. Who have been left without Appointment to Attend One of our Schools? William Hairston.
27. Was the Character of each Preacher examined? This was strictly done, as the name of each preacher was called in open conference.
28. Who are accepted as Supply Psators? J. L. Alford, W. H. Blackman, W. C. Cook, S. E. Dunham, E. Frost, G. Hoover, H. H. Houston, V. J. Ingram, J. M. Joyce, B. C. Littlejohn, C. B. Love, S. M. McBrayer, H. M. McNair, J. H. Meeks, Hattie L. Parker, E. A. Rush.
29. (a) What Accepted Supply Pastors now in charge are taking
 I. The Conference Course of Study?
 1. In the Frist Year. H. H. Houston, Hattie L. Parker.
 2. In the Second Year. J. L. Alford, W. H. Blackman, W. C. Cook, S. E. Dunham, E. Frost, G. Hoover, V. J. Ingram, J. M. Joyce, B. C. Littlejohn, C. B. Love, S. M. McBrayer, H. M. McNair, J. H. Meeks, E. A. Rush.
 3. In the Third Year. None.
 4. In the Fourth Year. None.
 II. The Local Preachers' Course of Study?
 1. In the First Year. None.
 2. In the Second Year. None.
 3. In the Third Year. None.
 4. In the Fourth Year. None.
 (b) Was the character of each Accepted Supply Pastor now in charge examined? Yes.
 (c) What Local Preachers have completed satisfactorily the studies prescribed?
 1. For Deacon Orders. Holton H. Houston, Hattie L. Parker.
 2. For Elder's Orders. None.
30. Who have been Transferred, and to what Conferences? None.
31. Who have died? J. H. Garrett, W. R. Zeigler.
32. Who have been Located at their own Request? A. M. Robertson.
33. Who have been Located? None.
34. Who have Withdrawn?
 (a) From the Ministry. None.
 (b) From the Ministry and Membership of the Church. None.
 (c) By surrender of the Ministerial Office. None.
35. Who have been Deprived of the Ministerial Office? None.
36. Who have been permitted to Withdraw under Charges or Complaints? None.

37. Who have been Expelled? None.
38. What other personal Notation should be made? None.
39. Who are the Supernumerary Ministers, and for what number of years consecutively has each held this relation? None.
40. Who are the Retired Ministers? J. J. Blanton, G. W. Byers, S. B. Cornelius, H. O. Frederick, D. H. Kearse, S. L. May, J. R. McNair, A. B. McQueen, Dorsey McRae, G. W. Morehead, Marcus Mundy, A. H. Newsome, A. E. Robinson, R. J. Shipp, B. F. Thomas, L. W. Thomas.
41. Who have been granted Leave of Absence? None.
42. Who are the Triers of Appeals? S. A. Peeler, G. M. Phelps, N. J. Pass, P. I. Wells, C. W. Perry. Reserves: B. F. Gleaves, R. B. Rhyne.
43. What is the Annual Report of the Conference Board of Home Missions and Church Extension? See Report.
44. What is the Annual Report of the Conference Board of Foreign Missions? No Report.
45. What are the Claims on the Conference Funds? For Annuity distribution, 1127 years multiplied by the Disciplinary rate of \$12.00 per Year, \$13,524.00. For Necessitous distribution, None.
46. (a) What has been received on these Claims?
From the Book Concern, None; From Annual Conference Investments, \$32.01; From the Chartered Fund, \$60.00; From Pastoral Charges, \$792.00; From Board of Pensions and Relief, \$743.00; From Other Sources, \$67.00; Total \$1,749.00.
(b) How has it been Applied? Through the Board of Stewards.
47. What amount has been apportioned to the Pastoral Charges within the Conference, to be raised for the Support of Conference Claimants? Five Per Cent Pastor's Cash Salary.
48. Where are the Preachers Stationed? See List of Appointments.
49. Where shall the Next Session of the Conference be held?
Hamlet, N. C.

LIST OF APPOINTMENTS

NOTE:—The numerals at the right of the names indicate the number of Years Service in the Appointment including this year.

GREENSBORO DISTRICT

W. T. Lomax, Superintendent—Years—1
Greensboro, N. C.

Charge	Pastor	Years
Brown Summit-Caswell—	H. A. Davis.....	5
Bullock-Creedmore—	R. J. Shipp (Sup).....	3
Empire—	S. J. Hayden	1
Greensboro:		
East—	J. B. Meekins	1
High Street—	W. J. Cameron	3
St. Matthews—	R. T. Weatherby.....	12
South—	J. W. Shuford	1
North West—	J. W. Simpson	1
South East—	J. C. Staley (Sup).....	2
Extension—	C. G. Bynum.....	2
Guilford—	W. B. Scales	2
Kernersville—	J. H. Ledwell	2
Leaksville—	H. C. Ganaway.....	1
Newport News, Va.—	J. W. Mickle	2
Oxford—	J. W. Hall	10
Pleasant Ridge, Va.—	C. B. Love (Sup).....	7
Ramseur—	T. H. Wooten	3
Randeman—	W. H. Blackmon (Sup).....	1
Reidsville—	H. L. Ashe	3
West Raleigh—	W. C. Scarborough	5

LAURINBURG DISTRICT

W. M. Wells, Superintendent—Years—6
Maxton, N. C.

Charge	Pastor	Years
Beauty-New Zion—	W. S. McLeod	3
Beaverdam-Pembroke—	E. A. Rush (Sup).....	1
Bowmore-Mt. Zion—	M. M. Patrick	4
Charlotte—	J. C. Rush	3
Charlotte Mission—	W. C. Cook (Sup).....	1
Gastonia—	R. S. Abernethy	2
Goldsboro—	To be Supplied
Hamlet—	R. B. McRae	6
John-Salem—	G. E. Hogue	2
Laurinburg-Cool Springs—	P. J. Cook	3
Lumberton—	W. E. Hairston	7

Maxton-Piney Grove—P. I. Wells	5
Monroe-Wingate—Henry Covington (Sup).....	3
Red Springs—L. W. Hedrick	3
Rocky Mount—J. E. Green	2
Rockingham-Philadelphia—B. C. Littlejohn (Sup).....	1
Roland Fairmont—R. D. Bethea	2
Sanford Circuit—H. M. McNair (Sup)	2
St. Marks-Hickory Bend—To be Supplied	
Southern Pines-Fayetteville—J. L. Alford (Sup).....	3

WESTERN DISTRICT

G. H. Caldwell, Superintendent—Years—5
Greensboro, N. C.

Charge	Pastor	Years
Asheville—S. A. Peeler		6
Bessemer-Galilee—S. B. Brayer (Sup)		1
Boone—E. I. Swann		4
Catawba Circuit—G. W. Patterson		2
Forest City-Shelby—E. M. McLeod		4
Franklin—C. N. Williams		2
Hickory—C. W. Perry		2
Hunters-Cornelius—H. H. Houston (Sup).....		1
Kings Mountain—B. F. Gleaves		8
Lawndale-Brooks—N. J. Pass		7
Lenoir—B. L. Burge		5
Lenoir Circuit—P. F. Johnson		1
Lincolnton-Mt. Holly—S. H. Pressly.....		4
Lowesville-Tuckers—B. E. Staton		4
Marion—F. S. Abernethy		2
Mooresville—F. J. Lee		3
Newton-Conover—J. H. Foy		1
Old Fort-Glades—J. H. Meeks (Sup).....		2
Sherrills Ford—C. L. Gidney		2
Statesville-Philadelphia—T. C. Frazier		4
Union Mills-Bracket Town—B. F. Thomas (Sup).....		1
West Asheville—D. L. Thomas		1
Wilkesboro—S. E. Dunham (Sup)		2

WINSTON DISTRICT

J. E. Brower, Superintendent
Asheboro, N. C.

Charge	Pastor	Years
Advance-Boston Cottage—W. S. Winston		3
Asheboro-Mitchell—R. B. Rhyne		1

Elkin—A. M. Erwin	1
High Point:	
Brooks Memorial—F. D. Caldwell	1
St. Mark—R. W. Winchester	1
Lexington—L. A. Brown	2
Madison—D. C. Skeen	1
Midway—W. M. Chavis	1
Mt. Airy—S. F. B. Peace	1
Pen Hook—M. S. Laughlin	3
Red Bank—J. M. Joyce (Sup).....	4
Rural Hall—Henry Jones	10
Thomasville East—R. C. Sharpe	3
Thomasville—P. A. Taylor	1
Trinity-Glenola—D. A. Hill	3
Walnut Cove-Rockhill—Ira Friend	5
Winston-Salem:	
Oak Grove-Walkertown—E. Frost (Sup)	8
Mt. Pleasant—L. A. Watson	1
St. Andrews—R. F. McCollum	1
St. Paul—G. M. Phelps	6

SPECIAL APPOINTMENTS

- R. N. Brooks, Professor in Gammon Theological Seminary, Brooks Chapel Quarterly Conference.
- Horace C. Woodland, Department Religious Education, Morristown College, St. Paul Quarterly Conference.

REPORTS

MR. AND MRS. HENRY PFEIFFER

In view of the magnificent gifts of Mr. and Mrs. Henry Pfeiffer totaling \$186,000.00 to Bennett College;

Be It Resolved, That we hereby express to Mr. and Mrs. Pfeiffer our sincere appreciation for their interest and their philanthropy. We rejoice in their intelligent giving to Bennett College as well as other Methodist enterprises.

We pray for these friends long life that they may continue to carry out their desires to extend the Kingdom of God.

Respectfully submitted,

S. A. PEELER,
R. T. WEATHERBY,
R. W. WINCHESTER,
J. E. BROWER,
G. H. CALDWELL,
W. M. WELLS.

EDUCATION

In consideration of the place which the Church occupies in Community Life; of the confidence invested in her for Leadership and life; of the responsibility which rests upon Her to meet human needs in a changing world;

Be It Resolved, That the North Carolina Conference of the Methodist Episcopal Church go on record as giving uncompromising support to all agencies of character and cultural development; particularly to Bennett College, Allen Home, Gammon Theological Seminary, and the School of Methods for Ministers held annually at Bennett College sponsored by our Board of Home Missions and Church Extension.

Be It Further Resolved, That the Pastors see to it that the Local Church School become more and more a place of Christian Training, and not just a rendezvous from which ambitious youth return unhelped.

Be It Resolved Finally, That the student habit be systematically practiced in the spirit of meditation and prayer.

(Signed),

P. A. TAYLOR,
T. H. WOOTEN,
G. W. PATTERSON,
E. I. SWAN,
J. B. MEEKINS,
P. F. JOHNSON.

REPORT FROM THE BOARD OF TRUSTEES ON THE MOTTS
GROVE CAMP GROUND PROPERTY

Whereas: G. H. Caldwell presented a formal request from a joint session of the two Quarterly Conferences—the Catawba charge and the Sherrill's Ford charge—that the Conference state an opinion as to the distribution of trustee representation on the Motts Grove Camp Ground property in Catawba County, and

Whereas: The Conference referred the matter to the Conference Board of Trustees for consideration and report;

Resolved: That the two Quarterly Conferences in question have equal representation; and that the District Superintendent together with the two pastors of the charges arrange for the election of a trustee, or trustees outside the two charges mentioned above, thus making odd number of three, five, seven or nine.

Resolved Further: That the Trustees representing the Motts Grove M. E. Church, shall have full control of the property and property interests so far as it affects their local church services and operations.

Resolved Third: That for the time of the Camp Meeting and in arranging for the Camp Meeting the entire trustee body together with a Committee of persons, members of the M. E. Church in Catawba County, be appointed by the District Superintendent and the pastors of the two charges involved, to arrange all items of the Camp Meeting. This joint committee shall make its full report of receipts and expenditures to the Quarterly Conference involved.

The report was adopted.

REPORT OF COMMITTEE APPOINTED TO CONSIDER AND
PRESENT PRACTICAL PROPOSALS FOR AN
EPWORTH LEAGUE INSTITUTE

The Committee Recommends:

1. That there be an annual Epworth League Institute of the North Carolina Conference.

2. That the first Institute be held at Bennett College at the same time of the Ministerial Institute, the first week in July, 1936.

3. That this Conference set up a committee of five (three ministers and two laymen, District Superintendents ex-officio) and invest that committee with the power to settle all questions in reference to the Institute. That this Committee, after due consideration, have the power to appoint (1) a manager, who shall have charge of all business arrangements for the Institute, (2) a dean, who shall be responsible for the planning of the instruction and who shall have the authority to select members of the Institute faculty, (3) a Life Work Secretary, who shall make arrangements for the service of consecration and that part of the program which is aimed at helping students of the Institute make intelligent choices of life work.

(Signed) J. E. BROWER
R. W. WINCHESTER
S. T. BROOKS
W. M. WELLS
DAVID D. JONES
G. H. CALDWELL
J. A. McRAE
MARVIN H. SCOTT
C. W. PERRY
W. S. McLEOD

CONFERENCE BENEVOLENCE FOR BENNETT COLLEGE

In view of a conditional gift of a friend to match dollar for dollar, amounts given for current expenses, and in view of the splendid record which Bennett College is making:

Be it resolved that the North Carolina Conference records its deep appreciation of the college and renews its pledge to stand by the administration. The Conference again sets the goal to be raised as Conference Benevolence for Bennett College at four thousand dollars. The time for the food shower will be the thanksgiving period and we hereby appoint December third as the time when the districts will report at the college with their collection.

Respectfully submitted,

P. A. TAYLOR, Chairman,
G. M. PHELPS
S. A. PEELER
R. T. WEATHERBY
W. M. WELLS
R. W. WINCHESTER
G. H. CALDWELL
J. E. BROWER
N. J. PASS, Education Committee.

PENSIONS AND RELIEF

The records of the past show that our Conference has given least support to the most worthy cause, and that in a large measure the "Retired Man has been the Forgotten Man." In the face of these facts we offer the following:

1. The full amount appropriated to the Charges for Conference Claimants be raised.

2. That we put on an active campaign in every Church of our Conference to raise \$500.00 annually for the Permanent Endowment Fund.

3. That in offering the above, we are ever mindful that it is an effort to give protection and comfort to those whose efforts and lives have made possible the accomplishments and victories of the present.

Respectfully submitted,

A. M. ERWIN

B. F. THOMAS

W. M. CHAVIS

D. C. SKEEN, Committee.

REPORT OF DISTRICT SUPERINTENDENTS COMPOSITE REPORT

Thanks to God and the Methodist Episcopal Church for the privilege of serving as District Superintendents in the North Carolina Conference.

The report which we bring today is, of necessity, but partial, for words and figures are not able to express the sweat from toil, the loyalty to duty, nor the deep yearnings of the human heart to help God in the salvation of His world. Read into it what words may say, and then read into it what only your own faith and loyalty and sacrifice ought dictate in what must be necessary in religious endeavor in these trying times.

Here is a word of hearty and sincere thanks to the pastors of the four districts for the co-operation they have given us, and for the hard work they have done through the year in making our report possible. They are men of integrity. Loyal to God and the cause of Kingdom building to which they have set their hands, heads and hearts. No formulated complaints have been lodged against any of these men. Some of us in all probability have made mistakes. Some of us, in our own estimations, have fallen short of our goal. Perhaps all of us are far short of God's hopes for us. In God's presence, we bough with our faces in the dust. In the presence of our great Church and in the presence of our superiors in office, we stand with our heads uncovered. In the presence of our peers, we are sympathetic. With them, we plead guilty to a common humanity subject to the caprices and weaknesses of the flesh. Like the peerless apostle, who himself, felt within him a battle constantly waging between two natures, we declare ourselves "Sinners saved by Grace", and today we continue our tedious journey from earth to heaven.

AFTER-EASTER GROUP MEETINGS

Our After-Easter Group Meetings have by now become an incorporate part of our conference set up. The presence of Bishop and Mrs. Brown, together with the team of workers brought to our meetings is verily "like bread cast upon the water" bringing a large return in a newer and more correct interpretation of Christian brotherhood, and an appreciable increase of financial returns to the Church.

DISTRICT SUPERINTENDENT'S RETREAT

We refer again to the District Superintendent's retreat meeting held in First Church, Chattanooga, under the able leadership of our chieftain. There the district superintendents of the four white and two colored conferences of the Chattanooga Area met to discuss and gain inspiration for our common church problems. If there are any racial or conditional differences drawn in these meetings, they are certainly not according to the plan or purpose of our resident bishop. These meetings are proving to all attendants that black and white men can sit together in the discussion of human problems without any detriment to the one race, or without any thought of exaltation to the other. There is proof here that there need be no separation of the races in Methodist Unification. We believe the District Superintendents of the Chattanooga Area will say at the proper time and in no uncertain terms that so far as we may be able there must be none.

DISTRICT MEETINGS

The district meetings of our Conference have all been well attended. Whether they were the group meetings in which we planned the work of the year, or After Easter roll call meetings, or institutes for our young people, or district conferences, each has shown a solidarity of purpose, and a concert of interest both of which are reechoed today in the reports of our pastors.

REPORTS

Our World Service reports for the four districts will show an increase of approximately 10% over last year. We are on the inside of 97% of our total askings. Our collections for Bennett will show an increase of 81% over last year. Conference Claimants and Episcopal Fund will show slight increases, as will also be shown in pastors salary. These figures recited are typical we believe of numerical gains along all lines in the conference. We are conscious, however, that figures are not always indicative of the amount of effort put forth. Often the report of a yearly aggregate of three or four thousand dollars does not deserve as much praise in one case as perhaps an aggregate of a few hundred dollars may show in another. This is said in all fairness to the pastors in the lesser appointments throughout the conference whose aggregate perhaps are not so large, but whose efforts to attain have been just as noble and sincere.

RETIREMENT AND DEATH

At each session of our annual conference, we are reminded that we, like Abraham of old, have here no continual dwelling, but are pilgrims who look for a city that hath foundations whose builder and maker is God. Before us into that place prepared two of our members have entered since we met one year ago. They are J. H. Garrett and W. R. Zigler. Mrs. F. L. Bost, the widow of our revered father Bost has also gone to join her husband in the invisible city. The loved ones bereaved have our deepest sympathy. Our prayers and the assurance of our fraternal interests are ever with them.

EDUCATIONAL INSTITUTIONS

Within the bounds of our conference, Bennett College on the Greensboro District, and Allen School on the Western District, represent the noblest and best of our educational system. We look back to them for what they have meant to so many of our Methodism in North Carolina and through our nation, and we look forward to them for what they are destined to do in the near and distant future.

Bennett's position is becoming more and more secured. More and abler friends are being found to support her. We of North Carolina are doing our bit. Of Bennett we say:

"Thou too sail on."

Sail on nor fear to breast the sea.

Our hearts, our hopes are all with thee:

Our hearts, our hopes, our prayers, our tears,

Our faith triumphant o'er fears,

Are all with thee, are all with thee."

OUR NEEDS

Our needs are pathetic and can not be spoken in words. Many of

our churches are severely threatened with debt. Parsonages and church buildings are in dire need of repair. Some of them e'er the next twelve months will probably fall into disuetude. Twelve thousand people, many of whom without jobs, and many of them with no earning strength if jobs were available have sacrificed of their meager means that the Methodist Church might carry on its program throughout the world. Many of them are doing this without a visible means of adequately supporting their own local church programs. There is a question as to how long some of these can continue. They too, must be helped some if they are to continue in helping others.

The fountains of spiritual power are full to overflowing, but many blinded by social, political and economic pressure, seem not to know how to tap the streams that the river of the "abundant life" may flow full and free into their souls. Surely there is a river the streams whereof shall make glad the City of God, the Holy places of the Tabernacle of the Most High. Our people need but to find it. If they may but find it, God becomes their refuge and strength, a very present help in trouble. Then will they not fear though the earth be removed, and though the mountains be carried into the midst of the sea. They the God of Hosts will be with them. The God of Jacob will be their refuge.

Respectfully submitted,
 R. W. WINCHESTER,
 W. M. WELLS,
 J. E. BROWER,
 G. H. CALDWELL.

BOARD OF HOME MISSIONS AND CHURCH EXTENSION

GREENSBORO DISTRICT:

Brown Summit	\$ 50.00
Empire	50.00
Guilford	37.00
Newport News	50.00
Warren Street	50.00
Total	\$237.00

LAURINBURG DISTRICT:

Charlotte Mission	\$ 40.00
Fayetteville	60.00
Gastonia	60.00
Total	\$160.00

WESTERN DISTRICT:

Bessemer City	\$ 55.00
Old Fort	30.00
Shelby	50.00
Union Mills	30.00
West Asheville	85.00
Total	\$250.00

WINSTON DISTRICT:

East Thomasville	\$ 35.00
Mt. Airy	45.00
Trinity	48.00
Walnut Cove	35.00
Total	\$163.00

(Signed),

R. W. WINCHESTER, Treasurer.
S. A. PEELER, Secretary.

REPORT OF TRUSTEES

RECEIPTS

Brought Forward	\$ 413.48
Hamlet Property	42.90
Interest	27.04
Notes for Collection—	
Wilmington	210.00
C. J. Yelton	450.72
North Carolina Conference	555.00
Trinity M. E. Church	262.40
S. J. Hayden	120.00
Total	\$2,081.54

DISBURSEMENTS

Insurance	\$ 33.00
Board of Stewards	37.00
Fidelity Bonding Company	5.00
Uncollected Notes	1,598.12
Balance	408.42
Total	\$2,081.54

**FINANCIAL AND STATISTICAL REPORT OF
THE BOARD OF STEWARDS
OF THE NORTH CAROLINA ANNUAL CONFERENCE**

For the Conference Year Ending October 27, 1935

PART 1. FINANCIAL.

I. Operating Statement.

RECEIPTS

Balance on hand from last year.....	\$ 60.09
For Annuity Distribution:	
Chartered Fund Dividend	60.00
Income from Conference Investments	8.69
Income from Preachers' Aid Society	22.32
For Necessitous Distribution:	
Board of Pensions and Relief Dividend	743.00
Part of Support Paid by the Churches	684.00
Sent to Board by Charges	175.00
Total.....	\$1,749.08

DISBURSEMENTS

On Basis of Service:	
To Preachers	\$ 738.00
To Widows	792.75
To Children	159.75
Expenses of Board of Stewards	2.08
Balance in Hand	56.50
Total.....	\$1,749.08

II. Endowment and Resources—Combined Statement. (No entries).

III. Apportionment Next Year:

(a) Total number of years 1,127; multiplied by \$12;	
Annuity Claims	\$13,524.00
(b) Total deductible Income, not including receipts from charges	834.00
(c) Amount fixed by Annual Conference for Annuity Claims this year	12,690.00
(d) Amount fixed by Conference action this year for Necessitous Cases	
(e) Total to be apportioned by the Conference Stewards; items 'c) and (d)	12,690.00

PART 2. STATISTICAL

I. ANNUITY RATE

(a) Number of Effective Members counted.....	69
(b) Total cash salary paid	\$48,986.00

(c) House Rent value (15%)	6,750.00
(d) Total support counted	55,736.00
(e) Average support	
(f) Minimum Annuity Rate	1.50
(g) Rate fixed by Annual Conference, 5% of Pastor's Cash Salary.	
(h) Annuity Rate paid last year	1.50
(i) Annuity Rate paid this year	1.53
(j) Change in Rate paid03
(k) Rate of Annuity paid by Separate fund	

II. AVERAGE ANNUITY

Last Yr. This Yr.

(a) Av. amt. of Annuity paid to a Retired Minister	\$711.45	\$738.00
(b) Av. amt. of Annuity paid to a Widow	755.22	792.75
(c) Av. amt. of Annuity paid to a Child	197.35	159.75

III. VITAL STATISTICS

(a) Number of Retired Ministers	16
(b) Number of Widows	34
(c) Number of Dependent Children	19
(d) Total number of Claimants	69

IV. YEARS OF SERVICE

Years

(a) Retired Ministers	492
(b) Widows (three-fourths basis)	528½
(c) Children (one-fourth basis)	106½
(d) Years of Claimants' claims relinquished	
(e) Total years claimed	1,127
(f) Total last year	1,077
(g) Amount of change	50

STATEMENT OF DISTRIBUTION TO RETIRED MINISTERS

Name	Years Counted	Annuity
Blanton, J. J.	23	\$34.50
Byers, G. W.	46	69.00
Cornelius, S. B.	16	24.00
Fredrick, H. O.	26	39.00
Kearse, D. H.	28	42.00
McNair, J. R.	17	25.50
McQueen, Albert	21	31.50
McRae, Dorsey	35	52.50
May, S. L.	35	52.50
Moorehead, G. W.	43	64.50
Munday, Marcus	39	58.50
Robinson, A. E.	27	40.50
Shipp, J. R.	34	51.00
Thomas, L. W.	10	15.00
Newsome, A. H.	50	75.00
Thomas, B. F.	42	63.00
Total	492	738.00

STATEMENT OF DISTRIBUTION TO WIDOWS

Name	Years Served		Annuity
	with Husband	Years on $\frac{3}{4}$ Basis	
Addie, Mrs. J. C.	32	24	\$ 36.00
Black, Mrs. N. M.	24	18	27.00
Blaylock, Mrs. C W.	21	15 $\frac{3}{4}$	23.62
Cherry, Mrs. J. A.	16	12	18.00
Dilliard, Mrs. J. R.	15	11 $\frac{1}{4}$	16.88
Fink, Mrs. Henry	6	4 $\frac{1}{2}$	6.75
Foley, Mrs. G. T.	7	5 $\frac{1}{4}$	7.87
Gibson, Mrs. S. A.	22	16 $\frac{1}{2}$	24.75
Harriston, Mrs. J. D.	28	21	31.50
Harshaw, Mrs. Charles	14	10 $\frac{1}{2}$	15.75
Hayes, Mrs. William P.	26	19 $\frac{1}{2}$	29.25
Hill, Mrs. George F.	22	16 $\frac{1}{2}$	24.75
Howard, Mrs. Charles E.	7	5 $\frac{1}{2}$	7.88
Hunter, Mrs. J. H.	2	1 $\frac{3}{4}$	2.25
Isham, Mrs. J. H.	7	5 $\frac{1}{4}$	7.87
Jenkins, Mrs. Albert G.	23	17 $\frac{1}{4}$	25.80
Jones, Mrs. Mattie	9	6 $\frac{3}{4}$	10.11
Jones, Mrs. M. M.	33	24 $\frac{3}{4}$	37.11
Laughlin, Mrs. James A.	25	18 $\frac{3}{4}$	28.11
Laughlin, Mrs. M. C.	24	18	27.00
McArthur, Mrs. Eli H.	42	31 $\frac{1}{2}$	47.25
McDonald, Mrs. Samuel	10	7 $\frac{1}{2}$	11.25
McMasters, Mrs. Frances	23	17 $\frac{1}{2}$	25.87
Martin, Mrs. N. M.	12	9	13.50
McDaniel, Mrs. Elizabeth	11	8 $\frac{1}{4}$	12.37
Morris, Mrs. J. P.	43	32 $\frac{1}{4}$	48.37
Petty, Mrs. Rosie L.	25	18 $\frac{3}{4}$	28.11
Prince, Mrs. Jacob C.	7	5 $\frac{1}{4}$	7.87
Pryor, Mrs. Wise A.	12	9	13.50
Robbins, Mrs J. C.	21	15 $\frac{3}{4}$	23.61
Shamborgur, Mrs. F. A.	23	17 $\frac{1}{4}$	25.87
Smith, Mrs. Lucy A. C.	34	25 $\frac{1}{2}$	38.25
Well, Mrs. J. W.	34	25 $\frac{1}{2}$	38.25
Zeiglar, Mrs. W. R.	44	33	49.50
Total		528 $\frac{1}{2}$	\$792.75

STATEMENT OF DISTRIBUTION TO CHILDREN

Name of Mother or Guardian	Name of Child	Age of Child Last Birthday	Father's Effective Years	$\frac{1}{4}$ Basis	Annuity
Black, Mrs. N. M.	Susie	16	24	6	\$9.00
	Mary	14	24	6	9.00
	Stockton	10	24	6	9.00
Foley, Mrs. G. T.	George T.	7	7	1 $\frac{3}{4}$	2.61
Howard, Mrs. C. E. ..	Elisha G.	14	14	3 $\frac{1}{2}$	5.25
	Frances Dorothy	13	14	3 $\frac{1}{2}$	5.25
	Ella Rose	11	14	3 $\frac{1}{2}$	5.25

Isham, Mrs. J. H.	Emma	10	8	2	3.00
McMasters, Mrs. F'n'cs	Lorraine	16	33	8¼	12.37
	Lula	14	33	8¼	12.37
Wells, Mrs. J. W.	Joseph	16	35	8¾	13.11
Watson, Mrs. Nellie	Sherrill McDonald	13	8	2	3.00
	Wilber McDonald	9	8	2	3.00
	Sandy McDonald	7	8	2	3.00
	Murphy, Mrs. John D.	John D.	16	36	9
	Vera G.	14	36	9	13.50
	Vincent	12	36	9	13.50
	Cleo	10	36	9	13.50
	Elizabeth	8	36	9	13.50
Total					\$179.35

LIST OF OFFICERS OF THE CONFERENCE STEWARDS

President, C. L. Gidney, Newton, N. C.

Secretary, W. J. Cameron, 604 High St., Greensboro, N. C.

Treasurer, R. F. McCallum, Winston-Salem, N. C.

CERTIFICATE OF SECRETARY

I certify that the above Financial and Statistical Report, together with the supporting data on Forms 5, 6 and 7 accompanying, has been carefully prepared and compared.

W. J. CAMERON, Secretary.

CONFERENCE PROGRAM

ANNUAL SESSION NORTH CAROLINA CONFERENCE
METHODIST EPISCOPAL CHURCH, ST. MATTHEWS
M. E. CHURCH, GREENSBORO, N. C.

October 22, 23, 24, 25, 26, 27, 1935

TUESDAY, OCTOBER 22, 1935

- 1:00 P. M.—Meeting of Board of Ministerial Training, Dr. S. A. Peeler, Chairman. Undergraduates, Supply Pastors and such others as have been recommended by their District Conferences.
- 7:30 P. M.—Sermon—Rev. C. W. Perry.
Rev. W. C. Scarborough, presiding.

WEDNESDAY, OCTOBER 23 !

- 9:00 A. M.—Devotions.
Sacrament of the Lord's Supper.
Organization of Conference.
- 11:00 A. M.—Welcome Addresses:
On Behalf of City, Mayor Roger W. Harrison.
On Behalf of Ministerial Alliance, Rev. J. A. Vache.
On Behalf Colored Ministers' Alliance, Rev. F. A. Hargett.
On Behalf of Local Church, Prof. J. A. Tarpley.
Response:
For the Ministers, Rev. R. S. Abernethy.
For the Laymen, Prof. J. F. Gunn.
- 12:30 P. M.—Lunch.
- 2:30 P. M.—Devotions—W. S. McLeod and L. A. Brown.
- 3:00 P. M.—Business Session—Statistical Reports.
- 5:00 P. M.—Announcements—Adjournment.
- 7:30 P. M.—Anniversary W. H. M. S. and Board of Home Missions and Church Extension:
Addresses by Mrs. Wallace E. Brown and Dr. M. A. Dawber.
Rev. H. C. Gannaway, presiding.

THURSDAY, OCTOBER 24

- 8:45 A. M.—Devotions led by Revs. P. A. Taylor and Robert McRae.
- 9:00 A. M.—Business Session of the Conference.
- 11:30 A. M.—Address by Dr. W. S. Bovard.
- 12:30 P. M.—Announcements—Adjournment.
- 2:30 P. M.—Devotions led by Revs. R. C. Sharpe and Ira Friend.

- 3:00 P. M.—Business Session.
5:00 P. M.—Announcements—Adjournment.
7:30 P. M.—Anniversary Board of Education (Bennett College Night),
Address—Dr. W. S. Bovard.
Rev. G. M. Phelps, presiding.

FRIDAY, OCTOBER 25

- 8:45 A. M.—Devotions led by Revs. R. B. Rhyne and G. W. Patterson.
9:00 A. M.—Business Session.
11:30 A. M.—Address by Dr. M. A. Dawber.
12:30 P. M.—Announcements—Adjournment.
2:30 P. M.—Devotions led by Rev. W. J. Cameron and T. C. Frazier.
3:00 P. M.—Business Session.
4:00 P. M.—Memorial Service. S. F. B. Peace, chairman, presiding.
5:00 P. M.—Announcements—Adjournment.
7:30 P. M.—Anniversary Church Papers..
Address—Dr. A. P. Shaw, or his representative.
Rev. W. T. Lomax, presiding.

SATURDAY, OCTOBER 26

- 8:45 A. M.—Devotions, led by F. D. Caldwell and T. H. Wooten.
9:00 A. M.—Business Session.
11:00 A. M.—Address—Dr. W. S. Bovard.
12:30 P. M.—Announcements—Adjournment.
2:30 P. M.—Completion of Conference Business.
Adjournment.

SUNDAY, OCTOBER 27

- 10:00 A. M.—Sunday School Session.
10:30 A. M.—Conference Love Feast, led by Revs. Byers and Mundy.
Address by Prof. W. H. Scott, Bennett College.
11:00 A. M.—Sermon—Bishop Wallace E. Brown,
Resident Bishop of the Chattanooga Area.
3:00 P. M.—Ordination Service.

(This program subject to change as Conference may elect)

CONFERENCE ROLL AND POST OFFICE ADDRESSES

RETIRED ELDERS

✓ Blanton, J. J.	Union Mills, N. C.
✓ Byers, G. W.	Greensboro, N. C.
✓ Cornelius, S. B.	Old Fort, N. C.
✓ Frederick, H. O.	Monroe, N. C.
✓ Kearse, D. H.	Union Mills, N. C.
✓ May, S. L.	Thomasville, N. C.
McNair J. R.	Red Springs, N. C.
✓ McQueen, A. B.	Jonesboro, N. C.
✓ McRae, Dorsey	Thomasville, N. C.
✓ Morehead, G. W.	High Point, N. C.
✓ Munday, Marcus	Maxton, N. C.
✓ Newsome, A. H.	Bennett St., Greensboro, N. C.
✓ Robinson, A. E.	Newton, N. C.
✓ Shipp, R. J.	Stovall, N. C.
✓ Thomas, B. F.	Pugh St., Lexington, N. C.
✓ Thomas, L. W.	Greensboro, N. C.

EFFECTIVE ELDERS

Abernethy, F. S.	Marion, N. C.
Abernethy, R. S.	506 N. York St., Gastonia, N. C.
Ashe, H. L.	Reidsville, N. C.
Bethea, R. D.	Rowland, N. C.
Brook, R. N.	Gammon Theo. Seminary, Atlanta, Ga.
Brower, J. E.	Box 437, Asheboro, N. C.
Brown, L. A.	Greensboro St., Lexington, N. C.
Burge, B. L.	Lenoir, N. C.
Bynum, C. G.	Dixie Broadway St., Winston-Salem, N. C.
Caldwell, F. D.	709 Fairview St., High Point, N. C.
Caldwell, G. H.	332 West Bragg St., Greensboro, N. C.
Cameron, W. J.	604 High St., Greensboro, N. C.
Chavis, William	Kernersville, N. C.
Cook, P. J.	Laurinburg, N. C.
Davis, H. A.	Fairview St., High Point, N. C.
Erwin, A. M.	Elkin, N. C.
Foye, J. H.	Newton, N. C.
Frazier, T. C.	Statesville, N. C.
Ganaway, H. C.	Leaksville, N. C.
Gidney, C. L.	Newton, N. C.
Gleaves, B. F.	Shelby, N. C.
Green, J. E.	Goldsboro, N. C.

Hairston, W. E.	Box 653, Lumberton, N. C.
Hall, J. W.	Oxford, N. C.
Hayden, S. J.	RFD, Seagrove, N. C.
Hedrick, L. W.	Box 332, Red Springs, N. C.
Hill, D. A.	Asheboro, N. C.
Hogue, G. E.	Johns, N. C.
Johnson, P. F.	Hickory, N. C.
Jones, Henry	Elkin, N. C.
Jones, R. E.	631 Baronne St., New Orleans, La.
Laughlin, M. S.	Penhook, Va.
Ledwell, J. H.	110 Granite St., Greensboro, N. C.
Lee, F. J.	Mooresville, N. C.
Lomax, W. T.	High St., Greensboro, N. C.
McCollum, R. F.	1260 Waughtown St., Winston-Salem, N. C.
McLeod, E. M.	Shelby, N. C.
McLeod, W. S.	Box 52, Gibson, N. C.
McRae, Robert	Hamlet, N. C.
Meekins, J. B.	111 Luther St., Greensboro, N. C.
Pass, N. J.	Box 744, Shelby, N. C.
Patrick, M. M.	Laurinburg, N. C.
Patterson, G. W.	Lenoir, N. C.
Peace, S. F. B.	Mount Airy, N. C.
Peeler, S. A.	220 Woodfin St., Asheville, N. C.
Perry, C. W.	737 South 12th St., Hickory, N. C.
Phelps, G. M.	911 12½ St., Winston-Salem, N. C.
Pressley, S. H.	Shelby, N. C.
Rhyne, R. B.	Asheboro, N. C.
Rush, J. C.	305 S. Graham St., Charlotte, N. C.
Scales, W. B.	Madison, N. C.
Scarborough, W. C.	State College Sta., Raleigh, N. C.
Sharpe, R. C.	625 Ashe St., Greensboro, N. C.
Simpson, J. W.	Greensboro, N. C.
Skeen, D. C.	Madison, N. C.
Shuford, J. W.	111 Luther St., Greensboro, N. C.
Staton, B. E.	RFD, Alexis, N. C.
Swann, E. I. S.	Boone, N. C.
Taylor, P. A.	104 Church St., Thomasville, N. C.
Thomas, D. L.	Burton St., W. Asheville, N. C.
Watson, L. A.	1127½ 14th St., Winston-Salem, N. C.
Weatherby, R. T.	609 Ashe St., Greensboro, N. C.
Wells, P. I.	Maxton, N. C.
Wells, W. M.	Maxton, N. C.
Winchester, R. W.	735 E. Washington St., High Point, N. C.
Wooten, T. H.	Ramseur, N. C.

DEACONS

Mickle, J. W.	1129 29th St., Newport News, Va.
Williams, C. N.	Franklin, N. C.

PROBATIONERS

Friend, Ira	Kernersville, N. C.
Winston, W. S.	1717 N. Cherry St., Winston-Salem, N. C.
Woodland, H. C.	Morristown College, Morristown, Tenn.

ACCEPTED SUPPLY PASTORS

Alfort, J. L.	Southern Pines, N. C.
Blackman, W. H.	Randleman, N. C.
Cook, W. C.	928 E. Hill St., Charlotte, N. C.
Dunham, S. E.	Wilkesboro, N. C.
Frost, E.	RFD, Box 17, Mocksville, N. C.
Hoover, G.	Thomasville, N. C.
Houston, H. H.	Mooresville, N. C.
Ingram, V. J.	Route 5, Rockingham, N. C.
Joyce, J. M.	Rt 1, Box 108, Greensboro, N. C.
Littlejohn, B. C.	Rockingham, N. C.
Love, C. B.	Pleasant Ridge, Va.
McBrayer, S. M.	Shelby, N. C.
McNair, H. M.	Red Springs, N. C.
Meeks, J. H.	Union Mills, N. C.
Parker, Hattie L.	911 12½ St., Winston-Salem, N. C.
Rush, E. A.	Hamlet, N. C.

In Loving Memory

THEIR WORKS DO FOLLOW THEM
LIFE! LIFE! ETERNAL LIFE!

JOHN HENRY GARRETT

John Henry Garrett was born in Rockingham County, North Carolina, December 8th, 1864, and died at his home in Reidsville, N. C., February 9th, 1935. Age 71.

* * * * *

WALTER RICHARD ZEIGLER

Walter Richard Zeigler was born in Forsyth County, N. C., February 22nd, 1868, and departed this life in Guilford County, N. C., September 30th, 1935. Age 67.

* * * * *

CROWNED CO-LABORER

MRS. F. L. BOST

“O Land beyond the Sea!
Sweet in thine endless rest,
But sweeter far the Father's breast,
Upon the shores eternally possess;
For Jesus reigns o'er thee,
Calm Land beyond the Sea!”

ROLL OF DEAD

CROWNED FELLOW WORKERS

"Blessed are the dead who die in the Lord"

Born	Name	Admitted to Conference	Effective	When and Where Departed
1816	Henry E. Pope	1870	7	May 28, 1879 Greensboro
1820	Mingo G. Groom	1874	7	March 17, 1881 Wilmington
	Geo. W. Price	1871	10	Sept. 12, 1881 Charlotte
	Florad Waters	1875	7	March 29, 1883 Maxton
1821	Matthew Alston	1870	14	April 1, 1884 Greensboro
	Nelson Farror	1871	4	January 9, 1887 Raleigh
1816	James Payne	1878	9	April 1, 1888 Greensboro
1825	A. M. Turner	1874	16	August, 1888 Raleigh
	Josiah Caldicut	1891	16	August 12, 1890 Marion
	Geo. W. Ratcliff	1891		1891 Hickory
1830	W. W. Morgan	1872	27	Sept. 16, 1882 Kernersville
1825	Wilson Gray	1877	15	November, 1892 Dobson
	Thos. S. Sitt	1893	1	November, 1894 Lexington
1839	W. W. Smith	1888	19	May 20, 1896 Lexington
1835	Wiley C. Gibson	1875	23	November, 1898 Hamlet
1826	Wyatt Walker	1871	26	May 20, 1900 Reidsville
1846	O. Letterlough	1889	2	April 20, 1900 Maxton
1840	C. Harshaw	1882	16	July 3, 1900 Lenoir
1840	Samuel L. Johnson	1890	12	November 6, 1902 Mount Airy
1818	Andrew Conner	1870	20	February 7, 1903 McPelah
1854	M. C. Rogers	1880	22	July 24, 1903 Salem
1841	John E. Champlain	1869	34	October 3, 1903 High Point
1837	Isaac Wells	1870	37	February 28, 1907 Greensboro
1846	Evander McDaniel	1889	18	August 8, 1907 Townsville
1867	Jacob C. Price	1907	4	May 23, 1911 Reidsville
1869	John M. McNeil	1902	9	August 5, 1911 Rowland
	W. L. Dixon	1910	2	November 18, 1912 Statesville
1852	S. A. Gibson	1890	22	August 22, 1912 High Point
1831	David Connell	1871	41	December 15, 1912 Greensboro
1863	Alexander Clark	1887	26	June 15, 1913 Greensboro
1869	John W. Davis	1893	21	April 14, 1914 Laurinburg
	L. G. McDonald			August, 1916 Lamar, S. C.
	Ellis Ellison		23	March 28, 1917 Winston-Salem
	Chas. W. Blaylock	1875	24	1917 Greensboro
	John C. Robbins		23	July 8, 1917 Gastonia
1856	W. A. Pryor		22	August 25, 1918 High Point
1857	F. L. Bost	1893	12	Kernersville
1849	J. H. Hunter	1883	15	Greensboro
1848	S. M. Hanes	1875		Winston
1853	Samuel McDonald	1890	30	Winston
1853	S. P. West	1882	38	January 22, 1921 Oxford
1864	G. F. Hill	1888		February 26, 1920 Old Fort

Born	Name	Admitted to		When and Where Departed
		Conference	Effective	
	Henry Fink			
1835	L. B. Gibson	1870	34	March 26, 1922 Greensboro
1844	W. P. Hayes	1888	16	August 28, 1922 Maxton
1861	M. M. Jones	1891	31	March 9, 1925 Greensboro
1872	J. A. Laughlin	1905	30	November 19, 1925 Greensboro
	J. H. Isham			September 21, 1927 Rockingham
	W. M. Crawford			November, 1927 Winston
1838	Elisha Howard	1885		February, 1928 Asheboro
1862	A. W. McMaster	1894	34	November, 1928 Greensboro
1858	J. D. Murphy	1896	30	August, 1928 Maxton
1881	A. D. McDonald	1920	9	1928 Randolph
1848	Robert Smith	1886	59	January 30, 1930 Brown Summit
1872	N. M. Martin	1906	24	February, 1930 Asheville
1864	G. W. Brower	1892	38	1930 High Point
1854	J. W. Jones	1898	32	1930 Guilford
1878	C. E. Howard	1916	14	July 25, 1930 Mocksville
1872	A. G. Jenkins	1905	25	September, 1930 Charlotte
1870	E. D. Petty	1894	36	1930 Chicago
1853	E. H. Arthur	1887	44	November, 1931 Greensboro
1861	J. P. Morris	1890	41	May, 1931 Greensboro
1869	N. S. T. Shambourger	1910	21	September, 1931 Lumberton
1874	N. M. Black	1907	21	December 20, 1931 Winston
	J. A. Cherry		13	May 10, 1932 Hickory
1854	M. J. Bullock	1885	37	June 13, 1932 Greensboro
1878	J. R. Dillard	1917	15	July 16, 1932 Ramseur
1849	W. W. Pope	1883	37	July 22, 1932 Winston
1896	G. T. Foley	1925	8	January 14, 1933 High Point
1843	J. C. Addie	1894	32	May 2, 1933 Hickory
1937	Daniel Brooks	1875	34	May 12, 1933 High Point
1867	M. C. Laughlin	1911	22	July 17, 1933 Greensboro
1852	J. D. Hairston	1885	28	October 23, 1933 Goldsboro
1872	J. W. Wells	1899	32	January 18, 1934 Greensboro
1864	J. H. Garrett	1882	21	February 9, 1935 Reidsville
1868	W. R. Ziegler	1893	40	September 30, 1935 Greensboro

HISTORICAL VIEW

From the organization of Methodism in America, the work in North Carolina was continued in Virginia and afterwards in the Virginia and South Carolina Conferences. In the year 1836, the General Conference set up in North Carolina. Its first session opened as a part of the Virginia Conference, but when it adjourned there were two Conferences.

Facts from the first ninety sessions are gleaned from the General Minutes from the Conference Journal for those years, which is now in custody of the North Carolina Conference of the Methodist Episcopal Church, South.

At the Conference of December 4, 1844, there were 19,495 white members and 3,190 colored. Without consulting the wisdom of the latter, nearly the whole membership became part of a new church, organized in May, 1845, and called the Methodist Episcopal Church, South. Some of the colored members entered the A. M. E. Church, some of the Colored M. E. Church of America, but thousands turned gladly to the bosom of the old Methodist Episcopal Church as it returned to the State after the Civil War.

Between the years 1844, when the Church was separated over the slave question, and in 1865, when at the close of the War the M. E. Church returned to shepherd its scattering flock in North Carolina, there was no session of the North Carolina Conference.

From the North Carolina Conference the Blue Ridge was formed with twelve preachers, 2,839 members and probationers, and 41 church edifices.

CONFERENCE SESSIONS

Date	Place	Bishop	Secretary	Preacher	In Class	Edifices
1—February 8, 1837	Petersburg, Va.					
2—January 31, 1838	Greensboro	Morris	G. H. Leigh		20030	
3—January 26, 1839	Louisburg	Andrews	G. H. Leigh		20030	
4—January 29, 1840	Newbern	Morris	G. H. Leigh		20225	
5—December 20, 1840	Mocksville	Morris	S. S. Bryant		25889	
6—October 26, 1841	Raleigh	Waugh	S. S. Bryant		20597	
7—October 26, 1842	Louisburg	Morris	S. S. Bryant		22851	
8—October 25, 1843	Halifax	Morris	S. S. Bryant		28413	
9—December 4, 1844	Pittsburg	Soule	S. S. Bryant		21247	

10—January 14, 1868	Union Chapel	Ames	Wm. G. Matton	16	3228	14
11—January 6, 1869	High Point	James	Wm. G. Matton	17	4106	
12—January 20, 1871	Lincolnton	Simpson	Wm. G. Matton	28	4560	69
13—December 28, 1872	Greensboro	Simpson	Wm. G. Matton	36	8111	79
14—January 8, 1873	Charlotte	Ames	Wm. G. Matton	37	8266	79
15—January 7, 1874	Lexington	Haven	Wm. G. Matton	25	9531	100
16—January 5, 1875	Greensboro	Wiley	Wm. G. Matton	44	8582	97
17—January 5, 1876	Winston	Foster	Wm. G. Matton	44	9717	104
18—January 10, 1877	Wilmington	Harris	Wm. G. Matton	44	10171	106
19—January 24, 1878	Lumberton	Scott	E. O. Thayer	42	8520	112
20—January 30, 1879	Greensboro	Peck	E. O. Thayer	46	8525	127
21—February 4, 1880	High Point	Simpson	E. O. Thayer	39	9854	97
22—January 27, 1881	Raleigh	Warren	E. O. Thayer	34	7012	97
23—January 26, 1882	Luarinburg	Foster	W. F. Steele	30	7338	92
24—January 31, 1883	Winston	Merrill	W. F. Steele	37	7498	87
25—February 6, 1884	Greensboro	Bowman	W. F. Steele	37	7761	94
26—February 5, 1885	Lumberton	Andrews	W. F. Steele	41	8167	96
27—February 11, 1886	Charlotte	Nince	W. F. Steele	43	8371	95
28—October 14, 1886	Raleigh	Walden	W. F. Steele	44	8424	95
29—October 27, 1887	High Point	Mallalieu	W. F. Steele	49	8664	100
30—October 25, 1888	Lenoir	Fitzgerald	W. F. Steele	52	8948	115
31—October 25, 1889	Goldsboro	Joyce	C. N. Grandison	54	8034	
32—October 23, 1890	Maxton	Joyce	C. N. Grandison	60		
33—October 15, 1891	Winston	Warren	C. N. Grandison	63	8200	116
34—October 20, 1892	Reidsville	Foss	C. N. Grandison	66	8100	125
35—October 19, 1893	Lexington	Hurst	J. P. Morris	66	8100	125
36—October 4, 1894	Oxford	Mallalieu	J. P. Morris	70	9612	124
37—October 16, 1895	Greensboro	Mallalieu	R. W. S. Thomas	78	8884	133
38—September 17, 1896	Charlotte	Andrews	R. W. S. Thomas			
39—October 7, 1897	Laurinburg	Foster	R. W. S. Thomas	74	12751	133
40—October 13, 1898	Lenoir	Mallalieu	R. W. S. Thomas	77	7049	133
41—October 12, 1899	Winston	Fowler	R. E. Jones	73	9525	133
42—October 11, 1900	Reidsville	Foss	R. E. Jones	76	10579	133
43—October 17, 1901	High Point	Goodsell	R. E. Jones	78	10597	133

44	October 16, 1902	Mount Airy	Walden	R. E. Jones	80	19579	133
45	October 14, 1903	Greensboro	Joyce	S. A. Peeler	84	14555	151
46	October 13, 1904	Hickory	Fitzgerald	S. A. Peeler	88	11109	152
47	October 12, 1905	Maxton	Cranston	S. A. Peeler	76	9773	166
48	October 11, 1906	Asheville	Burt	S. A. Peeler	76	11894	166
49	October 17, 1907	Winston	Spellmeyer	S. A. Peeler	79	10222	172
50	October 15, 1908	Charlotte	Bristol	S. A. Peeler	81	10547	172
51	October 14, 1909	High Point	Moore	S. A. Peeler	76	11063	172
52	October 6, 1910	Leaksville	Neely	S. A. Peeler	78	10984	179
53	October 12, 1911	Greensboro	Anderson	S. A. Peeler	84	11409	162
54	October 20, 1912	Lenoir	Henderson	S. A. Peeler	79	12278	169
55	Nov. 20-23, 1913	Maxton	Henderson	S. A. Peeler	85	12799	171
56	Nov. 26-30, 1914	Thomasville	Henderson	S. A. Peeler	86	13225	173
57	Dec. 1-4, 1915	Winston	Wilson, L. B.	G. Haven Caldwell	91	13921	172
58	Nov. 14-19, 1916	West Raleigh	Bristol, Frank M.	G. Haven Caldwell	90	13762	195
59	Nov. 14-18, 1917	Hickory	Hughes, E. H.	R. N. Brooks	88	14170	143
60	Nov. 13-17, 1918	Charlotte	Bristol, Frank M.	G. Haven Caldwell	89	14170	143
61	Nov. 12-16, 1919	High Point	Bristol, Frank M.	G. Haven Caldwell	89	14170	143
62	Nov. 11-14, 1920	Winston	Bristol, Frank M.	G. Haven Caldwell	90	13266	195
63	Nov. 10-13, 1921	Reidsville	Jones, R. E.	G. Haven Caldwell	90	12557	195
64	Nov. 8-12, 1922	Laurinburg	Wilson, L. B.	G. Haven Caldwell	96	12900	195
65	November 7-12, 1923	Lexington	Bristol, Frank M.	J. A. Baxter	97	14537	218
66	Oct. 29-Nov. 2, 1924	Marion	Thirkield, W. P.	J. A. Baxter	97	13261	254
67	Oct. 28-Nov. 1, 1925	West Raleigh	Clair, M. W.	S. A. Peeler	97	13138	149
68	Oct. 27-31, 1926	Madison	Thirkield, W. P.	S. A. Peeler	95	11796	161
69	Oct. 26-30, 1927	Greensboro	Jones, R. E.	S. A. Peeler	97	13321	137
70	Oct. 31-Nov. 4, 1928	Hickory	Smith, H. Lester	G. Haven Caldwell	89	13762	179
71	Oct. 23-27, 1929	Winston-Salem	Mead, Chas. L.	G. Haven Caldwell	88	13807	161
72	November 5-9, 1930	Charlotte	Jones, R. E.	G. Haven Caldwell	89	13575	161
73	Nov. 25-29, 1931	High Point	Smith, H. Lester	G. Haven Caldwell	92	13745	157
74	Oct. 27-30, 1932	Reidsville	Brown, W. E.	G. Haven Caldwell	91	13614	156
75	Sept. 28-Oct. 1, 1933	Maxton	Thirkield, W. P.	W. E. Hairston	90	13310	158
76	October 24-28, 1934	Lenoir	Brown, W. F.	W. E. Hairston	89	13220	163
77	October 22-27, 1935	Greensboro	Brown, W. E.	Cyrus W. Perry	83	13474	164

LAURINBURG DISTRICT

MINISTERIAL SUPPORT

STATISTICIAN'S REPORT

NAMES OF CHARGES	NAMES OF PASTORS	Support of Pastor—		Support of Value of Parsonage		Support of Dist. Supt.—		Support of Bishops—		Support of Conference		Total Deficiency
		Total Claims, including House Rent.	House Rent.	Total Paid, including House Rent.	House Rent.	Total Claim, incl. House Rent and Adm. Exp.	Support of Dist. Supt.— Rent and Adm. Exp.	Total Paid, incl. House Rent and Adm. Exp.	Support of Bishops—Paid	Claimants—Claim	Claimants—Paid	
1 Beauty Spot-New Zion	W. S. McLeod	\$ 1060	\$ 740	\$ 140	\$ 60	\$ 140	\$ 140	\$ 5	\$ 5	\$ 890	\$	
2 Bowmore-Fayetteville	M. M. Patric	900	470	100		100	100	4	4	578		
3 Bolton-Millers	R. G. Ingram	250		42		42				292		
4 Charlotte	J. C. Rush	1200	1000	100	200	100	100	12	15	1227		
5 Charlotte Mission												
6 Gastonia	R. S. Abernathy	1060	785	60	260	60	60			990		
7 Goldsboro	B. F. Thomas	200	90	120		120	150	10	12	1322		
8 Hamlet	R. B. McRae	1200	1150	150	150	150	130	2	3	748		
9 Johns-Beaverdam	G E Hogue	1000	608	150	130	130	190	8	12	1310		
10 Laurinburg-Cool Springs	P. J. Cook	1400	1100	200	200	200	90	8	18	866		
11 Lumberton	W. E. Hairston	1150	750	150	120	120	180	20	35	1359		
12 Maxton-Piney Grove	P. I. Wells	1350	1240	140	140	180	16			316		
13 Monroe-Wingate	Henry Covington	300								366		
14 Mount Zion	S. J. Hayden	800	300	50	50	120	60			330		
15 Pembroke-Fairmont	E. A. Rush	325	250	40		40	40			396		
16 Philadelphia-Hoffman	W. H. Blackman	650	300	81	100	81	80	7	9	1021		
17 Red Springs	L. W. Hedrick	1000	879	100	100	120	120	10	12	1021		
18 Rocky Mount	J. E. Green											
19 Rowland-Salem	R. D. Bethea	1200	950	170		175	175	12	17	1159		
20 Sanford Circuit	H. M. McNair	506	506	90		90	90	5	6	607		
21 St. Peters-Southern Pines	J. L. Alford	300	195	45		45	45	1	1	242		
Totals		\$15851	\$11713	\$1560	\$1976	\$1813	\$ 104	\$ 149	\$14093	\$		

WESTERN DISTRICT

MINISTERIAL SUPPORT

STATISTICIAN'S REPORT

NAMES OF CHARGES	NAMES OF PASTORS	MINISTERIAL SUPPORT										WESTERN DISTRICT				
		Support of Pastor— House Rent.	Support of Pastor— Total Paid, including House Rent.	Support of Pastor— Value of Parsonage	Support of Dist. Supt.— Total Claim, incl. House Rent and Adm. Exp.	Support of Dist. Supt.— Total Paid, incl. House Rent and Adm. Exp.	Bishops—Claim	Support of Bishops—Paid	Support of Conference Claimants—Claim	Support of Conference Claimants—Paid	Total Paid for Ministerial Support	Total Deficiency				
1 Asheville	A. Peeler	\$ 1500	\$ 1168	\$ 300	\$ 180	\$ 130	\$ 30	\$ 22	\$ 60	\$ 44	\$ 1364	\$ 406				
2 Bessemer City	P. F. Johnson	400	100	80	36	2	1	2	4	2	139	347				
3 Boone	E. I. Swan	550	328	50	75	60	11	5	27	9	400	263				
4 Catawba	G. W. Patterson	700	464	100	100	88	14	7	34	17	576	279				
5 Forest City-Lawndale	N. J. Pass	1100	800	169	169	16	10	10	10	10	1089					
6 Franklin	C. N. Williams	400	289	25	40			2			331					
7 Hickory	C. W. Perry	1220	1220	220	150	150	25	25	50	50	1440					
8 Hunters-Cornelius	W. C. Cook															
9 Kings Mountain	B. F. Gleaves	500	390		75	65		5		7	462					
10 Lenoir	B. L. Burge	1200	900	200	150	132		8		10	1150					
11 Lenoir Circuit	S. M. McBrayer	600	329	96	60	51	10	2			329	171				
12 Lincolnton-Mt. Holly	S. H. Pressly	755	447		80	48		4		5	514					
13 Lowesville-Tucker	B. E. Staton	800	600	100	100	100	12	4	25	5	609	328				
14 Marion	F. S. Abernathy	822	413	100	100	60					500					
15 Mooresville	F. L. Lee	1200	1000	200	120	109		5		4	1118	200				
16 Newton-Conover	A. H. Newsome	900	600	100	92											
17 Old Fort-Glades	J. H. Meeks	400	176	24	45	22	3	1	7	1	195					
18 Shelby-Brooks	E. M. McLeod	875	600	75	105	102		5		2	709	171				
19 Sherrill's Ford	C. L. Gidney	800	678	100	100	100		5		15						
20 Statesville	T. C. Frazier	1100	523	100	130	69	23	2	46	16	610	589				
21 Union Mills	J. J. Blanton	350	250	24		30	5	5		1	340					
22 West Asheville	H. M. Erwin	400	400				5	2		3	435					
23 Wilkesboro	S. E. Dunham	400	256	12	60	56	8	8	15	15	335	160				
Totals		\$16572	\$11931	\$1726	\$2011	\$1577	\$ 164	\$ 122	\$ 258	\$ 216	\$12650	\$ 2874				

STATISTICIAN'S REPORT		MINISTERIAL SUPPORT							WINSTON DISTRICT					
NAMES OF CHARGES	NAMES OF PASTORS	Support of Pastor—	Support of Pastor—	Support of Pastor—	Support of Dist. Supt.—	Support of Dist. Supt.—	Support of Dist. Supt.—	Support of	Support of	Support of Conference	Support of Conference	Support of Conference	Total Paid for	Total Deficiency
		Total Claims, including House Rent.	Total Paid, including House Rent.	Support of Value of Parsonage	Support of Dist. Supt.— Rent and Adm. Exp.	Total Claim, incl. House Rent and Adm. Exp.	Support of Dist. Supt.— Total Paid, incl. House Rent and Adm. Exp.	Bishops—Claim	Bishops—Paid	Claimants—Claim	Claimants—Paid	Ministerial Support		
		\$	\$	\$	\$	\$	\$	\$	\$	\$	\$	\$	\$	\$
1 Advance-Boston Cottage	W. S. Winston	350	250	150	82	63	1	1	1	1	1	315	130	
2 Asheboro	F. D. Caldwell	1450	1004	150	142	142	12	12	18	18	1176	274		
3 Chestnut Grove	G. Hoover		70			3					73			
4 Elkin-Jonesboro	D. C. Skeen	1150	600	60	172	117	5	5						
5 High Point—Brooks Mem.	J. B. Meekins	1200	700	120	130	50	8	8	11	11	773			
6 High Point—St. Marks	W. T. Lomax	1800	1250	200	200	150	15	15	25	25	1440	630		
7 Lexington	L. A. Brown	1200	776	150	150	81	15	15	18	18	880			
8 Madison	H. C. Gannaway	870	533	120	75	48	5	5	5	5	591	381		
9 Mount Airy	L. A. Watson	860	460	60	125	60	8	8	7	7	535	405		
10 Pen Hook	Samuel Laughlin	800	502	100	120	88	3	3	3	3	596	339		
11 Rural Hall	Henry Jones	650	550			76								
12 Thomasville—East Midway	R. C. Sharpe	700	515		92	82	8	8	2	2	607	122		
13 Thomasville	J. W. Simpson	1440	900	240	180	55	10	10	15	15	980	690		
14 Trinity-Glenola	D. A. Hill	300	300		60	7					307			
15 Walnut Cove-Rock Hill	Ira Friend	450	228			31	4	4	3	3	267			
16 Oak Gr.-Red Bk.—W'ston	E. Frost	450	260		50						322	200		
17 Mt. Pleasant-Blvw.—W'ston	D. L. Thomas	980	976	486	70	54	6	6	10	10	540	475		
18 St. Andrews—Winston	R. B. Rhyne	801	1101	300	160	110	15	15	20	20	1260	680		
19 St. Paul—Winston	G. M. Phelps	2100	1800	300	270	225	30	30	40	40	2095	375		
20 Zion Hill—Winston	J. M. Joyce	100	60		10						70			
Totals		\$18550	\$12029	\$1800	\$2093	\$1442	\$145	\$145	\$194	\$12827	\$4701			

CHURCH MEMBERSHIP—CHURCH SCHOOLS—EPWORTH LEAGUE GREENSBORO DISTRICT

NAMES OF CHARGES

NAMES OF CHARGES	Children Baptized	Adults Baptized	Preparatory Members Received During Year	Preparatory Members Now on Roll	Received from P.M. or on Profession of Faith	Received by Transfer	Full Members now on Roll	Incl. Inactive Members	Inactive Members	Removed by Transfer	Deaths During Year	Number of Church Schools	Officers and Teachers	Enrolled in All Depts.	Church School Current Exp	Epworth League—Senior and Young People	Epworth League—Intermediate	Epworth League—Juniors
1 Brown Summit			3	2	3		165	30			2	2	14	90	22			
2 Bullock-Creedmore				7		9	75					2	15	48	8			
3 Caswell	4						213	30		2		1	3	24	9			
4 Empire			30	29	30		165	25		1	4	3	21	165	35			
5 Greensboro—East	24				1		295	9		1	6	2	14	130	26			
6 Greensboro—High Street	30	2	10	5	10	2	162	30			4	1	14	78	30	1	1	
7 Greensboro—Extension	3	1					52					2	5	14	6			
8 Greensboro—St. Matthew	9			23		11	489	76			6	1	18	195	94			
9 Greensboro—South	12	2		208	7		275	17			3	3	20	170	40			
10 Greensboro—North West	15			15	16		150					3	21	143	25			
11 Greensboro—South East			2	2			19	4			1	1	4	20	4			
12 Guilford			1	143		1	143	30			4	3	18	132	72			
13 Kernersville—New Bethel	5	12	13		10	3	169	50			3	2	8		37			
14 Leaksville	4	5	6		2	2	169				4	1	23	100	48			
15 Newport News, Va.				2			62					1	8	42	17			
16 Oxford			1	1	2	2	164	89			6	2	9	60	15			
17 Pleasant Ridge, Va.	6	1	3	3		4	67	20			2	1	5	30	11			
18 Ramseur	5	1	4	25		2	137	5		2	1	3	25	78	25			
19 Reidsville	7	2	12	374	2	5	426	75			5	2	21	160	45			
20 Randleman			6	9	6		89	75			1	3	21	82	25			
21 West Raleigh	8	3	13	15	8	9	160	30			6	1	12	156	50			
Totals	132	28	104	866	107	50	3806	595		6	58	41	299	1917	644	162	11	20

LAURINBURG DISTRICT

CHURCH MEMBERSHIP—CHURCH SCHOOLS—EPWORTH LEAGUE

NAMES OF CHARGES	Children Baptized	Adults Baptized	Preparatory Members Received During Year	Preparatory Members Now on Roll	Received from P. M. or on Profession of Faith	Received by Transfer	Full Members now on Roll Incl. Inactive Members	Inactive Members	Removed by Transfer	Deaths During Year	Number of Church Schools	Officers and Teachers	Enrolled in All Depts.	Church School Current Exp	Epworth League—Senior and Young People	Epworth League—Intermediate	Epworth League—Juniors
1 Beauty Spot-New Zion
2 Bowmore-Fayetteville
3 Bolton-Millers
4 Charlotte
5 Charlotte Mission
6 Gastonia
7 Goldsboro
8 Hamlet
9 Johns-Beaverdam
10 Laurinburg-Cool Springs
11 Lumberton
12 Maxton-Piney Grove
13 Monroe-Wingate
14 Mount Zion
15 Pembroke-Fairmont
16 Philadelphia-Hoffman
17 Red Springs
18 Rocky Mount
19 Rowland-Salem
20 Sanford Circuit
21 St. Peters-Southern Pines
Totals	31	23	149	41	154	79	3163	526	12	42	34	255	1875	498	166	97	44

CHURCH MEMBERSHIP—CHURCH SCHOOLS—EPWORTH LEAGUE

WESTERN DISTRICT

NAMES OF CHARGES

	Children Baptized	Adults Baptized	Preparatory Members Received During Year	Preparatory Members Now on Roll	Received from P.M. or on Profession of Faith	Received by Transfer	Full Members now on Roll	Incl. Inactive Members	Inactive Members	Removed by Transfer	Deaths During Year	Number of Church Schools	Officers and Teachers	Enrolled in All Depts.	Church School Current Exp.	Epworth League—Seniors and Young People	Epworth League—Intermediate	Epworth League—Juniors	
1 Asheville	3	2	15	3	11	2	172	40	40	2	3	1	25	186	177	40			
2 Bessemer City			8	8	8		80	20	20		3	2	16	136	20	20			
3 Boone	2		2	4	2		39	8	8		1	1	11	40	12				
4 Catawba	2	1	10	18	2		111	10	10		8	22	7	92	12	25			
5 Forest City-Lawndale	10	5	25	25	5		255	105	105		8	2	25	250	80	63			
6 Franklin	8	5	12	6	6		36	30	30		1	1	8	51	10				
7 Hickory	15		20	30	7	5	155	30	30	1	1	1	16	124	30	20			
8 Hunters-Cornelius				40			40							20					
9 Kings Mountain	5		7	86	9	1	86	16	16		4	3	12	104	21	35			
10 Lenoir	23		5	182	22	6	182	22	22	6	2	1	11	136	36	25			
11 Lenoir Circuit				70	30		70	30	30		2	4	13	78					
12 Lincolnton-Mt. Holly	5	1	3	86	34		86	34	34		1	3	12	60	91				
13 Lowesville-Tuckers	8	10	5	5	5		200	25	25	1	3	3	16	135	30				
14 Marion				110			110							130					
15 Mooresville-Mayhew	7	15	18	18	3	3	240	57	57	4	2	4	30	160	50				
16 Newton-Conover				124			124							87					
17 Old Fort-Glades				40			40		10			2	14	39	5				
18 Shelby-Brooks	5	15	18	10	8	1	160	30	30		2	2	14	94	16	18			
19 Sherrill's Ford	28	1	8	36			170	35	35		4	3	17	40	23				
20 Statesville	7	1	3	33	3		112				4	2	12	124	15				
21 Union Mills	2		2	5	2		40	8	8		2	2	12	28		7	1	1	
22 West Asheville				68			68												
23 Wilkesboro			2	2			74	19	19		1	1	12	74	24				
Totals	130	56	163	189	75	12	2750	499	499	14	45	56	264	2258	562	253			1

CHURCH MEMBERSHIP—CHURCH SCHOOLS—EPWORTH LEAGUE WINSTON DISTRICT

NAMES OF CHARGES	Children Baptized	Adults Baptized	Preparatory Members Received During Year	Preparatory Members Now on Roll	Received from P.M. or on Profession of Faith	Received by Transfer	Full Members now on Roll, Incl. Inactive Members	Inactive Members	Removed by Transfer	Deaths During Year	Number of Church Schools	Officers and Teachers	Enrolled in All Depts.	Church School Current Exp.	Epworth League—Young People	Epworth League—Intermediate	Epworth League—Juniors
	1 Advance-Boston Cottage	5	4	5	21	6	8	44	1	..	4	2	19	200	8	18	10
2 Asheboro	170	30	3	28	150	
3 Chestnut Grove	20	1	3	10	
4 Elkin-Jonesboro	12	12	6	1	204	34	2	1	5	31	152	34	
5 High Point—Brooks Mem.	2	145	50	1	11	
6 High Point—St. Marks	5	2	..	21	19	8	393	39	..	6	1	21	183	93	18	..	
7 Lexington	3	..	2	6	4	1	121	24	1	..	1	12	59	42	29	..	
8 Madison	1	..	2	25	2	1	138	40	1	1	2	18	108	42	18	..	
9 Mount Airy	2	..	25	25	2	2	107	25	..	2	1	7	80	30	..	50	
10 Pen Hook	1	..	2	..	2	..	383	52	..	4	3	15	100	25	
11 Rural Hall	3	8	14	14	8	..	150	30	1	..	3	15	175	
12 Thomasville—East Midway	18	4	12	120	..	1	120	40	..	3	2	14	140	40	62	..	
13 Thomasville	5	..	7	12	136	36	..	1	1	9	79	50	..	30	
14 Trinity-Glenola	5	5	..	141	41	..	3	4	11	140	25	
15 Walnut Cove-Rock Hill	..	16	19	1	151	3	2	15	..	21	
16 Oak Grove-Red Bk.—Winston	..	1	1	..	1	..	100	1	2	4	46	
17 Mt. Pleasant-Bellview—W'ston	1	1	85	30	..	3	1	3	20	6	
18 St. Andrews—Winston	4	3	2	9	4	3	264	87	..	6	1	17	142	87	21	..	
19 St. Paul—Winston	5	3	8	4	12	7	853	305	..	14	1	33	319	200	35	40	
20 Zion Hill—Winston	8	30	1	2	6	50	6	
Totals	67	41	112	245	71	33	3755	865	7	56	37	287	2107	755	201	120	56

CHURCH PROPERTY AND MISCELLANEOUS

GREENSBORO DISTRICT

NAMES OF CHARGES

Number of Church Buildings	Estimated Value of Land and Buildings	Number of Parsonages	Estimated Value of Land and Buildings	Value of Other Properties, Endowments, Bonds, etc.	\$	Paid by the Charge for Buildings and Improvements	\$	Paid on Old Indebtedness Not Including Interest	\$	Present Indebtedness, incl. Debt on Current Expenses	\$	Current Expenses, not incl. Ministerial Support	Local Preachers	Sub. to The Advocate	Amount Contributed Ladies' Aid Society	No. of Congregations or Preaching Places	
																	1
1	\$ 4500																
2	1500					85						15	1		4	10	2
3	1000						35			20		8					
4	6000	1	1500			125						50	2	3		15	2
5	12000					200				61		44	2			200	2
6	12000	1	1500			480		48		196			1	2			
7	4000																
8	75000	1	2500			884						1373	1		366	1	
9	8000	3	1000			320		30		20		100	3	2	2000	3	
10	14000	1	800			300						115	3	2	112	3	
11	600											50					
12	4000	3				450						30	2				
13	3000	2				56						48	2		32	3	
14	35000	2	2000			600		78				172	2		85	2	
15	1000	1						40				240	2				
16	9000	2	1000									54	1	4		2	
17	1000	1	300				3					240	3	2	16	1	
18	3000	3	1200			30						45	1			3	
19	45000	2	1000					250		4000		325	3		125	2	
20	4000	3	2000					155				65	3	3	28	3	
21	15000	1	3000			150		140		450			2	10		1	
Totals	\$265000	43	\$17800		\$ 3680	\$ 701	\$ 4825	\$ 2974					32	32	\$ 3022	31	

CHURCH PROPERTY AND MISCELLANEOUS

LAURINBURG DISTRICT

NAMES OF CHARGES

	Number of Church Buildings	Estimated Value of Land and Buildings	Numbers of Parsonages	Estimated Value of Land and Buildings	Value of Other Properties, Endowments, Bonds, etc.	Paid by the Charge for Buildings and Improvements	Paid on Old Indebtedness Not Including Interest	Present Indebtedness, Incl. Debt on Current Expenses	Current Expenses not Incl. Ministerial Support	Local Preachers	Sub. to The Advocate	Amount Contributed Ladies' Aid Society	No. of Congregations or Preaching Places
1 Beauty Spot-New Zion	2	\$ 4000				\$ 300		\$ 52	\$ 400	2	4	\$ 75	2
2 Bowmore-Fayetteville	2	2000											
3 Bolton-Millers	2	1000					400	25	100		6	75	1
4 Charlotte	1	40000		12000									
5 Charlotte Mission	1						200	50	8		2	8	1
6 Gastonia	1	8000	1	400		5					1		
7 Goldsboro	7	1000				668		100				150	
8 Hamlet	1	1000	1	300		45			94	1	3	21	
9 Johns-Beaverdam	2	5000								2	4	100	2
10 Laurinburg-Cool Springs	2	80000	1	5000		200	150	2000		1	5	58	1
11 Lumberton	1	6000	1	1500		1262	125	60	175	4	5	12	2
12 Maxton-Piney Grove	2	12000	1	1200		150	75	100					
13 Monroe-Wingate	2												
14 Mount Zion	1	5000	1	500		25				4			1
15 Pembroke-Fairmont	2	1600				140	90	20	20	2			2
16 Philadelphia-Hoffman	3	900				25				1	3		
17 Red Springs	1	2000	1	1000		141	30	35	163		5	100	1
18 Rocky Mount													
19 Rowland-Salem	2	7200				125				5	2	35	2
20 Sanford Circuit	4	4000								2	1	14	4
21 St. Peters-Southern Pines	2	2000		52500		25							
Totals	35	\$161700	7	184400		\$ 2111	\$ 1060	\$ 2282	\$ 1000	24	41	\$ 648	20

WESTERN DISTRICT

CHURCH PROPERTY AND MISCELLANEOUS

NAMES OF CHARGES	Number of Church Buildings	Estimated Value of Land and Buildings	Number of Parsonages	Estimated Value of Land and Buildings	Value of Other Properties, Endowments, Bonds, etc.	Paid by the Charge for Buildings and Improvements	Paid on Old Indebtedness Not Including Interest	Present Indebtedness, incl. Debt on Current Expenses	Current Expenses, not incl. Ministerial Support	Local Preachers	Sub. to The Advocate	Amount Contributed Ladies' Aid Society	No. of Congregations or Preaching Places
1 Asheville	1	40000	1	5000	6000	60	3	1900	152	2	12	45	1
2 Bessemer City	2	800	1			30	18	375	100	2			2
3 Boone	1	2500	1				15	75	15	1	3	45	1
4 Catawba	3	6500	1	1000			250		175	1	10	43	3
5 Forest City-Lawndale	8	8000	1	400		30			45		4	200	2
6 Franklin	1	500	1	400					220	1	6	9	1
7 Hickory	1	10000	1	3000		534	150	1922				455	1
8 Hunters-Cornelius	2												
9 Kings Mountain	2					210	145	750	79	2	4	65	
10 Lenoir	1	5000	1	1000	1200				265	2	4	15	2
11 Lenoir Circuit	4	1500		2						1			
12 Lincolnton-Mt. Holly	3	3500		800			21			1			
13 Lewesville-Tuckers	3	5000	2	800		50	25		25	3	1	25	
14 Marion	1												
15 Mooresville-Mayhew	4	8600	1	1400		125	50	800	40	2	4	35	4
16 Newton-Conover	2												
17 Old Fort-Glades	2	3000	1	1000					20	1	2		
18 Shelby-Brooks	2	6000	1	1000			135	8	60		4	18	2
19 Sherrill's Ford	3	3000				15	4	5	1				3
20 Statesville	2	5600	1	1500		500	25		20	1	2		2
21 Union Mills	2	2000	1	500			18	12		1	1	12	2
22 West Asheville	1												
23 Wilkesboro	2	2500							25		1	6	2
Totals	47	\$114050	14	\$17802	\$ 7200	\$ 1554	\$ 909	\$ 5847	\$ 1242	19	70	\$ 973	28

CHURCH PROPERTY AND MISCELLANEOUS

WINSTON DISTRICT

NAMES OF CHARGES	Number of Church Buildings	Estimated Value of Land and Buildings	Number of Parsonages	Estimated Value of Land and Buildings	Value of Other Properties, Endowments, Bonds, etc.	Paid by the Charge for Buildings and Improvements	Paid on Old Indebtedness Not Including Interest	Present Indebtedness, incl. Debt on Current Expenses	Current Expenses, not incl. Ministerial Support	Local Preachers	Sub. to The Advocate	Amount Contributed Ladies' Aid Society	No. of Congregations or Preaching Places
1 Advance-Boston Cottage	1	7000	1	800		405		1120	5		2	2	4
2 Asheboro	3	5500	1	800		75		19				117	3
3 Chestnut Grove	1					25			50				5
4 Elkin-Jonesboro	5	14000	1	1500		60		35	113	1	3		1
5 High Point—Brooks Mem.	1		1										1
6 High Point—St. Marks	1	56000	1	5000	5000	25	750	20000	373	2	11	546	1
7 Lexington	1	30000	1	2000	1200	28	180	349	463		7		1
8 Madison	2	12000	1	1500				75	62	1	2	75	1
9 Mount Airy	2	20000	1	500		5	25	75	150		6	125	2
10 Pen Hook	3	1500	1	500		400	360		50	2	5	15	3
11 Rural Hall	3	2500				115	45		60	1	4		
12 Thomasville—East Midway	2	2000				175		942		1	5		
13 Thomasville	1	6500	1	2500			200	1000	108	1	8	15	1
14 Trinity-Glenola	4	6000			158	3			3	1	2		4
15 Walnut Cove-Rock Hill	2	5000	1	500			42		25		2		2
16 Oak Grove-Red Bk.—Winston	2	5000				215	215		60		2	12	2
17 Mt. Pleasant-Bellview—W'ston	1	5000			1000					3	4		2
18 St. Andrews—Winston	1	3000	1	5000			50	375	160	2		186	1
19 St. Paul—Winston	1	50000	1	7000		600	500		1001	2	20	275	1
20 Zion Hill—Winston	2	1500							6	1			2
Totals	39	\$232500	11	\$ 26300	\$ 7350	\$ 2120	\$ 2246	\$23915	\$ 2677	20	82	\$ 1266	42

GREENSBORO DISTRICT

CONFERENCE TREASURER'S REPORT

NAMES OF CHARGES	DISCIPLINARY BENEVOLENCES										DISCIPLINARY BENEVOLENCES				GRAND TOTAL, Dis. and Annual Conf. Benev. Other Cash Items.			
	Total Cash Payments For All Purposes	World Service Distr butable	Total World Service on Apportionments	Children's Day Fund (Board Education)	Woman's Home Missionary Society	Total Disciplinary Benevolences	Support of District Superintendents	Support of Bishops (Episcopal Fund)	Support of Conference Claimants	General Conference Expenses	Total Other Cash Items	Clarlin College	Bennett College	Annual Conf. Investments (Conf. Claimants)		City Missionary and Church Extens on Society	Minutes Publication Fund	Total Annual Conference Benevolences, Etc.
1 Brown Summit	\$ 40	\$ 12	\$ 50	2		\$ 50	\$ 60	\$ 6	\$ 10	\$ 4	\$ 80		\$ 13	\$ 4	\$ 3	\$ 20	\$ 150	
2 Bullock-Creedmore	4	12	12	7		14	32	3	3		38				1	1	52	
3 Caswell	2	7	7			7	48	1	2		51				3	22	139	
4 Empire	19	36	36			36	65	4	9	3	81		15	4	39	39	281	
5 Greensboro—East	36	61	61	15	4	81	120	14	27	8	161		28		5	33	284	
6 " —High Street	55	400	400		74	474	230	30	50	5	315	2	235	17	354	1143		
7 " —St. Matthews	20	20	20			20	80	5			85		5		5	110		
8 " —South	50	50	50			50	135	18	23	9	185		50		50	285		
9 " —North West	12	12	12			12	30	2			32					44		
10 " Extension	23	47	47	3		50	120	8	10	7	145		22		3	25	220	
11 Guilford	36	36	36			36	75	5	5	4	89		18		3	21	146	
12 Kernersville	6	72	72		3	75	130	16	28	6	180		45	4	49	304		
13 Leaksville	1							5			5		9	2	11	16		
14 Newport News, Va.	36	40	40			40	45	5	10	3	63		20	3	25	128		
15 Oxford	12	12	12			12		2			2					14		
16 Pleasant Ridge, Va.	7	17	17		4	36	60	4	6	3	73		25		3	28	151	
17 Ramseur	77	131	131			131	143	20	31	5	199		12	2	3	25	119	
18 Randleman	57	80	80			80	90	15	15	5	125		15		15	15	342	
19 Reidsville	2	2	2			2	2				2					4		
20 West Raleigh	2	2	2			2	2				2					2		
21 S. E. Greensboro																		
22 Miscellaneous																		
Totals	\$365	1200	1200	\$ 20	\$ 85	1305	1645	\$190	\$273	\$ 65	2173	\$ 2	\$671	\$ 19	\$ 17	\$ 26	\$735	4213

CONFERENCE TREASURER'S REPORT

LAURINBURG DISTRICT

NAMES OF CHARGES	DISCIPLINARY BENEVOLENCES										LAURINBURG DISTRICT					GRAND TOTAL, Dis. and Annual Conf. Benev. Other Cash Items.				
	Total Cash Payments for All Purposes	World Service Distributable	Home Missions and Church Extension	Hospitals, Homes and Deaconess Work	Total World Service on Apportionments	Children's Day Fund (Board Education)	Woman's Foreign Missionary Society	Woman's Home Missionary Society	Total Disciplinary Benevolences	Support of District Superintendents	Support of Bishops (Episcopal Fund)	Support of Conference Claimants	General Conference Expenses	Total Other Cash Items	Bennett College		Hospitals and Homes	Annual Conf. Investments (Conf. Claimants)	Minutes Publication Fund	Total Annual Conference Benevolences, Etc.
1 Beauty Spot-New Zion	\$ 8	\$ 41			\$ 41				\$ 41	\$ 140	\$ 5	\$ 5	\$ 3	\$ 153	\$ 42		\$ 5	\$ 5	\$ 52	\$ 246
2 Bowmore-Fayetteville	22	30			30	2		32	100	4	4			108			5	5	5	145
3 Bolton-Millers	10	10			10			10	44					44						54
4 Charlotte	17	90			90			90	100	12	15			127						217
5 Charlotte Mission																				
6 Gastonia	23	30			30		13	43	60	2	3			65						108
7 Goldsboro																				
8 Hamlet	28	100			100			100	150	10	15			178						278
9 Johns-Beaver Dam	51	51			51			51	135					135						191
10 Laurinburg-Cold Spring	15	128	24	18	170		10	180	190	8	12			213	24	18	5	48	441	
11 Lumberton	24	37			37			37	90	8	18			118	15		3	18	173	
12 Maxton-Piney Grove	66	125			125		5	130	180	20	35			238			8	8	376	
13 Monroe-Wingate	5	5			5			5	16					16						21
14 Mt. Zion	32	32			32			32	60					60						92
15 Pembroke-Fairmont	4	20			20			20	40	2	2			44				2	66	
16 Philadelphia-Hoffman	19	40			40			40	81	7	9			100			5	5	145	
17 Red Springs	12	60			60			60	120	10	12			147	9		3	4	223	
18 Rocky Mount																				
19 Rowland-Salem	33	79			79	4	7	93	175	12	17			207	4		5	9	309	
20 Sanford Circuit	31	40			40			40	90	5	6			101	14		3	17	158	
21 St. Peters-Southern Pine	14	20			20			20	45	1	1			47						67
Totals	\$ 373	\$ 938	\$ 24	\$ 18	\$ 980	\$ 6	\$ 3	\$ 35	\$ 1024	\$ 1816	\$ 107	\$ 154	\$ 25	\$ 2101	\$ 108	\$ 18	\$ 19	\$ 40	\$ 185	\$ 3310

WESTERN DISTRICT

CONFERENCE TREASURER'S REPORT

NAMES OF CHARGES	DISCIPLINARY BENEVOLENCES										WESTERN DISTRICT											
	Total Cash Payments for All Purposes	World Service Dist' butable	Home Missions and Church Extension	Education	Pensions and Relief	American Bible Society	Total World Service on Apportionments	Children's Day Fund (Board Education)	Woman's Foreign Missionary Society	Woman's Home Missionary Society	Total Disciplinary Benevolences	Support of District Superintendents	Support of Bishops (Episcopal Fund)	Support of Conference Claimants	General Conference Expenses	Total Other Cash Items	Bennett College	Annual Conf. Investments (Conf. Claimants)	Mines Publication Fund	Buildings and Improvements Paid on Old Indebtedness	Total Annual Conference Benevolences, Etc.	GRAND TOTAL, Dis. and Annual Conf. Benev. Other Cash Items.
1 Asheville	\$ 89	\$115	\$ 5	\$ 40			\$160	\$ 5			\$165	\$130	\$ 22	\$ 44	\$ 2	\$198	\$ 5	\$ 6			\$11	\$374
2 Bessemer City	5	9	1				9			9	36	1	3	1	41							50
3 Boone		25	1				25		2	28	60	5	7	3	75	14			2		16	119
4 Catawba	25	40	2				40			42	88	4	17	2	111	14					19	172
5 Forest City-Lawndale	14	60					60			60	150	12		2	164	70						224
6 Franklin	1	16					16			60	40	2	1		43	2			2		4	63
7 Hickory	54	38	10	32			80	3	43	126	150	25	50	10	235	40	4	5	1		50	411
8 Hunters-Cornelius	3	2					2			2	14		1		15	2					2	19
9 Kings Mountain	7	36					80			36	65	3	7		75	21					21	132
10 Lenoir	10	80					80			80	132	8	10		150	21					21	251
11 Lenoir Circuit	2	12		1			13			13	51	2			53	1						66
12 Lincolnton-Mt. Holly	6	25					25			25	48	4	5		57	18					18	100
13 Lowesville-Tuckers	10	25					25			25	100	4	5	3	112	6						137
14 Marion	5	40					40			40	79	10			89	5					5	134
15 Mooresville-Mayhew	19	43	3				46	5		51	109	5		1	115	5		8			3	169
16 Newton-Conover	10	50					50			50	90	5	5		100	12					12	162
17 Old Fort-Glades	2	20					20			20	22	1	1		24							44
18 Shelby-Brooks	30	40					40			40	102	5	2		109	9					20	132
19 Sherrill's Ford	3	10					10			10	100	1	1		102	17		3				20
20 Statesville	24	48		12	1		62	1	1	64	69	2	16	2	89	12					12	165
21 Union Mills	4	18		5			23			23	30	1	1		32	5					5	60
22 West Asheville		10					10			10	27				27	8		1			9	46
23 Wilkesboro	1	30	1				30	1		31	36	8	15	4	83	16					16	130
Totals	\$324	\$792	\$ 18	\$ 90	\$ 1	\$ 1	\$902	17	\$ 1	\$46	\$966	\$1748	\$130	\$191	\$ 30	\$2099	\$308	\$11	\$15	\$ 1	\$1253	\$3400

CONFERENCE TREASURER'S REPORT

WINSTON DISTRICT

NAMES OF CHARGES	DISCIPLINARY BENEVOLENCES											WINSTON DISTRICT									
	Total Cash Payments for All Purposes	World Service Distributable	Foreign Missions	Home Missions and Church Extension	Education	Total World Service on Apportionments	Children's Day Fund (Board Education)	Woman's Home Missionary Society	Total Disciplinary Benevolences	Support of District Superintendents	Support of Bishops (Episcopal Fund)	Support of Conference Claimants	General Conference Expenses	Total Other Cash Items	Bennett College	Charities	Annual Conf. Investments (Conf. Claimants)	Travel and Entertainment Fund	Minutes Publications	Total Annual Conference Benevolences, Etc.	GRAND TOTAL, Dis. and Annual Conf. Benev. Other Cash Items.
1 Advance-Boston College	9	15				15		15	63	1	1	1	1	66	11		3		3	17	98
2 Asheboro-Mitchell	4	84				84		84	142	12	18	3	175							259	
3 Chestnut Grove		5				5		5	3			3	6							11	
4 Elkin	3	70				70		70	117	5		3	125							195	
5 High Point																					
6 Brooks Memorial	14	30				30		30	54	8	11		73							103	
7 St. Mark's	32	100				100		35	135	15	25		190	20	37	5		5	67	392	
8 Lexington	12	85			15	100		16	116	81	18	3	117	50		2		3	55	288	
9 Madison	3	33				33		33	48	5	7		53	30		2		3	35	121	
10 Mount Airy	8	34				44		44	60	8			77							121	
11 Pen Hook	14	12				25		37	88	3	3		95					3	3	135	
12 Rural Hall	18	50				54		4	58	11	16		107							165	
13 Thomasville-East																					
14 Midway	2	50				50		13	63	8	2		92					6	4	10	165
15 Thomasville	22	85				85		2	92	55	15		70	30						30	192
16 Trinity-Glenola	5	17				17		1	18	67	9	3	80	20						20	118
17 Walnut Cove-R. Hill		15				15			31	4	3		39								54
Winston-Salem—																					
18 Oak Grv.-Walkertown	17	40				40			42	50	8	10	72								114
19 Mt. Pleasant-Bellview	17	34	10	6		50		7	57	54	6	10	74	13						13	144
20 St. Andrews	22	63				63		19	82	110	15	19	148							88	230
21 St. Paul	130	500				500		66	566	225	30	40	305	68		15				83	954
22 Zion Hill-Red Bank	11	7				7		7	10	1	2		13	1						1	21
Total	\$343	1329	\$ 10	\$ 6	\$ 54	1339	\$ 8	\$162	1569	\$164	\$203	\$ 44	1977	243	\$37	\$ 6	\$21	\$334	\$3880		

GREENSBORO DISTRICT

CHURCH SCHOOL STATISTICS

List No.	NAMES OF CHURCHES	No. of Schools	No. Classes Under 18 Yrs.	No. Classes Using Closely Graded Lessons	No. Organized Depts. Meeting Separately	Officers and Teachers	Pupils of All Grades	Nursery Roll	Home Department	Total Enrollment	Average Attendance	Pupils Incl. Home Depts. but not Baptized Children	Accessions During the Year to Church from S. S.	Rally Day Offerings	Paid by S. S. to World Serv., not Incl. Rally	Paid by Sunday School to All Other Benevolences	Expenses for Lesson Material, Supplies, Etc.	No. Methodist Training Classes	Enrollment	No. of Vacation Schools	No. Teachers and Helpers	Pupils Enrolled	Total Expenses of Vacation School
1	Brown Summit	2	2	3		15	48			48	33	3	1				6						
2	Bullock-Creedmore	1	3			4	24										4						
3	Caswell	3	7	10		21	165	30		195	80	150	30		36	16	35						
4	Empire	2	3			14	130			144	75				10		26						
5	Greensboro—East	1	8			14	78	12			50				61		30	2	20	1	4	50	25
6	" High Street	1	1			14	60					40					8						
7	" Extension	1	1			14	60																
8	" St. Matthews	1	7	2		18	175	17	22	193	120		20	10	16	28	94						
9	" South	3	6	6		20	150			170	90	160	20	10									
10	" North West	3	10							143	90												
11	" South East	2	3	1		4	20				14	8		1	1		4						
12	Guilford	3	5			18	132				92				30	12	55						
13	Kernersville-New Bethel	2	4	7		8	72			90	35			5			37						
14	Leaksville	2	8	4		26	100			122	65						40						
15	Newport News, Va.	1	3	1		8	42			50					4	2	15						
16	Oxford	2	4			9	51			60	35	18	1										
17	Pleasant Ridge, Va	1	4	2		8	30			30	20	15											
18	Ramsaur	3	4			25	38	15		78	45						25						
19	Reidsville	2	12	6		21	150	11		161	82	31	5	3		22	45						
20	Randleman	3	1	92		24	82		6	82	65	72		10	5		25						
21	West Rateigh	1	10	5		15	150			175	80	18	13				50						
	Total	39	101	144	19	286	1697	85	28	1741	989	505	70	9	162	73	527	2	20	1	4	50	25

CHURCH SCHOOL STATISTICS

LAURINBURG DISTRICT

List No.	NAMES OF CHURCHES	LAURINBURG DISTRICT																			
		Number of Schools	No. Classes Under 18 Yrs.	No. Classes Using Closely Graded Lessons	No. Organized Depts. Meeting Separately	Officers and Teachers	Pupils of All Grades	Nursery Roll	Home Department	Total Enrollm't	Average Attendance	Pupils Incl. Home Dept., but not Baptized Children	Accessions During the Year to Church from S. S.	Rally Day Offering Paid by S. S. to World Serv., not Incl. Rally	Expenses for Lesson Material, Supplies, Etc.	No. Methodist Training Classes	Enrollment	No. of Vacation Schools	No. Teachers and Helpers	Pupils Enrolled	Total Expenses of Vacation School
1	Beauty-Spot-New Zion	2	5	12	18	90			90	65	90		25								
2	Bowmare-Fayetteville	2	4	3	15	85			85	65	95		35								
3	Bolton-Miller's	2	2		6	41			41												
4	Charlotte	1	3			112			112												
5	Charlotte Mission	1	4		16	90			90		3	9									
6	Gastonia	1	2		5	28			28		28										
7	Goldsboro	1	5		12	18			18	40											
8	Hamlet	2	3		14	80			80	40			17	24							
9	Jones-Beaverdam	2	4		24	250			250	150			128	75							
10	Laurinburg-Cool Springs	1	3	3	14	76			290	60			7	36							
11	Lumberton	2	4	4	28	218			92	164	240	6	125								
12	Maxton-Piney Grove	1	1		14	120			207	40											
13	Monroe-Wingate	1	1			28			180												
14	Mt. Zion	2	2		9	74			74			2	20								
15	Pembroke-Fairmont	2	2		14	75			32	40											
16	Philadelphia-Hoffman	1	1		12	87			96	45		2	30	24							
17	Red Springs					88			88												
18	Rocky Mount	2			33	193			33	193											
19	Roland-Salem	4			17	71			118	60			40								
20	Sanford Circuit	2			8	45			44												
21	St. Peters-Southern Pines	1	4		12	75	8	20	75	45	40		12	12							
	Totals	33	44		271	1093	8	20	1928	889	496	20	42	447	170						

WESTERN DISTRICT

CHURCH SCHOOL STATISTICS

List No.	NAMES OF CHURCHES	CHURCH SCHOOL STATISTICS											WESTERN DISTRICT													
		No. of Schools	No. Classes Under 18 Yrs.	No. Classes Using Closely Graded Lessons	No. Organized Depts. Meeting Separately	Officers and Teachers	Pupils of All Grades	Nursery Roll	Home Department	Total Enrollment	Average Attendance	Pupils Incl. Home Dept., but not Baptized Children	Accessions During the Year to Church from S. S.	Rally Day Offerings	Paid by S. S. to World Serv., not Incl. Rally	Paid by Sunday School to All Other Benevolences	Expenses for Lesson Material, Supplis, Etc.	No. Methodist Training Classes	Enrollment	Interdenominational Classes	Enrollment	No. of Vacation Schools	No. Teachers and Helpers	Pupils Enrolled	Total Expenses of Vacation School	
1	Asheville	1				25	137	12	10	86	75	7	100	177	1	12					1	2	40	20		
2	Bessemer City	2	2			16	60	60		136	40	6		20	1	20					1					
3	Boone	1	2			11	29			40	28	8	3	4	6											
4	Catawba	3	25			7	85			92	58		2	15												
5	Forest City	2	5			25	225			250	150	20														
6	Franklin	1	2			8	43			51	32	20	2	4												
7	Hickory	1	6			16	75	10	23	134	48	7	10	30							1	2	45	5		
8	Huntersville-Cornelius																									
9	Kings Mountain	3				12	84	8		104	79	3		21	1											
10	Lenoir	1	6			11	125			136	75	3	10	36												
11	Lenoir Circuit	4	50			13	65			78																
12	Lincolnton-Mt. Holly	3	4							60		2	25	8												
13	Lowesville-Tuckers	3	2			15	120			135	75	2	5	10												
14	Marion	1	6			12				130	65			30												
15	Mooreville-Mayhew	4								160																
16	Newton-Conover	1	5			14	73			87																
17	Old Fort-Glades	2	2			14	25			39	15															
18	Shelby-Brooks	2	2			14	80			94	59	4	40	5												
19	Sherrill's Ford	3	4			17	120			137		8		2												
20	Statesville	2	20			12	100			126	40	5	3	7												
21	Union Mills	2	2			7	28			28		8	2	7												
22	West Asheville																									
23	Wilkesboro	1				12				74	40		5	24												
Total		42	143	15	1	263	1474	90	33	2285	879	196	63	43	219	45	467	3	32	1	1	2	9	235	70	

CHURCH SCHOOL STATISTICS

WINSTON DISTRICT

List No.	NAMES OF CHURCHES	CHURCH SCHOOL STATISTICS											WINSTON DISTRICT													
		No. Classes Under 18 Yrs.	No. Classes Using Closely Graded Lessons	No. Organized Depts. Meeting Separately	Officers and Teachers	Pupils of All Grades	Nursery Roll	Home Department	Total Enrollment	Average Attendance	Pupils Incl. Home Dept., but not Baptized Children	Accessions During the Year to Church from S. S.	Rally Day Offerings	Paid by S. S. to World Serv., not Incl. Rally	Paid by Sunday School to All Other Benevolences	Expenses for Lesson Material, Supplies, Etc.	No. Training Classes	Enrollment	No. of Vacation Schools	No. Teachers and Helpers	Pupils Enrolled	Total Expenses Week Day School	No. Methodist Week Day School	Pupils Enrolled	Total Expenses of Vacation School	
1	Advance-Boston College	2			19	26																				
2	Asheboro																									
3	Chestnut Grove	1	1		4	10																				
4	Elkin-Jonesboro	5	15		10	152																				
5	High Pt.--Brooks Mem.																									
6	High Pt.-St. Marks	1	6	9	21	143	8	16	159	12	175		10	15	55			1	20	183	15	1	45	15		
7	Lexington	1	4		12	59		13	84	38																
8	Madison	2	4		18	108			112	70																
9	Mt. Airy	1	4		2	80			87	50	80		15			1	10									
10	Pen Hook																									
11	Rural Hall	3			6	175			150																	
12	Thomasville-E. Midway	2	5	2	14	140			92	100	18		50	40				1	7	110	5					
13	Thomasville	1	3		9	90			79	48	39		40													
14	Trinity-Glenola	4	2	2	11	103	35	15	100	40			1													
15	Walnut Cove-Rock Hill								26																	
16	Oak Gr.-Red Bk.-W'ston	2	2						140				2	20												
17	Mt. Pleasant-Bellview	2	4		2	30			30				3													
18	St. Andrews-Winston	1	4		17				180				2	17	6	56										
19	St. Paul-Winston	1	10		2	33	4	10	319	200	319	2	100	136												
20	Zion Hill-Winston																									
	Total	29	49	23	21	221	1368	47	54	1874	806	742	26	5	264	157	297	1	10	2	27	293	20	1	45	15

EPWORTH LEAGUE STATISTICS—GREENSBORO DISTRICT

List No.	NAMES OF CHARGES OR CHURCHES	Young People—		Seniors—Chapters	Seniors—Members	Intermediates— Chapters	Intermediates— Members	Juniors— Chapters	Juniors— Members	Paid World Service— 24-Hour Day Plan	Paid World Service— Through All Channels
		Chapters	Members								
1	Brown Summit										
2	Bullock-Creedmore	1	15								
3	Caswell										
4	Empire										
5	Greensboro—East	1	20								
6	" —High Street	1	38								
7	" —Extension	1	20								
8	" —St. Matthew	1	70								
9	" —South	2	20		20		10		20		5
10	" —North West	1	28								
11	" —South East										
12	Guilford										
13	Kernersville-New Bethel										
14	Leaksville	1	50								
15	Newport News, Va.	1	25	1	15	1	17				
16	Oxford										
17	Pleasant Ridge, Va.										
18	Ramseur										
19	Reidsville	1	25								
20	Randleman										
21	West Raleigh	1	27								
Totals		12	338	1	35	1	27		20		\$ 5

EPWORTH LEAGUE STATISTICS—LAURINBURG DISTRICT

1	Beauty Spot-New Zion										
2	Bowmore-Fayetteville	2	15							3	3
3	Bolton-Millers	1	12								
4	Charlotte										
5	Charlotte Mission										
6	Gastonia										
7	Goldsboro	1	40								
8	Hamlet	1	28							2	
9	Johns-Beaverdam	1	26								
10	Laurinburg-Cool Spring										
11	Lumberton	1	25	1	40				15		
12	Maxton-Piney Grove										
13	Monroe-Wingate	1									
14	Mount Zion										
15	Pembroke-Fairmont										
16	Philadelphia - Hoffman	1	18								
17	Red Springs										
18	Rocky Mount										
19	Rowland - Salem										
20	Sanford Circuit										
21	St Peters-Southern Pine										
Totals		7	152	1	40	1		15		5	3

EPWORTH LEAGUE STATISTICS—WESTERN DISTRICT

List No.	NAMES OF CHARGES OR CHURCHES	Young People—		Seniors—		Intermediates—		Juniors—		Paid World Service— 24-Hour Day Plan	Paid World Service— Through All Channels
		Chapters	Members	Chapters	Members	Chapters	Members	Chapters	Members		
1	Asheville			1	40						44
2	Bessemer City	1	20	1	20						
3	Boone										
4	Catawba	1	25								
5	Forest City-Lawndale										
6	Franklin										
7	Hickory	1	20								2
8	Hunters-Cornelius										
9	Kings Mountain										36
10	Lenoir	1	25								5
11	Lenoir Circuit										
12	Lincolnton-Mt. Holly										
13	Lowesville - Tuckers										
14	Marion										
15	Mooreville - Mayhew										
16	Newton - Conover										
17	Old Fort - Glades										
18	Shelby-Brooks	1	18	12	6						
19	Sherrill's Ford										
20	Statesville	1	15								60
21	Union Mills	1	5	5		2					8
22	West Asheville										
23	Wilkesboro										
Totals		7	128	19	66	2					154

EPWORTH LEAGUE STATISTICS—WINSTON DISTRICT

1	Alamance-Boston College										
2	Asheboro										
3	Chestnut Grove										
4	Elkin-Jonesboro										
5	High Point-Brooks Mem.										
6	High Point-St. Marks			1	18						
7	Lexington	1	29								
8	Madison	1	18								3
9	Mt. Airy							1	50		
10	Pen Hook										
11	Rural Hall										
12	Thomasville-East Midway	2	12								50
13	Thomasville					1	30				
14	Trinity-Glenola	1	20	1	33	1	27		25		
15	Walnut Cove-R. Hill										
16	Oak Grove-Red Bk.—Winston ..										
17	Mt. Pleasant-B. Vw.—Winston ..	1									50
18	St. Andrews—Winston			1	21			1	26		
19	St. Paul—Winston	1	20	1	13	1	40	1	20		
20	Zion Hill—Winston										
Totals		7	99	4	85	3	97	3	121		103







Bennett College

Greensboro, N. C.

*A COLLEGE WHICH HAS HONORED THE NORTH
CAROLINA CONFERENCE THROUGH
ALL THE YEARS*

*A COLLEGE WHICH NORTH CAROLINA
CONFERENCE HONORS BY
GIVING ITS SUPPORT*

An
Outstanding College for
Girls of Discriminating Parents

For Information, Address

DAVID D. JONES, President Bennett College
GREENSBORO, N. C.

4
1
2



FEB 22 1937

NOV 5 1938

JAN 26 1939

MAY 7 '65

Div.S. 287.6 N873AC 62-77th
1920-1935
Methodist Episcopal Church. N.C.
Conference
Minutes

S

DENCO

FOR REFERENCE

Do Not Take From This Room

th

School of Religion

862153S



University Libraries