

2876
M569si
v.58cop261

UNIVERSITY OF ILLINOIS
FEB 2
THE LIBRARY OF THE

UNIVERSITY OF ILLINOIS
JAN 5 1910



PRESIDENT'S OFFICE.

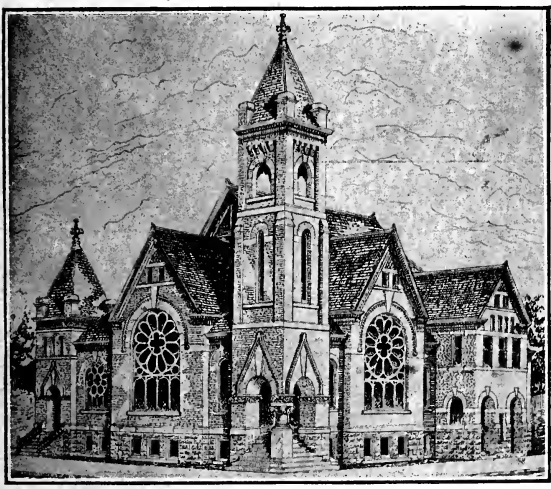
MINUTES

OF THE

FIFTY-EIGHTH SESSION

Southern Illinois Conference

Methodist Episcopal Church,



First 'M. E. Church, Centralia, Ill.,

September 22-27, 1909

HENRY SPELLMEYER, D.D., Bishop

J. C. KINISON, Secretary.

St. Louis, Mo.

PRICE 20 CENTS.

Herrin, Ill.



HINNERS ORGAN CO.

ESTABLISHED
1879

Pipe Organ Builders

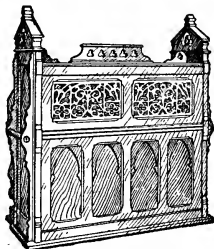
PEKIN,
ILLINOIS

We build organs of any required capacity or style, according to the most approved methods of construction. Our superior facilities and other advantages at our command enable us to furnish Pipe Organs of very highest quality at moderate prices.



Also large Manufacturers of **Reed Organs** for Chapel, School or Parlor which we sell direct at factory prices. Our new styles of Reed Organs for Churches, Schools and Homes are unsurpassed in sweetness and purity of tone and durable construction.

We make a specialty of Organs of large musical capacity adapted to church use.



Catalogue and Information sent to any address on application. Correspondence solicited.

HINNERS ORGAN CO., Pekin, Ills.

Pianos We will be pleased to send you our new Art Catalogue, representing 4 beautiful new styles of Pianos, which we are offering at very favorable prices.

Garrett Biblical Institute

THEOLOGICAL SEMINARY

EVANSTON, ILLINOIS

During the fifty-three years of its history, Garrett Biblical Institute has been true to its two-fold aim: To furnish the Church with thoroughly equipped Christian scholars and with scholarly and efficient pastors who shall, by their persuasive speech and pastoral skill, lead many to Christ. Unusual advantages offered earnest men. Tuition and room-rent free. On the same campus with Northwestern University. Students of the Institute permitted to take work in the College of Liberal Arts without additional expense.

For information, address

Concerning Scholarships, address

F. C. EISELEN, Registrar. C. J. LITTLE, President.

The new School Year begins Wednesday, Sept. 29th, 1909

1828 ————— 1909

McKendree College

Lebanon, Illinois

McKENDREE COLLEGE, founded in 1828, with College espousals from its beginning, is the oldest institution for higher education in the State of Illinois.

COURSES OF STUDY.—The Classical and Scientific Courses take even rank with the best of our American Colleges. The Music Department (Vocal and Instrumental) offers the best advantages.

FACULTY.—An able faculty, of fourteen members, give their undivided attention to the students in their respective departments.

ATHLETICS.—A new Gymnasium, 40x80 feet, is well equipped, and is in charge of an accomplished and experienced Director who gives his attention to Physical Culture on a thoroughly scientific basis.

Football and Intercollegiate Games are interdicted.

Special advantages will be found in the well-equipped Laboratory, the Museum, the Libraries, the Reading Rooms—where the leading magazines and newspapers are provided—and the three superior Literary Societies connected with the institution. There are also flourishing organizations of the Y. M. C. A. and Y. W. C. A.

LEBANON, the seat of the college, is a healthful and handsome inland city, 21 miles east of St. Louis, with which latter city it is connected by both steam and trolley lines.

Both Sexes Admitted to All Departments.

TUITION.—Collegiate and Academic Departments, \$15.00 per term. Private Board, everything furnished, \$3.75 to \$4.50 per week. Some students board in clubs at a total cost of \$2.50 to \$2.75 per week.

FALL TERM OPENS SEPTEMBER 20, 1909.

For further information, address

President JOHN F. HARMON,

LEBANON, ILLINOIS.



Bullard & Bullard,

ARCHITECTS

318 Unity Building,

Springfield, Illinois.

ARE SPECIALISTS IN CHURCH BUILDING

**Work Done in Best Gothic, Romanesque and
Classic Styles. Beauty and Utility Combined.**

WRITE US IF YOU INTEND TO BUILD.

Church Memorial Windows.



Our Work can be seen in the following Methodist Churches and we refer you to the Pastors of same:

Granite City (Niedringhaus Memorial.)
Alton (German M. E.)
Godfrey. Collinsville.
Lebanon. Harrisburg.
McLeansboro.
Pinckneyville.
Robinson. Centralia.
Decatur (Grace.)
Springfield (Laurel.)
Urbana (Trinity.)
Assumption. Macon.
Oconee. Rosemond.
Jacksonville
(Centenary.)
Wrights. Kane.
Niantic. Riverton.

Send for our Illustrated Catalogue and Inquiry Sheet.

JACOBY ART GLASS Co. 2700 St. Vincent Ave. ST. LOUIS, MO.

TO OUR PATRONS.

THE Secretaries are greatly aided in meeting the expenses of the publication of the Minutes by the Advertisers, and we assure you that you confer a favor on us by giving us your liberal support. **THIS OFFICIAL JOURNAL OF THE SOUTHERN ILLINOIS CONFERENCE** of the Methodist Episcopal Church circulates among thousands of Ministers, Church Officers and best families in Illinois and in almost every City and Village within our boundary. It is used as a reference all through the year. So an advertisement well displayed is continually seen. Our readers will advance their own interests by considering the advantages presented by our advertisers, for we only put in those we can recommend.

Any one desiring space in our Journal for 1910, may address

J. C. KINISON, - - - Secretary
HERRIN, ILL.

CHURCH INSURANCE

More Valuable Than Ever

is the service now being rendered by the

National Mutual Church Insurance Co. OF CHICAGO

Incorporated by Direction of the General Conference of 1896

Each month of 1908 showed a steady gain in business just as during previous years. Business now exceeds \$32,000,000. Losses paid over \$110,000. Profits go to policyholders. Advantageous rates and easy terms of payments. No assessments. Insures church property and pastors' property against fire, lightning and tornado. Those entitled to share in the benefits of this system should get full particulars.

BOARD OF DIRECTORS:

James B. Hobbs,
H. H. C. Miller,
H. C. Jennings, D. D.
P. H. Swift, D. D.
G. B. Johnson,
Nels E. Simonsen, D. D.
Chas. E. Mueller,

Henry P. Magill,
Thomas B. Morton,
Bishop J. F. Berry,
H. A. Goodrich,
Chas. M. Phillips,
Sampson Rogers,
N. M. Jones,

Frank L. Hart, D. D.

James B. Hobbs, President

H. A. Goodrich, Vice-President

N. M. Jones, Treasurer

Write for particulars to

HENRY P. MAGILL, Sec'y and Mgr.

184 LaSalle Street.

CHICAGO, ILL.



CORTRIGHT METAL SHINGLES

LAST
AS LONG
AS THE
BUILDING ITSELF

In some cases they last longer. They never need repairs. They're fire-proof, storm-proof. They reduce the cost of insurance, and they're easy to lay. They preserve the building too, by keeping out dampness: so if you want a thoroughly cozy home in winter, and a cool house in summer, you can't do better than see that Cortright Shingles are used for the covering.

Write for our three free books, showing all styles of Cortright Shingles as used all over the country.

Cortright Metal Roofing Co.
PHILADELPHIA AND CHICAGO.

The Western Methodist Book Concern

A LITTLE TALK

From the
Publishing Agents



THE MINUTES of your Conference are always important, being, as they are, the continuous history of your Conference life and work. These Minutes represent the crystallizing of the activities of your Conference for one year. These activities are built around certain principles, one of which is loyalty to your denominational life and work.

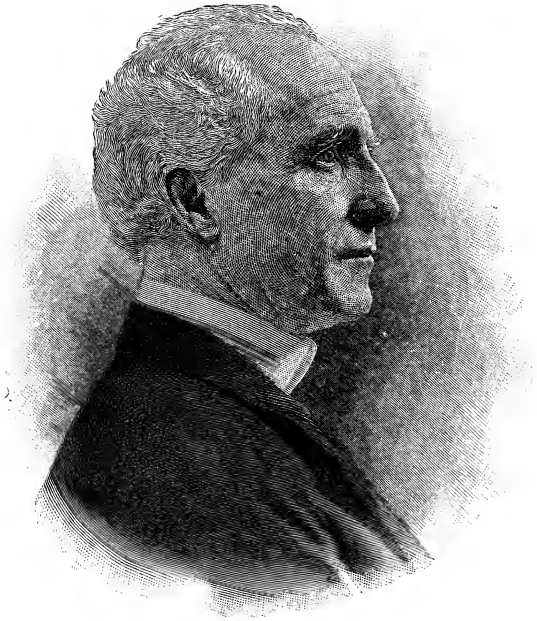
The Methodist machine, by which Methodist work is done, is in many respects the most remarkable thing of its kind in the world. One of its greatest arms of power is the Methodist Book Concern. It lives to serve the Church. It publishes the best books, and the widest variety of books for all the different classes which make up your home. There is no equal to this Publishing House in this country. It has a system of weekly Advocates covering the country. One of them serves your particular part of the country. It is the best medium of communication between you and the Church at large; it has the most inspiring news of the Kingdom, and the best methods are outlined for the bringing of the Kingdom. You ought to have the Advocate in your home. The cost is nothing compared with its value. The Book Concern publishes the finest, completest, strongest system of Sunday-school literature to be found in the world, and it is constantly being improved. The Publishing Agents will be glad to send samples liberally to any school inquiring; samples of Advocates without cost, either to preachers or laymen; catalogues of books and other publications always free.

There is another reason: the profits from these sales do not go into any man's private purse, they are gladly turned over each year to the deserving veterans of the Church. In twenty-five years these payments to needy superannuates and other claimants have amounted to millions of dollars. It is the most splendid thought to-day in the business world—crystallizing the annual profits into comforts for the deserving.

Consider first your duty, then consider your opportunity, and then consider your privilege, and try and get some comfort out of patronizing the Book Concern for this coming year because you shall give it more patronage. Always write to and order from your nearest Depository.

Respectfully,

Jennings & Graham



BISHOP HENRY SPELLMEYER, D. D.

LIBRARY OF THE
FEB 2 1935
SOUTHERN ILLINOIS

MINUTES

OF THE

FIFTY-EIGHTH SESSION

OF THE

Southern Illinois Annual
Conference

OF THE

Methodist Episcopal Church

HELD AT

CENTRALIA, ILLINOIS,

September 22-27, 1909

Published by Order of the Conference as the Official Journal,

by

J. C. KINISON, Herrin, Ill., and C. B. WHITESIDE, St. Elmo, Ill.

STANDING RULES OF CONFERENCE.

I. When any member of the Conference intends to object to the passage of the character of any other member, he shall hand the name of such member to the President, who shall pass the name by and direct the case to be investigated.

II. When any one of our members is called from earth, it shall be the duty of the nearest pastor or District Superintendent of the district to notify all the preachers in the district of such death, and of the time set for the funeral services.

III. At each session of Conference a publisher shall be elected to publish the minutes of the next session, who shall be authorized to make arrangements and enter into a contract for the publication in advance of the session.

IV. The District Superintendent of the district, and the preacher in charge of the station where the Conference is to be held, together with the presidents of the several Conference societies, are instructed to arrange the program of religious exercises, and, if practicable, secure their publication in the *Central Christian Advocate*.

V. The Board of Stewards shall consist of six members, each of whom shall serve three years—two being appointed at each session of the Conference. The Board shall organize by appointing a president, secretary and treasurer, whose names shall be published, and who shall serve one year.

VI. When the names of candidates for admission, on trial or for orders are called, they shall, if present, be called forward and introduced to the Conference.

VII. All candidates for recognition of orders shall, unless excused by vote of the Conference, be examined in the same manner as candidates for ordination, and the Committee on Conference Relation shall inquire into the character and fitness for the traveling connection of each candidate for admission on trial, for admission into full connection, or for readmission into the Conference, and all persons desiring a change of relation or any special appointment.

VIII. There shall be a meeting of the Statistical Secretaries with the Conference Treasurer at 8 o'clock on Saturday morning, for the purpose of comparing the money reported in the statistical tables.

IX. When a member of the annual Conference dies, the Con-

287.6

MS692i

v. 58

copy 2

ference shall provide a monument for him at a cost of not less than seventy-five dollars. The Conference to elect annually a custodian of Monument Fund, who shall apportion the amount necessary to this fund to the several charges on the basis of the amount paid by the charge for pastoral support the previous year. The pastor to report this under the head of other collections. The publisher of the minutes will reserve a column in the statistical tables for this report.

X. Each District Superintendent, at the close of his term, shall prepare a report of his district, not to exceed one thousand words, for publication in the minutes.

XI. The Stewards are authorized to take annually from the pro rata due the claimants from the book concern, a sum according to their discretion, not to exceed ten per cent of their indebtedness to the book concern, until it shall be paid in full.

XII. All reports of committees and resolutions shall be handed to the Secretary in duplicate.

XIII. No person shall have his orders recognized who comes from a church that requires a lower standard of literary qualification than the Methodist Episcopal Church, without passing an examination with us.

XIV. It will require a two-thirds vote of the members present and voting, to admit any candidate on trial who is over 35 years of age.

XV. It shall require two-thirds of those present and voting to change or suspend any of these rules.

XVI. All charges entertaining the Annual Conference shall provide lodging and breakfast only, leaving the attendants to provide for the midday and evening meals. Provided this does not apply to superannuated members, their wives, the widows of deceased ministers, deaconesses and guests officially invited, who shall have full entertainment. The Committee on Entertainment shall see that sufficient and wholesome meals shall be provided at reasonable rates.

DISTRIBUTION OF MINUTES.

Each pastor receiving \$1,000 or above shall receive 15 copies of minutes and pay \$2. Those receiving \$700 and less than \$1,000 shall receive 13 copies and pay \$1.75 each. The pastors receiving \$500 and less than \$700 shall have 11 copies and pay \$1.50 each. Those receiving less than \$500 shall have 8 copies and pay \$1 each. The District Superintendents shall have 15 copies and pay \$2 each.

OFFICERS OF THE CONFERENCE.

PRESIDENT.....BISHOP HENRY SPELLMEYER.

SECRETARY.

J. C. Kinison.....P. O. Herrin, Ill.

ASSISTANT SECRETARIES.

C. B. Whiteside, Robt. Morris, Z. J. Farmer.

STATISTICAL SECRETARY.

L. W. Porter.....P. O. Newton, Ill.

ASSISTANT STATISTICAL SECRETARIES.

F. O. Wilson,

O. F. Culver,

V. W. Thrall,

G. R. Goodman,

W. L. Rhein,

J. S. Hall,

G. H. Hall,

Gordon Waggoner,

Fay Marriott.

TREASURER.

P. R. Glotfelty.....P. O. Farina Ill.

ASSISTANT TREASURERS.

W. W. Edwards,

S. H. Hoar,

C. L. Peterson,

W. L. Terhune,

L. S. McKown,

W. H. Whitlock.

DISTRICT SUPERINTENDENTS.

Alton District—F. H. Knight.

Lebanon District—Lawrence Smith.

Mt. Carmel District—J. S. Cummins.

Mt. Vernon District—J. A. Taylor.

Olney District—S. A. D. Rogers.

Vandalia District—C. A. Beckett.

BOARD OF TRUSTEES.

First Year—B. A. Hoar, F. O. Wilson.

Second Year—G. E. McCammon, C. C. Hall.

Third Year—O. H. Clark, President ;

M. B. Baker, Secretary.

STANDING COMMITTEES.

EDUCATION AND FREEDMEN'S AID—Alton District, F. H. Knight; Lebanon District, C. H. Hoffmire; Mt. Carmel District, C. H. Spragg; Mt. Vernon District, A. G. Proctor; Olney District, O. L. Markman; Vandalia District, F. M. James.

SUNDAY SCHOOLS—Lebanon District, N. B. Cooksey; Mt. Carmel District, F. M. Latham; Mt. Vernon District, A. B. Campbell; Olney District, P. D. Griffin; Vandalia District, W. A. Allen; Alton District, Samuel Thero.

EDUCATION—Mt. Carmel District, Cameron Harmon; Mt. Vernon District, J. G. Tucker; Olney District, Robert Morris; Vandalia District, N. Crow; Alton District, C. C. Hall; Lebanon District, G. E. McCammon.

BOARD OF HOME MISSIONS AND CHURCH EXTENSION—Mt. Vernon District, G. L. Schaeffer; Olney District, F. M. Van Treese; Vandalia District, Elmer Wilton; Alton District, R. P. Hammons; Lebanon District, J. W. Smith; Mt. Carmel District, E. L. Loller.

SABBATH OBSERVANCE—Olney District, W. L. Jones; Vandalia District, D. T. Harris; Alton District, F. O. Wilson; Lebanon District, J. E. McCracken; Mt. Carmel District, S. S. Smith; Mt. Vernon, S. A. Mathews.

CONFERENCE RELATIONS—Vandalia District, J. A. Taylor; Alton District, J. H. Jones; Lebanon District, Z. J. Farmer; Mt. Carmel District, J. W. Cummins; Mt. Vernon District, Ressho Robertson; Olney District, J. W. Flint.

WOMAN'S HOME MISSIONARY SOCIETY—Alton District, J. W. Britton; Lebanon District, J. D. Shadrick; Mt. Carmel District, M. C. McKown; Mt. Vernon District, Geo. Fidler; Olney District, L. A. Porter; Vandalia District, R. M. Brown.

TEMPERANCE—Lebanon District, E. Barns; Mt. Carmel District, L. S. McKown; Mt. Vernon District, J. G. Dee; Olney District, R. D. Woodley; Vandalia District, F. W. Loy; Alton District, J. W. Webster.

PERIODICALS—Mt. Carmel District, D. W. Baker; Mt. Vernon District, Geo. Phelps; Olney District, G. R. Goodman; Vandalia District, L. R. Mauk; Alton District, T. DeWitte Peake; Lebanon District, P. A. Smith.

RESOLUTIONS—Mt. Vernon District, B. A. Hoar; Olney District, Theodore Cates; Vandalia District, J. G. Harmon; Alton District, P. R. Glotfelty; Lebanon District, W. A. Cross; Mt. Carmel District, B. F. Sheffer.

MEMOIRS—Olney District, L. W. Thrall; Vandalia District, W. T. Morris; Alton District, M. B. Baker; Lebanon District, V. W. Thrall; Mt. Carmel District, O. H. Clark; Mt. Vernon District, M. H. Loar.

CHURCH INSURANCE—Vandalia District, R. M. Brown; Alton District, W. G. Rector; Lebanon District, W. W. Kemper; Mt. Carmel District, G. H. Hall; Mt. Vernon District, W. L. Rhein; Olney District, W. I. Terhune.

BIBLE CAUSE—Alton District, W. T. Dunn; Lebanon District, M. B. VanLeer; Mt. Carmel District, Wm. Powis; Mt. Vernon District, M. C. Foltz; Olney District, A. Vandaveer; Vandalia District, J. S. Hall.

CLASS MEETINGS—Lebanon District, A. D. Lindsey; Mt. Carmel District, Jas. A. Landis; Mt. Vernon District, W. D. Margrave; Olney District, C. S. Tritt; Vandalia District, C. B. Whiteside; Alton District, J. W. Deweese.

WESLEY HOSPITAL—Mt. Carmel District, John E. Shafer; Mt. Vernon District, J. H. Davis; Olney District, O. F. Culver; Vandalia District, W. H. Whitlock; Alton District, W. W. Edwards; Lebanon District, G. Calvert.

DEACONESS WORK—Mt. Vernon District, C. D. Shumard; Olney District, J. W. Jackson; Vandalia District, W. T. Morris; Alton District, L. Cramp; Lebanon District, C. L. Peterson; Mt. Carmel District, C. E. Wood.

WESTERN BOOK ACCOUNTS—Mt. Carmel District, M. B. Holloway; Mt. Vernon District, Chas. Atchison; Olney District, C. W. Ivie; Vandalia District, J. B. Cummins; Alton District, C. W. Hall; Lebanon District, Albert Harris.

EPWORTH LEAGUE—Olney District, Harry Smoot; Vandalia District, J. B. Cummins; Alton District, J. B. Ravenscroft; Lebanon District, N. D. Sweeny; Mt. Carmel District, Cameron Harmon; Mt. Vernon District, C. W. Campbell.

DISTRICT CONFERENCE JOURNALS—Vandalia District, C. B. Whiteside; Alton District, J. W. Webster; Lebanon District, H. C. Brown; Mt. Carmel District, C. R. Phillips; Mt. Vernon District, Samuel Albrecht; Olney District, G. W. Hanks.

WOMAN'S FOREIGN MISSIONARY SOCIETY—Alton District, V. B. Sullins; Lebanon District, D. A. Keane; Mt. Carmel District, E. T. Carroll; Mt. Vernon District, Marion Jackson; Olney District, S. D. Berst; Vandalia District, W. H. Whitlock.

PASTORAL ADDRESS—Lebanon District, J. E. Nickerson; Mt. Carmel District, W. H. Pool; Mt. Vernon District, Fred L. Thomson; Olney District, Wm. Carson; Vandalia District, J. G. Harmon; Alton District, J. A. Scarritt.

OFFICERS OF CONFERENCE SOCIETIES

Missionary Society.

President—F. L. Thomson. Secretary—J. D. Shaddrick.
Vice-President—J. B. Ravenscroft. Treasurer—C. C. Hall.

Conference Board of Home Missions and Church Extension.

President—R. L. Strattan. Secretary—R. W. Lyon.
Vice-President—C. D. Shumard. Treasurer—J. Hill Williams.

Ex-Officio—District Superintendents.

Other Members—J. R. Allen, J. H. Maxey, F. P. Watson, B. A. Marshall, Robert Gray, Dr. W. C. Pace, Harvey Crozier, J. W. McNeil, N. Crow, C. Harmon, R. Robertson, J. S. Morrison, E. P. McFarland, L. W. Thrall.

Board of Education.

T. H. Herdman, President and Custodian.

Vice-President—F. H. Knight. Secretary—J. W. Flint.
J. A. Taylor, J. G. Dee, J. F. Harmon, J. M. Adams, J. W. Cummins,
G. E. McCammon.

Board of Stewards.

President—O. H. Clark. Secretary—T. H. Herdman.

Treasurer—F. L. Thomson.

To Serve Three Years—L. W. Thrall, F. L. Thomson.

To Serve Two Years—Wm. Carson and T. H. Herdman.

To Serve One Year—O. H. Clark and F. M. VanTreese.

Temperance Society.

President—J. W. Cummins. Vice-President—F. W. Loy.
Secretary—J. E. Nickerson.

Board of Conference Claimants Society.

President—J. M. Mitchell. Treasurer—Dr. E. W. Feigenbaum.
Secretary—J. C. Kinison.

F. M. VanTreese, V. W. Thrall, J. G. Harmon, C. D. Kendall.

SPECIAL APPOINTMENTS.

To Preach the Missionary Sermon—C. C. Hall; Alternate, Robert Morris.

District Missionary Secretaries—Alton, F. O. Wilson; Lebanon, N. D. Sweeny; Mt. Carmel, Ressho Robertson; Mt. Vernon, J. G. Tucker; Olney, O. F. Culver; Vandalia, J. S. Hall.

Trier of Appeals—O. H. Clark, Ressho Robertson, C. B. Whiteside, L. W. Porter, A. D. Lindsey.

BOARD OF CHURCH LOCATION.

Alton District—B. C. Richardson, T. DeWitt Peake, Samuel Thero.

Lebanon District—N. B. Cooksey, C. L. Peterson, J. Seaman, Q. E. Vaughn.

Mt. Carmel District—Cameron Harmon, C. R. Phillips, H. H. Crozier, Jacob Seitz.

Mt. Vernon District—F. L. Thomson, Geo. Fidler, Loyd Campbell, S. E. Harwood.

Olney District—J. W. Flint, G. R. Goodman, George Westerman, T. F. Hoops.

Vandalia District—J. B. Cummins, H. N. Woodard, E. F. McFarland, J. S. Hall.

VISITORS TO EDUCATIONAL INSTITUTIONS.

McKendree College—C. C. Hall, S. A. D. Rogers, G. E. McCammon, N. Crow, J. S. Cummins, J. W. McNeill, T. H. Herdman, C. L. Peterson, J. G. Harmon; Alternates, Robt. Morris, W. H. Whitlock, Z. J. Farmer.

Garrett Biblical Institute—Nathaniel Crow.

Drew—J. G. Tucker.

Boston University—C. A. Beckett.

SPECIAL SERVICES.

- Monday, 7:30 P. M.**—Sermon by Rev. J. B. Ravenscroft.
- Tuesday, 4 P. M.**—Pentecostal Services, led by Rev. A. G. Proctor.
- Tuesday, 7:50 P. M.**—Anniversary of the Conference Temperance Society, addressed by Rev. J. K. Shields, State Superintendent Anti-Saloon League.
- Tuesday, 2 P. M.**—Anniversary of the Freedmen's Aid Society, Address by Dr. F. L. Thompson, of St. Louis.
- Wednesday, 4 P. M.**—Pentecostal Services, led by Dr. Harmon.
- Wednesday, 7:30 P. M.**—Board of Conference Claimants. Address by Dr. J. B. Hingley, Secretary of Board.
- Thursday, 2 P. M.**—Annual Missionary Sermon, by Rev. E. T. Carroll.
- Thursday, 4 P. M.**—Brotherhood and Pentecostal Meeting, led by Dr. J. F. Harmon.
- Thursday, 7:30 P. M.**—Anniversary of the Board of Home Missions and Church Extension. Address by Dr. Ward Platt, of Philadelphia.
- Friday, 2 P. M.**—Anniversary of the Woman's Home Missionary Society, addressed by Rev. Frank McAnnally, returned missionary from Porto Rico.
- Friday, 4 P. M.**—Pentecostal Services, led by Rev. J. F. Harmon.
- Friday, 7:30 P. M.**—Board of Sunday Schools, addressed by Dr. David Downey.
- Saturday, 2 P. M.**—McKendree College Hour, J. M. Mitchell presiding. Addresses by J. M. Mitchell, J. A. Patton, Revs. Rogers, Smith, Cummins, McNeill, Ford, Beckett, Bishop Spellmeyer and Dr. J. F. Harmon.
- Saturday, 3:20 P. M.**—Laymen's Meeting, addressed by Hon. J. A. Patten.
- Saturday, 4:20 P. M.**—Pentecostal Services, led by Dr. J. F. Harmon.
- Saturday, 7:30 P. M.**—Board Foreign Missions, addressed by Dr. F. B. Price, of the Bengal Conference.

Sunday, 9:30 A. M.—Conference Love Feast, led by Rev. S. P. Groves.

Sunday, 10:45 A. M.—Sermon by Bishop Henry Spellmeyer.

Sunday, 2 P. M.—Memorial Service, led by Dr. T. H. Herdman.

Sunday, 3 P. M.—Consecration of Deaconess and Ordination of Deacons and Elders.

Sunday, 7:30 P. M.—Epworth League Anniversary, addressed by Drs. Stone and Randall.

CHRONOLOGICAL ROLL OF THE SOUTHERN ILLINOIS CONFERENCE.

The names of the non-effective are in capitals; the number indicates the year of entering the traveling ministry.

- | | |
|--------------------------|------------------------|
| 1853—J. A. SCARRITT. | 1881—N. Crow. |
| 1853—HIRAM SEARS. | 1881—J. G. Dee. |
| 1856—C. D. LINGENFELTER. | 1881—J. H. Ford. |
| 1856—DANIEL OGLESBY. | 1882—F. W. Loy. |
| 1857—R. W. LAUGHLIN. | 1883—R. D. Woodley. |
| 1857—V. D. LINGENFELTER. | 1883—W. T. Morris. |
| 1859—J. P. DEW. | 1884—J. H. BENNETT. |
| 1859—L. S. WALKER. | 1884—J. W. JACKSON. |
| 1861—O. H. Clark. | 1884—G. M. Webber. |
| 1862—S. P. GROVES. | 1884—W. R. Bradley. |
| 1867—T. H. Herdman. | 1884—J. H. Jones. |
| 1867—C. NASH. | 1884—A. W. VAN HOUTEN. |
| 1868—C. W. SABINE. | 1884—M. C. McKown. |
| 1868—F. L. Thompson. | 1885—W. W. Edwards. |
| 1869—WM. McMORROW. | 1885—B. A. Hoar. |
| 1869—WM. TILROE. | 1885—J. W. Britton. |
| 1869—J. B. Ravenscroft. | 1886—C. W. Campbell. |
| 1869—F. M. VanTreese. | 1886—J. T. HUFFMAN. |
| 1870—J. J. BOYER. | 1886—J. C. ORR. |
| 1870—D. A. PERRIN. | 1887—C. A. Beckett. |
| 1872—T. DeWitt Peake. | 1887—J. E. Nickerson. |
| 1873—E. Barnes. | 1887—Albert Harris. |
| 1873—C. B. BESSE. | 1887—H. L. STEVES. |
| 1873—J. P. YUNGLING. | 1888—Greenlee Calvert. |
| 1874—W. A. Cross. | 1888—J. G. Harmon. |
| 1874—L. W. Thrall. | 1888—J. F. Harmon. |
| 1875—G. M. WHITZELL. | 1888—ALBERT VANDAVEER |
| 1877—N. B. Cooksey. | 1888—J. M. MULVANEY. |
| 1877—J. W. Flint. | 1889—A. J. DEWHIRST. |
| 1877—W. H. Gannaway. | 1889—J. T. MURKIN. |
| 1878—G. A. SEED. | 1889—G. L. Schaefer. |
| 1878—J. W. McNeill. | 1889—ADAM YINGST. |
| 1879—J. L. CUNNINGHAM. | 1890—C. D. Shumard. |
| 1880—William Powis. | 1890—W. KIESLING. |
| 1880—M. H. EWERS. | 1890—M. B. Baker. |
| 1881—L. Cramp. | 1890—Z. J. Farmer. |

- 1891—D. T. Harris.
1891—J. E. BURKE.
1891—Wm. Carson.
1891—C. E. BOVARD.
1891—W. J. Hopper.
1891—Charles Atchison.
1891—J. C. Kinison.
1892—Samuel Albrecht.
1892—F. H. Knight.
1892—W. H. Poole.
1892—Lawrence Smith.
1892—J. A. Taylor.
1892—J. W. TENNYSON.
1892—D. W. Baker.
1893—J. B. Cummins.
1893—H. O. HISER.
1893—L. C. WILKIN.
1893—G. E. McCammon.
1894—Ressho Robertson.
1894—W. T. Dunn.
1894—W. C. Walton.
1894—Samuel Thero.
1894—J. W. Deweese.
1895—J. M. Adams.
1895—B. F. Sheffer.
1895—Theodore Cates.
1895—O. F. Culver.
1895—J. S. Cummins.
1895—J. W. Cummins.
1895—L. W. Porter.
1895—S. S. Smith.
1895—N. D. Sweeney.
1895—J. G. Tucker.
1896—P. C. Carlin.
1896—C. C. Hall.
1896—W. L. Jones.
1896—M. H. Loar.
1896—W. D. Margarves.
1896—J. E. McCracken.
1896—J. W. Webster.
1897—C. B. Whiteside.
1897—C. H. Spragg.
1898—H. L. MERRICK.
1898—W. L. Rhein.
1898—P. A. Smith.
1898—S. A. D. Rogers.
1899—J. H. Davis.
1899—A. G. Proctor.
1899—J. S. Hall.
1899—G. R. Hall.
1900—C. S. Tritt.
1900—Marion Jackson.
1900—G. R. Goodman.
1900—A. B. Campbell.
1900—L. R. Mauk.
1902—G. W. Hanks.
1902—C. E. Hoon.
1902—F. M. James.
1902—Robert Morris.
1902—J. D. Shaddrick.
1903—P. R. Glotfelty.
1903—W. H. Whitlock.
1903—E. L. Lollar.
1904—C. A. Sullivan.
1904—V. W. Thrall.
1904—J. W. Smith.
1904—W. G. Rector.
1904—J. E. Shafer.
1904—Geo. Fidler.
1904—M. B. Holloway.
1904—O. L. Markman.
1904—L. S. McKown.
1904—C. L. Peterson.
1904—C. R. Phillips.
1904—C. E. Leitzeli.
1904—F. O. Wilson.
1905—E. T. Carroll.
1905—Cameron Harmon.
1905—H. W. Smoot.
1905—R. M. Brown.
1905—W. I. Terhune.
1905—M. B. Van Leer.
1906—W. W. Kemper.
1906—J. L. Rentfro.

1906—J. S. Ellis.	1908—Chas. H. Hoffmire.
1906—M. C. Foltz.	1908—George H. Hall.
1907—C. W. Ivie.	1908—Rudolph N. Jones.
1907—S. H. Hoar.	1908—James A. Landis
1907—T. E. Hoon.	1908—Pearl D. Griffin.
1907—V. B. Sullens.	1909—Virgil N. Gould.
1907—I. W. Ellis.	1909—Harold Thrall.
1907—Fred N. Aten.	1909—W. Huntzberry.
1907—Elmer Wilton.	1909—W. D. Richardson.
1908—George A. Phelps.	1909—P. H. Hearn.
1908—Samuel A. Matthews.	1909—Geo. A. Dunn.
1908—William C. Harms.	1909—I. G. Flick.
1908—Harry C. Brown.	1909—F. C. Brown.
1908—Gordon Waggoner.	1909—Albert R. Ransom.
1908—Samuel D. Berst.	1909—Fay Marriott.
	1909—C. W. Hall.

PROBATIONERS.

1905—C. H. Thrall.	1909—Earl W. Barrett.
1906—C. M. Duncan.	1909—Rollin E. Bethards.
1907—L. M. Leyerle.	1909—Wm. E. Busch.
1908—Orval E. Connett.	1909—Guy Dewhirst.
1908—Wm. O. Finks.	1909—Richard O. Clements.
1908—Zeno L. Petty.	1909—George W. Edwards.
1908—Walter M. Brown.	1909—Waclav F. Fransee.
1908—Daniel D. Collins.	1909—Walter J. Fahnestock.
1908—Geo. C. Streubing.	1909—Samuel L. Ford.
1908—Jno. F. Glotfelty.	1909—Nathan S. Lanter.
1908—Oren L. Clapper.	1909—John W. Mahoney.
1908—Maurice G. Buchanan.	1909—Ollie O. Maxfield.
1908—Richard D. Myers.	1909—Wm. H. McPherson.
1908—Robt. R. Howe.	1909—Harry E. McKnight.
1908—Thos. B. Sowers.	1909—Herman B. Shoaff.
1908—Allan S. Weiss.	1909—James E. Willey.
1908—Petko D. Vassileff.	1909—Edward G. Wininger.
1909—Oscar W. Atterbury.	1909—Chas. A. Modlin.
1909—Grover C. Albin.	

SUMMARY OF DISCIPLINARY QUESTIONS.

- 1.—Is this Annual Conference incorporated according to the requirements of the Discipline?

It is.

- 2.—Who have been received by transfer, and from what Conferences?
W. T. Cline, David A. Keane, C. B. Thomas, from North Nebraska Conference; Stewart K. Jewell, Northwest Nebraska Conference, studies third year; George O. Waggoner, probationer, first year, Kentucky Conference; C. E. Wood, Southwest Kansas Conference; F. M. Latham, South Kansas Conference; A. D. Lindsey, Arkansas Conference.

- 3.—Who have been readmitted?

None.

- 4.—Who have been received on credentials, and from what churches?
John A. Bell, an Elder from the United Brethren Church; Thos. J. Haney, a Deacon in the Free Baptist Church.

- 5.—Who have been received on trial?

- (a) In studies of first year.

Oscar W. Atterbury, Grover C. Albin, Earl W. Barritt, Rollin E. Berthards, Wm. E. Busch, Richard O. Clements, Geo. W. Edwards, Waclav F. Fransee, Walter J. Fahnestock, Samuel L. Ford, Nathan S. Lanter, John W. Mahoney, Ollie O. Maxfield, Wm. H. McPherson, Harry E. McKnight, Herman B. Shoaff, James E. Willey, Edward G. Winninger, Chas. A. Modlin.

- (b) In studies of third year.

Guy Dewhirst.

- 6.—Who have been continued on trial?

- (a) In studies of first year.

None.

- (b) In studies of second year.

Levi M. Leyerle, Orval E. Connett, William O. Finks, Zeno L. Petty, Walter M. Brown, Dan D. Collins, George C. Streubing, John F. Glotfelty, Oren L. Clapper, Maurice G. Buchanan, Richard C. Myers, Robt. R. Howe, Petko D. Vassileff, Allan S. Weiss, Thos. B. Sowers, Geo. O. Waggoner.

- (c) In studies of third year.
None.
- (d) In studies of fourth year.
Paul Barnhart, Chas. H. Thrall.
- 7.—Who have been discontinued?
Herbert Harris and C. W. Stafford, at their own request.
- 8.—Who have been admitted into full membership?
(a) Elected and ordained Deacons this year.
Harold L. Thrall, Virgil L. Gould, William D. Richardson, Geo. A. Dunn, Isaac G. Flick, Frank C. Brown, Albert R. Ransom, Fay Marriott, Chas. W. Hall, John L. Hardesty, Oren L. Clapper.
(b) Elected and ordained Deacons previously.
Wellington Huntsberry, Perleman H. Hearn.
- 9.—What members are in studies of third year?
(a) Admitted into full membership this year.
Thos. J. Haney.
(b) Admitted into full membership previously.
Geo. A. Phelps, S. A. Matthews, Jas. A. Landis, Rudolph N. Jones, Theodore E. Hoon, Ira W. Ellis, Fred N. Aten, John S. Ellis, Chas. M. Duncan.
- 10.—What members are in studies of fourth year?
Harry C. Brown, conditioned on one book; W. C. Harms, conditioned on one book; C. H. Hoffmire, conditioned on two books; Gordon Waggoner, Samuel D. Berst, Geo. H. Hall, Pearl D. Griffin.
- 11.—What members have completed the Conference course of study?
(a) Elected and ordained Elders this year.
Van Buren Sullens, Silas H. Hoar, Elmer Wilton, Chas. W. Ivie, David A. Keane.
(b) Elected and ordained Elders previously.
None.
- 12.—What others have been elected and ordained Deacons?
(a) As local preachers.
Chester Shurtliff, Pierre De Lain, T. J. Overstreet, Claude Evans.
(b) Under missionary rule.
Waclav F. Fransee.

- (c) Under seminary rule.
Guy Dewhirst, Oren L. Clapper.
- 13.—What others have been elected and ordained elders?
(a) As local Deacons.
Wm. M. Ellagood.
(b) Under missionary rule.
None.
(c) Under seminary rule.
None.
- 14.—Was the character of each preacher examined?
It was.
- 15.—Who have been transferred, and to what Conferences?
Halleck Carlin, to the Illinois Conference; R. P. Hammons, to North Nebraska Conference; M. L. Cole, to the Arkansas Conference; J. Y. Reid, to the Arkansas Conference; W. A. Allen, to the Illinois Conference; Douglas Shouse, to the Illinois Conference; John L. Hardesty, to the Illinois Conference.
- 16.—Who has died?
F. W. Grupe.
- 17.—Who have been located at their own request.
None.
- 18.—Who have been located?
None.
- 19.—Who have withdrawn?
None.
- 20.—Who have been permitted to withdraw under charges or complaints?
None.
- 21.—Who have been expelled?
None.
- 22.—What other personal notation should be made?
(a) Those whose orders, as Deacons or Elders, have been recognized without admission to the Annual Conference.
Owen M. Snyder, an Elder from the Congregational Church, recognized as an Elder; Perry Center, a Deacon from the Missionary Baptist Church, recognized as a Deacon; Jas. M. Gordon, an

Elder from the M. E. Church, South, recognized as an Elder; Lacy M. Midyett, a Deacon in the M. E. Church, South, recognized as a Deacon.

- 23.—Who are the supernumerary preachers?
H. O. Hiser, L. C. Wilkin, M. H. Ewers, C. E. Bovard, Willard Kiesling, J. T. Huffman, P. C. Carlin, F. M. Latham.
- 24.—Who are the superannuated preachers?
Adam Yingst, S. P. Groves, J. C. Orr, J. J. Boyer, J. T. Murkin, J. H. Bennett, A. W. Van Houten, J. A. Scarritt, J. L. Cunningham, R. W. Laughlin, C. D. Lingenfelter, V. D. Lingenfelter, Wm. McMorro, J. M. Mulvaney, C. Nash, Daniel Oglesby, D. A. Perrine, J. W. Tennyson, Hiram Sears, Wm. Tilroe, L. S. Walker, G. M. Whitzell, J. P. Yungling, J. P. Drew, A. J. Dewhirst, J. E. Burke, C. B. Besse, G. A. Seed, C. W. Sabine, H. L. Merrick, H. L. Steves, J. W. Jackson, Albert Vandaveer.
- 25.—Who are the triers of appeals?
L. W. Porter, C. B. Whiteside, Ressho Robertson, O. H. Clark, A. D. Lindsey.
- 26.—What is the statistical report for this year?
See statistical report.
- 27.—What is the aggregate of the benevolent collections ordered by the General Conference, as reported by the Conference Treasurer?
\$33,004.
- 28.—What are the claims on the Conference Fund?
\$7,678.
- 29.—What has been received on these claims, and how has it been applied?
\$7,106—See Steward's report.
- 30.—What is the amount of the five per cent collections for the Conference claimants' connectional fund paid by the Treasurer to the Board of Conference Claimants?
\$275.
- 32.—Where shall the next Conference be held?
Olney, Ill.

CONFERENCE APPOINTMENTS.

ALTON DISTRICT.

1—F. H. Knight, District Superintendent. Postoffice, Edwardsville, Ill.

<p>Alton— First Church, 1.. ..W. T. Cline, E Washington Street. Batchtown, 2.....L. Cramp, E Bethalto, 3....T. B. Sowers, P Brighton, 1.. ..J. B. Ravenscroft, E Bunker Hill, 1..W. G. Rector, E Coffeen, 1.....C. A. Modlin, P Donnelson, 5....W. T. Dunn, E Edwardsville, 1.. ..J. W. McNeill, E Elsah, 2.....F. N. Aten, D Gillespie, 5....Samuel Thero, E Glen Carbon, 1..Chas. Stokes, S Grafton, 1.. ..Edmund Barnes, E Granite City— Niedringhaus Memorial, 1.. ..W. H. Pool, E Dewey Ave., 2..C. W. Hall, D Bulgarian Mission, 2.. ..P. D. Vassileff, P</p>	<p>Hamburg, 1.....C. W. Moorman Herrick, 2.....K. Hollingshead Jerseyville, 3....J. H. Jones, E Kane, 1.....P. A. Smith, E Litchfield— First Church, 2.. ..T. Dewitt Peake, E Litchfield Circuit, 2.. ..J. M. Gordan, S Madison, 2...L. M. Birkhead, S Medora, 2.....V. B. Sullens, E Mount Olive, 2..J. W. Britton, E New Douglas, 1.. ..Samuel A. Matthews, D Piasa, 1.....J. W. Mahoney, P Plainview, 3...G. M. Webber, E Ramsey, 2....J. W. Deweese, E Shipman, 1...W. W. Edwards, E Staunton, 1....F. O. Wilson, E Upper Alton, 3..M. B. Baker, E Venice, 1....Allan S. Weiss, P Wood River, 1....Silas Rees, S</p>
--	---

LEBANON DISTRICT.

3—Lawrence Smith, Dist. Superintendent. Postoffice, Belleville, Ill.

<p>Ashley, 2.....J. W. Smith, E Beaucoup, 1.. ..Wm. M. Ellagood, S Belleville— First Church, 2.. ..A. D. Lindsey, E Epworth, 1.. ..M. D. Van Leer, E Beckemeyer, 1.. ..Grover C. Albin, P Breese, 1.....Ben Andrews, S Beaver Creek, 1..Geo. H. Hall, D</p>	<p>Freeburg, 3.. ..Geo. C. Streubing, P Greenville, 1....C. E. Wood, E Hagerstown— Huey, 3.....W. W. Kemper, E Lebanon, 3....V. W. Thrall, E Marissa, 1....C. L. Peterson, E Mulberry Grove, 5.. ..J. E. McCracken, E Nashville, 2...N. B. Cooksey, E New Baden, 1.. ..Richard C. Myers, P O'Fallon, 2..Harry C. Brown, D</p>
--	---

Carlyle, 1..W. H. Gannaway, E	Okawville, 1..
Collinsville, 5...Z. J. Farmer, E	..Rudolph N. Jones, D
Coulterville, 1..Albert Harris, E	Pocahontas, 1..O. M. Snider, S
	Renault, 1..
East St. Louis—	..J. A. Landis & I. W. Ellis, D
Alta Sita, 1..Wm. O. Finks, P	Shiloh, 1.....Geo. Edwards, S
Bond Avenue, 2..	Sparta, 1.....J. W. Webster, E
..D. A. Keane, E	St. Jacobs, 1..Frank C. Brown, D
Century, 1...N. D. Sweeny, E	Tilden, 2....J. E. Nickerson, E
First Church, 1..	Trenton, 2.....G. Calvert, E
..J. W. Cummins, E	Troy, 1.....W. A. Cross, E
Winstanly, 2..	Waterloo, 6.....J. B. House, S
..C. H. Hoffmire, D	P. O., East St. Louis, Ill., 19
Slavonic Mission. 2..	N Third st.
..Waclav F. Fransee, E	

MT. CARMEL DISTRICT.

5—J. S. Cummins, District Superintendent. Postoffice, Carmi, Ill.

Belknap, 1....Isaac G. Flick, D	Macedonia, 1....E. L. Lollar, E
Bellmont, 2...M. C. McKown, E	Maunie, 2.....G. A. Dunn, D
Big Prairie, 4...S. S. Smith, E	McLeansboro, 4..
Bloomfield, 2..	..Cameron Harmon, E
..Walter M. Brown, P	McLeansboro Circuit, 1..
Broughton, 1..G. W. Edwards, P	..Henry McPherson, P
Carmi, 1..F. M. Van Treese, E	Metropolis, 4...J. M. Adams, E
Carrier Mills, 1..	Metropolis Circuit, 1..
..Zeno L. Petty, P	..Chas. Prince, S
Crossville, 3...C. H. Spragg, E	Mill ShoalsTo be supplied
Dahlgren, 2...W. C. Harms, D	Mt. Carmel, 1..C. D. Shumard, E
Eddyville, 1..	New Burnside, 1..
..Orville E. Connett, P	..J. B. Whiteside, S
Eldorado, 4....C. R. Phillips, E	Norris City, 1..
Elizabethtown, 1..Wm. Powis, E	..Samuel D. Berst, D
Enfield, 2.....J. E. Shafer, E	Norris City Circuit, 1..
Equality, 4....D. W. Baker, E	..W. J. Hopper, E
Galatia, 2...O. W. Atterbury, P	Omaha, 1.....O. B. Kinsey, S
Golconda and Brookport, 1..	Reevesville, 1..
..C. B. Thomas, E	..John Scannahan, S
Grayville, 4....E. T. Carroll, E	Ridgeway, 2..M. B. Holloway, E
Harrisburg, 1..	Shawneetown, 4..
..Ressho Robertson E	..L. S. McKown, E
Joppa, 1....T. J. Overstreet, S	Vienna, 4.....O. H. Clark, E
Keensburg, 1..John Pressley, S	

MT. VERNON DISTRICT.

1—J. A. Taylor, District Superintendent. Postoffice, Carbondale, Ill.

Anna, 2.....	A. G. Proctor, E	Mt. Vernon—
Benton, 1.....	R. D. Woodyly, E	First Church, 1..
Cairo, 2.....	J. G. Dee, E	..G. E. McCammon, E
Carbondale—		Epworth Church, 2..
First Church, 2..		..W. L. Rhein, E
..J. G. Tucker, E		Trinity Church, 2..
Grace and Vergennes, 1..		..B. A. Hoar, E
..Thos. J. Haney, D		Circuit, 1..S. O. Sheridan, S
Cartersville, 4....	Geo. Fidler, E	Murphysboro, 2..M. H. Loar, E
Chester, 2....	G. L. Schaeffer, E	New Palestine and Ava, 1..
Corinth, 2....	A. B. Campbell, E	..J. C. Cox, S
Crab Orchard, 2..		Olive Branch, 2....J. A. Bell, E
..W. R. Hammons, S		Opdyke, 3.....S. H. Hoar, E
Creal Springs....	To be supplied	Pinckneyville, 5..J. H. Davis, E
Du Quoin, 1..J. D. Shaddrick, E		Sesser, 1....Chas. Atchison, E
Ewing, 1...John F. Glotfelty, P		Spring Garden, 1..T. J. Jones, S
Elkville, 2....	J. A. Kirkman, S	Steelville, 1..Samuel Albrecht, E
Frankfort, 1....	J. F. Brown, S	Salem Circuit, 1..S. T. Laird, S
Herrin, 3.....	J. C. Kinison, E	Tamaroa, 5....P. H. Hearn, D
Johnston City, 1..		Thebes and Elco, 2..
..C. W. Campbell E		..L. M. Leyerle, P
Jonesboro, 1..Marion Jackson, E		Ullin, 2.....Wm. E. Busch, P
Makanda, 1....	F. M. James, E	Villa Ridge and Mounds, 1..
Marion, 7....	F. L. Thomson, E	..W. R. Bradley, E
Mound City, 2..		Waltonville, 1..Geo. A. Phelps, D
..W. D. Margrave, E		Woodlawn, 2..T. L. Boswell, S

OLNEY DISTRICT.

5—S. A. D. Rogers, District Superintendent, Postoffice, Olney, Ill.

Albion, 1.....	W. L. Jones, E	Newton, 2.....	L. W. Porter, E
Allendale, 1...Guy Dewhirst, D		Noble, 1.....	Harold Thrall, D
Bone Gap, 2..G. R. Goodman, E		Olney, 3.....	Robert Morris, E
Bridgeport, 4..W. I. Terhune, E		Oblong, 1.....	M. C. Foltz, E
Browns, 1.....	B. F. Sheffer, E	Oblong Circuit, 1..	
Calhoun, 2....	Chas. W. Ivie, E	..G. W. Hanks, E	
Chauncey, 1..		Pinkstaff, 1..G. O. Waggoner, P	
..Richard O. Clements, P		Palestine, 5..O. L. Markman, E	
Claremont, 1..		Robinson, 1.....	J. H. Ford, E
..Chester Shurtleff, S		St. Francisville..	
Clay City, 1....	Jasper Bray, S	..W. Huntsberry, D	
Fairfield, 2..	Theodore Cates, E	Sumner, 3.....	O. F. Culver, E
Flat Rock, 1.....	C. S. Tritt, E	Sumner Circuit, 2..	
Flora, 7.....	L. W. Thrall, E	..Virgil Gould, D	

Golden Gate, 2.C. C. Cullison, S	West Liberty, 2..
Hutsonville, 1..	..Gordon Waggoner, D
..Albert R. Ransom, D	West Salem, 1..
Jeffersonville, 1..	..Pearl D. Griffin, D
..Nathan S. Lanter, P	Wheeler, 1....O. O. Maxfield, P
Lawrenceville, 2.J. W. Flint, E	Willow Hill, 1..
Mt. Erie, 2.....I. N. Johnson, S	..E. G. Winger, P
New Hebron....To be supplied	Yale, 1.....H. B. Shoaf, P

VANDALIA DISTRICT.

5—C. A. Beckett, District Superintendent. Postoffice, Centralia, Ill.

Alma, 1.....Fay Marriott, D	Kinmundy, 4.J. B. Cummins, E
Altamont, 3..W. H. Whitlock, E	Louisville, 2.....J. S. Hall, E
Avena, 1....M. G. Buchanan, P	Laclede, 2...Samuel L. Ford, P
Beecher City, 1..J. A. Hadley, S	Mason, 1..Stewart K. Jewell, D
Brownstown, 2..	Moccasin, 1...Elmer Wilton, E
..Oren L. Clapper, D	Odin and Sandoval, 3..
Central City, 2..	..L. T. Hininger, S
..Jas. E. Willey, P	Patoka, 1..Harry Culbertson, S
Centralia, 3.....N. Crow, E	Richview, 2.....L. R. Mauk, E
Cisne and Rinard, 1..	Sailor Springs, 3.R. M. Brown, E
..J. L. Bullock, S	St. Elmo, 4..C. B. Whiteside, E
Deiterich, 2..	Salcm, 2.....W. T. Morris, E
..Wm. D. Richardson, D	Shobonier, 1.Earl W. Barrett, P
Effingham, 3...J. G. Harmon, E	Vandalia, 1.....C. C. Hall, E
Farina, 1....P. R. Gtofelty, E	Vernon, 1...S. A. Cossaboon, S
Irvington, 2...Robt. R. Howe, P	Walnut Hill, 1.C. A. Sullivan, E
Iuka, 2.....R. E. Bethards, P	Watson, 1.....H. M. Long, S
Johnsonville, 2..	Wayne, 1.Wm. M. Fitzgerrell, S
..Pirre De Lain, S	Xenia, 3.....D. T. Harris, E

SPECIAL APPOINTMENTS.

John F. Harmon, President McKendree College, member Lebanon Quarterly Conference.

W. C. Walton, professor in McKendree College, member Lebanon Quarterly Conference.

T. H. Herdman, Conference Historian, member Lebanon Quarterly Conference.

C. H. Thrall, professor in Central Holiness University, Oska-loosa, Iowa, member Flora Quarterly Conference.

Paul Barnhart, Soudan Mission, Africa, member Centralia Quarterly Conference.

Wm. Carson, Field Secretary Conference Claimants' Society, member Olney Quarterly Conference.

F. W. Loy, District Superintendent Central Southern District, Anti-Saloon League, member Effingham Quarterly Conference.

C. E. Hoon, left without appointment to attend school, member Clay City Quarterly Conference.

J. S. Ellis, left without appointment to attend school, member West Liberty Quarterly Conference.

H. W. Smoot, left without appointment to attend school, member Oblong Circuit, Quarterly Conference.

C. E. Leitzell, left without appointment to attend school, member Sailor Springs Quarterly Conference.

G. R. Hall, left without appointment to attend school, member Bond Avenue (East St. Louis) Quarterly Conference.

C. M. Duncan, left without appointment to attend school, member Epworth Belleville Quarterly Conference.

T. E. Hoon, left without appointment to attend school, member Beaucoup Quarterly Conference.

H. E. McKnight, left without appointment to attend school, member Lebanon Quarterly Conference.

Walter J. Fahnestock, left without appointment to attend school, member Lebanon Quarterly Conference.

D. D. Collins, left without appointment to attend school, member Collinsville Quarterly Conference.

J. L. Rentfro, left without appointment to attend school, member Lebanon Quarterly Conference.

Journal

OF THE SOUTHERN ILLINOIS CONFERENCE.

FIRST DAY.

Centralia, Ill., Sept. 22, 1909.

The Southern Illinois Conference, Methodist Episcopal Church, convened in its fifty-eighth session in the Methodist Episcopal Church in Centralia, Illinois, Bishop Henry Spellmeyer presiding.

SACRAMENT—The Sacrament of the Lord's Supper was administered by Bishop Spellmeyer, assisted by Revs. J. A. Scarritt, C. Nash, J. B. Ravenscroft, C. A. Beckett and F. W. Loy.

ROLL CALL—At the request of the Bishop the Secretary of the last Conference called the roll and the following answered to their names:

W. A. Allen, Samuel Albrecht, Chas. Atchison, F. N. Aten, C. E. Bovard, M. B. Baker, D. W. Baker, E. Barnes, C. A. Beckett, W. R. Bradley, R. M. Brown, H. C. Brown, S. D. Berst, G. Calvert, P. C. Carlin, A. B. Campbell, C. W. Campbell, Wm. Carson, Theo. Cates, E. T. Carroll, W. A. Cross, N. B. Cooksey, N. Crow, O. T. Culver, J. B. Cummins, J. S. Cummins, J. W. Cummins, L. Cramp, J. W. Deweese, J. G. Dee, J. H. Davis, W. T. Dunn, Z. J. Farmer, Geo. Fidler, J. W. Flint, J. H. Ford, M. C. Foltz, W. H. Gannoway, G. R. Goodman, S. P. Groves, P. R. Glotfelty, P. D. Griffin, J. S. Hall, C. H. Hoffmire, G. H. Hall, W. C. Harms, R. P. Hammons, G. W. Hanks, J. F. Harmon, J. G. Harmon, Cameron Harmon, Albert Harris, D. T. Harris, T. H. Herdman, B. A. Hoar, S. H. Hoar, J. T. Huffman, C. W. vie, Marion Jackson, F. M. James, J. H. Jones, W. L. Jones, J. C. Kinison, F. H. Knight, C. D. Lingenfelter, M. H. Loar, F. W. Loy, E. L. Lollar, L. R. Mank, W. D. Margrave, G. E. McCammon, J. E. McCracken, M. C. McKown, L. S. McKown, J. W. McNeill, S. A. Matthews, W. T. Morris, Robt. Morris, C. Nash, J. E. Nickerson, T. D. Peake, C. L. Peterson, C. R. Phillips, W. H. Pool, A. G. Proctor, G. A. Phelps, Wm. Powis,

J. B. Ravenscroft, W. L. Rhein, Ressho Robertson, S. A. D. Rogers, W. G. Rector, J. A. Scarritt, G. A. Seed, J. D. Shaddrick, C. D. Shumard, L. Smith, P. A. Smith, J. W. Smith, J. E. Shafer, G. L. Schaeffer, C. H. Spragg, N. D. Sweeney, V. B. Sullens, B. F. Sheffer, J. A. Taylor, J. W. Tennyson, W. I. Terhune, F. L. Thompson, J. W. Thrall, V. W. Thrall, J. G. Tucker, A. Vandaveer, A. W. Van Houten, F. M. Van Treese, M. B. Van Leer, G. M. Webber, J. W. Webster, C. B. Whiteside, W. H. Whitlock, F. O. Wilson, R. D. Woodley, L. S. Walker, Gordon Waggoner.

Probationers.

O. E. Connett, Z. L. Petty, W. M. Brown, D. D. Collins, G. C. Streubing, J. F. Glotfelty, O. L. Clapper, M. G. Buchanan, T. B. Sowers, A. S. Weiss, P. G. Vassileff, L. M. Leyerle, V. N. Gould, Harroll Thrall, W. Huntsberry, W. D. Richardson, P. H. Hearn, G. A. Dunn, I. G. Flick, F. C. Brown, A. R. Ransom, Foy Marriott

SECRETARY—

On motion of J. W. McNeill, J. C. Kinison was re-elected Secretary and chose as his assistants C. B. Whiteside, Robt. Morris, Z. J. Farmer.

STATISTICAL SECRETARY—

L. W. Porter was nominated for Statistical Secretary by S. A. D. Rogers and by vote of Conference was re-elected. He chose as his assistants F. O. Wilson, V. W. Thrall, W. L. Rhein, O. F. Culver, G. R. Goodman, J. S. Hall, G. H. Hall, Gordon Waggoner, Fay Marriott.

TREASURER—

On motion of J. H. Ford, P. G. Glotfelty was re-elected Treasurer. He chose for his assistants C. L. Peterson, W. H. Whitlock, L. S. McKown, S. H. Hoar, W. I. Terhune, W. W. Edwards.

POSTMASTER—

On motion of F. W. Loy, F. M. James was elected Conference Postmaster.

PROGRAM—

On motion of J. F. Harmon the program was adopted as printed.

BAR OF CONFERENCE—

The main auditorium was fixed as the Bar of the Conference.

RULES OF CONFERENCE—

On motion of J. F. Harmon the rules of the previous session were adopted for this Conference.

OPENING AND CLOSING—

The opening was fixed at 8:30 a. m., the closing at 11:45 a. m.

STANDING COMMITTEES—

The standing committees were read by J. W. McNeill and adopted by the Conference. See standing committees.

NEWSPAPER REPORTERS—

J. G. Dee and J. W. Smith were elected as reporters for the Conference for the newspapers of the city.

WESLEY HOSPITAL—

Dr. M. W. Satterfield, Corresponding Secretary of Wesley Hospital of Chicago, was introduced and addressed the Conference.

ADDRESSES OF WELCOME—

Addresses of welcome were made by Mayor Frazier on behalf of the city, by Rev. Hazen on behalf of Baptist and Presbyterian churches, and Rev. Rosenborough on behalf of the Christian Church. To which Bishop Spellmeyer made response on behalf of the Conference.

CONFERENCE CLAIMANTS—

On motion of C. A. Beckett the Statistical Secretary and Treasurer were instructed to correct any irregularities or mistakes in reports of Conference claimants' funds.

SPECIAL COMMITTEES—

The following committee on Conference claimants' connec-

tional fund was nominated by J. W. McNeill and elected by the Conference: J. B. Ravenscroft, T. H. Herdman, M. C. McKown, F. L. Thomson, L. W. Thrall, J. G. Harmon.

DR. J. B. HINGLEY—

Dr. J. B. Hingley, Secretary of the Board of Conference Claimants of the Methodist Episcopal Church, was introduced and addressed the Conference.

DR. F. L. THOMPSON—

Dr. F. L. Thompson, of St. Louis, was introduced and addressed the Conference in the interest of Freedmen's Aid Society.

QUESTION XIV—

Question Fourteen was called and after passage of character, J. H. Ford, District Superintendent of Alton District, Laurence Smith, District Superintendent of Lebanon District, and J. S. Cummins, District Superintendent of Mt. Carmel District, read their reports.

CHURCH INSURANCE—

Rev. F. L. Hart, representing the Mutual Church Insurance Company, was introduced and addressed the Conference.

METHODIST REVIEW—

J. W. Webster was appointed to solicit subscriptions for the Methodist Review.

CONFERENCE CLAIMANTS—

The following resolution was presented by the Secretary and adopted by the Conference:

Resolved, That the Treasurer of the Annual Conference be authorized to receipt for the allowance made to the Conference by the Board of Conference Claimants, and also to send the five per cent for connectional distribution in accordance with paragraph 427, section 2, of the Discipline.

Bishop Spellmeyer addressed the Conference.

F. W. Loy was appointed by the Bishop to lead devotional services Thursday morning.

After announcements the Conference adjourned with benediction by Dr. J. B. Hingley.

SECOND DAY.

Thursday, Sept. 23, 1909.

DEVOTIONAL SERVICE—

Devotional services were conducted by F. W. Loy at 8:30 a. m.

CONFERENCE SESSION—

At 9 a. m. Bishop Spellmeyer called the Conference to order.

JOURNAL—

The Journal of yesterday's session was read and approved.

ABSENTEES—

The roll of absentees was called and the following answered to their names: J. W. Britton, W. A. Cross, W. W. Edwards, R. P. Hammons, H. O. Hiser, M. B. Holloway, Willard Kiesling, W. W. Kemper, V. D. Lingenfelter, J. A. Landis, O. L. Markman, L. W. Porter, C. W. Sabine, N. D. Sweeny, Samuel Thero, C. S. Tritt, Elmer Wilton, W. O. Finks, J. L. Hardesty, C. W. Hall.

O. H. CLARK—

On motion of J. F. Harmon the Secretary was ordered to send a letter of greeting and sympathy to O. H. Clark, who as far as we know has not missed a roll call in fifty years.

QUESTION XIV—

Question Fourteen was called, and after passage of his character J. W. McNeill, District Superintendent of Mt. Vernon, read his report.

PRESENT TO J. W. MCNEILL—

F. L. Thompson on behalf of the pastors of Mt. Vernon District, after appropriate and well chosen words, presented Rev. J. W. McNeill, District Superintendent, with a box of gold, to which Rev. McNeill made an appropriate response. J. G. Tucker presented to Bishop Spellmeyer a bouquet of flowers with a request that he present same to Mrs. J. W. McNeill on behalf of the pastors' wives of the district. After a splendid address by the Bishop, Mrs. McNeill came forward and received the bouquet amid great cheering by the Conference.

QUESTION XIV (Resumed)—

Question Fourteen was resumed, and after passage of character S. A. D. Rogers, District Superintendent of Olney District, and C. A. Beckett, District Superintendent of Vandalia District, read their reports.

PRESENT TO J. H. FORD—

J. B. Ravenscroft on behalf of the pastors of Alton District, in a few well chosen words, presented to J. H. Ford, District Superintendent, a purse of gold as a token of their respect and appreciation of his six years' work among them. Rev. Ford made an appropriate response.

QUESTION XIII—

Question Thirteen was then called. After passage of their characters the effective elders of Alton, Lebanon, Mt. Carmel, Mt. Vernon, Olney and Vandalia Districts reported their collections.

DR. WARD PLATT—

Dr. Ward Platt, representing the Board of Home Missions and Church Extension, was introduced and addressed the Conference.

DR. HORACE REED—

Dr. Horace Reed, Field Secretary of the Vigilant Society

of the State of Illinois, was introduced and addressed the Conference.

HOSPITAL AND HOME FOR OLD PEOPLE—

Dr. T. Dewitt Peake presented a proposition from Mrs. Carrie Holden, of Litchfield, in which she proposes to give her home and six lots in Litchfield, Illinois, valued at \$10,000, to the Methodist Episcopal Church for a hospital and home for old people.

On motion of F. M. Van Treese, a committee of five were appointed as a commission on same. The following committee was appointed: T. Dewitt Peake, V. W. Thrall, J. G. Tucker, F. M. Van Treese and W. T. Morris.

VIGILENCE SOCIETY—

J. F. Harmon presented a resolution in the relation to the Vigilence Society of Illinois, which was adopted. See Resolution.

OLD PEOPLE'S HOME—

J. E. McCracken, Secretary of the Board of Trustees of the Eleanor Smith Old People's Home of Smithsboro, Illinois, read a report, which was ordered published in the minutes.

DRAFTS FOR CONFERENCE CLAIMANTS—

The Bishop announced a draft of \$1,653 from the book concern, and \$25 from the chartered fund for Conference claimants, which was ordered to be turned over to Treasurer Conference Board of Stewards.

BOARD OF HOME MISSIONS AND CHURCH EXTENSION—

On motion of G. E. McCammon the persons whose names appear in the Conference minutes were elected as the Board of Home Missions and Church Extension for the ensuing year.

METHODIST DEACONESS ASSOCIATION—

Miss Alice M. Robinson, Field Secretary of the Methodist

Deaconess Association, was introduced and addressed the Conference.

GREETINGS—

On motion of J. H. Ford, the Secretary was ordered to send the greetings of the Conference to C. C. Hall, who was kept away from the Conference by a serious accident.

SECRETARY OF THE BOARD OF HOME MISSIONS—

The Secretary of the Board of Home Missions read his report.

ANTI-SALOON LEAGUE—

The Secretary read a resolution in reference to the organization of local societies auxiliary to the Anti-Saloon League, which was referred to the Committee on Temperance.

ORDER OF THE DAY—

On motion of Robt. Morris, the time to select a place for the next Conference was made 10 a. m. Friday.

CONFERENCE RELATIONS—

By request of their District Superintendents, J. W. Jackson, H. L. Stevens, J. T. Huffman and F. M. Latham were referred to the Committee on Conference Relations for change of relation.

Rev. C. Nash was appointed to lead the devotional services Friday morning.

After announcements were made the Conference adjourned with the benediction by J. A. Scarritt.

THIRD DAY.

Friday, Sept. 24, 1909.

DEVOTIONS—

The devotions were conducted by C. Nash at 8:30 a. m.

CONFERENCE BUSINESS—

9 a. m.—Bishop in the chair.

JOURNAL—

The minutes of Thursday's session were read and after corrections were approved.

CONFERENCE CLAIMANTS—

W. T. MORRIS presented a resolution in reference to distribution of Conference claimants' fund, which was adopted.

MINUTES—

On motion of J. C. Kinison the plan for distribution of minutes was fixed the same as last year.

J. M. ADAMS—

On motion of E. T. Carroll, the Secretary was instructed to send a letter of greetings and sympathy to J. M. Adams, who is sick of typhoid fever and unable to attend the Conference.

QUESTION XI—

Question Eleven was called. After passage of character, report of collections and registrar and representation by the District Superintendent, the following were dismissed from the course of study and elected to Elder's orders. Van B. Sul-lins, Silas H. Hoar, Elmer Wilton and Chas. W. Ivie.

QUESTION X—

Question Ten was called. After passage of character, report of their collections, report of Registrar and representation by their District Superintendents, the following were advanced to the studies of the fourth year: Samuel D. Berst, Gordon Waggoner; Wm. C. Harms on condition of reading two books and passing his examination on Land of Israel; Geo. H. Hall; Harry C. Brown, on condition of passing examination on Land of Israel; Chas. H. Hoffmeyer, passing examination on Psychology and History of Christian Church; Pearl D. Griffin.

QUESTION IX—

Question Nine was called. Geo. A. Phelps, Samuel A.

Mathews, James A. Landis, Rudolph N. Jones, Theodore E. Hoon, Ira W. Ellis, Fred N. Aten, John S. Ellis and Chas. M. Duncan were continued in the studies of the third year.

QUESTION VI—

Question Six was called. After passage of character, the following were continued on trial and advanced to the studies of the second year: Levi M. Leyerle, Orval E. Connett, Wm. O. Finks, Zeno L. Petty, Walter M. Brown, Daniel D. Collins, Maurice G. Buchanan, John F. Glotfelty, Richard C. Myers, Robt. R. Howe, Petko D. Vasseliff, Allan S. Weiss, Thos. B. Sowers, Geo. O. Waggoner, and Geo. C. Streubing on condition of presenting sermon.

Oren L. Clapper was admitted in full membership under provision of Paragraph 152 of the Discipline and advanced to class of third year.

QUESTION XXXII—

Question Thirty-two was called as the order of the day.

C. D. Shumard offered a resolution requiring that hereafter places asking for the Conference shall furnish full entertainment. After much discussion the resolution was adopted.

On motion of F. H. Knight the time for fixing the place for holding the next session was fixed at Monday, Sept. 27, at 10 a. m.

DR. C. B. SPENCER—

Dr. C. B. Spencer, editor of the Central Christian Advocate, was introduced and addressed the Conference.

DR. D. G. DOWNEY—

Dr. David G. Downey, Secretary of our Board of S. S., was introduced and addressed the Conference.

QUESTION VII—

Question Seven was called. Herbert S. Harris was discontinued at his own request.

QUESTION IX—

Question nine was called. The class of the second year was called as follows: Harold L. Thrall, Virgil N. Gould, Wellington Huntsberry, Wm. D. Richardson, Geo. A. Dunn, Isaac G. Flick, Frank C. Brown, Albert R. Ransom, Fay Marriott, Chas. W. Hall, John L. Hardesty, Oren L. Clapper.

The Bishop addressed the class and propounded the Disciplinary questions.

After report of Registrar, Committee on Conference Relations and Representation by the District Superintendents, the following were admitted into full connection and elected to Deacon's orders: Harold L. Thrall, Virgil N. Gould, Wm. D. Richardson, Geo. A. Dunn, Isaac G. Flick, Frank C. Brown, Albert R. Ransom, Fay Marriott, Chas. W. Hall, John L. Hardesty.

Wellington Huntsberry and Perlemen H. Hearn were admitted to full membership, having previously been ordained Deacons.

Oren L. Clapper was elected to Deacon's orders under the Seminary rule.

EPWORTH LEAGUE—

A communication from the State Epworth League Cabinet was presented by J. G. Tucker, which was referred to Committee on Epworth League.

ADJOURNMENT—

On motion of G. E. McCammon it was ordered that when we adjourn, we adjourn to meet at 8:30 a. m. Saturday and that the devotions be conducted by the Bishop.

EXCUSED—

J. T. Huffman was excused from further attendance on the Conference.

ANNOUNCEMENTS—

After announcements the benediction was pronounced by Dr. Downey.

FOURTH DAY.

Sept. 25, 1909.

DEVOTIONS—

Devotions were conducted by Bishop Spellmeyer at 8:30 a. m.

BUSINESS—

At 8:15 the Bishop called the Conference to order.

JOURNAL—

Minutes of Thursday's session read and approved.

QUESTION VI—

Question Six was called. Paul Barnhart and Chas. W. Thrall were continued on trial in studies of the fourth year.

QUESTION V—

Question Five was called and the following class were admitted on trial: After proper recommendation and representation, John W. Mahoney, Walter J. Fahnestock, Wm. H. McPherson, Oscar W. Atterbury, Geo. W. Edwards, Grover C. Albin, Nathan S. Lanter, Guy Dewhirst, Richard C. Clement, Earl W. Barrett, Herman B. Shoaff, Edward G. Wininger, Ollie O. Maxfield, Samuel L. Ford, Rolland E. Bethards, Jas. E. Willey, Waclav F. Fransee, Harry E. McKnight, Wm. E. Busch.

AUDITING COMMITTEE—

The Bishop appointed G. E. McCammon, J. A. Taylor and C. D. Shumard on Auditing Committee.

DR. FREDERICK M. STONE—

Frederick M. Stone, representing the American University, was introduced and addressed the Conference.

HOME MISSIONS AND CHURCH EXTENSION.

The following persons were added to the Committee on Home Missions and Church Extension: J. R. Allen, J. H. Maxey, F. P. Watson, B. A. Marshal, Robt. Gray, Dr. W. C. Pace, Harvey Crozier and J. W. McNeill.

QUESTION II—

Question Two was called and the following transfers into the Conference were announced:

W. T. Cline, from North Nebraska Conference.

G. O. Waggoner, Prob. in first year from Kentucky Conference.

C. E. Wood, Northwest Kansas Conference.

F. M. Latham, South Kansas Conference.

D. A. Keane, North Nebraska Conference, Deacon in studies in third year.

A. L. Lindsey, Arkansas Conference.

QUESTION XI—

Question Eleven was called.

David A. Keane, having completed the course of study, was elected to Elder's orders.

C. E. Wood, D. A. Keane and A. D. Lindsey were introduced to the Conference.

QUESTION XII—

Question Twelve was called. Guy Dewhirst and Owen L. Clapper were elected to Deacon's orders under Seminary rule.

Waclav F. Fransee was elected to Deacon's orders under the Missionary rule.

QUESTION IV—

Question Four was called. J. A. Bell, an Elder in the United Brethren Church, after answering the required ques-

tions, was received on credentials and recognized as an Elder.

Thos. J. Haney, a Deacon in the Free Baptist Church, after proper representation and answering the required questions was received on credentials and placed in the studies in third year.

QUESTION V—

Question Five was called. Chas. A. Modlin, a member of the M. E. Church, South, was received on trial and placed in studies of first year.

QUESTION XXII—

Question Twenty-two was called and the credentials of the following brethren were recognized:

Owen N. Snyder, an Elder from the Congregational Church.

Perry Center, a Deacon in the Missionary Baptist Church.

James M. Gordon, an Elder in the M. E. Church, South, and

Lacy M. Midyett, a Deacon in the M. E. Church, South.

Chester Shurtleff, Pierre De Lain, Thos. J. Overstreet and Claude Evans were elected to Deacon's orders.

Wm. M. Ellagood was elected to Elder's orders.

Miss Mary Blanche Kinison was recommended for consecration as Deaconess.

AFTER ANNOUNCEMENTS—

The benediction was pronounced by R. P. Hammons and the conference adjourned to 2 p. m.

F. M. Van Treese was appointed by the Bishop to preside in the afternoon session.

AFTERNOON.

The Conference met at 2 p. m. with F. M. Van Treese in the chair.

After a song J. A. Taylor led in prayer.

T. H. Herdman, Secretary of the Conference Board of Stewards, read his report, which was adopted.

McKENDREE COLLEGE HOUR—

Dr. Van Treese introduced Hon. J. M. Mitchell, President of the Joint Board of the College, who addressed the Conference on the subject, "Some of McKendree's Present Day Needs."

"Why we as a Conference should support McKendree College" was discussed by S. A. D. Rogers, Laurence Smith and J. S. Cummins.

J. W. McNeill, J. H. Ford and C. A. Beckett delivered address on "How We May Help McKendree College."

Bishop Spellmeyer then addressed the Conference on "The Value and Work of Small Colleges."

Hon. J. A. Patton was then introduced and delivered an address.

J. F. Harmon then delivered an address, closing with an appeal to the Conference to make possible the securing of certain amounts already subscribed on certain conditions.

On motion of C. L. Peterson it was ordered that the Conference assume a subscription of 10c per member per year for every member in the Southern Illinois Conference until \$30,000—the amount necessary to secure \$70,000 already pledged on condition of raising \$100,000—be paid.

Conference adjourned with benediction, to meet at 7 p. m.

EVENING.

The Conference was called to order by F. M. Van Treese.

After a song Z. J. Farmer led in prayer.

STATISTICAL SECRETARY—

The Statistical Secretary read his report, which was adopted. (See Report.)

CONFERENCE CLAIMANT—

On motion of J. F. Harmon it was ordered that the members of the Conference pledge 1 per cent of their salaries to go into the Conference claimant fund of the Southern Illinois Conference.

W. F. FRANSEE—

On motion of Lawrence Smith, W. F. Fransee was elected to Elder's orders under Missionary rule.

CONFERENCE CLAIMANTS—

Wm. Carson, Field Secretary of the Conference claimant endowment fund, read his report, which was adopted and ordered incorporated in minutes. See Report.)

Conference adjourned.

FIFTH DAY.

Sept. 26, 1909.

9:30—CONFERENCE LOVE FEAST—

The Conference Love Feast was led by S. P. Groves.

SERMON—

10:45—Sermon by Bishop Spellmeyer.

2 p. m.—Memorial services conducted by T. H. Herdman, after appropriate services.

The obituary of F. W. Grupe was read by V. W. Thrall, of Mrs. Nina Harmon by J. W. Cummins, and of Mrs. H. Manifold by T. H. Herdman. Appropriate remarks were made in memory of the deceased by Revs. L. Smith, J. W. Smith, A. Vandaveer, Robt. Morris, A. G. Proctor, L. W. Thrall, Z. J. Farmer, J. S. Cummins, B. A. Hoar, J. S. Hall and Mrs. Z. J. Farmer.

Consecration and Ordination at 3 o'clock.

Miss Mary Blanche Kinison was consecrated as Deaconess, and the following were ordained Deacons: Harold L. Thrall,

Virgil N. Gould, Wm. D. Richardson, Geo. A. Dunn, Isaac G. Flick, Frank C. Brown, Albert R. Ransom, Fay Marriott, Chas. W. Hall, John L. Hardesty, Waclav F. Fransee, Guy Dewhirst, Oren L. Clapper, Chester Shurtliff, T. J. Overstreet, Pierre De Lain, Claud Evans.

As Elders—Van Buren Sullens, Silas H. Hoar, Elmer Wilton, Chas. W. Ivie, David A. Keane, Wm. M. Ellagood, Waclav F. Fransee.

The Conference adjourned to meet at 8:30 a. m. Monday.
Benediction by Bishop Spellmeyer.

C E R T I F I C A T E
OF
Consecration and Ordination

This Certifies, that at Centralia, Illinois, on
September 26th, 1909, I did consecrate as

DEACONESS

Miss Mary Blanche Kinison.

At the same place and on the same day I
ordained as

DEACONS

Harold L. Thrall,	Albert R. Ransom,	Waclav F. Fransee,
Virgil N. Gould,	Fay Marriott,	Chester Shurtleff,
Wm. D. Richardson,	Charles W. Hall,	Pierre DeLain,
George A. Dunn,	John L. Hardesty,	T. J. Overstreet,
Isaac G. Flick,	Guy Dewhirst,	Claud Evans.
Frank C. Brown,	Oren L. Clapper,	

At the same place and on the same day, as-
sisted by a number of Elders, did ordain as

ELDERS

Van Buren Sullens,	Elmer Wilton,	David A. Keene,
Silas H. Hoar,	Charles W. Ivie,	Wm M. Ellagood,
	Waclav F. Fransee.	

HENRY SPELLMEYER, Bishop.

SIXTH DAY.

Sept. 27, 1909.

DEVOTIONS—

Devotions were conducted by N. Crow at 8:30 a. m.

BUSINESS—

At 8:40 the Bishop called the Conference to order.

JOURNAL—

The minutes of Saturday and Sunday were read and approved.

J. W. Ross—

On motion of J. B. Ravenscroft the thanks of the Conference were tendered J. W. Ross, the florist, for plants presented the members.

QUESTION I—

Question One, Is this Annual Conference incorporated according to the requirements of the Discipline?

Answer: Yes.

QUESTION XIV—

Question Fourteen was called.

Answer: This was strictly attended to, as the name of each preacher was called in open Conference.

TREASURER'S REPORT—

The Treasurer read his report. Report adopted.

The Treasurer announced a balance of \$35 on hand, which on his motion was put into the local Conference claimant fund.

SPECIAL APPOINTMENTS—

The Bishop announced the list of special appointments. (See List of Appointments.)

CONFERENCE NOTE—

On motion of J. F. Harmon it was ordered that the Conference authorize C. C. Hall, President pro tem of the Conference Board of Trustees, to sign note of \$30,000, given by the Conference to McKendree College, in lieu of O. H. Clark, President, who was absent.

CHANGE OF RELATION—

The following changes of relation were announced:

J. W. Jackson, Albert Vandaveer, from Effective to Superannuate.

C. S. Tritt, from Supernumary to Effective.

P. C. Carlin, F. M. Latham and J. T. Huffman, from Effective to Supernumary.

H. L. Steves, from Effective to Superannuate.

QUESTION XXIII—

Question Twenty-three was called. H. O. Hiser, C. E. Bo-
vard, L. C. Wilkin, M. H. Ewers and Willard Kiesling were
continued in the Superannuate relation:

QUESTION XXIV—

Question Twenty-four was called and the following were
continued in the Superannuate relation:

A. Yingst, S. P. Groves, J. C. Orr, J. J. Boyer, J. T.
Murkin, J. H. Bennett, A. W. Van Houten, J. A. Scarritt, J.
L. Cunningham, R. W. Laughlin, C. D. Lingenfelter, V. D.
Lingenfelter, Wm. McMorrow, J. M. Mulvaney, C. Nash, D.
Oglesby, D. A. Perrin, J. W. Tennyson, H. Sears, Wm. Tilroe,
L. S. Walker, G. M. Whitzell, J. P. Yungling, J. P. Dew,
A. J. Dewhirst, J. E. Burke, C. B. Besse, G. A. Seed, C. W.
Sabine, H. L. Merrick.

EDUCATION FUND—

The Secretary of the Board of Education read his report,
which was adopted. C. C. Hall moved that amount of col-

lection for general education given to McKendree College according to standing order of the Conference..

QUESTION XXV—

O. H. Clark, Ressho Robertson, C. B. Whiteside, L. W. Porter and A. D. Lindsay were elected Triers of Appeal.

QUESTION VII—

C. W. Stafford was discontinued at his own request.

BOARD OF CHURCH LOCATION—

The Board of Church Location was nominated by the District Superintendents, and elected. (See Special Appointments.)

The Order of the Day was postponed.

DOMESTIC MISSIONS—

J. W. McNeill read the amounts asked to be raised for Domestic Missions, which was adopted.

DISTRICT MISSIONARY SECRETARIES—

District Missionary Secretaries for the various districts were appointed. (See Special Appointments.)

BOARD OF EXAMINERS—

The Board of Examiners were appointed the same as last year, except that J. D. Shadrack was appointed in the place of J. Y. Reid.

J. F. Harmon was appointed to the chair.

QUESTION XXII—

Question Twenty-two was called. On motion of G. W. Hanks the action of last Friday in reference to entertainment was reconsidered and the plan of last year was adopted.

NEXT CONFERENCE—

Robt. Morris nominated Olney as the place for next session, and on motion of J. G. Dee the invitation was accepted.

REPORTS—

The following committees reported and their reports were adopted:

Temperance, Education, Epworth League, Sunday School, Pastoral Address, Periodicals, Wesley Hospital, W. F. M. S., Class Meeting, District Conference Journal, Deaconess Work, Garrett Biblical Institute, Sabbath Observance, Home Missions and Church Extension, Custodian Monument Fund, American Bible Society, and Hospital for Litchfield.

On motion of Secretary the publishers were authorized to edit reports.

OFFICIAL JOURNAL—

On motion of J. C. Kinison the printed minutes were made the official record of the Conference.

BOARD OF STEWARDS AND EDUCATION—

The officers of the Boards of Stewards and Education were elected. (See Conference Societies.)

PUBLISHERS—

On motion of J. W. Smith the Secretary and first assistant were elected publishers of the minutes for next year.

On motion of Wm. Carson the plan for entertaining the Conference was made one of the standing rules.

AUDITING COMMITTEE—

The Auditing Committee read its report. Report adopted.

STANDING RULE—

On motion of C. D. Shumard Rule XVI. of the present general rules was stricken out and the rule on entertainment made Rule XVI.

AMERICAN BIBLE SOCIETY—

C. C. Hall addressed the Conference in the interest of the American Bible Society, and on his motion the amount of money raised this year for that cause was applied to the Sage

Endowment Fund and the amount asked for next year was fixed at \$300.

QUESTION XXVIII—

Question Twenty-eight was called.

Answer: \$7,678.

QUESTION XXIX—

Question Twenty-nine was called.

Answer: \$7,106.

CONFERENCE CLAIMANTS—

\$7,350 was asked for Conference claimants next year, and on motion of F. M. Van Treese the District Superintendents were authorized to apportion this amount to the different districts.

The Bishop took the chair.

UNIVERSITY OF ILLINOIS—

Rev. Fairchild, of the Illinois Conference, was introduced and addressed the Conference in the interest of the Methodist students attending the University at Champaign.

On motion of C. Harmon the following committee was appointed from Southern Illinois Conference to confer with a like committee from other Conferences in Illinois:

Samuel Thero, R. W. Roupiequet, C. A. Taylor, S. E. Harwood, L. W. Porter, W. H. Whitlock.

DR. PRICE—

Dr. F. B. Price, representing the Board of Foreign Missions, was introduced and addressed the Conference.

QUESTION II—

Question Two was called and Stewart K. Jewell was announced transferred from the Northwest Nebraska Conference, and C. B. Thomas from the Nebraska Conference to this Conference.

ADJOURNMENT—

It was moved that when the journal was approved and the appointments read the Conference stand adjourned.

The minutes of Monday's session were read and approved.

After a song, prayer was offered by J. F. Harmon.

The Bishop read the appointments, after which the doxology was sung, the Bishop pronounced the benediction and the Conference adjourned.

PASTORAL ADDRESS

To the members of the Methodist Episcopal Church throughout the bounds of the Southern Illinois Conference, we, your servants and pastors, in Annual Conference assembled, send greetings:

"Grace to you, and peace, from God our Father, and the Lord Jesus Christ."

"We give thanks to God always for you all, making mention of you in our prayers; remembering without ceasing your work of faith, and labor of love, and patience of hope in our Lord Jesus Christ, in the sight of God and our Father; knowing, brethren beloved, your election of God."

We rejoice with you that you have been counted worthy to be called the sons and daughters of God, and congratulate you on the attainments you may have made in the gifts and graces of a Christly life.

We are gratified to note the increased interest taken by you in the temporal economy of our Church in the last decade, as manifested in the larger amounts contributed to our various benevolent enterprises, the enlargement, repairing and beautifying of churches and parsonages, the building of many splendid and commodious new ones, and the increased liberality in the support of your pastors.

While there is much improvement still needed along all these lines, we believe you keenly appreciate the fact, and will prove equal to the need, thereby assisting to bring our beloved church to be the increased power in our bounds that the Master designed it to wield, and all to His honor. We call your attention favorably to the advanced movement taken by our church, and our sister churches, for the more rapid evangelization of the world, and especially to the Laymen's Missionary Movement. Fall in and keep step with the forward movement. Methodism should occupy a front rank in Southern Illinois for the universal spread of the gospel, and the salvation of the world. Where practicable, organize a Men's Missionary Movement in each church—at least in each charge. Our women are ahead of our men in missionary intelligence and enterprise. Methodist men, organize, study, and bring up your end of the line! That you may be the more intelligent as Christians and Methodists, take and read one or more of our excellent church papers. They are not surpassed. Order your books from our own book concern.

Be warned against the encroachments made by the world of industry, the world of sinful pleasure and Satan, upon the sanctity of the Sabbath, threatening to undermine this, one of the strong pillars of our holy Christianity, and an indispensable institution of this Christian republic.

Remember that the children and young people of your homes and schools are the hope of the world, and the church of tomorrow. The church of the future depends almost entirely upon our fidelity to the young of today.

If the world is ever savingly converted, it must be done in childhood and youth. Nothing can surpass wise, devout home training, or be substituted for it, or release parents from their obligations to use it. Let there be a family altar in each home, remembering that if we are not religious at home, we are not religious anywhere. Where it is possible, go with your children to the Sunday School, and then have them remain with you to the preaching service, and if convenient, again in the evening. Souls are rarely ever converted in Sunday School. They should be trained to regular church-going habits while young and in the formative period of life, or they rarely ever will be regular church-goers, or become church workers. If impossible for them to attend Sunday School and church both, they had better attend the preaching service. By failing to have our children and young people stay for church, have we not unwittingly trained a generation of non-churchgoers, and is there not danger that we are repeating it with the present generation of young people?

Let the parents join their pastor, Sunday School and church-workers to avert this. "The whole family in Sunday School, and the whole family at the Sunday morning preaching service" is a good stand to work to. Get them converted and into the church while they are young, and nurse them faithfully for Christ and His Church.

We deeply sympathize with, and devoutly pray for, any who, during the year, have suffered serious loss in business or health, or have been called to pass through deep sorrow or under the dark chilly cloud of bereavement, commending all such to the consolations of our Holy Gospel and the grace of Him who tempers the wind to the shorn lamb.

We rejoice with those who rejoice, and weep with those who weep.

FRED L. THOMSON,
FREDERIC H. KNIGHT,
J. G. HARMON,
A. D. WOODLEY.

REPORTS OF COMMITTEES.

EDUCATION.

We the Committee on Education desire to submit the following report:

1. We note with pleasure the continued prosperity of McKendree College, and pledge our hearty support in every way.
2. We urge all people to co-operate with us in raising the \$30,000 pledged to the endowment fund of McKendree.
3. We are pleased to note the purpose of the American University to early open its doors for students, and most heartily commend it to all students desiring an extended university course.
4. We urge all Sunday Schools to observe Children's Day and take collection for the Board.
5. See list of visitors to colleges and universities.

C. HARMON, Chairman.

G. E. McCAMMON, Secretary.

SABBATH OBSERVANCE.

Whereas, we believe that Sabbath desecration is a widespread and growing menace to the spiritual life of the church, rendering ineffective many of its vital forces and thereby endangering the moral and religious welfare of the community; therefore,

Resolved, That we both publicly and privately protest against all forms of Sabbath desecration, and that we more earnestly contend, that our people remember the Sabbath day to keep it holy.

W. L. JONES,

J. E. M'CRACKEN.

REPORT OF TREASURER OF LOCAL EDUCATION FUND.

Treasurer, Dr.

1908—Sept. 28.	To balance from last year.....	\$1,491.75
	To payments by beneficiaries during year.	279.70
	To payments by charges during year.....	325.00

1909—July 21.	To contribution of Rev. J. H. Ford.....	3.00
Sept. 25.	To payments made at Conference.....	83.21
	To draft from Conference Treasurer.....	722.00
	Total.....	<u>\$2,904.66</u>

Treasurer, Cr.

1908—Oct. 1.	By payment to Endowment Treasurer....	\$1,460.00
1909—Sept. 25.	By expenses for postage, etc.....	3.43
	Total.....	<u>\$1,463.43</u>
Sept. 27.	Balance on hand.....	1,441.23

Respectfully submitted,

T. H. HERDMAN, Treasurer.

REPORT OF THE CUSTODIAN OF MONUMENT FUND.

Balance on hand at last report.....	\$305.00
Received from—	
Alton District	\$26.00
Lebanon District	27.00
Mt. Carmel District	29.00
Mt. Vernon District	30.00
Olney District	38.00
Vandalia District	32.00—
Total received	<u>\$487.00</u>
Paid Out—	
Jan. 18, 1909—For monument of Rev. B. F. Utly.....	\$ 75.00
April 20, 1909—For monument of Rev. H. H. Kieth.....	75.00
May 27, 1909—For monument of Rev. M. L. King.....	50.00
June 30, 1909—For monument of Rev. J. H. McGriff.....	75.00
Sept. 21, 1909—For monument of Rev. M. House.....	75.00
Postage	2.00
Total paid out	<u>\$352.00</u>
Balance on hand Sept. 22, 1909.....	\$135.00

J. C. KINISON, Custodian.

**REPORT OF THE COMMITTEE ON HOME MISSIONS AND
CHURCH EXTENSION.**

Whereas, There are constantly increasing needs of the work of our church and ministry because of the opening up of new territory through development of mining districts especially in Southern Illinois, and in the railroad centers of our territory, where are now large foreign populations; and

Whereas, The forces we now have in these fields are wholly inadequate to meet these needs, while the people are themselves calling us to come in and possess the land; be it

Resolved, That, while we are heartily thankful for the \$1,300 we last year received for this work, we deem it necessary that we should have at least \$3,000 to put into the work of these fields; and

Resolved, That we ask the General Committee on Home Missions and Church, through our District representative, for an appre-

F. M. VAN TREESE, Chairman;

J. W. SMITH, Secretary.

EPWORTH LEAGUE.

Whereas, The Epworth League is both evangelical and educational; therefore, be it

Resolved, 1. That we most heartily recommend the work of the Epworth and Junior Leagues, and pledge our support to same.

2. That we are in perfect sympathy with the movement to secure an orphanage in our Conference.

3. That we approve of the method of making the Epworth League self-supporting.

4. That we encourage the circulation of the Epworth Herald among all our people.

5. We recommend the Bible and mission study, and that classes be organized wherever practical.

6. We cordially approve of the suggestion of the cabinet of the Illinois State Epworth League relative to reorganizing the State Cabinet and providing for a Conference President of the Epworth League, who shall be a member of the State Cabinet. We recommend Cameron Harmon as Conference President.

J. B. RAVENSCROFT, President.

J. B. CUMMINS, Secretary.

AUDITING COMMITTEE.

Having carefully examined the reports of the District Superintendents relative to receipts and disbursements of Domestic Missions Fund, we find the same to be correct.

G. E. M'CAMMON, Chairman.

DISTRICT CONFERENCE JOURNALS.

We, the Committee, report that we have examined the Journals of Lebanon, Mt. Vernon and Olney Districts, and find them neatly and correctly kept. Alton, Mt. Carmel and Vandalia Journals were not presented.

SAMUEL ALBRECHT, Secretary.

W. F. M. S.

We recognize the Woman's Foreign Missionary Society as a necessary complement to our parent Board, and second only to it, the most potent and efficient agent of the church in foreign lands. Therefore, we earnestly urge upon our pastors to encourage the organization of auxiliaries until there shall be, as far as practical, an auxiliary on every charge.

V. B. SULLENS, Chairman.

W. H. WHITLOCK, Secretary.

SUNDAY SCHOOL COMMITTEE REPORT.

We, your Committee on Sunday Schools, submit to you the following:

We, believing the Sunday School is the recruiting station for the church, and realizing that the church needs well-trained soldiers, recommend:

1. That the Bible be always present and more prominent in the school.
2. That the importance of teacher training be emphasized.
3. That the graded system be adopted.
4. That the teachers' meeting be regularly held in connection with all schools.
5. That all necessary helps be our own authorized publications.
6. That the evangelistic spirit be encouraged in every school.

N. B. COOKSEY, Chairman.

REPORT OF COMMITTEE ON FREEDMEN'S AID.

Your Committee on Freedmen's Aid most respectfully reports:

1. The last annual report of this Society shows that our colored people in the South are crowding our twenty-two schools and colleges to such an extent that increased buildings and equipment are sorely needed by our institutions. The number of colored young people anxious for industrial and professional training is vastly greater than our accommodations can supply. The colored people are rapidly realizing that the training of the hand and the head constitutes the principal means of uplift in this age, and are making every sacrifice that such training may be attained. Our schools constitute the only means by which Christian ministers, teachers, doctors and other leaders shall be prepared for the 350,000 colored members in our own church, and to a large extent for the ten millions of black people in the United States. The colored people gave for their own schools last year \$28,830.32. One of their Conferences, the South Carolina, gave \$6,225.26 of this amount.

2. For the moral and religious training of the colored people our schools are indispensable. The Christian teacher is more than a mere teacher of trades and industries. He is the director and example of the moral and religious life of the young people. No young man or woman can be in one of our schools for any length of time without receiving more or less of the great Christian impress necessary to the development of moral manhood and womanhood. In order to do our share towards the moral and spiritual uplift of this race, we must give them the Christian teacher.

3. The Board asks the whole church for \$250,000, or ONE-FIFTH of the apportionment for Home Missions and Church Extension. Of this amount the Southern Illinois Conference is apportioned \$2,000, which we have accepted. We hereby pledge ourselves to present this cause at least once during the year to our congregations, and give our people an opportunity to contribute towards this most needful work. Lincoln Sunday has come to be one of the institutions of the Church. It offers the best opportunity during the year for presenting the cause of the freedmen to our congregations. If it be inconvenient to do so at any other time during the year, we can at least present the cause on this Sunday and take the offering. Most respectfully submitted,

FREDERIC H. KNIGHT, Chairman.

A. G. PROCTOR, Secretary.

DEACONESS WORK.

In view of the good work done by our Deaconesses in the charges where they have been employed, we recommend the employment of the Deaconesses wherever practical. That as pastors we pledge our support to the office and work of the Deaconesses and commend the same to all suitable young women.

C. D. SHUMARD, President.

W. T. MORRIS, Secretary.

WESLEY HOSPITAL.

We cordially recommend Wesley Hospital to those of our churches who are in need of expert medical and surgical services, and that we heartily encourage the support of the free bed work of the institution. We recommend that all our pastors and Home Missionary Societies render such aid as will substantially assist in keeping this institution in the front rank.

JOHN E. SHAFER, Chairman.

CLASS MEETINGS.

Whereas, The Class Meeting is a service particular to Methodism, and about it lingers some of the most sacred memories of life, and believing it to be the means of strengthening the Christian life; be it

Resolved, That we seek to impress on all members of the church its vital importance, and by our attendance and testimony seek to further its interests.

C. S. TRITT, Secretary.

INTER-CONFERENCE MINISTERIAL INSTITUTE.

Whereas, There is a plan launched to organize an Inter-Conference Ministerial Institute; therefore, be it

Resolved, That we elect a Conference Institute Committee of three, the chairman of which, with the chairmen of like committees from each of the other conferences co-operating, shall form an

Executive Committee, who shall have authority to organize and maintain an Inter-Conference Ministerial Institute, with the provisions that:

1. They shall have no power to incur any financial indebtedness on the Southern Illinois Conference.
2. That the faculty shall, as far as possible, be manned by our strongest theological professors.
3. That the tuition fee shall not exceed \$10.

We recommend the committee to be Dr. J. F. Harmon, J. G. Tucker, J. W. Cummins.

J. C. KINISON, Secretary of Conference.

Passed at Centralia, Ill., September, 1909.

REPORT OF COMMITTEE ON TEMPERANCE.

Your Committee on Temperance, after careful consideration of all matters placed before it, reports as follows:

We are fully awake to the fact that a fierce moral battle is now being waged on American soil—the Federated Church in opposition to the liquor traffic and allied evils. The liquor dealers themselves have recently said, "This is not a wave, but a war." We accept the challenge. Our foes are so resourceful, determined and unscrupulous, and the issues of such tremendous importance as to call forth all our energies and strength. We urge every pastor and layman of our Church to stand in his place ready to do his full duty. Load to the muzzle and aim direct at the heart of this iniquitous trade. The saloon is wholly bad. It debauches politics. It is an open sore in our cities, and the pest of civilization. It is a deadly and corrupting foe to our young manhood, and an insolent affront to the womanhood of our land. We rejoice at the progress now being made against this hotbed of vice and immorality. The conscience of the people is declaring more and more loudly that money made by the degradation of man, the demoralization of woman, the corruption of the commonwealth and the ruin of souls, is foully made, and the rum-seller will not be forever allowed to accumulate more wealth as he piles up more iniquity.

We dare not temporize with this evil. We will not compromise, but, **standing**, pledge ourselves in the name of Jesus Christ, to do

our utmost, in every possible way, to accomplish the speedy and complete overthrow of the beverage traffic in strong drink.

We appreciate the great work of the Anti-Saloon League, and will continue to give it our most hearty support.

We recommend the appointment of Rev. John F. Harmon, D D., Lebanon, Illinois, and Dr. E. W. Fiegenbaum, Edwardsville Illinois, to represent this Conference on the Board of Directors of the Anti-Saloon League of Illinois.

We nominate Rev. G. E. McCammon, East St. Louis, Illinois, and Rev. Ira W. Terhune, Bridgeport, Illinois, as delegates from this Conference to the National Anti-Saloon League Convention, to be held at Chicago, December 6-9, 1909.

In regard to the organization of "Citizens' Local Anti-Saloon Leagues" we recommend that no action be taken.

We desire to express our appreciation of the work of our brother Dr. F. W. Loy as district superintendent of the Anti-Saloon League, and promise him, as a conference of his brethren, our support and co-operation, not only in holding the territory won, but also in pushing on for county option and State-wide prohibition.

E. BARNES, Chairman;
R. D. WOODLEY,
L. S. M'KOWN,
J. G. DEE,
J. W. WEBSTER.

REPORT OF THE STEWARDS—1909.

We respectfully report to the Conference that for this session we have received and disbursed as follows:

From—	Receipts.
Book Concern	\$1,653.00
Chartered Fund	25.00
Charges	5,229.00
Contribution of J. H. Ford.....	3.00
Love Feast collection.....	164.17
	<hr/>
Total	\$7,074.17

Our disbursements are as follows:

Rev. H. Sears	\$ 100.00
“ J. H. Bennett	100.00
“ C. B. Besse.....	150.00
“ J. L. Cunningham.....	150.00
“ A. J. Dewhirst.....	110.00
“ S. P. Groves.....	200.00
“ R. W. Laughlin.....	125.00
“ C. D. Lingenfelter	175.00
“ V. D. Lingenfelter	175.00
“ W. McMorrow.....	175.00
“ J. M. Mulvaney.....	50.00
Children of J. M. Mulvaney	60.00
“ J. T. Murkin.....	100.00
“ C. Nash	175.00
“ D. Oglesy.....	100.00
“ D. A. Perrin.....	104.00
“ G. A. Seed.....	200.00
“ C. W. Sabine.....	200.00
“ W. Tilroe.....	125.00
“ J. W. Tennyson	175.00
“ A. W. VanHauten.....	125.00
“ L. S. Walker.....	108.00
“ J. P. Yungling	150.00
“ J. W. Jackson.....	72.00
“ A. Vandaveer	100.00
“ H. L. Steves	160.00
Mrs. C. E. Baker.....	50.00
“ W. T. Brannum	100.00
“ W. B. Bruner.....	10.00
“ J. D. Crenshaw.....	100.00
“ C. T. Douthitt.....	100.00
“ L. C. English.....	200.00
“ G. W. Farmer.....	110.00
“ J. W. Field.....	100.00
“ J. W. Franklin.....	100.00
“ J. D. Gillham.....	100.00
“ S. Green.....	125.00
“ G. W. Hale.....	50.00
“ L. A. Harper.....	140.00
“ O. V. Jones.....	90.00
“ H. H. Keith.....	100.00

Mrs. J. Leeper.....	80.00
“ C. J. Littell.....	125.00
“ J. W. Locke.....	90.00
“ J. H. McGriff.....	150.00
“ D. R. Miller.....	90.00
“ C. O. Morris.....	75.00
“ J. R. Reef.....	150.00
“ J. B. Reynolds.....	125.00
“ J. A. Robinson.....	75.00
“ J. P. Rutherford.....	125.00
“ A. Snell.....	200.00
“ J. B. Thompson.....	100.00
“ C. J. T. Tolle.....	100.00
“ B. F. Utley.....	200.00
“ D. Williamson.....	26.00
“ W. Van Cleve.....	100.00
“ E. E. Waggoner.....	26.00
“ E. Root.....	100.00
“ C. W. Bonner.....	30.00
“ F. M. Groupe.....	100.00
“ J. W. Wright.....	75.00
Total	\$7,130.00

The Stewards recommend \$7,350 as the sum to be apportioned to the Charges for the ensuing year.

We nominate L. W. Thrall and F. L. Thomson as Stewards to serve three years.

O. H. Clark is recommended for Chairman.

F. L. Thomas is recommended for Treasurer.

T. H. Herdman is recommended for Secretary.

Respectfully submitted,

F. M. VAN TREESE, Chairman.

Attest: T. H. Herdman, Secretary.

Centralia, Ill., Sept. 27, 1909.

REPORT OF COMMITTEE ON RESOLUTIONS.

We are conscious of our obligations to the many who have contributed to our entertainment, comfort and instruction; and as a Conference feel ourselves greatly indebted for many favors shown.

Therefore, Resolved:

First. That we hereby extend to Bishop Spellmeyer our ex-

pression of gratitude for the efficient and brotherly manner in which he has presided over our Conference sessions.

Second. That it is the sense of this Conference that it has been ably and cheerfully served by the Secretary, the Statistical Secretary and their assistants; the Treasurer and his assistants, and our Postmaster, and we hereby express our thanks for the same.

Third. That we greatly appreciate the services of the pastor and the Committees on Reception, Transportation and Entertainment, and we hereby extend our thanks to them and to the people who have so kindly opened their homes for our entertainment.

Fourth. That we highly appreciate the kindness of the other churches of the city, shown in opening their houses of worship for our use; and we also express our gratitude to the newspapers of the city for the free use of their columns; and to the citizens of Centralia for their generous hospitality; for the many favors shown us, especially in the decoration of the business houses and in the illumination of the city in our honor.

We desire also to assure Col. Pettinger and his son of our hearty appreciation of their kindness in opening the Grand Opera House for our services on Sunday morning.

We desire also to extend to Mr. J. C. Ross, the florist of Centralia, our thanks for the beautiful flowers, and we assure him and the city that with the beautiful fern presented to each member of the Conference, we take to our homes also pleasant memories of all. Centralia has won the confidence and esteem of the Southern Illinois Conference of the Methodist Episcopal Church.

Respectfully submitted,

B. A. HOAR, President.

B. F. SHEFFER, Secretary.

Whereas, the present method of distributing the amounts received for Conference claimants to the claimants or their representatives fall at or near the closing session of the Conference, and is usually attended with a great deal of confusion; and, whereas, it is sometimes embarrassing to the claimants, therefore be it

Resolved, That the Board of Stewards shall make their usual report of amounts received and the disbursements in open Conference.

That the Treasurer of Board shall have an office in or near the church when the Conference is being held, and that all claimants or their representative shall call amounts received, and receipt for such amounts as have been apportioned to them.

W. T. MORRIS.

PERIODICALS.

We, your Committee on Periodicals, desire to submit the following report:

We have not had access to the pastors' reports, and therefore we are unable to state definitely the number of Church papers and other periodicals taken by our people, but we are persuaded that our literature is not appreciated as it should be.

The Central Christian Advocate, as was stated in last year's report, was born on the soil of the Southern Illinois Conference, and should therefore receive our earnest commendation and support.

We would urge every pastor to lay this important interest of our Zion to heart and prayerfully use every means within his power to give it prestige, and increase its circulation in the territory committed to our charge.

We desire to call the attention of the brethren anew to our own Sunday School literature which, in our estimation, is as good as the best now being published.

We think this literature should be used without exception in every Methodist Sunday School.

We would also heartily recommend the Methodist Review, as a journal presenting the latest and best religious thought and research; and we would emphasize the value of the Epworth Herald as a young people's paper, and urge all of our Epworthians to subscribe for it and help to increase its circulation.

D. W. BAKER,

L. R. MAUK.

AMERICAN BIBLE SOCIETY.

The American Bible Society is one of the greatest institutions in the publication and distribution of the Bible in the Foreign, as well as the Home field, and has been a great agency in helping the missionary cause and advancing the Kingdom of Jesus Christ. Be it

Resolved, That each preacher of the Conference commend this great work and urge the people to make an annual offering to same.

M. B. VAN LEER, Secretary.

A PROPOSITION.

This is the age of hospitals, homes, and institutions which commend and befriend Christianity. I therefore present this proposition to this body, that you may take advantage of every good thing, and put it to the use of humanity.

Mrs. Carrie Holden, the wife of the late Frank Holden, who was an honored member of the First Church of Litchfield, proposes to give a house and six lots, located in one of the most desirable parts of the city of Litchfield, valued by herself at \$9,000, and by S. M. Grubbs, the president of the First National Bank of said city, at \$10,000, to the Methodist Episcopal Church fee simple.

She desires to do this under the following conditions, to-wit:

1. It shall be a hospital and home for old people; and is to continue to be such perpetually.

2. That her brother-in-law, who is now sick, and seventy-nine years of age, shall have a place in this home, should he desire it, as long as he lives, without any compensation for such home, and the necessary expense for any service involved.

3. That should Mrs. Holden herself meet with any misfortune that would reduce her to the necessity of asking it, and should she so desire it, shall have a home and the usual care given to such persons in the home, as long as she shall elect, without compensation also.

4. The home and hospital shall be supported by voluntary contributions, donations, bequests, and by special solicitations made in keeping with the rules of the Methodist Episcopal Church.

The property is situated on State Street, one of the principal streets of the city, and is in one of the most desirable residential parts of the city, and with ample room, three lots fronting on State Street, and three fronting on Madison Street. State Street has been paved during the last summer. There is a main sewer on the street running south of the property, and a lateral sewer on State Street. The donor hopes to be able to pay for all this improvement before the transfer is made.

The house is a two-story frame building with an attic and cellar, which has a granitoid floor.

She thinks the transfer of the property can be made during the next Conference year, as soon as she is able to purchase and fit up a smaller house for herself.

The fourth condition is made, that for the support of the home and hospital, because she does not want it supported by dancing parties, card parties, or any sort of questionable schemes.

COMMITTEE ON HOLDEN HOSPITAL AT LITCHFIELD.

Your committee on the proposition submitted to this Conference by Mrs. Carrie Holden of Litchfield for the establishment of a Hospital and Home for Old People, having carefully considered the matter, report as follows:

1. The substance of her proposition is to donate to the Methodist Episcopal Church in fee simple a house and six lots favorably located on one of the principal streets of the City of Litchfield, and valued at \$9,000 or \$10,000. The same to be converted into a Hospital and Home for Old People to be maintained as such perpetually. A condition of the gift is that the Hospital-Home shall be supported by voluntary contributions, donations and bequests, and by special solicitation made in keeping with the rules of the Methodist Episcopal Church.

2. We wish to express to Mrs. Holden our high appreciation of her liberality in this generous proposition and to tender her our sincere thanks for the same.

3. We will accept the gift contemplated, and will undertake to administer the same in harmony with her high purpose and to the help of whomsoever may be benefited thereby.

4. We recommend the appointment of a commission of the following persons to have this matter in charge, with full power to act, making report of their trust to the next session of this conference, namely: The pastor of the First M. E. Church in Litchfield, Chairman. The pastors of the First M. E. Church in Edwardsville and in Alton, and of Niedringhaus Memorial Church, Granite City; also Messrs. Dr. J. R. Bennett, S. M. Grubbs and W. P. Thorp of the City of Litchfield.

T. DeWITT PEAKE, Chairman.
JAMES G. TUCKER, Secretary.

REPORT OF THE BOARD OF TRUSTEES OF THE OLD PEOPLE'S AND DEACONESS HOME AT SMITHBORO, ILL.

Smithboro, Ill., Jan. 5, 1909.

In compliance with the action of the Southern Illinois Conference taken at McLeansboro, Ill., the First Quarterly Conference of Mulberry Grove Charge, held at Smithboro, November 21, 1908, elected H. H. Smith and W. B. Hubbard members of the Board of Trustees of said home.

On December 31 the Board met in the office of Hon. J. J. Brown in Vandalia, Ills. Judge J. H. Webb was elected Chairman and J. E. McCracken Secretary. The same date H. H. Smith deeded to the trustees for said home his residence in Smithboro, including in all six lots of the original Village of Smithboro, numbering from 14 to 19, inclusive. At the same time Mr. Smith executed a will giving to said Home the sum of \$3,000, \$1,000 to be used for permanent improvement.

On the same day and date the Board of Trustees deeded to H. H. Smith a plot of ground 16 feet square, describe by fixed bounds, to be used by him for the burial of himself and wife.

Respectfully submitted,

J. H. WEBB, Chairman.

J. E. McCRACKEN, Secretary.

CONFERENCE OFFICERS.

President.....	Mrs. Norman Moss, Mt. Vernon, Ill.
First Vice-President.....	Mrs. H. C. Mitchell, Carbondale, Ill.
Second Vice-President.....	Mrs. S. L. Evans, East St. Louis, Ill.
Third Vice-President	Mrs. F. M. Van Treese, Carmi, Ill.
Recording Secretary.....	Mrs. O. O. Rice, Mt. Carmel, Ill.
Treasurer	Mrs. Olive S. Bower, Albion, Ill.
Corresponding Secretary.....	Mrs. D. P. Moore, Olney, Ill.

Department Secretaries.

Young People's Work.....	Mrs. Herbert Tonney, Flora, Ill.
Supplies.....	Mrs. J. J. Wagner, Sumner, Ill.
Temperance.....	Mrs. Theodore Cates, Fairfield, Ill.
Systematic Giving.....	Miss Luella Ammon, Carbondale, Ill.
Deaconess Work.....	Mrs. Lawrence Smith, Belleville, Ill.
Mite Box Secretary.....	Mrs. J. M. Mitchel, Mt. Carmel, Ill.
Reading Circle and Literature.....	Mrs. Lula Jones, Mt. Vernon, Ill.

DISTRICTS.	Auxiliaries	Members	Queen Esther Circles	Members	Home Guards Mothers Jewel	Members	Total No. Organiza- tions	Total No. Members	Cash	Cash Supplies	No. W. H. M.	C. H. M.	Life Members
Alton.....	5	75	...	1	20	6	93	\$ 90.00	\$ 15.00	46
Lebanon.....	3	77	1	25	...	4	102	242.00	61.00	25	1
Mt. Carmel.....	5	126	1	45	1	30	201	251.00	157.00	61	1 Jr.
Mt. Vernon.....	7	231	4	68	2	35	337	774.00	860.00	102	41	1	1
Olney.....	11	290	5	75	4	13.	20	502	771.00	425.00	87	78	1
Vandalia.....	5	104	3	45	...	8	149	59.00	18.00	22
Totals.....	26	901	14	258	8	225	58	1384	2,685.00	1470.00	217	119	4

Number second-hand garments and books, 2 192

Dues.....	\$ 889.00
Life Membership.....	100.00
Mite-Box Money.....	88.00
Thank Offering.....	205.00
Printing.....	2.00
Total General Fund.....	1290.00
Student Aid.....	448.00
Special Fund.....	363.00
By Voucher.....	295.00
Cash from other sources.....	69.00
Brought forward from last year.....	\$ 55.00
For Conference expenses.....	130.00
Grand Total Cash, Voucher and Cash Supplies.....	\$1075.00
Increase over last year.....	1361.00

Statistics of Woman's Foreign Missionary Society, Year ending September, 1909.

	Amount of Contributions Reported by Treasurer.										
	No. Mite Boxes in Use.										
	No. Subscriptions to Children's Missionary Friend.										
	No. Subscriptions to Woman's Missionary Friend.										
	Total Membership.										
	Total Organizations.										
	No. of Members.										
	No. Little Light Bearers' Societies.										
	No. of Members.										
	No. of King's Heralds' Societies.										
	No. of Members.										
	No. Standard Bearer Companies.										
	No. Members.										
	No. Young Women's Societies.										
	No. of Members.										
	No. of Auxiliaries.										
Names of Districts:	11	206	1	9	1	21	13	236	40	70	136
Alton	10	177	4	112	3	50	20	369	69	128	\$ 464 13
Vandalia	5	103	1	19	2	51	8	163	24	70	108 761 57
Lebanon	6	280	1	14	2	37	11	407	57	77	54 234 48
Mount Carmel	17	469	4	64	3	64	29	679	164	176	113 901 98
Mount Vernon	6	142	3	97	2	32	13	359	36	79	413 1995 56
Olney											168 619 45
Total	55	1377	4	307	15	235	94	2213	390	600	992 5637 17
Conference collections and reports by pastors.											147 64

Grand Total ----- \$5184 71

WOMAN'S FOREIGN MISSIONARY SOCIETY OFFICERS.

- CORRESPONDING SECRETARY --- Mrs. T. A. Wilson, Lebanon.
- TREASURER --- Mrs. J. H. Seaman, Greenville.
- SECRETARY OF SPECIAL WORK --- Mrs. J. R. Creighton, Fairfield.
- VICE-PRESIDENT --- Mrs. J. D. Crenshaw, Carbondale.
- VICE-PRESIDENT --- Mrs. J. H. Ford, Robinson.
- DISTRICT SECRETARIES.
- ALTON DISTRICT --- Mrs. F. M. Roberts, Litchfield.
- LEBANON DISTRICT --- Mrs. C. L. Walrath, Lebanon.
- MT. CARMEL DISTRICT --- Mrs. J. B. Jolly, Grayville.
- MT. VERNON DISTRICT --- Mrs. T. H. Seed, Mt. Vernon.
- OLNEY DISTRICT --- Mrs. J. T. Hilliard, Fairfield.

BOARD OF EXAMINERS.

Mid-Year Examinations.

The mid-year examinations will take place at the several District Conferences on a part of the work, as follows:

1. English Branches: Principles of Rhetoric and Outlines of History.
2. First year: Divine Library of the Old Testament; System of Christian Doctrine, pages 1-322.
3. Second Year: The Ancestry of Our English Bible; System of Christian Doctrine, pages 325-635.
4. Third Year: Bible Hermeneutics; Outlines of Descriptive Psychology.
5. Fourth Year: Grounds of Theistic and Christian Belief; Analogy of Religion, and Christian Ethics.

For Local Orders: Raymond's Systematic Theology, Vols. I, II. and III.; Life and Epistles of St. Paul.

The following are appointed chairmen of their respective districts:

Alton, M. B. Baker; Lebanon, J. W. Cummins; Mt. Carmel, R. Robertson; Mt. Vernon, J. G. Tucker; Olney, Robert Morris; Vandalia, N. Crow.

Division of the Work.

O. F. Culver—Elementary English; American History (Montgomery).

J. G. Tucker—Grounds of Theistic and Christian Belief (Fisher); Analogy of Religion (Butler).

C. Harmon—Written Sermons.

J. W. Cummins—Essays.

V. W. Thrall—System of Christian Doctrine (Sheldon); A Manual of Christian Evidence (Row); Introduction of New Testament (Dods).

M. B. Baker—The Governing Conference in Methodism (Neely); Theological Compend (Binney).

C. L. Peterson—Outlines of Descriptive Psychology (Ladd); Lessons in Logic (Jevons).

R. Robertson—Outlines of Universal History, Parts I., II. and III. (Fisher); Essentials of Argumentation (McEwen).

J. M. Adams—Outlines of History (Swinton); Raymond's Systematic Theology, Vols. I., II. and III.

W. H. Pool—Studies in Ethical Principals (James Seth); A Short History of the Christian Church, Mediaeval and Modern Periods (Hurst).

N. Crow—A Manual of Christian Doctrine (Banks); A History of Methodism, Abridged (Stevens).

J. G. Dee—Divine Library of the Old Testament (Kirkpatrick); Doctrinal Aspects of Christian Experience (Merrill).

A. G. Proctor—A Manual of Bible History (Blaikie); Christian Baptism (Merrill); A Short History of the English People (Green).

G. E. McCammon—History of the Christian Church, Vols. I. and II. (Hurst); Rhetoric (Hill).

P. R. Glotfelty—Biblical Hermeneutics (Terry); Lectures on Homiletics (Kern).

N. D. Sweeny—Plain Account of Christian Perfection (Wesley); Digest of Methodist Law (Merrill).

W. H. Whitlock—Discipline of M. E. Church, 1908; Life and Epistles of St. Paul (Conybeare and Howson).

Robert Morris—John Wesley and His Century; One Thousand Questions on Methodism (Wheeler).

J. D. Shaddrick—Divine Library of the Old Testament (Kirkpatrick); A Manual of Christian Evidence (Row).

EXAMINATION AT CONFERENCE.

The examination at Conference will be conducted according to the following schedule:

ADMISSION.	FIRST YEAR	SECOND YEAR	THIRD YEAR	FOURTH YEAR
Manual of Bible History.—[Blaikie.] ⁹⁻¹⁰ . A. M.		Lessons in Logic.—[Jeavons.] 9-10 A. M.	Outlines of Universal History, Parts I and II. [Fisher.] 9-10 A. M.	
Manual of Christian Doctrine. [Banks.] 10-11 A. M.				
Christian Perfection. (Wesley.) 11-12 A. M.	Lectures on Homiletics.—[Kern.] 9-10 A. M.		History of the Christian Church Vol. I. [Hurst.] 10-11 A. M.	Outlines of Universal History, Part III. [Fisher.] 9-10 A. M.
Methodist Discipline—1908. 2-5 P. M.				
John Wesley and his Century.	Student's American History (Montgomery) 10-11 A. M.	Short History of the English People (Green)	The Governing Conference in Methodism.	History of the Christian Church, Vol. II, (Hurst.)

RULES GOVERNING THE CONFERENCE EXAMINATIONS.

1. There shall be two examinations each year; one at the time and place of holding the District Conference of the respective districts, and the other on Tuesday, before the Wednesday on which the Annual Conference meets.

2. If an applicant shall be absent at the time appointed for examination, it shall be optional with his examiner and the chairman whether he be given an examination that year.

3. There shall be no giving or receiving information during the examination.

4. Sermons and essays shall be sent to the examiner by the first of August.

5. The following questions shall be appended to each list of questions: Have you received or given information during the examinations?

The Board of Examiners and the undergraduates will meet at 8:30 a. m., in church where the conference is to be held.

J. G. HARMON, Chairman, Effingham, Ill.

J. D. SHADDRICK, Registrar, Duquoin, Ill.

DEACONESS BOARD.

The character of these were passed:

Margaret F. Bell, Lillian E. Bishop, Anna Combs, Mary Blanche Kinison.

Appointments.

Miss Margaret F. Bell—First Church, East St. Louis.

Miss Lillian E. Bishop—First Church, Mt. Vernon.

Miss Anna Combs—Transferred to St. Louis Conference.

Miss Blanche Kinison—Transferred to Illinois Conference.

Miss Blanche Kinison was recommended for Consecration.

Members of the Board.

J. G. Tucker, President; J. W. Cummins, Secretary; J. S. Cummins, J. G. Harmon, J. A. Taylor, C. D. Shumard, Mrs. Lucy I. Priest, Mrs. J. H. Ford and Mrs. Sarah E. Watson.

GARRETT BIBLICAL INSTITUTE.

Your visitor to Garrett Biblical Institute would respectfully report as follows: Having spent a full week attending commencement exercises and examinations of that institution. The examinations and thesis seemed to him to afford evidence of thoroughness of research and scholarly leadership. While fully abreast with the highest biblical scholarship, this great school preserves its loyalty to the time-honored doctrine of historic Methodism. We recommend that all candidates for the ministry, after a course at McKendree, spend three years in this or some other theological school. Respectfully,

L. W. THRALL.

FIELD SECRETARY

of the

Conference Claimant Endowment Fund for 1908-09.

Total amount received from all sources.....		\$1,910.69
Disbursements—		
G. A. Seed home.....	\$1,350.00	
Improvements thereon	121.14	
Cash expenses	68.70	
Paid treasurer	231.00	
Cash to balance	139.85	
		<hr/>
	\$1,910.69	\$1,910.69

WM. CARSON, Field Secretary.

REPORT OF ALTON DISTRICT.

To Bishop Spellmeyer and the Members of Southern Illinois Conference: I make my sixth and final annual report of Alton District. The district embraces within its boundaries a large amount of manufacturing and mining interest. This brings to us a population that is quite cosmopolitan in its character, rendering the work more difficult and the results less satisfactory than would be if these conditions did not exist. In order to try to reach these people who are averse to the church and especially to Protestantism we have



Rev. J. H. Ford.

had a Bulgarian Mission at Granite City, with the Rev. P. D. Vassiloff, a native Bulgarian, as missionary. He has worked faithfully, doing the best he could under very great difficulties and discouraging conditions.

The Conference year has been, in many respects, the best during our entire administration. A very creditable progress has been made, and very encouraging success realized along all lines of church work.

A spirit of revivals has pervaded almost the entire district.

Nearly every pastoral charge has been quickened by the impulse of an evangelistic spirit. Among the charges that have shared most largely in this evangelistic movement, we would mention Granite City, Niedringhaus Memorial Church, 400 conversions; Upper Alton, 200; Jerseyville, 150; Coffeen, 145; Herrick, 146; Piasa, 75; Venice, 50; Staunton, 60; Glen Carbon, 46. Other charges report from 5 to 10 each, making a total of not less than 1,500 conversions, a larger number than that of any previous year of the six.

In some instances the pastor alone, or assisted by some other pastor, has held his own meetings. In others instances evangelists or deaconesses have been employed.

Three new charges have been formed this year, viz.: Mount Olive, Madison and Wood River. The first mentioned are stations, the latter is new territory in a city of about 3,000 inhabitants, that has sprung up in the last three years between Alton and Granite City.

We believe that we have here the opportunity of building up a good charge. Two excellent parsonages have been built, one at Gillespie and the other at Mt. Olive. The increase in ministerial support has exceeded that of any previous year. Each year during our term on the district there has been an increase in ministerial support ranging from \$600 to \$1,200. This year Mt. Olive makes an increase of \$600 over the entire charge of last year. Madison makes a similar increase of \$500; Edwardsville makes an increase of \$200 on pastor's salary; Granite City Niedringhaus Memorial, \$120; Herrick, \$100; Plainview, \$100; Medora, \$50; Ramsey \$50; Piasa, \$50; District Superintendent, \$300. Total, \$2,070.

The District Stewards at their annual meeting in the early part of the Conference year, made an apportionment fully covering the amount asked for conference claimants and Episcopal fund. I have especially called the attention of the pastors and quarterly conference to the fact that these claims are fixed on a per cent basis with the pastor's salary, and that each of these must share pro rata.

The placing of these claims, including that of the District Superintendent, on a per cent basis with the pastor's salary has, in most cases, met with the hearty approval of both pastors and the Quarterly Conference. They consider this, together with the pro rata division, as the only fair and equitable method to be pursued.

This has been a year of debt paying. Alton First has paid

during the year \$10,000 on a debt of \$22,000, reducing the debt to \$12,000; Granite City Niedringhaus Memorial has paid on interest and debt about \$1500. The church at Washington street, Alton, has struggled heroically with a burdensome debt. This debt was provided for in monthly payments through the building and loan. A good portion of this for the year has been paid, though they are somewhat in arrears.

All the indebtedness on the church at Glen Carbon has been paid off. The church at Hamburg is entirely out of debt, and the church was dedicated by Dr. John F. Harman August 29, 1909.

At Tyler Avenue Litchfield Circuit, over \$200 has been paid, reducing the debt to about \$360.

It is with gratitude to Almighty God for His goodness and mercy, and with due credit to the loyalty and faithfulness of the pastors and laity that we report the advance that has been made, as indicated by the following increase during the six years of our term of service on the District. Net increase in membership, 1,392.

Ten new churches have been built, as follows:

	Value.
Alton First Church	\$40,000
Alton Washington Street	14,000
Godfrey	6,000
Herrick Circuit	1,000
Granite City Dewey Avenue.....	3,000
Maryville	1,000
Upper Alton Mission	1,000
Litchfield Tyler Avenue.....	2,500
Madison	3,200
Venice	4,000

Ramsey and Jerseyville Churches have been remodeled, making them almost new churches in the interior.

The following new parsonages have been built:

	Value.
Granite City Niedringhaus Memorial.....	\$8,000
Litchfield First Church.....	5,000
Gillespie	3,000
Herrick	1,000
Donnellson	1,200
Piasa	700
Plain View	1,000
Shipman	1,500
Mt. Olive	2,500
Hamburg	1,200

This makes a total of ten new parsonages. Total cost of par-

sonages and churches, \$100,000. Other churches and parsonages have been improved and remodeled, making a total increase in value of church property of \$140,000.

Net increase in churches, three; in parsonages, five. Total increase in ministerial support, \$6,000. Total increase in the benevolent collections as reported last year, \$1222.

We believe the District is in a prosperous, growing condition. True, there are problems to solve and difficulties to meet and overcome, but with faith in God, heroic effort, and loyalty to our wholesome doctrines and unexcelled polity, the victory is ours. Southern Illinois Conference is almost inexhaustible in its resources and I predict a great future for this Egyptian territory.

I gratefully acknowledge the Divine Providence that has protected and guided me amid the great responsibilities and arduous duties connected with the office and work of a District Superintendent. I have been blessed with health and physical strength, so that I have not missed a single appointment on account of sickness.

J. H. FORD, District Superintendent.

**Report of J. W. McNeill, District Superintendent, Mt. Vernon
District, Southern Illinois Conference.**

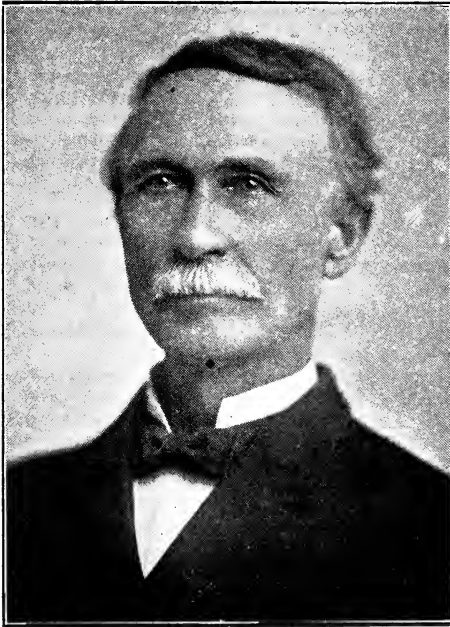
Dear Brethren—Through the good providence of God, I am permitted to present to you this, my sixth and last, annual report of the work of the church and my own work in the Mt. Vernon District.

With one exception the ministers appointed to work in the district continued with their charges until the end of the year. Rev. P. A. Smith, who was appointed to Ullin charge, was transferred at the end of the first quarter by Bishop Bristol to Marissa, in the Lebanon District.

The supplies secured, with two exceptions, continued with the work and did good and faithful service until the close of the year.

The increase in amounts estimated for ministerial support over the preceding year amounted to \$2,000, and in a large per cent of the charges the claims have been met in full. A few charges have fallen short, but the shortage is principally on charges where people have been embarrassed by continued inactivity of mining and manufacturing interests.

Of the 39 charges in the District, 23 have made an advance



Rev. J. W. McNeill.

in Benevolent Collections. Nine have held to the record of last year, and 7 have fallen below. From information gathered from pastors I think I may safely say there will be a respectable increase over last year in the aggregate of Benevolent Collections. I may say that continued stringency in money circulation will partially account for the decline on those charges showing a decrease. Theoretically we are in the midst of prosperity, but actually in many localities in the bounds of the Mt. Vernon District this has been a more trying year financially than last.

I regret to say at the end of my term on the Mt. Vernon Dis-

trict that our people are not in as hearty sympathy with the Benevolent claims which the Lord has laid upon her, either in the Home or Foreign fields, as they should be. Though we have made what we with a degree of modesty call a respectable advance, we feel that the contributions by our people to these institutions of the church, through which the light of the Gospel is carried out to the great wide world, should be ten-fold larger than is shown by these reports.

Church and Parsonage Movement.

Three new church buildings have been completed during the year. At Mounds, a rapidly growing town located on the I. C. R. R., nine miles north of Cario, a neat frame church building was dedicated by Dr. J. F. Harmon on the fourth Sunday in July. Cost, \$3,000. Rev. C. W. Campbell, the pastor, is entitled to much credit for untiring energy in pushing this enterprise to completion. The building will comfortably accommodate 300 people. At Pittsburg, on the Corinth Charge, a church has been completed costing \$1,200. Seating capacity, 200. Rev. A. B. Campbell, pastor. Pittsburg is a new and growing town located in the mining portion of Williamson County. The pastor, who has worked faithfully, and the people who have contributed freely toward the election of this comfortable house of worship deserve much credit. A very neat frame church building has been erected at Sessor, a new and prosperous mining town located on the Burlington Railroad, in Franklin County. This is a mission without a missionary appropriation. Cost of building, \$2,000. Seating capacity, 300. Rev. T. J. Davis, a local preacher, has worked faithfully without pecuniary remuneration in pressing to completion this enterprise.

Two new parsonages have been erected during the year. One at Cairo, a very pleasant home for the minister and his family, having all the comforts and conveniences of a modern home. The building, completed, cost \$3,500. I will say to the credit of our people and pastor at Cairo, there is not a better parsonage than this in the Mt. Vernon District, and very few, if any, in the Southern Illinois Conference. A very good and comfortable parsonage was erected during the first quarter of the year at Elkville. Cost, \$1,200.

Improvements have been made on churches and parsonages as follows:

Carbondale, First Church parsonage.....	\$ 500
Carbondale, Grace Church and parsonage.....	250

Murphysboro, parsonage	500
Chester Church and Parsonage	200
Olive Branch Church and parsonage	150
Frankfort, parsonage	100
The church at Herrin has been improved to the amount of..	700
Mt. Vernon Circuit improvements have been made to the amount of	100
Church and parsonage property on Tamaroa charge has improved at a cost of	2,000

The spiritual condition of the church seems, from information gathered through reports from pastors and official representatives of the charges, to be growing better. A larger attendance at the regular and special services of the church is a marked feature of encouragement to our pastors. Increased enrollment and a larger average attendance in Sunday Schools is reported in a large proportion of the charges of the District, and in not a few instances we are confronted with the problem of how we shall provide room for the increasing attendance in our Sunday Schools. The mid-week prayer meetings are better attended than formerly in a large number of our societies. It is plainly seen that greater emphasis is being placed on the value of service than in former times. In a few charges class meetings are held each Sabbath, with inspiring effect upon members and ministers.

During the year more than 1,500 conversions have been reported to me from charges throughout the District, and more than 1,000 accessions to the church.

Some noticeable activity in the work of the Epworth League has been shown recently. How lasting this may prove and what good results to the organization and to the church may be brought forth, remains to be revealed in the future. We have not yet ceased to discuss the reasons why we should seek for ourselves the highest Christian experience and help others to the same. It is evident that methods employed are too much on the plan of making the exercises more impressive than the end for which service is rendered. Our young people need to find a reason in every day's experience for activity in all lines of Christian work, and by constant fellowship with the Holy Spirit become personally conscious of that deep and broad foundation upon which all religious character must be constructed. If the end sought in the organization of the Epworth League is attained, it will be after we have passed from the shadows presented to us in books, church

papers, periodicals and magazines, which for a time may mellow the conscience for better things, into the real substance of good things in the Kingdom of God.

On all moral and social questions our people are right, theoretically, if not practically, and are unwilling at least to go on record as lowering the standard instituted for the government of the Methodist societies, and expressed in the General Rules of the Methodist Episcopal Church. Our members and people maintain an attitude of uncompromising opposition to the saloon. While the ranks are not as compact as they should be, to secure the greatest results, there is an evident tendency toward crystallization and unity of action through organization that prophesies in the near future the movement of an irresistible force in American politics that will strike down this giant evil which, under the protection of law, breeds moral disorder and eternal death in the atmosphere of every home.

I feel there are some things that should be mentioned in this report in regard to the unoccupied territory and the people unprovided for in this District. Located as we are in the center of the greatest and most productive valley on the globe, our wealth of soil and mineral deposits have directed the currents of emigration towards us. We no longer boast of our distinctive American population. Our agricultural districts are being rapidly transformed into mining centers whose populations are composed of people from mining localities of the East, and from many portions of Europe. We find it impossible with the local machinery of the church to meet the demands thrust upon us by this magic transition. We must therefore look to our connectional institutions for aid in the solution of this problem, which touches vitally our most sacred social and civil institutions. If our Board of Home Missions and Church Extension will come to our relief with a few thousand dollars annually, we can build houses of worship and organize strong societies in these growing towns, where at present we either have no societies at all or very weak ones. I therefore wish to call the attention of the committee on Home Missions and Church Extension to these facts and ask a careful consideration of the same in formulating the report which they will present to this conference.

Without going into figures, I will say a comparative examination of our Annual Minutes for six years will indicate permanent and continued growth on all lines of church work, as in the six

years preceding, under the direction of my predecessor, Rev. N. Crow.

A favoring providence has graciously protected the lives of all of our active ministers, so that neither death nor very serious sickness has invaded our homes. Bro. C. W. Campbell of Villa Ridge Charge, suffered a few weeks' affliction. Bro. Phelps of Ewing Charge, was also prevented from work a short time by an attack of rheumatism. Besides these, so far as I know, all other pastors have been able to continue at their posts of duty through the entire year.

My relation to pastors and people during the term has been very pleasant indeed. I cannot express in words my gratitude for the hospitality and kind personal treatment shown me.

For whatever measure of success may have been achieved and for the blessings of life and health we give thanks to God.

Respectfully submitted,

J. W. McNEILL.

Memoirs

REV. F. W. GRUPE.

Fred William, son of Mr. and Mrs. William Grupe, was born in Effingham, Ill., August 15, 1882, and died at the age of 23 years 2 months and 3 days. He was united in marriage to Miss Mamie Beck, of Lebanon, Ill., October 7, 1902. To this union



were born two children. He was converted at the early age of twelve years and united with the Van Treese Chapel, Methodist Episcopal Church, near his home. He lived a devoted, sincere Christian life. At an early age he felt called to the ministry

and began at once to prepare himself for the work. He spent three years at Austin College, Effingham, and two years at McKendree College, Lebanon, Ill.

He served three charges and built two churches. In the year 1905 he was appointed by the Southern Illinois Conference to Ashley, Ill. Here he gave three years of faithful service. September 16, 1908, he went to Conference and was ordained elder, finishing the Conference course. September 21, 1908, he was appointed by Bishop Bristol to Marissa, Ill., where he had the privilege of preaching only five sermons, when God called him home to a greater work. He leaves a devoted wife and two children, a father, mother, two sisters (Eva Grupe Moore and husband, Rev. J. F. Moore, of Beecher City, Ill., and Ida M. Grupe, of Effingham, Ill.), many relatives and a host of friends to mourn their loss.

LAURENCE SMITH.

MRS. NINA MAY HARMON.

Nina May Large was born in Newton Ill., August 31, 1880, and died in the sanitarium in Olney, Ill., November 2, 1908. She was converted in Carbondale in 1892, and united with our church under the pastorate of Rev. William Wallis. Later the family moved to Lebanon, where she was educated. On the 23d day of December, 1903, she was united in marriage to Rev. Cameron Harmon. Their first pastorate was Grayville, where they labored three years. Their next charge was McLeansboro, where they were living at her death. The funeral services were held in the new church in McLeansboro, in which she was so greatly interested and for which she had worked untiringly to see completed. Sister Harmon's characteristics fitted her well to be a Methodist minister's wife. She was sympathetic, kind, gentle, energetic and enthusiastic. Her death was not only a loss to her family and church at McLeansboro, but a loss to Methodism.

J. S. CUMMINS.

MRS. MARY W. MANIFOLD.

Mary Wright Lafferty was born at Poseyville, Ind., June 16, 1831. In young womanhood she was united in marriage with the late Rev. Henry Manifold, an honored member of the Southern

Illinois Conference, with whom, for thirty years, she shared the labors and hardships, the joys and sorrows of the itinerant ministry.

Two daughters, Mae and Dora, blessed the home, the former being now Mrs. Mae Kirkham of St. Louis, Mo., and the latter Mrs. Dora Hord of Louisville, Ill. These, with a sister, three stepchildren and many friends are given their cup of affliction in her death.

In early life she gave herself to the service of the Lord. At the time of her translation, January 24, 1909, she was a member of the Methodist Episcopal Church at Louisville, Ill., to which she had transferred by letter from Pomona, Cal.

Mrs. Manifold was a woman of high ideals and of strong convictions. In her close adherence to the gospel rule of life, she was a crown to her husband and an ornament to the church. She was a faithful wife and a devoted mother. "Her children rise up and call her blessed."

Her funeral services were conducted at Louisville, Ill., by her pastor, the Rev. J. S. Hall, two days after her departure, January 26, 1909, and her frail body, that had held so long her buoyant spirit in restraint, was laid away in Orchard Hill Cemetery.

T. H. HERDMAN.

Alphabetic Roll of the Southern Illinois Conference.

NAMES	P. O. ADDRESS	ADMITTED INTO FULL CONNECTION		Transferred to S. Ill. Con.	Nativity	Relation
		Year	Conference			
Adams, J. M	Metropolis	1895	S. Ill		Ky.	Effective.
Albrecht, Sam'l	Steelville	1892	C. Ill	1899	Ill	"
Atchison, Chas	Sesser	1891	Ky.	1895	Ill	"
Aten, Fred N	Rlsah	1907	S. Ill		Ill	"
Bovard, C. E	Mason	1891	S. Ill		Ohio	"
Baker, M. B.	Upper Alton	1890	S. Ill		Ind	"
Baker, D. W	Equality	1898	S. Ill		Ill	"
Barnes, Edmund	Grafton	1878	Ky.	1884	Ky.	"
Beckett, C. A	Centralia	1887	S. Ill		Ind	"
Bennett, J. H.	Eldorado	1884	S. Ill		Tenn	Superan.
Besse, C. B.	Orange, N. J.	1878	E. Maine	1890	Maine	"
Burke, J. E	Mason	1891	S. Ill		Ind	"
Boyer, J. J.	Xenia	1870	S. Ill		Pa	"
Bradley, W. R	Villa Ridge	1884	S. Ill		Ill	Effective.
Britton, J. W	Mt. Olive	1883	S. Ill		Ill	"
Brown, R. M	Sailor Springs	1905	S. Ill		Ill	"
Brown, Harry C.	O'Fallon	1908	S. Ill		Ill	"
Herst, Samuel D.	Norris City	1908	S. Ill		Ill	"
Brown, F. C	St. Jacob	1909	S. Ill		Ill	"
Calvert, Greenlee	Trenton	1888	S. Ill		N. Y.	"
Carlin, P. C.	Lebanon	1896	S. Ill		Ill	"
Campbell, A. B	Corinth	1900	S. Ill		Ill	"
Campbell, C. W.	Johnston City	1886	Austin	1906	Ind	"
Carson, William	Olney	1891	S. Ill		Ireland	"
Cates, Theodore	Fairfield	1895	S. Ill		Ill	"
Carroll, E. T.	Grayville	1905	S. Ill		Ill	"
Clark, O. H.	Vienna	1861	S. Ill		England	"
Cooksey, N. B.	Nashville	1877	S. Ill		Ill	"
Cross, W. A.	Troy	1874	Ch. South	1885	Ill	"
Crow, N.	Centralia	1881	S. Ill		Ill	"
Culver, O. F	Sumner	1895	S. Ill		Ill	"
Cummins, J. B.	Kimnundy	1898	S. Ill		Ill	"
Cummins, J. W	E. St. Louis	1895	S. Ill		Ill	"
Cummins, J. S	Carmi	1895	Arkansas	1898	Ill	"
Cramp, L.	Batchtown	1881	S. Ill		Ill	"
Cunningham, J. L	Edwardsville	1879	S. Ill		Tenn	Superan.
Cline, W. T	Alton			1909		Effective.
Davis, J. H	Pinckneyville	1899	S. Ill		Ill	"
Dee, J. G	Cairo	1881	S. Ill		Ill	"
Deweese, J. W	Ramsey	1894	Ky	1895	Ky.	"
Dewhurst, A. J	West Salem	1859	S. Ill		Ill	Superan.
Dew, J. P.	Kans. City Mo	1859	Ind.	1863	Va	"
Dunn, W. T	Donnellson	1894	Ky	1906	Ky.	Effective.
Dunn, G. A	Maunie	1909	S. Ill		Ill	"
Ellis, John S	West Liberty	1906	S. Ill		Ill	"
Edwards, W. W	Shipman	1885	S. Ill		Ill	"
Ewers, M. H.	Nashville, Ten	1880	Ill.	1902	Ill	Supersu.
Ellis, Ira W.	Renault	1907	S. Ill		Ill	Effective.
Farmer, Z. W.	Collinsville	1890	S. Ill		Ill	"
Fidler, George	Carterville	1904	S. Ill		Ind	"
Flint, J. W	Lawrenceville	1877	S. Ill		Ill	"
Ford, J. H	Robinson	1881	Ky	1886	Ky.	"
Foltz, M. C	Oblong	1906	S. Ill		Ohio	"
Flick, I. G	Belknap	1909	S. Ill		Ill	"
Gannaway, W. H.	Carlyle	1881	Ill.	1901	Ill	"
Goodman, G. R.	Bone Gap	1900	S. Ill		Ill	"
Groves, S. P.	Nashville	1862	S. Ill		Ohio	Superan.
Glottelty, P. R	Farina	1903	S. Ill		Ill	Effective.
Griffin, P. D.	West Salem	1908	S. Ill		Ill	"
Gould, V. N	Sumner	1809	S. Ill		Ill	"
Hall, C. C.	Vandalia	1896	Ky	1899	Ky.	"

MEMBERS OF CONFERENCE—Continued.

NAMES	P. O. ADDRESS	ADMITTED INTO FULL CONNECTION		Transferred to S. Ill. Con.	Nativity	Relation
		Year	Conference			
Hall, J. S.	Louisville.	1889	S. Ill.		Ill.	Effective.
Hall, G. R.	Bond Av. E. St. Louis	1899	Ch. South.	1903	Ky.	"
Hall, Geo. H.	Beaver Creek	1908	S. Ill.		Ill.	"
Harms, Wm. C.	Dahlgren.	1908	S. Ill.		Ill.	"
Harmon, J. F.	Lebanon.	1888	S. Ill.		Ill.	"
Harmon, J. G.	Efingham	1888	S. Ill.		Ill.	"
Harmon, Cameron	McLeansboro.	1905	S. Ill.		Ill.	"
Harris, Albert	Coulterville	1887	S. Ill.		Ill.	"
Harris, D. T.	Xenia	1891	S. Ill.		Ind.	"
Hanks, G. W.	Oblong	1894	S. Ill.		Ill.	"
Herdman, T. H.	Lebanon	1867	S. Ill.		Pa.	"
Hiser, H. O.	Nashville	1898	S. Ill.		Pa.	Supernu.
Hoar, B. A.	Mt. Vernon	1855	S. Ill.		Ohio	Effective.
Hoar, S. H.	Opdyke	1907	S. Ill.		Ill.	"
Hoffmire, C. H.	East St. Louis	1908	S. Ill.		Ill.	"
Holloway, M. B.	Ridgeway.	1904	S. Ill.		Ill.	"
Hopper, W. J.	Norris City	1891	S. Ill.		Ill.	"
Hoon, C. E.	Clay City	1902	S. Ill.		Ind.	"
Hoon, T. E.	Beaucoup	1907	S. Ill.		Ind.	"
Huffman, J. T.	Elco	1886	S. Ill.		Ill.	Supernu.
Hall, C. W.	Granite City.	1809	S. Ill.		Ill.	Effective.
Hearn, P. H.	Tamaroa	1909	S. Ill.		Ill.	"
Huntsberry, W.	St. Francisville	1909	S. Ill.		Ill.	"
Iva, Chas. W.	Calhoun	1907	S. Ill.		Ill.	"
Jackson, J. W.	Oblong	1884	S. Ill.		Ill.	Super an.
Jackson, Marion	Jonesboro	1900	Arkansas.	1901	Ill.	Effective.
James, F. M.	Makanda	1902	S. Ill.		Ill.	"
Jones, J. H.	Jerseyville	1884	S. Ill.		England	"
Jones, W. L.	Albion	1896	S. Ill.		Ill.	"
Jones, R. N.	Okawville	1908	S. Ill.		Ind.	"
Jewell, S. K.	Mason			1909	Ill.	"
Keane, D. A.	East St. Louis.			1909		"
Kiesling, Willard.	Lebanon	1890	S. Ill.		Ill.	Supernu.
Kinison, J. C.	Herrin	1891	S. Ill.		Kans.	Effective.
Knight, F. H.	Edwardsville	1892	C. N. Y.	1901	Canada	"
Kemper, W. W.	Huey	1906	S. Ill.		Ind.	"
Keane, D. A.	Bond Av. E. St. Louis			1909		"
Landis, J. A.	Renault	1908	S. Ill.		Ill.	"
Laughlin, R. W.	Tunneil Hill.	1857	S. Ill.		Ky.	Superan.
Leitzell, C. E.	Sailor Springs	1904	S. Ill.		Ill.	Effective.
Lingenfelter, C. D.	Clay City	1856	S. Ill.		Ky.	Superan.
Lingenfelter, V. D.	Kinmundy	1857	S. Ill.		Ky.	"
Loar, M. H.	Murphysboro	1896	S. Ill.		Ill.	Effective.
Latham, F. M.	Norris City			1909	Ill.	Supernu.
Loy, F. W.	Efingham	1882	S. Ill.		Ill.	Effective.
Loflar, E. L.	Macedonia	1903	C. Tenn.		Miss.	"
Lindsey, A. D.	Belleville	1899	C. Tenn.	1909	Tenn.	"
Mauk, Lovell R.	Richview	1900	Ch. South.	1907	Ky.	"
Margrave, W. D.	Mound City.	1896	S. Ill.		Ill.	"
Markman, O. L.	Palestine		Ev. Ass'n.	1904	Ill.	"
McCammon, G. E.	Mt. Vernon	1898	S. Ill.		Ill.	"
McCracken, J. E.	Mulberry G'v'e	1896	S. Ill.		Ill.	"
McKown, L. S.	Shawneetown	1904	S. Ill.		Ind.	"
McKown, M. C.	Bellmont	1884	Ind.	1905	Ind.	"
McMorrow, Wm	Mulberry G'v'e	1869	S. Ill.		Va.	Superan.
McNeill, J. W.	Edwardsville	1878	Tenn.	1880	Tenn.	Effective.
Matthews, S. A.	New Douglas	1909	S. Ill.		Ill.	"
Merrick, H. L.	Newton	1898	S. Ill.		Ill.	Superan.
Morris, W. T.	Salem	1883	S. Ill.		Tenn.	Effective.
Morris, Robert	Olney	1902	S. Ill.		Ill.	"
Mulvaney, J. M.	Anna	1888	S. Ill.		Ind.	Superan.
Murkin, J. T.	Mulberry G'v'e	1889	S. Ill.		Ill.	"
Marriott, Fay	Alma	1909	S. Ill.		Ill.	"

MEMBERS OF CONFERENCE.—Continued.

NAMES	P. O. ADDRESS	ADMITTED INTO FULL CONNECTION		Transferred to S. Ill. Con.	Nativity	Relation
		Year.	Conference			
Naah, Calloway.....	Jerseyville.....	1867	S. Ill.		Tenn.	Superan'ed.
Nickerson, J. E.....	Gilden.....	1887	S. Ill.		Ohio	Effective.
Oglesby, Daniel.....	Richview.....	1856	S. Ill.		Ill.	Superan'ed.
Orr, J. C.....	Nicky Grove, Ky.	1886	Ky.	1887	Ky.	"
Peake, T. DeWitte.....	Litchfield.....	1872	Ohio	1901	Ohio	Effective.
Peterson, C. L.....	Marissa.....	1904	S. Ill.		Ill.	"
Phillips, C. R.....	Eldorado.....	1904	S. Ill.		Ill.	"
Pool, W. H.....	Granite City.....	1892	S. Ill.		Ill.	"
Porter, L. W.....	Newton.....	1895	S. Ill.		Ill.	"
Powis, Wm.....	Elizabethtown	1880	Ky.	1886	England	"
Proctor, A. G.....	Anua.....	1890	S. Ill.		Ill.	"
Perrin, D. A.....	Normal.....	1870	C. Ill.	1894	Canada	Superan'ed.
Phelps, George A.....	Waltonville.....	1908	S. Ill.		Ill.	Effective.
Ravenscroft, J. B.....	Brighton.....	1869	S. Ill.		England	"
Rhein, W. L.....	Mt. Vernon.....	1898	S. Ill.		Ill.	"
Robertson, Ressho.....	Harrisburg.....	1894	S. Ill.		Ill.	"
Rogers, S. A. D.....	Olney.....	1898	S. Ill.		Ill.	"
Rentfro, J. L.....	Lebanon.....	1906	S. Ill.		Ill.	"
Rector, W. G.....	Bunker Hill.....	1904	St. John's R.	1906	Ind.	"
Richardson, Wm. D.....	Deiterich.....	1909	S. Ill.		Ill.	"
Ransom, A. R.....	Hutsonville.....	1909	S. Ill.		Ill.	"
Sabine, C. W.....	Murphysboro.....	1898	S. Ill.		Ohio	Superan'ed
Scarritt, J. A.....	Alton.....	1858	S. Ill.		Ill.	"
Sears, Hiram.....	Berea, O.....	1858	S. Ill.		Ohio	"
Seed, G. A.....	Olney.....	1878	S. Ill.		Ill.	"
Steves, H. L.....	Benton.....	1887	N. Ohio	1906	N. Y.	"
Shaddrick, J. D.....	Du Quoin.....	1902	S. Ill.		Ill.	Effective.
Shumard, C. D.....	Mt. Carmel.....	1890	S. Ill.		Ill.	"
Smith, Lawrence.....	Belleville.....	1892	S. Ill.		Ill.	"
Smith, P. A.....	Kane.....	1898	S. Ill.		Ill.	"
Smith, S. S.....	Big Prairie.....	1895	S. Ill.		Ill.	"
Smith, J. W.....	Ashley.....	1903	Oklahoma.	1904	Minn.	"
Shafer, John E.....	Enfield.....	1904	S. Ill.		Ill.	"
Smoot, H. W.....	Oblong.....	1905	S. Ill.		Ill.	"
Schaeffer, G. I.....	Chester.....	1899	S. Ill.	1904	Ill.	"
Spragg, C. H.....	Crossville.....	1897	S. Ill.		Ill.	"
Sullivau, C. A.....	Walnut Hill.....	1904	S. Ill.		Ill.	"
Sweeny N. D.....	East St. Louis	1895	S. Ill.		Ill.	"
Sullins, V. B.....	Medora.....	1907	S. Ill.		Ill.	"
Sheffer, B. F.....	Browns.....	1895	Ch. South.	1908	Ky.	"
Taylor, J. A.....	Carbondale.....	1892	S. Ill.		Ky.	"
Tennyson, J. W.....	Olney.....	1892	S. Ill.		Ill.	Superan'ed.
Tilroe, Wm.....	Robinson.....	1869	S. Ill.		Holland.	"
Tritt, C. S.....	Flat Rock.....	1900	S. Ill.		Ill.	Effective.
Terhune, W. I.....	Bridgeport.....	1905	S. Ill.		Ill.	"
Thero, Samuel.....	Gillespie.....	1894	Iowa	1902	Iowa	"
Thomson, F. L.....	Marion.....	1868	S. Ill.		Tenn.	"
Thrall, L. W.....	Flora.....	1874	S. Ill.		Ill.	"
Thrall, V. W.....	Lebanon.....	1904	S. Ill.		Ill.	"
Tucker, J. G.....	Carbondale.....	1895	S. Ill.		Ind.	"
Thrall, H. L.....	Nobel.....	1909	S. Ill.		Ill.	"
Thomas, C. B.....	Golconda.....			1909	Ky.	"
Vandaveer, A.....	Texas.....	1868	S. Ill.		Ind.	Superan'ed.
Van Houten, A. W.....	Patoka.....	1884	S. Ill.		Ill.	"
Van Treese, F. M.....	Carmi.....	1869	S. Ill.		Ind.	Effective.
Van Leer, M. B.....	Belleville.....	1905	S. Ill.		Ill.	"
Walton, W. C.....	Lebanon.....	1894	S. Ill.		Ill.	"
Wilton, Elmer.....	Moccasin.....	1907	S. Ill.		Ill.	"
Webber, G. M.....	Plainview.....	1884	C. Ill.	1896	N. Y.	"
Webster, J. W.....	Sparta.....	1896	S. Ill.		Tenn.	"
Whiteside, C. B.....	St Rimo.....	1897	S. Ill.		Ill.	"
Whitlock, W. H.....	Altamont.....	1903	S. Ill.		Ill.	"
Wilson, F. O.....	Staunton.....	1904	S. Ill.		Ill.	"
Woodley, R. D.....	Benton.....	1888	Ch. South	1895	N. C.	"
Walker, L. S.....	Richview.....	1959	S. Ill.		Ill.	Superan'ed.
Whitsel, G. M.....	HutchinsonKs	1875	S. Ill.		Ohio	"
Wilkin, L. C.....	Olney.....	1893	S. Ill.		Ill.	Superan'.
Waggoner, Gordon.....	West Liberty.....	1908	S. Ill.		Mo.	Effective
Wood, C. E.....	Greenville.....			1909		Superan'ed.
Yunglin, J. P.....	S'ta Paula, Cal	1878	S. Ill.		Ill.	Superan'ed.
Yingst, Adam.....	Canton, Minn	1889	S. Ill.		Ill.	"

PROBATIONERS, 1909.

NAME	POST OFFICE	Ad mitted	CLASS
Oscar W. Atterbury.....	Galatia.....	1909	First Yr.
Grover C. Albin.....	Beckemeyer.....	1909	"
Earl W. Barrett.....	Shobonier.....	1909	"
Rollin E. Bethards.....	Iuka.....	1909	"
Wm. E. Busch.....	Ullin.....	1909	"
Richard O. Clements.....	Chauncey.....	1909	"
Geo. W. Edwards.....	Broughton.....	1909	"
Waclave F. Fransee.....	East St. Louis.....	1909	"
Walter J. Fahnestock.....	Lebanon.....	1909	"
Samuel L. Ford.....	Laclede.....	1909	"
Nathan S. Lanter.....	Jeffersonville.....	1909	"
John W. Mahoney.....	Piasa.....	1909	"
Ollie O. Maxfield.....	Wheeler.....	1909	"
Wm. H. McPherson.....	McLeansboro.....	1909	"
Harry E. McKnight.....	Lebanon.....	1909	"
Herman B. Shoaff.....	Yale.....	1909	"
James E. Willey.....	Central City.....	1909	"
Edward G. Winger.....	Willow Hill.....	1909	"
Chas. A. Modlin.....	Coffeen.....	1909	"
Levi M. Leyerle.....	Thebes.....	1908	Second
Orval E. Connett.....	Eddyville.....	1908	"
Wm. O. Finks.....	East St. Louis.....	1908	"
Zeno L. Petty.....	Carrier Mills.....	1908	"
Walter M. Brown.....	Bloomfield.....	1908	"
Daniel D. Collins.....	Collinsville.....	1908	"
Geo. C. Streubing.....	Freeburg.....	1908	"
John F. Glotfelty.....	Ewing.....	1908	"
Oren L. Clapper.....	Brownsville.....	1908	"
Maurice G. Buchanan.....	Avena.....	1908	"
Richard C. Myers.....	New Baden.....	1908	"
Robt. R. Howe.....	Irvington.....	1908	"
Petko D. Vassileff.....	Granite City.....	1908	"
Allan S. Weiss.....	Venice.....	1908	"
Thos. B. Sowers.....	Bethalto.....	1908	"
Geo. O. Waggoner.....	Pinkstaff.....	1908	"
Chas. M. Duncan.....	Evanston.....	1906	Third
Guy Dewhirst.....		1906	"
Chas. H. Thrall.....	Oskaloosa, Iowa.....	1905	Fourth
Paul Barnhart.....	Donga, via Ibi, N. Nigeria West Africa	1905	Fourth

Members of Conference Deceased.

NAMES	NATIVITY.		ENTERED TRAVELING CON.		DECEASED	
	Where	When	Conference	When	Where	When
Haley, James W	Kentucky	1813	Illinois	1855	Alton, Ill.	1855
Allyn, Henry	Connectic't	1813	S. Illinois	1851	Nashville, Ill.	1855
Kendall, John D	Illinois	1824	S. Illinois	1853	Fairview, Ill.	1858
Massey, James M.	Tennessee	1809	Illinois	1831	Marion Co., Ill.	1858
Vest, James	Tennessee	1801	Illinois	1850	Mascoutah, Ill.	1859
Maxey, William H	Illinois	1823	S. Illinois	1836	Xenia, Ill.	1859
Chandler, Thos. W	1799	Kentucky	1827	Alton, Ill.	1861
Shepherd, John	Penn.	1789	Illinois	1836	Will'm'n Co., Ill.	1860
McCord, Chas. A.	Kentucky	1813	S. Illinois	1853	Tamaroa, Ill.	1861
Calnan, John	Ireland	1833	S. Illinois	1860	Alton, Ill.	1861
Ayers, R. G.	Ohio	1837	S. Illinois	1858	Equality, Ill.	1892
Walls, F. T.	Illinois	1848	Ashley, Ill.	1862
Shepherd, Moses	Illinois	1851	DuQuoin, Ill.	1862
Glaze, John	Ohio	1811	S. Illinois	1862	Albion, Ill.	1863
Allyn, Norman	Connectic't	1810	Illinois	1838	Bunker Hill, Ill.	1864
Babbitt, Carlisle	Vermont	1808	Kentucky	1831	Olney, Ill.	1864
Nall, Richard J	N Carolina	1818	Illinois	1839	Lawrenceville, Ill.	1864
Huggins, W. C.	Ohio	1825	S. Illinois	1857	Equality, Ill.	1865
Holt John	S. Illinois	1852	Hebron, Ill.	1866
Cliffe, William	England	Illinois	1843	Olney, Ill.	1866
Spencer, Travis O	S. Illinois	1859	DuQuoin, Ill.	1866
Mitchell, Wm. W	Virginia	1816	Illinois	1854	Richview, Ill.	1869
Thatcher, John	Connectic't	1806	Missouri	1835	Mt. Erie, Ill.	1869
HAMILTON, Presley P.	Illinois	1824	S. Illinois	1853	Litchfield, Ill.	1869
Frazier, John	Ireland	1803	New York	1831	Lebanon, Ill.	1871
Morrison, Jonas S	New York	1836	S. Illinois	1859	Shipman, Ill.	1871
Corrington, Wm. H	Kentucky	1825	S. Illinois	1863	Belleville, Ill.	1872
Richardson, Jas. I.	Tennessee	1808	Illinois	1827	Marion Co. Ill.	1872
Lambert, Cavey	England	1809	Illinois	1851	Grayville, Ill.	1872
Clifford, Zelotes S.	N. Ham're	1815	Indiana	1848	New Haven, Ill.	1872
Copeland, James	Missouri	1836	S. Illinois	1867	Lebanon, Ill.	1872
Walker, Wm. S. C.	Tennessee	1830	S. Illinois	1865	McLeansboro, Ill.	1873
Powell, Joseph H	Georgia	1824	Alabama	1891	Clay City, Ill.	1873
Taylor, Wm R	Illinois	1836	S. Illinois	1860	Spr'g Garden, Ill.	1873
Greenlaw, Wm. M.	New York	1850	S. Illinois	1869	Flora, Ill.	1873
Armstrong, I. S.	Ohio	1824	S. Illinois	1869	Noble, Ill.	1874
Risley, Asahel L.	Kentucky	1804	Indiana	1827	Lebanon, Ill.	1874
Randle, Thomas	Missouri	1824	Upper Alton, Ill.	1874
Van Cleve, John	New Jersey	1804	Illinois	1828	New York	1875
Hawley, Nelson	Ohio	1807	Illinois	1842	Middletown, O.	1875
Dickson, Wm. C.	Kentucky	1835	S. Illinois	1867	Olney, Ill.	1877
Jay, Charles S.	Penn.	1820	S. Illinois	1841	Steelville, Ill.	1878
Van Winkle, D. B.	Illinois	1832	S. Illinois	1860	DuQuoin Ill.	1878
Williamson, D.	Virginia	Indiana	1846	Watson, Ill.	1878
Campbell, A.	Penn.	1811	S. Illinois	1853	Freeburg, Ill.	1879
Deneen, W. L.	Penn.	Illinois	1828	Lebanon, Ill.	1879
Walker, Simeon	Georgia	1802	Illinois	1830	Carbondale, Ill.	1880
Harrington, S. J.	Penn.	1845	S. Illinois	1873	Es'sah, Ill.	1880
Robbins, G. W.	Georgia	1800	Kentucky	1821	Richview, Ill.	1880
Corrington, J. B.	Kentucky	1801	Illinois	1840	St. Louis, Mo.	1880
Holliday, C. M.	Kentucky	1807	Kentucky	1825	O'Fallon, Ill.	1881
Houts, C. J.	Kentucky	1812	Illinois	1838	Metropolis, Ill.	1881
Johnson, James	Kentucky	1809	Illinois	1848	Patoka, Ill.	1881
Lopez, T. C.	England	1808	Illinois	1839	Greenville, Ill.	1881
Delicate, H.	England	1842	S. Illinois	1872	Wanda, Ill.	1882
Whitaker, W. F.	Indiana	1842	S. Illinois	1870	Belleville, Ill.	1882
Nesbit, A. B.	Indiana	1813	Indiana	1841	Olney, Ill.	1883
Johnson, J. T.	Tennessee	1805	Illinois	1825	Mt. Vernon, Ill.	1884
Farmer, G. W.	N. Carolina	1838	S. Illinois	1866	Anna, Ill.	1884
Reynolds, J. B.	Illinois	1834	Illinois	1856	Salem, Ill.	1885
Jones, O. V.	Kentucky	1824	S. Illinois	1866	Lebanon, Ill.	1885
English, L. C.	New Jersey	1818	Illinois	1851	Robinson, Ill.	1886
Lathrop, Erastus	Vermont	1813	Indiana	1846	Moravia, Iowa.	1886
Woodard, J. B.	N. Carolina	1804	Illinois	1836	Mulberry Grv., Ill.	1887

PROBATIONERS, 1909.

NAME	POST OFFICE	Ad mitted	CLASS
Oscar W. Atterbury.....	Galatia.....	1909	First Yr.
Grover C. Albin.....	Beckemeyer.....	1909	"
Earl W. Barrett.....	Shobonier.....	1909	"
Rollin E. Bethards.....	Iuka.....	1909	"
Wm. E. Busch.....	Ulin.....	1909	"
Richard O. Clements.....	Chauncey.....	1909	"
Geo. W. Edwards.....	Broughton.....	1909	"
Waclave F. Fransee.....	East St. Louis.....	1909	"
Walter J. Fahnestock.....	Lebanon.....	1909	"
Samuel L. Ford.....	Laclede.....	1909	"
Nathan S. Lanter.....	Jeffersonville.....	1909	"
John W. Mahoney.....	Piasa.....	1909	"
Ollie O. Maxfield.....	Wheeler.....	1909	"
Wm. H. McPherson.....	McLeansboro.....	1909	"
Harry E. McKnight.....	Lebanon.....	1909	"
Herman B. Shoaff.....	Yale.....	1909	"
James E. Willey.....	Central City.....	1909	"
Edward G. Winger.....	Willow Hill.....	1909	"
Chas. A. Modlin.....	Coffeen.....	1909	"
Levi M. Leyerle.....	Thebes.....	1908	Second
Orval E. Connett.....	Eddyville.....	1908	"
Wm. O. Finks.....	East St. Louis.....	1908	"
Zeno L. Petty.....	Carrier Mills.....	1908	"
Walter M. Brown.....	Bloomfield.....	1908	"
Daniel D. Collins.....	Collinsville.....	1908	"
Geo. C. Streubing.....	Freeburg.....	1908	"
John F. Glotfelty.....	Ewing.....	1908	"
Oren L. Clapper.....	Brownsville.....	1908	"
Maurice G. Buchanan.....	Avena.....	1908	"
Richard C. Myers.....	New Baden.....	1908	"
Robt. R. Howe.....	Irvington.....	1908	"
Petko D. Vassileff.....	Granite City.....	1908	"
Allan S. Weiss.....	Venice.....	1908	"
Thos. B. Sowers.....	Bethalto.....	1908	"
Geo. O. Waggoner.....	Pinkstaff.....	1908	"
Chas. M. Duncan.....	Evanston.....	1906	Third
Guy Dewhirst.....		1906	"
Chas. H. Thrall.....	Oskaloosa, Iowa.....	1905	Fourth
Paul Barnhart.....	Donga, via Ibi, N. Nigeria West Africa	1905	Fourth

Members of Conference Deceased.

NAMES	NATIVITY.		ENTERED TRAVELING CON.		DECEASED	
	Where	When	Conference	When	Where	When
Haley, James W.	Kentucky		Illinois		Alton, Ill.	1855
Allyn, Henry	Connectic't	1813	S. Illinois	1851	Nashville, Ill.	1855
Kendall, John D.		1824	S. Illinois	1853	Fairview, Ill.	1858
Massey, James M.	Tennessee	1809	Illinois	1851	Marion Co., Ill.	1858
Vest, James	Tennessee	1801	Illinois	1850	Mascoutah, Ill.	1859
Maxey, William H.	Illinois	1823	S. Illinois	1836	Xenia, Ill.	1859
Chandler, Thos. W.		1799	Kentucky	1827	Alton, Ill.	1861
Shepherd, John	Penn.	1789	Illinois	1836	Will'm'n Co., Ill.	1860
McCord, Chas. A.	Kentucky	1813	S. Illinois	1853	Tamaroa, Ill.	1861
Calnan, John	Ireland	1833	S. Illinois	1860	Alton, Ill.	1861
Ayers, R. G.	Ohio	1837	S. Illinois	1858	Equality, Ill.	1892
Walls, F. T.			Illinois	1848	Ashley, Ill.	1862
Shepherd, Moses			Illinois	1851	DuQuoin, Ill.	1862
Glaze, John	Ohio	1811	S. Illinois	1862	Albion, Ill.	1863
Allyn, Norman	Connectic't	1810	Illinois	1836	Bunker Hill, Ill.	1864
Babbitt, Carlisle	Vermont	1808	Kentucky	1831	Olney, Ill.	1864
Nall, Richard J.	N Carolina	1818	Illinois	1839	Lawrenceville, Ill.	1864
Huggins, W. C.	Ohio	1825	S. Illinois	1857	Equality, Ill.	1865
Holt, John			S. Illinois	1852	Hebron, Ill.	1868
Cliffe, William	England		Illinois	1843	Olney, Ill.	1868
Spencer, Travis O.			S. Illinois	1859	DuQuoin, Ill.	1866
Mitchell, Wm. W.	Virginia	1816	Illinois	1854	Richview, Ill.	1869
Thatcher, John	Connectic't	1806	Missouri	1835	Mt. Erie, Ill.	1869
Hamilton, Presley P.	Illinois	1824	S. Illinois	1853	Litchfield, Ill.	1869
Frazier, John	Ireland	1803	New York	1831	Lebanon, Ill.	1871
Morrison, Jonas S.	New York	1836	S. Illinois	1859	Shipman, Ill.	1871
Corrington, Wm. H.	Kentucky	1826	S. Illinois	1863	Belleville, Ill.	1872
Richardson, Jas. I.	Tennessee	1808	Illinois	1827	Marion Co., Ill.	1872
Lambert, Cavey	England	1809	Illinois	1851	Grayville, Ill.	1872
Clifford, Zelotes S.	N. Ham're	1815	Indiana	1843	New Haven, Ill.	1872
Copeland, James	Missouri	1836	S. Illinois	1867	Lebanon, Ill.	1872
Walker, Wm. S. C.	Tennessee	1890	S. Illinois	1865	McLeansboro, Ill.	1873
Powell, Joseph H.	Georgia	1824	Alabama	1891	Clay City, Ill.	1873
Taylor, Wm. R.	Illinois	1836	S. Illinois	1860	Spr'g Garden, Ill.	1873
Greenlaw, Wm. M.	New York	1850	S. Illinois		Pfora, Ill.	1873
Armstrong, I. S.	Ohio	1824	S. Illinois	1869	Noble, Ill.	1874
Risley, Asahel L.	Kentucky	1804	Indiana	1827	Lebanon, Ill.	1874
Randle, Thomas			Missouri	1824	Upper Alton, Ill.	1874
Van Cleve, John	New Jersey	1804	Illinois	1828	New York	1875
Hawley, Nelson	Ohio	1807	Illinois	1842	Middletown, O.	1875
Dickson, Wm. C.	Kentucky	1838	S. Illinois	1867	Olney, Ill.	1877
Jay, Charles S.	Penn.	1820	S. Illinois	1841	Steelville, Ill.	1878
Van Winkle, D. B.	Illinois	1832	S. Illinois	1860	DuQuoin Ill.	1878
Williamson, D.	Virginia		Indiana	1846	Watson, Ill.	1878
Campbell, A.	Penn.	1811	S. Illinois	1853	Freeburg, Ill.	1879
Deneen, W. L.	Penn.		Illinois	1828	Lebanon, Ill.	1879
Walker, Simeon	Georgia	1802	Illinois	1830	Carbondale, Ill.	1880
Harrington, S. J.	Penn.	1845	S. Illinois	1873	E'sah, Ill.	1880
Robbins, G. W.	Georgia	1800	Kentucky	1821	Richview, Ill.	1880
Corrington, J. B.	Kentucky	1801	Illinois	1840	St. Louis, Mo.	1880
Holliday, C. M.	Kentucky	1807	Kentucky	1825	O'Fallon, Ill.	1881
Houts, C. J.	Kentucky	1812	Illinois	1838	Metropolis, Ill.	1881
Johnson, James	Kentucky	1809	Illinois	1848	Patoka, Ill.	1881
Lopas, T. C.	England	1808	Illinois	1839	Greenville, Ill.	1881
Delicate, H.	England	1842	S. Illinois	1872	Wanda, Ill.	1882
Whitaker, W. F.	Indiana	1842	S. Illinois	1870	Belleville, Ill.	1882
Nesbit, A. B.	Indiana	1813	Indiana	1841	Olney, Ill.	1883
Johnson, J. T.	Tennessee	1805	Illinois	1825	Mt. Vernon, Ill.	1884
Farmer, G. W.	N. Carolina	1838	S. Illinois	1866	Anna, Ill.	1884
Reynolds, J. B.	Illinois	1834	Illinois	1856	Salem, Ill.	1885
Jones, O. V.	Kentucky	1824	S. Illinois	1866	Lebanon, Ill.	1885
English, L. C.	New Jersey	1818	Illinois	1851	Robinson, Ill.	1886
Lathrop, Erastus	Vermont	1813	Indiana	1846	Moravia, Iowa	1886
Woodard, J. B.	N. Carolina	1804	Illinois	1836	Mulberry Grv. Ill.	1887

Members of Conference Deceased.—Con.

NAMES	NATIVITY		ENTERED TRAVEL- ING CONNECTION		DECEASED	
	Where	When	Conference	When	Where	When
Gibson, Josiah	Virginia	1817	Pittsburg	1848	Creston, Iowa	1888
Hill, J. H.	Ohio	1816	Illinois	1847	Lebanon, Ill.	1889
Caldwell, J. W.	Kentucky	1825	Illinois	1849	Kane, Ill.	1890
Caughlin, David	Virginia	1824	Illinois	1871	O'Fallon, Ill.	1890
Tolle, C. J. T.	Kentucky	1825	Illinois	1847	Patoka, Ill.	1890
Lowe, J. W.	Kentucky	1829	Illinois	1852	Stanton, Kas.	1890
Downey, A. L.	Indiana	1819	Kentucky	1854	Mar o w, Ill.	1892
Gilham, J.	Illinois	1816	Illinois	1834	Sacramento, Ill.	1892
Johnson, T. N.	Illinois	1837	S. Illinois	1857	Vergennes, Ill.	1892
Brannum, W. T.	Illinois	1825	S. Illinois	1858	Kinmundy, Ill.	1892
Casey L.	Illinois	1832	S. Illinois	1856	Centralia, Ill.	1893
Root, E.	Virginia	1817	S. Illinois	1878	Lebanon, Ill.	1893
Allyn, Robert	Connecticut	1838	N. England	1842	Carbondale, Ill.	1894
Hawk, J. L.	Ohio	1820	Kentucky	1889	Lebanon, Ill.	1894
Earp, Joseph	England	1862	S. Illinois	1854	Lebanon, Ill.	1894
Waggoner, E. E.	Illinois	1868	S. Illinois	1893	Stanton, Ill.	1894
Randle, Richard	Georgia	1861	S. Illinois	1863	Christian Co., Ill.	1895
Miller, R. D.	Ohio	1822	S. Illinois	1894	Enfield, Ill.	1895
Locke, J. W.	Kentucky	1817	Ohio	1845	Kansas City, Kas.	1895
Douthitt, C. T.	Indiana	1847	S. Illinois	1893	Patoka, Ill.	1896
Thompson, J. B.	Maryland	1842	S. Illinois	1875	Salem, Ill.	1896
Blair, F. O.	Massach'ts	1822	S. Illinois	1866	Trinidad Col.	1896
Crenshaw, J. D.	Kentucky	1846	Kentucky	1876	Makanda, Ill.	1896
Field, J. W.	Illinois	1839	S. Illinois	1872	Indianapolis, Ind.	1897
Cullom, G. W.	Illinois	1816	S. Illinois	1855	Avena, Ill.	1897
Walker, Samuel	Illinois	1823	S. Illinois	1859	Carlyle, Ill.	1897
Snell, Asa	Illinois	1827	S. Illinois	1857	Elwadsville, Ill.	1898
McIntosh, J. W.	Indiana	1841	S. Illinois	1896	Grayville, Ill.	1898
Mapes, Charles	Ohio	1817	Indiana	1841	Henderson, Ky.	1898
Bliss, Alfred	Vermont	1811	S. Illinois	1854	Effingham, Ill.	1899
Burkitt, Wm. L.	Illinois	1841	S. Illinois	1888	Beecher City, Ill.	1899
Van Cleve, Wm.	New Jersey	1834	S. Illinois	1864	O ney, Ill.	1899
Keith, H. H.	Indiana	1826	Indiana	1856	Walshville, Ill.	1900
Joy, Ephraim	Illinois	1819	Illinois	1844	Centralia, Ill.	1900
Mainfold, Henry	Pennsylvania	1822	S. Illinois	1835	St. Louis, Mo.	1900
Robinson, J. A.	Illinois	1815	Illinois	1847	Centralia, Ill.	1900
Bruner, Wm. B.	Indiana	1826	N. W. Ind	1852	Tamara, Ill.	1901
Franklin, Jos. W.	Kentucky	1831	Kentucky	1869	Pinckneyville, Ill.	1901
Gilham, John D.	Illinois	1846	S. Illinois	1856	Centralia, Ill.	1901
Thrapp, Jas. A.	Ohio	1822	S. Illinois	1856	Vandalia, Ill.	1901
Wallar, Jas. L.	Vermont	1819	S. Illinois	1866	Centralia, Ill.	1901
Wallis, Wm.	Ireland	1836	S. Illinois	1865	St. Louis, Mo.	1901
Harper, L. A.	Illinois	1827	S. Illinois	1858	Mt. Erie, Ill.	1902
Ransom, A.	New York	1826	S. Illinois	1859	Newton Ill	1902
House, M.	Illinois	1825	S. Illinois	1857	Greenville, Ill.	1902
Green, Silas	Ohio	1827	Kansas	1860	Steelville, Ill.	1902
Hale, W. G.	Illinois	1858	S. Illinois	1883	New Burnside, Ill.	1902
Hormel, W. H.	Illinois	1863	St. Louis	1891	Coffeen, Ill.	1902
Kepley, S. O.	Illinois	1872	S. Illinois	1899	Springer, N. Mex.	1903
Ravenscroft, W. E.	England	1824	Indiana	1857	Owensboro, Ky.	1903
Weeden, John	Illinois	1834	S. Illinois	1869	Bartley, Neb.	1904
Davis, W. F.	Kansas	1824	S. Illinois	1857	Bethany, Ill.	1904
Pierce, B. R.	Kentucky	1828	S. Illinois	1855	Centralia, Ill.	1905
Waggoner, G. W.	Tennessee	1821	S. Illinois	1852	Upper Alton, Ill.	1905
Rutherford, J. P.	Illinois	1818	S. Illinois	1857	Hagarstown, Ill.	1905
Reef, J. R.	Illinois	1838	S. Illinois	1867	Carbondale, Ill.	1905
Littel, A. J.	Indiana	1849	S. Illinois	1889	Mound City, Ill	1906
Nall, J. W.	N. Carolina	1819	S. Illinois	1865	St. Elmo, Ill.	1906
Staufner, N.	Illinois	1845	S. Illinois	1877	Rslaton, Okla.	1906
Leeper, John	Ohio	1827	S. Illinois	1849	Nashville, Ill.	1906
Wright, J. W.	Indiana	1848	S. Illinois	1872	St. Louis, Mo	1906
King, M. L.	Kentucky	1820	Kentucky	1841	Albion, Ill.	1906
Hampton, J. A.	Illinois	1885	S. Illinois	1874	Donnellson, Ill	1907
Scawthon, G. W.	England	1838	S. Illinois	1869	Kinmundy, Ill	1907
Eaton, Thos. A.	Kentucky	1825	S. Illinois	1852	Kansas City, Mo.	1907
Baker, Chas. E.	Ohio	1866	S. Illinois	1892	Mulberry Grove, Ill	1908
McGriff, Jas. H.	Pennsylvania	1832	Holston	1869	Olney, Ill	1908
Bonner, Chas. W.	Indiana	1838	S. Illinois	1867	Long Beach, Cal.	1908
Utley, E. F.	Illinois	1872	S. Illinois	1899	Mound City, Ill.	1908
Grupe, F. W.	Illinois	1882	S. Illinois	1906	Marissa, Ill.	1908

Ministers' Widows.

NAME	RESIDENCE	COUNTY	STATE
Mrs. H. Allyn	Metropolis	Massac	Illinois.
Mrs. I. S. Armstrong	Cairo	Alexander	Illinois.
Mrs. W. T. Brannum	Beaucoup	Washington	Illinois.
Mrs. W. L. Burkitt	Orchardville	Wayne	Illinois.
Mrs. W. B. Bruner	Tamaroa	Perry	Illinois.
Mrs. J. D. Crenshaw	Carbondale	Jackson	Illinois.
Mrs. L. C. English	Robinson		Illinois.
Mrs. G. W. Farmer	Manito		Illinois.
Mrs. J. W. Franklin	Pinckneyville	Perry	Illinois.
Mrs. John Gillham	Sacramento	White	Illinois.
Mrs. C. F. Jay	Steelville	Randolph	Illinois.
Mrs. O. V. Jones	Lebanon	St. Clair	Illinois.
Mrs. H. H. Keith	Walshville	St. Clair	Illinois.
Mrs. J. W. Locke	Lebanon	St. Clair	Illinois.
Mrs. D. R. Miller	Lebanon	St. Clair	Illinois.
Mrs. J. A. Robinson	Rock Island		Illinois.
Mrs. E. Root	Pinckneyville	Perry	Illinois.
Mrs. Asa Snell	Edwardsville	Madison	Illinois.
Mrs. Wm. Van Cleve	Olney	Richland	Illinois.
Mrs. E. E. Waggoner	Effingham	Effingham	Illinois.
Mrs. Samuel Walker	Carlyle	Clinton	Illinois.
Mrs. J. L. Wallar	Centralia	Marion	Illinois.
Mrs. D. Williamson	Watson	Effingham	Illinois.
Mrs. L. A. Harper	Mt. Erie	Wayne	Illinois.
Mrs. A. Ransom	Newton	Jasper	Illinois.
Mrs. Silas Green	Anna	Union	Illinois.
Mrs. W. G. Hale	Topeka	Shawnee	Kansas.
Mrs. C. T. Douthitt	St. Louis	St. Louis	Missouri.
Mrs. J. W. Wright	Terre Haute		Indiana.
Mrs. J. D. Gillham	Los Angeles		Cal.
Mrs. J. Gibson	Creston		Iowa.
Mrs. J. B. Reynolds	Hastings		Neb.
Mrs. J. B. Thompson	Geneva Lake		Wis.
Mrs. C. J. T. Tolle	Halls Summit		Kansas.
Mrs. J. P. Rutherford	Hagerstown	Fayette	Illinois.
Mrs. B. R. Pierce	Centralia	Marion	Illinois.
Mrs. A. J. Littell	Mounds	Pulaski	Illinois.
Mrs. J. R. Reef	Carbondale	Jackson	Illinois.
Mrs. J. W. Nall	St. Elmo	Fayette	Illinois.
Mrs. C. O. Morris	Catlin		Illinois.
Mrs. J. A. Hampton	Donnellson	Montgomery	Illinois.
Mrs. John Leeper	Nashville	Washington	Illinois.
Mrs. J. W. Field	Indianapolis	Marion	Indiana.
Mrs. B. F. Utley	Belknap		Illinois.
Mrs. C. E. Baker	Salem		Illinois.
Mrs. J. H. McGriff	Ingalls		Kansas.
Mrs. C. W. Bonner	Long Beach		Cal.
Mrs. F. W. Grupe	Lebanon	St. Clair	Ill.

Sessions of the Conference.

No. Session	DATE	PLACE	BISHOP	SECRETARY	STATISTIC'N
1	Oct. 17	1852 Belleville	E. R. Ames	J. Leaton	(*)
2	Oct. 26	1853 Mt. Carmel	L. Scott	J. Leaton	(*)
3	Sept. 27	1854 Mt. Vernon	E. R. Ames	J. Leaton	(*)
4	Sept. 26	1855 Alton	E. S. Janes	J. Leaton	(*)
5	Oct. 1	1856 Salem	M. Simpson	J. Leaton	(*)
6	Sept. 23	1857 Lebanon	L. Scott	M. Shepard	(*)
7	Oct. 6	1858 Olney	T. A. Morris	M. Shepard	(*)
8	Sept. 29	1859 Richview	E. R. Ames	M. Shepard	J. Leeper
9	Oct. 17	1860 Bunker Hill	M. Simpson	M. Shepard	J. Leeper
10	Oct. 3	1861 Salem	E. S. Janes	J. Leeper	J. D. Gillham
01	Oct. 1	1862 Alton	E. R. Ames	J. W. Caldwell	J. W. Nall
12	Sept. 23	1863 Mt. Carmel	O. C. Baker	J. W. Caldwell	J. W. Nall
13	Sept. 23	1864 Belleville	E. S. Janes	J. W. Caldwell	J. W. Nall
14	Sept. 27	1865 Olney	L. Scott	J. W. Caldwell	J. W. Nall
15	Sept. 19	1866 Centralia	E. Thompson	R. Allyn	J. W. Lane
16	Sept. 25	1867 Litchfield	E. R. Ames	J. W. Caldwell	J. W. Lane
17	Sept. 10	1868 DuQuoin	E. S. Janes	J. W. Caldwell	J. W. Lane
18	Sept. 15	1869 Vandalia	E. Thompson	R. Allyn	J. W. Lane
19	Sept. 14	1870 Lebanon	M. Simpson	R. Allyn	J. W. Lane
20	Sept. 27	1871 Cairo	L. Scott	R. Allyn	J. W. Lane
21	Oct. 2	1872 Mt. Vernon	T. Bowman	R. Allyn	J. P. Dew
22	Oct. 1	1873 Jerseyville	I. W. Wiley	R. Allyn	T. H. Herdman
23	Sept. 23	1874 Mt. Carmel	L. Scott	R. Allyn	J. Harris
24	Sept. 8	1875 Centralia	R. S. Foster	T. H. Herdman	J. Harris
25	Sept. 13	1876 Olney	M. Simpson	T. H. Herdman	J. Harris
26	Sept. 27	1877 Mt. Vernon	J. T. Peck	T. H. Herdman	W. Wallis
27	Sept. 25	1878 Alton	S. M. Merrill	T. H. Herdman	W. Wallis
28	Sept. 10	1879 Salem	E. G. Andrews	T. H. Herdman	W. Wallis
29	Sept. 1	1880 Fairfield	C. D. Foss	T. H. Herdman	W. Wallis
30	Aug. 31	1881 Greenville	J. F. Hurst	T. H. Herdman	K. A. Hoyt
31	Sept. 20	1882 Mt. Vernon	M. Simpson	F. M. VanTreese	E. A. Hoyt
32	Sept. 19	1883 Belleville	T. Bowman	F. M. VanTreese	E. A. Hoyt
33	Sept. 21	1884 Fairfield	R. S. Foster	F. M. VanTreese	E. A. Hoyt
34	Sept. 24	1885 Edwardsville	W. X. Ninde	F. M. VanTreese	E. A. Hoyt
35	Sept. 23	1886 Vandalia	J. M. Walden	O. H. Clark	E. A. Hoyt
36	Sept. 13	1887 Olney	C. D. Foss	O. H. Clark	J. W. VanCleve
37	Sept. 26	1888 East St. Louis	J. P. Newman	O. H. Clark	J. W. VanCleve
38	Oct. 9	1889 Carbondale	S. M. Merrill	O. H. Clark	J. W. VanCleve
39	Oct. 1	1890 Mt. Carmel	T. Bowman	O. H. Clark	J. W. VanCleve
40	Sept. 23	1891 Mt. Vernon	H. W. Warren	O. H. Clark	J. W. VanCleve
41	Sept. 28	1892 Belleville	R. S. Foster	J. W. VanCleve	J. G. Dee
42	Sept. 26	1893 Flora	C. H. Fowler	J. W. VanCleve	J. G. Dee
43	Sept. 25	1894 McLeansboro	W. F. Mallalieu	J. W. VanCleve	J. Y. Reid
44	Sept. 19	1895 Metropolis	I. W. Joyce	J. W. VanCleve	J. Y. Reid
45	Sept. 16	1896 Jerseyville	J. N. FitzGerald	J. W. VanCleve	J. Y. Reid
46	Sept. 22	1897 Mt. Vernon	S. M. Merrill	J. W. VanCleve	J. Y. Reid
47	Oct. 5	1898 DuQuoin	D. A. Goodsell	J. W. VanCleve	J. Y. Reid
48	Sept. 27	1899 Mt. Carmel	E. G. Andrews	J. W. VanCleve	J. Y. Reid
49	Sept. 26	1900 Edwardsville	W. X. Ninde	F. L. West	J. C. Kinison
50	Sept. 18	1901 Alton	J. N. FitzGerald	C. D. Shumard	J. C. Kinison
51	Sept. 24	1902 Fairfield	J. H. Vincent	C. D. Shumard	J. C. Kinison
52	Sept. 23	1903 Mt. Vernon	J. M. Walden	J. W. Cummins	J. C. Kinison
53	Sept. 28	1904 Litchfield	C. C. McCabe	J. W. Cummins	J. C. Kinison
54	Sept. 27	1905 East St. Louis	D. H. Moore	J. W. Cummins	J. C. Kinison
55	Sept. 18	1906 Vandalia	D. A. Goodsell	J. C. Kinison	L. W. Porter
56	Sept. 18	1907 Mt. Carmel	Earl Cranston	J. C. Kinison	L. W. Porter
57	Sept. 16	1908 McLeansboro	F. M. Bristol	J. C. Kinison	L. W. Porter
58	Sept. 22	1909 Centralia	H. Spellmeyer	J. C. Kinison	L. W. Porter

* For the first seven years of the Conference, the Secretary or assistant did the work of the Statistician.



Statistical Tables.



Statistics No. 4. LEBANON DISTRICT—Southern Illinois Conference, for 1909.

NAMES OF CHARGES	BENEVOLENT COLLECTIONS (DISCIPLINARY)										OTHER BENEVOLENT COLLECTIONS																		
	BOARD OF FOREIGN MISSIONS		BOARD OF HOME MISSIONS AND CHURCH EXTENSION		BOARD OF EDUCATION		BOARD OF SUNDAY SCHOOLS		BOARD OF CONFERENCE-ENGAGED CLAIMANTS		WOMAN'S FOREIGN MISSIONARY SOCIETY		WOMAN'S HOME MISSIONARY SOCIETY		Freedmen's Aid Society		American Bible Society		Domestic Missions.		Monument Fund...		Total Benevolent Collections		General Conference Expenses		Central Office Expenses of Epworth League		Grand Total
	(a) Church...	(b) Sunday Schools.	(c) Special Gifts	(a) Church...	(b) Sunday Schools.	(c) Special Gifts	(a) Church...	(b) Sunday Schools.	(c) Children's Fund.....	(a) Church...	(b) Sunday Schools.	Connectional Fund.....	Permanent Fund.....	(a) Cash.....	(b) Supplies.	Local Educational Interests	Other Benevolent Collections.....	Domestic Missions.	Monument Fund...	Total Benevolent Collections	General Conference Expenses	Central Office Expenses of Epworth League	Grand Total						
Ashley	29	11		11	25		11	9	2	5	4	5	4			4	22	12	5	44	3	2	146						
Beaumont	25	6		24	7		23	5	1	5	4	5	5			5	5	5	2	13	5	2	70						
Bellville-Epww	60	90	50	150				17	1	17	1	111	1			20	8	22	50	6	4	615							
Bellville-1st Ch.								2								2	2			2									
Beckmeyer																													
Breese	6				7																								
Beaver Creek	10	10		10	5		14	4	1	4	1	3	6			13	2	46	2	62	2	2	113						
Carlyle	20	28		28	10		28	5	1	4	1	30	6			63	2	46	2	62	2	2	119						
Collinsville	4	11		11	4		11	1	1	1	1	30	23			131	10	10	3	233	2	2	157						
Cottleville	10	10		10	10		10	1	1	1	1	1	1			35	10	36	5	53	4	4	92						
East St. Louis, Mrs Sis	11	12		12	8		12	2	2	2	2	2	2			21	2			21			21						
East St. Louis, Mrs Sis	11	12		12	8		12	2	2	2	2	2	2			21	2			21			21						
Century	8	10		10	8		10	2	2	2	2	2	2			45	25	24		74			70						
First Church	204	66		61	204		61	5	25	61	25	106	36			809	25	140	4	974	3	3	1113						
Winstanly	5	13		13	5		13	3	2	2	2	4	4			45	2	1	4	48	1	1	56						
Slavonic Mission	2				2											2				2			2						
Freeburg	14	14		14	14		14	1	1	1	1	85	28			98				126			126						
Greenville	25	15		15	25		15	1	3	4	1	3	4			184		47	18	201			252						
Hagerstown	18	2		2	18		2	6	1	1	1	3	4			31		4		35			35						
Haley	60	20		20	60		20	2	13	2	5	16	4			549	23	70	20	639	2	2	669						
Lebanon	8	10		10	8		10	1	1	1	1	11	1			11				22			22						
Marissa	16	16		16	16		16	4	1	1	1	7	1			49		18		67			67						
Mulberry Grove	30	20		20	30		20	2	4	1	1	10	1			89		10	40	139	1	1	142						
Nashville	10	10		10	10		10	2	2	2	2	1	1			117		12		129	1	1	131						
New Baden	10	10		10	10		10	5	1	1	1	8	1			26				34			34						
O'Fallon	5	4		4	5		4	10	1	1	1	10	1			106		21	7	134	2	2	138						
O'Kawville	5	4		4	5		4	2	1	1	1	1	1			14		2		16	4	4	24						
Pocahontas	11	10		10	11		10	2	2	2	2	60	60			60		180	10	190	3	3	244						
Renault	11	10		10	11		10	7	5	1	5	1	1			42		8		50	1	1	50						
Shiloh	5	5		5	5		5	1	1	1	1	7	3			7		3		10	1	1	11						
Shiloh	5	5		5	5		5	1	1	1	1	7	3			7		3		10	1	1	11						
Sparta	13	13		13	13		13	1	1	1	1	39	5			39		5	2	44	2	2	51						
Tilden	13	7		7	13		7	2	3	2	2	55	1			55		1		56	1	1	57						
Treulon	48	15		15	48		15	3	4	3	3	109	5			362		10	24	412	2	2	407						
Troy	60	30		30	60		30	4	4	4	4	120	99			120		99	2	219	1	1	221						
Waterloo	12	5		5	12		5	2	2	2	2	38	4			38		4	1	42	1	1	45						
Total	781	430	80	819	316	61	27	57	53	44	15	146	25	783	3	303	4002	184	780	1127	34	46	5240						

Statistics No. 2. MT. CARMEL DISTRICT—Southern Illinois Conference, for 1909.

NAME OF CHARGES	SUNDAY SCHOOLS										COLLECTION FOR BOARD OF SUNDAY SCHOOLS	
	No. of Schools	No. of Officers and Teachers	No. of Scholars of all Grades, not including Cradle Roll and Home Department	Average Attendance of all Grades	No. of Members in the Home Department	No. of Children on the Cradle Roll	Total Enrollment in all Departments, including Cradle Roll and Home Department, but not Officers and Teachers	No. of Officers and Teachers who are Church Members or Probationers	No. of Scholars, whether Attendants or Members in Home Department, who are Church Members or Probationers	No. of Members of Sunday School Converted during the Year	Current Expenses: Lesson Leaves, Books, etc.	(a) Church
Belknap	5	35	455	371	32	487	35	180	12	95	80	95
Belmont	2	35	250	225	—	250	15	50	—	25	25	25
Big Prairie	2	16	90	66	—	90	15	50	—	30	30	30
Bloomfield	4	35	900	180	—	900	35	150	—	80	80	80
Broughton	5	40	275	205	—	275	16	100	6	100	100	5
Carmel	3	16	150	125	—	150	24	200	10	60	60	5
Carrier Mills	3	24	200	—	—	200	35	180	—	121	8	—
Crossville	4	35	235	109	—	235	35	175	—	75	75	—
Dahlgren	4	40	300	196	—	300	35	175	30	60	60	1
Eddyville	6	48	300	190	45	345	38	135	10	10	10	—
Eldorado	1	35	250	190	—	250	18	175	15	125	125	—
Elizabethtown	5	35	250	200	1	251	35	50	—	110	110	—
Enfield	2	33	220	220	—	320	280	280	8	85	85	—
Equality	1	30	123	85	38	123	16	43	2	55	55	—
Galatia	2	30	114	116	3	185	23	90	10	62	62	—
Golconda and Brookport	3	24	225	125	—	245	20	100	10	100	100	—
Grayville	3	24	225	125	—	260	21	75	10	100	100	—
Harrisburg	1	22	275	300	—	275	40	—	—	40	40	—
Joppa	3	24	275	300	—	40	—	—	—	3	3	—
Keansburg	3	12	40	60	—	275	20	175	—	20	20	—
Macedonia	4	30	275	200	—	290	29	280	115	78	78	—
Mannie	3	30	280	134	—	472	16	151	3	115	6	—
McLeansboro	1	16	265	134	75	180	30	30	9	39	37	—
McLeansboro Circuit	6	30	180	130	—	325	17	150	—	74	74	—
Metropolis	1	18	300	190	25	200	20	400	—	40	40	—
Metropolis Circuit	3	30	200	130	—	250	35	250	—	250	250	—
Mill Shoals	5	35	250	200	—	490	35	300	10	448	40	—
Mt. Carmel	1	35	470	325	—	20	—	—	—	—	—	—
New Burnside	5	27	190	300	—	475	49	340	20	135	8	—
Norris City	5	50	450	360	25	200	24	100	14	100	100	—
Omaha	3	26	200	160	—	475	24	160	30	35	35	—
Reevesville	4	28	145	160	15	160	30	54	14	40	40	—
Ridgeway	2	16	220	150	—	220	24	120	32	32	32	—
Shawneetown	1	17	115	65	20	135	10	100	10	100	100	—
Vienna	1	13	125	75	—	125	16	60	1	50	50	—
Total	107	893	8117	4478	179	938	794	3437	406	2845	82	38
Last Year	108	978	8116	5660	145	8683	878	2683	706	2767	78	—
Increase	—	—	—	—	—	—	—	—	—	—	—	—
Decrease	1	45	1	1182	28	293	79	734	300	—	—	—

NAMES OF CHARGES	CHURCH MEMBERSHIP			BAPTISMS		SUNDAY SCHOOLS		EPWORTH LEAGUES			CHURCH PROPERTY									
	No. of Probationers	No. of Full Members	No. of Local Preachers	No. of Deaths	No. of Children Baptized	No. of Adults Baptized	No. of Schools	No. of Officers and Teachers	No. of Scholars, including Cradle Roll and Home Dept	No. of Senior Chapters	No. of Members	No. of Junior Chapters	No. of Members	No. of Churches	Probable Value	No. of Parsonages	Probable Value	Paid for building and improving Churches and Parsonages	Paid on old indebtedness on Church Property	Present indebtedness on Church Property
Anna	1	240	1	4	1	7	1	1	200	1	28	1	20	1	9000	1	1500	45	350	600
Beaton	1	216	1	2	3	6	1	23	501	1	34	1	30	1	11000	1	4500	3000	580	1200
Calro	9	475	1	6	9	5	1	36	350	1	65	1	30	2	15000	1	4500	500	42	600
Carbondale First Church	13	158	3	2	2	11	2	124	302	1	64	1	53	1	4000	1	1200	250	148	25
Carbondale Grace Church	22	209	2	1	22	1	1	16	302	1	50	1	67	1	3000	1	1300	148	200	200
Carterville	1	125	1	1	1	1	1	15	140	2	70	1	1000	1	3500	1	1700	275	25	25
Chester	5	399	1	4	2	18	3	67	447	2	21	1	90	4	3500	1	600	1300	6	6
Corinth	1	145	1	3	2	15	2	20	175	1	21	1	1	2	2800	1	3000	300	300	300
Crab Orchard	1	180	1	4	3	3	2	21	190	1	27	1	1	2	12000	1	600	300	6	6
Creal Springs	6	295	1	4	2	8	2	8	60	1	45	1	15	2	5000	1	5000	300	300	300
Du Quoin	8	117	1	3	1	3	2	227	60	1	15	1	15	2	2500	1	1500	1500	1500	1500
Elco	60	60	3	1	15	50	2	15	175	2	50	1	2	3	2500	1	1500	1500	1500	1500
Ewing	6	334	1	6	1	30	1	22	383	1	32	1	35	1	3700	1	1800	700	600	8500
Elkville	3	150	1	3	2	6	2	19	250	1	20	1	1	1	2500	1	1500	50	300	500
Frankfort	10	347	2	3	2	62	3	28	234	3	100	2	52	3	9000	1	1000	12	302	302
Herrin	10	342	1	1	1	17	3	39	269	3	100	2	52	3	7400	1	500	13	302	302
Jonesboro	51	400	2	5	7	2	2	40	145	1	63	1	80	1	8500	1	2000	284	284	284
Makanda	1	133	1	3	4	4	1	18	140	1	23	1	40	1	3500	1	5000	350	350	350
Marion	5	668	1	8	11	58	1	37	640	1	100	1	21	1	29000	1	1250	14	945	4710
Mound City	8	135	1	1	1	5	1	21	160	1	18	1	1	1	7250	1	1200	75	218	218
Mt. Vernon—First Church	2	250	3	1	1	3	1	16	250	1	48	1	50	6	7000	1	1700	75	225	218
Mt. Vernon—Tenth St. Church	4	352	1	1	12	1	5	50	230	1	97	1	30	1	4100	1	4600	600	375	450
Murphysboro	1	150	1	10	10	10	2	17	150	1	12	1	1	2	1800	1	500	50	83	83
New Palestine	5	342	1	2	1	1	5	55	350	2	75	1	1	1	5900	1	700	2040	2500	2500
Olive Branch	1	287	1	6	3	9	1	24	235	1	60	1	1	1	1500	1	2000	2040	2500	2500
Opdyke	1	145	1	10	1	10	3	95	105	1	15	1	1	3	4000	1	1400	95	95	95
Packneyville	4	230	1	4	18	28	2	18	200	1	38	1	1	2	4900	1	600	1900	900	900
Spring Garden	5	252	1	5	5	31	4	9	304	1	32	1	1	2	2900	1	500	42	42	42
Steelville	4	266	1	1	13	1	1	4	95	3	75	1	1	4	3200	1	1200	90	90	90
Tamaroa	1	80	1	1	1	1	1	10	122	1	60	1	1	1	1500	1	1000	470	470	470
Thebes	47	266	1	2	1	4	2	25	150	1	60	1	1	2	6500	1	1300	600	900	900
Union	18	129	1	1	1	11	2	25	150	1	60	1	1	2	6500	1	1300	600	900	900
Vergennes	1	115	1	1	1	22	1	6	68	1	68	1	1	2	2500	1	2500	2500	2500	2500
Villa Ridge and Mounds	240	8250	24	90	137	430	80	808	7978	38	1954	15	546	70	290550	32	52030	12258	6523	15436
Watsonville	407	5578	21	106	149	418	80	872	7391	38	1954	15	546	81	213400	32	48400	14750	2987	15447
Woodlawn	107	328	3	16	12	12	26	26	587	1	388	1	1	2	7150	1	3650	2492	3826	3826
Total	107	328	3	16	12	12	26	26	587	1	388	1	1	2	7150	1	3650	2492	3826	3826
Last Year	240	8250	24	90	137	430	80	808	7978	38	1954	15	546	70	290550	32	52030	12258	6523	15436
Increase	407	5578	21	106	149	418	80	872	7391	38	1954	15	546	81	213400	32	48400	14750	2987	15447
Decrease	107	328	3	16	12	12	26	26	587	1	388	1	1	2	7150	1	3650	2492	3826	3826

RECAPITULATION—Southern Illinois Conference, for 1909.

Statistics No. 1

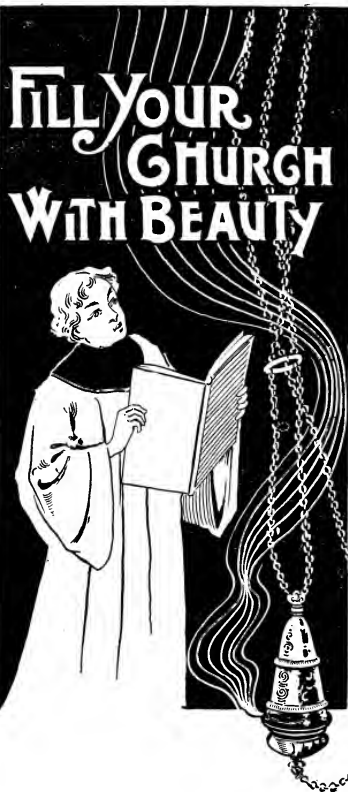
NAMES OF DISTRICTS	CHURCH MEMBERSHIP			BAPTISMS		SUNDAY SCHOOLS			EPWORTH LEAGUES			CHURCH PROPERTY								
	No. of Probationers	No. of Full Members	No. of Local Preachers	No. of Deaths	No. of Children Baptized	No. of Adults Baptized	No. of Schools	No. of Officers and Teachers	No. of Scholars, including Cradle Roll and Home Dept	No. of Senior Chapters	No. of Members	No. of Junior Chapters	No. of Members	No. of Churches	Probable Value	No. of Parsonages	Probable Value	Paid for building and improving Churches and Parsonages	Paid on old indebtedness on Church Property	Present indebtedness on Church Property
Alton	171	5424	10	83	163	498	58	756	6914	28	984	13	482	61	253222	31	56300	9351	15170	34315
Lebanon	89	5737	15	65	185	269	52	734	7831	34	1135	17	702	55	247400	27	47900	3834	2881	40634
Mt. Carmel	163	9437	26	95	32	573	407	696	8682	29	1172	11	465	114	284100	34	46025	11089	4412	7380
Mt. Vernon	240	8550	24	90	137	430	80	834	8186	38	1354	15	546	79	220550	32	52050	12258	6523	15436
Omney	284	9749	12	122	112	606	100	131	10081	38	1475	14	450	102	245400	33	47100	36941	1526	10486
Vandalia	133	7885	23	108	157	414	85	957	8290	42	1443	10	345	93	250550	31	40050	13863	7505	36814
Total	1080	46482	110	563	836	2390	482	5528	49985	209	7363	80	2900	504	1501322	188	292425	87936	38017	146270
Last Year	1802	45084	106	521	923	2690	485	5323	43001	—	—	—	—	506	1431650	182	275675	113707	18464	161586
Increase	722	1398	4	42	50	—	—	5	4984	—	—	—	—	—	68672	6	16750	27771	19553	16316
Decrease	—	—	—	—	87	—	3	—	—	—	—	—	—	2	—	—	—	—	—	—

Statistics No. 2.

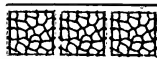
RECAPITULATION—Southern Illinois Conference for 1909.

NAMES OF DISTRICTS	SUNDAY SCHOOLS										COLLECTION FOR BOARD OF SUNDAY SCHOOLS		
	No. of Schools	No. of Officers and Teachers	No. of Scholars of all Grades, not including Cradle Roll and Home Department	Average Attendance of all Grades	No. of Members in the Home Department	No. of Children on the Cradle Roll	Total Enrollment in all Departments, including Cradle Roll and Home Department, but not Officers and Teachers	No. of Officers and Teachers who are Church Members or Probationers	No. of Scholars, whether Attendants or Members in Home Department, who are Church Members or Probationers	No. of Members of Sunday School Converted during the Year	Current Expenses: Lesson Le a v e s, Books, etc	(a) Church	(b) Sunday Schools
Allton	58	756	6485	3390	351	465	5563	701	2476	657	8515	25	21
Lebanon	52	741	6893	4021	326	612	7831	659	1929	372	2937	16	58
Mt. Carmel	107	926	8117	4478	173	293	8683	794	3437	406	2945	92	38
Mt. Vernon	80	834	7978	5208	426	370	8544	864	2410	737	3106	20	22
Olney	100	1314	9179	6486	638	615	10081	1241	4501	976	2973	76	16
Vandalia	85	957	7138	5080	566	586	8290	853	1555	664	2677	50	11
Total Last Year	482	5528	45790	29663	2480	2941	49022	5112	15708	3812	18053	280	166
Increase	485	5523		29877	2704			5146	15061	3274	18808		
Decrease	3	5	1214		254			34	647	438			255

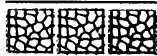
Beautiful Color Effects



FILL YOUR
CHURCH
WITH BEAUTY



Appropriate and fitting ornamentation for churches can be produced by an artist for less money than you often pay for very inferior work. It is in the knowing how. If your church is to be decorated, write for designs and estimates and we will prove it



G. H. SCHANBACHER

First and Monroe Streets,

Springfield, Illinois

THE BEST WAY



Individual Communion Service

PRICE LIST

ALUMINUM

Cover, \$2.25 Base, \$2.25

Trays, 40 plain glasses, \$5.75

BEST SILVER PLATE

Cover, \$6.50 Base, \$6.50 Tray, \$10.85

Write for full particulars and our handsome illustrated Catalogue. FREE.

INDIVIDUAL COMMUNION SERVICE COMPANY
168 Wabash Avenue Chicago, Ill.
CHAS. L. MAJOR, Manager.

H. A. BERRY

Physician
and...
Surgeon

Treatment of Throat and
Lung Diseases a Specialty
by the

Inhalator
METHOD

Herrin, Ill.

KANSAS CITY NATIONAL TRAINING SCHOOL

For Deaconesses and Missionaries

For Catalogue address

MISS ANNA NEIDERHEISER, Supt.

Cor. E. 15th St. and Denver Ave.

Kansas City, Mo.

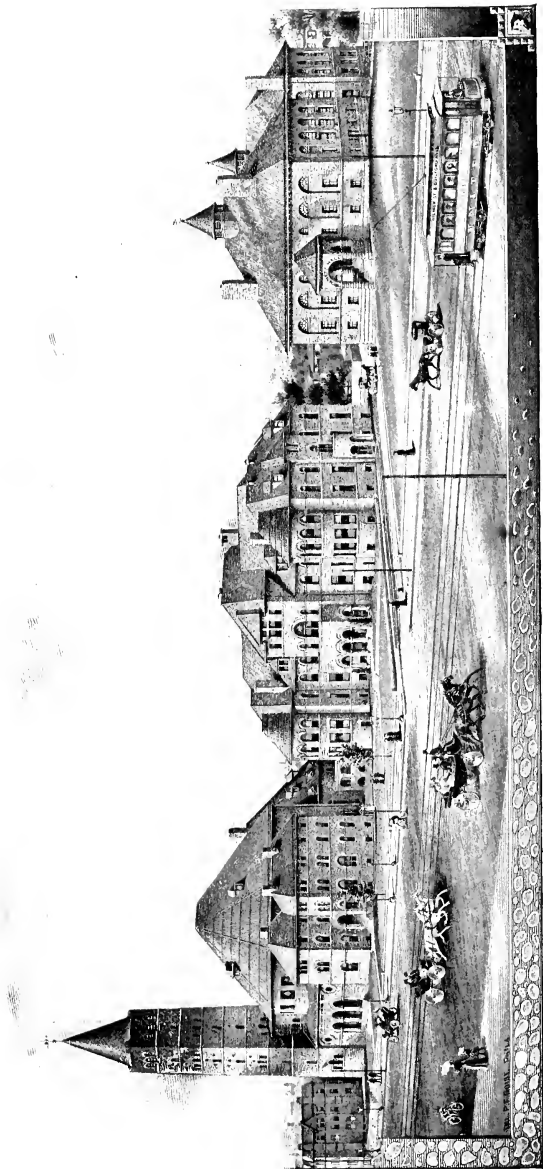
EPWORTH ORGANS and PIANOS

Send for Free Catalog, Factory Prices and Easy Terms. State which Catalog—Piano, Parlor Organ or Church Organ. Mention this publication. Williams Organ & Piano Co., Chicago.

RECEIVED AT THE
LIBRARY OF THE
FEB 7 1935

Index

Rules of Conference	8-9
Conference Officers	10
Standing Committees	11-12
Officers of Conference Societies.....	13
Special Appointments	14
Special Services	15-16
Chronological Roll	17
Summary of Disciplinary Questions.....	20-23
Conference Appointments	24-27
Journal of Proceedings.....	29-52
Pastoral Address	53-54
Memoirs	86-88
REPORTS.	
Educational	55
Sabbath Observance	55
Monument Fund	7
Home Missions	9
Church Extension	9
Epworth League	9
District Conference Journals	9
Woman's Foreign Missionary Society.....	9
Sunday Schools	59
Freedmen's Aid and Southern Education Society.....	59
Deaconess' Work	61
Wesley Hospital	61
Temperance	61
Stewards' Reports	62-64
Resolutions	64-65
Bible Society	66
Periodicals	66
Church Insurance	66
Woman's Home Missionary Society.....	70
Officers of Woman's Home Missionary Society.....	70
Woman's H. M. Society.....	70
Statistics of Woman's Foreign Missionary Society.....	71
Officers of Woman's Foreign Missionary Society.....	71
Board of Examiners	72-73
Examination at Conference.....	74-75
Deaconess' Board	75
Garrett Biblical Institute	55
Conference Claimants' Society	6
Conference Record	89-1
Probationers	92
Members of Conference Deceased	93-94
Ministers' Widows	95
Sessions of the Conference.....	96
Statistics	97-125



BENNETT HALL.

GOUCHER HALL.

THE WOMAN'S COLLEGE OF BALTIMORE.

SOUTHWEST QUARTER OF CAMPUS

FIRST METHODIST EPISCOPAL CHURCH.

The Woman's College of Baltimore

Founded 1885

Opened 1888

EUGENE A. NOBLE,

President

Situation The Woman's College of Baltimore is situated near the northern boundaries of the city of Baltimore, Md., in one of the best residential sections, one hundred and fifty feet above tide-water.

Buildings The buildings are seven in number—three devoted to instruction and administration, three to residence. All are new, cheerful and commodious, erected particularly for their respective purposes, and containing the conveniences devised by modern architectural science. They are heated from a battery of boilers and lighted by electricity from the new power house of the College.

Educational Equipment Ample and thoroughly furnished laboratories facilitate study of the natural sciences by modern methods. The apparatus is of recent type, carefully selected. Maps, charts, engravings, photographs and cabinets of specimens and of objects illustrating natural history and the development of the race are liberally provided. There is a good, modern working library of about ten thousand volumes, while half a million volumes are at the service of students in public and institutional libraries easily accessible.

Course of Study The course of study includes prescribed subjects and elective subjects in about equal proportions. Students who wish to follow particular lines of study are enabled to lay a solid foundation for subsequent specialization. Elective courses are offered in Greek, Latin, French, Spanish, Italian, German, English Literature, including Old and Middle English, Mathematics, Geology, Mineralogy, Physics, Chemistry, Botany, Biology, History, Economics and Sociology. Upon the completion of a course usually requiring four years, the student is graduated with the degree of Bachelor of Arts.

Physical Training and Hygiene Every candidate for the degree is required to pursue a course in physiology and hygiene. A commodious modern gymnasium provides systematic exercises according to the Ling, or Swedish, method under careful training and supervision of a physician specially prepared in mechanical therapeutics. Halls are provided for basket ball and courts for tennis and similar sports. Care is taken to prevent excess in these exercises.

Entrance Requirements These are the usual requirements of Eastern colleges and should be met by graduates of good high schools in which at least one language in addition to Latin is embraced in the course of study. Certificates of preparation which furnish full details will be considered when offered by schools previously accredited, and if found sufficient, will be accepted as substitutes for examination, otherwise examinations will be necessary. Certificates of the College Entrance Examination Board are accepted.

Numbers The College is now (1908) entering upon its twenty-first session. Its alumnae number seven hundred and seventy-two. Recent graduating classes have numbered from sixty to seventy-nine. The freshman class numbers, and for the present is limited to one hundred and twenty-five. The students are from all parts of the country. All religious denominations are liberally represented.

Application for Admission Program of the College courses, regulations for the government of the residence halls, blank forms of application and information upon special subjects will be promptly furnished upon request to

THE REGISTRAR.

The Woman's College of Baltimore, Baltimore, Md.