

## Historic, archived document

Do not assume content reflects current scientific knowledge, policies, or practices.



62.37 Index \*

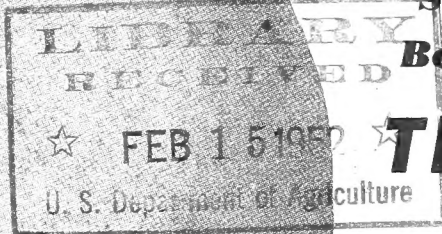
OUR  
SIXTY  
EIGHTH  
YEAR

# Modern Fruits and Ornamentals 1952

## HALE HARRISON

U. S. Patented **BRILLIANT** No. 814

*Sensational - New - Colossal  
Best Midseason Yellow Peach*



### *The Peach of the Future*

**Exquisitely Flavored  
Handsome Appearance  
Produces Bumper Crops  
Anywhere Peaches Are Grown  
Guaranteed To Be  
Superior to Elberta  
WILL REPLACE ELBERTA**

HALE  
HARRISON  
BRILLIANT

**Superior Strains - Earliest to Bear - True to Name Fruit Trees**

## RIO-OSO-GEM

U.S. Plant Patent No. 84

**Greatest of All Late  
Yellow Freestone Peaches**

**AMAZING MONEYMAKER**

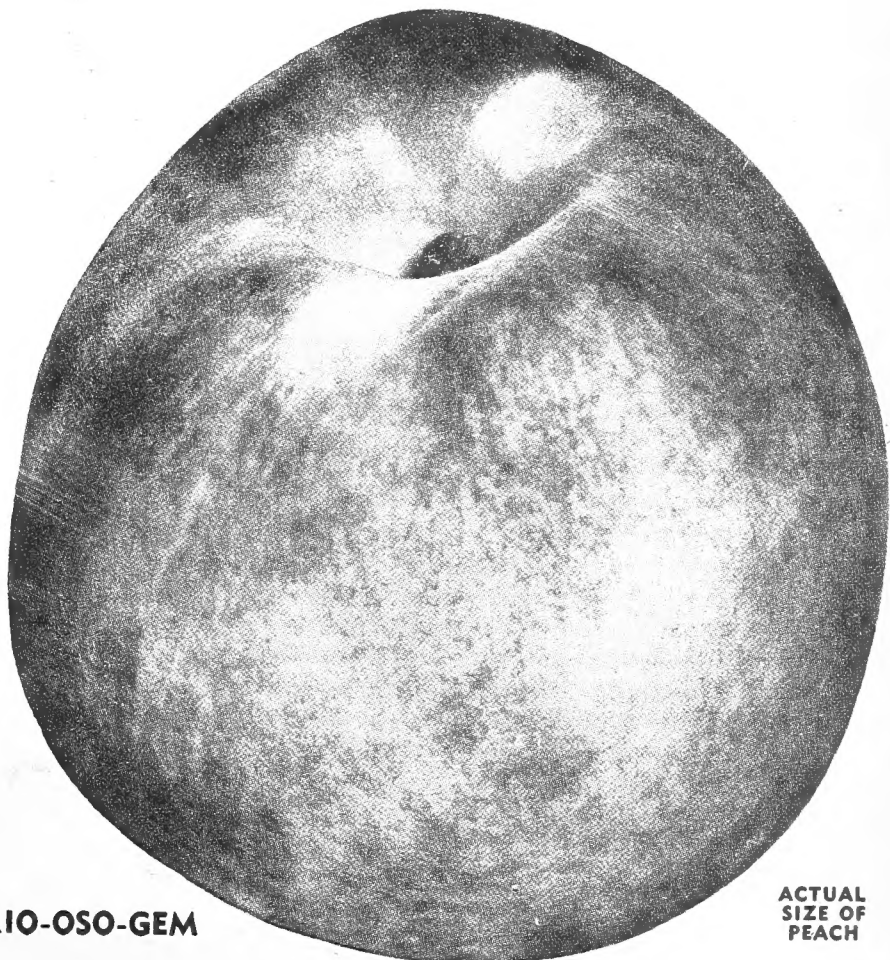
**Insure Your Profits by Planting  
Our Two Exclusive Patented Varieties  
Hale Harrison Brilliant and Rio-Oso-Gem**

**Harrison's  
NURSERIES**

HARRISON BROTHERS, PROPS.

**BERLIN • MARYLAND**

RIO-OSO-GEM



ACTUAL  
SIZE OF  
PEACH

**Growers of America's Best Quality Fruit Trees**

**New! Exclusive!  
Sensational!  
YELLOW FREESTONE**

# RIO OSO GEM

*The World's Greatest Peach*

**AT NEW  
LOWER  
PRICES**

**HARRISON  
BROTHERS,  
BERLIN,  
MARYLAND**

The sensational Peach which has caused the greatest amount of favorable reports of any Peach introduced in a half century is that marvelous, big Peach, the World's largest being a patented variety, the Rio-Oso-Gem U. S. Plant Patent No. 84. It has now been fruited in all Peach-growing districts in the United States and Canada, and has definitely proven itself to be the best all-around commercial Peach. Ask any man who has grown the Rio-Oso-Gem.

### THE BEAUTIFUL GLORIFIED PEACH

This beautiful Peach has a brilliant, bright red color, running around 95% good red, whereas they are easy to pack as U. S. Fancy grade. The size of the Peach is all that anyone can expect, as many of these Peaches will run a pound or more in weight and in many instances have been reported that the crop would average three-quarters pound per Peach. The flaming, beautiful bright red color in the cheek, along with an attractive orange-colored background, has earned it an envious reputation as being the prettiest Peach grown.

### BEST FLAVORED COMMERCIAL PEACH

The unexcelled flavor is better than that of J. H. Hale and Elberta. The enticing flavor makes it a very popular Peach for fresh eating. The rich flavor is retained when canned or preserved. Now recognized as the leading canning Peach in California. Rio-Oso-Gem is the only Peach which can be processed by quick freezing and still retain its firm texture, with its beautiful, rich, golden yellow flesh and the same flavor as when picked. We have quick frozen Rio-Oso-Gem Peaches which were picked and processed on September 1, 1944, which are still holding up in excellent condition.

### RECORD BREAKER FOR LONG DISTANCE SHIPMENTS

The Rio Oso Gem is the best of all Peaches for long distance shipments and the fruit will stand up longer after being picked than any other variety of Peach in existence. This stupendous variety adapts itself exceedingly well for shipments in refrigerator cars pre-cooled, under standard refrigeration for trans-continental hauls. This is the greatest Peach for shipments on trucks under ventilation, as its hard, firm texture insures arrival in excellent condition.

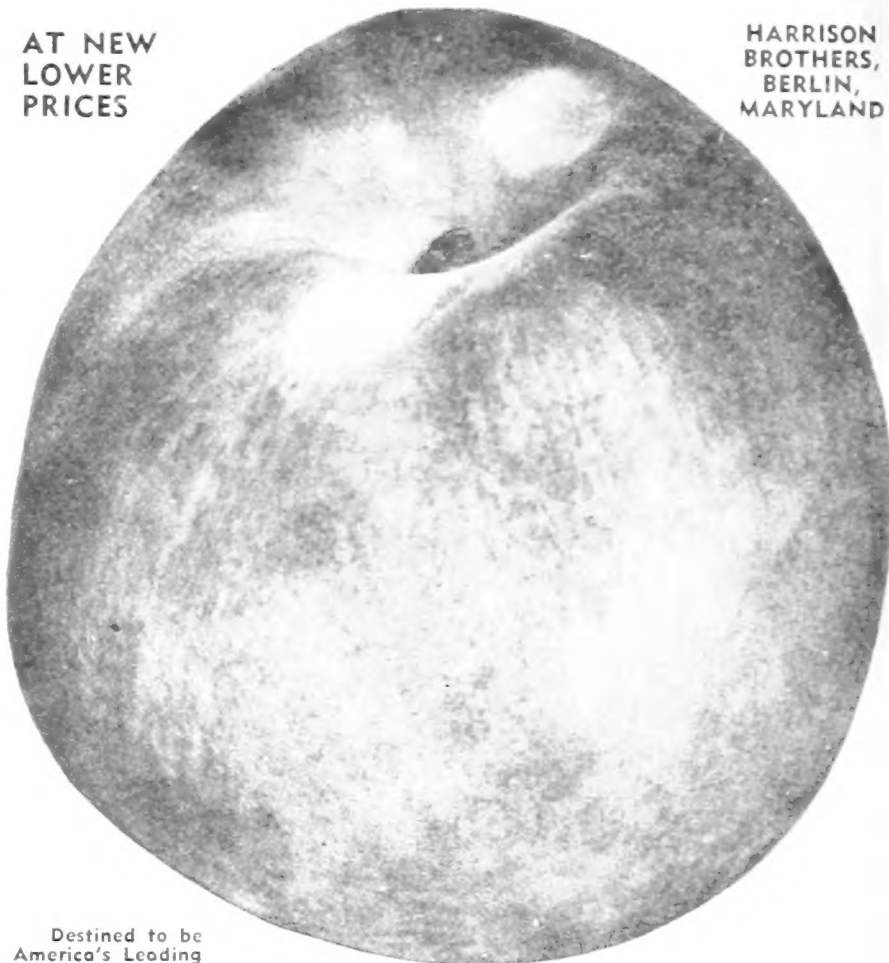
### RIO-OSO-GEM

**Ideal for Home Orchards**

Ripens 10 days later than Elberta. Rio-Oso-Gem is a very prolific bearer and dependable annual cropper.

### RIO-OSO-GEM IS NO EXPERIMENT

Colonel and Mrs. Frank Sleeter, Round Hill, Virginia, wrote, "We have the land ready for the 800 Rio-Oso-Gem peach trees, 5 to 6 feet for April, 1950 planting. It is a wonderful peach and we have had marvelous results marketing it last year at \$6.00 per bushel, in spite of the low market price prevailing during the summer of 1949."



Destined to be America's Leading Commercial Peach. Sample of RIO-OSO-GEM Grown in Harrison's Orchards at Berlin, Maryland. Sold only by Harrison's Nurseries in numerous states.

### READ WHAT FELLOW GROWERS SAY

We have received several hundred complimentary letters highly praising the Rio-Oso-Gem Peach, U. S. Plant Patent No. 84, from all over the United States, some of the typical remarks are from people such as Fussell-Graham-Alderson Company, Forest City, Arkansas: "We have about 1,000 of Harrison's Rio-Oso-Gem Peach trees from which we have been harvesting the largest and prettiest Peaches I ever saw. We sold our Elberta Peaches, U. S. No. 1 grade at \$2.25 per bushel and we had no trouble in picking the Rio-Oso-Gem Peaches 2 1/4 inches and up which we sold at \$4.00 per bushel, f. o. b. Forest City, Arkansas."

Mr. H. Frank Smith, Prop. Hillcrest Orchard, Dover, Arkansas, writes: "This year's crop convinces me that the Rio-Oso-Gem, U. S. Plant Patent No. 84, is the very finest Peach and has certainly proven such with me. It has very fine qualities as a canner and people go wild about it. It always brings the highest prices for me."

Mr. Charles Heilig, Sewell, New Jersey, Gloucester County, said that the most handsome and the best Peach of the forty years' experience that he has had was his first crop of Rio-Oso-Gem on 400 trees, three years old, from which he picked during early September 324 bushels and which he sold at an average price of \$5.00 per bushel at his farm, grossing him more than \$1,600.00 from this very young orchard. He bought 620 Rio-Oso-Gem trees for planting November, and said his future plantings would be Rio-Oso-Gem.

### AMERICA'S MOST FAMOUS PEACH

Mr. E. R. Connor, fruit grower and broker, of Stephen City, Virginia, in the famous Frederick County fruit section, was exceptionally well pleased with his first crop of Rio-Oso-Gem Peaches on his three-year-old trees which he picked during early September. From his 400 trees, three years old, he picked a 300-bushel crop for which he was offered \$3.75 per bushel, f. o. b. Stephen City, Virginia, for the entire crop, but he refused the sale so that he could sell the Peaches in smaller quantities at high prices to his customers throughout the Shenandoah Valley of Virginia and nearby cities. He planted 100 more trees two years ago which had a few Peaches on them this summer. Connor states he wishes he had 5,000 Rio-Oso-Gem Peach trees, U. S. Plant Patent No. 84, planted in his Orchard instead of 500.

### RIO-OSO-GEM IS A "MUST" FOR EVERY GROWER

There are still big cash profits in Peaches, provided you grow the right varieties and in the near future you will see where the Rio-Oso-Gem, U. S. Plant Patent No. 84 will be getting more prominence each year. It is predicted that within a decade or so, it will be the most extensively planted commercial Peach in America.

### MOST BEAUTIFUL PEACH ON EARTH

**NEW LOWER PRICES ON RIO OSO GEM**

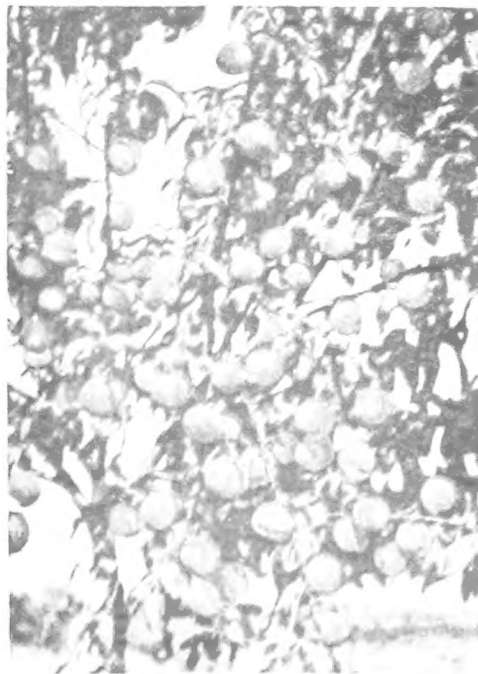
**U. S. Plant Patent No. 84**

True-to-Name, One-Year Budded Trees:	1 to 9 Trees	10 to 49 Trees	50 to 99 Trees	100 or More Trees
5- 6 ft., 11/16-7/8 in. caliper...	\$1.95	\$1.65	\$1.30	\$1.05
4- 5 ft., 9/16-11/16 in. caliper...	1.55	1.30	1.00	.90
3- 4 ft., 7/16-9/16 in. caliper...	1.30	1.10	.85	.75
2- 3 ft., 5/16-7/16 in. caliper...	1.15	1.00	.70	.60
2- 3 ft., 1/4-5/16 in. caliper...	.95	.80	.55	.45
18-24 inches .....	.80	.65	.45	.35
12-18 inches .....	.60	.45	.35	.25

Write Us About Your Planting Requirements.  
FOR LARGER QUANTITY, WRITE FOR SPECIAL PRICES

**RIO-OSO-GEM  
PEACHES BRING  
DOUBLE PRICES  
COMPARED TO  
MOST VARIETIES**

Every year the Rio-Oso-Gem brings highest prices of any variety on the American markets.



**PROLIFIC BEARER—RIO-OSO-GEM PEACH**

# The Peach of the Future

# HALE HARRISON

U. S. Patented **BRILLIANT**

No. 814

**Sensational! New! Colossal!**

Yellow freestone ripening during midseason at about the same time as Elberta. The fruit is nearly fuzzless and has a brilliant cardinal red almost completely covering a golden yellow ground color even when growing in shade in the interior of the tree. Fruit throughout the tree is uniformly large even when unpruned or unthinned. Tree is large, vigorous and rapid grower. Self pollinating, it bears tremendous crops year after year. Very hardy in bud and blossom and highly resistant to brown rot. Keeping qualities are excellent.

### FOR HOME OR COMMERCIAL ORCHARD

Whether you are going to plant one tree for home fresh eating, canning or freezing or one thousand trees for a commercial orchard, we unhesitatingly recommend Hale Harrison Brilliant as the best peach to plant. It will give you more pleasure to eat or more profit in growing than any other peach known today.

### WILL REPLACE ELBERTA

For many decades Elberta has been the standard peach of the world by which all peaches have been judged, tests and observations by leading peach authorities confirm our belief that the new sensational Hale Harrison Brilliant surpasses the Elberta in every way.

### OUTSELLS AND OUTBEARS

Hale Harrison Brilliant outclasses them all. It is really the one peach that has everything. Its beautiful attractive appearance, huge size, superior delicious flavor makes it have extraordinary favorable eye appeal, resulting in higher prices. This combined with its BUMPER crops, "Original tree has produced over twenty bushels a year" make it the outstanding moneymaker.

### WIDELY ADAPTED

Hale Harrison Brilliant has been planted in thirty-four states. Reports from these plantings prove it is equally as adaptable to the far south as it is in central and western areas and it even produces highly satisfactory in Canada and other northern peach sections.

### LONG PICKING SEASON

One of the finest features of Hale Harrison Brilliant is its early coloring, the golden yellow ground color appears weeks before it begins to ripen, this is the one peach that has a high sugar content even when it is hard. Fruit growers have been amazed at its ready to eat coloring and general smooth skin appearance several days before it is ready to pick and ship, this means a long picking season. Records show that it surpasses in keeping qualities any other peach on long distance shipments.

### HARRISONS AMAZING GUARANTEE

Several years of testing in co-operation with leading fruit authorities convince us as to the outstanding merits of Hale Harrison Brilliant that we can make the following guarantee.

"Each and every Hale Harrison Brilliant is a true reproduction of the original strain, it will produce more satisfaction to you than any other peach variety that ripens during its season, on proper proof of failure to do this we will furnish you without charge an equal number of peach trees of any other variety that you desire."

Back of this guarantee are the resources of Harrison Brothers Nurseries with an enviable record of sixty-eight years in the Nursery and Orchard business.



ACTUAL  
SIZE OF PEACH

### DISCOVERY OF THE HALE HARRISON BRILLIANT

This sensational new peach was discovered by Mr. Oscar F. Jones, near Crozet, Virginia in the famous mountainous Albemarle County section. He was manager for more than 30 years for the A. C. Bruce orchards, who planted many thousands of Harrison grown peach trees, starting in 1902. A life long horticulturist, he is a pioneer in one of the largest peach growing districts of the United States.

### WHAT PROMINENT GROWERS SAY

Mr. E. D. McGuire said—"After investigating I found that this amazing peach is just what I have been seeking for several years to grow instead of Elberta at Carbondale, Illinois." Mr. McGuire telephoned his order to express 700 Hale Harrison Brilliant peach trees 5 to 6 feet.

Mr. C. Purcell McCue—"Personally, I feel this peach will replace ELBERTA in this section."

Mr. C. E. Starkweather—"It bears larger, better colored peaches even with a heavier crop than the Elbertas do."

Mr. Lee T. Carpenter—"If it proves out in tests as good as it is in its original habitat I consider it to be the greatest find since Elberta in the 1870's."

Mr. Charles H. Martin—"The parent tree of this peach is the largest and the most prolific I ever saw and when it is loaded with those large, uniform fruit, one hundred per cent colored it is a sight to be remembered."

Mr. Edward D. Daugherty—"I know something of the HALE HARRISON BRILLIANT and consider it a very unusual variety which will soon replace Elberta if properly distributed and advertised."

Mr. H. P. Rhodes—"The 500 Hale Harrison Brilliant peach trees I got from you and planted during November of 1949, that 498 are growing and have made a tremendous growth with dark green, healthy leaves and sturdy limbs. I was over to Crozet this summer and got three bushels of this amazing peach from Mr. Oscar Jones, they were off of the parent (16 years old) tree, which had probably twenty bushels which he sold off the tree for \$4.50 per bushel. They were the most perfect example of a very large, delicious firm peach I have ever seen. Will eventually replace Elberta. I want to plant another block, as I believe and all of the fruit men of Winchester, Virginia agree with me, that this peach is the answer to a fruit grower's prayer."

### PRICES: HALE HARRISON BRILLIANT PEACH TREES

	1 to 9	10 to 49	50 to 99	100 or more
One Year Budded	1 to 9	10 to 49	50 to 99	100 or more
Fine Quality Trees	Trees	Trees	Trees	more Trees
5 to 6 feet . . . .	\$2.25	\$1.90	\$1.60	\$1.35
4 to 5 feet . . . .	2.00	1.65	1.35	1.15
3 to 4 feet . . . .	1.75	1.40	1.10	.95
2 to 3 feet heavy .	1.50	1.20	.90	.75
2 to 3 feet light . .	1.25	1.00	.70	.60
18 to 24 inches .	.95	.80	.55	.45
12 to 18 inches .	.80	.65	.45	.35

**GENUINE HALE HARRISON BRILLIANT PEACH TREES GROWN AND SOLD EXCLUSIVELY BY HARRISON BROTHERS NURSERIES, BERLIN, MARYLAND.**

**Bud-Selection  
THE KEY TO  
BETTER FRUITS**



**Harrisons' "Bud Strains"**

Some sixty years ago, and almost every year since, Harrisons' have planted orchards, not alone for fruit but principally to secure the type of parent fruit tree that was characteristic of a "variety" dominant in bearing qualities coupled with health, vigor and ability to withstand changeable climatic conditions. This type of tree became the parent supplying the budding stocks for future orchards in America and true-to-name varieties were assured.

**Dear Friends:**

For sixty-seven years the business of the Harrisons' has been to grow Fruit Trees, Roses and Ornamental Nursery Stock, also commercial fresh fruit growers—this business has grown and developed only through a thorough understanding of the science of horticulture in all its phases with practical use.

Now when you buy nursery stock—remember all of it is a living plant—the pedigree, or parents, play an important part in the future results of the very tree you buy—the "hidden value" is the inborn inheritance that becomes the final quality, type, strain, size, color and productiveness so necessary in the future performance—and right here is the very feature which makes HARRISON grown nursery products have superior merits.

HARRISONS' Fruit Trees and Small Fruits are true to name, earlier to bear, and yield larger crops because they are scientifically propagated from SUPER SELECTED STRAINS. Likewise, the parent plants used for propagating our Ornamentals are of the finest types for their respective varieties.

In closing, may we personally take this opportunity of thanking our many, many customers for their continued confidence, for which we are sincerely grateful.

Sincerely yours,  
HARRISON BROTHERS NURSERIES  
G. Hale Harrison, Gen. Mgr.

TELEPHONES  
BERLIN MARYLAND  
DAY 27 or 28  
NIGHT 35 or 32W

**TRUE TO NAME**

The World's Foremost Fruit Variety Identification Specialists Have Examined  
Harrison-Grown Trees and Pronounced Them True to Name.



**This is Your PROTECTION**

Every customer is assured of Harrisons' Hi-Quality Trees and Plants at all times. Expert growing on proper soils, careful digging and packing is Harrisons' policy on every order. Every tree and plant we ship is guaranteed to be strictly first class, free from injurious diseases and insects and to reach you in good condition.

Any time trees or plants are received that do not meet these standards they will be replaced free of charge or your money refunded.

Continued growth depends on soil, weather conditions, planting and after care. After ten days it is mutually understood that the nursery stock is satisfactory; however, we will replace nursery stock that dies from unavoidable causes at half price, if notified within two months after its arrival.

HARRISONS' NURSERIES.

**OVER FIFTY YEARS' DEPENDABLE DEALINGS.**

**MARVELOUS NEW**  
Earliest Ripening Yellow Freestone Peach  
Genuine

**Shinn's Delicious**

Trade Marked  
Trees Grown and Sold Only By Harrison Bros. Nurseries

A true mutation, being very early ripening budsport strain of Burbank July Elberta, U. S. Plant Patent #15, discovered by Mr. C. T. Shinn and Mr. L. S. Smith in their orchard near Russellville, Arkansas. Identical in large size, beautiful red color with handsome golden yellow background color, yellow flesh, freestone and superior flavor as its parent, however, its most appealing characteristic is that it ripens three weeks sooner, between Red Bird and Red Haven, making it about five weeks earlier ripening than Elberta. Every peach grower should make a planting of Shinn's Delicious this year. We know you will want more of them when you see the fruit. Shinn's Delicious (Trade Marked) is an exclusive Harrison variety and only genuine Shinn's Delicious trees can be obtained from Harrison Brothers Nurseries, Berlin, Maryland. Many growers say it is better than Starking Delicious peach U. S. plant patent #806.

Prices of Shinn's Delicious (Trade Marked).

	1 to 9 trees	10 to 49 trees	50 to 99 trees	100 or more trees
5 to 6 feet	\$2.25	\$1.90	\$1.60	\$1.35
4 to 5 feet	2.00	1.65	1.35	1.15
3 to 4 feet	1.75	1.40	1.10	.95
2 to 3 feet heavy	1.50	1.20	.90	.75
2 to 3 feet light	1.35	1.00	.70	.60
18 to 24 inches	.95	.80	.55	.45
12 to 18 inches	.80	.65	.45	.35

VISIT OUR NURSERIES  
on Routes U.S. 50 and U.S. 113

**BURBANK JULY ELBERTA** U.S. PLANT PATENT NO. 15

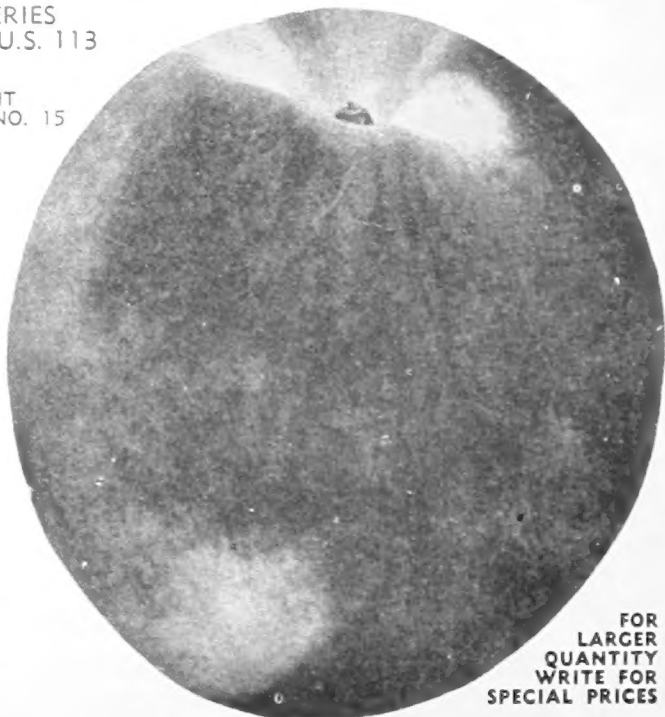
The Outstanding Medium Early Commercial Peach

Here is the peach that has caused a sensation wherever fruited. Growers in many sections say it is their best medium early, yellow, freestone peach for shipping, local markets and home use. Beautiful golden yellow, almost completely overspread with brilliant red. Ripens about the same time as Hale Haven, but on account of its vivid red color and yellow background with no green color, it can be picked for commercial shipments about four days sooner. Excellent in flavor, even superior to Hale Haven for fresh eating, freezing and canning. Hardy, sure cropper, large size, a sensational money maker. July Elberta is known by different names, such as Burnett Elberta, Burbank July Elberta, Kim Elberta, Burbank Elberta. We offer an outstanding strain selected from bearing trees. Season of ripening about two weeks sooner than Elberta (Original Strain).

	1 to 9 trees	10 to 49 trees	50 to 99 trees	100 or more trees
5 to 6 feet	\$1.95	\$1.65	\$1.30	\$1.05
4 to 5 feet	1.55	1.30	1.00	.90
3 to 4 feet	1.30	1.10	.85	.75
2 to 3 feet Heavy	1.15	1.00	.70	.60
2 to 3 feet Light	.95	.80	.55	.45
18 to 24 inches	.80	.65	.45	.35
12 to 18 inches	.60	.45	.35	.25

**TRIPLE CERTIFICATION**

By U. S. Government, State of Maryland, in addition to other horticultural inspectors. Your order insures Harrison Grown, healthy, clean nursery stock. Free from diseases and insect pests. Certificate of inspection accompanies each shipment.



FOR LARGER QUANTITY WRITE FOR SPECIAL PRICES



# Biggest Peach Tree Values in America

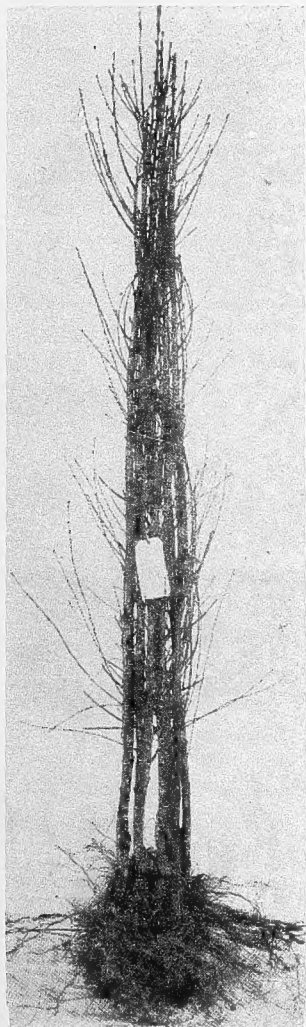
## HERE'S A "LOAD" OF REASONS WHY HARRISON'S PEACH TREES ARE BETTER

- A—Our organization has over 65 years' experience.
- B—Every step in growing under the personal supervision of the Harrison Brothers.
- C—One hundred and fifty thousand trees in Harrison Brothers orchards from which our propagating trees are selected.
- D—Use of modern methods for planting, cultivating and digging.
- E—Over 4,000 acres of various types of soil.
- F—Ideal soil and climatic conditions.
- G—Co-operation with leading horticulturists and experimental stations all over the world.

### Very Early Varieties

**DIXIED.** Very early, yellow, cling, medium size, round, bright attractive red blush; good flavor; prolific bearer. Ripens two weeks earlier than Golden Jubilee or about three days later than Red Bird. A new variety originated and introduced by the U. S. Department of Agriculture. Its most outstanding commercial feature is that it is a good shipper and has been planted extensively in Georgia to meet the demands for the very early Peach market.

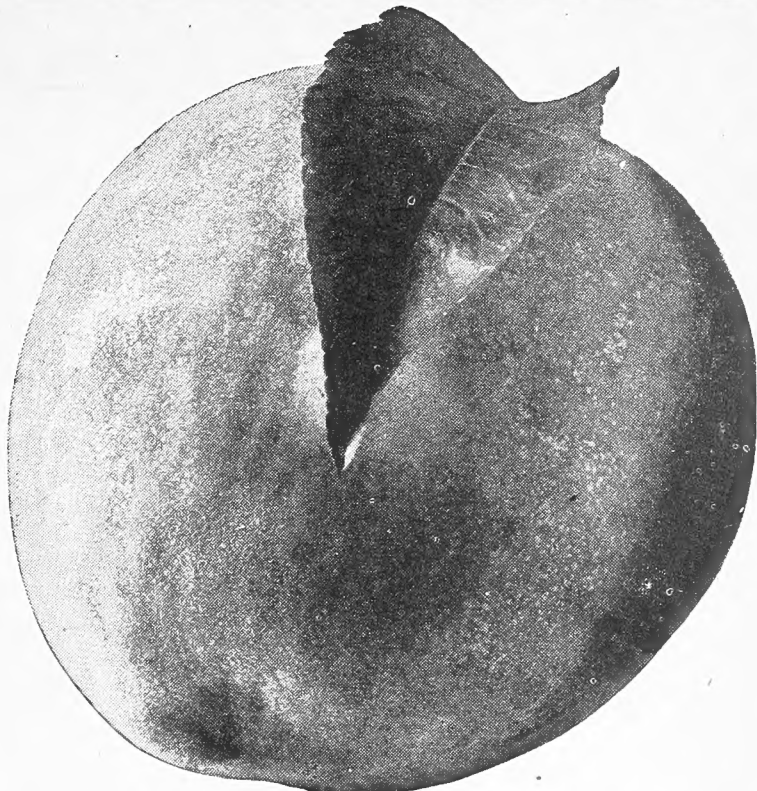
**DIXIGEM.** Early, yellow, semi-freestone, red blush, medium size, good quality. Ripens a few days sooner than Golden Jubilee. A new variety originated and introduced by the U. S. Department of Agriculture. Extensively planted in Georgia.



**FAIRHAVEN.** Early, yellow, freestone, medium large, nearly round, mostly bright golden in color with an attractive bright red cheek. Skin is smooth and very tough. Fruit very firm and ships exceptionally well. Ripens just after Golden Jubilee.

**JERSEYLAND (N.J. 135)** — Ripens a week sooner than Golden Jubilee, large, firm, attractive yellow flesh, freestone. Tree is hardy, sets buds freely. Introduced by New Jersey Experiment Station.

**FOR LARGER QUANTITY WRITE FOR SPECIAL PRICES**



**RED BIRD—Earliest Large Peach, Commanding High Prices**

### RED BIRD

**EARLIEST OF ALL PEACHES**  
Most Popular Extra Early Market Peach

Bright glowing color—"red as fire"—on a background of creamy white.

Handsome. Large—as large as Elberta. Ripens about 45 days before Elberta. Clingstone. Good to eat and fine for pies, cobbler and Peach pickles. Quality good, especially when left on the tree until they get fully ripe.

"Break all young-bearing records." "Break all bearing records." "One crop paid for my whole orchard." "Most profitable early Peach." "Sell fast as can ship." "Better shipper than Elberta."

**JUNE ELBERTA.** A big, handsome red and gold Peach, highly colored, excellent quality and a dandy home Peach, being a new variety. One of the earliest of the good yellow-fleshed Peaches, this semi-freestone variety quickly returns cash dividends before later varieties reach the market.

### HARRISON'S HARDY PEACH TREES

We absolutely guarantee Harrison-grown Peach trees, variety for variety, to be as hardy or hardier than trees grown in any locality north of us.

### PRICES OF HARRISON'S HIGH QUALITY PEACH TREES

New Lower Prices

Propagated Direct from "Verified" Varieties of Super-Selected Strains—Certified 100% Healthy

True-to-Name, One-Year, Budded Trees:	100% Healthy			
	1 to 9 Trees	10 to 49 Trees	50 to 99 Trees	100 or More Trees
5 to 6 ft., 11/16 to 7/8 in. caliper	\$1.85	\$1.55	\$1.15	\$0.95
4 to 5 ft., 9/16 to 11/16 in. caliper	1.45	1.20	.90	.80
3 to 4 ft., 7/16 to 9/16 in. caliper	1.20	1.00	.75	.65
2 to 3 ft., 5/16 to 7/16 in. caliper	1.05	.90	.60	.50
2 to 3 ft., 1/4 to 5/16 in. caliper	.85	.70	.45	.35
18 to 24 inches	.70	.55	.35	.25
12 to 18 inches	.50	.35	.25	.20

May be assorted varieties of Peach Trees. For Jumbo Peach Trees, see page 17.  
Write Us About Your Planting Requirements.

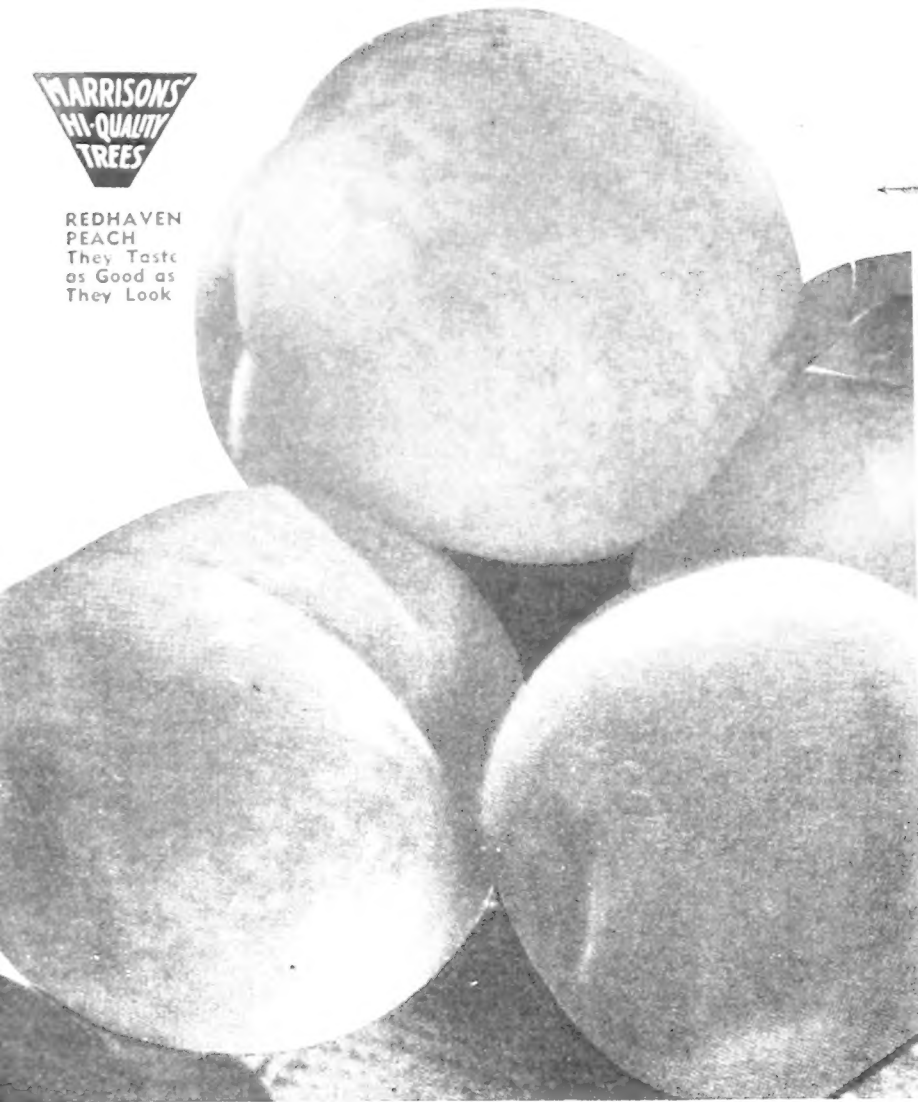
One-Year, Budded, 3- to 4-Ft. Peach Trees  
Ideal Economy Size

**HARRISON—A Name in Trees You Can Trust**





REDHAVEN  
PEACH  
They Taste  
as Good as  
They Look

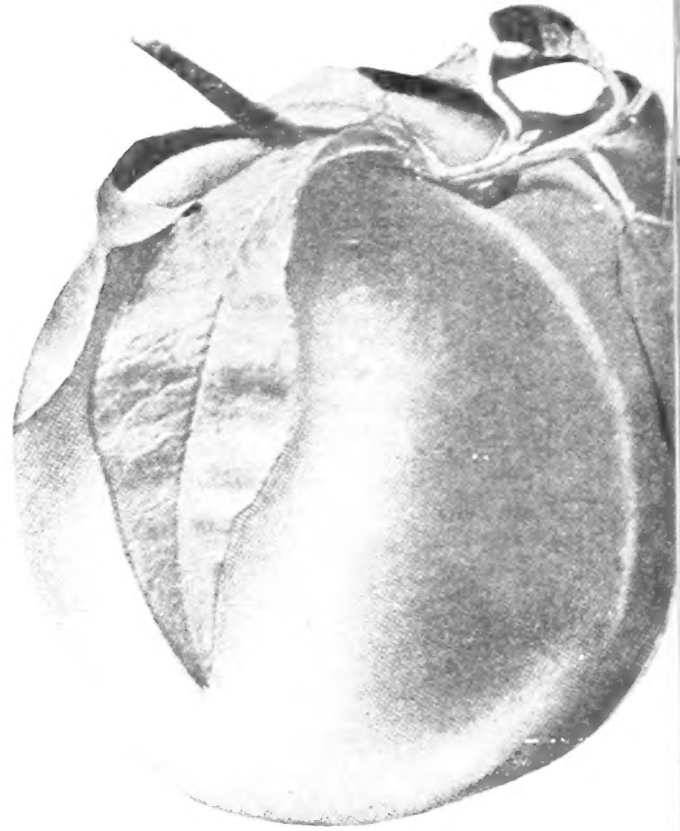


# The Sensational REDHAVEN

Tops All Extra Early Peaches, Earliest Yellow Freestone Peach

**THE NEW EARLY RIPENING YELLOW PEACH THAT RIPENS ABOUT 10 DAYS BEFORE GOLDEN JUBILEE**

The most promising early ripening yellow freestone Peach ever introduced. A cross between Hale-Haven and Kalhaven made at the South Haven, Michigan, Experimental Station. Brilliant red color with creamy yellow background, smooth skin, almost fuzzless. Reddens before it ripens. Bears heavy crops and should be thinned for best results. Every grower should try REDHAVEN. We have a good supply of genuine Redhaven trees this season. The demand for this variety is heavy, so order early.



HALE-HAVEN PEACH—Extra Large, Fine Flavored

## HALE-HAVEN

Early midseason. Ripens just after Golden Jubilee has been harvested and about 14 days ahead of Elberta. Yellow freestone, large, high red color, firm, fine flavored. It takes on red color early and the peaches show good red color several days before ripening, which gives it a distinct advantage for marketing. When allowed to ripen fully upon the trees its flavor is undoubtedly the best of any yellow Peach. Tree is an extra strong grower and produces a bumper crop of fruit each season. Very hardy in fruit bud. One of its parents is J. H. Hale, from which it inherits its large size and fine color. The other parent is South Haven from which it attains hardness, large crops yearly and strong growth. It is the best variety ripening just after Golden Jubilee and should be planted in every orchard. Excellent for fresh eating and quick-freezing.

**HARRISON'S'  
SUPER QUALITY  
FRUIT TREES  
BEAR HEAVIEST  
GROW FASTEST  
AND  
LIVE LONGEST**



GOLDEN JUBILEE PEACH—Yellow, Excellent Quality

# A LEADER and What a PEACH, GOLDEN JUBILEE

Early. The supreme early yellow Peach. Peach orchardists for a century have been looking for an early Peach of high quality, fine flavor, yellow, freestone, attractive color and firm texture, and eventually they have found it in the marvelous Golden Jubilee. Fruit bright deep yellow, medium to large size, oblong shape. Good size, fine appearance and excellent quality with delicious flavor. Ideal for roadside stands and home orchards, also commercial orchards for nearby city shipments. It ripens about ten days earlier than Hale-Haven.

**AMBER GEM CLING.** Midseason, long, medium size, beautiful color with deep red blush, firm flesh. Delicious honey-sweet flavor. One of the best canning varieties. Tree hardy and a good cropper. Now being planted extensively in Virginia and Michigan for canning factories. New canning peach.

**HERE IS THE HIGHLY FLAVORED EARLY  
WHITE FREESTONE PEACH YOU HAVE  
BEEN LOOKING FOR  
CUMBERLAND**

An outstanding favorite early white Peach. Is a comparatively new, white, nearly freestone variety that was developed by the New Jersey Experimental Station. The fruit resembles Belle of Georgia, both in appearance and quality, although it ripens about the same time or a little before Golden Jubilee.

**A GREAT PEACH COMBINATION—REDHAVEN, GOLDEN JUBILEE, HALE-HAVEN**



# Harrisons' Peaches

ARE A COLLECTION OF  
THE WORLD'S BEST

## TRIOGEM (N. J. 70)

Developed by the Master Plant Breeders of New Jersey  
MEDIUM TO LARGE, FIRM, ATTRACTIVE

Ripens early, medium to large, oval, firm, high quality, high red color over entire Peach, yellow flesh; freestone, smooth, nearly fuzzless like J. H. Hale, one of its parents; colors several days in advance of its ripening, being 2 days later than Golden Jubilee, or 3 weeks earlier than Elberta. This, combined with its very slow rate of softening, makes it an ideal Peach for commercial growers. Hangs well to the tree after the Peaches become firm ripe. When picked hard to firm it is a good long distance shipper. This is the best commercial Peach ripening at this period, and is being planted now by some growers in preference to Golden Jubilee. Considered as the best new variety of Peach so far originated and introduced by the New Jersey plant breeders.

### A REAL PROFIT MAKER

TRIOGEM has been fruited commercially in New Jersey and Maryland for several years. During this time it has topped all varieties in price on the New York and Philadelphia markets which ripen at this time during the summer. Several large commercial orchards have been planted with Triogem and its popularity is increasing each year.

Triogem  
Peach

## Stark Early Elberta

Midseason. Yellow, freestone, large, lemon-yellow with a dark cast, blushed with vivid red. Beautiful appearance, high quality, being somewhat similar to Elberta, although a trifle better flavor; rich golden tender flesh, yet firm and has a delightful flavor; excellent for canning. Gleason strain which ripens three days earlier than Elberta.



**HARRISONS' Super-Selected Strain Varieties Bear Bigger and Better Crops of Peaches.**

**INCREASES YOUR PROFITS AT NO EXTRA COST**

**CHAMPION. A Good Home Peach.** White, freestone, very large; creamy white with red cheek, sweet, juicy, very high flavor. Champion has lost its past commercial importance because it will not carry satisfactorily under refrigeration, but as a home garden or a roadside Peach, it is one of the best. Tree is hardy, large grower and productive. Ripens ten days earlier than Elberta.

**REDSKIN.** A new variety introduced by the University of Maryland. Midseason, yellow, freestone, large, round, deep red blush, firm flesh, sweet flavor. It is a cross between J. H. Hale and Elberta, which ripens slightly earlier than Elberta. Vigorous, good growing tree and productive.

**VEDETTE.** Early yellow freestone. Globular; large; good red color; good flavor. Canadian variety of the Elberta type. Ripens about six days later than Golden Jubilee. Adapted to Southern as well as Canadian Peach districts.

**SUNHIGH.** (N. J. 82.) A large, red, bright, smooth Peach which colors well all over before it ripens, softens slowly, making it a good commercial Peach. Flesh inclines to adhere to the pit when hard ripe. The variety seems to do best in hilly sections and requires thorough summer spraying. The fruit is large, roundish, thick-skinned, very uniform in size. Color deep yellow with red cheek. Stone is free. Ripens approximately 18 days before Elberta, at a time to bring high market prices.

**HILEY.** White. Early midseason. Bears huge crop of fancy Peaches. Freestone, medium size, highly red colored and is a very handsome Peach of exceptionally good flavor. Tree is strong grower, very healthy and an extra heavy bearer. You can depend on Hiley to bear heavy crops year after year. The marvelous color and wonderful flavor have made it popular on the markets. Hiley resembles Belle of Georgia but ripens about 14 days earlier.

**SOUTHLAND.** Early midseason, yellow, freestone, medium to large, round, attractive red blush with mild, good flavor. Originated by the U. S. Department of Agriculture, being an ideal peach for the extreme Southern peach Belt. Vigorous tree, productive and fruit ripens at the same time as Hiley. Promising commercial peach.

**VALIANT.** Early midseason. Seedling of Elberta. Yellow freestone, productive. A new Canadian variety. Ripens two weeks earlier than Elberta.

**SUMMERCREST.** (N. J. 94.) Midseason, yellow, freestone, large with red blush and sweet flavor. Trees exceptionally vigorous, fruit ripens the same time as Belle of Georgia, which is a few days earlier than Elberta. Popular in New Jersey where it is known.

**GOLDEN EAST.** (N. J. 87.) Early midseason. Very large, high red color, yellow, freestone. Very good flavor. Ripens 15 days earlier than Elberta. Good roadside market and commercial Peach.

**For Greater Profits From  
Your Land Plant Trees**





# NATIONAL J.H. HALE *Reputation*

Originated by the late PEACH KING

MIDSEASON—Ripens 2 to 3 days before Elberta.

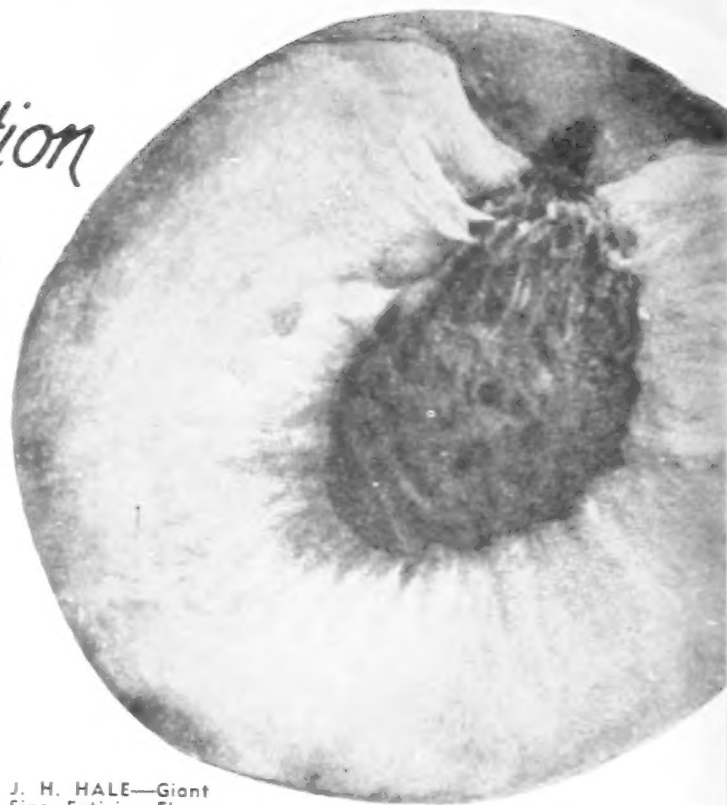
## Original Strain J. H. HALE

Our "Hales" are propagated direct from the original strain, the variety originated by the late J. H. Hale of South Glastonbury, Connecticut and Fort Valley, Georgia, known as the Peach King of America. There are many types and strains of J. H. Hale grown, but the only one worthy of commercial importance is the original strain, which is the extra large, round, highly colored Peach. The original strain necessitates cross-pollination and it is necessary, for proper results, to plant a few Belle of Georgia or Elberta or Hiley or any other variety of Peaches along with Hale for cross-pollination.

**Extra Large Size** Yellow, freestone, extra large, beautiful red coloring, firm and of the highest quality and enticing flavor. J. H. Hale ripens about two or three days prior to Elberta.

HARRISON BROTHERS  
NURSERIES  
BERLIN, MARYLAND

J. H. HALE—Giant  
Size, Enticing Flavor



## Belle of Georgia

*The Queen of Flavors*

THE BEST WHITE MID-SEASON VARIETY

Ripens midseason. Color creamy white with red cheek. Flesh white, red near pit. Size large, freestone. Belle of Georgia, for some time, has been recognized as the best all-around white Peach on the market. It is easily the best shipping white Peach of its season, ranking almost with Elberta in this respect. Because of its many desirable qualities, it has become standard in the large commercial orchards, and you can find few orchardists of any importance who do not have a block of Belle in their orchards. These men know from experience just what varieties pay best and endorse it highly.

- Fruit Large
- Delicious Flavor
- Attractive
- Big Crops
- Very Hardy
- Easy to Grow



BELLE OF  
GEORGIA  
The Finest  
Flavored Peach

## SULLIVAN EARLY ELBERTA

An Early Ripening Red Bud Sport of Elberta  
MIDSEASON YELLOW—FREESTONE

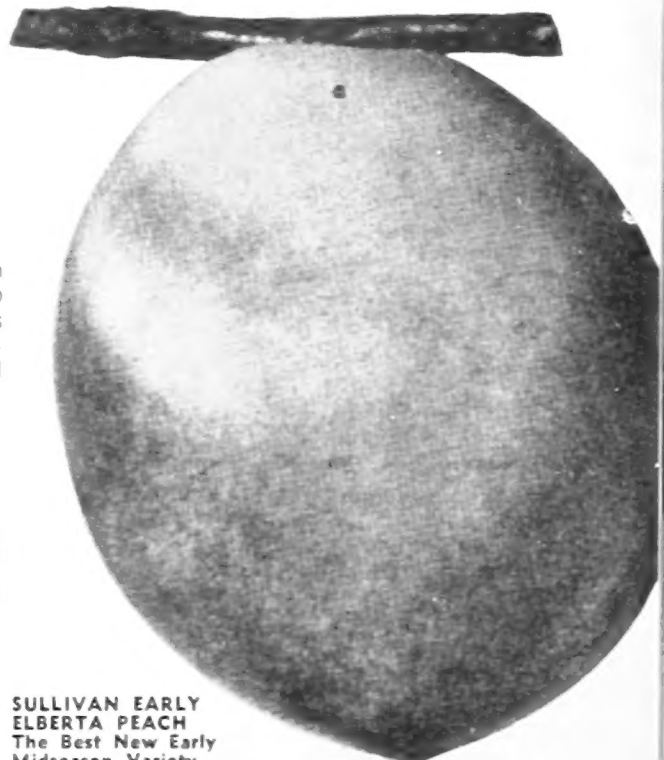
Here is the early ripening strain of original Elberta growers have been wanting. Discovered by Mr. Sullivan in a Georgia orchard. Identical to Genuine Elberta in every characteristic except it ripens about seven days earlier. Yellow freestone, firm, juicy, rich, good flavored. Equally attractive as Elberta and is a good keeper. Good for either home or commercial planting.

### 10 OUTSTANDING REASONS FOR PLANTING SULLIVAN EARLY ELBERTA

- 1—Size: Large to Extra Large.
- 2—Yellow Freestone.
- 3—Rich, Sweet Flavor.
- 4—Brilliant Red Colored with Golden Yellow Background. Excellent Long Distance Shipper.
- 5—Tree Vigorous Grower.
- 6—Bears Large Crops Annually.
- 7—Colors a Week Earlier Than Elberta.
- 8—Ripens Slowly After Being Picked.
- 9—Brings Highest Market Prices.
- 10—Completely Tested.

Harrison's  
Maryland  
Grown Peach  
Trees are the  
Finest  
Quality in  
World

SULLIVAN EARLY  
ELBERTA PEACH  
The Best New Early  
Midseason Variety



**Greater Profits**  
from  
**Harrisons' Original "BUD" Strain**

**Plant Harrisons' Superior Strain and Reap the Cash Benefits**

# Elberta TOPS PEACH SALES

**Sensational Standard Peach of the World**

**It's the Greatest Money Maker**

(Original Strain) **ELBERTA**

**Internationally Famous—The Standard by Which All Other Peaches are Judged**

Midseason. Yellow, freestone. Fruit is large to extra large; golden yellow with brilliant shades of red; firm, juicy, rich, sweet and good flavor. Elberta has the greatest international reputation of any Peach. It has been the standard for all other Peaches almost since the date of its introduction. The coloring of Elberta is practically perfect. The rich, yellow skin is almost entirely covered with dark red blush upon the sunny side. The attractive appearance and uniform large size serve to sell it almost on sight. We offer original strain trees which is the best strain obtainable.

**Save Disappointment—Plant Only Harrison ORIGINAL STRAIN Elberta**

Today, there are more than seven distinct types and strains of Elberta, bearing fruit in the orchards of this country. To compare the various sizes, shapes, texture and red coloring of these Elberta with those grown "on original strain trees" gives sufficient reason why they sold this year at a premium of \$1.00 to \$2.00 per bushel on the New York and other leading fruit markets.

**They Cost No More**

Why plant degenerated strains of Elberta when you can plant Harrisons' heavy yielding original strain trees. They can be purchased at the lowest price that high quality trees can be produced for. It is true trees, size by size, can be produced cheaper by budding them from non-fruiting trees in the nursery row, but this method causes degeneration. Trees grown in this manner will be lighter croppers and require a longer time in coming into bearing.

**JUMBO SIZE TREES PAGE 17**

**FOR NEW LOWER PEACH TREE PRICES SEE PAGE 5**



**ELBERTA Original Strain**  
The Leading Peach  
America's No. 1. Peach—Elberta. There are more Elberta Peach trees in bearing than any other variety on earth.  
**FOR JUMBO PEACH TREES,**

# Brackett

*Mid-Season Late* **1. Size  
2. Quality  
3. Color**

**A Profitable Commercial Variety Slightly Later Than Elberta**

Brackett is a comparatively new commercial Peach in some sections but wherever tried it has given uniformly good results. During the past thirty years we have planted many thousands of this variety in our own orchards and they have given good results.

The fruit is rich yellow, with dark carmine cheek. The size runs fully as large or larger than Elberta. Flesh is deep yellow, extremely juicy and is absolutely freestone. Fruit is much better flavored than Elberta. Good shipper.

**Popular On the Markets**

Brackett commands unusually high prices on the market and often outsells Elberta twenty-five to fifty cents per bushel. We know the grower who needs a Peach ripening slightly later than Elberta will make no mistake in planting Brackett.

**Plant Harrisons' Original Strain**

HARRISONS' were the first to popularize this great variety and distribute it throughout the Peach-growing sections. We offer trees that are propagated direct from the original strain and they are sure to produce results.

**BRACKETT—The Beautiful Red Peach With Handsome Orange-Lemon-Colored Background**



# Peaches

## Genuine SHIPPERS LATE RED

Attractive, large, freestone, with high red color, fine quality. Power flavor, good shipper and breaker, ripens about 12 days later than Elberta.

Commercial variety, ripens 12 days later than Elberta. A good commercial variety. Power flavor, good shipper and breaker, ripens about 12 days later than Elberta. Harrison's are growing this original strain of Shipper Late Red which is the finest fruit of this variety. Should be planted in every commercial orchard as well as home gardens. Dependable trees which are absolutely true to name.

Harrison's Maryland Grown Peach Trees are the Finest Quality in the World



SHIPPERS LATE RED PEACH

**SALBERTA.** A Late Commercial Peach. Yellow, freestone, large, being a satisfactory cross between Elberta and Sawey. Salberta inherited the size, quality and productiveness of Elberta and inherited the ripeness in season of Sawey. This new variety is planted commercially in many Peach-growing sections. Ripens about 12 days later than Elberta. A good shipper.

LIZZIE PEACH

**RIO-OSO-GEM.** Late. See page 2 for description and prices. Starts to ripen 10 days later than Elberta.

**AFTERGLOW.** IN 54. Late midseason. Yellow, freestone, large, round with high red blush, ripens about 5 to 6 days later than Elberta.

### VERY LATE RIPENING VARIETIES

**KRUMMEL'S** (Krummel's Late October). Yellow, freestone; extra large, round, deep yellow with a blush of carmine on the sunny side—fine flavor.

**SALWEY.** Very late. Yellow, freestone.

**WHITE HEATH CLING.** Large, late cling, fine flavor, good home Peach.

Harrison Grown Fast Fruiting Strains of the Best Peaches. For Larger Quantity. Write for Special Prices.

### PRICES OF HARRISON'S HIGH QUALITY PEACH TREES

New Lower Prices

Propagated Direct From "Verified" Varieties of Super-Selected Strain—Certified 100% Healthy.

1 to 9    10 to 49    50 to 99    100 or

True-to-Name, One-Year, Budded Trees:	Trees	Trees	Trees	More Trees
5 to 6 feet, 1 1/16 to 7/8 inch caliper	\$1.85	\$1.55	\$1.15	\$0.95
4 to 5 feet, 9/16 to 11/16 inch caliper	1.45	1.20	.90	.80
3 to 4 feet, 7/16 to 9/16 inch caliper	1.20	1.00	.75	.65
2 to 3 feet, 5/16 to 7/16 inch caliper	1.05	.90	.60	.50
2 to 3 feet, 1/4 to 5/16 inch caliper	.85	.70	.45	.35
18 to 24 inches	.70	.55	.35	.25
12 to 18 inches	.50	.35	.25	.20

May be assorted varieties of Peach Trees. For Jumbo Peach Trees, see page 17. Write Us About Your Planting Requirements.

Harrison's volume production has enabled us to supply you with high quality nursery products at low prices. All varieties are within reach of any home planter and fruit grower and priced to save you money. We ship everywhere. State and Federal inspected.



# A WHOLE ORCHARD

FOR ONLY \$2.50

**Five Varieties of Apples for Fresh Eating from Late June Until Early November produced on the same tree**

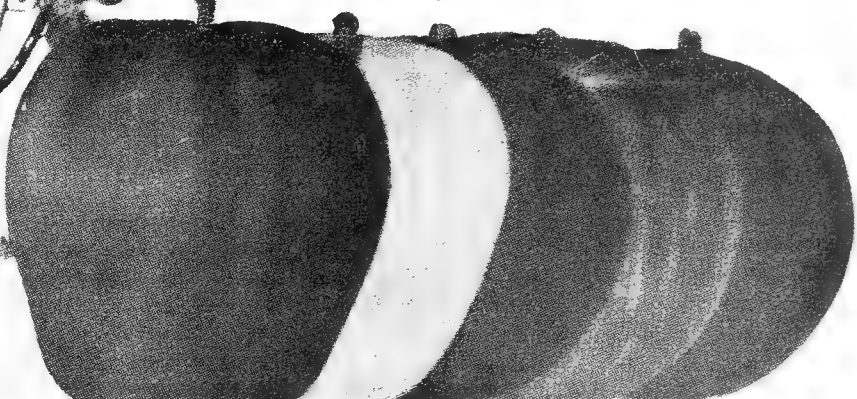
Here's the opportunity for those with limited space to have five mighty desirable varieties of Apples, all budded on one tree for a little more than the cost of one tree. Requires only 20 ft. space when fully grown. Each tree is budded to Large Transparent for first summer variety, Williams Early Red, Red Gravenstein, Triple Red Delicious and Yellow Delicious for autumn varieties, Scarlet Red Stayman and Red Rome Beauty for winter varieties.

Budded to 7 varieties, however, guaranteed to have 5 or more.

2 year, 4 to 5 feet, well branched at **\$2.50** each.

2 year, 5 to 6 feet, extra well branched with good heads, at **\$3.25** each.

Jumbo Size, 3 year, 6 to 8 feet, extra well and heavily branched with beautiful heads at **\$4.50** each.



## If Your Space Is Limited

Plant one or two of these novel trees. You will have a variety of Apples maturing over a long season. Desirable as an ornamental and shade tree, as well as for its fruit.

*Grow Your Own*  
**DELICIOUS! NUTRITIOUS**

# ASPARAGUS *It's Easy with*

**Harrisons' "Big Yield Strain"**

## MARY WASHINGTON

**Highly Profitable and Easily Grown**

Being the first vegetable to come in the spring it always brings a high price on the markets. Stalks being delicious and very healthful, every garden should have a generous supply and when properly set and cared for will last a lifetime.

### Prices of Genuine Pedigreed Mary Washington Asparagus Roots

	25 Roots	50 Roots	100 Roots	250 Roots	500 Roots	750 Roots	1000 Roots
2-Yr. No. 1	\$2.35	\$3.75	\$6.00	\$12.00	\$18.75	\$24.75	\$30.00
1-Yr. No. 1	1.50	2.50	4.00	8.00	12.50	16.50	20.00

**SAVE A YEAR!**

**PLANT JUMBO THREE-YEAR**

### Mary Washington Asparagus Roots

Yes, you can grow your own delicious tender Asparagus quick by planting our jumbo size roots. These roots are the cream of our three-year-old crop and have already borne large, early, tender, juicy Asparagus in the nursery. This is the selected pedigreed Mary Washington strain and is far superior to other kinds.

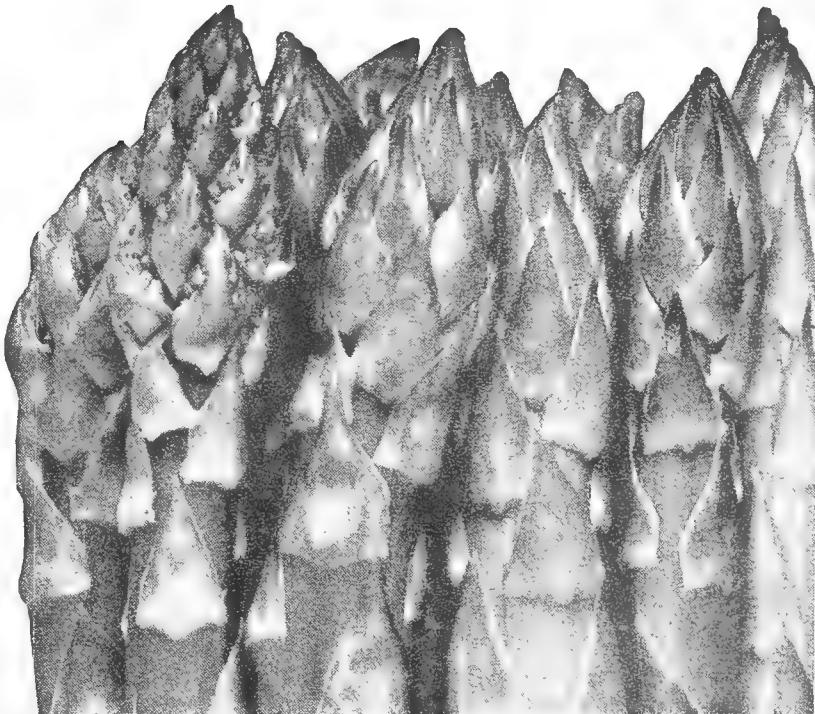
PRICES FOR JUMBO ASPARAGUS			
25 for	.....\$ 3.75	250 for	.....\$20.00
50 for	..... 6.25	500 for	..... 31.25
100 for	..... 10.00	750 for	.....\$41.25
		1000 for	..... 50.00

## New Gigantic Red MacDonald Rhubarb

If you want something different, something delicious in garden fruits, then plant some of this grand new MacDonald Rhubarb.

Stalks are of giant size on mature plants, and a rich rosy red in color. This beautiful color carries through the stalk. Sauce made from it has the red color of a dish of Strawberries. Flavor is mild and pleasing. This new Rhubarb does **not** send up seed stalks and never becomes tough or stringy. Just cut in small chunks and cook. Do **not** remove the tender skin; it cooks right up with the stalk.

**Heavy plants: \$1.00 each; 6 for \$5.40.**



# BETTER RESULTS Right From the Start with HARRISONS' HI-QUALITY APPLE TREES



**LARGE TRANSPARENT (Lodi)**  
You Can Depend on Bumper Crops—  
Plant Harrison's "Bud Selected" Strain

## Because They Are

- Absolutely true to name.
- Healthy—vigorous.
- Disease free.
- Hardy—budded fruit trees are superior to grafted.
- Properly hardened off before digging
- Come into bearing earlier.
- Yield bigger crops of better fruits.
- Have larger roots.
- Take hold quickly in new locations.
- The best trees for less money.
- Propagated from bearing trees of selected strains.

### PRICES OF HARRISONS' HIGH QUALITY APPLE TREES

New Lower Prices  
Propagated Direct from "Verified" Varieties of Super-Selected Strains

EXTRA WELL BRANCHED TREES True-to-Name, 2-Yr., Budded Trees:	Certified 100% Healthy			
	1 to 9 Trees	10 to 49 Trees	50 to 99 Trees	100 or More Trees
5 to 6 ft., 1 1/16 to 7/8 in. caliper	\$1.85	\$1.55	\$1.15	\$0.95
4 to 5 ft., 9/16 to 11/16 in. caliper	1.45	1.20	.90	.80
3 to 4 ft., 7/16 to 9/16 in. caliper	1.20	1.00	.75	.65
2 to 3 ft., 5/16 to 7/16 in. caliper	1.05	.90	.60	.50

May be Assorted Varieties of Apple Trees.  
For Jumbo Apple Trees, See Page 17.  
Write Us About Your Planting Requirements.

### HARRISONS' HIGH QUALITY APPLE TREES

New Lower Prices  
True-to-Name—Certified 100% Healthy.

One-Year Budded:	Certified 100% Healthy.			
	1 to 9 Trees	10 to 49 Trees	50 to 99 Trees	100 or More Trees
4 to 5 ft. whips	\$1.45	\$1.20	\$0.90	\$0.80
3 to 4 ft. whips	1.20	1.00	.75	.65
2 to 3 ft. whips	1.05	.90	.60	.50
18 to 24 in. whips	.85	.70	.45	.35
12 to 15 in. whips	.70	.55	.35	.25

Write Us About Your Planting Requirements.

## WILLIAMS' EARLY RED

The Big Red Home or Market Apple

Just at the time when people are hungry for a fresh, new red Apple, this superb sort comes into market. In New York, Boston, Philadelphia, and other eastern cities as well as middle western and southern cities, the fruit sells as quick as it hits the market-house or dealer's store. It holds its own anywhere and has proven to be

The Best Summer Apple

The rich bright red fruit catches the buyer's eye and is ordered at a price that yields the grower a good profit. Apple is large, with tender, crisp, white flesh, juicy, slightly tart. The trees come to bearing when quite young, producing freely and steadily. Fine for a filler or permanent tree, and being hardy, can be successfully grown in New England states and Canada. All orchards should include Williams Early Red

A good pollinizer for Red Yorking and Red Rome Beauty Apple trees



WILLIAMS EARLY RED—Ready for Market When Folks  
Just Get Hungry for Apples

## For Larger Quantity Write for Special Prices

# SUMMER APPLES

## LARGE TRANSPARENT (Lodi)

A New Summer Variety

Ripens Very Early—Destined to Replace the Ever-Popular Yellow Transparent

We believe there is a big future for this new summer Apple. Our commercial friends should lose no time in anticipating the demand for an Apple of this type.

Somewhat of a dwarf grower, bearing very young, it makes an excellent filler. The skin is a clear yellow, white flesh, of medium size. A good pollinizer.

### EARLY APPLE GROWERS MAKE MORE MONEY WITH LARGE TRANSPARENT

Yes, actual profits, that's what we mean. It can be done—here's why: Yellow Transparent Apples are always first on the market and generally bring good profits when they attain proper size. Size on Yellow Transparent is hard to get, but easy on its big brother, "Large Transparent," which ripens at the same time.

Large Transparent Apples Average Up to 1/2 Inch Larger Than Yellow Transparent—This Means \$1.00 to \$2.00 per Bushel Extra

## OTHER SUMMER APPLES

- ✓ **STARR.** Large, attractive with bright yellowish, smooth skin; sometimes marked with a faint blush and numerous russet dots; flesh yellow, fine, very tender, crisp, juicy, aromatic and of extra fine quality, bringing highest prices. Recommended to those with nearby markets, but a poor long distance shipper. Popular in Southern New Jersey.
- ✓ **DUCHESS OF OLDENBERG.** Large, striped, tender, juicy, sub-acid, good; regular and abundant bearer. One of the hardiest. Best pollinizer for early blooming varieties.
- ✓ **TWENTY OUNCE.** Very large, fine quality, yellow striped red.
- ✓ **WEALTHY.** Medium to large size; round, almost solid red; flesh white or a little stained, tender, crisp, juicy, fine grained, aromatic and very good flavor. Relatively good keeper. Old variety most extensively planted in North. Tree is very hardy, withstanding unusually cold climates, vigorous, fruits at early age, bears regular and abundant crops. Tree somewhat dwarf, making a fine filler.
- ✓ **EARLY McINTOSH.** Resembles its McIntosh parent in appearance, but is less aromatic. An attractive, uniform red color, good size, flesh white, tender, and juicy. The trees are vigorous, hardy, healthy, productive, and bear annually if thinned early and severely. The shape and framework of the tree, especially the heavy-butted branches, are like those of McIntosh. The crop ripens ten days later than that of Yellow Transparent. The fine flavor is similar to that of famous McIntosh Red.
- ✓ **RED SUMMER RAMBO.** A new earlier coloring solid red strain means much greater profits for growers everywhere
- ✓ **SUMMER RAMBO.** Large, splashed with red
- ✓ **EARLY RED DUCHESS.** Highly colored early Apples bring premium prices, this bud sport colors red all over early in the summer. Excellent pollinizer for Red Gravenstein
- ✓ **YELLOW TRANSPARENT.** Medium size, greenish yellow, very heavy bearer. Most widely planted yellow variety.
- ✓ **RED CRAVENSTEIN.** See description page 15. Excellent summer apple.]

To Make One Tree Do the Work of Two,  
Plant Harrison's Bud-Selected, Heavy-Bearing  
Strains.



## GRIMES GOLDEN

Harrisons' Selected "Big Yield" Strain—Best Home Orchard Apple

Autumn, medium sized, golden yellow, tender, rich, aromatic, sub-acid, delicious, possibly the best flavored Apple known, and a good keeper. No better variety exists for eating raw or for cooking. Tree is very hardy and one of the heaviest bearers known, producing extra large crops annually. Excellent variety for a filler, as it comes into bearing very early. Grimes Golden is the best pollenizer known, especially for Stayman Winesap, Lowry, Baldwin, Cortland, Rome, Winesap, McIntosh and others. Be sure to include Grimes Golden in your orchard. IT IS EASY TO GROW.

## YELLOW DELICIOUS *It's Golden!*

A golden yellow Apple with decided "Delicious" characteristics. Yellow Delicious has a remarkably good flavor, and is most popular for eating during the fall and winter months. Late September and January finds it at its best. Many people think it superior to the famous Delicious. Fall.

**A Prolific Cropper at an Early Age**

The Yellow Delicious tree is very thrifty, hardy, and a vigorous grower. It is renowned for its heavy bearing of fruit at a very early age. You can depend on a good yield of ripened fruit each year. Excellent pollenizer for all varieties.

## DELICIOUS

Sometimes Called Stark Delicious—This is the Original Strain of Red Delicious

Of peculiar and distinctive shape; brilliant dark red, flesh fine grained, juicy, crisp and melting; flavor sweet, with a slight acid taste, with a delightful aroma, very highest quality. Fall. Harrisons' Triple Red Delicious is superior.

## McINTOSH RED

Improved Type—Heavy Yielding Strain Preferred by Many Growers in the North.

Until the discovery of our New Super Red McIntosh our improved McIntosh Red was the best strain of McIntosh available. It colors solid red when climatic and soil conditions allow it to remain on the trees until it is mature. This heavy yielding strain is much superior to any strain of McIntosh, especially the dull striped kinds. If you do not have trouble getting sufficient color then we recommend you planting this time-proven, heavy yielding strain. McIntosh Red is very hardy and produces bumper crops each year. Generally considered as the best flavored Apple grown. Recommended for home or commercial orchard plantings.

### GRIMES GOLDEN

Big Crops—One of the Best Golden Apples

**Harrisons' Maryland Grown Apple Trees are the Finest Quality in the World**

## OTHER GOOD APPLES

**STAYMAN WINESAP** **Big Yield Strain.** Without a doubt the heaviest yielding strain of Stayman Winesap obtainable. This strain yields bumper crops year after year. It colors to a good bright red and gets nearly solid red colored when allowed to stay on trees until fully ripe. This is an improved strain and is preferred by many growers in the East. Tested and time-proven by thousands of growers.

**SMOKEHOUSE.** Large Apples of superfine flavor, excellent for eating, yellowish green mottled with dull red and with many russet dots; flesh firm, crisp, juicy and aromatic. Tree large, vigorous and reliably productive.

**WINESAP** **An Apple favorite in Virginia.** Sometimes called Old Winesap and Virginia Winesap. Medium size, oblong, smooth, and a fine dark red—one of the best red colored Apples grown; flesh yellow, crisp, tender, very juicy, aromatic, firm and of excellent flavor. Very long keeper and considered the best cold storage variety, keeping until July. Strong grower; comes into bearing early. Our strain produces bumper crops of the larger sized Apples with plenty of color.

**YORK IMPERIAL.** Medium to large size, round, irregular, greenish yellow overlaid bright red; flesh tender, firm, crisp, of high flavor; wonderful keeper. Keeps in cold storage until June. Vigorous grower, strong and healthy; an unusually heavy bearer.

**MAMMOTH BLACK TWIG (Paragon).** Extra large in size and round; skin smooth, yellowish covered with deep red, the general effect being dark red; flesh tender, tinged with yellow, crisp, sub-acid, aromatic, fine flavor, of excellent quality, long keeper of great value. An important commercial variety in the East. Tree is vigorous and healthy, yields big crops. Plant Delicious or Jonathan as a pollenizer.

**NORTHERN SPY.** Large, bright scarlet-red, with yellow markings. Flesh juicy, rich, crisp, tender, aromatic and highly flavored. Tree a strong erect grower, very healthy, extremely hardy and a free producer. We offer an exceptionally heavy bearing strain that comes into bearing at an early age.

**NORTHWESTERN GREENING.** Large, round, greenish yellow; juicy, firm, good quality; splendid keeper, ships well. Attractive Apple when packed in bushels, demands good prices, excellent baking Apple. Should not be planted extensively because crops are not so certain, due to blossoming early. Trees are extremely hardy, vigorous, and bear very young.

**RHODE ISLAND GREENING. The Popular Northern Apple.** Large, greenish yellow; flesh crisp, juicy, quite acid, firm, fine grained, tender, and of very fine flavor and quality. An excellent keeper, a popular barrel Apple, brings good prices. Generally planted in New England, New York, Michigan and Canada, but not advisable to plant south of the Mason-Dixon line.

**ROME BEAUTY.** Large, round, red, flavor and quality above average.

**RED LOWRY.** Red bud sport strain, identical with its parent Lowry in all respects with the exception that it has very much higher red color and when matured full red color. It can be picked 2 to 3 weeks earlier than Lowry, due to its earliness in season and color. Interplant a few Grimes Golden as a pollenizer.

**DOUBLE RED BALDWIN.** A new dress for this old reliable variety. Solid deep red color, much earlier than ordinary Baldwin. The color makes it sell better. This new strain will bring new profits to the grower of Baldwins. Late fall.

**CORTLAND.** A new variety resulting from cross pollenization of McIntosh Red and Ben Davis, and inheriting the good qualities of each parent. Beautiful red Apple, approximately the same size and fine flavor of the McIntosh, but ripens 3 weeks or a month later. Good keeper.

**GALLIA BEAUTY.** A Rome Beauty type of Apple identical in every respect, except its earlier coloring qualities; recommended for commercial planting. Harrisons' have the genuine original strain of Gallia Beauty.

**JONATHAN.** Medium to large, red, juicy. Good keeper and an excellent shipper.

**KENDALL**—A most attractive McIntosh strain—new variety. Try a few trees.

**SPARTAN**—A cross between McIntosh and Yellow Newtown, very worthy of a trial planting.

## CRAB APPLES

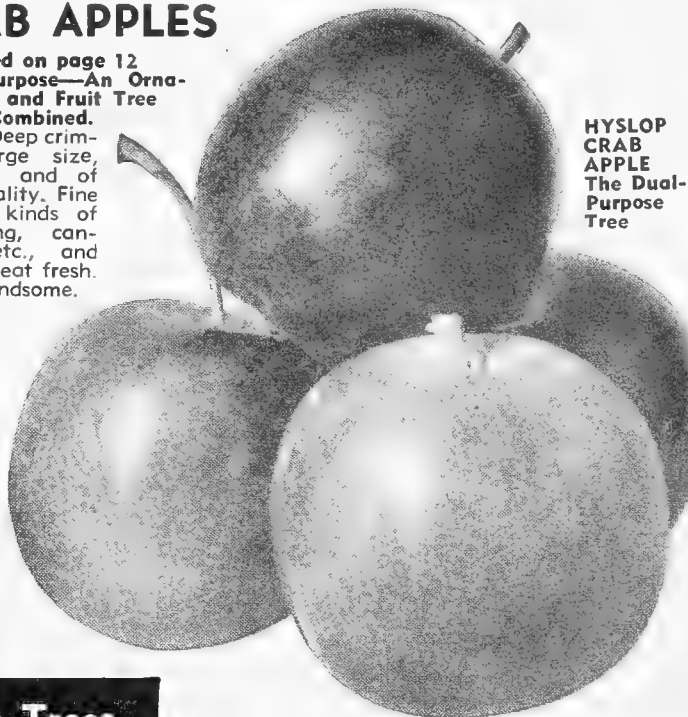
Priced on page 12  
Double Purpose—An Ornamental and Fruit Tree Combined.

**HYSLOP.** Deep crimson, large size, sub-acid and of good quality. Fine for all kinds of preserving, canning, etc., and good to eat fresh. Tree handsome.

**HYSLOP CRAB APPLE**  
The Dual Purpose Tree

**NEW LOWER APPLE TREE PRICES SEE PAGE 12**

**JUMBO SIZE PAGE 17**



**For Real Profit Plant Harrisons' Selected Strain Trees Scientifically Propagated by America's Best Fruit Tree Growers**

**DOLCO**—An abundance of beautiful little, bright-red-all-over apples in the fall. Glistening white blooms in the spring. Best apple for jelly as it rates highest in pectin. Delicious to can whole in spices. Needs very little sugar. Extremely hardy everywhere.



TRIPLE RED DELICIOUS—Finest Flavored, Best of All



SOLID RED WINESAP—Fine flavored, Long Keeper



SCARLET RED STAYMAN—Tops with Many Growers

# NEW BRIGHTER

*Bear Giant Size, Rich Colored, Fine*

A HORTICULTURAL TRIUMPH—UNEXCELLED FOR

## TRIPLE RED DELICIOUS—THE BEST

### King of All Red Apples

Solid bright red color months earlier than the original Red Delicious. Has all the fine qualities of famous parent strain. Plant Harrisons' Triple Red Delicious to insure your future financial income

AMERICA'S HIGHEST  
PRICE APPLE  
EXCELLENT FLAVOR

Budded  
Apple  
Trees  
are Far  
Superior  
to  
Grafted  
Apple  
Trees

1. Super Colored Bud Sports from the Standard Varieties.
2. Same as Parent in Flavor, Quality, Productiveness.
3. Color Weeks Earlier.
4. Produce Highest Percentage Fancy Fruit.
5. Tests Show They Come Into Bearing Sooner.
6. Better Shipping and Storage Qualities.
7. Completely Tested.
8. Excelled by No Other Red Bud Sports or Strains.
9. No Increases in Price Over Standard Varieties.
10. Greatest Profits.

### Glorified Red Apple of the World

#### Ideal for Home Orchards

Harrisons' Triple-Red Delicious is not only a commercial Apple, but it is every bit as well adapted to the home grounds. Whether you wish to plant a thousand or if you have room for only one tree, Harrisons' Triple-Red Delicious will give full value. Very similar to Starking Delicious but colors earlier.

## SCARLET RED STAYMAN BRILLIANT COLOR

We offer to the public the greatest strain of Stayman Winesap ever discovered. It is a true bud sport found in a Stayman Winesap orchard. Scarlet Red Stayman takes on bright red color weeks earlier than ordinary Stayman. Its ripening date is the same but can be picked earlier if desired.

#### A Ready Market at Top Prices

Scarlet Red Stayman is the best general purpose Apple for planting in the East. Its solid scarlet-red color and its bright attractive finish causes it to command highest market prices. The fruit is large and it produces bumper crops each year.

FOR JUMBO APPLE TREES  
SEE PAGE 17

*Superior  
to all  
Other  
Tested  
Strains*

PLANT BIG TREES  
for QUICKEST  
and BEST RESULTS

## SOLID RED WINESAP

Old Winesap generally has plenty of color when planted in most sections, but for those growers who want a more solid red-colored Winesap, we recommend our new strain.

## THE APPALACHIAN WINNER RED YORKING

(U. S. Plant Patent No. 125)

The Red Yorking is a "bud sport", being a mutation of the famous York Imperial. This "bud sport" originated on a tree, grown with other York Imperial trees, in Harrisons' Nurseries and later sold to Mr. W. H. Allison, near Shippenburg, Penna., for use in planting a large orchard about 40 years ago.



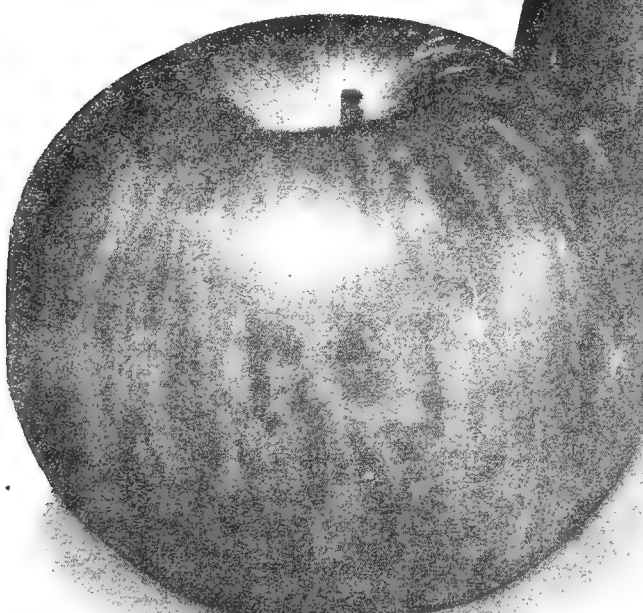
RED YORKING—Big Crops



# RED VARIETIES

## Flavored Apples

HOME OR COMMERCIAL ORCHARDS



**RED ROME BEAUTY**  
Quality and Appearance



**SUPER RED McINTOSH**  
Superb Flavor



**RED SPY**—Bears Crisp, Juicy Apples

### RED ROME BEAUTY

An improved Rome Beauty, identical in vigor and production. Color of fruit much brighter and solid red. Produces much higher percentage of fancy Apples and also superior in quality to the ordinary strain of Rome Beauty. Red Rome Beauty is renowned for bearing at a very early age, producing bumper crops of large size Apples. The tree is a vigorous, strong grower, exceedingly hardy. Pacific Coast strain. Has always been very popular.

### NEW STRAINS OF RED ROME

Can supply two new additional red budspout strains known as C. and O. Red Rome also C. and O. Red Rome number 262.

### SUPER RED McINTOSH

A new strain of McIntosh Red that starts coloring earlier and produces a larger percentage of extra fancy fruits. Super-Red McIntosh, when allowed to mature on the trees, is slightly darker in color than our regular improved McIntosh Red. Has all the best qualities of ordinary McIntosh and will mean larger profits for growers who have been unable to get sufficient color. McIntosh has been the favorite in the North; this new strain extends the planting area farther South. The most highly colored solid red strain available, regardless of price. We have some exceptionally good one-year trees and fine two-year trees to offer this season. Plant McIntosh strain of Apples for big profits, equally as good in home orchards as it is commercially.

### RED SPY

A new "bud sport" from New England. Identical with the ordinary Northern Spy in fruiting habit. Extra large size fruit, strong, vigorous, hardy trees. Comes into bearing earlier than the ordinary strain. Colors early, nearly every Apple being solid red in color. We recommend it for commercial and home plantings in northern states.

### BRIGHT RED JONATHAN

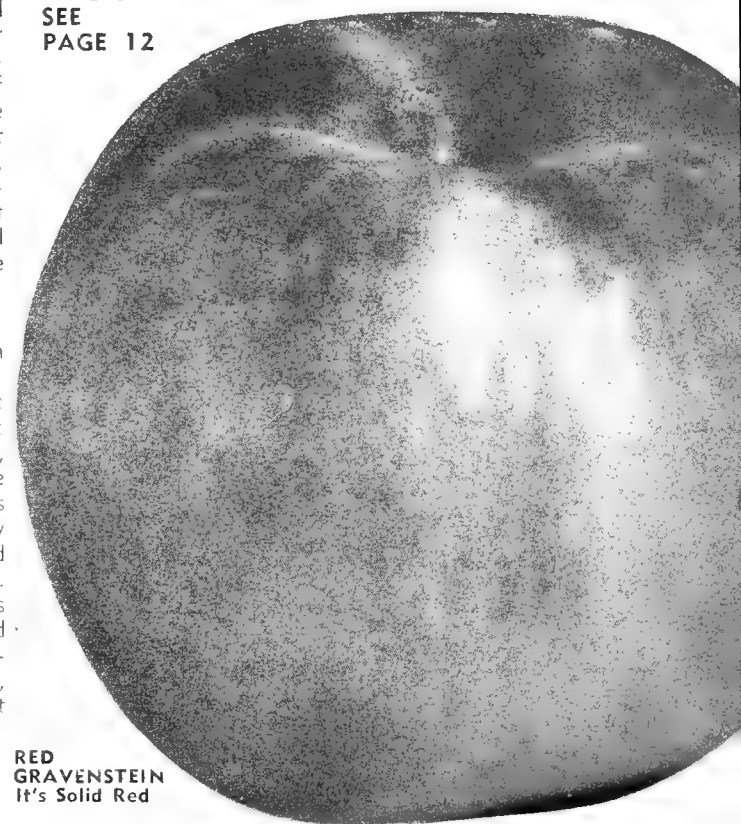
We searched the country over to find a strain of Jonathan that had more color than our selected Big Yield Strain of Jonathan. After thousands of miles of travel inspecting all of the new strains of this famous variety we found the one we had been looking for. It colors solid red several days earlier, otherwise it is identical with ordinary Jonathan. Growers who want more, deeper colored apples will find our Bright Red Jonathan the best colored strain obtainable.

### RED GRAVENSTEIN

Here is the Apple that has been overlooked by eastern growers. Old-fashioned Gravensteins have been grown in tremendous volume during the past twenty-five years, mostly in California, a few in the Eastern States. The old strain lacks the color to make it sell. Our new Red Gravenstein colors a solid bright red long before it is ripe. The quality of Red Gravenstein is extra good for an early Apple and its ability to carry to distant markets, even after it gets solid red, makes it command the highest prices.

NEW  
LOWER  
APPLE  
TREE  
PRICES  
SEE  
PAGE 12

**BRIGHT RED JONATHAN**—A Treat to Eat



**RED GRAVENSTEIN**  
It's Solid Red

# Fancy BARTLETT PEARS

**ALWAYS TOP**

- 1—Superb Quality
- 2—Heavy Cropper
- 3—For Home or Commercial Grower
- 4—For Eating and Canning
- 5—Bear Early
- 6—A Harrison Brothers Specialty

**BARTLETT PEAR**  
So Full of Juice  
You Can Eat  
Them With  
a Spoon

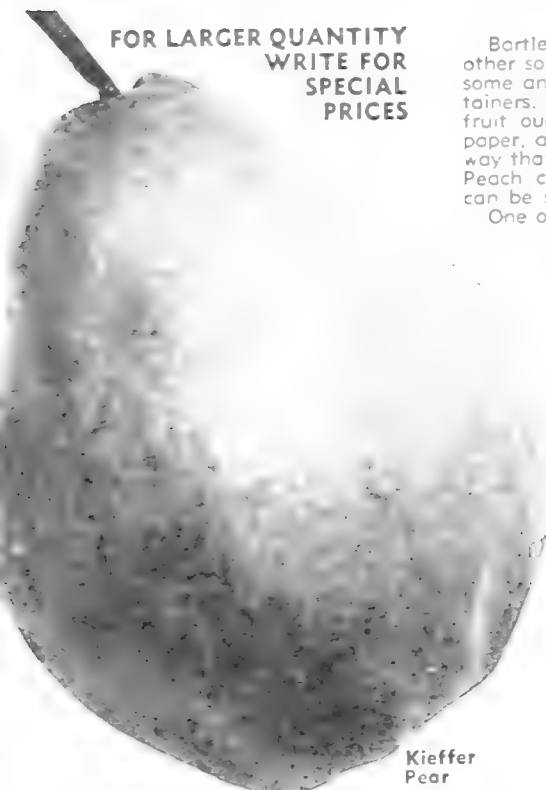


For many years known for market the best Pears  
The Bartlett Pear with a red cheek on many trees  
Bartlett pears and excellent for eating very  
kind in the fall when picked a week before  
and properly stored will keep to late. Flavor is about  
as much as flesh buttery rich and juicy. One of the best  
for eating grows to eat now. A fine quality of the Bartlett  
Pear and Quince gives about the finest taste  
of any fruit this world's fruits have. Bartlett trees bear  
early produce enormous crops and are very hardy. Pears  
will be damaged by insects and disease as some other sorts.  
The trees do especially well with high culture.

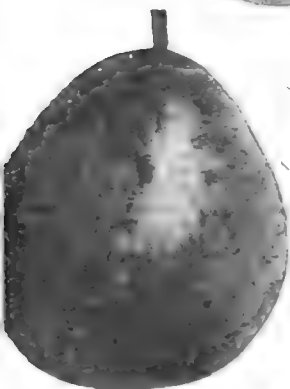
## Fancy Bartletts Bring Highest Prices

Bartlett Pears always sell on the markets even when  
other sorts are not in great demand. The fruit is so hardy,  
some and appealing that it pays to pack in fancy con-  
tainers. Bushels or bushel boxes are best packed. The  
fruit ought to be sorted and graded, wrapped in tissue  
paper, and cranged in the container practically the same  
way that you pack Apples. Pears are sometimes packed in  
Peach carriers, and sell to good advantage. Plain fruit  
can be sold without wrapping, in small baskets or boxes.  
One or two Bartlett Pear trees in the city yard will fur-  
nish a considerable amount of fruit a half  
dozen will supply the family with fresh fruit  
and a surplus for preserving.

**FOR LARGER QUANTITY  
WRITE FOR  
SPECIAL  
PRICES**



Kieffer  
Pear



Seckel Pear

- GORHAM.** Flavor is sweet and vinous with a very marked and pleasing  
aroma. Flesh is white, tender, buttery and juicy. Valuable for dessert  
and canning. New.
- KOONCE.** One of the earliest Pears, free from blight, does not rot at the  
core like many early Pears. Fruit is yellow, medium to large, delightful  
flavor. Very productive. Extra good for southern states
- SECKEL.** A beautiful and delicious little Pear. One of the richest and high-  
est flavored Pears grown. Tree dwarf, bears prolific crops. Late
- WORDEN SECKEL.** A seedling of Seckel. Superior in size and color. Mid-  
season.

## Budded Pear Trees are Far Superior to Grafted Pear Trees

### NEW LOWER PRICES ON HARRISON-GROWN PEAR TREES

Budded on Blight-Resistant Roots—True-to-Name

Bud Selected—Big Yield	1 to 9	10 to 49	50 to 99	100 or more Trees
Two-Year Budded, Hi-Quality Strains:	Trees	Trees	Trees	
5 to 6 feet	\$1.95	\$1.60	\$1.10	\$1.00
4 to 5 feet	1.70	1.40	.90	.80
3 to 4 feet	1.50	1.20	.75	.65
2 to 3 feet	1.25	1.00	.65	.55
1 to 2 feet	.95	.75	.55	.45

May be Assorted Varieties of Pear Trees. For Jumbo Size Pear Trees, See Page 17.  
Write Us About Your Planting Requirements.

## KIEFFER

**SURE CROPPER—EASY TO GROW**

Of all the Pears, Kieffer is the most easily grown. Trees are vigorous, exceptionally hardy and  
thrive on varied soils in any climate. Kieffer and Koonce are the only Pears that can be success-  
fully grown in such southern states as Alabama, Mississippi, Louisiana, etc., and yet it is the  
leading commercial Pear in Canada. Kieffer is blight-resistant, and can be successfully planted  
in large orchards.

This fruit is large to very large size; skin yellow, with light vermillion cheek; flesh yellowish  
white, very juicy. Noted for being a long time keeper. Most popular canning Pear.

- BEURRE BOSCH.** Large size, fine quality, brings highest market price. Late
- BEURRE D' ANJOU.** Large, green in color, somewhat yellow when ripe, buttery, melting, rich,  
vinous, good flavor. Tree vigorous, hardy, prolific bearer. Very late.
- CLAPP'S FAVORITE.** Large size, hardy and very productive. Thrives where other varieties fail.  
Very early.
- DOUGLAS.** Very resistant to blight. A winter  
Pear of wonderful quality, golden yellow with  
a faint blush on the cheek. Bears early.
- DUCHESS.** Very large, dull greenish yellow.  
Tree somewhat dwarf but a dependable  
bearer. Late.

**FOR JUMBO PEAR TREES  
SEE PAGE 17**

## QUINCE

**ORANGE.** Late, large, bright yellow, excellent flavor, productive  
and rarely fails to produce a crop.  
Best canning variety. We  
offer the Wayne County  
(New York) strain.

**Quince Tree Prices:**

Each  
4 to 5 ft. \$1.90



*Harrisons' Berlin, Maryland Grown Fruit Trees*

**ARE HARDY IN  
ANY CLIMATE**



# Harrisons' Jumbo Size Fruit Trees are Definitely Superior

SAVE TWO TO  
THREE YEARS BY  
PLANTING SUPER-  
SIZE FRUIT TREES  
HAVING JUMBO  
GROWTH

## GUARANTEE ON JUMBO TREES

You take no chances when you buy Jumbo trees from Harrisons'.

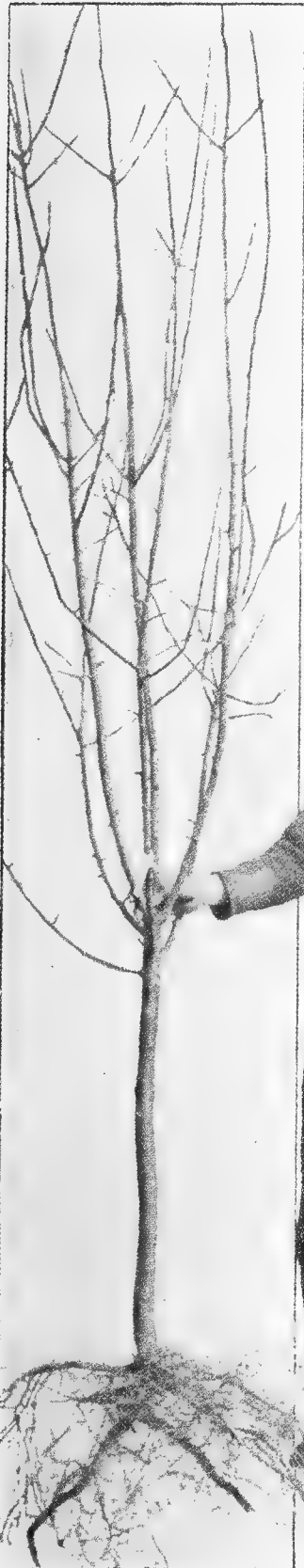
If they are not satisfactory your money will be cheerfully refunded in full, providing they are properly packed and returned within 24 hours after receipt.

GUARANTEED TO LIVE AND GROW SATISFACTORILY

**Best Trees OBTAINABLE—  
Carefully Selected Specimen Trees**

**NOW Everyone Can Grow  
Extra Large Rich-Colored,  
Extra Rich-Flavored, Healthful,  
VITAMIN-PACKED FRUIT  
In His Own Back Yard**

Time is money, therefore, for the additional expense of a few cents per tree you can plant Jumbo size fruit trees and eat the fruit from them surprisingly soon after planting. The Super-Size fruit trees, being especially grown as Jumbo trees, are the strongest growers. They are exceedingly vigorous, very hardy, and produce tremendous crops of fruit. These are ideal for the home garden.



A Jumbo Size Apple Tree Will Furnish You Fruit and Shade, Too

## ALL VARIETIES LISTED IN ORDER OF RIPENING

**APPLES.** Large Transparent (Lodi), Williams Early Red, Summer Rambo, Super Red McIntosh, Triple Red Delicious, McIntosh Red, Bright Red Jonathan, Stark Delicious, Grimes Golden, Hyslop Crab, Yellow Delicious, Scarlet Red Stayman, Red Yorking, Red Spy, Solid Red Winesap, Double Red Baldwin, Red Rome Beauty, Stayman Winesap, Rhode Island Greening, Mammoth Black Twig. **Price: Jumbo Size, 6 to 7 ft., heavily branched Apple trees, \$3.00 each; 3 for \$8.70; 6 for \$16.50; 10 for \$25.00; 25 for \$58.75; 50 for \$100.00; 100 for \$175.00.**

**PEACHES.** Red Bird, Shinn's Delicious, Dixired, June Elberta, Dixigem, Redhaven, Golden Jubilee, Triogen, Southland, July Elberta, Hale-Haven, Golden East, Sullivan Elberta, Summercrest, Belle of Georgia, J. H. Hale, ELBERTA, Hale Harrison Brilliant, Brackett, Rio-Oso-Gem, Salberta, Lizzie, Krummels. **Prices: Jumbo Sizes 6 to 7 ft., heavily branched Peach trees, \$3.00 each; 3 for \$8.70; 6 for \$16.50; 10 for \$25.00; 25 for \$58.75; 50 for \$100.00; 100 for \$175.00.**

**PEARS.** Koonce, Clapp's Favorite, Douglas, Bartlett, Kieffer, Buerre d' Anjou. **Prices: Jumbo Size, 6 to 7 ft., heavily branched Pear trees, \$3.75 each; 3 for \$10.95; 6 for \$21.00; 10 for \$32.50.**

**PLUMS.** Red June, Abundance, Burbank, Santa Rosa, Methley, Satsuma, Wickson, Stanley Prune, Big Mackey Damson, Grand Duke Prune, Shropshire Damson, Italian Prune (Fellenberg). **Prices: Jumbo Size, 6 to 7 ft., heavily branched Plum trees \$3.75 each; 3 for \$10.95; 6 for \$21.00; 10 for \$32.50.**

**CHERRIES.** Black Tartarian, Napoleon, Montmorency (Sour), Schmidt, Windsor. **Prices: Jumbo Size, 6 to 7 ft., branched Cherry trees, \$3.75 each; 3 for \$10.95; 6 for \$21.00; 10 for \$32.50.**

**APRICOTS.** Alexander, Early Golden, Superb. **Prices: Jumbo Size, 6 to 7 ft., heavily branched Apricot trees, \$3.75 each; 3 for \$10.95; 6 for \$21.00; 10 for \$32.50.**

**NECTARINES.** Hunter, Sure Crop. **Prices: Jumbo Size, 6 to 7 ft., heavily branched Nectarine trees, \$3.75 each; 3 for \$10.95; 6 for \$21.00; 10 for \$32.50.**

### NOW IT IS EASY TO GROW FRUIT WITH NEW, ALL-PURPOSE SPRAY

Spray your peach, apple, pear, plum cherry, apricot and nectarine fruit trees with one pound of PARATHION (15% strength) powder, a sensational new insecticide, best for general use ever discovered, which will kill all insects, along with three pounds of WETTABLE SULPHUR, paste type preferred, for the control of Rot and other fungus diseases to fifty gallons of water.

Parathion makes it easy to grow high quality fruits in your garden and home orchard.

**Harrison Brothers Nurseries  
BERLIN, MARYLAND**

**Harrisons' Maryland Grown  
Jumbo Fruit Trees are the  
Finest Quality in the World**

For a New  
Orchard or for  
Replanting  
Bearing  
Orchards Use  
Jumbo Bearing  
Size Fruit Trees  
for the Quickest  
and Best  
Fruiting Results  
Why Waste  
Space with  
Missing Trees?  
Superior Strains  
Earliest to Bear  
True to Name



**GUARANTEED TO LIVE AND GROW SATISFACTORILY**

*Harrisons' ~ The Nation's Fruit Tree Nurseries*

# Sour **HARRISON'S' Profitable** EASY TO GROW Cherries

## Montmorency



MONTMORENCY—The Best Sour Cherry, Easy to Grow

- EARLY RICHMOND.** Exceedingly hardy and productive.
- ENGLISH MORELLO.** Large, blackish red Cherry. Hardy, or 1/2 productive. Very late.

### PRICES ON SOUR CHERRY TREES

True To Name Certified 100% Healthy Two-year Budded Trees	1 to 4 trees	10 to 49 trees	50 to 99 trees
5 to 6 ft., 11-16-7, 9 in. cal.	\$2.25	\$1.70	\$1.20
4 to 5 ft., 9-16-11, 16 in. cal.	1.85	1.60	1.00
3 to 4 ft., 7-16-9, 16 in. cal.	1.65	1.40	.90
2 to 3 ft., 5-16-7, 16 in. cal.	1.40	1.20	.80
1 to 2 ft., 1, 4 - 5, 16 in. cal.	1.00	.80	.60

May be Assorted Varieties of Sour Cherry Trees.  
For Jumbo Cherry Trees, see page 17.

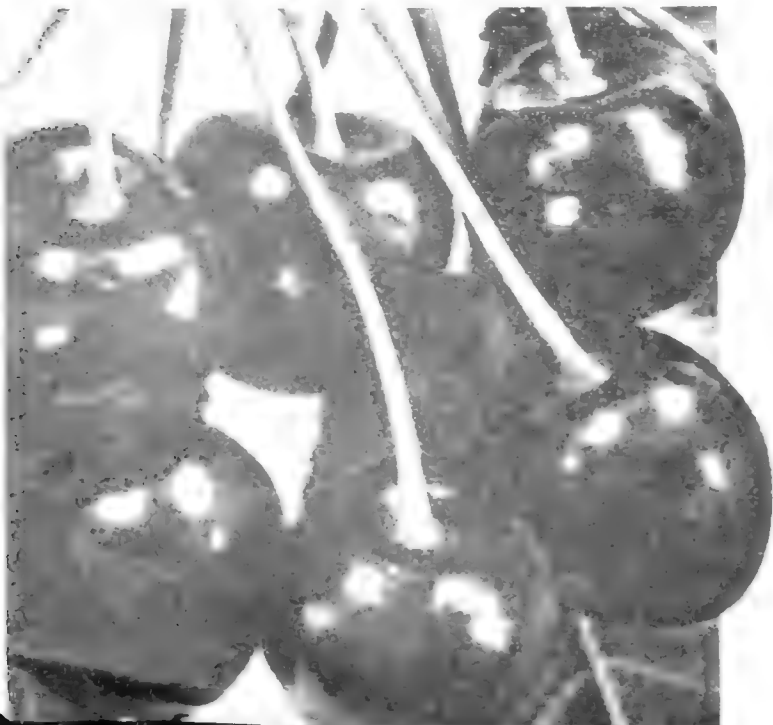
Write Us About Your Planting Requirements.



NAPOLEON (Royal Ann) Sweet Cherry

FOR JUMBO CHERRY TREES, SEE PAGE 17

BLACK TARTARIAN SWEET CHERRIES—Juicy, Rich Flavor



## SWEET CHERRIES

What fruit is more pleasing than the Sweet Cherry? The ideal fruit to plant in the back yard. We have a good supply of first-class trees in the following varieties.

- BING.** Very large, dark brown, flesh firm, sweet. Midseason.
- BLACK TARTARIAN.** Very large, sweet, purplish black color, juicy, rich flavor, heavy bearer and most profitable sweet variety grown. Early.
- GOLDEN WAX.** Large, yellow, fine flavor. Bears bumper crops. Easily grown. Midseason.
- GOVERNOR WOOD.** Large, light yellow, marked with red, sweet flavor.
- LAMBERT.** Extra large, sweet, jet black, very popular. Midseason.
- NAPOLEON.** (Royal Ann.) Large pale yellow, bright red cheek, sweet, excellent flavor, prolific bearer. Midseason.
- SENECA.** Resembles Black Tartarian but ripens two weeks earlier, rich sweet flavor.
- SCHMIDT.** (Schmidt's Bigarreau.) Large, sweet, deep black, tender fine flavor. Midseason.
- WINDSOR.** Large, sweet, almost black, fine quality. Valuable late variety.
- YELLOW SPANISH.** Large, sweet, yellow with red tinge. One of the most beautiful and popular of the light-colored Cherries. Heavy bearer. Midseason.

### PRICES ON SWEET CHERRY TREES

True to Name, Certified 100% Healthy One and Two year Budded Trees:	1 to 9 trees	10 to 49 trees	50 or more trees
5 to 6 feet	\$2.35	\$1.85	\$1.50
4 to 5 feet	2.00	1.70	1.30
3 to 4 feet	1.65	1.40	1.00
2 to 3 feet	1.30	1.00	.75
1 to 2 feet	1.00	.80	.60

May be Assorted Varieties of Sweet Cherry Trees.  
For Jumbo Sweet Cherry Trees, See Page 17.

## HANSEN'S IMPROVED Bush Cherry

An ornamental shrub producing delicious fruit. Very easy to grow, highly productive and hardy. The fruit is large, black and sweet, wonderful to eat right from the bush. Introduced by Dr. Hansen of the South Dakota Experimental Station. Leaves are silvery green, turning to red in autumn. Attractive white blossoms add to landscape effect.

3-Year Bushes, Bearing Size, \$1.00 each; 10 for \$9.00.

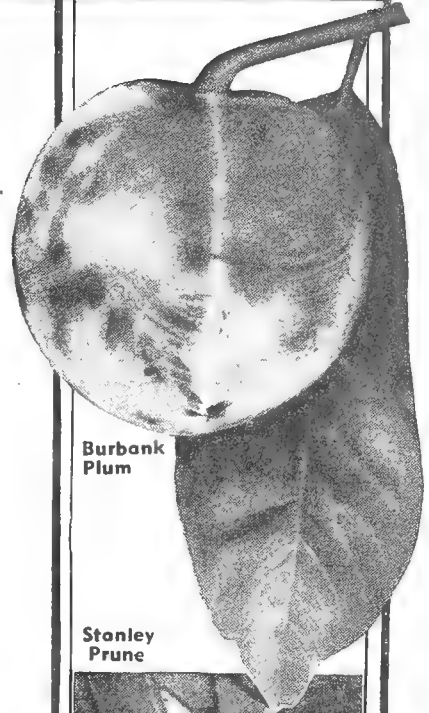




# HARRISON'S AMERICA'S BEST VARIETIES famous PLUMS

- ABUNDANCE.** Early, large, color pinkish red changing to darker red, with thin bloom. Yellow flesh. Very juicy, sweet and tender, pleasantly aromatic. Hardy, very productive. Adaptable to a wide diversity of soils and climates.
- BIG MACKEY.** Late. Largest and best Damson, being an improved strain of Shropshire Damson. Freestone. Deep purple, juicy, rich flavor; small stone. Fine for preserving. Easy to grow, produces immense crops. Should be planted in every orchard. Large size fruit makes ideal jams, preserves and jellies. An excellent variety for fresh fruit shipments to city markets, always demanding high prices.
- BURBANK.** Early, about one week after Abundance. Large, cherry-red with thin lilac bloom. Flesh amber-yellow with rich, sugary flavor; high quality and very productive. A product of Burbank, the master plant breeder. Should be in every orchard.
- FORMOSA.** A midseason variety of excellent and prolific bearing qualities. Large greenish yellow, overlaid with red. Alternate bearer. Heavy cropper.
- ITALIAN PRUNE (Fellenberg).** Late, medium size, freestone, dark purple, delicious. Fine for drying.
- GRAND DUKE PRUNE.** Late. Commercial variety. Purplish black, juicy, sweet, excellent for cooking.
- LOMBARD.** Midseason. Medium size, showy purplish red fruit, excellent quality for canning, cooking, preserving or spicing. Prolific cropper.
- MONARCH.** Very large, bluish purple. Juicy, golden green flesh. Bears early and abundantly. Excellent for market.
- BRADSHAW.** Very large, fine early Plum; dark violet-red, juicy and good. Very productive; valuable for market. Quality is excellent, color attractive. Good canner.

- METHLEY** A recent introduction which is rapidly gaining popularity due to its fine quality and handsome appearance. The fruit is medium to large in size, reddish purple in color with red flesh. It is juicy, sweet and of distinctive flavor. The tree is vigorous and upright in growth habit. Does well on most types of soil and is a heavy annual bearer.
- RED JUNE.** Early, medium size, garnet-red color, thin bloom, flesh light yellow, somewhat meaty, sweet, aromatic. Trees are healthy, hardy and productive. An early market Plum.
- SANTA ROSA.** Early. Fruit very large size, round, purplish red, flesh reddish near skin, firm, juicy, and has a pleasant tart flavor of exceptionally high quality.
- SATSUMA.** Midseason. Best flavored semi-freestone, blood-flesh Plum known. Large size. Flesh dark purplish red, juicy, sweet, possessing an alluring aroma. Originated by Luther Burbank.
- SHIRO (Early Gold).** Early. Fruit is very large, golden yellow, semi-transparent, covered with bright scarlet-red blush.
- SHROPSHIRE DAMSON.** Late, medium size, dark purple. Very productive. The best for preserving. The popular old-fashioned Damson variety.
- STANLEY PRUNE.** Midseason. Freestone, large, new Prune variety, outstanding characteristics. Considered best for cooking and fresh fruits.
- WICKSON.** Midseason. Extra large size, color dark red, thin bloom, flesh amber-yellow, firm, sweet.
- YELLOW EGG.** Late. Large, golden yellow. Good for cooking. Largest and handsomest of yellow Plums.



Burbank Plum

Stanley Prune

## HARRISON-GROWN PLUM TREE PRICES

Propagated Direct from "Verified" Varieties of Super-Selected Strains—True-to-Name Certified 100% Healthy

TWO YEAR BUDDED TREES:	1 to 9 Trees	10 to 49 Trees	50 to 99 Trees	100 or More Trees
5 to 6 feet	\$1.95	\$1.60	\$1.10	\$1.00
4 to 5 feet	1.70	1.40	.90	.80
3 to 4 feet	1.50	1.20	.75	.65
2 to 3 feet	1.25	1.00	.65	.55
1 to 2 feet	.95	.75	.55	.45

May be Assorted Varieties of Plum Trees. For Jumbo Size Plum Trees, See Page 17. Write Us About Your Planting Requirements.

FOR LARGER QUANTITY WRITE FOR SPECIAL PRICES

*Extra Good Fruits for The Home Garden*

## APRICOTS

The Apricot is one of the most delightful luscious fruits grown, when eaten fully ripe and fresh from the tree. It is remarkable that such a rich and beautiful, golden, sweet fruit is not planted more, especially since it ripens just after the early Cherries and before the best early Peaches.

- ALEXANDER.** Early, prolific, freestone, orange, with red blush; very juicy and sweet flavor. A large, prolific sort that will withstand adverse weather conditions. This variety deserves greater popularity. The best.
- EARLY GOLDEN.** Pale orange, juicy and sweet. Is a hardy prolific bearer; ripens first of July.
- SUPERB.** Very good quality. Fruit is beautiful, light salmon colored, best of the older varieties. Tree is large, very thrifty, hardy and is extremely productive in fruit.
- MOORPARK.** Midseason. Large, freestone; flesh yellow, sweet, juicy. Good for canning or drying. Dwarf type, medium size tree.

APRICOTS CAN BE GROWN ANYWHERE PEACHES SUCCEED

## NECTARINES

Delicious for Eating

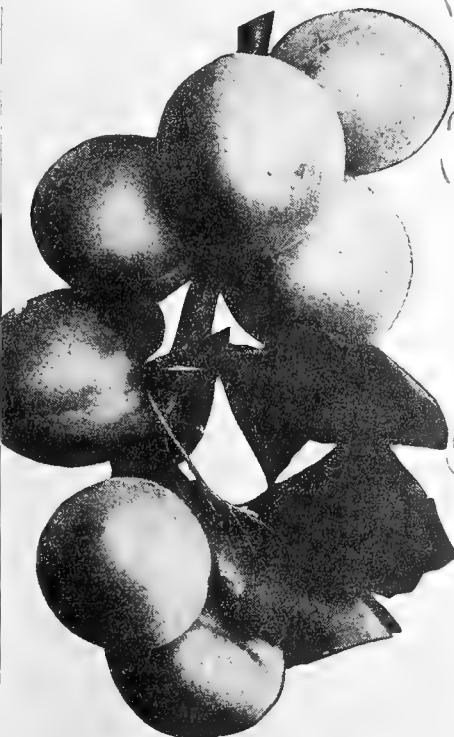
There is a mistaken idea that the Nectarine is a cross between the Peach and something else, while it is really nothing more or less than a smooth-skinned Peach. The melting, juicy texture of the Nectarine and its delicious flavor furnishes one of the most delightful fruits for eating during the summer. Plant a few trees in your home orchard this year.

- HUNTER.** Large, round, yellow, freestone.
- SURE CROP.** Very vigorous and productive. The fruits are large, roundish, white and overlaid with very attractive red. Very pleasing flavor.

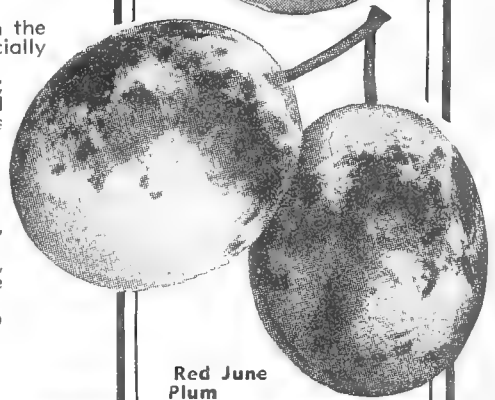
## PRICES ON APRICOT AND NECTARINE TREES

Budded, True-to-Name, Certified 100% Healthy Trees:	1 to 9 Trees	10 to 49 Trees	50 or More Trees
5 to 6 feet	\$2.20	\$1.80	\$1.30
4 to 5 feet	1.90	1.60	1.10
3 to 4 feet	1.70	1.40	.95
2 to 3 feet	1.45	1.20	.85

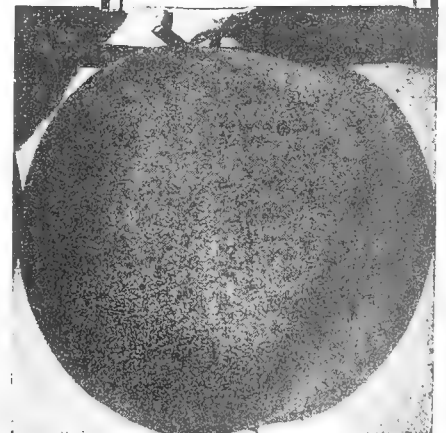
May be Assorted Varieties. For Jumbo Size Apricot and Nectarine Trees, See Page 17.



APRICOTS—A Real Treat



Red June Plum



NECTARINES ARE DELICIOUS

# Grow Finer Flavored Berries

With **Harrisons'** Select Certified **Raspberry Plants**

## LATHAM

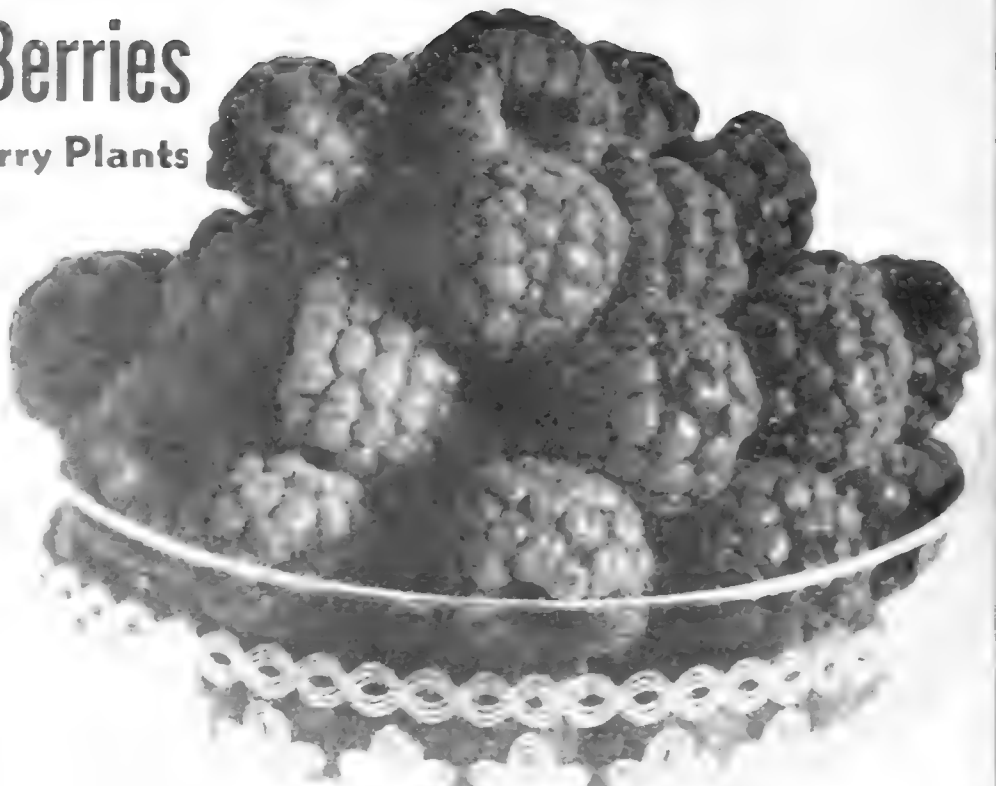
**WORLD'S LEADING RASPBERRY**

The sensational yields of this variety have attracted the attention of growers everywhere, and the many unusual features they have found in Latham. After thoroughly testing Latham we find it a remarkable variety in every respect you will be both delighted and surprised after giving it a trial.

**Large Berries—  
Tremendously Productive**

Latham is a tall, vigorous grower, the canes are extra heavy, well able to support the load of fruit. The foliage is healthy, dark green, tough and leathery, highly resistant to insects. Latham ripens with Cuthbert, covers a longer fruiting season. The berries are beauties and will cause a sensation wherever they are shown. Many are over an inch in diameter and they hold this size to the end of the season. Color dark, rich red.

**A Blue Ribbon  
Winner for the  
Home and  
Commercial  
Grower. It simply  
cannot be  
equalled.**



LATHAM—The Big Red Raspberry

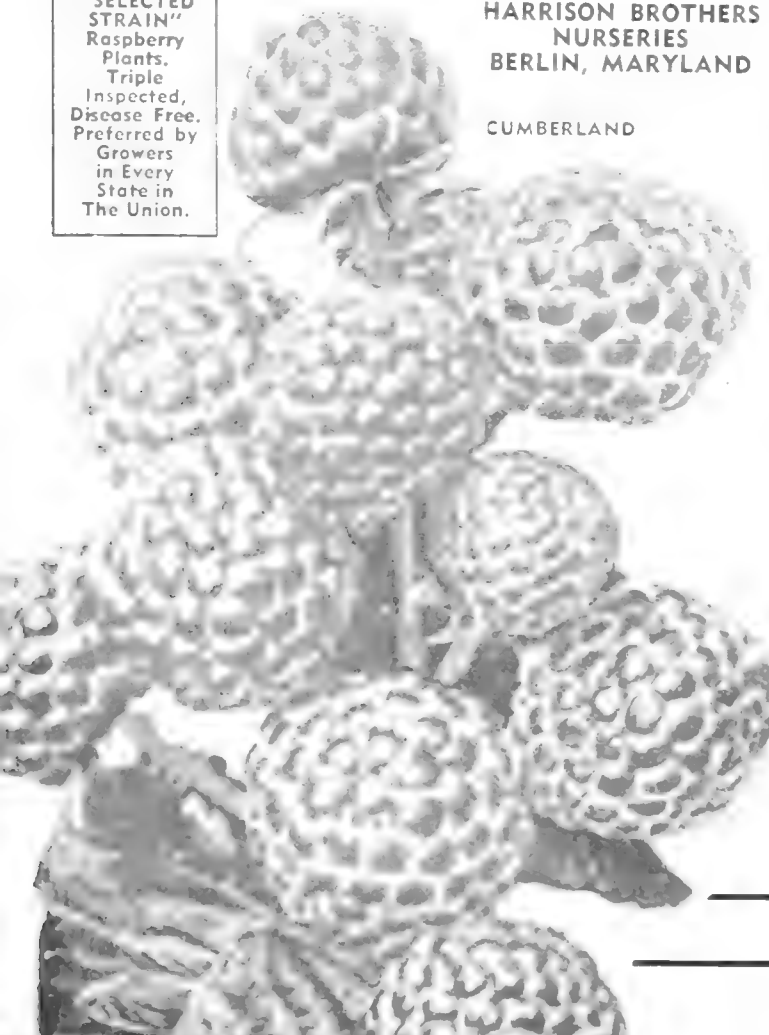
### NEW LOWER PRICES OF RED RASPBERRIES—ALL VARIETIES

Selected Plants, 1-Year, No. 1 Grade							
6	12	25	50	100	250	500	1000
Plants	Plants	Plants	Plants	Plants	Plants	Plants	Plants
\$1.80	\$2.60	\$4.10	\$7.10	\$12.35	\$26.80	\$43.10	\$75.00

**Harrisons'  
"SELECTED  
STRAIN"  
Raspberry  
Plants.  
Triple  
Inspected,  
Disease Free.  
Preferred by  
Growers  
in Every  
State in  
The Union.**

**HARRISON BROTHERS  
NURSERIES  
BERLIN, MARYLAND**

CUMBERLAND



**Every Garden Should Have**

### INDIAN SUMMER Sensational New Everbearing Raspberry

A dish of big red juicy Raspberries sprinkled with sugar and swimming in pure cream, it can be yours for every meal from June into July, and again from mid-September until frost, if you will plant Indian Summer. Makes tasty, scarlet-red sauce or pie and the finest jams and preserves you ever tasted. Frozen Indian Summer Raspberries is like having them fresh from your garden the year 'round.

Indian Summer Raspberries are no experiment; they have fruited successfully for thousands of gardeners in nearly every section of the country. This is truly a champion for your garden. Order early.

*The Most  
Popular  
Black  
Raspberry*

## CUMBERLAND

Midseason to late. This is the most popular Blackcap of the present time, because of its great size, firmness, and productiveness. The fruit is the largest of the Raspberry family, and is of such handsome appearance that it is sure to bring the top prices on the market.

### A BIG CROP EVERY YEAR

Cumberland has never been known to fail to produce a big crop every year. This variety is perfectly hardy and tremendously productive, the berries are vigorous, upright and healthy. Berries are glossy black in color, not equalled by any other variety in quality, flavor and appearance. It's good to eat and good to sell.

### Here's Another Extra Good Blackcap The Mammoth New MORRISON

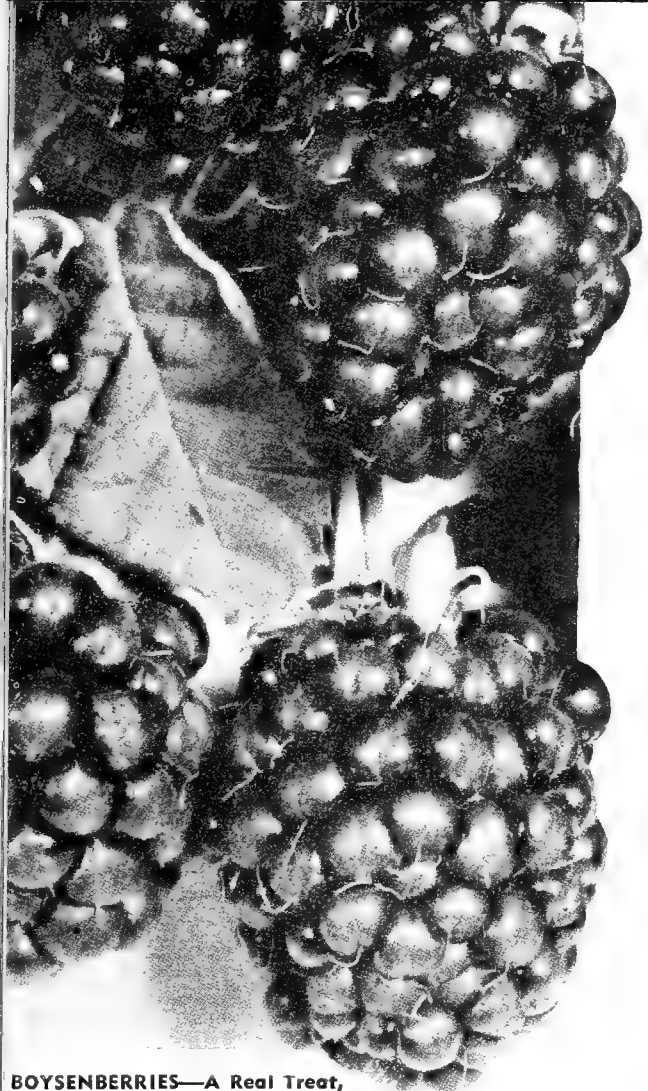
This brand new variety has been a sensation wherever planted. Mammoth sized berries, glistening jet-black color, rich flavor, fewer seeds, heavy producer. The thrifty, strong, hardy plants are heavily rooted and disease resistant. Easy to grow, excellent for canning, eating fresh, freezing. Ripens slightly later than Cumberland.

### NEW LOWER PRICES OF BLACK RASPBERRIES—SELECTED PLANTS All Varieties, 1-Year, No. 1 Tips

6	12	25	50	100	250	500	1000
Plants	Plants	Plants	Plants	Plants	Plants	Plants	Plants
\$1.45	\$2.10	\$3.30	\$5.70	\$9.90	\$21.40	\$34.50	\$60.00

**INCREASE YOUR PROFITS WITH**





# New the Sensational Boysenberry

**HARRISON BROTHERS**  
BERLIN, MARYLAND

## The New Mammoth Berry That Will Revolutionize the Berry-Growing Industry

Two Inches in Length  
**NEW LOWER PRICES**

The new Boysenberry is truly a glorified Youngberry. We offer it again this year because of the tremendous large size of the berries; because of its very prolific fruiting; and lastly, because we think that it has the highest qualities of all bramble fruits.

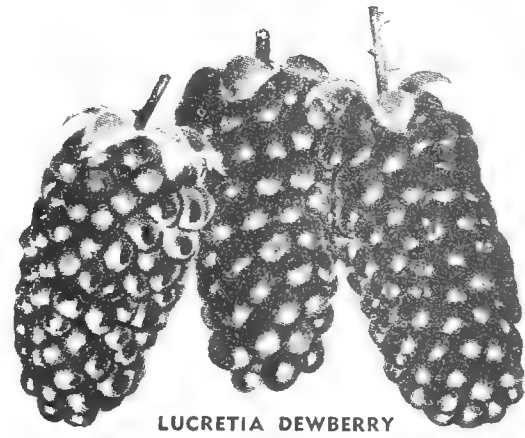
They are just as easy to grow as Blackberries. They produce a larger crop, not because there are more berries, but because each berry is so much larger. Has a rich, tangy flavor all its own.

**No. 1 plants: 3 for \$1.15; 6 for \$2.05; 12 for \$2.95; 25 for \$4.65; 50 for \$8.10; 100 for \$14.05; 250 for \$30.40; 500 for \$48.85; 750 for \$66.95; 1000 for \$85.00.**

### Lucretia Dewberry

Long, mammoth black berries, recognized as the leading variety. Incomparably better in every way than any Blackberry you have ever seen or tasted. Lucretia is a very early bearer, ripening from a week to ten days before even the earliest Blackberries. Big, uniform size makes them topnotchers in price on any market. For real profits and for home and commercial growing, Lucretia is the only variety of importance.

**No. 1 Plants: 6 for \$1.20; 12 for \$1.75; 25 for \$2.75; 50 for \$4.75; 100 for \$8.25; 250 for \$17.80.**



LUCRETIA DEWBERRY

## ELDORADO BLACKBERRY

*A Heavy Yielding Blackberry that Spells Success Everywhere*

sized in Eldorado. Berries of enormous size, shiny jet-black, sweet

**For Home or Commercial Planting.** It is valuable for all purposes, both home and commercial, being so firm that it will remain in good condition for three and four days, and can be sent to distant markets where it always commands the highest price. This variety is making big money for other growers and it will do the same for you.

**NEW LOWER PRICES OF BLACKBERRIES:** Selected plants, 1-yr., No. 1 grade, 6 for \$1.45; 12 for \$2.10; 25 for \$3.30; 50 for \$5.70; 100 for \$9.90; 250 for \$21.40.

**The Heavy Yielding Variety.** The heavy producing quality of Eldorado has placed it first among Blackberries. Every good quality possessed by other Blackberries is emphasized in Eldorado.

## CURRANTS

**NEW RED LAKE.** Biggest, sweetest, finest improved Red Currant on the market. Large bunches, produced in profusion. Extra hardy.

**WILDER.** One of the strongest growers and most productive. Bunch and berry large, bright, attractive red color.

**Large, 1-yr. bunches, \$1.00 each; 3 for \$2.85; 6 for \$5.40; 10 for \$8.00.**

ELDORADO BLACKBERRY

## GOOSEBERRIES

**RED JACKET.** Big, roundish oblong berries, with a mild sweet flavor. Delicious for fancy desserts, salads, preserves, pies, etc. Bushes lovely as shrubs. Small, yellow bloom.

**DOWNING (Green).** Large greenish yellow variety favored for shipping and canning. Highly flavored.

**Large, 1-yr. bushes, \$1.00 each; 3 for \$2.85; 6 for \$5.40; 10 for \$8.00.**

DOWNING GOOSEBERRY



NEW RED LAKE CURRANT



**HARRISON BROTHERS NURSERIES**  
BERLIN, MARYLAND

BOYSENBERRIES—A Real Treat, Easy to Grow



# NEW GIANT Cultivated Blueberries

- Profitable to Grow
- Delicious Berries
- Very Ornamental

## Once Planted Lasts a Lifetime

Blueberries are not only the largest money makers of all time commercially, but are also one of the easiest fruits to grow. The berries bring up to 75c per quart—\$400.00 per acre the third year. They are exquisitely mild, sweet and delicious, and bring highest prices on the market. The demand for Blueberries is practically unlimited. A planting lasts a lifetime with proper care and the plants will pay for themselves their first crop. A few bushes planted in the shrub border and in the garden will be sufficient to supply you with berries for years.

## Blueberries—Easy to Grow

Set the bushes 5 by 7 feet apart in moist, acid soil. If your soil is sweet, it may be made acid by mixing with it a little quantity of acid peat, rotted leaves and pine needles, or similar material. Fruit ripens over a period of several weeks. Plant two or more varieties so as to insure proper pollenization.

## Very Ornamental

As an ornamental shrub the Blueberry cannot be surpassed. Full of lovely pink blooms which open to bell-shaped, white flowers in June. Plants are compact, low growing, having waxy green leaves which turn red during the fall. Twigs are reddish brown and very showy during the winter.



BLUEBERRIES—Ornamental as well as fruitful  
Jumbo Size—Bear First Year Planted

## SPECIAL JUMBO SIZE BLUEBERRY PLANTS

Have already fruited in the nursery. Ready to bear big crops of luscious berries on your own grounds and are as easily grown as a shrub or Rose bush. You can pick delicious berries the first season planted, and each year they will produce a larger crop with very little attention. We only have a few hundred of these Jumbo sized plants to offer. Can supply in the following varieties only: Cabot, Rancocas, Concord, Rubel, and Jersey.

Prices: Jumbo size 4-year-old, 2 to 3 ft., \$2.50 each; 3 for \$6.75; 10 for \$20.00.

## NEW LOWER PRICES OF ALL BLUEBERRIES

		100			
		3 to 9	10 to 29	30 to 99	or More
		plants	plants	plants	plants
		Each	Each	Each	Each
2 yr.,	9 to 12 in.	\$ .90	.80	.70	.50
2 yr.,	12 to 18 in.	1.25	1.00	.90	.70
3 yr.,	18 to 24 in.	1.85	1.60	1.35	1.10

## LEADING BLUEBERRIES

Listed in Order of Ripening

**CABOT.** Bush seldom exceed three feet in height and make a broad, low bush. The young growth in winter is a light red over olive. The large berries have a delicate flavor.

**RANCOCAS.** The bush is of upright habit rarely surpasses five feet in height. The young growth is bright red. The berries are somewhat larger than those of Rubel and begin to ripen several days earlier.

**CONCORD.** The bush is of upright habit and at maturity exceeds six feet in height. The young growth is bright red in winter. The berries are large, tending to be somewhat flattened.

**RUBEL.** The bush is of upright habit and at maturity exceeds six feet in height. The young growth is bright red in winter. The berries are large, tending to be somewhat flattened. Best commercial.

**JERSEY.**

The bush is of upright habit and at maturity exceeds six feet in height. The young growth is light red over golden brown. The berries are the largest of any here listed light blue, and ripen about the same time as Rubel.

Harrison Brothers Nurseries  
BERLIN, MARYLAND

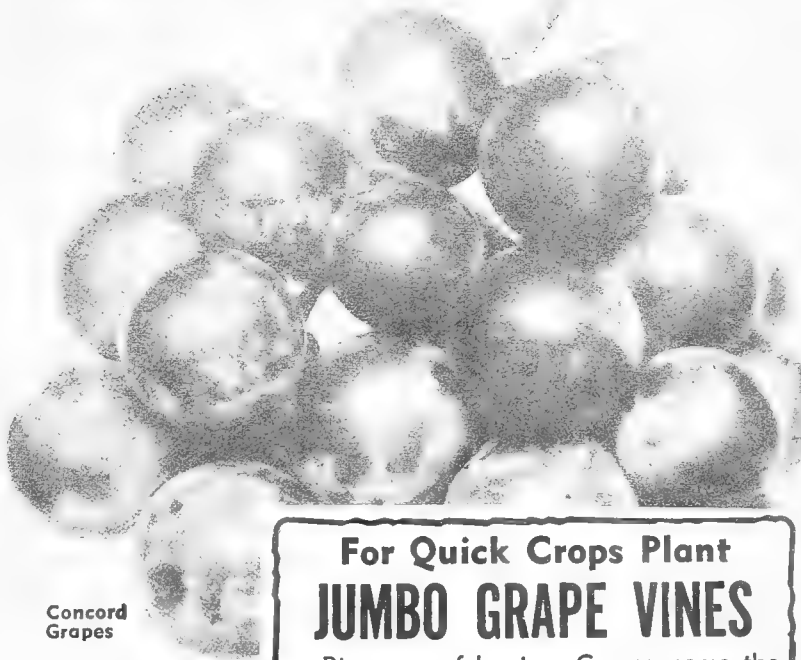


# HARRISONS' BIG YIELD GRAPE VINES

BEAR BETTER CROPS OF BETTER FRUIT.

## Harrison Brothers Selected Varieties Grapes

- ✓ **AGAWAM.** Red. Midseason. Large, thick skin, aromatic flavor. Vines strong, rank grower. Hardy and productive. Ripens with Concord.
- ✓ **CACO.** Red. Midseason. Fruit is very large and handsome. A rich wine-red color. Not a very rank grower and a shy bearer.
- ✓ **CATAWBA.** Red. Very late. Large. Flesh pulpy with rich, vinous flavor. Quality good. A very desirable variety.
- ✓ **DELAWARE.** Red. Early midseason. Bunch and berry good size, compact, flesh juicy, very sweet and refreshing. Vine very hardy and productive. A slow grower. Requires rich soil, good culture, close pruning.
- ✓ **FREDONIA.** Blue. Very early. Originated by New York Experimental Station. The bunch and berry are large, with excellent, juicy, delicious flavor. Vigorous and productive. Ripens fully ten days before Moore's Early.
- ✓ **NIAGARA.** White. Midseason. Best of the standard light colored Grapes. Bunches of large greenish white berries change to pale yellow when fully ripe. A rank grower and very productive. Popular with vineyardists and home gardeners in the North, as well as the South.
- ✓ **WORDEN.** Blue. This excellent Grape is as hardy, healthy, vigorous and productive as Concord, of which it is a seedling, but better in quality. It is sweeter, larger in bunch and berry. Several days earlier. Valuable for garden and vineyard.



Concord Grapes

**For Quick Crops Plant JUMBO GRAPE VINES**

Big crops of luscious Grapes, some the first season planted. No other fruit bears so much for so little attention. Our Jumbo Grape Vines have already fruited in the nursery.

We can furnish the following varieties only in Jumbo size; listed in their order of ripening: **Fredonia, Worden, Concord, Agawam, Niagara, Catawba.**

Prices: 90c each; 3 for \$2.40; 6 for \$4.20; 10 for \$6.50; 25 for \$13.75; 50 for \$25.00.

**PRICES—HARRISONS' BIG YIELD GRAPE VINES**  
Dependable, True-to-Name—Plant During 1952

	Each Vine	3 Vines	10 Vines	25 Vines	50 Vines	100 Vines
All Varieties						
2-yr., No. 1	\$0.60	\$1.65	\$4.50	\$9.40	\$15.65	\$25.00
1-yr., No. 1	.40	1.05	3.00	6.25	10.00	16.00

**RED-WHITE-BLUE**  
Victory Grape Vineyard  
**OFFER No. 22**  
2 Catawba, Red                      2 Niagara, White  
2 Concord, Blue  
**All for \$2.70**

## CONCORD Harrisons' Super Strain

Blue, midseason. The most popular and extensively planted Grape in America. It adapts itself to varying conditions and is grown in most every state in the union. Large, compact bunches of dark purplish black colored berries. The berries are covered with a rich bloom, skin is tender, but is sufficiently firm to carry to distant markets; flesh is juicy, sweet and tender.



BROWN TURKEY FIG

The Southerner's Favorite

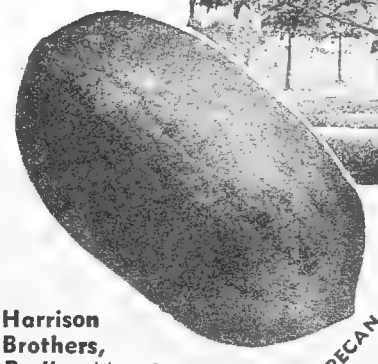
## Plant Paper Shell PECAN TREES for Shade and Nuts

**PAPER SHELL PECAN**  
Medium to large nuts; oblong thin shell; rich flavor. Good grower. The best type Pecan grown. 2 to 3 ft., \$2.75 each; 3 to 4 ft., \$3.75 each; 4 to 5 ft., \$4.75 each.

**BLACK WALNUT**  
(*Juglans nigra*)  
Rapid grower, spreading branches, large delicious nuts, prolific bearer. 2 to 3 ft., \$2.00 each.



PECANS—Abundant Nuts in Winter



PECAN

## FIGS To Tempt the Appetite

**BROWN TURKEY.** Medium to large size; copper-brown skin, flesh white. Not hardy North. 2 to 3 feet, \$1.75 each; 10 for \$15.00.

*Buy the Best*

Harrison Brothers, Berlin, Maryland



# Pick World's Finest Strawberries From Your Own Plants



Streamliner **EVERBEARING STRAWBERRIES**

## Harrisons' Everbearing **MASTODON** A TRIPLE YIELD

- 1—Plant this spring.
- 2—Pick first crop, July to frost.
- 3—Pick second crop, June next year.
- 4—Pick third crop, August to frost next year.

### 3 REAL CROPS—3 BIG PROFITS

Bears in 90 Days, and, too, It's the Best Family Garden Strawberry—Loads of Big Berries in 90 Days

Unlike the other varieties, Mastodon begins to bear luscious berries 3 months after planting and bears three big crops in 18 months. Customers have reported yields as high as three quarts per plant the first fall.

### WHY WAIT A WHOLE YEAR?

Plant Harrisons' "Big Yield" Mastodon this spring, and grow your own berries this summer and fall, instead of buying them. If you have more than you can use, they are easily disposed of in the nearby community, where they will bring top prices.



**MASTODON  
EVERBEARING**

## A Big Profit From Your Own Back Yard

Everybody prefers the flavor of vine-ripened Strawberries. They are more delicious and usually sell for 10c to 25c more per quart. Customers pay premium prices for garden fresh Strawberries and small growers make real money, up to \$500.00 per acre.

Whether you have a small garden or several acres, you can make a big extra cash income by planting Harrisons' "Big Yield" Strawberries. Others are doing it, why not you. It costs only a few dollars to get started

## Extra! STREAMLINER



### The Greatest Everbearing Strawberry

**SWEET AS HONEY—EXTRA LARGE  
EXCELLENT FOR EATING FRESH OR FREEZING  
MAKES HEAVY FRUITING BED**

- Berries in 90 days or less. No need to wait several months. Plants planted in March or April will commence bearing in early July and bear until frost.
- Three Big Crops From One Planting. Streamliner needs no nursing along as some everbearers do. They are thrifty growers, and do not require exacting soil requirements. Pick your first crop this summer and fall, second crop next June, third crop the following summer and fall.
- It costs less to grow your own berries if you plant Streamliner. Easy to grow, just space them 12 to 15 inches apart in the row with the rows 2½ to 3½ feet apart.
- Profitable to raise. Grow all the berries you need for your own use and sell the rest to your neighbors.

# HARRISONS' **BIG YIELD** STRAWBERRY PLANTS

## Dependable - Hardy - True-to-Name Harrisons' Selected Strain "Big Yield" Strawberry Plants Are Better

- 1—Sixty-five years' experience in growing, propagating and handling Strawberries.
- 2—Every plant propagated by Harrison is the offspring of a selected plant that is outstanding in vigor and productiveness.
- 3—Absolutely free from diseases and insects.
- 4—Grown on specially nurtured high ground soil
- 5—Our method of digging enables us to get all the roots.
- 6—Clean, graded and packed in modern packing house.
- 7—Absolutely true to name.
- 8—Prompt service.
- 9—Better plants for less money.

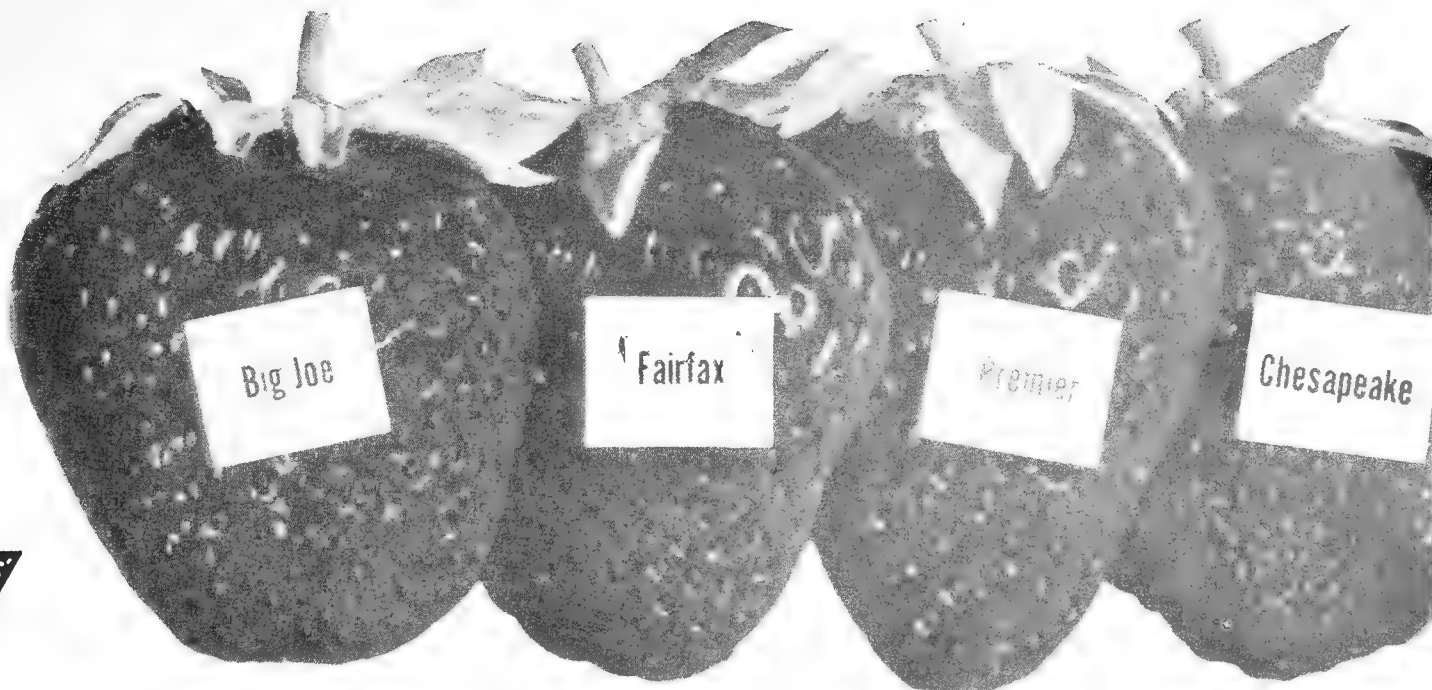
### HARRISONS' BIG YIELD STRAWBERRY PLANTS

	25 Plants	50 Plants	100 Plants	250 Plants	500 Plants	750 Plants	1000 Plants
<b>EARLY:</b>							
Blakemore	\$0.90	\$1.50	\$2.40	\$4.80	\$7.50	\$9.90	\$12.00
Dorsett	1.00	1.70	2.70	5.40	8.45	11.15	13.50
Fairfax	1.05	1.75	2.80	5.60	8.75	11.55	14.00
Premier	1.05	1.75	2.80	5.60	8.75	11.55	14.00
<b>MIDSEASON:</b>							
Big Joe	1.00	1.70	2.70	5.40	8.45	11.15	13.50
Catskill	1.05	1.75	2.80	5.60	8.75	11.55	14.00
Temple	1.00	1.70	2.70	5.40	8.45	11.15	13.50
<b>LATE:</b>							
Chesapeake	1.15	1.90	3.00	6.00	9.40	12.40	15.00
Red Star	1.15	1.90	3.00	6.00	9.40	12.40	15.00
<b>EVERBEARING:</b>							
Mastodon	1.90	3.15	5.00	10.00	15.65	20.65	25.00
Streamliner	1.90	3.15	5.00	10.00	15.65	20.65	25.00

STRAWBERRY PLANT SHIPPING SEASON: November 1st to May 15th.  
PRICES: F.O.B. Berlin, Maryland.

FOR LARGER QUANTITY WRITE FOR SPECIAL PRICES

# Four Undisputed Strawberry Leaders



**STRAWBERRY  
GARDEN OFFER  
No. 21**

25 BIG JOE	25 PREMIER
25 FAIRFAX	25 CHESAPEAKE

**ALL FOR \$3.75**

## BLAKEMORE

No Strawberry has become so popular so quickly as Blakemore. It is the most popular variety in all America. Ripens several days before Premier and is equally dependable, producing big crops every year. The plant is healthy and stands up well during drought. The berries are large, firm, an attractive red and good quality. Fine for canning and preserving because it holds its color and shape so well.

## DORSETT, Early

**Large Fruit—Vigorous Grower—Heavy Crops**

Dorsett berries average large size, considerably larger than the Premier; in fact, their size is comparative with Chesapeake, which is the outstanding late berry. Plant growth is exceedingly vigorous, being far more vigorous than most other varieties. Dorsett yields large crops of fancy, light red berries.

## FAIRFAX, Early

**The Sugar-Saving Berry**

Color is a deep, full red; its rich, sweet flavor brings buyers back for more. Fairfax berries are exceptionally firm, making it an ideal shipper. Superior to all for home use, equal to any for commercial planting.

## PREMIER King of the Early Berries

Too well known to need much description. The standard early berry by which all other varieties are judged. Holds all records for big crops and big profits. Premier has filled more crates, made more dollars, and brought joy to more Strawberry growers than any other variety ever grown.

**Adapted to All Soils—Heavy Yielder.** It thrives on most any type of soil and is a rampant plant maker. Premier fruits extra early when berries are selling at a high price. It is a big yielder of big, bright red berries of fine flavor. For home gardens, local markets, or for shipping moderate distances it has out-classed all the other varieties.

## BIG JOE The Old Reliable Midseason Variety LARGE YIELD—FANCY FRUIT FINE FLAVOR

Big Joe is a heavy producer of large, brilliant red berries of extra fine flavor and is firm enough to withstand long shipments. The plants are good growers and heavy yielders. This variety succeeds on all types of soil but does extra well with good care and fertility. Be sure to include Big Joe in your planting this spring. Our big yield strain insures big crops.

## CATSKILL Midseason

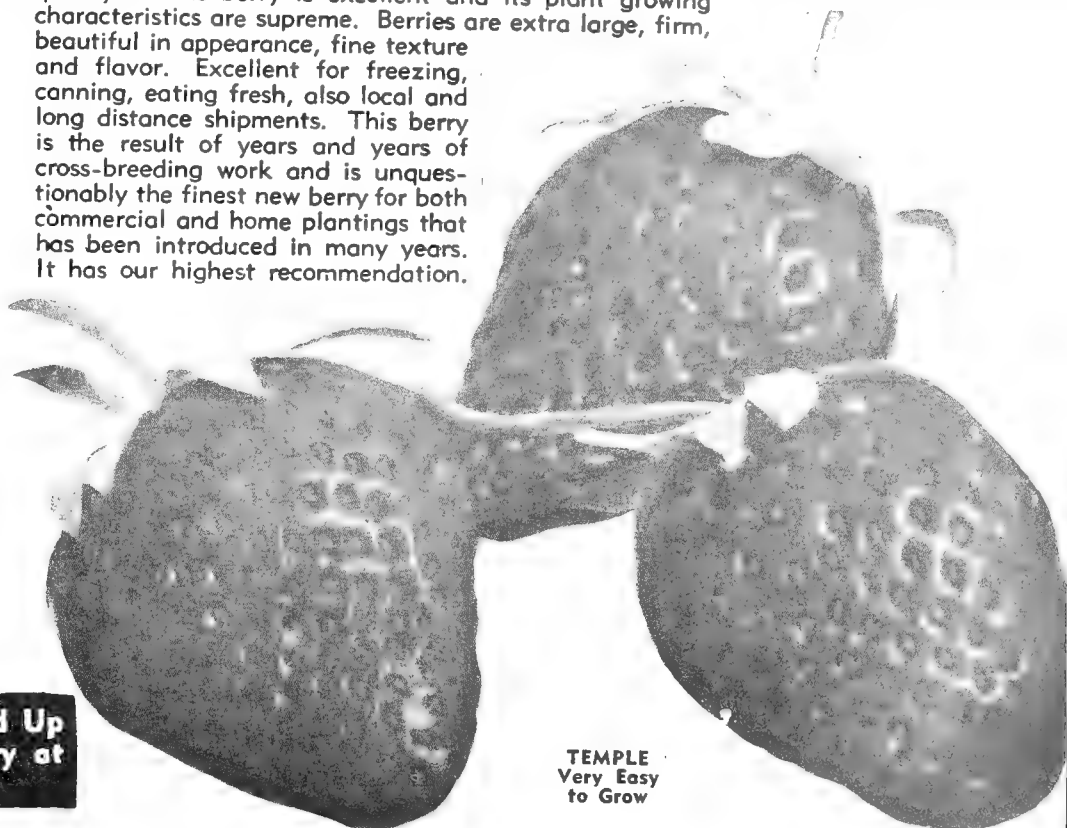
A midseason berry that will produce the largest crops of bigger berries of any midseason variety. Catskill is entirely satisfactory as to firmness, quality, color and attractiveness, season of ripening and climatic adaptation. The highest record of marketable berries was made with this variety. In shipping respects it ranks with Chesapeake and Lupton. It is rated equally as attractive as Fairfax or Dorsett. The berries are borne on rather long fruiting stems which makes it easier to get at in picking.

*Here is the Easiest  
Berry to Grow*

## TEMPLE

**The Successful New  
Variety—Can Be  
Grown Anywhere.**

If you have ever tried raising Strawberries and failed, here is the berry for you to try. It will grow on light, sandy soil as well as heavy, water-soaked kinds. The quality of this berry is excellent and its plant growing characteristics are supreme. Berries are extra large, firm, beautiful in appearance, fine texture and flavor. Excellent for freezing, canning, eating fresh, also local and long distance shipments. This berry is the result of years and years of cross-breeding work and is unquestionably the finest new berry for both commercial and home plantings that has been introduced in many years. It has our highest recommendation.



**TEMPLE  
Very Easy  
to Grow**

**Harrison Strawberry Plants Are Bred Up  
for Bigger Yields and Tell the Story at  
Harvest Time.**

# HARRISONS' BUD SELECTED YIELD LARGER and BETTER SPECIMENS ROSES

## EVERBLOOMING HYBRID TEAS

**ETOILE DE HOLLANDE.** At present considered most popular of crimson Hybrid Teas. Velvety scarlet-crimson with delicious fragrance, and enormous petals. It charms continuously with its delightful color, vigorous growth, and well-formed flowers on long stems. Faultless.

**EDITOR McFARLAND.** A very fine brilliant pink Rose, destined to great popularity.

**GOLDEN CHARM.** A

**KAISERIN AUGUSTE VIKTORIA.** bloom, slightly tinged with lemon shapely buds.

**PINK RADIANCE.**

**RESÉ.** it has made good everywhere.

**PRESIDENT HERBERT HOOVER.** One of the outstanding A glorious new Rose of the cerise-red toned w. orange and scarlet, richly perfumed and free flowering.

**RED RADIANCE.** A sport of the famous Radiance and identical in all characteristics, except color. A brilliant cerise-red color, and intensely fragrant. Tall and bushy, healthy foliage and excellent blooming qualities. The favorite red Rose of America's millions.

## The Colorful PEONIES

### THEY RIVAL THE ROSE

Once planted they last for years. There should be several planted in every yard. Their large, bright colored flowers during May and June furnish an abundance of flowers for the home.

Colors: **WHITE, PINK, and RED.** State color desired.

Prices: 75c each; 3 for \$1.95; 10 for \$5.50.



Condesa de Sastago

### Everblooming Hybrid Teas

#### CONDESA DE SASTAGO.

Marvelously colored Rose with large cupped flowers of coppery red inside and rich yellow outside. A profuse bloomer at all times keeps well when cut, and is spicily fragrant. Compares with the Radiance Rose in vigor and hardiness.

#### GOLDEN DAWN.

Considered the finest yellow Rose. Blooms of soft lemon-yellow tinted with old rose markings, long-lasting fragrance of real tea scent. Hardy, bushy, medium height, and very vigorous.

**WHITE RADIANCE.** A genuine white sport of the ever-popular Pink Radiance. Very vigorous, tall and bushy. Thrives extra well; intensely fragrant. Should be in every garden.

**POINSETTIA.** Brilliant rich scarlet-red, long, pointed buds; glorious flowers. Vigorous tall grower, long stems, and richest scarlet-red Grand, being a very fine Rose. Should be planted in every Rose garden.

**TALISMAN.** A multi-colored, glorious combination of orange, yellow and rose-red. They simply eclipse other Roses in autumn. Fine for decoration and cutting. The triple-tone flowers are produced all season.

HARRISONS' ROSE VARIETY SELECTION CONTAINS ONLY THE BEST THOROUGHLY TESTED VARIETIES

## HARRISONS' "BUD SELECTED" EXHIBITION ROSES EVERBLOOMING HYBRID TEAS

All Varieties True-to-Name

EVERBLOOMING HYBRID TEAS, NURSERY GROWN,  
BUDED ON MULTIFLORA JAPONICA UNDERSTOCKS

Super Selected Grade:

	Each	3 for	6 for	10 for
2-Yr. Big Bushes.	\$1.25	\$3.60	\$6.90	\$10.00

Poinsettia



Harrisons' Guaranteed  
Super-Select Grade  
Field-Grown Rose Plant

### HARDY ROSE PLANTS

We absolutely guarantee Harrison Bud-Selected Roses variety for variety, to be as hardy or harder than Roses grown in any locality north of us.



### Paul's Scarlet Climber

Large; intense scarlet blooms; freely produced. It is strong and perfectly hardy. The most popular climbing Rose.

Same price as other varieties of Roses.

Harrisons' Budded Roses are the Best  
Why Pay More?

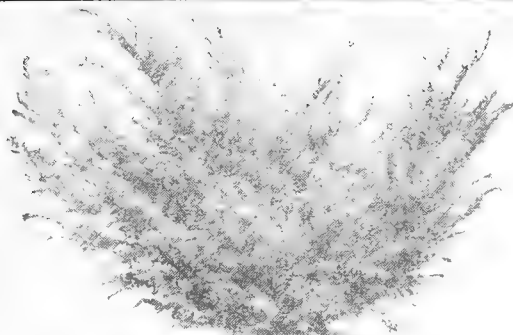


# HARRISONS' DECORATIVE EVERGREENS

Our Splendid Trees Embellish the Grounds of Beautiful Homes the Country Over



**GOLDEN RETINOSPORA**



**SPREADING YEW**

### SPREADING YEW

The beautiful Yew of moderate bushy growth, usually grows wider than it does tall, starts branching from the bottom, developing into a bush form. The spreading branches are densely clothed with short leaves of dull green. It is the most attractive spreading evergreen, will grow in semi-shady locations. Hardest of all Yews. By trimming the side branches the plant can be made to grow semi-upright and likewise by trimming the top branches the plant can be made to develop lower to the ground. Can also be trimmed into globe shape. **Prices: 12 to 15 inch \$2.50 each.**

### GOLDEN RETINOSPORA

A handsome golden colored evergreen that is admired by all. Its pleasing shade provides the right amount of contrast when it is planted along with other evergreens along its side or back of it. Feathery, fernlike foliage can be kept trimmed to any size. No home foundation plantings are complete without this remarkable healthy evergreen. **Price: 12 to 15 inches \$2.00.**

### COMPACT GLOBULAR ARBOR-VITAE

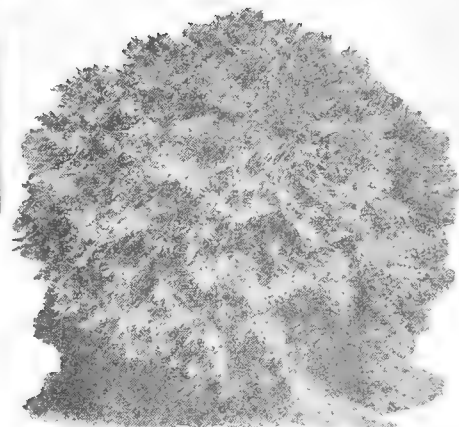
Natural compact, globe-shaped, dark green foliage. The ideal low growing plant for massing against the taller evergreens in foundation plantings. **Price: 12 to 15 inch \$2.00.**

### AMERICAN ARBOR-VITAE

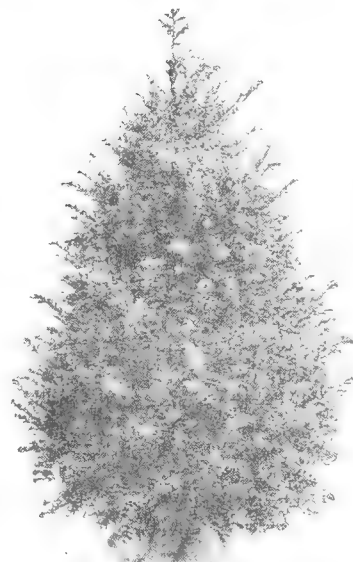
Probably no evergreen is more admired than American Arbor-Vitae with its beautifully carved foliage of deep green, its graceful, refined habits and its artistic upright shape. These features make it indispensable in the home foundation groups and in the lawn and garden plantings. **Price: 18 to 24 inch \$2.50 each.**

### IRISH JUNIPER

Forms a narrow and dense column, compact, bluish green foliage. Most attractive when planted around the foundation of a home at corners and entrances. **Price: 18 to 24 inch \$2.50 each.**



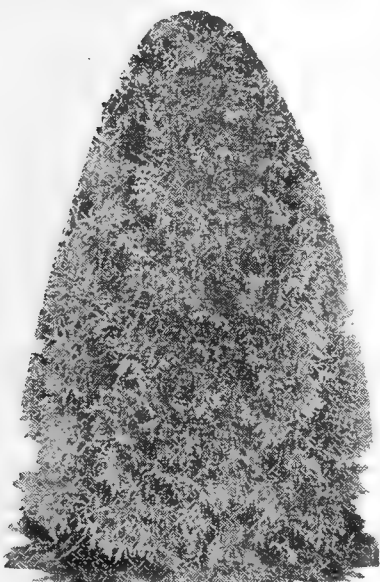
**COMPACT GLOBULAR ARBOR-VITAE**



**HICKS' YEW**  
(*Taxus cuspidata* Hicks)

### HICK'S YEW

Another form of Yew that is very similar to the Irish Yew, but is a much faster grower. The branches ascend almost vertically, generally growing with many stems. Its rich dark glossy green makes it much more attractive than Arbor-Vitae or Junipers. **Price: 12 to 15 inch \$2.50 each.**



**AMERICAN ARBOR-VITAE**

All evergreens are shipped with Moss on the Roots.

## American BOXWOOD

GROWN BY HARRISON BROTHERS  
BERLIN, MARYLAND

*Steps Out Ahead*

—the real Aristocrat of the Evergreen family

YOU CAN SECURE THE FINEST SPECIMENS IN AMERICA FROM HARRISONS'

Possibly no evergreen shrub has been so much used for marking the boundaries of formal gardens, to outline flower beds, for low hedges, and for other ornamental purposes. The plants will adapt themselves to almost any situation and climate, and by judicious pruning can be trained to many forms.

**Compact—Deep Glossy Leaves**

Our Boxwood has deep glossy green leaves. They are dense, compact specimens, having been sheared many times. The leaves

on this variety are small and resemble the dwarf English Boxwood. This variety is a dwarf grower, but it makes much faster growth than the English Boxwood. For those who want large Boxwood plants in a few years, this is the best variety to plant.

*Let's Plant More*

**American BOXWOOD**

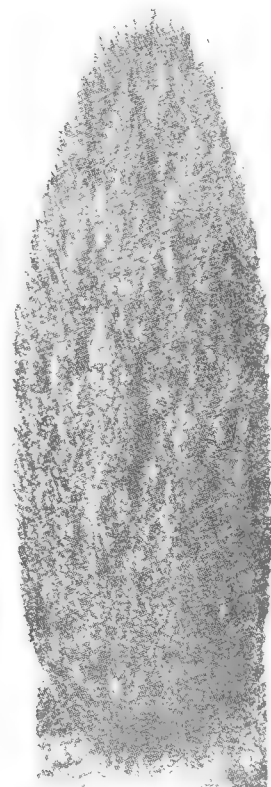
(*Buxus Sempervirens*)

A BROTHER OF  
"YE OLDE ENGLISH" BOXWOOD  
—It Grows Much Faster

**PRICES OF AMERICAN BOXWOOD**  
10 to 12 inches \$1.50 each; 10 for \$12.50



**AMERICAN BOXWOOD**



**IRISH JUNIPER**

**AMERICA'S  
FINEST  
FLOWERING**

**Trees**  
FOR  
YOUR GARDEN

**RED FLOWERING  
DOGWOOD**

(*Cornus Florida Rubra*)

One of the most popular small ornamental trees. Handsome red flowers in early spring. Makes an attractive lawn specimen.

Each  
1 1/2 to 2 feet ..... \$2.50  
2 to 3 feet ..... 3.50



PURPLE-LEAVED OTHELLO PLUM

**BECHTEL'S FLOWERING  
CRAB APPLE**

Only genuine double-flowered Crab. When in bloom, appears to be covered with delicate pink perfectly double, small Roses of delicious fragrance. Best Flowering Crab Apple.

Each  
1 1/2 to 2 feet ..... \$1.50

**WHITE FLOWERING DOGWOOD**

(*Cornus Florida*)

One of the native spring flowering small trees, with white flowers and bright red berries in fall.

Each  
2 to 3 feet ..... \$1.50      4 to 5 feet ..... \$3.00  
3 to 4 feet ..... 2.00      5 to 6 feet ..... 4.00

**KWANZAN—PINK FLOWERING CHERRY**—Large, double pink blossoms borne in profusion. Tree vigorous and upright in growth. Most lovely of all flowering cherries.

Prices: 5 to 6 feet ..... \$3.75 each

**DOUBLE WHITE FLOWERING CHERRY**—Large, double white blossoms, vigorous grower, withstands adverse weather more than most flowering cherries.

Prices: 3 to 4 feet ..... \$2.75 each

**ELEYI FLOWERING CRAB APPLE**—Here is the small tree to add color to your planting, beautiful reddish purple foliage all season. Wine colored blossoms during spring followed by multitudes of small, blood-red fruits during the fall. A real beauty.

Prices: 5 to 6 feet ..... \$2.75 each

**WEeping FLOWERING CHERRY**—One of the most beautiful of flowering trees. Drooping branches covered with delicate clusters of dainty pink flowers in early spring.

Prices: 3 to 4 feet ..... \$3.50 each

**PURPLE-LEAVED OTHELLO PLUM**

Upright grower, foliage brilliant reddish purple, holding its color throughout season. Prolific bearer, with crimson fruit producing ornamental effect.

Each  
3 to 4 feet ..... \$1.75      4 to 5 feet ..... \$2.00  
5 to 6 feet ..... 2.25

**MULTIFLORA ROSES—BEAUTIFUL FLOWERS**  
Abundance of Berries For Birds



Multiflora Roses are Recommended by U.S. Soil Conservation Service for Soil-Erosion and the most practical plant for Wild Life.

**EXTRA!**

**NEW WEEPING FLOWERING PEACH**

A beautiful red Flowering Peach that has a decided weeping effect. This Peach has bloom and weeping characteristics, somewhat similar to Japanese Weeping Cherry. A fine new discovery that is worthy of planting in every lawn or garden.

Each  
1 to 2 feet ..... \$1.25  
2 to 3 feet ..... 1.75  
3 to 4 feet ..... 2.25

**DOUBLE PINK  
FLOWERING PLUM**

A vigorous grower, every branch producing double, pink flowers, an inch or so in diameter, early in May.

Each  
18 to 24 inches ..... \$1.50  
2 to 3 feet ..... 2.00

**FLOWERING ALMONDS.** Nearly always seen in old-fashioned gardens and in early spring is covered with little Chrysanthemum-shaped flowers, very charming. Double white or double pink, state color desired. 18 to 24 inches, \$1.50 each; 2 to 3 ft., \$2.00 each.



DOUBLE RED FLOWERING PEACH

**DOUBLE RED FLOWERING PEACH**

During early spring the flowering Peaches are covered with a mass of beautifully formed and highly colored double flowers. Highly recommended. Perfectly hardy, thriving in any soil in which other Peaches grow. We make a specialty of growing Flowering Peach trees and have several hundred to offer. We offer **Double Red.**

Each  
3 to 4 feet ..... \$1.75      4 to 5 feet ..... \$2.00  
5 to 6 feet ..... 2.25

**LIVING ROSE FENCE**

Made Easy and at Low Cost with

**MULTI-FLORA ROSES**

Easy to Plant—Fast Healthy Growth  
Needs No Care

**MASSES OF BLOOM EVERY JUNE**

Beautiful green foliage, can be kept trimmed or grow naturally. Affords privacy for the home and garden. Beauty and protection for buildings and farms.

Harrisons Superior Plants give Better Results

**PRICES MULTIFLORA ROSES**

10 plants for \$2.45      25 for \$4.95  
50 for \$8.95      100 for \$16.75

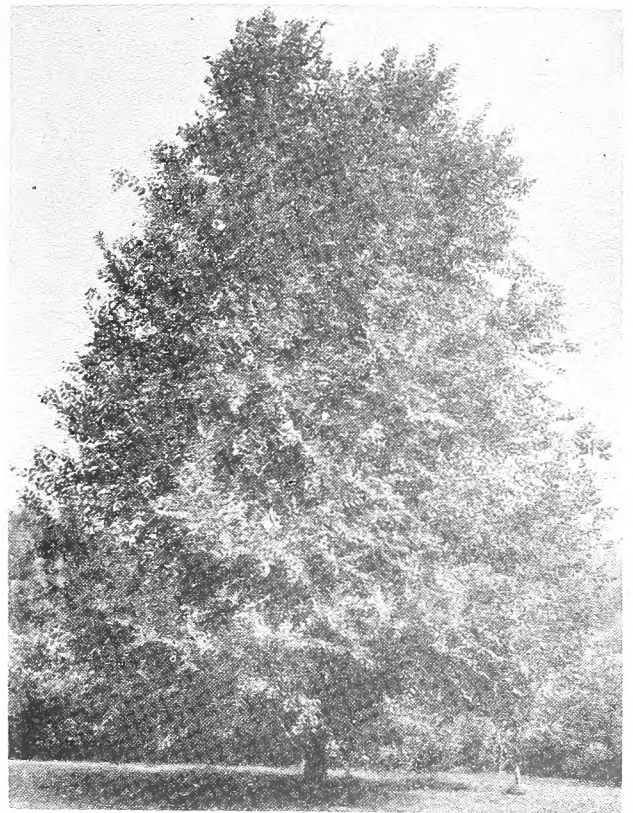
Plant 1 to 2 feet apart

**NORTHERN STRAIN**

**CHINESE  
ELM**

**Grows 20 Feet in Four Years**

Because of its beauty and extremely rapid growth, Chinese Elm has become a leading shade tree of America. It is planted in every state, and like its native country of Korea, withstands intense cold and extreme heat. It makes excellent shade in five short years, averaging about 5 feet growth annually. It is by far the fastest growing hard-wooded shade tree. It resembles the American Elm except that leaves are smaller, with the gracefulness of a Cut-Leaf Birch. **Prices: 5 to 6 ft., \$1.75 each; 6 to 8 ft., \$2.25 each**



**CHINESE ELM—Quickest Growing Tree in the World**

**ORIENTAL PLANE**

(*Platanus Orientalis*)

A rapid, upright, clean growing shade tree, long lived, beautiful dense foliage. A superb tree of gigantic proportions, which is very hardy. The Oriental Plane, being originally an imported tree during the past generation, has rapidly won high popularity in recent years due to its many merits, which have made it the most useful and the most sought for shade tree for lawns, parks, streets and highway plantings. Harrison's Nurseries are specializing in growing Oriental Planes and we are the largest growers in America. **Prices: 6 to 8 ft., \$3.50 each; 8 to 10 ft., \$5.00 each; 10 to 12 ft., \$7.00 each; 12 to 14 ft., \$11.00 each.**

**AMERICAN ELM**

(*Ulmus americana*). A noble native tree of great size, wide spreading, gracefully curving branches, growing up in a form like the outline of long-stemmed flowers in a tall vase. **Prices: 5 to 6 ft., \$1.75 each; 6 to 8 ft., \$2.25 each.**

**LOMBARDY POPLAR**

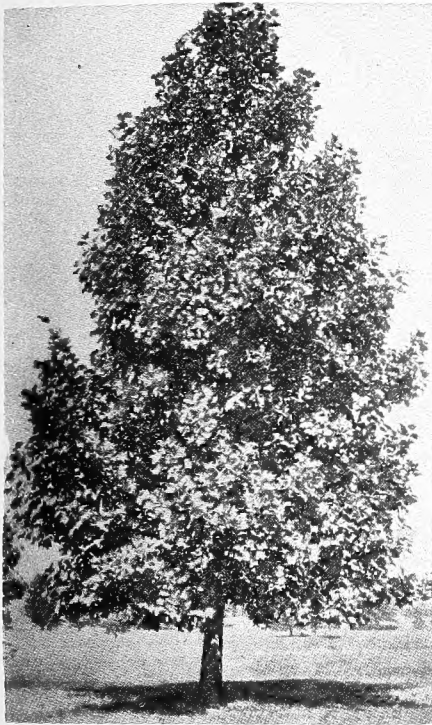
A tall, spirelike tree used for screens and formal plantings. It is fast growing, distinctly ornamental and beautiful. **Prices: 5 to 6 ft., \$1.00 each; 6 to 8 ft., \$1.50 each.**

**WEeping WILLOW**

A rapid growing, hardy tree, thriving in any moist soil. The Willows are valuable and interesting subjects on account of their graceful aspect. **Prices: 5 to 6 ft., \$1.50 each; 6 to 8 ft., \$2.25 each.**

**NORWAY MAPLE**

Typical Maple leaves, large and bright green, fading to gold in the fall. Trunk and branches are sturdy and strong, lending an effect of ruggedness. **Prices: 6 to 8 ft., \$4.00.**



**ORIENTAL PLANE**  
The Famous Light Bark Tree

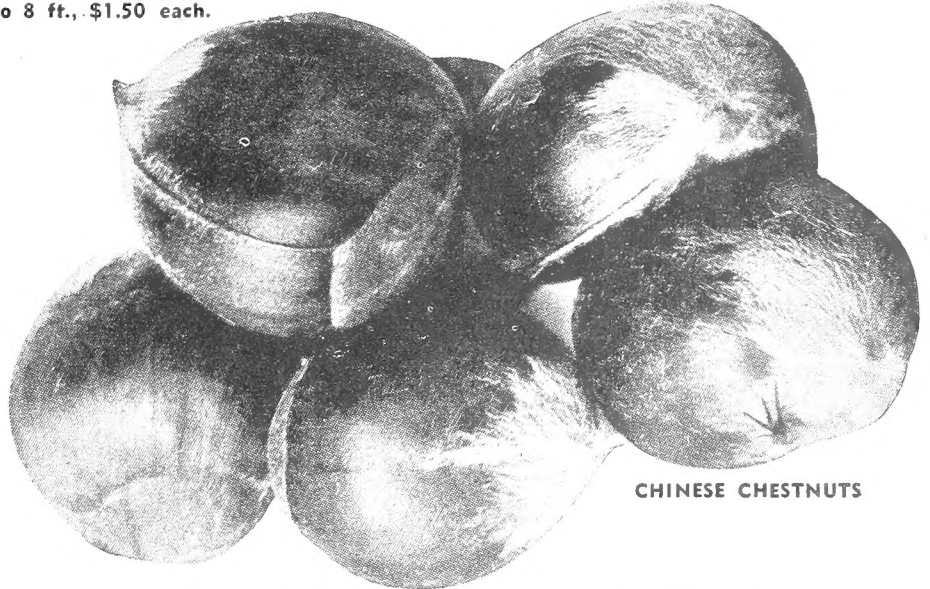
**CHINESE CHESTNUTS**

**Now You Can Grow Chestnuts!  
Blight-Resistant Chestnut Trees**

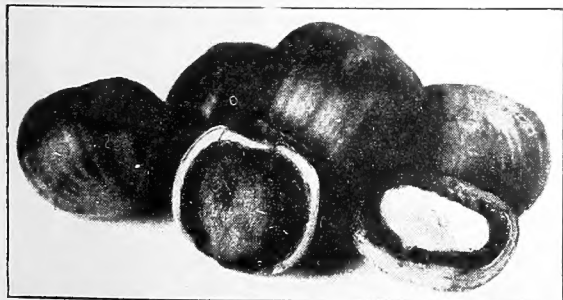
Only two years from this fall, right in your own grounds, you can pick big, fat, tasty Chestnuts from the trees you plant this year! Remember gathering Chestnuts in the good old days—haven't you felt sorry for your children because they couldn't? The devastating blight that stripped our forests of the native Chestnut was an American tragedy! Now these hardy, blight-resistant Chestnut trees will bring them back. More than that, you need not wait 15 to 20 years for nuts—they'll bear year after year!

Plant in abundance Harrison's strain of Chinese Chestnut Trees.

**PRICES: 2 to 3 ft., \$2.50 each.**



**CHINESE CHESTNUTS**



**AMERICAN FILBERT (Hazel Nut)**

**AMERICAN FILBERT**

(Hazel Nut)

Old family favorite. Small, attractive bush, yielding abundant crops of tasty, round nuts. Bears very young.

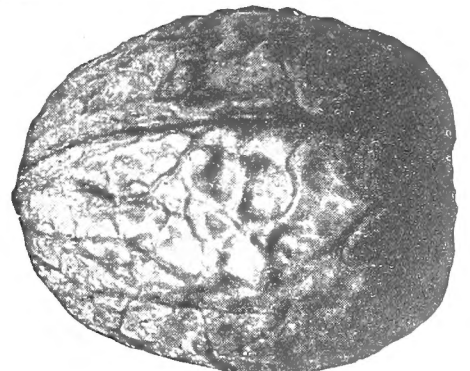
**PRICES: 2 to 3 ft., \$2.00 each.**

**ENGLISH WALNUT**

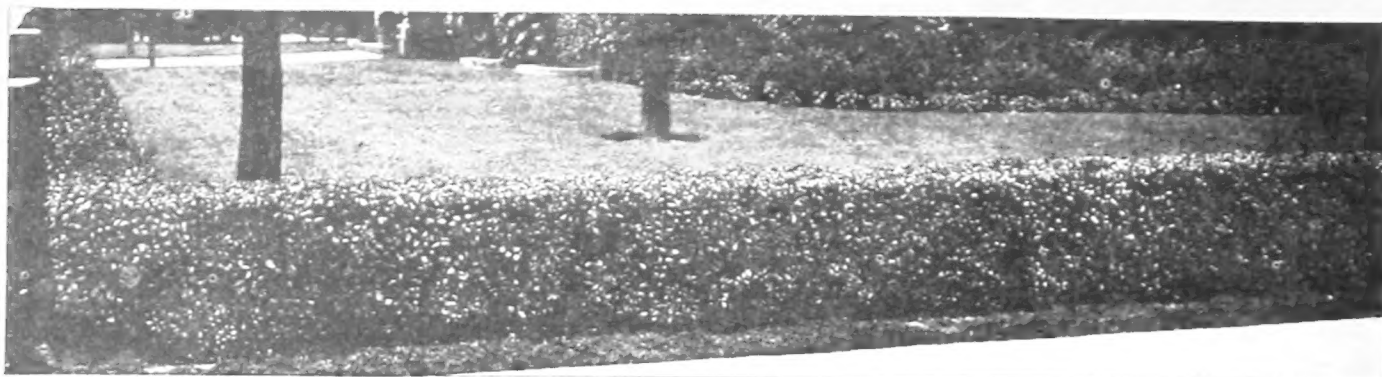
(*Juglans Regia*)

Thin shelled, large, delicious nuts, producing heavy crops and demanding good prices. The most popular Walnut grown.

**PRICES: 2 to 3 ft., \$2.75 each.**



**ENGLISH WALNUT**



THE FAMOUS CALIFORNIA PRIVET—The Best Low Cost Hedge—Grown by Harrison Brothers, Berlin, Maryland

Strong,  
Hardy,  
Well-  
Rooted  
Plants for  
Quick and  
Permanent  
Hedges  
Harrisons'  
Hi-Quality  
Grown

**California Privet is the Leading Low Cost Hedge Plant**

**CALIFORNIA PRIVET**

(*Ligustrum ovalifolium*)

This is the universal hedge in the East, a fact proving that Privet has greater merit under ordinary conditions for this purpose than any other plant. For live fences at village, town and country homes it is the very best of all materials. On public grounds of all kinds, parks and cemeteries, along roads and paths, on factory grounds, and on newly subdivided areas near towns, nothing else can be used in its place, and in this place it is indispensable. It is the best of all hardy hedge plants. Can be easily kept at any height desired; has glossy, deep green leaves, and holds them until late fall. Its strong, quick, upright growth makes it useful for screening out unsightly objects.

**A BARGAIN IN CALIFORNIA PRIVET**

We Grow California Privet by the Mile

	1 to 9 Plants	10 to 49 Plants	50 or More Plants
1-1½ ft. ....	\$0.20	\$0.14	\$0.10
1½-2 ft. ....	.25	.18	.14
2-3 ft. ....	.35	.25	.18
3-4 ft. ....	.45	.35	.25

Write Us About Your Planting Requirements.

**RED-LEAVED BARBERRY**

(*Berberis Thunbergi Atropurpurea*)

A highly important introduction among shrubs, giving us for the first time a practical, easily grown shrub of medium height, with good, distinctly red foliage. This must prove a boon to all types of landscaping, where studied contrasts are to be worked out with the shrub foliage depended on for color. Red berries during winter.

	1 to 9 Plants	10 to 49 Plants	50 or More Plants
12 to 15 inches ...	\$0.45	\$0.40	\$0.30
15 to 18 inches ...	.60	.50	.40

**SPIRAEA VAN HOUTTEI**

This grand shrub has done more to beautify the homes of America than any other variety. It is valuable as a specimen, in groups, in border planting and for hedges. The branches are slender, drooping, covered with white flowers in April or early May. It grows in any place either in full sunlight or partial shade. Disease resistant, hardy, thrives under adverse conditions. Ultimate height 6 to 8 feet but can be kept lower by trimming. The most popular shrub. We have an extra fine supply of first class plants this year and are pricing them especially low.

	Each	3	10
18 to 24 inches ...	\$0.70	\$1.95	\$6.00
2 to 3 feet ...	.80	2.25	7.00
3 to 4 feet ...	1.00	2.85	9.00

**BUSH ARBUTUS** (*Abelia Grandiflora*)

By Far the Best Evergreen Shrub

One of our beautiful, popular and satisfactory broad-leaved evergreens. The graceful, drooping stems and branches are covered with dark, glossy leaves which in winter assume a metallic sheen. From the middle of June until frost, this plant produces an immense quantity of tubular-shaped white flowers tinged with pink, about an inch long, which are borne in clusters. Good for shady locations.

	Each	10
1 to 1½ feet ...	\$1.50	\$12.50
1½ to 2 feet ...	2.00	17.00
2 to 3 feet ...	2.50	21.00
3 to 4 feet ...	3.00	25.00

*Harrisons'*  
**HARDY VINES**

NATURE'S DRAPERIES

**BOSTON or JAPANESE IVY** (*Ampelopsis Veitchii*).

A popular climber, clinging firmly to brick, stone or other material; deep, glossy green, ivy-shaped foliage which turns to cream and gold color in autumn. Price: \$1.00 each.

**CHINESE WISTARIA.** A rampant growing, clinging vine. Blue flowers in large, drooping clusters during May and June. Price: \$1.25 each.

**ENGLISH IVY** (*Hedera Helix*). The most popular evergreen vine; large, deep green, glossy foliage. Excellent for covering walls. Useful for shady locations. Price: \$1.00 each.

**HALL'S HONEYSUCKLE.** Deep glossy green foliage; fragrant flowers from July to fall. Price: \$1.00 each.

**SWEET AUTUMN CLEMATIS** (*Clematis paniculata*). A splendid climber for covering porches and trellises. Flowers snowy white, produced in immense quantities during late summer and autumn. Price: \$1.00 each.

**SILVER LACE VINE** (*Polygonum Auberti*). Will rapidly grow 20 feet or more. Forms cloud of lacy, misty white, shot with tints of cream and pale rose. Green foliage, lightly bronzed at tips. Price: \$1.25 each.



**SPIRAEA VAN HOUTTEI**  
Always Makes an Attractive Hedge

**GREEN BARBERRY**

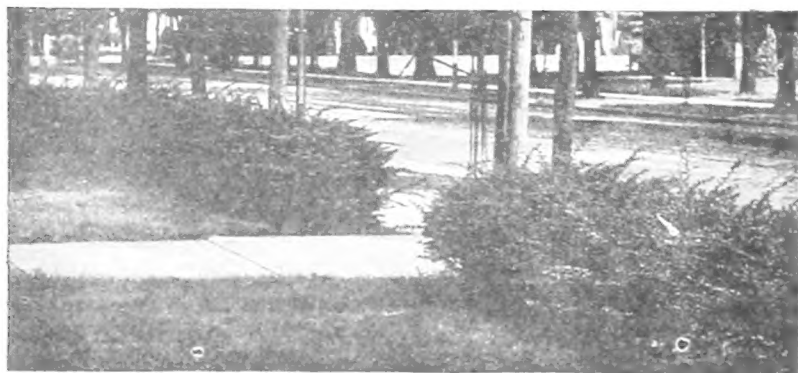
(*Berberis Thunbergi*)

The best low dense hedge plant grown. Its abundant, small light green leaves, which turn to rich colors in autumn, and its wealth of scarlet berries make it very attractive. Extremely hardy and requires but little pruning. Ornamental and graceful the whole year.

PRICES PER EACH PLANT

	1 to 9 Plants	10 to 49 Plants	50 or More Plants
9 to 12 inches ...	\$0.30	\$0.25	\$0.20
12 to 15 inches ...	.40	.30	.25
15 to 18 inches ...	.50	.40	.35
18 to 24 inches ...	.60	.50	.45

Write Us About Your Planting Requirements.



**GREEN BARBERRY**—Green in the summer, turning to a brilliant coppery red. A protection against small animals, because of the sharp thorns.

**YOU CAN PLACE YOUR ORDER WITH US WITH COMPLETE CONFIDENCE.** It is our earnest desire that each and every one of our customers be fully satisfied in their dealings with us. If you are not and feel that it is our fault in any way, please write to us. No transaction is complete unless you are completely satisfied.

**Terms—Net Cash**

Remittance with order, by check, money order or draft. We will ship C. O. D. provided a deposit of one-fourth amount of purchase price is sent with order. All nursery stock priced f. o. b. Berlin, Maryland.

**Money Back**

In the event that any nursery stock sold by us should prove untrue to name under which it is sold, we hereby agree, on proper proof of such untruthness to name, to replace the original order or to refund the purchase price. Except for such liability, and in respect to all nursery stock sold by us, we give no warranty, express or implied, as to description, quality, productiveness or any other matter.

HARRISONS' NURSERIES, Harrison Brothers, Props., Berlin, Maryland.

Note: Any money overpaid by customer will be promptly refunded.





**HARRISON BROTHERS, PROPS.  
BERLIN, MARYLAND**

# ORDER BLANK

Please Write  
Plainly

**OUR IDEAL LOCATION**  
ON THE EASTERN SHORE OF  
MARYLAND, near Ocean City on  
Highways Routes U.S. 50 and  
113; also served by the Pennsylv-  
ania Railroad.  
Can make quick shipments by  
Express, Parcel Post and Freight.  
**TELEPHONES:**  
Berlin, Maryland 27 and 28 Day  
Berlin, Maryland 35 and 32 W  
Night  
**WESTERN UNION TELEGRAPH**

Date \_\_\_\_\_

Gentlemen: Please accept my order and ship as nearly as possible as indicated. Subject to all terms, conditions, money-back, non-warranty and guarantee as printed in your catalog from which I am ordering.

My Name \_\_\_\_\_

Street \_\_\_\_\_ Rural Route No. \_\_\_\_\_ Box No. \_\_\_\_\_

Post Office \_\_\_\_\_ County \_\_\_\_\_

Nearest Town For Express or Freight \_\_\_\_\_ State \_\_\_\_\_  
If different from Postoffice \_\_\_\_\_

County \_\_\_\_\_ State \_\_\_\_\_

Read Other Side For Shipping Information

How Shall We Ship? Parcel  Express  Freight  Best   
v Check Way Wanted Post  Way

Use postal or express money order, bank draft or personal check.  
**CASH SENT IN PAYMENT MUST GO AT YOUR OWN RISK.**

Total Amount Enclosed \$ \_\_\_\_\_  
Shipping Date \_\_\_\_\_  
If undecided let us use our judgment

**About** \_\_\_\_\_  
(We will ship as near this date as possible).

Customer to pay all transportation charges on arrival. If shipment is desired by parcel post include 10% extra.

Quantity	Kind and Variety Wanted	Size	Price	Total

May we substitute an equally good variety if any of kinds ordered are exhausted? Answer: No \_\_\_\_\_ Yes \_\_\_\_\_  
WE CANNOT ACCEPT ORDERS FOR LESS THAN \$2.00.

Cut along this line

# Harrisons'

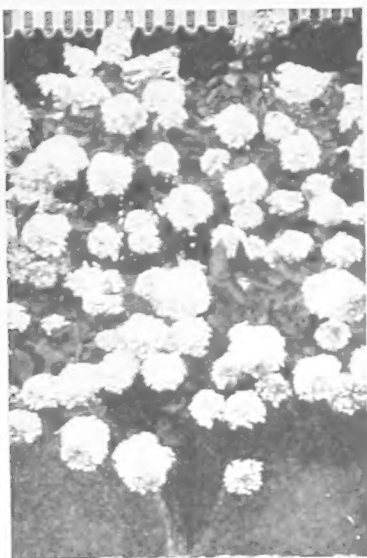
## Lifetime Shrubs To Beautify Your Home

### AZALEA HINODEGIRI

Deep Coral-Pink Flowers

Azalea Hinodegiri is a dwarf grower with ever-green foliage. In the spring it produces a profusion of deep coral colored blossoms, completely hiding the foliage. Ideally suited for planting around the foundation of homes or adding color in front of ever-greens. Grows well in the shade or sunlight.

	<b>Each</b>
4 to 6 inches .....	<b>\$1.00</b>
6 to 8 inches .....	<b>1.50</b>
8 to 10 inches .....	<b>2.00</b>



HYDRANGEA PEE GEE



DEUTZIA,  
PRIDE OF ROCHESTER

**CRÈPE MYRTLE** (*Lagerstroemia Indica*). Small green, glossy leaves; very beautiful showy flowers during midsummer to fall; noticeable object in any landscape. Not hardy north of Mason-Dixon line, but most popular southern shrub. Pink and red varieties. 1½ to 2 ft., \$1.50 each.

**QUINCE, FLOWERING** (*Cydonia Japonica*). Scarlet flowers in April and May. No doubt one of the most attractive spring blooming shrubs. 1 to 1½ ft., \$1.00 each.

**SPIREA ANTHONY WATERER**. Crimson flowers in large, flat clusters. Blooms early and continues till fall. 15 to 18 inches, \$1.00 each.

**WEIGELA, EVA RATHKE**. Very attractive deep carmine-red flowers, making a very showy shrub. 1½ to 2 ft., \$1.00 each; 2 to 3 ft., \$1.25 each.

**BEAUTY BUSH**. Pink tubular flowers, heavy bloomer, hardy. 2 to 3 ft., \$1.25 each.

**HYDRANGEA PEE GEE** (*Hydrangea Paniculata Grandiflora*). Large flowers; first snowy white, then pink, changing to reddish bronze in the fall. Blooms mid-summer to fall. 18 to 24 inches, \$1.00 each.

### GARDENS BURST INTO GLORY

With blooms of Harrisons' Berlin, Maryland, grown Hi-Quality Flowering Shrubs.

### PRICES OF SHRUBS BELOW

	Each	3 for
1½ to 2 feet ...	\$.70	\$1.95
2 to 3 feet ...	.80	2.25
3 to 4 feet ...	1.00	2.85

**ALTHEA or ROSE OF SHARON** (*Hibiscus Syriacus*). The double and single flowers are formed in varying colors. We can supply double red, white with crimson center, and double white.

**Buddleia Magnifica**. New and undoubtedly the finest of all the summer-flowering Butterfly bushes. Large bright lavender panicles. Flowers do not sunburn as do other varieties. Foliage heavy rich dark green. Very hardy.

**DEUTZIA, PRIDE OF ROCHESTER**. Double white flowers, slightly tinged with rose, appear in mid-June.

**DOGWOOD, RED-BRANCHED** (*Cornus Alba Sibirica*). Bright red bark, white flowers, blue fruit; rapid grower; beautiful winter effect.

**GOLDEN BELL** (*Forsythia*). Vigorous, upright grower; profusion of yellow flowers in April. One of the best early blooming shrubs.

**HONEYSUCKLE, BUSH** (*Lonicera Morrowi*). Early white flowers in June, followed by red berries.

**SYRINGA, SWEET MOCK ORANGE or GARLAND** (*Philadelphus Coronarius*). Of upright habit, and produces in June a wealth of white, fragrant flowers.

**SWEET-SCENTED SHRUB** (*Calycanthus Floridus*). Hardy native with many double, chocolate-colored flowers in May. Flowers, leaves and wood have a spicy fragrance.

**TAMARIX, AFRICAN** (*Tamarix Africana*). Feathery gray-green foliage; very showy.

**TARTARIAN HONEYSUCKLE** (*Lonicera Tatarica*). Very attractive in blossom, producing an abundance of flowers followed by red fruit. We offer pink and white varieties.

**WEIGELA, PINK** (*Weigela Rosea*). The most popular Weigela sold today. Its delicate pink, bell-shaped flowers are borne in great profusion along arching branches.



JAPANESE FLOWERING  
QUINCE



ALTHEA (Rose of Sharon)

### PINK MAGNOLIA

(*Magnolia Soulangeana*)

Our most outstanding early spring blooming plant. Large pink blooms. Grows in bush or tree form. Every garden should have one or two of these remarkable plants.

Prices—Strong Field Grown Plants—Each \$2.75  
2 for \$4.90.

### ROYAL BLUE HYDRANGEA

(*Hydrangea Otaksa*)

Old favorite southern Hydrangea. When winters are severe we suggest heeling in. Large balls of blue flowers and attractive large leaves. Color depends on acidity of soil. Field-grown plants, \$1.50 each; 2 for \$2.80.

## HARRISON BROTHERS

### NURSERIES

BERLIN, MARYLAND

A NAME IN TREES YOU CAN TRUST

RETURN

POSTAGE

GUARANTEED



Librarian  
U.S. Dept of Agriculture  
Washington 25, D.C.