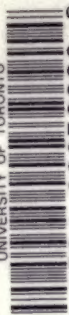


UNIVERSITY OF TORONTO



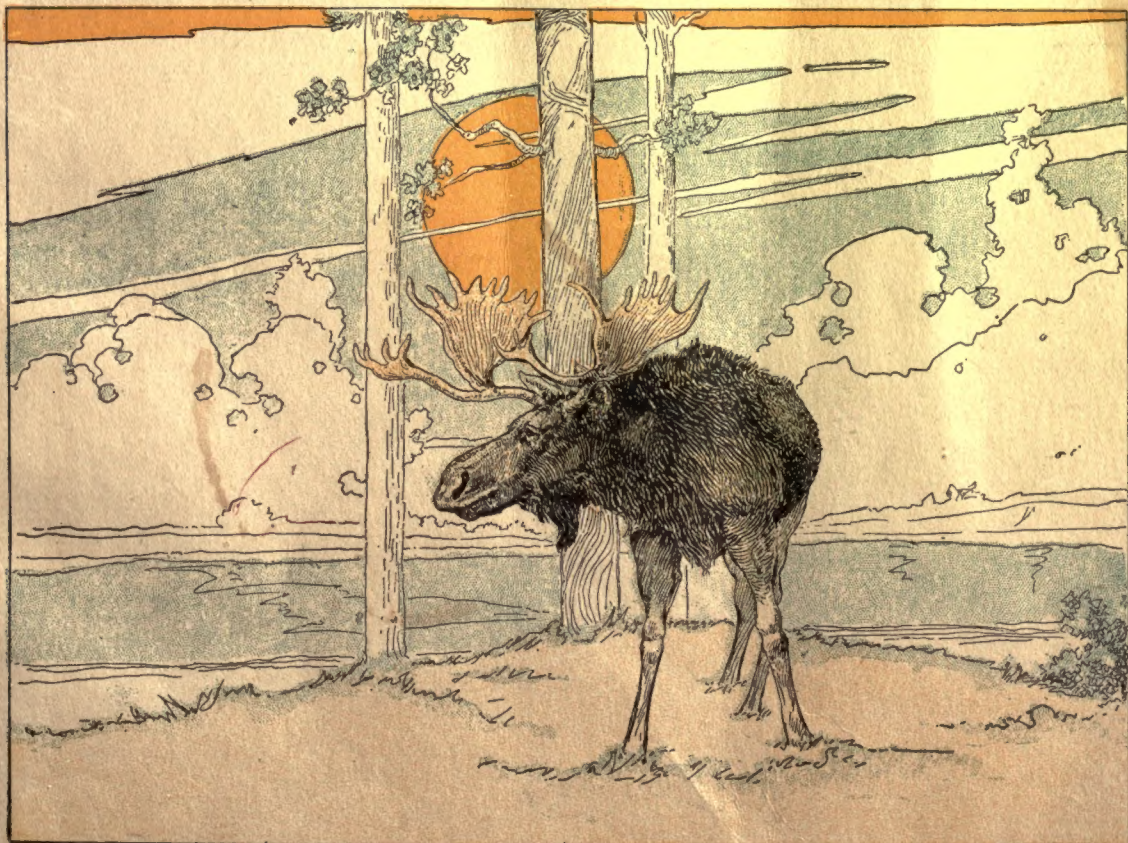
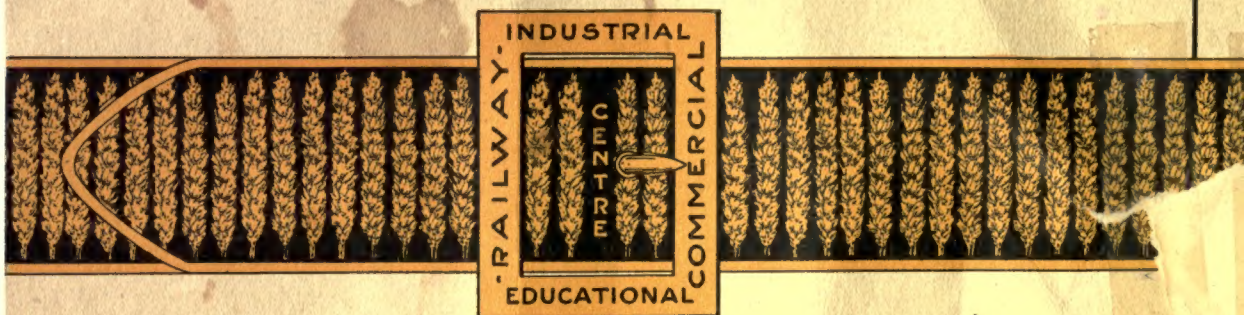
3 1761 00056960 8

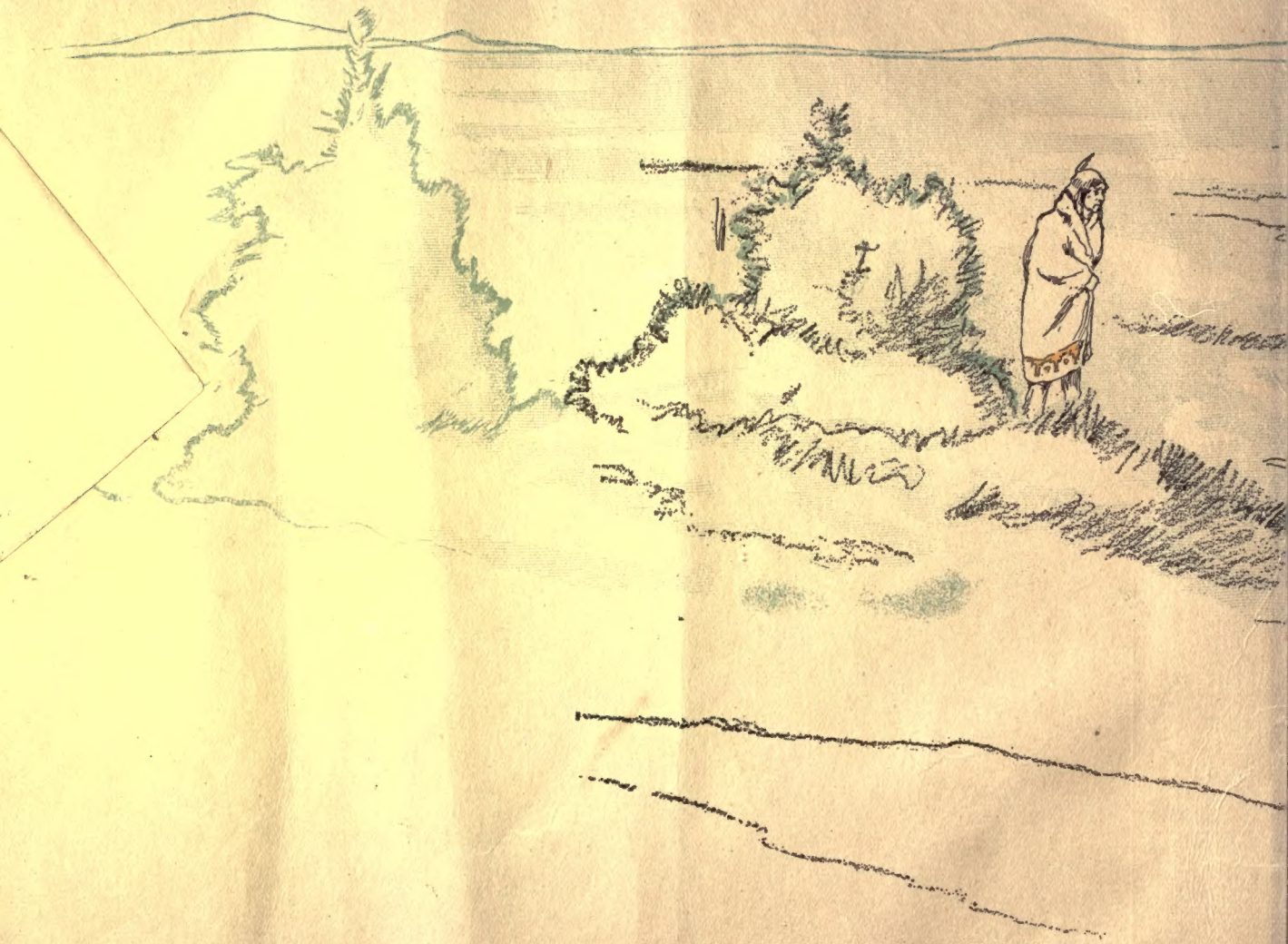
Moose Jaw, Saskatchewan, Board
of Trade
Moose Jaw

F
5747
M6M5

MOOSE JAW

*The Buckle of the greatest
Wheat Belt in the World*





*The Way Moose Jaw
Got It's Name*



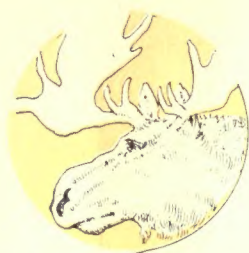


1913

Rice's Studio
Photographers, Illustrators
Publishers
Moose Jaw, Canada

MOOSE JAW

THE BUCKLE OF THE GREATEST
WHEAT BELT IN THE WORLD



*Interesting Facts
regarding
the Development
of the City of*
MOOSE JAW
SASKATCHEWAN



CALGARY

MEDICINE HAT

SWIFT CURRENT

MOOSE
JAW

REGINA

BRANDON

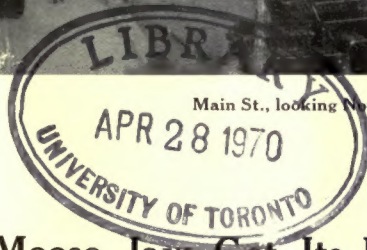
WINNIPEG

CALGARY 400 MILES WEST OF MOOSE JAW

WINNIPEG 400 MILES EAST OF MOOSE JAW



Rice Photo



Main St., looking North

F
5747
M6M5

How Moose Jaw Got Its Name



LITTLE did the pioneer think that his action in mending his "Red River" cart with the jaw bone of a moose, would have such a sequence as to give the name Moose Jaw to one of the foremost cities in Western Canada, yet, according

to Indian tradition, this is so.

The Indians tell us that some fifty years ago a pioneer, Lord Dunsmore with his wife and child camped on the banks of what is now known as Thunder Creek and mended the broken wheel of his "Red River" cart with the jaw bone of a moose. They afterward spoke of the spot as the place where the white man found the moose jaw. The name is unique and has its meaning.





Carnival Day

Cor. High & Main

Our Lighting System

Rapid Development

Ranking in the forefront of western development, Moose Jaw did not leap into the limelight in a day, but gained recognition as an industrial and distributing centre by reason of its rapid development without a boom. Many visitors know it as the "Boomless City."

A Natural Shipping Centre

Situated in the centre of the greatest wheat belt on the American continent, it is placed in the enviable position of shipping centre for the present and future crops of the Prairie Provinces.

Rapid Development Assured

The prairie belt of Western Canada is the most rapidly developing country in the world today, and the cities which are now well established will, undoubtedly, within a short time, become great centres.





High St. looking West

Rice

Municipal Improvements Installed

Moose Jaw has, up to date, $33\frac{1}{4}$ miles of concrete sidewalks, 28 miles of sewage pipe, 54 miles of water main, 250 hydrants, 8 miles storm sewers, 1,712 house connections. The sewerage disposal plant, one of the most modern in Canada, takes care of 36 miles of sewerage. The incinerator plant has a daily capacity of 50 tons. The Caron water line built at a cost of \$650,000, supplies the city water from Caron Springs, a distance of 22 miles. This supply gives sufficient water to meet the requirements of a much increased population.





High St. looking East

Fire Protection

Another important matter is the installing of the High Pressure Water System, costing about \$200,000, which when completed (July, 1913) will pump sufficient water from Moose Jaw river to give the best fire protection in Western Canada.



Building Development

The building permits for 1912 were \$5,275,797.00 as against \$2,425,736.00 for 1911, and in 1910, \$1,071,090, and at a conservative estimate the permits for 1913 will be \$7,500,000.00.



River Street (looking West) Moose Jaw, Canada.

Business Expansion

Customs Receipts

	1911	1912
January	\$12,852.67	\$29,091.43
February	29,805.19	46,499.45
March	43,206.74	79,262.88
April	48,170.21	75,403.43
May	41,410.72	173,782.98
June	41,005.15	96,791.92
July	29,214.67	94,638.13
August	53,823.57	84,815.69
September	44,939.53	70,631.35
October	30,368.66	84,769.05
November	49,168.82	67,990.89
December	41,162.22	36,781.82

These figures indicate the increase in business in Moose Jaw during the past year.



Bank of Hamilton

Canadian Bank of Commerce

Bank of Montreal



Dominion Bank
Imperial Bank

Royal Bank of Canada

Union Bank of Canada
Merchants Bank of Canada

Banking

The above cut shows eight of Moose Jaw's thirteen banks.

Clearing House Returns

The Bank Clearing House opened in February, 1911, and a review of the figures since that date is a good indication of the financial growth of the city.

	1911	1912
January		\$3,979,906
February	\$1,770,229	3,903,252
March	2,886,954	4,216,220
April	2,927,773	4,739,082
May	3,411,958	5,037,086
June	3,340,582	5,382,861
July	3,198,622	5,571,012
August	3,780,857	5,118,419
September	3,384,972	5,413,522
October	3,968,879	6,241,614
November	6,245,488	7,814,744
December	4,956,429	7,714,608





Walter Scott Building

R. ce

Postal Returns

Total Stamp Sales—1910	\$39,400.00
“ “ “ —1911	53,810.00
“ “ “ —1912	66,269.00

A new Post Office is now under construction at a cost of \$300,000.00. This is to replace the Post Office built in 1904 which is now inadequate for the needs of the city.

Moose Jaw is now on City Postal Basis.





Russell Block, Moose Jaw, Canada

Rice

Moose Jaw's Increase in Population

1901.....	1,558
1906.....	6,250
1911	20,623
1912	25,500
Present (Estimated) ..	30,000

The bulk of this population is of course Canadian born, next in order coming British born and ex-residents of the United States. Any language but English being seldom heard in Moose Jaw.



Commercial Block



Robinson McBean, Ltd.

Hammond Block



Land Titles, Moose Jaw, Canada

Rice

Land Titles

There is employed in this office a staff of 45 including Registrar and Deputy Registrar. The number of Transfers of property going through this office runs into enormous figures.

Buildings Erected 1912

Business	59
Residential	577
Industrial	62
Public	12

Building to be Active in 1913

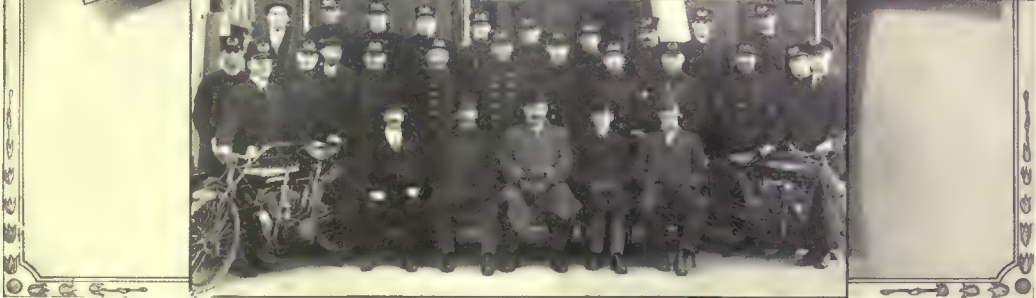
Some of the larger proposed buildings for 1913 are the new C. P. R. Depot, \$1,000,000. Moose Jaw Hotel Co., \$1,000,000; Dominion Government Armory, \$250,000; Cordova Building Co. Apartments, \$200,000. Two theatres each to cost \$200,000, and a number of buildings to cost from \$100,000 to \$150,000 each. Linseed oil plant \$500,000.



Court House



Central Fire Hall



Police Force

Public Service

The Police Force is admitted to be the finest in Western Canada, all the members having had experience either in Eastern Police Forces or the R. N. W. M. P. The Force averages six feet one and a half inches in height and one hundred and eighty two pounds in weight. The merchants in Moose Jaw obtain Burglary Insurance at a reduced rate on account of the efficiency of its Police Force.



Fire Department

The Fire Brigade of the City is equipped with the most modern fire fighting apparatus. The department is in charge of an expert Chief and twenty nine trained men.



Rees Photo

Collegiate Institute

Collegiate Institute

The above school is the most up-to-date institution of its kind in Saskatchewan. This is a higher grade school, preparatory for University with an average attendance of 360 pupils and a staff of 10 teachers, each a specialist in his department.



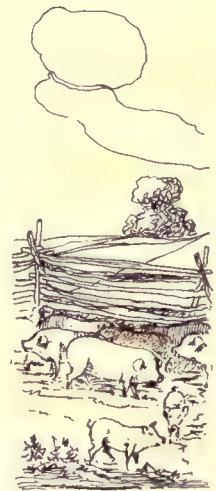
Saskatchewan College
(This College to be opened during 1913)



One of Moose Jaws 12 Churches. Zion Church, Moose Jaw, Canada

Twelve Thriving Churches

There are twelve churches with a combined seating capacity of about 5,000 and they are filled to over-flowing every Sunday, some of the Churches being obliged to hold over-flow services to accommodate the increasing attendance. A new Presbyterian Church is now being built at a cost of \$180,000, capable of seating 1,600. The denominations represented are Anglican, Baptist, Christian Scientist, Methodist, Presbyterian, Roman Catholic, United Norwegian, Free Methodist and Salvation Army.





Some of Moose Jaw's Public Schools

Educational Facilities

There are in these schools about 100 teachers, each of whom specializes in one line of education, thus giving the students the benefit of the best possible teaching in each line of training. A complete system of education such as this will, produce men and women of sterling type.



School Attendance

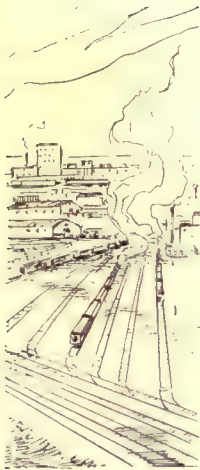
Year	Attendance	Increase
1905	727	...
1906	924	197
1907	1,143	219
1908	1,354	211
1909	1,566	212
1910	1,939	373
1911	2,367	428
1912	2,937	570



Panorama of Moose Jaw Looking I

Moose Jaw in General

A few of the buildings constructed during 1912 and now under construction;—Robin Hood Mills \$750,000; Hammond Block (one of the finest store and office blocks in Western Canada) \$275,000; Commercial Block \$120,000. (Departmental store and office block); Robinson MacBean Ltd., addition \$120,000; Post Office \$260,000; Public Library \$100,000; Saskatchewan College \$130,000; Presbyterian Church \$180,000; Royal George Hotel \$100,000; Empress Hotel \$80,000; Public Schools \$300,000; Banks \$200,000; H. Snell Ltd. Departmental Store \$100,000; Times Apartment block \$75,000; Moose Jaw Flour Mills Ltd. \$350,000; and International Linseed Company Ltd.





View west from Main and High Streets

Rice Studio

Land values are 30% below that of other cities and the business of buying and selling real estate is carried on in a business-like manner without boosting or inflating. There are unlimited opportunities for the careful investor in real estate and farm lands in this vicinity.

Moose Jaw does not lack amusement advantages. Three Parks are now at the service of the people to play baseball, football, cricket, lacrosse and other games. Moose Jaw's professional baseball team won the pennant in 1911. The hockey team are the winners of the Saskatchewan League 1912-13. There is a golf course, and the Moose Jaw Tennis club has a membership of 150. The city band plays in one or the other of the parks twice a week during the summer. The public Library will be open in June 1913.



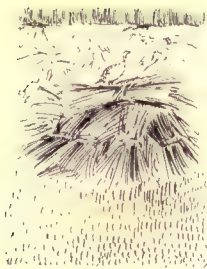


Robin Hood Mills

The Milling Centre

The Robin Hood Four Mills have established a Flour Mill of three thousand barrels daily capacity, an Oatmeal Mill of three hundred cases per day, a Corn Flake plant, Cream of Wheat plant, Molasses Feed Plant for the Manufacture of Stock Foods, Grain drying plant, Paper box factory, and a Coop-erage making in all eight factories controlled by one Company with an investment of three quarters of a million dollars.

The Moose Jaw Flour Mills now in course of construction will when completed have a daily capacity of 2000 barrels of Flour. The combined annual output of these mills will be about one and a half million barrels.





Water Tower

Electric Power Plant

Brick Plant

The above views show the Power Plant with a generating power of 1500 Killowatt. The High Pressure water tank, The Saskatchewan Bridge & Iron Works (which employs 150 to 200 men) and the Sewage Disposal Plant with a daily capacity of 50 tons.



Industrial Moose Jaw

Rice Studio

New industries which have located in Moose Jaw during 1912 are; Dominion Electric Co.; Directoyou Co. Ltd.; Moose Jaw Mattress Factory; Princess Sash and Door Factory; Kasow Electric Co. Ltd.; Western Canada Brush and Broom Mfg. Co. Ltd.; Moose Jaw Tile and Pottery Co.; Canadian Standard Auto and Tractor Co.

The following will locate during 1913:

Railway Accessories Company, manufacturers of rail joints and electric railway supplies. Expect to begin erection of plant July 1st. When completed will employ 50 men to start; when in full operation 125.

Chemical Soap Company, manufacturers of soap suited for this country, also chemicals. Start erection of plant June 1st; when completed will employ 40 men to start and within two years 250.

Incandescent Gas Light & Stove Company, manufacturers of gasoline gas manufacturing machines. Start the erection of their plant May 15th. When completed will employ 40 people to start and 90 when in full operation.





Industrial Moose Jaw

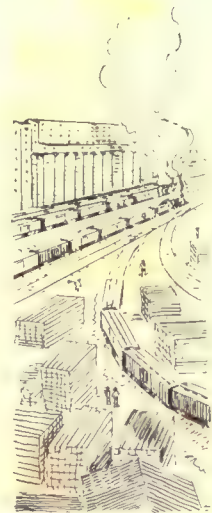
Rev. 20/11

International Linseed Company, start erection 1st of May, of a twenty-four press linseed oil mill which will be in full operation by October 1st. This will be one of the largest linseed oil mills in the world, and will employ at the start, 75 hands.

We are now negotiating with the following class of factories, all of which we have every reason to believe will be located in Moose Jaw and be in full operation before 1914—

Gasoline Tractor Factory,	Binder Twine Factory
Oat Meal Mill,	Stove Works
Threshing Machine Factory,	Pneumatic Tool Company
Gas Engine Plant,	Biscuit Factory
Paint Works	Cooperage

The retail trade of Moose Jaw is more nearly on a cash basis than any City in Western Canada owing to its large regular monthly pay roll.





Canadian Pacific Railway Yards from 6th Avenue East

Ree Studio

Moose Jaw is a Grand Divisional Point of the Canadian Pacific Railway and their investment in terminals at this point represents over \$5,000,000. Their Yards here contain 52 miles of trackage and are the third largest individually owned Yards in the world. Included in their estimates for 1913, is a new \$1,000,000 Depot for Moose Jaw. At this point, they have in their employ 2,063 persons, and their monthly payroll is over \$285,000. That Moose Jaw will be a great railroad centre is indicated by the fact that with the service of only one railroad, it has grown to a prosperous city.





Gordon Ironside and Fares Abattoir and Packing Plant

C. P. R. Freight Yards from 6th Ave. West

The Canadian Pacific Railway Stock Yards are the largest in the Central West. The C. P. R. have found it necessary to double-track their main line for many miles east and west of the city to cope with the ever increasing traffic converging from their terminal here.

Gordon Ironside and Fares Abattoir is located here. Their present killing capacity is 500 hogs and 125 cattle per day. They are now making arrangements to double their present plant this year.





Canadian Northern Railway Grade entering Moose Jaw

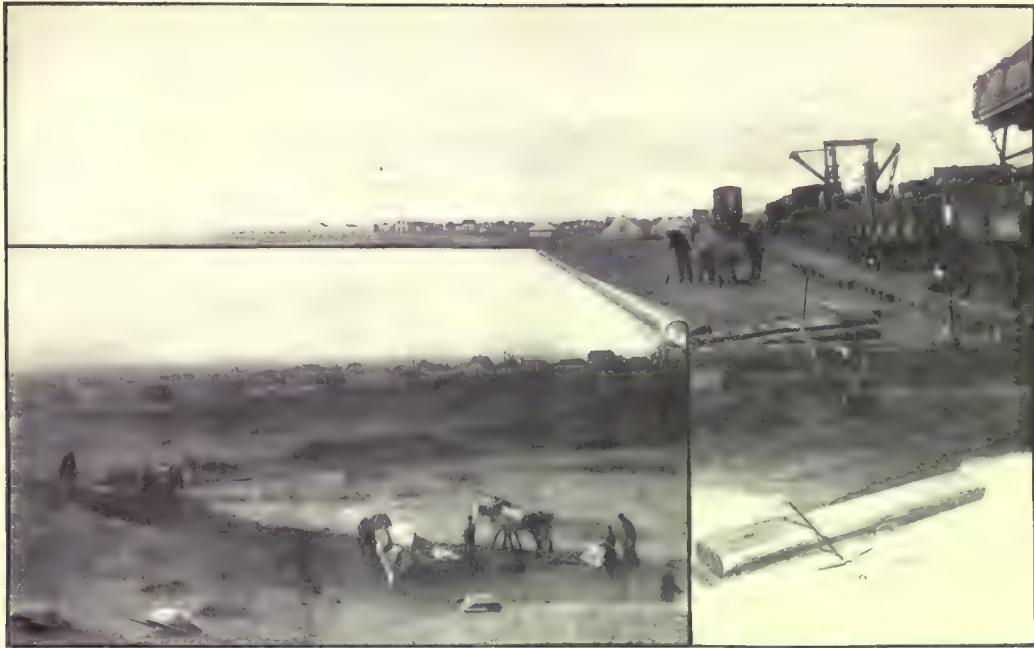
The above views show the Canadian Northern Railway Company grading their line from the South. Steel is laid to within a mile of the city limits, and the wholesalers of the city have been shipping over this line for some time. Completion of the line through the city is anticipated within a few months.



Mixed Farming

Mixed farming is now being taken up seriously and with great success. Our back page illustrations show the great possibilities that await the farmer who will take up this branch of agriculture. The citizens are now realizing that they can grow vegetables in their gardens for their family use and they find this both interesting and remunerative. The reputation of our wheat and other grain farms is world wide and requires no comment.





Grand Trunk Pacific Railway Grade entering Moose Jaw

The Grand Trunk Pacific Railway have their steel laid through the city, thus giving Moose Jaw service from three Transcontinental Railway Companies, namely: Canadian Pacific, Canadian Northern, and the Grand Trunk Pacific Railway Companies. The Grand Trunk will give a passenger service on and after the first of August, 1913.

Street Railway

Moose Jaw Electric Street Railway, the first in Saskatchewan, has now ten miles of track and is preparing for a large extension in its system, demonstrated by the fact that they have purchased a new Diesel engine with the largest fly-wheel in Western Canada.





PUBLIC BUILDINGS UNDER CONSTRUCTION

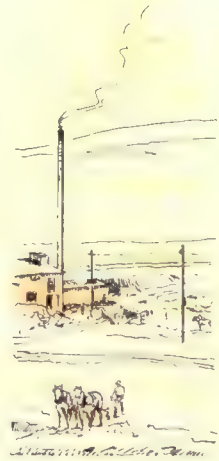


A walk in Crescent Park Moose Jaw

Rees Studio

Parks and Boulevards

We have been accused of being wholly utilitarian, and occupied only in chasing the almighty dollar and neglecting to cultivate the beautiful. A walk through Crescent Park, City Square, River Park, and along the River Drive, as well as through other smaller breathing spaces and along our boulevarded streets would exonerate us from that charge. One hundred and forty thousand dollars was voted last year to be used in beautifying the City, the Parks and River Drives.



Royal George Hotel



City Hall Square

Canadian Pacific Railway Gardens

Enterprising Municipal Organization

The Mayor and City Council have played important parts in the rapid development of Moose Jaw. The citizens have elected men of unquestionable integrity and ability who have conscientiously administered to the city's needs.

Lowest Tax Rate in Western Canada

The tax rate fixed for 1912 is 10 4-5 mills, the lowest of any city in the West. The assessment figures are:

1910.....	\$13,548,402
1911.....	27,770,453
1912.....	43,665,298

Showing a substantial growth.





Moose Jaw River

1100

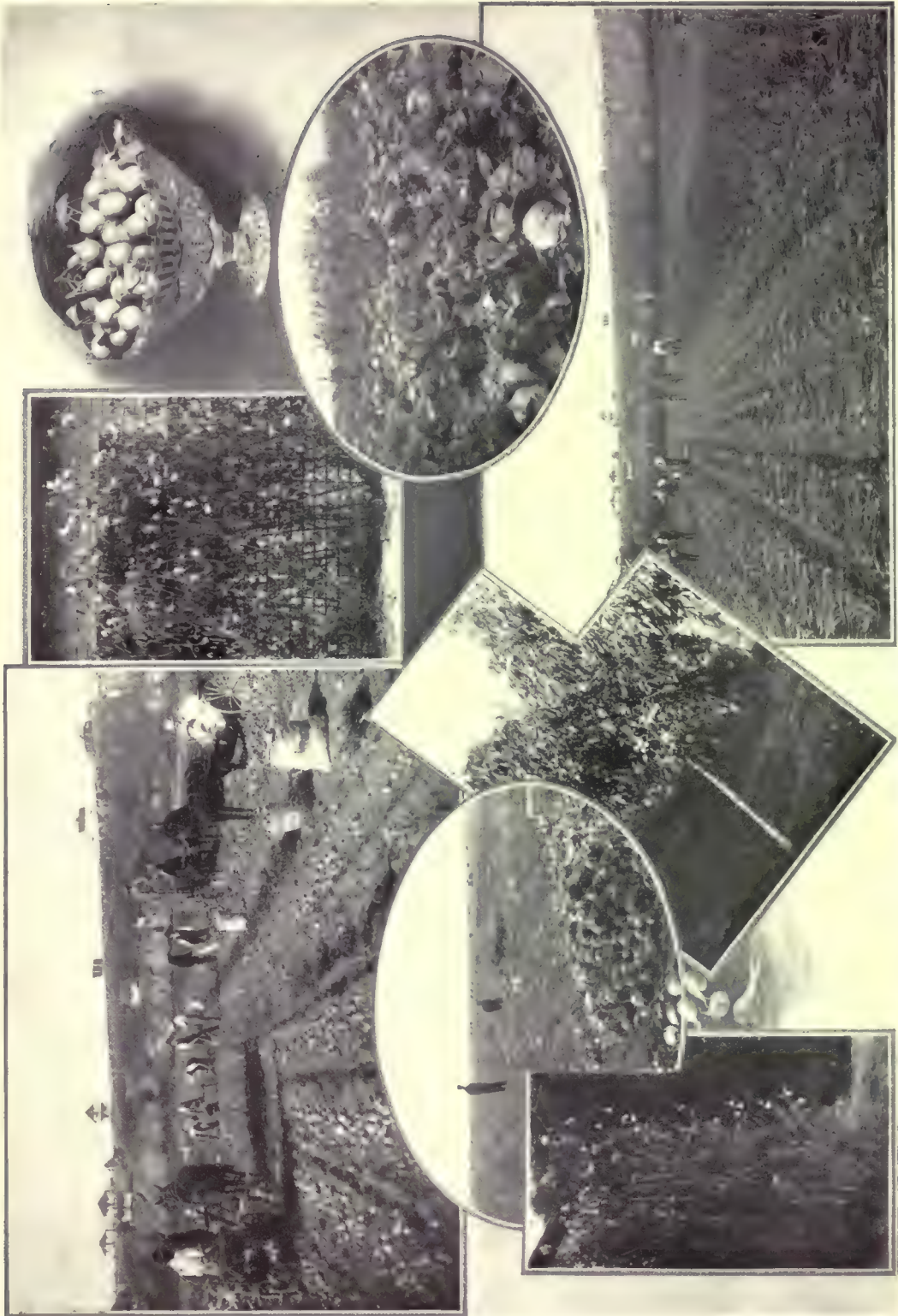
Boating and Canoeing

Moose Jaw is fortunate in having a navigable river, the long summer evenings are enjoyably spent in canoeing, rowing and motor boating. A handsome boat-house is to be built this Spring which will give an added interest to aquatic sports.

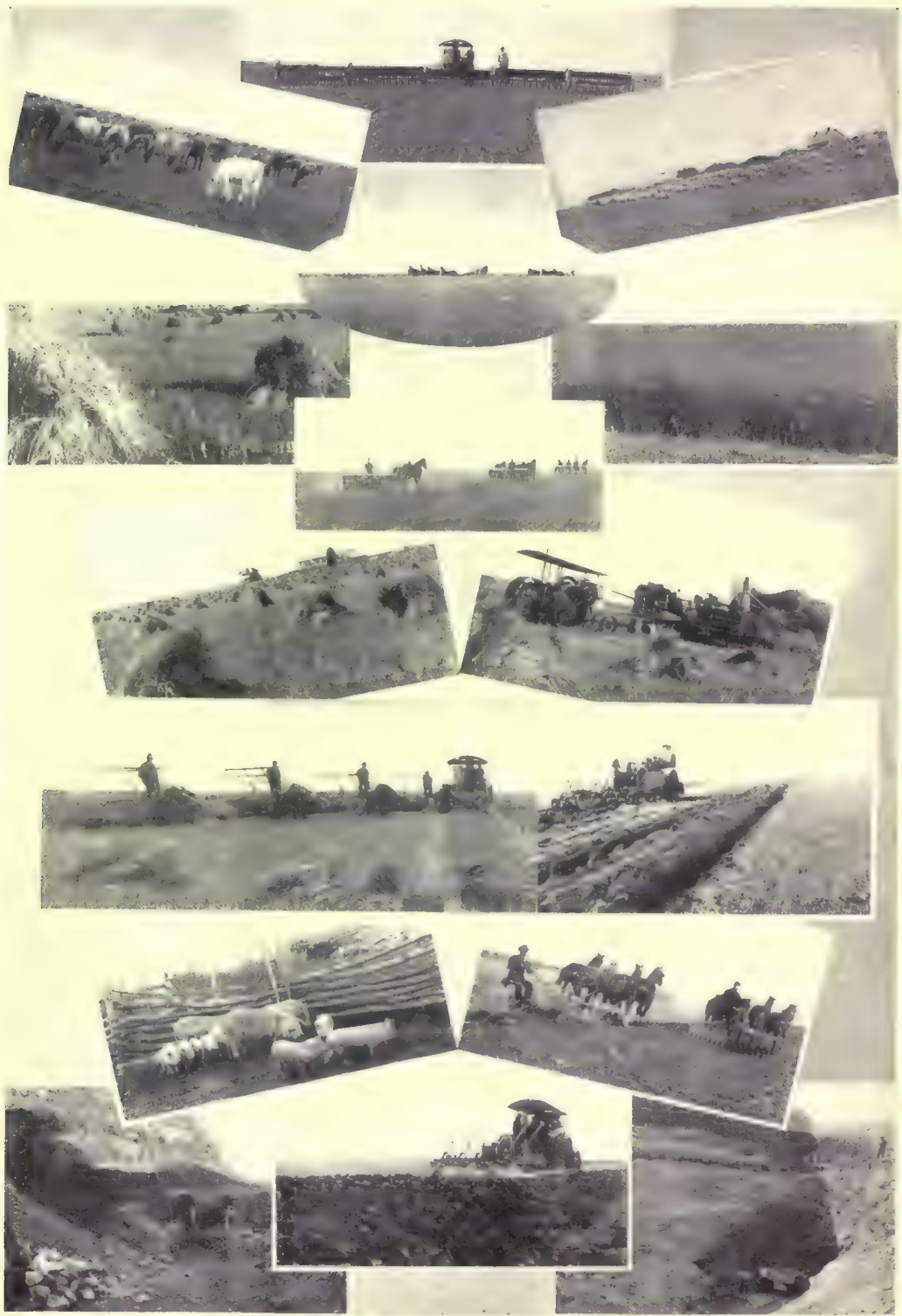




A FEW OF MOOSE JAW'S COMFORTABLE HOMES



PRODUCTS OF MOOSE JAW'S MARKET GARDENS



PRODUCTS OF MOOSE JAW FARMING DISTRICT

The Moose Jaw Board of Trade employs an Industrial Commissioner who assists desirable manufactures in organizing, financing, engineering and successfully locating factories in Moose Jaw. His services cost the manufacturer nothing.



The Moose Jaw Board of Trade employs a Secretary who will be pleased to reply to inquiries from intending settlers regarding the city and district.

Facts and Figures

Regarding the

Development

of the

City of Moose Jaw

Saskatchewan, Canada

1913

177 SS 4/25

730
315
—
415

PLEASE DO NOT REMOVE
CARDS OR SLIPS FROM THIS POCKET

UNIVERSITY OF TORONTO LIBRARY

F Moose Jaw, Saskatchewan. Board
5747 of Trade
M6M5 Moose Jaw

