



The

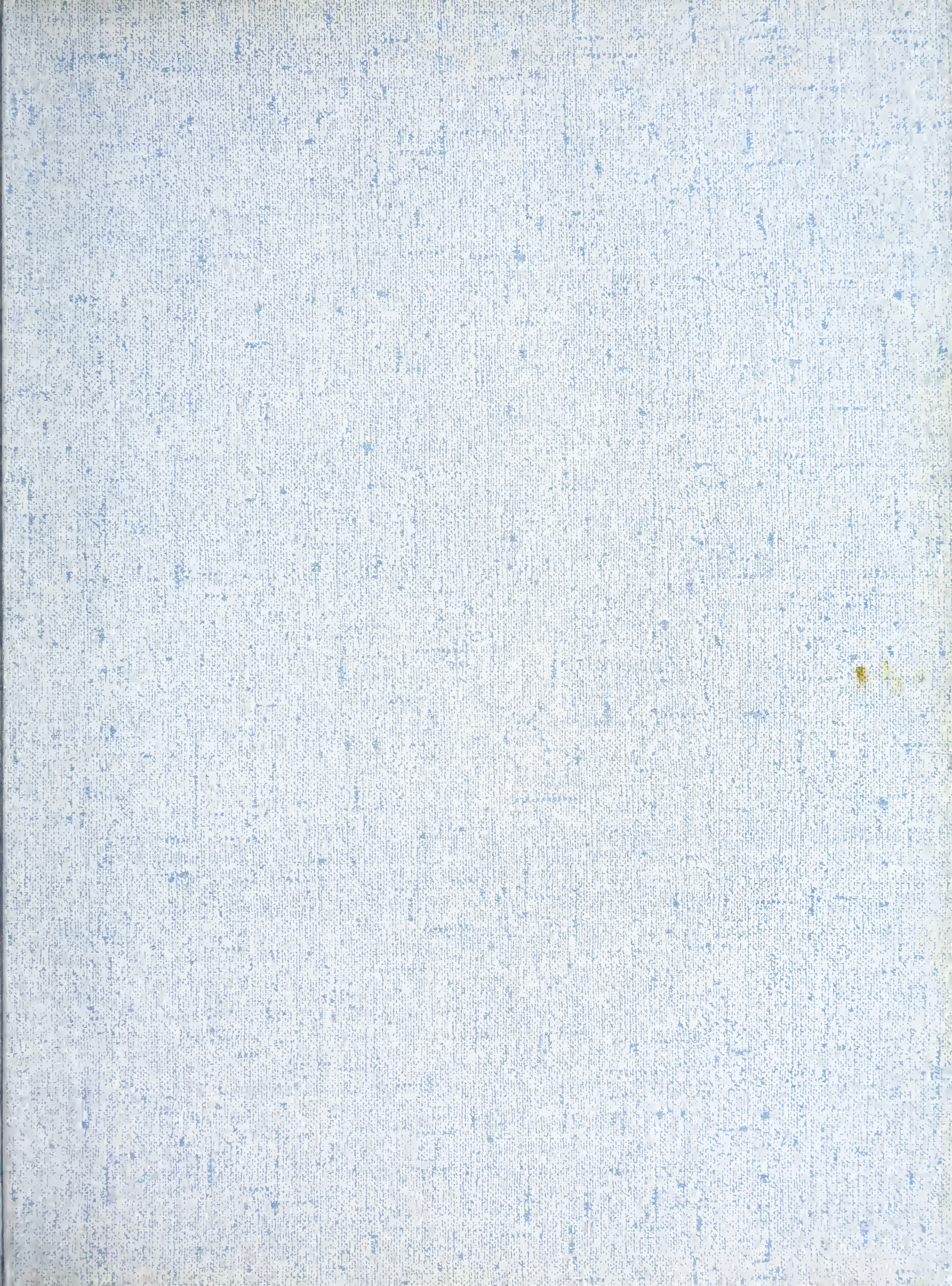
# HORNET

1965















This is an annual publication of the Student Body of Morris College, Sumter, South Carolina.

Myron Benford  
Editor-in-Chief

*THE  
HORNET*



Robert Johnson  
Photographer

Mrs. Julia Wells  
Adviser



*BUZZING THRU*



6







5



*WITH THE HORNETS*



# *FOREWORD*

We students must put forth every effort to unfold potentialities that the world offers. Electronic computers, new life saving formulas, and astronauts orbiting the earth have far surpassed the dreams of many dedicated men of wisdom and endurance.

The simple cooperation of our staff and adviser during this electronic era was totally responsible for this publication.

As you preserve this yearbook and reminisce from time to time we hope that its contents will become more valuable as the years go by.

## ALMA MATER

Morris our college dear  
With hearts all filled with cheer  
We come to thee  
Throughout life's checkered ways  
Thy name we'll ever praise  
Teachers of youthful ways  
All hail to thee.  
When from our homes we came  
To own thy lofty name  
Breathe courage free  
Parents and teachers dear  
Calmed by the lack of fear  
Pay homage through the years  
All hail to thee.





*OUR PRESIDENT*

*Dr. O. R. Reuben*



# *DEDICATION*

Through the years countless dedications have been made: dedications to men and women for accomplishments in various fields of endeavor; for achieving recognition among fellows; and, of course, for proficiency in professional and non-professional tasks. Yet, of all the prior dedications made, none carry a deeper meaning and sense of appreciation than the one made here.

The members of the 1965 Hornet Yearbook Staff, dedicate this volume to the Student Body of Morris College.

Our leaders of today were students of yesterday; our students of today will be leaders of tomorrow.

From throughout the country we have assembled here to prepare ourselves to properly guide and instruct the world tomorrow.

We, with a sense of loyalty, reverence, and vigor, will meet the challenges of a conflicting complicated world. Properly prepared our performance will be superb.





MAY 1965 GRADUATES





*IN MEMORIAM*

MRS. BEAULAH McCOLLUM

MR. ALFORD TITER

DESTINY

O' mighty, O' mighty Lord;

Strength arises within my invisible soul,

Which drives me to the altar of sacrifice to dedicate

I feel inspiration that chills the warmth of my body,

That you so heavenly gave;

Speechless as I am,

Parts bestow my faith to thee

When called upon to pay my due.

FAITH



# OUR FACULTY

L  
O  
Y  
A  
L



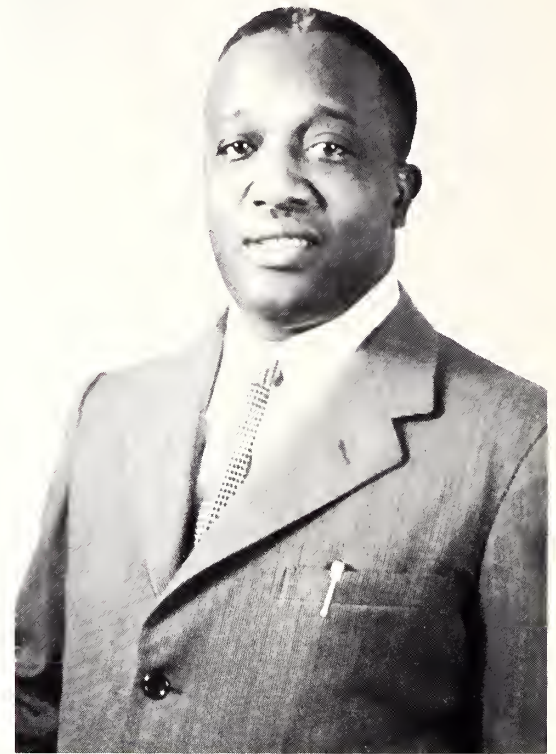
D  
E  
D  
I  
C  
A  
T  
E  
D



## *Administrative Officers*



PRESIDENT  
Dr. O. R. REUBEN



Rev. Henry E. Hardin  
Dean of Instruction

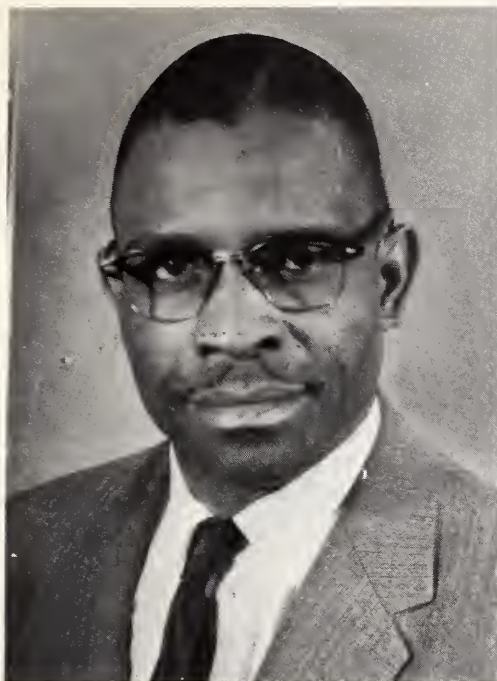


Mrs. Wilhelmenia Owens  
Bursar

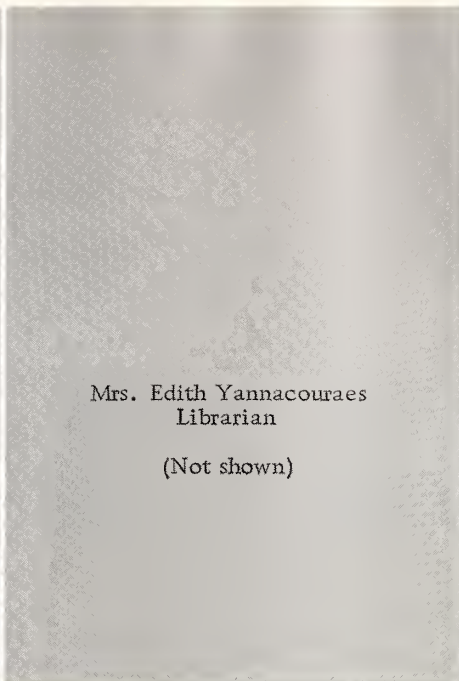


Mrs. Jessie M. Taylor  
Registrar





Rev. R. W. Stallings  
Superintendent of  
Buildings and Grounds



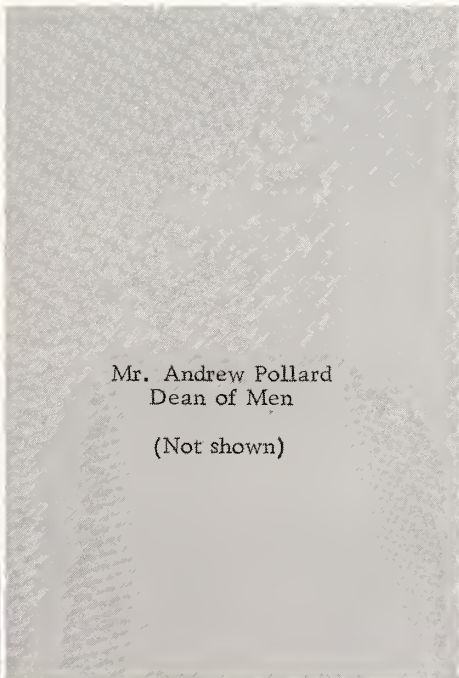
Mrs. Edith Yannacouraes  
Librarian  
(Not shown)



Rev. B. D. Lewis  
College Minister



Mrs. Nunie A. Smith  
Dean of Women



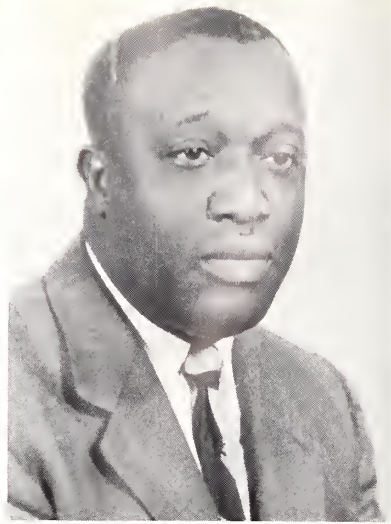
Mr. Andrew Pollard  
Dean of Men  
(Not shown)



Mrs. R. Littles  
Assistant Dean of Women

*and Faculty*





Rev. Henry E. Hardin  
Director  
Division of Humanities



Mr. Matthew W. Hays, Jr.  
Director  
Division of Natural Sciences



Mrs. Magnolia A. Lewis  
Director  
Division of Education



Mrs. Eliza E. Black  
English  
Department Chairman



Mrs. Eunice Abney  
English



Mrs. Elaine Hays  
English



Rev. Bert D. Lewis  
Religion





Mr. Theolander Taylor  
Art



Rev. Bennie J. Weston  
Religion



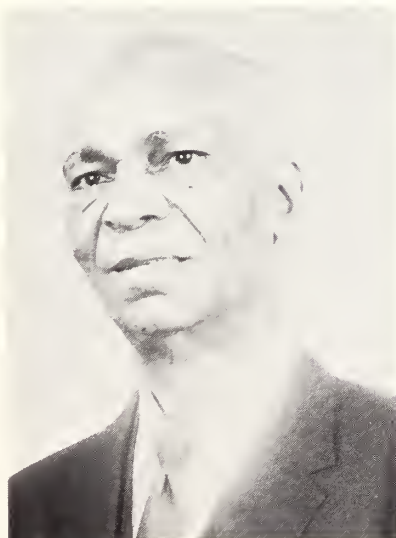
Dr. H. S. Lee  
Education



Mr. James W. Norris  
Music  
Department Chairman



Mr. Kuo-hsiung Ho  
Education



Rev. Zack Townsend  
Mathematics



Dr. Nichols Yannacouraes  
French





Rev. Lucius Daniels  
Social Studies



Miss H. L. Boseman  
Bookstore Manager



Mrs. Turnage  
Director of Student Center



Rev. M. McAllister  
Director of Alumni Activities



Miss Geneva Simon  
Dietitian



Mr. On B. Lee  
Mathematics



V. Backus, Sr.  
Field Worker



# FACULTY ROSTER

(NOT SHOWN)

*Mrs. Anna D. Reuben* ..... *Director, Division of Social Studies*

*Mr. Ernest A. Finney* ..... *Government*

*Mrs. Irene Williams* ..... *Education*

*Mrs. P. Pinson* ..... *Assistant Librarian*

*Rev. Harry Wright* ..... *Religion*

*Dr. P. V. Zanella* ..... *History*

*Mr. Andrew Pollard* ..... *Physical Education*

*Mr. W. H. Neal* ..... *Physical Education*

*Mr. David Coleman* ..... *Music*

*Mrs. J. S. Scott* ..... *Biology*

*Rev. J. J. Abney* ..... *History*

*Mrs. J. S. Walker* ..... *Secretary to Dean*

*Mrs. Julia Wells* ..... *Secretary to President*

*Mrs. Queen W. Span* ..... *Secretary to Registrar*





*The 1964-'65  
Graduating Class  
Being Led  
Into  
Commencement  
Exercises  
By  
Mr. Matthew Hays, Jr.  
and  
Mr. Theolander Taylor*

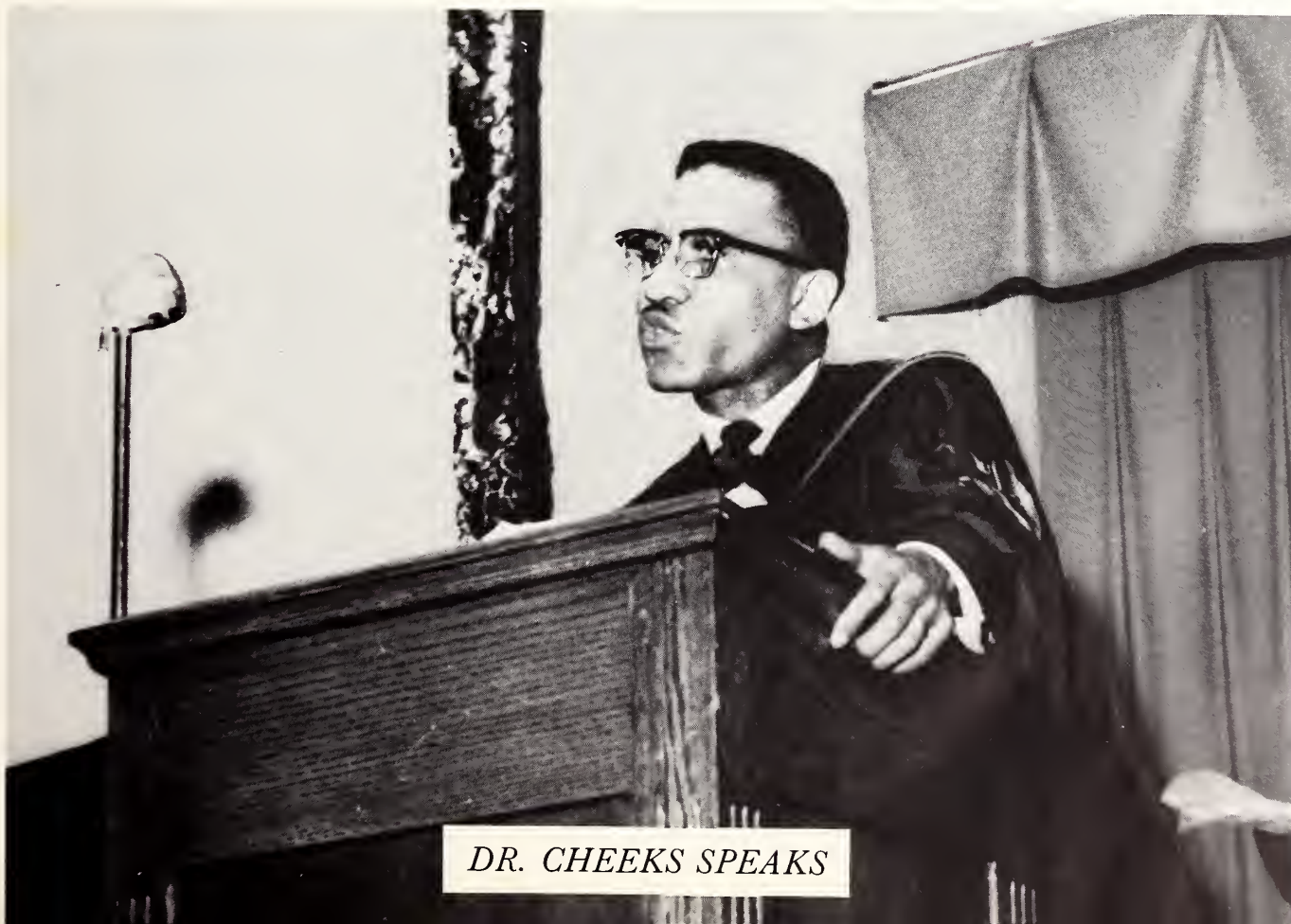






*PRESIDENT REUBEN*

*Gives Introduction of Commencement  
Speaker, Dr. James Cheeks*



*DR. CHEEKS SPEAKS*





## *STUDENT COUNCIL*



EXECUTIVE OFFICERS: Vice President, James Rawlinson; Treasurer, Emily Walters; President, William Dunbar; Secretary, Earnestine Easterling; Business Manager, Roy Dukes.



EXECUTIVE OFFICERS

Katherine Eaddy, Secretary; Andrea Jones, Vice President; Cinderitha Jackson, President; Albertha Graham, Treasurer.



*WOMEN'S SENATE*







*Mathematics Club*

*Science Club*







*The  
Chapel  
Ushers*

*The  
Baptist  
Student  
Union*







*THE MORRIS COLLEGE CHORALE*





*EXEGETICAL  
SOCIETY*

*CHESS  
CLUB*







*THE  
HORNET  
NEWSPAPER  
STAFF*

EXECUTIVE OFFICERS  
J. Toney, Feature Editor  
B. Sowell, Staff Editor  
A. Owens, Feature Editor  
M. McGriff, Editor-in-Chief

*YWCA*







*THE GARDEN CLUB*

*LITERARY SOCIETY*







*YWA*

*DRAMATICS CLUB*



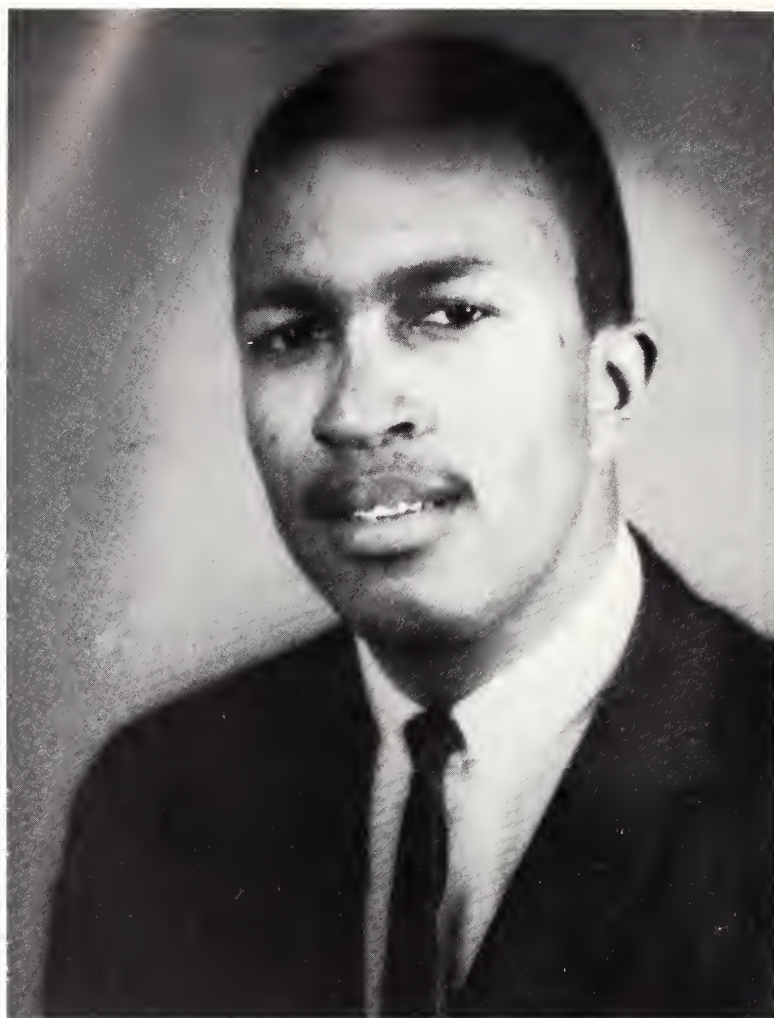


*SCENES — FROM THE TRAGEDY  
MEDEA BY EURIPIDES*





*WILLIAM DUNBAR*



*President  
Student Government*



*FRESHMEN  
TALENTED BEAUTIES*





# FRESHMEN



## ROW ONE

Robert Abson . . . . . Lamar  
 Robert Alexander . . . . . Hirman, Ga.  
 Bertha Alston . . . . . Sumter  
 Betty Anderson . . . . . Sumter  
 Mable Anderson . . . . . Lynchburg  
 Sarah Austin . . . . . Woodruff

## ROW TWO

Kenneth Bailey . . . . . Eutawville  
 Peggie Beard . . . . . Timmons ville  
 Nathaniel Benbow . . . . . Sumter  
 Mary Bess . . . . . Lamar  
 Charlotte Bethune . . . . . Manning  
 Matthew Bethune . . . . . Sumter

## ROW THREE

Annie Bowens . . . . . Liberty  
 James Boyce . . . . . Spartanburg  
 Harry Bradley, Jr. . . . . Sumter  
 Ray Brown . . . . . Sumter  
 Richard Brown . . . . . Florence  
 Lee Campbell . . . . . Dillon

## ROW FOUR

Marva Cannon . . . . . Greer  
 Okla Chatman . . . . . Greeleyville  
 Jean Collins . . . . . York, Pa.  
 Henry Cooper . . . . . Sumter  
 Marsha Daniels . . . . . Sumter  
 George Davis . . . . . Sumter



# FRESHMEN



ROW ONE

Mary Davis . . . . . Pinewood  
 Velma Davis . . . . . Timmonsville  
 Vermell Davis . . . . . Sumter  
 Sara Dennis . . . . . Rembert  
 Shirley Dickenson . . . . . Pittsburgh, Pa.  
 Mary Dogan . . . . . Columbia

ROW TWO

Ruth Douglas . . . . . Scranton  
 William Duncan . . . . . Brooklyn, N. Y.  
 Jerome Dupree . . . . . Sumter  
 Saddle English . . . . . Sumter  
 Frederick Evans . . . . . Sumter  
 Rebecca Fant . . . . . Anderson

ROW THREE

Zonobia Flood . . . . . Orangeburg  
 Catherine Fuller . . . . . Eutawville  
 Estella Funches . . . . . Sumter  
 Carrie Frierson . . . . . Sumter  
 Dorothy Frierson . . . . . Sumter  
 Mary Gaines . . . . . Great Falls

ROW FOUR

Judy Garland . . . . . Sumter  
 Leroy Gass . . . . . Sumter  
 Joseph Geter . . . . . Sumter  
 Gail Gibbs . . . . . Georgetown  
 Catherine Gore . . . . . Sumter  
 Corrine Grant . . . . . Charleston



# FRESHMEN



## ROW ONE

Ruth Grant . . . . . Sumter  
 Clearence Griffin . . . . . Spartanburg  
 Veronia Harper . . . . . Spartanburg  
 Lula M. Hastie . . . . . Sumter  
 Willie M. Hastie . . . . . Sumter  
 Qunnie Haynes . . . . . Moncks Corner

## ROW TWO

Thomas Haynesworth . . . . . Sumter  
 Jefferson Hennaghen . . . . . Sumter  
 James Hill . . . . . Lake Wales, Fla.  
 Theodore Holliday . . . . . Sumter  
 Marie Holmes . . . . . Oswego  
 Charles Holton . . . . . Lake Wales, Fla.

## ROW THREE

Victoria Hood . . . . . Paterson, N. J.  
 Kenneth Howard . . . . . Sumter  
 Virginia Hutchinson . . . . . Edisto Island  
 Sarah Issac . . . . . Hartsville  
 David Jackson . . . . . Brooklyn, N. Y.  
 Elizabeth Jefferson . . . . . Pineville

## ROW FOUR

Hope Jefferson . . . . . Chesterfield  
 Lois Jenkins . . . . . Alcolu  
 Herman Johnson . . . . . St. George  
 Joann Johnson . . . . . Timmonsville  
 Joel Johnson . . . . . Lake Wales, Fla.  
 Margaret Johnson . . . . . Kingtree



# FRESHMEN



ROW ONE

Danny Jones . . . . . Westminister  
 James Kenely . . . . . Washington, D. C.  
 Veronica Kennedy . . . . . Sumter  
 Charles King . . . . . Manning  
 Sara Lee . . . . . Sumter  
 Ernestine Larkin . . . . . Orangeburg

ROW TWO

Lillian Ligions . . . . . Ridge Springs  
 Mary LeSane . . . . . Ridge Springs  
 Richard Levy . . . . . Cheraw  
 Albertha Lewis . . . . . Rembert  
 Maudia Livingston . . . . . Mullins  
 Thomas Lowery . . . . . Sumter

ROW THREE

Bonnie Lurke . . . . . Orange, N. J.  
 Velma Lytch . . . . . Dillon  
 Kitaka Masiki . . . . . Uganda, Africa  
 Mary McCall . . . . . Dalzell  
 Douglas McCarroll . . . . . Taylors  
 Walter McClintock . . . . . Startex

ROW FOUR

Ruby McCullough . . . . . Lamar  
 Sammy McDowell . . . . . Laurens  
 Dorothy McFadden . . . . . Nesmith  
 Priscillia McQuillar . . . . . Camden  
 Mary Mack . . . . . Lynchburg  
 Elouise Magazine . . . . . Bishopville



# FRESHMEN



ROW ONE

Mildred Mazyck . . . . . St. Stephen  
 Queenie Melvin . . . . . Nichols  
 Carolyn Miller . . . . . Spartanburg  
 Ernestine Miller . . . . . Sumter  
 Mack Mitchell . . . . . Panama City, Fla.  
 Sally Moody . . . . . Sumter

ROW TWO

Manning More . . . . . Sumter  
 Ronetta Moses . . . . . Sumter  
 Omega Moss . . . . . Greer  
 Samuel Munnerlyn . . . . . Pawley's Island  
 Mary Nathaniel . . . . . Sumter  
 Yvonne Nicholson . . . . . Jamaica, N. Y.

ROW THREE

Alice Oliver . . . . . Sumter  
 Clifford Padgett  
 Phyllis Parker . . . . . Florence  
 Frances Pendergrass . . . . . Kingstree  
 LeVola Peterson . . . . . Sumter  
 Isaiah Porter . . . . . Sumter

ROW FOUR

Eddie Potts . . . . . Sumter  
 Pernell Pringle . . . . . Cross  
 Lilly Profit . . . . . Santee  
 Sarah Rayford . . . . . Ninety Six  
 James Reaves . . . . . Marion  
 Bernice Reeder . . . . . Greenville



# FRESHMEN



ROW ONE

Sam Rhue . . . . . Georgetown  
 Dianna Richardson. . . . . Ravenel  
 Eleanor Robinson . . . . . Sumter  
 Mary Robinson. . . . . Ninety Six  
 Evelyn Rucker . . . . . Belton  
 Lucille Scarborough . . . . . Sumter

ROW TWO

Delois Scoville . . . . . Bowman  
 Lottie Screen . . . . . Bath  
 Louise Shaw . . . . . Sumter  
 Benny Smith . . . . . Greenville  
 Earnestine Soon . . . . . Cheraw  
 Thelma Staggers. . . . . Chesham

ROW THREE

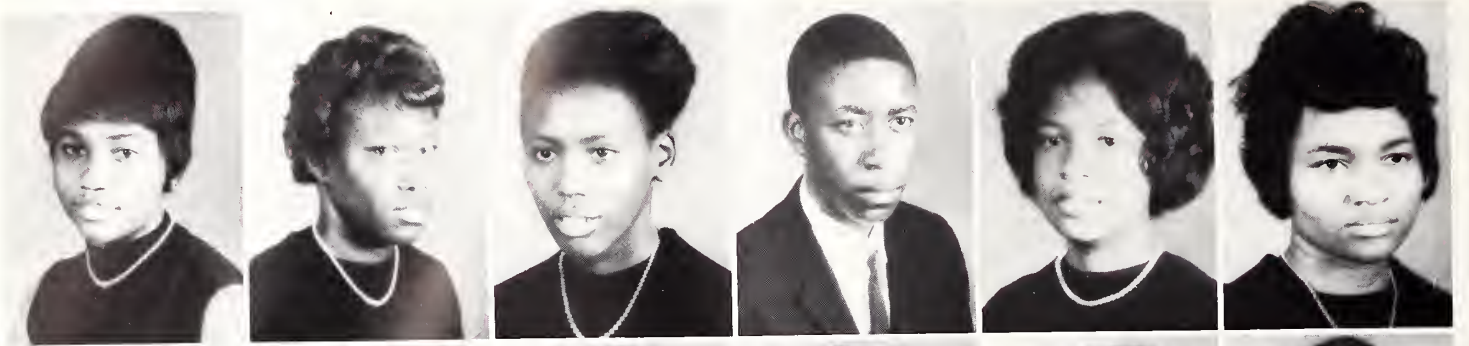
Shirley Steplight. . . . . Charleston  
 Roberta Stukes. . . . . Sumter  
 David Sumpter. . . . . Kingstree  
 Alfred Walker . . . . . Sumter  
 Thomas Washington . . . . . Sumter  
 Gloria Washington . . . . . Hopkins

ROW FOUR

Phyllis Way . . . . . Manning  
 Beulah White . . . . . Sumter  
 Josephine White . . . . . Sumter  
 Josephine White . . . . . Bishopville  
 Joseph Whiteside. . . . . Spartanburg  
 Famon Whitfield. . . . . Anderson



# FRESHMEN



ROW ONE

ROW TWO

Lydia Wigfall . . . . . Pineville  
 Joanne Wilder . . . . . Summerton  
 Betty Williams . . . . . Sumter  
 Eugene Williams . . . . . Sumter  
 Irene Williams . . . . . Sumter  
 Martha Williams . . . . . Silver Street

Simuel Williams . . . . . Palatka, Fla.  
 Neil Williamson . . . . . Cross  
 Nancy Wilson . . . . . Mayesville  
 Tillie Wilson . . . . . Elliott  
 Eartha Wright . . . . . Sumter  
 Rosa Lee Wrights . . . . . Belvedere

ROW THREE

Yvonne Young . . . . . E. Orange, N. J.

## Not Pictured

Minnie Ayers . . . . . Sumter  
 Thomas Bendford . . . . . Donora, Pa.  
 Carl Brooks . . . . . Bishopville  
 Solomon Brooks . . . . . Sumter  
 Burgess Carson . . . . . Anderson  
 Nathan Conyers . . . . . Sumter  
 Leroy Dinkins . . . . . Sumter  
 Martha Edwards . . . . . Charleston  
 Jonathan Evans . . . . . Salters  
 Yvonne Graham . . . . . Latta  
 Willie Grason . . . . . Sumter  
 Johnnie Haley . . . . . Belleglade, Fla.  
 Richard Hodges . . . . . Timmons ville  
 Margaret Hunter . . . . . Sumter

Elizabeth Lucas . . . . . Sumter  
 Moses McCants . . . . . Sumter  
 Shirley McDonald . . . . . Sumter  
 Shirley McGainey . . . . . Sumter  
 Johnnie Mae Poole . . . . . Greenville  
 Minnie Richardson . . . . . Sumter  
 Maude Robinson . . . . . Sumter  
 Charles Rogers . . . . . Cross  
 Johnnie Sanders . . . . . Latta  
 James Taylor . . . . . Baltimore, Md.  
 Vernell White . . . . . Cross  
 Patricks Williams . . . . . Silver Street  
 David Woods . . . . . Sumter  
 John Miller . . . . . Sumter



*SOPHOMORES*





# SOPHOMORES



ROW ONE

Eli Baker . . . . . Sumter  
 Allie Bethea . . . . . Dillon  
 Henry Bethea . . . . . Sumter  
 Myron Benford . . . . . Detroit, Mich.  
 William Bolton . . . . . Newark, N. J.  
 Herman Bowers . . . . . Brownsville, Pa.

ROW TWO

Robert Bowman . . . . . Charleston  
 Eddie Brown . . . . . Lake Geneva, Fla.  
 John Brown . . . . . Anderson  
 Margaret Brown . . . . . Sumter  
 Floydetta Butler . . . . . Sumter  
 Ralph Canty . . . . . Sumter

ROW THREE

Edith Chambers . . . . . Marshville, N. C.  
 Eartha Chisolm . . . . . Aiken  
 Rosa Clark . . . . . Sumter  
 Lillian Coger . . . . . Midville, Ga.  
 Rosa Cooper . . . . . Sumter  
 Thomasena Cooper . . . . . Effingham

ROW FOUR

Sara Dennis . . . . . Sumter  
 Cora Dixon . . . . . Hartsville  
 John Douglas . . . . . Great Falls  
 Letar Douglas . . . . . Great Falls  
 O'Dell Dozier . . . . . Trio  
 Kathryn Eaddy . . . . . Pamplico



# SOPHOMORES



ROW ONE

Joseph Felder . . . . . Pinewood  
 Wilhemina Fleming . . . . . Lynchburg  
 Francis Frazier . . . . . Hartsville  
 Mary Frierson . . . . . Alcolu  
 Luvenia Funderburk . . . . . Mt. Grogham  
 Rosa Glover . . . . . Sumter

ROW TWO

Joe Graham . . . . . Loris  
 Miriam Green . . . . . Washington, D. C.  
 Judy Harkless . . . . . Darlington  
 Ella James . . . . . Sumter  
 Joyce Johnson . . . . . Loris  
 Andrea Jones . . . . . Timmons ville

ROW THREE

Benjamin Jones . . . . . Conway  
 Theo Kirkland . . . . . Timmons ville  
 Willie Mae Lester . . . . . Marion  
 Robert Lewis . . . . . Loris  
 Chalres Littles . . . . . Union, N. J.  
 Julius Long . . . . . Holly Hill

ROW FOUR

Elizabeth Lucas . . . . . Sumter  
 Imogene Mikell . . . . . Sumter  
 Vernetta Mitchell . . . . . Ellore e  
 Jimmy Montgomery . . . . . Sumter  
 Freddie Morris . . . . . Brownsville, Pa.  
 Henry Murphy . . . . . Sumter



# SOPHOMORES



ROW ONE

Nathalie Murray . . . . . Charleston  
 Bobby McClary . . . . . Nesmith  
 Edward McDowell . . . . . Sumter  
 Mary Oaks . . . . . Sumter  
 Ronnie Pettigrew . . . . . Timmonsville  
 Blanche Pinckney . . . . . Georgetown

ROW TWO

Pauline Prioleau . . . . . Russellville  
 Robert Stephney . . . . . Bishopville  
 Theatrice Strickland . . . . . Hawthorne, Fla.  
 Herman Smith . . . . . Anderson  
 Willie Tate . . . . . Anderson  
 Betty Washington . . . . . Winsboro

ROW THREE

Eston Wells . . . . . Sumter  
 Clifford Washington . . . . . Ravenel  
 Alfonza Williams . . . . . Aiken  
 Janie Williams . . . . . Sumter  
 Marilyn Williams . . . . . Mullins  
 Rebecca Willis . . . . . Sumter

ROW FOUR

Azalee Wilson . . . . . Timmonsville  
 Glendell Wilson . . . . . Lanes  
 Vernice Woods . . . . . Daisytown, Pa.



# JUNIORS





# JUNIORS



## ROW ONE

Oliver Allen . . . . . Sumter  
 Beatrice Anderson . . . . . Grover  
 Horace Anderson . . . . . Johnston  
 Sarah Baker . . . . . Coward  
 Vera Barns . . . . . Coward  
 Betty Benbow . . . . . Manning

## ROW TWO

Lutisha Billups . . . . . Sumter  
 Thelma Bradley . . . . . Sumter  
 Addie Brown . . . . . Anderson  
 Charles Butler . . . . . Sumter  
 Albertha Cannady . . . . . Bennettsville  
 Smiley Cox . . . . . Travelers Rest

## ROW THREE

Fern Crawford . . . . . Washington Park  
 Willie Daniels . . . . . Moultrie, Ga.  
 Brenda David . . . . . Bennettsville  
 Peggy David . . . . . Bennettsville  
 Doris Davis . . . . . Holly Hill  
 Ruth Doctor . . . . . John's Island

## ROW FOUR

William Dunbar . . . . . Taylors  
 Beverly Dunlap . . . . . Eastover  
 Earnestine Easterling . . . . . Hartsville  
 Willie Evans . . . . . Sumter  
 Majorie Flemming . . . . . Cheraw  
 James Gary . . . . . Sumter



# JUNIORS



## ROW ONE

McMillian Gerald . . . . . Marion  
 Everett Gilliard . . . . . Georgetown  
 Nancy Godfrey . . . . . Mullins  
 Fostina Graham . . . . . Nichlos  
 Roy Graham . . . . . Mullins  
 Willie Grate . . . . . Loris

## ROW THREE

Cinderitha Jackson . . . . . Williamston  
 Roberta James . . . . . Sumter  
 Robert Jefferson . . . . . Hartsville  
 Marie Jones . . . . . Sumter  
 Sylvester Jones . . . . . Sumter  
 Rossie Kearson . . . . . Newark, N. J.

## ROW TWO

John Hall . . . . . New York, N. Y.  
 Jammie Hemingway . . . . . Loris  
 Janie Henderson . . . . . Jenkinsville  
 Jane Hennigan . . . . . Florence  
 Grace Howard . . . . . Aiken  
 Delores Isaac . . . . . Sumter

## ROW FOUR

Vivian Kemp . . . . . Timmons ville  
 Martha Kennedy . . . . . York, Pa.  
 Almetta King . . . . . Sumter  
 Jerry Maple . . . . . Sumter  
 Mary Mathis . . . . . Sumter  
 Sandra Montgomery . . . . . Sumter



# JUNIORS



ROW ONE

Helen Meyers . . . . . Ravenel  
 Elijah McCants . . . . . Sumter  
 Ruth McCants . . . . . Sumter  
 Mildred McCray . . . . . Sumter  
 Olivian McCrea . . . . . W. Hollywood, Fla.  
 Russell McClellan . . . . . Dillon

ROW TWO

Mary McGriff . . . . . Lancaster  
 Mae McKenzie . . . . . Sumter  
 Sylvester Neal . . . . . Anderson  
 Amanda Owens . . . . . Pelzer  
 Hazel Peppers . . . . . Pendleton  
 Gladys Perry . . . . . Sumter

ROW THREE

Robert Ragin . . . . . Sumter  
 Gloria Rantin . . . . . Davis Station  
 Ruth Ravenell . . . . . Cross  
 Minnie Richardson . . . . . Sumter  
 Ojetta Rhue . . . . . Georgetown  
 Annie Ryans . . . . . Aikens

ROW FOUR

Barbara Scott . . . . . Elliott  
 Tom Shubrick . . . . . Georgetown  
 Shirley Simmons . . . . . Charleston  
 James Sindab . . . . . Marion  
 John Smith . . . . . Aiken  
 Beulah Sowell . . . . . McBec



# JUNIORS



ROW ONE

Charles Speights . . . . . Bamberg  
 Jessie Toney . . . . . Elliott  
 DeWitt Walker . . . . . Panama City, Fla.  
 Emily Walters . . . . . Salters  
 John Washington . . . . . Sumter  
 Charles Watson . . . . . Loris

ROW TWO

Catherine Williams. . . . . Aiken  
 Dorothy Williams. . . . . Sumter  
 James Williams. . . . . Hartsville  
 Minnie Woodard . . . . . Winnsobor  
 Jacqueline Wright . . . . . Summerville

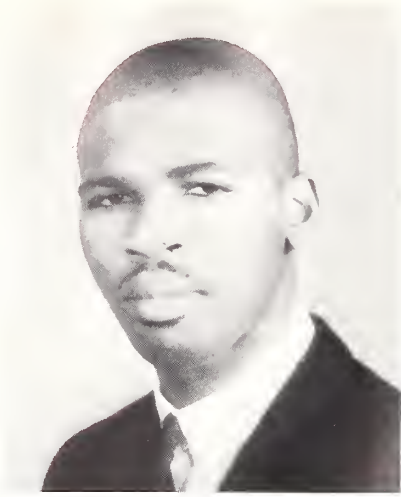
*(Not Pictured)*

Luvenia Chisolm . . . . . Roundo  
 Joreatha Gadson . . . . . Sumter  
 William Harvin. . . . . Trenton, N.J.  
 Ronald Jones . . . . . Newark, N.J.  
 Charles McMeekins . . . . . Hawthorne, Fla.  
 Betty Mitchell . . . . . Lynchburg  
 Jacob Murray . . . . . Trenton, N.J.  
 Tony Owens . . . . . Sumter  
 Joyce Rhue . . . . . Georgetown

Donna Samuels . . . . . Manning  
 Arneatha Timmons . . . . . Elliott  
 Carl Thompson . . . . . Sumter  
 Earnestine Vaughn . . . . . Sumter  
 John Walker . . . . . Columbus, Ohio  
 Zack White . . . . . Loris  
 Willie Williams . . . . . Effingham  
 Eugene Wright . . . . . Newark, N.J.



# SENIORS



Tyrone Adams  
Major: Elem. Ed.  
Ruffin



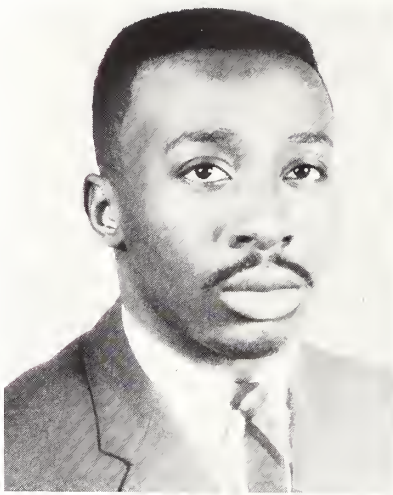
Bettye Allen  
Major: Social Studies  
Lake City



Marion Atkinson  
Major: Biology  
Rembert



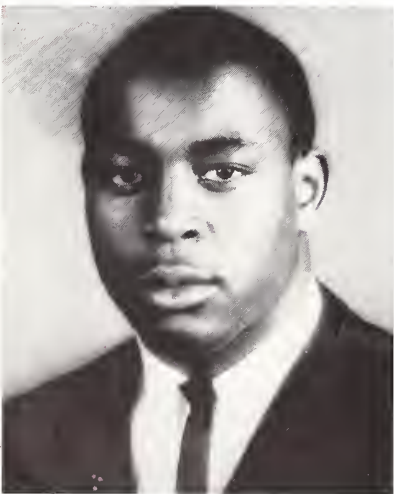
Bobby Benson  
Major: Elem. Ed.  
Fair Play



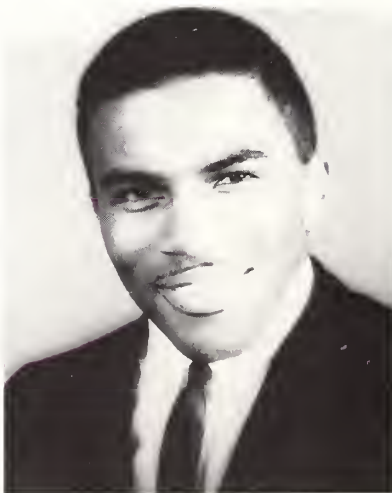
Jimmy Benson  
Major: Biology  
Bamberg



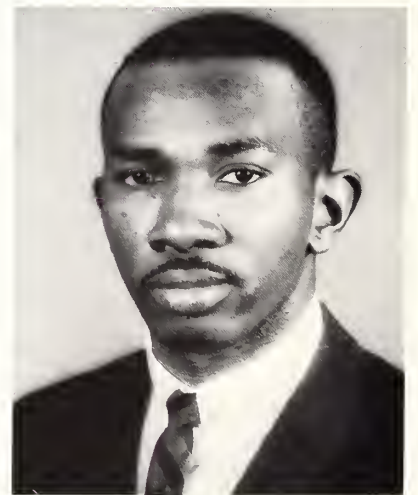
Mildred Best  
Major: Biology  
Marion



Richard Best  
Major: Social Studies  
Marion



Rayfield Bethea  
Major: Social Studies  
Latta

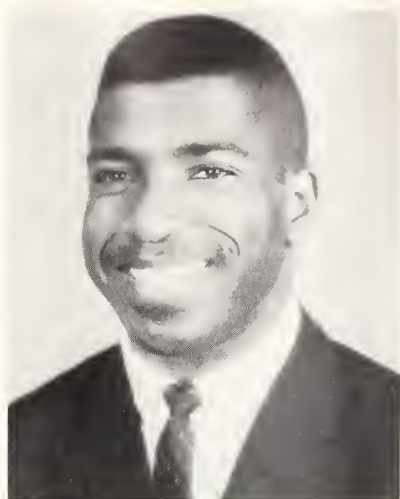


Issiah Briggs  
Major: Elem. Ed.  
Manning





James Brown  
Major: Mathematics  
Williston



Rockly Brown  
Major: Biology  
Myrtle Beach



Willene Brown  
Major: Elem. Ed.  
Clover



Robert Bryant  
Major: Mathematics  
Eutawville



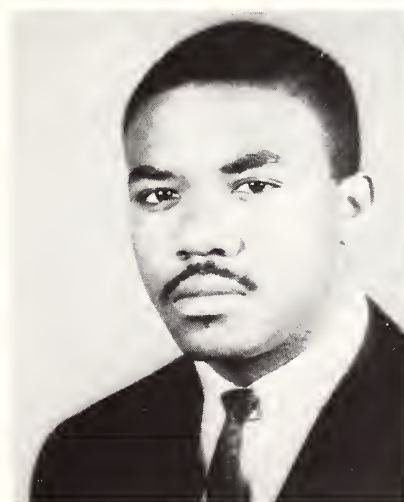
Lucius Buckman  
Major: Biology  
Wedgfield



Hilbert Campbell  
Major: Elem. Ed.  
Abbeville



Martha Capers  
Major: Elem. Ed.  
Sumter



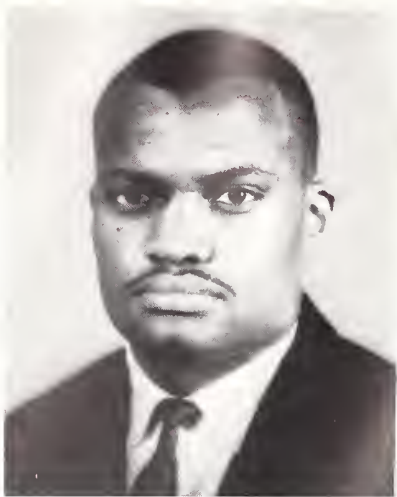
Alvin Cowley  
Major: Biology  
Bennettsville



Sam Davis  
Major: Social Studies  
St. Stephen



# SENIORS



Roy Dukes  
Major: Biology  
Lewisburg, Tenn.



Granville Dye  
Major: Elem. Ed.  
Great Falls



Bettye Duncan  
Major: Mathematics  
Philadelphia, Pa.



Leona Edge  
Major: Biology  
John's Island



Mary Floyd  
Major: Elem. Ed.  
Cheraw



Thomasina Franklin  
Special  
Sumter



Mamie Foxworth  
Major: Elem. Ed.  
Marion



Leroney Frederick  
Major: Mathematics  
Williston



Raymond Gadsden  
Major: Mathematics  
New York, N. Y.





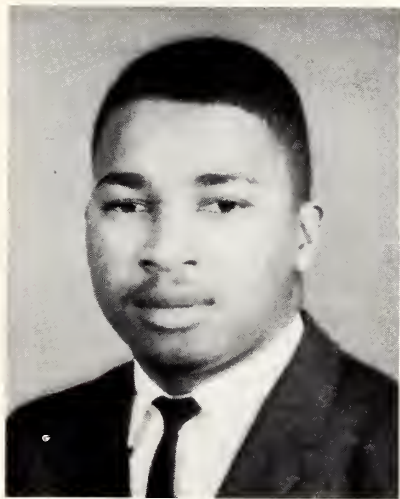
Albertha Graham  
Major: Biology  
Georgetown



Gardina Graham  
Major: Elem. Ed.  
Sumter



Ruth Graham  
Major: Elem. Ed.  
Latta



Ernest Grant  
Elem. Ed.  
N. Babylon, N. Y.



Gladys Griffin  
Major: Mathematics  
Simpsonville



Eartha Harris  
Major: Elem. Ed.  
Sumter



Mary Harvin  
Major: Elem. Ed.  
Bucksport



Cynthia Hayes  
Major: Biology  
Charleston



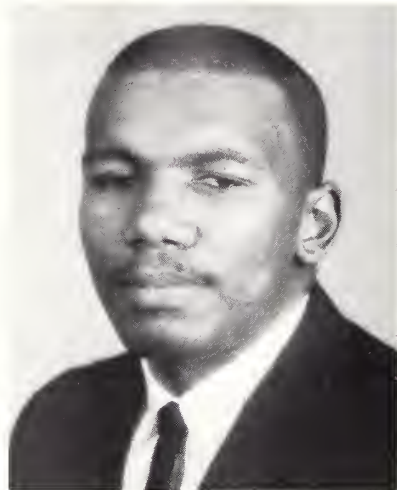
Emily Jenkins  
Major: Elem. Ed.  
Eutawville



# SENIORS



Frances Johnson  
Major: Elem. Ed.  
Effingham



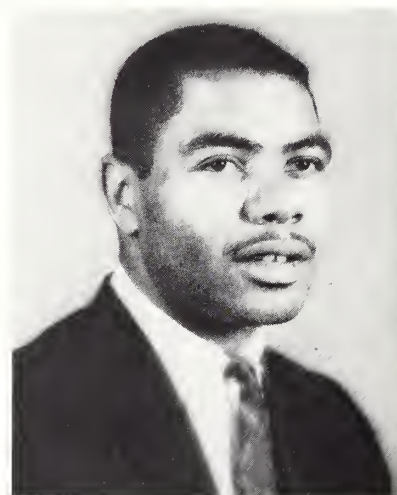
James Johnson  
Major: Mathematics  
Greeleyville



Lula Johnson  
Major: Chemistry  
Mayesville



Lena Jones  
Major: English  
Union



Grady Kirkland  
Major: Biology  
Madison, N. J.



Lillian Mays  
Major: Elem. Ed.  
Summerville



Jonnie McClary  
Major: Elem. Ed.  
Lane



John McKinney  
Major: Elem. Ed.  
Walhalla



Roney McClary  
Major: Biology  
Kingstree





Roosevelt Miott  
Major: Elem. Ed.  
Sumter



Betty Mitchell  
Major: Elem. Ed.  
Sumter



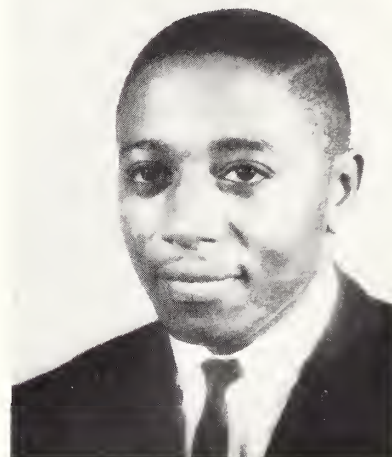
Willa Nesbitt  
Major: Elem. Ed.  
Yonges Island



Alma Nicholas  
Major: Elem. Ed.  
Yonges Island



Flora Page  
Major: Biology  
Mullins



Ernest Palmer  
Major: Mathematics  
Eutawville



Cecil Paxton  
Major: Biology  
Orangeburg



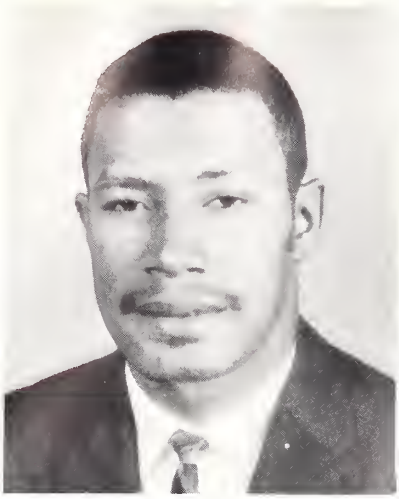
Laura Petty  
Major: Elem. Ed.  
Gaffney



Frances Porter  
Major: Biology  
Oswego



# SENIORS



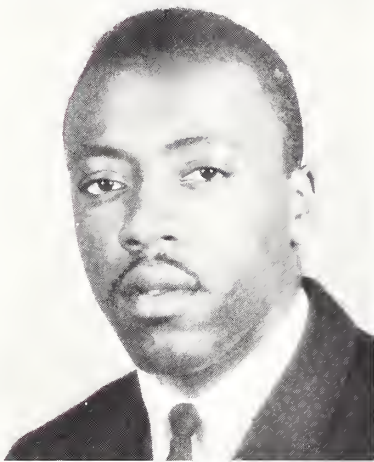
Alphonza Prioleau  
Major: Biology  
Russelville



Clara Prioleau  
Major: Mathematics  
St. Stephen



Maxine Ragin  
Major: Mathematics  
Sumter



James Rawlinson  
Major: Social Studies  
York



Benjamin Richardson  
Major: Biology  
Revenel



Samuel Richardson  
Major: Mathematics  
Sumter



Levern Rose  
Major: Biology  
Turbeville



Donna Samuels  
Major: Elem. Ed.  
Manning



Rosa Singletary  
Major: Mathematics  
Lake City





Eugene Smith  
Major: Biology  
Hemingway



Gunter Sweat  
Major: Social Studies  
Manning



Betty Thomas  
Major: Elem. Ed.  
Ridge Spring



Blanche Thomas  
Major: Biology  
Timmons ville



Laura Vandiver  
Major: Biology  
Pendleton



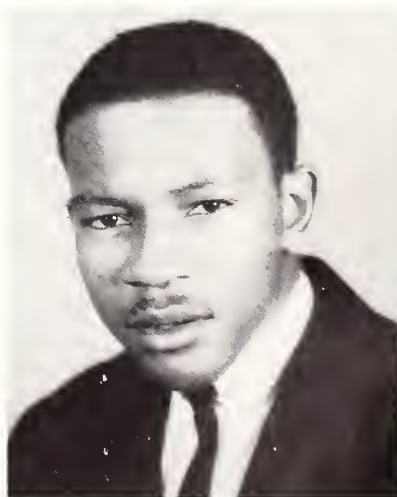
Earnestine Vaughn  
Major: Social Studies  
Sumter



Bettye Watson  
Major: Elem. Ed.  
Loris



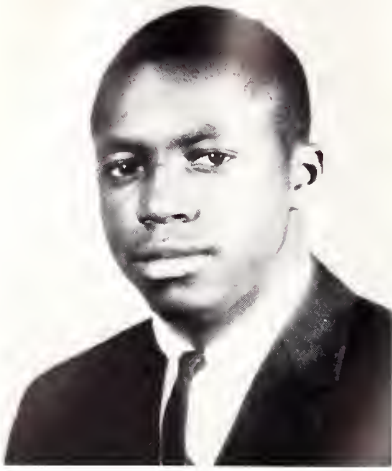
Dorothy Wigfall  
Major: Elem. Ed.  
Shelby, N. C.



Henry Wigfall  
Major: Chemistry  
Pineville



# SENIORS



Lewis Williams  
Major: Social Studies  
Congs



Ruth Williams  
Major: Biology  
Sumter



Jettie Whitaker  
Major: Elem. Ed.  
Lake City



Clara Wright  
Major: Elem. Ed.  
Bennettsville



Jeanette Zeigler  
Major: Elem. Ed  
Manning

## *Not Pictured*

Mary Abel  
Gloria Alford  
Jessie Bethea  
Bobby Choice  
Katie Floyd  
Emeral Foster  
Mary Gause  
Harold Harris  
Shirley Hartley  
Rosa James  
Thomasine Jones  
Catherine McDuffie  
James Moultrie  
Thomas Spann, Jr.  
Christopher Walker  
Coley White  
Jeryl Wilkinson

Elem. Ed.  
Elem. Ed.  
Elem. Ed.  
Social Studies  
Liberal Arts  
Mathematics  
Elem. Ed.  
Mathematics  
English  
Elem. Ed.  
Elem. Ed.  
Elem. Ed.  
Social Studies  
Elem. Ed.  
Biology  
Biology  
Mathematics

Sumter  
Sumter  
Sumter  
Sumter  
Loris  
Hawthorne, Fla.  
Bucksport  
Sebring, Fla.  
Batesburg  
Kingstree  
Timmons ville  
Mullins  
Latta  
Rembert  
Yonges Island  
Sumter  
Lauringburg, N. C.





*Miss Morris College  
Miss Albertha Graham*



*Miss Morris College  
Miss Albertha Graham*



*Miss Morris College  
and  
Attendants  
Ruth Williams,  
Laura Vandiver*



*Miss Morris College and Escort*



*Albertha Graham, Miss Morris College  
and Escort  
Dr. O. R. Reuben, President of College*





*Miss Senior  
Jeryl Wilkerson  
Escorted by:  
Jim Benson*

*Scene from the  
Coronation  
of Miss Morris College  
1964-65*







*The Coronation of Miss Morris College*





*Minnie Woodard*  
*Miss Co-Ed*



*Yvonne Young*  
*Miss Campus Queen*





*Mary McGriff*  
*Miss Y.W.A.*



*Marion Green*  
*Miss Exegetical Society*





*Right*  
*Gloria Rantin*  
*Miss Usher*

*Left*  
*Ruth Ravenell*  
*Attendant*

*Rebecca Jackson*  
*Miss Dramatic Club*







*Ernestine Easterling  
Miss Drill Team*



*Marilyn Williams  
Miss Block "M"*





*Emily Walters*  
*Miss S.N.E.A.*



*Beverly Dunlap*  
*Miss Human Relations*





*Lillian Coger*  
*Attendant to*  
*Miss Sophomore*

*Gladys Griffin*  
*Miss Student Council*



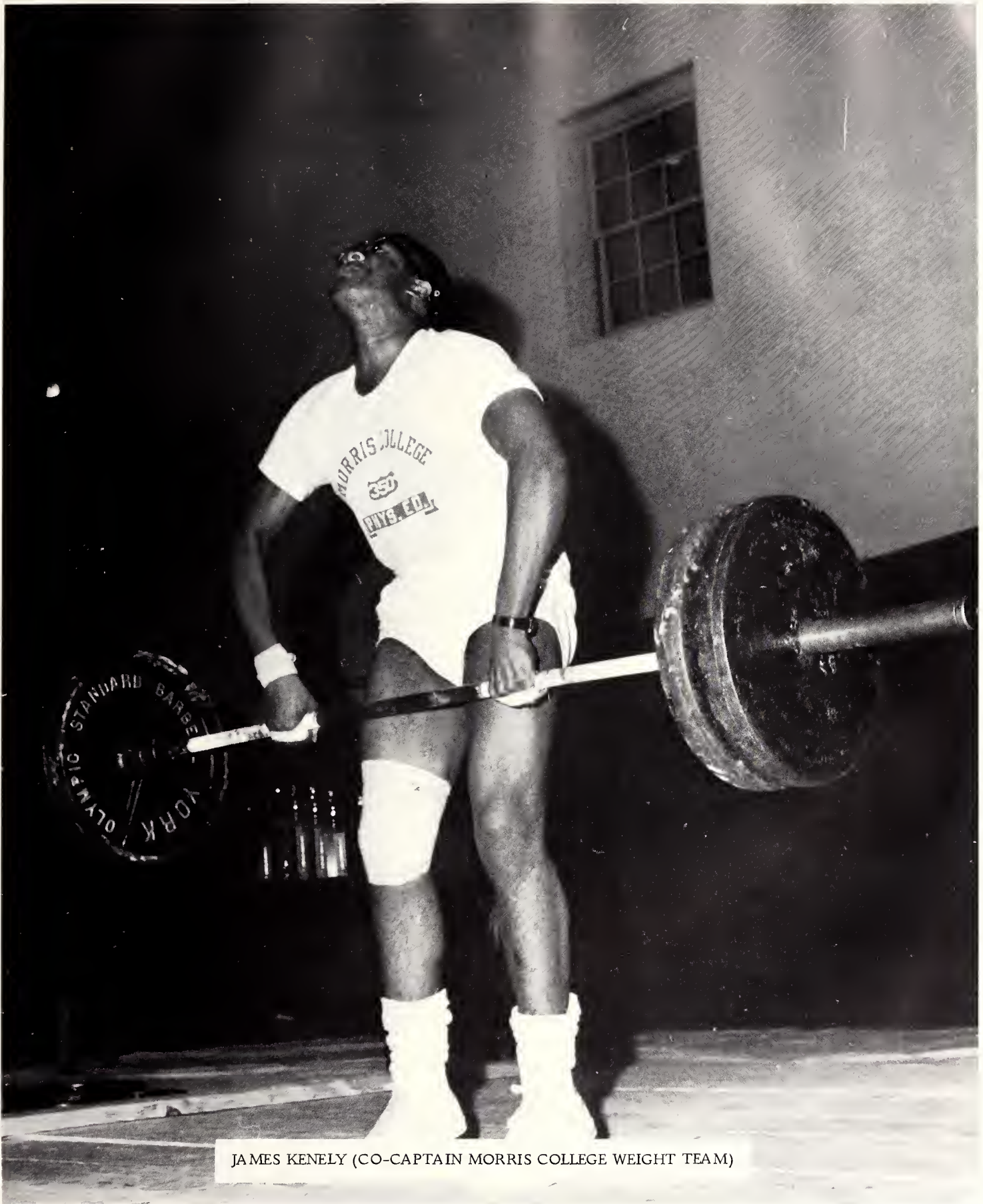




*Miss Betty Washington*  
*Miss Sophomore*



# ATHLETICS



JAMES KENELY (CO-CAPTAIN MORRIS COLLEGE WEIGHT TEAM)

## WEIGHT TEAM

Benjamin Richardson, Captain

Herman Bowers

Zack White

Eddie Brown



HOR  
SPO



*Captain  
Emerald Foster*

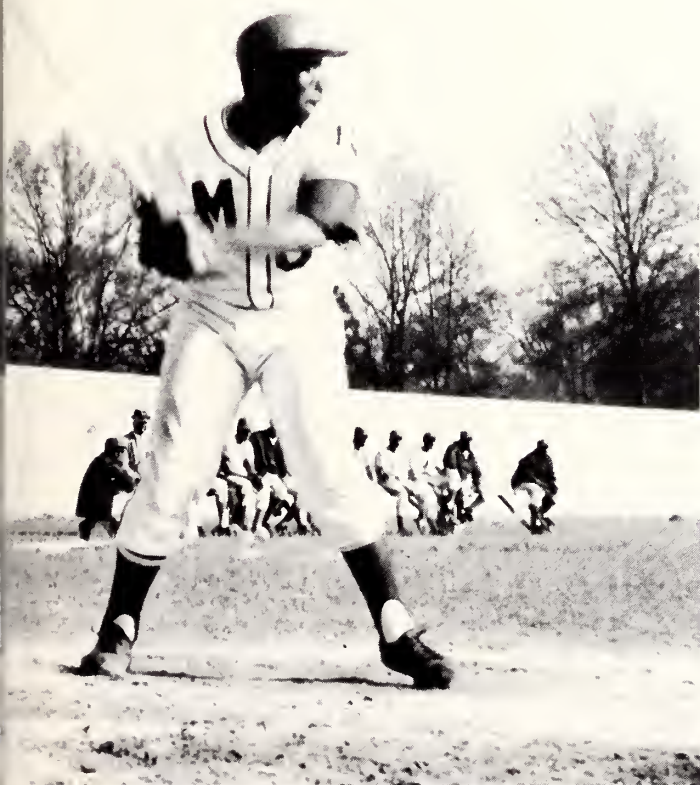




*NET  
RTS*

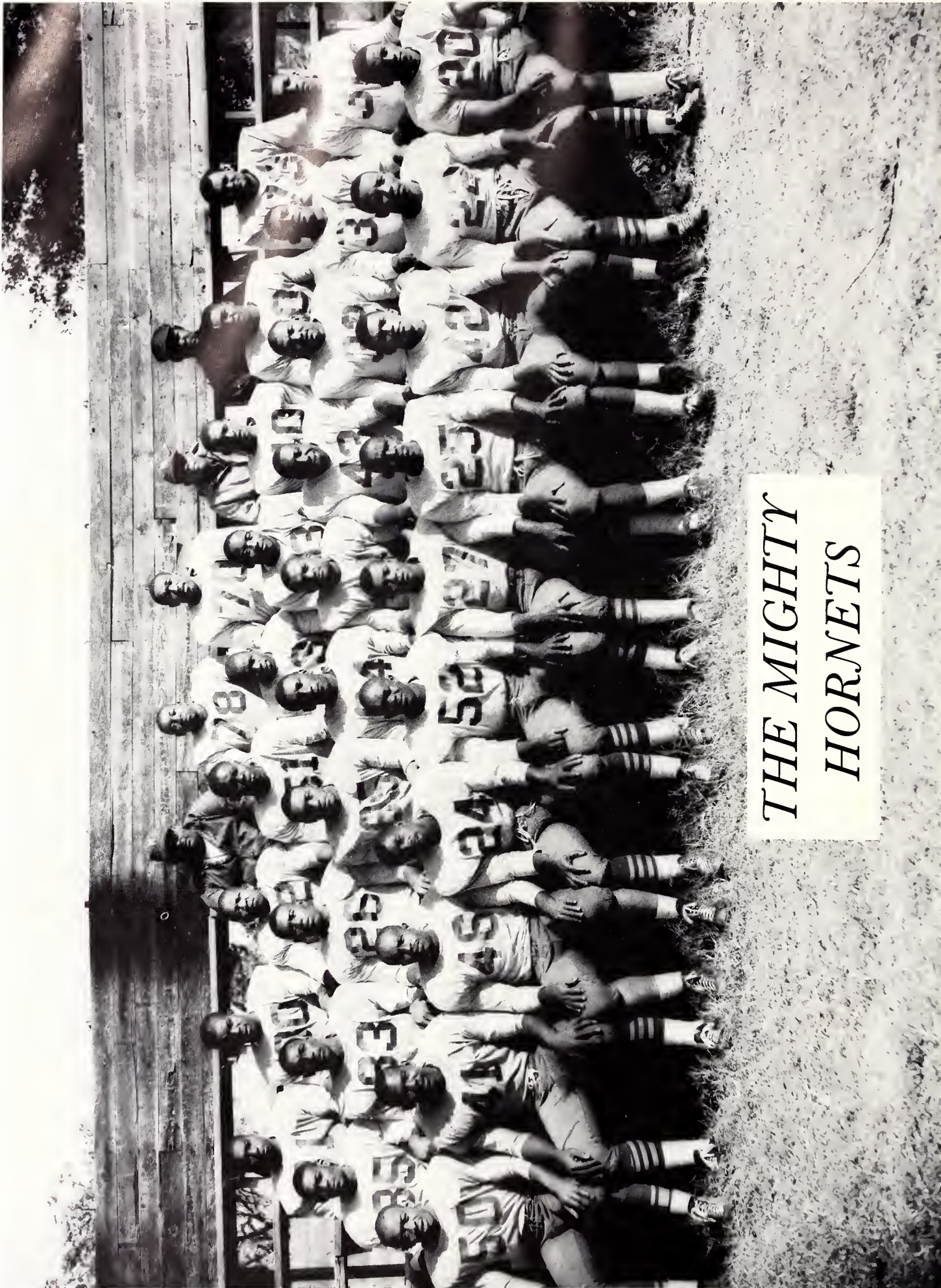


*Co-Captain  
John Belt*



*Ball Team*





*THE MIGHTY  
HORNETS*





## *FIRST UNIT — BLOOD TEAM*

DOWN: Charles Butler -- All Conference End, Jacob Murray -- All Conference Tackle, Grady Kirkland -- Team Captain -- Guard, Emeral Foster -- All Conference Center, Eddie Brown -- Guard, Russel McClellan -- Tackle, Wille Daniels -- Team Co-Captain, End. STANDING: William Bolton -- All Conference Half Back, Sylvester Neal -- Half Back, Theartice Strickland -- All Conference Quarter Back, Charlie Littleş -- All Conference Half Back.



## *SECOND UNIT — KILLER TEAM*

DOWN: V. Woods, W. Harvin, C. Holton D. McCarroll, J. Hill, B. Smith, M. Mitchell. STANDING: E. Potts, J. Johnson, A. Douglas, A. Hartley.





THE BEEF -- ONE HALF TON OF POWER  
#70 Bill Harvin 228, #78 Russel McClellan 235, Coach Pollard, #77 Tom Bedford 315, #76 Jacob Murray 240.



Head Coach Andrew Pollard (R) Assistant Coach W. H. Neal (L).



# THE BAD BOYS

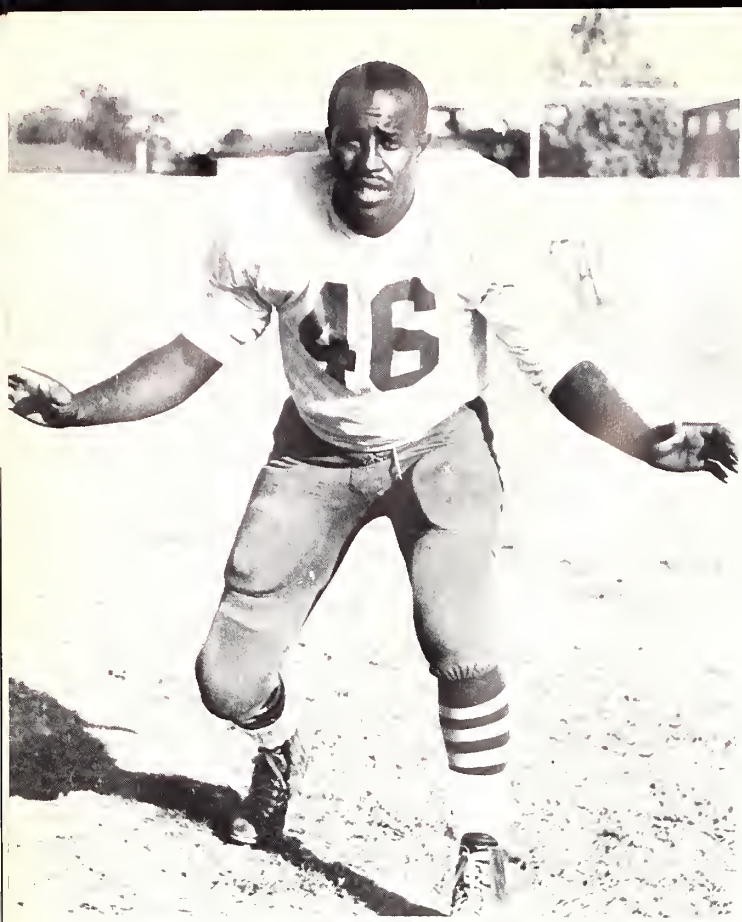
*Sylvester Neal, Jr.  
Speedy Halfback  
Anderson, S.C.*



*Bill Bolton  
All Conference  
Halfback  
Newark, N.J.*







*Defensive Linebacker  
Smiley Cox*



*Captain  
Grady Kirkland*



*Defensive Linebacker  
Roy Dukes*

*T  
H  
E  
K  
I  
L  
L  
E  
R  
S*



*All-Conference Tackle  
Jake Murray*



*Coach Andy Pollard  
and  
Linemen of the Year  
All Conference Center  
Emerald Foster*

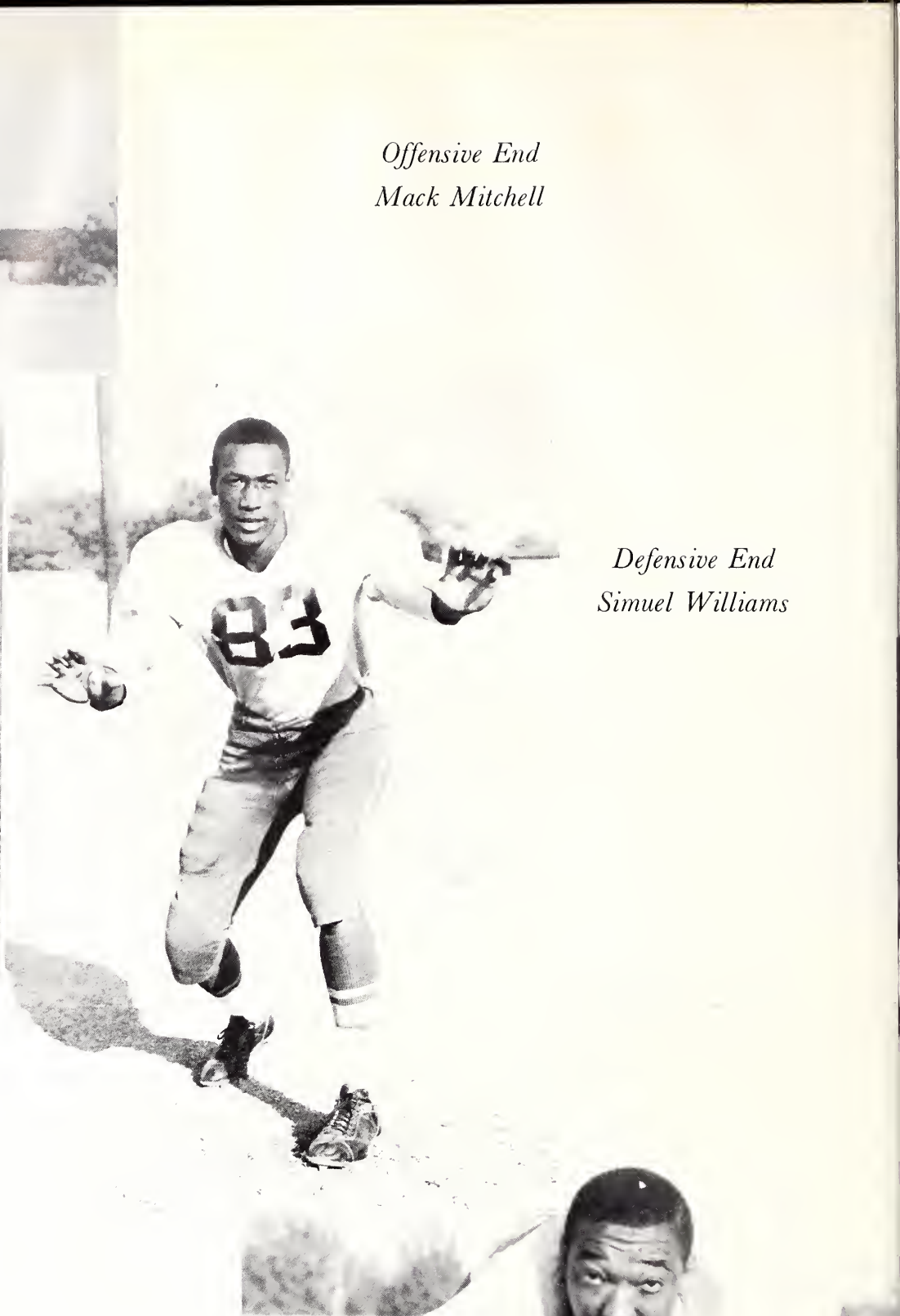


*Head Trainer  
Alvin Cawley*





*Offensive End  
Mack Mitchell*



*Defensive End  
Simuel Williams*

*Offensive Tackle  
Bill Harvin*





# HOMECOMING SCENES





# *HOMECOMING QUEENS*



*Mamie Foxworth*

*Miss Homecoming crowned by Mr. James Solomon*





# '64-'65 BASKETBALL SQUAD



KNEELING: Horace Anderson, Henry Lee, Rossie Kearson, Ronald Jones, Charlie Watson. STANDING: Manning Moore, Mack Mitchell, James Taylor, McMillian Gerald, James Sindab.

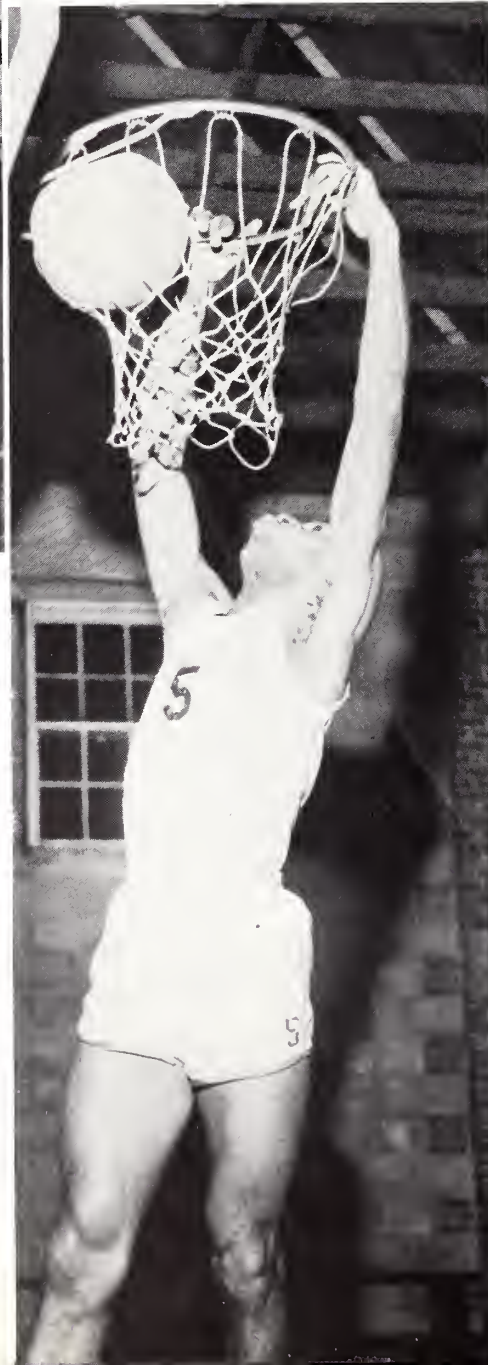
Ronald Jones, Co-Captain, Coach Andrew Pollard, Rossie Kearson, Captain. DISPLAY CONFERENCE TROPHIES



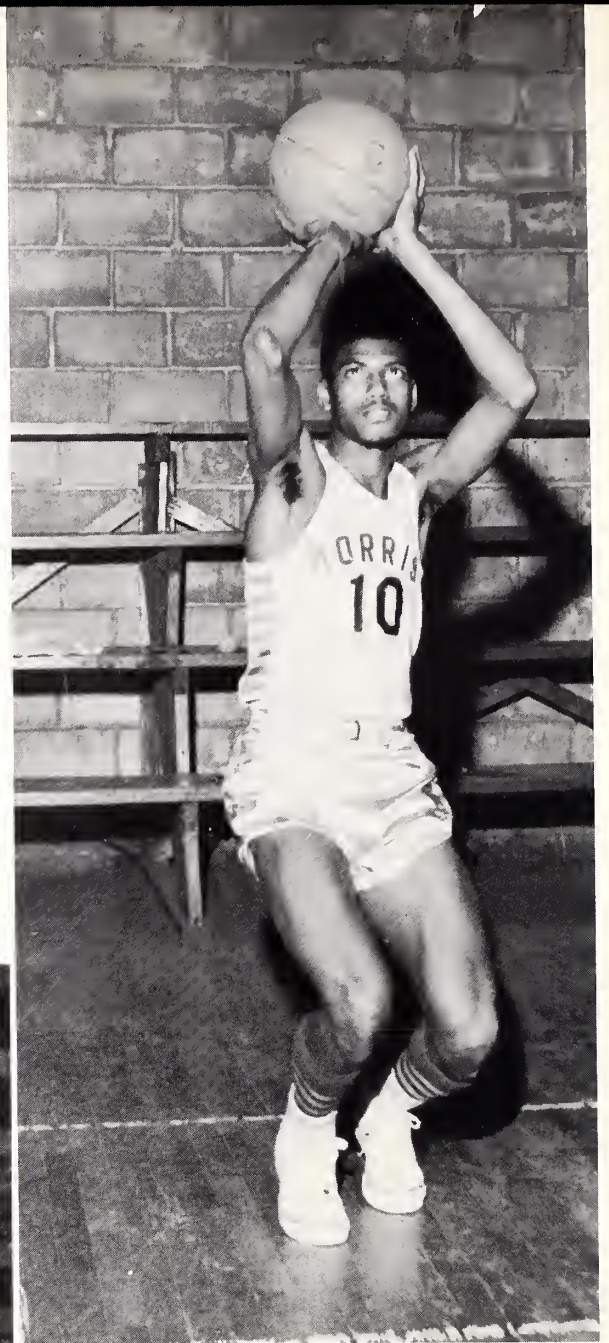




*Rossie Kearson*  
*Red*  
*Hot*



*J. T.*  
*Dunks One*



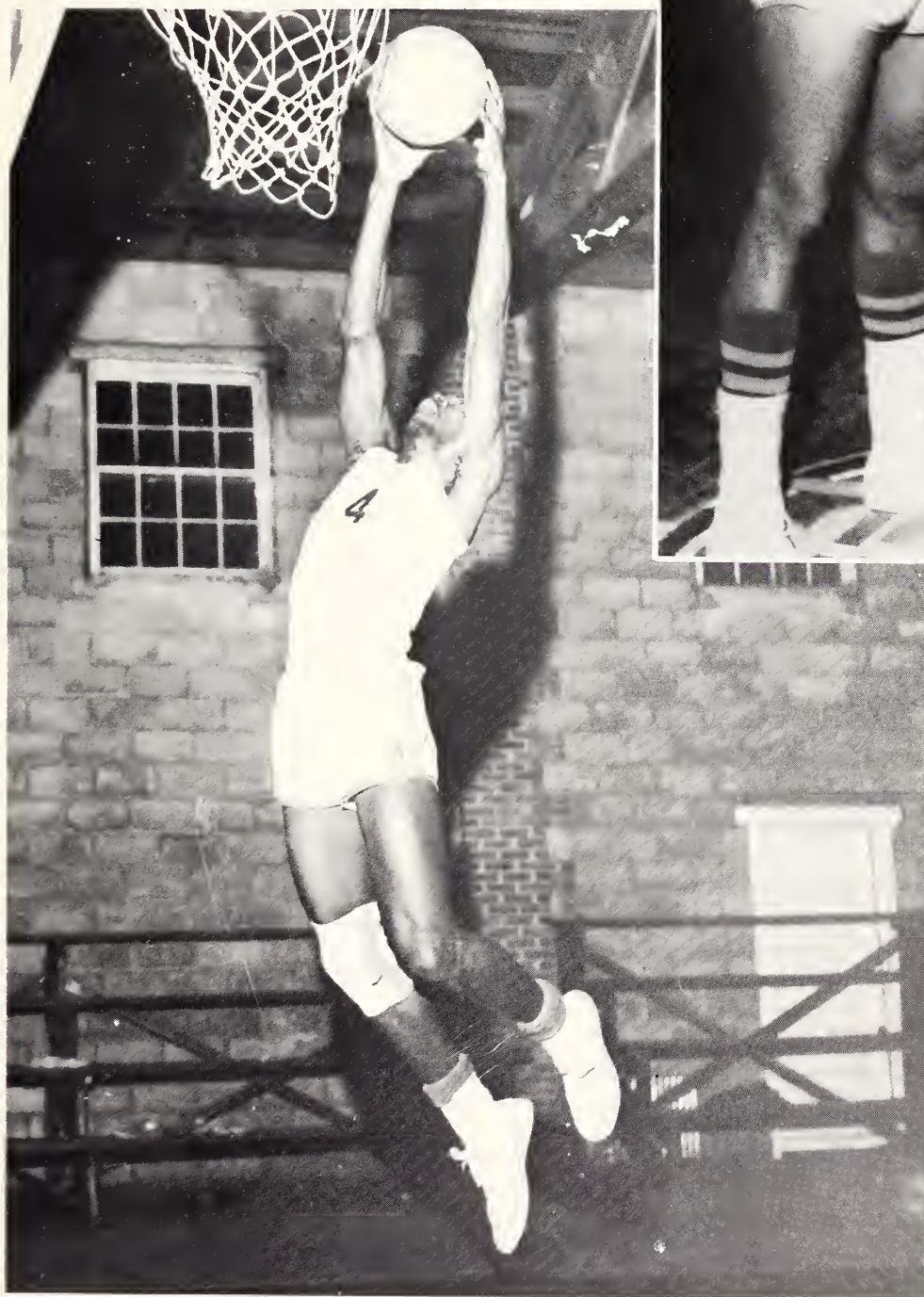
*James Sindab*  
*Shoots*  
*for*  
*Two*



*Sumters' Best*

Coley White

Manning Moore



*"Mighty"*  
*Mack Mitchell*  
*Lays It Up*



# SPORTS EDITORIAL

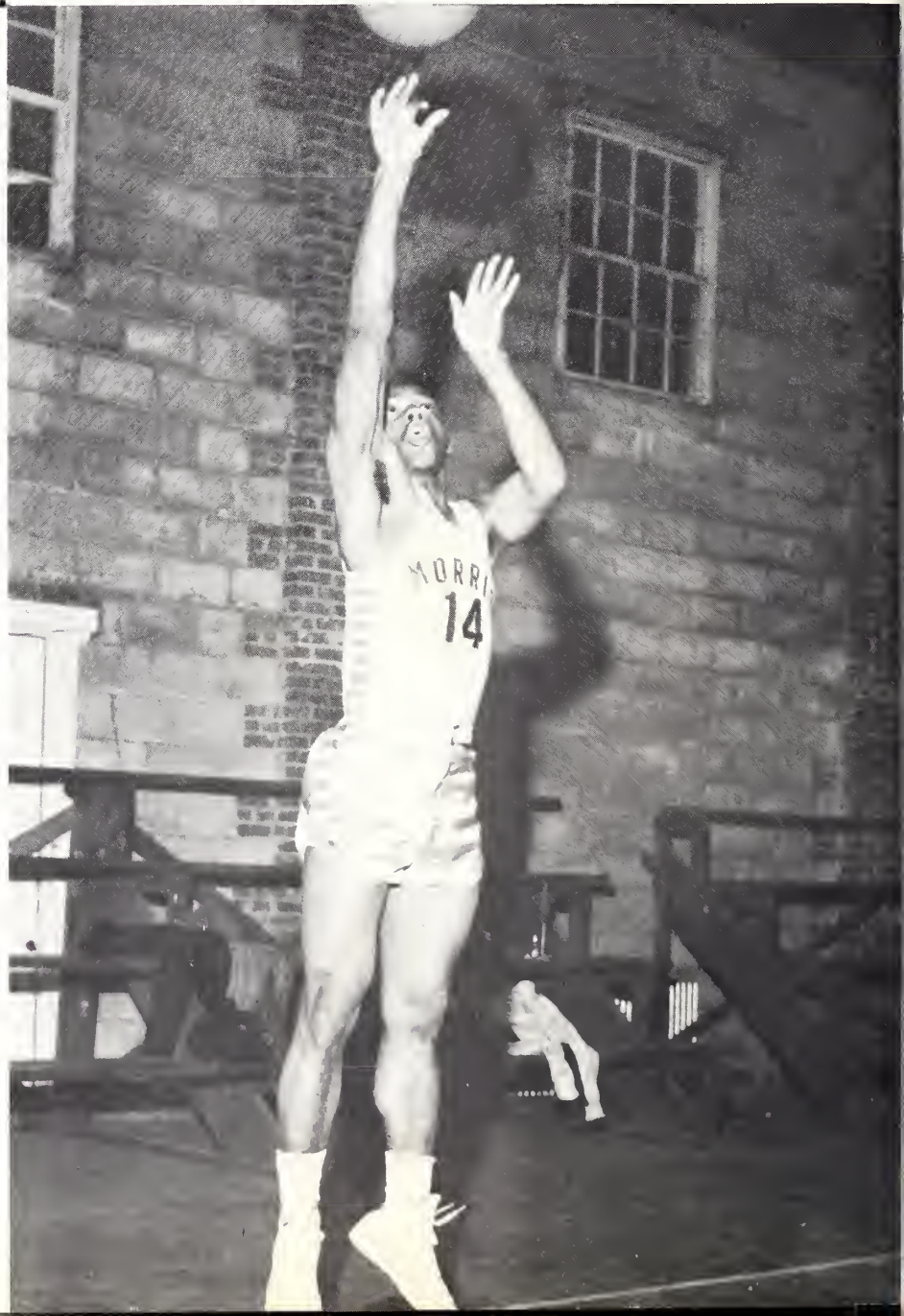
It is the opinion of the Editor-in-Chief and the staff of the Hornet Yearbook, that Rossie Kearson, Captain of the Hornet Basketball Team will become the all time high scorer in Morris College history.

He has a 34 point average per game and an average of 470 points scored per season.



*Rossie Kearson*

*Ronald  
Jones  
Shoots with  
Confidence*







## *THE CAMPUS*





*WOMEN'S STATE CONVENTION  
HELPS  
MORRIS COLLEGE GROW*



*Mrs. Mary Whitener  
President  
(Wielding Shovel)*

*and  
Distinguished  
Associates*

*Ground Breaking Ceremonies  
New Dobbins Keith Boys' Dormitory*





Ruth Williams

MOST STUDIOUS

Eugene Smith

Shirly Hartley

MOST LIKELY TO SUCCEED

Earnest Palmer



## SENIOR SUPERLATIVES



Bertha Simmons

MOST HUMOROUS

Hilbert Campbell





MOST COOPERATIVE  
Shirley Hartley & Jimmy Benson

## *SENIOR SUPERLATIVES*



MOST COURTEOUS  
Cecil Payton & Lena Jones



BEST DRESSED  
Mary Floyd & Robert Bryant



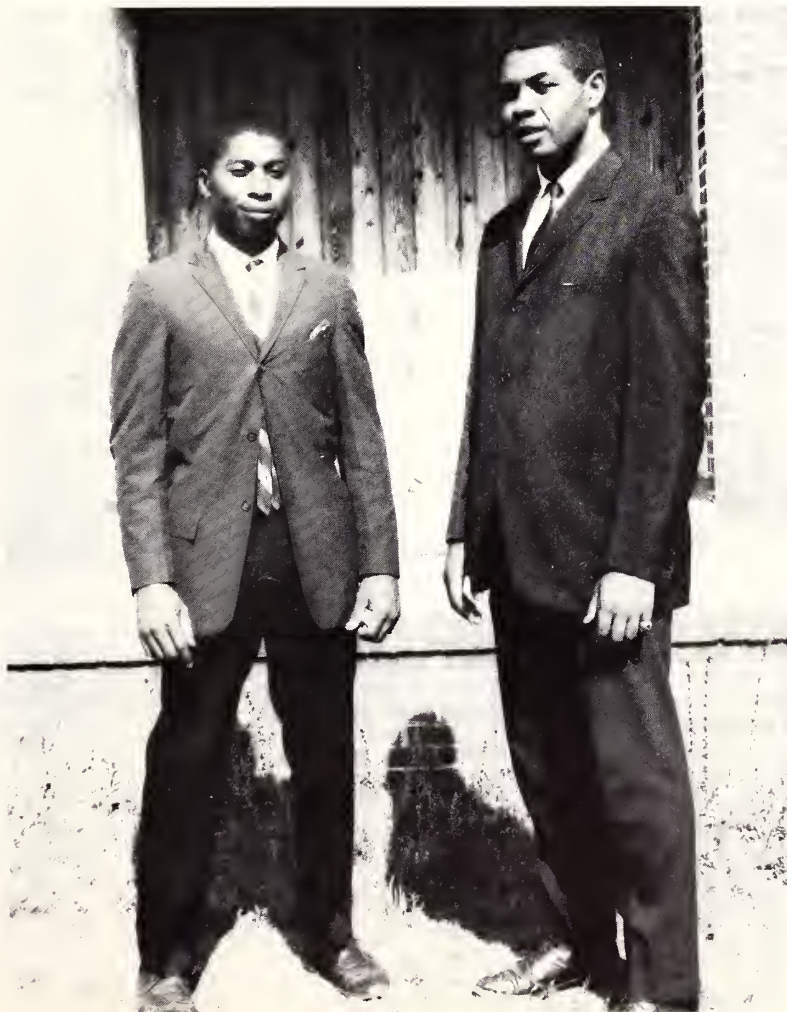


MOST POPULAR  
Albertha Graham & Henry Wigfall



MOST ATHLETIC  
Roy Dukes  
Gladys Griffin & Emeral Foster

CO-CAPTAINS FOOTBALL TEAM  
Fred Daniels, Grady Kirkland





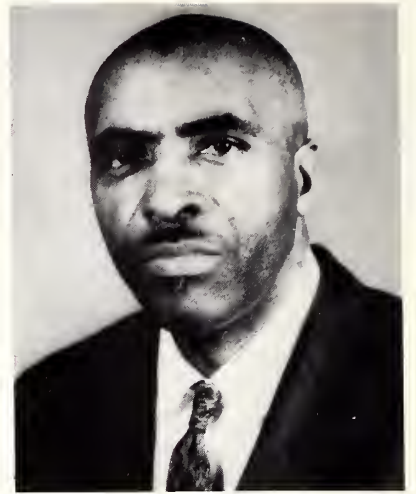
# SCHOOL OF RELIGION



Moultrie Barr



Austin Brown



James Evans



Cleve Johnson



Willie Johnson



Boykin Sanders



Emerson Wright



Cadimus Sanders



Henry Shaw















