

Mountaineer

1924

378.9756

W363m

1924

C.2



JAMES ADDISON JONES
LIBRARY

BREVARD COLLEGE
BREVARD, NORTH CAROLINA

CLASS NO. 378.9756

AUTHOR NO. W363m 1924 c.2

ACCESSION NO. 26467

GIFT _____

Ex Libris



Digitized by the Internet Archive
in 2011 with funding from
University of North Carolina at Chapel Hill

<http://www.archive.org/details/mountaineer1924weav>

1924 Mountaineer



Yearbook Published by
the Senior Class of
Weaver College
Weaverville, N. C.

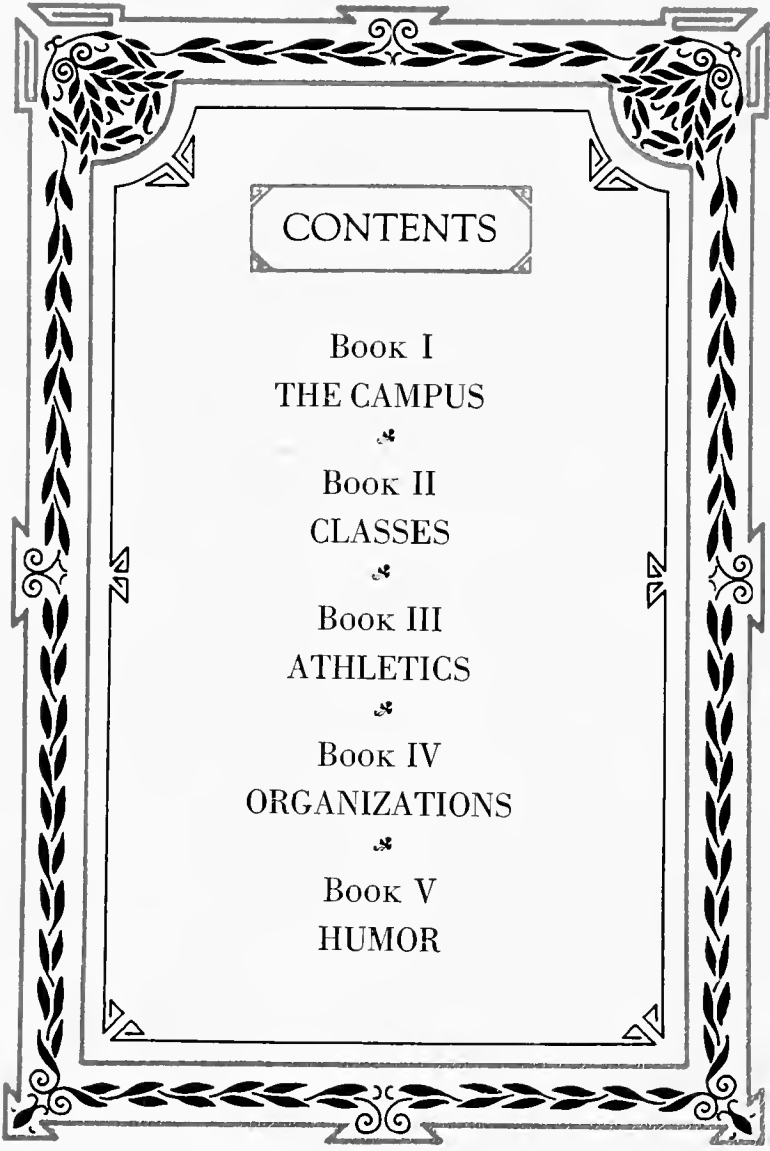
Foreword

"Montani semper liberi"

This publication is the result of much hard work and many sleepless nights in an effort to present to you a complete history of the year '23-'24 at Weaver.

We extend to Prof. W. E. Powell and to Mr. J. H. Burrus our hearty appreciation for their untiring efforts and interest in making this volume a success.

When in future years the troubles of this life become a burden, take down the old dust covered MOUNTAINEER and dream of the happy days spent with our Alma Mater. If this volume brings happiness to any one our labors will not have been in vain.



CONTENTS

BOOK I
THE CAMPUS



BOOK II
CLASSES



BOOK III
ATHLETICS



BOOK IV
ORGANIZATIONS



BOOK V
HUMOR



To Our Alma Mater



AMONG the mighty granite hills,
In a beauteous mountain land
Of shining rivers and sparkling rills,
Is found a college grand.

In a grove of sturdy oak and pine,
On a camp-ground's holy sod,
Where the sun shines bright and the cli-
mate's fine,
And nature points to God.

There at the foot of Hamburg's Hill,
On Reams' Creek's sacred ground,
Where everything is hushed and still,
'Tis there old Weaver's found.

So dark and somber are her walls,
For long years have they stood.
She's gathered youths within her halls
As only Weaver could.

She sends her students far and near,
And as they pass her door,
She bids them go—without a fear,
And turns to welcome more.

Thus may her students yet to come
Be always strong and bright,
And for each crisis of our home
There be a Weaverite.

Oh, Alma Mater, may each son
Thy fond traditions bear,
And for each triumph to be won,
Be brave and fearless there.

OAKLEY E. CROY, '24

THE MOUNTAINEER





DEDICATION

TO

H. A. DUNHAM

Chairman of Board of Trustees

Successful Business Man

Staunch Friend

Energetic Citizen

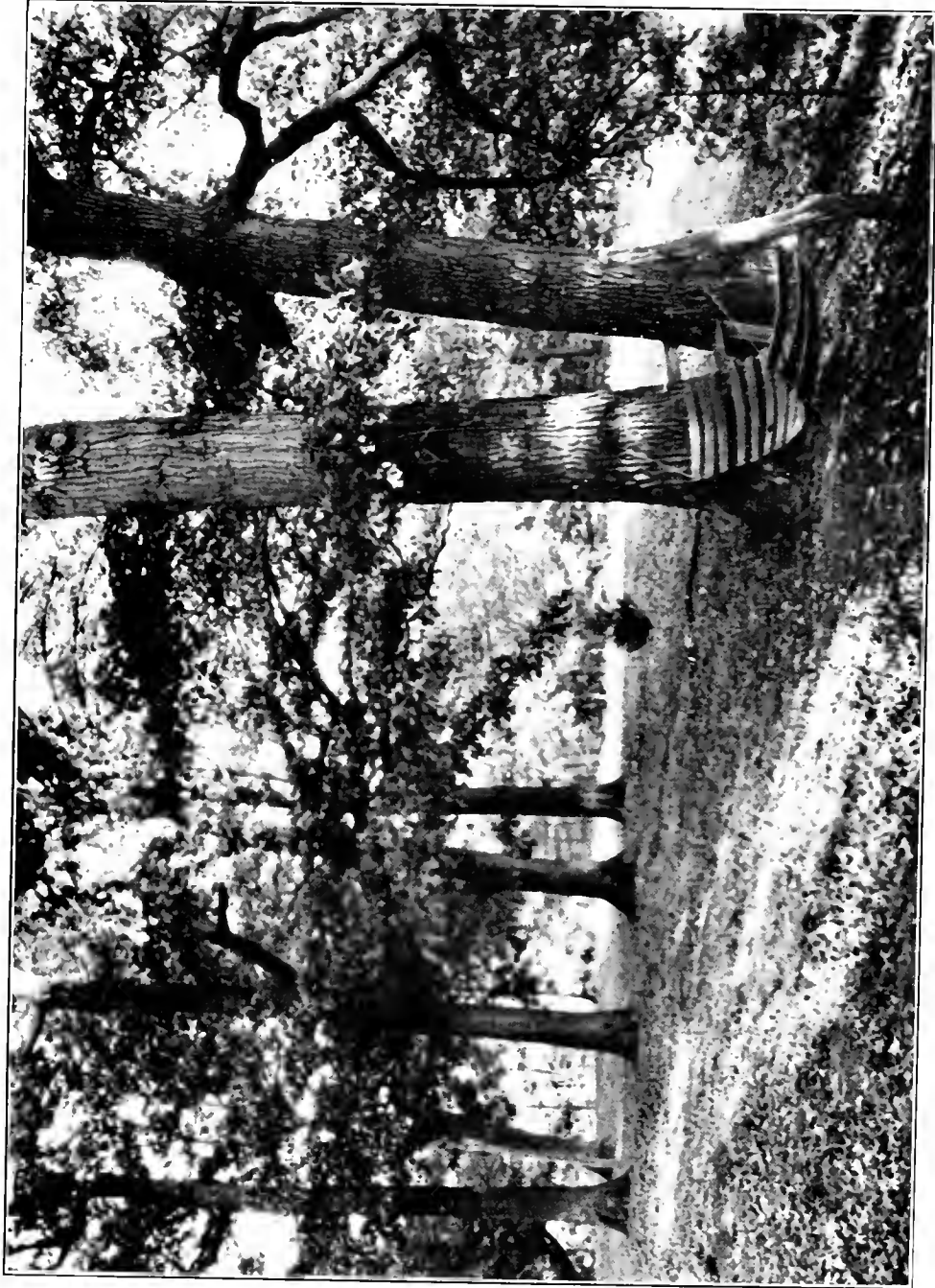
Leading Layman

General Philanthropist



THE CAMPUS

THE MOUNTAINEER



CAMPUS VIEW

THE MOUNTAINEER

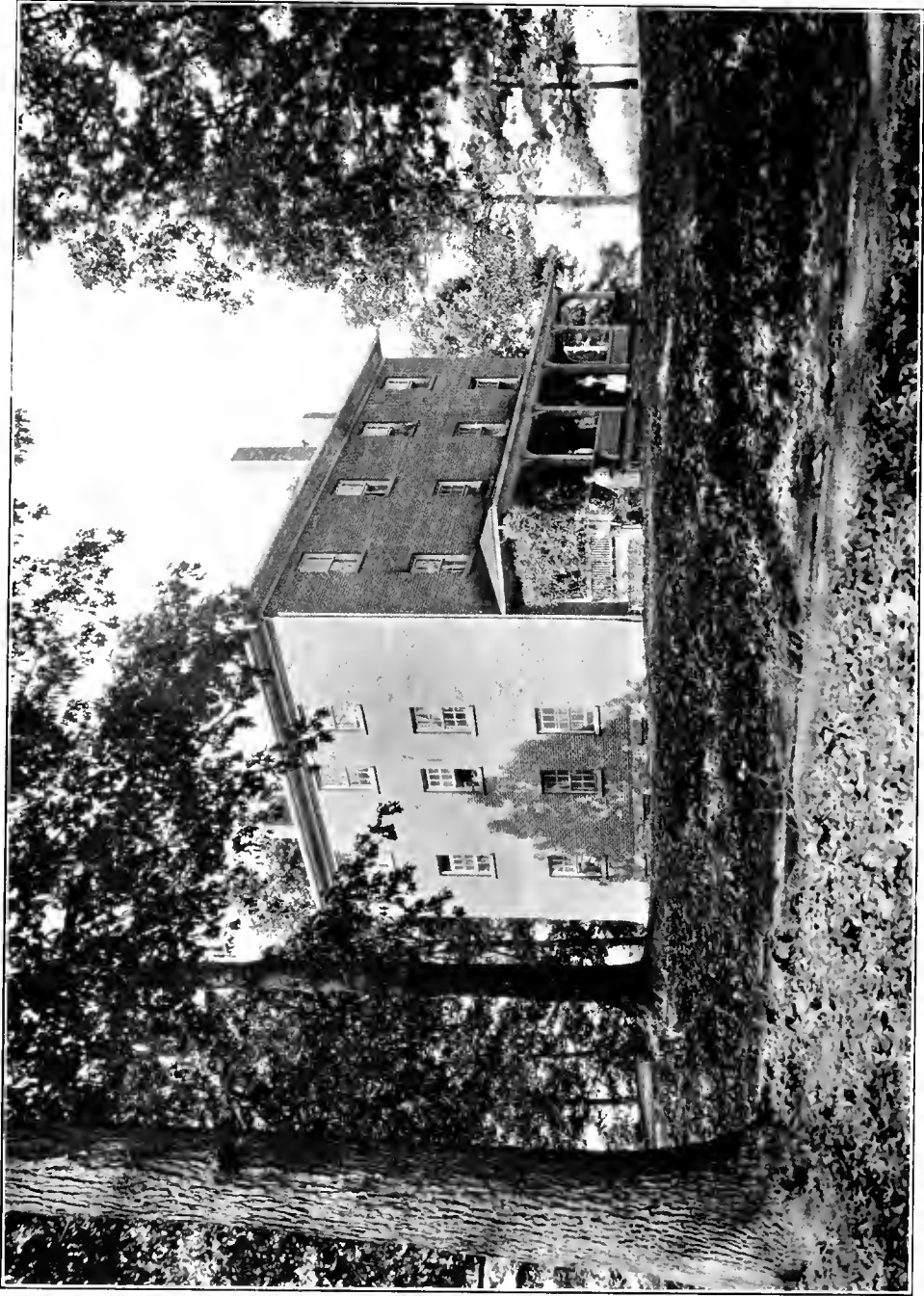


ADMINISTRATION BUILDING



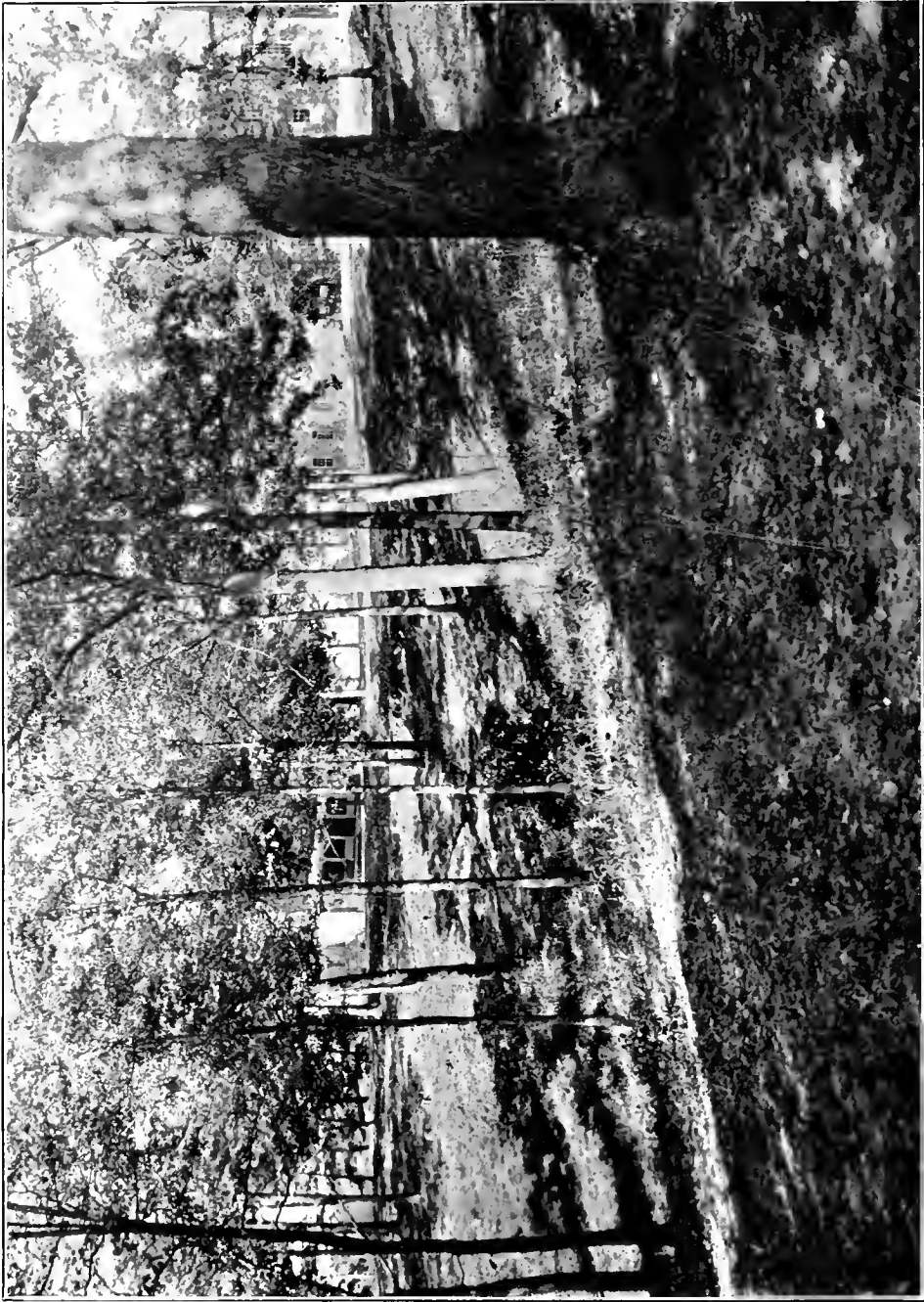
LOOKING TOWARDS TENNIS COURTS

THE MOUNTAINEER



CRUTCHFIELD HALL

THE MOUNTAINEER



LOOKING TOWARD CRITCHFIELD HALL AND ADMINISTRATION BUILDING

THE MOUNTAINEER



RESIDENCE OF THE PRESIDENT



LOOKING TOWARD SKINNER HALL

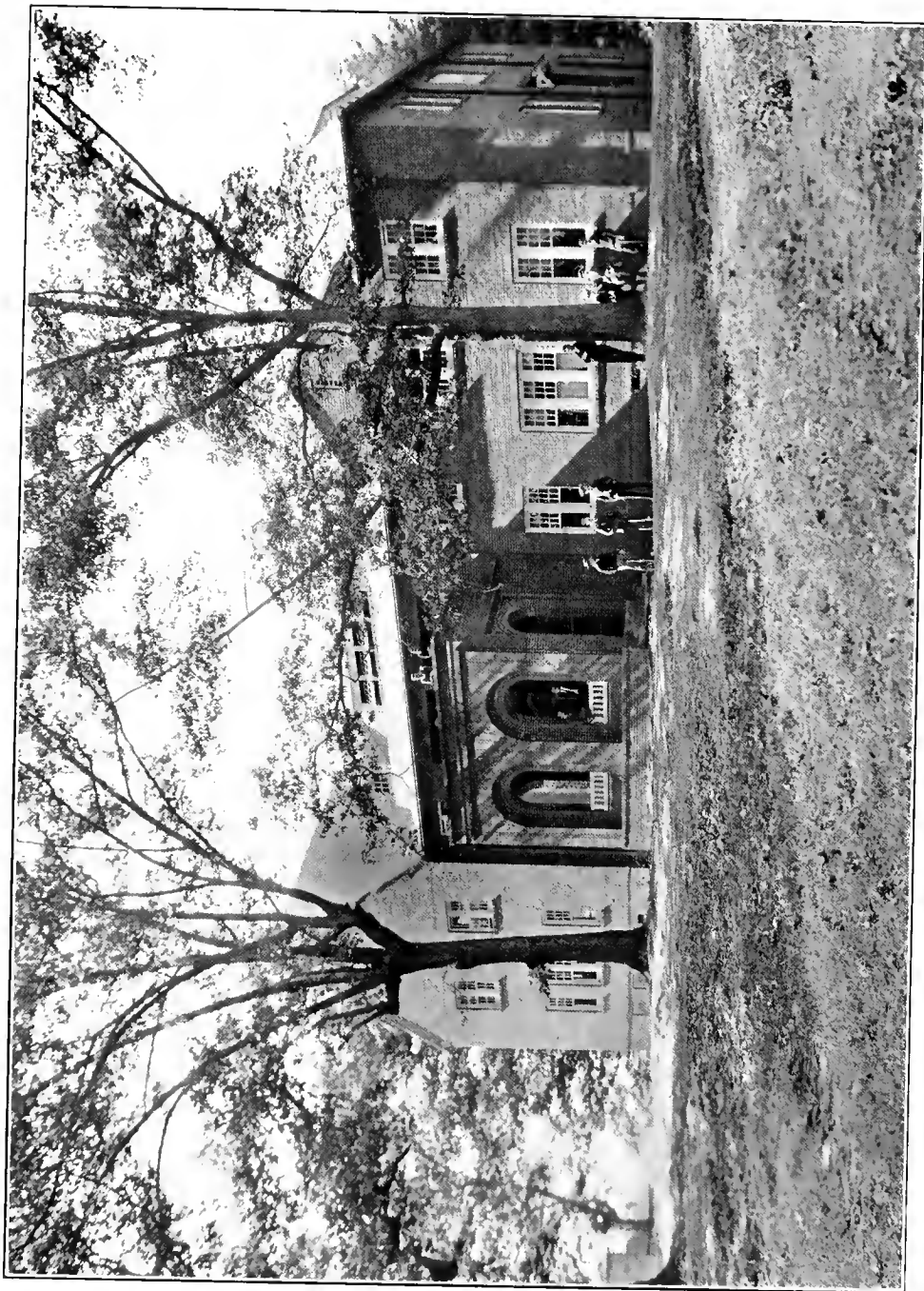


THE WHITE HOUSE

THE MOUNTAINEER



CAMPUS SCENE



SKINNER HALL

THE MOUNTAINEER



"Mt. Pisgah and The Ratt as Seen From Weaver Campus"

THE MOUNTAINEER



"Above the clouds on Mt. Mitchell. Elevation 6,711 feet. Near Weaver College."

THE MOUNTAINEER.



"Campus Scene in Midwinter."

THE MOUNTAINEER

THE FACULTY

WEAVER COLLEGE



Prof Deaderick



Prof Trowbridge



Prof Powell



Mrs Pylant



Mrs Elliot



Prof Churchwell



Miss Pescud



Prof Manchester



Mr Presson



Miss Smith



Rev. Reavis



Miss Williams



Miss Morris



Miss Jones

THE MOUNTAINEER

Faculty

8

C. H. TROWBRIDGE, *President*

Education and Religious Education

A.B., Pritchett Institute, 1893; Summer Student, University of Chicago, 1896, 1903, 1905; A.B., Harvard, 1901, and A.M., 1902; Graduate student, University of Iowa, 1920-21. Teacher and Principal, Missouri Public Schools, 1893-1896; Professor Science, Central College for Women, 1896-1900; Instructor in Chemistry, Manual Training School of Washington University, 1902-1907; Superintendent Brevard Institute, 1907-1923; Weaver College since 1923.

W. E. POWELL, *Dean*

History and Economics

A.B., Trinity, 1920, and A.M., 1922; Teacher East Durham High School, 1921-22; Principal Randleman High School, 1922-23; Councillor, Lake Junaluska Camp for Boys, Summer of 1923; Weaver College, since 1923.

MRS. LEE PYLANT, *Dean of Women*

Mathematics

Graduate Georgia State College for Women, 1915; Summer student, Columbia University, 1917; Summer Student, Georgia State College for Women, 1920, 1921, 1922, 1923; Mathematics Teacher, Bowden, Georgia, High School, 1915-1918; Principal and Teacher Mathematics, Roopville, Georgia, High School, 1918-1921; Dean of Women and Teacher of Mathematics, Weaver College, since 1921.

THOMAS O. DEADERICK

Latin, French and German

A.B., University of Tennessee, 1872, and A.M. later; B.L., Cumberland University, 1874; Teacher Latin and Greek, University of Tennessee, 1877-1888; student German Universities in Leipzig and Berlin, 1888-1889; Teacher Latin and Greek, West Florida Seminary, 1889-1891; Professor Latin and French, Southwestern Presbyterian University, 1891-1913; summer student, Chicago University, 1904-1907; attended lectures, Columbia University, New York, 1912.

S. B. CHURCHWELL

Science

Student University of Mississippi 1915-1917, 1919-1920, and summers of 1916 and 1920; Summer Student George Peabody College for Teachers, 1923; Principal Union High School, Mississippi, 1917-1918; Principal Central High School, Pascagoula, Miss., 1920-1921; Science Department Weaver College, since 1922.

MISS LUCILE SMITH

English

Graduate Georgia State School for Women; Student two years, University of Chicago; Summer student, University of Georgia, 1922; Summer student Georgia State College for Women, 1923; For eight years teacher in Georgia Public Schools; Teacher of English and History, Brevard Institute, 1920-1923.

MISS MARY T. PESCU, *Librarian*

Spanish and Portuguese

L.L. George Peabody College for Teachers; Graduate Eaton and Burnett's Business College; Special Student Scarritt Bible and Training School; Student Library Science, State College of North Carolina; Missionary Teacher in Brazil, 1898-1915; Librarian and Teacher of Spanish, Lander College, 1921-1923; Weaver College, since 1923.

ARTHUR L. MANCHESTER, *Director of Musical Department*

Piano, Voice, Theory, Harmony

Graduate of Philadelphia Music Academy; Student of Richard Zechwer, F. J. Bussman, of Royal Conservatory of Milan, Italy, and F. H. Tubbs, New York City; Associate Editor, the ETUDE, 1893-1896; Editor THE MUSICIAN, 1896-1902; Dean School of Music, Converse College, and Director South Atlantic States Music Festival, 1904-1913; Director Fine Arts Department, Southwestern University, 1913-1918; Director Music Department, Hardin College, 1918-1920; Composer, Contributor to musical periodicals, Conductor of symphony orchestra, Elmira, N. Y., 1920-1923; Weaver College, since 1923.

THE MOUNTAINEER

Faculty

(Continued)

Mrs. C. H. TROWBRIDGE

Secretary and Treasurer

A.B., St. Charles College; Summer student in English, Montague; Seven years teacher of English, Centenary Academy, Palmyra, Missouri.

BLANCHE LOUISE MORRIS

Business Department

Student Weaver College, 1917-1919; Siler Private School, 1920-1921; Graduate Emanuel Business College, 1922; Teacher in Public and Private Schools, North Carolina, two years; Principal in Vance Business College, Asheville, 1922-1924; Teacher Business Department, Weaver College, since February, 1924.

MILDRED LUCILE JONES

Secretary to President and Business Department

Graduate Brevard Institute, 1923; Secretary to the President of Weaver College; Instructor of Shorthand and Typewriting, Weaver College, since 1923.

EUGENE ROBERT PRESSON

Graduate Manager of Athletics and Alumni Secretary

Graduate Weaver College, 1916; Teacher in Public Schools, Buncombe County; Graduate Manager of Athletics and Alumni Secretary at Weaver College, since February, 1924.

GLADYS LOUISE WILLIAMS

Instructor of Latin

Brevard Institute, 1919; Martha Washington College, 1920; Weaver College, 1921-1924; Instructor of Latin, Weaver College, 1923-1924.

HAROLD SLATEN

Instructor of Algebra

Weaver College, 1923; Instructor of Algebra, Weaver College, 1923-1924.

Mrs. E. H. ELLIOTT

Dietitian and Domestic Science

B.M., Sayre College (Ky.); Dietitian, Meredith College, Oklahoma State College, Florida State College, Gulf Park College (Miss.), Weaver College, since 1923.

BERNARD HOUSTON ABROGAST

Athletic Coach

Fishburn Military School (Va.); Columbia Prep. School (D. C.); Washington and Lee University, 1914-1918; Assistant Physical Director, W. and L. University, 1918; Coach Football, Weaver College, 1923.

B. C. REAVIS

College Pastor

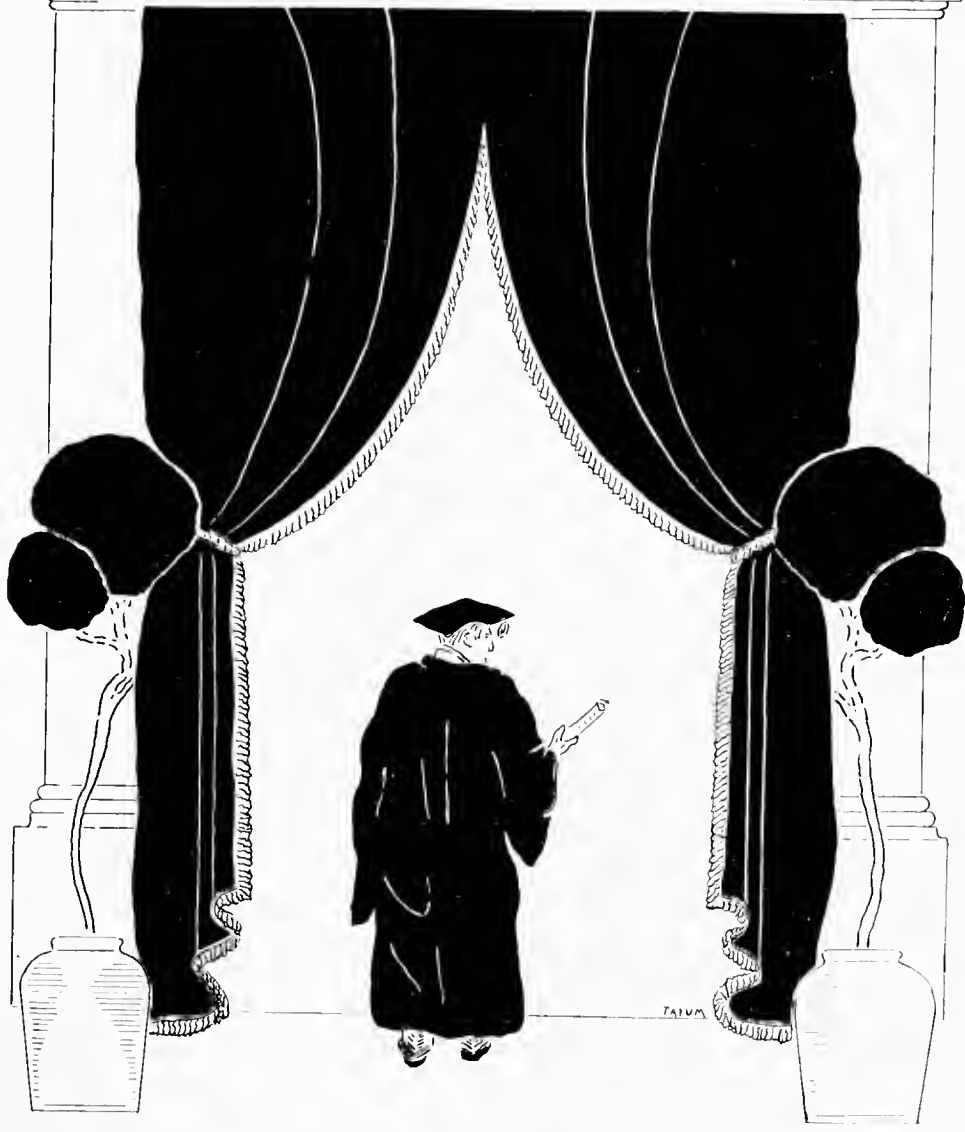
Rutherford College; Trinity College; Emory University.



CLASSES



SENIOR

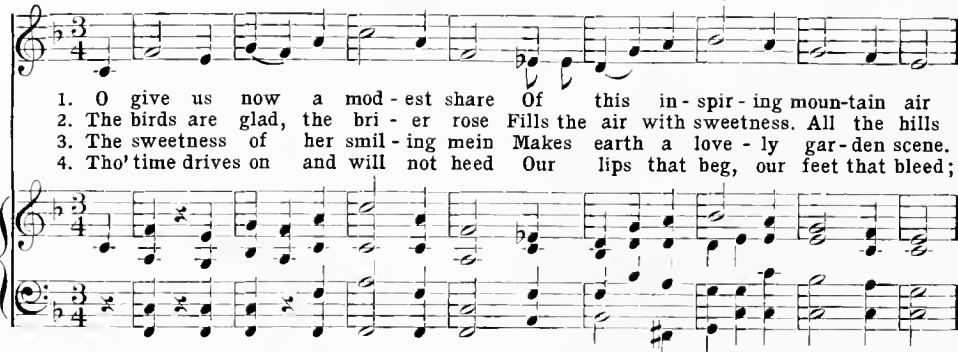


THE MOUNTAINEER

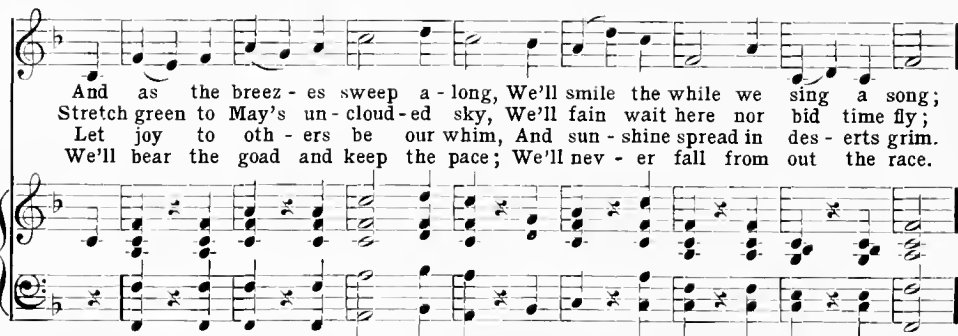
SENIOR CLASS SONG

Words by T. A. Jones

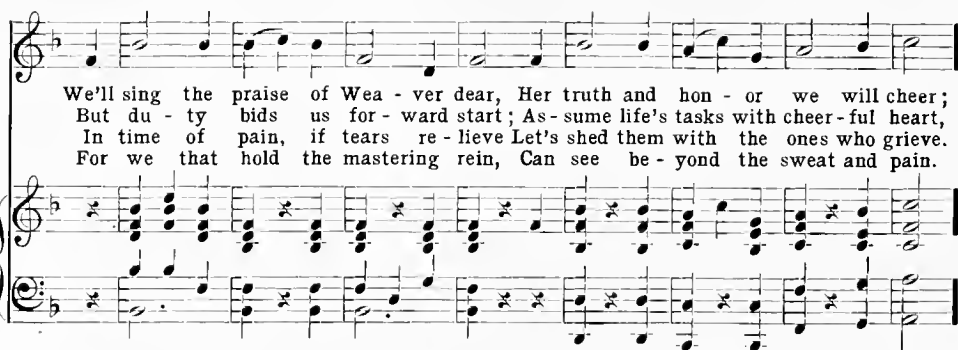
Music by Arthur L. Manchester



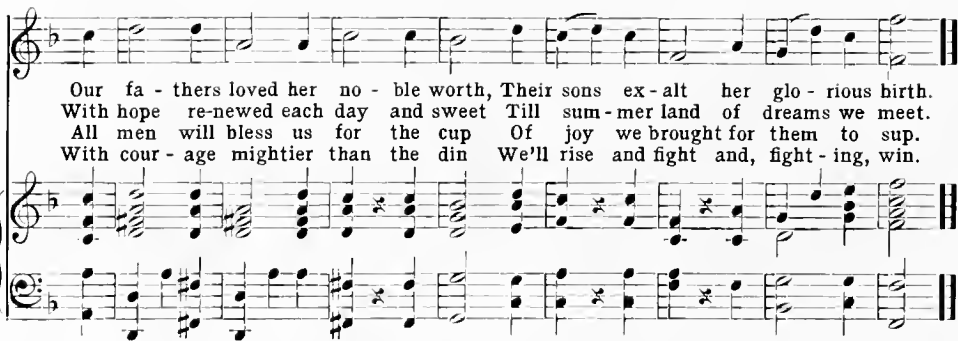
1. O give us now a mod-est share Of this in-spir-ing moun-tain air
2. The birds are glad, the bri-er rose Fills the air with sweetness. All the hills
3. The sweetness of her smil-ing mein Makes earth a love-ly gar-den scene.
4. Tho'time drives on and will not heed Our lips that beg, our feet that bleed;



And as the breez-es sweep a-long, We'll smile the while we sing a song;
Stretch green to May's un-cloud-ed sky, We'll fain wait here nor bid time fly;
Let joy to oth-ers be our whim, And sun-shine spread in des-erts grim.
We'll bear the goad and keep the pace; We'll nev-er fall from out the race.



We'll sing the praise of Wea-ver dear, Her truth and hon-or we will cheer;
But du-ty bids us for-ward start; As-sume life's tasks with cheer-ful heart,
In time of pain, if tears re-lieve Let's shed them with the ones who grieve.
For we that hold the mastering rein, Can see be-yond the sweat and pain.



Our fa-thers loved her no-ble worth, Their sons ex-alt her glo-rious birth.
With hope re-newed each day and sweet Till sum-mer land of dreams we meet.
All men will bless us for the cup Of joy we brought for them to sup.
With cour-age mightier than the din We'll rise and fight and, fight-ing, win.

Class History

THE soft evening breezes are gently blowing over the greensward and stately oaks of Weaver College. It is the night of graduation. Is not this the night of promise to the class of '24, the promise of a broader and more useful future? Can there be any more sublime conception than that of the vast opportunities offered to the seekers of knowledge in this modern age?

As we glance over the nineteen graduates of this night, our thoughts go back to our Freshman year. There are only two of the present students who started out with the large Freshman class, Mary Powlas and Margaret Aiken. The same two went through Sophomore year together, joined by one other, Howell Byrd. In the Junior year these were joined by a large crowd of students, twelve of whom are with us yet—John Vernon, Ethel Aycock, Myron Tatum, Clara Garrison, Joseph Young, Mae McClure, Oakley Croy, Annie Mae Ulmer, Reba Perry, Bonner Boger, Claude Reece, Murray Walters, Thomas Pack, Louise Williams. Two more were added in our Senior year, whom we were delighted to welcome—Marvin Hodge and T. A. Jones. We are not strong in numbers, but then we consider quality more desirable.

On the eve of our separation, we live over in memory the events of these crowded years. Some of these I will enumerate on account of their significance to us: April Fool's day when we ran away and lunched on "hot-dogs," in a beautiful glade; the baseball game with Carson-Newman College, with the social afterwards, which was so heartily enjoyed; the snow scenes, sleigh rides, kodaking parties and rabbit hunts of the Freshman year. Although we were a busy class, we did not forget those in need. We made numerous trips out to Miss McClure's to carry provisions and to cut firewood.

In our Sophomore year a steam heating plant was installed in the girls' dormitory, much to the delight of all. This year was also marked by the erection of the boys' dormitory donated by Mr. Skinner, who was once a student of Weaver College. Old Weaver received two other generous gifts during this year, the new athletic field, given by Mr. H. A. Dunham, and beautiful Lake Louise, donated by Mrs. Louise Moore. The former has witnessed numbers of hard fought battles ending in a few defeats, and many a glorious victory; along the banks of the latter we have enjoyed numerous delightful strolls during social hours.

In our Junior year, we recall with delight the hike to the pottery plant when it rained so hard that we returned in cars; the picnic at Reems Creek where one of our number received an unexpected shower bath; and the picnic at Lake Louise on Mrs. Pylant's birthday.

At the beginning of our Senior year, it gave us much pleasure to welcome into our college life President and Mrs. Trowbridge. The growth of the new library, to which so many friends generously contributed, has pleased us very much. The Thanksgiving football victory over Mars Hill will long be remembered by the class of '24. The dull monotony of school work has been broken by many plays, lyceums, concerts in Asheville, socials, and hikes with trips to Mount Mitchell, Mount Pisgah and Chimney Rock. By no means of least importance among the social events of the last two years were the Junior-Senior banquets. All these left golden memories tinged with sadness, for we were soon to leave our places to others.

Tonight the graduates of 1924 hold their last class meeting. We cannot guess what the future holds for us, nor can we see how widely separated our walks in life may lie; but there are precious memories and bonds of affection which will always keep us united in spirit. Our faith in each other, our loyalty to our Alma Mater, and our devotion to the ideals of courage and truth and honor which she has inspired will be our creed. In this faith, though we reach not fame nor fortune, we will hope to receive the Master's "Well Done" for a life spent in honorable service for others.

May the future appear a golden sunrise of opportunity to this class of one-thousand-nine-hundred and twenty-four.

LOUISE WILLIAMS, '24

THE MOUNTAINEER



AIKEN, MARGARET CORDELIA
WEAVERVILLE, N. C.
"PEGGY"

"The sunshine of your smile"

Weaver College Academic Department; Mnemosynean Literary Society.

"Peggy" is a great believer in "Fortune is merry, and in this mood will give us anything," therefore she does not worry. A sunny disposition is characteristic of her. She is indeed a regular gloom chaser, but, as some sage has said, there's a reason. We wish prosperity and happiness to this good pal of ours.



AYCOCK, ETHEL MARIE
CANTON, N. C.
"SHORTY"

*"Some say the world is made for fun and frolic,
and so do I"*

Canton High School; Euterpan Literary Society President (3); Society play (4); Reporter to PEP (4); Anson-Union County Club; College Council (4); Debate Council (4).

"Shorty" has been with us for two years and we have learned to like her very much. She is jolly and good-natured and quite popular. Ethel is a lover—in several senses of the word—of socials and it's not many she misses, pickles and dates, especially. Recently she seems to have taken a liking to the study of Uncle Sam's Navy. Her desire is to be a musician and we wish her luck.



BYRD, WILLIAM HOWELL
CANDLER, N. C.

*"I doubt not thro' the ages one increasing purpose
runs
And the thoughts of men are widened by the pro-
cess of the suns."*

Sand Hill High School; Delphian Literary Society President (3, 4), Secretary (3); Tennis Club, Secretary and Treasurer (4); "THE MOUNTAINEER" Staff, Joke Editor (4); Vice-President of Epworth League (3); Epworth League Council (4).

His perseverance and sincere interest in his work bespeak the qualities of success. He is neat in appearance and possesses the rare accomplishment of being a good listener. Byrd is a great believer in the old régime. He has a tendency to falling in love and to belonging to a number of organizations. He is said to be a lover of musical instruments, ukuleles preferred.

THE MOUNTAINEER

BOGER, BONNER
ROCKWELL, N. C.
"FATSO"

*"Thy life star has had elsewhere its setting
And cometh from afar."*

Unionville High school; Delphian Literary Society; Football (3, 4); Baseball (3); Monogram ("W") Club; Stanly-Rowan County Club Treasurer (4).

"Fatso," the steam-roller of the football team, is another jolly member of our class. We will not soon forget him as the Major in "Much Ado About Betty." He still retains a fondness for eats and girls, in fact, his tastes are Epicurean. He is one member of our class that surely believes in Weaver with all his heart and soul, especially with his heart. It is reasonable to assume that his future will be bright.



CROY, OAKLEY EASLEY
ROANOKE, VA.
"BISHOP TROMBONE"

"I am a part of all I have met."

Falcon Holiness School; Delphian Literary Society Secretary (3); Critic (3, 4); Chaplain (3, 4); Censor (4); Judge on Improvement Contests (3, 4); Glee Club (3, 4); Pastor of Elk Mountain-Woodfin Charge, M. E. Church (3); Buncombe County Club; Tennis Club (4); Alien Club secretary (4); Baseball squad (3); Football squad (4); Orchestra President and Trombonist (4); Weaverville Orchestra (3, 4); Committee on Maintenance of Order (4); Chairman of Memorial Committee (4); Debate Council (4); Senior play (4); Epworth League Council (4); Ministerial Band Secretary (4); Class Poet (4); "THE MOUNTAINEER" Staff, Social and Photo Editor (4); Music Dept. (4).

Hail to the champion filibuster of the campus! He possesses a masterly understanding of deep subjects. We of the Education Class wish to thank him for his funny anecdotes, and for frequent monopoly of class discussions. The height of his ambition is to become a bishop in his church and a college professor.



GARRISON, CLARA MAE
WEAVERVILLE, N. C.
"CLARENCE"
"Auld Lang Syne."

Weaverville High School; Mnesomyean Literary Society; Buncombe County Club; Second Honor in Reading Contest (3).

Mirabile Dictu, a real girl who doesn't talk much. "Clarence" lives in town and we don't know her as well as we should like to. Altho' she never volunteers an answer to a general question, she always answers when she is called upon. All her classmates extend to their very best wishes in any kind of work she may enter.



THE MOUNTAINEER



HODGE, MARVIN STELL

CASTLEWOOD, VA.

"MARY"

"Where Irish Eyes Are Smiling."

Graham (Va.) High School; Bluefield College; Ciosophic Literary Society Marshal (4); Critic (4); Ways and Means Committee (4); Alien Club President (4); Monogram ("W") Club (4); Tennis Club (4); Football (4); Reporter to "PEP" (4); Giftorian Senior Class; Member College Council; "THE MOUNTAINEER" Staff, Business Manager (4).

("Tis an ill wind that blows no man good.") This was one school's loss, but certainly our gain. As Business Manager of "THE MOUNTAINEER" he has been splendid. He is a good athlete as well as an excellent student. His hobby is talking to the girls. We wonder what he says to them, for he certainly make them smile. His rendezvous and favorite hanging out place is the postoffice, (and it is not always because of mail.) Marvin's ambition is to become a banker. May he find the golden keys that open the doors of opportunity.



JONES, TERRELL AMLEY

WEAVERVILLE, N. C.

"NUTE"

*"The future of our life to be
We weave with colors all our own,
And in the field of destiny,
We reap as we have sown."*

Rowan County Farm Life School; Rutherford College; Ciosophic Literary Society Critic (4); Society Play (4); Composer of Class Song (4); Senior Play (4).

You will go a long way before you find a better all round man. He has never tried to bluff his way, as most of the rest of us have, consequently he is well prepared. What T. A. Would do without his loyal Ford which brings him to school every day we do not know. With his energy and determination we can predict a bright future for him.



McCLURE, FANNIE MAE

LANDRUM, S. C.

"MAE"

*"And thro' all the dark years when the clouds
brought their tears, these two eyes of blue kept
smilin' thru' at me."*

Landrum High School; Enterpian Literary Society; Ways and Means Committee (3); South Carolina Club; Menu Committee Junior-Senior Banquet (4); Senior Play (4); Last Will and Testament (4).

Mae is *la plus petite et chic* as well as the youngest member of our class. She came to us in her Junior year and has made her many friends since here, which bespeaks her many winning characteristics. Mae is a hard worker and easily stands near the head of her classes. We wish her the success that she merits.

THE MOUNTAINEER

PACK, JAMES THOMAS
EAST FLAT ROCK, N. C.

"TOM"

*"Like the winds of the sea
Arc the ways of fate,
As we voyage along thru' life,
'Tis the set of the soul that decides the goal,
And not the calm or strife."*

East Flat Rock High School; Delphian Literary Society, Vice-President (3); Society Play (3); Henderson County Club President (4); Monogram ("W") Club (4); College Council President (4); Debate Council President (4); President of Y. M. C. A. (4); Manager of College Book Room (4); Football (3, 4); Baseball (3); Editor-in-Chief of "PEP" (4); Vice-President of Epworth League (4); Secretary of Senior Class; Statistician.

Tom is practical and yet amusing. He says that he never lets study interfere with his education. Tom is one of the most popular boys in school and has a wonderful gift of making friends even with his rivals. That he possesses executive ability is shown by the fact that he is president of practically every student organization on the campus. No need to wish him success. We believe he will have it, anyway.



POWLAS, MARY MATILDA
BARBER, N. C.

"MARY"

"Who'll take the place of Mary?"

Weaver College Academic Department; Euterpean Literary Society Treasurer (3); Ways and Means Committee (3); Society Play (4); Stanly-Rowan County Club President (4); Tennis Club President (4); Girls' Basketball Manager (3); Epworth League Cabinet (3); Secretary and Treasurer Class (3); Senior Play (4); Class Prophecy (4).

Mary has been with us for several years and probably knows more about the history and traditions of Weaver College than any other student. We wonder how it will be without her! Her favorite pastime is tennis, at which game she excels, and writing to Hobart.



REECE, CLAUDE JEFFERSON
CRUSO, N. C.

"JEFF"

*"Not in vain the distance beacons,
Forward, forward, let us range."*

Haywood Institute; Chiosopic Literary Society; Intersociety Debate (3); Vice-President (4).

"Jeff" joined us in his Junior year and many pleasures we have shared together. He is quiet and unassuming. There is really no describing him since he is not an extremist in anything. He would make a good track man if walking long distances, such as from across Reems Creek to the campus, means anything.



THE MOUNTAINEER



TATUM, JOSEPH MYRON

OLIN, N. C.

"TATE"

" * * But each for the joy of working
And each in his separate star,
Shall draw the thing as he sees it
For the God of things as they are."*

Guilford College; Clisophic Literary Society President (4); Secretary (3, 4); Treasurer (4); Anson-Union County Club; Monogram ("W") Club (4); Student Council Secretary (4); Baseball (3); Treasurer of Epworth League (4); Secretary Y. M. C. A. (4); Senior Play; Sport Editor of "PEP" (4); "THE MOUNTAINEER" Staff, Art Editor (4); Football (3, 4).

What success this book may prove is due to a large extent to Tate's tireless and invaluable work as Art Editor. He first went to Guilford, but the spirit moved him to migrate to higher ground, and there is at least one person who is glad of this.



ULMER, ANNIE MAE

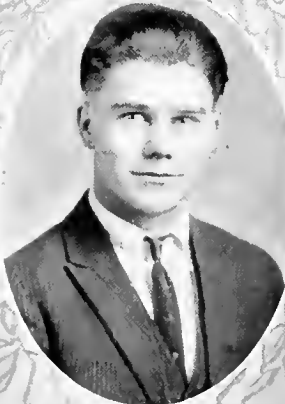
CAMERON, S. C.

"CURLY"

"Believe me if all those endearing young charms."

Cameron High School; Euterpan Literary Society Vice-President (4); Treasurer (4); South Carolina Club; Tennis Club (3, 4); F3 D. E. Club

This demure little maid is always late, except to social hour, always hoping that the old order will change and yield place to a new. Annie Mae takes life easily. No one has yet seen her in a hurry. She evidently likes boys, feasts, and English, for she talks considerably about Shakespeare's plays. It is rumored that she likes the fruit of the Plumtree.



VERNON, JOHN CALVIN

SEMORA, N. C.

"PARSON"

*"Let me live in a house by the side of the road and
be a friend to man."*

Thomasville High School; Trinity Park School; Weaver College Academic Department; Delphian Literary Society President (3); Society Play (3, 4); College Council (4); Committee on Maintenance of Order (4); Athletic Association Secretary (4); Football (3, 4); Vice-President Y. M. C. A. (4); Declaimer's Medal (3); Reporter to "PEP" (4).

A good athlete and all round student. There is an indefinable charm about him that causes his classmates to recall him with pleasure. If any one ever saw him in a gloomy mood we do not know who it could be. But it takes a happy, optimistic person to make a good salesman, and "Parson" certainly can sell the goods. He can always be relied upon to perform any task assigned to him.

THE MOUNTAINEER

WALTERS, MURRAY MOSES

MONROE, N. C.

"FINK"

*"Build thee more stately mansions, O my soul,
While the swift seasons roll."*

Monroe High School; Clisophic Literary Society Critic (3); Secretary (4); Anson-Union County Club; Tennis Club (4); College Council (4); Debate Council (4); Inter-Collegiate Debater (4); Basketball (3); Glee Club Manager (4); Senior Play.

You might search the world over, but you will find only one "Fink." He is the humorist of our class, and ranks as an entertainer of considerable merit with lots of wit and a likable disposition. "Fink" has a genuine aptitude for business and his favorite business relations seem to center around Biltmore Avenue and in selling pies.



WILLIAMS, GLADYS LOUISE

LAKE TOXAWAY, N. C.

"In the evening by the moonlight, dear Louise."

Brevard Institute; Martha Washington College; Mnemosynean Literary Society; Society Play (3); Epworth League Cabinet (3); Secretary (4); President of Girls' Sunday School Class (3); Winning Essay offered thru Daughters of Confederacy by Mr. H. A. Dunham (3); Class Historian (4); Assistant in Department of Languages Weaver College (4); "THE MOUNTAINEER" Staff, Associate Editor (4); Assistant to the Dean of Women (4).

Louise enjoys the enviable position of being the understudy of the Dean of Women and fills her place well. She is a shark in languages. Her *bête noir* is algebra. She hates socials, but makes excellent fudge. As an instructor in Latin, she is hard to beat.



YOUNG, JOE HERMAN

ASHVILLE, N. C.

"JOE"

*"The heights by great men reached and kept
Were not attained by sudden flight,
But they, while their companions slept,
Were toiling upward thru' the night."*

Woodfin High School; Brevard Institute; Honorary Member of Delphian Literary Society; Student Council (4); President Senior Class; Buncombe County Club; Senior Play (4); "THE MOUNTAINEER" Staff, Editor-in-Chief.

"Joe" is the valedictorian of our class and he certainly deserves the honor, for he has led several other aspirants to this coveted place a merry chase during the past two years. He is considering the career of an author. His executive ability will fit him for any field, and his policy of sticking to a thing until it is done will surely make him a success in any undertaking.



Seniors '24



THERE is a school of wondrous fame,
 Endeared to all the world who know it.
We do our homage to her name,
 We to our Alma Mater owe it.
To Weaver ignorant we came
 To get the learning we did need
To fit us well for life's hard game,
 And all her precepts do we heed.
As one we walked the rugged road
 Of school life's bright and gloomy days.
We helped each comrade bear his load,
 But now we take to divers ways.
We'll cherish long our teachers dear
 For all the lessons they have taught ;
For their brave hearts and words of cheer
 Which forth from books can ne'er be brought.
Seniors we are of Weaver College,
 Today we're finished here our work,
And now with head brim full of knowledge,
 We pledge a duty ne'er to shirk.
So in the years that are to come,
 Our Alma Mater's trustful places
Will not a day be left alone,
 But filled with other happy faces.

OAKLEY E. CROY.



Moonrise in the Mountains

(Class Prophecy)

THE NATIVE OAKS slowly waving their branches at the gentle touch of dying wind, the lowing of the herd in the distance as they were homeward driven, the first faint star peeping from the great arch of the darkly blue sky, the deep hush over the wide space and then the round red rim of the full moon slowly rising above the far lofty mountain tops. This was the picture as I sat at the window in the east end of my room. As I sat there watching the gentle moon slowly climb through the heavens some spirit unknown told me that this was that wonderful radiant night, when the goddess of the future was to reveal to me the destiny of those whose school life was linked with mine.

Lured by the brilliant tints of the eastward heavens I left the large noisy dormitory and sought the haven of the sloping, grassy hillside, where a commanding view of the whole wide heavens was mine. Idly lying there, watching the rosy glow from the sky and the timid peeping forth of the tiny stars, I paid no heed to the flight of time. In the drowsy stillness I realized that the mountain breeze was lulling me to sleep.

While slumbering peacefully on the sloping hillside, a vision piercing the veil of the future, appeared to me in that state of mind called dreaming. In the future I could see no other than myself wandering along the shores of a foreign country, where I had gone to assume my life's work as a teacher of the word of God. This was one of those many times I had wandered along the shores, while the gentle moon lighted my pathway, wandering and longing for those old familiar faces and voices of long ago I became tired and sat down on the sandy shore, just as a wave pushed itself upon the beach. I was closely watching the waves subside, when all at once I noticed a tiny shell, much unlike the others, had been left at my feet by the wave in its rush back to the great deeps. I picked up the shell and examined it closely, I saw that it had in its pearly hollow a paper telling me just where my dear old classmates of 1924 were and what they were doing.

As I opened the paper, my eyes fell on a very familiar name, Ethel Aycock, better known to us as "Shorty." But much to my surprise, I found that she had given up her career as a concert pianist and was playing the character of Maggie in a vaudeville while Bill Stack represented Jiggs to perfection.

Margaret Aiken was helping Madame Curie in her experiments with radium in the latter's laboratory in Paris. I was not at all surprised to learn this, as Margaret spent the greater part of her college days working out experiments, provided Professor Churchwell would help her.

Bonner Boger, after completing his course at Trinity College, was one of the world's most famous evangelists. We always thought that surely one of our number would take advantage of the religious training received at Weaver, but never one time thought that this would be Bonner Boger.

Who would have thought it! Howell Byrd, after being encouraged by his devoted wife, had at last received his degree from Harvard and was professor of his favorite study, Education, at Chicago University.

Oakley Croy, commonly called "Trombone," having been the most intellectual member of our class, had caused his classmates to expect great things of him; so it was with very much disappointment that I learned that he had not climbed to the heights of fame as was expected, but was now on the job advertising the Ringling Brothers Circus, by playing a trombone on the public squares of all the large cities.

Clara Garrison, while she was taking a special course in ethics of personal beauty, in New York City, caused her teachers to open their eyes. They could very easily see that Clara was a very promising young woman at such a profession, so they at once, after she completed her course, gave her a position in the school. I was greatly elated to learn that Clara had been so successful in her profession.

Marvin Hodge, who once took so much interest in the Co-eds at Weaver College, was still playing at love. He had been acclaimed the greatest interpreter of Shakespeare since Southern. His favorite roles were Romeo and Benedict. This came not as a great surprise to me because Marvin always lead his class in the Shakespearean Course at Weaver College.

(Continued on page 60)

Last Will and Testament

THE CLASS OF '24 has for some months been suffering from an incurable disease manifested by a visible enlargement of the cranial cavity, by a feeling of unaccountable melancholy and acute pains around the heart. After long and earnest consultation with her physician, Dr. C. H. Trowbridge, she has been advised that she cannot exist for longer than twenty-four hours: therefore she makes the following Will and Testament.

ARTICLE I

To Mr. and Mrs. C. H. Trowbridge we, the Senior Class, will our best regards and heartfelt sympathy for your untiring efforts to shape our characters.

ARTICLE II

To Miss Smith, we return her excellent qualities of leadership, her invariable smile and her good disposition that she may have them for another senior class.

ARTICLE III

To Mrs. Plyant, we the class of '24 will our Trig books and, as a treat, a book of Shakespeare thrown in.

ARTICLE IV

To Mr. Powell, we bequeath thanks for his untiring efforts and perseverance in the cause of "THE MOUNTAINEER," and the sincere respect of all the students through the coming years.

ARTICLE V

To Mrs. Elliott, we leave the hope that the occupants of the girls' dormitory in the future will receive a high College Attitude grade.

ARTICLE VI

To Miss Pescud, we leave our thanks for the stories of South America that she has related to us.

ARTICLE VII

To Mr. Deaderick, we will our keen appreciation of his patience and perseverance to all the students.

ARTICLE VIII

To Mr. Churchwell, we will back the store of manifold jokes which he has related to us that they may become the memories of all senior classes which follow us.

ARTICLE IX

We will to the prospective seniors of '25 the senior privileges of '24, the aspirations and ambitions of the Senior Class as a whole, and the prospect of the most prosperous and happiest future that can be desired.

ARTICLE X

I, Gladys Louise Williams, will my autobiography to the next monitor who aspires to keep perfect order on the third floor.

ARTICLE XI

I, Clara Mae Garrison, sincerely and tenderly bequeath to Robah Bland my infallible loquacity.

ARTICLE XII

I, Margaret Cordelia Aiken, do will to Leon Warlick my engaging smiles and perfume atomizer.

ARTICLE XIII

I, Mary Matilda Powlas, leave to Harold Gabriel my marvelous skill in tennis.

ARTICLE XIV

I, Annie Mae Ulmer, hereby bequeath to Sam Vance one of my long desired curls.

ARTICLE XV

I, Fannie Mae McClure, will my skill in figures to John Mayo, provided that he does not exhaust the supply.

(Continued on page 70)

JUNIOR



THE MOUNTAINEER



ALLISON, EUNA DEAN
Horse Shoe, N. C.

Brevard Institute; Mnemosynean Literary Society, President (3); President Girls Sunday School Class (3); Henderson-Rutherford County Club; Life Service Band.



BLAND, RALPH WALDO
Kinston, N. C.

Grainger High School; Chiosopic Literary Society Critic (3); Censor (3) Chairman Ways and Means Committee (3); Librarian (3).



BROOME, HOYLE SYDNEY
Monroe, N. C.

Rutherford College; Trinity College S. A. T. C., 1918; Chiosopic Literary Society President (3); Treasurer (3); Chairman Ways and Means Committee (3); Committee on Maintenance of Order Chairman (3); Associate Editor of "MOUNTAINEER" (3); Associate Editor of "PEP" (3); Intercollegiate Debate (3); Debate Council (3); Glee Club (3); Anson-Union County Club (3); Assistant to the Dean (3).



BURRUS, MAUDE ALICE
Weaverville, N. C.

Weaver Academic Department; Euterpian Literary Society Secretary (1); Treasurer (2); President (3); Society Play (3); Winner of Reading Medal (3); Buncombe county Club, Secretary and Treasurer (3); Associate Editor of "MOUNTAINEER" (3).



BUTT, PAUL ATLEE
Bakersville, N. C.

Mitchell Collegiate Institute; Atlanta Conseratory of Music; Delphian Literary Society, Treasurer (2), Secretary (2, 3); Assistant in Music Department (3); Pianist in Sunday School (2, 3); Pianist of Epworth League (2, 3); Glee Club Business Manager (3); Orchestra (3); Tennis Club (3); Y. M. C. A. Cabinet (3).



CALDWELL, LUCILE
Spartanburg, S. C.

Weaver Academic Department; Mnemosynean Literary Society, President (2), Vice-President (3); Basketball (1, 2, 3); Tennis Club (3); South Carolina Club; F. B. D. E. Club.

THE MOUNTAINEER

CARMICHAEL, ELIZABETH LUCILE
Weaverville, N. C.

Weaver Academic Department; Mnemosynean Literary Society, President (3), Treasurer (3); Society play (2, 3).

CRUMP, EUGENE LITTLE
Polkton, N. C.

Brevard Institute; Delphian Literary Society; Anson-Union County Club, Secretary (3); Tennis Club (3).

DACY, KENNETH GEORGE
Asheville, N. C.

Woodstock (Illinois) High School; Asheville High School; Post Graduate in Mechanical Drawing; Delphian Literary Society; Glee Club (3).

ELLIOTT, JEWEL MAIE
New London, N. C.

New London High School; Euterpean Literary Society, President (3), Vice-President (3); Ways and Means Committee (3); Society Play (3); Rowan-Stanly County Club, Secretary (3).

EAVES, ROBERT WENDELL
Forest City, N. C.

Forest City High School; Delphian Literary Society, Secretary (3), Critic (3); Librarian (3); Society play (3); Intercollegiate Debate (3); Assistant Business Manager of "MOUNTAINEER" (3).

EDWARDS, ESSIE IRENE
Tryon, N. C.

Brevard Institute; Mnemosynean Literary Society, Vice President (3); Life Service Band.



THE MOUNTAINEER



HOWELL, FANNIE BLAKE
Ansonville, N. C.

Albemarle Normal; Mnemosynean Literary Society, Secretary (3); Life Service Band; Basketball (3); Anson-Union County Club.

JONES, OKLE
Weaverville, N. C.

Jefferson High School; Clisophic Literary Society, Vice-President (3); Chairman of Ways and Means Committee (3); Football (3); Monogram Club (3).

JONES, MILDRED LUCILE
Greenville, S. C.

Brevard Institute; Mnemosynean Literary Society; Social Editor of "Per" (3); Secretary to the President of Weaver College; Instructor of Shorthand and Typewriting (3); South Carolina Club; Corresponding Secretary of Epworth League (3).

KIRKPATRICK, ADELINE PHILLIS
Clyde, N. C.

Haywood Institute; Enterpian Literary Society, Secretary (3); Society Play (3); College Orchestra, Assistant Pianist (3); Reporter to "Per" (3); Rutherford-Henderson County Club.

KING, LILLIAN LUCIE
Brevard, N. C.

Brevard Institute; Enterpian Literary Society; Chairman of Ways and Means Committee (3); Society Play (3); Henderson Rutherford County Club.

LEE, MYRTLE KATHRYN
Polkton, N. C.

Albemarle Normal Institute; Mnemosynean Literary Society, Chaplain (3); Ways and Means Committee (3); Reporter to "Per" (3); Chairman of Devotional Committee Sunday School Class (3); Anson-Union County Club, Vice-President.

THE MOUNTAINEER

KUYKENDALL, CORNELIUS
Biltmore, N. C.

Mars Hill College; Baseball (3).

LANCE, JANIE
Fletcher, N. C.

Weaver Academic Department; Enterpian Literary Society; Rutherford-Henderson County Club; Basketball Captain (2, 3); F3. D. E. Club.

MANCHESTER, RUTH
Weaverville, N. C.

Elmira (N. Y.) Free Academy; Enterpian Literary Society; Society Play (3); College Pianist (3); Buncombe County Club.

MAYO, JOHN BLOUNT
Richmond, Va.

John Marshall High School; Delphian Literary Society, Secretary (3), Treasurer (2); Society Play (2, 3); Winner in Annual Declamation Contest (2); President of Junior Class; Glee Club (2, 3); Tennis Club Vice-President (3); Orchestra (3); Cartoonist of "MOUNTAINEER".

MCCOLLUM, EVELYN ELIZABETH
West Asheville, N. C.

Weaver Academic Department; Enterpian Literary Society Secretary (3); Anson-Union County Club; F3 D. E. Club.

MANEY, MABEL VAUGHN
Weaverville, N. C.

Weaver Academic Department; Enterpian Literary Society, Treasurer (2); Ways and Means Committee (3); Society Play (3); Buncombe County Club.



THE MOUNTAINEER



MEASE, HELENE RUBY

Canton, N. C.

Canton High School; Euterpian Literary Society;
Anson-Union County Club; Tennis Club (3).



McELROY, JAMES LAWRENCE

Marshall, N. C.

Marshall High School; Chiosophic Literary Society.



McQUAGE, EULA MABEL

Salisbury, N. C.

Churchland High School; Euterpian Literary Society;
Rowan-Stanly County Club; Life Service Band; Bas-
ketball (3).



NEILL, SARAH GENEVA

Brevard, N. C.

Brevard High School; Euterpian Literary Society;
Life Service Band.



ORR, EDNA MAE

Andrews, N. C.

Asheville High School; Mnemosynean Literary Society;
President (3); Society Play (3); College Council (3);
Epworth League Cabinet (3); Life Service Band; Asso-
ciate Editor of "PEP" (3).



REID, JOHN KILPATRICK

Forest City, N. C.

Forest City High School; Delphian Literary Society;
Tennis Club (3); Henderson-Rutherford County Club.

THE MOUNTAINEER

REYNOLDS, MARGARET JOSEPHINE
Weaverville, N. C.

Union City (Tenn.) Training School; Weaverville High School; Weaverville Academic Department; Mnemosynean Literary Society Treasurer (2); Society Play (3).

SMELTZER, LULLIAN ANNETTE
New Market, Tenn.

Canton High School; Mnemosynean Literary Society, Intercollegiate Debate (3); Life Service Band

WALTERS, VERLA MAE
Monroe, N. C.

Monroe High School; Enterpian Literary Society Vice-President (3); Treasurer (3); Life Service Band Secretary (3); Anson-Union County Club Secretary (3).

WELLS, HOWARD LAFAYETTE
Bostic, N. C.

Rutherford College Academic Department; Delphian Literary Society, Vice-President (3), Critic (3); Chairman Ways and Means Committee (3); Glee Club (3); Tennis Club (3); Debate Council (3); President of Epworth League (3); Orchestra Pianist (3); Rutherford-Henderson County Club Secretary (3); Y. M. C. A. Cabinet (3); College Council (3); President of Boys' Sunday School Class (3); Ministerial Band, President (3).

WARLICK, LEON ROYSTER
Monticello, S. C.

Asheville High School; Weaver College Academic Department; Chiosophic Literary Society, Vice-President (2), Censor (3), Secretary (3); Chairman of Ways and Means Committee (3); South Carolina Club President (3); Monogram Club (3); Athletic Council (3); Committee on Maintenance of Order (3); Debater's Medal Chiosophic Literary Society (2); Business Manager of "Peep" (3); Football (2, 3); Baseball (2); College Council (3).

WILLIAMS, ZEB CARSON
Matthews, N. C.

Matthews High School; Chiosophic Literary Society; Glee Club (3); Anson-Union County Club



THE MOUNTAINEER

KENDALL, EVELYN MADELONA
Greensboro, N. C.

Randolph-Macon Institute; Mnemosynean Literary Society; College Council.

MARTINEZ, HENRY
Esperanza, Cuba

Publica School (Esperanza); Mannel Ruiz (Santa Clara); Mars Hill College; American International College (Springfield, Mass.)

PATTERSON, KING GEOFFREY
Weaverville, N. C.

East Flat Rock High School; Brevard Institute; Delphian Literary Society; Cheer Leader (3).

SLATEN, HAROLD
Charlotte, N. C.

Charlotte High School; Instructor of Mathematics, Weaver College (3).

BARTLETT, VERNE
Weaverville, N. C.

ERSKINE, MRS. J. B.
Weaverville, N. C.

HOPE, FRED
Gainesville, Georgia

JERVIS, THEODORE
Weaverville, N. C.

MORRISON, KATHLEEN
Asheville, N. C.

RAY, OLIVE
Weaverville, N. C.

ROGERS, BRONNIE
West Buncombe, N. C.

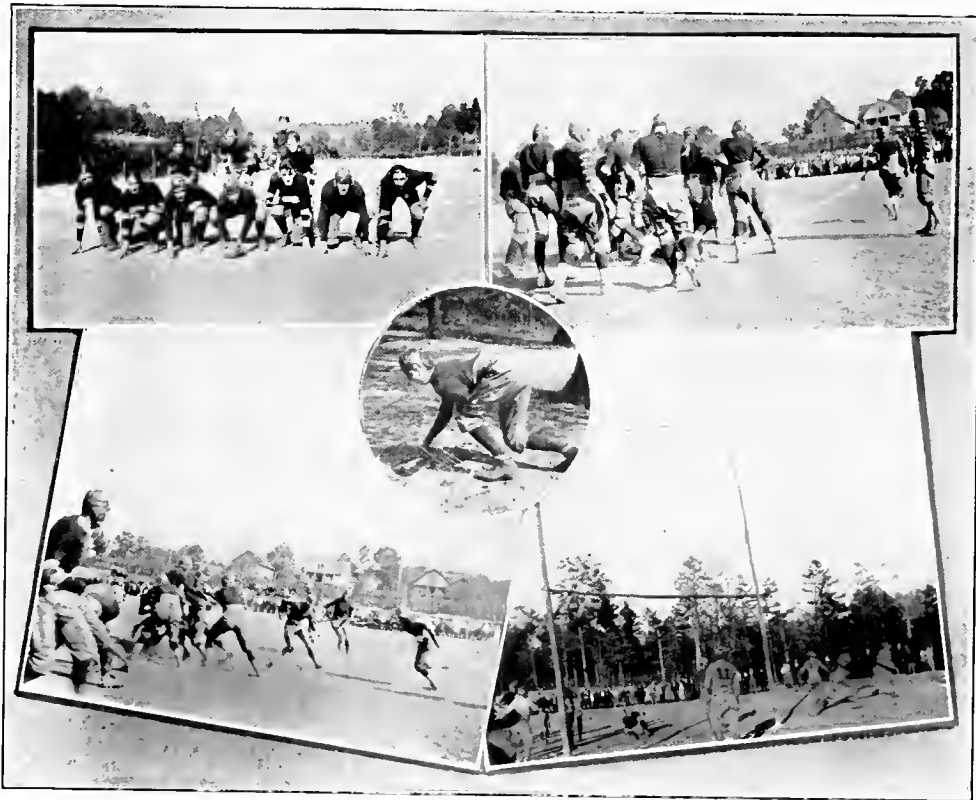
ROBERTS, MARGARET
Danville, Va.

TEAGUE, GRACE
Weaverville, N. C.

WASHBURN, E. N., JR.
Bostic, N. C.

WELLING, JOSEPH
Washington, D. C.

YOUNG, VESTA
Brevard, N. C.



THE MOUNTAINEER

ACADEMIC





ACADEMIC DEPARTMENT

THE MOUNTAINEER



Academic Department

•

MOTTO: *Build for character, not for fame.*

FLOWER: *Sweet Pea*

COLORS: *Pink and Green*

Officers

•

Presidentray carpenter
 Vice-Presidentlouise medley
 Secretarygertrude crowell
 Treasurerjames rogers

Class Roll

•

armstrong, mary
 barnard, fuschia
 bates, jere
 bell, elizabeth
 bennett, robert
 bland, robah
 brown, burder
 brunmitt, fred
 eagle, boone
 carpenter, ray
 chambers, clara
 chandler, frank
 clemens, horace
 crowell, gertrude
 croy, sidney

asheville, n. c.
 beech, n. c.
 travellers rest, n. c.
 taylorville, n. c.
 ansonville, n. c.
 hendersonville, n. c.
 weaverville, n. c.
 oxford, n. c.
 clyde, n. c.
 cherryville, n. c.
 stocksville, n. c.
 maryville, Tenn.
 maryville, Tenn.
 new london, n. c.
 miami, Fla.

THE MOUNTAINEER

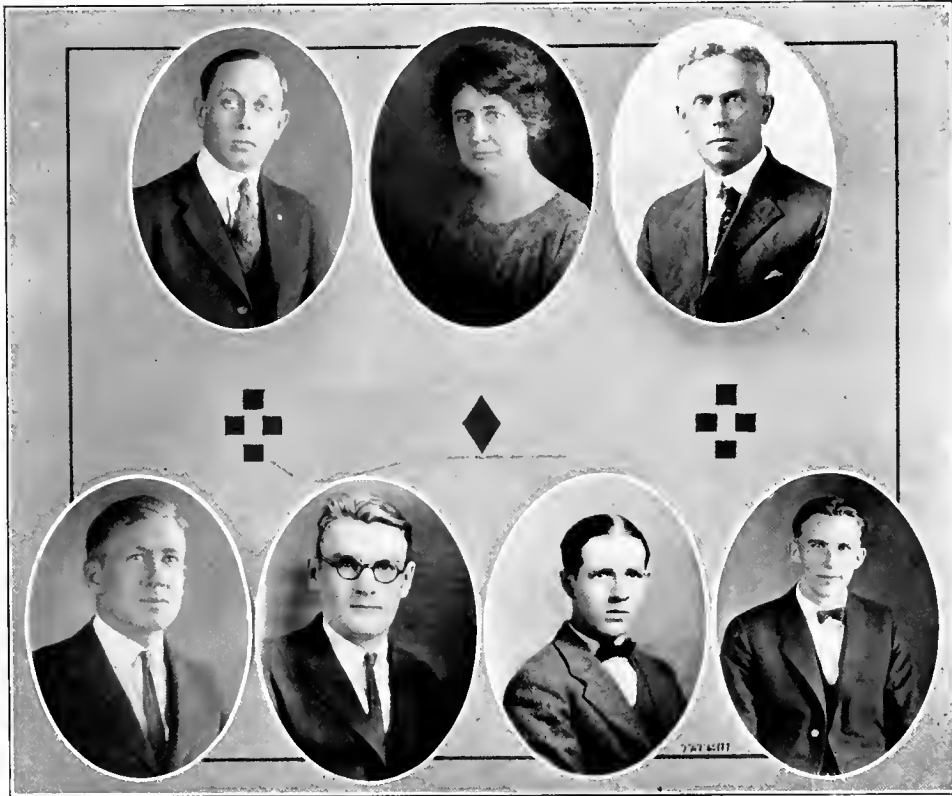
crump, eugene
dove, james
edwards, thomas
gabriel, harold
greenwood, hubert
groce, j. w.
groves, ruel
guthrie, naomi
hamilton, marion
hampton, edna
harwood, vina
henry, d.
jones, roy
kiker, wade
king, clara
kirk, invin
lance, willie
lee, callie belle
loftin, landis
lyda, emory
lyda, viola
medley, louise
michael, clara
mitchell, leonard
monday, erby
morris, paul
nelson, esther
newlin, claude
parks, walter
patrick, charles
patterson, geoffrey
pearson, dorothy
penley, robert
pickens, lass
reagan, william
robertson, bob
rogers, charles
rogers, james
ross, mary madeline
sharp, daisy
smith, louise
stack, william
vance, sam
wall, francis
weaver, mary jo
weaver, william
weir, ruth
west, stanley
white, g. r.
whiteside, clinton
wilson, evan
winstead, william
woodall, hubert

polkton, n. c.
carolcen, n. c.
weaverville, n. c.
terrell, n. c.
fletcher, n. c.
sandy mush, n. c.
union mills, n. c.
marshall, n. c.
marietta, n. c.
barnardsville, n. c.
albemarle, n. c.
maryville, tenn.
rutherfordton, n. c.
polkton, n. c.
brevard, n. c.
salisbury, n. c.
fletcher, n. c.
polkton, n. c.
mt. olive, n. c.
weaverville, n. c.
arden, n. c.
polkton, n. c.
weaverville, n. c.
new castle, pa.
weaverville, n. c.
weaverville, n. c.
weaverville, n. c.
randleman, n. c.
swannanoa, n. c.
plumtree, n. c.
weaverville, n. c.
weaverville, n. c.
candler, n. c.
weaverville, n. c.
weaverville, n. c.
simpsonville, n. c.
enfield, n. c.
enfield, n. c.
asheville, n. c.
weaverville, n. c.
polkton, n. c.
monroe, n. c.
plumtree, n. c.
asheville, n. c.
weaverville, n. c.
lester, n. c.
asheville, n. c.
weaverville, n. c.
salemburg, n. c.
fletcher, n. c.
fallston, n. c.
wilson, n. c.
weaverville, n. c.



ATHLETICS





Athletic Council



PROF. C. H. TROWBRIDGE.....*Chairman*
EUGENE PRESSON*Graduate Manager*

Members



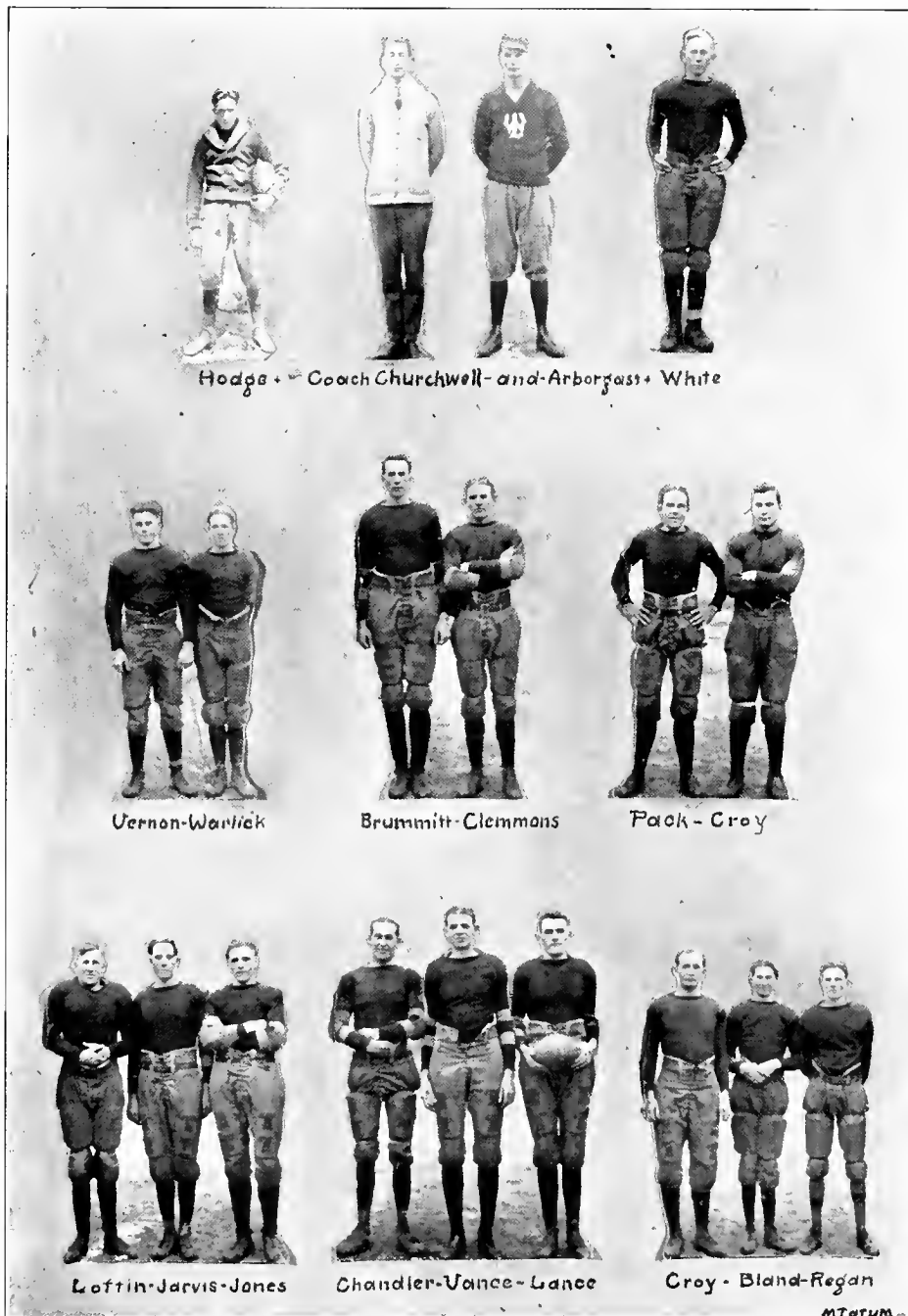
MISS LUCILE SMITH
WILLIAM LANCE

LEON WARLICK
FRED BRUMMIT

LANDIS LOFTIN



THE MOUNTAINEER



Hodge + Coach Churchwell - and - Arbogast + White

Vernon - Warlick

Brummitt - Clemmons

Pack - Croy

Lottin - Jarvis - Jones

Chandler - Vance - Lance

Croy - Bland - Regan

MTerum -

Football Personals

WILLIAM LANCE, *Captain*

Age 20

Left Guard

Weight 187

"Little Willie," our captain, is one of the most consistent players Weaver ever had. In his three years on the varsity no team was ever able to gain consistently over his position. With his powerful physique and even temperament he makes the ideal football player.

LANDIS LOFTIN, *Captain-Elect*

Age 21

Left Tackle

Weight 170

"Rat," who will captain the 1924 eleven, is one of the most brilliant linesmen in Western North Carolina. He has a fine habit of breaking through the lines and downing the runner before he gets started. We predict that Loftin will lead the best football team in this section this fall.

FRANK CHANDLER

Age 20

Fullback

Weight 190

Frank was the main cog about which the "Blue Giants" offense was centered. He was one of the greatest line buckers in the state, and a very fast man. His fighting spirit always aroused his men when things were going against them.

HORACE CLEMENS

Age 20

Halfback

Weight 168

Horace was the best ground gainer on the team. He was also one of the best men to furnish interference for the other backfield men.

LEON WARLICK

Age 18

Quarterback

Weight 128

"Span" was the lightest man ever to win the varsity letter in football at Weaver College. His remarkable knowledge of the game, and great fighting spirit marks him as one of the most valuable men on the squad.

MARVIN HODGE

Age 17

Halfback

Weight 150

Marvin had never played any football before he came to Weaver College, but he learned the fundamentals of the game and made the squad. He was the hardest tackler on the team.

FRED BRUMMITT

Age 22

Left End

Weight 190

"Freddie" played the left wing position and always got his man. He was in the fight in every game of the season. He is every inch a dependable player and true sport.

THE MOUNTAINEER

OKLE JONES

Age 22

Halfback

Weight 195

This "Baby Giant" simply tore opposing lines to "Smitherins." His defensive work was just as commendable. We could always count on Jones showing one hundred per cent efficiency.

GEORGE WHITE

Age 23

End

Weight 133

"Shad" made up for his lack of weight by his ability to navigate over "terra firma" in fast time. He was an excellent receiver of the forward pass.

EMORY LYDA

Age 17

Halfback

Weight 170

Emory was not only a powerful runner with the ball, but he starred particularly in his defensive work. He played center in 1922, but was shifted to the backfield because of a lack of material there.

THOMAS PACK

Age 20

Center

Weight 175

Tom has all the requisites of an excellent linesman. He was shifted from his old position of tackle to the pivot position. He stands out as the best center in Western North Carolina.

BONNER BOGER

Age 21

Right Guard

Weight 210

"Fatso" was the largest man on the team, and the opposing quarterback always found that to direct plays at his side of the line was sure suicide. He is a two year letter man.

THEODORE JERVIS

Age 20

Tackle

Weight 172

"Ted" was one of the best linesmen on the "Blue Giants" squad, though he was unable to make a position at the first of the year. However, his persistent efforts were rewarded towards the end of the season and he was used at tackle in most of the important games.

IVOR VANCE

Age 21

Right End

Weight 188

"Slim," the big baseball pitcher, went out with the intention of making the team and was placed at one of the wing positions where he stayed throughout the season. He played a particularly brilliant game on Thanksgiving Day.

SIDNEY CROY

Age 19

Right Guard

Weight 185

"Hambone," despite the fact that he was playing his first year of football, made a good record at his position. He was a good man at going down the field under punts and kick-offs.

Summary of the Season

ON THE TENTH of September Coach Churchwell called his men out for the first regular practice of the 1923 season. The material looked promising. With eight of last year's letter men back, in the persons of Lance, this year's captain, Lyda, Loftin, Boger, Tatum, Jarvis, Pack, and White as a nucleus to build upon, the prospects were fair for a victorious season.

The first game of the year was played in Maryville, Tennessee, with the strong Maryville College team. With a team hardened by only a few days training, and partly composed of inexperienced men, we could not hope to win over the veteran A Grade College outfit. The defeat which the husky Tennesseans handed us revealed the fact that Coach Churchwell had a team free from any taint of yellow. But the heavy pounding which the "Blue Giants" received was one cause for the inability to make a better showing against Mars Hill in the next game.

The next game was played with Mars Hill on October thirteenth. Coach Churchwell had been working hard to put the team in shape. He had succeeded in building up a strong line, but Mars Hill had developed an aerial system of attack that could not be overcome. Several times Weaver brought the ball up to the ten yard line, but each time a fumble left the ball in Mars Hill's possession. The injuries and withdrawals from the game during the third quarter, of Dove and Chandler made it clear to Weaver supporters that the score would rest in Mars Hill's favor. Such was the result, and our boys returned home resolved to get their revenge on Thanksgiving Day.

The third game of the season was played in Tusculum, Tennessee, with the strong team of Tusculum College, on October 20, 1923. This was one of the best grid contests of the year. The volunteers' line could not hold before the powerful thrusts of Chandler and Clemens. After a steady march up the field, making knife-like off-tackle plays, Chandler went through Tusculum line for the first Weaver touchdown of the season. The teams see-sawed over the field during the remainder of the the first quarter, neither side gaining advantage. The quarter ended 6-0 for the "Blue Giants." Weaver resumed her terrific offensive in the second quarter and brought the ball to Tusculum's four yard line. The Tennesseans held here and Weaver was forced to drop kick. Lyda sent the ball between the bars, and the score stood: Weaver, 9; Tusculum 0. Neither team scored during the third quarter. Tusculum started a beautiful aerial offensive in the fourth quarter which gave her only touchdown. The extra point was made, and the score was Weaver 9, Tusculum 7. It is needless to say, but worth remembering, that the bonfire was burning when the victors returned.

After the game with Mars Hill it was evident that Coach Churchwell could not long continue to do the work of two men. The team was progressing satisfactorily under his coaching, but he asked to be relieved of his duties as coach in order that he might give more attention to his work as head of the science department. The authorities were fortunate in being able to secure the services of Mr. Bernard A. Arbogast, a four year letter man in football at Washington and Lee, to become coach of the Weaver squad. Coach Arbogast began his duties just three days prior to the game with Tusculum College. He threw himself into his work with such vitality that no one doubted that we were headed for future victories.

The fourth game of the season was played with the Bingham Military Academy in Asheville, October twenty-seventh. The team was off form for this game and was badly beaten by the Cadets. This defeat marked the turning point of the season. Football took an upward turn for the "Blue Giants" and henceforth they were to go out and bring in the laurel.

It so happened there came tidings to Weaver of a team to the westward whose fame was great for skill in the science of handling the pig skin. The curiosity of the "Blue Giants" was aroused to such an extent that they proceeded to make a journey into those

THE MOUNTAINEER

parts, determined to test the mettle of this much talked of eleven. Accordingly, on October thirty-first, Coach Arbogast gathered his men of might and proceeded thenceforth. Asheville University put up a brave fight, but the terrific onslaught of the powerful Weaver back field was too much for the University eleven. Each quarter ended with a touchdown for Weaver, and for each touchdown, save one, the extra point was made. The University tried hard to plough the Weaver line, but in vain, and as the sun sank behind the Smokies, the score stood Weaver 27, Asheville University 0. Again Weaver faculty and student body welcomed their team's triumphant return.

On the following Saturday Asheville University team came to Weaver College determined to even up the defeat which had been handed to her a week before. Their men were in fine trim, and they exhibited a fighting spirit that was really commendable. The home team was showing its superior coaching, and would not be baffled by v.s.tors. Time and again the ball was carried across the goal line of the University. The mighty fullback, Westmoreland, several times plunged through Weaver's line, but always he was brought down by some one of the "Blue Giants." The visitors were forced to take home the little end of a 38-0 score.

The seventh game of the season was played with North Greenville Baptist Academy on the home field. They were a plucky little eleven, and they put up a manly fight. But the strong Weaver team ran rough shod over this fighting aggregation from South Carolina. The second string men were put into the fight and they continued to run up the score on the visiting eleven. The score stood: Weaver 52, Greenville 0, at the end of the game.

The final game of the year found the "Blue Giants" waiting on Dunham Field for their ancient rival, Mars Hill. The contest was the most thrilling ever seen in Weaver-ville. Weaver scored twice in the first half, while the Baptists did not even threaten to score during that period. In the third quarter both teams fought for the advantage, but neither was able to score.

Mars Hill made both her touchdowns in the early part of the fourth quarter. The first came when a forward pass and a long end run resulted in a touchdown. The goal was missed. The second touchdown was the result of a Weaver fumble, due to a wet ball. A long end run by Kuykendall put the ball across the line. This goal was also missed, but it was allowed because of a foul. With a powerful offensive drive that Mars Hill could not check, Weaver staged the most remarkable comeback ever witnessed in this section. With the score standing 13-12 in favor of the Baptists, and with only three minutes to play, Weaver started a steady march down the field after having received the kick-off. Weaver backs crashed through their line and made one first down after another. Mars Hill backed up against her own goal line and fought with desperation. She received the ball when a Weaver pass failed by a few inches to make first down. Anderson, the Baptist star end, tried to punt from his ten yard line. Captain-clet Loftin, Weaver tackle, blocked the punt and recovered the ball on the ten yard line. Weaver pushed through for the remaining distance and won the hardest fought battle of the year.

Thus ended one of the most glorious years in the history of Weaver College football. So to the team of '23, with hands of iron and knees of granite, we, the Senior Class, offer our deepest gratitude for what it has done to add to the glories of our Alma Mater.

Games and Scores

OPPONENT		WEAVER
Maryville	57.....	0
Mars Hill	12.....	0
Tusculum	7.....	9
Bingham	41.....	7
Asheville U.	0.....	27
Asheville U.	0.....	38
N. G. B. A.	0.....	52
Mars Hill	13.....	18
Total	130	151

THE MOUNTAINEER



BASEBALL TEAM 1924

Baseball Summary

ACTIVE practice was begun on March the second. Graduate Manager of Athletics, Mr. Eugene Presson, had been busily engaged in his work preparing for the baseball season. There was enough work that needed to be done since no contracts for games had been made when Mr. Presson took up his duties early in January. He arranged for games with colleges in Western North Carolina and made plans for a six day trip into the central part of the state. The first practice found a great quantity of promising material on the field. True, there were not so many of last year's team out, but the first workout showed quite a number of new men of ability. By strenuous practice, Coach Hogan Miller rounded out a very good club consisting of Captain Roy Jones, catcher; William Reagan, sub-catcher; Newlin, on the initial sack; "Ty" West, second base; Lyda, third base; Kuykendall, short stop; Williams, right field; Eayes, center field; Pack, left field; with Robertson and Boger filling in as utility men. The twirling staff consisted of Brummitt, Monday, and Newlin.

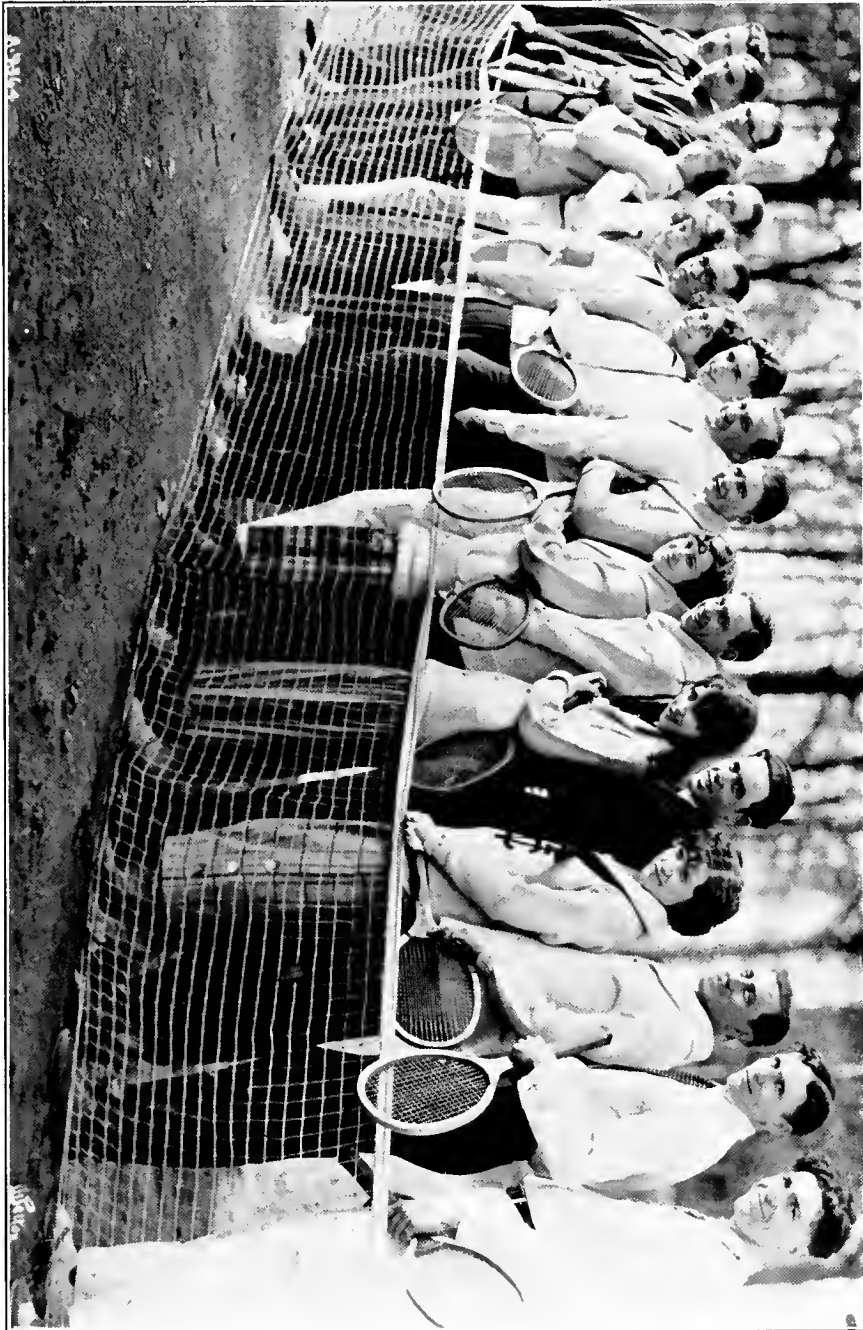
Early practice games revealed a strong team, which reputation was carried throughout the season. Our first big game was on March 27 with the Asheville League team of the South Atlantic Association. We made a very creditable showing before a large crowd, losing this game by the score of 13—5. Two practice games had been played previously, both of which were won. Then followed several home games.

On April 21, we started on our eastern trip, playing two games with Rutherford College, two with Mount Pleasant Collegiate Institute, one with Lenoir College, and one with an amateur team at China Grove. We consider the trip an unusually successful one, since we were able to win fifty per cent of the games played. Our season's average was materially increased by the games played on the home grounds, we being able to turn in seven victories against four defeats. However, the number 13 proved to be unlucky for us, since two games were lost to other teams, each of which scored 13 runs.

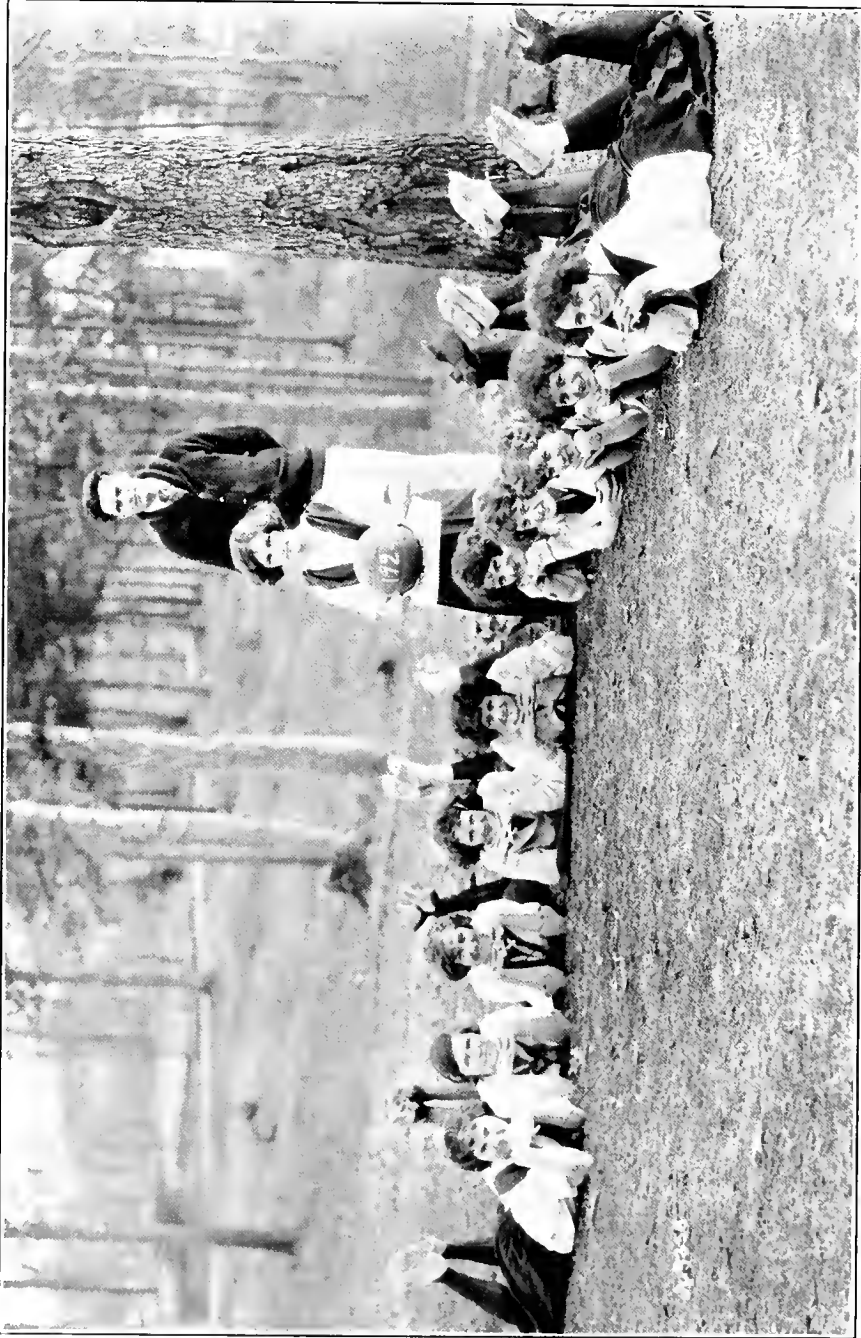
A complete schedule of all games with comparative scores follows:

March 24	Asheville High	5	Weaver....	7
March 25	Southern Railway	6	Weaver....	17
March 27	Asheville League	13	Weaver....	5
April 9	Rutherford College	4	Weaver....	11
April 10	Rutherford College (rained out)			
April 11	Rowan County Farm Life (rained out)			
April 12	Mars Hill	8	Weaver....	2
April 14	Mars Hill	3	Weaver....	2
April 17	Carson-Newman (rained out)			
April 21	Rutherford College	10	Weaver....	23
April 22	Lenoir College	6	Weaver....	2
April 23	M. P. C. I.	3	Weaver....	4
April 24	M. P. C. I.	5	Weaver....	10
April 25	Rowan County Farm Life School.....	13	Weaver....	3
April 26	Rutherford College	9	Weaver....	8
April 28	Wofford College Freshmen.....	8	Weaver....	12
April 29	Wofford College Freshmen.....	7	Weaver....	20
May 1	Mars Hill	6	Weaver....	0
May 2	M. P. C. I.	8	Weaver....	12
May 3	M. P. C. I.	6	Weaver....	7
May 5	Tusculum College (cancelled)			
May 6	Tusculum College (cancelled)			

THE MOUNTAINEER



TENNIS CLUB



GIRLS' BASKETBALL

THE MOUNTAINEER



Our Pastor



Happy Hutentots.



Better than the Best



Childhood Days.



Look Guts



!!Very Explosive!!



Lonesome, That's All



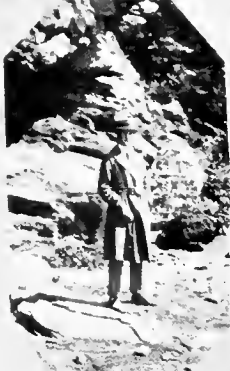
May Day Special.



"Promies"



66 Mixed Pickles??



Behold!



At Your Service!



Bless their little ♡s.



The IMMIGRANT PARTY.



!!Well Pleased!!

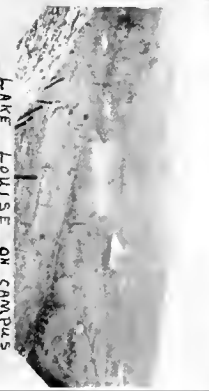


ON Chimney Rock

THE MOUNTAINEER



THE MOUNTAINEER



KODAK VIEWS

Class Prophecy

(Continued from page 33)

Could any one have imagined that T. A. Jones would win world fame as a tenor? He still loved his dear old Alma Mater and proved this by the use of his fortune, which he was always ready to spend in the upbuilding of the college. He had recently given \$100,000 for the erection of a model girls' dormitory.

Mae McClure, having spent two years at Weaver College, became so attached to the dear old place that, after she received her degree at the University of North Carolina, she returned to spend the rest of her life as a professor of math. within those dear old ivy clad walls.

Reba Ferry entered Weaver College with the intention of specializing in a campus course and she continued this occupation successfully through her college career. Having become thoroughly disillusioned after an exhaustive of the genus homo, she reached the conclusion that a good man is hard to find and with her two companions, the black cat and poll parrot, retired perfectly willing to be an old maid.

Tom Pack, who received his special training in Skinner's Hall, was fast putting Jack Dempsey off the record. As Tom was our class's best athlete, this came not as a great shock to me.

The class of 1924 has reasons to be proud of all of its members but especially of C. J. Reece, who was serving his country so nobly as instructor of military tactics at West Point.

We all thought in those college days Myron Tatum, with his gift of art would prove a success, and success he has won. He had recently married his old school sweetheart, Lillian King, and was touring the country of Greece securing new ideas for his work.

While my eyes rushed hurriedly over the names, I was eagerly watching to see just where my old roommate, Annie Mae Ulmer, was spending her life. With a great shock I saw that she no longer spent her afternoons writing to Landrum, South Carolina, and watching for Sam to pass; but was now in partnership with Janie Lance, heading one of the largest millinery stores in Paris, both having received their training by selling hats during social hour at dear old Weaver.

John Vernon, a few years after our graduation, became very much discouraged with life because a fortune did not come as quickly as he wished. He then decided to try his luck in the gold mines of Oregon. His favorite song was then:

Oh! Dear Edna,

Oh! don't you cry for me,

I'll come back to Weaverville,

With gold dust on my knee.

Our jolly old classmate, Murray Walters, was making a fortune by running a hot dog stand on the site where the old car station once stood in Weaverville, North Carolina.

The café had been closed as the college boys thought it advisable to patronize the old alumnus. I was glad to know "Fink" was so successful in the mercantile world.

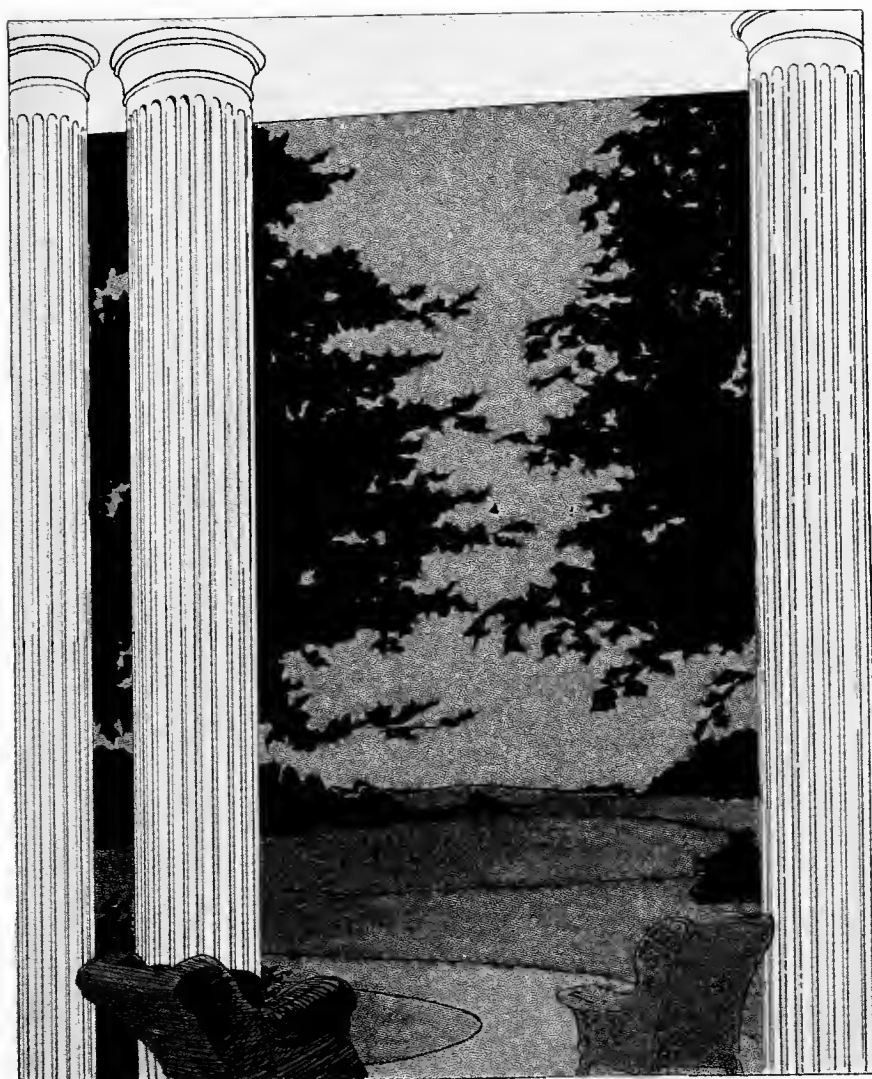
We had often heard Louise Williams plan great tours of the world, but never one time thought she would really take them; nevertheless, we were proud that she was planning to make a tour of the world to study political and economical conditions in the different countries of antiquity.

All at once a dark cloud hovered over the moon and caused me to pause and find myself thinking back over the paper. I wondered why some members of our class had not become president of our nation. Just then the cloud glided from over the moon, which again threw its soft pale rays upon the water and me. Glancing back over the paper, all at once I found that at the bottom of the left hand column, I had overlooked one of our members, Joe Young, and I was pleased to learn that he had risen from the chair of the president of our class to the Presidential Chair of our nation.

All at once the breeze snatched the paper from my hand. I reached to catch it, but, alas! my little bureau of information found a watery grave.

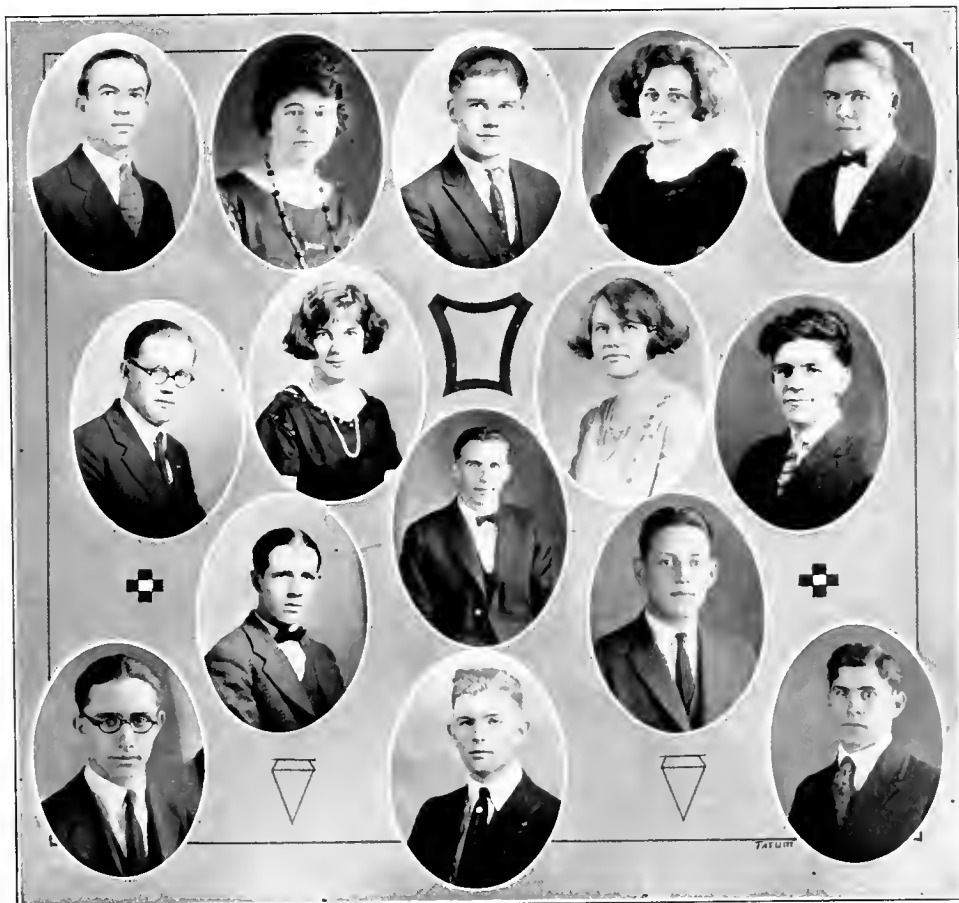
But listen, what is it I hear, a faint musical sound? Ah, 'tis bells. This brings back the quotation Miss Smith had us to memorize back in our high school days. Just how did it go?

MARY POWLAS, '24.



ORGANIZATIONS

THE MOUNTAINEER



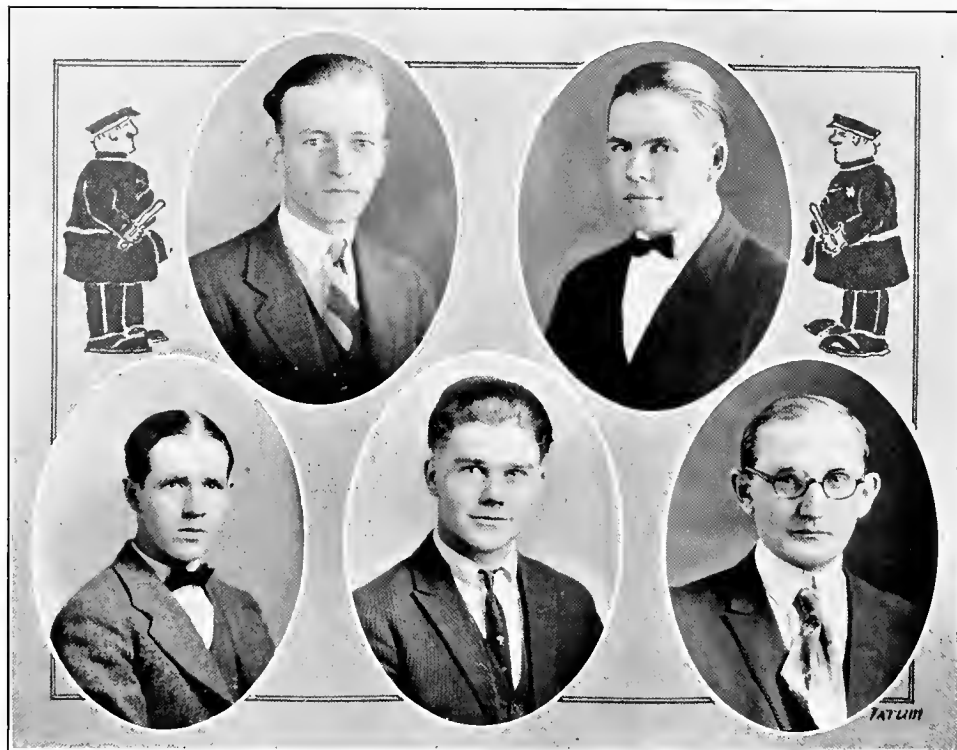
The College Council

Officers

THOMAS PACK *President*
 MYRON TATUM *Secretary*

Members

<i>Representatives</i>	<i>Organizations</i>
RAY CARPENTER	Y. M. C. A.
THOMAS PACK	Epworth League
EVELYN KENDALL	Mnemosynan Literary Society
ETHEL AYCOCK	Euterpian Literary Society
MYRON TATUM	Closophic Literary Society
WADE KIKER	Delphian Literary Society
FRED BRUMMITT	Ministerial Band
EDNA ORR	Chorus Class
MURRAY WALTERS	Glee Club
JOHN VERNON	Athletic Association
LEON WARLICK	"PEP" Staff
MARVIN HODGE	"THE MOUNTAINEER"
EUNA DEAN ALLISON	Debate Council
JOE YOUNG	Senior Class
ANNETTE SMELTZER	Life Service Band
MRS. PLYANT	The Faculty
HOWARD WELLS	Orchestra



COMMITTEE ON MAINTENANCE OF ORDER, SKINNER HALL

PresidentHOYLE S. BROOME
SecretaryLEON WARLICK
 JOHN VERNON J. THOMAS PACK ORLEY E. CROY

The "Big Five"

THE Committee on Maintenance of Order is one of the new organizations of the college that has functioned well. It was formed for the purpose of inaugurating partial student government in the men's dormitory. Its chief duty was to take care of minor explosions of pent up energy and to conserve it for use in "pep" meetings and football games. It enforced a set of simple regulations governing dormitory life and thereby made Skinner Hall a better and more ideal place in which to live. "The Big Five," as the committee came to be known, wielded the big stick, sometimes with justice, more often with mercy, but always with a sagacity that was commendable. The residents of Skinner Hall cooperated beautifully with the members of the committee, and it can be said to their credit success could not have come without their assistance. Just what influence this experiment will have with regard to more complete student government will perhaps depend very much on the attitude of the student body.

THE MOUNTAINEER



CLUBS

J.B. MAYNOR

THE MOUNTAINEER



Buncombe County Club

FLOWER: *Rhododendron*

COLORS: *Lavender and White*

MOTTO: "Smile"

Officers

LUCILE CARMICHAEL..... *President*
 MAUDE BURRUS..... *Secretary and Treasurer*

Members

MARY ARMSTRONG
 MARGARET AIKEN
 MAUDE BURRUS
 HOWELL BYRD
 BURDER BROWN
 FUCHSIA BARNARD
 VERNIA BARTLETT
 LUCILE CARMICHAEL
 OKLEY CROY
 SIDNEY CROY
 PROF. S. B. CHURCHWELL
 CLARA CHAMBERS
 PROF. T. O. DEADERICK
 MRS. T. O. DEADERICK
 KENNETH DACY
 MRS. J. V. ERSKINE
 CLARA GARRISON
 T. A. JONES
 RUTH MANCHESTER
 PROF. ARTHUR MANCHESTER

MRS. ARTHUR MANCHESTER
 VIOLA LYDA
 EMORY LYDA
 MABEL MANEY
 CLARA MICHAEL
 LASS PICKENS
 WALTER PARRS
 GEOFFREY PATTERSON
 MARGARET REYNOLDS
 ELOISE REED
 SALLIE ROBINSON
 WILLIAM REAGAN
 DAISY SHARPE
 MRS. C. H. TROWBRIDGE
 PRES. C. H. TROWBRIDGE
 GRACE TEAGUE
 DORIS WEAVER
 MARY JO WEAVER
 HUBERT WOODALL
 JOE YOUNG



Anson-Union Club

COLORS: *Black and Red*

MOTTO: *Esse Quam Videri*

Officers

LOUISE MEDLEY	<i>President</i>
WILLIAM STACK	<i>Vice-President</i>
VERLA WALTERS	<i>Secretary</i>
EUGENE CRUMP	<i>Treasurer</i>

Members

ELIZABETH BELL
 ROBERT BENNETT
 HOYLE BROOM
 EUGENE CRUMP
 BLAKE HOWELL
 WADE KIKER
 MYRTLE LEE
 VERLA WALTERS

CALLIE LEE
 LOUISE MEDLEY
 EVELYN MCCOLLUM
 LOUISE SMITH
 WILLIAM STACK
 LUCILE SMITH
 MYRON TATUM
 ZEB WILLIAMS

MURRAY WALTERS

THE MOUNTAINEER



Rutherford-Henderson County Club

Officers

THOMAS PACK *President*
HOWARD WELLS *Secretary*

Members

EUNA DEAN ALLISON	HOWARD WELLS
WENDELL EAVES	ROBAH BLAND
WILLIAM LANCE	LILLIAN KING
JANIE LANCE	ADELINE KIRKPATRICK
THOMAS PACK	JOHN REID

THE MOUNTAINEER



South Carolina Club

Officers

LEON WARLICK *President*
MILDRED JONES *Secretary*
JERE BATES *Treasurer*



Members

BOB ROBERTSON	ANNIE MAE ULMER
MILDRED JONES	LUCILE CALDWELL
JERE BATES	MARY ARMSTRONG
MAE MCCLURE	LEON WARLICK



Alien Club

Officers

MARVIN HODGE*President*
REBA PERRY*Vice-President*
OAKLEY CROY*Secretary*

Members

OAKLEY E. CROY, W. Va.
SIDNEY CROY, W. Va.
PROF. S. B. CHURCHWELL, Miss.
PROF. T. O. DEADERICK, Tenn.
MRS. T. O. DEADERICK, Tenn.
KENNETH G. DACY, III.
MRS. E. H. ERSKINE, Tenn.
MRS. E. H. ELLIOTT, Ky.
MARVIN HODGE, Va.
JOHN MAYO, Va.

PROF. MANCHESTER, N. Y.
MRS. MANCHESTER, N. Y.
MISS MARY T. PESCU, Md.
REBA PERRY
MRS. LEE PLYANT, Ga.
MARGARET ROBERTS, Tenn.
MISS LUCILE SMITH, Ga.
ANNETTE SMELTZER, Tenn.
PROF. C. H. TROWBRIDGE, Mo.
MRS. C. H. TROWBRIDGE, Mo.



Stanly-Rowan Club

FLOWER: *Sweet Pea*

COLORS: *Pink and White*

Officers

MARY POWLAS*President*
 JEWEL ELLIOT*Vice-President*
 BONNER BOGER*Secretary-Treasurer*

Members

BONNER BOGER
 GERTRUDE CROWELL
 JEWEL ELLIOT
 VINA HARWOOD
 EULA McQUAGE
 PROF. W. E. POWELL
 MARY POWLAS

Honorary Member, MRS. LEE PLYANT



Last Will and Testament

(Continued from page 34)

ARTICLE XVI

I, Ethel Marie Aycock, will my attractive glances to Hoyle Broom on condition that he does not try to vamp me.

ARTICLE XVII

I, Agnes Reba Perry, bequeath my collection of chewing gum to be gathered from various places to Okle Jones.

ARTICLE XVIII

I, Marvin Steele Hodge, hereby bequeath to Mabel Maney my sunny disposition and far reaching ambitions.

ARTICLE XIX

I, Joe Herman Young, will my scholarship and studious habits to Naomi Guthrie, trusting that she will use them frequently.

ARTICLE XX

I, Oakley E. Croy, will to those who seek knowledge and philosophy my place in the Education class.

ARTICLE XXI

I, John Calvin Vernon, will my earnestness and interest in college activities to John Reid, hoping that he will not partake of them oftener than he does his social hour.

ARTICLE XXII

I, T. A. Jones, hereby bequeath my place on the football team to Geoffrey Patterson, hoping that he will not get any more bruises than Sue Garrison can bandage.

ARTICLE XXIII

I, Joseph Myron Tatum, will to Eula McQuage my marvelous voice and artistic genius.

ARTICLE XXIV

I, Murray Walters, will to Elizabeth Bell my best regards, my wit, pathetic memories of our campus, Sunday afternoon social hours, and my place in the hearts of all the old students.

ARTICLE XXV

I, William Howell Byrd, leave to Geneva Neill my perseverance in class room activities and social hour, hoping that she uses it to better advantage than I have done.

ARTICLE XXVI

I, Claude Jefferson Reece, will to Janie Lance my worn Spanish books, with the desire that they inspire her to high grades in this subject.

ARTICLE XXVII

I, Bonner Boger, bequeath some of my superfluous weight to Helene Mease.

ARTICLE XXVIII

I, James Thomas Pack, leave my offices in the student activities and my good looks to Jewel Elliott.

This instrument is hereby signed, sealed and declared by the class of one thousand nine hundred and twenty-four, this the twenty-seventh day of May, one thousand nine hundred and twenty-four as their last Will and Testament.

(Signed) MAE McCLURE

Witnesses: JOE YOUNG, *President*
THOMAS PACK, *Secretary*

* * *

DEBATING





Debate Council

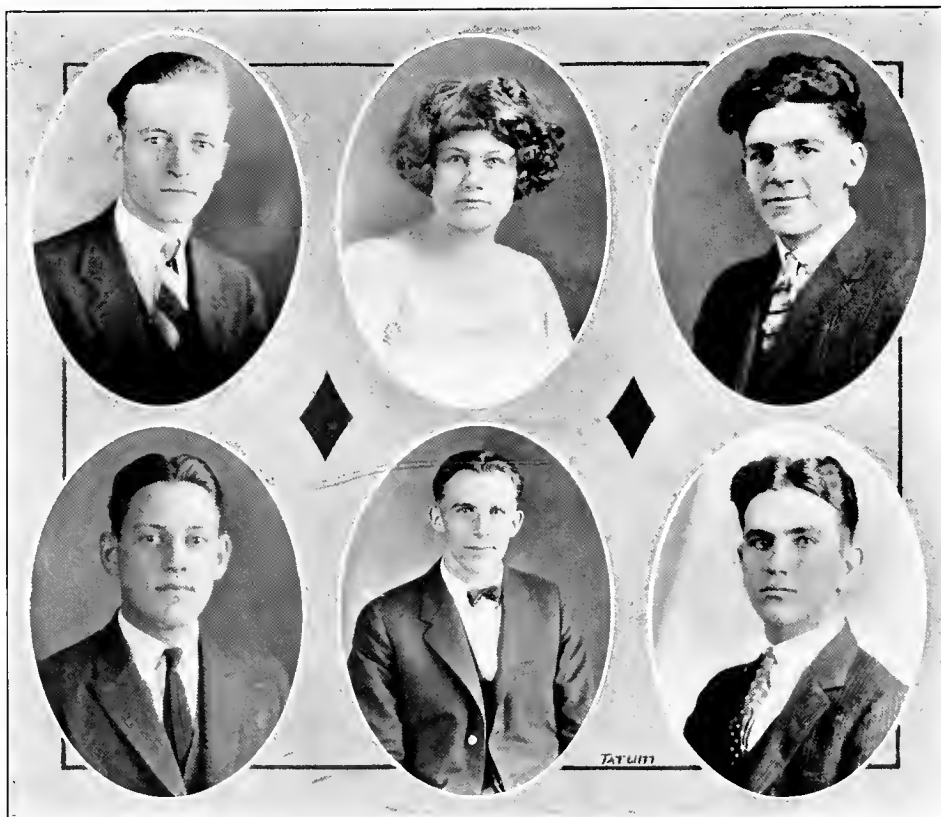
Officers

THOMAS PACK*President*
 HOWARD WELLS*Vice-President*
 JOHN VERNON*Secretary*

Members

HOWARD WELLS	ETHEL AYCOCK
OKIE JONES	WENDELL EAVES
HOYLE BROOME	MURRAY WALTERS
FRED BRUMMITT	RAY CARPENTER
LEON WARLICK	ANNETTE SMELTZER

EUNA DEAN ALLISON



Inter-Collegiate Debaters

Subject

RESOLVED. "That the inter-allied war debts should be canceled"

Weaver College vs. Mars Hill College

NEGATIVE, Miss Annette Smeltzer and Murray Walters

Weaver College vs. Rutherford College

AFFIRMATIVE, C. R. Carpenter and H. S. Broome

Weaver College vs. North Greenville Academy

NEGATIVE, F. G. Brummitt and Wendell Eaves





EUTERPEAN LITERARY SOCIETY

Euterpian Literary Society

FLOWER: *Daisy*

COLORS: *Yellow and White*

MOTTO: *Par nos effort nous esperons nous elever.*

Presidents

ETHEL AYCOCK

MAUDE BURRUS

LOUISE MEDLEY

Vice-Presidents

RUTH WEIR

JEWEL ELLIOTT

ANNIE MAE ULMER

Secretaries

JANIE LANCE

ADELINE KIRKPATRICK

EVELYN MCCOLLUM

Treasurers

JANIE LANCE

ADELINE KIRKPATRICK

VERLA MAE WALTERS

Members

ETHEL AYCOCK

MAUDE BURRUS

ELIZABETH BELL

CLARA CHAMBERS

GERTRUDE CROWELL

JEWEL ELLIOTT

NAOMA GUTHRIE

VINA HARWOOD

ADELINE KIRKPATRICK

LILLIAN KING

CLARA KING

JANIE LANCE

MAE McCLURE

MABEL MANEY

EVELYN MCCOLLUM

EULA McQUAGE

RUTH MANCHESTER

HELENE MEASE

LOUISE MEDLEY

GENEVA NEILL

MARY POWLAS

MARGARET ROBERTS

MARY MADELINE ROSS

LOUISE SMITH

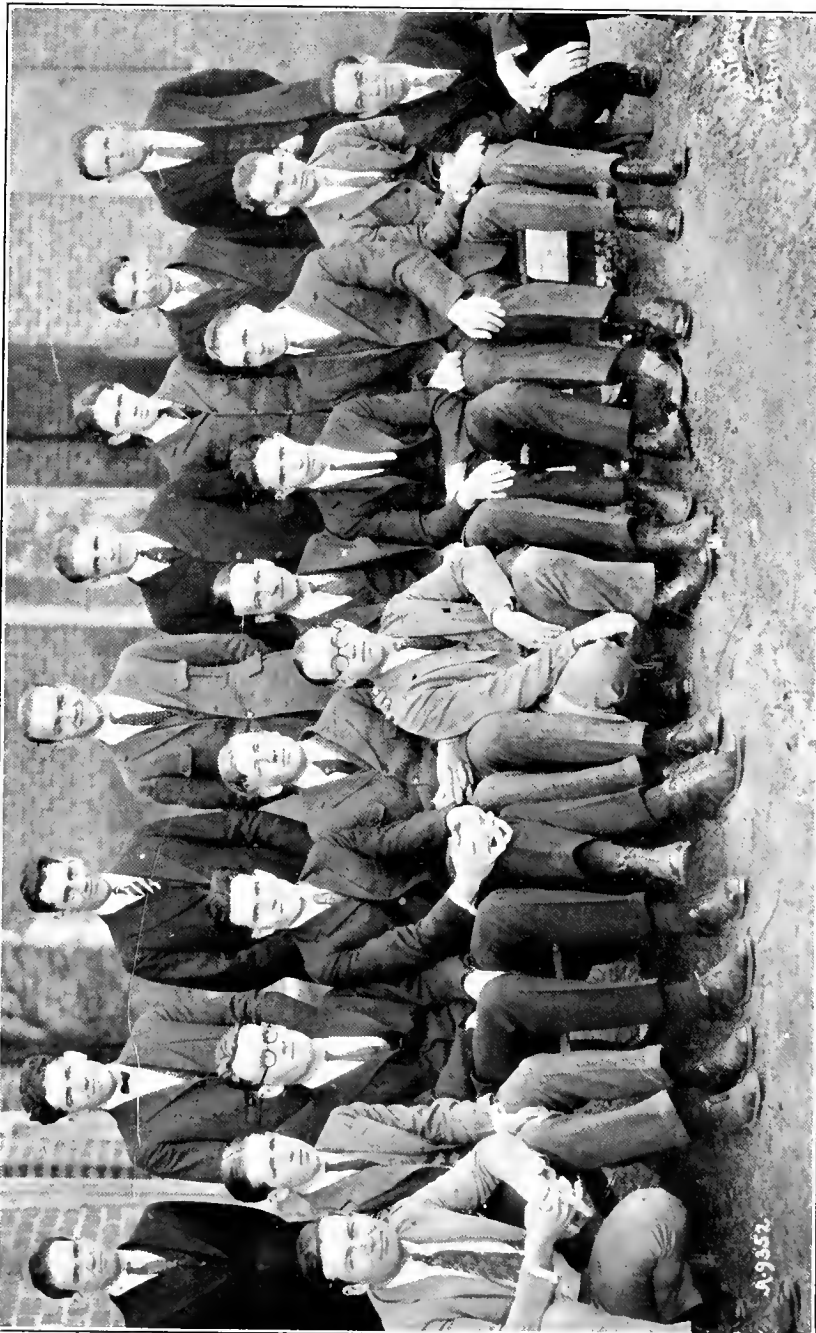
ANNIE MAE ULMER

VERLA MAE WALTERS

MARY JOE WEAVER



THE MOUNTAINEER



CLISOPHIC LITERARY SOCIETY

Philosophic Literary Society

MOTTO: *Hæc Olim meminisse jurabit*

COLORS: *Red and White*

Presidents

LANDIS LOFTIN WILLIAM LANCE HOYLE BROOME MYRON TATUM

Vice-Presidents

MYRON TATUM E. N. WASHBURN OKLE JONES CLAUDE REECE

Secretaries

LEON WARLICK MYRON TATUM LEON WARLICK MURRAY WALTERS

Treasurers

WILLIAM LANCE HOYLE BROOME MYRON TATUM WILLIAM LANCE

Members

JERE BATES
VERNIA BARTLETT
RALPH BLAND
HOYLE BROOME
BOONE CAGLE
SIDNEY CROY
THOMAS EDWARDS
MARVIN HODGE
OKLE JONES
T. A. JONES
WILLIAM LANCE
LANDIS LOFTIN
EMORY LYDA

LAWRENCE McELROY
CLAUDE NEWLIN
WALTER PARKS
WILLIAM REAGAN
CLAUDE REECE
BOB ROBERTSON
HAROLD SLATEN
WILLIAM STACK
MYRON TATUM
MURRAY WALTERS
E. N. WASHBURN
LEON WARLICK
ZEB WILLIAMS

Honorary Members

HON. JOSEPHUS DANIELS
HON. WILLIAM J. BRYAN



THE MOUNTAINEER



MNE MOSYNEAN LITERARY SOCIETY

Anemosynean Literary Society



Presidents

LUCILLE CARMICHAEL

EDNA ORR

EUNA DEAN ALLISON

Vice-Presidents

LASS PICKENS

ESSIE EDWARDS

LUCILE CALDWELL

Secretaries

GRACE TEAGUE

BLAKE HOWELL

CALLIE BELLE LEE

Treasurers

GRACE TEAGUE

LUCILE CARMICHAEL

MARGARET REYNOLDS



Members

MARGARET AIKEN
MARY ARMSTRONG
EUNA DEAN ALLISON
LUCILE CALDWELL
ESSIE EDWARDS
MRS. J. V. ERSKINE
CLARA GARRISON
BLAKE HOWELL
MILDRED JONES
EVELYN KENDALL
MYRTLE LEE

CALLIE BELLE LEE
VIOLA LYDA
ESTHER NELSON
EDNA ORR
LASS PICKENS
REBA PERRY
MARGARET REYNOLDS
ANNETTE SMELTZER
GRACE TEAGUE
LOUISE WILLIAMS
DORIS WEAVER

VESTA YOUNG



THE MOUNTAINEER



DELPHIAN LITERARY SOCIETY

Delphian Literary Society



COLORS: *Blue and White*

MOTTO: ΓΝΩΘΙ ΣΕΑΤΤΟΝ

Presidents

J. C. VERNON F. G. BRUMMITT W. H. BYRD J. C. VERNON

Vice-Presidents

T. J. PACK H. L. WELLS R. O. BENNETT H. L. WELLS

Secretaries

P. A. BUTT J. B. MAYO C. R. CARPENTER R. W. EAVES

Treasurers

J. B. MAYO C. R. CARPENTER J. C. VERNON F. G. BRUMMITT



Members

FRED BRUMMITT
ROBERT BENNETT
ROBAH BLAND
WILLIAM E. BLADES
BURDER BROWN
HOWELL BYRD
BONNER BOGER
RAY CARPENTER
FRANK CHANDLER
OKLEY E. CROY
JAMES DOVE
WENDELL EAVES
MARION HAMILTON
ROY JONES
JOHN MAYO

THOMAS PACK
GEOFFREY PATTERSON
JOHN REID
JAMES ROGERS
CHARLES ROGERS
SAM VANCE
IVOR VANCE
JOHN VERNON
JOSEPH WEHLING
HOWARD WELLS
GEORGE R. WHITE
EVAN WILSON
WILLIAM WINSTEAD
HUBERT WOODALL
TY WEST

Honorary Members

JOE YOUNG
MR. HOITSU KIMURA,
Kobe, Japan

Social Life at Weaver

IN THE REALM of the student activities, the social life is by no means the one to which the least attention has been given, for the faculty and student organizations have been swamped with calls for socials, and have responded beautifully to these calls with varied programs.

Sunday afternoon was set aside at the beginning of the year as a time when any resident of Skinner's Hall could boldly walk up to Crutchfield Home, and call for his particular lady friend, and then, either by perambulating in the campus groves or by settling in some quiet nook, could enjoy the sweet felicity of each other's companionship and in plighting their troths which ultimately are destined never to end in connubial bliss.

The new students were welcomed to the college and to the friendship of the student body by a reception given by the Delphian and Mnemosynean Literary societies early in September. Each society had its banner hung beside that of the college. The colors were beautifully arranged about the walls and harmonized strikingly with the clusters of pine branches that fragrantly adorned the room. Many games were played and, after a general good-old-get-acquainted social hour, ice cream and cake were served in abundance. Then the gentlemen escorted the ladies home where they left with a hearty "good-night."

To give the incoming new students a complete welcome to the hearth and home of Weaver life, the Cliosophic and its sister society, the Euterpian, spread before them a feast of good things in the form of another reception given in their honor. On this delightful occasion, the room was profusely decorated with golden rods, and the colors of the societies were tastefully draped about the hall. After a jolly social time, refreshments were served, and every one went home with a merry heart feeling that it was indeed pleasant to have been there.

The Delphians and Mnemosyneans gave a very enjoyable program Thanksgiving night. After the lapse of a few days the Cliosophics and Euterpians, under the supervision of Miss Smith, very successfully staged a comedy in three acts entitled "At the End of the Rainbow." Following in close succession was a play, brimful of fun, "Patty Makes Things Hum," given by the Delphians and Mnemosyneans under the supervision of Mrs. Erskine. Feeling their debt of gratitude for her untiring coaching, these two societies gave an open program and presented her with a beautiful bar-pin. The student body later attended an open program given by the Cliosophics and Euterpians and consisting of songs, readings, and special music. At the close of this, a short play was presented by the girls.

The Epworth League has had a successful social program for this scholastic year. In the very beginning a full calendar of social events was adopted by the council, and has been invariably followed. The initial entertainment was a festive celebration welcoming the new students. General socials, out-door sports, and musicales, with formal debates between chosen teams, have provided opportunities for advancement, not only socially, but intellectually as well. The League was fortunate in securing a splendid Lyceum attraction, whose amusements were the best. Altogether, the work of this organization has been most satisfactory.

The faculty and senior class were delightfully entertained by the juniors at a banquet in Asheville on the evening of Washington's birthday. Covers were laid for sixty-two, including the hosts and their guests. The color scheme chosen, pink and white, was daintily carried out both in the menu and in the decorations. Carnations were lavishly used and were later presented to the seniors. Mr. Leon Warlick was the jovial toastmaster, and under his direction fun and humor flowed merrily throughout the evening. A delightful program of readings and speeches was concluded with a duet by Misses Lillian King and Edna Orr, accompanied by Mr. Paul Butt at the piano. They expressed the sentiments of both hosts and guests as they sang "The End of a Perfect Day."

Thus ends the last scene of social life in Weaver for this year, so we bid the reader an affectionate farewell and ring down the curtain.



RELIGIOUS ACTIVITIES

TATUM



Ministerial Band

HOWARD WELLS*President*
WADE KIKER*Vice-President*
FREDDIE BRUMMITT*Secretary*

Members

O. E. CROY

F. G. BRUMMITT

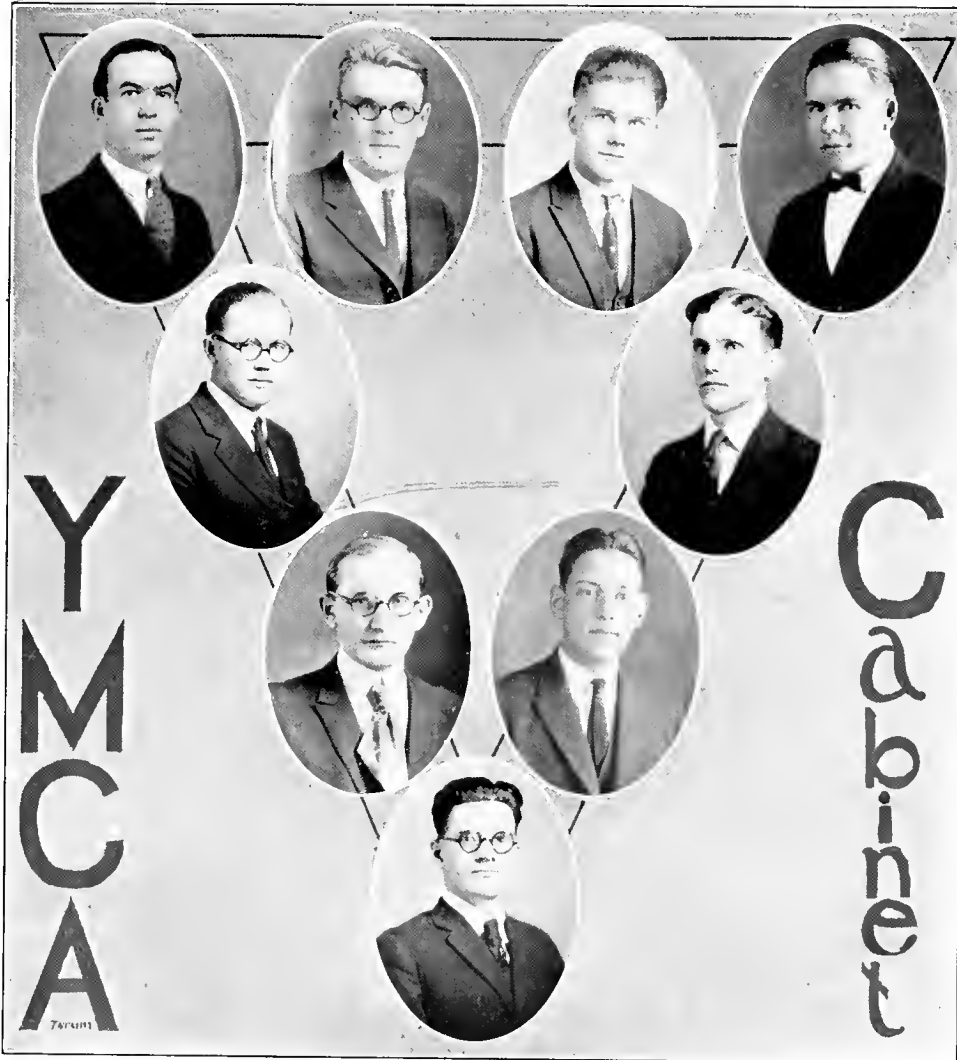
F. W. KIKER

K. G. PATTERSON

J. C. VERNON

H. L. WELLS

W. H. WINSTEAD



D. M. C. A. Cabinet

Officers of Y. M. C. A.

THOMAS PACK	<i>President</i>
JOHN VERNON	<i>Vice-President</i>
MYRON TATUM	<i>Secretary</i>
WILLIAM LANCE	<i>Treasurer</i>

Chairmen of Committees

MYRON TATUM	<i>Membership</i>
OAKLEY CROY	<i>Religious Meetings</i>
HOWARD WELLS	<i>Conventions</i>
ZEB WILLIAMS	<i>Social and Entertainments</i>
RAY CARPENTER	<i>Church and Sunday School</i>
PAUL BUTT	<i>Music</i>

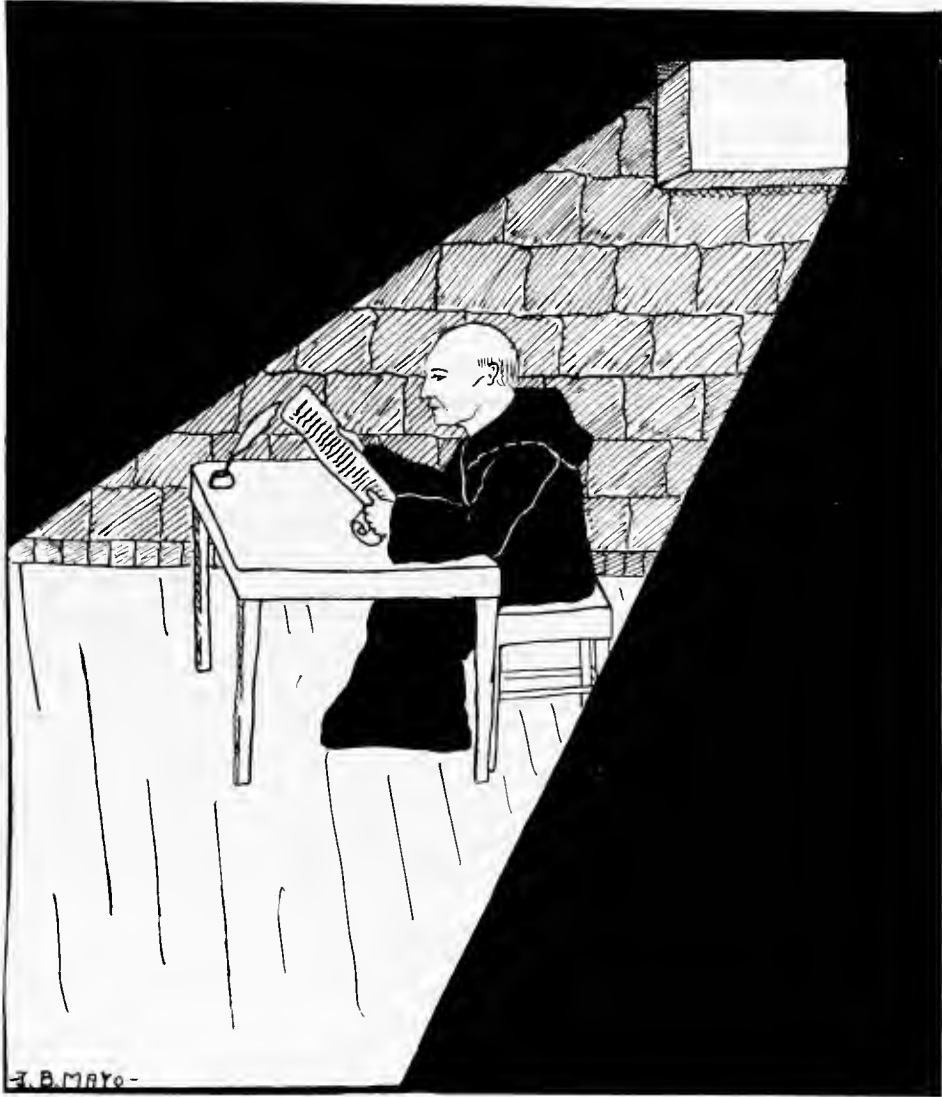


Epworth League Council

HOWARD WELLS	<i>President</i>
THOMAS PACK	<i>Vice-President</i>
MILDRED JONES	<i>Corresponding Secretary</i>
LOUISE WILLIAMS	<i>General Secretary</i>
MYRON TATUM	<i>Treasurer</i>
WADE KIKER	<i>Superintendent of First Department</i>
ETHEL AYCOCK	<i>Superintendent Second Department</i>
MARY POWLAS	<i>Superintendent Third Department</i>
EDNA ORR	<i>Superintendent Fourth Department</i>

THE EPWORTH LEAGUE was organized in Weaver College more than twenty-five years ago. The organization gained immediate favor and has grown rapidly; it has been a coöperative union with a distinct constitution and plan of work for the promotion of loyalty to our church and its missions among our young people, and for their education in the Bible and Christian literature. The Epworth League has long been a vital part of the student activities. It has efficiently filled the need in the College for such an organization. Its aim—the cultivation of Christian fellowship among the young people, consecration, preparation, and service, has been realized.

THE MOUNTAINEER



F. B. MAYO



F. B. MAYO

PUBLICATIONS

[87]

1924

THE MOUNTAINEER

THE WEAVER PEP

WEAVER (HILL) WEAVER (HILL)

**THRILLING CONTEST WEAVER WINS OVER
MARS HILL UNABLE TO STOP
THE POWERFUL OFFENSE OF "BLUE GIANTS"**

Warlick

Drum

Kirkpatrick

Vernon

**A GYMNASIUM FOR
WEAVER TALKED OF**

**Some Experiments That
Working Well**

Brooms

Prof Powell

**ARE WE HEADED FOR
STUDENT GOVERNMENT?**

Jones

Wells

Hodge

The Birth of a Publication

SOON AFTER the opening of the fall term a number of students and faculty members began to talk of a student publication. All were of the opinion that it would be very much in keeping with the standing of the college to have a college paper edited and supported by the student body. Nothing of this kind had ever been attempted by a Weaver student body before, so naturally it was largely to be a matter of experiment if attempted at all.

Dean Powell announced in chapel that a mass meeting would be held to consider the advisability of attempting to get out a periodical. That night almost all the student body, together with members of the faculty, gathered in the auditorium of the administration building to discuss the subject. The need for the publication was conceded, the desire for it was unanimous, the question then narrowed itself to the possibility of the project. "Could Weaver students finance the paper?" It was decided that the best way to find the answer to that question was to elect some one to make an investigation of the matter and report on the cost of it. Mr. Leon Warlick was selected for this job.

In a few days Mr. Warlick was ready to make his report. He was none too optimistic, but believed that the paper could be gotten out if it were made a monthly publication, and the subscription price were made at one dollar. All agreed that the price was rather stiff, but it was clear that the value of such a work would be far greater than the price. Accordingly it was agreed that the paper should be published.

The next question to present itself was, "What shall we call this new publication?" Quite a few names were suggested, among them were "The Polygon," "The Loom," "Mountaineer," "Weaverite," and "The Weaver Pep." There was heated discussion as to the name, but finally all were eliminated with the exception of "The Polygon" and "The Weaver Pep." The latter name was chosen by a majority vote.

The following staff was elected: Thomas Pack, Editor-in-Chief; Leon Warlick, Business Manager; Edna Orr, Associate Editor; Hoyle Broome, Associate Editor; Ruth Weir, Society Editor; Myron Tatum, Sports Editor; Prof. Yost, Alumni Editor; Bertha Goldstone, City Editor; Prof. Powell, Faculty Adviser. The literary societies elected the following reporters: Ruth Weir, Euterpian; Myrtle Lee, Mnemosynean; John Vernon, Delphian; Marvin Hodge, Cliosophic.

THE WEAVER PEP is an assured success. Faculty adviser Powell and the staff have made it a success in so far as news of college activities are concerned. Business Manager Warlick has been successful with the financial end of the "PEP." His work has been done, and always with the odds against him, but we feel that much credit is due him for making it the financial success, without which no publication can long survive. The financial difficulties of the the Business Manager can be better understood if we remember that advertising is hard to secure because merchants associations do not permit their members to advertise in periodicals with small circulations.

How has the "PEP" been received by the student body? Joyfully, when it comes from the press. However, it has not received the financial support due it. This is what might be expected at the average college.

There is growing a strong sentiment for a compulsory publication fee. With this compulsory fee there will come a greater "PEP" a greater "MOUNTAINEER," and a greater Weaver.

THE MOUNTAINEER

Tatum

Williams

Mayo

Staff

1924

Hodge

Young

Broome

Bureus

Eaves

Byrd

Prot Powell

Croy

Bureus



The Music Department of Weaver College



IS WHERE effort is being made to set into motion musical influences that will spread a real knowledge of good music and an abiding love for it. The world needs good music and plenty of it. It is the coming generation which will have very much to do with the making of a musical America. Weaver College Music Department hopes to have some part in preparing this generation for becoming an effective means for such musical development. Therefore

IT IS THE PURPOSE OF WEAVER COLLEGE

To present Music in various aspects so that its relation to social and religious life and to the life of the individual shall be demonstrated.

To teach Musical Fundamentals in such a way that they will be understood by all.

To combine Music-making with Music-learning.

To develop Music lovers as well as players and singers.

BECAUSE WEAVER COLLEGE

Realizes the place Music has taken in social and industrial life.

Remembers how the nation turned to song when overshadowed by war.

Apprehends the part played by Music in the well-rounded life of the individual.

Knows that Music is not solely a gift to a favored few.

Knows that Music can be taught so that it stimulates imagination, increases a discriminating perception and appreciation of beauty and satisfies desires that no other subject can touch.

Wants all its students to learn the truth of these statements and derive the benefit that a broad educational treatment of Music can, and does give.





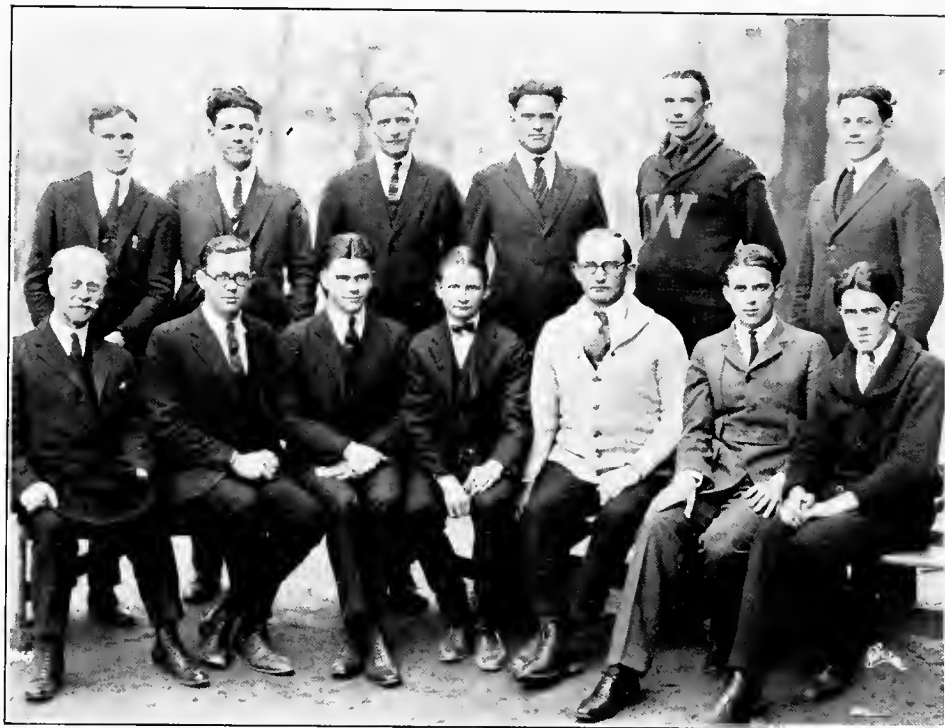
Music Students

•

MARGARET AIKEN
ETHEL AYCOCK
PAUL BUTT
MAUDE BURRUS
ELIZABETH BELL
OAKLEY CROY
BOONE CAGLE
MRS. FRED EDWARDS
W. R. JONES
T. A. JONES
ADELINE KIRKPATRICK
LILLIAN KING
CALLIE LEE
RUTH MANCHESTER
KATHELEEN MORRISON

EULA MCQUAGE
GENEVA NEILL
EDNA ORP
DOROTHY PEARSON
LASS PICKENS
HARVEY ROBINSON
SALLY ROBINSON
LOUISE SMITH
ANNETTE SMELTZER
ELEANOR TROWBRIDGE
JOSEPH WEHLING
ZEB WILLIAMS
W. H. J. WINSTEAD
VERLA WALTERS
HOWARD WELLS

• •



Glee Club

&

JERE BATES
ROBAH BLAND
HOYLE BROOME
FREDDIE BRUMMITT
PAUL BUTT
OAKLEY CROY
KENNETH DACY
MARION HAMILTON

JOHN MAYO
GEOFFREY PATTERSON
BOB ROBERTSON
MYRON TATUM
JOHN VERNON
ZEB WILLIAMS
WILLIAM WINSTEAD
HOWARD WELLS





College Orchestra

OAKLEY CROY *President*
CLAUDE NEWLIN *Secretary*
PROF. T. O. DEADERICK *Director*

Members

ETHEL AYCOCK
PAUL BUTT
FRED BRUMMITT
HOWARD WELLS

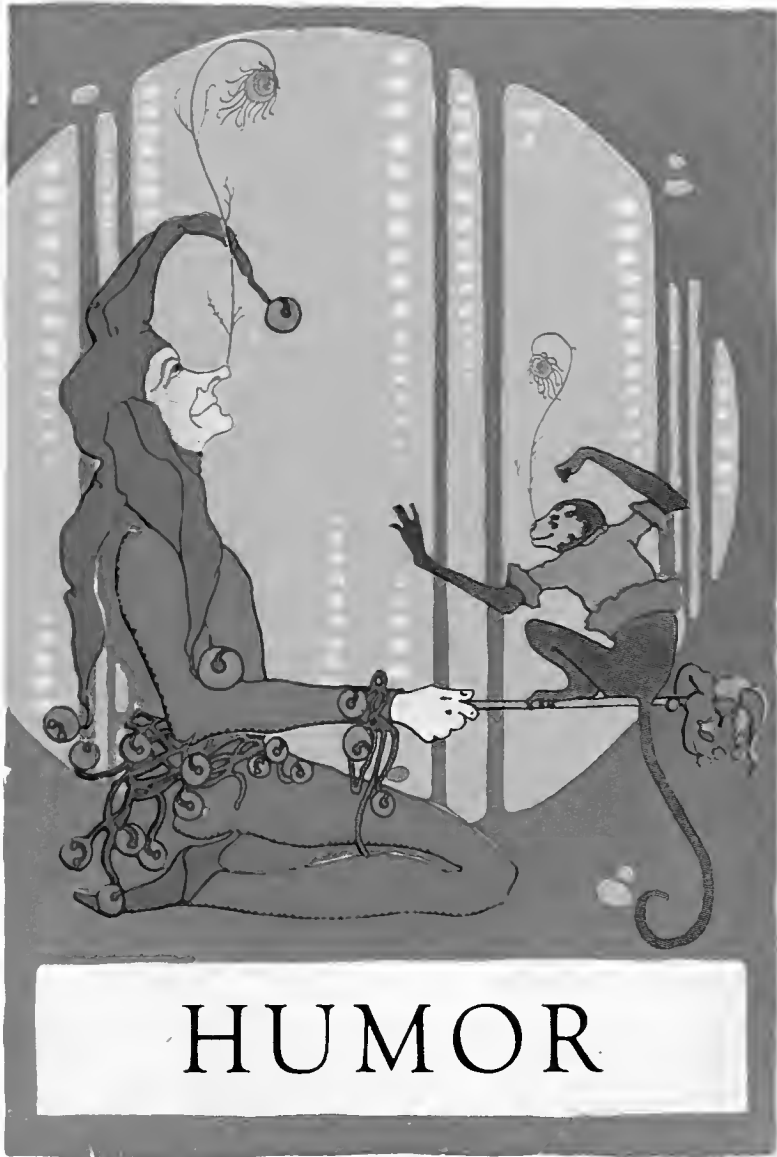
ADELINE KIRKPATRICK
GEOFFREY PATTERSON
WILLIAM WINSTEAD
JOHN MAYO

Weaver Alphabet

* *

A's for the Annual the MOUNTAINEER would say,
Still a's for apricots we eat 'most every day.
B's for basketball that comes in the fall;
B's for baseball that takes in all.
C is for chapel, classes, and crushes;
A glimpse of the last brings tremors and blushes.
D is for dirty dozen and their terrible fate,
But on Sunday afternoon it means only a date.
E's for exams that come twice a year
But when we take them we tremble with fear.
F is for flappers, flivvers, and flirts,
And Finklestein who deals in hobbleskirts.
G is for gym that we have hopes soon to build;
And good things to eat—we sure have our fill.
H is for hardness our lessons prove such;
Also H is for help we seek for so much.
I is for ink—my, it's a sight,
How English themes keep us up nearly all night.
J is for joy that is spread in "frau shack";
Take a co-ed to the drug store; dead broke you come back.
K is for kisses, to krushes most dear—
And then we tell each other, this will never do here.
L is for letters and love we cherish so dear,
But they always come with a kind of fear.
M is for mountain, to mountaineers most dear.
Please observe the name of our annual this year.
N is for nights when we have nothing to do
Except sit around and look sweet like you.
O is for outs you are sure to take
If you go to breakfast more than five minutes late.
P is for powder and also for paint;
They help Weaver girls to be what they ain't.
Q is for questionnaires at the wrong time arrived
They keep us from socials—how we hate to be deprived.
R is for rowdiness SKINNERS do make,
Then too, it's for racket the Dean has to take.
S is for soup that we put on the table,
Just find something in it if you are able.
T is for teahounds we find loafing in town,
When you give a social they are sure to come around.
U is for the use our text-books do,
Also for US, and we care for that too.
V is for victory that makes us jolly and gay,
Also for vacation that is coming in May.
W's for Weaver, we love her so dear;
We would like for you to come here next year.
X is for exercise—X-Y and Z
When you find the unknown you get excellent you see.
Y is for yells that come in by spells
When we win the game we ring all the bells.
Z is for Weaver Zip, in oceans they buy it,
If you don't believe it, just come and try it.
"ETC." is for the things that we know we don't know;
I guess they will fill ten volumes or so.

W. H. B.



HUMOR

Just For Fun

✽

- What kind of clothes did Adam and Eve wear in the garden of Eden? Bare-skin.
What shape is a kiss? Elliptical. (a lip tickle).
To what age do girls wish to attain? Marri-age.
What flowers are between a girl's nose and her chin? Tulips. (two lips)
What is the longest word in the English language? Smiles. Because there is a mile between the first and last letters.
Why is a newly-married couple like a pair of sugar-tongs? Because they are two spoons joined.
Why is a modern girl a bad grammarian? Because very few are able to decline matrimony.
At what time was Adam married? Upon his wedding Eve.
When is love deformed? When it is all on one side.
When is a lover like a talior? When he presses his suit.
A good definition of a muff. It is something or somebody that holds a girl's hand without squeezing it.
Which dress lasts a woman the longest? Her house dress for she seldom wears it out.
Why is an old bachelor always in the right? Because he is never miss-taken.
Why do girls kiss each other and men not? Because girls have nothing better to kiss and men do.
What tongue did Balaam's mule speak. Most likely in he-bray-ic. (Hebraic)
Which is the heavier the full moon or the new moon? The new moon, because the full moon is a great deal lighter.
The best thing to make in a hurry—haste.
When are eyes not eyes? When the wind makes them water.
There is no such thing as a whole day, for every day begins by breaking.

W. H. B.

✽ ✽

“We Wonder”

- If Evelyn McCollum should go fishing, would she take “Bates”?
If we were raking hay would “William Stack” or “Tom Pack”?
If Byrd should propose would “Geneva Neil”?
Why Prof. Trowbridge does not get another three thousand volume library for his education class to read?
If music would evaporate, would Winstead go up in vapor?
If Bland loves precious Jewels?
If Adeline could write, could John Reid?
Would Blake Howell if she should smash her finger?
If we were all drinkers would Wells go dry?
If Miss Pescud eats in Spanish or Portuguese?
What is the weight of the Georgia Club.
If Mabel Maney, Ruth Manchester and Maude Burrus are triplets.
How the boys enjoy the visits of Dean Powell. (Suggestion: Listen after he leaves.)
If Geneva would come near would Byrd fly?
If the young ladies are responsible for the breaking up of the mustache club?
Why the girls always want to borrow a Broome from Skinner's Hall?
If a newspaper contains news, what does a bulletin contain?
Why Leon Warlick and Bump Bland take a bath with their clothes on?
We wonder if Dacy knows where to find the egg now!

Baby Talk (but Oh, you Baby!)

Iph 'ou 'ove me tay to,
Iph 'ou 'ont 'ove me tay to,
An' iph 'ou 'ove me an' tan't tay to,
Dus' tweeze my han'.
Iph 'ou 'ont 'ove me, 'ont teep me 'tandin'
'ere on dese tol', tol', 'teps—Darn U.



Smiles and Laughs



BRUMMITT: "Did you see Miss Jones smile at me when we were introduced?"
PACK: "That is nothing: I laughed the first time I saw you."



Modern Chemistry

FINK: "What does the formula for potassium plus iodine plus sulphur taken twice give you?"
ELIZABETH: "I don't know, but we will try it and see."
Results: K-I-2SS—Kiss!!!! (To be performed in the dark under pressure.)
CLARA: "What kind of vegetables do you like best?"
LILLIAN: "Taters, of course."
CLARA: "Why?"
LILLIAN: "Because they are so much like Tatum."
MR. CROY, quoting Shakespeare: "Sit closer, Jessica." And we all wonder how he manages when he brings the whole family.



Oberheard During Social Hour

SLIM: "Give me one kiss."
HELENE: "I promised mother never to permit a man to kiss me."
SLIM: "Oh! I am sorry."
HELENE: "But you can grab me and make me kiss you."
PATTERSON (on Biology): "Prof. Churchwell, what is it that walks with its head downward?"
PROF. CHURCHWELL: "I didn't know there was such an animal."
PATTERSON: "Oh! yes, a nail on a shoe."
MISS SMITH (on Bible Class): "Maude, what food did John the Baptist eat while he was in the wilderness?"
MAUDE: "Worms."
MABEL: "Ruth, what time is it?"
RUTH: "I am fast."
MABEL: "Yes, I know that you are, hut what time is it?"

THE MOUNTAINEER

BILL CRUMP: "Lucile, I am on fire with love for you."

Fortunate for him Mrs. Pylant came in about this time and put him out.

MRS. PLYANTS (on college algebra class): "How many of those five examples did you get?"

HOYLE BROOME: "I did not get the last three or the first two."

LUCILE CALDWELL (in the chemistry lab.): "Oh! Prof. Churchwell, this water is leaking."

PROF. CHURCHWELL (very busy): "Well, why come to me about it? Get something and stop it—use your head, use your head."

MR. PATTERSON (to Miss Smith): "Is it correct to say five and two *is* eight or five and two *are* eight."

MISS SMITH: "Why, five and two *are* eight of course."

MR. PATTERSON: "No, you are wrong, five and two are seven."

(Broome campused for kissing one of co-eds.)—

Broome to Mrs. Pylant (after receiving a lecture on conduct of boys and girls together):

"When a pair of red lips are upturned and your own
With no one to gossip about it;
Would you pray for endurance and leave them alone?
Well, maybe you would, but I doubt it."

PROF. POWELL (on History): "Miss Orr, who was queen of France during the French Revolution?"

EDNA ORR (innocently): "The king's wife."

W. H. B.

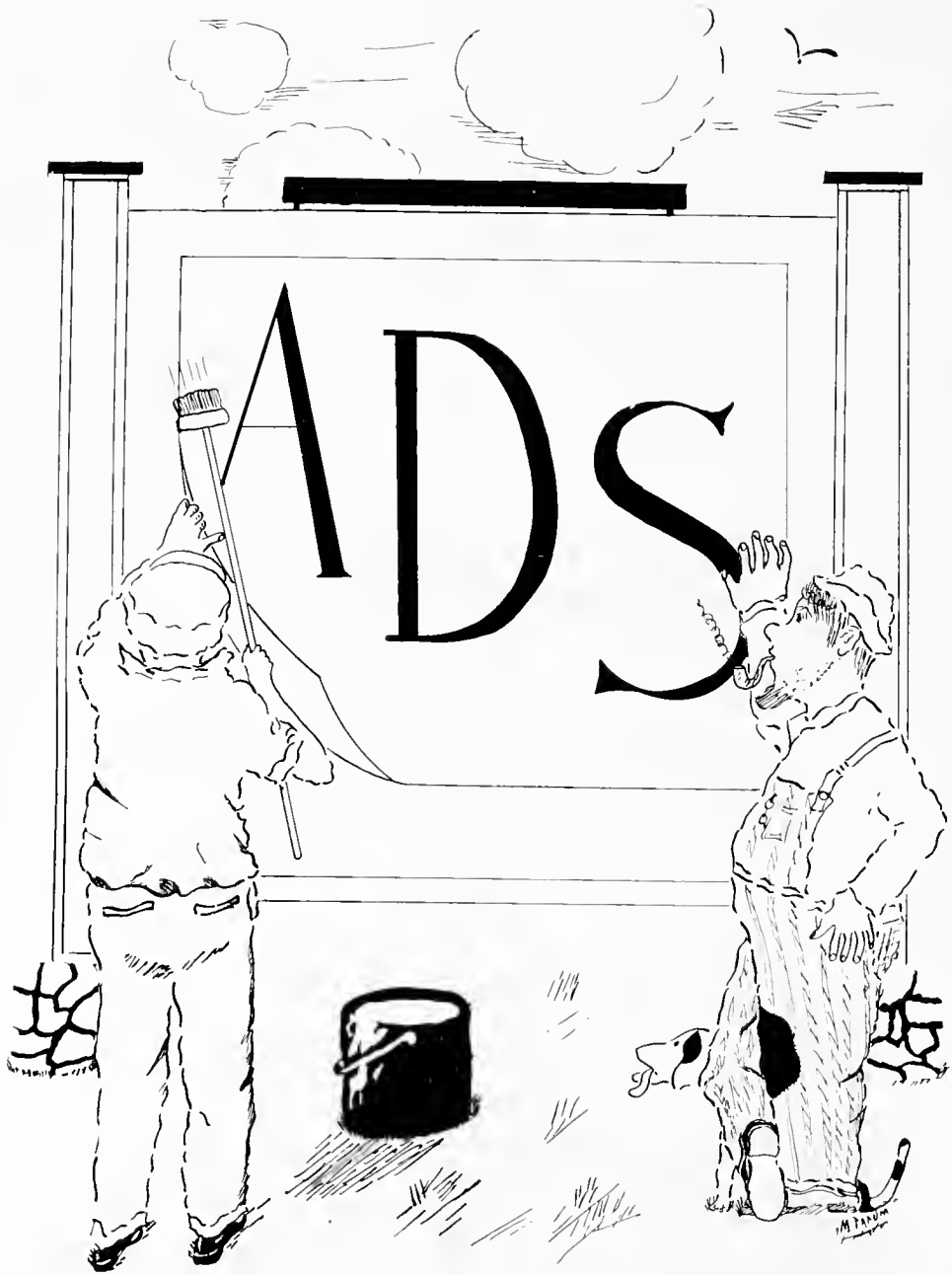


An Alphabet of Romance



A is for admirers that you have by the score;
B is for beauty which you have galore;
C is for cuteness to which there is no kin;
D is for dimple that is in your chin;
E is for eyes that are beautiful and gray;
F is for friendships that you make every day;
G is for goodness that in you reaches its prime;
H is for heart that I would like to claim as mine;
I is for innocence for which you are well known;
J is for jealousy to which you are sometimes prone;
K is for kisses that I know would be sweet;
L is for lovers who fall down at your feet;
M is for meanness of which you are not guilty;
N is for neatness, and of that you have a plenty;
O is for obedience which you don't know much about;
P is for purity of which there can be no doubt;
Q is for queen which you are to some degree;
R is for romantic which you always seem to be;
S is for sweetness that goes to make just you;
T is for temper, and you have it, it is true;
U is for unselfishness that is much to be admired;
V is for vivacity which you seem to have acquired;
W is for winning ways with which you make a hit;
X is for excellency, of which you lack not a bit;
Y is for youth which you still possess;
Z is for zest in which you love express.

ROMEO.



Moore's Style Record

Appeals to Students

WHILE it's an old record—established now for nearly thirty years—each new season we play it with new variations which are in tune with a student's ideas about clothes. Moore's has long since learned the secret and well-defined philosophy which college fellows have about their clothes. We know that these young and going chaps fairly originate and cause to be made, styles of their own. And such styles immediately find a place in our high quality stocks—here to help in maintaining Moore's Style Record.



M. V. Moore & Co.

Eleven Patton Avenue, Asheville, N. C.

Moore's Sport Shop

Uniforms and a complete line of Attire and Equipment for all games and sports. Special prices to schools and colleges.

ASHEVILLE LAUNDRY

12 PENLAND STREET



We will handle your laundry via
parcel post and pay return postage
on your package : : : : :

Give us a trial



ASHEVILLE LAUNDRY

12 PENLAND STREET



*Asheville's Most Complete
Department Store*

Specializing on Clothing the well dressed student wears, both for girls and boys at a price no other store in town can compete with.

5-7 Patton Avenue

Asheville, N. C.

WEAVERVILLE

(TWENTY MINUTES FROM PACK SQUARE)

The last decade has witnessed an interesting development in American home life—a resurgent movement from the city to the suburban district and small town. The automobile has been perhaps the chief influence in producing this exodus from the town, for by means of it the business man of even moderate income has been enabled to exchange the close quarters of a city house or apartment for a suburban or a country home with cool veranda, grassy lawn for the children to play upon, and perhaps a bit of garden in which he can exploit his own ideas as to the raising of beans and cabbage.

A number of such homes are to be found in Weaverville. Their charm is evident at the first glance and a second reveals the fact that they are equipped with every modern convenience—water, sewerage, electric lights and telephones—may we have the pleasure of showing them to you?

ERSKINE REALTY CO., Weaverville

(TWENTY MINUTES FROM PACK SQUARE)

A Near-by Neighbor--

WE are very happy indeed to live in the same town with grand old Weaver College and to regard that institution with all the pride and esteem which it richly merits and deserves.

D. J. WEAVER
President

N. W. ANDERSON
Vice-President

T. W. BLACKSTOCK
Vice-President

J. FRED REEVES
Cashier

And we are always glad to handle the personal banking matters of Weaver College students. In fact, by College and students alike, we wish to be accepted as a near-by neighbor, and as such, a willing friend.



FARMERS & TRADERS BANK

WHEN—

*You think of something
you want--just call*

PHONE
No. 11

*or walk over to our store
and let your wants be
known*

WE HAVE IT

REAGAN
&
CARMICHAEL

WEAVER CAFE

Corner Main and College
WEAVERVILLE, NORTH CAROLINA
PHONE 46

WE ARE AGENTS FOR SCHRAFT'S
CANDIES

WE CARRY A FANCY LINE OF
FRUITS

A SELECT LINE OF CIGARS,
CIGARETTES AND TOBACCO

OUR MIDDLE NAME IS GOOD EATS

We Serve Maxwell House Coffee
Exclusively

R. J. NORTHEY, Proprietor

Bon Marche

“Asheville’s Quality Department Store”

MARRIAGE

WE EXPECT the majority of the young men and women of Weaver College will some day enter the state of matrimony.

And then we hope they will remember that we help to make happy homes--by providing handsome furnishings and beautiful decorations.

SAM P. BURTON
FURNITURE
Asheville, North Carolina

OUR PRICES

ON

Diamonds, Watches
and
Jewelry

are strictly representative of the value of the article itself, dependable, trustworthy and unflinchingly just.

CARPENTER-MATTHEW
QUALITY JEWELERS
Six North Pack Square
ASHEVILLE, NORTH CAROLINA

IT'S

Butter-Krust

BREAD and CAKE

Morning

Noon

Night

=====
YOU KNOW!
=====

The Asheville Baking Co.

**Whitmire
Motor Sales Co.**

Distributors
for

**Paige, Jewett and
Anderson
Six-Cylinder
Motor Cars**

Sixes do beat Fours. Talk it over
with "Whit"

99-103 Patton Ave.
ASHEVILLE, N. C.

Destiny!

THIS institution seeks its reward from the prosperity of those whom it serves; exacts its pay from success gained by helpfulness, sympathy and zeal.

When college days are over, where will you bank? If your choice falls upon our bank, we shall be happy to join you as a partner in achievement and destiny.

Capital and Surplus \$500,000

*The Central
Bank & Trust Co.
Asheville, North Carolina*

To Keep the Memory of Those School Days

— *Your Photograph* —

The gift that only you can give

PELTON STUDIOS

SPRINKLES PHARMACY

The Rexall Store

Reliable Drug Service—Nun-
nally's Candies—Stationery

Kodak Supplies

Phone 78
Weaverville, N. C.

JEWELS

They are the most priceless possessions of sentimental and intrinsic value, richest adornments of beauty, finest tokens of love.

And the jewels offered by the House of Henderson are the purest gems of ray serene, chosen for buyers whose conception of quality knows but one standard - - THE BEST

Chas. E. Henderson
JEWELER

Asheville - - - - North Carolina

ROGERS GROCERY COMPANY

ASHEVILLE, N. C.



*Specializes on Quality Goods
for
Hotels and Institutions
Weights and Quality Guaranteed*



DISTRIBUTORS FOR
STOKLEY BROS. CANNED GOODS
LIBBY, McNEIL & LIBBY'S CANNED GOODS, PICKLES, ETC.
GOLD BAR CALIFORNIA FRUITS
DUKE'S MAYONNAISE DRESSING AND RELISH

SWANNANOA LAUNDRY

CANIE N. BROWN, Prop.

22-24 Church St.

ASHEVILLE, NORTH CAROLINA

HARRY L. FINKELSTEIN

DIAMONDS, WATCHES and JEWELRY

FIREARMS, SPORTING GOODS

TRUNKS, BAGS and SUIT CASES

23-25 Biltmore Ave., Asheville, N. C.

CADISON'S

A FASHION SHOP FOR LADIES

FOURTEEN BILTMORE AVE.

ASHEVILLE, NORTH CAROLINA

PAPER PRODUCTS

PHONE

3361

Southern Paper Products Co.

82½ Patton Avenue, Asheville, N. C.

Weaver ville Electric & Telephone Company

Local and Long Distance Connections

WITH

The American Bell Telephone & Telegraph Company

AND

Southern Bell Telephone & Telegraph Company

ELECTRICAL FIXTURES and APPLIANCES

WE

WIRE

HOUSES

Weaver ville Electric & Telephone Company

DRINK

Coca-Cola

Every Bottle

Sterilized

and

Inspected

90 Biltmore Avenue

Asheville,

N. C.

H-U-N-G-R-Y ?

S. ^A_N^D W.

Cafeterias

ASHEVILLE

CHARLOTTE

WINSTON-SALEM

GREENVILLE

OVER ONE MILLION MEALS

PER YEAR



THE WOMAN'S CLUB BUILDING OF RALEIGH
Post Card view printed by Edwards & Broughton Printing Company

“Printing is the Inseparable Companion of Achievement”

OVER FIFTY YEARS
of Continuous
Service to the Schools
and Colleges of the
State of North Carolina.

During this time we
have supplied, because
of our reputation for
Quality, a greater vol-
ume of this class of work
than any other plant in
the State. We specialize
on College work such as:

ANNUALS
CATALOGS
PUBLICATIONS
MAGAZINES
VIEW BOOKS

ENGRAVED
STATIONERY
INVITATIONS
ANNOUNCEMENTS
VISITING CARDS

THE SCHOOL ANNUAL

IS it an achievement from the hands
of skilled artisans — the result of
careful planning by experienced work-
men, or does it have the appearance
of ordinary printed literature? You
want the best that money can buy
when you issue your Annual. Our
facilities are perfect and our workmen
are specialists. Place your Annual
with those who know Good Printing.

EDWARDS & BROUGHTON
PRINTING COMPANY

ESTABLISHED 1871

College Annual Specialists
RALEIGH · NORTH CAROLINA

1902

1924

The Asheville Grocery Company

H. C. JOHNSON, Propr.

Phones 885
886

PILLSBURY'S FLOUR
PURITY OATS
HUNT'S FRUITS

IMPERIAL FLOUR
CUDAHY CANNED MEATS
GOODWIN'S JAMS
JELLIES, PRESERVES

SECURITY
Horse, Dairy, Poultry Feeds

EDGETT-BURHAM
New York State Canned Goods

College Courses

Classical
Education
Business
Music

Weaver College

DENOMINATIONAL—CO-EDUCATIONAL

Weaverville, North Carolina

Tenth and Eleventh Grades in High School.
Freshman and Sophomore Years of College Course.
Lake and Forested Campus Nine Miles from Asheville.
Modern Dormitories, Well-equipped Library and Laboratory.
Athletics, Receptions, Literary Societies, Religious Activities.
One Christian Teacher with Education and Experience to Every Fifteen Pupils.
An Excellent Gateway from the Restrictions of a Good High School to the Responsibilities of Professional and Business Life.
For Catalogue and Other Information Address

C. H. TROWBRIDGE, President
Weaverville, N. C.

High School Courses

Classical
Commercial
Domestic
Music

- the right kind of cuts

The painstaking care, the unremitting effort that goes into the making of our Commercial Halftones is also applied to every School Annual that we produce.

An inspection of the 1924 Volunteer, Voice, Sequoyah, Knox Junior, Itakha, Wataugan, Tusculana, Cadmea, Ocoean Cocks Crow, Mountaineer, Hill billy, Victorian, or any Annual carrying our advertisement will convince you that we make the right kind of cuts.

Knoxville Engraving Co.
Knoxville, Tennessee.

