



ROY McCUSKEY



This is Number

3

of a

Limited Edition

100 Copies

of

The

Murmurmontis

Signed By

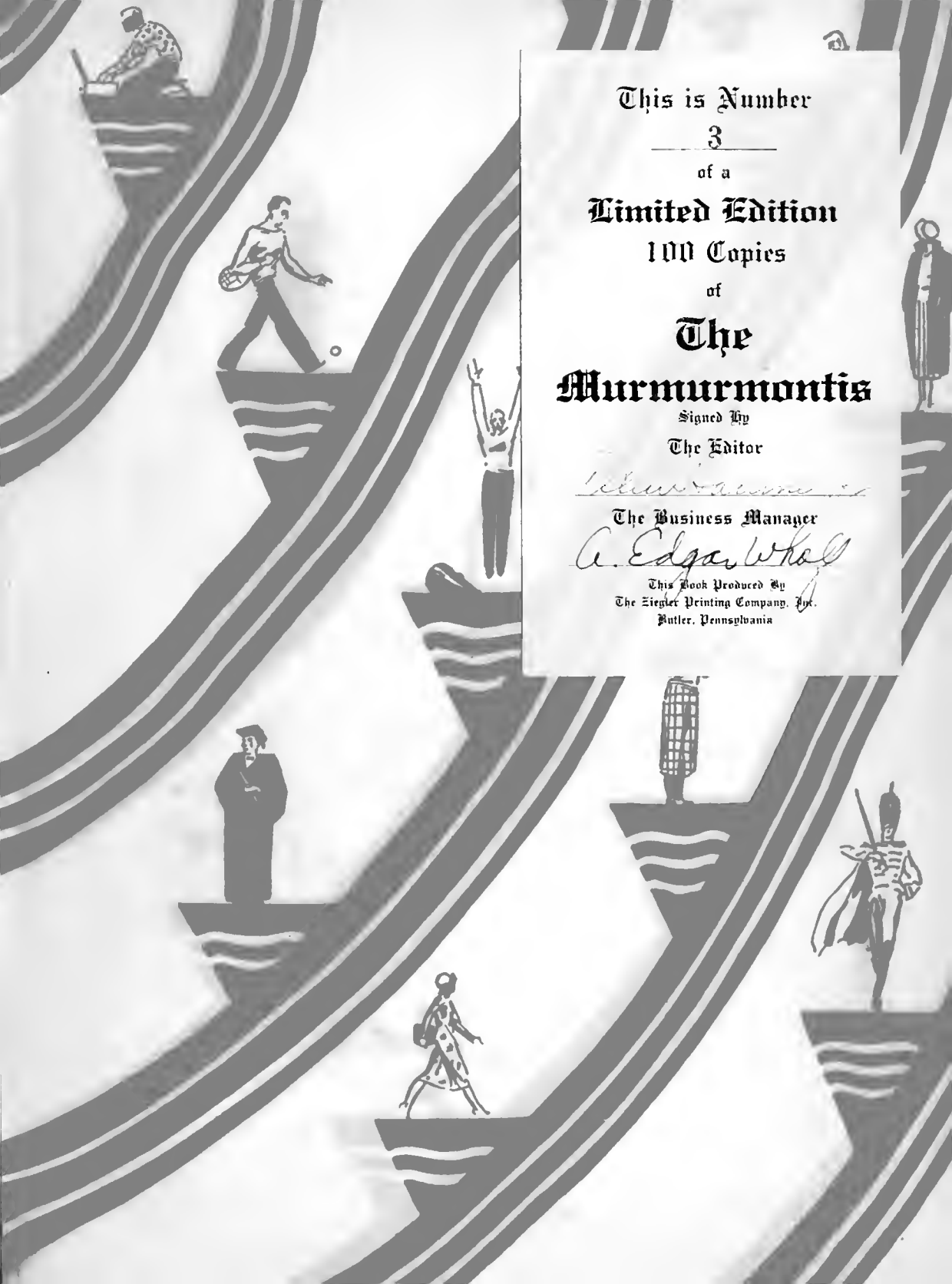
The Editor

Walter Dill Scott

The Business Manager

A. Edgar Wholl

This Book Produced By
The Siegel Printing Company, Inc.
Butler, Pennsylvania



Digitized by the Internet Archive
in 2010 with funding from
Lyrasis Members and Sloan Foundation

THE 1933
MURMURMONTIS



**COPYRIGHT
IN 1932**

By
ALLEN T. HAMNER, JR.
Editor-in-Chief
ALTON EDGAR WHOLF
Business Manager

THE 1933 MURMURMONIIS

VOLUME XXIX

PUBLISHED ANNUALLY
BY THE JUNIOR CLASS
WEST VIRGINIA
WESLEYAN COLLEGE
Buckhannon, W. Va.



246.154



278.75462
W5211
1933
C.1

Underwood Studios New York



DEDICATION

TO

LENNA LOWE YOST

FRIEND, SCHOLAR, STATES-
WOMAN, WHOSE INTEREST IN
WESLEYAN AND ITS STUDENTS
HAS ALWAYS BEEN FOREMOST,
WE DEDICATE THESE PAGES IN
DEEP APPRECIATION AND LAST-
ING GRATITUDE

THE CLASS OF 1933





FOREWORD

It is with pride that we, the class of 1933, present "Nostrum Maximum Laborem" to the world. We have endeavored to differentiate between the commonplace and the unusual, to produce a year book which will not only be an accurate account of school life during the past year, but which will be interesting and original for readers outside our school class. As to our success, it is for you to decide.

As the theme of this volume, we have selected one dear to all our hearts, "Wesleyan" with the aim in mind to ever keep before the reader Wesleyan's high ideals. We trust that our endeavor to publish an exceptional year book, with the interests of Wesleyan ever front, will appeal to all its readers.

ALLEN T. HAMNER, JR.
ALTON EDGAR WHOLF
ELIZABETH WILLIAMS
JACKSON RAFELD
LUCIE BROOKS
MARY FRANCES DEEDS
CADA RENICK
HELEN FURBEE
CLARENCE CASTO
MARTHA GLENN FLESHER
ORVILLE EDMUNDSON
GRACE HAMILTON

STAFF



CONTENTS

« THE SCHOOL »

ADMINISTRATION
SENIORS
JUNIORS
SOPHOMORES
FRESHMEN

» SPORTS «

» ACTIVITIES «

PUBLICATIONS
SERVICE GROUPS
DRAMA AND DEBATE
BEAUTY
CAMPUS LIFE

» ORGANIZATIONS «

FRATERNITIES
SORORITIES





THE CAMPUS



*ADMINISTRATION BUILDING
which contains the administrative
offices, library, and the spacious
Atkinson Chapel.*



*THE HAYMOND SCIENCE HALL
the gift of the late Col. Sydney
Haymond, dedicated to the re-
searches of the laboratory.*



AGNES HOWARD HALL
the dormitory for women, from a
view up the walk.



MUSIC HALL

devoted to improvement and continuation of music.



GYMNASIUM

*dedicated to the physical fitness of
the American Youth.*



CAMPUS BEAUTIFUL

*Attractively wooded with virgin
and cultivated trees and shrubs.*





SCHOOL



ADMINISTRATION AND FACULTY



THE MURMURMONTIS



ROY McCUSKEY, S.T.B., D.D.
President of West Virginia Wesleyan College

MCMXXXIII

THE MURMURMONTIS



THE MURMURMONTIS ventures forth another year! Each year we think the publication is the best one ever put out. Some of us who worked on the second issue—1905—thought it was far superior to the first! The ambition to excel has been handed down and this year's book will show no lowering of ideals in composition or artistic makeup.

The Murmurmontis is genuinely a student project and deserves the heartiest support of the entire college community. It is a cross section of life at West Virginia Wesleyan, revealing more vividly than anything else can possibly do, the character of our students, and their organizations. I congratulate the Staff upon their splendid work.

ROY McCUSKEY





THE MURMURMONTIS



OSCAR DOANE LAMBERT, M.A., Ph.D.
Dean of the College



MCMXXXIII

THE MURMURMONTIS



MARIE BRETHORST, B.L., M.A.
Dean of Women

Journalism and English Composition

Datoka Wesleyan University, University of Washington, Columbia University.



RALPH C. BROWN, A.B., S.T.B.
Registrar

Biblical Literature and Philosophy

West Virginia Wesleyan College; West Virginia University, Boston University School of Theology.



LEWIS H. CHRISMAN, A.M., Ph.D., Litt.D.
English Literature

Dickinson College, University of Michigan, University of Wisconsin, University of Pennsylvania



JAMES F. DICK, A.M., Ph.D., Ped.D.
French

University of Zurich; Georgetown University, West Virginia Wesleyan.





THE MURMURMONTIS



O. EARL KARICKHOFF, A.B., M.A.

Economics and Sociology

West Virginia Wesleyan College; Harvard University; Boston University.



GEORGE L. GLAUNER, A.B., M.A.

History

Otterbein College; Syracuse University; Ohio State University.



JACOB J. BOS, M.A., B.D., Ph.D.

Latin, Greek, and German

New York University; Drew University; University of Chicago



R. RAY SCOTT, A.B., M.A.

Secondary Education

Hiram College; Columbia University; University of Wisconsin; University of Pittsburgh; University of Chicago; Ohio State University



MCMXXXIII

THE MURMURMONTIS



FRANK E. MUZZY

Voice

Boston, Stephen Townsend; Paris, Sbriglia,
Paul Seguy; London, Randegger



CARL J. FARNSWORTH

Piano and Pipe Organ

Piano Graduate New England Conservatory
of Music, Boston, Boston University, Har-
vard University.



LETTA SNODGRASS

Fine Arts

West Virginia Conference Seminary, New
York School of Fine Arts, Cooper Woman's
Art School, Henri School.



B. W. FOLSOM, A.B., M.A.

Public Speaking

Southwestern College, Wisconsin University





THE MURMURMONTIS



THOMAS W. HAIGHT, M.A., D.Sc.

Geology and Physics

West Virginia Wesleyan College; West Virginia University; Harvard University; Johns Hopkins



NICHOLAS HYMA, A.B., M.S.

Chemistry

Kalamazoo College, University of Chicago



JAMES EDWARD JUDSON, M.S., Ph.D.

Biology

University of Wisconsin.



ROBERT D. MYERS, A.B., M. B. A.

Business Administration

Ohio State University.



MCMXXXIII

THE MURMURMONTIS



GLADYS M. CROSEMEYER, A.B., M.A.
Home Economics

University of Kansas, Washburn College,
University of Chicago, Columbia University



ESTHER ANSELL, B.S.
Mathematics

West Virginia Wesleyan College.



EVELYN E. LAZENBY, A.B., M.A.
Librarian and English Composition

West Virginia Wesleyan College, Peabody
Teachers College, Ohio State University,
Columbia University.



BARLETT I. LYONS, Mus.B.
Public School Music

New England Conservatory, West Virginia
Wesleyan College.





THE MURMURMONTIS



EMMETT F. STOFFT
*Business Manager and
Treasurer of College*



CECIL B. ROSS
Head Coach



ARTHUR H. SIMONS, A.B., M.A.
Physical Education for Men

West Virginia Wesleyan College; University of Michigan, Ohio State; Y. M. C. A. College; Association College; American Red Cross Institute



ALICE NASON, A.B., M.A.
Physical Education for Women
Goucher College; Columbia University



MCMXXXIII

THE MURMURMONTIS



MRS. MARGARET DRUMMOND
Matron



MRS. C. EDMUND NOTT
Adviser to Women
Ohio Wesleyan; West Virginia University,
Boston University, Columbia



C. F. FAUERBACH, AB, PhD
Elementary Education and Psychology

ISABELLE SANCHEZ YOUNG, AB
Spanish

V. F. KEMPER
Violin

ORA DOUGLAS CURRY
Assistant Librarian

LILLIAN MCGINNIS WOLLE
Secretary to the President

NEELIE ACKLES
Secretary to the Dean



ARTHUR WILLSWORTH
Assistant Treasurer







SENIORS



THE MURMURMONTIS

ARTHUR EVANS BECKETT, A.B.

Huntington

K A

President of Senior Class, President of Student Council;
Choir, Y. M. C. A. Wesleyan Key

Bible



MARY VIRGINIA COOKMAN, A.B.

Buckhannon

Σ Δ X

Society President PanHellenic Council Secretary of
Senior Class Y. W. C. A.

French



JOHN McCUSKEY, B.S.

Buckhannon

Σ X (Northwestern)

Director of Publications Student Council, Editor Handbook,
'32, Choir, Play Shop, Benzene Ring, Y. M. C. A. Gym
Club, Vice President Senior Class, Football '29, '30, Track
'30, '31, '32, Captain Track '32, Attended Northwestern
University '28-'29.

Biology and Chemistry



CHRISTINE YOUNG McCUSKEY, A.B.

Lost Creek

X K A

Vice President Choir, Play Shop, Y. W. C. A. Gym Club,
Debate Team, Girls Basketball, Girls Tennis Manager,
Oration, B.A. in Music.

English



MCMXXXIII

THE MURMURMONTIS



CHARLES SEATER, B.S.

Huntington

K A

Benzene Ring, Y. M. C. A., President Gamma Beta Sigma,
honorary business fraternity, Vice President of Class '28-'29,
'29-'30, Intramural Athletics '29-'30, '31, '32

Business Administration



PHYLLIS DEAN, A.B.

Buckhannon

Σ Δ X

Spanish Club

English



ELIZABETH TALBOT, A.B.

Buckhannon

Σ Δ X

English



ESKRIDGE HANSFORD McCOURT, B.S.

Webster Springs

X A T

Spanish Club, Varsity Club, Baseball '29-'31, Football '29,
'30, Intramural Athletics '28-'29-'30-'31, Attended W. U.
'27-'28

Mathematics





THE MURMURMONTIS

FRANK CRITES, A.B.

Buckhannon

Σ Π Δ

Benzene Ring, Captain Football '31, Football Squad '28, '29, '30, '31, Intramural Basketball, Varsity Club, Y. M. C. A.

Social Sciences



FRANCIS LOUISE SHANNON, A.B.

Buckhannon

K Φ Ω

Sorority President, PanHellenic Council.

History



HARRY MARONEY, B.S.

Thurmond

K Α

Play Shop, Benzene Ring, Treasurer, Y. M. C. A., Pharus Staff '29-'30, Intramural '29-'30, '31, Member Intramural Board, Baseball Squad '30, '31

Chemistry



MILDRED JANE MICK, A.B.

Buckhannon

X K Α

Choir, Intramural '29-'30, Y. W. C. A., Pharus Staff '29-'30, Play Shop Apprentice

English



MCMXXXIII

THE MURMURMONTIS



PAUL F. SHARP, B.S.

Edray

K Λ

Fraternity President, Director of Administration and Faculty Relations, Student Council, PanHellenic Council, Play Shop, Gamma Beta Sigma, honorary business fraternity, Pharos Staff, '31; Varsity Club, Football '28, '29, '30, '31, Track '29, '30, Intramural Athletics '28, '29

Business Administration



VONDA LOWE SHARP, A.B.

Buckbannon

Σ II Δ

Sorority President, President PanHellenic Council, Vice President Haight Literary Society, Y. W. C. A., Assistant in Library.

English



ROBERT COOKMAN, A. B.

Buckbannon

Σ II Δ

English and Biology



KATHRYN McGUIFIE, B.S.

Deep Valley, Pa.

X K Λ

Attended Waynesburg College '28-'29, '29-'30

Home Economics





THE MURMURMONTIS

ROBERT LAYFIELD, B.S.

Buckhannon

X A T

Editor 1932 Murmurmontis, Benzene Ring

Chemistry



LUCILLE LORENTZ LAYFIELD, A.B.

Buckhannon

Σ Δ X

Social Chairman of Sorority Y W C A

English and Art



ROBERT H HERZER, B.S.

Wheeling

X A T

President of Fraternity, PanHellenic Council, Y M C A, Gamma Beta Sigma honorary business fraternity, Assistant Director Intercollegiate Athletics, Director of Publicity, State Tournament Committee

Business Administration



MATHILDE L WIFFERS, A.B.

Buckhannon

Σ Δ X

Attended W V U, '30-'31

English



MCMXXXIII

THE MURMURMONTIS



LEWIS R. CLARK, B.S.

Cameron

TK E (WVU)

Alpha Psi Omega, Play Shop, Y. M. C. A., Gvm. Club,
Gamma Beta Sigma honorary business fraternity. Attended
W. V. U., '27-'28, '28-'29.

Business Administration



LOUISE MORGAN HAMILTON, A.B.

Mount Hope

X K A

English



SEXTON B. BEER, A.B.

Buckhannon

Δ Φ Ω (V.M.F.)

Spanish Club, Varsity Tennis '31

Spanish



EFFIE LEE STROTHER, A.B.

West Milford

X K A

Attended Marshall '28-'29, University of South Carolina
'29-'30, Corresponding Secretary of Sorority.

English





THE MURMURMONTIS

WAYMAN BENNETT, B.S.

Buckhannon

X A T

Business Administration



THELMA R. MCCOY, A.B.

Connellsville, Pa

X K A

Sorority Vice President

Social Sciences



J. ALBERT McTAVISH, A.B.

Farmington

Σ II Δ

Fraternity House Manager Football '30 Intramural Athletics
'30 '31 '32 Y. M. C. A.

Latin



EFFIE MAE MERRITT, B.S.

Monessen, Pa

X K A

PanHellenic Council Haught Literary Club, Secretary, Alpha
Psi Omega, Play Shop Y. W. C. A., Debate Team

Biology



MCMXXXIII

THE MURMURMONTIS



DAVID A. WHITE, B.S.

Buckhannon

Benzene Ring, President Instructor in Chemistry Laboratory
Red Cross Life Guard

Chemistry



ETHEL J. McOLVIN, B.S.

Buckhannon

Benzene Ring

Chemistry



FRIEDA MAE BEALL, A.B.

Buckhannon

Gym Club, Basketball '29, '30, '32 Attended New River
State, Spring '31

Education



MARGUERITE EARNSWORTH, A.B.

Buckhannon

French





THE MURMURMONTIS

V ARGYLE KNIGHT, A.B.

Clarksburg

K A

Secretary of Fraternity, Choir 4 years, Director of Social Life, Student Council, Alpha Psi Omega, Pi Kappa Delta, Play Shop, Y. M. C. A., Wesleyan Key, Class President of Freshman year, Debate 4 years, Orchestra 2 years, Murmurmontis Staff 31, Coach Girls Debate '32.

Public Speaking and English



ELIZABETH HARDESTY, A.B.

Shinnston

Σ Δ X

Choir, PanHellenic Council, Play Shop, President, Agnes Howard Hall Government, Attended Fairmont State Teacher's College Summer 1930.

English



MARTHA E. CORDER, A.B.

Clarksburg

Σ Δ X

Choir, PanHellenic Council '31, Spanish Club, Senior Representative on Agnes Howard Hall Government, Member Board of Control, Wesleyan Pharos, Attended Dennison University '28-'29.

English



MARGARET HARRIS, A.B.

West Milford

Σ Δ X

Choir, Attended Marshall, W. V. U. and Salem College

Music



MCMXXXIII

THE MURMURMONTIS



JAMES HUTCHINSON, AB

Buckhannon

K A

Choir, Pi Kappa Delta, Y. W. C. A., Cheerleader, Debate Team 3 years, President Boys Dorm '28-'29, President Debate Club, Representative in State Oratorical Contest '32, Business Manager Murmumontis '31, Won 3rd place in Pi Kappa Delta Extempore Speaking Contest '31

English



ISABELLE BAILEY, BS

Weston

Choir, Student Council '28-'29, Benzene Ring, Y. W. C. A., Gym Club, Girls Tennis '31, Intramural Athletics '28, '29, '32

Home Economics



HUBERT BRYANT, BS

Buckhannon

Benzene Ring

Chemistry



PAULINE FRANCES BAXX, AB

Buckhannon

Tallagee Association, Secretary-Treasurer Haught Literary Club, College Orchestra

French





THE MURMURMONTIS

CRAWFORD REPPERT, B.S.

Buckhannon

X A T

Benzene Ring Chemistry Laboratory Assistant.

Chemistry



ELAINE AVINGTON, B.S.

Ellamore

Pi Kappa Delta, Play Shop, Spanish Club, Gym Club, Gamma Beta Sigma, honorary business fraternity, Manager Girls Debate Team, Treasurer Senior Class, Attended Davis Elkins '29 Intramural Athletics.

Business Administration



KARL C. MEARN'S, B.S.

Buckhannon

Σ Π Δ

PanHellenic '31, Benzene Ring, Intramural Athletics '29

Chemistry



ELMA SUSAN PECK, A.B.

Swarthmore, Pa

K Φ Ω

Gym Club, Y. W. C. A., Intramural Athletics, Attended Duke University '30-'31

English



MCMXXXIII

THE MURMURMONTIS



JOHN C. WILE, AB

Revere, Mass

K A

Y. W. C. A. Play Shop

History



RUTH E. MAYSILES, AB

Grafton

Chairman Publicity Committee, Y. W. C. A. Play Shop,
Agnes Howard Hall Government, Phoros Assistant Editor,
Assistant Editor Handbook, Grafton '31, Murmurmontis Staff
'31, Wesleyan Key '32, Attended Hood College '28-'29

English



NICHOLAS FAMULARO, BS

Long Island City, N. Y.

K A

Benzene Ring, Biology Club, Phoros Reporter '31, Intra-
mural, Handball and Basketball, Tennis

Biology and French



MAXINE WOOD, BS.

Buckhamton

Biology





THE MURMURMONTIS

W. IRFED HART, B.S.

Saltsburg, Pa.

K A

Editor of *Pharos*; Corresponding Secretary, fraternity; Vice President, Benzene Ring; Wesleyan Key; Baseball '30-'31; Intramural sports

Chemistry



NINA VIRGINIA YOHO, B.S.

Mamington

K Φ Ω

Girls' Tennis '31; Intramural Basketball; Attended Fairmont State Teacher's College

Mathematics



MELVIN D. LAING, A.B.

Hyndman, Pa.

K A

Fraternity Secretary; Director Freshmen Relations; Student Council; Secretary-Treasurer Student Council '28-'29; Pi Kappa Delta; Play Shop; Y. M. C. A.; Wesleyan Key; Business Manager *Pharos*; Debate Team 4 years; Editor Handbook '30; Business Manager Handbook '32.

Philosophy



HELEN FARNSWORTH, B.S.

Buckhannon

X Ω

Attended Oklahoma A and M College; Acadia University, Nova Scotia

Biology



MCMXXXIII

THE MURMURMONTIS



GEORGE WYATT, B.S.

Dry Fork

Attended Davis Elkins College and Bridgewater College

Biology



VIRGINIA RITTENHOUSE, A.B.

Clarksburg

Y W C A

Σ Δ X

History



RUTH STROSNIDER, B.S.

Blacksville

President Y. W. C. A. Vice President Intramural Board
Secretary Student Volunteer Movement, Vice President Agnes
Howard Hall Government, Benzene Ring

Biology



JUANITA FORDYCE, A.B.

Buckhannon

Orchestra.

Musie





THE MURMURMONTIS

ROGER WILLIAMS, AB

Clarksburg

Choir, Play Shop, Spanish Club, Gym Club, Orchestra

English



GRACE SMITH SALVAGEOT, AB

Clarksburg

Σ Π Δ

Social Chairman, Sorority '30-'31, Pan Hellenic '30-'31

English



FRANCES A. SCOTT, AB

Buckhamton

X K A

Intramural Basketball, Tennis, Alpha Psi Omega, Play Shop, Y. W. C. A., Gym Club, Debate Team, Attended Ohio State Summer '30.

Public Speaking



EVELYN JANE GAY, AB.

Buckhamton

Σ Δ X

Y. W. C. A. Debate Team, Intramural Athletics

English and French



MCMXXXIII

THE MURMURMONTIS



MYA RAY MULLINS, AB

Sbarples

Choir Student Pastor President Rural Recreation and Art League Chairman Ministerial Group

English



RUTH MULLINS, AB

Sbarples

English



MARGUERITE MOORE, AB

Buckbannon

Y. W. C. A. Attended State Normal at Geneseo, N. Y.

Education



VIOLA ERNEST, AB

Belington

Y. W. C. A. Pharos Staff Attended Davis Elkins '28-29

Latin and English





THE MURMURMONTIS

ROBERT H. LINGER, B.S.

Buckannon

Choir 29-30

Mathematics



ELIZABETH JONES, A.B.

Buckannon

Haught Literary Club

English



VIRGINIA FISHER, B.S.

Clarksburg

Play Shop Benzene Ring Y W C A Pharos Staff, Debate Team Assistant in Chemistry Laboratory.

Chemistry



ZENNA BRAKE, B.S.

Buckannon

Home Economics



MCMXXXIII

THE MURMURMONTIS



FRANK HALL, B.S.

Buckhannon

Σ Π Δ

Benzene Ring Track Intramural Sports

Chemistry



MARJORIE DOVE GIBBS, A.B.

Terra Alta

Treasurer Tallagewe Association Choir Play Shop Y. W. C. A. Spanish Club Attended Marshall and Fullerton Junior College California

English



FLO ELIZABETH PETERSON, A.B.

Weston

Music



IRIS QUEEN, A.B.

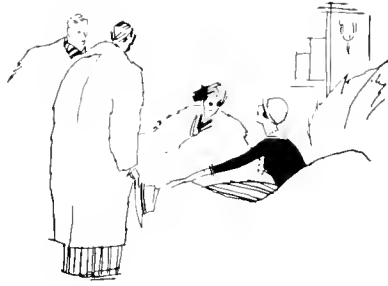
Buckhannon

Y. W. C. A. Assistant Librarian, Tri-V Latin Club at Fairmont Attended Fairmont State Teachers College '30-'31.

English







JUNIORS



THE MURMURMONTIS

CLIFFORD BAILES

Akron, Ohio

X A T

President Junior Class, Vice President fraternity, Football '28, '29, '30, '31, Basketball '29, '30, '31, '32, Captain '32, Tennis '31, Track '28, '29, '30; Director Elections and awards Student Council, Pharos Staff, Varsity Club, Wesleyan Key, Baseball '30, '31, Assistant Swimming Instructor

English



GRACE HAMILTON

Grantsville

K Φ Ω

Sorority Treasurer, '30-'31, Haught Literary Club, Murmurmontis Staff '33, Pharos Staff, Intramural Sports

History



ARTHUR BACHTEL

Akron, Ohio

X A T

House Manager Fraternity, Football '29, '30, '31, Captain Baseball '31, '32, Olympic Club, Varsity Club

Business Administration



ELSIE HOWARD

Cowen

K Φ Ω

Secretary Agnes Howard Hall Government, Pharos Staff, Haught Literary Club, Intramural Sports

Social Sciences



ALEX T HAMNER JR

Buckhannon

X A T

Editor-in-Chief Murmurmontis, 1933, Business Manager Pharos '31, Gamma Beta Sigma honorary Business fraternity

Business Administration



MCMXXXIII

THE MURMURMONTIS



ORVILLE EDMUNDSON

Bridgeport, Ohio

X A T

Football '29-'30-'31 Basketball '30, '31, '32, Baseball '30, '31 Murmurmontis Staff '33, Benzene Ring President Olympic Club Treasurer Junior Class Wesleyan Key, Varsity Club Vice President Boys Dorm '29-'30

Chemistry



HILDA REXROAD

Clarksburg

X K A

Choir Social Chairman of Sorority, Y. W. C. A. Secretary of Class '30-'31

English



ALTON E. WHOLE

Akron, Ohio

X A T

Football '29-'30-'31 Business Manager Murmurmontis 1933 Class Basketball Vice President Junior Class Varsity Club

Business Administration



MARTHA MEARNS

Buckhannon

Σ Δ X

English



VERNON THOMAS

Cambridge, Mass.

X A T

President and Instructor Buckhannon Gliding Club

Business Administration





THE MURMURMONTIS

CLEMENT SIANDRU

Martins Ferry, Ohio

X A T

Football '29-'30-'31 Basketball '30-'31-'32 Baseball '30-'31
President Spanish Club, Olympic Club, Varsity Club

Business Administration



ELIZABETH WILLIAMS

Buckhannon

K Φ Ω

Choir, Director Vocational Guidance Student Council, Pan-Hellenic, President Haught Literary Club, Associate Editor Murmurmontis 1933, Play Shop, Vice President of Sorority Y. W. C. A., Phoros Staff, Orchestra

English



CHARLES E. COLEMAN

Buckhannon

X A T

Football '29-'30-'31 Baseball '31 Class Basketball, Varsity Club

Business Administration



LUCIE BROOKS

Buckhannon

Σ Π Δ

Corresponding Secretary of Sorority Murmurmontis Staff 1933, Haught Literary Club, Vice President Y. W. C. A.

English



WILLIAM BRYAN KELLEY

Aliquippa, Pa.

K Α

Choir, Alpha Psi Omega Dramatic Fraternity, Play Shop Y. M. C. A. Class President '29-'30

Social Sciences



MCMXXXIII

THE MURMURMONTIS



JACK RAHEID

Akron, Ohio

X A T

Secretary of Fraternity, Basketball Manager '32, Director of Thuses and Alumni Relations, Student Council, PanHellenic, Murmurmontis Staff, Football '29, '30, Basketball '30, Baseball '30, '31, Wesleyan Key, Class President '30-'31, Gamma Beta Sigma honorary, business, Fraternity

Business Administration



CARRIE BENNETT

Grafton

X K A

President of Sorority, PenHellenic, Play Shop, Debate Team, Class Basketball Manager, Girls Basketball '32

English



MINOR PARKER

Mount Hope

K A

Historian of Fraternity, Play Shop, Olympic Club, Track '29, Basketball '30

Science



ELA SINCIAR

West Milford

X K A

Secretary of Sorority, Choir, Play Shop, Y. W. C. A., Secretary of Junior Class, Drivers

French



HOWARD POST

Lost Creek

Σ Η Δ

Secretary of Fraternity, Track, Intramural, Benzene Ring

Biology





THE MURMURMONTIS

ROSS LINGER

Student Pastor

Adrian
History



MARY FRANCES DEEDS

Treasurer of Sorority Murmurmontis Staff 1933.

Buckhamton
Σ Δ X
English



CLEARANCE CASTO

Benzene Ring, Phoros Staff '31, Murmurmontis Staff 1933

Leon
X A T
Chemistry



ELIZABETH WARD SPEIR

Vice President Sorority

Peel Tree
Σ Δ X
History



CHARLES PUGH

Intramural Basketball

Buckhamton
Biology



MCMXXXIII

THE MURMURMONTIS



SAM MAZZIE

Nutters Fort

Σ Η Δ

Vice President of Fraternity Choir, Spanish Club
Spanish



MARTHA GLENN HIESHER

Pruntytown

Δ Γ (W.V.U.)

Murmurmontis Staff 1933, Pi Kappa Delta, Y. W. C. A.,
Assistant Editor Pharos, Debate Team, Attended W. V. U.
1927-30

History



ORZA MARTIN

Abbott

Education



CADA RENICK

Mount Hope

Σ Η Δ

Murmurmontis Staff 1933, Y. W. C. A., Intramural
Biology



HERMAN PARRISH

Rensford

K Α

Director of Y. W. C. A., Student Council, Benzene Ring, Busi-
ness Manager Pharos '31

Chemistry





THE MURMURMONTIS

WILLIS SHUMAN

Fairview

Σ Η Δ

Treasurer of Fraternity

Public Speaking



CATHARINE CLOVIS

Hundred

Κ Φ Ψ

Play Shop Y W C A Attended Laurmont State College
2 years.

Home Economics



JOHN BOOTH

New York City

Χ Δ Τ

Spanish Club, Y M C A Intramural.

Chemistry



GRACE WHITE

Buckannon

Σ Δ Χ

Y W C A

Home Economics



SAM GILMORE

Wheeling

Σ Η Δ

Corresponding Secretary of Fraternity Trainer in Track
Pharos Staff Varsity Club

History



MCMXXXIII

THE MURMURMONTIS



CLAYTON HALL

Lost Creek

X A T

Manager of Track Benzene Ring

Mathematics



HAZEL DAWSON

Buckhannon

K Φ Ω

Home Economics



ROBERT WENZ FORDYCE

Buckhannon

Σ Η Δ

Football 29 30 31, Varsity Club,

Mathematics



MARY SULLIVAN

Buckhannon

Σ Η Δ

Class Basketball, Tennis, Manager Intramural League
Olympic Club

Physical Education



THOMAS VICTOR CUPPETT

Gratton

X A T

Track, Intramural Pharos Staff Gamma Beta Sigma honorary
Business Fraternity

Business Administration





THE MURMURMONTIS

MERRITT LEATHER

Mill Creek

K A

Managing Editor Pharos, Choir, Play Shop, Y. M. C. A.

Bible and Philosophy



HELEN MAXINE FURBEE

Clarksburg

Σ Δ X

Choir, Debate Team, Play Shop, Y. W. C. A., Olympic Club, Treasurer Hall Government '31, Pharos Staff '30.

Biology



JAMES RAMSLEY

Buckhannon

K A

Y. M. C. A. Attended Broadus 2 years

History



FRONA FOSTER

Buckhannon

X K A

Treasurer of Sorority, Haught Literary Club, Y. W. C. A.

French



LAWRENCE MYERS

Philippi

Attended Broadus 2 years

History



MCMXXXIII

THE MURMURMONTIS



VERL K REGER

Buckhannon

Gamma Beta Sigma honorary business fraternity, Orchestra

Business Administration



MABEL CASTO

Buckhannon

President of Tallagewe Association, Y. W. C. A., Orchestra

Home Economics



CARROL PALMER

Lost Creek

Σ H Δ

Attended Salem College

Biology



DOROTHY QUINN

Annoore

Σ H Δ

Social Chairman of Sorority Pan Hellenic Play Shop
Agnes Howard Hall Government

Biology



RUSSELL CHAPMAN

Smithburg

X A T

Track Benzene Ring Y. M. C. A. Assistant Business Manager Pharos '32

Chemistry





THE MURMURMONTIS

CLEMENCE PASE

Thomas

Tallagewe Association Y W C A Attended Potomac State College.

History



MARY LOUISE MILLER

Buckhannon

Σ Π Δ

Vice President of Sorority Choir Y W C A Debate Team

Mathematics



FLINORE ANDERSON

Wesleyville, Pa

Tallagewe Association Y W C A Attended Allegheny College

Education



ELLA RUTH WILKINS

Cowen

K Φ Ω

Attended Greenbrae College 2 years William and Mary '31

History



GERALDINE GASTON

Cumberland, Md

Σ Δ X

Choir Y W C A

Music



MCMXXXIII

THE MURMURMONTIS

Juniors Without Pictures

PAUL BEVERIDGE
Masonoxon

TOM BLONDIN
Williamson

GUY CUTRIGHT
Buckannon

FRED DIXON
Mount Hope

EARNEST FRADENBURGH
Akron, Ohio

DENZIL HINES
Webster Springs

JOHNSON HYER
Buckannon

FRANCIS LEWIS
Buckannon

VIRGINIA RICHNER
Woodsfield, Ohio

RAMONA REEDER
Buckannon

JOE ST. CLAIR
Moundsville

KELLY WYATT
Dry Fork

WINNIE HATHAWAY
Buckannon

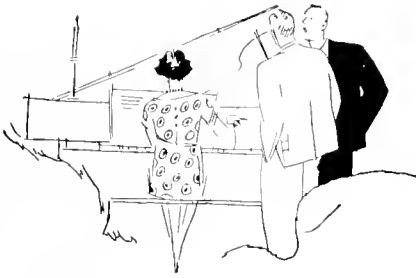
AGNES SWINT
Weston

MILLER MELLOTT
Cameron

ZANER POST
Buckannon







SOPHOMORES



THE MURMURMONTIS

HOWARD BACHTEL

Ukron, Ohio

X A T



MAXINE DOWNEY

Clay

Σ Δ X



JAMES FURBEE

Clarksburg

X A T



MATHILDE LEONARD

Buckhannon

K Φ Ω



JOSEPH HALL

Benwood

X A T



MILDRED REPPERT

Buckhannon

K Φ Ω



ARCHIE SNYDER

Weston

X A T



MCMXXXIII

THE MURMURMONTIS



GUY MICK
Buckhannon
K A



ZELLA WILLIAMS
Bristol

Σ Δ X



HARRISON MAHAN
Roanoke



VIRGINIA WHITE
Buckhannon
Σ Δ X



LYNDALL DeBARR
Clarksburg
K A



MARION DEEDS
Buckhannon
Σ Δ X



RICHARD HANIFAN
Ranelle
K A





THE MURMURMONTIS

CLARK HULL

Clarksburg

X A T



VIRGINIA REXROAD

Marlinton

Σ Δ X



JOHN EASTLACK

West Union

X A T



OLIVE SNYDER BAXA

St. Marys

Σ Δ X



JOHN WILLIAMS

Clarksburg

X A T



VIRGINIA McWHORTER FULTINEER

Buckhannon

Σ Δ X



CARL RIEHE

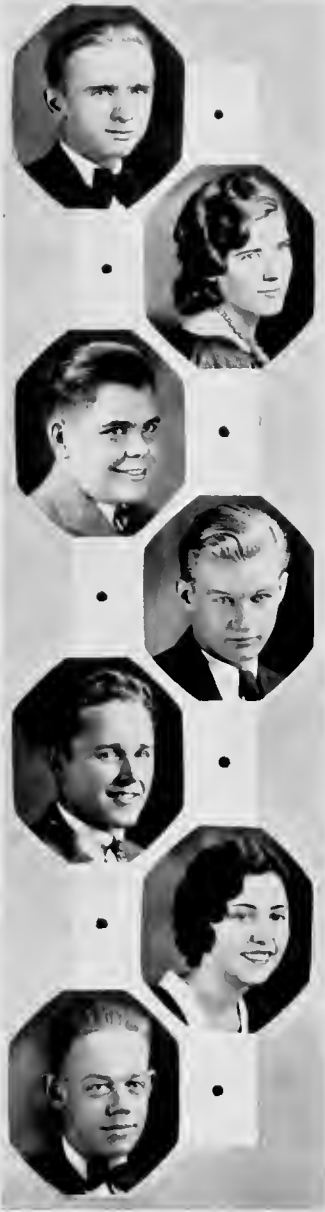
Parkersburg

K A



MCMXXXIII

THE MURMURMONTIS



FHEDORE HAYNES

Guthrie

K Δ



KATHERINE CUTRIGHT

Buckhannon

Σ Δ X



ROBERT CONNAWAY

Mannington



BYRON WOODRUFF

Clarksburg

K Δ



DANIEL CUTLIP

Richwood

K Δ



NELI YOHO

Mannington

K Φ Ω



ROBERT KARICKHOFF

Buckhannon





THE MURMURMONTIS

EDISON RINE

Moundsville

Φ Δ Θ



ANITA O'ROARK

Morristown, N. J.

Χ Κ Α



SHELBY BELL

Buckhannon

Χ Α Τ



MARGUERITE BYUS

Beckley

Κ Φ Ω



MIKE GREEN

Grant Town

Σ Η Δ



MARY LOUISE RILEY

South Charleston

Κ Φ Ω



WILLIAM LOWRY

Lagomer, Pa.

Χ Α Τ



MCMXXXIII

THE MURMURMONTIS



NICK GIANTONIO

Cleveland, O.

Σ Π Δ



MARIE MANKIN ANDERSON

Beckley

K Φ Ω



LEONARD FLASK

Youngstown, O

X Α Τ



PATTY COLEMAN

Buckhannon

K Φ Ω



WILLIAM CHANNEL

Huttonville

K Α



WRETHA PETERSON

Buckhannon

K Φ Ω



WILLIAM HARPER

Buckhannon

K Α



MCMXXXIII



THE MURMURMONTIS

HILBERT MEADOWS

Beckley

Σ Η Δ



IRMA GIBSON

Frame



ARTHUR FRAZER

Buckhannon

K Α



ALMA MCKINNEY

Beckley

Σ Η Δ



L. HERMAN STRADER

Buckhannon



MAXINE GUTHRIE

Clarksburg

Σ Η Δ



WILLIAM SPIDELL

Mt. Gilead, O.

K Α



MCMXXXIII

THE MURMURMONTIS



CLYDE ERVIN

Buckhannon

K A



IRINE WARD SMITH

Buckhannon

X K A



LESTER JOHNSON

Buckhannon



MARY BUCHER

Weston

Σ Π Δ



ROBERT REGER

Buckhannon

Σ Π Δ



RUTH CARPENTER

Spencer

Tallagewe



EARL ANDERSON

Spencer

X A T





THE MURMURMONTIS

HAROLD MILLS

Farmout

X A T



MARGARET THORNHILL

Buckhannon



MARK HAYMOND

Buckhannon



VELMA BELL

Buckhannon

Fallagewe



WARD REEDER

Buckhannon



MILDRED CASTO

Buckhannon

Fallagewe



ORACE YOUNG

Buckhannon



MCMXXXIII

THE MURMURMONTIS



DEL MAR MOORE

Elkins

X A T



HELEN FINGER HALL

Buckhannon



CLAY POST

Buckhannon

K A



MARY FRANCIS CHADDOCK

Moundsville

Σ Π Δ



HUTT MORRISON

Buckhannon



GRACE WESTFALL

Jane Lew

Σ Π Δ



PERCY K LAMBERT

Buckhannon





THE MURMURMONTIS

TOM PETE WRAY

Glenn White

Σ Π Δ



VIVIEN BELL

Middletown, N. Y.

Χ Κ Α



HARRY SPEARS

Cambridge, O.

Χ Α Τ



CINTILLA GILLESPIE

Charleston

Σ Π Δ



TOWELL FOLSOM

Buckhannon

Σ Π Δ



EDITH McOLVIN

Buckhannon



GERALD DeBARR

Clarksburg

Σ Π Δ



MCMXXXIII

THE MURMURMONTIS

Sophomores Without Pictures

CHELFORD BAXA

Buckhannon



MARION SAUNDERS

Trouton, Ohio



BRACE WESTFALL

Buckhannon



WILLIAM UNDERWOOD

Buckhannon



MAURICE TENNEY

Buckhannon



JAMES SMITH

Buckhannon



STEVE MAMICK

Benwood



CARL LAMB

Buckhannon



FRANK LUTTNER

Buckhannon



VIRGINIA BOYER

Wartington



ABBIE HOPE GREATHOUSE

Weston



LAYI WHITE ROBINSON

Webster Springs

FRANK NICHOLAS RESCINTO

Warton



IRUMAN MOORE

Buckhannon

MCMXXXIII







FRESHMEN



THE MURMURMONTIS

PAUL BROWN
Clarksburg



GOLDIE CREWS
Stotesbury



KATHERINE STABRIGHT
Wheeling



JOHN BROWN
Clarksburg



NICHOLAS CODY
Beckley



VIVIEN DOTSON
Grafton



KATHERINE CALLIHAN
Philippi



PAUL McCUSKEY
Buckhannon



ROBERT FOSTER
Buckhannon



OLIVE DUBY
Lakewood, R. I.



THE MURMURMONTIS



EDWARD HOWELL

McMechen



VIRGINIA ROGERS

Clarksburg



MABEL LINTON

Buckhannon



MERLE ROSELLE

Youngstown, O



JOHN COOK

Wheeling



ELEANOR MOCKLER

Mannington



GERALDINE BUCKLEY

Marlinton



CHARLES WHITE

Buckhannon



PAUL POWELL

Haywood



DOROTHY MARIE WATSON

Funnelton





THE MURMURMONTIS

CHARLES GREEN

Buckhannon



MARY ELIZABETH KELLY

Buckhannon



LESSIE HAMRICK

Bergoo



EDWIN FLETCHER

Follensbee



MARGARET HELEN WATSON

Buckhannon



LAWRENCE CHRISTY

New Sheffield, Pa



DAVID NUTTER

Lost Creek



OPAL ZICKEFOOSE

Hemlock



ROBERT STICKNEY

Suzex, N. J



TRILBY KIMBERLING

Clarksburg



MCMXXXIII

THE MURMURMONTIS



JEAN MILLER
Spencer



JAMES FULTON
Dunn Station, Pa



HOWARD CHAPMAN
Smithburg



MARTHA PAGE
French Creek



HELEN WARD
Beckley



MELVIN MATHIES
Charleston



ELIZABETH O'DELL
Richwood



CLYDE HAMRICK
Webster Springs



JANET BEAGG
Charleston



EDWIN MEREDITH
Clarksburg





THE MURMURMONTIS

LOWELL HAWKINS

Buckhannon



VIRGINIA CLOVIS

Hundred



HELEN CROUSER

Elkview



JAMES O'GRADY

Wheeling



HOWARD GOCHENOUR

Buckhannon



CHARLENE MEADOWS

South Charleston



MAXINE WHITE

Jane Lew



HOSEA PRATHER

Berea



PATTON YOUNG

Buckhannon



JUANITA PHILLIPS

Buckhannon



MCMXXXIII

THE MURMURMONTIS



WILLIE ANN WILSON
Buckhannon



PAUL ROGERSON
Moundsville



WILLIAM JONES
Mannington



IRIS QUERTIMONT
Clarksburg



ELAINE SEXTON
Buckhannon



ALVA CARR
Buckhannon



S. ROY McCUSKEY
Buckhannon



GLADYS BRUMLEY
Buckhannon



ROBERT WASSUM
Hundred



MADELINE PERRY
Clarksburg





THE MURMURMONTIS

DAVID LATHAM

Buckhannon

CAROLINE PRIESTER

Adrian

RUTH WRAY

Glen White

CHALLEN BONAR

Moundsville

GEORGE CLEAVENGER

Clark burg

VIRGINIA JOHNSON

Charleston

MARGARET MERRITT

Monessen, Pa.

DONALD BABB

Philippi

WILLIAM DOUGHERTY

West Alexander, Pa

SUSAN MAYO

Buckhannon



MCMXXXIII

THE MURMURMONTIS



RUBY HAMRICK
Bergoo



JOSEPH WALKER
Adrian



FRED THOMPSON
Spencer



DELORES SNIDER
Hundred



HELEN McWHORTER
Buckhannon



FRANK KARICKHOFF
Buckhannon



GLENN SHRADER
Huntersville



COSBI SAYRE
Buckhannon



ANNA KOSIER
Brockton



FLOYD SPIGGLE
Aurora





THE MURMURMONTIS

MERRILL EASTLACK

Harrisville



EVELYN SHAFER

Grafton



MARY SUE HICKLIN

Monterey, Va



DOROTHY VON BERG

Wheeling



DOUGLAS SWEARENGEN

Jane Lew



RUTH HAMRICK

Buckhannon



ELIZABETH FLANAGAN

Buckhannon



WILLIAM ISAAC

Charleston



PAUL CURRY

Buckhannon



PAULINE CUNNINGHAM

Marlinton



MCMXXXIII

THE MURMURMONTIS



VERA LOWE
Buckhannon



CLYDE CAMPBELL
Buckhannon



GEORGE GREER
Glen Ridge, N. J.



HELEN McFERRIN
Marlinton



MILDRED STOBBS
Wheeling



HUGH RAMSAY
Buckhannon



BERNARD BAILEY
Buckhannon



MARTHA CARTRIGHT
Buckhannon



ALMA LILLY
Glen White



VICTOR THACKER
Belington





THE MURMURMONTIS

WILLIAM JACK

Flozer



VIRGINIA MATHENY

Gassaway



LOLA BANA

Buckhannon



KENNETH STANLEY

Buckhannon



PAUL BROOKS

Buckhannon



EDNA WADE

Marlinton



DOROTHY BROOKS

French Creek



THOMAS NEELY

Spencer



CICIL REED

Buckhannon



MAYTON ZICKELFOOSE

Buckhannon



MCMXXXIII

THE MURMURMONTIS



MARY ELLEN YOUNG
Buckhannon



MURIEL CROUSER
Elkview



EUGENE DAVIS
St. Marys



THELMA HINCHCLIFFE
Burnsville



EDITH OKES
Glen Hedrick



JOHN WAUGH
Buckhannon



PHILIP KARICKHOFF
Buckhannon



ERMA FLEMING
Buckhannon



RENA BISSETT
New Rochelle, N. Y.



JOSEPH O'DAKER
Buckhannon





THE MURMURMONTIS

FARL STROHMEYER

Ronceverte



MARTHA STEMPLE

Adrian



MABEL SAYRE

Buckhannon



JEROME ARNETT

Aurora



HENRY WHITE

Buckhannon



HELEN HALL

Buckhannon



VIRGINIA BENNETT

Buckhannon



CLIVE HINKLE

Buckhannon



ALBERT CRANE

Buckhannon



BERTHA YOUNG

Charleston



MCMXXXIII

THE MURMURMONTIS

Freshmen Without Photographs

| | |
|---|---|
| IRENE BOONE <i>Gratton</i> | STUART LEETS <i>Buckhannon</i> |
| • | • |
| GHELETTE BERRY <i>Buckhannon</i> | LILLIAN LOGGIE <i>Buckhannon</i> |
| • | • |
| ALMA DeBARR <i>Buckhannon</i> | MARTHA FOSTER <i>Wheeling</i> |
| • | • |
| BORAS J. BILAS <i>New Britain, Conn</i> | HAZEL LAMB <i>Buckhannon</i> |
| • | • |
| MABEL FARNSWORTH <i>Monessen, Pa</i> | RIED JACKSON <i>Buckhannon</i> |
| • | • |
| HOWARD BRYANT <i>Buckhannon</i> | RUTH McWHORTER <i>Hoerner</i> |
| • | • |
| FRANK LAMB <i>Buckhannon</i> | CECELIA WARD <i>Peel Tree</i> |
| • | • |
| ERWOOD McSWAIN <i>Wheeling</i> | RUSSELL PHILLIPS <i>Buckhannon</i> |
| • | • |
| CLAREMONT RUTHERFORD <i>Webster Springs</i> | RUSSELL SMALLRIDGE <i>French Creek</i> |
| • | • |
| FLOYD WADDELL <i>Philippi</i> | SHERMAN WEST <i>Buckhannon</i> |
| • | • |
| MILTON WYATT <i>Dry Fork</i> | GEORGE WILSON <i>Weston</i> |
| • | • |
| | HARRY HARMER <i>Hammer</i> |

MCMXXXIII







S P O R T S



THE MURMURMONTIS



Athletic Officials



CECIL B. ROSS

Head Coach and Director of Athletics

"Cebe" has had many successful teams in his term at Wesleyan, but the last season was one above par. Last Spring the baseball season went through an eight-game schedule without defeat. The football team with victories over Duquesne, Allegheny, and Marshall, and a tie with Navy, was surely a success. Then the basketball team with two more victories over West Virginia, and a total of 11 won to 7 lost was by no means a failure.

ROBERT H. BERZER

Publicity Director and Assistant Director of Athletics

"Bob" deserves lots of credit for his untiring efforts in doing his job. He has been a consistently hard worker now for several years, and we all wish he could continue.



FRED E. CRITES

Football Captain

"Red" has proven a capable leader for the Bob Cats of 1931. Although fairly small, he was mighty when he came to doing the right thing and doing it well. Playing with Edmundson and Blondin, they formed a center of the line that was seldom outplayed or out-guessed. He will be greatly missed next year.



Student Managers

| | | |
|------------|-----------|-----------------------------|
| Football | - - - - - | JIM FURBEE AND JERRY DEBARR |
| Basketball | - - - - - | JACK RAFFELD |
| Baseball | - - - - - | GEORGE DIXON AND CHUB FOLKS |
| Tennis | - - - - - | WAYNE WHITE |
| Track | - - - - - | SAM GILMORE |
| Trainer | - - - - - | CLYDE CAMPRELL |



Wesleyan 0---Washington and Jefferson 14

The Bobcats dropped the opener to the Presidents, when their offense failed to materialize against the heavier team. Wesleyan put up a great defensive game, but they could not keep Wilson and his teammates from pushing across two touchdowns, one in the first and one in the last quarter. Wesleyan's greatest threat was made at the start of the second quarter when two passes placed the ball on the President's 22 yard line.



CLIFFORD BATTLES

Halfback

"Gip" closed a brilliant football career this year that established him as one of the greatest backs ever to attend Wesleyan. Besides his great open field running, his punting, passing, and pass-receiving could not be excelled.

PAUL SHARP

Tackle

Paul has played headup ball all season. A sturdy tackle, he filled a place in the line that will be greatly missed next year. He will be remembered long for his play in the Navy game.



Wesleyan 0---New York University 54



Wesleyan fell before the attack of Chick Meehan's warriors by a score of 54-0. A tricky running attack mixed with deceptive passes scored eight touchdowns, four in each half. Joe LaMark was the Violet's chief offensive threat, scoring four touchdowns. The punting of Battles, and the defensive play of Beveridge and Edmundson were features for the Bobcats. Wesleyan substituted very frequently during the game saving the men for future games.

ARTHUR BACHTEL

Halfback

Art is a fighting, hard working back that is hard to match anywhere. He is a wonder at tackling in the open.

ORVILLE EDMUNDSON

Center

"Tubby" was in the center of every play. He possesses that knack of knowing just where the play is going, and he is always there to stop it. He has one more year with the Orange and Black.



Wesleyan 12---Duquense 0

Wesleyan earned a hard-earned victory from the Dukes, outplaying them from start to finish. They scored touchdowns in the first and last quarters. The first touchdown was the result of a Duquesne fumble, recovered by Wesleyan on the 32 yard line. After 3 plays Battles circled the end for the last 10 yards and score. Late in the fourth quarter a pass, Battles to Art Bachtel, placed the ball on the 3 yard line. Beveridge plunged through center for the last marker. The ground gaining of Battles and Beveridge featured.



ALTON WHOLF

End

Bud is a great big end. He did not see much service during the last few games due to a knee injury. He has another year, though, and great things are expected from him.

TOM BLONDIN

Guard

Tom has made a great running mate for Captain Crites during the past three years, forming a pair of guards that were in the thick of every fight. Tom is one hard to excel in all around ability.



Wesleyan 13---Dayton University 7



Wesleyan defeated Dayton U in one of the most evenly contested games of the season. The Rossmen scored early in the first quarter when Art Bachtel carried the ball over from the 2 yard line. He missed the try for extra point. No more scoring was done until the 4th quarter when Dayton scored after a march down the field. The kick for goal was good. With only about 8 min-

utes to go, Wesleyan came back and pushed over their second tally of the game, with Battles totting the ball. Art Bachtel's kick was good.

PAUL BEVERIDGE

Fullback

"Beve," a big back, played a fast brand of ball, especially during the first part of the season. His all around play in the Duquesne and Dayton games deserve mention.

WENTZ FORDYCE

Tackle

"Doc," a giant tackle, was a "wow" at stopping plays just as they got to the line of scrimmage. He will be in there again next year.



Wesleyan 19---Glenville 14

Glenville threw a scare into the Bobcats in a very free scoring game. The Rossmen scored first early in the game on a pass, Battles to Spears. The kick failed. Glenville received the next kickoff and marched for a touchdown. Making good the goal, they led 7-6. Wesleyan again went into the lead in the second quarter when Battles plunged thru center and ran 55 yards for a touchdown.

In the third quarter, Rine recovered a muffed punt over the goal line for Wesleyan's final marker. Glenville again made a long march for their last tally.



SAM MAZZIE

Guard

Sam has been a first class guard during the last 3 years. The play in the center of the line never weakened a bit when he went into the game.

CLARK HULL

Fullback

Clark played great ball all season. His ability to hit the line, as well as to back it up, was unexcelled.



Wesleyan 0---U. S. Naval Academy 0



safe territory. The Navy backs were helpless in penetrating the Wesleyan line throughout the game.

HOWARD BACHTEL

Quarterback

"How" is the third of the blocking backs from the Bachtel family to play on the Wesleyan team. How well he is holding up the reputation of the family is shown by his playing regular all season and hardly touching the ball.

JOE HALL

Halfback

Joe had the difficult assignment of being the sub for Gipper, but he showed he possessed the goods by his performance in the Navy game where his excellent punting was the main factor in holding the Midshipmen scoreless.



Wesleyan 7---West Virginia 12

The Mountaineers received most of the breaks to beat Wesleyan 12-7. Greasy Neale's men scored their first touchdown after a fumble gave them the ball on the 24 yard line, and their second when an intercepted pass was carried to the 31 yard line. As the third period was closing, the Bobcats took the ball on their own 14 yard line, went the remaining 80 yards to score with Hull going over. The game ended with Wesleyan uncovering a passing attack, but it went for naught. The first downs registered 12 for Wesleyan to 8 for West Virginia



HARRY SPEARS

End

Spears is a good all around end, but his pass receiving and going down under punts stood out from many others

ARCHIE SNYDER

End

Snyder is a strong defender of the Orange and Black. His excellent work this season deserves for him much credit. He has two more years in there.



Wesleyan 51---Salem 6



one marker in the fourth, and were well on their way towards another when the whistle sounded.

Led by Battles, the Ross-men ran rough shod over Salem, gaining ground at will. Battles was by all means the outstanding player on the field scoring 7 touchdowns and covering 378 yards of territory. He scored his first from the 45 yard line. The second one came through a triple pass and a run of 86 yards. In the third period, Wesleyan scored 33 points alone. The substitutes scored

EDISON RINE

Tackle

Rine is another one who earned a regular berth soon after his arrival in camp. He showed his worth by his consistent, dependable playing all season.

NICK GIANTONIO

Tackle

Nick is a great big tackle that stepped right into a regular job and became a star overnight. His excellent playing marks for him a great season next year.



Wesleyan 38---Allegheny 7

Wesleyan ran all over the here-to-fore undefeated Allegheny eleven here before a large crowd of homecoming alumni. Allegheny received the first kickoff and carried it far into Wesleyan territory before Hull intercepted a pass. From that time on, the result was never in doubt. With Battles leading the way, the Bobcats started to run up a score that surprised everyone. The whole team was unstoppable, scoring 6 touchdowns before they were finally stopped by the whistle.



MARION SAUNDERS

Tackle

Shor is a big tackle that is fast coming into his own. He will be a great big gun in there for the next two years.

PAUL POWELL

Tackle

Powell was the only freshman to play with any regularity and he shows the makings of a great football player before his four years are up.



Wesleyan 13---Marshall 0



Wesleyan defeated Marshall in the annual Turkey Day Game at Huntington, 13-0. The Bobcats were on the offensive most of the time, keeping the ball in Marshall's territory. Battles crossed the goal line 3 times, but was called back once after a beautiful 25 yard run because of an off side play. Zontini, the Marshall backfield ace, was stopped dead before Wesleyan's forward wall.

THE 1931 FOOTBALL SQUAD

First Row, left to right: Hall, H. Bachtel, Sanders, Edmondson, Battles, Lowry, McCourt, Captain Gries, Blondin, Gaetano, Forrester, Shurt, Mazzei, and Beverage.
Middle Row: Kessler, Hall, Fawcett, Christy, McCuskey, Kline, Spots, Moore, Reger, Stanton, Wholt, Greer, and Coach Ross.
Top Row: Manager Furber, Manager DeBair, Greer, Rosselle, Snyder, A. Bachtel, Howell, White, Coleman, Franee, Campbell, and Assistant Manager Rogerson.





THE MURMURMONTIS

Basketball 1932 . . .



Photo by Clark

Back Row: Coach Ross, Manager Rafeld, Spears, Standru, Debarr, Edmundson, and Assistant Manager West. Front Row: left to right: Hall, Giantonio, Captain Battles, Hull, Furbee

Lettermen

| | | | | | |
|-----------------|---|---|---|---|---|
| CLARK HULL | - | - | - | - | F |
| — W — | | | | | |
| JIMMY FURBEE | - | - | - | - | F |
| — W — | | | | | |
| TUBBY EDMUNDSON | - | - | - | - | F |
| — W — | | | | | |
| GIP BATTLES | - | - | - | - | C |
| — W — | | | | | |
| LYNDALL DEBARR | - | - | - | - | C |
| — W — | | | | | |
| NICK GIANTONIO | - | - | - | - | G |
| — W — | | | | | |
| TOM BLONDIN | - | - | - | - | G |
| — W — | | | | | |
| JOE HALL | - | - | - | - | G |
| — W — | | | | | |
| SI STANDRU | - | - | - | - | G |
| — W — | | | | | |
| JACK RAELD | - | - | - | - | M |



MCMXXXIII

THE MURMURMONTIS

... Basketball 1932



WESLEYAN had a very successful basketball team this year, winning 11 and losing 7. High spots of the season were two more victories over West Virginia University, 26-25, and 26-22, making five straight wins for the Bob Cats over the Mountaineers in basketball; the defeat of Glenville State Normal at Wesleyan by the tune of 40-17, this being the only conference game dropped by the pioneers and their first defeat in many starts. Wesleyan, though, came out on the wrong side of the score at Glenville, the end showing 60-43 in favor of Glenville. Wesleyan also defeated Bethany, Fairmont, Salem, and Broadus twice each; lost twice to Marshall; once to Waynesburg, Duquesne, New River State, and Washington and Jefferson.



... Schedule ...

| | | |
|----------|--------------------|-------------------|
| Wesleyan | 26—West Virginia | 25 |
| Wesleyan | 19—Waynesburg | 34 |
| Wesleyan | 20—Bethany | 21 |
| Wesleyan | 25—Duquesne | 53 |
| Wesleyan | 43—Glenville | 60 |
| Wesleyan | 56—Fairmont | 35 |
| Wesleyan | 38—Salem | 36 |
| Wesleyan | 41—Broadus | 26 |
| Wesleyan | 27—Marshall | 31 (extra period) |
| Wesleyan | 28—Wash-Jeff. | 38 |
| Wesleyan | 63—Fairmont | 33 |
| Wesleyan | 42—Salem | 40 |
| Wesleyan | 40—Glenville | 17 |
| Wesleyan | 26—New River State | 31 |
| Wesleyan | 30—Marshall | 41 |
| Wesleyan | 44—Broadus | 27 |
| Wesleyan | 36—Bethany | 18 |
| Wesleyan | 26—West Virginia | 22 |

WON 11—LOST 7

WESLEYAN 630—OPPONENTS 588





THE MURMURMONTIS

Baseball 1931 . . .

| | | |
|-------------------|---------------------------------|----|
| Wesleyan. | 0—West Virginia | 0* |
| Wesleyan. | 8—West Virginia | 8† |
| Wesleyan. | 6—Salem | 2 |
| Wesleyan. | 1—Glenville | 0§ |
| Wesleyan. | 3—Marshall | 3‡ |
| Wesleyan. | 7—Weston Independents | 2 |
| Wesleyan. | 8—Alumni | 5 |

Won 5, Lost 0, Tied 3. Wesleyan 33—Opponents 20.

* 4 innings, rain; † 14 innings, darkness; § 11 innings; ‡ 5 innings, rain.

Top Row, left to right Johnson, p; Myers, c; Spears, cf; Hull, ss; Rhodes, 2b; Coleman, 1b.
Bottom Row McCourt, rt; Beveridge, p; Mazze, p; Edmundson, 3b; Captain Art Bachtel, c.



MCMXXXIII

THE MURMURMONTIS



... Tennis 1931

| | | | |
|---------------|---|-------------------------|---|
| Wesleyan | 4 | -Broaddus | 5 |
| Wesleyan..... | 5 | -Glenville | 4 |
| Wesleyan | 2 | - Broaddus | 7 |
| Wesleyan | 1 | -Clarksburg Tennis Club | 8 |
| Wesleyan | 8 | -Grafton Tennis Club | 1 |
| Wesleyan..... | 8 | -Alumni | 0 |

Won 3, Lost 3. Wesleyan 28—Opponents 25.



Reading from left to right White, Manager, Goodwin, Smith, Beer, Turbee, Captain-elect, Arnold, Captain and Hallam, Coach.

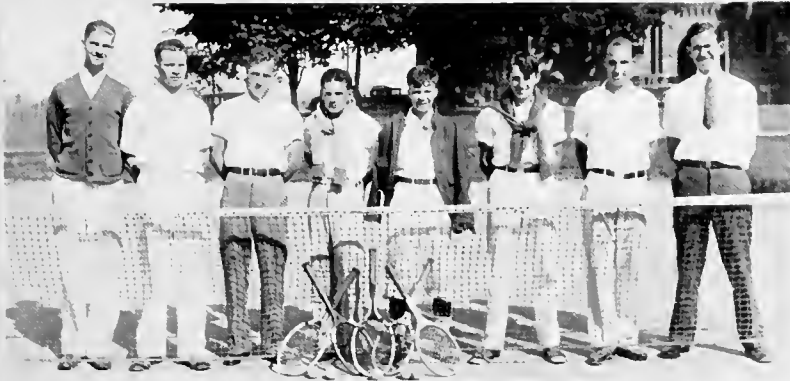


Photo by Clark



MCMXXXIII





ACTIVITIES



WEDDING

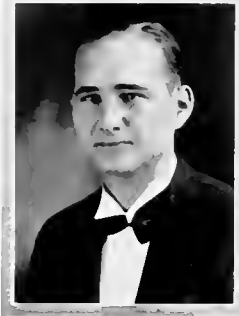


PUBLICATIONS



THE MURMURMONTIS

The Staff . . .



ALLEN T. HAMNER, JR.
Editor-in-Chief

WE THANK

President Roy McCuskey, for the information and help he has so kindly given

Mrs. Lenna Lowe Yost, for the privilege of dedicating the book to her.

Mr. Frank M. Mawicke, of the Pontiac Engraving Co., for his aid in the planning and supervising of the book.

Mr. George I. Woner, of the Ziegler Printing Co., for his personal supervision of the printing.

Mr. E. C. Schroeter, of the David J. Molloy Co., for the covers.

Miss Jo Louise MacAvoy, for her generous assistance in photography.

Clark Studio, for the athletic pictures.

Miss Marjorie Gibbs, for the use of her snap shots.

Mr. and Mrs. Robert Layfield, for their help with the art work.

The Athletic Department, for its co-operation and assistance.

The Administration of the College, for supplying lists and co-operating in business matters.

Officers of Organizations, for their assistance and co-operation.

The Advertisers, who have made this book possible.

JACK RAFFELD
Asst. Business Manager

LUCIE BROOKS
Seniors

ORVILLE EDMUNDSON
Fraternities

MARTHA CLINN FLESHER
Activities

CADA RENICK
Sophomores



MCMXXXIII

One hundred ten

THE MURMURMONTIS

... The Staff



ANOTHER volume of the Murmurmontis has been issued. The 1933 staff has nobly tried to carry on the tradition that has been handed down from each successive Junior Class—a tradition that was started back in 1903, when in May of that year, the Junior Class of the old West Virginia Conference Seminary founded the first Murmurmontis. Under the leadership of Mr. Charles A. McCue, '04, as editor, and Mr. A. F. McCue, '04, as business manager, the first staff created the ideals and standards which the present staff has sought to perpetuate.

No more beautiful nor more suitable title could be found for any annual than Murmurmontis. Its meaning, "murmur of the mountains," ably describes the book. Every student of Wesleyan is conscious of this lingering murmur about the campus. It has a fascination hard to explain. Nevertheless, the Class of 1933, through the present staff, has tried to exemplify this murmur into their book.



MILTON F. WHOLE
Business Manager

GRACE HAMILTON
Sororities

CLARENCE CASIO
Sports

BILLY WILLIAMS
Associate Editor

MARY FRANCES DEEDS
Juniors

HILLEN TURBEI
Freshmen





THE MURMURMONTIS

The Wesleyan Pharos . . .



W. FRED HART
Editor

THE WESLEYAN PHAROS is the students' official weekly newspaper, published every Wednesday morning of the school year. Under the capable editorship of W. Fred Hart, the size was increased from a six-column to a seven-column paper. With this addition, new departments and new columns were introduced. New heads were adopted, and the typography of the paper improved throughout. Under increased competition, news stories were better written and typographical errors reduced. An attempt was made to give the campus better news service; not only more complete news, but live and timely reports of student, alumni, and faculty activities. The Pharos has consistently backed a program of constructive progress in student affairs. In furthering these objectives, Ruth Maysilles and Martha Glenn Flesher were highly instrumental.

THEODORE HAYNES
Contributing Editor

JOHN COOK
Advertising

MARTHA G. FLESHER
Art Editor

RUSSEL CHAPMAN
Asst. Business Manager

ELIZABETH O'DELL
Reporter

WILLIAM JONES
Asst. Sport.

DOROTHY WATSON
Exchange

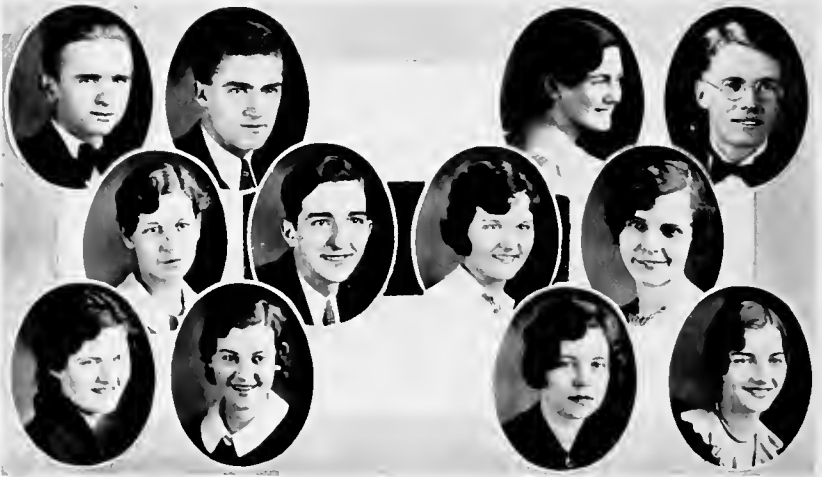
VIRGINIA FISHER
Reporter

WRETHA PETERSON
Reporter

MILDRED RIPPERT
Society

VIRGINIA RODGERS
Proof Reader

GRACE WESTFALL
Reporter



MCMXXXIII

One hundred twelve

THE MURMURMONTIS

... The Wesleyan Pharos



THE WESLEYAN PHAROS is supervised in its policies by a board of control composed of faculty, student, and alumni representatives. The members this year are: Prof. Marie Brethorst, chairman, Dr. L. H. Chrisman, Prof. Ralph C. Brown, representing the faculty; Ross C. Bonar, of the alumni; E. E. Stoffel, of the administration; Fred Hart, and Melvin Laing, of the staff; and Archie Snyder, and Martha Corder, representing the student body. This group selects the editor and business manager, and aids in the selection of other members of the staff.

The Pharos is a member of the West Virginia Inter-collegiate Press Association. At this year's convention, held at Fairmont State Teachers College, Wesleyan was represented by four delegates, Fred Hart, Ruth Maysilles, Martha Glenn Flesher, and Melvin Laing. They took a most active interest in the proceedings of the three-day meet, Haynes being elected executive secretary for the year 1932-33.



MELVIN D. LAING
Business Manager

MERRIL FEATHER
Managing Editor
VICTOR CUPPIT
Features
EDNA WADE
Reporter

RUTH MAYSILLES
Asst. Editor
BETTY WILLIAMS
Asst. News Editor
MERRILL EASTACK
Reporter

ELSIE HOWARD
Reporter
PATLY COLEMAN
Proof Reader
JULIEN SHALLER
Typist

GRACE HAMILTON
News Editor
WATHILDA LEONARD
Alumni
CHARLENE MEADOWS
Typist







SERVICE GROUPS



THE MURMURMONTIS

Student Council . . .

STUDENT REPRESENTATIVE COUNCIL, since its organization in 1922-23, has been the mouthpiece of the student body. This year it has endeavored to be of service both to the students and to the administration. The aim of the council has been co-operation, and the council has sponsored all activities this year with the purpose of creating a fine class loyalty and a devotion to the college.

One of the first duties of the Council this year was to work out a system of rules for the incoming freshmen that would at once serve the desire of the upper classmen, and would also be a means by which their loyalty to Wesleyan could be deep and lasting. The Council hopes that the near future will see the elimination of all freshmen rules.

The Student Hand Book was published with a great improvement over other years. This has been of great service to newcomers as well as to outsiders. The editors are to be congratulated on the splendid piece of work they did.



ARTHUR BECKETT
President

BETTY WILLIAMS
Vocational Guidance

MELVIN TAING
Freshmen Relations

JOHN McCUSKEY
Publications

HERMAN PARRISH
Lyceum



MCMXXXIII

THE MURMURMONTIS

. . . Student Council

THE LYCEUM sponsored this year by the Council was a very successful undertaking, despite the fact that a curtailment of funds was experienced due to the bank failure.

This year a large number of students was awarded the Student Activities Key. This award came as the result of outstanding work in extra curricula activities, and those receiving keys are to be congratulated.

Thus this year have been outstanding. Our Coach remarked that "Wesleyan students this year have shown a better spirit and enthusiasm than ever before." We know that our team deserves applause.

The Council this year has tried to keep a close relationship with the administration. We have suggested several changes, and the better ones have been willingly put into effect. We feel that much good has been accomplished by the various departments of the Council, and we wish to express our gratitude to the student body for their fine spirit and co-operation.

We hope that our efforts will inspire the incoming Student Council to greater efforts for a "bigger and better Wesleyan".



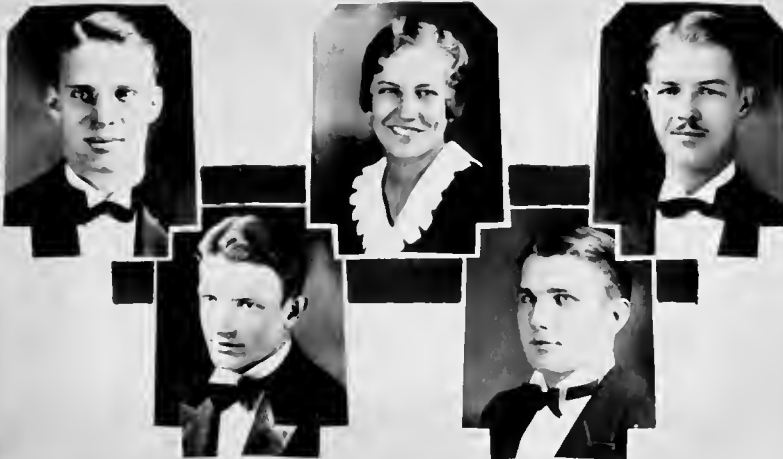
CLIFFORD BATTLES
Elections and Award

VIRGINIA MATHENY
Secretary-Treasurer

JACK RALLID
Fluses

ARGYLE KNIGHT
Social Life

PAUL SHARP
Faculty Relations





THE MURMURMONTIS

Agnes Howard Hall Government . . .

THE STUDENT GOVERNMENT of The Agnes Howard Hall for Women is becoming more pronounced in its success every year. A special feature this year was the welcome that the Executive Board members extended to the new students during Freshmen Week.

The members of the House Executive Board strive to promote a spirit of democracy and social life among the girls that reside in the Hall. The rules concerning each class, according to its rank, are made by the Board and put into effect by the girls.

Weekly meetings are held in the Hall and the problems which arise are thoroughly investigated and disposed of as equitable as possible. All girls living in the Agnes Howard Hall automatically become members of the Student Government Association and are subject to its rules. Hilda Rexroad was elected House Treasurer to succeed Marie Mankin Anderson, who did not return second semester.



| | | | |
|---------------------------------------|---------------------------------|--|---------------------------------------|
| MARY BUTCHER <i>Sophomores</i> | MARTHA CORDER <i>Seniors</i> | ELIZABETH HARDESTY <i>President</i> | HELEN TURBEF <i>Vice President</i> |
| MARIE M. ANDERSON <i>Treasurer</i> | DOROTHY QUEEN <i>Junior</i> | EUSH HOWARD <i>Secretary</i> | PAULINE CUNNINGHAM <i>Freshmen</i> |



MCMXXXIII

One hundred eighteen

THE MURMURMONTIS



. . . Young Women's Christian Association

THE purpose of the Young Women's Christian Association is to solve ethical problems, develop higher spiritual ideals, and to create a lasting fellowship among the girls on the campus.

The weekly meetings provide a place for the girls to discuss these vital problems. It is the desire of every member to promote a spirit of sisterhood. Through co-operation, each girl helps make the organization stronger and more successful.

MEMBERS

CLEMENCE PASE
 BERTHA YOUNG
 CATHERINE CLOVIS
 RENE BISSET
 PAULINE CUNNINGHAM
 MADELINE PERRY
 EDITH OKES
 EDNA WADE
 MARY LOU MILLER
 MARGARET MOORE
 RUTH MAYSILLES
 LUCIE BROOKS
 MILDRED MICK

RUTH STROSNIER
 VIRGINIA JOHNSON
 MARY FRANCES CHADDOCK
 ELEANOR MOCKIER
 GERALDINE BUCKLEY
 TRILBY KIMBERLING
 MRS. C. EDMUND NEIL
 RUTH WRAY
 MISS MARIE BRETHORST
 CHRISTINE MCCUSKEY
 HILDA REXROAD
 CATHERINE CALLIHAN
 JEAN MILLER

JANET BLAGG
 EDITH MCOLVIN
 MARY SUE HICKLIN
 EVELYN SHAFER
 HELEN HALL
 THELMA HINCHCLIFF
 HELEN FURBEE
 RUTH CARPENTER
 HELEN MCFERRIN
 BETTY WILLIAMS
 VELMA BELL
 VIRGINIA MATHENY
 MARJORIE GIBBS



| | | | | |
|------------------------------------|---|------------------------------------|---|--------------------------------|
| RUTH MAYSILLES <i>Publicity</i> | HILDA FURBEE <i>Vesper</i> | RUTH STROSNIER <i>President</i> | LUCIE BROOKS <i>Vice President</i> | VELMA BELL <i>Treasurer</i> |
| RUTH CARPENTER <i>Secretary</i> | MARY F. CHADDOCK <i>Social Service</i> | CATHERINE CLOVIS <i>Social</i> | MARY LOU MILLER <i>World Service</i> | |



MCMXXXIII



THE MURMURMONTIS

Young Men's Christian Association . . .

YOUNG MEN'S CHRISTIAN ASSOCIATION is one of the strongest and oldest organizations on the campus. The purpose of the association is to promote fellowship among the men of the campus, and to provide a forum meeting where, at the weekly meetings, discussions of vital problems of religion and life are carried on.

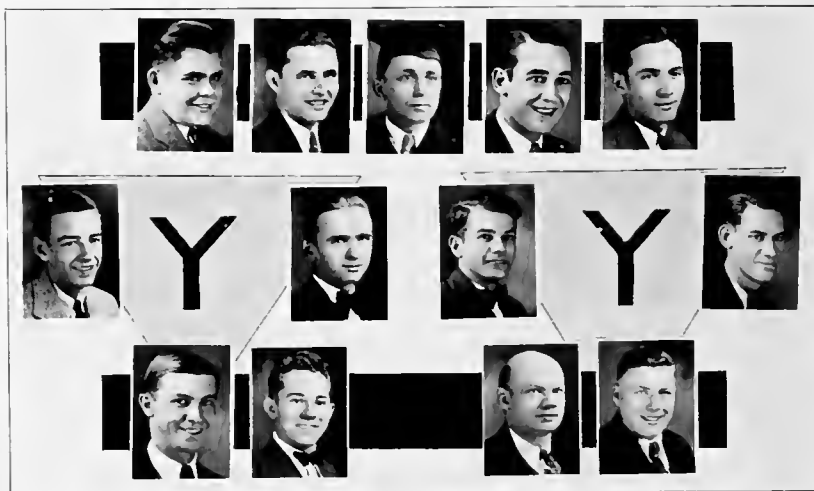
Activity in the "Y" meetings gives the college man an opportunity to study and to discuss many practical problems not considered in the same way in other organizations.

OFFICERS

ROBERT FOSTER - - - - - *President*
 EARL ANDERSON - - - - - *Vice President*



| | | | | |
|------------------|-------------------|----------------|--------------|---------------|
| Robert Connaway | Larl Anderson | Arthur Beckett | William Jack | Robert Wassum |
| Melvin Mathes | Theodore Haynes | Hosea Prather | Shelby Bell | Floyd Spigle |
| Robert Strickney | Frank Karrickhoff | Roy McUskev | | |



MCMXXXIII

One hundred twenty

THE MURMURMONTIS

. . . Young Men's Christian Association

ALTHOUGH the Y. M. C. A. was delayed in its organization last fall, the work of the year has been more than highly successful. The program of each week has been carried on with much interest; several prominent speakers were secured to lead the discussions along lines of interest to every member.

Listed among the major activities engaged in by this organization were: The trip to the West Virginia-Western Pennsylvania Conference, held at Washington, Pa., which gave much food for digest at the meetings when they returned; the sponsoring of the Northern Conference of the state's Young Men's Christian Associations and Hi-Y clubs here in April.

OFFICERS

CHALLOM BONAR - - - - - Secretary
 PAUL McCUSKEY - - - - - Treasurer



John McCuskey Harry Maroney Robert Foster Freal Crites Melvin Lang
 Nicholas Cody Aryle Knight Merritt Feather Paul McCuskey
 Earl Stromeyer Challop Bonar George Cleavenger Ed Fletcher



MCMXXXIII



THE MURMURMONTIS

The Benzene Ring . . .

AS a true scientist in his laboratory among his beakers, test tubes and retorts has a definite purpose for his labors, and proceeds toward this end in a systematic and predetermined way, so the founders of the Ring in 1921 set for themselves certain ideals and objectives toward which to strive. Then, having decided upon a purpose they set about determining the correct equation with which to work and wisely chose the following: "We take for our reaction mixture high ideals plus applied knowledge equals a life of successful service, in which reaction the amount and purity of the product is controlled by the quantity and quality of the reagents." As one of the largest and most active organizations on the campus, The Benzene Ring, West Virginia Wesleyan's physical science society, has consistently fostered these sciences, and endeavored to promote the ideals compatible with successful service after graduation.

MEMBERS NOT IN PICTURES

ROBERT KARRICKHOFF
FRID DIXON

CARL LAMB

STEPHEN MAMICK
JAMES SMITH



| | | | | |
|----------------|------------------|-----------------|--------------------|-------------------|
| Charles Stater | Mathilda Leonard | Milly Reppert | Virginia Iultineer | Clayton Hall |
| John McGuskey | Virginia Fisher | Ruth Strosnider | Isabelle Bailey | Orville Edmundson |
| Ethel McOlvin | Russel Chapman | Herman Parrish | | Nick Famulare |



MCMXXXIII

One hundred twenty-two

THE MURMURMONTIS



... The Benzene Ring

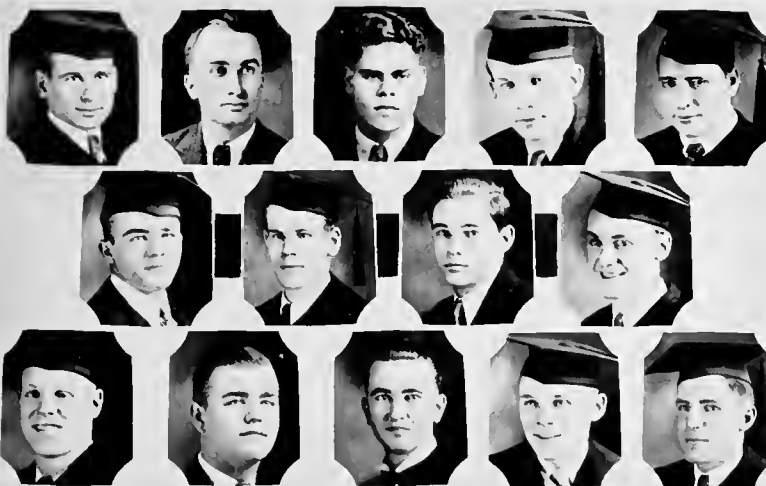
IN the decade that has followed the founding of the organization, the group has met twice each month where demonstrations and lectures by students, faculty members, or visiting men of science have added much to our knowledge and understanding of the world and its elements. Believing that any group is only so strong as its members, the society has always kept a high standard of eligibility. Before entering upon the privileges and duties of membership the individual must have completed not less than ten hours of chemistry with an average of not less than 86 and must be majoring or minoring in one of the physical sciences.

OFFICERS

| | | |
|---------------|-----------|-----------------------|
| DAVID WHITE | - - - - - | <i>President</i> |
| FRED HART | - - - - - | <i>Vice President</i> |
| ETHEL McOLVIN | - - - - - | <i>Secretary</i> |
| HARRY MARONEY | - - - - - | <i>Treasurer</i> |
| NICHOLAS HYMA | - - - - - | <i>Adviser</i> |



| | | | | |
|--------------|---------------|----------------|------------------|-----------------|
| David White | Ward Reeder | Francis Lewis | Harry Maroney | Robert Layfield |
| Frank Hall | Fred Hart | Joe St. Clair | Crawford Reppert | |
| Ideal Crites | Huff Morrison | Clarence Casto | Hubert Hyant | Carl Mearns |



MCMXXXIII



THE MURMURMONTIS

The Haught Literary Club . . .

HAUGHT LITERARY CLUB was organized on Wesleyan's campus in 1924 in honor of its patron, Dr. Thomas W. Haught. It was organized for the purpose of recognizing Wesleyan women in literary attainments, and to develop in them an appreciation of literature, both classical and modern. The highest standards in intellectual interests are cultivated and promoted.

Meetings are held weekly, and interesting reviews and discussions are given of the drama, poetry, fiction, and non-fiction.

Often outside speakers help the club by taking some phase of literature and giving an interesting lecture or reading a paper. Each member conducts the meeting once.



Wretha Peterson
Marguerite Bus

Pauline Bava
Marion Deeds

Vonda Sharp
Mildred Reppert

Effie Mae Merritt
Mathilda Leonjrd



MCMXXXIII

THE MURMURMONTIS

... The Haught Literary Club



MEMBERSHIP in the organization is limited to sixteen active members; the election being made in two different ways. One is through replacement by an outgoing senior by proposing an under-graduate to take her place; the other is through the direct election by the unanimous vote of the club.

OFFICERS

| | | |
|----------------|-----------|----------------------------|
| BETTY WILLIAMS | - - - - - | <i>President</i> |
| VONDA SHARP | - - - - - | <i>Vice President</i> |
| PAULINE BANA | - - - - - | <i>Secretary-Treasurer</i> |
| VIRGINIA BOYER | - - - - - | <i>Not in pictures</i> |



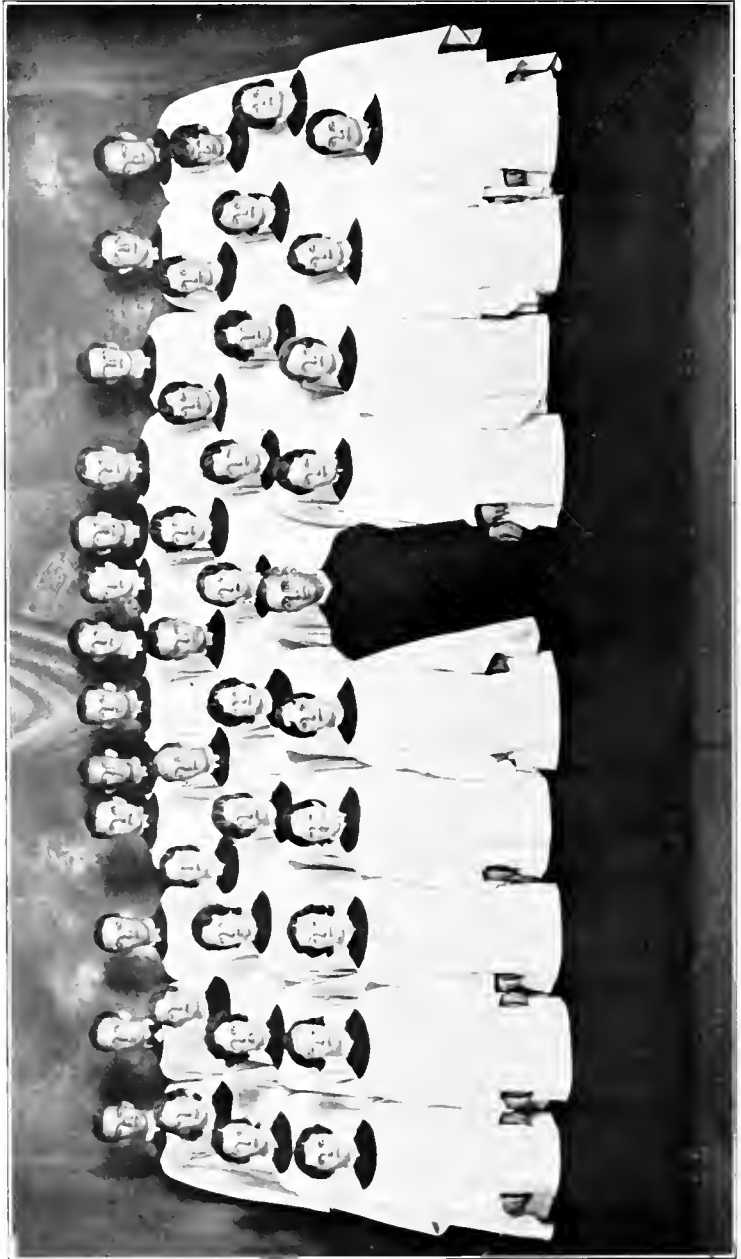
Betty Williams Lucie Brooks Virginia Fullmer Elizabeth Jones
 Fiona Foster Elsie Howard Grace Hamilton





THE MURMURMONTIS

THE WESLEYAN CHOIR



MCMXXIII

One hundred twenty-six

THE MURMURMONTIS

. . . The Wesleyan Choir



CARL J. FARNSWORTH
Director

BRYAN KELLEY
President

CHRISTINE McCUSKEY
Vice President

EARL ANDERSON
Librarian

NICHOLAS CODY
Manager

ASSISTANT MANAGERS

BYRON WOODRUFF

ALVA CARR

EDWARD FLETCHER

CUSTODIANS OF VESTMENTS

HELEN FURBEE
VIRGINIA RENROAD

PAULINE CUNNINGHAM
VIRGINIA MATHENY

MEMBERS OF CHOIR

GRACE WESTFALL
GERALDINE GASTON
CHRISTINE McCUSKEY
MARGARET HARRIS
PAULINE CUNNINGHAM
VIRGINIA MATHENY
GERALDINE BUCKLEY
JANET BIAGG
THELMA WEST
MARY CHADDOCK
ALVA CARR
P. BYRON WOODRUFF
EDWARD FLETCHER
ARTHUR BECKETT
MELVIN MATHES
ARGYLE KNIGHT

VIRGINIA JOHNSON
ILA SINCLAIR
HELEN FURBEE
MILDRED MICK
VIRGINIA RENROAD
ISABELLE BAILEY
IRENE BOONE
ELIZABETH O'DELL
PEGGY THORNHILL
NICHOLAS CODY
EARL ANDERSON
JAMES HUTCHINSON
SAM MAZZEI
JEROME ARNETT
JOHN McCUSKY
BRYAN KELLEY
HOSEA PRUIHER

HELEN McFERRIN
DONNA THOMAS
BETTY WILLIAMS
VIRGINIA BENNETT
MARY LOU MILLER
BETTY HARDESTY
ERMA FLEMING
ALMA MCKINLEY
MARJORIE GIBBS
EDWIN MEREDITH
FLOYD SPIGGLE
ROGER WILLIAMS
SHELBY BELL
HENRY P. WHITE
ARTHUR FRAZER
THOMAS NEELY





THE MURMURMONTIS

Les Bellotas . . .

ORGANIZED in the spring of 1931, Les Bellotas, honorary Spanish fraternity, and Wesleyan's only organization for students who are interested in promoting the study of foreign languages on the campus, has come to be recognized as one of the most prominent of our college groups. Dean Rachael C. Odgen, who organized the club, sought to bring together the students in the Spanish Department who were scholastically eligible, and was personally anxious to continue a study of Spanish customs and the language. The keen interest displayed by the members has demonstrated the need on the campus that Les Bellotas has filled.

OFFICERS

| | | |
|-----------------|-----------|----------------------------|
| CLEMENT STANDRU | - - - - - | <i>President</i> |
| MARJORIE GIBBS | - - - - - | <i>Vice President</i> |
| PATTY COLEMAN | - - - - - | <i>Secretary-Treasurer</i> |



| | | | | |
|---------------|-------------------|----------------|-----------------|---------------|
| Patty Coleman | Sam Mazzer | Isabelle Young | Clement Standru | Martha Corder |
| | Lewis Clark | Marjorie Gibbs | Elaine Avington | |
| Anita O Roark | Mary Louise Riley | Ve'ma Bell | John Booth | |



MCMXXXIII

One hundred twenty-eight

THE MURMURMONTIS

... Gamma Beta Sigma



GAMMA BETA SIGMA, honorary Business Administration fraternity, was organized on the campus in 1930 by a group of students in the Business Administration Department. Under the sponsorship of Prof. Robert D. Myers, it organized with the aim to promote scholarship and to encourage scientific thought. Those students are eligible for membership who are majoring in Business, with at least a Junior standing. Their grades must average B or more in their major field, with C or above in other fields. Those eligible are elected to membership by the actives. One of the features of the organization is the award of the Gamma Beta Sigma Key to the graduating senior of the group who achieves the highest grades in Business Administration. Cramer Gibson received the award in 1931

OFFICERS

CHARLES STATER - - - - - *President*
 JACK RAFFELD - - - - - *Secretary-Treasurer*
 PROF. ROBERT D. MYERS - - - - - *Faculty Regent*

TRUSTEES

PAUL SHARP ROBERT HERZER LEWIS CLARK WAYMAN BENNETT

PLEDGES

THEODORE HAYNES VICTOR CUPPETT JOHN EASTLACK
 WILLIAM HARPER LESTER JOHNSON WILLIAM LOWRY



Lewis Clark
Verle Reger

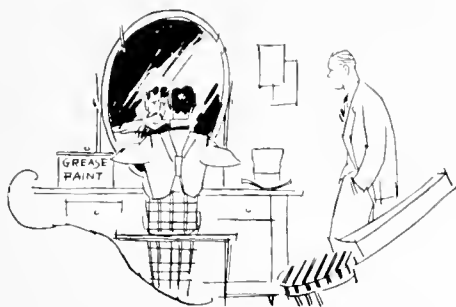
Charles Stater
Jack Raffeld

Robert Herzer
Allen Hammer

Paul Sharp
Laine Avington







DRAMA AND DEBATE



THE MURMURMONTIS

The Wesleyan Play Shop . . .

THE PLAY SHOP was organized under the supervision and direction of Prof. Lorin C. Staats during the term 1928-29. Since that time the Play Shop has grown considerably, and is one of the most prominent organizations on the campus.

Under the direction of Prof. B. W. Folsom, the Play Shop has endeavored to study all phases of play production, and to put into effect those principles of successful production: directing, acting, staging and scenic designing, and business management.

"Cinderella Married" and "The Finger of God", two one-act plays, and "Enter Madame", a three-act play, have been produced the past year. "Enter Madame", an Italian dialect play, received favorable comments because of the bits of comedy and dramatic scenes which the cast ably portrayed.

Wesleyan was not represented in the state one-act play contest due to an accident en route. The play to have been given was "Sacred Ground". The Play Shop sponsored the state Thespian one-act play contest at Wesleyan, April 22 and 23. This is the first of its kind ever held at Wesleyan.

Ruth Maysilles Lewis Clark Carl Larnsworth Evelyn Lazenby John Wile Roger Williams
 Betty Williams Jack Rafeld Marjorie Gibbs Bryan Kelley Irene Smith
 Effie Mae Merritt Patty Coleman Dan Cutlip Robert Wassum Roy McCuskey Esther Ansel



MCMXXXIII

THE MURMURMONTIS

The Wesleyan Play Shop



THE organization is composed of those persons who are interested in dramatics, especially the finer side of the art, both on the stage as actor, and as stage manager. Membership is obtained through the working off of certain apprenticeships. Under the capable direction of Bryan Kelley, as president, and Professor B. W. Folsom, as director, the year has been highly successful.

APPRENTICES

| | | |
|-----------------------|--------------------|-------------------|
| LOLA BAXA | JOHN BROWN | MARION DEEDS |
| CATHERINE CLOVIS | NICK CODY | RUTH HAMRICK |
| PAULINE CUNNINGHAM | ELIZABETH FLANAGAN | TRILBY KIMBERLING |
| WILLIAM JONES | MARY BETTY KELLEY | SUSAN MAYO |
| MATHILDA LEONARD | MABEL LINTON | HELEN MCWHORTER |
| MELVIN MATHES | HELEN MCFERRIN | MADELINE PERRY |
| MARGARET MERRITT | ELEANOR MOCKLER | VIRGINIA RODGERS |
| IRIS QUERTINMONT | MILLY REPPERT | EARL STROHMAYER |
| DOLORES SNYDER | ROBERT STICKNEY | WILLIE ANN WILSON |
| MARGARET HELEN WATSON | VIVIAN BELL | PAUL ROGERSON |
| JUANITA PHILLIPS | PAUL BROWN | |



| | | | | | |
|--------------------|-------------|----------------|----------------|----------------|----------------|
| Harry Maroney | Melvin Lang | Prof. Folsom | Argyle Knight | Betty Hardesty | Milly Mick |
| Carrie Bennett | Paul Sharp | Flame Arington | Chris McCuskey | Frances Scott | |
| Martha G. Fleisher | Bob Folsom | Anita O'Rourke | Bob Connaway | Ramona Reeder | Merrit Feather |





THE MURMURMONTIS

Alpha Psi Omega . . .

ALPHA PSI OMEGA, one of the largest of the national dramatic fraternities, was founded at Fairmont State Teachers College in 1926. The Alpha Rho cast of West Virginia Wesleyan was established May 28, 1930. A comparatively new addition to the rostrum of campus activities, the Alpha Psi Omega has proven its worth through the valuable impetus it has brought to dramatic work here. A live organization with rigorous entrance requirements, it is both an honor and a professional asset to become affiliated with this group of stage enthusiasts. Alpha Psi Omega is a member of the Association of Speech Arts Fraternities.



Argyle Knight Esther Ansell B. W. Folsom Effie Mae Merrit Lewis Clark
 Betty Williams Irene Smith Bryan Kelly Frances Scott



MCMXXXIII

One hundred thirty-four

THE MURMURMONTIS

. . . Pi Kappa Delta

WEST VIRGINIA'S Alpha Chapter of Pi Kappa Delta, national honorary forensic fraternity, was organized on Wesleyan's campus in 1928, and since that time has become one of the state's most active forensic institutions. Although the local chapter was unable to send a delegation to the national convention this year, the debate teams sponsored by this organization have met with great success. Pi Kappa Delta interests itself in three divisions of forensic activities—the debate, the extemporaneous speech, and the oration. It is the purpose of the organization to sponsor such speech activities, and to keep alive the interest of the student body in the various phases of the speech arts.



Martha Glenn Flesher

Melvin Lang

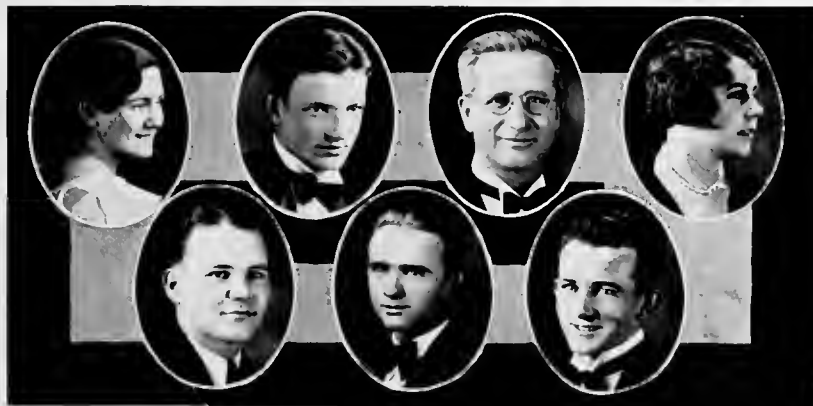
Argyle Knight

Theodore Haynes

B. W. Folsom

James Hutchinson

Flaine Avington





THE MURMURMONTIS

Men's Debate . . .

UNDER the coaching of Prof. B. W. Folsom, the Men's Debate Team enjoyed a very successful season. Non-Decision Debates, which are fast coming into practice in various Colleges and Universities, proved very popular here this year. The varsity team composed of Knight, Hutchinson, and Laing had only one decision debate at home. This was with Waynesburg College, held in the drawing room of the Agnes Howard Hall. This team debated the majority of State Schools, and made one western trip, taking in Waynesburg, Washington and Jefferson, and Mount Union. The freshman team, composed of Cody and Thacker did some splendid work in their numerous encounters. The season was closed on April 5, with a formal Debate with the University of Vermont here.

Standing Argyle Knight, Prof. B. W. Folsom, Victor Thacker
Sitting Hosea Prather, Nicholas Cody, James Hutchinson, Melvin Laing



MCMXXXIII

One hundred thirty-six

THE MURMURMONTIS

. . . Girls' Debate



GIRLS' DEBATE TEAM, coached by Argyle Knight, assistant to Prof. B. W. Folsom, officially opened their season with a decision debate with Potomac State on Friday, April 15. Wesleyan won the decision. They encountered Waynesburg and defeated them the following Monday night. One other home debate with Geneva College, and two trips, one south and one west, will conclude the season. Six members of the squad have made themselves eligible for Pi Kappa Delta.

TEAMS

Affirmative

ELAINE AVINGTON
CARRIE BENNETT
HELEN FURBEE

Negative

RUTH WRAY
PATY COLEMAN
VIRGINIA FISHER
MARY LOU MILLER



Standing — Mary Lou Miller, Helen Furbee, Vivien Dotson, Elaine Avington, Argyle Knight, Frances Scott, Effie Mae Merritt, Evelyn Gay, Patty Coleman
Sitting — Martha Glen Flesher, Virginia Fisher, Carrie Bennett, Ruth Wray







BEAUTY



Thelma Ruth McCoy



Carrie Lenora Bennett



Marine Eleanor Downey



Geraldine Buckley



© 2000



CAMPUS LIFE



Wesleyan to Inaugurate Native West Virginian



RECEPTION HELD FOR FRESHMEN SEPT. ELEVENTH



President McCuskey at his desk view of the campus with the Science Hall in the distance Joe
 Hall bearing a pass Red Crites at his familiar hangout, the Ladies' Hall Orville Lee Edmondson of
 Ettnesville, if you please a typical room inside the Agnes Howard Hall Old Glory flying in the breeze
 The A A I house down on Meade Merritt Feather and Cada Renick in spring a young man's
 tancy turns to love and the river Looking up the Buckhannon River from the swinging bridge Pro-
 fessor Chrisman, without his suitcase It's your turn, what are they doing Bud Wolff the ole Business
 Manager in the flesh that tempting (on spring nights) sun dial Pearlle, Sharp, Blondin, Riley, An-
 derson, O'Dell, Matheny out for a ride Marjorie Gibbs and Ruth Strosmider



Wesleyan Defeats Dayton



CLIFF BATTLES,
WEST VIRGINIA WESLEYAN
HALFBACK, GAINED 463 YARDS
IN ONE GAME
AGAINST SALEM.
HE SCORED
7 TOUCHDOWNS



Wesleyan

Machine Steams Through Duquesne

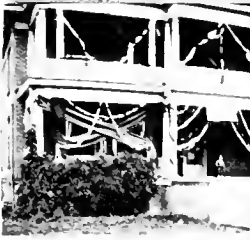


Dean Lambert in his office ... the blonde blizzard in action ... just a common sight on Wesleyan's campus ... 12-10 down at the Science Hall ... Mully Reppert tapping Fritz Seabright in case you don't recognize her ... Art Beckett, Wesleyan's popular student council president ... the power house in action ... Prof Glanner caught with his famous brief case ... Zaner Post, tennis ace ... those two sidekicks, Grace and Elsie ... Sexton Beer, just finishing a hard drive ... down at the curb for a brief smoke ... showing how a tackle is done according to Hoyle ... Coach Cobe Ross, who has just finished one of his most successful seasons, both in football and basketball ... the morning after they crowned the May King ... two girls caught walking home ... Giantomio, Blondin, Edmondson, Crites, and Saunders out for blood

Alligators Tumble to Mighty Bobcats, Score 38-7



*Homecoming Game
Draws Record Crowd*



Helen and Nick leading the cheers . . . the homecoming crowd . . . the back of the K A house . . . Nick Hyma (car) of the chemistry dept. . . the boys' dorm decked out in honor of the homecomers . . . tackling the dummy . . . Beveridge and Richner snapped at the tea room . . . Hal Bachtel and his kid brother, Art on their way to class (C) . . . looking out thru the circle . . . Wuxtra! Big reward for information as to whom this is . . . the capable football assistants, Rogerson, Fairbee, Campbell, and DeBarr . . . a scrimmage session . . . the men responsible for the Pharos from the mechanical end . . . the reward for getting out there in the mud for dear ole Wesleyan . . . as a girl's room in the Hall naturally looks . . . showing the entrance to the Haymond Science Hall . . . when the freshmen finally cleaned the walk

CAMPUS BEAUTY ANSWERS DEATH'S CALL



**WESLEYAN BOWS
TO POWERFUL
N. Y. U. ELEVEN**



**K
I
C
K
O
F
F**



2 P.M.

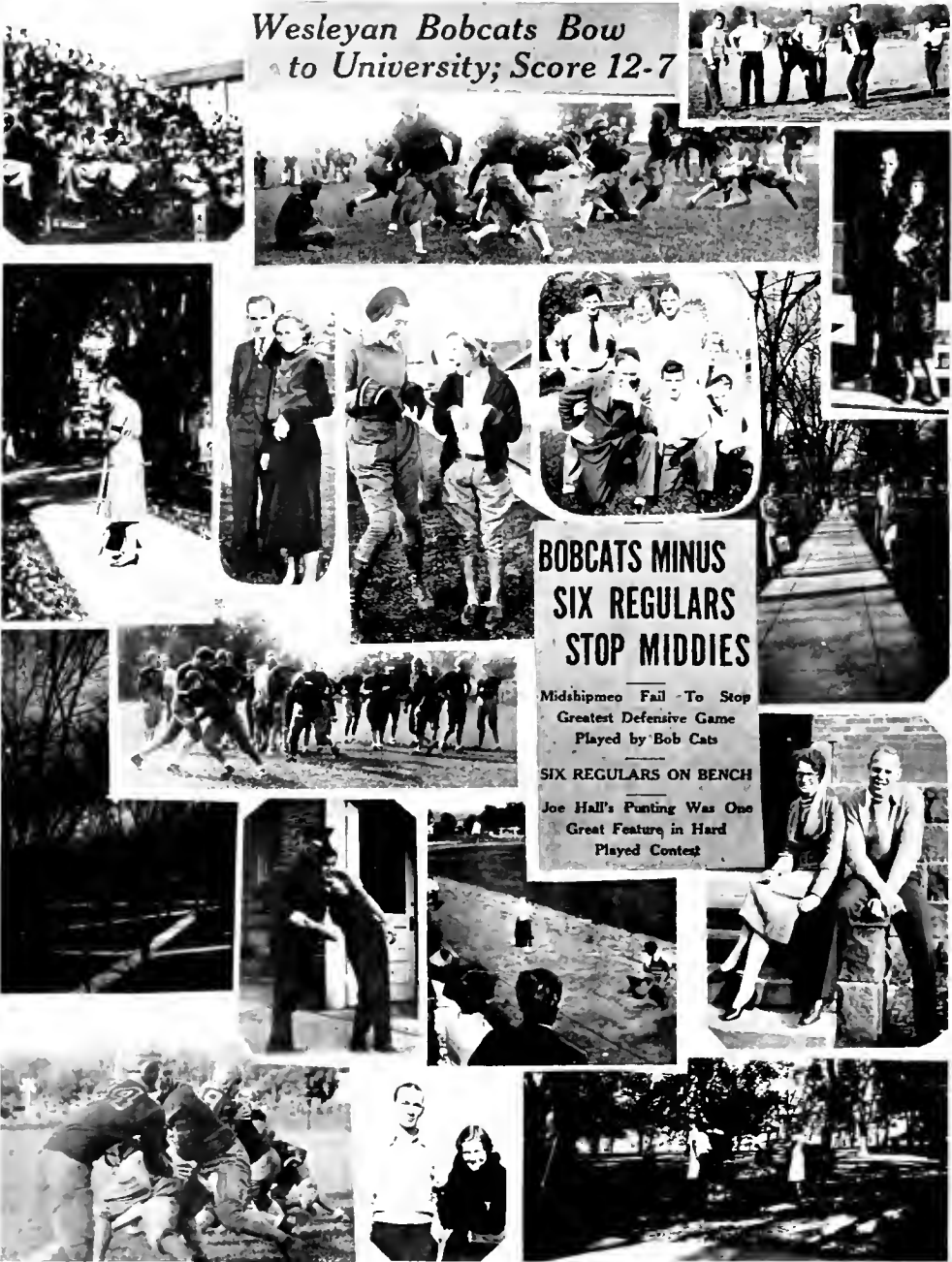


**Bobcats Win Slipshod Victory
Over Pioneers by 19-14 Score**



*Honoring the memory of an old Wesleyan Institution—Pearlie . . . You can tell they're freshmen
Art Simon's pep in the arms of Maxine Wood with Tarzan Crouser acting like a monkey, natural, 'know
that stone wall in the center, Tom and Red . . . The Kappa Phi's preps out for a stroll in the sunshine
the old swinging bridge which has essentially been many a couple's Waterloo . . . Feet White and his
chemistry assistant, Ethel McOlen, talking about atoms (?) . . . Wesleyan's four horsemen: H. Bachtel, Battles, A. Bachtel, and Beveridge . . . Paul and Virginia all dressed up . . . Cody and West trading licks to
sort of get used to things . . . Battles going over for another touchdown . . . What a couple, Boyer and Bell
. . . this is the best they could do at the time . . . Jimmy Furbec, the tennis flash from good old W. I. . .
the main walk . . . piling up for a brief meeting . . . Lewis Clark, sure there's Anita, too.*

Wesleyan Bobcats Bow to University; Score 12-7



BOBCATS MINUS SIX REGULARS STOP MIDDIES

Midshipmeo Fail To Stop Greatest Defensive Game Played by Bob Cats

SIX REGULARS ON BENCH

Joe Hall's Punting Was One Great Feature in Hard Played Contest

Out for a big chase — Hall finding an opening thru the line — just some fellas kind of a know,
 ye old editor and his girl friend — Most of been some job, that walk — another set of sweethearts on pa-
 rade — Cranchford and Marguerite — Doesn't this look natural, now — Mrs. Woods, the house mother at the
 Boys' Dorm and a few of her youngsters — The Sigma Pi Delt preps playing boo with the passers-by, re-
 member — View of the campus thru a window in the Hall — Looks just a little rough — Fred Hart re-
 sisting the Chief of Police — Rab, Rab, Rab — Red and Hilda, another pair on parade — Hold that line!
 Mrs. Fred Dison, and the Mister — Still cleaning the campus

**BATTLES BREAKS
YARDAGE RECORD
IN SALEM GAME**



**ALL-COLLEGE
CARNIVAL IS
TO BE FEB. 17**

Carnival Queen to be Chosen
at Tuesday Chapel
Period

SIMONS IN CHARGE



**Bobcats Defeat Herd
In Season Final**



WESLEYAN

Battles ready to leave a long one . . . a Sigma Pi prep . . . just three foolish fun-loving girls
John Booth giving a sample of a crack to Bill Isaac, ask Bill if it was a sample . . . Robert Layfield, ex-editor
and the Missus . . . Won't you buy a Amas seal Miter . . . Recognize it, no? It's the back door at the N A
I house . . . Pearlbe, who did everything from this to bat on the campus, never more to be seen . . . Inmates
of the prison on Florida street . . . Here, Here, Gentlemen, remember yourselves . . . is it a dummy or a rival
sutor . . . another pair on parade, Bell and Carpenter . . . Vixen Bell getting the scare of her life, well, then,
ask her . . . Battles and his educated toe . . . '09, '100, coming,—1, 2, 3, for Ruth Strosnider in the toddler shock

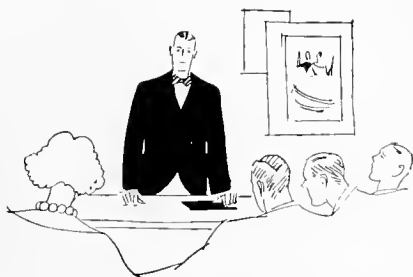




ORGANIZATIONS



THE UNIVERSITY OF CHICAGO



FRATERNITIES



THE MURMURMONTIS

Chi Alpha Tau

Local

Colors: Orange, Black, and White

Chi Alpha Tau Fraternity was organized in 1923 by a group of five men, John O. Little, Jesse Hall, Wetmore Haught, Truman J. Lynch, and James B. Evans, who sought to perpetuate the common bonds of friendship and scholastic interests which had held them together during the first years of college life. It was the first group on the campus to be granted a charter from the college.

OFFICERS

| | | |
|-------------------------------|-----------|--------------------------------|
| ROBERT HARVEY HERZER | - - - - - | <i>President</i> |
| CLIFFORD FRANKLIN BATTLES | - - - - - | <i>Vice President</i> |
| EUGENE VICTOR WILLIAMSON, JR. | - - - - - | <i>Treasurer</i> |
| FRED LECKIE DIXON | - - - - - | <i>Recording Secretary</i> |
| JACKSON WILLIAM RAFELD | - - - - - | <i>Corresponding Secretary</i> |
| ARTHUR BACHTEL | - - - - - | <i>House Manager</i> |

HONORARY MEMBERS

| | |
|-------------------|----------------------|
| E. E. STOFFEL | DR. THOMAS W. HAUGHT |
| HON. H. ROY WAUGH | HON. U. G. YOUNG |

FRATRES IN COLLEGIO

Semors

| | | |
|------------------|-----------------|------------------------|
| ROBERT HERZER | WAYMAN BENNETT | CRAWFORD REPERT |
| HANSFORD McCOURT | ROBERT LAYFIELD | EUGENE WILLIAMSON, JR. |

Juniors

| | | |
|-------------------|-----------------|-------------------|
| CLIFFORD BATTLES | VICTOR CUPPETT | ARTHUR BACHTEL |
| VERNON THOMAS | CLAYTON HALL | ALTON E. WHOLF |
| ORVILLE EDMUNDSON | JOHN BOOTH | CLEMENT SIANDRU |
| JACK RAFELD | CHARLES COLEMAN | ALLEN HAMNER, JR. |
| CLARENCE CASTO | FRANK BRADEN | RUSSELL CHAPMAN |
| ZANER POST | | FRED DIXON |

Sophomores

| | | |
|---------------|----------------|---------------|
| JOHN WILLIAMS | HARRY SPEARS | JOSEPH HALL |
| JAMES FURBEE | DELMAR MOORE | WILLIAM LOWRY |
| LEONARD FLASK | JOHN EASTLACK | ARCHIE SNYDER |
| CLARK HULL | HOWARD BACHTEL | HAROLD MILES |
| SHELBY BELL | | EARL ANDERSON |

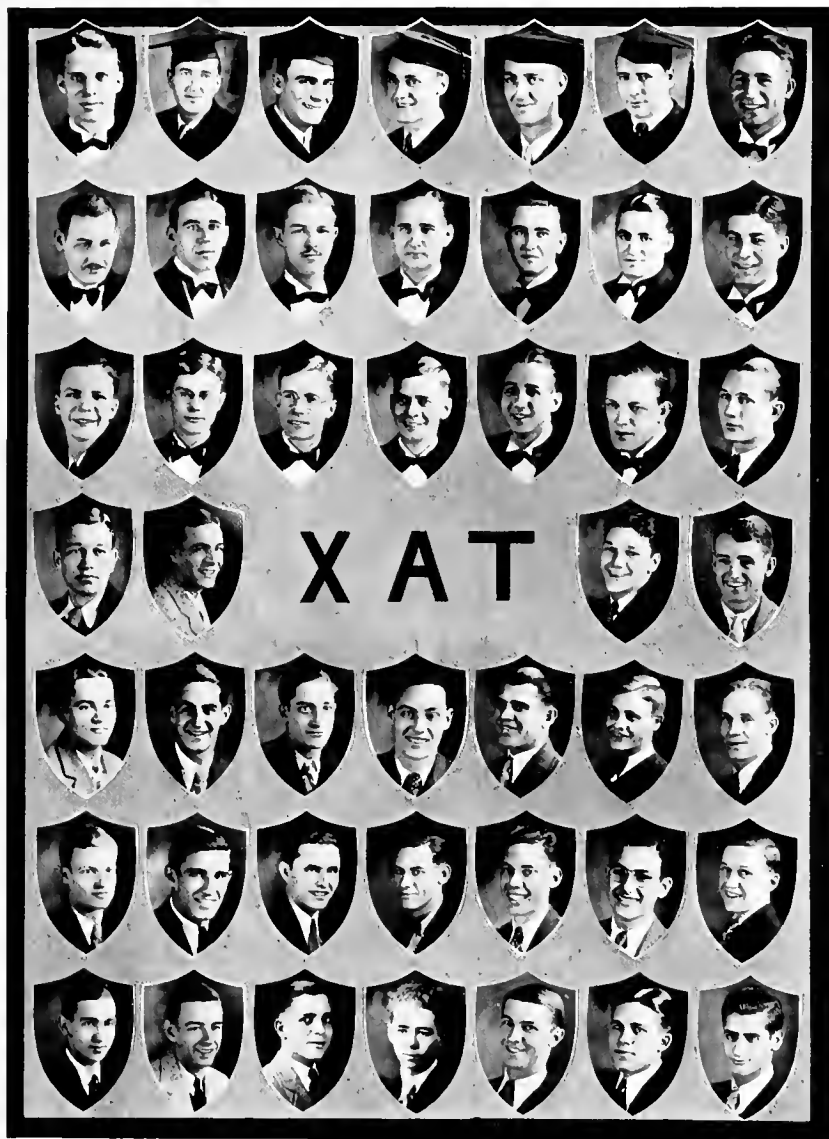
Freshmen

| | | |
|----------------|-----------------|------------------|
| MERLE ROSSELLE | EDWARD HOWELL | MERRILL EASTLACK |
| JOHN WAUGH | WILLIAM ISAAC | MELVIN MATHES |
| SHERMAN WEST | ROBERT STICKNEY | CHALLON BONAR |
| | NICHOLAS CODY | |



MCMXXXIII

THE MURMURMONTIS



XAT





THE MURMURMONTIS

Kappa Alpha Southern

FOUNDED AT WASHINGTON AND LEE UNIVERSITY, 1865

Colors: Crimson and Gold

Flower: Magnolia and the Red Rose

BETA CHI CHAPTER—ESTABLISHED 1929

FRATRE IN FACULTATE

ARTHUR H. SIMONS

FRATRES IN URBE

MYRON B. HYMES
ROSS M. BONAR
CHALMERS A. AULT

PERCY C. ROSS
WILLIAM D. FOSTER
FRANK HUTCHINSON

WILLIAM T. O'BRIEN
RALPH F. WILSON
LORING R. WILLIAMS

FRATRES IN COLLEGIO

Seniors

A. ARGYLE KNIGHT
HARRY B. MARONEY
ARTHUR E. BECKETT

CHARLES W. STATER
PAUL L. SHARP
NICHOLAS FAMULARO

W. FRED HART
MELVIN D. LAING
JAMES P. HUTCHINSON

Juniors

W. BRYAN KELLEY
MINOR L. PARKER

MERRITT H. FEATHER
P. BYRON WOODRUFF
EARNEST FRADENBURG

JOSEPH R. ST. CLAIR
HERMAN W. PARRISH

Sophomores

THEODORE N. HAYNES
WILLIAM H. SPIDELL

LYNDALL E. DeBARR

WILLIAM S. CHANNEL
RICHARD R. HANIFAN

PLEDGES

WILLIAM UNDERWOOD
JOHN COOK
PAUL McCUSKEY
JAMES FULTON
THOMAS NEELY
WILLIAM JACK
JAMES O'GRADY
WILLIAM JONES
HOSEA PRATHER

DAVID LATHAM
CHARLES WHITE
ROBERT WASSUM
ROBERT FOSTER
ERWOOD McSWAIN
CLYDE HAMRICK
GENE DAVIS
EDWARD MEREDITH
BERNARD BAILEY

PAUL ROGERSON
JAMES RAMSEY
HUGH RAMSEY
JOHN BROWN
PAUL BROWN
LAWRENCE CHRISTY
GLEN SHRADEE
PATTON YOUNG
MYRL CROUSER



MCMXXXIII

THE MURMURMONTIS





THE MURMURMONTIS

Sigma Eta Delta

Local

FOUNDED AT WEST VIRGINIA WESLEYAN COLLEGE, OCTOBER 20, 1925

Colors: Crimson and White

OFFICERS

| | | |
|-----------------|-----------|------------------------|
| THOMAS BLONDIN | - - - - - | <i>President</i> |
| SAMUEL MAZZIE | - - - - - | <i>Vice President</i> |
| HOWARD POST | - - - - - | <i>Secretary</i> |
| WILLIS SHUMAN | - - - - - | <i>Treasurer</i> |
| ALBERT McTAVISH | - - - - - | <i>House President</i> |

ADVISORS

PROF. ROBERT D. MYERS

DR. JAMES E. JUDSON

FRATRES IN COLLEGIO

Seniors

ROBERT COOKMAN
FRANK HALL

ALBERT McTAVISH

CARL MEARNS
FREAL F. CRITES

Juniors

THOMAS BLONDIN
SAMUEL MAZZIE

SAM GILMORE
CARROLE PALMER
WILLIS SHUMAN

JOHNSON HYER
HOWARD POST

Sophomores

GERALD DEBARR
HULBERT MEADOWS

LOWELL FOLSOM
MIKE GREEN

NICK GIANTONIO
ROBERT REGER

Freshmen

GEORGE CLEAVENGLER
REED JACKSON

ROY McCUSKLY

JOSEPH MYERS
VICTOR THACKER

PLEDGES

RAYMOND CAMPBELL

GEORGE GREER
JOSEPH WALKER

WENTZ FORDYCE



MCMXXXIII

THE MURMURMONTIS







SORORITIES



THE MURMURMONTIS

Kappa Phi Omega

The Kappa Phi Omega Sorority was officially organized in October, 1926. Friendship, scholarship, democracy and love are the cardinal aims of the organization. To promote these purposes, the Sorority has fostered a loan fund for students during the past four years.

Colors: Orchid and White

Flower: Yellow Rose

OFFICERS

| | | |
|------------------|-----------|------------------------|
| FRANCES SHANNON | - - - - - | <i>President</i> |
| BETTY WILLIAMS | - - - - - | <i>Vice President</i> |
| MATHILDA LEONARD | - - - - - | <i>Secretary</i> |
| ELMA PECK | - - - - - | <i>Social Chairman</i> |
| MARGUERITE BYUS | - - - - - | <i>Chaplain</i> |

PATRONESSES

| | | |
|-----------------------|----------------------|--------------------|
| MRS. THOMAS W. HAUGHT | MRS. FRANK LATHAM | MRS. W. E. GWYNNE |
| MRS. A. G. SHANNON | MRS. W. F. THORNHILL | MRS. C. D. HOWARD |
| MRS. FRED WILLIAMS | MRS. ENOCH BELLIS | MRS. H. H. WITHERS |

MEMBERS

| | | |
|------------------------|------------------------|----------------------|
| FRANCES SHANNON, '32 | WRETHA PETERSON, '34 | MARGUERITE BYUS, '34 |
| NINA YOHO, '32 | MATHILDA LEONARD, '34 | MILDRED REPERT, '34 |
| ELSIE HOWARD, '33 | MARY LOUISE RILEY, '34 | ELMA PECK, '32 |
| GRACE HAMILTON, '33 | HAZEL DAWSON, '33 | PATTY COLEMAN, '34 |
| MARIE M. ANDERSON, '34 | BETTY WILLIAMS, '33 | ISABEL S. YOUNG, '32 |
| | NELLE YOHO, '34 | |

PLEDGES

| | | |
|------------------------|------------------------|-------------------------|
| DOROTHY M. WATSON, '35 | CHARLENE MEADOWS, '35 | VIRGINIA CLOVIS, '35 |
| KATHRYN CALLIHAN, '35 | ELIA RUTH WILKINS, '33 | MILDRED STOBBS, '35 |
| KATHRYN CLOVIS, '33 | GOLDIE CREWS, '35 | ELIZABETH O'DELL, '35 |
| FRITZI SEABRIGHT, '35 | RUTH WRAY, '35 | PAULINE CUNNINGHAM, '35 |
| HELEN WARD, '35 | | DOROTHY VON BERG, '35 |



MCMXXXIII

THE MURMURMONTIS



One hundred sixty-seven

MCMXXXIII





THE MURMURMONTIS

Sigma Delta Chi

The Sigma Delta Chi, the oldest sorority on the campus, was first organized in 1921 by a group of Wesleyan girls, but was not officially recognized until 1926. Since then, they have grown rapidly, and have maintained the high standards of the college.

Colors: Violet and Silver

Flower: Violet

OFFICERS

| | | |
|------------------------------|-----------|-----------------|
| VIRGINIA COOKMAN | - - - - - | President |
| ELIZABETH WARD SPEIR | - - - - - | Vice President |
| VIRGINIA MCWHORTER FULTINEER | - - - - - | Secretary |
| MARY FRANCES DEEDS | - - - - - | Treasurer |
| LUCILLE LORENTZ LAYFIELD | - - - - - | Social Chairman |
| ELIZABETH HARDESTY | - - - - - | Pan Hellenic |

HONORARY MEMBERS

MISS ANNA REGER
MISS RUTH ZICKLEFOOSE

MISS ADA ALLMAN
MISS VIRGINIA HOYLMAN

ASSOCIATE MEMBER

LUCILLE MURRAY FARNSWORTH

PATRONS

DR. AND MRS. L. H. CHRISMAN

PROF. AND MRS. G. L. GLAUNER

PROF. AND MRS. W. A. HALLAM

FACULTY ADVISOR

MISS ALICE NASON

MEMBERS

| | | |
|---------------------------|--------------------------|-------------------------|
| VIRGINIA COOKMAN, '32 | PHYLLIS DEAN, '32 | EVELYN GAY, '32 |
| ELIZABETH HARDESTY, '32 | LUCILLE L. LAYFIELD, '32 | HELEN FURBEE, '33 |
| MARY FRANCES DEEDS, '33 | GERALDINE GASTON, '33 | MARTHA MEARNS, '33 |
| JEAN REPERT, '34 | ELIZABETH W. SPEIR, '33 | VIRGINIA RICHNER, '33 |
| MATHILDE WITHERS, '32 | GRACE WHITE, '33 | KATHERINE CUTRIGHT, '34 |
| MARION DEEDS, '34 | MAXINE DOWNEY, '34 | OLIVE SNYDER BAXA, '34 |
| ELIZABETH TALBOTT, '32 | VIRGINIA WHITE, '34 | ZELLA WILLIAMS, '34 |
| VIRGINIA RITTENHOUSE, '32 | MARTHA CORDER, '32 | VIRGINIA FULTINEER, '34 |

PLEDGES

| | | |
|---------------------------|--------------------------|-----------------------|
| GERALDINE BUCKLEY, '35 | MARY ELLEN YOUNG, '35 | LOLA BAXA, '35 |
| MABEL LINTON, '35 | WILLIE ANN WILSON, '35 | VIRGINIA MATHENY, '35 |
| MARGARET HARRIS, '32 | RUTH ANDREWS, '35 | VIRGINIA BENNETT, '35 |
| IRENE BOONE, '35 | ELIZABETH FLANNAGAN, '35 | MARTHA FOSTER, '35 |
| MARY BETTY KELLY, '35 | SUSAN MAYO, '35 | VIRGINIA RENROAD, '34 |
| ELAINE SEXTON, '35 | MARGARET H. WATSON, '35 | MAXINE WHITE, '35 |
| CELIA CATHERINE WARD, '35 | HELEN MCWHORTER, '35 | RUTH HAMRICK, '35 |



MCMXXXIII

One hundred sixty-eight

THE MURMURMONTIS



Σ Δ Χ

MCMXXXIII

One hundred sixty-nine





THE MURMURMONTIS

Chi Kappa Alpha

The Chi Kappa Alpha Sorority was organized as an individual group late in 1925, but official recognition from the college was not made until March, 1926. From the time of its organization, the sorority has always endeavored to uphold its primary aim of being a democratic, social organization, supporting the ideals of West Virginia Wesleyan College.

Colors: Yellow and White

Flower: Yellow Rose

OFFICERS

| | | |
|--------------------|-----------|-------------------------|
| CARRIE BENNETT | - - - - - | President |
| THELMA MCCOY | - - - - - | Vice President |
| ILA SINCLAIR | - - - - - | Secretary |
| FRONA FOSTER | - - - - - | Treasurer |
| HILDA RENROAD | - - - - - | Social Chairman |
| EFFIE LEE STROTHER | - - - - - | Corresponding Secretary |

SORORITY MOTHER

Mrs. E. J. REGER

HONORARY MEMBER

DEAN RACHAEL C. OGDEN

ASSOCIATE MEMBERS

MISS NELL MORGAN
MRS. ED. BOETTICHER

MISS BETH DARNALL
MRS. BASIL PAGE

MISS NELLIE ACKLES
MRS. ARTHUR BECKETT

PATRONS

DR. AND MRS. ORNE C. POST
PROF. AND MRS. R. RAY SCOTT
DR. AND MRS. J. E. JUDSON

PRES. AND MRS. ROY MCCUSKEY
MR. AND MRS. MYRON B. HYMES
DR. AND MRS. JOHN P. JONES

SORORITY SWEETHEART

PROFESSOR NICHOLAS HYMA

MEMBERS

CARRIE BENNETT, '33
FRONA FOSTER, '33
EFFIE MAE MERRITT, '32
HILDA RENROAD, '33
KITTY MCGUIFEY, '32
MARGARET MERRITT, '35

THELMA MCCOY, '32
MILDRED MICK, '32
LOUISA M. HAMILTON, '32
FRANCES SCOTT, '32
MADELINE PERRY, '35
ELEANOR MOCKLER, '35
VIRGINIA RODGERS, '35

ILA SINCLAIR, '33
VIVIEN BELL, '34
CHRISTINE MCCUSKEY, '32
EFFIE LEE STROTHER, '32
TRIBY KIMBERLING, '35
DELORES SNYDER, '35

PLEDGES

ANITA O'ROARK, '34
OLIVE DUBY, '35

IRIS QUERTIMONT, '35
VIVIAN DOTSON, '35

JUANITA PHILLIPS, '35
JO ANN LATHAM, '35



MCMXXXIII

THE MURMURMONTIS



X K A





THE MURMURMONTIS

Sigma Pi Delta

The Sigma Pi Delta Sorority was organized in October, 1926, with the membership rapidly increasing since that time. The organization especially stresses scholarship, and has had the honor of leading all Greek letter organizations in that respect for the past two years. The object is to promote social life on the campus.

Colors: Green and White

Flower: Pink Rose

OFFICERS

| | | |
|-----------------------|-----------|--------------------------------|
| VONDA LOWE SHARP | - - - - - | <i>President</i> |
| MARY LOU MILLER | - - - - - | <i>Vice President</i> |
| MARY FRANCES CHADDOCK | - - - - - | <i>Secretary</i> |
| MAXINE GUTHRIE | - - - - - | <i>Treasurer</i> |
| DOROTHY QUEEN | - - - - - | <i>Social Chairman</i> |
| LUCIE BROOKS | - - - - - | <i>Corresponding Secretary</i> |

SORORITY MOTHER

MRS. G. O. YOUNG

ASSOCIATE MEMBERS

MISS EVELYN LAZENBY

MRS. ARTHUR SMITH

PATRONESSES

MRS. W. R. GROSE

MRS. G. A. CLAGETT

MRS. W. S. ROBERTS

MEMBERS

VONDA LOWE SHARP, '32
 DOROTHY QUEEN, '33
 MARY F. CHADDOCK, '34
 MARY SULLIVAN, '33

MARY BUTCHER, '34
 LUCIE BROOKS, '33
 CADA RENICK, '33
 ALMA MCKINNEY, '34

MARY LOU MILLER, '33
 MAXINE GUTHRIE, '34
 GRACE S. SAUVAGEOT, '32
 CINTILLA GILLESPIE, '34

PLEDGES

VIRGINIA JOHNSON, '35
 VERA LOWE, '35
 EDNA WADE, '35
 EVELYN SHAFER, '35
 RUTH McWHORTER, '35

JANET BLAGG, '35
 BERTHA YOUNG, '35
 HELEN McFERRIN, '35
 DOROTHY BROOKS, '35

MARTHA CARTWRIGHT, '35
 GRACE WESTFALL, '34
 JEAN MILLER, '35
 RENA BISSET, '35
 EDITH OKES, '35



MCMXXXIII

THE MURMURMONTIS



Σ Π Δ





THE MURMURMONTIS

Tallagewe Association

The Wesleyan chapter of the National Tallagewe Association first functioned as a club, but in May, 1927, it was formally admitted by the National Association. In May, 1931, the club organized a Sister Association at Waynesburg College, and by the authority of the National Council, initiated them into the National Association. It had the distinction of being the first national organization on the Waynesburg campus, as well as on the Wesleyan campus. Tallagewe fosters a democratic and altruistic spirit among all college women.



MISS MARIE BRETHORST, *Faculty Advisor*

PATRONESSES

MRS. ORA D. CURRY MRS. G. L. GLAUNER

OFFICERS

| | | |
|---------------------|-----------|-----------------------|
| MABEL CASTO, '33 | - - - - - | <i>President</i> |
| VELMA BELL, '34 | - - - - - | <i>Vice President</i> |
| RUTH CARPENTER, '34 | - - - - - | <i>Secretary</i> |
| MARJORIE GIBBS, '32 | - - - - - | <i>Treasurer</i> |

MEMBERS

| | |
|-----------------------|--------------------------|
| ELINORE ANDERSON, '33 | MABEL CASTO, '33 |
| VELMA BELL, '34 | PAULINE BAXA, '32 |
| MILDRED CASTO, '34 | MARJORIE GIBBS, '32 |
| RUTH CARPENTER, '34 | LETA SNODGRASS |
| EVELYN GOLDEN, '34 | ABBIE H. GREATHOUSE, '34 |

PLEDGES

| | |
|------------------------|----------------------|
| CLEMENCE PASE, '33 | MARTHA STEMPLER, '35 |
| ANNA COZIAR, '35 | ERMA FLEMING, '35 |
| THELMA HINCHCLIFF, '35 | MARTHA PAGE, '35 |



MCMXXXIII

THE MURMURMONTIS



Tallageme Association







ADVERTISERS

McAvoy Studio

OFFICIAL PHOTOGRAPHERS

FOR

“THE MURMURMONTIS”

1915 to 1933



“PHOTOGRAPHS LIVE FOREVER”



21 East Main Street

BUCKHANNON, WEST VIRGINIA

THE BUCKHANNON RECORD

UPSHUR COUNTY'S LEADING NEWSPAPER

We Lead--Others Follow

School Periodicals and Papers

BUCKHANNON, W. VA.

LEVINSTEIN'S

INCORPORATED

HEAD-TO-FOOT OUTFITTERS

FOR

Men, Women and Children

"A THRIFT SHOP FOR THE THRIFTY"

BUCKHANNON, W. VA.

B. A. BENDER

DEALER IN

Ladies' and Gent's Furnishings

SHOES A SPECIALTY SOMETHING NEW EVERY DAY

SOFT DRINKS SCHRAFFT'S CANDIES ICE CREAM

RENE'S



CONEY ISLAND SANDWICH SHOP

"MEET YOUR FRIENDS AT RENE'S"



CIGARS

CIGARETTES

TOBACCO

MURRAY'S BAKERY

HOME OF

BUTTER-KRUST BREAD



"The Student's Bread Basket"

WOMEN'S WEAR SHOP

LELA HUFF BISHOP

Colonial Theatre Building

Main Street

Acme Book Store, Inc.

“Where You're Welcome”

11 EAST MAIN STREET

STATIONERY, SCHOOL SUPPLIES, GIFTS, CANDIES,
TOBACCOS, ATHLETIC GOODS, NEWSPAPERS,
AND MAGAZINES

WEIDENHAMER

Wholesale Grocers

AERO FLOUR A SPECIALTY

BUCKHANNON, W. VA.

ESPECIALLY FOR THE STUDENTS

CAMPUS TEA ROOM

MRS. H. O. TALBOTT, Proprietress

Selling Life Insurance Is a Pre-Eminent Profession

THE NORTHWESTERN MUTUAL LIFE INSURANCE
COMPANY IS AN AGENTS' COMPANY BECAUSE:

- 1—Through the agent it renders individual service;
- 2—Through trained agents it fits insurance to needs;
- 3—Through exact needs it prevents lapse, thereby putting renewal commissions in the agents' pockets;
- 4—Through low net cost it lowers sales resistance and prevents lapse;
- 5—Through "repeat business", from members previously insured (50 per cent or more annually), it provides the successful agent with a clientele of value; "once a policy holder, always a prospect";
- 6—Through stable agency incomes, it builds men of character and standing in their respective communities;
- 7—Through its no-brokerage rule, it projects its agents against the inroads of impecunious jacks of all trades;
- 8—Through its educational course it makes real salesmen.

Selling Life Insurance is a Pre-Eminent Profession

WRITE OR SEE

CLYDE O. LAW,

GENERAL AGENT

900 Hawley Building

WHEELING, W. VA.

Compliments of

IDEAL PRESSING COMPANY

YOUR CLEANERS

AND

COLONIAL THEATER

THE STUDENTS' THEATER

ON MAIN STREET

Buckhannon Flower Shop

“Flowers For All Occasions”

WE SPECIALIZE IN CORSAGE WORK, FUNERAL WORK
ALL KINDS OF DESIGNING

Congratulations--

TO THE GRADUATES OF WEST VIRGINIA
WESLEYAN!

Your completion of four years of hard, tedious work is a real achievement. The G. C. Murphy Company congratulates you and wishes you every success. Our belief is:

“The Foundation of Success is Service”

“He is paid most who serves best” is true in every field of endeavor. The size of a company does not alone determine its service to a community, but *Service* to a community alone determines the size of a company. Likewise the service an individual renders to his fellowmen will determine his place; the real measure of his success.

The G. C. Murphy Company is earnestly striving to be of service to the student body of West Virginia Wesleyan. Delightfully fresh Confections, Fine Quality Hosiery, Stationery Items, Ladies', Misses' Wear, Men's and Boys' Wear, and a multitude of other every-day necessities, all priced to suit the student's purse, is our every-day *service*.

G. C. Murphy Co., 5c & 10c Store

With Selected Merchandise to \$1.00

23-27 MAIN STREET

BUCKHANNON, W. VA.

COMPLIMENTS OF

TALBOTT DRUG COMPANY

AND

IMPERIAL ICE CREAM COMPANY

LARGEST CIRCULATION EVER HELD IN UPSHUR COUNTY

THE REPUBLICAN-DELTA

FRANK B. HUTCHINSON, Editor and Manager

BUCKHANNON, W. VA.

Backers and Boosters of Wesleyan

Printers of Quality and Service

Lowest Basic Advertising Rate in Trading Territory

DR. ORNE C. POST

Dentist

Over Latham Hardware

20½ DEPOT STREET

X-Ray

Phone 154

J. M. N. DOWNES

Attorney-at-Law

Central Exchange Building

BUCKHANNON, W. VA.

Charles Tenney
GOOD GULF GASOLINE
and
SUPREME MOTOR OIL

Phone 576

At B. & O. R. R. Crossing on
Clarksburg Road

DR. E. B. ALKIRE

Dentist

Office Hours: 9 a. m. to 12 m.

1:30 p. m. to 5:00 p. m.



**SPALDING ATHLETIC GOODS—
CORRECT FOR
ANY SPORT**

Football, Basket-
ball, Tennis, Track,
Golf—whatever
the game— if
your equipment is
SPALDING'S—
you'll find it right

A. G. Spalding & Bros.
608 Wood Street
Pittsburgh, Pa.

**CLARK'S
Cleaners**

AND

Tailors

Phone 222

17 W. Main

BUCKHANNON, W. VA.

**BUCKHANNON
SHOE SHOP**

GUS T. OLIVER

"On the Way to Wesleyan"

FLORIDA STREET

Special Service to Students

FRANZ and BURKA

Leads in Styles

Stores:

FAIRMONT

CLARKSBURG

GRAFTON

Wholesale Fruits and Feeds

RAINBOW CREAMERY, EAGLE MACARONI, BLUE

GOOSE ORANGES, GLOBE FEEDS

SHINGLETON BROTHERS

CLARKSBURG, WEST VIRGINIA

"Snappy Service for Busy Buyers"

Compliments of

W. H. WEBER

Weber's Flower Shop

411 W. Main Street

CLARKSBURG, W. VA.

"Say It With Flowers"

Member Florists' Telegraph Delivery
Association

CLARK'S STUDIO

Photographs, Framing,
Enlarging

Post Cards, Kodak Finishing

Copying Photos a Specialty

59 West Main Street

BUCKHANNON, W. VA.

THE YARDSTICK

We have been accustomed to press a button and have electricity at any time for any purpose. The ease with which it is obtained, anywhere in Monongahela territory, tends to push into the background the efforts necessary to keep this valuable servant at your back and call.

Our energies must be directed to maintaining electricity every hour of every day, whether you use it or not. We must supply energy without any previous demand from you. The way we perform this task determines the value of the service on which you depend.

MONONGAHELA SYSTEM

American Shoe Repair Shop

C. A. FORINASH

25 South Kanawha Street

The Peoples Grocery and Meat Market

"Buckhannon's Food Shop"

Phone 276

33 E. Main St.

Sport Goods

NOTHING ELSE

Tennis and Golf our Specialties

THE SPORT SHOP

We Sell Nothing But Athletic Equipment. It's a main line with us, not a side issue.

Mike Leatherwood, Mgr.
CLARKSBURG, W. V.

Rosen's Fashion Shop

"For the Fashionable Miss"

New Valley Hotel Building

BUCKHANNON, W. VA.

Molloy  Made

THE COVER on this book is the product of an organization of specialists whose sole work is the creation of unusual covers for School Annuals, Set Books, Histories, Catalogues, Sales Manuals and other Commercial Publications

THE DAVID J MOLLOY CO
2857 North Western Avenue
CHICAGO

PRICE QUALITY SERVICE

Upshur Hardware Company

A. G. Shannon
BUCKHANNON, W. VA.

Engravings by

PONTIAC
ENGRAVING
COMPANY

CHICAGO, ILL.

Grand Opera House

HARRY HYMES, Manager



LATEST AND BEST ATTRACTIONS

A Good Show is Known by Its Patrons

All Films Are Passed by the National Board of Censorship. We
Invite the Students to Visit Our Theatre.



Are You
Backing Our
Backers?



L. G. BALFOUR CO.

OFFICIAL JEWELERS TO ALL FRATERNITIES
WESLEYAN CAMPUS

We take this opportunity of thanking you for this continued confidence.

Pins, Rings, Favors, Programs, Plaques, Medals, Trophies, Stationery

Pittsburgh-Schenley Shoppe

3951 FORBES STREET

COMPLIMENTS OF

Home Laundry

GRAFTON, W. VA.

"WE ARE NOT SATISFIED UNLESS YOU ARE"

Laundry, Dry Cleaning and Pressing

SPECIAL RATES TO STUDENTS

ST. JOSEPH'S HOSPITAL

AN UP-TO-DATE INSTITUTION

All Patients Are Free to Choose Physician

X-RAY, FLUOROSCOPE, LABORATORY,

TRAINING SCHOOL

W. MAIN STREET

BUCKHANNON, W. VA.

AN APPRECIATION

We have enjoyed keenly our work in producing this edition of the MURMURMONTIS.

The laudable ambition of Allen Hamner and the staff, to make the best MURMURMONTIS yet, was kept well in mind when we printed and bound the book. We wanted to do our part as best we could and hope we have pleased you.

For twenty years we have made modest claim to a position as leaders in production of School Annuals. That we have held this leadership in Pennsylvania, Ohio and West Virginia is attested by our success this year in turning out books for leading schools in this section.

On the part of Salesman, Service Men, Artists, Designers, Mechanical Superintendent, Typographers, Pressmen, and Binders, there has been that earnest, painstaking work which always means a good product in a plant keyed to unerring results in quality.

Our plant is COMPLETE. All work except the making of the plates and the covers, is done under one roof. When selecting your Annual Printer, it is well to keep in mind that there are few plants in this class in the large section we serve.

The Ziegler Printing Co., Inc.

BUTLER, PENNSYLVANIA.

Autographs



et.

12

6 - 1/2





120671

