




Murmurmontis
1942



Digitized by the Internet Archive
in 2010 with funding from
Lyrasis Members and Sloan Foundation

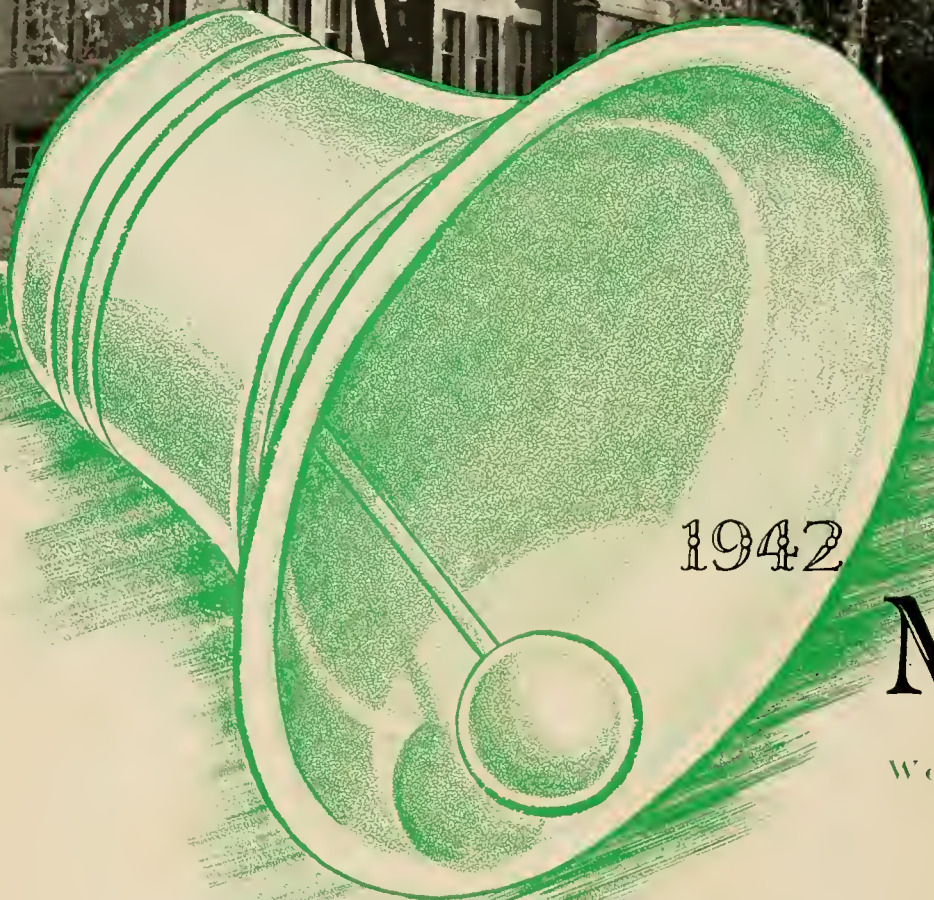


Editors

Mary Elizabeth Harper . . . Gene Meek

Business Managers

Cathryne Hardesty . . . James Thomas



1942

MU

West Virginia

Murmurmontis murmuring voice of the mountains Year-
book of 1942 the Old Bell pealing forth a year significant
in the eyes of historians World War II lifting us out of our
college circle into a world alive New Defense Courses No
Easter Vacation First Aid Classes Sugar Rationing
Selective Service changing the student into the soldier
This is a new Wesleyan a different Wesleyan unlike
any Wesleyan of the past And so like the Old Bell we
are remembering yesterday accepting today facing to-
morrow



RMURMONTIS

Wesleyan College, - Buckhannon, West Virginia

245100





Out Of The Ashes

The Old Bell in the Administration Building tower . . . never to be forgotten . . . has rung out since 1890 . . . A twelve hundred and seventy-five pound infant . . . you were born in a Baltimore foundry . . . and in that year was also born an institution . . . an ideal . . . West Virginia Wesleyan College . . . For all these years, you have been a part of that tradition . . . during that time, you have invaded the fitful slumber of the troubled student . . . you have pealed out the triumphant news of our athletic victories . . . time was when you even sounded a seven o'clock curfew . . . You never tell anyone about the day, back in 1915 when you were lifted . . . out of the ashes . . . after fire had destroyed the old Seminary Building. You speak always in dulcet and dignified tones . . . never to be forgotten . . . the Old Bell in the Administration Building tower



The Old Bell from its changeless tower

Autumn with its varied hues covers the campus with a tapestry of leaves . . . days are crisp and cool, betokening Freshman week, football games, hikes, and wiener roasts . . . Winter comes blustering in . . . mantling the campus in white . . . the evergreens sagging with snow . . . days are short . . . nights are long . . . basketball, Christmas caroling, informals . . . Then spring comes back . . . rustling with leafy impatience . . . casting green shadows from shrub and tree . . . tennis, baseball, formals, Commencement.

Rings out as changing seasons roll . .





Dr. Fleming! It snow joke!



Brothers Hickman and Lang lay a board walk, while the students hit the trail to higher learning.



John and Charles being framed

Resounding to eager students, earnest faculty

A dormant trio of Freshman girls . . . A group of rock-bound Kappa Phi's . . .
A party that was all wet . . .
And Rachel finally gets some E's . . .

Prof. Steele goes cinematic.

Majoring in Nutology.



To life and laughter and college companionship

Echoing to moments that will live



in Memory



Homecoming with its big parade of floats
Kappa Phi's captured the Fleming trophy,
the K A's came second, and the A K Pi's were
third Spectators sat in the rain to watch
the Bobcats beat the Bethany Bisons The
band led the parade with high-stepping Sleeth
out in front "Here they come!" yell the
street-corner crowds Fraternity houses
bedeck themselves to welcome returning alumni

Booming out for festivities, for victories won...





For holiday gayety and friendly associations

Christmas and the holiday spirit reigns the annual Santa Claus party is a great success at Agnes Howard Hall . the W A A portrays the Nativity scene in impressive tableau . The Circuit Rider returns to recall by-gone days of Methodism . and on pleasant days students meet to chat between classes on the Ad Building steps.



To

Lewis H. Chrisman

Connoisseur of good books . . .
. . . Raconteur par excellence
Teacher of rare ability . . .
Devoted servant of Wesleyan
Author, Preacher, Friend . . . this
volume of THE MURMURMON-
TIS is . . .

Dedicated



Administration

The Old Bell rang in the opening of West Virginia Wesleyan College in 1890 as Conference Seminary with Dr. B. W. Hutchinson as its first president . . . Only a dozen teachers comprised the faculty that first year . . . Through seven succeeding administrations, the Old Bell marked the progress of the school to its place among the leading educational institutions of the state . . . Along the way the name was changed to West Virginia Wesleyan . . . Today the Old Bell . . . while recalling the past . . . proudly proclaims an administration and faculty . . . varying widely in interests and personalities . . . yet outstanding for scholarly attainments and a progressive philosophy of education.



WALLACE B. FLEMING, Ph.D.

Acting President of the College
A.B., M.A., D.D., Muskingum
College; B.D., Drew Theological
Seminary; Ph.D., Columbia
University; LL.D.,
West Virginia Wesleyan College;
LL.D., Baker University.



MRS. C. EDMUND NEIL, M.A.

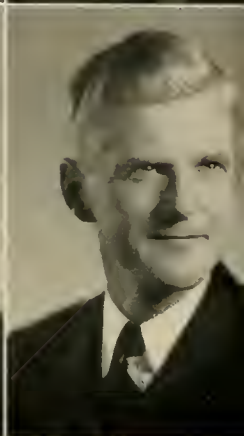
Dean of Women and Associate
Professor of Public Speaking
A.B., Ohio Wesleyan; M.A.,
West Virginia Wesleyan College.



OSCAR DOANE LAMBERT, Ph.D.

Dean of the College and
Professor of Political Science
A.B., West Virginia University;
M.A., University of Chicago;
Ph.D., Johns Hopkins
University.

Faculty



ARTHUR A. SCHOOLCRAFT,
PH.D.
Professor of Education
A.B., Marietta College;
S.T.B., Ph.D., Boston
University.

WEEMSA SAUCIER, PH.D.
Professor of Education
A.B., M.A., University of
Kentucky; Ph.D., Ohio
State University.

O. EARLE KARICKHOFF,
M.A.
Professor of Sociology
A.B., West Virginia Wes-
leyan College; M. A.,
Harvard University.

LEWIS H. CHRISMAN,
LITT.D.
Professor of English
Literature
Ph.B., M.A., Litt.D.,
Dickinson College.

HAROLD G. STEELE, M.A.
Associate Professor of
English
A.B., Northwestern Uni-
versity; M.A., Ohio State
University.

HAROLD N. AHLGREN,
M.S. in J.
Assistant Professor of
Journalism and Director
of Publicity
B.S. in J., M.S. in J.,
Northwestern University

GEORGE L. GLAUNER,
PH.D.
Professor of History
A.B., Otterbein College;
M.A., Syracuse Univer-
sity; Ph.D., Ohio State
University.

CECIL B. ROSS, A.B.
Coach and Director of Athletics
A. B., West Virginia Wesleyan
College.



DAVID E. REEMSNYDER, M.A.
Assistant Professor of
Physical Education
B.S., West Virginia Wesleyan
College; M.A., Ohio State Uni-
versity.

MARGARET E. COVERT, M.ED.
Instructor in
Physical Education
B.S., West Virginia University;
M.Ed., University of Pitts-
burgh.



FLOYD N. SHAVER, M.A.
Alumni Secretary and Field
Representative
A.B., West Virginia Wesleyan
College; M.A., University of
Pittsburgh.



ORA D. CURRY, A.B.
Librarian
A.B., West Virginia Wesleyan
College.

WINNIE HATHAWAY, M.A.
Assistant Librarian
A.B., M.A., West Virginia
Wesleyan College.



MARIE D. BOETTE, B.S.
Associate Professor of Music
B.S., New York University.

EDGAR SORTON, B.S.
Instructor in Music
B.S., Massachusetts State Col-
lege.



(Below)

JACOB BOS, PH.D.
Professor of German and Latin
A.M., New York University; B.D., Drew University; Ph.D., University of Chicago.

RACHEL C. OGDEN, M.A.
Professor of Spanish and French
A.B., Allegheny College; M.A., West Virginia Wesleyan College; M.A., Columbia University.

RALPH C. BROWN, D.D.
Professor of Biblical Literature and Philosophy
A.B., West Virginia Wesleyan College; S.T.B., Boston University; D.D., West Virginia Wesleyan College.



NICHOLAS HYMA, SC.D.
Professor of Chemistry
B.S., Kalamazoo College; M.S., University of Chicago; Sc.D., West Virginia Wesleyan College.

JAMES E. JUDSON, PH.D.
Professor of Biology
B.S., University of Illinois; M.S., Ph.D., University of Wisconsin.

WILLIAM A. HALLAM, M.A.
Professor of Mathematics and Geography
B.S., Washington and Jefferson College; M.A., Johns Hopkins University.

(Above)

ROSCOE H. CARDER, M.A.
Assistant Professor of Business Administration
A.B., Bowling Green College of Commerce; A.M., University of Kentucky.

LETA SNODGRASS, M.A.
Professor of Fine Arts
A.B., M.A., West Virginia Wesleyan College.





GLADYS CRONEMEYER, M.A.
 Professor of Home Economics
 A.B., University of Kansas;
 M.A., Columbia University.

ETHEL M. RICKE, M.A.
 Instructor in Business
 Administration
 B.S., M.A., University of Iowa.



OTIS P. HENDERSHOT, Ph.D.
 Professor of Physics
 B.S., M.S., Syracuse University;
 Ph.D., Cornell University.

MAXWELL R. LEPPER, M. MUS.
 Instructor in Music
 B. Mus., Oberlin; M. Mus.,
 Cincinnati Conservatory of
 Music.

ANNIE FRANCES REED
 Secretary to the Dean

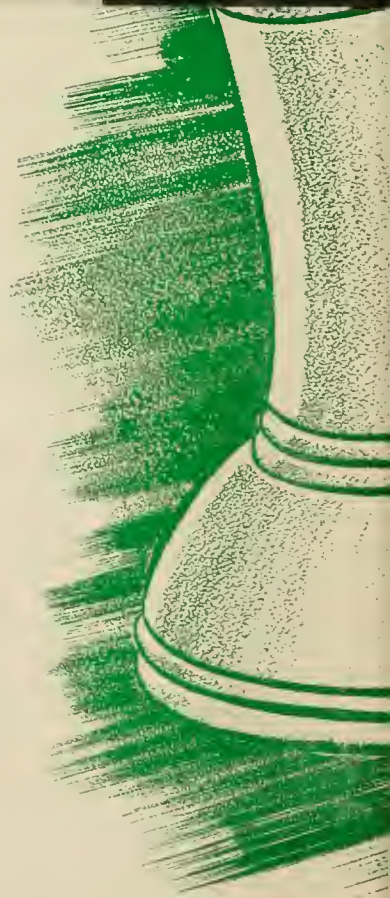
ARTHUR AYLESWORTH
 Treasurer of the College

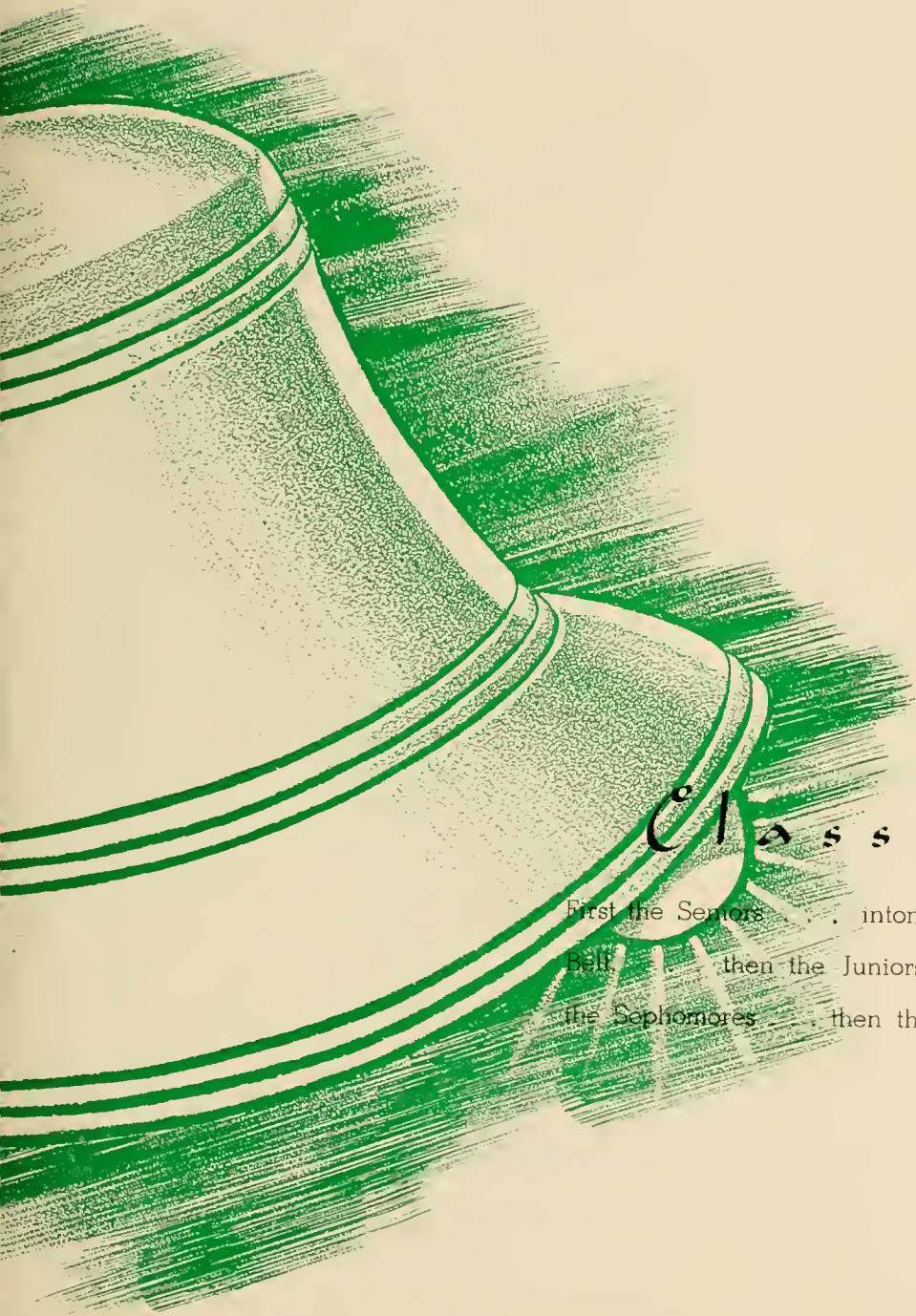
MARY GOULD
 Assistant Treasurer





Dean Gerwig, Senior President, braves the March blizzard with Bettie McQuiston, Secretary, and Muriel Kuhns, Treasurer. In the other pictures, fellow classmates are caught informally by the candid camera.





C l a s s e s

First the Seniors . . . intones the Old
Bell . . . then the Juniors . . . then
the Sophomores . . . then the Freshmen

1942

First row across

HAROLD DAVID ALMOND

Newark, N. J.

Lantern Club, Sec., '42; Nucleus Club, Treas., '42; Sigma Alpha Sigma, Pres., '42; Pharos, Circulation Manager, '42.

LOIS RUTH BARBE

Keyser

Future Teachers of America; Home Economics Club.

JAMES MARVIN BEER

Ivanhoe

Varsity Football; Olympic Club.

Second row across

HOWARD ALAN BENNETT

Lundy's Lane, Pa.

Sigma Eta Delta; International Relations Club; Student Volunteers; Nucleus Club; Allied Youth; Intramural Sports.

EVELYN JOAN BENNETT

Weston

Sigma Pi Delta; Y.W.C.A.

WILLA RUTH BROADWATER

Harrisville

Kappa Phi Omega, Chaplain, '42; Choir, Vice President, '42; Allied Youth, '41; Home Economics Club, '42.

Third row across

MARY JANE BOYLES

Charleston

Sigma Delta Chi, Social Chairman, '41, Pres., '42; Playshop; Choir; Haught Literary Society; Sigma Alpha Sigma; W. A. A.; Y.W.C.A.; House Board Representative, '40, '42, Sec., '41; F. T. A., Inter-Sorority, Sec., '42; Class Sec., '40, '41.

ELLEN LOU BROWN

Buckhannon

Sigma Delta Chi, Chaplain, '40; Pan-Hellenic Representative, '41; Class Sec., '39; Co-Editor Murrumontis, '41; Who's Who in American Colleges; Band; Playshop; Student Volunteers; Haught Literary Society, Vice Pres., '41, Pres., '42; F. T. A.; Intramural Sports; Pharos; Sigma Alpha Sigma; Home Economics Club; W. A. A.

RAYMOND JACK BURNER

Ivanhoe

Sigma Eta Delta, Vice Pres., '42; Lantern, Vice Pres., '42; Allied Youth, Treas., '42; Benzene Ring; Pi Kappa Delta; Debate; Murrumontis Staff, '41; Intramural Sports.

Fourth row across:

DELBERT JAMES COMBS

Lorentz

Ministerial Association; Sigma Alpha Sigma.

BETTY LEE CLAPSADDLE

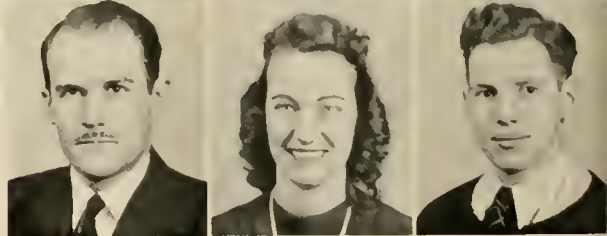
Parsons

Kappa Phi Omega, Soc. Chairman, '41, Pres., '42; Nucleus Club, Sec., '40, '41, '42; Agnes Howard Governing Board, Vice Pres., '41, '42; Olympic Club; W. A. A.; Benzene Ring; Haught Literary Society; F. T. A., Parliamentarian, '42; Intramurals; Inter-Sorority Council, Pres., '42.

ROBERT L. CHAMBERLAIN

Parkersburg

Band; Choir, Vice Pres., '40, Pres., '41; Benzene Ring, Treas., '41; Nucleus Club, Vice Pres., '41; Lantern; Student Council, '40; Intramural Sports; Who's Who In American Colleges.





SENIORS

Upper row across

ROSS MALCOLM EVANS

Glen Dale

Who's Who In American Colleges; Ministerial Association, Sec., '41, Pres., '42; Student Volunteers, Treas., '40, Pres., '41; Choir, Treas., '41; Allied Youth, Soc. Chairman, '42; Lantern; International Relations Club; Debate; Peace Group.

EVERETT DEAN GERWIG

Buckhannon

Sigma Eta Delta, Sec., '41, Soc. Chairman, '41; Class Pres., '41, '42; F. T. A., Vice Pres., '42; Lantern, Program Manager, '41, '42; International Relations Club; Intramural Sports; Murmurmontis Staff, '41, '42.

CLAUDE EARL GOODWIN

Buckhannon

Alpha Kappa Pi; Lantern; Intramural Sports.

CLARICE LENORE GORBY

Lumberport

Kappa Phi Omega; W. A. A., Y. W. C. A.; Sigma Alpha Sigma; Nucleus Club; Home Economics Club.

FRANK JESSE GRIFFIN

Buckhannon

Kappa Alpha, No. II, '40; Benzene Ring, Vice Pres., '40, '41, '42; Lantern; Intramural Sports.

Lower row across

MARY RACHEL GROVES

Canvas

Sigma Delta Chi; Olympic Club; Intramural Sports; Student Council, '40; W. A. A., Pres., '42.

CHARLES GRUVER

Wyoming, Pa.

Varsity Football.

SAMMY GWODEN

McKeesport, Pa.

Alpha Kappa Pi; Intramural Board, Treas., '40; Vice Pres. of Class, '41, '42; Varsity Football; Varsity Basketball.

JOHN JACOB HASSLER

Parkersburg

Kappa Alpha, No. V; Choir; Band; Orchestra; Pharos, Advertising Manager, '41, Business Manager, '42; Olympic Club; Cheerleader.

BETTY HELTZEL

Moorefield

Kappa Phi Omega; Choir; Potomac State Transfer; Intramurals.



UNPICTURED SENIORS

EVA BAILEY
Weston

ARNOLD BEACH
Horner

RICHARD DESHOE BOND
Rock Cave

FRANK WILLIAM BLAKE
Philippi

ELISE VIRGINIA BRANNON
Parcoal

MARY ELIZABETH CONNER
Charleston

THOMAS MERRELL CRAWFORD
Crawford

AUGUSTUS BERNARD DEAN
Buckhannon

FRED LECKIE DIXON
Mount Hope

JOHN WALTER FINCH
Leucadia, Calif.

GOLDA GOFF
Weston

DORA BELLE GROSE
Sago

VIRGINIA E. HASELDEN
Clarksburg

MAURICE CAMERON HOOVER
French Creek

Upper row across

CHARLES ELDRED HICKS

Buckhannon
Alpha Kappa Pi; Student Council,
'42; Intramural Sports.

NANCY HOVIS ELLSWORTH

Parkersburg
Sigma Delta Chi; Haught Literary
Society; Y. W. C. A.

ORPHA MILDRED JACKSON

Buckhannon
Sigma Pi Delta.

HARRISON E. S. KOPPE

Binghamton, N. Y.
Kappa Alpha, No. VI; Pi Kappa
Delta; Debate; Ministerial Asso-
ciation.

EDWARD PAUL KOSKO

Shinnston
Varsity Football, Basketball, Base-
ball.

Lower row across

MURIEL ELMA KUHN

Fairbank, Pa.
Kappa Phi Omega, Treas., '40, '41,
'42; Agnes Howard Governing Board,
Representative, '40, Pres., '42; Mur-
murmontis Business Manager, '41;
F. T. A. Sec., '41, '42; Intramural
Sports; Olympic Club; W. A. A.;
Haught Literary Society; Treas. of
Class, '42; Student Union Council;
Sigma Alpha Sigma; Who's Who In
American Colleges; Intramural
Board.

ELIZABETH RHODES LAW

Jane Lew
Sigma Delta Chi; Y. W. C. A.; W. A.
A.; Playshop; Choir; Who's Who In
American Colleges.

MARTHA VIRGINIA LAWSON

Charleston
Sigma Pi Delta, Pres., '41, '42; Choir;
Pharos Staff; Y. W. C. A.; Allied
Youth; Student Volunteers; W. A. A.;
Intramural Sports.

JOHN JACOB LINGER

Weston
Benzene Ring.

GEORGE ISAAC LOAR

Buckhannon
Ministerial Association.

First row across

VIRGINIA PEARL LONG

Clarksburg

Sigma Pi Delta; Choir; Y. W. C. A.; Student Volunteers; Allied Youth; Haight Literary Society; F. T. A.; Intramural Sports; W. A. A.

FLORA VIRGINIA McCOACH

Sistersville

Sigma Delta Chi; Benzene Ring; Nucleus Club; Sigma Alpha Sigma; F. T. A., Pres., '42; Y. W. C. A.; W. A. A.; Intramural Sports.

MARGARET H. McINTYRE

Pertersburg, Va.

Sigma Delta Chi; Intramural Sports; Southern Seminary Transfer.

BETTIE A. McQUISTON

Irwin, Pa.

Sigma Delta Chi, Vice Pres., '42; W. A. A.; Y. W. C. A.; Intramural Sports; Sec. of Class, '42; Keystone Club; Waynesburg College Transfer.

Second row across

DORTHY EVELYN McWHORTER

Jane Lew

Allied Youth, Pres., '40, '42, Vice Pres., '41; Student Volunteers; F. T. A.; Choir.

MARTHA MARTIN

Elkins

Kappa Phi Omega, Prep Master, '41.

THADDEUS M. MEREDITH

Shinnston

Kappa Alpha.

JACK LYNWOOD MOORE

Clarksburg

Alpha Kappa Pi; Varsity Football and Basketball.

Third row across

EDNA RUTH MOORE

Clarksburg

Kappa Phi Omega; Choir; Playshop.

HORACE HAYDEN MORGAN

Adrian

Kappa Alpha; F. T. A.; Intramural Sports.

WILLIAM BAILEY MORRISON

Sutton

Alpha Kappa Pi, Vice Pres., '41; Manager, Football and Basketball; Olympic Club.

REX VAUGHN NAYLOR

Buckhannon

Sigma Eta Delta; Manager, Varsity Tennis, '39, '40; Pharos, Feature Editor, '41; Student Council, '40; Lantern, Sec., '40; Sigma Alpha Sigma, Pres., '41; Murmumontis, Feature Editor, '42; Intramural Sports; Student Union Council; Who's Who In American Colleges.

Fourth row across

KENNETH ORR PHILLIPS

Buckhannon

Sigma Eta Delta, Pres., '42, Treas., '40, Soc. Chairman, '39; Band.

CHARLES POUNDSTONE

Buckhannon

Varsity Football.

ELMER A. RAUDMAN, JR.

Connellsville, Pa.

Kappa Alpha, No. IV, Soc. Chairman, '42; Benzene Ring; Lantern Club; Keystone Club.

MILTON UNDREL RAY

Cambridge, Md.

Kappa Alpha; Debate; Ministerial Association, Vice Pres., '42; Transfer Ferrum Jr. College.



First row across

FRANK THOMAS REED

Weston

Ministerial Association; F. T. A.;
Transfer from Beckley College.

MARION FRANCES REEDER

Buckhannon

Sigma Delta Chi; Pharos, Society
Editor, '41, News Editor, '42; Home
Economics Club, Vice Pres., '42.

LOIS LORAINNE REXROAD

Rock Cave

Sigma Pi Delta, Vice Pres., '42;
Olympic Club; Intramural Sports;
W. A. A.

VIRGINIA ELIZABETH RHODES

Spencer

Kappa Phi Omega; Choir; W. A. A.

Second row across

MILDRED V. ROSENMERKEL

Weston

Sigma Pi Delta; Sigma Alpha Sigma;
Y. W. C. A.; F. T. A.; Choir.

SARA ELIZABETH RUDASILL

Kingwood

Sigma Delta Chi; Y. W. C. A., Pres.,
'41; Sigma Alpha Sigma, Sec., '42;
W. A. A.; Choir; F. T. A.; Intra-
mural Sports; Transfer from Waynes-
burg College.

JAMES MARTIN SEAMON

Monessen, Pa.

Kappa Alpha, No VIII, '41, No. I,
'42; Pres. of Class, '40; Keystone
Club, Vice Pres., '42; Sigma Alpha
Sigma; Pi Kappa Delta, Sec., '40;
Benzene Ring; Pharos, News Editor,
'40, Editor, '41, Photographer, '42;
Murmurmontis Photographer, '42;
Intramural Sports.

BETTY JANE SHARPS

Dawson, Pa.

Kappa Phi Omega; Y. W. C. A.;
Keystone Club.

Third row across

BURL NOVIL SHAW

Buckhannon

Alpha Kappa Pi; Varsity Basketball;
Olympic Club; Lantern Club.

BETTY RAE SHUMAKER

Buckhannon

Sigma Delta Chi, Soc. Chairman, '40,
Treas., '41, Sec., '42; Playshop, Sec.,
'42; Alpha Psi Omega, Vice Pres., '42;
F. T. A.; Band Sponsor, '42; Pharos
Staff.

RONALD EUGENE SLEETH

Charleston

Kappa Alpha; Pres. of Class, '38;
Band, Drum Major; Choir; Playshop,
Pres., '42; Alpha Psi Omega; Sigma
Alpha Sigma; Student Council, Pres.,
'42; Intramural Sports; Who's Who
In American Colleges; Pharos Staff.

ANITA EVELYN STEWART

Smithville

Kappa Phi Omega, Soc. Chairman,
'42; Home Economics Club, Pres.,
'42; W. A. A.; Intramural Sports,
Y. W. C. A.; Class Representative,
Agnes Howard Governing Board, '39.

Fourth row across

CLYDE STANTON STEWART

Buckhannon

Varsity Football.

JOHN LELAND STRADER

Alexandria, Va.

Kappa Alpha, No. VI, '41, No. III,
'42; Benzene Ring; Nucleus Club;
Student Union Council; Lantern
Club, Pres., '40; Pharos, Copy Editor,
'41; Murmurmontis Co-Editor, '41;
Who's Who In American Colleges.

LILA PETT THURSTON

Parsons

Kappa Phi Omega; Home Economics
Club, Treas., '42; Choir; Pharos
Staff; Murmurmontis Staff; Play-
shop; F. T. A.

CHARLES BELA UHLAR

Wilkes-Barre, Pa.

Keystone Club, Governor, '42; Var-
sity Football.





Upper row across

LORAN ALEXANDER UMPLEBY
Salem

Sigma Eta Delta; Olympic Club, Pres., '42; Intramural Board; F. T. A.; International Relations Club; Intramural Sports; Lantern Club; Murmurmontis Staff.

KENNETH AVERY VICE
Duquesne, Pa.

Kappa Alpha; F. T. A.; Keystone Club; Intramural Sports; Playshop.

ENOCH WILLIAM WHITE, JR.
Jane Lew

Benzene Ring; Who's Who In American Colleges.

ISON TASKER WHITE, JR.
Buckhannon

Sigma Eta Delta; Choir.

RAY WOODROW WILSON

Buckhannon

Ministerial Association.

Lower row across

KATHLEEN NORRIS WILLIAMS
Buckhannon

MARY JOSEPHINE WOOFER
Jane Lew

Kappa Phi Omega; Home Economics Club.

ALEXANDER OLIVER WRAGG
Monongahela, Pa.

Benzene Ring; Varsity Football; Intramural Sports.

RACHEL G. ZICKEFOOSE
Buckhannon

Kappa Phi Omega, Vice Pres., '40; Alpha Psi Omega, Vice Pres., '41, Pres., '42; Playshop, Vice Pres., '42; Debate.

MARY LEWANA KOON
Weston

Kappa Phi Omega; Playshop; Alpha Psi Omega; Debate.

UNPICTURED SENIORS

FRANCES ORLEAN JOBE
Oak Hill

THERESA MARIE JOBE
Glen Jean

ERNEST GERALD KING
Camden

MARY ERNESTINE LAWSON
Weston

VINCENT LEGG, JR.
Charleston

CARLTON B. McWHORTER
Weston

VIRGIE THOMAS PHILLIPS
French Creek

GENEVA LUCILE POST
Buckhannon

GLEN SHINABERY
Buckeye

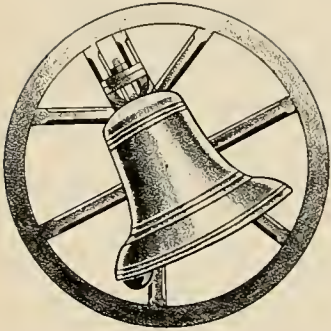
PHYLLIS ELIZABETH SIMS
Weston

FORREST STUMP
Buckhannon

GERNEY BUELL TETER
Weston

MARY ETHEL YOKUM
Shinnston

MARJORIE ALICE YOUNG
Buckhannon



Heralding the Juniors . . .



Kenneth Knox, Junior President, talks over class affairs with Frank Ellis, Treasurer, Cathryne Hardesty, Vice President, and Grace Brown, Secretary.

Versatile . . . Resolute . . . Challenging



Row one across

THOMAS ALFRED
Weston

ANNABELLE ALKIRE
Ireland

MARY ALLENDER
Troy

ELIZABETH BARLOW
Buckhannon

HELENA BORROR
Keyser

GRACE BROWN
Buckhannon

Row two across

CLARICE CERVENY
Plainfield, N. J.

MARY CHANNELL
Huttonsville

RACHEL COSGROVE
Buckhannon

MARTHA DEHENDARFER
Grafton

ARTHUR DENNIS
Exmore, Va.

RUTH DUNCAN
Gassaway

Third row across

FRANKLIN ELIS
Buckhannon

JANET ENNIS
Washington, D. C.

FRANK FEOLA
Buckhannon

LOIS FLANAGAN
Rainelle

GEORGE FOEHR
Portsmouth, Ohio

CECIL GABRIEL
Weston

Fourth row across

JEAN TUTTLE GLOD
Buckhannon

PAUL GLOD
Buckhannon

VIRGINIA GOSS
Hall

HELEN GOSS
Hall

MARGARET GREGORY
Jane Lew

CATHRYNE HARDESTY
Kingwood

Fifth row across

MARY ELIZABETH HARPER
Buckhannon

JEAN HEDDEN
Plainfield, N. J.

MASON HICKS
Buckhannon

ROBERT HOLT
Buckhannon

JEAN HORNOR
Weston

ORVILLE HUGHES
Ravenswood

Sixth row across

CRANDALL HUNT
Parkersburg

JOSEPH HUNTZ
Wyoming, Pa.

BILL JONES
Mannington

KATHLEEN JUDY
Circleville

CHARLOTTE KENNEDY
Crestwood, N. Y.

HAROLD KENNEY
Buckhannon

UNPICTURED JUNIORS

FRANCES COMSTOCK
Buckhannon

VALTA CURRY
Buckhannon

ELEANOR GILMORE
Wheeling

JAMES HINKLE
Buckhannon

JOHN HINZMAN
Buckhannon

JULIA MEZZATESTA
Syracuse, N. Y.

LOIS OURS
Buckhannon

JUNIOR NESTOR
Parsons

Row one

KENNETH KNOX
Huntington

WALTER KOHLHEIM
Lyndhurst, N. J.

SAMUEL KYLE
Clarksburg

JAMES LAW
Wheeling

RICHARD LEONARD
Grafton

GERTRUDE LINGER
Charleston

RUTH LOUDIN
Ripley

Row two

CLAUDINE LANHAM MCGINLEY
Pittsburgh, Pa.

FRANK MADDEN
Glen Dale

DAVID MARKER
Martins Ferry, Ohio

HARRISON MAHON
Mt. Clare

GENE MEEK
Greensburg, Pa.

JACK McDONALD
Mt. Hope

ANDREW PAVLINA
Triadelphia

Row three

CAROLYN PRINCE
McWhorter

QUENTIN QUICK
Buckhannon

ROBERT REGER
Morgantown

MELVIN RISINGER
Moundsville

ROBERTA ROBERTS
Buckhannon

JOSEPH ROHR
Weston

ELIZABETH ROHR
Alum Bridge

Row four

ROBERTO SANTANA
San Juan, Puerto Rico

JANE SHANNON
Buckhannon

HERBERT SHARP
Cairo

WILMA WARNER SHREVE
Buckhannon

JAMES SPESSARD
Harvey

JUNE TAMBLYN
Buckhannon

DONALD STEELE
Buckhannon

Row five

DOLLENA THOMAS
Clarksburg

JAMES THOMAS
Charleston

CURTIS THORNE
Pine Grove

IREENE TOLBERT
Wellsburg

PETER TOMLEY
Alexandria, Va.

RALPH TRAVIS
Buckhannon

DOROTHY TRIPPETT
Buckhannon

Row six

WILLIAM WAGGY
Buckhannon

HARRIET JANE WELLS
Huntington

HARRIETT WHETSELL
Elkins

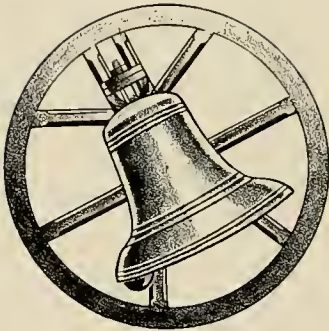
CARL WILFONG
Buckhannon

CHARLES ZUMBRUNNEN
Huntington

THOMAS CLAWSON
New Florence, Pa.

BETTY COTTON BARGER
Pittsburgh, Pa.





Serenading the Sophomores . . .



Bill Hudson, Sophomore President, pauses to talk over things with his fellow officers: Charles Post, Vice President; Barbara Marshall, Secretary; and Kay Tannehill, Treasurer.

Adroit . . . Facetious . . . Efficient



Row one

JOHN ALLOPENNA Brooklyn, N. Y.	OSCAR ANDEREGG Buckhannon	BETTY JANE ATKINS Valley Chapel	JEAN BAILEY Buckhannon
HESTER MAE BLACK Buckhannon	LORENCE BROWN Weston	RALPH BROWN Buckhannon	

Row two

IRENE COLE Buckhannon	LAURA COX Buckhannon	ALLEN CUTRIGHT Buckhannon	HELEN DARVES Clendenin
LUCILLE DEBAR Hamlin	MARGARET DEEDS Buckhannon	GERALD DEMARCO New York, N. Y.	

Row three

WILLIAM DOWNER Hamden, Conn.	GEORGE EDMISTON Buckhannon	BETTY ERICKSON Kenmore, N. Y.	JOANNA RUTH EVANS Blacksville
MARY RUTH EVANS Moundsville	DANNY FIDLER Arlington	EVELYN FOX Cass	

Row four

VANCE GAINER Richwood	JUANITA GEARY Clendenin	WILLIAM GLUVER Weston	FRED GRIGGS Weston
CARL GUTZWILLER Huntington	MYRTLE HAMMER French Creek	ROBERT HAMMOND Sparrowbush, N. Y.	

Row five

ELIZABETH HARMER Shinnston	FRED HIGHT Weston	MARTHA HILDRETH ROGERS Shinnston	EDNA MAE HILL Leet
BETTY HOFFMAN Buckhannon	WILLIAM HOLCOMB Sutton	FRANCES JEAN HORNER Turtle Creek, Pa.	

Row six

WILLIAM HUDSON McMechen	MARGUERITE HYMES Buckhannon	EUGENE JAMES West Liberty	ROY JARRETT Clendenin
ANNA KING Bergoo	JOHN KULNIS New Castle, Pa.	HARPER LAMBERT Parsons	

Row seven

MEREDITH LAMBERT Parsons	MARJORIE LAW Wheeling	OTTIS LINGER Buckhannon	PAUL LINGER Lorentz
JUNIOR LINGER Lorentz	FRANCES LYNCH Mt. Clare	MARY CHRISTIE MANN Renick	

UNPICTURED SOPHOMORES

LEONA BARNES Wilksburg, Pa.	VIRGINIA C. FOSTER Buckhannon	RALPH T. McCORD Buckhannon
ORA M. BRAKE Buckhannon	WAYNE HUFFMAN DUNDON	DAVID OLDAKER Buckhannon
PATRICIA CLENDENEN Buckhannon	ROSEMARY MCCRAY Clarksburg	FRED SAUTTER Montclair, N. J.
GAY FEATHER Frenchtown	THOMAS MCNEAL Hagerstown, Md.	LAURA FORD Buckhannon

Row one

BARBARA MARSHALL
Buckhannon

CHESTER MARSHALL
Buckhannon

MARY LOUISE MORRISON
Richwood

KENNETH NEWCOMB
Hall

VICTOR NOCERA
New Castle, Pa.

EDWARD O'HARA
Weston

HELEN ANN OSBORNE
Clendenin

Row two

DOROTHEA PIXLER
Holyoke, Mass.

CHARLES POST
Arlington, N. J.

BERNICE POWELL
Clarksburg

SHIRLEY PRINCE
McWhorter

ZOLA RAMSBURG
Jane Lew

MABEL REED
Cairo

CLIFFORD REEDER
Buckhannon

Row three

JOHN REID
Augusta, Maine

ROBERT ROBERTS
Buckhannon

VIRGINIA LEE RIDENOUR
Buckhannon

SOCRATES ROUSSOS
New Castle, Pa.

LOIS SCHOOLCRAFT
Buckhannon

IRENE SEE
Roanoke

HERBERT SHAFFER
Buckhannon

Row four

MARGARET SHARPS
Newburg

BETTY SIMONS
Clarksburg

JANIS SIMONS
Buckhannon

WILLIAM SIMPSON
Mt. Clare

PAUL SMALL
New Castle, Pa.

BARBARA SOMMERVILLE
Clarksburg

REVA STUMP
Volga

Row five

WILLIS SUMMER
Horner

CHARLES SWEENEY
Weston

KAY TANNEHILL
Mt. Pleasant, Pa.

SHIRLEY TAYLOR
Clarksburg

RUTH TENNEY
Buckhannon

EDWIN TOLBERT
Wellsburg

JOHN UHLAR
Wilkes-Barre, Pa.

Row six

WAYNE VANZANDT
Mt. Lebanon, Pa.

ROBERT WAGGY
Buckhannon

GLENNA GLEE WAGNER
Volga

JOHN WALDECK
Parkersburg

AUDRIA WARD
Volga

CREED WARD
Peel Tree

MARY ELIZABETH WHITTAKER
Connellsville, Pa.

Row seven

ROBERT WILKINSON
Mt. Lebanon, Pa.

JACQUELINE WILLIAMS
Buckhannon

LUCILE WILSON
Rock Cave

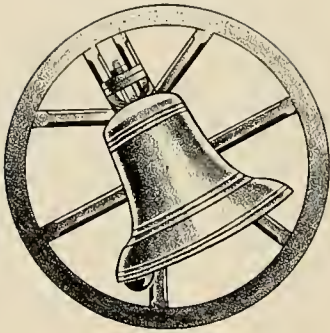
GLEN WILSON
Rock Cave

CLARENCE WINANS
Arlington, N. J.

JESSIE WITT
Manheim

HUGH ASHBY
Pensboro





Announcing the Freshmen . . .



Richard Young, Freshman President, stops to chat with Shirley Mitchell, Secretary and Treasurer, and Arthur Fleming, Vice President.

Abecedarian . . . Ingenious . . . Aspiring

Row one

LILLIAN ALKIRE
Jane Lew

EVELYN ALLMAN
Weston

FRANKLIN ATKINS
Sutton

BERTRAND ASH
Clarksburg

ADA RUTH BLEIGH
Weston

JAMES BOND
North Cambridge, Mass.

JACOB BOS
Buckhannon

Row two

HELEN JUNE BROWN
Clarksburg

JEROME BROWN
Buckhannon

RECTOR BROWN
Chloe

JAMES BUTCHER
Buckhannon

JENNINGS CAMP
Mt. Clare

BERNARD CARDER
Arbovale

JAYNE CARDER
Buckhannon

Row three

VIRGINIA LEE CASEY
Pine Grove

MARIE CHAPMAN
Crawford

JUNE CLARK
Scottdale, Pa.

PHYLLISMAE CLARK
Sewickley, Pa.

MARY COLVIN
Buckhannon

FRED COULTER
Pine Grove

MILES CUNNINGHAM
New Martinsville

Row four

ELIZABETH DAILEY
Buckhannon

LEWIS DANFORTH
Hempstead, N. Y.

SAMUEL DIXON
Mt. Hope

CHARLES DONLEY
Wellsburg

ARTHUR DUNN
Newark, N. J.

BONNIE EYE
Deer Run

LEO FISHER
Gassaway

Row five

DOROTHY FARNSWORTH
Buckhannon

ARTHUR FLEMING
Buckhannon

JOAN FRAME
Beverly

DORIS FREEMAN
Clarksburg

DAVID GABRIEL
Weston

NANCY GOODWIN
Buckhannon

EDWARD GOULD
Buckhannon

Row six

IDA BELLE GRIMM
Clarksburg

WILLIAM GROSE
Sago

ROBERT HAAS
Portsmouth, Ohio

CHARLES HARDMAN
Weston

GLORIA HARVEY
Buckhannon

RUTH HATHAWAY
Belington

JEAN HOLLOWAY
Morristown, N. J.

Row seven

EDWARD HOOVER
French Creek

LENORE HUBNER
Springdale, Pa.

DOROTHY JACKSON
Charleston

HELEN JEAN JACKSON
Shinnston

ALYCE JARVIS
Weston

URAL KELLISON
Rock Cave

RICHARD KENNEY
New Kensington, Pa.

UNPICTURED FRESHMEN

AMANDA LEE AMBROSE
Piedmont

HURLEY CURTIS
Weston

JOHN HUNTER
Madison

JEANNETA BEER
Buckhannon

DOROTHY DOAK
Wellsburg

RICHARD SNYDER
Bartow

WILLIAM BURR
Buckhannon

ELIZABETH EDMISTON
Buckhannon

GEORGE XENAKIS
Weston

FOREST BUSH
Cameron

HAROLD GODFREY
Parkersburg





Row one

MARY MIDA LAW Jane Lew	VERLIN LESURE Buckhannon	REUBEN LINGER Buckhannon	JAMES LOWTHER Park	LAWRENCE MARQUESS Beverly
DONALD MARTIN Buckhannon	SHIRLEY MITCHELL Brownsville, Pa.	MAXINE MOOSE Bridgeport	JEAN MULLER Brentwood, N. Y.	

Row two

JUNIUS MUSSER Park	JOHN MYERS Buckhannon	MAXINE McCLUNG Buckhannon	RICHARD McCONKEY Washington, D. C.
OLETA McMILLION Hillsboro	GAYLE McQUAIN Crawford	MARY LOUISE McWHORTER Weston	

Row three

ELDEN PERTZ Weston	RUTH PHILLIPS Buckhannon	ADA VIRGINIA POLING Philippi	JEANETT POLING Belington
JOAN PRITCHARD Dunmore	WILLIAM PUGH Gauley Bridge	RUTH REEDER Buckhannon	DONALD RESSEGUIE Wayresboro, Pa.

Row four

OTIS RAINES Adrian	DORIS RENROAD Buckhannon	CHARLES ROBERTS Buckhannon	GARFIELD SAGIE Buffalo, N. Y.
ANGELINE SAUNDERS Eccles	MABEL SEE Roanoke	MARY LEE SEITZ Jane Lew	ANNIE MAY SMITH French Creek

Row five

JOSEPHINE SOMMERVILLE Clarksburg	SARAH JANE SPARKS Indian Head, Pa.	HUGH SPENCER St. Marys	BETTY ANN STATHFES Buckhannon
WILLIAM STEMPLE Oakland, Md.	EDNA STOWERS Richwood	VIRGINIA STURM Clarksburg	LEE SUTTER Johnstown, Pa.

Row six

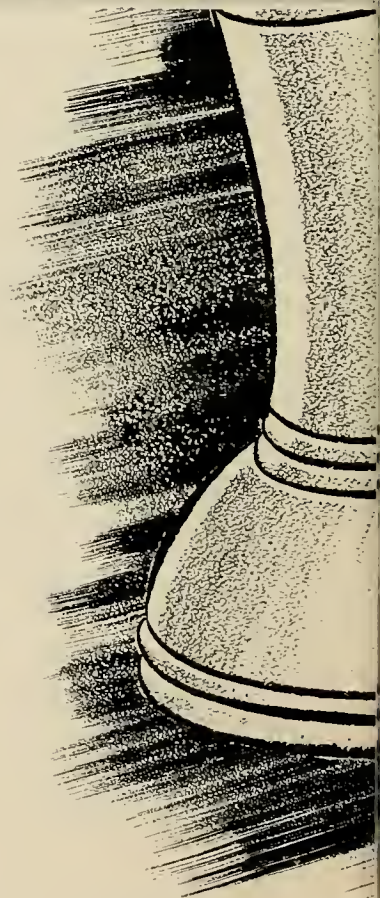
CLARENCE SPELLMAN Buckhannon	DONALD TAYLOR Buckhannon	LUCILLE TENNEY Buckhannon	ANNA JO THEIHERT Arnold, Pa.
PAUL THOMAS Charleston	ROBERTA TRAVIS Grafton	CLARA BELLE TUCKER Ravenswood	MARY FRANCES VAN GILDER Buckhannon

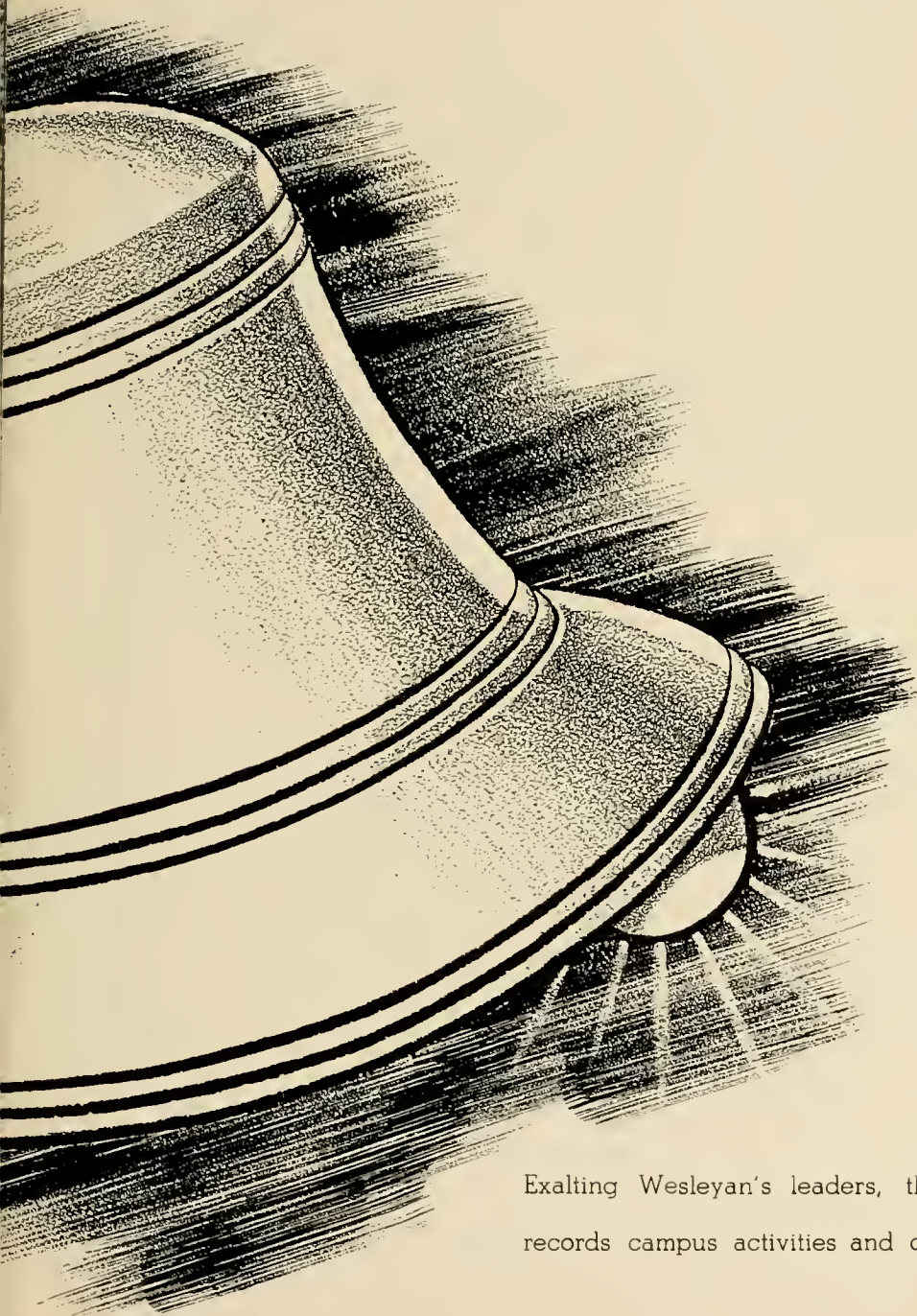
Row seven

MARGUERITE UNGER Tennerton	NORMAJEAN VILLERS Sistersville	JOANN WARD Peel Tree	ANNE VIRGINIA WELLS Huntington
BETTY WILLIAMS Buckhannon	GLEE WILLIAMS Bristol	NORMA WILLIAMS Buckhannon	RICHARD YOUNG Buckhannon



Ready for the football game are Ronald Sleeth, drum major, and Gloria Harvey, drum majorette. In the huddle are the band sponsors: Doris Freeman, Freshman; Janis Simons, Sophomore; Betty Rae Shumaker, Senior; Roberta Roberts, Junior.





Exalting Wesleyan's leaders, the Old Bell records campus activities and organizations.

The Old Bell Remembers

The Old Bell remembers a Homecoming parade . . . a football game with Bethany . . . the construction of a greenhouse . . . a Christmas party at the dorm . . . a basketball battle with Marshall . . . a big snow in March . . . dozens of other events of the 1942 College year. Here we have recorded them for you . . . in this . . . the thirty-ninth edition of the MURMUR-MONTIS.

1942



Left to right: Harper, Meek, Thomas, Hardesty.



Standing: Brown, Sommerville, Allender, Reeder, Leonard
 Seated, back: Casey, Thurston, Jackson, Mitchell, Villers
 Seated, front: Hardesty, Harper, Mee k

MURMURMONTIS

EDITORS

Mary Elizabeth Harper and Gene Meek

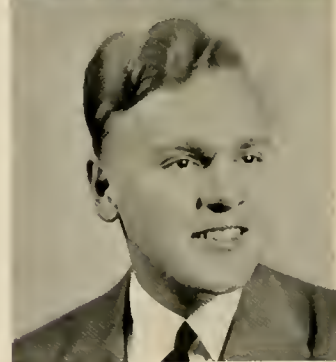
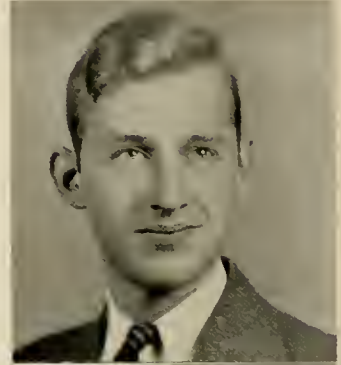
BUSINESS MANAGERS

Cathryne Hardesty and James Thomas

Clifford Reeder, Dean Gerwig, Mary Allender	Advertising
James Seamon	Photography
Jack McDonald	Faculty
Kenneth Knox, Ralph Brown, James Bond, Fred Hight	Sports
Harold Almond, Lois Flanagan, Helen June Brown, Betty Erickson, Marguerite Hymes, Jean Hedden, Herbert Sharp, Jean Hornor, Joan Sommerville, Lila Thurston, Peter Tomley, Virginia Lee Casey	Organizations
Shirley Mitchell, Dorothy Jackson	Classes
Rex Naylor	Features
Richard Leonard	Index
Harold N. Ahlgren	Faculty Adviser

WESLEYAN

Cecil Gabriel Editor-in-Chief
 John Hassler, Clifford Reeder . . . Business Managers
 Marion Frances Reeder News Editor
 Richard Leonard, Arthur Dunn . . . Sports Editors
 Mary Elizabeth Harper Society Editor
 Frank Madden Feature Editor
 Fred Coulter Copy Editor
 Mason Hicks Cartoonist
 James Seamon Photographer
 David Gabriel Advertising Manager
 Verlin Lesure Ass't. Advertising Manager
 Harold Almond Circulation Manager
 Lois Flanagan Ass't Circulation Manager
 Ronald Sleeth, Ross Evans, William Hudson, Martha
 Lawson, Ellen Lou Brown Columnists
 Frank Griffin, Lila Thurston, Lee Strader, Jack Mc-
 Donald, Dorothy Trippett, Shirley Mitchell,
 Virginia Lee Casey, Mary Ruth Evans, Angeline
 Saunders, Joan Sommerville, Sarah Jane Sparks,
 Helen June Brown, Ruth Loudin, Reva Stump,
 Normajeane Villers General Staff
 Harold N. Ahlgren Faculty Adviser



Top to Bottom: Gabriel,
 Hassler, Reeder.

PHAROS



Standing: Hudson, E. L. Brown, Mitchell, Griffin, Sommer-
ville, Reeder, H. J. Brown, Dunn, Villers, Leonard, Sparks
Seated, back: Thurston, Casey, Lawson, Flanagan, Almond,
Evans, Stump
Seated, front: Gabriel, Reeder, Harper

Who . . . What . . . When . . . Where . . . Why . . . ?

The answers to these questions about campus happenings, campus opinions, campus entertainment are provided throughout the year by a hard-working group of editors, reporters, copy-readers, columnists, and feature writers through the medium of The Wesleyan Pharos. This bi-weekly student newspaper, now in its forty-second year, proudly upholds its boast of being "An Accurate Account of Campus Activity--Complete and Unbiased".

Student Council

As the governing body of all Wesleyan students, this group stands at the center of every student activity. There are four Senior representatives, three Juniors, two Sophomores, and one Freshman. They are Ronald Sleeth, President; John Hassler, Dean Gerwig, Charles Hicks, Herbert Sharp, James Thomas, Clarice Cerveney, Ralph Brown, Jr., William Simpson, and Jerome Brown.

Agnes Howard Hall Governing Board

The governing board of Agnes Howard Hall is composed of eight girls elected by residents of the dormitory. These girls not only enforce rules and regulations, but also formulate plans for parties and receptions. Members are: Muriel Kuhns, President; Betty Clapsaddle, Vice President; Cathryne Hardesty, Secretary; Mary Elizabeth Whitaker, Treasurer; Mary Jane Boyles, Jean Hornor, Mary Ruth Evans, and Helen Jean Jackson.

Student Union

A Wesleyan Student Union was organized this year and functions under the guidance of a council of nine members, representing each fraternity, each sorority, and the non-organized students.

The purposes of the Wesleyan Student Union are to unify student groups on the campus; to provide a recreation center for student life; to promote student social life on the campus; to provide a lodge as a common center for gatherings of students and visiting alumni; and to foster college spirit. Officers are: Nancy Goodwin, President; Jack McDonald, Executive Secretary; Kathleen Judy, Corresponding Secretary; Betty Williams, Comptroller.



STUDENT COUNCIL

Standing: Thomas, Hicks, Sharp,
Simpson
Seated: Sleeth, Cerveny, Gerwig,
Hassler
Unpictured: R. C. Brown, J. Brown



AGNES HOWARD HALL GOVERNING BOARD

Standing: Jackson, Evans, Alkire,
Boyles
Seated: Clapsaddle, Kuhns, Har-
desty, Whittaker
Unpictured: Jean Horner



STUDENT UNION COUNCIL

Standing: McDonald, Thorne, Nay-
lor, Hicks
Seated: Williams, Goodwin, Judy
Unpictured: Kuhns, Strader

International Relations Club

In the fall of 1931, under the direction of Dr. Glauner, the International Relations Club was founded. Sponsored by the Carnegie Endowment for International Peace, members meet to discuss world affairs from an unbiased and objective view and to study the underlying principles of international conduct making for world peace. The club has had the privilege of hearing many well-known lecturers on international affairs. The Carnegie Endowment regularly sends a Fortnightly summary of international events to the club. Officers are: Andrew Pavlina, President; Allen Cutright, Vice President; Jack McDonald, Secretary-Treasurer.

Pan-American Chain

Pan-American Chain was first founded by a young man attending William and Mary College for the purpose of creating and maintaining friendly relations between the Americas. It represents the strong link of friendship between the Americas today.

The local chapter was founded by Mrs. Rachel Ogden, an authority on South American affairs. The organization is comprised chiefly of students studying Spanish, the language of the Central and South American countries. Officers are: Samuel Kyle, President; Richard Leonard, Vice President; William Simpson, Secretary-Treasurer; Mrs. Rachel Ogden, Sponsor.

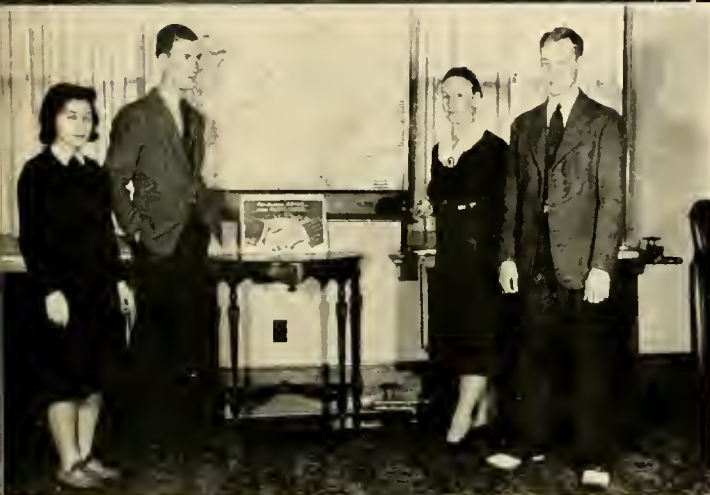
Haught Literary Society

Named in honor of Dr. Thomas W. Haught, retired member of the faculty, the Haught Literary Society is composed of sixteen girls interested in the arts. Its purpose is to further interest in and create an added desire for good literature. One of the year's projects was to purchase books which were read by the members and then given to the library. Officers are Ellen Lou Brown, President; Virginia Long, Vice President; Cathryne Hardesty, Secretary-Treasurer.



INTERNATIONAL RELATIONS

Standing: Marquess, Uhlar, Evans, Deneen, Cutright, Ashby, McDonald, Burner, Sleeth, Bennett, Gerwig, Umpleby, Santana, Cerveny
 Seated: Whetsell, Barnes, Mezzatesta, Pavlina, Vice, Sommerville, Dr. Glauner, Hedden, Pixler, Boyles, Meek



PAN-AMERICAN CHAIN

Standing: Mezzatesta, Kyle, Mrs. Ogden, Simpson
 Unpictured: Leonard, E. Tolbert, Holt



HAUGHT LITERARY SOCIETY

Standing: McGinley, Wells, Cerveny, Boyles, Kuhns, Hedden
 Seated: Loudin, Barger, Hardesty, Ellsworth, Clapsaddle, Whittaker, Brown, Mezzatesta
 Unpictured: Hoffman, Long, Hymes, M. R. Evans, Ennis

BETTY LAMP CLUB

Back row: Poling, Harper, Brown, Shannon, Hymes, Atkins, Miss Cronemeyer, Barbe, Sharps, Reed, Rexroad, Meek, Horner, Hammer
 Middle row: Mann, Gorby, Eye, Casey, Thurston, Rohr, Woolfer, Broadwater, Duncan, Cox, Sparks
 Front row: Stathers, Flanagan, Travis, Alkire, Stewart, Channell, B. Williams, Lynch
 Unpictured: Borrer, Shreve, G. Williams, Trippett, Carder, Doak, Geary, Reeder, Darves, Marshall, Harmer



BENZENE RING

Standing: Chamberlain, Glover, Sharp, Waggy, Holcomb, Griffin, Lambert, Fidler, Burner, O'Hara, Zumbrennen, Seamon, J. Linger, Wragg, Knox, Griggs, Sweeney, R. Brown, Cox, Debar, Marshall, McCoach, Loudin, L. Brown, Roberts, Judy, Allopenna, McDonald, Madden, Hight, Dr. Hyma
 Unpictured: Barlow, Beer, Gabriel, Kenney, Prince, Strader, Tamblын, Thorre, White, Clapsaddle, Horner, Hymes, Huffman



NUCLEUS CLUB

Back row: Curtis, Zumbrennen, McDonald, Dr. Judson, Loudin, Cosgrove, Whittaker, Fleming, Wilson
 Middle row: McCoach, Gorby, Flanagan, Hammer, Morrison
 Front row: Almond, Kohlheim, Chamberlain
 Unpictured: Clapsaddle, Strader, King, E. White



Betty Lamp Club

The Betty Lamp Club was organized in 1936 to encourage interest in home arts. Its members are students majoring and minoring in home economics.

Two meetings are held every month. The first part of the hour is devoted to a program and the latter part to a social time. The theme for this year has been National Defense.

A demonstration cottage was started this year for the use of the department. The cottage, a five-room brick building is located just off the campus on Barbour Street. Officers of the club are: Anita Stewart, President; Marion Frances Reeder, Vice President; Ruth Broadwater, Secretary; Lila Thurston, Treasurer; Miss Gladys Cronemeyer, Faculty Adviser.

Benzene Ring

Carbon tetrachloride and potassium silicate are no strangers to Benzene Ring, an honorary society of chemistry students. One of the most active groups on the campus, the members by no means confine themselves to the laboratory, but are diligent in sponsoring many college programs.

A highlight of the year is "Wesleyan On Parade," a variety show always keenly anticipated by the student body. Proceeds from performances are used for college improvements. Chief among these has been the installation of lightproof shades for the auditorium. Each spring the Benzene Ring crowns a Camphor King or Queen following the camphor synthesis experiment. Dr. Nicholas Hyma is faculty sponsor. Officers are: Kenneth Knox, President; Frank Griffin, Vice President; Robert Chamberlain, Treasurer; Ruth Loudin, Secretary.

Nucleus Club

In February, 1936, a group of students particularly interested in biology, met together and formed the Nucleus Club. This group of "searchers after science" has been an active force in campus activities since that time.

This year, the club's project was the construction and care of a modern greenhouse adjacent to the Science Hall. Besides gaining valuable experience and botanical knowledge, the members grow flowers which are sold at small cost. Officers are: Walter Kohlheim, President; Robert Chamberlain, Vice President; Betty Clapsaddle, Secretary-Treasurer; and Harold Almond, Financial Secretary for the greenhouse project. The club's sponsor is Dr. J. E. Judson.

Sigma Alpha Sigma

Sigma Alpha Sigma, founded in May 1933, is Wesleyan's honorary scholastic society. The organization includes all Wesleyan students who have attained general honors for three semesters.

Sigma Alpha Sigma consists of two divisions; the Alpha or men's division; and the Beta, or women's division. The organization's aim is to promote scholarship and to further the cultural education of all students on the campus. President of the Beta division is Grace Brown; Harold Almond is President of the Alpha division; Sara Rudasill is Secretary-Treasurer of both groups.

Future Teachers of America

Future Teachers of America was organized on our campus in 1940. It is an affiliate of the National Educational Association and of the State Educational Association. The local chapter was issued its charter January 31, 1941.

This chapter is known as the Morris P. Shawkey chapter named in honor of the late Morris P. Shawkey, once state superintendent of schools, president of Marshall College, and formerly a teacher at Wesleyan.

The purpose of this organization is to induct teachers-in-training into the organization of their profession before entering the teaching field and to develop professional mindedness in our future teachers.

The organization sponsors annually a conference dealing with some problem of the educational profession. Officers are: Virginia McCoach, President; Dean Gerwig, Vice President; Muriel Kuhns, Secretary and Treasurer. Dr. A. A. Schoolcraft and Dr. W. A. Saucier are faculty advisers.



SIGMA ALPHA SIGMA

Standing: White, Burner, Combs, Seamon
 Middle row: Barger, Sleeth, Hardesty, Almond, Cosgrove, McCoach, Rudasill
 First row: Wells, Boyles
 Unpictured: Gorby, G. Brown, Rosenmerkel, E. L. Brown, Pavlina, Kyle, Naylor, Kohlheim, McDonald, Thorne, Cole, M. R. Evans, Horner, Hymes, Hedden, Kuhns, Linger, Roberts, Lambert, Post



FUTURE TEACHERS OF AMERICA

Standing: Thomas, Vice, Koon, Brown, Evans, Rosenmerkel, Boyles, Gerwig, Reed
 Middle row: Downer, Shumaker, Rudasill, McWhorter, McCoach, Morgan, Barbe, McGinley
 Front row: Borrer, Flanagan, Powell, Schoolcraft, Clapsaddle, Horner
 Unpictured: Ramsburg, Kohlheim, Kuhns, Thorne, Umpleby, Holt, Long

ALPHA PSI OMEGA

Back row: Tomley, Sleeth
 Front row: Shumaker, Mrs. Neil,
 Koon, Zickefoose



PLAYSHOP

Back row: Whetsell, Sharp, Koon,
 Tomley, Barlow, Curry, Barger,
 Cosgrove, Madden, Hymes, Sleeth,
 Rhodes, Risinger, Winans
 Middle row: Meek, Shumaker, Mrs.
 Neil, Zickefoose
 Front row: Hardesty, Bailey, Brown,
 Williams
 Unpictured: Boyles, White, Moore,
 McDonald, Reeder, Waldeck, Os-
 borne, Hughes



PI KAPPA DELTA AND DEBATE

Back row: Seamon, Cutright, Burn-
 er, Kyle, Tomley, Prof. Ahlgren
 Front row: Koon, Cerveny, Cos-
 grove, Jackson
 Unpictured: McDonald, Ray



Alpha Psi Omega

The Alpha Rho cast of Alpha Psi Omega was established at Wesleyan College on May 28, 1930. Alpha Psi Omega is one of the largest of the national dramatic fraternities. There are eighty-two casts in colleges and universities of the United States and Canada.

Being an honorary fraternity, membership in Alpha Psi Omega is open to a select group. Participation in at least four major plays and the invitation and approval of all members are the primary qualifications for those who wish to join. Officers are: Rachel Zickefoose, President; Betty Rae Shumaker, Vice President; Ronald Sleeth, Secretary-Treasurer. Mrs. C. Edmund Neil is faculty adviser.

Playshop

The Playshop is the oldest organization on Wesleyan's campus. Since it was first founded it has given student actors, actresses, and directors an opportunity to display their talent. From two to four one-act plays are presented monthly - all coached by student directors. A major play of three acts is also presented each semester followed by an evening of one-act plays in the spring. Members participate in the annual West Virginia Intercollegiate Speech Festival.

The Playshop is open to all students who are interested in theatricals and who are willing to work off four apprenticeships. Officers are Ronald Sleeth, President; Rachel Zickefoose, Vice President; Betty Rae Shumaker, Secretary-Treasurer; Mrs. C. Edmund Neil, Faculty Adviser.

Pi Kappa Delta

West Virginia Alpha Chapter of Pi Kappa Delta, an honorary forensic fraternity, was installed at Wesleyan by national officers of the organization in May, 1928. Membership is restricted to students who have participated in five intercollegiate debates.

Promotion and encouragement of forensic endeavor is the purpose of this fraternity, and the year's program includes many debates with colleges in and out of the state and participation in the West Virginia Intercollegiate Speech Festival. Officers are Sam Kyle, President; Clarice Cerveny, Vice President; Rachel Cosgrove, Secretary-Treasurer. Harold N. Ahlgren and Dr. G. L. Glauner are the faculty advisers.



Back row: Risinger, Winans, Ashby, Gainer, Sleeth, J. Thomas, Chamberlain, Di Pollito, I. White, Gutzwiller, J. Brown, D. Taylor, G. Wilson.

Fourth row: E. James, Fidler, R. Evans, Zumbunnen, C. Marshall, Knox, Danforth, Thorne, Hammond, Cunningham, D. Gabriel, C. Gabriel, Leonard, Stemple, Madden

Third row: Dailey, A. V. Wells, Rudasill, Powell, Doak, Hardesty, Lawson, Debar, Casey, M. L. McWhorter, Allman, G. Linger, Barlow, R. Roberts, G. Brown, Harmer, M. M. Law, H. J. Brown, M. Hammer

Second row: Tamblin, Ridenour, Mitchell, I. Tolbert, B. Sommerville, Theibert, Rhodes, Loudin, Tucker, Cox, Hornor, Holloway, Erickson, M. R. Evans, Fixler, I. See, Fisher, J. Carder, J. Sommerville, Villers

First row: Bennett, Moose, Barger, F. J. Horner, Hoffman, B. Marshall, Rosenmerkel, H. J. Wells, Long, Boette, E. Law, L. M. Wilfong, Curry, H. J. Jackson, Jarvis, D. McWhorter, G. Wagner, Lynch, Broadwater

Unpictured: Ford, Sparks, Clark, Geary, Bleigh, Godfrey, Roberts

A CAPPELLA CHOIR

Under the direction of Miss Marie Boette, the Wesleyan Choir has given some excellent performances this year, the first one being Mendelssohn's, "Elijah" which was sung at Thanksgiving and Handel's famed oratorio, the "Messiah", given at Christmas. The combined offerings from these two performances were used to help buy chimes for the tower

This spring the choir made a trip through the southern part of the state. This tour is an annual event for selected choir members.

At the first meeting of the choir in the fall officers elected were: President, Robert Chamberlain; Vice President, Ruth Broadwater; Secretary, Betty Cotton Barger; Treasurer, Ross Evans.

BAND

Down the street they come, led by their high-stepping drum major and drum majorette. They're the Wesleyan bandsmen, in evidence in college and community festivities, at intercollegiate games, and on the concert stage. The Wesleyan band is an established campus organization with a varied repertoire of marches, novelty numbers, and classical selections.

Prof. Edgar Sorton is conductor, and Ronald Sleeth served as student director this year. At football games and other outdoor events, the twirler, Gloria Harvey, and the class band sponsors lend color and verve to the musical scene. Sponsors the past year were Betty Rae Shumaker, senior; Roberta Roberts, junior; Janis Simons, sophomore; and Doris Freeman, freshman.

ORCHESTRA

The curtain rises. The lights are lowered. The baton is raised, followed by the downbeat. Another performance by the Wesleyan orchestra, under the direction of Prof. Edgar Sorton, has begun.

Throughout the college year the orchestra makes many public appearances, either in concerts given by the music department or in programs sponsored by other campus groups. The string ensemble attained new perfection this year, adding emphasis to the string section. Special study is made of standard overtures, operatic transcriptions, and symphonic works.



Standing: L. Fisher, G. Brown, Hassler, C. Gabriel, Sutter, J. Brown, Sorton, Hoffman, Sleeth.

Seated: Leonard, Villers, J. Thomas, Taylor, Clawson, M. Linger, Gainer, Frame, Doak, D. Gabriel, Atkins, H. Lambert, D. Martin, R. Linger, Hunt.

Unpictured: Cutright, Debar, Knox, Zumbrunnen, Dixon.



Standing: I. Tolbert, Fisher, J. Brown, Sutter, Sorton, C. Gabriel, Hoffman.

Seated: Powell, I. Cole, B. Rohr, J. Thomas, Hassler, Leonard, Clawson, Doak, D. Taylor, Gainer, D. Gabriel, Hunt, D. Martin.

Unpictured: E. Tolbert, G. Brown, Frame.

**MINISTERIAL
ASSOCIATION**

Standing: Deneen, Post, Ashby, Combs, Resseguie, Gainer, J. Reed, Hammond, Summers, McCord, Hudson, Hunt, Spellman, Winans, Risinger

Seated: Dennis, Hedden, F. Reed, Tucker, Gutzwiller, Sommerville, Evans, King

Unpictured: Blake, Loar, Ray, R. Wilson, Mahon, Feather, O. Linger, Bond, Marquess, Raines, Coulter

Y. W. C. A.

Back row: Taylor, H. Jackson, Seitz, Goodwin, Muller, Stump, Tannehill, Sharps, M. See, Smith, Lynch, Cosgrove, Cox, Casey, Grimm, Barger, Loudin, McGinley, Tucker, Harmer, Osborne, Evans, Alkire, Erickson, Eye, Allman

Third row: Duncan, Atkins, Law, Channell, King, Mrs. Ogden, B. Sommerville, Flanagan, Debar, I. See, Horner

Second row: Cole, Theibert, Hubner, G. Williams, Fisher, D. Jackson, Bennett, Rudasill

Front row: Sparks, Hammer, Clark, Villers, Meeke, Mitchell, Whetsell, Cerveny, Hardesty

Unpictured: Pixler, Judy, Lawson, McQuiston, Boyles, Barnes, McCoach, Ellsworth, Gorby, Hedden, Whittaker, Morrison, H. J. Brown, Frame, Freeman, Hornor, M. M. Law, Moose, Pritchard, J. Sommerville, Sturm, Carder, Marshall, Rosenmerkel, Tolbert, B. Williams, Saunders

LANTERN CLUB

Standing: Naylor, Resseguie, Madden, Hudson, Cutright, Almond

Seated: Knox, Fidler, Brown, McDonald, Gerwig, Steele, Kenney, Burner, Musser

Unpictured: Zumbrunnen, Risinger, Gutzwiller, P. Linger, Roberts, Waldeck, J. Linger, Thomas, Lowther



Ministerial Association

The Wesleyan Ministerial Association was founded as an organization composed of those who were candidates for the ministerial profession. In 1939, the group broadened to take in those preparing for all types of religious education.

Its purpose is to provide inspiration, fellowship and instruction for the group as well as to help to meet the religious needs of the campus. The officers are: President, Ross Evans; Vice President, Milton Ray; Secretary-Treasurer, Barbara Sommerville; Chaplain, Robert Hammond.

Y. W. C. A.

Members of the Young Women's Christian Association are interested in the development of Christian comradeship and the advancement of the moral, intellectual, and spiritual outlook of Wesleyan's young women.

The main project of the year was cooperating with the Lantern Club to produce an all-campus movie of Wesleyan. The program for the year is so arranged that each person will develop a deeper spiritual and social life. Officers are: President, Lois Flanagan; Vice President, Barbara Sommerville; Secretary, Lucille Debar; Treasurer, Irene Cole.

Lantern Club

The Lantern Club replaced the Y. M. C. A. in 1937. It was founded to promote fellowship, to foster religious relationships, and to provide all possible means to aid the development of a well-rounded cultural life.

The Lantern's main project of the year is a technicolor film which depicts the life of the students in the class room, the laboratory, and in various social activities. It is hoped that the film will show to prospective college students the advantages of attending Wesleyan College for four years. Officers are: President, Ralph Brown; Vice President, Jack Burner; Treasurer, Allen Cutright; Secretary, Rex Naylor; Chaplain, Melvin Risinger.

Allied Youth

A national organization, Allied Youth has its only chapter in West Virginia at Wesleyan. The purpose of this group is to show that temperance among men and women on the campus does not prevent wholesome fun and activities. A social evening, at which this principle is exemplified, is held once a month.

One of the projects for the year was to aid in the Red Cross fund. Officers are: Dorthy McWhorter, President; Lois Flanagan, Vice President; Carolyn Prince, Secretary; Jack Burner, Treasurer; H. G. Steele, Sponsor.

Student Volunteers

The Student Volunteers is a co-educational organization for the purpose of furthering the Christian relationship among the students on our campus. They are largely interested in Christian missionary work off the campus as well as on. Every year in collaboration with the other Christian organizations on the campus, the Student Volunteers help the unfortunate in the local community at Christmas, Easter, and Thanksgiving. Any student interested in Christian work is cordially invited to join. Officers are: President, Julia Mezzatesta; Secretary, Barbara Sommerville; Treasurer, Robert Hammond; Social Chairman, Hugh Ashby; Student Councilor, Ross Evans; Deputation Chairman, Anna King.

ALLIED YOUTH

Standing: Deneen, Summers, Flanagan, Ashby, M. L. McWhorter, Burner, Evans
Middle row: Lynch, Powell, D. McWhorter, Tucker
Front row: Sparks, Broadwater
Unpictured: Gregory, S. Prince, Cosgrove, McDonald, Thorne, H. Bennett, M. Lawson, Ramsburg, De-bendarfer, Long, C. Prince



STUDENT VOLUNTEERS

Standing: Smith, Eye, Allman, Prince, Gregory, Cosgrove, Ashby, Loudin, Deneen, Tucker, McWhorter
Middle row: Sommerville, Mezzatesta, Hammond, Mrs. Ogden
Front row: Flanagan, Casey, King, Barnes





KEYSTONE CLUB

Back row: Shaver, Nocera, Roussos, Clawson, C. Uhlar, Raudman, Kulnis, Huntz, Resseguie
 Middle row: Seamon, P. Clark, Barnes, Tannehill, Whitaker, J. Clark, Meek, Mitchell
 Seated: Sparks, Hubner, Theibert, Horner
 Unpictured: Bennett, Gruver, Gwosden, Shirts, Vice, Wragg, Small, J. Uhlar, Van Zandt, Wilkinson, Kenney, Sutter



PANHANDLE CLUB

Left to right: R. Evans, McGinley, M. R. Evans, Risinger, Hudson, Barger, M. Law
 Unpictured: Gilmore, Madden, Pavlina, I. Tolbert, E. Tolbert, Donley, Doak, Bush, J. Law

Keystone Club

The Keystone Club is an organization of students from the state of Pennsylvania who meet informally for dinners and a social good time. Members act as ambassadors of the college on their trips back home, telling young people about the advantages offered at Wesleyan. Graduates of more than thirty high schools in Pennsylvania are represented among the membership. Officers are Charles Uhlar, Governor; James Seamon, Lieutenant Governor; Mary Elizabeth Whittaker, Secretary of State; Charles Gruver, Chief of State Police. Floyd N. Shaver is the club's sponsor.

Panhandle Club

This organization was formed during Christmas vacation, 1939, at a dinner given by Mr. and Mrs. Clyde O. Law at the Fort Henry Club in Wheeling. All students whose homes are in Marshall, Ohio, Hancock, and Brook Counties are eligible for membership, and for this reason the club bears the name of "Panhandle," referring to that section in the northern part of the state. The purpose of the club is to promote Wesleyan among high school students of West Virginia's Northern Panhandle.



Glenn Miller

Proclaims His Choice of . . .

GLENN MILLER
ORCHESTRA

March 11, 1942

Miss Gene Mack
Miss Mary E. Lisabet, Warner
Jett Virginia Bealeven Collins
Buckannon, West Virginia
Dear Miss Warner:

The eight pictures you submitted to me were all so very lovely, but it was too much for me and for one man to choose the four best. Therefore, I was forced to call in the boys in the band to have their help make my selection.

We have checked the backs of the pictures identifying our choice.

Thank you for all the swell things you say about our music, and, of course, not forgetting the blue for Chesterfield. I hope your annual, The Intimate, is a success, and, keep listening.

Sincerely,


Glenn Miller

27:89

Wesleyan's Beauties

Kay Tannehill







Jeanett Poling



Jean Bailey

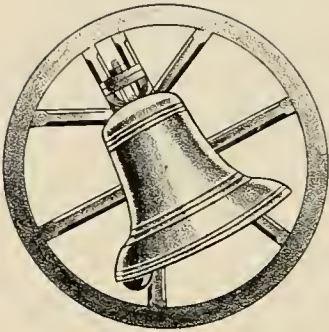






Jean Holloway





In Praise of the Greeks . . .



Phillips, Stump, McQuiston, Reger, F. J. Horner, A. Stewart
B. Williams

Warm-Hearted . . . Loyal . . . Cooperative

Sigma Delta Chi

OFFICERS

Mary Jane Boyles	President
Bettie McQuiston	Vice President
Betty Rae Shumaker	Secretary
Harriet Jane Wells	Treasurer
Gene Meek	
Harriett Whetsell	Social Chairmen

The Sigma Delta Chi sorority was founded in 1921, the first organization of its type on Wesleyan's campus. The sorority colors are orchid and silver, and the flower is the violet. Members: Mary Jane Boyles, Elizabeth Barlow, Jean Bailey, Betty Cotton Barger, Ellen Lou Brown, Grace Brown, Clarice Cerveney, Valta Curry, Helen Darves, Margaret Deeds, Nancy Hovis Ellsworth, Laura Ford, Juanita Geary, Rachel Groves, Elizabeth Harmer, Cathryne Hardesty, Betty Hoffman, Marguerite Hymes, Elizabeth Law, Gertrude Linger, Margaret McIntyre, Bettie McQuiston, Virginia McCoach, Claudine Lanham McGinley, Barbara Marshall, Gene Meek, Helen Ann Osborne, Marion Frances Reeder, Virginia Lee Ridenour, Roberta Roberts, Sara Rudasill, Jane Shannon, Betty Rae Shumaker, Lois Schoolcraft, Janis Simons, June Tamblyn, Irene Tolbert, Kay Tannehill, Shirley Taylor, Harriet Jane Wells, Harriett Whetsell, Mary Elizabeth Whittaker, Dorothy Doak, Doris Freeman, Evelyn Fox, Mary Mida Law, Nancy Goodwin, Jean Holloway, Alyce Jarvis, Joan Pritchard, Ruth Reeder, Betty Ann Stathers, Shirley Mitchell, Helen Jean Jackson, Normajean Villers, Anna Virginia Wells. Pledges: Elizabeth Edmiston, Glee Williams, June Clark, Janet Ennis, Jacqueline Williams

Sorority Mother	Mrs. H. D. Clark
Faculty Adviser	Miss Margaret E. Covert

PATRONS and PATRONESES

Dr. and Mrs. L. H. Chrisman
Dr. and Mrs. G. L. Glauner
Prof. and Mrs. W. A. Hallam



Row one: Boyles, McQuiston,
Shumaker, Wells, Meek,
Whetsell

Row two: Hoffman, Bailey,
Barger, Barlow, G. Brown,
E. L. Brown

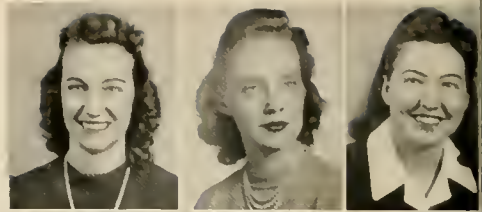
Row three: Cerveny, Darves,
Deeds, Geary, Groves, Har-
mer, Ellsworth

Row four: Hardesty, Hymes,
Law, Linger, McGinley, Mc-
Coach, McIntyre

Row five: Marshall, Osborne,
Reeder, Ridenour, Roberts,
Rudasill, Schoolcraft

Row six: Shannon, Simons,
Tamblyn, Tannehill, Taylor,
Tolbert, Whittaker

Row one: Clapsaddle, Harper,
Atkins



Row two: Kuhns, Stewart,
Alkire



Row three: Broadwater, Clendenen,
Duncan



Row four: Evans, Gorby,
Heltzel



Row five: Koon, Martin,
Moore



Row six: Ramsburg, Sharps,
Thomas



Row seven: Thurston, Woolter,
Zickefoose



Kappa Phi Omega

OFFICERS

Betty Lee Clapsaddle	President
Mary Elizabeth Harper	Vice President
Betty Jane Atkins	Secretary
Muriel Kuhns	Treasurer
Anita Stewart	Social Chairman

This sorority was founded at Wesleyan in October 1925. It was Wesleyan's second sorority. Its flower is the yellow rose and the colors are orchid and yellow. Members: Annabelle Alkire, Betty Jane Atkins, Ruth Broadwater, Betty Clapsaddle, Patricia Clendenen, Ruth Duncan, Joanna Ruth Evans, Clarice Gorby, Mary Elizabeth Harper, Betty Heltzel, Lewana Koon, Muriel Kuhns, Martha Martin, Edna Ruth Moore, Zola Ramsburg, Betty Jane Sharps, Anita Stewart, Dollena Thomas, Lila Thurston, Dorothy Trippett, Mary Josephine Woofter, Rachel Zickefoose, Ada Ruth Bleigh, Helena Borrer, Virginia Rhodes, Elizabeth Rohr, Mary Frances Van Gilder. Pledges: Helen June Brown, Mary Jane Channell, Mary Colvin, Maxine Moose, Jeanett Belle Poling, Joan Somerville, Virginia Lee Sturm, Norma Lee Williams.

Sorority Mother	Mrs. E. J. Reger
Faculty Adviser	Miss Marie Boette
Sorority Sweetheart	Dr. Nicholas Hyma

PATRON and PATRONESS
Mr. and Mrs. James Coleman

Sigma Pi Delta

OFFICERS

Martha Lawson	President
Lois Rexroad	Vice President
Lucille Debar	Secretary
Mary Ruth Evans	Treasurer
Virginia Long	Social Chairman

This sorority was organized in 1926. Its colors are green and white and its flower is the pink rose. Members: Leona Barnes, Lucille Debar, Irene Cole, Betty Erickson, Mary Ruth Evans, Lois Flanagan, Frances Horner, Kathleen Judy, Martha Lawson, Virginia Long, Ruth Loudin, Frances Lynch, Julia Mezzatesta, Mary Louise Morrison, Bernice Powell, Mabel Reed, Lois Rexroad, Margaret Sharps, Barbara Sommerville, Glenna Glee Wagner, Mildred Jackson, Mary Christie Mann, Mary Lee Seitz, Joan Frame, Lillian Alkire, Leo Fisher, Lenora Hubner, Oleta McMillion, Mary Louise McWhorter, Jayne Carder, Roberta Travis, Sara Jane Sparks, Dorothy Jackson, Anna King, Reva Stump. Inactive Members: Dorothea Pixler, Ruth Tenney, Wilma Warner Shreve, Evelyn Bennett, Mildred Rosenmerkel, Rachel Cosgrove. Pledges: Jean Muller, Lucille Tenney, Doris Rexroad, Ada Virginia Poling

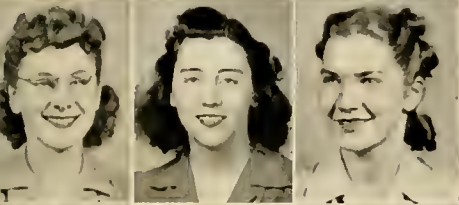
Sorority Mother	Mrs. Frank Martin
Faculty Adviser	Miss Leta Snodgrass

PATRONS and PATRONESSES

Dr. and Mrs. W. A. Saucier
Dr. and Mrs. Ralph C. Brown
Mr. and Mrs. W. T. Taylor



Row one: Lawson, Rexroad,
Debar



Row two: Evans, Long, Cole



Row three: Erickson, Flana-
gan, Horner



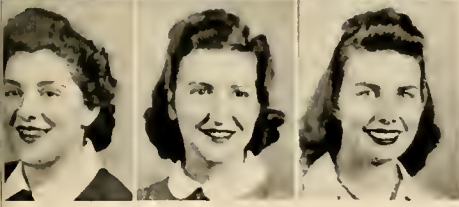
Row four: Judy, Loudin,
Lynch



Row five: Mann, Mezzatesta,
Morrison

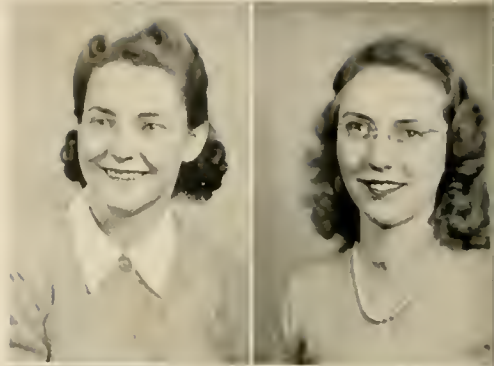


Row six: Powell, Reed, Sharps

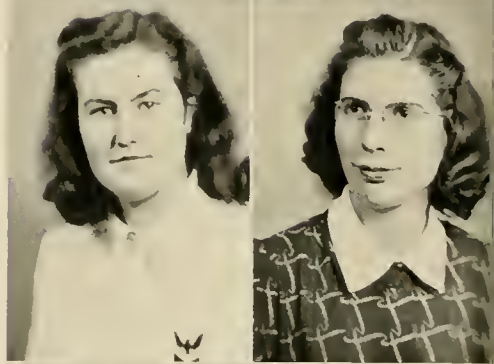


Row seven: Sommerville, Wag-
ner, Jackson

Row one: Allender, Wilson



Row two: Black, Hammer



Row three: M. See, Williams,
I. See



Tallagewe

OFFICERS

Mary Allender	President
Lucile Wilson	Vice President
Myrtle Hammer	Treasurer
Irene See	Secretary

The Tallagewe organization was founded on Wesleyan's campus in 1925. It became nationally recognized in 1928. The name of this association is derived from an Indian word meaning "endless" "everlasting". Members are: Mary Allender, Lucile Wilson, Myrtle Hammer, Irene See, Mae Black, Betty Williams, Frances Comstock, Mabel See.

SPONSORS

Mrs. Rachel Ogden
Mrs. G. L. Glauner
Mrs. Ora Curry
Miss Leta Snodgrass

Alpha Kappa Pi

OFFICERS

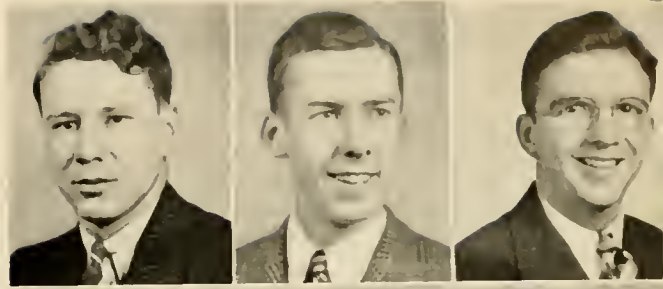
Forrest Stump	President
William Morrison	Vice President
Kenneth Knox	Secretary
Thomas Clawson	Treasurer
William Simpson	Historian
Jack Moore	Chaplain
Sammy Gwosden	Sentinel
Franklin Ellis	Marshal

Psi of Alpha Kappa Pi, is the oldest men's Greek letter organization on Wesleyan's campus. The national order was founded and incorporated in Newark College of Engineering in 1932. It was established on Wesleyan's campus in 1923 under the name of Chi Alpha Tau, which became Psi of Alpha Kappa Pi in 1933. There are at the present time three chapters in West Virginia and twenty-nine chapters in the United States. The colors are Dartmouth green and white. The flower is the yellow tea rose. Members are: Forrest Stump, William Morrison, Kenneth Knox, Thomas Clawson, William Simpson, Jack Moore, Sammy Gwosden, Franklin Ellis, George Edmiston, Frank Feola, Claude Goodwin, Jr, Fred Griggs, Raymond Hanna, William Holcomb, Orville Hughes, Fred Sautter, Charles Hicks, Mason Hicks. Pledges: James Bond, Ralph Brown, William Burr, James Butcher, Sam Dixon, Arthur Dunn, Arthur Fleming, Edward Gould, Charles Hardman, Richard McConkey, Gayle McQuain, John Myers, Elden Pertz, Charles Roberts, Roberto Santana, Hugh Spencer, William Stemple, Lee Sutter, Richard Young, John Hunter. Active pledge list: Gerald DeMarco, Danny Fidler, David Marker, Ralph Travis

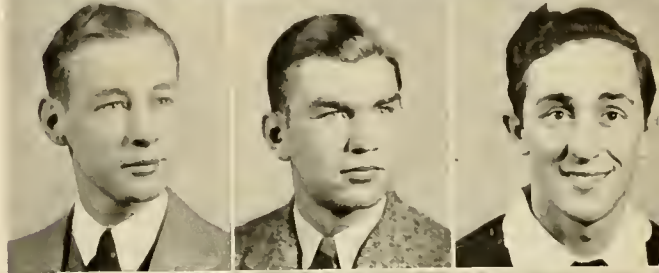
SPONSOR

William A. Hallam

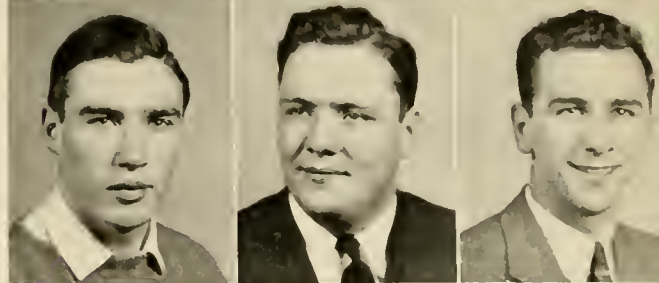
Row one: Morrison, Knox,
Clawson



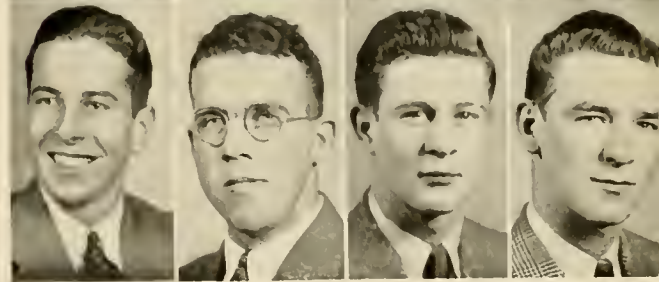
Row two: Simpson, Moore,
Gwosden

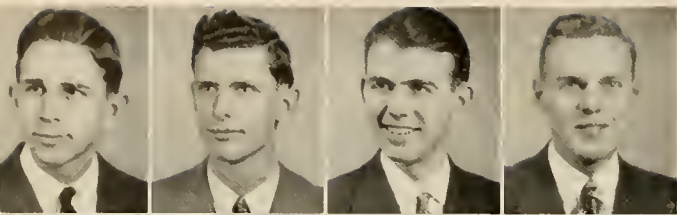


Row three: Ellis, Edmiston,
Feola

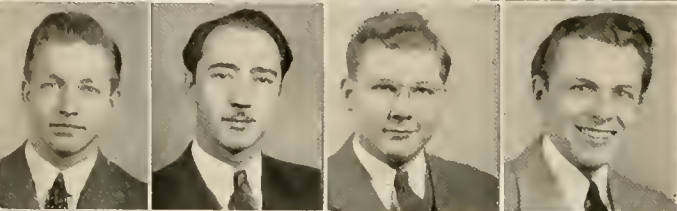


Row four: Goodwin, Griggs,
Holcomb, Hughes

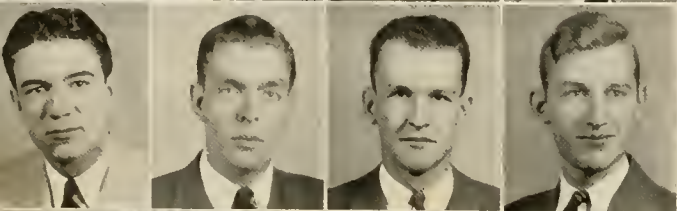




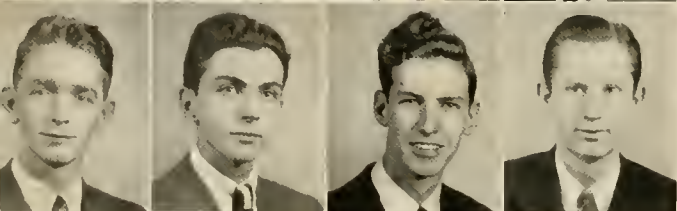
Row one: Seamon, Reger,
Strader, Raudman



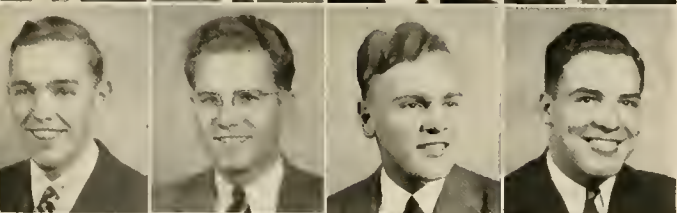
Row two: Hassler, Koppe,
Risinger, Vice



Row three: Sleeth, Alfred,
Downer, Gabriel



Row four: Griffin, Hight,
Kenney, Law



Row five: Madden, Meredith,
Reeder, Sharp



Row six: Thomas, Tolbert,
Van Zandt, Waldeck,
Wilkinson

Kappa Alpha Order

OFFICERS

James Seamon	I
Robert Reger	II
Leland Strader	III
Elmer Raudman	IV
John Hassler	V
Harrison Koppe	VI
Melvin Risinger	VII
Kenneth Vice	VIII
Ronald Sleeth	IX

The Kappa Alpha Order was founded in 1865 under the guidance of General Robert E. Lee. The Beta Chi chapter was Wesleyan's first national fraternity, being established in December 1929. There are now four chapters in West Virginia and sixty-nine in the United States with headquarters located in Louisville, Kentucky. The colors are crimson and old gold, and the flowers are the red rose and the magnolia blossom. Members: James Seamon, Robert Reger, Leland Strader, Elmer Raudman, John Hassler, Harrison Koppe, Melvin Risinger, Kenneth Vice, Ronald Sleeth, Thaddeus Meredith, Frank Griffin, James Law, Cecil Gabriel, Thomas Alfred, Harold Kenney, Frank Madden, James Thomas, Edwin Tolbert, Wayne VanZandt, Robert Wilkinson, Fred Hight, Lorence Brown, John Waldeck, Clifford Reeder, William Downer, Herbert Sharp, Fred Coulter, David Gabriel, William Hudson, William Grose, Verlin Lesure, Richard Snyder, Frank Atkins. Pledges: Miles Cunningham, Eugene James, Roy Jarrett, Richard Kenney, Hayden Morgan, Junius Musser, Milton Ray, Paul Thomas.

Sponsor	Prof. Nicholas Hyma
Alumni Adviser	Myron B. Hymes

Sigma Eta Delta

OFFICERS

Kenneth Phillips	President
Jack Burner	Vice President
Robert Holt	Secretary
Sam Kyle	Treasurer
William Waggy	Sergeant-at-Arms
Rex Naylor	Historian

The Sigma Eta Delta Fraternity was founded in 1925. The fraternity house at that time was the house in which Dr. Judson now lives. The fraternity residence was later moved to the house at College Avenue and Meade Street. Recently the fraternity has rented a new clubroom on East Main Street. The motto of the fraternity is *Loyal au Mort*. The colors are red and white, and the traditional flower is the red carnation. Members are: Kenneth Phillips, Jack Burner, Dean Gerwig, Sam Kyle, William Waggy, Thomas Deneen, Rex Naylor, Robert Holt, William Umpleby, Ison White, Allen Cutright, Charles Sweeney, Jacob Bos, Lee Carder, Hurley Curtis, Larry Marquess, Donald Martin, Edward O'Hara, Robert Roberts. Privileged prep list: Howard Bennett, David Oldaker, Joe Rohr, Oscar Anderegg, Jerome Brown, Wayne Huffman.

FACULTY ADVISER

Harold N. Ahlgren

Row one: Phillips, Burner,
Gerwig



Row two: Kyle, Waggy,
Naylor



Row three: Holt, Umpleby,
White.



WILLIE

The Old Bell rings in another year. We begin again. And now that the seniors are on the last lap, they remember another beginning—their Freshman year. They stood at a crossroad, looking back and looking forward. Perhaps their attitude was best symbolized by the classic title of James Seamon's autobiography for Freshman English: "From the Cradle to the Shave."

SEPTEMBER, 1941

12. Farewell dinner for Dr. Roy McCuskey, retiring president, and Mrs. McCuskey.
15. Fifty-second college year officially opens. Vice President Fleming takes over the duties of acting president. Starry-eyed Freshmen wander about the campus. Many transfers, too, including Good Neighbor Roberto Santana from Puerto Rico. Registration, matriculation, orientation. And another of those macabre receptions, which has one or more of three purposes: To let you see your name cut to ribbons and put together again in astonishing forms; to muddle your memory with names and faces of people with whom you later will become acquainted; or to introduce you to people you have known for years. The food is good, but scanty.
18. New attendance rules are to be enforced this year. Those who can take extra cuts won't; those who can't will wish they could.
19. Book store moved to new location in basement of Ad Building.
24. A public address system, rigged by Prof. Hallam now makes it possible for even the Freshmen to hear the announcements in chapel.
26. Decision of the Annual Conference at Huntington to regard Wesleyan as the only Methodist-sponsored college in the state.
29. Dr. Reinhold Shairer, head of the Department of International Relations at the University of London, speaks to us, looking beyond the war to the days when "men of good will" will begin reconstruction.

OCTOBER

3. First student employment service, organized through Alumni office and headed by Bill Downer.
6. Freshman Rules. Orange and black dinks hiding crew hair-cuts. Identification cards on Freshman backs. Freshman Court. Punishment includes wearing of odd garb and signs announcing sins of indiscretion.
8. Under the astute guidance of Walter Kohlheim, construction engineer and president of Nucleus Club, a greenhouse is now in process of erection behind the Science Hall.
10. We suddenly become aware that new red velvet curtains, presented by the Playshop, now adorn the stage of the auditorium.
11. Theatre party for the Freshman girls flung by the Agnes Howard house board.
13. This is an unlucky day for some—speech recordings in Dean Neil's public speaking class.
14. Home Ec Club style show, sponsored by a New York style expert.
15. Dr. Brown's reminiscent chapel talk strikes the keynote of Founders Week—a graphic, poignant picture of Wesleyan across the years.
17. Bishop's Day, honoring Bishop James H. Straughn.
18. The gathering of the Wesleyan clan, with that outlandish Homecoming parade. Kappa Phi Omega takes the Fleming Cup with its Victory float. Rain-soaked Bethany Bisons clawed by Wesleyan Wildcats, equally rain-soaked.
20. This week the mill of the gods is grinding. Six weeks tests are in progress. The library does a rushing business.



WESLEYAN'S ALMANAC

24. Leonard Warren, Metropolitan baritone, Figaroes his way into the good graces of Wesleyan listeners.

24-26. Student Volunteer fall conference at Salem.

27-31. Rush parties. Never such giving of the glad hand.

27. After furious painting and redecorating, the brothers of Sigma Eta Delta move into their new club-room on E. Main Street, showing forth at last with a blue ceiling studded with white stars.

28. Ten upperclassmen chosen for "Who's Who in American Universities and Colleges."

29. Field Day and Wesleyan On Parade. Remember "Aurora," by the pseudo-Andrews Sisters? And all the other stars, too numerous to mention, but too good to forget? And then this being the Age of Miracles—dancing in the gym?

30. S. E. A. meeting in Charleston and another Wesleyan banquet.

NOVEMBER

1. The U. S. Coast and Geodetic Survey has erected an observation tower on our front campus. A sign at the bottom strictly forbids climbing it. The view from the top is quite elegant.

5. Class elections proof, at least, that we live in a democracy of sorts . . . Hugh Hodgson explains for us in his warm Southern voice the subtle difference between a pianist and a pianist-musician. Ranging from the enraptured thunder of Liszt to the haunting sweetness of the Moonlight Sonata, his own playing pleases every taste.

6. Fraternity dance—and it rains—and Willie Wesleyan goes for his date looking like the "grease monkey" in the ad for a well-known hair tonic.

7. The Brothers Hickman Bert and Roma—and Okie Lang, unobtrusive but indispensable factors in Wesleyan's progress, have this week been repairing a section of the eaves along the front of the Ad Building.

10. The football team spends the week-end in Florida, and a very good time is had by—the Miami team.

11. In observance of Armistice Day, we listen to the Rev. Myron S. Collins, a chaplain in the trenches of the last war, a giant of a man physically and spiritually—a man who takes death at its face value, but who has a heartening faith in a warless world of the future.

14. First night football game under the new floodlights: Hot coffee, straight from the kettle—five cents; hot dogs—seven cents. Somehow unreal—like a scene from Alice in Wonderland viewed through a frosty haze. But the score is real enough: 7 to 0, in favor of Waynesburg.

15. Ground broken for the new Home Ec demonstration cottage . . . Another dance in the gym.

16. First presentation in many years of "Elijah," majestic oratorio, by the a cappella choir, highlighted by the trio of Mildred Rosenmerkel, Dorothy McWhorter, and Evelyn Bennett; the duet of Lota Marie Wilfong and Valta Curry; the solos of Bud White, Libby Law, and Ruth Broadwater.

17. Dr. Paul Popenoe, genetics expert, while fairly dripping pearls of wisdom on the subject, "How Do You Know It's Love?" whimsically observes that modern man is notoriously well satisfied with himself, while modern woman is both overexposed and underdeveloped.

19. Student Volunteers, led by Julia Mezzatesta, collect money for the war babies in China.

25. Prof. Glauner exhorts us on the eccentric grandeur of Carrie Nation and her policy of "hatchetation."

27. The four squirrels acquired by the Lantern Club have done the customary thing, and there are now seven of them camped in the Oak Grove.

28. Max Gene Nohl, explorer extraordinary, shows us his remarkable movies and explains boyishly, naively, his notable accomplishments in deep-sea diving.

29. Death of Dr. Bennett W. Hutchinson, first presi-

dent of Wesleyan. It is as though the first landmark of the college had been swept away. But here and elsewhere his spirit and purpose live on.

DECEMBER

3. Dr. McCuskey comes back for a brief visit, finding a hearty welcome from students and unmistakable signs of continued progress: two new jokes in Dr. Chrisman's repertoire, and a smile on Mr. Aylesworth's face.

6. The greenhouse becomes an accomplished fact.

7. Blitzkrieg in the Pacific . . . Pearl Harbor bombed.

8. War declared; and Dr. Haught, retired faculty member and former acting president of Wesleyan, speaks to us coolly, calmly, taking the long look: "Geographic Background of Present World Condition."

9. "Kind Lady," annual fall play, directed by Mrs. Neil and admirably done by Betty Cotton, Ronnie Sleeth, and a slick supporting cast.

11. War with Germany and Italy . . . West Virginia Intercollegiate Press Association convenes at Salem. Blond and modest "Zeke" Gabriel elected president.

12. Election of Student Union Council—a small organization with a large and worthy purpose: Let there be no more jealousy or shady politics; let peace and co-operation reign over the campus. Selah.

13. A cappella choir, directed by Miss Boette, presents "The Messiah" for the fourth consecutive year. Beautiful, heartening beyond words. Prof. Hallam makes recordings of two choruses.

15. Dr. Saucier's new college text, "Theory and Practice in the Elementary School," hot off the press.

16. Annual fall band concert is played to small but appreciative audience.

18. Farewell vacation fling-ding in the gym . . . Lantern and Y. W. C. A. go Christmas caroling.

19. Two-weeks vacation starts today. In the defense industries, ten-hour days and seven-day weeks are coming into vogue. This is a war. No cake-eaters need apply.

20. Dr. Judson's fourth annual biology field study tour leaves for the Sunny South, with Florida's great outdoors as the main classroom.

24. Prime Minister Churchill and President Roosevelt make history via radio from the White House, meeting to demonstrate Anglo-American unity.

27. Frank E. Muzzy, retired music professor of Wesleyan's faculty, dies in a Baltimore hospital following an illness of several weeks. He will perhaps be remembered best for the warm encouragement he gave to many a struggling young piano student.

JANUARY 1942

3-4. Conference of college presidents in Baltimore to discuss the place of higher education in the national emergency. Dr. Fleming attends.

5. Back to the grindstone. The students will now have a chance to rest up from their vacation. Cupid has been busy among our sweet young things. Diamond rings light up the place like the Great White Way. It's bewilderin'.

9. Dr. Judson presents his Florida movies, frantically urging his assistant at the projector to "Move it up a little, Frank." But it is no go, and we miss the better part of his shots of a girl diving champion.

11. A collection of recorded voices of former Wesleyan presidents has been started. Those of Dr. Carl G. Doney and of the late Dr. B. W. Hutchinson have already been made.

12. Dynamic, black-haired Jay Allen, the fightin' Irish personified, shakes the very ground under our feet with his lacerating wit and sarcasm, gives us hard facts about France and the Germans. Also: "I pray for the English—they're magnificent—but I don't like 'em."

14. A dazzled audience pays ear to the superfine piano playing of Mieczyslaw Munz—a strong and silent man who had quite a struggle to find a place in Buckhannon where he could shave in comfort.

15. Nancy Goodwin, first Speaker of the new Student Union Council, appoints Jack McDonald first Executive Secretary. Plans for the proposed Union Building are drawn up and presented by Mason Hicks.

16. Miss Boette's students give a recital, including organ, piano, and vocal numbers. Fascinating.

18. Those holes on the campus are not shell craters or giant gopher holes. Professional ditch-diggers are looking for a stopper in the water line. (They found it.)

20. Orchestra gives first concert in years.

23. Student body votes to eliminate Easter vacation to hurry up the school year. Each day the war comes closer home.

24. Zero hour. Exams start today. Head-aches start tomorrow.

29. Night courses in first aid, quantitative analysis, and other subjects related to national defense are now in progress.

FEBRUARY

1. Second semester begins. We register an unknown quantity—X for Xenakis. With Young and Zumbunnen he makes up the X, Y, Z of Wesleyan.

2. The ground-hog is so busy figuring his income tax he doesn't have time to come out. This spring there won't be any weather.

4. Beaming, explosive Rabbi George B. Lieberman, turner of fine phrases and large ideas, reviews Douglas Miller's "You Can't Do Business With Hitler."

5. Morse Code instruction begins under Prof. Hallam. Eleven would-be radio "hams" in attendance, including Profs. Lepper, Steele, and Sorton.

6. Major J. P. Easley and Civilian Defense Supervisor John T. Flynn tell us what to do when the bombers come—probably to bomb the pants factory.

7. The thermometer touched 10 degrees below this week. Which is nothing to the chills felt when semester grades come out.

8. Dr. Schoolcraft at last finds long-deserved national recognition—as a "teacher of school craft" in Ripley's "Believe It or Not." Horatio Alger, Jr., was right: Perseverance pays.

9. Dr. Roy L. Smith, editor of Christian Advocate, challenges us to seek "the greatest single fact in the universe—the fact of God."

10. In the most hair-raising basketball game in many a moon, the Bobcats take Glenville over the coals 62 to 59. The welkin not only rang—it rattled. And did that Old Bell peal out! Those proficient bandiers of words, the debate team, also let go against Glenville on the question of government regulation of labor unions.

11. The draft is blowing again. Our ranks are thinning daily as the men leave to get ready for another "Over There."

13-15. At its initial conference in Morgantown, the new West Virginia Methodist Student Movement elects Bill Hudson as president.

14. St. Valentine's Day. Willie Wesleyan discovers that there are only two good ways of showing affection for a nice girl: Kiss her when she's not looking; kiss her when she is.

16. Wesleyan contributes its quota to today's nine million Selective Service registrants. This time the twenty-year-olds and the fortyish sign on the dotted line.

19. Open House at Agony Inn: Anyone who has been using the fire escape may now use the front door.

20. "Ballad for Americans" sung by the choir—highlighted by the stellar solo work of Bob Chamberlain.

23. The new meteorology course is so tough that several of the class are seeing stars.

MARCH

1. Hell Week is vanishing—remnant of the good old days when fraternity and sorority life was a caution to our elders and a joy to us. But Mt. Hibbs still beckons to hardy trail blazers.

2. New social rules in effect. From now on, there will be a chaperon at every pillar and every post.

3. March is doing the lion act, with the heaviest snow in six years covering campus and countryside.

6. Sigma Alpha Sigma, scholastic honorary, holds its annual food-fest and initiation of new members, this year adding a dance to the festivities.

9. The campus squirrel population has increased again. Which isn't surprising.

11. The Barrere trio do their stuff. Willie Wesleyan's taste in music is gradually rising above "No Name Jive" and "Lament to Love." But very gradually, accompanied by much pain.

15. Prof. Hallam named communications officer by Upshur County Civilian Defense Council headed by Prof. Carder.

16. Today the earth is fairly buzzing with the promise of new growth. A Senior walking toward the oak grove is likely to think: "No more springs on Wesleyan's campus after this one. Where will I be a year from now?"

17. St. Patrick's—with here and there the wearin' o' the green.

19. Intercollegiate Speech Festival at Concord down where the Southern hospitality begins. Debaters, actors, stage crew go down to sample it.

20. Last night the wind blew so hard that Willie Wesleyan went out and tied down the Agnes Howard Skirt Barn for fear it would blow away.

21. A cappella choir leaves on tour of southern West Virginia.

22. Dr. Judson introduces us to Jezebel. "The most accommodating lady on the campus."

25. Mary Mida Law, Freshman, is named West Virginia Holstein Calf Club girl of 1941. Reason: They see her smile and grow up into contented cows.

27. Red-letter day for the male chorus of the choir, making recordings for the Fred Waring contest . . . Students of Lost Creek High School pay us a visit.

29. Cebe Ross, after seventeen years of service at Wesleyan, is to become head coach at Morris Harvey on June 1. To say that he will be missed is an understatement. He is part of the Wesleyan tradition.

30. Wesleyan is once again recognized by the North Central Association . . . And financial gifts from friends so far this year total \$25,790. Excelsior.

31. Religious Emphasis Week begins, with students leading the services and conducting the choir. And something new has been added—a welcome dash of brilliant orange to the sombre black robes of the choir.

APRIL

1. Lots of chicanery today, but there's no foolin' about the copy for the Murrumurmontis being tenderly bundled off to the printer.

3. We pause for a breather at what would have been a ten-day Easter vacation.

6. Arbor Day. Nucleus Club plants a red oak on the campus in memory of John Raine, Wesleyan benefactor.

7. Girls' basketball tournament: a shrieking success about two octaves above high C at the more exciting moments.

8. The Rev. Arthur Beckett, jovial as ever, is here to talk to us

10. Susanne Fisher, star of opera and concert stage, sings for chapel program and thrills students with her lovely voice.

13. Series of alumni meetings in Eastern cities, arranged by Dr. Fleming and Mr. Shaver, begins tonight in Philadelphia.

15. Dean Neil holds tea for all the girls. Nobody plays that well-known song, "Tea for Two Hundred."

17. Dr. Joseph Warren Broyles named new President of Wesleyan.

17-10 If the tires hold out, the choir is singing in Parkersburg and surrounding points this week-end.

17-19. Tires or no tires, Student Volunteers from all over the state get to Wesleyan for annual Spring Conference.

22. Student Union all-school party.

24-25. Organic chemistry students show Uncle Sam they can make synthetic camphor even if they have to stay up all night. Some curl up and go to sleep in the lab.

29. A. W. Gottschall, representative of the National Conference of Christians and Jews, is our guest today.

MAY

1-2. West Virginia Academy of Science convenes on our campus.

3. The choir gives its spring concert—a thorough-going treat for music lovers.

4. E. Ross Allen Florida's Nature Man—is today's Lyceum speaker.

8. All-Sorority formal in the gym. A sight to warm the heart and speed the pulse-beat.

11. Gird thyself, student. These are the days of judgment. The bitter hour of semester finals is at hand.

15. Recognition Day and campus leaders take a bow in chapel . . . Inter-Fraternity formal. The gym was joltin' with jive.

16. Alumni Day. They're all here again. Dinner with Harold G. Cutright, Wesleyan alumnus and vice president of Standard Brands, Inc., as the main speaker . . . And then the Commencement play, "The Whole Town's Talking."

17. Baccalaureate Sunday.

18. The Day of Days . . . Dr. Lynn Harold Hough, dean of Drew Theological Seminary, is the Commencement speaker. Degrees are granted to nearly one hundred graduates.

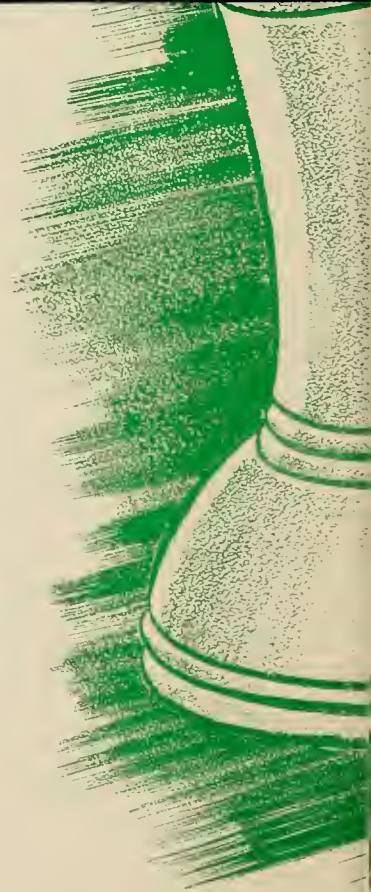
The iris blooms again along Senior Walk Early summer shadows slant across the campus. The long years die quickly Somewhere in the distance we hear Mendelssohn's "War March of the Priests" The Seniors listen There's a new road somewhere ahead for them "But we aren't tossing you a torch. No . . . just try to find the things we missed Take more from Wesleyan than we have taken, and give more than you take Then you will know why West Virginia Wesleyan is not just a name but a symbol and like the Old Bell will go ringing on through the years

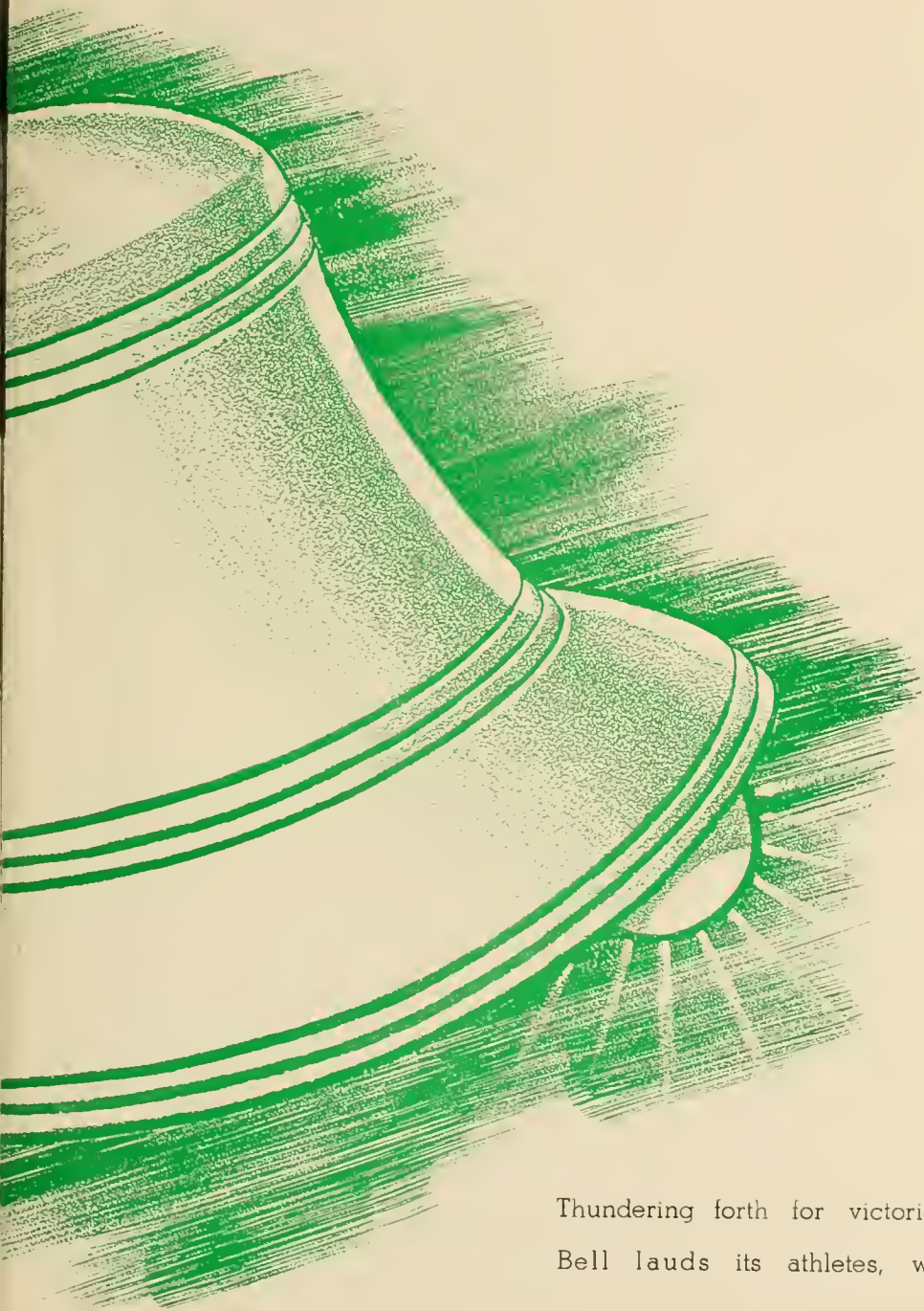
—Willie Wesleyan





Joe Huntz sends an arrow into the bull's-eye





Thundering forth for victories, the Old
Bell lauds its athletes, win or lose.

THE COACHES

Dave and Cebe talk over prospects



Cecil B. Ross has served his Alma Mater as head coach and director of athletics for seventeen years. "Cebe," as he is known to sports fans throughout the state, is regarded as one of the most successful small-college coaches in the East.

An all-star Bobcat himself during his college days, Coach Ross has seen many of his Wesleyan-trained players go on to win fame in professional football. Next fall the Bobcats will be under new tutelage. Coach Ross goes to Charleston to become coach at Morris Harvey College.

David Reemsnyder, assistant coach and director of physical education, is also a former Bobcat star. He returned to Wesleyan after several years of coaching in southern West Virginia high schools.

FOOTBALL

For the past few years Coach C. B. Ross has been striving to develop a football team which, with respect to wins and losses, would approach those of "days gone by." Slowly the annual records have been improving, and to many 1941 appeared to be the season when the Old Bell would set up a continual clanging for victorious Bobcats. But disappointment was the result.

Even so, the 1941 season was far from being unsuccessful. The Methodists boasted wins over Geneva, Davis and Elkins, and Bethany. Morris Harvey was tied 7-7. And holding an exceptionally strong West Virginia University team to three touchdowns is not to be overlooked. St. Vincent and Miami were both stronger than average. So it can safely and reasonably be said that the Bobcats are still holding their own.

Prospects for 1942 are not encouraging. The armed forces of our country have precedence and few veterans are available for next year's squad. However, first-year men will be used to fill the shoes of the veterans, and the Old Bell will keep on proclaiming victories as football marches on at Wesleyan.

1941 SEASON RECORD

Wesleyan	7	Morris Harvey	7
Wesleyan	28	Geneva	0
Wesleyan	33	Davis and Elkins	6
Wesleyan	0	W. Va. Univer.	20
Wesleyan	47	Bethany	0
Wesleyan	0	St. Vincent	19
Wesleyan	0	Miami	34
Wesleyan	0	Waynesburg	7
Wesleyan		Marshall (cancelled)	

Below: The band maneuvers on the football field between halves; excitement runs high when the Bobcats scrimmage; Jackie Williams, Dave Gabriel, and Maxine Moose, Wesleyan's cheerleaders, head the thuse sections.





In the opening game of 1941 the Bobcats tied the Golden Eagles of Morris Harvey 7-7. The Rossmen started strong as Spessard, husky fullback, scored the only Wesleyan touchdown early in the first quarter. Poundstone added the extra point. Late in the second quarter Morris Harvey also scored and converted. The second half was scoreless, and the game ended 7-7.

Bounding back from the tie with the Charleston school, the Orange and Black steam-rolled over Geneva with a 28-0 victory. The game, which was highlighted by fumbles and pass interceptions, saw the ball change hands twenty-six times. The Bobcats scored in each quarter, with Pugh, Glod, DeMarco, and Nocera carrying the ball. Poundstone added the extra points by placements. Kosko, veteran end, received injuries which kept him out of the next four games.

Top to bottom: Jones, Kosko, Beer, Spessard, Wilfong, Poundstone, Stewart, Gwsden, Gruver, Small, Kulnis, DeMarco, Roussos



The following week, before a rain-soaked Forest Festival crowd at Elkins, the Rossmen set back Davis and Elkins 33-6. With power and precision, the Bobcats had little trouble in outclassing the Senators in every department. Glod scored twice, while Jones, Pugh, and Donley each had a touchdown to his credit. Poundstone again added three placements.

On October 11 West Virginia University trounced the 'Cats in Mountaineer Stadium 20-0. Only with reserve power did Bill Kern's team outclass Wesleyan. The University Gridders, rebounding from the Navy setback, were out for all they could get at the Bobcats' expense. Their passing and running were outstanding, even so, time after time, the Bobcat line held as big "Toar" Forinash, Gruver, Beer, and Stewart broke through.

Unhampered by the rain, the Bobcats took the next game at the expense of the Bethany Bisons before a small homecoming crowd 47-0. The Methodists, led by Glod, rolled up a total of 386 yards gained, while holding Bethany to 13. Glod again led in scoring with three touchdowns, while Spessard, Wilfong, Kulnis, and DeMarco each had one. Poundstone kicked four out of six attempts at conversions, to make his total thus far in the season twelve out of sixteen, and Moore scored the fifth extra point on a pass.

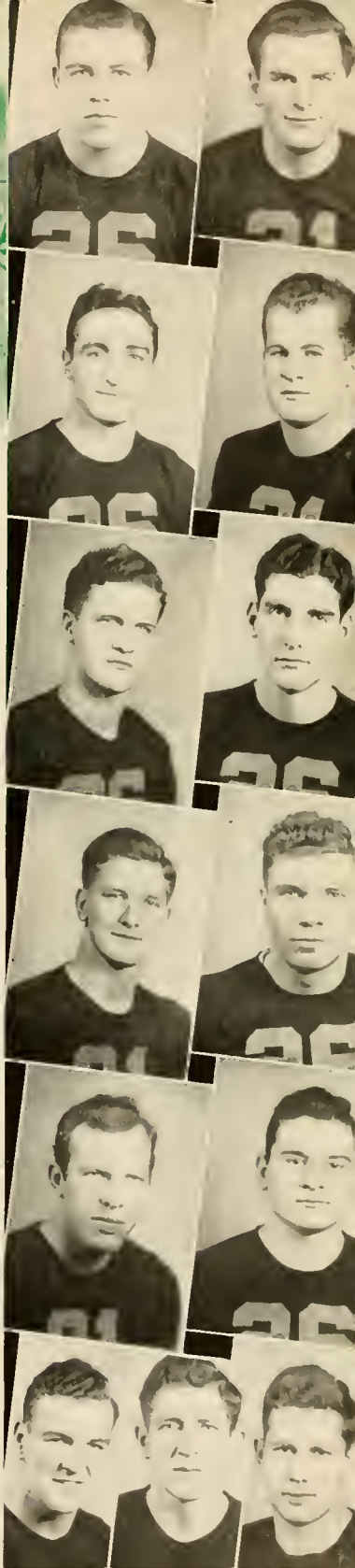


Journeying to Latrobe the following Friday night the Bobcats were decisively beaten by St. Vincent College 19-0. The Bearcats, led by Detzel, had 17 first downs to Wesleyan's 6. The Rossmen were definitely below par although Glod, Small, and Donley turned in good performances. The Bearcats scored in the first, second, and last periods and gained 292 yards to the Rossmen's 132.

On November 7 and more than half the continent from home, the Methodists lost to Miami by a score of 34-0. The game, played in the Orange Bowl before 20,000 fans and in 80 degree heat, saw the Hurricanes scoring five times and converting four extra points. Kosko returned to the line-up, but Poundstone received injuries which kept him on the bench for the remainder of the season. Despite the score, the team and the college could well be proud of the players' conduct and performance.

Playing under lights on their own field for the first time, the 'Cats dropped a close 7-0 decision to the Waynesburg Yellow Jackets. The first half went scoreless. But early in the third quarter Waynesburg reached pay dirt. Twice the Methodists had the Jackets back in the shadows of their own goal posts, but seemingly lacked the scoring punch.

The annual Turkey Day affair with Marshall College at Huntington was cancelled because of differences of opinion on the use of Freshmen, and so the season ended with three wins, four losses, and one dead-lock.



FOOTBALL ROSTER

Player	Position
Beer, James	Center
Bond, James	End
Brown, Rector	Tackle
Bush, Forest	Guard
DeMarco, Gerald	Back
Donley, Charles	Center
Feola, Frank	Back
Foehr, George	Tackle
Forinash, Adam	Tackle
Glod, Paul	Back
Gruver, Charles	Tackle
Gwosden, Sammy	End
Haas, Bob	Guard
Huntz, Joseph	Tackle
Jones, William	Guard
Kosko, Edward	End
Kulnis, John	Back
Marker, David	Back
Moore, Jack	End
Nocera, Victor	End
Poundstone, Charles	Back
Pugh, William	Back
Roussos, Socrates	Tackle
Small, Paul	Guard
Spessard, James	Back
Steele, Donald	End
Stewart, Clyde	Guard
Sutter, Lee	Guard
Uhlar, Charles	Back
Wilfong, Carl	Back
Young, Richard	Back

Top to bottom: Foehr, Huntz,
Nocera, Marker, Uhlar,
Steele, Donley, Pugh, Bond,
Brown, Young, Sutter, Haas

BASKETBALL

Boasting the best season record in years, the Wesleyan basketballers came through with fourteen wins and ten losses in twenty-four games, giving an average of .583.

The year's standouts were well-earned victories over Marshall, Glenville, and Salem. Other wins were scored over Davis and Elkins, Bethany, and West Virginia Tech, twice, while splitting two games with Waynesburg, Alderson-Broaddus, Fairmont, Glenville, Marshall, and Morris Harvey. The Bobcats swept a single victory from West Liberty and lost twice to West Virginia University.

At the beginning of the second semester, Coach Ross found fate against him as he lost three squad members in the persons of Sammy Gwosden, Jack Moore, and "Mickey" Glod. Neither finching or complaining, the Bobcats, led by Frank Feola and Frank Ellis, clawed their way through the remaining games to a fitting climax by a decisive win over Morris Harvey.

For the third consecutive year, Wesleyan played host to the West Virginia Intercollegiate Tournament. In the tri-finals Morris Harvey fell before the fighting Bobcats 74-45. By virtue of this win, Salem was met and defeated in a thrilling overtime contest 70-67. The same day the Rossmen, playing sluggish ball, lost in the finals to the Glenville Pioneers 77-53.

BASKETBALL SEASON RECORD

1941-42

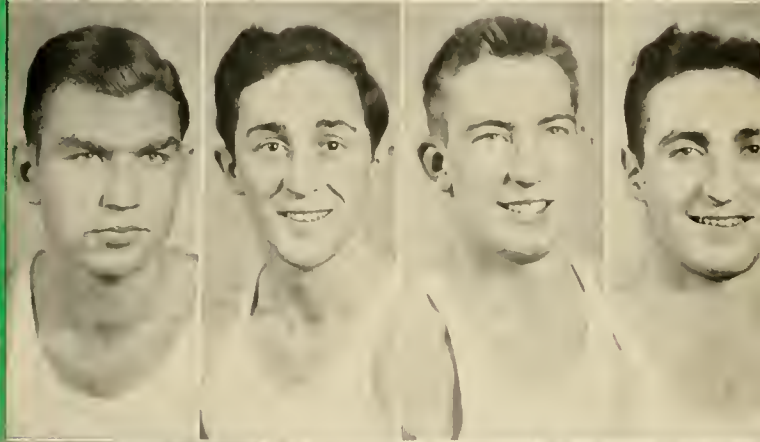
Wesleyan	67	Fairmont	61
Wesleyan	49	Waynesburg	37
Wesleyan	61	Davis and Elkins	56
Wesleyan	67	Salem	51
Wesleyan	55	Bethany	42
Wesleyan	50	Fairmont	55
Wesleyan	55	Alderson-Broaddus	57
Wesleyan	48	Glenville	64
Wesleyan	40	Alderson-Broaddus	39
Wesleyan	44	West Virginia	58
Wesleyan	60	West Liberty	42
Wesleyan	36	West Virginia	59
Wesleyan	62	Glenville	59
Wesleyan	43	Waynesburg	45
Wesleyan	78	West Virginia Tech	53
Wesleyan	53	Bethany	43
Wesleyan	53	Salem	70
Wesleyan	67	Marshall	62
Wesleyan	83	Salem	87
Wesleyan	61	West Virginia Tech	59
Wesleyan	79	Davis and Elkins	53
Wesleyan	59	Marshall	76
Wesleyan	55	Morris Harvey	73
Wesleyan	65	Morris Harvey	50



TOURNAMENT RECORD

Wesleyan	74	Morris Harvey	45
Wesleyan	70	Salem	67
Wesleyan	53	Glenville	77

Top to bottom: Ellis, Feola, DeMarco, Moore, Gwosden, Brown, Nocera, Marshall, Knox, Travis, Young, Myers. Unpictured: Glod and Oldaker.



Tennis and Baseball

Each spring the varsity tennis team plays matches with netmen from several other colleges. Although the season is short, the tennis team is playing an increasingly important part in Wesleyan's athletic program. They remained undefeated during the 1941 season and have enjoyed a very successful season this year.

Baseball was again introduced on our campus last spring after an absence of eight years.

Woman's Athletic Association

This organization has been active in campus activities since its organization in the fall of 1940. All girls who are interested in physical education and sports may become members.

As their project for the year, the girls remodeled a room in the gymnasium to use as a meeting room and also a recreation room for girls. The members have also presented interesting chapel programs and have really made themselves known in campus activities.

Officers are: President, Cathryne Hardesty; Vice President, Roberta Roberts; Secretary, Grace Brown; Treasurer, Lucille Debar; Historian, Mary Ruth Evans. There is also an executive board of twenty members, and each member of the board has charge of the development of some sport. Miss Covert is the club sponsor.

Intramural Board

The Intramural Athletic Board was organized with the purpose of fostering and promoting intramural athletics among the students on the campus. Some of the intramural sports promoted by this organization are touch football, volleyball, basketball, hockey, ping pong, badminton, archery, golf, and tennis; sports for both the men and women of Wesleyan.

The board is composed of one male representative from each class and girl representatives from the Woman's Athletic Association. All of these play an important part in Wesleyan's athletic program. Members are: William Umpleby, Frank Feola, William Glover, and Richard Young.

Olympic Club

Students who were particularly interested in athletics formed the Olympic Club in 1931, and it has continued to hold a place in campus activities ever since.

Each year this group sponsors the Intercollegiate Field Day when teams from other colleges come here to take part in competitive sports. The club has presented some interesting programs and has supported many other activities.

The officers are: President, William Umpleby; Vice President, Rachel Groves; Secretary, Cathryne Hardesty; Treasurer, William Waggy.



SPRING SPORTS

Kyle tries his racket as spring brings tennis and baseball to the fore.



W.A.A. EXECUTIVE BOARD

Standing: Law, Rexroad, Sharps, Marshall, Curry, Hardesty, Barlow, Duncan, Brown
 Seated: Hedden, Debar, Groves, Lawson, Roberts, Alkire, Kuhns



INTRAMURAL BOARD

Left to right: Glover, Alkire, Umpleby, Debar



OLYMPIC CLUB

Standing: Duncan, Shreve, Rexroad, Reemsnyder, Hedden, Clendenen, Glover, M. Hicks, C. Marshall, Groves, Beer, Shaw, Tambllyn, Roberts, Hardesty, Sharp, Hassler, Santana, Atkins, Umpleby, Covert
 Seated: Debar, Barlow, J. Williams, G. Brown, Alkire
 Unpictured: Clapsaddle, Kuhns, Kyle, B. Marshall, Morrison, Reger, Marker, C. Uhlar, Oldaker, Ramsburg

INTRAMURALS

Each year a comprehensive program of intramural sports for both men and women is carried on at Wesleyan. The men's division is under the supervision of Dave Reemsnyder, while Margaret E. Covert has charge of the women's events. Assisting in the program are representatives from the Men's Intramural Board and from the Women's Athletic Association.

Touch football started the sports season for the men last fall with teams from each class participating. The Seniors went through the tournament play without a loss; the Freshmen won one, lost one; the Sophomores won one, lost two; and the juniors lost two encounters. Members of the championship team were Shaw, Parsons, Umpleby, Sleeth, Hassler, Chamberlain, Stump, Morrison, Hicks, Bennett, and Morgan.

At the end of the play-offs, the Intramural Board selected an all-tournament squad of outstanding players. Those so honored were Ellis and Oldaker, Ends; R. C. Brown and C. Hicks, Guards; Pertz, Center; Shaw, Glover, Morrison, and Myers, Backs. Honorable mention went to Stump, Reger, Umpleby, Chamberlain, Atkins, and Dunn.

The Sophomores proved to be the most skillful kickers in the college, taking the honors in booting the football from all contenders. Members of the second-year class dominated the first four places, taking a total of ten points out of a possible ten. Those who accomplished this kicking feat were Glover, M. Lambert, Marshall, and R. C. Brown.

When snow forced the intramural program indoors, the Seniors again proved formidable in competition. They were easy victors in the volleyball tourney, though rivalry was keen. Members of the winning team were Morgan, Beer, Shaw, Umpleby, Morrison, and Burner.

Among the women's events, field hockey claimed first attention, with the Juniors whacking the puck to a championship. Members of this team were Annabelle Alkire, Captain, Roberta Roberts, Grace Brown, Harriet Jane Wells, Cathryne Hardesty, Elizabeth Barlow, June Tamblyn, Valta Curry, Jean Hedden, Ruth Duncan, and Mary Channell.

The volleyball crown went to the Seniors, captained by Muriel Kuhns. Her team-mates were Martha Lawson, Peg McIntyre, Lois Rexroad, Anita Stewart, Becky Clapsaddle, Bettie McQuiston, Rachel Groves, Edna Ruth Moore, Elizabeth Law, and Virginia Rhodes.

An all-college basketball team was chosen in mid-season for intercollegiate competition. On the squad were Capt. Kuhns, Helen Goss, Lois Rexroad, Martha Lawson, Mary Elizabeth Whittaker, Ruth Duncan, and Jean Bailey. In the foul shooting events, Lois Rexroad out-pointed all others by putting the ball through the loop fifteen times in twenty-five attempts.

As THE MURMURMONTIS went to press, interest centered in the race for basketball laurels in both the men's and women's divisions. Later in the spring, the attention shifted to individual sports, including table tennis, handball, archery, golf, tennis, and horseshoe pitching.



Left to right: Morrison, Morgan, Burner, Umpleby



Wesleyan's Gym

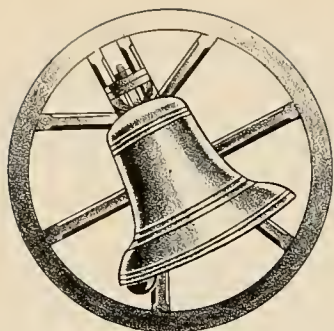


Left: Kuhns, Rexroad, Rhodes, Lawson, Groves, Stewart, McIntyre

Right: Curry, Duncan, Brown, Hardesty, Tamblyn, Roberts, Barlow



Left to right: Whittaker, Bailey, Groves, Kuhns, Rexroad, Duncan, Lawson



For Whom the Bell Tolls . . .

*No man is an island, intire of it selfe; every man is a peece of the Continent, a part of the maine; if a clod bee washed away by the Sea, Europe is the lesse, as well as if a Promontorie were, . . . any man's death diminishes me, because I am involved in Mankinde; And therefore never send to know for whom the bell tolls; It tolls for thee . . .
John Donne.*

Bennett W. Hutchinson

First President of Conference Seminary

1859 - 1941

Frank E. Mussy

Instructor in Voice and Music
(Retired)

1871 - 1941

CLASS AND PICTURE INDEX

Ahlgren, Harold N.	18, 62	Casey, Virginia Lee	45, 51, 53, 58, 64, 66, 68
Alfred, Thomas	32, 92	Casto, David	22
Alkire, Annabelle	11, 32, 55, 58, 66, 84, 111	Cervený, Clarice	11, 32, 55, 57, 62, 66, 83
Alkire, Lillian	45	Chamberlain, Robert	24, 58, 64
Allender, Mary	32, 51, 88	Channell, Mary	32, 58, 66
Allman, Evelyn	45, 64, 66, 68	Chapman, Marie	45
Allopenna, John	38, 58	Chrisman, Lewis H.	15, 18
Almond, Harold	24, 51, 53, 58, 61, 66, 99	Clapsaddle, Betty	9, 24, 55, 57, 61, 84
Ambrose, Amanda Lee	44	Clark, June	45, 69
Anderegg, Oscar	38	Clark, Phyllismae	9, 45, 66, 69
Ash, Bertrand	45	Clawson, Thomas	35, 65, 69, 91
Ashby, Hugh	41, 57, 64, 66, 68	Clendenen, Patricia	39, 84, 111
Atkins, Betty Jane	38, 58, 66, 84, 111	Cole, Irene	38, 65, 66, 87
Atkins, Frank	45, 65	Combs, Delbert	24, 61, 66
Aylesworth, A. L.	21	Comstock, Frances	33
Bailey, Eva	26	Colvin, Mary Elizabeth	45
Bailey, Jean	38, 62, 76, 77, 113	Conner, Mary Elizabeth	26
Barbe, Ruth	24, 58, 61	Cosgrove, Rachel	9, 32, 58, 61, 62, 66, 68
Barger, Betty Cotton	9, 35, 57, 61, 62, 64, 66, 69, 83, 99	Coulter, Fred	45
Barlow, Elizabeth	11, 32, 62, 64, 83, 111, 113	Covert, Margaret E.	19, 111
Barnes, Leona	57, 68, 69	Cox, Laura	38, 58, 64, 66
Beach, Arnold	26	Crawford, Thomas	26
Beer, Jeanneta	44	Cronemeyer, Gladys	21, 58, 96
Beer, James	22, 24, 104, 111	Cunningham, Miles	45, 64
Bennett, Evelyn	24, 64, 66	Curry, Ora D.	19
Bennett, Howard	24, 57	Curry, Valta	11, 33, 62, 64, 111, 113
Black, Hester Mae	38, 88	Curtis, Hurley	44, 58
Blake, Frank	26	Cutright, Allen	38, 57, 62, 66
Bleigh, Adah Ruth	45	Danforth, Lewis	45, 64
Boette, Marie D	19, 64	Dailey, Elizabeth	45, 64
Bond, James	45, 107	Darves, Helen	11, 38, 83
Bond, Richard	26	Dean, Bernard	26
Borror, Helena	32, 61	Debar, Lucille	38, 58, 64, 66, 87, 99, 111
Bos, Jacob, Jr	45	Debendarfer, Martha	32
Bos, Jacob, Sr	20	Deeds, Margaret	38, 83
Boyles, Mary Jane	22, 24, 55, 57, 61, 83	DeMarco, Gerald	38, 164, 109
Brake, Ora	39	Deneen, Thomas	57, 66, 68
Brannon, Elise	26	Dennis, Arthur	32, 66
Broadwater, Ruth	24, 58, 64, 68, 84	Dixon, Fred	26
Brown, Ellen Lou	22, 24, 53, 57, 58, 61, 83	Dixon, Samuel	45
Brown, Grace	11, 31, 32, 62, 64, 65, 83, 99, 111, 113	Dippolito, Paul	64
Brown, Helen June	9, 10, 45, 51, 53, 64	Doak, Dorothy	44, 64, 65
Brown, Jerome	45, 55, 64, 65	Donley, Charles	11, 45, 96, 107
Brown, Lorence	38	Downer, William	38, 61, 92
Brown, Ralph C. Jr	38, 55, 58, 66, 109	Duncan Ruth	11, 32, 58, 66, 84, 111, 113
Brown, Ralph C. Sr.	20	Dunn, Arthur	45, 53
Brown, Rector	45, 107	Edmiston, Elizabeth	44
Burner, Jack	24, 57, 58, 61, 62, 66, 68, 95, 113	Edmiston, George	38, 91
Burr, William	44	Ellis, Frank	31, 32, 91, 109
Bush, Forest	44	Ellsworth, Nancy Hovis	26, 57, 83
Butcher, James	11, 45	Ennis, Janet	11, 32
Camp, Jennings	45	Erickson, Betty	38, 64, 66, 87
Carder, Jayne	45, 64	Evans, Joanna Ruth	38, 84
Carder, Lee	45	Evans, Mary Ruth	38, 53, 55, 61, 64, 66, 69, 87
Carder, R. H.	20		

Evans, Ross.....	25, 57, 64, 66, 68, 69	Hathaway, Winnie.	19
Eye, Bonnie.....	45, 58, 66, 68	Hedden, Jean	32, 51, 57, 66, 111
Farnsworth, Dorothy	45	Heltzel, Betty	25, 84
Feather, Gay.....	39	Hendershot, O. P.	21
Feola, Frank	32, 91, 99, 109	Hickman Brothers	8
Fidler, Danny	38, 58, 64, 66	Hicks, Charles.	26, 55
Finch, John	26	Hicks, Mason	32, 55, 111
Fisher, Leo	10, 45, 64, 65, 66	Hight, Fred	38, 51, 58
Flanagan, Lois	32, 51, 53, 58, 61, 66, 68, 87	Hill, Edna Mae.	38
Fleming, Arthur	43, 45, 58	Hinkle, James	33
Fleming, Wallace B.	8, 17, 96	Hinzman, John	33
Foehr, George....	32, 107	Hoffman, Betty	38, 64, 65
Ford, Laura	39	Holcomb, William	38, 58, 91
Foster, Virginia C.	39	Holloway, Jean	45, 64, 78, 79
Fox, Evelyn	38	Holt, Robert	32, 95
Frame, Joan	45, 65	Hoover, Edward	45
Freeman, Doris	45, 48	Hoover Maurice	26
		Horner, Frances Jean	38, 58, 61, 64, 66, 69, 81, 87
Gabriel, Cecil....	9, 32, 53, 64, 65, 92	Hornor, Jean	11, 32, 51, 55, 64
Gabriel, David	45, 52, 64, 65, 103	Hubner, Lenore	45, 66, 69
Gainer, Vance	38, 64, 65, 66	Hudson, William	37, 38, 53, 66, 69
Gear, Juanita	11, 38, 83	Huffman, Wayne	39
Gerwig, Dean	22, 25, 51, 55, 57, 61, 66, 95	Hughes, Olin	32, 91
Gilmore, Eleanor	33	Hunt, Crandall	32, 65, 66
Glauner, George L.....	18, 57	Hunter, John	44
Glod, Jean Tuttle.....	32	Huntz, Joseph	32, 69, 100, 107
Glod, Paul.....	32	Hyma, Nicholas	20, 58
Glover, William....	38, 58, 111	Hymes, Marguerite	38, 51, 58, 62, 83
Godfrey, Harold....	44	Jackson, Dorothy	45, 51, 62, 66
Goff, Golda.....	26	Jackson, Helen Jean	45, 51, 55, 64, 66
Goodwin, Claude....	25, 91	Jackson, Mildred	26, 87
Goodwin, Nancy.....	45, 55, 66	James, Eugene.	38, 64
Gorby, Clarice.....	25, 58, 84	Jarrett, Roy	38
Goss, Helen.....	32	Jarvis, Alyce.	45, 64
Goss, Virginia	32	Jobe, Frances..	29
Gould, Edward	45	Jobe, Theresa	29
Gould, Mary.....	21	Jones, Bill	32, 104
Gregory, Margaret.....	32, 68	Judson, James E..	20, 58, 96
Griffin, Frank	25, 53, 58, 92, 99	Judy, Kathleen..	32, 55, 58, 87
Griggs, Fred	38, 58, 91	Karickhoff, O. E..	18
Grimm, Ida Belle.....	45, 66	Kennedy, Charlotte	32
Grose, Dora Belle.....	26	Kellison, Ural	45
Grose, William	45	Kenney, Harold	32, 92
Groves, Rachel	25, 83, 111, 113	Kenney, Richard	45, 66
Gruver, Charles....	25, 104	King, Anna	38, 66, 68
Gutzwiller, Carl	38, 64, 66	King, Ernest	29
Gwosden, Samuel	22, 25, 91, 104, 109	Knox, Kenneth	31, 35, 51, 58, 64, 66, 91, 109
		Kohlheim, Walter	35, 58, 96
Haas, Robert..	45, 107	Koon, Lewana	29, 61, 62, 84
Hallam, William A	20	Koppe, Harrison	26, 92
Hammer, Myrtle	38, 58, 64, 66, 88	Kosko, Edward	26, 104
Hammond, Robert	38, 64, 66, 68, 96	Kuhns, Muriel	9, 22, 26, 55, 57, 84, 111, 113
Hardesty, Cathryne	31, 32, 50, 51, 55, 57, 61, 62, 64, 66, 83, 111, 113	Kulnis, John.	8, 38, 69, 104
		Kyle, Sam	35, 57, 62, 95, 111
Hardman, Charles	45	Lambert, Harper	38, 65
Harmer, Elizabeth	11, 38, 64, 66, 83	Lambert, Meredith	38, 58
Harper, Mary Elizabeth	32, 50, 51, 53, 58, 84	Lambert, O. D..	10, 17
Harvey, Gloria	45, 48	Law, Elizabeth	26, 64, 66, 83, 111
Haselden, Virginia Elizabeth	26	Law, James.	35, 92
Hassler, John	25, 52, 55, 65, 92, 111	Law, Marjorie.	38, 69
Hathaway, Ruth.....	45		

Law, Mary Mida	46, 64	Naylor, Rox	27, 51, 55, 66, 95
Lawson, Martha	22, 26, 53, 64, 87, 111, 113	Neil, Mrs. C. Edmund	17, 62
Lawson, Mary	29	Nestor, Junior.....	33
Legg, Vincent	29	Newcomb, Kenneth	41
Leonard, Richard	35, 51, 53, 64, 65	Noocera, Victor	41, 69, 107, 109
Lepper, Maxwell	21	Ogden, Rachel	20, 57, 66, 68
Lesure, Verlin	46, 52	O'Hara, Edward	41, 58
Lowther, James	46	Oldaker, David	39
Linger, Gertrude	35, 64, 83	Osborne, Helen Ann	41, 66, 83
Linger, John	26, 58	Ours, Lois	33
Linger, Margaret	65	Pavlina, Andrew	35, 57
Linger, Otis	38	Pertz, Elden	46
Linger, Paul..	38	Phillips, Kenneth	27, 81, 95
Linger, Reuben	46, 65	Phillips, Ruth	46
Linger, Roy, Jr.	38	Phillips, Virgie	29
Loar, George I.	26	Pixler, Dorothea	41, 57, 64
Long, Virginia	22, 27, 64, 87	Poling, Ada	46
Loudin, Ruth	35, 52, 57, 58, 64, 66, 68, 87	Poling, Jeanett	46, 58, 74, 75
Lynch, Frances	38, 58, 64, 66, 68, 87	Post, Charles	37, 41, 66
McClung, Maxine	46	Post, Geneva	29
McCoan, Virginia	27, 58, 61, 83	Poundstone, Charles	27, 104
McConkey, Richard	46	Powell, Bernice..	41, 61, 64, 65, 68, 87
McCord, Ralph	39, 66	Prince, Carolyn	35
McCray, Rosemary	39	Prince, Shirley	41, 68
McDonald, Jack	35, 51, 52, 55, 57, 58, 66	Pritchard, Joan	46
McGinley, Claudine Lanham	35, 57, 61, 66, 69, 83	Pugh, William	11, 46, 107
McIntyre, Margarut	27, 83, 113	Quick, Quentin	35
McMillion, Oleta	46	Raines, Otis	46
McNeal, Thomas	39	Ramsburg, Zola	41, 84
McQuain, Gayle	46	Raudman, Elmer	27, 69, 92
McQuiston, Bettie	22, 27, 81, 83	Ray, Milton	27
McWhorter, Carlton	29	Reed, Annie Frances	21
McWhorter, Dorothy	27, 61, 64, 68	Reed, Frank	28, 61, 66
McWhorter, Mary Louise	46, 64, 68	Reed, James	66
Madden, Frank	35, 52, 58, 62, 64, 66, 92	Reed, Mabel	41, 58, 87
Mahon, Harrison	35	Reeder, Clifford	41, 51, 52, 53, 92
Marker, David	35, 107	Reeder, Marion Frances	28, 53, 83
Mann, Mary Christie	38, 58, 87	Reeder, Ruth	46
Marquess, Lawrence	46, 57	Reemsnyder, David	19, 102, 111
Marshall, Barbara	37, 41, 58, 64, 83, 111	Reger, Robert	35, 81, 92
Marshall, Chester	41, 64, 109, 111	Reid, John	41
Martin, Donald	46, 65	Resseguie, Donald	46, 66, 69
Martin, Martha	27, 84	Rexroad, Doris	46, 58
Meek, Gene	11, 35, 50, 51, 57, 58, 62, 66, 69, 83	Rexroad, Lois	28, 87, 111, 113
Meredith, Thaddeus	27, 92	Rhodes, Virginia	28, 62, 64, 113
Mezzatesta, Julia	33, 57, 68, 87	Ricke, Ethel M.	21
Miller, Glenn	70	Ridenour, Virginia Lee	41, 64, 83
Mitchell, Shirley	43, 46, 51, 53, 64, 66, 69, 96	Risinger, Melvin	35, 64, 66, 69, 92
Moore, Edna Ruth	27, 84	Roberts, Charles	46
Moore, Jack	27, 91, 109	Roberts, Robert	41, 58
Moose, Maxine	10, 46, 64, 103	Roberts, Roberta	11, 35, 48, 64, 83, 111, 113
Morgan, Hayden	27, 61, 113	Rogers, Martha Hildreth	38
Morrison, Mary Louise	41, 87	Rohr, Elizabeth	9, 10, 35, 58, 65
Morrison, William	27, 91, 113	Rohr, Joseph	35
Muller, Jean	46, 66, 96	Rosenmerkel, Mildred	28, 61, 64
Musser, Junius	46, 66	Ross, C. B.	19, 102
Myers, John	11, 46, 109	Roussos, Socrates	41, 69, 104
		Rudasill, Sarah.	28, 61, 64, 66, 83
		Sager, Garfield	46
		Santana, Roberto	35, 57, 96, 111
		Saucier, W. A.	18

Saunders, Angeline.....	9, 10, 46, 52, 96	Theibert, Anna Jo.....	9, 10, 46, 64, 66, 69, 96
Sautter, Fred.....	39	Thorne, Curtis.....	35, 55, 64
Schoolcraft, A. A.....	18	Thomas, Dollena.....	35, 84
Schoolcraft, Lois.....	41, 61, 83	Thomas, James.....	35, 50, 51, 55, 61, 64, 65, 92
Seamon, James.....	28, 51, 58, 61, 62, 69, 92	Thomas, Paul.....	46
See, Irene.....	41, 64, 66, 88	Thurston, Lila.....	28, 51, 53, 58, 84
See, Mabel.....	46, 66, 88	Tolbert, Edwin.....	41, 92
Seitz, Mary Lee.....	46, 66	Tolbert, Irene.....	9, 35, 64, 65, 83
Shaffer, Herbert.....	41	Tomley, Peter.....	35, 62
Shannon, Jane.....	35, 58, 83	Travis, Ralph.....	35, 169
Sharp, Herbert.....	35, 51, 55, 58, 62, 92, 111	Travis, Roberta.....	46, 58
Sharps, Betty Jane.....	28, 84	Trippett, Dorothy.....	35, 52
Sharps, Margaret.....	41, 58, 66, 87, 111	Tucker, Clara Belle.....	46, 64, 66, 68
Shaver, Floyd N.....	19, 69	Uhlar, Charles.....	28, 57, 69, 107
Shaw, Burl.....	28, 111	Uhlar, John.....	8, 41
Shinabery, Glen.....	29	Umpleby, Loran.....	29, 57, 95, 111, 113
Shreve, Wilma Warner.....	35, 111	Unger, Marguerite.....	46
Shumaker, Betty Rae.....	22, 28, 48, 61, 62, 83	Van Gilder, Mary Frances.....	46
Sims, Phyllis E.....	29	Van Zandt, Wayne.....	41, 92
Simons, Betty.....	41	Vice, Kenneth.....	29, 57, 61, 92
Simons, Janis.....	41, 48, 83	Villers, Normajean.....	46, 53, 64, 65, 66
Simpson, William.....	41, 55, 57, 91	Waggy, Robert.....	41
Sleeth, Ronald.....	28, 48, 55, 57, 61, 62, 64, 65, 92	Waggy, William.....	35, 58, 95
Small, Paul.....	41, 104	Wagner, Glenna Glee.....	41, 64, 87
Smith, Annie.....	46, 66, 68	Waldeck, John.....	41, 92
Snodgrass, Leta.....	20	Ward, Audrea.....	41
Snyder, Richard.....	44	Ward, Creed.....	41
Sommerville, Barbara.....	41, 57, 64, 66, 68, 87, 96	Ward, Jo Ann.....	46
Sommerville, Joan.....	9, 10, 46, 51, 53, 64	Wells, Anne Virginia.....	46, 64
Sorton, Edgar.....	19, 65	Wells, Harriet Jane.....	11, 35, 57, 61, 64, 83
Sparks, Sarah Jane.....	46, 53, 58, 66, 68, 69	Whetsell, Harriett.....	11, 35, 57, 62, 66, 83
Spellman, Clarence.....	46, 66	White, Enoch.....	29, 61
Spencer, Hugh.....	46	White, Ison T.....	29, 64, 95
Spessard, James.....	35, 104	Whittaker, Mary E.....	41, 55, 57, 58, 69, 83, 96, 113
Stathers, Betty Ann.....	46, 58	Wilfong, Carl.....	35, 104
Steele, Donald.....	35, 107	Wilfong, Lota Marie.....	64
Steele, H. G.....	9, 18, 66	Wilkinson, Robert.....	41, 92
Stemple, William.....	46	Williams, Betty.....	46, 55, 58, 81, 88
Stewart, Anita.....	9, 28, 58, 81, 84, 96, 113	Williams, Glee.....	46, 66
Stewart, Clyde.....	28, 104	Williams, Jacqueline.....	41, 62, 103, 111
Stowers, Edna.....	46	Williams, Kathleen.....	29
Strader, Lee.....	28, 55, 92	Williams, Norma.....	46
Stump, Forrest.....	29, 81	Wilson, Glen.....	41, 64
Stump, Reva.....	41, 53, 66	Wilson, Lucille.....	41, 88
Sturm, Virginia Lea.....	46	Wilson, Ray.....	29, 58
Summers, Willis.....	41, 66, 68	Winans, Clarence.....	41, 62, 64, 66
Sutter, Lee.....	46, 65, 107	Witt, Jessie.....	41
Sweeney, Charles.....	41, 58	Woofter, Mary Jo.....	29, 58, 84
Tamblyn, June.....	35, 64, 83, 111, 113	Wragg, Alexander.....	29, 58
Tannehill, Kay.....	37, 41, 66, 69, 72, 73, 83	Xenakis, George.....	44, 99
Taylor, Donald.....	46, 64, 65	Yokum, Mary Ethel.....	29
Taylor, Shirley.....	41, 66, 83	Young, Marjorie.....	29
Tenney, Lucille.....	46	Young, Richard.....	43, 46, 99, 107, 109
Tenney, Ruth.....	41	Zickefoose, Rachel.....	29, 61, 84
Teter, Gerney B.....	29	Zumbrunnen, Charles.....	35, 58, 64, 99

BEHIND *Your* SWITCH



When you flip the switch that turns on a flood of bright, cheerful light—you aren't likely to think of the great generators in the power station, the miles of transmission lines, or the thousands of workers that make this convenience possible.

Nor do we expect you to be aware of these things—for it is our aim to provide you with dependable, low cost electric service so efficiently that you take it for granted.

But today, all of us are being called upon to shoulder added burdens, to assume added responsibilities.

Our nation's tremendous war effort has called for greatly increased power output—to keep factories and mills lighted day and night, to run the machines that make the guns and planes and ships that will win the war.

The electric service companies of the nation are meeting these increased power demands—and you may be sure that we will continue to meet them.

APPALACHIAN ELECTRIC POWER COMPANY

ACME BOOK STORE

"Where You're Welcome"



Stationery, School Supplies, Gifts,
Candies, Tobaccos, Athletic Goods,
Newspapers and Magazines

11 EAST MAIN STREET
Buckhannon, W. Va.

"A man is judged by the
company he keeps"

So is a store by the
merchandise it sells . . .

- FLORSHEIM SHOES
- ARROW SHIRTS, TIES,
UNDERWEAR
- DOBBS HATS
- EDGERTON SHOES
- RUGBY & McGREGOR
SPORTSWEAR
- BOTANY TIES
- SWANK JEWELRY
- SOCIETY CLUB HATS
- INTERWOVEN HOSE
- WILSON BROS.
PAJAMAS

PERCE ROSS

MEN'S WEAR

Buckhannon, W. Va.

Would you enjoy a Career that offers

F R E E D O M

I N D E P E N D E N C E

a n d

C O M P E N S A T I O N

commensurate with your Ability

and Efforts?

If YOU Can qualify . . .

You are invited to join

the

CLYDE O. LAW

General Agency

900 Hawley Building

WHEELING

of

The Northwestern Mutual Life

Insurance Company

Milwaukee, Wisconsin

Mutual Fire Insurance Company of West Virginia



S	James A. Sigafoose, President	S
A	Blaine Engle, Secretary	E
V	Goff Building, Clarksburg, W. Va.	R
I		V
N	General Line of Insurance . . .	I
G	Farm Property, Schools	C
S	Church and Town Property	E



DIVIDENDS IN ADVANCE ON EVERY POLICY



Article 5, Chapter 33 of the Code of West Virginia as amended by the 1935 Session of the Legislature gives Boards of Education, County Commissioners and other public bodies a perfect legal right to insure in Mutual Companies.

Compliments of

THE CENTRAL NATIONAL BANK

Buckhannon, W. Va.

"The Bank of Friendly Service"

Compliments of

EMPIRE LAUNDRY CO.

Clarksburg, W. Va.

Master Cleaners and Dyers

CREIGHTON MUSIC COMPANY

403 West Main Street Clarksburg, W. Va.

Phone 3941

Baldwin Pianos
Hammond Solovox
Radio—Phonographs
Band Instruments
Sheet Music
Records

TRAVEL
The Modern Way . . .
GO BY BUS

Comfortable—Convenient—Safe

Money Saving Fares

CHARTERED BUSES

For Groups or Parties to Any Point

REYNOLDS TRANSPORTATION CO.

Phone 597

Phone 580

Phone 476

Clarksburg, W. Va.

Buckhannon, W. Va.

Elkins, W. Va.

A
Code
for
Americans

IT IS DIFFICULT for us to adjust our thoughts and actions to "all out" war making. That is true because, for generations, we have been a peace-loving people.

There is a code, however, that stands the tests of wars. It is the code of decency, of intelligent thought, of action motivated by unquestioned impulses, of determination to do one's part thoroughly and completely.

This company, with scores of college men and women in its ranks, as well as in executive positions, follows that code in its public and private affairs. With your help, electric power will greatly assist in winning the war and the peace to follow. We welcome your cooperation in everything affecting our common interests.

Monongahela System

H & K
CASTO
GROCERY



"If it comes from here, it's got to be good"

HILLSVIEW FLOWER GARDENS
Besse Gibson Hardesty

Member
Florist Telegraph Delivery Association
Kingwood, W. Va.

Compliments of

ANDERSON'S

THE STATES LARGEST
RESTAURANT

Clarksburg, W. Va.
F. H. Johnson, Mgr.

CITY CLEANERS & DYERS

"We do our own dry cleaning"

Buckhannon, W. Va.
Phone 222

Compliments of

COMSTOCK
CHEVROLET COMPANY

Buckhannon, W. Va.

Throughout The Year

THE PHAROS

Rings The Bell

VELVET ICE CREAM

3 Kanawha Street

Phone 142 Buckhannon, W. Va.

Want a lift ?



INDECO GUIDES TO BETTER ANNUALS

STABILITY

Since the turn of the century the Indianapolis Engraving Company, Inc., has maintained the highest standards of quality and intelligent cooperation, thus accounting for the continuous use of our service by many high schools, colleges and universities.

QUALITY

Indeco quality is the finest that modern equipment and skilled craftsmen can produce. Every engraving is unconditionally guaranteed to be a perfect printing plate and to give a faithful reproduction of your engraving copy.

SPECIALIZATION

Our service includes help in planning and designing, suggestions on how to get the best pictorial effects, assistance in preparation of engraving copy, and solving the many problems arising in making your book both an editorial and financial success.

IDEAS

The latest ideas in yearbook construction are offered to make the annual best meet the requirements of your particular school. Our "Service Manual" is a complete guide for the staff in their work.

RESULTS

Indeco planned yearbooks have long been recognized as being among the outstanding annuals of the country. You will be agreeably surprised, too, at the purchasing power of your budget. Write us asking for a complete explanation of the Indeco plan.

INDIANAPOLIS ENGRAVING COMPANY INC
DESIGNERS AND ENGRAVERS OF YEARBOOKS AND SCHOOL PUBLICITY
INDIANAPOLIS * * * INDIANA

**WHETSELL'S
INSURANCE AGENCY**

Elkins, W. Va.

THOMPSON'S PHARMACY

"The Modern Drug Store"

Buckhannon, W. Va.

"Say It With Flowers"

from

Buckhannon Florist Co.



GREEN HOUSES

We Telegraph
Flowers For All Occasions

D. L. Feola, Florist

Phone 190

**ADRIAN
BUCKHANNON
BANK**

Wishes You Many, Many,

Successful Years

**HAYMOND'S
RESTAURANT**

"Where Students
Meet to Eat"

7 S. Kanawha Street

**SEXTON'S
DEPARTMENT STORE**

"CLOTHING FOR THE ENTIRE FAMILY"

27-29 East Main

Buckhannon, W. Va.

Compliments of
BUCKHANNON MILLING CO.

Buckhannon, W. Va.

Compliments of

THE UPSHUR SODA GRILL
and
TALBOTT DRUG CO., Inc.

"The Place to Meet Your Friends"

SHINGLETON BROTHERS

★

Continue to
Boost Our Wesleyan Endowment
Campaign and Thereby Insure
Christian Education for The
Coming Years.

★

CLARKSBURG, W. VA.

MURPHY'S FIVE & TEN CENT STORE

Suppliers

CLASS ROOM NEEDS
DORM ROOM NEEDS



"Shop With Us for Pleasure"

Compliments of
UPSHUR COUNTY DENTAL SOCIETY

E. B. ALKIRE
W. C. CARPER
F. M. FARNSWORTH
ORNE C. POST

PEOPLES GROCERY
and
MEAT MARKET

"BUCKHANNON'S FOOD SHOP"

Buckhannon, W. Va.

KOLLEGE KITCHEN

Sandwiches
oft Drinks
wing

Compliments of

ELKINS LAUNDRY

"If It's CLEANING, WE DO It"
We call and deliver in Buckhannon

Elkins, West Virginia

Congratulations to the Graduates

SAYRE STUDIO

PHOTOGRAPHS OF QUALITY

AND DISTINCTIVE PORTRAITURE



An exchange of photographs with classmates creates Bonds of Friendship for Life

Fourth Street

Phone 872

Clarksburg, W. Va.

**SKYLINE
Meat Market**

M. G. Smith, Proprietor

HONEST SERVICE
HOME DRESSED MEATS

G. O. Young

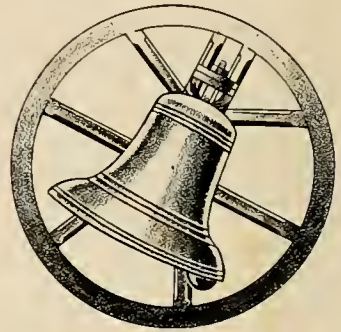
Wholesale and Retail

DRUGGIST

West Virginia's Largest, Finest and
Most Complete Drug Store

Buckhannon, W. Va.

*The Old Bell
will go on
ringing . . .*



For more than a half-century . . . West Virginia Wesleyan College has been proud to serve in the education of youth . . . proud to see its young men and its young women . . . three generations of them . . . leave its classrooms and its laboratories to take on responsibilities of trained and useful citizenship . . . proud to record and rejoice in their successes . . . For them . . . and for others who follow . . . the Old Bell . . . symbol of Wesleyan's pioneer leadership in education . . . will keep on ringing.

WEST VIRGINIA WESLEYAN COLLEGE

Member North Central Association of Colleges and Secondary Schools

WVWC LIBRARY



120684

C. 2

