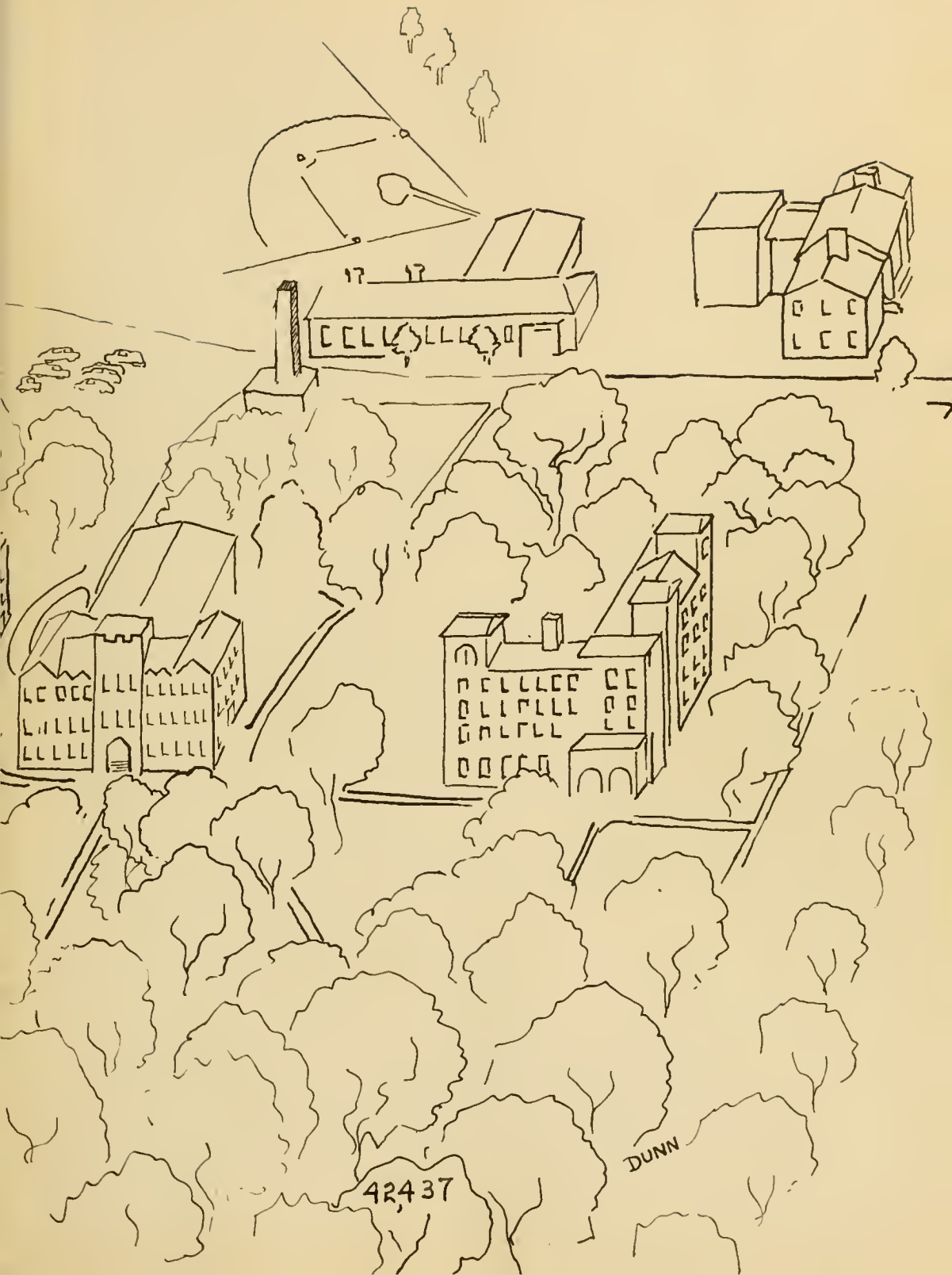


*nineteen hundred fifty-six*

*nineteen hundred fifty-six*

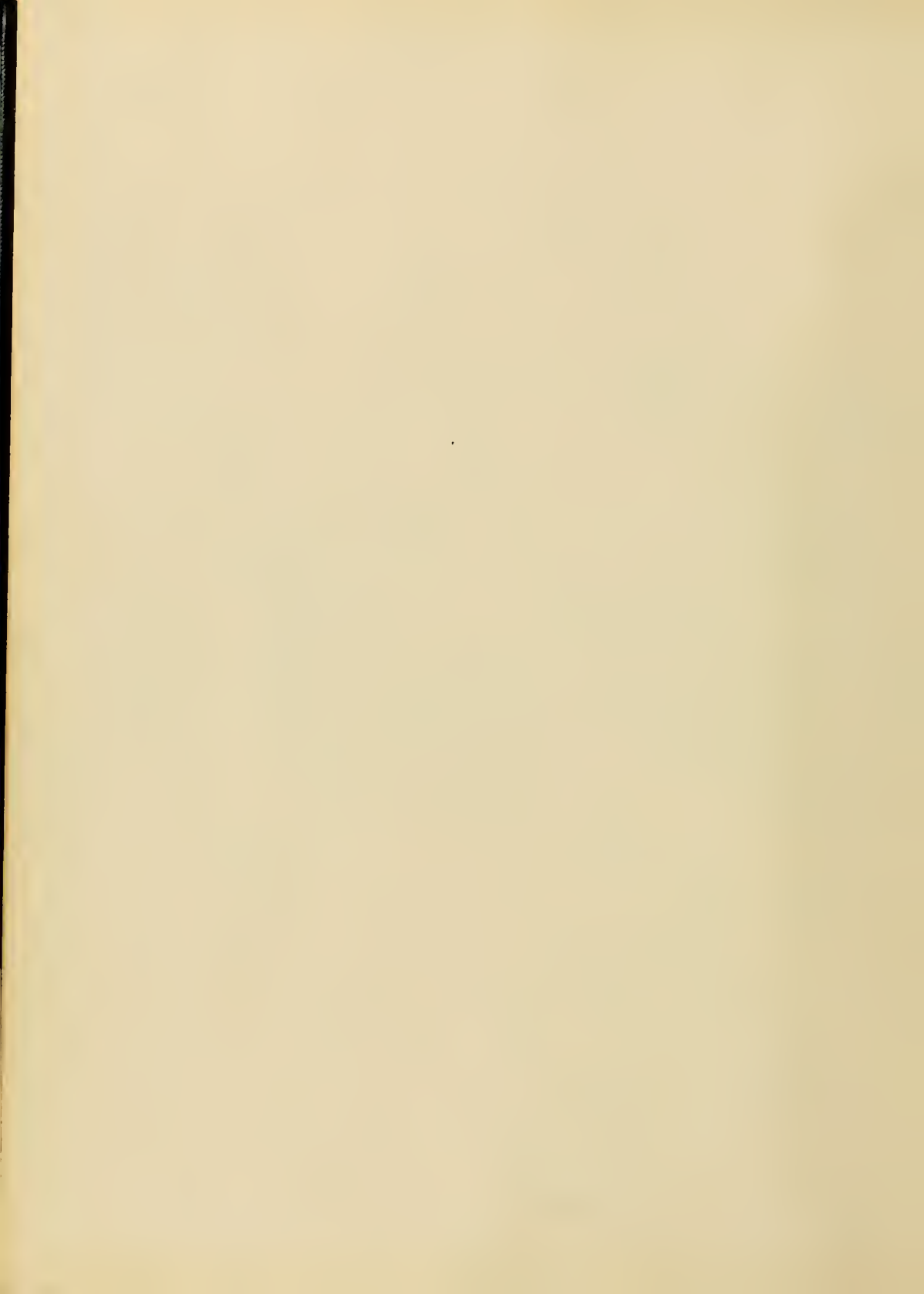
West Virginia Wesleyan College  
 LESHKY





42437

DUNN



One musical composition cannot adequately present life; nor one vivid painting, or one literary work come close to capturing in physical form the essence of human existence.

Nevertheless, in the 1956 Murrumurmontis, your yearbook staff attempts to display a segment of your sojourn at West Virginia Wesleyan College. It is our desire that, in years to come, you will find within these pages recollections that will bring back this unique interval known as college.

Kay Evans, editor

*This Is Wesleyan . . .*



. . . "It is the common wonder of  
all men how, among so many millions  
of faces, there should be none alike."

SIR THOMAS BROWNE





*"It is . . . a small college, and there  
are those who love it."*

DANIEL WEBSTER





DR. LEWIS HERBERT CHRISMAN

*"And gladly wolde he lerne, and gladly teache."*

CHAUCER

A refinement through the medium of literature from Homer to Hemingway has been the heritage of students who have attended the classes of Dr. Lewis Herbert Chrisman. This May his nearly forty years of full-time service at West Virginia Wesleyan College will come to a close; however, he will continue to teach on a limited schedule.

Born August 21, 1883, at Upper Uwchlan Township, Chester County, Pennsylvania, Dr. Chrisman is prominent as a writer and lecturer. He has written *John Ruskin, Preacher, and Other Essays*, *The English of the Pulpit*, *The Message of the American Pulpit*, and *Ten Minute Sermons*. He is a staff writer for church school publications of the Methodist Church, and has jointly edited *Selections from Speeches of Abraham Lincoln*. He has lectured at W. Va. University, Drew Theological Seminary, and Garrett Biblical Institute.

In 1903 he received a *Ph.B.* from Dickinson College, *A.M.* in 1909, and *Litt.D.* in 1920. He studied at the University of Pennsylvania, University of Michigan, University of Wisconsin, and, in 1943, received a *L.H.D.* from W. Va. Wesleyan.

He has taught at W. Va. University, was Professor of English at Union College, Professor of English Literature at Baldwin-Wallace College, and came to Wesleyan in 1919, acting as dean in 1925-26.

Dr. Chrisman, who is a member of the American Association of University Professors, Alpha Chi Rho, and Phi Beta Kappa, married Elizabeth Lash in 1914. They had two children, Esther Elizabeth and Margaret Lucille.

The 1956 Murrumontis is dedicated to Dr. L. H. Chrisman with ineffable appreciation, not solely for the knowledge he has imparted to us, but for the wisdom to use it.



*"To be at home in all lands  
and ages;  
to count Nature a familiar  
acquaintance  
and Art an intimate friend:  
to gain a standard for the  
appreciation of other  
men's work  
and the criticism of your  
own:  
to carry the keys of the  
world's library in your  
pocket,  
and feel its resources behind  
you in whatever task you  
undertake:  
to make hosts of friends  
among people of your  
own age  
who are to be leaders in  
all walks of life;  
to lose yourself in generous  
enthusiasms  
and cooperate with others  
for common ends:  
to learn manners from stu-  
dents who are gentlemen;  
and form character under  
professors who are cul-  
tured—  
this is the offer of the col-  
lege for the best four  
years of your life."*

WILLIAM DEWITT HYDE

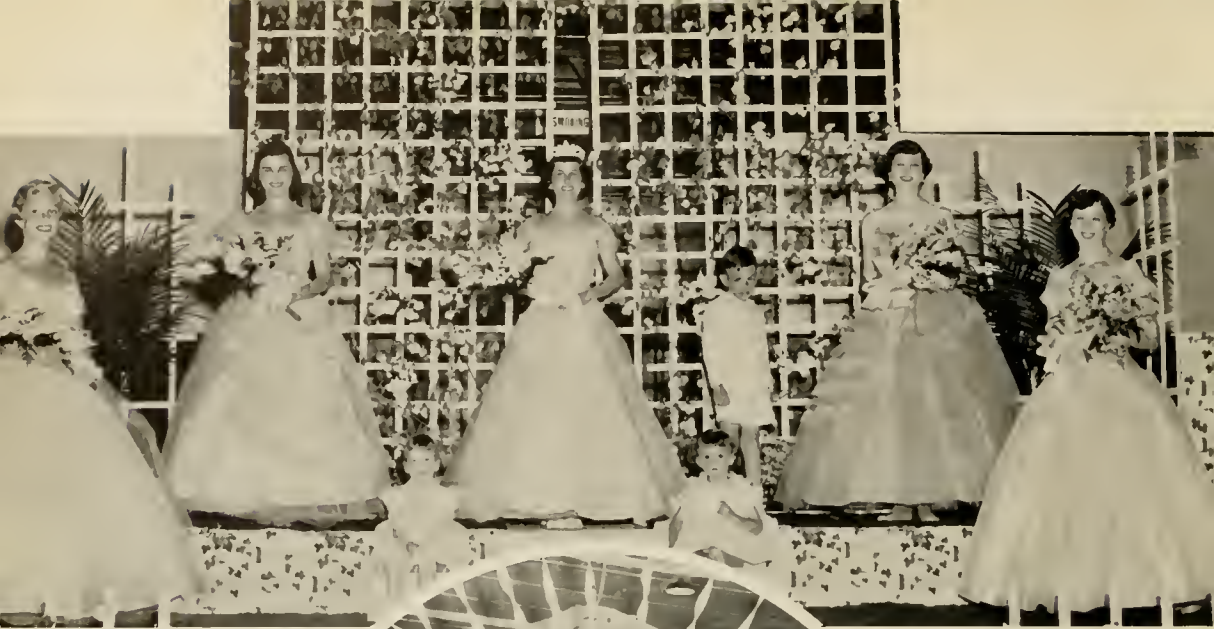
PRESIDENT SCARBOROUGH

*"Pursued with perseverance and patience, the main pathway at Wesleyan leads to levels of comprehension and competence, and culture, and concern, and compassion, and Christian commitment, below which the life good to live is relatively impossible."*

A. A. SCHOOLCRAFT



DEAN SCHOOLCRAFT



queen Corena . . .

. . . and court



. . . may pole dance



kappa alpha fraternity  
. . . second place



*independent women . . . first place*

## *May Day - 1955*

*a moonlight serenade  
in May*



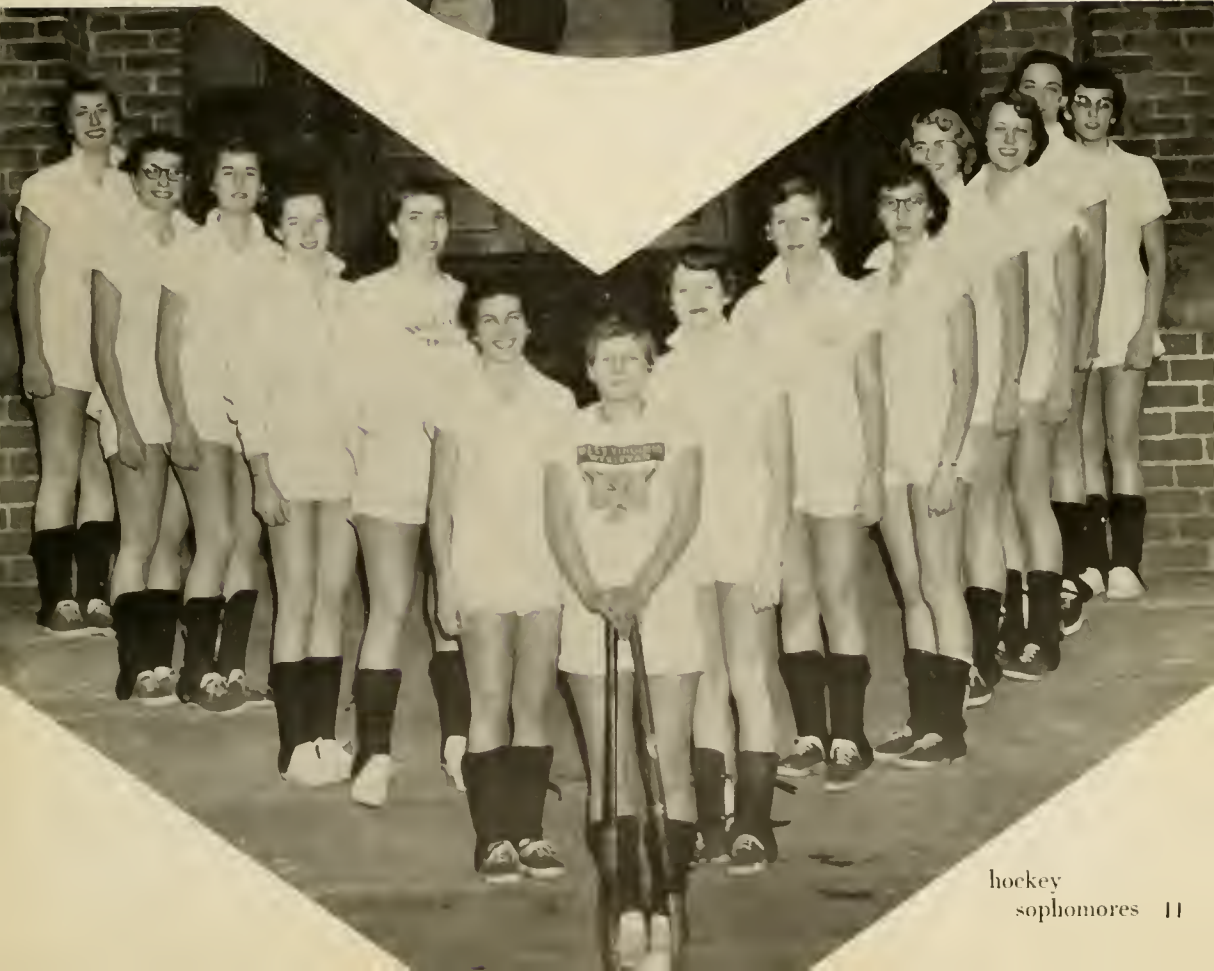


*Intramurals*



football  
kelsoe's

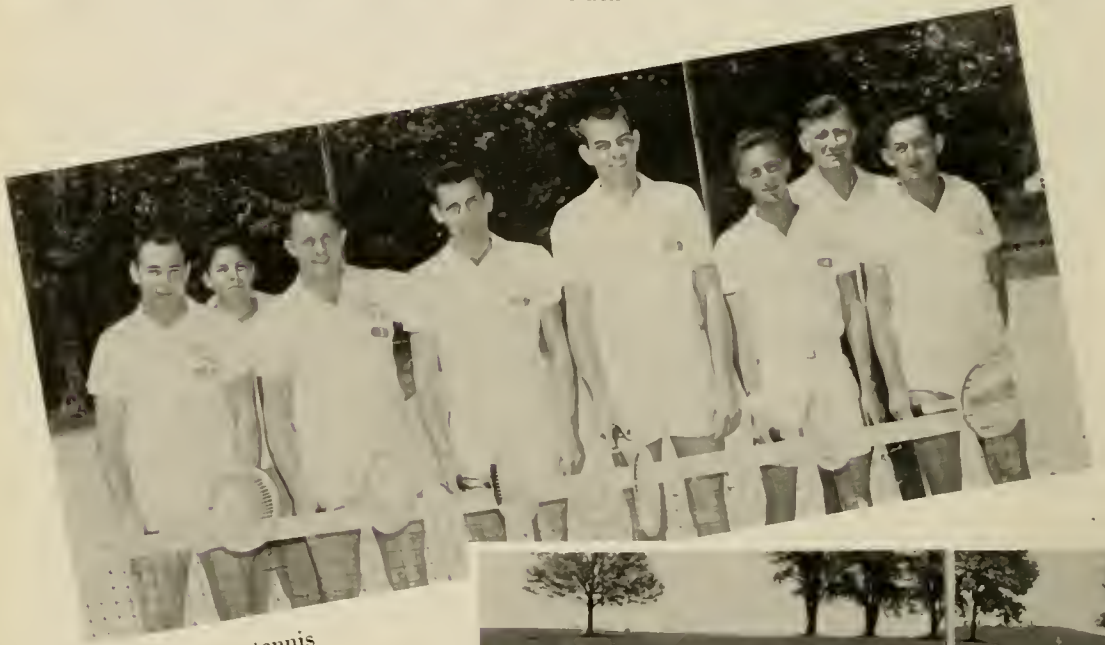
volleyball  
buckhamon boys  
juniors



hockey  
sophomores 11



track



tennis



golf



## Track

SCHEDULE: *Won*—4    *Lost*—1

Wesleyan	66	Fairmont	60
Wesleyan	69	D.&E.	55
Wesleyan	23 <sup>1</sup> / <sub>2</sub>	W.V.U.	106 <sup>1</sup> / <sub>2</sub>

Duel meet—Wesleyan 73; Bethany 68; D.&E. 39

W.V.I.A.C. Champions.

State W.V.I.A.C. meet—Wesleyan 55; Bethany 40; Fairmont 23; W. Liberty 23.

## Tennis

SCHEDULE: *Won*—0    *Lost*—5

Wesleyan	3	Fairmont	6
Wesleyan	1	D.&E.	8
Wesleyan	1	Salem	8
Wesleyan	4	Fairmont	5
Wesleyan	0	Salem	9

## Golf

SCHEDULE: *Won*—3    *Lost*—3    *Tied*—1

Wesleyan	7 <sup>1</sup> / <sub>2</sub>	Glenville	7 <sup>1</sup> / <sub>2</sub>
Wesleyan	1	Fairmont	14
Wesleyan	6	W. Va. Tech.	9
Wesleyan	3 <sup>1</sup> / <sub>2</sub>	Fairmont	11 <sup>1</sup> / <sub>2</sub>
Wesleyan	12 <sup>1</sup> / <sub>2</sub>	D.&E.	21 <sup>1</sup> / <sub>2</sub>
Wesleyan	7 <sup>1</sup> / <sub>2</sub>	W. Va. Tech.	4 <sup>1</sup> / <sub>2</sub>
Wesleyan	13	D.&E.	2

## Baseball

SCHEDULE: *Won*—13    *Lost*—4  
 CONFERENCE RECORD: *Won*—10    *Lost*—1  
 CONFERENCE RANKING: *First*

Wesleyan	2	Marietta	12
Wesleyan	8	W.V.U.	16
Wesleyan	14	*A.&B.	0
Wesleyan	2	*A.&B.	1
Wesleyan	2	Marshall	1
Wesleyan	9	Marshall	3
Wesleyan	19	*Glenville	9
Wesleyan	7	*W. Va. Tech	6
Wesleyan	4	*Morris Harvey	1
Wesleyan	21	*Glenville	0
Wesleyan	9	*Fairmont	1
Wesleyan	15	*D.&E.	10
Wesleyan	9	W.V.U.	10
Wesleyan	4	Marietta	3
Wesleyan	13	*D.&E.	4
Wesleyan	0	*Fairmont	5
Wesleyan	3	*Morris Harvey	2

\*Conference Games

baseball



*Graduation  
Day -*





*“Alma Mater of the Mountains  
West Virginia Wesleyan  
At thy magic mystic fountains  
Noblest dream of life began.  
We, thy children, bow before thee;  
We, thy children, now adore thee;  
And pledge God, who watches o’er thee,  
Thou shalt fill the ample measure of his  
plan.”*

WALLACE B. FLEMING

*“How bravely Autumn paints upon the  
sky  
The gorgeous flame of Summer which is  
fled!”*

THOMAS HOOD







thanksgiving dinner away from home

*"Enter into his gates with THANKSGIVING, and into his courts with praise; be thankful unto him, and bless his name."*

PSALM 100:4

swing your partners



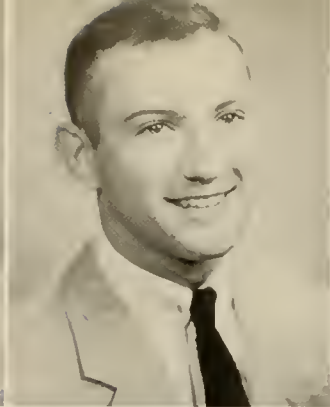


JACK ROLLO, *vice president*  
PAT NICKELL, *treasurer*  
DAVE CUCINOTTA, *president*  
DIANE DIETENHOFER, *secretary*

## SENIOR CLASS

*"You to the left and I to the right,  
For the ways of men must sever—  
And it may be for a day and a night,  
And it well may be forever.  
But whether we meet or whether we part,  
(For our ways are past our knowing)  
A pledge from the heart to its fellow heart,  
On the ways we all are going!  
Here's luck!  
For we know not where we are going."*

RICHARD HOVEY



LILLIAN FRANCES ALFRED WESTON  
*B.S.*, Alpha Gamma Delta (treas.), Benzine King,  
 W.R.A., F.T.A., House Board (pres.), Intramurals.

DENNY DARRELL BOGGS WESTON  
*B.A.*, Choir, Band, Presser Scholarship.



ELLA ELIZABETH BOLEAN TEANECK, N. J.  
*B.S.*, S.A.C., Betty Lamp Club.

ARLENE RUTH BROOKS NIANTIC, CONN.  
*B.A.*, Playshop, W.R.A., Choir, Band, Freshman  
 Counselor, Christian Emphasis Publicity Committee.



DELLA ANNETTE BRUNDRETT. BUCKHANNON  
*B.A.*, Delta Psi Kappa, M.S.M., W.R.A., Playshop,  
 Fellowship Teams, Christian Service Fellowship,  
 Hockey Team.

WILLIAM BRUNDRETT BUCKHANNON  
*B.A.*, M.S.M., Christian Service Fellowship, Fellow-  
 ship Teams.



SAMUEL FRANCIS BUTCHER COWEN  
*B.A.*, Sociology Club.

EDMUND JAMES BUTLER, JR.  
 STRATFORD, CONN.  
*B.A.*, Kappa Alpha, S.A.C. (pres.), Murmurmontis.



**SANTO JOSEPH BUTTAFUOCA**

**BROOKLYN, N. Y.**

*B.S.*, Theta Chi (treas.), Benzine Ring, Awards Committee, Social Committee, Interfraternity Council (sec.).

**CHARLES OTHO CADLE**

**RUPERT**

*B.S.*, Theta Chi, Football, Basketball, Intramurals Chairman.



**ROBERT EDGAR CALL** **E. ANDOVER, N. H.**

*B.A.*, Sociology Club (v. pres.), Choir, Religious Activities Committee, M.S.M. (pres.), Community Council, Cross-Country, W.U.S. Committee, Interfraternity Constitution Committee, Intramurals.

**WALTER RAY COLLINS** **WYOMING, PA.**

*B.A.*, Theta Chi (v. pres.), Pharos, Track, Cross-Country, Community Council (pres.), Junior Class (treas.), Intramurals.



**ROBERT DONALD CRANE**

**FLORHAM PARK, N. J.**

*B.S.*, Alpha Sigma Phi.

**BEATRICE EVELYN CUCINOTTA**

**FALL RIVER, MASS.**

*B.A.*, Alpha Xi Delta, Sociology Club (pres.), M.S.M., W.R.A., Murmurmontis, Publications Committee, Freshman Handbook.



**DAVID MEARS CUCINOTTA**

**FALL RIVER, MASS.**

*B.S.*, Freshman Class (v. pres.), Sophomore Class (pres.), Junior Class (pres.), Senior Class (pres.), Community Council, Educational Committee, Freshman Handbook, Student Directory, Murmurmontis.

**JANNIE ALVENTINE DAVIS**

**SOPHIA**

*B.S.*, Alpha Gamma Delta (v. pres.), Playshop, M.S.M., W.R.A., Pharos, Band, Awards Committee, Religious Activities Committee, Delta Psi Kappa (pres.), Hockey Team, Intramurals.





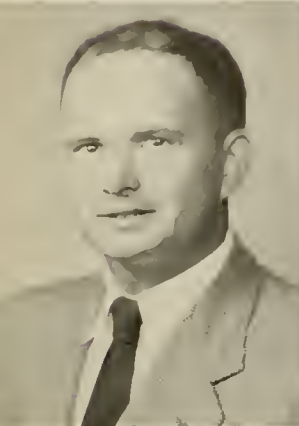
**DIANE ELINOR DIETHOFER**

**WETHERSFIELD, CONN.**

*B.A.*, Alpha Psi Omega (v. pres.), Playshop (v. pres.), M.S.M., W.R.A., W.U.S. Committee, Haught Literary Society, Hockey Team.

**RICHARD AYRES DUNN, JR.** **MADISON, N. J.**

*B.S.*, Alpha Sigma Phi, S.A.G., Murmurmontis.



**JAMES EDWARD ELMER**  
*B.S.*

**JANE LEW**

**ARLINE H. FRANQUIZ**

**BUCKHANNON**

*B.S.*, Alpha Gamma Delta (2nd v. pres.), Alpha Psi Omega, Playshop, Betty Lamp Club, S.A.G., Cultural Enrichment Committee, Orientation, Haught Literary Society, Hockey Team, Intramurals.



**JAMES EDWARD GASTON**  
*B.S.*

**BUCKHANNON**

**CHARLES ERWOOD GOODIN**

**WELLSBURG**

*B.A.*, Phi Sigma Epsilon, M.S.M., Playshop, Murmurmontis, Choir (pres.).



**JEAN CORK GREER**

**CLARKSBURG**

*B.A.*, Alpha Xi Delta (marshal), Murmurmontis, Pharos, Publications Committee, Canterbury Club (v. pres.).

**MARTHA KATHLEEN HAMRICK** **BURLINGTON**

*B.S.*, Alpha Psi Omega, Playshop (sec.-treas.), M.S.M., Betty Lamp Club.

WINNIFRED LEONE HEAVNER BURNSVILLE  
*B.A., M.S.M., Band, National Methodist Scholarship.*

EDWARD PATRICK HENNESSY POMEROY, O.  
*B.S., Football, Baseball.*



PHYLLIS JEAN HILLMAN BECKLEY  
*B.A., Alpha Gamma Delta (pres.), M.S.M., W.R.A.,  
Haught Literary Society (sec.), Sociology Club,  
Murmurmontis, House Board, Panhellenic (pres.),  
Freshman Class (treas.), Junior Class (sec.), May  
Day Attendant (Fr.), Homecoming Attendant (Sr.).*

HERBERT IRWIN HIRSCH BROOKLYN, N. Y.  
*B.S., Benzine Ring, Beta Beta Beta, Baseball, In-  
tramurals.*



JOHN THOMAS HITCHENS PHILADELPHIA, PA.  
*B.S., Theta Chi, Choir, Band, Beta Beta Beta, Psy-  
chology Club, Philosophical Fraternity, College  
Quartet.*

ANNE HOUDASBELT MEADVILLE, PA.  
*B.S., Alpha Xi Delta.*



JOHN ELMER HOUDASBELT SYRACUSE, O.  
*B.S., Football, Baseball.*

CHARLES WILLIAM JOHNSON, JR. WESTON  
*B.A.*





NAOMI RUTH JUDY CIRCLEVILLE  
*B.S., Alpha Delta Pi (corres. sec.), 4-H Club, Betty  
 Lamp Club (v. pres.).*

ELIZABETH KARICKHOFF WINONA  
*B.S., Band.*



BERNICE RUTH KING CLARKSBURG  
*B.A., Alpha Delta Pi (sec.), Playshop, M.S.M.,  
 W.R.A., F.T.A. (v. pres.).*

YOUNG WON LEE SEOUL, KOREA  
*B.A., Dorothy Lee Scholarship.*



GREGORY D. LESSIG PEN ARGYL, PA.  
*B.A., Theta Chi (sec.), Pharos, Murmurmontis,  
 Football, Track, Publications Committee, Intra-  
 murals.*

CAROLYN LOUISE LEWIS OAKLAND, MD.  
*B.A., Alpha Delta Pi, Benzine Ring, W.R.A.,  
 Camphor Queen, Hockey Team, Intramurals.*



ELIZABETH JEAN LINDSAY WEST DECATUR, PA.  
*B.S., M.S.M., F.T.A., Murmurmontis, Betty Lamp  
 Club (sec.), Fellowship Teams.*

DEWAYNE RYMER LOWTHER WILSONBURG  
*B.A., M.S.M., Pharos, Choir, Band, Student  
 Minister.*

**NYLA JEADELLE McCULLOUGH**

**PARKERSBURG**

*B.A.*, Alpha Delta Pi (social chairman), Benzine Ring, W.R.A.

**HARRY ALEXANDER MARHOFFER**

**WILTON, CONN.**

*B.S.*, Kappa Alpha (v. pres.), Marmurmontis, S.C.O.W. Committee, Conduct Committee, Community Council, Sophomore Class (v. pres.), Interfraternity Council (pres.), Golf, Football, Intramurals.



**EUGENE ROBERT MARTENEY BUCKHANNON**  
*B.S.*, Theta Chi (pres.), Benzine Ring (v. pres.), Philosophical Fraternity, Intramurals.

**PATRICIA TEMPLETON MARTIN**

**MOUNT HOPE**

*B.S.*, Alpha Xi Delta (secret office), W.R.A., F.T.A.



**JOHN FRANKLIN MARTZ BUCKHANNON**  
*B.S.*, Theta Chi.

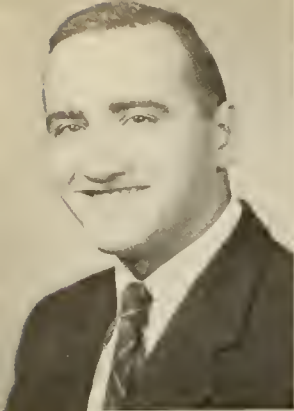
**BARBARA ANN MAXWELL ST. MARYS**  
*B.S.*, Alpha Delta Pi (pres.), W.R.A., Haught Literary Society (v. pres.), Pharos, Band, Delta Psi Kappa (chaplain), Beta Beta Beta, Publications Committee, Conduct Committee, Community Council (sec.), House Board, Homecoming Attendant (jr.), Homecoming Queen (sr.), Hockey Team, Intramurals.



**BIJAN MELANY NEW YORK, N. Y.**  
*B.S.*, Beta Beta Beta (pres.), Benzine Ring, Intramurals.

**THOMAS R. MERRILL POCOMOKE, MD.**  
*B.A.*, Playshop, Fellowship Team.





JULIUS JOHN METROKA NEW YORK, N. Y.  
*B.A.*, Alpha Sigma Phi (pres.), Baseball Team.

ELSIE VIRGINIA MILLER GORMANIA  
*B.A.*, F.T.A. (treas.).



WILLIAM GENE MILLER ROMNEY  
*B.A.*

RICHARD EDWARD MOHR NORWALK, CONN.  
*B.S.*, Kappa Alpha, S.A.G.



MARTHA LOU MOORE ELKINS  
*B.A.*, Sociology Club, M.S.M.

NAAMAN LEE MYERS BELINGTON  
*B.S.*

PATTON LACY NICKELL, JR. BECKLEY  
*B.S.*, Senior Class (treas.), Conduct Committee,  
 Basketball.

SAMUEL PARK SEOUL, KOREA  
*B.A.*, I.R.C., Philosophical Society.

ROBERT MELVIN POST BUCKHANNON  
*B.A.*, Playshop, F.T.A., Pharos (co-editor).



**SHIRLEY HOPE POST**                      **BUCKHANNON**  
*B.S., Benzine Ring, Alpha Delta Pi.*



**ARTHUR JACK RIBA**                      **BROOKLYN, N. Y.**  
*B.S., Pharos, I.R.C., Tennis.*

**JOHN ROLLO, JR.**                      **BUFFALO, N. Y.**  
*B.A., Theta Chi, Sociology Club, Murmurmontis (bus. mgr.), Pharos, Choir, Cheerleader, Senior Class (v. pres.), W.U.S., S.C.O.W. Committee, Psychological Society (pres.), Intramurals.*



**BEVERLY ROMAINE RUTHERFORD**  
**WAYNESBURG, PA.**  
*B.A., Benzine Ring.*

**THOMAS MELVIN RUTHERFORD**  
**BUCKHANNON**  
*B.S., Benzine Ring, Football, Baseball, Basketball.*

**ROBERT HOWELL SAMMIS**  
**STRATFORD, CONN.**  
*B.S.*



**WILLIAM RICHARD SCHENCK**  
**DUNELLEN, N. J.**  
*B.S., Theta Chi, Community Council (v. pres.), Football, Tennis, Track.*

**GUS MATHIEW SOKOS**                      **RICHWOOD**  
*B.A.*

**JOHN PATRICK SOUTH**                      **MOUNDVILLE**  
*B.A., Alpha Psi Omega (pres.), Playshop (pres.), Sociology Club, Murmurmontis, Choir, Cultural Enrichment Committee.*





JANE ELIZABETH STRONG      HORNELL, N. Y.  
*B.A.*

JOSEPH N. STRONG      PENN YAN, N. Y.  
*B.A.*



MARTHA LOUISE TANNEHILL      AUGUSTA, GA.  
*B.A.*, Alpha Gamma Delta (sec.), W.R.A., So-  
ciology Club, Haught Literary Society, Pharos,  
Choir, Delta Psi Kappa, Community Council.

PAUL VAUGHAN, JR.      CHARLESTON  
*B.A.*, Kappa Alpha, Intramurals.



ROBERT DICK WHITESCARVER      BUCKHANNON  
*B.S.*, Basketball.

JAMES HAROLD WIMER      ROCK CAVE  
*B.S.*, Alpha Sigma Phi.



PEARL CHUNG BIN YIM      SEOUL, KOREA  
*B.A.*, Sociology Club, M.S.M., W.R.A.

TOMMIE RUTH YOST      BLUEFIELD  
*B.A.*, M.S.M., W.T.A., F.T.A. (pres.), Haught Li-  
terary Society, Murrumontis, I.R.C., Educational  
Affairs Committee, Freshman Counselor, National  
Methodist Scholarship.





*"Not only is there an art in knowing a thing, but also a certain art in teaching it."*

CICERO



community council workshop  
faculty banquet, thanksgiving



*Counseling*



SIDNEY DAVIS, *M.Ed.*

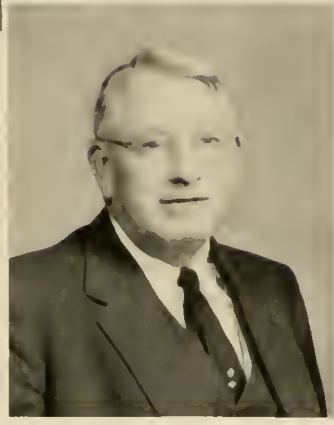
FLORENCE SCHAPER  
*Ph.D.*



NELLIE WILSON  
*B.A.*



*Religion*



RALPH BROWN, *D.D.*

JOHN SHAVER  
*M.A.*



*Business*

E. KIDD LOCKARD, *M.A.*

LEWIS CLARK, *Ed.D.*

JUANITA PARKER, *M.A.*





FRED MESSERSMITH, *M.A.*



BUELL AGEY, *Ph.D.*  
JANET GUESS, *M.A.*

ROBERT SHAFER, *M.M.*  
JOAN BROWN, *M.S.*

*Music and Art*

*Physical Education*

CHARLOTTE KNEPSHIELD, *M.A.* DAVID REEMSNYDER, *A.M.*

FRANKLIN ELLIS, *M.S.*





ESTIER McALLESTER, M.S.

## Literature and Language

LEWIS CHRISMAN  
*L.H.D.*



## Home Economics

MARY BRILL  
*Ph.D.*



## Philosophy and Education

JAMES HUPP, *Ph.D.*  
JAMES BAY, *Ph.D.*



SAMUEL SMALL  
*Ph.D.*



JOSE FRANQUIZ, *Ph.D.*



MARY McKITTRICK, *Ph.D.* 33

*Science*



NICHOLAS HYMA. *Sc.D.*



MARVIN DOWNEY. *Ph.D.*



GEORGE GLAUNER. *Ph.D.*



WILLIAM HALLAM, *A.M.*

ARTHUR GOULD. *Ph.D.*



*Social  
Studies*



*Library  
Science*

EVELYN CROUCH. *M.A.*



HELEN STOCKERT. *B.S.*

GEORGE ROSSBACH. *Ph.D.*





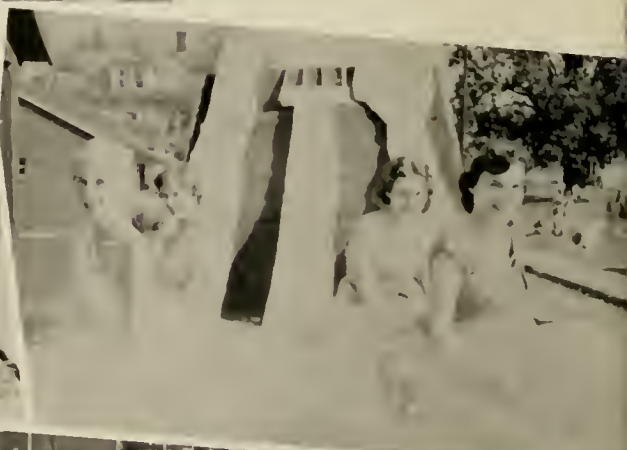
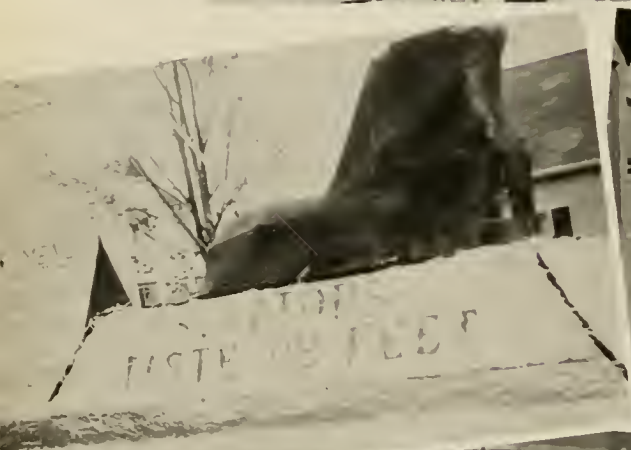
# Homecoming



Queen Barbara and her court reigned over the Homecoming festivities.

Highlighting the weekend was the return of Wesleyan's own Clifford "Gip" Battles, one of the greatest all-around backs, who received his certificate for the Football Hall of Fame.

Kappa Alpha Order and Alpha Xi Delta sorority took first and second place honors in the Homecoming Parade.







Alpha Gamma Delta sorority won first place in Wesleyantics with "A College Level Thuse."

Taking second prize was the Alpha Delta sorority with "Davius Elkus."

First place House Decoration went to Kappa Alpha Order with their "Sink the Ship for Gip."



# Cross-Country

SCHEDULE: *Won*—2    *Lost*—2

Wesleyan . . . . .	37	W.V.U. . . . .	18
Wesleyan . . . . .	17	Fairmont . . . . .	41
Wesleyan . . . . .	23	Fairmont . . . . .	32
Wesleyan . . . . .	41	W.V.U. . . . .	18

(low score wins)



SCHEDULE: *Won*—6    *Lost*—1    *Tied*—1

Wesleyan . . . . .	6	Fairmont . . . . .	2
Wesleyan . . . . .	4	Pa. College . . . . .	0
Wesleyan . . . . .	2	P.F.H.A. . . . .	2
Wesleyan . . . . .	3	Fairmont . . . . .	1
Wesleyan . . . . .	6	D.&E. . . . .	0
Wesleyan . . . . .	3	Bridgewater . . . . .	5
Wesleyan . . . . .	6	W.V.U. . . . .	0
Wesleyan . . . . .	6	D.&E. . . . .	0

# Hockey





BEVERLY SCHERBAUM, *secretary*  
RAY MILLER, *treasurer*  
NANCY WALTON, *vice president*  
DAVE TRADER, *president*

# J U N I O R S

*"It is hard to find a man  
who has studied for three years  
without making some progress in virtue."*

CONFUCIUS



Andrew  
Arendas  
*Passaic, N. J.*

Anne  
Armentrout  
*Beckley*

Margaret  
Austin  
*Bennington, Vt.*

Marilyn  
Aveyard  
*Gardner, Mass.*

John  
Aylestock  
*Buckhannon*

Robert  
Baumgartner  
*Flushing, N. Y.*

Barbara  
Beecroft  
*Wheeling*

Florence  
Bennett  
*Groveton, N. H.*

Robert  
Bitten  
*Jersey City, N. J.*

Carolyn  
Boling  
*Charleston*

Mary  
Bond  
*Bluefield*

Bill  
Bowman  
*Talcott*

Thomas  
Bradford  
*Buckhannon*

Shirley  
Brinkman  
*Cumberland, Md.*

Clifford  
Buell  
*Kittanning, Pa.*

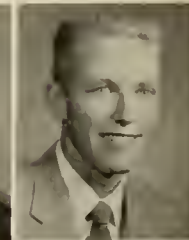
Evelyn  
Callaghan  
*Bethpage, N. Y.*

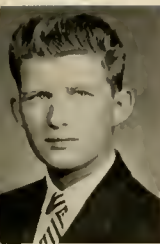
George  
Chappell  
*Pittsfield, Mass.*

Walter  
Clark  
*Orange, Conn.*

Liennie  
Cottrill  
*Pennsboro*

Lorna  
Cox  
*Elkins*





Gordon  
Damon  
*East Williston, N. Y.*

Philip  
Decker  
*Riverside, Conn.*

Glenn  
Dye  
*Buckhannon*

Kay  
Evans  
*Beckley*

Ronald  
Feldman  
*White Plains, N. Y.*

Louis  
Filosa  
*Flushing, N. Y.*

Peter  
Fink  
*Jamaica, N. Y.*

Marilyn  
Gardner  
*White Plains, N. Y.*

Jane  
Gaston  
*Buckhannon*

Nancy  
Gatherum  
*Richwood*

William  
Gaunt  
*Buckhannon*

Robert  
Gould  
*New Haven, Conn.*

Wayne  
Graham  
*Oakland, Md.*

Robert  
Gue  
*Brownsville, Pa.*

Audrey  
Gwennap  
*Wheeling*

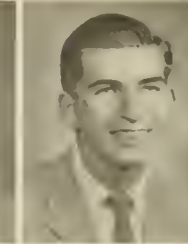
Bryce  
Hatch  
*Henniker, N. H.*

Roberta  
Hiehle  
*Vienna*

Jim  
Hill  
*Greenwood, S. C.*

Robert  
Horton  
*Fairfield, Conn.*

David  
Houston  
*Hempstead, N. Y.*





Priscilla  
Howard  
Cowen

William  
Hughes  
Trenton, N. J.

Cora  
Ansley  
Neptune City, N. J.

Robert  
Jablonsky  
Bridgeport, Conn.

Marshall  
Johnson  
Terra Alta

Shirley  
Kincaid  
Kincaid

Nelson  
Lantz  
Buckhannon

Barbara  
Leece  
Mount Hope

Barbara  
Lefler  
Rainelle

Virginia  
Light  
Erie, Pa.

Margaret  
Long  
University City, Mo.

Marjorie  
McCullough  
Bronx, N. Y.

Arthur  
McDermott  
West Haven, Conn.

June  
Mearns  
Clarksburg

Vaughn  
Micheal  
Morgantown

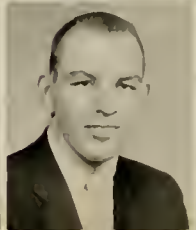
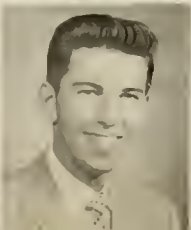
Howard  
Miller  
Fairview, Pa.

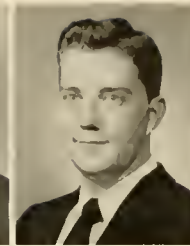
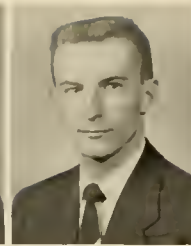
Raymond  
Miller  
Arnold, Pa.

Patricia  
Miller  
Buckhannon

Roy  
Miller  
Martins Ferry, Ohio

Patrick  
Murphy  
Buckhannon





Judy  
Murray  
*Buckhannon*

Sanford  
Murray  
*West Simsbury, Conn.*

Edward  
Newton  
*Danbury, Conn.*

Philip  
Nicholson  
*Minrola, N. Y.*

Howard  
Oliver  
*Wheeling*

David  
Paisley  
*Buckhannon*

Malcolm  
Parker  
*Buckhannon*

Kay  
Post  
*West Milford*

Robert  
Reed  
*Buckhannon*

Helen  
Sarounie  
*Long Island, N. Y.*

Norman  
Schanek  
*Millville, N. J.*

Beverly  
Scherbaum  
*Dunbar*

Calvin  
Sheasley  
*Duquesne, Pa.*

Kum Hyun  
Shin  
*Seoul, Korea*

Louis  
Sicilian  
*Bridgeport, Conn.*

Helen  
Simmons  
*Buckhannon*

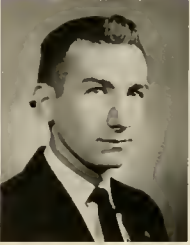
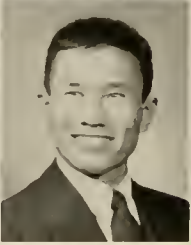
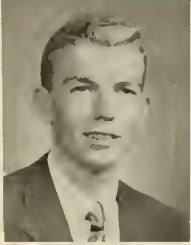
Allen  
Simon  
*New Rochelle, N. Y.*

Junior  
Snyder  
*Buckhannon*

Alton  
Taylor  
*Nutley, N. J.*

Kay  
Thacker  
*French Creek*





Clifford  
Rollins  
*Buckhannon*

Ronald  
Thomas  
*Duquesne, Pa.*

David  
Trader  
*Vienna, Md.*

Nancy  
Walton  
*Oak Hill*

Elene  
Ward  
*Memphis, Tenn.*

Daniel  
Weeks  
*Hackensack, N. J.*

Daniel  
Weston  
*Granby, Conn.*

Tae  
Whang  
*Seoul, Korea*

David  
Whitescarver  
*Buckhannon*

Annamary  
Wilson  
*Philippi*

Patricia  
Wilt  
*Buckhannon*

## Head Residents

Mrs. Hereford, Mrs. Harold, Mrs. Wolverton, (not pictured) Mrs. Gussler,







*vice president's office*  
Mr. Ling, J. Marple

## *Administration*



*alumni office*  
Mr. Stansbury



*admissions office*  
Mr. Schum, Mr. Neely,  
J. Trowbridge, E. Nickell

*president's office*  
M. Dean



*"I believe that every right implies a responsibility; every opportunity, an obligation; every possession, a duty."*

JOHN D. ROCKEFELLER, JR.



*dean's office*  
S. Filosa, M. Aveyard,  
J. Williams.



*treasurer's office*  
W. Hicks, P. Reabe,  
R. Kenney, H. Williams.

*Winter at Wesleyan  
Brings . . .*

*"O Winter, ruler of th' inverted year,  
I crown thee king of intimate delights . . ."*

at play



# *Holiday Season*



sno-ball

faculty dinner





Haydn's *The Creation*

here we come a-caroling





exam week

*Library*

circulation



*"Less good from genius we may find  
Than that from perseverance flowing;  
So have good grist at hand to grind,  
And keep the mill a-going."*

THOMAS DUNN ENGLISH

# *SOPHOMORES*

JANET WARFEL, *vice president*  
RONALD BROOKS, *treasurer*  
RONALD TALKINGTON, *president*  
HARRIET AVEYARD, *secretary*



Victoria  
Alexander  
Charlotte, N. C.

Edward  
Aslanian  
New York, N. Y.

Judith  
Atkinson  
Monroe, Conn.

Harriet  
Aveyard  
Gardner, Mass.

David  
Baker  
Brooklyn, N. Y.

Louis  
Barail  
New York, N. Y.

Laura  
Bays  
Beckley

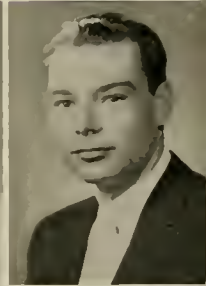
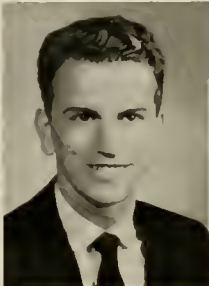
Janet  
Belcher  
Kimball

Gerard  
Boe  
Dunellen, N. J.

Paul  
Bodurtha  
Rome, N. Y.

Carol  
Boyer  
Wildwood, N. J.

Reed  
Bradford  
Manhasset, N. Y.



Ronald  
Brooks  
Davin

Harold  
Bullock  
Hermion, N. Y.

John  
Burnett  
Dunellen, N. J.

Mary  
Burton  
Romney

Margaret  
Carper  
Athens

Paul  
Chaddock  
Endicott, N. Y.

Rhea  
Chenoweth  
Buckhannon

George  
Cherlong  
Hartford, Conn.

Clarence  
Clark  
Silverlake, N. Y.

Robert  
Coates  
New York, N. Y.

Joann  
Collins  
Buckhannon

Louis  
Colombo  
Montclair, N. J.



Donald  
Cooke  
*N. Plainfield, N. J.*

Clyde  
Critch  
*Buckhannon*

Norma  
Davis  
*New Brighton, Pa.*

Russell  
Dean  
*Buckhannon*

Georgetta  
Decker  
*Buckhannon*

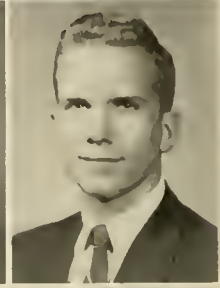
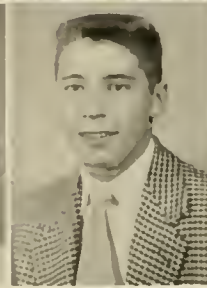
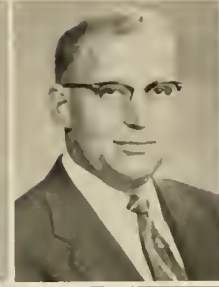
Donald  
Douglas  
*Clarksburg*

Sue  
Edgell  
*Lake Floyd*

William  
Eifert  
*Yonkers, N. Y.*

Ruth  
Epler  
*Kenne, Pa.*

Richard  
Evans  
*Needham, Mns.*



Theodore  
Evertsen  
*Glen Rock, N. J.*

Robert  
Finta  
*Forest Hills, N. Y.*

Roger  
Fischer  
*E. Williston, N. Y.*

Douglass  
Fitch  
*Bronxville, N. Y.*

Jo Ellen  
Flagg  
*Charleston*

Ronald  
George  
*Buckhannon*

Nadine  
Glass  
*Petersburg*

Kent  
Goff  
*Fishkill, N. Y.*

Thomas  
Goheen  
*Rupert*

Allen  
Golden  
*New York, N. Y.*

Paul  
Gramlich  
*Bellerose, N. Y.*

Frank  
Hamrick  
*Charleston*

Harold  
Greenway  
*Duquesne, Pa.*

Janet  
Harris  
*Bridgeport*

Ruth  
Grose  
*Charleston*

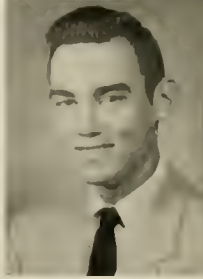
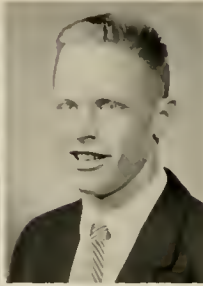
Jeannette  
Hedrick  
*Ronceverte*

John  
Hadley  
*Hamden, Conn.*

Roy  
Henderson  
*Richwood*

Sandra  
Hall  
*Fairmont*

Robert  
Hetz  
*Fairview, Pa.*



Edgan  
Hodson  
*Mamavoneck, N. Y.*

Phyllis  
Hogsett  
*East Rainelle*

Sue  
Holm  
*Manhasset, N. Y.*

John  
Holt  
*Weston*

Donald  
Hoy  
*Bayside, N. Y.*

George  
Hubbell  
*Milford, Conn.*

Joan  
Ingoldby  
*Fair Lawn, N. J.*

Sue  
Jarrett  
*Clendenin*

Robert  
Jervis  
*N. Tarrytown, N. Y.*

Clifford  
Judy  
*Clarksburg*

Ted  
Jungas  
Worcester, Mass.

Ruth  
Kedward  
Moundsville

John  
Kennedy  
Malverne, N. Y.

Judith  
Kerwood  
Ripley

Dolores  
Keyser  
Bridgeport

Jack  
Kissel  
Elmira, N. Y.

James  
Koon  
Buckhannon

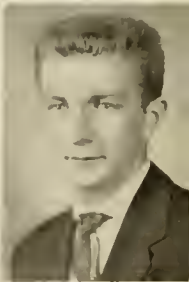
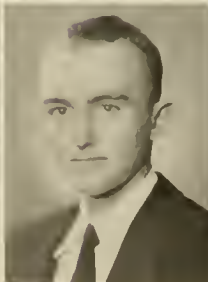
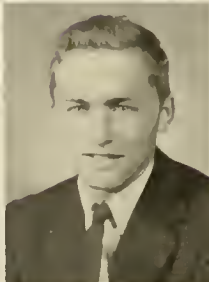
Edmund  
Kristofik  
Munhnl, Pa.

Robert  
Lafalce  
Hackensack, N. J.

Fred  
Lanting  
Hnethorne, N. J.

Phelps  
Laszlo  
Southport, Conn.

Linwood  
Lathrop  
Norwich, Conn.



Martha  
Law  
Bridgeport

Noel  
Lemon  
Inne Lew

Mara  
Linaberger  
Wellsburg

Eric  
Lipetz  
Forest Hills, N. Y.

Patricia  
Malone  
Millburn, N. J.

Jefferson  
Manser  
Buckhannon

Courtney  
McCaslin  
Floral Park, N. Y.

Glenda  
McDonald  
Bridgeport

Thomas  
McKinney  
Staten Island, N. Y.

Thomas  
McLaughlin  
Arnold, Pa.

Suzanne  
McNutt  
Salem

Donald  
McVitty  
Mt. Vernon, N. Y.

James  
Medley  
*Brooklyn, N. Y.*

Robert  
Middlebrook  
*Wilton, Conn.*

Merton  
Mitchell  
*New York, N. Y.*

Charles  
Modlin  
*Ravenswood*

Richard  
Moisan  
*Waterbury, Conn.*

Peggy  
Morton  
*Hamlin*

James  
Mowry  
*Derry, Pa.*

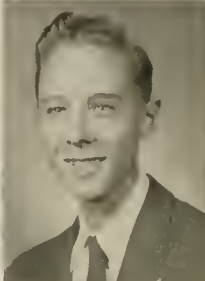
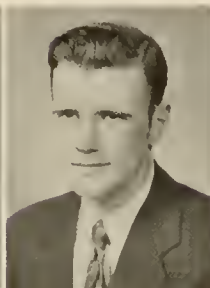
John  
Murawski  
*Goshen, N. Y.*

Judith  
Murray  
*Fairfield, Conn.*

Annabelle  
Muse  
*New Martinsville*

Frank  
Neuner  
*Bloomfield, N. J.*

Robert  
Palatiello  
*Trumbull, Conn.*



Ray  
Palmer  
*Norwich, Conn.*

John  
Parks  
*Lewisburg*

Ann  
Pemberton  
*Buckhannon*

Linda  
Perry  
*South Charleston*

Thomas  
Posteraro  
*Manhasset, N. Y.*

Kenneth  
Powers  
*Buckhannon*

Ann  
Queen  
*Bridgeport*

Jerry  
Rabinowitz  
*Brooklyn, N. Y.*

Jean  
Rawson  
*Parkersburg*

William  
Reiter  
*Doyton, Ohio*

Kay  
Rider  
*Sophia*

Elsie  
Rosenberger  
*Jersey City, N. J.*

Carol  
Rough  
Weston

Joseph  
St. Miklossy  
Fair Lawn, N. J.

Linda  
Saxton  
Dunbar

William  
Schoonmaker  
Montclair, N. J.

Francisco  
Sciotto  
New York, N. Y.

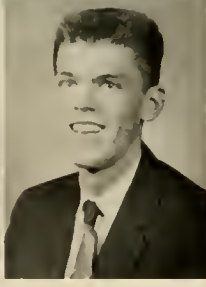
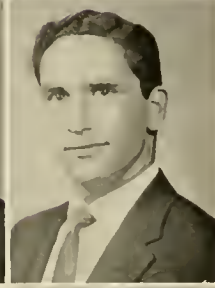
Gustave  
Semrow  
Bristol, Conn.

David  
Sheppard  
Buckhannon

Elaine  
Sheppard  
Petersburg

John  
Shirley  
Harrison City, Pa.

Neal  
Small  
Forest Hills, N. Y.



Marilyn  
Smith  
Nitro

Eileen  
Snyder  
Epperly

Donald  
Souder, Jr.  
West Chester, Pa.

Linda  
Sowers  
Lebanon, Pa.

Ronald  
Talkington  
Clarksburg

James  
Tatem, Jr.  
Hillsdale, N. J.

John  
Tissot  
Flushing, N. Y.

Nathan  
Tonelson  
New York, N. Y.

Tod  
Torrence  
Morris Plains, N. J.

William  
Trembath  
Tenneck, N. J.

Richard  
VonHoorn  
Warwick, R. I.

William  
Watson  
Jane Lew

Mary  
Wadleigh  
Concord, N. H.

Wesley  
Wheeler  
Stratford, Conn.

Rose  
Walton  
Oak Hill

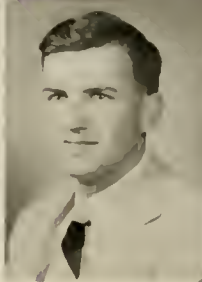
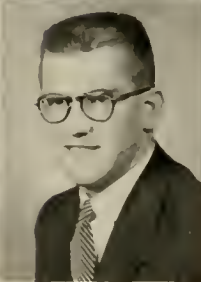
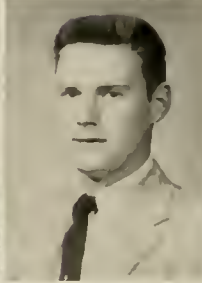
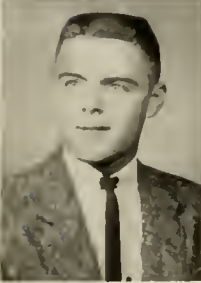
Roger  
Wieland  
Bayside, N. Y.

Janet  
Warfel  
Bolivar, Pa.

William  
Will  
Johnstown, Pa.

Howard  
Wasserman  
Mount Vernon, N. Y.

Carol  
Wilson  
Moundsville



Richard  
Hamilton  
Fredericktown, Pa.

Randall  
Wingert  
Elmira, N. Y.

Robert  
Winters  
Stoystown, Pa.

Stuart  
Yagoda  
Brooklyn, N. Y.

Marianna  
Young  
Buckhannon

Robert  
Zanesky  
Fairfield, Conn.

*Cultural  
Enrichment*



Harriet Fitzgerald, artist

*Sabrina Fair Barter Theatre*



Members of the Cultural Enrichment Committee are Shirley Brinkman, Miss Janet Guess, Mr. Fred Messersmith, John South, Gene Marteney, Bryce Hatch, and Janet Warfel.



# FRESHMAN



*"The hardest step is that  
over the threshold."*

JAMES HOWELL





WEEK

*"Examinations are formidable, even to the best prepared, for the greatest fool may ask more than the wisest man can answer."*

C. C. COLTON



## *Harmonizers*

D. Boggs, W. Seamans, E. Hodsdon, B. Call,  
H. Greenway.



## *Collegians*

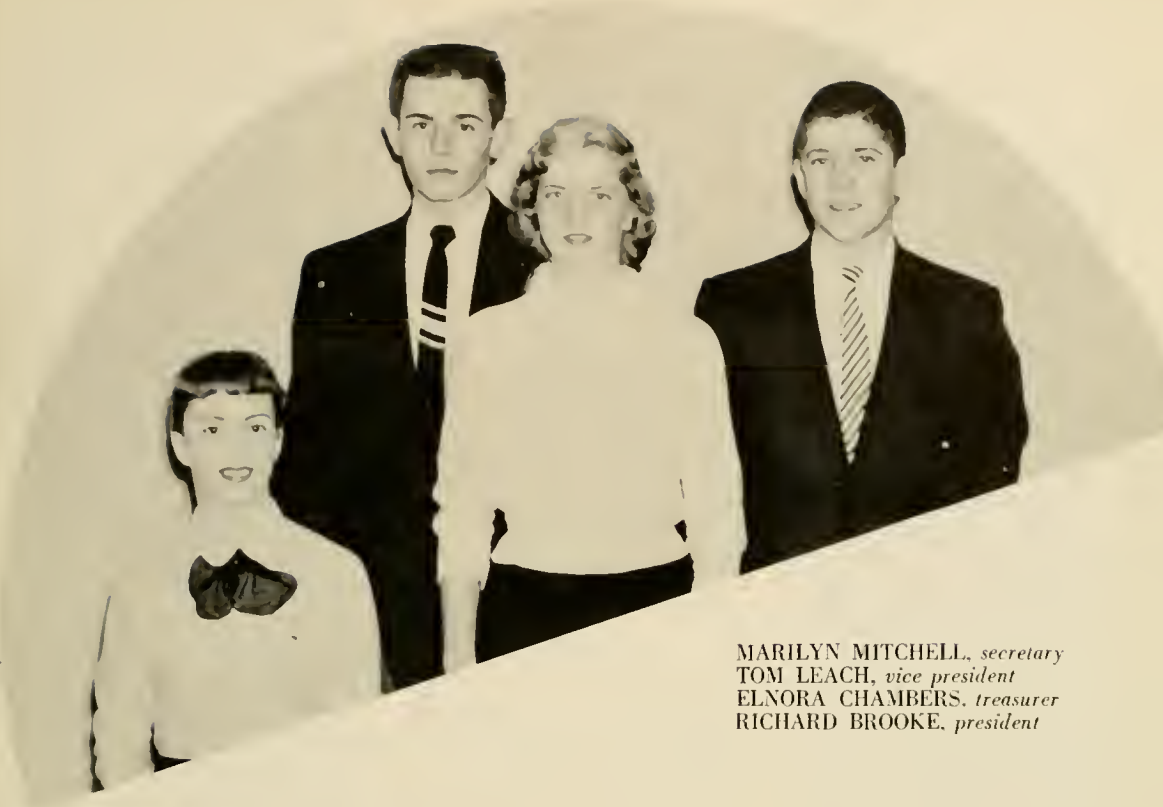
H. Oliver

T. Evertsen,  
A. Ross.



1956

42, 437



MARILYN MITCHELL, *secretary*  
 TOM LEACH, *vice president*  
 ELNORA CHAMBERS, *treasurer*  
 RICHARD BROOKE, *president*

# FRESHMEN

*"The love of higher things and better days;  
 The unbound hope, and heavenly ignorance  
 Of what is call'd the world, and the world's ways."*

LORD BYRON



James Adams  
Elbert  
Richard Aidala  
Bayside, N. Y.



George Batterson  
New Milford, N. J.  
Artis Baxa  
Buckhannon



Edward Alberter  
Johnstown, Pa.  
George Alcure  
New Hyde Park, N. Y.



Elizabeth Baylis  
Rockville Centre, N. Y.  
Allen Bean  
Moorefield



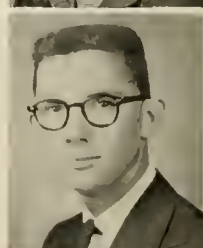
Anthony Alizio  
Bayside, N. Y.  
Joseph Alizio  
Bayside, N. Y.



Carol Beers  
Ridgefield, Conn.  
Irwin Beitch  
Brooklyn, N. Y.



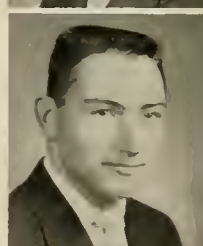
John Altman  
Apollo, Pa.  
Shirley Armfield  
Newport News, Va.



Billy Bennett  
Buckhannon  
Virginia Boggs  
Worcester, Mass.



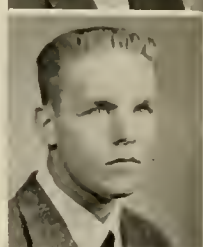
Doris Armstrong  
Buckhannon  
Richard Artman  
Westmont, N. J.



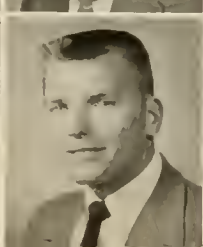
Arthur Berg  
Vienna  
Richard Beveridge  
Brooklyn, N. Y.



Carl Bachmeier  
Brooklyn, N. Y.  
Robert Baiert  
Pompton Lakes, N. J.



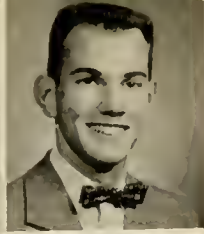
Thomas Blair  
Lambertville, N. J.  
John Bluhagh  
Metuchen, N. J.



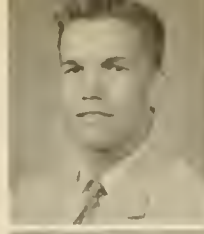
Irene Barrett  
Dayton, Pa.  
Clarence Bartman  
Stowe, Pa.



Janet Boggess  
Sissonville  
Emil Bohus  
Trenton, N. J.



Richard Brooke  
Lumberport  
William Burdette  
Buckhannon



Lawrence Cassel  
Eunice  
Elnora Chambers  
Beckley



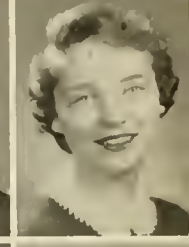
Richard Burgess  
Beechhurst, N. Y.  
Jerry Burke  
Ellamore



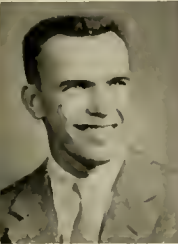
Joseph Chiusano  
Brooklyn, N. Y.  
Betsy Chostner  
Buckhannon



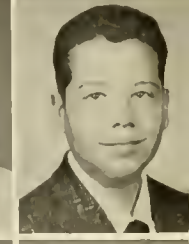
Elbert Burr  
Hasbrouck Heights, N. J.  
Janet Butcher  
Parkersburg



Anthony Ciuffo  
Brooklyn, N. Y.  
Barbara Class  
Westfield, N. J.



Kenneth Butkiewicz  
Ridgewood, N. Y.  
Thomas Buttermore  
Parkersburg



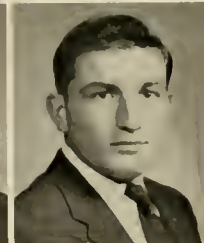
Martin Cohen  
Newark, N. J.  
Mike Cohen  
Flushing, N. Y.



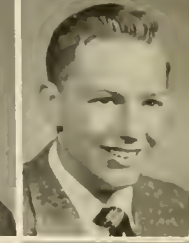
James Caldwell  
Irwin, Pa.  
Helen Campbell  
Kittanning, Pa.



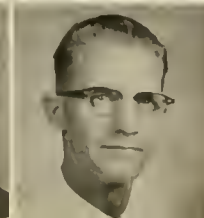
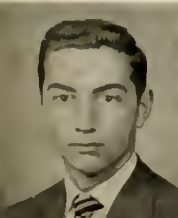
Murray Cohen  
Philadelphia, Pa.  
Carole Conaway  
Monnington



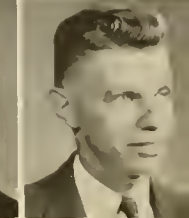
John Campbell  
Clarksburg  
Alfred Capuano  
New Rochelle, N. Y.



June Cooper  
Webster Springs  
Bert Corneby  
Endicott, N. Y.



Anthony Carbone  
Stratford, Conn.  
Arthur Carter  
Buckhannon



Arthur Costaris  
Interlaken, N. J.  
Charles Couchenour  
West Newton



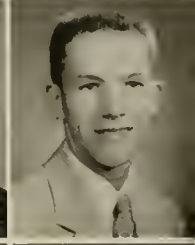
Carol Cucinotta  
Medford, Mass.  
Neill Cutlip  
Midland Park, N. J.



Bob Fennimore  
Yonkers, N. Y.  
Wailand Figgatt  
Charleston



Robert Day  
Adrian  
Sharie Dean  
Berea, Ohio



Bertrand Fisher  
Stamford, Conn.  
James Fraser  
Westwood, N. J.



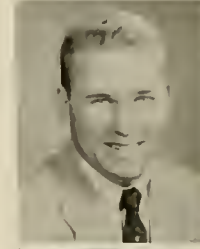
Albert Deitsch  
Paterson, N. J.  
Henry DeMattia  
Bloomfield, N. J.



Sanford Frey  
Westport, Conn.  
Nancy Funk  
Clarksburg



Frantz Dengler  
Royerford, Pa.  
Pierre DesRochers  
Bloomfield, N. J.



Lynn Gardner  
White Plains, N. Y.  
Ralph Gay  
Huntington



Denver Dickens  
Montrose  
John Donnelly  
New York, N. Y.



Carol Gearty  
Beechhurst, N. Y.  
Allen Geller  
Flushing, N. Y.



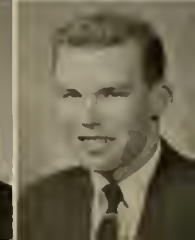
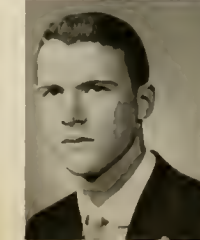
Edward Dworetz  
Paterson, N. J.  
James Earley  
Ford City, Pa.



Jerry Geller  
Brooklyn, N. Y.  
Janet George  
Clarksburg



Kenneth Eipel  
Beechhurst, N. Y.  
Susan Farmer  
Morgantown



Burton Goldberg  
Westwood, N. J.  
James Golden  
New Haven, Conn.



Lloyd Fike  
Rome, N. Y.  
Donald Goodearl  
Darien, Conn.



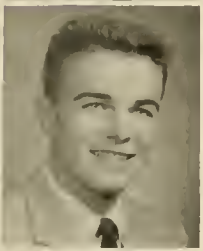
Carol Hayden  
Winthrop, Mass.  
Gary Hess  
Munhall, Pa.



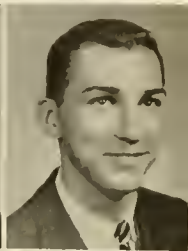
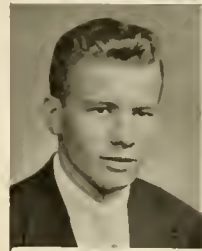
Garry Grabelle  
Bradley Beach, N. J.  
John Grant  
New York, N. Y.



Georganna Hession  
Cowen  
Mary Hetz  
Fairview, Pa.



Ann Greathouse  
Buckhannon  
Robert Grever  
Park Ridge, N. J.



David Hoag  
Maywood, N. J.  
Robert Hollbrook  
Springfield, Mass.



James Griesi  
West Englewood, N. J.  
Frances Griffith  
Parkersburg



Bill Holmes  
Wesleyville, Pa.  
Michael Hormelin  
Philadelphia, Pa.



Hugh Groody  
Feasterville, Pa.  
William Hall  
Buckhannon



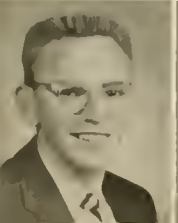
Frank Horn  
Charleroi, Pa.  
Alan Hubbard  
New Haven, Conn.



Betty Hanifan  
Clarksburg  
Howard Hak  
Paterson, N. J.



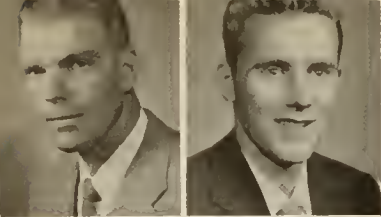
David Huenerberg  
Southport, Conn.  
Bonita Huffman  
French Creek



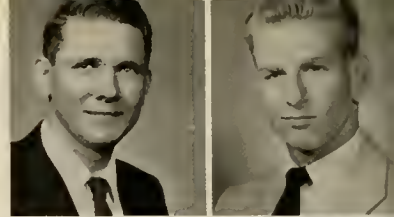
Herbert Hartman  
Pottstown, Pa.  
Harvey Hatfield  
Weston



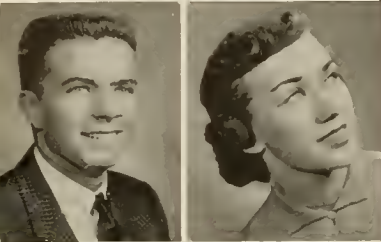
John Huston  
Easton, Pa.  
Robert Hyams  
New York, N. Y.



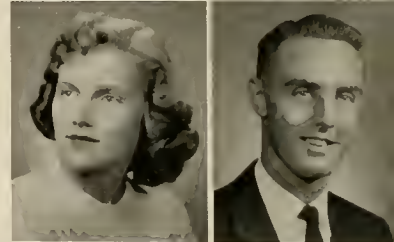
Herbert Hyre  
*French Creek*  
Tom Jeffries  
*Millford, Conn.*



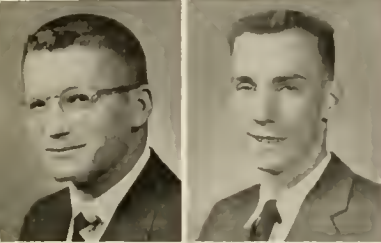
Joseph King  
*Buckhannon*  
Keith Kissel  
*Elmira, N. Y.*



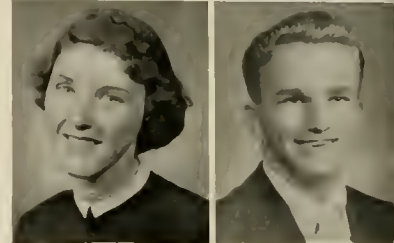
David Jentoft  
*Darien, Conn.*  
Catherine Johnson  
*South Charleston*



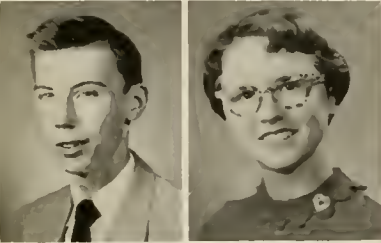
Sylvia Klepper  
*Fanwood, N. Y.*  
William Koelln  
*Ridgefield Park, N. J.*



Howard Johnson  
*Selbyville, Del.*  
Edwin Johnston  
*Butler, N. J.*



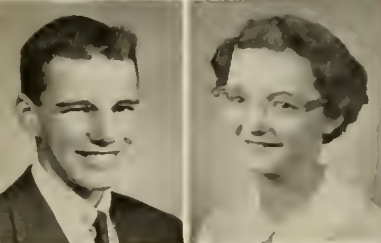
Phyllis Kuhl  
*Elkins*  
Michael Kundrat  
*Whitaker, Pa.*



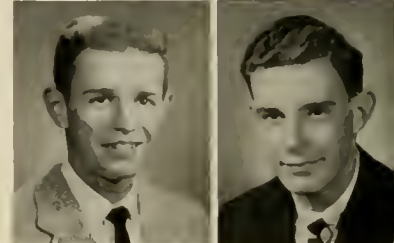
Marvin Jones  
*Beaverfalls, Pa.*  
Marlene Jones  
*Fairmont*



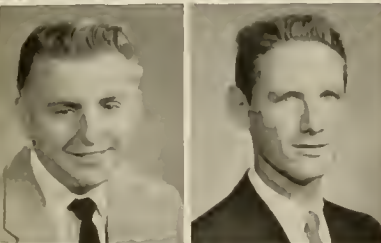
Carolyn Koppel  
*Charleston*  
David Kough  
*Hawthorne, N. J.*



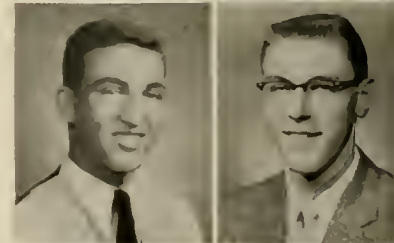
John Johnstone  
*East Williston, N. J.*  
Carol Kane  
*Wesleyville, Pa.*



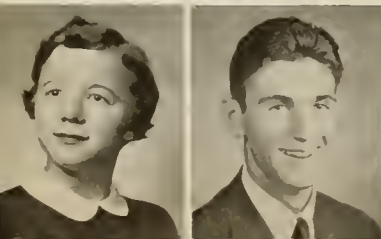
Thomas Leach  
*Parkersburg*  
Robert Louer  
*Vutley, N. J.*



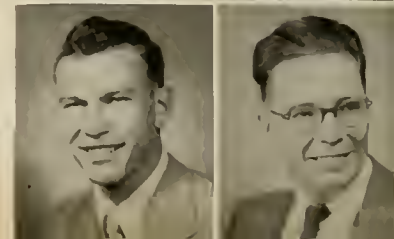
Eugene Keezer  
*Fort Lee, N. J.*  
James Kennedy  
*Pittsburgh, Pa.*



Robert Mavian  
*Flushing, N. Y.*  
Ronald McCauley  
*Elizabeth*



Jenny Kessel  
*Gormanian*  
Isaac Khedouri  
*Forest Hills, N. Y.*



Calvin McCutcheon  
*Reedy*  
Clarence McCloud  
*Weston*





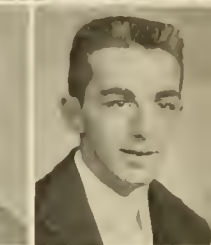
John McCulloch  
Brooklyn, N. Y.  
Madonna McDonald  
Parsons



Jackson Morgan  
Shinnston  
Fredric Morris  
Long Island, N. Y.



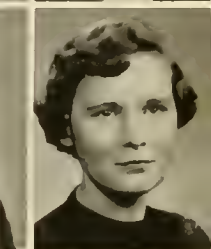
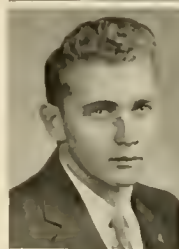
Thomas McGovern  
West Orange, N. J.  
Nancy McGregor  
Glen Aubrey, N. Y.



Linda Moulder  
South Charleston  
Donald Murphy  
Rome, N. Y.



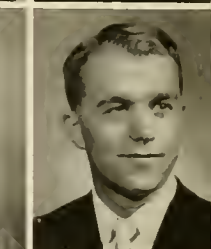
Effie Mellvaine  
Bridgeport  
Robert McLaughlin  
Montclair, N. J.



Richard Neely  
Buckhannon  
Gail Nelson  
Sophia



John McLean  
Burlington, N. J.  
Cornelia Mendoza  
Mann, Philippines



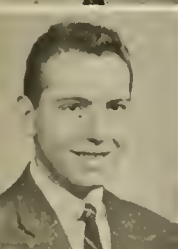
Paul Olive  
Ridgewood, N. J.  
Pete Oliver  
Wheeling



Warren Merrill  
Westwood, N. J.  
Samuel Meyer  
Maplewood, N. J.



Bill Olmstead  
Little Veck, N. Y.  
George Orr  
Coroopolis, Pa.



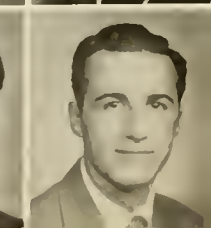
Harvey Michelman  
Flushing, N. Y.  
Arthur Miklosey  
Metuchen, N. J.



Shirley Owen  
Bayside, N. Y.  
Linda Paisley  
Buckhannon



Marilyn Mitchell  
Vienna  
Clifford Moebius  
Nutley, N. J.



Frank Parisi  
New York, N. Y.  
Vahan Parseghian, Jr.  
New Milford, N. Y.



John Patterson  
Upper Saddle River, N. J.  
Frank Patti  
Pavamue, N. J.



Marie Reese  
Buckhannon  
Douglas Remy  
Saddle River, N. J.



Martha Peregoy  
Beckley  
Charles Perry  
Totowa Borough, N. J.



Allen Rennard  
Westwood, N. J.  
Shirley Reppert  
Woodstown, N. J.



William Pettibon  
McKeesport, Pa.  
Janie Pfalzgraf  
Parkersburg



Joseph Rial, Jr.  
Greensburg, Pa.  
Priscilla Rice  
Rutland, Vt.



Conrad Pierce  
Jackson Heights, N. Y.  
Eleanor Pinnell  
French Creek



Howard Richelsof  
Bridgeport, Conn.  
Robert Ringel  
Neutoun, Pa.



Ronald Pomerantz  
Brooklyn, N. Y.  
Charles Powers  
Buckhannon



Alma Robertson  
Alliance, Ohio  
Gwendolyn Robinson  
Hampton, Va.



Edward Powers  
Cochituate, Mass.  
William Printz  
Englewood, N. J.



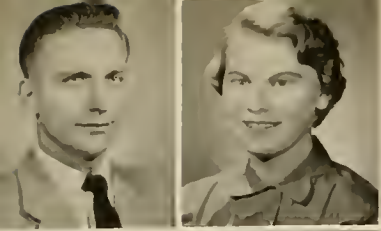
Jerry Romantini  
Fort Lee, N. J.  
Ann Romig  
Baltimore, Md.



Carol Quattlander  
Hillsdale, N. J.  
Jean Ragan  
Jenkinjones



George Rosier  
Morgantown  
Denis Rossi  
Hicksville, N. Y.



Dean Ruhlow  
*Buckhannon*  
Jackie Runyon  
*Holden*



Frank Santoro  
*New Rochelle, N. Y.*  
Ann Sias  
*Man*



Gerald Russin  
*Bayside, N. Y.*  
John Rutkowski  
*Bayside, N. Y.*



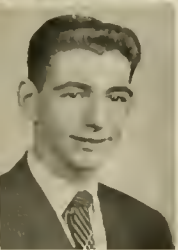
William Silberman  
*Patterson, N. J.*  
William Sklar  
*Stamford, Conn.*



Harry Santillo  
*Jamaica, N. Y.*  
Walter Sattler  
*Brooklyn, N. Y.*



June Smith  
*Clarksburg*  
Delores Snyder  
*Clarksburg*



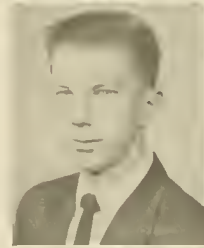
Martin Schwartz  
*Brooklyn, N. Y.*  
Jimmy Scott  
*Salem*



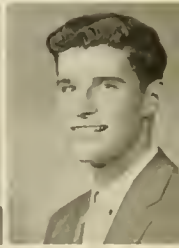
Douglas Solvesen  
*Staten Island, N. Y.*  
Charles Spencer  
*Manhasset, N. Y.*



Arthur Seiderman  
*Philadelphia, Pa.*  
John Seigh  
*Johantown, Pa.*



Robert Stell  
*Buckhannon*  
James Surridge  
*Beechhurst, N. Y.*



Edward Seldin  
*New York, N. Y.*  
Kenneth Selody  
*Manville, N. J.*



Gerard Sweeton  
*Scarsdale, N. Y.*  
Diana Swiger  
*Clarksburg*



Wesley Shaffner  
*Stratford, Conn.*  
Youngsun Shin  
*Seoul, Korea*



Charles Taylor  
*Park Ridge, N. J.*  
Jeremiah Tell  
*Pelham, N. Y.*





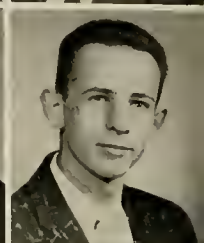
Sandra Tipper  
Clarksburg  
William Todd  
Coalwood



Bob Weaver  
Pittsburgh, Pa.  
Paul Weber  
West Mifflin, Pa.



George Townsend  
Staten Island, N. Y.  
Julian Trail  
Beckley



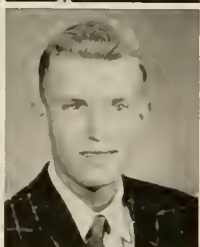
Henry Weissmann  
Harpurville, N. Y.  
Marshall Wellisch  
New York, N. Y.



Ralph Undreiwier  
Flushing, N. Y.  
John Van Cleve  
Princeton, N. J.



Samuel Werlinich  
McKees Rocks, Pa.  
Richard Wiemokly  
Longbench, N. Y.



Hollis Vance  
Whitmer  
Donald Voneiff  
Flushing, N. Y.



James Wilkinson  
Munhall, Pa.  
Edith Woo  
Hong Kong, China



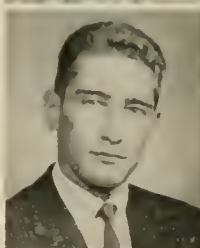
Melynn Wadler  
Franklin Square, N. Y.  
Michael Wagner  
Huntington, N. Y.



Shitley Woo  
Hong Kong, Chinn  
Betty Wood  
Mabscott



Stephen Walton  
Moundsville  
Gordon Wanless  
Buckhannon



Malcolm Zarnfeller  
College Point, N. Y.  
Robert Zolan  
Lynbrook, N. Y.



Willard Wassell  
Stamford, Conn.



David D'Work  
North Bergen, N. J.

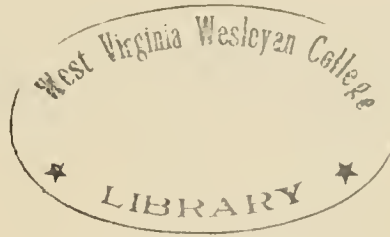


Douglas Miller  
*Pittsfield, Mass.*

Frank Schneider  
*Metuchen, N.J.*

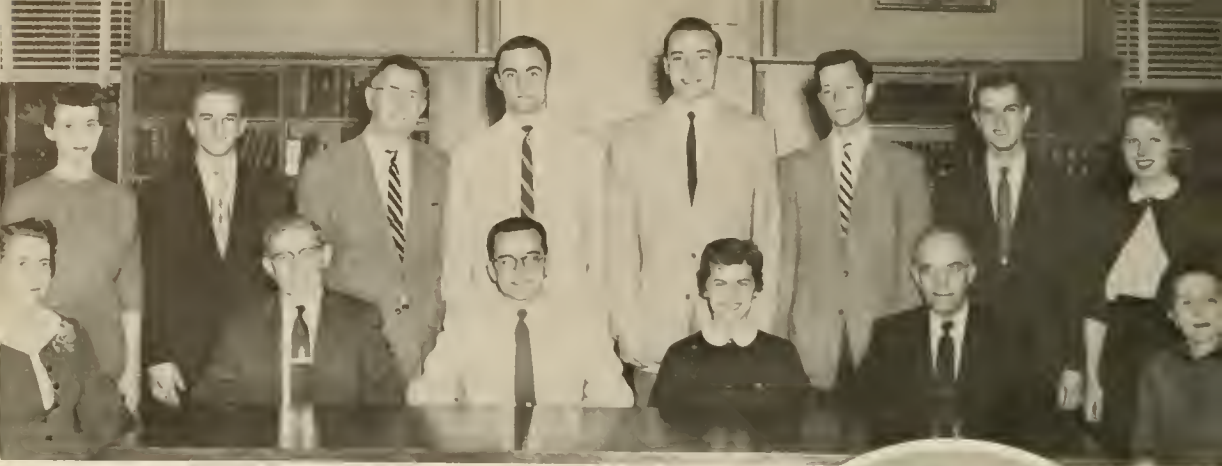


Elizabeth Strader  
*Buckhannon*



buckhannon at night





First row: Parker, Davis, Collins, Maxwell, Schoolcraft, Wilson. Second row: Strader, Brooks, Shaver, Judy, Houston, Weston, Jungas, Tannehill.

*Community Council  
and Committees*



WALTER COLLINS, president

*"Our grand business undoubtedly is not to see what lies dimly at a distance,  
but to do what lies clearly at hand."*

CARLYLE

*Student Center*

*Special Activities*

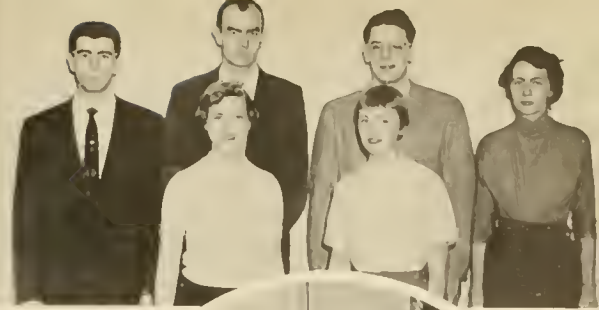
B. Scherbaum, J. Rollo, L. Sowers, P. Morton, J. Tatum.

J. Gaston, B. Scherbaum, T. Jungas, J. Stansbury, E. Nickell, D. Hancock.





McAllester, J. Hedrick, R. Talkington, N. Walton, R. Miller, Davis, B. Call, B. Gue,



J. Warfel, S. Brinkman, B. Hatch, Messersmith, E. Marteney, Guess,

*Religious Activities*  
*Cultural Enrichment*  
*W.U.S.*  
*Social Activities*



G. Boe, C. Galle, R. Zanesky,



D. Dietenhofer, B. Call, A. Brooks, S. Buttafuoco, Wilson, L. Tammhill,



E. Cucinotta, J. Greer, Wilson, R. Fischer, E. Newton,

*Intramurals*  
*Publications*  
*Educational Affairs*

Glauner, T. Yost, Downey, D. Cucinotta, R. Epler, D. Evans,





*"The country is lyric . . .  
the town dramatic.  
When mingled, they make the  
most perfect musical drama"*

LONGFELLOW







L. Alfred, J. Boggess, S. Brinkman, M. Carper, R. Chenoweth, J. Cooper, J. Davis, A. Franquiz.

# Alpha Gamma Delta



Louise Tannehill, secretary; Arlene Franquiz, 2nd vice president; Janie Davis, 1st vice president; Phyllis Hillman, president; Lillian Alfred, treasurer.

R. Grose, A. Gwennap, P. Hogsett, B. Hanifan, J. Hedrick, P. Hillman, K. Johnson, S. Klepper.





R. Kedward, J. Kerwood,  
J. Kessel, L. Paisley,  
M. Peregoy, L. Perry,  
J. Rawson, K. Rider.



"Rain turned hayride into theatre party . . .  
"A College Level Thuse" won first place in  
Wesleyantics . . . Prexy Phyllis attended  
Homecoming Queen . . . copped Panhellenic  
Scholarship Trophy . . . ghosts haunted SCOW  
at informal "Halloween" rush party . . .  
"Evening in Paris" formal rush party in  
October . . . pledged Janet, B.K., Jenny Lynn,  
Kitty, Linda, Duddle, Kay, Sylvia, Ann, Lin-  
da, Robbie, June S., Diana, June C., Martha,  
Rhea Lee . . . activities honored pledges at  
informal Glenn Miller dance in January . . .  
initiation and "Feast of Roses" banquet . . .  
Spring Formal . . . International Reunion  
Day . . . May Day Sing . . . end of another  
wonderful, exciting year for Alpha Gams.



A. Robertson, A. Romig, E. Sheppard, J. Smith, L.  
Sowers, E. Strader, D. Swiger, L. Tannehill, N.  
Walton.



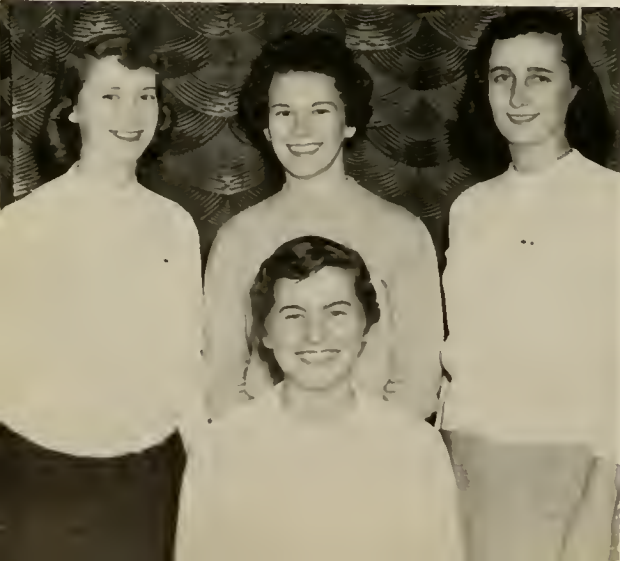
# Alpha Delta Pi



*"We live for each other."*



Barbara Maxwell, president; Bernie King, secretary;  
Kay Evans, vice president; Harriet Aveyard, treasurer.



Hayride to Ross's camp started year with a bang . . . Pat initiated . . . Prexy "Max" reigned as Homecoming Queen . . . "Davius Elkus" capped second place in Wesleyantics . . . informal "This Is Your Life" rush party at SCOW . . . A D Pi Bar Ranch formal rush party . . . "Bunny," Nancy Jo. "Moe," Marilyn A., Irene, Rosie, Shirley, Marilyn G., and Florence pledged . . . Marilyn A. chosen president of pledge class . . . Blue Moon Dance during Thanksgiving weekend . . . Christmas parties with alums . . . Active initiation in February . . . Black and White Diamond highlighted the spring . . . May Day Sing closed wonderful year of A D Pi activities.



A. Armentrout, P. Austin, H. Aveyard, M. Aveyard, I. Barrett, B. Beecroft, F. Bennett, C. Boyer, M. Burton, M. Gardner, G. Decker, K. Evans, N. J. Funk, N. Glass, N. Judy, B. King, C. Lewis, P. Malone, B. Maxwell, P. Morton, A. Muse, N. McCullough, S. Post, C. Quattlander, H. Sarounie, R. Walton, C. Wilson, P. Wilt, and M. Young. J. L. West (not pictured).



L. Bays, C. Boling, M. Bond, J. Butcher, C. Conaway, C. Cucinotta, S. Farmer



Martha Law treasurer; Mary Lee Bond, vice president; Priscilla Howard, president; Kay Post, secretary.



*Alpha*



*Delta*



*Xi*



J. Gaston, C. Gearty, J. Greer, R. Hiehle, S. Holm, A. Houdashelt, P. Howard.





D. Keyser, S. Kincaid, M. Law, M. Linaberger, M. Long, P. Martin, P. Miller



SCOW party . . . autumn Indian informal rush party . . . formal rush party a Hawaiian affair . . . sarongs, grass skirts, tropical fish . . . pledged Carol C., Nancy, Susan, Carol G., Marilyn, Effie, Carole C., Judy, Patty, Mara, Janet, and Janie in November . . . Second place in Homecoming float parade with "Victory Is Our Pattern". . . Jane and Marilyn, attendants . . . skit on "Macbeth". . . "Prill" succeeds Helen as KA Sweetheart . . . Christmas party for underprivileged children . . . "Little Sisters" honored at Sweetheart Dance . . . Pledges gave trophy case to sorority . . . Founder's Day, April 17 . . . Carol C., Marilyn, Kay, and Janie in new Alpha XI quartet directed by Glenda . . . May Day Sing wonderful . . . Beautiful, breathtaking Rose Formal in May climaxed year . . . Magnificent year for Beta Sigma.



M. Mitchell, J. Murray, G. McDonald, N. McGregor, E. McIlvaine, J. Pfalzgraf, K. Post, A. Queen.





# Alpha Sigma Phi

*"The cause is hidden, the results well known."*



R. Bitten  
J. Chiusano  
S. Frey  
R. Holbrook







Frank Floyd  
secretary;  
Julius Metroka,  
president;  
Dan Koehler,  
vice president;  
Bob Bitten,  
treasurer (not  
pictured).  
E. Keezer, J. King,  
J. Metroka, A. Mik-  
losey, F. Patti, N.  
Small.

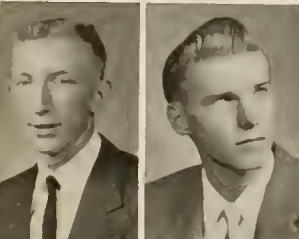
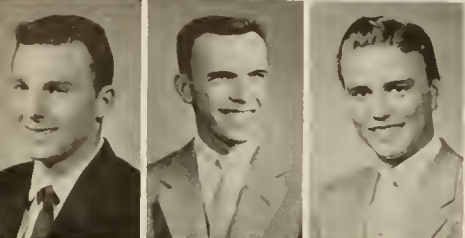
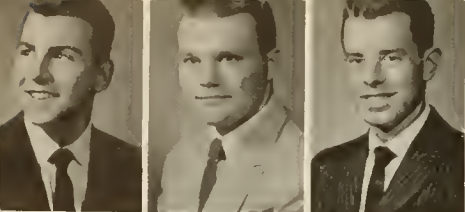


Alpha Sigs returned to campus after two inactive years . . . big pledged class . . . Skating party . . . Banquet . . . Hobo Dance . . . Rivalry with Alpha Sigs at D.&E. in football, basketball, softball . . . Beta Nu has football and basketball trophies . . . Sweetheart Dinner . . . Spring formal . . . beginning of a new career for Beta Nu Chapter.



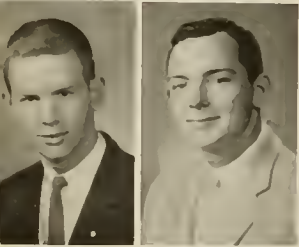
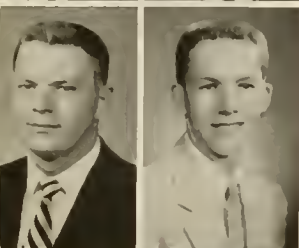
Not pictured: F. Floyd, R. Heine, D. Koehler, R. Lamperti, J. Merone, M. Shumate.



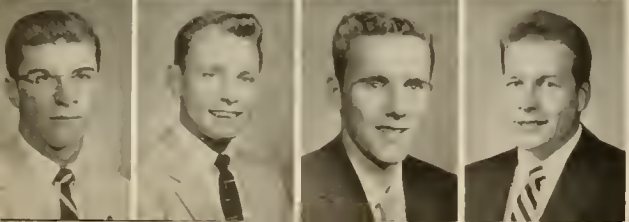


- R. Aidala
- A. Arendas
- A. Bean
- R. Burgess
- K. Butkiewicz
- J. Caldwell
- D. Douglas
- K. Eipel
- R. Fennimore
- J. Fraser
- R. Gay
- D. Goodearl
- W. Graham
- F. Hamrick
- R. Horton
- A. Hubbard
- R. Jablonsky
- T. Jeffries
- R. Jervis

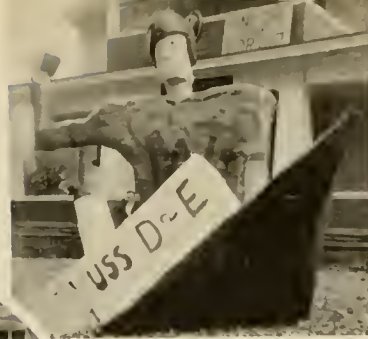
Began '55-'56 with Twin Party . . . first place honors in Homecoming float parade ("Senators Tast DeFeet") and house decoration ("Sink the Ship for Gip") . . . Open House . . . Dixie Ball and "Ole Southern Weekend" . . . Confederates on the move . . . parade . . . house party . . . Rebel Greys . . . land troops, small band, Southern gentlemen . . . Skip awarded plaque for outstanding service to Beta Chi . . . "Skip" and Priscilla, KA Sweetheart, engaged . . . many house parties . . . annual spring Sweetheart dance . . . second place trophy in '55 May Sing . . . over 20 pledges first semester . . . May Day Sing . . . end of a profitable year for KA.



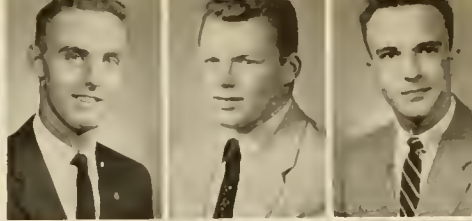
*"God and Women"*



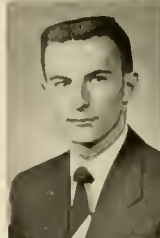
# Kappa Alpha Order



Not pictured: J. Adkins, F. Ardito, S. Bass, H. Hitchcock, E. Innes, A. Johnstone, T. Macek, M. Muller, J. Murray, J. McCutcheon, R. Pancirov, R. Rice, R. Richmond, R. Thourloron, R. Webber, and R. Wiseman.

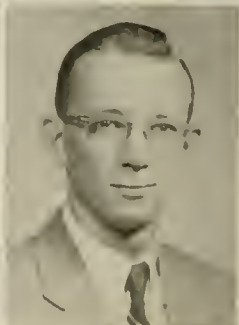
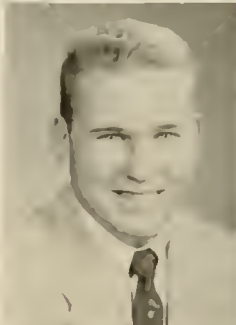
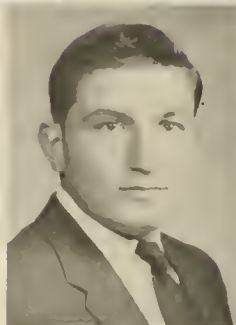


W. Koelln  
A. McDermott  
J. Manser  
H. Marhoffer  
R. Middlebrook  
R. Miller  
C. Moebius  
R. Mohr  
S. Murray  
E. Newton  
P. Nicholson  
W. Reiter  
J. Van Cleve  
P. Vaughn  
W. Wassell  
W. Watson  
S. Werlinich  
D. Weston  
R. Zanesky





Kappa Sigma Kappa became fifth social fraternity at Wesleyan . . . only international fraternity on campus . . . float in Homecoming Parade . . . Open House for alums . . . W. Va. Eta chapter established December 2, 1955 . . . thirteen charter members . . . Ron pinned Toby . . . Mal pinned Pat . . . Paul pinned Jan . . . February theatre party . . . sixth place in intramural volleyball . . . first pledge class . . . first annual Iris Ball in April . . . KSK, the new, but growing fraternity.

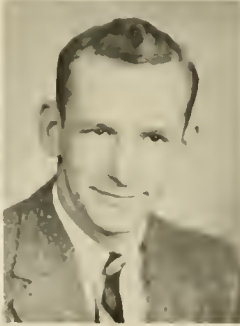
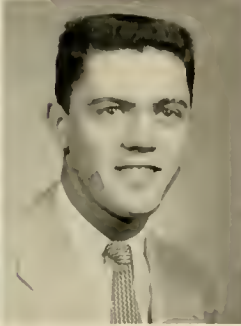
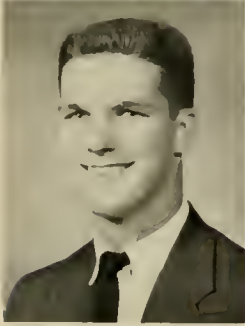
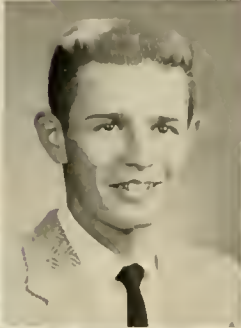
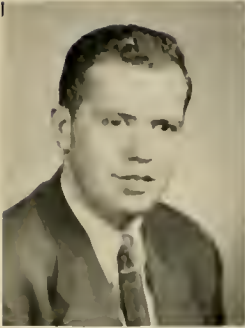


A. Capuano, R. Feldman, P. Fink,  
L. Gardner, K. Goff, P. Gramlich.

## *Kappa Sigma Kappa*



Peter Fink, treasurer; Roy Henderson, president; Kent Goff, vice president; and Tom McLaughlin, secretary.



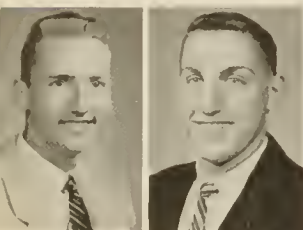
R. Henderson, T. Leach,  
E. Lipetz, T. McLaughlin,  
M. Parker, J. Parks,  
R. Talkington.

*"Loyalty and Truth"*





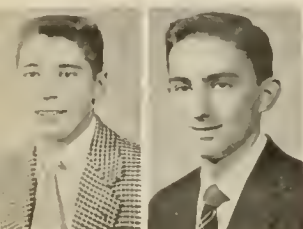
C. Bartman, A. Berg, G. Boe, R. Bradford, S. Buttafuoco, C. Cadle, W. Collins.



D. Cooke, A. Costaris

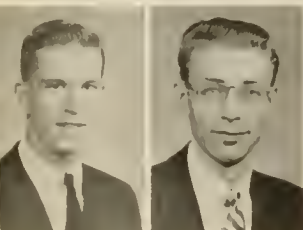


*"Alma Mater  
first,  
Theta Chi  
for  
Alma Mater."*

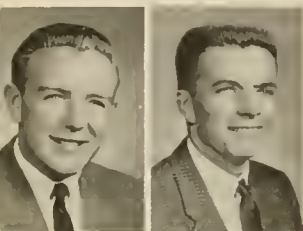
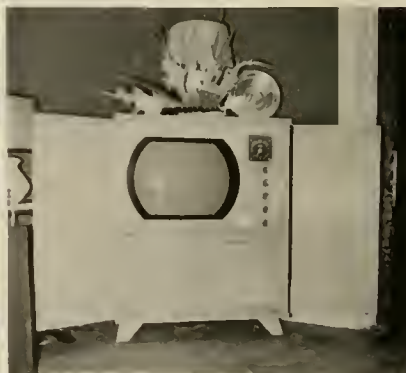


W. Eifert, J. Griesi  
M. Harmelin, J. Hitchens

## Theta Chi

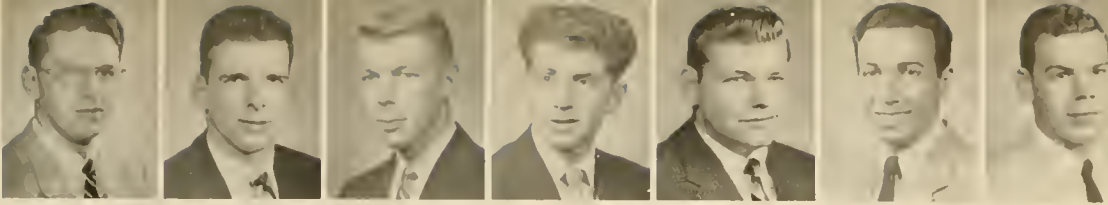


D. Hoy, D. Jentoft



J. Kennedy, F. Lanting, G. Lessig, R. Loner, T. McKinney, J. McLean, D. McVitty





E. Marteny, R. Moison, D. Paisley, F. Parisi, R. Pomerantz, T. Posteraro, R. Reed

Hundredth Anniversary . . . founded on April 10, 1856, by Frederick Freeman and Arthur Chase . . . celebrated with a banquet and ball in Clarksburg . . . membership has increased to over 38,000, and 118 chapters . . . serenades for girls of Don Taylor, Fred Lanting, Don Cooke . . . Monte Carlo and Flapper party highlight social activities . . . 100th Corral held at University of Toledo.



R. Ringel



W. Schenck

Eugene Marteny, president; Walt Collins, vice president; Gerald Boe, secretary; Santo Buttafucio, treasurer.



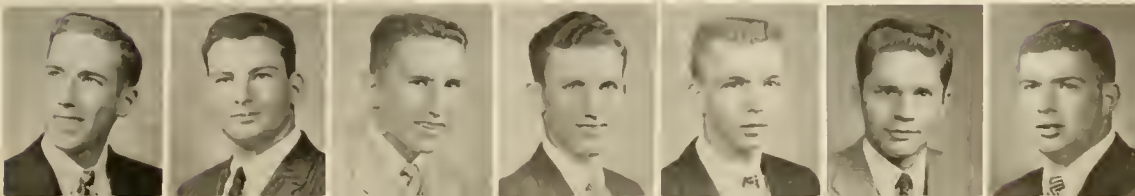
Not pictured: R. Bergdoll, E. Fellows, D. Hancock, H. Hickle, D. Maeder, P. McIntire, J. Swander, and V. Michael.



J. Rollo  
J. Rutkowski



J. Scott, A. Seiderman, K. Seludy, G. Semros, W. Shaffner, A. Taylor, H. Weissman





E. Alberter



J. Altman



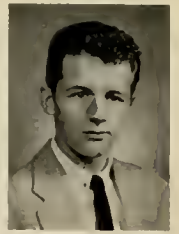
R. Brooks



T. Buttermore



C. Goodin



J. Grant



E. Burr

*To be, is to be capable of action.*



T. Goheen

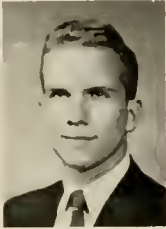


R. Fischer

# Phi Sigma Epsilon



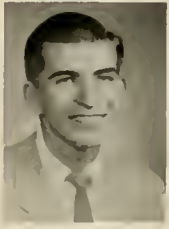
R. Coates  
H. Greenway



R. Evans



G. Hubbell



R. Gue



R. Hamilton



B. Hatch

Dave Houston, vice president; Bryce Hatch, president; Ray Miller, pledge trainer; Howie Miller, comptroller; Ted Jungas, secretary; and Roger Fischer, historian.



M. Johnson



T. Jungas



J. Kissel



K. Kissel



J. Hill



D. Houston





D. Miller



H. Miller



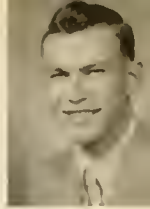
M. Kundrat



R. LaFalce



L. Lathrop



W. McCutcheon



R. Miller



M. Mitchell

Not pictured:  
C. Grosclose  
R. Jones, J.  
Stansbury, and  
K. Synes.



S. Meyer



J. Mowry



J. Rabinowitz



Bill, Bob, Jack initiated . . . Rained-out hayride turned into theatre party . . . enjoyed Mrs. McAllester's home cooking . . . Roger, Harold, Charlie entertained at Rush Party . . . Ken "pulled punch" at Homecoming reception . . . Stoppette bottle almost went "plof" instead of "poof" . . . Harold *ad libbed* while reading funnies . . . Jim "Hushed-up" first time . . . Bill pinned a lemon . . . we "slipped" into second place in football intramurals . . . Dick elected president of pledge class . . . Bryce pinned Martha . . . Elks overrun by "Stags" . . . "Gip" Jungas led actives to defeat—Yea Pledges! . . . braved wilds of W. Va. . . Bob pinned a girl with Class . . . Ray pinned Joan . . . we celebrated our First Anniversary in Leap Year, Feb. 29 . . . banquet and spring formal at Plunkett's.



J. Seigh



M. Schwartz



C. Sheasley



R. Wieland



A. Simon



W. Will  
R. Wingert  
R. Winters



J. Tissot



W. Trembath

# Interfraternity and Panhellenic

*"Men work together." I told him from the heart,  
"Whether they work together or apart."*

ROBERT FROST



S. Buttafuoco, R. Miller, W. Collins,  
A. McDermott, B. Hatch, S. Marhoffer,  
G. Martency, R. Henderson.



B. Maxwell, P. Howard, P. Hillman,  
N. Walton, P. Wilt.



the music box



sorority girls work together

interfraternity frolic



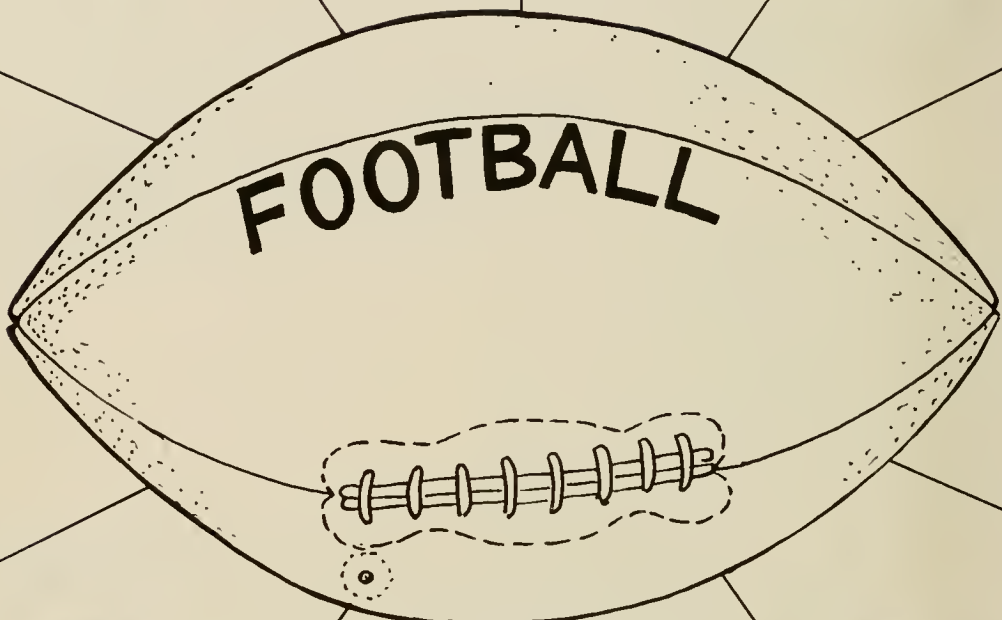
© Stevenson University 1942



CHARLES CADLE



PAT HENNESSY



SAM ZINAICH



ELMER HOUDASHELT



third down



touchdown

*"I am homesick for my  
mountains . . .  
My heroic mother hills . . .  
And the longing that is on me  
No solace ever stills."*

BLISS CARMAN





# Haught Literary Society

This "quote" society, founded by Dr. Thomas W. Haught, encourages interest in the fine arts. Membership is limited to sixteen girls who, each year, attempt to further the publication of *Voices*, a book containing original writings by Wesleyan professors and students.

Some of the things Haught plans each year include a May Day Breakfast, a trip to Pittsburgh, a campaign to further interest in current events, and participation in campus activities. Each weekly program is accented by a phase of art, literature, or music.

Officers of the group are president, Kay Evans; vice president, Barbara Maxwell; secretary-treasurer, Phyllis Hillman. Members not pictured are Helen Sarounie, Lorna Cox, and Cora Insley. Dr. McKittrick is the advisor.

BARBARA MAXWELL  
IRENE STRIEBY  
KAY EVANS  
PHYLLIS HILLMAN



S. Kincaid, M. Aveyard, L. Tannehill, T. Yost, M. McCullough, N. Walton, D. Dietenhofer, A. Wilson, P. Howard, A. Franquiz, B. Scherbaum.







The Alpha Rho cast of Alpha Psi Omega, national honorary dramatics fraternity presented several plays throughout the year in connection with Playshop. The climax of the year's activities was initiation of new members, with a social hour following the initiation.

The officers are president, John South; vice president, Diane Diethofer; secretary, Marjorie McCullough. Mr. Shaver is the advisor.

J. South  
 M. McCullough,  
 D. Diethofer  
 A. Franquiz  
 Mr. Shaver  
 M. Hamrick

## *Alpha Psi Omega*

First row: J. Gaston, M. Bond, J. Davis, P. Howard, B. Maxwell. Second row: D. Glass, D. Keyser, N. Walton, J. Harris, L. Sowers, R. Walton, P. Wilt. Third row: V. Light, B. Beecroft, M. Carper, W. Heavner, A. Queen, L. Tannehill, K. Post.



## *Delta Psi Kappa*

Delta Psi Kappa, a national honorary fraternity for women majoring or minoring in physical education, was founded at Normal College of the American Gymnastic Union in 1916. Alpha Eta Chapter was formed at Wesleyan in 1947.

Each year the group sponsors a project for the betterment of the college community. To raise money, the girls sell programs at the W.V.I.C. tournament and check coats at all basketball games. For several years, Delta Psi Kappa has sponsored a modern dance group on campus.

Officers are president, Jannie Davis; vice president, Priscilla Howard; secretary, Jane Gaston; treasurer, Mary Lee Bond; sergeant-at-arms, Nancy Walton; publicity chairman, Louise Tannehill; foil reporter, Patty Wilt; and historian, Kay Post. Miss Knepshield is the advisor.



# Beta Beta Beta



First row: B. Beecroft, R. Hetz, M. Law, H. Hirsch, L. Cox. Second row: K. Post, S. Zanich, S. Buttafuoco, J. Bee, Dr. Rossbach, B. Melany, B. Maxwell.

Beta Beta Beta is a national honorary biological society which is composed of students who achieve high academic marks and who indicate a special aptitude for the subject of biology. Tri-Beta emphasizes quest for scientific knowledge and the promotion of biological research.

The officers are: president, Bijan Melany; vice president, Herb Hirsch; secretary-treasurer, Lorna Cox.

## Pi Epsilon Theta

The Beta Chapter of the Argonauts' Society of Pi Epsilon Theta, founded on Wesleyan's campus in the fall of 1946, seeks to encourage the spirit of philosophical study and emphasize the value of voluntary discipline in serious inquiry. The fraternity's motto is "'Tis not too late to seek a new world." Its flower is the laurel, and its colors, white and celestial blue.

Officers are president, Samuel Park; vice president, Diane Dietenhofer; secretary, Arline Franquiz.

The fraternity's activities include participation in the bi-annual W. Va. Philosophical Society Meetings, discussion groups, sponsoring guest speakers, and the annual spring banquet with a speaker.

Officers of the group are president, Samuel Park; vice president, Diane Dietenhofer; secretary, Arline Franquiz; treasurer, Eugene Marteney.



First row: Dr. Franquiz, A. Franquiz, S. Park, D. Dietenhofer. Second row: T. Merrill, E. Marteney, R. Miller, J. Rollo.





First row: J. Smith, C. Cucinotta, S. Hall. Second row: M. Hamrick, J. Murray, B. Scherbaum, Mrs. McAllester, N. Judy, D. Glass. Third row: M. Law, C. Boling, E. Chambers, B. Lindsay, N. Funk, M. L. Linaberger, G. Decker, A. Queen, A. Franquiz, M. Jones.

## *Betty Lamp Club*

This home economics club for those majoring or minoring in the field is symbolized by the Betty Lamp. The group engages in many projects such as refinishing tables, making curtains, and decorating tray mats for the Buckhannon hospitals; these activities are carried out at each meeting. The group also sells home-made doughnuts, sponsors breakfasts and a barbecue.

Betty Lamp Club officers are president, Beverly Scherbaum; vice president, Naomi Judy; secretary, Martha Law; treasurer, Debbie Glass. Mrs. McAllester is the advisor.



First row: C. Johnson, R. Feldman, B. Hughes. Second row: P. Yim, E. Cucinotta, B. Call. Third row: M. McCullough, M. Moore, J. South, L. Tannehill, P. Hillman.

## *Sociology Club*

This club, for juniors and seniors majoring in sociology, attempts to present, through discussion, information concerning current social problems and employment opportunities. Outside speakers are heard and field trips planned to the children's home, the prison, and the mental hospital.

Club officers are president, Evelyn Cucinotta; vice president, Bob Call; secretary, Pearl Yim.



# *Psychological Society*

The purpose of the Psychological Society of West Virginia Wesleyan College is to promote interest in the field of psychology and to provide opportunities for study and observance which the class room cannot facilitate.

Activities of the group consist of discussions and panels on hypnosis, sleep, et cetera, as well as field trips, filmstrips, and outside speakers.

Officers are president, John Rollo; vice president, Jack Hitchens; secretary, Janet Warfel; and treasurer, Marilyn Smith. Dr. Franquiz is the advisor.

First row: S. Park, R. Olah, M. McCullough, M. Wadleigh, K. Evans, Dr. Franquiz, J. Warfel, D. Dietenhofer, B. Leece, D. Hoy, B. Brundrett. Second row: J. Hitchens, J. Rollo, D. Houston.





The functions of this group are to promote interest in the field of the natural sciences, especially chemistry. The officers are president, Dave Trader; secretary, Sharon Lundell; treasurer, George Demertgis.

. . . camphor?

## *Benzene Ring*

First row: T. McLaughlin, C. Lewis, M. Smith, B. Breerof, H. Shin, N. McCullough, Dr. Hyma.  
 Second row: R. Moisan, H. Hirsch, S. Zanich, D. Trader, B. Melany, L. Alfred, K. Post, S. Lundell.







First row: R. Baierl, J. Blubaugh, J. Huston, C. Johnson, B. Goldberg. Second row: P. Badertha, R. Evans, president, D. Baker, W. Weeler.

## *Photographic Arts Club*

. . . our purpose is to stimulate interest in the photographic arts and develop various techniques of photography . . .

enlarging





First row: M. L. Hetz, S. Woo, P. Rice, A. Franquiz, L. Cottrill, J. Hinkle. Second row: R. Fosnaugh, M. Muller, E. Butler.

## *Student Art Guild*

The S.A.G. fosters interest and advancement in the field of art. A picture rental project, various art exhibits, and a "master-piece of the week," painted and displayed by a S.A.G. member are but a few of the yearly projects this group carries out.

Officers of the S.A.G. are president, Ed Butler; vice president, Max Muller; secretary, Priscilla Rice; and treasurer, Bob Fosnaugh.



# Playshop

Beginning the school year with *Arbie, the Bug Boy* presented during Freshman Week, many one-act plays and a three-act revealed Playshop's place on the campus.

Officers of the group are president, John South; vice president, Diane Diethofer; secretary - treasurer, Martha Hamrick. Mr. Shaver is the advisor.

*Boccaccio's Untold Tale*



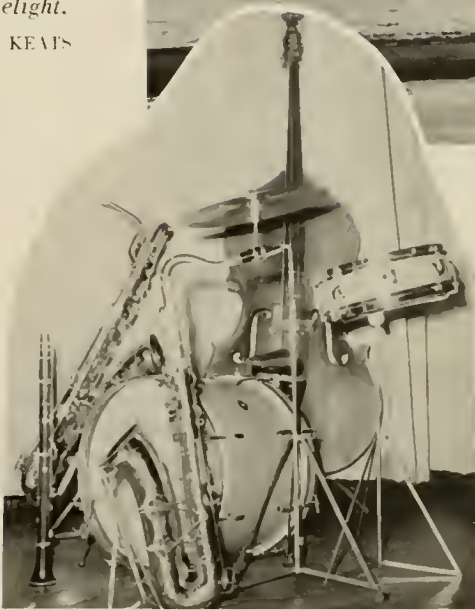
First row: J. Boggess, S. Klepper, R. Grose, M. Hamrick, J. South, D. Diethofer, T. Goheen, M. Parker, P. Martin, S. Tipper, K. Evans. Second row: Mr. Shaver, S. Owen, R. Wingert, B. Lefler, J. Warfel, E. Callaghan, J. Lockhart, R. Thomas, R. Post.





*"Let me have music dying,  
and I seek  
No more delight."*

KEATS



## *Loar Hall*

music

wesleyan choir





band



cheerleaders

J. Butcher, D. Hancock, M. Carper, T. Leach, E. Sheppard.

thuse





men's resident hall



dining hall

## *Residence*

freshman counselors



J. Kissel, W. Schoonmaker, V. Michael, R. Bergdoll,  
J. Powell, C. Judy.

forty-nine





Houseboard

M. Bond, B. Maxwell, B. Scherbaum, vice president; N. Funk, N. Glass, L. Alfred, president; L. Sowers, treasurer. Not pictured: M. Aveyard, secretary.



agnes howard

Halls

sixty-eight



Freshman counselors

A. Brooks, M. McCullough, J. Warfel, M Bond, G. McDonald, N. Judy, H. Aveyard, T Yost, I. Hedrick.



## Women's Recreation Association

Fun, fellowship, service projects, and athletic keys are the benefits of W.R.A., gained through such activities as a supper outing, a party for underprivileged children, Christmas caroling, a Valentine's Day Dance, and intramurals.

Officers are president, Patty Wilt; vice president, Barbara Beecroft; secretary, Linda Sowers; treasurer, Marilyn Aveyard. Miss Knepschild is the advisor.



First row: J. Boggess, S. Reppert, J. Cooper, K. Johnson, C. Kopple, L. Moulder, H. Murphy, E. Chambers, B. Beecroft, L. Sowers, P. Wilt, B. Scherbaum, J. Murray, C. Insley, I. Barrett. Second row: M. L. Bond, P. Kuhl, C. Kane, M. L. Hetz, B. Maxwell, D. Keyser, A. Queen, D. Glass, R. Walton, K. Post, N. McGregor. Third row: S. Farmer, C. Cucinotta, V. Boggs, C. Boyer, H. Aveyard, K. Rider, J. Ragan, L. Saxton, P. Morton, C. Wilson, E. Strader, C. Quattlander, N. Funk. Fourth row: M. Carper, B. Baylis, D. Snyder, S. Dean, E. Callaghan, J. Pfalzgraf, B. K. Hanifan, J. E. Flagg, N. Walton, R. Grose, J. L. Kessel. Fifth row: V. Alexander, P. Howard, J. Hedrick, M. Peregoy, A. Sias, J. Gaston, W. Heavner, V. Light.





## 4-H Club

One of the newest organizations on campus this year is the "Tubby" Boggs Memorial 4-H Club. The club is named in memory of I. B. Boggs, West Virginia State 4-H Boys' Agent, who passed away last fall. The purpose of the club is to provide an opportunity for the 4-H club members on campus to meet together and to share their 4-H experiences. This year the club sponsored an all-campus square dance, and the members visited Jackson's Mill, the State 4-H Camp.

Officers are president, Calvin McCutcheon; vice president, Richard Brooke; secretary, Elaine Sheppard; reporter, John Campbell; song leader, Jeannette Hedrick.

First row: N. Glass, C. McCutcheon, R. Brooke, N. Judy, J. Hedrick, E. Pinnell. Second row: D. Voneiff, C. Pierce, E. Sheppard, J. Campbell, M. Wagner, J. Donnelly.



# *Future Teachers of America*

F.T.A. is a professional organization designed to aid those interested in teaching. Each monthly meeting of the Morris Shawkey Chapter attempts to carry out this purpose.

Activities in which the group engages include campus activities, an annual Christmas party, and a banquet in May for the installation of new officers.

Chapter officers are president, Tommie Yost; vice president, Bernie King; Secretary, Jeannette Hedrick; and treasurer, Elsie Miller. Advisors are Dr. Hupp and Dr. Bay.



First row: E. Miller, J. Hedrick, B. King, T. Yost. Second row: J. Rawson, P. Morton, L. Bays, M. Jones, A. Gwennap. Third row: J. Belcher, B. Lindsay, V. Alexander, B. Baylis, C. Kopple. Fourth row: T. Goheen, C. Insley, A. Pemberton, R. Post.



## *International Relations Club*



First row: S. Woo, M. Wadleigh, B. Scherbaum, N. Mendoza, E. Woo. Second row: V. Parseghian, A. Riba, M. Wellisch.

The aim of the International Relations Club is embodied in the preface to its constitution:

"We, the members of the International Relations Club of West Virginia Wesleyan College, in order that we ourselves and our fellow students and associates may better understand the peoples of the world and the problems which confront them, have pledged ourselves to study and interpret pertinent issues of international concern unbiasedly, and to submit these studies and reports to all persons interested in world peace and the removal of barriers which hamper it."

The officers are president, Art Riba and secretary treasurer, Beverly Scherbaum. Dr. Downey is the advisor.



*"He who would arrive at the  
appointed end must follow a  
single road and not wander  
through many ways."*

SENECA



CHRISTIAN EMPHASIS WEEK was held on April 3 to 6, 1956. The guest speaker was Bishop Fred P. Corson, the Bishop of the Philadelphia Area of the Methodist Church. The resource leaders included Mrs. Martin E. Talbott, the Director of Religious Education at Christ Church Methodist, Charleston, W. Va., Rev. Elmer E. Diercks, the Director of the Baptist Student Center at W. Va. University, Morgantown, W. Va.; and Rev. Aldred Wallace, the chairman of the Conference Board of Education, Parkersburg, W. Va. The theme of the week was Christian Witness in a World of Crises. The program for the week included a mixer to open the week, discussions on "Christian Witness on the Campus," "Christian Witness in Science and Business," and "Christian Witness Through Marriage;" it concluded with a communion service in Atkinson Chapel. The Bishop delivered the chapel addresses on April 4 to 6.

The members of the committee working on Christian Emphasis Week were Robert Call, Ronald Talkington, Robert Gue, Judy Kerwood, Nancy Walton, Mrs. McAllester, Mr. Davis, David Trader, Arlene Franquiz, Jeannette Hedrick, and Ray Miller, chairman.

"5716"

*Newman Club  
Canterbury Club*

M. Mitchell, M. Cohen, S. Yagoda, D. Muchnick, I. Beitch, M. Cohen, N. Tonelson, M. Brounberg, G. Grabelle, N. Wasserman, Secretary; M. Wellisch, H. Hirsch, President; M. Schwartz, B. Goldberg.

"5716"



First row: C. Gearty, J. Murray, Vice President; S. Buttafuoco, President; E. Rosenberger, Secretary; S. Lundel, Second row: J. Martz, Treasurer; D. Johnstone, J. Alizio, P. DesRochers, F. Sciotto, Third row: L. Scilian, M. Wagner, A. Alizio, J. King, J. Murawski, R. Heine.

NEWMAN CLUB



First row: J. Murray, Secretary; J. Ingoldby, J. Greer, Vice President; C. Insley, D. Diethofer, Second row: J. McCoy, D. Souder, A. Taylor, President; C. McCaslin, D. Baker, Treasurer.

CANTERBURY CLUB

# Methodist Student Movement

M.S.M. seeks "... to present the Christian way of life in all its fields of activity, in order to make Christian ideals more real and to give the members spiritual inspiration for active daily life."

Morning and evening programs, vespers, fellowship teams, drama groups, newsletters, Kris Kringle Kraft Klub, and special activities all help to fulfill this purpose.

Officers of the group are president, Bob Call; first vice president, Ronald Talkington; second vice president, Janet Warfel; secretary, Nancy Walton; treasurer, Paul Bodurtha. Mr. Davis is the advisor.



First row: Mr. Davis, N. Walton, J. Warfel, B. Call. Second row: C. Goodin, M. Hamrick, L. Sowers, B. King, R. Grose, T. Yost. Third row: D. Houston, P. Bodurtha, R. Hamilton, R. Miller.

First row: B. King, T. Jungas, V. Boggs, C. Kopple, J. Hedrick, B. Hanifan, C. Kane, R. Grose, J. Kissel, T. Yost. Second row: I. Barrett, M. McCullough, S. Reppert, P. Kuhl, N. Walton, S. Kincaid, P. Hogsett, J. Warfel, J. Bogges, C. Hayden. Third row: B. Call, L. Sowers, E. Callaghan, F. Bennet, S. Davis, A. Muse, M. Hamrick, J. Belcher, P. Granlich. Fourth row: R. Hamilton, D. Houston, P. Bodurtha, R. Wingert, T. Goheen, C. Goodin, B. Hughes, C. Perry.





## Fellowship Teams and Vespers

Under the leadership of Bernie King, Dave Houston, and Ted Jungas, ten teams have carried on the work of organizing and reviving youth groups in rural churches. Team leaders are Harriet Aveyard, Ruth Epler, Jack Kissel, Margie McCullough, June Mearns, Norm Schanck, Ken Symes, Nancy Walton, Janet Warfel, and Paul Wells.

Martha Hamrick is chairman of the committee which plans weekly vesper programs. Serving on the committee are Jim Powell, Irene Barrett, and Miss Wilson, advisor.



a vesper service

First row: B. K. Hanifan, R. Grose, P. Hogsett, B. King, J. Mearns, S. Tipper, G. McDonald, A. Brooks. Second row: M. McDonald, I. Barrett, S. McNutt, H. Aveyard, J. Hedrick, M. Gardner, C. Boyer, R. Epler, A. Muse, M. McCullough. Third row: J. Kissel, M. Kundrat, E. Hodsdon, T. Jungas, R. McLaughlin, B. Hughes, G. Orr. Fourth row: K. Symes, J. Caldwell, B. Holmes, K. Kissel, J. Parks, D. Houston, T. Goheen, J. Grant, J. Tissot, B. Pettibon.

# The Pharos



ROBERT POST  
*co-editor*



SHIRLEY KINCAID  
*co-editor*



NANCY WALTON  
*business manager*



Deadline, Thursday! Another eight page issue!

And the *Pharos* staff works another weekend on the bi-weekly student newspaper that doubled in size this year. Homecoming was extra special with news on "Gip" Battles. "International Issue" featured Professor Messersmith who was hailed in French magazine for his painting. The *Pharos* honored seniors with a special Commencement issue. And on, and on, the staff worked steadily all year to make the *Pharos* the "Voice of the Students."

Staff positions this year included B. Trembath as senior associate editor; P. Bodurtha and J. Hedrick, junior associate editors; N. Cutlip, business manager (second semester); M. Aveyard, circulation; R. Bergdoll, B. Watson, sports; and M. McCullough, advertising. Dr. McKittrick replaced C. A. Marshall as advisor (second semester).



First row: P. Bodurtha, B. Trembath, S. Kincaid, R. Post, J. Hedrick. Second row: J. Kerwood, J. Greer, C. Kopple, J. Boggess, B. Baylis, C. A. Marshall, advisor; N. Walton, P. Kuhl, S. Klepper, S. McNutt, A. Muse, N. Cutlip. Third row: K. Johnson, N. McGregor, I. Barrett, D. Snyder.





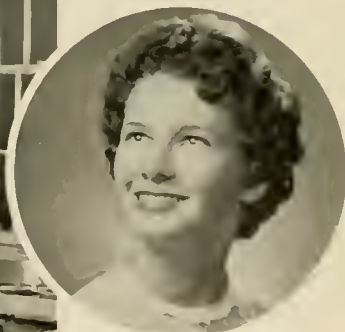
First row: J. Greer, J. Rollo, K. Evans, D. Snyder, M. Jones, D. Dunn. Second row: R. Kedward, J. Rawson, T. Yost, Carol Ann Marshall, advisor, and N. Cutlip.

## *Murmurmontis*

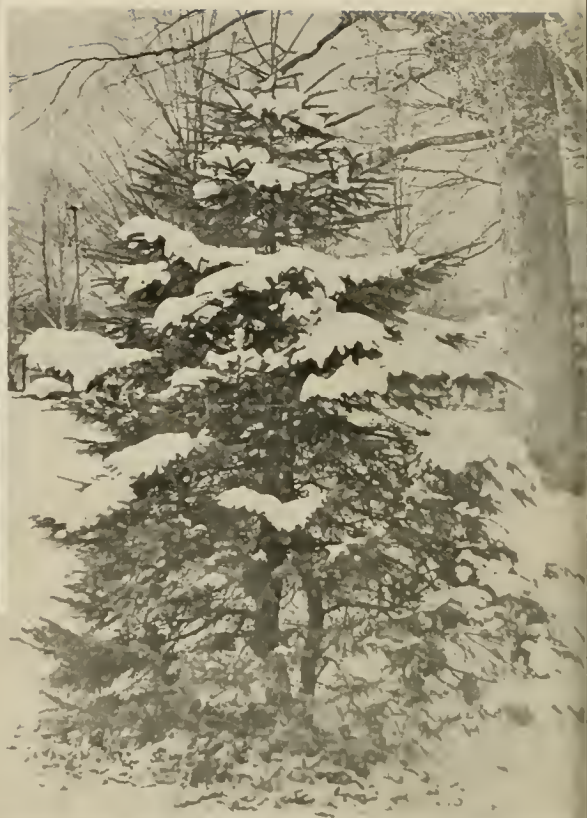
The Murmurmontis staff is composed of layout and copy editor, Jean Greer; staff, John Blubaugh, Vince Palomba, Neill Cutlip, Sam Zinaich, Dick Dunn, Lynn Gardner, Marlene Jones, Ruth Kedward, Shirley Dawn Kincaid, Jean Rawson, Delores Snyder, Linda Sowers, and Tommie Yost. The advisor for second semester is Dr. McKittrick.



**JOHN ROLLO**  
business manager



**KAY EVANS**  
editor



*"Today I have grown taller from  
walking with the trees."*

KARLE WILSON BAKER



*Haymond  
Science  
Hall*



chemistry



*"Science is the great antidote  
to the poison of enthusiasm  
and superstition."*

ADAM SMITH

bacteriology

*"Mountains are good to look  
upon  
But do not look too long.  
They are made of granite.  
They will break  
your heart."*

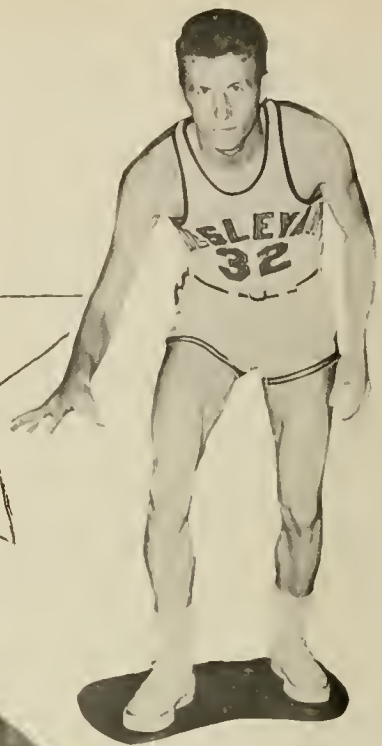
GRACE CONKLING



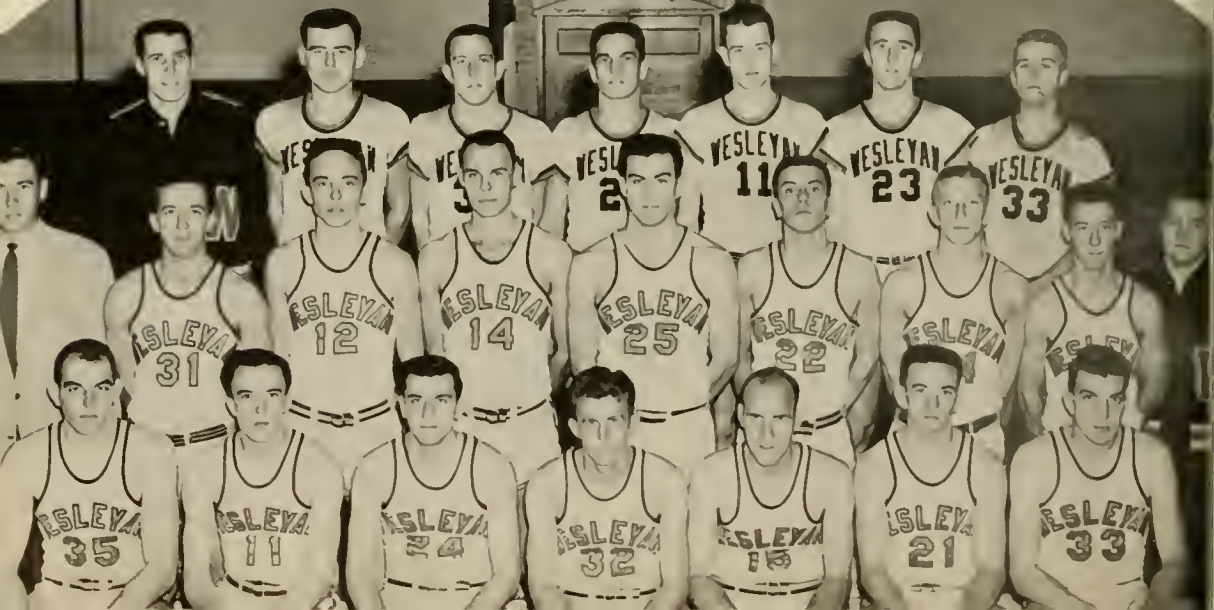




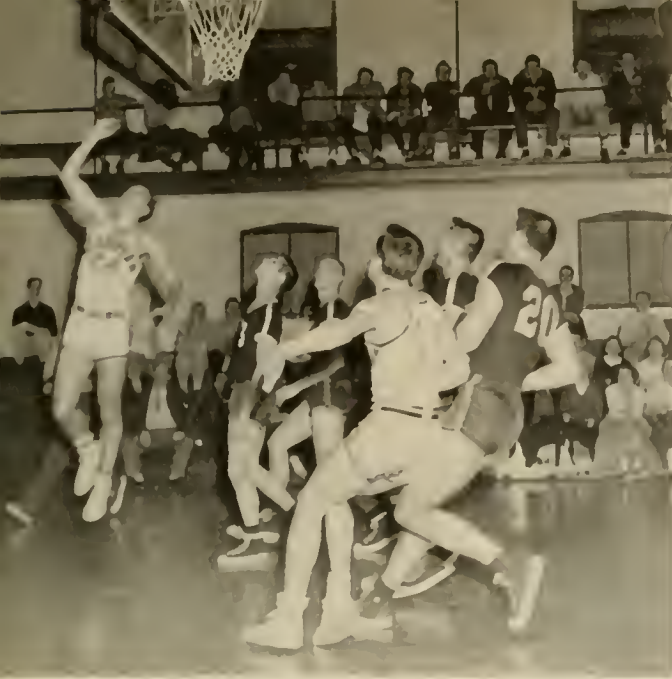
Pat Nickell



Tom Rutherford







B  
a  
s  
k  
e  
t  
b  
a  
l  
l

rebound

## 1955-'56

### Schedule

#### ANTLER'S TOURNAMENT

Wesleyan.....	72	Salem .....	84
Wesleyan.....	83	Fairmont .....	73

#### REGULAR SEASON

Wesleyan.....	74	D.&E. ....	66
Wesleyan.....	71	Marietta .....	80
Wesleyan.....	73	A.-B. ....	68
Wesleyan.....	92	D.&E. ....	73
Wesleyan.....	65	Fairmont .....	72
Wesleyan.....	107	Beckley .....	79
Wesleyan.....	85	Morris Harvey .....	99
Wesleyan.....	90	W. Va. Tech. ....	116
Wesleyan.....	75	Beckley .....	55
Wesleyan.....	97	W. Liberty .....	86
Wesleyan.....	105	Bethany .....	85
Wesleyan.....	85	Salem .....	83
Wesleyan.....	78	Glennville .....	80
Wesleyan.....	67	Morris Harvey .....	74
Wesleyan.....	81	Glennville .....	90
Wesleyan.....	85	W. Liberty .....	75
Wesleyan.....	79	W.&J. ....	65
Wesleyan.....	64	Marshall .....	85
Wesleyan.....	88	Bethany .....	61
Wesleyan.....	91	Salem .....	67
Wesleyan.....	75	Fairmont .....	74
Wesleyan.....		A.-B. ....	
Wesleyan.....		W. Va. Tech. ....	



layup



men's dorm



a.h.h.



portals to  
c.c.c. students



to coffee break

the oasis



'49er's

study



neatness  
personified



victory



critics



study



line up



orchids



loafing



hat winners

good luck



*Student Center  
of  
Wesleyan*

*"Friendship is a union of spirits . . ."*

WILLIAM PENN

to class



open house





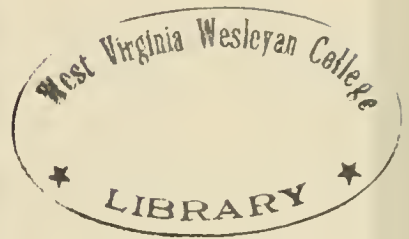
snack bar



book store



health center





WEST VIRGINIA  
WESLEYAN  
COLLEGE  
FOUNDED 1890



ADRIAN-BUCKHANNON  
BANK

MEMBER OF THE FEDERAL  
DEPOSIT INSURANCE CORPORATION

"We Do for You Anything  
a Good Bank Ought to Do"

CONTINUOUS

SERVICE

SINCE

1920



KANAWHA THEATER

Always a Good Show



"Meet the Crowd"  
at the

RAINBOW RESTAURANT

The  
HORNOR-GAYLORD  
COMPANY

Wholesale Grocers

60 Years of Continued Service

CLARKSBURG  
WEST VIRGINIA



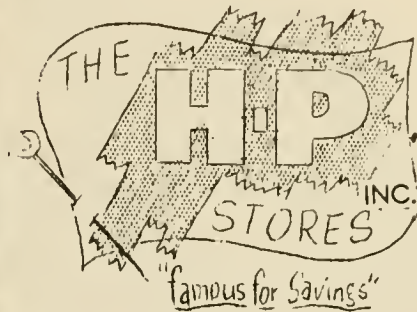


**KOLLEGE KITCHEN**  
 35 College Avenue  
 SPUDNUTS OUR SPECIALTY

CONGRATULATIONS

Class of 1956

SHOP . . .



TODAY  
 TOMORROW  
 AND EVERY DAY  
 For Better Buys  
 BUCKHANNON, W. VA.

Compliments of  
**THE CLARKSBURG  
 CURTAIN SHOP**  
 426 W. Main Street  
 CLARKSBURG, W. VA.  
 Everything Beautiful for  
 the Home

**GASTON GROCERY CO.**

Wholesale Grocers  
 BUCKHANNON, W. VA.



**THOMPSON'S PHARMACY**  
 "the Best in Town"



## THE CENTRAL NATIONAL BANK

Central Bank Bldg., Buckhannon, W. Va.

"COURTEOUS AND FRIENDLY SERVICE"

Night Depositing and Banking by Mail

Safe Deposit Boxes

Loans—Real Estate and Personal

Installment Financing

Large or Small

WE INVITE BOTH CHECKING  
AND SAVINGS ACCOUNTS

All Deposits Insured

Up to \$10,000 with F. D. I. C.

Resources Approximately

5½ Million Dollars

BUCKHANNON

420

"A Complete Banking Service"

### POUNDSTONE DRUG COMPANY

Whitman's Chocolates

Phone 432

24 WEST MAIN ST. BUCKHANNON

### ACME BOOK STORE

"The Place Where You  
Are Always Welcome"

MAGAZINES

STATIONERY

and

SPORTING GOODS

### REPUBLICAN DELTA

Your Twice-a-Week

Newspaper

### BUCKHANNON MILLING COMPANY

Feed and Flour

Telephone 302

BUCKHANNON

W. VA.

West Virginia Wesleyan College is a fully accredited liberal arts college. It is held in esteem by the alumni who have walked briskly to classes through its halls and sat in many hours of quiet study on the green lawns.

Since a college degree is almost imperative in this day and age of ours, won't you consider coming to Wesleyan if you're planning to obtain a college education?

An Alumnus

DAWSON FURNITURE  
SALES

Complete Home Furnishings  
Phone 377

PEOPLES GROCERY AND  
MEAT MARKET

"Buckhannon's Food Shop"  
BUCKHANNON, WEST VIRGINIA

REED RADIO SERVICE  
Expert Service on All Makes  
of

RADIOS  
PHONOGRAPHS  
TELEVISION

Phone 251  
18 W. Main St. Buckhannon

STRADER'S

"A Better Place to Buy"  
MERCHANDISE TO MEET  
YOUR NEEDS





Buckhannon, W. Va.

Phone 777

Pictured above is coach "Hank" Ellis and his Wesleyan basketball team with their new Ford Country Sedan furnished by THE FENTON AUTOMOBILE COMPANY.

Compliments of

**WILSON  
BAKING COMPANY**

CLARKSBURG  
WEST VIRGINIA



**PERCE ROSS  
MEN'S WEAR**

Buckhannon W. Va.



**G. C. MURPHY'S COMPANY**  
FIVE AND TEN CENT STORE  
Buckhannon W. Va.

Get Your Vitamins  
the Natural Way

**EAT FRESH FRUITS  
and  
VEGETABLES EVERY DAY**

**SHINGLETON BROTHERS**

Wholesale  
CLARKSBURG W. VA.

## CURRY CHEVROLET COMPANY, INC.

Distributors  
CHEVROLET PASSENGER CARS  
AND TRUCKS

Retail and Wholesale

Distributors of  
Chevrolet Parts and Accessories

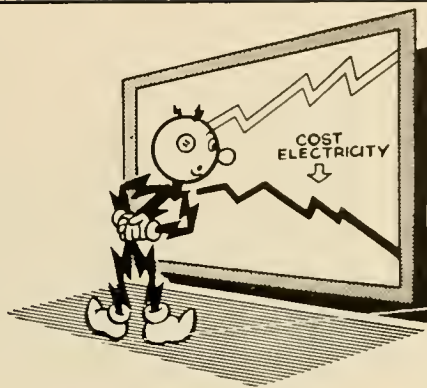
77 West Main St.

BUCKHANNON WEST VIRGINIA

also

Maple at Walnut St.

GRAFTON WEST VIRGINIA



## MONONGAHELA POWER CO.

Light — Power — Appliances

Electricity costs less than ever before. It is  
the biggest bargain in your family's budget.



## GREEN'S RESTAURANT

Phone 517

7 S. KANAWHA BUCKHANNON

## MILLER'S PHARMACY

Phone 404

BUCKHANNON WEST VIRGINIA

The Editors and Staff of the MUR-  
MURMONTIS 1956 sincerely thank the  
advertisers and the anonymous friend  
for their consideration.

STUDENT CENTER OF WESLEYAN

STUDENT CENTER  
of  
WESLEYAN

SNACK BAR  
DANCING  
BOOK STORE  
GAME ROOM  
HEALTH CENTER



Book Store



Snack Bar



# Index

Adams, James E.	64	Bohus, Emil M.	64	Collins, Jarvis, L.	
Adkins, Jackie H.		Bolcan, Ella E.	20	Collins, Joann M.	52
Aidala, Richard T.	64	Boling, Carolyn S.	40	Collins, Walter R.	21
Alberter, Edward E.	64	Bond, Mary L.	40	Colombo, Louis F.	52
Alcure, George F. Jr.	64	Bone, Evelyn H.		Conaway, Carole A.	65
Alexander, Donald C.		Bowman, Billie W.	40	Cooke, Donald	53
Alexander, Victoria	52	Boyer, H. Carol	52	Cooper, F. June	65
Alfred, Lillian F.	20	Bradford, I. Reed	52	Cooperman, Ted I.	
Alizio, Anthony P.	64	Bradford, Thomas G.	40	Corney, Bert W.	65
Alizio, Joseph	64	Brinkman, Shirley L.	40	Costaris, Arthur J.	65
Altman, John C.	64	Brooke, Richard C.	65	Catsoradis, Stephen J.	
Altman, William G.		Brooks, Arlene R.	20	Cottrill, Lennie P.	40
Andrick, John L.		Brooks, Ronald R.	52	Couchenour, Charles W.	65
Ardito, Frank C.		Broumberg, Michael M.		Cox, Lorna M.	40
Arendas, Andrew N.	40	Brown, Huling		Crane, Robert D.	21
Armentrout, D. Anne	40	Brown, Richard L.		Crites, Clyde S.	53
Arnfield, Shirley A.	64	Brubaker, David B.		Cucinotta, B. Evelyn	21
Armstrong, Doris L.	64	Brundrett, Della A.	20	Cucinotta, Carol S.	66
Artman, Frank R.	64	Brundrett, William	20	Cucinotta, David M.	21
Aslanian, Edward	52	Buell, Clifford E.	40	Cuiffo, Anthony F.	65
Atkinson, Judith S.	52	Bullock, Harold G.	52	Cutlip, D. Neill	66
Austin, Margaret R.	40	Burdette, George W.	65	Cutright, Lois Dawn	
Aveyard, Harriet M.	52	Burgess, Richard R.	65	Cvetnick, Frank	
Aveyard, Marilyn J.	40	Burke, Jerry A.	65	Damon, Gordon G.	41
Aylestock, John T.	40	Burnett, John H.	52	Davis, Jannie A.	21
Bachmeier, Carl A.	64	Burr, Elbert M.	65	Davis, Norma C.	53
Baierl, Robert E.	64	Burton, Mary H.	52	Day, Robert J.	66
Bailey, Betty J.		Butcher, Janet L.	65	Dean, Russell C.	53
Baker, David V.	52	Butcher, Samuel F.	20	Dean, Sharie L.	66
Barail, Joan L.	52	Butkiewicz, Kenneth A.	65	Decker, Georgetta E.	53
Barrett, Irene M.	64	Butler, Edmund J. Jr.	20	Decker, Philip L.	41
Bartman, Clarence J.	64	Buttafuoco, Santa J.	21	Deitsch, Albert R.	66
Bass, Stuart M.		Buttermore, Thomas F.	65	Delli-Gatti, John L.	
Batterson, George E. Jr.	64	Cadle, Charles O.	21	DeMattia, Henry J. Jr.	66
Baumgartner, Robert J.	40	Caldwell, James E.	65	DeMertgis, George S.	
Baxa, Artis E.	64	Call, Robert E.	21	Dengler, Frantz A.	66
Baxa, Willard O. Jr.		Callaghan, Evelyn K.	40	Dennison, James E.	
Baylis, Elizabeth A.	64	Campbell, Helen I.	65	DeRevere, Bradford F.	
Bays, Laura E.	52	Campbell, John R.	65	DesRochers, Pierre A.	66
Bean, Murray A.	64	Capuano, Alfred I.	65	Dickens, Denver H.	66
Beecroft, Barbara J.	40	Carbone, Anthony	65	Dickenson, Paul H. Jr.	
Beers, Carol R.	64	Carper, Margaret T.	52	Dietenhofer, Diane E.	22
Beitch, Irvin	64	Carter, Arthur S.	65	Donnelly, John P.	66
Belcher, Janet R.	52	Cassell, Lawrence	65	Dorffman, David A.	
Bennett, Billy E.	64	Chaddock, Paul H.	52	Douglas, Donald L.	53
Bennett, Florence M.	40	Chambers, Elnora	65	Dudding, John F.	
Berg, Arthur D.	64	Chappell, George E.	40	Dulaney, John T.	
Bergdoll, Ralph N.		Chenoweth, Rhea Lee	52	Dunn, Richard A. Jr.	22
Berliner, Teddy		Cherlong, George R.	52	Dworetz, Edward C.	66
Beveridge, Richard L.	64	Chiusano, Joseph J.	65	Dwork, David	72
Bitten, Robert D.	40	Chostner, Kathryn B.	65	Dye, Glenn T.	41
Black, Floyd F.		Clark, Clarence R.	52	Dykema, Roger Scot	
Blubaugh, John G.	64	Clark, Walter E. III	40	Earl, Francis J.	
Blair, Thomas K.	64	Class, Barbara E.	65	Earley, James J.	66
Bodurtha, Paul R.	52	Clawson, Grace E.		Edgell, S. Sue	53
Boe, Gerald P.	52	Coates, Robert E.	52	Edwards, Noel K.	
Boggess, Janet G.	64	Cohen, Martin M.	65	Eifert, William D.	53
Boggs, Denny D.	20	Cohen, Murray A.	65	Eipel, Kenneth C.	66
Boggs, Virginia B.	64	Cohen, Michael D.	65	Elmer, James E.	22

Engelhardt, Forest L.		Grose, Ruth Ann	54	Huffman, Bonita L.	67
Epler, O. Ruth	53	Groseclose, Charles M.		Hughes, William H.	42
Ervin, Elmer L.		Gue, Robert L.	41	Huston, John A.	67
Evans, B. Kay	41	Gurack, Billy J.		Hyams, Robert M.	67
Evans, Richard L.	53	Gwennap, Audrey M.	41	Hyre, Herbert	68
Evertsen, Tehodore A.	53	Hadley, John A.	54	Ingoldby, Joan L.	54
Farmer, Susan T.	66	Hak, Howard J.	67	Innes, Edward	
Feldman, Ronald J.	41	Halderman, John W.		Insley, Cora M.	42
Fellows, Edward W.		Hall, Sandra J.	54	Jablonsky, Robert R.	42
Fennimore, Robert T.	66	Hall, William R.	67	Jackson, William M., Jr.	
Figgatt, Wailand C.	66	Hamilton, Richard M.	58	Jarrett, A. Sue	54
Fike, Lloyd A.	67	Hamrick, Frank B.	54	Jeffries, Thomas J.	68
Filosa, Louis F.	41	Hamrick, Martha K.	22	Jentoft, David M.	68
Fink, Gordon J.		Hancock, Donald T. Jr.		Jervis, Robert G.	54
Fink, Peter B.	41	Hanifan, Betty Kay	67	Johnson, Catherine N.	68
Finta, Robert J.	53	Harmelin, Michael C.	67	Johnson, Charles W.	23
Fischer, Roger C.	53	Harris, Janet R.	54	Johnson, Howard E.	68
Fisher, Bertrand T.	66	Hart, Gilbert L.		Johnson, Jack L.	
Fitch, John D., Jr.	53	Hartman, Herbert W.	67	Johnson, Marshall S.	42
Flocco, Vincent R. Jr.		Hatch, Bryce R.	41	Johnston, Edwin L.	68
Flagg, Jo Ellen	53	Hatfield, Harvey H.	67	Johnstone, D. Anthony	
Fosnaugh, Robert G.		Hawkins, Richard H. Jr.		Johnstone, John J.	68
Franquiz, Arline H.	22	Hayden, Carol	67	Jones, Marvin P.	68
Fraser, James J.	66	Heavner, Winnifred L.	23	Jones, R. Marlene	68
Frey, Sanford P.	66	Hedrick, H. Jeannette	54	Jones, Roger L.	
Funk, Nancy Jo	66	Heine, Robert E.		Jordan, A. Warren	
Gardner, Lynn S.	66	Hellmann, John A.		Judy, Clifford P.	54
Gardner, Marilyn G.	41	Henderson, Roy A.	54	Judy, Naomi R.	24
Gaston, B. Jane	41	Hennessy, E. Patrick	23	Jungas, Theodore	55
Gaston, James E.	22	Hess, Gary F.	67	Kane, Carol J.	68
Gatherum, Nancy L.	41	Hession, Georganna L.	67	Karickhoff, Elizabeth T.	24
Gaunt, William H.	41	Hetz, Mary Lou	67	Keezer, Eugene J.	68
Gay, Ralph G.	66	Hetz, Robert L.	54	Kedward, V. Ruth	55
Gearty, Carol J.	66	Hickle, Harry V.		Kelly, Dennis E.	
Geller, David L.		Hiehle, Roberta S.	41	Kelly, James C.	
Geller, Allen H.	66	Hill, James K.	41	Kennedy, James E.	68
Geller, Jerome	66	Hillman, Phyllis J.	23	Kennedy, John E.	55
George, Janet L.	66	Hinkle, C. Joan		Kerwood, Judith A.	55
George, Ronald D.	53	Hinkle, Elmer G.		Kessel, Jenny Lynn	68
Goff, Kent R.	53	Hinkle, Shirley W.		Keyser, Dolores R.	55
Glass, Nadine M.	53	Hinzman, Parker L.		Khedouri, Ike	68
Goheen, Thomas P.	53	Hirsch, Herbert I.	23	Kincaid, Shirley D.	42
Goldberg, Burton S.	66	Hitchcock, Harold W.		Kinder, Lowell G.	
Golden, Allen	53	Hitchens, John T.	23	King, Bernice R.	24
Golden, James T., Jr.	66	Hoag, David W., Jr.	67	King, Joseph A.	68
Goldstein, Arthur I.		Hodsdon, Edgar W.	54	Kissel, Jack	55
Goodearl, Donald A.	67	Hogsett, Phyllis A.	54	Kissel, J. Keith	68
Goodin, Charles E.	22	Holbrook, Robert E.	67	Klepper, Sylvia R.	68
Gould, Robert G.	41	Holm, O. Sue	54	Koehler, Dan M.	
Gower, Mary L.		Holmes, William H. Jr.	67	Koelln, William H.	68
Grabelle, Garry R.	67	Holt, John M.	54	Koon, James G.	55
Graham, W. Wayne	41	Horn, Frank G.	67	Kopple, Carolyn L.	68
Gramlich, Paul W.	54	Horton, Robert L.	41	Koslin, Stephen	
Grant, John H.	67	Houdashelt, D. Anne	23	Kough, David J.	68
Greathouse, Ann R.	67	Houdashelt, J. Elmer	23	Kristofik, Edmund A.	55
Greenway, Harold E.	54	Houston, David C.	41	Kuhl, Phyllis J.	68
Greer, Jean C.	22	Howard, Priscilla	42	Kundrat, Michael L.	68
Grever, Robert E.	67	Hoy, Donald R.	54	LaFalce, Robert A.	55
Griesi, James V.	67	Hubbard, Alan E.	67	Lamperti, Richard S.	
Griffith, D. Frances	67	Hubbell, George T.	54	Lanting, Fred L.	55
Groody, Hugh R.	67	Huenerberg, David C.	67	Lantz, Nelson H.	42

Laszlo, Pete	55	Mitchell, Marilyn J.	69	Nickell, Patton L., Jr.	26
Lathrop, Linwood B.	55	Mitchell, Merton J.	56	O'Brien, Esther Y.	
Law, Martha A.	55	Modlin, Charles E.	56	Olah, Richard L.	
Leach, Tomas E.	68	Moebius, Clifford E.	69	Olive, Paul N.	69
Lee, Young Won	24	Mohr, Richard E.	26	Oliver, Armand C.	69
Leece, Barbara J.	42	Moisan, Richard W.	56	Oliver, Howard G.	43
Lefler, Barbara L.	42	Montgomery, James J.		Olmstead, William W.	69
Lemon, Frederick D.		Moore, Martha L.	26	Orr, George A. III	69
Lemon, Noel E.	55	Morgan, Arnold J.	69	Owen, Shirley R.	69
Leonard, William F.		Morris, Fredric D.	69	Paisley, David M.	43
Lessing, Gregory D.	24	Morton, Peggy Jo	56	Paisley, Linda L.	69
Levine, Robert		Moulder, Linda J.	69	Palatiello, Robert F.	56
Lewis, Carolyn L.	24	Mowry, John J.	56	Palmer, Ray O.	56
Light, Virginia A.	42	Muchnick, David P.		Palomba, Vincent A.	
Lighthall, Kent A.		Muller, Max P.		Pancirov, Roy J.	
Linaberger, Mara L.	55	Murawski, John S.	56	Parisi, Frank D.	69
Lindsay, Elizabeth J.	24	Murphy, Donald J.	69	Park, Samuel	26
Lipetz, Eric D.	55	Murphy, Helen B.		Parks, John H.	56
Lockart, James O.		Murphy, Hugh P.	42	Parseghian, Vahan	69
Long, Margaret E.	42	Murray, Charles S.	43	Parker, Malcolm M.	43
Louer, Robert C.	68	Murray, John E.		Patterson, John D.	70
Lowther, Dewayne R.	24	Murray, Judith A.	56	Patti, Frank L.	70
Lundell, Sharon J.		Murray, Judy	43	Pemberton, Carol A.	56
Lynch, Charles I.		Muse, Annabelle	56	Peregoy, Martha J.	70
MacCallum, Malcolm J. II		Myers, Naaman L.	26	Perry, Charles W.	70
Macek, Thomas A.		McCaslin, George C.	55	Perry, Linda E.	56
Maeder, Douglas E.		McCauley, Ronald M.	68	Peveler, Paul S.	
Malone, Patricia A.	55	McCloud, Clarence A.	68	Petry, William H.	
Manser, Jefferson W.	55	McCoy, James M.		Pettibon, William C.	70
Margolies, Alvin		McCulloch, John	69	Pfalzgraf, Jane L.	70
Marhoffer, Harry A.	25	McCullough, Marjorie F.	42	Pierce, Conrad	70
Marini, Frank D.		McCullough, Nyla J.	25	Pinnell, D. Eleanor	70
Marteny, Eugene R.	25	McCutcheon, James B.		Platt, Allen	
Martin, Patricia T.	25	McCutcheon, William C.	68	Plummer, Walter F. III	
Martz, John F.	25	McDermott, Arthur L.	42	Pomerantz, Ronald S.	70
Mason, John A.		McDonald, Glenda J.	55	Post, Kay A.	26
Mavian, Robert	68	McDonald, Madonna Y.	69	Post, Robert M.	26
Maxwell, Barbara A.	25	McGovern, Thomas E.	69	Post, Robert R.	
Mayers, William H.		McGregor, Nancy J.	69	Post, Shirley H.	27
Mearns, Dolores J.	42	McIlvaine, Effie L.	69	Posteraro, Thomas J.	56
Medley, James L.	56	McIntire, Paul W. Jr.		Powell, James A. Jr.	
Melany, Brian	25	McIntosh, Arnold L.		Powers, Charles R.	70
Mendoza, Cornelia L.	69	McKinney, Thomas A.	55	Powers, Edward F.	70
Merone, Jesse J.		McLaughlin, Robert A.	99	Powers, Kenneth L.	56
Merrill, Thomas R.	25	McLaughlin, Thomas C.	55	Printz, William H.	70
Merrill, Warren K.	69	McLean, John W.	69	Quattlander, Carol E.	70
Metropa, Julius J.	26	McMillan, James W.		Queen, Ann M.	56
Meyer, Samuel F.	69	McNieol, James T.		Rabinowitz, Jerry	56
Michael, Vaughn J., Jr.	42	McNutt, Suzanne	55	Ragan, Jean C.	70
Michelman, Harvey J.	69	McVitty, Donald W.	55	Range, M. Conrad, Jr.	
Middlebrook, Robert C.	56	Nash, Kenneth J.		Rawson, N. Jean	56
Miklosey, Arthur F.	69	Neely, Richard L.	69	Reabe, John F.	
Miller, A. Catherine		Neidich, Lloyd I.		Reed, Robert L.	43
Miller, Douglas S.		Nelson, Z. Gail	69	Reed, Willard R.	
Miller, Elsie V.	26	Nesbitt, Warren R.		Reese, Marie	70
Miller, Howard E.	42	Neuner, Frank J.	56	Reiter, William E.	56
Miller, John R.	42	Newlon, Philip M.		Remy, Douglas N.	70
Miller, Patricia A.	42	Newman, David L.		Rennard, Allen H.	70
Miller, Roy M.	46	Newman, Frederick D.		Reppert, Shirley A.	70
Miller, Shirley A.		Newton, Edward J.	43	Rial, Joseph Jr.	70
Miller William G.	26	Nicholson, Phillip W., Jr.	43	Riba, Arthur J.	27

Rice, Priscilla J.	70	Shumate, George C., Jr.		Vance, Hollis C.	71
Rice, Robert A.		Sias, M. Ann	71	Van Cleve, John C.	71
Richelsoph, Howard M.	70	Sicilian, Louis V.	43	Vaughan, Paul, Jr.	28
Richmond, Robert A.		Silberman, William J.	71	Vita, Anthony J.	
Rider, Kay A.	56	Simmons, A. Helen	43	Von Eiff, Donald C.	72
Ringel, Robert H.	70	Simon, Allen J.	43	Von Hoorn, Richard P.	58
Robertson, Alma P.	70	Sklar, William S.	71	Wadleigh, Mary E.	58
Robinson, Gwendolyn M.	70	Small, Neal J.	57	Wadler, Melvyn M.	72
Rollins, Clifford E.	44	Smith, James R.		Wagner, Michael A.	
Rollo, John, Jr.	27	Smith, June E.	71	Walton, Nancy K.	44
Romantini, Jerry M.	70	Smith, Lawrence P.		Walton, Rose A.	58
Romig, Ann W.	70	Smith, Marilyn Y.	57	Walton, Stephen E.	72
Rosenberger, Elsie T.	56	Snyder, Delores J.	71	Wanless, Gordon H.	72
Rosenstock, Jerome		Snyder, Eileen C.	57	Wanless, Howard W.	
Rosier, George L.	70	Snyder, Ellen J.		Ward, Elene D.	44
Ross, Alexander M.		Snyder, Martin		Ward, Norma H.	44
Rossi, Denis A.	70	Snyder, Arvil J.	43	Warfel, Janet E.	58
Rough, Carol J.	57	Sokos, Gus M.	27	Wassell, Willard D., Jr.	72
Revello, Samuel V.		Solvesen, Douglas B.	71	Wasserman, Howard S.	58
Rudy, Melvyn A.		Sos, Alexander J.		Watson, William E.	58
Rulow, Dean H.	71	Souder, William D., Jr.	57	Waxberg, David	
Runyon, Emma L.	71	South, John P.	27	Weaver, Robert L., Jr.	72
Ruof, John M.		Sowers, Linda K.	57	Webber, Robert L.	
Russin, Gerald H.	71	Spencer, Charles J.	71	Weber, Paul F.	72
Rutherford, Beverly R.	27	Spera, Anthony V.		Weeks, Daniel P.	44
Rutherford, Thomas M.	27	Stagon, Leonard A.		Weiser, Richard J.	
Rutkowski, John A.	71	Stahl, David		Weissmann, Henry D.	72
Sammis, Robert H.	27	States, William G.		Wells, Marshall	72
Santillo, Harry R.	71	Stell, Robert H.	71	Wells, Paul L.	
Santoro, Frank F.	71	Story, Frederick W., Jr.		Werlinich, Samuel	72
Sarounie, Helen A.	43	Strader, Elizabeth R.		West, Jenny L.	
Sattler, Walter O.	71	Strieby, Irene C.		Weston, Daniel J.	44
Saxton, Linda L.	57	Strieby, Oscar		Whang, Tae Byang	44
Schanck, Norman W.	43	Strong, Jane E.	28	Wheeler, Wesley R.	58
Scharlatt, Harold		Strong, Joseph N.	28	White, William N.	
Scherbaum, Beverly A.	43	StMiklossy, Joseph	57	Whitescarver, David L.	44
Schneider, Frank P.		Surridge, James H.	71	Whitescarver, Robert D.	28
Schoonmaker, William L.	57	Swander, John R.		Wieland, Roger P.	58
Schenck, William R.	27	Sweeton, Gerard F.	71	Wiemokly, Richard	72
Schultz, Howard F.		Swiger, Diana A.	71	Wilburn, Charles E.	
Schwartz, Martin S.	71	Symes, Kenneth G.		Wilkinson, James E.	71
Sciotto, Francisco	57	Talkington, Ronald W.	57	Will, William A.	58
Scott, Bruce G.		Tannehill, M. Louise	28	Williams, Joan	
Scott, James F.	71	Tatem, James A., Jr.	57	Willis, Robert G.	
Seamans, Lyman H., Jr.		Taylor, Alton H.		Wilson, Annamary E.	44
Seamans, Winston G.		Taylor, Charles J.	71	Wilson, Carol A.	58
Seiderman, Arthur	71	Taylor, Mollie B.		Wilt, Patricia	44
Seiah, John	71	Tell, Jeremiah J.	71	Wilmer, James H.	
Seldin, Edward G.	71	Thacker, Kay L.	43	Wingert, Randall	58
Selody, Kenneth	71	Thomas, Roland A.	44	Winston, David C.	
Semrow, Gustave C.	57	Thoubboron, Robert D.		Winters, George R.	58
Shaffner, Wesley D.	71	Tipper, Sandra S.	72	Wiseman, Richard M.	
Shay, Neil T.		Tissot, John F.	57	Woo, Edith	72
Shearer, Donald L.		Todd, William R.	72		
Shearer, Shonette M.		Tonelson, Nathan	57		
Sheasley, G. Calvin, Jr.	43	Torrence, Tod A.	57		
Sheppard, David L.	57	Townsend, George H.	72		
Sheppard, Elaine D.	57	Trader, Charles D.	44		
Shin, Helen	43	Trail, Julian S.	72		
Shin, Young Sun	71	Trembath, William J.	57		
Shirley, John M.	57	Trowbridge, Delphia			
Shreve, Charles W.		Undreiner, Ralph G.	71		

Woo, Shirley	72
Wood, Betty M.	72
Yagoda, Stuart	58
Yim, Pearl C.	28
Yost, Tommie R.	28
Young, Marianna	58
Zanesky, Robert G.	58
Zarnfaller, Malcolm	72
Zinaich, Samuel	
Zolan, Robert E.	

## Second Semester Enrollment

Bartlett, Boyd	Lenhart, James
Lost Creek	Connellsville, Pa.
Bryan, Belton O.	Lichstein, Jack
Arlington, Va.	Trenton, N. J.
Brown, Donald	Lober, Edward
Buckhannon	Woodhaven, N. Y.
Brown, Harry	Long, Bruce
Easton, Pa.	Green Village, N. J.
Buttafuccho, Joseph	Mante, Van
Brooklyn, N. Y.	Saddle River, N. J.
Caruso, Phyllis	Marini, Frank
Newark, N. J.	Passaic, N. J.
Cheatham, Wallace	McCue, Sandra Jean
New York City	Buckhannon
Cohen, Stuart	McNutt, Mary
Flushing, N. Y.	Salem
Cole, William	Meister, Taylor
Perrysville, Md.	Munhall, Pa.
Costolo, Herbert	Miller, John
Pittsburgh, Pa.	Buckhannon
Culley, Audrey	Pennington, John
Bayside, N. Y.	Wilton, Conn.
Dawson, Patricia	Perry, Burr
Buckhannon	Fairfield, Conn.
Fitch, Thomas	Pierce, David
Danville, Ind.	Masontown, Pa.
Floyd, Frank	Raymer, Richard
Buckhannon	Bayside, N. Y.
Gardner, Lawrence	Rissmeyer, Helen
Elmhurst, N. Y.	New York City
Geigley, David	Roche, Daniel
Hastings	Hasbrouck Heights, N. J.
Greenberg, Gilbert	Rohr, Stephen
Brooklyn, N. Y.	Alum Bridge
Hegelein, Norman	Schilling, Fred
Jamaica, N. Y.	Packenack Lake, N. J.
Hill, George	Schwengher, Ernest
Norfolk, Va.	Flushing, N. Y.
Holbert, Jefferson	Slade, Julia
Bayonne, N. J.	East Natick, Mass.
Innes, John	Steinberg, Alan
Pelhem, N. Y.	Valley Stream, N. Y.
Johnson, Donald	Stewart, Homer
Succasunna, N. J.	Kasson
Karasik, George	Stroles, Constantine
Flushing, N. Y.	New York City
Langer, Murray	Walsh, John P.
Yonkers, N. Y.	Milford, Conn.



# Summer

4th of july



after class

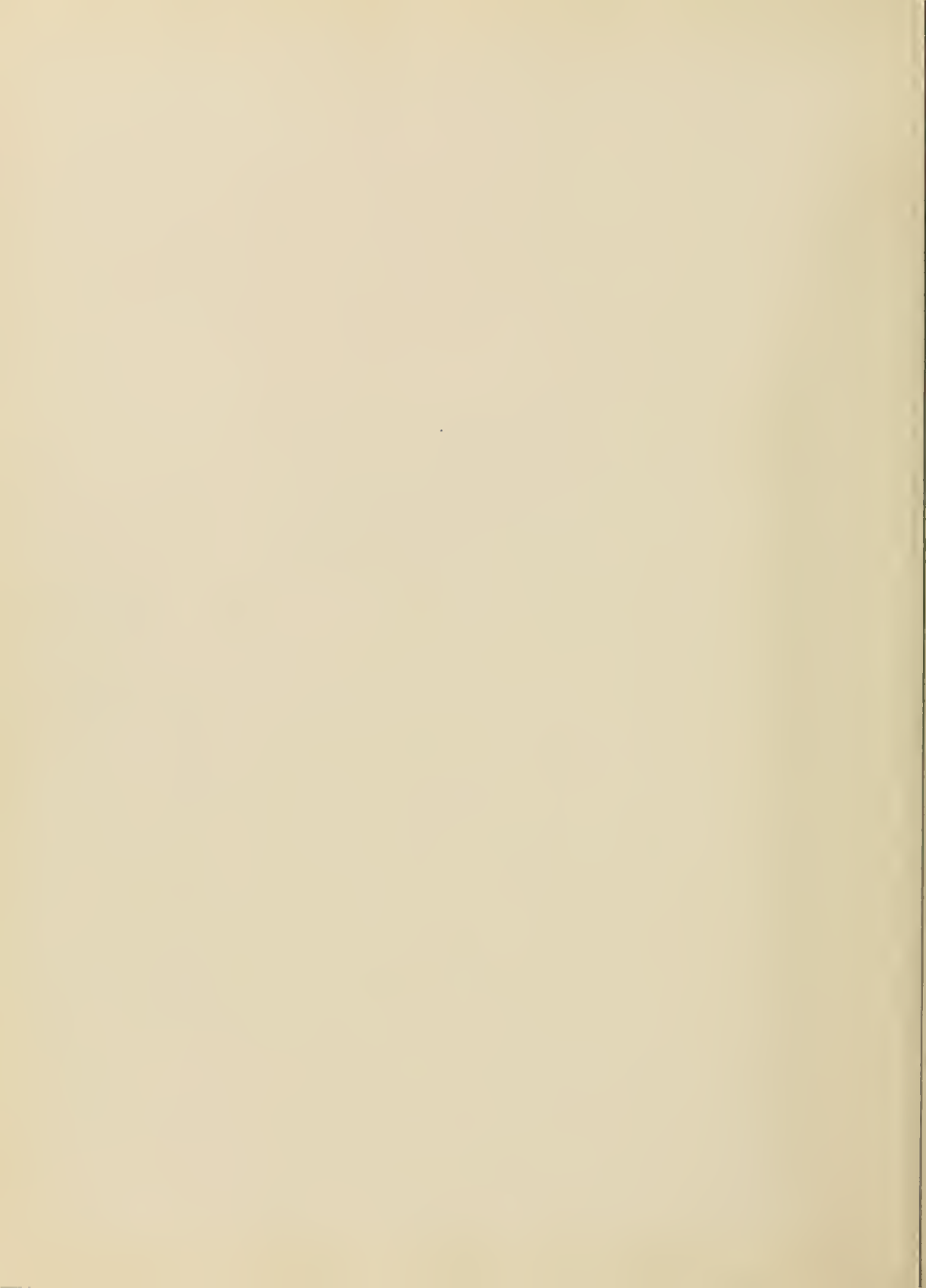


We sincerely hope that you, the students, have enjoyed reading your yearbook. It has been a pleasure compiling and editing the 1956 Murmurmontis. We wish to thank all those, especially Mr. Howard Hiner of the Mountain State Photo and Engraving Service, who have helped make this yearbook a success.

The Murmurmontis Staff











LITHOGRAPHED BY

**TAYLOR PUBLISHING CO.**

DALLAS • TEXAS

The Best Yearbooks are TAYLOR PUBLISHING CO.

