

1

9

5

8



# THE MURMURMONTIS

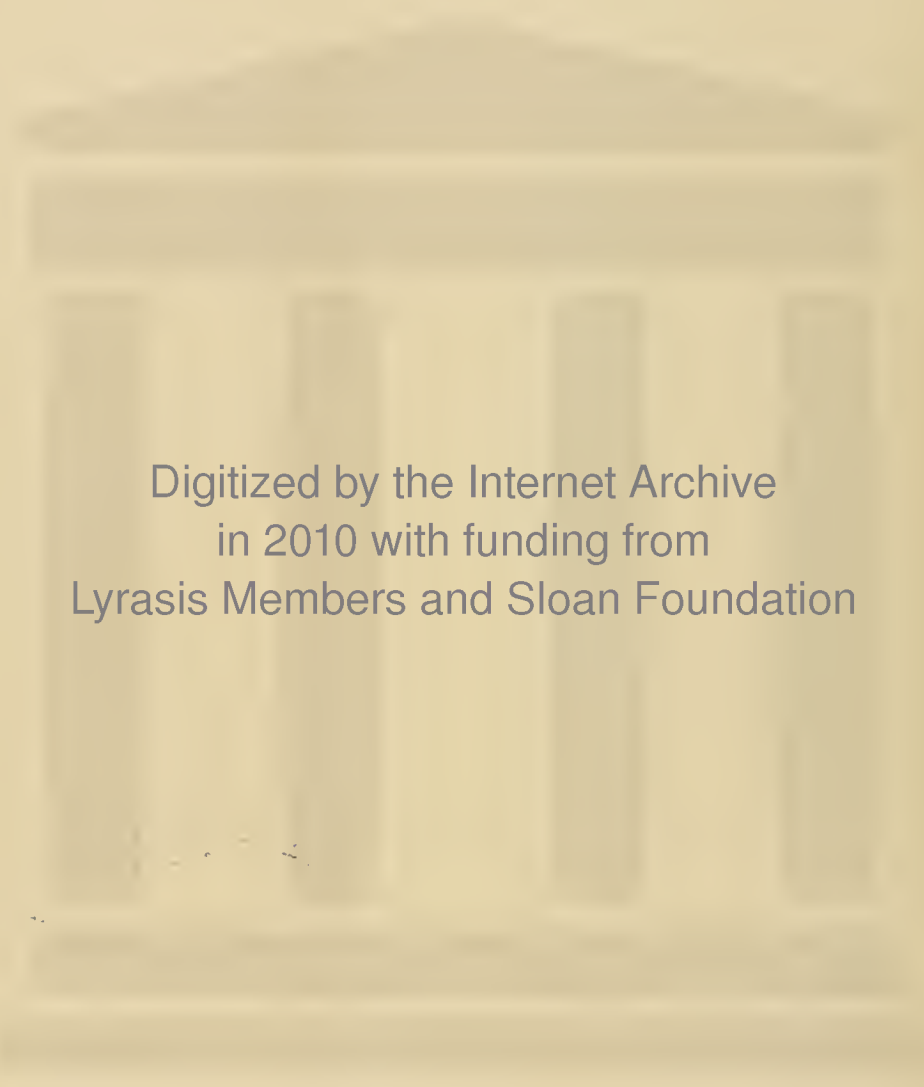
**WEST VIRGINIA CONFERENCE SEMIN**  
**WESLEYAN UNIVERSITY OF WEST VI**  
**WEST VIRGINIA WESLEYAN COLLEG**

ARY  
GINIA

1890-1903

1903-1906

1906-



Digitized by the Internet Archive  
in 2010 with funding from  
Lyrasis Members and Sloan Foundation

<http://www.archive.org/details/murmurmontisyear48west>



**west virginia wesleyan college**

**buckhannon, west virginia**

45,5 135



**students, faculty, administration . . .**

**who we are  
why we came  
what we found**



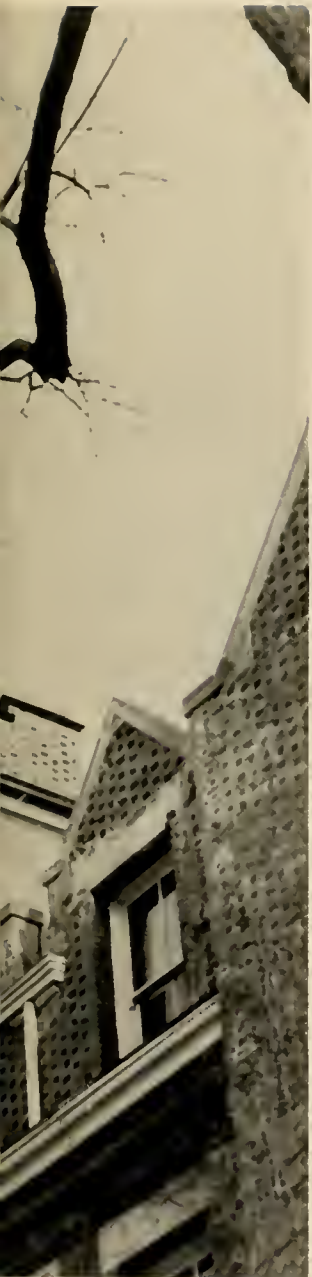
**900 strong**

# The **1958** Murmurmontis . . .



**unfolds the story of those who live**





published by the  
student body of  
west virginia  
wesleyan  
college

This is our story. It is a tale  
of life on our campus and what  
prompted us to come here.

It is a story told by the  
students in pictures and print.

What prompted us to become  
involved? Each has a different  
answer and the 1958 MURMURMONTIS  
presents these stories in  
three sections . . .

#### editors

carol ann pemberton  
james david harbert, jr.

#### business manager

james robert mclaughlin

**contents . . .**



# who we are

seniors  
underclassmen



# why we came

campus  
traditions  
administration  
faculty



# what we found

government  
honoraries  
religion  
organizations  
greeks  
sports







one day . . .

# WHO WE ARE







## we are seniors, juniors, sophomores, and freshmen

We come from West Virginia, Pennsylvania, New York, and a score of other states.

We have come to Wesleyan in our quest for knowledge and college life.

Seniors may dream of commencement ceremonies and underclassmen may pause during a busy day to hear the president speak from the steps of Haymond Science Hall but we are all the Wesleyan family. Here is the spot where most of us eat, sleep, play, and study . . . usually in that order.



Top: Students gather for pre-game Thuse meeting on intramural field.

Bottom: The campus appears en masse for a jazz concert by Woody Herman.





**seniors**

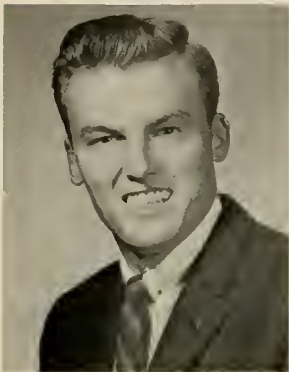
# senior class officers



**Ronald Talkington**  
**president**

B.A., English, Kappa Sigma Kappa, Basketball, Methodist Student Movement, Choir, Tennis, Fellowship Teams, Football Manager, Community Council Committees, Intramurals, Interfraternity Council, Psychology Club.

CLARKSBURG



**William Reiter**  
**vice president**

B.S., Business Administration, Kappa Alpha Order, Intramurals, Football.

DAYTON, OHIO



**Linda Sowers**  
**secretary**

B.A., Sociology, Alpha Gamma Delta, Delta Psi Kappa, Women's Recreation Association, Haught Literary Society.

LEBANON, PA.



**Ronald Brooks**  
**treasurer**

B.A., Sociology, Phi Sigma Epsilon, Intramurals, Sociology Club.

DAVIN

# seniors

Alizio, Anthony  
Alizio, Joseph  
Altman, William  
Ardito, Frank



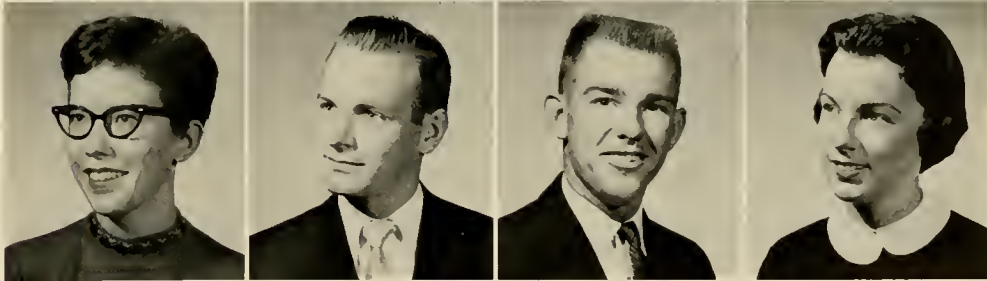
Aslanian, Edward  
Atkinson, Judith  
Aveyard, Harriet  
Aylestock, Judith



Bailey, Betty Jo  
Barail, Louis  
Bays, Laura  
Belcher, Janet



Black, Floy  
Bodurtha, Paul  
Boe, Gerard  
Bone, Evelyn



ALIZIO, ANTHONY PHILIP  
B.A., History

BAYSIDE, N.Y.

ALIZIO, JOSEPH PETER  
B.A., History

BAYSIDE, N.Y.

ALTMAN, WILLIAM GLENN  
B.A., Bible, Phi Sigma Epsilon, Sigma Theta Epsilon, Cross-Country

JAMESTOWN, N.Y.

ARDITO, FRANK CHARLES  
B.S., Chemistry, Kappa Alpha Order, Track

SAN DIEGO, CALIF.

ASLANIAN, EDWARD  
B.S., Home Economics, Alpha Gamma Delta, Women's House Board, Methodist Student Movement, Fellowship Teams, Women's Recreation Relations Club, Intramurals

MASPETH, N.Y.

ATKINSON, JUDITH STEARN  
B.S., Home Economics, Alpha Gamma Delta, Women's House Board, Methodist Student Movement, Fellowship Teams, Women's Recreation Association

MONROE, CONN.

AVEYARD, HARRIET M.  
B.A., Sociology, Alpha Delta Pi, Women's House Board, Methodist Student Movement, Fought Literary Society, Panhellenic Council, Community Council, Fellowship Teams

GARDNER, MASS.

AYLESTOCK, JUDITH KERWOOD  
B.A., Sociology, Alpha Gamma Delta, Sociology Club, Pharos, Playshop, World University Service, Women's Recreation Association.

RILEY

BAILEY, BETTY JO  
B.S., Chemistry

BUCKHANNON

BARAIL, J. LOUIS  
B.S., Business Administration, Alpha Sigma Phi, Intramurals

NEW YORK, N.Y.

BAYS, LAURA ESTALINE  
B.A., Education, Alpha Xi Delta, Women's House Board, SCOW Committee, Women's Recreation Association, Newman Club, Playshop, Student National Education Association, Intramurals

BECKLEY

BELCHER, JANET RAE  
B.A., English, Kappa Chi, Choir, Student National Education Association, Music Educators' National Conference

KIMBALL

BLACK, FLOY FAE  
B.S., Chemistry, Benzene Ring

BUCKHANNON

BODURTHA, PAUL RAY  
B.A., English, Pharos, Pi Epsilon Theta, Methodist Student Movement

ROME, N.Y.

BOE, GERARD PATRICK  
B.S., Biology, Theta Chi, Benzene Ring, Beta Beta Beta, Cross-Country, Track, Interfraternity Council, Special Activities Committee

DUNELLEN, N.J.

BONE, EVELYN H.  
B.A., Sociology, Alpha Gamma Delta

NORTH ARLINGTON, N.J.

BOYER, CAROL  
B.A., Sociology, Alpha Delta Pi, Delta Psi Kappa, Pi Epsilon Theta, Sociology Club, Women's Recreation Association, Hockey, Intramurals, Choir

BRADFORD, JOHN REED  
B.S., Economics, Theta Chi, SCOW Committee, United States National Student Association Committee

BROUMBERG, MICHAEL MARK  
B.S., Biology, Beta Beta Beta, Pharos, Band

BROWN, ALICE NEWMAN  
B.S., Chemistry, Benzene Ring

BULLOCK, HAROLD GLENN  
B.S., Chemistry, Methodist Student Movement, Intramurals

BURNETT, JOHN HOWARD  
B.A., Political Science, Tennis, International Relations Club

BURTON, MARY HUMBERT  
B.A., Social Studies, Alpha Delta Pi, SCOW Committee, MURMUR-MONTIS Queen, Student Art Guild, Women's Recreation Association

CARTER, ARTHUR SIDNEY  
B.A., Bible

WILDWOOD, N.J.

MANHASSET, N.Y.

NEW YORK, N.Y.

BUCKHANNON

HERMAN, N.Y.

DUNELLEN, N.J.

ROMNEY

BLUE JAY

CHADDOCK, PAUL HENRY  
B.S., Business Administration

CHENOWETH, RHEA LEE  
B.M.E., Music, Alpha Gamma Delta, Music Educators' National Conference, American Guild of Organists, Choir

COATES, ROBERT EDWIN  
B.A., English, Phi Sigma Epsilon

COLOMBO, LOUIS FRANCIS  
B.S., Business, Track, Men's Glee Club, Newman Club, Intramurals

COOKE, DONALD  
B.S., Economics, Theta Chi, Band, Intramurals

COTTRILL, GEORGETTA DECKER  
B.S., Home Economics, Alpha Delta Phi, Betty Lamp Club

CRISPIN, RAYMOND  
B.A., History, Alpha Sigma Phi

DAVIS, NORMA CAROLYN  
B.M.E., Music, Kappa Phi, Choir, Music Educators' National Conference

BUCKHANNON

BUCKHANNON

NEW YORK, N.Y.

MONTCLAIR, N.J.

NORTH PLAINFIELD, N.J.

BUCKHANNON

PITTSBURGH, PA.

NEW BRIGHTON, PA.



Boyer, Carol  
Bradford, John  
Broumberg, Michael  
Brown, Alice

Bullock, Harold  
Burnett, John  
Burton, Mary  
Carter, Arthur

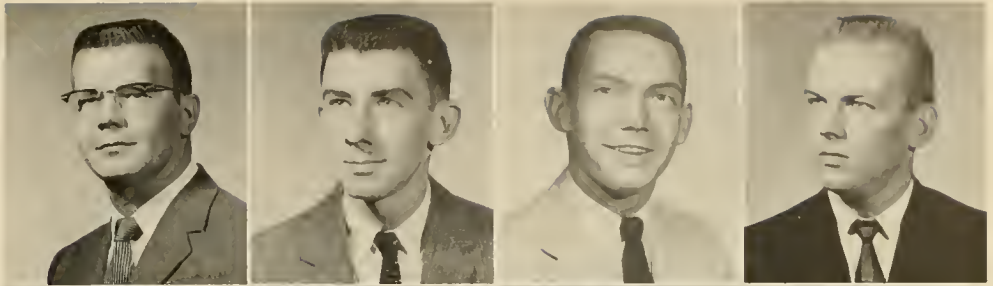
Chaddock, Paul  
Chenoweth, Rhea  
Coates, Robert  
Colombo, Louis

Cooke, Donald  
Cottrill, Georgetta  
Crispin, Raymond  
Davis, Norma

# seniors

# seniors

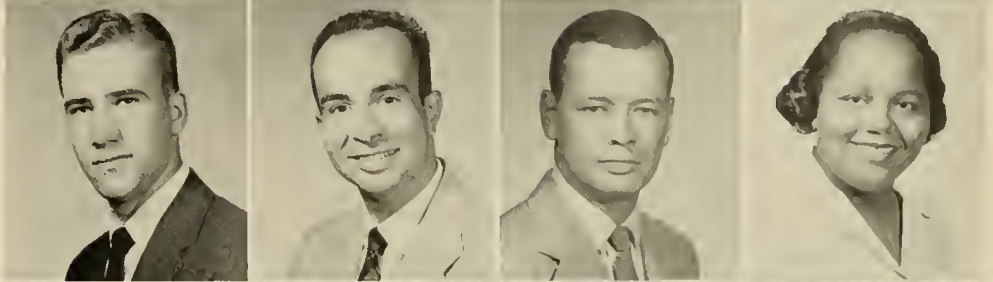
Dengler, Frantz  
Dulaney, John  
Dykema, Scot  
Earley, James



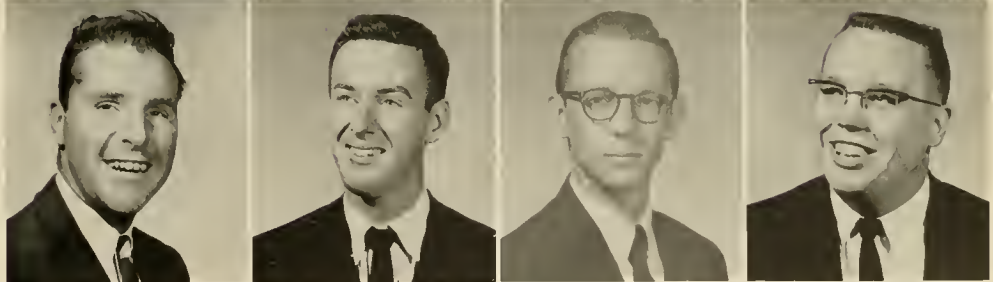
Epler, Ruth  
Evans, Richard  
Evertsen, Theodore  
Feldman, Ronald



Fischer, Roger  
Fitch, Douglass  
Fitch, Thomas  
Flagg, Jo Ellen



Fosnaugh, Robert  
Goheen, Thomas  
Gramlich, Paul  
Greenway, Harold



DENGLER, FRANTZ ALLEN  
B.S., Home Economics

LEBANON, PA.

DULANEY, JOHN THORNTON

B.S., Chemistry, Psychology Society, Benzene Ring

KANAWHA HEAD

DYKEMA, SCOT

B.A., English, Track, Orchestra, Band, Intramurals, Student Art Guild

COS COB, CONN.

EARLEY, JAMES JOHN

B.S., Business Administration, Football, Baseball

FORD CITY, PA.

EPLER, ONA RUTH

B.A., Religious Education, Fellowship Teams, Pi Epsilon Theta, Psychology Club

BROOKVILLE, PA.

EVANS, RICHARD LEE

B.A., English, Phi Sigma Epsilon, Pi Epsilon Theta, Photographic Arts Club, Methodist Student Movement, MURMURMONTIS

NEEDHAM, MASS.

EVERTSEN, THEODORE A.

B.A., Music, Collegians

GLEN ROCK, N.Y.

FELDMAN, RONALD J.

B.A., Sociology, Kappa Sigma Kappa, Sociology Club, Psychological Society, Playshop, Band, Intramurals, Methodist Student Movement, Pharos

WHITE PLAINS, N.Y.

FISCHER, ROGER C.

B.A., Sociology, Phi Sigma Epsilon, Choir, Community Council, Metho-

EAST WILLISTON, N.Y.

dist Student Movement, Publications Committee, Religious Activities Committee, Operetta

FITCH, DOUGLASS

B.A., History, Canterbury Club, Men's Chorus, International Relations Club

BRONXVILLE, N.Y.

FITCH, THOMAS E.

B.S., Business Administration

INDIANAPOLIS, IND.

FLAGG, JO ELLEN

B.S., Library Science, Women's Recreation Association, Kappa Phi, Psychology Club

CHARLESTON

FOSNAUGH, ROBERT GLENN

B.A., Art, Student Art Guild

CLEVELAND, OHIO

GOHEEN, THOMAS PATRICK

B.A., Music, Phi Sigma Epsilon, Alpha Psi Omega, Band, Choir, Playshop, Sigma Theta Epsilon, Fellowship Teams, Operetta

RUPERT

GRAMLICH, PAUL WARREN

B.A., Sociology, Kappa Sigma Kappa, Psychology Club, Methodist Student Movement

BELLEROSE, N.Y.

GREENWAY, HAROLD E.

B.A., History, Phi Sigma Epsilon, Sigma Theta Epsilon, Choir, Glee Club, Harmonizers, Methodist Student Movement, Fellowship Teams

DUQUESNE, PA.

GROSE, RUTH ANN  
 B.A., Religious Education, Alpha Gamma Delta, Alpha Psi Omega, Playshop, Kappa Phi, Delta Psi Kappa, Methodist Student Movement, Fellowship Teams, Choir, Music Educators' National Conference, Women's Association

HADLEY, JOHN A.  
 B.S., Business Administration, Tennis, World University Service, Men's Glee Club

HAHM, SUNG KOOG  
 B.A., Bible, Pi Epsilon Theta

HALL, SANDRA JO  
 B.S., Home Economics, Alpha Gamma Delta, Kappa Phi, Betty Lamp Club, Student Art Guild, Methodist Student Movement

HAMILTON, RICHARD MARTIN  
 B.A., Bible, Phi Sigma Epsilon, Community Council, Choir, Religious Activities Committee, Music Educators' National Conference

HANJIAN, ARMEN  
 B.A., Bible, Methodist Student Movement, Band

HARRIS, JANET RAE  
 B.A., Art, Alpha Xi Delta, Delta Psi

HARTMAN, JANET SUE  
 B.S., Chemistry

CHARLESTON

HAMDEN, CONN.

SEOUL, KOREA

FAIRMONT

FREDERICKSTOWN, MD.

ROSELLE, N.J.

BRIDGEPORT

BUCKHANNON

HEDRICK, HARRIET JEANNETTE  
 B.A., Music, Alpha Gamma Delta, Pharos, Student Handbook Editor, Band, Student National Education Association, Haught Literary Society, Methodist Student Movement, Fellowship Teams, Women's Recreation Association, Publications Committee, Religious Activities Committee

HERBST, JOHN ANTHONY  
 B.S., Chemistry

HETZ, ROBERT LEE  
 B.S., Biology, Beta Beta Beta, Intramurals

HICKLE, HARRY VERNON  
 B.S., Physical Education, Theta Chi, Football, Intramurals Director

HODSDON, EDGAR WATSON  
 B.A., English, Choir, Playshop, Band, Methodist Student Movement, Fellowship Teams

HOGSETT, PHYLLIS ANN  
 B.A., English, Alpha Gamma Delta, Choir, Methodist Student Movement, Student National Education Association

HOLBERT, JEFFERSON LINDSEY  
 B.S., Physical Education, Theta Chi, Football, Track

HOLT, JOHN MATHEW  
 B.S., Chemistry, Baseball, Benzene Ring

RONCEVERTE

FORD CITY, PA.

FAIRVIEW, PA.

IRWIN, PA.

RIDGEWOOD, N.J.

RAINELLE

BAYONNE, N.J.

WESTON



Grose, Ruth Ann  
 Hadley, John  
 Hahn, Sung Koog  
 Hall, Sandra

Hamilton, Richard  
 Hanjian, Armen  
 Harris, Janet  
 Hartman, Janet

Hedrick, Jeannette  
 Herbst, John  
 Hetz, Robert  
 Hickle, Harry

Hodsdon, Edgar  
 Hogsett, Phyllis  
 Holbert, Jefferson  
 Holt, John

# seniors

# seniors

Hoy, Donald  
Hubbell, George  
Innes, John  
Jervis, Robert



Jordan, Ralph  
Jungas, Theodore  
Kennedy, John  
Keyser, Dolores



Kissel, Jack  
Koon, James  
Koslin, Stephen  
Krevitt, Phillip



Kristofik, Edmund  
Kuhl, Phyllis  
LaFalce, Robert  
Lamb, Jodi



**HOY, DONALD RICHARD** BAYSIDE, N.Y.  
B.A., English, Theta Chi, Pi Epsilon Theta, Treasurer; Intramurals

**HUBBELL, GEORGE THOMAS** MILFORD, CONN.  
B.S., Business Administration, Phi Sigma Epsilon

**INNES, JOHN JAMES** NORTH TARRYTOWN, N.Y.  
B.S., Business Administration

**JERVIS, ROBERT G.** NORTH TARRYTOWN, N.Y.  
B.A., History, Kappa Alpha Order, Intramurals

**JORDAN, RALPH HUBERT** PENNSVILLE, N.J.  
B.A., Art, Kappa Alpha Order, SCOW Committee

**JUNGAS, THEODORE** WORCESTER, MASS.  
B.A., History, Phi Sigma Epsilon, Methodist Student Movement, Fellowship Teams, Community Council, President; Choir, Interfraternity Council, Special Activities Committee

**KENNEDY, JOHN EVERETT** MALVERNE, N.Y.  
B.S., Economics, Theta Chi, SCOW Committee, Intramurals

**KEYSER, DOLORES RUTH** BRIDGEPORT  
B.S., Physical Education, Alpha Xi Delta, Delta Psi Kappa, Panhellenic Council, Women's Recreation Association, Intramurals

**KISSEL, JACK** ELMIRA, N.Y.  
B.A., History, Phi Sigma Epsilon, Sigma Theta Epsilon, President; Methodist Student Movement, Fellowship Teams, Playshop, Sociology Club, DeMolay

**KOON, JAMES GOFF** BUCKHANNON  
B.S., Chemistry

**KOSLIN, STEPHEN** MONSEY, N.Y.  
B.A., History

**KREVITT, PHILIP JOHN** BROOKLYN, N.Y.  
B.A., History

**KRISTOSIK, EDMUND ANDREW** MUNHALL, PA.  
B.A., History, Basketball, Student National Education Association

**KUHL, PHYLLIS JANE** ELKINS  
B.A., Elementary Education, Methodist Student Movement, Fellowship Teams

**LAFALCE, ROBERT ANTHONY** HACKENSACK, N.J.  
B.S., Mathematics, Phi Sigma Epsilon, Newman Club, Glee Club, Intramurals

**LAMB, JODI** BECKLEY  
B.A., Art, Alpha Xi Delta

LASELL, EDAH M. WILLIAMSTOWN, VT.  
 B.A., Religious Education, Fellowship Teams, Methodist Student Movement, Kappa Phi, Choir

LATHROP, LINWOOD BENTON NORWICH, CONN.  
 B.S., Business Administration, Phi Sigma Epsilon, Glee Club

LIGHT, VIRGINIA ANN ERIE, PA.  
 B.A., Sociology, Women's Recreation Association, Delta Psi Kappa, Playshop, Sociology Club, Pi Epsilon Theta, Psychology Club, Methodist Student Movement, Hockey, Pharos

LINABERGER, MARA LOUISE WELLSBURG  
 B.S., Home Economics, Alpha Xi Delta, Betty Lamp Club

LIPETZ, ERIC DAVID FOREST HILLS, N.Y.  
 B.A., Sociology, Kappa Sigma Kappa, Sociology Club

MALONE, PATRICIA ANN JACKSON, MICH.  
 B.A., English, Alpha Delta Pi, Intramurals, Band, MURMURMONTIS

MANSER, JEFFERSON W. BUCKHANNON  
 B.S., Economics, Kappa Alpha Order, Basketball, Golf, Band, Philosophy Club, Collegians, Interfraternity Council

MARINE, JACK L. FEDERALSBURG, PA.  
 B.S., Economics, Methodist Student Movement, Playshop, Intramurals, Fellowship Teams

MASON, HAROLD EDWIN ELMSFORD, N.Y.  
 B.S., Economics

MEARNS, DOLORES JUNE CLARKSBURG  
 B.A., Religious Education, Methodist Student Movement, Fellowship Teams, Kappa Phi, Psychology Club, Pi Epsilon Theta

MEDLEY, JAMES LEWIS BROOKLYN N.Y.  
 B.A., History, Theta Chi, Canterbury Club Intramurals, Tennis

MENDOZA, CORNELIA L. MANILA, P.I.  
 B.A., Religious Education, Methodist Student Movement, Kappa Phi, Women's Recreation Association, Philosophical Club, Choir

MIDDLEBROOK, ROBERT C. WILTON, CONN.  
 B.S., Business Administration

MILLER, SHIRLEY ANN BUCKHANNON  
 B.S., Chemistry

MITCHELL, MERTON JOEL NEW YORK, N.Y.  
 B.S., Chemistry

MODLIN, CHARLES ERNEST ALDERSON  
 B.A., English, Phi Sigma Epsilon, Pharos



Lasell, Edah  
 Lathrop, Linwood  
 Light, Virginia  
 Linaberger, Mara

Lipetz, Eric  
 Malone, Patricia  
 Manser, Jefferson  
 Marine, Jack

Mason, Harold  
 Mearns, June  
 Medley, James  
 Mendoza, Cornelia

Middlebrook, Robert  
 Miller, Shirley  
 Mitchell, Merton  
 Modlin, Charles

# seniors



# seniors

Morton, Peggy Jo  
Mowry, James  
McDonald, Glenda  
McKinney, Thomas



McNutt, Suzanne  
McVitty, Donald  
Neuner, Frank  
Newlon, Philip



Oleson, Stuart  
Parisi, Frank  
Pemberton, Ann  
Pettibon, William



Pfalzgraf, Janie  
Queen, Ann  
Rabinowitz, Jerry  
Rawson, Jean



**MORTON, PEGGY JO** HAMLIN  
B.A., Education, Alpha Delta Pi Haught Literary Society, SCOW Committee, Student National Education Association, Social Activities Committee, Women's Recreation Association

**MOWRY, JAMES JOHN** DERRY, PA.  
B.S. Political Science, Phi Sigma Epsilon, Sigma Theta Epsilon, Choir, Glee Club

**MCDONALD, GLENDA JEAN** BRIDGEPORT  
B.A., Music, Alpha Xi Delta, Choir, Band, Community Council, Methodist Student Movement, Fellowship Team, Music Educators' National Conference, Octet

**MCKINNEY, THOMAS ALAN** STATEN ISLAND N.Y.  
B.A., Art, Theta Chi, Pi Epsilon Theta, Student Art Guild, Intramurals

**MCNUTT, SUZANNE** SALEM  
B.A., Sociology, Alpha Delta Pi, Haught Literary Society, Choir, Playshop, Methodist Student Movement, World University Service Committee, Fellowship Teams

**MCVITTY, DONALD WILLIAM** MT. VERNON, N.Y.  
B.S., Economics, Theta Chi, Baseball

**NEUNER, FRANK JOSEPH** NEW PROVIDENCE, N.J.  
B.S., Chemistry, Alpha Sigma Phi, Intramurals

**NEWLON, PHILIP MARVIN** BUCKHANNON  
B.S., Chemistry

**OLESON, STUART EDWIN**  
B.S., Business Administration, Intramurals

**PARISI, FRANK DANIEL** FLUSHING, N.Y.  
B.S., Physical Education, Theta Chi

**PEMBERTON, CAROL ANN** SHERMAN, TEX.  
B.A., History, Student National Education Association, MURMURMONTIS, Editor; Haught Literary Society, Awards Committee. United States National Student Association Committee, Intramurals

**PETTIBON, WILLIAM CLIFFORD** MCKEESPORT, PA.  
B.A., Sociology, Phi Sigma Epsilon, Sigma Theta Epsilon, Glee Club

**PFALZGRAF, JANIE LEE** PARKERSBURG  
B.A., Elementary Education, Alpha Xi Delta, SCOW Committee, Community Council, Haught Literary Society, Student National Education Association, House Governing Board, Women's Recreation Association

**QUEEN, ANN MARY** BRIDGEPORT  
B.S., Home Economics, Alpha Xi Delta, Beta Lamp Club, Delta Psi Kappa, Women's House Governing Board, Educational Affairs Committee, Women's Recreation Association, Fellowship Team

**RABINOWITZ, JERRY** BROOKLYN, N.Y.  
B.A., History, Phi Sigma Epsilon, Pharos, World University Service, Interfraternity Council

**RAWSON, NINA JEAN** PARKERSBURG  
B.A., Education, Student National Education Association, Women's Recreation Association

REPPERT, SHIRLEY WOODSTOWN, N.J.  
 B.A., Education, Alpha Gamma Delta, Student National Education Association

RIDER, KAY ALAN SOPHIA  
 B.M.E., Music, Alpha Gamma Delta, Music Educators' National Conference, Student National Education Association, Choir, Octet

RISSMEYER, HELEN M. FARMINGSDALE, N.Y.  
 B.A., Sociology, Kappa Phi, Choir, Haught Literary Society, Methodist Student Movement, Sociology Club, Fellowship Teams

ROSS, ALEXANDER BUCKHANNON  
 B.M.E., Music, Collegians, Band, Orchestra

ROUGH, CAROL JEAN WESTON  
 B.S., Physical Education, Hockey, Women's Recreation Association

RUBIN, ROBERT SETH BROOKLYN, N.Y.  
 B.S., Biology, Kappa Sigma Kappa, Beta Beta Beta, Benzene Ring, Intramurals, MURMURMONTIS

RUHLOW, DEAN HARRIS BUCKHANNON  
 B.S., Business Administration

RUSSIN, GERALD HARVEY BAYSIDE, N.Y.  
 B.S., Economics, Psychology Club, International Relations Club

SEAGRAVES, GEORGE WILLIAM CLAYMONT, DEL.  
 B.S., Physical Education, Football, Baseball, MURMURMONTIS

SEAGRAVES, MARGARET ATHENS  
 B.S., Physical Education, Alpha Gamma Delta, Delta Psi Kappa, Hockey, Intramurals, Student National Education Association, Cheerleader, Women's Recreation Association

SEAMANS, LYMAN HOWARD, JR. HIGH BRIDGE, N.J.  
 B.S., Business Administration, Methodist Student Movement, Playshop, Glee Club

SHEPPARD, DAVID LEE BUCKHANNON  
 B.S., Business Administration

SHIRLEY, JOHN MORRIS HARRISON CITY, PA.  
 B.A., History, Intramurals Committee

SMITH, MARILYN YVONNE NITRO  
 B.S., Chemistry, Benzene Ring, Beta Beta Beta, Haught Literary Society

SOS, ALEXANDER JOHN FAR ROCKAWAY, N.Y.  
 B.S., Mathematics

STAGON, LEONARD ANDREW MUNHALL, PA.  
 B.S., Physical Education, Football, Newman Club, Intramurals



Reppert, Shirley  
 Rider, Kay  
 Rissmeyer, Helen  
 Ross, Alexander

Rough, Carol  
 Rubin, Robert  
 Ruhlow, Dean  
 Russin, Gerald

Seagraves, George  
 Seagraves, Margaret  
 Seamans, Lyman  
 Sheppard, David

Shirley, John  
 Smith, Marilyn  
 Sos, Alexander  
 Stagon, Leonard

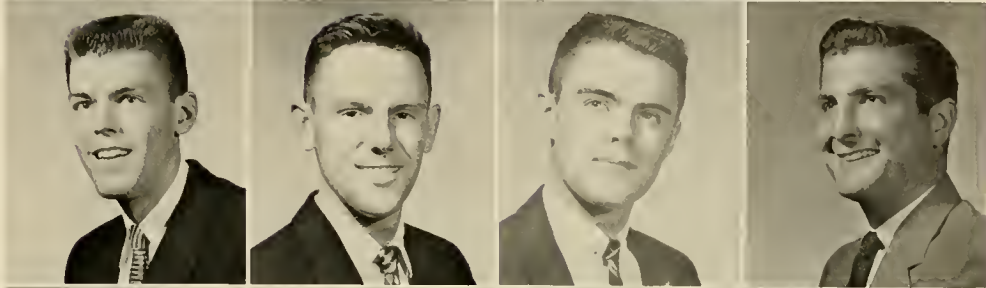
# seniors

# seniors

Stahl, David  
St. Miklossy, Joseph  
Tatem, James  
Tell, Jeremiah



Tissot, John  
Von Hoorn, Richard  
Watson, William  
Weaver, Robert



Will, William  
Williams, Joan  
Wilson, Carol  
Wingert, Randall



Winters, Robert  
Zinaich, Samuel



- |  |                           |   |                       |
|--|---------------------------|---|-----------------------|
| <b>STAHL, DAVID</b><br>B.S., Economics, International Relations Club   | <b>FOREST HILLS, N.Y.</b> | <b>WILL, WILLIAM ASHLEY</b><br>B.A., Sociology, Phi Sigma Epsilon, Sigma Theta Epsilon, Interfraternity Council, Sociology Club, Glee Club  | <b>JOHNSTOWN, PA.</b> |
| <b>ST. MIKLOSSY, JOSEPH S.</b><br>B.S., Business Administration, Alpha Sigma Phi   | <b>FAIR LAWN, N.J.</b>    | <b>WILLIAMS, JOAN</b><br>B.A., Education, Kappa Phi   | <b>BUCKHANNON</b>     |
| <b>TATEM, JAMES ALEXANDER JR.</b><br>B.S., Economics, Alpha Sigma Phi, SCOW Committee, Intramurals, Tennis                               | <b>HILLSDALE, N.J.</b>    | <b>WILSON, CAROL ANN</b><br>B.A., Education, Alpha Delta Pi, Alpha Psi Omega, Women's Recreation Association, Playshop, Student National Education Association, Choir, Intramurals  | <b>MOUNDSVILLE</b>    |
| <b>TELL, JEREMIAH JAY</b><br>B.S., Mathematics   | <b>PELHAM, N.Y.</b>       | <b>WINGERT, RANDALL W.</b><br>B.S., Business Administration, Phi Sigma Epsilon, Sigma Theta Epsilon   | <b>ELMIRA, N.Y.</b>   |
| <b>TISSOT, JOHN F.</b><br>B.S., Business Administration, Phi Sigma Epsilon, Track, Cross-Country   | <b>FLUSHING, N.Y.</b>     | <b>WINTERS, GEORGE ROBERT</b><br>B.S., Business Administration, Phi Sigma Epsilon, Music Educator's National Association, Cultural Enrichment Committee, Methodist Student Movement | <b>STOYSTOWN, PA.</b> |
| <b>VON HOORN, RICHARD PAUL</b><br>B.A., Art, Collegians, Glee Club, Student Art Guild  | <b>WARWICK, R.I.</b>      | <b>ZINAICH, SAMUEL</b><br>B.S., Biology, Football   | <b>WEIRTON</b>        |
| <b>WATSON, WILLIAM EDWARD</b><br>B.A., Political Science, Kappa Alpha Order, Pharos, Social Activities Committee, Publications Committee | <b>JANE LEW</b>           |   |                       |
| <b>WEAVER, ROBERT L.</b><br>B.A., Religion, Methodist Student Movement, SCOW Committee, Fellowship Teams                                 | <b>PITTSBURGH, PA.</b>    |   |                       |

# unpictured seniors

|   |                      |
|---|----------------------|
| CHILDERS, RUSSELL DALE<br>B.A., Bible   | JUNIOR               |
| CHRISTIE, LOIS ELAINE<br>B.A., Education  | BUCKHANNON           |
| COLLINS, JARVIS LEE<br>B.S., Mathematics  | BUCKHANNON           |
| CVETNICK, FRANK<br>B.S., Physical Education, Football, Baseball   | CENTURY              |
| DAMON, GORDON GEORGE<br>B.A., English   | EAST WILLISTON, N.Y. |
| DAY, ANNABELLE MUSE<br>B.A., Sociology, Haught Literary Society, Sociology Club, Methodist Student Movement, World University Service Committee | NEW MARTINSVILLE     |
| GATRILL, BILLIE ROBERT<br>B.S., Economics   | TALLMANSVILLE        |
| HOFFMAN, JAMES LEHNERT<br>B.A., History, Football, Baseball   | NEW TRIPOLI, PA.     |
| HOLM, OLIVE SUE<br>B.A., Sociology, Alpha Xi Delta, Women's Recreation Association  | MANHASSET, N.Y.      |
| JUDY, CLIFFORD PAGE<br>B.S., Biology, Football, Track, Community Council  | CLARKSBURG           |
| NEUMAN, FRED DAY<br>B.A., Education, Football   | BUCKHANNON           |
| PARMET, PHILIP MICHAEL<br>B.S., Economics   | WEST ISLIP, N.Y.     |
| RAYMOND, DOMINIC JOHN<br>B.S., Chemistry  | CLARKSBURG           |
| POWERS, KENNETH LEE<br>B.S., Mathematics  | BUCKHANNON           |
| SCHOONMAKER, WILLIAM LYON<br>B.A., Political Science  | MONTCLAIR, N.J.      |
| THOMPSON, LOIS ANN<br>B.S., Chemistry, Benzene Ring   | BUCKHANNON           |
| WEST, JENNY LYNNE<br>B.S., Chemistry, Alpha Delta Pi  | BUCKHANNON           |



**underclassmen**

# class officers



*President*  
RICHARD BROOKE  
Lumberport



*Vice President*  
JAMES CALDWELL  
Irwin, Pa.



*Secretary*  
CAROL BEERS  
Ridgefield, Conn.



*Treasurer*  
JAMES SCOTT  
Salem

juniors



*President*  
DEAN PATENAUDE  
Middletown, Conn.



*Vice President*  
WILLIAM SMITH  
Gauley Bridge

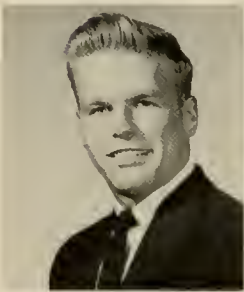


*Secretary*  
PATRICIA AMBROSE  
Parkersburg



*Treasurer*  
STANLEY MCGREGOR  
Glen Aubrey, N. Y.

sophomores



*President*  
JOHN HODGE  
Portland, Conn.



*Vice President*  
RICHARD CALENDINE  
Parkersburg



*Secretary*  
ELIZABETH WEIGLEIN  
St. Albans



*Treasurer*  
ANN WELKER  
Petersburg

freshmen

“... a guiding light.” Referring, of course, to those untiring souls who serve as valiant standard bearers for the freshmen, sophomores, and juniors at West Virginia Wesleyan.

# underclassmen



Abbott, William  
Freshman  
Riverside, Conn.

Abbott, Argyle  
Sophomore  
Jackson Heights, N. Y.

Abbott, Rosalie  
Sophomore  
Buckhannon

Ackenbom, Beatrice  
Freshman  
Washington, D. C.

Ackenbom, Charles  
Freshman  
Lawton, Okla.

Aidala, Richard  
Junior  
Bayside, N. J.

Ailstock, Janet  
Freshman  
Charleston

Albert, Mary Beth  
Freshman  
St. Albans

Alberter, Edward  
Junior  
Johnstown, Pa.

Alberts, William  
Freshman  
Baden, Pa.

Alper, Kenneth  
Freshman  
Fairfield, Conn.

Ames, Bonnie  
Freshman  
Syracuse, N. Y.



Angelikoussis, Leon  
Sophomore  
Asbury Park, N. J.

Arbogast, James  
Freshman  
Volga

Armfield, Shirley  
Junior  
Newport News, Va.

Bakas, Stanley  
Freshman  
Weston

Balaban, James  
Freshman  
Bayside, N. Y.

Barnes, Franklin  
Freshman  
Logan

Bartek, Bernard  
Sophomore  
Munhall, Pa.

Bartell, Eugene  
Freshman  
Succasunna, N. J.

Bauserman, William  
Sophomore  
Moorefield

Baxa, Artis  
Sophomore  
Buckhannon

Baylis, Elizabeth  
Junior  
Rockville Center, N. Y.

Becker, Joyce  
Sophomore  
Elmira, N. Y.

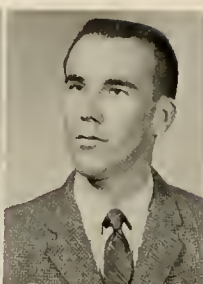
# underclassmen



Beer, Delma  
Sophomore  
Buckhannon



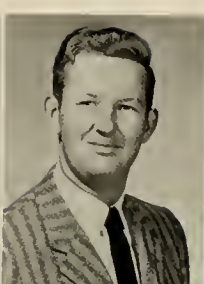
Beerler, John  
Freshman  
Glassport, Pa.



Beveridge, Richard  
Junior  
Brooklyn, N. Y.



Bierwirth, Fay  
Freshman  
Pittsburgh, Pa.



Bigelow, Richard  
Freshman  
Bridgeport, Conn.



Bileca, Dennis  
Freshman  
Bridgeport, Conn.



Biser, Madora  
Sophomore  
Buckhannon



Bissell, Donna  
Sophomore  
Parkersburg



Block, Joan  
Sophomore  
Beechurst, N. Y.



Blomberg, Dale  
Freshman  
Queens Village, N. Y.



Blubaugh, John  
Junior  
Metuchen, N. J.



Blumenfeld, Lillian  
Sophomore  
Brooklyn, N. Y.



Boegershausen, Gary  
Freshman  
Short Hills, N. J.



Boggess, Janet  
Junior  
Sissonville



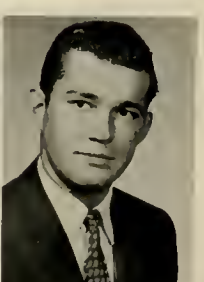
Bonar, Carol  
Sophomore  
Charleston



Bond, Sally  
Sophomore  
Bluefield



Boone, Daniel  
Freshman  
Richwood



Borg, Kenneth  
Freshman  
Worcester, Mass.



Bower, Edwin  
Freshman  
Mullens



Bower, Nancy  
Freshman  
Mullens



Brewer, Barbara  
Freshman  
Bluefield



Broderick, Edward  
Freshman  
North Plainfield, N. J.



Brookover, Margo  
Freshman  
Charleston



Brooks, Frederick  
Sophomore  
Richwood



# underclassmen

Brotherton, Paul  
Freshman  
Munhall, Pa.

Brown, David  
Sophomore  
Long Hill, Conn.

Brown, Gene  
Sophomore  
Dunbar

Browning, Rondal  
Sophomore  
Lost Creek

Brush, Howard  
Sophomore  
Bangor, Maine

Burdette, William  
Junior  
Buckhannon

Burgess, Harry  
Freshman  
Charleston

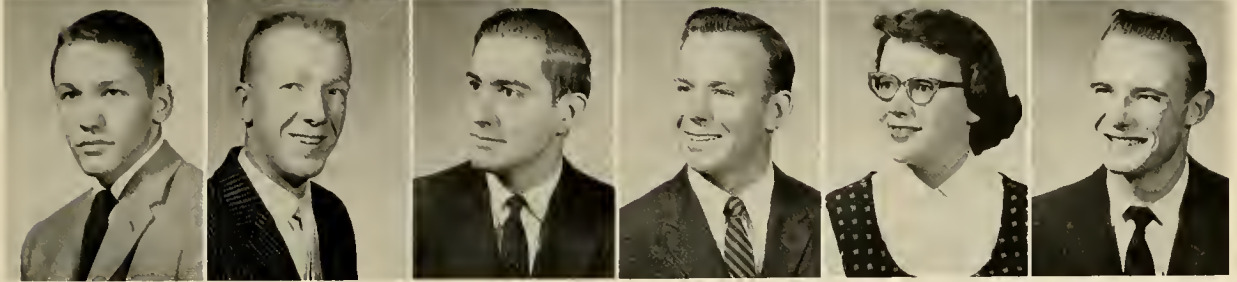
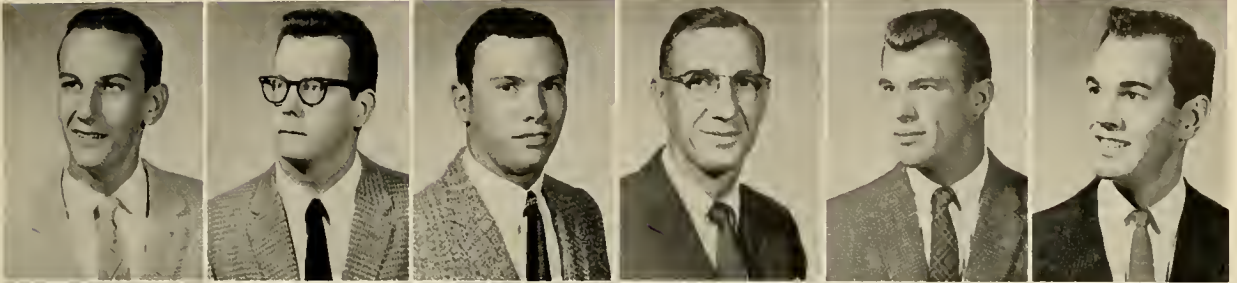
Burke, Jerry  
Junior  
Ellamore

Burkholder, Phillip  
Junior  
Binghamton, N. Y.

Burr, Elbert  
Junior  
Hasbrook Heights, N. J.

Burrus, Nancy  
Sophomore  
Mt. Hope

Buschmann, John  
Freshman  
Westfield, Mass.



Cafarella, Robert  
Freshman  
Hillsdale, N. J.

Campbell, Garry  
Freshman  
Scotia, N. Y.

Campbell, John  
Junior  
Clarksburg

Campbell, Peter  
Freshman  
North Plainfield, N. J.

Carathanasis, Nicholas  
Freshman  
White Plains, N. Y.

Carbone, Anthony  
Junior  
Royal Oak, Mich.

Carroll, Donald  
Sophomore  
Metuchen, N. J.

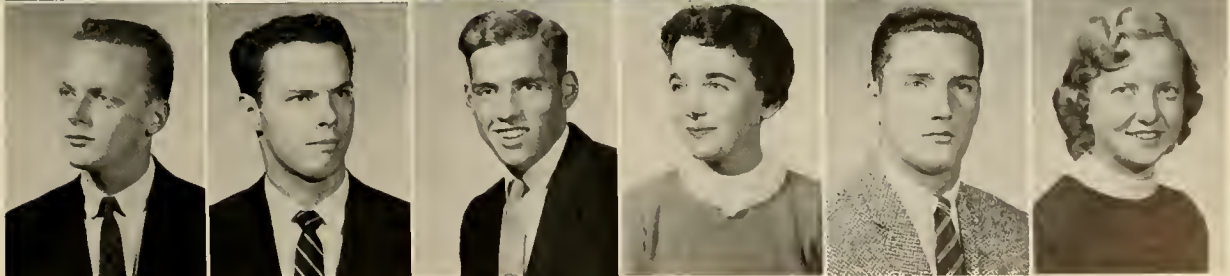
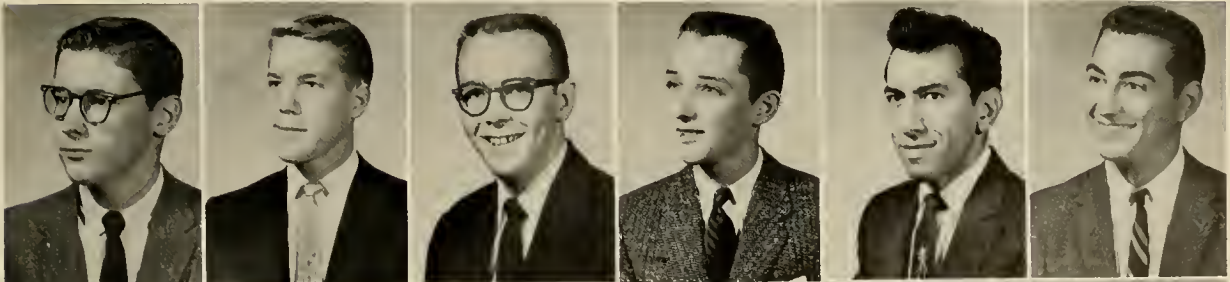
Carter, Ronald  
Freshman  
Bridgeton, N. J.

Casto, Ronald  
Freshman  
Ellenboro

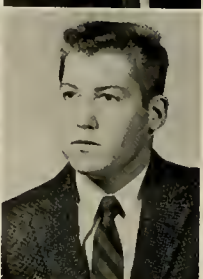
Catlin, Bette Kae  
Sophomore  
Ridgewood, N. J.

Caudill, Samuel  
Sophomore  
Beckley

Chambers, Elnora  
Junior  
Beckley



# underclassmen



Chang, Diana  
Freshman  
New York, N. Y.

Cheatham, Wallace  
Junior  
New York, N. Y.

Chigos, Beatrice  
Freshman  
Wilkes-Barre, Pa.

Childs, Wayne  
Freshman  
North Haven, Conn.

Chisnell, Howard  
Sophomore  
Jeannette, Pa.

Ciuffo, Anthony  
Junior  
Brooklyn, N. Y.

Clark, Tompkins  
Freshman  
Danielson, Conn.

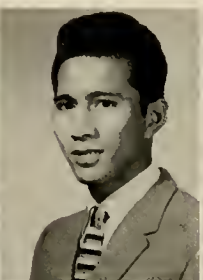
Clawson, William  
Sophomore  
Califon, N. J.

Cloman, James  
Freshman  
Munhall, Pa.

Cloyes, Mary Beth  
Freshman  
El Dorado, Kan.

Cobb, Earl  
Freshman  
Cranston, R. I.

Cole, William  
Junior  
Perryville, Md.



Colvin, Harold  
Sophomore  
East Orange, N. J.

Colvin, Martha  
Freshman  
Sistersville

Cooper, June  
Junior  
Webster Springs

Cordero, Ernesto  
Sophomore  
Philippines

Corneby, Bert  
Junior  
Endicott, N. Y.

Corscadden, Alan  
Freshman  
Massapequa, N. Y.

Covert, Denton  
Sophomore  
Binghamton, N. Y.

Crickenberger, Robert  
Sophomore  
Westfield, N. J.

Crites, Jo Ann  
Sophomore  
Buckhannon

Crutchfield, Sandra  
Freshman  
Buckhannon

Cupples, Howard  
Freshman  
Coraopolis, Pa.

Custer, Kay  
Junior  
Hinton, Va.

# underclassmen

Cutright, Dalton  
Sophomore  
Buckhannon

Dalton, Clyde  
Sophomore  
Buckhannon

Damaska, David  
Freshman  
Bradfordwoods, Pa.

D'Apolito, John  
Sophomore  
Port Reading, N. J.

Davis, Geraldine  
Sophomore  
Oakland, Md.

Dean, Sharie  
Junior  
Berea, Ohio

Deane, James  
Sophomore  
Buckhannon

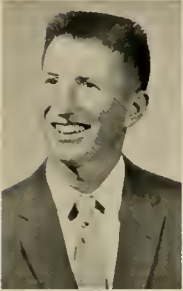
Dearborn, Robert  
Sophomore  
Bridgeport, Conn.

DeBarr, Alan  
Freshman  
Buckhannon

DeBarr, Victor  
Sophomore  
Buckhannon

DeGroot, Peter  
Freshman  
Syracuse, N. Y.

DeHaven, Jeanette  
Freshman  
Washington, D. C.



Deluse, George  
Sophomore  
Trenton, N. J.

DeMarco, Raymond  
Sophomore  
Dunellen, N. J.

Dennis, David  
Sophomore  
Martinsville, N. J.

Dent, Charles  
Freshman  
Montgomery

DeRevere, Brad  
Junior  
Staten Island, N. Y.

Deskins, Niawana  
Freshman  
Man

Dickens, Denver  
Sophomore  
Philippi

Diller, Edith  
Sophomore  
Glendora, N. J.

Dizon, Josye  
Junior  
Philippines

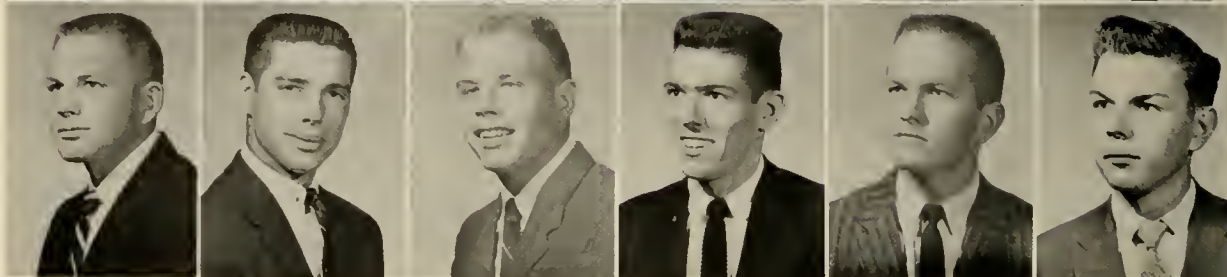
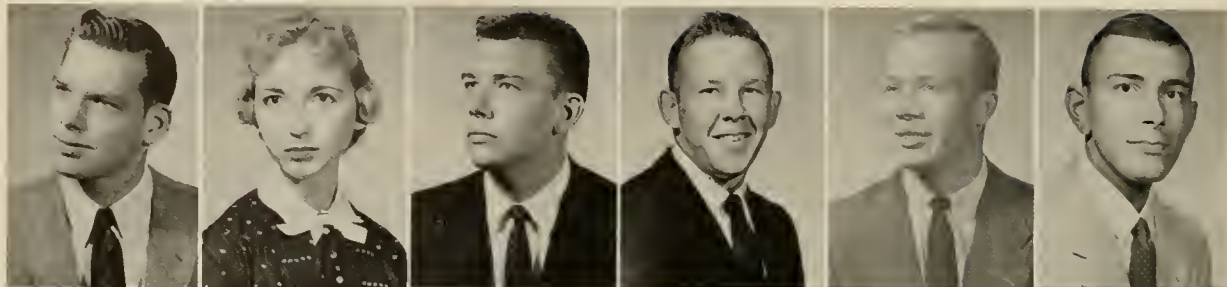
Donald, Edward  
Sophomore  
Charlotte, N. C.

Donegan, Harold  
Freshman  
Hartford, Conn.

Doolin, John  
Sophomore  
Ardmore, Pa.



# underclassmen



Dotson, Boyd  
Freshman  
Webster Springs

Daughton, Carole  
Sophomore  
Roanoke, Va.

Downham, Willard  
Sophomore  
Wilmington, Del.

Dunlap, Thomas  
Sophomore  
South Charleston

Durborow, Louis  
Sophomore  
New Kensington, Pa.

Eakle, John  
Freshman  
Sutton

Echols, William  
Sophomore  
Richwood

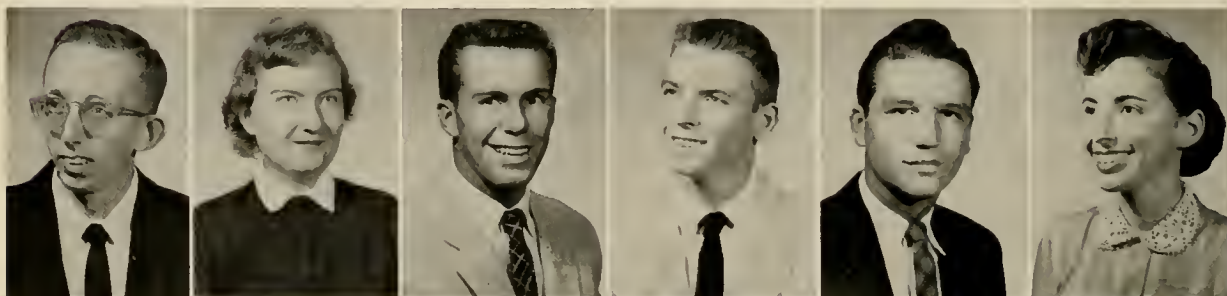
Eckert, Herbert  
Sophomore  
Westfield, N. J.

Edberg, Paul  
Sophomore  
Natick, Mass.

Edman, Clare  
Sophomore  
Parkersburg

Eliot, Charles  
Sophomore  
Newington, Conn.

Elissen, Frederick  
Freshman  
Queens Village, N. Y.



Elliott, Tom  
Freshman  
Bluefield

Emery, Esther  
Freshman  
Charleston

Engle, Stanley  
Freshman  
White Plains, N. Y.

Eppley, Robert  
Freshman  
Homer City, Pa.

Evarts, Ward  
Freshman  
Norwalk, Conn.

Falik, Linda  
Sophomore  
Richmond Hills, N. Y.

Feinberg, Lawrence  
Junior  
Bronx, N. Y.

Feldbin, Isabelle  
Freshman  
Danbury, Conn.

Fennimore, Robert  
Junior  
Yonkers, N. Y.

Fenstermacher, Iva  
Freshman  
Century

Ferrell, Barbara  
Freshman  
St. Albans

Fike, Lloyd  
Junior  
Rome, N. Y.

# underclassmen

Firl, Marilyn  
Freshman  
Ridgefield Park, N. J.

Fisher, Judith  
Freshman  
Cumberland, Md.

Fitzgerald, Dianne  
Sophomore  
Somerville, Mass

Flansburg, Donald  
Freshman  
Scotia, N. Y.

Fleming, Kenneth  
Sophomore  
Clarksburg

Flint, Robert  
Freshman  
Sutton

Fonz, Margaret  
Freshman  
Nutley, N. J.

Fosbenner, Martha  
Freshman  
Norristown, Pa.

Frame, Charles  
Freshman  
Weston

Franks, Larrimore  
Freshman  
Salisbury, Md.

Fraser, James  
Junior  
Westwood, N. J.

Frosch, Allan  
Freshman  
Windsor, Conn.



Fultineer, Sandra  
Freshman  
New Albany, Ind.

Funk, Nancy Jo  
Junior  
Bristol

Gage, Robert  
Freshman  
Scarsdale, N. Y.

Gammons, Allen  
Freshman  
East Greenwich, R. I.

Gardner, Lawrence  
Junior  
Elmhurst, N. Y.

Gardner, Lynn  
Junior  
White Plains, N. Y.

Gaston, Garren  
Freshman  
Johnstown, Pa.

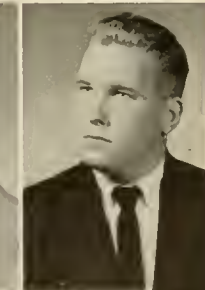
Gates, Alvin  
Freshman  
Belle Vernon, Pa.

Gay, Ralph  
Junior  
Huntington

Gearty, Carol  
Junior  
Beechurst, N. Y.

Geigley, David  
Junior  
Hastings

Geller, Allen  
Junior  
Flushing, N. Y.



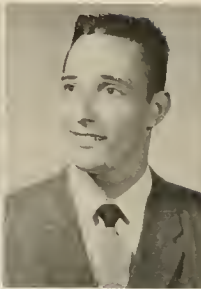
# underclassmen



German, Charles  
Freshman  
Baltimore, Md.



Goff, Mari  
Freshman  
Clarksburg



Gosman, Jeffrey  
Freshman  
Ridgewood, N. J.



Gourlay, Bruce  
Sophomore  
Port Washington, N. Y.



Gower, Mary  
Freshman  
Buckhannon



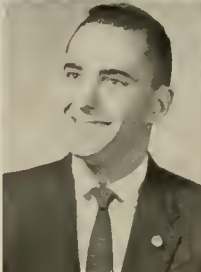
Graham, Sharon  
Sophomore  
Worcester, N. Y.



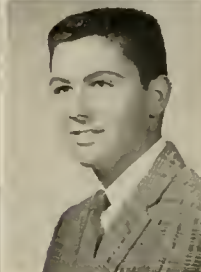
Grant, Joan  
Freshman  
New York, N. Y.



Grant, John  
Junior  
New York, N. Y.



Greene, Gordon  
Sophomore  
Westerly, R. I.



Greenfield, Harvey  
Freshman  
Laurelton, N. Y.



Gregory, Kleber  
Sophomore  
Bedford, Va.



Gress, Janet  
Sophomore  
Wellsburg



Gruer, Kenneth  
Freshman  
Park Ridge, N. J.



Griffin, Jane  
Freshman  
New Martinsville



Griffith, Frances  
Junior  
Parkersburg



Groner, Phyllis  
Freshman  
Stroudsburg, Pa.



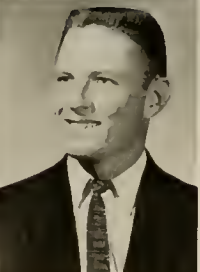
Gross, Samuel  
Freshman  
Beaver



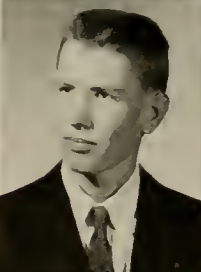
Gulinello, Frank  
Sophomore  
E. Weymouth, Mass.



Halasz, Michael  
Sophomore  
S. Norwalk, Conn.



Hall, Jerry  
Freshman  
Buckhannon



Hall, Jonathan  
Freshman  
Norwalk, Conn.



Hall, Judith  
Sophomore  
Buckhannon



Hall, Lorentz  
Sophomore  
Buckhannon



Hall, William  
Junior  
Buckhannon

# underclassmen

Hamilton, John  
Freshman  
Bridgeville, Pa.

Hamner, Shannon  
Freshman  
Buckhannon

Hamrick, Gordon  
Sophomore  
Bergoo

Haney, Jack  
Freshman  
Philadelphia, Pa.

Hanifan, Betty Kay  
Junior  
Clarksburg

Hanson, James  
Freshman  
Rye, N. Y.

Hanson, John  
Freshman  
Rye, N. Y.

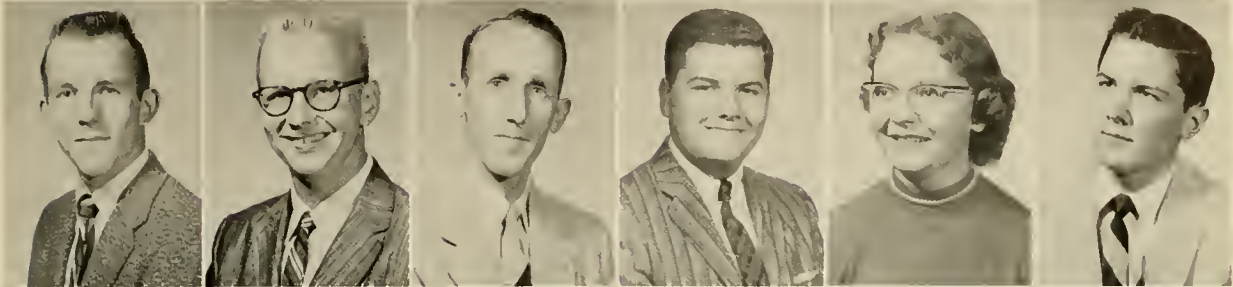
Harbert, James  
Sophomore  
Lumberport

Harman, Judith  
Freshman  
Wheeling

Harper, John  
Sophomore  
Webster Springs

Harrison, Roger  
Freshman  
Grafton

Hart, Frederick  
Sophomore  
Bridgeville, Pa.



Hartman, Franklin  
Freshman  
Buckhannon

Hastings, James  
Sophomore  
Selbyville, Del.

Hayden, Carol Sue  
Junior  
Winthrop, Mass.

Heinrich, Craig  
Freshman  
Warren Twp., N. J.

Hellmann, John  
Junior  
Pittsburgh, Pa.

Henry, William  
Sophomore  
Old Greenwich, Conn.

Herold, Margaret  
Freshman  
Middle Village, N. Y.

Herrera, Michael  
Sophomore  
Bridgeport, Conn.

Hess, Gary  
Junior  
Pittsburgh, Pa.

Hetz, Mary Lou  
Junior  
Fairview, Pa.

Hider, Robert  
Freshman  
Glen Ridge, N. J.

Hiller, Kenneth  
Sophomore  
Stratford, Conn.



# underclassmen



Hillman, Norman  
Sophomore  
New Martinsville



Hipple, John  
Freshman  
Trenton, N. J.



Hoag, David  
Sophomore  
Maywood, N. J.



Hodyas, Paul  
Sophomore  
Wheeling



Hogsett, Margaret  
Freshman  
Rainelle



Holm-Anderson, Ingolf  
Junior  
Rockville Centre, N. Y.



Holmes, Beverly  
Sophomore  
Wesleyville, Pa.



Holman, William  
Junior  
Wesleyville, Pa.



Homann, William  
Freshman  
Woodcliff Lake, N. J.



Hopping, Ruth  
Freshman  
Chester, N. J.



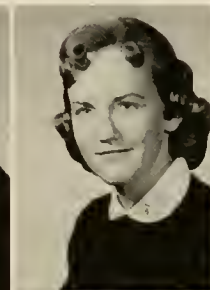
Horn, Frank  
Junior  
Charleroi, Pa.



Hoskinson, Floyd  
Freshman  
Annoore



Howell, Harold  
Sophomore  
Madison



Howes, Cara  
Freshman  
Buckhannon



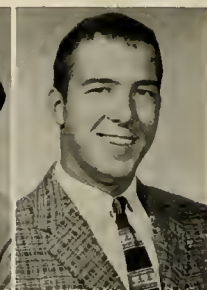
Hubbard, Alan  
Junior  
New Haven, Conn.



Hubbard, Betty  
Sophomore  
Kimball



Huffman, Bonita  
Junior  
French Creek



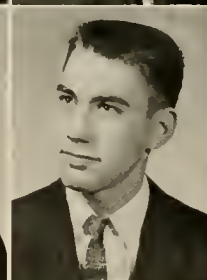
Ignatovig, Robert  
Freshman  
Brooklawn, N. J.



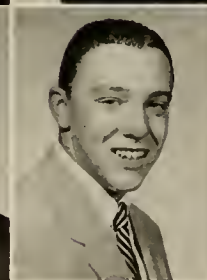
Ingraham, Harold  
Freshman  
Glen Aubrey, N. Y.



Innes, Edward  
Junior  
Aldan, Pa.



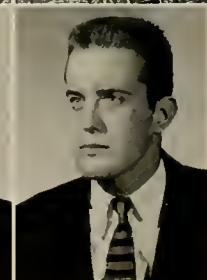
Ireland, Robert  
Freshman  
Buckhannon



Isaac, Earl  
Freshman  
Charleston



Jackson, James  
Sophomore  
Newton, N. J.



James, Arthur  
Freshman  
Metuchen, N. J.



# underclassmen

Jeffreys, Sue  
Freshman  
Logan

Johnson, Donald  
Junior  
Succasunna, N. J.

Johnson, Howard  
Freshman  
Flushing, N. Y.

Johnson, Leonard  
Freshman  
Pittsburgh, Pa.

Johnson, Paul  
Sophomore  
Fairmont

Johnston, Marilyn  
Freshman  
Donora, Pa.

Johnston, William  
Freshman  
Haverford, Pa.

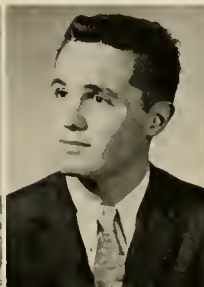
Johnstone, John  
Junior  
E. Williston, N. Y.

Jones, Gerald  
Sophomore  
Pittsburgh, Pa.

Jones, Marvin  
Junior  
Beaver Falls, Pa.

Kacer, Edward  
Freshman  
Fairfield, Conn.

Kachel, Gretchen  
Freshman  
Long Beach, N. Y.



Kailing, William  
Sophomore  
Welch

Kaminski, Bettyann  
Sophomore  
Cranford, N. J.

Kane, Carol  
Junior  
Wesleyville, Pa.

Karickhoff, Paul  
Sophomore  
Buckhannon

Kawadler, Elliot  
Sophomore  
Boston, Mass.

Keene, Phyllis  
Freshman  
Brooklyn, N. Y.

Kelley, Neal  
Freshman  
Philadelphia, Pa.

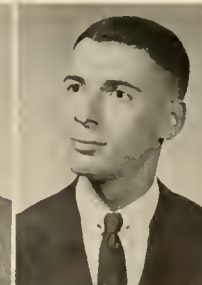
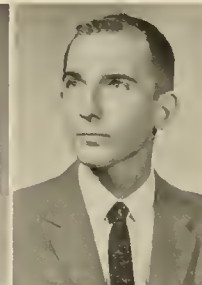
Kelley, Terry  
Sophomore  
Swissvale, Pa.

Kennedy, James  
Junior  
Pittsburgh, Pa.

Kennedy, Scott  
Sophomore  
Pittsburgh, Pa.

Kercher, Connie  
Junior  
Wheeling

Kerr, James  
Sophomore  
Morgantown



# underclassmen



Kessel, Jenny Lynn  
Junior  
Gorman, N. J.



Khedouri, Isaac  
Junior  
Forest Hills, N. Y.



Kibler, John  
Freshman  
Cranesville, Pa.



Kinnamon, Gilbert  
Freshman  
Cambridge, Md.



Kleinstuber, David  
Freshman  
Milford, Pa.



Klepper, Sylvia  
Junior  
Fanwood, N. J.



Koelln, William  
Junior  
Ridgefield Park, N. J.



Kohlepp, Sue  
Freshman  
Pittsburgh, Pa.



Kohler, Charles  
Freshman  
Gloversville, N. Y.



Kopple, Carolyn  
Junior  
Charleston



Kost, William  
Sophomore  
Hartsdale, N. Y.



Kotsonis, Emmanuel  
Freshman  
Brooklyn, N. Y.



Kough, David  
Junior  
Hawthorne, N. J.



Kripsak, Debby  
Freshman  
Somerville, N. J.



Kundrat, Michael  
Junior  
Whitaker, Pa.



Kurzel, Joyce  
Sophomore  
North Bergen, N. J.



Laign, David  
Freshman  
Gassaway



Lambert, Betty  
Freshman  
Grafton



Lampila, Judith  
Freshman  
Averill Park, N. Y.



Lantz, George  
Sophomore  
Buckhannon



Lantz, Marilyn  
Freshman  
Elkins



Lantz, Mary Sue  
Freshman  
Buckhannon



Lauritsen, Jean  
Freshman  
Fords, N. J.



Law, Carolyn  
Freshman  
Pensboro

# underclassmen

Layfield, Robert  
Junior  
Buckhannon

Levin, Harvey  
Sophomore  
Philadelphia, Pa.

Leach, Thomas  
Junior  
Parkersburg

Lewis, James  
Freshman  
Westport, Conn.

LeBeau, Deann  
Sophomore  
Easthampton, Mass.

Lewis, Neil  
Freshman  
Nutter Fort

Lee, Shirley  
Sophomore  
Buckhannon

Lewis, Ronald  
Sophomore  
Nutter Fort

Leppla, William  
Sophomore  
Munhall, Pa.

Lewis, Weller  
Freshman  
Hooperville, Md.

Lesko, John  
Freshman  
Duquesne, Pa.

Lilly, Gerald  
Sophomore  
Beckley



Lindberg, Carl  
Freshman  
Munhall, Pa.

Love, Marshall  
Sophomore  
Vandergrift, Pa.

Linger, Eleanor  
Freshman  
Fairmont

Maberry, Kenneth  
Sophomore  
Derry, Pa.

Lockey, Daniel  
Freshman  
Danbury, Conn.

Machenberg, Alan  
Freshman  
Forest Hills, N. Y.

Long, Bruce  
Junior  
Green Village, N. J.

MacQueen, Gordon  
Sophomore  
Jackson Heights, N. Y.

Lord, Dennis  
Junior  
Warren, Pa.

McWilliams, Donna  
Sophomore  
Johnstown, Pa.

Lore, Joseph  
Freshman  
Bridgeton, N. J.

Maloney, Donald  
Sophomore  
Morristown, N. J.



# underclassmen



Martin, Ann  
Freshman  
Norwalk, Conn.

Martin, David  
Freshman  
Buckhannon

Martin, Patricia  
Freshman  
Buckhannon

Masek, Penny  
Freshman  
Hicksville, N. Y.

Mathers, Frank  
Sophomore  
Bridgeton, N. J.

Meister, Taylor  
Junior  
Munhall, Pa.

Metallides, Anthony  
Sophomore  
Berea, Greece

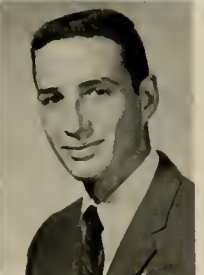
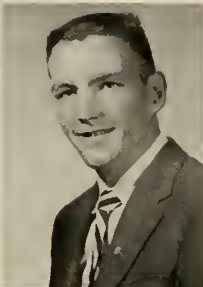
Meyer, Judith  
Freshman  
Bloomsbury, N. J.

Miklosey, Arthur  
Junior  
Metuchen, N. J.

Miles, Nancy  
Freshman  
Buckhannon

Miller, Douglas  
Junior  
Pittsfield, Mass.

Miller, George  
Freshman  
Stratford, Conn.



Miller, Jack  
Sophomore  
Connellsville, Pa.

Miller, Robert  
Freshman  
Arnold, Pa.

Miller, Russell  
Freshman  
Clifton, N. J.

Minnis, Clyde  
Sophomore  
Pittsburgh, Pa.

Moebius, Clifford  
Junior  
Nutley, N. J.

Montagna, John  
Freshman  
Metuchen, N. J.

Moore, Samuel  
Sophomore  
Oakland, Md.

Morrison, Bonnie  
Freshman  
Bergoo

Morrison, William  
Freshman  
Richwood

Moser, Paul  
Sophomore  
Ossining, N. Y.

Moss, Imogene  
Sophomore  
Buckhannon

Moss, Larry  
Freshman  
New York, N. Y.

# underclassmen

Moye, Alfred  
Sophomore  
Washington, D. C.

Mullen, Carolyn  
Freshman  
Rochelle Park, N. J.

Mumford, James  
Sophomore  
Nyack, N. Y.

Myers, John  
Sophomore  
Madison

McBride, Robert  
Sophomore  
Parkersburg

McBride, William  
Junior  
Parkersburg

McCabe, Nancy  
Freshman  
Morgantown

McClelland, Robert  
Freshman  
Wexford, Pa.

McCloud, Clarence  
Junior  
Weston

McCue, Ralph  
Junior  
Buckhannon

McCulloch, John  
Junior  
Brooklyn, N. Y.

McCulloch, Ralph  
Junior  
Baltimore, Md.



McCutcheon, Calvin  
Junior  
Reedy

McCutcheon, Paul  
Sophomore  
Elkins

McDonald, James  
Sophomore  
Bridgeport

McDonald, Madonna  
Junior  
Parsons

McGirk, John  
Sophomore  
Altoona, Pa.

McGovern, Thomas  
Sophomore  
West Orange, N. J.

McGregor, Nancy  
Junior  
Glen Aubrey, N. Y.

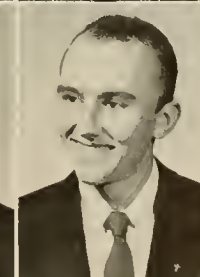
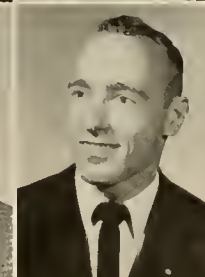
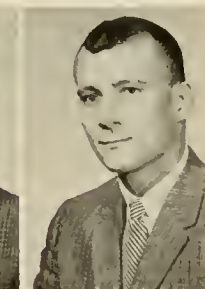
McGuire, Richard  
Freshman  
Westport, Conn.

McIlvried, Paul  
Junior  
Clairton, Pa.

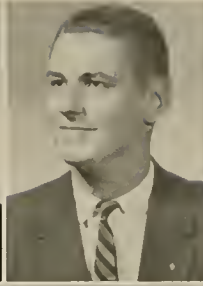
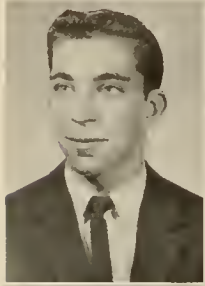
McLaughlin, James  
Junior  
Arnold, Pa.

McLaughlin, Robert  
Junior  
Montclair, N. J.

McPhee, Frank  
Freshman  
Riverside, Conn.



# underclassmen



Nargiz, Gerald  
Freshman  
Asbury Park, N. J.

Neely, Richard  
Junior  
Buckhannon

Nicolas, Robert  
Freshman  
Sault Ste. Marie, Mich.

Nicholson, Paul  
Sophomore  
Baldwin, N. Y.

Nixon, Michael  
Junior  
Scarsdale, N. Y.

Norman, William  
Sophomore  
Norfolk, Va.

Oasis, Robert  
Freshman  
West Hartford, Conn.

O'Brien, David  
Freshman  
Westport, Conn.

Olive, Paul  
Junior  
Ridgewood, N. J.

Orr, George  
Junior  
Corapolis, Pa.

Orr, Melvin  
Sophomore  
Darien, Conn.

Ost, Justin  
Sophomore  
Maplewood, N. J.



Otto, Gletchen  
Sophomore  
Marietta, Ohio

Otto, Margaret  
Freshman  
Pittsburgh, Pa.

Owen, Leith  
Freshman  
Spencer

Parks, Donald  
Freshman  
Buckhannon

Parrilla, Ken  
Freshman  
Westerly, R. I.

Perry, Philip  
Freshman  
Teaneck, N. J.

Parseghian, Vahan  
Junior  
New Milford, N. J.

Patterson, Rex  
Freshman  
Ligonier, Pa.

Patti, Frank  
Junior  
Paramus, N. J.

Payton, Roy  
Freshman  
Ellenboro

Pearson, Nancy  
Freshman  
McMechen

Pennett, Donald  
Sophomore  
Stockton, N. J.

# underclassmen

Pennington, Ronald  
Freshman  
Wilton, Conn.

Pepper, William  
Freshman  
Selbyville, Del.

Perry, Charles  
Junior  
Totowa Borough, N. J.

Perry, Fred  
Freshman  
Man

Peterson, Noel  
Sophomore  
New York, N. Y.

Petry, Nancy  
Freshman  
Pax

Phillips, Rowena  
Sophomore  
Lake Worth, Fla.

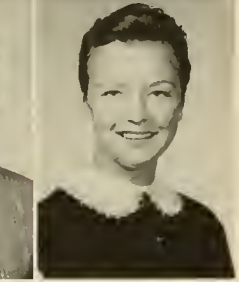
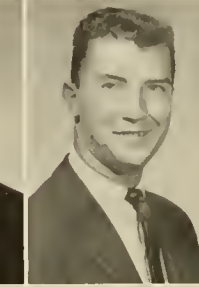
Pierce, Conrad  
Junior  
Jackson Heights, N. Y.

Pifer, Letetia  
Freshman  
Buckhannon

Plate, David  
Freshman  
Erie, Pa.

Podrog, Robert  
Freshman  
Washington, D. C.

Post, Rebecca  
Freshman  
Buckhannon



Potter, Frank  
Freshman  
Albany, N. Y.

Powell, Richard  
Sophomore  
Pittsburgh, Pa.

Power, Virginia  
Freshman  
Brooklyn, N. Y.

Powers, Edward  
Junior  
Cochituate, Mass.

Preston, Ellis  
Freshman  
Wilmington, Del.

Proffitt, Sara  
Freshman  
Mason

Pulhamus, Aaron  
Sophomore  
Totowa Borough, N. J.

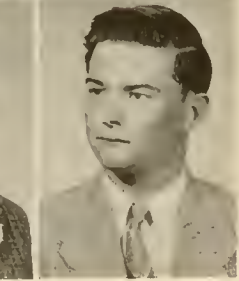
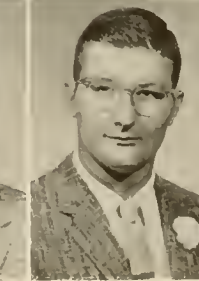
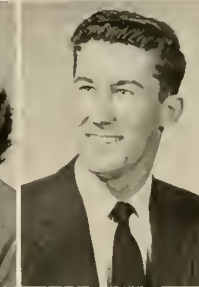
Purdy, Joy  
Freshman  
Burlington, N. J.

Quattlander, Carol  
Junior  
Hillsdale, N. J.

Rabatin, Leonard  
Freshman  
Perryopolis, Pa.

Rader, John  
Freshman  
Richwood

Raesly, Leland  
Freshman  
Pittstown, N. J.



# underclassmen



Rainey, Donald  
Sophomore  
Westwood, N. J.



Ramage, Gay  
Sophomore  
Beekman, N. Y.



Randolph, Edward  
Sophomore  
West Union



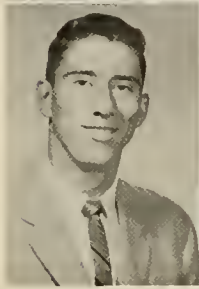
Rautner, William  
Sophomore  
Pittsburgh, Pa.



Raymond, Michael  
Freshman  
Pittsburgh, Pa.



Reemsnyder, Jane  
Freshman  
Buckhannon



Remley, Kenneth  
Sophomore  
Massillon, Ohio



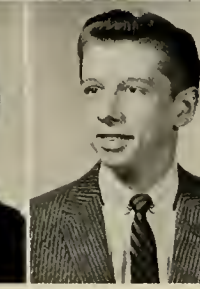
Reynolds, Bruce  
Sophomore  
Stratford, Conn.



Rial, Joseph  
Junior  
Greensburg, Pa.



Rice, Priscilla  
Junior  
Lebanon, Ill.



Rice, Robert  
Junior  
New York, N. Y.



Riggs, John  
Freshman  
Parkersburg



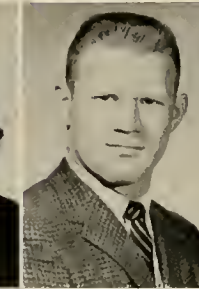
Robbins, Clarence  
Sophomore  
Springdale, Pa.



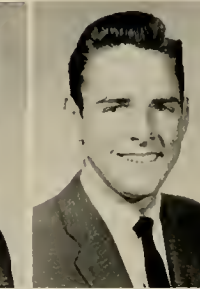
Roberts, Kenneth  
Sophomore  
Munhall, Pa.



Robinson, Twana  
Freshman  
Buckhannon



Rock, James  
Sophomore  
Munhall, Pa.



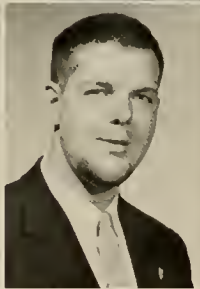
Rodgers, Vincent  
Freshman  
Irwin, Pa.



Roessle, Margot  
Sophomore  
Jackson Heights, N. Y.



Rogers, John  
Freshman  
Hillsdale, N. Y.



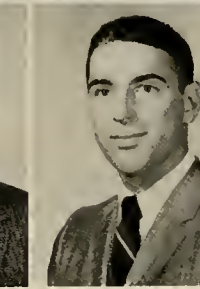
Rohrbaugh, Raymond  
Sophomore  
Baltimore, Md.



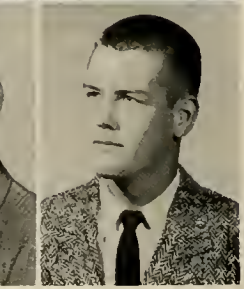
Rohrbough, Constance  
Freshman  
Cambridge, Mass.



Roney, Frederick  
Freshman  
Parkersburg



Rosenman, Joseph  
Freshman  
Fairfield, Conn.



Ross, John  
Freshman  
Pittsburgh, Pa.



# underclassmen

Rossmeyer, William  
Sophomore  
Metuchen, N. J.

Rovello, Samuel  
Junior  
South River, N. J.

Ryerson, Cornelia  
Freshman  
Packanack Lake, N. J.

Sage, Robert  
Sophomore  
Metuchen, N. J.

Salata, Thomas  
Sophomore  
Fort Lee, N. J.

Sanders, John  
Sophomore  
Keyser

Sanford, Richard  
Sophomore  
Titusville, Pa.

Santillo, Harry  
Junior  
Jamaica, N. Y.

Sapp, Edwin  
Freshman  
Miami, Fla.

Schaffer, Nadine  
Sophomore  
Clarksburg

Scherer, Henry  
Freshman  
Glens Falls, N. Y.

Schleicher, Don  
Freshman  
White Plains, N. Y.



Schneider, Frank  
Junior  
Metuchen, N. J.

Schork, Kenneth  
Sophomore  
New York, N. Y.

Schwartz, Martin  
Junior  
Brooklyn, N. Y.

Schwengber, Ernest  
Junior  
Flushing, N. Y.

Sciotto, Francisco  
Junior  
New York, N. Y.

Seamans, Winston  
Junior  
High Bridge, N. J.

Seiderman, Arthur  
Junior  
Philadelphia, Pa.

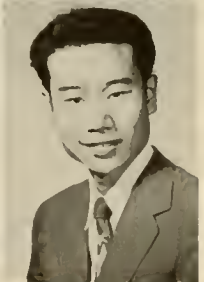
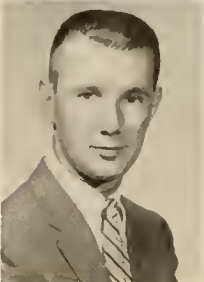
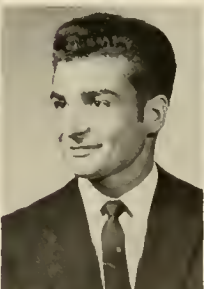
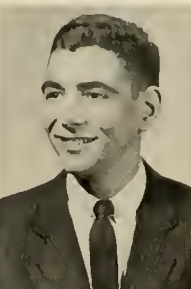
Sepulveda, Edward  
Freshman  
Lebanon, Pa.

Sell, Gaynell  
Freshman  
Johnstown, Pa.

Shaffner, Wesley  
Junior  
Stratford, Conn.

Shamblin, Robert  
Freshman  
War

Shin, Young Sun  
Junior  
Seoul, Korea



# underclassmen



Shreve, Charles  
Junior  
Buckhannon

Shuttleworth, Nancy  
Freshman  
Bridgeport, Conn.

Silberman, William  
Junior  
Paterson, N. J.

Silver, Jay  
Sophomore  
New York, N. Y.

Silvester, Ellsworth  
Freshman  
Oldbridge, N. J.

Simons, Carol  
Sophomore  
Bridgeport

Simons, Melvin  
Sophomore  
Buckhannon

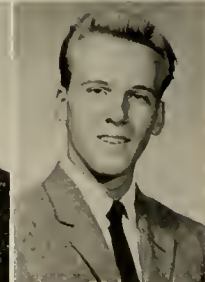
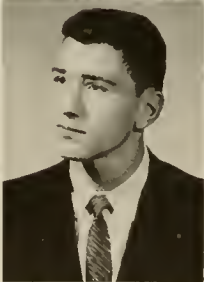
Simpson, Joseph  
Sophomore  
Glendale, N. Y.

Slaving, Judith  
Sophomore  
Ossining, N. Y.

Smith, June  
Junior  
Clarksburg

Smith, Robert  
Sophomore  
Tiverton, R. I.

Solvesen, Douglas  
Sophomore  
Staten Island, N. Y.



Sprout, Warren  
Sophomore  
Westfield, N. J.

Stanley, Barbara  
Sophomore  
Rutland, Vt.

Stanley, William  
Freshman  
Parkersburg

Stawarky, James  
Freshman  
Bridgeport, Conn.

Stell, Robert  
Junior  
Buckhannon

Stemple, Janet  
Sophomore  
Buckhannon

Stepanian, Michael  
Freshman  
Englewood Cliffs, N. J.

Stewart, Donald  
Freshman  
Lebanon, N. J.

Stewart, Homer  
Junior  
Lorentz

Stewart, JoAnn  
Freshman  
Kenova

Stone, Walter  
Freshman  
Gardner, Mass.

Stotz, David  
Freshman  
New York, N. Y.

# underclassmen

Strader, Elizabeth  
Junior  
Buckhannon

Taylor, Grace  
Sophomore  
St. George

Stroles, Constantine  
Sophomore  
New York, N. Y.

Teagarden, Jean  
Sophomore  
Wheeling

Swan, John  
Sophomore  
Hamilton, Bermuda

Tenney, Bettie  
Sophomore  
Flemington

Sweet, Marlene  
Freshman  
Gloversville, N. Y.

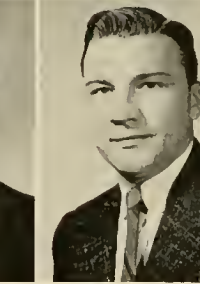
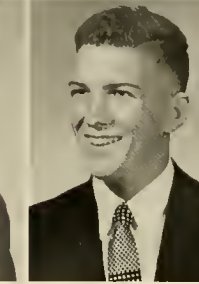
Tenney, Elvin  
Junior  
Buckhannon

Sweeten, Gerard  
Junior  
Scarsdale, N. Y.

Tenney, Ronald  
Freshman  
Adrian

Talkington, Walter  
Freshman  
Clarksburg

Tereshko, Joseph  
Sophomore  
Lambertville, N. J.



Teter, Elizabeth  
Sophomore  
Clarksburg

Torrence, Tod  
Junior  
Morris Plains, N. J.

Teter, William  
Freshman  
Buckhannon

Tracy, James  
Sophomore  
Steubenville, Ohio

Thompson, William  
Sophomore  
Darien, Conn.

Trusilo, William  
Freshman  
Pittsburgh, Pa.

Thorne, Joseph  
Freshman  
Fairmont

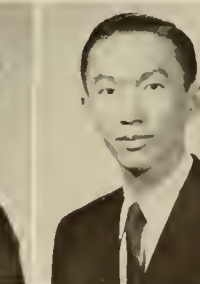
Turley, James  
Freshman  
Charleston

Tillinghast, Greta  
Freshman  
Madison

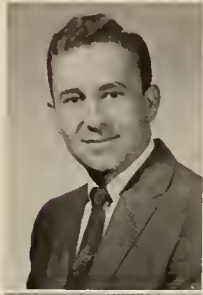
Umstead, Carolyn  
Freshman  
Pottstown, Pa.

Tjioe, Gim Beng  
Sophomore  
Medan, Sumatra

Undreiner, Ralph  
Junior  
Flushing, N. Y.



# underclassmen



Ursaki, George  
Freshman  
Bridgeport, Conn.



Van Camp, Mary  
Sophomore  
Wheeling



Van Osdol, Gretchen  
Freshman  
Jane Lew



Vaughn, Edward  
Junior  
Berlin, Md.



Vigna, James  
Freshman  
West Homestead, Pa.



Voegtlin, David  
Sophomore  
New Kensington, Pa.



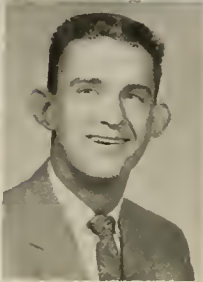
Von Eiff, Donald  
Junior  
Flushing, N. Y.



Wadsworth, Raymond  
Sophomore  
Nyack, N. Y.



Wagner, Shirley  
Sophomore  
West Pittston, Pa.



Walker, James  
Junior  
Mt. Hope



Wallwork, James  
Freshman  
Yonkers, N. Y.



Wanless, Gordon  
Junior  
Buckhannon



Ward, George  
Freshman  
Milford, Conn.



Wassell, Willard  
Junior  
Stamford, Conn.



Waugh, Carolyn  
Freshman  
Buckhannon



Weissman, Henry  
Junior  
Harpersville, N. Y.



Wellisch, Marshall  
Junior  
Bayside, N. Y.



West, Larry  
Freshman  
Buckhannon



Westberg, Charles  
Freshman  
Stanford, Conn.



Westfall, Lynn  
Sophomore  
Buckhannon



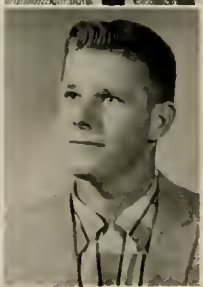
White, Jean  
Sophomore  
Jamaica, N. Y.



Wiemokly, Richard  
Junior  
Long Beach, N. Y.



Wilcox, Ruth  
Junior  
Oakland, R. I.



Wilfong, Jack  
Freshman  
Buckhannon

# underclassmen

Wilfong, Richard  
Sophomore  
Buckhannon

Wilkerson, James  
Sophomore  
Whitesville

Wilkinson, James  
Junior  
Munhall, Pa.

Williams, Hazelmae  
Sophomore  
North Plainfield, N. J.

Williams, Joseph  
Sophomore  
Kingston, Pa.

Wilmoth, Esther  
Freshman  
Quiet Dell

Wilson, Cora  
Freshman  
Buckhannon

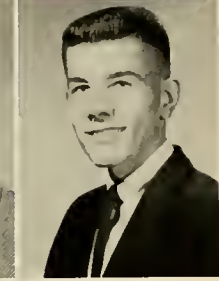
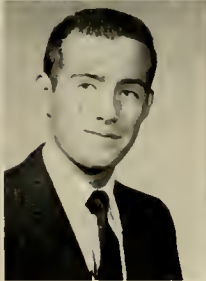
Wilson, David  
Freshman  
North Plainfield, N. J.

Wilson, Naomi  
Freshman  
Frenchtown

Winnett, Mary Lee  
Freshman  
Amity, Pa.

Winspear, George  
Freshman  
Plainsfield, N. J.

Witschey, Warren  
Freshman  
New Martinsville



Wolfe, David  
Sophomore  
Buckhannon

Wood, Betty  
Junior  
Mabscott

Wood, Karla  
Junior  
Chicago, Ill.

Wooddell, Mary  
Freshman  
Green Bank

Wolf, Thomas  
Freshman  
Lynbrook, N. Y.

Woolley, Norman  
Freshman  
Mountainside, N. J.

Wright, Clarence  
Freshman  
Fairmont

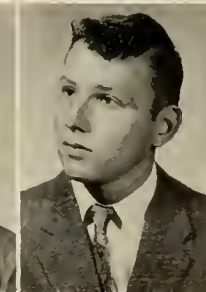
Wright, Samuel  
Freshman  
Boomer

Wyatt, Fred  
Freshman  
Buckhannon

Yates, Richard  
Freshman  
Beckley

Zolan, Robert  
Junior  
Lynbrook, N. Y.

Walsh, John  
Junior  
Milford, Conn.



# WHY WE CAME







## we came because of alumni, faculty, and friends

"Beautiful campus, competent faculty, pleasant accommodations, friendly people . . ." Wesleyan is lauded far and wide by former students and present friends.

While our reasons for coming to Buckhannon vary, many will acknowledge the advice of others as instrumental in their decisions.



Top: Alumni Council in session.

Bottom: Campus growth . . . dedication of Benedum Lounge in New Hall for Men.





**campus**

# chemistry, biology, etc.

Most science majors will agree that hours, too many, are spent in the labs and lecture rooms of Haymond Science Hall . . .

The chemistry, biology, physics, and mathematics departments are continually producing unexpected reactions.



# music replaced here

The staccato click-clack of typewriters and the voices of sorority members have replaced the echoes of instrument and voice within the walls of Music Hall.

The "Old Music Box" . . . transformed into an auxiliary office building and "what have you!"



# physical education

Between grunts and groans . . . the ideal place for physical education . . . the Wesleyan Gym.



# home ec

The Home Economics Cottage . . . women's intuition applied here!



# music and art

Renowned for its practice rooms and as birthplace of many current paintings by Wesleyan's Fred L. Messersmith . . . Loar Hall . . . music department becomes associate member of American Association of Schools of Music in 1957! . . . another remarkable achievement.

# when boy meets girl . . .

at Agnes Howard Hall on the south end of the Wesleyan campus, life takes on a new meaning. Lurking behind the "imposing" portals of "Agony Inn" are 160 studious co-eds.

Campus social life often seems to revolve about the swing on the front porch.



**south  
campus . . .  
home for 160**

# florida street . . . college avenue . . . wesleyan co-eds brave these spots, too

The house at 68 College Avenue rings constantly with the voices of a small group of girls . . . smallest but still important.



The scene of unexpected pilgrimages . . . the Women's Residence Hall at 49 South Florida Street houses several upperclass co-eds . . . distance fails to daunt their courage.



# north campus . . . home for 275



The new Residence Hall for Men and our oldest new dorm, Fleming Hall. Sophomores, freshmen, and a few upperclassmen fill these halls with unlimited enthusiasm expressed in often surprising ways . . . strictly for fun.

# junior . . . senior men left to own devices . . .



**traditions**

# freshmen ready for new year . . .



Faculty members elect incoming Freshmen

Freshman Week began Friday, September 13. It was exciting for some, less exciting to others, and very new to all. Most of the Freshmen were full of questions: what to do, when to do it, and where to go. Registration, receptions, a picnic, various and sundry tests, an All-Campus Party, and other events filled the week. When classes finally began, the new members of the Wesleyan family settled down to prepare themselves for life after college. Mid-semester grades came all too soon for some.







The punch bowl proved to be popular at the faculty reception.

## ... new life

Upperclassmen and freshmen "mix" at All-Campus Mixer. S. C. O. W. Committee puts up "Welcome" sign in gym.



Tuesday dawns and weary Freshmen file through the long registration line.

Janie Pfalzgraf mulls over the ballot for Homecoming queen and attendants . . . Janie was elected junior attendant.



## kay reigns during home

Fall and Homecoming, almost synonymous terms at Wesleyan . . . Kay Rider, voice major from Sophia, reigned during the celebrations. Jean White, sophomore; Harriet Aveyard, senior; Janie Pfalzgraf, junior; and Sandra Fultineer, freshman, surround the throne after coronation ceremonies.



Alpha Gamma Delta beams after winning first place trophy in annual "Wesleyantics" production.

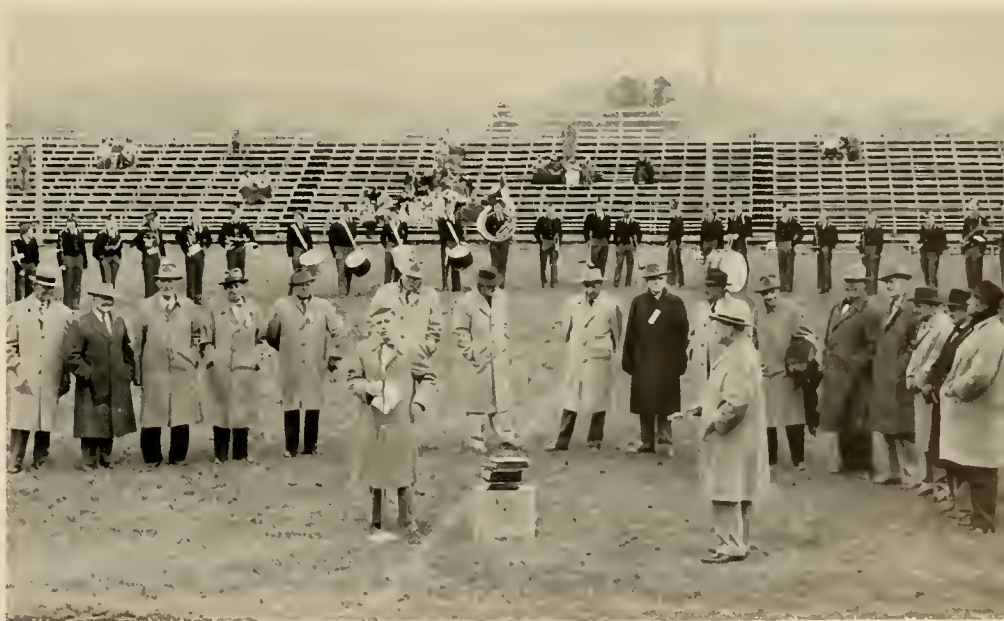


## coming festivities

Above top: "Clean Up Tech" was the title for the first place float in the Homecoming Parade. The men of Kappa Sigma Kappa say, "Our Team Duz It!"

Next above: Queen's float during parade.

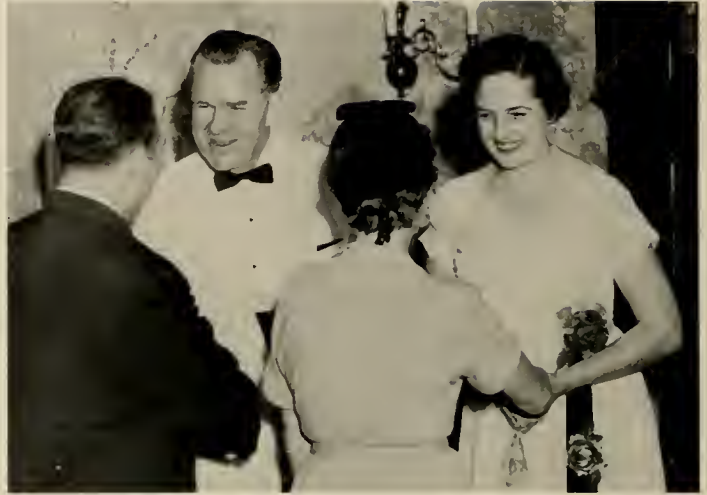
The college stadium is formally named "Ross Field" during half-time ceremonies and the all-time-great football squad of 1912 is honored . . . Wesleyan lost to West Virginia Tech, not without a battle worthy of the occasion.



# president inaugurated . . .

A new president and a new era in the growth and development of the college. The Inauguration-Homecoming week included seminars, forums, and a student-faculty-administration analysis of our present status.

Dr. Stanley Hubert Martin became the eleventh person to serve as president of West Virginia Wesleyan College. He came to Wesleyan after service with the Board of Education of the Methodist Church and is a graduate of Quincy College, Illinois, and received S.T.B., M.R.E., and Ph.D. degrees from Boston University.



Dr. and Mrs. Martin greet faculty and students in Loar Memorial Room during the President's Reception.



An honorary degree is conferred during the Inaugural Ceremony.



Dr. E. Ray Jones, president of the Board of Trustees, inducts Dr. Martin into the office of president of the college.



The procession moves toward Atkinson Chapel from Annie Merner Pfeiffer Library.



An inauguration speaker emphasizes a point.

The stage of Atkinson Chapel appears laden with distinguished personalities as Dr. Martin assumes the leadership of the College.





Standing room only was the word during the Inaugural Ceremonies. Even the library was filled by the overflow. Colleges and universities from across the East were represented for the ceremony.

## . . martin becomes eleventh president



The officiating ministers pose within the chancel of First Methodist Church after the Inaugural Sermon: Rev. Mr. Samuel Harford, pastor; Dr. John O. Gross, Board of Education of The Methodist Church and preacher; Dr. Stanley Martin; and Dr. A. A. Schoolcraft, dean of the college.

Speakers for the Campus Conference on The Renaissance of American Idealism in Liberal Arts Education post on stage: Dr. D. D. Lassenberry from the University of Pittsburgh; Dr. Harold A. Bosley, pastor of Evanston, Ill., First Methodist Church; Dr. Max Lauffer from the University of Pittsburgh; and Dr. Stanley Idzerda of Michigan State University.



Social Science majors gather at First Methodist Church for a symposium presided over by Dr. George Glauner.



Loar Hall Auditorium is the scene of panel discussions during the Campus Conference marking the Inauguration.





"And she brought forth her first born son . . ."

## christmas 1957 . . . "his name shall be called, wonderful,

The Yuletide season brings a cheerful atmosphere to the West Virginia Wesleyan College Campus. A new tradition was inaugurated this year, a living creche was placed in the front entrance of the Administration Building. The Hyma Glee Club and the Methodist Student Movement presented the Christmas Story in music and word.

The traditional concert was presented in Atkinson Chapel Sunday afternoon. The Christmas portion of "The Messiah" was sung before the student body, local residents, and faculty. The Christmas Dance was cheerful. All the dining halls on the campus held Christmas dinners during the week.

"It came upon the midnight clear, that glorious song of old . . ." The Nicholas Hyma Glee Club shown singing before the Creche was organized this year by Miss Elizabeth Armstrong.







A winter wonderland with finsel and trimmings. The Christmas Dance highlights the winter social calendar.



Music by Tommy Tucker. The second "name" band of the year played for an all-campus dance.

**councilor . . . prince of peace."**

Miss Cora Fultz, head resident for the Men's New Residence Hall joins the entire campus in a favorite Yule custom. Gene Brown, house president, and John Hodge look on.



Christmas dinners are observed in all of the college dining halls. The men in New Hall celebrated the season with holly and pine decorations. Installation of the hi-fi sound system in the dining hall was begun during the week.



## christian emphasis week

February 4 to 7 was a period of campus-wide discussion on the theme, "Lord, Give Us Faith." Chapel services and discussion groups were held during the week with a varied group of campus guests.

All-American football stars from Pitt, Jim Theodore and Dick Bowen, were "kick-off" speakers for the week. Dr. Richard K. Toner, Episcopal priest, and chemistry professor at Princeton University and the Rev. Raymond Fedje, pastor of The Methodist Church of Amherst, Mass., appeared as resource leaders for the week.

Christian Emphasis Week, 1958, was concluded to have been a success beyond most expectations.



Dr. Richard Toner confers with student following a discussion session.



Rev. Sidney Davis, college chaplain; Dr. Toner; Rev. Samuel Harford, local pastor; Rev. Raymond Fedje; and Dr. William Willis, physics professor, answer student questions.



The drawing room of Agnes Howard Hall provides the setting for many "buzz" sessions with Christian Emphasis Week guests.



Armen Hanjian, Mrs. John Wright, and Rev. Fedje share experiences and reactions with a student group.



The faculty hosts Dr. Toner and Rev. Fedje at a dinner in Agnes Howard Hall Dining Room.



## may weekend . . . tops spring social calendar

To the Wesleyanite the May weekend is the whip cream topping for the social calendar. May Queen Priscilla Howard, was an example of the coeds that Wesleyan educates. Her attendants shine equally about the palm centered dais: freshman attendant, Diane Butters; sophomore attendant Janie Pfalzgraf; junior attendant, Jean Rawson; senior attendant, Nancy Walton.

As expected, the big weekend turned out to be the biggest. Jan Campbell's orchestra was about the "coolest" heard in a long time. The extra attraction of the weekend was the presence of the attractive "imports" escorted by men not lucky enough to have their dates on campus.





The Phi Sig's express their enthusiasm after being named first place winners in the annual May Day Sing.



Gleeful looks move quickly across the faces of the Alpha Gams after receiving the second place award.



Senior girls do the traditional dance around the May Pole at the May Sing.



"Alma Mater of the Mountains . . ."

Speakers and honorary graduates pose for *Murmurmontis* photographer.



Seminary Class of 1907 returns to campus for its Golden Anniversary.



# graduation

The apex of our college studies, graduation, is a mixture of tears and pride over the work of four years. Through four years of trial and error, the graduate learns to discipline his time, "creating" moments to relax in the S.C.O.W. between studies and hours to be spent with a voluminous textbook. He has learned to persevere, and to adapt himself to everchanging methods and ideals; to accept his Christian duties and develop his civic pride.



ABOVE RIGHT: Presentation of a portrait honoring Edna Jenkins, benefactress of Wesleyan College.

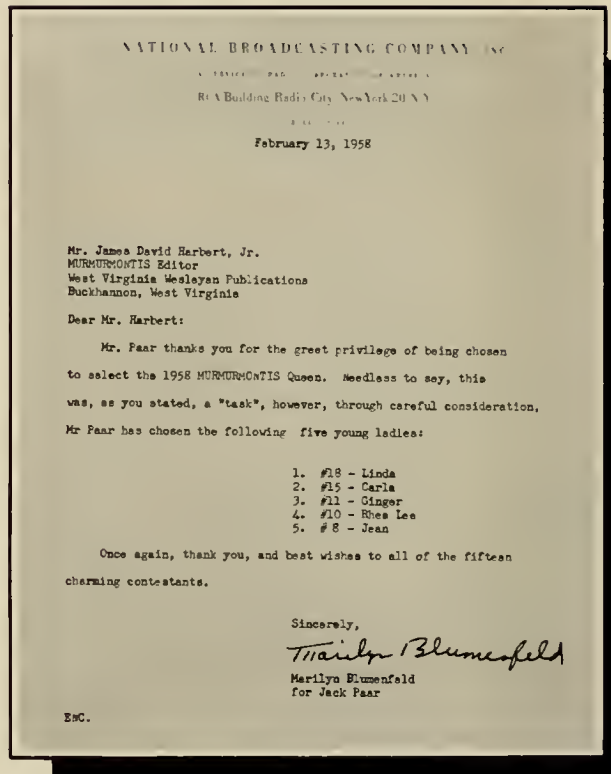
RIGHT: Harmonizers perform at Alumni Banquet during graduation week.

BELOW: Panoramic view of Alumni Banquet.



# jack paar selects . . . murmurmontis

## queen 1958



**linda west** ■

**karla wood** ■

**ginger power** ■

**rhea lee chenoweth** ■

**jean white** ■





**linda west . . . kappa sigma kappa**



**karla wood . . . kappa alpha**



**judy atkinson . . .  
sigma theta epsilon**



**carol beers . . .  
theta chi**



**janet belcher . . .**  
kappa phi



**nancy burruss . . .**  
sigma theta epsilon



**ginger power . . .** alpha xi delta



**rhea lee chenowith . . . alpha gamma delta**



**kay custer . . .  
alpha delta pi**



**sharie dean . . .  
phi sigma epsilon**



**nancy jo funk . . .**

**alpha delta pi**



**mary lou hetz . . .**

**w.r.a.**



**jean white . . . alpha xi delta**



**janie pfalzgraf . . . alpha xi delta**

**jean rawson . . . s.n.e.a.**

**jean teagarden . . . kappa phi**

**carol quattlander . . . alpha delta pi**

**jenny lynne west . . . kappa sigma kappa**





**administration  
faculty**



## president

Dr. Martin maintains a constant atmosphere of "good will" among the 900 odd members of the Wesleyan family—students, faculty, and administration. His very successful first year as president of the college has had many noticeable effects. Kept busy planning for the future, and the 1965 Diamond Jubilee of the school, he still manages to find time for almost all problems that enter his office. (Dr. Martin forecasts for the jubilee the completion of a multi-million dollar building program: a new women's dormitory, a chapel, new student center, field house, and modern science facilities.)

**stanley hubert martin**  
president of the college



## dean

For a quarter of a century Dr. Schoolcraft has served W.V.W.C. as a professor and as dean and registrar. He has constantly striven to make Wesleyan a fine liberal arts college. As supervisor of the faculty and curriculum he has constantly encouraged the highest standards. Once past the door the student finds that his warm personality smooths the way. Dr. Schoolcraft came to Wesleyan as professor of education and psychology in 1930. He became dean and registrar in 1944 and has twice served as interim president.

**arthur allen schoolcraft**  
dean of the college



# vice president

Mr. Ling is not in close contact with the student body but much of the planning of the administration passes through his office. He directs the financial program of the college and is currently engaged with plans for college expansion. The multi-million dollar building program now in progress heads the list of his activities.

**james i. ling**  
vice president



# treasurer

Each semester the 750 members of the college student body are offered an opportunity to renew their acquaintance with Mr. Williams. As treasurer of the college he handles budget problems during the year. Income and expenditures are carefully totaled in his office in order that the college may operate.

**heyward williams**  
treasurer



# business manager

Controlling the expenditures of the college, Mr. Hicks' talents are employed in a wide variety of ways. Besides serving the college in business matters, personnel relations, and building maintenance, he directs the West Virginia Inter-Collegiate Athletic Conference Tournament, held annually in the Wesleyan Gymnasium.

**william hicks**  
business manager

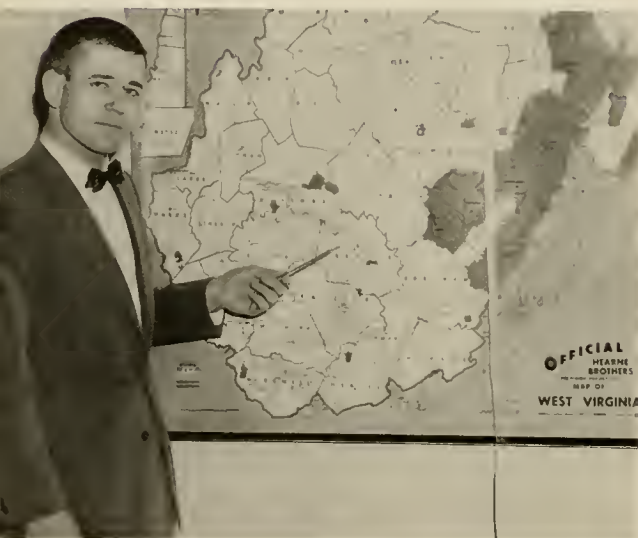




## admissions director

Prospective students learn about the many advantages offered by West Virginia Wesleyan College as Raymond Kiser, admissions director, attempts to answer their questions about the campus. Applications for admission are received and checked in this office as hundreds of college catalogs are mailed each year.

**raymond kiser**  
admissions director



## alumni director

James Stansbury, Wesleyan's first director of alumni relations, has the significant task of keeping in touch with W.V.W.C. graduates. Editions of the *Sundial*, the alumni magazine, are widely circulated. Mr. Stansbury's office is the scene of constant activity as alumni participation in the life of the college is encouraged.

**james stansbury**  
alumni director



## publicity director

Students and college activities are the subjects for news articles written by Miss Hallie Lu Hallam, publicity director. She makes certain that Wesleyan news gets to its readers. The Athletic Department utilizes Miss Hallam's artistic talents to publicize the high riding Bobcat floor team. A Wesleyan graduate, she is a friend to both student and professor.

**hallie lu hallam**  
publicity director

# counseling

Florence Schaper has been joined this year by Orlo Strunk in counseling Wesleyan students. The counseling offices are always open to those needing advice and encouragement. Dr. Schaper's office in the Administration Building and Dr. Strunk's office in the Old Music Hall are scenes for solutions of many involved problems.

**florence schaper**  
**orlo strunk**  
counselors



# deans of students

Mr. Shaver and Miss Wilson work to promote the best interests of the college students. The dean of women is responsible for the campus homes of Wesleyan co-eds. Dean Shaver is kept busy supervising general activities for the masculine portion of the W.V.W.C. population.

**nellie wilson**  
dean of women  
**john shaver**  
dean of men



# student center

The most popular campus spot, the Student Center of Wesleyan, is managed by Mrs. Ethel Vaughn. Dances, movies, and open houses are among the many activities sponsored by the S.C.O.W. The S.C.O.W. committee of the Community Council, under the direction of Mrs. Vaughn, is currently projecting plans for a new student center.

**ethel vaughn**  
manager of s.c.o.w.





## all in the prof's day

This is a tribute to the faculty of West Virginia Wesleyan College and their constant efforts to educate a multitude of students.

After a hearty breakfast the professor is ready to begin his day . . . answering questions that could only originate with Wesleyan students. Lecturing is only one of the tasks a professor encounters while performing his daily routine.

Between classes the professor enjoys the solitude of his study. Here he must do much of his paper work, and confer with faculty members and students.

At home the professor may spend his leisure time doing research work, preparing papers, or just relaxing during a quiet evening. All in one day for the professor.





## art and music faculty

ROBERT E. SHAFER — Music — B.M.,  
B.M.E., M.M.  
ELIZABETH J. ARMSTRONG—Music—  
B.M., M.M.  
CALVIN B. AGEY — Music — B.M.,  
M.M., Ph.D.  
MARY JO BROWN — Music — B.M.,  
M.M.

BELOW: FRED L. MESSERSMITH—Fine  
and Applied Arts—B.F.A., M.A., helps  
a group of student artists.

**music**  
**fine and applied arts**

**bible**  
**religion**  
**religious education**



**bible and**  
**religious education faculty**

SIDNEY T. DAVIS—Religion and Religious Education  
—A.B., S.T.B., Ed.M.  
RALPH C. BROWN—Bible—A.B., S.T.B., D.D.  
NELLIE G. WILSON—Religious Education—A.B.





## science faculty

ARTHUR B. GOULD—Chemistry and Physical Science—B.S., M.S., Ph.D.  
 WILLIAM R. WILLIS—Physics—B.S., M.S., Ph.D.  
 KATHERINE A. TISSUE—Home Economics—A.B., M.S.  
 GEORGE B. ROSSBACH—Biology—B.S., A.M., Ph.D.  
 JOHN WRIGHT—Chemistry—B.S., Ph.D.

BELOW: WILLIAM A. HALLAM—Mathematics—B.S., A.M.

biology  
 chemistry  
 home economics  
 mathematics  
 physics

business administration  
 economics



## business administration and economics faculty

LEWIS B. CLARK—Business Administration—A.B., M.A., Ed.D.  
 JUANITA BOWYER PARKER—Secretarial Studies—B.S., M.A.  
 E. KIDD LOCKARD—Economics—A.B., M.A.

## education, philosophy, and psychology faculty

JAMES L. HUPP—Education—B.S.,  
A.M., Ph.D.  
JOSE A. FRANQUIZ—Philosophy—  
A.B., S.T.B., Ph.D.  
ORLO STRUNK, JR.—Psychology—  
A.B., S.T.B., Ph.D.  
ROBERT D. MARTIN—Education—B.S.,  
A.M.



education  
philosophy  
psychology

english

## english faculty

ABOVE: SAMUEL A. SMALL—English—A.B., M.A.,  
Ph.D.

RIGHT: LEWIS H. CHRISMAN—English—Ph.B.,  
A.M., Litt. D., L.H.D.  
KEITH N. RICHWINE—English—B.S., M.A.  
MARY C. BRILL—English—A.B., A.M., Ph.D.



## foreign languages and speech faculty

BETTY A. GROAH—Speech and Dramatic Arts—A.B., M.A.  
 JOHN D. SHAVER—Speech—B.S., M.A.  
 MARY McKITTRICK—French and German—A.B., M.A., Ph.D.



## foreign languages speech

## history political science sociology



## history, political science, and sociology faculty

GEORGE L. GLAUNER—History—A.B., A.M., Ph.D.  
 FLORENCE W. SCHAPER—Sociology—B.S., M.A., Ph.D.  
 MARVIN DOWNEY—Political Science—B.A., M.A., Ph.D.  
 ROBERT C. BOWLES—History—A.B., M.A., Ph.D.







### library science faculty

EVELYN VIRGINIA CROUCH—Assistant Librarian and Library Science—A.B., Ed.M., M.A.  
 HELEN S. GAYLORD—Assistant Librarian and Library Science—A.B., B.S. in L.S.  
 HELEN STOCKERT—Librarian and Library Science—A.B., B.S. in L.S.



### library science

### physical education



### physical education faculty

SAMUEL MORGAN ROSS—Physical Education—B.S.  
 ETTA WALTERS — Physical Education — B.A., M.Ed  
 FRANKLIN CLAY ELLIS—Physical Education and Coach of Basketball—B.S., M.S.  
 DAVID ECHOLS REEMSNYDER—Physical Education and Coach of Football—B.S., A.M.

# what we found







## we found almost too much . . .

There seemed almost too much to do and never enough time to do it in. There were fraternities and sororities, clubs and honoraries . . .

We spent almost too much time engaged in these activities as was seen when the twice-a-semester registrar's notice was received. We vowed to do better . . . but there still seemed to be so many things we just had to do . . .



TOP: Students and faculty fill the Agnes Howard drawing room.

BOTTOM: Three rehearsals each week and at least one performance.



**government**



# community council . . . voice of the

The Community Council of West Virginia Wesleyan College is composed of elected representatives from each class and faculty and administration representatives elected by the student body at large. This group forms the policy making body for the college. With Ted Jungas wielding the gavel in the Methodist Historical Room of the library every Wednesday evening, campus problems are often brought to satisfactory conclusions.

Wesleyan is fortunate in having such an organization capable of solving most situations. Representing all phases of college life—students, faculty, and administration—the Community Council serves a vital function.

Elections are held each spring in order to select a president for the council. Candidates are nominated by individual classes and by the faculty and a campus wide-election is held.

## preamble to the constitution of the community council

*"We, the members of the campus community of West Virginia Wesleyan College, recognizing the need for an inclusive and efficient form of college government where students, faculty, and administration work side by side, do institute this constitution and dedicate ourselves to the realization of the objectives of our college through its faithful execution."*

## council officers

President .....THEODORE JUNGAS  
 Vice President .....JAMES SCOTT  
 Secretary .....GLEENDA McDONALD



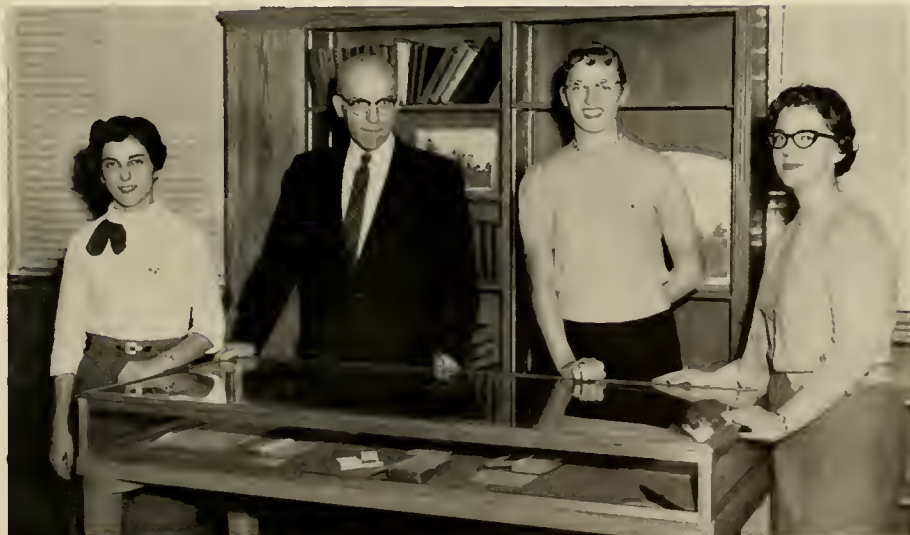
## community council

Samuel Caudill, William Bauserman, Dean John Shaver, Richard Hamilton, Roger Fischer, Glenda McDonald, Ted Jungas, James Scott, Janie Pfalzgraf, Ralph Gay, Dean A. A. Schoolcraft, Janet Ailstock, Mr. Sam Ross, Mr. Fred Messersmith.

BELOW: Council president, Ted Jungas.

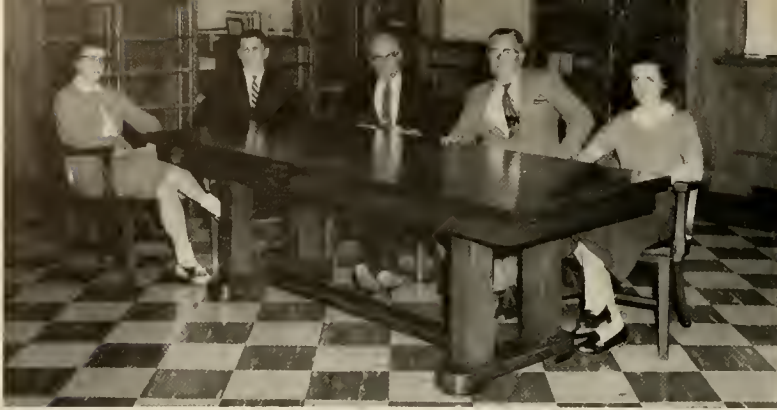


## students



## awards committee

Carol Boyer, Dean A. A. Schoolcraft, Sharie Dean, Ann Pemberton.



## conduct committee

Nancy Burruss, Richard Brooke, Dean A. A. Schoolcraft, Dean John Shaver, Harriet Aveyard.



## publications committee

Jeannette Hedrick, Frederick Hart, Nancy McGregor, James Scott.



## world university service committee

Ronald Lewis, Jose Dizon, Suzanne McNutt, Donna MacWilliams.

## educational affairs committee

Shirley Armfield, Ann Queen.





## s.c.o.w. committee

Laura Bays, Mary Burton, Janie Pfalzgraf, Jean White, Patricia Ambrose, William Smith.



## u.s. national student assoc. committee

Reed Bradford, Ann Pemberton, Clare Edman.



## social activities committee

Dean Shaver, Peggy Jo Morton, Dean Wilson.



### **religious activities committee**

Richard Hamilton, Carol Kane, Ruth Grose, John McCulloch.

## **committees of community council**

Much of the responsibility assumed by the Community Council is performed by a group of standing committees. These committees are chosen by the council from the results of a committee preference survey of the student body. Most all-campus activities are regulated by these committees: Student Center operations, cultural enrichment programs, publications, and other aspects of community life.



### **cultural enrichment committee**

Robert Winters, Sylvia Klepper, William Norman, Mr. Messersmith.

## women's house governing board

Margo Brookover, Elnora Chambers, Sharie Dean, Harriet Aveyard, Sally Profit, Linda Sowers, Janet Gress, Ann Queen, Ann Welker, Judy Atkinson, Mara Linaberger, Donna MacWilliams.



## women's house governing board

The three residence halls occupied by women are governed by the Women's House Governing Association. Each class is represented on the governing board with elections held each semester. Officers for the group are selected each spring. Rules and regulations are made and enforced by the residents of Agnes Howard Hall, Florida Street House, and College Avenue House through this board. Linda Sowers is president of the board.

## house board of new hall

A new hall and a new governing association . . . with the first year of residence in the New Hall for Men a house board was organized to give the 164 men living there a voice in the operation of this new dormitory. Miss Cora Fultz, head resident, and Dr. Florence Schaper, head of counseling, have helped to activate this self-governing group. President is Gene Brown.

## house board of new hall

Gene Brown, Kenneth Maberry, Paul Nicolson, Dennis Lord, Kenneth Fleming, Michael Herrera, Kenneth Roberts, Ronald Casto, James Harbert, Frank Horn.



## interfraternity council

TOP ROW: James Scott, William Will, Jefferson Manser.  
BOTTOM ROW: Frank Patti, Jerry Rabinowitz, Edward Powers.



## interfraternity council

The Interfraternity Council is composed of the presidents and one representative from each of the four national and the one local fraternity on campus. Rushing, pledging, and fraternal conduct are coordinated by the council. While serving as a governing board, I.F.C. continues to promote good inter-fraternity relations. Jerry Rabinowitz is president.

## panhellenic council

The three national sororities on Wesleyan's campus are governed by the Panhellenic Council. Two representatives from each chapter act as the policy making group for inter-sorority situations. They serve as an effective forum for greek problems and seek to maintain high standards of fraternal activity.



## panhellenic council

Harriet Aveyard, Linda Sowers, Delores Keyser, Carol Gearty, Kay Custer.



## honoraries



## benzene ring

TOP ROW: William McBride, William Burdette, John Herbst, Paul Nicolson, Jay Silver, John Johnstone, James Tracy. SECOND ROW: Sharon Graham, James Koon, David Wolfe, Marilyn Smith, Ronald Lewis, Gerard Boe, William Echols, Dr. Gould. BOTTOM ROW: Gim Bong Tijoe, Betty Kay Hanifan, Richard Brooke, William Hall, Floy Black, Robert Rubin.

## benzene ring

Membership in the Benzene Ring, oldest honorary organization on the campus, is quite an honor for chemistry students. The purpose of this honorary is to work for the improvement of the science department and to encourage greater interest in the physical sciences. Selection of a Camphor King and the annual Strawberry Breakfast at Commencement are outstanding activities of Benzene Ring. Marilyn Smith is president.



ABOVE: Camphor King Fritz Dengler receives his crown.



LEFT: Annual Strawberry Breakfast is in progress.



## beta beta beta

Norman Hillman, George Orr, Gerard Boe, Nancy McGregor, Ralph Gay, Marilyn Smith, Robert Hetz, Robert Rubin.

## beta beta beta

For aspiring biologists at West Virginia Wesleyan, Beta Beta Beta offers a gauge of achievement. This national biology honorary seeks to promote biological research and stresses scholastic principles.

Gerry Boe is president; Robert Hetz, vice president; and Nancy McGregor, secretary.

## alpha psi omega

Students who have exhibited superior ability in dramatics are invited to become members of Alpha Psi Omega. Alpha Rho chapter of this national honorary dramatics fraternity aids the Wesleyan Playshop in drama presentations.

## alpha psi omega

Ruth Grose, Carol Ann Wilson. (Not pictured, Thomas Goheen.)





### haught literary society

TOP ROW: Helen Rissmeyer, Marilyn Smith, Betty Kay Hanifan, Janie Pfalzgraf, Sylvia Klepper, Jeannette Hedrick, Suzanne McNutt, Janet Boggess, Ann Pemberton. BOTTOM ROW: Peggy Jo Morton, Annabelle Day, Harriet Aveyard, June Mearns, Linda Sowers, Jodi Lamb.

## haught literary society

The sixteen women who comprise the membership of the Haught Literary Society are selected for their interest in the fine arts and their academic standing. The "quote" and program topics for the weekly meetings may range from Sputnik to Weddings. Harriet Aveyard is president; June Mearns, first vice president; Annabelle Day, second vice president; and Linda Sowers, secretary-treasurer.

## delta psi kappa

Delta Psi Kappa is the national honorary fraternity for women majoring or minoring in physical education. Delta Psi Kappa was founded in 1916 and Alpha Eta chapter was organized at Wesleyan in 1947. Fund raising projects include selling programs at the W.V.I.A.C. Tournament and checking coats at basketball games. Ann Queen is president; Virginia Light, vice president; Sharie Dean, secretary; and Carol Boyer, treasurer.



## delta psi kappa

Dolores Keyser, Janet Harris, Deann LeBeau, Carol Boyer, Ann Queen, Virginia Light, Ruth Grose, Mary Lou Hetz, Linda Sowers, Sharie Dean.





**religion**



## canterbury club

TOP ROW: William Thompson, Kleber Gregory, Thomas Clark, Paul Moser, Bruce Gourlay, Gary Boegershausen. SECOND ROW: Delma Beer, Diane Fessler, Cornelia Ryerson, Bonny Ames, Ann McClain. BOTTOM ROW: Robert Hider, Mary Beth Alberts, Douglas Fitch.

## canterbury club

The Canterbury Club is a vital force in the activity of Buckhannon's Church of the Transfiguration. They assist the Rev. Mr. Stuart West in regular services of Evensong and Holy Communion. Sunday evening suppers, dances, and car-washings, for the vestment fund, are important activities for these Episcopal Students. William Thompson is president.

## kappa phi

The Methodist Girls' Club was begun on Wesleyan's campus in 1957 and became a probationary group of Kappa Phi, National Methodist Women's Sorority, in the fall of 1957. They expect to complete their probation during the spring. This large group of girls play an important part in the religious life of the campus. Janet Belcher is president.

## kappa phi . . . methodist girls' club

TOP ROW: Nancy Pearson, Sally Profitt, Betty Jane Thonen, Marilyn Johnson, Ann Welker, Carolyn Law, Sue Kohlhepp, Barbara Brewer, Peggy Otto, Cornelia Mendoza. THIRD ROW: Jo Ellen Flagg, Ruth Grose, Constance Rohrbough, Esther Wilmoth, Janet Gress, Betty Jo Hubbard, Mary Woodale, Madonna McDonald, June Mearns, Elizabeth Weiglein, Gaynell Sell, Margaret Herold, Nancy McCabe. SECOND ROW: Donna MacWilliams, Sandi Hall, Barbara Stanley, Sue Jeffreys, Jean Teagarden, Betty Kaminski, Rosalie Abbott, Judi Slaving, Judy Fisher, Gerri Davis, Carolyn Kopple. BOTTOM ROW: Norma Davis, Patricia Ambrose, Carol Simons, Joyce Becker, Janet Belcher, Joan Williams, Grace Taylor, Rowena Phillips, Nancy Burruss, Donna Bissell.





## sigma theta epsilon . . . methodist men's fraternity

TOP ROW: William Pettibon, Clare Edman, William Kailing, Robert Louer, Jerry Jones, George Orr, Thomas Goheen, William Will, Melvin Orr, William Altman, Paul Johnson, James Harbert, James Scott, Lloyd Fike. SECOND ROW: Charles Perry, John Sanders, Robert McLaughlin, Harold Greenway, James Mowry, Richard Sanford. BOTTOM ROW: Raymond Rohrbaugh, Lynn Westfall, Bing Scherer, Allen Frosch, Donald Stewart, Robert Smith, Charles Kohler.

### ΣΘΕ officers

|                               |                  |
|-------------------------------|------------------|
| President .....               | JAMES MOWRY      |
| Vice President .....          | JACK SANDERS     |
| Recording Secretary .....     | CLARE EDMAN      |
| Treasurer .....               | RICHARD SANFORD  |
| Chaplain .....                | WILLIAM WILL     |
| Corresponding Secretary ..... | LYNN WESTFALL    |
| Pledge Master .....           | WILLIAM PETTIBON |

### sigma theta epsilon

Alpha Gamma chapter of Sigma Theta Epsilon began its first full year of activity during 1957-1958. This is a national fraternity for Methodist Men and exists as an important part of the Methodist Student Movement, along with its sister group, Kappa Phi.

The local group has achieved a considerable degree of success, being recognized at national and regional conferences. In only one year of growth the chapter has grown to a position of responsibility beyond most expectations.

Religious services, including the Holy Communion, are offered to members of the fraternity along with a love feast and a second semester dinner and dance held with Kappa Phi.



## methodist student movement

TOP ROW: Jim Hanson, Joyce Becker, Carol Sue Hayden, Paul Bodurtha, Barbara Brewer, Michael Kundrat, Janet Belcher, Paul Gramlich, Marlene Sweet, Bing Scherer. SECOND ROW: Armen Hanjian, Robert Weaver, Allen Frosch, Thomas Elliott, Charles Perry, Jerry Jones, Samuel Moore, Howard Cupples, William Pettibon, Pete DeGroote, Donald Flansburg. BOTTOM ROW: Jeannette Hedrick, Ruth Grose, Ann Welker, Constance Rohrbough, Elizabeth Weiglein, Hazel Mae Williams, Marilyn Johnston, Margaret Herold, Nancy McCabe, Betty Jane Thonen, Greta Tillinghast, Marilyn Firl, Judy Lampila, Margaret Hogsett.

## methodist student movement

Undoubtedly the largest group on campus, the Methodist Student Movement serves as a link between Methodist students and their church.

Regular services of worship are conducted in Brown Chapel, Atkinson Chapel, Loar Hall, and the Blue Room of the S.C.O.W. Sunday morning and evening and Thursday evening are devoted to religious services on the campus. M.S.M. also sponsors Wesleyan Fellowship Teams who travel to area churches in an effort to strengthen local youth programs.

A planning retreat in the fall and an evaluation retreat in the spring are important among the multitudinous M.S.M. activities.

## m.s.m. council

TOP ROW: Nancy Burruss, Joseph Rial, Sam Moore, Roger Fischer. SECOND ROW: Joyce Becker, Carol Sue Hayden, Paul Bodurtha, Armen Hanjian. BOTTOM ROW: Jeannette Hedrick, Betty Kay Hanifan, Harriet Aveyard, Suzanne McNutt.

## m.s.m officers

President ..... PAUL BODURTHA  
 First Vice President ..... ARMEN HANJIAN  
 Second Vice President ..... JEANNETTE HEDRICK  
 Secretary ..... HARRIETT AVEYARD  
 Treasurer ..... WILLIAM RAUTNER





## m.s.m. drama

The M.S.M. Drama group, under the direction of Suzanne McNutt, presented an adaptation of Charles Dickens' "A Christmas Carol" during a pre-Christmas assembly.



## wesleyan fellowship teams

TOP ROW: Charles Kohler, Robert Smith, Walter Talkington, Robert McLaughlin, Garren Gaston, William Morrison, John Hanson, Jerry Jones, Frank Gulinello, Theodore Jungas. SECOND ROW: Edah Lasell, Sue Kohlhepp, Suzanne McNutt, Nancy Burrus, Gaynell Sell, Elizabeth Weiglein, Carol Kane, Ruth Grose, Helen Rissmeyer, Virginia Light, Clarence Wright, Walter Stone. BOTTOM ROW: Judy Lampila, Joyce Becker, Margaret Hogsett, Carolyn Umstead, Marlene Sweet, Betty Wood, Martha Fosbenner, Ann Welker, Ruth Epler.





## hillel society

TOP ROW: Joseph Balaban, Jay Silver, Robert Oasis, Harvey Levin, Joseph Ros-enman, Elliot Kawadler. BOTTOM ROW: Linda Falik, Dr. Brown, Larry Feinburg.

## hillel society

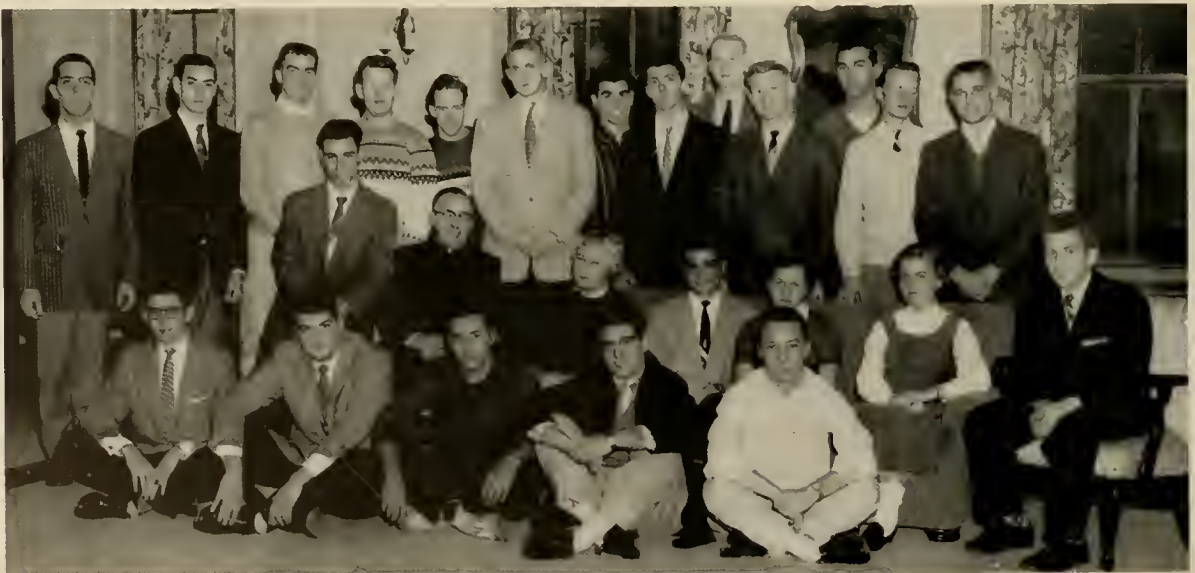
The Hillel Society of West Virginia Wesleyan College was organized in the fall of 1957. While it follows the general principles of Hillel Societies across the nation it functions as an independent group, providing the nucleus for Jewish Religious activity on the campus. Marshall Wellish is president; Linda Falik, secretary; and Elliot Kawadler, student chaplain.

## newman club

St. Joseph's Roman Catholic Church is the home for Wesleyan's Newman Club. This large group participates in varied activities during the year—both religious and social. Under the direction of the Rev. Father Murray, parish priest, the group remains a stable organization for Catholic students.

## newman club

TOP ROW: Louis Colombo, Robert LaFalce, James Lewis, Richard Bigelow, John Blubaugh, Richard McGuire, Taylor Meister, Arthur Miklosey, Russell Miller, James Rock, Robert Holbrook, Donald Carroll. SECOND ROW: Joseph Alizio, Father Murray, Shirley Wagner, Frank Scioto, Joan Block, Esther Emery, Frank Parisi. BOTTOM ROW: Alan Machenberg, Craig Heinrich, Frank Patti, Harry Santillo, Thomas Salata.





## **organizations**



### editors

JAMES DAVID HERBERT, JR.  
CAROL ANN PEMBERTON

### associates

Will Lewis, Susan Jeffreys, Jane Reemsnyder, Paul Moser, Sharon Graham.

### sports

JOHN CAMPBELL GEORGE SEAGRAVES

### business manager

JAMES ROBERT McLAUGHLIN

### associates

Shirley Lee, Judi Slaving, Bruce Gourlay, Sally Bond, Elizabeth Teter, Argyle Abbott, Leonard Rabatin, Kleber Gregory.

## murmurmontis

Few people view the efforts expended by the staff of the college yearbook until the date of publication, but the production of the 1958 MURMURMONTIS was not the result of slight work.

Ann complained of one and two people work sessions lasting until the wee hours. Paul was usually reliable but the question was raised, "what for?" Jim was the optimist with few words of pessimism, even at 2:30 a.m. Money-bags Jim dropped by to add a few words of encouragement, wrote a few checks, stamped pictures, and ducked out. His work came later . . . All this and another copy deadline was met.

Sue, Jane, and Sharon felt the yearbook squeeze along with all the staff members but took time out to come to the rescue of the editors. John and George could be relied upon for interesting bits of information. Will and Lenie provided a helping hand. Even in the midst of a crushing deadline time could be found for a little fun.



RIGHT ABOVE: Howard Hiner, *photographer*, views work.  
RIGHT: What did I do?

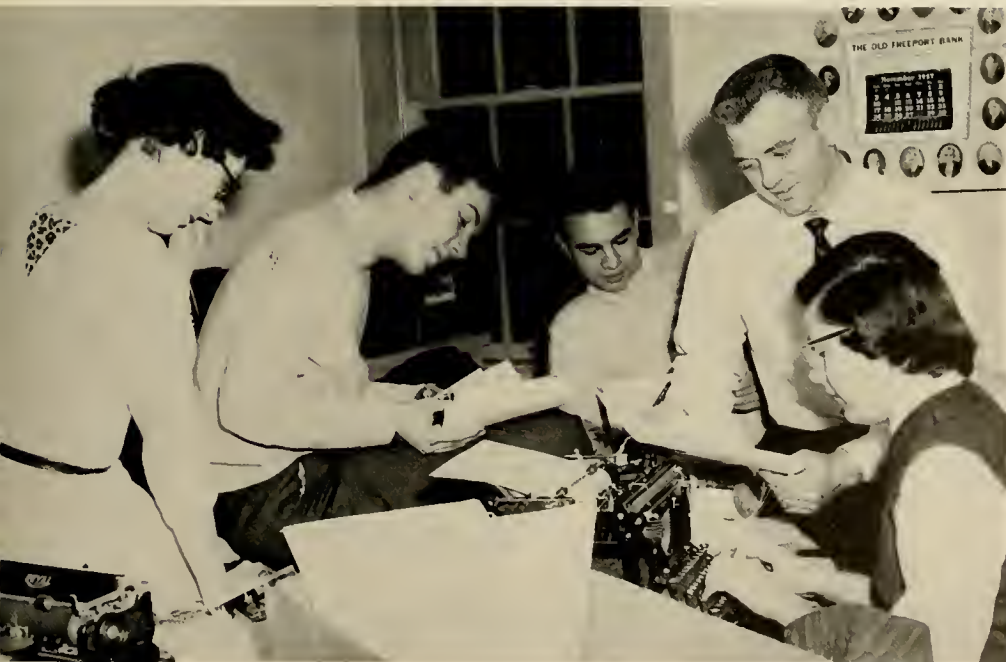




TOP RIGHT: Staff works frantically to meet another deadline.

RIGHT: Reward for a job well done. Staff of 1957 annual gathers at Nixon Plaza in Clarksburg for year-book dinner.

BOTTOM: Getting down to business.



## staff members

Co-Editors .....Janet Boggess, Charles Modlin  
 Business Manager .....James Scott  
 Staff Members .....Virginia Light, Lloyd Fike,  
 Carolyn Kopple, Ray DeMarco, Clare Edman,  
 Bea Chigos, Jeanette DeHaven, Gay Sell, Caro-  
 lyn Umstead, Elizabeth Weiglein  
 Circulation Managers ..... Sharie Dean, Betty Baylis  
 Advisor .....Keith Richwine

## pharos

"The Pharos is published twice a month by the students of West Virginia Wesleyan College . . ."

The campus paper serves the campus community by providing an outlet for news accessible to all the students. A tremendous effort has been exerted during the year, resulting in a much neater and better newspaper.

LEFT: Charlie and Jan sweat out another issue with the able assistance of "Blackie."



## pharos staff

TOP ROW: Betty Byliss, Bea Chigos, Sharie Dean, George Miller, Elizabeth Weiglein, Ray DeMarco, Hunter Cobb. BOT-  
 TOM ROW: Charles Modlin, Carolyn Kopple, Carolyn Umstead, Gay Sell, James Scott, Mr. Richwine, Janet Boggess.



## sports writers

Ray DeMarco points out interesting candid from recent basketball game to Bruce Gourlay.



## staff interview

Pharos staff conducts an interview with German student while visiting in Buckingham.



pharos brings  
news to  
campus



## the wesleyan playshop . . . drama group

TOP ROW: Grace Taylor, Barbara Ferrell, Nancy Pettry, Mary Beth Albert, Nancy McCabe, Robert Hjder, Louis Duhorow, Letitia Pifer, Janet Boggess, Frances Griffith, Delma Beer, Jack Marine. BOTTOM ROW: Miss Betty Groah, Sylvia Klepper, James Tracy, Ruth Grose, Connie Kercher, Paul Moser, Walter Stone, Elliot Kawadler, Diane Fessler, Linda Falik.

## playshop

Credit for the first full length dramatic production on the campus in several seasons has been given to the Wesleyan Playshop under the direction of Miss Betty Groah. This group gives students an opportunity to express themselves through directing, costuming, and make-up, as well as acting. Ruth Grose is president of playshop.

RIGHT: The cast takes a well deserved curtain call after the performance of "The Silver Cord."

BOTTOM: Full length drama returns to W.V.W.C.



## women's recreation association

TOP ROW: Nancy Halsall, Ginger Powers, Ann Queen, Nancy Shuttleworth, Mary Beth Albert, Bonnie Ames, Constance Rohrbough, Gretchen Otto, Nadine Schaffer, Nancy McGregor. THIRD ROW: Mary Lou Hetz, Linda Sowers, Carolyn Kopple, Carol Simons, Judy Slaving, Sally Bond, Sue Jeffreys, Sandra Fultineer, Janie Pfalzgraf, Phyllis Keene. SECOND ROW: Janet Bog-gess, Nancy Pettry, Jo Ellen Flagg, Mary Burton, Sue Kohlhepp, Virginia Light, Deann LeBeau, June Cooper, Sylvia Klepper, June Smith. BOTTOM ROW: Sharie Dean, Elnora Cham-bers, Jean White, Betty Baylis, Ruth Grose, Nancy Jo Funk, Peggy Jo Morton, Delores Keyser, Beatrice Chigos, Janet Ailstock.



## women's recreation association

The Women's Recreation Association is another of the large groups on campus fulfilling an important purpose. Encouraging athletics on the part of the Wesleyan Co-Ed is an essential service of W.R.A. Sharie Dean is president; Elnora Chambers, vice president; and Jean White, secretary.

## student art guild

Art addicts find kindred souls in the Student Art Guild. A non-conforming organization, the S.A.G. holds forth in the reaches of the art studio in Loar Hall. In an effort to spur interest in art the guild sponsors an assembly program, picture rentals, and trips to museums. Ralph Jordan is president.



## student art guild

TOP ROW: Frank Conway, Thomas Leach, Robert Fosnaugh, Ralph Jordan, Thomas McKinney, William Rossmeyer, Carla Wood, Richard Von Hoorn, Mr. Messersmith. BOT-TOM ROW: Jane Griffin, Gretchen Otto, Ruth Hopping, Jodi Lamb, Kay Rider, Sandi Hall.



## wesleyan a cappella choir

TOP ROW: Robert Hider, Robert Smith, Garren Gaston, Helen Rissmeyer, Janet Belcher, Janet Gress, Eleanor Linger, Ann Welker, Patricia Ambrose, Beverly Holmes, Greta Tillinghast, Marilyn Johnson, Nancy Pearson, John Campbell, Robert Weaver, Richard Calendine. THIRD ROW: Thomas Goheen, Edgar Hodson, James Harbert, Ann Martin, Margaret Hogsett, Joyce Kurzel, Betty Lambert, Mary Waddell, Betty Kay Hanifan, Phyllis Hogsett, Edah Lasell, Alfred Moye, Robert Miller, Roger Fischer. SECOND ROW: Richard Hamilton, John Ross, Theodore Jungas, Betty Tenney, Judith Lampila, Carol Boyer, Betty Wood, Joyce Becker, Sue Kohlhepp, Donna MacWilliams, Robert McLaughlin, Garry Campbell, Lynn Westfall. BOTTOM ROW: Charles Dent, Jack Haney, Norma Davis, Nancy Shuttleworth, Kay Rider, Mr. Shafer, Ruth Grose, Suzanne McNutt, Glenda McDonald, Denton Covert, Richard Yates.

## a cappella choir

The A Cappella Choir performs a rugged schedule during the year. Directed by Mr. Shafer they appear weekly in Chapel and on special occasions. The spring tour was taken in the Bluefield area of the state.

## hyma glee club

Organized in the fall, the Glee Club is directed by Miss Armstrong and has appeared for various campus functions, including Homecoming inauguration and the M.S.M. Christmas pageant.

## hyma glee club

TOP ROW: Robert Weaver, Conrad Pierce, John Beeler, Melvin Orr, Lyman Seamans, Wesley Shaffner, Ralph McCulloch, Ronald Talkington, Kenneth Remley, Robert Hider, Charles Kohler, Robert Smith, John Hipple, Gary Boegershausen, Lynn Westfall. THIRD ROW: Douglas Fitch, Tony Ciuffo, Robert Hetz, Elbert Burr, William Norman, Harold Greenway, Thomas Goheen, Lenwood Lathrop, Louis Colombo, John Hadley, Todd Torrence. SECOND ROW: Jim Mowry, Michael Kundrat, Richard Yates, Charles Perry, James Lewis, Donald Johnson, Ed Alberter, Robert La Falce, Paul Johnson, William Wills, John Hall. BOTTOM ROW: James Kerr, Gordan Green, Charles Dent, Walter Stone, James Wilkinson, Bing Scherer, Richard Von Hoorn, Al Lee Raesley, Floyd Hoskinson, Norman Hillman, Dave Demaski, William Pettibon.





### music educator's national conference

TOP ROW: Miss Elizabeth Armstrong, Janet Belcher, Mary Wooddell, Naomi Wilson, Betty Lambert, Carole Doughton, Alexander Ross, Glenda McDonald, Robert Winters, Betty Tenney, Thomas Goheen. BOTTOM ROW: Carolyn Kopple, Norma Davis, Joyce Kurzel, Charles Dent, Kay Rider, Rhea Lee Chenoweth, Jeannette Hedrick, Ruth Grose, Robert Hider.

### music educators national conference

The Wesleyan M.E.N.C. organization is added evidence to the progress of the music department in achieving added status. Music majors and minors seek to aid the department in many ways. With the assistance of Miss Armstrong they plan several projects within the fields of interest displayed by their members.

### american guild of organists

Newly organized during the fall the Student Chapter of the American Guild of Organists is a group of music majors specializing in organ. Mr. Shafer is guiding the group with Rhea Lee Chenoweth as president; Rosemary Bryan, secretary; and Mary Wooddell, treasurer.

### student chapter of american guild of organists

TOP ROW: Mr. Shafer, Marilyn Johnston, Mary Wooddell, Betty Lambert. BOTTOM ROW: Robert Hider, Rosemary Bryan, Rhea Lee Chenoweth, Paul Moser, Carole Doughton, Charles Dent.





## pi epsilon theta

TOP ROW: Michael Kundrat, Sung Hahn, Dr. Franquiz.  
BOTTOM ROW: Virginia Light, Ruth Epler, Carol Boyer, Betty Wood, Cornelia Mendoza, Carol Kane, Richard Evans.

## pi epsilon theta

Wesleyan philosophers are encouraging the spirit of philosophical study and the value of voluntary discipline in serious inquiry on the college campus and in world affairs. Beta chapter was founded here in 1946. This year the group participated in the West Virginia Philosophical Society meeting and acted as host for the affair. Michael Kundrat is president.

## psychology club

This group, under the direction of the new head of the psychology department, Dr. Orlo Strunk, Jr., has presented a wide variety of programs. Titles have ranged from such intriguing subjects as "How to Make an A," to "What Are Little Girls Made Of." Shirley Armfield is president.

## psychology club

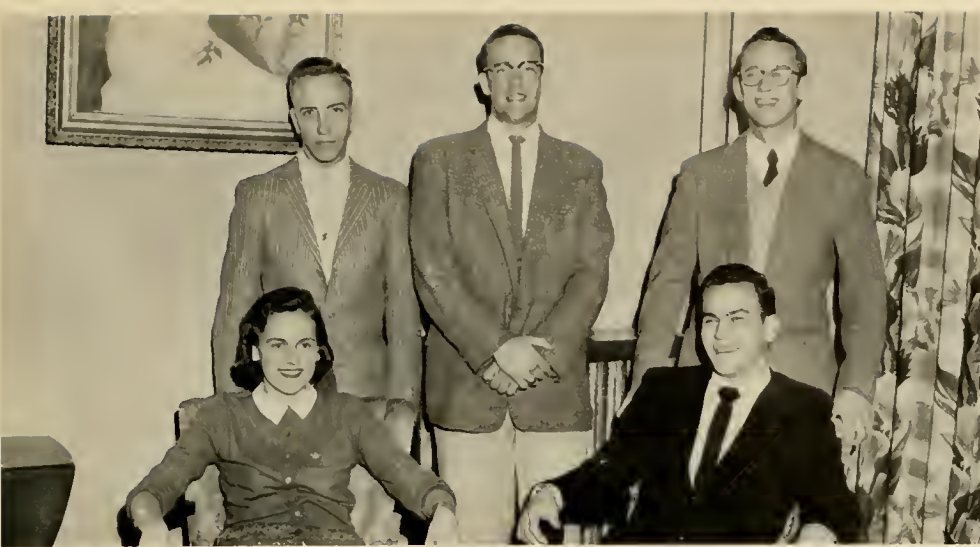
TOP ROW: Hazel Mae Williams, John Roach, Janet Belcher, Paul Gramlich, Harold Colvin, Richard Evans, Frank Horn, Edward Donald, Sue Kohlhepp, Donald Carroll, Allen Geller, Virginia Light. BOTTOM ROW: Linda Falik, Sylvia Klepper, Michael Kundrat, Betty Kay Hanifan, Dr. Strunk, Ruth Epler, Calvin McCutcheon, Jo Ellen Flagg, Shirley Armfield.





## sociology club

TOP ROW: Ronald Brooks, William Will, Paul Gramlich.  
BOTTOM ROW: Sylvia Klepper, Calvin McCutcheon.



## sociology club

Juniors and Seniors majoring in sociology gain further opportunities in this field as members of the Sociology Club. They obtain information, concerning the current social problems and situations, through many interesting speakers and the other functions of the group. Although not completely activated during the fall the group is striving to become more active during the second semester.

## de molay

The campus DeMolay club provides an opportunity for its members to remain active and interested in DeMolay work while away from their home chapter. Their purpose is to promote worthwhile activities for the campus.

Bruce Gourlay is president while Paul Olive is vice president; Fred Eliassen, secretary-treasurer; and George Miller, sergeant-at-arms.

## order of de molay

TOP ROW: Hunter Cobb, Bruce Gourlay, Fred Eliassen, Dale Blomberg.  
BOTTOM ROW: Michael Kundrat, Larry Gardner, George Miller.





### student national education association

TOP ROW: Mendel Zickafoose, Samuel Caudill, Paul Grake, David Brown, Robert Fosnaugh, Leonard Stagon, Harry Hickie, Edmund Kristofik, George Seagraves, John Shirley, Mr. Martin, Dr. Hupp. THIRD ROW: Ann McClain, Delma Beer, Carolyn Kopple, Janie Pfalzgraf, Nancy McGregor, Laura Bays, Bonnie Bean, Delores Keyser, Margaret Seagraves. SECOND ROW: Mary Lou Hetz, Georgetta Cottrill, Phyllis Kuhl, Sharie Dean, Ann Queen, Jean Rawson, Marilyn Johnson, Betty Jo Hubbard. BOTTOM ROW: Patricia Malone, Peggy Jo Morton, Jeannette Hedrick, Donna Bissel, Bonita Huffman, Mrs. Feather, Ann Pemberton, Rosalie Abbott, Mary Burton.

### student national education association

A new name on Wesleyan's campus is the Student National Education Association. Previously known as the Morris P. Shawkey Chapter of the F.T.A., the chapter seeks to create interest and awareness in education and its problems.

Monthly meetings of S.N.E.A. are devoted to study of educational problems. Jean Rawson is president.

### betty lamp club

The Betty Lamp Club, composed of majors or minors in home economics, under the supervision of Miss Tissue has put into practice the skills that they will find in everyday housekeeping. Mara Linaberger is president.

### betty lamp club

TOP ROW: Elnora Chambers, June Smith, Mara Linaberger, Ann Queen, Geraldine Davis, Sally Bond, Nancy Jo Funk, Mary Lee Winnet. BOTTOM ROW: Sandi Hall, Bonnie Ames, Judy Atkinson, Georgetta Cottrill, Connie Kercher.





**grieks**



TOP ROW: Janet Ailstock, Judy Atkinson, Judy Aylestock, Mary Beth Cloyes, Bettie Kae Catlin, Margo Brookover. FIFTH ROW: Janet Boggess, Evelyn Bone, Rhea Lee Chenoweth, Beatrice Chigos, June Cooper, Jo Ann Crites. FOURTH ROW: Ruth Grose, Sandra Hall, Betty Kay Hanifan, Jeanette Hedrick, Margaret Hogsett, Phyllis Hogsett. THIRD ROW: Jenny Lynn Kessel, Sylvia Klepper, Eleanor Linger, Shirley Miller, Sally Proffitt, Jean Rawson. SECOND ROW: Kay Rider, Connie Rohrbough, June Smith, Dorothy Surber, Linda Sower, Elizabeth Strader. FIRST ROW: Mary Sue Van Camp, Ann Welker.

# alpha gamma delta

Alpha Gamma Delta will remember Butch Surber as Santa Claus at their Christmas Party. The Providence scholarship trophy was awarded to the Alpha Omicron Chapter of Alpha Gamma Delta for high scholastic achievements. This presentation was made at the national convention held in San Diego, California. Kay Rider, president, was present at the convention in July and was soprano soloist on the convention program.

Official colors are red, buff, and green. The flower is the red and buff rose.

## officers

|                               |                   |
|-------------------------------|-------------------|
| President .....               | KAY RIDER         |
| First Vice President .....    | JEANNETTE HEDRICK |
| Second Vice President .....   | JUDY AYLESTOCK    |
| Recording Secretary .....     | JEAN RAWSON       |
| Corresponding Secretary ..... | SYLVIA KLEPPER    |
| Treasurer .....               | JUNE SMITH        |



TOP: Alpha Gams beam with glee.  
BOTTOM: An assortment of swishy costume.  
LEFT: Sorority scientists display skill.



alpha omicron  
chapter of  
ΑΓΔ



TOP ROW: Harriet Aveyard, Delma Beer, Carol Boyer, Mary Burton, Elnora Chambers, Kay Custer. FOURTH ROW: Georgetta Cottrill, Sharie Dean, Barbara Ferrell, Marilyn Firl, Nancy Jo Funk, Judy Lampila. THIRD ROW: Marilyn Lantz, Deann LeBeau, Patricia Malone, Peggy Jo Morton, Suzanne McNutt, Carolyn Mullen. SECOND ROW: Leith Owen, Nancy Pettry, Letifia Pifer, Rebecca Post, Carol Quattlander, Greta Tillinghast. BOTTOM ROW: Carol Ann Wilson, Mary Lee Winnett.

# alpha delta pi

Activities during the year included informal parties, a recognition banquet, dances and the Black and White Diamond formal.

Alpha Delta Pi was founded in 1851 at Wesleyan College, Macon, Georgia. National Headquarters is at Atlanta, Georgia. Alpha Delta Pi, the first secret society for women, has 84 chapters and 40,000 members. Gamma Kappa was established on Wesleyan's campus in 1948. The official colors are blue and white and their flower is the violet.

## officers

President ..... PEGGY JO MORTON  
Vice President ..... CAROL BOYER  
Recording Secretary ..... HARRIET AVEYARD  
Corresponding Secretary ..... PAT MALONE  
Treasurer ..... NANCY JO FUNK



TOP: Attentive, aren't they.  
BOTTOM: And the band played on.

LEFT: The home ec majors enter another baking contest.



**gamma kappa  
chapter of  
ΑΔΠ**



TOP ROW: Laura Bays, Edith Diller, Margaret Fonz, Carol Gearty, Janet Harris. FOURTH ROW: Dolores Keyser, Joyce Kurzel, Nancy Halsall, Phyllis Keene, Jodi Lamb. THIRD ROW: Shirley Lee, Mara Linaberger, Glenda McDonald, Nancy McGregor, Janie Pfalzgraff. SECOND ROW: Ginger Power, Ann Queen, Jane Reemsnyder, Priscilla Rice, Nadine Schaffer. BOTTOM ROW: Elizabeth Teter, Shirley Wagner, Jean White, Ruth Wilcox, Sue Holm.



# alpha xi delta

The Alpha Xi's Santa Claus left eleven smiling faces after a visit at their annual underprivileged children's Christmas party. Other functions such as card parties, the Valentine's dance, the traditional Rose Formal, and a hayride fill the calendar of the Alpha Xi's.

Official colors are double blue and gold and their flower is the pink Killarney rose.



## officers

President ..... DOLORES KEYSER  
 Vice President ..... CAROL GEARTY  
 Corresponding Secretary ..... MARA LINABERGER  
 Recording Secretary ..... SUE HOLM  
 Treasurer ..... ANN QUEEN  
 Membership Chairman ..... NANCY MCGREGOR



TOP: The pledges are always interesting!  
 BOTTOM: Does that cat use Ipana?  
 LEFT: This is what you really call "demobilized."

beta sigma  
 chapter of  
**AΞΔ**



TOP ROW: Louis Barail, Richard Beveridge, John Blubaugh, Donald Carroll. FOURTH ROW: John D'Apolito, Herbert Eckert, Kenneth Hiller, Gerald Lilly. THIRD ROW: Arthur Miklosey, Thomas McGovern, Frank Neuner, Frank Patti. SECOND: Bruce Reynolds, Robert Sage, Thomas Salata, Harry Santillo. BOTTOM ROW: Joseph St. Miklosey, James Tatem. NOT PICTURED: Gordon Damon, John Ruof.

# alpha sigma phi

Beta Nu Chapter of Alpha Sigma Phi was noted this year for its successfully intriguing Masquerade Dance and other social functions. The Dragon Float in the Homecoming parade brought back the days when knights were young and bold.

Beta Nu appeared on the Wesleyan campus in 1946.

Alpha Sigma Phi official colors are cardinal red and stone gray. The flower is the red rose.

## officers

President  
Vice President  
Treasurer  
Recording Secretary  
Corresponding Secretary  
Marshal

FRANK NEUNER  
JOHN RUOF  
JAMES TATEM  
JOHN BLUBAUGH  
HARRY SANTILLO  
FRANK PATTI



TOP: United they stand!  
BOTTOM: Tired, but proud.  
LEFT: A real snort of a float.



beta nu  
chapter of  
**ΑΣΦ**



TOP ROW: Bernard Bartek, Gerard Boe, Reed Bradford, Richard Brooke, Harold Bullock, William Cole. SIXTH ROW: Donald Cooke, Bert Corneby, David Dennis, Willard Downham, Louis Durborow, Kenneth Fleming. FIFTH ROW: Kay Franks, Gordon Green, James Hastings, Jefferson Holbert, Ingolf Holm-Anderson, Donald Hoy. FOURTH ROW: John Kennedy, David Kough, Marshall Love, Taylor Meister, William McBride, James McDonald. THIRD ROW: Thomas McKinney, Donald McVitty, Frank Parisi, Dean Patenaude, Noel Petersen, Richard Powell. SECOND ROW: Kenneth Remley, Kenneth Roberts, James Rock, Wesley Schaffner, James Scott, Winston Seamans. BOTTOM ROW: Art Seiderman, William Smith, Gerard Sweeton, Joseph Tereshko, Ralph Undreiner. NOT PICTURED: Clarence Bartman, Herbert Hartman, Robert Louer, John Swander, Van Mante, Edwin Johnston.

# theta chi

A variety of parties, house parties, the Anniversary dance and the Spring Dance, were sponsored by Theta Chi this year.

Theta Chi fraternity was founded in 1856, but it was not until 1950 that Wesleyan's Delta Gamma Chapter was established. At the present there are 119 chapters throughout the country. Official colors are military red and white; the flower is the white carnation.



## officers

|                           |                   |
|---------------------------|-------------------|
| President .....           | JEFFERSON HOLBERT |
| Vice President .....      | GERARD BOE        |
| Secretary .....           | RICHARD BROOKE    |
| Treasurer .....           | JOHN KENNEDY      |
| Assistant Treasurer ..... | LOUIS DUBOROW     |
| Chaplain .....            | ROBERT LOUER      |



TOP: Pledges display Colgate smiles.  
 BOTTOM: A real high romance.  
 LEFT: Intricate mechanism.

delta gamma  
 chapter of  
 ΘΧ



TOP ROW: Dick Aidala, Frank Ardito, William Bauserman, James Caldwell, Samuel Caudill, William Echols. FOURTH ROW: Paul Edberg, Robert Fennimore, James Fraser, Ralph Gay, Paul Hodyas, Alan Hubbard. THIRD ROW: Kirk Innes, Robert Jervis, John Johnstone, Ralph Jordan, Paul Karickhoff, Terry Kelly. SECOND ROW: William Koelln, Jefferson Manser, Clifford Moebius, Michael Nixon, Aaron Pulhamus, Willim Reiter. BOTTOM ROW: Robert Rice, Frank Schneider, Joseph Simpson, Tod Torrence, Willard Wassell, William Watson. NOT PICTURED: Allen Bean, Harold Hitchcock, Jack Pennington.

# kappa alpha order

Kappa Alpha Order, Wesleyan's southern fraternity, came to the campus as Beta Chi in 1929. Kappa Alpha Order was founded in 1865 at Washington and Lee University. At present there are 78 chapters and 40,000 members. National headquarters are at Atlanta, Georgia.

Official colors are crimson and old gold, and the flower is the crimson rose.

The big activity of the year is the Old South Weekend. Other activities include an Alumni Banquet, house parties, and a sweet-heart dance. Margo Brookover was selected as "Belle of the Ball" at the annual Dixie Ball.

## officers

|                  |                  |
|------------------|------------------|
| Number I .....   | WILLIAM WATSON   |
| Number II .....  | WILLIAM REITER   |
| Number III ..... | JAMES CALDWELL   |
| Number IV .....  | JAMES FRASER     |
| Number V .....   | CLIFFORD MOEBIUS |
| Number VI .....  | WILLARD WASSELL  |



TOP: A promising chorus line for the Latin Quarter.  
 BOTTOM: Even Kappa Alpha has Angels!  
 LEFT: Hope she doesn't sneeze.



**beta chi  
 chapter of  
 KA order**



TOP ROW: John Campbell, Ronald Feldman, Lynn Gardner, Paul Gramlich. FOURTH ROW: Michael Halasz, James Harbert, Frank Horn, Thomas Leach. THIRD ROW: Eric Lipetz, James McLaughlin, Kenneth Maberry, William Norman. SECOND ROW: Edward Powers, Robert Rubin, Jay Silver, Ronald Talkington. BOTTOM ROW: William Thompson, Robert Zolan. NOT PICTURED: William Clawson, Alfred Moye, Malcom Zarnfaller.



# kappa sigma kappa

Kappa Sigma Kappa, founded at VMI in 1867, came to Wesleyan's campus as West Virginia Eta Chapter in 1955. There are 40 chapters and a membership of 12,000. Official colors are purple and gold, and the flower is the iris.

A hayride, dinner dances, the Iris Ball, a picnic, and the landslide victory of its float in the Homecoming parade were outstanding events of the year.

Frank Horn was appointed acting president of the Southeastern Province of Kappa Sigma Kappa during the International Convention held in Buffalo in August of 1957. William Norman was named author of one of the five best pledge letters written to the grand president.

## officers

|                           |               |
|---------------------------|---------------|
| President .....           | JOHN CAMPBELL |
| Vice President .....      | FRANK HORN    |
| Secretary .....           | ROBERT RUBIN  |
| Treasurer .....           | LYNN GARDNER  |
| Chaplain .....            | THOMAS LEACH  |
| Financial Secretary ..... | ROBERT ZOLAN  |



TOP: A neat trick if you can do it?  
 BOTTOM: Note that pitcher???  
 LEFT: It's a winner.



**west virginia eta  
 chapter of  
 KΣK**



TOP ROW: Edward Alberter, William Altman, Ronald Brooks, Ronald Casto, Robert Coates, Clare Edman. FIFTH ROW: Richard Evans, Lloyd Fike, Roger Fischer, Allen Geller, Thomas Goheen, Harold Greenway. FOURTH ROW: Richard Hamilton, Frederick Hart, John Hellemann, William Holmes, George Hubbell, Ted Jungas. THIRD ROW: Jack Kissel, Michael Kundrat, Robert LeFalce, Linwood Lathrop, Charles Modlin, James Mowry. SECOND ROW: Calvin McCutcheon, Paul McCutcheon, George Orr, Vaughn Parseghian, Charles Perry, William Pettibon. BOTTOM ROW: Jerry Rabinowitz, Martin Schwartz, Jack Tissot, William Wills, Randy Wingert, Robert Winters.

# phi sigma epsilon

Phi Sigma Epsilon, the only local campus fraternity, was organized in 1951. The Phi Sigs are a brotherhood, maintaining high standards of character and action. Official colors are green, gold, and white.

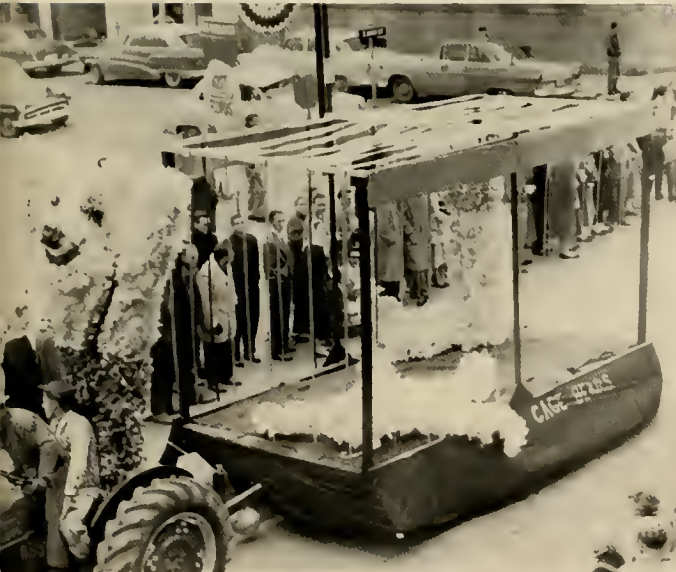
Activities this year have been a retreat, Christmas and Spring formals.



## officers

|                           |                 |
|---------------------------|-----------------|
| President .....           | WILLIAM WILL    |
| Vice President .....      | FRED HART       |
| Recording Secretary ..... | JACK KISSEL     |
| Comptroller .....         | LINWOOD LATHROP |
| Historian .....           | JAMES MOWRY     |
| Chaplain .....            | ROGER FISCHER   |

TOP: "Ain't" love great!  
BOTTOM: A man of intellect and of the world?  
LEFT: A real "cagey article."



ΦΣΕ



**interfraternity and panhellenic project  
queen's float in homecoming parade**



**sports**



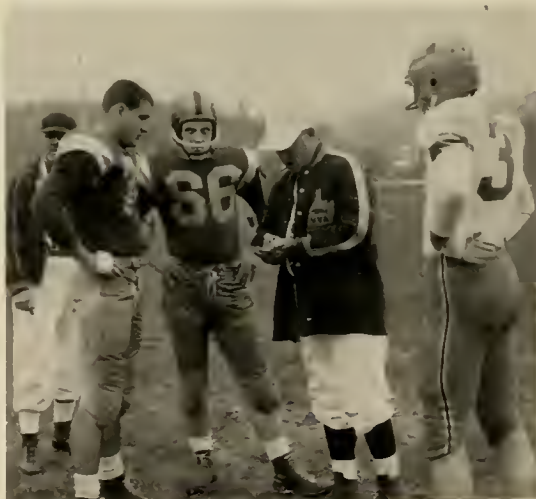
TOP ROW: Coach Reemsnyder, Bob Hider, Craig Heinrich, George Ward, Joe Lore, Terry Kelley, Jeff Gosman, John Buschmann, Ronald Talkington, Coach Ross. THIRD ROW: Len Stagon, Jeff Holbert, Gail Zickefoose, Allen Corscadden, Bill Mayers, Mike Herrera, Ronald Casto, John Herbst, Sam Gross. SECOND ROW: Paul Hodyas, Will Downham, Gene Brown, Bruce Reynolds, Pete Rock, Phil Newlon, Ronald Tenney, Dave Wolfe, Tay Meister. BOTTOM ROW: Dean Patenaude, Bob Fennimore, Fred Newman, Jim Early, Frank Cvetnick, Bernie Bartek, Dave Winston, George Seagraves.

## football



LEFT: Head Coach Dave Reemsnyder talks with backfield coach Sam Ross and end coach "Hank" Ellis.

BELOW: Game Captain Cliff Judy watches as Tech elects to receive the kickoff at Homecoming.





**CLIFF JUDY**  
Guard  
All Methodist, All W.V.I.A.C.  
Thompson Memorial Award



"Bernie" starts Wesleyan offense.

## marietta . . . bethany

Marietta squeaked by Wesleyan in the season's opener. Wesleyan's first touchdown of the season was scored on a 40 yard run by Seagraves. Gail Zickefoose added the second score. Two blocked extra points by Marietta were the deciding factors.

The Bethany Bisons opened their season by defeating the Bobcats 50-13. A 25 yard pass play brought the first touchdown of the game to Bethany. Wesleyan's scores came on an 81 yard play by Seagraves and a 4 yard plunge by John Herbst. Seagraves made 1 out of 2 extra point attempts. The Wesleyan forward wall, Patenaude, Judy, Mayers, Newlon, Rock, Winston, and Hodyas played excellent ball but were on the short end of the score.



**LEN STAGON**  
Tackle  
All W.V.I.A.C.  
Four Year Veteran



**FRANK CVETNICK**  
Fullback  
All W.V.I.A.C., All Methodist  
Thompson Award 1955



Wesleyan Goliaths drag defenseless Falcon to ground.



Don't slow down now!



PHIL NEWLON  
Center  
Honorary W.V.I.A.C.  
Four Year Veteran

## fairmont . . . salem

The first home game saw the Bobcats defeated by the Falcons 19-0. In each of the first three quarters the Falcons scored. Meister prevented a Falcon score by downing Rank on the 8 yard line after a climactic 54 yard gain.

The Salem Bengals triumphed over the Bobcats at Hite Field in Clarksburg 27-6. An 84 yard pass-run play from Travis Parks to Jim Hartbarger was Salem's outstanding play. A series of running plays put the ball on the Salem 31 where Gross fired to Gammons for Wesleyan's only tally. The Bobcats failed to click because of injuries to key players.

The Wesleyan-Glenville game was cancelled because of flu.



"GENO" SEAGRAVES  
Right Halfback  
Leading Scorer  
Leading Ground Gainer



Frank clears way as Tay Meister makes nice gain.



FRED NEWMAN  
Fullback  
Hard Running Back  
Four Year Veteran





**JEFF HOLBERT**  
Tackle  
Tough Lineman  
Two Year Veteran



You've got my headgear, but I've got a touchdown.

## tech . . . hampden sydney . . . elkins

The annual Homecoming game saw Tech overpower the Bobcats 27-7. Tech drew first blood, but Wesleyan came fighting back. Meister ran back a kickoff good for 78 yards with Bartek scoring from the 8 yard line. Seagraves converted the extra point and the first half ended 7-7. Tech outplayed Wesleyan and scored 20 points to dominate the second half.

Wesleyan's sixth defeat came at the hands of undefeated Hampden Sydney 32-6. Gene Brown scored the lone touchdown that Cvetnick set up with a 15 yard run.

Elkins' Senators were humbled 27-6 for the Bobcats' only victory of the season. From the 7 yard line Seagraves tallied Wesleyan's first touchdown. Then Brown sliced off tackle on a 53 yard run. Bartek hit Gammons on an 11 yard pass-play for the third tally. Cvetnick powered over from the 4 yard line for the fourth Bobcat touchdown.



**JIM EARLEY**  
Left Halfback  
Fine Punter  
Three Year Veteran



**JOHN HERBST**  
Fullback  
Defensive Stallwart  
Veteran



Seagraves splits the uprights for the final point of the '57 season.



## cross country

The Wesleyan harriers wound up the season with two victories in five meets. Captain Jack Fraser twice led the long distance team to the finish line, coming in ahead against Fairmont (4.2 miles in 23.51 minutes) and Marshall (4.2 miles in 22.16½ minutes). In the other meet with the Fairmont Falcons, Jack Johnstone and Fraser both crossed the finish line in 21 minutes to tie for first place over the 3.7 mile course.

### 1957 CROSS COUNTRY SUMMARY

|                |    |          |                  |
|----------------|----|----------|------------------|
| Wesleyan ..... | 48 | 15 ..... | Geneva           |
| Wesleyan ..... | 24 | 33 ..... | Fairmont         |
| Wesleyan ..... | 25 | 30 ..... | Marshall         |
| Wesleyan ..... | 44 | 15 ..... | West Virginia U. |
| Wesleyan ..... | 28 | 27 ..... | Fairmont         |
| Won 2—Lost 3   |    |          |                  |

James Fraser, Wallace Cheatham, William Altman, Arthur Mikloszy, Charles Ackenbom, William Clawson, Jack Johnstone, Ronald Pennington, Coach Ellis.





The Bobkittens were captained by Sharie Dean and Linda Sowers.



## field hockey

Wesleyan's hockey team added to the Homecoming festivities by battling Davis-Elkins to a 2-2 tie. Jean White, left wing, scored both goals for the Bobkittens. Serving as co-captains for the seventeen girl squad were Sharie Dean and Linda Sowers. The Bobkittens and Coach Miss Walters are looking forward to a bigger and better season next fall with the hope that the 'flu bug' will forget about the hockey players.





FRANKLIN "HANK" ELLIS  
Head Basketball Coach



# best in wesleyan history

floor squad streaks past west virginia tech to win berth in kansas city n.a.i.a. tournament



TOP ROW: Bert Corneby, Bob Shamblin, Gail Zickefoose, Floyd Hoskinson, Bob McBride, Lee Raesly, Hank Weissmann. SECOND ROW: Frank Hartman, Boyd Dotson, Larry West, Jeff Manser, Sam Caudill, Gary Hess, Sam Gross, John Mumford. BOTTOM ROW: Coach Ellis, Bill Smith, Jim McDonald, Ed Kristofik, Ken Remley, Bill Bauserman, Jim Wilkinson.

SUPPORT YOUR TEAM  
Next home game  
FEB  
. 15



Captain Ed Kristofik confers with the opposing captain and referees before the opening of the Glenville game.

## basketball

West Virginia Wesleyan College climaxed its most successful basketball season in history February 26, when the red-hot Bobcats trounced West Virginia Tech to win the honor of representing District 28 in the N.A.I.A. tournament held the week of March 10 at Kansas City. W.V.W.C. had never before managed to win this berth.

Coached by former Wesleyan hardcourt star, Hank Ellis, the Cats finished the regular season in second place in the W.V.I.A.C., losing only twice in 21 conference contests—each time to undefeated West Virginia Tech, the nation's highest scoring basketball quint.

When W.V.I.A.C. Tournament time rolled around February 18-22, the host Bobcats, seeded in second place, racked up victories over Concord, Bethany, and West Liberty and then turned on the Golden Bears of Tech 80-72, to win their first tournament title in 12 years.

A well balanced team with five men averaging in double figures and a definite height advantage were credited by Coach Ellis as the backbone of the tremendous season, which he called, "The easiest . . . for me since I've been coaching—because these fellows made it easy."

Wesleyan's over-all season record, prior to the Kansas City Classic, was 28-4.

Hess chalks up two more points for Wesleyan.

Remley unleashes a vicious hook-shot as Wesleyan downs Glenville.





Kris steps to the free-throw line as Bauserman waits "just in case . . ."



The action went "thataway."



"Thanks for the assistance, pal, but I can put it in myself."  
Bill Smith scores for our side.



TOP: "How's the altitude up there?" asks number  
"50" as Remley goes up for two.

RIGHT: "Is it is or is it ain't?" wonder McDonald  
and Hess as they bottle up a Fairmont player  
while Remley goes in for the lay-up.



# w.v.i.a.c. tournament winners

## west virginia wesleyan bobcats



Jean White clutches trophy after selection as an outstanding cheerleader at tournament.

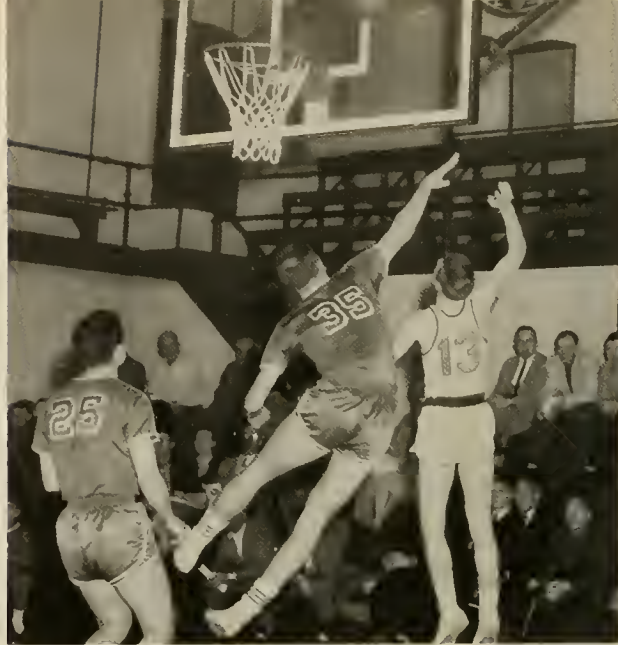


RIGHT: "I guess we can find room for it in our trophy room." Coach Ellis and Kris accept the winning trophy from Salem College President and W.V.I.A.C. head, Dr. K. Duane Hurley.

BOTTOM RIGHT: The tournament champs! Bill Smith points to the proof.

BOTTOM: The vanquished foe!





ABOVE LEFT: "It goes through the air with the greatest of ease and down through the hoop for a two point breeze!" Hess connects for two points.

ABOVE: "I'll take two points despite that curve." Wilkinson braves backcourt for a lay-up.



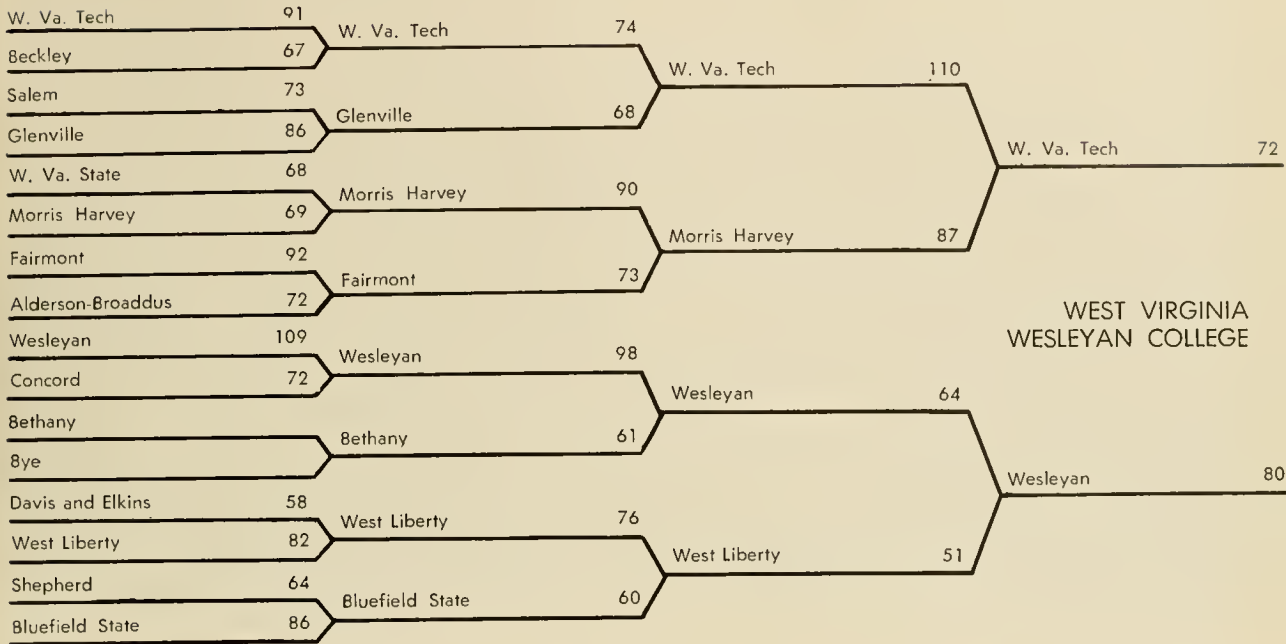
ABOVE: "Pardon our open mouths, but . . ."

LEFT: "Let's set it up, Sam." Wilkinson and Caudill start a Wesleyan offense.

RIGHT: "If you ever went in, go in now!" Remley ties up Tech as the half ends.



# 1958 w.v.i.a.c. tournament pairings



The cheerleaders play a very important part in the athletic program on Wesleyan's campus by leading cheers at all athletic events. These enthusiastic cheerleaders, Jean White, Bette Kae Catlin, head cheerleader Tom Leach, and Sandy Fultineer, were responsible for the thuses held on the campus as well as inspiring the home crowd at the games.



TOP ROW: Dave Winston, Clifford Moebius, Terry Kelley, Alfred Moye', Charles Murray, Norman Hillman, Howard Brush. THIRD ROW: Robert Mavian, Jeff Holbert, Dave Trader, Jack Pennington, William Bauserman, Clarence Robbins, Sam Caudill. SECOND ROW: Clifford Judy, James Powell, William Smith, Frank Ardito, James Fraser, Julian Trail, Coach Ross. BOTTOM ROW: David Dennis, Jerry Boe, Herbert Costolo, Daniel Weeks, Gene Brown, James Lockhart.

## track

After losing its first two meets, Wesleyan's track team finished strong with three victories. The Wesleyan track men captured the W.V.I.A.C. Championship Meet held in Buckhannon by defeating Fairmont, Concord, Bethany, West Liberty, and Davis and Elkins. This is the third consecutive year that the Championship Trophy has stayed at Wesleyan.

Cliff Judy broke the record for the 120-yard high hurdles by running them in 15.8 seconds. Jim Fraser broke the record for the 880-yard run and set a new record of 2 minutes and 2 seconds while Frank Ardito, Bill Bauserman, Sam Caudill, and Jack Pennington set a new record for the four-fifth's mile relay by running it in 2 minutes 42.2 seconds.

### 1957 TRACK SUMMARY

|          |     |     |                  |
|----------|-----|-----|------------------|
| Wesleyan | 34  | 102 | West Virginia U. |
| Wesleyan | 56  | 70  | Geneva           |
| Wesleyan | 81½ | 49½ | Fairmont         |
| Wesleyan | 93  | 29  | Marshall         |
| Wesleyan | 95  | 35  | Frostburg, Md    |

### W.V.I.A.C. TRACK MEET

|          |     |     |                  |
|----------|-----|-----|------------------|
| Wesleyan | 72½ | 47  | Fairmont         |
|          |     | 15  | Concord          |
|          |     | 28½ | Bethany          |
|          |     | 8   | West Liberty     |
|          |     | 4   | Davis and Elkins |

W.V.I.A.C. Champs



Pace-setters of the 1957 Orange and Black squad were Co-Captains Clifford Judy and Daniel Weeks.



Jim Powell exhibits the form which won first place for him in the pole vault.



Big Ken Remley clears the bar at 5' 4" in the high jump.

Wesleyan hurdler Cliff Judy and his opponent match strides in the exciting hurdles event.





James Tatem, Ronald Talkington, William Norman, William Hughes, John Burnett, John Hadley, Ralph Undreiner, Charles Reutiman, Coach Reemsnyder.

# tennis

## 1957 TENNIS SUMMARY

|          |   |   |                  |
|----------|---|---|------------------|
| Wesleyan | 0 | 9 | Marietta         |
| Wesleyan | 1 | 8 | Salem            |
| Wesleyan | 3 | 6 | Davis and Elkins |
| Wesleyan | 5 | 4 | Concord          |
| Wesleyan | 0 | 9 | Bethany          |
| Wesleyan | 0 | 9 | Marietta         |
| Wesleyan | 4 | 5 | Salem            |
| Wesleyan | 4 | 5 | Davis and Elkins |
| Wesleyan | 2 | 7 | Bethany          |
| Wesleyan | 5 | 4 | Fairmont         |
| Wesleyan | 6 | 3 | Fairmont         |
| Wesleyan | 6 | 3 | Concord          |

Won 4—Lost 8

Bob Zanesky exhibits form on putt.



Robert Oesau, Daniel Weston, John Ryan, Jack Utermehle, Robert Zanesky, Jeff Manser, Coach Reemsnyder.



Talkington exhibits his backhand.



# golf

## 1957 GOLF SUMMARY

|          |        |        |                     |
|----------|--------|--------|---------------------|
| Wesleyan | 6 1/2  | 8 1/2  | Fairmont            |
| Wesleyan | 6      | 9      | Bethany             |
| Wesleyan | 9 1/2  | 5 1/2  | Davis and Elkins    |
| Wesleyan | 13 1/2 | 1 1/2  | Davis and Elkins    |
| Wesleyan | 8 1/2  | 6 1/2  | W. Va. Tech         |
| Wesleyan | 7      | 8      | Glenville (tri)     |
| Wesleyan | 4      | 11     | Fairmont match)     |
| Wesleyan | 10     | 5      | Glenville           |
| Wesleyan | 7      | 8      | Wheeling (tri       |
| Wesleyan | 11 1/2 | 4 1/2  | West Liberty match) |
| Wesleyan | 6 1/2  | 8 1/2  | W. Va. Tech         |
| Wesleyan | 4 1/2  | 10 1/2 | Wheeling (four      |
| Wesleyan | 4      | 11     | West Liberty team   |
| Wesleyan | 3      | 12     | Bethany match)      |

Won 5—Lost 9

# baseball

Coach "Hank" Ellis' Wesleyan diamond team experienced its ups and downs last spring as the team won 11 contests and lost 9. The Wesleyan team was paced by hitters Hal Hitchcock, Jim Wilkinson, Gary Hess and Bill Leppla, and the superb mound performance of Jim Early. At the conclusion of the season Wilkinson, Hitchcock, and Hess were named to the All-Conference Team.

## 1957 BASEBALL SUMMARY

|          |    |    |                    |
|----------|----|----|--------------------|
| Wesleyan | 1  | 5  | West Virginia U.   |
| Wesleyan | 8  | 2  | Salem              |
| Wesleyan | 8  | 9  | Marietta           |
| Wesleyan | 6  | 9  | Ohio U.            |
| Wesleyan | 3  | 2  | Davis and Elkins   |
| Wesleyan | 6  | 1  | Glenville          |
| Wesleyan | 3  | 4  | West Virginia U.   |
| Wesleyan | 19 | 1  | Morris Harvey      |
| Wesleyan | 5  | 3  | West Virginia Tech |
| Wesleyan | 9  | 3  | Davis and Elkins   |
| Wesleyan | 4  | 7  | Fairmont           |
| Wesleyan | 8  | 3  | Marietta           |
| Wesleyan | 6  | 3  | Salem              |
| Wesleyan | 12 | 0  | Morris Harvey      |
| Wesleyan | 9  | 10 | West Virginia Tech |
| Wesleyan | 5  | 1  | Alderson Broaddus  |
| Wesleyan | 6  | 5  | Concord            |
| Wesleyan | 4  | 6  | Fairmont           |
| Wesleyan | 5  | 10 | Alderson Broaddus  |
| Wesleyan | 4  | 6  | Glenville          |

Won 11—Lost 9  
W.V.I.A.C.—Second Place



TOP: Captain "Rudy" Jablonsky smokes a single into right center field.

ABOVE: What did we leave at home? asks the Morris Harvey coach as Wesleyan downed his team 12-0.



TOP ROW: John Holt, Al Platt, Will Downham, Bernie Bartek, Jim McDonald. SECOND ROW: Coach Ellis, George Seagraves, Jim Early, Hal Hitchcock, Don Alexander, Ed Johnston, Bob Sage. BOTTOM ROW: Tay Meister, Gary Hess, Frank Cvetnick, Rudy Jablonsky, Bill Leppla, Jim Wilkinson, Don Pennet.

# intramurals

The intramural program at Wesleyan plays a vital part in the lives of the students. It provides a wholesome activity for those who cannot or do not participate in varsity competition. There is an intramural program for both men and women in football, basketball, volleyball, ping-pong, and softball.

The men's football championship was won by the Greek League's Theta Chi's Don McVitty, Bill Smith, Jim McDonald, Wes Schaffner, Van Mantee, Butch Bartman, Jerry Boe, Bill Cole, Art Seiderman, Ken Roberts, and Frank Parisi, who defeated Jim Wilkinson, Gary Hess, "Buckeye" Leppla, Don Pennett, "Buck" Hickie, "Hank" Weissman, Larry West, Ed Kristofik, and Frank Hartman of Pat Moor's team.

"Buck" Leppla, Phil Krevitt, John Holt, Ron Pennington, Dean Patenaude, Don Rainey, John Buschman, "Hank" Weismann of "The Goofers" won the independent volleyball championship.



Greek League Volleyball champs: BACK ROW: Frank Ardito, Jack Pennington, Bill Reiter. FRONT ROW: Jack Johnstone, Jim Fraser, Bob Rice, and Tod Torrence.



ABOVE TOP: "I got it over, can you?"

ABOVE: The long stretch.

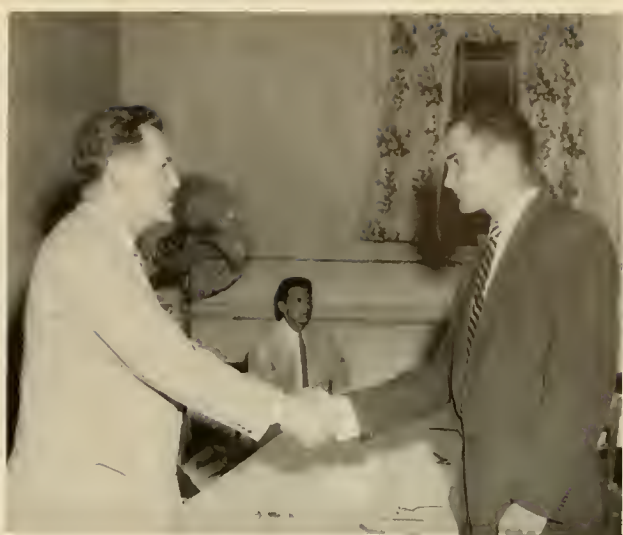
Sophomore Girls are Volleyball Champs: BACK ROW: Madine Schaffer, Sally Bond, Jean White. FRONT ROW: Deann LeBeau, Mary Sue Van Camp, Shirley Lee, Edith Diller.





# all sports banquet

"We couldn't have a better coaching staff and they have attracted a fine group of athletes" . . . thus the chairman of West Virginia Wesleyan's athletic committee, William A. Hallam, summarized another successful sports year Saturday evening, May 18, at the annual college Athletic Banquet. The yearly fete honors athletes, managers, and trainers from the Bobcats' eight varsity squads—baseball, track, tennis, golf, football, cross country, basketball and women's hockey.



ABOVE TOP: President Martin presents Cliff Judy with the All-Methodist Football award.

ABOVE: Arthur McDermott presents the Sportsmanship Award to James Powell.

LEFT TOP: Coach Reemsnyder cuts the Bobcat cake as President Martin and Dean Schoolcraft look on with amusement.

LEFT: John Holt presents Bob Jablonsky with a gold baseball autographed by all of the members of the team.



TOP: Jim goes over advertising reports with Libby and Shirley.

BOTTOM: George, Jane, and John.

# MURMURMONTIS . . . Business and Sports Staffs

## BUSINESS MANAGER

James McLaughlin

## ADVERTISING

Shirley Lee  
Sally Bond  
Judi Slaving  
Elizabeth Teter

## SPORTS

John Campbell  
George Seagraves  
Jane Reemsnyder

## PHOTOGRAPHY

Professional:  
Howard Hiner  
Organizations, Sports,  
Activities  
Ulysses Buffington  
Portraits, Cover  
Student Photographer:  
Kleber Gregory  
Sports, Activities, Buildings



Staff Photographer looks over work.

CONGRATULATIONS  
1958 GRADUATES

**SHINGLETON BROTHERS, INC.**

Wholesale Fresh Fruits and Vegetables

We specialize in all fresh fruit and vegetable items in season —  
bananas, our specialty.

# Individual, Organizational Index

## a

Abbott, William—27  
 Abbott, Argyle—27, 116  
 Abbott, Rosalie—27, 110, 126  
 Ackenbom, Beatrice—27  
 Ackenbom, Charles—27, 150  
 Agey, Dr. C. Buell—89  
 Aidala, Richard—27, 138  
 Ailstock, Janet—27, 99, 121, 128  
 Albert, Mary—27, 110, 120, 121  
 Alberter, Edward—27, 122, 142  
 Alberts, William—27  
 Alizio, Anthony—15  
 Alizio, Joseph—15, 114  
 Alper, Kenneth—27  
 Alpha Gamma Delta—128, 129  
 Alpha Delta Pi—130, 131  
 Alpha Psi Omega—107  
 Alpha Sigma Phi—134, 135  
 Alpha Xi Delta—132, 133  
 Altman, William—15, 111, 142, 150  
 Ambrose, Patricia—26, 101, 110, 122  
 American Guild of Organists—123  
 Ames, Bonnie—27, 110, 121, 126  
 Angelikoussis, Leon—27  
 Arbogast, James—27  
 Ardito, Frank—15, 138, 160

Armfield, Shirley—27, 100, 124  
 Armstrong, Miss Elizabeth—89, 123  
 Astanian, Edward—15  
 Atkinson, Judith—15, 103, 126, 128  
 Aveyard, Harriet—15, 62, 100, 103,  
 104, 108, 112, 130  
 Awards Committee—99  
 Aylestock, Judith—15, 128

## b

Bailey, Betty—15  
 Bakas, Stanley—27  
 Balaban, Joseph—27, 114  
 Barail, Louis—15, 134  
 Barnes, Franklin—27  
 Bartek, Bernard—27, 136, 163  
 Bartell, Eugene—27  
 Bauserman, William—27, 99, 138, 153,  
 155, 160  
 Baxa, Artis—27  
 Baylis, Elizabeth—27, 118, 121  
 Bays, Laura—15, 101, 126, 132  
 Bean, Bonnie—126  
 Becker, Joyce—27, 110, 112, 113, 122  
 Beeler, John—28, 122  
 Beer, Delma—28, 110, 120, 126, 130  
 Beers, Carol—26

## abb—bow

Belcher, Janet—15, 110, 112, 122, 123,  
 124  
 Benzene Ring—106  
 Beta Beta Beta—107  
 Betty Lamp Club—126  
 Beveridge, Richard—28, 134  
 Bierwirth, Fay—28  
 Bigelow, Richard—28, 114  
 Bileca, Dennis—28  
 Biser, Madona—28  
 Bissnell, Donna—28, 110, 126  
 Black, Floy—15, 106  
 Block, Joan—28, 114  
 Blomberg, Dale—28, 125  
 Blubaugh, John—28, 114, 134  
 Blumenfeld, Lillian—28  
 Bodurtha, Paul—15, 112  
 Boe, Gerad—15, 106, 107, 136, 160  
 Boegershausen, Gary—28, 110, 122  
 Boggess, Janet—28, 108, 118, 120,  
 121, 128  
 Bonar, Carol—28  
 Bond, Sally—28, 116, 121, 126  
 Bone, Evelyn—15, 128  
 Boone, Daniel—28  
 Borg, Charles—28  
 Bower, Gaylord—28  
 Bower, Nancy—28



**PERCE ROSS MEN'S WEAR**

9 W. Main Street

Buckhannon, W. Va.

**Fine Cars . . .**

**OLDSMOBILE**

**CHEVROLET**

**America's Most Popular**

**Automobiles**

**CURRY CHEVROLET  
 COMPANY, INC.**

**Genuine General Motors factory  
 precision parts and accessories . . .  
 wholesale and retail.**

bow—cri

Bowles, Dr. Robert—88, 92  
Bowyer, Carol—16, 99, 108, 122, 124, 130  
Bradford, Reed—16, 101, 136  
Brewer, Reed—16, 101, 136  
Brewer, Barbara—28, 110, 112  
Brill, Dr. Mary—91  
Broderick, Edward—28  
Brookover, Margo—28, 103, 128  
Brooke, Richard—26, 100, 106, 136  
Brooks, Frederick—28  
Brooks, Ronald—14, 125, 142  
Brotherton, Paul—29  
Broumberg, Michael—16  
Brown, Alice—16  
Brown, David—29, 126  
Brown, Gene—29, 103, 160  
Brown, Miss Mary Jo—89  
Brown, Dr. Ralph—89, 114  
Browning, Rondal—29  
Brush, Howard—29, 160  
Bryan, Rosemary—123  
Bullock, Harold—16, 136  
Burdette, William—29, 106  
Burgess, Harry—29  
Burke, Jerry—29  
Burkholder, Phillip—29  
Burnett, John—16, 162  
Burr, Elbert—29, 122  
Burruss, Nancy—29, 100, 110, 112, 113

Burton, Mary—16, 101, 121, 126, 130  
Buschmann, John—29

C

Cafarella, Robert—29  
Caldwell, James—26, 138  
Calendine, Richard—26, 122  
Campbell, Carlton—29  
Campbell, Garry—29, 122  
Campbell, John—29, 116, 122, 140  
Canterbury Club—110  
Carathanasis, Nicholas—29  
Carbone, Anthony—29  
Carroll, Donald—29, 114, 124, 134  
Carter, Albert—29  
Carter, Arthur—16  
Casto, Ronald—29, 103, 142  
Catlin, Bette Kae—29, 128, 159  
Catrill, Billie—24  
Caudill, Samuel—29, 99, 126, 138, 158, 160  
Chaddock, Paul—16  
Chambers, Elnora—29, 103, 121, 126, 130  
Chang, Diana—30  
Cheatam, Wallace—30, 150  
Chenoweth, Rhea Lea—16, 123, 128  
Chigos, Beatrice—30, 118, 121, 128, 151

Childers, Russel—24  
Childs, Wayne—30  
Chisnell, Barry—30  
Choir, A Cappella—122  
Chrisman, Dr. Lewis—91  
Christie, Lois—24  
Ciuffo, Anthony—30, 122  
Clark, Breckinridge—30, 110  
Clark, Dr. Lewis—90  
Clawson, William—30, 150  
Cloman, James—30  
Cloyes, Mary Beth—30, 128  
Coates, Robert—16, 142  
Cobb, Hunter—30, 118, 125  
Cole, William—30, 136  
Collins, Jarvis—24  
Colombo, Louis—16, 114, 122  
Colvin, Harold—30, 124  
Colvin, Martha—30  
Community Council—98  
Conduct Committee—100  
Conway, Frank—121  
Cooke, Donald—16, 136  
Cooper, June—30, 121, 128  
Cordero, Ernesto—30  
Corneby, Bert—30, 136, 153  
Corscadden, Allen—30  
Cottrill, Georgetta—16, 126, 130  
Covert, Denton—30, 122  
Crickenberger, Robert—30

SNACK BAR  
PING-PONG  
CARDS AND GAMES  
DANCING  
BOOK STORE

## STUDENT CENTER OF WESLEYAN

S.C.O.W. COMMITTEE ROOM  
PUBLICATIONS OFFICE  
PUBLICITY OFFICE  
HEALTH OFFICE



Crispin, Raymond—16  
 Crites, Jo Ann—30, 128  
 Crouch, Miss Evelyn—93  
 Crutchfield, Sandra—30, 151  
 Cultural Enrichment Committee—102  
 Cupples, Howard—30, 112  
 Custer, Kay—30, 104, 130  
 Cutright, Dalton—31  
 Cvetnick, Frank—24, 163

## d

Dalton, Clyde—31  
 Damaska, David—31, 122,  
 Damon, Gordon—24  
 D'Apolito, John—31, 134  
 Davis, Norma—16, 110, 122, 123, 126  
 Davis, Geraldine—31, 110  
 Davis, Mr. Sidney—89  
 Day, Annabelle—24, 108  
 Dean, Sharie—31, 99, 103, 108, 118,  
 121, 126, 130, 151  
 Deane, James—31  
 Dearborn, Robert—31  
 DeBarr, Alan—31  
 DeBarr, Victor—31  
 DeGroot, Peter—31, 112  
 DeHaven, Jeanette—31, 118, 151  
 Delta Psi Kappa—108  
 Deluse, George—31

DeMarco, Raymond—31, 118, 119  
 DeMolay Club—125  
 Dengler, Frantz—17, 106  
 Dennis, David—31, 136, 160  
 Dent, Charles—31, 122, 123  
 DeRevere, Bradford—31  
 Deskins, Niawana—31  
 Dickens, Denver—31  
 Diller, Edith—31, 132  
 Dizon, Josue—31, 100  
 Donald, Edward—31, 124  
 Donegan, Harold—31  
 Doolin, John—31  
 Dotson, Boyd—32, 153  
 Doughton, Carole—32, 123  
 Downey, Dr. Marvin—92  
 Downham, Willard—32, 136, 163  
 Dulaney, John—17  
 Dunlap, Thomas—32  
 Durborow, Louis—32, 120, 136  
 Dykema, Scott—17

## e

Eakel, John—32  
 Earley, James—17, 163  
 Echols, William—32, 106, 138  
 Eckert, Herbert—32, 134  
 Edberg, Paul—32, 138  
 Edman, Clare—32, 111, 118, 142  
 Educational Affairs Committee—100  
 Eliassen, Frederick—32, 125

Eliot, Charles—32  
 Elliott, Thomas—32, 112  
 Ellis, Mr. Franklin—92, 150, 152, 157,  
 163  
 Emery, Esther—32, 114  
 Engle, Stanley—32  
 Epler, Ruth—17, 113, 124  
 Eppley, Robert—32  
 Evans, Richard—17, 124, 142  
 Everts, Ward—32  
 Evertsen, Theodore—17

## f

Falik, Linda—32, 114, 120, 124  
 Feather, Esther—126  
 Feinberg, Lawrence—32, 114  
 Feldbin, Isabelle—32  
 Feldman, Ronald—17, 140  
 Fellowship Teams—113  
 Fennimore, Robert—32, 138  
 Fenstermacher, Iva—32  
 Ferrell, Barbara—32, 120, 130  
 Fessler, Diana—110, 120  
 Fike, Lloyd—32, 111, 118, 142  
 Firl, Marilyn—33, 112, 130, 151  
 Fischer, Roger—17, 99, 112, 122, 142  
 Fisher, Judith—33, 110  
 Fitch, Douglas—17, 110, 122  
 Fitch, Thomas—17  
 Fitzgerald, Dianne—33

Official Commercial Photographer for Your Murmumontis

≡ **MOUNTAIN STATE** ≡  
**PHOTO & ENGRAVING SERVICE**

LINE & HALF TONE  
 ENGRAVINGS

BUCKHANNON,  
 WEST VA.

COMMERCIAL PHOTOGRAPHY  
 FILM PROCESSING

**ACME BOOK STORE**

"The Place Where You  
 Are Always Welcome"

MAGAZINES  
 STATIONERY

and

SPORTING GOODS

**PEOPLES GROCERY AND  
 MEAT MARKET**

"Buckhannon's Food Shop"  
 BUCKHANNON, WEST VIRGINIA

fla—har

Flagg, Jo Ellen—17, 110, 121, 124  
Flansburg, Donald—33, 112  
Fleming, Kenneth—33, 103, 136  
Flint, James—33  
Fonz, Margaret—33, 132  
Fosbenner, Martha—33, 113  
Fosnaugh, Robert—17, 121, 126  
Frame, Charles—33  
Franks, K. Larrimore—33, 136  
Franquiz, Dr. Jose—91, 124  
Fraser, James—33, 138, 150, 160  
Frosch, Allen—33, 111, 112  
Fultineer, Sandra—33, 62, 121, 159  
Funk, Nancy Jo—33, 121, 130

g

Gage, Robert—33  
Gammons, Allen—33  
Gardner, Lawrence—33, 125  
Gardner, Lynn—33, 140  
Gaston, Garren—33, 113, 122  
Gates, Alvin—33  
Gay, Ralph—33, 99, 107, 138  
Gaylord, Mrs. Helen—93  
Geraty, Carol—33, 104, 132  
Geigley, David—33  
Geller, Allen—33, 124, 142  
German, Charles—34  
Glauner, Dr. George—88, 92  
Glee Club, Hyma—122

Goff, Mary—34  
Goheen, Thomas—17, 111, 122, 123,  
142  
Gosman, Jeffery—34  
Gould, Dr. Arthur—90, 106  
Gourlay, Bruce—34, 110, 116, 119, 125  
Gower, Mary—34  
Graham, Sharon—34, 106, 116  
Grake, Paul—126  
Gramlich, Paul—17, 112, 124, 125, 140  
Grant, Joan—34  
Grant, John—34  
Greene, Gordon—34, 122, 136  
Greenfield, Harvey—34  
Greenway, Harold—17, 75, 111, 122,  
142  
Gregory, Kleber—34, 110  
Gress, Janet—34, 103, 110, 122  
Grever, Kenneth—34  
Griffin, Jane—34, 121  
Griffith, Frances—34, 120  
Groah, Miss Betty—92, 120  
Groener, Phyllis—34  
Gross, Ruth—18, 102, 107, 108, 110,  
112, 113, 120, 121, 122, 123, 128  
Gross, Samuel—34, 153  
Guinello, Frank—34, 113

h

Hadley, John—18, 122, 162

Hahm, Sung Koog—18, 124  
Halasz, Michael—34, 140  
Hall, Jerry—34  
Hall, Johnathan—34, 122  
Hall, Judith—34  
Hall, Lorentz—34  
Hall, Sandra Jo—18, 110, 121, 126,  
128  
Hall, William—34, 106  
Hallam, Miss Hallie Lu—86  
Hallam, Mr. William—90  
Halsall, Nancy—121, 132  
Hamilton, John—35  
Hamilton, Richard—18, 75, 99, 102,  
122, 142  
Hamner, Shannon—35  
Hamrick, Gordon—35  
Haney, Jack—35, 122  
Hanifan, Betty Kay—35, 106, 108, 112,  
122, 124, 128  
Hanjian, Armen—18, 112  
Hanson, James—35, 112  
Harbert, James—35, 103, 111, 116,  
122, 140  
Harman, Judith—35  
Harper, John—35  
Harris, Janet—18, 108, 132  
Harrison, Roger—35  
Hart, Frederick—35, 100, 142  
Hartman, Franklin—35, 153

Get the Best  
Get  
**SEALTEST**



RIECK DAIRY DIVISION  
PHONE ELKINS, W. VA. 45

Compliments of

**WILSON  
BAKING COMPANY**

CLARKSBURG  
WEST VIRGINIA

Hartman, Janet—18  
 Hastings, James—35, 136  
 Haught Literary Society—108  
 Hayden, Carol Sue—35, 112  
 Hedrick, Jeanette—18, 100, 108, 112, 123, 126, 128  
 Heinrich, Craig—35, 114  
 Hellmann, John—35, 142  
 Henry, William—35  
 Herbst, John—18, 106  
 Herold, Margaret—35, 110, 112  
 Herrera, Michael—35, 103  
 Hess, Gary—35, 154, 156, 158, 163  
 Hetz, Mary—35, 108, 121, 126  
 Hetz, Robert—18, 107, 122  
 Hickle, Harry—18, 26  
 Hicks, Mr. William—85  
 Hider, Robert—35, 110, 120, 122, 123  
 Hillel Society—114  
 Hiller, Kenneth—35, 134  
 Hillman, Norman—36, 107, 122, 160  
 Hipple, John—36, 122  
 Hitchcock, Harold—163  
 Hoag, David—36  
 Hodge, John—26  
 Hodsdon, Edgar—18, 75, 122  
 Hodyas, Paul—36, 138  
 Hoffman, James—24  
 Hogsett, Margaret—56, 112, 113, 122, 128  
 Hogsett, Phyllis—18, 122, 128  
 Holbert, Jefferson—18, 136, 160

Holbrook, Robert—114  
 Holm, Sue—24  
 Holm-Anderson, Ingolf—36, 136  
 Holmes, Beverly—36, 122  
 Holmes, William—36, 142  
 Holt, John—18, 163, 165  
 Homann, William—36  
 Hopping, Ruth—36, 121  
 Horn, Frank—36, 103, 124, 140  
 Hoskinson, Floyd—36, 122, 153  
 Howell, Harold—36  
 Howes, Cara—36  
 Hoy, Donald—19, 136  
 Hubbard, Alan—36, 138  
 Hubbard, Betty Jo—36, 110, 126  
 Hubbell, George—19, 142  
 Huffman, Bonita—36, 126  
 Hupp, Dr. James—91, 126

James, Arthur—36  
 Jeffreys, Susan—37, 110, 116, 121  
 Jervis, Robert—19, 138  
 Johnson, Donald—37, 122  
 Johnson, Howard—37  
 Johnson, Leonard—37  
 Johnson, Paul—37, 111, 122  
 Johnston, William—37  
 Johnston, Edwin—163  
 Johnston, Marilyn—37, 110, 112, 122, 123, 126  
 Johnstone, John—37, 106, 138, 150  
 Jones, Gerald—37, 111, 112, 113  
 Jones, Marvin—37  
 Jordon, Ralph—19, 121, 138  
 Judy, Clifford—24, 160, 161, 165  
 Jungas, Theodore—18, 98, 99, 113, 122, 142

i

Ignatovic, Robert—36  
 Ingraham, Harold—36  
 Innes, Kirk—36, 138  
 Innes, John—19  
 Interfraternity Council—104  
 Ireland, Robert—36  
 Issac, Earl—36

k

Kacer, Edward—37  
 Kachel, Gretchen—37  
 Kailing, William—37, 111  
 Kaminski, Betty—37, 110  
 Kane, Carol—37, 102, 113, 124  
 Kappa Alpha Order—138, 139  
 Kappa Phi—110  
 Kappa Sigma Kappa—140, 141

j

Jackson, James—36

**POUNDSTONE  
 DRUG COMPANY  
 WHITMAN'S CHOCOLATES**

Phone 432

24 West Main St.

Buckhannon

**DRS. R. L. HAWKINS  
 and  
 W. D. KNOX  
 Dentists**



**Meet the Crowd at the  
 RAINBOW ROOM**

E. Main Street

Buckhannon, W. Va.

kar—man

Karickhoff, Paul—37, 138  
Kawadler, Elliot—37, 138  
Keene, Phyllis—37, 121, 132  
Kelley, Frederick—37  
Kelley, Terry—37, 138, 160  
Kennedy, Hall—37  
Kennedy, James—37  
Kennedy, John—19, 136  
Kercher, Donnie—37, 120, 126  
Kerr, James—37, 122  
Kessel, Jenny—38, 128  
Keyser, Dolores—19, 104, 108, 121, 126, 132  
Khedouri, Issac—38  
Kibler, John—38  
Kinnamon, Gilbert—38  
Kiser, Mr. Raymond—86  
Kissel, Jack—19, 142  
Kleinstuber, David—38  
Klepper, Sylvia—38, 102, 108, 120, 121, 124, 125, 128  
Koelln, William—38, 138  
Kohler, Charles—38, 111, 113  
Kohlhepp, Sue—38, 110, 113, 121, 122, 124, 151  
Koon, James—19, 106  
Kopple, Carolyn—38, 110, 118, 121, 123, 126  
Koslin, Steven—19  
Kost, William—38  
Kotsonis, Emmanuel—38  
Kough, David—38, 136

Krevitt, Philip—19  
Kripsak, Barbara—38  
Kristofik, Edmund—19, 126, 153, 154, 155, 157, 158  
Kuhl, Phyllis—19, 126  
Kundrat, Michael—38, 112, 122, 124, 125, 142  
Kurznel, Joyce—38, 122, 123, 132

|  
LaFalce, Robert—19, 114, 122, 142  
Laign, David—38  
Lamb, Martha Jo—19, 108, 121, 132  
Lambert, Betty—38, 122, 123  
Lampila, Judith—38, 112, 113, 122, 130  
Lantz, George—38, 130  
Lantz, Marilyn—38  
Lantz, Mary Sue—38  
Lasell, Edah—20, 113, 122  
Lathrop, Linwood—20, 122, 142  
Lauritsen, Jean—38  
Law, Carolyn—38, 110  
Layfield, Robert—39  
Leach, Thomas—39, 121, 140, 159  
LeBeau, Deann—39, 108, 121, 130, 151  
Lee, Shirley—39, 116, 132  
Leppla, William—39, 163  
Lesko, John—39  
Levin, Harvey—39, 114

Lewis, Neil—39, 114, 122  
Lewis, Ronald—39, 100, 106  
Lewis, Larry—39  
Lewis, Weller—39, 116  
Light, Virginia—20, 108, 113, 118, 121, 124, 151  
Lilly, Gerald—39, 134  
Linaberger, Mara—20, 103, 126, 132  
Lindberg, Carl—39  
Ling, Mr. James—85  
Linger, Eleanor—39, 122, 128  
Lipetz, Eric—20, 140  
Lockard, Mr. E. Kidd—90  
Lockart, James—160  
Lockey, Daniel—39  
Long, Bruce—39  
Lord, Dennis—39, 103  
Lore, Joseph—39  
Lover, Robert—111  
Love, Marshall—39, 136

m

Maberry, Kenneth—39, 103, 140  
Machenberg, Allen—39, 114  
Malone, Patricia—20, 126, 130  
Maloney, Donald—39  
Manser, Jefferson—20, 104, 138, 162



G. C. MURPHY CO.

Buckhannon's Leading  
Variety Store . . .

Every Item Guaranteed . . .

First Quality . . .

STRADER'S

"A BETTER PLACE TO BUY"

Merchandise to  
Meet Your Needs

BUCKHANNON  
MILLING COMPANY

Feed and Flour

Telephone 302

BUCKHANNON

W. VA.



Marine, Jack—20, 120  
 Martin, Ann—40, 122  
 Martin, David—40  
 Martin, Patricia—40  
 Martin, Mr. Robert—91, 126  
 Martin, Dr. Stanley—65, 84, 165  
 Masek, Penny—40  
 Mason, Harold—20  
 Mathers, Frank—40  
 Mayers, William—146  
 Mearns, June—20, 108, 110  
 Medley, James—20  
 Meister, John—40, 114, 136, 163  
 Mendoza, Cornelia—20, 110, 124  
 Men's House Board—103  
 Messersmith, Mr. Fred—89, 99, 102,  
 121  
 Metallides, Anthony—40  
 Methodist Student Movement—112  
 Meyer, Judith—40  
 Middlebrook, Robert—20  
 Miklosey, Arthur—40, 114, 134, 150  
 Miles, Nancy—40, 151  
 Miller, Douglas—40  
 Miller, George—40, 118, 125  
 Miller, Jack—40  
 Miller, Robert—40, 122  
 Miller, Russell—40, 114  
 Miller, Shirley—20, 128  
 Minnis, Clyde—40

Mitchell, Merton—20  
 Modlin, Charles—20, 118, 142  
 Moebius, Clifford—40, 138, 160  
 Montagua, John—40  
 Moore, Samuel—40, 112  
 Morrison, Bonnie—40  
 Morrison, William—40, 113  
 Morton, Peggy Jo—21, 101, 108, 121,  
 126, 130  
 Moser, Paul—40, 110, 116, 120, 123  
 Moss, Imogene—40  
 Moss, Lawrence—40  
 Mowry, John—21, 111, 122, 142  
 Moye, Alfred—41, 122, 160  
 Mullen, Carolyn—41, 130  
 Mumford, John—41, 153  
 Murmurmotis—116, 117  
 Music Educators National  
 Conference—123

## mac and mc

MacQueen, Gordon—39  
 MacWilliams, Donna—39, 100, 103,  
 110, 122  
 McBride, William—41, 106, 136  
 McBride, Robert—41, 153  
 McCabe, Nancy—110, 112, 120  
 McClain, Ann—110, 126  
 McCue, Ralph—102

McCulloch, John—102  
 McCutcheon, Paul—41, 142  
 McCutcheon, Calvin—41, 124, 125, 142  
 McDonald, Glenda—21, 98, 99, 122,  
 123, 132  
 McDonald, James—41, 136, 153, 156,  
 163  
 McDonald, Madonna—41, 110  
 McGuirk, John—41  
 McGovern, Thomas—41, 134  
 McGregor, Nancy—41, 100, 107, 121,  
 126, 132  
 McGregor, Stanley—26  
 McGuire, Richard—41, 114  
 McIlvried, Paul—41  
 McKinney, Thomas—21, 121, 132  
 McKittrick, Dr. Mary—92  
 McLaughlin, James—41, 116, 140  
 McLaughlin, Robert—41, 111, 113, 122  
 McNutt, Suzanne—21, 100, 108, 112,  
 113, 122, 130  
 McPhee, James—41  
 McVitty, Donald—21, 136

## n

Nargiz, Gerald—42  
 Neely, Richard—42  
 Neuman, Frederick—24  
 Neuner, Frank—21, 134



**THOMPSON'S PHARMACY**  
 "THE BEST IN TOWN"

## REPUBLICAN DELTA

Upshur County's  
 Leading Newspaper

## GASTON GROCERY CO.

Wholesale Grocers  
 BUCKHANNON, W. VA.

new—rem

Newlon, Phillip—21  
Newman Club—114  
Nicholas, Paul—42, 103, 106  
Nixon, Michael—42, 138  
Norman, William—42, 102, 122, 140,  
162

O

Oasis, Robert—42, 114  
O'Brien, David—42  
Oleson, Stuart—21  
Olive, Paul—42  
Orr, George—42, 107, 111, 142  
Orr, Melvin—42, 111, 122  
Ost, Justin—42  
Otto, Gretchen—42, 121  
Otto, Margaret—42, 110  
Owen, Leith—42, 130

P

Panhellenic Council—104  
Parisi, Frank—21, 114, 136  
Parker, Mrs. Juanita—90  
Parks, Donald—42  
Parmet, Phillip—24  
Parrilla, Kenneth—42  
Parry, Phillip—42  
Parseghian, Vahan—42, 142  
Patenaude, Dean—26, 136  
Patterson, Rex—42

Patti, Frank—42, 104, 114, 134  
Payton, Roy—42  
Pearson, Nancy—42, 110, 122  
Pemberton, Ann—21, 99, 101, 108, 126  
Pennett, Donald—42, 163  
Pennington, John—160  
Pennington, Ronald—43, 150  
Pepper, William—43  
Perry, Charles—43, 111, 112, 122, 142  
Perry, Fred—43  
Peterson, Noel—43, 136  
Pettibon, William—21, 111, 112, 122,  
142  
Pettry, Nancy—43, 120, 121, 130  
Pfalzgraf, Janie—21, 62, 72, 99, 101,  
108, 121, 126, 132  
Pharos—118, 119  
Phillips, Rowena—43, 110  
Phi Sigma Epsilon—142, 143  
Pi Epsilon Theta—124  
Pierce, Conrad—43, 122  
Pifer, Letitia—43, 120, 130  
Plate, David—43  
Playshop—120  
Podrog, Robert—43  
Post, Rebecca—43, 130, 151  
Potter, Francis—43  
Powell, Richard—43, 136  
Power, Virginia—43, 121, 132  
Powers, Edward—43, 104, 140  
Powers, Kenneth—24  
Preston, William—43

Proffitt, Sara—43, 103, 110, 128  
Psychology Club—124  
Publications Committee—100  
Pulhamus, Aaron—43, 138  
Purdy, Joy—43

q

Quattlander, Carol—43, 130  
Queen, Ann—21, 100, 103, 108, 121,  
126, 132

r

Rabatin, Leonard—43, 116  
Rabinowitz, Jerry—21, 104, 142  
Rader, John—43  
Raesly, Leland—43, 122, 153  
Rainey, Donald—44  
Ramage, Gael—44  
Randolph, Edward—44  
Rautner, William—44  
Rawson, Jean—21, 72, 126, 128  
Raymond, Dominic—24  
Raymond, Michael—44  
Reemsnyder, Mr. David—93, 116, 162,  
165  
Reemsnyder, Jane—44, 132, 151  
Reiter, William—14, 138  
Religious Activities Committee—102  
Remley, Kenneth—44, 122, 126, 153,  
154, 156, 158, 161



**Official Portrait  
Photographer for  
Your Murmumontis**

**— ULYSSES BUFFINGTON —**

**CLARKSBURG, WEST VIRGINIA**

**Photographer**

Reppert, Shirley—22  
 Reynolds, Bruce—44, 134  
 Rial, Joseph—44, 112  
 Rice, Priscilla—44, 132  
 Rice, Robert—44, 138  
 Richwine, Mr. Keith—91, 118  
 Rider, Kay—22, 62, 121, 122, 123, 128  
 Riggs, John—44  
 Rissmeyer, Helen—22, 108, 113, 122  
 Roach, John—124  
 Robbins, Clarence—44, 160  
 Roberts, Kenneth—44, 103, 136  
 Robinson, Twana—44  
 Rock, Pete—44, 114, 136  
 Rogers, Vincent—44  
 Roessle, Margot—44  
 Rogers, John—44  
 Rohrbough, Constance—44, 110, 112,  
 121, 128, 151  
 Rohrbough, Raymond—44, 111  
 Roney, Frederick—44  
 Rosenman, Joseph—44, 114  
 Ross, Alexander—22, 123  
 Ross, John—44, 122  
 Ross, Mr. Samuel—93, 99, 160  
 Rossbach, Dr. George—90  
 Rossmeyer, William—45, 121  
 Rough, Carol—22  
 Rovello, Samuel—45  
 Rubin, Robert—22, 106, 107, 140

Rudlow, Dean—22  
 Russin, Gerald—22  
 Ryerson, Cornelia—45, 110

S

Sage, Robert—45, 134, 163  
 St. Miklossy, Joseph—23, 134  
 Salata, Thomas—45, 114, 134  
 Sanders, John—45, 111  
 Sanford, Richard—45, 111  
 Santillo, Harry—45, 114, 134  
 Sapp, Edwin—45  
 Schaffer, Nadine—45, 121, 132  
 Schaper, Dr. Florence—92  
 Scherer, Bing—45, 111, 112, 122  
 Schleicher, Don—45  
 Schneider, Frank—45, 138  
 Schoolcraft, Dr. A. A.—84, 99, 165  
 Schoonmaker, William—24  
 Schork, Kenneth—45  
 Schwartz, Martin—45, 142  
 Schwengber, Ernest—45  
 Sciotta, Francisco—45, 114  
 Scott, James—26, 98, 99, 100, 104,  
 111, 118, 136  
 SCOW Committee—100  
 Seagraves, George—22, 116, 126, 163  
 Seagraves, Margaret—22, 126

Seamans, Lyman—22, 122  
 Seamans, Winston—45, 75, 136  
 Seiderman, Arthur—45, 136  
 Sell, Gaynell—45, 110, 113, 118  
 Sepulveda, Edward—45  
 Shafer, Mr. Robert—89, 122, 123  
 Shaffner, Wesley—45, 122, 136  
 Shamblin, Robert—45, 153  
 Shaver, Mr. John—87, 92, 99, 100  
 Sheppard, David—22  
 Shin, Young Sun—45  
 Shirley, John—22, 126  
 Shreve, Charles—46  
 Shuttleworth, Nancy—46, 121, 122  
 Sigma Theta Epsilon—111  
 Silberman, William—46  
 Silver, Jay—46, 106, 114, 140  
 Silvester, Ellsworth—46  
 Simons, Carol—46, 110, 121  
 Simons, Melvin—46  
 Simpson, Joseph—46, 138  
 Slaving, Judith—46, 110, 116, 121  
 Small, Dr. Samuel—91  
 Smith, June—46, 121, 126, 128  
 Smith, Marilyn—22, 106, 107, 108  
 Smith, Robert—46, 111, 113, 122  
 Smith, William—26, 101, 136, 153, 156,  
 160  
 Sociology Club—125  
 Solvensen, Douglas—46

"For the Best  
 in Entertainment"  
**KANAWHA THEATRE**  
 18 S. Kanawha St.  
 BUCKHANNON, W. VA.

Congratulations  
 to the  
 1958 Graduates  
 From the  
**MURMURMONTIS STAFF**

**DAWSON**  
**FURNITURE SALES**  
 Complete Home Furnishings  
 Phone 377  
 BUCKHANNON, W. VA.  
 Phone 377

**REED RADIO SERVICE**  
 Expert Service on All Makes  
 Radios, Phonographs, Television  
 Phone 251  
 18 W. MAIN ST. BUCKHANNON

soc—zol

Social Activities Committee—101  
 Sos, Alexander—22  
 Sowers, Linda—14, 103, 104, 108, 121, 128, 151  
 Sprout, Warren—46  
 Stagon, Leonard—22, 126  
 Stahl, David—23  
 Stanley, Barbara—46, 110  
 Stanley, William—46  
 Stansbury, Mr. James—86  
 Stawarky, James—46  
 Stell, Robert—46  
 Stemple, Janet—46  
 Stepanian, Michael—46  
 Stewart, Dewey—46  
 Stewart, Donald—46, 111  
 Stewart, Jo Ann—46  
 Stockert, Mrs. Helen—93  
 Stone, Walter—46, 113, 120, 122  
 Stotz, David—46  
 Strader, Elizabeth—47, 128  
 Stroles, Constantine—47  
 Strunk, Dr. Orlo—87, 91, 124  
 Student Art Guild—121  
 Student National Education Association—126  
 Surber, Dorothy—128  
 Swan, John—47  
 Sweet, Marlene—47, 112, 113  
 Sweeton, Gerald—47, 136

Talkington, Ronald—14, 122, 140, 162  
 Talkington, Walter—47, 113  
 Tatem, James—23, 134, 162  
 Taylor, Grace—47, 110, 120  
 Teagarden, Jean Ann—47, 110  
 Tell, Jeremiah—23  
 Tenney, Bettie—47, 122, 123  
 Tenney, Elvin—47  
 Tenney, Ronald—47  
 Tereshko, Joseph—47, 136  
 Teter, Elizabeth—47, 116, 132  
 Teter, William—47  
 Theta Chi—136, 137  
 Thompson, Lois Ann—24  
 Thompson, William—47, 110, 140  
 Thonen, Betty—110, 112  
 Thorne, Joseph—47  
 Tillinghast, Greta—47, 112, 122, 130

Tissot, John—23, 142  
 Tissue, Miss Kathryn—90  
 Tjioe, Gim Beng—47, 106  
 Torrence, Tod—47, 122, 138  
 Tracy, James—47, 106, 120  
 Trusilo, William—47  
 Turley, James—47

U

Umstead, Carolyn—47, 113, 118  
 Undreiner, Ralph—47, 136, 162  
 Ursaki, George—48  
 United States Student Association Committee—101

V

VanCamp, Mary—48, 128  
 VanOsdol, Gretchen—48  
 Vaughn, Mrs. Ethel—87  
 Vaughn, Joseph—48  
 Vigna, James—48  
 Voegtlin, David—48  
 VonEiff, Donald—48  
 VonHorn, Richard—23, 121, 122

W

Wadsworth, Raymond—48  
 Wagner, Shirley—48, 114, 132  
 Walker, James—48  
 Wallsork, James—48  
 Walsh, John—49  
 Walters, Miss Etta—93, 151  
 Wanless, Gordon—48  
 Ward, George—48  
 Wassell, Willard—48, 138  
 Watson, William—23, 138  
 Waugh, Carolyn—48  
 Weaver, Robert—23, 112, 122  
 Weiglein, Elizabeth—26, 110, 112, 113, 118  
 Weissmann, Henry—48, 153  
 Welker, Ann—26, 103, 110, 112, 113, 122, 128  
 Wellish, Marshall—48  
 West, Jenny Lynne—24  
 West, Larry—48, 153  
 West, Linda—151  
 Westberg, Charles—48  
 Westfall, Lynn—48, 111, 122

White, Jean—48, 101, 132, 151, 159  
 Wiemokly, Richard—48  
 Wilcox, Ruth—48, 132  
 Wilfong, Jack—48  
 Wilfong, Richard—49  
 Wilkerson, James—49, 122  
 Wilkinson, James—49, 158, 163  
 Will, William—23, 104, 111, 122, 125, 142  
 Williams, Hazel—49, 112, 124  
 Williams, Mr. Heyward—85  
 Williams, Joan—23, 110  
 Williams, Joseph—49  
 Willis, Dr. William—90  
 Wilmoth, Esther—49, 110  
 Wilson, Cara—49  
 Wilson, Carol—23, 107, 130  
 Wilson, David—49  
 Wilson, Naomi—49, 123  
 Wilson, Miss Nellie—87, 89, 101  
 Wingert, Randall—23, 142  
 Winnett, Marry—49, 126, 130  
 Winspear, George—49  
 Winston, David—160  
 Winters, Robert—23, 102, 123, 142  
 Witschey, Warren—49  
 Wolfe, David—49, 106  
 Women's House Board—103  
 Women's Recreation Association—121  
 Wood, Betty—49, 113, 122, 124  
 Wood, Karla—49, 121  
 Wooddell, Mary—49, 110, 122, 123  
 Woolf, Thomas—49  
 Woolley, Norman—49  
 World University Service Committee—100  
 Wright, Clarence—49, 113  
 Wright, Dr. John—90  
 Wright, Samuel—49  
 Wyatt, Fred—49

Y

Yates, Richard—49, 122

Z

Zickefoose, Gail—153  
 Zickefoose, Mendel—126  
 Zinaich, Samuel—23  
 Zolan, Robert—49, 140

## Buyers Index

Acme Book Store—169  
 Buckhannon Milling Co.—172  
 Ulysses Buffington—174  
 Curry Chevrolet—168  
 Dawson Furniture Co.—175  
 Gaston Grocery Co.—173  
 G. C. Murphy Co.—172

Kanawha Theatre—175  
 Knox and Hawkins—171  
 Mt. State Photo and Engraving—169  
 Peoples Grocery and Meat Market—169  
 Perce Ross Men's Wear—168  
 Poundstone Drugs Co.—171  
 Rainbow Room—171  
 Reed Radio—175

Republican Delta—173  
 Rieck, Dairy Division—170  
 Shingleton Brothers—166  
 Strader's—172  
 Student Center of Wesleyan—167  
 Thompson's Pharmacy—173  
 Wilson Baking Co.—170



**WEST VIRGINIA CONFERENCE SEMIN**  
**WESLEYAN UNIVERSITY OF WEST VI**  
**WEST VIRGINIA WESLEYAN COLLEG**



120707

**ARY**  
**RGINIA**

**1890-1903**  
**1903-1906**  
**1906-**

