

1

9

5

8



THE MURMURMONTIS

WEST VIRGINIA CONFERENCE SEMIN
WESLEYAN UNIVERSITY OF WEST V
WEST VIRGINIA WESLEYAN COLLEGE

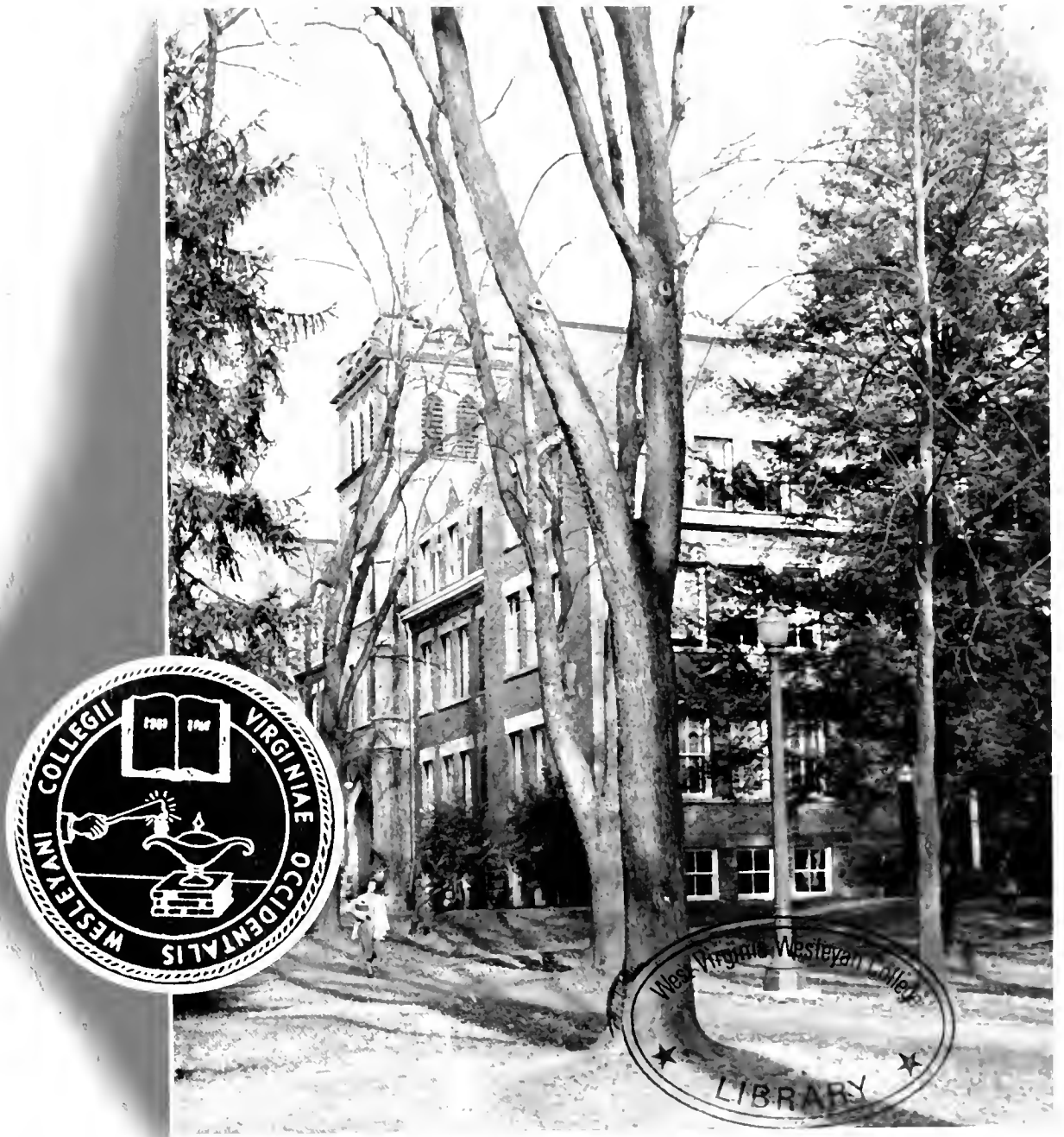
ARY
RGINIA

1890-1903

1903-1906

1906-

Digitized by the Internet Archive
in 2010 with funding from
Lyrasis Members and Sloan Foundation



west virginia wesleyan college

buckhannon, west virginia



students, faculty, administration . . .

who we are
why we came
what we found



900 strong

The 1958 Murmuration . . .



unfolds the story of those who live



published by the
student body of
west virginia
wesleyan
college

This is our story. It is a tale
of life on our campus and what
prompted us to come here.

It is a story told by the
students in pictures and print.

What prompted us to become
involved? Each has a different
answer and the 1958 MURMURMONTIS
presents these stories in
three sections . . .

editors

carol ann pemberton
james david harbert, jr.

business manager

james robert mclaughlin

contents . . .



who we are

seniors
underclassmen



why we came

campus
traditions
administration
faculty



what we found

government
honoraries
religion
organizations
greeks
sports







one day . . .

WHO WE ARE







we are seniors, juniors, sophomores, and freshmen

We come from West Virginia, Pennsylvania, New York, and a score of other states.

We have come to Wesleyan in our quest for knowledge and college life.

Seniors may dream of commencement ceremonies and underclassmen may pause during a busy day to hear the president speak from the steps of Haymond Science Hall but we are all the Wesleyan family. Here is the spot where most of us eat, sleep, play, and study . . . usually in that order.



Top: Students gather for pre-game Thuse meeting on intramural field.

Bottom: The campus appears en masse for a jazz concert by Woody Herman.



seniors

senior class officers



Ronald Talkington
president

B.A., English, Kappa Sigma Kappa, Basketball, Methodist Student Movement, Choir, Tennis, Fellowship Teams, Football Manager, Community Council Committees, Intramurals, Interfraternity Council, Psychology Club.

CLARKSBURG



William Reiter
vice president

B.S., Business Administration, Kappa Alpha Order, Intramurals, Football.

DAYTON, OHIO



Linda Sowers
secretary

B.A., Sociology, Alpha Gamma Delta, Delta Psi Kappa, Women's Recreation Association, Haught Literary Society.

LEBANON, PA.



Ronald Brooks
treasurer

B.A., Sociology, Phi Sigma Epsilon, Intramurals, Sociology Club.

DAVIN

seniors

Alizio, Anthony
Alizio, Joseph
Altman, William
Ardito, Frank



Aslanian, Edward
Atkinson, Judith
Aveyard, Harriet
Aylestock, Judith



Bailey, Betty Jo
Barail, Louis
Bays, Laura
Belcher, Janet



Black, Floy
Bodurtha, Paul
Boe, Gerard
Bone, Evelyn



ALIZIO, ANTHONY PHILIP
B.A., History

BAYSIDE, N.Y.

ALIZIO, JOSEPH PETER
B.A., History

BAYSIDE, N.Y.

ALTMAN, WILLIAM GLENN
B.A., Bible, Phi Sigma Epsilon, Sigma Theta Epsilon, Cross-Country

JAMESTOWN, N.Y.

ARDITO, FRANK CHARLES
B.S., Chemistry, Kappa Alpha Order, Track

SAN DIEGO, CALIF.

ASLANIAN, EDWARD
B.S., Economics, Philosophy Club, Sociology Club, International Relations Club, Intramurals

MASPETH, N.Y.

ATKINSON, JUDITH STEARN
B.S., Home Economics, Alpha Gamma Delta, Women's House Board, Methodist Student Movement, Fellowship Teams, Women's Recreation Association

MONROE, CONN.

AVEYARD, HARRIET M.
B.A., Sociology, Alpha Delta Pi, Women's House Board, Methodist Student Movement, Fought Literary Society, Panhellenic Council, Community Council, Fellowship Teams

GARDNER, MASS.

AYLESTOCK, JUDITH KERWOOD
B.A., Sociology, Alpha Gamma Delta, Sociology Club, Pharos, Playshop, World University Service, Women's Recreation Association.

RIPLEY

BAILEY, BETTY JO
B.S., Chemistry

BUCKHANNON

BARAIL, J. LOUIS
B.S., Business Administration, Alpha Sigma Phi, Intramurals

NEW YORK, N.Y.

BAYS, LAURA ESTALINE
B.A., Education, Alpha Xi Delta, Women's House Board, SCOW Committee, Women's Recreation Association, Newman Club, Playshop, Student National Education Association, Intramurals

BECKLEY

BELCHER, JANET RAE
B.A., English, Kappa Chi, Choir, Student National Education Association, Music Educators' National Conference

KIMBALL

BLACK, FLOY FAE
B.S., Chemistry, Benzene Ring

BUCKHANNON

BODURTHA, PAUL RAY
B.A., English, Pharos, Pi Epsilon Theta, Methodist Student Movement

ROME, N.Y.

BOE, GERARD PATRICK
B.S., Biology, Theta Chi, Benzene Ring, Beta Beta Beta, Cross-Country, Track, Interfraternity Council, Special Activities Committee

DUNELLEN, N.J.

BONE, EVELYN H.
B.A., Sociology, Alpha Gamma Delta

NORTH ARLINGTON, N.J.

BOYER, CAROL
B.A., Sociology, Alpha Delta Pi, Delta Psi Kappa, Pi Epsilon Theta, Sociology Club, Women's Recreation Association, Hockey, Intramurals, Choir

BRADFORD, JOHN REED
B.S., Economics, Theta Chi, SCOW Committee, United States National Student Association Committee

BROUMBERG, MICHAEL MARK
B.S., Biology, Beta Beta Beta, Pharos, Band

BROWN, ALICE NEWMAN
B.S., Chemistry, Benzene Ring

BULLOCK, HAROLD GLENN
B.S., Chemistry, Methodist Student Movement, Intramurals

BURNETT, JOHN HOWARD
B.A., Political Science, Tennis, International Relations Club

BURTON, MARY HUMBIRD
B.A., Social Studies, Alpha Delta Pi, SCOW Committee, MURMUR-MONTIS Queen, Student Art Guild, Women's Recreation Association

CARTER, ARTHUR SIDNEY
B.A., Bible

WILDWOOD, N.J.

MANHASSET, N.Y.

NEW YORK, N.Y.

BUCKHANNON

HERMAN, N.Y.

DUNELLEN, N.J.

ROMNEY

BLUE JAY

CHADDOCK, PAUL HENRY
B.S., Business Administration

CHENOWETH, RHEA LEE
B.M.E., Music, Alpha Gamma Delta, Music Educators' National Conference, American Guild of Organists, Choir

COATES, ROBERT EDWIN
B.A., English, Phi Sigma Epsilon

COLOMBO, LOUIS FRANCIS
B.S., Business, Track, Men's Glee Club, Newman Club, Intramurals

COOKE, DONALD
B.S., Economics, Theta Chi, Band, Intramurals

COTTRILL, GEORGETTA DECKER
B.S., Home Economics, Alpha Delta Phi, Betty Lamp Club

CRISPIN, RAYMOND
B.A., History, Alpha Sigma Phi

DAVIS, NORMA CAROLYN
B.M.E., Music, Kappa Phi, Choir, Music Educators' National Conference

BUCKHANNON

BUCKHANNON

NEW YORK, N.Y.

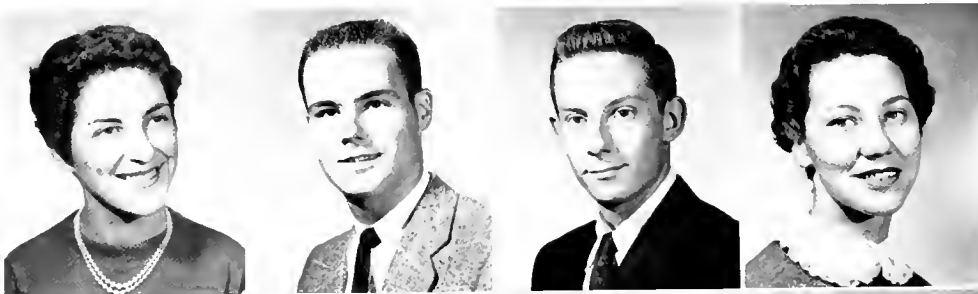
MONTCLAIR, N.J.

NORTH PLAINFIELD, N.J.

BUCKHANNON

PITTSBURGH, PA.

NEW BRIGHTON, PA.



Boyer, Carol
Bradford, John
Broumberg, Michael
Brown, Alice



Bullock, Harold
Burnett, John
Burton, Mary
Carter, Arthur



Chaddock, Paul
Chenoweth, Rhea
Coates, Robert
Colombo, Louis

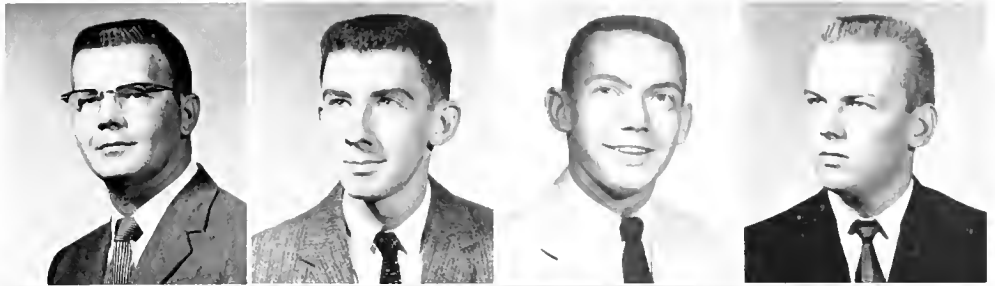


Cooke, Donald
Cottrill, Georgetta
Crispin, Raymond
Davis, Norma

seniors

seniors

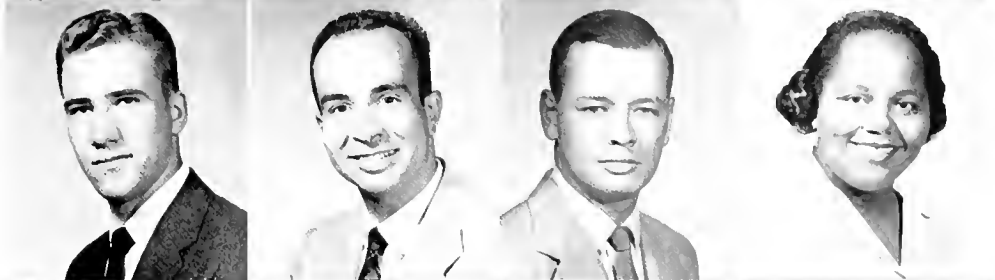
Dengler, Frantz
Dulaney, John
Dykema, Scot
Earley, James



Epler, Ruth
Evans, Richard
Evertsen, Theodore
Feldman, Ronald



Fischer, Roger
Fitch, Douglass
Fitch, Thomas
Flagg, Jo Ellen



Fosnaugh, Robert
Goheen, Thomas
Gramlich, Paul
Greenway, Harold



DENGLER, FRANTZ ALLEN
B.S., Home Economics

LEBANON, PA.

DULANEY, JOHN THORNTON

B.S., Chemistry, Psychology Society, Benzene Ring

KANAWHA HEAD

DYKEMA, SCOT

B.A., English, Track, Orchestra, Band, Intramurals, Student Art Guild

COS COB, CONN.

EARLEY, JAMES JOHN

B.S., Business Administration, Football, Baseball

FORD CITY, PA.

EPLER, ONA RUTH

B.A., Religious Education, Fellowship Teams, Pi Epsilon Theta, Psychology Club

BROOKVILLE, PA.

EVANS, RICHARD LEE

B.A., English, Phi Sigma Epsilon, Pi Epsilon Theta, Photographic Arts Club, Methodist Student Movement, MURMURMONTIS

NEEDHAM, MASS.

EVERTSEN, THEODORE A.

B.A., Music, Collegians

GLEN ROCK, N.Y.

FELDMAN, RONALD J.

B.A., Sociology, Kappa Sigma Kappa, Sociology Club, Psychological Society, Playshop, Band, Intramurals, Methodist Student Movement, Pharos

WHITE PLAINS, N.Y.

FISCHER, ROGER C.

B.A., Sociology, Phi Sigma Epsilon, Choir, Community Council, Metho-

EAST WILLISTON, N.Y.

dist Student Movement, Publications Committee, Religious Activities Committee, Operetta

FITCH, DOUGLASS

B.A., History, Canterbury Club, Men's Chorus, International Relations Club

BRONXVILLE, N.Y.

FITCH, THOMAS E.

B.S., Business Administration

INDIANAPOLIS, IND.

FLAGG, JO ELLEN

B.S., Library Science, Women's Recreation Association, Kappa Phi, Psychology Club

CHARLESTON

FOSNAUGH, ROBERT GLENN

B.A., Art, Student Art Guild

CLEVELAND, OHIO

GOHEEN, THOMAS PATRICK

B.A., Music, Phi Sigma Epsilon, Alpha Psi Omega, Band, Choir, Playshop, Sigma Theta Epsilon, Fellowship Teams, Operetta

RUPERT

GRAMLICH, PAUL WARREN

B.A., Sociology, Kappa Sigma Kappa, Psychology Club, Methodist Student Movement

BELLEROSE, N.Y.

GREENWAY, HAROLD E.

B.A., History, Phi Sigma Epsilon, Sigma Theta Epsilon, Choir, Glee Club, Harmonizers, Methodist Student Movement, Fellowship Teams

DUQUESNE, PA.

GROSE, RUTH ANN CHARLESTON
 B.A., Religious Education, Alpha Gamma Delta, Alpha Psi Omega, Playshop, Kappa Phi, Delta Psi Kappa, Methodist Student Movement, Fellowship Teams, Choir, Music Educators' National Conference, Women's Association

HADLEY, JOHN A. HAMDEN, CONN.
 B.S., Business Administration, Tennis, World University Service, Men's Glee Club

HAHM, SUNG KOOG SEOUL, KOREA
 B.A., Bible, Pi Epsilon Theta

HALL, SANDRA JO FAIRMONT
 B.S., Home Economics, Alpha Gamma Delta, Kappa Phi, Betty Lamp Club, Student Art Guild, Methodist Student Movement

HAMILTON, RICHARD MARTIN FREDERICKSTOWN, MD.
 B.A., Bible, Phi Sigma Epsilon, Community Council, Choir, Religious Activities Committee, Music Educators' National Conference

HANJIAN, ARMEN ROSELLE, N.J.
 B.A., Bible, Methodist Student Movement, Band

HARRIS, JANET RAE BRIDGEPORT
 B.A., Art, Alpha Xi Delta, Delta Psi

HARTMAN, JANET SUE BUCKHANNON
 B.S., Chemistry

HEDRICK, HARRIET JEANNETTE RONCEVERTE
 B.A., Music, Alpha Gamma Delta, Pharos, Student Handbook Editor, Band, Student National Education Association, Haught Literary Society, Methodist Student Movement, Fellowship Teams, Women's Recreation Association, Publications Committee, Religious Activities Committee

HERBST, JOHN ANTHONY FORD CITY, PA.
 B.S., Chemistry

HETZ, ROBERT LEE FAIRVIEW, PA.
 B.S., Biology, Beta Beta Beta, Intramurals

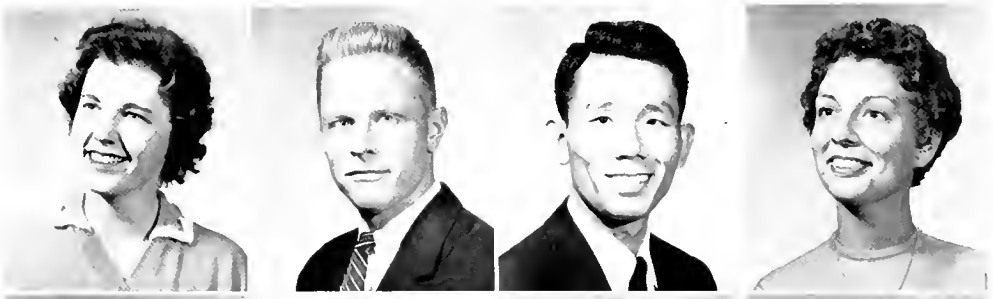
HICKLE, HARRY VERNON IRWIN, PA.
 B.S., Physical Education, Theta Chi, Football, Intramurals Director

HODSDON, EDGAR WATSON RIDGEWOOD, N.J.
 B.A., English, Choir, Playshop, Band, Methodist Student Movement, Fellowship Teams

HOGSETT, PHYLLIS ANN RAINELLE
 B.A., English, Alpha Gamma Delta, Choir, Methodist Student Movement, Student National Education Association

HOLBERT, JEFFERSON LINDSEY BAYONNE, N.J.
 B.S., Physical Education, Theta Chi, Football, Track

HOLT, JOHN MATHEW WESTON
 B.S., Chemistry, Baseball, Benzene Ring



Grose, Ruth Ann
 Hadley, John
 Hahm, Sung Koog
 Hall, Sandra



Hamilton, Richard
 Hanjian, Armen
 Harris, Janet
 Hartman, Janet



Hedrick, Jeannette
 Herbst, John
 Hetz, Robert
 Hickle, Harry

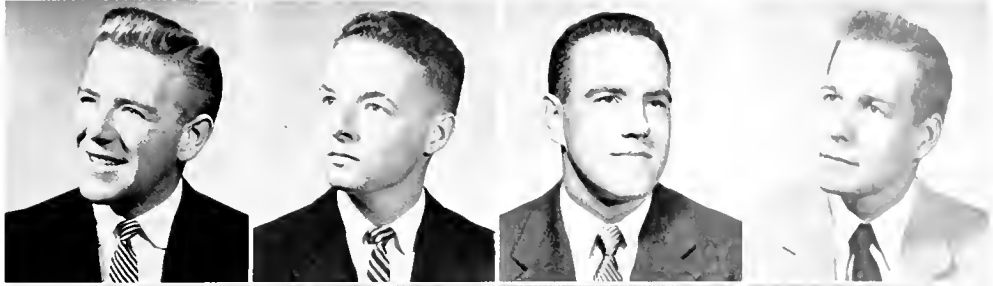


Hodsdon, Edgar
 Hogsett, Phyllis
 Holbert, Jefferson
 Holt, John

seniors

seniors

Hoy, Donald
Hubbell, George
Innes, John
Jervis, Robert



Jordan, Ralph
Jungas, Theodore
Kennedy, John
Keyser, Dolores



Kissel, Jack
Koon, James
Koslin, Stephen
Krevitt, Philip



Kristofik, Edmund
Kuhl, Phyllis
LaFalce, Robert
Lamb, Jodi



HOY, DONALD RICHARD BAYSIDE, N.Y.
B.A., English, Theta Chi, Pi Epsilon Theta, Treasurer; Intramurals

HUBBELL, GEORGE THOMAS MILFORD, CONN.
B.S., Business Administration, Phi Sigma Epsilon

INNES, JOHN JAMES NORTH TARRYTOWN, N.Y.
B.S., Business Administration

JERVIS, ROBERT G. NORTH TARRYTOWN, N.Y.
B.A., History, Kappa Alpha Order, Intramurals

JORDAN, RALPH HUBERT PENNSVILLE, N.J.
B.A., Art, Kappa Alpha Order, SCOW Committee

JUNGAS, THEODORE WORCESTER, MASS.
B.A., History, Phi Sigma Epsilon, Methodist Student Movement, Fellowship Teams, Community Council, President; Choir, Interfraternity Council, Special Activities Committee

KENNEDY, JOHN EVERETT MALVERNE, N.Y.
B.S., Economics, Theta Chi, SCOW Committee, Intramurals

KEYSER, DOLORES RUTH BRIDGEPORT
B.S., Physical Education, Alpha Xi Delta, Delta Psi Kappa, Panhellenic Council, Women's Recreation Association, Intramurals

KISSEL, JACK ELMIRA, N.Y.
B.A., History, Phi Sigma Epsilon, Sigma Theta Epsilon, President; Methodist Student Movement, Fellowship Teams, Playshop, Sociology Club, DeMolay

KOON, JAMES GOFF BUCKHANNON
B.S., Chemistry

KOSLIN, STEPHEN MONSEY, N.Y.
B.A., History

KREVITT, PHILIP JOHN BROOKLYN, N.Y.
B.A., History

KRISTOFIK, EDMUND ANDREW MUNHALL, PA.
B.A., History, Basketball, Student National Education Association

KUHL, PHYLLIS JANE ELKINS
B.A., Elementary Education, Methodist Student Movement, Fellowship Teams

LAFALCE, ROBERT ANTHONY HACKENSACK, N.J.
B.S., Mathematics, Phi Sigma Epsilon, Newman Club, Glee Club, Intramurals

LAMB, JODI BECKLEY
B.A., Art, Alpha Xi Delta

LASELL, EDNA M. WILLIAMSTOWN, VT.
 B.A., Religious Education, Fellowship Teams, Methodist Student Movement, Kappa Phi, Choir

LATHROP, LINWOOD BENTON NORWICH, CONN.
 B.S., Business Administration, Phi Sigma Epsilon, Glee Club

LIGHT, VIRGINIA ANN ERIE, PA.
 B.A., Sociology, Women's Recreation Association, Delta Psi Kappa, Playshop, Sociology Club, Pi Epsilon Theta, Psychology Club, Methodist Student Movement, Hockey, Pharos

LINABERGER, MARA LOUISE WELLSBURG
 B.S., Home Economics, Alpha Xi Delta, Betty Lamp Club

LIPETZ, ERIC DAVID FOREST HILLS, N.Y.
 B.A., Sociology, Kappa Sigma Kappa, Sociology Club

MALONE, PATRICIA ANN JACKSON, MICH.
 B.A., English, Alpha Delta Pi, Intramurals, Band, MURMURMONTIS

MANSER, JEFFERSON W. BUCKHANNON
 B.S., Economics, Kappa Alpha Order, Basketball, Golf, Band, Philosophy Club, Collegians, Interfraternity Council

MARINE, JACK L. FEDERALSBURG, PA.
 B.S., Economics, Methodist Student Movement, Playshop, Intramurals, Fellowship Teams

MASON, HAROLD EDWIN ELMSFORD, N.Y.
 B.S., Economics

MEARNS, DOLORES JUNE CLARKSBURG
 B.A., Religious Education, Methodist Student Movement, Fellowship Teams, Kappa Phi, Psychology Club, Pi Epsilon Theta

MEDLEY, JAMES LEWIS BROOKLYN, N.Y.
 B.A., History, Theta Chi, Canterbury Club Intramurals, Tennis

MENDOZA, CORNELIA L. MANILA, P.I.
 B.A., Religious Education, Methodist Student Movement, Kappa Phi, Women's Recreation Association, Philosophical Club, Choir

MIDDLEBROOK, ROBERT C. WILTON, CONN.
 B.S., Business Administration

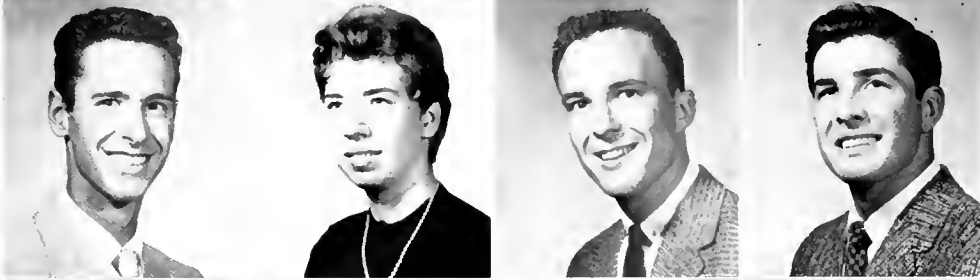
MILLER, SHIRLEY ANN BUCKHANNON
 B.S., Chemistry

MITCHELL, MERTON JOEL NEW YORK, N.Y.
 B.S., Chemistry

MODLIN, CHARLES ERNEST ALDERSON
 B.A., English, Phi Sigma Epsilon, Pharos



Lasell, Edah
 Lathrop, Linwood
 Light, Virginia
 Linaberger, Mara



Lipetz, Eric
 Malone, Patricia
 Manser, Jefferson
 Marine, Jack



Mason, Harold
 Mearns, June
 Medley, James
 Mendoza, Cornelia



Middlebrook, Robert
 Miller, Shirley
 Mitchell, Merton
 Modlin, Charles

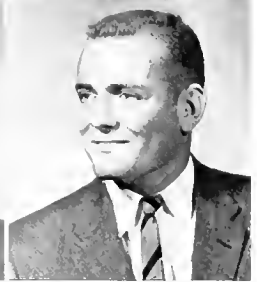
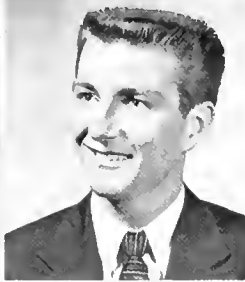
seniors

seniors

Morton, Peggy Jo
Mowry, James
McDonald, Glenda
McKinney, Thomas



McNutt, Suzanne
McVitty, Donald
Neuner, Frank
Newlon, Philip



Oleson, Stuart
Parisi, Frank
Pemberton, Ann
Pettibon, William



Pfalzgraf, Janie
Queen, Ann
Rabinowitz, Jerry
Rawson, Jean



MORTON, PEGGY JO HAMLIN
B.A., Education, Alpha Delta Pi, Haught Literary Society, SCOW Committee, Student National Education Association, Social Activities Committee, Women's Recreation Association

MOWRY, JAMES JOHN DERRY, PA.
B.S., Political Science, Phi Sigma Epsilon, Sigma Theta Epsilon, Choir, Glee Club

MCDONALD, GLENDA JEAN BRIDGEPORT
B.A., Music, Alpha Xi Delta, Choir, Band, Community Council, Methodist Student Movement, Fellowship Team, Music Educators' National Conference, Octet

MCKINNEY, THOMAS ALAN STATEN ISLAND, N.Y.
B.A., Art, Theta Chi, Pi Epsilon Theta, Student Art Guild, Intramurals

MCNUTT, SUZANNE SALEM
B.A., Sociology, Alpha Delta Pi, Haught Literary Society, Choir, Playshop, Methodist Student Movement, World University Service Committee, Fellowship Teams

MCVITTY, DONALD WILLIAM MT. VERNON, N.Y.
B.S., Economics, Theta Chi, Baseball

NEUNER, FRANK JOSEPH NEW PROVIDENCE, N.J.
B.S., Chemistry, Alpha Sigma Phi, Intramurals

NEWLON, PHILIP MARVIN BUCKHANNON
B.S., Chemistry

OLESON, STUART EDWIN BOGOTA, N.J.
B.S., Business Administration, Intramurals

PARISI, FRANK DANIEL FLUSHING, N.Y.
B.S., Physical Education, Theta Chi

PEMBERTON, CAROL ANN SHERMAN, TEX.
B.A., History, Student National Education Association, MURMUR-MONTIS, Editor; Haught Literary Society, Awards Committee, United States National Student Association Committee, Intramurals

PETTIBON, WILLIAM CLIFFORD MCKEESPORT, PA.
B.A., Sociology, Phi Sigma Epsilon, Sigma Theta Epsilon, Glee Club

PFALZGRAF, JANIE LEE PARKERSBURG
B.A., Elementary Education, Alpha Xi Delta, SCOW Committee, Community Council, Haught Literary Society, Student National Education Association, House Governing Board, Women's Recreation Association

QUEEN, ANN MARY BRIDGEPORT
B.S., Home Economics, Alpha Xi Delta, Beta Lamp Club, Delta Psi Kappa, Women's House Governing Board, Educational Affairs Committee, Women's Recreation Association, Fellowship Team

RABINOWITZ, JERRY BROOKLYN, N.Y.
B.A., History, Phi Sigma Epsilon, Pharos, World University Service, Interfraternity Council

RAWSON, NINA JEAN PARKERSBURG
B.A., Education, Student National Education Association, Women's Recreation Association

REPPERT, SHIRLEY WOODSTOWN, N.J.
 B.A., Education, Alpha Gamma Delta, Student National Education Association

RIDER, KAY ALAN SOPHIA
 B.M.E., Music, Alpha Gamma Delta, Music Educators' National Conference, Student National Education Association, Choir, Octet

RISSMEYER, HELEN M. FARMINGSDALE, N.Y.
 B.A., Sociology, Kappa Phi, Choir, Haught Literary Society, Methodist Student Movement, Sociology Club, Fellowship Teams

ROSS, ALEXANDER BUCKHANNON
 B.M.E., Music, Collegians, Band, Orchestra

ROUGH, CAROL JEAN WESTON
 B.S., Physical Education, Hockey, Women's Recreation Association

RUBIN, ROBERT SETH BROOKLYN, N.Y.
 B.S., Biology, Kappa Sigma Kappa, Beta Beta Beta, Benzene Ring, Intramurals, MURMURMONTIS

RUHLOW, DEAN HARRIS BUCKHANNON
 B.S., Business Administration

RUSSIN, GERALD HARVEY BAYSIDE, N.Y.
 B.S., Economics, Psychology Club, International Relations Club

SEAGRAVES, GEORGE WILLIAM CLAYMONT, DEL.
 B.S., Physical Education, Football, Baseball, MURMURMONTIS

SEAGRAVES, MARGARET ATHENS
 B.S., Physical Education, Alpha Gamma Delta, Delta Psi Kappa, Hockey, Intramurals, Student National Education Association, Cheerleader, Women's Recreation Association

SEAMANS, LYMAN HOWARD, JR. HIGH BRIDGE, N.J.
 B.S., Business Administration, Methodist Student Movement, Playshop, Glee Club

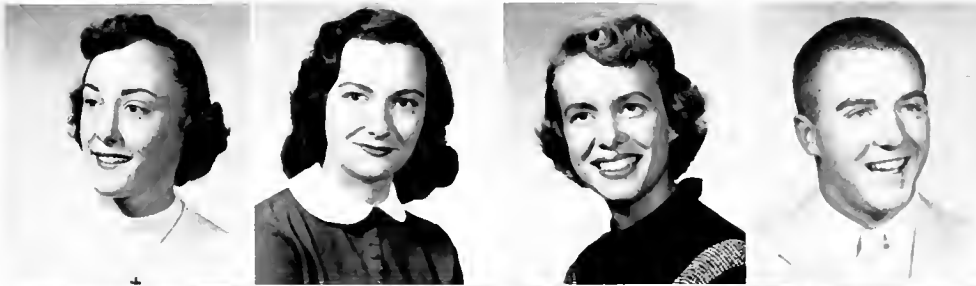
SHEPPARD, DAVID LEE BUCKHANNON
 B.S., Business Administration

SHIRLEY, JOHN MORRIS HARRISON CITY, PA.
 B.A., History, Intramurals Committee

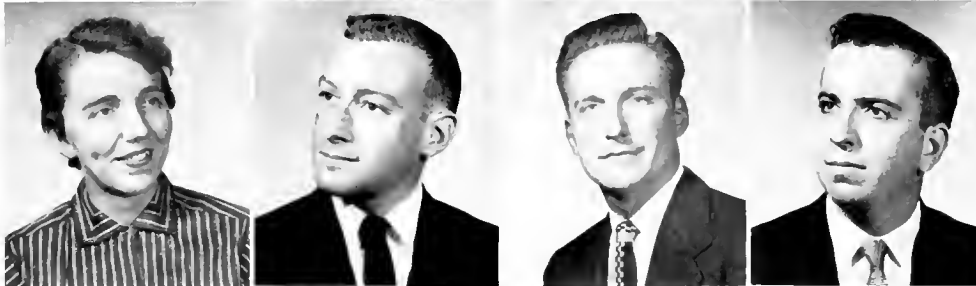
SMITH, MARILYN YVONNE NITRO
 B.S., Chemistry, Benzene Ring, Beta Beta Beta, Haught Literary Society

SOS, ALEXANDER JOHN FAR ROCKAWAY, N.Y.
 B.S., Mathematics

STAGON, LEONARD ANDREW MUNHALL, PA.
 B.S., Physical Education, Football, Newman Club, Intramurals



Reppert, Shirley
 Rider, Kay
 Rissmeyer, Helen
 Ross, Alexander



Rough, Carol
 Rubin, Robert
 Ruhlow, Dean
 Russin, Gerald



Seagraves, George
 Seagraves, Margaret
 Seamans, Lyman
 Sheppard, David



Shirley, John
 Smith, Marilyn
 Sos, Alexander
 Stagon, Leonard

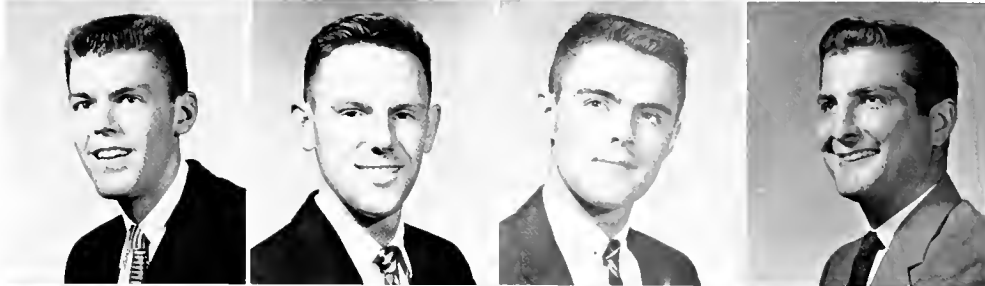
seniors

seniors

Stahl, David
St. Miklossy, Joseph
Tatem, James
Tell, Jeremiah



Tissot, John
Von Hoorn, Richard
Watson, William
Weaver, Robert



Will, William
Williams, Joan
Wilson, Carol
Wingert, Randall



Winters, Robert
Zinaich, Samuel



- | | | | |
|--|--------------------|---|----------------|
| STAHL, DAVID
B.S., Economics, International Relations Club | FOREST HILLS, N.Y. | WILL, WILLIAM ASHLEY
B.A., Sociology, Phi Sigma Epsilon, Sigma Theta Epsilon, Interfraternity Council, Sociology Club, Glee Club | JOHNSTOWN, PA. |
| ST. MIKLOSSY, JOSEPH S.
B.S., Business Administration, Alpha Sigma Phi | FAIR LAWN, N.J. | WILLIAMS, JOAN
B.A., Education, Kappa Phi | BUCKHANNON |
| TATEM, JAMES ALEXANDER JR.
B.S., Economics, Alpha Sigma Phi, SCOW Committee, Intramurals, Tennis | HILLSDALE, N.J. | WILSON, CAROL ANN
B.A., Education, Alpha Delta Pi, Alpha Psi Omega, Women's Recreation Association, Playshop, Student National Education Association, Choir, Intramurals | MOUNDVILLE |
| TELL, JEREMIAH JAY
B.S., Mathematics | PELHAM, N.Y. | WINGERT, RANDALL W.
B.S., Business Administration, Phi Sigma Epsilon, Sigma Theta Epsilon | ELMIRA, N.Y. |
| TISSOT, JOHN F.
B.S., Business Administration, Phi Sigma Epsilon, Track, Cross-Country | FLUSHING, N.Y. | WINTERS, GEORGE ROBERT
B.S., Business Administration, Phi Sigma Epsilon, Music Educator's National Association, Cultural Enrichment Committee, Methodist Student Movement | STOYSTOWN, PA. |
| VON HOORN, RICHARD PAUL
B.A., Art, Collegians, Glee Club, Student Art Guild | WARWICK, R.I. | ZINAICH, SAMUEL
B.S., Biology, Football | WEIRTON |
| WATSON, WILLIAM EDWARD
B.A., Political Science, Kappa Alpha Order, Pharos, Social Activities Committee, Publications Committee | JANE LEW | | |
| WEAVER, ROBERT L.
B.A., Religion, Methodist Student Movement, SCOW Committee, Fellowship Teams | PITTSBURGH, PA. | | |

unpictured seniors

CHILDERS, RUSSELL DALE B.A., Bible	JUNIOR
CHRISTIE, LOIS ELAINE B.A., Education	BUCKHANNON
COLLINS, JARVIS LEE B.S., Mathematics	BUCKHANNON
CVETNICK, FRANK B.S., Physical Education, Football, Baseball	CENTURY
DAMON, GORDON GEORGE B.A., English	EAST WILLISTON, N.Y.
DAY, ANNABELLE MUSE B.A., Sociology, Haught Literary Society, Sociology Club, Methodist Student Movement, World University Service Committee	NEW MARTINSVILLE
GATRILL, BILLIE ROBERT B.S., Economics	TALLMANSVILLE
HOFFMAN, JAMES LEHNERT B.A., History, Football, Baseball	NEW TRIPOLI, PA.
HOLM, OLIVE SUE B.A., Sociology, Alpha Xi Delta, Women's Recreation Association	MANHASSET, N.Y.
JUDY, CLIFFORD PAGE B.S., Biology, Football, Track, Community Council	CLARKSBURG
NEUMAN, FRED DAY B.A., Education, Football	BUCKHANNON
PARMET, PHILIP MICHAEL B.S., Economics	WEST ISLIP, N.Y.
RAYMOND, DOMINIC JOHN B.S., Chemistry	CLARKSBURG
POWERS, KENNETH LEE B.S., Mathematics	BUCKHANNON
SCHOONMAKER, WILLIAM LYON B.A., Political Science	MONTCLAIR, N.J.
THOMPSON, LOIS ANN B.S., Chemistry, Benzene Ring	BUCKHANNON
WEST, JENNY LYNNE B.S., Chemistry, Alpha Delta Pi	BUCKHANNON



underclassmen

class officers



President
RICHARD BROOKE
Lumberport



Vice President
JAMES CALDWELL
Irwin, Pa.



Secretary
CAROL BEERS
Ridgefield, Conn.



Treasurer
JAMES SCOTT
Salem

juniors



President
DEAN PATENAUDE
Middletown, Conn.



Vice President
WILLIAM SMITH
Gauley Bridge



Secretary
PATRICIA AMBROSE
Parkersburg



Treasurer
STANLEY MCGREGOR
Glen Aubrey, N. Y.

sophomores



President
JOHN HODGE
Portland, Conn.



Vice President
RICHARD CALENDINE
Parkersburg



Secretary
ELIZABETH WEIGLEIN
St. Albans



Treasurer
ANN WELKER
Petersburg

freshmen

“... a guiding light.” Referring, of course, to those untiring souls who serve as valiant standard bearers for the freshmen, sophomores, and juniors at West Virginia Wesleyan.

underclassmen



Abbott, William
Freshman
Riverside, Conn.

Abbott, Argyle
Sophomore
Jackson Heights, N. Y.

Abbott, Rosalie
Sophomore
Buckhannon

Ackenbom, Beatrice
Freshman
Washington, D. C.

Ackenbom, Charles
Freshman
Lawton, Okla.

Aidala, Richard
Junior
Bayside, N. J.

Ailstock, Janet
Freshman
Charleston

Albert, Mary Beth
Freshman
St. Albans

Alberter, Edward
Junior
Johnstown, Pa.

Alberts, William
Freshman
Baden, Pa.

Alper, Kenneth
Freshman
Fairfield, Conn.

Ames, Bonnie
Freshman
Syracuse, N. Y.



Angelikoussis, Leon
Sophomore
Asbury Park, N. J.

Arbogast, James
Freshman
Volga

Armfield, Shirley
Junior
Newport News, Va.

Bakas, Stanley
Freshman
Weston

Balaban, James
Freshman
Bayside, N. Y.

Barnes, Franklin
freshman
Logan

Bartek, Bernard
Sophomore
Munhall, Pa.

Bartell, Eugene
Freshman
Succasunna, N. J.

Bauserman, William
Sophomore
Moorefield

Baxa, Artis
Sophomore
Buckhannon

Baylis, Elizabeth
Junior
Rockville Center, N. Y.

Becker, Joyce
Sophomore
Elmira, N. Y.

underclassmen



Beer, Delma
Sophomore
Buckhannon



Beerler, John
Freshman
Glassport, Pa.



Beveridge, Richard
Junior
Brooklyn, N. Y.



Bierwirth, Fay
Freshman
Pittsburgh, Pa.



Bigelow, Richard
Freshman
Bridgeport, Conn.



Bileca, Dennis
Freshman
Bridgeport, Conn.



Biser, Madora
Sophomore
Buckhannon



Bissell, Donna
Sophomore
Parkersburg



Block, Joan
Sophomore
Beechhurst, N. Y.



Blomberg, Dale
Freshman
Queens Village, N. Y.



Blubaugh, John
Junior
Metuchen, N. J.



Blumenfeld, Lillian
Sophomore
Brooklyn, N. Y.



Boegershausen, Gary
Freshman
Short Hills, N. J.



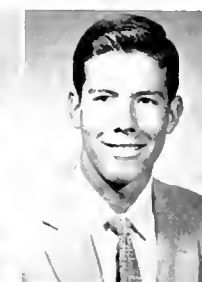
Boggess, Janet
Junior
Sissonville



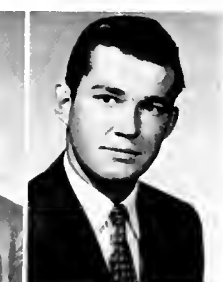
Bonar, Carol
Sophomore
Charleston



Bond, Sally
Sophomore
Bluefield



Boone, Daniel
Freshman
Richwood



Borg, Kenneth
Freshman
Worcester, Mass.



Bower, Edwin
Freshman
Mullens



Bower, Nancy
Freshman
Mullens



Brewer, Barbara
Freshman
Bluefield



Broderick, Edward
Freshman
North Plainfield, N. J.



Brookover, Margo
Freshman
Charleston



Brooks, Frederick
Sophomore
Richwood

underclassmen

Brotherton, Paul
Freshman
Munhall, Pa.

Brown, David
Sophomore
Long Hill, Conn.

Brown, Gene
Sophomore
Dunbar

Browning, Rondal
Sophomore
Lost Creek

Brush, Howard
Sophomore
Bangor, Maine

Burdette, William
Junior
Buckhannon

Burgess, Harry
Freshman
Charleston

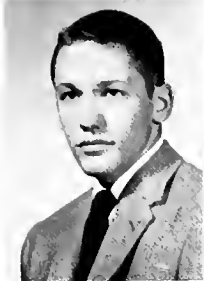
Burke, Jerry
Junior
Ellamore

Burkholder, Phillip
Junior
Binghamton, N. Y.

Burr, Elbert
Junior
Hasbrook Heights, N. J.

Burrus, Nancy
Sophomore
Mt. Hope

Buschmann, John
Freshman
Westfield, Mass.



Cafarella, Robert
Freshman
Hillsdale, N. J.

Campbell, Garry
Freshman
Scotia, N. Y.

Campbell, John
Junior
Clarksburg

Campbell, Peter
Freshman
North Plainfield, N. J.

Carathanasis, Nicholas
Freshman
White Plains, N. Y.

Carbone, Anthony
Junior
Royal Oak, Mich.

Carroll, Donald
Sophomore
Metuchen, N. J.

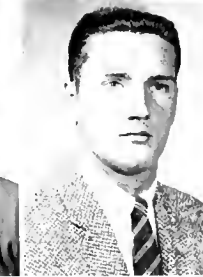
Carter, Ronald
Freshman
Bridgeton, N. J.

Casto, Ronald
Freshman
Ellenboro

Catlin, Bette Kae
Sophomore
Ridgewood, N. J.

Caudill, Samuel
Sophomore
Beckley

Chambers, Elnora
Junior
Beckley



underclassmen



Chang, Diana
Freshman
New York, N. Y.

Cheatham, Wallace
Junior
New York, N. Y.

Chigos, Beatrice
Freshman
Wilkes-Barre, Pa.

Childs, Wayne
Freshman
North Haven, Conn.

Chisnell, Howard
Sophomore
Jeannette, Pa.

Ciuffo, Anthony
Junior
Brooklyn, N. Y.

Clark, Tompkins
Freshman
Danielson, Conn.

Clawson, William
Sophomore
Califon, N. J.

Cloman, James
Freshman
Munhall, Pa.

Cloyes, Mary Beth
Freshman
El Dorado, Kan.

Cobb, Earl
Freshman
Cranston, R. I.

Cole, William
Junior
Perryville, Md.



Colvin, Harold
Sophomore
East Orange, N. J.

Colvin, Martha
Freshman
Sistersville

Cooper, June
Junior
Webster Springs

Cordero, Ernesto
Sophomore
Philippines

Corneby, Bert
Junior
Endicott, N. Y.

Corscadden, Alan
Freshman
Massapequa, N. Y.

Covert, Denton
Sophomore
Binghamton, N. Y.

Crickenberger, Robert
Sophomore
Westfield, N. J.

Crites, Jo Ann
Sophomore
Buckhannon

Crutchfield, Sandra
Freshman
Buckhannon

Cupples, Howard
Freshman
Coraopolis, Pa.

Custer, Kay
Junior
Hinton, Va.

underclassmen

Cutright, Dalton
Sophomore
Buckhannon

Dalton, Clyde
Sophomore
Buckhannon

Damaska, David
Freshman
Bradfordwoods, Pa.

D'Apolito, John
Sophomore
Port Reading, N. J.

Davis, Geraldine
Sophomore
Oakland, Md.

Dean, Sharie
Junior
Berea, Ohio

Deane, James
Sophomore
Buckhannon

Dearborn, Robert
Sophomore
Bridgeport, Conn.

DeBarr, Alan
Freshman
Buckhannon

DeBarr, Victor
Sophomore
Buckhannon

DeGroot, Peter
Freshman
Syracuse, N. Y.

DeHaven, Jeanette
Freshman
Washington, D. C.



Deluse, George
Sophomore
Trenton, N. J.

DeMarco, Raymond
Sophomore
Dunellen, N. J.

Dennis, David
Sophomore
Martinsville, N. J.

Dent, Charles
Freshman
Montgomery

DeRevere, Brad
Junior
Staten Island, N. Y.

Deskins, Niawana
Freshman
Man

Dickens, Denver
Sophomore
Philippi

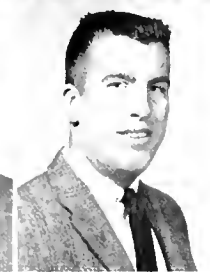
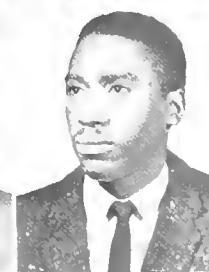
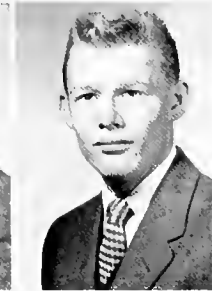
Diller, Edith
Sophomore
Glendora, N. J.

Dizon, Josye
Junior
Philippines

Donald, Edward
Sophomore
Charlotte, N. C.

Donegan, Harold
Freshman
Hartford, Conn.

Doolin, John
Sophomore
Ardmore, Pa.



underclassmen



Dotson, Boyd
Freshman
Webster Springs

Daughton, Carole
Sophomore
Roanoke, Va.

Downham, Willard
Sophomore
Wilmington, Del.

Dunlap, Thomas
Sophomore
South Charleston

Durborow, Louis
Sophomore
New Kensington, Pa.

Eakle, John
Freshman
Sutton

Echols, William
Sophomore
Richwood

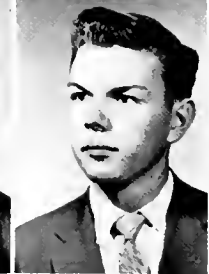
Eckert, Herbert
Sophomore
Westfield, N. J.

Edberg, Paul
Sophomore
Natick, Mass.

Edman, Clare
Sophomore
Parkersburg

Eliot, Charles
Sophomore
Newington, Conn.

Elissen, Frederick
Freshman
Queens Village, N. Y.



Elliott, Tom
Freshman
Bluefield

Emery, Esther
Freshman
Charleston

Engle, Stanley
Freshman
White Plains, N. Y.

Eppley, Robert
Freshman
Homer City, Pa.

Everts, Ward
Freshman
Norwalk, Conn.

Falik, Linda
Sophomore
Richmond Hills, N. Y.

Feinberg, Lawrence
Junior
Bronx, N. Y.

Feldbin, Isabelle
Freshman
Danbury, Conn.

Fennimore, Robert
Junior
Yonkers, N. Y.

Fenstermacher, Iva
Freshman
Century

Ferrell, Barbara
Freshman
St. Albans

Fike, Lloyd
Junior
Rome, N. Y.



underclassmen

Firl, Marilyn
Freshman
Ridgefield Park, N. J.

Fisher, Judith
Freshman
Cumberland, Md.

Fitzgerald, Dianne
Sophomore
Somerville, Mass

Flansburg, Donald
Freshman
Scotia, N. Y.

Fleming, Kenneth
Sophomore
Clarksburg

Flint, Robert
Freshman
Sutton

Fonz, Margaret
Freshman
Nutley, N. J.

Fosbenner, Martha
Freshman
Norristown, Pa.

Frame, Charles
Freshman
Weston

Franks, Larrimore
Freshman
Salisbury, Md.

Fraser, James
Junior
Westwood, N. J.

Frosch, Allan
Freshman
Windsor, Conn.



Fultineer, Sandra
Freshman
New Albany, Ind.

Funk, Nancy Jo
Junior
Bristol

Gage, Robert
Freshman
Scarsdale, N. Y.

Gammons, Allen
Freshman
East Greenwich, R. I.

Gardner, Lawrence
Junior
Elmhurst, N. Y.

Gardner, Lynn
Junior
White Plains, N. Y.

Gaston, Garren
Freshman
Johnstown, Pa.

Gates, Alvin
Freshman
Belle Vernon, Pa.

Gay, Ralph
Junior
Huntington

Gearty, Carol
Junior
Beechurst, N. Y.

Geigley, David
Junior
Hastings

Geller, Allen
Junior
Flushing, N. Y.



underclassmen



German, Charles
Freshman
Baltimore, Md.

Goff, Mari
Freshman
Clarksburg

Gosman, Jeffrey
Freshman
Ridgewood, N. J.

Gourlay, Bruce
Sophomore
Port Washington, N. Y.

Gower, Mary
Freshman
Buckhannon

Graham, Sharon
Sophomore
Worcester, N. Y.

Grant, Joan
Freshman
New York, N. Y.

Grant, John
Junior
New York, N. Y.

Greene, Gordon
Sophomore
Westerly, R. I.

Greenfield, Harvey
Freshman
Laurelton, N. Y.

Gregory, Kleber
Sophomore
Bedford, Va.

Gress, Janet
Sophomore
Wellsburg



Gruer, Kenneth
Freshman
Park Ridge, N. J.

Griffin, Jane
Freshman
New Martinsville

Griffith, Frances
Junior
Parkersburg

Groner, Phyllis
Freshman
Stroudsburg, Pa.

Gross, Samuel
Freshman
Beaver

Gulinello, Frank
Sophomore
E. Weymouth, Mass.

Halasz, Michael
Sophomore
S. Norwalk, Conn.

Hall, Jerry
Freshman
Buckhannon

Hall, Jonathan
Freshman
Norwalk, Conn.

Hall, Judith
Sophomore
Buckhannon

Hall, Lorentz
Sophomore
Buckhannon

Hall, William
Junior
Buckhannon

underclassmen

Hamilton, John
Freshman
Bridgeville, Pa.

Hamner, Shannon
Freshman
Buckhannon

Hamrick, Gordon
Sophomore
Bergoo

Haney, Jack
Freshman
Philadelphia, Pa.

Hanifan, Betty Kay
Junior
Clarksburg

Hanson, James
Freshman
Rye, N. Y.

Hanson, John
Freshman
Rye, N. Y.

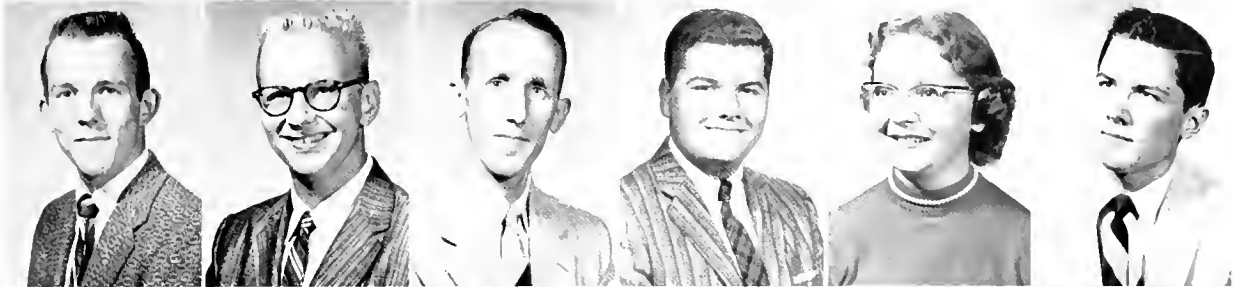
Harbert, James
Sophomore
Lumberport

Harman, Judith
Freshman
Wheeling

Harper, John
Sophomore
Webster Springs

Harrison, Roger
Freshman
Grafton

Hart, Frederick
Sophomore
Bridgeville, Pa.



Hartman, Franklin
Freshman
Buckhannon

Hastings, James
Sophomore
Selbyville, Del.

Hayden, Carol Sue
Junior
Winthrop, Mass.

Heinrich, Craig
Freshman
Warren Twp., N. J.

Hellmann, John
Junior
Pittsburgh, Pa.

Henry, William
Sophomore
Old Greenwich, Conn.

Herold, Margaret
Freshman
Middle Village, N. Y.

Herrera, Michael
Sophomore
Bridgeport, Conn.

Hess, Gary
Junior
Pittsburgh, Pa.

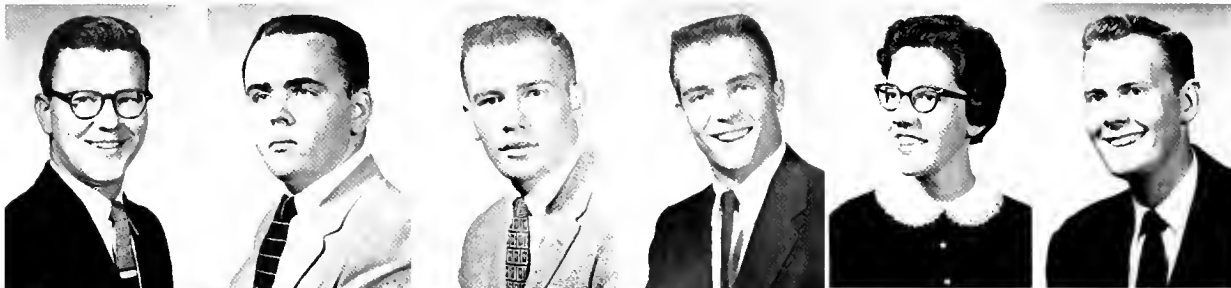
Hetz, Mary Lou
Junior
Fairview, Pa.

Hider, Robert
Freshman
Glen Ridge, N. J.

Hiller, Kenneth
Sophomore
Stratford, Conn.



underclassmen



Hillman, Norman
Sophomore
New Martinsville

Hipple, John
Freshman
Trenton, N. J.

Hoag, David
Sophomore
Maywood, N. J.

Hodyas, Paul
Sophomore
Wheeling

Hogsett, Margaret
Freshman
Rainelle

Holm-Anderson, Ingolf
Junior
Rockville Centre, N. Y.

Holmes, Beverly
Sophomore
Wesleyville, Pa.

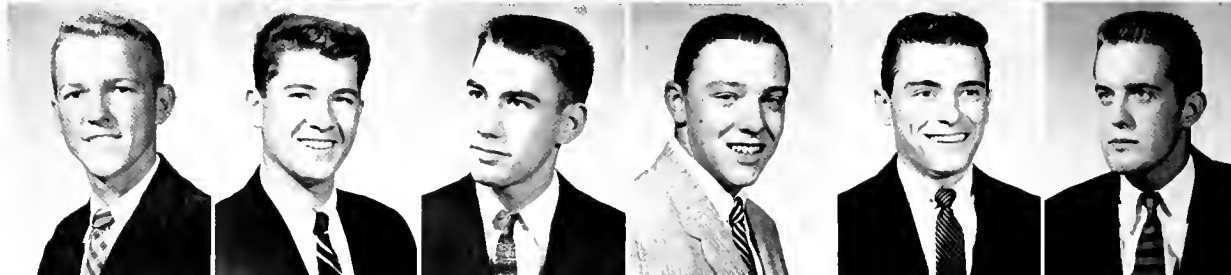
Holmes, William
Junior
Wesleyville, Pa.

Homann, William
Freshman
Woodcliff Lake, N. J.

Hopping, Ruth
Freshman
Chester, N. J.

Horn, Frank
Junior
Charleroi, Pa.

Hoskinson, Floyd
Freshman
Annoore



Howell, Harold
Sophomore
Madison

Howes, Cara
Freshman
Buckhannon

Hubbard, Alan
Junior
New Haven, Conn.

Hubbard, Betty
Sophomore
Kimball

Huffman, Bonita
Junior
French Creek

Ignatovig, Robert
Freshman
Brooklawn, N. J.

Ingraham, Harold
Freshman
Glen Aubrey, N. Y.

Innes, Edward
Junior
Aldan, Pa.

Ireland, Robert
Freshman
Buckhannon

Isaac, Earl
Freshman
Charleston

Jackson, James
Sophomore
Newton, N. J.

James, Arthur
Freshman
Metuchen, N. J.

underclassmen

Jeffreys, Sue
Freshman
Logan

Johnson, Donald
Junior
Succasunna, N. J.

Johnson, Howard
Freshman
Flushing, N. Y.

Johnson, Leonard
Freshman
Pittsburgh, Pa.

Johnson, Paul
Sophomore
Fairmont

Johnston, Marilyn
Freshman
Donora, Pa.

Johnston, William
Freshman
Haverford, Pa.

Johnstone, John
Junior
E. Williston, N. Y.

Jones, Gerald
Sophomore
Pittsburgh, Pa.

Jones, Marvin
Junior
Beaver Falls, Pa.

Kacer, Edward
Freshman
Fairfield, Conn.

Kachel, Gretchen
Freshman
Long Beach, N. Y.



Kailing, William
Sophomore
Welch

Kaminski, Bettyann
Sophomore
Cranford, N. J.

Kane, Carol
Junior
Wesleyville, Pa.

Karikhoff, Paul
Sophomore
Buckhannon

Kawadler, Elliot
Sophomore
Boston, Mass.

Keene, Phyllis
Freshman
Brooklyn, N. Y.

Kelley, Neal
Freshman
Philadelphia, Pa.

Kelley, Terry
Sophomore
Swissvale, Pa.

Kennedy, James
Junior
Pittsburgh, Pa.

Kennedy, Scott
Sophomore
Pittsburgh, Pa.

Kercher, Connie
Junior
Wheeling

Kerr, James
Sophomore
Morgantown



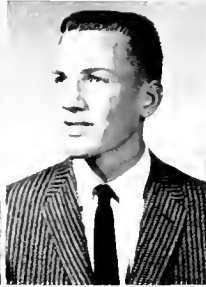
underclassmen



Kessel, Jenny Lynn
Junior
Gormania



Khedouri, Isaac
Junior
Forest Hills, N. Y.



Kibler, John
Freshman
Cranesville, Pa.



Kinnamon, Gilbert
Freshman
Cambridge, Md.



Kleinstuber, David
Freshman
Milford, Pa.



Klepper, Sylvia
Junior
Fanwood, N. J.



Koelln, William
Junior
Ridgefield Park, N. J.



Kohlepp, Sue
Freshman
Pittsburgh, Pa.



Kohler, Charles
Freshman
Gloversville, N. Y.



Kopple, Carolyn
Junior
Charleston



Kost, William
Sophomore
Hartsdale, N. Y.



Kotsonis, Emmanuel
Freshman
Brooklyn, N. Y.



Kough, David
Junior
Hawthorne, N. J.



Kripsak, Debby
Freshman
Somerville, N. J.



Kundrat, Michael
Junior
Whitaker, Pa.



Kurzel, Joyce
Sophomore
North Bergen, N. J.



Laign, David
Freshman
Gassaway



Lambert, Betty
Freshman
Grafton



Lampila, Judith
Freshman
Averill Park, N. Y.



Lantz, George
Sophomore
Buckhannon



Lantz, Marilyn
Freshman
Elkins



Lantz, Mary Sue
Freshman
Buckhannon



Lauritsen, Jean
Freshman
Fords, N. J.



Law, Carolyn
Freshman
Penssboro

underclassmen

Layfield, Robert
Junior
Buckhannon

Levin, Harvey
Sophomore
Philadelphia, Pa.

Leach, Thomas
Junior
Parkersburg

Lewis, James
Freshman
Westport, Conn.

LeBeau, Deann
Sophomore
Easthampton, Mass.

Lewis, Neil
Freshman
Nutter Fort

Lee, Shirley
Sophomore
Buckhannon

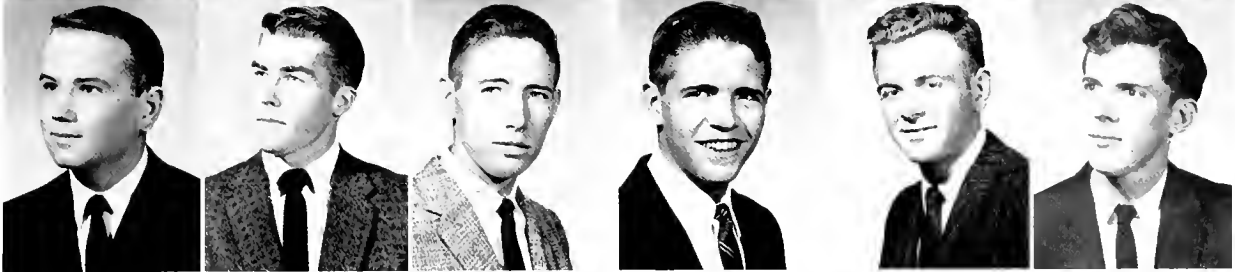
Lewis, Ronald
Sophomore
Nutter Fort

Leppla, William
Sophomore
Munhall, Pa.

Lewis, Weller
Freshman
Hooperville, Md

Lesko, John
Freshman
Duquesne, Pa.

Lilly, Gerald
Sophomore
Beckley



Lindberg, Carl
Freshman
Munhall, Pa.

Love, Marshall
Sophomore
Vandergrift, Pa.

Linger, Eleanor
Freshman
Fairmont

Maberry, Kenneth
Sophomore
Derry, Pa.

Lockey, Daniel
Freshman
Danbury, Conn.

Machenberg, Alan
Freshman
Forest Hills, N. Y.

Long, Bruce
Junior
Green Village, N. J.

MacQueen, Gordon
Sophomore
Jackson Heights, N. Y.

Lord, Dennis
Junior
Warren, Pa.

McWilliams, Donna
Sophomore
Johnstown, Pa.

Lore, Joseph
Freshman
Bridgeton, N. J.

Maloney, Donald
Sophomore
Morristown, N. J.



underclassmen



Martin, Ann
Freshman
Norwalk, Conn.

Martin, David
Freshman
Buckhannon

Martin, Patricia
Freshman
Buckhannon

Masek, Penny
Freshman
Hicksville, N. Y.

Mathers, Frank
Sophomore
Bridgeton, N. J.

Meister, Taylor
Junior
Munhall, Pa.

Metallides, Anthony
Sophomore
Berea, Greece

Meyer, Judith
Freshman
Bloomsbury, N. J.

Miklosey, Arthur
Junior
Metuchen, N. J.

Miles, Nancy
Freshman
Buckhannon

Miller, Douglas
Junior
Pittsfield, Mass.

Miller, George
Freshman
Stratford, Conn.



Miller, Jack
Sophomore
Connellsville, Pa.

Miller, Robert
Freshman
Arnold, Pa.

Miller, Russell
Freshman
Clifton, N. J.

Minnis, Clyde
Sophomore
Pittsburgh, Pa.

Moebius, Clifford
Junior
Nutley, N. J.

Montagna, John
Freshman
Metuchen, N. J.

Moore, Samuel
Sophomore
Oakland, Md.

Morrison, Bonnie
Freshman
Bergoo

Morrison, William
Freshman
Richwood

Moser, Paul
Sophomore
Ossining, N. Y.

Moss, Imogene
Sophomore
Buckhannon

Moss, Larry
Freshman
New York, N. Y.

underclassmen

Moye, Alfred
Sophomore
Washington, D. C.

Mullen, Carolyn
Freshman
Rochelle Park, N. J.

Mumford, James
Sophomore
Nyack, N. Y.

Myers, John
Sophomore
Madison

McBride, Robert
Sophomore
Parkersburg

McBride, William
Junior
Parkersburg

McCabe, Nancy
Freshman
Morgantown

McClelland, Robert
Freshman
Wexford, Pa.

McCloud, Clarence
Junior
Weston

McCue, Ralph
Junior
Buckhannon

McCulloch, John
Junior
Brooklyn, N. Y.

McCulloch, Ralph
Junior
Baltimore, Md.



McCutcheon, Calvin
Junior
Reedy

McCutcheon, Paul
Sophomore
Elkins

McDonald, James
Sophomore
Bridgeport

McDonald, Madonna
Junior
Parsons

McGirk, John
Sophomore
Altoona, Pa.

McGovern, Thomas
Sophomore
West Orange, N. J.

McGregor, Nancy
Junior
Glen Aubrey, N. Y.

McGuire, Richard
Freshman
Westport, Conn.

McIlvried, Paul
Junior
Clairton, Pa.

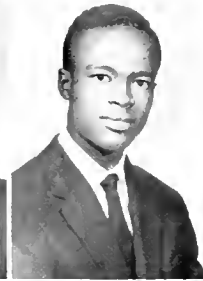
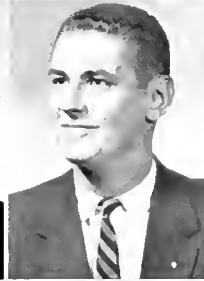
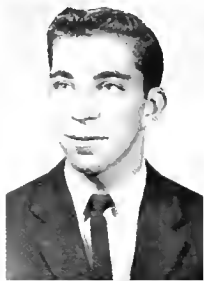
McLaughlin, James
Junior
Arnold, Pa.

McLaughlin, Robert
Junior
Montclair, N. J.

McPhee, Frank
Freshman
Riverside, Conn.



underclassmen



Nargiz, Gerald
Freshman
Asbury Park, N. J.

Neely, Richard
Junior
Buckhannon

Nicolas, Robert
Freshman
Sault Ste. Marie, Mich.

Nicholson, Paul
Sophomore
Baldwin, N. Y.

Nixon, Michael
Junior
Scarsdale, N. Y.

Norman, William
Sophomore
Norfolk, Va.

Oasis, Robert
Freshman
West Hartford, Conn.

O'Brien, David
Freshman
Westport, Conn.

Olive, Paul
Junior
Ridgewood, N. J.

Orr, George
Junior
Corapolis, Pa.

Orr, Melvin
Sophomore
Darien, Conn.

Ost, Justin
Sophomore
Maplewood, N. J.



Otto, Gletchen
Sophomore
Marietta, Ohio

Otto, Margaret
Freshman
Pittsburgh, Pa.

Owen, Leith
Freshman
Spencer

Parks, Donald
Freshman
Buckhannon

Parrilla, Ken
Freshman
Westerly, R. I.

Perry, Philip
Freshman
Teaneck, N. J.

Parseghian, Vahan
Junior
New Milford, N. J.

Patterson, Rex
Freshman
Ligonier, Pa.

Patti, Frank
Junior
Paramus, N. J.

Payton, Roy
Freshman
Ellenboro

Pearson, Nancy
Freshman
McMechen

Pennett, Donald
Sophomore
Stockton, N. J.

underclassmen

Pennington, Ronald
Freshman
Wilton, Conn.

Pepper, William
Freshman
Selbyville, Del.

Perry, Charles
Junior
Totowa Borough, N. J.

Perry, Fred
Freshman
Man

Peterson, Noel
Sophomore
New York, N. Y.

Petry, Nancy
Freshman
Pa.

Phillips, Rowena
Sophomore
Lake Worth, Fla.

Pierce, Conrad
Junior
Jackson Heights, N. Y.

Pifer, Letetia
Freshman
Buckhannon

Plate, David
Freshman
Erie, Pa.

Podrog, Robert
Freshman
Washington, D. C.

Post, Rebecca
Freshman
Buckhannon



Potter, Frank
Freshman
Albany, N. Y.

Powell, Richard
Sophomore
Pittsburgh, Pa.

Power, Virginia
Freshman
Brooklyn, N. Y.

Powers, Edward
Junior
Cochituate, Mass.

Preston, Ellis
Freshman
Wilmington, Del.

Proffitt, Sara
Freshman
Mason

Pulhamus, Aaron
Sophomore
Totowa Borough, N. J.

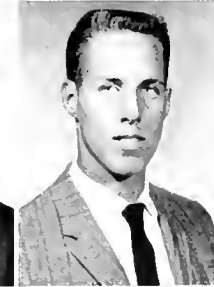
Purdy, Joy
Freshman
Burlington, N. J.

Quattlander, Carol
Junior
Hillsdale, N. J.

Rabatin, Leonard
Freshman
Perryopolis, Pa.

Rader, John
Freshman
Richwood

Raesly, Leland
Freshman
Pittstown, N. J.



underclassmen



Rainey, Donald
Sophomore
Westwood, N. J.

Ramage, Gay
Sophomore
Beekman, N. Y.

Randolph, Edward
Sophomore
West Union

Rautner, William
Sophomore
Pittsburgh, Pa.

Raymond, Michael
Freshman
Pittsburgh, Pa.

Reemsnyder, Jane
Freshman
Buckhannon

Remley, Kenneth
Sophomore
Massillon, Ohio

Reynolds, Bruce
Sophomore
Stratford, Conn.

Rial, Joseph
Junior
Greensburg, Pa.

Rice, Priscilla
Junior
Lebanon, Ill.

Rice, Robert
Junior
New York, N. Y.

Riggs, John
Freshman
Parkersburg



Robbins, Clarence
Sophomore
Springdale, Pa.

Roberts, Kenneth
Sophomore
Munhall, Pa.

Robinson, Twana
Freshman
Buckhannon

Rock, James
Sophomore
Munhall, Pa.

Rodgers, Vincent
Freshman
Irwin, Pa.

Roesle, Margot
Sophomore
Jackson Heights, N. Y.

Rogers, John
Freshman
Hillsdale, N. Y.

Rohrbaugh, Raymond
Sophomore
Baltimore, Md.

Rohrbaugh, Constance
Freshman
Cambridge, Mass.

Roney, Frederick
Freshman
Parkersburg

Rosenman, Joseph
Freshman
Fairfield, Conn.

Ross, John
Freshman
Pittsburgh, Pa.

underclassmen

Rossmeyer, William
Sophomore
Metuchen, N. J.

Rovello, Samuel
Junior
South River, N. J.

Ryerson, Cornelia
Freshman
Packanack Lake, N. J.

Sage, Robert
Sophomore
Metuchen, N. J.

Salata, Thomas
Sophomore
Fort Lee, N. J.

Sanders, John
Sophomore
Keyser

Sanford, Richard
Sophomore
Titusville, Pa.

Santillo, Harry
Junior
Jamaica, N. Y.

Sapp, Edwin
Freshman
Miami, Fla.

Schaffer, Nadine
Sophomore
Clarksburg

Scherer, Henry
Freshman
Glens Falls, N. Y.

Schleicher, Don
Freshman
White Plains, N. Y.



Schneider, Frank
Junior
Metuchen, N. J.

Schork, Kenneth
Sophomore
New York, N. Y.

Schwartz, Martin
Junior
Brooklyn, N. Y.

Schwengber, Ernest
Junior
Flushing, N. Y.

Sciotto, Francisco
Junior
New York, N. Y.

Seamans, Winston
Junior
High Bridge, N. J.

Seiderman, Arthur
Junior
Philadelphia, Pa.

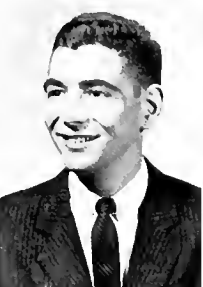
Sepulveda, Edward
Freshman
Lebanon, Pa.

Sell, Gaynell
Freshman
Johnstown, Pa.

Shaffner, Wesley
Junior
Stratford, Conn.

Shamblin, Robert
Freshman
War

Shin, Young Sun
Junior
Seoul, Korea



underclassmen



Shreve, Charles
Junior
Buckhannon

Shuttleworth, Nancy
Freshman
Bridgeport, Conn.

Silberman, William
Junior
Paterson, N. J.

Silver, Jay
Sophomore
New York, N. Y.

Silvester, Ellsworth
Freshman
Oldbridge, N. J.

Simons, Carol
Sophomore
Bridgeport

Simons, Melvin
Sophomore
Buckhannon

Simpson, Joseph
Sophomore
Glendale, N. Y.

Slaving, Judith
Sophomore
Ossining, N. Y.

Smith, June
Junior
Clarksburg

Smith, Robert
Sophomore
Tiverton, R. I.

Solvesen, Douglas
Sophomore
Staten Island, N. Y.



Sprout, Warren
Sophomore
Westfield, N. J.

Stanley, Barbara
Sophomore
Rutland, Vt.

Stanley, William
Freshman
Parkersburg

Stawarky, James
Freshman
Bridgeport, Conn.

Stell, Robert
Junior
Buckhannon

Stemple, Janet
Sophomore
Buckhannon

Stepanian, Michael
Freshman
Englewood Cliffs, N. J.

Stewart, Donald
Freshman
Lebanon, N. J.

Stewart, Homer
Junior
Lorentz

Stewart, JoAnn
Freshman
Kenova

Stone, Walter
Freshman
Gardner, Mass.

Stotz, David
Freshman
New York, N. Y.

underclassmen

Strader, Elizabeth
Junior
Buckhannon

Taylor, Grace
Sophomore
St. George

Stroles, Constantine
Sophomore
New York, N. Y.

Teagarden, Jean
Sophomore
Wheeling

Swan, John
Sophomore
Hamilton, Bermuda

Tenney, Bette
Sophomore
Flemington

Sweet, Marlene
Freshman
Gloversville, N. Y.

Tenney, Elvin
Junior
Buckhannon

Sweeten, Gerard
Junior
Scarsdale, N. Y.

Tenney, Ronald
Freshman
Adrian

Talkington, Walter
Freshman
Clarksburg

Tereshko, Joseph
Sophomore
Lambertville, N. J.



Teter, Elizabeth
Sophomore
Clarksburg

Torrence, Tod
Junior
Morris Plains, N. J.

Teter, William
Freshman
Buckhannon

Tracy, James
Sophomore
Steubenville, Ohio

Thompson, William
Sophomore
Darien, Conn.

Trusilo, William
Freshman
Pittsburgh, Pa.

Thorne, Joseph
Freshman
Fairmont

Turley, James
Freshman
Charleston

Tillinghast, Greta
Freshman
Madison

Umstead, Carolyn
Freshman
Pottstown, Pa.

Tjroe, Gim Beng
Sophomore
Medan, Sumatra

Undreiner, Ralph
Junior
Flushing, N. Y.



underclassmen



Ursaki, George
Freshman
Bridgeport, Conn.

Van Camp, Mary
Sophomore
Wheeling

Van Osdol, Gretchen
Freshman
Jane Lew

Vaughn, Edward
Junior
Berlin, Md.

Vigna, James
Freshman
West Homestead, Pa.

Voegtlin, David
Sophomore
New Kensington, Pa.

Von Eiff, Donald
Junior
Flushing, N. Y.

Wadsworth, Raymond
Sophomore
Nyack, N. Y.

Wagner, Shirley
Sophomore
West Pittston, Pa.

Walker, James
Junior
Mt. Hope

Wallwork, James
Freshman
Yonkers, N. Y.

Wanless, Gordon
Junior
Buckhannon



Ward, George
Freshman
Milford, Conn.

Wassell, Willard
Junior
Stamford, Conn.

Wauth, Carolyn
Freshman
Buckhannon

Weissman, Henry
Junior
Harpersville, N. Y.

Wellisch, Marshall
Junior
Bayside, N. Y.

West, Larry
Freshman
Buckhannon

Westberg, Charles
Freshman
Stanford, Conn.

Westfall, Lynn
Freshman
Buckhannon

White, Jean
Sophomore
Jamaica, N. Y.

Wiemokly, Richard
Junior
Long Beach, N. Y.

Wilcox, Ruth
Freshman
Oakland, R. I.

Wilfong, Jack
Freshman
Buckhannon

underclassmen

Wilfong, Richard
Sophomore
Buckhannon

Wilkinson, James
Sophomore
Whitesville

Wilkinson, James
Junior
Munhall, Pa.

Williams, Hazelmae
Sophomore
North Plainfield, N. J.

Williams, Joseph
Sophomore
Kingston, Pa.

Wilmoth, Esther
Freshman
Quiet Dell

Wilson, Cora
Freshman
Buckhannon

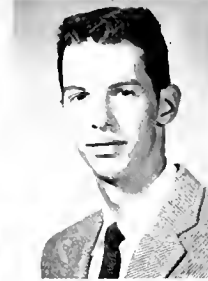
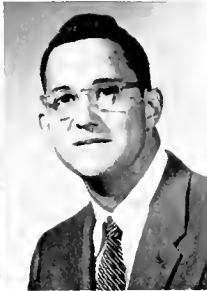
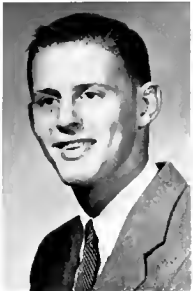
Wilson, David
Freshman
North Plainfield, N. J.

Wilson, Naomi
Freshman
Frenchtown

Winnett, Mary Lee
Freshman
Amity, Pa.

Winspear, George
Freshman
Plainsfield, N. J.

Witschey, Warren
Freshman
New Martinsville



Wolfe, David
Sophomore
Buckhannon

Wood, Betty
Junior
Mabscott

Wood, Karla
Junior
Chicago, Ill.

Wooddell, Mary
Freshman
Green Bank

Wolf, Thomas
Freshman
Lynbrook, N. Y.

Woolley, Norman
Freshman
Mountainside, N. J.

Wright, Clarence
Freshman
Fairmont

Wright, Samuel
Freshman
Boomer

Wyatt, Fred
Freshman
Buckhannon

Yates, Richard
Freshman
Beckley

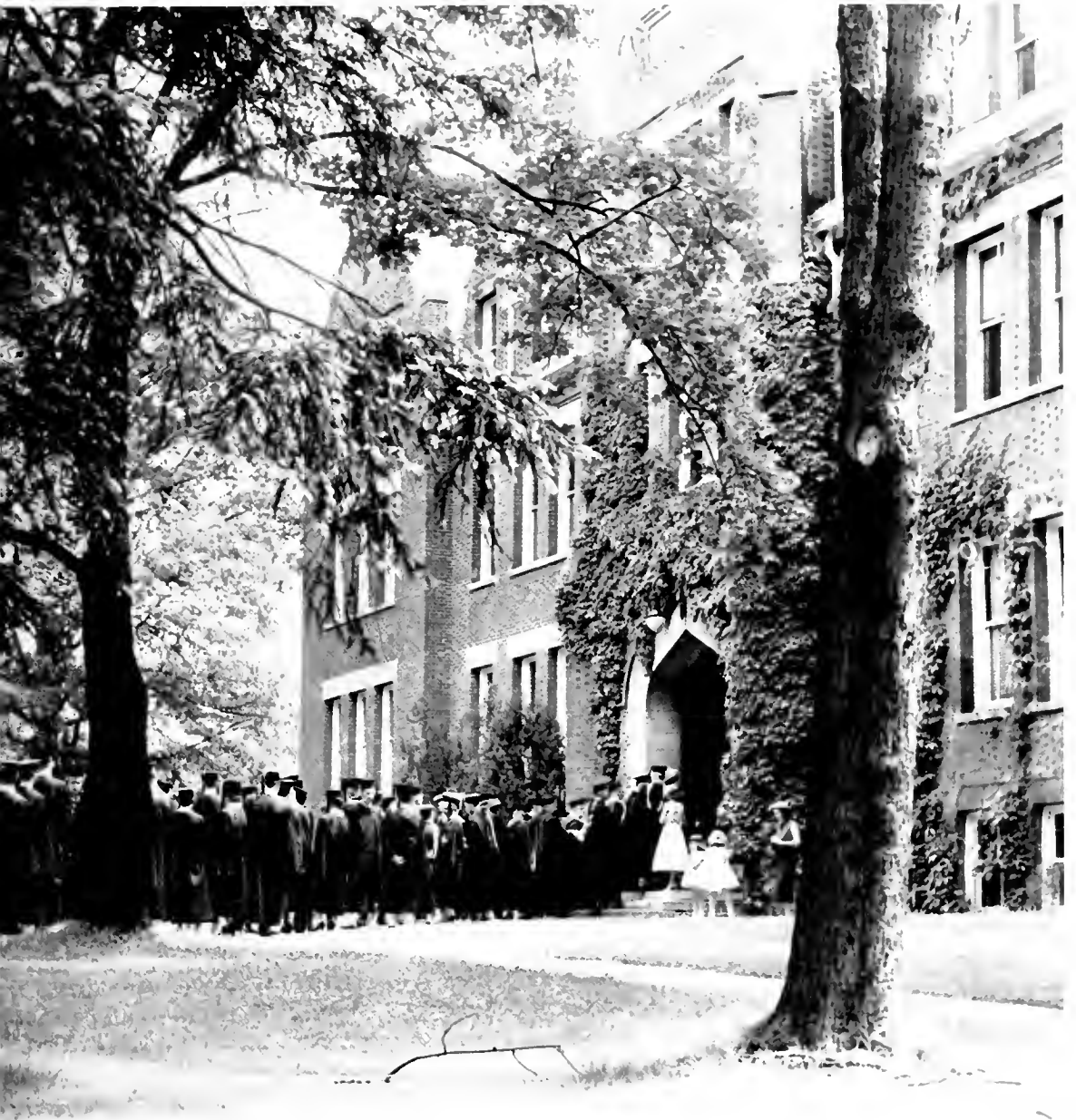
Zolan, Robert
Junior
Lynbrook, N. Y.

Walsh, John
Junior
Milford, Conn.



WHY WE CAME







we came because of alumni, faculty, and friends

"Beautiful campus, competent faculty, pleasant accommodations, friendly people . . ." Wesleyan is lauded far and wide by former students and present friends.

While our reasons for coming to Buckhannon vary, many will acknowledge the advice of others as instrumental in their decisions.



Top: Alumni Council in session.

Bottom: Campus growth . . . dedication of Benedum Lounge in New Hall for Men.



campus

chemistry, biology, etc.

Most science majors will agree that hours, too many, are spent in the labs and lecture rooms of Haymond Science Hall . . .

The chemistry, biology, physics, and mathematics departments are continually producing unexpected reactions.



music replaced here

The staccato click-clack of typewriters and the voices of sorority members have replaced the echoes of instrument and voice within the walls of Music Hall.

The "Old Music Box" . . . transformed into an auxiliary office building and "what have you!"



physical education

Between grunts and groans . . . the ideal place for physical education . . . the Wesleyan Gym.



home ec

The Home Economics Cottage . . . women's intuition applied here!



music and art

Renowned for its practice rooms and as birthplace of many current paintings by Wesleyan's Fred L. Messersmith . . . Loar Hall . . . music department becomes associate member of American Association of Schools of Music in 1957! . . . another remarkable achievement.

when boy meets girl . . .

at Agnes Howard Hall on the south end of the Wesleyan campus, life takes on a new meaning. Lurking behind the "imposing" portals of "Agony Inn" are 160 studious co-eds.

Campus social life often seems to revolve about the swing on the front porch.



**south
campus . . .
home for 160**

florida street . . . college avenue . . . wesleyan co-eds brave these spots, too

The house at 68 College Avenue rings constantly with the voices of a small group of girls . . . smallest but still important.



The scene of unexpected pilgrimages . . . the Women's Residence Hall at 49 South Florida Street houses several upperclass co-eds . . . distance fails to daunt their courage.



north campus . . . home for 275



The new Residence Hall for Men and our oldest new dorm, Fleming Hall. Sophomores, freshmen, and a few upperclassmen fill these halls with unlimited enthusiasm expressed in often surprising ways . . . strictly for fun.

junior . . . senior men left to own devices . . .



traditions

freshmen ready for new year . . .



Faculty members elect incoming Freshmen

Freshman Week began Friday, September 13. It was exciting for some, less exciting to others, and very new to all. Most of the Freshmen were full of questions: what to do, when to do it, and where to go. Registration, receptions, a picnic, various and sundry tests, an All-Campus Party, and other events filled the week. When classes finally began, the new members of the Wesleyan family settled down to prepare themselves for life after college. Mid-semester grades came all too soon for some.





The punch bowl proved to be popular at the faculty reception

... new life

Upperclassmen and freshmen "mix" at All-Campus Mixer. S. C. O. W. Committee puts up "Welcome" sign in gym.



Tuesday dawns and weary Freshmen file through the long registration line

Janie Pfalzgraf mulls over the ballot for Homecoming queen and attendants . . . Janie was elected junior attendant.



kay reigns during home

Fall and Homecoming, almost synonymous terms at Wesleyan . . . Kay Rider, voice major from Sophia, reigned during the celebrations. Jean White, sophomore; Harriet Aveyard, senior; Janie Pfalzgraf, junior; and Sandra Fultineer, freshman, surround the throne after coronation ceremonies.



Alpha Gamma Delta beams after winning first place trophy in annual "Wesleyantics" production.



coming festivities

Above top: "Clean Up Tech" was the title for the first place float in the Homecoming Parade. The men of Kappa Sigma Kappa say, "Our Team Duz It!"

Next above: Queen's float during parade.

The college stadium is formally named "Ross Field" during half-time ceremonies and the all-time-great football squad of 1912 is honored . . . Wesleyan lost to West Virginia Tech, not without a battle worthy of the occasion.



president inaugurated . . .

A new president and a new era in the growth and development of the college. The Inauguration-Homecoming week included seminars, forums, and a student-faculty-administration analysis of our present status.

Dr. Stanley Hubert Martin became the eleventh person to serve as president of West Virginia Wesleyan College. He came to Wesleyan after service with the Board of Education of the Methodist Church and is a graduate of Quincy College, Illinois, and received S.T.B., M.R.E., and Ph.D. degrees from Boston University.



Dr. and Mrs. Martin greet faculty and students in Loar Memorial Room during the President's Reception.



An honorary degree is conferred during the Inaugural Ceremony.



Dr. E. Ray Jones, president of the Board of Trustees, inducts Dr. Martin into the office of president of the college.



The procession moves toward Atkinson Chapel from Annie Merner Pfeiffer Library.



An inauguration speaker emphasizes a point.

The stage of Atkinson Chapel appears laden with distinguished personalities as Dr. Martin assumes the leadership of the College.





Standing room only was the word during the Inaugural Ceremonies. Even the library was filled by the overflow. Colleges and universities from across the East were represented for the ceremony.

. . martin becomes eleventh president



The officiating ministers pose within the chancel of First Methodist Church after the Inaugural Sermon: Rev. Mr. Samuel Harford, pastor; Dr. John O. Gross, Board of Education of The Methodist Church and preacher; Dr. Stanley Martin; and Dr. A. A. Schoolcraft, dean of the college.

Speakers for the Campus Conference on The Renaissance of American Idealism in Liberal Arts Education post on stage: Dr. D. D. Lassenberry from the University of Pittsburgh; Dr. Harold A. Bosley, pastor of Evanston, Ill., First Methodist Church; Dr. Max Lauffer from the University of Pittsburgh; and Dr. Stanley Idzerda of Michigan State University.



Social Science majors gather at First Methodist Church for a symposium presided over by Dr. George Glauner.



Loar Hall Auditorium is the scene of panel discussions during the Campus Conference marking the Inauguration.





"And she brought forth her first born . . ."

christmas 1957 . . . "his name shall be called, wonderful,

The Yuletide season brings a cheerful atmosphere to the West Virginia Wesleyan College Campus. A new tradition was inaugurated this year, a living creche was placed in the front entrance of the Administration Building. The Hyma Glee Club and the Methodist Student Movement presented the Christmas Story in music and word.

The traditional concert was presented in Atkinson Chapel Sunday afternoon. The Christmas portion of "The Messiah" was sung before the student body, local residents, and faculty. The Christmas Dance was cheerful. All the dining halls on the campus held Christmas dinners during the week.

"It came upon the midnight clear, that glorious song of old . . ." The Nicholas Hyma Glee Club shown singing before the Creche was organized this year by Miss Elizabeth Armstrong.





A winter wonderland with tinsel and trimmings. The Christmas Dance highlights the winter social calendar.



Music by Tommy Tucker. The second "name" band of the year played for an all-campus dance.

councilor . . . prince of peace."

Miss Cora Fultz, head resident for the Men's New Residence Hall joins the entire campus in a favorite Yule custom. Gene Brown, house president, and John Hodge look on.



Christmas dinners are observed in all of the college dining halls. The men in New Hall celebrated the season with holly and pine decorations. Installation of the hi-fi sound system in the dining hall was begun during the week.



christian emphasis week

February 4 to 7 was a period of campus-wide discussion on the theme, "Lord, Give Us Faith." Chapel services and discussion groups were held during the week with a varied group of campus guests.

All-American football stars from Pitt, Jim Theodore and Dick Bowen, were "kick-off" speakers for the week. Dr. Richard K. Toner, Episcopal priest, and chemistry professor at Princeton University and the Rev. Raymond Fedje, pastor of The Methodist Church of Amherst, Mass., appeared as resource leaders for the week.

Christian Emphasis Week, 1958, was concluded to have been a success beyond most expectations.



Dr. Richard Toner confers with student following a discussion session.



Rev. Sidney Davis, college chaplain; Dr. Toner; Rev. Samuel Harford, local pastor; Rev. Raymond Fedje; and Dr. William Willis, physics professor, answer student questions.



The drawing room of Agnes Howard Hall provides the setting for many "buzz" sessions with Christian Emphasis Week guests.



Armen Hanjian, Mrs. John Wright, and Rev. Fedje share experiences and reactions with a student group.



The faculty hosts Dr. Toner and Rev. Fedje at a dinner in Agnes Howard Hall Dining Room.



may weekend . . . tops spring social calendar

To the Wesleyanite the May weekend is the whip cream topping for the social calendar. May Queen Priscilla Howard, was an example of the coeds that Wesleyan educates. Her attendants shine equally about the palm centered dais: freshman attendant, Diane Butters; sophomore attendant Janie Pfalzgraf; junior attendant, Jean Rawson; senior attendant, Nancy Walton.

As expected, the big weekend turned out to be the biggest. Jan Campbell's orchestra was about the "coolest" heard in a long time. The extra attraction of the weekend was the presence of the attractive "imports" escorted by men not lucky enough to have their dates on campus.





The Phi Sig's express their enthusiasm after being named first place winners in the annual May Day Sing



Gleeful looks move quickly across the faces of the Alpha Gams after receiving the second place award.



Senior girls do the traditional dance around the May Pole at the May Sing.



"Alma Mater of the Mountains . . ."

Speakers and honorary graduates pose for *Murmurmontis* photographer.



Seminary Class of 1907 returns to campus for its Golden Anniversary.



graduation

The apex of our college studies, graduation, is a mixture of tears and pride over the work of four years. Through four years of trial and error, the graduate learns to discipline his time, "creating" moments to relax in the S.C.O.W. between studies and hours to be spent with a voluminous textbook. He has learned to persevere, and to adapt himself to everchanging methods and ideals; to accept his Christian duties and develop his civic pride.



ABOVE RIGHT: Presentation of a portrait honoring Edna Jenkins, benefactress of Wesleyan College.

RIGHT: Harmonizers perform at Alumni Banquet during graduation week.

BELOW: Panoramic view of Alumni Banquet.



jack paar selects . . . murmurmontis

queen 1958



NATIONAL BROADCASTING COMPANY, INC.
A SERVICE OF RADIO CORPORATION OF AMERICA
RCA Building Radio City, New York 20 N.Y.
FEBRUARY 13, 1958
February 13, 1958

Mr. James David Harbert, Jr.
MURMURMONTIS Editor
West Virginia Wesleyan Publications
Buckhannon, West Virginia

Dear Mr. Harbert:

Mr. Paar thanks you for the great privilege of being chosen to select the 1958 MURMURMONTIS Queen. Needless to say, this was, as you stated, a "task", however, through careful consideration, Mr Paar has chosen the following five young ladies:

1. #18 - Linda
2. #15 - Carla
3. #11 - Ginger
4. #10 - Rhea Lee
5. # 8 - Jean

Once again, thank you, and best wishes to all of the fifteen charming contestants.

Sincerely,
Marilyn Blumenfeld
Marilyn Blumenfeld
for Jack Paar

ESC.

linda west ■

karla wood ■

ginger power ■

rhea lee chenoweth ■

jean white ■



linda west . . . kappa sigma kappa



karla wood . . . kappa alpha



**judy atkinson . . .
sigma theta epsilon**



**carol beers . . .
theta chi**



janet belcher . . .
kappa phi



nancy burruss . . .
sigma theta epsilon



ginger power . . . alpha xi delta



rhea lee chenowith . . . alpha gamma delta



**kay custer . . .
alpha delta pi**



**sharie dean . . .
phi sigma epsilon**



nancy jo funk . . .

alpha delta pi



mary lou hetz . . .

w.r.a.



jean white . . . alpha xi delta



janie pfalzgraf . . . alpha xi delta

jean rawson . . . s.n.e.a.

jean teagarden . . . kappa phi

carol quattlander . . . alpha delta pi

jenny lynne west . . . kappa sigma kappa





**administration
faculty**



president

Dr. Martin maintains a constant atmosphere of "good will" among the 900 odd members of the Wesleyan family—students, faculty, and administration. His very successful first year as president of the college has had many noticeable effects. Kept busy planning for the future, and the 1965 Diamond Jubilee of the school, he still manages to find time for almost all problems that enter his office. (Dr. Martin forecasts for the jubilee the completion of a multi-million dollar building program: a new women's dormitory, a chapel, new student center, field house, and modern science facilities.)

stanley hubert martin
president of the college



dean

For a quarter of a century Dr. Schoolcraft has served W.V.W.C. as a professor and as dean and registrar. He has constantly striven to make Wesleyan a fine liberal arts college. As supervisor of the faculty and curriculum he has constantly encouraged the highest standards. Once past the door the student finds that his warm personality smooths the way. Dr. Schoolcraft came to Wesleyan as professor of education and psychology in 1930. He became dean and registrar in 1944 and has twice served as interim president.

arthur allen schoolcraft
dean of the college

vice president

Mr. Ling is not in close contact with the student body but much of the planning of the administration passes through his office. He directs the financial program of the college and is currently engaged with plans for college expansion. The multi-million dollar building program now in progress heads the list of his activities.

james i. ling
vice president



treasurer

Each semester the 750 members of the college student body are offered an opportunity to renew their acquaintance with Mr. Williams. As treasurer of the college he handles budget problems during the year. Income and expenditures are carefully totaled in his office in order that the college may operate.

heyward williams
treasurer



business manager

Controlling the expenditures of the college, Mr. Hicks' talents are employed in a wide variety of ways. Besides serving the college in business matters, personnel relations, and building maintenance, he directs the West Virginia Inter-Collegiate Athletic Conference Tournament, held annually in the Wesleyan Gymnasium.

william hicks
business manager





admissions director

Prospective students learn about the many advantages offered by West Virginia Wesleyan College as Raymond Kiser, admissions director, attempts to answer their questions about the campus. Applications for admission are received and checked in this office as hundreds of college catalogs are mailed each year.

raymond kiser
admissions director



alumni director

James Stansbury, Wesleyan's first director of alumni relations, has the significant task of keeping in touch with W.V.W.C. graduates. Editions of the *Sundial*, the alumni magazine, are widely circulated. Mr. Stansbury's office is the scene of constant activity as alumni participation in the life of the college is encouraged.

james stansbury
alumni director



publicity director

Students and college activities are the subjects for news articles written by Miss Hallie Lu Hallam, publicity director. She makes certain that Wesleyan news gets to its readers. The Athletic Department utilizes Miss Hallam's artistic talents to publicize the high riding Bobcat floor team. A Wesleyan graduate, she is a friend to both student and professor.

hallie lu hallam
publicity director

counseling

Florence Schaper has been joined this year by Orlo Strunk in counseling Wesleyan students. The counseling offices are always open to those needing advice and encouragement. Dr. Schaper's office in the Administration Building and Dr. Strunk's office in the Old Music Hall are scenes for solutions of many involved problems.

florence schaper
orlo strunk
counselors



deans of students

Mr. Shaver and Miss Wilson work to promote the best interests of the college students. The dean of women is responsible for the campus homes of Wesleyan co-eds. Dean Shaver is kept busy supervising general activities for the masculine portion of the W.V.W.C. population.

nellie wilson
dean of women
john shaver
dean of men



student center

The most popular campus spot, the Student Center of Wesleyan, is managed by Mrs. Ethel Vaughn. Dances, movies, and open houses are among the many activities sponsored by the S.C.O.W. The S.C.O.W. committee of the Community Council, under the direction of Mrs. Vaughn, is currently projecting plans for a new student center.

ethel vaughn
manager of s.c.o.w.





all in the prof's day

This is a tribute to the faculty of West Virginia Wesleyan College and their constant efforts to educate a multitude of students.

After a hearty breakfast the professor is ready to begin his day . . . answering questions that could only originate with Wesleyan students. Lecturing is only one of the tasks a professor encounters while performing his daily routine.

Between classes the professor enjoys the solitude of his study. Here he must do much of his paper work, and confer with faculty members and students.

At home the professor may spend his leisure time doing research work, preparing papers, or just relaxing during a quiet evening. All in one day for the professor.



art and music faculty

ROBERT E. SHAFER — Music — B.M.,
B.M.E., M.M.
ELIZABETH J. ARMSTRONG — Music —
B.M., M.M.
CALVIN B. AGEY — Music — B.M.,
M.M., Ph.D.
MARY JO BROWN — Music — B.M.,
M.M.

BELOW: FRED L. MESSERSMITH — Fine
and Applied Arts — B.F.A., M.A., helps
a group of student artists.

music
fine and applied arts

bible
religion
religious education



bible and
religious education faculty

SIDNEY T. DAVIS — Religion and Religious Education
— A.B., S.T.B., Ed.M.
RALPH C. BROWN — Bible — A.B., S.T.B., D.D.
NELLIE G. WILSON — Religious Education — A.B.





science faculty

ARTHUR B. GOULD—Chemistry and Physical Science—B.S., M.S., Ph.D.
 WILLIAM R. WILLIS—Physics—B.S., M.S., Ph.D.
 KATHERINE A. TISSUE—Home Economics—A.B., M.S.
 GEORGE B. ROSSBACH—Biology—B.S., A.M., Ph.D.
 JOHN WRIGHT—Chemistry—B.S., Ph.D.

BELOW: WILLIAM A. HALLAM—Mathematics—B.S., A.M.

biology
 chemistry
 home economics
 mathematics
 physics

business administration
 economics



business administration and economics faculty

LEWIS B. CLARK—Business Administration—A.B., M.A., Ed.D.
 JUANITA BOWYER PARKER—Secretarial Studies—B.S., M.A.
 E. KIDD LOCKARD—Economics—A.B., M.A.

education, philosophy, and psychology faculty

JAMES L. HUPP—Education—B.S.,
A.M., Ph.D.
JOSE A. FRANQUIZ—Philosophy—
A.B., S.T.B., Ph.D.
ORLO STRUNK, JR.—Psychology—
A.B., S.T.B., Ph.D.
ROBERT D. MARTIN—Education—B.S.,
A.M.



english faculty

ABOVE: SAMUEL A. SMALL—English—A.B., M.A.,
Ph.D.

RIGHT: LEWIS H. CHRISMAN—English—Ph.B.,
A.M., Litt. D., L.H.D.
KEITH N. RICHWINE—English—B.S., M.A.
MARY C. BRILL—English—A.B., A.M., Ph.D.



education
philosophy
psychology

english

foreign languages and speech faculty

BETTY A. GROAH—Speech and Dramatic Arts—A B., M.A.
 JOHN D. SHAVER—Speech—B.S., M.A.
 MARY McKITTRICK—French and German—A B., M.A., Ph.D.



foreign languages speech

history political science sociology



history, political science, and sociology faculty

GEORGE L. GLAUNER—History—A B., A.M., Ph.D.
 FLORENCE W. SCHAPER—Sociology—B.S., M.A., Ph.D.
 MARVIN DOWNEY—Political Science—B.A., M.A., Ph.D.
 ROBERT C. BOWLES—History—A B., M.A., Ph.D.



library science faculty

EVELYN VIRGINIA CROUCH—Assistant Librarian and Library Science—A.B., Ed.M., M.A.
 HELEN S. GAYLORD—Assistant Librarian and Library Science—A.B., B.S. in L.S.
 HELEN STOCKERT—Librarian and Library Science—A.B., B.S. in L.S.



library science

physical education

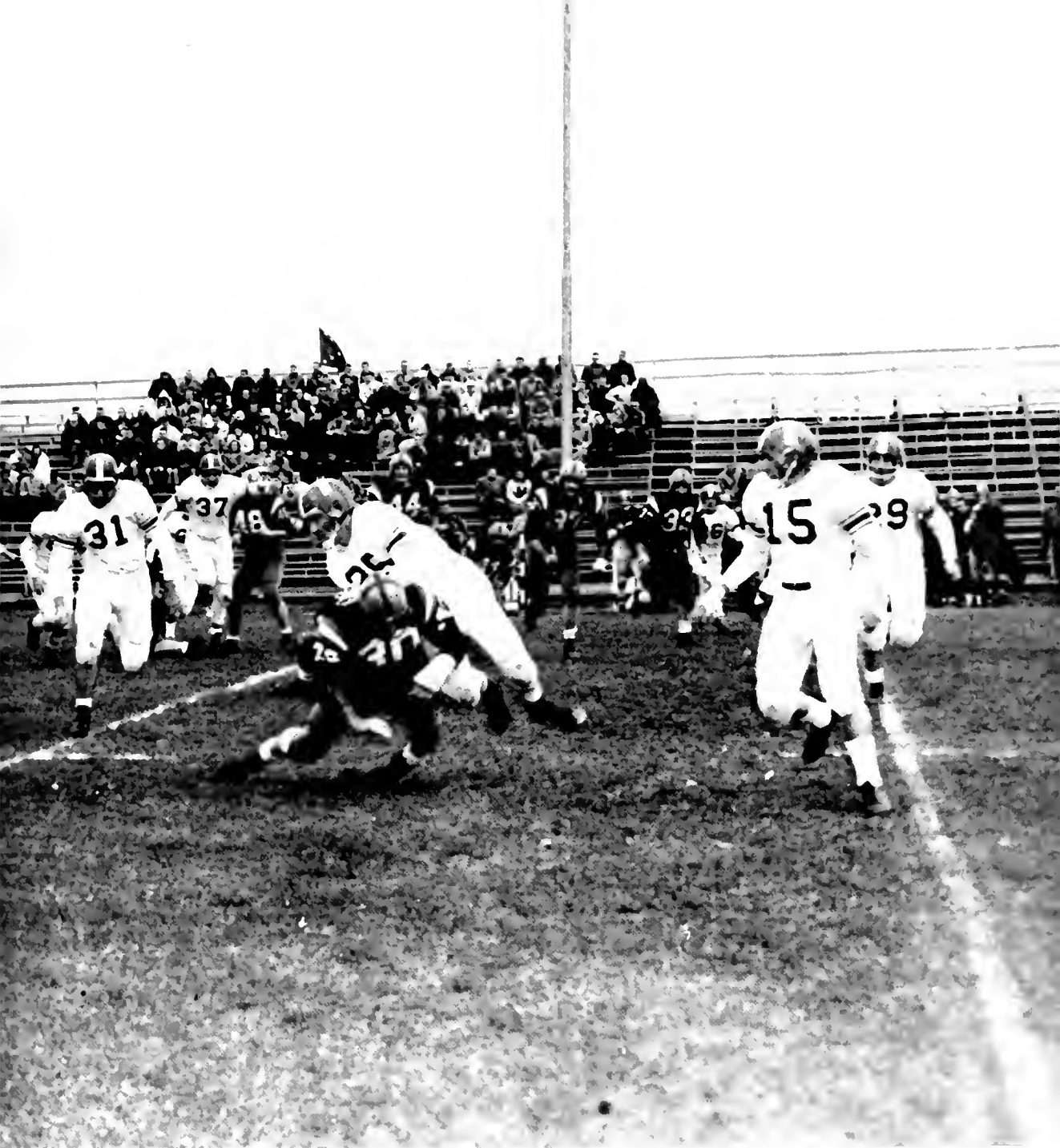


physical education faculty

SAMUEL MORGAN ROSS—Physical Education—B.S.
 ETTA WALTERS—Physical Education—B.A., M.Ed.
 FRANKLIN CLAY ELLIS—Physical Education and Coach of Basketball—B.S., M.S.
 DAVID ECHOLS REEMSnyder—Physical Education and Coach of Football—B.S., A.M.

what we found







we found almost too much . . .

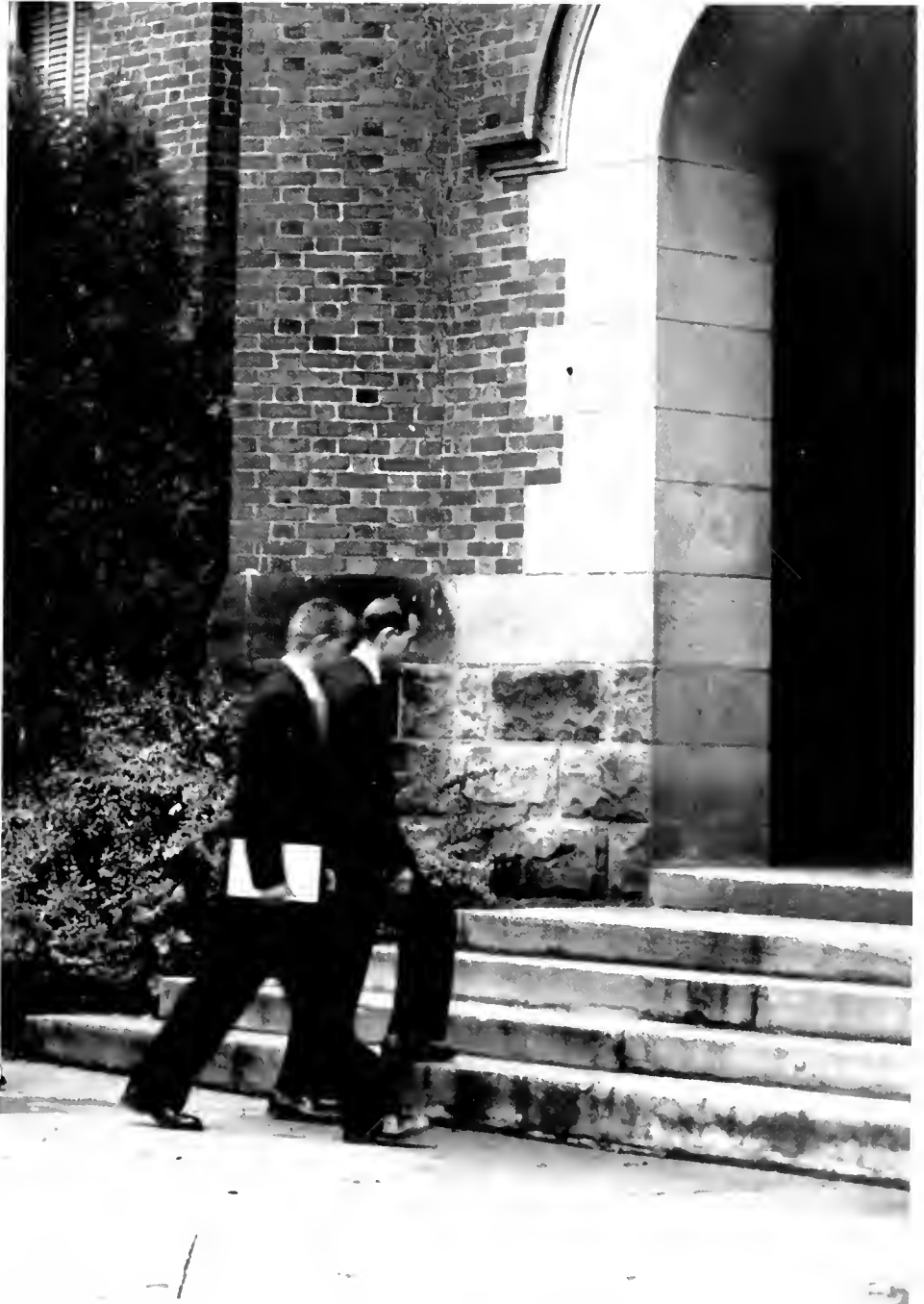
There seemed almost too much to do and never enough time to do it in. There were fraternities and sororities, clubs and honoraries . . .

We spent almost too much time engaged in these activities as was seen when the twice-a-semester registrar's notice was received. We vowed to do better . . . but there still seemed to be so many things we just had to do . . .



TOP: Students and faculty fill the Agnes Howard drawing room.

BOTTOM: Three rehearsals each week and at least one performance.



government



community council . . . voice of the

The Community Council of West Virginia Wesleyan College is composed of elected representatives from each class and faculty and administration representatives elected by the student body at large. This group forms the policy making body for the college. With Ted Jungas wielding the gavel in the Methodist Historical Room of the library every Wednesday evening, campus problems are often brought to satisfactory conclusions.

Wesleyan is fortunate in having such an organization capable of solving most situations. Representing all phases of college life—students, faculty, and administration—the Community Council serves a vital function.

Elections are held each spring in order to select a president for the council. Candidates are nominated by individual classes and by the faculty and a campus wide-election is held.

preamble to the constitution of the community council

"We, the members of the campus community of West Virginia Wesleyan College, recognizing the need for an inclusive and efficient form of college government where students, faculty, and administration work side by side, do institute this constitution and dedicate ourselves to the realization of the objectives of our college through its faithful execution."

council officers

President	THEODORE JUNGAS
Vice President	JAMES SCOTT
Secretary	GLENDIA McDONALD



community council

Samuel Caudill, William Bauserman, Dean John Shaver, Richard Hamilton, Roger Fischer, Glenda McDonald, Ted Jungas, James Scott, Janie Pfalzgraf, Ralph Gay, Dean A. A. Schoolcraft, Janet Ailstock, Mr. Sam Ross, Mr. Fred Messersmith.

BELOW: Council president, Ted Jungas.



students



awards committee

Carol Boyer, Dean A. A. Schoolcraft, Sharie Dean, Ann Pemberton.



conduct committee

Nancy Burruss, Richard Brooke, Dean A. A. Schoolcraft, Dean John Shaver, Harriet Aveyard.



publications committee

Jeannette Hedrick, Frederick Hart, Nancy McGregor, James Scott.



world university service committee

Ronald Lewis, Jose Dizon, Suzanne McNutt, Donna MacWilliams.

educational affairs committee

Shirley Armfield, Ann Queen.



s.c.o.w. committee

Laura Bays, Mary Burton, Janie Pfalzgraf, Jean White, Patricia Ambrose, William Smith



u.s. national student assoc. committee

Reed Bradford, Ann Pemberton, Clare Edman.



social activities committee

Dean Shaver, Peggy Jo Morton, Dean Wilson



religious activities committee

Richard Hamilton, Carol Kane, Ruth Grose, John McCulloch.

committees of community council

Much of the responsibility assumed by the Community Council is performed by a group of standing committees. These committees are chosen by the council from the results of a committee preference survey of the student body. Most all-campus activities are regulated by these committees: Student Center operations, cultural enrichment programs, publications, and other aspects of community life.



cultural enrichment committee

Robert Winters, Sylvia Klepper, William Norman, Mr. Messersmith.



women's house governing board

Margo Brookover, Elnora Chambers, Sharie Dean, Harriet Aveyard, Sally Profit, Linda Sowers, Janet Gress, Ann Queen, Ann Welker, Judy Atkinson, Mara Linaberger, Donna MacWilliams.

women's house governing board

The three residence halls occupied by women are governed by the Women's House Governing Association. Each class is represented on the governing board with elections held each semester. Officers for the group are selected each spring. Rules and regulations are made and enforced by the residents of Agnes Howard Hall, Florida Street House, and College Avenue House through this board. Linda Sowers is president of the board.

house board of new hall

A new hall and a new governing association with the first year of residence in the New Hall for Men a house board was organized to give the 164 men living there a voice in the operation of this new dormitory. Miss Cora Fultz, head resident, and Dr. Florence Schaper, head of counseling, have helped to activate this self-governing group. President is Gene Brown.

house board of new hall

Gene Brown, Kenneth Maberry, Paul Nicolson, Dennis Lord, Kenneth Fleming, Michael Herrera, Kenneth Roberts, Ronald Casto, James Harbert, Frank Horn.



interfraternity council

TOP ROW: James Scott, William Will, Jefferson Manser.
BOTTOM ROW: Frank Patti, Jerry Rabinowitz, Edward Powers.



interfraternity council

The Interfraternity Council is composed of the presidents and one representative from each of the four national and the one local fraternity on campus. Rushing, pledging, and fraternal conduct are coordinated by the council. While serving as a governing board, I.F.C. continues to promote good inter-fraternity relations. Jerry Rabinowitz is president.

panhellenic council

The three national sororities on Wesleyan's campus are governed by the Panhellenic Council. Two representatives from each chapter act as the policy making group for inter-sorority situations. They serve as an effective forum for greek problems and seek to maintain high standards of fraternal activity.



panhellenic council

Harriet Aveyard, Linda Sowers, Delores Keyser, Carol Gearty, Kay Custer.



honoraries



benzene ring

TOP ROW: William McBride, William Burdette, John Herbst, Paul Nicolson, Jay Silver, John Johnstone, James Tracy. SECOND ROW: Sharon Graham, James Koon, David Wolfe, Marilyn Smith, Ronald Lewis, Gerard Boe, William Echols, Dr. Gould. BOTTOM ROW: Gim Bong Tijoe, Betty Kay Hanifan, Richard Brooke, William Hall, Floy Black, Robert Rubin.

benzene ring

Membership in the Benzene Ring, oldest honorary organization on the campus, is quite an honor for chemistry students. The purpose of this honorary is to work for the improvement of the science department and to encourage greater interest in the physical sciences. Selection of a Camphor King and the annual Strawberry Breakfast at Commencement are outstanding activities of Benzene Ring. Marilyn Smith is president.



ABOVE: Camphor King Fritz Dengler receives his crown.



LEFT: Annual Strawberry Breakfast is in progress.



beta beta beta

Norman Hillman, George Orr, Gerard Boe, Nancy McGregor, Ralph Gay, Marilyn Smith, Robert Hetz, Robert Rubin.

beta beta beta

For aspiring biologists at West Virginia Wesleyan, Beta Beta Beta offers a gauge of achievement. This national biology honorary seeks to promote biological research and stresses scholastic principles.

Gerry Boe is president; Robert Hetz, vice president; and Nancy McGregor, secretary.

alpha psi omega

Students who have exhibited superior ability in dramatics are invited to become members of Alpha Psi Omega. Alpha Rho chapter of this national honorary dramatics fraternity aids the Wesleyan Playshop in drama presentations.

alpha psi omega

Ruth Grose, Carol Ann Wilson. (Not pictured, Thomas Goheen.)





haught literary society

TOP ROW: Helen Rissmeyer, Marilyn Smith, Betty Kay Hanifan, Janie Pfalzgraf, Sylvia Klepper, Jeannette Hedrick, Suzanne McNutt, Janet Boggess, Ann Pemberton. BOTTOM ROW: Peggy Jo Morton, Annabelle Day, Harriet Aveyard, June Mearns, Linda Sowers, Jodi Lamb.

haught literary society

The sixteen women who comprise the membership of the Haught Literary Society are selected for their interest in the fine arts and their academic standing. The "quote" and program topics for the weekly meetings may range from Sputnik to Weddings. Harriet Aveyard is president; June Mearns, first vice president; Annabelle Day, second vice president; and Linda Sowers, secretary-treasurer.

delta psi kappa

Delta Psi Kappa is the national honorary fraternity for women majoring or minoring in physical education. Delta Psi Kappa was founded in 1916 and Alpha Eta chapter was organized at Wesleyan in 1947. Fund raising projects include selling programs at the W.V.I.A.C. Tournament and checking coats at basketball games. Ann Queen is president; Virginia Light, vice president; Sharie Dean, secretary; and Carol Boyer, treasurer.



delta psi kappa

Dolores Keyser, Janet Harris, Deann LeBeau, Carol Boyer, Ann Queen, Virginia Light, Ruth Grose, Mary Lou Hetz, Linda Sowers, Sharie Dean.



religion



canterbury club

TOP ROW: William Thompson, Kleber Gregory, Thomas Clark, Paul Moser, Bruce Gourlay, Gary Boegershausen. SECOND ROW: Delma Beer, Diane Fessler, Cornelia Ryerson, Bonny Ames, Ann McClain. BOTTOM ROW: Robert Hider, Mary Beth Alberts, Douglas Fitch.

canterbury club

The Canterbury Club is a vital force in the activity of Buckhannon's Church of the Transfiguration. They assist the Rev. Mr. Stuart West in regular services of Evensong and Holy Communion. Sunday evening suppers, dances, and car-washings, for the vestment fund, are important activities for these Episcopal Students. William Thompson is president.

kappa phi

The Methodist Girls' Club was begun on Wesleyan's campus in 1957 and became a probationary group of Kappa Phi, National Methodist Women's Sorority, in the fall of 1957. They expect to complete their probation during the spring. This large group of girls play an important part in the religious life of the campus. Janet Belcher is president.

kappa phi . . . methodist girls' club

TOP ROW: Nancy Pearson, Sally Profitt, Betty Jane Thonen, Marilyn Johnson, Ann Welker, Carolyn Law, Sue Kohlhepp, Barbara Brewer, Peggy Otto, Cornelia Mendoza. THIRD ROW: Jo Ellen Flagg, Ruth Grose, Constance Rohrbough, Esther Wilmoth, Janet Gress, Betty Jo Hubbard, Mary Woodale, Madonna McDonald, June Mearns, Elizabeth Weiglein, Gaynell Sell, Margaret Herold, Nancy McCabe. SECOND ROW: Donna MacWilliams, Sandi Hall, Barbara Stanley, Sue Jeffreys, Jean Teagarden, Betty Kaminski, Rosalie Abbott, Judi Slaving, Judy Fisher, Gerri Davis, Carolyn Kopple. BOTTOM ROW: Norma Davis, Patricia Ambrose, Carol Simons, Joyce Becker, Janet Belcher, Joan Williams, Grace Taylor, Rowena Phillips, Nancy Burruss, Donna Bissell.





sigma theta epsilon . . . methodist men's fraternity

TOP ROW: William Pettibon, Clare Edman, William Kailing, Robert Louer, Jerry Jones, George Orr, Thomas Goheen, William Will, Melvin Orr, William Altman, Paul Johnson, James Harbert, James Scott, Lloyd Fike. SECOND ROW: Charles Perry, John Sanders, Robert McLaughlin, Harold Greenway, James Mowry, Richard Sanford. BOTTOM ROW: Raymond Rohrbaugh, Lynn Westfall, Bing Scherer, Allen Frosch, Donald Stewart, Robert Smith, Charles Kohler.

ΣΘΕ officers

President	JAMES MOWRY
Vice President	JACK SANDERS
Recording Secretary	CLARE EDMAN
Treasurer	RICHARD SANFORD
Chaplain	WILLIAM WILL
Corresponding Secretary	LYNN WESTFALL
Pledge Master	WILLIAM PETTIBON

sigma theta epsilon

Alpha Gamma chapter of Sigma Theta Epsilon began its first full year of activity during 1957-1958. This is a national fraternity for Methodist Men and exists as an important part of the Methodist Student Movement, along with its sister group, Kappa Phi.

The local group has achieved a considerable degree of success, being recognized at national and regional conferences. In only one year of growth the chapter has grown to a position of responsibility beyond most expectations.

Religious services, including the Holy Communion, are offered to members of the fraternity along with a love feast and a second semester dinner and dance held with Kappa Phi.



methodist student movement

TOP ROW: Jim Hanson, Joyce Becker, Carol Sue Hayden, Paul Bodurtha, Barbara Brewer, Michael Kundrat, Janet Belcher, Paul Gramlich, Marlene Sweet, Bing Scherer. SECOND ROW: Armen Hanjian, Robert Weaver, Allen Frosch, Thomas Elliott, Charles Perry, Jerry Jones, Samuel Moore, Howard Cupples, William Pettibon, Pete DeGroote, Donald Flansburg. BOTTOM ROW: Jeannette Hedrick, Ruth Grose, Ann Welker, Constance Rohrbough, Elizabeth Weiglein, Hazel Mae Williams, Marilyn Johnston, Margaret Herold, Nancy McCabe, Betty Jane Thonen, Greta Tillinghast, Marilyn Firl, Judy Lampila, Margaret Hogsett.

methodist student movement

Undoubtedly the largest group on campus, the Methodist Student Movement serves as a link between Methodist students and their church.

Regular services of worship are conducted in Brown Chapel, Atkinson Chapel, Loar Hall, and the Blue Room of the S.C.O.W. Sunday morning and evening and Thursday evening are devoted to religious services on the campus. M.S.M. also sponsors Wesleyan Fellowship Teams who travel to area churches in an effort to strengthen local youth programs.

A planning retreat in the fall and an evaluation retreat in the spring are important among the multitudinous M.S.M. activities.

m.s.m. council

TOP ROW: Nancy Burruss, Joseph Rial, Sam Moore, Roger Fischer. SECOND ROW: Joyce Becker, Carol Sue Hayden, Paul Bodurtha, Armen Hanjian. BOTTOM ROW: Jeannette Hedrick, Betty Kay Hanifan, Harriett Aveyard, Suzanne McNutt.

m.s.m officers

President PAUL BODURTHA
 First Vice President ARMEN HANJIAN
 Second Vice President JEANNETTE HEDRICK
 Secretary HARRIETT AVEYARD
 Treasurer WILLIAM RAUTNER



m.s.m. drama

The M.S.M. Drama group, under the direction of Suzanne McNutt, presented an adaptation of Charles Dickens' "A Christmas Carol" during a pre-Christmas assembly.



wesleyan fellowship teams

TOP ROW: Charles Kohler, Robert Smith, Walter Talkington, Robert McLaughlin, Garren Gaston, William Morrison, John Hanson, Jerry Jones, Frank Gulinello, Theodore Jungas. SECOND ROW: Edah Lasell, Sue Kohlhepp, Suzanne McNutt, Nancy Burrus, Gaynell Sell, Elizabeth Weiglein, Carol Kane, Ruth Grose, Helen Rissmeyer, Virginia Light, Clarence Wright, Walter Stone. BOTTOM ROW: Judy Lampila, Joyce Becker, Margaret Hogsett, Carolyn Umstead, Marlene Sweet, Betty Wood, Martha Fosbenner, Ann Welker, Ruth Epler.





hillel society

TOP ROW: Joseph Balaban, Jay Silver, Robert Oasis, Harvey Levin, Joseph Ros-enman, Elliot Kawadler. BOTTOM ROW: Linda Falik, Dr. Brown, Larry Feinburg.

hillel society

The Hillel Society of West Virginia Wesleyan College was organized in the fall of 1957. While it follows the general principles of Hillel Societies across the nation it functions as an independent group, providing the nucleus for Jewish Religious activity on the campus. Marshall Wellish is president; Linda Falik, secretary; and Elliot Kawadler, student chaplain.

newman club

St. Joseph's Roman Catholic Church is the home for Wesleyan's Newman Club. This large group participates in varied activities during the year—both religious and social. Under the direction of the Rev. Father Murray, parish priest, the group remains a stable organization for Catholic students.

newman club

TOP ROW: Louis Colombo, Robert LaFalce, James Lewis, Richard Bigelow, John Blubaugh, Richard McGuire, Taylor Meister, Arthur Miklosey, Russell Miller, James Rock, Robert Holbrook, Donald Carroll. SECOND ROW Joseph Alizio, Father Murray, Shirley Wagner, Frank Scioto, Joan Block, Esther Emery, Frank Parisi. BOTTOM ROW Alan Machenberg, Craig Heinrich, Frank Patti, Harry Santillo, Thomas Salata.





organizations



editors

JAMES DAVID HERBERT, JR.
CAROL ANN PEMBERTON

associates

Will Lewis, Susan Jeffreys, Jane Reemsnyder, Paul Moser, Sharon Graham.

sports

JOHN CAMPBELL GEORGE SEAGRAVES

business manager

JAMES ROBERT McLAUGHLIN

associates

Shirley Lee, Judi Slaving, Bruce Gourlay, Sally Bond, Elizabeth Teter, Argyle Abbott, Leonard Rabatin, Kleber Gregory.

murmurmontis

Few people view the efforts expended by the staff of the college yearbook until the date of publication, but the production of the 1958 MURMURMONTIS was not the result of slight work.

Ann complained of one and two people work sessions lasting until the wee hours. Paul was usually reliable but the question was raised, "what for?" Jim was the optimist with few words of pessimism, even at 2:30 a.m. Money-bags Jim dropped by to add a few words of encouragement, wrote a few checks, stamped pictures, and ducked out. His work came later . . . All this and another copy deadline was met.

Sue, Jane, and Sharon felt the yearbook squeeze along with all the staff members but took time out to come to the rescue of the editors. John and George could be relied upon for interesting bits of information. Will and Lenie provided a helping hand. Even in the midst of a crushing deadline time could be found for a little fun.



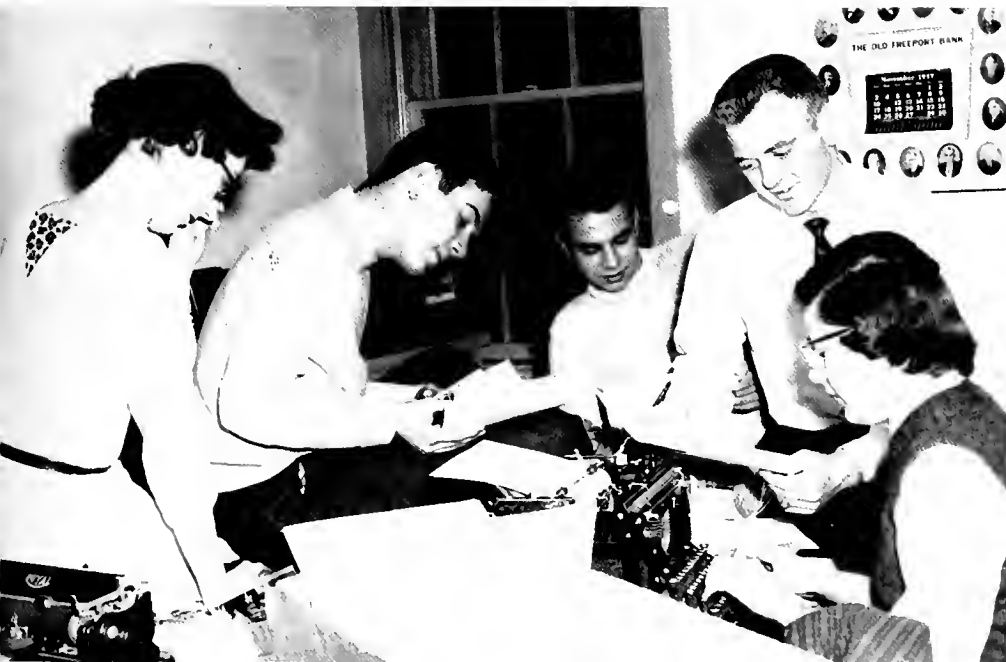
RIGHT ABOVE: Howard Hiner, *photographer*, views work.
RIGHT: What did I do?



TOP RIGHT: Staff works frantically to meet another deadline.

RIGHT: Reward for a job well done. Staff of 1957 annual gathers at Nixon Plaza in Clarksburg for year-book dinner.

BOTTOM: Getting down to business.



staff members

Co-Editors Janet Boggess, Charles Modlin
 Business Manager James Scott
 Staff Members Virginia Light, Lloyd Fike,
 Carolyn Kopple, Ray DeMarco, Clare Edman,
 Bea Chigos, Jeanette DeHaven, Gay Sell, Caro-
 lyn Umstead, Elizabeth Weiglein
 Circulation Managers Sharie Dean, Betty Baylis
 Advisor Keith Richwine

pharos

"The Pharos is published twice a month by the students of West Virginia Wesleyan College . . ."

The campus paper serves the campus community by providing an outlet for news accessible to all the students. A tremendous effort has been exerted during the year, resulting in a much neater and better newspaper.

LEFT: Charlie and Jan sweat out another issue with the able assistance of "Blackie."



pharos staff

TOP ROW: Betty Byliss, Bea Chigos, Sharie Dean, George Miller, Elizabeth Weiglein, Ray DeMarco, Hunter Cobb. BOT-TOM ROW: Charles Modlin, Carolyn Kopple, Carolyn Umstead, Gay Sell, James Scott, Mr. Richwine, Janet Boggess.

sports writers

Ray DeMarco points out interesting candid from recent basketball game to Bruce Gourlay.



staff interview

Pharos staff conducts an interview with German student while visiting in Buckingham.



pharos brings
news to
campus



the wesleyan playshop . . . drama group

TOP ROW: Grace Taylor, Barbara Ferrell, Nancy Pettry, Mary Beth Albert, Nancy McCabe, Robert Hider, Louis Duhorow, Letitia Pifer, Janet Boggess, Frances Griffith, Delma Beer, Jack Marine. BOTTOM ROW Miss Betty Groah, Sylvia Klepper, James Tracy, Ruth Grose, Connie Kercher, Paul Moser, Walter Stone, Elliot Kawadler, Diane Fessler, Linda Falik.

playshop

Credit for the first full length dramatic production on the campus in several seasons has been given to the Wesleyan Playshop under the direction of Miss Betty Groah. This group gives students an opportunity to express themselves through directing, costuming, and make-up, as well as acting. Ruth Grose is president of playshop.

RIGHT: The cast takes a well deserved curtain call after the performance of "The Silver Cord"

BOTTOM: Full length drama returns to W.V.W.C.



women's recreation association

TOP ROW: Nancy Halsall, Ginger Powers, Ann Queen, Nancy Shuttleworth, Mary Beth Albert, Bonnie Ames, Constance Rohrbough, Gretchen Otto, Nadine Schaffer, Nancy McGregor. THIRD ROW: Mary Lou Hetz, Linda Sowers, Carolyn Kopple, Carol Simons, Judy Slaving, Sally Bond, Sue Jeffreys, Sandra Fultineer, Janie Pfalzgraf, Phyllis Keene. SECOND ROW: Janet Bog-gess, Nancy Pettry, Jo Ellen Flagg, Mary Burton, Sue Kohlhepp, Virginia Light, Deann LeBeau, June Cooper, Sylvia Klepper, June Smith. BOTTOM ROW: Sharie Dean, Elnora Cham-bers, Jean White, Betty Baylis, Ruth Grose, Nancy Jo Funk, Peggy Jo Morton, Delores Keyser, Beatrice Chigos, Janet Ailstock.



women's recreation association

The Women's Recreation Association is another of the large groups on campus fulfilling an important purpose. Encouraging athletics on the part of the Wesleyan Co-Ed is an essential service of W.R.A. Sharie Dean is president; Elnora Chambers, vice president; and Jean White, secretary.

student art guild

Art addicts find kindred souls in the Student Art Guild. A non-conforming organization, the S.A.G. holds forth in the reaches of the art studio in Loar Hall. In an effort to spur interest in art the guild sponsors an assembly program, picture rentals, and trips to museums. Ralph Jordan is president.



student art guild

TOP ROW: Frank Conway, Thomas Leach, Robert Fosnaugh, Ralph Jordan, Thomas McKinney, William Rossmeyer, Carla Wood, Richard Von Hoorn, Mr. Messersmith. BOT-TOM ROW: Jane Griffin, Gretchen Otto, Ruth Hopping, Jodi Lamb, Kay Rider, Sandi Hall.



wesleyan a cappella choir

TOP ROW: Robert Hider, Robert Smith, Garren Gaston, Helen Rissmeyer, Janet Belcher, Janet Gress, Eleanor Linger, Ann Welker, Patricia Ambrose, Beverly Holmes, Greta Tillinghast, Marilyn Johnson, Nancy Pearson, John Campbell, Robert Weaver, Richard Calendine. THIRD ROW: Thomas Goheen, Edgar Hodson, James Harbert, Ann Martin, Margaret Hogsett, Joyce Kurzel, Betty Lambert, Mary Waddell, Betty Kay Hanifan, Phyllis Hogsett, Edah Lasell, Alfred Moye, Robert Miller, Roger Fischer. SECOND ROW: Richard Hamilton, John Ross, Theodore Jungas, Betty Tenney, Judith Lampila, Carol Boyer, Betty Wood, Joyce Becker, Sue Kohlhepp, Donna MacWilliams, Robert McLaughlin, Garry Campbell, Lynn Westfall. BOTTOM ROW: Charles Dent, Jack Haney, Norma Davis, Nancy Shuttleworth, Kay Rider, Mr. Shafer, Ruth Grose, Suzanne McNutt, Glenda McDonald, Denton Covert, Richard Yates.

a cappella choir

The A Cappella Choir performs a rugged schedule during the year. Directed by Mr. Shafer they appear weekly in Chapel and on special occasions. The spring tour was taken in the Bluefield area of the state.

hyma glee club

Organized in the fall, the Glee Club is directed by Miss Armstrong and has appeared for various campus functions, including Homecoming inauguration and the M.S.M. Christmas pageant.

hyma glee club

TOP ROW: Robert Weaver, Conrad Pierce, John Beeler, Melvin Orr, Lyman Seamans, Wesley Shaffner, Ralph McCulloch, Ronald Talkington, Kenneth Remley, Robert Hider, Charles Kohler, Robert Smith, John Hipple, Gary Boegershausen, Lynn Westfall. THIRD ROW: Douglas Fitch, Tony Cruffo, Robert Hetz, Elbert Burr, William Norman, Harold Greenway, Thomas Goheen, Lenwood Lathrop, Louis Colombo, John Hadley, Todd Torrence. SECOND ROW: Jim Mowry, Michael Kundrat, Richard Yates, Charles Perry, James Lewis, Donald Johnson, Ed Alberter, Robert La Falce, Paul Johnson, William Wills, John Hall. BOTTOM ROW: James Kerr, Gordan Green, Charles Dent, Walter Stone, James Wilkinson, Bing Scherer, Richard Von Hoorn, Al Lee Raesley, Floyd Hoskinson, Norman Hillman, Dave Demaski, William Pettibon.





music educator's national conference

TOP ROW: Miss Elizabeth Armstrong, Janet Belcher, Mary Wooddell, Naomi Wilson, Betty Lambert, Carole Doughton, Alexander Ross, Glenda McDonald, Robert Winters, Betty Tenney, Thomas Goheen. BOTTOM ROW: Carolyn Kopple, Norma Davis, Joyce Kurzel, Charles Dent, Kay Rider, Rhea Lee Chenoweth, Jeannette Hedrick, Ruth Grose, Robert Hider.

music educators national conference

The Wesleyan M.E.N.C. organization is added evidence to the progress of the music department in achieving added status. Music majors and minors seek to aid the department in many ways. With the assistance of Miss Armstrong they plan several projects within the fields of interest displayed by their members.

american guild of organists

Newly organized during the fall the Student Chapter of the American Guild of Organists is a group of music majors specializing in organ. Mr. Shafer is guiding the group with Rhea Lee Chenoweth as president; Rosemary Bryan, secretary; and Mary Wooddell, treasurer.

student chapter of american guild of organists

TDP ROW: Mr. Shafer, Marilyn Johnston, Mary Wooddell, Betty Lambert. BOTTOM ROW: Robert Hider, Rosemary Bryan, Rhea Lee Chenoweth, Paul Moser, Carole Doughton, Charles Dent.





pi epsilon theta

TOP ROW: Michael Kundrat, Sung Hahn, Dr. Franquiz.
BOTTOM ROW: Virginia Light, Ruth Epler, Carol Boyer, Betty Wood, Cornelia Mendoza, Carol Kane, Richard Evans.

pi epsilon theta

Wesleyan philosophers are encouraging the spirit of philosophical study and the value of voluntary discipline in serious inquiry on the college campus and in world affairs. Beta chapter was founded here in 1946. This year the group participated in the West Virginia Philosophical Society meeting and acted as host for the affair. Michael Kundrat is president.

psychology club

This group, under the direction of the new head of the psychology department, Dr. Orlo Strunk, Jr., has presented a wide variety of programs. Titles have ranged from such intriguing subjects as "How to Make an A," to "What Are Little Girls Made Of." Shirley Armfield is president.

psychology club

TOP ROW: Hazel Mae Williams, John Roach, Janet Belcher, Paul Gramlich, Harold Colvin, Richard Evans, Frank Horn, Edward Donald, Sue Kohlhepp, Donald Carroll, Allen Geller, Virginia Light. BOTTOM ROW: Linda Falik, Sylvia Klepper, Michael Kundrat, Betty Kay Hanifan, Dr. Strunk, Ruth Epler, Calvin McCutcheon, Jo Ellen Flagg, Shirley Armfield



sociology club

TOP ROW: Ronald Brooks, William Will, Paul Gramlich.
BOTTOM ROW: Sylvia Klepper, Calvin McCutcheon.



sociology club

Juniors and Seniors majoring in sociology gain further opportunities in this field as members of the Sociology Club. They obtain information, concerning the current social problems and situations, through many interesting speakers and the other functions of the group. Although not completely activated during the fall the group is striving to become more active during the second semester.

de molay

The campus DeMolay club provides an opportunity for its members to remain active and interested in DeMolay work while away from their home chapter. Their purpose is to promote worthwhile activities for the campus.

Bruce Gourlay is president while Paul Olive is vice president; Fred Eliassen, secretary-treasurer; and George Miller, sergeant-at-arms.

order of de molay

TOP ROW: Hunter Cobb, Bruce Gourlay, Fred Eliassen, Dale Blomberg.
BOTTOM ROW: Michael Kundrat, Larry Gardner, George Miller.





student national education association

TOP ROW: Mendel Zickafoose, Samuel Caudill, Paul Grake, David Brown, Robert Fosnaugh, Leonard Stagon, Harry Hickie, Edmund Kristofik, George Seagraves, John Shirley, Mr. Martin, Dr. Hupp. THIRD ROW: Ann McClain, Delma Beer, Carolyn Kopple, Janie Pfalzgraf, Nancy McGregor, Laura Bays, Bonnie Bean, Delores Keyser, Margaret Seagraves. SECOND ROW: Mary Lou Hetz, Georgetta Cottrill, Phyllis Kuhl, Sharie Dean, Ann Queen, Jean Rawson, Marilyn Johnson, Betty Jo Hubbard. BOTTOM ROW: Patricia Malone, Peggy Jo Morton, Jeannette Hedrick, Donna Bissel, Bonita Huffman, Mrs. Feather, Ann Pemberton, Rosalie Abbott, Mary Burton.

student national education association

A new name on Wesleyan's campus is the Student National Education Association. Previously known as the Morris P. Shawkey Chapter of the F.T.A., the chapter seeks to create interest and awareness in education and its problems.

Monthly meetings of S.N.E.A. are devoted to study of educational problems. Jean Rawson is president.

betty lamp club

The Betty Lamp Club, composed of majors or minors in home economics, under the supervision of Miss Tissue has put into practice the skills that they will find in everyday housekeeping. Mara Linaberger is president.

betty lamp club

TOP ROW: Elnora Chambers, June Smith, Mara Linaberger, Ann Queen, Geraldine Davis, Sally Bond, Nancy Jo Funk, Mary Lee Winnet. BOTTOM ROW: Sandi Hall, Bonnie Ames, Judy Atkinson, Georgetta Cottrill, Connie Kercher.





grieks



TOP ROW: Janet Ailstock, Judy Atkinson, Judy Aylestock, Mary Beth Cloyes, Bette Kae Catlin, Margo Brookover. FIFTH ROW: Janet Boggess, Evelyn Bone, Rhea Lee Chenoweth, Beatrice Chigos, June Cooper, Jo Ann Crites. FOURTH ROW: Ruth Grose, Sandra Hall, Betty Kay Hanifan, Jeanette Hedrick, Margaret Hogsett, Phyllis Hogsett. THIRD ROW: Jenny Lynn Kessel, Sylvia Klepper, Eleanor Linger, Shirley Miller, Sally Proffitt, Jean Rawson. SECOND ROW: Kay Rider, Connie Rohrbough, June Smith, Dorothy Surber, Linda Sower, Elizabeth Strader. FIRST ROW: Mary Sue Van Camp, Ann Welker.

alpha gamma delta

Alpha Gamma Delta will remember Butch Surber as Santa Claus at their Christmas Party. The Providence scholarship trophy was awarded to the Alpha Omicron Chapter of Alpha Gamma Delta for high scholastic achievements. This presentation was made at the national convention held in San Diego, California. Kay Rider, president, was present at the convention in July and was soprano soloist on the convention program.

Official colors are red, buff, and green. The flower is the red and buff rose.

officers

President	KAY RIDER
First Vice President	JEANNETTE HEDRICK
Second Vice President	JUDY AYLESTOCK
Recording Secretary	JEAN RAWSON
Corresponding Secretary	SYLVIA KLEPPER
Treasurer	JUNE SMITH



TOP: Alpha Gams beam with glee.
 BOTTOM: An assortment of swishy costume.
 LEFT: Sorority scientists display skill.



alpha omicron chapter of ΑΓΔ



TOP ROW: Harriet Aveyard, Delma Beer, Carol Boyer, Mary Burton, Elnora Chambers, Kay Custer. FOURTH ROW: Georgetta Cottrill, Sharie Dean, Barbara Ferrell, Marilyn Firl, Nancy Jo Funk, Judy Lampila. THIRD ROW: Marilyn Lantz, Deann LeBeau, Patricia Malone, Peggy Jo Morton, Suzanne McNutt, Carolyn Mullen. SECOND ROW: Leith Owen, Nancy Pettry, Letitia Pifer, Rebecca Post, Carol Ouattlander, Greta Tillinghast. BOTTOM ROW: Carol Ann Wilson, Mary Lee Winnett.

alpha delta pi

Activities during the year included informal parties, a recognition banquet, dances and the Black and White Diamond formal.

Alpha Delta Pi was founded in 1851 at Wesleyan College, Macon, Georgia. National Headquarters is at Atlanta, Georgia. Alpha Delta Pi, the first secret society for women, has 84 chapters and 40,000 members. Gamma Kappa was established on Wesleyan's campus in 1948. The official colors are blue and white and their flower is the violet.

officers

President PEGGY JO MORTON
Vice President CAROL BOYER
Recording Secretary HARRIET AVEYARD
Corresponding Secretary PAT MALONE
Treasurer NANCY JO FUNK



TOP: Attentive, aren't they.
BOTTOM: And the band played on.

LEFT: The home ec majors enter another baking contest.



gamma kappa
chapter of
ΑΔΠ



TOP ROW: Laura Bays, Edith Diller, Margaret Fonz, Carol Gearty, Janet Harris. FOURTH ROW: Dolores Keyser, Joyce Kurzel, Nancy Halsall, Phyllis Keene, Jodi Lamb. THIRD ROW: Shirley Lee, Mara Linaberger, Glenda McDonald, Nancy McGregor, Janie Pfalzgraff. SECOND ROW: Ginger Power, Ann Queen, Jane Reemsnyder, Priscilla Rice, Nadine Schaffer. BOTTOM ROW: Elizabeth Teter, Shirley Wagner, Jean White, Ruth Wilcox, Sue Holm.

alpha xi delta

The Alpha Xi's Santa Claus left eleven smiling faces after a visit at their annual underprivileged children's Christmas party. Other functions such as card parties, the Valentine's dance, the traditional Rose Formal, and a hayride fill the calendar of the Alpha Xi's.

Official colors are double blue and gold and their flower is the pink Killarney rose.



officers

President DOLORES KEYSER
 Vice President CAROL GEARTY
 Corresponding Secretary MARA LINABERGER
 Recording Secretary SUE HOLM
 Treasurer ANN QUEEN
 Membership Chairman NANCY MCGREGOR



TOP: The pledges are always interesting!
 BOTTOM: Does that cat use Ipana?
 LEFT: This is what you really call "demobilized."



beta sigma
 chapter of
AΞΔ



TOP ROW: Louis Barail, Richard Beveridge, John Blubaugh, Donald Carroll. FOURTH ROW: John D'Apolito, Herbert Eckert, Kenneth Hiller, Gerald Lilly. THIRD ROW: Arthur Miklosey, Thomas McGovern, Frank Neuner, Frank Patti. SECOND: Bruce Reynolds, Robert Sage, Thomas Salata, Harry Santillo. BOTTOM ROW: Joseph St. Miklosey, James Tatem. NOT PICTURED: Gordon Damon, John Ruof.

alpha sigma phi

Beta Nu Chapter of Alpha Sigma Phi was noted this year for its successfully intriguing Masquerade Dance and other social functions. The Dragon Float in the Homecoming parade brought back the days when knights were young and bold.

Beta Nu appeared on the Wesleyan campus in 1946.

Alpha Sigma Phi official colors are cardinal red and stone gray. The flower is the red rose.

officers

President
Vice President
Treasurer
Recording Secretary
Corresponding Secretary
Marshal

FRANK NEUNER
JOHN RUOF
JAMES TATEM
JOHN BLUBAUGH
HARRY SANTILLO
FRANK PATTI



TOP United they stand!
BOTTOM Tired, but proud
LEFT A real snort of a float

beta nu
chapter of
ΑΣΦ



TOP ROW Bernard Bartek, Gerard Boe, Reed Bradford, Richard Broofe, Harold Bullock, William Cole. SIXTH ROW: Donald Cooke, Bert Corneby, David Dennis, Willard Downham, Louis Durborow, Kenneth Fleming. FIFTH ROW: Kay Franks, Gordon Green, James Hastings, Jefferson Holbert, Ingolf Holm-Anderson, Donald Hoy. FOURTH ROW: John Kennedy, David Kough, Marshall Love, Taylor Meister, William McBride, James McDonald. THIRD ROW: Thomas McKinney, Donald McVitty, Frank Parisi, Dean Patenaude, Noel Petersen, Richard Powell. SECOND ROW Kenneth Remley, Kenneth Roberts, James Rock, Wesley Schaffner, James Scott, Winston Seamans. BOTTOM ROW Art Seiderman, William Smith, Gerard Sweeton, Joseph Tereshko, Ralph Undreiner. NOT PICTURED: Clarence Bartman, Herbert Hartman, Robert Louer, John Swander, Van Mante, Edwin Johnston.

theta chi

A variety of parties, house parties, the Anniversary dance and the Spring Dance, were sponsored by Theta Chi this year.

Theta Chi fraternity was founded in 1856, but it was not until 1950 that Wesleyan's Delta Gamma Chapter was established. At the present there are 119 chapters throughout the country. Official colors are military red and white; the flower is the white carnation.



officers

President	JEFFERSON HOLBERT
Vice President	GERARD BOE
Secretary	RICHARD BROOKE
Treasurer	JOHN KENNEDY
Assistant Treasurer	LOUIS DUBOROW
Chaplain	ROBERT LOUER



TOP: Pledges display Colgate smiles.
 BOTTOM: A real high romance.
 LEFT: Intricate mechanism.

delta gamma
 chapter of
 ΘΧ



TOP ROW: Dick Aidala, Frank Ardito, William Bauserman, James Caldwell, Samuel Caudill, William Echols. FOURTH ROW: Paul Edberg, Robert Fennimore, James Fraser, Ralph Gay, Paul Hodyas, Alan Hubbard. THIRD ROW: Kirk Innes, Robert Jervis, John Johnstone, Ralph Jordan, Paul Karickhoff, Terry Kelly. SECOND ROW: William Koellin, Jefferson Manser, Clifford Moebius, Michael Nixon, Aaron Pulhamus, Willim Reiter. BOTTOM ROW: Robert Rice, Frank Schneider, Joseph Simpson, Tod Torrence, Willard Wassell, William Watson. NOT PICTURED: Allen Bean, Harold Hitchcock, Jack Pennington.

kappa alpha order

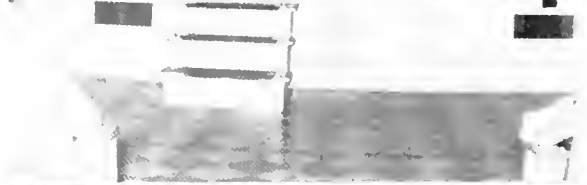
Kappa Alpha Order, Wesleyan's southern fraternity, came to the campus as Beta Chi in 1929. Kappa Alpha Order was founded in 1865 at Washington and Lee University. At present there are 78 chapters and 40,000 members. National headquarters are at Atlanta, Georgia.

Official colors are crimson and old gold, and the flower is the crimson rose.

The big activity of the year is the Old South Weekend. Other activities include an Alumni Banquet, house parties, and a sweetheart dance. Margo Brookover was selected as "Belle of the Ball" at the annual Dixie Ball.

officers

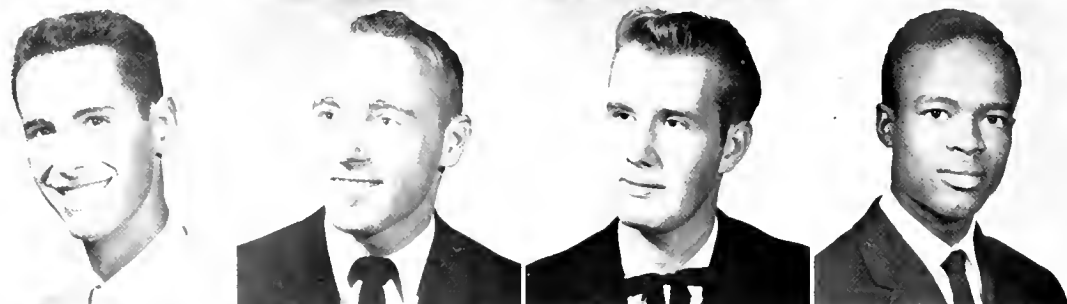
Number I	WILLIAM WATSON
Number II	WILLIAM REITER
Number III	JAMES CALDWELL
Number IV	JAMES FRASER
Number V	CLIFFORD MOEBIUS
Number VI	WILLARD WASSELL



TOP: A promising chorus line for the Latin Quarter.
 BOTTOM: Even Kappa Alpha has Angels!
 LEFT: Hope she doesn't sneeze.



beta chi chapter of KA order



TOP ROW: John Campbell, Ronald Feldman, Lynn Gardner, Paul Gramlich. FOURTH ROW: Michael Halasz, James Harbert, Frank Horn, Thomas Leach. THIRD ROW: Eric Lipetz, James McLaughlin, Kenneth Maberry, William Norman. SECOND ROW: Edward Powers, Robert Rubin, Jay Silver, Ronald Talkington. BOTTOM ROW: William Thompson, Robert Zolan. NOT PICTURED: William Clawson, Alfred Moye, Malcom Zarnfaller.

kappa sigma kappa

Kappa Sigma Kappa, founded at VMI in 1867, came to Wesleyan's campus as West Virginia Eta Chapter in 1955. There are 40 chapters and a membership of 12,000. Official colors are purple and gold, and the flower is the iris.

A hayride, dinner dances, the Iris Ball, a picnic, and the landslide victory of its float in the Homecoming parade were outstanding events of the year.

Frank Horn was appointed acting president of the Southeastern Province of Kappa Sigma Kappa during the International Convention held in Buffalo in August of 1957. William Norman was named author of one of the five best pledge letters written to the grand president.

officers

<i>President</i>	JOHN CAMPBELL
<i>Vice President</i>	FRANK HORN
<i>Secretary</i>	ROBERT RUBIN
<i>Treasurer</i>	LYNN GARDNER
<i>Chaplain</i>	THOMAS LEACH
<i>Financial Secretary</i>	ROBERT ZOLAN



TOP: A neat trick if you can do it?
 BOTTOM: Note that pitcher???
 LEFT: It's a winner.



**west virginia eta
 chapter of
 KΣK**



TOP ROW: Edward Alberter, William Altman, Ronald Brooks, Ronald Casto, Robert Coates, Clare Edman. FIFTH ROW: Richard Evans, Lloyd Fike, Roger Fischer, Allen Geller, Thomas Goheen, Harold Greenway. FOURTH ROW: Richard Hamilton, Frederick Hart, John Hellemann, William Holmes, George Hubbell, Ted Jungas. THIRD ROW: Jack Kissel, Michael Kundrat, Robert LeFalce, Linwood Lathrop, Charles Modlin, James Mowry. SECOND ROW: Calvin McCutcheon, Paul McCutcheon, George Orr, Vaughn Parseghian, Charles Perry, William Pettibon. BOTTOM ROW: Jerry Rabinowitz, Martin Schwartz, Jack Tissot, William Wills, Randy Wingert, Robert Winters.

phi sigma epsilon

Phi Sigma Epsilon, the only local campus fraternity, was organized in 1951. The Phi Sigs are a brotherhood, maintaining high standards of character and action. Official colors are green, gold, and white.

Activities this year have been a retreat, Christmas and Spring formals.



officers

President	WILLIAM WILL
Vice President ...	FRED HART
Recording Secretary	JACK KISSEL
Comptroller	LINWOOD LATHROP
Historian	JAMES MOWRY
Chaplain	ROGER FISCHER



TOP: "Ain't" love great!
BOTTOM: A man of intellect and of the world?
LEFT: A real "cagey article."



ΦΣΕ



**interfraternity and panhellenic project
queen's float in homecoming parade**



sports



TOP ROW: Coach Reemsnyder, Bob Hider, Craig Heinrich, George Ward, Joe Lore, Terry Kelley, Jeff Gosman, John Buschmann, Ronald Talkington, Coach Ross. THIRD ROW: Len Stagon, Jeff Holbert, Gail Zickefoose, Allen Corscadden, Bill Mayers, Mike Herrera, Ronald Casto, John Herbst, Sam Gross. SECOND ROW: Paul Hodyas, Will Downham, Gene Brown, Bruce Reynolds, Pete Rock, Phil Newlon, Ronald Tenney, Dave Wolfe, Tay Merster. BOTTOM ROW: Dean Patenaude, Bob Fennimore, Fred Newman, Jim Early, Frank Cvetnick, Bernie Bartek, Dave Winston, George Seagraves.

football



LEFT: Head Coach Dave Reemsnyder talks with backfield coach Sam Ross and end coach "Hank" Ellis.

BELOW: Game Captain Cliff Judy watches as Tech elects to receive the kickoff at Homecoming.





CLIFF JUDY
Guard
All Methodist, All W.V.I.A.C.
Thompson Memorial Award



"Bernie" starts Wesleyan offense.

marietta . . . bethany

Marietta squeaked by Wesleyan in the season's opener. Wesleyan's first touchdown of the season was scored on a 40 yard run by Seagraves. Gail Zickefoose added the second score. Two blocked extra points by Marietta were the deciding factors.

The Bethany Bisons opened their season by defeating the Bobcats 50-13. A 25 yard pass play brought the first touchdown of the game to Bethany. Wesleyan's scores came on an 81 yard play by Seagraves and a 4 yard plunge by John Herbst. Seagraves made 1 out of 2 extra point attempts. The Wesleyan forward wall, Patenaude, Judy, Mayers, Newlon, Rock, Winston, and Hodyas played excellent ball but were on the short end of the score.



LEN STAGON
Tackle
All W.V.I.A.C.
Four Year Veteran



FRANK CVETNICK
Fullback
All W.V.I.A.C., All Methodist
Thompson Award 1955



Wesleyan Goliaths drag defenseless Falcon to ground.



Don't slow down now!



PHIL NEWLON
Center
Honorary W.V.I.A.C.
Four Year Veteran

fairmont . . . salem

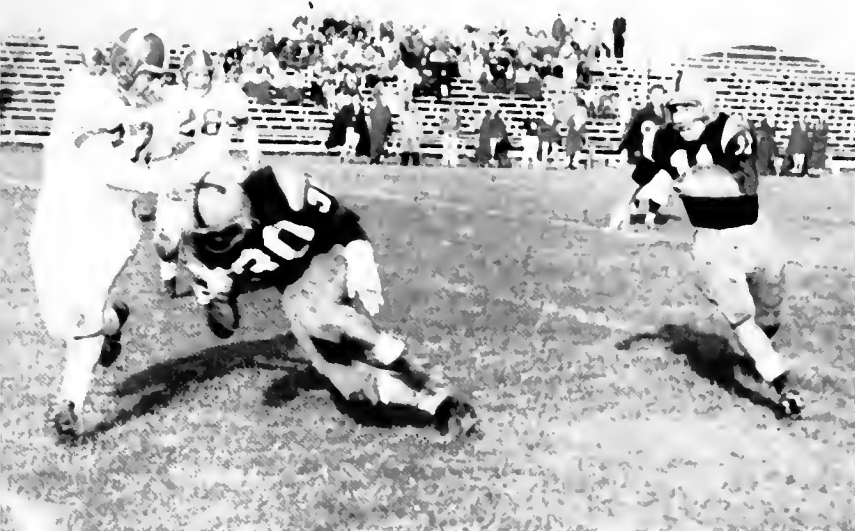
The first home game saw the Bobcats defeated by the Falcons 19-0. In each of the first three quarters the Falcons scored. Meister prevented a Falcon score by downing Rank on the 8 yard line after a climactic 54 yard gain.

The Salem Bengals triumphed over the Bobcats at Hite Field in Clarksburg 27-6. An 84 yard pass-run play from Travis Parks to Jim Hartbarger was Salem's outstanding play. A series of running plays put the ball on the Salem 31 where Gross fired to Gammons for Wesleyan's only tally. The Bobcats failed to click because of injuries to key players.

The Wesleyan-Glenville game was cancelled because of flu.



"GENO" SEAGRAVES
Right Halfback
Leading Scorer
Leading Ground Gainer



Frank clears way as Tay Meister makes nice gain.



FRED NEWMAN
Fullback
Hard Running Back
Four Year Veteran



JEFF HOLBERT
Tackle
Tough Lineman
Two Year Veteran



You've got my headgear, but I've got a touchdown.

tech . . . hampden sydney . . . elkins

The annual Homecoming game saw Tech overpower the Bobcats 27-7. Tech drew first blood, but Wesleyan came fighting back. Meister ran back a kickoff good for 78 yards with Bartek scoring from the 8 yard line. Seagraves converted the extra point and the first half ended 7-7. Tech outplayed Wesleyan and scored 20 points to dominate the second half.

Wesleyan's sixth defeat came at the hands of undefeated Hampden Sydney 32-6. Gene Brown scored the lone touchdown that Cvetnick set up with a 15 yard run.

Elkins' Senators were humbled 27-6 for the Bobcats' only victory of the season. From the 7 yard line Seagraves tallied Wesleyan's first touchdown. Then Brown sliced off tackle on a 53 yard run. Bartek hit Gammons on an 11 yard pass-play for the third tally. Cvetnick powered over from the 4 yard line for the fourth Bobcat touchdown.



JIM EARLEY
Left Halfback
Fine Punter
Three Year Veteran



JOHN HERBST
Fullback
Defensive Stalwart
Veteran



Seagraves splits the uprights for the final point of the '57 season



James Fraser, Wallace Cheatham, William Altman, Arthur Mikloszy, Charles Ackenbom, William Clawson, Jack Johnstone, Ronald Pennington, Coach Ellis.

cross country

The Wesleyan harriers wound up the season with two victories in five meets. Captain Jack Fraser twice led the long distance team to the finish line, coming in ahead against Fairmont (4.2 miles in 23.51 minutes) and Marshall (4.2 miles in 22.16½ minutes). In the other meet with the Fairmont Falcons, Jack Johnstone and Fraser both crossed the finish line in 21 minutes to tie for first place over the 3.7 mile course.

1957 CROSS COUNTRY SUMMARY

Wesleyan	48	15	Geneva
Wesleyan	24	33	Fairmont
Wesleyan	25	30	Marshall
Wesleyan	44	15	West Virginia U.
Wesleyan	28	27	Fairmont
Won 2—Lost 3			





The Bobkittens were captained by Sharie Dean and Linda Sowers.



field hockey

Wesleyan's hockey team added to the Homecoming festivities by battling Davis-Elkins to a 2-2 tie. Jean White, left wing, scored both goals for the Bobkittens. Serving as co-captains for the seventeen girl squad were Sharie Dean and Linda Sowers. The Bobkittens and Coach Miss Walters are looking forward to a bigger and better season next fall with the hope that the 'flu bug' will forget about the hockey players.





FRANKLIN "HANK" ELLIS
Head Basketball Coach



best in wesleyan history

floor squad streaks past west virginia tech to win berth in kansas city n.a.i.a. tournament



TOP ROW Bert Corneby, Bob Shamblin, Gail Zickefoose, Floyd Hoskinson, Bob McBride Lee Raesly, Hank Weismann SEC
MIDDLE ROW: Frank Hartman, Boyd Dotson, Larry West, Jeff Manser, Sam Caudill, Gary Hess, Sam Gross, John Mumford BOTTOM
ROW: Coach Ellis, Bill Smith, Jim McDonald, Ed Kristofik Ken Remley, Bill Bauserman, Jim Wilkinson

SUPPORT YOUR TEAM
Next home game
FEB
15



Captain Ed Kristofik confers with the opposing captain and referees before the opening of the Glenville game.

basketball

West Virginia Wesleyan College climaxed its most successful basketball season in history February 26, when the red-hot Bobcats trounced West Virginia Tech to win the honor of representing District 28 in the N.A.I.A. tournament held the week of March 10 at Kansas City. W.V.W.C. had never before managed to win this berth.

Coached by former Wesleyan hardcourt star, Hank Ellis, the Cats finished the regular season in second place in the W.V.I.A.C., losing only twice in 21 conference contests—each time to undefeated West Virginia Tech, the nation's highest scoring basketball quint.

When W.V.I.A.C. Tournament time rolled around February 18-22, the host Bobcats, seeded in second place, racked up victories over Concord, Bethany, and West Liberty and then turned on the Golden Bears of Tech 80-72, to win their first tournament title in 12 years.

A well balanced team with five men averaging in double figures and a definite height advantage were credited by Coach Ellis as the backbone of the tremendous season, which he called, "The easiest . . . for me since I've been coaching—because these fellows made it easy."

Wesleyan's over-all season record, prior to the Kansas City Classic, was 28-4.

Hess chalks up two more points for Wesleyan.



Remley unleashes a vicious hook-shot as Wesleyan downs Glenville.





Kris steps to the free-throw line as Bauserman waits "just in case"



The action went "thataway"



"Thanks for the assistance, pal, but I can put it in myself
Bill Smith scores for our side



TOP "How's the altitude up there?" asks number
"50" as Remley goes up for two

RIGHT "Is it is or is it ain't?" wonder McDonald
and Hess as they bottle up a Fairmont player
while Remley goes in for the lay-up

w.v.i.a.c. tournament winners

west virginia wesleyan bobcats



Jean White clutches trophy after selection as an outstanding cheerleader at tournament.



RIGHT: "I guess we can find room for it in our trophy room." Coach Ellis and Kris accept the winning trophy from Salem College President and W.V.I.A.C. head, Dr. K. Duane Hurley.

BOTTOM RIGHT: The tournament champs! Bill Smith points to the proof.

BOTTOM: The vanquished foe!





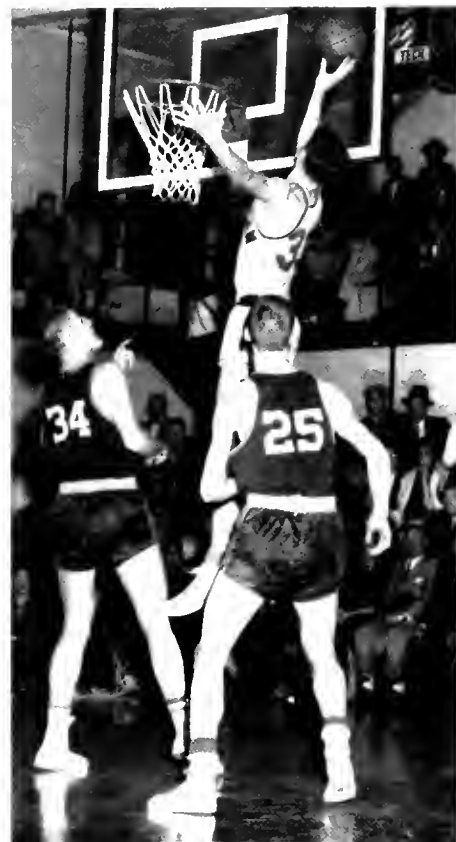
ABOVE "Pardon our open mouths, but..."

LEFT "Let's set it up, Sam!" Wilkinson and Caudill start a Wesleyan offense

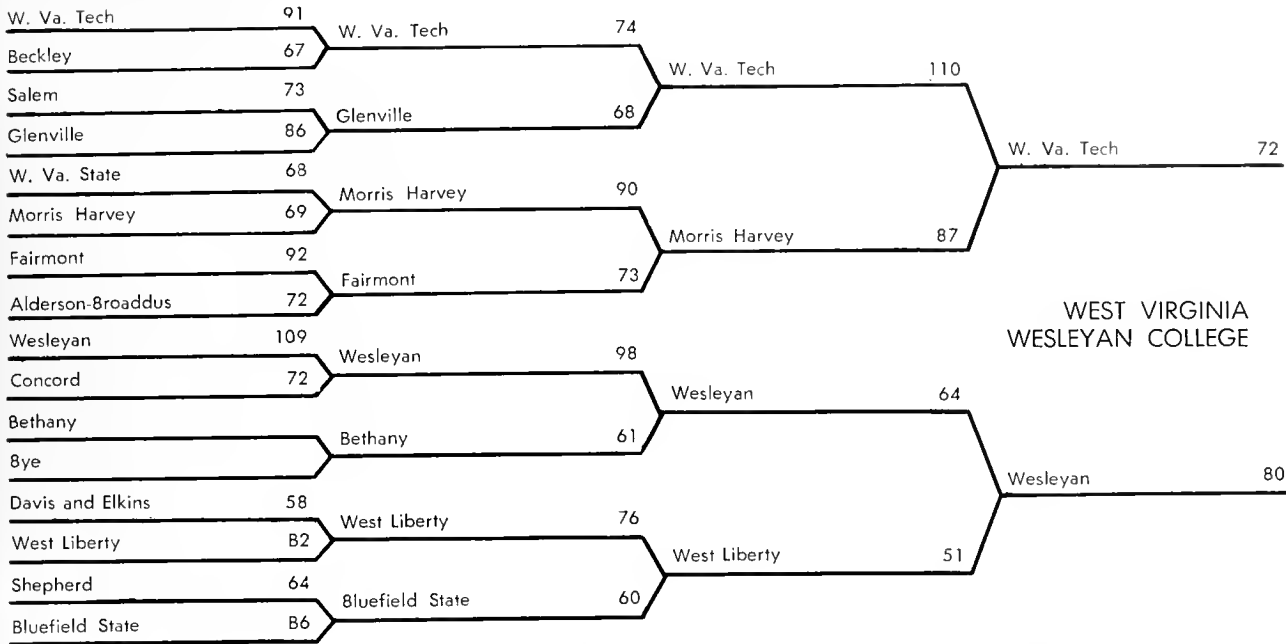
RIGHT "If you ever went in, go in now!" Remley ties up Tech as the half ends

ABOVE LEFT "It goes through the air with the greatest of ease and down through the hoop for a two point breeze!" Hess connects for two points

ABOVE "I'll take two points despite that curve" Wilkinson braves back court for a lay-up



1958 w.v.i.a.c. tournament pairings



The cheerleaders play a very important part in the athletic program on Wesleyan's campus by leading cheers at all athletic events. These enthusiastic cheerleaders, Jean White, Bette Kae Catlin, head cheerleader Tom Leach, and Sandy Fultineer, were responsible for the thuses held on the campus as well as inspiring the home crowd at the games.



TOP ROW: Dave Winston, Clifford Moebius, Terry Kelley, Alfred Moyer, Charles Murray, Norman Hillman, Howard Brush.
 THIRD ROW: Robert Mavian, Jeff Holbert, Dave Trader, Jack Pennington, William Bauserman, Clarence Robbins, Sam Caudill.
 SECOND ROW: Clifford Judy, James Powell, William Smith, Frank Ardito, James Fraser, Julian Trail, Coach Ross. BOTTOM
 ROW: David Dennis, Jerry Boe, Herbert Costolo, Daniel Weeks, Gene Brown, James Lockhart.

track

After losing its first two meets, Wesleyan's track team finished strong with three victories. The Wesleyan track men captured the W.V.I.A.C. Championship Meet held in Buckhannon by defeating Fairmont, Concord, Bethany, West Liberty, and Davis and Elkins. This is the third consecutive year that the Championship Trophy has stayed at Wesleyan.

Cliff Judy broke the record for the 120-yard high hurdles by running them in 15.8 seconds. Jim Fraser broke the record for the 880-yard run and set a new record of 2 minutes and 2 seconds while Frank Ardito, Bill Bauserman, Sam Caudill, and Jack Pennington set a new record for the four-fifth's mile relay by running it in 2 minutes 42.2 seconds.

1957 TRACK SUMMARY

Wesleyan	34	102	West Virginia U.
Wesleyan	56	70	Geneva
Wesleyan	81 ¹ / ₂	49 ¹ / ₂	Fairmont
Wesleyan	93	29	Marshall
Wesleyan	95	35	Frostburg, Md

W.V.I.A.C. TRACK MEET

Wesleyan	72 ¹ / ₂	47	Fairmont
		15	Concord
		28 ¹ / ₂	Bethany
		8	West Liberty
		4	Davis and Elkins

W.V.I.A.C. Champs



Pace-setters of the 1957 Orange and Black squad were Co-Captains Clifford Judy and Daniel Weeks



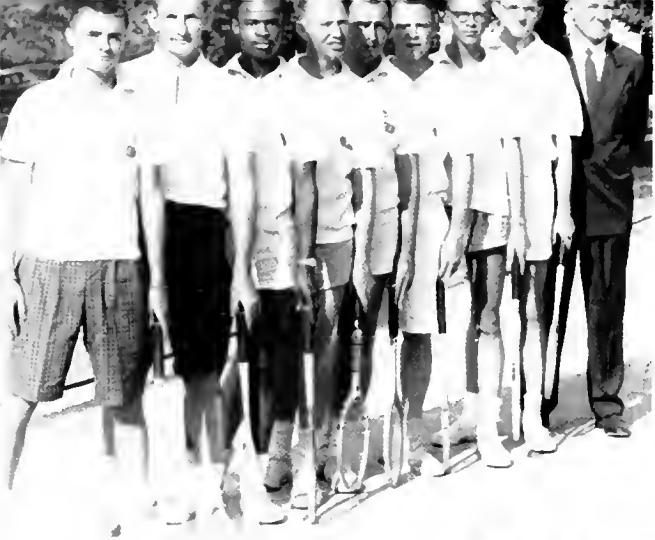
Jim Powell exhibits the form which won first place for him in the pole vault.



Big Ken Remley clears the bar at 5' 4" in the high jump

Wesleyan hurdler Cliff Judy and his opponent match strides in the exciting hurdles event.





James Tatem, Ronald Talkington, William Norman, William Hughes, John Burnett, John Hadley, Ralph Undreiner, Charles Reutiman, Coach Reemsnyder.

tennis

1957 TENNIS SUMMARY

Wesleyan	0	9	Marietta
Wesleyan	1	8	Salem
Wesleyan	3	6	Davis and Elkins
Wesleyan	5	4	Concord
Wesleyan	0	9	Bethany
Wesleyan	0	9	Marietta
Wesleyan	4	5	Salem
Wesleyan	4	5	Davis and Elkins
Wesleyan	2	7	Bethany
Wesleyan	5	4	Fairmont
Wesleyan	6	3	Fairmont
Wesleyan	6	3	Concord

Won 4—Lost 8



Bob Zanesky exhibits form on putt.



Talkington exhibits his backhand.

Robert Oesau, Daniel Weston, John Ryan, Jack Utermehle, Robert Zanesky, Jeff Manser, Coach Reemsnyder.



golf

1957 GOLF SUMMARY

Wesleyan	6 1/2	8 1/2	Fairmont
Wesleyan	6	9	Bethany
Wesleyan	9 1/2	5 1/2	Davis and Elkins
Wesleyan	13 1/2	1 1/2	Davis and Elkins
Wesleyan	8 1/2	6 1/2	W. Va. Tech
Wesleyan	7	8	Glenville (tri)
Wesleyan	4	11	Fairmont match)
Wesleyan	10	5	Glenville
Wesleyan	7	8	Wheeling (tri)
Wesleyan	11 1/2	4 1/2	West Liberty match)
Wesleyan	6 1/2	8 1/2	W. Va. Tech
Wesleyan	4 1/2	10 1/2	Wheeling (four
Wesleyan	4	11	West Liberty team
Wesleyan	3	12	Bethany match)

Won 5—Lost 9

baseball

Coach "Hank" Ellis' Wesleyan diamond team experienced its ups and downs last spring as the team won 11 contests and lost 9. The Wesleyan team was paced by hitters Hal Hitchcock, Jim Wilkinson, Gary Hess and Bill Leppla, and the superb mound performance of Jim Early. At the conclusion of the season Wilkinson, Hitchcock, and Hess were named to the All-Conference Team.

1957·BASEBALL SUMMARY

Wesleyan	1	5	West Virginia U.
Wesleyan	8	2	Salem
Wesleyan	8	9	Marietta
Wesleyan	6	9	Ohio U.
Wesleyan	3	2	Davis and Elkins
Wesleyan	6	1	Glenville
Wesleyan	3	4	West Virginia U.
Wesleyan	19	1	Morris Harvey
Wesleyan	5	3	West Virginia Tech
Wesleyan	9	3	Davis and Elkins
Wesleyan	4	7	Fairmont
Wesleyan	8	3	Marietta
Wesleyan	6	3	Salem
Wesleyan	12	0	Morris Harvey
Wesleyan	9	10	West Virginia Tech
Wesleyan	5	1	Alderson Broaddus
Wesleyan	6	5	Concord
Wesleyan	4	6	Fairmont
Wesleyan	5	10	Alderson Broaddus
Wesleyan	4	6	Glenville

Won 11—Lost 9
W.V.I.A.C.—Second Place



TOP: Captain "Rudy" Jablonsky smokes a single into right center field.

ABOVE: What did we leave at home? asks the Morris Harvey coach as Wesleyan downed his team 12-0.



TOP ROW: John Holt, Al Platt, Will Downham, Bernie Bartek, Jim McDonald. SECOND ROW: Coach Ellis, George Seagraves, Jim Early, Hal Hitchcock, Don Alexander, Ed Johnston, Bob Sage. BOTTOM ROW: Tay Meister, Gary Hess, Frank Cvetnick, Rudy Jablonsky, Bill Leppla, Jim Wilkinson, Don Pennet.

intramurals

The intramural program at Wesleyan plays a vital part in the lives of the students. It provides a wholesome activity for those who cannot or do not participate in varsity competition. There is an intramural program for both men and women in football, basketball, volleyball, ping-pong, and softball.

The men's football championship was won by the Greek League's Theta Chi's Don McVitty, Bill Smith, Jim McDonald, Wes Schaffner, Van Mantee, Butch Bartman, Jerry Boe, Bill Cole, Art Seiderman, Ken Roberts, and Frank Parisi, who defeated Jim Wilkinson, Gary Hess, "Buckeye" Leppla, Don Pennett, "Buck" Hickie, "Hank" Weissman, Larry West, Ed Kristofik, and Frank Hartman of Pat Moor's team.

"Buck" Leppla, Phil Krevitt, John Holt, Ron Pennington, Dean Patenaude, Don Rainey, John Buschman, "Hank" Weismann of "The Goofers" won the independent volleyball championship.



Greek League Volleyball champs: BACK ROW: Frank Ardito, Jack Pennington, Bill Reiter. FRONT ROW: Jack Johnstone, Jim Fraser, Bob Rice, and Tod Torrence.



ABOVE TOP: "I got it over, can you?"

ABOVE The long stretch.

Sophomore Girls are Volleyball Champs: BACK ROW: Madine Schaffer, Sally Bond, Jean White. FRONT ROW: Deann LeBeau, Mary Sue Van Camp, Shirley Lee, Edith Diller.



all sports banquet

"We couldn't have a better coaching staff and they have attracted a fine group of athletes" . . . thus the chairman of West Virginia Wesleyan's athletic committee, William A. Hallam, summarized another successful sports year Saturday evening, May 18, at the annual college Athletic Banquet. The yearly fete honors athletes, managers, and trainers from the Bobcats' eight varsity squads—baseball, track, tennis, golf, football, cross country, basketball and women's hockey.



ABOVE TOP. President Martin presents Cliff Judy with the All-Methodist Football award

ABOVE. Arthur McDermott presents the Sportsmanship Award to James Powell.

LEFT TOP. Coach Reemsnyder cuts the Bobcat cake as President Martin and Dean Schoolcraft look on with amusement

LEFT: John Holt presents Bob Jablonsky with a gold baseball autographed by all of the members of the team

MURMURMONTIS . . . Business and Sports Staffs



BUSINESS MANAGER

James McLaughlin

ADVERTISING

Shirley Lee
Sally Bond
Judi Slaving
Elizabeth Teter

SPORTS

John Campbell
George Seagraves
Jane Reemsnyder

PHOTOGRAPHY

Professional:
Howard Hiner
Organizations, Sports,
Activities
Ulysses Buffington
Portraits, Cover
Student Photographer:
Kleber Gregory
Sports, Activities, Buildings



TOP: Jim goes over advertising reports with Libby and Shirley.

BOTTOM: George, Jane, and John.

Staff Photographer looks over work.

CONGRATULATIONS
1958 GRADUATES

SHINGLETON BROTHERS, INC.

Wholesale Fresh Fruits and Vegetables

We specialize in all fresh fruit and vegetable items in season —
bananas, our specialty.

Individual, Organizational Index

a

Abbott, William—27
 Abbott, Argyle—27, 116
 Abbott, Rosalie—27, 110, 126
 Ackenbom, Beatrice—27
 Ackenbom, Charles—27, 150
 Agey, Dr. C. Buell—89
 Aidala, Richard—27, 138
 Ailstock, Janet—27, 99, 121, 128
 Albert, Mary—27, 110, 120, 121
 Alberter, Edward—27, 122, 142
 Alberts, William—27
 Alizio, Anthony—15
 Alizio, Joseph—15, 114
 Alper, Kenneth—27
 Alpha Gamma Delta—128, 129
 Alpha Delta Pi—130, 131
 Alpha Psi Omega—107
 Alpha Sigma Phi—134, 135
 Alpha Xi Delta—132, 133
 Altman, William—15, 111, 142, 150
 Ambrose, Patricia—26, 101, 110, 122
 American Guild of Organists—123
 Ames, Bonnie—27, 110, 121, 126
 Angelikoussis, Leon—27
 Arbogast, James—27
 Ardito, Frank—15, 138, 160

Armfield, Shirley—27, 100, 124
 Armstrong, Miss Elizabeth—89, 123
 Aslanian, Edward—15
 Atkinson, Judith—15, 103, 126, 128
 Aveyard, Harriet—15, 62, 100, 103,
 104, 108, 112, 130
 Awards Committee—99
 Aylestock, Judith—15, 128

b

Bailey, Betty—15
 Bakas, Stanley—27
 Balaban, Joseph—27, 114
 Barail, Louis—15, 134
 Barnes, Franklin—27
 Bartek, Bernard—27, 136, 163
 Bartell, Eugene—27
 Bauserman, William—27, 99, 138, 153,
 155, 160
 Baxa, Artis—27
 Baylis, Elizabeth—27, 118, 121
 Bays, Laura—15, 101, 126, 132
 Bean, Bonnie—126
 Becker, Joyce—27, 110, 112, 113, 122
 Beeler, John—28, 122
 Beer, Delma—28, 110, 120, 126, 130
 Beers, Carol—26

abb—bow

Belcher, Janet—15, 110, 112, 122, 123,
 124
 Benzene Ring—106
 Beta Beta Beta—107
 Betty Lamp Club—126
 Beveridge, Richard—28, 134
 Bierwirth, Fay—28
 Bigelow, Richard—28, 114
 Bileca, Dennis—28
 Biser, Madona—28
 Bissnell, Donna—28, 110, 126
 Black, Floy—15, 106
 Block, Joan—28, 114
 Blomberg, Dale—28, 125
 Blubaugh, John—28, 114, 134
 Blumenfeld, Lillian—28
 Bodurtha, Paul—15, 112
 Boe, Gerad—15, 106, 107, 136, 160
 Boegershausen, Gary—28, 110, 122
 Boggess, Janet—28, 108, 118, 120,
 121, 128
 Bonar, Carol—28
 Bond, Sally—28, 116, 121, 126
 Bone, Evelyn—15, 128
 Boone, Daniel—28
 Borg, Charles—28
 Bower, Gaylord—28
 Bower, Nancy—28



PERCE ROSS MEN'S WEAR

9 W. Main Street

Buckhannon, W. Va.

Fine Cars . . .

OLDSMOBILE

CHEVROLET

America's Most Popular

Automobiles

**CURRY CHEVROLET
 COMPANY, INC.**

Genuine General Motors factory
 precision parts and accessories . . .
 wholesale and retail.

bow—cri

Bowles, Dr. Robert—88, 92
Bowyer, Carol—16, 99, 108, 122, 124, 130
Bradford, Reed—16, 101, 136
Brewer, Reed—16, 101, 136
Brewer, Barbara—28, 110, 112
Brill, Dr. Mary—91
Broderick, Edward—28
Brookover, Margo—28, 103, 128
Brooke, Richard—26, 100, 106, 136
Brooks, Frederick—28
Brooks, Ronald—14, 125, 142
Brotherton, Paul—29
Broumberg, Michael—16
Brown, Alice—16
Brown, David—29, 126
Brown, Gene—29, 103, 160
Brown, Miss Mary Jo—89
Brown, Dr. Ralph—89, 114
Browning, Rondal—29
Brush, Howard—29, 160
Bryan, Rosemary—123
Bullock, Harold—16, 136
Burdette, William—29, 106
Burgess, Harry—29
Burke, Jerry—29
Burkholder, Phillip—29
Burnett, John—16, 162
Burr, Elbert—29, 122
Burruss, Nancy—29, 100, 110, 112, 113

Burton, Mary—16, 101, 121, 126, 130
Buschmann, John—29

C

Cafarella, Robert—29
Caldwell, James—26, 138
Calendine, Richard—26, 122
Campbell, Carlton—29
Campbell, Garry—29, 122
Campbell, John—29, 116, 122, 140
Canterbury Club—110
Carathanasis, Nicholas—29
Carbone, Anthony—29
Carroll, Donald—29, 114, 124, 134
Carter, Albert—29
Carter, Arthur—16
Casto, Ronald—29, 103, 142
Catlin, Bette Kae—29, 128, 159
Catrill, Billie—24
Caudill, Samuel—29, 99, 126, 138, 158, 160
Chaddock, Paul—16
Chambers, Elnora—29, 103, 121, 126, 130
Chang, Diana—30
Cheatam, Wallace—30, 150
Chenoweth, Rhea Lea—16, 123, 128
Chigos, Beatrice—30, 118, 121, 128, 151

Childers, Russell—24
Childs, Wayne—30
Chisnell, Barry—30
Choir, A Cappella—122
Chrisman, Dr. Lewis—91
Christie, Lois—24
Ciuffo, Anthony—30, 122
Clark, Breckinridge—30, 110
Clark, Dr. Lewis—90
Clawson, William—30, 150
Cloman, James—30
Cloyes, Mary Beth—30, 128
Coates, Robert—16, 142
Cobb, Hunter—30, 118, 125
Cole, William—30, 136
Collins, Jarvis—24
Colombo, Louis—16, 114, 122
Colvin, Harold—30, 124
Colvin, Martha—30
Community Council—98
Conduct Committee—100
Conway, Frank—121
Cooke, Donald—16, 136
Cooper, June—30, 121, 128
Cordero, Ernesto—30
Corneby, Bert—30, 136, 153
Corscadden, Allen—30
Cottrill, Georgetta—16, 126, 130
Covert, Denton—30, 122
Crickenberger, Robert—30

SNACK BAR
PING-PONG
CARDS AND GAMES
DANCING
BOOK STORE

STUDENT CENTER OF WESLEYAN

S.C.O.W. COMMITTEE ROOM
PUBLICATIONS OFFICE
PUBLICITY OFFICE
HEALTH OFFICE



Crispin, Raymond—16
 Crites, Jo Ann—30, 128
 Crouch, Miss Evelyn—93
 Crutchfield, Sandra—30, 151
 Cultural Enrichment Committee—102
 Cupples, Howard—30, 112
 Custer, Kay—30, 104, 130
 Cutright, Dalton—31
 Cvetnick, Frank—24, 163

d

Dalton, Clyde—31
 Damaska, David—31, 122,
 Damon, Gordon—24
 D'Apolito, John—31, 134
 Davis, Norma—16, 110, 122, 123, 126
 Davis, Geraldine—31, 110
 Davis, Mr. Sidney—89
 Day, Annabelle—24, 108
 Dean, Sharie—31, 99, 103, 108, 118,
 121, 126, 130, 151
 Deane, James—31
 Dearborn, Robert—31
 DeBarr, Alan—31
 DeBarr, Victor—31
 DeGroot, Peter—31, 112
 DeHaven, Jeanette—31, 118, 151
 Delta Psi Kappa—108
 Deluse, George—31

DeMarco, Raymond—31, 118, 119
 DeMolay Club—125
 Dengler, Frantz—17, 106
 Dennis, David—31, 136, 160
 Dent, Charles—31, 122, 123
 DeRevere, Bradford—31
 Deskins, Niawana—31
 Dickens, Denver—31
 Diller, Edith—31, 132
 Dizon, Josue—31, 100
 Donald, Edward—31, 124
 Donegan, Harold—31
 Doolin, John—31
 Dotson, Boyd—32, 153
 Doughton, Carole—32, 123
 Downey, Dr. Marvin—92
 Downham, Willard—32, 136, 163
 Dulaney, John—17
 Dunlap, Thomas—32
 Durborow, Louis—32, 120, 136
 Dykema, Scott—17

e

Eakel, John—32
 Earley, James—17, 163
 Echols, William—32, 106, 138
 Eckert, Herbert—32, 134
 Edberg, Paul—32, 138
 Edman, Clare—32, 111, 118, 142
 Educational Affairs Committee—100
 Eliassen, Frederick—32, 125

Eliot, Charles—32
 Elliott, Thomas—32, 112
 Ellis, Mr. Franklin—92, 150, 152, 157,
 163
 Emery, Esther—32, 114
 Engle, Stanley—32
 Epler, Ruth—17, 113, 124
 Eppley, Robert—32
 Evans, Richard—17, 124, 142
 Everts, Ward—32
 Evertsen, Theodore—17

f

Falik, Linda—32, 114, 120, 124
 Feather, Esther—126
 Feinberg, Lawrence—32, 114
 Feldbin, Isabelle—32
 Feldman, Ronald—17, 140
 Fellowship Teams—113
 Fennimore, Robert—32, 138
 Fenstermacher, Iva—32
 Ferrell, Barbara—32, 120, 130
 Fessler, Diana—110, 120
 Fike, Lloyd—32, 111, 118, 142
 Firl, Marilyn—33, 112, 130, 151
 Fischer, Roger—17, 99, 112, 122, 142
 Fisher, Judith—33, 110
 Fitch, Douglas—17, 110, 122
 Fitch, Thomas—17
 Fitzgerald, Dianne—33

Official Commercial Photographer for Your Murmumontis

≡ MOUNTAIN STATE ≡
PHOTO & ENGRAVING SERVICE

LINE & HALF TONE
 ENGRAVINGS

BUCKHANNON,
 WEST VA.

COMMERCIAL PHOTOGRAPHY
 FILM PROCESSING

ACME BOOK STORE

"The Place Where You
 Are Always Welcome"

MAGAZINES
 STATIONERY

and

SPORTING GOODS

**PEOPLES GROCERY AND
 MEAT MARKET**

"Buckhannon's Food Shop"
 BUCKHANNON, WEST VIRGINIA

fla—har

Flagg, Jo Ellen—17, 110, 121, 124
Flansburg, Donald—33, 112
Fleming, Kenneth—33, 103, 136
Flint, James—33
Fonz, Margaret—33, 132
Fosbenner, Martha—33, 113
Fosnaugh, Robert—17, 121, 126
Frame, Charles—33
Franks, K. Larrimore—33, 136
Franquiz, Dr. Jose—91, 124
Fraser, James—33, 138, 150, 160
Frosch, Allen—33, 111, 112
Fultineer, Sandra—33, 62, 121, 159
Funk, Nancy Jo—33, 121, 130

g

Gage, Robert—33
Gammons, Allen—33
Gardner, Lawrence—33, 125
Gardner, Lynn—33, 140
Gaston, Garren—33, 113, 122
Gates, Alvin—33
Gay, Ralph—33, 99, 107, 138
Gaylord, Mrs. Helen—93
Geraty, Carol—33, 104, 132
Geigley, David—33
Geller, Allen—33, 124, 142
German, Charles—34
Glauner, Dr. George—88, 92
Glee Club, Hyma—122

Goff, Mary—34
Goheen, Thomas—17, 111, 122, 123,
142
Gosman, Jeffery—34
Gould, Dr. Arthur—90, 106
Gourlay, Bruce—34, 110, 116, 119, 125
Gower, Mary—34
Graham, Sharon—34, 106, 116
Grake, Paul—126
Gramlich, Paul—17, 112, 124, 125, 140
Grant, Joan—34
Grant, John—34
Greene, Gordon—34, 122, 136
Greenfield, Harvey—34
Greenway, Harold—17, 75, 111, 122,
142
Gregory, Kleber—34, 110
Gress, Janet—34, 103, 110, 122
Grever, Kenneth—34
Griffin, Jane—34, 121
Griffith, Frances—34, 120
Groah, Miss Betty—92, 120
Groner, Phyllis—34
Gross, Ruth—18, 102, 107, 108, 110,
112, 113, 120, 121, 122, 123, 128
Gross, Samuel—34, 153
Guinello, Frank—34, 113

h

Hadley, John—18, 122, 162

Hahm, Sung Koog—18, 124
Halasz, Michael—34, 140
Hall, Jerry—34
Hall, Johnathan—34, 122
Hall, Judith—34
Hall, Lorentz—34
Hall, Sandra Jo—18, 110, 121, 126,
128
Hall, William—34, 106
Hallam, Miss Hallie Lu—86
Hallam, Mr. William—90
Halsall, Nancy—121, 132
Hamilton, John—35
Hamilton, Richard—18, 75, 99, 102,
122, 142
Hamner, Shannon—35
Hamrick, Gordon—35
Haney, Jack—35, 122
Hanifan, Betty Kay—35, 106, 108, 112,
122, 124, 128
Hanjian, Armen—18, 112
Hanson, Mr. William—35, 112
Harbert, James—35, 103, 111, 116,
122, 140
Harman, Judith—35
Harper, John—35
Harris, Janet—18, 108, 132
Harrison, Roger—35
Hart, Frederick—35, 100, 142
Hartman, Franklin—35, 153

Get the Best
Get
SEALTEST



RIECK DAIRY DIVISION
PHONE ELKINS, W. VA. 45

Compliments of

**WILSON
BAKING COMPANY**

CLARKSBURG
WEST VIRGINIA

Hartman, Janet—18
 Hastings, James—35, 136
 Haught Literary Society—108
 Hayden, Carol Sue—35, 112
 Hedrick, Jeanette—18, 100, 108, 112, 123, 126, 128
 Heinrich, Craig—35, 114
 Hellmann, John—35, 142
 Henry, William—35
 Herbst, John—18, 106
 Herold, Margaret—35, 110, 112
 Herrera, Michael—35, 103
 Hess, Gary—35, 154, 156, 158, 163
 Hetz, Mary—35, 108, 121, 126
 Hetz, Robert—18, 107, 122
 Hickie, Harry—18, 26
 Hicks, Mr. William—85
 Hider, Robert—35, 110, 120, 122, 123
 Hillel Society—114
 Hiller, Kenneth—35, 134
 Hillman, Norman—36, 107, 122, 160
 Hipple, John—36, 122
 Hitchcock, Harold—163
 Hoag, David—36
 Hodge, John—26
 Hodson, Edgar—18, 75, 122
 Hodyas, Paul—36, 138
 Hoffman, James—24
 Hogsett, Margaret—56, 112, 113, 122, 128
 Hogsett, Phyllis—18, 122, 128
 Holbert, Jefferson—18, 136, 160

Holbrook, Robert—114
 Holm, Sue—24
 Holm-Anderson, Ingolf—36, 136
 Holmes, Beverly—36, 122
 Holmes, William—36, 142
 Holt, John—18, 163, 165
 Homann, William—36
 Hopping, Ruth—36, 121
 Horn, Frank—36, 103, 124, 140
 Hoskinson, Floyd—36, 122, 153
 Howell, Harold—36
 Howes, Cara—36
 Hoy, Donald—19, 136
 Hubbard, Alan—36, 138
 Hubbard, Betty Jo—36, 110, 126
 Hubbell, George—19, 142
 Huffman, Bonita—36, 126
 Hupp, Dr. James—91, 126

James, Arthur—36
 Jeffreys, Susan—37, 110, 116, 121
 Jervis, Robert—19, 138
 Johnson, Donald—37, 122
 Johnson, Howard—37
 Johnson, Leonard—37
 Johnson, Paul—37, 111, 122
 Johnston, William—37
 Johnston, Edwin—163
 Johnston, Marilyn—37, 110, 112, 122, 123, 126
 Johnstone, John—37, 106, 138, 150
 Jones, Gerald—37, 111, 112, 113
 Jones, Marvin—37
 Jordon, Ralph—19, 121, 138
 Judy, Clifford—24, 160, 161, 165
 Jungas, Theodore—18, 98, 99, 113, 122, 142

i

Ignatovic, Robert—36
 Ingraham, Harold—36
 Innes, Kirk—36, 138
 Innes, John—19
 Interfraternity Council—104
 Ireland, Robert—36
 Issac, Earl—36

k

Kacer, Edward—37
 Kachel, Gretchen—37
 Kailing, William—37, 111
 Kaminski, Betty—37, 110
 Kane, Carol—37, 102, 113, 124
 Kappa Alpha Order—138, 139
 Kappa Phi—110
 Kappa Sigma Kappa—140, 141

j

Jackson, James—36

**POUNDSTONE
 DRUG COMPANY**
 WHITMAN'S CHOCOLATES

Phone 432

24 West Main St.

Buckhannon

**DRS. R. L. HAWKINS
 and
 W. D. KNOX**
 Dentists



Meet the Crowd at the
RAINBOW ROOM

E. Main Street

Buckhannon, W. Va.

kar—man

Karickhoff, Paul—37, 138
Kawadler, Elliot—37, 138
Keene, Phyllis—37, 121, 132
Kelley, Frederick—37
Kelley, Terry—37, 138, 160
Kennedy, Hall—37
Kennedy, James—37
Kennedy, John—19, 136
Kercher, Donnie—37, 120, 126
Kerr, James—37, 122
Kessel, Jenny—38, 128
Keyser, Dolores—19, 104, 108, 121,
126, 132
Khedouri, Issac—38
Kibler, John—38
Kinnamon, Gilbert—38
Kiser, Mr. Raymond—86
Kissel, Jack—19, 142
Kleinstuber, David—38
Klepper, Sylvia—38, 102, 108, 120,
121, 124, 125, 128
Koelln, William—38, 138
Kohler, Charles—38, 111, 113
Kohlhepp, Sue—38, 110, 113, 121, 122,
124, 151
Koon, James—19, 106
Kopple, Carolyn—38, 110, 118, 121,
123, 126
Koslin, Steven—19
Kost, William—38
Kotsonis, Emmanuel—38
Kough, David—38, 136

Krevitt, Philip—19
Kripsak, Barbara—38
Kristofik, Edmund—19, 126, 153, 154,
155, 157, 158
Kuhl, Phyllis—19, 126
Kundrat, Michael—38, 112, 122, 124
125, 142
Kurznel, Joyce—38, 122, 123, 132

|

LaFalce, Robert—19, 114, 122, 142
Laign, David—38
Lamb, Martha Jo—19, 108, 121, 132
Lambert, Betty—38, 122, 123
Lampila, Judith—38, 112, 113, 122,
130
Lantz, George—38, 130
Lantz, Marilyn—38
Lantz, Mary Sue—38
Lasell, Edah—20, 113, 122
Lathrop, Linwood—20, 122, 142
Lauritsen, Jean—38
Law, Carolyn—38, 110
Layfield, Robert—39
Leach, Thomas—39, 121, 140, 159
LeBeau, Deann—39, 108, 121, 130, 151
Lee, Shirley—39, 116, 132
Leppla, William—39, 163
Lesko, John—39
Levin, Harvey—39, 114

Lewis, Neil—39, 114, 122
Lewis, Ronald—39, 100, 106
Lewis, Larry—39
Lewis, Weller—39, 116
Light, Virginia—20, 108, 113, 118, 121,
124, 151
Lilly, Gerald—39, 134
Linaberger, Mara—20, 103, 126, 132
Lindberg, Carl—39
Ling, Mr. James—85
Linger, Eleanor—39, 122, 128
Lipetz, Eric—20, 140
Lockard, Mr. E. Kidd—90
Lockart, James—160
Lockey, Daniel—39
Long, Bruce—39
Lord, Dennis—39, 103
Lore, Joseph—39
Lover, Robert—111
Love, Marshall—39, 136

m

Maberry, Kenneth—39, 103, 140
Machenberg, Allen—39, 114
Malone, Patricia—20, 126, 130
Maloney, Donald—39
Manser, Jefferson—20, 104, 138, 162



G. C. MURPHY CO.
Buckhannon's Leading
Variety Store . . .
Every Item Guaranteed . . .
First Quality . . .

STRADER'S
"A BETTER PLACE TO BUY"
Merchandise to
Meet Your Needs

**BUCKHANNON
MILLING COMPANY**
Feed and Flour
Telephone 302
BUCKHANNON **W. VA.**

Marine, Jack—20, 120
 Martin, Ann—40, 122
 Martin, David—40
 Martin, Patricia—40
 Martin, Mr. Robert—91, 126
 Martin, Dr. Stanley—65, 84, 165
 Masek, Penny—40
 Mason, Harold—20
 Mathers, Frank—40
 Mayers, William—146
 Mearns, June—20, 108, 110
 Medley, James—20
 Meister, John—40, 114, 136, 163
 Mendoza, Cornelia—20, 110, 124
 Men's House Board—103
 Messersmith, Mr. Fred—89, 99, 102, 121
 Metallides, Anthony—40
 Methodist Student Movement—112
 Meyer, Judith—40
 Middlebrook, Robert—20
 Miklosey, Arthur—40, 114, 134, 150
 Miles, Nancy—40, 151
 Miller, Douglas—40
 Miller, George—40, 118, 125
 Miller, Jack—40
 Miller, Robert—40, 122
 Miller, Russell—40, 114
 Miller, Shirley—20, 128
 Minnis, Clyde—40

Mitchell, Merton—20
 Modlin, Charles—20, 118, 142
 Moebius, Clifford—40, 138, 160
 Montagua, John—40
 Moore, Samuel—40, 112
 Morrison, Bonnie—40
 Morrison, William—40, 113
 Morton, Peggy Jo—21, 101, 108, 121, 126, 130
 Moser, Paul—40, 110, 116, 120, 123
 Moss, Imogene—40
 Moss, Lawrence—40
 Mowry, John—21, 111, 122, 142
 Moye, Alfred—41, 122, 160
 Mullen, Carolyn—41, 130
 Mumford, John—41, 153
 Murmurmotis—116, 117
 Music Educators National Conference—123

mac and mc

MacQueen, Gordon—39
 MacWilliams, Donna—39, 100, 103, 110, 122
 McBride, William—41, 106, 136
 McBride, Robert—41, 153
 McCabe, Nancy—110, 112, 120
 McClain, Ann—110, 126
 McCue, Ralph—102

McCulloch, John—102
 McCutcheon, Paul—41, 142
 McCutcheon, Calvin—41, 124, 125, 142
 McDonald, Glenda—21, 98, 99, 122, 123, 132
 McDonald, James—41, 136, 153, 156, 163
 McDonald, Madonna—41, 110
 McGuirk, John—41
 McGovern, Thomas—41, 134
 McGregor, Nancy—41, 100, 107, 121, 126, 132
 McGregor, Stanley—26
 McGuire, Richard—41, 114
 McIlvried, Paul—41
 McKinney, Thomas—21, 121, 132
 McKittrick, Dr. Mary—92
 McLaughlin, James—41, 116, 140
 McLaughlin, Robert—41, 111, 113, 122
 McNutt, Suzanne—21, 100, 108, 112, 113, 122, 130
 McPhee, James—41
 McVitty, Donald—21, 136

n

Nargiz, Gerald—42
 Neely, Richard—42
 Neuman, Frederick—24
 Neuner, Frank—21, 134



THOMPSON'S PHARMACY
 "THE BEST IN TOWN"

REPUBLICAN DELTA

Upshur County's
 Leading Newspaper

GASTON GROCERY CO.

Wholesale Grocers
 BUCKHANNON, W. VA.

new—rem

Newlon, Phillip—21
Newman Club—114
Nicholas, Paul—42, 103, 106
Nixon, Michael—42, 138
Norman, William—42, 102, 122, 140,
162

O

Oasis, Robert—42, 114
O'Brien, David—42
Oleson, Stuart—21
Olive, Paul—42
Orr, George—42, 107, 111, 142
Orr, Melvin—42, 111, 122
Ost, Justin—42
Otto, Gretchen—42, 121
Otto, Margaret—42, 110
Owen, Leith—42, 130

P

Panhellenic Council—104
Parisi, Frank—21, 114, 136
Parker, Mrs. Juanita—90
Parks, Donald—42
Parmet, Phillip—24
Parrilla, Kenneth—42
Parry, Phillip—42
Parseghian, Vahan—42, 142
Patenaude, Dean—26, 136
Patterson, Rex—42

Patti, Frank—42, 104, 114, 134
Payton, Roy—42
Pearson, Nancy—42, 110, 122
Pemberton, Ann—21, 99, 101, 108, 126
Pennett, Donald—42, 163
Pennington, John—160
Pennington, Ronald—43, 150
Pepper, William—43
Perry, Charles—43, 111, 112, 122, 142
Perry, Fred—43
Peterson, Noel—43, 136
Pettibon, William—21, 111, 112, 122,
142
Pettry, Nancy—43, 120, 121, 130
Pfalzgraf, Janie—21, 62, 72, 99, 101,
108, 121, 126, 132
Pharos—118, 119
Phillips, Rowena—43, 110
Phi Sigma Epsilon—142, 143
Pi Epsilon Theta—124
Pierce, Conrad—43, 122
Pifer, Letitia—43, 120, 130
Plate, David—43
Playshop—120
Podrog, Robert—43
Post, Rebecca—43, 130, 151
Potter, Francis—43
Powell, Richard—43, 136
Power, Virginia—43, 121, 132
Powers, Edward—43, 104, 140
Powers, Kenneth—24
Preston, William—43

Proffitt, Sara—43, 103, 110, 128
Psychology Club—124
Publications Committee—100
Pulhamus, Aaron—43, 138
Purdy, Joy—43

q

Quattlander, Carol—43, 130
Queen, Ann—21, 100, 103, 108, 121,
126, 132

r

Rabatin, Leonard—43, 116
Rabinowitz, Jerry—21, 104, 142
Rader, John—43
Raesly, Leland—43, 122, 153
Rainey, Donald—44
Ramage, Gael—44
Randolph, Edward—44
Rautner, William—44
Rawson, Jean—21, 72, 126, 128
Raymond, Dominic—24
Raymond, Michael—44
Reemsnyder, Mr. David—93, 116, 162,
165
Reemsnyder, Jane—44, 132, 151
Reiter, William—14, 138
Religious Activities Committee—102
Remley, Kenneth—44, 122, 126, 153,
154, 156, 158, 161



**Official Portrait
Photographer for
Your Murmumontis**

— ULYSSES BUFFINGTON —

CLARKSBURG, WEST VIRGINIA

Photographer

Reppert, Shirley-22
 Reynolds, Bruce-44, 134
 Rial, Joseph-44, 112
 Rice, Priscilla-44, 132
 Rice, Robert-44, 138
 Richwine, Mr. Keith-91, 118
 Rider, Kay-22, 62, 121, 122, 123, 128
 Riggs, John-44
 Rissmeyer, Helen-22, 108, 113, 122
 Roach, John-124
 Robbins, Clarence-44, 160
 Roberts, Kenneth-44, 103, 136
 Robinson, Twana-44
 Rock, Pete-44, 114, 136
 Rogers, Vincent-44
 Roessle, Margot-44
 Rogers, John-44
 Rohrbough, Constance-44, 110, 112, 121, 128, 151
 Rohrbough, Raymond-44, 111
 Roney, Frederick-44
 Rosenman, Joseph-44, 114
 Ross, Alexander-22, 123
 Ross, John-44, 122
 Ross, Mr. Samuel-93, 99, 160
 Rossbach, Dr. George-90
 Rossmeyer, William-45, 121
 Rough, Carol-22
 Rovello, Samuel-45
 Rubin, Robert-22, 106, 107, 140

Rudlow, Dean-22
 Russin, Gerald-22
 Ryerson, Cornelia-45, 110

5

Sage, Robert-45, 134, 163
 St. Miklossy, Joseph-23, 134
 Salata, Thomas-45, 114, 134
 Sanders, John-45, 111
 Sanford, Richard-45, 111
 Santillo, Harry-45, 114, 134
 Sapp, Edwin-45
 Schaffer, Nadine-45, 121, 132
 Schaper, Dr. Florence-92
 Scherer, Bing-45, 111, 112, 122
 Schleicher, Don-45
 Schneider, Frank-45, 138
 Schoolcraft, Dr. A. A.-84, 99, 165
 Schoonmaker, William-24
 Schork, Kenneth-45
 Schwartz, Martin-45, 142
 Schwengber, Ernest-45
 Sciotta, Francisco-45, 114
 Scott, James-26, 98, 99, 100, 104, 111, 118, 136
 SCOW Committee-100
 Seagraves, George-22, 116, 126, 163
 Seagraves, Margaret-22, 126

Seamans, Lyman-22, 122
 Seamans, Winston-45, 75, 136
 Seiderman, Arthur-45, 136
 Sell, Gaynell-45, 110, 113, 118
 Sepulveda, Edward-45
 Shafer, Mr. Robert-89, 122, 123
 Shaffner, Wesley-45, 122, 136
 Shamblin, Robert-45, 153
 Shaver, Mr. John-87, 92, 99, 100
 Sheppard, David-22
 Shin, Young Sun-45
 Shirley, John-22, 126
 Shreve, Charles-46
 Shuttleworth, Nancy-46, 121, 122
 Sigma Theta Epsilon-111
 Silberman, William-46
 Silver, Jay-46, 106, 114, 140
 Silvester, Ellsworth-46
 Simons, Carol-46, 110, 121
 Simons, Melvin-46
 Simpson, Joseph-46, 138
 Slaving, Judith-46, 110, 116, 121
 Small, Dr. Samuel-91
 Smith, June-46, 121, 126, 128
 Smith, Marilyn-22, 106, 107, 108
 Smith, Robert-46, 111, 113, 122
 Smith, William-26, 101, 136, 153, 156, 160
 Sociology Club-125
 Solvensen, Douglas-46

"For the Best
 in Entertainment"
KANAWHA THEATRE
 18 S. Kanawha St.
 BUCKHANNON, W. VA.

Congratulations
 to the
 1958 Graduates
 From the
MURMURMONTIS STAFF

DAWSON
FURNITURE SALES
 Complete Home Furnishings
 Phone 377
 BUCKHANNON, W. VA.
 Phone 377

REED RADIO SERVICE
 Expert Service on All Makes
 Radios, Phonographs, Television
 Phone 251
 18 W. MAIN ST. BUCKHANNON

soc—zol

Social Activities Committee—101
 Sos, Alexander—22
 Sowers, Linda—14, 103, 104, 108, 121, 128, 151
 Sprout, Warren—46
 Stagon, Leonard—22, 126
 Stahl, David—23
 Stanley, Barbara—46, 110
 Stanley, William—46
 Stansbury, Mr. James—86
 Stawarky, James—46
 Stell, Robert—46
 Stemple, Janet—46
 Stepanian, Michael—46
 Stewart, Dewey—46
 Stewart, Donald—46, 111
 Stewart, Jo Ann—46
 Stockert, Mrs. Helen—93
 Stone, Walter—46, 113, 120, 122
 Stotz, David—46
 Strader, Elizabeth—47, 128
 Stroles, Constantine—47
 Strunk, Dr. Orlo—87, 91, 124
 Student Art Guild—121
 Student National Education Association—126
 Surber, Dorothy—128
 Swan, John—47
 Sweet, Marlene—47, 112, 113
 Sweeton, Gerald—47, 136

Talkington, Ronald—14, 122, 140, 162
 Talkington, Walter—47, 113
 Tatem, James—23, 134, 162
 Taylor, Grace—47, 110, 120
 Teagarden, Jean Ann—47, 110
 Tell, Jeremiah—23
 Tenney, Bettie—47, 122, 123
 Tenney, Elvin—47
 Tenney, Ronald—47
 Tereshko, Joseph—47, 136
 Teter, Elizabeth—47, 116, 132
 Teter, William—47
 Theta Chi—136, 137
 Thompson, Lois Ann—24
 Thompson, William—47, 110, 140
 Thonen, Betty—110, 112
 Thorne, Joseph—47
 Tillinghast, Greta—47, 112, 122, 130

Tissot, John—23, 142
 Tissue, Miss Kathryn—90
 Tjioe, Gim Beng—47, 106
 Torrence, Tod—47, 122, 138
 Tracy, James—47, 106, 120
 Trusilo, William—47
 Turley, James—47

U

Umstead, Carolyn—47, 113, 118
 Undreiner, Ralph—47, 136, 162
 Ursaki, George—48
 United States Student Association Committee—101

V

VanCamp, Mary—48, 128
 VanOsdol, Gretchen—48
 Vaughn, Mrs. Ethel—B7
 Vaughn, Joseph—48
 Vigna, James—48
 Voegtlin, David—48
 VonEiff, Donald—48
 VonHoorn, Richard—23, 121, 122

W

Wadsworth, Raymond—48
 Wagner, Shirley—48, 114, 132
 Walker, James—48
 Wallsork, James—48
 Walsh, John—49
 Walters, Miss Etta—93, 151
 Wanless, Gordon—48
 Ward, George—48
 Wassell, Willard—48, 138
 Watson, William—23, 138
 Waugh, Carolyn—48
 Weaver, Robert—23, 112, 122
 Weiglein, Elizabeth—26, 110, 112, 113, 118
 Weissmann, Henry—48, 153
 Welker, Ann—26, 103, 110, 112, 113, 122, 128
 Wellish, Marshall—48
 West, Jenny Lynne—24
 West, Larry—48, 153
 West, Linda—151
 Westberg, Charles—48
 Westfall, Lynn—48, 111, 122

White, Jean—48, 101, 132, 151, 159
 Wiemokly, Richard—48
 Wilcox, Ruth—48, 132
 Wilfong, Jack—48
 Wilfong, Richard—49
 Wilkerson, James—49, 122
 Wilkinson, James—49, 158, 163
 Will, William—23, 104, 111, 122, 125, 142
 Williams, Hazel—49, 112, 124
 Williams, Mr. Heyward—85
 Williams, Joan—23, 110
 Williams, Joseph—49
 Willis, Dr. William—90
 Wilmoth, Esther—49, 110
 Wilson, Cara—49
 Wilson, Carol—23, 107, 130
 Wilson, David—49
 Wilson, Naomi—49, 123
 Wilson, Miss Nellie—87, 89, 101
 Wingert, Randall—23, 142
 Winnett, Marry—49, 126, 130
 Winspear, George—49
 Winston, David—160
 Winters, Robert—23, 102, 123, 142
 Witschey, Warren—49
 Wolfe, David—49, 106
 Women's House Board—103
 Women's Recreation Association—121
 Wood, Betty—49, 113, 122, 124
 Wood, Karla—49, 121
 Wooddell, Mary—49, 110, 122, 123
 Woolf, Thomas—49
 Woolley, Norman—49
 World University Service Committee—100
 Wright, Clarence—49, 113
 Wright, Dr. John—90
 Wright, Samuel—49
 Wyatt, Fred—49

Y

Yates, Richard—49, 122

Z

Zickefoose, Gail—153
 Zickefoose, Mendel—126
 Zinaich, Samuel—23
 Zolan, Robert—49, 140

Buyers Index

Acme Book Store—169
 Buckhannon Milling Co.—172
 Ulysses Buffington—174
 Curry Chevrolet—168
 Dawson Furniture Co.—175
 Gaston Grocery Co.—173
 G. C. Murphy Co.—172

Kanawha Theatre—175
 Knox and Hawkins—171
 Mt. State Photo and Engraving—169
 Peoples Grocery and Meat Market—169
 Perce Ross Men's Wear—168
 Poundstone Drugs Co.—171
 Rainbow Room—171
 Reed Radio—175

Republican Delta—173
 Rieck, Dairy Division—170
 Shingleton Brothers—166
 Strader's—172
 Student Center of Wesleyan—167
 Thompson's Pharmacy—173
 Wilson Baking Co.—170

WEST VIRGINIA CONFERENCE SEMIN
WESLEYAN UNIVERSITY OF WEST V
WEST VIRGINIA WESLEYAN COLLEG



120707

ARY
RGINIA

1890-1903
1903-1906
1906-

