

Winnipeg
1921






CONTENTS:

Preface	2
90th Anniversary	19
Traditions	33
Entertainment	59
Sports	81
Greeks	135
Organizations	169
Honoraries	191
Academics	215
Faculty & Administration	229
Graduates	251
Underclass	273
Identification	291
Editor's Farewell	endsheet

245178



Digitized by the Internet Archive
in 2010 with funding from
Lyrasis Members and Sloan Foundation

<http://www.archive.org/details/murmurmontisyear70west>

Murmurmontis
1980
90th Anniversary
Commemorative Edition
West Virginia
Wesleyan College
Buckhannon,
West Virginia
Volume 70







*There's a land
of rolling mountains
Where the sky
is blue above;*







*And though
I may roam,
I hurry home
to the friendly hills
I love.*







*Where the moonlit
meadows ring
with the call
of whipporwills,
always you will
find me
in my home
among the hills.*







*And where the sun
draws rainbows
in the mist
of waterfalls
and mountain rills,*







*My heart
will be always
in the
West Virginia hills.*

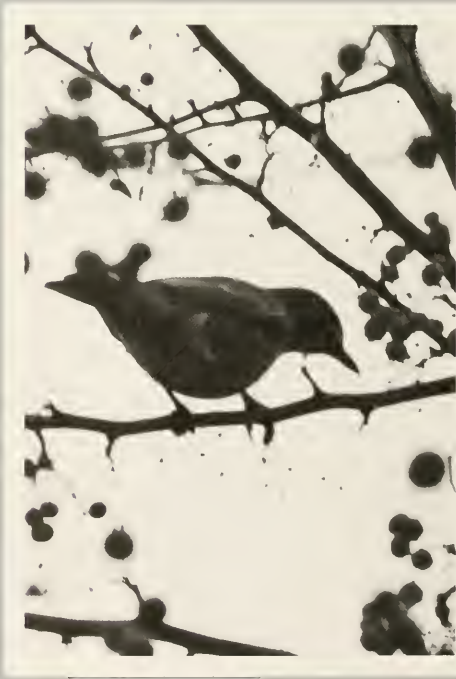






*There autumn
hillsides
are bright with
scarlet trees;*

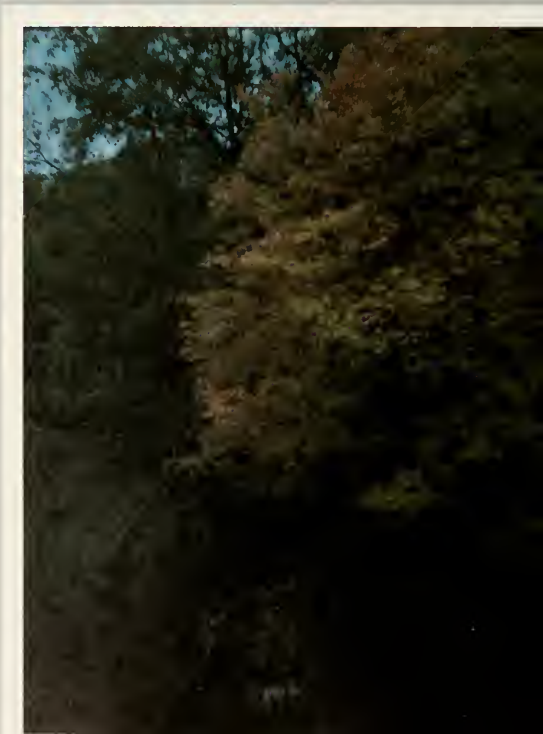
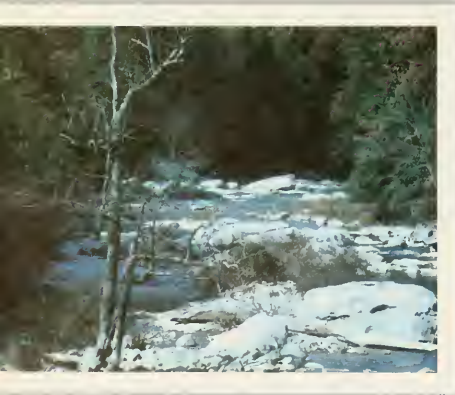






*And
in the spring
the robins sing
while apple
blossoms whisper
in the breeze.*







*And there is
music in the
flashing streams
and joy in
fields of daffodils;
laughter
through the
happy valleys
of my home
among the hills.*





90th ANNIVERSARY

90 YEARS: TYING THE PAST TO THE PRESENT

The 1951 edition of the *Mur-murmontis* read, "Sixty one years ago our fathers brought forth in Buckhannon, West Virginia Wesleyan College. Buildings have been burned and raised; students, faculty and administrators have come and gone, but the oak grove has remained. The trees in the oak grove are the original trees that were on campus when the school was first founded. High in the branches the winds whisper secrets of Wesleyan's family, are their sentinels of time. In this grove devotionals rise to praise the creator, youth discovers courage to face difficult decisions and boys press the hands of girls they love."

In 1980, the oak grove still exists on the vast lawn in front of the library down the walkway from the Administration Building. Ninety years have passed since West Virginia Wesleyan College first opened its doors to students. In those ninety years many changes have occurred to the college in both educational and physical aspects.

Throughout the changes and the years Wesleyan has strived to maintain its original aim: "not simply to produce scholars, but to develop character, to promote Christian culture and the truest refinement of thought and conduct." Since the inception of Wesleyan, both this ideal and the oak grove have remained. Thus, a part of Wesleyan remains constant through changes, tying the past to the present.





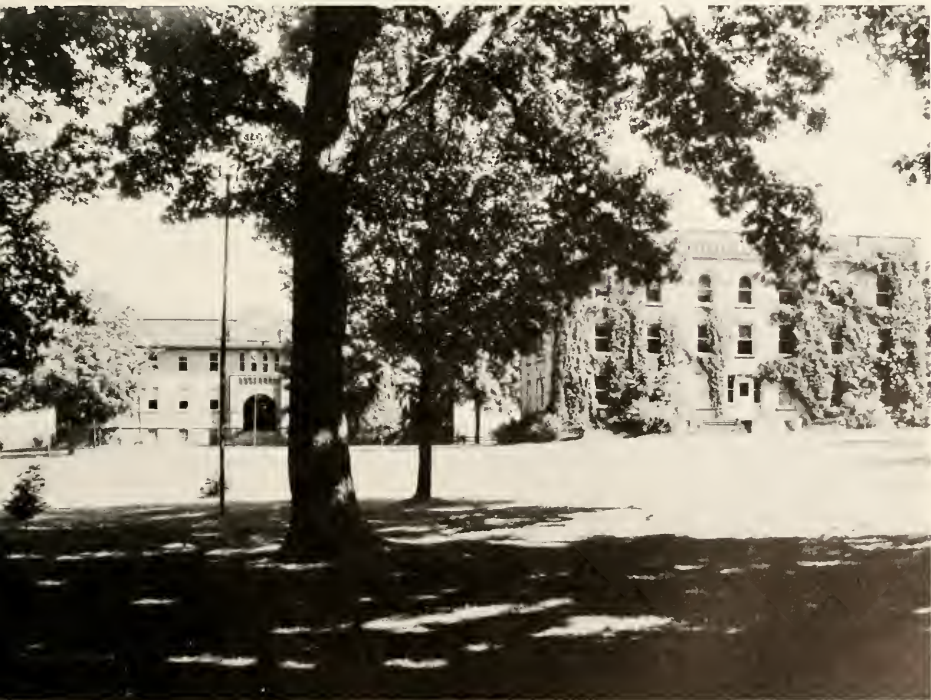
In 1885, the West Virginia Conference of Methodists proposed to erect a seminary. To that end, a Board of Trustees was elected. Two years later the Board approved the purchase of 43 acres of Buckhannon land for the sum of \$5,551.87. On September 3, 1890, seventy-five students attended class at West Virginia Conference Seminary. Somehow they were able to survive without tables, library, or classroom apparatus. The campus consisted of the "Main Building" (above) and one piano. There were three faculty members and the President.

What we know as Agnes Howard Hall (left) was erected in 1895 as the "Ladie's Hall." Presently the oldest building on campus, Agnes Howard exists as an example of Wesleyan's small beginning.





In 1903, the growing seminary was chartered to confer degrees. The course of study was then raised to that of a college graduate. West Virginia Conference Seminary became Wesleyan University of West Virginia. In 1905, disaster struck. Fire destroyed the Main Building, (opposite, top left and right). Being a vital part of the college, immediate steps were taken to replace it. The following year "College Hall" (opposite, below) was ready for occupancy. The Annex (right) was built in 1902 to use as a Music Hall. (Below) The Music Hall is flanked on the left by the old Gym which was built in 1912.





In 1920, "Ladie's Hall" was renamed Agnes Howard Hall in memory of a college coed who died from an illness while attending Wesleyan. Her father was a substantial contributor to Wesleyan for years.

A former hospital at 49 Florida Street (right) was purchased to use as a freshman dorm for men. Later it was used to house upperclass women.

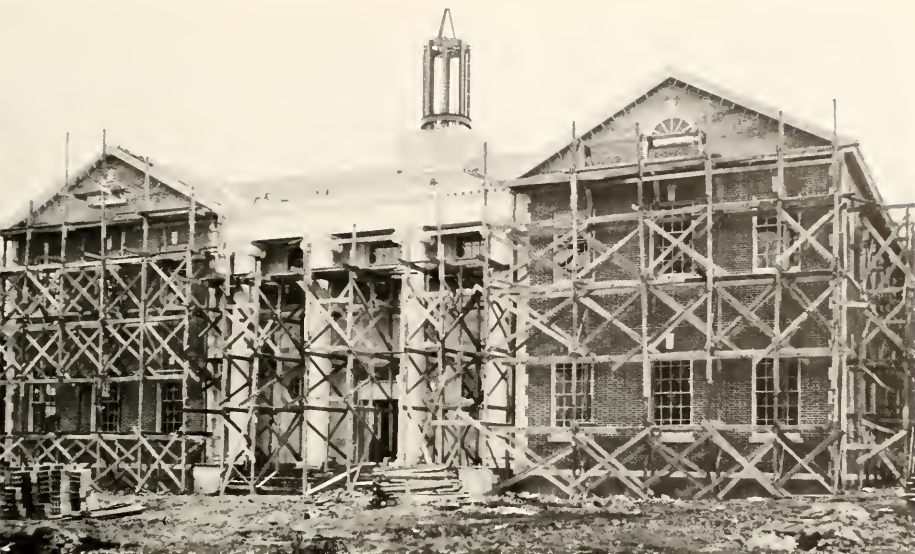
By 1959, a new women's dormitory was built beside Agnes Howard and called "Edna Jenkins Hall." (opposite) Later the name was condensed to "Jenkins."

The addition of these dorms indicated a growing interest in this small school.









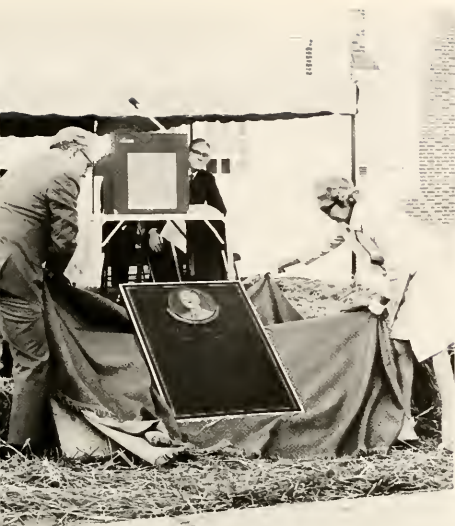
Haymond Science Hall (opposite, above) was built in 1913 and opened for classes in 1914. Since then it has been carpeted and modernized.

A \$100,000 donation was offered to the college to build a new library by Mrs. Annie Merner Pfeiffer. She gave the money provided that the funds were to be made available when construction of the building began and at least two other buildings of equal value were to be constructed at the same time. These conditions were met with the building of Loar Hall and the West Chapel (now Atkinson Auditorium). The Annie Merner Pfeiffer Library (left) opened for use in 1952, giving students (opposite below) a new study and resource center.



The original SCOW was a one story frame structure built between Loar Hall and the old gymnasium in 1947. Sixteen years later a new SCOW was built and opened on February 2, 1963. At that time it was the only building at that corner of campus. The old campus center was remodeled to accommodate the classrooms and labs of the Departments of Psychology and Education and the Testing and Evaluation Service. By 1957, McCuskey Hall was under construction (right) to be used as a men's dorm. Fleming was built in 1952 and in 1962, Doney Hall was completed creating "The Quad."





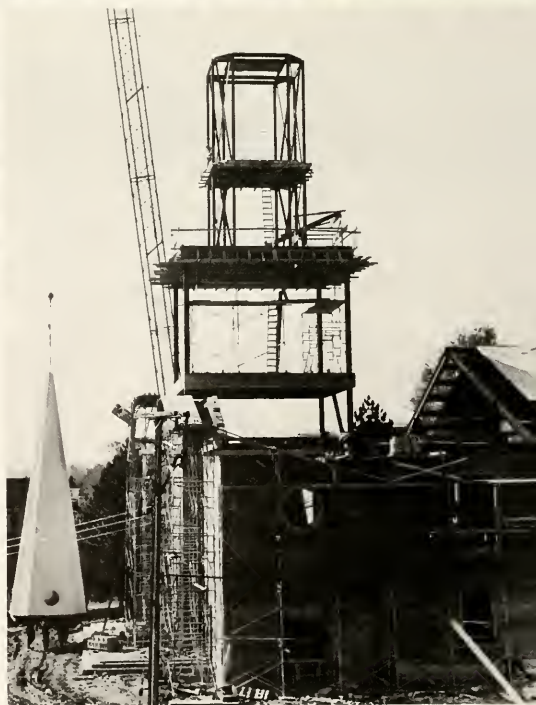
The unveiling of the plaque honoring H. Ward Christopher takes place in front of the science hall (left). The corner stone of the building was laid in 1967.

An aerial view of the campus taken in May, 1967 shows the campus with the foundation of Christopher being dug. At that time the chapel was under construction as well. Annie Merner Pfeiffer Library had been established and the old gymnasium was the center for sports directly behind the library. Behind Loar the old campus center is visible. The now familiar mud of Wesleyan's campus is in ample supply.





Before the chapel was built, religious services were held in Atkinson Auditorium. Chapel service was mandatory for all students. Construction of a larger and more modern chapel was discussed in the 1940's. Bishop James Straugh cautioned against the originally planned site between Agnes Howard and the Administration Building. Feeling that the Chapel should be located in a dominant position on campus to symbolize that the college is a Christian institution, Straugh stated that it should be "the very heart and center of the campus." Here (above right) is Wesley Chapel in 1966 minus its familiar steeple.

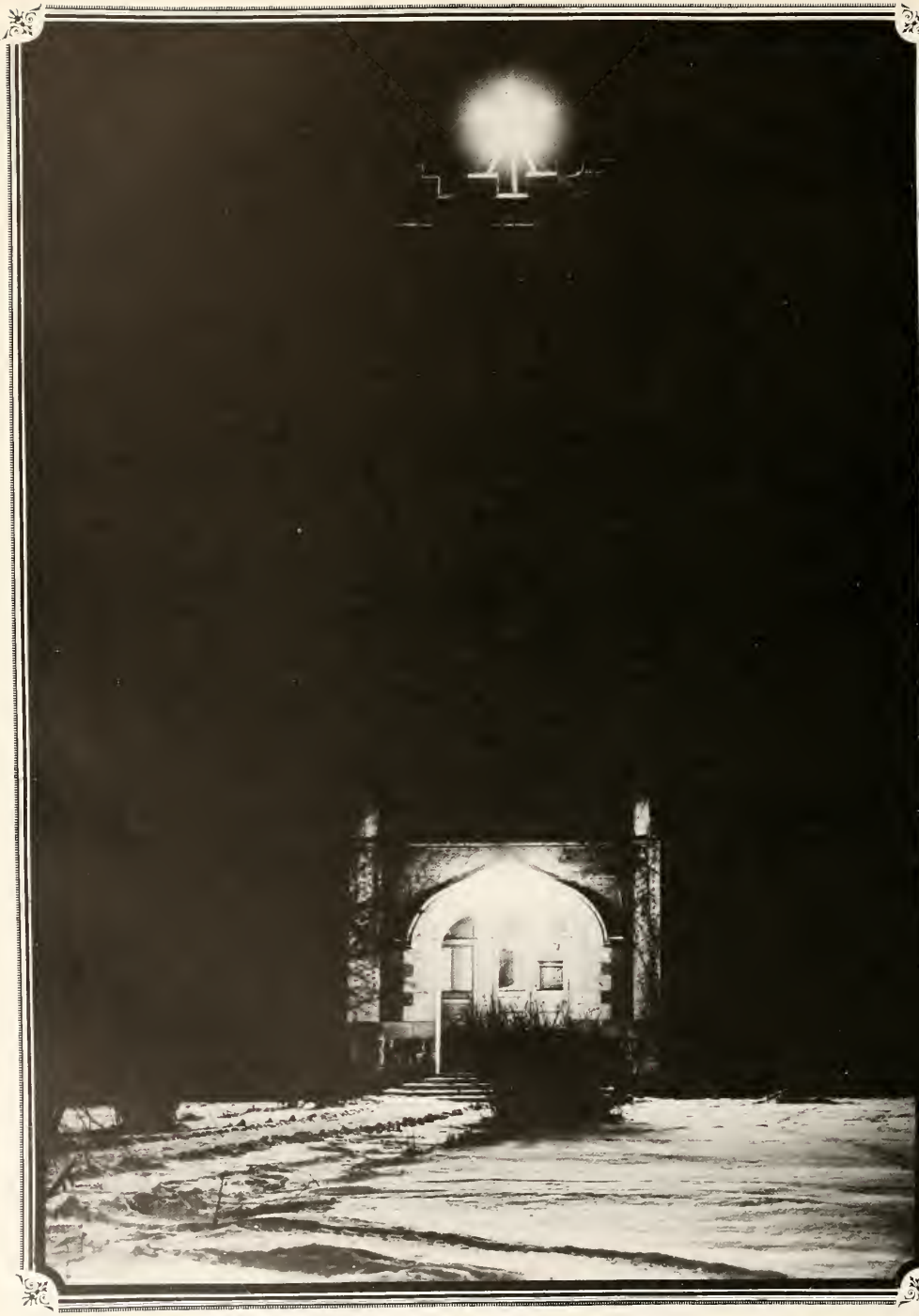


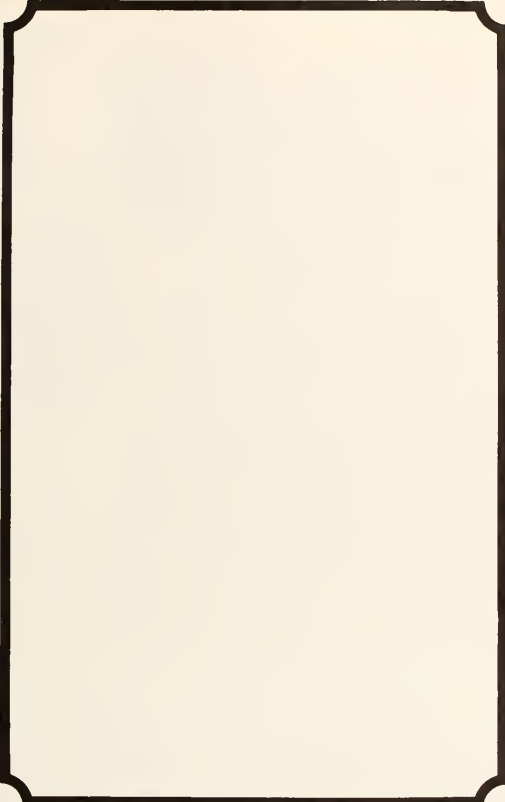


John D. Rockefeller IV, president of the college in 1975, cuts the ribbon on the new physical education complex bearing his name. Opened for use in 1975, the new gym replaced the 1912 building.

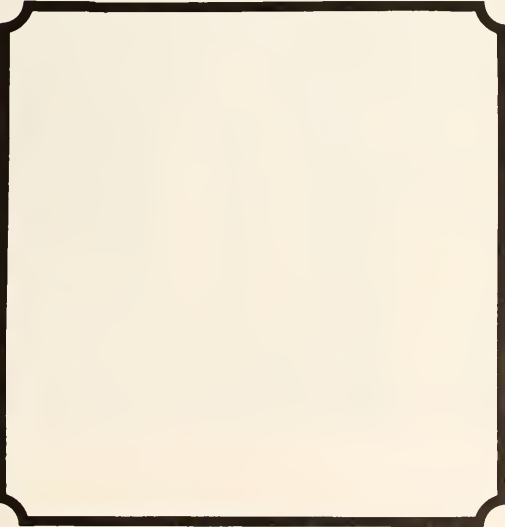
When the Rockefeller center was opened, the old gymnasium was demolished (bottom). The completion of the physical education complex marked the end of a campus expansion drive begun, if not realized at the time, in 1890.







TRADITIONS



FRESHMAN ORIENTATION

Each year, before the majority of the campus community returns, the college greets its newcomers. Amidst, or perhaps despite, confused feelings, the incoming freshmen are "oriented" to Wesleyan and college life through the help of student leaders, faculty and members of the administration. However, the newest Wesleyan students don't have campus to themselves for long. Upperclassmen soon return to a now familiar routine of greeting friends, moving in and preparing for another year of classes.





President Harris greets a guest at the President's Reception (opposite, top). The reception offered the opportunity for faculty, administrators, new students and their parents to mingle. Saga's first picnic of the year provided the same opportunity. Perhaps typical of orientation programs are the questions. During the three days, student leaders Carol Deinger (opposite, below), Kathy McGee (above) and Dale Powell (left) had the chance to answer many questions from both students and parents. Student leaders served many functions including guiding "lost" parents and students to check-in at the gym.

CAPPING

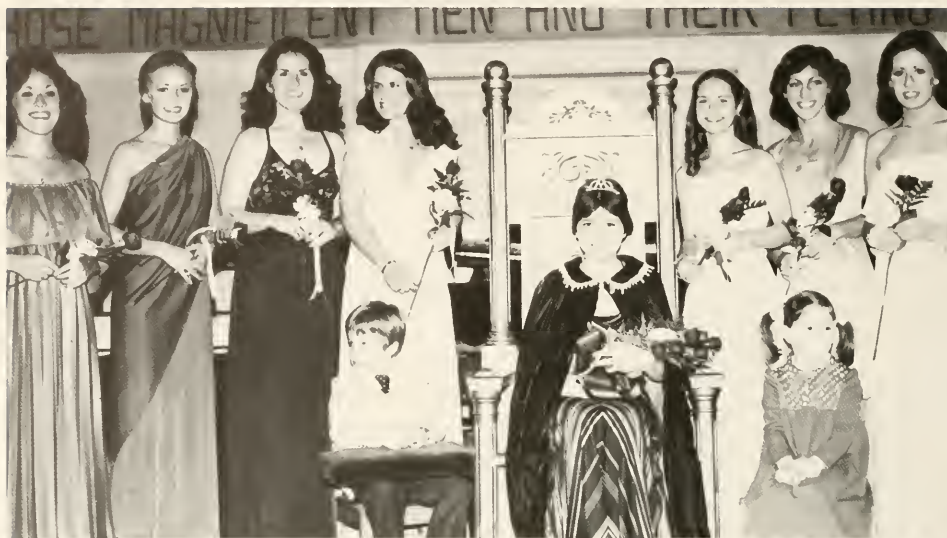
A close look at the faces of newly capped sophomore nursing students reveals a variety of expressions. Perhaps the first visible evidence of progress in the nursing curriculum, capping becomes a very sentimental and symbolic experience for the students, their parents, and friends. With the accomplishment of being capped, these students accept the responsibility of beginning their practical clinical experience.





Exhibiting different reactions as well as their newly acquired caps, sophomore student nurses anticipate the future (opposite, top). Anne Thomas anxiously awaits the moment when the final pin is in place, and Dianne Aldridge receives a congratulatory hug from her big sister, Jayne. Jayne, a Wesleyan nursing graduate, returned to cap Diane during the ceremony. The nursing cap has long been the symbol of the profession but now it meets with mixed appeal. Donna Hooten received her cap, along with all of her female classmates, but Jeff Craven opted to forego the tradition. Val Rodgers sang prior to the ceremony.

HOMECOMING:



THOSE DARING YOUNG MEN . . .



Surrounded by her court, Homecoming Queen Leslie Cochran presided over the festivities (opposite, top). The pageantry of the coronation began with the traditional rose arch provided by the Freshman Honor Court (opposite, below) and the entertainment of Masters of Ceremony Rich Ingraham and Tom Bickerton. Dressed to illustrate the Homecoming theme were Jeff Wood, Bruce Gladstone, Don Patterson and Scott Hobson as they performed barbershop quartet versions of songs. With the coronation, "Those Daring Young Men" got off to a flying start.



AND THEIR FLYING MACHINES





"Those Daring Young Men and Their Flying Machines" came in the forms of airplanes, rockets and balloons with imagination to match that of the original "daring young men." Zeta Tau Alpha's entry in the float competition ordered Bluefield to "Get Lost" with the aid of Amelia Earhart. It captured first place in the women's float division. Alpha Gamma Delta floated down the street with the helium balloon while Theta Xi "Bombed Bluefield," (opposite page). "One small step for Wesleyan" was Alpha Xi Delta's solution to the Bluefield problem and the Outing Club glided through the parade by "Hanging in There."



FOUNDER'S DAY

Traditionally, "Founder's Day" is a time to pay tribute to those who have assisted the college through the years. A service of recognition is held to honor the dedication, devotion and assistance given to the college by its benefactors. Wesleyan owes its existence to the efforts of these people — its founders and supporters. They are the people who have helped to make Wesleyan the college it is and will be. At the Founder's Day Convocation, honorary degrees are awarded to people whose accomplishments and contributions are recognized as outstanding.





CHRISTMAS AT WESLEYAN

The celebration of the Christmas season at Wesleyan has always been a traditional observance. The concert band brings in the sounds of the season with a Christmas concert held in the chapel. Chapel Choir helps make the customary Hanging of the Greens service a rich and beautiful experience. The chapel itself, decorated with the greens of the area hills gathered and hung by the students, takes on the smell of pine and the appearance of celebration as both the Wesleyan and Buckhannon communities gather to celebrate the birth of the Christ Child.

SPRING WEEKEND

THE QUEEN'S CORONATION

"I Write the Songs" seemed to be the appropriate theme for Spring Sing 1980, as Cynthia Stormer, a senior music major, was crowned Spring Queen. In the excitement of the coronation, Cindy was congratulated by the 1979 Queen, Carolyn Martin, and President Harris. After receiving her crown, Queen Cindy sat on her throne and accepted the flowers and songs of the groups participating in the sing.







THE SING

Spring Sing 1980 followed the Queen's coronation and featured fourteen groups singing songs written by a single composer. "One Singular Sensation" placed first in women's competition. Directed by Polly Say, they performed songs written by Marvin Hamlisch. Albatross took top honors in the men's competition. The directors of both groups, Polly Say and Jeff Haught, won the award for Best Directors. "Women's Independent" followed "One Singular Sensation" by taking second place. Third place went to Alpha Gamma Delta. Phi Sigma Epsilon placed second in men's competition, and they were followed by Theta Xi. To keep the audience entertained during the tallying of the votes, the Weston Sisters performed some of their favorite renditions.







First Place Women: One Singular Sensation



Second Place Women: Women's Independent



First Place Men: Albatross



Second Place Men: Phi Sigma Epsilon

Baccalaureate

Baccalaureate is a traditional service, religious in nature, held prior to Commencement. Although it is not attended by all of the senior class, being optional, the majority of the graduating class does attend. It is, perhaps, lost in the anticipation of the graduation ceremonies themselves, but to those who attend, it is well remembered.







Senior Pinning



To the senior nursing major, there exists a ceremony more important than graduation, more emotional than capping. After completing four intensive years of student nursing, they are ready to leave the ranks of student nurses. The accomplishment is recognized through the presentation of the nursing "pin." The small gold disc bearing the name of West Virginia Wesleyan represents a long awaited goal and the Pinning ceremony represents the beginning of a career. For the first time, senior nurses appear in their caps with orange and black stripes across them. Until their "state boards" they have achieved it all.



Commencement

Commencement. It appears as the end . . . the final dawn of four years at Wesleyan. In reality it is a beginning like so many others. As in most beginnings, all that can be thought of is the past: parties, classes, tests, friends, the good times and the bad times. Even the bad begins to look more appealing than the future because it is at least "Known." In a span of time that is barely two hours, Wesleyan's seniors pass from the familiar to the unknown. They leave the grounds where they have received top status. To those who have "made it," commencement is the beginning and the end.







Senior walk is the walk in front of the Administration building, but "Senior Walk" is the last walk a student takes at Wesleyan before becoming an alumni. It begins on Senior walk and extends to the gym. The Class of 1980 enters the gym to the strains of "Pomp and Circumstance," ending its "Senior Walk." **(Right)** Kim Phares Godwin receives the congratulations of President Harris after receiving her honor hood and diploma. **(Opposite)** No longer seniors, new graduates leave the gym and are greeted by the faculty. Within minutes the gym lawn is crowded with graduates, parents and well-wishers. Shortly the lawn clears and the Class of 1980 moves on.









ENTERTAINMENT

THE N T E R T A I N E R S

The entertainers. They stimulate our senses through their music, dance, humor and various talents. Classes, exams, or homesickness, may get us down, but an entertainer can carry us away forgetting all our worries. Whether he's a travelling rockstar singing out his million dollar tunes, a student testing his talent, a C.C.P.B. game show, or a lone guitarist in a dorm room, the entertainers are an integral part of the Wesleyan spirit. Wesleyan's spirit is the thunder of applause and the hundreds of lit matches hoping for an encore. It's clapping along as Vic Genri struts around stage. It's laughing hysterically at the ridiculous answers given in the annual Family Feud. It's snapping fingers and feeling chills to the blaring brass and the rhythms of the Jazz band. It's echoes of a gurgling voice in the shower. It's the wonderment over a grace of dance. It's the laughing good times shared over the funny antics of the Peanuts characters . . .





GENE COTTON

The year got off to a good start. Freshmen were just beginning to get a taste of their new way of life. Many adventures awaited them and one of these adventures they were to encounter was the boundless possibilities of entertainment at Wesleyan. Coffeehouses, dances, movies and concerts. It was time for a concert, Gene Cotton was headlining and the enthusiasm was mounting. Listening to such fine songs as "Save the Dancer" and "Before My Heart Finds Out" proved to be an evening spent well. With thoughts of the coming year in everyone's mind, relaxing for an evening of music with one's friends seemed to put everybody's mind at rest. Entertainment at Wesleyan proves to be a part of campus life in which everyone can take part. People tend to find a natural interest in music, and Gene Cotton seemed to have a little something for all. Entertainment at Wesleyan proves to be the enlightenment and the relaxation we all share and feel while we are being entertained.

HARRY CHAPIN SINGS FOR WORLD HUNGER

An enriching musical performance by Harry Chapin beckoned the audience to travel along with the lives of his wide array of characters. A taxidriver, a pensive father, a dreamer, a lover, the audience captured the thoughts of them all. It's funny how a guy in blue jeans with only a guitar could hold an audience better than any large rock-n-roll band could. We cried and laughed, we dreamed, and we sang a-long. Most importantly we enjoyed ... ENTERTAINMENT. It follows us wherever we go, whatever we do, it is always there.





POCKET MIME THEATRE AND NINA KAYLE

Entertainment at Wesleyan seems to be able to include everyone in some way. Many an interest can be sparked by the many different varieties available. Just a few of these experiences which took place were the delightful performances by the Pocket Mime Theatre and pianist Nina Kayle. Music lovers have certainly found an overabundance of outlets by the appearances of The Chestnut Brass Company and Maynard Ferguson. Whether one is inclined to try his own talents in these fields and enjoy these moments through the eyes of the art or merely a way to spend an enjoyable evening, the opportunities are unlimited. No matter what the activity, it is always thoroughly enjoyed and appreciated. Every person comes away from these events a little more enhanced by the artistry of . . .

ENTERTAINMENT





MAYNARD
FERGUSON
AND
THE CHESTNUT
BRASS CO.



HOMECOMING ENTERTAINMENT

Remember . . . how we laughed hysterically at the jokes told by Edmunds and Curley. They seemed to be able to find a funny experience that we all could relate to . . . and be entertained by its unique experiences.





Next came the music of the Pure Prairie League. Their music seemed to get everybody involved. They were clapping their hands, stomping their feet to the beat, or just plain singing along. Remember ... all the laughter, good music and the smiles that lighted the entire place. Sharing good times with friends. Relaxing and taking it easy, away from the pressures of classes. Just being swept away from all of your cares by

...

ENTERTAINMENT



ENTERTAINMENT AT WESLEYAN COMES

BLACK STUDENT COALITION FASHION SHOW AND CASINO NIGHT



IN MANY, MANY, WAYS . . .



FAMILY FEUD . . .
HOW ABOUT A
SQUARE DANCE?

STUDENT
TALENT
NIGHT





THE
BUFFALO
CHIP KICKERS



WWWC THEATRE

Entertainment is the pride and amazement we feel for Wesleyan as our classmates show an air of professionalism on stage.



JAZZ BAND: THE SOUNDS OF THE BRASS





THE GONDALIERS





YOU'RE A GOOD
MAN
CHARLIE BROWN





CHILDREN'S THEATRE

A performance meant especially for the children, but it reaches the child locked up in every one of us. We can see this hidden child, when we are truly enjoying ourselves. Enjoying ourselves with the

...
ENTERTAINMENT . . . It can please anyone, numerous forms all help in achieving the goal to keep the people entertained.





C.D.B. BRYAN
AND
6
RMS RIV VW





How about a reception at the top of the SCOW ... or just spending a quiet moment with someone you care about ... that's ENTERTAINMENT.



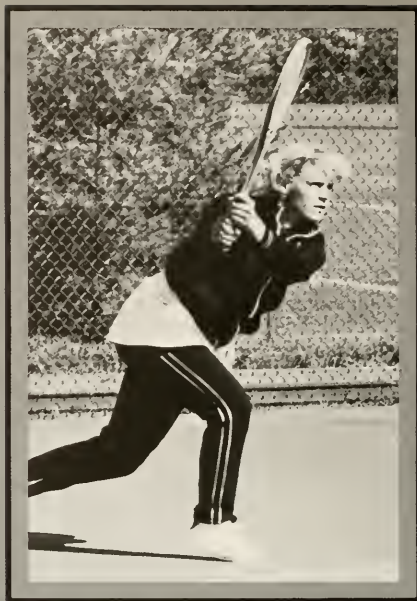






SPORTS

Give me your spine
old man, old man.
Give me your rugged hate,
give me your sturdy
oak-tree love.
Teach me to sing
so that the song may
be mine.
“Keep your hands on
the plow: hold on!”
For such
is the strength needed
to preserve our future.



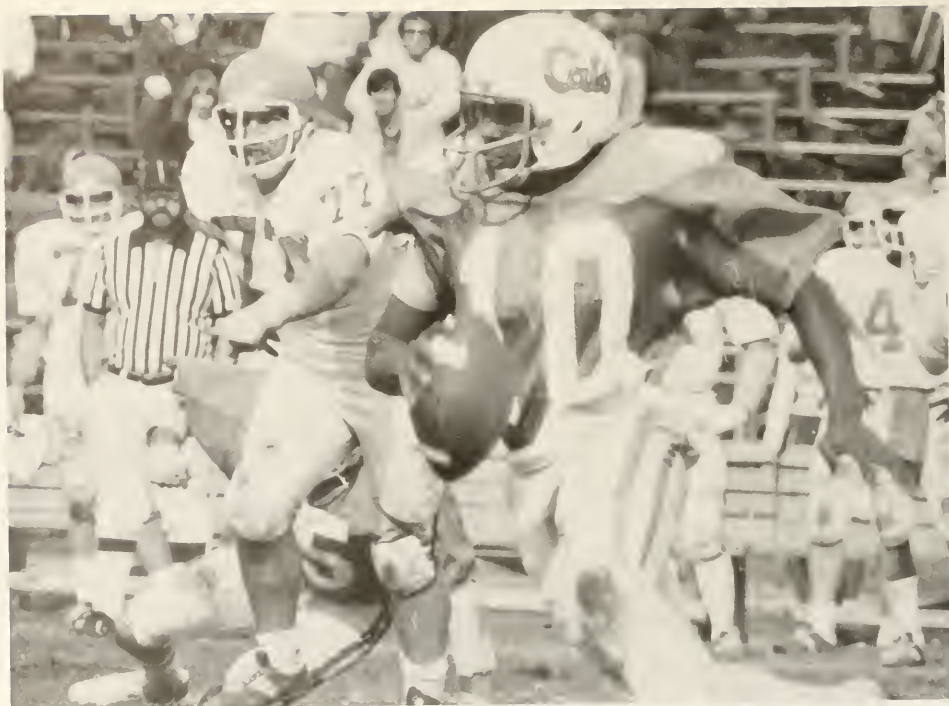


Dedication, one of the most essential elements of sports, is a common term to Wesleyan athletes. From grueling practices in the August sun to late night trips home to an already sleeping campus, the individuals who represent Wesleyan on the field and in the gymnasium devote long hours of their time preparing themselves as individuals and teams. But those of the campus community who witness these athletes merely at an afternoon competition or a Saturday night contest, do not know of the long hours of practice and training that are involved in producing successful sports teams. To those athletes who devote so much of themselves, we dedicate these pages. It is you who have made West Virginia Wesleyan athletics a proud institution.

FACES REFLECT A SEASON'S FEELINGS







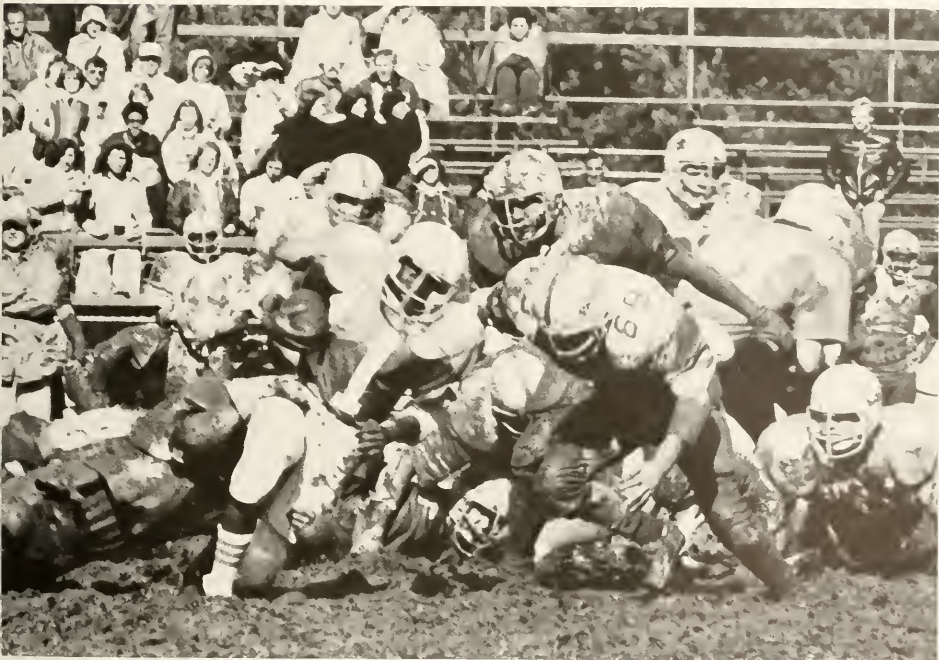
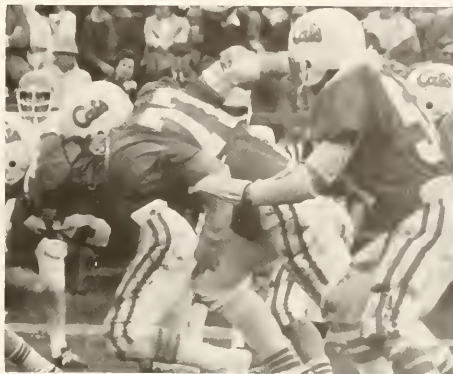
TEAM SEES HIGH HOPES BECOME DISAPPOINTMENTS

Top: Vince Mitchell picks up big yardage against Bluefield. The talented senior had a great day highlighted by a record setting 99 yard run for a touchdown. **Right:** The talented W. Va. State defense swamps the Bobcat offensive line and sacks Mitchell for a loss. The Yellow Jackets defeated Wesleyan after the Cats led 19-14 at halftime.





(Left) Larry Coffey and Frank Ciocchi celebrate Coffey's second touchdown run against West Virginia State. Coffey gained over 800 yards during the season, earning all-conference honors for the second consecutive year. (Lower right) The Bobcat defense charges forward to stop the Bluefield offense. Wesleyan lost the Homecoming game 14-7 before many disappointed fans. (Bottom) Vincent Mitchell slides through the Tech defense for a big gain. The Cats defeated the Golden Bears 42-0 on the Wesleyan field, which became a sea of mud for most of the season.



MITCHELL SETS WITH HELP OF



First Row: Chris Ware, Tim Tosh, Jerry Free, Bruce Carlisle, Preston Wright, Larry Coffey, Kevin Davis, Bill Klenk, Ken Woodie, George Claffey, Brian Lamond, Randy Stapleton, Mike Peery. Second Row: J. K. Milliken, John Kelleher, Ron Norris, Paul Kaufmann, Frank Ciocci, Mike Mastroianni, Robbie Reed, John Switch, John Taylor, Ron Jenkins, Chris Lyons, Raynard Lee, Ken Mur-

Wesleyan's football squad began the year with high hopes, but saw their quest for a third consecutive winning season fall through because of inexperience and crucial mistakes at important game situations. The Cats finished the year with a 1-8 season, with the only win coming in a 42-0 romp over West Virginia Tech.

Coach Kent Carpenter's squad kept every contest close but always seemed to fumble, have a pass interception, or commit a major penalty late in the game, resulting in many tough losses. The squad led the conference in yards penalized which contributed to having six touchdowns called back during the season.

Injuries also plagued the orange and black with such top players as John Devanney, Larry Coffey, and Ron Jenkins missing many key games. The Wesleyan defense was inexperienced at the beginning of the season, but showed good improvement during the course of the year. Defensive back Bill Klenk had a tremendous year, and was selected to the All-WVIAC squad.

NEW SCHOOL RECORD FOOTBALL SQUAD



ay. Third Row: Murray Harris, Tom Mason, John Devanney, Dave Harrold, Leon Cash, Andy Kundmueller, Barry Douthitt, Randall Brown, Tony Branch, Terry Dixon. Fourth Row: Randy McVay, Bob Hartzell, Joe Ducar.

Offensively, Larry Coffey had another fine year, despite many injuries and earned all-conference honors for the second consecutive season. John Devanney also did well along with quarterback Vincent Mitchell who set a new school record with a 99-yard run against Bluefield State.

Strangely enough another big story during the course of the season was the condition of Ross Field with driving rain storms occurring during every home game, the field became a sea of mud and cost the college a great amount of money to repair. During every contest it became very difficult to tell the teams apart.

Despite the fact the Bobcats suffered a tough season, there is much optimism for next year with most all players returning. If the squad can avoid serious injuries, they could well return to the top spot in the Northern Division of the WVIAC.

Martin Has Another Winning Season

"They are a tight team, that's probably why they did so well."

Coach Tom Martin

(Right) Allen Blackwell steals the ball from an opposing player. The talented English performer had a fine season in his initial year at Wesleyan. **(Below)** Norman Pennycooke and Tom Fullowan congratulate Ritchie Stevenson after scoring a goal against A-B. The Cats lost a hard fought 5-4 contest to the Battlers in overtime.









Page 91: (Top) Two time All-American Martin Woodstock takes a goal kick, as goalie Bob Middleton looks on. (Bottom left) Eyes upward, Allen Blackwell positions himself against an A.B. player. English teammate David Turner and Matt Engle are in background. (Bottom right) Matt Engle and Norman Pennycooke battle for the ball in a crowd of D&E players. Page 92: (Top) Two Wesleyan players collide with some help from an opponent's elbow. (Bottom) Blasting a shot on goal is Norman Pennycooke. (Left) Norman Pennycooke brings the ball upfield against Davis and Elkins. (Below) The opponent stands little chance of retaining possession with Cats David Turner and Anthony Sicignano intent on tackling. Page 94: (Top right) Martin Woodstock battles for the ball against Davis and Elkins. The Cats lost the game 2-0, but upset the Senators in the NAIA playoffs 2-0, eliminating D and E from the post season competition for the first time since the late 1960's. (Bottom) The Bobcats try to score a goal on a corner kick against D and E. The team's greatly improved offense was a major factor in the Cats posting the best record in the school's history.







First Row: Matt Engle, Jim Pinney, Jack Vanderlock, Matt Offredi, Anthony Scignano, Bemba Balsirow, Joey Pietanza, Daniel Guthrie, Martin Woodstock, Allen Blackwell. **Second Row:** David Turner, David Harper, Billy Wylson, Dave Jenkins, Norman Pennycooke, Robert Hays, Mike Ripple. **Third Row:** Assistant Coach Ian Taplin, Manager Doug Quade, Eldrid Halsey, Larry Charles, Steve Bressenelli, Preston Modlin, Bob Middleton, Greg Joachim, Carl Johnson, Dave Lapan, Doug Fuller, Victor Simko, Manager Bill Kennedy, Coach Tom Martin.

Wesleyan's soccer team posted the best record in the school's history with a fine 13-3-0 slate. Coach Tom Martin's squad having little experience relied on speed and conditioning to become one of the premier teams in the state and earned Martin WVIAC Coach of the Year.

The Cats had a fine regular season with tough wins over West Virginia University, Bethany, Villanova, and Washington and Lee, but capped off the fall with a superb performance in the post season playoffs.

Wesleyan had the unenviable task of facing national powerhouse Davis and Elkins in Elkins for the opening round in the playoffs. The Cats scored early and added another goal late in the game, while goalie Bob Middleton stopped every D and E scoring threat to give the Bobcats a stunning, 2-0 victory. It was Wesleyan's first win over the Senators since 1965, and marked the first time that D and E did not go to the NAIA Tournament since 1967.

The Cats' next obstacle was Alderson-Broadus in Philippi. In this contest, Martin's squad had the misfortune of playing on a field that had more water than grass. This neutralized the orange and black's speed, stopping several scoring threats and allowed A-B to win 2-1.

Most all the Bobcats return next year except goalies Bob Middleton, and Bemba Balsirow and fullback Tom Fullowan. With All-American Martin Woodstock returning along with standouts Matt Engle, Roger Gordon-Martin, Norman Pennycooke, Allen Blackwell, and David Turner, the Cats again figure to be tough in 1980.

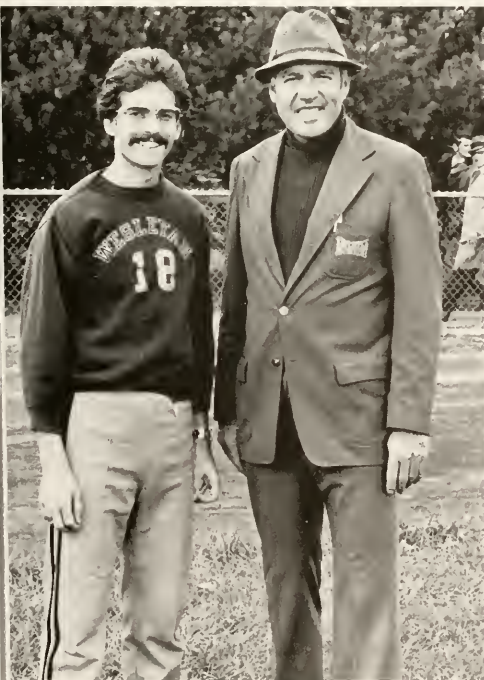
C
R
O
S
S

C
O
U
N
T
R
Y





First Row: Tony Marcucci, Greg Issacs, Gerry Murphy. **Second Row:** Jeff Zahn, Tom Elmore, Bill Gentry, Pete Major, Rich Ingraham, Bill Crawford, Rich Ralph, Coach Ellis.



The Bobcat Cross Country team had a season with some excitement but plagued with injuries. The team finished fifth in the WVIAC meet at Sandy Brae Country Club in Amma, W.Va. The Rockefeller 5-0 was a thrilling meet as Rich Ingraham led the team to a fourth place finish. This earned him All-Conference honors, and a trip to the NAIA nationals in Kenosha, Wisconsin. The team has a strong nucleus that shows promise for even more excitement next year.

LADY CATS
WVIAA
CHAMPIONS
FOR SECOND
CONSECUTIVE
SEASON.

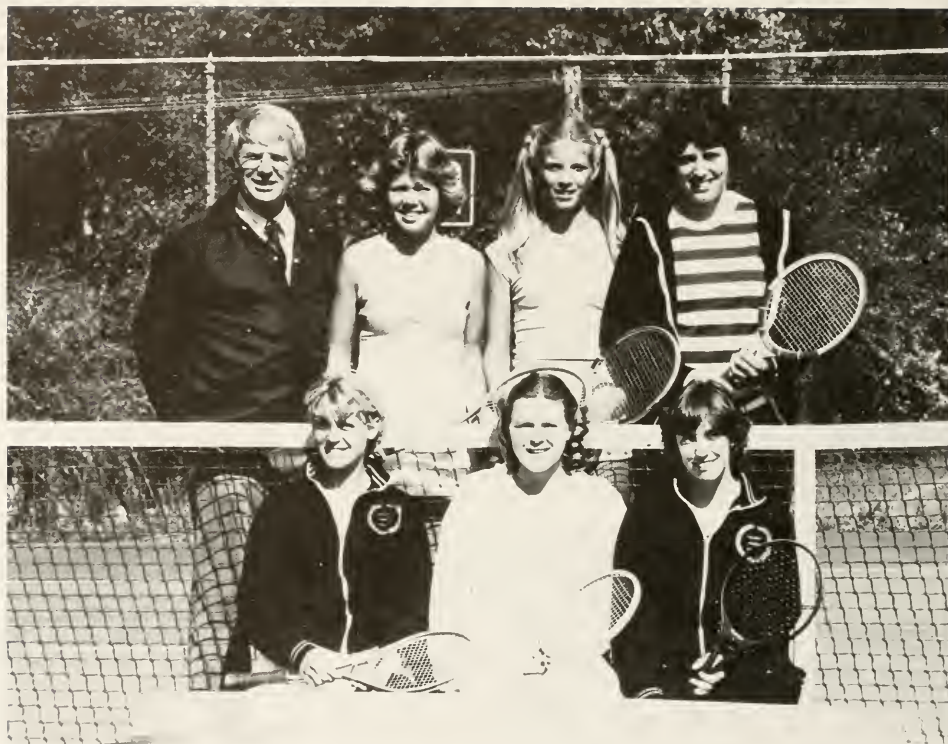




Tournament players and their positions in singles:

Linda Spears: #3 singles
Diane Ross: #1 singles
Betty Cook: #4 singles
Linda Oertel: #2 singles
Lisa Humphreys: #5 singles
Kathy O'Geary: #6 singles

All above players reached the finals in the WVIAA tournament, with Betty Cook, Lisa Humphreys, and Kathy O'Geary winning State Champion seats. Betty Cook and Kathy O'Geary were #3 State Champions in doubles.



First Row: Linda Spears, Lisa Humphreys, Linda Oertel. **Second Row:** Coach Sam Ross, Diane Ross, Kathy O'Geary, Betty Cook.

West Virginia Wesleyan Women's tennis team captured the 1979 WVIAA championship for the second consecutive year under the leadership of Coach Sam Ross. In the Spring of 1980 Wesleyan's Lady Cats represented our area at the AIAW tournament in Detroit, Michigan. There were approximately fourteen colleges and universities represented, out of which Wesleyan finished in eighth position. Kathy O'Geary competed in the finals for #6 singles and the others performed very well. The overall record included losses to Va. Tech, WVU, and victories over University of Charleston, Marietta, Davis and Elkins, Marshall, West Liberty, Fairmont and Concord, ending the season with another 8-2 record. Coach Sam Ross regrets the loss of senior Linda Spears and Kathy O'Geary who is not returning due to wedding plans. Coach Ross is looking forward to another sensational year with the rest of the team returning because he feels that he has a very competitive team.

F I E L D H O C K E Y







The 1979 Field Hockey Team completed a very successful season with a trip to the AIAW Regional Division III Tournament. The team competed against Wooster College of Ohio on a very cold, wet day in November and were tied at the end of regulation play 2-2. However, after a weather delay Wesleyan lost 3-2 in double overtime to Wooster, the eventual tournament winner.

Scoring leaders were junior Kathy Higgins with 9 and freshman Tammy Cooper with 10. The defense made up of mostly seniors showed a lot of leadership and determination. Playing their last season for the Bobcats were halfbacks Terry Donovan, Sally Large, and Mary Beth Michael and Goalie Lynn Matz who had a highly successful four years. Sally joined Lynn as a four year starter, Terry 3 years and Mary Beth two.

The team dominated the Division III schools: Marietta, Bethany, Frostburg, and Muskingum while also playing Division I powerhouses Davis and Elkins and Ohio University.

MEN'S BASKETBALL

(Below) All WVIAC guard Jim Brogan scores on a lay up after stealing the ball from Salem's Daryl Pearson. (Lower left) Tim Dixon fights for the ball in heavy traffic against the University of Charleston. The Cats defeated the Golden Eagles despite their stall tactics. (Right) Senior John Bates closed out a brilliant career for Wesleyan earning all conference honors for the fourth consecutive year. John finished third on the all time scoring, went to Russia to participate in the Sparticade games and was drafted by the Indiana Pacers of the NBA.





(Below) John Bates follows a missed shot and scores for the Cats. The talented Bobcats superstar finished second on the all-time rebounding list. (Lower center) Coach Gary Hess and assistant Paul Toth talk over strategy during a Bobcat time-out. (Lower right) Mike Williams scores in heavy traffic against Concord. (Left) Jim Brogan, the other half of the Philadelphia duo also closed out a brilliant career at Wesleyan. Long remembered for his last second shot which beat Fairmont in the WVIAC Tournament during his freshman year, Brogan always seemed to make the big play. He earned all-conference honors for two years and finished seventh on the all-time scoring list. "Riley" was expected to earn several pro tryouts.



(Right) Carl Smith scores inside against Baldwin-Wallace. (Lower left) Shirley Martin hits a long jump shot against Baldwin-Wallace. Martin had a big season averaging 16 points per game. (Lower right) Brogan knives through the Concord defense for an easy basket.





(Above) Tim Dixon scores over Salem's Phil Dailey. Dixon was a three year starter and was quite instrumental in the Cat's success. (Left) Mike Williams connects on a 20 foot jumper against Concord. After suffering broken bones in both feet during his sophomore year, Mike came back to make a big contribution during the season.



First Row: Jeff Ochroch, Kevin Dokes, Mike Cardamone, Michael Williams, Bill Eskew, John Hosey. **Second Row:** Jim Brogan, John Bates, Jerome Peterson, Tim Dixon, Carl Smith, Doug Weir, Shirley Martin.

It was the end of an era. It was a year of hope and bitter disappointment. It was a year in which the highlight came in the very first game. But most of all, it was a year of saying good-bye.

For the past few seasons, the Bobcats basketball team had asserted itself as one of the premier programs in the state of West Virginia. After winning all the marbles the previous year, many felt the Cats would do it again in 1979-80. It appeared the predictions were correct when Wesleyan downed Fairmont 64-60 at the Feaster Center in the opening game of the season. However, after that win, the empire began to crumble.

The orange and black seemed to lose every close game, and aside from wins over Davis and Elkins, University of Charleston and West Virginia Tech, there really was little to be cheerful about. It was not a terrible season. After all, a 13-12 slate, and the school's sixth consecutive winning campaign should have made everybody happy. But somehow, it was not enough.

For John Bates and Jim Brogan, two of the best players ever to play in a Wesleyan uniform, the defeats were hard to accept. They still, however, had tremendous seasons and closed out brilliant careers.

Bates averaged over seventeen points per game and finished third on the all-time scoring list, and second on the rebounding list. He earned all-conference honors for the fourth consecutive year and was drafted by the Indiana Pacers of the National Basketball Association.

Brogan scored over nineteen points per game and finished seventh on the all-time scoring list. Jim was selected to the All-WVIAC squad for the second consecutive year and was expected to have many NBA tryouts.

Two other players also closed out careers for the Cats. Center Tim Dixon, a three year starter, finished with a ten points per game average, while pesky guard Mike Cardamone continued to harass opposing players with his aggressive defensive play. Both were most instrumental in the Wesleyan success.

While it was tough enough to say good-bye to those four players, Bobcat fans also watched the end of Coach Gary Hess' career at Wesleyan. Disappointed and unhappy, Hess resigned during the season, closing out a great six year stay here. The Cats never had a losing season under Hess, won two WVIAC Tournament championships and one WVIAC regular season title. He had brought the program back to its position in power. Ironically, he also saw the empire begin to crumble.

Yes, it was a winning season, but also a sad one. No longer will Cats fans cheer Bates, Brogan, Dixon, Cardamone, or Hess. There will be new faces, and a new coach. Time will tell how their fortunes will go. But for many Cat fans, it was indeed the end of a great era and one many will never forget.



WOMEN'S BASKETBALL

(Upper left) Tammy Shockey drives through the Concord defense for two points. (Above) Senior Mary Beth Michael closed out a fine two year career for Wesleyan. The talented player scored over ten points per game in helping the Cats finish second in the WVIAA. (Left) Freshman Cathy Mullooly follows up a missed shot in a Bobcat win over Concord.



(Right) Mary Beth Michael scores two in the Cats' win over West Virginia State in the WVIAA Tournament. (Below) Freshman Tammy Cooper. (Lower left) Cathy Mullooly scores on a layup while Annette Wiseman readies for a possible missed shot. (Lower right) Mullooly scores a tough basket against the University of Charleston in the WVIAA title game.





(Upper left) Mullooly scores over Charleston's Karen Mays in the WVIAA Tournament. The Cats lost the championship game placing second in the five day event. (Upper right) Mary Beth Michael connects on a baseline jumper.



First Row: Mary Ann Balli, Tammie Shockey, Tammy Cooper, Lisa Black, Sandy Wheeler, Jeanne Donahue. **Second Row:** Head Coach Caroline Horner, Jayne Smith, Kelly Geary, Betty Cook, Mary Beth Michael, Cathy Mullooly, Annette Wiseman, Assistant Coach Kathy Hass.

The Wesleyan women's Bobcat basketball team finished their 1979-1980 season with an outstanding 17-6 record. Led by the lone senior Mary Beth Michael, juniors Betty Cook and Jayne Smith, sophomore Mary Ann Balli and freshman Cathy Mullooly, the Lady Bobcats ended their season with a second place finish in the WVIAA basketball tournament. Cook and Mullooly received all-tournament honors and were also placed on the All-WVIAA team with Cook named to the second team squad and Mullooly receiving honorable mention. Smith and Michael also received votes in the balloting. Other team members included juniors Kelly Geary, and Annette Wiseman, and freshmen Lisa Black, Tammy Cooper, Jeanne Donahue, Tammy Shockey and Sandy Wheeler.



MEN'S TRACK

(Left) Sophomore Rick Reddecliff had a phenomenal year for the Bobcats and was most instrumental in leading the squad to the WVIAC title. Reddecliff scored over twenty points in the WVIAC meet, and won the high jump. The highlight for Rick came when he jumped over seven feet at the Penn relays. For his efforts, Reddecliff earned a gold medal at the prestigious Trackland field meet. (Below) "WVIAC Coach of the Year" Bob Braine discusses strategy with Preston Wright, Tony Branch, Randall Brown, and Larry Coffey.





First Row: Steve Malta, John Davidson, Jeff Zahn, Bill Gentry, Bill Shep, Phil Cunningham. **Second Row:** Preston Mouldin, Tom Mason, Jerry Free, Willie Waugh, Preston Wright, Rick Reddecliff. **Third Row:** Gerry Murphy, Larry Coffey, Bob Boyles, Randall Brown, Pete Mooney, Tony Branch, Coach Braine.

(Right) Larry Coffey and Randall Brown complete a successful exchange practicing for the WVIAC meet at Glenville.

The Bobcat track team had a most successful season, capturing their first conference title since the early 1960's. The orange and black were small in numbers, but still managed to dethrone perennial champ West Liberty.

WVIAC "Coach of the Year" Bob Braine had plenty of reasons to be proud of his squad. The veteran coach received maximum efforts from the entire squad which led to taking the conference crown.

Two sophomores had phenomenal seasons for Wesleyan. Discus man Willie Waugh won the conference title and placed third in the NCAA Division II meet to earn All-American honors. Waugh also qualified for the NCAA Division I championship meet.

High jumper Rick Reddecliff also captured the WVIAC title and scored over twenty points in the state meet. Reddecliff also earned a gold medal in the Penn Relays jumping over seven feet in that prestigious event.

With most everyone returning to the squad next year, the Bobcats should be tough to beat in 1981.





W
O
M
E
N'
S

T
R
A
C
K

(Lower left) Tammy Shockey readies herself for a big throw in the discus competition as Wesleyan All-American Willie Waugh looks on. (Lower right) Cindy Overbeck and Tyann Bitetti train for an upcoming meet.







First Row: Sallie Jones, Tammy Cooper, Tammie Shockey, Colleen Conklin, Donna Myers, Beth Edwards. **Second Row:** Mary Ann Balli, Debbie Hart, Terry Donovan, Sally Large, Tyann Bitetti, Dee Dee Donnelly, Karen MacWilliams. **Third Row:** Asst. Coach Jill Bergmann, Claire Gayley, Kim Donnelly, Gail Bagwell, Cathy Mullooly, Betty Cook, Penne Freyberger, Cindy Overbeck, Martha Nizanski, Head Coach Kathy Haas.

Page 116: (Upper left) Distance Runner Kim Donnelly surges ahead for a Wesleyan victory in the two mile run. **(Upper right)** Jill Bergmann and Willie Waugh measure the winning discus toss in the Wesleyan Invitational.

Kathy Haas greeted 12 veterans from a squad that had finished a distant fourth in the WVIAA a year earlier. Haas then molded the experienced performers and several outstanding freshmen into a Conference Champion.

The Lady Cats opened the season by smashing four school records in the Hall of Fame Relays at Marshall University. The Lady Bobcats edged out Fairmont State, 79-78, in winning the WVIAA Championship. They did it by placing first in 7 of 16 events and placing in all others. Winners for the Cats were Betty Cook (javelin), Tyann Bitetti (400 meter dash), Dee Donnelly (3,000 meter run), Tammie Shockey (high hurdles), the 4x100 meter relay team of Shockey, Mary Ann Balli, Sally Large, and Tyann Bitetti, and the 4x800 meter relay quartet of Kim Donnelly, Beth Edwards, Cathy Mullooly, and Donna Myers.

The women's track squad's record breaking list is a good indication of the quality of athletes on the team. College marks were set by Sally Large (200 meter), Tyann Bitetti (400 meter), Tammy Cooper (110 high hurdles), Mary Ann Balli (high jump), Dee Donnelly (2 mile run), Betty Cook (javelin), Tammie Shockey (long jump, discus, and shot put), and Kim Donnelly, Karen McWilliams, Cathy Mullooly and Donna Myers in the two mile relay. The fleet quartet of Shockey, Balli, Large, and Bitteti set school records in the 400 relay, the 800 relay, and the 800 medley.

BASEBALL

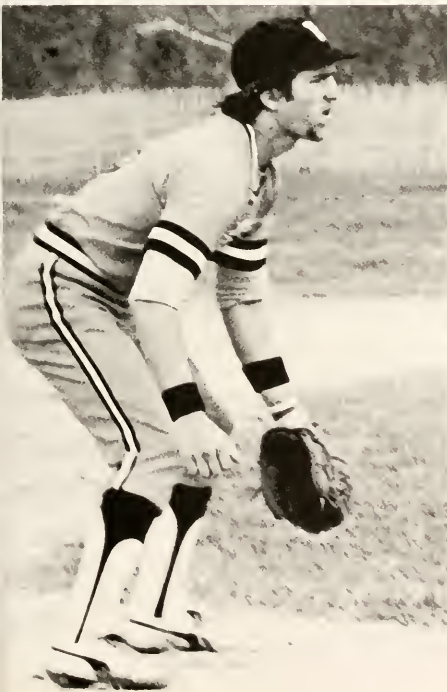
(Right) Chris Owen lines a single to the right. (Lower left) Jon Beetham looks at the signals from third base coach Randy Tenney before stepping up to the plate. (Lower right) Bobcat runner slides in safe at third base.





(Upper left) Mickey Tenney steals second as umpire Steve Coilett looks on. (Above) Mike Greely fires a fast ball against an opposing player. Page 120: (Top) Jon Beetham gets ready to pitch as Chris Owen sets himself defensively. (Left) Mickey Tenney gets back to first base safely against Fairmont. (Bottom) It is off to the races as centerfielder Vincent Mitchell goes for a double. Page 121: (Top) Mickey Tenney and Chris Owen get ready to put the tag on a Fairmont player in a rundown. (Right) Chris Assman laces a hit to left.



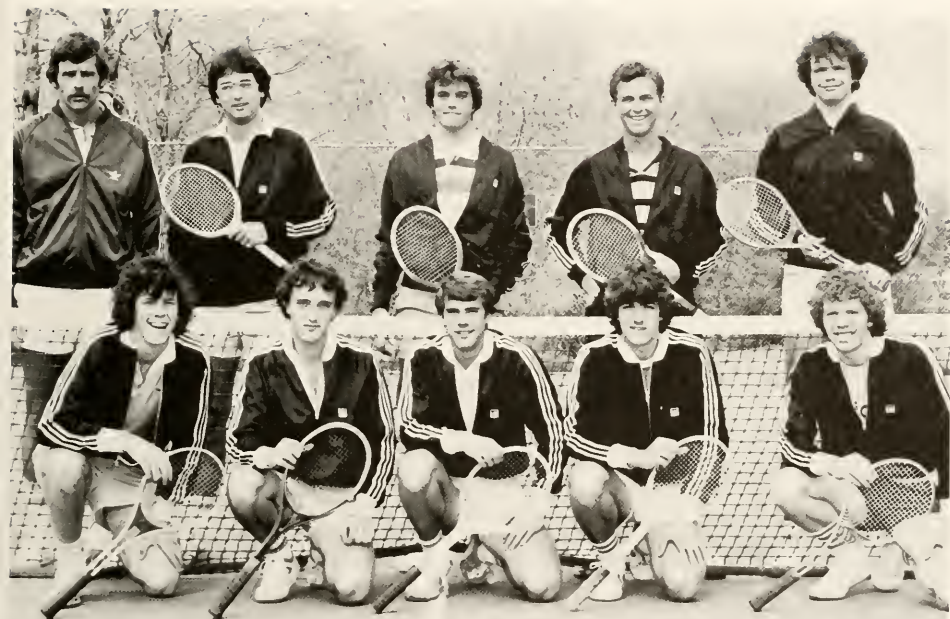




First Row: Assistant Coach Randy Tenney, Mark Shaw, Mickey Tenney, Vincent Mitchell, Jim Warner, Jim Gagnon, Coach Ellis. **Second Row:** Chris Owen, Jerry Simonelli, Russ Warner, Danny Minnix, B. J. Phillips, Steve Klebart. **Third Row:** Bob Koepka, Jon Beetham, Mike Greely, Chris Assmann, Don Lambie, Dave Mayo. **Fourth Row:** Ron Warner, Frank Ellis, Bob Beto, — Hinkle, Bob Lynch.

The baseball team under the Dean of Wesleyan coaches, Hank Ellis, compiled an 11-11 record. The young squad was paced by its only two seniors, second baseman Mickey Tenney and center fielder Vincent Mitchell. Tenney closed out an outstanding career by pacing the team with a .403 batting average, fifteen runs-batted-in and fifteen stolen bases. Mitchell hit .308 with fourteen runs-batted-in and twelve stolen bases. He topped the team with three home runs. Junior lefthander, Jim Warner, posted a 2-1 record with an ERA of 3.13. Bob Koepka, also a junior, pitched a team high of 33.3 innings while notching a 3-3 record. Sophomore Jon Beetham showed versatility by batting .370 and pitching 28.6 innings with a 1-2 mark. Mike Greely, a junior, was 2-3 on the season and reported four saves. Freshman Chris Owen topped the team with 21 runs scored. Owen hit .307 and stole 14 bases.

WVIAC CHAMPIONS MEN'S TENNIS



First Row: Richard Warhurst, Tom Martin, Edward Crawford, Tim Hulsey, Ed Austin. **Second Row:** Coach Tom Martin, Will Armstead, John Humes, Dale Powell, Allen Watts.

Under the tutelage of Coach Tom Martin the Bobcat Men's Tennis squad nipped West Liberty for the WVIAC Tennis Championship. Martin's Cats had been runners-up a year ago. The Wesleyan squad had four champions while Shepard College's John Koepke earned individual honors by winning the number one singles competition. Winners for the Orange and Black were number three doubles players Ed Crawford and John Humes, the number one doubles duo of Will Armstead and Dick Warhurst, number six singles player Tom Martin (no relation to the coach) and number two singles standout, Warhurst. In addition, John Hulsey and the double team of Hulsey and Dale Powell also advanced to the finals.

Both the entire Wesleyan team and Koepke represented the conference in the NAIA Tournament in Kansas City.

CHEERLEADERS

The West Virginia Wesleyan College cheerleaders for 1979-1980 cheered the W.V.W.C. Bobcat football and basketball teams through their victories and defeats. The cheerleaders traveled with both teams to away games within a fifty mile radius and traveled with the Bobcat basketball team to Charleston, W.Va. where the annual W.V.I.A.C. Basketball tournament was held. Promoting enthusiasm and spirit as well as supporting the Bobcats in all of their challenges was the 1979-1980 Wesleyan Cheerleaders' prime purpose.





COACHES

(Right) Bobcat football coaching staff Kent Carpenter, Dave Harsh, Bob Braine, Bill Struble, Danny Williams and Trainer Mark Gardner.



Bobcat fans will miss Gary Hess who after six winning seasons, resigned. Outspoken and sometimes controversial, the likable coach had an 101-65 record, and led the Cats to two WVIAC Tourney titles, one WVIAC regular season Championship and one WAIA district 28 title. His presence will be missed by all.



Kathy Haas made many valuable contributions to the Wesleyan women's athletic program assisting in basketball, and guiding her track team to a WVIAA championship.



(Upper left) Caroline Horner had a fine year, as her women's basketball team placed second in the state and in the WVIAA Tourney. It was also the squad's fourth consecutive winning season. (Upper right) Paul Toth, after serving one year as the assistant basketball coach, was named the new head coach after Gary Hess resigned. (Bottom) "WVIAC Coach of the Year" Tom Martin and assistant Ian Taplin helped lead the Bobcats to the best soccer campaign in the school's history.

(Right) Coach Bob Braine looks from the sidelines during a Wesleyan football game. The veteran coach's year was highlighted when his track squad won the WVIAC title. For his efforts, Braine earned WVIAC Track Coach of the Year. (Below) Tom Martin has accomplished much in his two years here at Wesleyan posting winning seasons in soccer, beating Davis and Elkins, and guiding the tennis team to a WVIAC title.



(Right) Football coach Kent Carpenter watches the Rockefeller Five-O cross country race. Kent's football squad suffered through a tough 1-8 record in 1979. However, the popular coach expects to have an outstanding upcoming season.





The Heights by Great
Men Reached and Kept
Were Not Attained by
Sudden Flight,





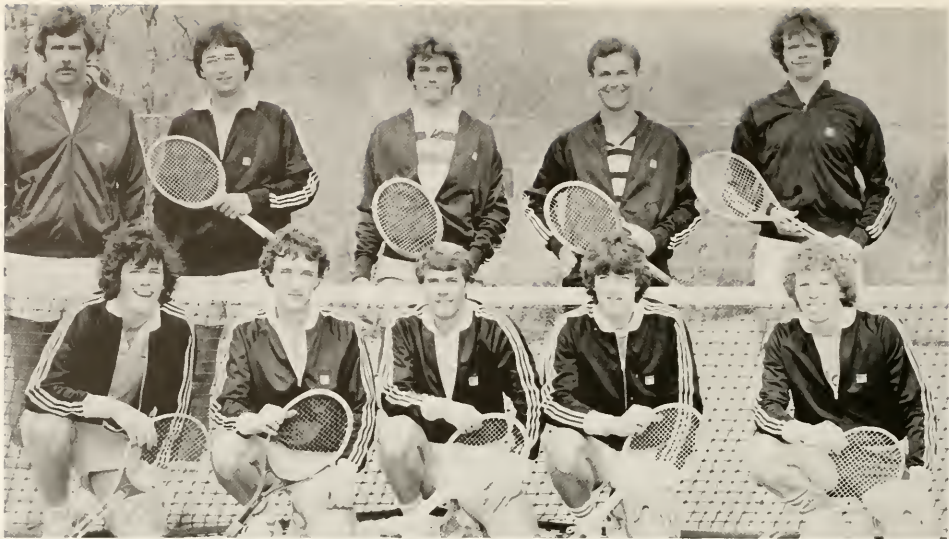
But They, While Their
Companions Slept,
Were Toiling Upward in
the Night.





The Man Who Once
Most Wisely Said Be
Sure You're Right,
Then Go Ahead . . .






Might Well Have Added
This to It: Be Sure You're
Wrong Before You Quit.





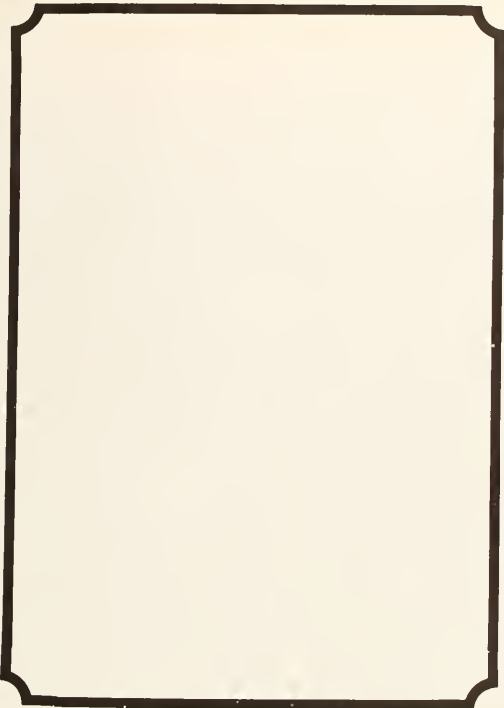
If You Can't Be a
Highway, Then Just Be
a Trail; If You Can't Be
a Sun, Be a Star.



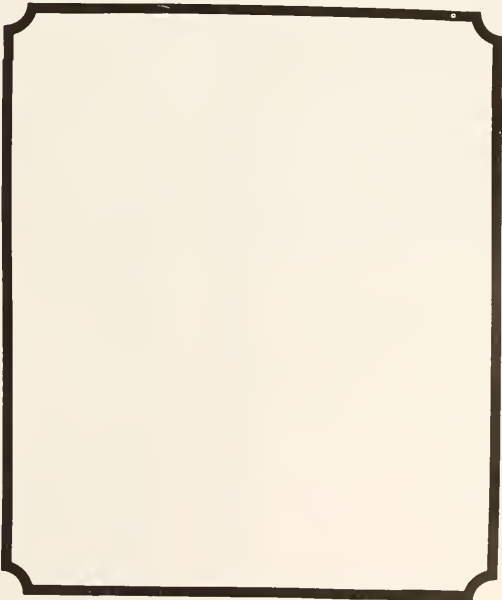


It Isn't by Size That You Win or Fail; Just Be
the Best of Whatever You Are.

Longfellow



GREEKS





*It seems wherever I go
People come into my life or go out of it
Touching me where I feel
Then leave only a memory*



*Like the gossamer fairy tales
of children
Easily forgotten . . .
And I wasn't through knowing them*

*How do I know
Whom I'm seeing for the last time*





*How do you halt your life
To gather and keep those around you
That you'd ever known . . .
And how do you keep fairy tales
From losing their magic?*



So come . . .

*Brush against the walls of my life
And stay long enough for us to know each other
Even though you know we'll have to part sometime
And we both know the longer you stay
The more I will want you when you get back
But come anyway
For fairy tales are the happiest stories we know
And good books are made up of little chapters.*



ALPHA
DELTA
PI





SHAW, J.



DEWITT, M. J.



MARTELL, E. J.



MCLELLAN, J.



WATSON, J.



POWELL, M.



WALKER, S.



STORCH, A.



WATTS, T.



BLIGHT, S.



WELLS, S.



WELLS, S.



WELLS, S.



WELLS, S.



WELLS, S.



WELLS, S.



WELLS, S.



WELLS, S.



WELLS, S.



WELLS, S.



WELLS, S.



WELLS, S.



WELLS, S.



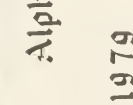
WELLS, S.



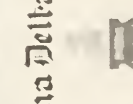
WELLS, S.



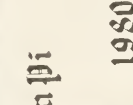
WELLS, S.



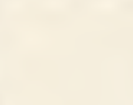
WELLS, S.



WELLS, S.



WELLS, S.



WELLS, S.



WELLS, S.



WELLS, S.



WELLS, S.



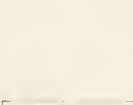
WELLS, S.



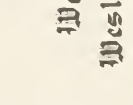
WELLS, S.



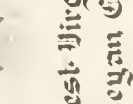
WELLS, S.



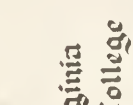
WELLS, S.



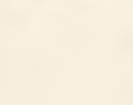
WELLS, S.



WELLS, S.



WELLS, S.



WELLS, S.



WELLS, S.



WELLS, S.



WELLS, S.



WELLS, S.



WELLS, S.



WELLS, S.



WELLS, S.



WELLS, S.



WELLS, S.



WELLS, S.



WELLS, S.



WELLS, S.



WELLS, S.



WELLS, S.



WELLS, S.



WELLS, S.



WELLS, S.



WELLS, S.



WELLS, S.



WELLS, S.



WELLS, S.



WELLS, S.



WELLS, S.



WELLS, S.



WELLS, S.

Alpha Delta Pi

1979  1980

West Virginia Wesleyan College

ALPHA
GAMMA
DELTA







HELEN M. LEE

BRENDAN S. SHANNON

ANNE M. BERT

MARIE T. KELLEY

JOYCE M. WALKER

DEBRA M. O'NEAL

ANNE M. BERT



MARIE T. KELLEY

ANNE M. BERT

JOYCE M. WALKER

DEBRA M. O'NEAL

ANNE M. BERT

MARIE T. KELLEY

ANNE M. BERT

MARIE T. KELLEY



ANNE M. BERT

JOYCE M. WALKER

DEBRA M. O'NEAL

ANNE M. BERT

JOYCE M. WALKER

DEBRA M. O'NEAL

ANNE M. BERT

JOYCE M. WALKER



MARIE T. KELLEY

ANNE M. BERT

JOYCE M. WALKER

DEBRA M. O'NEAL

ANNE M. BERT

MARIE T. KELLEY

ANNE M. BERT

MARIE T. KELLEY



HELEN M. LEE

BRENDAN S. SHANNON

ANNE M. BERT

MARIE T. KELLEY

JOYCE M. WALKER

DEBRA M. O'NEAL

ANNE M. BERT



HELEN M. LEE

BRENDAN S. SHANNON

ANNE M. BERT

MARIE T. KELLEY

JOYCE M. WALKER

DEBRA M. O'NEAL

ANNE M. BERT

MARIE T. KELLEY

ANNE M. BERT



1979

1980

Alpha Gamma Delta
West Virginia
M Wesleyan College



Α
L
P
H
A

X
I

D
E
L
T
A





DEBORAH L. FREEMAN



SARAH N. DEPRAN



STEPHANIE WILLIAMS



STACEY E. BOWER



ELIZABETH TRAYLOR



AMBER A. DAVIS



CASSIA W. SCHELLHAASE



C.A. PFEIFFER



MARY E. PAYNE



JENNIFER P. HARGROVE



AMBER T. BERNAL



STEPHANIE C. KAY



STEPHANIE C. KAY



STEPHANIE C. KAY



NICOLE P. HARGROVE



SARAH N. DEPRAN



LETITIA M. CORBETT



LETITIA M. CORBETT



HALLE G. RILEY



HALLE G. RILEY



STEPHANIE C. KAY



AMBER T. BERNAL



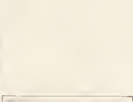
NICOLE P. HARGROVE



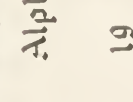
NICOLE P. HARGROVE



NICOLE P. HARGROVE



NICOLE P. HARGROVE



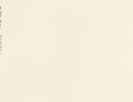
NICOLE P. HARGROVE



NICOLE P. HARGROVE



NICOLE P. HARGROVE



NICOLE P. HARGROVE



NICOLE P. HARGROVE



NICOLE P. HARGROVE



NICOLE P. HARGROVE



ASHLEY A. GUNTIGER



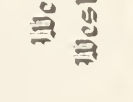
ASHLEY A. GUNTIGER



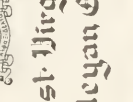
ASHLEY A. GUNTIGER



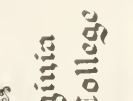
ASHLEY A. GUNTIGER



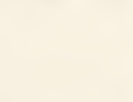
ASHLEY A. GUNTIGER



ASHLEY A. GUNTIGER



ASHLEY A. GUNTIGER



ASHLEY A. GUNTIGER



ASHLEY A. GUNTIGER



ASHLEY A. GUNTIGER



ASHLEY A. GUNTIGER



ASHLEY A. GUNTIGER



ASHLEY A. GUNTIGER



ASHLEY A. GUNTIGER



ASHLEY A. GUNTIGER



ASHLEY A. GUNTIGER



ASHLEY A. GUNTIGER



ASHLEY A. GUNTIGER



ASHLEY A. GUNTIGER



ASHLEY A. GUNTIGER



ASHLEY A. GUNTIGER



ASHLEY A. GUNTIGER



ASHLEY A. GUNTIGER



ASHLEY A. GUNTIGER



ASHLEY A. GUNTIGER



ASHLEY A. GUNTIGER



ASHLEY A. GUNTIGER



ASHLEY A. GUNTIGER



ASHLEY A. GUNTIGER



ASHLEY A. GUNTIGER



ASHLEY A. GUNTIGER



ASHLEY A. GUNTIGER



ASHLEY A. GUNTIGER

Alpha Xi Delta 80
 19 West Virginia Wesleyan College



Z
E
T
A

T
A
U

A
L
P
H
A



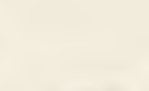
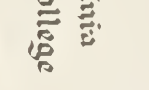
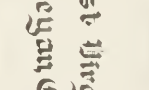




1979



1980



West Virginia Wesleyan College

Zeta Tau Alpha



1980



C
H
I

P
H
I





JAMES D. BACKMAN III
VICE PRESIDENT



ROBERT K. MIDDLETON
SECRETARY



DOUGLAS S. QUADE
VICE PRESIDENT



BARRY H. WOLFE
PRESIDENT



PETER T. OGDEN
PRESIDENT



GREGORY A. SIDES
VICE PRESIDENT



BRIAN J. SHEEDY



JOHN E. HALL



JOHN E. HALL



STEVE PRESSANELLI



CALVIN J. ARNOLD



GARY W. RAY



TIM J. LEWIS



JAMES L. HUNTER



HOWARD S. KEEFER



TIMOTHY K. SHIPLEY



RUSSEL E. SPEICHER, JR.



JOHN W. WELLS III

19



80

West Virginia Wesleyan College

K
A
P
P
A

A
L
P
H
A







DANIEL M. ISNER
SOCIAL CHAIRMAN



GREGORY A. DERWITZ
PUBLIC RELATIONS



EDWARD L. SMITH
CORRESPONDENCE SECRETARY



RICHARD D. UCHREDREE
TREASURER



VERNON W. LUTZ
PRESIDENT



EDWARD D. ROBBINS
SECRETARY



DAVID L. BOSS
PUBLICIST



SCOTT TABLER
EDITOR



MICHAEL J. LAFFERTY



ANDREW W. BUNTING



JOSEPH T. GORDON
TREASURER



MARK A. VASSISH



DAVID A. DOWNING, JR.



JOHN L. COLAPINTO

Kappa Alpha

80



19

West Virginia Wesleyan College



KEITH E. GRANAM



JOHN S. MOORE



BRIAN R. RICH
SOCIAL MANAGER



MICHAEL J. BERRY



GEORGE E. CLAFFEY



MATTHEW T. OFFRED



MARK R. STROHM



BRIAN JAMONO



ANN R. WALKER
ROSE COURT



BRENDA K. LUMBERS
ROSE COURT



KAREN M. DELGRANDE
ROSE COURT



STEPHEN R. JONES



DAMIEN



PHI
SIGMA
EPSILON





JEFF CHILDERS



WILLIAM F. RNEAU



WILLIAM S. MENDENHALL



ALLEN D. LANEY



THOMAS S. E. YOUNG



STEVE TRUA

SECRETARY

VICE-PRESIDENT

PRESIDENT

TREASURER

Phi Sigma Epsilon

19



80



THOMAS F. CHURCH



JAMES M. BOTTOMS



TIMOTHY B. DULLANY



TIMOTHY E. EE



FRANK P. BORCHERT



THOMAS L. ECHIN



RICHARD E. ELY



JEFFREY E. ELY

West Virginia Wesleyan College



ERIC A. WAMBLEY



WILLIE E. HAMLET JR.



WILLIAM LOWE



SHARON M. DELOTTO



AVES F. ALLEN



ADAM P. EE



TIMOTHY E. EE



JEFFREY E. ELY



ROBERT E. CAL



STAN EYTANEWITZ



BLAYNE E. ELY



ROBERT E. ELY



TIMOTHY E. EE

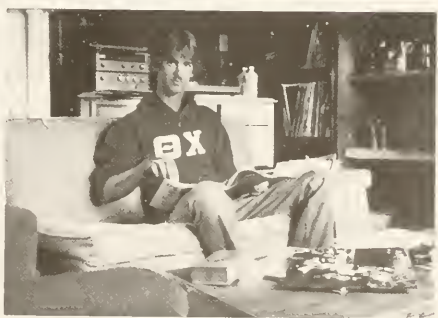


TIMOTHY E. EE

T
H
E
T
A

C
H
I







THOMAS J. RENCOW



JOSEPH P. ZEKAITIS



DANIEL W. HEROLD



JOHN B. KIENKER



MARK E. FRAZEE



BRIAN E. MCCANN



ODWIN D. BECKINS



ROBERT D. KOSKA



BRIAN J. ANASTOPOULOS



GREGOIRE J. ACCETOLLO



WILLIAM J. KENNEDY



ANTHONY J. ANAGNOSTE



JAMES C. SUTTON



HELEN J. ROSSETTELLI



DONALD S. ZOSPANAK



JAMES S. WARNER



SCOTT A. BOODLE



DEBRA S. W. ZOSPANAK



VALERIE J. STRALASS



RICHARD D. POWELL



JOHN E. KENNEDY



NORMA D. HAMRICK



DAVID P. NITE



CURTIS E. WHITSON



GLENN W. MOORE



JOHN W. SKOLAVA



JOHN W. CARTELLI



BRIAN T. SHINDLER



JAMES W. STRAWN



STEPHEN G. BOWEN



KOT A. GULL



DAVID E. CHAPPISS



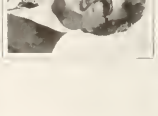
DAVID C. ROSE




STEPHEN C. CLEBERT



JEREMY A. FRIES



DAVID W. HARKNELL

19  80

West-Virginia
Methodyan College



T
H
E
T
A

X
I





JAMES B. NEWMAN



JAMES B. NEWMAN



JAMES B. NEWMAN



JAMES B. NEWMAN



JAMES B. NEWMAN



JAMES B. NEWMAN



JAMES B. NEWMAN



JAMES B. NEWMAN



JAMES B. NEWMAN



JAMES B. NEWMAN



JAMES B. NEWMAN



JAMES B. NEWMAN



JAMES B. NEWMAN



JAMES B. NEWMAN



JAMES B. NEWMAN



JAMES B. NEWMAN



JAMES B. NEWMAN



JAMES B. NEWMAN



JAMES B. NEWMAN



JAMES B. NEWMAN



JAMES B. NEWMAN



JAMES B. NEWMAN



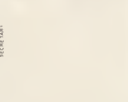
JAMES B. NEWMAN



JAMES B. NEWMAN



JAMES B. NEWMAN



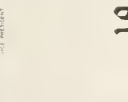
JAMES B. NEWMAN



JAMES B. NEWMAN



JAMES B. NEWMAN



JAMES B. NEWMAN



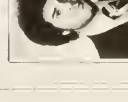
JAMES B. NEWMAN



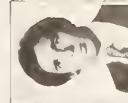
JAMES B. NEWMAN



JAMES B. NEWMAN



JAMES B. NEWMAN



JAMES B. NEWMAN



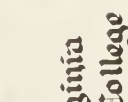
JAMES B. NEWMAN



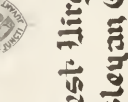
JAMES B. NEWMAN



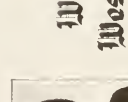
JAMES B. NEWMAN



JAMES B. NEWMAN



JAMES B. NEWMAN



JAMES B. NEWMAN



JAMES B. NEWMAN



JAMES B. NEWMAN



JAMES B. NEWMAN



JAMES B. NEWMAN



JAMES B. NEWMAN



JAMES B. NEWMAN



JAMES B. NEWMAN



JAMES B. NEWMAN



JAMES B. NEWMAN



JAMES B. NEWMAN



JAMES B. NEWMAN



JAMES B. NEWMAN



JAMES B. NEWMAN



JAMES B. NEWMAN



JAMES B. NEWMAN



JAMES B. NEWMAN



JAMES B. NEWMAN



JAMES B. NEWMAN



JAMES B. NEWMAN



JAMES B. NEWMAN



JAMES B. NEWMAN



JAMES B. NEWMAN



JAMES B. NEWMAN



JAMES B. NEWMAN



JAMES B. NEWMAN



JAMES B. NEWMAN

Theta Xi



80

19

West Virginia Wesleyan College



EDMUND L. TOP



CHARLES S. MORRIS



WILLIAM B. AMSTUTZ



JOHN R. HART



FREDERICK K. LEWIS



GARY B. DAVIS



DONALD E. SMALLWOOD



ROBERT B. DUPIN



DENNIS L. GATES



THOMAS E. JONES



JEFFREY D. THOBEL



ROBERT G. DIETRICH



WAYNE M. VOSS



RONALD L. GANTNER



CHARLES S. MULLER



GARY B. MONTOMARY



MICHAEL J. ALCI



ROBERT B. DUPIN



C. FREDDIE LAMPTON



SEAN P. KENNEDY



WILLIAM J. SELZER



ALEXANDER S. WITHERS



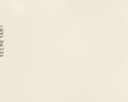
PAUL J. JAMES, JR.



JOSEPH S. FENECELLA



BRADFORD C. FENTON



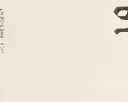
JOSEPH A. DEARTH



DONALD R. LAMBRE



DONALD R. BOURQUE



DAVID A. FINE



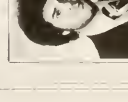
MARK L. TOLMAN



WILLIAM B. RICKETT



ROBERT F. ROBBY



JOSEPH A. DEARTH



JOSEPH A. DEARTH



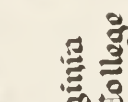
DONALD R. LAMBRE



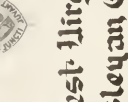
DONALD R. BOURQUE



DAVID A. FINE



MARK L. TOLMAN



WILLIAM B. RICKETT



ROBERT F. ROBBY



JOSEPH A. DEARTH



JOSEPH A. DEARTH



JOSEPH A. DEARTH



JOSEPH A. DEARTH



JOSEPH A. DEARTH



JOSEPH A. DEARTH



JOSEPH A. DEARTH



JOSEPH A. DEARTH



JOSEPH A. DEARTH



JOSEPH A. DEARTH



JOSEPH A. DEARTH



JOSEPH A. DEARTH



JOSEPH A. DEARTH



JOSEPH A. DEARTH



JOSEPH A. DEARTH



JOSEPH A. DEARTH



JOSEPH A. DEARTH



JOSEPH A. DEARTH



JOSEPH A. DEARTH



JOSEPH A. DEARTH



JOSEPH A. DEARTH



JOSEPH A. DEARTH



JOSEPH A. DEARTH



JOSEPH A. DEARTH



JOSEPH A. DEARTH



JOSEPH A. DEARTH





ORGANIZATIONS



SACRED DANCE



INTERVARSITY
CHRISTIAN
FELLOWSHIP

LOVESHINE





ENGINEERING CLUB

FEATURE TWIRLERS



MAJORETTES





THE
83rd



ALBATROSS

HOME ECONOMICS ASSOCIATION



COMMUNITY
COUNCIL
EXECUTIVE
BOARD



COMMUNITY COUNCIL

GLAUNER HISTORICAL SOCIETY



SIGMA
THETA
EPSILON



STUDENT VOLUNTEER PROJECTS



CHRISTIAN
LIFE
COUNCIL

CAMPUS
JUDICIAL
BOARD

WVWC-FM





OUTING CLUB



CHILDREN'S THEATRE



JAZZ ENSEMBLE



AMERICAN
GUILD OF
ORGANISTS



AWARDS AND
ELECTIONS
COMMITTEE



RESIDENCE
HALL COUNCIL

STUDENT NURSES OF WESLEYAN





FELLOWSHIP OF CHRISTIAN ATHLETES

PANHELLENIC COUNCIL



CCPB EXECUTIVE BOARD



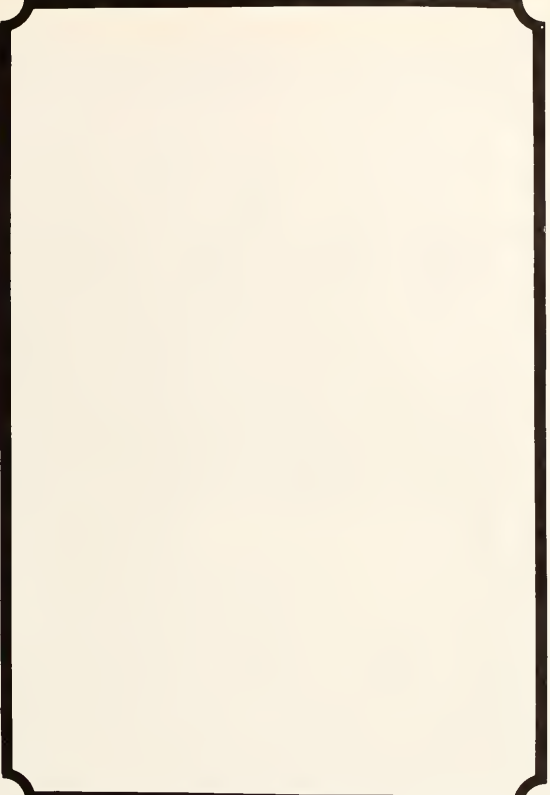


MURMURMONTIS

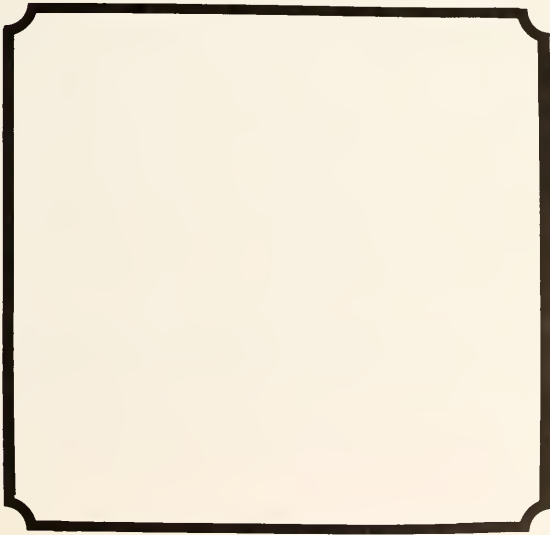
PHAROS







HONORARIES





ALPHA BETA ALPHA

Alpha Beta Alpha, national undergraduate Library Science Fraternity, has chapters at colleges and universities in all sections of the United States. It was established on May 3, 1950. Its purpose is to encourage young men and women to become librarians to promote fellowship, and to further the professional knowledge of its members. Its motto is "Books, People, Service, Life." The honorary began on Wesleyan's campus as the Pfeiffer Society in 1968. It received its national charter on October 25, 1969 as the Alpha Omicron Chapter of Alpha Beta Alpha.

Alpha Lambda Delta is a national scholastic honorary founded in 1924 by Dean Maria Leonard at the University of Illinois. Wesleyan's chapter was installed on December 8, 1974, under Dr. McBrair Davis. The purpose of this honorary is to encourage superior scholarship among freshman women, to promote intelligent living, and to enhance the appreciation of cultural life. Membership is limited to those freshmen and sophomore women who have maintained a cumulative grade point average of 3.5 and above.

ALPHA LAMBDA DELTA





ALPHA PSI OMEGA

Alpha Psi Omega, National Dramatics Honorary Fraternity, celebrated its 50th anniversary on Wesleyan's campus on May 5, 1980. This honorary, one of the most active on campus, has produced and directed shows, sponsored a freshman open house, and other theatrical activities. Chartered to promote dramatics and to recognize outstanding achievement in theatre, Wesleyan's Alpha Rho chapter presented "Lovers and Other Strangers" in the fall and took in 5 new members during the year. In addition to other activities, the chapter also supported all WVWC Theatre Department Productions.

Benzene Ring was founded on the Wesleyan campus. It is the Chemistry honorary and is open for membership to all students who have had at least eight hours of chemistry, have maintained the adequate grade average in chemistry and are genuinely interested in this fascinating science. Short informative programs on special topics are presented by students as well as guest lecturers and faculty members during the course of the year.

BENZENE RING



BETA BETA BETA





DELTA MU DELTA

The Alpha Theta Chapter of Delta Mu Delta was installed at Wesleyan on May 8, 1970, being the 32nd chapter to be installed. The Society was founded in 1914 at New York University. The purpose of the Society is to recognize those who have demonstrated superior scholarship and leadership in the field of business.



DELTA PSI KAPPA

Delta Psi Kappa, an honorary fraternity for Physical Education majors and minors, was founded in 1916. The present chapter, Alpha Rho, was installed at Wesleyan in May of 1947 and has remained active ever since. The purposes of the fraternity are to further an interest in the profession, encourage high standards of scholarship, recognize achievement and promote fellowship in the profession. The requirements are an academic average of 3.0 in Physical Education. Major activities of this organization include the sponsoring of Spring Sing. Also each year, Delta Psi Kappa sponsors the Davis Reemsnnyder Award, to be presented to one senior male and female who have best exemplified overall excellence in academic achievement and athletic performance.

KAPPA DELTA PI



KAPPA PI

Kappa Pi International Honorary Art Fraternity serves as a method of recognizing contributions to the field of art on college and university campuses. Its aim is to raise the standards of productive work among students. The Gamma Omega chapter of Kappa Pi was founded on the campus of West Virginia Wesleyan in 1961.





KAPPA OMICRON PHI

Kappa Omicron Phi is one of three National Honor Societies in the field of Home Economics. Its emphasis is placed on intellectual and scholarship excellence as well as personal values and concern for fellow human beings. It focuses on total development which encompasses one's professional and personal ideals. To a college student, Kappa Omicron Phi means the forging of life-long friendships as well as many rich experiences.





MORTAR BOARD

Mortar Board began on Wesleyan's campus in 1924 as the Haught Literary Society. The society was named after Dr. Thomas Haught who was the Dean of the College at the time. Membership signified literary attainment by exceptional Wesleyan women. The society aimed to arouse interest in important but frequently neglected aspects of cultural education. Members gathered informally to share readings of drama, poetry, fiction, non-fiction, and the classics. The society presented many literary works to Wesleyan's library. The Haught Society received an affiliation from the National Council of Mortar Board in 1975. Today, Mortar Board recognizes scholarship, leadership, and campus involvement.

Omicron Delta Epsilon is an International Economics Honorary Society. It is dedicated to the advancement of economic science and a scholarly effort to make freedom from want and privation a reality for all mankind. This society recognizes students who have an overall cumulative average of 3.0 and an average of 3.0 in the field of Economics.

OMICRON DELTA EPSILON





OMICRON DELTA KAPPA

Omicron Delta Kappa, National Leadership Honor Society, was founded December 3, 1914, at Washington and Lee University. The founders formulated the idea that leadership of exceptionality and versatility in college be recognized, that all representatives in all phases of college life should cooperate in worthwhile endeavors, and the outstanding students, faculty, and administrative members should meet on a basis of mutual interest, understanding and helpfulness.



PHI ALPHA THETA

Phi Alpha Theta is an International Honor Society in History. This society possesses the largest number of chapters of the accredited honor societies holding membership in the Association of College Honor Societies.

The Wesleyan chapter, Rho Mu, was organized and granted a charter on January 20, 1971. Phi Alpha Theta has continued to bring students, teachers and writers of history together both intellectually and socially. Students and faculty are elected to membership upon the basis of excellence in the study or writing of history.

The primary objective of the National Honor Society of Phi Kappa Phi is the recognition and encouragement of superior scholarship in all academic disciplines. Chapters can be established only at institutions which provide the means and atmosphere for academic excellence. To be eligible for consideration, one must be in the upper 10% of the senior class or in the upper 5% of the junior class. Limited faculty members and alumni who have achieved academic distinction may also be admitted. Phi Kappa Phi was founded in 1897 at the University of Maine. West Virginia Wesleyan successfully established its chapter in the spring of 1977.

PHI KAPPA PHI



Alpha Phi Gamma is a National Journalism Honorary which was established on the Wesleyan campus in 1969 by a former *Murmurmontis* editor, Nancy Baker. Currently this honorary consists of faculty and students. Requirements for membership include active participation in an editorial or managerial position on either the *Murmurmontis*, *Pharos*, or Radio staff. This honorary recognizes individual ability and achievement in journalistic pursuits.

ALPHA PHI GAMMA





PI GAMMA MU

Pi Gamma Mu, the National Social Science Honor Society, was founded in 1924 by Dean Leroy Allen of Southwestern College and Dean William A. Hamilton of the College of William and Mary. The purpose of Pi Gamma Mu is to improve scholarship in the social sciences and to achieve syntheses therein; to inspire social service to humanity by an intelligent approach to the solution of social problems; to engender sympathy towards others with different opinions and institutions by a better mutual understanding and to supplement and to support, but not to supplant existing social science organizations by promoting sociability and attendance at meetings.

PSI CHI



The official birth of Psi Chi, the National Honor Society in psychology, is dated September 4, 1929, with the help of a small group of aspiring young psychologists at the University of Kansas. The Wesleyan chapter of Psi Chi was installed on May 20, 1962, becoming the 167th chapter of 480 active chapters. Wesleyan's chapter is founded on the same ideals as those set forth by that first chapter in 1929. These are to advance the science of psychology; to encourage, stimulate and maintain the scholarship of all the members in all academic fields, especially psychology.

Sigma Alpha Iota began as the Hemidemisemiquavers, a local music honorary for women. This local honorary began on May 15, 1971. All members installed are of high scholastic quality and musical ability. The members' candidacy is voted on by the faculty of the Music Department. This chapter became the Zeta Eta chapter of Sigma Alpha Iota, the national music honorary, on October 28, 1972.

SIGMA ALPHA IOTA



Sigma Tau Delta, National English Honorary, was founded in 1924. A charter was granted to the Phi Kappa chapter on Wesleyan's campus on January 10, 1968 under the leadership of Orville Anderson and Arminta Baldwin. The first initiation ceremony was held on February 18, 1968. Inductees exhibit outstanding achievement in the field of English.

SIGMA TAU DELTA

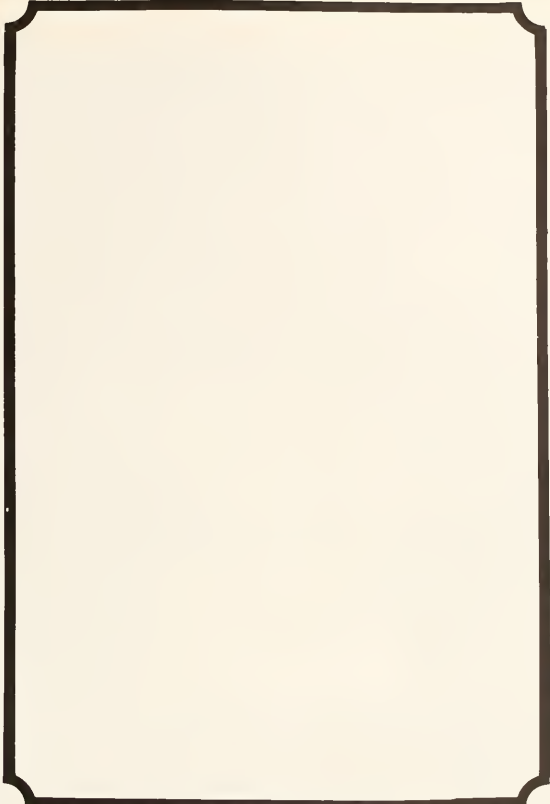




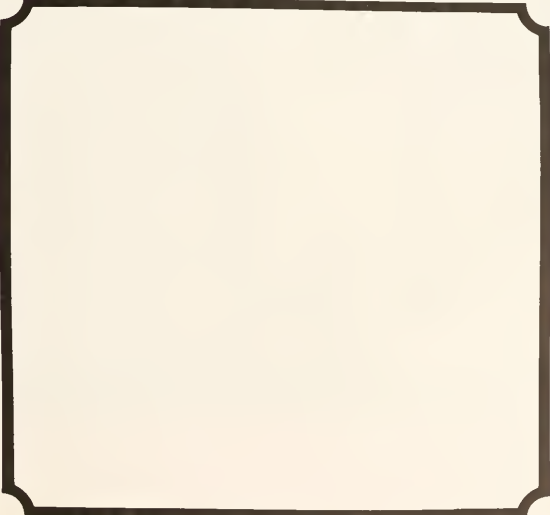
SIGMA THETA TAU

Sigma Theta Tau is an International Nursing Honor Society. Attempts were made for many years before a local honorary was initiated in the fall of 1977. On May 4, 1980, Wesleyan's local society, Pi Epsilon Alpha, became the Epsilon Delta chapter of Sigma Theta Tau. Sigma Theta Tau was founded in 1922 at the Indiana University Training School for nurses. It was organized to recognize superior scholarship and leadership in the undergraduate and graduate levels of nursing. The purposes are to recognize superior achievement, the development of leadership qualities, foster high professional standards and creative work, and to strengthen commitment to the ideals and purposes of the nursing profession.





ACADEMICS



LOOKING AHEAD . . .

Students passing through the library prior to the beginning of fall classes faced the usual registration procedures including, among others, ID pictures and validation and add-drop slips, but mostly the endless lines. But fall 1979 was the last time for all the paperwork.





... TO THE CHANGE

Registration took on a different appearance for the spring semester with the arrival of several computer terminals. These terminals eliminated much of the paperwork that seemed to go with registration and preregistration. But since their arrival the days of "pulling cards" for friends are over.

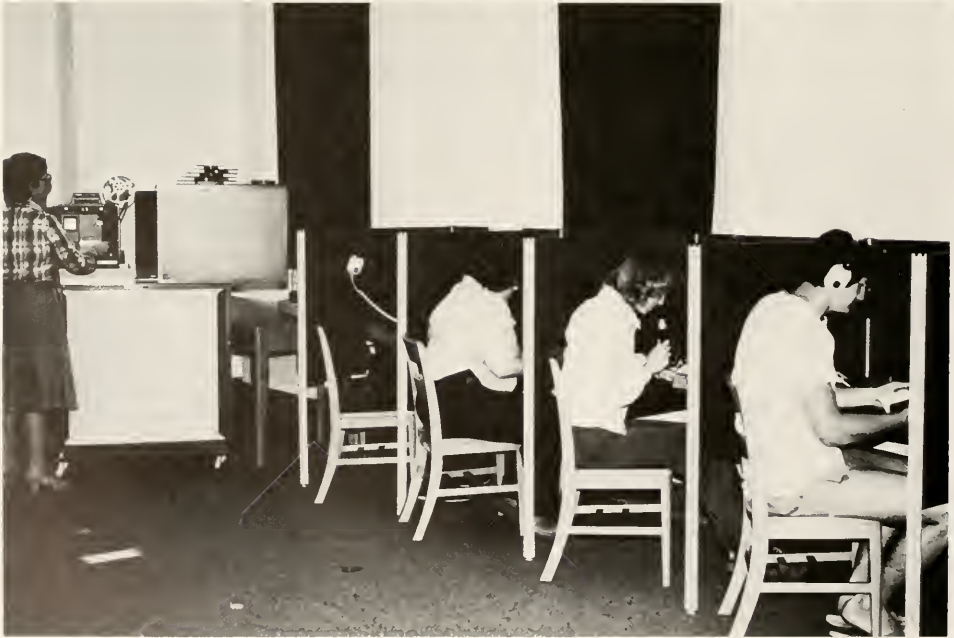


EXPLORING EDUCATION

The involvement can be shared between instructor and student on an individual basis or a lecture; the experience can be for a future career or the satisfaction of the student. The result is the same: the growth of an individual and his education.









ADMINISTRATIVE ASSISTANTS

The Administrative Assistant program was initiated in the spring of 1978 and was originally intended for one person. The internship has since been expanded to accommodate one more student. This year President Harris had as his aides seniors Debbie Powers and Mike Aloï. Debbie has the distinction of being the first woman to occupy a position as an Administrative Assistant. The internship is a demanding job and is applicable to majors in both government and business fields. Both Debbie and Mike were majors in the Government Department.





NURSING . . .

A strenuous four year program demanding mental, physical and emotional involvement, each year produces a select group that from pinning on will be known as nurses. This year the Nursing department achieved their goal of having a national nursing honorary on campus with the installation of the Epsilon Delta chapter of Sigma Theta Tau.

AWARDS ASSEMBLY



Acknowledging the achievements of outstanding students is the purpose of the awards assembly. Most of the awards involve scholarships. **(Above)** The recipients of "Who's Who" accept their certificates of nomination. **(Below, left)** Dr. Warner presents the Anthropology award to Lynn Duvall Belcher. **(Below, right)** Cindy Stormer receives the "Pamela Thorn Memorial Humanities Award" from presenter Dr. Mow. **(Opposite)** Recognized as the "Outstanding Senior Men and Women" for 1980 were **(top)** Mike Aloï, Rich Ingraham and Jay Parker; and **(bottom)** Nancy Emerick, Cindy Stormer and Deb Powers.

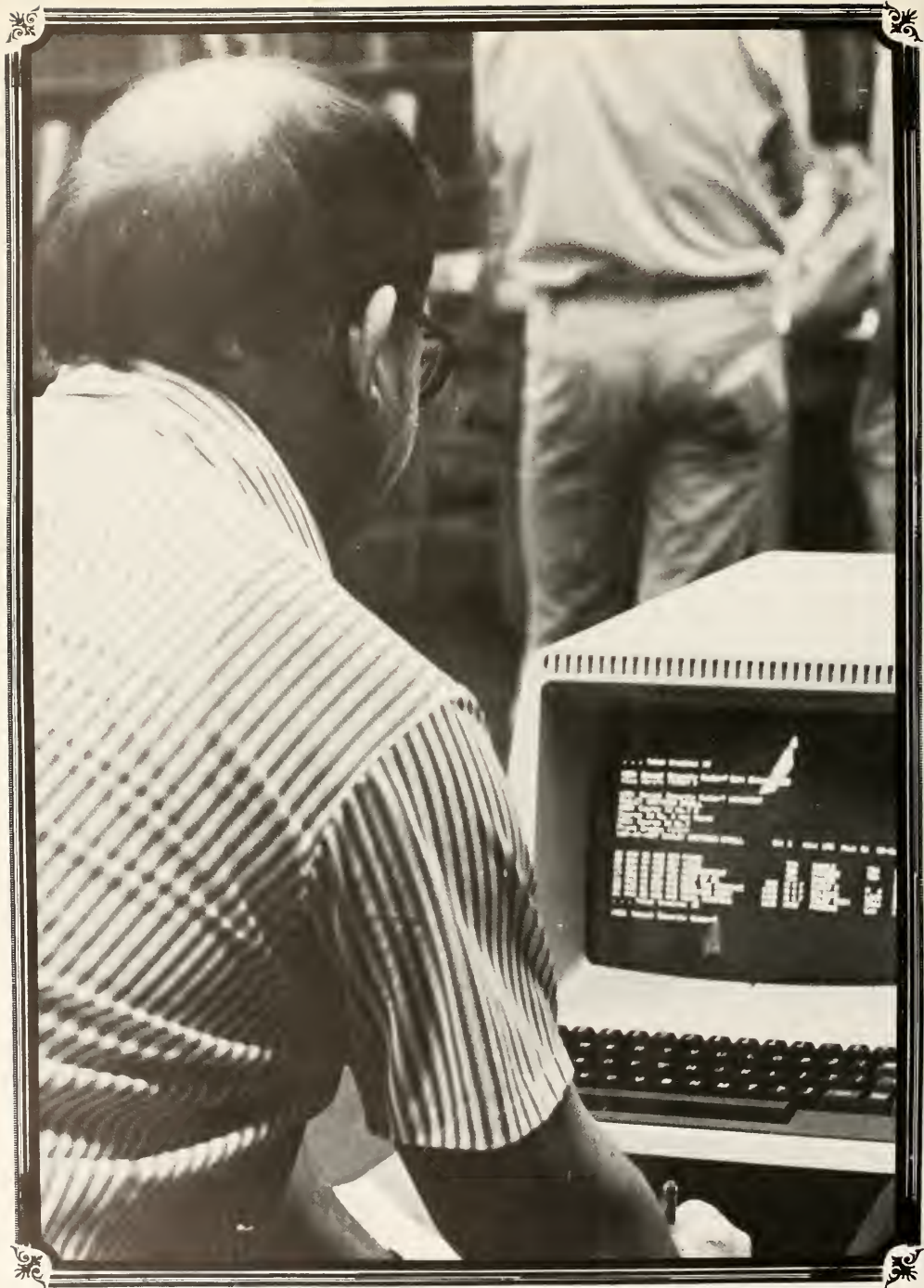


(Below) Mike Aloï is presented with the Marvin Downey Award in government by C. Thayer White. (Right) The Oakey Stout Trustees Award is received by Mary Lou Greenwood from President Harris. (Far below) Betty Cook and Coach Ross receive the Pharos "Outstanding Male and Female Athlete Award" for Betty and John Bates (not pictured), from Scott Miller, editor of the Pharos.





(Far above) Coach Haas presents the Reemsnyder Award, awarded by Delta Psi Kappa, to Theresa Donovan and Mickey Tenney. (Left) Rich Ingraham is congratulated by Dr. Herbert Coston after receiving the History Award. (Above) Mr. Ruhlow presents Judy Pickett and Steve Woomer with the McDonough-Caper-ton-Sheperd-Goldsmith Business Award scholarship.





FACULTY &
ADMINISTRATION



Dallas Bailey
 Keith Burns
 Laurel Burton
 Kay Carpenter
 Phyllis Coston
 Jean Fitzgerald
 David Fleenor
 Wenrich Green
 William Hicks
 Howard Hiner
 Catherine Howell
 Ron Klauswitz
 Patton Nickell
 Dave Puddington
 Hugh Radcliff
 Samuel Ross
 Ronald Roth
 Herbert Sharp
 Bob Skinner
 Gerry Steed
 Herbert Stotts
 Patricia Strader
 Betty Van Kirk
 Dotty Warner
 Kenneth Welliver
 Linda Winspear

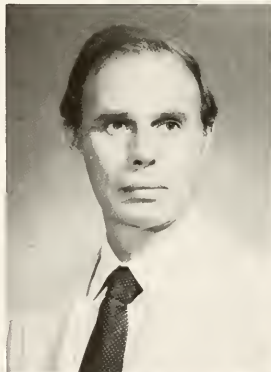
Dean of Students
 Dir. of Continuing Education
 Dean of the Chapel
 Personnel Coordinator
 Director of the Learning Center
 Assistant to the VP
 Comptroller
 Dir. of Admissions
 Dir. of Purchasing
 Dir. of the Service Center
 Dir. of Financial Aid
 Dir. of the Computer Center
 VP for the Administration
 Dir. of College Advancement
 Dir. of the Physical Plant
 Dir. of Athletics
 Dir. of the Radio Station
 Dir. of Planned Giving
 Dir. of the Campus Center
 Bursar
 Pres. Rep. for Development
 Dir. of the Health Center
 Dir. of Public Information
 Alumni Office
 VP for Academic Affairs
 Assistant Registrar



Dr. Fred E. Harris

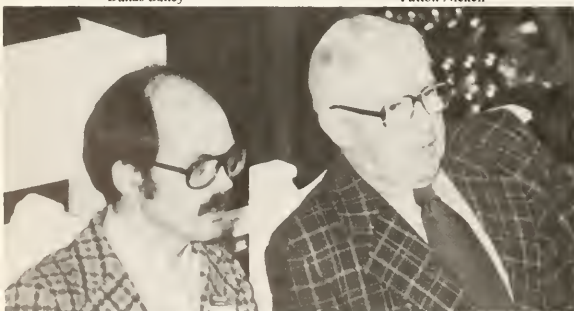


Dallas Bailey



Patton Nickell

Administration



Laurel Burton and Fred Harris



Kenneth Welliver



Linda Winspear

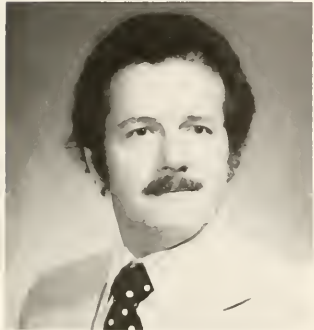


Keith Burns

Fred Harris

Kenneth Welliver

Charles Presar



Wenrich Green



Judith Siewart



William Johnston



Sister Jean Fitzgerald



Hugh Latimer, Chairman of the Board of Trustees, and Fred Harris confer an honorary degree upon Theodore Wilson.



Dotty Warner and Kenneth Welliver



Dr. Harris



Patton Nickell and Keith Burns take time out for a bite.



Dave Puddington and John Kennedy



Herbert Sharp



Herbert Stotts



Betty Van Kirk



Dotty Warner



Inez McCourt



Maxine Davidson



Bob Skinner



Ron Roth



John Lhota



Jerri Carpenter



Sam Ross with an award for Betty Cook



Board of Trustees

H
u
m
a
n
i
t
i
e
s

Art
Music
Speech and
Dramatic Arts
Modern Languages
Religion
Philosophy
English
Christian Education

Art A major in this department is helped to develop a knowledge of aesthetic elements as well as his creative potential. This year's department is proud to have completed a reworking of the art gallery. The entire art collection of WVWC was assessed and catalogued and is in the process of restoration. Others: William Oldaker.



Ralph Cook — Chairperson



Stephen Tinelli



Mike Thiedeman

Music

The Music Department not only gives a student the opportunity to develop an understanding of music and to become an accomplished musician, but it prepares the music major for careers as teachers, performers or ministers of music in churches. Those in the department also give those inside and outside the campus community the enjoyment of cultural enrichment. Others: Bobby Loftis — Chairperson, C. Buell Agye, Linda Gamble, R. Gary Kendrick, David Milburn.



Larry Parsons



Caroline Dees



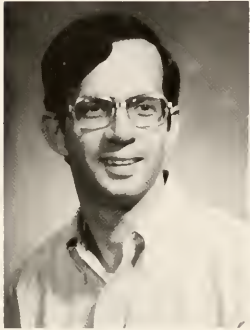
Robert Shafer

English

The Department of English believes that literature should be an integral part of every student's program. In its curriculum listings, the department provides literary experiences suitable to the needs of all students. The departmental aims are broadly cultural and are intended for persons who wish contact with the world of experiences, ideas, and human relations. Others: Mark DeFoe, Mort Gamble.



John Saunders



William Mallory



Arminta Baldwin — Chairperson



Robert O'Brien

Speech and Dramatic Arts



Susan Hopkins



Carl Flaningam



Charles Presar — Chairperson



Betty Norvell

This department serves to help the student achieve effective, artistic and creative self-expression in response to his environment. It recognizes that communication is the basis of all human interaction. Others: Sandra Presar, Larry Reed.



Thaddeus Gurdak

Modern Languages

Course work in French, German or Chinese develops not only a knowledge of a foreign language and culture, but also a sensitivity to the use of language in general. A major in this area serves as a foundation for the bilingual skills and international orientation needed for many careers in education, business and government service. As our economy and political situation evolve, it becomes more and more evident that language learning is an open door to the world. Others: Marjorie Trusler — Chairperson.



Allen Hamner

Religion

The courses in Religion contribute to education in the humanities through their consideration of man in terms of his religious insights, commitments and traditions.

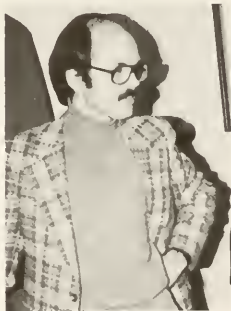
Others: Sidney Davis, Kenneth Welliver.

Philosophy

This department seeks to help the individual develop such competencies in reasoning, the study of values, critical thinking, and the formulation of individual, constructive views about one's life, beliefs, and work.



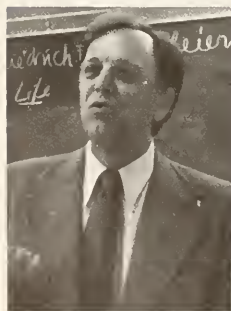
Peter Bercovitz — Chairperson



Laurel Burton



Joseph Mow — Chairperson



Arthur Holmes



Thaddeus Gurdak



Bernard Keating



Edward Avenll

P
h
y
s
i
c
a
l
a
n
d

- B
S
C
I
E
N
C
E
S
- Biology
 - Chemistry
 - Nursing
 - Mathematics
 - Physical Science

Biology

The objectives of this department are to make available to the students the cultural and practical values of biology, to provide pre-professional training for students who plan to enter schools of dentistry, medicine, forestry or other graduate schools, medical technology or to become teachers. Others: Carl Colson.



Elizabeth Weimer — Chairperson



Kathanne Gregg

Chemistry



Joseph Glencoe



Roger McCormick



Homer Holloway



Allen Hamner



Ernest Capstack — Chairperson



Paul Richter

Nursing



Florence Elliot — Chairperson



Jean Roy



Margaret Campbell



Doris Godsey



Helen TenBrink

Those in the Nursing Department seek to prepare a nurse generalist who is competent to utilize the nursing process in a professional nursing practice and to be a responsible member of the profession. This year the students planned and organized for the Red Cross Blood Mobile's visit to campus. The department now has a chapter of Sigma Theta Tau, a national Nursing Honor Society, also prepares a workshop focusing on the role of the nurse on primary health care. The nursing students also worked with local families and with blood pressure clinics throughout the county. Others: Jane Bryant, Patricia Craven, Carroll Anne Hinkle, Vera Kauffman, Delores McCollum, Judith McKinney, Donna Moore, Toni Nesselrotte, Patricia Purcell.



Mona Farthing

Nancy Jackson

Mathematics

The Math Department structures its courses to prepare students majoring in math for entrance to graduate school, to provide students of engineering with the necessary foundations, to train students who wish to pursue careers in teaching, to provide the mathematical tools needed in the natural, social and applied sciences. Others: Michael Berry — Chairperson, Eugene Anderson, Philip Honsinger, Ron Klauswitz.

Physical Science

The Physical Science Department is a multidisciplinary department including the area of astronomy, geography, geology, physics and the physical sciences. The Physical Science Department intends to strengthen the areas of Health Physics and Engineering Physics in terms of updating the laboratories in these areas. Others: Paul Hickman.



Joseph Weist



Martin Finston



Homer Holloway — Chairperson

S
c
o
i
c
i
e
n
c
e
l
e
s

Economics
Government
Sociology and
Anthropology
History
Psychology

Economics

Economics courses provide the student with an understanding of economic principles and problems. It gives a good background to those interested in business, finance, government, teaching, law and other fields. The Economics Club was very active this year. Representatives from oil and steel industries addressed the meetings as well as those from the faculty and administration. Omicron Delta Epsilon, the economics honorary, was also active with trips to a steel mill and coal mines. The Wesleyan Economist is an economics newsletter that was published six times this year. Others: Franck Bayard, Ben Young.



Kumaran Nair — Chairperson

Government

If the government was as afraid of disturbing the consumer as it is of disturbing business, this would be some democracy. Kin Hubbard. Others: Gerard Ballucci.



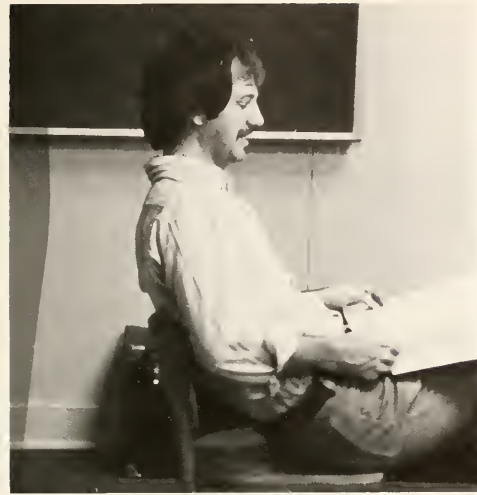
W. Frick Curry — Acting Chairperson



Thayer White

PSYCHOLOGY

This department aims to aid the student in adjustment with himself and others. It prepares the individual for immediate placement after college or graduate school. Others: Richard Calef — Chairperson, Ruth Calef, Gary Hess, Annette Hiedemann.



Don Murray



Earl McHewitt

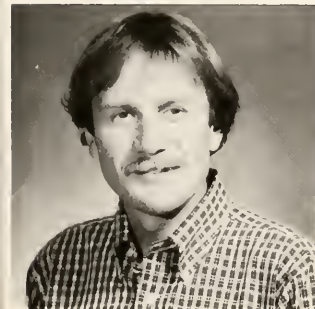
HISTORY



Benjamin Martin

The History Department meets the needs of those who wish to become a more aware and liberally educated person to develop more refined research and thinking skills and to teach or to pursue graduate study in history, law, theology, business or other concentrations. Others: Herbert Coston — Chairperson, Roy Curry, Robert Hunt, Frederick Peterson, David Sharpe.

SOCIOLOGY AND ANTHROPOLOGY



Ian Taplin

Understanding the character of human relationships and of group life is the aim of this department. Others: Howard Bright, Reginald Olson, Fred Peterson, John Warner.

A
r
t
s
a
n
d
S
c
i
e
n
c
e

Business Administration

Education

Library Science

Health and
Physical Education

Home Economics

Business

The intellectual competence to become successful, responsible, and creative business leaders is what a business education must provide for students of business. Thus, the faculty tries to develop in students an understanding of and insight into the many problems and solutions involved in a business world that is always changing. Others: Anthony Gum, Shirley Crowther.



Robert Craig



Dean Ruhlow — Chairperson

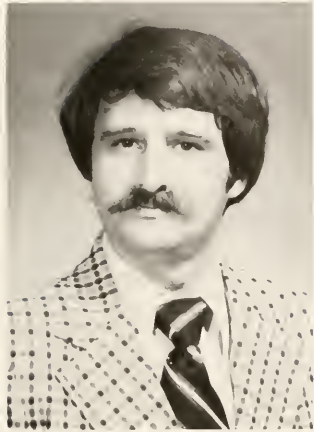


Frank Berisford



James Davis

Ronald Kupcinski



Charles Emery



Richard Clemens



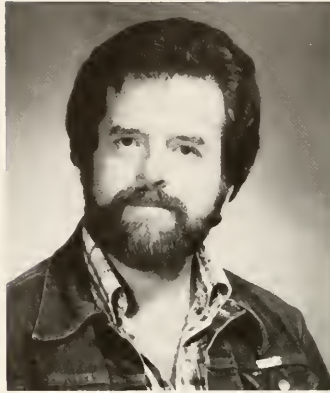
Robert Wallace

The Education Department is designed to help the students preparing to teach to achieve the necessary professional understanding and skills so that they may be successful in their teaching careers. It will lead to meeting the certification requirements for West Virginia as well as several other states. Others: Phyllis Coston, Sue Marks, Darrell Newberger, Patton Nickell.

Education



Ellis Ivey — Chairperson



Paul McArdle



Pamela Balch



Esther Wilmoth with Jennifer Carr.

LIBRARY SCIENCE



Helen Staley
Christian Education



Lonnie Hinkle

Preparation for working in libraries and public schools is the aim of those in the Library Science Department. Others: Ferenc Androczi, Mary Thiedemann.



Benjamin Crutchfield



John Burgess



Judith Stewart



Keith Burns



Robert Moore



Judith Martin

Health and Physical Education



Thomas Martin



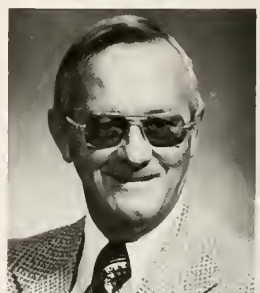
Kent Carpenter



Frank Ellis



Sam Ross



James Myers — Chairperson

Those in this department seek to teach history, rules and skills to all interested students, to prepare future Health and Physical Education teachers for certification, and to provide an intramural program and a varsity athletic program for men and women. Others: Robert Braine, Caroline Hornor, Patricia Tracewell.



Kathryn Haas

WE WELCOME WESLEYAN'S NEW INSTRUCTORS

T
O

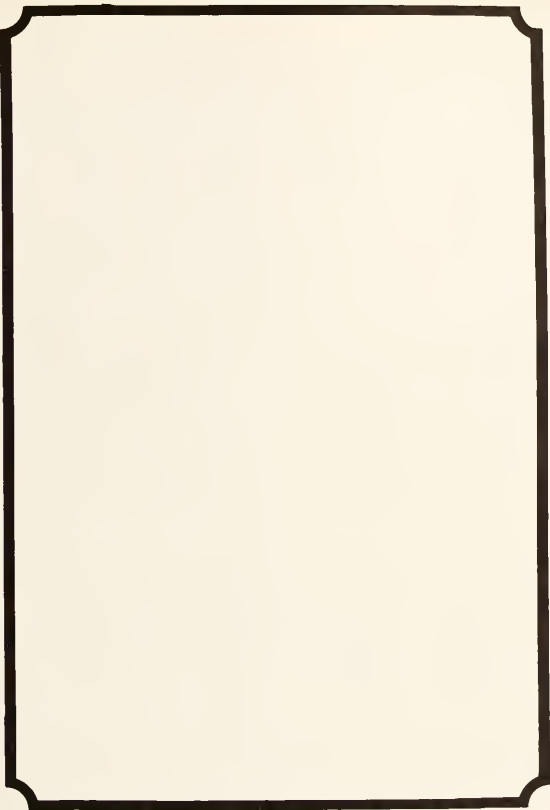
T
H
E

C
L
A
S
S
R
O
O
M

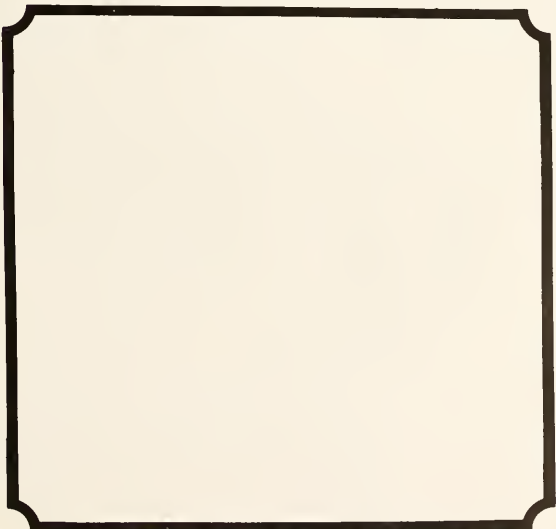


IT'S ALL YOURS!





GRADUATES





AUNDRA ALEXANDER



MIKE ALOI



PATTI ANDERSON



GAIL BAGWELL



DEBORAH BANAS



BRIEN BAILEY



LINDA BARAKAT



LYNN BARGMAN



ELIZABETH BARROW



ANNE BEAL



ANN BEEMER



RICHARD BEIGHLEY



SANDY BELTON



GINA BETTI



THOMAS BICKERTON



REBECCA BODENHEIMER



DEVONNE BROWN



JAMES BROGAN



ROBIN BUNCH



ROBERT BURGESS



BECKY BURROWS



EVELYN BYKOWSKI



MELISSA CALVERT



JENNIFER CARR



DENVER CASTO II



LESLIE COCHENOUR



ROBIN COLEMAN



TRACY COPELAND



MARY COX



ANNE CRAIG



JEFF CRAVEN



DEBRA CRITCHFIELD



STEPHEN CROW



DELORIS CUNNINGHAM



JOHN DAVIES II



BETH DIEDRICH



THOMAS DUKES



JOYCE DYE



CATHERINE EHLERS



NANCY EMERICK



MAUREEN FOLEY



STEPHEN FRESHWATER



BARBARA FRUM



BECKY FURY



SUSAN GLASSER



KIMBERELY GODWIN



LINDA GOSS



BRUCE GRAFF



SUSAN HACKETT



JOHN HALL



KELLY HAMPTON



JOHN HART



PATTI HELFRICH



KATHRYN HICKMAN



TAMMY HOOVER



CATHY HOWE



MARGO HOWELL





RICHARD INGRAHAM



GREG ISAACS



JACKIE JANICE



RON JENKINS



JUDY JONES



JOANN KALUHIOKALANI



OLIVE KESSEL



BONNIE KILGORE



ELIZABETH KNIGHT



VALERIE KNOPPEL



BEVERLEY KNOTTS



RICHARD LANGAN



KATHY LASSI



PHILLIP LINDEMAN



SUSAN LONG



ELIZABETH LOWE



MARCIA MASCIARELLI



KAREN MASSEY



SUSAN McCONAUGHEY



COLLEEN McEVOY



BEVERLY MEADOWS



PAM MELLOTT



SCOTT MENDENHALL



MARY MICHAEL



ROBERT MIDDLETON



JULIE MOHR



KIM MOLESWORTH



CHRISTOPHER MOORE



LESLIE MORRIS



CINDY MOSITES



TERRI MURCHLAND



MARGARET NAGEL



HEATHER O'CONNOR



DONNA OVERBECK



DAN OWEN



MARY PARSONS



DONALD PATTERSON



KAREN PETERSON





MELANIE PATTISON



LOIS PAULSGROVE



DEBRA PAWLOSKI



DEBBIE POWERS



TERRI PRITT



KAREN QUINN



LAURIE QUINN



DAVID RADCLIFF



DAWN RATZLAFF



KENNETH ROBINSON



JANET ROGAN



GLEN SAGER



POLLY SAY



PAM SCOTT



CATHY SHARP



KEVIN SHARP



EILEEN SHEA



BRIAN SHEEDY



KIMANN SHULTZ



BARBARA SMITH



JOHN SMITH



ROBERT STEPHENS



CYNTHIA STORMER



ROBERT STRONG



ELLEN SUMPTER



ANN TASSINARY



WENDY TATE



SARAH THOMAS



JULIE TITUS



BRUCE TROETSCH



AMY UHL



BRENDA UTZ



MAUDIE VANCE



KAREN VEON



KAREN VOLMER



BARBARA WILLIAMS



TERRY WINTERS



MATEAL WAMSLEY



TERRY WEISER



LISA WHITCOMB



SUSAN WILCOX



BARBARA WILKIN



LYNN WILKINSON



LIZ AND FRIENDS



BERNADETTE YESTER







Our Thoughts



MIKE ALOI — "The woods are lonely dark and deep, but I have promises to keep, and miles to go before I sleep." Robert Frost

PATTI ANDERSON — "They shall be my people, and I shall be their God; I will give them one heart and one way." Jer. 32:38

GAIL BAGWELL — "You only live once, but if you live it right once is enough."

LYNN BARGMAN — Experience is a wonderful thing. It enables you to recognize a mistake when you make it again.



ELIZABETH ANNE BARROW — "Don't part with your illusions. When they are gone, you may still exist, but you have ceased to live." MT



GINA BETTI — "It is only with the heart that one can see rightly; what is essential is invisible to the eye."

And Hopes



THOMAS BICKERTON — As you leave Wesleyan, keep your goals in front of you and be optimistic about all situations of life.

LESLIE COCHENOUR — To achieve all that is possible, we must attempt the impossible. To be as much as we can be, we must dream of being more.

BETH DIEDRICH — "Happiness is the capacity to feel deeply, to think freely, and to love joyfully."



JOYCE M. DYE — Be glad of life because it gives you the chance to love, work, play and look up at the stars.

NANCY EMERICK — We should all have dreams, precious dreams. Some came true while others become plays never to be performed . . .

GEORGE EVANO — “If you can do no good, then at least do no harm.”

STEVE FRESHWATER — “Learning is the only thing which the mind can never exhaust, nor alienate, never fear of distrust, and never dream of regretting.”

SUSAN GLASSER — There are friends who pretend to be friends, but there is a friend who sticks closer than a brother.

BRUCE GRAFF — In the sky, shines a star, spaces, near and far, calling out, who you are and smiling in the night . . .



KELLY HAMPTON
To accomplish great things,
we must only act,
but also believe,
not only plan,
but also dream.

A. France



MARY PATRICIA HELFRICH — "I will sing of your love and justice; to you, O Lord, I will sing Praise." Psalm 101:1

RICHARD INGRAHAM — The most unfortunate thing that happens to a person who fears failure is that he limits himself to try anything new.

JACKIE JANICE — The best way to know life is to love many things. Vincent Van Gogh

JUDY JONES — "Still Crazy after all these years!!!"



NANCY JONES — "Friends, no matter how far separated, will grow in love and sympathy and nearness to each other."

MARY KEANEY — It is in loving not in being loved, the heart is blessed. It is in giving, not in seeking gifts we find our guest. Whatever be your longing or your need, that give; so shall your soul before, and you indeed shall live.

OLIVE KESSEL — To be what we are and to become what we are capable of becoming, is the only end in life.

BONNIE KILGORE — When a person has a real friend, he learns not only to appreciate another human being, but he also learns to understand himself better.

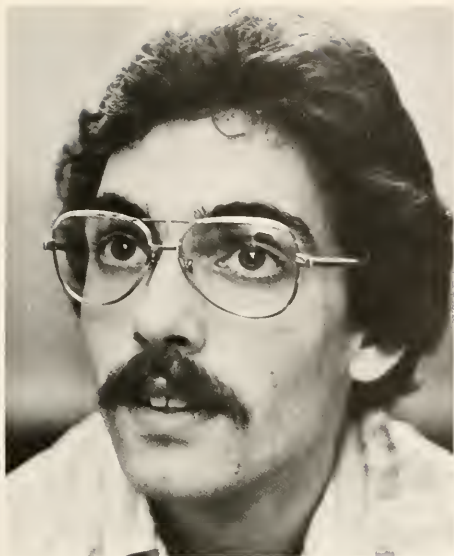
SHARON LOCKHART — Everything is appropriate in its own time.



SUSAN McCONAUGHEY

Rings of Growth

1. An observer
2. A tentative agent
3. An involved participator
4. A self actualizing creation



NANCY McELREE — "Hark to love's triumphant shout! Joy is born from pain, Joy is sorrow inside out, Broken hearts look up and see this is love's own victory."

MICHELE McLAUGHLIN — Grant me the serenity to accept the things I can not change, the courage to change the things I can; and the wisdom to know the difference.

PAM MELLOTT — The world is round and the place which may seem like the end may also be only the beginning.

MARY BETH MICHAEL — I want to do what I want to do . . . I want to be what I want to be.

KIMBERLY MOLESWORTH — I think about the people who mean so much to me and for these years have made me so very happy . . .

PEGGY MILLER

Time will never fade away
The memories of these days.

MARGIE NAGEL

Count your age by friends,
not years;
Count your life by smiles,
not tears.



HEATHER O'CONNOR — Even if I knew the world would end tomorrow, I would still plant my apple tree.

DONNA OVERBECK — “The primary purpose of education is not to teach you to earn your bread, but to make every mouthful sweeter.”

DAN OWEN — “A special thanks to those people who have influenced me in these four years. I'll miss you!!”

JAY B. PARKER — “Life is a song worth singing . . . Sing it!!”

DEBRA PAWLOSKI — Friendship is something you consider for a moment, but cherish for an eternity.



DEBI POWERS — “It is necessary to try to surpass one's self to make living worthwhile; this occupation ought to last as long as life.”

Laurie Quinn
What lies behind us and what lies before us are tiny matters compared to what lies within us.



DANNY RADER — Isn't life fun? No? Come over here. Nice view, huh? Want to see it too? Ask Jesus. Cause it is a whole new ball game.

CATHY SHARP — "Happy are those who dream dreams, and are ready to pay the price to make them come true."

SUSAN SHAWVER — If you can imagine it, you can achieve it. If you can dream it, you can become it.

EILEEN SHEA — What the heart has once known, it shall never lose.

BARB SHEARER — Those who bring sunshine to the lives of others . . . cannot help but bring it to themselves.

KIM SHULTZ — "I can do all things through Him who strengthens me."

BARBARA SMITH — "Do not follow where the path leads. Rather go where there is no path and leave a trail."

ROBERT STEPHENS — "Let me share a song of love, that those who hear might also share."



CHARLENE STOCKS — "We do not remember days, we remember moments."

CINDY STORMER — The rose unfolds and blossoms in radiant splendor only to fade and wither, but the memory of its fragrance lingers eternally.

ROBERT STRONG — . . . Seen only thru the light we see, from them so far ago, distances traveled, unperceived, as yet too far to touch.

ANN TASSINARY — When the night has been too lonely and the road has been too long and you think that love is only for the lucky and the strong . . . Just remember that in the winter far beneath the bitter snow, lies a seed that with the sun's love in the spring becomes the ROSE.

A special thanks to Bon, Moke, Rich, Julie, Bob, Dee, Jesse, and Phi Sig for all your time, love, and friendship.



JULIE TITUS — "I've got to be where my spirit can run free, got to find my corner of the sky."

BRUCE TROETSCHER — "Be someone important . . . be yourself!"



BRENDA UTZ — Cherish yesterday . . . Dream tomorrow . . . live today!

KAREN VEON — “Say what you have to say not what you ought. Any truth is better than make-believe.”

KAREN VOLMER — Sailing is like life; you must ride up and down on waves, fight the tide, and run with the wind.

SUSAN WILCOX — “The main thing in life is not to be afraid to be human.”

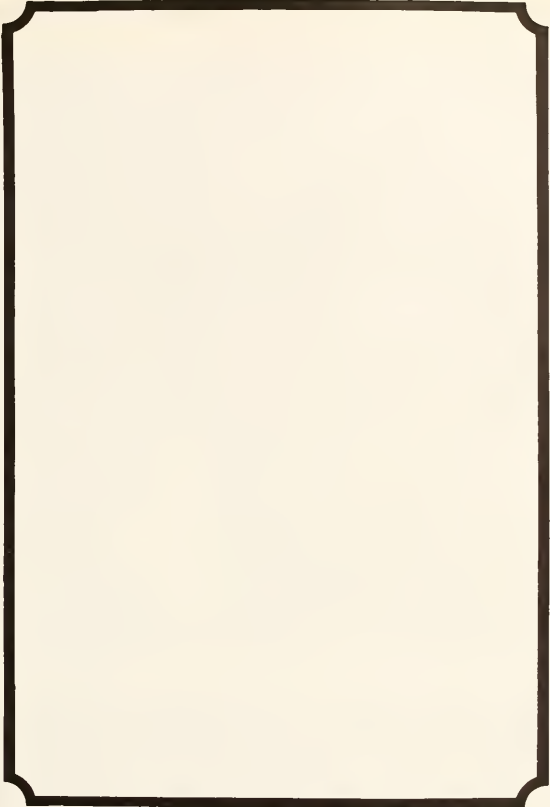
LYNN WILKINSON — Very little is needed to make a happy life. It is all within yourself — in your way of thinking.

BARB WILLIAMS — Don't ever forget that it is best to listen much, speak little and not become angry.

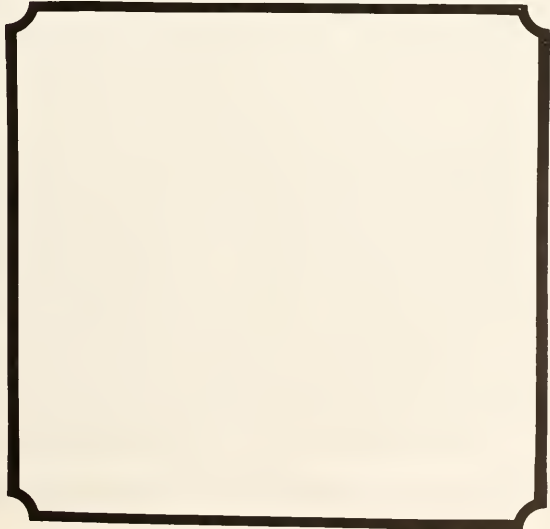
BERNADETTE YESTER — “If one advances confidently in the direction of his dreams, and endeavors to live the life which he has imagined, he will meet with a success unexpected . . .” Thoreau







UNDERCLASS



THE CLASS OF 1981



Vice Pres.: David Bellotti Sec./Treas.: Donna Smith Not pictured: Pres.: Don Bendure

Pam Ackley
Leslie Adams
Debra Ahearn
Lisa Albert
Peggy Allio
Cathy Allnutt
Wilma Angle
Gretchen Bailey



Nancy Beachley
David Bellotti
Laura Bender
Donald Bendure



Deborah Bollinger
Elizabeth Bolt
James Bottoms
Rebecca Burgess



Debbie Carver
Olga Chandra
Frank Ciocci
Valerie Conn





Evelyn Cook
Paula Cowen
Cathy Crissman
Amelia Dalton



Tony Davis
Joseph Dearth
Dee Dee Donnelly
Timothy Dulany



Tom Elmore
Patricia Erickson
Cindy Farrah
Dave Fine



Marilyn Fitzgerald
John Fletcher
Christine Floyd
Douglas Frashure



Penne Freyberger
Claire Gayley
Evelyn Gilsky
Bruce Gladstone
Mary Lou
Greenwood
Kim Guesman
Mine Gurgun
Brian Hackenberg



Julia Hall
Sandy Henderson



David Henzler
Myra Huffman



Karen Jones
Sallie Jones



Susanne Jones
Diane Kaup
Joe Kenaston
Laurie Kennard
Jill Kennedy
William Kennedy
David Kite
William Klenk



Joy Krause
Ken Krimmell
Don Lambie
Karen Lannin
Jennifer Lee
Thomas Lewis
Veronica Lindsey
Judy Loney



David Manson
Anthony Marcucci
Dorothy Marks
Cheryl Marteny
Suzette Matt
Teresa May
Barbara Mays
Nancy McEwan



Susan McGhee
Debbie McLamb
Olivia Mendez
Holly Merkle
Joy Miller
Suzanne Miller
Linda Mills
Stacy Mitchell





Lisa Myers
Jane Nickell
James Nowling



Hyun Park
Tammy Perkins
Judy Pickett



Debra Pitman
Donald Pool
Catherine Pronesti



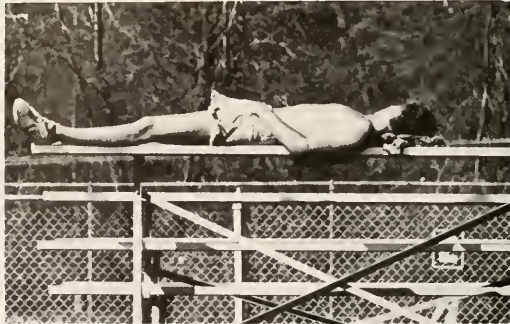
Richard Purcell
Danny Rader
Donna Ranson



Isaiah Ravi
Henry Rischitelli
Larry Rogina
Carol Saunier
Patty Saxman
Del Scheer
Jeff Scott
Tam Sherrer



Diane Shipley
Lynette Simmons
Arlene Smith



Cynthia Smith
Bob Spencer
Fred Spicer



Marjorie Stackman
Gail Stocks
Michele Stump
Susan Thomson
Janet Thorne
Arthur Tucker
Deborah Vereen
Catherine Voeding



Crystalyn Wagoner
Carol Watkins
Amita Wetherill
Carroll Wilcox
Kimberly Wiseman
Keith Witt
Kevin Witt
Jimmy Wolfe



THE CLASS OF 1982



The Class of 1982: Class Officers



Sue Albaugh
Dianne Aldridge
Brenda Alkire
James Allen
Barbara Anderson
Wendy Babbitt
Betty Bailey
Sharon Barley



Kelli Bartman
Judy Beane
Nancy Blandford
Gail Booher



Kathi Brown
Peggy Bryant
Joseph Burgess
Cindy Butler



Elizabeth Campbell
Charlene Canterbury
Sarah Carr
Carolyn Casman



Dale Chomas
 Carol Clark
 Sharon Clifford
 Cathy Coburn
 Cynthia
 Commendatore
 Joe Conley
 Bonnie Cunningham
 Nancy Davidson



Stephen Davidson
 Tom Davis
 Cathy Delsardo
 John Devaney
 Stacey De YO
 Carol Curnow
 Kimberly Connelly
 Barry Douthitt



Jennifer Dulany
 Dawn Durrah
 William Eary
 Mary Exline



Holly Farren
 Pat Dietsche
 Becky Fast
 Wendelyn Fefolt



Bonnie Fetty
 Karen Flowers
 Laura Fox
 Michael Frishkorn





Kathy Fulk
Emily Furr
Jane Garrabrant
Kristi George



Dane Goff
Jeff Greenway
Brian Hackenberg
Jane Haines



Billie Hamlet
Wendy Harris
Jeanette Heiskell
Geoffrey Hickman



Nancy Hildenbrand
Regina Holyfield
Laurel Hook
Lilly Hoover



Debbie Hutton
Lois Infanger
Sandra Isner
Deborah Jones
Karen Jones
Steve Jones
Dan Kimble
Kristi Kirchner



Dawn Koch
Shelley Kuziak



Michael Linger
Judy Loney



Frank Mams
Ann Matthews



William McDermott
 Cheryl McDonald
 Debbie Miller
 Herb Miller
 Mark Miller
 Taryn Miller
 Peter Mooney
 Eileen Moreto



Susan Morgan
 Jodale Myers
 Mary Myers
 Paul Naylor



Kathleen Nester
 Juliann Nicolette
 Linda Oertel
 Julie Olsen



Cindy Overbeck
 Kathy Owens
 Debbie Patti
 George Perry





Tonya Perry
Bee Portser
Dale Powell
Donna Queen
Sheri Rhodes
Margaret Rodgers
David Rose
Diane Ross



John Ruggieri
Luann Scaramucci
Laura Schaal
Bruce Schanck



Ron Schroeder
Terry Schultz
Karen Sekira
Cynthia Sheppard



Joyce Singleton
Charlotte Skena
Teresa Skidmore
Karen Staley



Sharon Story
Becky Tacy
Deann Tenney
Anne Thomas
Susan Trowbridge
Diane Walaszczyk
Ann Walker
Christine Walker



Time Weidner
Lisa Wiegand



Mike Williams
Sandy Williams



Pam Wilt
Donna Young

THE CLASS OF 1983



The Class of 1983: Class Officers

Lori Abramovic
Robin Accuosti
Lisa Acker
Autumn Addington
Laura Adkins
Brian Akemon
Jennifer Anderson
Sally Armstrong



Susan Ball
Polly Barrett
Susan Bartholomew
Eva Becar



Selina Benson
Brian Berry
David Billhimer
Lisa Black



Susan Bomberger
Lynette Brennan
Sharon Brown
Cindy Buchanan





Kevin Burns
 Joy Butcher
 Margie Carr
 Michele Chanholtzer
 Doug Cooper
 Terri Cooper
 Dean Cousins
 Gretchen Cratzer



Robert Criss
 Nancy Dalmagro
 Fred Daniels
 Jed Daniels
 Marshall Davenport
 Janelle Davis
 Brenda Dean
 Lori Detweiler



Donna Dilley
 Jennifer Diserio
 Jennifer Dunn
 Beth Edwards
 Bruce Edwards
 Kathy Egan
 Barbara Eisengart
 Kathryn Ernst



Jacque Foster
 Julia Foster



Cathy Fowler
 Carla Fredlock



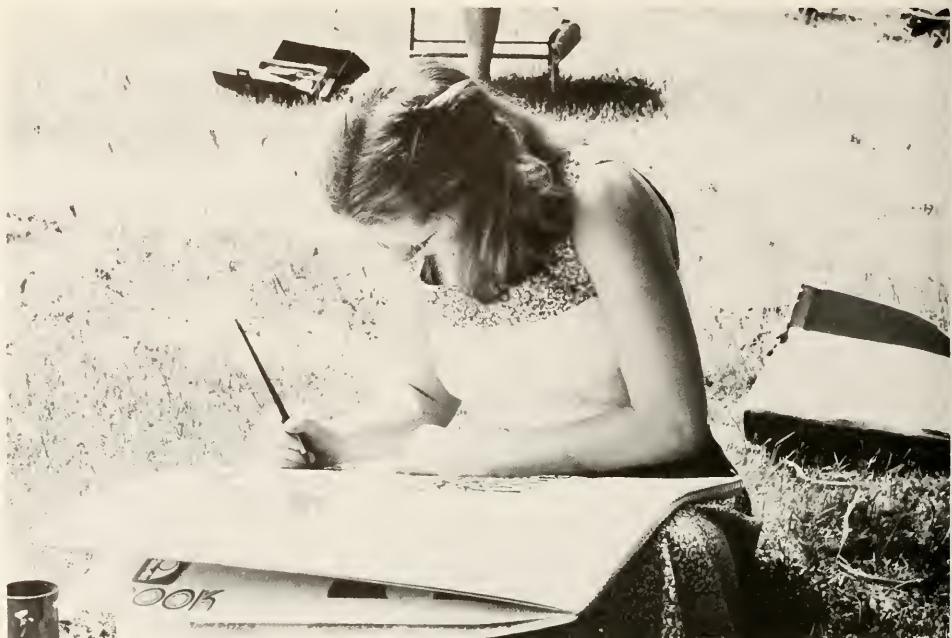
Debbie Garrett
 Colleen Gilmore



Robin Gilmore
 Deborah Glunt
 Paul Goddard
 Gregory Godwin
 Lana Gotjen
 Elizabeth Gray
 Ruth Groetzingler
 Edward Grohe



Wendy Grubb
 Kim Hall
 Julie Halloran
 Sara Halverson
 Tamata Hamilton
 Jennifer Haught
 Beverly Hauldren
 Mark Hedrick



Heidi Hill
 Kim Herbel
 Joni Hill
 Sandy Hooper
 Barbara Horne
 Leigh Howard
 Cheryl Hudson
 Julane Huffman



Nancy Hutchinson
 Tracey James
 Karen Jarboe
 James Jenkins, Jr.
 Greg Joachim
 Virginia Johns
 Berta Johnson
 Carl Johnson



Lori Jones
 Mark Jorden
 Denise Katchur
 Margaret Kaufman
 Barbara Klein Essnk
 Peggy Kortvelesy
 Christine Krimmel
 Annette Lane

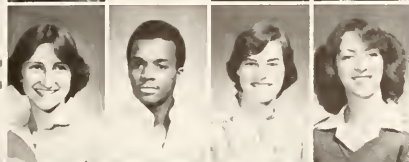


Linda Larva
 Charles Lee
 Jennifer Lee
 Beth Lipscomb
 Marion Lloyd
 Laurie Lytle
 Linda MacDonald
 Jenny Matheny





Tami Matthews
 Mary McCaffrey
 Laura McGinnity
 Jackie McLaughlin
 Catherine McShea
 Maureen McShea
 Kevin Merkle
 Diane Mihlek



Jenny Miller
 Renato Minard
 Martha Mizinski
 Cathy Mullooly



Lisa Mumma
 Terri Myers
 Jeffrey Neu
 Mary Newman



Songhui NO
 Kitty O'Harra
 Susan Orr
 Jessica Orrhood



Suellyn Oskamp
 Chris Owen
 Dean Patterson
 Laura Patton
 Lee Patton
 Linda Paulovich
 Suzanne Pawlosky
 Debbie Pepper



Stephanie Perkins
 Linsann Phares
 Connie Phillips



Joseph Pietan
 Mark Priddy
 Pam Pringle



Karen Radcliff
 Denise Ramaley
 Alisa Ramsey

Carmela Reed
Patty Reigh
Ellen Richards



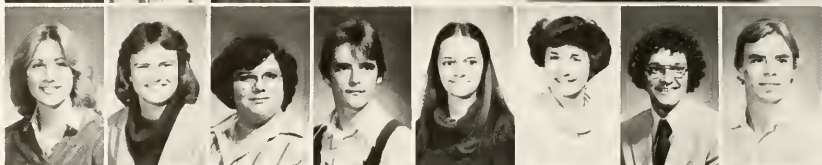
Mike Rippel
Holly Risedorf
Doug Ritchie



Ann Rogers
Nancy Sammis
Sheri Sanford



Susan Santee
Kim Sapp
Cindy Scheipers
Brian Schertz
Linda Sepp
Kristin Sepp
John Sheirer
William Shep





Anthony Scignano
Thomas Simpson



Deborah Skidmore
Gregory Smith



Sherry Smith
Paula Soergel



Linda Steckbeck
Eric Stephan
Melanie Stultz
Terri Sullivan
Gail Swarn
Afsaneh Tamadon
Gary Taylor
Cari Thomas



Jody Thomas
Thomas Thompson
Cindy Uron



John Walaszczyk
Janet Walters
Dona Ward

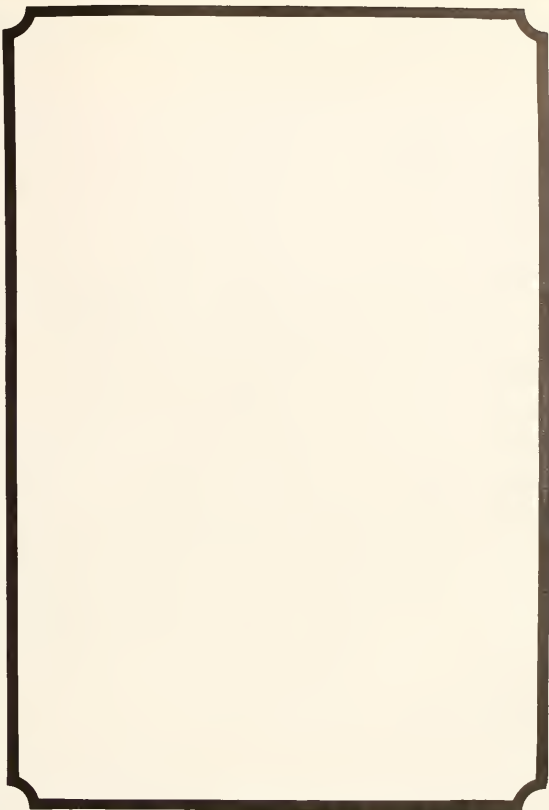


Rick Weinstein
Steve Wendling
Ed Westling

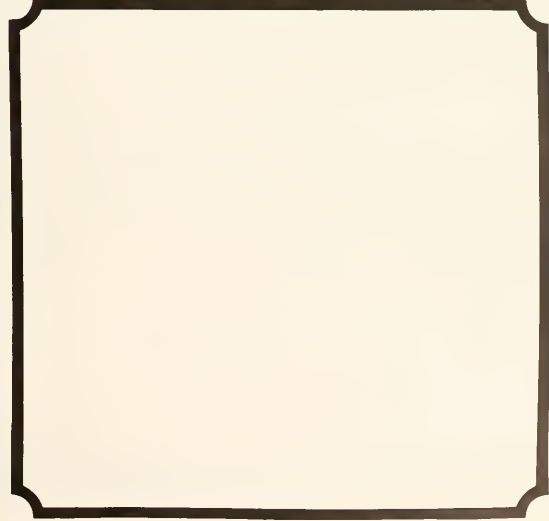


Mary Ann Whisner
Tracy White
Diane Whitescarver
Robert Wright
Susan Wiemann
Mary Wolfe
Loretta Zahren





IDENTIFICATION

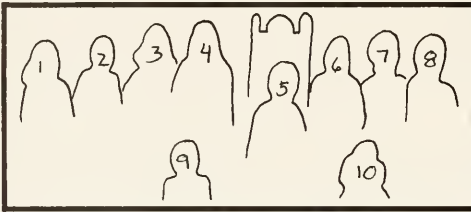


FRESHMAN HONOR COURT

Pictured on Page 38

1. Beth Edmiston
2. Kristen Sepp
3. Sue Wieman
4. Margie Carr
- 5.
6. Tamara Matthews

7. Jennifer McCauley
8. Jennifer Diserio
9. Sally Fitterer
- 10.
11. Susan Orr



HOMECOMING COURT

Pictured on Page 38

1. Debbie Naylor
2. Sue McConaughey
3. Sarah Mangus
4. Charlene Stocks
5. Leslie Cochenour

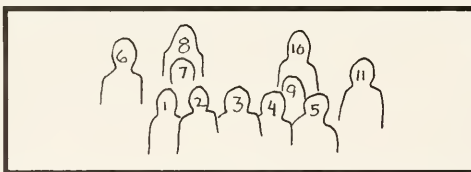
- 6.
7. Karen Jones
8. Cathy Crissman
9. crown bearer
10. rose bearer, Jenny DeFoe

SPRING COURT

Pictured on Page 45

1. Cathy Crissman
2. Suzi Miller
3. Mary Beth Michael
4. Cindy Stormer
5. Laurel Peacock

6. Nancy Jones
7. Valene Rodgers
8. Carla Fredlock
9. rose bearer, Michelle Baldwin
10. crown bearer, Robbie Allman



SACRED DANCE

Pictured on Page 170

1. Barb Smith
2. Cathy Vogeding
3. Suzanne Jones
4. Cindy Sheppard
5. Linda MacDonald
6. Donna Wills

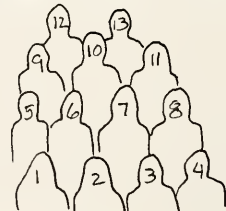
7. Jill Kennedy
8. Laura Bender
9. Debbie Carver
10. Susan Wallace
11. Sue Shawver

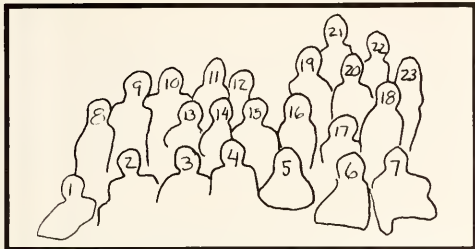
INTERVARSITY CHRISTIAN FELLOWSHIP

Pictured on Page 170

1. Barb Dunton
2. Cindy Stormer
3. Tam Shener
4. Greg McGillivray
- 5.
6. Sharon Kirby
7. Charlotte Skena

8. Sharon Barley
9. Margie Stackman
10. Greg Isaacs
11. Sandy Henderson
12. Tom Benthum
13. Bob Gillespie





LOVE SHINE

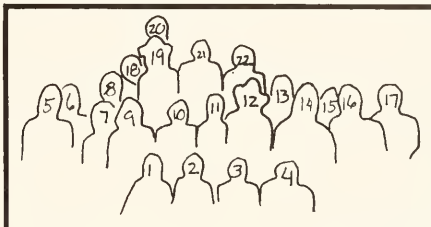
Pictured on Page 171

- | | |
|--------------------|-----------------------|
| 1. Don Poole | 13. Diane Kaup |
| 2. Mark Jordan | 14. Patty Saxman |
| 3. Susan McGhee | 15. Marge Stackman |
| 4. Bruce Gladstone | 16. |
| 5. Sarah Callaway | 17. Juliann Nicolette |
| 6. David Barr | 18. |
| 7. Bruce Schnack | 19. |
| 8. Tracy White | 20. Sue Shawwer |
| 9. Dale Chomas | 21. Bruce Troetschel |
| 10. Beth Deitrich | 22. John Sherer |
| 11. Nancy Emerick | 23. Cindy Bray |
| 12. | |

ENGINEERING CLUB

Pictured on Page 172

- | | |
|---------------------|---------------------------|
| 1. Kim Donnelly | 12. Mike Tenney |
| 2. Raymond Yap | 13. David Postlethwait |
| 3. Jody Thomas | 14. Robert Strong |
| 4. Selina Benson | 15. |
| 5. Anthony DeMattra | 16. Brian Stork |
| 6. John Bowen | 17. Philip Honsung (adv.) |
| 7. Nita Stone | 18. Barry Douthitt |
| 8. | 19. Howard Keeter |
| 9. Cathy Allnutt | 20. |
| 10. Paul Welty | 21. Joseph Wiest (adv.) |
| 11. Janet Rogan | 22. Augustine Cardillo |



FEATURE TWIRLERS

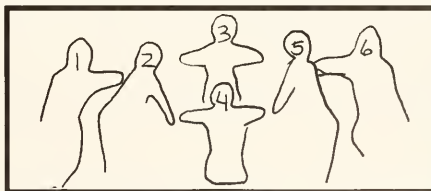
Pictured on Page 173

- | | |
|----------------|----|
| 1. Nancy Jones | 2. |
|----------------|----|

MAJORETTES

Pictured on Page 173

- | | |
|-------------------|------------------|
| 1. Lee Ann Murphy | 4. Sue Shawwer |
| 2. | 5. Sherry Hinkle |
| 3. Robin Coleman | 6. Cathy Sharp |



THE 83rd

Pictured on Page 174

- | | |
|--------------------|------------------------|
| 1. Jeanne Dantona | 7. Lynn Duvall Belcher |
| 2. Barb Lyons | 8. |
| 3. Margie Stackman | 9. Nita Stone |
| 4. | 10. Barb Dunton |
| 5. Donna Miller | 11. Becky Summers |
| 6. Janet Naser | 12. Priscilla Carroll |

ALBATROSS

Pictured on Page 174

- | | |
|------------------|---------------------|
| 1. Cindy Stormer | 8. Bruce Gladstone |
| 2. Bob Stevens | 9. Steve Freshwater |
| 3. Tony Lindeman | 10. Tom Bickerton |
| 4. Kevin Sharp | 11. Jay Parker |
| 5. Don Poole | 12. Bob Burgess |
| 6. Jeff Haught | 13. Keith Witt |
| 7. Dan Owen | |



HOME ECONOMICS ASSOCIATION

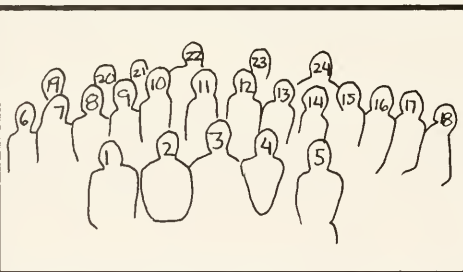
Pictured on Page 175

- | | |
|--------------------------|--------------------|
| 1. | 11. Cathy Crissman |
| 2. Deb Vereen | 12. Cathie Ehlers |
| 3. Margaret Walls (adv.) | 13. Annette Carper |
| 4. Ann Beal | 14. |
| 5. Nancy Pekarchik | 15. Ann Beamer |
| 6. | 16. |
| 7. Sharon Barley | 17. |
| 8. Liz Campbell | 18. |
| 9. Julie Hall | 19. |
| 10. Donna Ranson | 20. |

COMMUNITY COUNCIL EXECUTIVE BOARD

Pictured on Page 176

- | | |
|---------------------|------------------|
| 1. Ben Young (adv.) | 4. Suzi Miller |
| 2. Sarah Mangus | 5. Rich Ingraham |
| 3. Joe Kenaston | |



COMMUNITY COUNCIL

Pictured on Page 176

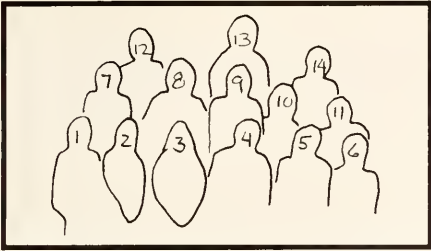
- | | |
|------------------|-----------------------|
| 1. Andy Couch | 13. Suzanne Jones |
| 2. Becky Burgess | 14. Brenda Frankfield |
| 3. Rich Ingraham | 15. Dean Bailey |
| 4. Carol Curnow | 16. Margo Howell |
| 5. John Wells | 17. Ben Young |
| 6. Kim Wiseman | 18. Doris Godsey |
| 7. Kim Donnelly | 19. Dan Owen |
| 8. Joe Kenaston | 20. Steve Freshwater |
| 9. Suzi Miller | 21. Rob Gilpin |
| 10. Mike Aloï | 22. Jay Parker |
| 11. Sarah Mangus | 23. Dr. Welliver |
| 12. John Davies | 24. Mr. Nickell |

GLAUNER HISTORICAL SOCIETY

Pictured on Page 177

- | | |
|------------------|----------------------|
| 1. Joe Kenaston | 5. Barb Smith |
| 2. Mike Aloï | 6. Rich Ingraham |
| 3. Leslie Morris | 7. Dr. Coston (adv.) |
| 4. Bev Meadows | |





SIGMA THETA EPSILON

Pictured on Page 178

1. Rick Nelson
2. Susan Orr
3. Barb Shearer
4. Lynn Beisler
5. Steve Woomer
6. Jeff Zahn
7. Gary Kramer

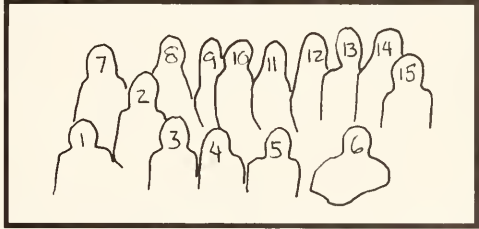
8. Ron Schroeder
9. Fred Spicer
10. Peter Major
11. Dr. Mow (adv.)
12. Jeff Greenaway
13. John Lane
14. David Bellotti

STUDENT VOLUNTEER PROJECTS

Pictured on Page 178

1. Juliann Nicolette
2. Brenda Frankenfield
3. Gail Stocks
4. Peg Dickert
5. Gretchen Nau
6. Bob Spencer
7. Susan McConaughy

8. Ann Beth Rodgers
9. Susan Ball
10. Deb Carver
11. Kim Donnelly
12. Claire Gayley
13. Janet Thorne
14. Sandy Knoth

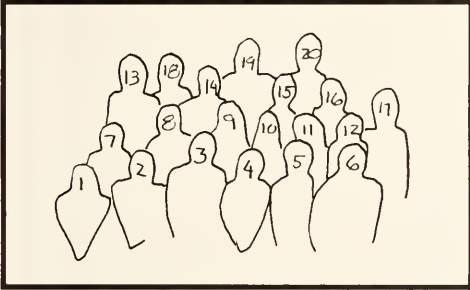


CHRISTIAN LIFE COUNCIL

Pictured on Page 179

1. Sandy Henderson
- 2.
3. Rick Nelson
4. Cathy Howe
5. Pam Ackley
6. Dan Owen
7. Tam Sheirer
- 8.
9. Susan Albaugh
10. Sarah Callaway

- 11.
12. Susan McGhee
13. Kurt Pferdekamper
14. Mike Linger
15. Don Poole
16. Diane Kaup
17. Dr. Burton
18. Patty Saxman
19. Dale Chomas
20. Tom Benthum

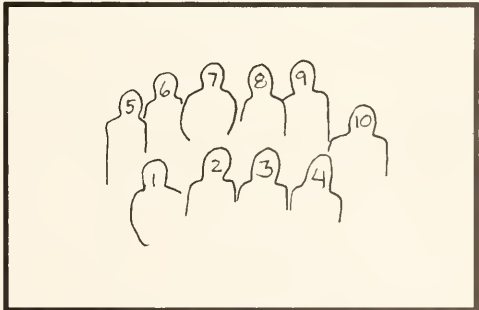


CAMPUS JUDICIAL BOARD

Pictured on Page 179

1. Deb Vereen
2. Liz Knight
3. Beth Schriber
4. Margo Howell
5. Nick Green

6. Susan McGhee
7. Doris Godsey
8. Patricia Strader
9. Deb Powers
10. Dean Bailey

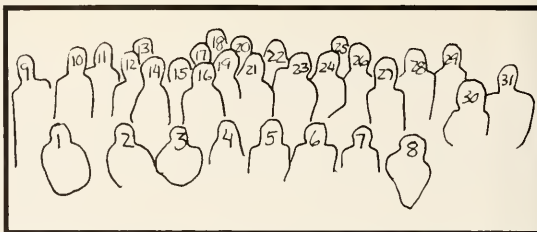


OUTING CLUB

Pictured on Page 181

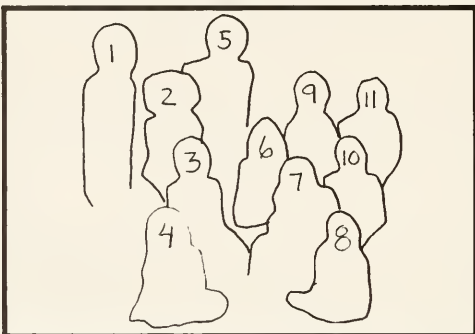
- 1 Sue Cowper
- 2 Lynn Wilkinson
- 3 Janalee Huffman
- 4 Peggy Kortvelsky
- 5 Maude Vance
- 6 Andrea Caouette
- 7
- 8
- 9
- 10
- 11
- 12
- 13 Mark Martin
- 14
- 15 Berta Johnson
- 16 Judy Loney

- 17 Bob Burgess
- 18 Randy Light
- 19 Cindy Union
- 20 Kevin Sharp
- 21 Arlene Smith
- 22 Robert Strong
- 23 Janelle Davis
- 24 Clare Gayley
- 25 Paul Goddard
- 26
- 27 Cindy Farrar
- 28
- 29 Brenda Utz
- 30 Lori Deweiler
- 31 Dave Henzler



CHILDREN'S THEATRE

Pictured on Page 182



1. Joe Luparello
2. Michelle Reese
3. Paula Krzykowski
4. Marcia Jonczak
5. Allen Delaney
6. Nancy Emerick

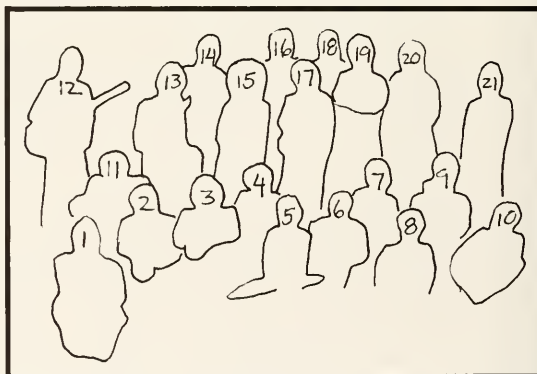
7. Karen Quinn
8. Susan Wilcox
9. Dave Petty
10. Moke Post
11. Larry Wagner

JAZZ ENSEMBLE

Pictured on Page 183

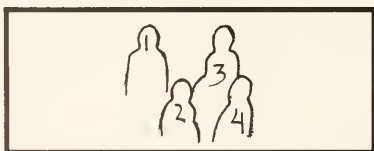
1. Jeff Childers
2. Randy Ward
3. Randy Brown
4. Robin Bunch
5. Frank Mams
6. Fred King
7. Jeff Hodge
8. Tom Simpson
9. Andy Shreve
10. Bill Hamman
11. Brenda Hager

12. Paul Taylor
13. Mark Dolin
14. George Evano
15. Anne Craig
16. Stefan Tolliver
17. Doug Babcock
18. David Milburn
19. John Ruggieri
20. David Young
21. Jon Bright



AMERICAN GUILD OF ORGANISTS

Pictured on Page 183



1. Robert Shafer
2. Shelly Kuziak

3. Brenda Frankenfield
4. Marge Nagel

AWARDS AND ELECTIONS COMMITTEE

Pictured on Page 184



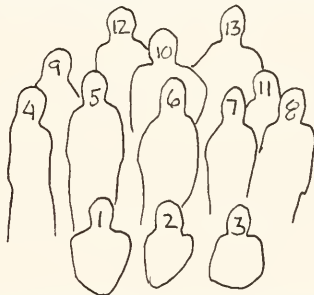
- | | |
|---------------------|-------------------|
| 1. Mary Lynn Wilson | 7. Gail Bagwell |
| 2. Diane Shipley | 8. Don Bendure |
| 3. Tammy Hoover | 9. Berta Johnson |
| 4. David Bellotti | 10. Amy Uhl |
| 5. Kelly Hampton | 11. Carol Saunier |
| 6. Heather O'Connor | |

RESIDENCE HALL COUNCIL

Pictured on Page 184

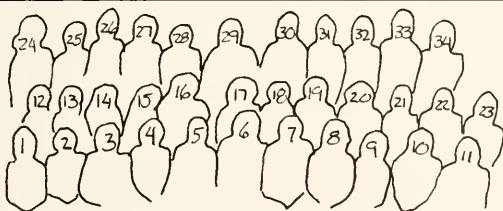
1. John Davies
2. Mary Lou Greenwood
3. Joy Miller
4. Wendy Outwren
5. Mark Shuster (adv.)
6. Bev Knotts
7. Valene Post

8. Ed Crawford
9. Claire Gayley
10. Debbie Smith
11. Lynn Keir
12. John Shearer
13. Dale Powell



STUDENT NURSES OF WESLEYAN

Pictured on Page 185



1. Dianne Wittich, 2. Maude Vance, 3. Julann Nicolette, 4. Maureen Foley, 5. Patti Sager, 6. JoAnn Kaluhokalani, 7. Marcia Mascarelli, 8. Maris Miller, 9. Bernadette Yester, 10. Heather O'Connor, 11. Kelly Hampton, 12. Carroll Wilcox, 13. Beth Lipscomb, 14. Nancy Sammis, 15. Sallie Beth Jones, 16. Janet Thorne, 17. Marge Nagel, 18. Kasee Veer, 19. Diane Shipley, 20. Tern Pratt, 21. Adele Hawkins, 22. Peggy Allio, 23. Deborah Barker, 24. Lynette Brennan, 25. Carol Saunier, 26. Gail Bagwell, 27. Amy Jerolman, 28. Beth Barrow, 29. Joy Miller, 30. Lois Paulsgrove, 31. Pam Mellott, 32. Kim Molesworth, 33. Ellen Sumpter, 34. Cindy Farrar

FELLOWSHIP OF CHRISTIAN ATHLETES

Pictured on Page 186

1. Ingrid Ballhausen
2. Eileen Shea
3. Lynette Brennan

4. Peter Major
5. Lee Ann Patton
6. Jalane Huffman



CCPB EXECUTIVE BOARD

Pictured on Page 187



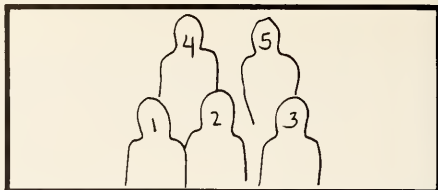
- | | |
|---------------------|---------------------|
| 1. Dr. Bright | 7. Laura Schaal |
| 2. Bob Oliver | 8. Marianne Arroyo |
| 3. Steve Freshwater | 9. Dr. Gurdak |
| 4. Liz Lowe | 10. Jenny Lee |
| 5. Bob Skinner | 11. Lon Hinkle |
| 6. Donna Ranson | 12. Archie Robinson |

PANHELLENIC COUNCIL

Pictured on Page 187

1. Karen Lannin
2. June Rose Simmons
3. Deb Pitman

4. Patti Bejsovec
5. Tammy Perkins

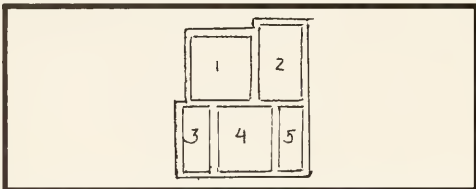


MURMURMONTIS

Pictured on Page 188

1. Heather O'Connor
- Diane Kaup
- Ann Tassinary
2. Cindy Mosites

3. Julie Titus
4. Greg Isaacs
- Mary Jean Parsons
5. Julie Mohr



PHAROS

Pictured on Page 189

1. Jane Garrabrant
2. Lori Heitman
3. Scott Miller
4. Mary Ann Whisner
5. Jeanette Heiskell

6. Amy Jeroloman
7. Olga Chandra
8. Berta Johnson
- 9.
- 10.

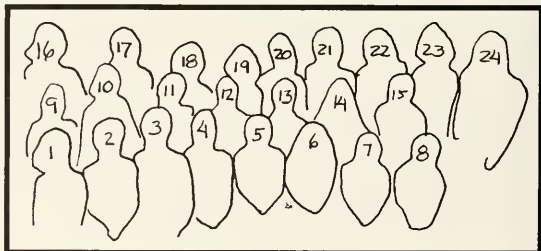


ALPHA LAMBDA DELTA

Pictured on Page 193

1. Linda MacDonald
2. Susan Wallace
3. Lisa Mummaw
4. Heidi Hill
5. Susan Santee
6. Pam Arthur
7. Sandy Hooper
8. Carol Clark
9. Wendy Harris
10. Loretta Zahren
11. Debbie Glunt
12. Jennifer Lee
13. Nancy Sammis

13. Nancy Sammis
14. Gail Swarm
15. Lori Jones
16. Kathryn Ernst
17. Diane Ross
18. Valerie Rodgers
19. Barbie McClean
20. Annette Heideman (adv.)
21. Martha Nizinski
22. Kim Hackenberg
23. Cheryl Harshberger
24. Alicia Barnard



ALPHA PSI OMEGA

Pictured on Page 194



1. Beth Deitrich
2. Kim Molesworth
3. Larry Wagner
4. Jeff Haught
5. Cathy Sharp
6. Susan Wilcox

7. Barb Smith
8. Jay Parker
9. Beth Barrow
10. Nancy Emerick
11. Devonne Brown
12. Bruce Gladstone

BENZENE RING

Pictured on Page 195

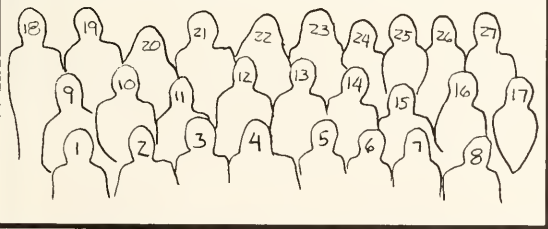
1. Jeff Childers
2. Karen Massey
3. Sue Shawver
4. Joann Jablonski

5. Paul Taylor
6. Dale Chomas
7. Diana Marks
8. Dr. Richter (adv.)



BETA BETA BETA

Pictured on Page 196



1. Steve Crow
2. Tom Eimore
3. Amy Jerolman
4. Joy Miller
5. Don Poole
6. Sue Shawver
7. Karen Massey
8. Diane Shipley
9. Steve Freshwater
10. Bob Tebbetts
11. Lynn Keur
12. Dale Chomas
13. David Henzler
14. Carol Sauner

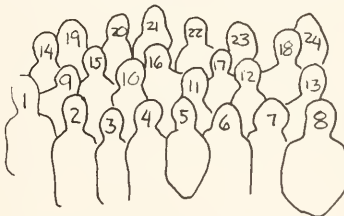
15. Marge Nagel
16. Dr. Colson (adv.)
17. Scott Mendenhall
18. Tony Lindeman
19. Larry Rognna
20. DeeDee Donnelly
21. Jeff Neal
22. Pam Arthur
23. Janet Thorne
24. JoAnn Kaluhoakalan
25. Kim Molesworth
26. Patu Sager
27. Dan Harman

DELTA MU DELTA

Pictured on Page 197

1. Wayne Voss
2. Nancy Jones
3. Patt Miller
4. Julie Titus
5. Cathie Ehlers
6. Annette Butler
- 7.
8. Mr. Clemens
9. Tony Andrade
10. Judy Pickett
11. Steve Woomer
12. David Radcliff

13. Robert Burgess
14. Deb Powers
- 15.
16. Andrea Caouette
17. Suzi Miller
18. Mike Brown
19. Terry Weiser
20. Sue Thornhill
- 21.
22. Gail Stocks
- 23.
24. Carol Deminger

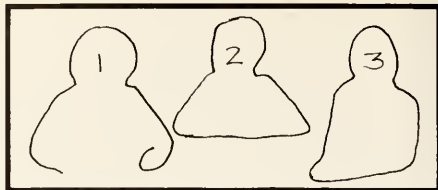


DELTA PSI KAPPA

Pictured on Page 198

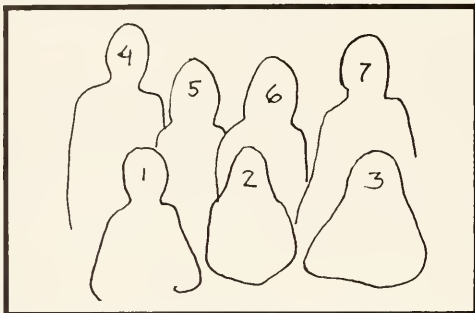
1. Gay Cunningham
2. Coach Haas

3. Dee Donaldson



KAPPA DELTA PI

Pictured on Page 199



1. Donna Overbeck
2. Terri Winters
3. Mateo Wamsley
4. Rich Ingraham

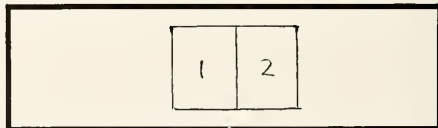
5. Kathy Howe
6. Bev Knotts
7. Jen Carr

KAPPA PI

Pictured on Page 200

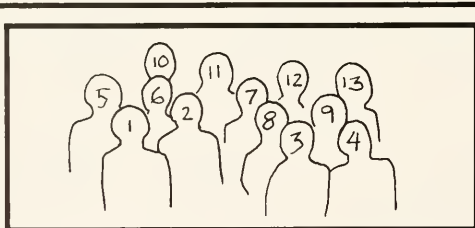
1. Julie Titus

2. Leslie Morris



KAPPA OMICRON PHI

Pictured on Page 201



1. Liz Campbell
2. Margaret Walls
3. Ann Beal
4. Nancy Pekarchik
5. Sharon Barley
6. Julie Hall
7. Donna Ranson

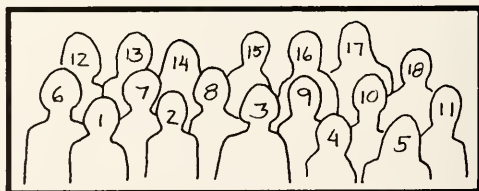
8. Cathy Crissman
9. Annette Carper
10. Ann Beamer
11. Karen Volmer
12. Cathie Ehlers
13. Mrs. Simmons

MORTARBOARD

Pictured on Page 202

1. Susan Wilcox
2. Kelly Hampton
3. Becky Fury
4. Lynn Wilkinson
5. Anne Craig
6. Kim Molesworth
7. Donna Overbeck
8. Nancy Pekarchik
9. Julie Titus

10. Matelle Wamsley
11. Leslie Cochenour
12. Patti Helfirch
13. Kathy Howe
14. Cindy Stormer
15. Sue Shawver
16. Deb Powers
17. Nancy Emerick
18. Tina Lowers



OMICRON DELTA EPSILON

Pictured on Page 204



- | | |
|-------------------|----------------|
| 1. Greg Isaacs | 9. Nancy Jones |
| 2. Gail Stocks | 10. Wayne Voss |
| 3. Carol Watkins | 11. John Hart |
| 4. Don Lambie | 12. Mr. Bayard |
| 5. Mr. Nair | 13. Bob Keepka |
| 6. Liz Knight | 14. Dr. Bright |
| 7. Colleen McEroy | 15. Bob Emch |
| 8. Beth Shriber | |

OMICRON DELTA KAPPA

Pictured on Page 205

- | | |
|----------------------|---------------------|
| 1. George Porter | 13. Steve Crow |
| 2. Tom Bickerton | 14. Dr. Mow |
| 3. Jay Parker | 15. John Hart |
| 4. Don Lambie | 16. Mike Aloji |
| 5. Tony Lindeman | 17. Gary Montgomery |
| 6. Tony Marcucci | 18. Mr. White |
| 7. Tom Elmore | 19. Dr. Weist |
| 8. Scott Mendenhall | 20. Paul Kauffman |
| 9. Mr. Bayard | 21. Dr. Capstack |
| 10. Ken Krimmel | 22. Dr. Coston |
| 11. Steve Freshwater | 23. Dr. Richter |
| 12. Joe Kenaston | |



PHI ALPHA THETA

Pictured on Page 206



- | | |
|-----------------|-------------------|
| 1. Mr. Sharp | 7. Karen Lannin |
| 2. Joe Kenaston | 8. Dr. Martin |
| 3. Dr. Coston | 9. Leslie Morris |
| 4. Mike Aloji | 10. Jane Overton |
| 5. Dr. Hunt | 11. Tom Benthum |
| 6. Dr. Curry | 12. Rich Ingraham |

PHI KAPPA PHI

Pictured on Page 207

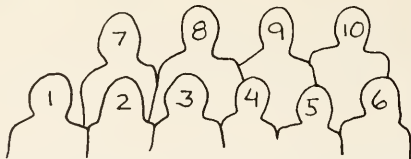
- | | |
|------------------|--------------------|
| 1. Jeff Neal | 8. Kim Molesworth |
| 2. Dr. Capstack | 9. Patti Sager |
| 3. Cinsy Stromer | 10. Patti Helfrich |
| 4. Dr. Gregg | 11. Nancy Emerick |
| 5. Dr. Weimer | 12. Dr. Welliver |
| 6. Dan Owen | 13. Jane Nickell |
| 7. Dr. Colsen | 14. Dr. Mow |



PI DELTA EPSILON

Pictured on Page 208

- | | |
|----------------------|-----------------|
| 1. Ms. Baldwin | 6. Amy Jerolman |
| 2. Jane Garrabrand | 7. Julie Mohr |
| 3. Jeanette Heiskell | 8. Scott Miller |
| 4. Julie Titus | 9. Rich Elhott |
| 5. Olga Chandra | 10. Ron Roth |



PI GAMMA MU

Pictured on Page 209

- | | |
|-------------------|-------------------------|
| 1. Deb Powers | 7. Nancy Duvall Belcher |
| 2. Karen Lannin | 8. Ruth Karns |
| 3. Tom Bickerton | 9. Joe Kenaston |
| 4. Mike Aloï | 10. Tam Sherier |
| 5. David Bellotti | 11. Dr. Bright |
| 6. Rich Ingraham | 12. Mr. Bayard |



PSI CHI

Pictured on Page 210

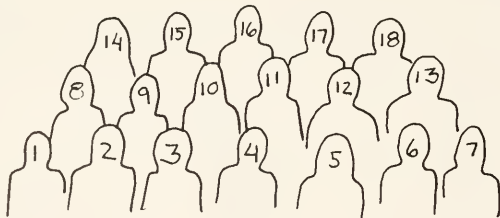
- | | |
|----------------------|-----------------|
| 1. Tamara Sherier | 4. Brenda Utz |
| 2. Tina Lowers | 5. Janet Thorne |
| 3. Mary Beth Michael | |



SIGMA ALPHA IOTA

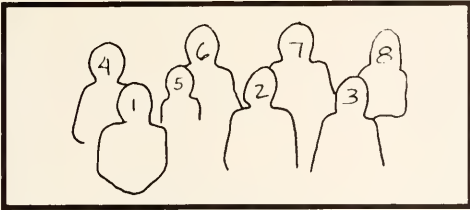
Pictured on Page 211

- | | |
|----------------------|-------------------|
| 1. Susan McConaughey | 10. Cindy Stormer |
| 2. Darlene Allman | 11. Luellen Cobb |
| 3. Karen Lannin | 12. Caroline Dees |
| 4. Gretchen Bailey | 13. Robin Bunch |
| 5. Anne Craig | 14. Diane Bozic |
| 6. Joy Krause | 15. Wendy Tate |
| 7. Patti Helfrich | 16. Jane Nickell |
| 8. Sarah Carr | 17. Donna Coffman |
| 9. Becky Fast | 18. Polly Say |



SIGMA TAU DELTA

Pictured on Page 212

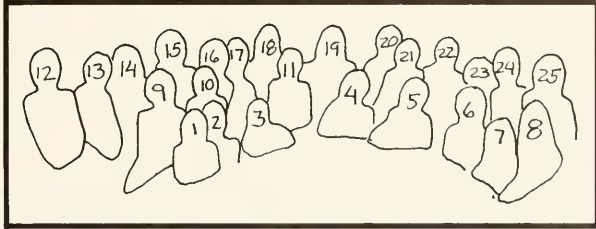


1. Susan McGhee
2. Joy Krause
3. Susanne Jones
4. Matelle Wamsley

5. Michelle Baldwin
6. Ms. Baldwin
7. Mark Defoe
8. Jane Nickell

SIGMA THETA TAU

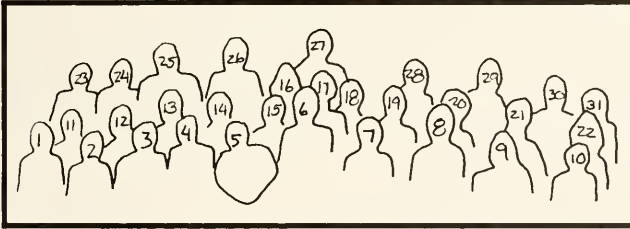
Pictured on Page 213



1. Margie Nagel, 2. Vera Kaufman, 3. Kelly Hampton, 4. Miss Elliot, 5. Kim Molesworth, 6. Barb Wilkins, 7. Debbie Troutman, 8. Sue Kanifa, 9. Berardette Yester, 10. Kim Guesman, 11. Mrs. Godley, 12. Mrs. Craven, 13. Mrs. Bryant, 14. Mine Gurgan, 15. Mrs. Nesselrodt, 16. Mrs. Campbell, 17. Mrs. McKinney, 18. Carol Hinkle, 19. Patti Sager, 20. Nancy Jackson, 21. Jean McEldowney, 22. Sister Mona Farthing, 23, 24, 25. Janet Thorne

WHO'S WHO

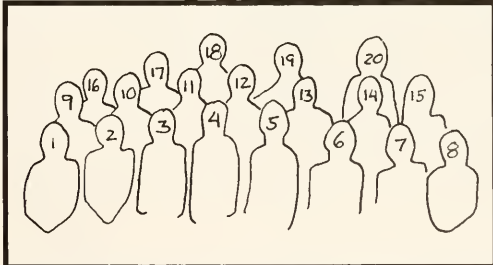
Pictured on Page 224



1. Joy Krause, 2. Karen Lannin, 3. Tina Lowers, 4. Kim Molesworth, 5. Heather O'Connor, 6. Dan Owen, 7. Nancy Petarchis, 8. Danny Rader, 9. Patti Sager, 10. Susan Wilcox, 11. Becky Burrows, 12. Leslie Cochenour, 13. John Hart, 14. Patti Helfrich, 15. Tammy Hoover, 16. Nancy Emerick, 17. Rich Ingraham, 18. Kelly Hampton, 19. Joe Kenaston, 20. Jane Nickell, 21. Sue Shaver, 22. Cindy Stormer, 23. Mike Aho, 24. David Bellotti, 25. Tom Bickerton, 26. Paul Taylor, 27. Charle Wamsley, 28. Steve Freshwater, 29. Cathy Sharp, 30, 31. Julie Trus

MORTARBOARD SPRING INITIATES

Pictured on Page 203



1. Joann Jablonski
2. Gretchen Bailey
3. Joy Krause
4. Karen Lannin
5. Cheryl Marteney
6. Carroll Wilcox
7. Gail Stocks
8. Terri May
9. Sue McGhee
10. Dee Donaldson
11. Debbie Carver
12. Mary Lou Greenwood
13. Diane Shipley
14. Tamara Shearer
15. Jody Reese
16. Jane Weimer
17. Robin Bunch
18. Penne Freyberger
19. Jane Nickell
20. Janet Thorne

We apologize to all those we were not able to identify due to unfamiliarity, photography or oversight.

Type

All Heading Type is Times Roman; 18, 24, or 36 point. Body copy is Times Roman. Printed in 8, 10, and 12 point. Type in the senior directory is News Gothic. The special effect headings on the divider pages are ChartPak lettering.



Copy

The song used in the opening section is "My Home Among The Hills." Portions of the copy in the sports section were contributed by Bob Skinner, Scott Miller and Preston Modlin. Research for the 90th Anniversary section derived from *A History of West Virginia Wesleyan College* by Kenneth Plummer and past editions of the *Murmurmontis*.

Specification

The 1980 *Murmurmontis*, published annually by the students of West Virginia Wesleyan College, is copyrighted, printed and bound by the Taylor Publishing Company of Dallas, Texas. The Divider design and endsheet design were the artistic contributions of Julie Lynn Titus. The 1980 *Murmurmontis* had a press run of 1600.

Photography

Howard Hiner
Mark Martin
Ann Tassinary

Gary Taylor
Julie Titus
Robert Wright

Class portraits by Stevens Studio. Photographs in the 90th Anniversary Section courtesy of the alumni office. Thank you.

Editorial Staff

Co-Editors

Julie Lynn Titus

Julie Lin Mohr

Photography/Art

Julie Lynn Titus

Copy Editor

Mary Jean Parsons

Underclass

Cindy Mosites

Academics

Greg Isaacs

Honoraries

Heather O'Connor

Faculty

Beth Shriber

Graduates

Ann Tassinary

Sports

Julie Lin Mohr

Financial Advisor

Dean Ruhlow

Advisor

Arminta Baldwin

Epilogue

"Every man has his daydreams. Every man has his goal,
People like the way dreams have of sticking to the soul;
Thunderclouds have their lightning, Nightingales have their song,
Don't you see I want my life to be something more than long?"

Rivers belong where they can ramble,
Eagles belong where they can fly.
I've got to be where my spirit can run free
Got to find my corner of the sky.

So many men seem destined to settle for something small
But I won't rest until I know I'll have it all;
So don't ask where I'm going, But listen when I've gone,
Far away you'll hear me singing softly to the dawn . . .

I'm not a river or a giant bird that soars to the sea,
and if I'm never tied to anything I'll never be free."
— Stephen Schwartz
excerpts from "Pippin"

It has become a "semi-tradition" for the editor of this publication to apologize for or explain the problems associated with it. We feel that there is no need to do that. When we stepped into this joint editorship mid-year, our primary goals were to finish this volume of the *Murmurmontis* on schedule and to make it the best book we possibly could. We hope we have succeeded.

This yearbook was conceived in the minds of a few to represent a portion of the lives of many. With this in mind, we have attempted to draw on as many sources as possible in the hope that this yearbook will be truly representative of West Virginia Wesleyan, 1979-1980.

We would like to express our thanks and give credit where it is due to our staff of editors, Gary Taylor, Robert Wright, Mark Martin and all those other students who contributed photographs or copy to this publication. Special thanks to Wendy Bowman for her help and Ron Richardson of Taylor Publishing for his answers to our never ending questions. We also owe Ms. Arminta Baldwin thanks and extreme gratitude for her patience, help and, most importantly, moral support. In addition, we would like to thank each other for the help and support given.

Although we leave Wesleyan this May, it will always be remembered as an important span of time in our lives. We have found that, like the song above, we need to be tied to something and we feel that Wesleyan is that tie. Through all it has given us and all that we have given it, we are now free to find our 'corner of the sky'.

It is our hope that this volume of the *Murmurmontis* will represent to you, as it does to us, that tie.

Juliet⁽²⁾ Mohr and Titus
Co-editors



120783



