

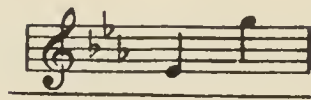
11
2113
L43
N62
931

Genevieve Peterson
444-2074

NO 1 IN C



NO 2 IN E^b



Harp

NO CANDLE WAS THERE AND NO FIRE



WORDS BY
FRANCES M. GOSTLING

MUSIC BY
LIZA LEHMANN

PRICE ^R 60 CENTS

EXCEPT CANADA AND FOREIGN COUNTRIES

CHAPPELL & Co., Inc.
RKO BUILDING-ROCKEFELLER CENTER
NEW YORK, N.Y.

CHAPPELL & Co., Ltd.
LONDON — PARIS
SYDNEY

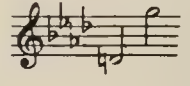
PRINTED IN U.S.A.

Other Notably Successful Sacred Songs

by
BERNARD HAMBLÉN

Nº 1 in F

Nº 2 in A^b



Cast Thy Burden

(A veritable gem of Sacred melody)

vide press.

REFRAIN

Adagio religioso

poco cresc.

poco rall.

p
Cast thy bur-den on the Lord, He shall thee sustain; He hath promis'd in His word Ease for all thy pain.
colla voce

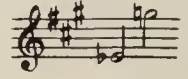
He who knows thy every care shall thy footsteps guide,
Cast thy burden on the Lord, in His love abide.

VERSE - Sometimes the way is dark, the path unknown;
Thy spirit seems to bear its cross alone;
There is no song of bird, no wayside flow'r,
No light to guide thee through the darksome hour, etc.

Copyright, 1917, by Chappell & Co. Ltd.

Nº 1 in F

Nº 2 in A



Jesus of Nazareth King!

(A magnificent song of triumph)

vide press.

FINALE

Andante maestoso

p

rall.

f
Hail, King E-ter-nal, All praise to Thee, Who bore our sor-rows On yon-der tree;
Trpt. *Trpt.* *dim.* *p* *rall.*

Own we Thy sceptre, in willing thrall,
Hail, hail, King of all!
Jesus of Nazareth, King!

OPÉNING Jesus of Nazareth, King!
A humble Nazarene, upon a cross of shame,
Pierced and bruised is suff'ring for those who scorned His name;
Around His form is hov'ring grim Death, with sable wing;
Above His head, a sign is writ - "Jesus of Nazareth, King!" etc.

Copyright, 1918, by Chappell & Co. Ltd.

CHAPPELL & CO., Ltd.

New York, London, Toronto, Melbourne.

No Candle Was There And No Fire

Words by
FRANCES M. GOSTLING

Music by
LIZA LEHMANN

Andante e semplice ♩ = 126

VOICE

PIANO

p ♩ = 108 (a little slower than the introduction)

No can - dle was there and no

fire, In the sta - ble where Je - sus was

Copyright MCMIX by Chappell & Co., Ltd.

4

born; In the stall where our Sav - iour was

laid Till the ro - sy - red break - ing of

morn; For the Christ - child and Sav - iour no

cresc. *mf*

cresc. *colla voce mf*

light, and nev - er a can - dle to

dim.

burn.

p dolce

cresc.

But the

moon gave a ra - diance di - vine, And the

L.M. cresc.

stars an ef - ful - gence bright; And the

A♯
D♯

on - ly sound to be heard ————— Was the

p
R. H.
p

low - ing of kine through the night, ————— And the

cresc.
cresc.

sigh - ing of wind in the trees, ————— and the

f rall.
pp poco rall.
L. H.
f colla voce
Red. * Red. *

flap - ping of An - gels' wings. —————

pp poco rall.
L. H.
Red. *

A 7
M 6
H

TWO SONGS OF MERIT

THE THIEF (Old Father Time) A Song for Bass or Baritone

Words and Music by
BERNARD HAMBLÉN

Fairly fast, with spirit

With humor and dramatic sense

There's a cunning old man you all must know, Whose
spe-cial-ty is crime; He's the cle-ver-est thief in the whole wide world, And he's fa-mous in ev-ry clime: He

f *dim.* *poco rall.* *mf* *tempo*

R.H.

The musical score for 'The Thief' consists of a vocal line and a piano accompaniment. The vocal line is in a 4/4 time signature and features a melody with various dynamics and articulations. The piano accompaniment includes chords and rhythmic patterns, with specific markings for dynamics and tempo changes. The lyrics are written below the vocal line.

Copyright MCMXXXVI by Chappell & Co., Inc., N.Y.C.

THE BLIND MENDICANT

Words and Music by
BERNARD HAMBLÉN

Agitato
mf accel.

Al-lah, I wait till ¹⁾Az - ra-ël Shall come to set me free, And
bear me to that land of light Where these blind eyes will see

mf accel. *f* *rall.* *ten.* *molto rall.* *ten.* *Tempo I* *ff*

The musical score for 'The Blind Mendicant' features a vocal line and a piano accompaniment. The tempo starts with 'Agitato' and 'mf accel.', then changes to 'Tempo I' with 'ff'. The score includes various dynamics and articulations, as well as a key signature change to 3/4 time. The lyrics are written below the vocal line.

¹⁾ The Mahomedan 'Angel of Death' Copyright MCMXXXVI by Chappell & Co., Inc., N.Y.C.

Red.

*

CHAPPELL & CO. INC., R K O Building, Rockefeller Center, New York, N.Y.

