

# NOCATULA

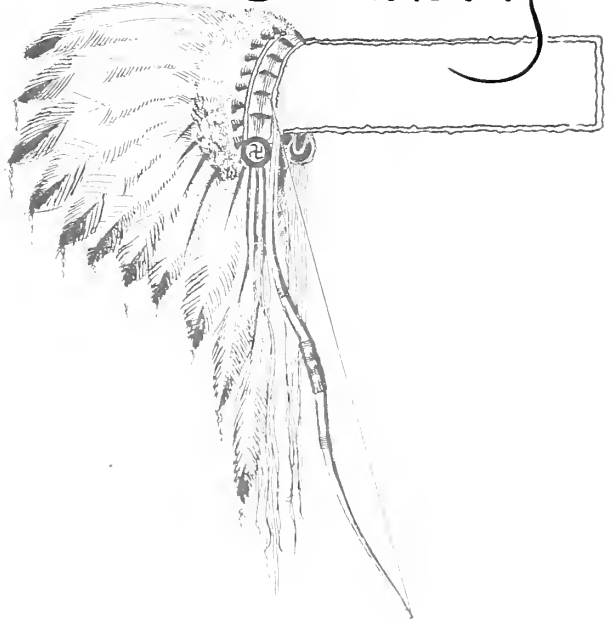
1937

R

W  
378.05  
T256n  
1937



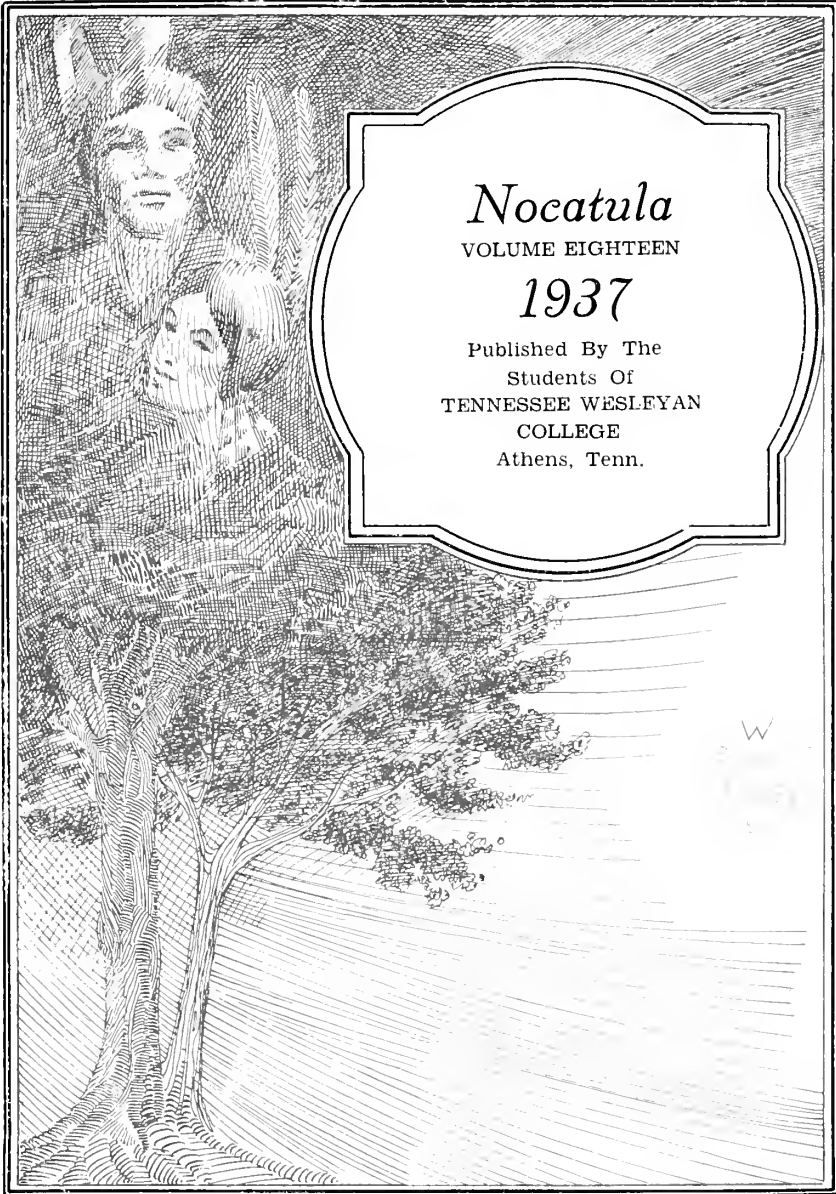
Ex Libris



Digitized by the Internet Archive  
in 2011 with funding from  
LYRASIS Members and Sloan Foundation

<http://www.archive.org/details/nocatula193718tenn>

21100



*Nocatula*

VOLUME EIGHTEEN

1937

Published By The  
Students Of  
TENNESSEE WESLEYAN  
COLLEGE  
Athens, Tenn.

MERNER - PFEIFFER LIBRARY  
TENNESSEE WESLEYAN COLLEGE  
ATHENS, TENNESSEE



COACH R. N. McCRAY

## DEDICATION

In grateful recognition of his tireless work, and as a token  
of the affectionate regard in which he is held by  
the student body, we, the staff of the  
Nocatula dedicate this volume to  
Coach Reuben N. McCray



BENNETT HALL



OLD COLLEGE BUILDING



RITTER HOME



PETTY MANKER HALL



# NOCATULA



## NOCATULA STAFF

Editor-in-Chief .....	Ruth Vaniman
Associate Editor .....	Ernest Bowery
Faculty Advisor .....	Samuel Carroll Evins
Business Manager (Senior edition) .....	Lawrence Eisenberg
Business Manager (regular editions) .....	Don Watson
Advertising Manager .....	E. K. Yates
Feature Editor .....	Rose Rickey
Alumni Editor .....	Inez Bailey
Exchange Editor .....	Mabel Wells
Typists .....	Rhoda Witt, Nina Mulkey
Reporters:—Blanche Gilland, Wilma Dennis, Dorothy Elrod, Doris Cooper, Douglas Simpson, Anna Rhodes, Mary Ann Watkins, Ruth Buttram.	



M. F. STUBBS  
A. B., M. S., Ph. D.  
DEAN  
Physics, Chemistry, Biology



JAMES L. ROBB  
A. B., M. A.,  
President



C. C. DOUGLASS  
A. B., M. A.,  
Registrar  
Education

#### MESSAGE TO THE SENIORS

To The Members of the Class of 1937:

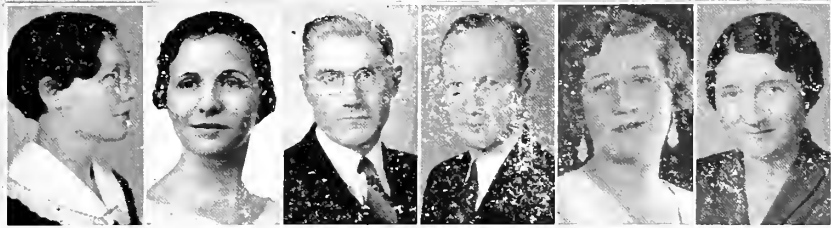
A statement which I read recently was to the effect that we do not know what college spirit is and we never will know, adding, "In the markets of the world it isn't worth the cost of the price tag, but in the hearts of students and graduates it rates in terms of million-dollar libraries, scholarship funds, and thousand-mile trips to cheer the colors." The statement added further "You don't get college spirit. It gets you."

I dare say your experience at Tennessee Wesleyan covering the past two years gives you reason to comprehend the above statement. Two years ago the college was probably just another institution to you. Today it is an integral part of you, just as your family name, your nationality, and your church. How this change has been brought about you probably would have difficulty to explain, yet you recognize it. My hope is that the benefits that have come to you through this relationship will have increasing value through the years in helping you to carry out continuously the poet's injunction to "Build the more stately mansions, O, my Soul."

Our best wishes go with you as you advance to new undertakings, new opportunities and new responsibilities.

Sincerely,  
JAMES L. ROBB  
PRESIDENT.

# NOCATULA



LELA BROWN  
EDUCATION

ELLEN COTTRILL  
DRAMATICS

G. A. YATES  
MATHEMATICS

S. C. EVINS  
ENGLISH

OTHO BURN HAMNER  
EDUCATION

IRENE GELINAS  
LIBRARIAN



LAWRENCE DIXON  
COMMERCIAL

MRS. A. B. COLLINS

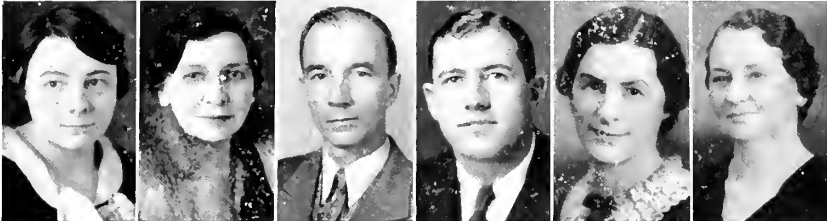
ELIZABETH BRUBAKER  
BIBLE

BISHOP WILLIAM F.  
ANDERSON-BIBLE

MRS. J. L. ROBB  
MUSIC

EDA SELBY  
MODERN LANGUAGES

ANDREW J. PETERS  
SOCIAL SCIENCE



ETHEL PRYOR  
HOME ECONOMICS

FRANCES MOFFITT  
SIANO

A. H. MYERS  
RELIGIOUS EDUCATION

R. N. MCCRAY  
COACH

LOUISE TUELL  
SECRETARY

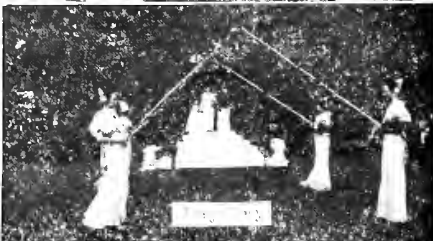
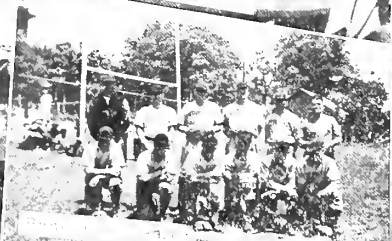
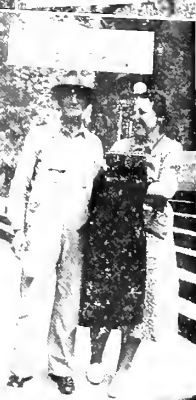
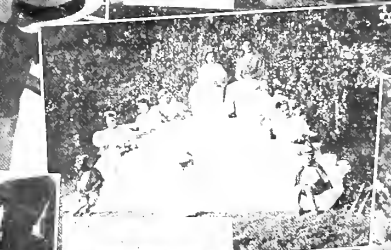
MRS. LILY SIBLE  
PETTY MARKER DIETITIAN

## FACULTY

Tennessee Wesleyan is duly proud of its well-trained, versatile faculty presided over by diplomatic and resourceful President J. L. Robb. It is largely through his efforts that the college has developed from a small struggling preparatory department into the fully accredited, well-organized junior college of today.

Tennessee Wesleyan has been fortunate in securing the services of William F. Anderson, retired Bishop of the Methodist Episcopal church, as instructor of Bible during the spring quarter. His classes in Old and New Testament, as well as his chapel lectures and informal advice have been a source of real help and inspiration to the students.

Mrs. Brubaker, who also holds the title of Dean of Women and Superintendent of Ritter Hall, has conducted a course in English composition during the Spring Quarter.





**CLASSES**

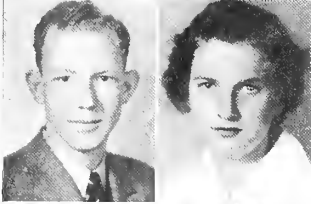
# NOCATULA

## SENIORS



**RUTH E. VANIMAN**  
 Knighto-Philo Literary Society 36-37, Alpha Gamma Sorority 36-37 Pres. 37, Dramatic Club Chairman 37, Phi Bi Chem Sec. 37, Editor Nocatula 37, Y. M. C. A. 36-37, May Queen 37.

**GENEVA GRIFFITH**  
 Pi Nu Lambda Sorority 36-37, V. Pres. 37, Orchestra 36-37, Y. M. C. A. 36-37, Queen Esther 36-37, International Relations Club 37, Knighto-Philo Literary Society, 36-37.



**STEVE PORTER**  
 Chorus 37, Pres. Band 37, Tennis 37, Phi Pi Delta Fraternity 37, International Relations Club 37.

**DEAN K7ELLEY**  
 Sigma Tau Sigma 36-37, Home Pryor Club 36-37, International Relations Club 36-37, Queen Esther Club 36-37, Knighto-Philo Literary Society 36-37, Vice Pres. International Relations Club 37, Y. W. C. A. 36, Sec. & Treas. Sigma Tau Sigma 37.



**WILMA BRISTOW**  
 Off Campus Women 37, International Relations Club 37, Sigma Iota Chi Sorority 37.

**RUTH GREGORY**  
 Queen Esther, 35-36-37, Y. M. C. A., Knitting Club 36-37; Literary Society 35-36-37, Sec. 36, Home Pryor Club 35-36.



**THEODORE WOFFORD**  
 Dramatic Club 36-37, Y. M. C. A. 36-37, Sec.-Treas. 37, Christian Service Club 36-37, Eta Iota Tau Fraternity 36-37, Pres. Knighto-Philo Literary Society 36-37, Nocatula Staff 37, International Relations Club 37, Phi Rho Pi, Off Campus Men 36-37, Orchestra 37, Second Prize, Sizer Prize Debate 37.

**IRENE BROOKS**  
 Knighto-Philo Literary Society, Phi Bi Chem, Pi Nu Lambda Sorority, Queen Esther, Dramatic Club.



**LURA V. THAMES**  
 Knighto-Philo Literary Society 36-37, Y. W. C. A. 36-37, Queen Esther 36-37, Treas. 37, Pi Nu Lambda Sorority 36-37, Sec.-Treas. 37, Chorus 36-37, International Relations Club, Dramatic Club 37.

**CLAUDE CUPP**  
 Knighto-Philo Literary Society, Phi Bi Chem Pres., Y. M. C. A., P. K. Club, Chorus, Dramatic Club.



**BILLY MACKEY**  
 Eta Iota Tau Fraternity 36-37, Phi Theta Kappa 36-37, Off Campus Men 36-37, Student Council, Phi Bi Chem 36-37, Tennis 37.

**INEZ BAILEY**  
 Phi Theta Kappa 36-37, Alpha Gamma Sorority 36-37, Nocatula Staff-Alumni Ed. 37, Y. W. C. A. 36-37, Religious Council 36-37, Sec. 37, Knighto-Philo Literary Society 36-37, Chaplain 36, V. Pres. 37, Pres. 37, Chorus 37, Dramatic Club 36-37, P. K. Club 36-37, Queen Esthers 36-37 Pres. 37, Phi Bi Chem Club 37, Music Club 36.



## SENIORS

### BERNICE CRAIG

Sigma Iota Chi Sorority 37, Basketball 37, Off Campus Women Pres. 37.

### FRENCHY WILKINS

College Play 37, Parchment Ed. and Director Sigma Iota Chi Sorority 37, Dramatic Club 37, International Relations Club 36, Off Campus Club 36-37, Manager Girls' Basketball Team 37.

### ROSE RICKEY

Alpha Gamma Sorority 36-37, Treas. 37, Knighto-Philo Literary Society 36-37, Phi Theta Kappa 36-37, Pres. 37, Home Pryor Club 36, Y. W. C. A. Sec. 36-37, Feature Ed. Nocatula Staff 37, Phi Bi Chem. V. Pres. Chorus 36, Basketball 35, Queen Esther 36-37.

### ROY HO SCLAW

Off Campus Club, Phi Bi Chem Club, Y. M. C. A. 36-37, International Relations Club 36-37, Etowah Club 36-37.

### DELBERT PUETT

International Relations Club 36-37, Vice Pres. 37, Off Campus Club 36-37, Etowah Club 36-37, Soft-Ball Champs 36.

### PAULINE MARIE CASTEEL

Sigma Iota Chi, Vice. Pres., International Relations Club, Off Campus, Pan Hellenic Union.

### RUTH BUTTRAM

Sigma Iota Chi Sorority, Off Campus Women 36-37, Y. W. C. A. 36-37, Special Chorus 36, International Relations Club 36, Student Council 36, Nocatula Staff 36, V. Pres. Student Council 37, Glee Club 36-37, Dramatic Club 37, Y. W. C. A. 36-37, Membership Chairman 37.

### GEORGE KIMBROUGH TAYLOR

Y. M. C. A., International Relations Club, Off Campus Men, Etowah Club, Tennis 36, Football 36-37, Phi Bi Chem 36.

### BLANCHE TALLENT

Alpha Gamma, Y. W. C. A.

### NANCY ROBERTS

Knighto-Philo Literary Society, Editor Nocatula Summer Quarter, Queen Esther, Y. W. C. A., Phi Theta Kappa Home Pryor Club, Pi Nu Lambda Sorority.

### MABEL WELLS

Y. W. C. A. 35-37, Knighto-Philo Literary Society 36-37, Queen Esthers, Program Chairman 36-37, Exchange Ed. Nocatula Staff 37, Alpha Gamma Sorority 36-37, P. K. Club 35-37, Glee Club 36-37, Art Club 36, Home Pryor Club 36, Phi Bi Chem Club 36, International Relations Club 37, Pan Hellenic Union 36-37 Sec.-Treas. 37.

### JIMMIE HEISKELL

"W" Club 36-37, Football 36-37, Student Council 36, International Relations Club Pres. 36, Athletic Council 37, Y. M. C. A. 36-37, Off Campus Men 36-37, Phi Delta Fraternity 36-37, V. Pres. 37.



# NOCATULA

## SENIORS



### VIRGINIA ZIEGLER

Knights-Philo Literary Society 36-37, Chaplain 37, Y. W. C. A. 36-37, Home Pryor Club 36, V. Pres., Queen Esther 36-37, Knitting Club 37, Dramatic Club 37.

### RAY HARGRAVES

P. K. Club 37, Eta Iota Tau Fraternity Sec.-Treas. 37, Phi Rho Pi 37.



### RAYMOND HUSKEY

Pres. "W" Club 36, Pres. Student Body 37, Basketball 36-37, Track 37, V. Pres. International Relations Club 37, Phi Pi Delta Fraternity 36-37, All-Tournament Forward, Junior College Basketball Tournament 37.

### MILDRED KING

Alpha Gamma Sorority 37, Y. W. C. A. 37, Knights-Philo Literary Society 37, Queen Esther 37.



### LEE VESTA ERWIN

International Relations Club 36, Off Campus Women 36-37, First Prize Rule Essay Contest 36.

### WILLARD EAVES

Football Co-Capt., V. Pres. Senior Class, V. Pres. Junior Class, International Relations Club Sec.-Treas., "W" Club, Off Campus Men.



### MARY ESTHER ATHEARN

Alpha Gamma Sorority 36-37, Y. W. C. A. 36-37, Christian Service Club 36-37, Knights-Philo Literary Society 36-37, P. K. Club 36-37, Dramatic Club 37, Glee Club 36-37, Queen Esther 36-37, Home Pryor 36.

### MARGERY COCHRAN

Sigma Iota Chi 36-37, Pres. 36-37, Off Campus Girls 36-37, Sec. 36-37, International Relations Club, Vice Pres. (fall quarter) Y. M. C. A. 36-37, Chorus 36-37.



### MARGARET ELIZABETH BEAN

Sigma Tau Sigma Sorority 36-37, V. Pres. 37, Y. W. C. A. 36-37, Queen Esther 36-37, Knights-Philo Literary Society 36-37, International Relations Club 36-37, Sec.-Treas. 37, Home Pryor Club 36-37, Cleveland Club 36-37.

### CURTIS WAGNER

Band, leader 36-37, Christian Service Club 36-37, Y. M. C. A.



### JOHNNY THOMPSON

Sigma Tau Sigma 35-36-37, Basketball 36-37, Literary Society 36.

### IRENE REYNOLDS

Sigma Tau Sigma Sorority 37, International Relations Club 37, Y. W. C. A.



### HERSCHEL ELLIOTT

Football 36-37, Y. M. C. A. 36-37, Phi Pi Delta Fraternity 36-37, International Relations Club Pres. 36, Off Campus Men 36-37, Student Council 36-37, "W" Club.

### EDITH HUTCHINS

Y. W. C. A., Off Campus Women.





## SENIORS

### EULYS BRYANT

Phi Pi Delta Fraternity 36-37, International Relations Club 36-37, Sappho-Athenian Literary Society 36.

### WILMA R. DENNIS

Y. W. C. A. 36-37, Knighto-Philo 36-37, Queen Esther 36-37, P. K. Club, Music Club 37, Vice Pres., Dramatics 37, Glee Club 36-37, Senior Play Reporter Noc-atula 37, International Relations Club 36-37, Sigma Tau Sigma 36-37, Home Pryor Club 36-37.

### CATHERINE GILJ ILAND

Y. W. C. A. 36-37, Music Club 37, Queen Esther 36-37, Knighto-Philo Literary Society 36-37, Home Pryor Club 36, Art Club 37, Glee Club.

### TEXAS ROBERTS

Knighto-Philo Literary Society 36-37 Pres. 37, Alpha Gamma Sorority 36-37, Y. W. C. A. 36-37, V. Pres. 37, International Relations Club 37, Pres. 37, Queen Esther 36-37, Phi Theta Kappa 36-37, Treas. 37, Christian Service Club, Phi Bi Chem Club.

### SPENCER ROBB

Y. M. C. A. 36-37 Pres. 37, Pres. Junior Class, Pres. Senior Class, V. Pres. Off Campus Men 37, Football 36-37, Basketball 36-37, Capt. 37, Tennis 37-37, Inter-national Relations Club 36-37, Eta Iota Tau Frater-nity 36-37, Student Council 36-37, King of the Car-nival 37, Religious Council 36-37, Boys Glee Club 36

### ETHEL PAULINE LINDSAY

Phi Theta Kappa 36-37, Sec. 37, International Relations Club 36, Y. W. C. A. 36-37, Off Campus Women 36-37, Pan Hellenic Union, Etowah Club, 1st Prize Rule Essay Contest.

### STELJA LE VANN

Phi Theta Kappa 36-37, V. Pres. 37, Alpha Gamma Sorority 36-37, Knighto Philo Literary Society 36-37, Official Delegate to Phi Theta Kappa Convention 37.

### JOSEPHINE WATSON

Sigma Tau Sigma 36-37, Pres. 37, Home Pryor Club, Y. W. C. A. 36-37, Queen Esther 36-37, Knighto-Philo Literary Society 36-37.

### J. R. PHILLIPPE

Eta Iota Tau Fraternity 36-37, V. Pres. 36, Knighto-Philo Literary Society 36-37, Chaplain 36, Christian Service Club 36-37, Pres. 37, P. K. Club 36-37, Y. M. C. A. 36-37, Religious Council.

### RUTH HAMPTON

Student Council 37, Pan Hellenic Council V. Pres. 37, Religious Council Pres. 37, Y. W. C. A. 36-37, Pres. 37, Alpha Gamma Sorority 36-37 Sec. 37, Christian Service Club 36-37, V. Pres. 37, Phi Bi Chem Club 37, Queen Esther 36-37, Dramatic Club 36-37, Knighto-Philo Literary Society 36-37.

### ALMA STOUT

Art Club, International Relations Club, Off Campus Women.

### CLYDE N. ROGERS

Y. M. C. A., Christian Service Club, International Relations Club, Off Campus Boys.





## SENIORS

### RUTH STEWART

Literary Society 36-37, Music Club Pres. 37, Y. W. C. A., Dramatic Club 36-37, Glee Club 37, Special Chorus 36, International Relations Club, Pi Nu Lambda 37, Queen Esther.

### MILDRED ERYSON

International Relations Club 36-37, Art Club, Off Campus Women 36-37, Y. W. C. A. 36-37.

### JOHN CATE

Phi Pi Delta Fraternity 36-37, V. Pres. 37, V. Pres International Relations Club 37.

### MILDRED F. DELANEY

Alpha Gamma Sorority 36-37, Off Campus Women 36-37, International Relations Club 36-37, Y. W. C. A. 36-37, Etowah Club 36-37.

### REBA GOFF

Pi Nu Lambda Sorority 36-37, Pres. 37, Knighto-Philo Literary Society 36-37, International Relations Club, Y. W. C. A., Queen Esther 36-37.

### TILDA BEST

Y. W. C. A., International Relations Club.

### PAUL HUTSELL

Eta Iota Tau Fraternity 36-37, Football 36-37, Track 37, International Relations Club.

### ILA MAYE ARMSTRONG

Alpha Gamma Sorority 36-37, International Relations Club 36-37, Off Campus Women 36-37, Etowah Club Reporter 37, Y. W. C. A. 37.

### FRANCES CAVALERI

Literary Society 36-37, P. K. Club 36-37, Pres. P. K. Club 37, Tewesco Players 37, Nut Farm Cast 37, International Relations Club 36, Y. W. C. A. 36-37, Home Pryor Club 37, Alpha Gamma 37, Queen Esther 36-37.

### ALLEN POWERS

"W" Club, Sappho-Athenian Literary Society 36, Football 36-37, Track 37, International Relations Club 36, V. Pres. Student Council.

### EDGAR A. ELDRIDGE

Phi Rho Pi 36-37, Pres. 36-37, Eta Iota Tau Fraternity 36-37 Pres. 1st quarter 37, Cheer Leader 37, Drum Major in Band 37, Christian Service Club 36-37, P. K. Club 36-37, Knighto-Philo Literary Society 36-37 Pres. 37, Boys Glee Club 36-37, International Relations Club Pres. 37, Y. M. C. A. 36-37, Student Council, Pan Hellenic Pres. 37.

### RUTH E. SMITH

Attendant to May Queen 37, Nocatula Staff 36-37, Music Club 36-37, Art Club 36-37, Dramatic Club 36-37, Y. W. C. A. 36-37, B. O. B. Pres. Club 36-37, Student council 37, Phi Theta Kappa 36-37.

### ELIZABETH ELLISON

Y. W. C. A. 36-37, Knighto-Philo Literary Society 36-37, Queen Esther 36-37, Citiz. Sec. 36-37, Dramatic Club 37, Glee Club 36-37, Senior Play 37, International Relations Club 36-37, Pi Nu Lambda Sorority 36-37, Home Pryor Club 36-37, Music Club 37, Phi Xi Chem Club.

### ZEB SHERRILL

Student Council 36, Y. M. C. A. 36-37, Phi Xi Chem Club 36, Pres. International Relations Club 37, Sappho-Athenian Literary Society 36, Nocatula Staff 36.





## SENIORS

**J. D. BROCK, JR.**

Off Campus Club 36-37, International Relations Club, Y. M. C. A., Etowah Club.

**CHARLOTTE CARD**

Special Chorus 35-36, Chorus 36, Queen Esther, Attendant to May Queen 36.

**ETHEL WOMAC**

Glee Club, Knighto-Philo Literary Society, Y. W. C. A., Knitting Club, Queen Esther.

**WALTER WAYMAN**

Football 36-37, "W" Club 36-37, Track 37, Y. M. C. A. 36-37, International Relations Club 36-37.

**ORBEL ERWIN**

Eta Iota Tau '36-'37, Secretary '37; Off-Campus Men, International Relations Club; Y. M. C. A.; English Improvement Prize '36.

**REBA S. REYNOLDS**

Sigma Tau Sigma Sorority 37, Y. W. C. A. 37, International Relations Club 37, Cleveland Club.

**BEULAH DAVIS**

Sec.Treas. Senior Class, Y. W. C. A. 36-37, Queen Esther 36-37, Knighto-Philo Literary Society 36-37, Band Sponsor 37, Home Pryor Club 36, Art Club 37, Glee Club.

**GRACE E. GRUBB**

Phi Theta Kappa 36-37, International Relations Club, Off Campus Women, Pan Hellenic Union.

**SUE DYE**

Dramatic Club 37, Phi Rho Pi 37, Alpha Gamma Sorority 37, Queen Esther 37, Knighto-Philo Literary Society 37, Christian Service Club 37, Y. W. C. A. Chaplain 37, International Relations Club V. Pres. 37.

**JACK BLALOCK**

Knighto-Philo Literary Society, Phi Pi Delta Fraternity Pres. 37, "W" Club, Y. M. C. A., Football, Basketball, Track, Pan Hellenic Council, Dramatic Club, Art Club, International Relations Club, Pres. May King.

**MARGARET ROWLAND**

Knitting Club, Y. W. C. A.

**CORA E. HATFIELD**

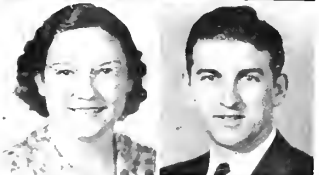
Dramatic Club 37, B. O. B. Club Sec.-Treas., Art Club, International Relations Club, Y. W. C. A.

**MARY FRANCES CHAPMAN**

Off Campus Women International Relations Club, Etowah Club, Y. W. C. A.

**EARL CRUMPTON**

Y. M. C. A., Off Campus Men Pres., Eta Iota Tau Fraternity 36-37.



# NOCATULA



## JUNIOR CLASS

First Row—(Reading from left to right)—Virginia Bradford, Ralph Turner, Doris Cooper, Guy Eileenor, Edna Creswell, Don Watson, Margery Allen, E. K. Yates.

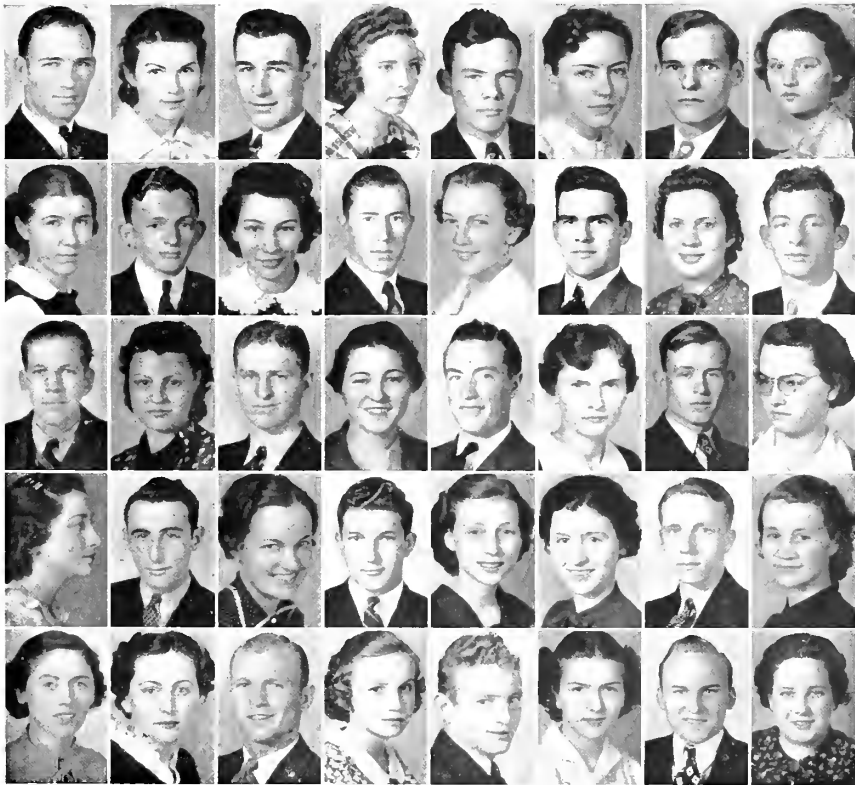
Second Row—Lorane Baker, Jeanette Slagle, Lawrence Eisenberg, Sara Jane List, Margaret Ann Lackey, Eugene McKinney, Pearl Welch, Helen Northcutt.

Third Row—Hugh Chance, Annette Hillard, Ila Huff, Betty Varnell, Frances Miller, Robert Dew, Pauline Rutherford, Ernest Bowery.

Fourth Row—Frances Andes, Rankin Hudson, Sue Ashley, Mary Henry, Agnes Lillard, Euby Wilson, Winifred Brown, Blanche Inman.

Fifth Row—True Gambill, Johanna Banks, Rhoda Witt, June Hoback, Marie Goss, Ernest Jones, Irene Ellis, Jerrene Chambers.

# NOCATULA



## JUNIOR CLASS

First Row (Reading from left to right)—Douglas Simpson, Dorothy Abel, Willard Bacon, Rita Kate Masters, Paul Dake, Rowena Craig, Walter Rose, Edna Best.

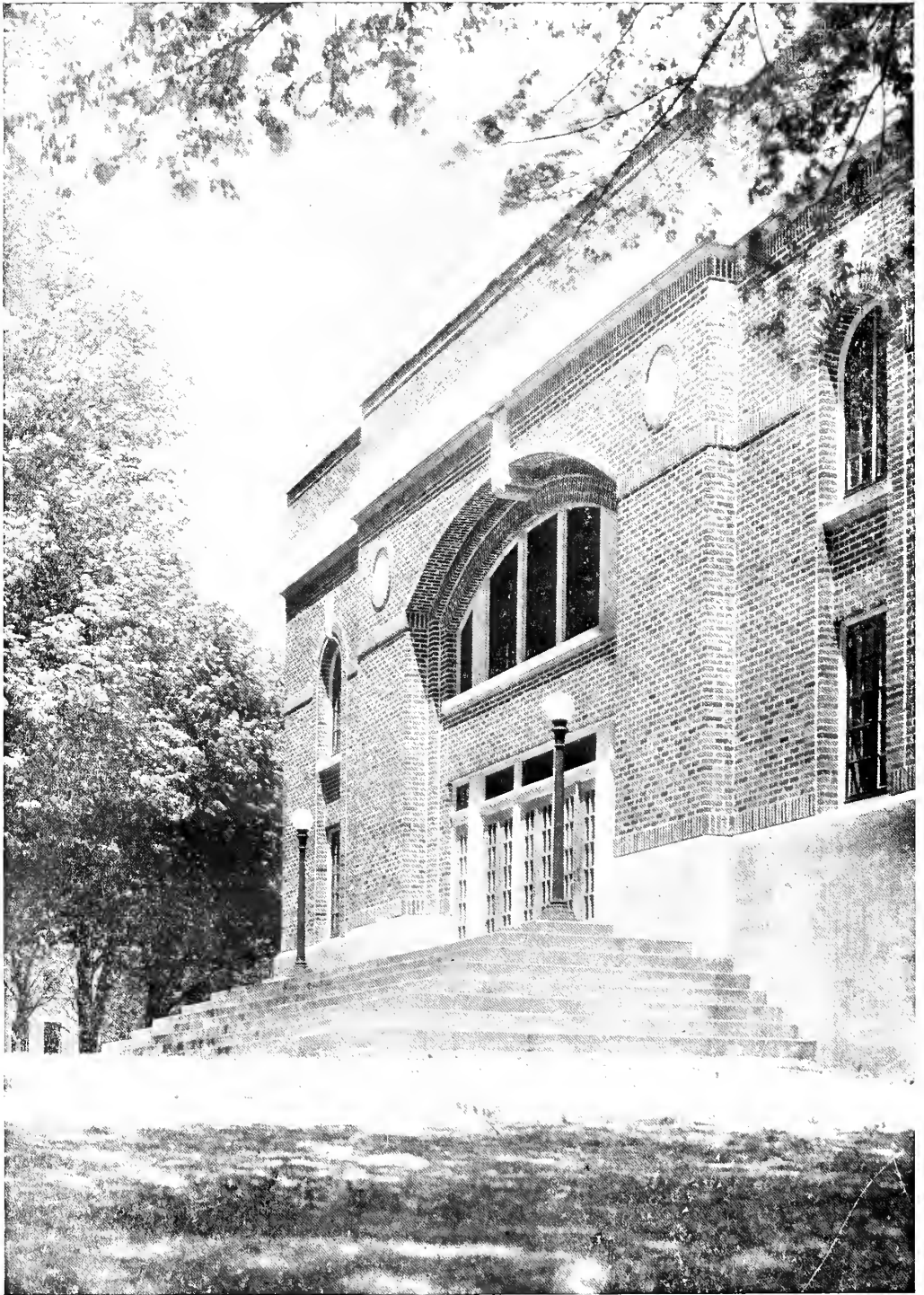
....

Second Row—Blanche Gilland, Herbert Rawlings, Anna Rhodes, Anderson Bailey, Alice Bates, John Henderson, Edith Elizabeth Hodge, Martin Luther Greer.

Third Row—Horace Forshay, Helen Wilson, Joel Armstrong, Bessie Shultz, Maurice Scott, Helen McDonald, Stiril Pickens, Dorothy Elrod.

Fourth Row—Helen Maher, George Mize, Sue Robinson, Howard Hollingsworth, Drucilla Reed, Helen Bailey, Walter Pickering, Viola Kyker.

Fifth Row—Valerie Lindsay, Eula Thomas, Ben Simpson, Starr Pannell, Harry Davis, Mary Ann Watkins, J. D. Millsaps, Lenora Daugherty.



ADMINISTRATION BUILDING  
18.



---

# ORGANIZATIONS

---



### **FIVE CANDLES BURNING BRIGHTLY**

Into the hearts and lives of Tennessee Wesleyan students there shine the warm radiant rays of five candles burning in the spirit of Christian ideals. Those candles are known as the Y. W. C. A., the Y. M. C. A., the Christian Service Club, the Queen Esther Circle, and the Religious Council. During the past years, these candles have lighted the pathway of every student who belonged to Tennessee Wesleyan. Their glow has been felt in every activity whether scholastic, social or spiritual. And strange as it may seem, each one has grown taller, throwing its rich light forward and upward as the years have passed. With the beginning of this past year, warm beams of welcome reached out and drew new friends into their circles. Then the intense flame of cooperative service burned into the hearts of our Christian young men and women until now we see the realization of aims and hopes of '36 and '37. Those who found a deep spiritual life seemingly beyond their reach have been drawn by their fellow students into the circle of candlelight which symbolizes the citizenry of Christ's Kingdom here on earth.

Drawn into the light of these organizations, our students seek to carry away with them a single shining ray to guide them—onward and upward. The circle of '36-'37 is now broken by the parting of students whose work has been completed. Nevertheless, soft shadows remain to encourage others to carry the torch of duty faithfully and loyally. To those who await the coming year and those who will start anew, may your services of love and fellowship and duty to God, add to the brilliance of our candles. May each future year find them beckoning on the threshold of a Christian college and lighting the halls of that college with the rays of love and service . . . .

Five Candles Burning Brightly.



NOCATULA



Y. W. C. A. - Y. M. C. A.



CHRISTIAN SERVICE CLUB



RELIGIOUS COUNCIL

# NOCATULA



## STUDENT COUNCIL

Reading From Left to Right, (Sitting); Ruth Vaniman, Herschel Elliott, Virginia Bradford, Raymond Huskey, Ruth Buttram, Ed Eldridge, Ruth Hampton, Ruth Smith. (Standing): Billy Mackey, Ralph Turner, Spencer Robb, Lawrence Eisenberg.



INTERNATIONAL RELATIONS CLUB

Since its organization in 1932, the International Relations Club, sponsored by Professor Peters has served as a medium in bringing world events to Tennessee Wesleyan campus. In its councils are discussed the economic, commercial, and political affairs of the United States and their relation to those of other nations. Worthy citizens and future leaders are being trained to deal wisely and successfully with current problems. The noble aim of the club is to interest students in research work and comparatively study of national policy and their relations to international affairs. Special emphasis is placed upon the possibilities of eliminating war and establishing World Peace. Students are encouraged to prepare to assume their responsibilities in a universal state and to promote the progress of that state.



## ORGANIZATIONS ON THE CAMPUS

Because of the close fellowship and cooperation of the different clubs and organizations on the campus, Wesleyan is drawn very closely together. They are not only of an educational advantage to the students but lend a social life as well. It would be difficult to determine the most important of these organizations but one that is enjoyed by practically all the college is the Knighto-Philo Literary Society. This group meets each Saturday night in the attractive Literary Hall and enjoy some very profitable programs. 1936 and 1937 was one of the most successful years the society has ever known. New officers were chosen at the beginning of each new quarter, and the management of the organization ran very smoothly under the capable leadership of the students. The new officers are:

President .....	Robert Dew
Vice President .....	Faye Smith
Secretary .....	Sue Ashley
Critic .....	Lenora Daugherty
Treasurer .....	Martin Luther Greer
Sarg. at Arms .....	Lawrence Eisenberg
Chaplain .....	Rosa Jones
Pianist .....	Doris Cooper

All students of a dramatic mind belong to the dramatic club known as the Tewesco Players. The very capable Mrs. Harry T. Burns was sponsor of the club during the past year. Each meeting brought very interesting programs to the members. A very successful production of "The Nut Cracker" was put on by this group and was presented several times in Athens and nearby towns. The officers of the Tewesco Players are:

President .....	Sue Dye
Vice President .....	Ruth Vaniman
Sec. & Treas. ....	Jerry Chambers

However, Wesleyan's organizations are not confined merely to the campus, for a very important group is the Off-Campus Club. This club is made up of all the off-campus students attending the college. They have their regular meetings and have sponsored several affairs during the year. Perhaps one of the most significant was the chapel program put on at Christmas time. Much credit and honor should go to the sponsor, Mrs. Brubaker and to the officers:

President .....	Bernice Craig
Vice President .....	Virginia Bradford
Sec. & Treas. ....	Mary Ann Watkins

A very successful band has been organized by Curtis Wagner and it has been very important to Wesleyan all year. It has played for many various affairs both on and off the campus.

Under the direction of Mr. Evins the Phi Rho Pi has gone forward in leaps and bounds during '36 and '37. At present each member of the debating class belongs to the National Society. In March, Wesleyan's Phi Rho Pi Club was represented at the conference at Wingate, North Carolina, and all through the year its members have participated in debates with other colleges. The officers for the year:

President .....	Ed. Eldridge
Vice President .....	Claude Cupp
Sec. & Treas. ....	Theodore Wofford

One of the foremost organizations on the Campus is the P. K. Club — (P. K. meaning Preacher's Kids) all sons and daughters of ministers may belong to this Club and all ministerial students may be honor members. Devotional services were held twice a month and at various times socials were enjoyed. The club this year was one of the largest in several years as there were sixteen active members. The Rev. Frank Porter of the First Methodist Episcopal Church of Athens was the sponsor.

Because of the many students coming from Etowah, an Etowah Club has been organized on the campus. A large group, twenty-two in all, belong to this club. Lucy Frye is president. Vice President—Kim Taylor, Secretary—Treasurer—Agnes Lillard.

Last but not least is the Moffitt Music Club. This is a branch of the National Music Society and much interest is displayed by both the sponsor, Miss Moffitt and the members of the club. Meetings were held once a month, sometimes on the campus, but often at different homes of the members living in town. Two honor members were taken into the club at the last meeting, Mrs. C. O. Douglass and Mrs. C. O. Foree. The officers of the club:

Sponsor .....	Miss Moffitt
President .....	Ruth Stewart
Vice President .....	Wilma Dennis
Sec. & Treas. ....	Doris Cooper

NOCATULA



P. K. CLUB



MUSIC CLUB



ETOWAH CLUB



DRAMATIC CLUB

NOCATULA



OFF CAMPUS CLUB



LITERARY SOCIETY

R  
378.05  
T256n  
1937

21100

NOCATULA



BAND



PHI RHO PI

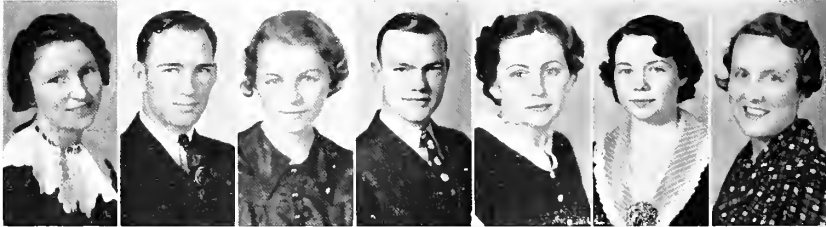
MERNER - PFEIFFER LIBRARY  
TENNESSEE WESLEYAN COLLEGE  
ATHENS, TENNESSEE



SUE ROBINSON    MARY ANN WATKINS    ROSE RICKEY    RHODA WITT    ALICE BATES    BETTY VARNELL    EVELYN GRUBB



LAWRENCE EISENBERG    LENORA DAUGHTREY    JEANETTE SLAGLE    PROF. C.O. DOUGLAS    TEXAS ROBERTS    VIOLA KYKER    BILL MACKAY



STELLA LEVANN    DOUGLAS SIMPSON    ETHEL LINDSAY    HERSCHEL ELLIOTT    EULA THOMAS    RUTH SMITH    INEZ BAILEY

### PHI THETA KAPPA

The Beta Chi Chapter of the Phi Theta Kappa Fraternity, National Honor Fraternity for Junior Colleges, was organized in 1931. Its purpose is to encourage the highest possible scholastic attainments among college men and women and to promote fellowship among such junior college students throughout the United States. Its aim is to ever strive and seek to acquire wisdom, purity, and inspiration. Its members upon acceptance by the local chapter and National Secretary, dedicate their faculties to the development of high and nobler purposes of life and the acquisition of knowledge as the Key to success. Each year the National Phi Theta Kappa Convention meets and brings together representatives of local chapters throughout the country. Stella LeVann and Douglas Simpson went to Little Rock, Ark., as Tennessee Wesleyan delegates for '36-'37. Officers of this year are:

- |                      |               |
|----------------------|---------------|
| President .....      | Rose Rickey   |
| Vice-President ..... | Stella LeVann |
| Secretary .....      | Ethel Lindsay |
| Treasurer .....      | Texas Roberts |
| Reporter .....       | Evelyn Grubb  |

Its members hold some of the most worthy positions on the campus. Douglas Simpson was elected President of the student body and Lawrence Eisenberg was elected Editor of the Nocatula for the coming year. Two girls, Ethel Lindsay and Eula Thomas, won first and second prizes respectively in the Rule Essay Contest. May the fraternity continue in its noble work and be ever a symbol of wisdom, purity and aspiration.





HELEN MAHER-CHAPLAIN



BETTY HODGE - PRES.



MARGARET BEAN-V. PRES.



DEAN KELLEY-SECY-TREAS



JOHNNIE THOMPSON



ANNA RHODES



RHEBA REYNOLDS



WILMA DENNIS



RITA KATE MASTERS



IRENE REYNOLDS



JOSEPHINE WATSON



HELEN NORTHCUTT

## SIGMA TAU SIGMA SORORITY

COLORS—Red and White

FLOWER—Gladiolus

### OFFICERS

President .....	Betty Hodge
Vice-President .....	Margaret Bean
Secretary-Treasurer .....	Dean Kelley
Chaplain .....	Helen Maher
Sponsor .....	Mrs. R. N. McCray

Throughout the years the Sigma Tau Sorority has been one of the most active sororities on the campus. The outstanding social event of the year was the annual Sorority Banquet held at the Robert E. Lee Hotel.



## SIGMA IOTA CHI SORORITY

Founded at St. James, Xavier 1903

Beta Iota Chapter

Established at Tennessee Wesleyan in 1932

21 Active Chapters

COLORS—Purple and Gold

FLOWER—Violet

Sponsor .....	Miss Eda Selby
President .....	Marjorie Cochran
Vice-President .....	Pauline Casteel
Secretary-Treasurer .....	Ruth Buttram
Parchment Editor .....	Frenchy Wilkins

# NOCATULA



RAYMOND HUSKEY



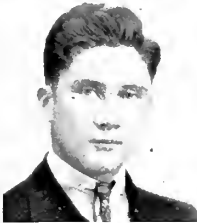
STERLING PORTER



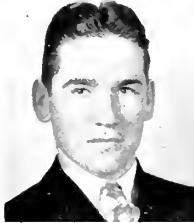
R.N. McCRAY



WALTER ROSE



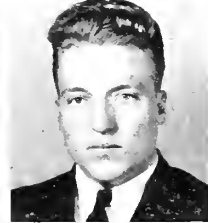
TRUE GAMBILL



EULYS BRYANT



HERBERT RAWLINGS



RALPH TURNER



HERSCHEL ELLIOTT



JOHN CATE



E.K. YATES



MAURICE SCOTT



JIMMY HEISKELL

## PHI PI DELTA

The Phi Pi Delta Fraternity was organized at Tennessee Wesleyan College by members of the graduating class of 1930. It is a vital organization on the campus and enters wholeheartedly into activities of the campus.

The past year has been another fine chapter in the history of the Fraternity, from both social and scholastic points of view.

### OFFICERS

President .....	Raymond Husky
Vice-President .....	John Cate
Secretary-Treasurer .....	Eulys Bryant
Reporter .....	True Gambill
Sponsor .....	Coach McCray

# NOCATULA



## ALPHA GAMMA SORORITY

(Founded in 1926)

First known as Black Fiends of New Moon; later changed to Alpha Gamma.

COLORS: Gold and Black

MOTTO: Fearless Virtue Bringth Boundless Gains

Sponsor	Mrs. M. F. Stubbs
President	Ruth Vaniman
Vice-President	Mildred DeLaney
Secretary	Texas Roberts
Treasurer	Rose Rickey

# NOCATULA



THEODORE  
WOFFORD



ROBERT  
DEW



DOUGLAS  
SIMPSON



PAUL  
HUTSELL



RAY  
HARGRAVES



EUGENE  
MCKINNEY



J.R.  
PHILLIPPE



EDGAR  
ELDRIDGE



DEAN  
M.F. STUBBS



EARL  
CRUMPTON



WALTER  
PICKERING



RANKIN  
HUDSON



LAWRENCE  
EISENBERG



SPENCER  
ROBB



DON  
WATSON



ORBEL  
ERWIN



HUGH  
CHANCE



BILLY  
MACKEY

## ETA IOTA TAU FRATERNITY

The Eta Iota Tau Fraternity, better known as the "Hit's" has done a great deal during the past year to promote a wholesome worthwhile social life at Tennessee Wesleyan college. It has sponsored three banquets as well as numerous hikes and informal get-to-gethers.

This fraternity claims the special honor of having two of its members elected as officers of the student body—Douglas Simpson as president and Lawrence Eisenberg as Editor of the Nocatula.

By following their motto "Hit; don't miss" this fraternity maintains a code of high ethics and sincere fellowship. Their weekly meetings, held in the third floor of old College Building were presided over by the following officers:

President .....	Walter Pickering
Vice-President .....	Douglas Simpson
Secretary-Treasurer .....	Ray Hargraves
Sargeant at Arms .....	Eugene McKinney
Sponsor .....	Dean M. F. Stubbs


**NOCATULA**



**PHI NU LAMBDA SORORITY**

The oldest sorority on T. W. C. Campus

MOTTO: Pluck Not Luck

COLORS: Green and White

- |                               |                 |
|-------------------------------|-----------------|
| Sponsor .....                 | Mrs. Carrol     |
| President .....               | Reba Goff       |
| Vice-President .....          | Geneva Griffith |
| Secretary and Treasurer ..... | Lura Thames     |
| Chaplin .....                 | Ruth Stewart    |
| Reporter .....                | Bessie Shultz   |



**ATHLETICS**



## FOOTBALL

The Tennessee Wesleyan Bulldogs trampled all opposition to rack up the greatest football record ever achieved by a Wesleyan team. The Bulldogs went through the entire season without experiencing defeat. In winning every game on their schedule the Methodists won their fifth consecutive Southeastern Junior Conference title and their first National Junior College Championship.

Rated as the highlights of the season were the smashing victories over King College, who tied Wesleyan last year, and University of the South, the only team to defeat Wesleyan the previous year.

Much credit for this successful season goes to the able coaching of Coach McCray and to the playing of both the line and the backfield. Co-captain "Wit" Eaves was the outstanding lineman in the Bulldog line. Spencer Robb, at end, also deserves much credit. Smashing Red McGee, fullback, and co-captain J. R. Hudson at quarter were the main cogs in the Wesleyan backfield. The entire team played great ball to give Wesleyan its only season without a defeat in the history of the school.



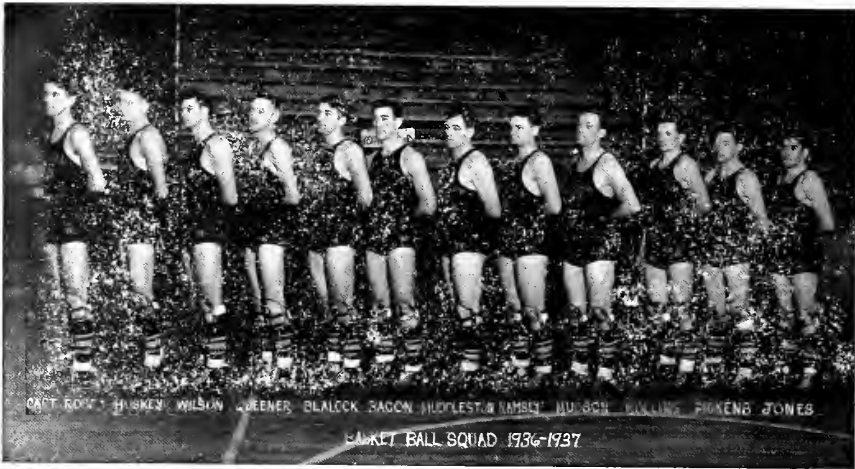
# NOCATULA



## FOOTBALL RECORD

Tennessee Wesleyan 12	Tennessee Wesleyan 40
Bristol College 6	Maryville College 7
Tennessee Wesleyan 13	Tennessee Wesleyan 35
Georgia Military College 0	South Georgia State 0
Tennessee Wesleyan 31	Tennessee Wesleyan 35
Bluefield College 0	University of Chattanooga Frosh 0
Tennessee Wesleyan 19	Tennessee Wesleyan 24
Milligan College 6	Hiwassee College 6
Tennessee Wesleyan 19	Tennessee Wesleyan 40
University of the South 7	Wingate College 0

# NOCATULA



## BASKETBALL

The Wesleyan basketball team of 1936-37 was one of the strongest Bulldog teams to ever takke the floor. The Metho lists played some of the strongest teams in this part of the country and emerged with an enviabile record. Their most praiseworthy accomplishment was their victory over the University of Chattanooga. Despite the fact that Wesleyan is only a Junior college, the world champion Original Celtics chose her as their opponent for this section of Tennessee when making their annual tour of the South.

The Wesleyan attack was built around the four veterans of the squad, Bob Queener, floor-man de luxe, Raymond Huskey, the scrring ace, Blalock, the sharpshooter, and Robb, the bulwark of defense. Huskey led the Wesleyan scoring with an average of almost 15 points per game. Bob Queener had an average of almost 10 points per game and Captain Robb's average was slightly below that. Ramsey, the only freshman on the team played bang-up ball all season and will form the nucleus for the Bulldog team for '37-'38. The entire team played great ball and gave Wesleyan a record she can be proud of.

NOCATULA



GIRLS  
BASKETBALL  
TEAM



ATHLETIC COUNCIL

TENNIS  
TEAM



The Photos in This  
SENIOR NOCATULA

Were Made By

STANFIELD STUDIO  
CLEVELAND, TENN.

Portrait and Commercial Photographers

---

The Engravings In The

SENIOR NOCATULA

By

KNOXVILLE ENGRAVING COMPANY

KNOXVILLE, TENNESSEE

**H. G. HILL STORE**

It's a fact you always do better  
at Hill's

For the best in Quality, Quantity, and  
Service. Phone 433

Athens, Tennessee

---

**ATHENS DRY CLEANING CO.**

For Your Cleaning and Pressing, see  
J. D. Millsaps, Phone 364

Athens, Tennessee

---

**M. GOODFRIEND**

Quality Wearing Apparel  
Florsheim —Nunn-Bush Shoes

Athens, Tennessee

---

**PHILIP WYNER SHOE SHOP**

Expert Shoe Repairing  
"Best In Town"

Reasonable Prices —Guaranteed Work

---

Compliments

**LINDER BEAUTY SHOP**

Phone 300

Athens, Tennessee

---

**KUHN'S 5 and 10 CENT STORE**

Stock Up On Our School Supplies  
Candies and Notions

"On The Square"

---

**FEDERATED STORES**

Owned And Operated By

**K E T R O N ' S , I N C .**

Everything In Ready-To-Wear

**ATHENS**

Phone 40

**TENNESSEE**

---

**TENNESSEE MOTOR COMPANY**

De Soto

—

Plymouth

Athens and Cleveland

---

**SMITH CLOTHINNG COMPANY**

"Athens' Only Exclusive Men's Store

The Best of Furnishings For Men and Young Men

---

# RIDDLE'S

Nunnally's and Martha Washington Candies  
Parker and Schaefer Pen and Pencil Sets

"The Rexall Store in Athens"

Newest and Best Equipped Soda  
Fountain in Town

Phone 49

Prescriptions

We Deliver

<p><b>CENTRAL</b> Service Station  Texaco Gas and Oil  Open 24 Hours a Day Telephone 124</p>	<p>Compliments <b>ROBERT E. LEE</b> Barber Shop  It Pays To Lock Well  Athens, Tenn.</p>	<p><b>STANFROD'S</b> Sandwich Shop Sport and Recreation Center  Athens, Tenn.</p>	<p>Compliments <b>McMINN</b> <b>MOTOR CO.</b>  Ford Dealers Athens, Tenn.</p>
<p>Compliments <b>W. M. ANDERSON</b> Ladies' Ready- To-Wear Athens, Tenn.</p>	<p>Compliments <b>PROFFETT'S</b> Department Store  East Side Square Athens, Tenn.</p>	<p>Compliments  <b>F. W.</b> <b>WOOLWORTH</b> <b>COMPANY</b></p>	<p>Compliments  <b>RAY</b> <b>COAL CO.</b>  Phone 367</p>
<p><b>THE McMINN COUNTY</b> <b>HERALD</b>  "The Best Advertising Medium In This Section"  <b>JOB PRINTING THAT PLEASES</b> <b>ADVERTISING THAT PAYS</b></p>		<p>For Excellent Service Go To <b>ALLEN'S BARBER</b> <b>SHOP</b></p>	<p>Compliments <b>MRS. IRA M.</b> <b>BOLTON, Jeweler</b> Athens, Tenn.</p>

## MAYFIELD'S CREAMERY

HOME OWNED — HOME MARKET

Mayfield's Creamery believes in a greater Athens and section. They pay best prices direct to producers of McMinn and adjoining counties for their milk and cream. Mayfield takes these products and turns them into food products for the market. They stand high among similar products.

DELICIOUS IS THE WORD FOR

MAYFIELD'S ICE CREAM

ACCEPT NO SUBSTITUTE

Athens, Tenn.

Phone 336

### SENICRS:

Of course you won't forget those lovely corsages and flowers from—

**McKeldin's Floral Co.**

"Flowers for all Occasions"

Athens,

Tenn.

### COMPLIMENTS

**EVANS & SON**

Funeral Home

Athens, Tenn.

Phone 44

### COMPLIMENTS

**Athens Motor Company**

Authorized Chevrolet  
Dealers

**Tennessee Electric  
Power Co.**

"For Better Eyesight Use  
Better Lights"

### QUALITY HARDWARE AND FUNITURE



"At The Sign of The Saw"

**Athens Hardware Co.**

Harry C. Johnson  
Owner

### YOU CAN'T FORGET

Those Big, Delicious Banquets

Served At The

**ROBERT E. LEE  
HOTEL**

**BLUE GRASS DAIRY**

"A bottle of milk is a bottle of health"

**T. B. TESTED COWS**

RFD No. 1

Athens, Tenn.

**Welch's Cafe**

"Best Restaurant  
in  
Athens"

Compliments of  
**Hammer Supply  
Co.**  
Builders' Supplies  
Phone 13  
Athens, Tenn.

**MOORE'S  
HARDWARE**  
Hardware and Furniture  
Everything for Home  
And Farm  
Phone 1

**Wayne Ray's  
Market**  
Meats — Groceries  
Produce  
"The House of Quality"  
Phones 56 and 76

**Sinclair H-C Gasoline**

**Stops Knocks — Adds Power**

**J. P. (Coach) CARTWRIGHT**  
Distributor

**1937 GRADUATES:**

we wish you the best of success. We  
have appreciated your patronage.

**MINIT CAFE**

**NOCATULA BOOSTERS**

**WHITE STORE**

**JIM TUELL GROCERY**

**A. G. BUTTRAM**

Doug Simpson, M. Guy Fleenor, J. Lawrence Eisenberg, Puett Macker, Rankin Hudson, Joe H. Rayder, Ray Hargraves, Eta Iota Tau, Martin L. Greer, J. R. Phillippe, A. Jarvis, Andy Bailey, Gene McKinney, Jud and Virginia, Sara and Sis, Bacon, Ed Eldridge, Don Watson, Coach RuBe N. McCray, Ralph Turner, Hugh Chance, Ernest B. Bowery, Useless Bryant, Lawrence W. Dixan, George and Edna.

**Sigma Iota Chi**

Marjorie  
Frenchy  
Polly  
Ruby  
Doris  
Mary  
Jerry  
Marie  
Edna  
Rcwena

**Bernice**

Margaret Ann  
Durscilla  
Betty  
Orbel Erwin  
Tuggie  
Sue Ashley  
Frances Andes  
Det Abel  
Lenora  
Dct Elrod

**Mildred King**

Val Lindsay  
"Frankie", "Ruthie"  
To room 40—Ritter  
Hall—Long may it  
rave—Rose and Ruth  
The three Newport-  
ers:  
Betty  
Rita  
Helen

**Ruth B.**

Geneva Griffith  
Reba Goff  
Walter Rose  
"Herb"  
R. F. Porter  
A. H. Myers  
Scott  
C. N. Rogers  
O. S. Vaniman  
**ALPHA GAMMA'S**  
**PI NU LAMBDA**



## HEIRD DRUG STORE

"The Gang's Hang-out"

Doc Heird wishes the Graduating Class continued success and happiness.  
When in town, remember where you get those big  
Sundaes, "Cokes", and Candies.

Prescriptions Filled anytime — We Deliver

PHONE 33

—::—

ATHENS, TENN.

### Rigg's Service Station

Shell Products — Goodyear Tires

PHONE 34

### McMinn County Hardware Company

Hardware and Furniture

PHONE 14

Athens,

Tenn.

#### 1937 GRADUATES:—

We have enjoyed your patronage during these two years. Best wishes for your continued success.

### STRAND THEATRE

"The House of Perfect Sound"

### Athens Insurance Agency

PAUL WALKER, Prop.

General Insurance and Bonds

PHONE 72

## J. O. CHARLES DRY CLEANING CO.

Insured Moth-Proof Cleaning on all Woolen Garments

McMinn County's Leading Cleaners

Curb Service

Phone 55

Athens, Tenn.

# **AUTOGRAPHS**

# AUTOGRAPHS

# AUTOGRAPHS

# **AUTOGRAPHS**

# AUTOGRAPHS

# For Reference

Not to be taken from this room

