


W
378.05
T256n
1938



Pages 47-50
missing!



Digitized by the Internet Archive
in 2011 with funding from
LYRASIS Members and Sloan Foundation

<http://www.archive.org/details/nocatula193819tenn>

The

1938

NOCATULA



Salutes

our beautiful state

TENNESSEE

W
 375.05
 T256n
 1938

in this nineteenth volume
published by the students of

TENNESSEE WESLEYAN COLLEGE
Athens, Tennessee

MERNER - PFEIFFER LIBRARY
TENNESSEE WESLEYAN COLLEGE
ATHENS, TENNESSEE

DEDICATION

With the hope that it may convey to her some small measure of our regard for her and gratitude for her unfailing kindness and untiring labor in our behalf, we, the Senior Class of 1938, respectfully dedicate this volume to

Mrs. J. M. Melear





FOREWORD

In a state well-known for its outstanding scenic interests, our own campus presents a veritable picture of natural loveliness. Tradition, with its haunting story of an Indian princess and her lover, has blended itself into the ideals and spirit of Wesleyan.

Scenes of beauty and of historic interest in Tennessee have been assembled in the book to picture some of the outstanding attractions which may be found in our own state.

When you are using this edition of the Nocatula to recall pleasant days spent on this Wesleyan campus, may the rosy glasses of memory be able to supplement what has been pictured as the important activities of the year.



CONTENTS

Book I	FACULTY, STAFF
Book II	CLASSES
Book III	PICTORIAL
Book IV	ORGANIZATIONS
Book V	ATHLETICS
Book VI	ADVERTISEMENTS





FACULTY AND STAFF

PRESIDENT J. L. ROBB
A. B., M. A.

FRANCIS CULLEN MOFFITT
Piano

C. O. DOUGLASS, A. B., A. M.
Registrar, Education

MRS. LILLIE BIBLE, Dietician
Petty-Manker Dining Hall

S. CARROLL EVINS, A. B., A. M.,
English

MRS. MARTHA HALE, A. B., A. M.
Art

A. H. MYERS, PH. B., A. M., B. D.
Religion

NELLIE RUTH RAY BOWERS, A. B.
Languages

MRS. NANNIE HOLBERG
Matron, Bennett Hall

MRS. ELIZABETH BRUBAKER, A. B., A. M.
Bible, Supt. Ritter Hall

LELA I. BROWN, B. S.
Education

MARJORIE ALDERFER, B. R. E.
Typing, Religious Education

ETHEL PRYOR, B. S.
Home Economics



OF THE COLLEGE



Dean M. F. STUBBS
A. B., M. S., Ph. D.



MISS S. C. KUTZ, B. S., M. S.
Dietician of Ritter Hall

G. A. YATES, A. B., A. M.
Mathematics and Social Science

MARY A. DELANEY, B. A., M. A.
Speech, Physical Education



LAWRENCE W. DIXON, A. B., M. ED.
Commerce

MRS. A. B. COLLINS
Ass't Supt. Ritter Hall

J. ROGERS CARROLL, B. S.
Business Manager



OTHO BURN HAMMER, B. S., M. S.
Practice School

ANDREW J. PETERS, Ph. B., A. B., M. A.
Social Science

LOUISE TUELL
Secretary

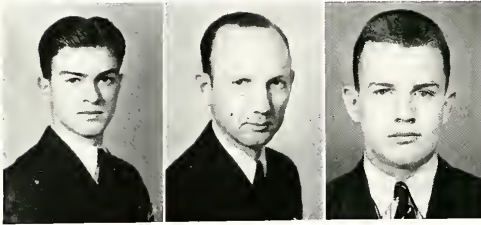


COACH R. N. McCRAY, A. B.
Physical Education

FANNYE MACKEY, A. B., B. S.
Librarian

MRS. EDA SELBY MELEAR, A. B., A. M.
Modern Languages

NOCATULA STAFF



Eisenberg

Evins

Davis

Nocatula, the school paper, is published tri-weekly by the students of the college. The same staff has published this senior edition in the form of an annual. Dedicated to the progress of a greater Wesleyan, the school paper advocates Christian conduct, school loyalty, clean sportsmanship and fair play, clear, mature thinking, and a broad social outlook.

Simpson
Slagle

Reed
Fleenor

Cate
Varnell

E. Smith
Hodge

Lackey
Watts

- Editor** LAWRENCE ESIENBERG
Associate ANNA RHODES
Business Mgr. HEYWARD DAVIS
Faculty Adviser PROF. S. C. EVINS
Alumni Editor DRUSILLA REED
Exchange Editor RHODA WITT
Humor Editor DORIS COOPER MOORE
Sports Editors "HOP" SHOAF,
JOHNNY CATE
Girls' Sports BETTY VARNELL
Religious Editor GUY FLEENOR
Literary Editors CLIFFORD WATTS,
FAYE SMITH
Advertising MARGARET LAWSON
MARGARET LACKEY
Reporters: ELIZABETH SMITH, BETTY
HODGE, MARTIN L. GREER, JERRENE
CHAMBERS, EULA THOMAS, EMMA
JEAN RITCHIE, DOUGLAS SIMPSON,
MARY ANN WATKINS, BILLY LAN-
INGHAM.
Typists: IVA RODRICK WOMACK,
JEANETTE SLAGLE.



Witt

Lawson

Greer

Chambers

Rhodes

Thomas

F. Smith

Ritchie

Moore



THE HERMITAGE

Always of interest to the visitor of Nashville is the home of Andrew Jackson, statesman and seventh president of the United States. This beautiful building is surrounded with tall, stately trees, which make a beautiful setting for its graceful columns and sturdy lines.



CLASSES



TENNESSEE WESLEYAN



EULA LUCILLE THOMAS
Athens

YWCA; Phi Theta Kappa; Vice-President, Phi Theta Kappa '38; Off-Campus Club; Nocatula Staff '38; Art Club '38; Home Economics Club; International Relationships Club; Second Prize, Rule Essay Contest '37; Pi Nu Lambda Sorority '38.

DON WATSON
Wheat

International Relationships Club; Vice-President, Eta Iota Tau and President Eta Iota Tau '38; Literary Society; Phi Rho Pi '37; Tewesco Players '37; Nocatula '37; YMCA; Secretary-Treasurer YMCA '38.

VIOLA KYKER
Niota

YWCA; Chorus; Phi Theta Kappa; Christian Service Club '37; Literary Society '37; Home Economics Club '37; Off-Campus Club '37; International Relationships Club '38.

MARGARET ROWLAND
Athens

Off-Campus Club; YWCA; International Relationships Club.

LENORA ULENE DAUGHTREY
Hixson

Christian Service Club; International Relationships Club; YWCA; Queen Esther Circle; Literary Society; Chorus; Phi Theta Kappa; Phi Rho Pi.

JOHANNA BANKS
Liberty

YWCA; Queen Esther Circle; Christian Service Club; Chorus '38; Literary Society.

MARTIN L. GREER
Parrottsville

Phi Rho Pi; Eta Iota Tau '38; Phi Bi Chem Club; Chorus; P K Club; Literary Society; Tewesco Players; YMCA; Nocatula Staff; Christian Service Club; Art Club '37; Orchestra '38; President Literary Society '38; "Moon Maiden"; Nocatula Short Story Winner, '37 "Double Door" '38; "Lady of Letters" '38.

HELEN BAILEY
Kingston

YWCA; Queen Esther Circle; Chorus; Home Economics Club; Alpha Gamma Sorority '38; Literary Society; Tewesco Players.

JOHN L. HENDERSON
Sevierville

Football; Baseball; Phi Bi Chem '37; Literary Society; YMCA; International Relationships Club; W Club; Tewesco Players '38; King, Sigma Iota Chi Carnival '38.

ANNA L. RHODES
Knoxville

Sigma Tau Sigma Sorority; President, Sigma Tau Sigma '38; International Relationships Club; Y W C A; Associate Editor, Nocatula, '38; Nocatula Staff; Tewesco Players '38; Pan-Hellenic Council '38; Music Club '38; Chorus; Pep Squad '38.

SENIORS OF 1938



HOWARD HOLLINGSWORTH
Clinton

Football; Basketball; Track; International Relationships Club; Student Council '38; President Senior Class '38; May King.

RUBY MORGAN WILSON
Briceville

Sigma Iota Chi Sorority; Tewesco Players; Chorus; Music Club '37; Literary Society; YWCA; Pan-Hellenic Union; Pep Squad '38; International Relationships Club.

DRUSILLA REED
Athens

Sigma Iota Chi Sorority; President, Sigma Iota Chi, '38; Off-Campus Women; Chorus; International Relationships Club; Nocatula Staff; YWCA; Pan-Hellenic Union '37; Pan-Hellenic Council.

EUGENE MCKINNEY
Lenoir City

Band; Chorus; Eta Iota Tau Fraternity; President, Eta Iota Tau, '38; Pan-Hellenic Council '38; Student Council; YMCA; Vice-President, YMCA '38; Religious Council.

ROWENA BLANCHE CRAIG
Athens

Sigma Iota Chi Sorority; Secretary, Sigma Iota Chi, '38; Queen, Sigma Iota Carnival '37; Phi Bi Chem Club '37; President, Athletic Association, '38; Basketball Captain '38; Off-Campus Club.

HELEN MARGUERITE MAHER
Lenoir City

Sigma Tau Sigma Sorority; Secretary-Treasurer, Sigma Tau Sigma Sorority '38; Basketball; Literary Society; Chorus; International Relationships Club; Queen Esthers.

TRUE GAMBILL
Hanover, Ohio

Chorus; Tewesco Players; Phi Pi Delta Fraternity; Pan-Hellenic Union; Tennis; International Relationships Club.

MARY ANN WATKINS
Athens

Sigma Iota Chi Sorority '38; Phi Theta Kappa; Chorus; Band '37; Off-Campus Club; Nocatula Staff '38; International Relationships Club; Scholarship Prize '37; Tewesco Players; Girls Athletic Association.

JOHNNY CATE
Athens

Football; Baseball; International Relationships Club; YMCA; Nocatula Staff; Chorus '38; W Club; Tewesco Players '38; Literary Society.

MARGARET ANNE LACKEY
Athens

Sigma Iota Chi Sorority; Treasurer, Sigma Iota Chi '38; Student Council; Vice-President, Student Body '38; Pep Squad; Off-Campus Club.

TENNESSEE WESLEYAN



HELEN WILSON
Athens

Pi Nu Lambda Sorority, Off-Campus Club, YWCA, Pep Squad '38, International Relationships Club.

DOUGLAS EARL SIMPSON
Harlingen, Texas

Eta Iota Tau, Vice-President, Eta Iota Tau '38; YMCA; Nocotula Staff; W Club; Football; Baseball; International Relationships Club; Delegate to International Relationships Convention, Auburn, Ala. '37; Phi Theta Kappa; President, Phi Theta Kappa '38; Delegate to Phi Theta Kappa Convention, Little Rock, Ark; President Student Body '38.

FAYE LOUISE SMITH
Strawberry Plains

Phi Rho Pi, YWCA; Literary Society; Critic, Literary Society '37, Vice-President '38; Tewesco Players; Alpha Gamma Sorority; Christian Service Club; Glee Club; Queen Esther Circle; Vice President '38; Nocotula Staff.

RHODA ANN WITT
Morristown

Phi Theta Kappa; Queen Esther Circle; Alpha Gamma Sorority; YWCA; International Relationships Club; Literary Society '37; Nocotula Staff.

SARA JANE LIST
Soddy

Alpha Gamma Sorority; Literary Society; Queen Esther Circle; Home Economics Club; YWCA; Band '38; Glee Club.

JERRENE CHAMBERS
Cleveland

YWCA; Queen Esther Circle; Chorus; Christian Service Club; Tewesco Players; Sigma Iota Chi Sorority; Literary Society '38; Home Economics Club; Band '38; Nocotula Staff '38; May Queen '38.

HATTIE E. WHITLOCK
Sevierville

Pi Nu Lambda Sorority; Literary Society; Queen Esther Circle; Phi Bi Chem Club '37; Basketball; YWCA; Home Economics Club; Chorus.

JUNE HOBACK
Athens

Off-Campus Women, YWCA; Sigma Iota Chi Sorority '38; Chorus '38.

FRANCES ANDES
Oakdale

Alpha Gamma Sorority; Christian Service Club; YWCA; Penmanship Prize '37; International Relationships Club.

VIRGELIA CLOWER
Athens

YWCA; Off-Campus Women.

SENIORS OF 1938



SUE ASHLEY
Hixson

Christian Service Club; Literary Society; YWCA;
Religious Council; Queen Esther Circle.

BLANCHE INMAN
Ten Mile

Home Economics Club; International Relationships
Club; Tewesco Players; Chorus '38; Queen Esthers
'38; YWCA; Music Club '38.

RALPH TURNER
South Pittsburg

Phi Pi Delta Fraternity, Phi-Bi-Chem Club; YMCA;
Pan Hellenic Union.

MILDRED KING
Knoxville

YWCA; Literary Society; Christian Service Club;
Alpha Gamma Sorority; Queen Esther Circle.

JEANETTE SLAGLE
Athens

Chorus; YWCA; Off-Campus Women; Phi Theta
Kappa; Vice-President, Phi Theta Kappa '38;
Basketball '37; P K Club; Pan-Hellenic Union '38;
Nocataula Staff; Alpha Gamma Sorority.

HELEN McDONALD
Clarkrange

Pi Nu Lambda Sorority; YWCA; Chorus; Art Club;
Music Club; Home Economics Club.

AGNES LILLARD
Blue Ridge, Georgia

International Relationships Club; YWCA '37;
Literary Society; Glee Club; Off-Campus Women
'37; Alpha Gamma Sorority '37; Student Council
'38; Home Economics Club '38.

EDITH ELIZABETH HODGE
Newport

Nocataula Staff; Sigma Tau Sigma Sorority; President,
Sigma Tau Sigma Sorority '37; Pan-Hellenic Council
'37; Pan-Hellenic Union; Chorus; Trio '37;
Tewesco Players; YWCA; Literary Society '37;
Pep Squad '38; International Relationships Club
'38.

HUGH CHANCE
Hagan, Virginia

Eta Iota Tau Fraternity; YMCA; Literary Society;
Christian Service Club; Band '37.

IRENE ELLIS
Etowah

Off-Campus Women; International Relationships
Club; YWCA.

TENNESSEE WESLEYAN



MARY ELIZABETH GOSS
Kingston

Religious Council; Christian Service Club; Music Club '37; Queen Esther Circle; Home Economics Club '38; Chorus; Alpha Gamma Sorority.

IVA RODRICK WOMAC
Athens

Literary Society; International Relationships Club; Pi Nu Lambda Sorority; Nocatula Staff '37; Queen Esther Circle '35; Phi Theta Kappa '38.

EDNA BEST
Sweetwater

Pi Nu Lambda Sorority; Literary Society; Chorus; Queen Esther Circle '37; International Relationships Club; YWCA; Pep Squad '38.

DOROTHY ELROD
Meadowview, Virginia

Y W C A; Vice-President, Y W C A '38; Literary Society; Alpha Gamma Sorority; Chorus; Music Club; Christian Service Club; Vice-President, Christian Service Club '38; Religious Council; Student Council; "Moon Maiden" '38; Pan Hellenic Council President; '38; Nocatula Staff '38; Home Economics Club '38.

VALERIE LINDSAY
Cosby

YWCA; Queen Esther Circle; Christian Service Club '38; Literary Society; Secretary, Literary Society, '38; International Relationships Club '38; Chorus; Pi Nu Lambda Sorority.

RUBY MAYE HARRISON
Etowah

YWCA; Off-Campus Women; Music Club; Debating '38.

LORANE BAKER
Charleston

Sigma Tau Sigma Sorority '38; Literary Society; Chorus; International Relationships Club; Queen Esther Circle; YWCA.

BESSIE SHULTZ
Cosby

YWCA; Christian Service Club; International Relationships Club; Queen Esther Circle; Pi Nu Lambda Sorority; Off-Campus Club '38; Home Economics Club; Chorus.

GUY FLEENOR
Fries, Virginia

Christian Service Club; Chorus; YMCA; Petty-Manker Council '38; International Relationships Club '38; Cheer Leader '38; Music Club '38; Literary Society '38.

ANNETTE HILLIARD
Cleveland

Music Club; Literary Society; YWCA; Chorus; Queen Esther Circle; Band '38.

SENIORS of 1938



STARR PANNELL
Benton

Pi Nu Lambda Sorority; Literary Society; Chorus; International Relationships Club; Basketball '37; Tewesco Players '38; Pep Squad '38; YWCA.

JOEL ARMSTRONG
Englewood

YMCA; Off-Campus Men's Club; International Relationships Club.

PEARL WELCH
Athens

Off-Campus Club; International Relationships Club '38; YWCA.

E. K. YATES
Athens

Phi Pi Delta Fraternity; Vice-President, Phi Pi Delta, '38; Pan-Hellenic Union '38; Nocatula Staff '37; Phi Bi Chem Club; Band; Orchestra; Off-Campus Men; YMCA.

DORIS COOPER MOORE
Greenville

Sigma Iota Chi Sorority; Phi Rho Pi; Secretary, Phi Rho Pi '38; YWCA; P K Club; Tewesco Players "Moon Maiden"; "Double Door"; Trio '37; Nocatula Staff '38; Literary Society.

ALICE BATES
Charleston

YWCA; Off-Campus Club; Home Economics Club '38; Cheer Leader; Alpha Gamma Sorority '38; Phi Theta Kappa; Treasurer, Phi Theta Kappa '38.

HUGH TROTTER
Sevierville

Phi Pi Delta Fraternity; President, Phi Pi Delta, '38; YMCA; International Relationships Club; Tennis.

MARTHA DEAN REED
Etowah

Alpha Gamma Sorority '38; Off-Campus Club; International Relationships Club '38; YWCA '38; Etowah Club '38.

RANKIN HUDSON
Sweetwater

Football; Baseball; Basketball; Eta Iota Tau Fraternity; YMCA; Literary Society; W. Club; Student Council '38; International Relationships Club '38.

LELA V. REAGAN
Townsend

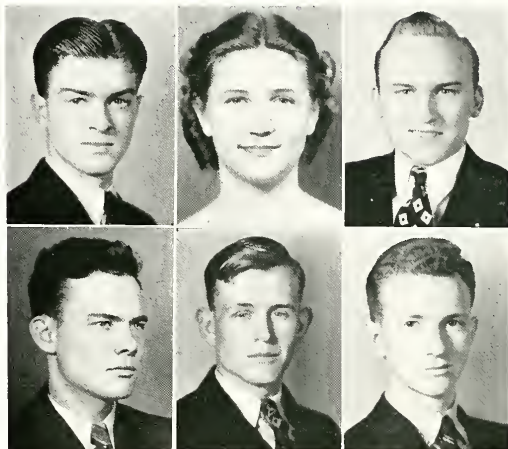
Literary Society '31-'32, '38; Queen Esther Circle; Chorus; International Relationships Club; Nocatula Poetry Contest Winner.

SENIORS OF 1938

Eisenberg

Varnell

Millsaps



Dake

Pickens

Dew

LAWRENCE EISENBERG

Knoxville

Editor, Nocatula '38; Business Manager, Nocatula Annual '37; President, Tewesco Players '38; President, Christian Service Club '38; President, Junior Class '37; Vice-President, Phi Rho Pi '38; First Prize, Sizer Debate, '37; Student Council; Religious Council; YMCA; Men's Chorus; Mixed Chorus; "Nut Farm" '37; "Moon Maiden" '38; "Lady of Letters" '38; Debating Team '37; Cheer Leader '37; Petty-Manker Council; Band '37; Phi Theta Kappa; Eta Iota Tau Fraternity.

BETTY VARNELL

Charleston

Sigma Iota Chi Sorority; Off-Campus Women; Basketball; Nocatula Staff '38; YWCA; International Relationships Club '38.

J. D. MILLSAPS

Madisonville

International Relationships Club; Literary Society; Y M C A; Eta Iota Tau Fraternity.

PAUL DAKE

Athens

Phi Bi Chem Club '37; Off-Campus Men '38; Orchestra; "Double Door"; International Relationships Club; YMCA '38.

STIRL PICKENS

Englewood

Off-Campus Club; International Relationships Club; YMCA; Baseball '37; Track '37.

ROBERT DEW

Russellville

Eta Iota Tau Fraternity; Chorus; YMCA; President, YMCA '38; Christian Service Club; Men's Chorus; Mixed Chorus; Literary Society; President, Literary Society, '38; Religious Council '38; Student Council '38; P K Club '37; Vice-President, Tewesco Players '38; International Relationships Club '38; Phi Rho Pi.

WHO'S WHO AT WESLEYAN



When a poll of the student body was taken by the Nocatula staff this spring, the following results were shown:

BOY

Most Popular
Most Handsome
Friendliest
Best Student
Best Sport

HOWARD HOLLINGSWORTH
 JOHN L. HENDERSON
 LAWRENCE EISENBERG
 FRED COKER
 HOWARD HOLLINGSWORTH

Best All Around
Best Dressed
Funniest
Most Polite
Most Talented
Most Original
Sisziest
Most Tomboyish
Most Loyal
Laziest
Most Dependable
Most Bashful
Best Leader
Most Serious
Most Pleasing Personality
Most Devoted Couple:

LAWRENCE EISENBERG
 FRED E. WANKAN, JR.
 ED McCOY
 CLIFFORD WATTS
 EUGENE McKINNEY
 LAWRENCE EISENBERG
 FRED E. WANKAN, JR.

LAWRENCE EISENBERG
 FERN LAMBERT
 LAWRENCE EISENBERG
 CLYDE KIRK
 LAWRENCE EISENBERG
 MARTIN L. GREER
 LAWRENCE EISENBERG
 CLYDE KIRK

GIRL

HELEN MAHER
 DORIS COOPER MOORE
 MARGARET ANNE LACKEY
 MARY ANNE WATKINS
 ROWENA CRAIG & HELEN
 PATTON (tie)

BETTY VARNELL
 MARGARET LAWSON
 HATTIE WHITLOCK
 DOROTHY ELROD
 DORIS COOPER MOORE
 FAYE SMITH

HATTIE WHITLOCK
 DOROTHY ELROD
 FAYE SMITH
 DOROTHY ELROD
 VIOLA KYKER
 DOROTHY ELROD
 LELA V. REAGAN
 DOROTHY ELROD
 VIOLA KYKER

JUNIOR CLASS



First Row: Joyce Mulkey, Mary Reese, Olen Armstrong, Ruth Layman, Mary Frances Grogan.
Second Row: Harold Burchfield, Frances Scott, Kenneth McMahan, Sara Proffitt, Martha Brown.
Third Row: Heyward Davis, Thelma Duncan, Evelyn Sproule, Edgar Self, Bertha Dean Upshaw.
Fourth Row: Etta Mae Jewell, Clyde Hughes, Mae Stegall, Elizabeth Smith, Robert Longaker.
Fifth Row: Grace Smith, Sonny Troutman, Blanche Beaty, Juanita Dodson, Layton Humberd.

OF 1938



First Row: Kathleen Hall, Marie Daughtery, J. D. Perkinson, LaNelle McKinney, LaVelle Davis.
Second Row: Vernon Jones, Geneva Blazer, Betty Chaney, Walter Watkins, Lorene LeVann.
Third Row: Clara Freels, Mary Emert Davis, Byron Griffith, Margaret Johnson, Gussie Biggs.
Fourth Row: Clyde Kirk, Anne Caldwell, Floyd Watkins, Clara Campbell, Mary Eolen.
Fifth Row: Ronald Williams, Bernice Davis, Dorothy Patty, William McNabb, Edna Loveday.



JUNIORS OF 1938

First Row: Mary Emma Felknor, Ray Graves, Buna Thames, Agnes Ruth Zirkle, Roy McClusky.

Second Row: Marjorie Masden, Robert Delaney, Helen Patton, Kaye Smith, Newton Dickens.

Third Row: Mary Elizabeth Neely, Betty Baker, Billy Laningham, Bennie Simpson, Emma Jean Richey.

Fourth Row: Ethel Davis, Ruth Hargraves, LaVerne Owenby, Hazel Proffitt, Sammie Jean Arrants, Margaret Lawson.

Fifth Row: Helen Slack, George Sivils, Hattie Stevens, Ozelle Whittaker, Walter Brown, Phyllis Douglass.





Cannon marking Confederate Battery position on Lookout Mountain overlooking Chattanooga. The cannon stands in Point Park.



PICTORIAL





ADMINISTRATION BUILDING

Ritter
Hall
for
Women



Petty-Manker
Hall
for
Men

Bennett
Hall
for
Women





Resume of the Year's Doings

According to the Nocatula, the school year 1937-38 has been filled with interesting activities. Here are the headlines:

First Edition: Enrollment larger than last year's. . . seniors arrive, talking over events of summer and preparing to give juniors a going-over. . . excellent football team predicted. . .

Second: Bulldogs drop hard game to King at Bristol, 19-14. . . Lick South Georgia in first home stand, 33-0. . . Nocatula staff announced. . . Blessed with substantial Carnegie Grant, the library begins to blossom out with new books. . . Irene Bewley gives mountain skits in first lyceum. . .

Homecoming: Sevanee routs Bulldogs, 25-0; St. Bernard falls, 65-6; Hiwassee bows again, 19-0; Bulldogs come back to lick Bluefield, 19-7. . . music and drama departments combine efforts in comic operetta, "Moon Maiden" . . . group sees films of Europe trip of R. B. Gilbert. . . alumni welcomed back, and teas and parties given for them. . . a memorable game with Milligan and a 20-20 tie. . .

Number Four: Dr. C. F. Sitterly, Drew Theological Seminary, gives series of lectures on "Appreciating the Bible" . . . "G" Man, W. H. Lester, packs auditorium with his talk on crime. . . Football team wins South-eastern Grid Title for sixth time by licking South Georgia, 38-6, and lays claim to National Championship. . . Ruth Hargraves is delegate to Methodist Student Conference, St. Louis. . . "Dust of the Road" presented by the Tewesco Players. . . Debaters discuss compulsory arbitration question. . . Rush Week, and keen competition for pledges. . . then initiations. . .

Christmas Edition: Paper is dressed up in green. . . Dean's honor roll has only 15 names. . . library gets new charging desk. . . Chorus sings at Chattanooga Area Meeting. . . Mrs. Annie M. Pfeiffer, generous benefactor of College, wins student body in visit to campus. . . students write letter to Santa. . . Random Opinion finds that girls notice personal appearance first when they meet new boys, and that males strongly dislike bright nail polish. . . Wesleyan begins basketball season with win over Englewood. . . Bobby Baker is named captain of 1938 football team. . .



Douglas Simpson

Student President



Number Six: Nocatula editor and business manager return from press meeting at Murfreesboro full of ideas . . . Tewesco Players start work on "Double Door" . . . Petty-Manker act wins in Stunt Night . . . "Campus Indifference" editorial causes some comments . . .

Old College Edition: Campaign gets under way to raise funds for rehabilitating Old College . . . students contribute . . . alumni recall days of yore . . . daughter of first college president visits . . . W. D. Wilkinson, Conference Evangelist, holds week of successful religious meetings . . . Sizer Debate, postponed to March 8, won by Floyd Watkins and Fred Coker . . . Jerold Frederic performs . . . Basketball team starts winning streak . . . Phi Theta Kappa takes in new members . . . Sixty-five attend Sigma Chi alumnae banquet . . . Ritter has party for Off-Campus girls . . . Hits have banquet . . .

April Fool Edition: "Shoaf is named to run institution (into ground)" . . . Etowah wins second annual play tourney of Tewesco Players with "The Wedding" . . . Group enacts Nocatula legend at Berea Folk Festival . . . Actors register with "Double Door" . . . Heyward Davis edits Junior Edition of the paper . . . Softball replaces basketball in interests . . . Spring football practice ends successfully after three weeks of work . . . Sammy Jean Arrants and John L. Henderson are Queen and King of Carnival . . . Little Philharmonic Symphony entertains . . . Mrs. Robb and Miss Moffitt present students in a recital . . . Nocatula paper publishes new platform . . . Grades on Campusology released . . . Singers go out on Educational Sunday trips . . . Debaters go to Lees-McRae and Union Colleges for tournaments . . . Evins re-elected Southeastern Phi Rho Pi President . . . Phi Rho Pi tourney will be held here in 1939 . . .

Junior Edition: Lambert will captain basketball team . . . Patton chosen to lean girls' sextet . . . Banquets in profusion . . . Sigma Tau, Pi Nu, then Pan Hellenic and Junior-Senior and Phi Pi . . . Not to mention Phi Theta . . . the annual is ready for press . . . May Day crowns Hollingsworth and Jerrene Chambers . . . Student election, with hot air and all sorts of crazy notions and ballyhoo . . . "spring teachers" enter school and are welcomed . . . winners in "Who's Who" announced . . . Speakers chosen . . . senior play is "Lady of Letters" . . . Moses named student president, Lawson, vice-president, and Watts, editor, for 1938-39 . . . Baccalaureate, class day, and then graduation . . . plenty of tears shed as nearly 70 seniors prepare to leave. Wesleyan's a grand old place after all!

•
Vice-President
 •



Margaret Ann Lackey



CANDID



21701

P
378.05
72560
1935

SHOTS

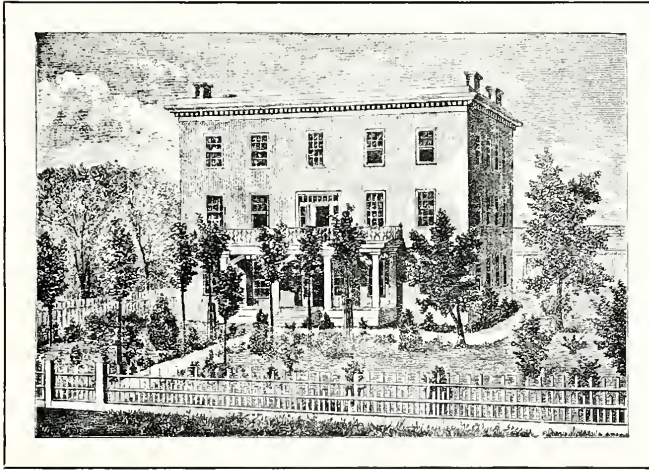


MERNER-PFEIFFER LIBRARY
TENNESSEE WESLEYAN COLLEGE
ATHENS, TENN. 37013

Personal Snapshot Page

(Paste your snapshots in this space)

To Be Re-Dedicated To Generations of Service



OLD COLLEGE

A link with the glorious past, Old College is to have renewed life injected into her for another three-score-and-ten-years of service. Alumni are raising a \$5,000 fund to rehabilitate the building, and the work will include a new heating plant, new lighting and seating arrangements, new flooring, and re-decorating.

Old College holds tender memories for men and women all over the world. . . . tender memories of those who have become friends, and in some instances, mates. Since 1865, the sturdy structure has sheltered youth in quest of higher learning. Now is coming a much-needed rejuvenation at the insistence of interested former students, who have contributed freely in order to add years of usefulness to the building.

Autographs



THE PARTHENON--NASHVILLE

An exact duplicate of the Parthenon in Athens, Greece, this building is located in Centennial Park, Nashville. It is the result of years of research and study on the part of architects, artists, and archaeologists.



ORGANIZATIONS





Front Row: Miss Ethel Pryor, Robert Dew, Lawrence Eisenberg.
Back Row: Marie Goss, Prof. A. H. Myers, Sponsor, Dorothy Elrod, Sue Ashley, and Eugene McKinney.

The Religious Council is composed of the student presidents of the three religious organizations on the campus, the two "vice-presidents of the YMCA-YWCA, and the faculty sponsors of these organizations. It is responsible for planning religious conferences, special services, affiliated church memberships in the local churches, and for sending delegates representing the college to Christian conferences elsewhere. Its members have charge of one Sunday night meeting per month in the Athens Methodist Church, and the final "Candle Lighting" Service at Commencement.

Among the Christian leaders brought to the campus by the Council this year are: Rev. W. D. Wilkinson, Conference Evangelist; Dr. Charles F. Sitterly, professor of Biblical Literature at Drew University; Dr. N. C. McPherson, assistant secretary of the Division of Schools and Colleges of the M. E. Church, South; Rev. Frank Hamilton, First M. E. Church, Chattanooga, and Dr. Homer Slutz, First M. E. Church, Knoxville. Student delegates have attended conferences at St. Louis, Mo., Cookeville, Tenn., Blue Ridge, N. C., and Knoxville, Tenn.

RELIGIOUS COUNCIL

STUDENT COUNCIL

Administering student government is the purpose of the Student Council. Besides serving as representatives from their respective groups, the members of the Council have some specific duty assigned to them. The Student Vice-President, for example, is responsible for student chapel programs. The Council also serves as student representatives before the faculty.

Members pictured are: (left to right)

Seated

Dorothy Elrod, President of the Pan Hellenic Union; Margaret Anne Lackey, Vice-President of the Student Body; Douglas Simpson, President of the Student Body; Agnes Lillard and Rankin Hudson, representatives from the Senior Class.

Standing

Lawrence Eisenberg, Editor of the Nocatula; Robert Dew, representative of the Religious Council; Eugene McKinney, special Senior representative; Kaye Smith and Walter Watkins, representatives of the Junior Class; Ray Graves, President of the Junior Class.



CAMPUS



INTERNATIONAL RELATIONSHIPS CLUB



YMCA--YWCA

V
V
V

CLUBS



OFF CAMPUS CLUB



CHORUS

V
V
V

CAMPUS



TEWESCO PLAYERS



•
PHI
RHO
PI
•



CHRISTIAN SERVICE



•
LITERARY
SOCIETY
•

CLUBS

•
MUSIC
CLUB
•



•
P K
CLUB
•

•
COLLEGE
BAND
•



PHI THETA KAPPA

The Beta Chi Chapter of Phi Theta Kappa Fraternity for Junior Colleges, was organized in 1931. Its purpose is to encourage the highest possible scholastic attainments among college men and women, and to promote a fellowship among such junior college students throughout the United States.

Its aim is ever to strive, and seek to acquire wisdom, purity, and aspiration. Its members, upon acceptance by the local chapter and National Secretary, pledge themselves to dedicate their faculties to the development of high and noble purposes of life, and to the acquisition of knowledge as the key to success.

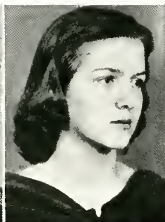
Officers for this year are:

President	DOUGLAS SIMPSON
Vice-President	JEANETTE SLAGLE
Secretary	RHODA WITT
Treasurer	ALICE BATES
Sponsor	PROF. C. O. DOUGLASS

Viola Kyker
Eula Thomas



Mary Ann Watkins
Jeanette Slagle



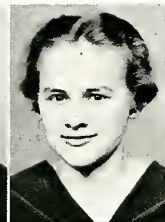
Prof. C. O. Douglass
Alice Bates



Betty Baker
Joyce Mulkey



Kathleen Hall
Iva Rodrick Womack



Douglas
Simpson



Rhoda
Witt



Lawrence
Eisenberg



Helen
Patton



Lenora
Daughtrey



Clifford
Watts

Not Pictured: Helen Slack

SIGMA IOTA CHI

Founded at St. James Xavier Academy, 1903
Beta Iota Chapter
 Established at Tennessee Wesleyan, 1932
 Twenty-one active chapters

Colors—PURPLE AND GOLD

Flower—VIOLET

Sponsor.....	MRS. J. M. MELEAR
President.....	DRUSILLA REED
Vice-President.....	RUBY WILSON
Secretary.....	ROWENA CRAIG
Treasurer.....	MARGARET ANNE LACKEY
Parchment Editor.....	DORIS COOPER MOORE

Betty Baker	June Hoback	Drusilla Reed	Phyllis Douglass	Betty Varnell	Doris Moore
Evelyn Sproule	Bertha Dean Upshaw	Thelma Duncan	Margaret Lawson	Mary Ann Watkins	Jerrene Chambers



Rowena Craig	Ruby Wilson	Mrs. J. M. Melear	Helen Slack	Margaret Lackey	Sammye Arrants
--------------	-------------	-------------------	-------------	-----------------	----------------

ALPHA GAMMA

President
 Vice-President
 Secretary
 Treasurer
 Reporter
 Chaplain
 Sponsor

DOROTHY ELROD
 ... ALICE BATES
 MARTHA DEAN REED
 ... FRANCES ANDES
 ... FAYE SMITH
 ... MARIE GOSS
 ... MRS. M. F. STUBBS

Colors: BLACK AND GOLD

Motto: FEARLESS VIRTUE BRINGETH BOUNDLESS GAIN.

The Alpha Gamma Sorority was founded in 1929. Before being changed to the Greek name it was known as Black Friends of New Moon.

The Sorority tries to select those members who are outstanding in that they are representative in all respects. These members must be capable of upholding the standards for high moral, social, and scholastic life at Tennessee Wesleyan.

Jeanette Slagle
 Agnes Lillard

Marie Goss
 La Nell McKinney

Helen Patton
 Alice Bates

Faye Smith
 Mae Stegall

Mrs. M. F. Stubbs
 Dorothy Elrod

Kay Smith
 Kathleen Hall



Rheda Witt

Frances Andes

Helen Bailey

Sara Jane List

Martha Dean Reed

Ruth Hargraves

Mildred King

ETA IOTA TAU

Colors: Green and White
Motto: Hit, don't fan!

The Eta Iota Tau fraternity, better known as the "Hits," try to promote wholesome, worthwhile social times on the campus. They select their members on the basis of scholastic attainment, social qualities, and moral calibre.

This year, as always, the Hits have had a number of social events, including the annual banquet in the winter quarter.

Officers of the year:

	Fall Quarter	Winter Quarter	Spring Quarter
President	Don Watson	Eugene McKinney	Wayne Moses
Vice-Pres.	Rankin Hudson	Hugh Chance	Kenneth McMahan
Sec'y-Treas.	Eugene McKinney	Lawrence Eisenberg	Layton Humberd
Sgt. at Arms	Hugh Chance	Rankin Hudson	Martin L. Greer



Douglas Simpson Hugh Chance Sponsor G. A. Yates Wayne Moses Eugene McKinney
 Vernon Jones Charles Emerson Clyde Kirk Martin L. Greer Don Watson
 Layton Humberd Lawrence Eisenberg Robert Dew Rankin Hudson J. D. Millsaps Kenneth McMahan

PHI PI DELTA

Colors: RED AND BLACK.

Organized: 1930.

The Phi Pi Delta Fraternity was organized by the graduating class of 1930. A constitution was drawn up and the fraternity came into being. It has been quite active since.

This year activity was highest during the Fall and Spring quarters. Fraternity aim: to get members whose social and scholastic points of view are similar.

Officers of the year:

President	HUGH TROTTER
Vice-President	E. K. YATES
Secretary-Treasurer	RALPH TURNER
Sponsor	COACH R. N. McCRAY

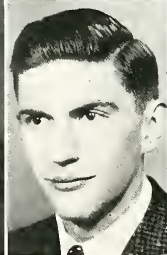
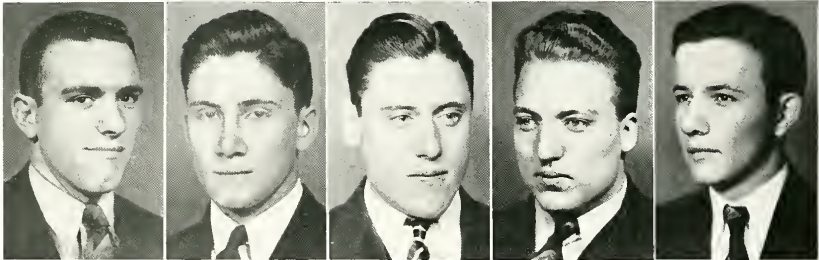
Ray Graves

True Gembill

Clyde Hughes

Ralph Turner

Bill Todd



Hugh Trotter

Coach McCray

E. K. Yates

Walter Rose

PI NU LAMBDA

First organized at the I. T. Club in 1927. In 1928 reorganized as the W. W. Club, and in 1929 the name was changed to Pi Nu Lambda.

Motto: "PLUCK, NOT LUCK."

Colors: WHITE AND GREEN.

Officers

Sponsor.....	MRS. J. ROGERS CARROLL
President	BESSIE SHULTZ
Vice-President	HELEN WILSON
Secretary-Treasurer	HELEN McDONALD
Chaplain	VIOLA KYKER
Sergeant-at-Arms	HATTIE WHITLOCK
Reporter	VALERIE LINDSAY

Hazel Proffitt	Clara Campbell	Hattie Whitlock	Joyce Mulkey	Valerie Lindsay	Margaret Rowland
Ethel Davis	Juanita Dodson	Edna Best	Helen McDonald	Sara Proffitt	Helen Wilson



Eula Thomas	Viola Kyker	Starr Pannell	Iva Rodrick	Bessie Shultz
-------------	-------------	---------------	-------------	---------------

SIGMA TAU SIGMA

The Sigma Tau Sigma Sorority has been for years one of the outstanding sororities on the campus, and continues to hold a prominent place in the social life of Tennessee Wesleyan College.

Colors: Red and White
Flowers: Gladiolus

President Anna Rhodes
Vice-President Betty Hodge
Secretary-Treasurer Helen Maher
Sponsor Mrs. R. N. McCray

Edna Loveday
Betty Hodge

Mary Emert Davis
Helen Maher

Mrs. R. N. McCray
Agnes Zirkle

Anna Rhodes
Betty Chaney



Mary Emma Felknor

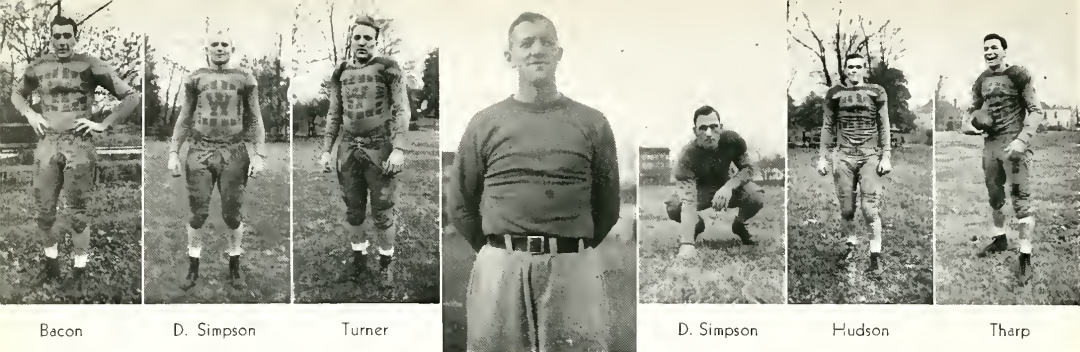
Mary Reese

Lorane Baker



ATHLETICS





Bacon

D. Simpson

Turner

Coach Rube McCray

D. Simpson

Hudson

Tharp

FOOTBALL

The Tennessee Wesleyan Bulldogs trampled over all Junior College teams to win the Southeastern Junior College Gridiron Championship for the sixth consecutive time, and lay undisputed claim to the National Junior College Championship for the second straight time.

Playing a ten-game schedule with the leading small colleges of the Southeast, the Gold and Blue aggregation won seven games, lost two, and tied one. King College overcame Wesleyan in a heart-breaker at Bristol, 19-14; Sewanee licked the Bulldogs by 25-0 to avenge last year's defeat.

Probably the most thrilling game of the season was the homecoming contest with Milligan. It resulted in a 20-20 tie. Milligan marched through to score 20 points in the first half, but Wesleyan came back strong in the latter half to score 20 points.

Much of the success of the 1938 team is due to the brilliant coaching of Rube McCray. Captain Howard Hollingsworth was the mainstay in the Wesleyan backfield, his brilliant running accounting for many of the Bulldog tallies. He did much to keep Wesleyan in the ball game. The work of Lambert, Ramsey, and Graves was a great asset to the team through the entire season. The whole team functioned well, and Coach McCray commended them for their fine work.

At the annual banquet given the boys by President and Mrs. Robb, Bobby Baker, fleet-footed halfback, was chosen captain for next year. Prospects for another successful season are very bright.



Boosters of Nocatula

T. O. F.'s	"Nero"	Thelma
"Tuell"	"Ann"	Reese
"Val"	"Hey" Davis	Felkror
Roddy & Eula	Ruth & M. Guy	Gene & Helen
"Wally"	"Cue Ball" Dobbs	"Ozell"
Mary Emert	"G Man" W.	Trouman
"Scennie"	"Hook"	"Tuffy"
Floyd	"Fire Chief" Graves	"Satchel"
Fred E. Wankan	Clyde Hughes	"Bunny Mouth"
Self & Sproule	J. D. Millsaps	"Half-Pint" Aiken
Dot Elrod	Florida Boy	"Kansas Kid"
Varnell	"Skipper"	"Bat Eye"
Kirk & Kyker	"Jasper" Jones	"Kid"
Doug & Kaye	Cliff Watts	"Sal"
E. K. & Cary	Penn & Va.	"Bru"
"Redeye" Sivils	Rankin & Helen S.	"Lily"
&	"Do-Nutt" James	"Butter" McCray
"Boop" Baker	Chas. W. Reynolds	"Baldy"
"Goon" McClusky	Bob Delaney	"Prexy"
"Tuffy" Lambert	"Sarg" Harrison	"H-B" Carroll
"Baby Gal" Arrants	"Rough House" Armstrong	Storm
"Annette & Dolly"	H. Proffitt	Aunt Betty
Starr, Edna, Omalee	Walter Watkins	Lanelle
Humberd	S. Proffitt	Hine & Gossy & Stevey
Pearl Welch	Bill & Binnie	Nora
Martha Dean Reed	Dot Patty	Cleo
"Scottie"	"Lou"	Banks
"G. Biggs"	"Juanita" & Ken	Grace
Lawson	"Phil" Douglass	Beaty
"Grogan"	Campbell	Kathryn
"Hop" Shoaf	J. D. Perkinson Jr.	Isadore
"Brownie"	Emerson	Inman
"Mae" Myers	Grace	Neely
"Lib" & Johnny	"Happy Four"	Cricket
Ruby & Upjohn	Puett	Sara List
"House Kitten" Lanningham	M. Bolen	Ann & John L.
"House Cat" McNabb	Hattie	Agnes & Bettiena
"Dee" & Ed	Joyce	Helen & Bernice
"E" Bowery	"Jess & Nell"	F. Watkins
Lackey	Ida Stanley	Alma & Wilma
"Drusy"	Grisson	"Nocatula"
"Buddy"	Maher	Chaney
"Holly"	Frances Andes	Zirkle

SMITH CLOTHING CO.

"Athens Only Exclusive Men's Store"

"Curlee Clothes" & "Jarman Shoes"

Athens,

Tennessee

RIGGS LUMBER CO.

QUALITY LUMBER AND SUPPLIES

Athens,

Tennessee

MRS. IRA M. BOLTON

Jeweler

Anything in Jewelry Line

Athens,

Tennessee

Patronize our Advertisers—

They Are Your Friends.

Compliments

of

LINDER BEAUTY SHOPPE

The Pictures in the 1938

SENIOR NOCATULA

were by

DANIELS STUDIO

Commercial and Portrait Photographers

Athens,

Tennessee

The Engravings in the

SENIOR NOCATULA

by

KNOXVILLE ENGRAVING CO.

KNOXVILLE, TENNESSEE

The Printer

THE AID OF ART
THE LIGHT OF LITERATURE
THE NARRATOR OF NEWS
THE ASSISTANT OF ADVERTISING
THE TICKLER OF TRADE
THE BUILDER OF BOOKS
THE KEY OF KNOWLEDGE

THE COLLEGE PRESS
COLLEGEDALE, TENNESSEE

HEIRD DRUG STORE

"The Gang's Hang-Out"

Doc. Heird wishes the Seniors continued success.

Sundaes, Cokes, and Candies
Prescriptions filled any time

Phone 33

We deliver

Athens, Tenn.

SCOTT LUMBER CO.

Raw and Finished Lumber

ATHENS

TENNESSEE

Compliments of

MAYFIELD'S CREAMERY

Manufacturers of

MAYFIELD'S "Jersey Maid" ICE CREAM

MAYFIELD'S "Jersey Milk" "IT'S PASTEURIZED"

and

MAYFIELD'S "Jersey Maid" BUTTER

TENNESSEE MOTOR CO.

DE SOTO

DODGE

PLYMOUTH

ATHENS and CLEVELAND

Compliments
of

EVANS and SONS

FUNERAL HOME

ATHENS, TENN.

PHONE 44

Compliments of

HAMMER SUPPLY CO.

"The House of Service."
BUILDERS' SUPPLIES

Phone 13

ATHENS

TENNESSEE

RIDDLE'S

"The Rexall store in Athens."

NUNNALLY'S AND MARTHA WASHINGTON CANDIES

PARKER AND SCHAEFER PEN AND PENCIL SETS

NEWLY EQUIPPED SODA FOUNTAIN

Phone—47

We Deliver

Prescriptions

J. NAT MOORE and SON

HARDWARE AND FURNITURE

Everything for Home and Farm

SEEDS AND FERTILIZERS

ATHENS

Phone 1

TENNESSEE

Compliments of

G. & H. FOOD STORE

Staple and Fancy Groceries

ATHENS

TENNESSEE

SANFORD SPORT CENTER

"Place where good fellows get together."

ATHENS

TENNESSEE

J. O. CHARLES DRY CLEANING CO.

"McMINN COUNTY'S LEADING CLEANERS"
18 Years Experience

PHONE 55

ATHENS, TENNESSEE

1938 GRADUATES

We wish you the best of success. We have appreciated your patronage.

MINIT CAFE

Compliments

of

THE WHITE STORE

Compliments

of

McMINN COUNTY HARDWAER CO.

Athens,

Tenn.

THE H. T. HACKNEY CO.

Wholesale Grocers

ATHENS

TENNESSEE

Seniors:

Of course you won't forget those lovely corsages and flowers from

Mc KELDIN'S FLORAL CO.

"Flowers for all occasions."

Athens

TENNESSEE

HARDWARE, PAINT, WALL-PAPER

FURNITURE AND RADIOS



ATHENS HARDWARE CO.

Seniors:

We know you'll remember those big, delicious banquets.

At

THE ROBERT E. LEE HOTEL

TENNESSEE ELECTRIC POWER CO.

LAMPS, FRIGIDAIRES, AND ELECTRICAL APPLIANCES

"For better eyesight use better lights."

FEDERATED STORES

OWNED AND OPERATED BY

KETRONS', INC.

Everything in ready-to-wear

ATHENS

Phone 40

TENNESSEE



For Reference

Not to be taken from this room

