

1940


NOCATULA



W
378.05
T256n
1940



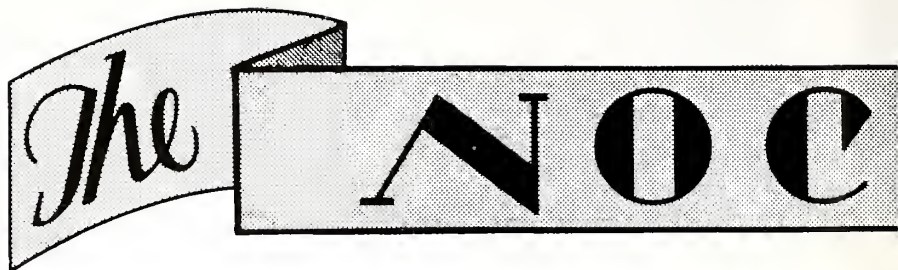




Digitized by the Internet Archive
in 2011 with funding from
LYRASIS Members and Sloan Foundation

<http://www.archive.org/details/nocatula194021tenn>

RUDOLPH A. HOPPE-----Editor
OSCAR JOHNSON----Bus. Mgr.

The title 'The NOC' is presented on a graphic that resembles a ribbon or banner. The word 'The' is written in a cursive script on a curved section of the ribbon. The letters 'NOC' are in a bold, blocky, sans-serif font on a straight section of the ribbon. The ribbon has a textured, stippled appearance.

The NOC

Volume XXI

Published by the Students of
TENNESSEE WESLEYAN COLLEGE

Athens, Tenn.

DEDICATION

To the progress of a greater Wesleyan we dedicate this twenty-first volume of the NOCATULA. May the interest and progress shown in this present Forward Movement be characteristic of the future of a great college, Tennessee Wesleyan.

21103

W
318.05
T256n
1940

ATULA



1
9
4
0

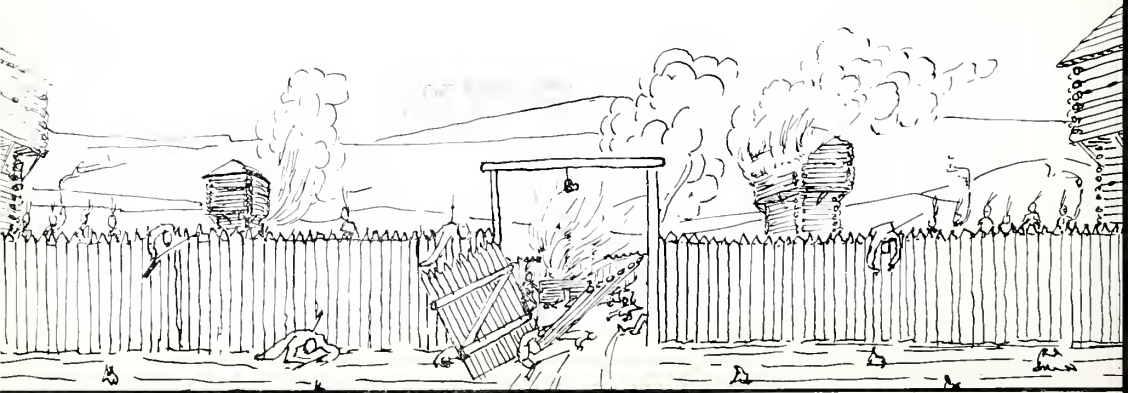
THE HACKBERRY AND OAK

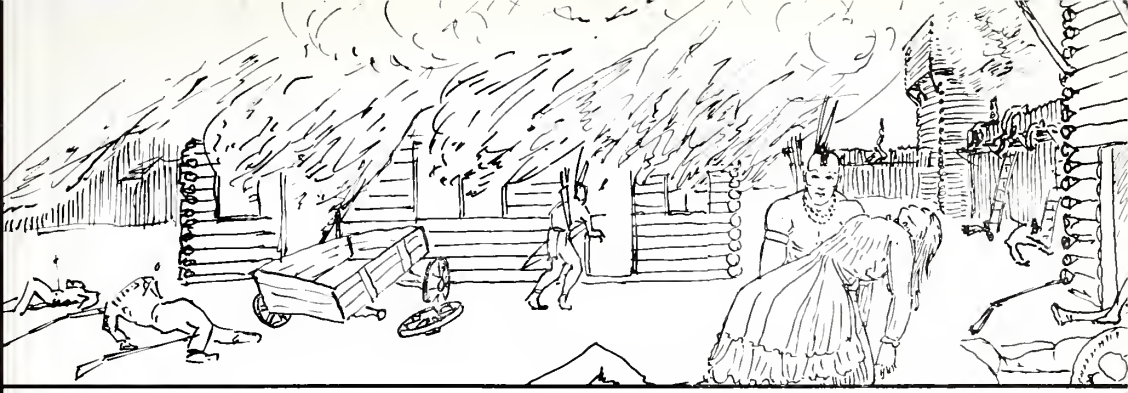
MERNER - PFEIFFER LIBRARY
TENNESSEE WESLEYAN COLLEGE
ATHENS, TENNESSEE

FOREWORD

There is a beautiful legend concerning two trees on our campus which has come to us from the Indians of this section of the United States. Because of its appropriateness we have selected it as the theme of this volume. The undying love and devotion of the Indian maiden and her lover in the legend signifies our own love and devotion to Wesleyan. May this book, as well as the story, serve to remind us of laborious, but happy days spent on the campus. A summary of the legend is begun below and continued on the division pages which follow.

Many years ago white soldiers came to the Indian town of Chota, on the Tennessee River, and erected a fort which they called Fort Loudon. The soldiers were honest and fair in their dealings with the Indians and so won their friendship. But soon traders and other settlers moved in and took such unfair advantage of the Indians that a delegation of chiefs told them that they must leave. They severely beat the chiefs and threw them from the fort. A terrible war broke out and soon the whites were forced to give in and leave. The Indians agreed to let them leave in peace provided they left behind most of their guns and ammunition, which they agreed to do. But instead of living up to their agreement they sunk the guns in the river and ruined all the powder before the Indians could find them.





CONTENTS

Book I

Book II

Book III

Book IV

Book V

The College

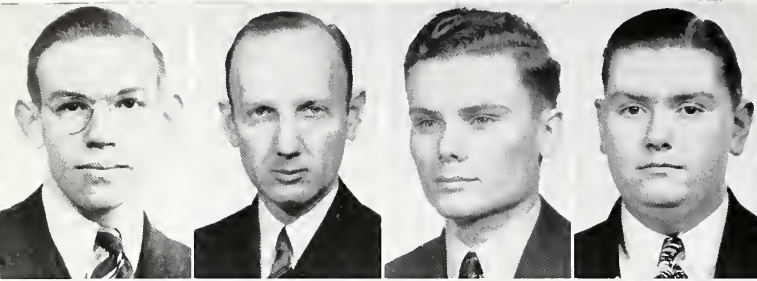
The Classes

Organizations

Athletics

Advertisements

1940 NOCATULA STAFF

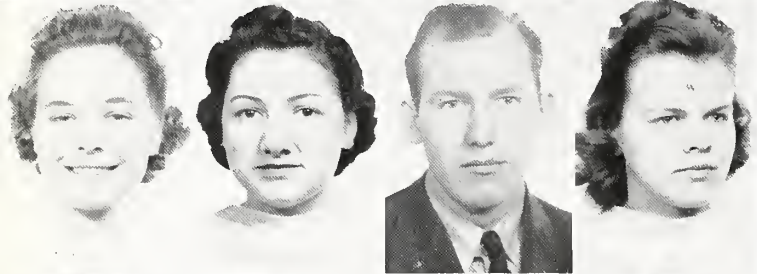


Rudolph A. Hoppe
Editor-in-chief

Prof. S. C. Evins
Faculty Advisor

Oscar Johnson
Business Manager

Lyston Jaco
Sports Editor



Ida Mae Kildgore
Club Editor

Ruth Campbell
Features Editor

Paul Smith
Rel. News Editor

Marie Gregg
Sports Editor

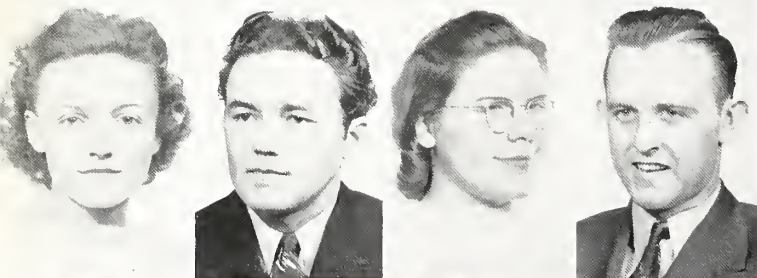


Ann Caldwell
Humor Editor

Mary Ruth Cochran
Library Editor

Anna Joyce Walton
Columnist

Ruth Hines
Columnist



Martha Cavaleri
Columnist

Vernon Moore
Columnist

Bernalyn Kelley
Reporter

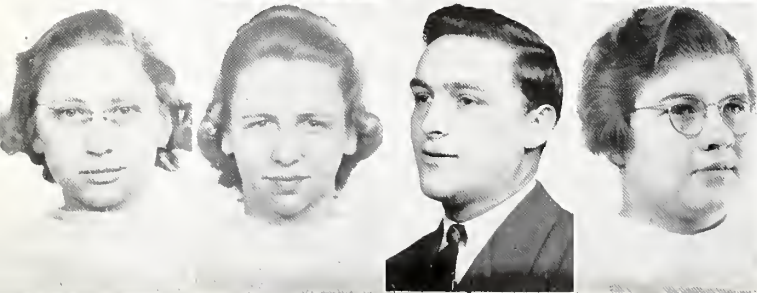
C. P. Hardy
Reporter

Elizabeth Guess
Alumni Editor

Orinda Wood
Typist

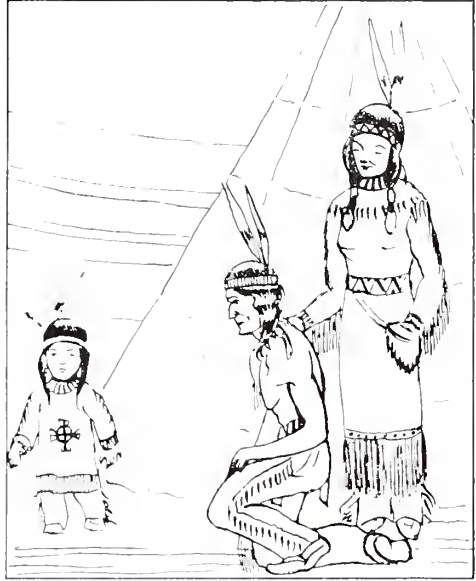
Costo Ridenour
Advertising Mgr.

Martha Sue Dean
Advertising



Advertising Staff not
Pictured: Lucille Rich-
ardson, Jane Hollings-
worth, Clureta Ray,
Margery Taylor, and
Frankie Sue Riggs.

THE CHILD, 'WEENA'



As soon as the Indians learned of the perfidy of the whites they followed them with a yearning for vengeance. A few of the older chiefs tried to warn the white men but arrived too late. The massacre was already going on. One chief, Attakull-kulla noticed a young woman begging for mercy for her baby boy. He bade the warrior spare them and took them both into his household.

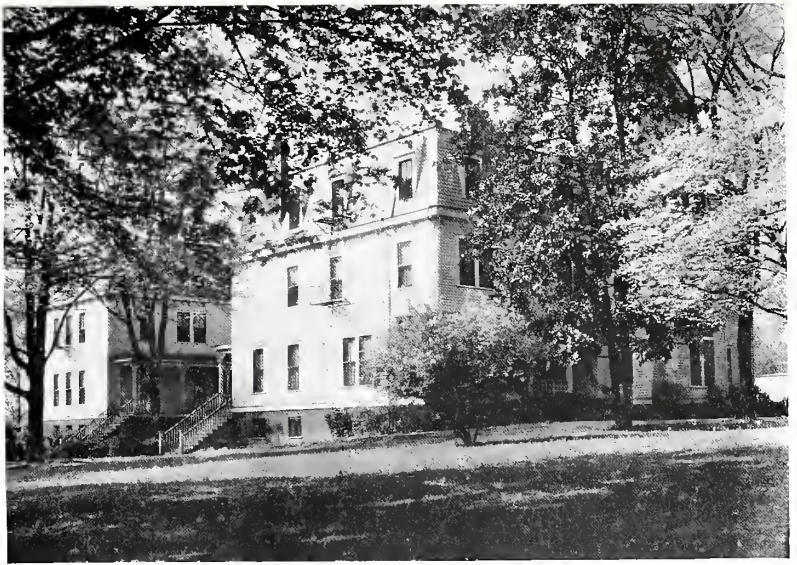
About a year later a baby girl was born to the Indian chief and the white woman whom he had taken as his wife, now known in the tribe as Ocamá. She was named Na-ca-too-la- Coo-we-na, which meant "sun shining on dew drops". This was shortened to Weena. As she grew into womanhood she became a very beautiful maiden and was a great joy to the old chief and his wife.

THE COLLEGE



ADMINISTRATION BUILDING

RITTER HALL



PETTY-MANKER HALL

BENNETT HALL



The FAC



President James L. Robb
A. B., A. M.



C. O. Douglass
A. B., A. M.
Registrar, Education



Mrs. Elizabeth Brubaker
A. B., A. M.
Religion



James B. Robb
A. B.
Business Manager



Mary A. Delaney
B. A., M. A.
Speech, Phy. Ed.



Mrs. Eda Selby Melear
A. B., A. M.
Modern Languages



Marjorie Alderfer
B. R. E.
Commerce



Ethyl Pryor
B. S.
Home Economics



Mrs. Metta Russell
Dietician
Ritter Hall



Lela I. Brown
B. S.
laboratory School



Alden D. Eddy
Field Representative



Martha Brown
Office Ass't.



Mrs. Esta Vestal
Dietician
Petty-Manker



G. A. Yates
A. B., A. M.
Math. Soc. Science



Werner Wolf
Liepsig Conservatory
Music

ULTY



A. H. Myers
Ph. B., A. M., B. D.
Religion



Mrs. Bessie Huntzinger
Superintendent
Bennett Hall



S. Carroll Evins
B. A., M. A.
English



Dean M. F. Stubbs
A. B., M. S., Ph. D.
Chem., Physics



M. R. Richmond
B. A., M. S.
Biology



Mrs. Martha Hale
A. B., A. M.
Art



J. W. Overbey
B. S.
Commerce



Francis Cullen Moffitt
Mus. B.
Piano



Andrew J. Peters
Ph. B., A. B., A. M.
Social Science



R. H. Eblen
B. S.
Athletics



Fannye Mackey
A. B., B. S.
Librarian



Claryse D. Myers
A. B.
Library Ass't.



Mrs. A. B. Collins
Ass't. Supt. Ritter Hall



Louise Tuell Eblen
Secretary

TRUSTEES

OF

TENNESSEE WESLEYAN COLLEGE

CLASS OF 1940

S. E. Miller, Johnson City, Tenn.	Board of Trustees
F. L. Bewley, Mosheim, Tenn.	Board of Trustees
R. H. Burkhart, Johnson City, Tenn.	Board of Trustees
Tom Sherman, Athens, Tenn.	Board of Trustees
J. A. Grigsby, White Horn, Tenn.	Board of Trustees
J. E. Milburn, Bristol, Tenn.	Alumni Association
W. M. Dye, Etowah, Tenn.	Holston Conference
J. Rollo A. Emert, Athens, Tenn.	Holston Conference
G. T. Francisco, Knoxville, Tenn.	Holston Conference
J. B. Cooper, M. D. Birmingham, Ala.	Alabama Conference
A. B. Dennis, Asheville, N. C.	Blue Ridge-Atlantic Conference
H. P. Keathley, Baxter, Tenn.	Central Tennessee Conference
E. C. Dewey, Lafayette, Ga.	Georgia Conference
G. E. Farrar, Melrose, Florida	St. John's River Conference

CLASS OF 1941

Mrs. J. A. Patten, Chattanooga, Tenn.	Board of Trustees
*Clem J. Jones, Athens, Tenn.	Board of Trustees
Mrs. W. H. C. Goode, Sidney, Ohio	Board of Trustees
Frank R. Dodson, Athens, Tenn.	Board of Trustees
G. F. Lockmiller, Athens, Tenn.	Board of Trustees
J. A. Fowler, Knoxville, Tenn.	Alumni Association
R. R. Kramer, Maryville, Tenn.	Holston Conference
J. M. Melear, Athens, Tenn.	Holston Conference
C. E. Rogers, Johnson City, Tenn.	Holston Conference

CLASS OF 1942

T. W. Appleby, Cincinnati, Ohio	Board of Trustees
J. J. Graham, Knoxville, Tenn.	Board of Trustees
S. C. Brown, Athens, Tenn.	Board of Trustees
Miles A. Riddle, Athens, Tenn.	Board of Trustees
*Everett M. Ellison, M. D. Washington, D. C.	Alumni Association
W. Clay Daniels, Chattanooga, Tenn.	Holston Conference
W. D. Wilkinson, Gatlinburg, Tenn.	Holston Conference
W. L. Humphrey, Cleveland, Tenn.	Holston Conference

EX-OFFICIO MEMBERS

Bishop Paul B. Kern, Nashville, Tenn.
President James L. Robb, Athens, Tenn.

OFFICERS OF THE BOARD

J. A. Fowler, President
W. L. Humphrey, Vice President
J. Rollo A. Emert, Secretary
J. M. Melear, Treasurer

*Deceased

WEENA CARES FOR THE
WHITE SOLDIER



One day a hunting party, returning to Chota, found a white soldier, wounded and almost dead, upon the ground. They stopped and spent the night bringing him back to life. When he was able to speak he told them that he was one of General Ferguson's men who had met with disaster at the Battle of King's Mountain. The hunters took him immediately to Atta-kulla-kulla, who instructed them to leave the soldier in his care.

He was placed in the chieftain's wigwam and there Weena cared for his needs and brought him back to health. Gradually he regained his strength and began to take part in the games and exercises of the young men, as well as the hunting and fishing expeditions.

THE CLASSES

The SEN



FRANCES BUTTRAM
Athens, Tenn.

Basketball-'39, '40 (Captain-'40), Sigma Iota Chi-'39, '40 (Pres.-'40), Y. M.-Y. W.-'39, '40, Student Council-'40, Athletic Council-'40, Off Campus-'39, '40, Int. Relations-Pres. '40, Nocatula Staff-'39.

JOSEPH SIMPSON
Niota, Tenn.

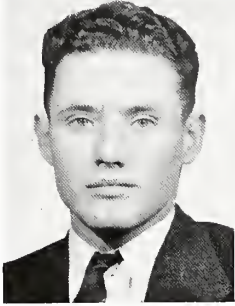
Int. Relations-'39, '40 (Pres.-'39), Football-'39, '40, "W" Club-'39, '40 (V. Pres.-'40), Off Campus-'39, '40.

NELSON B. SIMPSON
Athens, Tenn.

Football-'39, '40, "W" Club-'40, Phi Pi Delta-'39, '40.

FRANCES SCOTT
Athens, Tenn.

Off Campus-'39, '40, Int. Relations-'40 (Sec.), Y. M.-Y. W.-'39.



CARL RHEA ATHEARN
Oakdale, Tenn.

Hit Fraternity-'39, '40, Tewesco Players-'39, Y. M.-Y. W. C. A.-'39, '40, Literary Society-'40.

ROBERTA SUSONG
Morristown, Tenn.

Chorus-'39, Delta Psi Omega-'40 (V. Pres.), Tewesco Players-'40 (V. Pres.) Drum Major-'40, Y. M.-Y. W.-'39, Queen Esther-'39, Lit. Society-'39.

MARTHA CAVALERI
Jellico, Tenn.

Alpha Gamma-'39, '40 (Pres.-'40), Queen Esther-'39, '40 (Pres.-'40), Y. M.-Y. W.-'39, '40 (V. Pres.-'40), V. Pres. of Senior Class, Nocatula Staff, Lit. Society-'39, '40, Tewesco Players-'39, '40, Phi Theta Kappa-'39, '40, Religious Council-'40, Chorus-'39.

R. B. BUNCH, JR.
Athens, Tenn.

Int. Relations-'40, Phi Rho Pi-'40, Y. M.-Y. W.-'39, '40, Off Campus-'39, '40 (Sec.-'40).

GAY HARRIS
Athens, Tenn.

Y. M.-Y. W. C. A.-'39, '40, Off Campus-'39, '40, Literary Society-'40.

GAYNELLE SMITHSON
Greenvile, Tenn.

Chorus-'39, Tewesco Players-'39, '40, Y. M.-Y. W.-'39, '40, Queen Esther-'39, '40, Sigma Iota Chi-'39, '40, Int. Relations-'39, '40, Lit. Society-'39, '40, Art-'39.



ORS

WALTER G. ADAMS
Mountain City, Tenn.

Phi Pi Delta-'40, Band-'39, Int. Relations-'40.

FRANSOLA HAUN
Morristown, Tenn.

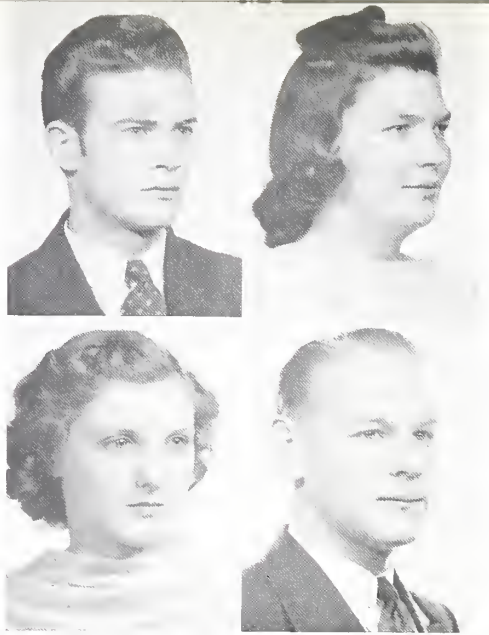
Sigma Tau Sigma-'39, '40 (Pres.-'40), Basketball-'40,
Queen Esther-'39, '40, Lit. Society-'39, '40, Y. M.-
Y. W.-'39, '40.

MAR HA SUE AILEY
Dandridge, Tenn.

Y. M.-Y. W.-'39, '40, Lit. Society-'39, '40, Tewesco
Players-'39, '40, Band-'39, '40, Pi Nu Lambda-'39, '40
(Sec.-'40).

JACK A BELL
Athens, Tenn.

Student President-'40, Phi Pi Delta-'39, Tewesco Players-
'39, '40, Delta Psi Omega-'39, '40 (Pres.-'40) Off Campus-
'39, '40.



MARISE WANKAN
Athens, Tenn.

Music Club-'39, '40, Sigma Iota Chi-'39, '40, Literary
Society-'40.

FRED LEWIS
Athens, Tenn.

Off Campus-'39, '40, Int. Relations-'39, '40.

JAMES BURN
Niota, Tenn.

Eta Iota Tau-'39, '40, Phi Theta Kappa-'39, '40, Off-
Campus-'39, '40 (Pres.-'40), Phi Rho Pi-'39, '40, Int.
Relations-'40, Literary Soc.-'40, Y. M.-Y. W. C. A.-
'39.

MARGARET ANN CALDWELL
Andrews, N. Carolina

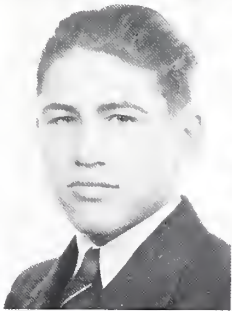
Lit. Society-'39, '40, Y. M.-Y. W.-'39, '40, Sigma Tau
Sigma-'40, Tewesco Players-'40, Glee Club-'39, Queen
Esther-'39, '40, Cheerleader-'39, '40, May Queen-'40,
Nocatula Staff-'39, '40, Int. Relations-'39, '40.

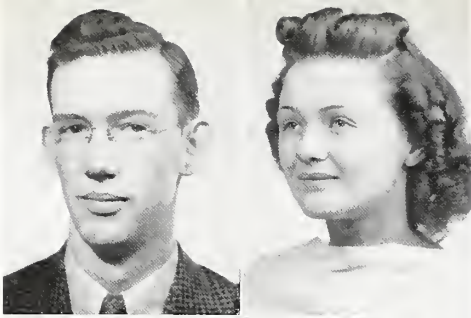
DIXIE IRENE DUNCAN
Briceville, Tenn.

Y. M.-Y. W.-'39, '40, Tewesco Players-'39, '40, Lit.
Society-'39, '40, Christian Service-'39, '40, Queen
Esther-'39, '40, Int. Relations-'39, Chorus-'39, Band-'39,
Art-'39, '40, Home Ec.-'40.

WILLIAM TAYLOR SCOTT
Lancing, Tenn.

Eta Iota Tau-'39, '40 (Pres.-'40), Sec. Senior Class, Lit.
Society-'39, '40, Chorus-'39, '40.





JAMES McCALL RAY

Shell Creek, Tenn.

Basketball-'39, "W" Club-'40, Phi Pi Delta-'39, '40.

JEWEL SHELL

Athens, Tenn.

Student Council-'39, Chorus-'39, Int. Relations-'40, Y. M. Y. W.-'39, '40, Off Campus-'39, '40, Literary Society-'40, Cheer Leader-'40.

MARY LOU YATES

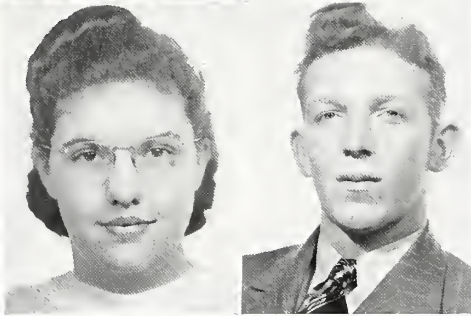
Athens, Tenn.

Y. M. Y. W.-'39, '40, Home Ec-'40, Off Campus-'39, '40 (V. Pres.-'40), Literary Society-'39, '40, Sigma Tau Sigma-'39, '40 (Treas.-'40), Chorus-'39.

NEWELL S. IRWIN JR.

Seymour, Tenn.

Phi Pi Delta-'39, '40, Football-'39, '40, "W" Club-'40, Int. Relations-'39, '40, Soft Ball-'39, '40, Tewesco Players-'39, Art-'40.



IRENE HALL

Loudon, Tenn.

Y. M.-Y. W.-'39, '40, Christian Service-'39, '40, Lit. Society-'39, '40 (V. Pres.-'40), Queen Esther-'39, '40, Phi Theta Kappa-'39, '40 (V. Pres.-'40), Sigma Tau Sigma-'39, '40, Chorus-'39, '40, (V. Pres.-'40), Music '39.

BRISCOE STALEY

Niota, Tenn.

Phi Pi Delta-'39, '40, Band-'39, '40, Int. Relations-'39, '40, Off Campus-'39, '40.

R. OWEN SNODDERLY

Fountain City, Tenn.

Eta Iota Tau-'40, Phi Rho Pi-'40, Lit. Society-'40, Christian Service-'40, Y. M.-Y. W.-'40.

RACHEL ANN STEPHENS

Tellico Plains, Tenn.

Sigma Iota Chi-'40, Y. M.-Y. W.-'39, '40, Int. Relations-'39, '40, Chorus-'39, Art-'39, '40, Lit. Society-'39, '40.

KATHLEEN MCKENZIE

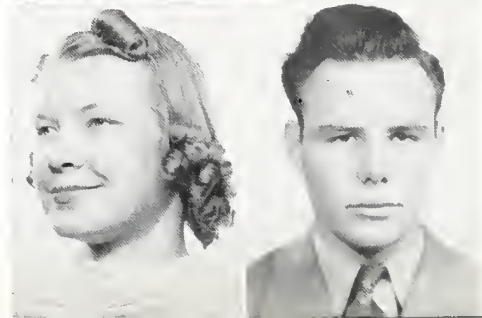
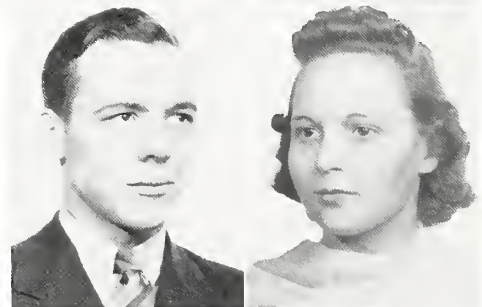
Decatur, Tenn.

Music-'39, '40, Lit. Society-'39, '40, Chorus-'39, Int. Relations-'39, '40, Off Campus-'39, '40, Tewesco Players-'40, Y. M.-Y. W.-'39, '40, Philalethian-'40.

BILL GRIFFITH

Wartrace, Tenn.

Phi Pi Delta-'40, "W" Club-'40, Football-'39, '40, Basketball-'39, Int. Relations-'39, '40, Softball-'39, '40.



ORS

ANNA JOYCE WALTON
Rugby, Tenn.

Home Ec.-'39, '40, Y. M. Y. W.-'39, '40, Chours-'39, '40, Sigma Iota Chi-'39, '40 (Sec.-'40).

PAUL SMITH
Chattanooga, Tenn.

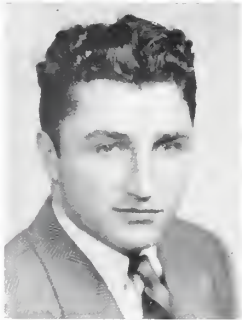
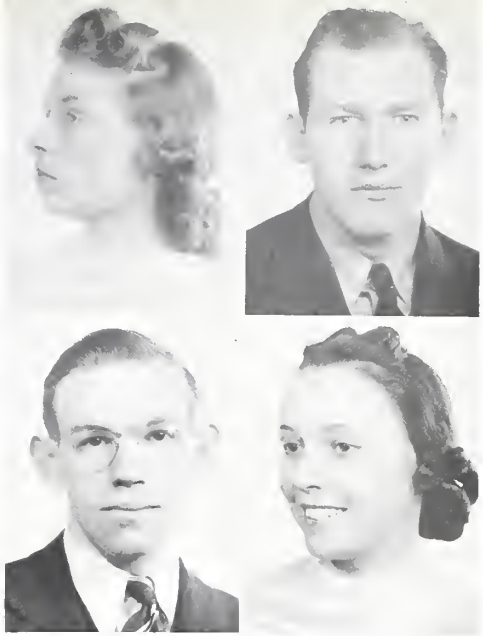
Nocatula Staff-'40, Student Council-'39, Rel. Council-'40, Int. Relations-'39, '40, Christian Ser.-'39, '40 (Pres.-'40), Lit. Society-'39, '40, Y. M. Y. W.-'39, '40, Phi Theta Kappa-'39, '40 (Pres.-'40), Eta Iota Tau-'39, '40, Petty Manker Council-'40, Softball-'39.

RUDOLPH A. HOPPE
Sweetwater, Tenn.

Nocatula Staff-'39, '40 (Editor in chief-'40), Phi Theta Kappa-'39, '40, Phi Rho Pi-'39, '40 (Sec.-'40), Phi Pi Delta-'40, Sec. Student Council-'40, Y. M. Y. W.-'39, '40 (Sec.-'40), Off Campus-'39, '40 Lit. Society-'40.

LISSIE MAE QUINN
Copperhill, Tenn.

Chorus-'39, '40, Pi Nu Lambda-'39, '40 (Pres.-'40), Lit. Society-'39, Queen Esther-'39, '40, Int. Relations-'39, '40, Art-'40.

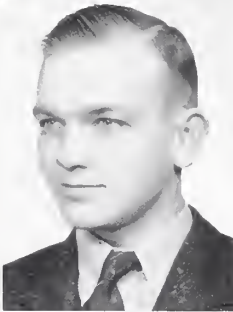


ROBERT MARION ROBERTSON
Pigeon Forge, Tenn.

"W" Club-'39, '40, Int. Relations-'39, '40.

GLADYS ANDES
Oakdale, Tenn.

Chorus-'39, '40, Christian Service-'39, '40 (Pianist), Y. M. Y. W.-'39, '40, Alpha Gamma-'39, '40 (Sec.-'40), Phi Theta Kappa-'39, '40, (Sec.-'40) Queen Esther-'39, '40, Music-'39, '40, (Pres.-'40), Lit. Society-'40.



MARY EVELYN STINNETTE
Knoxville, Tenn.

Chorus-'39, Pi Nu Lambda-'39, '40 (V. Pres.-'40) Queen Esther-'39, '40 (Sec.-'40), Art-'40 (Sec.), Int. Relations-'39, Phi Theta Kappa-'39, '40.

KENNETH ELLIOT
Athens, Tenn.

Phi Pi Delta-'39, '40, Off Campus-'39, '40, Literary Society-'40, Int. Relations-'39, '40.

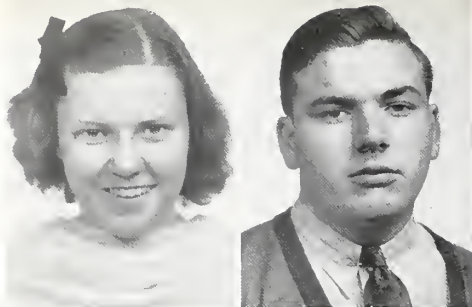
JAMES FROST
Etowah, Tenn.

Phi Rho Pi-'40, Off Campus-'39, '40, Lit. Society-'40, Y. M. Y. W.-'39, '40, Int. Relations-'40.



DOROTHY THOMPSON
Athens, Tenn.

Off Campus-'39, '40, Sigma Iota Chi-'39, '40, Lit. Society-'40.



ELIZABETH PERKINSON
Athens, Tenn.

Sigma Tau Sigma-'39, '40, Off Campus-'40, Int. Relations-'40, Lit. Society-'39, '40, Music-'39.

JOHN CALHOUN
Athens, Tenn.

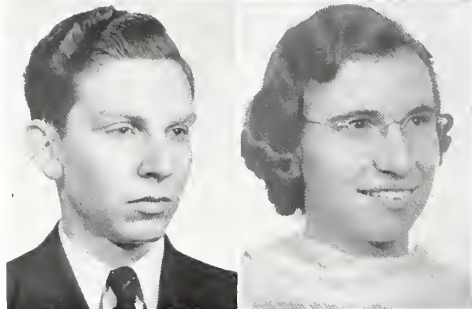
Off Campus-'39, '40, Int. Relations-'39, '40, Literary Society-'40.

LOUIS HUDSON
Etowah, Tenn.

Off Campus-'39, '40, Phi Pi Delta-'39, '40, Y. M. Y. W.-'39, '40, Band-'39.

WILMA TAYLOR
Crossville, Tenn.

Y. M. Y. W.-'39, '40, Lit. Society-'39, '40, Queen Esther-'39, '40, Chorus-'39, Phi Theta Kappa-'40, Philalethians-'40.



NEWELL MORRIS
Athens, Tenn.

Off Campus-'39, '40, Lit. Society-'39, '40, International Relations-'39, '40.

EVELYN CRAIG
Tellico Plains, Tenn.

Int. Relations-'39, Queen Esther-'39, '40, Pi Nu Lambda-'40, Literary Society-'39, '40, Chorus-'39, Y. M. Y. W.-'39, '40.

HELEN ELIZABETH NIECE
Chattanooga, Tenn.

Phi Theta Kappa-'39, Pi Nu Lambda-'39, '40, Literary Society-'39, '40, Int. Relations-'39, Student Council-'40, Y. M. Y. W.-'39.

FRED E. JENKINS
Knoxville, Tenn.

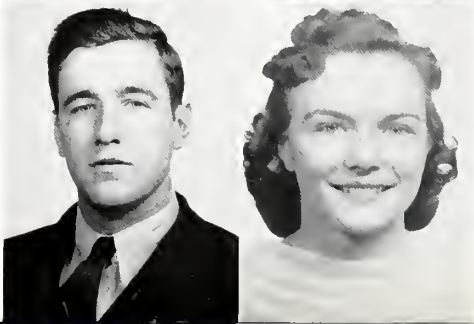
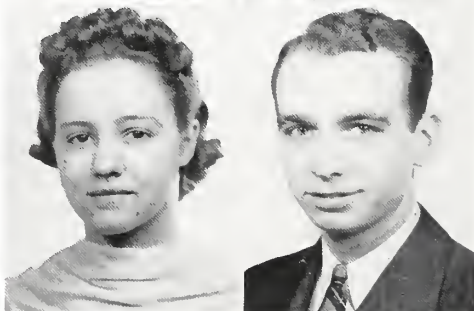
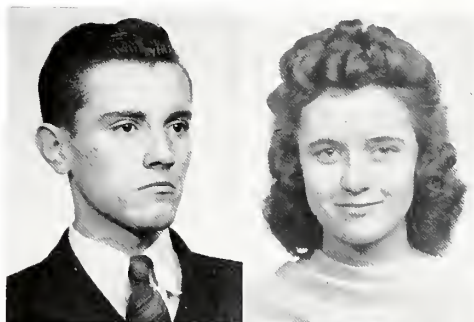
Pres. Senior Class, Twesco Players-'39 (Pres.-'40), Lit. Society-'39 (Pres.-'40), Chorus-'39, (Pres.-'40), Y. M. Y. W.-'39 V. Pres.-'40, Eta Iota Tau-'39, (V. Pres.-'40), Student Council-'39, '40, Music-'39, Intl Relations-'40, Christian Service-'39, '40, Rel. Council-'40, Cheerleader-'40, Delta Psi Omega-'40.

LAWRENCE FOX
Cleveland, Tenn.

Lit. Society-'40, Y. M. Y. W. C. A.-'39, Int. Relations-'39, '40.

ELIZABETH ALLEN
Etowah, Tenn.

Sigma Iota Chi-'39, '40, Y. M. Y. W.-'39, '40, Int. Relations-'39, '40, Art-'39, '40, Lit. Society-'39, '40



ORS

RAYMOND SHOEMAKER
Athens, Tenn.

Lit. Society-'40, Off Campus-'39, '40, Int. Relations-'39, '40.



ELIZABETH GUESS
Chattanooga, Tenn.

Christian Service-'39, '40, (V. Pres.-'40), Queen Esther-'39, '40, Tewesco Players-'40, Chorus-'39, '40, Int. Relations-'39, '40, Music-'39, Philalethians-'40, Rel. Council Sec.-'40.



EDNA EARLE COZART
Etowah, Tenn.

Off Campus-'39, '40, Int. Relations-'39, '40, Y. M.-Y. W.-'39, '40, Art-'39, '40.

CHARLES HOLDWAY
Newport, Tenn.

Int. Relations-'39, Literary Society-'40.



LUCILLE BEATY
Grimmsley, Tenn.

Philalethian Society-'40, Queen Esther-'39, '40, Y. M.-Y. W.-'39, '40, Lit. Societv-'39, '40, Art-'40, Int. Relations-'39.

BILL DEW
Russellville, Tenn.

Lit. Society-'40, Y. M. Y. W.-'39, '40, Christian Service-'40, Int. Relations-'39, '40, Student Council-'40, Tennis-'39, '40, (Sec.-'40), Chorus-'39, '40, Petty Manker Council-'40.



RICE THOMAS
Athens, Tenn.

Int. Relations-'39, '40, Off Campus-'39, '40.

HELEN PERKINSON
Riceville, Tenn.
(A Junior)

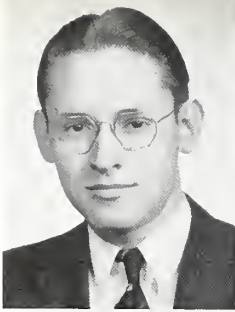


MYRA W. WILSON
Portsmouth, Ohio

Y. M. Y. W.-'39, '40, Home Ec.-'40, Sigma Iota Chi-'39, '40, Lit. Society-'40, Tewesco Players-'40, Int. Relations-'39, '40, Chorus-'39.

KENNETH JACKSON
Etowah, Tenn.

Phi Pi Delta-'39, '40, Delta Psi Omega-'39, '40, Tewesco Players-'39, '40, Y. M. Y. W.-'39, '40, Off Campus-'39, '40.



CLIFFORD M. INGRAM
Athens, Tenn.

Y. M. Y. W.-'39, '40 (Pres.-'40), Phi Rho Pi-'39, '40, (Pres.-'40), Student Council-'40, Religious Council-'40, Eta Iota Tau-'39, '40, Off Campus-'39, '40.

GRACIA B. MONTEITH
Sweetwater, Tenn.

Home Ec.-'39, '40 (V. Pres.-'40), Basketball-'40, Lit. Society-'39, '40, Christian Service-'40, Philalethians-'40, Glee Club-'39, Y. M. Y. W.-'39, '40.

MARIE GREGG
Friendsville, Tenn.

Alpha Gamma-'39, '40, Queen Esther-'39, '40, Basketball-'39, '40, Nocatula Staff-'40.

L. O. BACON
Kingston, Tenn.

Eta Iota Tau-'39, '40, Christian Service-'39, '40, Literary Society-'39, '40, Y. M. Y. W.-'39, '40, Int. Relations-'40 (Sec.)



RUTH CAMPBELL
Knoxville, Tenn.

Chorus-'39, Pi Nu Lambda-'39, '40, Lit. Society-'39, '40 (Sec.-'40), Queen Estee-'39, '40 (Treas.-'40), Tewesco Players-'40, Phi Theta Kappa-'39, '40, (Treas.-'40), Y. M. Y. W.-'39, '40, Nocatula Staff-'40.

W. H. PROFFITT
Cosby, Tenn.

Int. Relations-'39, '40, Y. M. Y. W.-'39, '40.

LYSTON G. JACO, JR.
Athens, Tenn.

Phi Rho Pi-'39, '40, Phi Pi Delta-'39, '40 (Pres.-'40), Lit. Society-'40, Phi Theta Kappa-'39, '40, Y. M. Y. W.-'40, Sports Editor Nocatula-'39, '40, Student Council-'40, Off Campus-'39, '40, Int. Relations-'40.

ORA BESS HUNTER
Decatur, Tenn.

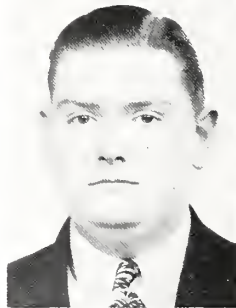
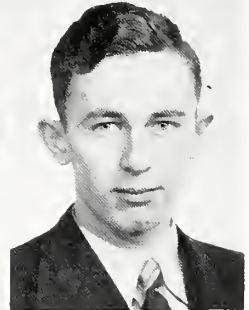
Music-'39, '40 (V. Pres.-'40), Off Campus-'39, '40, Int. Relations-'39, Y. M. Y. W.-'39, '40, Chorus-'39, Tewesco Players-'39, '40, Basketball-'39, '40, Art-'39, '40, Philalethian-'40.

MAXINE LEDFORD
Copperhill, Tenn.

Pi N. Lamba-'39, '40 (Sec.-'40), Queen Esther-'39, '40, Lit. Society-'39, Art-'40, Int. Relations-'39.

OSCAR JOHNSON
Jacksonville, Fla.

Lit. Soc.-'39, '40, Eta Iota Tau-'39, '40, Delta Psi Omega-'39, '40, Eta Iota Tau-'39, '40, Delta Psi Omega-'39, '40 (V. Pres.-'40), Y. M. Y. W.-'39, '40, Phi Rho Pi-'40, Tewesco Players-'39, '40, Int. Rel.-'40, Religious Council-'40.



IOBS

GEORGIA KEARNEY

Lafayette, Tenn.

Alpha Gamma-'39, '40, Lit. Society-'39, '40, Y. M. Y. W.-'39, '40, Int. Relations-'39, '40, Tewesco Players-'39, Chorus-'39, Band-'39, Home Ec.-'39, '40.

VINCENT PATTON

Athens, Tenn.

Off Campus-'39, '40, Lit. Society-'40.

TOM TAYLOR

Dayton, Tenn.

Int. Relations-'39, '40, Y. M. Y. W.-'39, '40, Literary Society-'40.

ITA MARIE BALL

Cleveland, Tenn.

Chorus-'40, Pi Nu Lambda-'40, Lit. Society-'39, Y. M. Y. W.-'39, '40, Queen Esther-'39, '40, Int. Relations-'39, '40, Art-'40.



IRENE ELROD

Meadowview, Virginia

Cho us-'39, '40, Christian Service-'39, '40 (Reporter-'40), Y. M. Y. W.-'39, '40 (Sec.-'40), Queen Esther-'39, '40, Int. Relations-'39, Art-'39, Alpha Gamma-'39, '40, (V. Pres.-'40), Lit. Society-'39, '40 (Sec.-'39).

MAUDE ELLA PEERMAN

Newport, Tenn.

Lit. Society-'39, '40, Pi Nu Lambda-'39, '40, Queen Esther-'39, '40, Home Ec.-'40, Y. M. Y. W.-'39, '40.

BERTHA CHASTAIN

Lawrenceville, Ga.

Queen Esther-'39, '40, Y. M. Y. W.-'39, '40, Christian Service-'39, '40, Delta Psi Omega-'40, Literary Society-'39, '40, Glee Club-'39, '40, Tewesco Players-'39, '40, Band-'40, Int. Relations-'40.

DURWARD E. HAMBY

Athens, Tenn.

Phi Pi Delta-'39, '40, Lit. Society-'39, '40, Off Campus-'39, '40.

LOUISE FRITTS

Harriman, Tenn.

Lit. Society-'40 (Sec.), Christian Service-'39 (V. Pres.), '40 (Sec.), Band-'39, '40, Chorus-'39, '40, Y. M. Y. W.-'39, '40, Queen Esther-'39, '40, Tewesco Players-'39, '40, Sigma Tau Sigma-'39, '40 (V. Pres.-'40), Int. Relations-'39, '40 (V. Pres.-'40), Music-'39.

LOUISE FREELS

Harriman, Tenn.

Y. M. Y. W.-'39, '40, Lit. Society-'39, '40, Basketball-'39, '40, Int. Relations-'40, Band-'39.



The SENIORS



IDA MAE KILDGORE
South Pittsburgh, Tenn.

V. Pres. Student Body-'40, Y. M. Y. W.-'39, '40, Lit. Society-'39, '40, Art-'39, '40, Pi Nu Lambda-'39, '40, Band-'40, Int. Relations-'39, '40, Student Council-'40, Queen Esther-'39, '40, Nocatula Staff-'40.



MARY LUCILLE PATTON
Athens, Tenn.

Y. M. Y. W.-'39, '40, Off Campus-'39, '40, Literary Society-'39, '40.



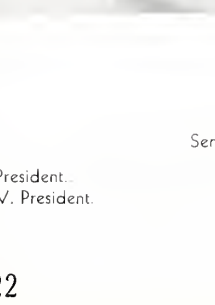
ELIZABETH ROSE FERGUSON
Kingston, Tenn.

Philalethians-'40, Home Ec.-'40, Queen Esther-'39, '40, Y. M. Y. W.-'39, '40, Lit. Society-'39, '40, Art-'40, Christian Service-'40.



LOVE GRAY
Newport, Tenn.

Int. Relations-'40, Art-'40, Y. M. Y. W.-'40.



CORRINE HOLLAND
Newport, Tenn.

Literary Society-'40.



JEAN NIPPER
Erie, Tenn.

V. Pres. Philalethians-'40, Queen Esther-'39, '40, Int. Relations-'39, '40, Y. M. Y. W.-'39, Lit. Society-'39, Chorus-'39.

JANE HUGHES
Englewood, Tenn.

Home Ec. Club-'40, Int. Relations-'40, Sigma Iota Chi-'40, Basketball-'40, Debate-'39.

CLASS OFFICERS

Senior

President... .. Fred Jenkins
V. President... .. Martha Cavaleri

Junior

President... .. Frank Dodson
V. President... .. Ruth Crowder

Ruth Sewell
Klamath Falls, Oregon
Richard LaFrance
Ithaca, New York
Claudia Harrison
Greeneville, Tennessee
Charles Hardy
Peakland, Tennessee
Beulah Branam
Sevierville, Tennessee



Harry Pierce
Pt. Pleasant, New Jersey
Marjorie Ault
Pikeville, Tennessee
Robert Freels
Oliver Springs, Tennessee
Claudia Cox
Tonga, Georgia
James McKenzie
Deatur, Tennessee



Norma Stonecipher
Oakdale, Tennessee
Onolee Fillmore
Harriman, Tennessee
James Wilson
N. Tarrytown, New York
Lawrence Amburge
Athens, Tennessee
Maxine Renner
Greeneville, Tennessee



Jack Ferguson
Tellico Plains, Tennessee
Lois Akers
Erwin, Tennessee
Bill Headrick
Oakdale, Tennessee
Peggy Lohr
Copperhill, Tennessee
Childrey Austin
Blacksburg, Virginia



Virginia Thomas
Athens, Tennessee
W. A. Freels
Harriman, Tennessee
Bernalyn Kelly
Athens, Tennessee
William Selden
Athens, Tennessee
Ruth Crowder
London, Tennessee



Thomas Hopkins
Shelbyville, Tennessee
Virginia Quinn
Copperhill, Tennessee
Jerry Ayers
Haley, Tennessee
Mary Deaderick
Oliver Springs, Tennessee
Lee Dickey
Sweetwater, Tennessee



Virginia Swanson
Andrews, North Carolina
Albert Maltby
Hastings, Florida
Ruth Hines
Lenoir City, Tennessee
Felix Harrod
Athens, Tennessee
Panthea Prince
Benton, Tennessee



The JUNIORS



Marjorie Taylor
Englewood, Tennessee
Frank Dodson
Athens, Tennessee
Muriel Wilson
Portsmouth, Ohio
Henry Scroggs
Clinton, Tennessee
Helen Slaten
Onida, Tennessee

Vernon Moore
Knoxville, Tennessee
Audrey Jacks
Burrville, Tennessee
Billy Richardson
Jonesboro, Arkansas
Arlene Jones
Athens, Tennessee
Charles Forrester
Knoxville, Tennessee

Glenice Seale
Speedwell, Tennessee
John Shipley
Athens, Tennessee
Mildred Crum
Greenville, Tennessee
Paul Nave
Mountain City, Tennessee
Aulena Lindsay
Cosby, Tennessee

Leonard Lomell
Pt Pleasant, New Jersey
Ruth Woodward
Abingdon, Virginia
Maynard Ellis
Athens, Tennessee
Mary Faye Kennedy
Niota, Tennessee
Verbon Murphree
Trade, Alabama

Maxine Rollins
Hartford, Tennessee
Horace Knox
Niota, Tennessee
Katherine Haren
Epworth, Georgia
Matney Reed
Etowah, Tennessee
Ortense Wilson
Cosby, Tennessee

Jack Ruggles
Etowah, Tennessee
Clureta Ray
Jacksboro, Tennessee
J. P. Kennedy
Sweetwater, Tennessee
Lucille Richardson
Jacksboro, Tennessee
Richard Cooke
Athens, Tennessee

Ernestine Grant
Rockwood, Tennessee
James Hooper
Tellico Plains, Tennessee
Edith Smith
Kingston, Tennessee
(Senior)
David Nugent
Hickman, Kentucky
(Senior)
Martha Sue Dean
Folkston, Georgia

The JUNIORS

Allie Marie Jenkins

Riceville, Tennessee

Mary Ruth Cochran

Chattanooga, Tennessee

Mavis Skeens

Glenmary, Tennessee

Rachel Crowder

Loudon, Tennessee

Elizabeth Hamblin

Greenville, Tennessee

Karl Saulpaw

Calhoun, Tennessee

Jane Hollingsworth

Clinton, Tennessee

William Cantwell

Morristown, Tennessee

Francell Redwine

Chattanooga, Tennessee

Costo Ridenour

Newcomb, Tennessee

Orinda Wood

Sweetwater, Tennessee

Lonnie May

Hixvassee Dam, North Carolina

Ruth Horton

Newport, Tennessee

Herold Wilson

Tennga, Georgia

Mary Moore

Chattanooga, Tennessee

Maurice Steppe

Maryville, Tennessee

Mary Hill Abel

Gulport, Mississippi

Charles Gibbs

Fountain City, Tennessee

Jean Douglass

Athens, Tennessee

Clarence Brees

Carbondale, Pennsylvania

Frances Crabtree

Ten Mile, Tennessee

Neal Jiles

Ten Mile, Tennessee

Janis Hixson

Dunlap, Tennessee

Bryce Brooks

Greenville, Tennessee

Marzetta Hite

Jonesboro, Tennessee

Eula Moser

Vonore, Tennessee

Christine Langley

Lancing, Tennessee

Joe McCampbell

Knoxville, Tennessee

Ozelle Shoemaker

Athens, Tennessee

Elizabeth Davis

Liberty, Tennessee

Mary Witt

Morristown, Tennessee

Martha Lankford

Athens, Tennessee

Janet Marson

Ft. Lauderdale, Florida

Carolyn Bishop

Morristown, Tennessee

Doris Tallent

Copperhill, Tennessee



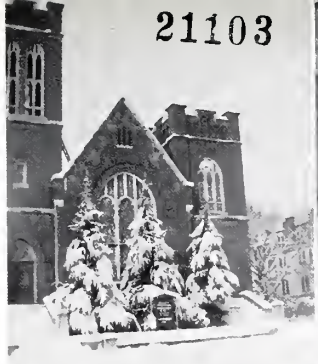
The JUNIORS



S
N
A
P

78.05
256n
1940

21103



S
H
O
T
S

MERNER - PFEIFFER LIBRARY
TENNESSEE WESLEYAN COLLEGE
ATHENS, TENNESSEE

A GLIMPSE INTO THE FUTURE



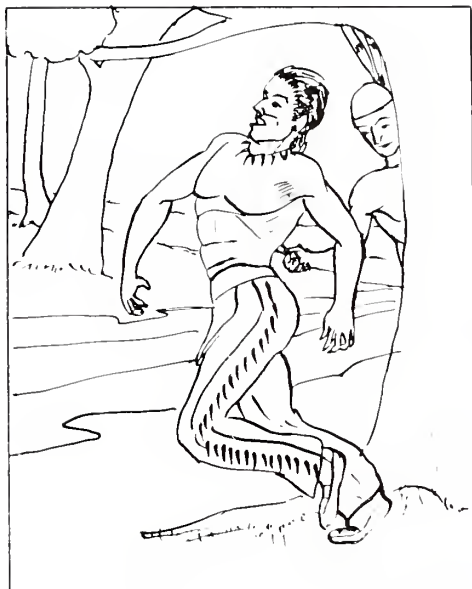
Mr. and Mrs. Henry Pfeiffer

In the near future students of Tennessee Wesleyan will enjoy the privilege of a modern college library because of the generosity and kindness of Mrs. Henry M. Pfeiffer. It is to be called the Merner-Pfeiffer Library and is being made possible by Mrs. Pfeiffer's donation of one hundred thousand dollars, seventy five thousand of which will go into the erection of the library. In order to receive the gift her money is being matched by an equal amount from other friends of the college. We are glad to announce that this goal is now within sight.

The architect's sketch below was made some time ago by Mr. O. C. Poundstone from Atlanta, Ga., and includes the features desired in the building. It will truly be a great asset to the college and will permit the use of the present library as much-needed laboratories and class rooms.



CONNESTOGA IS STABBED
FROM BEHIND



By the time the young man was able to sit up he and Weena were deeply in love. He became a favorite among the tribe and soon Atta-kulla-kulla consented to the marriage of Weena and the young man, whom the tribe took in and named Connestoga, "the Oak."

All was well until one day on a hunting trip. Connestoga and a companion were stationed at a pass early in the morning to stop the deer which the others were driving their way. Suddenly while the young man was in a crouching position an Indian warrior sprang out from behind a tree and plunged a knife down into Connestoga's neck. It was a jealous rival who had wanted Weena for himself.

ORGANIZATIONS

STUDENT COUNCIL

The Student Council is the governing body of the student organization. It also serves as representatives of the student body before the faculty.

Officers:

President..... Jack Bell
 V. President..... Ida Mae Kildgore
 Secretary Rudolph Hoppe
 Ida Mae Kildgore served as president and Clifford Ingram as vice president during the last quarter.

Seated: Frank Dodson, Pres. Jr. Class; Ida Mae Kildgore, Student Vice-President; Jack Bell, Student President; Norma Stonecipher, junior class representative; Francis Buttram, senior class representative.

Standing: Clifford Ingram, President Y. M.—Y. W. C. A.; Horace Knox, junior class representative; Fred Jenkins, President Senior Class; Rudolph Hoppe, Editor NOCATULA; and C. M. Boyer, senior class representative.





Prof. A. H. Myers, Clifford Ingram, Prof. A. J. Peters, Elizabeth Guess, Paul Smith, Oscar Johnson, Miss Ethyl Pryor.

The religious Council is composed of the student presidents of the three religious organizations on the campus, the two vice-presidents of the Y. M.-Y. W. C. A. and the faculty sponsors of these organizations. It is responsible for planning religious conferences, special services, affiliated church memberships in the local churches, and for sending delegates representing the college to Christian conferences elsewhere. Its members have charge of one Sunday night meeting per month in the Trinity Methodist Church, and the final "Candle Lighting" Service at Commencement.

This organization has also brought to our campus many outstanding Christian leaders to speak and confer with the students.

RELIGIOUS COUNCIL



LITERARY SOCIETY

Fred Jenkins.....President
 Irene Hall.....Vice Pres.

INTERNATIONAL RELATIONS CLUB

Section Presidents — Glenn Knox, Bill Selden,
 Newell Irwin, and J. D. Gully.
 Section V. Presidents — Ben Garner, Louise Fritts,
 Panthea Prince, and Jack Ruggles.





QUEEN ESTHER CIRCLE

Martha Cavaleri..... President
Elisabeth Guess..... V. Pres.

Y M.-Y. W. C A

Clifford Ingram..... President
Fred Jenkins..... V. Pres.
Irene Hall..... V. Pres.



CHORUS

Fred Jenkins.....President
 Irene Hall.....V. Pres.



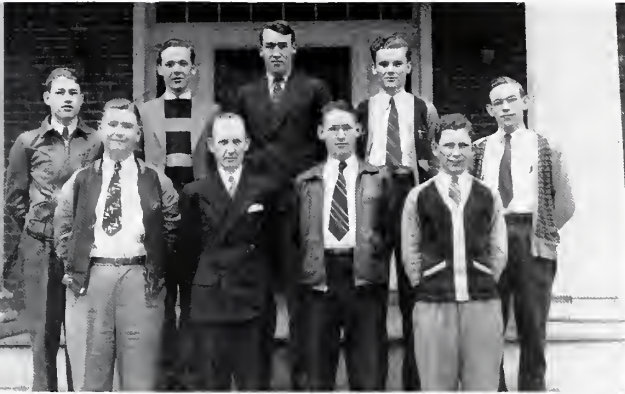
TEWESCO PLAYERS

Fred Jenkins.....President
 Roberta Susong.....V. Pres.

CHRISTIAN SERVICE CLUB

Paul Smith.....President
 Elizabeth Guess.....V. Pres.





PHI RHO PI
Clifford Ingram..... President

HOME ECONOMICS CLUB
Jewell Rice.....President
Grace Monteith.....V. Pres.



PHILA LETHIANS
Mary Ruth Cochran.....President
Jean Nipper.....V. Pres.



OFF CAMPUS CLUB

President James Burn, Helen Perkinson
V. Pres.... R. B. Bunch, Mary Lou Yates



MUSIC CLUB

Gladys Andes..... President
Bess Hunter..... V. Pres.

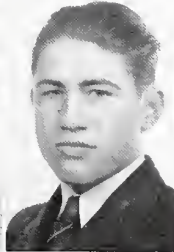
Paul Smith

Evelyn Stinnette

C. O. Douglass

Irene Hall

Rudolph Hoppe



Ida Mae Kildgore

Lyston Jaco

Gladys Andes

James Burn

Martha Cavaleri

PHI THETA KAPPA

The Beta Chi chapter of Phi Theta Kappa Fraternity for Junior Colleges was organized in 1931. Its purpose is to encourage the highest possible scholastic attainments among college men and women, and to promote a fellowship among such junior college students throughout the United States.

Officers:

President..... Paul Smith
 V. President..... Irene Hall
 Secretary..... Gladys Andes
 Sponsor..... C. O. Douglass

New members of Phi Theta Kappa are: Orinda Wood; Wilma Taylor, Ruth Hines, Francella Redwine, Muriel Wilson, Ernestine Grant, Mary Witt, Bill Selden, Roy Godsey, and Leo Howell.

Anna Joyce Walton
Marise Wankan

Elizabeth Allen
Jane Hughes

Myra Wilson
Gaynelle Smithson

Orinda Wood
Frances Buttram



Dorothy Thompson

Mrs. Melear

Rachel Stephens

SIGMA IOTA CHI

The Beta Iota Chapter, established at Tennessee Wesleyan in 1932, is one of twenty-one chapters of Sigma Iota Chi active throughout the United States. The original chapter saw its inception at St. James Xavier Academy in 1903.

Officers:

- President.....Frances Buttram
- V. President.....Marise Wankan
- Secretary.....Anna Joyce Walton
- Treasurer.....Dorothy Thompson
- Parchment Editor.....Gaynelle Smithson
- Sponsor.....Mrs. J. M. Melear

Evelyn Stinnette
Maxine Ledford

Miss Delaney
Martha Sue Dean

Ruth Campbell
Evelyn Craig

Lissie Mae Quinn
Beulah Branam



Mary Hill Abel

Helen Niece

Ida Mae Kildgore

Ita Ball

PI NU LAMBDA

In 1927 a group of girls met and formed a society known as the I. T. Club, and the next year re-organized under the name of the W. W. Club. In 1929 they took their present name of Pi Nu Lambda, and taking as their motto, "Pluck, not Luck", they have ever since carried it out to the letter.

Officers:

- President.....Lissie Mae Quinn
- V. President.....Mary Evelyn Stinnette
- Sec. and Treas.....Maxine Ledford
- Sponsor.....Miss Delaney

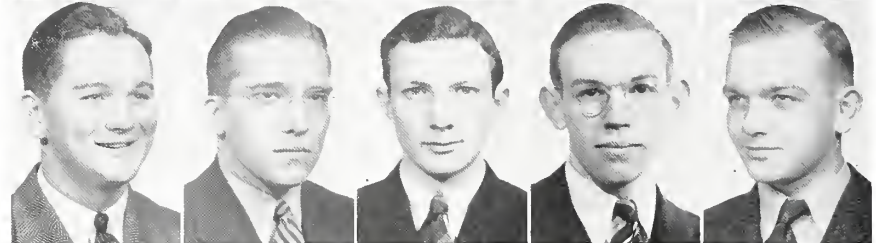
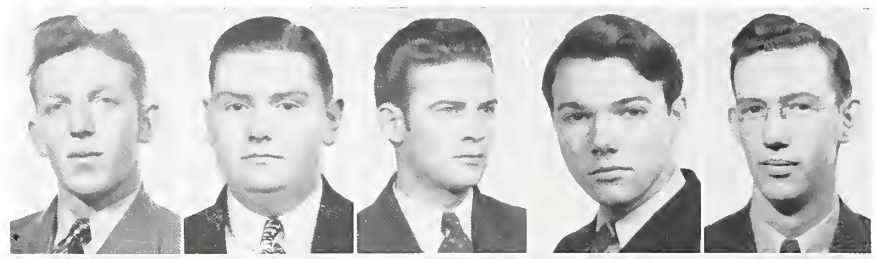
Red Irwin
Felix Harrod

Lyston Jaco
Frank Dodson

Buster Adams
Lee Dickey

Kenneth Jackson
Rudolph Hoppe

Cedric Ray
Kenneth Elliott



Louis Hudson

Briscoe Staley

Laurence Amburgey

Jerry Ayers

Richard Cooke

Harry Pierce

Not Pictured—Bill Griffith, Carl Saulpaw

PHI PI DELTA

During the closing days of the school year of 1930 several members of the graduating class convened. The outcome was the drawing up of a constitution for a fraternity to be known as the Phi Pi Delta. From its very beginning interest has never waned and today it ranks as one of the first fraternal organizations on the campus.

- Officers:
- President.....Lyston Jaco
 - V. President.....Newell Irwin
 - Secretary-Treas.....James Ray
 - Sponsor.....R. H. Eblen

Martha Cavaleri

Mrs. M. F. Stubbs

Janet Marson

Mary Deaderick



Mary Fay Kennedy

Gladys Andes

Irene Elrod

Georgia Kearney

ALPHA GAMMA

In 1929 there was organized a society at Ritter Hall that was later named Alpha Gamma. Today this society is a sorority recognized for its high standards in that those selected must be representative in all aspects and phases of college life.

Officers:

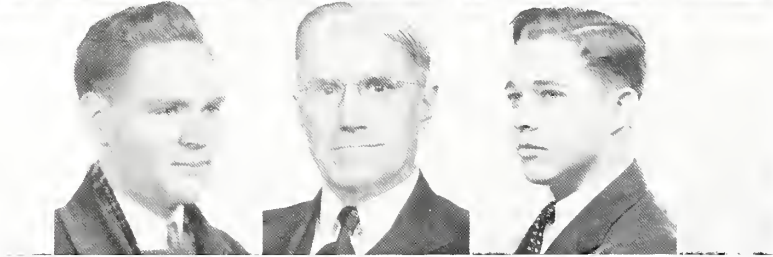
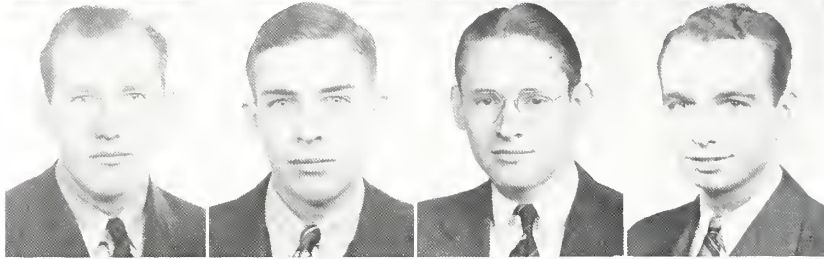
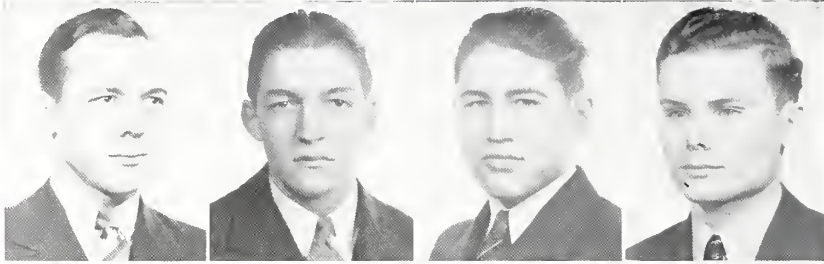
- President.....Martha Cavaleri
- V. President.....Irene Elrod
- Sec. and Treas.....Gladys Andes
- Sponsor.....Mrs. M. F. Stubbs

Owen Snodderly
Paul Smith

Bill Headrick
L. O. Bacon

James Burn
Clifford Ingram

Oscar Johnson
Fred Jenkins



James Wilson

G. A. Yates

Bill Scott

ETA IOTA TAU

The Eta Iota Tau fraternity, better known on the campus as the "Hits", endeavors to promote worthwhile social activities. Their members are selected on the basis of scholarship, personality and character.

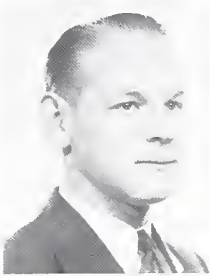
Officers:

President.....	Bill Scott
V. President.....	Fred Jenkins
Sec. and Treas.....	Oscar Johnson
Sponsor.....	G. A. Yates

Jack Bell

Miss Delaney

Fred Jenkins



Roberta Susong

Oscar Johnson

Bertha Chastain

DELTA PSI OMEGA

The newest fraternity on the campus is Delta Psi Omega, a national honorary dramatic fraternity. To become eligible for membership one must be outstanding in dramatics and must have performed in several outstanding productions.

Officers:

President.....Jack Bell

V. Pres.....Oscar Johnson

Helen Slaten

Fransola Haun

Louise Fritts

Irene Hall



Elizabeth Perkinson
Mary Witt

Norma Stonecipher
Mary Lou Yates

Edith Smith
Virginia Quinn

Lois Akers
Francella Redwine

SIGMA TAU SIGMA

For years the Sigma Tau Sigma Sorority has held an outstanding place in campus activities. This year they are one of the largest sororities on the campus. Their standards are high and their influence wide.

Officers:

President.....	Fransola Haun
V. President.....	Louise Fritts
Sec. and Treas.....	Mary Lou Yates
Sponsor.....	Mrs. Overby

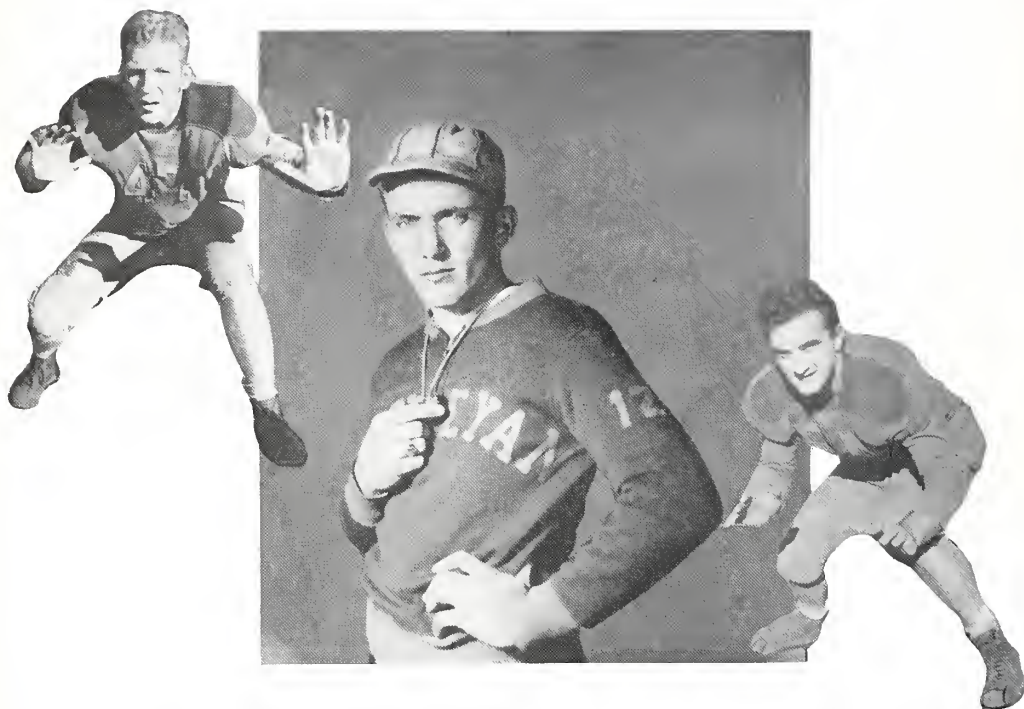
UNITED IN DEATH



The dying Connestoga called for Weena who was soon at his side. Uttering the words "Weena—my—love—how—can—I—leave—you,— God—help", he closed his eyes. In despair Weena, drawing the knife from his neck said, "I cannot, I will not live without him", and plunged the weapon into her heart. Her body fell across his and in a convulsive throb their spirits departed.

The old chief was grieved beyond words. But before the earth covering was applied, he placed in Connestoga's hand an acorn and in Weena's a hackberry—following an ancient tribal custom, whose full significance symbolizes to us the undying love and devotion which characterized their lives. The two trees are to be found today just north of Ritter on the college campus.

ATHLETICS



Captain Newell "Red" Irwin

Coach Hooper Eblen

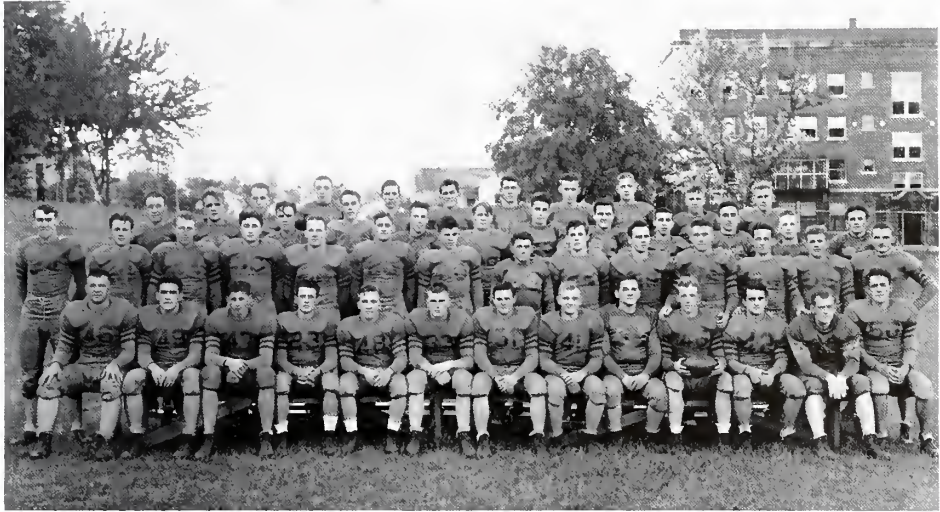
Captain-elect Dick LaFrance

FOOTBALL

For the eighth consecutive year the Tennessee Wesleyan Bulldogs remain supreme in Southeastern Junior College football. This marked Coach Hooper Eblen's first year at the helm of the Bulldog machine, and he came through superbly, with his squad compiling a record of 7 victories and 2 losses against high class opposition. Georgia Military College and the University of Tennessee Freshmen were the only victors over Wesleyan while the Bulldogs gained decisions over Snead, Hiwassee, Maryville, Bluefield, Tennessee Junior, South Georgia, and Middle Georgia. Especially sweet were the triumphs over Hiwassee and Maryville, both old Wesleyan rivals.

The leadership of Captain "Red" Irwin is to be applauded; he was a true leader. The attitude of the squad throughout the year is especially worthy of commendation; few unsportsmanlike actions being observed. The same type of work is expected next year under the leadership of Captain-elect Dick LaFrance.

It may be put on record that the 1939 Tennessee Wesleyan football season was a success in every way.



Front row: Long, McCampbell, Garner, N. Simpson, Dodson, Gulley, J. Simpson, Elliott, Harrod, Irwin, LaFrance, H. Jones, M. Knox.

Second row: Amburgey, Barker, Meredith, Robertson, Swann, Clevenger, May, J. Jones, Barber, Griffith, Block, Richardson, Pack, White.

Third row: Whaley, Reed, Ferguson, Lomell, J. Long, Pierce, Ayers, Forester, Saulpaw, Moore.

Fourth row: Foree, Waller, Tallent, Kennedy, Steir, Barger, Headrick, Bainbridge, Kirkszy.

1939 RECORD

Wesleyan	Opponents
6	Snead..... 0
20.....	Hiwassee..... 7
0	Georgia Military..... 13
26.....	Maryville..... 14
19.....	Bluefield..... 13
33.....	U. T. Junior..... 0
12.....	U. T. Frosh..... 38
18.....	South Georgia..... 0
25.....	Middle Georgia..... 0



"Mutt" Knox

"Abe" Swann

"Feets" Jones

Bill Griffith

Marion Robertson

Tennessee Wesleyan Football Squad 1939-40

Name	Position	Weight	Name	Position	Weight
Lonnie May.....	Back.....	160	Hobert Jones.....	Tackle.....	200
Kenneth Barker.....	Back.....	150	Newell Irwin.....	End.....	190
Horace Knox.....	Center.....	175	Felix Harrod.....	Tackle.....	205
Nelson Simpson.....	Guard.....	160	Milburn Long.....	Tackle.....	195
Tom Amburgy.....	Back.....	168	Ben Garner.....	Center.....	190
William Clevenger.....	Back.....	183	Frank Dodson.....	Guard.....	180
J. P. Kennedy.....	Back.....	170	Joe McCampbell.....	Tackle.....	200
Frank Barber.....	Back.....	155	Glenn Knox.....	End.....	190
Bill Richardson.....	Back.....	165	Joe Simpson.....	Guard.....	190
Bill Griffith.....	Back.....	175	Albert Swann.....	Back.....	200
Ralph White.....	End.....	180	Jerry Ayers.....	End.....	155
J. D. Pack.....	Guard.....	170	Bill Headerick.....	End.....	175
John Gulley.....	Tackle.....	190	Clyde Waller.....	Tackle.....	180
Jason Jones.....	Back.....	155	Eugene Whaley.....	Guard.....	164
John Stair.....	Back.....	160	Joe Block.....	Guard.....	180
Marion Robinson.....	Back.....	185	Vernon Moore.....	Back.....	167
Tom Bainbridge.....	Back.....	180	H. C. Scruggs.....	Back.....	150
"Tony" Kirksey.....	Back.....	180	Charles Forester.....	Back.....	160
Ottis Meredith.....	End.....	180	Jake Reed.....	Back.....	185
Kenneth Elliott.....	Guard.....	190	Len Lommell.....	Back.....	170
Richard LaFrance.....	End.....	195	Harry Pierce.....	Back.....	160
Buddy Maltby.....	Back.....	145			



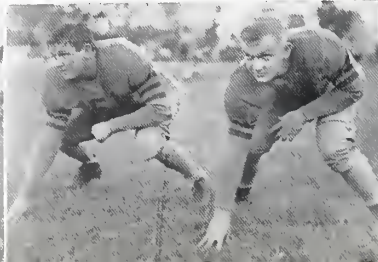
Kenneth Barker

Ben Garner

Joe Simpson

Kenneth Elliot

Milburn Long





Seated Charles Pangle, Ben Barner, Bill Headrick, Glenn Knox, Glen Michael, Winston Kirksey, Manager Proudfoot.
Standing: Tom Foree, L. C. Clift, Charles Gibbs, Henry Scruggs, Stewart Johnson, Coach Eblen.

BASKETBALL

The Tennessee Wesleyan basketball quintet won runner-up honors in the Southeastern Junior College tournament held this year in Athens under the sponsorship of the Lions Club. In the finals Middle Georgia dethroned Wesleyan as champs by defeating the Bulldogs 56-52 after a hectic battle that saw the lead interchanged a dozen times.

Captain Glenn "Mutt" Knox and Glen Michaels were honored with positions on the all-tournament team. Knox finished the season with a game average of better than 20 points, one of the best records ever compiled at Wesleyan.



1940 RECORD

Wesleyan	Opponents
47.....	Englewood.....26
43.....	Lincoln Memorial.....45
53.....	Hiwassee.....31
37.....	Englewood.....33
33.....	Dixie Aces.....42
45.....	Carson-Newman.....34
54.....	Hiwassee.....39
40.....	Snead.....38
35.....	Snead.....36
38.....	Carson Newman.....29
35.....	Dixie Aces.....36
21.....	Tennessee.....43
58.....	Young Harris.....37
38.....	Georgia Military.....49
33.....	Middle Georgia.....48
48.....	Mercer Frosh.....40
85.....	Atlanta Y.M.C.A.....22
39.....	Hiwassee.....30
49.....	Snead.....39
47.....	Snead.....36
49.....	Cumberland.....27
49.....	Hiwassee.....30
61.....	Young Harris.....26
48.....	Snead.....28
52.....	Pikeville.....28
52.....	Middle Georgia.....56



Top to Bottom: Glenn Knox, forward; Glen Michaels, forward; Bill Headrick, center; Charles Pangle, guard, and Stewart Johnson, guard.



Seated. Helen Perkinson, Virginia Quinn, Francis Buttram, Marie Gregg, Louise Freels, Mary Faye Kennedy.
 Standing: Fransola Haun, Carolyn Bishop, Grace Monteith, Ora Bess Hunter, Coach Eblen.
 Not pictured—Orinda Wood, Ruth Crowder

BASKETBALL GIRLS

Due to the fact that there was no girls league in the Southeastern Junior Association, the Wesleyanettes did not have a real chance to show their strong fighting abilities.

Wood and Crowder, two sharpshooting forwards, led the offense, and accounted for many of the Wesleyan points. The defense was set around Bishop and Buttram, a couple of flashy defense players and excellent ball-handlers.

Although the Wesleyan lassies did not win all their games, they did have a very successful season and are looking forward to a still better one next year.

It is hoped that a girls basketball league will be formed in the small colleges of East Tennessee and Southwest Virginia to provide greater incentive for the girls. If this is ever accomplished Wesleyan will be in that league.

The Engravings In The
SENIOR NOCATULA

by

Knoxville Engraving Co.

KNOXVILLE



TENNESSEE

Compliments of
HAMMER SUPPLY COMPANY
"The House of Service"
Building Supplies and Plumbing Goods
Phone 13

Athens,

Tennessee

ALWAYS ON TIME



To dress up your printing in a smart new type face that precisely fits your line of business or the thought you wish to express. Your printing will go through The College Press with the precision of clockwork.

THE COLLEGE PRESS

Collegedale, Tenn.

Tel. 2-1186

Board of Public Utilities

Electricity Is Your Best Servant

Power Office

Phone 174

Federated Stores

owned and operated by

KETRON'S INC.

Everything in Ready-to-wear

Phone 40

Athens,

Tennessee

Compliments

GULF

M. G. Rogers, Dist.

Athens, Tenn.

Phone - 123-J

SMITH CLOTHING CO.

"Athens' only Exclusive Men's store"

Curlee Clothes and Jarman Shoes

Athens,

Tenn.

CHEROKEE HARDWARE CO.

Furniture, Paints

Electric Appliances

Phone 14

No. 1 Main

Compliments of

Mayfield's Creamery

Manufacturers of
Mayfield's "Jersey Maid" Ice Cream

Mayfield's "Jersey Maid" Milk
"It's Pasturized"

and
Mayfield's "Jersey Maid" Butter

In TENNESSEE -
to Stay in Step



FILL YOUR TANK WITH -



L. D. STAPLETON
Distributor

Athens

Tennessee

Compliments
of
Mrs. Clem Jones

Mrs. Ira M. Bolton
Jeweler
Anything in Jewelry Line
Athens, Tennessee

Compliments
of
FIRST NATIONAL
BANK

PATRONIZE
OUR
ADVERTISERS

Stanford Sport Center

A good place to get behind the eight ball

Athens,

Tennessee

Hotel Robert E. Lee

Featuring Well Served, Delicious Banguets

RIDDLES DRUG STORE

"The Rexall Store in Athens"

Whitman's, Nunnally's, Martha Washington
Candies

Pangburn's, Richard Hudnut, Lucien Lelong,
Lentheric, and Cara Nome Cosmetics.

Soda Fountain Service

We Deliver

Prescriptions Our Specialty

Riggs Service Station

Shell Gas and Oils

Goodyear Tires

Phone 34

N. White St.

J. Nat Moore & Son

Hardware, Furniture,
Feed, Seed

Phone - 1

Athens,

Tenn.

Compliments

of

Paul Walker

Bonds and Insurance

Compliments

of

G & H Food Store

Phone - 187-184

Athens Most Complete Food Store

The Pictures in the 1940
Senior Nocatula are by

DANIELS STUDIO

Athens, Tennessee

ATHENS OIL COMPANY

Shell Distributors

Try our "New Super Shell"

Gasoline

Compliments

of

ATHENS PLOW CO.

Tenn. Motor Co.

DeSoto—Plymouth

Athens

Phone 42

HEIRD DRUG STORE

The "Gang's" hangout
Doc Heird wishes the seniors
continued success.

Sundaes, Cakes, and Candies
Prescriptions Filled Anytime
We Deliver

Phone 33

Athens, Tenn.

THE H. T. HACKNEY CO.

Wholesale Grocery

Athens,

Tennessee





For Reference

Not to be taken from this room

