



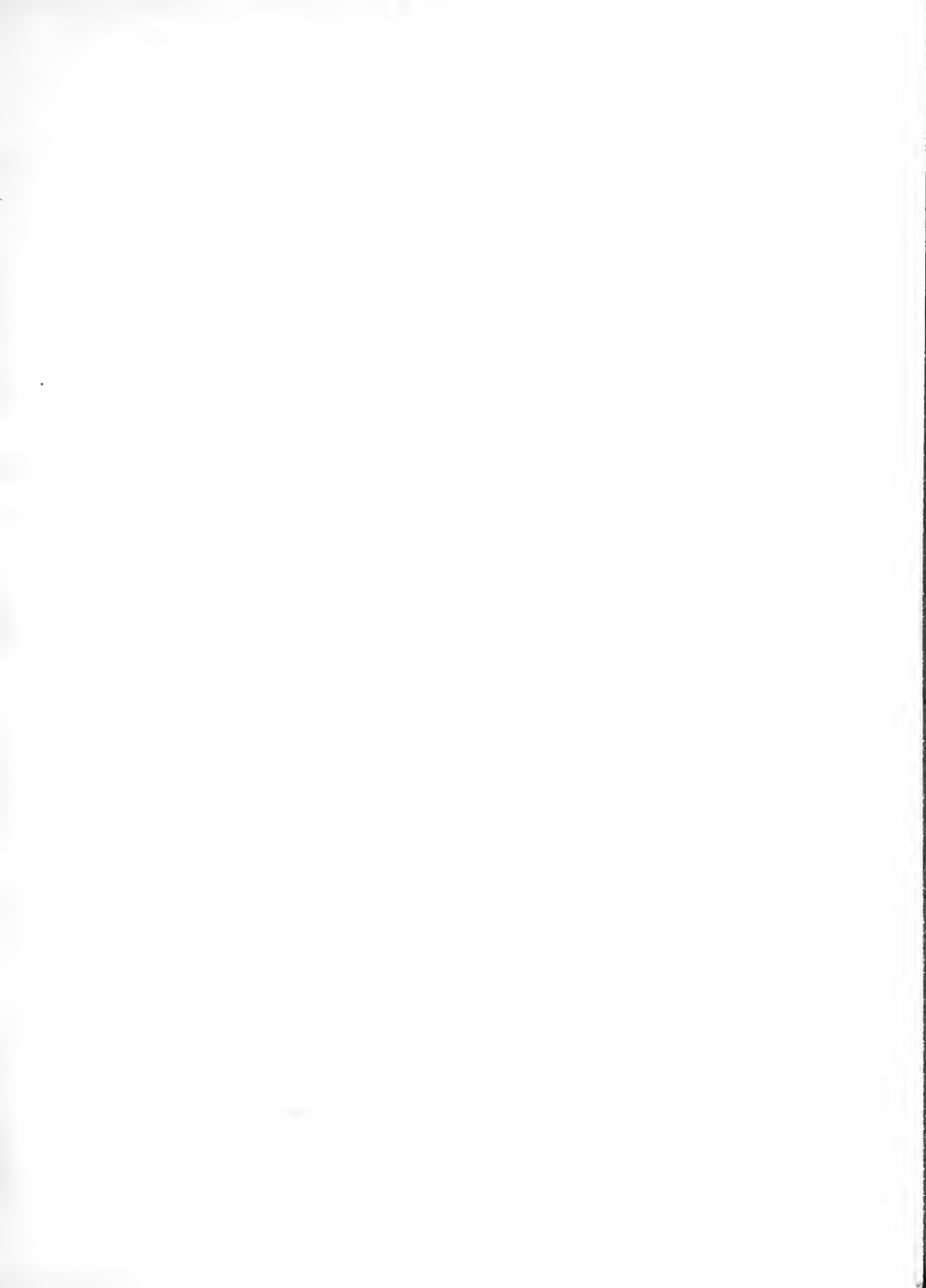
INTERNATIONAL

W  
378.05  
T256n  
1941

1941

Digitized by the Internet Archive  
in 2011 with funding from  
LYRASIS Members and Sloan Foundation

<http://www.archive.org/details/nocatula194122tenn>





# EX LIBRIS

---

**The Students of**  
**TENNESSEE WESLEYAN**  
**COLLEGE**

*Present*

**T H E**

**N O**



LIBRARY



# CATULA

*of* **NINETEEN FORTY-ONE**

W  
378.05  
T26n  
1941

HARRY PIERCE . . . . . Editor

JOHN MURPHY ( . . . . . Business Managers  
COSTO RIDENOUR (

**MERNER-PFEIFFER LIBRARY  
TENNESSEE WESLEYAN COLLEGE  
ATHENS, TN 37303**

# **F O R E W O R D**

MAY the following pages serve to remind us in the years to come, that while the clouds of war enveloped the world and brought with it his cohorts of thundering field artillery and the lightning fire of aerial warfare there was yet a little ray of sunshine seeping through the cloudy heavens.

This ray of hope centered itself on our great United States of America and thus we are hoping that this, the twenty-second issue of Nocatula, may serve as a typical example in illustrating the true way of life, the AMERICAN WAY, and that it may also serve as a reminder to those of the student body of Wesleyan of a time when we spent many laborious, but happy days here on this campus.



# **C O N T E N T S**

---

**C L A S S E S**

---

**O R G A N I Z A T I O N S**

---

**F E A T U R E S**

---

**S P O R T S**



**Mrs. Annie Pfeiffer**

## DEDICATION

WE, the senior class of Tennessee Wesleyan College hope that in making this humble dedication we may in some way show our appreciation and gratitude to one who, through her unselfish spirit, has been a most gracious benefactor to this institution. She has "given to him that asketh, and him that would borrow she hath turned not away." Although she has enjoyed God's richest and most abundant blessings, she has maintained those qualities of humility, of sharing, and of free-heartedness. Whenever able to be of service in any way she has always answered the call as did the Apostle Peter when he said, "Such as I have give I thee."

So to Mrs. Annie Merner Pfeiffer, and to that spirit of unselfishness which dominates her every action, and which stands out as the most glowing quality of a most radiant personality we sincerely and humbly dedicate this, the twenty-second issue of NOCATULA.

# NINETEEN FORTY - ONE



Top row, left to right: Evins, Pierce  
Murphy, Lomell. Second row: Harrod,  
Snyder, Quinn, Hardy. Bottom row:  
Ritchie, Martin, Hines, Robinson.

S. C. Evins . . . . . Faculty Advisor  
 Harry Pierce . . . . . Editor in Chief  
 Len Lomell . . . . . Assistant Editor  
 John Murphy . . . . . Business Manager  
 Charles Gibbs . . . . . Sports Editor  
 Betty Burgner . . . . . Assistant Sports Editor

Virginia Quinn . . . . . Club Editor  
 Rachel Gunn . . . . . Alumni Editor  
 C. B. Hardy . . . . . Humor Editor  
 Eugene Martin . . . . . Religious News Editor  
 Phyliss Jensen . . . . . Exchange Editor  
 Helen Kate Ritchie . . . . . Advertising Manager

# NOCATULA STAFF . . .

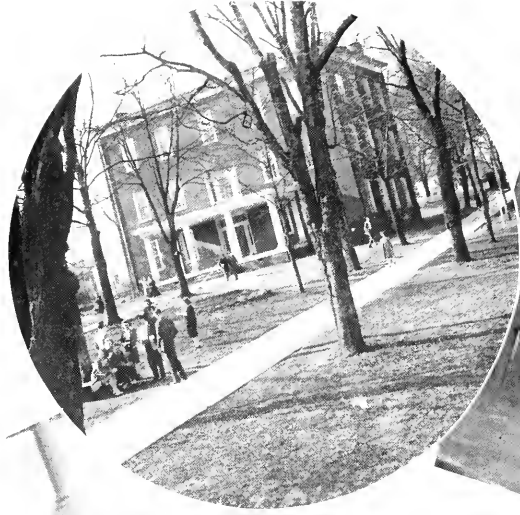


Top row, left to right: Prince, Gunn, Gibbs, Sewell. Second row: Ridenour, Ray, Jensen, Stonecipher. Bottom row: Pickett, Ramsey, Fannon, Seldon.

Costo Ridenour . . . . . Advertising      Panthea Prince . . . . . Advertising  
 Clureta Ray . . . . . Advertising      Felix Harrod . . . . . Photographer

## REPORTERS

Ruth Sewell	Bill Seldon	Betty Jo Pickett
Nancy Ellison	Norma Stonecipher	Marianna Fannon
Eva Robinson	Margaret Ramsey	Mavis Skeens



The Nocatula of Tennessee Wesleyan College  
HARRY PIERCE, EDITOR

ATHENS, TENNESSEE

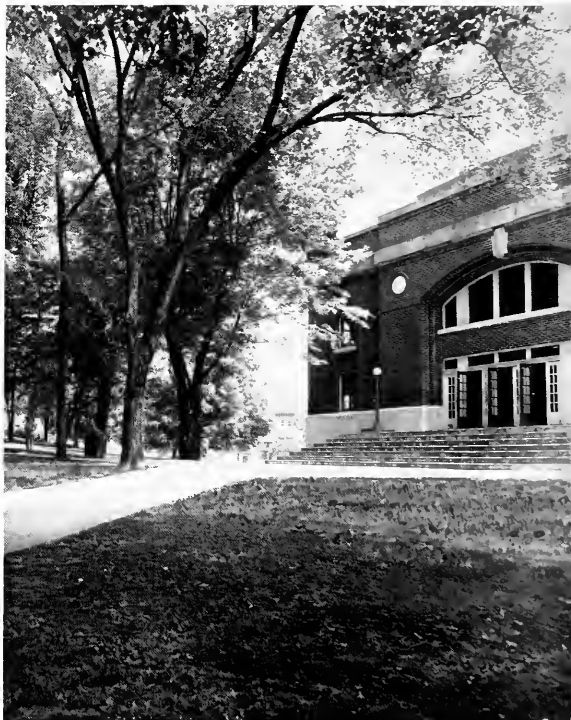
Dear Schoolmate:

At last the great Day is  
here and here is your '41 Nocatula  
We have tried our best to  
present you with a mirror of  
your '41 year at Wesleyan.....

May it bring back many  
fond memories.

The Staff

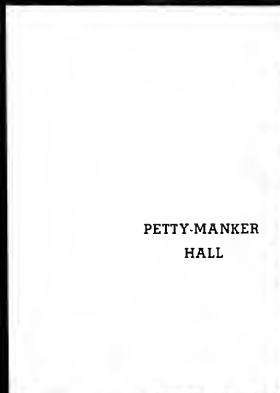
ADMINISTRATION







RITTER HALL



PETTY-MANKER  
HALL



BENNETT HALL



J. W. Overby, B.S.  
Commerce



M. R. Richmond,  
B.A., M.S.  
Biology



Mrs. Elizabeth  
Brubaker, A.B., A.M.  
Religion



Francis Culien Moffit  
Mus. B.  
Piano



PRESIDENT JAMES L. ROBB  
A.B., A.M.



Mrs. Edna Selby  
Melear, A.B., A.M.  
Modern Languages



Mrs. A. B. Collins  
Asst. Supt., Ritter Hall



Mrs. Esta Vestal  
Dietician Petty-Manker



A. H. Myers, Ph.B.,  
A.M., B.D.  
Religion



Alden D. Eddy  
Field Representative



G. A. Yates, A.B., A.M.  
Math., Soc. Science



Mary A. Delaney  
B.A., M.A.  
Speech, Phy. Ed.



Louise Medlin, B.S.  
Bus. Adm., Com-  
merce



Mrs. Martha Hale  
A.B., A.M.  
Art



R. H. Eblen, B.S.  
Athletics



DEAN M. F. STUBBS, A.B., M.S., Ph.D.  
Chem., Physics



James B. Robb, A.B.  
Business Manager



Werner Wolff  
Leipzig Conservatory Music



Mrs. Bessie Huntsinger  
Supt. Bennett Hall



Claryse D. Myers, A.B.  
Library Ass't



Mrs. Emmy Woll



Fanny Mackey  
A.B., B.S.  
Librarian



Ethyl Pryor, B.S.  
Home Economics



C. O. Douglass, A.B., A.M.  
Registrar Education



Andrew J. Peters  
Ph.B., A.B., A.M.  
Social Science



Martha Brown  
Office Assistant



Mrs. Mary Pope  
Office Assistant



Mrs. Louise Eblin  
Secretary



S. Carroll Ewins.  
B.A., M.A.  
English



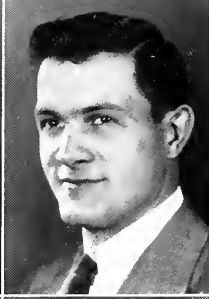
CLASS

*of* 1941

**O F F I C E R S**

THOMAS HOPKINS . . . . . President  
RUTH CROWDER . . . . . Vice-President  
WILLIAM SELDEN . . . . . Secretary-Treasurer  
R. H. EBLEN . . . . . Sponsor

# SENIORS



**FRANCES QUEEN** . . . . . Copperhill, Tennessee

Pi Nu Lambda, '41; Christian Service Club, '41; Home Economics Club; Literary Society; Queen Esther Circle; YWCA; Chorus, '41; Art Club, '41; Delta Psi Omega, '41.

**JERRY HOUSTON AYERS** . Shelbyville, Tennessee

Student President, '41; Phi Pi Delta Fraternity, '40-'41; International Relations Club, '41; Off-Campus, '41.

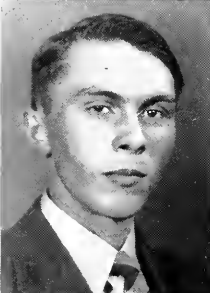


**VIRGINIA THOMAS** . . . . . Athens, Tennessee

Phi Theta Kappa, '41; Phila Lethian, '40-'41; Off-Campus, '40-'41; International Relations Club.

**LUCILLE RICHARDSON** . . . . . Jacksboro, Tennessee

YWCA; Literary Society, '40-'41; Queen Esther Circle, International Relations Club, '40-'41; Sigma Tau Sigma Sorority, '40-'41; Art Club, '40-'41.



**FRED ELLIOTT** . . . . . Athens, Tennessee

Off Campus; YMCA; Literary Society, '40-'41.

**OZELLE SHOEMAKER** . . . . . Athens, Tennessee

Off Campus Club, '40-'41; Literary Society, '40-'41; International Relations Club.



**ROBERT LEGG** . . . . . Athens, Tennessee

Off Campus; YMCA; Literary Society, '40-'41.

**ORINDA WOOD** . . . . . Sweetwater, Tennessee

Sigma Iota Chi, '40-'41; Student Council, '41; Athletic Council, '41; Phi Theta Kappa, '40-'41; Literary Society, '40-'41; YWCA; International Relations Club, '40-'41.



**PAUL NAVE** . . . . . Mountain City, Tennessee

Phi Pi Delta Fraternity, '40-'41; YMCA; Christian Service Club, '40-'41.

**NORMA STONECIPHER** . . . . . Oakdale, Tennessee

Chorus, '40-'41, Pres. '41; Sigma Tau Sigma, '40-'41; Pres. '41; Literary Society, '40-'41, Pres. '41; Music Club, '40-'41; Pres. '41; Christian Service Club, '40-'41; YWCA; Student Council, '40; Queen Esther Circle; Nocatula Staff, '41.

**HARRY PIERCE** . . . Point Pleasant, New Jersey

Phi Pi Delta Fraternity; Scribe, '40-'41; Editor NOCATULA, '41; Football, '40; Twesco Players, '40-'41; Literary Society, '40-'41; YMCA, '40-'41; Christian Service Club, '41; International Relations, '41; Student Council, '41; Art Club, '40.

**VIRGINIA QUINN** . . . Copperhill, Tennessee

Art Club, '40-'41; Chorus, '40-'41; International Relations Club, '41; Sigma Tau Sigma Sorority, '40-'41; Queen Esther Circle; Nocatula Staff, '41.

**KATHLEEN WATSON** . . . Elowah, Tennessee

Off Campus; YWCA; Literary Society, '40-'41; International Relations Club, '40-'41; Literary Society, '40-'41; Christian Service Club, '40-'41.

**COSTO RIDENOUR** . . . Newcomb, Tennessee

Phi Rho Pi, '40-'41; Chorus, '40-'41; Christian Service Club, '40-'41; YMCA; Twesco Players, '40-'41; International Relations Club, '40; Music Club, '40-'41; Art Club, '40-'41.

**CLURETA RAY** . . . Jacksboro, Tennessee

YWCA; Art Club, '40-'41; Queen Esther Circle; International Relations Club, '40-'41; Sigma Tau Sigma Sorority, '40-'41; Literary Society, '40-'41.

**FRANK DODSON, JR.** . . . Athens, Tennessee

"W" Club, '40-'41; Phi Pi Delta, '40-'41; Off Campus Club, '40-'41; Football, '40-'41; Student Council, '40; Pres. Junior Class, '40.

**CLAUDIA HARRISON** . . . Greeneville, Tennessee

Queen Esther Circle; Christian Service Club, '40-'41; Phila Lethian Sorority, '40-'41; International Relations Club, '40-'41; Literary Society, '40-'41; Music Club, '41.

**EULA MOSER** . . . Vonore, Tennessee

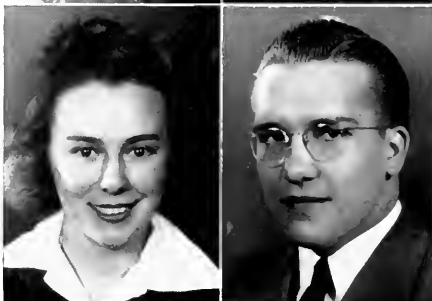
International Relations Club; Off Campus; Chorus, '40-'41.

**JANIS HIXSON** . . . Dunlap, Tennessee

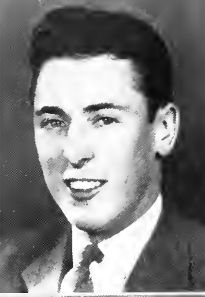
Literary Society, '40-'41; Home Economic Club, '40-'41; YWCA; Christian Service Club, '40-'41; Queen Esther Circle, '40-'41; International Relations Club, '40-'41.

**MAXINE RENNER** . . . Greeneville, Tennessee

Literary Society, '40-'41; Queen Esther Circle, '40-'41; International Relations Club, '40-'41; YWCA, '40-'41.



# SENIORS



**MARY FAY KENNEDY** . . . . Niota, Tennessee  
YWCA; Alpha Gamma Sorority, '40-'41; Vice President, '41; Queen Esther Circle; Christian Service Club, '40-'41; Chorus, '40-'41.

**LEN LOMELL** . . . . Point Pleasant, New Jersey  
Phi Pi Delta Fraternity, '40-'41; YMCA; Literary Society, '40-'41; International Relations Club, '40-'41; Football, '40-'41; Nocatula Staff, '41.



**WILLIAM SELDEN** . . . . Athens, Tennessee  
YMCA; Delta Psi Omega, '41; Phi Theta Kappa, '41; Phi Pi Delta, '41; Dramatic Club; Chorus; Off Campus Club; Nocatula Staff, '41.

**MAXINE ROLLINS** . . . . Hartford, Tennessee  
Pi Nu Lambda Sorority, '40-'41; International Relations Club, '40-'41; Literary Society, '40-'41; Christian Service Club, '40-'41.



**PEGGY LOHR** . . . . Copperhill, Tennessee  
Sigma Tau Sigma, '40-'41; Queen Esther Circle, '40-'41; International Relations Club, '41.

**SYBIL WHITE** . . . . Cocee, Tennessee  
Queen Esther Circle; YWCA; Phila Lethian Sorority, '40-'41.



**MAVIS SKEENS** . . . . Glenmory, Tennessee  
Sigma Iota Chi, '41; Queen Esther Circle, '40-'41; Twesco Players, '40; International Relations; Literary Society, '40-'41; Phila Lethians, '40.

**RUTH HINES** . . . . Lencir City, Tennessee  
Literary Society, '40-'41; YWCA; Christian Service Club, '40-'41; Phi Theta Kappa, '40-'41; Phila Lethian Sorority, '40-'41; Queen Esther Circle; Religious Council, '40; Nocatula Staff, '40.



**RICHARD COOKE** . . . . Athens, Tennessee  
Phi Pi Delta Fraternity, '40-'41; Phi Theta Kappa, '41.

**AVERAL TALLENT** . . . . Etowah, Tennessee  
International Relations Club, '40; Off Campus; Pi Nu Lambda, '40-'41.



**CHRISTINE LANGLEY** . . . Wartburg, Tennessee

Literary Society, '40-'41; International Relations Club, '40-'41; Pi Nu Lambda, '40-'41; Queen Esther Circle; Home Economics Club, '40-'41; Art Club, '40; Homecoming Queen.

**HELEN SLATEN** . . . . . Oneida, Tennessee

Sigma Tau Sigma Sorority, '40-'41; Christian Service Club, '40-'41; Literary Society, '40-'41; International Relations Club, '40-'41.



**BRYCE BROOKS** . . . . . Greeneville, Tennessee

YWCA, '40-'41; Literary Society, '40-'41.

**GLENICE SEALE** . . . . . Speedwell, Tennessee

Queen Esther Circle; Literary Society, '40-'41; Christian Service Club, '40-'41; Phila Lethian Sorority, '40-'41; International Relations Club, '40-'41;



**OTIS MEREDITH** . . . . . Pioneer, Tennessee

Phi Pi Delta Fraternity, '41; Football, '40-'41.

**AULENA LINDSAY** . . . . . Ccsby, Tennessee

International Relations; Queen Esther Circle, '40-'41; YWCA, '40-'41; Christian Service Club, '40-'41; Pi Nu Lambda, '41; Literary Society, '40-'41; Home Ec. Club, '40-'41.



**RHEA ATHEARN** . . . . . Chattanooga, Tennessee

Eta Iota Tau Fraternity, '38, '39, '40; "W" Club, '40; Chorus, '38; Twesco Players, '38.

**WINSTON KIRKSEY** . . . . . Englewood, Tennessee

International Relations Club; "W" Club, '41; Off Campus Club; Basketball, '40-'41.

**JANET MARSON** . . . . . Fort Lauderdale, Florida

YM-YWCA, '40-'41; Christian Service Club, '40-'41; Dramatic Club, '40-'41; Alpha Gamma Sorority, '40-'41; Delta Psi Omega Fraternity, '40-'41; Queen Esther Circle; International Relations Club, '40-'41; Religious Council, '40.



**C. MURRY HENDERSON** . . . . . Newport, Tennessee

Delta Psi Omega Fraternity, '40-'41; International Relations Club, '41; Off Campus Club; Twesco Players, '41; Literary Society, '40-'41.



# SENIORS

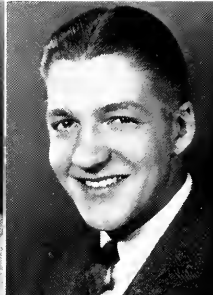


**DAVID NUGENT** . . . . . Hickman, Kentucky

Delta Psi Omega; International Relations Club; Twesco Players.

**DORIS TALENT** . . . . .

Pi Nu Lambda, '40-'41; Queen Esther Circle, '40-'41; Chorus, '40-'41; Home Economics Club, '40-'41.

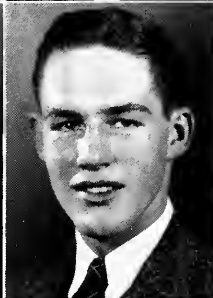


**PANTHEA PRINCE** . . . . . Benton, Tennessee

Sigma Iota Chi, Pres, '40-'41; Delta Psi Omega, Sec. '40-'41; Dramatic Club, Vice Pres., '40-'41; Nacataula Staff, '40-'41; Literary Society; YWCA; Basketball, '39-'41.

**WILLIAM HEADRICK** . . . . . Oakdale, Tennessee

Eta Iota Tau Fraternity, '40-'41; "W" Club, '40-'41; Student Council, '41; Football, '40; Basketball, '40-'41.



**VIRGINIA SWANSON** . . . . . Charleston, Tennessee

Alpha Gamma Sorority, '40-'41; Christian Service Club, '40-'41; Queen Esther Circle; Literary Society, '40-'41; International Relations Club, '40-'41.

**HORACE KNOX** . . . . . Niota, Tennessee

Phi Pi Delta Fraternity, '40-'41; "W" Club, '40-'41; Off Campus Club; Chorus, '41.

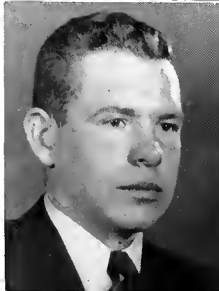


**GENE MARTIN** . . . . . Rockwood, Tennessee

YMCA; Christian Service Club, '41; Phi Rho Pi, '41; Eta Iota Tau Fraternity, '41; Literary Society, '41.

**JEAN DOUGLAS** . . . . . Athens, Tennessee

Off Campus; Literary Society, '40-'41; Christian Service Club, '40-'41.



**LEO HOWELL** . . . . . Sweetwater, Tennessee

Phi Pi Delta, '40-'41; Phi Theta Kappa, '40-'41; Debate, '40; Student Council, '41.

**MARY DEADRACK** . . . . . Oliver Springs, Tennessee

Literary Society, '40-'41; YWCA; Alpha Gamma Sorority, Pres., '40-'41; Queen Esther Circle; Music Club, '40-'41; International Relations Club, '40-'41; Chorus, '40-'41.

**CAROLYN BISHOP** . . . Morristown, Tennessee

Queen Esther, '40-'41; Literary Society, '40-'41; YWCA, '40-'41; International Relations Club, '40; Chorus, '40-'41.



**JAMES L. HOOPER** . . . Tellico Plains, Tennessee

International Relations Club, '40-'41; Christian Service Club, '40-'41; YMCA, '40-'41; Literary Society, '40-'41.

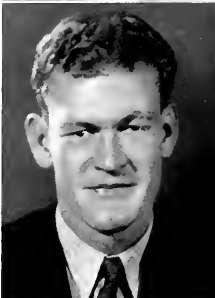


**ALBERT EARLE MALBY** . . . Hastings, Florida

Delta Psi Omega, '40-'41; Twesco Players, '40-'41; Football, '40-'41; Literary Society, '40; YMCA; Chorus, '40-'41.

**KATHLEEN CRABTREE** . . . Sweetwater, Tennessee

YWCA; Student Council, '41; Religious Council, '40; Christian Service Club, '40-'41; Alpha Gamma Sorority, '40-'41; Queen Esther Circle; Literary Society, '40-'41; International Relations Club, '41.

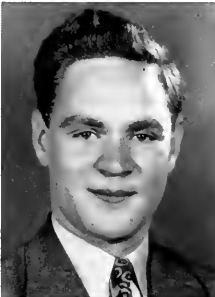


**HOBART JONES** . . . Etowah, Tennessee

Phi Pi Delta Fraternity, '41; Football, '40-'41; Literary Society, '40-'41; YMCA.

**W. A. FREELS** . . . Harriman, Tennessee

YMCA; Literary Society, '40-'41; Christian Service Club, '40-'41.



**JAMES WILSON** . . . North Tarrytown, New York

Eta Iota Tau Fraternity, '40-'41, Pres. '41; Off Campus; YMCA; Literary Society, '40-'41.

**RUTH HORTON** . . . Newport, Tennessee

Queen Esther Circle; International Relations Club, '40-'41; Home Economics Club, '40-'41; YWCA; Literary Society, '40-'41.



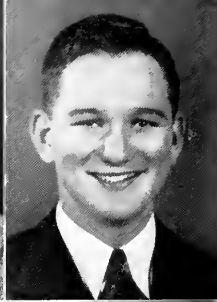
**CHARLES FORESTER** . . . Knoxville, Tennessee

Phi Pi Delta Fraternity, '41; "W" Club, '40-'41; YMCA, '40-'41; International Relations Club; Literary Society, '40-'41; Football, '40-'41; Tennis, '40-'41.

**MARTHA SUE DEAN** . . . Jacksonville, Florida

Pi Nu Lambda Sorority, '40-'41; Literary Society, '40-'41; YWCA; Queen Esther Circle.

# SENIORS



**MARY WITT** . . . . . Morristown, Tennessee

Phi Theta Kappa, Treas., '41; Queen Esther, Treas., '40-'41; Sigma Tau Sigma, Reporter, '40-'41; Home Economics Club, '40-'41.

**FELIX HARROD** . . . . . Athens, Tennessee

Phi Pi Delta Fraternity, '40-'41; "W" Club, '40-'41; Football, '40-'41; Chorus, '40-'41; Off Campus Club, '40-'41; Nocatula Staff, '41; Twesco Players, '40-'41.



**TOMMY HOPKINS** . . . . . Shelbyville, Tennessee

International Relations Club; Phi Pi Delta Fraternity, '40-'41; "W" Club, '41; Student Council, '41; Athletic Council, '41.

**ELIZABETH DAVIS** . . . . . Liberty, Tennessee

Sigma Tau Sigma Sorority, '40-'41; YWCA, '40-'41; International Relations Club, '40; Literary Society, '40-'41; Home Economics Club, '40-'41; Queen Esther Circle, '40-'41.



**MRS. DILLARD BROWN** . . . Athens, Tennessee

Literary Society, '41; Off Campus; International Relations Club, '41.

**P. B. CARRUTH** . . . . . Blue Ridge, Georgia

International Relations Club; YMCA, '40-41.



**VANLIER GRAVES** . . . . . Fyffe, Alabama

Delta Psi Omega, '40-'41; Phi Pi Delta Fraternity, '40-'41; Twesco Players, '41; International Relations Club; Off Campus Club, '40-'41.

**MARJORIE AULT** . . . . . Pikeville, Tennessee

YM-YWCA, '40-'41; Queen Esther Circle, '40-'41; Literary Society, Reporter, '41; Christian Service Club, Vice Pres., '41; Home Economics Club, '40-'41.



**HARRY SNYDER** . . . . . Oakdale, Tennessee

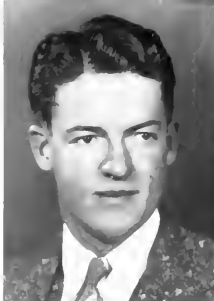
YMCA; Literary Society, '41; Christian Service Club, '41; International Relations Club, '41; May King, '41.

**ROY GODSEY, JR.** . . . . Sweetwater, Tennessee

Phi Pi Delta Fraternity, '40-'41; Phi Theta Kappa Fraternity, Vice Pres., '41; Off Campus Club; Literary Society, '40-'41.

**CHARLES PANGLE** . . . Englewood, Tennessee

"W" Club, '40-'41; Off Campus Club, '40-'41; International Relations Club; Art Club; Basketball, '40-'41, Captain, '41.



**JANE HOLLINGSWORTH** . . . Clinton, Tennessee

Sigma Tau Sigma Sorority, '40-'41; Queen Esther Circle; International Relations Club, '40-'41; Literary Society, '40-'41; YWCA, '40-'41; May Queen '41.

**BEULAH BRANAM** . . . Sevierville, Tennessee

Pi Nu Lambda Sorority, '40-'41; Home Economics Club, '40-'41; Queen Esther Circle, '40-'41; International Relations Club, '41; Art Club, '41; YWCA, '40-'41; Literary Society, '40-'41; Chorus, '40-'41.



**MATNEY REED** . . . Etowah, Tennessee

Eta Iota Tau Fraternity, '41; Literary Society, '40-'41; YMCA; Chorus, '40-'41; Twesco Players, '40-'41; Christian Service Club, '40-'41; International Relations Club, '40-'41; Off Campus; Music Club, '40-'41; Art Club, '40-'41.

**MILDRED CRUM** . . . Greeneville, Tennessee

YWCA; Alpha Gamma Sorority, '40-'41; International Relations Club, '40-'41; Queen Esther Circle; Christian Service Club, '40-'41.



**MAE CANNON** . . . Riceville, Tennessee

Off Campus Club, '40-'41; International Relations Club, '40-'41; Literary Society, '40-'41.

**MARZETTE HITE** . . . Jonesboro, Tennessee

Literary Society, '40-'41; Home Economics Club, '40-'41; YWCA; Christian Service Club, '40-'41; Queen Esther Circle.



**JOE TAYLOR** . . . Jefferson City, Tennessee

YMCA; Literary Society, '40-'41; International Relations Club, '40-'41; Christian Service Club, '40-'41.

# SENIORS

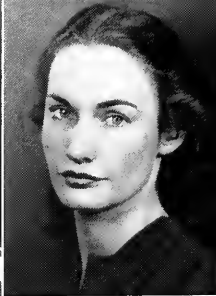


**C. B. HARDY** . . . . . Birmingham, Alabama

"W" Club, '40-'41; Tennis, '40; Twesco Players, '40-'41; YMCA; Literary Society, '40-'41.

**MARY RUTH SEWELL** . . . Los Angeles, California

International Relations Club, '40-'41; Delta Psi Omega, '40-'41, Pres., '41; Dramatic Club, '40-'41; Literary Society, '41; Nocatula Staff, '41.

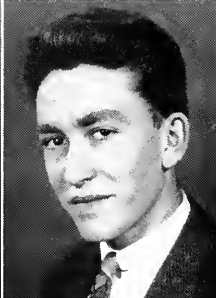


**MAJORIE TAYLOR** . . . . . Williamsburg, Tennessee

Off Campus; Literary Society, '40-'41; International Relations Club, '40-'41; Twesco Players, '40-'41 Chorus, '40-'41.

**MARGARET HENDERSON** . . . . . Athens, Tennessee

Sigma Iota Chi, '40-'41; Delta Psi Omega, '40-'41; YWCA; Literary Society, '40-'41.



**ERNESTINE GRANT** . . . . . Rockwood, Tennessee

YWCA, '40-'41; Christian Service Club; Religious Council, '40; Queen Esther Circle; Phila Lethians, '40-'41; Literary Society, '40-'41; Phi Theta Kappa, '41; Music Club; Student Council, '41.

**CHARLES GIBBS** . . . . . Fountain City, Tennessee

Phi Pi Delta, '40-'41; Phi Rho Pi Fraternity, '40-'41; Literary Society, '40-'41; YMCA; International Relations Club, '40; Nocatula Staff, '40; Basketball, '40-'41; Off Campus; Cheer Leader, '41.

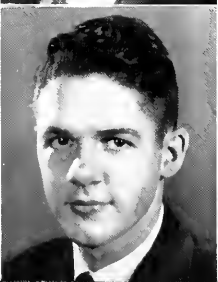


**MARY RUTH CHOCHRÁN** . . . . . Chattanooga, Tenn.

Phila Lethian Sorority, '40-'41; Literary Society, '40-'41; YWCA; Christian Service Club, '40-'41.

**RUTH CROWDER** . . . . . Loudon, Tennessee

Sigma Tau Sigma Sorority, '40-'41; Chorus, '40-'41; Queen Esther Circle; International Relations Club, '40-'41; Literary Society, '40-'41.



**JOHN SHIPLEY** . . . . . Athens, Tennessee

Off Campus Club, '40-'41.

**EVA ROBINSON** . . . . . Sunbright, Tennessee

Phila Lethian Sorority, '40-'41; Nocatula Staff, '41; Literary Society, '40-'41; Christian Service Club, '40-'41; Queen Esther Circle; YWCA.





CLASS

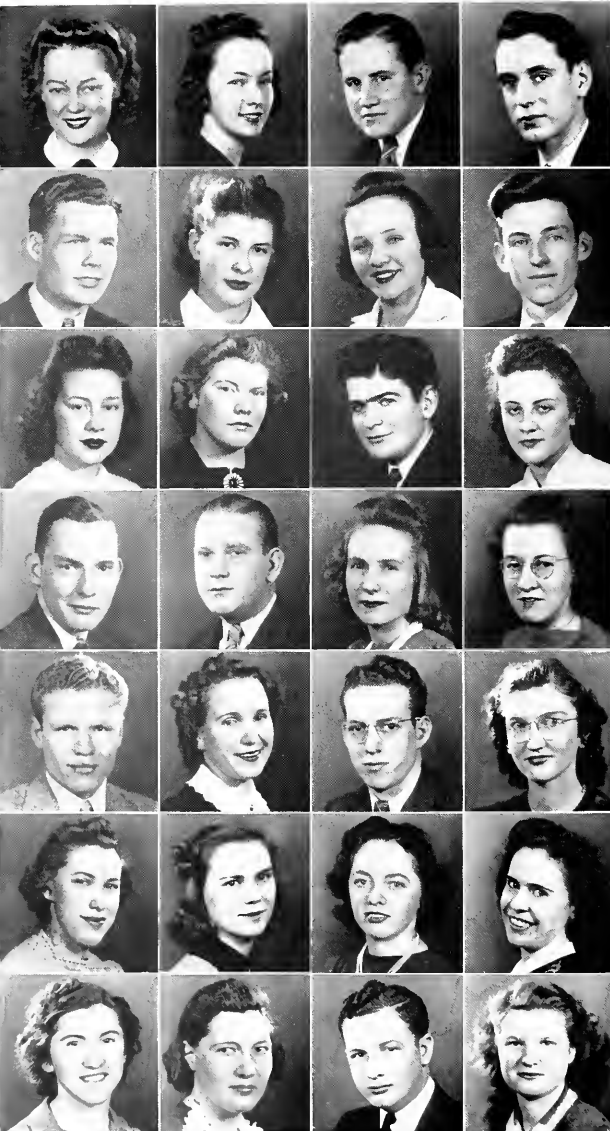


*of* 1942

**OFFICERS**

JACK THAMES . . . . . President  
JIMMY HOPE SLACK . . . . . Vice President  
RACHEL GUNN . . . . . Secretary-Treasurer  
MISS LOUISE MEDLIN . . . . . Sponsor

# J U N I O R S



LAVONIA BUSLER  
 RACHEL GUNN  
 WALLACE CLENDENEN  
 HERBERT CHANCE

CHARLES BRICKELL  
 CAROL FRYE  
 MARGARET RAMSEY  
 G. B. BOOKOUT

HOPE EDWARDS  
 LOIS SHOUN  
 PAUL ADAMS  
 RUTH MILLER

DAVID DAKE  
 WILLIAM BROWN  
 MARJORIE McPHERSON  
 HELEN LONG

PAT KERR SHARP  
 HAZEL TOMPKINS  
 M. B. GASS  
 LILLIAN HAMPTON

HELEN VINSANT  
 HELEN KATE RITCHIE  
 RHYLLIS JENSEN  
 FLORENCE BUNCH

SARAH JENKINS  
 REBA JOHNSON  
 PASCAL GRINDSTAFF  
 VERNA FAY ALLEN

# I D 4 I

JOHN MURPHY  
VIRGINIA BUTT  
NANCY ELLISON  
CLAUDE BALCH



OLENE SHARP  
JEAN FINCANNON  
HELEN WARWICK  
ISOBEL BARNETTE



EDWARD HOLSGHUH  
MARY ALETHA BUNCH  
FRANCES DAVIS  
EDGAR RUTHERFORD



PAULINE RENEGAR  
MARGARET MOORE  
ZULA DAVIS  
TOM RAULSTON



MARY LOU BECK  
EVELYN BOWERS  
NANCY DUNLAP  
GLADYS EMERY



RHEA McPHERSON  
WILLIAM BURN  
HORTENSE DAILEY  
CLARA FRANCES HAMBY



LOU McJUNKIN  
RUTH CROWDER  
DOROTHY DAVIS  
MARIANNA FANNON



ELIZABETH DOUGLASS  
CLARA ENGERT  
KATHLEEN HARPER  
SPENCE RENFRO



# J U N I O R S

# J U N I O R S



MARIE HENRY  
CLAUDE HAMILTON  
VIOLET LINDSAY  
HAZEL GALYON

BETTY JO PICKETT  
RUTH WEBB  
HELEN JEAN GEORGE  
PHYLLIS GRUBB

ANSEL RYMER  
GWENDOLYN MAPLES  
MILDRED HAMPTON  
WILLIE BLANCHE WHEELER

JOSEPHINE KREIS  
BLANCHE INGRAHM  
RALPH NELSON  
VIRGINIA HUSKEY

KENNETH SHOEMAKER  
MONA THOMPSON  
HELEN TAYLOR  
JIMMY HOPE SLACK

HUGH HENDERSON  
LORAL HICKS  
JANE ROACH  
ANNA MAE HENRY

OPAL LANE  
MOSSIE JONES  
HILDA PRINCE  
IRENE HUMBERD

**I 9 4 I**

AUSTIN McDONALD  
CARROLL CARTWRIGHT  
BETTY BURGNER  
D. L. HUTSON



MARY RUTH LANE  
BETTY DEW  
MARY HELLERSTEDT  
STANLEY BURRELL



RUTH BACON  
MARY HANNAH CRASS



**J U N I O R S**



The Nocatula of Tennessee Wesleyan College  
HARRY PIERCE, EDITOR.

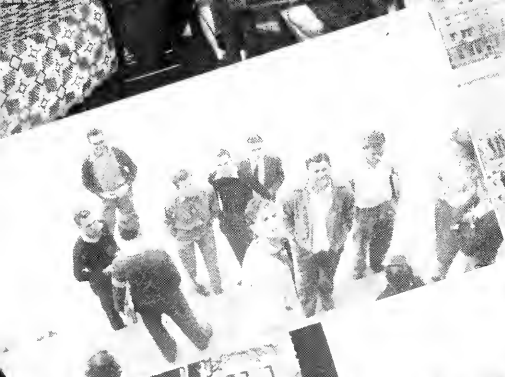
ATHENS, TENNESSEE

Now we'll attempt to  
have some fun at other  
peoples' expense. — The  
joke page will bring  
Memories of the best  
submitted throughout the  
year.











# JOKES ?

Bill Brown, "Now, what are you crying for Joe?"

Joe Taylor, "I wanna drink"

Bill Brown, "So do I, go to sleep."

Wally Clendenen, "Sweetheart does my love-making intoxicate you?"

Hortense Daily, "No, half-pint."

—Brothers—

I love my fraternity brothers

They wear my clothes--  
and keep them

They copy my notes--  
and lose them

They borrow my money--  
and forget it

They drink my beer--  
and love it

They use my car--  
and wreck it

They holler all night--  
and sing

They beat me at poker--  
and collect

Those blankety, blank fraternity brothers,

PHI PI DELTA.

Felix, "What's a co-ed?"

Mr. Harrod, "A co-ed is something which puts enjoyment in College and takes education out."

?

I like an exam  
I think they're fun  
I never cram  
I never flunk one  
I'm the professor.

"Daddy, what is a bachelor?"

"A bachelor, son, is a man who didn't have a car when he was young."

Rev. Porter, "If there be anyone in the congregation who likes sin let him stand up. What's this, Brother Hardy, you like sin?"

C. B. Hardy, "Oh, pardon me, I thought you said gin."

John Shipley, "She has the prettiest mouth in the world."

Bill Seldon, "I'd put mine against it any day."

Jim Brake, "Was your friend shocked over the death of his mother-in-law?"

Spence Renfro, "Shocked? He was electrocuted."

Nine little doggies  
Sizzling on the plate;  
In came "Feets" Jones—  
Then they were ate.

Ruth Crowder, "My boy friend, Nick, is in the army and he made \$50.00 extra last week for his shooting."

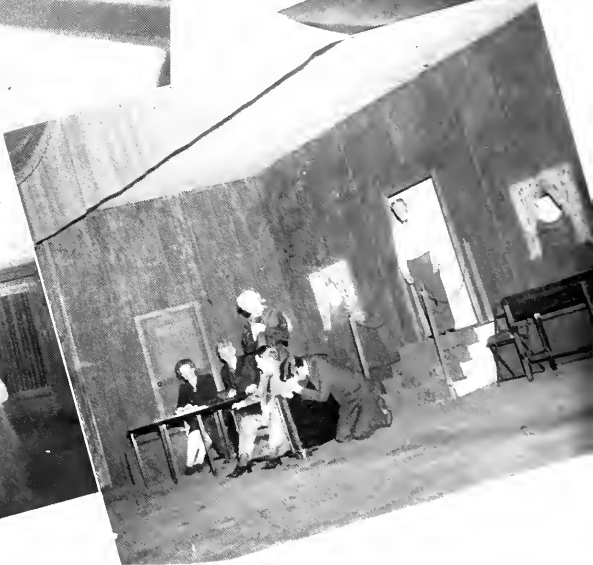
Mrs. Brubaker, "Ah, he's an expert with a rifle?"

Ruth, "No —— with dice."

Pat Sharp sez: "You can always draw the queens if you've got the Jack."

Jerry, "Darling, I have but a single thought."

(any girl), "Yes, anyone can see that."



The Nocatula of Tennessee Wesleyan College  
HARRY PIERCE, EDITOR.

ATHENS, TENNESSEE

Here are some grand pictures  
of our Sororities, Fraternities  
and Clubs, and some news  
about what they have been  
doing throughout the year.—  
They certainly present a fine  
appearance don't they?—

# S T U D E N T   C O U N C I L

The Student Council is the governing body of the student organization. It also serves as representatives of the student body before the faculty.

## OFFICERS

Jerry Ayers . . . . .	President
Ernestine Grant . . . . .	Vice President
Orinda Wood . . . . .	Secretary



Seated: Orinda Wood, senior class representative; Jerry Ayers, Student President; Ernestine Grant, Student Vice President.  
Standing: Kathleen Crabtree, President YM-YWCA; Kenneth Shoemaker, Junior Class Representative; Leo Howell, served one quarter in Thomas Hopkins place; Harry Pierce, Editor Nocatula; William Headrick, Senior Class Representative; Jack Thames, Junior Class President; Thomas Hopkins, Senior Class President; and Betty Burgner, Junior Class Representative.





Left to right: Kathleen Crabtree, A. H. Myers, Ernestine Grant, Miss Louise Medlin, Ruth Hines, Janet Marson, Miss Ethyl Pryor, William Selden.

## R E L I G I O U S C O U N C I L

The religious Council is composed of the student presidents of the three religious organizations on the campus, the two vice-presidents of the YM-YWCA and the faculty advisors of these organizations. It is responsible for planning religious conferences, special services, affiliated church memberships in the local churches, and for sending delegates representing the college to Christian conferences elsewhere. It's members have charge of one Sunday night meeting per month in the Trinity Methodist Church, and the final "Candle Lighting" Service at Commencement.

This organization has also brought to our campus many outstanding Christian leaders to speak and confer with the students.

LITERARY  
SOCIETY



INTERNATIONAL  
RELATIONS  
CLUB



LITERARY SOCIETY

Norma Stonecipher . . . . . President  
Mary Lou Beck . . . . . Vice President

INTERNATIONAL RELATIONS CLUB

SECTION PRESIDENTS

Joe Taylor                      Charles Forester  
Mary Ruth Cochran          Harry Pierce  
Eula Moser                      John Murphy



YOUNG  
WOMEN'S  
MISSIONARY  
SOCIETY



Y M C A  
Y W C A

YOUNG WOMEN'S MISSIONARY  
SOCIETY

Ernestine Grant . . . . . President  
Janet Hixon . . . . . Vice President

Y M - Y W C A

Kathleen Crabtree . . . . . President  
William Selden . . . . . Vice President  
Janet Marson . . . . . Vice President

**MUSIC  
CLUB**



**TWESCO  
PLAYERS**



**CHRISTIAN  
SERVICE  
CLUB**



**MUSIC CLUB**

Norma Stonecipher  
Martha Wisebram

President  
Vice President

**TWESCO PLAYERS**

Janet Marson  
Panthea Prince

President  
Vice President

**CHRISTIAN SERVICE CLUB**

Ruth Hines  
Majorie Ault

President  
Vice President



DEBATING  
CLUB



OFF  
CAMPUS  
GIRLS

**DEBATING CLUB**

Thomas Raulston	.....	President
Eugene Martin	.....	Vice President

**OFF CAMPUS GIRLS**

Kathleen Watson	.....	President
Virginia Thomas	.....	Vice President

CHORUS



NOCATULA  
STAFF



**CHORUS**

Norma Stonecipher . . . . . President  
Felix Harrod . . . . . Vice President

**NOCATULA STAFF**

Here is the hard-working bunch — all together for the first and only time.



HOME  
ECONOMICS  
CLUB



OFF  
CAMPUS  
BOYS

**HOME ECONOMICS CLUB**

- |                |           |                |
|----------------|-----------|----------------|
| Beulah Brannon | . . . . . | President      |
| Hazel Thompson | . . . . . | Vice President |

**OFF CAMPUS BOYS**

- |                |           |                |
|----------------|-----------|----------------|
| Felix Harrod   | . . . . . | President      |
| William Selden | . . . . . | Vice President |



Top row, left to right: Bowers, Skeens, Henderson, Wood, Prince. Second row: Hellerstedt, Ellison, Ritchie, Miller, Gunn. Third row: Henry, Moore, Lane, Galyon, Harper. Bottom row: Slack, Roach, MeJunkin, Mrs. Melear.

## S I G M A I O T A C H I

The Beta Iota Chapter, established at Tennessee Wesleyan in 1932, is one of twenty-one chapters of Sigma Iota Chi active throughout the United States. The original chapter saw its inception at St. James Xavier Academy in 1903.

### OFFICERS

Panthea Prince . . . . .	President
Orinda Wood . . . . .	Vice President
Mrs. Melear . . . . .	Sponsor





Top row, left to right: Queen, Frye, Rollins, Tallent. Second row: Langley, Warwick, Emery, Lindsay. Third row: Watson, Brannon, George, Thompson. Bottom row: Lindsay, Fincannon, Dean, Delaney.

## P I N U L A M B D A

In 1927 a group of girls met and formed a society known as the I.T. Club, and the next year re-organized under the name of the W.W. Club. In 1929 they took their present name of Pi Nu Lambda, and taking as their motto, "Pluck, not Luck", they have ever since carried out this motto to the letter.

### OFFICERS

Beulah Brannon . . . . .	President
Christine Langley . . . . .	Vice President
Maxine Rollins . . . . .	Secretary and Treasurer
Martha Sue Dean . . . . .	Reporter
Miss Delaney . . . . .	Sponsor

Sponsor

President

Vice President



Eblen

Ayres

Lomell

# PHI PI

# 19



Dodson  
Gibbs  
Renfro

Howell  
Grindstaff  
Adams

Hopkins  
Hamilton  
Sharp

Meredith  
Brown  
Forester

Graves  
McDonald  
Jones

# DELTA

## 4 I

Sec. Treas.

Scribe

Sgt. at Arms



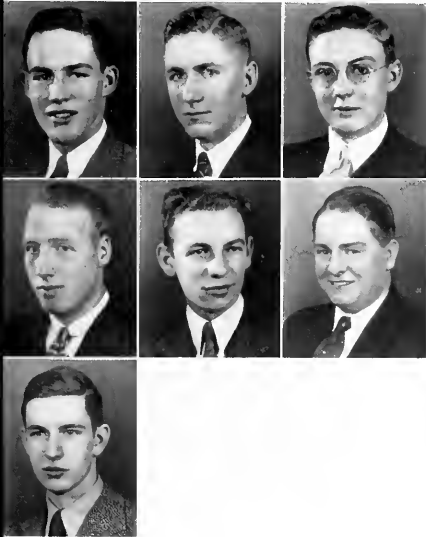
Harrod



Pierce



Cook



Knox  
Nelson  
Selden

Godsey  
Shoemaker

Nave  
Raulston

During the closing days of the school year of 1930 several members of the graduating class convened. The outcome was the drawing up of a constitution for a fraternity to be known as the Phi Pi Delta. From its very beginning interest has never waned and today it ranks as one of the first fraternal organizations on the campus.



Top row, left to right: Burn, Elliot, Headrick, Gass. Second row: Martin, Wilson, Hutson, Burrell. Third row: Legg, Chance, Snyder, Clendenen. Bottom row: Athearn, Reid, Yates.

## E T A I O T A T A U

The Eta Iota Tau Fraternity, better known on the campus as the "Hits", endeavors to promote worthwhile social activities. Their members are selected on the basis of scholarship, personality and character.

### OFFICERS

James Wilson . . . . .	President
William Headrick . . . . .	Vice President
Rhea Athearn . . . . .	Secretary and Treasurer
G. A. Yates . . . . .	Sponsor



Top row, left to right: Queen, Nugent, Mar-  
son, Sewell. Second row: Maltby, Prince,  
Selden, Henderson. Third row: Hellerstedt,  
Raulston, Burrell, Graves. Bottom row:  
Miller, Henderson, Delaney.

## D E L T A   P S I   O M E G A

The newest fraternity on the campus is Delta Psi Omega, a national honorary dramatic fraternity. To become eligible for membership one must be outstanding in dramatics and must have performed in several outstanding productions.

### OFFICERS

Ruth Sewell . . . . .	President
Margaret Lawson Henderson . . . . .	Vice President
Panthea Prince . . . . .	Secretary
Miss Delaney . . . . .	Sponsor



Top row, left to right: Quinn, Witt, Crowder, Stonecipher. Second row: Hollingsworth, Kreis, Davis, Hampton. Third row: Edwards, Lohr, Slaten, Davis. Bottom row: Busler, Beck, Ray, Richardson.

## S I G M A   T A U   S I G M A

For years the Sigma Tau Sigma Sorority has held an outstanding place in campus activities. This year they are one of the largest sororities on the campus. Their standards are high and their influence wide.

OVERBY



### OFFICERS

Norma Stonecipher . . . . .	President
Virginia Quinn . . . . .	Vice President
Helen Slaten . . . . .	Secretary
Peggy Lohr . . . . .	Treasurer
Mary Witt . . . . .	Reporter
Mrs. Overby . . . . .	Sponsor



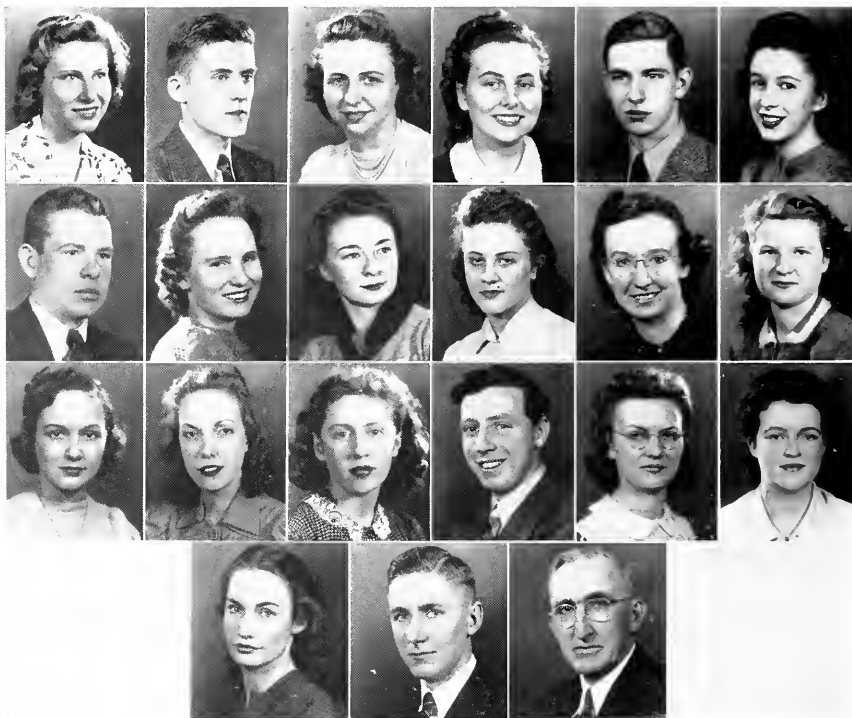
Top row, left to right: Renegar, Butt, Crum, Crass. Second row: Crabtree, Maples, Ingraham, Hamby. Third row: Dew, Webb, Deadrick, Marsen. Bottom row: Kennedy, Bunch, Swanson, Stubbs.

## A L P H A   G A M M A

In 1929 there was organized a society at Ritter Hall that was later named Alpha Gamma. Today this society is a society recognized for its high standards in that those selected must be representative in all aspects and phases of college life.

### OFFICERS

Mary Deadrick	. . . . .	President
Mary Fay Kennedy	. . . . .	Vice President
Janet Marson	. . . . .	Secretary and Reporter
Virginia Swanson	. . . . .	Treasurer
Mrs. M. F. Stubbs	. . . . .	Sponsor



Top row, left to right: Thomas, Cooke, Wood, Grant, Seldon, Hampton. Second row: Howell, Watson, Witt, Miller, Hines, Allen. Third row: Ellison, Lane, Douglas, Burrell, Ingram, Hellerstedt. Bottom row: Henderson, Godsey, Douglas.

## P H I   T H E T A   K A P P A

The Beta Chi Chapter of Phi Theta Kappa Fraternity for Junior Colleges was organized in 1831. Its purpose is to encourage the highest possible scholastic attainments among college men and women, and to promote a fellowship among such junior college students throughout the United States.

### OFFICERS

Leo Howell . . . . .	President
Roy Godsey . . . . .	Vice President
William Seldon . . . . .	Secretary
Mary Witt . . . . .	Treasurer
Ruth Hines . . . . .	Reporter
Orinda Wood . . . . .	Council Member
Prof. C. O. Douglass . . . . .	Sponsor





Top row, left to right: Henry, Davis, Shoen, White, Ramsey, Vinsant. Second row: Tompkins, Johnson, Robinson, Hines, Grant, Cochran. Third row: Horton, Taylor, Seale, Pickett, Wheeler, Lane. Bottom row: Humbred, Bunch, Jones, Thomas, Harrison, Brubaker.

## P H I L A   L E T H I A N   S O C I E T Y

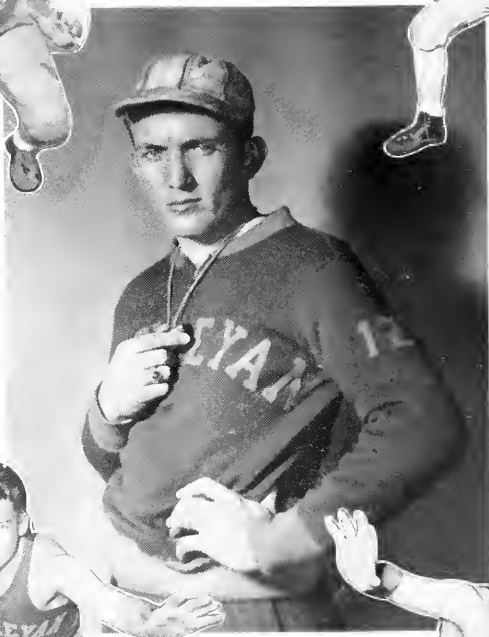
The Phila Lethian Society is one of the youngest of the campus organizations. The group was organized in December 1939 by a group of girls who did not belong to a sorority. Its purpose is to make a contribution to the campus in social life and through social service.

### O F F I C E R S

Mary Ruth Cochran . . . . .	President
Ruth Hines . . . . .	Vice President
Glenice Seale . . . . .	Secretary
Hazel Tompkins . . . . .	Treasurer
Mrs. Elizabeth A. Brubaker . . . . .	Sponsor
Mrs. M. R. Richmond . . . . .	Patroness

Captain Dick LaFrance

Captain-Elect Pat Sharp



Captain Charles Pangle

Coach Eblen

Captain-Elect Pat Sharp

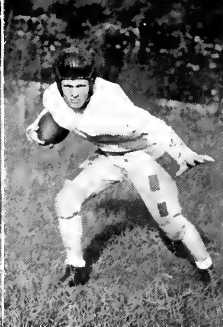
The Nocatula of Tennessee Wesleyan College  
HARRY PIERCE, EDITOR

ATHENS, TENNESSEE

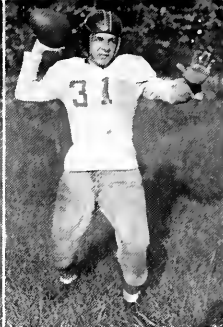
Now for our Sports Section,  
with its history of our conquests,  
and defeats. It was quite a  
successful year for the men, —  
and a year of new and better  
ideas and organization for the  
women —



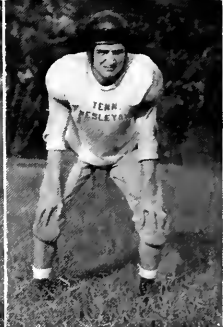
SWANN



SHARP



SHERROD



RENFRO



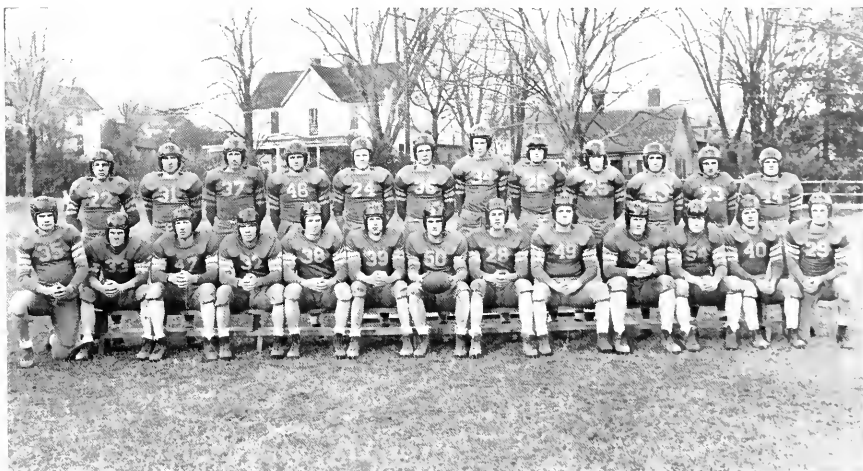
ROBERTSON

## JUNIOR COLLEGE CHAMPS

For the ninth consecutive year the Wesleyan Bulldogs captured the football title in the South-eastern Junior College Conference. This season, the second for Coach Eblen at Wesleyan, looked rather dismal at the beginning.

Undaunted by lack of material, but aided by a fighting spirit and the will to work hard as a unit enabled Coach Eblen to guide the Bulldogs down victory lane to another Championship.

This year's championship squad was not one of individual stars, but was a constellation as it performed with superb unity from game to game throughout the season. This unity more than offset lack of strength in numbers and in the final analysis proved the margin of victory in many contests.



Seated, left to right: Austin McDonald, J. O. Kimsey, Ralph Nelson, Jim Brake, Spence Renfro, Jim Trotter, Capt. Dick LaFrance, Horace Knox, Felix Harrod, Hobart "Fets" Jones, Ab Swann, J. D. Pack and Jerry Ayres.

Standing: Walter Sherrod, Charles Forrester, Otis Meredith, Millman Stroud, Pat Sharp, Charles Brickle, Hugh Henderson, Edgar Rutherford, Len Lomell, Albert Maltby, Emert Robertson and Frank Clay.



HARROD



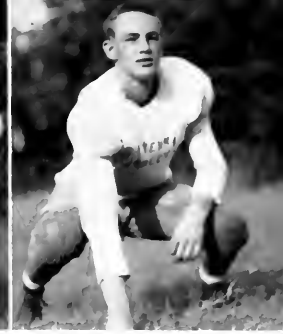
JONES



MEREDITH



STROUD



KNOX

## T H E R E C O R D

Wesleyan .....	40	Sneed .....	0
" .....	2	G. M. C. ....	6
" .....	6	Hiwassee .....	6
" .....	15	Martin .....	0
" .....	19	Brevard .....	14
" .....	2	Belmont-Abby .....	26
" .....	6	South Georgia .....	0
" .....	36	Middle Georgia .....	0





Seated, left to right: Miles Proudfoot, (Manager), Jack Thames, Bill Headrick, James Brake, Capt. Charles Pangle, Pat Sharp, and Jim Trotter.  
 Standing: Millman Stroud, Ralph Nelson, Glenn Michaels, Spence Renfro, Charles Brickel and Winston Kirksey.

## M O R E   C H A M P S

This years team was the sensation of all Wesleyan basketball history, winning twenty games while receiving only two set backs. Their losses came at the hands of four year institutions and were lost by only one and two points respectively.

This year team and its successful season is another one of the many Eblen athletic machines that our brilliant yet youthful coach has turned out.

The success of this years team is attributed however, to the fact that the building of a unit instead of a star is the motto of Coach Eblen. Through the execution of this motto we have seen the return not only of the league championship but also the tournament title. Therefore this year the cry is, "Hail to Tennessee Wesleyan College, Southeastern Junior College Champions."





## T H E R E C O R D

Wesleyan.....	46	Cumberland	42
" .....	33	L. M. U.	34
" .....	74	Norman Park Jr. College	28
" .....	72	Rayburn Gap College	24
" .....	71	Beckly Jr. College	25
" .....	38	Hiwassee	28
" .....	46	Dixie Aces	39
" .....	32	Snead Jr. College	11
" .....	33	Snead Jr. College	24
" .....	32	Dixie Aces	21
" .....	32	Union College	21
" .....	57	Hiwassee	37
" .....	52	Cumberland	42
" .....	40	Tenn. Poly. Institute	42
" .....	44	Campbellville Jr. College	32
" .....	45	Cumberland College	36
" .....	42	Mars Hill	25
" .....	49	Hiwassee	34

THAMES

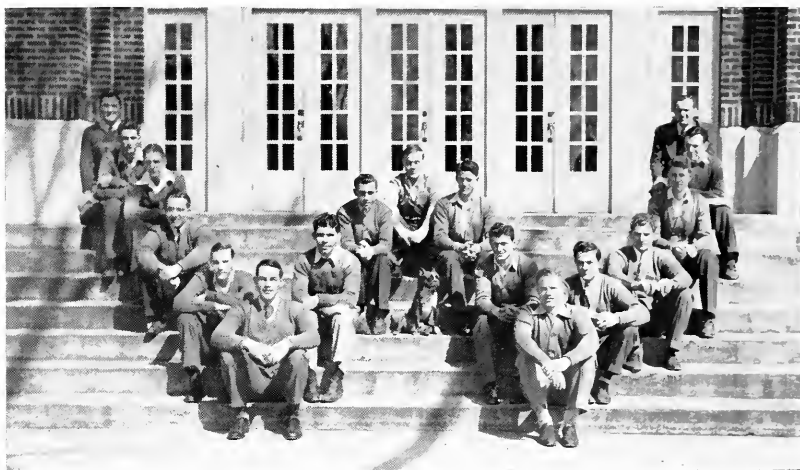
SHARP

PANGLE

MICHAELS

HEADRICK





## T H E W C L U B

### OFFICERS

Charles Pangle . . . . .	President
Bill Headrick . . . . .	Vice President
Miles Proudfoot . . . . .	Secretary and Treasurer

Although this organization is rather new on the campus, being in its second year, it has in this short time become one of the most outstanding clubs on the campus.

The membership of this club consists of the young men on the campus who have lettered in some varsity sport or who have lettered as a manager of any of the various varsity teams.

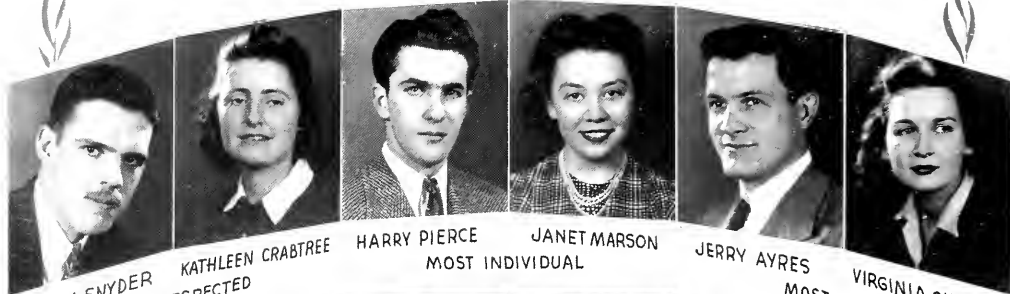
The purpose of this club is three fold. First, it is for the purpose of having an organized athletic body on the campus. Second, it has proven that it is for the building of school spirit by being the most outstanding club in this field of endeavor. Third, it has its own library with which it furnishes athletes with text books to offset scholastic expense.

This year's club has been a hard working one, and although it is a new organization we know that it is here to stay.





# s p o r t s h o t s



HARRY SNYDER  
MOST RESPECTED

KATHLEEN CRABTREE

HARRY PIERCE  
MOST INDIVIDUAL

JANET MARSON

JERRY AYRES

VIRGINIA QUINN  
MOST POPULAR



MISS MEDLIN      PROF. RICHMOND  
BEST LIKED TEACHERS



LEO HOWELL  
MOST LIKELY TO SUCCEED

JANE HOLLINGSWORTH  
MOST BEAUTIFUL CO-ED

PAT SHARP  
BEST ATHLETE

SPENCE RENFRO  
MOST HANDSOME BOY

RUTH HINES  
MOST STUDIOUS



RACHEL GUNN  
BEST DRESSED

CHARLES FORESTER

RUTH CROWDER

"FEETS" JONES  
BEST ALL-AROUND

EDNA RUTH CROWDER

TOM RAULSTON  
MOST HUMOROUS



MARY WITT  
MOST NAIVE

BILLY SELDEN

DAVID NUGENT

RUTH SEWELL  
MOST NOISY

✕  
All Negatives of the  
Annual on file.

Place any order you  
like with the

**E. McLean Studio**

Middlesboro, Ky.

Compliments  
of

**G & H Food Store**

Phone 187-184

Athens Most Complete Food Market

Compliments of

**Mayfield's Creamery**

Manufacturers of

Mayfield's "Jersey Maid"  
Ice Cream

Mayfield's "Jersey Maid"  
Milk—It's Pasteurized

and

Mayfield's "Jersey Maid"  
Butter

**Students!**

Delicious Hot Dogs  
Hamburgers

Toasted Sandwiches at

**LEE WAY LUNCH**



Tennessee Wesleyan  
Headquarters  
in  
Robert E. Lee Hotel  
Bldg.

Compliments  
of  
**BRAKE BILL'S MARKET**

Athens, Tenn.

Compliments  
of  
**RIGGS LUMBER CO.**

Athens, Tenn.

◆  
Compliments  
of  
**ATHENS PLOW COMPANY**

Compliments  
of  
**CITIZEN'S NATIONAL BANK**  
Member of Federal Deposit Insurance  
Corporation  
Athens, Tenn.

Compliments  
of  
Paul Walker  
Bonds and Insurance

To see the most Popular Pictures  
at Most Popular Prices  
go to the  
**STRAND AND ATHENS  
THEATRES**  
ATHENS, TENN.

## MERNER - PFEIFFER LIBRARY

Built by

**Southeastern Construction Co.**

Atlanta

—

Charlotte

—

Miami

### RIDDLES Drug Store

"The Rexall Store in Athens"

Whitman's, Nunnally's, Pangburn's  
and Martha Washington  
Candies

Richard Hudnut, Lucien Lelang, Len-  
theric, and Cara Nume Cosmetics.

Soda Fountain Service

We Deliver

Prescriptions Our Speciality

### MERITA BREAD AND CAKE

~

AMERICAN BAKERIES  
Knoxville, Tenn.

### BOARD OF PUBLIC UTILITIES City of Athens

Electricity Is Your  
Best Servant

TVA POWER

Jackson Street

Power Office : Phone 174

◆  
Sears, Roebuck & Co.  
"The Thrift Store of the Nation"  
Chattanooga, Tenn.  
◆

**Photographs of Distinction**

We Specialize in  
**COLLEGE ANNUALS**



Studio

Second Floor

**SANITIZOR**

No Germ-Laden Bag or  
Container to Empty

**AIR-WAY BRANCHES, Inc.**

305 Volunteer Building  
Chattanooga, Tenn.

Compliments

of

**MILLER'S DEPT.  
STORE**

Athens, Tenn.



Compliments

of

**ROBERT FISHER**

Salesman, "Do you wear nightgowns or pajamas?"  
Young lady, "No"  
Salesman, ""My name is Ridenour, Costo Crump Ridenour."

Jimmie Slack, "What are you thinking about Jack?"  
Jack Thames, "The same thing you are."  
Jimmie, "If you do I'll scream!"

Compliments  
of  
**ATHENS STOVE WORKS**

Compliments  
of  
**American Woolen Mills**

Athens : Sweetwater

**J. NAT MOORE & SON**

Hardware, Furniture  
Feed, Seed

If It's Electric — We Have It

Phone 1  
Athens, Tenn.



"At the Sign of the Saw"

**FURNITURE**  
Sporting-Goods

**ATHENS HARDWARE CO.**

**Elgin - Bulova - Hamilton**

and other makes

**Diamonds**

Class Rings and Pins

Wesleyan Students Welcome

**MRS. IRA M. BOLTON**

— Jewelry —

**Smith Clothing Co.**

"Athens' Only Exclusive Men's Store"

**Manhattan Shirts**

**Nunn-Bush Shoes**

**Curlee Clothes**

**Jarman Shoes**

Leading Brands in all lines

Athens, Tenn.

**TENNESSEE MOTOR  
CO.**

Plymouth

DeSoto

Sales

Service

Phone 42

Everything In . . .  
Ready-to-Wear

**KETRON'S**

Your Federated Store

Phone 40

Athens, Tenn.

**Athens Jewelry Co.**

Fine

Watches and Jewelry

**ON EASY TERMS**

W. Washington, Athens

**CHEROKEE HARDWARE CO.**

Sporting Goods

Furniture, Paints

Electric Appliances

Phone 14 : No. 1 Main

**Hammer Supply**

"THE HOUSE OF SERVICE"

**Building Supplies and Plumbing  
Goods**

Phone 13

Athens, Tenn.

**Heird Drug Store**

The "Gangs" Hangout

Doc Heird wishes the Seniors  
Continued Success

Sundaes, Cakes, and Candies  
Prescriptions Filled Anytime

We Deliver

Phone 33 : Athens



**THE H. T. HACKNEY COMPANY**

Wholesale Grocery

Athens : : : : : Tennessee

The official body of the city wishes the students of Tennessee Wesleyan every success in the future. Come back to the college and the city for visits often.

---

BOARD OF MAYOR AND ALDERMEN, CITY OF ATHENS

When  
Check  
for  
90  
Minit

C A

~  
**PROFFITT'S**

Department Store

Athens, Tenn.

~

◆  
Compliments of

**McMinn County Motor Co.**

Ford - Mercury - Lincoln Zephyr  
Ford Tractors

◆

**KERN'S**

VITAMIN B-1 BREAD

It's good and good for you. Equiva-  
lent to Whole Wheat yet it's White  
and Palatable.

*More than  
A Third of A Century*

of continuous, conscientious effort in designing and engraving College and High School Annuals has given us the "something" that differentiates between mediocracy and Class. This book is a specimen of our work.

Our experience and facilities are at **your** command at no higher cost than the average.

We invite your inquiries.



**KNOXVILLE ENGRAVING COMPANY**

225 Chamber of Commerce Bldg.

P. O. Box 257

**KNOXVILLE**

:

:

**TENNESSEE**

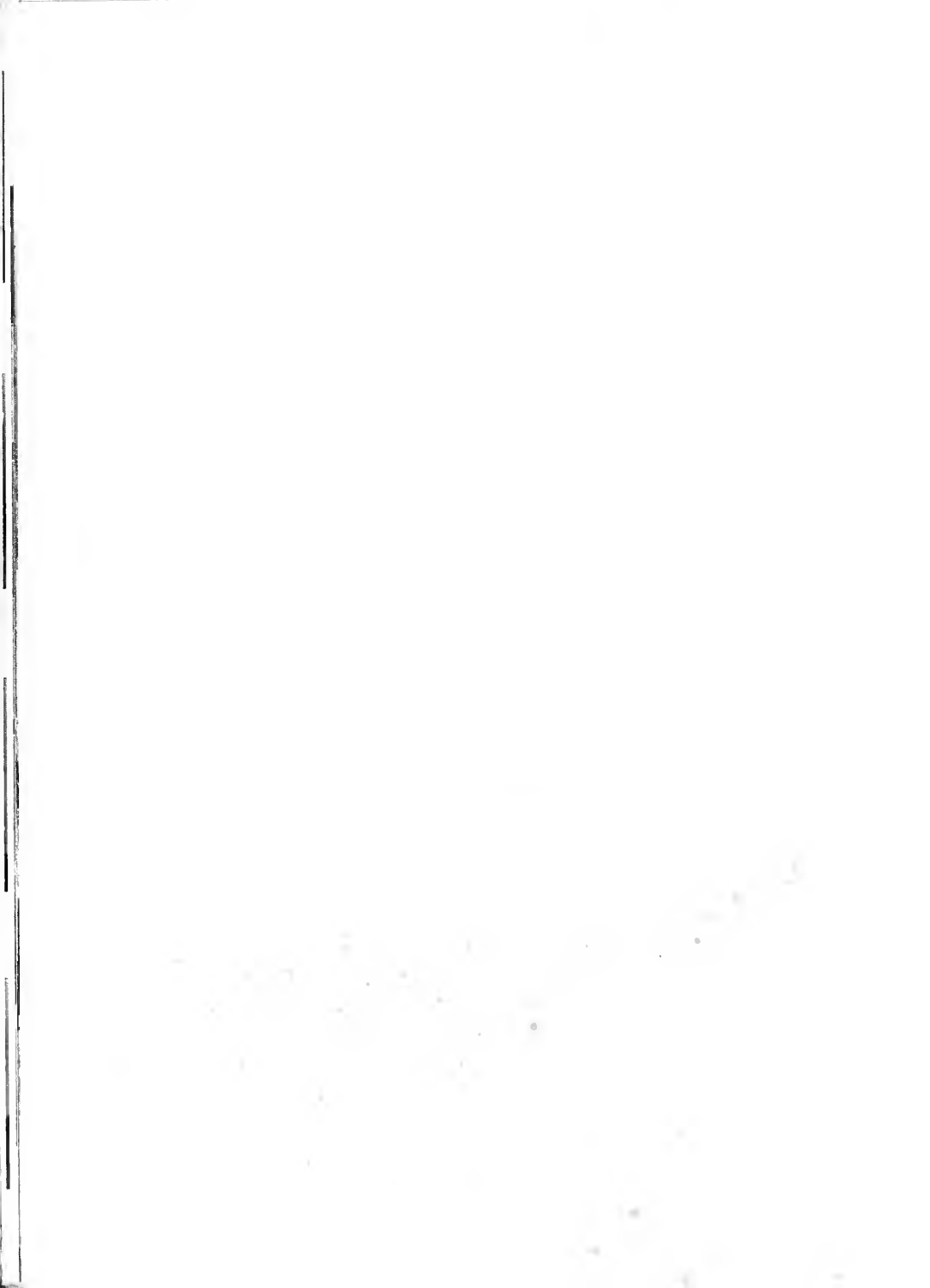
ARCHER & SMITH PRINTING COMPANY

---

*creators of*  
**ANNUALS**  
*distinctive*  
*and original*

---

KNOXVILLE, TENNESSEE







## **For Reference**

Not to be taken from this room

