







Digitized by the Internet Archive  
in 2011 with funding from  
LYRASIS Members and Sloan Foundation

<http://www.archive.org/details/nocatula194600tenn>

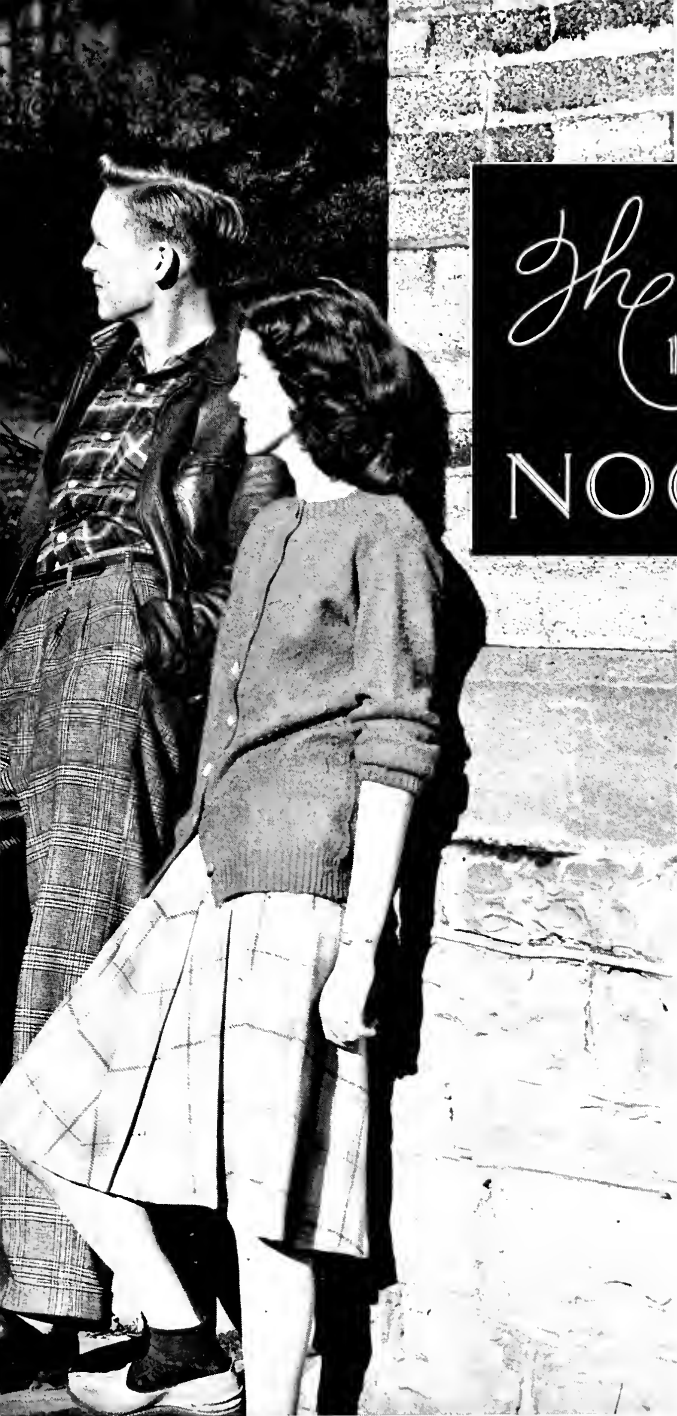
*here's the* B O O K



MALVINA STEGALL, EDITOR  
MAUDE ELSIE ARMSTRONG and  
PHYLLIS BOYD, Business Managers



21109



*The*  
1946

# NOCATULA

PUBLISHED BY THE  
SENIOR CLASS OF

★

TENNESSEE  
WESLEYAN  
COLLEGE

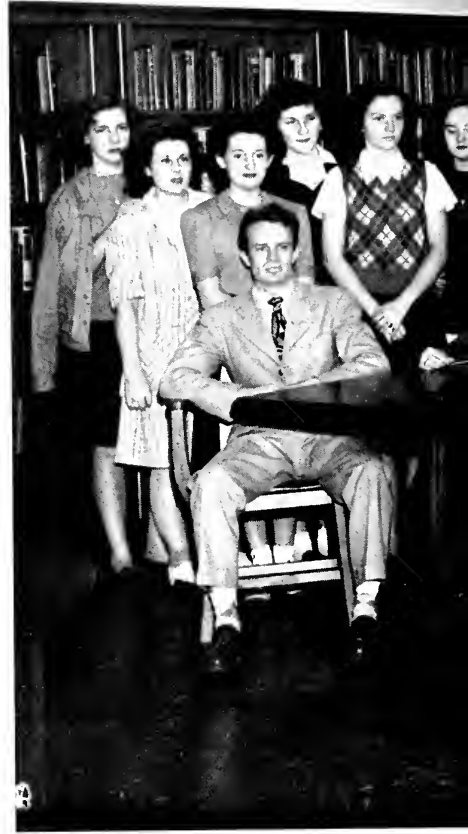
★

ATHENS, TENNESSEE

LIBRARY  
TENNESSEE WESLEYAN COLLEGE  
ATHENS, TENNESSEE

# WE PUBLISHED THE BOOK

The NOCATULA staff is composed of both Juniors and Seniors. This group is responsible for the publication, in addition to the annual, of a monthly paper, also called The Nocatula. The paper serves as a medium of student expression and keeps each individual aware of the activities of the various religious, social, and scholastic organizations on the campus.









DEDICATION

# PROFESSOR T. W. WHITEHEAD

In behalf of the student body, the Senior Class of 1946 dedicates this edition of the NOCATULA to Professor T. W. Whitehead.

To him we pay this tribute for his courage to sit on the same level and at the same seminar table with students and listen to what they have to say.

He has helped to make our initiation into college life and higher training something more than a thin, superficial veneer of "culture." He has helped us to find those refining elements of education—a love of beauty, discipline of the will, the trained intellect, respect for one's self and others, and a cordial acceptance of truth.

Every student who has worked with Mr. Whitehead during these two years feels that simply knowing him has been a personal honor.

Our strong band can ne'er be broken  
Formed at T. W. C.  
Far surpassing wealth unspoken,  
Sealed by loyalty.

Lift the chorus, speed it onward,  
Loud her praises be;  
Hail to thee, our Alma Mater!  
Hail to T. W. C.!

School life here at best is passing,  
Fast the moments flee;  
Let us pledge in word and deed  
Our love for T. W. C.

**H A I L T O O U R A L M A M A T E R**

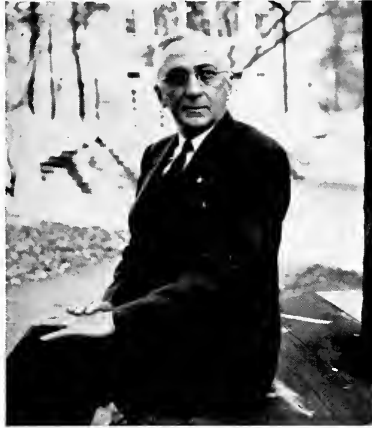


TENNESSEE WESLEYAN COLLEGE



DR. JAMES L. ROBB

# GREETINGS FROM THE PRESIDENT



To the Members of the Class of 1946

Greetings:

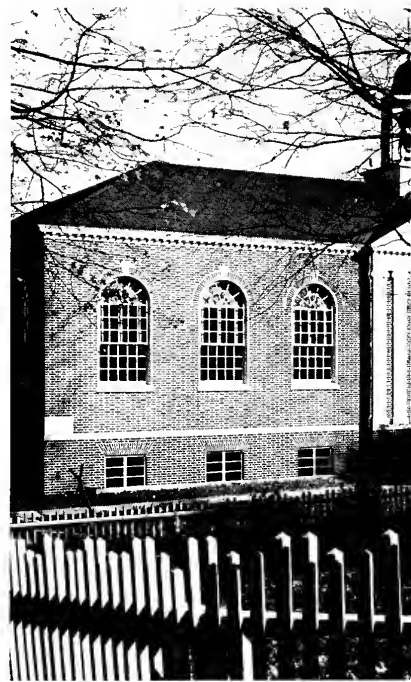
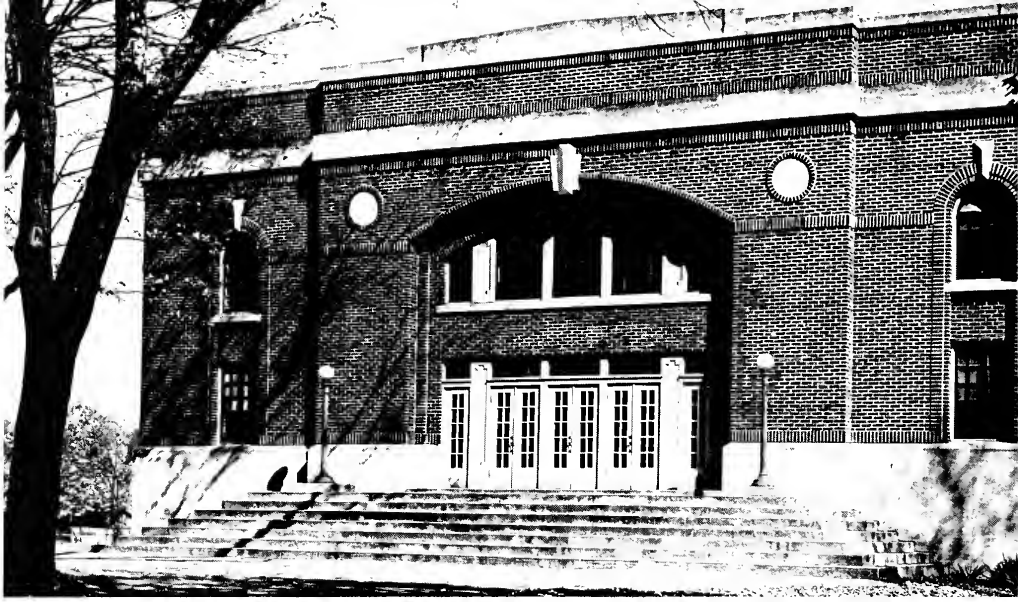
Allow me to add my word of congratulation and felicitation upon the accomplishment that is yours of successfully completing your course of study. Your junior college career has embraced one of the most significant periods in human history, the winding up of the World War and the opening up of a new era. We devoutly trust that it will be an era of world peace. Each of you is sure to have the opportunity to play an important part in helping to make it such. We are counting upon you.

May God's blessings be upon you as you go forth from these halls to meet the responsibilities that lie ahead of you.

Sincerely,

JAMES L. ROBB

President







## *This* **CAMPUS** *of Ours*

Wesleyan's campus has for many years figured in the comings and goings of hundreds of students.

Two years amid the surroundings and teachings of love and friendship seem all too short. One only says hello to Wesleyan and seemingly turns around and makes an exit.

Hurrying from building to building, trying to beat the bells, attending chapel and Wednesday Church, finishing last-minute note books and book reports, cramming for examinations—all these campus routines end far too soon and become only pleasant memories.

It would be an act of ingratitude not to mention also the beauty with which the campus is blessed. The colorful scenes make it appear a veritable picture. Even the dullest season of the year contributes its share, giving a touch of variety with the occasional snow and abundant rain.

The rumors of new buildings, a swimming pool, better athletic programs, already give more zest to campus life. For the seniors going out, it is a vision of the Wesleyan of tomorrow. For the students entering, it is something to look forward to, a dream which they must make a reality.







# The Peace We Must KEEP

It is from scenes like these that the grandeur of Wesleyan springs.

The class room is a place, not merely in which to spend a number of hours, but one where the mental development of the student is encouraged and promoted. It is there that his knowledge is further increased and enriched.

Many times it may seem that lessons are laid aside, and other topics of discussion enter in. That is not always done without purpose, for the study of books is not the only thing which college has to offer. Even the toughest and strictest teacher realizes that, and often adds a touch of variety with a little practical training.

Lessons may, at times, seem dull and uninteresting, but if the privilege of attending classes were taken away and other restrictions placed upon us, we would find our very souls yearning for that which we no longer possessed.

The participation by students in scenes such as these give a better understanding of personal values and a higher sense of integrity. It is not from such college classrooms that those with selfish desires and ambitions come, bringing unhappiness and destruction to a people and a nation.

From these classes come individuals who have faith and belief in their fellow man, who strive for and help to build a nation in which integrity is not a luxury.





# FRIENDSHIPS *Are Everlasting*

One has, after two years at Wesleyan, won many friends. All-school parties, clubs, sororities, and fraternities, as well as class rooms, have brought the students in frequent contact with one another. The close relationship has made them understand each other and share alike both joys and sorrows.

This simple understanding will ever remain in the hearts and minds of all. It will become a link in a chain of friendship which can never be broken, an invisible bond that will stir and warm the heart throughout life.



"I shall not pass this way again. Therefore, any good that I may do to any human creature, let me do it now. Let me not postpone or neglect it for I shall not pass this way again."





## RELIGIOUS *Influence*

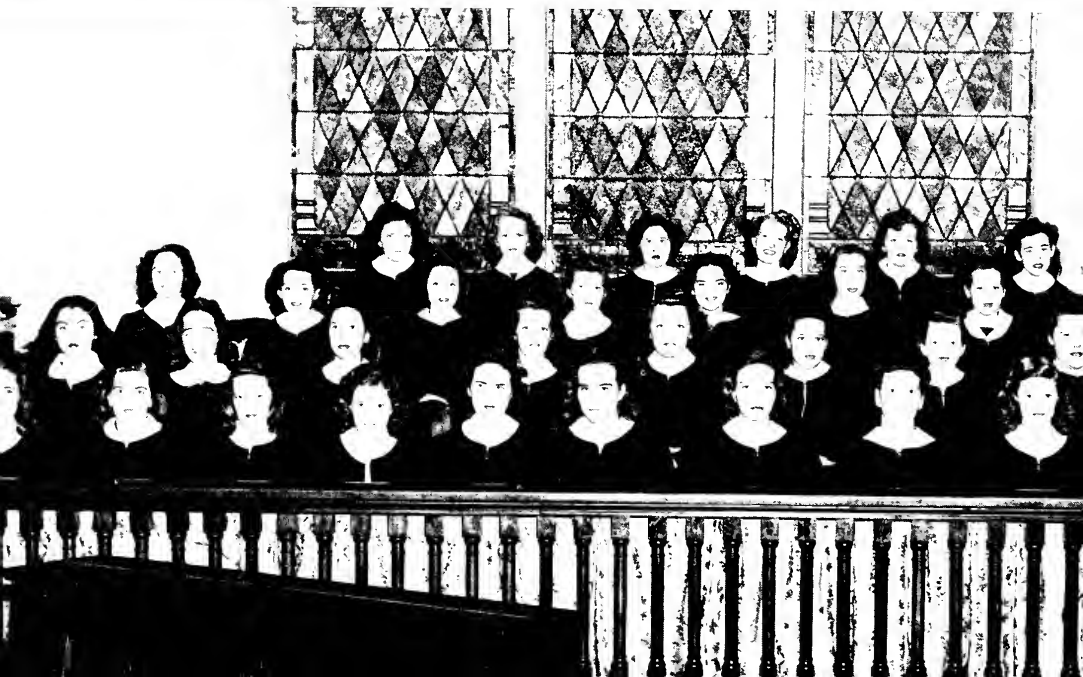
Religious meetings and activities play an important part in campus life at Tennessee Wesleyan. Four religious clubs are active: The Christian Service Club, the Y. M.-Y. W., The Wesleyan Youth Fellowship—formerly known as the Queen Esthers—and The Life Service Volunteers, a group of twenty-five students planning to enter full-time Christian service in various fields.

The presidents and vice-presidents of these clubs together with two faculty members, compose the Religious Council, which serves to direct the religious program as a whole.

Each year the first week in February is set aside as Religious Emphasis Week, and a minister from the conference is invited to conduct on the campus a concentrated program of religious activity.

The entire college program strives to make the general atmosphere as Christian as possible, and the large number of students who are each year inspired to enter and prepared to live fully a life of Christian service, attests to the success of this effort.







78.05  
T2567  
1946

# *The Inspiration of* MUSIC AND DRAMA

Robert Haven Schauffler once said, "It takes three to take music: one to create, one to perform, one to appreciate. And who can tell which is the most important?"

From its earliest forms, music has always been the expression of man's inner being. A love for make-believe, a desire to be amused, and a natural instinct on the part of man to express his feelings are the roots from which music has grown from its primitive stages to its complex development of the last few centuries.

Interest in the great treasures of our musical heritage is keenly alive today. Its value to the individual lies in its fulfillment of man's need for inspiration and beauty.

To create, to perform, to appreciate—dare we say that one of these holds more value than the other?



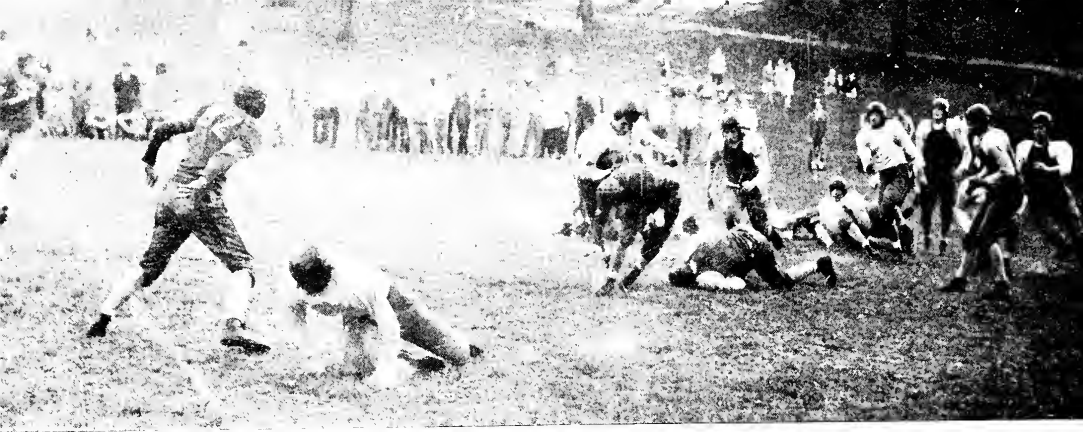
MRS. VERGENE JONES COLLOPS  
Director



MARGARET GAMBLE  
Accompanist

MERNER - PFEIFFER LIBRARY  
TENNESSEE WESLEYAN COLLEGE  
ATHENS, TENNESSEE







# Physical E D U C A T I O N

The Physical Education program at Wesleyan has been hindered in many ways during the first and second quarters of 1945-46. First of all, equipment at times has been almost impossible to obtain. Furthermore, school had already started before the college was able to secure an Athletic Director.

In spite of these and other handicaps, the school has managed to provide enough recreation to take care of the needs of the majority of the students. Ping-pong has been popular all year, with both boys and girls taking a major interest in the sport. Phyllis Boyd won the girls' ping-pong tournament and Charles Montgomery, the boys' championship. Basketball was the main sport during the winter months, with the Physical Education classes as well as the varsity taking part. Football practice has now started and softball is becoming increasingly popular on the campus.

Now that the college has a full-time Athletic Director and the equipment situation has become more promising, the school is looking forward to a great expansion in Physical Education classes, both in the number of students participating and the variety of the program. Volleyball, horseshoes, tennis, softball, and badminton are to be added to the program in order to offer every student some kind of wholesome recreation.





# COLLEGE





JAMES L. ROBB  
President



MISER R. RICHMOND  
Dean

First Row: Brubaker, Collins, Colloms, Colston, Douglass.  
Second Row: French, Hale, Hampton, Harrison, Hoch.  
Third Row: Huntzinger, A. H. Myers, C. D. Myers, Parkinson, Peck, Peters.



# Wesleyan's FACULTY

MRS. ELIZABETH A. BRUBAKER ..... Dean of Women, Supt. Ritter Hall  
 MRS. A. B. COLLINS ..... Assistant Supt. Ritter Hall  
 MRS. VERGENE COLLOMS ..... Piano, Voice, Choir  
 MRS. AGNES B. COLSTON ..... Practice School  
 C. O. DOUGLASS ..... Registrar, Education  
 ETHEL FRENCH ..... Nurse, Ritter Hall  
 MRS. MARTHA B. HALE ..... Art  
 LEVIS HAMPTON ..... Public Relations, Dramatics, Chorus  
 MRS. MAGDALENE HARRISON ..... Dietitian, Ritter Hall  
 YADA HOCH ..... Secretary to President  
 MRS. BESSIE HUNTZINGER ..... Supt. Lawrence Hall  
 A. H. MYERS ..... Religion, English  
 MRS. CLARYSE DAVIS MYERS ..... Acting Librarian  
 MAURICE A. PARKINSON ..... Modern Languages  
 MRS. MINNIE PECK ..... Dietitian, Petty Manker  
 ANDREW J. PETERS ..... Social Science, Orientation

MRS. MARY N. POPE ..... Bursar  
 ANNA LOUISE PRESTON ..... Home Economics  
 FRED PUETT ..... Speech, English  
 MRS. M. R. RICHMOND ..... Home Economics  
 C. Q. SMITH ..... Director of Athletics  
 MRS. THELMA R. STANDRIDGE ..... Piano, Organ  
 MARGARET L. STEWART ..... Commerce  
 MRS. NORA MAE TALLENT ..... Piano  
 PATRICIA TREBLAS ..... Physical Education  
 J. L. UNDERWOOD ..... Supt. of Grounds  
 MRS. THEMIS H. WARE ..... Practice School  
 THOMAS W. WHITEHEAD ..... Chemistry, Physics  
 MRS. HOMER N. WILLIAMS ..... Home Economics  
 HOMER N. WILLIAMS ..... Commerce, Supt. Petty Manker  
 JOSEPH C. WILSON, JR. .... Mechanical Drawing  
 G. A. YATES ..... Mathematics, Social Science

First Row: Pope, Preston, Puett, Richmond, Smith.  
 Second Row: Standridge, Stewart, Tallent, Treblas, Underwood.  
 Third Row: Ware, Whitehead, Mrs. H. N. Williams, H. N. Williams, Wilson, Yates.



# SENIORS

**NELLE ANDERSON** . . . . . Athens, Tenn.  
 Eta Upsilon Gamma Sorority, '45, '46; International Relations,  
 '46; NOCATULA Staff, '46; Winner Time Award, '46.



**MAUDE ELSIE ARMSTRONG** . . . . . Chattanooga, Tenn.  
 Secretary, Off Campus Club, '45; Sigma Iota Chi Sorority, '45,  
 President, '46; Tumbling Team, '45, '46; Physical Education As-  
 sistant, '45, '46; Y.M.-Y.W., '45, '46; NOCATULA Business  
 Manager, '46; International Relations Club, '45, '46.

**ERMA MIRIAM BALL** . . . . . Kingsport, Tenn.  
 Life Service Volunteers, '46; Christian Service Club, '46;  
 Y.M.-Y.W., '46; Wesleyan Fellowship, '46; NOCATULA Staff, '46.



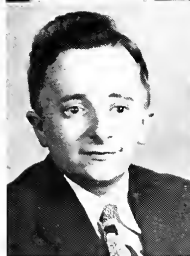
**MARGARET ELLEN BEATY** . . . . . Jamestown, Tenn.  
 Wesleyan Student Fellowship President, '46; Basketball, '45,  
 Co-Captain, '46; Y.M.-Y.W., '45, '46; Christian Service Club,  
 '45, Chaplain, '46; Religious Council, '46; Band, '45; Chorus,  
 '46; NOCATULA Staff, '46; Secretary, Senior Class, '46; At-  
 tendant to Harvest Queen, '46; Most Athletic, '45.

**DAPHNE BELLAMY** . . . . . Kingsport, Tenn.  
 Basketball, '45, Manager, '46; Y.M.-Y.W., '45, '46; Commercial  
 Club, '46; Wesleyan Fellowship, '45, '46; NOCATULA Staff, '46;  
 International Relations Club, '46.



**MILDRED MYRTLENE BLEDSOE** . . . . . Chattanooga, Tenn.  
 Christian Service Club, '45, '46; Eta Upsilon Gamma, '45, Chap-  
 lain, '46; Art Club, '45, '46; Christian Service Club, '46; Wesleyan Fel-  
 lowship, '45, '46; Chorus, '45; May Court, '45; Delta Psi Omega,  
 '45, Vice-President, '46; Religious Council, '46; Choir, '46; Trio  
 Ensemble, '46; College Fellowship Team, '46.

**MAC L. BOWERS, JR.** . . . . . Newport, Tenn.  
 President, Senior Class, '46; Secretary, Junior Class, '45; NOCA-  
 TULA Reporter, '45, '46; Phi Theta Kappa, '45, Secretary, '46;  
 Debate Team, '45; Most Popular Boy, '45.



**ELIZABETH ANN BOYD** . . . . . Englewood, Tenn.  
 Home Ec. Club, '45, '46; Basketball, '46; Off Campus Club,  
 '46; Y.M.-Y.W., '45, '46.

**PHYLLIS MARJORIE BOYD** . . . . . Athens, Tenn.  
 Off Campus Club, '45, '46; Y.M.-Y.W., '45, '46; Basketball, '46;  
 Sigma Iota Chi Sorority, '45, '46; International Relations Club,  
 '45; Business Manager, NOCATULA, '46; Student Council, '45.



**SALLY BOYLES** . . . . . Dalton, Georgia  
 Art Club, '46; Home Ec. Club, '46; Transferred from Gulfport,  
 Mississippi.





**MARY KATHERINE BROCK** . . . . . Morristown, Tenn.  
 Christian Service Club, '45, '46; Queen Esthers, '45, '46;  
 Y.M.-Y.W., '45, '46; Zeta Mu Epsilon Sorority, '45, '46; Com-  
 mercial Club, '46; Art Club, '46; Home Ec. Club, '46.



**EVELYN MAE BROWN** . . . . . Knoxville, Tennessee  
 Dean's Honor Roll; Secretary, Y.M.-Y.W., '45; House Chair-  
 man, Lawrence Hall, '46; Christian Service Club, '45, '46; Sec-  
 retary Trinity Church, '45; Worthy Directress, Sigma Iota Chi,  
 '46.

**MARY LOU BROWN** . . . . . Calhoun, Tenn.  
 Home Ec. Club, '45, President, '46; Basketball Team, '45, '46.

**MILDRED RICE BROXTON** . . . . . Ocoee, Tennessee  
 Vice-President, Eta Upsilon Gamma, '46; Home Ec. Club, '45,  
 '46; Chorus, '45, '46; International Relations Club, '45; Y.M.-  
 Y.W., '45, '46; Wesleyan Fellowship, '45, '46; Assistant, Com-  
 mercial Dept., '45, '46.



**ANITA STEWART CLACK** . . . . . Dunlap, Tennessee  
 Treasurer, Kappa Delta Phi, '46; Vice-President, Y.M.-Y.W.,  
 '46; NOCATULA Staff, '46; Commercial Club, '46; Religious  
 Council, '46; Christian Service Club, '45, '46; Library Staff,  
 '45, '46; Chorus, '45, '46.

**CHRISTINE COOPER** . . . . . Powell Station, Tenn.  
 Y.M.-Y.W., '45; International Relations Club, '45; Eta Upsilon  
 Gamma, '45, '46.

**JAMES WINSTON CRAIG** . . . . . Copperhill, Tennessee  
 Eta Iota Tau Fraternity, '45, President, '46; Basketball, '45; Vice-  
 President, Senior Class, '46; Christian Service Club, '45, '46;  
 Y.M.-Y.W., '45, '46; Debate Club, '45.



**ISABELLE CROWDER** . . . . . Unicoi, Tenn.  
 Eta Upsilon Gamma, '46; Basketball, '45, Captain, '46; NOC-  
 ATULA Staff, '46; Christian Service Club, '45, '46; Y.M.-Y.W.,  
 '45, '46; Wesleyan Fellowship, '45, '46; Tumbling Team, '45, '46;  
 Best Athlete, '46.

**MARTHA DEW** . . . . . LaFollette, Tenn.  
 Eta Upsilon Gamma Sorority, '46; Christian Service Club, '45,  
 President, '46; Y.M.-Y.W., '45, '46; Delta Psi Omega, '45, '46;  
 Queen Esthers, '45; Thank Offering Secretary, '46; Cheerleader,  
 '45, '46; Vice-President Junior Class, '45; Commercial Club, '45;  
 Art Club, President, '46; Religious Council, '45; T. W. C.  
 Fellowship Team, '46.



**JOHN BROWNLOW ELLIOTT, JR.** . . . . . Athens, Tenn.  
 Eta Iota Tau Fraternity, '45, Vice-President, '46; Student Coun-  
 cil, '46; Cheerleader, '46; Band, '45; Off Campus Club, '45, '46;  
 Delta Psi Omega, '45, '46; Debate Club, '45.

**FRANCES FRYE FOX** . . . . . Blaine, Tenn.  
 Commercial Club, '46; Y.M.-Y.W., '45, '46; Wesleyan Fellow-  
 ship, '45, '46; Zeta Mu Epsilon, '45, '46.



**MARGARET GAMBLE** . . . . . Etowah, Tenn.  
 Chorus, '45, Accompanist, '46; Commercial Club, '46; Wesleyan  
 Fellowship, '45, '46; Christian Service Club, '45, '46; Y.M.-Y.W.,  
 '45, Pianist, '46; NOCATULA Staff, '46; Art Club, '46; Sigma  
 Iota Chi Sorority, '45, '46; T. W. C. Trio, '46.

# SENIORS

**WILFRED L. GUSTIN** . . . . . Evanston, Ind.  
 President, Junior Class, '45; Christian Service Club, '45, '46;  
 Y.M.-Y.W., '45, Chaplain, '46; Phi Theta Kappa, '45, President,  
 '46; Secretary, Eta Iota Tau, '46; Basketball, '45, '46; Tennis  
 Team, '45; Life Service Volunteers, '45, '46.

**NELLA MAE HAIRIS** . . . . . Etawah, Tenn.  
 Vice-President, Zeta Mu Epsilon, '46; Basketball, '45, '46; Sec-  
 retary, Commercial Club, '46; Christian Service Club, '45; Y.M.-  
 Y.W., '45, '46; Wesleyan Fellowship, '45, '46; Chorus, '45, '46;  
 NOCATULA Staff, '45, '46.

**MARGARET JANE HINTON** . . . . . Chattanooga, Tenn.  
 Kappa Delta Phi Sorority, '45, Secretary, '46; Christian Service  
 Club, '45, '46; NOCATULA Staff, '46; Chorus, '45, '46; Y.M.-  
 Y.W., '45, '46.

**NELLIE MARIE HOLDER** . . . . . Maryville, Tenn.  
 Transferred from Maryville College, Maryville, Tennessee.

**AGNES HOWELL** . . . . . Sweetwater, Tenn.  
 Y.M.-Y.W., '45, '46; Home Economics Club, '45, '46; Phi Theta  
 Kappa, '46; Zeta Mu Epsilon, '45, Secretary, '46.

**BOBBIE JEAN HUFF** . . . . . Sevierville, Tenn.  
 Kappa Delta Phi Sorority, '45, '46; Basketball, '45, '46; Com-  
 mercial Club, '46; Christian Service Club, '45, '46; Y.M.-Y.W.,  
 '45, '46; Wesleyan Fellowship, '45, '46.

**KATHLEEN HUMBERD** . . . . . Cleveland, Tenn.  
 Y.M.-Y.W., '45, '46; Art Club, '45, '46; International Relations  
 Club, '45, '46; Wesleyan Fellowship, '45, '46; Delta Psi Omega,  
 '45, Treasurer, '46; Christian Service Club, '46; Eta Upsilon  
 Gamma, '45, Sentinel, '46.

**JEAN E. JACKSON** . . . . . Rutledge, Tenn.  
 Y.M.-Y.W., '45, '46; Wesleyan Fellowship, '45, '46; Commercial  
 Club, '46; Christian Service Club, '45, '46.

**JASON JONES** . . . . . Oliver Springs, Tenn.  
 G. I. Student, Army.

**VOREATA G. LEWIS** . . . . . Mountain City, Tenn.  
 Zeta Mu Epsilon, '46; International Relations Club, '45; Y.M.-  
 Y. W., '45, '46; Christian Service Club, '45, '46; Wesleyan  
 Fellowship, '45, '46; Ritter Hall Council, Vice-President, '45;  
 Life Service Volunteers, '46.





CAROLYN R. LOCKNANE . . . . . Washington, D. C.  
Phi Theta Kappa, '46; Y.M.-Y.W., '45, '46; Wesleyan Fellowship, '45, Secretary, '46; NOCATULA, '46; Christian Service Club, '45, '46; Life Service Volunteers, '45, '46; International Relations Club, '45, '46; Zeta Mu Epsilon, '45, '46.



MAE JO LONG . . . . . Athens, Tenn.  
Off Campus Club, '45, President, '46; Y.M.-Y.W., '45, '46; International Relations Club, '45, '46; Basketball, '45, '46.



MARJORIE FAY LOWE . . . . . Athens, Tenn.  
Phi Theta Kappa, '45, Vice-President, '46; Eta Upsilon Gamma, '45, Treasurer, '46; Y.M.-Y.W. Reporter, '46.



JEANNE HELEN MCGOVERN . . . . . Malone, N. Y.  
Delta Psi Omega, '45, '46; Phi Theta Kappa, '45, '46; President, Y.M.-Y.W., '46; Senior Play, '45; Christian Service Club, '45, Treasurer, '46; Kappa Delta Phi, '45, '46; NOCATULA Staff, '46; Sweetheart of T. W. C., '46.



MARGARET McCLARY MARION . . . . . Etowah, Tenn.  
Home Ec. Club, '45; Off Campus Club, '46; Basketball, '46; Y.M.-Y.W., '45, '46.



GRACE IRENE MOSER . . . . . Vonore, Tenn.  
International Relations Club, '45; Art Club, '45; Y.M.-Y.W., '45, '46; Wesleyan Fellowship, '45, '46; Christian Service Club, '46; Zeta Mu Epsilon, '45, '46.



DOROTHY LYNN NANCE . . . . . Blaine, Tenn.  
Eta Upsilon Gamma Sorority, '46; Library Staff, '46; Y.M.-Y.W., '46; Christian Service Club, '45, '46; International Relations Club, '45.



CLOYD FARMAN, JR. . . . . Asheville, N. C.  
Ex-Service man; Pre-Engineering.



MARGARET JOYCE PARTON . . . . . Gatlinburg, Tenn.  
Y.M.-Y.W., '45, '46; International Relations Club, '45, Secretary, '46; Sigma Iota Chi Sorority, '45, Secretary, '46; Home Ec. Club, '45; Christian Service Club, '45; Winner Ochs Rule Contest, '45; NOCATULA Staff, '46.



MILDRED PATTON . . . . . Athens, Tenn.  
Phi Theta Kappa, '46; Sigma Iota Chi, '46; Most Likely to Succeed, '46.



JOANNE HILL POPE . . . . . Etowah, Tenn.  
Off Campus Club, '46; International Relations Club, '45; NOCATULA Staff, '45; Sigma Iota Chi Sorority, '46.



MARY JO RAMBO . . . . . Sevierville, Tenn.  
Zeta Mu Epsilon Sorority, '45, President, '46; President, Pan-Hellenic Council, '46; Christian Service Club, '45, '46; Home Ec. Club, '45, '46; Y.M.-Y.W., '45, '46; International Relations Club, '45.

# SENIORS

**GEORGE ROBINSON, JR** . . . . . Copperhill, Tenn.  
G. I. Student, Navy; Basketball, '45, '46; International Relations Club, '45, '46; Y.M.-Y.W., '45, '46; NOCATULA Reporter, '46; Commercial Club, '46.



**HATTIE LORRAINE RUSSELL** . . . . . Athens, Tenn.  
Sigma Iota Chi Sorority, '45, Treasurer, '46; Off Campus Club, '45, '46; Y.M.-Y.W., '45, '46; Cheerleader, '46; International Relations Club, Secretary, '45, President, '46; Band, '45; Winner J. B. Cooper Prize in Spanish, '45; NOCATULA Staff, '46.

**THOMAS D. SAMPLE** . . . . . Sweetwater, Tenn.  
Class of '42; Eta Iota Tau, '42, '46; Delta Psi Omega, '42, '46; G. I. Student, Army—European Theatre; International Relations Club '42, '46; Chorus, '46; Twesco Players, '42.



**CAROLYN MOORE SCRUGGS** . . . . . Clinton, Tenn.  
Wesleyan Fellowship, '45, '46; Basketball, '45, '46; Y.M.-Y.W., '45, '46; Christian Service Club, '45, Pianist '46; International Relations Club, '46; Chorus, '45, '46; Eta Upsilon Gamma Sorority, '45, President, '46; Girls' Quartet, '46; Panhellenic Council, '46; Delta Psi Omega, '45, '46.

**EMMA HESTER SHARP** . . . . . LaFollette, Tenn.  
Vice-President, Student Body, '46; Sigma Iota Chi, '46; Home Ec. Club, '45; Christian Service Club, '45, '46; Y.M.-Y.W., '45; Secretary Debating Club, '45; Delta Psi Omega, '45, '46; Chorus, '45.



**FRANCES INEZ SHORT** . . . . . Oakdale, Tenn.  
Zeta Mu Epsilon Sorority, '45, '46; Christian Service Club, '45, '46; International Relations Club, '45; Y.M.-Y.W., '45, '46; Tumbling Team, '46; Chorus, '45, '46; NOCATULA Staff, '45, '46; Wesleyan Fellowship, '45.

**MILDRED SMITH** . . . . . Knoxville, Tenn.  
Christian Service Club Reporter, '46; Commercial Club, '46; Y.M.-Y.W., '45, '46; Wesleyan Fellowship, '45, '46; International Relations Club, '45, '46; Chorus, '45, '46; NOCATULA Staff, '46.

**MADOLON RUTH SNIDER** . . . . . Marion, Va.  
Chorus, '45, '46; Y.M.-Y.W., '45, '46; International Relations Club, President, '45; Commercial Club, '46; NOCATULA Staff, '46; Superlatives, '45.



**MARTHA JEAN STARRING** . . . . . Grandview, Tenn.  
Choir, '45, '46; Y.M.-Y.W., '45, '46; Art Club, '45, '46; International Relations Club, '45; NOCATULA Staff, '46; Kappa Delta Phi, '45, Corresponding Secretary, '46.

**MALVINA JANE STEGALL** . . . . . Chattanooga, Tenn.  
Christian Service Club, '45, '46; Art Club, '45, '46; Y.M.-Y.W., '45, '46; NOCATULA Staff, '45; Editor, NOCATULA, '46; Chorus, '45; Student Council, '46; International Relations Club, '46; Tumbling Team, '45, '46; Delta Psi Omega, '45, '46; Wesleyan Fellowship, '45, '46; Winner Art Award, '45.





**REBA TATUM** . . . . . Etowah, Tenn.  
Sigma Iota Chi, '45, '46.



**VIVIAN RUTH TAYLOR** . . . . . Athens, Tenn.  
Chorus, '45, '46; Off Campus, '45, '46; Vice-President, Moffitt Music Club, '46; Y.M.-Y.W., '45, '46; Choir, '45, '46.



**EUNICE RUTH TEAGUE** . . . . . Greenville, Tenn.  
Consul, Eta Upsilon Gamma, '46; President, Delta Psi Omega, '46; Senior Representative, Student Council, '46; Biology Lab, Assistant, '46; Christian Service Club, '45, Y.M.-Y.W., '45, '46; Wesleyan Fellowship, '45, '46; Feature Editor, NOCATULA, '46.



**FRITTS W. THOMAS** . . . . . Athens, Tenn.  
President, Phi Pi Delta, '46; President, Phi Theta Kappa, '43, Member, '46; Y.M.-Y.W., '43, '46; Off Campus, '43, '46.



**LUCY LEIGH TRAMEL** . . . . . Englewood, Tenn.  
International Relations Club, '45, '46; Y.M.-Y.W., '45, '46; Wesleyan Fellowship, '45, '46; Zeta Mu Epsilon Sorority, '46.



**LILLIAN DALE WALLACE** . . . . . Etowah, Tenn.  
Christian Service Club, '45; Secretary-Treasurer, '46; Y.M.-Y.W., '45, '46; Queen Esthers, '45, '46; Kappa Delta Phi Sorority, '45; President, '46; Library Staff, '45, '46; Chorus, '45; NOCATULA Staff, '45, '46; International Relations Club, '45; Phi Theta Kappa, '45, '46; Pan-Hellenic Council, '46.



**MARJORIE WATSON** . . . . . Oakdale, Tenn.  
Christian Service Club, '45, '46; Wesleyan Fellowship, '45, '46; Commercial Club, '46; NOCATULA Staff, '46; Chorus, '45, '46; Eta Upsilon Gamma, '45; Secretary, '46; Y.M.-Y.W., '45, '46.



**NELL VIRGINIA WEBB** . . . . . Athens, Tenn.  
International Relations Club, '45, '46; Y.M.-Y.W., '45, '46; Home Ec. Club, '45; Off Campus Club, '45; Vice-President, '46.



**GWENDOLYN E. WESTBROOK** . . . . . Chattanooga, Tenn.  
Student President, '46; Y.M.-Y.W., '45; Vice-President, '46; Personnel Council, '46; Christian Service Club, '45, '46; Delta Psi Omega, '45, '46; Religious Council, '46; Wesleyan Fellowship, '45, '46; Choir, '45, '46; Student Council, '46; Eta Upsilon Gamma, '45, '46.



**JOSEPHINE WILLIAMS** . . . . . St. Charles, Va.  
Christian Service Club, '46.



**LOUISE WILLIAMS** . . . . . Knoxville, Tenn.  
Commercial Club, '46; NOCATULA Staff, '46; Library Staff, '45, '46; Christian Service Club, '45, '46; Eta Upsilon Gamma Sorority, '45, '46; Y.M.-Y.W., '45, '46; Wesleyan Fellowship; Spiritual Life, Secretary, '45; Vice-President, '46; Religious Council, Secretary, '46.

# JUNIORS

CLEO ALFORD . . . . . Lenior City, Tenn.

VIRGINIA ANDERSON . . . . . Athens, Tenn.

ALICE ANN AYERS . . . . . Chattanooga, Tenn.

MARTHA BALLEW . . . . . Copperhill, Tenn.

MARY BALLEW . . . . . Copperhill, Tenn.

BUD BANKS . . . . . Liberty, Tenn.

ETHEL BARDILL . . . . . Oak Ridge, Tenn.

JANE BEALS . . . . . Kingsport, Tenn.

NELDA BILLINGSLEY . . . . . Kingsport, Tenn.

KENNETH BRAKEBILL . . . . . Athens, Tenn.

J. B. BRIDGES . . . . . Englewood, Tenn.

EDNA BROOKS . . . . . Athens, Tenn.

BUSTER BROWN . . . . . Englewood, Tenn.

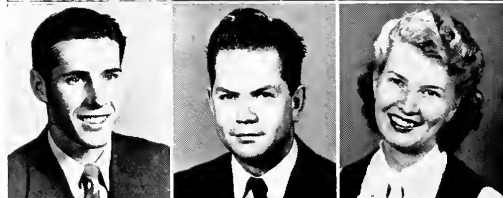
BETTY BURNS . . . . . Knoxville, Tenn.

EDITH BUSH . . . . . Norton, Va.

HOYT CAMPBELL . . . . . Riceville, Tenn.

DOROTHY CARPENTER . . . . . Oak Ridge, Tenn.

BETTY CARTEP . . . . . Athens, Tenn.





W. T. CARTER . . . . . Englewood, Tenn.  
 HELEN COATES . . . . . Kingsport, Tenn.  
 ROBERT COLLINS, JR. . . . . Niota, Tenn.  
 MARGIE CRABTREE . . . . . Bland, Va.  
 MARGARET CROWE . . . . . Tellico Plains, Tenn.  
 ROBERT CROWE . . . . . Harriman, Tenn.  
 MARY CUNNINGHAM . . . . . McCaysville, Ga.  
 BILLIE RUTH DEATHERAGE . . . . . Kingston, Tenn.  
 THOMAS DICKENS . . . . . Copperhill, Tenn.  
 WINDOM DILLARD . . . . . Mineral Bluff, Ga.  
 JENNIE EASLEY . . . . . Allardt, Tenn.  
 BEN ESTES . . . . . Chattanooga, Tenn.  
 MARTIN GILLIAM . . . . . St. Charles, Va.  
 AILENE GOODWIN . . . . . Mountain City, Tenn.  
 GERALDINE GRUBB . . . . . Sweetwater, Tenn.  
 WILLIAM HAGA . . . . . Rockwood, Tenn.  
 HELEN HARRIS . . . . . Johnson City, Tenn.  
 GERALDINE HUFFAKER . . . . . Kodak, Tenn.  
 HELEN IRWIN . . . . . Concord, Tenn.  
 VIRGINIA JERALDS . . . . . Englewood, Tenn.  
 MILDRED JOHNSON . . . . . Sparta, Tenn.

PAUL KELLEY . . . . . Athens, Tenn.  
 GUINN ELLEN KIMSEY . . . . . Turtletown, Tenn.  
 BARBARA KIRK . . . . . Limestone, Tenn.  
 KENNETH KUHNERT . . . . . Bergenfield, N. J.  
 ROBERT LARGE . . . . . Niota, Tenn.  
 MATTIE ZOE LAY . . . . . Jellico, Tenn.  
 HELEN LOWRY . . . . . Greeneville, Tenn.  
 RUTH LUTHER . . . . . Tellico Plains, Tenn.  
 FREDERICK LYNCH . . . . . Caryville, Tenn.  
 MAXINE LYON . . . . . Jamestown, Tenn.  
 ANNA LYNN McCRAVY . . . . . Bulls Gap, Tenn.  
 MARGARET McNABB . . . . . Lenoir City, Tenn.  
 JUNE McWANE . . . . . Clinton, Tenn.  
 JEANNE MARTIN . . . . . Chattanooga, Tenn.  
 LINNIE MARTIN . . . . . Crab Orchard, Tenn.  
 BETTY MERCER . . . . . Tyner, Tenn.  
 DORIS MEREDITH . . . . . Powell Station, Tenn.  
 EDGAR MILLER . . . . . Athens, Tenn.  
 MATTIE MONTEITH . . . . . Sweetwater, Tenn.  
 CHARLES MONTGOMERY . . . . . Cleveland, Tenn.  
 MARIAN MYERS . . . . . Greeneville, Tenn.



# J U N I O R S





WILMA MYERS . . . . . Athens, Tenn.



DORTHA OWNBY . . . . . Greeneville, Tenn.

RETHEL PACK . . . . . McCaysville, Ga.

DON PARKINSON . . . . . Riceville, Tenn.

JACK PARSON . . . . . Athens, Tenn.



W. L. PERKINSON . . . . . Athens, Tenn.

JEAN RADER . . . . . Jefferson City, Tenn.

WANOKA REYNOLDS . . . . . Athens, Tenn.



JANIE ROBERTS . . . . . Kingston, Tenn.

HOMER ROTH . . . . . Chattanooga, Tenn.

BETTY SCOTT . . . . . Cleveland, Ohio

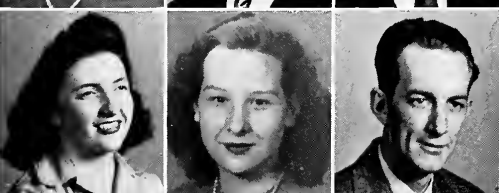


JERRY SHAYER . . . . . Statesville, N. C.

OPAL SHERRILL . . . . . Crab Orchard, Tenn.

JOHN SLOAN . . . . . Walland, Tenn.

WALTER SMALLEY . . . . . Lenior City, Tenn.



MARY DOUGLAS SMITH . . . . . Rosedale, Va.

BETTYE SMITHSON . . . . . Greeneville, Tenn.

DAVID SPAHR . . . . . Athens, Tenn.



KATHLEEN STOVER . . . . . Blue Ridge, Ga.

RAYMOND SUTTON . . . . . Madisonville, Tenn.

BETTYE TAUSCHER . . . . . Rockwood, Tenn.

# J U N I O R S

MARGARET JEAN TAYLOR . . . . . Copperhill, Tenn.

BOBBIE THOMAS . . . . . Copperhill, Tenn.

MARGIE TIPTON . . . . . Fountain City, Tenn.

THOMAS TUPPER . . . . . Clinton, Tenn.

WILLIAM HOWARD TURNER . . . . . Copperhill, Tenn.

JULIA YAQUERANO . . . . . El Salvador

MARGARET WALLACE . . . . . Powell Station, Tenn.

HELEN WARD . . . . . Athens, Tenn.

MORGAN WATKINS . . . . . Athens, Tenn.

MARGARET WIGGINS . . . . . Lenoir City, Tenn.

KENNETH WILD . . . . . Hixson, Tenn.

ALBERTA WILKINS . . . . . Etowah, Tenn.

EMMA C. WILLIAMS . . . . . Huntsville, Ala.

MILDRED RUTH WILLIAMS . . . . . St. Charles, Va.

MARTHA WILSON . . . . . Dalton, Ga.

MILDRED WOLIVER . . . . . Pennington Gap, Va.

CATHRYN WOMAC . . . . . Riceville, Tenn.



# J U N I O R S

# ACTIVITIES AND ATHLETICS





## STUDENT COUNCIL

### OFFICERS

GWENDOLYN WESTBROOK . . . . . President  
 EMMA HESTER SHARP . . . . . Vice-President  
 MAC BOWERS . . . . . Secretary

## LIBRARY STAFF

### STUDENT LIBRARY ASSISTANTS

AND  
 MRS. C. D. MYERS  
 ACTING-LIBRARIAN

# CHRISTIAN SERVICE CLUB



## OFFICERS

MARTHA DEW ..... President      MILDRED BLEDSOE ..... Vice-President  
 LILLIAN WALLACE ..... Secretary-Treasurer

# D E B A T E C L U B



## OFFICERS

CHARLES MONTGOMERY  
 President  
 EMMA HESTER SHARP  
 Secretary-Treasurer  
 FRED PUETT  
 Sponsor





## OFF-CAMPUS CLUB

### OFFICERS

MAE JO LONG . . . . . President  
 VIRGINIA WEBB . . . . . Vice-President  
 VIRGINIA ANDERSON . . . . . Secretary  
 ALBERTA WILKINS . . . . . Treasurer  
 NELL ANDERSON . . . . . Reporter

## ART CLUB

### OFFICERS

MARTHA DEW . . . . . President  
 SALLY BOYLES . . . . . Vice-President  
 OPAL SHERRILL . . . . . Secretary-Treasurer  
 MARTHA HALE . . . . . Sponsor



# H O M E   E C O N O M I C S   C L U B

## OFFICERS

MARY LOU BROWN ..... President  
MARY CUNNINGHAM ..... Vice-President  
NELLE ANDERSON ..... Secretary-Treasurer

# I N T E R N A T I O N A L   R E L A T I O N S   C L U B





## Y. M. — Y. W.

### OFFICERS

JEANNE McGOVERN

President

GWENDOLYN WESTBROOK

Vice-President

STEWART CLACK

Secretary

## LIFE SERVICE VOLUNTEERS

### OFFICERS

CAROLYN LOCKNANE

President

ALICE ANN AYERS

Vice-President

MIRIAM BALL

Secretary-Treasurer

A. H. MYERS

Sponsor





# W E S L E Y A N F E L L O W S H I P

## OFFICERS

MARGARET BEATY . . . . . President      LOUISE WILLIAMS      Vice-President  
 CAROLYN LOCKNANE . . . . . Secretary



## OFFICERS

DON PARKINSON . . . . . President      DORIS MEREDITH . . . . . Vice-President  
 NELLIE HARRIS . . . . . Secretary-Treasurer

# C O M M E R C E C L U B





COACH SMITH

# B A S K E T B A L L

## GIRLS' SCHEDULE

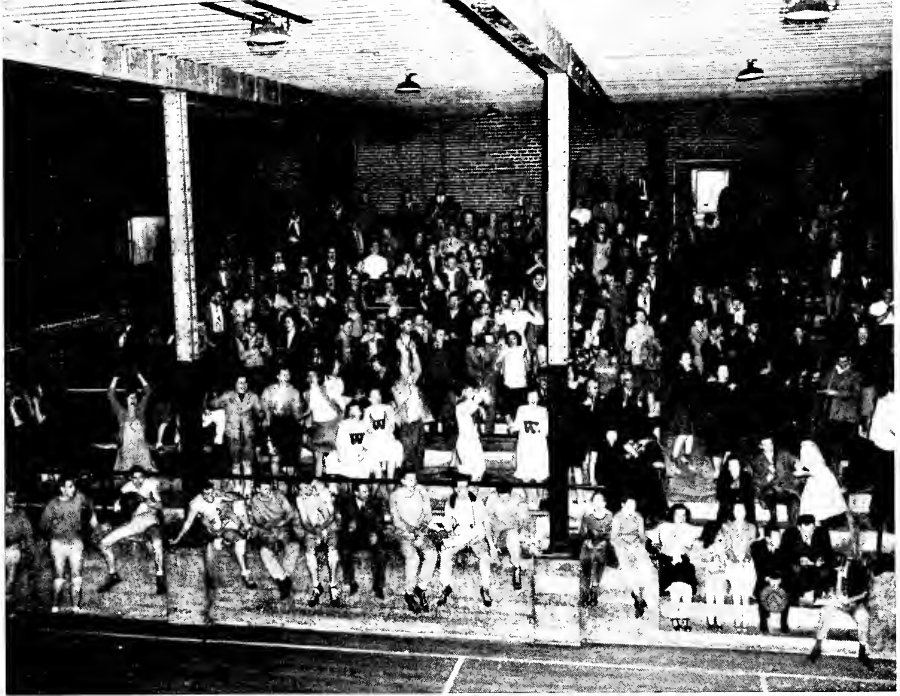
Tenn. Wesleyan . . . . .	46;	Hiwassee . . . . .	28
Tenn. Wesleyan . . . . .	51;	Hiwassee . . . . .	24
Tenn. Wesleyan . . . . .	35;	McMinn . . . . .	28
Tenn. Wesleyan . . . . .	68;	Knox. Bus. C. . . . .	28
Tenn. Wesleyan . . . . .	56;	Emory and H. . . . .	38
Tenn. Wesleyan . . . . .	42;	Va. Institute . . . . .	37
Tenn. Wesleyan . . . . .	52;	Sweetwater In. . . . .	25

## BOYS' SCHEDULE

Tenn. Wesleyan . . . . .	26;	Hiwassee . . . . .	32
Tenn. Wesleyan . . . . .	41;	Cumberland . . . . .	38
Tenn. Wesleyan . . . . .	30;	LMU . . . . .	39
Tenn. Wesleyan . . . . .	37;	Tusculum . . . . .	38
Tenn. Wesleyan . . . . .	45;	Sweetwater . . . . .	40
Tenn. Wesleyan . . . . .	19;	Hiwassee . . . . .	40
Tenn. Wesleyan . . . . .	36;	LMU . . . . .	50

Tenn. Wesleyan . . . . .	40;	Union . . . . .	47
Tenn. Wesleyan . . . . .	38;	N. Georgia . . . . .	50
Tenn. Wesleyan . . . . .	36;	Tusculum . . . . .	38
Tenn. Wesleyan . . . . .	34;	Hiwassee . . . . .	30
Tenn. Wesleyan . . . . .	25;	Hiwassee . . . . .	35
Tenn. Wesleyan . . . . .	30;	Chattanooga . . . . .	44
Tenn. Wesleyan . . . . .	70;	Sweetwater . . . . .	60
Tenn. Wesleyan . . . . .	30;	Maryville . . . . .	40
Tenn. Wesleyan . . . . .	36;	Cumberland . . . . .	32
Tenn. Wesleyan . . . . .	29;	Maryville . . . . .	43
Tenn. Wesleyan . . . . .	49;	Mars Hill . . . . .	39

Since Coach C. Q. Smith has come to TWC the athletic department has shown more life. Not only has he created an interest in basketball and football, but also volleyball, softball, tennis and other sports.



# S P O R T S

During the war, Tennessee Wesleyan, like all other colleges, suffered from the drain on manpower which the supplying of our armed forces necessitated. Consequently there was no 1945-46 football team. This year Miss Patricia Treblas is in charge of women's sports and Mr. C. Q. Smith is Athletic Director and coach of men.

With the acquiring of these two coaches, sports at Tennessee Wesleyan have begun to take on new life, and plans are now being made to put our Bulldogs back in their place at the top among Southeastern Junior Colleges.

More and more boys are coming to our campus, and many of these boys are the athletes who are going to make Tennessee Wesleyan Bulldogs a strong threat to anybody's football or basketball team. Many servicemen whose education was interrupted by war are coming to Wesleyan and will most certainly boost our sports program.

The school already owes a debt of gratitude to the basketball boys and girls, who in the face of difficulties worked so hard for their Alma Mater during 1945-46.

Softball is always popular, and the students are looking forward to the forming of intramural teams, which should add much life and competition to the recreation program. If present plans for an expansion of our curricular are carried out, the students at Wesleyan should soon have a well-rounded sports program.





# SNAPSHOTS

# FRATERNITIES



# S I G M A I O T A C H I



## OFFICERS

- MAUDE ELSIE ARMSTRONG . . . . . President
- EMMA HESTER SHARP . . . . . Vice-President
- PEGGY PARTON . . . . . Secretary
- LORRAINE RUSSELL . . . . . Treasurer
- VERGENE COLLOMS . . . . . Sponsor

## MEMBERS

- Cleo Alford
- Jane Beals
- Nelda Billingsley
- Phyllis Boyd
- Evelyn Brown
- Betty Carter
- Margaret Crowe
- Mary Cunningham

- Billie Deatherage
- Margaret Gamble
- Ruth Luther
- Margaret McNabb
- Linnie Martin
- Peggy Parton
- Joanne Pope
- Wanoka Reynolds

- Lorraine Russell
- Betty Scott
- Emma Hester Sharp
- Reba Tatum
- Margaret Wallace
- Alberta Wilkins
- Mildred Williams
- Mrs. Colloms





# KAPPA DELTA PHI

## OFFICERS

LILLIAN WALLACE . . . . . President  
 BOBBIE JEAN HUFF . . . . . Vice-President  
 MARGARET HINTON . . . . . Secretary  
 STEWART CLACK . . . . . Treasurer  
 MARGARET STEWART . . . . . Sponsor



## MEMBERS

Ethel Bardill  
 Betty Burns  
 Edith Bush  
 Stewart Clack  
 Margie Crabtree

Margaret Hinton  
 Bobbie Huff  
 Jeanne McGovern  
 Mattie Monteith  
 Rethel Pack  
 Martha Jean Starring

Margaret Jean Taylor  
 Margie Tipton  
 Helen Ward  
 Julia Vaquerano  
 Miss Stewart



# ETA UPSILON GAMMA



## OFFICERS

- CAROLYN SCRUGGS . . . . . President
- MILDRED BROXTON . . . . . Vice-President
- MARJORIE WATSON . . . . . Secretary-Treasurer
- MAGDALENE HARRISON . . . . . Sponsor

## MEMBERS

- |                   |                   |                     |
|-------------------|-------------------|---------------------|
| Nelle Anderson    | Isabelle Crowder  | Dorothy Lynn Nance  |
| Virginia Anderson | Martha Dew        | Malvina Stegall     |
| Alice Anne Ayers  | Kathleen Humberd  | Ruth Teague         |
| Mildred Bledsoe   | Barbara Kirk      | Marjorie Watson     |
| Edna Brooks       | Marjorie Lowe     | Gwendolyn Westbrook |
| Mildred Broxtan   | Anna Lynn McCravy | Louise Williams     |
| Christine Cooper  | Doris Meredith    | Mrs. Harrison       |



# Z E T A M U E P S I L O N

## OFFICERS

MARY JO RAMBO . . . . . President  
 NELLIE HAIRIS . . . . . Vice-President  
 AGNES HOWELL . . . . . Secretary  
 FRANCES FOX . . . . . Treasurer  
 PATRICIA TREBLAS . . . . . Sponsor



## MEMBERS

Miriam Ball  
 Daphne Bellamy  
 Mary K. Brock  
 Frances Fox  
 Nellie Hairris  
 Agnes Howell  
 Geraldine Huffaker

Virginia Jeralds  
 Voreata Lewis  
 Carolyn Locknane  
 Betty Mercer  
 Grace Moser  
 Opal Sherrill

Frances Short  
 Mildred Smith  
 Kathleen Stover  
 Vivian Taylor  
 Lucy Tramel  
 Margaret Wiggins  
 Miss Treblas



# DELTA PSI OMEGA



## OFFICERS

RUTH TEAGUE . . . . . President  
 KATHLEEN HUMBERD . . . . . Secretary

## MEMBERS

Mildred Bledsoe

Jeanne McGovern

Malvina Stegall

Martha Dew

Thomas D. Sample

Gwendolyn Westbrook

John B. Elliott

Carolyn Scruggs

Mr. Hampton

Kathleen Humbert

Emma Hester Sharp



# P H I P I D E L T A

## OFFICERS

FRITTS THOMAS . . . . . President  
 KENNETH BRAKEBILL . . . . . Vice-President  
 W. T. CARTER . . . . . Secretary-Treasurer  
 FRED PUETT . . . . . Sponsor

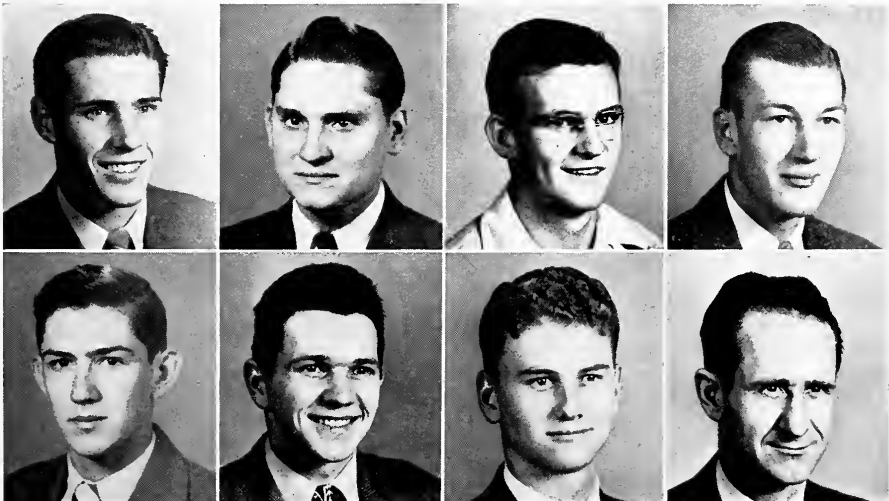


## MEMBERS

Kenneth Brakebill  
 Hoyt Campbell  
 W. T. Carter

Fred Lynch  
 Edgar Miller

Don Parkinson  
 Jerry Shaver  
 Mr. Puett



# PHI THETA KAPPA



## OFFICERS

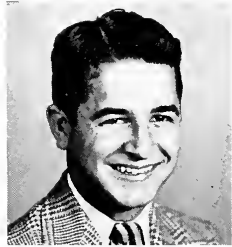
- WILFRED GUSTIN . . . . . President  
 MARJORIE ROSE LOWE . . . . . Vice-President  
 MAC BOWERS . . . . . Secretary  
 JEANNE McGOVERN . . . . . Treasurer  
 C. O. DOUGLASS . . . . . Sponsor

## MEMBERS

- Mac Bowers  
 Agnes Howell  
 Carolyn Locknane  
 Marjorie Lowe  
 Jeanne McGovern  
 Lillian Wallace  
 Mr. Douglass



# ETA IOTA TAU

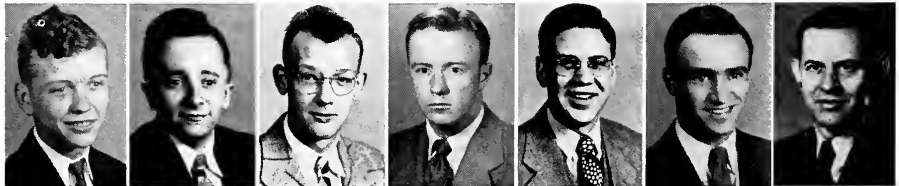


## OFFICERS

- JAMES W. CRAIG . . . . . President  
 JOHN B. ELLIOT . . . . . Vice-President  
 WILFRED L. GUSTIN . . . . . Secretary-Treasurer  
 THOMAS WHITEHEAD . . . . . Sponsor

## MEMBERS

- Bud Banks  
 Mac Bowers  
 John B. Elliott  
 Bud Estes  
 Wilfred Gustin  
 Walter Smalley  
 Mr. Whitehead



# WINNERS



# BEAU

---



ALBERTA WILKINS

MARGARET GAMBLE





# TIES

---

HELEN IRWIN



PEGGY PARTON

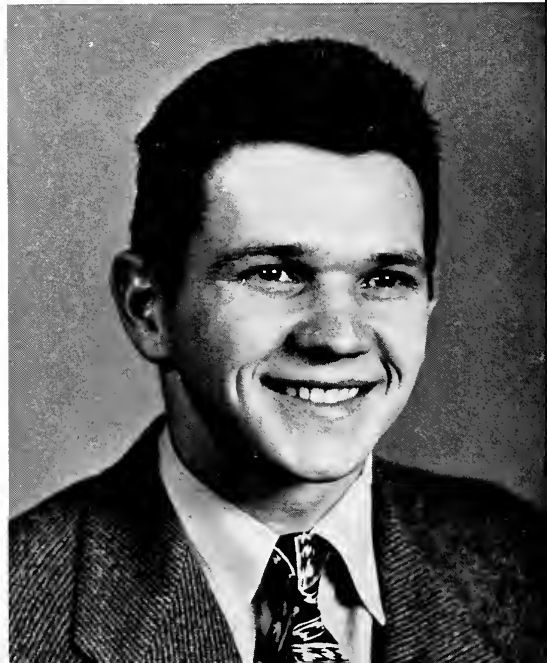


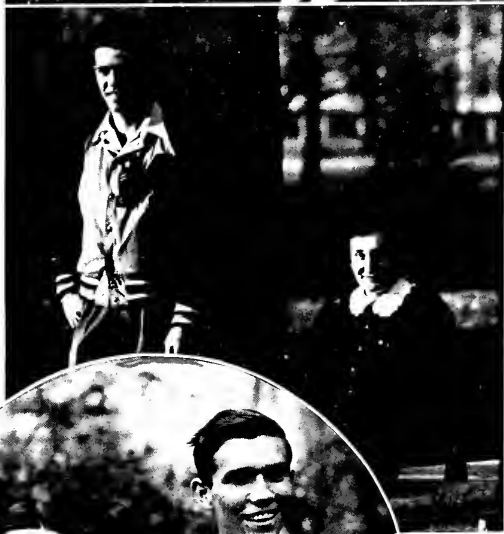


KENNETH BRAKEBILL

*Most Handsome*

DON PARKINSON





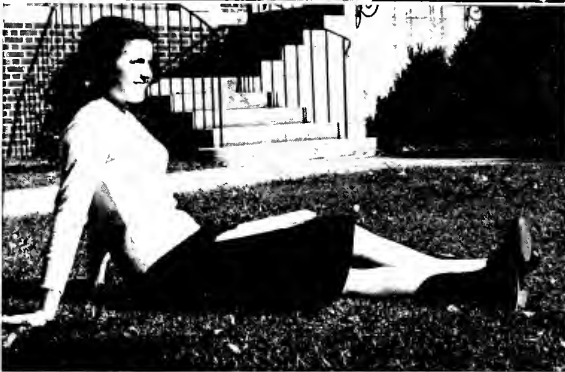
**MOST POPULAR**  
MARTHA DEW  
BUCK ELLIOTT

**MOST TALENTED**  
MILDRED WILLIAMS  
BUD BANKS

**BEST ALL-AROUND**  
MARGARET BEATY  
KENNETH BRAKEBILL

**BEST ATHLETE**  
ISABELLE CROWDER  
JOHN SLOAN

**MOST LIKELY TO SUCCEED**  
MILDRED PATTON  
PAUL KELLEY



Athens, Tennessee

May 27, 1946

Dear Friends:

Every good thing must come to an end, and our school life here at Wesleyan is certainly no exception. We view our graduation from this college with mixed feelings of joy and sorrow, satisfaction and remorse, eagerness and reluctance. For some it is only another milestone before continuing elsewhere. For others it means the period of training is over and we must now throw ourselves into the fierce struggle of life. But whatever be our fate, we carry from these halls sacred memories to cheer us in times of distress, to strengthen us in times of weakness, to encourage us in times of fear.

We had our good times and our bad times. We did our share of "beefing." We gave you faculty members plenty of hours of uneasiness and worry. But somehow, somehow, things always worked out for the best. And when the lovely strains of our Alma Mater floated through the ether, those who had "beefed" most, sang Wesleyan's praises loudest.

When we came here in the fall of 1944, our country was in the midst of the greatest war in the history of mankind. Through it all, Wesleyan, despite a sharply curtailed enrollment, kept her chin up and fought to continue giving her charges the best in higher education. Now we are at peace and Wesleyan is rapidly regaining her former status.

We returned in the fall of '45 with lightened hearts but an even firmer purpose: to help restore the nations of the world to a spirit of brotherhood and Christian fellowship. A weird calm seemed to have settled upon the campus because of the conspicuous absence of last year's graduating class. But they have journeyed on to new fields of endeavor and greater glory.

And so our own story comes to a successful but too early an end. The campus, the trees, the buildings, the people, the town, have all become a part of us. With a saddened heart, we turn our backs upon these last two years and put our faces toward new horizons. We may forget in time the campus, the buildings, the town. But not in ten years, twenty years, nor twenty times twenty years, shall we forget those friendships which have been born, nourished, and developed here at Wesleyan. We feel that we are a part of Wesleyan and we are certain that Wesleyan is an integral part of us. May Christ's richest blessings be upon Tennessee Wesleyan College, her faculty, and her students.

Respectfully,

Senior Class of 1946

# J. NAT MOORE AND SON

Everything for the Farm  
and Home

Phone 1

Athens, Tennessee

East Tennessee's Most Complete One-Stop Service



"At the Sign of the Saw"

HIGH QUALITY

FRIENDLY SERVICE

ATHENS, TENNESSEE

COMPLIMENTS

OF

## ATHENS STOVE WORKS

# PROFFITT'S

DEPARTMENT STORE

ATHENS' FASHION CENTER

ATHENS, TENNESSEE

*Neely's*

THE FASHION CENTER

Phone 162

Athens, Tennessee



**DIXIE MOTOR CO.**

DODGE & PLYMOUTH

Phone 66

ATHENS, TENNESSEE

MAKE

**MANGLE'S**

YOUR

Shopping Headquarters

634 Market

Phone 7-1626

CHATTANOOGA, TENN.

Eat Lay's Potato Chips

**GARDNER  
FOOD PRODUCTS CO.**

621 N. Gay St.

KNOXVILLE, TENN.

**FOODS**

**ROBINSON'S LITTLE SUPER  
MARKET**

ETOWAH

ATHENS

MARYVILLE

BENTON

**RALPH P. THOMISON CO.**

Firestone Dealer Store

RECORDS—SHEET MUSIC  
SPORTING GOODS  
RADIOS—RECORD PLAYERS

On the Square

Phone 44

COMPLIMENTS

**CITIZENS  
NATIONAL BANK**

ATHENS, TENNESSEE

COMPLIMENTS

OF

**RUSSELL MOTOR CO.**

PONTIAC

Phone 480

Athens, Tennessee

**HARODS THRIFT MARKET**

FROSTED FOODS

VEGETABLES

MEAT

Phones 889, 890

Athens, Tennessee

**CHEROKEE  
HARDWARE COMPANY**

SPORTING GOODS  
FURNITURE—PAINTS  
ELECTRICAL APPLIANCES

Phone 14

No. 2 Main

Athens, Tennessee

**SMITH  
CLOTHING STORE**

Athens' Only Exclusive

Men's Store

ATHENS, TENNESSEE

Everything in Ready-To-Wear

**KETRON'S**

Your Federated Store

Phone 40

ATHENS, TENNESSEE

The Friendliest Store In Town

**SEARS, ROEBUCK & CO.**

Order Office

Phone 763

Shop at Sears and Save

RUTHA L. BROOKS, Mgr.



# ATHENS MERCHANTS' PAGE



ATHENS FURNITURE EXCHANGE

SNOW DRUG COMPANY

WILLIAMS AND COMPANY

G. & S. CLEANERS

FARMER SUPPLY

ATHENS DEPARTMENT STORE

GUFFEY'S FOOD MARKET

OFFICE SUPPLY STORE

GRACE PEEK, Florist

BIDDLE AND BRIDGES

GENERAL SALES AND SERVICE

COMPLIMENTS

OF

**ROBERT E. LEE  
BEAUTY SHOP**

COMPLIMENTS

OF

**COPENHAVER'S**

**Jewelers**

Athens  
759

Etowah  
7811

# CHATTANOOGA MERCHANTS' PAGE

LOVEMANS, . Inc.

KOBLENTZ

PICKETT'S, . Inc.

TEMPLETON'S JEWELERS

MILLER BROTHERS COMPANY

HARDIE & CAUDLE

THE VOGUE

THE FISCHER COMPANY

GRAND HOTEL

EDWARDS & LEBRON, Ltd.

ANDREWS'

CLEMONS BROS. CO.

SEARS, ROEBUCK AND CO.

**MINIT LUNCH CAFE**

Students Always Welcome

Owned and Operated by  
MRS. E. O. BREEDEN

Phone 9189

DUCK IN

COMPLIMENTS

OF

**CITY DRUG**

Phone 131

**PINION JEWELERS**

WATCHES AND JEWELRY

DIAMONDS

SILVERWARE

Easy Payments

ATHENS, TENNESSEE

**"RICE'S"**

ELECTRICAL SUPPLIES

Phone 327

COMPLIMENTS

OF

**MILES A. RIDDLE**

DRUGGIST

School Supplies

Cosmetics

Phone 47

Athens, Tennessee

COMPLIMENTS

OF

**FIRST NATIONAL BANK**

ATHENS, TENNESSEE

**HAMMER  
SUPPLY COMPANY**

"The House of Service"

BUILDING SUPPLIES AND

PLUMBING GOODS

Phone 13

Athens, Tennessee

When You Think of

**PORTRAITS**

Think of Your Official

NOCATULA PHOTOGRAPHERS

**RICHARD K. WOOD**

COMPLIMENTS  
OF  
**MILLER'S**  
DEPARTMENT STORE  
ATHENS, TENNESSEE

**MRS. IRA M. BOLTON**  
JEWELER  
Watches—Diamonds  
Jewelry  
G. S. HORTON, Manager  
ATHENS, TENNESSEE

**THE CLAUDIA SHOPPE**

MRS. H. M. ROBERTS

"The latest in wear, for ladies  
who care."

Phone 442

Jackson Street

Athens, Tenn.

**ROYAL CROWN  
COLA**

Best By Taste Test

**NEHI BOTTLING CO.**

**SECURITY MILLS**

Manufacturers of

**POULTRY AND LIVESTOCK FEEDS**

KNOXVILLE, TENN.

519

**REED BEAUTY SHOP**

519

One of Athens' Newest

Air-Conditioned

"Where Beauty Is An Art"

APPOINTMENTS

Main Street

Kathleen Reed, Mgr.

COMPLIMENTS  
OF  
**ATHENS CAFE**

ROSS J. CHADWELL, Mgr.

COMPLIMENTS  
OF  
**McMINN COUNTY MOTOR  
COMPANY**

Phone 390

Athens, Tennessee

COMPLIMENTS  
OF  
ROBERT E. LEE LAUNDRY  
HOTEL ROBERT E. LEE

PHONE 185

ATHENS, TENNESSEE

BOARD OF PUBLIC UTILITIES

CITY OF ATHENS

Your Electric System

JACKSON STREET

PHONE 174

MAYFIELD'S CREAMERY



"Jersey Maid" Ice Cream

"Jersey Maid" Milk—It's Pasteurized



ATHENS, TENNESSEE

COMPLIMENTS

McSPADDEN & SONS, INC.

FURNITURE AND HARDWARE

Phone 532

Athens, Tenn.

COMPLIMENTS

OF

KNOXVILLE BUSINESS  
COLLEGE

"The Quality School"

CHURCH AND STATE STREETS

Knoxville, Tenn.

ETOWAH  
MERCHANTS' PAGE



ROY'S CAFE

EARL LINDSEY GROCERY STORE

ETOWAH HARDWARE AND FURNITURE CO.

ETOWAH GROCERY COMPANY

WESTERN AUTO STORE

RULE FURNITURE CO.

PATRONIZE

OUR

ADVERTISERS

COMPLIMENTS

OF

CANTRELL BANKING CO.

ETOWAH, TENN.

## JEWELRY

The Perfect gift

. . . for every occasion

WATCHES RINGS  
DIAMONDS  
LOCKETS BRACELETS  
COSTUME JEWELRY  
SILVERWARE

"It's Easy to Pay—The Royal Way"

**ROYAL** JEWELERS

51 South Gay St.

KNOXVILLE

## BAUM'S

HOME OF FLOWERS

KNOXVILLE, TENN.

Flowers To All the World by Wire

"Say it with flowers"

WHEN YOU THINK OF

**PORTRAITS**

THINK OF YOUR OFFICIAL

NOCATULA

PHOTOGRAPHERS

**RICHARD K. WOOD**

"We Invite You In"

*Kimball's Jewelers*

KNOXVILLE

"At the Sign of the Clock"

## YELLOW

## CAB SERVICE

Call 38

Thinking fellow rides the Yellow

## YOUR DEALER

STEINWAY — KIMBALL

WURLITZER

WURLITZER ORGATRON

**CLARK BROS. PIANO CO.**

706 S. Gay—Knoxville

AUTO GLASS  
GLASS BLOCK

WINDOW GLASS  
MIRRORS

STORE FRONT CONSTRUCTION

"If It's Glass We Have It"

**STANDARD GLASS CO.**

Incorporated

Depot and Broadway  
KNOXVILLE, TENNESSEE

Dial 2-3131, 2-3132

World's Largest Publishers

THIS BOOK DESIGNED AND PRINTED BY

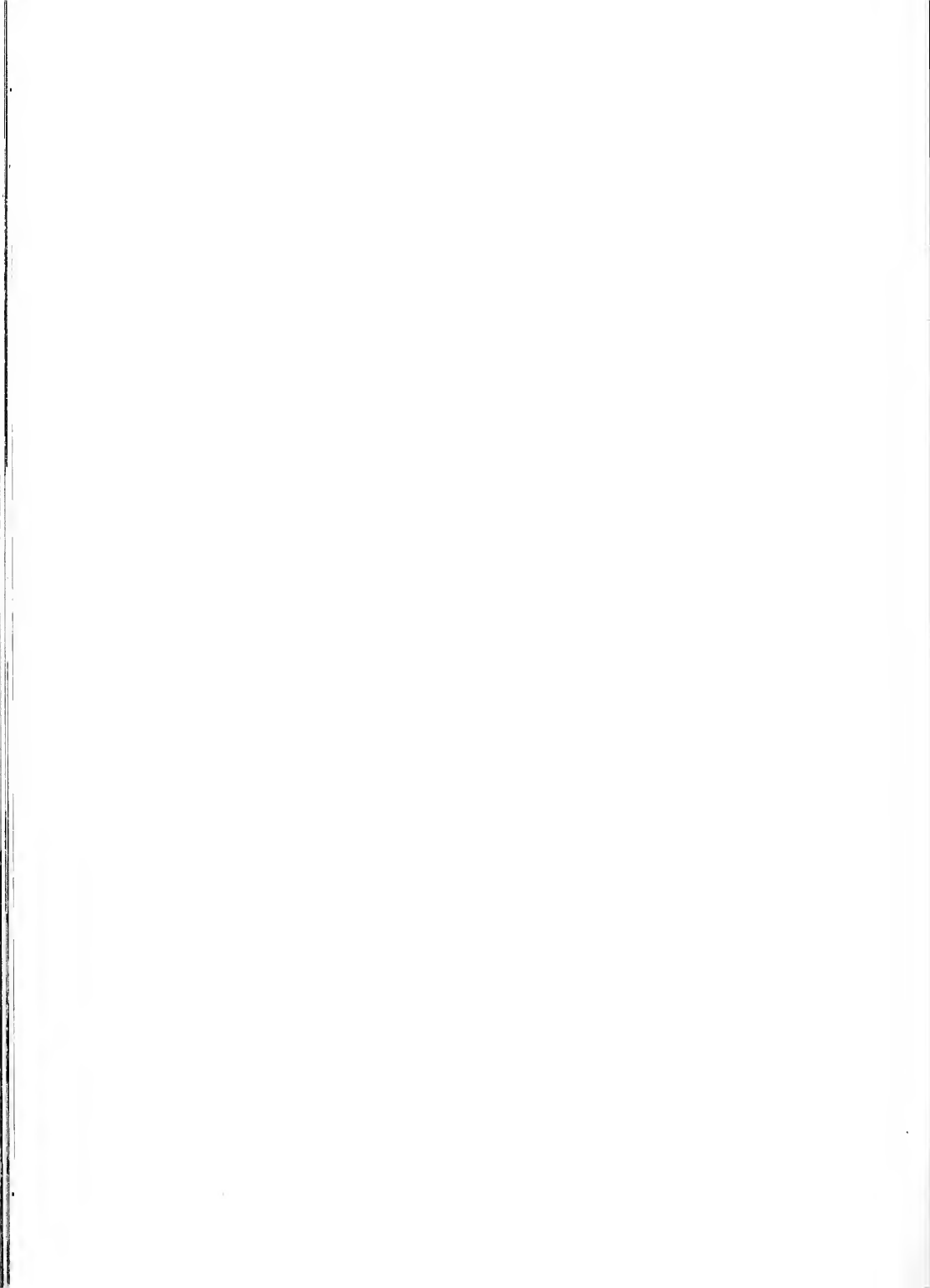
*Benson*

PRINTING COMPANY ☆ NASHVILLE

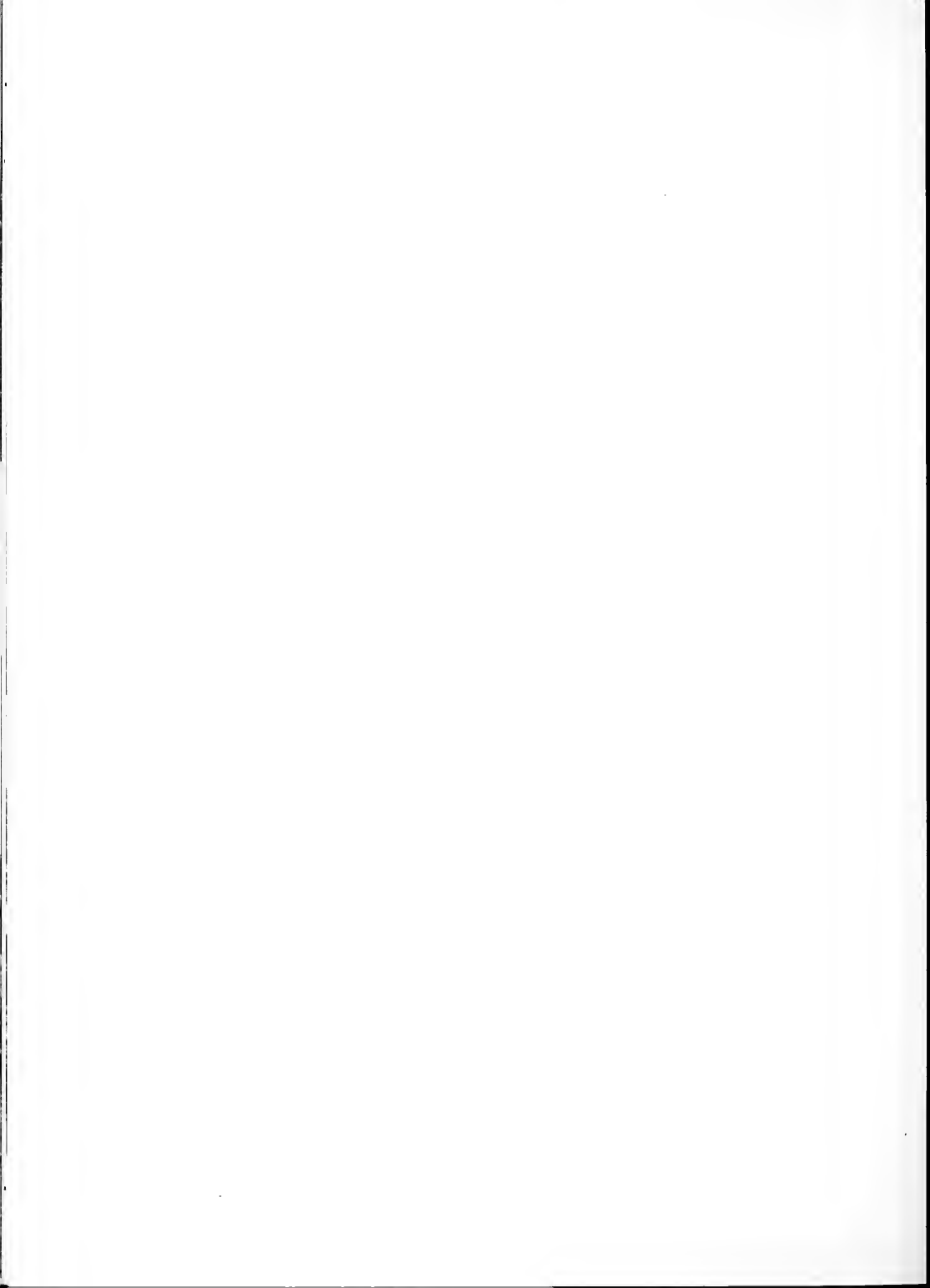
of College Annuals



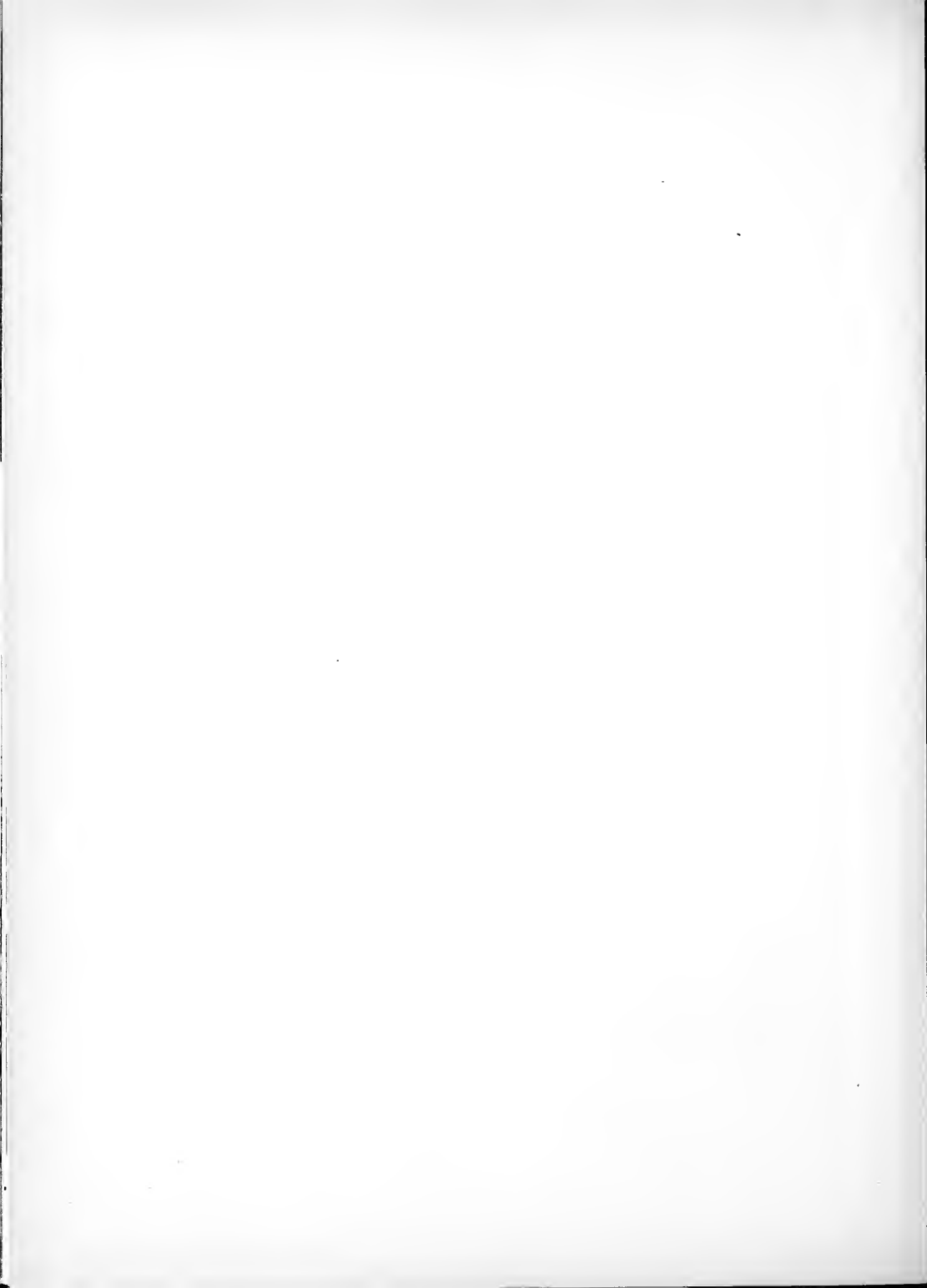












# For Reference

Not to be taken from this room

