



Scutella

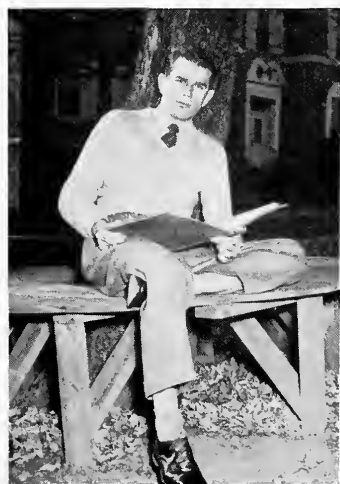


Duplicate

Digitized by the Internet Archive  
in 2011 with funding from  
LYRASIS Members and Sloan Foundation

<http://www.archive.org/details/nocatula194700tenn>

*Nocatula*





**THE**

# **Nocate**

Published by the Senior Class of

**T E N N E S S E E    W E S L I**



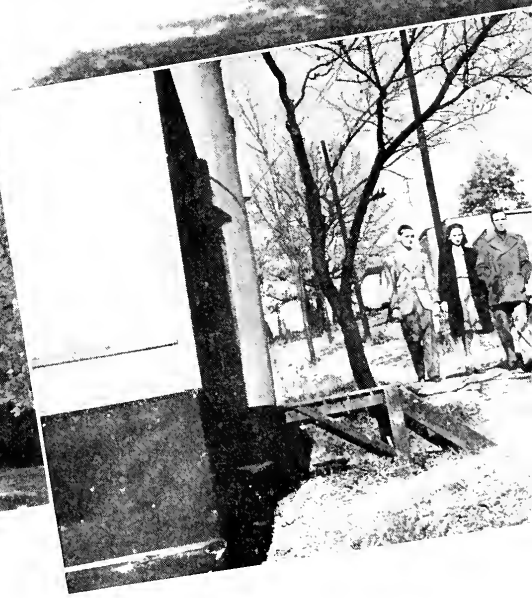
PORTER HAWKINS  
Editor

PHYLLIS TOOMEY  
Business Manager

MAURICE A. PARKINSON  
Sponsor

la 1947

Y A N C O L L E G E





# THIS CAMPUS OF OURS

Administration Building

Ritter Home

Autumn Scene

Old College Building

Trailer Village

Merner Pfeiffer Library





## A MESSAGE FROM DR. ROBB

To each member of the Class of 1947

Tennessee Wesleyan College

Dear Senior:

This letter is addressed to each of you individually. It is my fervent hope that you have discovered in your two years at Tennessee Wesleyan something of the true meaning of life. You have had opportunity to do this both through the curriculum which you have pursued and through the campus activities and personal contacts which you have experienced.

I wonder if included in the interpretation of life that you have formed are some of these conclusions:

1. That life offers genuine rewards to those who merit them.
2. That habits of thrift and sobriety are important assets.
3. That real nobility of life calls for true gentility of character.
4. That every individual needs divine aid to bring his life to full fruition.

It is my hope that your life will incorporate all of these and that you will enjoy the richness of life which these make possible.

Sincerely,

JAMES L. ROBB  
President



## A MESSAGE FROM THE CHAPLAIN

TO THE MEMBERS OF THE SENIOR CLASS:

Allow me to congratulate you upon the successful completion of your junior college "quest." It is my hope that here you have obtained every good thing for which you have been seeking, and that you will go away with fine academic training and with a devotion for God in your hearts.

All of our best wishes accompany you as you depart, and we trust that you will take Christ's Spirit into partnership with you in every future undertaking.

We shall be expecting you to become a leader in business, in your community and in your church. We confidently await a report from your future efforts that will indicate that you are making a good living and a good life. May God's richest blessings accompany you.

Your friend,

GEORGE E. NAFF  
College Chaplain



## The Administration Of T.W.C.

**JAMES L. ROBB**  
President

**THOMAS W. WHITEHEAD**  
Administrative Asst. to  
the President

**MISER R. RICHMOND**  
Dean



# THE FACULTY & STAFF

Those who led us

**LOIS C. ARNOLD**  
Secretary to President



**REV. H. N. BARKER**  
Economics and Sociology

**JIM BROOKS**  
Asst. Coach

**MRS ELIZABETH A. BRUBAKER**  
Dean of Women, Supt. of Ritter Hall



**MRS. AGNES B. COLSTON**  
Practice School

**GENEVIEVE COWEN**  
Music and Piano



**C. O. DOUGLAS**  
Registrar, Education

**MARY HANNAH DUNCAN**  
Assistant Bursar



**ETHEL FRENCH**  
Nurse, Ritter Hall

**MARTHA B. HALE**  
Art

**LEVIS H. HAMPTON**  
Dramatics and Speech



**MRS. MAGDALENE HARRISON**  
Dietitian, Ritter Hall

**A. J. HOUTS**  
Voice and Chorus

**MRS. BESSIE HUNTZINGER**  
Supt. Lawrence Hall

**FANNYE MACKEY**  
Librarian

**RUTH MILLER**  
Typing and Shorthand

**MRS. CLARYSE DAVIS MYERS**  
Assistant Librarian

**A. H. MYERS**  
Religion

**REV. GEORGE E. NAFF**  
Chaplain

**MRS. EDITH BOYD PARKINSON**  
English

**MAURICE A. PARKINSON**  
Modern Language

**ANDREW J. PETERS**  
History

**FRED PUETT**  
Business Law

**MISER R. RICHMOND**  
Biology

**E. G. ROGERS**  
Head of English Dept.

**EVELYN S. SELF**  
Bursar

**EDGAR R. SELF**  
Business Manager



**C. Q. SMITH**  
Head of Physical  
Education Dept.

**THEIMA RUCKER STANDRIDGE**  
Piano and Organ

**MARTHA JEAN STARRING**  
Secretary to Dean

**MRS. NORMA MAE TALLENT**  
Piano

**MARTHA L. TAYLOR**  
Assistant Biology

**PATRICIA TREBLAS**  
Physical Education

**J. L. UNDERWOOD**  
Supt. of Grounds  
and Buildings

**NELL ROSE WARE**  
Typing and Shorthand

**MRS. JANE CURRIER WHITEHEAD**  
Assistant Chemistry

**THOMAS WILSON WHITEHEAD**  
Chemistry, Physics

**MRS. HOMER N. WILLIAMS**  
Supt. Petty Manker Dining Hall

**HOMER N. WILLIAMS**  
Commerce

**JOSEPH C. WILSON, JR.**  
Mechanical Drawing

**G. A. YATES**  
Mathematics

**MRS. THEMIS H. WARE**  
Practice School

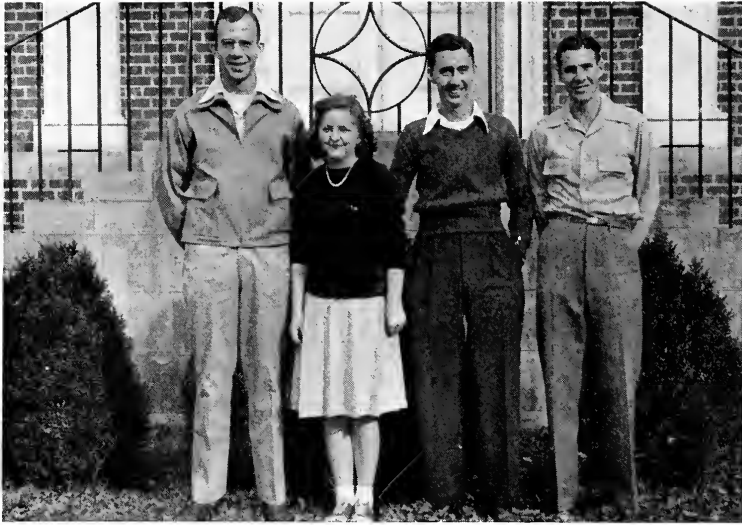








asses



## SENIOR CLASS OFFICERS

President \_\_\_\_\_ Francis Bishop

Sec.-Treas. \_\_\_\_\_ Jack Parson

Student Council Rep. — Mary Cunningham

Student Council Rep. — Kenneth Brakebill

# SENIORS

**AMBURGEY, GORDON MOORE** Athens, Tenn.  
Phi Sigma Nu Fraternity '47; Off Campus Club '47.

**AYERS, ALICE ANN** Chattanooga, Tenn.  
Eta Upsilon Gamma Sorority; Phi Theta Kappa '46, '47; President "Y" '47; Student Council '47; Fellowship Team '46; Life Service Volunteers '46, '47; Religious Council '47; Christian Service Club '46, '47.

**BAKER, MARGARET** Charleston, Tenn.  
Eta Upsilon Gamma Sorority; Christian Service Club '46, '47; Art Club; International Relations Club; Wesleyan Fellowship.

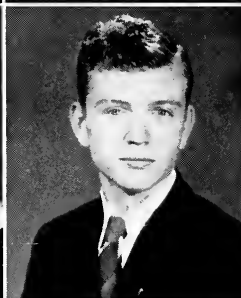
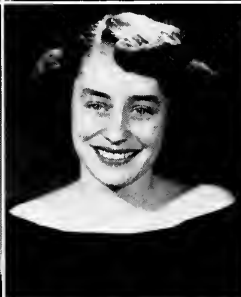
**BALLEW, MARTHA JANE** Copperhill, Tenn.  
Mixed Chorus '46; "Y" '46, '47; Commerce Club '47.

**BALLEW, MARY LOUISE** Copperhill, Tenn.  
Sigma Iota Chi Sorority '47; Mixed Chorus '46; International Relations Club '46; Commerce Club '46, Vice-Pres. '47; "Y" '46, '47.

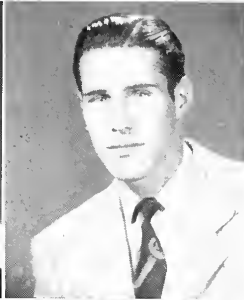
**BANKS, BUD WILLIAM** Liberty, Tenn.  
Eta Iota Tau Fraternity '46, Sec. '47; Christian Service Club '46, '47; "Y" '46, Sec. Treas. '47; Biology Lab. Assistant '47.

**BARDILL, ETHEL LUEVENA** Oak Ridge, Tenn.  
Kappa Delta Phi Sorority '46, Treas. '47; Commerce Club '46, Treas. '47; "Y" '46, '47; International Relations Club '47; Commerce Department Assistant '47.

**BEALS, ETHEL JANE** Kingsport, Tenn.  
Sigma Iota Chi Sorority '46, President '47; Delta Psi Omega '46, '47; Girls Quartette '46, '47; "Y" '46, '47; Christian Service Club '46, '47; Mixed Chorus '46, '47; International Relations Club '46, '47.

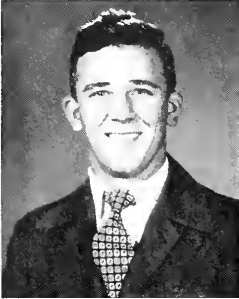


# SENIORS



**BILLINGSLEY, NELDA LOUISE** Kingsport, Tenn.  
Sigma Iota Chi Sorority '46, Sec. '47; Christian Service Club '46, '47; Life Service Volunteers '46 '47; Mixed Chorus '46, '47; Bulldog Staff '46, '47; "Y" '46, '47.

**BRAKEBILL, ELVIN KENNETH** Atheis, Tenn.  
Phi Sigma Nu Fraternity, President '47; Phi Theta Kappa '46, '47; Basketball '46, '47; Football '46, '47; Off Campus Club '46, '47; Phi Pi Delta Fraternity '46, President '47.



**BROWN, REID LEWELLEN** Isabella, Tenn.  
Basketball '43; Tennis '43; International Relations Club '43; Band '43; "Y" '43.

**BURNS, BETTY** Knoxville, Tenn.  
Kappa Delta Phi Sorority '46, Reporter '47; "Y" '46, '47; Tumbeling '46; Bulldog Staff '47.



**BUSH, EDITH ISABELLE** Rockford, Ala.  
Kappa Delta Phi Sorority '46, Chaplain '47; Christian Service Club '46, Vice-Pres. '47; Life Service Volunteers '46, '47; Phi Theta Kappa '47; Wesleyan Fellowship '46; Mixed Chorus '47; International Relations Club '46, '47; Fellowship Team '47; Bulldog Staff '46, '47.

**CAMPBELL, HOYT THOMAS** Riceville, Tenn.  
Phi Sigma Nu '47; Christian Service Club '46, '47; "Y" '46, '47; Commerce Club '46, '47; International Relations Club '47; Phi Pi Delta Fraternity '46, '47.



**CARPENTER, ESTON LEVETTA** Maryville, Tenn.  
Transferred from Emory and Henry College; Chorus '47; Life Service Volunteers '47; Christian Service Club '47; Fellowship Team '47.

**CARTER, ELIZABETH JOSEPHINE** Athens, Tenn.  
Sigma Iota Chi Sorority '46, Directress '47; Home Economics Club '46; Off Campus Club '46, '47; "Y" '46; Girls Chorus '46; Mixed Chorus '46; Bulldog '46; Nocatula '46; Transferred from Virginia Intermont College.

# SENIORS

**CARTER, WALTER THOMAS** Englewood, Tenn.  
Phi Sigma Nu Treas. '47; Commerce Club '46,  
Treas. '47; Off-Campus '46; International Relations  
Club '46, '47; "Y" '46, '47; Phi Pi Delta  
Fraternity '46, '47.



**CATE, MARY ELIZABETH** Athens, Tenn.  
Kappa Delta Phi Sorority '47; International Relations  
Club '46, '47; "Y" '46, '47; Off-Campus  
Club '46, '47; Library Assistant '46, '47.



**COLLINS, ROBERT CLINTON, JR.** Athens, Tenn.  
Phi Sigma Nu Fraternity '47; International Relations  
Club '47; Mixed Chorus '47; Phi Pi Delta  
Fraternity '46, '47.

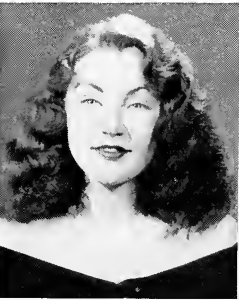
**COOK, JEAN** McCaysville, Ga.  
Delta Psi Omega '46, Sec. and Treas. '47; Commerce  
Club '46, '47; International Relations Club  
'46; Mixed Chorus '46.



**CRABTREE, MARGIE MARIE** Bland, Va.  
Kappa Delta Sorority '46, '47; Christian Service  
Club '46, '47; Wesleyan Fellowship '46; International  
Relations Club '46; Noccutula '46; "Y" '46,  
'47; Moffit Music Club '46.

**CRAWFORD, CLYDA EUGENIA** Bristol, Tenn.  
Wesleyan Fellowship President '47; Life Service  
Volunteer President '47; Christian Service  
Club '47; "Y" '47; Relations Council '47; Mixed  
Chorus '47. Eta Upsilon Gamma Sorority '47.

**CROWE, MARGARET ANN** Tellico Plains, Tenn.  
Sigma Iota Chi Sorority '46, '47; International  
Relations Club '46, '47; College Chorus, '46,  
Mixed Chorus '47; "Y" '46, '47; Christian Service  
Club '46, '47.



**CUNNINGHAM, MARY** McCaysville, Ga.  
Sigma Iota Chi Sorority '46, '47; Student Council  
'47; Phi Theta Kappa '46, Sec. '47; Home  
Economics Club, Vice-President '46, President  
'47; "Y" '46, '47; Lawrence Hall Secretary '46.

# S E N I O R S



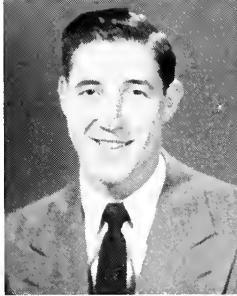
**DEPUE, MARIE LOUISE** Bangor, Penn.  
Transferred from Maryville College; Nocatula '47; Mixed Chorus '47; Girls Quartet '47; Wesleyan Fellowship '47; Superlative '47.

**DUNN, WILLIAM REED** Etowah, Tenn.  
Phi Sigma Nu Fraternity '47; International Relations Club '47; Vice-President Senior Class '47.



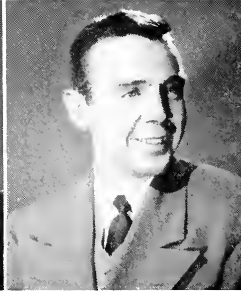
**DULA, THOMAS T. JR.** Warren, Ohio  
Delta Lou Delta Fraternity, Ohio University '43; International Relations Club '47; President Kappa Kappa Psi, Ohio University '43; Scabbard & Blade Honorary Society, Ohio University '43.

**EASLEY, JENNIE PAULINE** Allardt, Tenn.  
Girls' Chorus '46, '47; International Relations Club '46; "Y" '46; Wesleyan Fellowship '46, '47; Accompanist Girls' Quartet '47; Accompanist Girls' Chorus '47.



**EGGERT, WILLIAM** Westfield, N. Y.  
Phi Sigma Nu Fraternity '47; Football '47; International Relations Club '47; Basketball '47.

**ESTES, BEN EARL** Chattanooga, Tenn.  
Eta Iota Tau Fraternity '46, Vice-President '47; President Vets Club '46; International Relations Club '46, '47; "Y" '46, '47.



**GOODWIN, GLADYS AILEEN** Mountain City, Tenn.  
Zeta Mu Epsilon Sorority '46, Sgt. at Arms '47; Wesleyan Fellowship '46, Sec. '47; Christian Service Club '46, '47; Commerce Club '46, '47; Art Club '46, '47.

**GRIGSBY, CHARLES** Oak Ridge, Tenn.  
Commerce Club '46, President '47; Eta Iota Tau Fraternity '47.

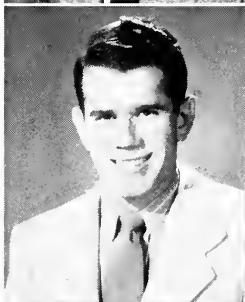
# SENIORS

**HAGA, WILLIAM SHERMAN** Rockwood, Tenn.  
President Student Body '47; Personnel Council '47; Debat Club '47; "Y" '47; International Relations Club '46.



**HARRIS, HELEN MARIE** Maryville, Tenn.  
Christian Service Club '46; Commerce Club '46; Band '46; "Y" '46; Youth Fellowship '47.

**HAWKINS, PORTER** Tellico Plains, Tenn.  
Phi Sigma Nu Fraternity '47; Phi Pi Delta Fraternity '43, '47; Editor of Nocatula '47; Nocatula Staff '43; Junior Class President '43; International Relations Club '43.



**HOLCOMBE, DAVID LAVANT** Raleigh, N. C.

**HOLLOWAY, HELEN JOYCE** Spring Sity, Tenn.  
Transfer Virginia Intermont; International Relations Club '47; Basketball '47.



**HUFFAKER, GERALDINE** Kodak, Tenn.  
Zeta Mu Epsilon Sorority '46, President '47; "Y" '46; Christian Service Club '46; Wesleyan Fellowship '46; Library Staff '46; English Prize '46; Intergational Relations Club '46; Pan-Hellenic Council '47; Student Chairman '47.

**INGRAM, THOMAS F.** Lenior City, Tenn.  
Basketball '43; International Relations Club, President '47.



**IRWIN, HELEN DORIS** Concord, Tenn.  
Junior Clas Secretary '46; International Relations Club '47; Christian Service Club '47; Mixed Chours '47; "Y" '46, '47; Home Economics Club '47; Harvest Queen '46; Superlative '46; Football '47.

# SENIORS



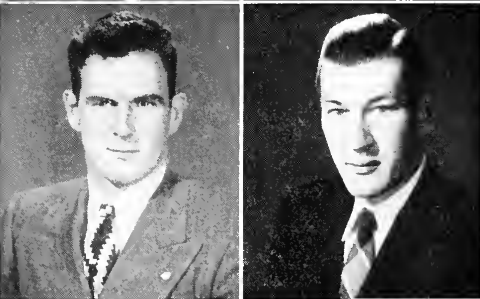
**JOHNSON, HARRY C., JR.** Athens, Tenn.  
Phi Pi Delta Fraternity '46.

**KELLEY, PAUL LEWIS** Englewood, Tenn.  
Phi Theta Kappa Fraternity '46; President '47;  
Junior Class Representative '46.



**KIMSEY, GUINN ELLEN** Turtletown, Tenn.  
International Relations Club '46, '47; Christian  
Service Club '47; Wesleyan Fellowship '47; "Y"  
'46, '47; Commerce Club '46.

**KIRK, BARBARA JEAN**  
Eta Upsilon Gamma Sorority '46; President '47;  
Religious Council '47; "Y" '46, '47; Christian  
Service Club '46; President '47; Life Service  
Volunteers '46, '47; Wesleyan Fellowship '46,  
'47; Mixed Chorus '46, '47; Girls' Trio '47; Pan-  
Hellenic Council '47; Superlative '47.



**KUHNERT, KENNETH** Bergenfield, N. J.  
Basketball '46; Football '47.

**LYNCH, FREDERICK** Royal Blue, Tenn.  
Phi Sigma Nu Fraternity '47; Basketball '46;  
"Y" '46; Off-Campus Club '46; Phi Pi Delta  
Fraternity, Vice-President '47.



**MCCRIVEN, ANNA LYNN** Bulls Gap, Tenn.  
Eta Upsilon Gamma Sorority '46; Treasurer '47;  
Christian Service Club '46; "Y" '46; Art Club,  
Reporter '46; International Relations Club '46;  
Basketball '46; Wesleyan Fellowship '46, Vice-  
President '47.

**MARTIN, JEANNE** Chattanooga, Tenn.  
Sigma Iota Chi Sorority '47; Commerce Club '46,  
Secretary '47; "Y" '46, '47; Christian Service  
Club '46, '47; Wesleyan Fellowship '46, '47;  
International Relations Club '46; May Day At-  
tendant '46.



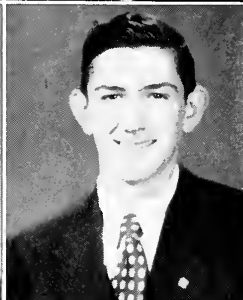
# SENIORS

**MARTIN, LINNIE BLACK** Crab Orchard, Tenn.  
Sigma Iota Chi Sorority '46, '47; Rule Essay Prize '46; "Y" '46; International Relations Club '46; Vice President Student Body '47; Phi Theta Kappa '46; Student Council '47; Personal Council '47.



**MERCER, BETTY** Tyner, Tenn.  
Zeta Mu Epsilon Sorority '46; Vice-Pres. '47; Life Service Volunteers '46, '47; Christian Service Club '46, '47; Religious Council Sec. '47; Student Council '46; Art Club '46; Mixed Chorus '47.

**MEZA, FREDESVIDA** Honduras, C. A.  
Transfer Northeast Junior College, Monroe, La.; Zeta Mu Epsilon Sorority '47; Commerce Club '47; Wesleyan Fellowship '47.



**MILLER, EDGAR GENE** Athens, Tenn.  
Phi Sigma Nu Fraternity '47; Phi Pi Delta Fraternity '47; Phi Pi Delta Fraternity '46, Sgt. at Arms '47; Debate Club '46; International Relations Club '46 '47; Basketball '46; "Y" '46, '47; Off-Campus Club '46, '47.

**MONTEITH, MATTIE** Sweetwater, Tenn.  
Kappa Delta Phi Sorority '46, Sec. '47; Christian Service Club '46, '47; "Y" '46, '47; Wesleyan Fellowship '46, '47; Home Economics Club '46, '47.



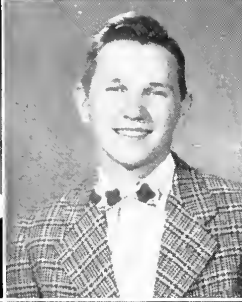
**MONTGOMERY, CHARLES** Sweetwater, Tenn.  
"Y" '46, '47; International Relations Club President '46; Phi Theta Kappa '46, '47; Bulldog Staff '46, Editor '47; Basketball '46; Student Council '47.

**MYERS, MARIAN** Greeneville, Tenn.  
"Y" '46, '47; Bulldog Staff '47; International Relations Club '46, '47; May Day Program '46.



**NEELY, FORREST** McCaysville, Ga.  
Phi Sigma Nu Fraternity '47; Assistant Editor Nocatula '47; President Art Club '47; International Relations Club '43, '47.

# S E N I O R S



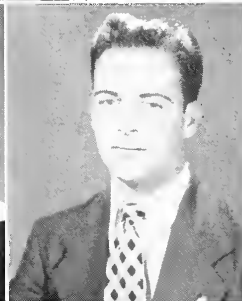
**PACK, RETHEL GENEVA**      **McCaysville, Ga.**  
Kappa Delta Phi Sorority '46, Vice-President '47;  
"Y" '46, '47; Christian Service Club '47; May  
Day Program '46.

**PARKINSON, DON**      **Riceville, Tenn.**  
Phi Sigma Nu Fraternity '47; Phi Pi Delta Frater-  
nity '46, '47; Basketball '46; Commerce Club,  
President '46; International Relations Club '46,  
'47; "Y" '46, '47; Off-Campus Club, President  
'46, '47.



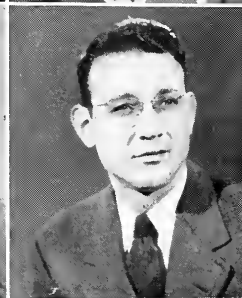
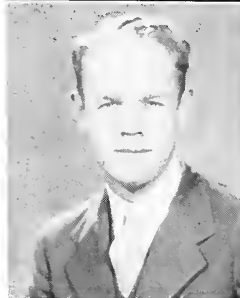
**PARSON, JACK**      **Athens, Tenn.**  
Phi Sigma Nu Fraternity Secretary '47; Phi Pi  
Delta Fraternity '46 '47; Delta Psi Omega Frater-  
nity '46 '47; "Y" Sec. '46; Sr. Class Sec. '47.

**RADER, ELBA JEAN**      **Jefferson City, Tenn.**  
Zeta Mu Epsilon Sorority; International Relations  
Club, Secretary '47; "Y" '46, '47; Commerce  
Club '47; Art Club Secretary '47; Home Econ-  
omics Club '46, '47.



**REYNOLDS, EVELYN WANOKA**      **Athens, Tenn.**  
Sigma Iota Chi Sorority, Treasurer '47; Library  
Staff '47; Home Economics Club '47; Off-Cam-  
pus Club '47; "Y" '46, '47; Delta Psi Omega  
Fraternity '47.

**ROBERTS, ALTON**      **Hastings, Florida**

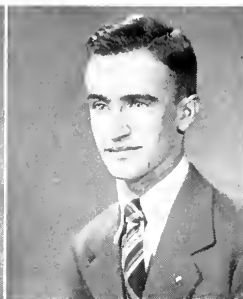


**ROBINSON, HOMER**      **Cleveland, Tenn.**  
Phi Sigma Nu Fraternity '47; Christian Service  
Club '47; "Y" '47; Commerce Club '47.

**SELF, EDGAR ROSS**      **Athens, Tenn.**  
Phi Sigma Nu Fraternity '47; Phi Pi Delta Frater-  
nity '46, '47.

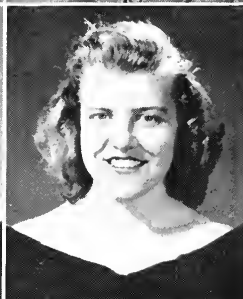
# SENIORS

**SHAVER, JERRY** Statesville, N. C.  
Phi Sigma Nu Fraternity '47; Phi Pi Delta Fraternity '46, '47; Christian Service Club '46, '47; Basketball '46; Vice-President Junior Class '46; "Y" '46, '47.



**SMALLEY, WALTER E. JR.** Lenoir City, Tenn.  
Eta Iota Tau Fraternity '46, '47; Basketball '46; Bulldog Staff '47; Christian Service Club '46, '47; Life Service Volunteers '46, '47; "Y" '46, Chaplain '47; Phi Theta Kappa '46, '47; Student Council '46; President Junior Class '46.

**SMITHSON, BETTYE** Greeneville, Tenn.  
Delta Psi Omega '46, '47; International Relations Club '46, '47; Art Club '47; Assistant in Dramatic Department '47; Delta Psi Omega President '47.



**SMITH, BOBBIE NELLE** Athens, Tenn.  
Home Economics Club '47; Off-Campus Club '47; "Y" '47; Transfer from Virginia Intermont College.

**SNIDER, EVELYN** Marion, Va.  
Transfer from Madison College; Art Club '47; Home Economics Club '47; "Y" '47.



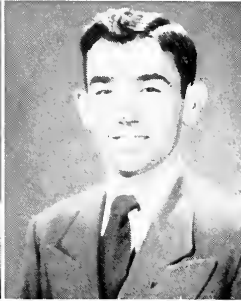
**SPAHR, DAVID** Athens, Tenn.  
Eta Iota Tau Fraternity '46; President '47; Sgt. at Arms, Delta Psi Omega '47; Commerce Club '46, Reporter '47; International Relations Club '47; "Y" '46, '47; Mixed Chorus '46, '47; Misc. Club '46.

**STANDRIDGE, VIRGINIA I.** Englewood, Tenn.  
Zeta Mu Epsilon Sorority '46, Guard '47; International Relations Club '46, '47; "Y" '46, '47; Off-Campus Club '46, '47; Commerce Club '46, '47.



**STOVER, KATHLEEN** Epworth, Ga.  
Zeta Mu Epsilon Sorority '46, '47; Commerce Club '46, '47; International Relations Club '46, '47; Wesleyan Fellowship '46, '47; "Y" '46, '47.

# SENIORS



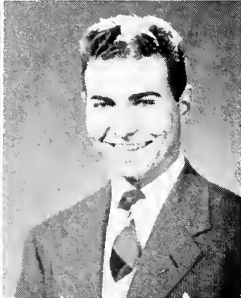
**SULLIVAN, ROBERT HUGH** McCaysville, Ga.  
Phi Sigma Nu Fraternity '47.

**SUTTON, RAYMOND** Madisonville, Tenn.  
Eta Iota Tau Fraternity '46, Sgt. at Arms '47;  
International Relations Club '46, '47; Christian  
Service Club '46, '47; "Y" '46, '47.



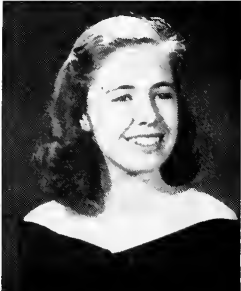
**TAYLOR, MARGARET JEAN** Copperhill, Tenn.  
Kappa Delta Phi Sorority, '46, Sec. '47; Mixed  
Chorus '46, '47; "Y" '46, '47; Wesleyan Fellow-  
ship '46, '47; Home Economics Club '46, Historian  
'47; Christian Service Club '46, '47.

**TIPTON, MARGIE DELL** Fountain City, Tenn.  
Kappa Delta Phi Sorority '46, '47; Christian Serv-  
ice Club '46, '47; Wesleyan Fellowship '46, '47;  
"Y" '46, '47; Library Assistant '47; Intern-  
ational Relations Club '46, '47; Musical Club '46;  
Cooper Spanish Award '46; Nocatula Staff '46;  
Campus Capers '46.



**TSEN, JU-CHIEN** Shanghai, China  
Transfer from St. John's University, Shanghai,  
China; Wesleyan Fellowship, '47; Christian Serv-  
ice Club '47; Eta Upsilon Gamma Sorority '47.

**TUPPER, THOMAS** Clinton, Tenn.  
Eta Iota Tau Fraternity '46, '47; Tumbling '46,  
Archery '46, Tennis '46.



**WALLACE, MARGARET** Powell Station, Tenn.  
Sigma Iota Chi Sorority '46, Vice-President '47;  
"Y" '46, '47; May Day '46; Lawrence Hall House  
Chairman '47; Christian Service Club '46, Sec.  
Home Economics Club '46, Vice-Pres. '47; Bulldog  
Staff; Society Editor '47.

**WARD, HELEN LOUISE** Athens, Tenn.  
Kappa Delta Phi Sorority '46, President '47;  
Christian Service Club '46; International Rel-  
ations Club '46, '47; "Y" '46, '47; Mixed Chorus  
'46, '47; May Day '47.

# S E N I O R S

**WEST, BETTY SCOTT** Chattanooga, Tenn.  
Relations Club '46, '47; Cheerleader '46; "Y" '46;  
Sigma Iota Chi Sorority '46, '47; International  
'47; May Queen Attendant '46.

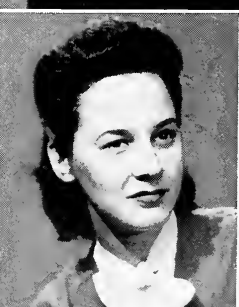
**WHITEHEAD, HAROLD** Etowah, Tenn.  
Basketball '44; Off-Campus Club; Staff, Presi-  
dent's Office; '47; "Y" '44, '47; International  
Relations Club '44.

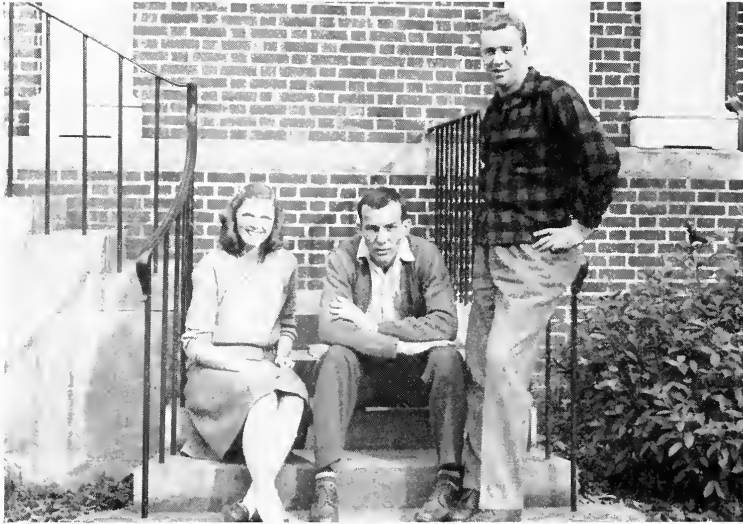
**WILKINS, ALBERTA** Etowah, Tenn.  
Sigma Iota Chi Sorority, Reporter '47; Interna-  
tional Relations Club, Secy. and Treas. '46, '47;  
Phi Theta Kappa, Treasurer '47; Off-Campus  
Club, Treasurer '47; Superlatives '46, '47; Noca-  
tula Staff '47; Peach Bowl Sponsor.

**WILLIAMS, MILDRED RUTH** Saint Charles, Va.  
Sigma Iota Chi Sorority; Phi Theta Kappa '46,  
'47; Wesleyan Fellowship '46; Christian Ser-  
vice Club '46, '47; Mixed Chorus '46, Accom-  
panist '47; Superlative '47; Life Service Volun-  
teers '47; Girls' Trio '46; Accompanist '47; Music  
Club President '47.

**WOLIVER, MILDRED** Pennington Gap, Va.  
Wesleyan Fellowship, Vice President '47; Life  
Service Volunteers, Sec. & Treas. '47; Home Eco-  
nomics Club '47; Christian Service Club '46, '47;  
Literary Editor of Bulldog '47; Mixed Chorus '46,  
'47; "Y" '46, '47.

**ANDERSON, VIRGINIA RUTH** Athens, Tenn.  
Eta Upsilon Gamma Sorority '46, Vice-Pres. '47;  
Home Economics Club '46, Secretary '47; Off-  
Campus Club Sec. '46, '47; Delta Psi Omega '46,  
'47; Bulldog Staff '46, '47.





## JUNIOR CLASS OFFICERS

President \_\_\_\_\_ Basil Millican

Vice-Pres. \_\_\_\_ Charlie Davis (Not Pictured)

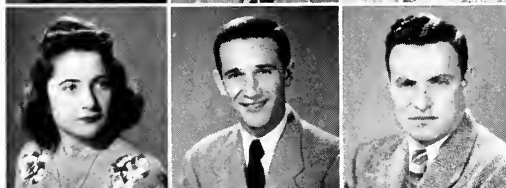
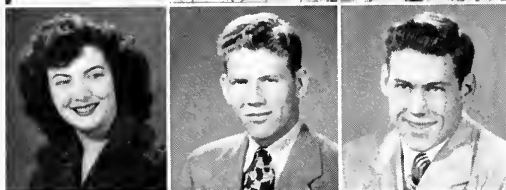
Student Council Rep. \_\_\_\_ Mary Jane Wiley

Student Council Rep. \_\_\_\_ Jack Pemberton

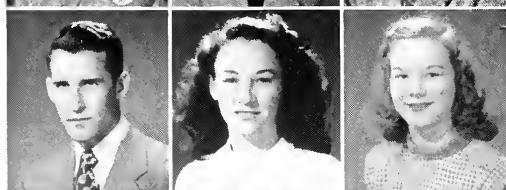
# J U N I O R S



Aaron, Nora Lee  
Abernathy, Lorraine  
Adams, Gardner



Addington, Billie  
Aiken, Bill  
Allen, John Edward



Allison, Betty  
Alvis, Willard  
Anderson, Joseph



Anderson, Leroy  
Anderson, Mary Aileen  
Anthony, Alice



Archer, Joseph  
Ardary, Mary Frances  
Armstrong, Jane



Baker, George  
Baker, Mary Eitta  
Baker, Roberta



Ballback, Neldridge  
Barclay, Jesse  
Barrett, Louella K.

# J U N I O R S

Bell, Robert  
Beman, Lillian  
Benton, Robert

Biddle, Hugh  
Bilderack, Eloise  
Blackley, Claiborne

Blevins, Bill  
Bogges, Robert  
Bogges, William

Boswell, Paul  
Bounds, Mary Helen  
Brackett, Henry

Bragg, Mary Nelle  
Brakebill, Betty  
Branham, Mary Faith

Branham, Charles T. Jr.  
Bright, William  
Brock, Gene

Brock, James  
Brock, Margaret  
Brown, Buster

Brown, James  
Broyles, Bobbie Jean  
Bruner, John





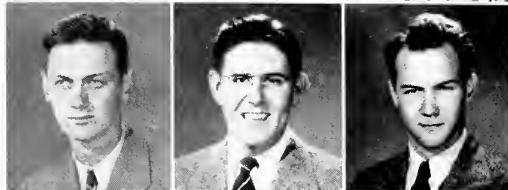
# J U N I O R S



Burger, Arland  
Burger, Charles  
Burgner, Florence



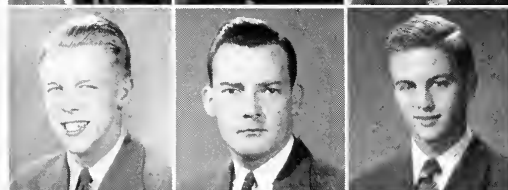
Burris, Bill  
Buttram, Mary Jo  
Calfee, Helen



Campbell, Delmar  
Campbell, William  
Carter, William



Carr, Jack  
Cathcart, Benny  
Chapman, Robert



Cobb, William  
Coe, George  
Colston, James



Colston, Kenneth  
Collins, Polly  
Conant, Sarah



Conant, William  
Cox, Bessie  
Cox, Buell



Cook, Thomas  
Cooper, Glenna  
Cooper, Glenn

# J U N I O R S

Cooper, Lyda  
Crowder, James  
Cunningham, Roy

Daugherty, Ashley  
David, John  
Davis, Burleigh

Davis, Charles  
Davis, Rita  
Danman, Ned

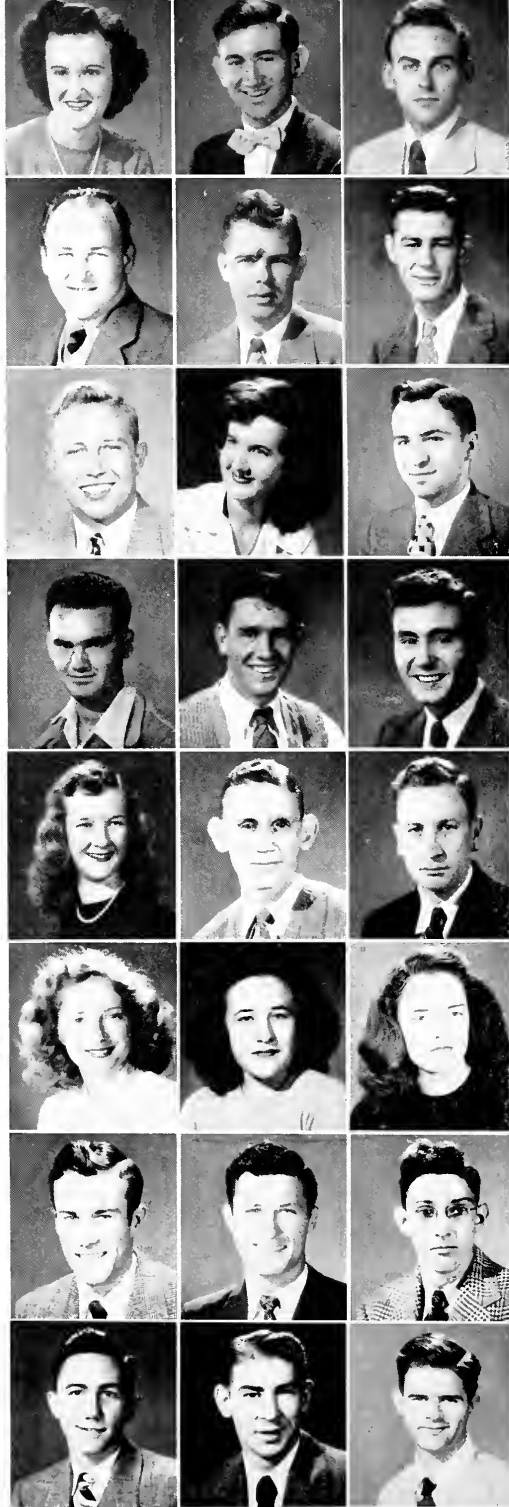
Derrick, Malcolm  
Deakin, John  
Dillard, Raleigh

Donaldson, Jane  
Duncan, Burl  
Dunn, John

Dunn, Paula  
Dykes, Anne  
Edgemon, Joyce

Edwards, Hoyt  
Elliot, Marvin  
Elzey, William

Epperson, Jack  
Everett, Larson  
Farrell, Dene



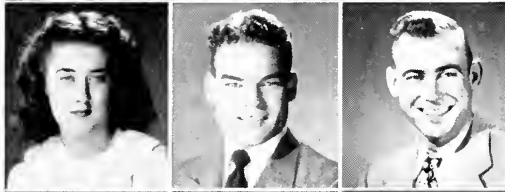
# J U N I O R S



Farrell, Gene  
Felts, Charles  
Fillers, William



Fox, Jack  
Frazier, Lee  
Frazier, Wayne



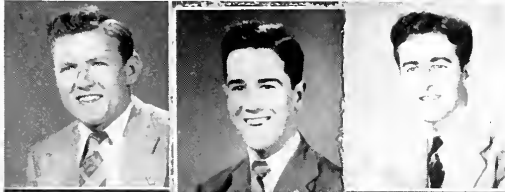
Frye, Mary  
Godwin, Russell  
Gowens, Harry



Green, Kenneth  
Griffin, Joseph  
Gayader, Mary



Hamilton, Elroy  
Hampton, Joan  
Hankins, Alice



Hanks, John  
Harper, Elvin William Jr.  
Harper, Lyndus



Harris, Stanley  
Herndon, Ralph  
Hicks, Dwight



Hill, Johnny  
Hiltzheimer, Charles  
Hinds, William

# J U N I O R S

Holley, Juanita  
Hoskins, John  
Houghton, Katherine

Houston, Jean  
Huffsteller, Dorothy  
Hughes, Shufford

Humphrey, Uldean  
James, Clifford  
Jarvis, Roy

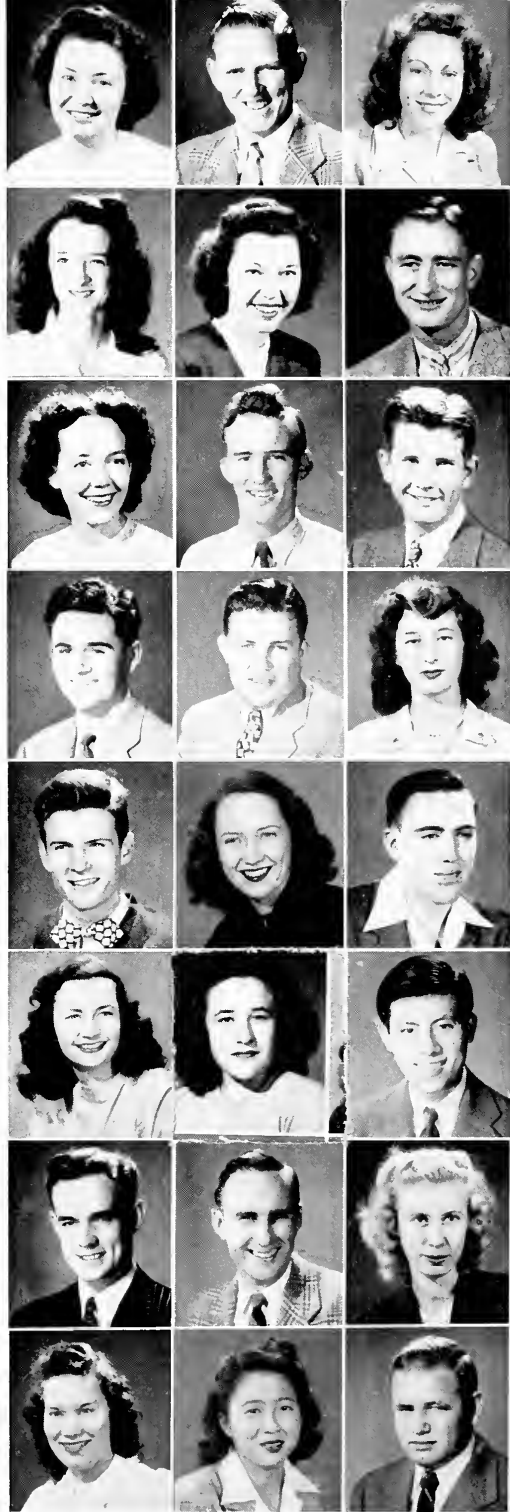
Jenkins, William  
Jewell, Thomas  
Johnson, Gwendolyn

Johnson, James  
Johnson, Joyce  
Johnson, William

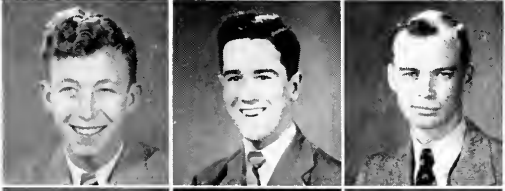
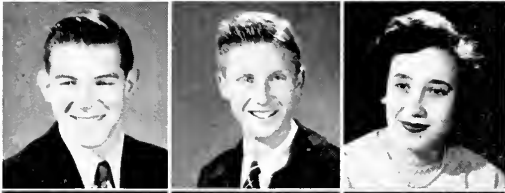
Jones, Dorothy  
Jones, T. N.  
Kam, William

Kelley, James  
Kennedy, Cecil  
Kidd, Mary Ruth

Kilgore, Billie Jo  
Kiyono, Marion  
Lambert, Forrest



# J U N I O R S



Lambert, Robert  
Ledbetter, Howard  
Lee, William

Leimkuhler, Martin  
Lent, Phyllis  
Liner, James

Lynch, Thomas  
McAlister, William  
McCall, Odell

McCamy, Anne  
McCloud, Jack  
McKenzie, Edwin

McKinney, Vernon  
McMillian, John  
McMillian, Frances

McPherson, John  
McQueen, Edmund  
Malone, Arnold

Manney, John  
Mansfield, Richard  
Martin, Grace

Martin, Rose  
Mason, Dwight  
Mason, Glenn

# J U N I O R S

Mason, Ray  
 Mayfield, Eugene  
 Mayfield, Scott

Meredith, Ruth  
 Miller, Helen  
 Miller, Paul

Millican, Basil  
 Mills, James  
 Mitchell, Damon

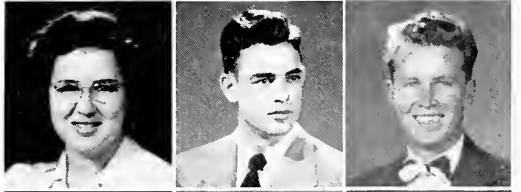
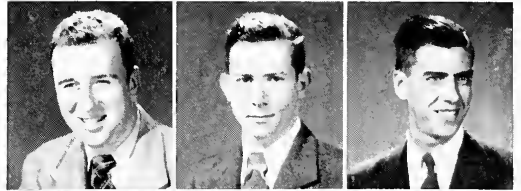
Mitchell, T. J.  
 Morgan, Johnny K.  
 Morgan, Harley

Moore, Jean  
 Moore, Sarah  
 Moss, William

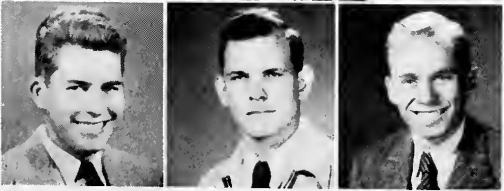
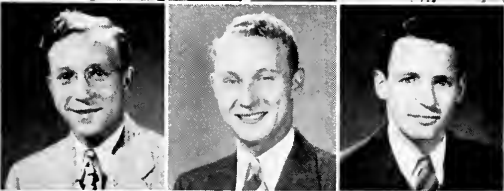
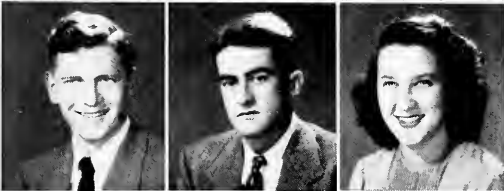
Munsey, Mary Lou  
 Murray, Allen  
 Nichols, Joseph

Nuchols, Alice Sue  
 Owen, Jack  
 Pack, Katherine

Paul, Neva  
 Painter, Thomas  
 Panter, Elizabeth



# J U N I O R S



Panter, Louise  
Parker, Sam  
Parkinson, Gordon

Parrott, John  
Payne, Jack  
Pearman, Edgar

Peck, Albert  
Pena, Amelia  
Pennington, Wanda

Peugney, Frank  
Perkins, Clifford  
Perkinson, Frances

Perkinson, William  
Perry, Thursie  
Petzinger, Harry

Pickering, Fred  
Pickering, Jack  
Pierce, Ira

Pizella, Florence  
Powell, Lowery  
Powers, Faye

Powers, Harold  
Proctor, William  
Rankin, Bruce

# J U N I O R S

Ray, Joan  
Ray, Richard  
Reeves, Doris

Reynolds, Margaret  
Rice, Martha Jo  
Richesin, Ruby Lee

Riggs, Joan  
Roberts, Kenneth  
Robertson, Tony

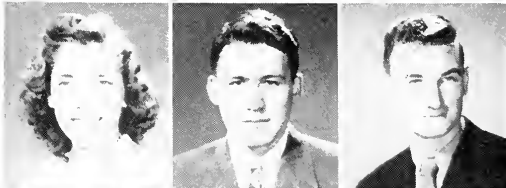
Robinson, Edith  
Rogers, William  
Roos, Robert

Ross, Clyde  
Roth, Charlotte Chambers  
Roth, Homer

Ryden, Betty  
Salling, Walter  
Saulpaugh, Betty

Sawyer, Daniel  
Scanlan, Betty  
Scott, Alice

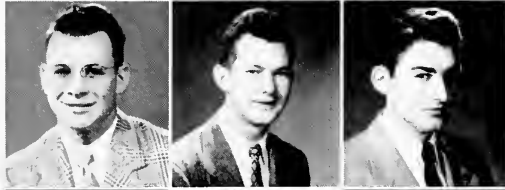
Scruggs, Thomas  
Secreto, Marie Theresa  
Sharits, Mary Juanita







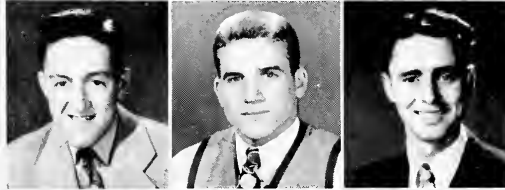
# J U N I O R S



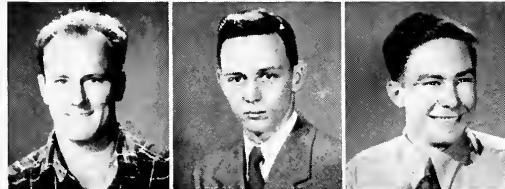
Shiple, Frances  
Simpson, Joe  
Simpson, Roy



Sliger, George  
Smith, Bruce  
Smith, James Earl



Smith, Marion  
Smith, Roxie  
Smith, Velma



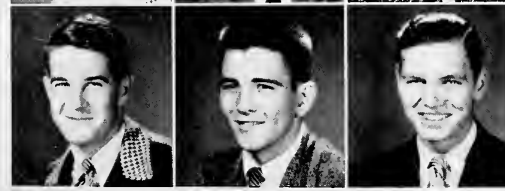
Snodderly, John  
Sparkman, Cecil  
Sparks, Albert Glenn



Standridge, J. B.  
Standridge, Lyndoll  
Stephenson, James



Stone, Raymond  
Stratton, Mary  
Sumner, Jack  
  
Swaney, Suean  
Tallent, Mack  
Tatum, Willim Garland



Taylor, Charles  
Thompson, Jack  
Tierney, Richard

# J U N I O R S

Timmons, Betty June  
Tipton, Dwight  
Toomey, Phyllis

Trent, Kenneth  
Trotta, Maria  
Turlington, Charles

Turner, Sterling  
Umberger, William  
Underdown, Luther

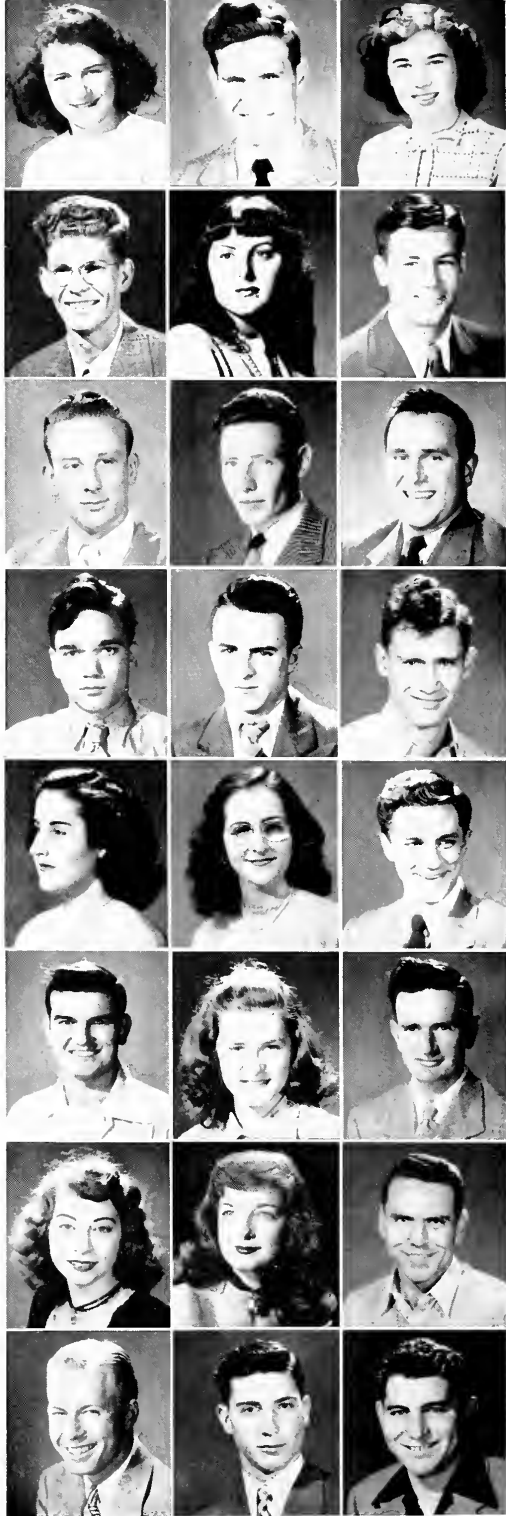
Utley, Ishmael  
Vance, Walter  
Vincent, William

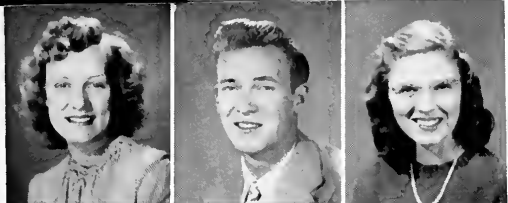
Vinsant, Beatrice  
Vinsant, Bernice  
Vollman, Bush

Waddell, Charles  
Wade, Eula Mae  
Walker, Russell

Wallace, Emma Sue  
Wallace, Rosline  
Watson, William

Webb, Paul  
West, David Jerome  
White, Kenneth





# J U N I O R S



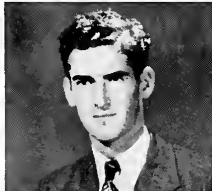
Whitehead, Mary Davis  
Wild, Kenneth  
Wiley, Mary Jane



Wiley, Robert  
Wilkins, Nancy  
Williams, Frelan



Williams, Helen  
Williams, Tommy  
Wilson, Graham



Wilson, Harry  
Wilson, Helen  
Wright, Peggy

Wrinn, Frank



Organiz



## BULLDOG STAFF

CHARLES MONTGOMERY  
Editor

WALTER SMALLEY  
Sports Editor

MARGARET WALLACE  
Society Editor

ations

# WESLEYAN FELLOWSHIP

President \_\_\_\_\_ Clyda Crawford  
Vice-Pres \_\_\_\_\_ Mildred Woliver  
Vice-Pres \_\_\_\_\_ Ann McCravey  
Sec. and Treas. \_\_\_\_\_ Aileen Goodwin



# HOME ECONOMICS CLUB

President \_\_\_\_\_ Mary Cunningham  
Vice-Pres \_\_\_\_\_ Margaret Wallace  
Secretary \_\_\_\_\_ Wanoka Reynolds  
Treasurer \_\_\_\_\_ Helen Irwin

# COMMERCE CLUB

President \_\_\_\_\_ Charles Grigsby  
 Vice-Pres \_\_\_\_\_ Martha Ballew  
 Secretary \_\_\_\_\_ Jeanne Martin  
 Treasurer \_\_\_\_\_ Ethel Bardill  
 Reporter \_\_\_\_\_ David Spahr  
 Sponsor \_\_\_\_\_ Prof. Williams



# OFF CAMPUS CLUB

President \_\_\_\_\_ Paula Dunn  
 Vice-Pres. \_\_\_\_\_ Wanoka Reynolds  
 Sec.-Treas. \_\_\_\_\_ Fesse Armstrong

# INTERNATIONAL RELATIONS CLUB

Sponsor \_\_\_\_\_

A. J. Peters



# ART CLUB

President \_\_\_\_\_ Forrest Neely

Vice-Pres. \_\_\_\_\_ Ed Williams

Sec.-Treas \_\_\_\_\_ Jean Rader

Sponsor \_\_\_\_\_ Mrs. Hale



## LIBRARY STAFF

Fannye Mackey \_\_\_\_\_ Librarian

Mrs. A. H. Myers \_\_\_\_\_ Asst. Librarian



## STUDENT COUNCIL

President \_\_\_\_\_ William Haga

Vice-President \_\_\_\_\_ Linnie Martin

MEMBERS: Jack Pemberton, Porter Hawkins, Frances Bishop, Alice Ann Ayers, Mary Cunningham, Mary Jane Wiley, Basil Millican, Kenneth Brakebill, Chas. Montgomery.

# YM - YW OFFICERS

President _____	Alice Ann Ayers
Vice-President _____	Betty Mercer
Vice-President _____	Charles Montgomery
Sec. Treas. _____	Bud Banks
Chaplain _____	Walter Smalley
Pianist _____	Eloise Bilderback
Sponsor _____	Mr. Myers



## RELIGIOUS COUNCIL

Chaplain Nall  
 Mrs. Parkinson  
 Mildred Woliver  
 Tommy Scruggs  
 Alice Ann Ayers  
 Betty Mercer

Clyda Crawford  
 Edith Bush  
 Barbara Kirk  
 Lee Frazier  
 Mr. Rogers  
 Mr. Myers, Chairman

## LIFE SERVICE VOLUNTEERS

President \_\_\_\_\_ Tommy Scruggs  
 Vice-President \_\_\_\_\_ Lee Frazier  
 Sec.-Treas. \_\_\_\_\_ Mildred Woliver  
 Sponsor \_\_\_\_\_ Mr. Myers



## CHRISTIAN SERVICE CLUB

President \_\_\_\_\_ Barbara Kirk  
 Vice-President \_\_\_\_\_ Edith Buch  
 Sec.-Treas. \_\_\_\_\_ Margaret Wallace  
 Chaplain \_\_\_\_\_ Lee Frazier  
 Pianist \_\_\_\_\_ Jeannie Easley  
 Reporter \_\_\_\_\_ Howard Ledbetter  
 Sponsor \_\_\_\_\_ Mr. Naff



## PAN HELLENIC COUNCIL

**Faculty Adviser—Mrs. Whitehead**

**Chairman of Campus Council—Prof. Yates**

**Student Chairman—Jerry Huffaker**

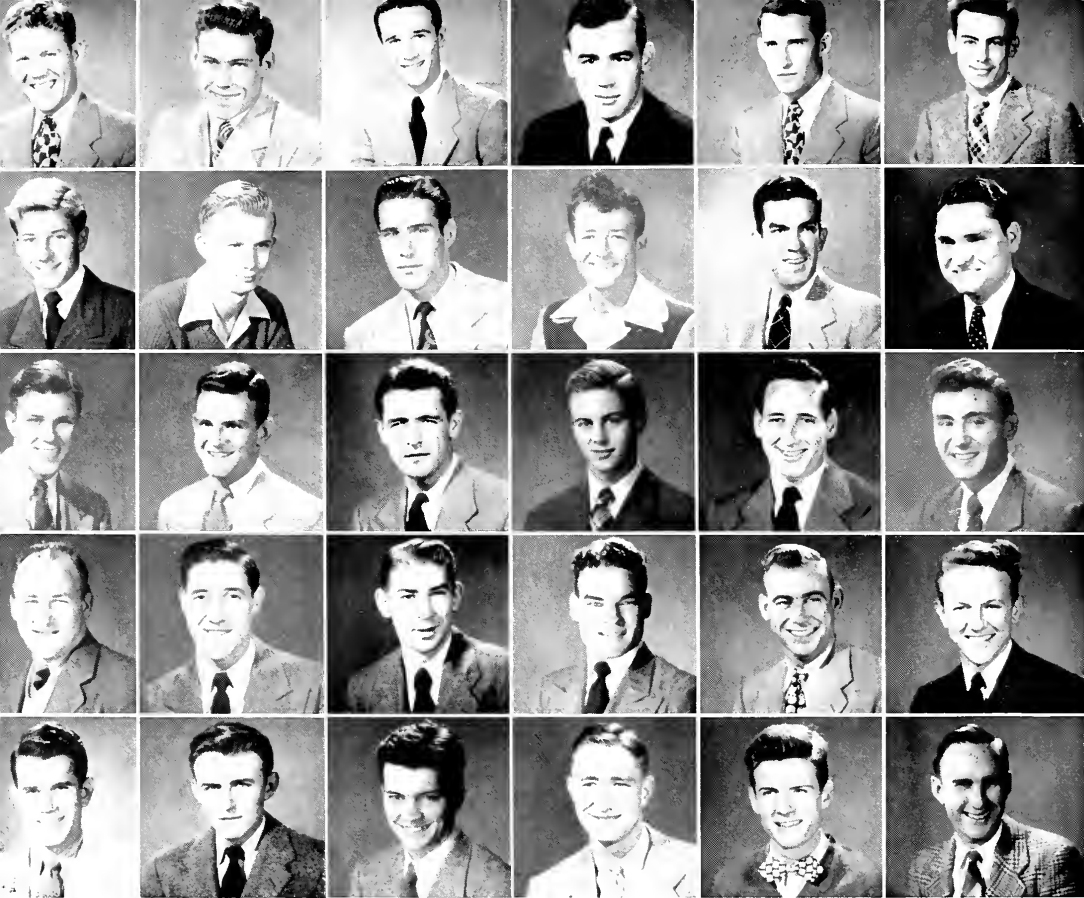
**Secretary—Helen Ward**

The Pan-Hellenic Council is the organization which controls the Fraternities and Sororities on the Tennessee Wesleyan campus. The council is made up of the Sorority and Fraternity presidents, their sponsors and faculty advisers.



## WE PUBLISHED THE BOOK

We wish to express our appreciation to the student body for their efforts in publishing this annual, to the faculty for their patience on all occasions, to the publishers for their very helpful suggestions and contributions, to our advertisers whose support has done much toward making the Nocatula possible, and to Hart's Studio for their generosity of time, effort, skill, and their unexcelled cooperation at all times.



## PHI SIGMA NU FRATERNITY

### OFFICERS

President \_\_\_\_\_ Kenneth Brakebill  
 Vice-Pres. \_\_\_\_\_ Fred Lynch  
 Secretary \_\_\_\_\_ Jack Parson  
 Treasurer \_\_\_\_\_ W. T. Carter  
 Reporter \_\_\_\_\_ Shufford Hughes  
 Grand Councilman \_\_\_\_\_ Porter Hawkins

Aiken, Bill  
 Allen, Ed  
 Alvis, Willard  
 Amburgey, Tag  
 Anderson, Leroy  
 Baker, George  
 Blackley, Claiborne  
 Boggess, Bobby  
 Brakebill, Kenneth  
 Brown, Buster

Bruner, John  
 Campbell, Hoyt  
 Carr, Jack  
 Carter, W. T.  
 Collins, Robert  
 Colston, Bobby  
 Dunn, Bill  
 Dillard, Raleigh  
 Daugherty, A. T.  
 Eggert, Bill

Everett, Larson  
 Godwin, Russell  
 Gowens, Harry  
 Harper, Junior  
 Hawkins, Porter  
 Hiltzheimer, Charles  
 Hinds, Bill  
 Hughes, Shufford  
 Johnson, Jimmy  
 Kennedy, Cecil



## PHI SIGMA NU FRATERNITY

Kuhnert, Kenneth  
 Lee, Bill  
 Liner, Jimmy  
 Lynch, Fred  
 McKensie, Edward  
 Mason, Glenn  
 Mason, Ray  
 Miller, Edgar  
 Murray, Allen  
 Neely, Forrest

Owen, Jack  
 Parkinson, Don  
 Parrot, John  
 Parson, Pack  
 Perkins, Clifford  
 Perkinson, William  
 Pierce, Ira  
 Powers, Harold  
 Rankin, Lamar  
 Ray, Richard

Robinson, Homer  
 Ross, Clyde  
 Sawyer, Dick  
 Self, Edgar  
 Shaver, Jerry  
 Smith, Marion  
 Standridge, Lyndoll  
 Sullivan, Hugh  
 Turlington, Charles  
 Hampton, Levis



## ETA IOTA TAU FRATERNITY

### OFFICERS

President \_\_\_\_\_ David Spahr  
 Vice-President \_\_\_\_\_ Bud Estes  
 Sec. and Treas. \_\_\_\_\_ Bud Banks  
 Sgt. at Arms \_\_\_\_\_ Raymond Sutton  
 Sponsor \_\_\_\_\_ Mr. Houts

Banks, Bud  
 Blevins, Bill  
 Colston, Ken  
 Cook, James  
 Estes, Bud  
 Felts, Charles  
 Frazier, Lee

Girsby, Charles  
 Kelly, James  
 Leimkuhler, Martin  
 McPherson, J. R.  
 Simpson, Joe  
 Smalley, Walter  
 Snodderly, John

Spahr, David  
 Sutton, Raymond  
 Tallent, Mack  
 Tipton, Dwight  
 Turner, Sterling  
 Tupper, Thomas  
 Houts, Jack





## KAPPA DELTA PHI SORORITY

### OFFICERS

President \_\_\_\_\_ Helen Ward  
 Vice-President \_\_\_\_\_ Rathel Pack  
 Treasurer \_\_\_\_\_ Edith Bardill  
 Secretary \_\_\_\_\_ Mattie Monteith

Anthony, Alice  
 Bush, Edith  
 Burns, Betty  
 Branham, Mary  
 Bardill, Ethel  
 Baker, Roberta  
 Cate, Mary  
 Collins, Polly

Crabtree, Margie  
 Donaldson, Jane  
 Dykes, Anne  
 Edgemon, Joyce  
 Johnson, Gwendolyn  
 Lent, Phyllis  
 Monteith, Mattie  
 Pack, Katherine

Pack, Rathel  
 Saulpaugh, Betty  
 Taylor, Margaret Jean  
 Tipton, Margie  
 Toomey, Phyllis  
 Wallace, Emma Sue  
 Ward, Helen  
 Wilkins, Nancy



## SIGMA IOTA CHI SORORITY

### OFFICERS

Worthy Matron _____	Jane Beals	Worthy Directress _____	Betty Carter
Worthy Protectress _____	Margaret Wallace	Worthy Guard _____	Mary Cunningham
Worth Scribe _____	Nelda Billingsley	Reporter _____	Alberta Wilkins
Worthy Keeper of Treasure _____	Wanoka Reynolds	Sponsor _____	Evelyn Self

Abernathy, Lorraine ✓	Billingsley, Nelda ✓	Davis, Rita ✓	Martin, Rose Celia ✓	West, Betty
Allison, Betty ✓	Burquer, Florence ✓	Hampton, Joan ✓	Perkinson, Frances ✓	Wilkins, Alberta ✓
Ballew, Mary ✓	Buttram, Mary Jo ✓	Huffstetler, Louise ✓	Pizzella, Florence ✓	Wiley, Mary Jane ✓
Barrett, Kay ✓	Carter, Betty ✓	Irwin, Helen ✓	Ray, Joan ✓	Williams, Mildred
Beals, Jane ✓	Crowe, Margaret ✓	Martin, Jeanne ✓	Riggs, Joan ✓	Reynolds, Wanoka
Bilderback, Eloise ✓	Cunningham, Mary ✓	Martin, Linnie ✓	Wallace, Margaret	Self, Evelyn



## ZETA MU EPSILON SORORITY

### OFFICERS

President \_\_\_\_\_ Geraldine Huffaker  
 Vice-President \_\_\_\_\_ Betty Mercer  
 Sec.-Treas. \_\_\_\_\_ Kathleen Stover  
 Sgt. at Arms \_\_\_\_\_ Aileen Goodwin  
 Guard \_\_\_\_\_ Virginia Standridge  
 Sponsor \_\_\_\_\_ Miss Treblas

Aaron, Nora Lee  
 Addington, Billie  
 Bounds, Mary Helen  
 Carpenter, Lavetta  
 Cooper, Lydia  
 Cooper, Glenna

Frye, Mary  
 Goodwin, Aileen  
 Hankins, Alice  
 Huffaker, Geraldine  
 Humphrey, Uldean  
 McCall, Odell

McCamey, Anne  
 Mercer, Betty  
 Munsey, Mary Lou  
 Mesa, Fredes  
 Rader, Jean  
 Pena, Amelia

Roth, Charlotte Chambers  
 Standridge, Virginia Jerals  
 Stover, Kathleen  
 Williams, Helen  
 Wilson, Helen  
 Wright, Peggy Joyce  
 Treblis, Patricia



## ETA UPSILON GAMMA SORORITY

### OFFICERS

President \_\_\_\_\_ Barbara Kirk  
 Vice-President \_\_\_\_\_ Virginia Anderson  
 Secretary \_\_\_\_\_ Margaret Baker  
 Treasurer \_\_\_\_\_ Anna McCravey  
 Chaplain \_\_\_\_\_ Alice Ann Ayers  
 Sponsor \_\_\_\_\_ Mrs. Parkinson

Anderson, Virginia  
 Ardary, Mary Frances  
 Armstrong, Jane  
 Atchley, Carolyn  
 Ayers, Alice Ann  
 Bailey, Nell

Baker, Margaret  
 Brakebill, Betty  
 Crawford, Clyda  
 Guyader, Mary  
 Holley, Juanita  
 Houghton, Katherine

Kidd, Mary Ruth  
 Kilgore, Billie Jo  
 Kirk, Barbara  
 McCravey, Anne  
 Meredith, Ruth  
 Panter, Louise

Rice, Martha Jo  
 Riden, Betty Jo  
 Scott, Alice  
 Simmons, Betty June  
 Tsen, Ju-Chien  
 Vinsant, Bernice  
 Parkinson, Edith Boyd

# DELTA PSI OMEGA



## OFFICERS

President \_\_\_\_\_ Bettye Smithson      Head Usher \_\_\_\_\_ David Spahr  
 Sec.-Treas. \_\_\_\_\_ Jean Cook      Sponsor \_\_\_\_\_ Mr. Hampton

Beals, Jane      Cook, Jean      Parson, Jack  
 Reynolds, Wanoka      Hampton, Levis      Smithson, Bettye  
    Spahr, David

# PHI THETA KAPPA



## OFFICERS

President \_\_\_\_\_ Paul Kelly      Secretary \_\_\_\_\_ Mary Cunningham  
 Vice-Pres. \_\_\_\_\_ Walter Smalley      Treasurer \_\_\_\_\_ Alberta Wilkins  
 Sponsor \_\_\_\_\_ Mr. Douglas

Ayers, Alice Ann  
 Brakebill, Kenneth  
 Bush, Edith

Williams, Mildred

Cunningham, Mary  
 Haga, William  
 Kelly, Paul

Douglas, C. O.

Montgomery, Charles  
 Smalley, Walter  
 Wilkins, Alberta



Act



ivities



# "Campus Daze"<sup>54</sup>









*Miss Helen Irwin*



*Miss Mary Jo Buttram*



*Miss Marie DePue*



*Miss Geraldine Huffaker*

# BEAUTIES

*Miss Helen Irwin*



*Miss Alberta Wilkins*



## TWC'S HANDSOMEST

BILL AIKEN

DICK SAWYER



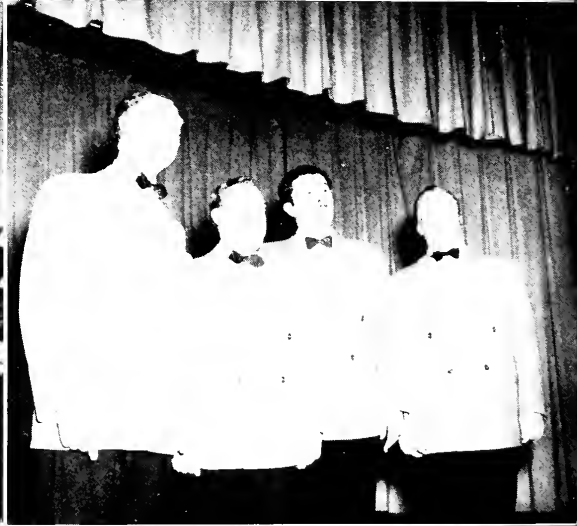
**MOST TALENTED**  
Mildred Williams  
Tommy Painter

**BEST ALL-AROUND**  
Barbara Kirk  
Jack Payne

## STUDENTS CHOICE

**MOST POPULAR**  
Linnie Martin  
Francis Bishop  
**BEST ATHLETE**  
Sarah Conant  
Tom Pemberton

**MOST LIKELY TO SUCCEED**  
Alice Ann Ayers  
Ken Brakebill







## MUSIC AT TWC

Mixed Chorus and

Director Jack Houts

### GIRLS TRIO

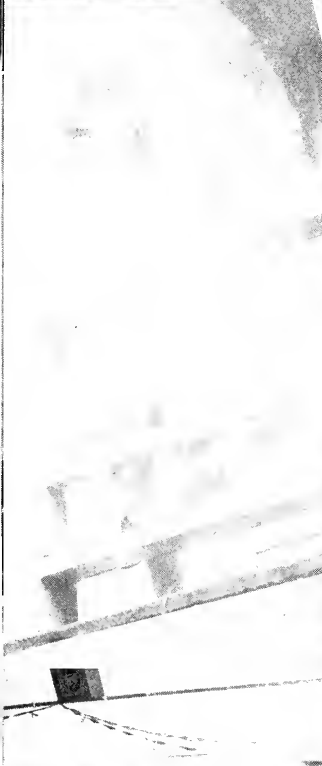
Kay Barret  
Barbara Kirk  
Joan Hampton

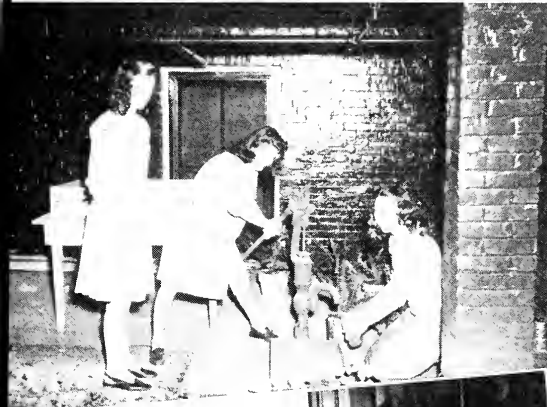
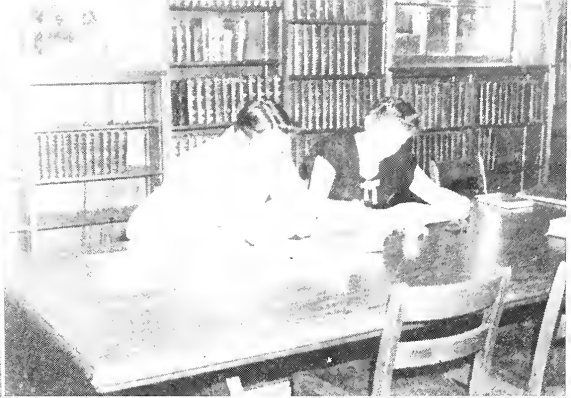
Accompanist—Mildred Williams

### GIRLS QUARTETTE

Betty Allison  
Alice Ann Ayers  
Marie Depue  
Jane Beals  
Accompanist—Jennie Easley









# Athle



tics

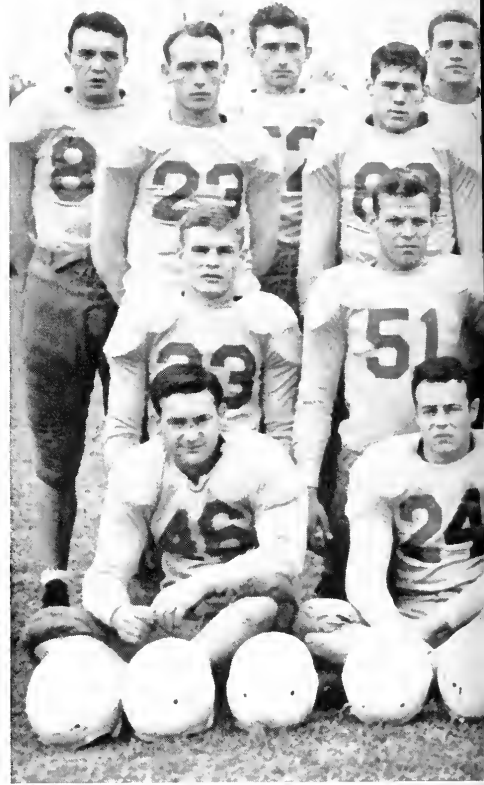
and All-American ...

# TENNESSEANS ARE 14-12 WINNERS OVER CADETS

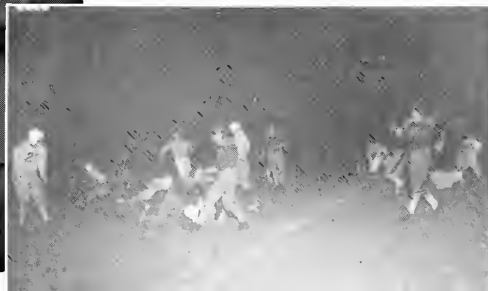
Delaxes

Wesleyan Takes Peach Bowl Game

Tennessee Wesleyan's gallant gridiron gladiators were the cream in the Peach Bowl as the Wesleyan athletes captured the southeastern junior college football title from Georgia Military College.



1. Coach C. Q. Smith and Assistant Coach Jim Brooks
2. "Fight Team Fight"
3. "Rip 'em up, tear 'em up"
4. "We gotta team"
5. "Go team Go"





Front Row, left to right: Barker, Miller, Wilson, Blackley, Montgomery, Burger C.

Second Row, left to right: Jumper, McCombs, Davis, Aiken, West, Gowans, Davis B., Pemberton J.

Third Row, left to right: Adams, Allen Ed, Rogers, Jones, Burger A., Hall, Anderson, Long, Pemberton C. W., Allen B.

Fourth Row, left to right: Baker, Smith, Sparkman, Marion, Kuhnert, Mayfield, Bishop, Godwin, Pemberton T.



## PIGSKIN REVIEW OF '46

Wesleyan started its first post-war season with a flock of ex-GI's and also facing one of the greatest schedules in its history. With the return of the GI's came some of the best material ever accumulated at Wesleyan and a new head coach, C. Q. Smith and Assistant Jim Brooks.

Our first four encounters were with Senior colleges, the first with Austin Peay State College. In what appears to be a scoreless stalemate during most of the game, victory became ours when Russ Godwin, an ex-Marine, scooped in a flat pass and ran forty yards to victory. Our next game was with Maryville College which we dropped 14 to 0, the "Scotties" later went to the Tangerine Bowl. Next came our toughest foe, Vanderbilt's "B" team, from the southeastern conference. The score, Vandy 27, Wesleyan 0. The next game was a heart-breaker, our old foe, Carson-Newman winning 3 to 0.

Pemberton, C. W.



Eggert



McCombs



Pemberton, T.



Mayfield



Sparkman







Jack Pemberton, Tom Pemberton, C. W. Pemberton

Coming into our own class Wesleyan beat Brevard 14 to 0 on a very muddy field. The team finally rounded into excellent shape and most of the boys wanting victory over Milligan, our team played possibly their finest game of the season. Milligan's scores came 10 seconds before the first half and 20 seconds before the final whistle, beating us 12 to 7. This game in many a sport fans' opinion was one of the roughest ever played in Athens.

Next came our oldest foe, Hiwassee College, which we thoroughly trounced 14 to 0, keeping our record intact of having never lost a football game to the "Tigers." Middle Georgia was an easy foe, Wesleyan winning 44 to 0. Then came the Peach Bowl for the southeastern Junior College championship. Our opponent was Georgia Military College. In what was a bruising ball game our "Bulldogs" came from behind to chew out victory from the hide of a tough foe.

#### BURRY ADAMS

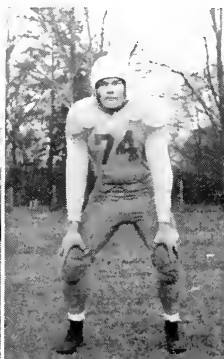
Sports Analysis

Godwin

Barker

Adams

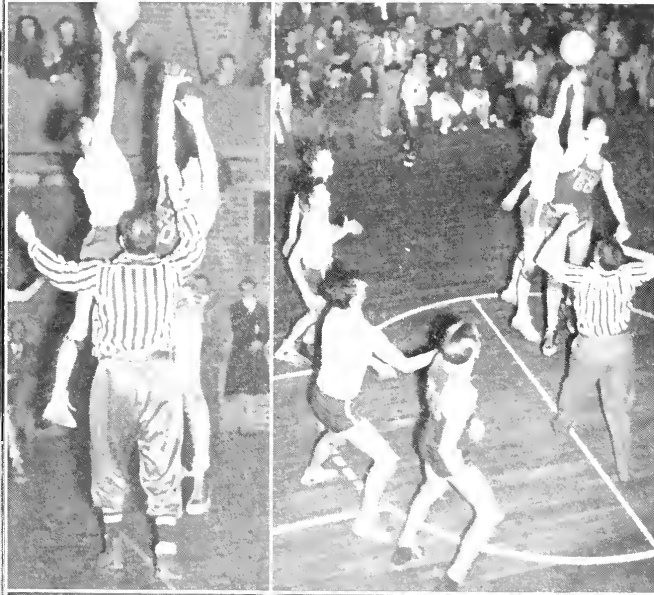
Burger



## TWC ON THE HARDWOOD

Some of the finest basketball material ever assembled in Tennessee Wesleyan College gym played excellent ball during a rough and tough schedule. Both teams are looking forward to their next basketball year as we know Wesleyan will produce another Southeastern Junior College championship team.

Action shots taken during the game with Hiwassee College. The Bulldogs trounced the "Tigers" in both games.





## BOY'S BASKETBALL TEAM

Back Row, left to right: Manager Ross, Williams, Godwin, Baker, Perkinson, Brakebill, Coach Smith.  
 Front Row, left to right: Mason, Carr, Hinds, Kelly, Erown, Hill.

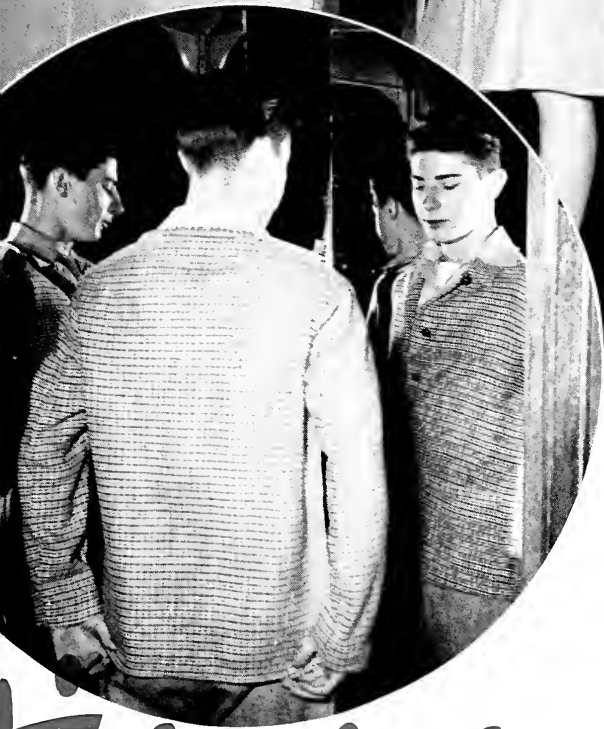
## GIRL'S BASKETBALL TEAM

Back Row, left to right: Manager Huffaker, Ray, Paul, Huffstetter, Reeves, Conant, Asst. Mgr. Shipley, Coach Treblas.  
 Front Row, left to right: Houston, Baker, Cooper





adver



tisers

**CRAVEY'S**

"We Clothe The Family"

Dry Goods — Notions — Millinery

Ready-to-Wear Work Clothing

Ladies and Gents Furnishings

Compliments of

**EDNA'S**

Compliments of

**ATHENS HARDWARE**

Compliments of

**Howard's Ice Cream Bar**

*Neely's*

A SHOP FOR LADIES

Phone 162

Athens, Tennessee

**BOARD OF PUBLIC UTILITIES**

**CITY OF ATHENS**

Your Electric System

**JACKSON STREET**

**PHONE 174**

**"RICE'S"**

ELECTRICAL SUPPLIES

Phone 327

COMPLIMENTS

OF

**McMINN COUNTY MOTOR  
COMPANY**

Phone 390

Athens, Tenn.

Everything in Ready-To-Wear

**KETRON'S**

Your Federated Store

Phone 40

ATHENS, TENNESSEE

COMPLIMENTS

OF

**FIRST NATIONAL BANK**

Athens, Tennessee

**PARK AVENUE LAUNDRY**

"Your Pal"

Tel. 311

Athens, Tenn.

Compliments

of

**Robert E. Lee Laundry**

Phone 185

Athens, Tenn.

For Finer Foods, Visit—

**GUFFEY'S MARKET**

COMPLIMENTS

OF

**Mrs. Ira M. Bolton, Jeweler**

**J. Nat Moore and Son**

Everything for the farm and home

**McMinn Furniture Co.**

DEPENDABLE FURNITURE

ZENITH AND PHILCO RADIOS

**ATHENS — ETOWAH**

COMPLIMENTS

OF

**FARMERS BANK**

**Athens Insurance Agency**

**ATHENS, TENNESSEE**

"Every form of reliable insurance"

**PAUL J. WALKER, Owner**

**Athens Federal Savings and  
Loan Association**

**ATHENS, TENNESSEE**

Phone 72 Paul J. Walker, Sec-Tres.

A Federal Savings Institution

Member Federal Home Loan Bank

System

Savings Insured up to \$5,000

COMPLIMENTS

of

**HARRODS MARKET**



**MILES A. RIDDLE**

**DRUGGIST**

**School Supplies**

**Cosmetics**

Phone 47

Athens, Tenn.

COMPLIMENTS

**CITIZENS NATIONAL BANK**

ATHENS, TENNESSEE

**Ralph P. Thomison Co.**

**Firestone Dealer Store**

RECORDS—SHEET MUSIC

SPORTING GOODS

RADIOS—RECORD PLAYERS

On the Square

Phone 44

**PROFFITT'S**

"THE STUDENT STORE"

**Central Service Station**

—E S S O—

**Complete Service**

Phone 124

Athens, Tennessee

**The Athens Department Store**

"The Friendly Store"

**ARMSTRONG'S FURNITURE**

**& APPLIANCES**

"Athens' Finest Furniture Store"

**OLEN E. ARMSTRONG, Owner**

Main St.

Athens, Tennessee

Compliments of

**SOUTHERN SODA SHOP**

"SLOP SHOP"

COMPLIMENTS

Of

**Robert E. Lee Beauty Shoppe**

"For good things to Eat"

**ATHENS CAFE**

Compliments of

**COPENHAVER'S  
JEWELERS**

Athens  
759

Etowah  
7811

**Cates Athletic House**

Athletic Equipment and

Sporting Goods

IT-PAYS-TO-PLAY

**SMITH CLOTHING STORE**

Athens' Only Exclusive

Men's Store

ATHENS, TENNESSEE

**ROYAL CROWN COLA**

**Best By Taste Test**

**NEHI BOTTLING CO.**

Compliments

**McSpadden & Sons, Inc.**

**FURNITURE AND HARDWARE**

Phone 532

Athens, Tenn.

**HAMMER SUPPLY  
COMPANY**

"The House of Service"

**BUILDING SUPPLIES AND**

**PLUMBING GOODS**

Phone 13

Athens, Tenn.

# MAYFIELD'S CREAMERY

"JERSEY MAID" ICE CREAM

"JERSEY MAID" MILK—IT'S PASTEURIZED

ATHENS, TENNESSEE

---

*Millers*

The House of Quality

McGregor Sportswear

Portis Hats

Rhythm Step Shoes

Sandler of Boston

Acrobat Shoes

Doris Dodson

Gay Gibson

Cohand Fabrics

---

TOMORROW'S BUSINESS EXECUTIVES ARE  
TODAY'S ACCOUNTANTS, SECRETARIES AND

SALESMEN

Now—more than ever before, we are prepared to offer thorough  
and adequate training in—

- ACCOUNTING\*
- SECRETARIAL
- STENOGRAPHY
- BOOKKEEPING
- SALESMANSHIP
- BUSINESS ADMINISTRATION

\* All phases—Cost Accounting, Tax, Governmental, Auditing, Financial  
Management, C. P. A. Coaching.

**Knoxville Business College**

"THE QUALITY SCHOOL"

209 W. Church Avenue (Occupying entire building).

We wish to express our heartfelt thanks to the editor, his staff, the faculty and the entire student body for their kind cooperation and patience while we were making the photographs for your annual.

Photographically, we have tried very hard to make the 1947 Nocatula the best annual in the history of the school.

*Hart's*

**Studio**

Commercial and Portrait

Photographer

PHONE 696

ATHENS

TENNESSEE

# CHATTANOOGA

## MERCHANT'S PAGE

**KOBLENTZ**

**TEMPLETON'S JEWELERS**

**LANSFORD PIANO CO.**

**MARTIN-THOMPSON CO.**

### **Your Career**

A business career affords interesting duties, inspiring associations, rapid advancement, dignified employment and future security. Aim high—choose the best.

### **Your Choice**

The National Business College offers you modernized courses, reasonable rates, easy monthly payment plan, comfortable quarters, experienced faculty and modern facilities to train you for leadership in business.

### **Your Opportunity**

Your future is now in the making. Let us help you make it a successful future. It is better to be safe than sorry. Mail your application today and begin your training later.

**National Business College**

**"The Progressive Business School"**

**KNOXVILLE 12, TENNESSEE**

**CHEROKEE**

**HARDWARE CO.**

**SPORTING GOODS**

**FURNITURE—PAINTS**

**ELECTRICAL APPLIANCES**

Phone 14

No. 2 Main

Athens, Tenn.

**The Friendliest Store In Town**

**SEARS, ROEBUCK & CO.**

Order Office

Phone 763

**Shop at Sears and Save**

RUTHA L. BROOKS, Mgr.

## **Copperhill Merchants Page**

NEW YORK HOTEL

HEMPHILL CAB CO.

HUMPHREY FUNERAL HOME

GEORGE JABALEY & SONS

NU-ICY BOTTLING CO.

OCCOEE BARBER SHOP

TALLENT DRUG CO.

ISACC & CO.

---

*Hart's*

**Studio**

Commercial and Portrait

Photographer

PHONE 696

ATHENS

TENNESSEE

Your Family Department Store

KNOXVILLE, TENNESSEE

Gay Street and Wall Ave. — Tel. 3-6161



Compliments of

**RUSSELL MOTOR CO.**

**PONTIAC**

Phone 480

Athens, Tenn.

519

**REED BEAUTY SHOP**

519

One of Athens' Newest

Air-Conditioned

"Where Beauty Is An Art"

APPOINTMENTS

Main Street

Kathleen Reed, Mgr.

### Your Career

A business career affords interesting duties, inspiring associations, rapid advancement, dignified employment and future security. Aim high—choose the best.

### Your Choice

The National Business College offers you modernized courses, reasonable rates, easy monthly payment plan, comfortable quarters, experienced faculty and modern facilities to train you for leadership in business.

### Your Opportunity

Your future is now in the making. Let us help you make it a successful future. It is better to be safe than sorry. Mail your application today and begin your training later.

**National Business College**

"The Progressive Business School"

**KNOXVILLE 12, TENNESSEE**

**CHEROKEE**

**HARDWARE CO.**

**SPORTING GOODS**

**FURNITURE—PAINTS**

**ELECTRICAL APPLIANCES**

Phone 14

No. 2 Main

Athens, Tenn.

**The Friendliest Store In Town**

**SEARS, ROEBUCK & CO.**

Order Office

Phone 763

**Shop at Sears and Save**

RUTHA L. BROOKS, Mgr.









