


the
NOGATULA
Nineteen Hundred Fifty Three



W
378.05
T256n
1953

Mermer - Pfeiffer Library
Tennessee Wesleyan College
Athens, Tennessee



Digitized by the Internet Archive
in 2011 with funding from
LYRASIS Members and Sloan Foundation

<http://www.archive.org/details/nocatula195300tenn>



TENNESSEE WESLEYAN



21116

NOCATULA

FOR NINETEEN HUNDRED FIFTY THREE

Merner - Pfeiffer Library
Tennessee Wesleyan College
Athens, Tennessee

W
378.05
T256n
1953

Editor
Assistant Editor
Artist
Photographer

William A. Adams
Virginia Patten
Bodo Jose Weber
William A. Adams
Richard K. ...
William ...

MERNER - PFEIFFER LIBRARY
TENNESSEE WESLEYAN COLLEGE
ATHENS, TENNESSEE

INTRODUCTION

We, the class of fifty three, remember Wesleyan; the whirling schedules, the hard pressed assignments, the tingle of pride in our "Bulldogs," the guys and girls we dated, the fellowship in which we all shared and the inspiration of prayer that bound it all together.

Come with us now through the halls of memory. Laugh with us, cry with us, work with us once again in the indelible spirit of NOCATULA.

— The Editor

TWC



—old college



What is life but a shadow on this lowly earth,
If we but trip and fall, get up, go, on,
but not remember.

—selected

DEDICATION

One would have a hard time finding a person interested enough in young adults to dedicate his life to them. Such a man, who will always be young in heart, is "Maestro" Jack Houts.

His tremendous personality and overwhelming enthusiasm have inspired his choirs to singing heights which are hard to surpass. His excellent musicianship has been demonstrated from year to year by his musical achievements with groups that have no longer than one year to work together.

He teaches forty individuals to blend their beliefs and individualities in as perfect harmony as he is able to direct their voices in song. The only payment he asks is that his students go away leading richer and more meaningful lives, for having shared a profound religious experience in music.

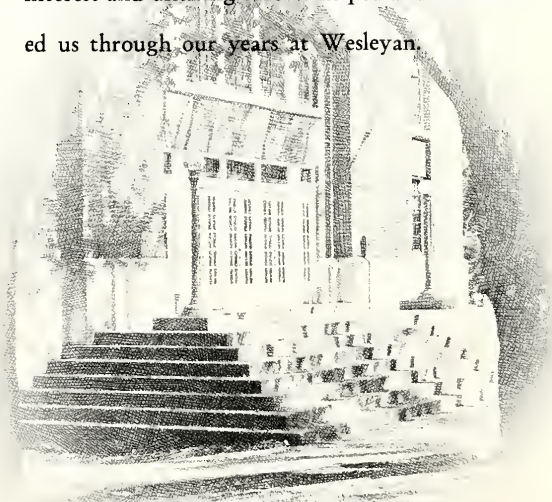
Jack Houts is much more than a fine choir director. He is a personal friend to all of us in and out of the choir, and, unknowingly, a guide to many who observe and realize his fine sense of humor, his high ideals, and general philosophy of life.

It is with unforgettable memories, and with our untold thanks, that we dedicate this Nocatula to you, Jack Houts.



THE ADMINISTRATION

We remember our professors who through their interest and untiring efforts helped and counseled us through our years at Wesleyan.



— townsend hall



He calleth his sheep by name and leadeth them out.

— John 10:3

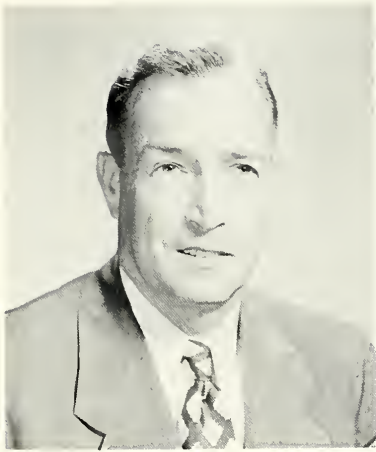


President Dr. Leroy A. Martin



Secretary Mrs. Nelle Jackson

Our president and his secretary have filled a warm spot in the hearts and minds of all students and faculty members. Their kind understanding of our problems and our joys have inspired and aided us all through our time here. Their friendly smiles and greetings have given us a feeling of being an integral part of this school and we hope someday to repay in some small way the indebtedness that each of us owes to them.



J. Van Coe
Dean of Students

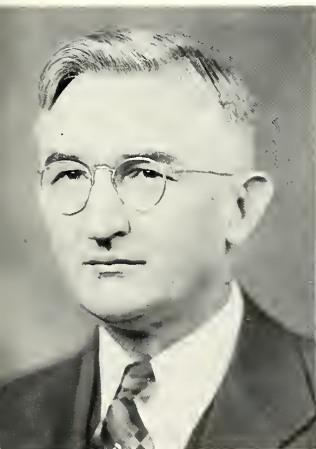


Paul Riviere
Dean of College

Dr. F. B. Shelton
Public Relations, HCC.

Mrs. Ken Rees
Business Manager

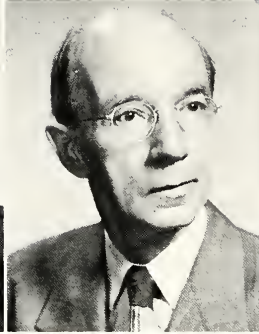
C. O. Douglas
Registrar



FACULTY



Mrs. Hilda Wrinn — Methods and Laboratory School



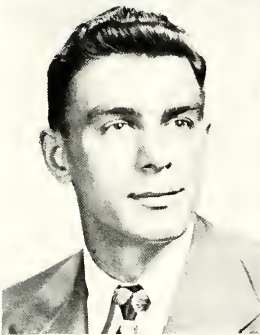
A. H. Myers — Religion and Philosophy



Mrs. A. H. Myers — Librarian



Marvin Shadel — Mechanical Drawing



Richard M. Johnson — Natural Science



Charles O'Reilly — Methods and Laboratory School



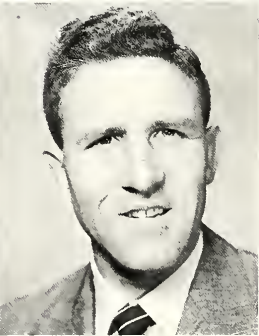
Mrs. James Lattimore — Home Economics



Mrs. Gertrude B. Millard — Superintendent of Ritter Hall



Mrs. Agnes B. Colston — Methods and Laboratory School



Louis Underwood — Grounds Superintendent



Mrs. Ruth Lewis — Superintendent of Lawrence Hall



Mrs. Thelma Rucker Standridge — Organ and Piano

Not pictured: Mrs. T. B. Donner — Dietician

Mrs. Glen Roach — Nurse



James Fitzpatrick — Commerce



Mrs. James Fitzpatrick — Commerce



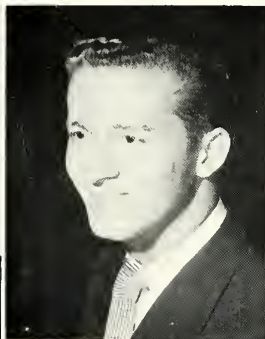
Mrs. Martha Hale — Art



Jack Houts — Voice



Thomas B. Donner — Modern Language



James Wilson — Organ and Piano



G. A. Yates — Mathematics



Carl Honaker — Chemistry and Physics



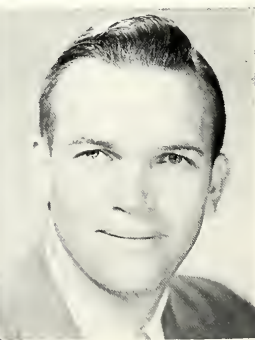
Lewis Hampton — Drama and Speech



Mrs. Levis Hampton — English



E. G. Rogers — English



Rankin Hudson — Director of Athletics

Not pictured: Kenneth D. Higgins — Economics

CLASSES

We remember those classes we gladly attended, those we had to attend, and those we didn't attend.



— banfield hall



Study to show thyself approved. — II Timothy 2:15

No man has a right to govern another man without that man's consent.
— Abraham Lincoln



Standing: Danny Hays, Bulldog Editor; Don McElroy, Senior Class President; Don Patrick, Senior Representative; Bill Adams, Nocutula Editor. Seated: Faye Templin, Religious Council Repre-

sentative; Pat Isenhower, Senior Representative; Lee Asbury, Student Body President; Jean Guinn, Student Body Vice President; Paul Phillips, Junior Representative.

STUDENT COUNCIL

SENIOR OFFICERS

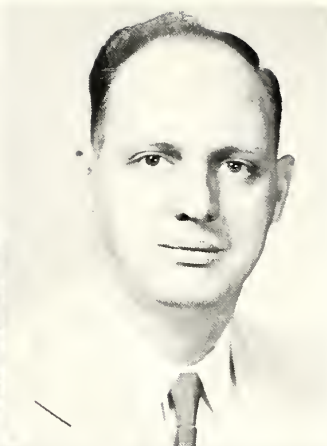
The senior class at Wesleyan is represented by a group of officers elected by the senior students. Among their many duties are presiding over meetings of the senior class and making arrangements

for the commencement program. These duties demand leadership and careful management. The senior class at Wesleyan believes that their officers have exemplified these characteristics.

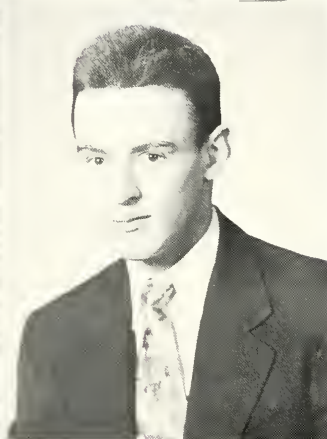
From left to right: James McQuain, Vice-President; Don McElroy, President; and Betty Shetterly, Secretary-Treasurer.



CLASS OF 1953



ADAMS, WILLIAM A., Walton, N.Y. Liberal Arts, Student Christian Association, 1, 2; Life Service Volunteers, 1, 2; Chaplain 2; Phi Sigma Nu, 1, 2, Reporter 2; Phi Rho Pi, 2, Secretary; Phi Theta Kappa, 2, Reporter 2; Delta Psi Omega, 1, 2, Vice President 2; Nocatula 1, 2, Editor, Photographer 2; Bulldog 1, 2; Superlative; Student Assistant to president, 2; Personnel Committee, 2.



ALLISON F. MAX, Athens, Tenn. Liberal Arts, Student Christian Association, 1, 2; Life Service Volunteers, 1, 2.



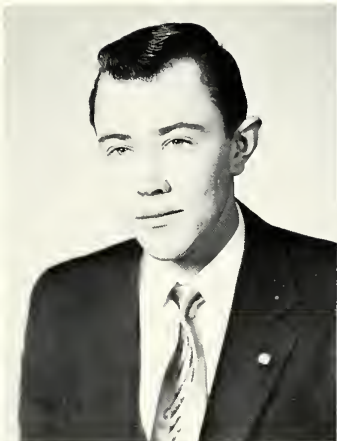
JOAN ANTHONY, Mount Tabor, N.J. General Culture, Religious Council 2; Student Christian Association, 1, 2; Life Service Volunteers, 1, 2; Wesleyan Fellowship, 1, 2, Vice President, 2; Zeta Mu Epsilon, 1, 2, Chaplain 2; Delta Psi Omega, 1, 2; Nocatula 2; Bulldog 2; Choir, 1, 2, Publicity Manager, 2.

ASBURY, LEE, Caryville, Tenn. Liberal Arts, Theta Sigma Chi, 2, Secretary 2; Student Council 2, President 2; Bulldog 2; Basketball, 1, 2; Football, 1, 2; Boys' Letter Club, 1, 2.

BARNETTE, SARA, Englewood, Tenn. Elementary Teacher, Zeta Mu Epsilon, 2; Art Club, 2; Football Queen Attendant, 2; Senior Beauty, 2.

CLASS OF 1953

BASKETT, BILL, Sweetwater, Tenn. Off-Campus Club, 49-50; Vets Club, 2.



BLEDSON, ROBERT C. JR., Rose Hill, Va. Pre-Law, Phi Rho Pi, 2, President 2; Vets Club, 2, President 2.

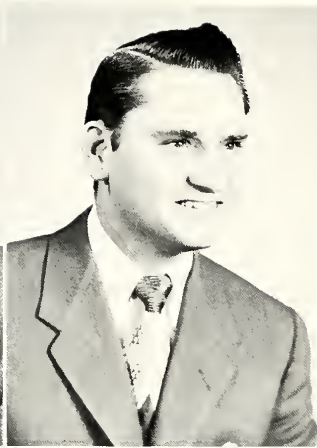


BRITTON, PHYLLIS, Nashville, Tenn. General Culture, Zeta Mu Epsilon, 1, 2; Reporter, Art & Publicity, 2; Nocatula, 2; Bulldog, 2, Reporter, 2; Choir, 1, 2.

WALKER, JANE BURNETT, Etowah, Tenn. Secretarial, Student Christian Association, 2; Wesleyan Fellowship, 2; Zeta Mu Epsilon, 1, 2, Art & Publicity, 2; Nocatula, 2; Bulldog, 2; Cheerleader, Alternate, 2.



CLASS OF 1953



JOHNSON, WILLIAM, Athens, Tenn.
Business Administration.



CAMPBELL, HOYT THOMAS, Riceville, Tenn. Third Year Education, Christian Service Club, 47; Phi Sigma Nu, 47, 53; Phi Pi Delta, 47; Art Club, 53; Commerce Club, 47; International Club, 47.



CLARK, LAWRENCE C., Bean Station, Tenn. Liberal Arts, Student Christian Association, 1, 2; Life Service Volunteers, 1, 2, President, 2; Religious Council, 2; Eta Iota Tau, 1, 2, Treasurer, 2; Library Assistant, 1.

CLARK, MILDRED LUCILLE, Niota, Tenn. General Culture, Phi Theta Kappa, 2, Treasurer, 2.

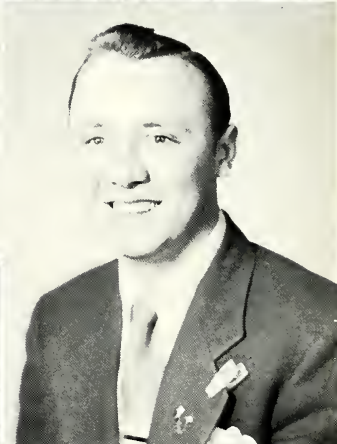
CORN, BETTY JEWELL, Etowah, Tenn. Education.

CLASS OF 1953

COTTEN, WILLIAM FRED, Philadelphia, Tenn. Business Administration, Theta Sigma Chi, 1, 2.



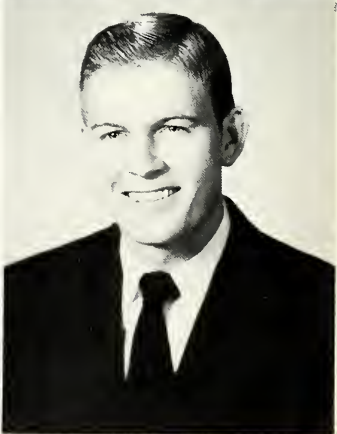
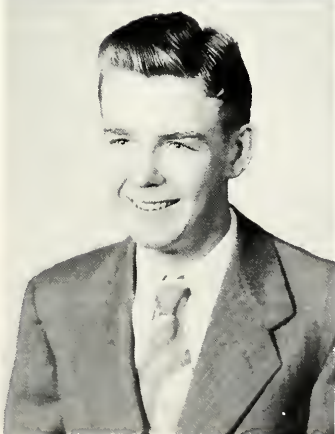
CRABTREE, RONALD ELLIS, Rockwood, Tenn. Eta Iota Tau, 1, 2, Secretary, 2; Choir, 1, 2.



CREECH, RICHARD, Knoxville, Tenn. Business Administration, Basketball, 1; Bulldog, 2.

CRUMP, WILLIAM H., Memphis, Tenn. Liberal Arts, Student Christian Association, 1, 2; Chaplain 2; Life Service Volunteers, 1, 2; Phi Sigma Nu, 1, 2, President, 2; Pan Hellenic, 2; Bulldog, 1; Delta Psi Omega, 2; Choir, 1, 2, Manager, 2.

DAKE, JOHNNY, Decatur, Tenn. Engineering, English Award, 1.



DOUGHERTY, LLOYD, Clinton, Tenn. Physical Education, Basketball, 1, 2; Boys' Letter Club, 1, 2.

CLASS OF 1953



DUCKETT, LEE E., Etowah, Tenn. Business Administration, Phi Sigma Nu, 1, 2, Vice President, 2; Vets' Club, 2.

GOSE, MARY ALICE, Sweetwater, Tenn. Elementary Education, Student Christian Association, 2; Kappa Delta Phi, 1, 2, Ritual Chairman, 2; Art Club, 1; Basketball, 1.



GUFFEY, JAMES EDWIN, Athens, Tenn. General Culture, Phi Sigma Nu, 1, 2, Treasurer, 2.

GUINN, JEAN, Lenoir City, Tenn. General Culture, Student Christian Association, 1, 2; Wesleyan Fellowship, 1, 2; Zeta Mu Epsilon 1, 2, Vice President, 2; Student Council, 2, Vice-President, 2; Bulldog Staff, 2; Nocatula Staff, 2; Letter Club, 2; Basketball, 1, 2, Co-Captain 1, Captain, 2; Tumbling Team, 1, 2; Cheerleader, 1, 2, Alternate, 1, Head Cheerleader, 2; Theta Sigma Chi Sweetheart, 2; Superlative, 2.



HAMILTON, ZELMA, Englewood, Tenn. Secretarial, Library Assistants, 2.

MARTINEZ, BETTYE HANEY, Chattanooga, Tenn. Liberal Arts, Student Christian Association, 1, 2; Life Service Volunteers, 1, 2; Wesleyan Fellowship 1, 2; Zeta Mu Epsilon, 1, 2, Conductress, 2; Basketball 1, 2, Co-Captain, 2; Girls' Letter Club, 2; Superlative, 2.

CLASS OF 1953

HANEY, CHARLENE, Kingsport, Tenn. Music, Student Christian Association, 2; Wesleyan Fellowship, 1, 2; Sigma Iota Chi, 1, 2, Secretary 2; Choir, 1, 2, Accompanist, 1, 2; Music Department, 2, Secretary, 2.



HAYS, DANNY R., Jasper, Tenn. Pre-Med., Student Christian Association, 2; Eta Iota Tau, 1, 2, President, 2; Pan Hellenic, 2; Delta Psi Omega, 1, 2; Bulldog, 1, 2, Editor, 2; Student Council, 2; Choir, 1, 2; Football 1; Tumbling Team, 1, 2; Superlative.



HEATHERLY, MARY HELEN, Etowah, Tenn. Physical Education, Sigma Iota Chi, 1, 2, Guard, 2; Bulldog, 1, 2; Society Editor, 2; Basketball, 2, Manager, 2.

HENNE, LILA, Rye, N. Y. General Culture, Zeta Mu Epsilon, 1, 2, Secretary, 2; Bulldog, 2.



HERIOT, SHERRY, Copperhill, Tenn. Liberal Arts, Sigma Iota Chi, 1, 2, Vice President, 2.

CLASS OF 1953



HENSON, FRANK, Copperhill, Tenn. Physical Education, Football, 1, 2; Boys' Letter Club, 1, 2; Senior Most Handsome.



HIXSON, JANICE, Mascot, Tenn. General Culture, Student Christian Association, 1, 2, Secretary, 2; Wesleyan Fellowship, 2; Eta Upsilon Gamma, 1, 2, President, 2; Pan Hellenic Council 2; Bulldog Staff, 2; Art Club, 1, 2; Choir, 1, 2; Phi Theta Kappa, 1, 2, Secretary, 2.



HOLT, SHIRLEY ANNE, Newport, Tenn. General Culture, Student Christian Association 2; Sigma Iota Chi, 1, 2, Pen Chairman.



ISENHOWER, PAT, Etowah, Tenn. Secretarial, Basketball, 2, Manager 2; Student Council, 2; Student Christian Association, 2; Wesleyan Fellowship, 1, 2; Zeta Mu Epsilon, 1, 2, Corresponding Secretary, 2; Nocatula, 2; Library Assistants, 1, 2; Superlative.



JOHNSTON, HELEN, Etowah, Tenn. General Culture, Student Christian Association 2; Kappa Delta Phi, 1, 2, Worthy Directress 2; Bulldog Staff, 1, 2, Business Manager 2; Football Queen, 1, 2.



KEITH, JOSIE ANN, Hixson, Tenn. Elementary Education, Zeta Mu Epsilon, 1, 2, Treasurer 2; Delta Psi Omega 1, 2; Class Treasurer, 1.

CLASS OF 1953

KELSO, NANCY, Loudon, Tenn. Elementary Education, Eta Upsilon Gamma, 1, 2, Secretary, 2.



KNIGHT, STANLEY R., So. Pittsburg, Tenn. General Culture, Phi Sigma Nu, 1, 2, Sgt. at Arms 2; Phi Rho Phi, 2.

KNOWLES, JIMMIE MAE, Chattanooga, Tenn. Liberal Arts, Rel. Council, 2, Secretary; Student Christian Association, 1, 2; Life Service Volunteers, 1, 2, Sec., Treas., Reporter; Wesleyan Fellowship, 1, 2, Pres., Kappa Delta Phi, 1, 2, Treas., Bulldog, 2; Choir, 1, 2; Basketball, 1.



LEDFORD, RAY, Athens, Tenn. General Culture, Choir, 2; Football, 2; Tennis, 2; Boys' Letter Club, 2.

McALISTER, JACK D., Charleston, Tenn. General Business.

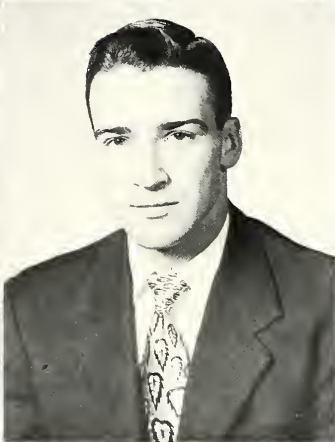


McQUIN, PAULINE E., Beebe River, N. H. Pre-Nursing, Student Christian Association, 2; Kappa Delta Phi, 1, 2, Vice-Pres., 2; Bulldog, 2.

CLASS OF 1953



McELROY, DON, Etowah, Tenn. Liberal Arts, Eta Iota Tau, 1, 2, Sergeant at Arms 2; Delta Psi Omega, 1, 2; Phi Rho Phi, 2; Nocatula Staff, 2; Bulldog Staff, 2; Choir, 1, 2, President, 2; Boys' Letter Club; Senior Class President, 2; Football, 1, 2; Superlative, 2; Zeta Mu Epsilon Sweetheart, 2.



McKENZIE, JOHNNY, Athens, Tenn. Business Administration, Phi Sigma Nu, 1, 2, Secretary 2; Phi Theta Kappa, 1, 2, President, 2; Tennis 1, 2; Superlative, 2.



McMAHAN, BETTY ANN, Athens, Tenn. Business, Eta Upsilon Gamma, 2; Phi Theta Kappa, 1, 2, Recording Secretary, 2; Choir, 1, 2; Librarian, 2; Bulldog Staff, 2.

McMILLAN, BOB, Athens, Tenn. Business Administration, Theta Sigma Chi, 1, 2, Vice-President, 2; Boys' Letter Club, 1, 2; Football, 1, 2.

R
378.05
TR 1971
1953

CLASS OF 1953

McQUAIN, JIM, Oak Ridge, Tenn. Liberal Arts, Theta Sigma Chi, 1, 2, President, 2; Phi Rho Phi, 2; Pan Hellenic Council, 1, 2, Co-ordinator, 2; The Bulldog Staff, 1, 2; Senior Class Vice-President, 2; Tennis Team, 2.



MARGRAVE, KAYE, Clinton, Tenn. General Culture, Student Christian Association, 2; Wesleyan Fellowship, 1, 2; Sigma Iota Chi, 1, 2, President, 2; Pan Hellenic Council, 2, Co-ordinator, 2; Bulldog Staff, 1; Choir, 1, 2; Girls' Letter Club, 2; Cheerleader, 1, 2; Phi Sigma Nu Sweetheart, 2; Superlative, 2.



MARTIN, BETTY JEAN, Limestone, Tenn. General Culture, Student Christian Association, 1, 2; Life Service Volunteers, 1, 2; Eta Upsilon Gamma, 1, 2, President, 1; Chaplain, 2; Pan Hellenic Council, 2; Student Council Representative, 2; Honor Council, 2, Secretary, 2; Personnel Committee, 1; Student Council, 1; Choir, 1; Bulldog, 1; Phi Theta Kappa, 1.

MARTIN, JULIA CAROLINE, Athens, Tenn. Liberal Arts, Student Christian Association, 2; Sigma Iota Chi, 1, 2, Parchment Editor, -2; Nocatula Staff, 1, 2, Copy Editor, 2; Bulldog Staff, 2, Feature Editor, 2; The Choir, 2, Technical Asst., 2; Delta Psi Omega, 2.

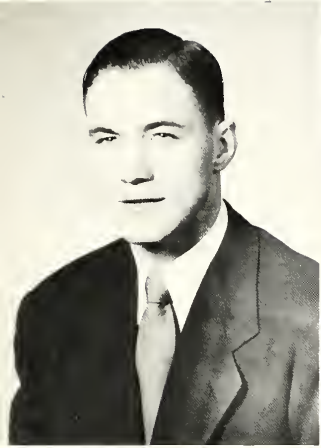


MARTINEZ, OSIRIS R., Chaparra, Cuba. Engineering, International Club, 2, President, 2; Superlative, 2.

MILLER, BLAINE, Athens, Tenn. Chemical Tech., Phi Sigma Nu, 1, 2; Phi Theta Kappa, 2; International Club, 2.

MERNER - PFEIFFER LIBRARY
TENNESSEE WESLEYAN COLLEGE
ATHENS, TENNESSEE

CLASS OF 1953

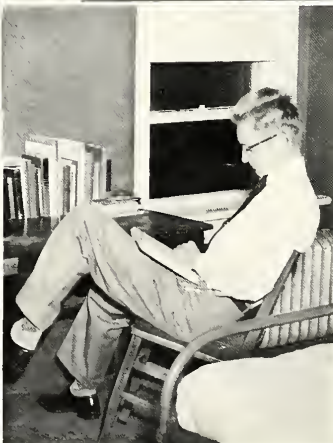


RANDALL, HORACE J., Athens, Tenn. Pre-Engineering, Phi Sigma Nu, 1, 2, Chaplain, 2; Library Assistant, 1; Football, 1.



REMINE, HILDA ANNE, Limestone, Tenn. Secretarial, Student Christian Association, 1, 2; Methodist International Relations with Church, 2; Personnel Committee, 2; Eta Upsilon Gamma, 1, 2, Treasurer, 2; The Bulldog, 1, 2, Assistant Editor, 2; Library Assistant, 1, 2; Superlative, 2.

RIDDLE, INEZ, Athens, Tenn. Secretarial Science, Zeta Mu Epsilon, 1, 2, Social Chairman, 2.



ROBERTSON, CAROLYN JO, Ringgold, Ga. General Culture, Student Christian Association, 1, 2; Kappa Delta Phi, 1, 2, Secretary, 2; Student Council, 1; Junior Class Officer, 1; The Bulldog Staff, 2; The Choir, 1, 2; Superlative, 2.

SCROGGINS, ROY E., Decatur, Tenn. Liberal Arts, Student Christian Association, 2; Life Service Volunteers, 1, 2.

CLASS OF 1953

MOORE, JAMES M., Etowah, Tenn.
Business, Vet's Club.



NEAL, BETTY LOU, Kingsport, Tenn.
General Culture, Student Christian Association, 2; Sigma Iota Chi, 1, 2, Treasurer, 2; Superlative, 2.

PADGETT, SUE, Chattanooga, Tenn.
Elementary Teaching, Student Christian Association, 1, 2; Life Service Volunteers, 1, 2; Wesleyan Fellowship, 1, 2; Kappa Delta Phi, 1, 2, Corresponding Secretary, 2; Choir, 1, 2.



PATRICK, DONALD F., Etowah, Tenn.
Business Administration, Student Council, 2; Personnel Committee, 2; Basketball, 1, 2, Captain, 2; Boys' Letter Club, 2.

PATRICK, VIRGINIA SUE, Fountain City, Tenn. General Culture, Religious Council, 2; Student Christian Association, 1, 2, Vice President, 2; Life Service Volunteers, 1, 2; Wesleyan Fellowship, 2; Eta Upsilon Gamma, 1, 2, Vice President, 2; Nocatula Staff, 1, 2, Assistant Editor, 2; The Bulldog Staff, 1, 2; The Choir, 1, 2, Vice President, 2; Delta Psi Omega, 1, 2, Secretary-Treasurer, 2; International Club, 2.



POTTS, ELIZABETH, Kingsport, Tenn.
Secretarial Science, Student Christian Association, 1, 2; Sigma Iota Chi, 1, 2, Literary Chairman, 2; The Choir, 1, 2.

CLASS OF 1953



SHARP, JEAN, Lafollette, Tenn. Music. Student Christian Association, 2; Wesleyan Fellowship, 2; Kappa Delta Phi, 1, 2, Chaplain, 2; The Nocatula Staff, 2; The Bulldog Staff, 2; Choir, 1, 2, Corresponding Secretary, 2; Secretary of Junior Class, 1; Superlative, 2.



SHETTERLY, BETTY, Kingsport, Tenn. General Culture, Student Christian Association, 1, 2; Sigma Iota Chi, 1, 2, Reporter, 2; Senior Class Secretary, 2; Nocatula Staff, 1, 2; Girls' Letter Club, 2; Cheerleader, 1, 2.

SMAIL, DEBORAH (Debbie), Athens, Tenn. Liberal Arts, Student Christian Association, 2; Kappa Delta Phi, 1, 2, President, 2; Pan Hellenic Council, 2; The Nocatula Staff, 2, Activities Editor, 2; The Bulldog Staff, 2; Library Assistant, 2, Reporter, 2; The Choir, 1, 2, Treasurer, 2; Delta Psi Omega, 2, President, 2.



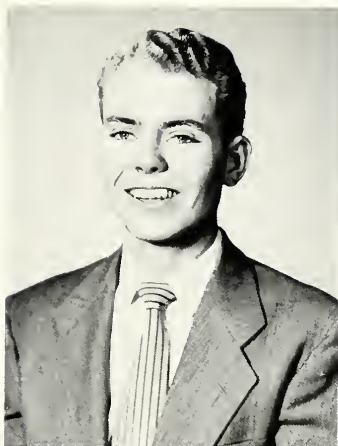
SNYDER, JOANNE, Cranford, N. J. General Culture, Student Christian Association, 2; Sigma Iota Chi, 1, 2, Worthy Directress, 2; The Bulldog, 1, 2, Society Editor, 2; Girls' Letter Club, 2; Delta Psi Omega, 2; Basketball, 1.

STEPHENSON, BILLIE JOE, Athens, Tenn. Elementary Education.

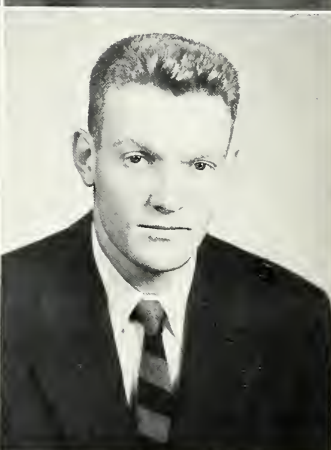
TEMPLIN, ALPHA FAYE, Fountain City, Tenn. Liberal Arts, Religious Council, 2; Student Christian Association, 1, 2, President, 2; Life Service Volunteers, 1, 2; Wesleyan Fellowship, 1, 2; Student Council, 2, Secretary, 2; Zeta Mu Epsilon, 2, Sgt. at Arms, 2; The Bulldog Staff, 2; Typist, 2; The Choir, 2.

CLASS OF 1953

TUPPER, CHARLES ERNEST, Clinton, Tenn. Pre-Pharmacy, Student Christian Association, 1, 2; Eta Iota Tau, 1, 2, Vice President, 2; The Nocatula Staff, 2; The Bulldog Staff, 2; The Choir, 1, 2.



WALKUP, MYRA DUNCAN, Knoxville, Tenn. General Culture, Eta Upsilon Gamma, 1, 2, Sentinel, 2.



WEARY, DORIS JEAN, Chatham, N. J. Liberal Arts, Student Christian Association, 1, 2; Wesleyan Fellowship, 1, 2; Zeta Mu Epsilon, 1, 2, President, 2; Pan Hellenic Council, 2; The Nocatula Staff, 2; The Bulldog Staff, 1, 2; Tumbling Team, 1, 2; Basketball, 1, 2; Girls' Letter Club, 2; Eta Iota Tau Sweetheart, 2.



WILSON, PETE, Athens, Tenn. Physical Education, Junior Class Representative of Student Council; Vet's Club, 2; Football, 1, 2, Captain, 2; Tennis Team, 1, 2; Badminton, 1, Champion, 1; Letter Club, 2.

CLASS OF 1953



WEBER, BODO JOSE F, Munich, Germany. Liberal Arts, Religious Council, 2; Student Christian Association, 2; Life Service Volunteers, 2, Vice-President, 2; Eta Iota Tau, 2, Reporter, 2; The Nocatula Staff, 2, Art Department, 2; The Bulldog Staff, 2, Art Department and Reporter, 2; The Choir, 2; International Social Club, 2, Secretary and Treasurer, Reporter, 2.



WHITE, RALPH, Sweetwater, Tenn. Liberal Arts, The Honor Council, 2; Vet's Club, 2; Boys' Letter Club 1, 2; Football; 49-50, 52-53, Basketball, 49-50, 52-53; Superlative, 2.

NOT PICTURED

ABOU, RAGHEB MOUSA H, Amman, Trans-Jordan

BARNETTE, BETTY, Sweetwater, Tenn.

BICKLEY, W. R., Athens, Tenn.

BINGHAM, REAVES, Knoxville, Tenn.

BOWMAN, ELBERT, Wytheville, Va.

CLARK, GARY, Athens, Tenn.

HAIRRELL, PEGGY, Athens, Tenn.

INZER, CHARLES, Montgomery, Ala.

KIRK, DAVID, Knoxville, Tenn.

McGHEE, BETTY CAROL, Etowah, Tenn.

MERRELL, JIMMIE, Etowah, Tenn.

NORWOOD, MANCIL, Athens, Tenn.

POWELL, BETTY, Athens, Tenn.

SMITH, WILLIAM DAVID

"Right judgements, and true laws, good statutes and commandments."
—Nehemiah 9:13

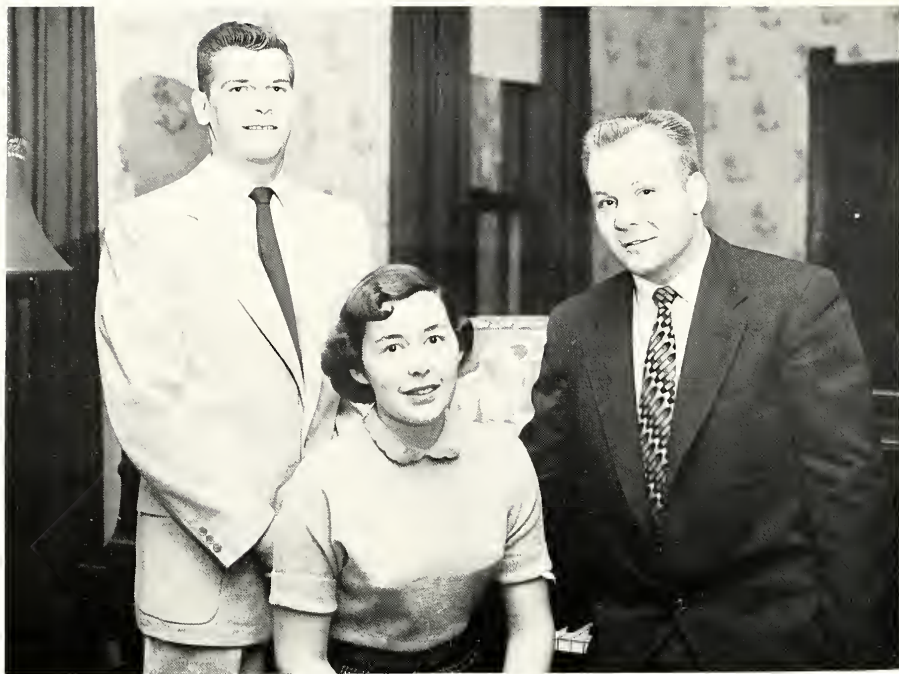


Back: Dave Lillard, Reeves Bingham. Front: Ralph White, Betty Martin, John Atha.

HONOR COUNCIL

A recent innovation on the campus is the honor system which is governed by the honor council, a five member board which tries and punishes any offender. The three senior and two junior members are elected by the student body

at the recommendation of the student council. After just one year of operation, this new organization has taken its place among the most respected and active groups at Wesleyan.



Left to right: Paul Phillips, President; Betty Calmes, Secretary-Treasurer; and Robert Pope, Vice-President.

JUNIOR OFFICERS

Each year the Junior Class elects a group of officers from their class to represent them. They preside over the Junior Class meetings and discuss any problems which arise among the Junior students. It is important that a good representa-

tion be elected to see the new students off to a good start. The Junior Class feels that they have successfully chosen their leaders and are well on their way to a profitable senior year.

JUNIORS

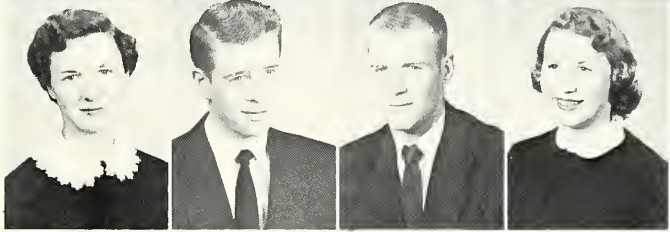


Abel, Paul B.

Acaff, Jean

Allen, Marcia Mae

Allen, Robert



Anderson, Betty Jean

Anderson, Dallas

Atba, Johnny

Baskette, Marilyn

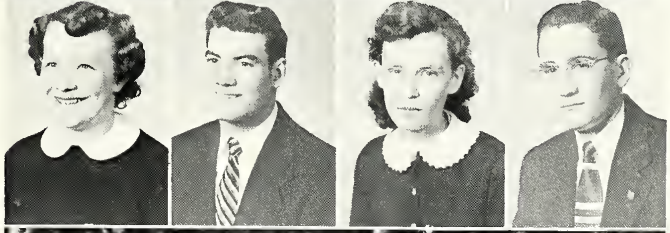


Boles, Jo Ann

Boyd, Mary Lynn

Brock, Betty Jo

Calmes, Betty



Chappelcar, Theresa

Childs, Jack

Clark, Hazel

Cofer, W. A.

NOT PICTURED

Appleby, Eddie

Baker, Glen

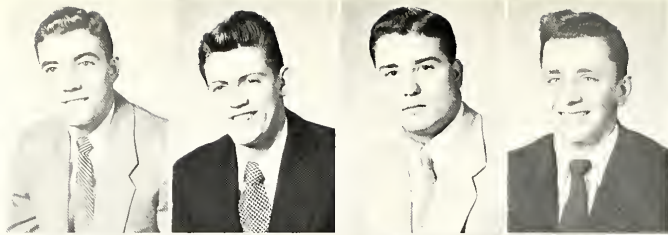
Baker, William Kinzel

Brakebill, Bill

Davis, Bob

Dodson, James





JUNIORS

Creasman, Merritt F.

Crowson, Joe

Davidson, Charles K

Davis, Nash

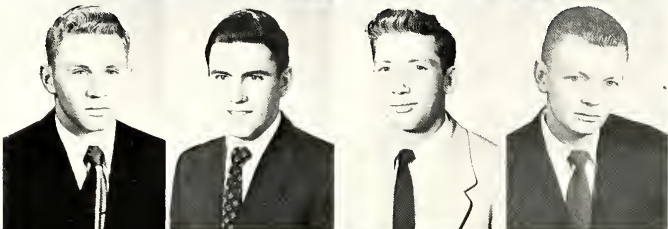


Eaves, Adab L.

Emmannelli, Lorenzo

Emert, Ann

Ensminger, Bobbie Jean

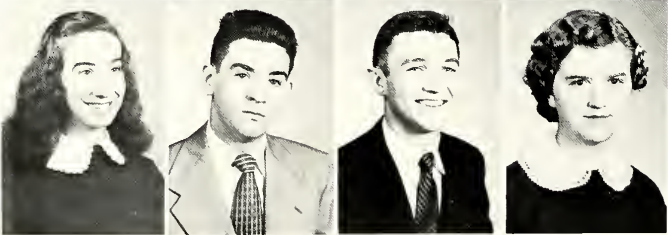


Eruin, Bobby

Fletcher, Charles

Gerals, William

Gibson, Robert



Gomez, Graciela

Grayson, Joseph D

Gregory, Kenneth

Groover, Audrey Joanne



Gully, Gerald

Hamilton, H. L.



NOT PICTURED

Durbam, Paul

Grant, Clinton

JUNIORS

Hammer, Nancy



Harris, Bobby

Harrison, Jo Ann



Honey, Phil

Huffaker, Otella

Huskey, Viola

Hutcherson, Ann

Jarvis, Joyce



Jenkins, Shirley

Johnson, Roy

Kimbrough, Mary Ellen

Lawson, Regenia

Layman, Mary Belle



Leatherwood, Mary Ruth

Lewis, J. D

NOT PICTUED

Locke, Don



Long, Ed

Lowe, Don

Malone, Hal

Margrave, George

Mimcy, Virgil

Moore, Lane

Nichols, A. W.



North, Thomas H.

Norwood, Mancel



JUNIORS

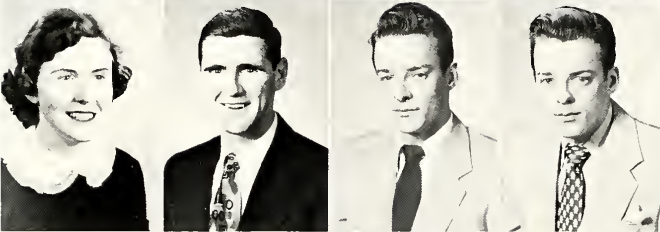


Lillard, Dave

Lillard, Nancy Jo

Louvy, Barbara

Lusk, George A.

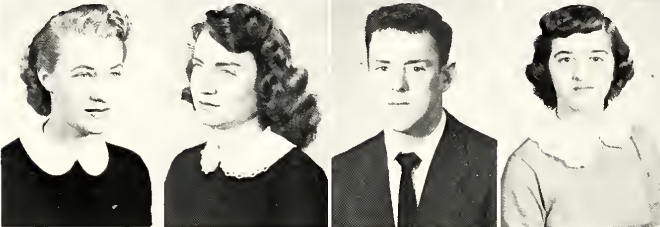


McIntyre, Barbara

McQuain, Raymond F. Jr.

Maal, Carlos

Maal, Freddy



Mackey, Christine

Miller, Nancy Kathryn

Newbern, Charles E.

Ogle, Margaret A.



Parks, Betty

Pope, Bobby Eugene

Ramey, Jack D.

Riddle, Jean



Riden, Wayne

Runyon, Shirley



NOT PICTURED

O'Rear, Charles A.

Payne, Rex

Pennington, Gloria L.

Pennington, James W.

Phillips, Chun

Rainwater, Albert K.

Rogers, Tommy

Samples, James

Seivers, Hoyt

Sherlin, James A.



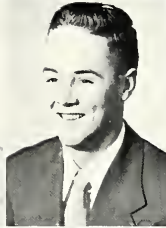
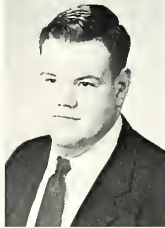
JUNIORS

Scott, Dorothy



Shankles, Peggy

Sberlin, Hershel E.



Smalley, Edith Miriam

Snow, James Ketron

Stansell, Eddie

Thomas, Kent W.

Thompson, Zack



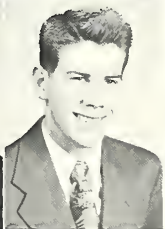
Turner, Helen

Turner, Jean

Vestal, Fimmie Lou

Walker, Audrey

Watkins, I. Paul



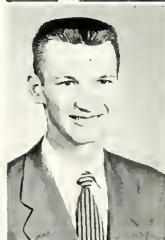
Webb, Marvin

Wilds, Jim

Williams, Vonne

Wilson, Hugh (Billy)

Yates, Margaret



NOT PICTURED

Sigmon, Hollingsworth D

Sizer, Annabelle

Skipper, Delano Roosevelt

Tiller, Thomas

Weeks, Thomas L.

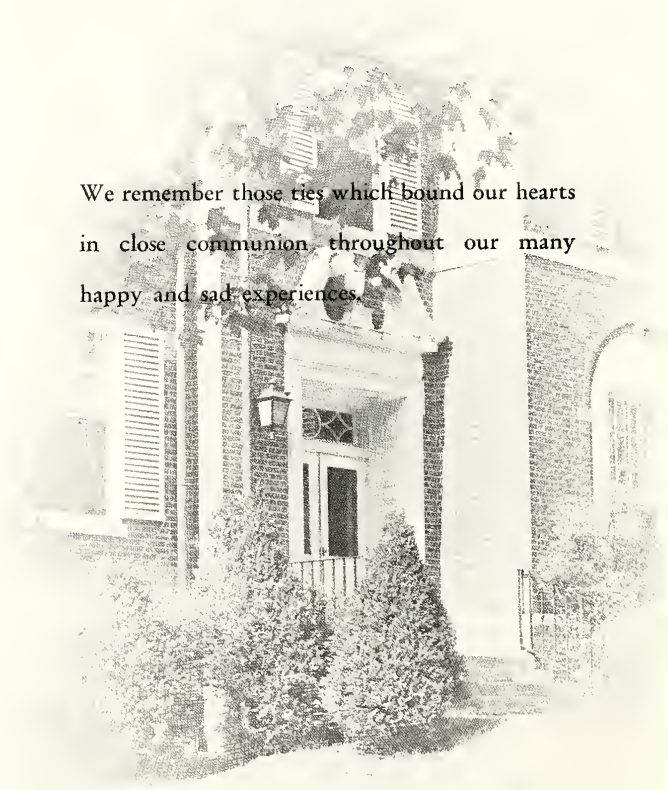
White, Kenneth

Walker, Jerry



ORGANIZATIONS

We remember those ties which bound our hearts
in close communion throughout our many
happy and sad experiences.



— lawrence hall



Let all things be done decently and in order.

— Cor. 14:40

THE CHOIR



*Jack Houts, Director
Sally Martin, Technical Assistant
Houts Shows How!*



*James Wilson, Organ Accompanist
Wilson Knows How!*



*Charlene Haney, Piano Accompanist
Haney Learned How!*



From Top Right Center Clockwise: Ronald Crabtree, "Bo" Weber, Joe Crowson, James Pennington, Charles Newbern, Bobby Pope, Paul Watkins, Paul Durham, Jeanne Turner, Sue Padgett, Elizabeth Potts, Mary Lynn Boyd, Betty Ann McMahan, Carolyn Robertson, Janice Hixson, Jimmie Lou Vestel, Helen Turner, Kaye Margrave, Mary Ellen Kimbrough, Virginia Patrick, Debbie Smail, Margaret Ogle,

Jimmie Mae Knowles, Jean Sharp, Barbara McIntyre, Jo Ann Boles, Regenia Lawson, Betty Jean Anderson, Shirley Runyon, Joanne Groover, Faye Templin, Christine Mackey, Joan Anthony, Ann Hutchinson, Phyllis Britton, Ray Ledford, David Clayton, Bill Crump, Kent Thomas, Chun Phillips, Danny Hayes, Ernest Tupper, Johnny Atha. (Right inset) Don McElroy, President. (Left inset) "Henry".

The Choir . . . and how!



As in years past the Tennessee Wesleyan College Choir has provided many hours of fun, hard work, and spiritual inspiration for its members.

The forty-five voice choir under the able and much beloved leadership of Jack Houts has toured the various churches in the Holston Conference bringing religious inspiration to its congregations as well as to its own members.

During the past season the choir has also toured into Virginia and Georgia, appearing on television in Atlanta, assisted in a beautiful rendition of the "Messiah" here in Athens, and

presented their own successful production of the musical comedy "Rosemarie" under the inspiring leadership of Jack and Charlotte Houts.

Accompanying this, the more serious vein, is a lighter one which brings memories of fast friends made, laughter, tears, hard work, fellowship and a lasting feeling of satisfaction. There is an indefinable "something" which causes suspiciously glistening eyes when we gather round our coffee cups to reminisce and recall how much the choir, its members and its leaders have done for and meant to each of us.

TO SERVICE AND TRUTH

The Religious Life of Wesleyan is emphasized by the organizations which maintain Spiritual Fellowship and Guidance. Believing that religion is essential in forming character, The Student Christian Association, The Life Service Volunteers, and The Wesleyan Fellowship foster the creating of men and women who have their faces lifted to the future, who have the desire to complete the unfinished tasks, and who have the passion to make the kingdom of God a reality among men.

"The measure of life is not its duration, but its donation".



Religious Council

Back row: Joan Anthony, Lawrence Clark, Bodo Weber, Virginia Patrick, Jimmie Knowles.

Front row: Mr. A. H. Myers, Mr. Carl Honaker, Betty Calmes, Faye Templin.





Back row: Bill Adams, Mr. Carl Honaker, Max Allison,, Roy Scroggins, Lawrence Clark, Mr. A. H. Myers, Bodo Weber. Front row: Virginia Patrick, Joan Anthony, Joanne

Grpover, Betty Martin, Bill Crump, Edith Smalley, Jim Pennington, Jimmie Knowles, Sue Padgett, Bettye Haney, Faye Templin.

Life Service Volunteers

The Life Service Volunteers are a group of students who are planning to go into full-time Christian service. They hold regular meetings twice a month and sponsor brotherhood week

and religion in life week. They make up the deputa-tion team, which gives worship programs in various churches and have at least two socials a year.

Trinity Church



Keith Memorial





First row: Sue Padgett, Virginia Patrick, Jean Sharp, Janice Hixson, Faye Templin, Jean Guinn, Audrey Walker. Second row: Mrs. Millard, Jimmie Knowles, President; Nancy Miller, Treasurer; Jane Burnett, Barbara Lowery, Pat Isenhower, Viola Huskey, Mary Lynn Boyd. Third

row: Joanne Groover, Otella Huffmaker, Betty Calmes, Nancy Jo Lillard, Bettye Haney, Joan Anthony, Vice President; Anne Hutcheson, Doris Weary, Kaye Margrave, Charlene Haney, Jo Ann Harrison, Ruth Leatherwood.

Wesleyan Fellowship Student Christian Association

Back row: Carl Honaker, Bo Weber, Roy Scroggins, Lawrence Clark, Max Allison, Christine Mackey, Ernest Tupper, Bill Crump, Danny Hays, Bill Adams, Joe Crowson. Third row: Joanne Groover, Hilda Remine, Margaret Ogle, Ann Emert, Dorothy Scott, Virginia Patrick, Charlene Haney, Kaye Margrave, Betty Martin, Nancy Hammer, Margaret Yates, Faye Templin, Jo Ann Harrison, Mary

Lynn Boyd. Second row: Prof. Myers, Anne Hutcheson, Bettye Haney, Ruth Leatherwood, Nancy Miller, Betty Calmes, Joan Anthony, Viola Huskey, Doris Weary, Paul Watkins, Carolyn Robertson, Nancy Jo Lillard. First row: Jimmie Knowles, Polly McGuin, Debbie Smail, Jean Sharp, Jane Burnett, Pat Isenhower, Jean Guinn, Betty Shetterly, Janice Hixson, Sue Padgett.



International Social Club

Left to right: Graciella Gomez, Blaine Miller, Lorenzo Eenmannelli, Osiris Martinez, Mr. Donner, Bodo Jose Weber, Virginia Sue Patrick, Carlos Maal, Freddy Maal. Not shown: Ann Hutcheson and Betty Calmes.



Veterans Club

First row: Bill Baskett, Lee Duckett, Bob Allen, Bob Bledsoe. Second row: Dave Lillard, Charles Davidson, Raymond McQuain, James Moore, Thomas Tiller, Don Long, Hoyt Sievers, David Sigman. Third row: Chun Phillips, Ed Long, Jack Thompson, Donald Lock, Ralph White, Tom North, W. R. Bickley. Vets Not Present: George Lusk, Jim Wade, Roy Johnson, Hershel Sherlin, Pete Wilson, Eddie Appleby, George Margrave, Ray Baker, Charles Inzer, William Johnson, Norwood.

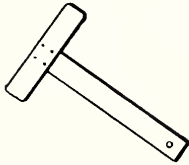




Left to right: (back) Bo Weber, Joe Grayson, Ernest Tupper. Second row: Debbie Smail, Doris Weary, Nancy Lillard, Betty Shetterly, Jane Burnett, Pat Isensower, Jo Ann Harrison, Sally Martin, Betty Calmes, Jean Guinn.

Front: Joan Sharp, Joan Anthony, Virginia Patrick, Bill Adams, Nancy Miller, Ruth Leatherwood. Not Shown: Phyllis Britton and Charlene Haney.

Nocatula Staff



The Nocatula is an all-work proposition and those who gave, gave unselfishly to its cause. To them and to our sponsor, Mr. Rogers, goes my thanks and appreciation for the quality and workmanship you find on these pages.

— Bill Adams

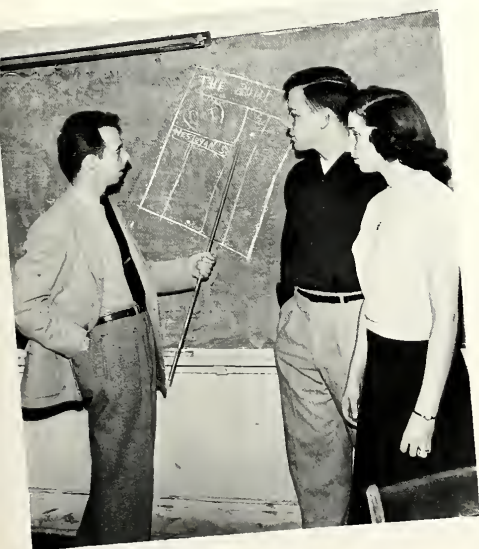
Bill Adams, Editor; Mr. E. G. Rogers, Sponsor; Virginia Patrick, Associate Editor.





Front row: Lila Henne, Virginia Patrick, Carolyn Robertson, Helen Johnston, Joan Anthony, Jean Guinn, Debbie Smail. Second row: Paul Watkins, Joanne Snyder, Danny Hays, Mr. Charles O'Reilly, Hilda Remine, Sally Martin, Jimmie Mae Knowles. Third row: Jean Sharp, Charles Newbern, James McQuain, Phyllis Britton, Polly McQuin,

Mary Helen Heatherly, Ernest Tupper, Bodo Weber, Doris Weary, Janice Hixson, Bobby Pope, Faye Templin, Jane Burnett. Fourth row: Stanley Knight, Don McElroy, Bill Fullam, John Atha. Not pictured: Bill Adams, Reaves Bingham, Lee Asbury, Betty McMahan, Osiris Martinez, Betty Shetlerly, Edith Smalley, Dick Creech.



Bulldog Staff

Sponsor — Mr. Charles O'Reilly

Editor.....	Danny Hays
Assistant Editor.....	Hilda Remine
Feature Editor.....	Sally Martin
Sports Editors.....	John Atha
	Paul Watkins
Society Editor.....	Joanne Snyder
Activities Editor.....	Debbie Smail
Photography Editor.....	Ernest Tupper
Business Manager.....	Helen Johnston
Assistant Business Mgr.....	Charles Newbern
Circulation Manager.....	Reaves Bingham



Standing: Jo Ann Harrison, Nancy Miller, Jimmie Merrell, Joe Crowson, Miss Hale, Paul Watkins, Anne Hutcheson, Ruth Leatherwood, Joyce Jarvis. Seated: Sara Barnett, Betty Corn, Janice Hixson, Joanne Snyder, Helen Johnston, Lila Henne, Wayne Riden, Hoyt Campbell.

Art Club

Front row: Mrs. A. H. Myers, Hilda Remine, Betty Parks, Debbie Smail. Back row: Pat Isenhower, Otella Huffaker, Hazel Clark, Zelma Hamilton, Jim Pennington. Not Pictured: Paul Watkins, Nancy Hammer.

Library Staff





Back Row: David Kirk, Ralph White, Bobby Pope, Charles Inzer, Frank Henson, George Margrave, Warren White, Bob McMillan, Robert Allen, Lloyd Daugherty, Charles Newbern. Second Row: Pete Wilson, Johnny Atha, Paul Phillips, Kenneth Gregory, Roy Johnson, Eddy Appleby, Ray Ledford, Lee Asbury, J. D. Lewis, Jack Childs. Front Row: Joe Grayson, Don McElroy, Don Patrick, H. L. Hamilton.

Boys Letter Club

Girls Letter Club



Bettye Haney, Doris Weary, Jean Guinn, Betty Barnett, Kaye Margrave, Betty Shetterly.

THE GREEKS



Pan Hellenic Council. First row: Mr. Dick Johnson, Mr. Levis Hampton, Mrs. Levis Hampton, Mr. J. Van B. Coe, Mrs. Rankin Hudson, Mr. Carl Honaker, Mr. James Fitzpatrick. Second row: Kaye Margrave, Doris Weary, Danny Hayes, Jim McQuain, Bill Crump, Janice Hixon, Debbie Smail. Not shown: G. A. Yates, Mrs. A. H. Myers, Mrs. Jack Houts, Mrs. Marvin Shadel.

PAN HELLENIC COUNCIL





Back: Danny Hays, Joanne Snyder, Josie Keith, Joan Anthony, Debbie Smail, President; James Garrett, Bill Adams, Vice President. Front: Virginia Patrick, Secretary-

Treasurer; Bill Crump, Mr. Levis Hampton, Sponsor; Don McElroy. Not shown: Sally Martin.

DELTA PSI OMEGA

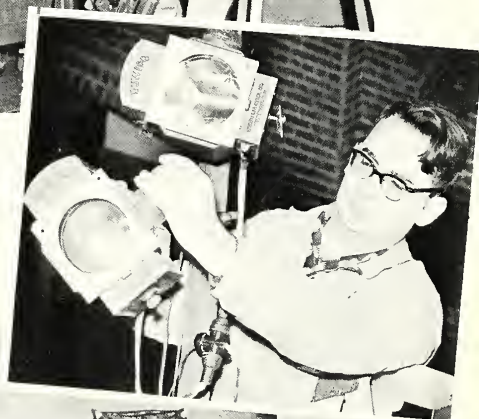
The 129th cast of Delta Psi Omega serves as the honorary dramatic fraternity of the college. Those students with grease paint in their veins

gain membership through their efforts in the organization and production of plays and radio programs.





This year we produced James Montgomery's "Nothing But the Truth"; played it two nights at Wesleyan and took it on the road to three more towns in East Tennessee. For those of us in the cast it proved an indelible part of our memories of fellowship and work at Wesleyan.



BETA CHI CHAPTER

Phi Theta Kappa is the junior college honorary scholastic society and there are Chapters all over the United States. We of the Beta Chi chapter enjoyed a successful year under the sponsorship of Prof. Douglass. The annual national con-

vention this year was held at San Antonio, Texas, during the week-long Fiesta de San Jacinto. We strive to promote scholarship and character among the members as well as non-members.

Left to right: W. R. Bickley, Lucille Clark, John McKenzie, President; Blaine Miller, Betty McMahan, Itzelle Hannah, Mr. C. O. Douglas, Sponsor; Janice Hixson, (inset) Bill Adams.



PHI RHO PI

For those who like to disagree and prove it, the Phi Rho Pi Forensic Society gave the opportunity. Nourished by the friendly philosophy of Professor Rogers, we found it possible to

travel the length of Tennessee to enter the state convention finals at Memphis. The F.E.P.C. will never be the same!

Standing: Bill Adams, Jim McQuain. Seated: Stanley Knight, Mousa Abou, Mr. E. G. Rogers, Sponsor; Lee Asbury, Vice President; Bob Bledsoe, President. Not shown: Don McElroy, Ray Ledford.



ETA UPSILON GAMMA



Back: Itzsalle Hannah, Janice Hisson, Gloria Pennington, Shirley Jenkins, Otella Huffaker. Middle: Hazel Clark, Edith Smalley, Joyce Jarvie, Mrs. Marvin Shadel, Myra Walkup, Dorothy Scott, Christine Mackey, Betty McMahan. Front: Hilda Remine, Nancy Kelso, Betty Martin, Betty Parks, Theresa Chappellear, Connie McDonald. Not shown: Virginia Patrick.

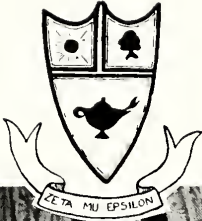
Eta Upsilon Gamma is one of the four national junior college sororities on the campus. Each group is assigned a duty for a fund raising by the Pan Hellenic Council. With cries of "Hot dogs, shakes, programs, cokes," the Gammas had charge of all the concessions at the home football games. It was also their privilege to act as host to the annual Valentine dance where the King and Queen of Hearts were crowned. The royalty were selected by popular choice of the students and their reign constitutes one of the high points in the social life of the campus.



President — Janice Hixson
Sponsor — Mrs. Shadel



ZETA MU EPSILON



Back row: Betty Calmes, Ann Hutcheson, Phyllis Britton, Josie Ann Keith, Jean Guinn. Third row: Mrs. Hampton, Joan Anthony, Betty Jo Brock, Doris Weary, Lila Henne. Second row: Nancy Miller, Pat Isenhower, Jimmy Lou Vestal. Seated: Betty Haney, Jo Ann Harrison, Faye Templin, Jane Burnett, Audry Walker, Margaret Yates. Not pictured: Jean Riddle, Inez Riddle, Sara Barnett.

Zeta Mu Epsilon Sorority has striven this year to make lasting friendships and to uphold the high ideals for which the sorority stands. We have had one of our most successful years, being honored with two fraternity sweethearts, Junior and Senior Beauties, three superlatives, basketball captain and co-captain, vice president of student council, head cheerleader, football queen attendant, and vice president of the senior class.

We selected Don McElroy as our sweetheart, whom we honored at our annual dance. We also staged a caravan which brought happiness to a country school and thirteen families. We have carried out all our projects with the untiring efforts of our sponsor, Mrs. Levis Hampton.



Above: President, Doris Weary with sponsor, Mrs. Levis Hampton.

Below: The Christmas Caravan and our Sweetheart.





KAPPA DELTA PHI



Top row: Helen Johnston, Mary Alice Goss, Sue Padgett, Mrs. Jack Houts, Ann Emert, Nancy Jo Lillard. Second row: Polly McCuin, Mary Ruth Leatherwood, Joanne Groover, Viola Huskey, Mary Belle Layman, Jimmie Knowles, Margaret Ogle. Front row: Jean Sharp, Carolyn Jo Robertson, Marcia Mae Allen, Debbie Smail, Sally Snyder, Jean Acuff, Mary Lynn Boyd.

A new addition to sorority life this year is the meeting rooms in Ritter Hall. Kappa Delta Phi's main project has been the redecoration of its room. Their annual dance was held in March, the shamrock season. For the raising of funds, they have sold various personal supplies in Ritter and Lawrence Halls. In the homecoming parade, they participated in a float with two other sororities and won a second prize. Late in the spring they held their annual banquet where officers for the year 1953-54 were presented to the group, their alumni and friends.





SIGMA IOTA CHI



Top row: Mary Helen Heatherly, Shirley Holt, Joanne Snyder, Kaye Margrave, Mrs. Rankin Hudson, Charlene Haney. Middle row: Mary Ellen Kimbrough, Regenia Lawson, Marilyn Baskette, Betty Lou Neal, Barbara Lowery, Jo Ann Boles, Elizabeth Potts. Front row: Sally Martin, Robbie Jean Ensminger, Barbara McIntyre, Betty Jean Shetterly, Shirley Runyon, Betty Jean Anderson, Sherry Heriot, Helen Turner.

Sigma Iota Chi, the oldest national sorority on the Wesleyan campus, has a membership of twenty members. This year their money-making project was that of selling refreshments at the Athens Artist Series. Their clever "Hold That Line" float which attracted so much attention in the homecoming parade, was awarded first prize. Sigma Iota Chi's other activities included a chapel program, a banquet and the annual spring dance held in April, as well as cooperating in intersorority projects such as selling hot dogs and coffee in the dormitories at night and supplying models for the local civic club quiz program.



Sponsor Mrs. Rankin Hudson and President Kaye Margrave.





PHI SIGMA NU

Sponsor Levis Hampton and President Bill Crump. Other officers: Lee Duckert, Vice President; John McKensie, Secretary; James Guffey, Treasurer; Stanley Knight, Sgt. at Arms; David Kirk, Pledge Master; Jack Randall, Chaplain; Bill Adams, Reporter.

Back row: Wayne Riden, Blaine Miller, Mincy Ledford, John McKensie, Vonne Williams, Kent Thomas, Dave Kirk, A. W. Nichols. Front row: Stanley Knight, Jack Randall, Hoyt Cambell,

Mr. Hampton, Bill Crump, James Guffy, Bill Adams and "Robinhood". Not pictured: Lee Duckert, Thomas Weeks and Hon. Sponsor Charles O'Reilly.



To us the letters Phi Sigma Nu are synonymous with fellowship and fond memories. To our sweethearts this year and last and to all our friends who shared with us and helped us to make Wesleyan mean as much as it has, we extend a warm hand of thanks and a sad heart at parting. To Levis Hampton (Pop) we owe it all and though we will never repay that debt, we will look forward to the chance to make instalments. Right: Our Dream Girl — Kaye Margrave





ETA IOTA TAU

Sponsor, Dick Johnson with President Danny Hays. Other officers: Ernest Tupper, Vice President; Ronald Crabtree, Secretary; Lawrence Clark, Treasurer; Don McElroy, Pledge Master.

Back row: John Atha, Ken Gregory, Hal Malone, Mr. Richard Johnson, Don McElroy, Bodo Weber. Seated: James Garrett, Lawrence Clark, Danny Hays, Jo Crowson Ronald Crabtree. Front:

Charles Newburn and Paul Watkins. Not pictured: Mr. Carl Honaker, Ernest Tupper, James Samples.



OUR CREED

We the members of the Greek fraternity, the Eta Iota Tau, established on the campus of Tennessee Wesleyan College, in order to promote better fraternal feeling, to create life lasting friendships, to encourage high scholarship, and to develop high ideals of integrity, truth, loyalty, and faith do hereby establish this as our creed.



Right: Sweetheart of '52-'53, Miss Doris Weary





THETA SIGMA CHI

Sponsor Roy Fitzpatrick and President Jim McQuain. Other officers: Bob McMillan, Vice President; Lee Asbury, Secretary; Bill Fullam, Treasurer; Fred Cotten, Sgt. at Arms.

Back row: Fred Cotten, Jim McQuain, Charles Fletcher, Mr. Fitzpatrick, Bill Fullam. Front row: Chuck O'Rear, Ray McQuain, Phil Honey, Dallas Anderson, Bob McMillan, Gerald Gully,

Lee Asbury, and "Snowball". Not pictured: Charles Stone, Frank Hensen, Mr. James Wilson, Co-sponsor.



Nineteen fifty-three completes the Theta Sigs' seventh year on the Wesleyan Campus. As usual it has been another year of success for all. Socially, scholastically and civically, we have contributed to the leadership of the student body.

Our sweetheart for 1953 has been a tremendous asset to our organization and we take this time to express our thanks to Miss Jean Guinn.

With heavy hearts we look back upon the activities of another successful year. Although life's paths will separate many of the brothers, our feeling of unity will always exist.

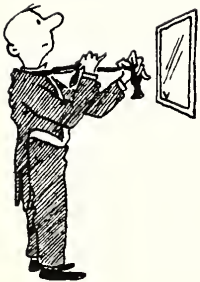


Our Sweetheart



CAMPUS LIFE

We remember those carefree moments spent
in the pursuit of lasting friendships.



— ritter hall



Honor all men, love the brotherhood. 1 Peter 2:17



JUNIOR BEAUTY — Betty Calmes



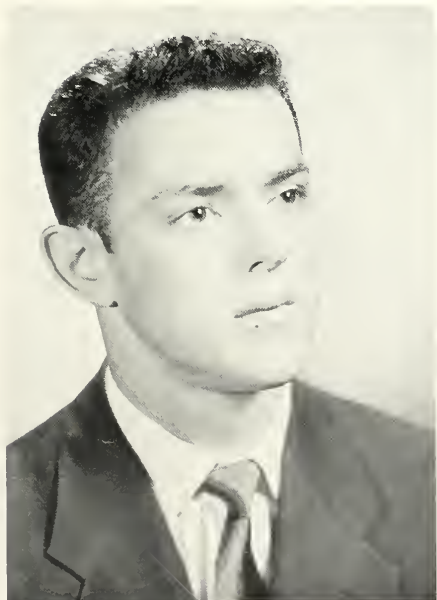
SENIOR BEAUTY — Sara Barnette



Football Queen - Helen Johnston. Attendants - Sara Barnett, Marcia Mae Allen.

WESLEYAN'S HANDSOMEST

Senior: Frank Henson



Junior: Charles Newbern

SUPERLATIVES



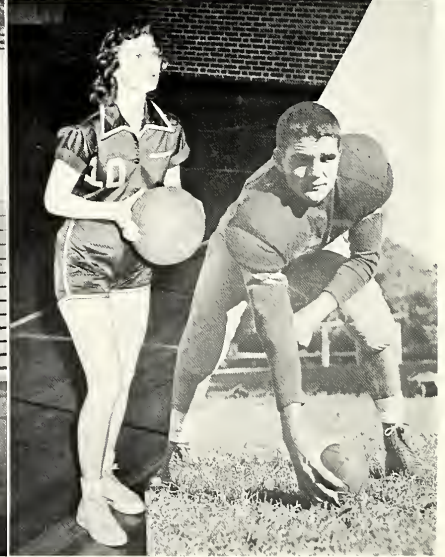
Most Popular - Kaye Margrave, Lee Asbury



Best Dressed - Betty Lou Neal, Osiris Martinez

Most Likely to Succeed - Hilda Remine, John McKenzie

Most Athletic - Jean Guinn, Charles Stone





Best All Around - Bettye Haney, Don McElroy



Best Personality - Jean Sharp, Ralph White

Most Talented - Carolyn Robertson, Bill Adams

Most Friendly - Pat Isenhower, Danny Hays



HOMECOMING

United, happy hearts; the big parade; the winning "Bulldogs" on the gridiron - all this and more that cannot be expressed in writing spell Homecoming at Wesleyan.



The Prophets

The girls came back



The boys who won



Wesleyan through the ages

Advice for the boys

Crowning the Queen



L S V PICNIC 1952

FUN



FOOD



FELLOWSHIP

SPRING FESTIVAL

ROSE MARIE



TOTEM TOM TOM

VIVA LA CANADIENNE



LAWRENCE LAFFS



The Junior Birdmen!



After chow . . . chow



Riot Detail



Time out for time in



To sooth the savage . . .

RITTER RIFTS



... Better than one



circle of confusion



Lovely hands



It happens at midnight

THE FORMALS

Hit Parade



Crystal Room



The Girls



Homecoming



Christmas Capers

GENERAL GAS

Dating - et al



Kitchen Kabinet



Seagoing Wesleyans



See!



Reception



ATHLETICS

We remember those times when we cheered our teams on to their many victories which made our dear "Ole Alma Mater" so famous.



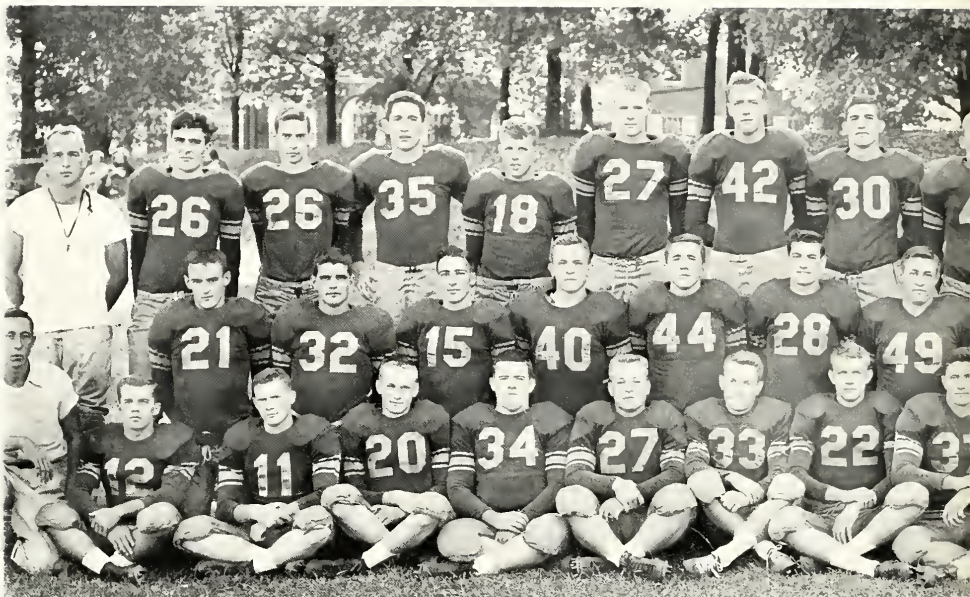
— robb gym



Jo Ann, Elaine, Burnette, Ann,
Betty Calmer, Kaye Margrave.

... Kimbrough, Betty ...

Be of good courage and let us play the men for our people.
II Sam. 10:12



Standing: Coach Ace Adams, Charles Inzer, Jimmy Dodson, Ralph White, A. W. Nichols, Johnny Atha, Robert Allen, Warren White, Bill Buchanan, Doc McCaslin, Ray Ledford, Bill Brakebill, Coach Rankin Hudson. Second row: Lee Asbury, Charles Stone, Bob McMillan, Charles O'Rear, Bobby Harris, Jack Childs, Roy Johnson,

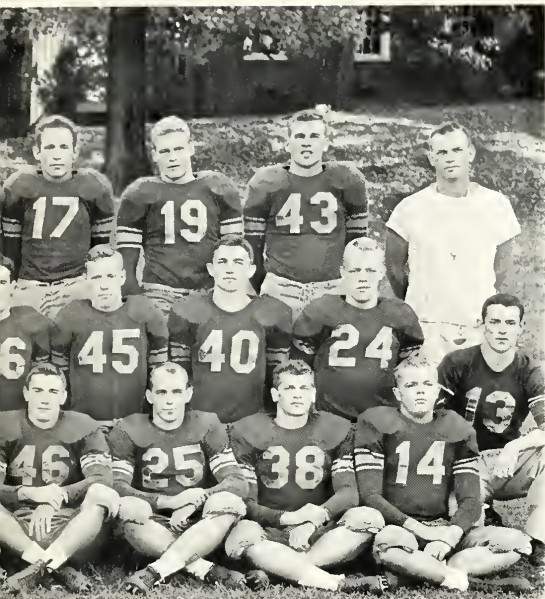
Eddy Appleby, Hoyt Sievers, Kenneth Gregory, Don McElroy, Charles Newburn. Front: James Sherlin, J. D. Lewis, Red Baker, H. L. Hamilton, Kinzel Baker, Bobby Pope, Pete Wilson, Paul Durham, Jimmy Wade, Gene Pharr, George Margrave, Paul Phillips, George Lusk.



"DADDY"

FOOTBALL

WE	OPPONENT	THEY
34	Hiwassee	0
18	Middle Georgia	7
25	West Georgia	0
18	Asheville Biltmore	12
9	Carson Newman	20
34	Hiwassee	13
20	U. T. Senior	7
12	Maryville (Aluminum Bowl)	20
170	TOTALS	79



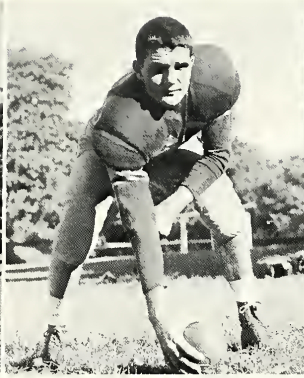
ALL FOR WESLEYAN!



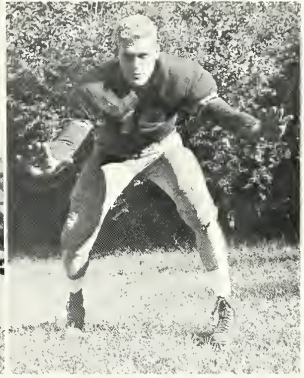




"Pistol" Co-Captain



"Hard Rock" Co-Captain



"Uncle Ray"

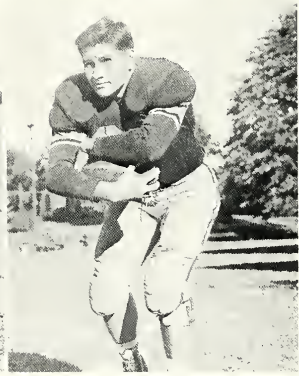


"Washington"



"Gut"

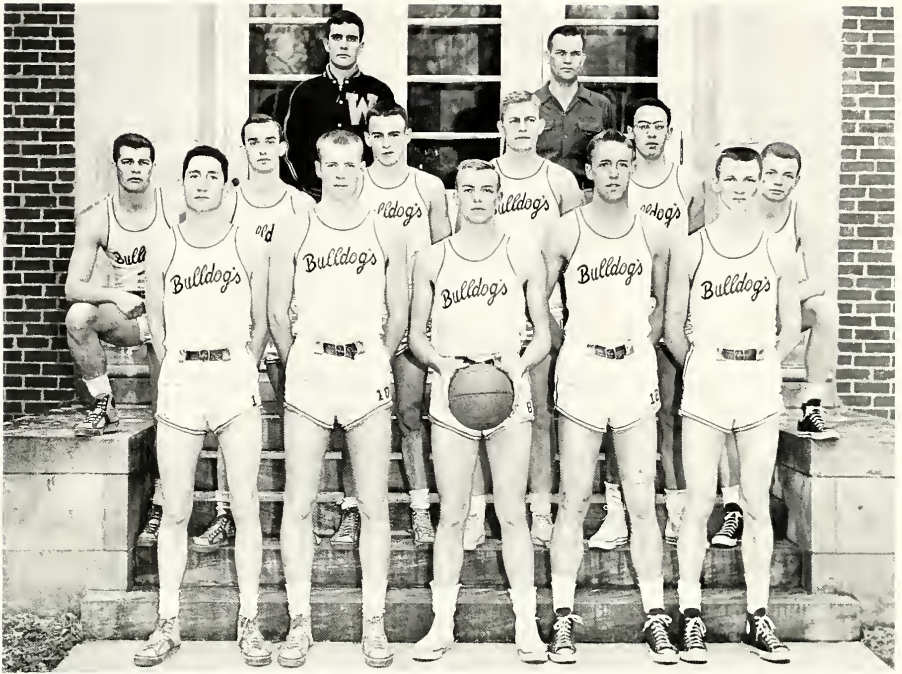
"Chun"



"Big Jim"

"Ring Eye"





Back: Charles Inzer, Manager; Coach Rankin Hudson. Second row: Paul Phillips, Charles Burris, Lee Asbury, Lloyd Daugherty, David Kirk, Bobby

Gibson. Front: Ralph White, John Atha, Don Patrick, Bob Allen, Bill Wilson.



BASKETBALL

WE	Scores* OPPONENT	THEY
77	University of Georgia Ext.	71
58	Young Harris	64
84	West Georgia	56
70	Belmont	60
82	Hiwassee	71
86	West Georgia	37
70	University of Georgia Ext.	79
69	Maryville	80
64	Berry	67
77	Emory and Henry	64
78	Berry	73
815	TOTALS	722

* To date of printing

Don Patrick - Captain
—All done with springs



Dingle



Catfish



Gib



Machine Gun



Fudd



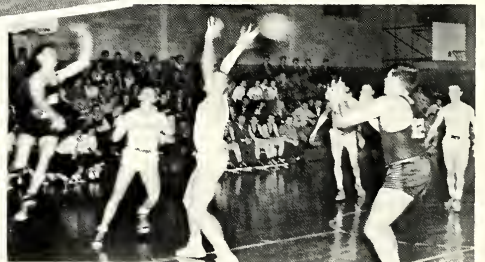
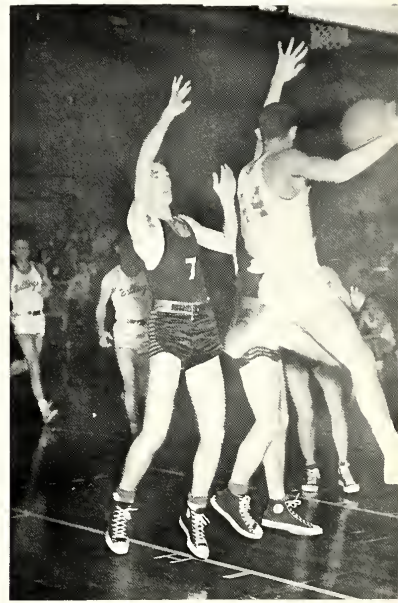
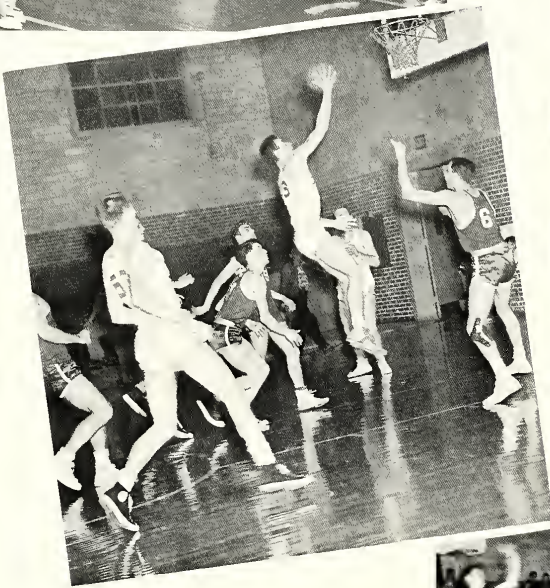
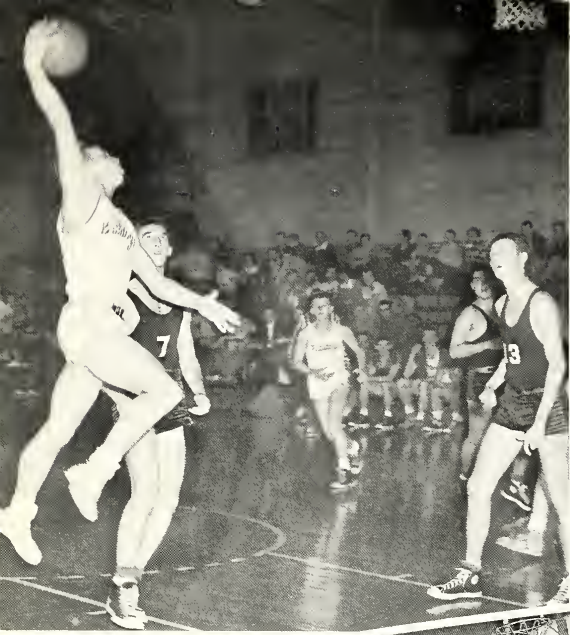
Birdlegs

Speed

Chun

Lover







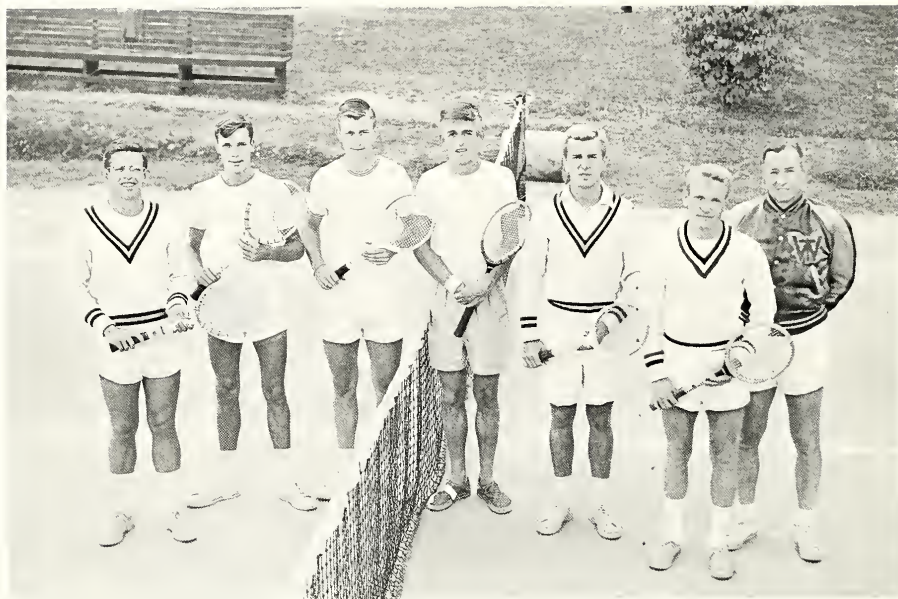
Standing: Marilyn Basket, Betty Barnett, Ruth Leatherwood, Coach Van Coe, Joyce Jarvis, Betty Calmes, Pat Isenhower (Manager). Front: Viola

Huskey, Doris Weary, Bettye Haney, Otella Huffaker, Jean Guinn, Nancy Lellard, Audrey Walker.

GIRLS' BASKETBALL



co-captains
Jean Guinn
Bettye Haney



Left to right: Eugene Mahaffey, Joe "Tiger" Harris, John McKensie, Billy "Deacon" Watts, Moris Beecroft, Pete Wilson, Dean J. Van Coe.



Pete Wilson
— Pigskin to catgut

TENNIS

Johnny McKensie
— also a racket in groceries

In the spring of 1952 the racket swinging Bulldogs sliced and backhanded their way to the Southeastern Junior College Conference Championship. — Well done, men!



. . . Of course there are other things about Wesleyan we remember; things that cannot be printed on paper; great memories that these pages only suggest to those of us who were there. We sincerely hope that the class of 1954, who are only beginning to know what Wesleyan means, will find next year as rich and meaningful as this year was to us. To them we say, "Goodbye, good luck, and God bless you."





For Reference

Not to be taken from this room

Merner - Pfeiffer Library
Tennessee Wesleyan College
Athens, Tennessee

