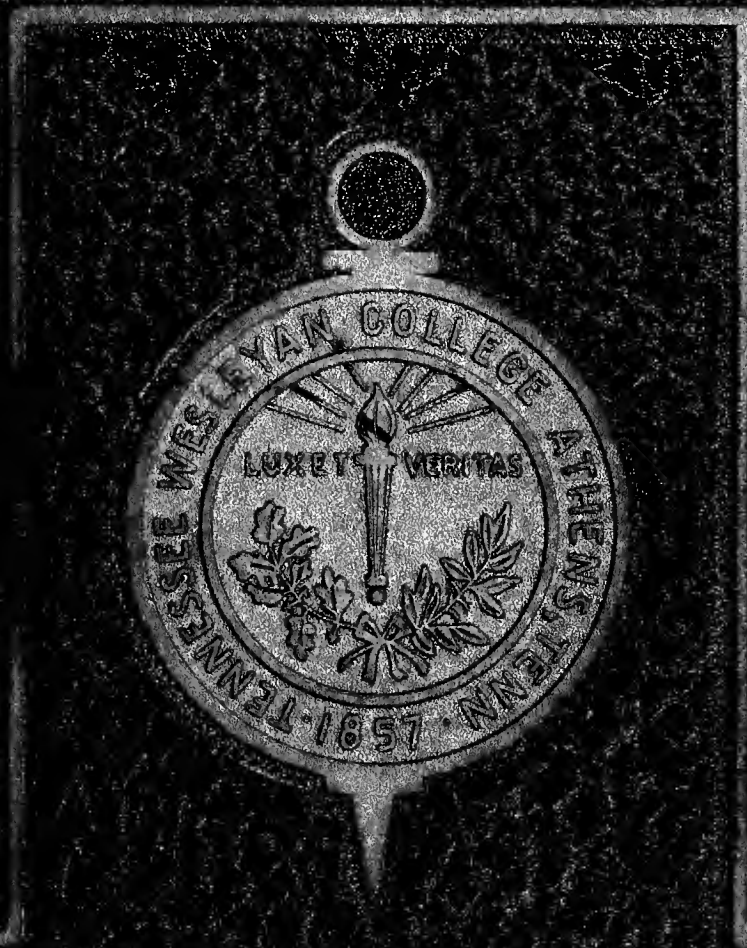


# *Nocatula*



1960



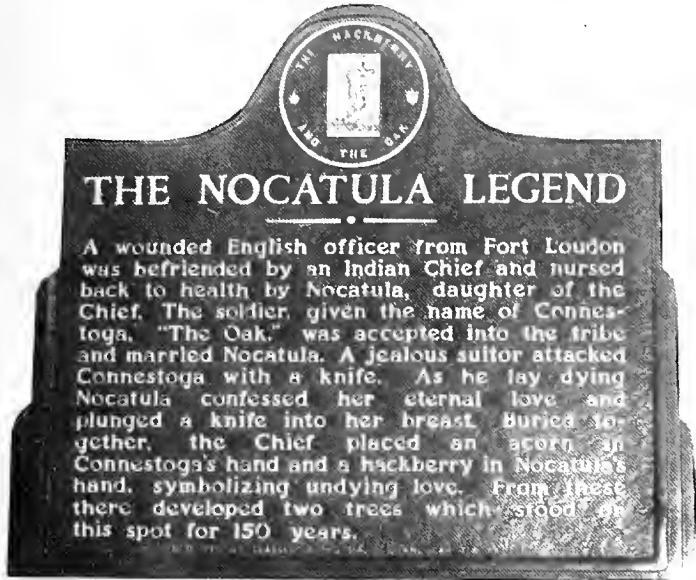
Digitized by the Internet Archive  
in 2011 with funding from  
LYRASIS Members and Sloan Foundation

<http://www.archive.org/details/nocatula196000tenn>





# Tennessee Wesleyan College



... united in its efforts to create within its students sound scholarship and Christian ideals that produce mentally healthy persons, emotionally integrated, and socially cooperative.

## Recorded in this — the Nineteen Sixty Nocatula

by

BETTY POTTER  
*Editor*

CHARLES KETRON  
*Layout Editor*

RICKY PERACHIO  
*Photographer*

MISS JOAN BRIDGES  
*Sponsor*

W  
373.6  
T25  
1960

Memor-Pfeiffer Library  
Tennessee Wesleyan College  
Athens, Tennessee

# WELCOME, DR. MOHNEY



## DR. RALPH WILSON MOHNEY

When Dr. LeRay A. Martin left to become the President of the University of Chattanooga, the Board of Directors of Tennessee Wesleyan College indeed had a responsibility . . . to secure a man with the ability, devotion, and tact to meet the challenge that Wesleyan offers with its new status as an accredited four-year college. These qualities they found in the person of Dr. Ralph Wilson Mahney.

Dr. Mahney holds a Bachelor of Arts Degree from Transylvania College in Lexington, Kentucky, a Bachelor of Divinity Degree from the Vanderbilt University School of Religion, and a Master of Sacred Theology Degree from Boston University. He has done additional graduate work at Harvard University

and the Garrett Biblical Institute. He was also granted the honorary Doctor of Divinity Degree by Emory and Henry College.

Dr. Mahney has served various churches throughout the Halston Conference. When he accepted the presidency of Wesleyan, he was serving as Superintendent of the Kingsport District. He and his wife, the former Nell Marie Webb, and sons, Richard Bentley and Ralph Wilson, Jr., came to Athens in July 1959. At ceremonies held in Townsend Memorial Hall on October 3, 1959, Dr. Mohney was formally inaugurated as President of Tennessee Wesleyan College.

# INAUGURATION DAY



Dr. F. Heisse Johnson, Dr. John O. Gross, Dr. Mohney, Dr. R. R. Kramer, Rev. Conway Weikel, Bishop Roy H. Short, Dr. Horold C. Cose.



Former President Dr. LeRoy A. Mortin congratulates Dr. Mohney.



Bishop Roy H. Short and Dr. Mohney chat after the Inauguration ceremonies.



Many delegates remain for the Inaugural luncheon.



The Mohneys greet guests at their home following the Inauguration.



Dr. and Mrs. Mohney, Rolph Wilson, Jr., and Richard Bentley in their home.



MERNER PFEIFFER LIBRARY





# DEDICATION



DR. RICHARD M. JOHNSON

Dr. Richard Mann Johnson came to the campus of Tennessee Wesleyan College in the fall of 1951 with a B.S. degree from Ohio State University and an M.S. degree from Tulane University. At that time, Tennessee Wesleyan College was a two-year college. There was talk of the possibility of Wesleyan's becoming a four-year degree granting institution. Dr. Johnson realized that to progress with the school it would be necessary to continue his education; therefore he began to study for his Ph.D., which he successfully completed at the University of Florida during a year's leave of absence from Wesleyan in 1956. The knowledge he gained he shares effectively with his students.

Dr. Johnson is held in high esteem by the entire student body as well as the faculty. For his scholarship, his high Christian ideals, his sense of duty and his friendly spirit, we dedicate to him this 1960 Nocotula.



"Scholar"



"Friend"



"Leading Man"

# PRESIDENT AND DEANS OF THE COLLEGE



RALPH W. MOHNEY, A.B., B.D., S.T.M., D.D.  
President of the College.



ROBERT C. MILDAM, Ph.B., B.D., M.A., Ph.D.  
Dean of the College and Professor of Religion and Philosophy.



PAUL RIVIERE, B.S., M.A., B.D.  
Dean of Admissions and Registrar.



FLOYD BOWLING, A.B., M.S., Ed.D.  
Dean of Students and Professor of Mathematics.









*Administration and Faculty*



# ADMINISTRATION



MARY NELLE GRAVES  
Administrative Secretary.



R. E. BRANHAM, C.P.A.  
Bursor.



EUGENE SADLER, B.S.  
Assistant to the Bursor.

# DIVISION OF SOCIAL SCIENCE



ALBERT H. BOWMAN, A.B., M.A., Ph.D.  
Chairman of the Division  
Professor of History.



J. VAN B. COE, A.B., M.A.  
Associate Professor of Economics and Sociology.

NOT PICTURED  
RAY E. SHORT, A.B., B.D.  
Associate Professor of Religion and Sociology.

# DIVISION OF EDUCATION, APPLIED ARTS, AND BUSINESS ADMINISTRATION



WILLIAM BOYD CATE, B.S., M.A.  
Instructor in Physical Education, Basketball and  
Baseball Coach.



FRED PUETT, B.S., LL.B.  
Instructor in Commercial Subjects.



B. T. HUTSON, B.S., M.S.  
Associate Professor of Business Administration.



ALF H. WALLE, B.S., M.S., Ed.D.  
Chairman of the Division  
Professor of Education  
Director of Evening College.



REVA PUETT, B.S., M.S.  
Assistant Professor of Home Economics and  
Assistant Dietitian.



E. G. ROGERS, B.S., M.A.  
Associate Professor of Education  
Instructor in Geography.



MRS. ROBERT C. MILDGRAM, B.S.  
Instructor in Physical Education.

# DIVISION OF LANGUAGE, LITERATURE, AND FINE ARTS



JOAN BRIDGES, B.A., M.A.  
Assistant Professor of English.



MARTHA B. HALE  
Instructor in Art.



MARY L. GREENHOE, B.M., M.M.  
Assistant Professor of Piano and Organ.



ROWLAND M. HILL, A.B., A.M., Ph.D.  
Chairman of the Division  
Professor of English.



WILLIAM ARCHER, B.A., M.A.  
Associate Professor of Foreign Languages.



JACK HOUTS, B.A., M.M.  
Associate Professor of Music and Choral  
Director.

NOT PICTURED  
HARRY W. COBLE, A.B., B.L.I., M.A.  
Assistant Professor of Speech and Dramatics.

NOT PICTURED  
CLARYSE DAVIS MYERS, A.B., B.S. in L.S.,  
M.A.  
Librarian.

MRS. WILLIAM ARCHER, B.A., M.A.  
Assistant Professor of English.



# DIVISION OF NATURAL SCIENCE



RICHARD M. JOHNSON, B.S., M.S., Ph.D.  
Professor of Biology.



M. CLIFTON SMITH, B.S., M.S.  
Associate Professor of Education, Mathematics and Science  
Director of Athletics.



CARL B. HONAKER, B.S., M.S., Ph.D.  
Chairman of the Division  
Professor of Chemistry and Physics.



RICHARD P. SAVAGE, B.S., M.S.  
Assistant Professor of Mathematics.

NOT PICTURED  
HELEN M. RICHARDS, A.B., M.D.  
Assistant Professor of Biology.



FLOYD BOWLING, A.B., M.S., Ed.D.  
Dean of Students and Professor of Mathematics.



# DIVISION OF PHILOSOPHY AND RELIGION



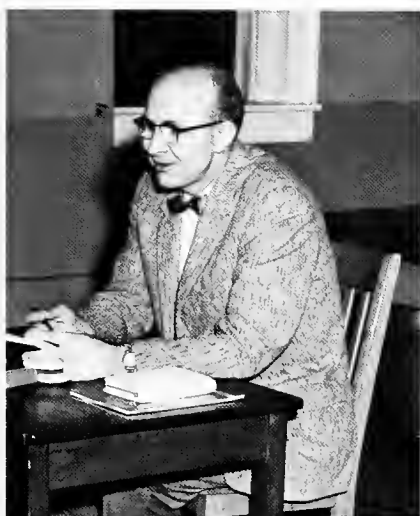
GORDON A. STERCHI, B.A., B.D.  
Instructor in Bible.



JOHN R. STEINER, B.A., B.D.  
Instructor in Bible.



ROBERT C. MILDAM, Ph.B., B.D., M.A.,  
Ph.D.  
Chairman of the Division  
Dean of the College and Professor of Religion and Philosophy.



WILMER B. ROBBINS, B.Ed., B.A., B.D.  
Instructor in Bible.



RAY E. SHORT, A.B., B.D.  
Associate Professor of Religion and Sociology.

# STAFF



CHARLES "BUDDY" LINER  
Director of Student Recruiting and Alumni Work.



MRS. H. A. SMITH  
Reader's Adviser.



MRS. FLOYD BOWLING  
Secretary to Dean of Students.



LOUIE UNDERWOOD  
Superintendent of Buildings and Grounds.



JANE ANN YARBROUGH  
Secretary to Librarians.



VERA COE  
Assistant Librarian.



IDA RUTH LEWIS  
Head Resident, Lawrence Hall.



REBA PARSONS  
Head Resident, Ritter Hall.



NANCY SEEPE  
Secretary to Dean of the College.



JUDY BURNETT  
Stenographer to Bursar.



PATRICIA HOOPER, NANCY WHITE, LEE BRAKE-BILL  
Stenographer, Secretary, Assistant to Registrar.



CLARYSE DAVIS MYERS  
Librarian.



MARILYN JOHNSON  
Manager of Book Store.



ROBBIE JEAN ENSMINGER  
Secretary to President.

# Classes



# SENIOR CLASS OFFICERS

OLD COLLEGE



# SENIORS



CHARLES ABERNATHY  
Madisonville  
Tennessee  
B.S., Accounting  
Phi Sigma Kappa 3,4.

JOHN JOSEPH ALISE  
Greenwood Avenue  
Butler, New Jersey  
B.S., Education  
Sigma Phi Epsilon 1,2,3,4; Sergeant-at-Arms 1; Pledgemaster 2; President 3; "W" Club 1,2,3,4; Sergeant-at-Arms 3,4; Football 1,2; Baseball 3,4; Drama Fraternity 3,4; Zeta Mu Epsilon Sweetheart 3.



LETHA ANN CHAPPELEAR ALLEN  
Williams Street C-4  
Athens, Tennessee  
B.S., Education  
Transferred from Belmont College.

RICHARD WILLIAM ANDERSON  
1444 N. W. 5th Avenue  
Ft. Lauderdale, Florida  
B.S., Secondary Education  
Phi Sigma Kappa 2,3,4; Reporter 2; Vice-President 3; Grand Councilman 4; Student Council 3,4; Boy Representative 4; Junior Class President; Religious Life Council 4; BULLDOG Staff 2,3,4; Sports-Editor; Social Life Committee 3; Director of Intramural Sports 4; Track 1; Captain.

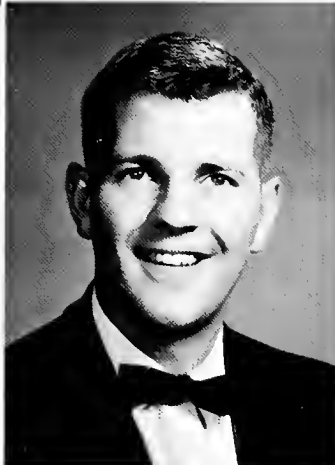
JOHN JESSE BACON, JR.  
Greer Apartments  
Loudon, Tennessee  
B.S., Accounting  
Transferred from East Tennessee State College; Phi Sigma Kappa 3,4; Grand Councilman 3; Secretary 4; Alpha Beta 3,4; Vice-President 4; Veterans' Club 2,3,4; Secretary 3; President 4.

WHO'S WHO AMONG STUDENTS  
IN AMERICAN UNIVERSITIES AND  
COLLEGES

MARY O'DELL BAUGH  
Tozwell  
Virginia  
B.A., Religion & Philosophy  
Student Christian Association 1,2,3,4; Wesleyan Worship Chairman 2; Wesleyan Fellowship 1; Religious Activities Committee 1; Life-Service Girls 1,2,3,4; Dorm Program Chairman 1; BULLDOG Staff 1,2; Social Life Committee 1; Independents 1.

CHARLOTTE ELIZABETH BAKER  
Bluefield  
Virginia  
B.S., Religion & Philosophy  
Transferred from Hiwassee College; Zeta Mu Epsilon 3,4; President 3; Secretary 4; Music Fraternity 4; Student Christian Association 3,4; Life-Service Girls 3,4; Assistant Chapel Organist 4.

JOHN RAYMOND BEAN  
Route B  
Maryville, Tennessee  
B.A., Religion & Philosophy  
Transferred from Maryville College; Religious Life Council 4; Student Ministerial Association 3,4; Reporter 3; Vice-President 4.





# SENIORS



DAVID HERBERT BECKLER  
Box 333  
Ducktown, Tennessee  
**B.S., Education**  
Transferred from University of Tennessee; Choir 3,4; Social Chairman 4; BULLDOG Staff 3,4; News Reporter.

GARY DEAN BEST  
Route 1  
Friendsville, Tennessee  
**B.S., Education**  
Sigma Phi Epsilon 1,2,3,4; Chaplain 2,3; Vice-President 4; Alpha Beta 3,4; Student Council 3; Vice-President 3; Choir 4; Poetry Club 1,2,3; Vice-President 2; Student Christian Association 1,2,3,4; President 2,3; Vice-President 4; Religious Life Council 2,3,4; Social Life Committee 2; Wesleyan Roundtable 3,4; President 4; International Club 3.  
WHO'S WHO AMONG STUDENTS IN AMERICAN UNIVERSITIES AND COLLEGES.



CHARLES CURTIS BURNETT, JR.  
Route 9  
Knoxville, Tennessee  
**B.A., History**  
Transferred from Hiwassee College; Student Christian Association 3,4; Student Ministerial Association 3,4.

ALICE VAUDINE CRAVEY  
399 Farrest Avenue  
Athens, Tennessee  
**B.S., Elementary Education**  
Sigma Iota Chi 3,4; Independents 1,2.

BARBARA JANE CRUMLEY  
303 East First Avenue  
Lenior City, Tennessee  
**B.S., Religion**  
Sigma Iota Chi 3,4; Life-Service Girls 4.

JUDITH MARIE DICKSON  
Route 5  
Athens, Tennessee  
**B.S., Education**  
Zeta Mu Epsilon 1,2,3,4; Corresponding Secretary 4; Baptist Student Union 3,4; Publicity 4.



GEORGE WILLIAM DORSAM  
446 Boston Post Road  
Rye, New York  
**B.S., History**  
Transferred from Centre of Kentucky; Wesleyan Roundtable 4.

ALLEN RICHARD DOUGLASS  
234 Kings' Road  
Madison, New Jersey  
**B.S., Education**  
Transferred from Hiram College; Sigma Phi Epsilon 3,4.



# SENIORS



WANDA LEE ELLIOTT  
10 Forrest Avenue  
Athens, Tennessee  
B.S., Education  
Sigma Iota Chi 1,2,3,4; Parchment  
Editor 2; Worthy Guard 3; BULL-  
DOG Staff 2.

CARL RONALD ELY  
B.A., Music  
Pennington Gap  
Virginia  
B.S., Secondary Education  
Phi Sigma Kappa 3,4; Athletic Di-  
rector 3,4; Basketball 4; Baseball  
3,4.



MARY GRACE FEEZELL  
Route 1  
Ten Mile, Tennessee  
B.A., English & Education  
Eta Upsilon Gamma 1,2,3,4; Editor  
3; Alpha Beta 2,3,4; President 4;  
Senior Class Secretary; Chair 1,2,  
3,4; Assistant Wardrobe Mistress 4;  
Alpha Psi Omega Drama Fraternity  
3,4; Poetry Club 1,2,3,4; Secretary  
2; President 3; BULLDOG Staff 2,3,4;  
Editor 3,4; NOCATULA Staff 1,2;  
Student Christian Association 1,2,  
3,4; International Club 3; Parliamen-  
tarian 3; Lawrence Hall President  
2,3,4.

FLORA MARGARET FRITZSCHE  
Box 254  
Shelbyville, Tennessee  
B.S., Elementary Education  
Eta Upsilon Gamma 2,3,4; Vice-  
President 4; Junior Class Secretary;  
Women's Athletic Association 1,2,  
3,4; Vice-President 4.

## WHO'S WHO AMONG STUDENTS IN AMERICAN UNIVERSITIES AND COLLEGES

FRED GOODEN  
Route 7  
Louisville, Tennessee  
B.A., Philosophy  
Sigma Phi Epsilon 4; Student Coun-  
cil 2; Poetry Club 1,2,3; Religious  
Life Council 3,4; Student Christian  
Association 1,2,3,4; Student Minis-  
terial Association 2,3,4; President 3;  
BULLDOG Staff 3; Religious Editor;  
Religion-In-Life Week Chairman 3,4.  
WHO'S WHO AMONG STUDENTS  
IN AMERICAN UNIVERSITIES AND  
COLLEGES

LOUIS NICHOLAS GUARINIELLO  
145 Paulisan Avenue  
Passaic, New Jersey  
B.A., Religion & Philosophy  
Transferred from Upsala College;  
Sigma Phi Epsilon 3,4; Chaplain 4  
Student Christian Association 4; Stu-  
dent Ministerial Association 3,4.

CORNELIA RAE HARRIS  
Box 145  
North Tazewell, Virginia  
B.A., Religion  
Zeta Mu Epsilon 3,4; President 4;  
Independents 1; Pan-Hellenic Coun-  
cil 4; Alpha Beta 2,3,4; Treasurer  
3,4; Chair 3,4; Section Leader 3,4;  
Librarian 3; Music Fraternity 2,3,4;  
Historian 3; Secretary-Treasurer 4;  
Life-Service Girls 1,2,3; Student  
Christian Association 1,2,3,4.  
WHO'S WHO AMONG STUDENTS  
IN AMERICAN UNIVERSITIES AND  
COLLEGES.

BETTY HAMPTON  
Lincoln Avenue  
Oxford, New Jersey  
B.S., Elementary Education  
Kappa Delta Phi 1,2,3,4; Historian  
4; Chair 2,3,4; Student Christian As-  
sociation 1,2; Ritter Hall Darm Coun-  
cil 1,2.





# SENIORS



**BILLY THOMAS HICKS**  
Clinton  
Tennessee

**B.S., Education**  
Sigma Phi Epsilon 2,3,4; Sergeant-at-Arms 3; Secretary 4; Choir 1,2,3; Assistant Business Manager 3; Poetry Club 1; Student Christian Association 3; Football 1.

**JOYCE ELINOR HOWARD**  
Blocker Lane  
Chattanooga 11, Tennessee  
**B.A., Music**

Eta Upsilon Gamma 1,2,3,4; Sentinel 2; President 4; Alpha Beta 2,3,4; Historian 3; Secretary 4; Student Council 4; Senior Class Representative; Choir 1,2,3,4; Secretary 4; Music Fraternity 2,3,4; President 2,3; Vice-President 4; Poetry Club 1,2,3,4; Treasurer 2; Secretary 3; NO-CATULA Staff 2,3,4; Student Christian Association 1,2,3,4; Women's Athletic Association 1,2.

**WHO'S WHO AMONG STUDENTS IN AMERICAN UNIVERSITIES AND COLLEGES**



**JIMMIE DAVIS HUGGINS**

Jones Street  
Maryville, Tennessee

**B.S., Education**  
Transferred from Hiwassee; Phi Sigma Kappa 3,4; Veteran's Club 4; Society for the Advancement of Management 4; Wesleyan Round-table 3,4.

**WANDA SUE JENKINS**  
Delano  
Tennessee

**B.S., Secondary Education**  
Baptist Student Union 3,4.

**BILLIE BEATRICE KENNEDY**

Box 507  
Athens, Tennessee  
**B.S., Education**

Sigma Iota Chi 1,2,3,4; Guard 2; President 3,4; Pan-Hellenic Council 3,4; Religious Life Council 4.

**BARBARA FOWLER KETRON**

6 Forrest Avenue  
Athens, Tennessee  
**B.S., Education**

Zeta Mu Epsilon 1,2,3,4; Secretary 2.



**CLAUDIA LAMB**

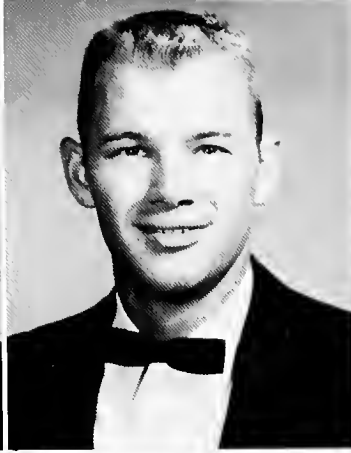
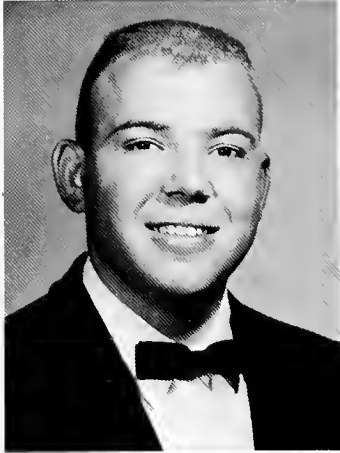
Jasper  
Tennessee  
**B.A., English**  
Transferred from University of Tennessee; Eta Upsilon Gamma 4; Chair 3,4; BULLDOG Staff 4; Reporter.

**RUTH AUGUSTA LEWIS**

Benton  
Tennessee  
**B.S., Education**  
Independents 1; Baptist Student Union 3,4.



# SENIORS



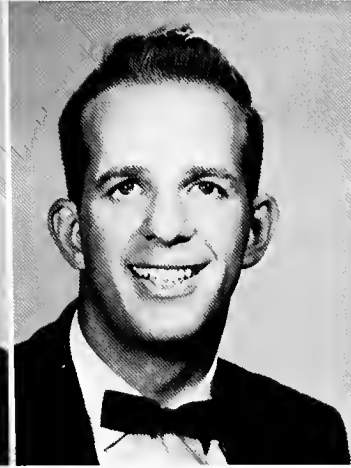
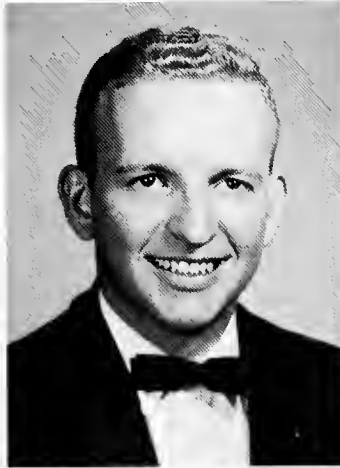
DAVID HERMAN LOVELACE

1511 Ringgold Road  
Chattanooga, Tennessee  
B.A., Religion & Philosophy  
Sigma Phi Epsilon 2,3,4; President 4;  
Eta Upsilon Gamma Sweetheart 4;  
Chair 1,2,3,4; Vice-President 3;  
Business Manager 4; Pan-Hellenic  
Council 4; Student Council 2;  
Sophomore Class President; Fresh-  
man Class Vice-President; Student  
Ministerial Association 1,2,3,4; Stu-  
dent Christian Association 1,2,3,4;  
President 4; Religious Life Council  
3,4; Cheerleader 1.

WHO'S WHO AMONG STUDENTS  
IN AMERICAN UNIVERSITIES AND  
COLLEGES.

MARVIN TYSON LOWRY  
Greenback  
Tennessee

B.S., Business Administration  
Transferred from University of Ten-  
nessee; Phi Sigma Kappa 3,4; Ser-  
geant-at-Arms 3; Treasurer 4; Bas-  
ketball 1,2; Society for the Ad-  
vancement of Management 4.



HARRY BYERS McCLURG

Mentor  
Tennessee  
B.A., Philosophy  
Transferred from Emory and Henry  
College; Sigma Phi Epsilon 2,3,4;  
Social Chairman 4; Chair 2,3,4;  
President 4; Student Christian As-  
sociation 2,3; Student Ministerial  
Association 2,3; Kappa Delta Phi  
Sweetheart 4.

ALBERT CONLEY MEHAFFEY

Big Stone Gap  
Virginia  
B.S., Business  
Phi Sigma Kappa 1,2,4; Treasurer 1;  
President 2; Pan-Hellenic Council 2;  
Eta Upsilon Gamma Sweetheart 2;  
Student Council 1,2,4; Freshman  
Class President; Sophomore Class  
President; Senior Class President;  
Religious Life Council 1,2; "W" Club  
1,2,4; President 2; Tennis 1,2,4;  
Captain 2; Social Life Committee 2;  
International Club 2; President; So-  
ciety for the Advancement of Man-  
agement 4.

ANNA CHRISTINE MOSES

608 Francis Street  
Athens, Tennessee  
B.S., Chemistry

Kappa Delta Phi 1,2,3,4; Secretary  
2; Vice-President 3,4; Student Coun-  
cil 3,4; Secretary 3,4; Freshman  
Class Secretary; Sophomore Class  
Secretary; Alpha Beta 2,3,4; Re-  
porter 4; Chair 1,2,3,4; Librarian 2;  
Secretary 3; Treasurer 4; Religious  
Life Council 3,4; Cheerleader 1,2,  
3,4; Head Cheerleader 2,3,4; Queen  
of Hearts 1; Athletic Queen 2; Har-  
vest Queen 4; Phi Sigma Nu Sweet-  
heart 2; Veterans' Club Sweetheart  
3.

WHO'S WHO AMONG STUDENTS  
IN AMERICAN UNIVERSITIES AND  
COLLEGES

JOYCE ELAINE MULLINS

6224 Liberty-Fairfield Road  
Hamilton, Ohio  
B.S., Social Science  
Transferred from Lee College;  
Kappa Delta Phi 4; Student Chris-  
tian Association 3; BULLDOG Staff  
4; Proofreader; Ritter Hall Dorm  
Council 4.



JAMES BERNARD NICELY

607 Bernhurst Drive  
Fountain City, Tennessee  
B.S., Business Administration  
Transferred from Carson Newman  
College.

MARGARET ELIZABETH ORR

R.F.D. #4  
Athens, Tennessee  
B.S., Education  
Transferred from University of Ten-  
nessee.

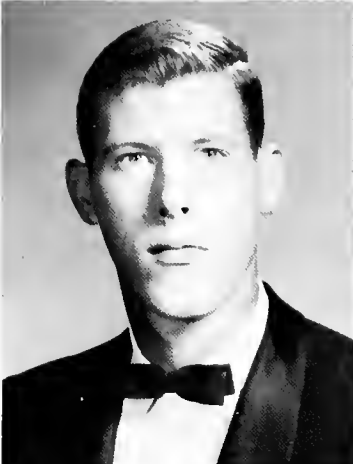


# SENIORS



**SALEEM H. SAFFAR**  
Baghdad  
Iraq  
**B.S., Business**  
Transferred from Southern Illinois  
University; International Club 3.

**FRANK HILL SEABOLT**  
400 Clay  
Rogersville, Tennessee  
**B.S., Education**  
Sigma Phi Epsilon 3,4; Choir 1,4;  
Veterans' Club 2.

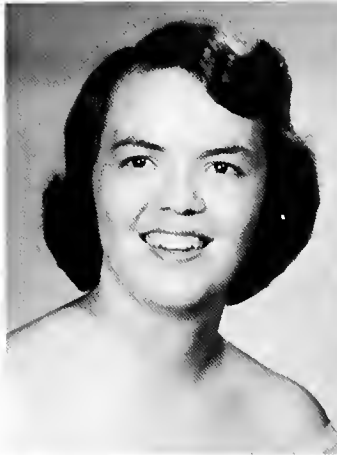


**RICHARD EDWARD SWETT**  
17 Vinton Road  
Madison, New Jersey  
**B.S., Business Administration**  
Sigma Phi Epsilon 1,2,3,4; Treasurer  
4; Choir 1,2,4; BULLDOG Staff 4;  
Harvest King 4; Basketball 1,2; Ten-  
nis 3,4.

**RICHARD VERN WALLE**  
S. Motlock Road  
Athens, Tennessee  
**B.S., Education**  
Sigma Phi Epsilon 3,4; Rush Chair-  
man 4; Social Life Committee 4; Re-  
ligious Life Council 4; Student Coun-  
cil 4; Vice-President; BULLDOG Staff  
2,4; Columnist; NOCATULA Staff 4;  
Sports Co-Chairman.

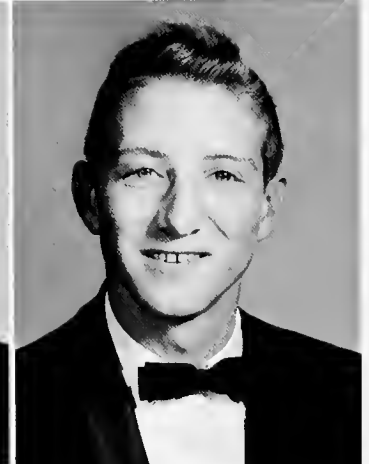
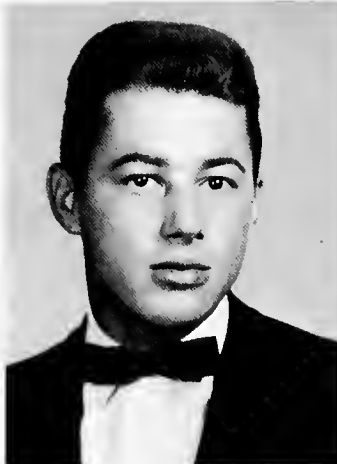
**EDNA CHRISTINE WATKINS**  
1604 Idlewild Road  
Johnson City, Tennessee  
**B.S., Religion**  
Zeta Mu Epsilon 2,3,4; Reporter 3;  
Treasurer 4; Independents 1; Alpha  
Beta 3,4; Alpha Psi Omega Drama  
Fraternity 4; Life-Service Girls 1,2,  
3,4; Reporter 2,3; Student Christian  
Association 1,2,3,4; BULLDOG Staff  
2,3,4; News Editor 4; Women's Ath-  
letic Association 1,2,3,4.

**ELIZABETH ANN WATKINS**  
Route 5  
Elizabethton, Tennessee  
**B.A., Education**  
Kappa Delta Phi 1,2,3,4; Cor-  
responding Secretary 4; Choir 1,2,  
3,4; Assistant Wardrobe Mistress 4;  
Student Christian Association 1,2,  
3,4; Life-Service Girls 1,2,3,4; Senior  
Class Treasurer; Ritter Hall Dorm  
Council 4; Vice-President 4.



**ROBERT KENNETH WHEELER**  
902 W. 5th Street  
Big Stone Gap, Virginia  
**B.S., Secondary Education**  
Transferred from Hiwassee Col-  
lege; Phi Sigma Kappa 3,4; Ser-  
geant-at-Arms 4; Basketball 1,2.

**HAROLD DOUGLAS WHITE**  
Glenwood Park  
Athens, Tennessee  
**B.S., Accounting**  
Phi Sigma Kappa 3,4; Vice-President  
3,4; Society for the Advancement of  
Management 4; President; Veterans'  
Club 4; President.



# SENIORS



KENNETH WILBURN

Chatsworth

Georgio

B.S., Education

Phi Sigma Kappa 3,4; President 4;

Pan-Hellenic 4; Alpha Beta 2,3,4;

Veterans' Club 1,2,3,4; Student

Council 3,4; Boy Representative 3;

President 4; Football 1.

# SENIOR SUPERLATIVES



FIRST ROW, Left to right: John Bacon, Mory Grace Feezell, Cornelia Harris, Joyce Howard, Tina Moses, David Lovelace.

SECOND ROW, Fred Gaden, Harold White, Kenneth Wilburn, Dean Best, Dick Walle, Al Mehaffey.

# WHO'S WHO IN AMERICAN



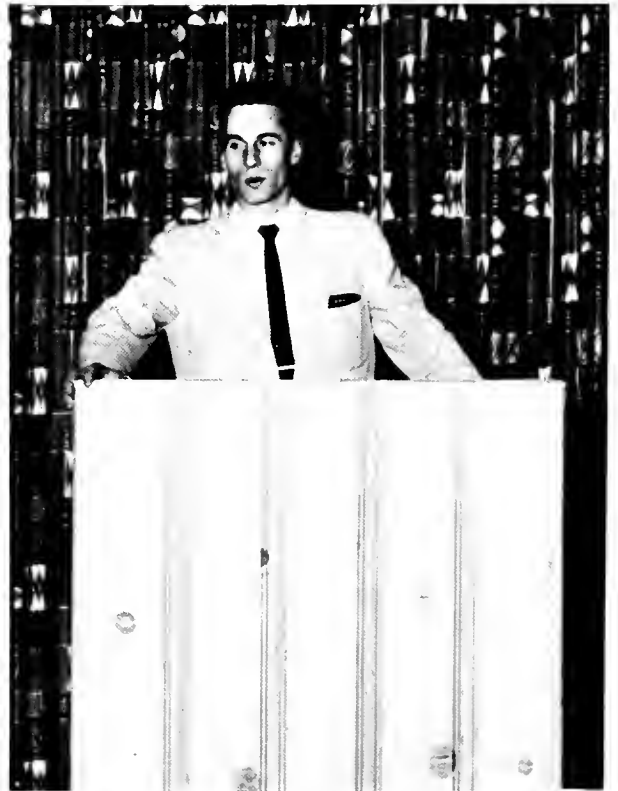
DAVID LOVELACE



TINA MOSES



JOYCE HOWARD



DEAN BEST

8.05  
256m  
960

# COLLEGES AND UNIVERSITIES



FRED GOODEN



MARY GRACE FEEZELL



CORNELIA HARRIS



JOHN BACON





Mary Ann Carpenter  
Secretary

Don Wilson  
Vice-President

Sandra Edenfeld  
Chairperson

Bill Storm  
President

Sarah Davis  
Treasurer

Dwight Smith  
Representative



# JUNIORS

PATRICIA ALLEN  
Sweetwater  
Tennessee

DONALD EUGENE ALLISON  
3802 Mark Twain Circle  
Chattanooga, Tennessee

JUDY ANN ASHLEY  
30 South Germantown  
Chattanooga, Tennessee

PAULINE BANKS  
Middletown  
Ohio

JEWELL BARNARD  
Route 4  
Athens, Tennessee

EDNA RAMONA BATES  
19 Lafayette Street  
Athens, Tennessee

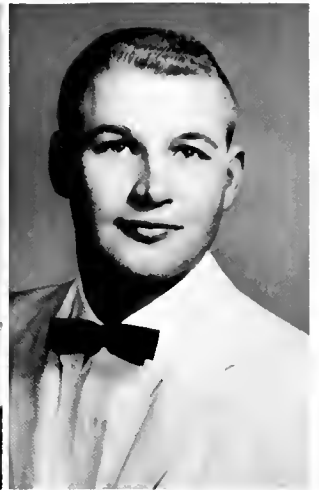
MELVIN BEAL  
2500 Brice Street  
Knoxville, Tennessee

WILLIAM BIGHAM  
Route 2  
Athens, Tennessee

REBA JO BRAKEBILL  
Niota  
Tennessee

LYNN W. BRANDON  
Route 5  
Manchester, Tennessee





ROBERT BURGIN, JR.  
1130 Pennsylvania Avenue  
Etowah, Tennessee

PHYLLIS ANDREA BUTCHER  
Route 3  
Churchill, Tennessee

ROXIE JEAN CALFEE  
Route 5, Box 413  
Cleveland, Tennessee

MARY ANN CARPENTER  
Route 2  
Laudon, Tennessee

DWIGHT CREASMAN  
William Park  
Athens, Tennessee

SALLY MAE DEWITT  
Niota  
Tennessee

STARR DIXON  
3130 Clearwater Drive  
Middlesex, North Carolina

SANDRA ELAINE EDENFIELD  
4401 Fulton Drive  
Knoxville, Tennessee

NAN EWING  
509 Shasta Avenue  
Doyton, Tennessee

CHARLES FLEENOR  
Pennington Gap  
Virginia

# JUNIORS

# JUNIORS

HAROLD DON FRENCH  
Strotton  
Virginia

BETTY HOLMES  
Florence  
Kentucky

SUE FULLER  
Norton  
Virginia

CLAIRE JOHNSON  
Box 5  
Dunlop, Tennessee

RALPH GREEN  
2521 McCallie Avenue  
Chattanooga, Tennessee

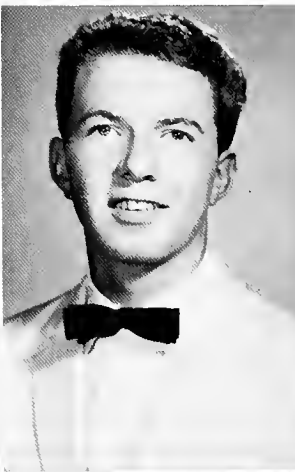
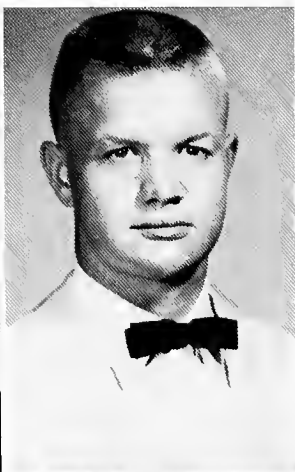
DONALD JONES  
54 Park Place  
Suffern, New York

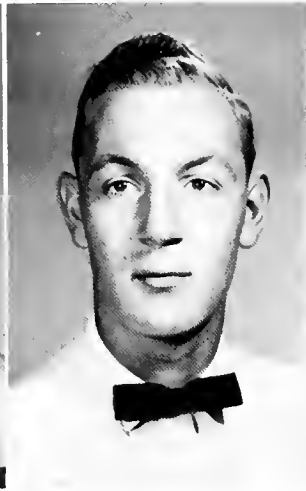
CHARLES GUINN, JR.  
200 3rd Street  
Etowah, Tennessee

CHARLES KETRON  
159 Green Street  
Athens, Tennessee

RONDA HAMMONTREE  
Pine Street  
Maryville, Tennessee

SHARON KING  
Route 3  
Oneonta, Alabama





JOAN LOCKE  
Route 1  
Spring City, Tennessee

SARAH LOFTIS  
231 Athens Pike  
Etawah, Tennessee

MARY SUE LONGMIRE  
Route 1  
Andersonville, Tennessee

MARY LEE McAMIS  
Route 2  
Sweetwater, Tennessee

FRANCIS MADDUX  
Spring City  
Tennessee

CHARLOTTE MARSHALL  
1909 Emoriland Boulevard  
Knoxville, Tennessee

RANDALL MILLER  
Route 2  
Magnolia, Kentucky

JAMES MOORE  
117 Pine Street  
Athens, Tennessee

FOUAD MOUSTAFA  
Baghdod  
Iraq

LOIS MULLINS  
6224 Liberty-Fairfield Road  
Hamilton, Ohio

# JUNIORS

# JUNIORS

NANN PEERY  
North Tazewell  
Virginia

HASSAN SAFFAR  
Baghdad  
Iraq

BILLIE JEAN PERKINS  
Jocksbaro  
Tennessee

PEGGY SEDMAN  
Apison  
Tennessee

GLENDA PETERSON  
305 18th Street  
Alma, Georgia

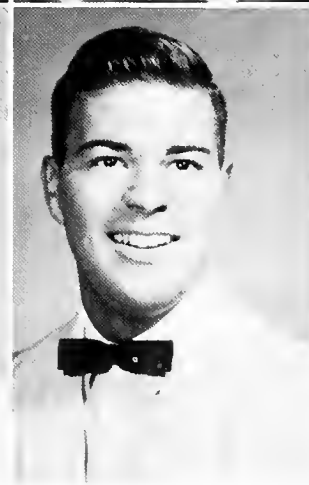
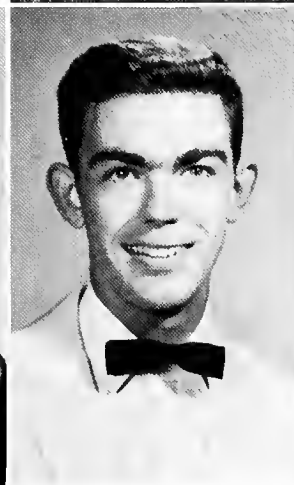
BARBARA SELF  
Box 312  
Copperhill, Tennessee

BETTY POTTER  
900 Columbia Avenue  
Knoxville, Tennessee

CHARLES STANBERY  
Route 3  
Maryville, Tennessee

DONNA ROBERSON  
Pound  
Virginia

GERALD STANBERY  
Route 2 — Wildwood  
Maryville, Tennessee





JAMES STEELE  
 8 St. Joseph Drive  
 East Langmeadow, Massachusetts

FERN STOOKSBURY  
 Maryville  
 Tennessee

BILL STORM  
 1113 Geargetown Road  
 Cleveland, Tennessee

LINDA STYLES  
 34 Virginia Apartments  
 Chattanooga, Tennessee

PETE VON DREELE  
 2217 Hillside Road  
 Wilmington, Delaware

CLYDE WEBB  
 Athens  
 Tennessee

MARY ANN WHITAKER  
 Cedar Springs Drive  
 Athens, Tennessee

PAT WIGGINS  
 300 Dogwood Drive  
 Maryville, Tennessee

ELIZABETH WOODY  
 Box 174  
 Etawah, Tennessee

FRED WOMACK  
 215 Blaunt Street  
 Riceville, Tennessee

ALLEN YORK  
 2803 Tarletan Avenue  
 Knoxville, Tennessee

# JUNIORS



# HARVEST MASQUERADE BALL



The Harvest King and Queen for 1959-60 were Ricky Swett and Tina Moses, representing the senior class.

One of the highlights of this year was the Harvest Masquerade Ball, sponsored by the senior class. The Harvest King and Queen candidates were: Seniors — Ricky Swett and Tina Moses; Juniors — Allen York and Betty Potter; Sophomores — Jerry Edmands and Patricia Stowe; Freshmen — Daug Reed and Judy Bull. Due to the success of this party the past two years, it has become an annual event on the campus. First prizes were captured by Mary Baugh and Charles Ketron. A skit, written by Joyce Howard, lent a very comical note to the program. Jack Houts served as master of ceremonies.



"And they lived happily everafter!"



"You do the hokey pokey . . ."



"Eeeeeek! A ghost!"



"Here comes the bride!"



First prize winners.



"Brainwashed!"

# SOPHOMORE CLASS OFFICERS



Ann Roberson  
Secretary

Harry Stutzman  
Boy Representative

Judith Qualls  
President

Dot Jones  
Girl Representative

Mort Trew  
Vice-President

Patricia Stowe  
Treasurer

# SOPHOMORES



ELISE AYTES  
Dondridge  
Tennessee



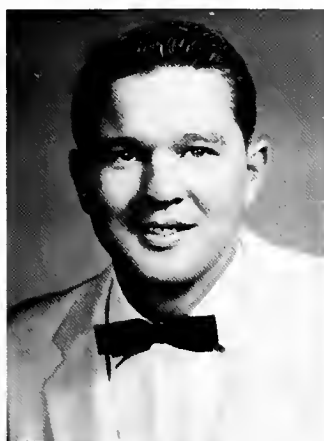
COLIN BAGWELL  
510 Oakhurst Drive  
Knoxville, Tennessee



BOYD BAKER  
Box 56  
Dandridge, Tennessee



JERRY BECK  
Athens  
Tennessee



JAMES BRAKEBILL  
336 E. Madison  
Athens, Tennessee



GLENDA BREWER  
Dandridge  
Tennessee



JAMES BROWN  
Denville  
New Jersey



GAIL BUTTRAM  
9 Elizabeth Street  
Athens, Tennessee



LOUISE CAMPBELL  
Route 1  
Corryton, Tennessee



LILLIAN COOK  
1204 McForland  
Rossville, Georgia



ELIZABETH CURTIS  
Friendsville  
Tennessee



EMMA SUE DELOZIER  
Route 1  
Rockford, Tennessee

# SOPHOMORES



ANNETTE FRAZIER  
5018 Straw Plains Pike  
Knoxville, Tennessee



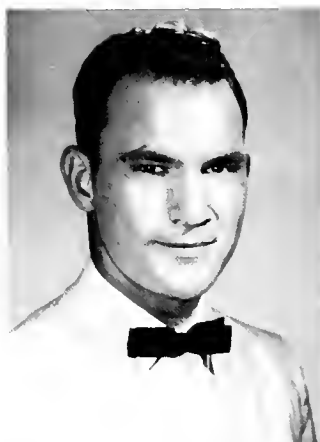
STEVE FUTTERMAN  
1486 East 4th Street  
Brooklyn, New York



RICHARD GALBERAITH  
Route 1, Box 723  
Lakeland, Florida



ELIZABETH GRANT  
Doisy  
Tennessee



DEAN GRANT  
520 First Street  
Athens, Tennessee



ANN GRAY  
Route 1  
Newport, Tennessee



JAMES GREGORY  
Box 97  
Brandon, Florida



CAROLYN HAMMOND  
Glade Springs  
Virginia



WILMA HANEY  
1108 Club Drive  
Cleveland, Tennessee



PHYLLIS HIGHLAND  
517 W. 28th Street  
Baltimore 11, Maryland



GARY HOLT  
Route 1  
Newport, Tennessee



MERLE HOWARD  
293 Ingleside  
Athens, Tennessee

# SOPHOMORES



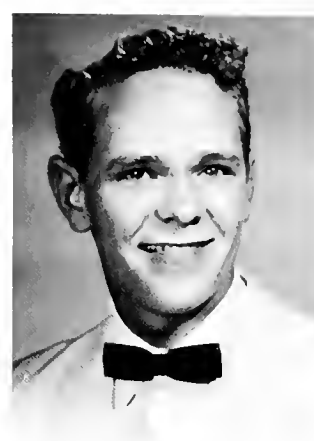
JANICE HURST  
Route 1  
Newport, Tennessee



FAIZ ISMAIL  
Adhamija  
Baghdad, Iraq



JO ANN JACKSON  
Route 1  
Ten Mile, Tennessee



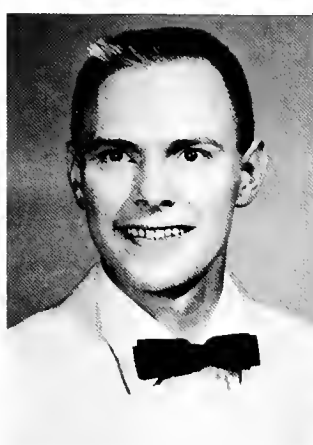
BOBBY KETCHERSID  
Spring City  
Tennessee



ANNETTE KINSER  
Route 2  
Madisonville, Tennessee



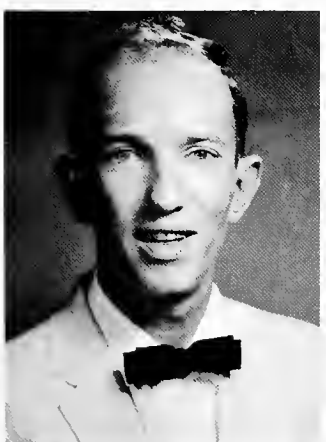
SYLVIA LAMBERT  
Old Niles Ferry Road  
Maryville, Tennessee



ROY LATOURETTE  
Route 1  
Auburn, Pennsylvania



BARBARA MASSEY  
109 Linden Street  
Lookout Mt., Tennessee



DON MOORE  
117 Pine Street  
Athens, Tennessee



NANCY MOORE  
Box 51  
Englewood, Tennessee



U. S. MYERS  
2404 Crutchfield Street  
Chattanooga, Tennessee



MARY FRANCES MYNATT  
413 Cunningham  
Moryville, Tennessee



# SOPHOMORES



HARRY NEWMAN  
2614 Mogill Street  
Maryville, Tennessee



BETTY OUSLEY  
Moynordville  
Tennessee



RICKY PERACHIO  
64 Oriole Lane  
Trumbull, Connecticut



MARY PETREE  
Newport  
Tennessee



JOHN PIERCE  
140 Henderson Street  
Athens, Tennessee



CAROLYN POWERS  
209 Scott Street  
Athens, Tennessee



JUDITH QUALLS  
McCord Avenue  
Athens, Tennessee



JUDITH RIDEN  
Route 2  
Athens, Tennessee



MARY LYNNE ROBINETTE  
1002 W. Main Street  
Rogersville, Tennessee



ARTURO RODRIGUEZ  
Colles 78 #2325  
Morionoo, Cubo



LAMETA SAGERS  
Westville Road  
Almonesson, New Jersey



BRENDA SMITH  
1917 Chamberlain Avenue  
Chottonoogo, Tennessee



# SOPHOMORES



MARY ANNA SMITH  
211½ W. Irish Street  
Greenville, Tennessee



KAY SPRADLING  
244 Lynn Avenue  
Athens, Tennessee



PATRICIA STOWE  
910 Schmitt Road  
Rosville, Georgia



HARRY STUTZMAN  
404 W. Main Street  
Lykens, Pennsylvania



SWEE LEAN TEH  
28 Main Street  
Selangar, Malaya



TOM THOMPSON  
Route 3  
Madisonville, Tennessee



WANDA TREVENA  
Route 2  
Sevierville, Tennessee



MORT TREW  
Etawah  
Tennessee



LINDA VARNELL  
3615 Westview  
Cleveland, Tennessee



ROSIE WEBB  
Box 224  
Jasper, Tennessee



DAVE WHITFORD  
4814 Radney Road  
Richmand, Virginia



MARY TIM WILSON  
Route 2  
Cleveland, Tennessee

# SOPHOMORES



LARRY WIMBERLY  
Niota  
Tennessee



JANICE WOLFE  
Maynardville  
Tennessee



DARRYL WOOLERY  
1528 Akins Drive  
Chattanooga, Tennessee

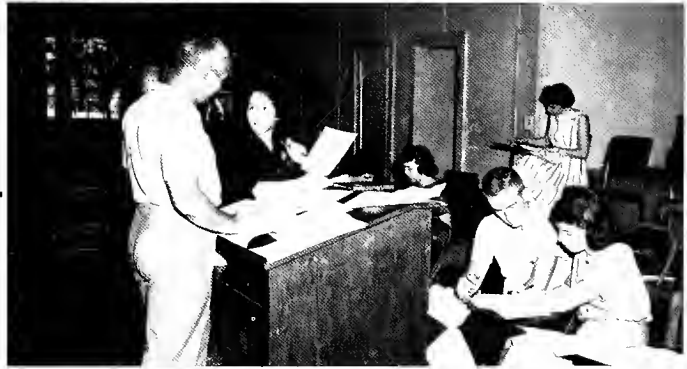
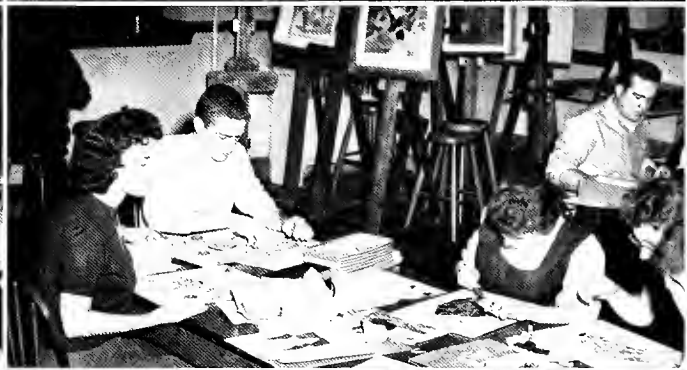


NADYNE WOOLSEY  
603 E. Main Street  
Newport, Tennessee



NEAL WORMSLEY  
2301 Old Knoxville Pike  
Maryville, Tennessee





**RELIGION IN LIFE WEEK**  
 "CHRIST IN YOU... YOU IN THE WORLD"  
**APRIL 13-16**  
 SPEAKERS  
 • ELTON JONES • MARCUS TRIPLETT  
 • GLEN MARTIN • JAMES NEWSOME  
 TOWNSPEOPLE INVITED

**CONVOCATION**  
 9:50 EACH MORNING  
**WORSHIP**  
 7:30 EACH EVENING

# FRESHMAN CLASS OFFICERS



Walter [unclear] [unclear] [unclear]

Dennis Gillikin  
[unclear]

Gaynell Hixson  
Treasurer

Dave Merton  
President

Kath Ann Moody  
Girl Representative



# FRESHMEN

CARLOS PAUL ALDUNATE  
187 Nassau Road  
Hunt, New York

CAROLE JEAN ANTHONY  
1720 E. Broadway  
Maryville, Tennessee

ROLAND WILLIS AYTES  
Box 44  
Dondridge, Tennessee

JOHN BAIN  
Athens  
Tennessee

CHARLES EUGENE BALLEW  
5 Mary Street  
Rossville, Georgia

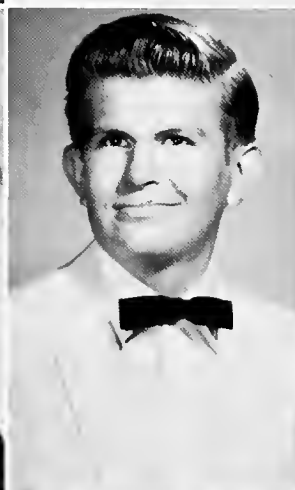
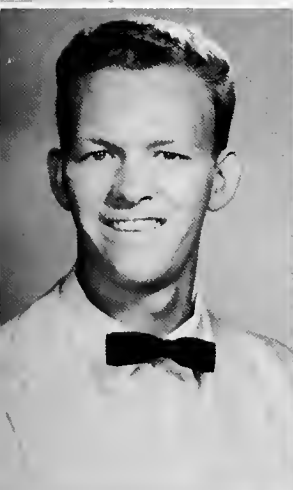
EDWARD ROY BLANKENSHIP  
245 Thamos Street  
Kingspart, Tennessee

JANE CAROL BOWLING  
Athens  
Tennessee

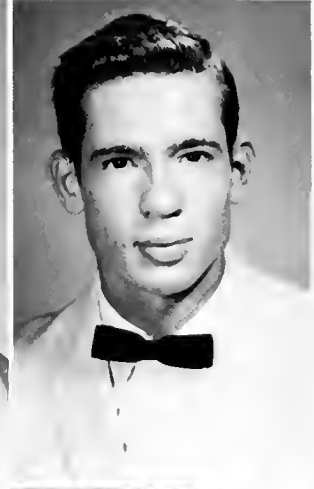
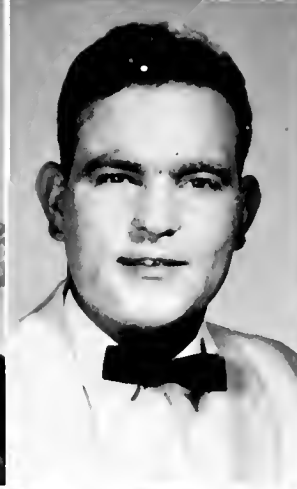
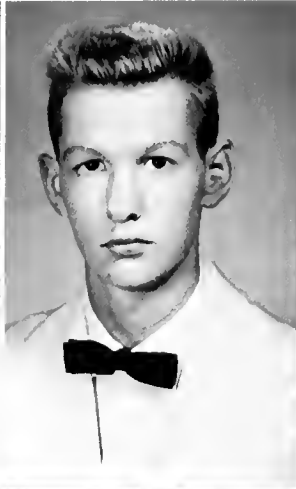
EDWARD BOWNE, JR.  
Newfoundland  
New Jersey

KATHLEEN BRYAN  
1333 Harle Avenue  
Cleveland, Tennessee

GLENDY BRYANT  
Raute 1, Jones Drive  
Knoxville, Tennessee







JOHN BUCKHEIT  
Box 7  
Charleston, Tennessee

FRANCIS JOSEPH BURGER  
Riceville  
Tennessee

JONNIE SHARON CARTER  
Surrey Lodge Road  
Chattham, New Jersey

GEORGE DANIEL CHANDLER  
204 E. 11th Street  
Bowling Green, Kentucky

STEVE CHAPIN  
4411 Cypress Lane  
Knoxville, Tennessee

JAMES COBLE, JR.  
Cleveland  
Tennessee

JOYCE COOK  
Route 2  
Greenback, Tennessee

SYLVIA CAROL CORN  
Route 1  
Etawah, Tennessee

JOYCE COULTER  
Route 3  
Maryville, Tennessee

MARY FRANCES CRESWELL  
Route 19  
Knoxville, Tennessee

# FRESHMEN

# FRESHMEN

CHARLES CULBERSON  
242 S. Jackson  
Athens, Tennessee

HAROLD DAVIS  
Kingspart  
Tennessee

LARRY DEAL  
Route 1  
Niota, Tennessee

MARGIE DEFOE  
Route 8  
Maryville, Tennessee

DORIS DICKEY  
511 Broad Street  
Sweetwater, Tennessee

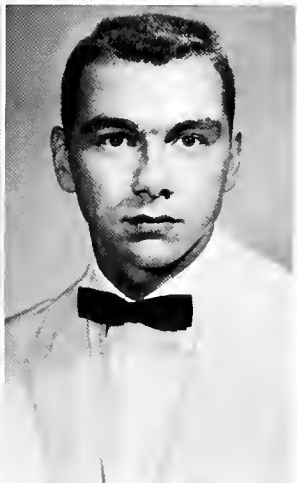
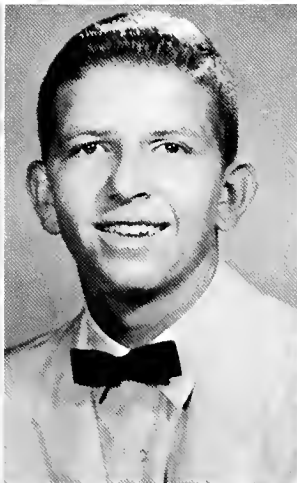
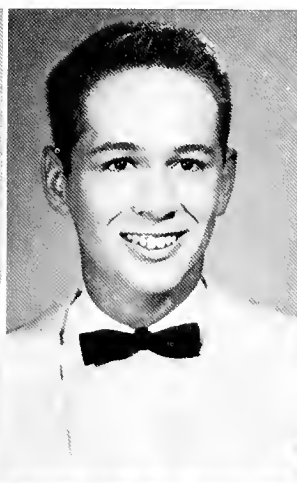
JOHN DIXON  
3308 Adeline Street  
Kingsport, Tennessee

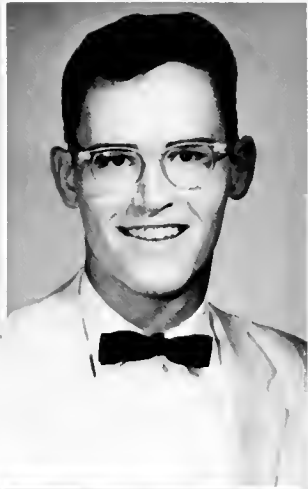
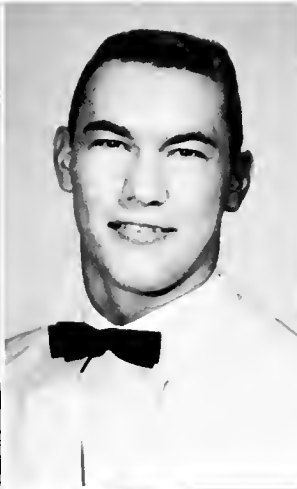
MAX DOUGLAS  
Spring City  
Tennessee

CAROLYN DUNBAR  
Limestone  
Tennessee

MALCOLM DUNN  
418 Union Street  
Hartford, Kentucky

JOHN EAKIN  
Box 12  
Gotlinburg, Tennessee





DANNY FARBER  
3000 Brighton, 12 Street  
Brooklyn, New York

WANDA GAYLE FRENCH  
Route 1  
Greenback, Tennessee

LYNDA CAROL GARRISON  
Box 22  
Spring City, Tennessee

TROY GILES  
Route 4  
Clinton, Tennessee

DENNIS GILLIKIN  
27 Mortling Avenue  
Staten Island 10, New York

JOHN GOTHARD  
Wildwood  
Georgio

BARBARA JEAN GRACE  
Stanego  
Virginio

BARBARA GRAHAM  
504 Centrol Avenue  
Cranford, New Jersey

EUGENE HAMILTON, JR.  
Holmes Street  
Boonton, New Jersey

NANCY HARMON  
505 Longview Rood  
Knoxville, Tennessee

# FRESHMEN

# FRESHMEN

LOU ANN HARRIS  
118 East Tennessee Avenue  
Oak Ridge, Tennessee

WILLIAM J. HARRISON, JR.  
Broadway  
Lenoir City, Tennessee

ISSAC PAYTON HAYES, JR.  
Box 486  
Spring City, Tennessee

JAMES HICKEY, III  
Moloney Raad Route 3  
Knoxville, Tennessee

GAYNELL HIXSON  
805 Auburn Street  
Chattanooga, Tennessee

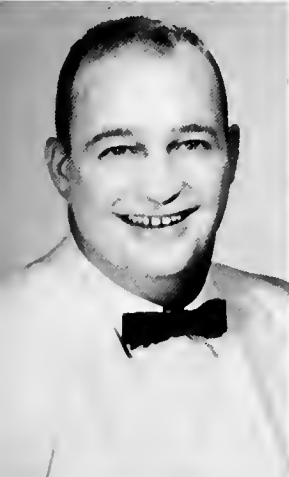
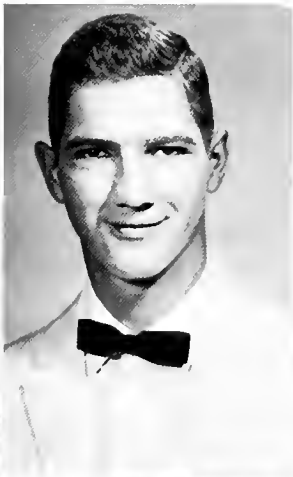
CHARLES HOOD  
2530 Fountain Park Boulevard  
Knoxville, Tennessee

LOUISE HUDSON  
Route 2  
Knoxville, Tennessee

DORIS HUGHES  
Route 2  
Niota, Tennessee

JOE JAGUSH  
North Avenue  
Athens, Tennessee

MIKE KADDOURI  
Baghdad  
Iraq





DIANNE KILLOUGH  
3409 Hartford Drive  
Chattanooga, Tennessee

RICHARD KIMSEY  
Route 1  
Evansville, Tennessee

MARY GEORGE KING  
Fort Lauderdale  
Florida

LINDA KNOX  
Sunview Drive  
Athens, Tennessee

GARY A. KOTLER  
46 Old Town Lane  
Holesite, New Jersey

GLADYS KYLE  
Athens  
Tennessee

KAY LILLY  
Sweetwater  
Tennessee

ALICE LOOMIS  
Athens  
Tennessee

FOUNTA LOVE  
347 S. Jackson Street  
Athens, Tennessee

JOHN ANNA LOVIN  
Box 66  
Tellico Plains, Tennessee

# FRESHMEN



# FRESHMEN

JOHN MARTIN  
2106 Market Street  
New Albany, Indiana

JENNIE MEREDITH  
Beaver Creek Drive  
Powell, Tennessee

BRENDA MILNER  
643 Guille Street  
Athens, Tennessee

CAROL MINK  
938 N. 4th Avenue  
Knoxville, Tennessee

CARMEN MOLINA  
38 Ft. Washington Avenue #63  
New York, N. Y.

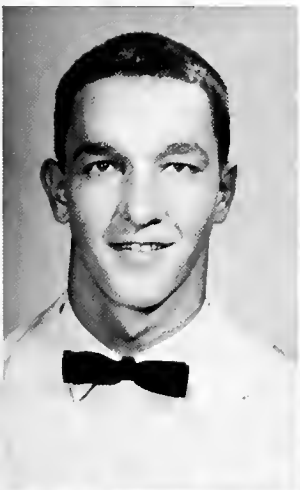
RUTH ANN MOODY  
Route 8  
Kingsport, Tennessee

DAVID MORTON  
Route 1  
Friendsville, Tennessee

GLENDA SUE PANTER  
Copperhill  
Tennessee

CHARLES PEMBURN  
2 Norton Street  
Albany 5, New York

ANN PENDLETON  
1829 Fairbrooks Road  
Kingsport, Tennessee





NAOMI PENNELL  
Route 3  
Concord, Tennessee

EUGENE PHILLIPS  
2141 N. E. 17th Street  
Ft. Lauderdale, Florida

SHIRLEY PRICE  
Route 2  
Erie, Tennessee

DONNA REED  
Doyton  
Tennessee

DOUGLAS REED  
Fisher's Landing  
New York, N. Y.

ANNE RIVIERE  
249 North Jackson Street  
Athens, Tennessee

JERRY ROBERTS  
Box 117  
Niota, Tennessee

PHILIP SCHRADER  
Dondridge  
Tennessee

BILLIE SCOTT  
Sweetwater  
Tennessee

DAN SELF  
Athens  
Tennessee

# FRESHMEN

# FRESHMEN

AL SHABIBI  
Baghdad  
Iraq

JUDITH SMITH  
Box 103  
Church Hill, Tennessee

PAMELA SNELBAKER  
41 Coaper Street  
Woodbury, New Jersey

HARRIET STRATTON  
Willochs Avenue  
Maryville, Tennessee

CAROLYN SUE SUTTLES  
100 Main Road  
Maryville, Tennessee

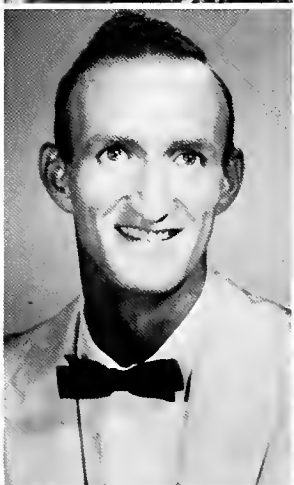
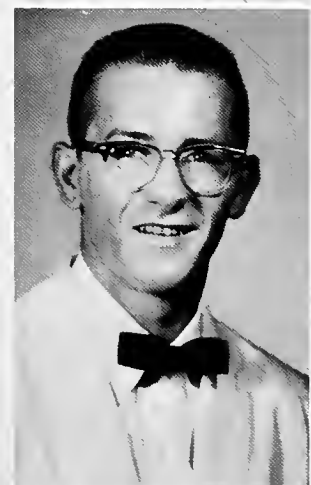
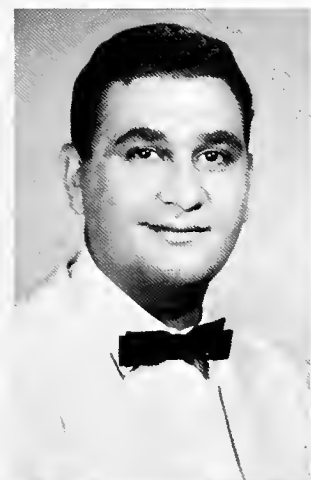
CURTIS SWAFFORD  
Route 2  
Riceville, Tennessee

JEANETTE TATE  
Tellico Plains  
Tennessee

KARL TROTTER  
West 5th Street  
Etowah, Tennessee

NANCY ANN WADE  
Decatur  
Tennessee

RANDALL WEBB  
2428 Lawson Avenue  
Knoxville, Tennessee



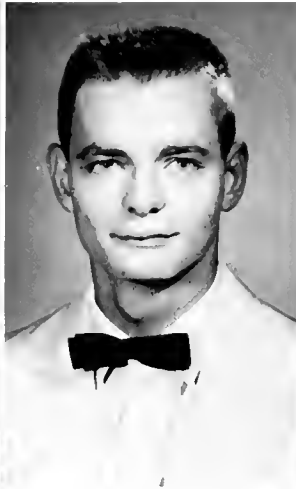
# FRESHMEN



JOAN WHEELER  
2817 Gaston Avenue  
Knoxville, Tennessee



JUDY WILSON  
Montvale Road, Raute 6  
Maryville, Tennessee



CARLETON WRIGHT  
410 W. 7th Street  
New Albany, Indiana



POLLY YORK  
Etowah  
Tennessee



RAYMOND BRIDWELL  
Indian Springs  
Tennessee



# *Activities*

*Cultural Life*

*Drama*

*Student Activities*



# CULTURAL LIFE

TENNESSEE WESLEYAN COLLEGE

Athens, Tennessee

## Fine Arts Calendar

1959 - 60

The Cultural Life Committee arranges Sunday afternoon and Friday assembly programs in the arts for audiences of students and townspeople . . . on the committee were Mary Greenhoe, Harry Cable, Carl Honaker, Jack Hauts, and student representatives Linda Styles and Harry Stutzman.

... dates included are subject to change without notice ...

... detailed information concerning all events is available through sponsoring departments or organizations as well as through local newspapers ...

... a publication of the College, including events of the departments of music and drama, Athens Civic Music Association, the Wesleyan Roundtable, and student-faculty Cultural Life Committee ...

### FINE ARTS CALENDAR TENNESSEE WESLEYAN COLLEGE 1959-60

#### OCTOBER

Fri., 30th ... **Barbara Lockard**, mezzo-soprano. Townsend Auditorium, 10:00 a. m.

#### NOVEMBER

Sun., 1st ... **Ted Strongin**, arts critic, Chattanooga Times, guest lecturer. Community Hall, 4:00 p. m.

Thurs., 12th ... **Mildred Dilling**, harpist. Athens Civic Music Association. Townsend Auditorium, 8:00 p. m.

Fri.-Sat., 13th-14th ... **Wesleyan Drama Department**: "The Glass Menagerie". Townsend Auditorium, 8:00 p. m.

#### DECEMBER

Wed., 2nd ... **Student Recital**: Townsend Auditorium, 10:00 a. m.

Sun., 6th ... **Ellsworth Snyder**, pianist, Hindemith, Ravel, Chopin, Liszt, Saint-Saens Concerto No. 4. Community Hall, 4:00 p. m.

Sat., 12th ... **The Bishop's Company**: "The Great Divorce". Townsend Auditorium, 8:00 p. m.

Fri., -8th ... **Collage Choir**: A program of Christmas music. Townsend Auditorium, 10:00 a. m.

#### JANUARY

Sun., 10th ... **Foreign Film**: "The Last Bridge", starring Maria Schell. Community Hall, 3:00 p. m.

Mon., 18th ... **Marina Sveltova Ballet**: Athens Civic Music Association. Townsend Auditorium, 8:00 p. m.

Fri., 22nd ... **"The Summit"**: Dr. Schonbach, Consul of Federal German Republic, Atlanta, Georgia, Townsend Auditorium, 10:00 a. m.

Sun., 24th **Little Theatre of Chattanooga**: "Night Must Fall". Townsend Auditorium, 3:00 p. m.

#### FEBRUARY

Sun., 7th ... **The Play of Daniel**: W. H. Auden's narration read by Harry Coble, The Cloisters' recording of Greenberg's musical setting. Community Hall, 4:00 p. m.

Thurs., 11th ... **Senior Recital**: Joyce Howard, pianist. Townsend Auditorium, 8:00 p. m.

Sun., 21st ... **Foreign Film**: "La Strada". Community Hall, 3:00 p. m.

Thurs., 25th ... **Junior Recital**: Sandra Edenfield, Sarah Loftis, Charles Stenberg. Townsend Auditorium, 8:00 p. m.

#### MARCH

Thurs.-Sat., 3, 4, 5 ... **Drama Department!** "Arms and the Man". Townsend Auditorium, 8:00 p. m.

Fri., 25th ... **Wesleyan Roundtable**: "Segregation". Townsend Auditorium, 10:00 a. m.

Sun., 27th ... **Soulima Stravinsky**, guest lecturer, composer-pianist. Community Hall, 4:00 p. m.

Mon., 28th ... **Soulima Stravinsky**, pianist. Scarlatti, Mozart, Chopin, Stravinsky. Townsend Auditorium, 8:00 p. m.

Mon., 21st ... **Curtis String Quartet**. Civic Music Association. Townsend Auditorium, 8:00 p. m.

#### APRIL

Tues., 5th ... **Nelson and Neal**, duo-pianists. Athens Civic Music Association. Townsend Auditorium, 8:00 p. m.

Sun., 10th ... **Maryville Collage Drama Department**: "The Way of the Cross". Community Hall, 4:00 p. m.

Tues., 19th ... **Faculty Recital**: Mary Greenhoe, pianist. Townsend Auditorium, 8:00 p. m.

#### COMING EVENTS TO BE ANNOUNCED:

**Spring Festival**. Dates and title. **Walter Terry**, dance critic, New York Herald Tribune. Date and subject. **Foreign Films**: Tennessee Wesleyan College. Fridays, 10:00 a. m., January-April. Dates and titles.



#### GUEST ARTISTS

- . . . Barbara Lockard
- . . . The Bishop's Company
- . . . Soulima Stravinsky
- . . . Ellsworth Snyder
- . . . Chattanooga Little Theatre

BARBARA LOCKARD, mezzo-soprano, star of "The Stephen Foster Story" and of many on- and off-Broadway productions including those of the New York City Center Opero Company . . . Miss Lockard presented a recital at Friday Assembly on October 30, 1959.

WALTER TERRY, dance critic for the New York Herald Tribune, spoke in May, 1959, to a Sunday afternoon audience and returned to speak again this year.



# THE BISHOP'S COMPANY



The Bishop's Company, religious drama repertory group, appeared for the second time at Tennessee Wesleyan in December, 1959.



# NIGHT MUST FALL



Members of the Chattanooga Little Theatre appeared in a Sunday afternoon production of the mystery, "Night Must Fall." The Cultural Life Committee provided coffee between acts to relieve the audience's tension.

# DRAMA

Under the leadership of Mr. Harry Cable, the Drama Department presented "The Glass Menagerie" in Townsend auditorium on November



13-14, 1959. Lead parts were played by Mrs. Barbara Hill, Tammy Watson, Sharan Carter, and Paul Ziegler.



## THE GLASS MENAGERIE

November 14-15, 1959





# ALPHA PSI OMEGA



Left to Right: John Alise, Harry Cable, Sponsor, Mary Grace Feezell, President. NOT PICTURED: Frank Kennedy, Bruce Wentworth, Christine Watkins.

A chapter of Alpha Psi Omega, national drama fraternity, has been organized on the Wesleyan campus this year.

The purpose of the fraternity is to stimulate interest in and appreciation of live drama in the college community, and to bring outside groups to present productions on the campus.

Membership in the fraternity is based on a point system. Points are given for roles in a play and for technical assistance.



**MR. AND MISS T. W. C.**



**TINA MOSES**

ATHENS, TENNESSEE

**AL MEHAFFEY**

BIG STONE GAP, VIRGINIA

*Religion*



+

HOLY

+

HOLY

+

HOLY

+

# RELIGION-IN-LIFE WEEK



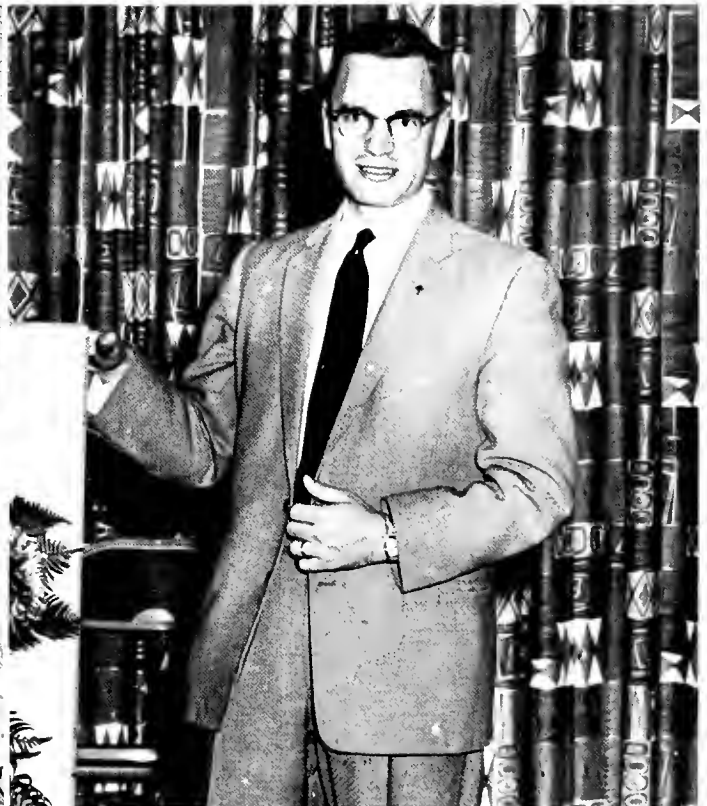
DR. ROBERT HAMILL, Convocation Speaker



DR. GEORGE K. SCHWEITZER



DR. E. E. WILEY



DR. THOMAS F. CHILCOTE



# NOVEMBER 16 – 19, 1959

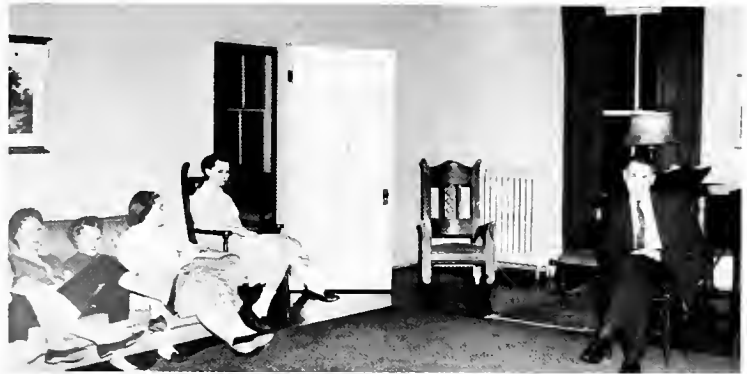


## “A HEART OF CONFESSION IN A WORLD OF CONFUSION”

One of the major events of the school year is Religion-In-Life Week. Interest in this program has grown encouragingly during the past several years, and students have been stimulated by the intellectual and spiritual challenges which have been presented to them through chapel addresses, forums on topics of interest suggested by students, and informal discussions in the dormitories. Religion-In-Life Week is a time when the students and faculty have the opportunity to grow spiritually.

The Convocation speaker for this year was Dr. Robert Hamill, director of the Wesley Foundation at the University of Wisconsin, and pastor of the University Methodist Church. Prior to that, he was the pastor of Ottawa Street Methodist Church in Joliet, Illinois. In popular demand as a speaker and leader in Methodist Student Movement Work, he was program leader at the 1958 Methodist Student Movement Convocation. He was winner of a nation-wide contest among Methodist ministers for the outstanding peace sermon for 1955, and is the author of the book, GODS OF THE CAMPUS, a penetrating analysis of student spiritual life.

Other speakers featured during the week were Dr. George K. Schweitzer, Associate Professor of Chemistry, the University of Tennessee; Dr. Thomas F. Chilcote, Minister, First Methodist Church, Maryville, Tennessee; Dr. E. E. Wiley, Minister, Centenary Methodist Church, Chattanooga, Tennessee; and Rev. Marquis Triplett, Minister, Broad Street Methodist Church, Cleveland, Tennessee.





# STUDENT CHRISTIAN ASSOCIATION



**FIRST ROW**, Left to Right: Deon Best, Vice-President; Betty Potter, Corresponding Secretary; Sandy Edenfield, Recording Secretary; David Lovelace, President; Christine Watkins; Mary Petree, Linda Styles; Fred Gaaden; Allan York; Don Allison. **SECOND ROW**, Sarah Loftis; Carolyn Hammond; Joyce Howard; Louise Hudson; Nodyne Woolsey; Brendo Smith; Lillian Cook; Mary George King;

Mary Groce Feezell; Don Jones. **THIRD ROW**, Nancy Harmon; Phyllis Butcher; Chorlotte Baker; Mary Bough; Betty Jo Kelso; Phyllis Highland; Lometa Sogers; Barbaro Groce; Glendo Brewer; Elise Aytes. **FOURTH ROW**, Claire Johnson; Connie Harris; Lou Guorinello.

# PRE-MINISTERIAL ASSOCIATION



Left to Right: Allen York, Don Allisan, Ray Latourette, Bill Bigham, Charles Pemburn, Lou Guariniello, John Bean, Fred Gooden, David Lovelace, Darryl Woolery, Dan Janes, Ton Lynch.

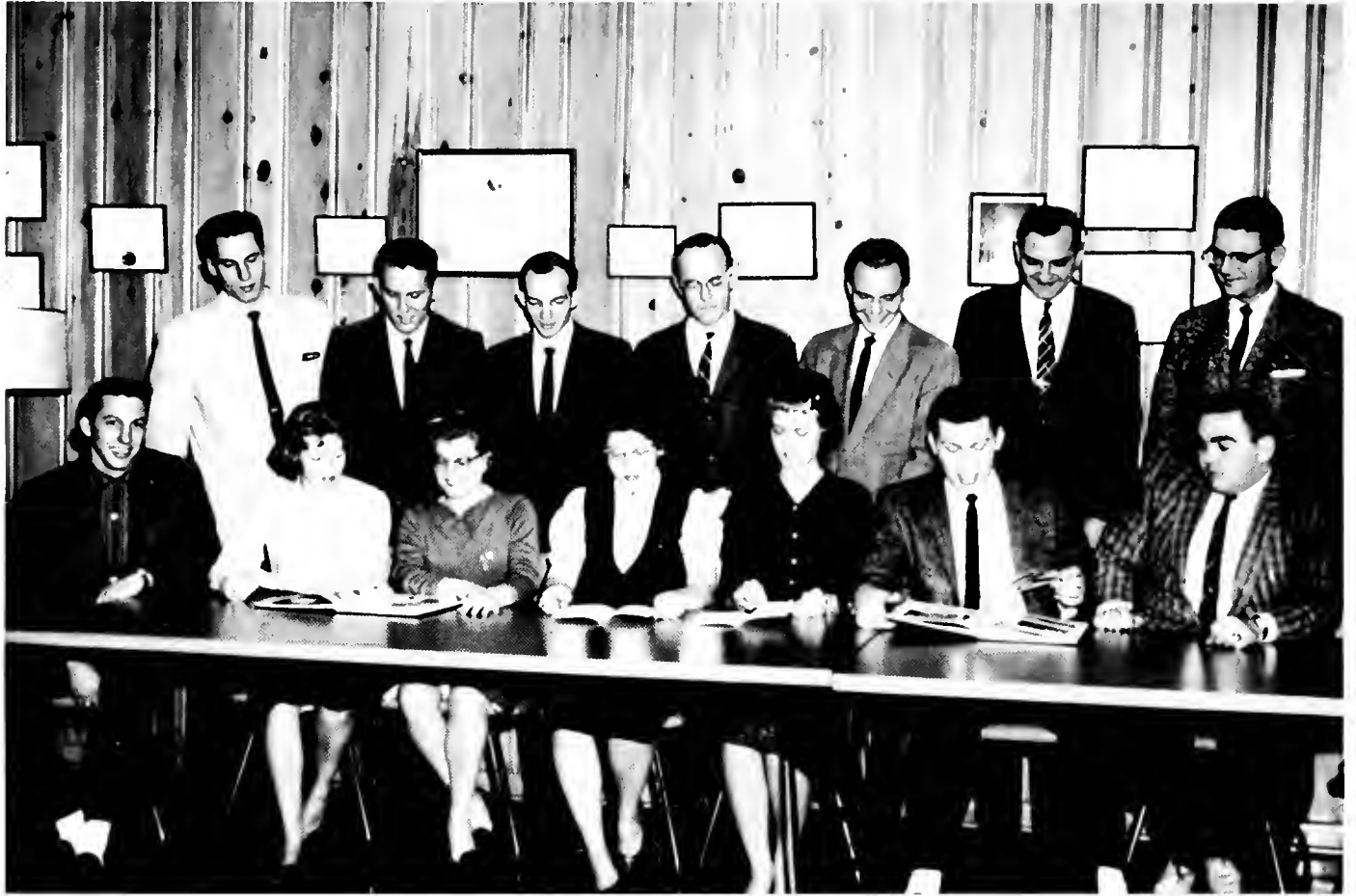
# LIFE-SERVICE GIRLS



FIRST ROW, Left to Right: Wanda Trevena, Mary Petree, Brenda Smith, Sandra Edenfield, Barboro Crumley, Coralyn Hommand, Donna Robersan, Lometa Sogers. SECOND ROW, Mary Bough,

Phyllis Butcher, Nan Ewing, Christine Watkins, Phyllis Highland, Charlotte Baker, Nodyne Woolsey, Lillian Cook, Louise Hudson, Betty Ja Kelso.

# RELIGIOUS LIFE COUNCIL



FIRST ROW, Left to Right: Dan Allison, Tina Moses, Billie Bea Kennedy, Lillian Cook, Pot Wiggins, Fred Goaden, Dan Jones. SECOND ROW: Dean Best, Dick Anderson, Jahn Beon, Dean Robert Mildram, Roy Lo-Tourette, Professor Ray Shart, President Ralph Mahney.



Trinity Methodist Church, our church host!

The excellent attendance of the Religion-in-Life Week chapel services has proven to be worthwhile to both students and to the Council members, who spent numerous hours in preparation for these services.

O

R

G

A

N

I

Z

A

T

I

O

N

S

# TENNESSEE WESLEYAN COLLEGE CHOIR



Accompanist: Nancy Kelsa. **FIRST ROW**, Left to Right: Joyce Howard, Barbara Grace, Swee Lean Teh, Nan Peery, Claire Johnson, Lindo Styles, Tina Mases, Sarah Loftis, Annette Frazier, Mary Lynne Robinette, Sandro Edenfield, Glenda Brewer, Lillian Cook. **SECOND ROW**, Joyce Caulter, Betty Hampton, Linda Vornell, Claudia Lamb, Sylvia Lambert, Phyllis Butcher, Charles Haad, Dan Janes, Allan Best, Connie Harris, Brenda Smith, Mary Petree, Barbara Self, Lois Mullins, Donna Roberson. **THIRD ROW**, Elizabeth Kennedy, Dat Janes, Anne Riviere, Charles Pemburn,

David Lavelace, Charles Stanbery, Jim Brown, Sam Nesbitt, Joe Jacquish, Dough Reed, Allen Yark, Ed Bawne, Mart Trew, Dura Underwood, Mary Grace Feezell, Beth Grant. **FOURTH ROW**, Nadyne Woolsey, Carole Anthony, Pamela Snelbaker, Mickey McClurg, Frank Seabolt, Jim Gregory, Gene Hamilton, Ricky Swett, Colin Bagwell, Paul Oat, Dennis Gillikin, Deon Best, David Beckler, Betty Potter, Gaynell Hixson, Elise Aytes.



JACK HOUTS

The Tennessee Wesleyan College Choir, under the direction of Jack Houts, has been very successful this year. They sang for the dedication of St. Luke's Methodist Church in Knoxville, and the annual church meeting of Munsey Memorial Methodist Church in Johnson City. In December, the choir presented the "Song of Christmas" on a Mayfield Dairy Farm Presentation over two television stations, WATE in Knoxville and WDEF in Chatanooga. Also the choir presented the first live stereophonic program in Athens with the aid of the Athens and Etowah radio stations. The choir gave an outstanding performance each time it sang. Besides touring churches in the Holston Conference, the choir lends a worshipful atmosphere to the sacred chapels by singing each Wednesday. Each year the choir presents a Spring Show in which the students spend a great deal of time. Being a member of the choir requires much of one's time, but they who are members love it.





## OFFICERS

Left to Right: Sandra Edenfield, Assistant Librarian; Joyce Howard, Secretary; Tina Moses, Treasurer; Mary Grace Feezell, Assistant Wardrobe Mistress; Connie Harris, Librarian; Elizabeth Kennedy, Assistant Wardrobe Mistress; Mickey McClurg, President; Phyllis Butcher, Wardrobe Mistress; David Lovelace, Business Manager; Charles Stanbery, Assistant Business Manager; David Becker, Social Chairman, Randy Miller, Technical Assistant.

## SECTION LEADERS

Left to Right: Sandra Edenfield, Soprano Section Leader; Nancy Kelsa, Accompanist; Connie Harris, Alto Section Leader; Sarah Loftis, Bass Section Leader; Joyce Howard, Tenor Section Leader.





FIRST ROW, Left to Right: Jim Gregory, Claire Johnson, Charles Ketran, Nan Peery, Linda Styles, Director Jack Hauts, Sarah Laftis, Beth Grant, Claudia Lamb, Mary Lynne Robinette, Joyce Howard, Jaan Wheeler. SECOND ROW, Mickey McClurg, Elizabeth Kennedy, Charles Stanbery, Daug Reed, Charles Pemburn, Jim Brawn, Phyllis Butcher, Mary Grace

Feezell, Joe Jacquish. THIRD ROW, Gaynell Hixson, David Lavelace, Frank Seabolt, Mart Trew, Dean Best, Donna Roberson, Sandra Edenfield, David Beckler. FOURTH ROW, Dat Jones, Carole Anthony, Allen Yark, Dennis Gillikin, Gene Hamilton, Ricky Swett, Paul Oot, Patricia Stawe, Dura Underwood, Charles Haad.



"Now, Pete, be sure and watch the program!"



"Careful fellows!"

# "THE RED MILL" MAY 8-9, 1959.



# NOCATULA STAFF



Left to Right: Jane Bowling, Nancy Harman, Dick Walle, Betty Potter, Sarah Loftis, Miss Joan Bridges, Bill Storm, Ricky Perachio.



Left to Right: Miss Joan Bridges, Mr. Wendell Deyton, American Yearbook Company Representative, Betty Patter, Pat Wiggins.



Left to Right: Charles Ketran, Miss Jaan Bridges, Jane Bawling, Pat Stowe, Nancy Harmon, Mr. Wendell Deyton, Betty Patter, Sarah Laftis, Pat Wiggins, Pete Taylor.



Nocatula editors were guests of The American Yearbook Company at Hannibal, Mo.

# SOCIETY FOR THE ADVANCEMENT OF MANAGEMENT



Left to Right: Harold White, President; Denny Lee, Fred Wamac, Sonny Newmon, Ann Crockett, B. T. Hutson, Ricky Swett, Jahn Bacon, Vice-President; Horold French, Jim Huggins, Clyde Webb, Clyde Link.



Carl Richardson, President of the Chattanooga Senior Chapter presents charter to B. T. Hutson, sponsor. Looking on are John Bacon, Vice-President; Harold White, President; Charles C. Thompson, Vice-President of student activities of Chattanooga chapter, and Mrs. B. T. Hutson.



Carl Richardson presenting Ricky Swett with S.A.M. pin.



# BULLDOG STAFF



## The Bulldog

Published during the school year by the students of  
TENNESSEE WESLEYAN COLLEGE, ATHENS, TENNESSEE

---

Friday, February 5, 1960

---

### THE STAFF

Editor ..... Mary Grace Feezell  
Assistant Editor ..... Dave Whitford  
Business Manager ..... Joan Locke  
News Editor ..... Christine Watkins  
Feature Editor ..... Mary Petree  
Religious Editor ..... Freddie Gooden  
Sports Editor ..... Dick Anderson  
Circulation Head ..... Wanda Trevena  
News Reporters—Linda Styles, David Beckler, Claudia Lamb,  
Louann Harris, John Anna Lovin, Carlos Aldunate, and  
Carmen Molina.  
Feature Writers—Sam Nesbitt, Bob Fair, Dean Grant, Ricky  
Swett, Dot Jones, Dick Walle, and Allen York.  
Proofreader ..... Joyce Mullins  
Typists—Mary Lynn Robinette, Ann Roberson, Kathleen Bryan,  
Lillian Cook, and Elizabeth Gaby.  
Circulation Staff ..... Charlotte Marshall and Bill Storm  
Advisor ..... Mrs. Mildred Archer

# STUDENT COUNCIL



**FIRST ROW:** Left to Right: Tina Moses, Secretary; Kenneth Wilburn, President; Dick Walle, Vice-President; Claire Johnson, Treasurer.  
**SECOND ROW:** Dennis Gillikin, Freshman Class Vice-President; Bill Storm, Junior Class President; Dot Jones, Sophomore Class Representative; Al Mehoffey, Senior Class President; Roy Blankenship, Freshman Class Representative; Mort Trew, Sophomore Class President; Bobby Ketchersid, Sophomore Class Vice-President; Don Al-

lison, Junior Class Vice-President; Sandro Edenfield, Junior Class Representative, Harry Stutzman, Sophomore Class Representative; David Morton, Freshman Class President. **NOT PICTURED:** Wayne Standefer, Senior Class Vice-President; Dick Anderson, Senior Class Representative; Joyce Howord, Senior Class Representative; Dwain Ealy, Junior Class Representative; Lou Ann Horris, Freshman Class Representative; Rondy Miller, Junior Class Vice-President.

# VETERANS CLUB



Left to Right: Harry Stutzman, Jim Huggins, John Bacon, president, Harold White, vice-president, Bobby Coker, Boyd Hooper, Fred Womack, Clyde Webb, treasurer, Jim Riden, Oran Creoseman, Charlie Guinn, Bill Storm.



# WESLEYAN ROUND TABLE



FIRST ROW, Left to Right: Professor J. Van B. Coe, Charlotte Marshall, Lindo Styles, Co-Secretaries; Dean Best, President; Don Jones, Vice-

President; Dr. A. H. Bowman, Sponsor. SECOND ROW: Claire Johnson, George Dorsam, Steve Futterman, Charles Guinn.

The Wesleyan Round Table, formed on the Wesleyan campus in 1959, has attempted this year to extend its program to include informative and interesting programs on Friday assembly periods for the entire student body. The Round Table, comprised of students interested in current events, is under the sponsorship of Dr. A. H. Bowman. One of the outstanding presentations of the year was Dr. Karl Schaenbach, German consul from Atlanta, who was the guest of the Round Table during the month of January. Other speakers on the agenda included Mr. Martin Ochs, editor of the *Chattanooga Times*, who delivered an address on segregation.

# ALPHA BETA



Left to Right: Tino Moses, Connie Harris, Dean Best, Mary Grace Feezell, Buddy Bacon, Pop Wilburn, Christine Watkins, Joyce Howard.

## OFFICERS



Left to Right: Tina Moses, Reporter; Connie Harris, Treasurer; Mary Grace Feezell, President; Joyce Howard, Secretary; Buddy Bacon, Vice-President.

Alpha Beta Honorary Fraternity is the only campus group based on high scholastic standing. Membership in the group is a coveted honor. A person may be considered for membership only in his junior or senior year. The group always has a project for the school. This year they are concerned with reworking their constitution and planning a leadership organization. The main purpose of the group is to promote scholarship.



# LAURA T. SHERMAN MUSIC FRATERNITY



FRONT ROW, Left to Right: Joyce Howard, Sondro Edenfield, Miss Mary Greenhoe, Sarah Laftis, Joon Wheeler. SECOND ROW: Mary Lynne Robinette, Carnelia Harris, Dona Roberson, Nann Peery, Charles Stonbery, Swee Lean Teh, Allon Yark.



"Like Man, THIS 'PAD' SURE IS HOT!"



WAKE UP CONNIE!

The music fraternity began its third year with four old members and twelve new members. The purpose of the music fraternity is to create an awareness and appreciation of music among the student body and to strengthen the music department.

Joyce Howard, Sandra Edenfield, Charles Stanbery, and Sarah Laftis gave recitals during the winter quarter.

Among other of the year's programs there were several ones on "Beatniks."

During the spring quarter, the fraternity brought Ellsworth Snyder to the campus to give a recital in assembly.

# PAN-HELLENIC COMMITTEE



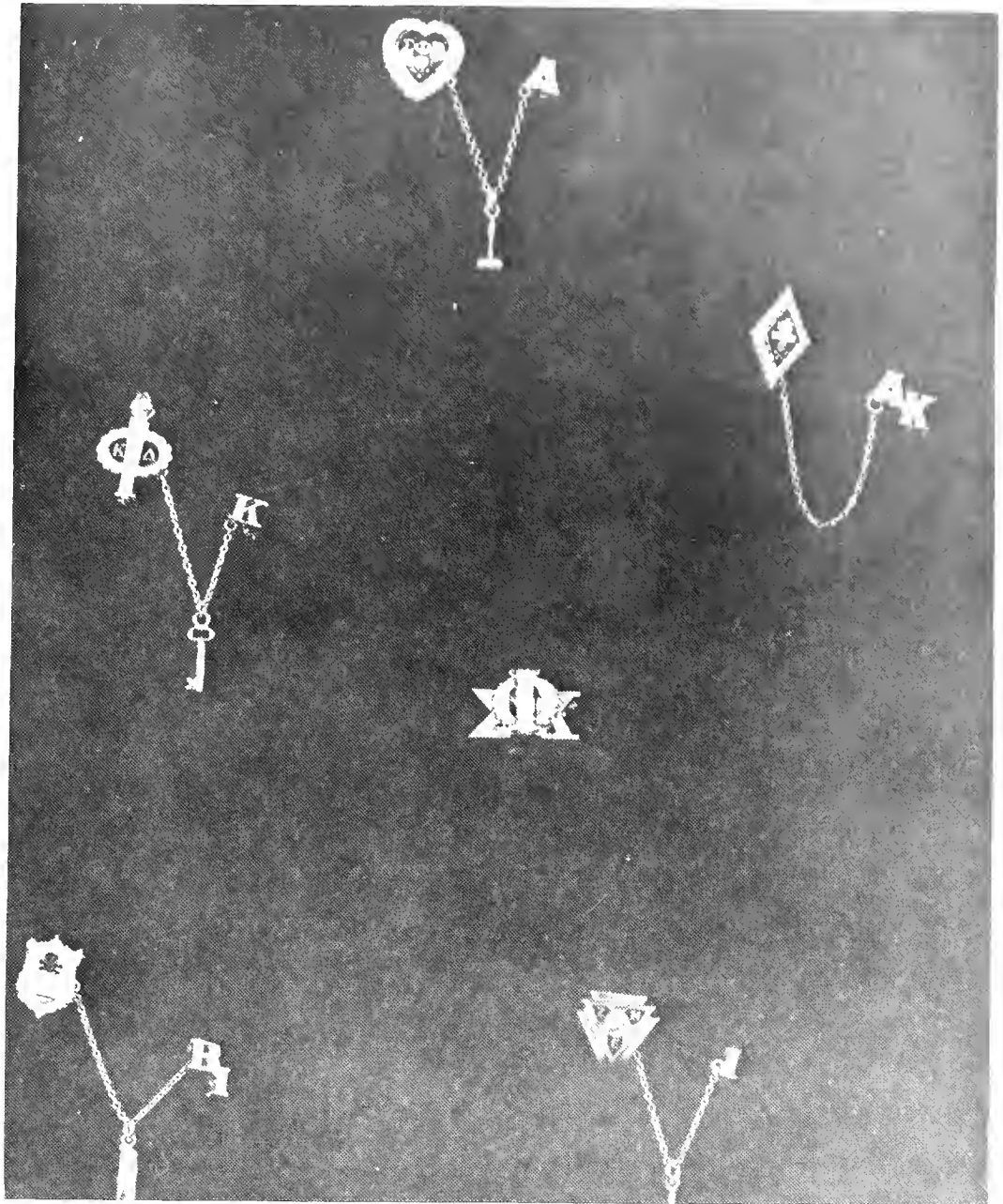
**FIRST ROW**, Left to Right: Joyce Howard, President of Eta Upsilon Gamma; Mrs. Albert Bowman, Sponsor of Sigma Iota Chi; David Lovelace, President of Sigma Phi Epsilon; Phyllis Butcher, President of Kappa Delta Phi; Connie Harris, President of Zeta Mu Epsilon; Billie Bea Kennedy, President of Sigma Iota Chi. **SECOND ROW**: Mr. Harry Coble, Faculty

Sponsor; Kenneth Wilburn, President of Phi Sigma Kappa; Dr. Floyd Bowling, Faculty Sponsor; Mrs. Nancy Seepe, Sponsor of Kappa Delta Phi; Mrs. Richard Johnson, Sponsor of Eta Upsilon Gamma; Jack Houts, Sponsor of Sigma Phi Epsilon.



Presidents of Greek Organizations inform freshmen of campus fraternal life.

The Pan-Hellenic Committee is composed of the presidents of the Greek Organizations on campus; their sponsors; and faculty sponsors. This is the controlling body of all the Greek activities.



*Greeks*



FIRST ROW, Left to Right: Rosie Webb, Mary Petree, Carolyn Hammond, Ann Roberson. SECOND ROW: Elizabeth Gaby, Charlotte Marshall, Linda Styles, Sarah Loftis, Cloire Johnson, Joyce Howard, Jone Bowling. THIRD ROW: Glenda Brewer, Dot Jones, Joan Locke, Louise Hudson, Kathy Bryon, Nodyne Woolsey, Betty Potter, Claudia Lamb, Floro Fritzsche, Pat Wiggins, Mrs. Richard Johnson, Judy Ashley, Mary Sue Longmire, Ann Gray, Billie Jean Perkins, Brenda Smith, Lillian Cook, Wonda Trevena, Mary Grace Feezell, Elise Aytes.

# ETA UPSILON GAMMA

## OFFICERS



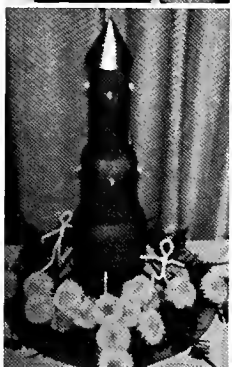
FIRST ROW, Left to Right: Lindo Styles, Treasurer; Claudia Lamb, Corresponding Secretary; Joyce Howard, President. SECOND ROW: Flora Fritzsche, Vice-President; Pat Wiggins, Recording Secretary; Mrs. Richard Johnson, Co-Sponsor.



## GAMMA GUY

David Lovelace





# GAMMAS

This year has been one of much work and re-organization for the Gammas and the beginning of definite steps in the direction of national affiliation, for in keeping with the great progress being made at Tennessee Wesleyan, we too look forward anxiously to moving forward more rapidly as a national senior-college sorority. Returning to the campus in September were twenty Gammas and three Gamma pledges, and soon after school began three more girls were pledged. Joining us in the fall as our new sponsor and co-sponsor, Mrs. Alf Wolle and Mrs. Richard Johnson have been invaluable to us this year. Throughout the year we undertook several projects, among them sending news of Wesleyan students to their hometown newspapers and helping the Sigma Phi Epsilon Fraternity with their benefit Christmas party. Social activities included a party in honor of our 1959-60 GAMMA GUY, David Lovelace, and our honorary sweetheart, Al Mehaffey; our rush party on the theme "Teahouse of the Gamma Moon"; an overnight "stagette" party for members and pledges; and the final Spring Bonquet given by the new members. Gammas were proud this year to have Mary Grace Feezell, Joyce Howard, and David Lovelace elected to WHO'S WHO IN AMERICAN COLLEGES AND UNIVERSITIES and they, along with Al Mehaffey, were chosen senior superlatives. Also among our sisters were the editors of the NOCATULA and the BULLDOG, and other student body and organizational officers.







FIRST ROW, Left to Right: Roxie Calfee, Marlyn Booker, Sandy Edenfield, John Anna Lovin, Wilma Honey, Swee Lean Teh, Mary Frances Creswell. SECOND ROW: Pat Stowe, Tina Moses, Phyllis Butcher, Libby Curtis, Betty Hampton. THIRD ROW: Nancy Seepe, Mary Lynne Rabinette, Annette Frazier, Lois Mullins, Joyce Mullins, Nancy Kelso, Helen Ellis, Elizabeth Ann Kennedy, Beth Grant, Barbara Massey, Emma Sue DeLazier, Janice Wolfe, Linda Varnell, Ann Begley, Betty Ousley, Di Anne Killough.

# KAPPA DELTA PHI

## OFFICERS



## KAPPA KING

Mickey McClurg



FIRST ROW, Left to Right: Tina Moses, Vice-President; Phyllis Butcher, President; Libby Curtis, Treasurer. SECOND ROW: Pat Stowe, Recording Secretary; Joyce Mullins, Reporter; Helen Ellis, Athletic Director; Elizabeth Ann Kennedy, Corresponding Secretary; Beth Grant, Guard; Barbara Massey, Chaplain.



## KAPPAS

Kappa Delta Phi began this school year with the ambition of becoming a national sorority and because of the devoted energies of members and President Phyllis Butcher and faculty sponsor, Mrs. Nancy Seepe, this goal draws ever closer. To really start the year off right, the Kappas pledged six girls and elected their sweetheart, Mickey McClurg. In the fall, a hayride was given in his honor and in December a Kappa Kattan Ball was held when Mickey was presented his crown and scepter as Kattan King. At Christmas, the Kappas assisted the Sigma Phi Epsilon Fraternity in their Christmas party for underprivileged children. The annual Christmas Feast was given the members by the patronesses at which two newly wed members were "showered." The Italian Rush party, pizza and all, was a great success and eight more pledges joined the ranks! The pledge dance, the Spring Banquet and the Easter Egg Hunt for underprivileged children — all annual events are always big events in the Kappa diaries. Four Kappas held class offices this year, four held offices in Ritter Hall, and Tina Moses was Harvest Queen, Senior Superlative, Miss T.W.C., and chosen as one of eight for WHO'S WHO IN AMERICAN COLLEGES AND UNIVERSITIES.





FIRST ROW, Left to Right: Jane Ann Yarbrough, Nann Peery, Dr. Helen Richards, Sponsor, Pauline Banks, Mrs. E. G. Rogers, Co-Sponsor, Charlotte Baker, Connie Harris. SECOND ROW: Glenda Peterson, Lou Ann Horris, Christine Watkins, Sue Fuller, Phyllis Highland, Mary Lee McAmis, Mary Ann Carpenter, Judy Dixon, Barbaro Ketron.

# ZETA MU EPSILON

## OFFICERS



FIRST ROW, Left to Right: Mary Ann Carpenter, Vice-President; Judy Dixon, Recording Secretary. SECOND ROW: Mrs. E. G. Rogers, Co-Sponsor; Dr. Helen Richards, Sponsor. THIRD ROW: Connie Harris, President; Charlotte Baker, Corresponding Secretary; Christine Watkins, Treasurer; Sue Fuller, Recorder; Mary Lee McAmis, Alumni Secretary; Phyllis Highland, Sgt.-at-Arms.



## SWEETHEART

Ricky Swett



## ZETAS

The Zeta's, under the leadership of Connie Harris, began the year with nine members returning, and six new pledges being initiated within the first few weeks. The first big event of the year was the announcement of our new sweetheart and mascot at an Italian dinner and dance. The theme of the occasion was "Three Coins in a Fountain," with Mr. Jack Houts singing the theme sang. The main event of the evening was the unveiling of the portroit of our sweetheart, Richard Swett, and the presentation of Rick Perachia as a most handsome and morvelous mascot. The members and their dates dined and danced by candlelight about a fountain entwined with ivy. An informal party honoring Mrs. E. G. Rogers, ca-sponsor, was given. Dr. "Helen," our sponsor, was presented an honorary pin as she was recognized as a member of Zeta Mu Epsilon by nomination of National Council. At Thanksgiving, the Zeta's delivered a basket of faad to one of the families of Athens, and then at Christmas, we worked with the Sigma Phi Epsilon Fraternity in furnishing and preparing the refreshments for the underprivileged children. A gala time was enjoyed at the Zeta rush party which took place in the setting of a Beatnik Coffeehouse in the Community "pad." A few weeks later, the new pledges of '59-'60 were presented at their pledge party and donce. In April, we donned our "glad rags" and headed for Greenbriar College in Lewisburg, W. Virginia for Notional Convention. A banquet was held in May for all members ond their dates. Our president was elected as a Senior Superlative and named as one of eight in WHO'S WHO IN AMERICAN COLLEGES AND UNIVERSITIES. Christine Watkins was elected WORLD CHRISTIAN COMMUNITY CHAIRMAN in Nashville. Nann Peery was chosen sweetheart of Sigma Phi Epsilon Fraternity, and was a candidate for Athletic Queen.







FIRST ROW, Left to Right: Glenda Bryant, Suzie Wilson, Donna Reed, Wanda Elliott, Linda Knox, Vaudine Cravey, Judy Bechstran. SECOND ROW: Peggy Sedman, Gail Buttram, Mary Ann Whitaker, Sally DeWitt, Billie Bea Kennedy, Mary Bratton, Carolyn Powers, Sara Dickey. THIRD ROW: Kay Spradling, Ann Riviere, Reba Brakebill, Ann Davis, Daris Hughes, Barbara Brakebill.

# SIGMA IOTA CHI

## OFFICERS



Left to Right: Mary Bratton, Worthy Scribe; Peggy Sedman, Pledge Directress; Carolyn Powers, Worthy Proctectress; Billie Bea Kennedy, Worthy Matron; Gail Buttram, Sgt.-at-Arms; Mary Ann Whitaker, Worthy Treasurer.



## SWEETHEART

Don Allison





# SIGMAS

This is Sigma Iota Chi's twenty-eighth year at Tennessee Wesleyan. The Sigma Iota Chi Sorority began the school year with fourteen returning members. We were glad to have Mrs. A. H. Bowman as our sponsor for the third year. For the second year the Sigmas were under the leadership of Billie Bea Kennedy. We have been very busy this year, being invited to the home of Mrs. Rhea Hammer for a special meeting and for our pledge service, to the home of President and Mrs. Mohney and to the home of a member for a chili supper. Our annual Christmas party was held at the home of Gail Buttram. Bath actives and pledges had a very good time at our annual meeting with our alumnae chapter. At this meeting the pledges were introduced to the alumnae. Our rush party, which was held at the home of Mary Bratton, was entitled "My Fair Lady." Our spring banquet was a success, thanks to our pledges. We again observed Founders Day.

We are very proud that President Mohney accepted our invitation to become an honorary member of our sorority.

Don Allison was re-elected Sigma Sweetheart for the second year. The Sigmas and the Phi Sigs held a joint sweetheart party for our sweetheart, Don, and for their sweetheart, Peggy Sedman.

The Sigmas are all proud of Peggy for being elected sweetheart of the Phi Sigs and also very proud of Mary Bratton, who is Athletic Queen.

We again enjoyed our week-end at the lake.

Our projects for the year were to sell baked goods and records for the March of Dimes. We also prepared a large basket for a needy family at Christmas.





FIRST ROW, Left to Right: Charles Hood, John Eekin, Dick Walle, Joe Burger, Mort Trew, Charles Ketron, Lou Guaraniello, Allan Best, Al Douglas, David Lovelace, Sonny Wright, Charles Stonbery, Ricky Perachio. SECOND ROW: Don Yarbrough, Jim Brown, Allon York, Mickey McClurg, Lynn Sanders, John Alise, Charles Guinn, Harry Stutzmon, John Martin, Jack Houts, Sponsor. THIRD ROW: Dean Best, Doug Reed, Lynn Brandon, Sam Nesbitt, Fred Fuller, Ed Bowne, Calvin Miller, Don Jones, Dove Morton, Richard Golberoith. FOURTH ROW: Fount Love, Ronnie Edwards, Roy Sellers, Danny Centers, Gene Hamilton, Randy Miller, Ricky Swett, Tom Watson, Gene Bellew, Charles Fannon, Dennis Gillikin, Fred Gooden, Bill Hicks.

# SIGMA PHI EPSILON

## OFFICERS



FIRST ROW, Left to Right: Lou Guaraniello, Chaplain; David Lovelace, President; Deon Best, Vice-President; Mort Trew, Recording Secretary. SECOND ROW: Don Jones, Corresponding Secretary; Ricky Swett, Treasurer; Harry Stutzman, Historian.



## SWEETHEART

Miss Nonn Peery

# SIG EPS



Talking about nationalization with Chuck.



Hey, Hawk!



Sig Ep football team.



MISS NANN PEERY, Sigma Phi Epsilon Sweetheart.



The bosses!



Herman, Vern, and Byers smocky mouth with Sig Ep pin.

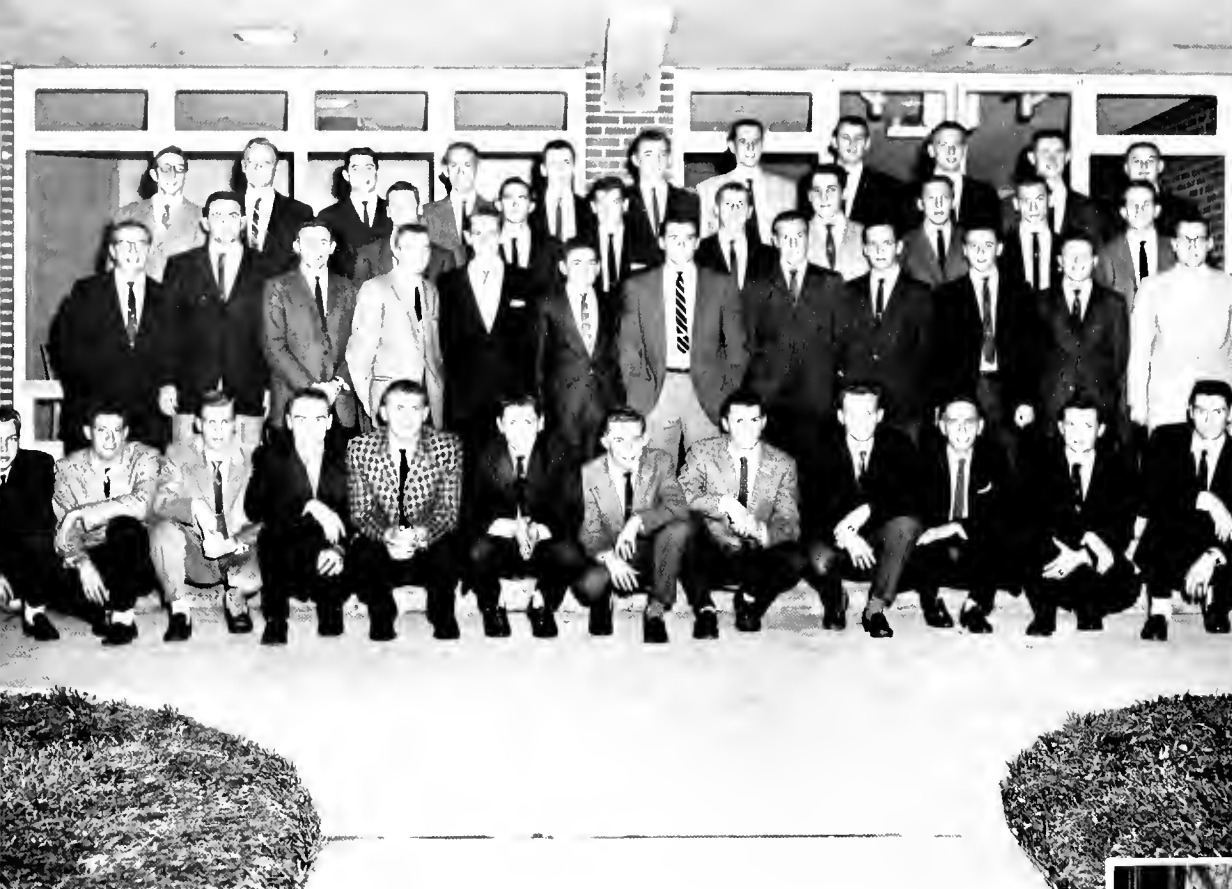


"Boy, I like THIS party!"



Sig Ep Sweetheart candidates and escorts.

This has been a big year for the Sigma Phi Epsilon Fraternity. Everything, and everybody points to one thing — March 26, 1960. This is the date upon which the old Eta Iota Tau ceased to be and the Sigma Phi Epsilon fraternity took up where the old left off — continuing many years of campus leadership and service. The year began with service with the production of the first T.W.C. Student Directory. This was followed by the "Sweetheart Dance" at which Miss Nann Peery was chosen from a bevy of wonderful candidates to be the Sweetheart. A turkey raffle followed to help raise money for the Christmas party. Sigma Phi Epsilon came in second in the intramural football tournament, and then a project of Christmas tree selling raised the remainder of the needed money for the Christmas party for underprivileged children at which 45 were entertained, given a good time, and in short, given a Christmas. Reorganization, of course, took plenty of time and hard work, but under the leadership of David Lavelace and Dean Best, great strides have been taken. The Honorable Jack Hauts also deserves a great deal of credit. Although a new name has been assumed, the old traditions will still go on, adding new ones, and improving upon the old. We fondly look back on an Eta Iota Tau, and proudly assume the new name of Sigma Phi Epsilon.



**FIRST ROW**, Left to Right: Guy Henry, Lloyd Barham, Jack Townsend, Jack Harrison, Bill Cate, Malcolm Dunn, John Pierce, Jim Richardson, Roy Blankenship, Luke McAmis, John Bain, Dick Kimsey. **SECOND ROW**: Harry Newman, Ken (Pop) Wilburn, Jerry Crow, Larry Gaby, Bob Ketchersid, Gary Holt, Dwain Ealy, Harold French, Gene Vest, Brent Mills, Charles Abernathy, Jim Huggins. **THIRD ROW**: Tom McBee, Elbert Carlton, Fred Wamack, John Bacon, Steve Futterman, Don Allison, Francis Maddux, Al Mehaffey. **FOURTH ROW**: Harold White, Bob Joines, Bob Wheeler, Dick Anderson, Eddie Crawford, U. S. Myers, Ronnie Ely, Marvin (Blue) Lowry, Wayne Standefer, Charles (Herkey) Paine, Charles Fleenor.

# PHI SIGMA KAPPA

## OFFICERS



## SWEETHEART

Miss Peggy Sedman



**FIRST ROW**, Left to Right: Bob Wheeler, Sgt.-at-Arms; Harold White, Vice-President; Wayne Standefer, Sentinel; Marvin Lowery, Treasurer; Kenneth Wilburn, President; John Bacon, Secretary. **SECOND ROW**: Harry Newman, Scholarship Chairman; Dwain Ealy, Historian; Al Mehaffey, Reporter; Don Allison, Chaplain; Harold French, Pledge Master. **THIRD ROW**: Bobby Ketchersid, Project Chairman; Dick Anderson, Corresponding Secretary; Ron Ely, Athletic Director; Charles (Herkey) Paine, Assistant Pledge Master; Elbert Carlton, Public Relations Chairman.



# PHI SIGS



FIRST ROW, Left to Right: Jackie Townsend, Jack Harrison, Guy Henry, John Pierce, Jim Richardson, John Bain. SECOND ROW: Lloyd Barnham, Bill Cate, Malcolm Dunn, Luke McAmis, Roy Blankenship, Richard Kimsey.



Careful boys, it's just a picture!



Phi Sig football team who won Intramural Championship!

At the beginning of the school year, two fraternities which were on the Wesleyan campus last year, Alpha Tau and Phi Sigma, combined and formed the Phi Sigma fraternity. The Phi Sigma fraternity won the intramural football championship with an over-all record of 7—0. We were scored on only one time and our total number of points scored against the other teams was 175. Several members of the team were elected to the intramural all-star team.

The lovely and congenial Miss Peggy Sedmons was chosen for our fraternity sweetheart. We had a very nice sweetheart dance in her honor, in conjunction with the Sigma Iota Chi Sorority, who honored as their sweetheart one of our brothers, Don Allison. The Phi Sigmas petitioned for membership

in the Phi Sigma Kappa national fraternity at the beginning of this school year. We were initiated at the University of Tennessee on December 5, 1959, and we are now the Omicron Tetartion chapter of the Phi Sigma Kappa. The Phi Sigma Kappa members are very active in school activities. We have six members on the twenty member student council. Our president, Pop Wilburn, is the President of the Student body this year.

We gave a dance free of charge to the student body on January 15, featuring the Blenders of Knoxville. This dance was staged to celebrate our going national.

Tentative plans for the future include a trip to Florida during Spring vacation. We also have a Spring Banquet planned.







# ATHLETIC DIRECTOR AND BASKETBALL COACH



**MR. CLIFTON "TIP" SMITH**

"Tip" was born in Greenville and now resides in Cleveland. His formal education began at Carson Newman College, from which he received his B.S. with a major in Chemistry and a minor in Mathematics. His M.S. degree is from the University of Tennessee, with a major in Physical Education. He has coached at Charleston High School for seven years, at T.M.I. for two years, coached and was principal of Bradley County High School in Cleveland for ten years, coached here at Wesleyan for three years, and is now in his second year here as Director of Athletics. "Tip" must smile to himself when he reads of a rare case where a coach has won over three hundred games, for he has won over five hundred.



**COACH WILLIAM BOYD CATE**

Coach "Buddy" Cate has an excellent basketball background. He was an outstanding basketball player at Cleveland, Tennessee. Upon graduation, he entered the service and returned to enroll in Kentucky Wesleyan at Bowling Green. There, for three years, he was a member of the famous "Western Five," and during his senior year, received honorable mention for All American. Following college he played one year of professional basketball with the Waterloo Hawks, and after six years of high school coaching, came to Wesleyan, where, in two short years, he has made quite a name for himself. He has brought the T.W.C. five to championship in the Volunteer State Athletic Conference and also in the Smokey Mountain Conference.



Wesleyan..... 68	King ..... 53
Wesleyan..... 94	Tusculum ..... 85
Wesleyan..... 82	Georgia St. .... 72
Wesleyan..... 66	Milligan ..... 65
Wesleyan..... 88	U. of Chatt. .... 85
Wesleyan..... 57	Marville ..... 67
Wesleyan..... 111	King ..... 76
Wesleyan..... 73	Jacksonville .... 65
Wesleyan..... 79	Howard ..... 63
Wesleyan..... 108	Emory and Henry .. 63
Wesleyan..... 95	L.M.U. .... 81
Wesleyan..... 72	Carson Newman .. 69
Wesleyan..... 78	U. of Chatt. .... 61
Wesleyan..... 57	Maryville ..... 61
Wesleyan..... 77	Milligan ..... 65
Wesleyan..... 64	L.M.U. .... 73
Wesleyan..... 67	Howard ..... 85
Wesleyan..... 68	Berry ..... 61
Wesleyan..... 82	Carson Newman .. 75
Wesleyan..... 92	Georgia St. .... 56
Wesleyan..... 76	Tusculum ..... 87
Wesleyan..... 83	Jacksonville .... 58

# BASKETBALL 1959-1960



**FIRST ROW**, Left to Right: Don Jones, statistician; Jerry Edmonds, 6'1", 175, 19, sophomore from Grant, Alabama; Sonny Wright, 5'10", 150, 18, freshman from New Albany, Indiana; John Martin, 6'1", 185, 20, freshman from New Albany, Indiana; Ronnie Campbell, 6'1", 185, 20, freshman from Decatur, Tennessee; Dave Morton, 5'8", 185, 18, freshman from Friendsville, Tennessee; Reed Wright, Assistant to Coach Cate. **SECOND ROW**: U. S. Myers, 6'1", 170, 23, freshman from Chattanooga, Tennes-

see; Charles Fannon, 6'3", 170, 18, freshman from Kingsport, Tennessee; Tommy Springfield, 6'5", 175, 19, sophomore from Soddy Daisy, Tennessee; Bill Storm, 6'3", 185, 24, junior from Athens, Tennessee; Ronnie Ely, 6'5", 170, 21, senior from Pennington Gap, Virginia; Randall Kyker, 6'2", 175, 19, sophomore from Athens, Tennessee; Buddy Cate, Coach of the Bulldogs.



# VARSITY BASKETBALL



JERRY EDMONDS



RON ELY



BILL STORM



TOMMY SPRINGFIELD



SONNY WRIGHT

RONNIE CAMPBELL



JOHN MARTIN



TROY GILES





# 1959 - 1960



RANDALL KYKER



DOUG REED



MALCOLM DUNN



CHARLES FANNON

U. S. MYERS



MAX DOUGLAS



DAVE MORTON





# ATHLETIC QUEEN



MISS MARY BRATTON  
Athens, Tennessee

# BASEBALL



FIRST ROW, Left to Right: John Alise, Eddie Fox, Dean Small, Clyde Link, Hoyt Ward, Bob Lancaster, Pat Cook. SECOND ROW: Jerry Edmonds, Charlie Guinn, David Haltackers, Bill Irwin, Coach Buddy Cate, Randy Miller, John Ramano, Jim Woies, Bobby Blankenship.



Safe!



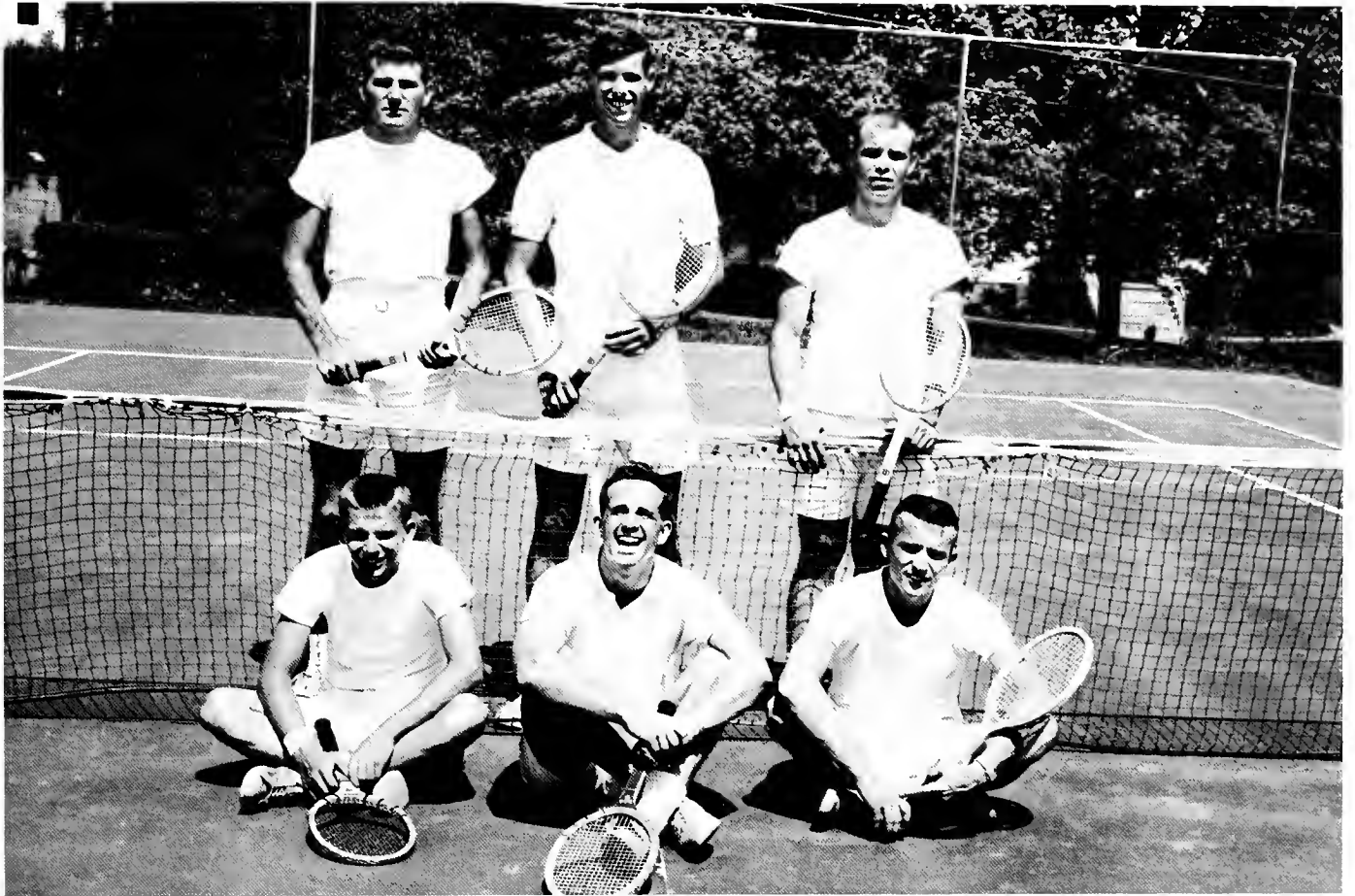
Balk!



Home?



# TENNIS



SEATED, Left to Right: Dewey Davidson, Al Mehoffey, Lawrence Martin. STANDING: Bill Storm, Ricky Swett, Jim Moys.



Mehoffey wins with fine style!



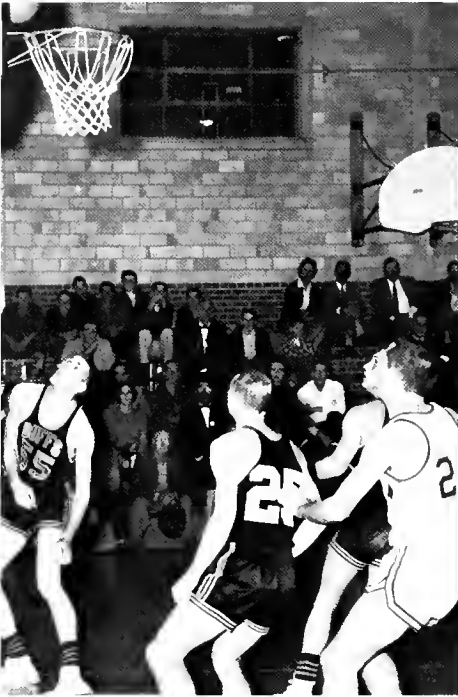
Dewey takes another one!

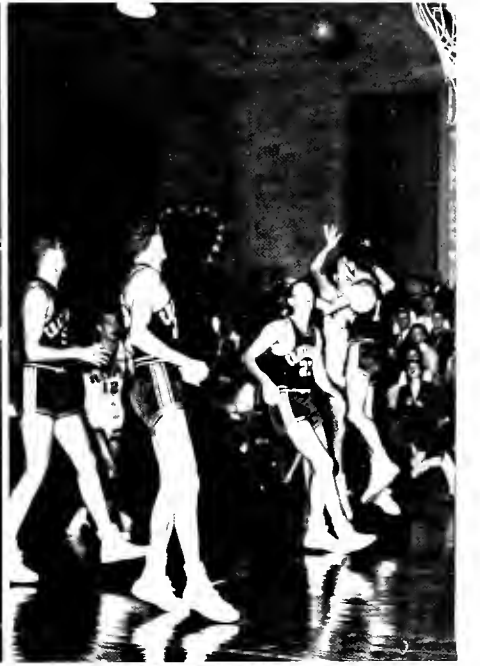
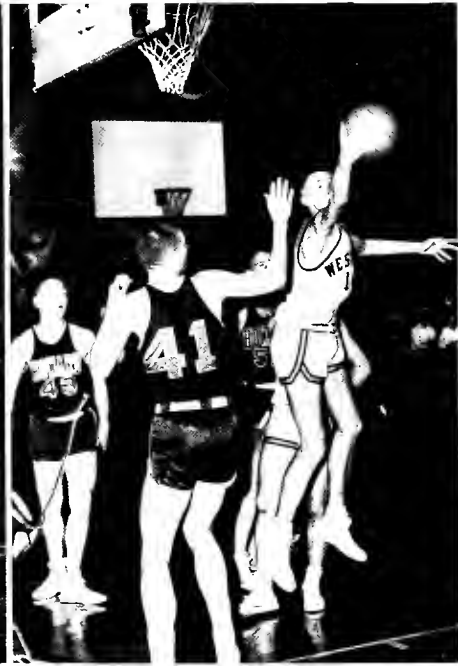
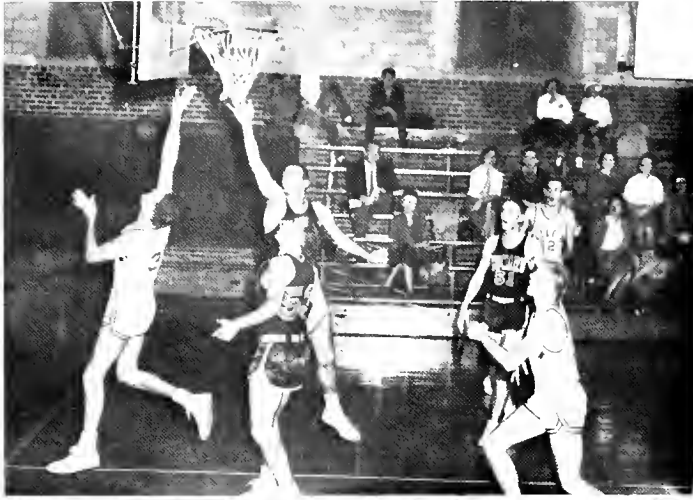


Don docks opponent!

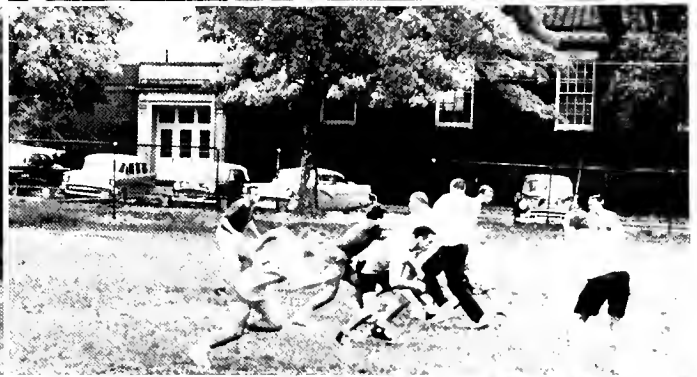


# BULLDOGS IN ACTION



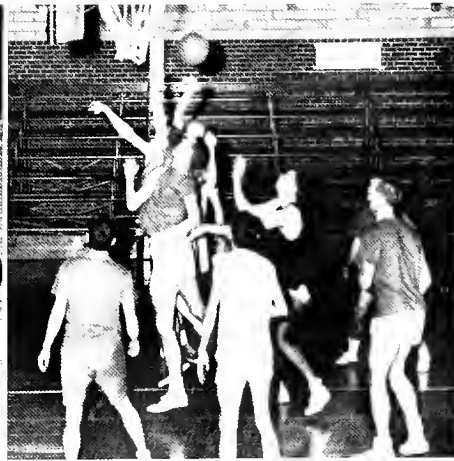


# BOYS' INTRAMURALS





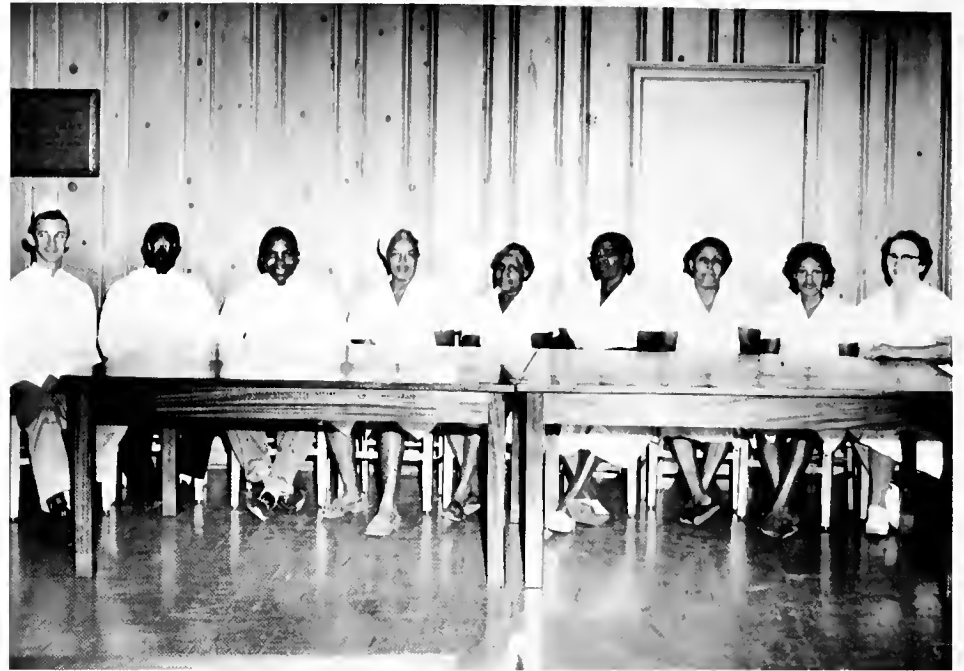
# BOYS' INTRAMURALS



# KITCHEN AND CAMPUS COLLEAGUES



MRS. EDITH WALKER, Dietitian



LEFT TO RIGHT: Clarence Rue, George Arnwine, Arnold Snowden, Cuedello Witt, Bell Davis, Annie Rucker, Dora Hammond, Jennie Boylew, Collie Nelson.



FIRST ROW, Left to Right: William Bradley, James Scruggs, James Sherman. SECOND ROW: Woodrow Thrasher, Ralph Sherlin, Carl Passmore. THIRD ROW: Gleen Snowden, Louis Underwood, superintendent of grounds, Oro Lee Lillard.

Many students this year have been making comments about the food in the dining hall. They have said on numerous occasions that the food is much improved. Only under the watchful eye of Mrs. Walker has this been possible. Mrs. Walker has spent untold hours planning well-balanced meals for the students. Our hats are off to Mrs. Walker for a job well done.

Many of us have noticed improvements in the beauty of the campus. New grass has been sewn, buildings have been painted, and other noticeable "helps" have been in effect this year under Louis Underwood and his staff. Louis is a hard worker himself and he expects his men to work equally hard, AND THEY DO. On behalf of the student body, the NOCATULA takes this time and space to say a well deserved "THANK YOU."





**RILEY'S**

**STUDIO**

LAVON RILEY

Specialist in Senior Portraits

---

HAVE CAMERA WILL TRAVEL

— WEDDINGS —

Telephone 1703 — 1704

128 A. E. Washington Avenue

Athens & Cleveland, Tennessee

# CHEERLEADERS



FIRST ROW, Left to Right: Donna Reed, Gory Holt, Judy Wilson. SECOND ROW: Gail Buttrom, Helen Ellis, Emma Sue DeLozier, Tina Moses, Head Cheerleader.

# "W" CLUB



FIRST ROW, Left to Right: Dave Holtackers, Herky Poine, Don Allison, Al Mehoffey. SECOND ROW: Hoyt Word, Glenn MacKinnon, Ron Ely, Bill Storm.

# WOMEN'S ATHLETIC ASSOCIATION



FIRST ROW, Left to Right: Beth Orr, Roxie Calfee, Nann Peery, Gail Buttram, Janice Walfe, Emma Sue DeLozier, Charlotte Baker. SECOND ROW: Libby Curtis, Caralyn Pardue, Phyllis Butcher, Carale Ann Gray, Helen Ellis, President, Flara Fritzsche, Vice-President. NOT PICTURED: Fern Stooksbury, Secretary-Treasurer.

# INDEPENDENTS



FIRST ROW, Left to Right: Judy Bull, Secretary-Treasurer, Mary Tim Wilson, Vice-President, Carale Ann Gray, President. SECOND ROW: Louise Campbell, Caralyn Pardue, Shirley Price.

# GIRLS' INTRAMURALS



INDEPENDENTS, winner of Girls' Intramural Basketball Tournament. FIRST ROW, Left to Right: Ruth Ann Maady, Coral Mink, Beth Orr, Corale Ann Gray. SECOND ROW: Shirley Price, Gaynell Hixson, Judy Bull, Wilmo Honey.



# GIRLS' INTRAMURALS



ETA Upsilon GAMMA SORORITY, runner-up of Girls' Intramural Basketball Tournament. FIRST ROW, Left to Right: Joyce Howord, Claudic Lamb, Wanda Treveno, Elizabeth Goby. SECOND ROW: Dot Jones, Joan Locke, Pat Wiggins. NOT PICTURED: Floro Fritzsche.







FINE CLASS RINGS



ANNOUNCEMENTS



YEARBOOKS

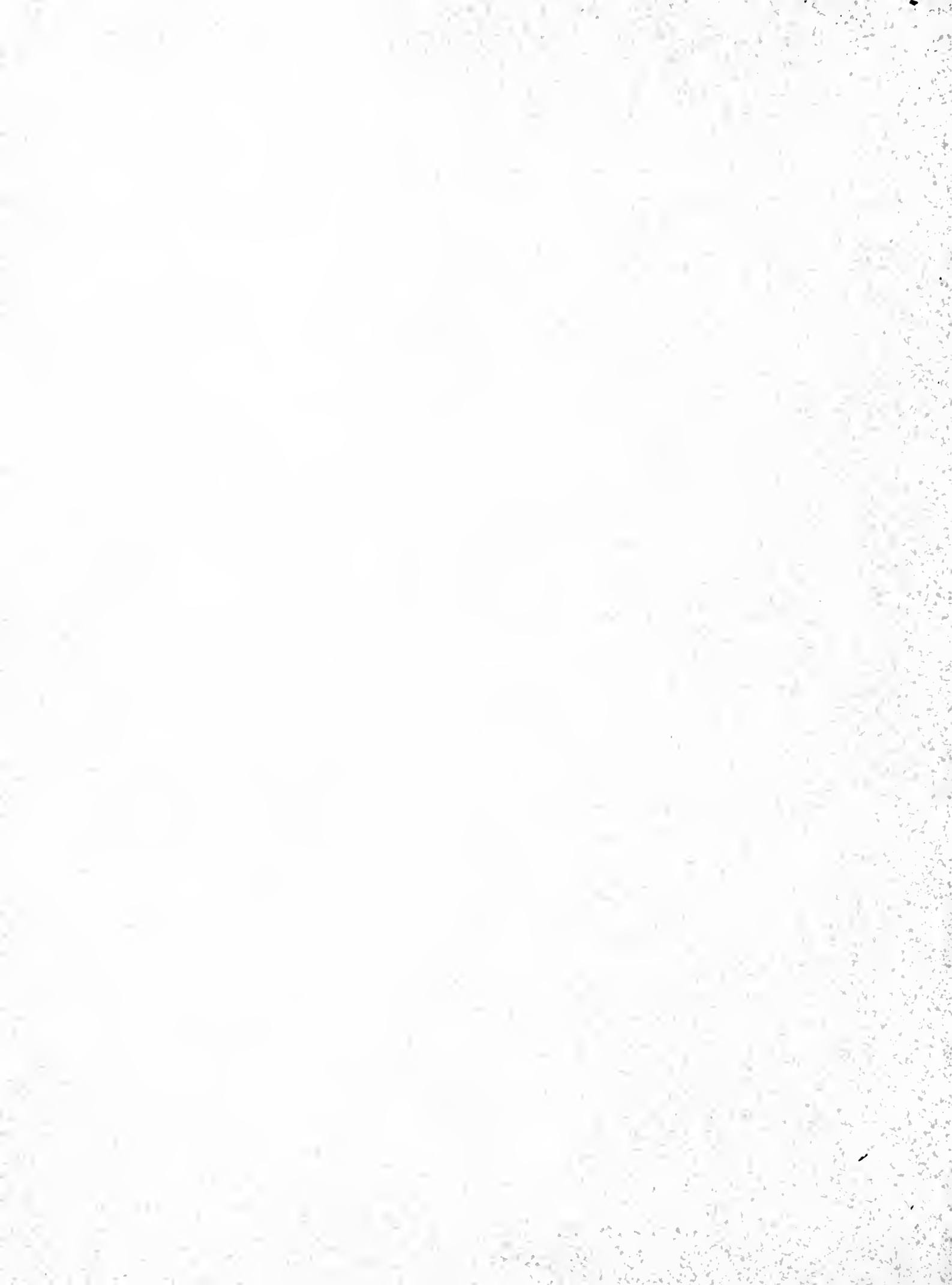


AWARDS

**J O S T E N ' S**

Since 1897





# **For Reference**

**Not to be taken from this room**

