



~~Book by Ellis~~

Digitized by the Internet Archive
in 2011 with funding from
LYRASIS Members and Sloan Foundation

<http://www.archive.org/details/nocatula196200tenn>

Nocatula

Publication by the students
of Tennessee Wesleyan College

Peggy Rapking—*Editor*
Peter Von Dreele—*Assistant Editor*
Josette Crites—*Art Editor*

1962





MR. AND MRS. WILLIAM H. ARCHER

DEDICATION

IN APPRECIATION . . .

Of your individual and combined efforts to raise the academic standards of this institution;

Of your service to students of language and literature;

Of your inquiring minds that continually challenge us to greater achievement;

We dedicate to you the NOCATULA for 1962.



Mr. and Mrs. Archer

Mrs. Archer directs a sophomore English class.



Mr. Archer gives his French class a test.



TABLE OF CONTENTS:

- I. PROLOGUE
- II. FACULTY
- III. CLASSES
- IV. ACTIVITIES
- V. GREEKS
- VI. ATHLETICS

FOREWORD:

We, the editor and staff, of the *Nocatula* for 1962 present this book for your enjoyment. As you leaf through these pages may you recall fond memories of pleasant associations of this school year, 1961-62.

PROLOGUE

When the last hot breath of summer
Ceased to stir,
We returned to the citadel of Tennessee Wesleyan.
Entering once more the ritual and pattern
of collegiate life.
Old rendezvous revisited—
cronies, colleagues—
new faces—
A subtle change is evident, an aura of transition.
Progress is the motif.

The interminable slowness of endless lines—
This is registration
An hour's twitching pencil's labor swept
away by an advisor's dissenting nod—
This is Registration
Blank staring faces emerge,
Clutching class cards,
wondering . . .
. . . did I really sign away a pint of blood?
This is registration . . .



Freshmen!
confused,
inhibited,
neurotic,
New products of public education—
hiding heads in fear of air invasion;
transformed into:
confused,
sophisticated,
neurotic,
collegians.

Mr. B's beaming smile,
the pulsation of the walls as the Wurlitzer
blazes at 120 decibels—
Slap, slap, riffle, slap, bid a heart and
the floating bridge game goes ever onward.
The euphonous din of classmates:
bantering,
cajoling,
reflecting.
Calloused elbows—
Struggling for position—
Craning—
Straining—
Bargain day at the book store?
No—the daily 10 o'clock mass compulsion
to compress 500 bodies into the confines of
the post office.
Again we relive these reminiscences at
our rollicking recluse.









Books, Books, Books—
tirelessly we wade through an endless
sea of books.
Devouring!
Learning!
Maturing!
Reams of notes record the passing of
our days.
Studying,
Scrambling to the pinnacle of one
assignment,
only to find still higher peaks to scale—
The slow ebb of hours poured over
innumerable volumes,
molding!
Pushing you on to greater heights—
Upward,
ever upward,
pursuing the rainbow of excellence.

Reference books are worn,
Periodicals frayed,
Ideas are born—
... lots of action in the periodicals
room!
Mid-terms; finals—
bring forth a legion of blood-shot,
sleepless eyes
Procrastination followed by despair—
Gnawed fingernails—
Flags for a few—
For most, the satisfaction of a
mission accomplished.



Rowdy, raucous, rising unison of
 voices,
 giving the team that extra push—
 moments of glory,
 disappointment,
 surging adrenalin—
 Pleasant exhaustion—“twisting”
 off
 the pent-up energy at the post-game
 soirees.



‘The best-laid plans . . . gang aft
 a-gley’—
 Who turned off the Voo-doo?
 The effigy’s execution fails to
 jinx the
 high-flying Eagles . . . this time.



We are the captive audience of
nature's artistry.
A world of dazzling whiteness
Awestruck Floridians
Snow . . . calls up the latent
adolescence—
The charm of the snowman draws
the unwary from their tasks—
as in all seasons.
Moffitt Hall transformed into a
carillon
of crystal chimes.

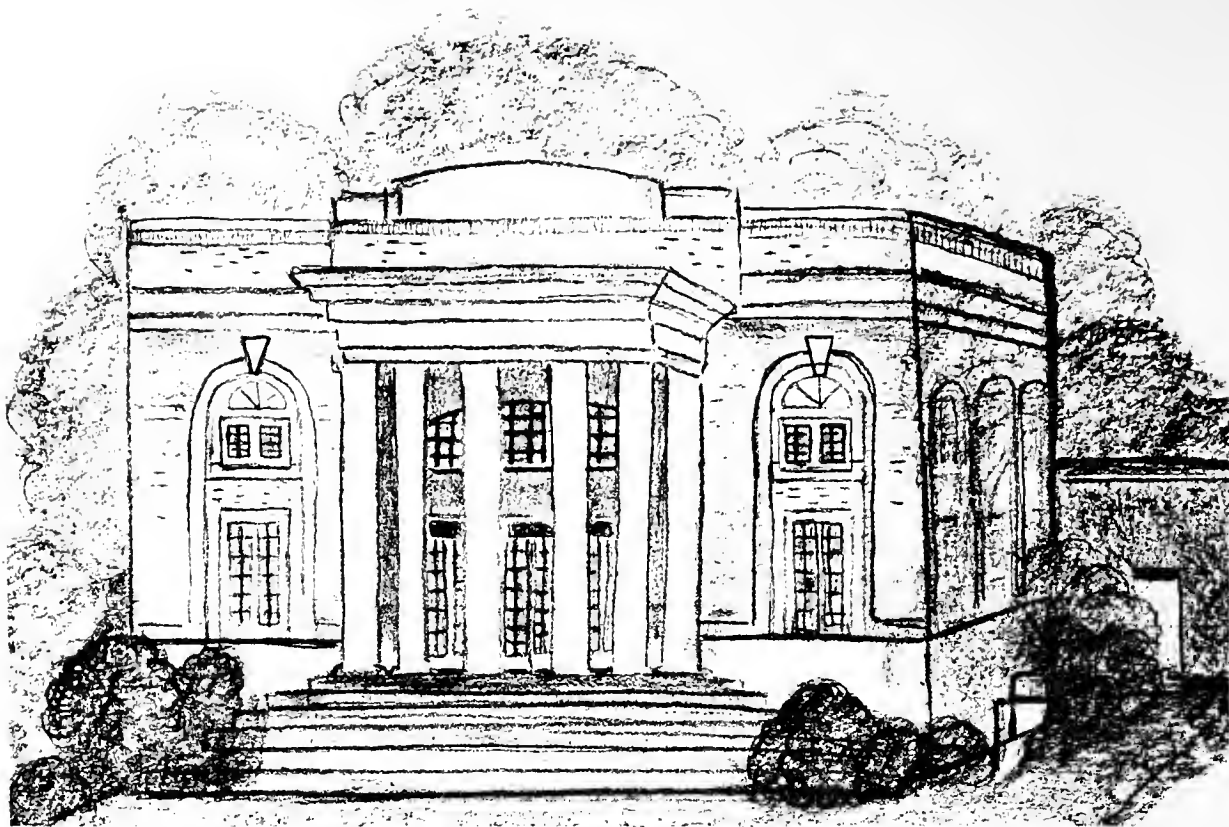
Growing pains . . .
A giant has arisen, and now
moves forward.
The Decade of Destiny
challenges,
with a call to higher echelons
of academic excellence—
Wesleyan is you;
You are the vanguard of an
auspicious era—
You are its destiny!

—R. V. Jennings



Faculty





ADMINISTRATION

FACULTY

STAFF MEMBERS



RALPH W. MOHNEY. A. B., B. D., S. T. M., D. D.
President



ROBERT C. MILDRAM, Ph.B., B.D., M.A., Ph.D.
Dean of the College



FLOYD E. BOWLING, A.B., M.S., Ed.D.
Dean of Students



PAUL RIVIERE, B.S., M.A., B.D.
Dean of Admissions and Registrar



MARY NELLE GRAVES
Administrative Secretary



R. E. BRANHAM, C.P.A.
Bursar

Administrative Staff

ROY B. SHILLING, JR., B.A., B.D.
Director of Development



CHARLES J. LINER, B.S., M.S.
Director of Alumni and Recruitment



HARRY COBLE, A.B., B.L.I., M.A.
Chairman of Division
Associate Professor of Speech and Dramatics

NOT PICTURED:

MILDRED ARCHER, B.A., M.A.
Associate Professor of English

HARRYLYN G. SALLIS, B.A., M.M.
Instructor in Music

ANN P. PUETT, B.A.
Instructor in Art

Division of Language



WILLIAM B. YATES, B.A.
Instructor in Speech



CLARYSE D. MYERS, A.B., B.S. in
 L.S., M.A.
Librarian



MARTHA B. HALE
Instructor in Art



MARY L. GREENHOE, B.M., M.M.
Assistant Professor of Piano and Organ



WILLIAM H. ARCHER, A.B., M.A.
*Associate Professor of Modern
Languages*



RAYMOND DOWNING, A.B.
*Assistant Professor of Modern
Languages*



BEN H. McCLARY, B.A., M.A.
Assistant Professor of English

Literature, and Humanities

ALFRED JACK HOUTS, B.A., M.M.
*Associate Professor of Music
and Choral Director*



ADDISON R. BARKER, JR.,
B.A., M.A.
Assistant Professor of English



GENEVIEVE WIGGINS, B.A., M.A.
Instructor in English



Division of Religion and Philosophy



ROBERT C. MILDAM, Ph.B., B.D.,
M.A., Ph.D.
*Chairman of Division
Professor of Religion and Philosophy*



HOWARD N. HINDS, B.S., B.D.
Chaplain and Instructor in Religion



CAROLINE BECKER,
B.A., M.A., B.D.
Instructor in Religion

Division Of Social Science



WILLIAM CHARLES SALLIS,
B.S., M.S.
Assistant Professor of History



J. VAN B. COE, A.B., M.A.
*Associate Professor of
Economics and Sociology*

ALBERT H. BOWMAN, A.B., M.A., Ph.D.
*Chairman of Division
Professor of History*



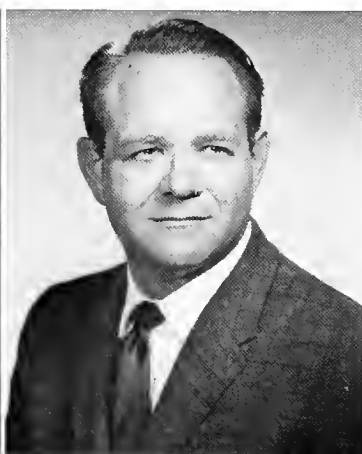
Division of Natural Science



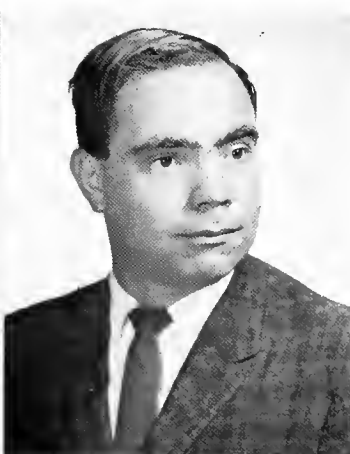
CARL B. HONAKER, B.S., M.S., Ph.D.
Chairman of Division
Professor of Chemistry and Physics



FLOYD E. BOWLING,
A.B., M.S., Ed.D.
Professor of Mathematics



ALTON LOYD SMITH, B.S.
Instructor in Mathematics



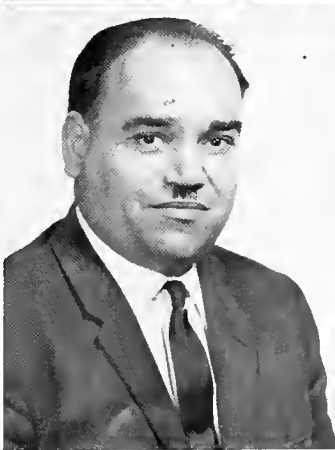
BUDD L. DUNCAN, B.A., M.S.
Assistant Professor of Chemistry



WILLIAM H. ADAMS, JR.,
B.A., M.S., Ph.D.
Professor of Biology



FRED E. WHITEHEAD,
B.S., M.S., Ph.D.
Professor of Biology



ZSIGMOND PATAKÝ,
Teacher's Diploma from
University of Debrecen, Hungary
Assistant Professor of Physics



ALF H. WALLE, B.S., M.S., Ed.D.
*Chairman of Division
Professor of Education*

Division of Education, Applied Arts and Business Administration

NOT PICTURED:

REVA PUETT, B.S., M.S.
Assistant Professor of Home Economics

B. T. HUTSON, B.S., M.S.
*Associate Professor of Business
Administration and Director
of Evening College*

E. G. ROGERS, B.S., M.A.
Associate Professor of Education

FRED PUETT, B.S., LL.B.
*Instructor in Commercial
Subjects*



M. CLIFTON SMITH,
B.S., M.S.
*Associate Professor of Education
and Director of Athletics*

WILLIAM B. CATE, B.S., M.A.
*Instructor in Physical Education
and Basketball and Baseball
Coach*

CAROLYN F. STALEY, B.S.
Instructor in Physical Education



SAMUEL D. ELROD
Assistant to Bursar

JEAN D. ARRANTS, B.S.
Assistant to Bursar



Left to Right:

CAROL BROWDER, B.S.
Stenographer for the Registrar
GAIL REDDING
Stenographer for the Registrar
SALLY D. EALY, B.A.
Stenographer for the Registrar
NANCY H. SEEPE, A.B.
Secretary to the Dean
ANN WATKINS
Secretary to the Dean
NORMA WHITEHEAD
Secretary to the Director of Development
REBA WELDON
Secretary to the Director of Recruitment and Alumni
ROBBIE J. ENSMINGER, A.A.
Secretary to the President

Left to Right:

ADELINE WALLE, B.S.
Catalog Assistant in Library
VERA COE
Assistant to the Librarian
CLARYSE D. MYERS
Librarian
MAGGIE ENSMINGER
Assistant to the Librarian
BETTY P. MOSS, B.A.
Typist in Library





Left to Right: Miss Reba Parsons, Relief Resident; Budd L. Duncan, Head Resident—Petty-Manker; Mrs. Blanche Greene, Head Resident — Ritter; Mrs. Sally Robeson, Head Resident — Centennial; Mrs. Mattie B. Martin, Head Resident — Brammer; Mrs. Ida Ruth Lewis, Head Resident — Lawrence.



*Mr. Louie Underwood
Superintendent of Buildings and Grounds*



*Mrs. Edith Walker
Dietitian*



*Mrs. Dixie C. Liner, R.N.
Nurse*



*Mrs. Mildred Smith
Bookstore Manager*

Classes





SENIORS

JUNIORS

SOPHOMORES

FRESHMEN

SENIOR CLASS OFFICERS

(Left to Right)

Gary Holt.....President
 Peggy Rapking.....Vice-President
 Carolyn Hammond.....Girl Representative
 Lillian Cook.....Secretary
 Wallace Smith.....Boy Representative
 Brenda Smith.....Treasurer



SENIOR CLASS



JERRY ALLEN ANDERSON
 Route #2
 Cleveland, Tennessee
B.A., Religion and Philosophy

LOLA ELISE AYTES
 Dandridge, Tennessee
B.A., English

Alpha Xi Delta 1, 2, 3, 4, Chaplain 3, Corresponding Secretary 4; Student Christian Association 1, 2, 3, 4, Fellowship Chairman 3, Council 4; Choir 1, 2, 3, 4; BULLDOG Staff 1, 4; Laura T. Sherman Music Fraternity 2, 3, 4, Historian 3; Life Service Girls 3, 4; Lawrence Hall Dorm Council 1.



COLIN BAGWELL
 510 Oakhurst Drive
 Knoxville, Tennessee
B.S., Biology

Choir 1, 2, 3, 4; Student Christian Association 1, 2, 3, 4, Witness Team 3.

PAULINE BANKS
 2820 Willraham Road
 Middleton, Ohio
B.A., Education

Transferred from Lee College. Delta Zeta 3, 4.



FREIDA JUNE BARNETT
Box 127
Englewood, Tennessee
B.A., Education



JAMES EDWARD BARNETT
Box 127
Englewood, Tennessee
B.S., Social Science



BILLY JOE BRAKEBILL
Niota, Tennessee
B.S.



JAMES GEORGE BRAKEBILL
631 Guille Street
Athens, Tennessee
B.S., Business

MARY KIMBROUGH BRATTON
P.O. Box 277
Athens, Tennessee
B.A., History

Sigma Kappa 1, 2, 3, 4, Corresponding Secretary 2, 3, First Vice-President and Recording Secretary 4; Alpha Beta 4, Secretary 4; Wesleyan Roundtable 3, 4, Secretary 4; Student Christian Association 3, 4; Life Service Girls 3, 4; Athletic Queen 2; Sigma Phi Epsilon Queen of Hearts 4; WHO'S WHO AMONG STUDENTS IN AMERICAN UNIVERSITIES AND COLLEGES.

JANE ELITHA BRIDGES
3900 Ivy Road
Atlanta 5, Georgia
B.S., Education

Transferred from Georgia State College. Alpha Xi Delta 3, 4; Choir 3, 4, Wardrobe Mistress 4.



JAMES WALTER BROWN
Denville, New Jersey
B.S., Business Administration

Sigma Phi Epsilon 1, 2, 3, 4, Comptroller 3, President 4; Choir 2; Inter-Fraternity Council 4; Society for the Advancement of Management 4.

EDNA BATES BURGER
718 Jones Street
Athens, Tennessee
B.S., Education

Sigma Iota Chi 2, 3, Secretary 3.



GEORGE LARRY BURGER

718 Jones Street

Athens, Tennessee

B.S., Mathematics

Transferred from Memphis State University. Sigma Phi Epsilon 1, 2, 3, 4, Pledge Master 2, Social Chairman 3.

MARY TIM WILSON BURGIN

Route #2

Cleveland, Tennessee

B.S., Biology and Education

Independents 1, 2, 3, President 3; Women's Intramural Athletics Sportsmanship Award 2; Best-All-Round Woman Athlete Award 3; Alpha Beta 4; Women's Athletic Association 1, 2, 3; Student Christian Association 3.

CHARLOTTE ANN BURKHART

Route #19

Knoxville 20, Tennessee

B.S., Education

Transferred from Hiwassee College. Delta Zeta 4, Chaplain 4; Student Christian Association 3, 4.

LEON LESTER CALDWELL

303 E. Beech Street

LaFollette, Tennessee

B.S., Education

Transferred from Hiwassee College. Basketball 3.



LILLIAN ANN COOK

1204 McFarland Avenue

Rossville, Georgia

B.S., Religion and Philosophy

Alpha Xi Delta 1, 2, 3, 4, Marshal 4; BULLDOG Staff 1, 2, 3, 4; Life Service Girls 1, 2, 3, 4, Vice-President 2; Women's Athletic Association 1, 2, 3, 4; Religious Life Council 2; Student Christian Association 1, 2, 3, 4, Council 4, MSFF Treasurer 4; Choir 2, 3, 4, Librarian 4; Senior Class Secretary.

MARY FRANCES CRESWELL

Route #19

Knoxville, Tennessee

B.S., Biology

Kappa Delta 1, 2, 3, 4; Women's Athletic Association 1, 2, 4; Harvest Queen 4; Panhellenic Council Secretary 4; Sophomore Class Secretary; Phi Sigma Kappa Moonlight Girl 4.

ELIZABETH MAUDE CURTIS

Box 126

Friendsville, Tennessee

B.S., Business Education

Kappa Delta 1, 2, 3, 4, Treasurer 2, 3, President 4; Choir 1; Junior Class Girl Representative; Panhellenic Council Treasurer 3.

DEWEY WILLIAM DAVIDSON, JR.

Cleveland, Tennessee

B.S., Biology

Transferred from University of Tennessee. Tennis 3, 4; "W" Club 3, 4.



MYRTLE MAUDE DAVIS

Route #2
Gate City, Virginia
B.A., English

Transferred from Hiwassee College. **BULLDOG**
Staff 4.

EMMA SUE DELOZIER

Rockford, Tennessee
B.S., Business Education

Kappa Delta 1, 2, 3, 4; Women's Athletic Association
1, 2, 3, 4, Secretary-Treasurer 3, Vice-President 4;
Cheerleader 2, 3, 4, Captain 4.

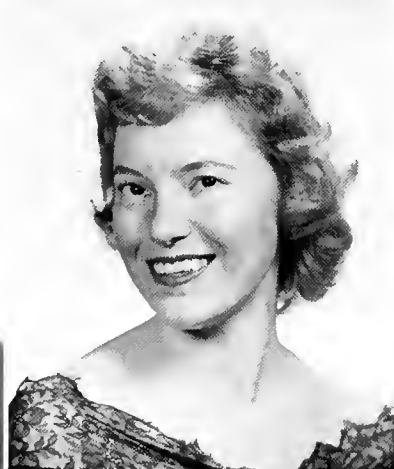
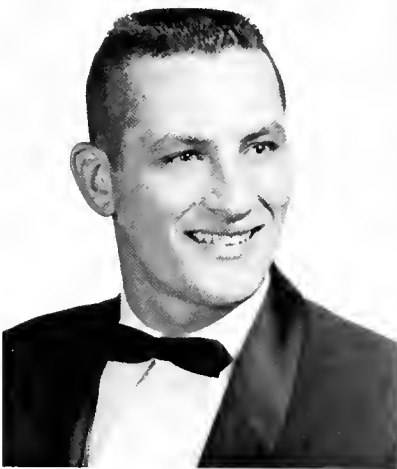
MARY ELEANOR DOVER

823 Oak Street
Marion, North Carolina
B.A., Religion and Philosophy

Sigma Kappa 3, 4, President 4; Student Christian
Association 3, 4, Council 4; Student Council Treasurer
4; Phi Sigma Kappa Moonlight Girl 3; Religious Life
Council Secretary 4; **WHO'S WHO AMONG STU-
DENTS IN AMERICAN UNIVERSITIES AND
COLLEGES.**

IDA LOU DUGGAN

Route #1
Englewood, Tennessee
B.S., Education



JERRY FAY EDMONDS

Route #1
Grant, Alabama
B.S., Education

Phi Sigma Kappa 1, 2, 3, 4; Basketball 1, 2, 3, 4,
Captain 4; "W" Club 2, 3, 4; **WHO'S WHO AMONG
STUDENTS IN AMERICAN UNIVERSITIES AND
COLLEGES.**

LILA JUNE EWTON

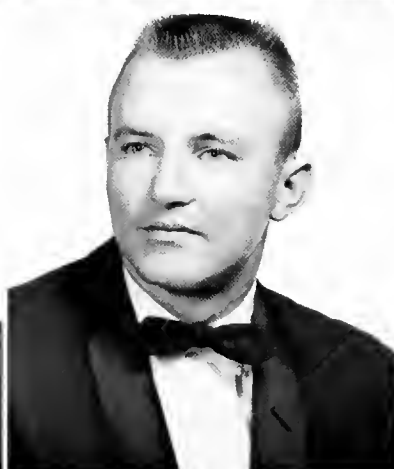
Route #1
Dunlap, Tennessee
B.S., Business Administration

Transferred from Hiwassee College.

FRED FRANK FULLER

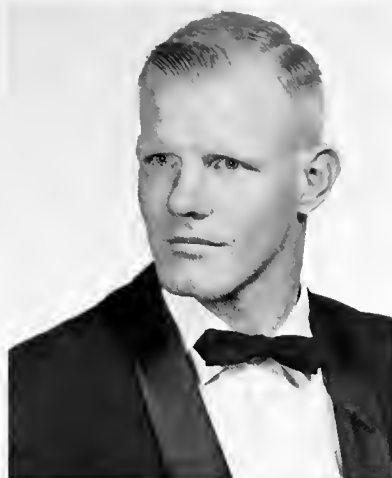
90 Westmont Avenue
Elmira, New York
B.S., Biology

Transferred from Mansfield State College. Sigma Phi
Epsilon 2, 3, 4, Athletic Director 3, 4, Senior Marshal
4; Alpha Xi Delta Dreamman 3; Inter-Fraternity
Council 3; Centennial Dorm Council 3; Harvest King
4; Student Christian Association 2, 3, 4.



LARRY ALEXANDER GABY

Route #11
Greeneville, Tennessee
Phi Sigma Kappa 4; Alpha Beta 4; Mathematics
Achievement Award 1.



J. TEDDIE GILBERT
Oak Street, City 7
Maryville, Tennessee
B.S., Business Administration
Transferred from Hiwassee College.

LARRY KENDALL GRAHAM
Route #2
Concord, Tennessee
B.S., Education
Transferred from Hiwassee College. Basketball 3;
Baseball 3.



EMMA ELIZABETH GRANT
Athens, Tennessee
B.S., Education
Kappa Delta 1, 2, 3; Choir 1, 2; Women's Athletic
Association 1, 2, 3, 4.

Franklin Dean Grant

FRANKLIN DEAN GRANT
520 First Street
Athens, Tennessee
B.S., Education
Yates Mathematics Award 1; BULLDOG Staff 1, 2,
3, 4; Debating Team 4.

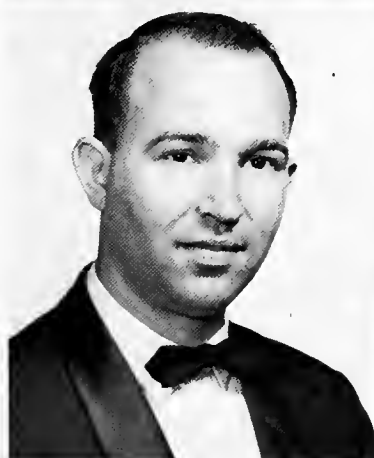
JAMES COLLIS GREGORY, JR.
Brandon, Florida
B.A., History
Choir 1, 2, 3; Pre-Ministerial Association 1, 2, 4.

EVA LOU GROVES
Blue Ridge, Georgia
B.A., Religion
Transferred from Young Harris Junior College.
NOCATULA Staff 3, 4; Life Service Girls 3, 4; Stu-
dent Christian Association 3, 4, Council 4.



COY DEXTER HAGAMAN, JR.
Box 195
Niota, Tennessee
B.S., Religion and Philosophy
Pre-Ministerial Association 2, 3, 4, President 4;
Religious Life Council 4; Society for Advancement of
Management 3.

PHILIP R. HALL
Copperhill, Tennessee
B.S.





CAROLYN JANE HAMMOND

Glade Spring, Virginia

B.A., Religion and Philosophy

Alpha Xi Delta 1, 2, 3, 4, Chaplain 2, Corresponding Secretary 3, President 4; Student Christian Association 1, 2, 3, 4, President 3, Vice-President 4; Life Service Girls 1, 2, 3, 4, President 2; Pi Tau Chi 2, 3; BULL-DOG Staff 3, 4; Student Council 4; Religious Life Council 3, 4; Panhellenic Council 3; Lawrence Dormitory Council 2; Senior Class Girl Representative; WHO'S WHO AMONG STUDENTS IN AMERICAN UNIVERSITIES AND COLLEGES.

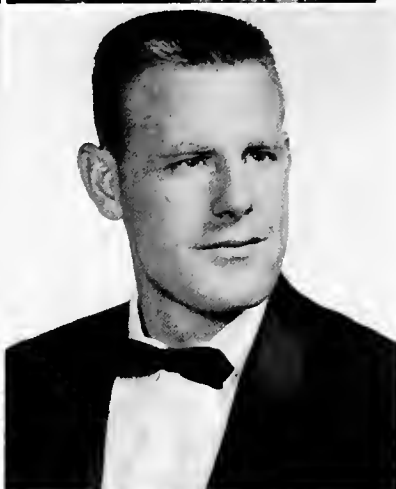
WILMA HALCIE HANEY

1108 Club Drive

Cleveland, Tennessee

B.A., History

Kappa Delta 3, Athletic Director 3; Independents 1, 2, 4; Student Christian Association 1, 2, 3, 4; Women's Athletic Association 1, 2, 3, 4; Spanish Club 3.



SHIRLEY HARMON

Decatur, Tennessee

B.S., Education

OLAF WAYNE HASSLER

Route #4

Crossville, Tennessee

B.S., Education

JAMES CLYDE HICKEY, III

Maloney Road, Route #3

Knoxville, Tennessee

B.S., Education

Sigma Phi Epsilon 1, 2, 3, 4.

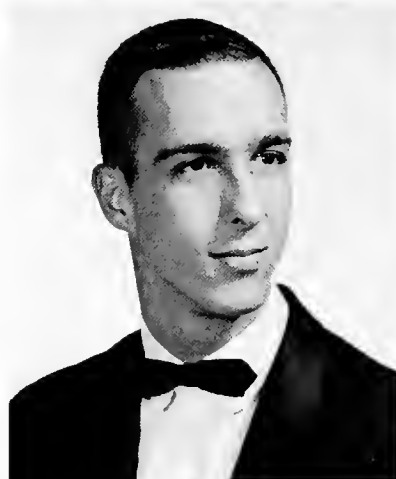
MARGARET MOULTON HICKEY

1915 Hickory Valley Road

Chattanooga, Tennessee

B.S., Education

Kappa Delta 3; Sigma Phi Epsilon Queen of Hearts 4.



GARY RAY HOLT

Route #1

Newport, Tennessee

B.S., Biology

Phi Sigma Kappa 1, 2, 3, 4, Inductor 4; Cheerleader 2; Junior Class Vice-President; Senior Class President; Inter-Fraternity Council 3, 4; Student Christian Association 2, 3, 4, Council 3, 4; Student Council 4; WHO'S WHO AMONG STUDENTS IN AMERICAN UNIVERSITIES AND COLLEGES.

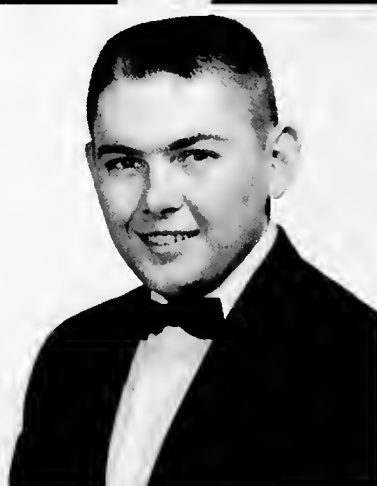
CHARLES FRANKLIN HOOD

2930 Fountain Park Boulevard

Knoxville, Tennessee

B.S.

Sigma Phi Epsilon 2, 3, 4.



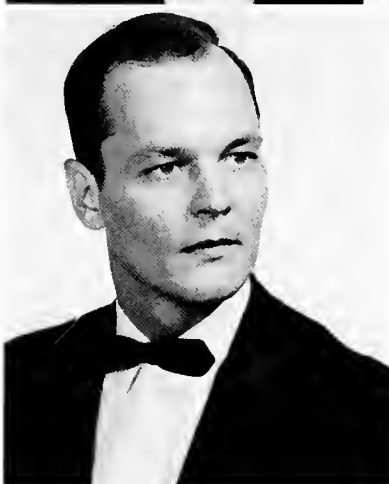
FREDERICK LEON HOPKINS
Mineral Bluff, Georgia
B.S.



DOROTHY MURRAY JONES
203 Washington Avenue
Newport, Tennessee
B.S., Education

Alpha Xi Delta 1, 2, 3, 4, Mistress of Robes 3, Pledge Trainer 4; Women's Athletic Association 1, 2, 3, 4; BULLDOG Staff 2, 3, 4; Student Council 2; Choir 1, 2; Student Christian Association 1, 2, 3, 4.

JAMES EDWARD KELLEY
425 Ohio Avenue
Etowah, Tennessee
B.S., Business Administration



CHARLOTTE KELLY
Pennington Gap, Virginia
B.A., Music

*Cherie's
lots of
Bob*

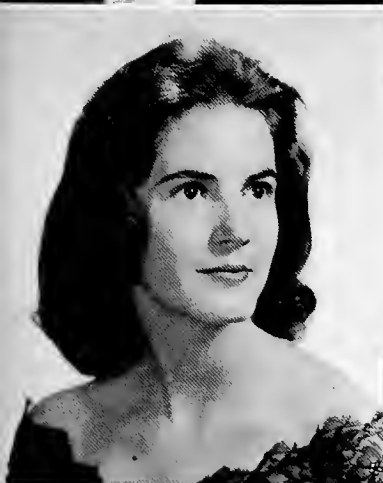


ROBERT MAX KETCHERSID
Spring City, Tennessee
B.S., Mathematics

Phi Sigma Kappa 1, 2, 3, 4, Secretary 2; Vice-President of Sophomore Class; Junior Class President; BULLDOG Staff 3; Student Christian Association Treasurer 3; Chemical Rubber Company Award 1.

ELIZABETH ANNETTE KINSER
Route #2
Madisonville, Tennessee
B.A., English

Alpha Beta 3, 4, Vice-President 3, President 4; BULLDOG Staff 3, 4; Religious Life Council 4; WHO'S WHO AMONG STUDENTS IN AMERICAN UNIVERSITIES AND COLLEGES.



GLADYS KYLE
Athens, Tennessee
B.A., English

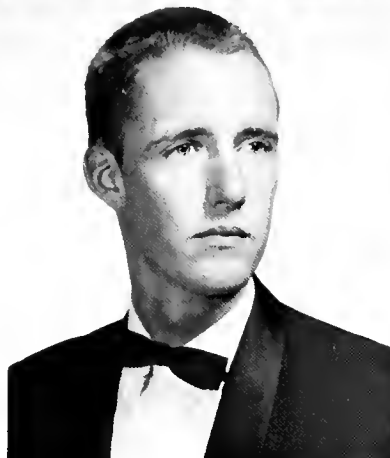
JOSEPH LEE LAWSON
717 Summitt Street
Athens, Tennessee
B.S., Business
Society for Advancement of Management 4.



J. C. LYONS
226 N. Purdue, #103
Oak Ridge, Tennessee
B.S., Education
Transferred from Hiwassee College.

CHARLENE NOTGRASS
MISCHLICH
Tavares, Florida
B.S., Business Administration
Transferred from Hiwassee College.

JOE CLYDE MISCHLICH
Knoxville, Tennessee
B.S., Accounting
Transferred from Hiwassee College. Society for the Advancement of Management 3, 4, Vice-President 4.



JAMES HOWARD MOORE
Athens, Tennessee
B.S., Accounting

SAMUEL NESBITT, JR.
36 Plymouth Street
Montclair, New Jersey
B.S., History

GERALD JACINTO PEDINI
408 W. Lockhart Street
Sayre, Pennsylvania
B.S., Education
Wesleyan Roundtable 4.

FREDERICK MICHAEL PERACHIO
64 Oriole Lane
Trumbull, Connecticut
B.S., Biology

Sigma Phi Epsilon 1, 2, 3, 4, Junior Marshal 3, Comptroller 4; NOCATULA Staff 1, 2, 3, Editor 3; Mascot of Zeta Mu Epsilon 2, Sweetheart of Zeta Mu Epsilon 3; Inter-Fraternity Council President 4; WHO'S WHO AMONG STUDENTS IN AMERICAN UNIVERSITIES AND COLLEGES.

MARY EMILY PETREE
Newport, Tennessee

B.A., Religion and Philosophy

Alpha Xi Delta 1, 2, 3, 4, Consul 2, Recording Secretary 3, Vice President 4; Student Christian Association 1, 2, 3, 4, Worship Chairman 2, Vice-President 3; BULLDOG Staff 2, 3, 4, Editor 3, 4; Life Service Girls 1, 2, 3, 4; Junior Class Treasurer; Alpha Beta 3, 4, Treasurer 3; Choir 1, 2; Lawrence Dorm Council 2; WHO'S WHO AMONG STUDENTS IN AMERICAN UNIVERSITIES AND COLLEGES.

MARGARET HOPE RAPKING
Madisonville, Tennessee
B.A., English

Transferred from Hiwassee College. Alpha Xi Delta 4, Scholarship Chairman 4; NOCATULA Staff 3, 4, Editor 4; Senior Class Vice-President; Student Council 4; BULLDOG Staff 3; WHO'S WHO AMONG STUDENTS IN AMERICAN UNIVERSITIES AND COLLEGES.

JAMES CLAIR RICHARDSON
Pigeon Forge, Tennessee
B.S., Biology

Phi Sigma Kappa 1, 2, 3, 4, Secretary 4; Balfour Award 3; Harvest King 3; Student Council 3, 4, Vice-President 3, President 4; WHO'S WHO AMONG STUDENTS IN AMERICAN UNIVERSITIES AND COLLEGES.



WANDA McCONNELL RIDDLE
Etowah, Tennessee
B.S., Education

MARGARET ANN ROBERSON
2201 Ashmore Avenue
Chattanooga, Tennessee
B.S., Education

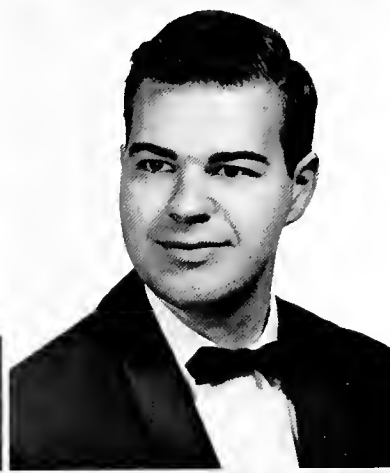
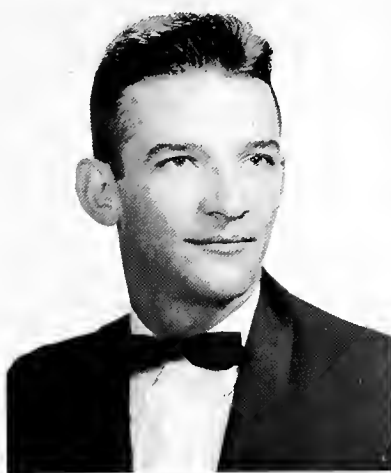
Alpha Xi Delta 1, 2, 3, 4; Secretary 4; Historian 2; Sophomore Class Secretary; Junior Class Secretary; Freshman Class Secretary; Student Council Secretary 4; Dorm Council 1; BULLDOG Staff 1, 2, 3, 4; Women's Athletic Association 2; Poetry Club 1, 2, 3; Student Christian Association 1, 2, 3, 4.

JEAN CORUM SAIN
Athens, Tennessee
B. S., General Business

Alpha Beta 3, 4.

BRENDA SUE SMITH
1917 Chamberlain
Chattanooga, Tennessee
B.S., Business Administration

Alpha Xi Delta 1, 2, 3, 4; Projects Chairman 2, Assistant Treasurer 3, Treasurer 4; BULLDOG Staff 3, 4; Business Manager 3; Feature Editor 4; Choir 1, 2; Life Service Girls 1, 2, 3, 4; Student Christian Association 1, 2, 3, 4; Dorm Council 1, 2; Senior Class Treasurer.



MARY ANNA SMITH
Greeneville, Tennessee
B.S., Education
Kappa Delta 3, 4.

WALLACE AUBREY SMITH
Ooltewah, Tennessee
B.S., Business
Society for Advancement of Management 4; Debate Team 3; Student Council 4; Senior Class Boy Representative.

GERALD LESLIE
STANBERY
Route #3, Wildwood
Maryville, Tennessee
B.S., History

FONDA GAYLE STARNES
Cleveland, Tennessee
B.A., Music

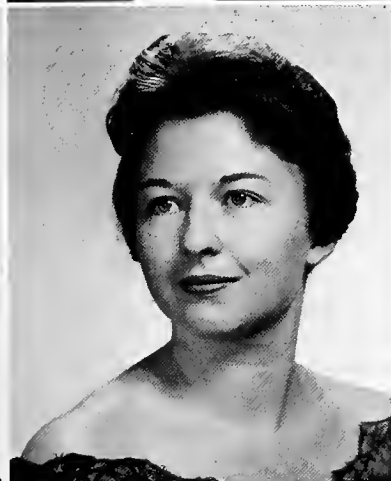
Kappa Delta 3, 4, President 4; Choir 3, 4, Section Leader 4; Life Service Girls 4; Student Christian Association 4; Laura T. Sherman Music Fraternity 3, 4, President 4.

WANDA MAE TREVENA
Route #3

Sevierville, Tennessee
Alpha Xi Delta 1, 2, 3, 4, Athletic Director 4; Women's Athletic Association 1, 2, 3, 4, Vice-President 3, President 4; Freshman Class Treasurer; Dorm Council 1, 3; BULLDOG Staff 1, 2, 3, 4.

PETER FRANCIS
VON DREELE
2217 Hillside Road
Wilmington 3, Delaware
B.A., History

BULLDOG Staff 3; NOCATULA Staff 4.





JOHN DAVIS WALKER
Athens, Tennessee
B.S., Business Education
Transferred from University of Tennessee. Society for
Advancement of Management 4.

AGNES ROSE WEBB
Jasper, Tennessee
B.S., Education
Alpha Xi Delta 2, 3, 4, Historian 3, Social Chairman
4; Dorm Council 3; Laura T. Sherman Music
Fraternity 3.



JOHN ALTON WEEKS
Copperhill, Tennessee
B.S., Biology

CATHERINE McINTYRE WENTWORTH
Athens, Tennessee
B.A., Piano

Kappa Delta 1, 2, 3, Secretary 2, 3; Choir Accom-
panist 1, 2, 3; Laura T. Sherman Music Fraternity
1, 2, 4, Reporter 1; NOCATULA Staff 1; Dorm
Council 2; Alpha Beta 4; WHO'S WHO AMONG
STUDENTS IN AMERICAN UNIVERSITIES AND
COLLEGES.

GRADY GENE WHITE
1519 Clinch Avenue
Knoxville, Tennessee
B.S., Business

SHELBY ELFREDA WILLIAMS
Route #1
Cosby, Tennessee
B.S., Education

Transferred from Hiwassee College. Delta Zeta 4,
Secretary 4; Student Christian Association 3, 4.

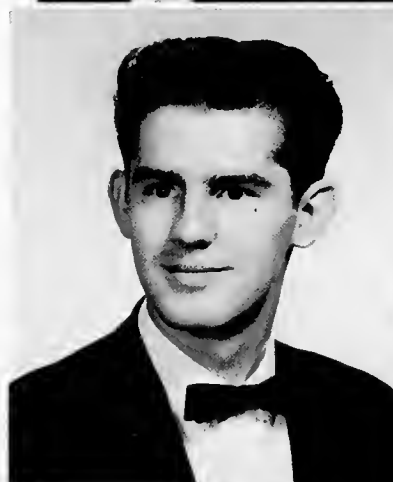


KENNETH JAMES WOODARD
Cleveland, Tennessee
B.A., Economics

Transferred from Lee College. Pre-Ministerial Asso-
ciation 4.

NADYNE WOOLSEY
Newport, Tennessee
B.S., Home Economics

Alpha Xi Delta 2, 3, 4, Historian 4; Student Christian
Association 1, 2, 3, 4, Council 4; Life Service Girls
1, 2, 3, 4; BULLDOG Staff 2, 3, 4.





Junior Class

JUNIOR CLASS OFFICERS:
(Left to Right)

Doris Hughes—*Secretary-Treasurer*

Wayne Anderson—*Vice-President*

Eloise Hitson—*Girl Representative*

Bill Gibson—*Boy Representative*

Guy Henry—*President*

SANDRA LEE ALLEN
3298 Van Buren Street
Chattanooga, Tennessee

DOROTHY ALMY
330 Phoenix Avenue
Daytona Beach, Florida

WAYNE EDWARD ANDERSON
3602 Pickering Avenue
Chattanooga, Tennessee

ROBERT BOWMASTER
3601 Timberlake
Knoxville, Tennessee

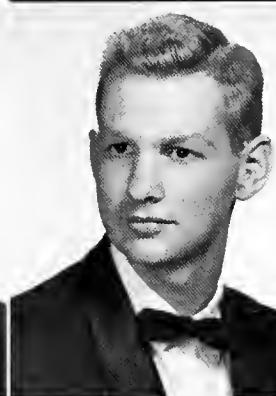
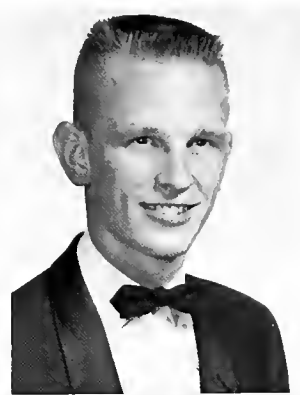
FRANCIS JOSEPH BURGER
Riceville, Tennessee

CYRUS WESLEY CALLAHAN
701 Woodman Street
Athens, Tennessee

JONNIE SHARON CARTER
Chippewa Trail
Medford Lakes, New Jersey

BENJAMIN DILLON CHISM, JR.
2512 Henderson
Cleveland, Tennessee

JOYCE DELORES COOK
Greenback, Tennessee





SYLVIA CAROL CORN
Route #1
Etowah, Tennessee

KATHERINE JOYCE COULTER
Route #3
Maryville, Tennessee



PAUL DAVID DENTON
413 W. 1st Avenue
Lenoir City, Tennessee

DONALD LEE DONES
Elizabeth, Indiana

CHARLES EDWIN FANNON
1537 Greenfield
Kingsport, Tennessee

HELEN JOAN FRAZIER
417 Rosedale Drive
Kingsport, Tennessee

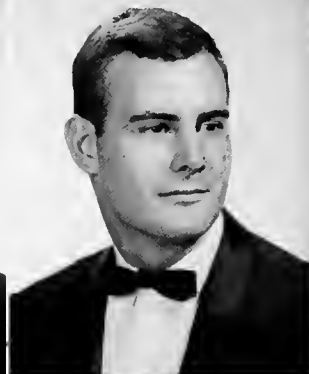
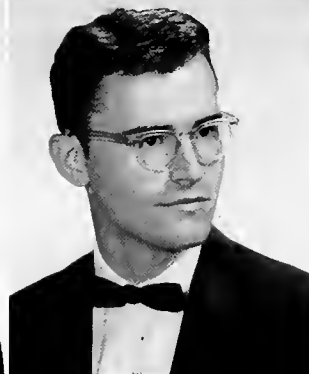
WANDA GALE FRENCH
Route #1
Greenback, Tennessee



WILLIAM RONALD GIBSON
132 E. Park Place
Jeffersonville, Indiana

DENNIS O. GILLIKIN
27 Martling Avenue
Staten Island 10, New York

LANDON HAYNES GOINS
Signal Mountain, Tennessee



JAMES RICHARD GRIFFITH
Route #4
Madisonville, Tennessee

EUGENE WILLIAM HAMILTON
213 Holmes Street
Boonton, New Jersey

SUE ELLA HANKINS
3501 Crestwood Drive
Knoxville, Tennessee



LOU ANN HARRIS
118 East Tennessee Avenue
Oak Ridge, Tennessee

GUY NOEL HENRY
60 Governor Bradford Drive
Barrington, Rhode Island

JACK RONALD HENRY
1194 Hardwick
Cleveland, Tennessee

SHIRLEY ELOISE HITSON
Route #6
Maryville, Tennessee



LOY GAYNELL HIXSON
805 Auburn Street
Chattanooga, Tennessee

DORIS JEAN HUGHES
Route #2
Niota, Tennessee

NORMAN PETER KERL
435 E. 79th Street
New York, New York



RICHARD KIMSEY
Route #1
Evansville, Tennessee

MARY GEORGE KING
1609 Middle River Drive
Fort Lauderdale, Florida

BARBARA MAE KUNDRAT
615 Potts Road
Tipton, Georgia



RANDALL LEE KYKER
Hicks Street
Athens, Tennessee

BYUNG AI LEE
166-134, Noo Song Dong
Seoul, Korea

FOUNTA LEE LOVE, JR.
347 S. Jackson Street
Athens, Tennessee



GLENN MACKINNON
Kingsland Road
Boonton, New Jersey

LON ELDON MARCUM
1417 Avondale Avenue
Richmond, Virginia



ALBERT PAYNE
Route #1
Ten Mile, Tennessee

JANET DOUGLAS PEACHER
4105 Estes Road
Nashville, Tennessee

PRISCILLA JANE PEERY
Hall Road
Alcoa, Tennessee

IDA DIANE RAMSEY
1312 Union Street
Brunswick, Georgia

JOSEPH THOMAS REDDING
Knoxville, Tennessee



JERRY CLIFFORD ROBERTS
Box 17
Niota, Tennessee

NANCY JO ROCK
1305 Texas Avenue
Bristol, Virginia

WILEY ROSENBAUM
209 Fifth Avenue
Galax, Virginia



JAMES HALBERT RUTHERFORD
724 East Oak Hill Avenue
Knoxville 17, Tennessee

LAMETA CAROL SAGERS
Westville Road
Almonesson, New Jersey

ROY SELLERS
Route #3
Athens, Tennessee



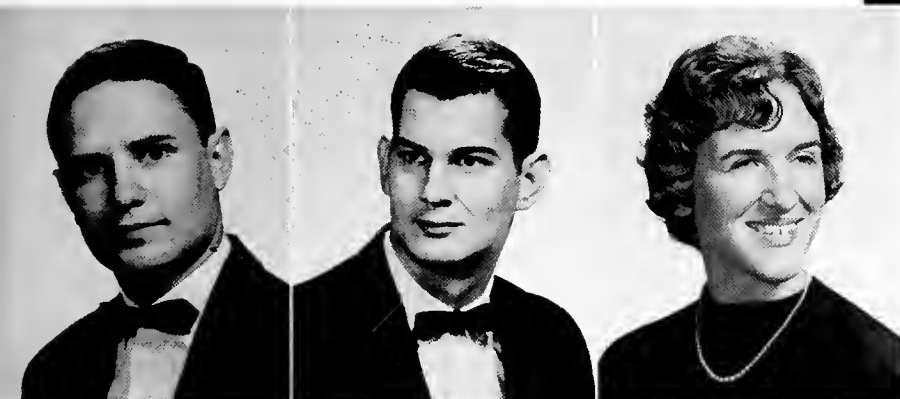
DAVID LEEROY SIMMERLY
228 Lincoln
Alcoa, Tennessee

BETTY LOU SMITH
Route #2
Athens, Tennessee



LYNDA GARRISON SMITH
Box 226
Spring City, Tennessee

ROBERT SOSEBEE
Blue Ridge, Georgia



JOHN HENDERSON STILES
Madisonville, Tennessee

GERALD DOUGLAS
STRICKLAND
Madisonville, Tennessee

DURA ELIZABETH
UNDERWOOD
414 Green Street
Athens, Tennessee



NANCY WADE
Decatur, Tennessee

MARTHA ANN WAMPLER
Knoxville, Tennessee

CHESTER L. WARREN
Madisonville, Tennessee



ELIZABETH WILL
Mount Tabor, New Jersey

LARRY GILBERT WIMBERLY
Route #2
Niota, Tennessee

CARLETON RAY WRIGHT
410 7th Street
New Albany, Indiana



SOPHOMORE CLASS OFFICERS:
(Left to Right)

Bill Albritton—*Vice-President*

Kay Rayfield—*Secretary*

Sonny Tarpley—*President*

Becky Owen—*Girl Representative*

Alan Kennedy—*Boy Representative*

Not pictured:

Ernie Ruesch—*Treasurer*

Sophomore Class

NANCY MARIE ADKINS
2208 Charsley Road
Kingsport, Tennessee

WILLIAM HOYLE ALBRITTON
Cleveland, Tennessee

ALAN LEE ARMSTRONG
7 Treis Terrace
Saugerties, New York

ANNA LAURA AYLES
Lakeview Drive
Dandridge, Tennessee

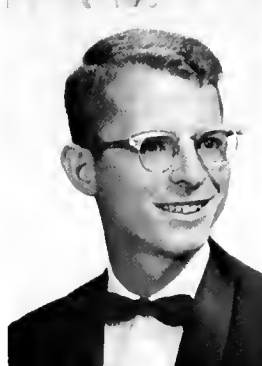
ELIZABETH B. BANKS
939 W. 1st Street
Big Stone Gap, Virginia

JOHN BARRY BARNETT
922 Louisiana Avenue
Etowah, Tennessee

ALBERT JOE BURGESS
3331 Roberts Road
Chattanooga, Tennessee

JEAN HAGER BURTON
Box 469
Tazewell, Virginia

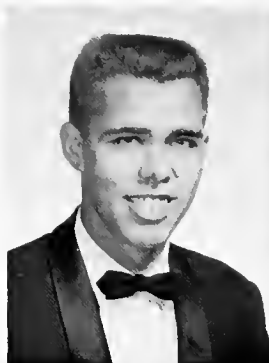
HILDRETH CAMERON
White River Junction, Vermont



ROBERT HOLLIS CATE
306 Cardinal Street
Maryville, Tennessee

ELLEN PATRICIA CHAMBERS
1537 Guilford Road
Columbus, Ohio

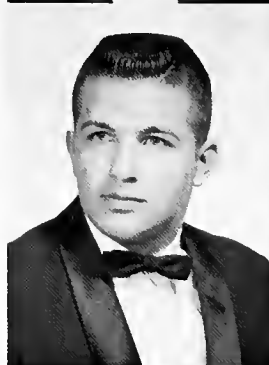
WILLIAM COCHRAN
Englewood, Tennessee



JAMES THOMAS COLEMAN, JR.
1292 Farrow Road
Memphis, Tennessee

CARL COLLOMS
Route #2
Charleston, Tennessee

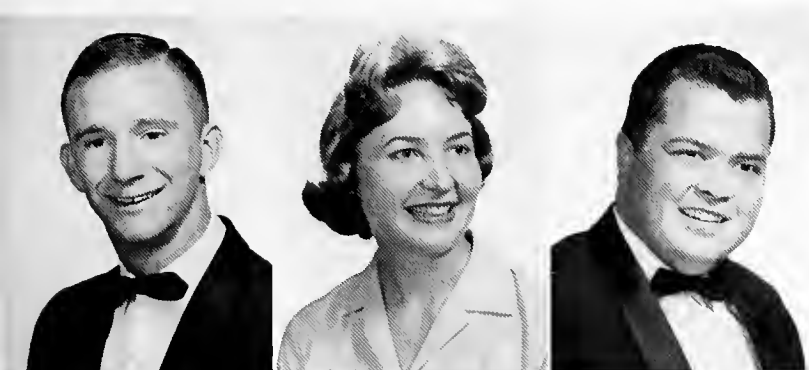
MARTHA JANE CRABTREE
Keith Lane
Athens, Tennessee



ROBERT WALTON CRABTREE
Gleason Road
Knoxville, Tennessee

JOSETTE CRITES
Soddy, Tennessee

WILLIAM HOWELL CURTIS
Route #3, Beechwood Road
Knoxville, Tennessee



JAMES EDWIN DAVIS
Georgia Avenue
Etowah, Tennessee

KAREN ROSE DAWSON
Route #2
Bybee, Tennessee

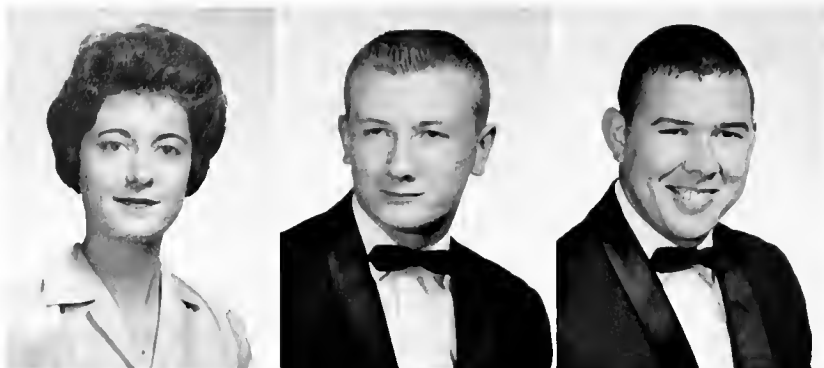
DAVID ROSS DERRICK
Route #1
Englewood, Tennessee



BETTY JEAN DOUGLAS
Box 153
Madisonville, Tennessee

BEN ALLEN DUNN
362 Lincoln Road
Alcoa, Tennessee

PIERCE JACKSON EDWARDS
Galax, Virginia



SANDRA HU FOX
Cedar Springs Estates
Athens, Tennessee

WILLIAM FRANKLIN FOX
Oliver Springs, Tennessee

THOMAS RICHARD FRAZIER
4221 Hawthorne Avenue
Huntsville, Alabama



PHILIP DAVIS GARDNER, JR.
215 Ridgedale Avenue
Florham Park, New Jersey

SANDRA LOUISE GARRISON
South Main
Sweetwater, Tennessee

BILLY MACK GILES
Route #2
Loudon, Tennessee



JAMES HATCHER GRAHAM, JR.
506 Lincoln
Newport, Tennessee

DONNA GREEN
9200 N. W. 15 Avenue
Miami, Florida

FRED GRIFFIN
505 Cosby Road
Newport, Tennessee

LARRY JOEL GRIFFITH
Route #7
Chattanooga, Tennessee

KENNETH EARL GUFFEY
Route #4
Athens, Tennessee

MARGARET ANN HANEY
Route #2
Charleston, Tennessee

GLENNA HARRIS
North Tazewell, Virginia

DOROTHY LUENA HELTON
Box 151
Charleston, Tennessee

PAUL KILLIAM HENSLEY
646 Lupton Drive
Chattanooga, Tennessee



WILLIAM LARRY HICKS
Route #4, Box 471
Lenoir City, Tennessee

MARY CATHERINE HOOPER
Tellico Plains, Tennessee

DOROTHY LOURRAINE HOPKINS
414 Laws Street
Bridgeville, Delaware

BRENDA JO HOWELL
Route #2
Sweetwater, Tennessee

RONALD TIMOTHY JABALEY
Copperhill, Tennessee

GEORGE EARL JAMES
2724 Magnolia
Knoxville, Tennessee

JUDY JOAN JARVIS
530 S. Kingston Avenue
Rockwood, Tennessee

ROSS VERNON JENNINGS, JR.
3609 Crestwood Drive
Kingsport, Tennessee

LAGONDA KELLY
Route #8
Knoxville, Tennessee



PEGGY ANN KELSO
Route #2, Box 211
Loudon, Tennessee

MARCHIE KATHERINE KNITTLE
407 Holly Avenue
South Pittsburgh, Tennessee

JOHN A. LATSHAW
Box 353
Spring City, Tennessee



DAVID LEPCHITZ
909 Jefferson
Pulaski, Virginia

LELAND DAVID LOOSE
529 March Street
Shillington, Pennsylvania

NANCY JOAN LOWMILLER
2811 Wellesley Drive
Columbus 21, Ohio



WILLIE PATRICIA MAPLES
510 B Street
Lenoir City, Tennessee

JOHN MALCOLM McKEE
6700 Sherwood Drive
Knoxville, Tennessee

MARY ALICE McREYNOLDS
Route #2
Athens, Tennessee



PATRICIA JOAN MICHAELSON
Hillcrest Drive
Denville, New Jersey

BARBARA ROSE MILLER
Stanford Drive
Athens, Tennessee

MARY ANNE MONK
Box 67
Tazewell, Virginia



MAURICE McKELLAR MOSER, JR.
3825 Wood Lake Drive
Knoxville, Tennessee

REBECCA ANN OWEN
Fairview Avenue
Athens, Tennessee

HOPE SHARON PARDUE
Crestway Drive
Athens, Tennessee

CAROL JEAN PAYNE
Route #1
Copperhill, Tennessee

JAMES ELLIOTT PECK
Decatur, Tennessee

CHARLES STAFFORD
PEMBURN, JR.
2 Norton Street
St. Albany 5, New York

LUCY KAY RAYFIELD
Route #15
Knoxville, Tennessee

NANCY REYNOLDS
Englewood, Tennessee

DENNIS DUAIN RICH
1625 Washington Avenue
Kingsport, Tennessee



PATRICIA ROWE
1040 S. Orlando Avenue
Cocoa Beach, Florida

ERNIE RUESCH
Boynton Beach, Florida

BETTY RUTH SMITH
3306 Berkley Drive
Chattanooga, Tennessee



JAMES FRANKLIN SMITH
Route #1
Dayton, Tennessee

DON ALLEN STEPHENS
128 Pine Street
Maryville, Tennessee

DONNA MARLENE STEPPE
Old Niles Ferry Road
Maryville, Tennessee



THOMAS A. TAYLOR
207 E. Main Avenue
Dayton, Tennessee

DORTHY ELIZABETH VINCENT
Box 197
Athens, Tennessee

RICHARD WADDELL
4218 Tennessee Avenue
Chattanooga, Tennessee



MARY ALBERTA WARD
Decatur, Tennessee

MARTHA WHATLEY
1409 Fiske
Cocoa, Florida

JIMMIE HAROLD
WHELCHER
Route #19
Knoxville, Tennessee

BETTY JO WHITAKER
Etowah, Tennessee

MEL BERTRAND
WILHITE, JR.
2716 Keystone Avenue
Knoxville 17, Tennessee

JUANITA WOMAC
Athens, Tennessee

ELIZABETH SUE WOOLSEY
8009 Beverly Road
Knoxville, Tennessee

BONNIE LUCILLE WRIGHT
31 Valencia Road
Rockledge, Florida



FRESHMAN CLASS OFFICERS:
(Left to Right)

Standing:

Howard Hinds—*Faculty Advisor*

John Lee—*Treasurer*

Seated:

Bill Ketchersid—*Boy Representative*

Kathy Rowe—*Vice-President*

Dave Chambers—*President*

Linda McGee—*Secretary*

Not pictured:

Judy Jones—*Girl Representative*

Freshman Class

JAMES H. ACKERMAN
25 Jewett Avenue
Clifton, New Jersey

WILLIAM CURTIS AIKEN
408 Milligan Drive
Greeneville, Tennessee

LINDA BERYL AKERS
210 North Daisy Street
Morristown, Tennessee

MARY MELINDA ALFORD
518 Clinton Street
Harriman, Tennessee

STEPHEN ALLEN ANDERSON
1209 Washington Pike
Knoxville, Tennessee

JAMES AUTHOR ARMOUR
Route No. 1, Box 190
Kingston, Tennessee



MARY JO ARNWINE
Route #1
Niota, Tennessee

MARGIE LENOIR BAILEY
Route #1
Lenoir City, Tennessee

MELVIN ERNEST BAILEY
1424 McFarland Avenue
Rossville, Georgia

SALLY CHURCH BAXTER
Woods Hole Road
Falmouth, Massachusetts

OLEN CAIN BEETS, JR.
2017 N. Chamberlain
Chattanooga, Tennessee

PATRICIA ANN BENNETT
4 Castle Avenue
Chattanooga, Tennessee

BENNIE EUGENE BEVERLY
148 Hedges Street
Marietta, Georgia

JOHN LARGE BOGART
Route #6
Sevierville, Tennessee

MARILYN CAROL BOWERS
414 Louisiana Avenue
Etowah, Tennessee



ROSE ANN BRIDGES
Box 22
Englewood, Tennessee

MICHAEL EVERETT BRUCE
2104 Coker Avenue
Knoxville, Tennessee

PAUL BRYANT
817 Spring Street
Royston, Georgia

BARBARA ANN BUCKNER
1207 Park Street
Sweetwater, Tennessee

FRANCES E. BUNCH
Chatsworth, Georgia

BOYD ALLEN CALDWELL
Route #4
Loudon, Tennessee



VIRGINIA ANN CAMISA
Athens, Tennessee

FRANCES MARIE CARROLL
Box 122
Englewood, Tennessee

EDWIN DAVID CHAMBERS
1537 Guilford Road
Columbus 21, Ohio

BARBARA JEAN CLEMENTSON
Big Spring, Tennessee

JOSEPH POPE COBB, III
83 South Marne
Memphis, Tennessee

MARGARET PENNY COLL
129 Nyetimber
Corapolis, Pennsylvania

LINDA SUE COMBS
1801 6th Street
Richlands, Virginia

RICHARD AUSTIN COMER, JR.
4118 Maloney Road
Knoxville, Tennessee

WELDON REESE CROOK
2856 Boulevard Drive, N.E.
Atlanta 17, Georgia

MILDRED SUE CRUMLEY
Indian River Village
LaFollette, Tennessee

MELBA MAE DAVIS
Delano, Tennessee

FRANKIE ALLEN DENNIS
10 Johnson Street
Athens, Tennessee

HOWARD LONG DENNIS
Route #5
Athens, Tennessee

WILLIAM EDWARD DRAKE
4728 Holston Drive
Knoxville, Tennessee

PEGGY EDGEMON
Route #2
Erie, Tennessee



HORACE MAYNARD ELLIS, III
167 Green Street
Athens, Tennessee

JAMES OWEN ELLIS
167 Green Street
Athens, Tennessee

ARLENE KATHRYN EVANS
110 Main Street
Ridgefield Park, New Jersey



JOHN CRAIGMILES FARMER
1321 Calderwood Avenue
Maryville, Tennessee

LINDA BONNELL FOWLER
1124 Euclid Avenue
Bristol, Virginia

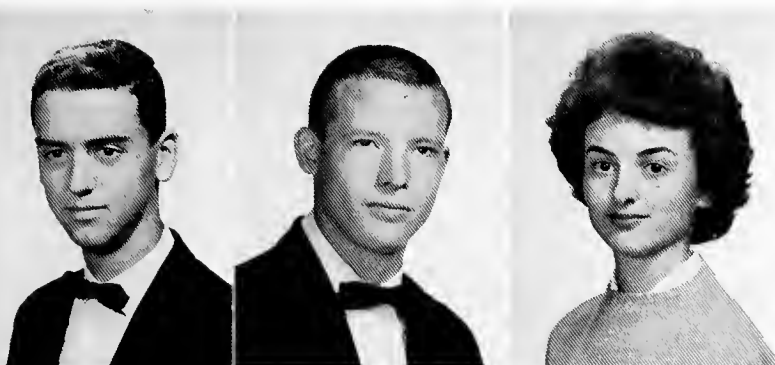
LAWRENCE LEO FUGATE
Route #1
Calhoun, Tennessee



ELIZABETH MARTHA GERDES
99 West Forest Avenue
Tewneck, New Jersey

JOY ANN GRAY
217 Delashmitt Road
Hixson 4, Tennessee

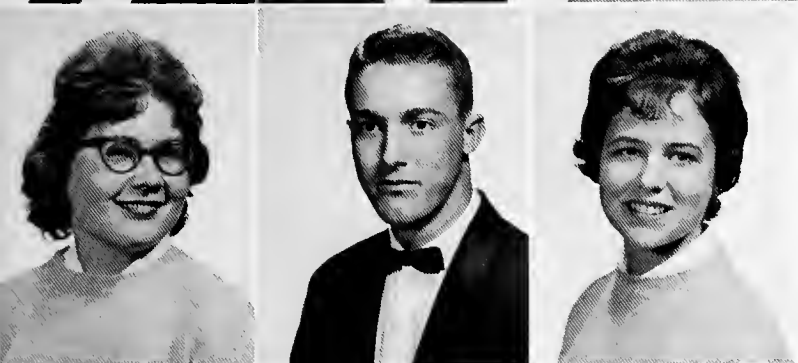
JUDY GAIL GROSECLOSE
Route #4
Wytheville, Virginia



JOHNNY FRANK GUINN
808 Whitehall Road
Knoxville 19, Tennessee

RUFUS MAJOR GUTHRIE
205 N. Thornton Avenue
Dalton, Georgia

SYLVIA DARLENE HARGIS
Route #1
Lenoir City, Tennessee



BENNIE LORENE HELTON
Charleston, Tennessee

CHARLES LEE HILL, JR.
408 High Street
Franklin, Kentucky

KATHY HILL
228 North Hermitage
Lookout Mountain, Tennessee



CHARLES WILLIAM HOGAN, JR.
4616 Alabama Avenue
Lynchburg, Virginia

DIONG YONG HOO
556 Pekan Gurney
Perak, Malaya

KAREN LEE HORTON
1326 Blacker Lane
Chattanooga, Tennessee

LARRY WILLIAM HUFFMAN
2355 Oak Avenue
Buena Vista, Virginia

MILES DANIEL HUGHES
Route #1
Niota, Tennessee

WILLIAM GLENN HUMBERT
Route #2
Philadelphia, Tennessee

CAROL JO HUNT
Route #1
Kingston, Tennessee

CHARITY HUNT
1218 W. 21 Ct.
Fort Lauderdale, Florida

MONA FAYE HUNT
Box 15
Tellico Plains, Tennessee

JUDITH KAY JONES
1401 Lamont
Kingsport, Tennessee

FRED CLIFTON KEENER, JR.
7 Brookside
Sweetwater, Tennessee

WILLIAM LESTER KETCHERSID
Spring City, Tennessee

VELMA RAYE KIDWELL
Route #11
Greenville, Tennessee

JOHN J. KILLEFFER, JR.
107 Ridgeside Road
Chattanooga 11, Tennessee

JAMES C. LANCASTER
1328 Lamar
Memphis, Tennessee



MARY MARLENE LATHAM
R.F.D. #5
Sevierville, Tennessee

JOHN LAMBERT LEE
218 W. Fairview Road
Oak Ridge, Tennessee

ELIZABETH ANNE LITTLE
Box 125
Decatur, Tennessee

GAIL ELIZABETH LOWERY
3419 Dell Trail
Chattanooga, Tennessee

RONALD CHRISTIAN MARTIN
809 Lester Road
Knoxville, Tennessee

JAMES FREDERICK McAMIS, JR.
24 Lafayette Street
Athens, Tennessee

CHARLES ERNEST McCALLIE
6814 Conner Lane
Chattanooga, Tennessee

LINDA JOYCE McGEE
1201 Lee Avenue
Rossville, Georgia

EVELYN EARLE McKINNEY
Route #7, E. Brainerd Road
Chattanooga, Tennessee



ELIZABETH ANN McNISH
225 Mechanic Street
Jefferson City, Tennessee

WAYNE MELVIN
Route #2
Charleston, Tennessee

ROBERT LEWIS MILLER
Pope Avenue
Athens, Tennessee

RONNIE LOWAS MILLER
Route #2
Niota, Tennessee

WILLIAM PETER MILLER, JR.
110 Second Avenue
Jonesboro, Tennessee

PATSY MORGAN
Route #5, Box 520
Cleveland, Tennessee



LANA MYNATT
125 Fair Street
Chattanooga, Tennessee

GRADY LAKE NICHOLS, JR.
Athens, Tennessee

J. LOICE PARKS
Route #1
Fries, Virginia

HAROLD LEE PEDEN
503 Elm Street
South Pittsburgh, Tennessee

CHARLES D. PIERCE, JR.
811 North Jackson Street
Athens, Tennessee

DONALD CRUZE PRATT
Matlock Road
Athens, Tennessee

KAREN INGRID QUAMMEN
Baconton, Georgia

ROGER ALLAN RICHARDSON
2808 N. Chadwick Drive
Mobile, Alabama

MARY LOU ROBBINS
Route #1
Clinton, Tennessee

EWART SANFORD ROBINSON
100 Peach Road
Oak Ridge, Tennessee

FRANK EDWIN RODDY
6616 Ballard Drive
Chattanooga, Tennessee

KATHLEEN ELIZABETH ROWE
1040 S. Orlando Avenue
Cocoa Beach, Florida

PATRICIA LEE SATTERFIELD
2908 Oswald Street
Knoxville, Tennessee

NOLA RUTH SCROGGINS
800 Pope Avenue
Athens, Tennessee

JANICE SHASTEEN
Circle Drive
Cleveland, Tennessee

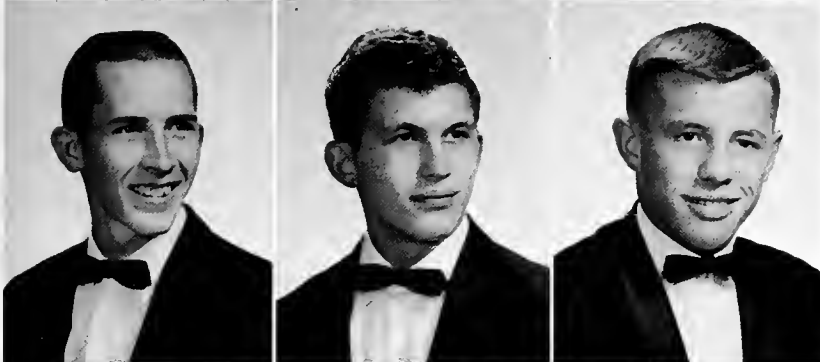




EARLENE SIMPSON
Box 111
Oakwood, Virginia

LESLIE RONALD SLACK
Route #4
Athens, Tennessee

THOMAS REECE SMALL
342 S. Jackson Street
Athens, Tennessee



RAYMOND DELANE STILES
Route #1
Englewood, Tennessee

EARL COLUMBUS STINNETT
Route #2
Friendsville, Tennessee

WILLIAM DAVID SULLINS
302 Forrest Avenue
Athens, Tennessee



MILDRED ANN SUTTON
13th Street, Box 39
Etowah, Tennessee

EDWARD TAYLOR
Crisfield, Maryland

JAMES RONALD THOMPSON
Route #2
Eric, Tennessee

SANDRA LOUISE THOMPSON
1300 Ohio Avenue
Etowah, Tennessee

JERRY LEE TIPTON
Route #12, Burkhardt Road
Knoxville, Tennessee

KAREN D. TREHER
114 Laronia Avenue
Red Bank, Tennessee

MARY FRANCES TROTTER
Box 1024
Pulaski, Virginia

GLENDA ALLEN TRUE
Route #3, Crestwood
Kingston, Tennessee

MARGARET LOUISE UNDERWOOD
414 Green Street
Athens, Tennessee





KATHERINE MAE VAN HUSS
907 Joslyn Avenue
Pennington Gap, Tennessee

J. ALAN VAN OSTENBRIDGE
166 Francisco Avenue
Little Falls, New Jersey

BARBARA ANNE WALKER
Route #5, Keith Lane
Athens, Tennessee



HUGH WILLIAM WALKER
1100 Watercress Drive
Knoxville, Tennessee

SALLY JO WALL
605 Forest Hills
Knoxville, Tennessee

MARILYN ROSE WARD
Route #4
Sweetwater, Tennessee



FRANK SHADDEN WEBB
600 9th Street
Etowah, Tennessee

ROBERT LAND WELLS
3911 Oakland Terrace
Chattanooga, Tennessee

LYNDA DORENE WHITMIRE
4201 Palm Drive
Knoxville, Tennessee

WILLIAM HERMAN WIBEL
60 Boulevard
Mountain Lakes, New Jersey

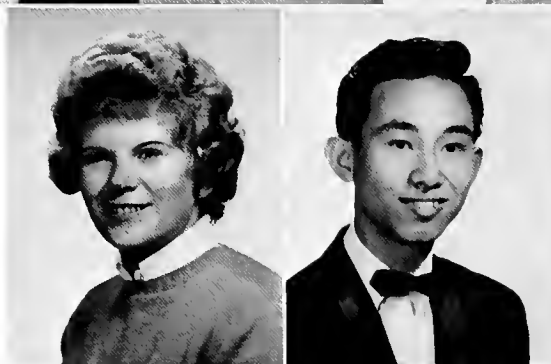
MARY LYNNE WILHOIT
Route #1
McDonald, Tennessee

COLETTA JOAN WILLIAMS
North Tazewell, Virginia



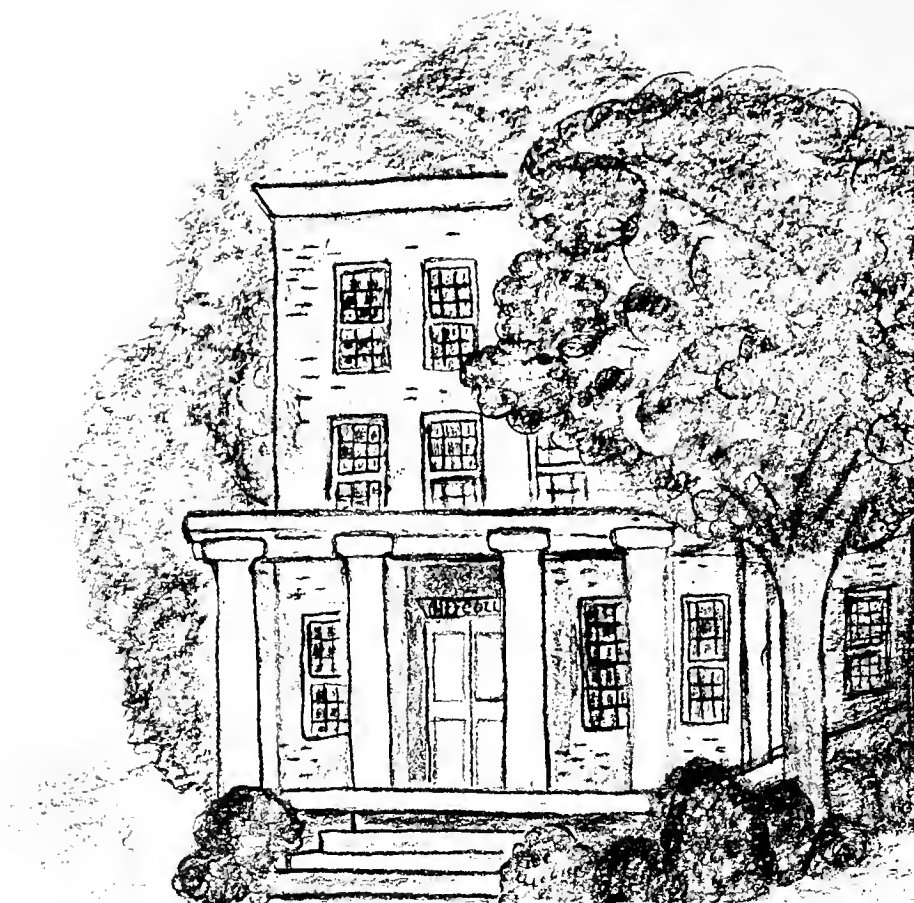
SALLY ANN WILLIAMS
141 Elm Road
Falmouth, Massachusetts

CHRIS CHEW ONG WONG
8 Blacksmith Road
Sibu, Sarawak



Activities





SUPERLATIVES

STUDENT GOVERNMENT

PUBLICATIONS

ORGANIZATIONS

WHO'S WHO AMONG STUDENTS IN AMERICAN UNIVERSITIES AND COLLEGES

WHO'S WHO, a national honor organization for outstanding students, has been in existence since 1934. This year Tennessee Wesleyan College was privileged to have the opportunity of nominating eleven seniors, all of whom were accepted by the organization. These students were nominated by members of the junior and senior classes and members of the faculty.

Students are recognized by this organization each year on the basis of scholarship, participation and leadership in academic and extra-curricular activities, citizenship and promise of future usefulness. A certificate of recognition is presented to the student upon graduation. In addition to this, the nationwide honor organization maintains a reference or placement service which is free of cost to the student.

Membership in WHO'S WHO is one of the highest honors that may come to a college or university student.



MARY BRATTON



ELEANOR DOVER



JERRY EDMONDS



CAROLYN HAMMOND



GARY HOLT



ANNETTE KINSER



RICK PERACHIO



MARY PETREE



PEGGY RAPKING



JIM RICHARDSON



CATHERINE WENTWORTH



MISS TWC

MARY FRANCES CRESWELL



MR. TWC

JERRY EDMONDS

Senior Superlatives

Senior Superlatives are selected by popular vote of the senior class. These students are chosen on the basis of leadership, achievement, personality, and character. This year the class elected thirteen of its members as Senior Superlatives.



Mary Bratton (Not pictured: Catherine Wentworth).

Jerry Edmonds, Ann Roberson, and Jim Brown.





Peggy Rapking, Carolyn Hammond, and Eleanor Dover.

Gary Holt, Susie Creswell, and Rick Perachio.



Jim Richardson and Mary Petree.



Left to Right, First Row (reading up): Jim Richardson, Dave Chambers, Bill Ketchersid, Sonny Tarpley, Wayne Anderson, Bill Gibson. Second Row: Ann Roberson, Kathy Rowe, Eloise Hitson, Becky Owen, Wallace Smith. Third Row: Eleanor Dover, Gary Holt, Guy Henry, Peggy Rapking, Carolyn Hammond. Fourth Row: Sonny Wright. Not pictured: Judy Jones, Floyd Bowling — Sponsor.

STUDENT GOVERNMENT

At the beginning of the year the student leaders at TWC attended a retreat designed to acquaint faculty and students with problems and plans for the year ahead. Students were informed of new construction, including the renovation of the Student Lounge.

The Student Council has continued its practice of holding freshmen orientation, post-ballgame dances, and sponsoring assembly programs. Student Council projects are designed to benefit the students and carry out the policies of the college.



OFFICERS: *Left to Right:* Ann Roberson, Secretary; Jim Richardson, President; Eleanor Dover, Treasurer; Sonny Wright, Vice-President.



Dr. Frederick A. Rohrman, one of the Assembly speakers sponsored by the Student Council.



A local dance band playing for post-ballgame dances.

A Student election being held in the Student Lounge.





Left to Right, Seated: Carolyn Hammond; Nancy Adkins, Alternate; Lou Ann Harris; Judy Jones, Alternate; Becky Owen; Sue Ella Hankins; Peggy Rapping, Alternate. *Standing:* Karen Treher; Mary Lou Robbins; Jim Richardson; Bill Gibson; John Moss; Allen Dennis, Alternate; Gene Hamilton; Rick Perachio, Alternate; Bill Albritton; Wayne Anderson; Phil Gardner, Alternate; Betty Ruth Smith; Sonny Tarpley.

TWC AMBASSADORS

Fourteen Tennessee Wesleyan College students were elected as charter members for a new campus organization to be known as the TWC AMBASSADORS. Members of the organization will serve for one year as official hosts for all college events related to the Offices of Development, Recruitment, and Alumni Relations. In addition, they will participate in the high school visitation program conducted by the Recruitment Office. College sponsor for the group is Charles J. (Buddy) Liner, Director of Student Recruitment and Alumni Relations.

Carolyn escorts a group of visitors.





Distribute those papers, gang!



Mary Petree, Editor

The Bulldog

Published during the school year by the students of
TENNESSEE WESLEYAN COLLEGE, ATHENS, TENNESSEE

FRIDAY, DECEMBER 8, 1961

THE STAFF

Editor Mary Petree
 News Editor Jill Davis
 Feature Editor Brenda Smith
 Religious Editor Carolyn Hammond
 News Reporters—Anna Aytes, Patsy Bennett, Randall Bigham,
 Charles Fannon, Dennis Gillikin, Dean Grant, Dot Jones,
 Nancy Lowmilier, Mary Frances Trotter, Dura Under-
 wood.
 Feature Writers—Elise Aytes, Phil Gardner, Charlie Hood, R.
 V. Jennings, Annette Kinser, Kay Rayfield, Ann Rober-
 son.
 Sports Writers Ralph Jones, Tom Watson
 Typists Lynn Wilhoit, Lillian Cook, Juanita Womac
 Circulation Staff—Sharon Pardue, Nancy Reynolds, Wanda
 Trevena, Nadyne Woolsey.
 Advisor Addison R. Barker, Jr.

Left to Right, Seated: Sharon Pardue, Ann Roberson, Carolyn Hammond, Mary Petree, Brenda Smith, Jill Davis. *Standing:* Dot Jones, R. V. Jennings, Dean Grant, Mr. Addison Barker, Elise Aytes, Nadyne Woolsey, Randall Bigham, Wanda Trevena, Charles Hood, Lillian Cook, Phil Gardner, Annette Kinser, Juanita Womac, Dennis Gillikin, Pat Bennett, Nancy Reynolds, Mary Frances Trotter.



Editor Peggy Rapking

Assistant Editor
Peter Von Dreele



Left to Right, Seated: Pat Bennett; Linda McGee; Lynda Whitmire; Peggy Rapking; Mr. Ben McClary, Sponsor; Eva Lou Groves. *Standings:* Josette Crites; Jan Peacher; Peter Von Dreele; Dennis Gillikin; Sandra Allen; Charles Hood; Evelyn McKinney.

THE NOCATULA STAFF

Pete Von Dreele, the assistant editor, is hard at work.

All the materials are here. Where's the staff?





Left to Right, Seated: Dr. Albert Bowman, Sponsor; Bill Albritton; Mary Bratton; Phil Gardner; Alan Kennedy; Becky Owen; Mr. J. Van B. Coe, Sponsor. *Standing, First Row:* Doug McCoy, Sally Baxter, Karen Quammen, Ann Mason, Mary Ann Monk, Jack Houts, Sponsor. *Second Row:* Dennis Gillikin, Bill Bork, Peter Von Dreele, Jim Gregory, Bill Yates, Sponsor.

WESLEYAN ROUNDTABLE

A dinner meeting of the Roundtable.



Left to Right, First Row: Mary Bratton, Secretary; Phil Gardner, President; Becky Owen, Treasurer. *Second Row:* Bill Albritton, Program Chairman; Alan Kennedy, Vice-President.

Alpha Beta Honorary Fraternity

The purpose of Alpha Beta Honorary Fraternity is twofold:

First, to recognize students who have attained a high standard of scholarship, to encourage them to continue along this line, and to inspire others to strive for similar conspicuous attainment;

Second, to develop good character, and to motivate each individual to the realization of his highest potential.



Left to Right, Seated: Dr. Albert Bowman, Sponsor; Annette Kinser, President; Jean Sain; Mary Bratton, Secretary; Sylvia Corn, Treasurer; Dr. Robert Mildram, Sponsor. *Standing:* Larry Gaby; Joe Burger; Mary Tim Burgin; Mary Petree, Vice-President; Peggy Rapking; Catherine Wentworth.



Left to Right, Seated: Sally Ealy; Peggy Rapking; Mary Bratton; Baker Martin; Dr. Albert Bowman, Sponsor. *Standing:* Albert Payne; Mr. Van B. Coe, Sponsor; Mr. Charles Sallis, Sponsor; Sonny Wright; Guy Henry.

Pi Gamma Mu

The purpose of Pi Gamma Mu, the National Social Science Honor Society, is to improve scholarship in the social studies; to take an intellectual approach to the solution of social problems; to develop a better understanding of others with different opinions and institutions.

Tennessee Wesleyan College's chapter of Pi Gamma Mu was organized this year, and it is looking toward increasing growth in the years ahead.

Society For The Advancement Of Management



The Society for the Advancement of Management, a national organization, brings business executives and students together. It provides the student with the opportunity for participation in the organizing, planning, directing, and controlling of the activities of an organization dedicated to the promotion and advancement of the art of science and management.

Left to Right, Seated: B. T. Hutson, Sponsor; Gary Womac, Secretary-Treasurer; Jim Brakebill, President; Joe Mischlich, Vice-President. *Standing:* Robert Crabtree, Gene Leslie, Bill Cochran, Jim Smith, Pete Kerl, Jim Brown, James Kelley, Jim Davis, Barry Barnett, Phil Hall, Wallace Smith, Wiley Rosenbaum, Tom Coffey, Bob Bowmaster, Joe Lawson, Bill Gibson, Hal Roe, John Walker, Ron Biddle.

Beta Beta Beta

Tennessee Wesleyan College has been granted a charter for the organization of the Eta Omega Chapter of Beta Beta Beta, a national honor fraternity for the encouragement of the biological sciences. The purpose of Beta Beta Beta is to form an honor society for students of biological sciences and thereby stimulate sound scholarship, to promote the dissemination of scientific truth and encourage investigation in the life sciences.



Left to Right, Seated: Becky Owen, Wanda Trevena, Wanda French, Joyce Cook, Susie Creswell. *Standing:* Dr. William Adams—Sponsor, Tom Grizzard, Jordan Carter, Jim Richardson, Rick Perachio, Gary Holt.



Left to Right: Dr. Carl Honaker, John Moss, Rev. Wilmer Robbins, Annette Kinser, Bill Albritton, Dr. Ralph Mohney, Bob Bowmaster, Eleanor Dover, Chaplain Howard Hinds, Jim Richardson, Phil Gardner, Carolyn Hammond, C. D. Hagaman, Eloise Hitson, Mr. A. J. Houts.

RELIGIOUS LIFE COUNCIL

The Religious Life Council directs the religious life program. It serves as an advisory council for the work of the chaplain and directs recommendations to the executive committee regarding policies and philosophy of religious activities.

THE CHAPLAIN



The Reverend Mr. Howard N. Hinds

RELIGIOUS LIFE AT TENNESSEE WESLEYAN COLLEGE

The religious life program of Tennessee Wesleyan College is designed to assist and guide each student into a personal understanding of and commitment to the Christian faith. We are dedicated to the idea that the Christian religion is a vital part of education and that education is an integral part of the Christian religion.

Realizing that our chief end is to become effective witnesses for Jesus Christ, and being fully cognizant that our college experience is a vital step toward this end, we seek to provide an atmosphere where persons may study and work together for the development of their physical, intellectual, and spiritual capacities.

STUDENT CHRISTIAN ASSOCIATION COUNCIL

The Student Christian Association Council is comprised of elected representatives of the student body. Its duties are to plan, promote and activate the Christian life program on the campus. The council chose as a theme for its activities this year: "Our Campus, World, Selves, and Our Faith!"



Left to Right, Seated: Lou Ann Harris, Mel Wilhite, Eloise Hitson, John Moss, Carolyn Hammond, Lillian Cook, Joyce Coulter. *Standing:* Wayne Anderson, Dura Underwood, Elise Aytes, Gene Hamilton, Chaplain Howard Hinds, Betty Ruth Smith, Bill Albritton, Nadyne Woolsey, Karen Dawson, R. V. Jennings.

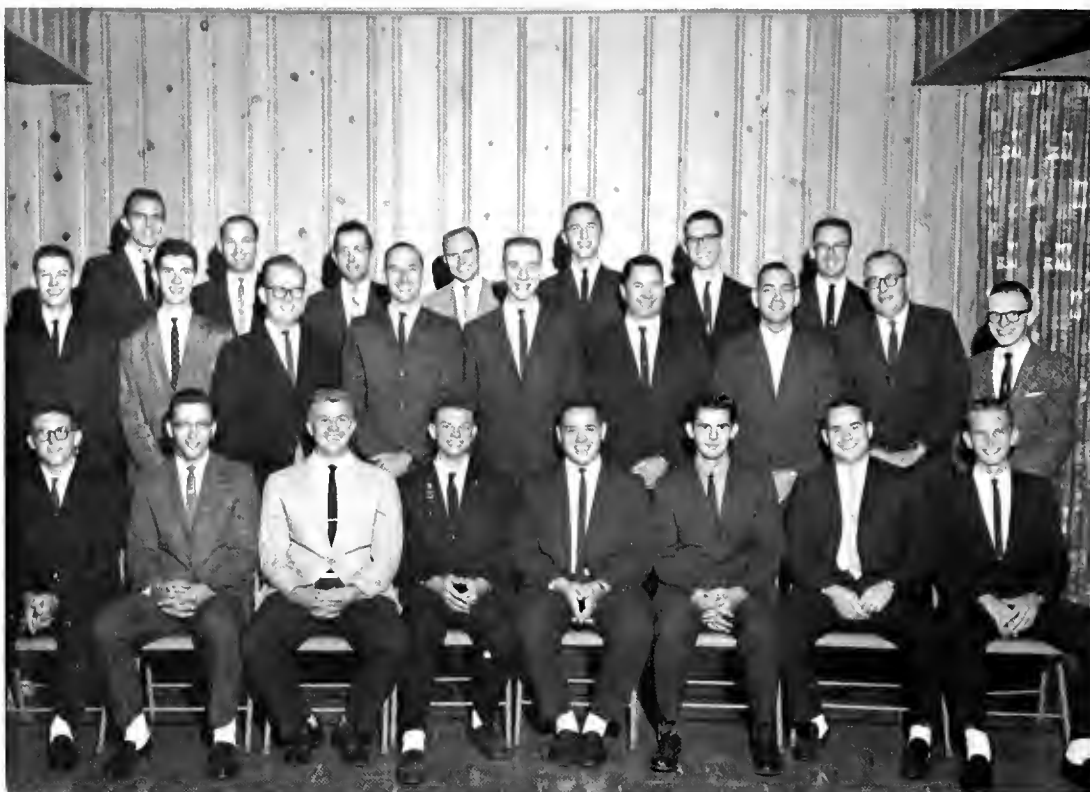
STUDENT CHRISTIAN ASSOCIATION

The Student Christian Association is the student Christian life organization for ALL students, regardless of denominational affiliations. Each student becomes a member upon enrollment in the college. Pictured below is a typical meeting of the SCA with Mr. Roy Shilling, director of development, speaking on the subject of "Alcohol and the College Campus."



Wesleyan Ministerial Association

The Wesleyan Ministerial Association offers fellowship and inspiration to the pre-ministerial students. Many of the men have pastoral charges. This promotes a feeling of unity of purpose within the group.



Left to Right, First Row: Billy Mack Giles, Bill Miller, Lee Ellis, Edward Taylor, Mel Wilhite, Kenneth Woodward, Dwayne Scott, Wayne Anderson. *Second Row:* Jack Edwards, John Moss, Chaplain Howard Hinds, Jerry Anderson, James Rutherford, Charles Dixon, Charles Pemburn. *Third Row:* Charles Fannon, C. D. Hagaman, Albert Payne, Roy Latourette, Bill Albritton, Cyrus Callahan, Jerry Roberts.

Life Service Girls

The Life Service Girls is an organization of girls who are planning to enter a church-related vocation. It offers fellowship to those who feel a need to dedicate their lives to a vocation serving human needs.



Left to Right, First Row: Martha Wampler, Mary Lou Robbins, Eloise Hitson, Karen Treher, Betty Ruth Smith. *Second Row:* Pat Bennett, Joy Gray, Peggy Kelso, Nancy Lowmiller, Eva Lou Groves, Lillian Cook, Brenda Smith, Wanda Trevena. *Third Row:* Fonda Starnes, Carolyn Hammond, Betsy Banks, Marlene Latham, Pat Satterfield, Nadyne Woolsey, Mary Petree.

Special Events



DR. ROLAND HAYES

Dr. Hayes presented the "Life of Christ" Concert and Sacred Music Symposium during the Fall Quarter. Reprinted by permission of the Arts Program of the Association of American Colleges.



MRS. RALPH W. MOHNEY

Mrs. Mohny addressed the SCA on the subject: "The Christian Family."



RABBI MEYER MARX

Mr. Marx, spiritual leader of the Temple Beth El in Knoxville, was the Brotherhood Week speaker.



MISS BETTY RUTH GOODE

Miss Goode, representative of the Board of Missions, visited the campus to interview students regarding the frontiers of service in our Church.

Special Projects



The Worship Committee of the SCA Council completed a prayer room for meditation and prayer in Trinity Church.



The Community Service Committee of the SCA Council and a group of SCA members enroute to the Athens Convalescent Home for their weekly visitation.



The Worship Committee and the Pre-Min and LSG united to initiate a voluntary chapel service for the student-faculty community which meets each Monday. Pictured is a group at prayer at the altar of Trinity.

The Team Committee of the SCA Council sponsored four teams — Witness, Deputation, Vocation, National — throughout the Conference during the year. Pictured is a visiting choir from our sister college, Morristown College.



SPIRITUAL LIFE RETREAT

DR. ROY H. BURKHART, *Retreat Speaker*



"Cha-Cha" and company partake of nourishment at the Chow Hall.



"Burkie" and gang in an informal counseling session.



"Burkie" and Jack blend voices in song.



Mrs. M. and the "Bunnies" hop.



Dennis and cohorts pour the syrup on the flap-jacks at the annual Pancake Supper sponsored by the SCA.



"Veep" Carolyn and gang in deep theological conversation at the close of an SCA session.



NATHAN TWINING, *Pianist*

Reprinted by permission of the National Concert and Artist Corporation.

The Cultural Life Committee and the Athens Civic Music Association are responsible for many of the cultural programs at the College during the year. Among the contributions of the Civic Music Association to this program of cultural appreciation were concerts by Nathan Twining, pianist, and I Musici, a twelve-piece string ensemble.

Included in the Fine Arts program are drama productions presented each quarter under the direction of Mr. Harry Coble. Senior student recitals also provide opportunities for students and townspeople to enjoy fine performances.



CHARLOTTE KELLY, *senior organ recital*



Bill Yates, one of the leading actors in "Our Town."



CATHERINE WENTWORTH, senior piano recital



A scene from the Drama Department's production of "Our Town."



Mr. Harry Coble, sole actor in "Krapp's Last Tape," presented in the Fall Quarter.



"The House by the Stable," a modern religious drama presented by the Religious Drama Class.



The chorus of "John Brown's Body" in rehearsal.



Tommy Watson and Gladys Kyle rehearse a tense scene.



"Get those hands up, you stupid Yank!"

Laura T. Sherman Music Fraternity

Left to Right: Fonda Starnes, President; Don Pratt; O. C. Beets; Judy Jones; Karen Horton; Jill Cameron; Paul McElhaney; Pat Bennett; Charlotte Kelly; Betsy Banks; Betty Douglas. Not pictured: Mary Greenhoe, Sponsor.





Left to Right, First Row: Don Pratt, at Piano; Elizabeth McNish; Charlotte Kelly; Jill Cameron; Sue Ella Hankins; Anna Aytes; Karen Horton; Joy Gray; Quammen. *Second Row:* Sylvia Hargis; Melinda Alford; Carol Hunt; Betty Douglas; Evelyn McKinney; Karen Horton; Nancy Adkins; Glenda True; Mary Helen Frazier; Libby Little. *Third Row:* George Gregory; O. C. Beets; Dura Underwood; Betsy Banks; Elise Aytes; Dot Hopkins; Mary Lou Robbins; Haney; Sandra Fox; Joyce Coulter; Dennis Gillikin; Joe Lamb. *Fourth Row:* James Graham; Bill Albritton; Colin Bagwell; Charles Hood; Mel Wilhite; McElhaney; Ronnie Harris; George James; Bob Bonnet; Ben Chism; Sonny Tarpley; Gene Hamilton; Larry Griffith; Charles Fannon.



An informal choir rehearsal —

Left to Right: Charlie Hood, President; Charlie Fannon, Vice-President; Gene Hamilton, Assistant Business Manager; Lillian Cook, Librarian; Joyce Coulter, Assistant Librarian; Dennis Gillikin, Business Manager; Sandra Fox, Social Chairman; Bob Bonnet, Social Chairman; Charlotte Kelly, Treasurer.





inda Combs; Fonda Starnes; Judy Jones; Lillian Cook; Lisa Lee; Karen
rances Trotter; Josette Crites; Pat Bennett; Nancy Lowmiller; Kathy Hill;
etty Ruth Smith; Martha Wampler; P. J. Michaelson; Becky Owen; Marti
ayne Anderson; Alan Kennedy; Steve Anderson; Ronnie Martin; Paul



DIRECTOR: A. J. Houts

The four leading players in the 1962 Spring Show, "South Pacific."



SECTION LEADERS: Charlotte Kelly, Tenor Section; Fonda
Starnes, Second Soprano Section; Don Pratt, Bass Section; Judy Jones,
Alto Section; Betty Douglas, First Soprano Section.





Joe Lowry does the Sword Dance



Let's go to the wedding!

“BRIGADOON”

Spring Show, 1961



Come to the fair!



It's almost like being in love!

Greeks





GOVERNING BODIES

SORORITIES

FRATERNITIES

Mary Petree
Vice-President

Juanita Womac

Betsy Will

Joyce Coulter

Mary Anne Monk

Lou Ann Harris
President

Susie Creswell
Secretary

NOT PICTURED:

Sharon Pardue
Treasurer

Floyd E. Bowling
Advisor



First Row:

Phil Gardner
Secretary-Treasurer

Rick Perachio
President

Floyd E. Bowling
Advisor

Ronnie Edwards

Second Row:

Gary Holt

Bob Bowmaster

Bill Bork

Jim Brown

Fred Griffin

Guy Henry



Panhellenic And Inter-Fraternity Councils

The women's Panhellenic Council and the men's Inter-Fraternity Council are the advisory boards for the sororities and fraternities on campus. Composed of representatives from the fraternal organizations, their aim is to maintain on a high plane fraternal life and inter-fraternal relations.

ALPHA XI DELTA

The Alpha Xi's, with twenty-two actives returning in the fall, chose Bill Albritton as their "Dream Man."

The first pledging period was concluded February 17 with formal initiation and an anniversary dance. Several closed parties were also held during the year, including our informal Sweetheart party in October.

Alpha Xi Delta is proud of the following honors: Mary Petree, BULLDOG editor; Peggy Rapking, editor of NOCATULA; WHO'S WHO: Mary Petree, Carolyn Hammond, and Peggy Rapking; Senior Superlatives: Ann Roberson, Carolyn Hammond, and Mary Petree; Nancy Adkins was selected as Sigma Phi Epsilon Sweetheart and Jean Burton and Betty Ruth Smith as Sig Ep Queens of Hearts. Wanda Trevena served as president of the Women's Athletic Association and Ann Roberson served as secretary of the Student Body.



Bill Albritton — Alpha Xi Dream Man

Left to Right, First Row: Glenda Brewer, Jean Burton, Nancy Adkins, Marilyn Ward, Elise Aytes, Betty Ruth Smith, Pat Satterfield, Lillian Mary Petree, Carolyn Hammond, Margaret Underwood.



Alpha Xi's plan strategy for use against the Pi Kap's in touch football!





Penny Coll, P. J. Michaelson, Dot Jones, Rosie Webb, Peggy Rapping, Becky Owen, Linda McGee, Anna Aytes. *Second Row:* Mary Ward, Judy Jarvrs, Cook, Wanda Trevena, Jane Bridges, Ann Roberson, Carol Payne, Nadyne Woolsey, Dura Underwood, Kay Rayfield, Joyce Coulter, Brenda Smith,



Were you girls naughty and have to stand in the corner?



OFFICERS: *Left to Right, Seated:* Brenda Smith, Treasurer; Elise Aytes, Corresponding Secretary; Carolyn Hammond, President; Mary Petree, Vice-President. *Standing:* Lillian Cook, Marshal; Wanda Trevena, Recording Secretary; Jane Bridges, Wardrobe Mistress; Becky Owen, Rush Chairman; Nadyne Woolsey, Historian; Dura Underwood, Assistant Treasurer; Kay Rayfield, Journal Correspondent; Joyce Coulter, Chaplain.



Don Pratt—Delta Zeta Man of the Year

DELTA ZETA

For us the year 1961-62 has been one filled with work and anticipation for the day when we may complete the requirements necessary to become a Chapter of Delta Zeta.

In 1902 six young women at Miami University in Oxford, Ohio, had a vision of what college girls might be able to attain together; this vision became the Delta Zeta Sorority. These young women founded their sorority with high objectives, and we as Delta Zetas today are proud to uphold these ideals and to strive toward their highest fulfillment. Our goals are four in number: First, to assist each other in pursuit of knowledge, and attainment of high standards of morality. Second, to afford each other every possible assistance. Third, to incite all to the attainment of a memorable fame, and last, and perhaps most important of all, to instill its members with the truest and deepest ties of friendship.

At first glance our group may appear small, but we believe that greatness is found in quality not in quantity. We as Delta Zetas believe that the true sorority lies in the individuals and not in any organization; as the flame of the golden lamp of Delta Zeta burning within each sister is reflected in her life, we feel that the first step has been taken toward the accomplishment of our high ideals.

This year the Delta Zeta Sorority was very honored to have one of our sisters, Donna Green, chosen Rose of Pi Kappa Phi. We selected a most loyal and deserving guy as Delta Zeta Man of the Year, Don Pratt, a Sig Ep.

Left to Right, Seated: Jan Peacher, Donna Green, Jonnie Carter, Lou Ann Harris, Eloise Hitson. Standing: Elizabeth McNish, Gladys Kyle, Baker Martin.





The Delta Zetas entertain with the limbo at a party.



OFFICERS: *Left to Right, Seated:* Jan Peacher, Treasurer; Donna Green, Second Vice-President; Jonnie Carter, President; Lou Ann Harris, First Vice-President; Eloise Hitson, Historian. *Standing:* Gladys Kyle, Reporter; Baker Martin, Guard; Betsy Will, Athletic Chairman; Pauline Banks, Secretary.

Betsy Will, Arlene Evans, Pauline Banks, Linda Fowler, Karen Quammen.



Just a sisterly trick, Baker?

KAPPA DELTA

On October 14, 1961, Kappa Delta Phi Sorority affiliated with Kappa Delta Sorority. We cherish our fond memories of Kappa Delta Phi, but becoming a National Panhellenic Sorority is a dream that we have strived to realize.

We became Gamma Phi Chapter in a very beautiful and impressive installation service at Trinity Methodist Church, followed by our Installation Banquet at Keith Memorial Methodist Church.

Nine active members, five alumnae, and two honor initiates were initiated. Here in Athens for our installation were the National President, National Chapterian, National Counselor, and representatives from the University of Tennessee, the University of Chattanooga, and Vanderbilt University.

Activities during the year included rush parties, an informal party honoring new initiates in the winter, a dance given by the actives, and a banquet given by the pledge class in the spring. We participated in intramural activities and worked with the Athens civic organizations in the annual March of Dimes drive. Our local philanthropy is helping a teen-age girl who is a victim of polio.

We are proud of the honors won by the following members: Emma Sue Delozier, Athletic Queen; Sue Ella Hankins, TWC Ambassador; Susie Creswell, Harvest Queen, Phi Sig Moonlight Girl, and Miss TWC.



Bill Gibson—Kappa Delta Sweetheart

Left to Right, Seated: Sandra Fox, Juanita Womac, Fonda Starnes, Dot Lagonda Kelly, Libby Curtis, Susie Creswell. Not pictured: Emma Sue



One of the coke parties honoring the new chapter of Kappa Delta here at Wesleyan.



Busy bees get ready for a rush party!



OFFICERS: *Left to Right:* Dot Hopkins, Membership Chairman; Betsy Banks, Treasurer; Fonda Starnes, President; Juanita Womac, Vice-President; Sandra Fox, Secretary; Betty Douglas, Editor.

Hopkins, Betsy Banks. *Standing:* Sue Ella Hankins, Betty Douglas, Janice Shasteen, Sandra Allen, Sally Wall, Linda Combs, Linda Akers, Lana Mynatt, Delozier.





Mary Bratton and Judy Pitts attend a convention in Denver, Colorado.

OFFICERS: *Left to Right:* Ann Mason, Historian; Doris Dickey, Corresponding Secretary; Eleanor Dover, President; Mary Anne Monk, Treasurer; Doris Hughes, Social Chairman; Mary Bratton, Recording Secretary; Sharon Pardue, Second Vice-President; Josette Crites, TRIANGLE Correspondent.



Left to Right, Seated: Doris Hughes, Josette Crites, Sally Baxter, Barbara Kundrat, Ann Mason. *Standing:* Eleanor Dover, Betty Williams, Pat Bennett, Anne Riviere, Mary Anne Monk, Mary Bratton, Doris Dickey.



Sigma Kappa

Sigma Kappa has had a fine year this year, full of honors and happiness. The honors include our President Eleanor Dover being chosen Treasurer of the Student Body and Secretary of the Religious Life Council. Eleanor was also nominated for Miss TWC and elected to WHO'S WHO. Mary Bratton was chosen as one of the Sig Ep Queens of Hearts and elected to WHO'S WHO. Mary also represented our chapter at Chapter Officers Training School for Sigma Kappa at Fort Collins, Colorado, August 18-20. Some of her experiences are shown in these pictures.

The girls had great fun with the rush parties, one being a "flapper" party, and the other being a Polynesian party. In December a Christmas party was held at the home of an alumna member. Big and little sisters exchanged gifts. In the month of February a Valentine's party was held as well as formal initiation. The Sigmas have participated in intramurals with Betty Williams being first runner-up in the tennis tournament. This has been a very profitable year for all of us and we look forward to many more such years.



Eleanor Dover makes a good-looking flapper!

Jeeta Puett, Sharon Pardue, June Moore, Luena Helton, Gail Lowery.



Sigmas entertain rushees at a "flapper" party.



PHI SIGMA KAPPA

The members of the Phi Sigma Kappa Fraternity are proud occupants of a new house on Lynn Avenue. This house is directly behind the new Lucy Fowler Women's Dormitory. Many of the actives as well as pledges have participated in decorating the house for their use in years to come.

The Phi Sig's activities this year have been many and varied. We boast the President and Vice-President of the Student Body, President and Vice-President of the Senior Class, President and Vice-President of the Junior Class, President and Vice-President of the Sophomore Class, and President and Treasurer of the Freshman Class.

Three members of our fraternity, Gary Holt, Jerry Edmonds, and Jim Richardson, were elected to WHO'S WHO. Jerry Edmonds was elected Mr. TWC. The Phi Sigs actively participated in the annual March of Dimes. Mary Frances Creswell was chosen as our Moonlight Girl. "Susie" is a member of the Kappa Delta Sorority and an education major.

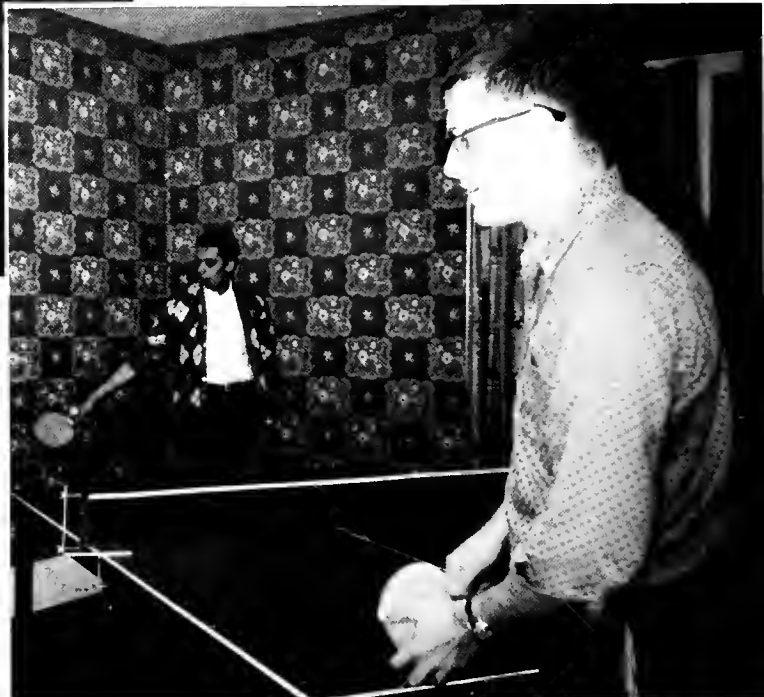


Left to Right, Seated: Fred Keener, Wiley Rosenbaum, Gary Holt, Bob Jones, Billy Simpson, David Sullins, Malcolm Dunn, George James, Bill Drake



OFFICERS: *Left to Right:* Wiley Rosenbaum, Pledge Master; Jim Whelchel, Secretary; Bob Bowmaster, President; Susie Creswell, Moonlight Girl; Guy Henry, Treasurer; Gary Holt, Inductor.

Just a friendly game of Ping-Pong!





Bowmaster, Susie Creswell—Moonlight Girl, Guy Henry, Jim Whelchel, Bob Cate, Tom Coffey. *Standing:* Neil Moulton, Phil Hall, Bill Cochran, Ralph Dave Chambers, Jim Smith, Ronnie Sherrill, David Lepchitz.

Susie Creswell—Moonlight Girl



Looks like somebody is wet!





Left to Right, Seated: Phil Gardner; Howard Hinds, Sponsor; Bill Bork; Fred Griffin; Jack Edmonds. *Standing:* Jim Lancaster; John Killeffer; Tommy



Donna Green — Pi Kappa Phi Rose



PI KAPPA PHI

Gamma Alpha Colony of Pi Kappa Phi Fraternity has had a very successful and enjoyable first year as part of the Pi Kappa Phi Brotherhood.

The Fall saw a fine football team fielded by the Pi Kapps with promises of even better ones to come. The first pledge class of the fraternity took shape, and was honored at the Fall Pledge Party. Fall Quarter climaxed as the brothers serenaded and pinned their fraternity "Rose", Miss Donna Green, a sophomore from Miami, Florida.

The Winter Quarter hardly got underway before the Brotherhood was increased in number by the initiation of new men. Winter Quarter was also the time when the Pi Kapps took an active interest in the March of Dimes Campaign.

The highlight of Spring Quarter was the annual Spring Banquet. This year the Banquet was held in the honor of the Pi Kappa Phi alumni who contributed so much to the growth and prosperity of the chapter. Also, the chapter advisor, Chaplain Hinds, was honored for his leadership and guidance.

Watson; Doug McCoy; Alan Van Ostenbridge; Melvin Bailey; Johnny Guinn; Jim Little.



OFFICERS: *Left to Right:* Doug McCoy, Secretary; Jack Edmonds, Historian; Phil Gardner, President; Bill Bork, Warden; Fred Griffin, Treasurer.

Sigma Phi Epsilon

After many hours of careful planning and hard work during the summer months, which included a very successful rush party, the Brothers of Sigma Phi Epsilon began the year with the largest pledge class in the history of the fraternity. Twenty-nine young men were formally initiated as pledges, and five have already achieved active status.

The Sig Eps chose the charming Miss Nancy Adkins of Kingsport, Tennessee as the "Sig Ep Sweetheart." Nancy was honored at the Annual Sweetheart Dance where she was attended by the lovely Queens of Hearts—Misses Mary Bratton, Margaret Moulton, Jean Burton, and Betty Ruth Smith. The pledge class named Miss Karen Horton of Chattanooga as the "Pledge Princess" and honored her with a Pledge Party.

In community service the Sig Eps held their annual Christmas party for underprivileged children, financed by a turkey raffle at Thanksgiving. We also helped in the March of Dimes with roadblocks and a benefit basketball game with the Alpha Xis. The Sig Eps look forward to a bright year at Tennessee Wesleyan College.



Left to Right, Seated: Bill Albritton, Jerry Roberts, Rick Perachio, Jim Brown, Ronnie Crook, Roger Richardson, Hugh Walker, John Farmer, Larry Burger, Jim Peck, Bill Charlie Hood, Carl Honaker—Sponsor, A. J. Houts—Sponsor.



OFFICERS: *Left to Right, Seated:* Rick Perachio, Comptroller; Jim Brown, President; Ronnie Edwards, Vice-President. *Standing:* Jerry Roberts, Chaplain; Ronnie Harris, Junior Marshal; Fred Fuller, Senior Marshal; Alan Kennedy, Pledge Trainer; Gene Hamilton, House Manager; Fount Love, Historian; Steve Kyker, Guard.

The Queen and her Court—Lovely!





Harris, Gene Hamilton, Fount Love, Steve Kyker, Alan Kennedy, Ronnie Edwards, Fred Fuller, *Standing:* Bennie Beverly, Butch Hogan, Weldon Aiken, H. L. Dennis, James Graham, Wayne Anderson, Bill Miller, Larry Huffman, Joe Burger, Jim Hickey, William Hicks, Don Pratt, Jim Ackerman,

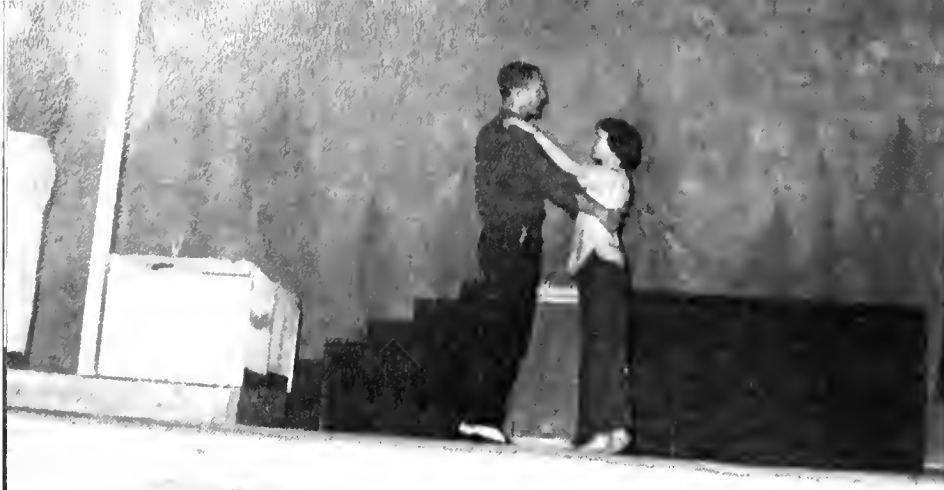
Nancy Adkins—Sigma Phi Epsilon Sweetheart



Santa Claus came again this year!



SNAPSHOTS



Strike up the music, maestro!



A gay crew feeds their faces!



TWC's Pride and Joy.



Can you do the limbo???

Athletics





BASKETBALL

TENNIS

BASEBALL

GROUPS

INTRAMURALS

BASKETBALL

1961-62

Tennessee Wesleyan's Bulldogs were in fine shape this year with a record of fifteen wins and five losses. We are looking forward to an equally good year during the 1962-63 season with several veteran ballplayers returning.



Coach Buddy Cate and Director of Athletics, M. C. Smith



Jerry Edmonds, Captain and Senior Player

Make those two points, Jack!



Block that shot!





Left to Right: Sonny Wright, Don Dones, Jerry Edmonds, Duain Rich, John Lee, Glenn Humbert, Jack Henry, Robert Wells, Harold Peden, Troy Ingle, Robbie Robinson.

Get that rebound!



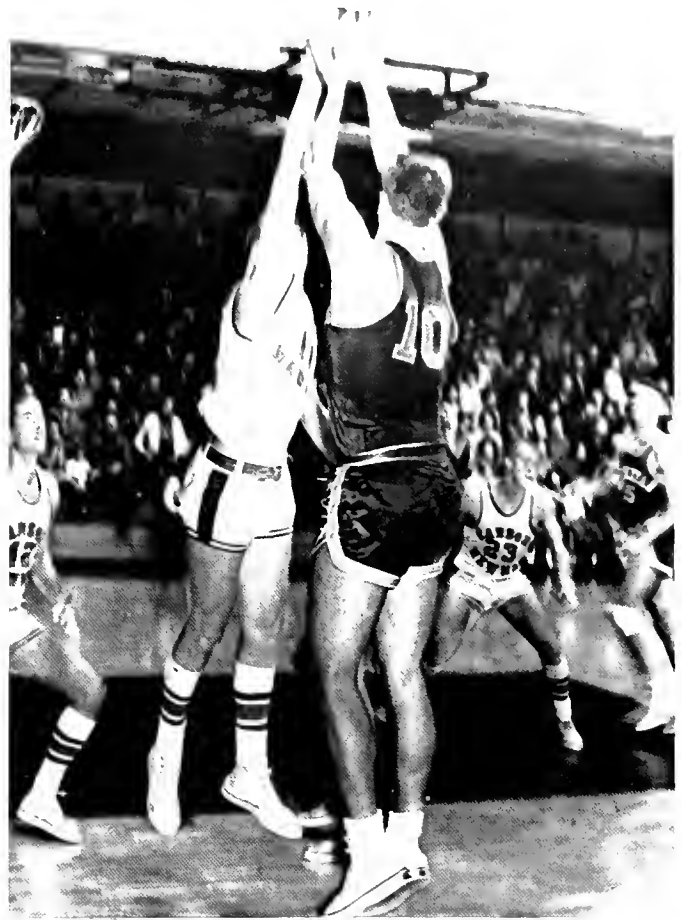
SCHEDULE

Wesleyan	99	Bryan College	83
Wesleyan	97	Shorter College	70
Wesleyan	99	Georgia State	70
Wesleyan	88	L. M. U.	59
Wesleyan	74	Milligan	70
Wesleyan	86	Milligan	56
Wesleyan	70	King	56
Wesleyan	72	Emory and Henry	69
Wesleyan	80	King	65
Wesleyan	86	U. of Chattanooga	81
Wesleyan	71	Milligan	78
Wesleyan	63	Tusculum	74
Wesleyan	104	Bryan College	91
Wesleyan	89	L. M. U.	80
Wesleyan	61	Carson-Newman	70
Wesleyan	57	Shorter College	65
Wesleyan	68	Tusculum	56
Wesleyan	60	Carson-Newman	78
Wesleyan	92	Georgia State	74
Wesleyan	106	Emory and Henry	72
Wesleyan	64	U. of Chattanooga	59
Wesleyan	79	L. M. U.	78

BULLDOGS IN ACTION



Don't let him block that shot, Duain!



Make it good!!



Jack gets off another shot—

The 1961-62 Athletic Queen and her court: Emma Sue Delozier with Kay Van Huss, Mary Ann Monk, and Wanda French.



TENNIS



Don't miss that ball, Don!



Reach high, there!

Left to Right, First Row: Sonny Tarpley, Darrell Coleman, Ernie Ruesch, Mickey Fleming. Second Row: Dwain Ealy, Don Allison, Professor Coe—Coach, Mike Thomas, Dewey Davidson.





Left to Right, First Row: Larry Graham, Darrell Coleman, Mickey Fleming, Jim Davis, David Simmerly, David Morton. Second Row: Randall Bigham, Max Bear, Randall Kyker, Rehus Fleming, David Holtackers, Sonny Wright.



Whee! It's a home run!

BASEBALL

I just know he's going to strike out!





Women's Athletic Association

The W.A.A. is made up of any girls who participate in intramural sports. Their projects for the year include the sponsorship of the intramural activities, including basketball, tennis, volleyball, and softball. Trophies are given at the end of the year to the teams winning the championship in the above sports.

Left to Right, First Row: Mary Anne Monk, Betsy Will, Susie Creswell, Doris Dickey. *Second Row:* Gaynell Hixson, Doris Hughes, Emma Sue Delozier, Wanda Trevena—President, Mary Anna Smith, Peggy Rapking, Karen Dawson.



Independents

Left to Right, First Row: Glenda True, Kathy Rowe, Nancy Rock, Lameta Sagers. *Second Row:* Karen Dawson, Peggy Edgemon, Marlene Latham, Bennie Helton, Pat Newman.

Cheerleaders

Left to Right: Kay Van Huss, Karen Horton, Emma Sue Delozier—Captain, Bonnie Wright, Kathy Rowe.





Set it up, girls!



Rebound!!



Hurrah! A completed pass!

INTRAMURALS

The Touch Football Champs!

Bill Gibson's Raiders!



*Congratulations
to the
Senior Class
from*

STANRICH STUDIOS
3823 Ringgold Road
Chattanooga 11, Tennessee
Phone MA 9-3219

James Milburn, *Photographer* Stanley Baker, *Photographer*
Member of The Photographers' Association of America

WERNER PFEIFFER LIBRARY



1 0420 00072 0605

