

Mollusca

Cyclophoridae

NOMENCLATURE
OF
MOLLUSCOUS ANIMALS
AND SHELLS
IN
THE COLLECTION
OF THE
BRITISH MUSEUM.

[by William Baird]

PART I. CYCLOPHORIDÆ.

PRINTED BY ORDER OF THE TRUSTEES.

LONDON: 1850.



LONDON :
SPOTTISWOODES and SHAW,
New-street-Square.

IZ-G
QL 406
B7

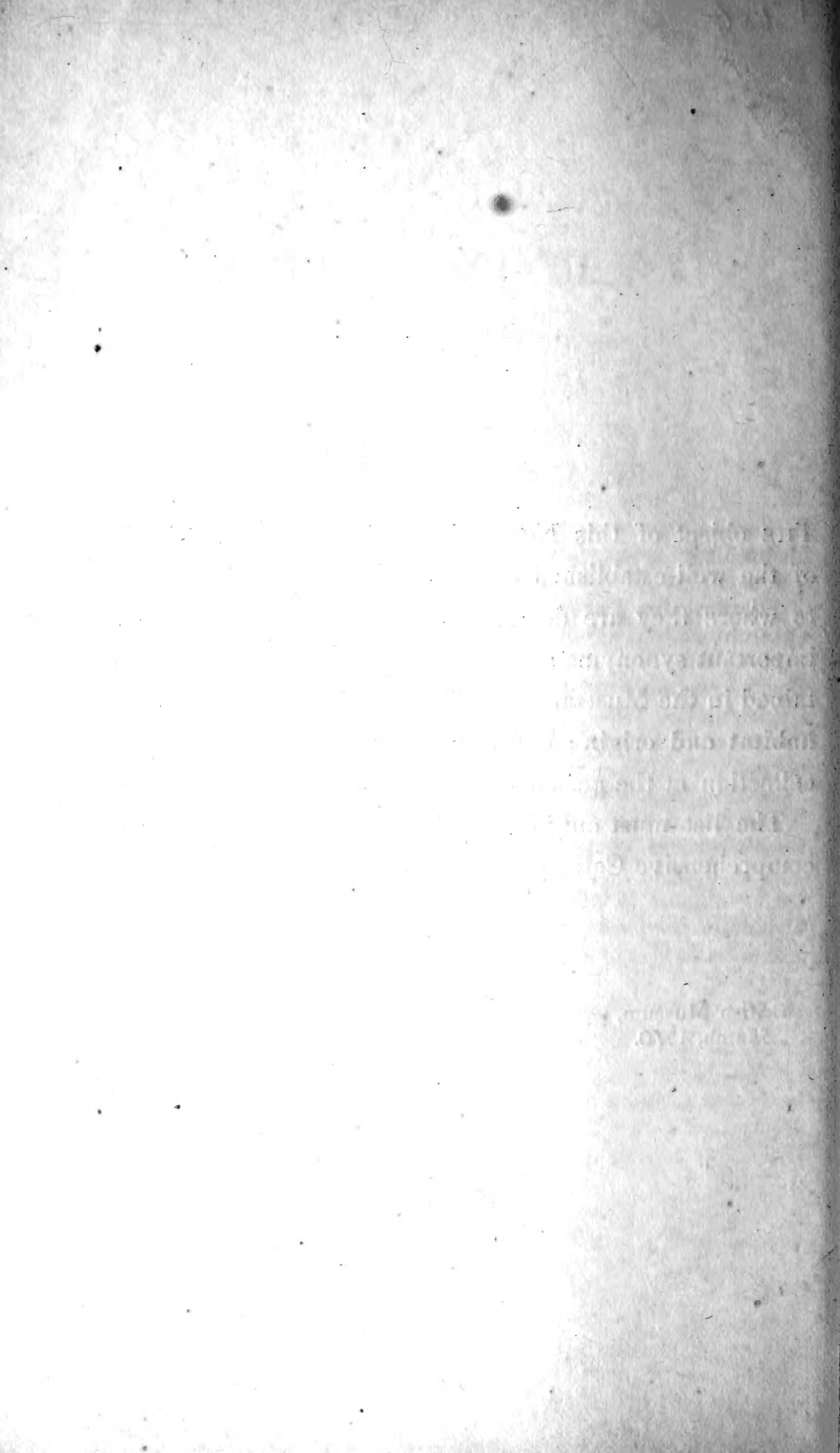
P R E F A C E.

THE object of this Nomenclature is to present a Catalogue of the well-established Species of Mollusca, with references to where they are described and figured, and to the most important synonyma ; to give a List of the Specimens contained in the Museum collection, with an indication of their habitat and origin ; and to point out the Desiderata of that collection at the period of publication.

The list must only be considered as prefatory to a more comprehensive Catalogue.

JOHN EDWARD GRAY.

British Museum,
March, 1850.



LIST OF CYCLOPHORIDÆ.

FAM. I. CYCLOPHORIDÆ.

- Mollusca phaneropneumona *Gray, Lond. Med. Rep.* 1821.
M. pneumonopoma Latr.
Cyclostomina *M. Edwards.*
Cyclostomoidea *Fitzinger, Syst. Verz.* 115. 1833.
Cyclostomaceen *Pfeiffer, Menke und Pfeiffer, Zeitsch. für Malak.*
1847, 101.
Cyclophoridæ *Gray, Proc. Zool. Soc.* 1847, 181.
Cyclostomidæ *Gray, Turton. Man.* ed. 2. 102. 273. (1840).
Cyclostomidæ (pars) *D'Orb. Moll. Canar.* 1837?, *Moll. Cuba*, i.
199. 236. 1841
Cyclostomacea *Menke, Syn.* ed. 2. 39. 1830; *Pfeiffer, Symb. Hist.*
Helic. i. 4. 1841, in *Chemn. Conch.* ed. 2. i. 19. 7. 1846.
Cyclostomacea (pars) *Anton. Verz.* xiii. 52. 1839; *Reeve, Conch.*
Syst. ii. 90.
Cyclostomiatae *Menke, Syst.* 22. 1828.
Turbinina *Férussac, Prod.*
Turbinacea (pars) *Rafin. Annal. Nat.* 144. 1815.

- A. *Operculum orbicular often concave externally, of many very gradually enlarging whorls, nucleus central.*
a. *Operculum thick, formed of two laminæ, with a groove on the edge between them; the outer layer calcareous, usually furnished with a raised border on the outer edge, forming a spiral ridge or fringe.*

1. CYCLOTUS.

Operculum thick, testaceous; outer surface rather concave; whorls numerous, very gradually enlarging, fringed.—*Shell* subturbinate, depressed or discoidal. Mouth simple, or with a reflexed outer lip. Peristome continued, or joined by a callous margin; straight or reflexed.

Cyclotus Guild. in *Swains. Malac.* 1840, 186.; *Gray, Syn. B. M.* 1842, 9., *Proc. Zool. Soc.* 1847, 182.; *Hermann. Ind. Gen. Moll.* i. 350.

Aperostoma Troschel, Zeitsch. f. Malak. 1847, 44.; *Pfeiffer in Menke und Pfeiffer's Zeitsch. f. Malak.* 1847, 104.

β. *Poteria Gray, Syn. B. M.* 1840.

§ *Whorls in front of the axis rounded.*

* *Whorls of operculum very narrow. Peristome nearly straight.*

† *Whorls of shell near suture simple.*

1. CYCLOTUS GIGANTEUS.

Cyclostoma giganteum Gray, MS. Brit. Mus.; Sow. Proc. Zool. Soc. 1843, 30., *Thes. Conch.* i. 92. n. 5. t. 23. f. 8, 9.; *Pfeiffer, Kuster, Chemn. Conch. Cab.* 11. n. 2. i. 19. t. 1. f. 11—14.; *Reeve, Conch. Syst.* t. 184. f. 17.

Cyclost. Cumingii? *Jay, Cat. of Shells,* t. 7. f. 4, 5.

Aperostoma giganteum Pfeiffer, Zeit. Mal. 1847, 104. n. 1.

a. Adult. S. America.

b. St. Elena, W. Columbia. Adult; weathered. Presented by R. B. Hinds, Esq.

2. CYCLOTUS CINGULATUS.

Cyclost. cingulatum Sow. Thes. Conch. i. 93. n. 9. t. 29. f. 213, 214.; *Pfeiffer, Kuster, Chemn. Conch. Cab.* i. 19. t. 22. f. 20—22.

Aperostoma cingulatum Pfeiffer, l. c. 104. n. 2.

Hab. New Granada.

3. CYCLOTUS INCA.

Cyclost. Inca D'Orb. Mag. de Zool. 1835, 29., *Amér. Mérid.* 361. t. 16. f. 21—23.; *Sow. Thes. Conch.* i. 92. n. 6. t. 24. f. 71, 72.; *Pfeiffer, Kuster, Chemn. Conch. Cab.* xii. n. 3. 1. 19. t. 1. f. 5—7.

Cyclost. Blanchetianum Moricand, Mém. de Genève, vii. 1836, 442. t. 2. f. 21—23.; *Potiez et Mich. Gal. de Douai,* 233. t. 23. f. 21, 22.; *Lamck. An. s. Vert.* 2d. edit. viii. 366. n. 29.

Cyclost. nobile Fér. Mus. (fide *Potiez et Mich.*)

Aper. Inca Pfeiff. l. c. 104. 48.

a—e. Bolivia, Yungas.

4. CYCLOTUS BRASILIENSIS.

Cyclost. Brasiliense Sow. Thes. Conch. i. 92. n. 4. t. 23. f. 7.; *Pfeiffer, Kuster, Chemn. Conch. Cab.* i. 19. t. 12. f. 13—15.

? Cyclost. prominulum *Férus*.

Aper. Brasiliense *Pfeiff*. l. c. 104. n. 12.

a, b. Rio Janeiro. Presented by J. E. Gray, Esq.

5. CYCLOTUS? DUFFIANUS.

Cyclost. Duffianum *Adams*.

Aper. Duffianum *Pfeiff*. l. c. 104. n. 9.

Hab. Jamaica.

6. CYCLOTUS STRAMINEUS.

Cyclost. stramineum *Reeve*, *Proc. Zool. Soc.* 1843, 41.; *Sow. Thes. Conch.* i. 93. n. 8. t. 29. f. 211, 212.; *Pfeiffer, Kuster, Chemn. Conch. Cab.* 94. n. 90. i. 19. t. 12. f. 6, 7.

Aper. stramineum *Pfeiff*. l. c. 104. n. 11.

Hab. Merida, in the Columbian Andes.

7. CYCLOTUS PLEBEJUS.

Cyclost. plebeium *Sow. Proc. Zool. Soc.* 1843, 60., *Thes. Conch.* i. 94. n. 12. t. 25. f. 40.; *Pfeiffer, Kuster, Chemn. Conch. Cab.* 56. n. 50. i. 19. t. 7. f. 14, 15.

Aper. plebejum *Pfeiff*. l. c. 104. n. 15.

a—c. Calauang in Luçon. From Mr. Cuming's Collection.

†† *Whorls of shell with a ridge near the suture.*

8. CYCLOTUS SUTURALIS.

Cyclost. suturale *Sow. Thes. Conch.* i. 91. n. 1. t. 23. f. 1, 2.; *Pfeiffer, Kuster, Chemn. Conch. Cab.* i. 19. t. 12. f. 10—12.

Aper. suturale *Pfeiff*. l. c. 104. n. 14.

a. Demerara.

b—f. Jamaica. Presented by the Rev. Barham Zincke.

** *Whorls of operculum very narrow. Peristome double; inner lip simple, outer expanded.* — Cyclostus *Swains.*, passing to *Pterocyclos*.

9. CYCLOTUS DISTOMELLUS.

Cyclost. distomella *Sow. Thes. Conch.* i. 114. n. 68. t. 25. f. 94.; *Pfeiffer, Kuster, Chemn. Conch. Cab.* 95. n. 91. i. 19. t. 12. f. 4, 5. t. 28. f. 14, 15.

Aper. distomella *Pfeiff*. l. c. 184. 16.

a, b. ——— ?

c. Var. small. ——— ?

10. CYCLOTUS HEBRAICUS.

Valvata hebraica *Lesson, Voy. Coquille, Zool.* ii. 347. t. 13. f. 8.
 Cyclost. distomella *Pfeiffer, Kuster, Chemn. Conch. Cab.* 95. n. 91.
 Cyclost. papua *Quoy & Gaim. Voy. Astr.* ii. 185. t. 12. f. 23—26.
 Aper. hebraicum *Pfeiff.* l. c. 104. 17.

Hab. New Guinea?

11. CYCLOTUS DISCOIDEUS.

Cyclost. discoideum *Sow. Thes. Conch.* i. 111. n. 60. t. 25. f. 87,
 88.; *Kuster, Chemn. Conch. Cab.* i. 19. t. 20. f. 1—3.
 Aper. discoideum *Pfeiff.* l. c. 104. 19.

Hab. Demerara.

12. CYCLOTUS MUCRONATUS.

Cyclost. mucronatum *Sow. Proc. Zool. Soc.* 1843, 63., *Thes. Conch.*
 i. 113. n. 66. t. 25. f. 91.; *Pfeiffer, Kuster, Chemn. Conch. Cab.*
 58. n. 52. i. 19. t. 7. f. 11—13.
 Aper. mucronatum *Pfeiff.* l. c. 104. 20.

a—i. Calauang in Luçon. From the Collection of Mr.
 Cuming.

13. CYCLOTUS ? ATRAMENTARIUS.

Cyclost. atramentarium *Sow. Thes. Conch.* i. 128. n. 105. t. 30. f.
 236.; *Pfeiffer,* l. c. 106. 78.; *Kuster, Chemn. Conch. Cab.* i. 19.
 t. 18. f. 17, 18.

Hab. — ?

14. CYCLOTUS PLANORBULUS.

Cyclost. planorbulum *Lamck. Enc. Méth.* t. 461. f. 3., *An. s. Vert.*
 2d ed. viii. 353. n. 1.; *Sow. Thes. Conch.* i. 110. n. 58. t. 25. f. 83
 —86.; *Desh. Enc. Méth. Vers.* ii. 39. n. 1.; *Kuster, Chemn.*
Conch. Cab. i. 19. t. 22. f. 6—16.

Cornu venatorium *Chemn. Conch. Cab.* ix. 104. t. 127. f. 1132—
 1133.; *Gmel. Syst. Nat.* 3641. n. 227. ?; *Petiver, Gazoph.* t. 1.
 f. 6.

Aper. planorbulum *Pfeiff.* l. c. 104. n. 18. a. b.

Cyclot. planorbulus *Gray, Proc. Z. Soc.* 1847, 182.

a. Philippine Islands. Large.

b—d. Philippine Islands. Small. From the Collection of
 Mr. Cuming.

15. CYCLOTUS RUPESTRIS.

Pterocyclos rupestris *Hutton's MSS. B. M.*; *Benson.*

a, b. India.

*** *Whorls of operculum, very narrow. Peristome simple, reflexed.*

16. CYCLOTUS SUBSTRIATUS.

Cyclost. substriatum *Sow. Proc. Zool. Soc.* 1843—61., *Thes. Conch.* i. 113. n. 67. t. 25. f. 35.; *Pfeiffer, Kuster, Chemn. Conch. Cab.* 57. n. 51., i. 19. t. 7. f. 18—29.

Aper. substriatum *Pfeiff.* l. c. 104. n. 21.

a—c. Island of Siquijor. From the Collection of Mr. Cuming.

17. CYCLOTUS EXIGUUS.

Cyclost. exiguum *Sow. Thes. Conch.* i. 112. n. 63. t. 25. f. 92.

Aper. exiguum *Pfeiff.* l. c. 104. n. 23.

Hab. — ?

18. CYCLOTUS PUSILLUS.

Cyclost. pusillum *Sow. Proc. Zool. Soc.* 1843, 9., *Thes. Conch.* i. 94. n. 10. t. 23. f. 5. 5.*; *Pfeiffer, Kuster, Chemn. Conch. Cab.* 59. n. 53. i. 19. t. 7. f. 16—17.

Aper. pusillum *Pfeiff.* l. c. 104. n. 22.

a—f. Isle of Luçon. From the Collection of Mr. Cuming.

g—i. Philippine Islands. Var. small. From the Collection of Mr. Cuming.

19. CYCLOTUS MEXICANUS.

Cyclost. Mexicanum *Menke, Synops.* 1830, 135.; *Sow. Thes. Conch.* i. 112. n. 64. t. 25. f. 93.; *Philippi, Abbild. und Beschr. Conch.* i. 104. t. 1. f. 4.; *Pfeiffer, Kuster, Chemn. Conch. Cab.* 56. n. 49. i. 19. t. 7. f. 21—22.

Aper. Mexicanum *Pfeiffer,* l. c. 104. n. 10.

a. Mexico. Presented by J. E. Gray, Esq.

20. CYCLOTUS PFEIFFERI.

a. With operculum. — ? Presented by J. E. Gray, Esq.

21. CYCLOTUS? ORBELLUS.

Cyclost. orbella *Lamck. An. s. Vert.* vi. 148. 2d ed. viii 360. n. 22., *De Lessert, Rec. Coq.* t. 29. f. 13.; *Sow. Thes. Conch.* i. 93. n. 7. t. 23. f. 6.* 6.**; *Pfeiffer, Kuster, Chemn. Conch. Cab.* i. 19. t. 20. f. 4—6.

Cyclost. variegatum *Férussac*.

Cycloph. ? orbellus *Pfeiffer*, l. c. 108. n. 38.

a. — ?

**** *Whorls of operculum rather wide. Peristome straight.* —
Passing to Tropicophora.

22. CYCLOTUS TRANSLUCIDUS.

Cyclost. translucidum *Sow. Proc. Zool. Soc.* 1843, 29. 106. n. 46.,
Thes. Conch. t. 23. f. 4.; *Pfeiffer, Kuster, Chemn. Conch. Cab.*
13. n. 4. i. 19. t. 1. f. 8—10.

Aper translucidum *Pfeiff.* l. c. 104. n. 5.

a—f. — ?

g—i. Central America. From the Collection of Mr. Cuming.

23. CYCLOTUS INCONSPICUUS.

Cyclost. Popayanum *Lea, Obs. on the genus Unio*, ii. 94. t. 23. f. 76.;
Pfeiffer, Kuster, Chemn. Conch. Cab. 55. n. 48. i. 19. t. 7. f. 7—
10.

Cyclost. inconspicuum *Sow. Thes. Conch.* i. 109. n. 56. t. 24. f. 73.,
74.

Aper. Popayanum *Pfeiff.* l. c. 104. n. 6.

a, b. New Granada.

24. CYCLOTUS ASPERULUS.

Pyxis sp. *Humph. MS.*

Cyclost. asperulum *Sow. Thes. Conch.* i. 91. n. 2. t. 23. f. 3.;
Pfeiffer, Kuster, Chemn. Conch. Cab. i. 19. t. 20. f. 16—17.

Aper. ? asperulum *Pfeiff.* l. c. 104. n. 7.

a—c. Jamaica. From the Collection of Mr. Cuming.

25. CYCLOTUS CONOIDEUS.

Cyclost. conoideum *Pfeiffer, Kuster, Chemn. Conch. Cab.* i. 19. t.
13. f. 19—21.

Cyclost. spurcum *Sow. Thes. Conch.* i. 99. n. 26. t. 24. f. 75, 76.

Trop. conoidea *Pfeiff.* l. c. 107. n. 15.

a, b. S. America (collected by Capt. Fitzroy, R.N.). Pre-
sented by J. E. Gray, Esq.

26. CYCLOTUS SEMISTRIATUS.

Cyclost. semistriatum *Sow. Thes. Conch.* i. 19. n. 3. t. 23. f. 6.; *Kuster,*
Chemn. Conch. Cab. i. 19. t. 20. f. 10—12.

Cyclost. fasciatum *Hutton, MS. B. M.*

Cyclost. albus *Hutton, MS. B. M.*

Aper. semistriatum *Pfeiff. l. c. 104. n. 13.*

a—c. Banks of Ganges.

§§ *Whorls in front of axis keeled. Peristome straight.*—*Poteria Gray, Syn. Brit. Mus. 1840, 1842, 91.*

27. CYCLOTUS LINEATUS.

Cyclostoma jamaicense *Sow. Thes. Conch. i. 96. n. 15. t. 23. f. 12, 13., not Gray.*

Aper. jamaicense *Pfeiff. l. c. 104. n. 3.*

a. Jamaica.

b, c. Jamaica. Presented by Rev. Barham Zincke.

28. CYCLOTUS JAMAICENSIS.

Cyclost. corrugatum *Menke, Cat. Malak. 10.; Sow. Proc. Zool. Soc. 1843, 30., Thes. Conch. i. 95. t. 23. f. 10, 11.; Pfeiffer, Kuster, Chemn. Conch. Cab. 17. n. 8. i. 19. t. 2. f. 13, 14.*

Turbo jamaicensis *Chemn. Conch. xi. t. 209. f. 2057, 2058.*

T. (Cyclostoma) jamaicensis *Gray in Wood's Cat. Supp. t. 6. f. 3.; Lister, Conch. t. 55. f. 51.; Sloane, Jamaica, ii. t. 240. f. 84.*

Aper. corrugatum *Pfeiff. l. c. 104. n. 4.*

a—h. Jamaica.

i—k. Jamaica. Presented by Professor C. B. Adams.

l, m. Jamaica. Var. with operculum ridges higher. Presented by Rev. Barham Zincke.

2. PTEROCYCLOS.

Operculum shelly, many whorled, spirally lamellated, externally very convex, internally concave.—*Shell* broadly umbilicated, rather discoidal. Peristome double; the internal short, cut on the right margin, the external dilated above into a roof-shaped beak.

Spiraculum *Pearson, Journ. As. Soc. Bengal, ii. 590. 1833 ?*

Steganotoma *Troschel, Wieg. Arch. 163, 1837; Philippi, Abbild. und Besch. 1844.*

Pterocyclos *Benson, Journ. Asiat. Soc. Beng. 1832, i. 11., Zool. Jour. v. 462. 1834; Gray, Syn. B. M. 1840, 133., 1842, 91, Proc. Zool. Soc. 1847, 182.; Troschel, Menk. Z. f. Malak. 1847, 44.; Pfeiffer in Menke und Pfeiffer, Z. f. Malak. 1847.*

Cyclostoma sp. *Sow. Thes. Conch.*

§ *Periostraca spinulose*. Mouth with a reflexed lobe near the suture.

1. PTEROCYCLOS PRINSEPSI.

Pterocyclos Princepsi Von Busch in *Pfeiffer*, l. c. 111. n. 3.;
Kuster, Chemn. Conch. Cab. i. 19. t. 24. f. 7. 10.

Steganotoma Princepsi Von Busch in *Philippi, Conch. Abbild.* 10.
t. 1. f. 6.

a. India. Presented by Dr. Horsfield.

2. PTEROCYCLOS HISPIDUS.

Cyclost. spiraculum Sow. *Thes. Conch.* i. 110. n. 59. t. 31. f. 270—
272.

Spiraculum hispidum Pearson, *Jour. Asiat. Soc. Bengal*, ii. 591.
1833.

Pterocyclos hispidus Benson, MSS.

Hab. India. Perhaps the same as the preceding.

§§ *Periostraca smooth*. Mouth with a hole near the suture.

3. PTEROCYCLOS RUPESTRIS.

Steganotoma pictum Troschel, *Philippi, Conch. Abbild.* 105.
t. 1. f. 5.

Spiraculum parvum Pearson, *Jour. As. Soc. Beng.* ii. 592. 1833.

Cyclostoma spiraculum var. *f.* Sow. *Thes. Conch.* f. 273.

Pterocyclos anguliferus *Pfeiffer*, l. c. 111. n. 2.; *Kuster, Chemn.*
Conch. i. 19. t. 24. f. 3. 6.

P. rupestris Benson, *J. A. S. Beng.* i. 13. t. 2. f. 1.; Pearson, l. c. 592.

Cyclostoma anguliferum Souleyet.

a—c. India.

d—f. Ceylon. Presented by H. L. Layard, Esq.

g. Ceylon. Var. Presented by H. L. Layard, Esq.

§§§ *Uncertain*.

4. PTEROCYCLOS ALBERSI.

P. Albersi *Pfeiffer*, l. c. 111. n. 5. and 151. n. 18.

Hab. — ?

5. PTEROCYCLOS PICTUS.

P. pictus Trosch.; *Pfeiffer*, l. c. 111. n. 4.; *Kuster, Chemn. Conch.*
Cab. i. 19. t. 24. f. 21—25.

Hab. — ?

Appears to be the same as *Cyclotus planorbulus* jun.

6. PTEROCYCLOS BILABIATUS.

Cyclostoma bilabiatum Sow. *Thes. Conch.* 1. 110. n. 57. t. 25. f. 81—82.

Pterocyclos bilabiatum Benson (in Sow.); Pfeiffer, *Kuster, Chemn. Conch. Cab.* i. 19. t. 24. f. 11—14.; Pfeiffer, l. c. 111. n. 1.

Hab. Salem near Madras.

Near *Cyclotus planorbulus*.

3. CRASPEDOPOMA.

Operculum horny, solid; whorls very narrow, with a central nucleus; external plate flat; internal concave, furnished with a circular marginal prominence.—*Shell* subturbinate, gaping; last whorl slightly produced, straight. Mouth circular, rather contracted. Peristome continuous, simple, receiving the external prominence of the operculum. Axis imperforate.

Craspedopoma Pfeiffer in *Menke und Pfeiffer, Z. f. Malak.* 1847, 48. 107.

Cyclostoma sp. Lowe.

Valvata sp. *Menke*.

Bolania Gray, *Syn. B. M.* 1842, 91., not described.

§ *Last whorl slightly produced.*

1. CRASPEDOPOMA LUCIDUM.

Cyclostoma lucidum Lowe, *Moll. of Madeira, Trans. Camb. Phil. Soc.* 1831, 66. t. 6. f. 40.; *Lamck. An. s. Vert.* 2d ed. viii. 369. n. 36.; Pfeiffer, *Kuster, Chemn. Conch. Cab.* i. 19. t. 13. f. 26, 27.

Valvata turbinata *Menke*?

Craspedopoma lucidum Pfeiffer, l. c. 111. n. 1.

Bolania lucida Gray, *B. M.* 1840.

a—f. Madeira. Presented by Rev. R. T. Lowe.

g—t. Madeira. Presented by T. V. Wollaston, Esq.

u—z. Madeira. Fossil. Recent limestone formation. Presented by T. V. Wollaston, Esq.

§§ *Last whorl much produced, straight.*

2. CRASPEDOPOMA LYONNETIANUM.

Cyclostoma Lyonnetianum Lowe *MS.* fide Wollaston.

a—r. Madeira, wet rocks. Presented by T. V. Wollaston, Esq.

s—x. Madeira. Fossil. Recent limestone formation. Presented by T. V. Wollaston, Esq.

- b. *Operculum* horny, thin without any external calcareous layer. Shell conical or depressed. Last whorl rounded, without any groove or ridge round the front of the axis.

4. AULOPOMA.

Operculum horny, with many whorls; outer edge larger than the aperture, and reflexed over the peristome of the shell. — *Shell* turbinate, depressed, or subdiscoidal, the last whorl anteriorly open; peristome free, straight, continuous, immersed in the circular groove of the operculum.

Aulopoma Troschel in *Menke und Pfeiffer, Z. f. Malak.* 1847, 43.; *Pfeiffer* in *Menke und Pfeiffer, Z. f. Malak.* 1847.

1. AULOPOMA CORNU VENATORIUM.

Cyclostoma cornu venatorium *Sow. Thes. Conch.* i. 107. n. 48. t. 24. f. 41—42.; *Pfeiffer, Kuster, Chemn. Conch. Cab.* i. 19. t. 22. f. 1—3.

Aulopoma cornu venatorium Pfeiffer, l. c. 111. n. 1.

a. Ceylon.

b—f. Ceylon.

g—l. Ceylon. Presented by H. L. Layard, Esq.

m—q. Ceylon. Var. small. Presented by H. L. Layard, Esq.

r—s. Ceylon. With operculum. Presented by H. L. Layard, Esq.

2. AULOPOMA HELICINUM.

Cyclost. helicinum? *Pfeiffer, Kuster, Chemn. Conch. Cab.* i. 19. t. 22. f. 4, 5.

A.? *helicinum Pfeiffer, l. c.* 111. n. 2.

Hab. — ?

3. AULOPOMA ITIERII.

A. *Itierii Guér.; Pfeiffer, l. c.* 111. n. 3.

Hab. — ?

4. AULOPOMA HOFFMEISTERI.

A. *Hoffmeisteri Trosch.; Pfeiffer, l. c.* 111. n. 4.

Hab. — ?

5. MYXOSTOMA.

Operculum thick, lamellar, subcartilaginous, many-whorled. — *Shell* widely umbilicated, depressed. Peristome double; the internal continuous, entire; the external reflexed, with a beak behind closely pressed to the last whorl.

Myxostoma Troschel in *Menke, Zeitsch. f. Malak.* 1847, 44.;
Pfeiffer in *Menke und Pfeiffer, Z. f. Malak.* 1847; *Gray, Proc. Zool. Soc.* 1847, 182.

Lituus Martyn, U. C. 1784; *Humph. Mus. Calonn.* 1797, not
Breyn, 1732; *Gray, Proc. Zool. Soc.* 1847, 182.

1. MYXOSTOMA BREVE.

Lituus breve Martyn, Un. Conch. t. 28.

Cyclost. Petiverianum Gray, Wood's Cat. Supp. t. 6. f. 2.; *Sow. Thes. Conch.* 1. 116. n. 74. t. 25. f. 100, 101.

Cyclost. breve Pfeiffer, Kuster, Chemn. Conch. Cab. i. 19. t. 24. f. 1, 2.

Myxostoma breve Pfeiffer, l. c. 111. n. 1.

a. — ?

6. CYCLOPHORUS.

Operculum horny, thin, closely whorled, more or less concave externally.—*Shell* globose, turbinate; either depressed or discoidal. *Peristome* continuous; expanded or straight.

Cyclophorus Montf. Conch. Syst. ii. 290. 1810; *Blainv. Man. Malac.* 435. 1825; *Gray, Proc. Zool. Soc.* 1847, 182.; *Pfeiffer* in *Menke und Pfeiffer, Z. f. Malak.* 1847, 106.

Cyclophora Swains. Malac. 185. 336. 1840.

Annularia a Schum. Ess. 1817.

Annularia Gray, Syn. B. M. 1842, 91.

§ *Turbinate.*

* *Axis umbilicated, open.*

1. CYCLOPHORUS AURANTIACUS.

Cyclost. aurantiacum Pfeiffer, Kuster, Chemn. Conch. Cab. 31. n. 22. t. 4. f. 8, 9., i. 19. t. 23. f. 45.

Cyclost. pernobile Gould, Bost. Jour. 1844, 458. t. 24. f. 11.;
Pfeiffer, Kuster, Chemn. Conch. Cab. 30. n. 21. i. 19. t. 3. f. 15.

Annularia aurantiaca Schum. Nouv. Syst. 196.

Turbo volvulus var. *Chemn.* ix. 58. t. 123. f. 1064, 1065.

Helix volvulus γ *Müll. Hist. Verm.* ii. 83.

Cycloph. aurantiacus Pfeiffer, l. c. 107. n. 1.

Hab. Burmah ?

2. CYCLOPHORUS SPECIOSUS.

Cyclostoma speciosum Philippi, Zeitsch. für Malak. 1847, 123. n. 60.; *Pfeiffer, Kuster, Chemn. Conch. Cab.* i. 19. t. 25. f. 1—3.

Cycloph. speciosus Pfeiffer, l. c. 107. n. 2.

Hab. — ?

3. CYCLOPHORUS TUBA.

Cyclost. tuba *Sow. Zool. Proc.* 1842, 83., *Thes. Conch.* i. 122. n. 91. t. 27. f. 129, 130.; *Kuster, Chemn. Conch. Cab.* i. 19. t. 23. f. 10, 11.

Cycloph. tuba *Pfeiffer*, l. c. 107. n. 3.

a—c. Malacca. From the Collection of Mr. Cuming.

4. CYCLOPHORUS PERDIX

Cyclost. perdix *Brod. & Sow. Zool. Journ.* v. 50., *Thes. Conch.* i. 122. n. 90. t. 27. f. 127, 128.; *Pfeiffer, Kuster, Chemn. Conch. Cab.* 60. n. 55. i. 19. t. 8. f. 7—9.

Cyclost. variegatum *Valenc. in Mus. Paris; Philippi, Abbild. und Besch. Conch.* i. 5. 104. t. 1. f. 3.

Cycloph. perdix *Pfeiffer*, l. c. 107. n. 4.

Hab. Tenasserim.

5. CYCLOPHORUS VALIDUS.

Cyclost. validum *Sow. Proc. Zool. Soc.* 1842, 82., *Thes. Conch.* i. 123. n. 93. t. 27. f. 132, 133.; *Pfeiffer, Kuster, Chemn. Conch. Cab.* 89. n. 85. i. 19. t. 11. f. 9, 10., t. 16. f. 15, 16.

Cycloph. validus *Pfeiffer*, l. c. 107. n. 5.

a—d. Philippine Islands. From the Collection of Mr. Cuming.

e. Philippine Islands. Var. From the Collection of Mr. Cuming.

f—i. Philippine Islands. Var. minor. From the Collection of Mr. Cuming.

6. CYCLOPHORUS AQUILA.

Cyclost. aquilum *Sow. Proc. Zool. Soc.* 1843, 61., *Thes. Conch.* i. 123. n. 92. t. 27. f. 131.; *Pfeiffer, Kuster, Chemn. Conch. Cab.* 14. n. 5. i. 19. t. 2. f. 1, 2. i. 19. t. 8. f. 1, 2.

Cycloph. aquila *Pfeiffer*, l. c. 107. n. 6.

a, b. Singapore. From the Collection of Mr. Cuming.

c. Singapore. Presented by the Earl of Derby.

d, e. China. Presented by G. Tradescant Lay, Esq.

7. CYCLOPHORUS VOLVULUS.

Cyclost. volvulus (pars) *Lamck. An. s. Vert.* 2d ed. viii. 353., *Encyc. Méth.* t. 461. f. 5. a, b.; *Sow. Thes. Conch.* i. 121. n. 89. t. 26. f. 126.; *Pfeiffer, Kuster, Chemn. Conch. Cab.* 27. n. 19. i. 19. t. 3. f. 1, 2. t. 4. f. 3, 4.; *Desh. Enc. Méth. Vers.* ii. 39. n. 2.; var. *Grat. Act. Soc. Linn. Bord.* xi. 435. t. 3. f. 1.

Cyclost. lævigatum Voigt, *Uebers. v. Cuvier*, iii. 178.

Helix volvulus Müll. *Verm.* ii. 82. n. 280.; *Born, Test.* 379. t. 14. f. 23, 24.; *Wood, Ind. Test.* t. 32. f. 7.; *Gmel. Syst. Nat.* 36. 38. n. 91.

Lituus Martyn, Un. Conch. t. 27.; *Lister*, t. 50. f. 48.

Cycloph. volvulus Pfeiffer, l. c. 107. n. 17.; *Montfort, Conch.* ii. 291. t. 73.? *Swainson, Malacology* 336.?

a—c. — ?

d. Mandoo, India (*Cyclost. variata* Boys MS.). From the Collection of Capt. Boys.

e. Moluccas. Var. From the Collection of Mr. Cuming.

f—h. Vars. — ?

i, j. India. Var. (variegated). Presented by Dr. Horsfield.

8. CYCLOPHORUS INVOLVULUS.

Cyclost. involvulus Gray, *Mus. Brit.*; *Sow. Thes. Conch.* i. 119. n. 82. t. 26. f. 114—116.; *Benson, Zool. Journ.* v. 462.; *Pfeiffer, Kuster, Chemn. Conch. Cab.* 28. n. 20. i. 19. t. 4. f. 3, 4. t. 8. f. 10—12.

Cyclost. volvulus Lamck. *An. s. Vert.* 2d ed. viii. 353., *Enc. Méth.* ii. 39. n. 2.

Turbo volvulus Chemn. ix. 57. t. 123. f. 1066.

Helix involvulus Müll. *Hist. Verm.* ii. 84. n. 281.

Helix volvulus Wood, *Ind. Test.* t. 32. f. 7.; *Seba, Thes.* iii. t. 40. f. 18, 19.; *Lister*, t. 75. f. 75.

Cyclophora involvula Swainson, *Malacology*, 336.

Cycloph. involvulus Pfeiffer, l. c. 108. n. 27.

a—c. Malacca. From the Collection of Mr. Cuming.

d—h. Bengal.

i, k. India. Presented by Rev. R. Everest.

l, m. Mandoo (*Cyclost. picta* Boys MSS.). From the Collection of Capt. Boys.

n—p. Bumourie. From the Collection of Capt. Boys.

q. Var. white. *r, s.* Var. red mouth. *t.* Var. red mouth, strongly keeled. *u—w.* Var. red mouth, strongly ribbed, ribs distant (bad state). India. From the Collection of Capt. Boys.

x. Rajmahal. Var. red mouth, lineated. From the Collection of Capt. Boys.

y—hh. Ceylon. Presented by H. L. Layard, Esq.

9. CYCLOPHORUS STENOMPHALUS.

Cyclostoma stenomphalum Pfeiffer, *Zeitsch. Malak.* 1846, 44.; *Kuster, Chemn. Conch. Cab.* 59. n. 54. i. 19. t. 8. f. 5, 6.

Cycloph.? stenomphalus Pfeiffer, l. c. 107. n. 8.

Hab. — .

Special exchange - Eugene v. Coan - 2/1/18

10. CYCLOPHORUS MENKEANUS.

Cyclost. Menkeanum *Philippi, Zeitsch. für Malak.* 1847, 123. n. 61.

Cycloph. Menkeanus *Pfeiffer, l. c.* 107. n. 9.

Hab. — ?

11. CYCLOPHORUS PUNCTATUS.

Cyclost. punctata *Grat. Act. Soc. Linn. Bord.* xi. 440. t. 3. f. 10.

Cyclost. punctatum *Pfeiffer, Kuster, Chemn. Conch. Cab.* 40. n. 31. i. 19. t. 5. f. 12, 13.

Cyclost. irroratum *Sow. Proc. Zool. Soc.* 1843, 11., *Thes. Conch.* i. 123. n. 94. t. 27. f. 134, 135.

Cycloph.? punctatus *Pfeiffer, l. c.* 107. n. 11.

a—h. Madagascar.

i—j. China. Presented by R. B. Hinds, Esq.

12. CYCLOPHORUS SOWERBYI.

Cyclost. megacheilus *Sow. Thes. Conch.* i. 131. n. 114. t. 31. f. 276.

Cycloph. Sowerbyi *Pfeiffer, l. c.* 107. n. 12.; *Kuster, Chemn. Conch. Cab.* i. 19. t. 19. f. 10—12.

a, b. — ? Presented by Miss Saul.

13. CYCLOPHORUS TIGRINUS.

Cyclost. tigrinum *Sow. Zool. Proc.* 1843, 30., *Thes. Conch.* i. 126. n. 100. t. 29. f. 201—204.; *Pfeiffer, Kuster, Chemn. Conch. Cab.* 61. n. 56. i. 19. t. 8. f. 13—16., t. 16. f. 17—20.; *Reeve, Conch. Syst.* t. 183. f. 10.

Cycloph. tigrinus *Pfeiffer, l. c.* 107. n. 13.

a—h. Philippine Islands. From the Collection of Mr. Cuming.

i. India. Presented by G. B. Sowerby, Esq.

j. Var. *k, l.* Var. Philippine Islands. From the Collection of Mr. Cuming.

m, n. Philippine Islands. Var. red mouth. From the Collection of Mr. Cuming.

14. CYCLOPHORUS GUIMARASENSIS.

Cyclost. Guimarasense *Sow. Thes. Conch.* i. 131. n. 115. t. 31. f. 274, 275.; *Pfeiffer, Kuster, Chemn. Conch. Cab.* i. 19. t. 12. f. 8, 9.

Cycloph. Guimarasensis *Pfeiffer, l. c.* 109. n. 13.

a—c. Isle of Guimaras. From the Collection of Mr. Cuming.

15. CYCLOPHORUS ZEBRA.

Cyclost. zebra *Grat. Kuster, Chemn. Conch. Cab. i. 19. t. 13. f. 30, 31.*

Cycloph. zebra *Pfeiffer, l. c. 107. n. 16.*

Hab. — ?

16. CYCLOPHORUS PHILIPPINARUM.

Cyclost. Philippinarum *Sow. Zool. Proc. 1842, 83., Spec. Conch. ii. f. 180—183. ? Thes. Conch. i. 125. n. 99. t. 29. f. 205—207. ; Pfeiffer, Kuster, Conch. Cab. 42. n. 23. i. 19. t. 5. f. 17, 18. t. 13. f. 32—34.*

Cycloph. Philippinarum *Pfeiffer, l. c. 107. n. 17.*

a—l. Philippine Islands. From the Collection of Mr. Cuming
m—o. Philippine Islands. Var. white bands. From the Collection of Mr. Cuming.

p—u. Philippine Islands. Var. small. From the Collection of Mr. Cuming.

17. CYCLOPHORUS TURBINATUS.

Cyclost. turbinatum *Pfeiffer, Kuster, Chemn. Conch. Cab. i. 19. t. 13. f. 19—21.*

Cyclost. helicoides *Sow. Thes. Conch. i. 127. n. 103. t. 30. f. 245, 246.*

Cycloph. turbinatus *Pfeiffer, l. c. 107. n. 18.*

a, b. Isle of Bohol. From the Collection of Mr. Cuming.

** *Axis umbilicated, partly covered with a tongue-like process.*

18. CYCLOPHORUS CANALIFERUS.

Cyclost. canaliferum *Sow. Zool. Proc. 1842, 81., Thes. Conch. i. 115. n. 71. t. 27. f. 140—142., Spec. Conch. f. 195, 196. ; Pfeiffer, Kuster, Chemn. Conch. Cab. 40. n. 32. i. 19. t. 5. f. 14—16.*

Cyclost. Gironnieri *Soul. Rev. Zool. 1842? (fide Sow.)*

Cyclophorus canaliferus *Pfeiffer, l. c. 107. n. 14.*

a—c. Philippine Islands.

d—f. Philippine Islands. From the Collection of Mr. Cuming.

19. CYCLOPHORUS LINGUIFERUS.

Cyclost. linguiferum *Sow. Thes. Conch. i. 125. n. 98. t. 29. f. 198. ; Pfeiffer, Kuster, Chemn. Conch. Cab. i. 19. t. 23. f. 1—3.*

Cyclophorus linguiferus *Pfeiffer, l. c. 107. n. 10.*

a—d. Isle of Bohol. From the Collection of Mr. Cuming.

20. CYCLOPHORUS LINGULATUS.

Cyclost. lingulatum *Sow. Thes. Conch.* i. 126. n. 101. t. 29. f. 208—210.; *Kuster, Chemn. Conch. Cab.* i. 19. t. 23. f. 6—9.
 Cyclophorus lingulatus *Pfeiffer*, l. c. 107. n. 15.

a, b. Philippine Islands. From the Collection of Mr. Cuming.
c—p. Different varieties. From the Collection of Mr. Cuming.

*** *Axis imperforated.*

21. CYCLOPHORUS TURBO.

Cyclost. turbo *Sow. Thes. Conch.* i. 116. n. 75. t. 25. f. 102, 103.;
Pfeiffer, Kuster, Chemn. Conch. Cab. i. 19. t. 19. f. 4, 5.
 Cyclost. maculosa *Jay, Cat. of Shells*, 122. t. 7. f. 9, 10.
 Trochus turbo *Chemn. Conch. Cab.* ix. 153. t. 122. f. 1059.
 Cycloph. turbo *Pfeiffer*, l. c. 108. n. 19.

a. Sumatra.

22. CYCLOPHORUS ICTERICUS.

Cyclost. ictericum *Sow. Thes. Conch.* i. 131. n. 113. t. 31. f. 268,
 269.; *Pfeiffer, Kuster, Chemn. Conch. Cab.* i. 19. t. 19. f. 8, 9.
 Cycloph. ictericus *Pfeiffer*, l. c. 108. n. 20.

Hab. — ?

§§ *Depressed.*

* *Peristome expanded. Axis umbilicated, open.*

23. CYCLOPHORUS OCLUS CAPRI.

Cyclost. oculus capri *Gray in Brit. Mus.*; *Sow. Thes. Conch.* i.
 115. n. 73. t. 25. f. 96.; *Reeve, Conch. Syst.* t. 184. f. 11.;
Pfeiffer, Kuster, Chemn. Conch. Cab. 26. n. 18. i. 19. t. 3. f. 5, 6.
 Helix oculus capri *Wood, Ind. Test.* t. 32. f. 7.
 Cyclost. volvulus (pars) *Lamck.* viii. ed. 2d. 353. n. 2.
 Cyclost. Rafflesii *Sow. Zool. Journ.* v. 50.
 Cyclost. indica *Desh. Belang. Voy.* 415. t. 1. f. 4, 5.; *Lamck. An. s.*
Vert. 2d. ed. 363. n. 28.; *Müller, Synops.* 38.; *Philippi, Abbild.*
und Beschr. Conch. i. 5. 103. t. 1. f. 2.
 Cycloph.? oculus capri *Pfeiffer*, l. c. 108. n. 23.

a, b. — ?

c, d. (Nearly smooth on last whorl.)

24. CYCLOPHORUS SEMISULCATUS.

Cyclost. semisulcatum *Sow. Proc. Zool. Soc.* 1843, 62., *Thes.*
Conch. i. 124. n. 96. t. 25. f. 99.; *Pfeiffer, Kuster, Chemn. Conch.*
Cab. 86. n. 81. i. 19. t. 11. f. 1, 2.
 Cycloph. semisulcatus *Pfeiffer*, l. c. 108. n. 24.

a, b. — ?

c—e. Malacca. Var. nearly white.

25. CYCLOPHORUS CARINIFERUS.

Cyclost. cariniferum *Sow. Thes. Conch.* i. 114. n. 69. t. 25. f. 98.;
Pfeiffer, Kuster, Chemn. Conch. Cab. i. 19. t. 19. f. 13—15.

Cycloph.? cariniferus *Pfeiffer*, l. c. 108. n. 25.

a—c. Madagascar. From the Collection of Mr. Cuming.

26. CYCLOPHORUS WOODIANUS.

Cyclost. Woodiana *Lea, Trans. Am. Phil. Soc.* 1841, vii. 465. t. 12.
f. 19.

Cyclost. Woodianum *Pfeiffer, Kuster, Chemn. Conch. Cab.* 53. n.
46. i. 19. t. 7. f. 1—3.

Cyclost. Gironnieri *Soul. Rev. Zool.* 1842, 101.

Cyclost. luzonicum *Sow. Zool. Proc.* 1842, 80., *Spec. Conch.* f. 133.,
Thes. Conch. i. 114. n. 70. t. 27. f. 136, 137.

Cycloph. Woodianus *Pfeiffer*, l. c. 108. n. 28.

a—h. Luçon. From the Collection of Mr. Cuming.

27. CYCLOPHORUS MOULINSII.

Cyclost. Moulinsii *Grat. Act. Soc. Linn. Bord.* xi. 444. t. 3. f. 19.;
Pfeiffer, Kuster, Chemn. Conch. Cab. 15. n. 6. i. 19. t. 2. f. 18, 19.

Cyclost. Desmoulinsii *Sow. Thes. Conch.* i. 125. n. 97. t. 25. f. 97.

Cycloph.? Moulinsii *Pfeiffer*, l. c. 108. n. 29.

a—c. Madagascar.

d. (Bad condition).

28. CYCLOPHORUS VITTATUS.

Cyclost. vittatum *Sow. Spec. Conch.* f. 91—94., *Thes. Conch.* i.
112. n. 62. t. 25. f. 89, 90.; *Reeve, Conch. Syst.* t. 185. f. 22.;

Pfeiffer, Kuster, Chemn. Conch. Cab. 87. n. 82. i. 19. t. 11. f. 5, 6.

Cycloph.? vittatus *Pfeiffer*, l. c. 108. n. 26.

Hab. Madagascar.

a. Madagascar. Presented by J. E. Gray, Esq.

29. CYCLOPHORUS STENOSTOMA.

Cyclost. stenostoma *Sow. Thes. Conch.* i. 95. n. 13. t. 31. f. 261.;
Pfeiffer, Kuster, Chemn. Conch. Cab. i. 19. t. 20. f. 23—25. and
f. 18, 19. Var.

Cyclost. planorbula *Enc. Méth.* ?

Cycloph. stenostoma *Pfeiffer*, l. c. 108. n. 34.

a. Arabia.

30. CYCLOPHORUS PAPUA.

Cyclost. papua Quoy & Gaim. *Voy. Ast.* ii. 185. t. 12. f. 23—26.;
Lamck. An. s. Vert. 2d. ed. viii. 369. n. 35.; *Pfeiffer, Kuster,*
Regist. zu Chemn. 85. (in plate) *Kuster, Chemn. Conch. Cab.*
 i. 19. t. 4. f. 5, 6.

Cyclost. helicinum (in letter-press) *Pfeiffer, Kuster, Chemn. Conch.*
 35. n. 26. t. 4. f. 5, 6.

Turbo helicinus *Chemn. Conch. Cab.* ix. 59. t. 123. f. 1067, 1068.

Turbo helicoides *Gmel.* 103.

Cyclost. spiraculum var. *Sow. Thes. Conch.* t. 31. f. 273; *Seba,*
Thes. iii. t. 40. f. 15.?

Cycloph.? *papua* *Pfeiffer,* l. c. 108. n. 35.

Hab. India.

31. CYCLOPHORUS MACULOSUS.

Cyclost. maculosum *Sow. Proc. Zool. Soc.* 1843, 66., *Thes. Conch.*
 i. 112. n. 65. t. 31. f. 256, 257.; *Pfeiffer, Kuster, Chemn. Conch.*
Cab. 54. n. 47. i. 19. t. 7. f. 4—6.

Cycloph.? *maculosus* *Pfeiffer,* l. c. 108. n. 31.

Hab. — ?

32. CYCLOPHORUS ANNULATUS.

Cyclost. annulatum *Troschel, Zeitsch. für Malak.* 1847, 150. n.
 17.; *Pfeiffer, Kuster, Chemn. Conch. Cab.* i. 19. t. 22. f. 17—19.

Cycloph. annulatus *Troschel MS.; Pfeiffer,* l. c. 108. n. 33.

Hab. Ceylon.

33. CYCLOPHORUS DISTINCTUS.

Cyclost. distinctum *Sow. Thes. Conch.* i. 106. n. 47. t. 24. f. 38.;
Pfeiffer, Kuster, Chemn. Conch. Cab. i. 19. t. 20. f. 7—9.

Cycloph.? *distinctus* *Pfeiffer,* l. c. 108. n. 37.

Hab. Bay of Montija, W. Columbia.

** *Peristome* straight.

34. CYCLOPHORUS CUMINGII.

Cyclost. Cumingii *Sow. Proc. Zool. Soc.* 1832, 32., *Spec. Conch.*
 f. 187—189., *Thes. Conch.* i. 108. n. 54. t. 24. f. 68, 69.;
Müller, Synop. 37.; *Lamck. An. s. Vert.* 2d ed. viii. 367. n. 30.;
Reeve, Conch. Syst. t. 185. f. 19.; *Pfeiffer, Kuster, Chemn.*
Conch. Cab. 92. n. 89. i. 19. t. 12. f. 1—3.; *Jay, Cat. of Shells,*
 122. t. 7. f. 4, 5.?

Cyclost. striata *Lea, Fér.* in *Bull. Zool.* 1835, 101.

Cycloph. Cumingii *Pfeiffer,* l. c. 108. n. 32.

a—d. Island of Tumaco, W. Columbia. From the Collection of
 Mr. Cuming

35. CYCLOPHORUS RUFESCENS.

Cyclost. rufescens *Sow. Thes. Conch.* i. 94. n. 11. t. 24. f. 36, 37.;
Pfeiffer, Küster, Chemn. Conch. Cab. i. 19. t. 12. f. 16—18.
 Cycloph. rufescens *Pfeiffer*, l. c. 108. n. 36.

a—c. Martinique.

36. CYCLOPHORUS DISJUNCTUS.

Cyclost. disjunctus *Moric.*
 Cycloph.? disjunctus *Pfeiffer*, l. c. 108. n. 39.

Hab. — ?

37. CYCLOPHORUS PARVUS.

Cyclost. parvum *Sow. Thes. Conch.* i. 101. n. 29. t. 31. f. 254, 255.;
Pfeiff. l. c. 105. n. 14.; *Kuster, Chemn. Conch. Cab.* i. 19. t. 13.
 f. 15, 16.

a—c. Philippine Islands.

38. ? CYCLOPHORUS CYTORA. †

Cyclostoma *Cytora Gray, Proc. Zool. Soc.* 1849.

a. New Zealand. Presented by Major Greenwood.

7. LEPTOPOMA.

Operculum membranous, closely whorled, flat.—*Shell* globose, turbinated, or conical; narrowly umbilicated. Peristome simple, reflexed; with distant margins, joined sometimes by a very thin callus.

Leptopoma Pfeiffer in *Menke und Pfeiffer, Z. f. Malak.* 1847, 47. 108.

§ *Subglobose.*

* *Whorls rounded, not keeled.*

1. LEPTOPOMA PERLUCIDUM.

Cyclost. perlucida *Grat. Act. Soc. Linn. Bord.* xi. 442. t. 3. f. 13.
 Cyclost. perlucidum *Pfeiffer, Kuster, Chemn. Conch. Cab.* 19.
 n. 11. i. 19. t. 2. f. 5—10. t. 16. f. 8.
 Cyclost. concinnum *Sow. Proc. Zool. Soc.* 1843, 61., *Thes. Conch.*
 i. 134. n. 122. t. 29. f. 223, 224.; *De Less. Recueil*, t. 38. f. 14.
 Cyclost. multilineata *Jay, Cat. of Shells*, 1839, 123. t. 7. f. 12, 13.?
 Lept. perlucidum *Pfeiffer*, l. c. 108. n. 4.

a—h. Philippine Islands. From the Collection of Mr. Cuming.

i. Philippine Islands. Var. From the Collection of Mr. Cuming.

2. LEPTOPOMA NITIDUM.

Cyclost. nitidum *Sow. Proc. Zool. Soc.* 1843, 60., *Thes. Conch.* i. 133. n. 121. t. 29. f. 225—227.; *Reeve, Conch. Syst.* 183. f. 2.; *Pfeiffer, Kuster, Chemn. Conch. Cab.* 96. n. 92. i. 19. t. 12. f. 27—29. t. 16. f. 10.

Lept. nitidum *Pfeiffer*, l. c. 108. n. 6.

a—e. Philippine Islands. From the Collection of Mr. Cuming.

f—h. Philippine Islands. Var. From the Collection of Mr. Cuming.

3. LEPTOPOMA LUTEUM.

Cyclost. luteum *Less. Voy. Coq. Zool.* ii. 345. t. 13. f. 5.

Lept.? luteum *Pfeiffer*, l. c. 108. n. 7.

Hab. Tahiti.

4. LEPTOPOMA VITREUM.

Cyclost. vitreum *Less. Voy. Coq. Zool.* ii. 346. t. 13. f. 6.; *Sow. Thes. Conch.* i. 134. n. 124. t. 30. f. 252.; *Lamck. An. s. Vert.* 2d ed. viii. 367. n. 31.; *Pfeiffer, Kuster, Chemn. Conch. Cab.* i. 19. t. 21. f. 24—26.

Cyclost. lutea *Quoy & Gaim. Voy. Astr. Zool.* ii. 180. t. 12. f. 11—14.

Lept. vitreum *Pfeiffer*, l. c. 108. n. 8.

a. — ?

5. LEPTOPOMA LUTEOSTOMA.

Cyclost. luteostoma *Sow. Thes. Conch.* i. 135. n. 125. t. 30. f. 228, 229.; *Pfeiffer, Kuster, Chemn. Conch. Cab.* 96. n. 93. i. 19. t. 12. f. 21—23.

Lept. luteostoma *Pfeiffer*, l. c. 108. n. 9.

a—c. Philippine Islands. From the Collection of Mr. Cuming.

6. LEPTOPOMA MASSENÆ.

Cyclost. Massenæ *Less. Voy. Coquille, Zool.* ii. 346. t. 13. f. 7.

Lept. Massenæ *Pfeiffer*, l. c. 108. n. 2.

Hab. New Guinea.

7. LEPTOPOMA MELANOSTOMA.

Cyclost. melanostoma *Petit, Rev. Zool.* iv. 1841, 308.; *Pfeiffer, Kuster, Chemn. Conch. Cab.* i. 19. t. 25. f. 12—15.

Lept. melanostoma *Pfeiffer*, l. c. 108. n. 5.

Hab. — ?

** *Whorls rounded, slightly keeled.*

8. LEPTOPOMA IMMACULATUM.

Turbo immaculatus Chemn. Conch. Cab. ix. 57. t. 123. f. 1063.

(*Turbo*) *Cyclostoma læve Gray in Wood's, Cat. Supp. t. 6. f. 5.; Sow. Proc. Zool. Soc. 1843, 63., Thes. Conch. i. 133. n. 120. t. 29. f. 220—222.*

Cyclost. immaculatum Sow. Spec. Conch. ii. 124.; Beechey, Voy. Zool. t. 38. f. 29.; Pfeiffer, Kuster, Chemn. Conch. Cab. i. 19. t. 3. f. 7. t. 7. f. 23, 24. t. 16. f. 10. var.

Cyclost. maculata Lea, Observ. on Unio, ii. 68. t. 23. f. 87.?

Cyclost. maculosa Soul. Rev. Zool. 1842, 101.?

Turbo marginellus Gmel. 102. 3602.

Lept. immaculatum Pfeiffer, l. c. 108. n. 3.

a—h. Philippines. From the Collection of Mr. Cuming.

i—k. Philippines. Var. minor. From the Collection of Mr. Cuming.

l—m. Philippines. Var. last whorl subcarinated: Chemn. l. c. f. 1063.

9. LEPTOPOMA INSIGNE.

Cyclost. insigne Sow. Thes. Conch. i. 138. n. 132. t. 30. f. 232.; Pfeiffer, Kuster, Chemn. Conch. Cab. i. 19. t. 12. f. 19, 20.

Lept. insigne Pfeiffer, l. c. 108. n. 10.

a—c. Philippine Islands. From the Collection of Mr. Cuming.

10. LEPTOPOMA PANAYENSE.

Cyclost. panayense Sow. Thes. Conch. i. 134. n. 123. t. 30. f. 239. Pfeiffer, Kuster, Chemn. Conch. Cab. i. 19. t. 20. f. 28, 29.

Lept. Panayense Pfeiffer, l. c. 108. n. 11.

a—c. Island of Panay. From the Collection of Mr. Cuming.

11. LEPTOPOMA CILIATUM.

Cyclost. ciliatum Sow. Thes. Conch. i. 127. n. 102. t. 30. f. 237, 238.; Pfeiffer, Kuster, Chemn. Conch. Cab. i. 19. t. 20. f. 26, 27.

Lept. ciliatum Pfeiffer, l. c. 109. n. 12.

Hab. Island of Luçon: Cuming.

12. LEPTOPOMA PERPLEXUM.

Cyclost. perplexum Sow. Thes. Conch. i. 136. n. 127. t. 30. f. 243, 244.; Pfeiffer, Kuster, Chemn. Conch. Cab. i. 19. t. 16. f. 11, 12.

Lept.? perplexum *Pfeiffer*, l. c. 109. n. 14.

a—c. Philippine Islands. From the Collection of Mr. Cuming.

§§ *Conical, elevated. Whorls keeled.*

13. LEPTOPOMA FIBULA.

Cyclost. fibula *Sow. Thes. Conch.* i. 135. n. 126. t. 30. f. 240—242.; *Pfeiffer, Kuster, Chemn. Conch. Cab.* i. 19. f. 23, 24. t. 16. f. 4. var.

Lept. fibula *Pfeiffer*, l. c. 109. n. 15.

a—c. Isle of Luçon. From the Collection of Mr. Cuming.

d—f. Isle of Luçon. Var. From the Collection of Mr. Cuming.

g—i. Isle of Luçon. Var. From the Collection of Mr. Cuming.

14. LEPTOPOMA GONIOSTOMA.

Cyclost. goniostoma *Sow. Proc. Zool. Soc.* 1843, 64., *Thes. Conch.* i. 137. n. 131. t. 30. f. 233, 234.; *Reeve, Conch. Syst.* ii. t. 183. f. 3.; *Pfeiffer, Kuster, Chemn. Conch. Cab.* 19. n. 10. i. 19. t. 2. f. 5—7. t. 16. f. 5.

Lept. goniostoma *Pfeiffer*, l. c. 109. n. 16.

a—d. Island of Mindanao. From the Collection of Mr. Cuming.

15. LEPTOPOMA PILEUS.

Cyclost. pileus *Sow. Proc. Zool. Soc.* 1843, 31., *Thes. Conch.* i. 136. n. 128. t. 29. f. 196, 197.; *Pfeiffer, Kuster, Chemn. Conch. Cab.* 18. n. 9. i. 19. t. 2. f. 3, 4.

Lept. pileus *Pfeiffer*, l. c. 109. n. 17.

a—f. Philippine Islands. From the Collection of Mr. Cuming.

16. LEPTOPOMA ATRICAPILLUM.

Cyclost. atricapillum *Sow. Proc. Zool. Soc.* 1843, 64., *Thes. Conch.* i. 137. n. 130. t. 30. f. 230, 231.; *Pfeiffer, Kuster, Chemn. Conch. Cab.* i. 19. t. 2. f. 11, 12. t. 16. f. 6, 7. var. ♀

Lept. atricapillum *Pfeiffer*, l. c. 109. n. 18.

a—c. Philippine Islands. From the Collection of Mr. Cuming.

17. LEPTOPOMA MULTILABRE.

Cyclost. multilabris *Lamck. An. s. Vert.* vi. 148. 2nd ed. viii. 360. n. 24.; *De Lessert, Recueil*, t. 29. f. 14.; *Quoy et Gaim. Voy. Astrol.* ii. 183. t. 12. f. 20—22.

Cyclost. atricapillum (pars olim) *Pfeiffer, Kuster, Chemn. Conch. Cab.* 20. n. 12.

Lept. multilabre *Pfeiffer*, l. c. 109. n. 19.

Hab. — ?

18. LEPTOPOMA ACUMINATUM.

Cyclost. acuminatum *Sow. Thes. Conch.* i. 138. n. 133. t. 30. f. 235.; *Pfeiffer, Kuster, Chemn. Conch. Cab.* i. 19. t. 13. f. 11, 12.

Lept. ? acuminatum *Pfeiffer*, l. c. 108. n. 1.

a—c. Isle of Luçon. From the Collection of Mr. Cuming.

§§§ *Conical depressed. Whorls acutely keeled.*

19. LEPTOPOMA HELICOIDES.

Cyclost. helicoides *Grat.*; *Pfeiffer, Kuster, Chemn. Conch. Cab.* i. 19. t. 15. f. 25, 26. t. 16. f. 1—3. var.

Cyclost. *Stainforthii Sow. Zool. Proc.* 1842, 82., *Thes. Conch.* i. 136. n. 129. t. 29. f. 215, 216. t. 30. f. 217.

Lept. helicoides *Pfeiffer*, l. c. 109. n. 20.

a—g. Philippine Islands. From the Collection of Mr. Cuming.

20. LEPTOPOMA ACUTIMARGINATUM.

Cyclost. acutimarginatum *Sow. Thes. Conch.* i. 124. n. 95. t. 27. f. 138, 139.; *Pfeiffer, Kuster, Chemn. Conch. Cab.* i. 19. t. 15. f. 19, 20.

Lept. acutimarginatum *Pfeiffer*, l. c. 109. n. 21.

a—d. China. From the Collection of Mr. Cuming.

8. ALYCÆUS.

Operculum horny, many-whorled. — *Shell* conical, spire regular. Last whorl distorted, compressed, much contracted before the mouth. Mouth circular. Peristome regularly reflexed.

Alycæus Gray MS. B. M.

Cyclophorus sp. *Pfeiffer*, l. c.

§ *Spire conical. Axis perforated. Last whorl much compressed.*

1. ALYCÆUS GIBBUS.

Cyclost. gibbum *Fér. Mag. de Zool.* t. 117. f. 1.; *Sow. Thes. Conch.* i. 139. n. 135. t. 30. f. 247, 248.; *Kuster, Chemn. Conch. Cab.* i. 19. t. 17. f. 4—6.

Cycloph. gibbus *Pfeiffer*, l. c. 108. n. 21.

a. Cochin China.

§§ *Shell depressed. Axis umbilicated. Last whorl slightly compressed.*

2. ALYCÆUS STRANGULATUS.

Cyclost. strangulatus *Hutton; Pfeiffer, Kuster, Chemn. Conch. Cab.* i. 19. t. 17. f. 7, 8.

Cycloph. strangulatus *Pfeiffer*, l. c. 108. n. 30.

a—z. Landour, India. From the Collection of Capt. Boys.

c. *Operculum horny, thin, many-whorled. Shell oblong, elongate. Last whorls with a fold or spiral ridge on the inner side in front of the axis, sometimes forming a groove in the outer lip.*

9. FARCIMEN.

Shell oval or pupiform, elongate. Last whorl without any, or only a very slight, angularity in front. Mouth circular. Peristome reflexed.

Farcimen *Troschel* in *Menke und Pfeiffer, Zeit. f. Malak.* 1847, 44.; *Gray, Proc. Zool. Soc.* 1847, 182.

Megalomastoma (pars) *Pfeiffer* in *Menke und Pfeiff. Z. f. Malak.* 1847.

Megalomastoma sp. *Swains. Malac.* 1841.

§ *Peristome slightly thickened all round.*

1. FARCIMEN CYLINDRACEUM.

Helix cylindracea Chemn. Conch. Cab. ix. 166. t. 135. f. 1233.

Helix crocea Gmel. Syst. Nat. 3655. n. 243.

Cyclost. flavula *Lamck. An. s. Vert.* vi. 146. 2nd ed. viii. 357. n. 13.

Cyclost. flavidum *Gray* in *Wood's Ind. Test. Supp.* t. 6. f. 31.; *Sow. Thes. Conch.* i. 108. n. 53. t. 24. f. 66, 67.

Cyclost. croceum *Pfeiffer, Kuster, Chemn. Conch. Cab.* i. 19. t. 17. f. 1—3.

Megalomastoma flavula Swains. Malac.

Megalomast. cylindraceum Pfeiffer, l. c. 109. n. 4.

a. — ?

b. Porto Rico.

2. FARCIMEN CROCEUM.

Cyclost. croceum Sow. Thes. Conch. i. 150. n. 167. t. 29. f. 190, 191.; Pfeiffer, Kuster, Chemn. Conch. Cab. i. 19. t. 24. f. 15, 16.

Turbo croceus Dillw. Cat. ii. 862. n. 112.

Cyclost. flavula Lamck. Enc. Méth. t. 461. f. 6. a. b., An. s. Vert. vi. 146. 2nd ed. viii. 357. n. 13.; Webb et Berth. Syn. Moll. Canar. 18. n. 3.; Desh. Enc. Méth. Vers, ii. 40. n. 8.

Megalomast. croceum Pfeiffer, l. c. 109. n. 5.

a. — ?

3. FARCIMEN SECTILABRUM.

Cyclost. sectilabrum Gould; Pfeiffer, Kuster, Chemn. Conch. Cab. i. 19. t. 24. f. 17, 18.

Megalomast. sectilabrum Pfeiffer, l. c. 109. n. 6.

Hab. — ?

§§ *Peristome not thickened near the penultimate whorl.*

4. FARCIMEN TORTUM.

Turbo tortus Wood's Cat. Supp. t. 6. f. 32.

Cyclost. tortum Gray in Wood's Cat. Supp.; Sow. Thes. Conch. i. 151. n. 169. t. 28. f. 181, 182.; Pfeiffer, Kust. Chemn. Conch. Cab. i. 19. t. 17. f. 22, 23.

Cyclost. torta Lamck. An. s. Vert. 2nd ed. viii. 372. n. 42.

Cyclost. bicolor Gould.

Cyclost. idoliolum — ?

Megalomast. tortum Pfeiffer, l. c. 109. n. 7.

a—d. Cuba.

e. — ?

Var. 1.

Cyclost. ventricosum D'Orb.; Sow. Thes. Conch. i. 151. n. 170. t. 28. f. 183, 184.; Pfeiffer, Kuster, Chemn. Conch. Cab. i. 19. t. 17. f. 20, 21.

Megalomast. ventricosum Pfeiffer, l. c. 109. n. 10.

f. Cuba.

Var. 2.

Cyclost. auriculatum D'Orb. in Sow. Thes. Conch. i. 151. n. 171.

t. 31. f. 277.; *Pfeiffer, Kuster, Chemn. Conch. Cab. i. 19. t. 17. f. 12—17.*

Megalomast. auriculatum Pfeiffer, l. c. 109. n. 8.

g. Cuba. Presented by E. Doubleday, Esq.

Var. 3.

Cyclost. alutaceum Menke, Pfeiffer, Kuster, Chemn. Conch. Cab. i. 19. t. 17. f. 18, 19.

Megalomast. alutaceum Pfeiffer, l. c. 109. n. 9.

Hab. — ?

10. ELECTRINA.

Operculum orbicular, many-whorled, horny? — *Shell* conical short, covered with a thin periostraca. Spire conical. Axis perforated. Whorls with a strongly marked keel in the front, forming an edge to the axis. Mouth circular, continued, simple.

Electrina Gray MS. B. M.

1. ELECTRINA SUCCINEA.

Cyclost. succineum Sow. Zool. Proc. 1832, 32., Thes. Conch. i. 108. n. 51. t. 23. f. 18, 19.; Müller, Synops. 37.; Pfeiffer, Kuster Chemn. Conch. Cab. 24. n. 15. i. 19. t. 3. f. 12. 13. magn. f. 14.

Cyclost. australe Mühlf. Anton. Verz. 54.

Cycloph. succineus Pfeiffer, l. c. 108. n. 22.

a—d. Opara. From the Collection of Mr. Cuming.

11. MEGALOMASTOMA.

Operculum horny, thin, closely whorled, flat. — *Shell* scarcely perforated, cylindrical or pupa-shaped, covered with a thin periostraca. Mouth orbicular, with a slight groove on front angle. Peristome continuous, thickened or reflexed. Last whorl with a ridge round the axis in front.

Megalomastoma Gould MS. in Swains. Malac. 1840; Gray, Syn. B. M. 1842, 91., Proc. Zool. Soc. 1847, 182.; Pfeiffer in Menke und Pfeiffer, Z. f. Malak. 1847.

§ *Peristome continued, thickened all round. Asia.*

1. MEGALOMASTOMA TORTUOSUM.

Turbo tortuosus Chemn. Conch. Cab. xi. t. 195. A. f. 1882. 1883.

Cyclost. tortuosum Sow. Thes. Conch. i. 152. n. 172. t. 28. f. 185, 186.; Pfeiffer, Kuster, Chemn. Conch. Cab. i. 19. t. 24. f. 19, 20.

Meg. tortuosum Pfeiffer, l. c. 102. n. 3.

a. Nicobar Islands. From the Collection of Lord Tankerville.

2. MEGALOMASTOMA ALTUM.

Cyclost. altum Sow. *Thes. Conch.* i. 152. n. 173. t. 28. f. 187.;
Pfeiffer, Kuster, *Chemn. Conch. Cab.* i. 19. t. 15. f. 12—14.

Cyclost. brunneum Gould?

Meg. altum Pfeiffer, l. c. 109. n. 1.

a—c. Isle of Negros. From the Collection of Mr. Cuming.

3. MEGALOMASTOMA FUNICULATUM.

Cyclostoma funiculatum Benson MS.

a—c. Darjeeling. From the Collection of Capt. Boys.

d, e. Himalaya. Presented by Dr. Horsfield.

4. MEGALOMASTOMA LAYARDII.

a. Ceylon. Presented by H. L. Layard, Esq.

§§ *Peristome not thickened near the penultimate whorl.* America.

5. MEGALOMASTOMA ANTILLARUM.

Cyclost. Antillarum Sow. *Thes. Conch.* i. 150. n. 168. t. 28. f. 180.;
Pfeiffer, Kuster, *Chemn. Conch. Cab.* i. 19. t. 15. f. 15, 16.

Cyclost. elongatum Gould MS.

Megalomastoma elongatum Swainson, *Malac.* 1840.

Cyclost. suspensum Guild.

Megalomastoma suspensum Pfeiff. l. c. 109. n. 11.

Meg. Antillarum Pfeiff. l. c. 109. n. 2.

a—n. St. Vincent's, W. Indies. From the Collection of Rev.
Lansdown Guilding.

o—q. —?

12. REGISTOMA.

Shell oval, polished. Whorls rather distorted, large, flattened.
Mouth orbicular. *Peristome* reflexed, inner lip thin, with a
slight notch on the inner side near the axis.

Registoma Hasselt, *Allg. Konst. en Letterbode*, 1823; *Férussac*,
Bulletin Sci. 1824; *Gray, Syn. B. M.* 1842, 91., *Proc. Zool.*
Soc. 1847, 182.

Rhegostoma Agassiz, *Nomenclat. Zoolog.*

Rhexistoma Hermannsen, *Ind. Gen.* ii. 390.

Moulinisia *Grateloupe*, *Trans. Linn. Soc. Bord.*; *Gray, P. Z. Soc.* 1847, 182.

Pupina sp. *Gray, Ann. Nat. Hist.* 1840, 77.

Pupina *Pfeiffer*, l. c.

§ *Last whorl large, much flattened.*

1. REGISTOMA GRANDE.

Pupina *grandis Gray, Ann. Nat. Hist.* 1840, 77.

Pupina *Nunezii Sow. Thes. Conch. i. 17. n. 1. t. 4. f. 8—11.; Pfeiffer, l. c. 110. n. 1.*

Moulinisia *Nunezii Grat. Ann. Soc. Linn. Bord.* 1840.

a, b. Isle of Leyte, Philippines. From the Collection of Mr. Cuming.

c, d. Isle of Luçon, Philippines. Var. From the Collection of Mr. Cuming.

e. Isle of Samar, Philippines. Var. From the Collection of Mr. Cuming.

f. Isle of Catanduanos, Philippines. Var. From the Collection of Mr. Cuming.

2. REGISTOMA PELLUCIDUM.

Pupina *pellucida Sow. Zool. Proc.* 1842, *Thes. Conch. i. 17. n. 2. t. 4. f. 18—20.; Pfeiffer, l. c. 110. n. 2.*

a, b. Isle of Zebu, Philippines. From the Collection of Mr. Cuming.

3. REGISTOMA SIMILE.

Pupina *similis Sow. Zool. Proc.* 1842, *Thes. Conch. i. 18. n. 5. t. 4. f. 4, 5.; Pfeiffer, l. c. 110. n. 3.*

a—c. Isle of Luçon. From the Collection of Mr. Cuming.

d. Isle of Luçon. Var. From the Collection of Mr. Cuming.

§§ *Last whorl nearly like the others.*

4. REGISTOMA FUSCUM.

Pupina *fusca Gray, Ann. N. Hist.* 1840, 77.

Pupina *vitrea Sow. Zool. Proc.* 1842, *Thes. Conch. i. 18. n. 4. t. 4. f. 6, 7.; Pfeiffer, l. c. 110. n. 4.*

Registoma *vitreum Hasselt?*

a—c. Philippine Islands. From the Collection of Mr. Cuming.

d—l. Manilla. Presented by J. Fox, Esq.

m—o. —? Presented by Mr. Powis.

5. REGISTOMA EXIGUUM.

Pupina exigua Sow. *Zool. Proc.* 1842, *Thes. Conch.* i. 18. n. 6. t. 4. f. 17.; *Pfeiffer*, l. c. 110. n. 5.

a—d. Isle of Luçon. From the Collection of Mr. Cuming.

13. PUPINA.

Operculum thin, membranous, narrow-whorled, rather flat.—*Shell* pupa-shaped, for the most part covered by a smooth callus. Peristome simple, thickened or reflexed; the columellar margin channel-cut in the middle.

Pupina Vignard, *Ann. Sci. Nat.* 1829; *Gray*, *Syn. B. M.* 1844, 91., *Proc. Zool. Soc.* 1847, 182.

Pupina § 2. *Pfeiffer* in *Menke und Pfeiffer*, *Z. f. Malak.* 1847.

1. PUPINA BICANALICULATA.

Pup. bicanaliculata Sow. *Zool. Proc.* 1842, *Thes. Conch.* i. 19. n. 9. t. 4. f. 1.; *Pfeiffer*, l. c. 110. n. 7.

a, b. Restoration Island, N. E. coast of Australia. Presented by Capt. Wickham, R. N.

c. Blackwood Bay, Australia. Presented by Sir John Richardson, M.D., R. N.

2. PUPINA HUMILIS.

Pup. humilis *Jacq. Pfeiffer*, l. c. 110. n. 6.

Pupina antiquata Sow. (fide *Pfeiffer*, l. c.)

Hab. — ?

3. PUPINA AUREA.

Pup. aurea *Hinds*, *Pfeiffer*, l. c. 110. n. 8.

Hab. — ?

4. PUPINA KERAUDRENI.

Pup. Keraudrenii *Vignard*, *Ann. Sci. Nat.* 1829, t. .; *Pfeiffer*, l. c. 110. n. 9.; *Sow. Thes. Conch.* i. 19. n. 8. t. 4. f. 2.

Hab. Manilla and Singapore.

14. PUPINELLA.

Operculum horny.—*Shell* oval, covered with a thin horny periostraca. Mouth circular. Peristome reflexed, thickened, with a groove on the inner side of front near the axis.

Pupinella *Gray MS. B. M.*

Pupina § 3. *Pfeiffer*, l. c.

1. PUPINELLA PUPINIFORMIS.

Pupina *Sowerbyi Pfeiffer*, l. c. 110. n. 10.

Cyclostoma pupiniforme Sow. Thes. Conch. i. 152. n. 174. t. 28. f. 188.

a, b. Isle of Luçon. From the Collection of Mr. Cuming.

15. CALLIA.

Operculum thin, membranous, narrow-whorled.—*Shell* pupiform, covered with a smooth shining callus. Peristome subcontinuous, straight, scarcely thickened, columellar margin entire, above appressed-reflexed; in the young altogether closing the perforation.

Callia Gray, Ann. Nat. Hist. 1840, 77., Syn. B. M. 1840, 1842, 91. 1844, 72., Proc. Zool. Soc. 1847, 182.; Pfeiffer in Menke und Pfeiffer, Z. f. Malak. 1847.

Pupina sp. Sow. Proc. Z. S. 1842.

1. CALLIA LUBRICA.

Pupina lubrica Sow. Zool. Proc. 1842, Thes. Conch. i. 18. n. 3. t. 4. f. 12—16.

Callia lubrica Pfeiff. l. c. 110. n. 1.

a—f. Isle of Luçon. From the Collection of Mr. Cuming.

g—i. Philippine Islands. Var. From the Collection of Mr. Cuming.

j—l. Isle of Zebu. Var. From the Collection of Mr. Cuming.

B. Operculum ovate, of a few more or less rapidly enlarging whorls, nucleus excentric.

a. Operculum thick, with an external shelly coat.

16. LEONIA.

Operculum ovate, with a single whorl; convex externally (very like *Phasianella*).—*Shell* ovate, conical. Peristome simple, slightly reflexed.

Leonia Gray, Syn. Brit. Mus. 1840, 1842, 91.

1. LEONIA MAMMILLARIS.

Cyclostoma mammillaris Lamck. An. s. Vert. vi. 147. 2nd edit. viii. 359. n. 19.; De Lessert, Recueil, t. 29. f. 10. a—d.

Cyclost. mamillare Sow. *Thes. Conch.* i. 102. n. 35. t. 24. f. 45.;
Kuster, Chemn. Conch. Cab. i. 19. t. 14. f. 28, 29.; *Pfeiff.* l. c.
 105. n. 20.

Cyclost. Voltzianum Mich. *Coq. d'Algers*, 10. n. i. f. 21, 22.;
Potiez et Mich. Gal. Moll. Douai, i. 243. n. 23. bis, t. 24. f. 24,
 25.

Cyclost. Volziana Lamck. *An. s. Vert.* 2nd edit. viii. 371. n. 39.

Cyclost. lævigatum Sow. *MS.* in *Cab. Gray*, not *Thesaurus Conch.*

a—h. Oran, Algiers.

i—m. Var. larger. — ?

17. LITHIDION.

Operculum subcircular, shelly; whorls rather rapidly enlarged,
 with a strong, convex, subcentral keel, and simple edges.—*Shell*
 depressed, broadly umbilicated, open. Mouth circular. Peri-
 stome simple.

1. LITHIDION SULCATUM.

Cyclostoma lithidion Sow. *Thes. Conch.* i. 111. n. 61. t. 31. f. 262.;
Kuster, Chemn. Conch. Cab. i. 19. t. 20. f. 20—22.; *Pfeiffer*, l. c.
 112. n. 4.

a. Yemen, Arabia.

18. OTOPOMA.

Operculum shelly, solid; whorls convex in the centre, with simple
 edges.—*Shell* subglobose, solid, umbilicated, with an ear-like
 process from the inner side of the mouth, covering part of the
 axis. Mouth circular. Peristome simple, or slightly reflexed.

§ *Whorls rounded in front of axis.*

1. OTOPOMA FOLIACEUM.

Turbo foliaceus Chemn. *Conch. Cab.* xi. 59. t. 123. f. 1069, 1070.;
Gmel. Linn. Syst. Nat. 104.

Cyclost. foliaceum Pfeiffer, *Kuster, Chemn. Conch. Cab.* 36. n. 27.
 t. 4. f. 10, 11.

Cyclost. naticoides Recluz, *Rev. Zool.* 1843, 3., *Mag. Zool.* 1843,
 t. 73.; Sow. *Thes. Conch.* i. 117. n. 78. t. 26. f. 108, 109.; *Pfeiff.*
 l. c. 104. n. 1.; *Kuster, Chemn. Conch. Cab.* 37. n. 28. i. 19. t. 5.
 f. 1—4.

Cyclost. clathratulum Recluz, *Rev. Zool.* 1843, 3., *Mag. Zool.*
 1843, t. 74.; Sow. *Thes. Conch.* i. 97. n. 17. t. 23. f. 15, 16.;

Pfeiff. l. c. 104. n. 4.; *Kuster, Chemn. Conch. Cab.* 38. n. 29. i. 19. t. 5. f. 5—7.

a. Socotra.

b, c. Arabia Felix.

d. Socotra (*C. clathratulum Recluz.*)

2. OTOPOMA CLAUSUM.

Cyclost. clausum Sow. Thes. Conch. i. 128. n. 104. t. 31. f. 266, 267.; *Pfeiffer, Kuster, Chemn. Conch. Cab.* i. 19. t. 20. f. 13—15., *Zeitsch.* l. c. 112. n. 2.

Hab. Yemen, Arabia.

3. OTOPOMA LISTERI.

Cyclost. Listeri Gray, Ann. Philos. 1821; *Sow. Thes. Conch.* i. 98. n. 20. t. 23. f. 22, 23.; *Pfeiffer, Zeitsch.* l. c. 105. n. 10; *Kuster, Chemn. Conch. Cab.* i. 19. t. 12. f. 30, 31.

Cyclost. fimbriata Quoy & Gaim. Voy. Astrol. ii. 188. t. 12. f. 31—35.; *De Lessert, Recueil.* t. 29. f. 12. a—c.? *Philippi, —?* *Gratel. —?*

Cyclost. unifasciatum Sow. Thes. Conch. i. 119. n. 81. t. 26. f. 105, 106.; *Pfeiffer, Zeitsch.* l. c. 106. n. 73.; *Kuster, Chemn. Conch. Cab.* i. 19. t. 25. f. 4, 5.; *Lister, Conch.* t. 44. f. 42.

a—e. Mauritius.

4. OTOPOMA AURICULARE.

Cyclost. auriculare Gray in Griffith's A. K. xii. t. 28. f. 5.

Cyclost. candidum Sow. Thes. Conch. i. 117. n. 77. t. 26. f. 107.; *Pfeiffer, Zeitsch.* l. c. 104. n. 2.; *Kuster, Chemn. Conch. Cab.* i. 19. t. 25. f. 6.

a. —?

5. OTOPOMA ALBICANS.

Cyclost. albicans Sow. Spec. Conch. f. 104, 105., *Beechey's Voy. Zool.* 146. t. 38. f. 30., *Thes. Conch.* i. 118. n. 79. t. 26. f. 110—112.; *Pfeiff. Zeitsch.* l. c. 104. n. 3.; *Kuster, Chemn. Conch. Cab.* 87. n. 83. i. 19. t. 11. f. 13, 14.

Hab. —? *Cab.* Gray.

6. OTOPOMA HÆMASTOMUM.

Cyclost. hæmastomum Ant. Verzeichn. 54. n. 1954.; *Pfeiff. Zeitsch.* l. c. 104. n. 5.; *Kuster, Chemn. Conch. Cab.* 24. n. 16. i. 19. t. 3. f. 3, 4.

Hab. Isle of France.

7. OTOPOMA POLITUM.

Cyclost. politum *Sow. Thes. Conch.* i. 97. n. 18. t. 23. f. 17.; *Pfeiff. Zeitsch.* l. c. 104. n. 6.; *Kuster, Chemn. Conch. Cab.* i. 19. t. 21. f. 13, 14.

Hab. — ?

8. OTOPOMA PYGMÆUM.

Cyclost. pygmæum *Sow. Thes. Conch.* i. 104. n. 39. t. 30. f. 253.; *Pfeiff.* l. c. 105. n. 5.

a. New Ireland. Presented by R. B. Hinds, Esq.

9. OTOPOMA SPURCUM.

Cyclost. spurcum *Grat.* (not *Sow.*); *Pfeiff.* l. c. 104. n. 7.

Hab. — ?

§§ *Whorls keeled in front of axis, with a lip-like callus in axis.*

10. OTOPOMA MICHAUDI.

Cyclost. Michaudi *Grat.*; *Pfeiffer, Kuster, Chemn. Conch. Cab.* i. 19. t. 18. f. 14— 6.

Cyclost. carinatum *Sow. Thes. Conch.* i. 119 n. 83. t. 26. f. 117, 118. (not *Cyclost. carinata Lamck.*)

Tropidophora Michaudi Pfeiff. Zeitsch. l. c. 106. n. 13.

a. — ?

19. TROPIDOPHORA.

Operculum shelly, flat; whorls from 4 to 5, gradually increasing.—
Shell depressed, or highly turbinated, generally acutely keeled, or strongly striated. *Peristome* simple, subcontinuous, reflexed, often partially covering the axis.

Tropidophora Troschel in *Menke und Pfeiffer, Zeitsch. f. Malak.* 1847, 44.; *Pfeiffer* in *Menke und Pfeiffer, Z. f. Malak.* 1847, 106.

§ *Peristome simple, reflexed. Axis open.*

1. TROPIDOPHORA CUVIERIANA.

Cyclostoma Cuvierianum Petit, Rev. Zool. 1841, 184., *Mag. Zool. Moll.* t. 55.; *Reeve, Conch. Syst.* t. 184. f. 14. t. 185. f. 24.; *Sow. Thes. Conch.* i. 115. n. 72. t. 30. f. 218, 219.; *Philippi,*

Abbild. und Beschr. Conch. i. 5. 103. t. 1. f. 1.; *Pfeiffer, Kuster, Chemn. Conch. Cab.* 9. n. 1. i. 19. t. 1. f. 1—4.

Tropidophora Cuvieriana Pfeiffer, Zeitsch. l. c. 106. n. 1.

a. Madagascar.

Var. 1. *Smaller, axis open.*

Cyclost. Deshayesianum Petit, Mag. de Zool. 2nd ser. 1844, *Mollusques*, t. 98.; *Kuster, Chemn. Conch. Cab.* i. 19. t. 25. f. 8—10.

Tropidoph. Deshayesiana Pfeiffer, l. c. 106. n. 6.

Hab. Madagascar.

Var. 2. *Smaller, axis nearly closed.*

Cyclostoma — ? *Sow. Proc. Z. Soc.?*

a. Madagascar.

2. TROPIDOPHORA ARTICULATA.

Cyclost. articulata Gray in Griffith's A. K. t. 28. f. 1.

Cyclost. filosum Sow. Beechey's Voy. t. 38. f. 31., *Thes. Conch.* i. 96. n. 11. t. 23. f. 14.; *Kuster, Chemn. Conch. Cab.* i. 19. t. 18. f. 12, 13.

Tropidoph. filosa Pfeiffer, l. c. 106. n. 2.; *Cab. Gray*, specimen figured by Gray & Sowerby.

Hab. East Indies.

3. TROPIDOPHORA CARINATA.

Lister, Hist. Conch. t. 28. f. 26.; *Schröter, Einleit. Conchyl.* ii. 181. n. 10.

Turbo carinatus Born, Mus. Cæs. Vind. 353. t. 13. f. 3, 4.; *Gmel. Syst. Nat.* 3601. n. 57.; *Dillwyn, Cat.* ii. 866. n. 123. (not *Cyclost. carinata Lamck.*, nor *Desh. Enc. Meth.* n. 3.)

Cyclost. tricarinatum Sow. Thes. Conch. i. 120. n. 86. t. 26. f. 122.

Tropidoph. carinata? Pfeiffer, l. c. 106. n. 5.?

Var. *Cyclost. formosum Sow. Proc. Zool. Soc.* 1849, 15. n. 21., *Moll.* t. 2. f. 8, 9.

a, b. — ?

4. TROPIDOPHORA PULCHRA.

Cyclost. pulchra Gray in Griffith's A. K. t. 28. f. 3.

Cyclost. ortyx (Val.) D'Orb. Mag. de Conch. t. 117. f. 2.; *Sow. Thes. Conch.* i. 99. n. 24. t. 23. f. 27, 28.; *Kuster, Chemn. Conch. Cab.* i. 19. t. 16. f. 13, 14.

Cyclost. multicarinata *Jay, Cat. of Shells*, 122. t. 7. f. 78.

Tropidoph. ortyx *Pfeiffer*, l. c. 107. n. 14.

a—d. Persian Gulf.

5. TROPIDOPHORA TRICARINATA.

Helix tricarinata Müller, Hist. Verm. ii. 84. n. 282., *Chemn. Conch. Cab.* ix. 85. t. 126. f. 1103, 1104.; *Gmel. Syst. Nat.* 3621. n. 34.

Turbo carinatus Wood, Ind. Test. t. 32. f. 125.

Cyclost. unicarinatum *Sow. Thes. Conch.* i. 120. n. 84. t. 26. f. 119, 120.

Cyclost. tricarinata *Lamck. An. s. Vert.* vi. 144. 2nd edit. viii. 355. n. 6.

Cyclost. tricarinatum *Potiez & Michaud, Gal. Moll. Douai*, i. 242. n. 21. t. 24. f. 22, 23.

Tropidoph. tricarinata *Pfeiffer*, l. c. 106. n. 12.

a—c. Madagascar.

d, e. — ?

Var. 1. *Axis nearly completely closed by a callosity.*

Cyclost. bicarinatum *Sow. Thes. Conch.* i. 120. n. 85. t. 26. f. 121.; *Kuster, Chemn. Conch. Cab.* i. 19. t. 19. f. 1—3.

Tropidoph. bicarinata *Pfeiffer*, l. c. 106. n. 9.

a—c. Madagascar.

Var. 2. *With only one keel.*

Cyclost. unicarinata *Lamck. An. s. Vert.* vi. 144. 2nd edit. viii. 355. n. 5.; *Desh. Enc. Méth. Vers*, ii. 40. n. 4. t. 461. f. 1. a, b.

Cyclost. unicarinatum *Potiez & Michaud, Gal. Moll. Douai*, t. 243. n. 23.

Cyclost. obsoletum var. *Sow. Thes. Conch.* i. 120. n. 84. t. 26. f. 125.; *Grat. Act. Soc. Linn. Bord.* xi. 443. t. 3. f. 17.

Cyclost. madagascariensis *Gray in Griffith's A. K.* t. 28. f. 4.

Cyclophora madagascariensis *Swainson, Malac.* 336.

Tropidoph. unicarinata *Pfeiffer*, l. c. 106. n. 4.

a. Madagascar.

Var. 3. *With several keels.*

Cyclost. carinata *Lamck. An. s. Vert.* vi. 143. 2nd edit. viii. 354. n. 3., exclusive of synonymes, with exception of *Desh. Enc. Méth. Vers*, ii. 40. n. 3.

Hab. Madagascar; fide *Deshayes*.

Var. 4. *2-keeled?*

Cyclost. campanulatum *Pfeiffer, Kuster, Chemn. Conch. Cab.* i. 19. t. 18. f. 4. 6.

Tropidoph. campanulata Pfeiffer, *Zeitsch.* l. c. 106. n. 8.

Hab. — ?

6. TROPIDOPHORA OBSOLETA.

Cyclost. obsoleta Lamck. *An. s. Vert.* 1st edit. vi. 144., 2nd edit. viii. 355. n. 7.; *De Lessert, Recueil*, t. 29. f. 11.

Cyclost. obsoletum Sow. *Thes. Conch.* i. 121. n. 88. t. 26. f. 124.; *Reeve, Conch. Syst.* t. 183. f. 4.; *Pfeiffer, Kuster, Chemn. Conch. Cab.* 32. n. 23. t. 4. f. 14. (15.?) i. 19. t. 5. f. 8, 9., *Zeitsch.* l. c. 106. n. 67.

Turbo ligatus Chemn. *Conch. Cab.* ix. 60. t. 123. f. 1073-74 ?

a, b. Madagascar.

7. TROPIDOPHORA APLUSTRIS.

Cyclost. aplustre Sow. *Proc. Zool. Soc.* 1849, 15. n. 2., *Moll.* t. 2. f. 4, 5.

Hab. Madagascar.

8. TROPIDOPHORA PULCHELLA.

Cyclost. pulchellum Sow. *Thes. Conch.* i. 129. n. 109. t. 31. f. 263, 264. young; *Pfeiffer, Kuster, Chemn. Conch. Cab.* i. 19. t. 18. f. 7, 8. (copied.)

Tropidoph. pulchella Pfeiffer, *Zeitsch.* l. c. 106. n. 11.

Cyclost. Hanleyi Pfeiffer, *Kuster, Chemn. Conch. Cab.* t. 19. t. 18. f. 9. 11. older.

Trop. Hanleyi Pfeiffer, *Zeitsch.* l. c. 106. n. 10.

a — ?

9. TROPIDOPHORA ASPERA.

Cyclost. asperum Pot. & Mich. *Gal. Moll.* i. 233. t. 23. f. 15, 16.; *Pfeiff. Zeitsch.* l. c. 106. n. 69.; *Kuster, Chemn. Conch. Cab.* 90. n. 86. i. 19. t. 11. f. 3, 4.

Cyclost. Harveyanum Sow. *Thes. Conch.* i. 128. n. 106. t. 30. f. 250., *Spec. Conch.* f. 210.; *Reeve, Conch. Syst.* t. 184. f. 13.

a-c. Madagascar.

10. TROPIDOPHORA CALCAREA.

Cyclost. calcareum Sow. *Thes. Conch.* i. 118. n. 80. t. 26. f. 113.; *Pfeiffer, Zeitsch.* l. c. 106. n. 63.; *Kuster, Chemn. Conch. Cab.* 88. n. 84. i. 19. t. 11. f. 11, 12.

Cyclost. sulcata Lamck. *An. s. Vert.* vi. 144. 2nd edit. viii. 354. n. 4.; *De Lessert, Recueil*, t. 29. f. 9. a-c.

a. — ?

11. ? TROPIDOPHORA CITRINA.

Cyclost. citrinum Sow. *Thes. Conch.* i. 117. n. 76. t. 25. f. 104.;
Pfeiffer, Zeitsch. l. c. 106. n. 72.; *Kuster, Chemn. Conch. Cab.* i.
 19. t. 21. f. 22.

a. Without operculum. — ?

Var. β . *Smaller.*

Cyclost. rugosum Sow. *Thes. Conch.* i. 121. n. 87. t. 26. f. 123.?
Cyclost. semidecussatum Pfeiffer, l. c. 106. n. 63.; *Kuster, Chemn.*
Conch. Cab. i. 19. t. 21. f. 17. 19.

Hab. Trinidad.

12. ? TROPIDOPHORA FULVESCENS.

Cyclost. fulvescens Sow. *Proc. Zool. Soc.* 1843, 63., *Thes. Conch.*
 i. 99. n. 23. t. 25. f. 79, 80.; *Pfeiffer, Zeitsch.* l. c. 106. n. 70.;
Kuster, Chemn. Conch. Cab. 39. n. 30. i. 19. t. 5. f. 10, 11.

a. Madagascar.

13. ? TROPIDOPHORA PYROSTOMA.

Cyclost. pyrostoma Sow. *Thes. Conch.* i. 129. n. 108. t. 29. f.
 200.; *Pfeiffer, l. c.* 106. n. 71.; *Kuster, Chemn. Conch. Cab.* i.
 19. t. 21. f. 23.

Cyclost. hæmastoma Grat.

a, b. Mayotta.

14. TROPIDOPHORA RUGOSA.

Cyclost. rugosa Lamck. *An. s. Vert.* vi. 145. 2nd ed. viii. 356. n. 8.;
De Lessert, Rec. t. 29. f. 7. a—c. ?; *Kuster, Chemn. Conch. Cab.*
 i. 19. t. 21. f. 15, 16. ??

Cyclost. cinctum Sow. *Thes. Conch.* i. 129. n. 107. t. 29. f. 199.;
Pfeiff. l. c. 106. n. 64.; *Kuster, Chemn. Conch. Cab.* i. 19. t. 19.
 f. 6, 7.

Hab. E. Indies.

§§ *Peristome reflexed. Outer lip sinuous. Axis closed.*

15. TROPIDOPHORA FLEXILABRUM.

Cyclost. flexilabrum Sow. *Thes. Conch.* i. 130. n. 112. t. 31. f. 258,
 259.; *Pfeiffer, l. c.* 106. 77.; *Kuster, Chemn. Conch. Cab.* 91. n.
 87. t. 11. f. 7, 8.

a, b. Madagascar.

16. ? TROPIDOPHORA MULTIFASCIATUM.

Cyclost. multifasciatum Grat.; *Pfeiff.* l. c. 106. n. 68.

17. ? TROPIDOPHORA DUISABONIS.

Cyclost. Duisabonis *Grat.*; *Pfeiff.* l. c. 106. n. 66.

18. TROPIDOPHORA TERVERIANA.

Cyclost. Terveriana *Grat.*

Trop. Terveriana *Pfeiff.* l. c. 106. n. 7.

19. TROPIDOPHORA ABEILLEI.

Cyclost. Abeillei *Grat.*

Tropidoph. Abeillei *Pfeiffer*, l. c. 106. n. 3.

20. CYCLOSTOMUS.

Operculum shelly, few-whorled; whorls flat, last broad; nucleus excentric. — *Shell* globoso-conical, or conical-turritid, thin. Axis open, simple. Peristome simple or double, continued, straight or expanded.

Cyclostomus *Montf. Conch. Syst.* 1810; *Gray, Proc. Zool. Soc.* 1847, 181.

Cyclostome (Cyclostoma) *Lamck. Ext. du Cour.* 1812. not *Syst.* 1801; not *Bosc*, 1802; not *Schum.* 1817, 196.

Cyclostoma sp. *Lamck. Ann. Mus.* iv. 109. 212. 1803, *Phil. Zool.* 1804; *Drap. Hist.* 25. 28. 32. 1805; *Studer, Verz.* 21. 1820; *Hartmann, Sturm. Fauna*, 35. 1821, 1840; *Troschel in Menke, Zeitsch. f. Malak.* 1847, 43.; *Pfeiffer in Menke und Pfeiffer, Z. f. Malak.* 1847, 104.

β. *Leonia Gray, Syn. Brit. Mus.* 1840 (*Cyclost. Volsii*).

§ *Peristome simple, slightly reflexed.*

* *Axis widely umbilicated. Shell globoso-conical.*

1. CYCLOSTOMUS LIGATUS.

Nerita ligata Müller, Hist. Verm. ii. 181. n. 368.

Turbo ligatus Chemn. Conch. Cab. ix. 60. t. 123. f. 1071-72.; *Wood, Ind. Test.* t. 32. f. 122.

Cyclostoma ligata Lamck. An. s. Vert. 2nd ed. viii. 359. n. 20.

Cyclost. ligatum *Sow. Thes. Conch.* i. 98. n. 21. t. 23. f. 24.; *Potiez et Mich. Gal. Moll. Douai*, 234. t. 23. f. 23, 24.; *Pfeiffer, Kuster, Chemn. Conch. Cab.* i. 19. t. 4. f. 12. 15. t. 8. f. 3, 4., *Zeitsch.* l. c. 104. n. 8.; *Krauss, Sudafrik. Mollusk.* 82. n. 1.

Cyclophora ligata Swainson, Malac. 336.

a, b. — ?

c—e. Syria ?

f. Cape of Good Hope. From the Collection of Dr. Krauss.

Var. *Smaller*.

Cyclost. affine *Sow. Thes. Conch.* i. 98. n. 22. t. 23. f. 25, 26.;
Pfeiffer, Kuster, Chemn. Conch. Cab. 62. n. 57. i. 19. t. 8. f. 17,
 18., *Zeitsch.* l. c. 105. n. 9.

Cyclost. ligatum var. *Krauss, Sudafrik. Mollusk.* 82.

a—j. Cape of Good Hope. From the Collection of Dr.
 Krauss.

k—v. Simon's Bay, Cape of Good Hope. Presented by J.
 M'Gillivray, Esq.

w, x. — ?

y, z. India. From the Collection of Capt. Boys.

2. CYCLOSTOMUS GOUDOTIANUS.

Cyclost. Goudotianum *Sow. Thes. Conch.* i. 130. n. 110. t. 29.
 f. 193.; *Pfeiffer, Zeitsch.* l. c. 106. n. 74.; *Kuster, Chemn, Conch.*
Cab. i. 19. t. 13. f. 8. 10.

Cyclost. ligatum var. *Krauss, Sudafrik. Mollusk.* 82.

a. — ? Var. of Cyclost. ligatum ?

b—d. Cape of Good Hope. From the Collection of Dr.
 Krauss.

** *Axis narrowly umbilicated.*

† *Shell subgloboso-conical.*

3. CYCLOSTOMUS CONSOCIUS.

Cyclost. consocium *Fer. MS. Brit. Mus.*

a—c. Madagascar.

4. CYCLOSTOMUS NOVÆ HIBERNIÆ.

Cyclost. Novæ Hiberniæ *Quoy & Gaim. Voy. Astr. Zool.* ii. 182.
 t. 12. f. 15. 19.; *Pfeiffer, l. c.* 106. 79.; *Lamck. An. s. Vert.* 2nd
 ed. viii. 368. n. 33.

Hab. New Ireland.

5. CYCLOSTOMUS LÆVIGATUS.

Cyclost. lævigatum *Webb & Berth. Ann. Sc. Nat.* 1833; *Sow.*
Thes. Conch. i. 107. n. 49. t. 24. f. 62, 63.; *Pfeiff.* l. c. 105. n.
 11.; *Kuster, Chemn. Conch. Cab.* i. 19. t. 13. f. 13, 14. f. 23,
 24. var.

Cyclost. canariense *D'Orb.*

Hab. Teneriffe.

6. CYCLOSTOMUS UNDULATUS.

Cyclost. undulatum *Sow. Thes. Conch.* i. 99. n. 25. t. 23. f. 29, 30.; *Pfeiff.* l. c. 105. n. 13.; *Kuster, Chemn. Conch. Cab.* i. 19. t. 12. f. 24. 26.

? Cyclost. fimbriata *Lamck. An. s. Vert.* 2nd edit. viii. 360. n. 23.

Hab. Bengal.

†† *Shell conico-pyramidal.*

7. CYCLOSTOMUS VIRGATUS.

Cyclost. virgatum *Sow. Thes. Conch.* i. 130. n. 111. t. 29. f. 192.; *Pfeiffer,* l. c. 106. n. 75.; *Kuster, Chemn. Conch. Cab.* i. 19. t. 13. f. 1—4. f. 5—7. var.

a—c. Madagascar?

8. CYCLOSTOMUS CINCINNUS.

Cyclost. cincinnus *Sow. Thes. Conch.* i. 102. n. 32. t. 24. f. 77, 78.; *Pfeiff.* l. c. 105. n. 12.; *Kuster, Chemn. Conch. Cab.* i. 19. t. 18. f. 1—3.

? Cyclost. ligatulum *Gratel.*

Cyclost. modestum ? *Fer. ? MS. in Brit. Mus.*

a. Madagascar?

9. CYCLOSTOMUS TENUIS.

Cyclost. tenue *Sow. Thes. Conch.* i. 138. n. 134. t. 31. f. 265.; *Pfeiffer,* l. c. 106. n. 76.; *Kuster, Chemn. Conch. Cab.* i. 19. t. 25. f. 11.

a. — ? Jun. ?

§§ *Peristome simple, straight.*

* *Shell globoso-conical.*

10. CYCLOSTOMUS COSTULATUS.

Cyclost. costulatum *Ziegler MS. in Rossm. Icon. Moll.* vi. 49. n. 395. t. 28. f. 395.; *Potiez et Mich. Gal. Moll. Douai,* i. 234. t. 24. f. 1, 2.; *Crist. et Jan. Cat. Moll.* 6. n. 4.; *Pfeiffer, Kuster, Chemn. Conch. Cab.* 71. n. 66. i. 19. t. 9. f. 6—8., *Zeitsch.* l. c. 105. n. 17.

Cyclost. sulcatum *Olivier (not Lamck.) Voy. dans le Levant, in Sow. Thes. Conch.* i. 100. n. 27. t. 23. f. 31.

Cyclost. Olivieri *Sow.*; *Pfeiffer, Kuster, Conch. Cab.* i. 19. t. 21. f. 20. 24., *Zeitsch.* l. c. 105. n. 16.; *Charpentier, Zeitsch. für Malak.* 1847, 144. n. 22.

Cyclost. syriacum *Ziegler*, fide *Parreyss*, *Charpent.* l. c.

Cyclost. orientale *Rossm.* ? fide *Parreyss*.

a. — ?

b—f. Orient. From the Collection of M. Parreyss.

g. Egypt.

h. Syria.

i, j. — ? From the Collection of M. Ziegler.

11. CYCLOSTOMUS GLAUCUS.

Cyclost. glaucum *Sow. Thes. Conch.* i. 100. n. 28. t. 24. f. 39.;
Pfeiff. l. c. 105. n. 18.; *Kuster, Chemn. Conch. Cab.* 72. n. 67. i.
19. t. 9. f. 3—5.

Cyclost. breviale *Gray MS. Brit. Mus.*

Cyclost. striatum *Menke, Synops.* ed. 11. p. 40. (absque descript.)

a. — ? Mus. Sloane.

** *Shell conical, oblong.*

12. CYCLOSTOMUS ELEGANS.

Nerita elegans Müller, Hist. Verm. ii. 177. n. 363.; *Schröter, Fluss. Conch.* 366. t. 9. f. 15.

Turbo elegans Gmel. S. N. 3606. n. 74.; *Poiret, Prodr.* 31. n. 2.;
Pennant, Brit. Zool. iv. 302. t. 85. f. 2.; *Dillwyn, Cat.* ii. 863. n.
116.; *Wood, Ind. Test.* t. 32. f. 118.

Cyclost. elegans *Drap. Hist. Moll.* t. 1. f. 5. and 7., *Tab. Moll.*
38. n. 1.; *Lamck. A. s. V.* 2nd ed. viii. 360. n. 25.; *Rossmassler, Icon.* i. 90. t. 2. f. 44. t. 5. f. 80—82.; *Potiez et Mich. Gal. Moll. Douai,* i. 235. n. 7.; *Féruss. Syst. Conch.* 66. n. 1.; *Turton, Manual,* 93. f. 75. edit. Gray, 275. t. 7. f. 75.; *Pfeiffer, Kuster, Chemn. Conch. Cab.* 73. n. 68. t. 9. f. 29—31. t. 28. f. 23.; *Zeitsch.* l. c. 105. n. 24.; *Sow. Thes. Conch.* i. 101. n. 30. t. 23. f. 32, 33.; *Bouillet, Cat. Coq. Foss. d'Anv.* 113. n. 1. (fossil); *Webb et Berth. Syn. Moll. Canar.* 17. n. 1.

Var. β. *Hartm.* in *Neue Alpina*, i. 215.

Turbo lincina Chemn. Conch. Cab. ix. t. 123. f. 1060. d, e.

Turbo striatus Da Costa, Brit. Conch. 86. t. 5. f. 9.

Turbo reflexus Olivi, Adriat. 170.

Columna de Purp. ch. 9. p. 16. t. 13.; *Lister, Hist. Conch.* t. 27. f. 25.

a—c. Genoa. From Dr. Goodall's Collection.

d, e. South of Italy. Presented by Sir W. Trevelyan, Bart.

f—h. — ? From the Collection of M. Ziegler.

i—p. Pymont.

q. St. Girons, Cariége.

r—t. Dalmatia.

u—w. Syria. From the Collection of M. Parreyss.

x, y. —? Var. white.

z—bb. Grignon. Fossil. From the Collection of M. Deshayes.

Var. *Small.*

Turbo marmoreus Brown, *Edin. Journ. Nat. and Geogr. Sc. i.*

Cyclost. marmoreum Sow. *Thes. Conch. i.* 101. n. 31. t. 23. f. 34, 35.; *Pfeiff. l. c.* 105. n. 25.

a, b. Near Edinburgh. From the Collection of Mr. Sowerby.

13. CYCLOSTOMUS SULCATUS.

Cyclost. sulcatum Drap. *Moll. 33.* n. 2. t. 13. f. 1.; *Philippi, Enum. Moll. Sic. 144.* n. 2.; *Rossm. Icon. Moll. vi.* 48. n. 394. t. 28. f. 394.; *Pfeiffer, Kuster, Chemn. Conch. Cab. 67.* n. 63. i. 19. t. 9. f. 24—26., *Zeitsch. l. c.* 105. n. 22.; *Risso, Hist. Nat. Eur. Merid. n.* 243.

Cyclost. sulcata Lamck. *An. s. Vert.* 2nd ed. viii. 370. n. 38.

Turbo lincina Chemn. *Conch. Cab. ix.* t. 123. f. 1060. b, c.

Cyclost. affinis Risso, *Nat. Hist. Eur. Merid.* iv. 104.

Cyclost. multisulcatum Potiez & Mich. *Gal. Moll. Douai, i.* 238. n. 13. t. 24. f. 11, 12.; *Pfeiffer, Kuster, Chemn. Conch. Cab. 69.* n. 64. i. 19. t. 9. f. 21—23., *Zeitsch. l. c.* 106. n. 53.

Cyclost. polysulcatum Potiez & Mich. *l. c.* 239. n. 16. t. 24. f. 13, 14.

Cyclost. aurantium Anton, *Verz.* 54. n. 1956.

Cyclost. siculum Sow. *Thes. Conch. i.* 104. n. 40. t. 24. f. 51, 52.

Cyclost. tenellum Sow. *l. c. i.* 104. n. 38. t. 24. f. 50.

a—l. —?

m—q. Marseilles. Presented by Professor Roux.

r. —?

s—w. Brignoles. Presented by G. Newman, Esq.

x, y. —? From the Collection of Mr. Broderip.

z. Marseilles. Presented by Professor E. Forbes.

aa—dd. Oran.

ee—hh. Bougie. (*Cyclost. tenellum* Sow.)

ii—ll. —? (*Cyclost. tenellum* Sow.)

mm. Sardinia. (*Cyclost. tenellum* Sow.) Presented by Professor Bonelli.

nn—pp. —? (*Cyclost. tenellum* Sow.)

14. CYCLOSTOMUS MELITENSIS.

Cyclost. melitense Sow. *Thes. Conch. i.* 105. n. 41. t. 24. f. 53, 54.; *Pfeiffer, Kuster, Chemn. Conch. i.* 19. t. 13. f. 24—26., *Zeitsch. l. c.* 105. n. 23.

Var. of preceding?

a—d. Malta. Presented by J. Ritchie, Esq.

e, f. Malta.

g. Var. Malta. Presented by J. Ritchie, Esq.

*** *Shell conical, elongate.*

15. CYCLOSTOMUS FERRUGINEUS.

Cyclost. ferruginea *Lamck. An. s. Vert.* vi. 147. n. 17., 2nd ed. viii. 358. n. 16.; *De Lessert, Rec. Coq.* t. 29. f. 4. a—c.

Cyclost. ferrugineum *Sow. Thes. Conch.* i. 105. n. 42. t. 24. f. 55—57.; *Pfeiffer, Kuster, Chemn. Conch. Cab.* 70. n. 65. i. 19. t. 9. f. 27, 28., *Zeitsch.* l. c. 105. n. 21.; *Mich. Coq. d'Algers*, ii. n. 2. f. 23.; *Potiez et Mich. Gal. Moll. Douai*, i. 236. t. 24. f. 7, 8.; *Rossmass. Icon. Moll.* vi. 49. n. 396. t. 28. f. 396.

Cyclost. fulvum *Gray in Wood's Cat. Supp.* 36.

Turbo fulvus *Wood's Cat. Supp.* t. 6. f. 9.

Cyclost. productum *Turton, Man.* 94. n. 76. f. 76.

Cyclost. sulcata (pars) *Desh., Lamck. ed.* viii. 370. n. 38.

a—c. Palma.

d—f. —? Mus. Cracherode.

16. CYCLOSTOMUS DISSECTUS.

Cyclost. dissectum *Sow. Thes. Conch.* i. 105. n. 43. t. 24. f. 58, 59.; *Pfeiffer, Kuster, Chemn. Conch. Cab.* i. 19. t. 21. f. 1, 2., *Zeitsch.* l. c. 105. n. 27.

Hab. —?

§§§ *Peristome double, expanded.*

* *Shell globoso-conical. Suture simple.*

17. CYCLOSTOMUS ALBUS.

Cyclost. albus *Sow. Thes. Conch.* i. 141. n. 139. t. 28. f. 154.; *Pfeiff.* l. c. 106. n. 57.; *Kuster, Chemn. Conch. Cab.* 51. n. 44. i. 19. t. 6. f. 17—19.

a—d. Jamaica. Presented by Professor C. B. Adams.

e—g. Jamaica. Var. fuscum. Presented by Prof. C. B. Adams.

** *Shell globoso-conical. Suture crenulate.*

18. CYCLOSTOMUS BRONNII.

Cyclost. Bronnii *Adams, Proc. Bost. Soc.* 1845, 11.; *Pfeiff.* l. c. 105. n. 38., *Zeitsch. Malak.* 1846, 46.; *Kuster, Chemn. Conch. Cab.* 50. n. 43. i. 19. t. 6. f. 24, 25.

β. fuscolineatum *Ad. Bost. Proc.* 1845, 11.?

a—d. Jamaica. Presented by Prof. C. B. Adams.

e—n. — ?

19. CYCLOSTOMUS PYGMÆUS.

Cyclost. pygmæum Mich. *Compl. à Drap.* 75. n. 3. t. 15. f. 46, 47.; *Potiez et Mich. Gal. Moll. Douai*, i. 240. n. 17. t. 24. f. 15—17.

Cyclost. pygmæa Lamck. *An. s. Vert.* 2nd ed. viii. 373. n. 44.

Hab. South of France.

21. TUDORA.

Operculum shelly, flat, of few whorls concentrically striated (*Potiez*, figure). — *Shell* ovate. Peristome much expanded, slightly reflexed, especially on inner edge, where it nearly conceals the umbilicus.

Differs from *Choanopoma* in having no appearance of the inner of the two lips.

1. TUDORA SIMILIS.

Cyclost. megacheilos *Potiez & Mich. Moll. Gal. Douai*, i. 237. t. 24. f. 9, 10.; *Pfeiffer*, l. c. 106. n. 55.

Cyclost. megachilum *Pfeiffer, Kuster, Chemn. Conch. Cab.* 66. n. 62. i. 19. t. 9. f. 15—19.

Cyclost. simile *Gray MS. in Sow. Thes. Conch.* i. 103. n. 37. t. 24. f. 48, 49.

a—g. Orient.

22. CHOANOPOMA.

Operculum calcareous, thin, externally deeply concave; the whorls rather narrow, terminating externally in more or less prominent thin lamellæ, with a subcentral nucleus. — *Shell* turbinate, globose, or turritid, often truncate. Peristome double; the internal continuous, circular; the external rectangular, expanded.

Choanopoma *Pfeiffer in Menke und Pfeiffer, Z. f. Malak.* 1847, 47. and 107.

Cistula *Humph. Mus. Calonne*, 1797; *Swainson, Malac.* 21. 1840.

Licina β . *Gray, Syn.* 1840, 1842, 91., *Proc. Zool. Soc.* 1847, 181.

§ *Lamellæ of whorls of operculum very prominent.*

* *Shell subglobose, cancellate.*

† *Fringe crenated.*

1. CHOANOPOMA PULCHRUM.

Turbo pulcher Wood, *Cat. Supp.* t. 6. f. 4.

Cyclost. pulchrum Gray in *Wood's Cat. Supp.* 36.; *Sow. Gen.* n. 35. f. 2., *Spec. Conch.* f. 134, 135., *Thes. Conch.* i. 132. n. 117. t. 27. f. 143, 144.; *Reeve, Conch. Syst.* t. 184. f. 12.; *Pfeiffer, Kuster, Chemn. Conch. Cab.* 75. n. 69. i. 19. t. 10. f. 1, 2.

Cyclophora pulchra Swains. *Malacol.* 336.

Choanopoma pulchrum Pfeiffer, l. c. 107. n. 1.

a, b. — ?

2. CHOANOPOMA FIMBRIATULUM.

Cyclost. fimbriatum Sow. *Tank. Cat. App.* 8. n. 1015., *Spec. Conch.* f. 136., *Thes. Conch.* i. 132. n. 118. t. 28. f. 145, 146.; *Reeve, Conch. Syst.* t. 183. f. 5.; *Pfeiffer, Kuster, Chemn. Conch. Cab.* 76. n. 70. i. 19. t. 10. f. 3—5.

Turbo lincina Chemn. *Conch. Cab.* ix. 54. t. 123. f. 1060. a.

Annularia fimbriata Schumach. *Ess. Nov. Syst.* 196.?

Choanopoma fimbriatum Pfeiffer, l. c. 107. n. 7.

a, b. — ?

3. CHOANOPOMA LINCINUM.

Turbo lincina Linn. *Syst. Nat.* ed. 12. i. 1239. n. 639.; *Schröter, Einleitung*, ii. 43. n. 35.; *Gmel. Linn. Syst. Nat.* 3605. n. 71.; *Dillw. Cat.* ii. 864. n. 117.; *Wood, Cat.* t. 32. f. 119.?

Cyclost. lincinum Sow. *Thes. Conch.* i. 140. n. 138. t. 28. f. 148.; *Pfeiffer, Chemn. Conch. Cab.* 43. n. 34. i. 19. t. 6. f. 1, 2.

Cyclost. lincina Lamck. *An. s. Vert.* 2nd edit. 368. n. 32.

Nerita lincina Müller, *Hist. Verm.* ii. 178. n. 364. ? *Schröter, Fluss. Conch.* 365.

Campulote en forme de Buccin, Guettard, *Mém. Sc. et Arts*, iii. 542. t. 71. f. 10.

Choanopoma lincina Pfeiffer, l. c. 107. n. 3.

Lister, Hist. Conch. t. 26. f. 24.; *Petiver, Gazoph.* t. 118. f. 11.; *Sloane, Jamaica*, ii. 240. f. 12, 13.; *Browne, Jamaica*, t. 40. f. 5.

a, b. Jamaica. Presented by Professor C. B. Adams.

c. — ?

4. CHOANOPOMA SCABRICULUM.

Cyclost. scabriculum *Sow. Thes. Conch.* i. 133. n. 119. t. 28. f. 147.; *Pfeiffer, Kuster, Chemn. Conch. Cab.* 77. n. 71. i. 19. t. 10. f. 6—8.

Choanopoma scabriculum *Pfeiffer*, l. c. 107. p. 8.

a—c. Jamaica.

d, e. — ?

†† *Fringe of mouth simple.*

5. CHOANOPOMA LIMA.

Cyclost. lima *Adams, Proc. Bost. Soc.* 1845, 11.; *Pfeiffer, Zeitsch. für Malak.* 1846, 46.; *Kuster, Chemn. Conch. Cab.* 44. n. 35. i. 19. t. 6. f. 3—6.

Cyclost. lincinum (pars) *Sow. Thes. Conch.* t. 28. f. 149.

Choanopoma lima *Pfeiffer*, l. c. 107. n. 2.

a, b. Jamaica. Presented by Professor C. B. Adams.

6. CHOANOPOMA OTTONIS.

Cyclost. Ottonis *Pfeiffer, Zeitsch. für Malak.* 1846, 45.; *Kuster, Chemn. Conch. Cab.* 45. n. 36. i. 19. t. 6. f. 7, 8.

Choanopoma Ottonis *Pfeiffer*, l. c. 107. n. 7.

Hab. Cuba.

7. CHOANOPOMA LATILABRE.

Cyclost. latilabrum *D'Orb. Cub.* i. 255. t. 21. f. 12.; *Sow. Thes. Conch.* i. 131. n. 116. t. 31. f. 281.; *Pfeiffer*, l. c. 104. n. 43.; *Kuster, Chemn. Conch. Cab.* 78. n. 7. i. 19. t. 10. f. 26, 27.

Hab. — ?

8. CHOANOPOMA PUDICUM.

Cyclost. pudicum *D'Orb. Sow. Thes. Conch.* i. 143. n. 147. t. 31. f. 282.

Choanopoma pudicum *Pfeiffer*, l. c. 107. n. 5.

Hab. Cuba.

9. CHOANOPOMA AMBIGUUM.

Cyclost. ambigua *Lamck. An. s. Vert.* vi. 2nd ed. viii. 357. n. 11.; *Pfeiffer*, l. c. 105. 449.

Cyclost. interrupta *De Lessert, Recueil*, t. 29. f. 2. a—c.

Hab. — ?

** *Shell elongate.*

† *Fringe crenated.*

10. CHOANOPOMA SAULIÆ.

Cyclost. Sauliæ Sow. *Thes. Conch.* i. 145. n. 152. t. 28. f. 189.;
Pfeiffer, Kuster, Chemn. Conch. Cab. 85. n. 80. i. 19. t. 10. f.
24, 25., *Zeitsch.* l. c. 106. n. 60.

a—c. — ?

11. CHOANOPOMA DISLOCATUM.

Smaller than preceding; last whorl separated.

a—g. Jamaica. Presented by the Rev. Barham Zincke.

12. CHOANOPOMA SCABROSUM.

Cyclost. rugulosum Sow. (not Pfeiff.) *Thes. Conch.* i. 146. n. 155.
t. 28. f. 166, 167.; Sow. in *Proc. Zool. Soc.* 1843, 29. ?

Cistula scabrosa *Humphrey MS.* in Sow. *Thes.* l. c.

a—c. Jamaica. From the Collection of Mr. Cuming.

13. CHOANOPOMA PRETREI.

Cyclost. Pretrei *D'Orb. Sow. Thes. Conch.* i. 139. n. 136. t. 31. f.
260.; *Pfeiffer*, l. c. 106. n. 62.; *Kuster, Chemn. Conch. Cab.* i.
19. t. 21. f. 9—12.

Hab. Cuba.

†† *Fringe of mouth simple.*

14. CHOANOPOMA LARGILLIERTI.

Cyclost. Largillierti *Pfeiffer, Zeitsch. für Malak.* 1836, 46., l. c.
105. n. 36.; *Kuster, Chemn. Conch. Cab.* i. 19. t. 14. f. 26, 27.

Hab. Yucatan.

15. CHOANOPOMA MAURITIANUM, sp. nov. ?

Cyclostoma crenulatum *Fér. fide Parreyss, MS. Brit. Mus.*

a. Isle of France. From the Collection of M. Parreyss.

*** *Shell oblong. Fringe of mouth simple.*

16. CHOANOPOMA MIRABILE.

Turbo mirabilis *Wood, Cat. Supp.* t. 6. f. 22.

Cyclost. mirabile *Gray in Wood's Cat. Supp.* 36.; *Sow. Thes. Conch.* i. 145. n. 153. t. 28. f. 164.; *Kuster, Chemn. Conch. Cab.* i. 19. t. 14. f. 17—19.

Cyclost. mirabilis Lamck. *An. s. Vert.* 2nd ed. viii. 371. n. 40.
Choanopoma mirabile Pfeiffer, l. c. 107. n. 9.

Hab. Demerara.

17. CHOANOPOMA ARTICULATUM.

Cyclost. articulatum Sow. *Thes. Conch.* i. 142. n. 144. t. 28. f. 160, 161.

Choanopoma articulatum Pfeiffer, l. c. 107. n. 10.

Var. of *Choan. mirabile*?

a—c. —?

d, e. Jamaica. Presented by Prof. C. B. Adams.

f, g. Jamaica. Var. nearly smooth. Presented by Prof. C. B. Adams.

h—j. —? From the Collection of Mr. Cuming.

18. CHOANOPOMA GRAYANUM.

Cyclost. obscurum Gray MS. in Sow. *Thes. Conch.* i. 147. n. 157. t. 28. f. 169.

Cyclost. Grayanum Pfeiffer, *Zeitsch. f. Malak.* 1846, 43.; *Kuster, Chemn. Conch. Cab.* 49. n. i. 19. 42. t. 6. f. 15, 16.

Choanopoma Grayanum Pfeiffer, l. c. 107. n. 11.

a—c. Jamaica. Presented by Prof. C. B. Adams.

19. CHOANOPOMA BANKSIANUM.

Cyclost. Banksianum Sow. *Thes. Conch.* i. 144. n. 148. t. 29. f. 194.; *Pfeiff.* l. c. 105. n. 39.; *Kuster, Chemn. Conch. Cab.* i. 19. t. 21. f. 7, 8.

Hab. Manchester Mountains, Jamaica.

20. CHOANOPOMA BINNEYANUM.

Cyclost. Binneyanum Adams, *Pfeiff. Zeitsch. f. Malak.* 1846, 47., l. c. 106. n. 51.; *Kuster, Chemn. Conch. Cab.* i. 19. t. 14. f. 12—14.

Cyclost. pulchrius? Adams, *Proc. Bost. Soc.* 1845.

a—c. Jamaica. Presented by Prof. C. B. Adams.

21. CHOANOPOMA HILLIANUM.

Cyclost. Hillianum Adams.

Choanopoma Hillianum Pfeiffer, l. c. 107. n. 12.

Hab. Jamaica.

22. CHOANOPOMA ? BILABIATUM.

Cyclost. bilabiatum D'Orb., Pfeiffer, l. c. 106. n. 50.

23. CHOANOPOMA XANTHOSTOMA.

Cyclost. xanthostoma *Sow. Thes. Conch.* i. 144. n. 149. t. 29. f. 195.; *Pfeiffer*, l. c. 105. n. 47.; *Kuster, Chemn. Conch. Cab.* i. 19. t. 14. f. 6—8.

a—c. Jamaica. From the Collection of Mr. Gosse.

d—g. —?

24. CHOANOPOMA CHLOROSTOMA.

Cyclost. chlorostoma *Sow. Thes. Conch.* i. 146. n. 156. t. 28. f. 168.; *Pfeiff.* l. c. 106. 52.; *Kuster, Chemn. Conch. Cab.* i. 19. t. 14. f. 1—3.

a, b. Demerara. From Mr. Bainbridge's Collection.

§§ *Lamellæ of whorls of operculum slightly prominent.*

* *Last whorl of shell not separate from preceding.*

25. CHOANOPOMA HUMPHREYANUM.

Cyclost. Humphreysianum *Pfeiff. Wieg. Archiv.* 1839, *Zeitsch. f. Malak.* 1846, 41.

Cyclost. Humphreyanum *Pfeiffer, Zeitsch.* 1847, 105. n. 46.; *Kuster, Chemn. Conch. Cab.* 80 n. 74. i. 19. t. 10. f. 9—11.

Cyclost. pictum *Sow. Thes. Conch.* i. 142. n. 142. t. 28. f. 157, 158.

Cistula picta *Humph. MS. ined.* in *Sow.* l. c.

Near *thysanoraphe*.

a—h. Jamaica. Presented by the Rev. Barham Zincke.

l. —? From Mr. Powis's Collection.

m. —? Running into *C. thysanoraphe*. From Mr. Powis's Collection.

26. CHOANOPOMA THYSANORAPHE.

Cyclost. thysanoraphe *Sow. Thes. Conch.* i. 143. n. 145. t. 28. f. 162, 163.; *Pfeiff.* l. c. 105. n. 31.; *Kuster, Chemn. Conch. Cab.* 81. n. 75. i. 19. t. 10. f. 16—18. t. 13. f. 28, 29.

a—c. Jamaica.

d, e. Jamaica. Presented by Prof. C. B. Adams.

27. CHOANOPOMA INTERRUPTUM.

Cyclost. interrupta *Lamck. An. s. Vert.* vi. 145. 2nd ed. viii. 356. n. 10.

Cyclost. interruptum *Sow. Thes. Conch.* i. 141. n. 141. t. 28. f. 152, 153.; *Pfeiffer*, l. c. 104. n. 42.; *Kuster, Chemn. Conch. Cab.* 63. n. 58. i. 19. t. 9. f. 1, 2.

Cyclost. *ambigua* De Lessert, *Recueil*, t. 29. f. 5.; *Reeve, Conch. Syst.* t. 183. f. 8.

a-c. — ?

Var. *Small.*

Turbo *Chemnitzii* Wood, *Cat. Supp.* t. 6. f. 6.

Cyclost. *Chemnitzii* Gray in *Wood's Cat. Supp.* 36.; *Sow. Thes. Conch.* i. 141. n. 140. t. 28. f. 155, 156.; *Pfeiffer*, l. c. 106. n. 58.; *Kuster, Chemn. Conch. Cab.* 92. n. 88. i. 19. t. 32, 33.

a-c. — ? From the Collection of Mr. Powis.

d. — ?

** *Last whorl separated from the preceding.*

28. CHOANOPOMA LINCINELLUM.

Cyclost. *lincinella* Lamck. *An. s. Vert.* vi. 148. 2nd ed. viii. 359. n. 21.

Cyclost. *lincinellum* Sow. *Thes. Conch.* i. 140. n. 137. t. 28. f. 150, 151.; *Pfeiffer, Kuster, Chemn. Conch. Cab.* i. 19. t. 21. f. 3—5.

Turbo *compressus* Wood, *Cat. Supp.* t. 6. f. 42.

Cyclost. *compressum* Gray in *Wood's Cat. Supp.* 36.

Cyclost. *lincina* Lamck. *Enc. Méth.* t. 461. f. 2. a, b.

Choanopoma *lincinella* Pfeiffer, l. c. 107. n. 4.

Hab. Jamaica.

29. CHOANOPOMA SEMIPRODUCTUM.

a, b. — ?

23. DIPLOMMATINA.

Operculum shelly, thin; whorls few, with thin prominent lamellæ on their external edges.—*Shell* thin, subovate; whorls convex, last subsacendent. Mouth nearly circular. Peristome double, outer expanded.

Diplommatina *Benson, Ann. and Mag. Nat. Hist.* 1849, 193.

Carychium (sp.) *Hutton MS.*

Bulimus sp. *Pfeiffer, Helicidæ*, ii. 81.

§ *Apex elongate, conical.*

1. DIPLOMMATINA FOLLICULUS.

Diplommatina *folliculus* *Benson, Ann. and Mag. N. H.* 1849, 194.

Carychium *costatum* *Hutton MS. Brit. Mus.*

Diplommatina *folliculus* *Pfeiffer, Mon. Helicidæ*, ii. 81.

a—f. India; Simla, near Sutlej. From Mr. Hutton's Collections. *Carychium costatum* *Hutton*.

g—ii. (With operculum.) Landour. From the Collection of Capt. Boys.

§§ *Apex blunt.*

2. DIPLOMMATINA COSTULATUM.

Carychium costulatum *Hutton MS.*

Diplommatina costulatum *Benson*, l. c. 194.

Carychium parvulum *Boys MS. Brit. Mus.*

Probably only a smaller variety of the preceding.

a—x. (With operculum.) Landour. From the Collection of Capt. Boys.

3. ?DIPLOMMATINA MINUS.

Cyclost. minus *Sow. Thes. Conch.* i. 153. n. 175. t. 30. f. 249.; *Pfeiffer, Kuster, Chemn. Conch. Cab.* i. 19. t. 17. f. 9—11., *Zeitsch.* l. c. 112. n. 6.

a—d. Zebu, Philippine Islands. From the Collection of Mr. Cuming.

24. CHONDROPOMA.

Operculum ovate, subcartilaginous; whorls few, rapidly increasing. — *Shell* for the most part turritid, often truncated. Peristome continuous, for the most part free, simple, single; expanded or thickened.

Differs from *Cyclostomus* in the operculum being thinner and somewhat horny.

Chondropoma *Pfeiffer* in *Menke und Pfeiffer, Z. f. Malak.* 1847.

§ *Shell turritid.*

1. CHONDROPOMA LIMBIFERUM.

Cyclost. limbiferum *Menke MS.* in *Pfeiffer, Zeitsch. für Malak.* 1846, 45.; *Pfeiffer, Kuster, Chemn. Conch. Cab.* 46. n. 38. i. 19. t. 6. f. 11, 12. t. 21. f. 6.

Cyclost. catenatum *Gould, Bost. Journ.* iv. 1. 1842?

Chondropoma limbiferum *Pfeiffer*, l. c. 109. n. 4.

Hab. Cuba.

2. CHONDROPOMA SEMILABRE.

Cyclost. semilabris *Lamck. An. s. Vert.* vi. 2nd ed. viii. 357. n. 12.; *De Lessert, Recueil*, t. 29. f. 1. a, b.

Cyclost. semilabrum *Sow. Thes. Conch.* i. 106. n. 44. t. 24. f. 60.;
Cyclost. semilabre *Pfeiffer, Kuster, Chemn. Conch. Cab.* i. 19. t.
15. f. 17, 18.

Cyclost. sagra *D'Orb.* (fide *Pfeiffer.*)

Cyclost. punctulata *Gould.*

Chondropoma semilabre *Pfeiffer, l. c.* 109. n. 2.

Hab. Cuba.

Var.

Cyclost. sagra *Sow. Thes. Conch.* i. 150. n. 166. t. 31. f. 279, 280.

Cyclost. pictum *Pfeiffer, Kuster, Chemn. Conch. Cab.* i. 19. t. 15.
f. 1—11.; *Pfeiffer, l. c.* 109. n. 1.

Cyclost. mahogani *Gould.*

β . minus (Cyclost. Poyeana *D'Orb.*)

Chondropoma pictum *Pfeiffer, l. c.* 109. n. 1.

a—f. Cuba.

3. CHONDROPOMA PLICATULUM.

Cyclost. plicatum *Pfeiffer, Zeitsch. Malak.* 1846, 48.; *Kuster,*
Chemn. Conch. Cab. 82. n. 77. i. 19. t. 10. f. 14, 15. t. 28. f. 12,
13.

Chondrop. plicatum *Pfeiffer, l. c.* 109. n. 3.

Hab. Puerto Caballo, Venezuela.

4. CHONDROPOMA OBESUM.

Cyclost. obesum *Pfeiffer, Wieg. Archiv.* 1840, i. 253.; *Kuster,*
Chemn. Conch. Cab. 83. n. 78. i. 19. t. 10. f. 21—23.; *Sow.*
Thes. Conch. i. 143. n. 146. t. 31. f. 278.

Truncatella obesa *Menke, Synops.* 2nd ed. 137.

Chondropoma obesum *Pfeiffer, l. c.* 109. n. 5.

Hab. Cuba.

5. CHONDROPOMA HELLENICUM.

a. Greece. Presented by C. Lamb, Esq.

6. CHONDROPOMA CRENULATUM.

Cyclost. crenulatum *Pfeiffer, Wieg. Archiv.* 1839; *Kuster,*
Chemn. Conch. Cab. i. 19. t. 14. f. 24, 25. 30, 31. var.

Cyclost. Auberianum *D'Orb.* in *Sow. Thes. Conch.* i. 144. n. 150.
t. 31. f. 285.

Cyclost. lineolatum *Ant.*

Chondrop. crenulatum *Pfeiffer, l. c.* 109. n. 6.

a—c. Cuba. From Mr. Cuming's Collection.

§§ *Shell suborbicular, solid.*

7. CHONDROPOMA FLAVUM.

Cyclost. flavum *Brod. Proc. Zool. Soc.* 1832, 59.; *Müller, Synops.* 38.; *Sow. Thes. Conch.* i. 109. n. 55. t. 24. f. 70.; *Pfeiffer, Kuster, Chemn. Conch. Cab.* 23. n. 14. i. 19. t. 3. f. 9, 10. magn. f. 11., *Zeitsch.* l. c. (an *Littorina*?) 112. n. 3.

a—d. Chain Island, South Seas. From the Collection of Mr. Cuming.

25. CISTULA.

Operculum ovate, thin, horny, with a very thin external shelly coat; whorls few, gradually enlarging, flat, edge simple, centre rather concave.—*Shell* ovate elongate, or conico-turrited. Mouth subcircular. Peristome double, or simple with subexpanded margin.

Licina Browne, Jamaica, 1756; *Gray, Proc. Zool. Soc.* 1847, 181.

Cyclostoma Swainson, Malac. 1840 (not *Lamck.* 1801).

Annularia β. Schum. N. Syst. 1817.

§ *Peristome double.*

* *Shell conico-turrited.*

1. CISTULA FASCIA.

Turbo fascia Wood, Cat. Supp. t. 6. f. 8.

Cyclost. fascia *Gray in Wood's Cat. Supp.* 36.; *Pfeiffer*, l. c. 105. n. 30.; *Kuster, Chemn. Conch. Cab.* 45. n. 37. i. 19. t. 6. f. 9, 10.; *Sow. Thes. Conch.* i. 149. n. 164. t. 28. f. 176, 177.

a—c. Jamaica.

d, e. Jamaica. Presented by Professor C. B. Adams.

f, g. Jamaica.

2. CISTULA COLUMNNA.

Turbo columna Wood, Cat. Supp. t. 6. f. 21.

Cyclost. columna *Gray in Wood's Cat. Supp.* 36.; *Lamck. An. s. Vert.* 2nd edit. 372. n. 41.; *Pfeiffer*, l. c. 105. 45.; *Kuster, Chemn. Conch. Cab.* 47. n. 39. i. 19. t. 6. f. 13, 14.

a, b. Jamaica. Presented by Professor C. B. Adams.

c—f. Jamaica. Jun. Presented by Rev. Barham Zincke.

Var. *Suture crenulated.*

Cyclost. *Adamsi Pfeiffer*, l. c. 105. n. 35., *Zeitsch. Malak.* 1846, 43.; *Kuster, Chemn. Conch. Cab.* 48. n. 40. i. 19. t. 6. f. 20, 21.

Cyclost. crenulatum Gray MS. in *Sow. Thes. Conch.* i. 148. n. 113. t. 28. f. 174, 175.

a—e. Jamaica. Presented by Professor C. B. Adams.

f—h. Jamaica.

3. CISTULA VERSICOLOR.

Cyclost. versicolor Pfeiffer, *Zeitsch. Malak.* 1846, 33., l. c. 105. n. 26.; *Kuster, Chemn. Conch. Cab.* 65. n. 60. i. 19. t. 9. f. 13, 14. (not Grat.)

Turbo aurantius Wood, *Cat. Supp.* t. 6. f. 23.

Cyclost. aurantium Gray in *Wood's Cat. Supp.* 36.

Cyclost. aurantiacum Sow. *Thes. Conch.* i. 103. n. 36. t. 24. f. 46, 47.

a—f. Jamaica. Presented by Professor C. B. Adams.

4. ? CISTULA COSTATA.

Cyclost. costatum Menke MS. in Pfeiffer, *Zeitsch. Malak.* 1846, 47.; Pfeiffer, l. c. 106. n. 54.; *Kuster, Chemn. Conch. Cab.* 64. n. 59. i. 19. t. 9. f. 9, 10.

Hab. ?

5. CISTULA LINEOLATA.

Cyclost. lineolata Lamck. *An. s. Vert.* vi. 147. n. 19. 2nd edit. viii. 358.; *De Lessert, Recueil*, t. 29. f. 8.

Cyclost. lineolatum Pfeiffer, l. c. 105. n. 48.; *Kuster, Chemn. Conch. Cab.* 49. n. 41. t. 6. i. 19. f. 27, 28.

a—q. St. Vincent's, West Indies. From the Collection of Rev. Landsdown Guilding.

r—t. — ?

6. ? CISTULA DECUSSATA.

Cyclost. decussata Lamck. *An. s. Vert.* vi. 2nd ed. viii. 358. n. 17.; *De Lessert, Recueil*, t. 29. f. 6. *a—c.*

Cyclost. decussatum Pfeiffer, l. c. 106. n. 56.

Hab. Porto Rico.

7. CISTULA TRUNCATA.

Cyclost. truncatum Mus. *Berol. Rossmass. Iconograph.* vi. 49. t. 28. f. 397.; Pfeiffer, l. c. 105. n. 34.; *Kuster, Chemn. Conch. Cab.* i. 19. t. 14. f. 20, 21.

Cyclost. candeanum D'Orb. *Sow. Thes. Conch.* i. 145. n. 151. t. 31. f. 283, 4.

Hab. Cuba.

8. CISTULA DELATREANA.

Cyclost. Delatreanum *D'Orb. Pfeiff.* l. c. 105. n. 33.; *Kuster, Chemn. Conch. Cab.* i. 19. t. 14. f. 22, 23.

** *Shell cylindrical.*

9. CISTULA RUFILABRIS.

Cyclost. rufilabrum *Beck. MS. in Sow. Thes. Conch.* i. 106. n. 45. t. 24. f. 61.; *Pfeiff.* l. c. 106. n. 57.; *Kuster, Chemn. Conch. Cab.* (in plate) t. 6. f. 22, 23.; *Potiez et Mich. Gal. Moll. Douai,* i. 241. t. 24. f. 20, 21.

Cyclost. bilabre *Menke, Moll. Nov. Holl.* 8.; *Pfeiffer, Kuster, Chemn. Conch. Cab.* (in letter-press) 52. n. 45.

a, b. — ?

c. Orient.

10. CISTULA RUGULOSA.

Cyclost. rugulosum *Pfeiffer, Wieg. Archiv,* 1839, *Zeitsch.* l. c. 106. n. 61.

Cyclost. clathratum *Gould.*

a—c. Cuba. From the Collection of Mr. Cuming.

d, e. — ? Presented by E. Doubleday, Esq.

f—o. — ?

11. ?CISTULA GRUNERI.

Cyclost. Gruneri *Pfeiffer, Zeitsch. Malak.* 1846, 47., l. c. 105. n. 44.; *Kuster, Chemn. Conch. Cab.* 79. n. 73. i. 19. t. 10. f. 28, 29.

Hab. Honduras.

§§ *Peristome single. Shell nearly cylindrical.*

12. CISTULA QUATERNATA.

Cyclost. quaternata *Lamck. An. s. Vert.* vi. 147. 2nd edit. viii. 358. n. 15.; *De Lessert, Recueil,* t. 29. f. 3. a. c.

Cyclost. quaternatum *Pfeiff.* l. c. 105. n. 19.; *Kuster, Chemn. Conch. Cab.* 81. n. 77. i. 19. t. 10. f. 12, 13.; *Sow. Thes. Conch.* i. 149. n. 165. t. 28. f. 178, 179.

Cyclost. pupaceum *Sow. MS. Cab. Gray.*

a, b. — ?

13. CISTULA PUPIFORMIS.

Cyclost. pupiforme *Sow. Thes. Conch.* i. 102. n. 34. t. 24. f. 43,

44.; *Pfeiff.* l. c. 105. n. 32.; *Kuster, Chemn. Conch. Cab.* i. 19. t. 14. f. 15, 16.

Hab. — (Cab. Gray?)

14. CISTULA ELONGATA.

Turbo elongatus *Wood, Cat. Supp.* t. 6. f. 10.

Cyclost. elongatum *Gray* in *Wood's Cat. Supp.* 36.; *Sow. Thes. Conch.* i. 107. n. 50. t. 24. f. 64.; *Pfeiffer, Kuster, Chemn. Conch. Cab.* 84. n. 79. i. 19. t. 10. f. 19, 20., *Zeitsch.* l. c. 105. n. 28.

a. — ?

b—d. West Indies. Var. ? with suture crenulated ?

15. ?CISTULA SOLIDA.

Cyclost. solidum *Menke, Pfeiff.* l. c. 105. n. 29.; *Kuster, Chemn. Conch. Cab.* i. 19. t. 14. f. 4, 5.

26. LICINA.

Operculum — ?

Shell conical; last whorl produced out of the spiral line, straight. Mouth circular. Peristome somewhat reflexed, expanded.

Licina Browne, Jamaica, 401.

1. LICINA LABEO.

Nerita labeo *Müller, Hist. Verm.* ii. 180. n. 367.; *Schröter, Fluss-Conch.* 364.

Turbo labeo *Gmel. Syst. Nat.* 3605. n. 73.; *Dillw. Cat.* ii 865. n. 118.; *Wood, Cat.* t. 32. f. 120.

Turbo lincina magna *Chemn. Conch. Cab.* ix. 56. t. 123. f. 1061, 1062.

Turbo lincina *Born, Test.* 355. t. 13. f. 5, 6.

Turbo dubius *Gmel. Syst. Nat.* 3606. n. 75.

Cyclostoma labeo *Lamck. An. s. Vert.* vi. 145. 2nd ed. viii. 356. n. 9., *Enc. Méth.* t. 461. f. 4.; *Desh. Enc. Méth. Vers.* ii. 40. n. 5.; *Féruss. Syst. Conch.* 66. n. 3.; *Sow. Thes. Conch.* i. 146. n. 154. t. 28. f. 165.; *Pfeiffer, Kuster, Chemn. Conch. Cab.* 34. n. 25. i. 19. t. 4. f. 1, 2. t. 9. f. 20., *Zeitsch.* l. c. 105. n. 40.

Buccinum *Lister, Hist. Conch.* t. 25. f. 23.; *Schröter, Einleit. Turbo,* n. 60.

Licina rugosa *Browne, Jamaica,* 401. t. 40. f. 5—7.

a, b. — ? From the Sloane Museum.

2. LICINA EVOLUTA.

Cyclost. evolutum *Reeve, Pfeiffer*, l. c. 105. n. 41.

Cyclost. subasperum *Sow. Thes. Conch.* i. 142. n. 143. t. 28. f. 159.

Cistula decussata *Humph. MS. ined. Sow.* l. c.

Hab. East Indies.

b. *Operculum thin, few-whorled; front of last whorl rounded.*

27. POMATIAS.

Operculum thin, shelly, few-whorled, composed of two plates, concamerated within.—Shell somewhat imperforate, conico-turritid or turritid, longitudinally striated or ribbed. Peristome nearly simple or double, the internal edge continuous, the external reflexed.

Pomatias Studer, Verz. 21. 1820; *Hartmann; Gray, Syn. B. M.* 1842, 91., *Proc. Zool. Soc.* 1847, 182.; *Troschel in Menke und Pfeiffer, Z. f. Malak.* 1847, 43.

Cyclostoma sp. Drap. Lamck. Hist. An. s. Vert.

§ *Peristome eared.*

1. POMATIAS AURITUS.

Cyclostoma auritum Ziegler MS. in Rossmass. Iconograph. vi. 50. t. 28. f. 398.; *Sow. Thes. Conch.* i. 148. n. 162. t. 28. f. 172.

Cyclost. excissilabrum Megerle (fide Crist. & Jan.) in Potiez et Mich. Gal. Moll. de Douai, i. 236. n. 9. t. 24. f. 5, 6.

Pomatias auritus Pfeiffer, l. c. 110. n. 1.

a—c. Albania.

d—k. — ?

l—r. Dalmatia. Presented by Charles Lamb, Esq.

2. POMATIAS MACULATUS.

Cyclostoma maculatum Drap. Moll. 39. n. 13. t. 1. f. 12.; *Sturm, Faun.* vi. 47. t. 3.; *Stud. Verz.* 22.; *Pfeiffer, Syst. Anord.* iii. 43. t. 7. f. 30.; *Rossmass. Iconog.* vi. 51. t. 28. f. 399, 400.; *Potiez et Mich. Gal. Moll. Douai,* i. 239. n. 15. var. A. maj. = *Cyclost. tessellatum Ziegler, Desm. Cat. Moll. de Gironde,* 18. n. 2.

Cyclost. affinis Parreyss MS. in Brit. Mus.

Cyclost. turriculatum Philippi, Enum. Moll. Sic. 144.

C. turriculatum a. Menke, Synops. 40.

Cyclost. tessellatum Sow. Thes. Conch. i. 147. n. 158. t. 28. f. 173.

Cyclost. striolatum Sow. Thes. Conch. i. t. 31. f. 286.

Pomatias Studeri β . *Hartmann*, § 214. n. 5.

Pomatias maculatus *Pfeiffer*, l. c. 110. n. 6.

a—d. Corfu.

e, f. Syria (C. affinis). Var. *Rossmass.* From the Collection of M. Parreys.

g—x. —? From the Collection of M. Ziegler.

3. POMATIAS TESSELLATUS.

Cyclostoma tessellatum *MS.* in *Berlin Museum*, fide *Rossmass. Iconograph.* vi. 53. t. 28. f. 404.

Pomatias tessellatus *Pfeiffer*, l. c. 110. n. 2.

Hab. Corfu.

4. POMATIAS CINERASCENS.

Cyclostoma cinerascens *Rossmass. Iconograph.* vi. 53. t. 28. f. 406.

Pomatias cinerascens *Pfeiffer*, l. c. 110. n. 7.

Hab. Dalmatia.

5. POMATIAS PATULUS.

Cyclostoma patulum *Drap. Moll.* 38. t. 1. f. 9—11.; *Lamck. An. s. Vert.* 2nd edit. viii. 362. n. 26.; *Rossmass. Iconog.* vi. 52. t. 28. f. 401, 402, 403. vars., *Col. des Ch. Cat. des Coq. du Finist.* 71. n. 2.

Cyclost. turriculatum b. majus unicolor *Menke, Synops.* 40.

Cyclost. obscurum var. major *Drap. Moll.* 39. n. 14. t. 1. f. 13. ?

Pomatias patulus *Pfeiffer*, l. c. 110. n. 5.

a—f. Provence.

g—p. Grasse, South of France. Presented by G. Newman, Esq.

q. Perpignan, France.

r—t. Styria.

§§ *Peristome simple.*

6. POMATIAS OBSCURUS.

Cyclostoma obscurum *Drap. Moll.* 39. t. 1. f. 13.; *Rossmass. Iconograph.* vi. 53. t. 28. f. 405.

Cyclost. patulum *Sow. Thes. Conch.* i. 147. n. 159. t. 28. f. 170.

Cyclost. maculatum *Sow. Thes. Conch.* i. t. 28. f. 171.

Pomatias obscurus *Pfeiffer*, l. c. 110. n. 3.

a—c. Pyrenees.

d—h. —?

i—m. Naples. Presented by S. P. Pratt, Esq.

n, o. Dauphiny. Presented by Professor E. Forbes.

7. POMATIAS STRIOLATUS.

Cyclostoma striolatum Porro, *Rev. Zool.* 1840, 106. (not Sow. f. 286.)

Pomatias striolatus Pfeiffer, l. c. 110. n. 4.

Hab. Europe.

8. POMATIAS SCALARINUS.

Pomatias scalarinus Villa in Pfeiffer, l. c. 110. n. 8.

9. POMATIAS GRACILIS.

Pomatias gracilis Kuster, Pfeiffer, l. c. 110. n. 9.

28. REALIA.

Operculum thin, few-whorled, horny. — *Shell* globose, turbinate, or turrated. Aperture oval. Peristome simple, straight, or somewhat expanded, with margins approximated.

Realia Gray, *Syn. B. Mus.* 1840, 1844, 91., *Proc. Zool. Soc.* 1847. (Cycl. rubens Quoy.)

Hydrocena Parreyss MS. ? Pfeiffer in *Menke und Pfeiffer, Z. f. Malak.* 1847.

1. REALIA CATTAROENSIS.

Cyclost. cattaroense Pfeiffer, *Wieg. Archiv.* 1841.

Hydrocena cattaroensis Pfeiffer, *Zeitsch.* l. c. 112. n. 1.

Hab. Cattaro.

2. REALIA BELANGERI.

? *Cyclost. aurantiacum* Desh. *Voy. Belanger, Zool.* 416. n. 6. t. 1. f. 16, 17. ; *Lamck. An. s. Vert.* 2nd ed. viii. 373. n. 43.

Hydrocena Belangeri Pfeiffer, l. c. 112. n. 3.

Hab. Pondicherry.

3. REALIA MINUTISSIMA.

Cyclost. minutissimum Sow. *Zool. Proc.* 1832, *Thes. Conch.* i. 102. n. 33. t. 30. f. 251.

Hydrocena minutissima Pfeiffer, l. c. 112. n. 2.

Hab. Pitcairn's Island.

4. REALIA EROSA.

Cyclostoma erosa Quoy & Gaim. *Voy. Astr. Zool.* ii. 191. t. 12. f. 40—44. ; *Lamck. An. s. Vert.* 2nd edit. viii. 370. n. 37.

Hydrocena erosa Pfeiffer, l. c. 112. n. 4.

Hab. Isle of Guam, Marianne Islands.

5. REALIA RUBENS.

Cyclost. rubens Quoy & Gaim. Voy. Astr. Zool. ii. 189. t. 12. f. 36—39.; *Lamck. An. s. Vert.* 2nd edit. viii. 368. n. 34.

Hydrocena rubens Pfeiffer, l. c. 112. n. 5.

Hab. Mauritius.

6. REALIA DUBIA.

Hydrocena dubia Pfeiffer, l. c. 112. n. 6.

Assaminea sp. *Cuming MS.*

7. REALIA HIEROGLYPHICA.

Hydrocena hieroglyphica Fér.; *Pfeiffer*, l. c. 112. n. 7.

8. REALIA OPARICA.

Hydrocena oparica Pfeiffer, l. c. 112. n. 8.

Assaminea sp. *Cuming.*

9. REALIA EGÆA.

Realia Egæa Gray, Proc. Zool. Soc. 1849.

a. New Zealand. Presented by Dr. A. Sinclair, R. N.

b—d. New Zealand. Presented by Major Greenwood.

29. FERUSSINA.

Ferussina Grateloup, Bull. Soc. Linn. Bord. ii. 5. 92. 1826? 1827;
Rang, Man. 180. 1829; *Pot. et Mich. Gal.* i. 232. 1833.

Ferussacia Leufroy, Ann. Sci. Nat. xv. 403. 1828 (not Risso, 1826);
Oken, Isis, 1834, 1036.; *Bronn, Lith.* 1013. 1838.

Strophostoma Desh. Ann. Sc. Nat. xiii. 1830, *Encyc. Méth.* ii. 51.
832. iii. 998.; *Gray, Syn. B. M.* 1842, 91.

Anastoma sp.

1. FERUSSINA ANASTOMÆFORMIS.

Ferussina anastomæformis Grateloup, l. c.

Strophostoma lævigata Desh. Ann. Sc. Nat. xiii. 286. t. 11 a. f. 1. 4.

Ferussacia lævigata Bronn, Lith. 1013. 40. t. 27.

Fossil.

C. *Uncertain Species.*

1. CYCLOSTOMA VARIEGATUM.

Cyclost. variegatum *Swains. Pfeiffer*, l. c. 112. n. 9.

2. CYCLOSTOMA CININNATIENSE.

Cyclost. cincinnatiense *Lea*; *Pfeiffer*, l. c. 112. n. 1.

3. CYCLOSTOMA MARGINATUM.

Turbo marginatus *Chemn. Conch. Cab.* ix. 60. t. 123. f. 1075. a and b.

Cyclost. marginatum *Pfeiffer*, l. c. 112. n. 5.

4. CYCLOSTOMA RIVULARIS.

Cyclost. rivularis *Eichw.*; *Pfeiffer*, l. c. 112. n. 7.

5. CYCLOSTOMA LIMBIFERUM.

Cyclost. limbiferum *Menke, Kuster, Chemn. Conch. Cab.* i. 19. t. 21. f. 6.

6. CYCLOSTOMA DENTATUM.

Cyclost. dentatum *Say*; *Pfeiffer*, l. c. 105. n. 37.

7. CYCLOSTOMA CARNEUM.

Cyclost. carneum *Menke MS. Pfeiffer, Kuster, Chemn. Conch. Cab.* 65. n. 61. i. 19. t. 9. f. 11, 12.

Hab. ?

Doubtful Species.

8. CYCLOSTOMA FASCIATA.

Cyclost. fasciata *Lamck. An. s. Vert.* vi. 2nd ed. viii. 358. n. 14.,
Enc. Méth. t. 461. f. 7.; *Desh. Enc. Méth. Vers*, ii. 42. n. 10.

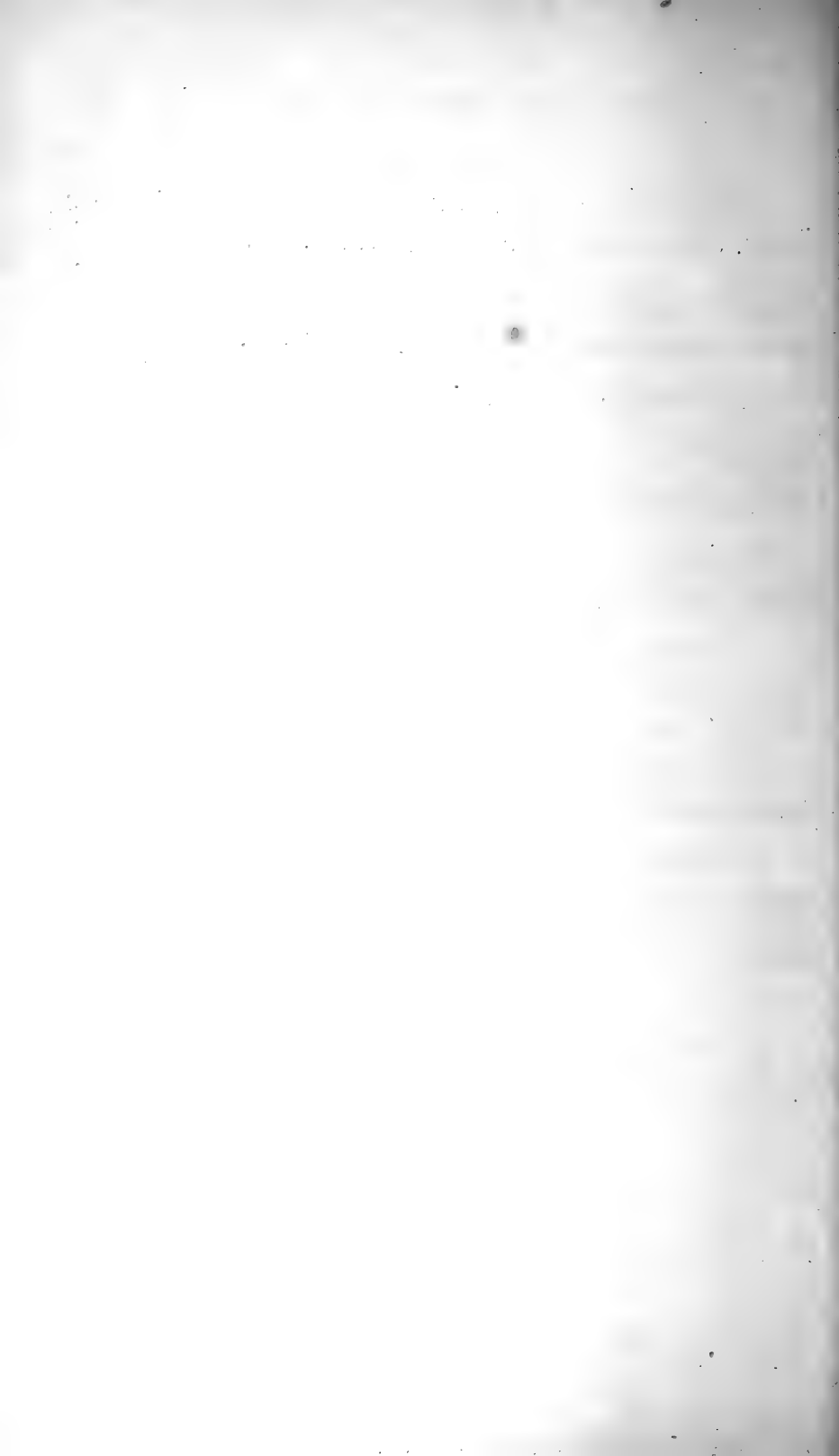
Cyclost. fasciatum *Sow. Thes. Conch.* i. 108. n. 52. t. 24. f. 65.

Helix truncata Dillw. Cat. ii. 948. n. 137.

Helix decollata Chemn. Conch. Cab. ix. t. 136. f. 1256, 1257.;

Favanne, Conch. t. 65. f. B. 10.

Hab. St. Domingo.



FAM. II. ACICULIDÆ.

Head with a rather produced aculeated proboscis, truncated at the end. *Tentacula* subulate. *Eyes* on the back of the head, between, and rather behind the base of, the tentacula.

Foot oblong, short.

Shell spiral, turrited. *Mouth* ovate.

Operculum spiral, few-whorled, thin.

Auriculadæ (pars) *Gray, Syn. B.M.* 1840, *Turton's Man.* 2nd ed. 222., *Proc. Zool. Soc.* 1848, 130.

Cyclostomacea (pars) *Pfeiffer, Zeitsch. f. Malak.* 1847, 103.

These animals have been confounded with *Auriculadæ*. Fé-russac (*Dict. Class. H. N.* ii. 90. 1822) first noticed the operculum, and Mr. Alder has more lately described it.

1. ACICULA.

Operculum very thin, glassy, few-whorled.—*Shell* subimperforate; cylindrical. *Peristome* rather thickened, with sub-parallel margins joined by a thin callus.

Acicula *Hartmann* in *Steinmuller, Neue Alpina*, i. 205. 215. 1821 (not *Risso*, 1826, nor *Blainv.* 1825); *Pfeiffer, Archiv f. Naturg.* i. 228. 1825, in *Menke und Pfeiffer, Z. f. Malak.* 1847.

Auricula (pars) *Draparnaud.*

Carychium *Studer.*

Carychium sp. *Fleming, Brit. Anim.* 1828; *Potiez et Mich. Gal. Moll. Douai.*

Acme *Hartmann*, 1828; *Sturm, Faun.* vi. 37. 1821; *Gray, Turt. Man.* 2nd ed. 222.

Acmea *Gray, Proc. Zool. Soc.* 1847, 180.

Turbo sp. *Montag. B. Shells.*

Bulimus sp. *Turton.*

Cyclostoma sp. *Férussac, Dict. Class. Hist. Nat.* ii. 90.; *Porro; Alder, Moll. North.; Quoy & Gaim. Voy. Astrol.* ii. 186.

Pupula *Agassiz* in *Charpent. Catal.* 22. 1839; *Hartmann, Erd et Sussw. Gasterop.* 1840.

Auricella sp. *Jurine.*

N. B. *Acmea* *Hartmann* in *Steinmuller, Neue Alpina*, 204. 212., according to *Herrmannsen*, i. 15., is established on *Cyclostoma truncatula* *Drap.*, and is synonymous with *Truncatella* *Risso*. *Acmea* of *Eschscholtz* is the *Lottia* of *Gray*.

1. ACICULA FUSCA.

Turbo fuscus Walker, *Min. Shells*, f. 42.

Auricula lineata Drap. *Moll.* 17. t. 3. f. 20, 21.

Carychium lineatum Pfeiffer, *Syst. Anord.* iii. 43. t. 7. f. 26, 27.;

Rossmass. Iconog. vi. t. 29. f. 408.

Carychium cochlea Stud. *Syst. Verz.* 21.; *Fér. Prodr.* 104. n. 1.

Carychium acicularis Férus. *Dict. Sc. Nat.* vii. 188. 1817.

Acicula lineata β. *polita* Hartm. *Neue Alpin.* 215. n. 9.

Acme lineata Hartm.; *Sturm, Faun.*

Bulimus lineatus Turton, *Man.* n. 66.

Carychium fuscum Flem. *Brit. An.* 270. n. 97.

Acicula fusca Pfeiffer, l. c. 111. n. 2.

a—z. Copford, Essex. Semifossil. Presented by Miss Alicia Barker.

aa—rrr. Copford, Essex. Semifossil. Presented by S. P. Woodward, Esq.

2. ACICULA SPECTABILIS.

Acicula spectabilis Rossmass.; Pfeiffer, l. c. 111. n. 1.

Hab.

3. ACICULA STRIATA.

Cyclost. striata Quoy & Gaim. *Voy. Astrol.* ii. 186. t. 12. f. 27.

Hab. Vanikoro, on leaves. Quoy.

2. GEOMELANIA.

Animal like *Acicula*. — *Operculum* horny, ovate, of a few rapidly enlarging whorls. — *Shell* imperforate, turritid. Aperture entire, effused. Peristome simple, expanded; the margins joined, the basal produced into a somewhat twisted tongue-shaped appendix.

Geomelania Pfeiffer in *Menke und Pfeiffer, Z. f. Malak.* 1847.

1. GEOMELANIA JAMAICENSIS.

Geomelania jamaicensis Pfeiffer, l. c. 111. n. 1.

a—c. Jamaica.

INDEX.

- Acicula, 67.
Acme, 67.
Acmea, 67.
Alycæus, 27.
Anastoma, 64.
Annularia, 15. 57.
Aperostoma, 6.
Aulopoma, 14.
Auricella, 67.
Auricula, 67.
- Bolania, 14.
Bulimus, 54. 67.
- Callia, 34.
Carychium, 54. 67.
Cistula, 57.
Choanopoma, 48.
Chondropoma, 55.
Craspedopoma, 13.
Cyclophora, 15.
Cyclophorus, 15.
Cyclostoma, 42.
Cyclostome, 42.
Cyclostomus, 42.
Cyclotus, 4.
- Diplommatina, 54.
- Electrina, 30.
- Farcimen, 28.
Ferussacia, 64.
Ferussina, 64.
- Geomelania, 68.
- Hydrocena, 63.
- Leonia, 34. 42.
Leptopoma, 23.
Licina, 48. 57. 60.
Lithidion, 35.
Lituus, 14.
- Megalomastoma, 30.
Moulinsia, 32.
Myxostoma, 14.
- Otopoma, 35.
- Pomatias, 61.
Poteria, 6.
Pterocyclos, 11.
Pupina, 33.
Pupinella, 33.
Pupula, 67.
Pyxis, 10.
- Realia, 63.
Registoma, 31.
Rhegostoma, 31.
Rhexistoma, 31.
- Spiraculum, 11.
Steganotoma, 11.
Strophostoma, 64.
- Tropidophora, 37.
Truncatella, 56.
Tudora, 48.
- Valvata, 14.

1787

LONDON:
SPOTTISWOODES and SHAW,
New-street-Square.

