

19 THE 28
OAK
LEAVES





Alma Witt

CARLYLE
CAMPBELL
LIBRARY

Meredith College
Raleigh, NC 27607-5298





PUBLISHED BY THE
ASTROTEKTON AND PHILARETIAN LITERARY SOCIETIES

ILLUSTRATED BY THE
ART DEPARTMENT AND STUDENTS

RUTH BOWDEN, *Editor*
MARY WILLIS, *Business Manager*

MEREDITH COLLEGE
RALEIGH, N. C.





Dak Leaves
Volume 25
East & West number

CARLYLE CAMPBELL LIBRARY
MEREDITH COLLEGE

Foreword

"GREAT as has been the advance in the Arts and Sciences in the past 435 years, equally great has been the progress of the intellect. Superstition and fear no longer deter men from advancing the means to conquer the unknown. The wind, the rain, and the storm are no longer peopled by gods, nor by the devils; darkness no longer holds its terrors."—DWIGHT F. DAVIS, *Secretary of War*.

From the clipping above one learns that the time has come when the words

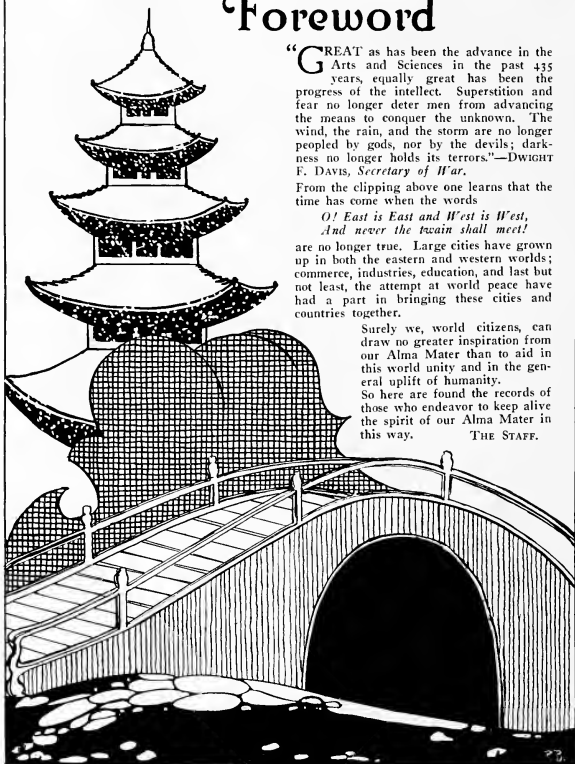
*O! East is East and West is West,
And never the twain shall meet!*

are no longer true. Large cities have grown up in both the eastern and western worlds; commerce, industries, education, and last but not least, the attempt at world peace have had a part in bringing these cities and countries together.

Surely we, world citizens, can draw no greater inspiration from our Alma Mater than to aid in this world unity and in the general uplift of humanity.

So here are found the records of those who endeavor to keep alive the spirit of our Alma Mater in this way.

THE STAFF.



Contents

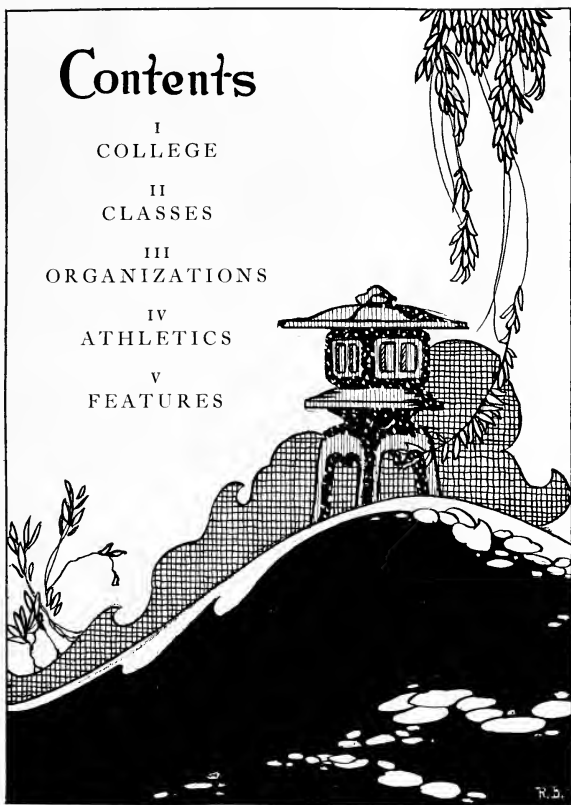
I
COLLEGE

II
CLASSES

III
ORGANIZATIONS

IV
ATHLETICS

V
FEATURES





Dedication

Editors-in-Chief

Business Managers

RUBY REID	1905	BELLE TYNER
MARY JOHNSON	1906	LUCILE WITHERS
LUCILE WITHERS	1907	STEPHENS CARRICK
NANNIE E. PIGG	1908	JENNIE FLEMING
GRACE DAPHNE ROGERS	1909	MARTHA LAWRENCE
GRACE COUNCIL	1910	ANNIE GARDNER
LUCILE ARTHUR	1911	ALMA HOLLAND
KATE WATSON	1912	FANNIE WEBB
HATTIE HERRING	1913	LILLIAN WILKINSON
ANNE MCKAUGHAN	1914	MARGARET GULLEY
ADA BRIGGS	1915	LAVIECE CHAMBLISS
ALBERTA BROWN	1916	CORNELIA COVINGTON
NELL ADELAIDE PASCHAL	1917	NANCY E. JOYNER
CARMEN ROGERS	1918	FRENCH HAYNES
ISABELLE POTEAT	1919	ELSIE RIDDICK
DOROTHY BLAND	1920	GLENN WARD
LIDIE PENTON	1921	ANNIE HALL BAITY
KATHLEEN MATHESW	1922	MADGE HEDRICK
THOMASINE UNDERWOOD	1923	LOUISE BOWDEN
SUSIE HERRING	1924	JOYNER BEAMON
MONTA CLARK	1925	LILLIAN EVANS
MARTHA LIVERMON	1926	BETTY HEWLETT
CLARISSA POTEAT	1927	MARGARET HAYWOOD





Dedication

*To the
builders of the past Oak Leaves,
who are scattered to the East
and West, and who
endeavored to create within us
a new zeal for Alma Mater, we
dedicate this
twenty-fifth volume of the*

Oak Leaves





Alma Mater

*We salute thee, Alma Mater, we salute thee with a song;
At thy feet our loyal hearts their tribute lay;
We had waited for thy coming, in the darkness waited long,
Ere the morning star proclaimed thy natal day.*

*Thou hast come through tribulation, and thy robe is clean and white!
Thou art fairer than the summer in its bloom.
Thou art born unto a kingdom, and thy crown is all of light;
Thou shalt smile away the shadow and the gloom.*

*In thy path the fields shall blossom and the desert shall rejoice,
In the wilderness a living fountain spring;
For the blind shall see thy beauty, and the deaf shall hear thy voice,
And the silent tongues their high hosannas sing.*

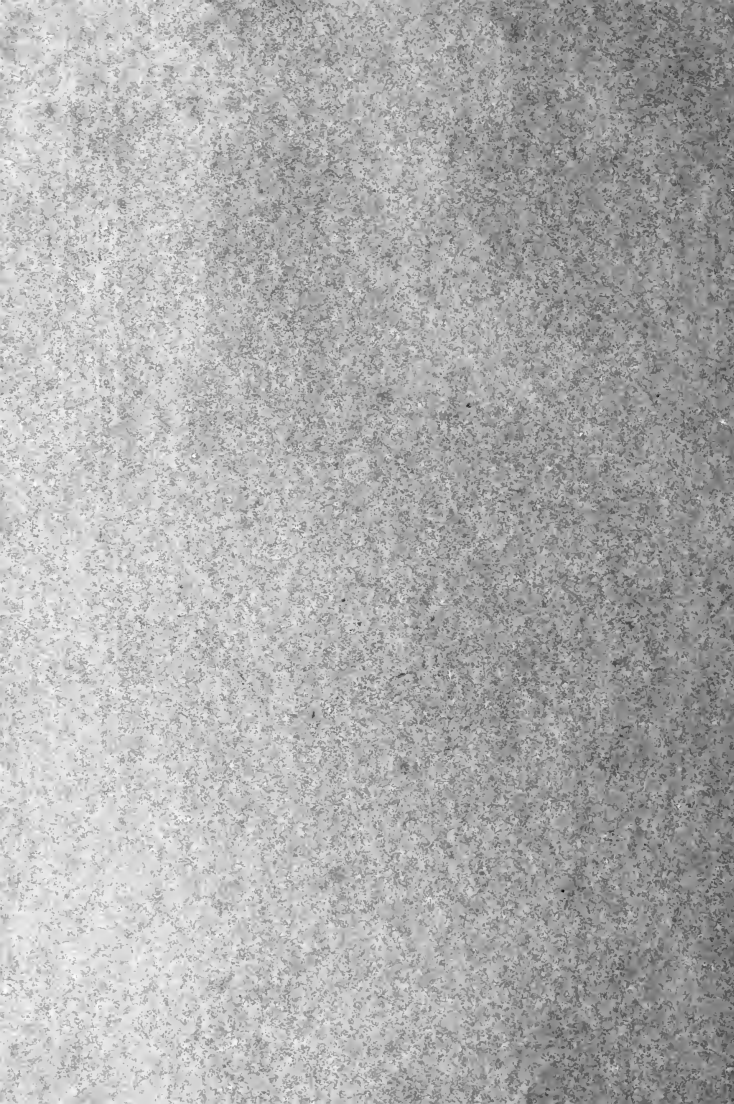
*Where the rhododendron blushes on the burly mountain's breast,
In the midland where the wild deer love to roam,
Where the water lily slumbers while the cypress guards its rest,
Lo! thy sunny land of promise and thy home.*

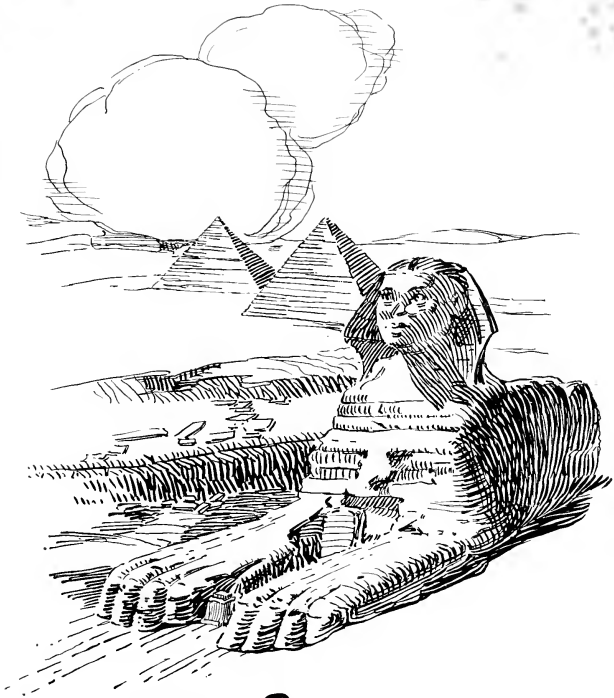
*Where the sons of Carolina taught a Nation to be free,
And her daughters taught their brothers to be brave;
O'er a land of peaceful plenty, from the highlands to the sea,
May thy banner, Alma Mater, ever wave!*

R. T. VANN.



COLLEGE





The Faculty



CHARLES E. BREWER
PRESIDENT





J. GREGORY BOOMHOUR
DEAN





MISS GRACE LAWRENCE
DEAN OF WOMEN





Officers of Administration

CHARLES EDWARD BREWER, A.M., Ph.D., LL.D.

Wake Forest College, A.M.; Graduate Student Johns Hopkins University; Cornell University, Ph.D.;
Baylor University, LL.D.
President

J. GREGORY BOOMHOUR, A.B., A.M.

Colgate University, A.B.; University of Chicago, A.M.
Dean

GRACE E. LAWRENCE

Student, North Carolina College for Women, University of North Carolina, and Columbia University
Dean of Women

CAROLINE ROBINSON BIGGERS, A.B.

Meredith College, A.B.; Graduate Student University of North Carolina
Assistant Dean of Women

MARY SIMS SMITH, A.B.

Thomasville Female College, A.B.; Student University of North Carolina Summer School; Student
University of California Summer School
Acting Assistant Dean of Women

WILLIAM JASPER FERRELL, A.B.

Wake Forest College, A.B.; Student Cornell University
Bursar

GLADYS BOONE LEONARD, A.B., B.S.

Meredith College, A.B.; Simmons College, Boston, B.S.
Acting Librarian

GERTRUDE ROYSTER

Graduate of St. Mary's School, State Normal College; Special Student of Physical Training at
Trinity College, Columbia and Yale
Director of Physical Education

RUBY DAVIS, A.B.

Meredith College, A.B.
Assistant Librarian

LATTIE RHODES

Coker College
Secretary to the President

HATTIE H. FERRELL

Secretary to the Bursar

MARY FRANCES WELCH, B.S.

Hilman College, B.S.; Graduate of School of
Home Economics and Dietetics of Battle Creek
Sanitarium
Dietitian

ANNIE LEE WHITE

House Director

MRS. BEULAH WRIGHT COOPER

Stewardess for the Meredith Club

MRS. OCTAVIA SCARBOROUGH NORWOOD

Nurse





Faculty of Arts and Sciences

ELIZABETH DELIA DIXON CARROLL, M.D.
 Woman's Medical College of the New York
 Infirmary
Professor of Physiology; College Physician

LEMUEL ELMER McMILLAN FREEMAN,
 A.B., A.M., B.D., Th.D.
 Furman University, A.B.; Harvard University,
 A.M.; Newton Theological Institute, B.D.;
 Southern Baptist Theological Seminary, Th.D.;
 Student University of Chicago
Professor of Religious Education

CATHERINE ALLEN, A.B., A.M.
 Oberlin College, A.B., A.M.; Postgraduate Stud-
 ent University of Chicago; Harvard University;
 University of Berlin; The Sorbonne
Professor of Modern Languages

J. GREGORY BOOMHOUR, A.B., A.M.
 Colgate University, A.B.; University of Chicago,
 A.M.
Professor of Physics

ERNEST F. CANADAY, A.B., A.M.
 William Jewell College, A.B.; University of Mis-
 souri, A.M.
Professor of Mathematics

SAMUEL GAYLE RILEY, A.B., A.M.
 Princeton University, A.B., A.M.
Professor of History and Economics

LULA GAINES WINSTON, B.S., Ph.D.
 Richmond College, B.S.; John Hopkins Univer-
 sity, Ph.D.
Professor of Chemistry

JULIA HAMLET HARRIS, Ph.B., A.M., Ph.D.
 University of North Carolina, Ph.B.; Cornell
 University, A.M.; Yale University, Ph.D.
Professor of English

LENA AMELIA BARBER, B.S., A.B., M.S.
 Adrian College, B.S.; University of Michigan,
 A. B., M.S.; Fellow in Botany in Graduate
 School, University of Missouri
Professor of Biology

ELLEN DOZIER BREWER, A.B., B.S., A.M.
 Meredith College, A.B.; Columbia University,
 B.S., A.M.
Professor of Home Economics

HERBERT JUDSON PERRY, A.B., B.D., A.M.
 Acadia University, A.B.; Colgate University,
 B.D., A.M.; Graduate Student Southern Baptist
 Theological Seminary; University of South
 Carolina
Professor of Education

HELEN PRICE, A.B., Ph.D.
 Swarthmore College, A.B.; University of Penn-
 sylvania, Ph.D.
Professor of Latin and Greek

MARY LYNCH JOHNSON, A.B., A.M., Ph.D.
 Meredith College, A.B.; Columbia University,
 A.M.; Cornell University, Ph.D.
Professor of English

MARY LOUISE PORTER, Ph.B., A.M.
 University of Chicago, Ph.B.; Cornell Univer-
 sity, A.M.; Student Harvard University; Oxford,
 England; Alliance Française, Paris
Associate Professor of Modern Languages

MARY MARTIN JOHNSON, A.B., A.M.
 Meredith College, A.B.; University of West Vir-
 ginia, A.M.
Associate Professor of Chemistry

MARY LOOMIS SMITH, A.B., A.M.
 Trinity College, A.B.; Columbia University, A.M.
Assistant Professor of English

HERMINE CAROLINE STUEVEN
 Graduate the Hanover Teachers' College, Ger-
 many; Graduate Student of the Sorbonne, Paris;
 Harvard and Columbia Universities
Assistant Professor of Modern Languages

SARA LUCILE BURRIS, A.B., A.M.
 Anderson College, A.B.; Cornell University, A.M.
Instructor in English





Faculty of Arts and Sciences

(Continued)

LILLIAN PARKER WALLACE, A.B.
University of Denver, A.B.; Graduate Student of
University of North Carolina
Instructor in History

ELIZABETH BURDEN PARKER, A.B., A.M.
University of Richmond, A.B.; Columbia Uni-
versity, A.M.
Instructor in English

MARY FRANCES WELCH, B.S.
Hilman College, B.S.; Graduate of School of
Home Economics and Dietetics, Battle Creek
Sanitarium
Instructor in Physiology

DORIS KATHERINE TILLERY, A.B.
Meredith College, A.B.
Instructor in Mathematics

ANNIE MITCHELL BROWNLEE, A.B.
Mississippi State College for Women, A.B.;
Summer Session University of Michigan
Instructor in Biology

NETTIE SOUTHWORTH HERNDON, A.B., A.M.
West Virginia University, A.B., A.M.
Assistant Professor of History

CONNIE MAY HORNE, A.B., A.M.
Oxford College, A.B.; Columbia University, A.M.
Instructor in Modern Languages

MARY JAMES SPRUILL, A.B., A.M.
University of North Carolina, A.B., A.M.;
Graduate Student of Columbia University and
University of North Carolina
Instructor in English

FLORENCE MARIAN HOAGLAND, A.B., A.M.
Cornell University, A.B.; Columbia University,
A.M.
Instructor in Education

MARY GRAYDON, A.B., A.M.
University of South Carolina, A.B., A.M.
Assistant Professor of Latin

W. W. DAVIDSON, A.B., Th.M.
Furman University, A.B.; Southern Baptist
Theological Seminary of Kentucky, Th.M.
Assistant Professor of Religious Education

LUCY PLATT, B.S.
Mississippi State College for Women, B.S.
Director of Recreation and Dramatics



Faculty of School of Art

IDA ISABELLA POTEAT
New York School of Fine and Applied Arts; Cooper Union Art
School, New York; School of Applied Design, Philadelphia; Pupil
of Mounier; Chase Class, London.
Professor of Art

MARY H. TILLERY
Meredith College, Diploma in Art; Graduate Study in Pennsylvania
Academy of Fine Arts.
Associate Professor of Art





Faculty of School of Music

DINGLEY BROWN, MUS.D.

London College of Music, Licentiate, and Doctor of Music; Fellow Society of Science and Arts, London

Director-Professor of Piano, Organ and Theory

MAY CRAWFORD

Graduate Brownell Hall, Omaha, Nebraska; Student University of Nebraska School of Music; four years in Paris; Piano with Wagner Swayne; Harmony and Analysis with Campbell Tipton; Solfeggio and Theory with Emile Schwartz of Paris Conservatoire

Professor of Piano

CHARLOTTE E. ARMSTRONG

Institute of Musical Art, N. Y. C.; Pupil of Charles M. Loeffler, Anton Wittek and Felix Winternitz

Professor of Violin

KATHRYN CAREY

Graduate of Oberlin Conservatory of Music

Instructor in Piano

MILDRED E. WIGGIN

Graduate of Piano at Washington College; Pupil of Moses Boguslavoski; Graduate of New England Conservatory in Boston; Pupil of Dennee of New England Conservatory of Music

Instructor in Piano

EMILY PARSONS

State Normal of Massachusetts School of Music Pedagogy, Northampton, Mass.; Student of Mabel A. Maynard, Rupert Nelly, La Forge and Monsieur Puel

Professor of Voice

MARTHA CAROLINE GALT, A.B.

Shorter College, Diploma in Piano and A.B. Degree; Post Graduate Work in Piano, Shorter College; Pupil of Heinrich Pfitzner and Rudolph Ganz, New York City

Professor of Piano

LOUISE BURTON OWSLEY

Diploma in Public School Music, Cincinnati Conservatory of Music; Pupil of Leo Paalz, Cincinnati Conservatory; Student of Public School Music, Hollis Dann, West Chester State Normal, West Chester, Penn.

Professor of Public School Music

RUTH MELBA ARMSTRONG

Diploma Illinois College Conservatory of Music; Studied with Mrs. Genevieve Clark Wilson, Springfield, Ill., Arnold Lovejoy and Arthur Westbrook, Bloomington, Ill., Clayton C. Quast, Chicago, and coached with Edgar A. Nelson, Chicago

Professor of Voice

LOUISE E. WALSWORTH

Teachers' Certificate Lyceum Arts Conservatory, Chicago; Voice Diploma, University School of Music, Ann Arbor, Michigan

Professor of Voice





Alumnae Association

President

MRS. ROBERT EVERETT
Palmyra, N. C.

Acting President

MISS BERTHA CARROL
Chowan College, Murfreesboro, N. C.

Secretary

MRS. CHARLES HARRIS
Rocky Mount, N. C.

Treasurer

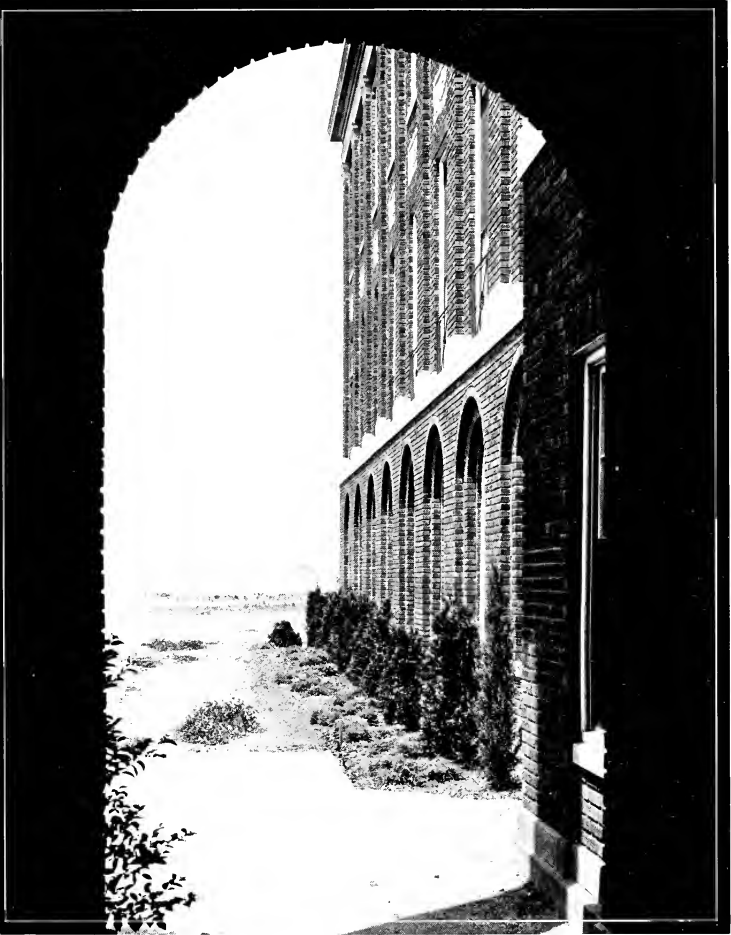
MISS LULIE REYNOLDS
Raleigh, N. C.

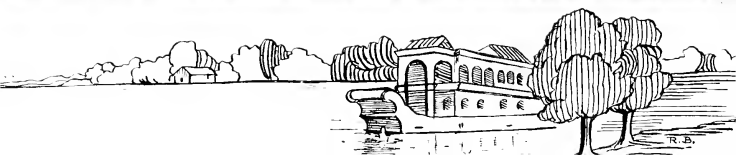
Reporter on "Twig"

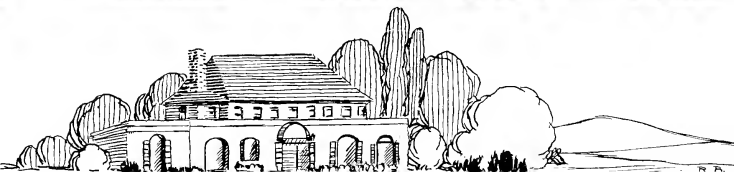
MISS ELLEN BREWER
Meredith College, Raleigh, N. C.















In Memoriam



Gertrude Souseley

Born October 23,
1879

Died July 31,
1927



Instructor in Piano

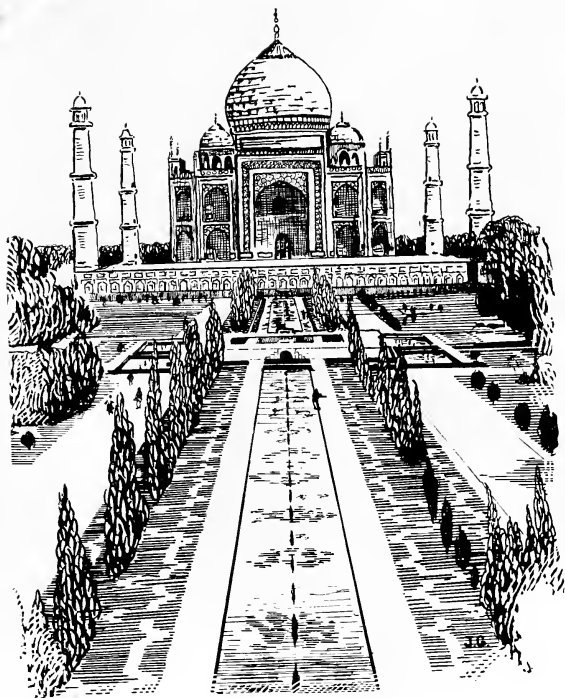




CLASSES

J.G.





Seniors



MARY ELIZABETH PHINNEY
MASCOT





Senior Class Officers

- MILDRED ALLEN *President*
 MUSETTE KITCHIN *Vice-President*
 MARY WILLIS *Secretary and Treasurer*
 SARA OLIVER *Historian*
 PAULINE FREEMAN *Prophet*
 MADALINE MOORE *Testator*
 RUTH BOWDEN *Poet*

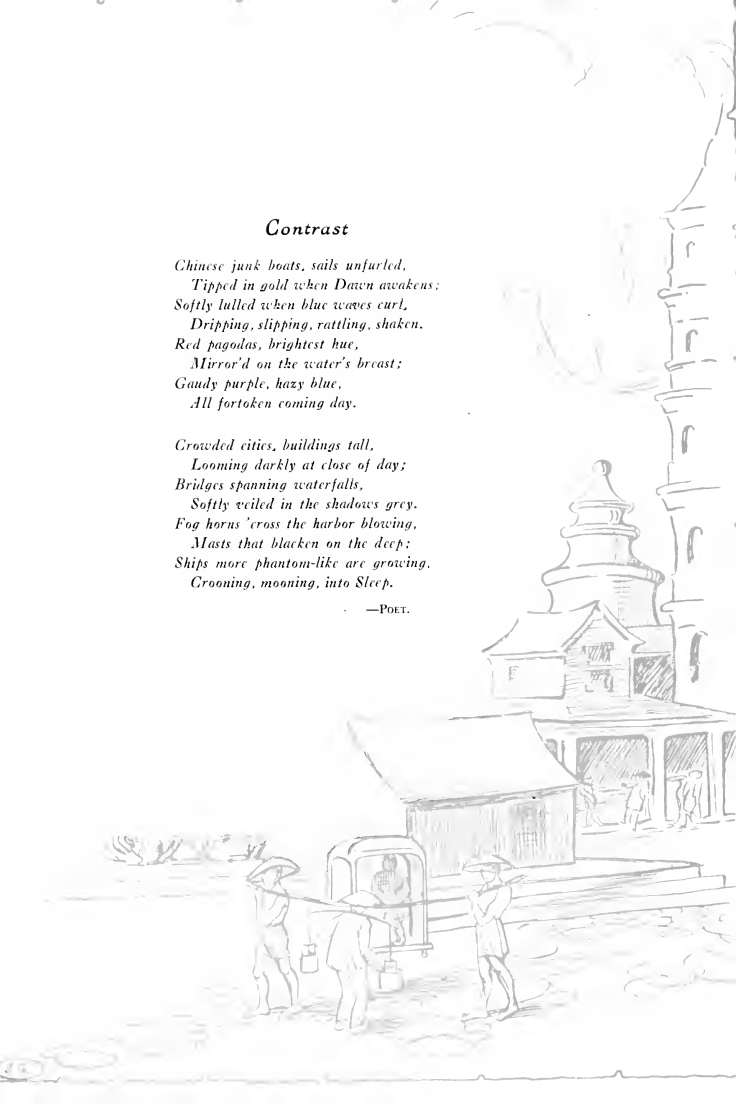


Contrast

*Chinese junk boats, sails unfurled,
Tipped in gold when Dawn awakens;
Softly lulled when blue waves curl,
Dripping, slipping, rattling, shaken.
Red pagodas, brightest hue,
Mirror'd on the water's breast;
Gaudy purple, hazy blue,
All foretolden coming day.*

*Crowded cities, buildings tall,
Looming darkly at close of day;
Bridges spanning waterfalls,
Softly veiled in the shadows grey.
Fog horns 'cross the harbor blowing,
Masts that blacken on the deep;
Ships more phantom-like are growing,
Crooning, mooning, into Sleep.*

—POET.



Senior Class

LONIE GORDON

BASKERVILLE, VA.

Astrotekton

Class President (1);
Annual Staff (2, 3);
President Astrotekton Society (4).



MARY BROWNING

MONROE, N. C.

Philaretian

Wingate College (1, 2);
Basketball Team (3, 4);
Assistant Athletic Director (4).



Senior Class

ISABEL MACLEOD

LUMBERTON, N. C.

Philaretian

Vice-President Y. W. C. A. (3);
President Y. W. C. A. (4);
B. S. U. Council (4);
Nominating Committee (4).

HOWARD MUMFORD

WALLBURG, N. C.

Astrocton

Mars Hill College (1, 2);
Officer B. Y. P. U. (3, 4);
Classical Club (3, 4);
Colton English Club (4);
Home Economics Club (4);
Mars Hill Club (3, 4).

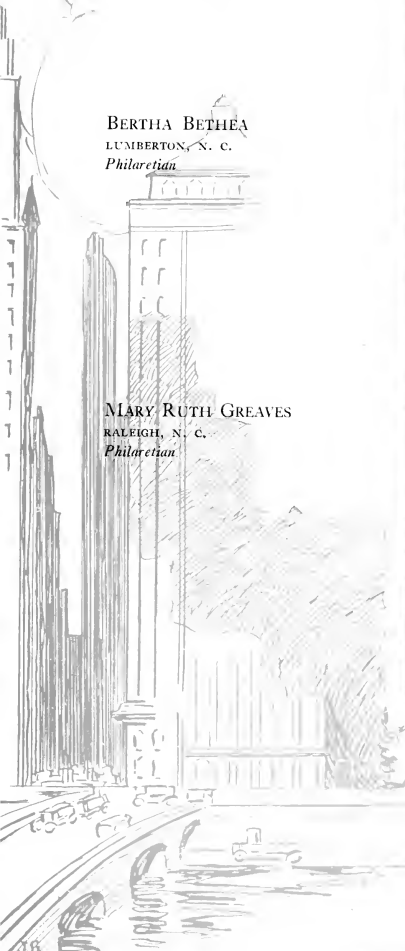


Senior Class

BERTHA BETHEA
LUMBERTON, N. C.
Philaretian



MARY RUTH GREAVES
RALEIGH, N. C.
Philaretian



Senior Class

THELMA HALES

ENFIELD, N. C.

Philaretian

VIRGINIA BRANCH

ENFIELD, N. C.

Philaretian

Accompanist Glee Club (2, 3, 4);
Accompanist Choir (2, 3, 4);
Pianist B. Y. P. U. (1, 2);
Pianist General B. Y. P. U. (2);
Treasurer Glee Club (3, 4);
Pianist Y. W. A.



Senior Class

DOROTHY TURLINGTON

SALEMBURG, N. C.

Astrotektion

College Choir;

Secretary Class (2);

Glee Club (3, 4);

President Glee Club (4);

Vice-President Astrotektion Society (4);

Pianist B. Y. P. U. (3);

General Pianist B. Y. P. U. (4);

Proctor Practice Halls (3);

Head Proctor (4).



EVELYN RHEA WOOD

ENFIELD, N. C.

Philaretian

College Choir (1, 2, 3, 4);

Glee Club (2, 3, 4);

Secretary Glee Club (4);

General Chorister B. Y. P. U. (3);

B. Y. P. U. Group Leader (4);

Vice-President Class (3);

First Baptist Church Choir (2);

Choister Sunday School Department (3);

President of Sunday School Class (3).



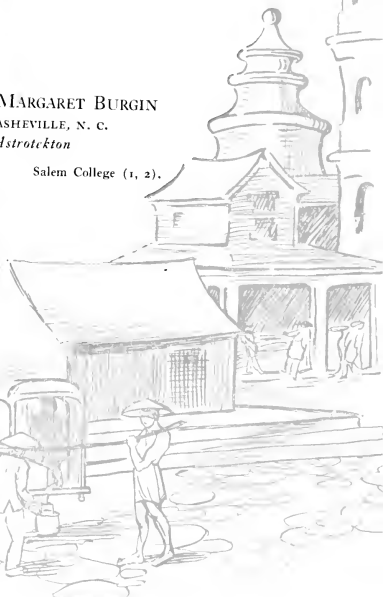
Senior Class

MARY BROCKWELL
RALEIGH, N. C.

Glee Club (1, 2, 3, 4);
Choir (1, 2, 3, 4).

MARGARET BURGIN
ASHEVILLE, N. C.
Astrotckton

Salem College (1, 2).



Senior Class

MARY LEE COPELAND

EDENTON, N. C.

Philaretian

Wake Forest Brothers Club (1, 2);
Classical Club (2);
International Relations Club (3, 4).



PAULINE HUFF

ASHEVILLE, N. C.

Astrotekton

Mars Hill College (1, 2);
Officer of Mars Hill Club (4);
Officer Colton English Club (4).



Senior Class



PAGE MOREHEAD

WELDON, N. C.

Astrotekton

Martha Washington Seminary (1, 2).



MOELLA ASKEW

WINDSOR, N. C.

Astrotekton

Chowan College (1, 2);
Dramatic Club (2);
Althenian Society (2);
Althenian Marshal (1, 2);
Classical Club (2);
Secretary Class (1);
Champion Soccer Team (1);
Graduated in Dramatics (2).



Senior Class

MILDRED ALLEN

WARRENTON, N. C.

Astrotekton

Commencement Marshal (2);
"Twig" Staff (3);
International Relations Club (4);
Home Economics Club (4);
Nominating Committee (4);
President Class (4).



MARY WILLIS

ASHEVILLE, N. C.

Astrotekton

Cheer Leader (1);
Tennis Team (1, 2, 3);
Class Secretary-Treasurer (4);
Business Manager "Oak Leaves" (4);
"Oak Leaves" Staff (3);
Y. W. A. Study Course (4);
W. A. A. (4).



Senior Class

LOUISE MCCOMB

HICKORY, N. C.

Philaretian

K. K. K. Club (1, 2, 4);
Assistant Art Editor "Oak Leaves" (3);
Colton English Club (4);
Classical Club (4);
Tennis Team (2).

MADELINE MOORE

GASTONIA, N. C.

Philaretian

President Class (2);
President Philaretian Society (4);
Mathematics Club (2, 3, 4);
Vice-President Mathematics Club (3);
Marshal Philaretian Society (3);
Colton English Club (3, 4);
"Acorn" Staff (2, 3);
Assistant Business Manager "Acorn" (3);
Nominating Committee (2, 3);
Testator (4).



Senior Class

CHARLOTTE CURTIS

MAXTON, N. C.

Astrotekton

Robeson County Club (1, 2, 3, 4);
Student Government Council (3, 4);
Sub-House President (2);
Treasurer Student Government (3);
Vice-President Student Government (4);
"Acorn" Staff (2);
Glee Club (3, 4);
Business Manager Glee Club (4).



PAULINE FREEMAN

RAEFORD, N. C.

Philarctian

Alliance Francaise (1);
Classical Club (2);
Colton English Club (3, 4);
B. Y. P. U. Officer (3);
House President (4);
Student Council (4);
Class Prophet (4).



Senior Class



MUSETTE KITCHIN

SCOTLAND NECK, N. C.

Astrotekton

Hollins College (1);
St. Mary's School (2);
Vice-President Class (4);
B. Y. P. U. Cheer Leader (4);
B. Y. P. U. President (4);
Business Manager "Twig" (4);
International Relations Club (4);
Astrotekton Cheer Leader (4).



SARA OLIVER

PINE LEVEL, N. C.

Astrotekton

Freshman Representative Student Govern-
ment Council (1);
Basketball Team (1, 2, 3, 4);
Treasurer of Athletic Association (1);
President Class (3);
Johnson County Club (3);
Nominating Committee (3);
Business Manager "Acorn" (4);
Home Economics Club (4);
Class Historian (4);
International Relations Club (4).



Senior Class

MARY LEE SEARS

RALEIGH, N. C.

Philaretian

Le Cercle Francais (1, 2, 3, 4);

Colton English Club (3, 4);

Classical Club (4).



ELIZABETH RICHARDSON

WAKE FOREST, N. C.

Astrotekton

Wake Forest Brothers Club (1, 2);

Chemistry (2, 3);

"Oak Leaves" Staff (3);

Photograph Editor "Oak Leaves" (4);

International Relations Club (4).



Senior Class

EULA HODGES

BOONE, N. C.

Astrotekton

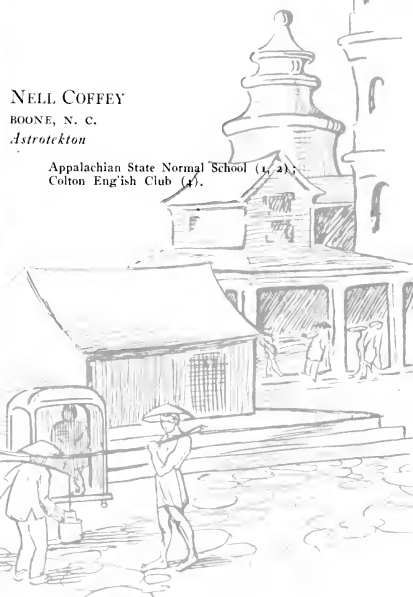
Appalachian State Normal School (1);
Member Y. W. C. A. Cabinet (3);
President B. Y. P. U. (4);
Alliance Francaise (3, 4);
Circulation Manager and Exchange Editor
"Twig" (4).

NELL COFFEY

BOONE, N. C.

Astrotekton

Appalachian State Normal School (1, 2);
Colton English Club (4).



Senior Class

RUTH BROOKSHIRE

ASHEVILLE, N. C.

Philaretian

Mars Hill College (1, 2);
Mars Hill Club (3, 4);
B. Y. P. U. Officer (3, 4);
Colton English Club (4);
President Classical Club (4);
Home Service Band (3, 4);
Assistant in Biology (4).



ETHEL FRYE

WINSTON SALEM, N. C.

Philaretian

Mars Hill College (1, 2);
Officer Mars Hill Club (4);
Classical Club (3, 4);
Meredith Representative on Pullen B. S.
U. Council (4);
Officer B. Y. P. U. (4);
Home Service Band (3, 4).



Senior Class



KATHARINE MADDRY

RALEIGH, N. C.

Philaretian

North Carolina College for Women (1);
President Student Government Association
(4);
International Relations Club (3);
Colton English Club (3);
Biology Assistant (3);
Town Girls Club (2);
Assistant Business Manager "Twig" (3);
"Acorn" Staff (3);
Nominating Committee (4);
Official Chaperon (4).



MABEL CLAIRE HOGGARD

AHOSKIE, N. C.

Philaretian

Reading Honors (1, 2, 4);
Correspondent for "Baptist Student" (3,
4);
General B. Y. P. U. Officer (3, 4);
B. Y. P. U. President (2);
Assistant Circulation Manager "Twig"
(2);
Managing Editor "Twig" (3);
Y. W. A. Council (3);
President Young Peoples Department of
First Baptist Sunday School (4);
General Officer Sunday School Depart-
ment (3);
Editor-in-Chief "Twig" (4).



Senior Class

MARY RODWELL HUNTER

KINSTON, N. C.

Philaretian

Chief Marshal (4);
Official Chaperon (4);
Secretary Sunday School Department (4);
Member W. A. A. (4);
Secretary S. G. Association (3);
B. Y. P. U. Officer (1, 2, 3, 4);
College Cheer Leader (3);
Class Cheer Leader (2, 3, 4);
Tennis Team (1, 3);
Curie Chemistry Club (2);
Chemistry Association (3, 4);
Reading Honors (1);
International Relations Club (4).



MADALINE ELLIOTT

EDENTON, N. C.

Astrotekton

B. S. U. President (4);
Official Chaperon (4);
Nominating Committee (4);
B. S. U. Council (3, 4);
Colton English Club (3, 4);
Le Cercle Francais (3, 4);
President Home Service Band (3);
"Twig" Staff (2, 3);
"Oak Leaves" Staff (2);
Classical Club (1, 2);
Wake Forest Brothers Club (1, 2);
B. Y. P. U. Officer (1, 2, 3);
Library Assistant (2, 3, 4);
Second Prize State Peace Oratorical Contest (1);
Reading Honors (1, 2).



Senior Class

LOIS ROSS

RALEIGH, N. C.

Philaretian

Mars Hill College Piano (1, 2);
Choir (1, 2, 3);
Colton English Club (3, 4);
Classical Club (3, 4);
Mars Hill Club (3, 4).

GRACE HONEYCUTT

BURNSVILLE, N. C.

Philaretian

Colton English Club (4);
Classical Club (4);
Mars Hill Club (4).



Senior Class

MINNIE BRILEY

POLKTON, N. C.

Philaretian

Wingate Junior College (1, 2);

Basketball (3, 4);

Member W. A. A. (4).



VIOLA THOMAS

MICAVILLE, N. C.

Astroekton

Math Club (1, 2, 3);

Home Economics Club (3);

Classical Club (2).



Senior Class

AILENE YOUNG

ASHEVILLE, N. C.

Philarectian

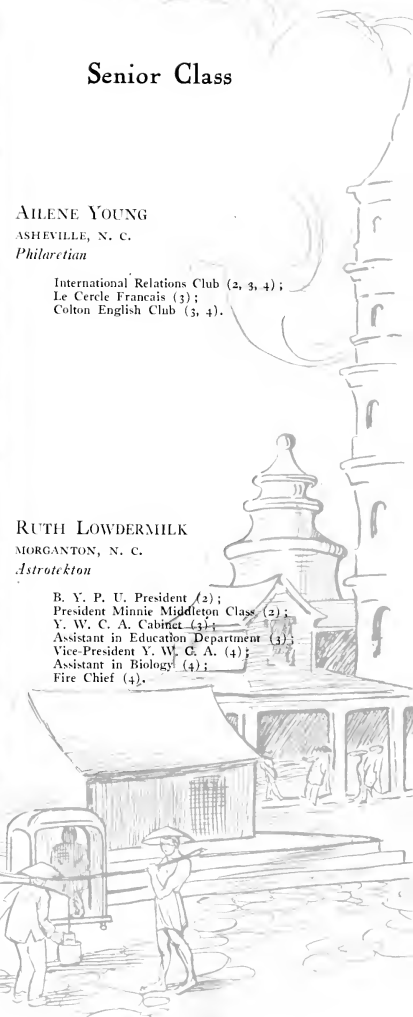
International Relations Club (2, 3, 4);
Le Cercle Francais (3);
Colton English Club (3, 4).

RUTH LOWDERMILK

MORGANTON, N. C.

Astrotekton

B. Y. P. U. President (2);
President Minnie Middleton Class (2);
Y. W. C. A. Cabinet (3);
Assistant in Education Department (3);
Vice-President Y. W. C. A. (4);
Assistant in Biology (4);
Fire Chief (4).



Senior Class

ELIZABETH GRAHAM

FARMINGTON, N. C.

Philaretian

Mars Hill College (1, 2);
B. Y. P. U. Officer (1, 2);
Officer Society (2);
Mars Hill Club (4).



LENA ALLEN

ST. PAUL, N. C.

Philaretian

Wingate Junior College (1, 2);
Society Officer (2);
Commencement Marshal (2);
International Relations Club (3, 4);
Vice-President International Relations Club
(4);
Robeson County Club (3, 4);
B. Y. P. U. President (4).



Senior Class

MARTHA MAYNARD

RALEIGH, N. C.

Philaretian

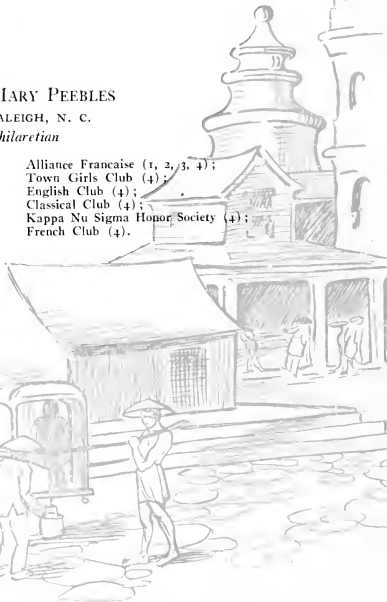
Alliance Francaise (1, 2, 3, 4);
Town Girls Club (4);
English Club (4);
Classical Club (4);
Kappa Nu Sigma Honor Society (4);
French Club (4).

MARY PEBBLES

RALEIGH, N. C.

Philaretian

Alliance Francaise (1, 2, 3, 4);
Town Girls Club (4);
English Club (4);
Classical Club (4);
Kappa Nu Sigma Honor Society (4);
French Club (4).



Senior Class

HILDA GODWIN

RALEIGH, N. C.

Philaretian

Classical Club (2, 3, 4);
Town Girls Club (4);
Colton English Club (2, 3, 4);
Alliance Francaise (1).



KATHERINE NELSON

OXFORD, N. C.

Oxford College (1, 2);
Treasurer Class (1);
Mars Hill College
English Club (2);
French Club (4).



Senior Class

HAZEL WILDER

LOUISBURG, N. C.

Astroctkon

Louisburg College (1, 2);
Franklyn County Club (1);
Chemistry Club (1);
Freshman Education Club (1);
Sea Gift Literary Society (1);
Wake Forest Summer School (2).

MARGARET BROADHURST

LA GRANGE, N. C.

Astroctkon

B. Y. P. U. Officer (3, 4);
International Relations Club (3);
Officer International Relations Club (4);
Y. W. A. Circle Leader (4).



Senior Class

ZELMA HOCUTT

ASHTON, N. C.

Astrotekton

Sunday School Officer (2);
Math Club (2, 3);
Basketball (1, 2, 3, 4);
B. Y. P. U. Officer (1, 2, 3, 4);
B. C. A. Club (1, 2, 3, 4);
Home Economics Club (4);
Home Service Band (3, 4);
Winner W. A. A. Pin (4);
Y. W. A. Cabinet (4);
Meredith Club Proctor (4).



KATIE LEE WALTON

JACKSONVILLE, N. C.

Astrotekton

Basketball (1, 2, 3, 4);
Monogram Winner (1);
Officer Math Club (2, 3);
B. Y. P. U. Officer (1, 3, 4);
Classical Club (2, 3);
Officer Sunday School (2);
Library Assistant (2, 3);
"Y" Store Manager (4);
B. S. U. Council (4);
English Club (3, 4);
Winner W. A. A. Pin (4);
Vice-President Kappa Nu Sigma Honor
Society (4);
Officer Y. W. A. (3);
Associate Editor "Twig" (3).



Senior Class

FLORENCE STAKES

SUFFOLK, VA.

Philaretian

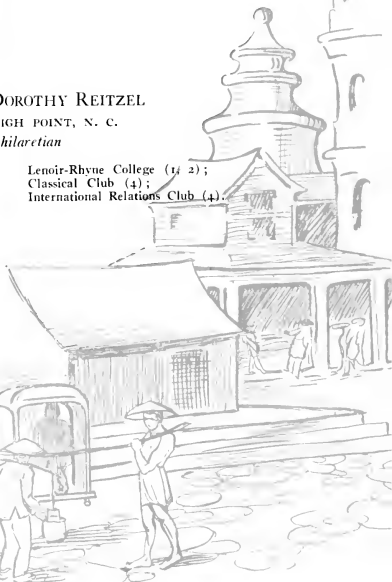
Curie Chemistry Club (2, 3);
Treasurer Curie Chemistry Club (2);
Secretary Philaretian Literary Society (3);
Home Economics Club (2, 3, 4);
Vice-President B. S. U. (3);
Y. W. A. Circle Leader (2);
President B. Y. P. U. (3);
Tennis Club (2, 3);
Student Volunteer Band (1, 2, 3, 4);
College Cheer Leader (4).

DOROTHY REITZEL

HIGH POINT, N. C.

Philaretian

Lenoir-Rhyne College (1, 2);
Classical Club (4);
International Relations Club (4).



Senior Class

ELIZABETH BREWER

WINGATE, N. C.

Astrotekton

Wingate Junior College (1, 2);
Glee Club (3, 2);
Choir (1);
McNeill Society (1, 2);
Secretary Society (2);
Meredith College (3, 4);
Wingate Club (3, 4);
Colton English Club (3);
Student Government Committee (4);
House President (4);
President Y. W. A. (4);
B. S. U. Council (4).



SALLIE WILLIAMS

WINGATE, N. C.

Astrotekton

Wingate Junior College (1, 2);
O. Henry Society (1, 2);
Officer Society (1, 2);
Meredith College (3, 4);
Colton English Club (3);
Wingate Club (3, 4);
Press Club (4).



Senior Class

ELIZABETH BUFFALOE

RALEIGH, N. C.

Philaretian

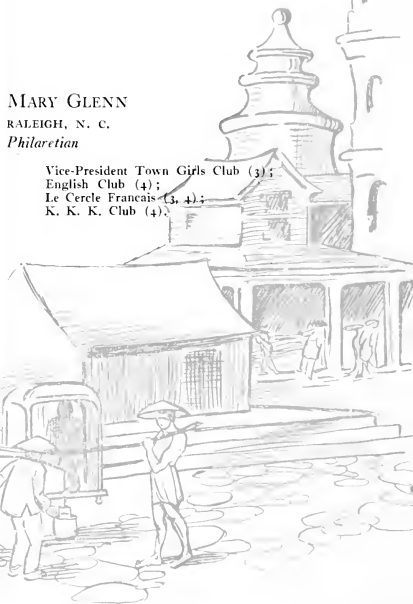
Choir (1, 2, 3, 4);
Colton English Club (4);
Town Girls Club (1, 2, 3, 4).

MARY GLENN

RALEIGH, N. C.

Philaretian

Vice-President Town Girls Club (3);
English Club (4);
Le Cercle Francais (3, 4);
K. K. K. Club (4).



Senior Class

RUTH UPCHURCH

OXFORD, N. C.

Philaretian

Choir (1, 2, 3, 4);
Home Economics Club (4).



LOIS JACOBS

ROXBEL, N. C.

Astrotektion

B. Y. P. U. Officer (1, 2, 3);
Sisters' Club (2);
Secretary Tri-County Club (2);
Classical Club (2, 3, 4);
Alliance Francaise (1, 2, 3, 4);
French Club (3, 4);
Corresponding Secretary Astrotektion So-
ciety (4).



Senior Class

RUTH ABEE

BELMONT, N. C.

Wingate Junior College (1, 2);
Member O. Henry Literary Society (1, 2).

LOTTIE MITCHEM

RALEIGH, N. C.

Philaretian

Organizer Home Service Band (1);
Secretary Home Service Band (1);
Vice-President Home Service Band (2,
3, 4);
Math Club (2, 3, 4);
Town Girls Club (2, 3, 4).

Senior Class

LEAH ANDREWS

GREENSBORO, N. C.

Chowan College (1);
President Student Volunteer Band;
General Secretary B. Y. P. U.;
Meredith (2, 3, 4);
Secretary-Treasurer Middleton Mission
Band;
Vice-President Student Volunteer Band
(3);
President Volunteer Band (4);
Member B. S. U. Council (4).



CHARLOTTE ROSSER

RALEIGH, N. C.



Senior Class



GENEVA YEARGAN
GARNER, N. C.
Philaretian



ANNIE REE MCGUGAN
CORDELE, GA.
Philaretian

Choir (1, 2, 3, 4);
Treasurer Philaretian Society (3);
Vice-President Dramatic Club (4).



Senior Class

SARAH WISEMAN

SPENCER, N. C.

Philaretian

Coker College (1);
Home Economics Club (4);
Math Club (4);
W. A. A. (4);
Hike Leader (4);
Vice-President Home Economics Club (4);
Treasurer Y. W. C. A. (4);
Head of Tennis (4).



RUTH JONES

GREENSBORO, N. C.

Philaretian

Greensboro College (1, 2);
Classical Club (3, 4);
Home Economics Club (4);
Basketball (3, 4);
W. A. A. (4).



Senior Class

PAIGE LEONARD

RAMSEUR, N. C.

Philaretian

Reporter Philaretian Society (1);
Commencement Marshal (1);
Associate Editor "Acorn" (3);
Chief Philaretian Commencement Marshal
(3);
International Relations Club (3, 4);
President English Club (4);
Dramatic Club (4);
College Marshal (4);
"Oak Leaves" Staff (4);
Kappa Nu Sigma Honor Society (4).

HELEN OLDHAM

WENDELL, N. C.

Philaretian

B. Y. P. U. Officer (2, 3, 4);
Classical Club (2, 3, 4);
English Club (3, 4);
Secretary B. S. U. (3);
Vice-President B. S. U. (4);
Official Chaperon (4).



Senior Class

MARGARET NASH

ELIZABETH CITY, N. C.

Philaretian

Curie Chemistry Club (2);
Home Economics Club (2, 4);
Secretary-Treasurer Class (3);
Secretary-Philaretian Literary Society (4);
Assistant in Home Economics (4).



ELLEN BROADWELL

FUQUAY SPRINGS, N. C.

Astrotekton

B. Y. P. U. Officer (2);
Fire Lieutenant (2);
Secretary-Astrotekton Society (3);
International Relations Club (4);
Business Manager "Hand Book" (4);
B. Y. P. U. Officer (4);
Le Cercle Francais (4).



Senior Class

CAROLYN BOSTIC

BEULAVILLE, N. C.

Astrotekton

B. Y. P. U. (1, 2, 4);
U. N. C. Summer School (2, 3);
Officer B. Y. P. U. (4);
International Relations Club (4).

ALICE LAWRENCE

APEX, N. C.

Philaretian

Alliance Francaise (1, 2, 3, 4);
International Relations Club (3, 4);
Colton English Club (3, 4);
Choir (3);
Y. W. C. A. Cabinet (4);
President International Relations Club
(4);
Glee Club (4);
French Club (4);
B. Y. P. U. Officer (4);
Editor Student-Government "Handbook"
(4);
Undergraduate Representative (4).



Senior Class

VERA MCGOUGAN

LUMBER BRIDGE, N. C.

Philaretian

Hiking Club (1);
B. Y. P. U. Officers (3, 4);
Robeson County Club (2, 3);
Home Economics Club (4);
International Relations Club (4).



RUBY HORNER

GATESVILLE, N. C.

Astroektón

Chowan College (1, 2);
Math Club (1);
Treasurer B. Y. P. U. (2).



Senior Class

ESTELLE WILKINS

BAHAMIA, N. C.

Philaretian

Oxford College (1);
Basketball (1, 2, 3, 4);
President Y. W. C. A.;
Secretary Athletic Association;
Secretary Class;
B. Y. P. U. Officer (2, 3, 4);
Officer Y. W. A. (4);
Math Club (2, 3, 4);
Home Economics Club (2, 3, 4);
Home Mission Band (2, 3, 4);
Basketball Manager (4);
Member Student Government Council (4).

MARY CHEVES

BUNN, N. C.

Astrotekton

Basketball Team (1, 2, 3, 4);
Wake Forest Brothers Club (1);
Curie Chemistry Club (2);
Home Economics Club (3);
W. A. A. (4);
Head Hiking (4);
Captain Basketball Team (4).



Senior Class

LORA DILLS

SYLVA, N. C.

Philaretian

B. Y. P. U. Officer (1, 2, 3);
Basketball Team (1, 2, 3, 4);
Winner of Monogram (1);
Secretary Athletic Association (3);
Captain Basketball Team (2, 3);
President W. A. A. (4);
W. A. A. (4);
Nominating Committee (4);
Winner W. A. A. Pin.



RUTH BOWDEN

CHARLOTTE, N. C.

Philaretian

Classical Club (2, 4);
English Club (4);
Editor "Oak Leaves" (4);
Class Poet (4);
Nominating Committee (4).



Senior Class



VIRGINIA SWANSON

PILOT MOUNTAIN, N. C.

Astrotekton

Davenport Junior College (1, 2);
University of Maryland (3).



BESS THOMAS

RAMSEUR, N. C.

Astrotekton

Alliance Francaise (1, 2, 3, 4);
Officer Sunday School Class (1);
Reading Honors (1, 2, 3);
"Acorn" Staff (2);
B. Y. P. U. Officer (2, 3, 4);
French Club (2, 3, 4);
Classical Club (2, 3, 4);
Treasurer Astrotekton Society (3);
B. S. U. Council (3);
Colton English Club (3, 4);
Secretary-Treasurer English Club (3);
Winner State and Southwide Tithing
Story Contest (3);
Nominating Committee (4);
Official Chaperon (4);
Kappa Nu Sigma Honor Society (4);
Secretary-Treasurer Honor Society (4);
Editor-in-Chief "Acorn" (4).



Senior Class

ALMA WEBB

MT. AIRY, N. C.

Philaretian

B. Y. P. U. Officer (1, 2);
Curie Chemistry Club (2);
Home Economics Club (2, 3, 4);
Y. W. C. A. Cabinet (3);
Manager "Y" Store (3);
President Home Economics Club (4);
Wake Forest Brothers Club (2);
Basketball (2, 4).



EVELYN VEASEY

RAEFORD, N. C.

Astrotekton

B. Y. P. U. Officer (3);
International Relations Club (4);
Home Economics Club (4).



Senior Class

LOUISE SULLIVAN

WILMINGTON, N. C.

Philaretian

Hiking Club (1);
Wake Forest Brothers Club (1, 2);
B. Y. P. U. Officer (2, 3, 4);
Athletic Association (2, 3);
Home Service Band (4);
Choir (1, 2, 3, 4);
House Vice-President (3);
New Hanover County Club (1, 2);
Member Student Government Committee
(3);
Secretary-Treasurer Dramatic Club (4).

HORTENSE HONEYCUTT

CLINTON, N. C.

Philaretian

Secretary Sampson County Club (1);
President Sampson County Club (2);
Classical Club (2, 3, 4);
Secretary Classical Club (3);
Sisters' Club (2);
Y. W. A. Council (3);
Home Service Band (3, 4);
Vice-President Y. W. A. (4);
Sunday School Council (4);
Home Economics Club (4).



Senior Class

ANNIE MILDRED KELLY

GOLDSBORO, N. C.

Philaretian

Secretary Y. W. A. (1);
Circle Leader (2);
B. Y. P. U. Officer (3, 4);
Y. W. C. A. Cabinet (2);
B. S. U. Council (3, 4);
President Y. W. A. (3);
Home Service Band (2);
Sunday School Director (4);
International Relations Club (3, 4);
Home Economics Club (4).



ANNIE BELLE NOEL

DUNN, N. C.

Astrotektan

B. Y. P. U. Officer (1, 2);
President Johnson-Harnett County Club
(2);
Secretary Home Service Band (3);
Sunday School Officer (3);
Associate Director B. Y. P. U. (3);
Director B. Y. P. U. (4);
Officer Home Economics Club (4);
B. S. U. Council (4);
Official Chaperon (4).



Senior Class

JESSIE GAMBILL

WEST JEFFERSON, N. C.

Astrotekton

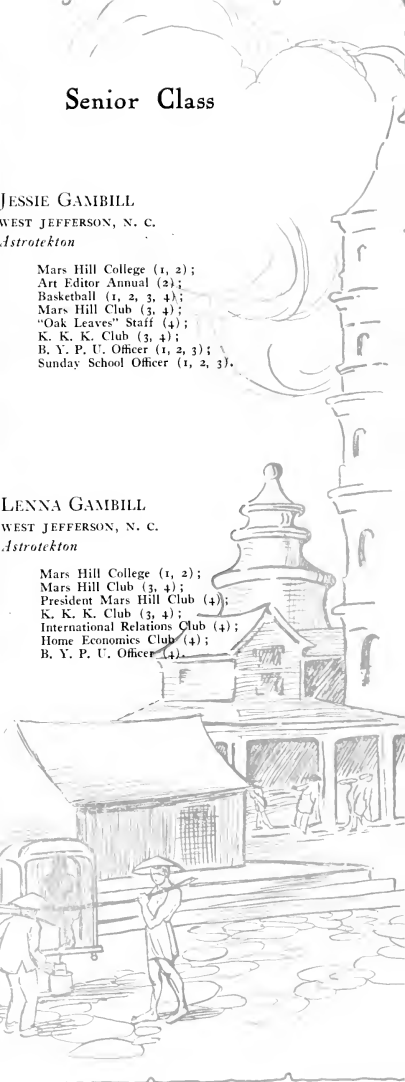
Mars Hill College (1, 2);
Art Editor Annual (2);
Basketball (1, 2, 3, 4);
Mars Hill Club (3, 4);
"Oak Leaves" Staff (4);
K. K. K. Club (3, 4);
B. Y. P. U. Officer (1, 2, 3);
Sunday School Officer (1, 2, 3).

LENNA GAMBILL

WEST JEFFERSON, N. C.

Astrotekton

Mars Hill College (1, 2);
Mars Hill Club (3, 4);
President Mars Hill Club (4);
K. K. K. Club (3, 4);
International Relations Club (4);
Home Economics Club (4);
B. Y. P. U. Officer (4).



Senior Class

ELOISE GREENWOOD

STATESVILLE, N. C.

Astrotekton

Vice-President Class (1);
Secretary Curie Chemistry Club (2);
Classical Club (2);
"Oak Leaves" Staff (2, 3);
International Relations Club (4);
Monogram Club (3);
Assistant in Chemistry (3, 4);
Home Economics (4);
Kappa Nu Sigma Honor Society (3).



LENA TUTTLE

WALLBURG, N. C.

Astrotekton

Mars Hill College (1, 2);
President Suodday School Class (2);
B. Y. P. U. Officer (1, 2, 3, 4);
Dramatic Club (1);
Vice-President Society (2);
Society Marshal (1);
Annual Staff (2);
Art Club (1, 2, 3, 4);
French Club (1, 2);
Y. W. A. Cainer (3);
Mars Hill Club (3, 4);
President Home Service Band (4);
B. S. U. Council (4);
Home Economics Club (4);
House President (4);
Student Government Committee (4).



Senior Class

WINONA HOOPER.

ROBBINSVILLE, N. C.

Philaretian

Mars Hill College (1);
Summer School (2);
Mars Hill Club (3, 4);
B. Y. P. U. Officer (3);
Colton English Club (4);
International Relations Club (4);
House President (4).
Student Government Council (4).

BLANCHE HORTON

VILAS, N. C.

Astroekton

Appalachian State Normal School (1);
Officer Bland Dolph Literary Society (1);
Meredith (2, 3, 4);
B. Y. P. U. Officer (2, 3, 4);
Glee Club (3, 4);
Mars Hill Club (2, 3, 4);
College Choir (2, 3, 4).



Senior Class

ANNIE BROWN

REIDSVILLE, N. C.

Astroekton

B. Y. P. U. (1, 2, 3, 4);
B. Y. P. U. Officer (2, 3);
Sisters' Club (2);
Campbell College Club (3);
Home Economics Club (3);
International Relations Club (4).



ELLEN JOHNSON

SILVER CITY, N. C.

Philaretian

Classical Club (2);
House Vice-President (3);
Student Government Council (3);
Secretary Y. W. A. (3);
Y. W. A. Council (3);
International Relations Club (3, 4);
Home Economics Club (4).



Senior Class

NORINE RATLEY

ST. PAUL, N. C.

Astrotekton

Colton English Club (4);
Treasurer Colton English Club (4);
Secretary and Treasurer Home Economics
Club (4);
International Relations Club (4);
Secretary Pearl Johnson B. Y. P. U. (3);
Y. W. A. Officer (4);
Robeson County Club.

ELIZABETH WHEELLESS

ROCKY MOUNT, N. C.

Astrotekton

Choir (1, 2, 3, 4);
Glee Club (4).



Japanese Tryst

*She trembling waits, as dusky lotus buds
Pagoda-shadowed in a holy pool,
Her only messengers the mirrored stars
And straying phantom breezes, moon-washed, cool.
A guarded bud whose fragrance to be given
Is kept or wasted on the vacant air;
She listens for the temple bells at dusk,
Yet smiling quaintly, wondering—waits him there.*

SARA COOK, '29.





Confidentially Speaking

WHEN I think of teaching a crowd of children everything I know, I don't feel as if what I know is worth teaching, and the things which were stuffed in my mind are only unimportant and really not worth teaching an undeveloped child.

Sometimes I'm going to have a room all to myself, and everything in it will be different from anything anyone else has. I'll have a hand-carved suite, and everything in the room will be in blue and yellow. There will be a tiny yellow tea set, filmy blue curtains, blue scarfs, and yellow lamps. I'll even have a blue and yellow rug on the floor.

· · · · ·

I started embroidering a slumber pillow this afternoon, but the face was so ugly on the pillow that I tore it up. There are lots of girls up here who have much uglier faces, but they have such personalities that one never thinks of faces.

· · · · ·

Sometimes I think, "If only I would get a letter this morning"—and then when I do get a letter half the time I am sorry. It's grand to get a letter full of news from home, but it's dreadful to get a letter saying that someone is ill or someone's home has burned. If I send someone after the mail I am quite contented if I don't receive a letter, but to walk down there and wait twenty minutes makes me feel as if a friend has done wrong by not writing to me; even the postmistress, I feel, should make some explanation about it.

· · · · ·

Yesterday while shopping I saw about a dozen things I wanted. I just wondered what all of us girls would do with a hundred dollar gift apiece, and the money had to be spent just for incidentals. I should buy several trinkets for the room, a teakwood tray, several new books, a victrola with six records, and some shade pulls. I mentioned this to one of my friends and asked her what she would buy. "The first thing," she said, "would be an ever ready pocket knife (to use when cutting my suite-mate's cake), a flashlight, a man's wrist watch, and a sun watch." Both of us want a pair of opera glasses. We felt a dire need of the glasses at Ziegfeld Follies.





That show was heavenly—no wonder, though, with us sitting on the back row of the peanut gallery trying to be taller than all the Wake Forest boys. The nearest thing I ever see to the Follies is Gym.

.

Time is a queer thing. Often I feel as if a hundred years ago was just the other day; last week seems longer. A day may seem a week or an hour, according to the accomplishments. Now it seems that I never was any age but this, and the time when I was a little girl is only vaguely remembered.

.

Almost every girl up here has a memory book in which there is everything from a postage stamp to a scrap of cloth; everyone has flowers, letters, paper candy wrappers, talley cards, and contests. Last year I had a book so thick that the pages could scarcely be turned. This year I have a little book called "My Memory Book," and in it I write two lines about each thing to be remembered. Now I get the whole impression of the way I felt.

.

The State College boys still have the collective instinct. Last week two of the boys took twenty-three lights to their rooms. It would be a good plan for them to collect cigarette cartons or something less expensive than lights. When a girl feels the inspiration of this instinct, she puts it to good use by collecting all of her clothes in their rightful place.

.

Last night I went to bed late, but lay awake a long time thinking of the sleep I had already missed. I have learned a good way to keep from getting lonesome when I am by myself. I just close my eyes and see different things. Always after I go violet hunting I see violets every time I close my eyes, but other times I see just the things I think about.

.

It is sort of queer what different notions people take; sometimes I feel as if I just must take exercise, and will be worried if I do not. Then I forget it for a month. It is the same way about clothes; sometimes I say, "I will just wear all of these hose out," and a few days later I feel the need of hose.





Last night when I was at the concert I decided that I should look at all the handkerchiefs to see if they are in any way connected with our personalities. First an enormous woman came in "dressed to kill," as the moderns would say. In her hand was a yellow handkerchief that almost hurt my eyes. Over to my left were four or five young flappers. Each of them had a handkerchief of georgette with a painted lady on it in her coat sleeve. Behind me sat a crowd of young women who giggled throughout the performance. I could not keep from overhearing some of their conversation, from which I learned that they were school teachers from a nearby town. One of them said, "Gertie, for goodness' sake, put that handkerchief in your pocket. I have never seen so many holes in one handkerchief in my life—use this sheet of mine." I was thoroughly disgusted until I saw a woman come in, dressed in a Hudson seal coat and a lavender hat. She held in her hand a white linen handkerchief of the sheerest quality.

PAULINE FREEMAN, '28.





Soliloquies

I

Scene: Room 10, Arts Building.

Time: 1:30 p. m.

Occasion: Freshman English Class. The roll has just been called, to which Virginia Wray, one of the one hundred and fifty members of the Class of '28, which has been on the campus something like three weeks, answered abruptly, and then immediately sank back into a state of reverie.

"So this is what college life is! Well, I never thought it would be like this. All of my life I have heard people talk about the glorious times they had in college, and of the charming girls they knew there. I've never wanted to be at home so much in all my life. I know it has never been this hot there at this time of the year. Some people may consider it a privilege to get to go to college, but as for me—why I don't see why I ever came anyway.

"To be sure, the Juniors have entertained us, and tried to make us feel at home—but what did that matter? I wasn't a part of it. I was just lost in the crowd. No one seemed to realize that I was there. Oh! how different things are to what they were in High School. There it did make a difference whether or not I was at a party. The crowd missed me, and came after me. I should like to be right back there, too. Gee, but we did have some glorious times! Not at all like this college with all of its restrictions, though. Can't even talk to a boy that I've known all my life without a chaperone, and I have to have permission sent from home for everything that I want to do.

"What about this, 'hero as divinity'? Have men always worshipped some being higher than they? Have they? Oh, she's calling on some girl on the back row. I surely am glad that she missed me that time. What? Did she say Miss Wray? What was the question? My—I almost have it—there it is—is that right? Well, I'll guess anyway—to be sure, 'the first requirement of a hero as stated by Carlyle is *sincerity*.' She says that's right. I'm certainly glad I had courage enough to answer. Maybe the teacher will get a good impression of me.

"Those horrible Sophs! Why do they make such a fuss over nothing? They make me tired. Certainly the Freshmen are just as important as anybody else, and I know we are the biggest class in the school. This thing of having to wear your dress inside out, and carrying an umbrella all day is no joke, particularly when it's as warm as it is today, and when I'm feeling cross anyway.

"Why do the teachers call us poor little Freshmen, *Miss*? I do wish they would call me plain Virginia. I like it so much better than the cold, formal way in which





they say Miss Wray. I always have been called Virginia and I just can't grow up all at once. Suppose Mother and Daddy could see me now! Wouldn't they think that their little daughter is really grown? Oh! I do wish this class were over. I think I'm going to cry in a minute, I feel so blue. Oh! There's the bell. 'Here, let me by please, I'm in a hurry to get to my room.'"

II

Scene: Room 18, Arts Building.

Time: 8:30 a. m.

Occasion: Sophomore English Class.

"Oh! What a grand and glorious feeling to be alive. I have never had so much fun! And those Freshmen—I declare, they are the funniest things I ever saw. There they go bowing to the Seniors whenever they meet them. I know they are twice as scared as we were last year. I wish the teacher would come on. If she realized just how important *Soph Day Off* is, she'd be here so we could have our lesson and be done with it. I can't wait for some more fun with the Freshmen!

"Here she comes, but I know I can't pay attention this morning. I'm too excited. I can't help thinking about the way those Freshmen did this morning. They were literally scared to death—even afraid to come out into the hall. They yelled for '28 and '26, though. My, but there's some difference in being a Sophomore and being a Freshman. I know every class in school is envying us today, even the Seniors.

"What is this I hear they are saying about Samuel Johnson, Addison, Steele, and Boswell? I guess I had better pay attention. Let me take notes on this. 'Dr. Johnson was very untidy. Whatever he said at a meeting was accepted by all of the others.' Nobody will ever be able to read this scrawl except me—that's sure. I guess I'd better think of something to say, myself—she's coming down my row. Oh! but the songs we have for tonight are so clever. I bet the peoples' hair will stand on end, too, when they hear those blood-curdling yells. I certainly wish it were time to put on our costumes—by the way, I've got to put the numeral on mine. I can't wait for the trip to Durham—that's going to be the greatest thing of all.

"Oh! she's calling on me—I believe they've told everything Samuel Johnson ever thought about doing. Let me see—'Dr Johnson thought that Durham was an ideal place to go.' What is everybody laughing at? I certainly didn't know I said anything funny.

"Why worry anyway though, I don't remember exactly what I said. What does it matter though? The teacher seemed to take it as a joke. Well, this is *Soph Day Off*, and it happens only once in a lifetime. College days are so short, so why not have fun while we can?"





III

Scene: Administration Building.

Time: 9:00 a. m.

Occasion: Opening of School in September.

"My! I never saw such a mad scramble! I can't tell whether it is I who is talking, or whether it is somebody else—there's so much noise out here. I never have seen so many girls. On all sides there are girls, girls, girls, and none of them know what to do. Once in a while I catch a glimpse of a familiar face, but it is lost in a crowd of new ones. These familiar faces almost remind me of an oasis in a desert. After all, there is nothing like greeting old friends again. But I do love these new girls. I don't believe that I ever will learn all their names, though—but they are all my little sisters. I declare they are dears! I've just got to make these girls feel at home. For two days I've done nothing but meet trains and show girls to their rooms. I don't believe I ever will get settled down and start to work.

"Oh, dear, it's time for chapel and I guess I had better show the new girls where to go. But I haven't found one of my little sisters—I found the first three easily, but I guess that last one hasn't come.

"Shall I have to stand up and make that announcement? What shall I say? Dr. Brewer has already greeted the girls. I will just call a meeting of the Classes of '28 and '30 in the Astro hall immediately after chapel. I'm glad that's over. This business of being Class President, and having to make announcements in chapel isn't so funny. Let's see what I've got to do before I go to that meeting—make punch, ask two girls to help serve, get somebody to play, and someone to sing. Work out a scheme so that all the girls will feel at home. Find my little sister.

"My! But I've got to hustle—only ten minutes from now until the girls will come to the society hall. I know what I'll do—I'll get some of our magazines, the *Acorns*, and take them up there, then the new girls will learn all about them first thing, and probably they will like to read them while we're getting together.

"Wasn't that luck? I ran right into the other little sister out in front of the Bursar's Office. Now I've found them all, and they are dears! So sweet and pretty. I love them so much! I myself am a part of Meredith, and I must make them love it too."

IV

Scene: Administration Building.

Time: 8 p. m.

Occasion: Junior-Senior Banquet.

"I have never seen such an ideal night—the sky is perfectly lovely. I feel romantic. I have never seen so many pretty evening dresses. And to think that John will be





here in just a few minutes. I can hardly wait. This is an important event. I've been looking forward to this ever since I was a Freshman.

"John is really here—yes, standing right here with me. I'm so happy I hardly know what's going on. I feel as though I were in a dream. Why! Here we are walking across the quadrangle—it all seems too good to be true. And the music and flowers really breathe forth Spring. This is really the most delightful feeling I ever imagined one could have. And to think that John will graduate this spring, too, I really can't believe it all.

"What a good toast—indeed we do love Meredith. I am part of Meredith, and she is part of me. I do know college is the most delightful place in the world. College days are glorious days. I will never forget this occasion. Always, I shall remember the joy and radiance and beauty of it. Oh! But I am happy!"

The End.

BESS THOMAS, '28





Juniors



Junior Class

OFFICERS

MARION FISKE	<i>President</i>
JANIE BURNS	<i>Vice-President</i>
MATTIE LASSITER	<i>Secretary</i>
SARAH MEWBORN	<i>Treasurer</i>



Junior Class

LOUISE ANGE Winterville, N. C.
A pink check sunbonnet, sage, field daisies.

BESSIE BARKER Charlotte, N. C.
Puritans, checkered apron, sweet grass baskets.

NELL BARKER Apex, N. C.
Blue linen cuffs, a covered wagon, cedar.

FRANCES BARNHILL Bethel, N. C.
Silver birches, camos, a minuet.

PULLEN BELVIN Raleigh, N. C.
Bay-buds, Florentine leather, family albums.

SHELLIE BENNETT Marshville, N. C.
Roasted apples, lace collars, open fireplaces.

FAYE BIVENS Monroe, N. C.
Taffy, geraniums, patent leather pumps.

ANETTE BONEY Wallace, N. C.
High heel pumps, silver vanities, flax.

ILA BRIGGS Burnsville, N. C.
Mountain snow, winesaps, white porcelain.

ELSIE BROWN Reidsville, N. C.
A blue hair bow, apple buds, lavender.

JANIE BURNS Roxboro, N. C.
Troubadours, Russian wolfhounds, a merry-go-round.

MARY BURNS Lawndale, N. C.
Amber satin, Shelley, Venetian glass.



Junior Class



NELL CADIEU Monroe, N. C.
Pansies, flowered muslin, period dolls.

IVA CARROLL Wendell, N. C.
A reed organ, a teakwood tray, illuminated manuscripts.

SARA COOK Wallace, N. C.
Fairy princesses, red heels, madonnas.

LOUISE CRAVEN Greensboro, N. C.
Bungalow awnings, chintz chairs, a bonfire.

MIRIAM DAUGHTRY Fuquay Springs, N. C.
A sea captain, burnished copper, breakers.

ALICE DOWD Raleigh, N. C.
A moonstone circlet, Southern ladies, fans.

MAITHE LEE EAGLES Fountain, N. C.
A sundial, papyrus, Indian brocade.

DAVIE BELLE EAION Winston-Salem, N. C.
A Packard roadster, silver buckles, swagger stick.

GLADYS ELLIOTT Nelson, Va.
Lace doilies, collies, black pansies.

MARION FISKE Moyock, N. C.
Opals, robins, a pipe organ.

BESSIE GRAY GILL Raleigh, N. C.
Soft furs, blue velvet, silver rings.

PAULINE GOODWIN Raleigh, N. C.
Cedar chests, red dahlias, a what-not.



Junior Class

EDITH ROWE GRADY Wilson, N. C.
A red toboggan, jumping jacks, animal crackers.

JANE GREENE Raleigh, N. C.
Starched flounces, a walnut highboy, tattooing.

LAURA MABEL HAYWOOD Raleigh, N. C.
Coty's Styx, an Arabian steed, cavaliers.

DORIS HEWLETT Wilmington, N. C.
Crickets, a locket, soft breezes.

LOUISE HILL Canton, N. C.
An Airedale, Titian, banquets.

ANNIE SUE HOLLAND Statesville, N. C.
A mantilla, a silver chalice, starlight.

VIRGINIA HOLTZCLAW Canton, N. C.
Old lace, a ruffled parasol, white mice.

LECLAIRE JACOBS Roxobel, N. C.
Moon opals, a spinet, bang curls.

CORDELIA JOHNSON Fayetteville, Tenn.
A shooting jacket, marches, cardinal.

EVA BELLE JOHNSON Kerr, N. C.
Flags, sleigh-rides, school bells.

EVELYN JOLLEY Mooresboro, N. C.
A yellow slicker, gray leather, Oxford.

HALLIE JONES Wingate, N. C.
Pink lemonade, confetti, gold brocade.





Junior Class

- MARGARET JONES Kenansville, N. C.
Seed pearls, family portraits, lichen.
- HESTA KITCHEN Scotland Neck, N. C.
Toreadors, orchids, scarlet slippers.
- LEILA KNOTTS North, S. C.
Cherries, black lacquer, a 'cello.
- MATTIE LASSIER Smithfield, N. C.
A copper tankard, a riding crop, galoshes.
- OLIVE LEAKE Rich Square, N. C.
Large portraits, aeroplanes, gray coat suit.
- GWYN LENOIR Lenoir, N. C.
An English garden, flute notes, fairy tales.
- NELL McCULLEN Burgaw, N. C.
Nosegays, a lullaby, blue satin slippers.
- THELMA MARTIN Liberty, N. C.
Red velvet, Italian songs, blackbirds.
- ALMA MEDLIN Monroe, N. C.
A jumping jack, lollypops, poinsettias.
- MARTHA MEDLIN Raleigh, N. C.
Red carbobs, heroines, red roses.
- METHEL MEDLIN Monroe, N. C.
A boat race, an elf, a red sash.
- SARA MEWBORN Farmville, N. C.
Red velvet slippers, victrolas, paintex sets.



Junior Class

MILDRED MULLIS Morganton, N. C.
A clear pool, English print, blue glass teacups.

PAULINE NEWTON Chadbourd, N. C.
Jet earrings, Gainsborough, chivalry.

MARY NOLEN Stoneville, N. C.
A patchwork spread, miniatures, a Paisley shawl.

LILLIAN ODUM Pembroke, N. C.
Sachets, cretonne pillows, a drop leaf table.

ELSIE ORDERS Mooresville, N. C.
Mrs. Siddons, Angora kittens, foxgloves.

WENDELL PARSONS Londonburg, Va.
Bellows, a crystal pitcher, ballads.

MAISIE PATTERSON Coats, N. C.
Madam Le Brun, phlox, palettes.

PAULINE POWELL Clinton, N. C.
Larks, Sherry, a jade chain.

ELIZABETH ROGERS Durham, N. C.
Blue sunlight, a sailboat, fraternity pins.

EUNICE RUSHING Marshville, N. C.
Spiced cookies, hem-stitched linen, window boxes.

SALLIE PAGE RUFFIN Raleigh, N. C.
A turquoise ring, palms, plumes.

BESSIE SAMS Raleigh, N. C.
Black satin, libraries, tea tables.



Junior Class



FRANCES SCARBOROUGH Macon, N. C.
"Sunnybrook Farm", blue gingham, checkered sunlight.

JULIA MOORE SCARBOROUGH Macon, N. C.
Hikes, Yule logs, open trails.

LORETTA SEAWELL Rockingham, N. C.
A snowball battle, red ribbon, a goblin dance.

LEMA SLOAN Apex, N. C.
Tarts, long braids, holly berries.

ALLIE SMART Union Mills, N. C.
Pioneers, a hand loom, mountain crags.

THELMA TADLOCK Marshville, N. C.
Nabiscoes, Scotch plaid, tar shampoo.

MARtha TAYLOR Burgaw, N. C.
Shakespeare, manuscripts, memories.

MARGARET TEAGUE Newland, N. C.
Cathedral windows, madonnas, onyx.

VELMA TEAGUE Kernersville, N. C.
Blue flounces, down, quilted satin.

VIVIAN TEAGUE Thomasville, N. C.
Tangerines, red felt, a calliope.

RUTH TRUESDELL Charlotte, N. C.
Pierrot, black pearl, thoroughbred horses.

LUCILE WALKER Hillsboro, N. C.
Barette, white candles, handkerchief boxes.



Junior Class

RUTH WALKER Graham, N. C.
Chocolate bars, sport sweaters, week-end bags.

LILLIAN WHEELER Scotland Neck, N. C.
A lyre, liquid amethyst, summer twilight.

MARY B. WHEELER Spring Hope, N. C.
Blue shadows, memory books, sweet peas.

RUTH WILLIAMS Monroe, N. C.
Tea wagons, linen doilies, embroidery.

EVA WOODALL Clayton, N. C.
Thumb tacks, willow ware, tea napkins.

ADDIE YOW Midland, N. C.
Indian beads, a black velvet tam, fir trees.







Sophomores



Sophomore Class

OFFICERS

SALINDA PERRY	<i>President</i>
DOROTHY ROWLAND	<i>Vice-President</i>
HAZEL BUMGARDNER	<i>Secretary</i>
LUCILE GIBSON	<i>Treasurer</i>





Sophomore Class

- | | | | |
|------------------|--------------------|--------------------|------------------|
| ALLEN, BESSIE | BARKWELL, ANNIE S. | BONEY, VICTORIA | BRENSON, LORENA |
| APPLE, ELIZABETH | BARRIER, NELL | BLOODWORTH, ERIN | BRITT, BRUCE |
| BAGBY, MABEL | BEEKER, MABEL | BONEY, ANNIE GRAY | BROADHURST, MARY |
| | BLAYLOCK, GLADYS | BRADLEY, JOSEPHINE | |
| | | BRADSHIER, ELLEN | |
| | | BRAY, NATHALIA | |





Sophomore Class

BUCHANAN, EDITH	BUMGARDNER, EDNA	CULLER, EDITH	EDWARDS, MARY LOUISE
BULLARD, EUNICE	BUMGARDNER, HAZEL COX, BEATRICE	CUMMINGS, SARA	ELLIS, CONSTANCE
BULLARD, SUSIE	BUMGARDNER, MAMIE CRAIG, MARGARET	DAY, ETHEL	EVANS, DOROTHY
	COVINGTON, ELEANOR	DEANS, ELIZABETH	





Sophomore Class

FENDER, CORA	FOWLER, MILDRED	GILLIF, DOROTHY	HATCHER, CHARLOTTE
FERELEE, MARJORIE	FOX, BONNIE LEE	GRAY, LUCY CLYDE	HOLDING, ELMA
FITZGERALD, PAULINE	FULGHUM, FRANCES	GIBSON, LUCILE	HOLDING, LEILA
	GIBSON, NANNIE C.	GRIMES, JULIA	
GAMBILL, LUCILE		HARRIS, MARION	





Sophomore Class

	JACKSON, ANNIE MARIE	McDANIEL, MARGARET	
HONEYCUTT, ESTHER	KELLAM, CHLORIS	MASON, MARGUERITE	
	JACKSON, MYRTLE	McNEILL, ESTHER	
BOARD, NELL	KITCHIN, PAULINE	MORGAN, MARY	
	JAMES, ELIZABETH	MANEY, IRENE	
HUFEMAN, MARY LOUISE	JOHNSON, LOUISE	LEWIS, EDITH	MOTTE, ERMA





Sophomore Class

NOLEN, LEILA	RAEFORD, JESSE	SAUNDERS, MABEL	SORRELL, RUTH
PEELE, MARGARET	RAND, LINDA	SEXTON, JANIE B.	STONE, IDA LEE
PERRY, SALINDA	ROBERSON, DELLA	SHERWIN, EVELYN	TEAGUE, ELIZABETH
	ROBERTSON, LILLIAN	ROYSTER, ROBERTA	SISK, BEULAH





Sophomore Class

TEDDER, CHARLOTTE
TEW, NORA

THOMAS, LEILA
TILLIE, NETTIE PEARL
TROTMAN, MARGARET

UMBERGER, LULA
WHITTEMORE, MARGARET
WILKINS, ETHEL

WILLIAMSON, DOROTHY
WOOLEY, LOUISE





freshmen



Freshman Class

OFFICERS

SARAH BRIGGS	<i>President</i>
IRENE THOMAS	<i>Vice-President</i>
BRUCE GORE	<i>Secretary</i>
KATHLEEN DURHAM	<i>Treasurer</i>
CLAIRBELLE HUGHES	<i>Cheer Leader</i>





Freshman Class

ALLEN, BESSIE	AYSUE, ELIZABETH	BARNETTE, LUCY	BONE, EUNICE	BRIGGS, SARA
ALSOP, VIRGINIA	BAILEY, FANNIE	BEAVERS, ALICE	BOOKER, NELLIE	BRIT, NANCY
ARNETTE, LOIS	BAKER, NELLIE	BLAKELY, ONIE	BORDERS, BERNICE	BRIT, RUTH
ARRINGTON, M.	BARBER, MARY	BLALOCK, JANIE	BOSTIC, GERTRUDE	BROUGHION, M.





Freshman Class

BRYAN, JULIA	CAUBELL, GRAYCE	COON, CATHERINE	CRAWLORD, V.	DEHART, GLADYS
BUCHANAN, LUCY	CASSADA, NETTIE	COWARD, OLIVE	CRUMPLER, MABEL	DOWDSE, EMILY
BUE, MARY	CHIEK, GRETTCHEN	CRAIG, MARGARET	CULLOM, SARAH	DRY, HALLIE
CAGLE, EVELYN	COLE, EVANGELINE	CRAWLEY, LILA	DAVIS, UNA MAE	DURHAM, K.





Freshman Class

DUVAL, EDNA MAE
 ELLIOTT, SALLIE M.
 EVANS, BESSIE
 EVANS, MARGARET

FALLS, WILLIE
 FLEMING, M.
 FLOYD, MARY L.
 FREEMAN, M.

FURR, DOROTHY
 GARDNER, SNOWDON
 GOODWIN, MILDRED
 GOODWYN, K.

GORE, BRUCE
 GREENE, JESSIE
 GREEN, RUTH
 HAMRICK, E.

HAMRICK, SYBIL
 HAMRICK, WINFREY
 HANNOCK, ANNIE
 HARRIS, ANNE





Freshman Class

HARPER, ALTA
 HARPER, FESSIE
 HARKNESS, BETSIE
 HORTON, LORA

HAINES, ROSA MAE
 HENDRICKS, MARY
 HENDRIX, MARY A.
 HIPPS, GRACE

HODGTS, PEARL
 HOLLEMON, M.
 HOLLOWELL, E.
 HONEYCUTT, ELVA

HUGHES, C.
 HUNT, BURNETTE
 HUTCHINSON, M.
 JACKSON, THETA

JAMES, VIRGINIA
 JOHNSON, LILLIAN
 KENDALL, MARTHA
 KENYON, MABEL





Freshman Class

KINBALL, MAMIE L.	KRAHNKE, CLEONE	LAYTON, SUSAN	LINDSEY, E.	MCCALL, EVELYN
KINDLER, DOROTHY	LAMM, ELEANOR	LEE, LYDA	LOVELACE, FRANCIS	MCGOUGAN, LULA
KING, MARGARET	LANG, VIRGINIA	LEE, RUBY	LUCAS, MARGARET	MADDRY, LINDA
KING, MARY V.	LAWRENCE, D.	LEWIS, NANCY	McADEN, MARY	MILLER, HAZEL





Freshman Class

MILLER, VIDA	MYERS, LOUISE	POE, MARY SUE	RIGGAN, ALICE	ROYALL, MARGARET
MILLS, ELIZABETH	OLDDIAM, K.	POWELL, VIVIAN	ROBERTSON, E.	SANDERLIN, EDNA
MITCHELL, C.	PHELPS, HELEN	RANDOLPH, EDITH	ROGERS, ADELL	SAUNDERS, JANICE
MORSE, BLONDIE	PHILLIPS, RUTH	RICKS, TEMPIE	ROWLAND, MARY	SIMMS, ANNE





Freshman Class

SLEDGE, CHRISTINE	STEVENS, LENA	TARKINGTON, G.	TRADER, IVEY	WATKINS, CARRIE
SLOAN, RUTH	STEWART, HELEN	TAYLOR, CARRIE	TUNNELL, LOIS	WATSON, CLARA
SNYDER, BERNICE	STOKES, OLIVE	THOMAS, IRENE	WARD, WRAE	WEST, VERONA
SORRELL, JUANITA	STONE, HERO	THOMPSON, DONIE	WASHBURN, RUBY	WHEELER, MARY





Freshman Class

WHILEY, SARA
WILDER, MATHIE

WILLIAMS, FRANCES
WILLIAMS, CATHERINE
WILLIAMS, MAE
WOODY, AVA

WORRELL, RUBY
YOUNG, BERNICE





In Memoriam



Thelma Louise Gondwin
'26



May 2, 1903

December 26, 1927







ORGANIZATIONS







Student Government Officers

- KATHARINE MADDY *President*
- CHARLOTTE CURTIS *Vice-President*
- MARY BURNS *Secretary*
- LECLAIRE JACOBS *Treasurer*





Student Executive Committee

HOUSE PRESIDENTS

PAULINE FREEMAN LENA TUTTLE ELIZABETH BREWER WINONA HOOPER

HOUSE VICE-PRESIDENTS

MIRIAM DAUGHTRY THELMA MARTIN ESTELLE WILKINS

CLASS REPRESENTATIVES

MARGARET CRAIG VIRGINIA CRAWFORD





Nominating Committee

FACULTY MEMBERS

MISS MARY MARTIN JOHNSON MISS JULIA HARRIS MISS GRACE LAWRENCE

STUDENT MEMBERS

MILDRED ALLEN	MARION FISKE	SALINDA PERRY	SARAH BRIGGS
KATHARINE MADDRY	LONIE GORDON	MADALINE MOORE	MADALINE ELLIOTT
BESS THOMAS	MABEL C. HAGGARD	RUTH BOWDEN	LORA DILLS





Baptist Student Union Officers

- MADALINE ELLIOTT *President*
 HELEN OLDHAM *Vice-President*
 MARGARET JONES *Recording Secretary*
 MATHIE LEE EAGLES *Treasurer*
 EVELYN JOLLEY *Corresponding Secretary*





BAPTIST STUDENT UNION COUNCIL





Y. W. C. A.

OFFICERS

ISABEL MacLEOD	<i>President</i>
RUTH LOWDERMILK	<i>Vice-President</i>
MABEL BAGBY	<i>Secretary</i>
SARAH WISEMAN	<i>Treasurer</i>
ALICE LAWRENCE	<i>Undergraduate Representative</i>





B. Y. P. U. Officers

- | | | | |
|-------------------------------|---------------------------|------------------------------|-------------------|
| ANNIE BELLE NOEL | <i>Director</i> | DOROTHY TURLINGTON | <i>Pianist</i> |
| FRANCES SCARBOROUGH | <i>Assistant Director</i> | PAULINE POWELL | <i>Chorister</i> |
| ELIZABETH APPLE | <i>Secretary</i> | MUSETTE KITCHIN | <i>Pep Leader</i> |

PRESIDENTS OF THE UNIONS

- | | |
|-------------------------------|------------------------------|
| EULA HODGES | <i>Pearl Johnson Union</i> |
| ALICE LAWRENCE | <i>Winnie Rickett Union</i> |
| LENA ALLEN | <i>Evelyn Campbell Union</i> |
| KATIE LEE WALTON | <i>Rosa Hocutt Union</i> |
| ELLEN BROADWELL | <i>Celia Herring Union</i> |
| ANNIE MILDRED KELLY | <i>Perry Morgan Union</i> |
| LOUISE SULLIVAN | <i>Ada Grayson Union</i> |
| MUSETTE KITCHIN | <i>Foy Willingham Union</i> |
| MARGUERITE MASON | <i>The New Union</i> |





Y. W. A.

OFFICERS

- | | |
|------------------------------|---------------------|
| ELIZABETH BREWSTER | President |
| HORTENSE HONEYCUTT | Vice-President |
| MARGUERITE MASON | Secretary-Treasurer |

CIRCLE LEADERS

- | | |
|-------------------------------|-----------------|
| FRANCES SCARBOROUGH | Sophie Lanneau |
| BESSIE HIMES | Marjorie Spence |
| THELMA TADLOCK | Mary Warren |
| ZELMA HOCUTT | Nell Fowler |
| CHARLOTTE TEDDER | Lottie Moon |
| VICTORIA BONEY | Fannie Heck |
| NORINE RATLEY | Blanche Barrus |
| JULIA GRIMES | Dorothy Kellam |
| HELEN OLDHAM | Dorothy Gorcer |
| ESTELLE WILKINS | Mary Reid |





Home Service Band

LENA TUTTLE *President*
 LOTTIE MITCHEM *Vice-President*
 DORIS HEWLETT *Secretary*



Foreign Service Band

LEAH ANDREWS *President*
 LORETTA SEAWELL *Vice-President*
 GLADYS BLALOCK *Secretary*





Sunday School

OFFICERS

ANNIE MILDRED KELLY *Director*
 LILLIAN WHEELER *Associate Director*
 MARY RODWELL HUNTER *Secretary*





Societies



MARY RODWELL HUNTER
CHIEF MARSHAL



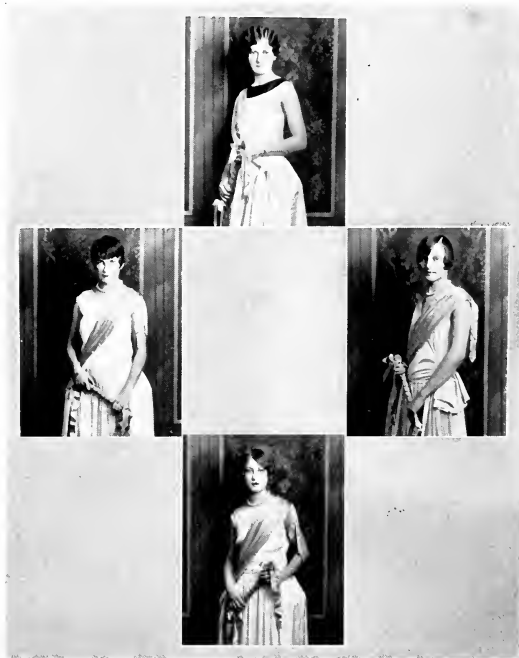




OFFICERS

- | | |
|------------------------------|-----------------------|
| LONIE GORDON | <i>President</i> |
| DOROTHY TURLINGTON | <i>Vice-President</i> |
| MUSETTE KITCHIN | <i>Secretary</i> |
| LOUISE HILL | <i>Treasurer</i> |





Marshals

ALBERTA ATKINSON, *Chief*
LELA HOLDING

DAVIE BELLE EATON
ANNETTE BONEY





Song of the Astrotektons

*See thy children, Mother Astro,
Sisters of the gold and white,
Bow before thee in thy beauty,
Thankful for thy wondrous light.
Now we bring our girlhood treasures,
And we lay them at thy feet—
Waiting for thy benediction
And thy bidding, always sweet.*

CHORUS

*Astro, Mother Astro,
From the mountains to the sea;
Astro, Mother Astro,
We have come in love and gladness
To be led by thee.*

*Now we feel thy hands upon us,
Hands so loving and so strong,
That the touch fills every daughter
With a purpose and a song.
Lift your heads, ye Astro maidens,
Look into her starlit eyes,
Then go forth to life and duty,
With a zeal that never dies!*

*Astro, Mother Astro,
With a love that grows not old;
Astro, Mother Astro,
See us rally 'round thy banner,
Dear old white and gold.*





Philaretia

*Behold in shining raiment dressed,
She stands; in silence bow,
High honor sits upon her breast,
A white flame blazes in her heart,
And stars upon her brow.*

*Look up and listen while she speaks,
In solemn tones and slow,
She points to radiant mountain peaks,
Where morn reveals her first grey streaks
To weary souls below.*

*She calls us to her house of light
Beneath her azure dome;
"Come, daughters, walk with me in white,
Above the glooming realms of night:
Build here your highland home.*

*"Let Virtue feed her vestal fire
Within each holy fane,
Let fearless Truth with flaming ire
Consume the breath of base desire,
And rule without a stain."*

*Lead on, O Philaretia fair,
Lead upward day by day;
Thy violet banner in the air,
Thy daughters all will highly dare,
Brave mother, lead the way.*



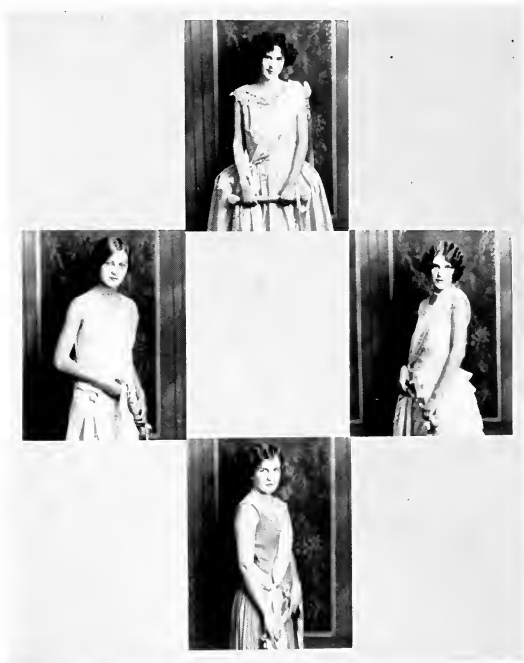




OFFICERS

- MADALINE MOORE *President*
 MARY GLENN *Vice-President*
 MARGARET NASH *Secretary*
 SARAH MEWBORN *Treasurer*





Marshals

PAIGE LEONARD, *Chief*
HAZEL BUMGARDNER

JANIE BURNS
FRANCES FULGHUM





Medal Winners

CLARISSA POTEAT

The Earthly Paradise in Literature

CARTER-UPCHURCH MEDAL

MARY HERRING

*"Plato's Idea of Beauty as Exemplified
in Shelley*

MINNIE JACKSON BOWLING MEDAL





Kappa Nu Sigma Honor Society

- | | |
|----------------------------|--------------------------------|
| MARTHA MAYNARD | <i>President</i> |
| KATIE LEE WALTON | <i>Vice-President</i> |
| BESS THOMAS | <i>Secretary and Treasurer</i> |
| ELOISE GREENWOOD | PAIGE LEONARD |
| MARY PEELES | |

RESIDENT ALUMNAE MEMBERS

- | | |
|--------------------------|---------------------|
| MISS MARY LYNCH JOHNSON | MISS ELLEN BREWER |
| MISS MARY MARTIN JOHNSON | MISS GLADYS LEONARD |





Publications

Twig Staff

MEMBER NORTH CAROLINA COLLEGIATE PRESS ASSOCIATION

MABEL CLAIRE HOGGARD *Editor-in-Chief*
 ALICE DOWD *Managing Editor*

BUSINESS STAFF

MUSETTE KITCHIN *Business Manager*
 DAVIE BELLE EATON *Assistant Business Manager*
 PULLEN BELVIN *Assistant Business Manager*
 EULA HODGES *Circulation Manager*

ASSISTANT EDITORS

HESTA KITCHIN *Alumnæ Editor*
 IVA CARROLL *Literary Editor*
 DAVIE BELLE EATON *Sports Editor*
 MARGARET CRAIG *Society Editor*
 EVELYN MCCALL *Art Editor*
 SARAH BRIGGS *Feature Editor*
 MATILDA HOLLOMAN *Feature Editor*

REPORTORIAL STAFF

MARGUERITE MASON ETHEL DAY
 FRANCIS SCARBOROUGH

MISS NETTIE HERNDON *Faculty Adviser*
 MISS ELLEN BREWER *Alumnæ Representative*







Acorn Staff

MEMBER NORTH CAROLINA COLLEGIATE PRESS ASSOCIATION

BESS THOMAS *Editor-in-Chief*
EVELYN JOLLEY *Associate Editor*

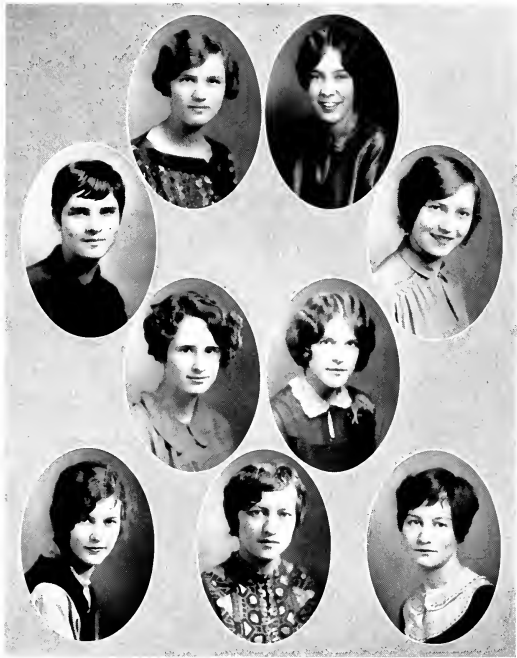
BUSINESS STAFF

SARA OLIVER *Business Manager*
JANIE BURNS *Assistant Business Manager*
JOYBELLE CLARK *Circulation Manager*

ASSISTANT EDITORS

SARAH COOKE *Junior Editor*
MARY LOUISE HUFFMAN *Sophomore Editor*
ELEANOR COVINGTON *Sophomore Editor*
MARY BURNS *Exchange Editor*
MISS MARY LYNCH JOHNSON *Faculty Adviser*







Oak Leaves Staff

RUTH BOWDEN *Editor-in-Chief*
 SARAH COOKE *Assistant Editor*
 MARY WILLIS *Business Manager*
 PAULINE NEWTON *Assistant Business Manager*

ASSISTANT EDITORS

PAIGE LEONARD *Senior Editor*
 LOUISE HILL *Junior Editor*
 FRANCES BARNHILL *Junior Editor*
 FRANCES FULGHUM *Sophomore Editor*
 SARAH CUMMINGS *Sophomore Editor*
 JESSIE GAMBILL *Art Editor*
 MAISIE PATTERSON *Art Editor*
 ELIZABETH RICHARDSON *Photo Editor*
 MISS JULIA HARRIS *Faculty Adviser*
 MR. E. F. CANADAY *Faculty Adviser*







Recompense

Suddenly, *from the highway*
I see a charming vista but a second
Opened to view,
But in that moment, elusive beauty
Of a wonder world, an earth created for men
By a joyous God.
In a room of images
I see one thing alone, a bronze
That has caught the glory of existence,
The swing of motion, the gay lilt of youth.
In a book of verses
A careless phrase, a measured line,
Holds all the beauty of the universe.
I hear a voice, a half familiar name, a lovely word,
And for a moment know
The thrill of joy, the charmingness of life,
The recompense of years of mediocrity.

—MARY BURNS, '29





Clubs



Helen Hull Law Classical Club

- RUTH BROOKSHIRE *President*
 HELEN OLDHAM *Vice-President*
 EVELYN JOLLEY *Secretary*
 JULIA MOORE SCARBOROUGH *Treasurer*

FACULTY MEMBERS

- MISS MARY GRAYDON MISS HELEN PRICE





Dramatic Club

MARTHA MEDLIN *President*
 ANNIE REE MCGUGAN *Vice-President*
 LOUISE SULLIVAN *Secretary and Treasurer*

PAIGE LEONARD *Leader of Group One*
 HOWARD MUMFORD *Leader of Group Two*
 MISS LUCY PLATT *Faculty Member*





Colton English Club

PAIGE LEONARD *President*
PAULINE HUFF *Vice-President*

FRANCES BARNHILL *Secretary*
NORINE RATLFY *Treasurer*

FACULTY MEMBERS

MISS JULIA HARRIS MISS LUCILE BURRIS
MISS MARY LYNCH JOHNSON MISS MARY LOOMIS SMITH
 MISS ELIZABETH PARKER
 MISS MARY TILLERY
MISS RUBY DAVIS, *Honorary Member*







Home Economics Club

ALMA WEBB *President*
SARAH WISEMAN *Vice-President*
NORINE RATLEY *Secretary and Treasurer*
MISS ELLEN BREWER *Faculty Member*







International Relations Club

ALICE LAWRENCE *President*
LENA ALLEN *Vice-President*
MARGARET BROADHURST . . . *Secretary and Treasurer*
AILENE YOUNG *Reporter*







K. K. K.

Kranky Criticism: "It is pretty, but is it Art?"—Kipling.

Kombination: Krome Yellow and Kobalt Blue

Kronic Konditions: Klinbing, Kulmination, Kapability

KAPTAINS OF THE KLAN

- I. ISABELLA POLEAT "*The Man with the Red Tie*"
 M. TILLERY "*Kaliopo*'

KOMRADES

- | | |
|--|--|
| LONIE GORDON " <i>Father William</i> " | MARGARET WHITTEMORE <i>The Maid of Arr</i> |
| LOUISE McCOMB <i>Kassandra</i> | RACHEL HATCHER <i>Kalypso</i> |
| LENA TUTTLE <i>L'Ambitieuse</i> | LOIS TUNNEL <i>Kurlylocks</i> |
| JESSIE GAMBILL <i>Angelica K.</i> | OLIVE COWARD <i>Sylvia</i> |
| KATE HIGDON <i>Koo Koo Kate</i> | ELIZABETH HAMRICK <i>Oenone</i> |
| VIRGINIA PENNY <i>A Bit of Dresden</i> | LOUISE PARKER <i>The Salamander</i> |
| SARAH COOK <i>Peter Pan</i> | ALTA HARPER <i>Puck</i> |
| MAISIE PATTERSON <i>A Jolly Javanesse</i> | CARRIE WATKINS <i>The Krack Krackler</i> |
| LULA UMBERGER <i>Paint Putter</i> | MARY LOUISE HUFFMAN <i>Hebe</i> |
| BESSIE HIMES <i>The Mountain Maid</i> | BETSY HARTNESS <i>The Brown Wren</i> |
| EVELYN McCALL <i>Evander</i> | DESSIE BANKS <i>The Lone Star</i> |
| DAVIE BELLE EATON <i>The Gawky Giraffe</i> | BERNICE YOUNG <i>Krafter</i> |

KONFAB KALENDAR

- January 27*—Discussion of Exhibit from Grand Central Galleries.
February 17—Excavations at Cyrene.
February 24—Annual Art Evening.
March 9—A Borglum Idea.
March 30—The Romance of the Antique.
April 13—George Bellows: His Place in American Art.
April 27—The International Art Congress at Prague.
May 11—The Beauty of the Nebraska Capitol.
 "Konsistency is the Hobgoblin of little minds."





Le Cercle Francais

- MARY LEE SEARS *President*
 LOIS JACOBS *Vice-President*
 MISS CATHERINE ALLEN *Secretary-Treasurer*





Mars Hill Club

LENA GAMBILL *President*
 ETHEL FRYE *Vice-President*
 VELMA TEAGUE *Secretary*

PAULINE HUFF *Treasurer*
 VIRGINIA HOLTZCLAW *Reporter*
 MISS CAROLINE BIGGERS . . . *Faculty Member*





Wingate Club

- SALLIE WILLIAMS *President*
 SHELLIE BENNETT *Vice-President*
 HALLIE JONES *Secretary*
 MARGARET CARROLL, Wake Forest, *Mascot*

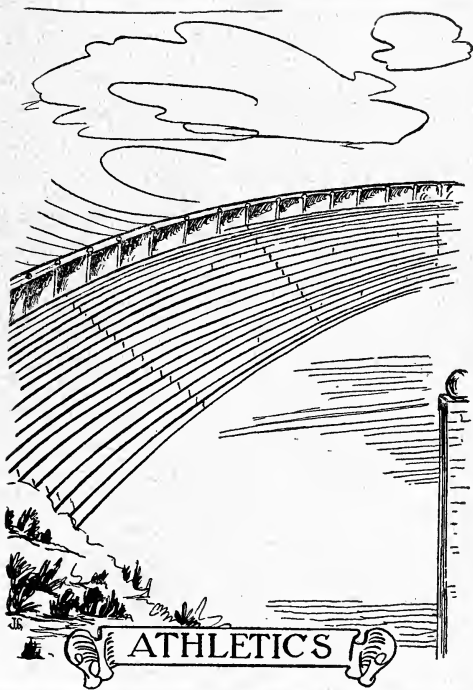




Town Girls' Club

- PULLEN BELVIN *President*
 MARTHA MEDLIN *Vice-President*
 BESSIE GRAY GILL *Secretary*
 ALICE DOWD *Treasurer*





ATHLETICS





W. A. A. Officers

- LORA DILLS *President*
 DAVIE BELLE EATON *Vice-President*
 ANNETTE BONEY *Secretary*
 DOROTHY ROWLAND *Treasurer*

MARY BROWNING, *Student Assistant Coach*



MISS PLATT, *Coach*







PAULINE POWELL AND FLORENCE STAKES
CHEER LEADERS





Senior Class Basketball Team

- | | |
|----------------------------|--------------------|
| MARY CHEVES | <i>Captain</i> |
| ESTELLE WILKINS | <i>Manager</i> |
| MARY BROWNING | <i>Forward</i> |
| ESTELLE WILKINS | <i>Forward</i> |
| KATIE LEE WALTON | <i>Guard</i> |
| LORA DILLS | <i>Guard</i> |
| MARY CHEVES | <i>Center</i> |
| ZELMA HOCUTT | <i>Side Center</i> |

SUBSTITUTES

- | | | |
|------------|---------------|-------------|
| RUTH JONES | JESSE GAMBILL | SARA OLIVER |
|------------|---------------|-------------|





Junior Class Basketball Team

MATTIE LASSIER	<i>Captain</i>
GWYN LENOIR	<i>Manager</i>
LOUISE ANGE	<i>Forward</i>
FRANCES SCARBOROUGH	<i>Forward</i>
LEMA SLOAN	<i>Guard</i>
GWYN LENOIR	<i>Guard</i>
MIRIAM DAUGHTRY	<i>Center</i>
MATTIE LASSIER	<i>Side Center</i>

SUBSTITUTES

FRANCES BARNHILL

JULIA MOORE SCARBOROUGH

LOUISE HILL





Sophomore Basketball Team

DOROTHY ROWLAND	<i>Captain</i>
ELIZABETH APPLE	<i>Manager</i>
LULA UMBERGER	<i>Forward</i>
ELIZABETH APPLE	<i>Forward</i>
MARY MORGAN	<i>Guard</i>
ELIZABETH JAMES	<i>Guard</i>
DOROTHY ROWLAND	<i>Center</i>
MARGARET PEELE	<i>Side Center</i>

SUBSTITUTES

VICTORIA BONEY

JOSEPHINE BRADLEY

MARION HARRIS





Freshman Basketball Team

ELIZABETH AYSUCE	<i>Captain</i>
MARY VIRGINIA KING	<i>Manager</i>
GRETCHEN CHEEK	<i>Forward</i>
MARY VIRGINIA KING	<i>Forward</i>
MARY BUIE	<i>Guard</i>
ONIE BLAKELY	<i>Guard</i>
ELIZABETH AYSUCE	<i>Center</i>
LOIS ARNETTIE	<i>Side Center</i>

SUBSTITUTES

LUCY BUCHANAN

CLAIREBELLE HUGHES

GURLINE TRIPLETT





BROWNING-WISEMAN



LASSITER ~ DAUGHTRY



ROWLAND APPLE



KINDLER DEHART





CHEVES — HIKING



DAUGHTRY — BASEBALL



BRADLEY — VOLLEYBALL



JAMES — TRACK





CHERES



WILKINS



ROWLAND



BROWNING
ASST. COACH





LASSITER



LENOIR



AYSCUE



KING





MARY HERRING
QUEEN OF MAY





THE MAY COURT, 1927



THE MAY DANCERS



A FRAME L...

OH HENRY!

STUNT NIGHT

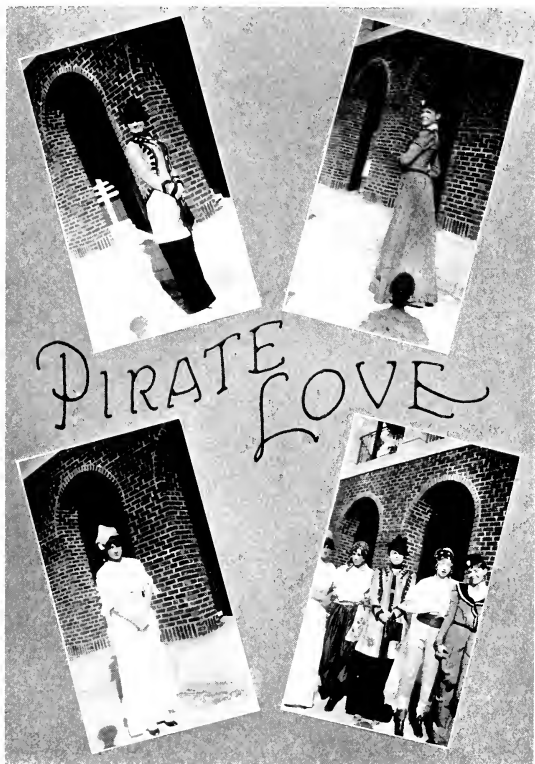
NOVEMBER
5th
1927

30

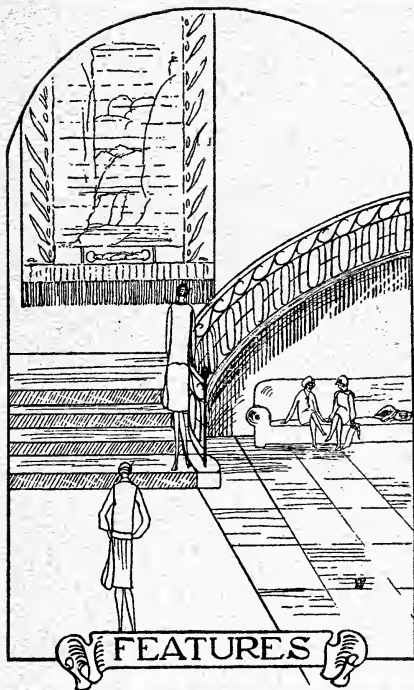
PRESENTS PIRATE LOVE

IN
DUTCH

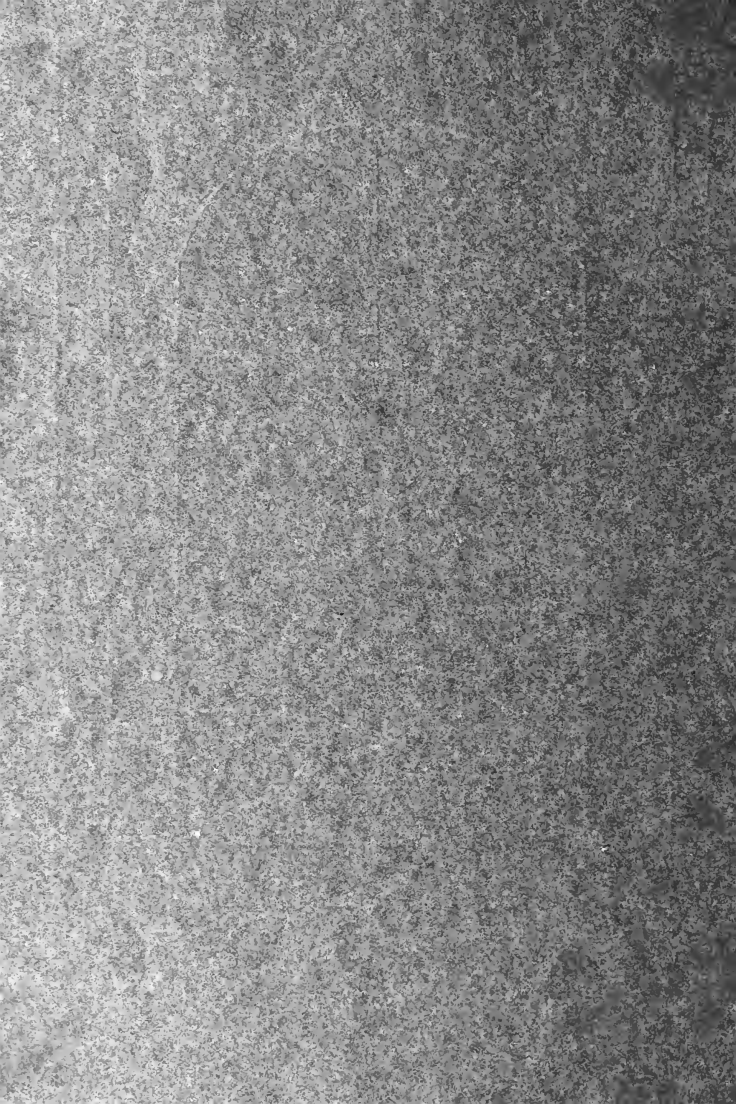








FEATURES





Statistics

Miss Japan JANIE BURNS
Entertaining

Miss France DAVIE BELLE EATON
Stylish

Miss Persia MILDRED ALLEN
Charming

Miss England MARY BROWNING
Athletic

Miss Hawaii DOROTHY TURLINGTON
Musical

Miss Spain ANNETTE BONEY
Graceful

Miss Egypt BESS THOMAS
Intellectual

Miss America MADELINE ELLIOTT
Service

















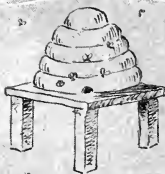




NEHI



HAM?



PRODUCTS

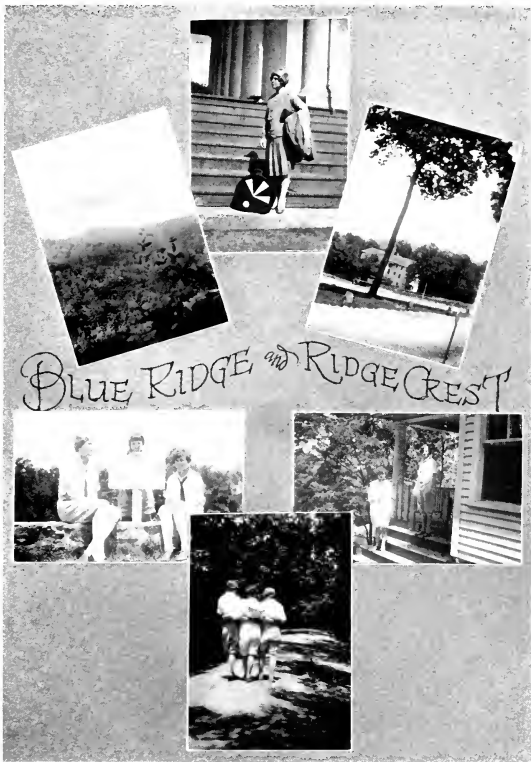


GOLD DUST
TWIN'S



GOLDEN
GLINT



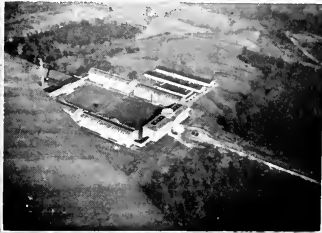




GETTIN' THERE







AROUND THE CAMPUS







Snappy Bits

"Did you hear about Jack stepping in front of a train?"

"Was he killed?"

"No, the train was backing up."

* * *

Our idea of the tactful hostess is the lady who, when a guest accidentally knocks over the salt cellar, kicks the legs from under the table and jerks the chandelier out of the ceiling to keep the offender from feeling embarrassed.

* * *

The three R's of matrimony: Romance, Rice, Rocks.

* * *

P. Freeman: "I'm going to Ifornia next week."

P. Huff: "What do you mean by Ifornia?"

P. Freeman: "The Cal is silent, as in Coolidge."

* * *

The celebrated soprano was doing a solo when "Rowdy" said to Fatty Phelps, referring to the conductor of the orchestra:

"Why does that man hit at that woman with his stick?"

"He's not hitting at her," replied Fatty. "Keep quiet."

"Well, then, what's she hollerin' for?"

* * *

Edna Sanderlin: "Thank you for the hug and kiss."

"He": "The same to you, the pressure was mine."

* * *

Nettie Cassada: "Can you match this piece of ribbon?"

Shop Assistant: "Unfortunately we cannot, Madam. It was one of the matchless bargains we offered last week."

"Why, I'll have you cured of the measles in a week."

Mabel Claire: "Now, doctor, no rash promises."

* * *

"Do you take this woman for your lawfully wedded wife?"

"Ask me another!"

* * *

Warden: "Everybody here has to learn a trade. What would you like to be?"

Convict: "A commercial traveler."

* * *



* * *

"Do the children understand the bed-time stories?"

"I dunno. Last night my little girl went to sleep very nicely on a hash recipe."

* * *

The English law gives a man the right to open his wife's letters. But it does not give him the courage.





Snappy Bits

WHAT HE WANTED (At the Counter)

"Gimme a lettuce which."

"A lettuce which?"

"Yeh, a lettuce sandwich, without the sand."

* * *

"I don't know which girl to take to the game."

"Why don't you flip a coin?"

"I did, but it didn't come out right."

* * *

Waiter: "Soup?"

Musette: "Is it good soup?"

Waiter: "Yeh, fourteen carrot."

* * *

"Did you ever hear of Helen of Troy?"

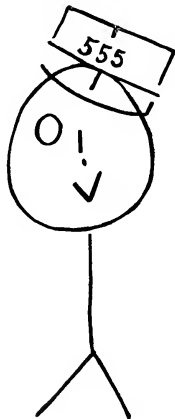
"No. But I know about the Sack of Rome."

* * *

"I see we are having war with Central America."

"What newspaper is sponsoring it?"

* * *



* * *

Father: "So you borrowed the car last night to take the girls for a spin, eh?"

Davie Belle: "Er—well—"

Father: "It's all right—only one of them left her pipe under the seat."

* * *

ALWAYS TRUE?

Think of all the people you can get on the telephone for a nickel.

* * *

Janie: "Three weeks ago I couldn't play one note."

Isabel: "Well?"

Janie: "Now I can play one note."





Snappy Bits

What any campus needs is fewer people who like to tell it what it needs.

* * *

He: "Do you know what hymn that dress you are wearing reminds me of?"

She: "No, what?"

He: "Frock of Ages."

* * *

Tucker: "And why do you call me Pilgrim?"

Katherine: "Well, every time you call you make a little progress."

* * *

Matilda: "What's an Amateur Gentleman?"

Dot K.: "A guy that prefers bleached blondes."

* * *

REVISED PROVERB

Modern woman has been tried and found wanting—everything under the sun.

* * *

George: "I have no more confidence in women."

"Why not?"

"I put a matrimonial advertisement in the paper and one of the replies was from Connie."

* * *

Howard: "Who wrote th's piece?"

Bess: "The program says Andante."

Howard: "Who's that?"

Bess: "Don't display your igoorance—the daughter of the famous poet, of course."

* * *

Mary Willis: "Why don't you advertize?"

Merchant: "It's no use. It ruins my business."

Miss Willis: "Ruins your business? How?"

Merchant: "I tried it last year and the people nearly bought everything I had."

"Why did Sally break her engagement with Jack?"

"She tried to cut her initials on a window with the diamond he gave her and—"

"Didn't it work?"

"Well, when she looked for the initials she found them on the diamond."

* * *

"If the engagement is broken off, why don't you send his pin back?"

"I'm keeping it until the next one sees what he's got to live up to!"

* * *

HER HAPPY PRIVILEGE

Nitt: "I used to be on my girl's mind all the time, but—"

Witt: "But what?"

"But she changed her mind."

* * *

Norene: "Why were you so careful to see that there were no worms in that apple?"

Chloris: "I'm a strict vegetarian."

* * *





Snappy Bits

"Why did you break your engagement with that school teacher?"

"I didn't show up one night, and she wanted me to bring a written excuse signed by my mother."

* * *

She: "Where in the world did you get that horrible necktie?"

He: "The laugh's on you. You gave it to me last Christmas."

* * *

He: "My, but you are stupid."

She (bending over): "Oh, you should see my sister. She's more stoop-ed than I am."

* * *

Excited Freshman (to cafe cashier): "Have you seen a fellow eating in here with one arm?"

Cafe Cashier: "Yes, but he has a knife in the other."

* * *

Eagles: "My dream are like eggs—they're nearly always scrambled."

Jolley: "M:ne are mostly Freud."

* * *

To err is human—to keep it quiet is not.

* * *

Broker: "How much you ask for diss watch?"

Broken: "I want three dollars."

Broker: "Vell, I giff you two dollars."

Broken: "But this is an exceptional watch. It gains five minutes each day."

Broker: "Vell, I guess I g:ff t'ree dollars."

* * *

He sold his brain to a research laboratory, but he fooled them; he didn't have any brain.



* * *

Customer: "Gimme the biggest medical dictionary you got."

Bookseller: "Certainly, Doctor—"

Customer: "Doctor, nothing! I'm an ad writer."

* * *

"There's the piano," she said. "Please play something."

He rose to his full graceful height, pushed back his long black hair, and adjusted his cuffs. He sat before the piano. Something was amiss. He searched. How he hunted! He turned despairingly.

"Gloria," he groaned, "Where is the slot?"





Just a Line or Two

Ether Anaputt -

Alma here smiling
you must succeed

William Johnson

Here's hoping you
have a successful & happy year

Gladys Bennett

Love to you
always, always, Luck & joy
always, always, in the year

Carrie Taylor

Don't forget to write
I hope to see you & the big appointment
and we'll be sure to log you in
top of the year!

12 - 3 - 1928

111 at F & 1200

Erma White

I wish you the best
of everything in life

Continued





Just a Line or Two

A large writing area consisting of two columns of horizontal lines. The left column has 11 lines, and the right column has 11 lines. The lines are evenly spaced and extend across most of the page's width.



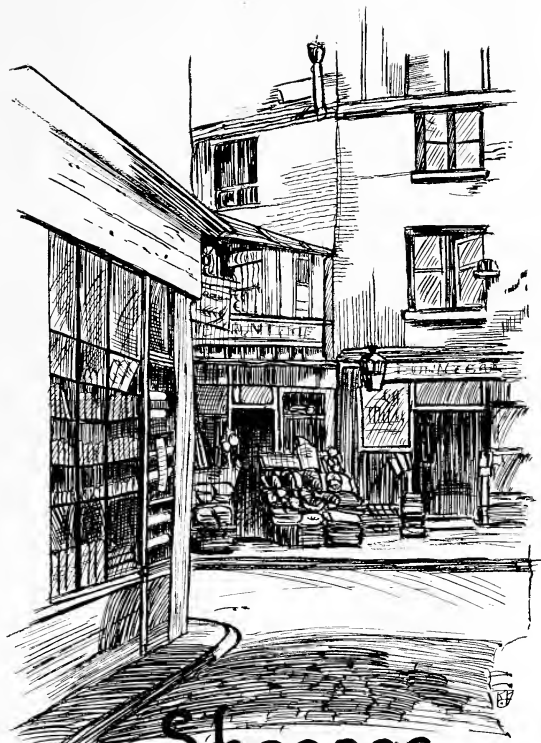


“Errata”

Listed in Oak Leaves as Classed by College as

BONEY, ANNETTE	Junior	Sophomore
GILL, BESSIE GRAY	Junior	Sophomore
MEDLIN, MARTHA	Junior	Sophomore
ALLEN, BESSIE	Sophomore	Freshman
BONEY, VICTORIA	Sophomore	Freshman
BRADLEY, JOSEPHINE	Sophomore	Freshman
BRENSON, LORENA	Sophomore	Freshman
HORD, NELL	Sophomore	Freshman





Shoppes



TIFFANY & Co.

JEWELRY WATCHES SILVERWARE
OF DEPENDABLE VALUE

MAIL INQUIRIES RECEIVE PROMPT ATTENTION

FIFTH AVENUE & 37TH STREET
NEW YORK





EAT

Pine State Ice Cream

FOR HEALTH

“IT’S PURE, THAT IS SURE”

PHONE 717-718

We Extend to You a Cordial Invitation to
Inspect Our New Things

Special Dresses, \$19.50

Coats, Ensembles, Dressy Sports Wear

Knox Hats

EQUEL'S STYLE SHOP, Inc.

117½ FAYETTEVILLE STREET

RALEIGH, N. C.





UNIVERSAL HOUSEHOLD HELPS

Like traditions that have been handed down through the ages, Universal Household Helps have stood the test of time. Women for several generations have been familiar with their fine quality of workmanship and admired their lines of beauty. Actual experience has taught them that Household Helps bearing the Universal stamp are most dependable in the home.

CAROLINA POWER AND LIGHT COMPANY

S. & W. CAFETERIA

RALEIGH—CHARLOTTE—ASHEVILLE—KNOXVILLE
ATLANTA

THOMPSON ELECTRIC COMPANY

Electrical Supplies and Appliances

PHONE 370

122 FAYETTEVILLE STREET

RALEIGH, N. C.





TAYLOR'S

"The Show Place of the Carolinas"

TO MEREDITH STUDENTS

IF YOU WILL COMPARE PRICES, QUALITY AND
STYLE AT TAYLOR'S WITH OTHER PLACES
YOU WILL BUY AT

TAYLOR'S

"We Like Our Flat Rate Laundry System"

ENDORSED BY BOARD OF TRUSTEES

Mr. J. B. Cullins Does Work by Contract

COLLEGE LAUNDRY, Raleigh, North Carolina
WAYNE LAUNDRY AND DRY CLEANER, Goldsboro, North Carolina
HENDERSON STEAM LAUNDRY, Henderson, North Carolina
CULLINS DRY CLEANING, Greenville, North Carolina

CULLINS BROTHERS, *Proprietors*

J. B. CULLINS, *President*





MEREDITH COLLEGE

RALEIGH, N. C.

A Standard College
For Young Women



Offers Course of Study Leading to the
A.B. Degree and to Diplomas
in Art and in Music



For Catalogue or Further Information Write

CHAS. E. BREWER, *President*

RALEIGH, N. C.





ALWAYS THE NEWEST IN FOOTWEAR
AT
ROSCOE-GRIFFIN SHOE CO.

COMPLIMENTS OF
T. H. BRIGGS & SONS, Inc.
"Carolina's Oldest Wholesale and Retail Hardware House"

Established 1865

PHONE NO. 45

RALEIGH, N. C.

If We Were Cheer
Leaders!

We could shout to the utmost
of our vociferous capacity
telling you the delight-
fulness of our

Drinks and Candies

MAKE OUR STORE
YOUR STORE

CALIFORNIA
FRUIT STORE

The Rendezvous

PHONE 36

College Students Are Always
Welcome at Our Store

Make It Your Headquarters

AGENTS FOR

HUYLER'S AND HOLLINGSWORTH
FINE CANDIES

Boone-Iseley Drug Co.

WILSON'S
COFFEE SHOP

Best 35c Meals in Raleigh

Salisbury Street

RALEIGH, NORTH CAROLINA





GALLOWAY'S DRUG STORE

STOP BY BETWEEN CARS AND HAVE A BITE TO EAT

"At the End of the Car Line"

"SERVICE"

WE MAKE IT EVERY DAY

"Royster's Candy"

**A. D. ROYSTER &
BROTHERS**

RALEIGH, NORTH CAROLINA

J. J. FALLON CO.

Incorporated

FLORISTS

CORSAGES, CUT FLOWERS
DECORATIONS

*Largest Floral Establishment in
North Carolina*

203 Fayetteville St. RALEIGH, N. C.

"THE STORE OF DEPENDABILITY"

There are gifts that please for a moment, an hour, or a day;
as beautiful and fleeting as roses. Then there
is the perfect gift of

JEWELRY

That endures longer than years, longer than generations
This then is surely the **PERFECT GIFT**; give once
It carries for all time its message of Friendship and **LOVE**

BOWMAN'S

"The Shop of Beautiful Gifts"

15 West Hargett Street

RALEIGH, N. C.





Carolina's
Largest
Photographic
Studio

SIDDELL STUDIO

RALEIGH, NORTH CAROLINA



OFFICIAL
PHOTOGRAPHERS

for

OAK LEAVES





"Safe and Courteous Motor Coach Service"

SAFETY TRANSIT LINES

INCORPORATED

RALEIGH, NORTH CAROLINA

RICHMOND, VIRGINIA

Operating Motor Coach Service Between the Following Points:

CHARLOTTE	KENLEY
LUCAMA	SANFORD
ALBEMARLE	DUNN
PETERSBURG	BENSON
SOUTH HILL	RALEIGH
NORLINA	SMITHFIELD
WELDON	SELMA
LITTLETON	GOLDSBORO
WARRENTON	MOUNT OLIVE
HENDERSON	WARSAW
FRANKLINTON	CLINTON
LOUISBURG	FAYETTEVILLE
NASHVILLE	EAST WALLACE
ROCKY MOUNT	BURGAW
WILSON	WILMINGTON

COACHES FOR SPECIAL TRIPS FURNISHED
AT REASONABLE RATES ON SHORT NOTICE

CALL RALEIGH 3279, 447

CALL RICHMOND MADISON 5422





To Be a Guest at THE YARBOROUGH is to Fully Appreciate Its Envied Reputation for
Genuine Service and Sincere Hospitality.

YARBOROUGH HOTEL
"Raleigh's Most Famous Hotel"

The Personification of Good Taste is Exemplified in Our Wearing Apparel for Milady.
Ten Per Cent Discount to College Girls.

The Shop of Original Modes
LUCIELLE, Inc.

Visit Our Ready-to-
Wear Department,
Second Floor



Mail and Phone Or-
ders Receive Prompt
Attention

One of the South's Greatest Shopping Centers. Offering the Newest Styles in Quality
Merchandise at the Lowest Prices

ONE PRICE—\$7.00—MORE WORTH
CINDERELLA SHOE STORE

113 FAYETTEVILLE STREET

RALEIGH, N. C.

THE SIR WALTER

"Raleigh's New Million Dollar Hotel"

240 ROOMS—240 BATHS

WHERE THE GIRLS AND THEIR PARENTS ARE
ALWAYS WELCOME

PATRONIZE OUR ADVERTISERS

They Serve Us By Selling Us the Very Best





Fountain Supplies, Fancy Candy and Specialties

We Are Exclusive Distributors For

Dixie Individual Drinking Cups

GARLAND C. NORRIS & COMPANY

Grocers and Confectioners

Wholesale Only

Some of the Publications We Print

"The Wake Forest Student," "Old Gold and Black," "The Raleigh Student," "N. C. Sunday School Observer," "N. C. Teacher," "N. C. Odd Fellow," "N. C. Christian," "The Wautaugan," "The Technician," "Alumni News," "The Sanatorium Sun," and others.

If You Want Quality—We Give It

If You Want Service—We Furnish It

If You Want Satisfaction—We Guarantee It

CAPITAL PRINTING COMPANY

RALEIGH, N. C.

ALDERMAN & COMPANY

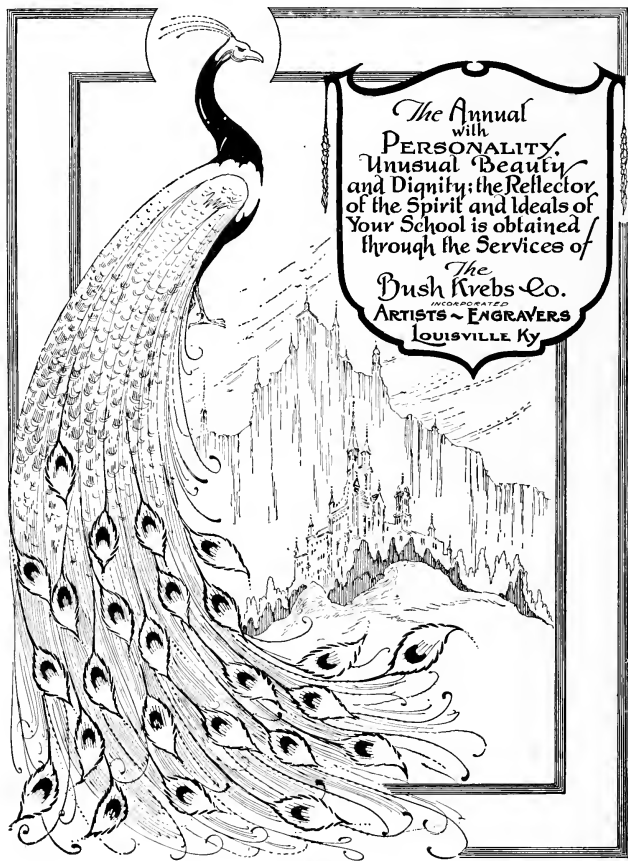
WHOLESALE CANDIES

Products of National Biscuit Company

317 South Wilmington St., RALEIGH, N. C.

PATRONIZE OUR ADVERTISERS





The Annual
with
PERSONALITY
Unusual Beauty
and Dignity; the Reflector
of the Spirit and Ideals of
Your School is obtained
through the Services of

The
Bush Krebs Co.
INCORPORATED
ARTISTS ~ ENGRAVERS
LOUISVILLE Ky



THIS BOOK PRINTED BY BENSON



LARGEST COLLEGE ANNUAL
PUBLISHERS IN THE WORLD

HIGHEST QUALITY WORKMANSHIP
SUPERIOR EXTENSIVE SERVICE



COLLEGE ANNUAL HEADQUARTERS



finis

