







Ex Libris

Sarah Cook
Editor-in-Chief

Pauline Newton
Business Manager



Oak Leaves

VOLUME 26



Published by the
Astrotekton and Philaretian Literary Societies

Illustrated by the
Art Department and Students

Meredith College

Raleigh, North Carolina

CARLYLE CAMPBELL LIBRARY
MEREDITH COLLEGE

Foreworde



Kynde reader, as these pages you should
scanne,

You see there caught the spirit of an age
Of bright reflections through the poet-
manne

Whose soule was one with Nature's, and
a sage

Who knew the heights and depths of human
kinde,

And smiled in tolerance e'en upon the
weake.

We can but holde such beauty of the minde
As an Ideale; to know, to love, to seeke!

Contents



Book I	College
Book II	Classes
Book III	Organizations
Book IV	Features

164940 From the Library of the University of Michigan



DR. JULIA HAMLET HARRIS



Dedication

To

Doctor Harris

Who has given us a greater zeal
for living and for learning; who
has delighted us with "the before
unapprehended relations of
things;" who has given us the
greatest poetry—the poetry
of the mind.



In Memoriam

Susan E. Young

Professor of
Modern Languages, 1899-1917



Died November 10, 1928



College



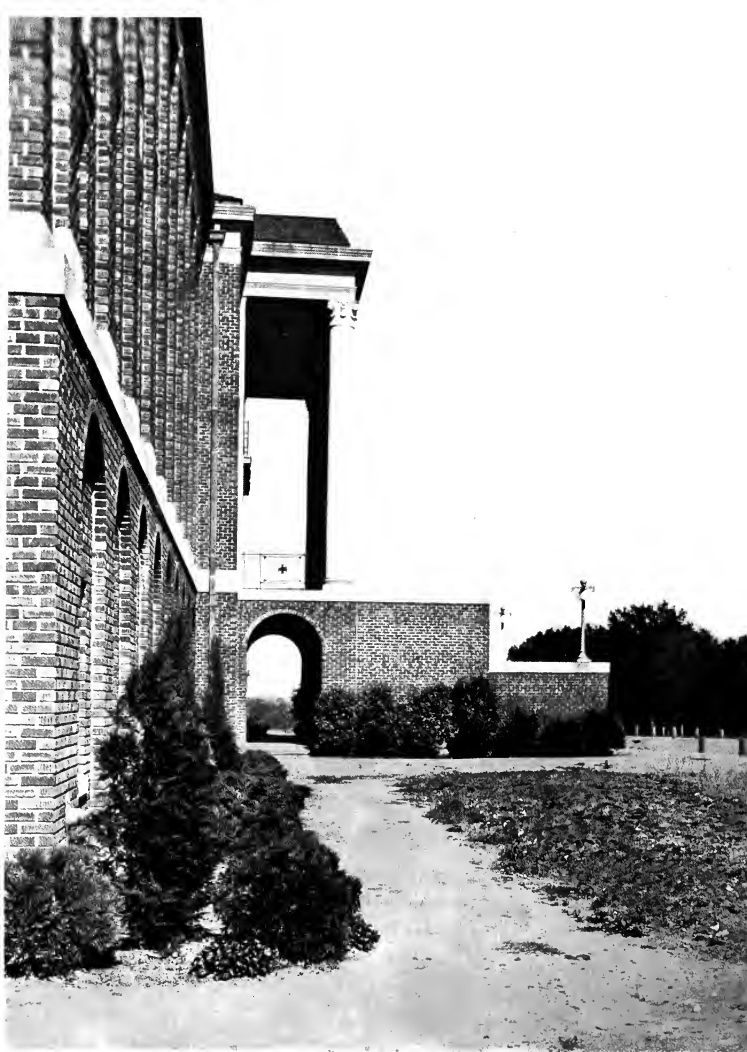
Views

















Faculty



CHARLES E. BREWER, A.M., Ph.D., LL.D.
President

Oak Leaves



J. GREGORY BOOMHOUR, A.B., A.M.

Dean





Oak Leaves



MISS GRACE LAWRENCE
Dean of Women





Faculty

L. E. M. FREEMAN, A.B., A.M., B.D., Th.D.

Professor of Religion

ERNEST F. CANADY, A.B., A.M.

Professor of Mathematics

SAMUEL G. RILEY, A.B., A.M.

Professor of History and Economics

LULA G. WINSTON, B.S., Ph.D.

Professor of Chemistry

JULIA H. HARRIS, Ph.B., A.M., Ph.D.

Professor of English

LENA A. BARBER, B.S., A.B., M.S.

Professor of Biology

ELLEN D. BREWER, A.B., B.S., A.M.

Professor of Home Economics

H. JUDSON PERRY, A.B., B.D., A.M.

Professor of Education

HELEN PRICE, A.B., Ph.D.

Professor of Latin and Greek

MARY LYNCH JOHNSON, A.B., A.M., Ph.D.

Associate Professor of English



Faculty



Mlle. LOUISE PASCHAL
Instructor in French

MARY MARTIN JOHNSON, A.B., A.M.
Associate Professor of Chemistry

MARY LOOMIS SMITH, A.B., A.M.
Assistant Professor of English

NETTIE SOUTHWORTH HERNDON, A.B., A.M.
Assistant Professor of History

SARAH LUCILE BURRISS, A.B., A.M.
Assistant Professor of English

LILLIAN PARKER WALLACE, A.B.
Assistant Professor of History

WILLIAM W. DAVIDSON, A.B., Th.M.
Assistant Professor of Religion

ELIZABETH BURDEN PARKER, A.B., A.M.
Instructor in English

DORIS K. TILLERY, A.B.
Instructor in Mathematics

ANNIE M. BROWNLEE, A.B.
Instructor in Biology

Oak Leaves



Faculty

CONNIE M. HORNE, A.B., A.M.

Instructor in Foreign Languages

MARY JAMES SPRUILL, A.B., A.M.

Instructor in English

FLORENCE M. HOAGLAND, A.B., A.M.

Instructor in Education

MARY E. GRAYDON, A.B., A.M.

Instructor in Latin

MARY YARBOROUGH, A.B., A.M.

Instructor in Chemistry and Biology

ALICE B. KEITH, B.S., M.S.

Instructor in History

IDA I. POTEAT

Professor of Art

MARY H. TILLERY

Associate Professor of Art

FRANK M. EYER

Director, Professor of Piano, Organ, and Theory

MAY CRAWFORD

Professor of Piano





Faculty

EMILY PARSONS
Professor of Voice

MARTHA CAROLINE GALT
Professor of Piano

LOUISE BURTON OWSLEY
Professor of Public School Music

RUTH MELBA ARMSTRONG
Professor of Violin

LOUISE E. WALSWORTH
Professor of Voice

CHARLOTTE E. ARMSTRONG
Professor of Violin

MRS. SARAH BLALOCK
Professor of Piano

VIRGINIA BRANCH
Instructor in Piano

CAROLINE ROBINSON BIGGERS, A.B.
Assistant Dean of Women

MRS. MARY SIMS SMITH, A.B.
Acting Assistant Dean of Money

Oak Leaves



Faculty

WILLIAM JASPER FERRELL, A.B.

Bursar

GLADYS LEANARD DOWELL, A.B., B.S.

Librarian

RUBY KATHLEEN DAVIS, A.B.

Assistant Librarian

LATTIE RHODES

Secretary to the President

HATTIE H. FERRELL

Secretary to the Bursar

MARY FRANCES WELCH, B.S.

Dietician

ANNIE LEE WHITE

House Director

MRS. BEULAH WRIGHT COOPER

Stewardess for the Meredith Club

MRS. OCTAVIA SCARBOROUGH NORWOOD

Nurse

MAE GRIMMER, A.B.

Alumnae Secretary

MADLINE ELLIOT, A.B.

B. S. U. Secretary





Faculty

CATHERINE ALLEN, A.B., A.M.
Professor of Modern Languages

ELIZABETH DELIA DIXON CARROLL, M.D.
Professor of Physiology; College Physician

HERMINE CAROLINE STEUVEN
Assistant Professor of Modern Languages

GERTRUDE ROYSTER
Director of Physical Education

Student Assistants in Biology

EVELYN SHERWIN

LILLIAN ROBERTSON

Student Assistants in Chemistry

NELL BARRIER

ELIZABETH JAMES

PAULINE NEWTON

Student Assistant in Home Economics

LOUISE CRAVEN

Student Assistants in Library

BESSIE BARKER

MARY BROADHURST

EVELYN JOLLEY

GLADYS BLAYLOCK

MARY BUIE

JESSIE RAIFORD

EVA WOODALL

Student Assistant in Physical Education

MIRIAM DAUGHTRY





Classes



Seniors



Oak Leaves



“**A**lle things are knowne to the astrologere. Alle that has taken place in the past, alle that wille happene in the future — everything is revealed to him, since he knowes the effectes of the heavenlie motions which have bene, those which are, and those which wille be, and since he knowes at what time they wille act, and what effects they ought to produce.”

The stars are the hammeres, earthe the metel — they are the seale, earthe the waxe.

Therefore everie manne, of the beggynnyng of hise birthe, by the virtue of the stars which then have gouernance to him, is disposed diversely to virtues and vices.



Oak Leaves



WILLIAM BAILEY JONES, JUNIOR
Senior Class Mascot





Oak Leaves



JANIE BURNS
Senior Class President





Court Dignitaries

<i>Her Majesty</i>	JANIE BURNS
<i>First Lady-in-Waiting</i>	MATTIE LASSITER
<i>Recorder</i>	LILLIAN WHEELER
<i>Keeper of the Treasury</i>	MARTHA TAYLOR
<i>Chronicler</i>	EVELYN JOLLEY
<i>Astrologer</i>	LAURA MABEL HAYWOOD
<i>Poetess</i>	SARAH COOK





MARION FISKE

MÖYOCK, N. C.

A.B.

Astroekton

The signe of Sagittarius was in the ascendent at your birthe, passunge through the hove of personalite, and Jypiter was in the sextile aspecte thereto, giving you a gentil sympathetic, a readie faith, which in addition to your capabilitie in doing all thynges well, will prove the philosopher's stone to all ventvres which you may vndertake.

President of Student Body, 4; Official Chaperon, 4; Kappa Nu Sigma Honor Society, 4; President of Class, 3; Nominating Committee, 3, 4; Dramatic Club, 4; Colton English Club, 3, 4; International Relations Club, 3, 4; Representative to Student Council, 2; Assistant Editor "Twig," 2.

LILLIAN WHEELER

A.B.

Astroekton

Jupiter and Venuis in their majeste presided at the birthe of her, in pleasante a pecte, the one to the other—a love of beautie to be found in hidden places, and the same elusive beautie of spirite does she possesse—a strong minde holding in control the emotions which p'ay so large a part in her lyfe. Venuis was good to this maiden and called her a favored childe.

Secretary of Sunday School Department, 2; Associate Director of Sunday School, 3; House President, 4; Secretary of Senior Class, 4; Student Council, 4; Mathematics Club, 2; Home Economics Club, 3; Colton English Club, 3, 4; Senior Editor of "Oak Leaves," 4; Associate Member of Little Theatre, 4.

Senior Class



PAULINE POWELL

CLINTON, N. C.

B.M. Voice

Astrotekton

Mars being in harmonie pleasavnte and fair with Venvs, the native loves to sing and to dance, and will achieve success in these bysinesses.

Glee Club, 2; 3, 4; General Chorister B. Y. P. U., 3, 4; Assistant College Cheer Leader, 2; Director of Sunday School Department, 4; Vice-President of Astrotekton Society, 4; College Cheer Leader, 4; Class Cheer Leader, 4; President Glee Club, 4; B. S. U. Council, 4.

MARY ELIZABETH CHEEK

BURLINGTON, N. C.

P.S.M.

Astrotekton

The first face of Tavrvs being in the ascendent, the qverent is lightlie given to affayres of the herte, and being borne vnder such a starre and in such a house, will be a faithfvl and charmyng wylfe and yet a careless housewyfe.

*"Twig" Staff, 2; Glee Club.

Senior Class



FRANCES BARNHILL

BETHEL, N. C.

A.B.

Astroekton

The faire and illvstrious ladye Venus being the onlic starre in the ascendante at your birthe, and she being in the angle of the seconde house; gentilnesse, refynement and calme dignitie are yours. Successfvl and smoothe your lyfe shalle be, because you have the facultie of bringing back peace and concorde whenever it is loste.

Vice-President of Student Government, 4; Official Chaporan, 4; "Oak Leaves" Staff, 3; B. Y. P. U. President, 4; Secretary of Colton English Club, 4; International Relations Club, 3, 4.

MATTIE LASSITER

SMITHFIELD, N. C.

A.B.

Astroekton

Jupiter alone and in a goode position, in sextile aspecte to the Sonne, vnder the seconde house; the starres have decreed your trustworthinesse and reliabilitie, but they have also endowed you with a heart that is care-free, so that you bear your bvrthens casilie.

President of Johnston County Club, 2; Secretary of Class, 3; Captain of Basketball Team, 3; International Relations Club, 3, 4; Tennis Team, 3; First Vice-President of B. S. U., 4; Vice-President of Class, 4; Vice-President of Home Economics Club, 4.

Senior Class



FRANCES SCARBOROUGH

MACON, N. C.

A.B.

Philaretian

Neptyne was the significator of your lyfe, and decreed that you should be of a spiritual natvre lookynge forward beyonde this vale of sorrows for your trve happiness, although love and friendsheppe offer you some happinesse now,

Basketball, 1, 2, 3, 4; Y. W. A. Officer, 2, 3; Mathematics Club, 2; International Relations Club, 3; Associate Director B. Y. P. U., 3; W. A. A., 3, 4; "Twig" Staff, 3, 4; Kappa Nu Sigma Honor Society, 4.

JULIA MOORE SCARBOROUGH

MACON, N. C.

A.B.

Astrotekton

Jupiter being in the sygne favovrable to him at your birthe, the habit of trvthful speeche is upon you, and honestie of actionnes and of purpose, byt as the Lorde of your birthe passed through the hove of twelve also at your birthe, you are inclined to take responsibilities far too seriovsly, and to be too prone to cvt all lightness ovt of your lyfe.

French Club, 3, 4; English Club, 3, 4; Classical Club, 2, 3; Other Classical Club, 3.

Senior Class



PAULINE NEWTON

I.B.

CHADBOURN, N. C.

Astrotekton

Virgin was the signe at your birthe, and Mercvry his lorde was in favorable aspecte with Venys, and from these starres got you the abilitie and fondness for the sciences, but Venys being coascent with Mercvry, and in the seventh howse, love and marriage will cause science to be repulsed and caste down.

Class President, 1; Nominating Committee, 1; Basketball, 1; Class Cheer Leader, 2; "Oak Leaves" Staff, 2; Home Economics Club, 2; President of Sunday School Department, 3; B. Y. P. U. President, 3; Dramatic Club, 3, 4; Assistant Business Manager of "Oak Leaves," 2; Chief Astro Commencement Marshal, 2; Chief Astro College Feher, 4; Business Manager of "Oak Leaves," 4; Student Assistant in Chemistry, 3, 4.

LOUISE CRAVEN

I.B.

GREENSBORO, N. C.

Astrotekton

Being borne under the influence of Venys, with Libra in occasy, and in the seventh howse, the same being that of love and marriage, you delighte in the fine formes, and goodde manners, have manie friendes, and will prove to be an affectionate as wellle as successful wife.

Home Economics Club, 2, 3, 4; Dramatic Club, 3, 4; President of Home Economics Club, 4; Chief Commencement Marshal, 3; Chief College Usher, 4; Nominating Committee, 4; Student Assistant in Home Economics, 4.

Senior Class



HESTA KITCHIN

SCOTLAND NECK, N. C.

A.B.

Astrotekton

Mercvrie wast in the ascendant at thy birthe, passing through the tenth house, that of the kinges and dignities; therefore, yours is a natvre fitted well for association with the greate and for positions of high ranke.

Alliance Française, 1, 2; Commencement Marshal, 1, College Usher, 2, Classical Club, 2, 3, 4; Y. W. A. Circle Leader, 2; "Twig" Staff, 3; Secretary of Astro Society, 3; International Relations Club, 4; President of Classical Club, 4; President of Astro Society, 4; Nominating Committee, 4; Kappa Nu Sigma, 4.

LOUISE HILL

CANTON, N. C.

A.B.

Astrotekton

Being borne when Jypiter was in the mansion of his dignitie, passynge through the seventh house, marriage is assured you and fortune with it.

Class Treasurer, 2; "Oak Leaves" Staff, 2, 3; Treasurer of Astro Society, 3; Student Council, 4; International Relations Club, 3, 4; Home Economics Club, 3.

Senior Class



MARY MOFFETT BURNS

LAWNSDALE, N. C.

A.B.

Astroctkon

Venus being in the seconde house, in sexti'e aspecte to the Lorde of the Heavens, your lyfe will be given to the searche for trvth and delighte in delicate fancies. These are your chiefest delights, yet being so trvie a daughter of the Faire one, you delighte in preciovs stones, and are attracted to the beauties of this worlde, as well as to those of the spirit.

Elizabeth Colton Prize, 1; "Acorn" Staff, 2, 3, 4; French Club, 2, 3, 4; English Club, 3; Student Council, 3; President English Club, 4; Dramatic Club, 4.

IDA LEE STONE

NASHVILLE, N. C.

P.S.M.

Astroctkon

In the signe of Libra with Venus in conjvction with Mercvrie and in her essentieth mansion, was borne this qverent. A quiet, gentil natvre is hers, and a love for the all-enthrallynge beauties of the worlde of Musicke and fine arts.

Choir, 1, 2, 3, 4; B. Y. P. U. Officer, 4.

Senior Class



JANIE BURNS

ROXBORO, N. C.

Piano

Philaretian

Being borne vnder Sagittariys, with Venys in the ascendante face to the Lorde of that house, your natvre demands varietie of scene and travell, and association with people of vnlike cystem. Svch assoçiation wold moderate your tendencie toward too mvch certaintie, which is yours on account of the place of the War Starre at your birthe, he being in trine aspekte.

Philaretian Marshal, 1, 2, 3; Assistant Business Manager "Acorn," 3; Pianist B. Y. F. U., 2; Vice-President Class, 3; President Senior Class, 4; Nominating Committee, 4.

EDITH ROWE GRADY

WILSON, N. C.

P.S.M.

Astrotekton

Venys being in trine aspekte from the Sonne, a happie marriage is prognosticated for this native, and although volyble tongve may be a disadvantage to the mann concerned, your readie goode natvre will prove a soothynge remedie.

Basketball, 1, 2; Athletic Assocation, 3; Choir, 1, 2, 3, 4. B. Y. F. U. General Pianist, 4; Music Proctor, 4.

Senior Class



IVA CARROLL

WENDELL, N. C.

A.B.

Philaretian

Borne was this native vnder the aspecte benevolent of Jypiter, residing in the mansion of his dignitie, and therefore was she given a trythful speeche, benevolence in deeds, a nature prone to meditating and plannynge good actions while wishyng to have them secrete and vnnoticed.

Class Treasurer, 1; Y. W. C. A. Cabinet, 2; Y. W. A. Officer, 2; S. S. Officer, 2; "Twig" Staff, 2, 3; Volunteer Band, 1, 2, 3, 4; Kappa Nu Sigma Honor Society, 4; President Kappa Nu Sigma Honor Society, 4; Town Girls Club, 2, 3, 4; Vice-President Town Girls Club, 4; Vice-President Volunteer Band, 4.

MARY NOLEN

STONEVILLE, N. C.

A.B.

Astrotektion

Being borne vnder the signe of Capricorn, when passing through the fourth house, you are endowed with good bysness ability, both for the view of accvmulating and from the aspecte of investment.

Mathematics Club, 2; Town Girls Club, 4; Tennis Team, 3.

Senior Class



MARTHA TAYLOR

BURGAW, N. C.

A.B.

Astroekton

Jupiter the greatest of the fortunat planets, being in his own dignity of Sagittarius, and passing through the house of termination, was present at your birthe, since you are the possessor of a steadfast heart, yet gentil and sweet withal.

Wingate Junior College, 1, 2; Secretary and Treasurer of Class, 1; O'Henry Society President, 2; Wingate Club, 3; President Wingate Club, 4; Treasurer of Class, 4; International Relations Club, 4.

THELMA TADLOCK

MARSHVILLE, N. C.

A.B.

Astroekton

Jupiter was the significator of your birthe, passynge through the eleventh house, thus granting you manie friendes, and the abilitie to gvard and kepe them well, as well as servyng them, withal.

Wingate Junior College, 1, 2; General Secretary B. Y. P. U., 1; Associate Director E. Y. P. U., 2; President Y. W. A., 2; President O'Henry Literary Society, 2; President B. Y. P. U., 3, 4; Culton English Club, 3; Student Council, 4; House President, 4; Official Chaperon, 4; Wingate Club, 3, 4.

Senior Class



SHELLIE BENNETT

MARSHVILLE, N. C.

J.B.

The signe of Caucer was your natal signe and the Lorde of this mansion is the significator of all your dayes. From this fortune, I do opine that you are endowed with greate delicacie of sentiments and yet your lyfe shall be a moving force because that you are of a gentil persistencie in the pvrsvit of those things to which yvor sense of dvtie directes you.

Wingate Junior College, 1, 2; Home Economics Club, 3; Vice-President Wingate Club, 3; President of B. Y. P. U., 4; Secretary of B. S. U., 4; President of Le Cercle Francais, 4.

MARTHA SHERWOOD

ERWIN, TENN.

J.B.

Astrotekton

You were borne vnder Mars, who was favorable aspected in his owne mausion, in the seconde house, and to you he gave his chiefest gifte, enthysiasm, ande you do abandonne yourself completelie to the execvtion of whatever you shalle planne, never withdrawyunge your hande from accomplishynge that which you beginne.

Carson Newman College 1, 2, 3; Captain Senior Basketball, 4; Colton English Club, 4; Wingate Club, 4.

Senior Class



RUTH WALKER

GRAHAM, N. C.

A.B.

Philaretian

In the east of the Lorde of the Heavens, vnder the signe of Sagittarivs, your horoscope was decided, with the Lorde of the house in the ascendant. Restraynte and reserve are qualities with which you are possessed, but being somewhat matter-of-fact and strayght forwarde, you allow yourself to trust in the kindnesse and honestie of others more than seemes wise.

Flora MacDonald College, 1, 2; Meredith, 3, 4; International Relations Club, 1; Ensemble, 4.

MARGARET TEAGUE

NEWLAND, N. C.

A.B.

Astroctekton

Being borne vnder the signe of the seventh mansion; with the fayre Venus in trine aspecte, you are fitted for manie occypations, hvt none more svitable than that of a happy bride.

Pineland College, 1, 2; Meredith, 3, 4; Colton English Club, 7, 1; Secretary of Colton English Club, 4; International Relations Club, 4.

Senior Class



MARGARET JONES

KENANSVILLE, N. C.

A.B.

Philactian

Venus being beneficentle placed in good aspects and free from destructive influence, you have a noble nature, cleaving to high ideals. A finely developed sense of duty shows itself in all your actions.

B. Y. P. U. President, 2; "Twig" Staff, 2; Secretary of B. S. U., 3; Chief Phi Commencement Marshal, 3; Chief Phi College Usher, 4; "Oak Leaves" Staff, 4; President of International Relations Club, 4; Kappa Nu Sigma, 4; Dramatic Club, 3, 4; Le Cercle Francaise, 4.

MATTIE LEE EAGLES

FOUNTAIN, N. C.

A.B.

Philactian

The War starve governed your birth, being in the sextile of favorable aspects, you are endowed with capability, but since Mars was not well situated, this instilled in you the tendency to ignore your possibilities. Your love of intricate figuring will lead you to solve many difficult problems.

Vice-President of Class, 2; "Twig" Staff, 2; Treasurer of B. S. U., 3; Vice-President of B. S. U., 4; Vice-President of Phi Society, 4; Vice-President of Kappa Nu Sigma Honor Society, 4; Dramatic Club, 4; W. A. A., 2, 4; Math Club, 2, 3; Classical Club, 2, 3, 4; Le Cercle Francaise, 4.

Senior Class



SARAH MEWBORN

FARMVILLE, N. C.

A.B.

Philaretian

With the goode signe Tavrns risynge high up in the heavnes, and the lorde of this hove in goode aspecte, you are given the capabilitie of earlie becomynge a ruler, performynge whatever you vndertake with facilitie. Your pleasant disposition gives to you the friendes and aide which are necessarie to the carrynge out of your pvrpose.

Psychology Club, 1; College Usher, 3; Treasurer of Class, 3; Treasurer of Phi Society, 3; Colton English Club, 3, 4; Dramatic Club, 3, 4; President of Senior Sunday School Class, 4; Basketball, 4; Nominating Committee, 4; President of Phi Society, 4.

NELLIE McCULLEN

BURGAU, N. C.

A.B.

Astrocton

In the hove of seven with the signe of Libra in the angle, an earlie and a happie marriage, attended with much wealth of preciovs stones awaits you.

Sisters Club, 1; Philosophy Club, 2; Home Economics Club, 3, 4.

Senior Class



GLADYS ELLIOT

NELSON, VA.

A.B.

Astroekton

A chylde of Venys in her most favovrable aspecte, and being in conjnyction with Mercvry, gives you an amiable and attractive disposition enamored of the goode and noble things of lyfe, yet delyghtyng in innocent amusements.

International Relations Club, 4.

CORDELIA JOHNSON

FAYETTEVILLE, TENN.

A.B.

Astroekton

The Twins were present at your birthe, and Mercvry was in trine aspecte with the Sonne, thys making you the recipiente of a happie and carefree natvre, with a liking for jests and laughter which will smooth your future pathway.

Intermont College, 1, 2.

Senior Class



ELSIE BROWN

REIDSVILLE, N. C.

A.B.

Astrologer

Under the sign of Sagittarius with Mercury in conjunction with Jupiter in the sextile aspect, but Saturn in the quadrile face, we find that you will achieve extreme old age, with Jupiter counteracting the evil effects of Saturn.

Sister's Club, 2; Psychology Club, 3; Baseball Team, 3; Rockingham County Club, 3; Home Economics Club, 3, 4.

FAYE BIVENS

MONROE, N. C.

A.B.

Philaretian

As Aries was in the ascendent at your birth, your life will be checkered—advantages will be followed fast after by disadvantages, but these latter ones will be amended by the sign of Cancer, which was *in imo caeli* at your birth.

Wingate Junior College, 1, 2; O'Henry Society, 1, 2; Meredith College, 3, 4; Wake Forest Summer School, 2; Wingate Club, 3, 4; International Relations Club, 4.

Senior Class



BESSIE SAMS

RALEIGH, N. C.

A.B.

Philaretian

Borne in Scorpio, with the Sonne in trine prospecte ande in the thyrde hovse, you will fynd lyfe a series of advantage and disadvantages, with advantages in the forme of voyages and long journeies predominatyng.

Town Girls Club.

MEITHEL MEDLIN

MONROE, N. C.

A.B.

Philaretian

Vnder Neptyne, in the hovse of the number twelwe, your lot was foretolde—humor finds an abiding p'ace in your hearte, and yet the little things of lyfe at times are of too mych matter with you.

Wingate Junior College, 1, 2; Glee Club, 1, 2; McNiel Society, 1, 2; Meredith College, 3, 4; Wingate Club, 3, 4; International Relations Club, 4; B. Y. P. U. Offices, 4; Phi Society, 3, 4.

Senior Class



LOUISE GRIFFIN

PINETOPS, N. C.

P.S.M.

Philartian

Venus was presente at the qverent's birthe and in a howse favorable to mortals on this earthe planet. Gentle, therefore, art thov, vnassuming, and delightfule indifferente to the vanities of this worlde. Even will thy lyfe be; neither storme clouds nor blynding sun shalle be thy lot.

Choir, 1, 2, 3, 4.

ILA BRIGGS

BURNSVILLE, N. C.

P.S.M.

Astrotekton

Venus is your gviding and protectyng starre, and as she was in the angle of the howse of love and marriage at your birthe, with Jvpiter in sexti'e aspect, you will finde an earlie marriage a fityng feelde for the exercise of your talentes.

Senior Class



OLIVE LEAKE

RICH SQUARE, N. C.

A.B.

Astroekton

Venus was in the angle under her sign so favorable at your birth, making of you a lover of pleasure, and giving to you a cheerful disposition, with many friends.

Colton English Club, 3; Alliance Française, 1, 2; Tri-County Club, 1, 2; International Relations Club, 3.

ELIZABETH ROGERS

DURHAM, N. C.

A.B.

Astroekton

Venus on your girth was shining, and was in her essential dignity Taurus, passing through the ninth house, indicating love of learning, a happy disposition, and the possession of many friends.

Colton English Club, 4.

Senior Class



LILLIAN ODUM

PEMBROKE, N. C.

A.B.

Jupiter was in the angle of his essential dignity, at your birth, endowing you with a reliable and capable nature, with a touch of romance which finds outlet at the present time in research into ancient times, but which will be satisfied later by a successful marriage.

Wingate Junior College, 1, 2; Society Officer, 2; President B. Y. P. U., 1, 2; International Relations Club, 4; President Volunteer Band, 4; B. S. U. Council, 4; Wingate Club, 2, 4.

MARY B. WHELESS

SPRING HOPE, N. C.

A.B.

Philaretian

Under the star of Neptune she was borne, and he being in his familiar house, endowed her with a quiet and most feminine nature, and yet, being borne under a watery star, many voyages will be her lot, to far distant and enchanting lands.

Hiking Club, 1; International Relations Club, 2, 4; Home Economics Club, 2.

Senior Class



DORIS HEWLETT

WILMINGTON, N. C.

A.B.

Philarectian

Venus was in the succedante at your birthe, and in the seconde house, the whiche position of this starre did to you designe freenlienesse, and the pro pects of fortvne in a stravnge forme.

Sisters Club, 1; Home Service Band, 1, 2, 3, 4; Secretary of Home Service Band, 3; Alliance Francais, 1, 2, 3, 4; International Relations Club, 3, 4.

EVA WOODALL

CLAYTON, N. C.

A.B.

Astrolecton

Borne into this wearie worlde, forsoothe, vnder the signe Tavrns in the seventh house with Venus in the sextile aspecte, a happy vnion in marriage trve, and a lyfe longe and hale is to be yours.

Jo-Ha Club 1, 3; Member of Classical Club, 2, 3, 4; Colton English Club, 3, 4; Library Assistant, 2, 3, 4; Vice-President of Classical Club, 4.

Senior Class



KATHERINE CARTER

RALEIGH, N. C.

Voice

Astrotekton

Another favored child of Venus, being borne when she was in trine aspects with Mercurie, thus being a personage of charme and personalitie, an ardent lover of flowers, and of elegance, and a devotee of the Muses.

Choir, 1, 2, 3, 4; Glee Club, 2, 3, 4; Dramatic Club, 4.

PELLEN BELVIN

RALEIGH, N. C.

A.B.

Astrotekton

Your horoscope was cast in Taurus, which gave unto you providence and industry, and a lively tongue, and since Argvirius was in Medio Coeli, favor shall be to you, and positions of high rank, and much success and enjoyment in your future life.

Town Girls Club, 1, 2, 3, 4; President Student Council, 3; Nominating Committee, 2; Assistant Business Manager "Twig," 3; Business Manager "Twig," 4; Little Theatre, 3, 4; Editor "Handbook," 4;

Alliance Francaise, 3, 4.

Senior Class



MARTHA MEDLIN

RALEIGH, N. C.

A.B.

Philaretian

Being borne vnder Venus with Mercvrie in the trine aspecte, your destinie is shaped for travell in manie landes, for facilitie in quicke changes, and treasvre shall be yovrs in proportion to your lovable disposicion since fortvne follows those who vtter softe and gentil-voiced words with a smalle sweete movth.

Colton English Club; International Relations Club; Little Theatre; President Little Theatre, 3; Business Manager Little Theatre, 4; Vice-President Town Girls Club, 3; President Town Girls Club, 4; Student Council, 4; Nomination Committee, 4.

THELMA MARTIN

LIBERTY, N. C.

A.B.

Philaretian

Being borne into this worlde vnder the beneficial influence of the stars Venus and Jvpiter, you are a personne who is blessed with the qualities of sympathie and dependabilitie, a combination which will you provide with manie friendes and with svccesse in lyfe.

Mathematics Club, 2; Home Economics Club, 2, 3, 4; Student Council, 3.

Senior Class



VIVIAN TEAGUE

THOMASVILLE, N. C.

A.B.

Astroctkton

Satyrn in the mansion of his affinitie, and passyng through the house numbered twelve, hast given unto the qverent a goodlie portion of an independent spirit rejoicyng in its strengthe, and as welle, a spirit generous to all in the givynge of this worldes goodes.

Sisters Club, 1; Y. W. A. Circle Leader, 2; International Relations Club, 3, 4; Classical Club, 3, 4.

RUTH WILLIAMS

MONROE, N. C.

A.B.

Philarectian

Vnder the signe of Libra, in the house of seven, the best of fortyne for trve women was decreed — a happye and earlie marriage.

Wingate Junior College, 1, 2; President Tennis Club, 1, 2; O'Henty Society, 1, 2; Officer Society, 1, 2; Meredith College, 3, 4; International Relations Club, 3, 4; Wingate Club, 3, 4.

Senior Class



NELL BARKER

APEX, N. C.

A.B.

Astroctkon

Being borne the while Jypter and Venys were placed favorable the one to the other, and Venys being in the seconde house, you have execvtev ability, and will acheeve high positions of responsibility. Well-rovaded is your character, though, because you love noble deedes, and also fvn and games.

International Relations Club, 3, 4; B. S. U., 4; Manager "B-Hive," 4; Official Chaperon, 4; Home Service Band, 2, 3, 4.

WENDELL PARSONS

LANDENBERG, PA.

A.B.

Philartian

The Gemini in cheefe t glorie were at the birthe of this qverent, and passynge through the house of jovrneys, so that it is trve that she shall finde her lyfe more pleasant made by manie voyages and close contacte with people of cvstomes different from hers, which will be the way of bringynge ovt the depth of her character.

Appalachian Normal School, 1, 2; President Blan Dolph Literary Society, 2; Officer Sunday School, 2; Y. W. A., 1, 2; Art Club, 2; International Relations Club, 3, 4; Circle Francaise, 3, 4.

Senior Class



SARAH COOK

WALLACE, N. C.

Art

Astroekton

Being borne while Tavrus was in the ninth mansion, and Venus in sextile aspecte to the Sonne, happie art thou in intercourse of a social natvre with those of cvltvre, possessing a taste for the artistic and talented in manie waies, a sovrce of keenest pleavre to all who know you.

Le Cercle Francais, 2, 3; Home Service Band, 2; K. K. K., 2, 3; Sophomore Editor "Acorn," 3; Junior Editor "Avorn"; Colton English Club, 1; Class Poet, 4; Nominating Committee, 4; Chaplain Astroekton Society, 4; Official Chapron, 4; Associate Editor "Oak Leaves," 3; Editor-in-Chief "Oak Leaves," 4; Elizabeth Avery Colton Prize, 2.

LAURA MABEL HAYWOOD

RALEIGH, N. C.

A.B.

Astroekton

Venus and the Moon graced thy birthe with their shynynges, and being in the houses which are friendlie toward them, a love of beavtie was the birtright of this mortale, and a love of readyng manie bokes in which one takes pleavnce for the findyng of manie strange and wondrous things.

Peace Institute, 1, 2; Dramatic Club, 1, 2; Assistant Editor "Voices of Peace," 1; Editor-in-Chief, 2; Class Poet, 2; Little Theatre, 3, 4; President, 4; College Reporter, 4; Business Manager "The Acorn," 4; Class Prophet, 4; Colton English Club, 3, 4; Reading Honors, 3.

Senior Class



HALLIE JONES

WINGATE, N. C.

A.B.

Astroekton

The Lorde of the seventh mansion being in trine aspekte to the Sonne, provided you with clere jvdgmente and personality. Being of a friendlie natvre, your jvdgmente enables you to selekte those personnages for friendes whose qvialities are in harmonie with your own.

French Club, 3; Wingate Club, 3, 4; English Club, 4; Secretary English Club, 3.

ANNIE SUE HOLLAND

STATESVILLE, N. C.

A.B.

Astroekton

Jvpiter is your signifikator, hvt as Mercvrie was in sextile aspekte with him, you combine the quiete depthe given by the Rvler, with the airynesse which comes from the mascvline house of Sagittarivs. Your future will be a shinynge one if you develop the qvialities given by these starres.

French Club, 3; English Club, 3, 4; International Relations Club, 4.

Senior Class



LUCILE WALKER

HILLSBORO, N. C.

A.B.

Philaretian

Vnder Jvpter wast thov borne, in his most favovrable light with the signe Sagittarivs risynge in the Easte. Silence is an attribute of thy natvre, and the qualitie gives to you the confidance of manie friends which thov does never betraye.

Wingate Junior College, 1, 2; O'Henry Society, 1, 2; Officer Society, 1, 2; Officer B. Y. P. U., 1, 2, 4; Meredith College, 3, 4; Wingate Club, 3, 4; Colton English Club, 3; Y. W. A. Officer, 2.

EUNICE RUSHING

MARSHVILLE, N. C.

A.B.

Astrotektion

With the two fortunat stars placed in beneficente aspecte the one to the other, in the signe of Tavrvs, passynge thogh the hovse of terminations, vnemotionalitie is the key note of your caractere, and in tymes of grete stres, you will be of invalvabe assistance.

Wingate Junior College, 1, 2; O'Henry Society, 1, 2; Officer Society, 1; Meredith College, 3, 4; Colton English Club, 3; Y. W. A. Officer, 2; B. Y. P. U. Officer, 1, 2, 4.

Senior Class



LUCY BENNETT

CANDLER, N. C.

A.B.

Philaretian

Jupiter being alone, and in a good position, in the ascendent at your birth, you are possessed of nobility of mind, and the ability to eschew all vain things. The happiness of your future activities will be in the realization of these characteristics, and in the proper application of your talent.

Mars Hill College, 1, 2; Y. W. A. Circle Leader, 2; Officer Society, 1, 2; Society Anniversary Marshal, 2; Vice-President English Club, 2; B. S. U. Council, 2, 4; Sunshine Leader Pullen Memorial Church, 4; President Home Service Band, 4; Mars Hill Club, 3, 4; Classical Club, 4; Colton English Club, 4.

LYDIA BEAVERS

APEX, N. C.

A.B.

Philaretian

Being borne under the beneficent influence of both Jupiter and Venus, you are blessed with mildness and gentleness of character, and the ability to find humor in the most commonplace situations. This happy faculty will prove a great aid and advantage in your chosen occupation.

Alliance Francaise, 1; Basketball Team, 1, 4; Wake Forest Brothers Club, 1; Member Sisters Club, 1; Head of Basketball, 4; Member W. A. A., 4.

Senior Class



MILDRED MULLIS

MORGANTON, N. C.

A.B.

Astrologon

The War god was present at your birth, but Jupiter caused him to be moved from his rightful place, and Jupiter himself being in conjunction with the sun, the good qualities which are yours by birth are—reticence, appreciation, and unselfishness.

Davenport College, 1, 2.

GWYN LENOIR

YADKIN VALLEY

A.B.

Astrologon

Venus was the significator at your birth, with Venus in sextile aspect, endowing you with an interest in all its freshness, and with that elusive silver quality of the maiden herself, who causes your life to be covered by the pleasant fantasies of dreamy life.

English Club, 3, 4; Dramatic Club, 4; Basketball Team, 2, 3, 4; "Acorn" Staff, Science Club, 1, 2.

Senior Class



LOUISE ANGE

WINTERVILLE, N. C.

A.B.

Astrotekton

Being borne vnder the shadow of importvne Mars, you woyld have been quick to anger and to altercations, bvt, lyklike, Jypiter, the strongest of all friendlie planets, was in qvartrile aspecte to one of his dignities, and made the evil effectes of Mars vanish away like miste in the sonne, leaving you high-spirited, and with a dependabilitie the valve of which cannot be estimated.

International Relations Club, 3, 4; W. A. A., 3, 4; Basketball, 1, 2, 3, 4; Head of Hiking, 4.

LORETTA SEAWELL

ROCKINGHAM, N. C.

A.B.

Astrotekton

Venus wast in her cheefest mansion at your birthe, and with her the Lorde of Leo blessed you, givinge you a gladsome natvre, a love for the ovt-of doors, and a hidden passion for the enthrallemente of mysicke. Such a combination will assvredlie provide for you a colorfyl lyfe.

Wingate College, 1, 2; McNell Society, 1, 2; Secretary Volunteer Band, 2, 4; Member W. A. A., 4; Tennis Team, 3, 4; B. S. U. Council, 3; Wingate Club, 3, 4; Wake Forest Summer School, 3.

Senior Class



EVELYN JOLLEY

MOORESBORO, N. C.

A.B.

Philaretian

The war starre being in conjnyction with the planet of love, vbt in the angle, the native is sensitive, a deepe ponderer of thoughts, and will find her lyfe to be made pleasavute by the examination and the stydie of bokes.

Secretary B. S. U., 2; English Club, 2, 4; Classical Club, 2, 3; Cleveland County Club, President, 2, 3; Tennis Team, 4; "Acorn" Staff, 2, 3, 4; Editor-in-Chief, 4; Nominating Committee; Kappa Nu Sigma Honor Society; Library Assistant, 2, 3, 4; French Club, 2, 4; Elizabeth Avery Colton Prize, 2; Little Theatre, 4.

RUTH TRUESDELL

CHARLOTTE, N. C.

A.B.

Philaretian

Vnder the planet whose essentielle mansion is in Libra, with the signe being in the Easte, the influence was beneficente, causing the native to live and move by faith, to be of a religious natvre. Since she has insighte into things religious, she will directe her lyfe to worke of this kynde.

Reading Honors, 1, 2, 4; Home Economics Club, 2, 3; English Club, 2, 4; Dramatic Club, 3; B. S. U. President, 4; International Relations Club, 2; Home Service Band 4.

Senior Class



LEILA KNOTTS

NORTH, S. C.

A.B.

Philaretian

Under the signe of Tavrus, with the Lorde of the hovse being in trine aspecte to the Sonne, a gaie spirit and an open heart are yours, giving you manie friendes, and although certaine mis-fortynes may befall you, you will be able to bear vp vnder them with eqvaninitie, if you let your trve natvre ryle.

Greenville Womans College, 1, 2; Volley Ball Squad, 1; International Relations Club, 1; Home Economics Club, 1, 2, 3, 4; President of S. C. Club, 4.

MIRIAM DAUGHTRY

FUQUAY SPRINGS, N. C.

A.B.

Astrotekton

With Tavrus in the angle of the first hovse, the significator being the planet Venys, the qverent is well able to performe a maximvm of labere, with a minimvm aversion thereto, and will be successfull in acqvirng wealth, although through generositie she maie lo'e it easilie.

Basketball Team, 1, 2, 3, 4; Student Executive Committee, 3; President of Athletic Association, 4; Colton English Club, 3, 4; Nommating Committee, 4; International Relations Club, 3, 4; Little Theatre, 4.

Senior Class



MARIE NOBLES

AYDEN, N. C.

A.B.

Astroekton

The prognostication concernyng this qverent comes from the influence of the planet Venus, being ovt of her essentielle dignities, bvt not having an unfortnate ascendencie. As a consequence you are goode, friendlie, talkative, and a studente of manie bokes.

Le Cercle Francaise, 4; Y. W. A. Officer, 4.

PAULINE GOODWIN

RALEIGH, N. C.

A.B.

Astroekton

Being borne vnder the heade of Tavrvs, with Venus in the trine aspecte, covrage, honestie, and a lovable disposiciovn are her attribvtes, and she will have a happie married lyfe.

Alliance Francaise, 1, 2, 3; Town Girls Club, 2, 3, 4; Officer of Town Girls Club, 4; International Relations Club 4.

Senior Class



LECLAIRE JACOBS

ROXBEL, N. C.

Piano

Astroekton

Being borne under the auspicious and kindlie planets, Jypiter and Venus, which were in beneficent aspects the one to the other, you are endowed with a gentil sympathie and a love of law and order, and have the promise of a happie married lyfe.

Sister's Club, 2; Rosa Hocutt B. Y. P. U., 2; Tri-County Club, 2; Choir, 1, 2, 3, 4; Student Government Council, 3; Treasurer Student Government Association, 3; Music Proctor, 3; Head Proctor, 4; Member Glee Club, 4; Treasurer Glee Club, 4; Class Stunts, 1, 4.

ALICE DOWD

RALEIGH, N. C.

A.B.

Astroekton

Jypiter, the greatest of fortunate planets, was present at your birthe, and brought to you peace, gentilnesse of character, and the promise of a happie marriage.

Secretary North Carolina Collegiate Press Association, 4; Editor-in-Chief of "The Twig," 4; Managing Editor "The Twig," 3; Secretary Town Girls Club, 3; Town Student, 1, 2, 3.

Senior Class



MRS. E. J. GREENE

OXFORD, N. C.

A.B.

Astrotekton

Because your birthe was attended by Uranvs in his essentielle dignittie, which was in a favovrable angle, lyfe presentes to you vnexpected events, and svccesse in the majoritie of your endeavovrs.

JANE GREEN

RALEIGH, N. C.

A.B.

Astrotekton

With Mervrie in trine aspecte to Jypiter who was in the ninth hoise, it is not wonderfvl to me that you are of a studivovs character, a lover of science, and the starres foretell you mvch svccesse in the searchynge into manie dark and observe treasvres in the scientific worlde.

W. A. A., 2, 3; Volley Ball, 3; Basketball, 4; President B. Y. P. U., 4; Mathematres Club, 2; Town Girls Club, 3.

Senior Class



MAISIE PATTERSON

COATS, N. C.

Art

Astratkon

Being borne vnder the shadowe of a favorable Planet, the faire ladye Venus, which was in fine aspects to the Lorde of all the heavens, thov art most blessed in manie ways, bvt to the joie of thy friends and to the everlastyng enrichment of mankinde, endowed hast thov been with the abilitie to create beavtie—a matchless gyfte.

Johnson-Harnet County Club, 1, 2; Y. W. C. A. Council, 2; Home Economics Club, 2; K. K. K., 2, 3, 4; English Club, 3; "Oak Leaves" Staff, 3; "B-Hive," 3.

VIRGINIA HOLTZCLAW

CANTON, N. C.

A.B.

Philartcian

Jupiter, in the fourth house of feminine designation, vnder the signe Sagittarius, gave you the power of restoring peace and the establishment of conorde among those engaged in altercations. Such faculties will prove invaluable in your later life.

President Society, 1; President Sunday School, 1; Y. W. A. Officer, 1; Vice-President Society, 2; President of B. Y. P. U., 2; Vice-President Y. W. A., 2; Mars Hill Club, 3, 4; Reporter for Mars Hill Club, 3.

Senior Class



Transients

*We've duelled with the long black swords of rain
That cut across the wind-swept downs at night,
And sickened when the horses' plunging feet
Have weakened far before the tavern light . . .
The inn-yard court was purpled in the dusk,
As children of the road we came to play—
Some laughing up into the face of dark,
Remembering the brilliance of the day;
While others in the heavy shadows stood
With palely timid faces, wondering why
The night should take the sunshine in its cloak
And leave the brilliant blackness of the sky—
Then torches flared upon the cobwebbed walls;
We revelled in our rest, and in the night;
Mad laughter drowned the heavy silences,
And flagons glittered in the guttering light.
Some souls had wandered just a bit apart,
Their laughter but an echo passing by,
For from the tavern window they had seen
A single fiery star fall from the sky . . .
We've known the hush and misted tenderness
Of wistful dawn, when smoking lanterns through
The softly dripping silence sent their beams
And made the inn a shadow, bathed in blue.
And we have waited breathless in the mist,
Impatient ere the journey had begun;
We traced our fingertips along the east
To part the trembling curtains for the sun.
A single jagged beam of light, and then
The glory of the sunrise lights the way—
With wanderlust and conquest in his soul
The traveler fares forth to meet a day!*

—POET





Ye Chronicle of Ye Senior Classe

NOW IN THE YEARE OF OUR LORDE 1925, did come from over the high sees into the countrie hight Meredith, a goodlie bande of folke, the which, after that they had seene that the lande was inhabited by white men, did come forth from their shippes and prepare them for settling of a colonie (for that they had made this longe journie to seeke new places and new learninge) the which was in no wise opposed by the four grovpes of people who had their dwellinge there (the which were called by the yeare in the which they did expecte to departe, while that it was their cvstome to goe forth after that they had remained there for foure yeares, a periode longe enough for the makinge of the lande habitable in goodlie fashione, yet there was one colonie which lefte not, but staid the yeares throughovt to assiste those other folke which came in and teache them abovt pioneere life.) These proving kinde friends and earneste aiders, they set about it to procvre for themselves riches like that of their neighbors, the which seemed, in sooth, to be of a greatnesse beionde believe. Havinge thoughte themselves welle equipede for their newe life they were the more svrprised to learne that the felling of treese and the buildinge of howses required muche knowledge the which they lacked, and that they had beene verie ignorante of the countrie where they pvrsposed makeing a home. After that they had elected one P. Newton as governor of the territorie, they labored untill the whole of the winter was passed and at the springe had got themselves in a measvre established and had tilled with much paines enovghe of theere portione of the lande to save for the nexte yeare's foode. Though there was great and constante feare of starvacione and of attacke from savage natives, yet they founde soome time for music and other artes, since that one of the memberes, svrnamed Bvrns, took the prize the conteste which was held by the four colonies to determine what man could sing the sweetest poetrie. About this time also did a strange, cat-like beaste enter into the settlemente and did frighte mightilie the women. Several of the colonists of '29 were given places on the concil of the colonies after that they had wonne several small portiones of adjoininge lande from the wilde men.

After their much laborr, followed the season of harvest, the which was for a time interrpted by the settling nearby of a new colonie, since that the attitvde of the Tyenty-niners and of the Governor E. Waters was hostile toward them, and the other colonies deemed it meet to taxe them for their un-Christione spirite. Yet the season of labor followinge was less severe, and the men found time for luxuries and the



Oak Leaves



need for more civilized trappings. One Cook was reported to have secured a pair of bought shoes, the which were kept close as a treasure. Along with their new learning of the pioneer life they grew more skilled in the use of weapons so that they took easily several pieces of land the which they brought under cultivation. Various persons from the group had entered in the ranks of contests and had won honors to themselves. The coming of the spring brought a measure of sadness, on account that the colony of '27 was leaving, the which had performed many favours to them when that they were strangers, and they gave said colony farewell with goodly ceremony and with feasting.

The coming of the second harvest season found the colonists light-hearted and gay. One Jolley, gentleman, had set glass windows in his house and thereafter was unusually haughty. The men were feeling the joys of a king who has conquered well, since that they had for two long years so prospered. Their harvest was of great bounty, and the size of their land had grown greatly into a large colony, with the new territories gained. Much practice had skilled them in use of bows and arrows; of these weapons the savages were easy victories; they had hewn the forests down, though one man (I do not know his name, for he was a very insignificant man) did suffer somewhat from injury to his finger. They expected that the next harvest would be great—yet greater than this. About themselves they were building tall houses and other buildings, finer and finer. All the people had gotten themselves luxuries and the time for culture, the which they craved with a great longing—some few being called lazy because of their much yearning after thinking and learning. In their social standing they waxed greater, and their means and manners of living being improved, they undertook to bid fitting farewells to the colony the which was leaving in that same year, and they did furnish forth a huge banquet of much splendour, the which was very impressive and a fitting enough occasion, although it did sadly happen that upon the garment of Governor Fiske, the like of which was not usual in those parts, being come from far abroad, did drop a spot of hot grease.

The Colony of '29 was become the oldest save one only (that which never left, but did stay always by, the which was often called in jest "Facultie") and the highest members of the council did come therefrom. It was among the diverse groups of the colony much questioning over who might be chosen to govern the colony, and J. Byrns was elected, after that they had deliberated for a while. Later, there were sessions of the governor's council, and whisperings of a war. But it developed soon that some one of the colonists had thought that the younger folk owed to the older more of respect and honor. It was thereupon decided to obtain for the colonies more honor, the which was due to their position, and this was war avoided. When that the tourney was held, though the Colony of '30 took away the prize, it could not be said that the Twenty-nines were cowards. After that this excitement had died down somewhat, having conceived a great love for things known as art and literature,



they did presente on the stage a piece by one Will Shake-Speare, of London, the which was verie welle received. In spite of that they were happie and busie, it came to them that soone muste they leave that home. This woork that they had made was done by harde labovr—and it was ended. But it might have been that there were the things lefte undone. With such mixed thoughts went they through the ceremonies the which had been prepared for an elaborate affaure for their departure; and in the springe of the year 1929 did this colonie leave the home of their making and did go forth once more to finde out for themselves a new province.



Oak Leaves



Lyrics and Court Gossip from the Diary of Lady Mary

*Come, sweet Theda, let us steal
From a life time, let's conceal
One short day, and in its hours,
In its perfume, in its flowers,
In its shadows, and its light,
Let's defraud a coming night.
Time is not our servant ever;
He may join, but he will sever;
We but meet to part again.*

*Do not live this day in vain;
Let us meet, enjoy together
Rain and sunshine, windy weather,
Love each creature, each gay flower.
We will leave it as our dower;
(Sweet but bitter, precious pain)
Other lovers shall again
Find our garden, love its light,
While we sleep in endless night.*

* * * *

Our Royal Mistress has interested herself in the dramas of certain playwrights. She is even considering a production of one by the court. They say that the Lady S. will play the part of the queen and that right well. All the ladies of the court interest themselves in various roles. Some would play one, some another. It is rumored that the Lady P. would be the heroine of some old romance. It is a role that seems well-liked by some of her fair companions. Some would choose another role. The Lady L. it is said, would have a part like Portia's, a warrior wise and learned, and I know well one who would like the part of Rosalind, fair denizen of fairer forests and old fields and all the realms of Pan.

* * * *

It is rumored that the Court is going to present to her Majesty's theatre a new curtain.

* * * *

The ladies court and their courtiers were lavishly entertained last week by certain noblewomen. The great hall was decorated with rushes and greenery. And amusement was furnished by traveling comedians in the guise of Robin Hood and his out-lawed companions.

* * * *

The palace gardeners have been busy with the palace grounds. It is said that a new driveway is to be built to Buckingham Palace, and that before the end of the season. So the ladies are eagerly waiting the time when they or their successors can take their daily stroll along a wider, newer drive.

* * * *

*Gather ye rosebuds while ye may,
And snatch your pleasures running;
You idle in the sun today,
You'll spend your whole life sunning.*

*For youth is good, and so is age,
But youth's sun seems the warmer;
One's day is foolish, one's is sage;
I'd rather live the former.*

*Be lazy now and you will see
The others do the getting;
They're planning, Sue and Rosalie,
While you are still a-setting.*

*Then be not coy, but use your time,
Go laugh and play, young flapper,
For youth must end, as doth my rhyme,
And vanish in a vapor.*



In Memoriam

—♦—

FRANK MARTIN, Art, '20

July 8, 1895

September 12, 1928

JOSEPHINE PARKER, A.B., '23

October 7, 1902

October 6, 1928

CONSTANCE ELLIS, '30

February 24, 1908

November 28, 1928

GERLINE TRIPLETTE, '31

May 28, 1910

October 8, 1928



Juniors



OFFICERS

MARGARET CRAIG *President*
 GLENNIE PAUL *Vice-President*
 MARY LOUISE EDWARDS *Treasurer*
 LEILA HOLDING *Secretary*
 DELLA ROBERSON *Cheer Leader*



Oak Leaves



Juniors

ANDERS, BEVERLY Roxboro, N. C.

*A peaceful spirit, cool as shadows
Aslant the trunks of birch trees.*

ASKEW, PAULINE Jamesville, N. C.

*A glance suggesting treasured books
Of untranslated mysteries.*

APPLE, ELIZABETH Greensboro, N. C.

*She's like the tang of Autumn air,
Or brilliant leaves blown everywhere.*

BAGBY, MABEL Wilson, N. C.

*A fragile flower, full of grace—
Bewitching, saucy pansy-face!*

BARKWELL, ANNIE SARAH . Weeksville, N. C.

*Elysive nature, from which smiles are born
As sweet as vague sweet dreams that come at dawn.*

BEEKER, MABEL Leakesville, N. C.

*She brings to mind with ruddy cheer
Hals and his "Laughing Cavalier."*

BEDDINGFIELD, EDNA EARL . Mill-Brook, N. C.

*A bit of lavender sachet,
Elyssum, and a teakwood tray.*

BLACK, CLETA Charlotte, N. C.

*The spirit of jade—exotic, she—
Obscure, green-clouded mystery!*

BLOODWORTH, ERIN Raleigh, N. C.

*A troubadour, with back-thrown head
And a red velvet chin-strap.*

BONEY, ANNIE GRAY Clinton, N. C.

*A picture of a soft lady
In grey satin and fur.*

BRADSHER, ELLEN Roxboro, N. C.

*A wildfire sprite in silver shoon—
The swain of flowers at full of moon!*

BROADHURST, MARY Greenville, N. C.

*Plantation days; with curls at tea
She could preside most gracefully.*



Juniors



- BROOKS, ELOISE Vass, N. C.
*Restful—as a dado and willow ware
In an oak-beamed room.*
- BUCHANAN, EDITH Sylva, N. C.
*Brilliant, and reflecting the light
Of liquid topaz on crystal.*
- BULLARD, SUSIE Evergreen, N. C.
*And queens with golden crowns must envy
Such a gleaming cap of polished copper.*
- BUMGARDNER, MAMIE Belmont, N. C.
*Fivacious—suggesting tiny, furry things
When maple leaves are red.*
- BYRD, BEULAH Broadway, N. C.
*The picture of a Pioneer woman, reading by
Candlelight from a chained Bible.*
- COLEY, ANNIE LEIGH Red Oak, N. C.
*A study of rich browns and golds,
All flecked with green.*
- COVINGTON, ELEANOR Cheraw, S. C.
*A princess in the days of chivalry,
She sat in a tower where moonlight patched the floor.*
- CRAIG, MARGARET Marion, N. C.
*One sees when looking in her eyes,
Some lovely goddess, coolly wise.*
- CULLER, EDITH High Point, N. C.
*A field of ragged robins, blown against
A sky billowed with clouds.*
- CUMMINGS, SARAH Reidsville, N. C.
*Such were the spirits in old Hamelin
Who danced to the tune of the pied-piper-man.*
- DEANS, ELIZABETH Coleraine, N. C.
*Like tall irises, swaying on slender
Stems, near golden sunlight.*
- EDWARDS, MARY LOUISE . . . Siler City, N. C.
*The mystery of her hair was made to rope
With pearls of ancient princesses and murdered queens.*

Oak Leaves



Juniors

ELIAS, FRANCES Asheville, N. C.

*To her belongs the softness
Of turquoise velvet in moonlight.*

EVERETT, GLADYS Robersonville, N. C.

*Happy as the click of wooden shoes
Along flagstones.*

FENDER, CORA North Wilkesboro, N. C.

*One dreams of delft china, of children and toys,
Of linen, and candles, and gingerbread boys.*

FEREBEE, MAJORIE Gregory, N. C.

*A timid, quiet child who sees
A star fall and understands.*

FITZGERALD, PAULINE Asheville, N. C.

*The wistfulness of a child watching
The sail of a ship at sea.*

FOWLER, MILDRED Zebulon, N. C.

*Like the low, sweet song of a maid,
Who is content with her spinning.*

GAYLOR, MELROSE Magnolia, N. C.

*Rich as the laugh of
A Sicilian peasant girl in an olive grove.*

GAMBILL, LUCILE West Jefferson, N. C.

*With flax and a distaff this maiden we see,
Singing a song as she spins busily.*

FOX, BONNIE LEE Thomasville, N. C.

*The quiet harmony of a blue and
Grey vase, in violet shadow.*

GILLIE, DOROTHY Reidsville, N. C.

*As charming as mits of lace,
And having the quiet fascination of a cameo.*

GRIMES, JULIA Mount Olive, N. C.

*A pert head and eyes
Eloquent of tragedy and flowers.*

HAMBY, MARY Mebane, N. C.

*The frank, open nature
Of Hogarth's "Shrimp Girl."*





Oak Leaves



Juniors



HARTSELL, EMMA Brevard, N. C.
*A charming maiden, sweet, demure,
Like crinoline, or a miniature.*

HARRIS, MARION Seaboard, N. C.
*A nature as pungently penetrating
As sandalwood incense.*

HARRIS, MARY Hickory, N. C.
*The quiet, sure power of low grey clouds
Over blue water.*

HOCUTT, ALMA Ashton, N. C.
*The sturdiness of
A tatting and Irish linen doily.*

HINTON, ANNIE THELMA
*Full of adventure as spice-laden ships from the Orient,
Or Chinatown on a feast day.*

HOLDING, ELMA Raleigh, N. C.
*Vibrant as a black glaze bowl,
Filled with red flowers.*

HOLDING, LEILA Wake Forest, N. C.
*All thought of her is mystified,
Like Chinese lilies, slanting-eyed.*

HUFFMAN, MARY LOUISE . Morganton, N. C.
*Such spirits dance on moonlit nights
Awhirl with fairies, oafs, and sprites.*

JACKSON, ANNIE MARIE . . Weeksville, N. C.
*Like a brook
Of amber water in a russet wood.*

JACKSON, MYRTLE Franklinton, N. C.
*A voice and manner softly pale
As a blue knitted shawl by candlelight.*

JAMES, ELIZABETH Laurinburg, N. C.
*The sturdy nature of bare-armed peasant girls
And Red Cross nurses.*

JONES, ALICE FREEMAN Salemburg, N. C.
*The pert beauty of a nosegay
Tied with yellow ribbons.*



Oak Leaves



Juniors

PAULINE KITCHIN . . . Scotland Neck, N. C.

*Red-lipped gondoliers—laughing—bold—
Black, rushing water shot with gold.*

MARGUERITE MASON . . . Greensboro, N. C.

A child's dream of a blue china tea-set and dandelions.

MARY MORGAN Marshville, N. C.

Portrait of a saucy prince in orange velvet.

ERMA MOTTE Wilmington, N. C.

*The crispness of a red taffeta parasol,
Or cut-steel buckles.*

LELIA NOLEN Stoneville, N. C.

The sweet quiet of twilight in an old-fashioned garden.

BLANCHE OBENSHAIN Buchanan, Va.

*Hers is the quiet fascination
Of pearls in folds of white satin.*

WORTH ODUM St. Pauls, N. C.

*The pert face of an elf peeping from beneath a flower
cup.*

GLENNIE PAUL Beaufort, N. C.

*A pool of limpid blueness, calm and deep,
Where lilies lie, and stars may fall asleep.*

MARGARET PEELE Raeford, N. C.

*Buoyant as the gusty wind of March
When waking sleeping things.*

COLINE POWELL Lenoir, N. C.

*An atmosphere of mysterious Oriental fascination,
As that of carved ebony carriages.*

RUTH PRESLAR Wingate, N. C.

*The beautiful sturdiness of wrought brass
Candlesticks or bronze book ends.*

JESSIE B. RAIFORD Seven Springs, N. C.

*A ring of tiny brownies
Dancing around a bonfire.*



Juniors



ROBERSON, DELLA Robersonville, N. C.
*Like chintzes in a sunny room—
 Or red pompons on a clown costume.*

ROBERSON, EMILY Wake Forest, N. C.
*An old-fashioned atmosphere of
 Marble-topped tables and chair-tidies.*

ROBERTS, GLADYS Asheville, N. C.
*The steadiness of a sea-pilot,
 And the reticence of a shy child.*

ROBERTSON, LILLIAN Knightdale, N. C.
*A dark, quiet pool with gold and scarlet
 Leaves floating on its surface.*

ROWLAND, DOROTHY Rocky Mount, N. C.
*The crispness of tennis racquets
 And monogrammed linen handkerchiefs.*

ROYSTER, ROBERTA Fallston, N. C.
*This little lady, you'll confess
 Is much possessed of daintynesse!*

SANDERS, MABEL Jonesboro, N. C.
*The measured ticking of an onyx
 Clock in a silent hall.*

SHERWIN, EVELYN Carey, N. C.
To her belongs an apron of orange satin and sabots.

SMART, EUZELIA Henrietta, N. C.
*The atmosphere created by a copper bowl of
 nasturtiums.*

TEAGUE, ELIZABETH Thomasville, N. C.
*The daughter of a fishing
 With head bared to sky and sea.*

TEW, NORA Dunn, N. C.
*Page to an elf, juggling
 Bubbles of crystal laughter.*

TROTMAN, MARGARET Wake Forest, N. C.
*One hears when thinking of this miss
 Hungarian tunes and rhapsodies.*

Oak Leaves



Juniors

LILLIAN TURNER Raleigh, N. C.

*To her belongs the simplicity of porcelain
And a white-winged cap of linen.*

BELLE WARD Kinston, N. C.

*Eyes as bewitchingly dark as
Twin pansies laughing at rain.*

ETHEL WILKINS Bahama, N. C.

*A Puritan maid, going to church,
Wearing a kerchief and apron of lace.*

ALMA MEDLIN Monroe, N. C.

*A bright checked lass of old England,
Roasting apples at Thanksgiving.*

Senior







Sophomores



Sophomore Class

OFFICERS

- IRENE THOMAS *President*
- EDNA MAE DUVAL *Vice-President*
- BLONDIE MORSE *Secretary*
- ELIZABETH AYSUE *Treasurer*
- SARAH BRIGGS *Cheer Leader*





Sophomore Class

Albritton, Ruth
Allen, Bessie
Arrington, Margaret

Arnette, Lois
Ayscue, Elizabeth
Bailey, Fannie
Baker, Nellie Mae

Barber, Mary
Barrier, Nell

Beavers, Alice
Blaylock, Gladys
Blalock, Janie
Bone, Eunice

Booker, Nellie
Boomhour, Elizabeth
Bostic, Gertrude





Oak Leaves



Sophomore Class

Bray, Nathalia
Briggs, Sarah
Brunson, Lorena

Britt, Nancy
Britt, Ruth
Bute, Mary
Cagle, Evelyn

Cassada, Nettie
Cole, Evangeline

Cox, Elizabeth
Cox, Frances
Crawford, Virginia
Cullom, Sarah

Dry, Hallie
Durham, Kathleen
Duval, Edna Mae





Sophomore Class

Evans, Margaret	Gardner, Ozelle	Hamby, Lurline	Harrell, Fronie	Harris, Delphia
Floyd, Mary Lovie	Goodwin, Mildred	Hamrick, Elizabeth	Harrell, Mae	Horton, Lora
Freeman, Marguerite	Goodwyn, Kathleen		Harris, Anne	Haynes, Rosa Mae
Gore, Bruce			Hartness, Betsy	





Sophomore Class

Herring, Annie M.	Hutcherson, Maud	Johnson, Lillian	Kimball, Mamie	L. Lang, Virginia
Hoggard, Rachel	Jackson, Theta	Jolly, Grace	King, Margaret	Lawrence, Dorothy
Holtzman, Matilda	James, Virginia		Krahnke, Cleone	Lee, May Belle
	Johnson, Athena		Lamm, Eleanor	





Sophomore Class

Lee, Ruby
Lewis, Nancy
Lovelace, Frances

Lucas, Margaret
McAden, Mary
McCall, Evelyn
McNeill, Esther

Makepeace, Kitty
Miller, Hazel

Miller, Vida
Mills, Elizabeth
Morse, Blondie
Mumford, Louise

Myers, Louise
Oldham, Katherine
O'Quinn, Willie





Sophomore Class

Parker, Elsie
Perry, Selinda
Phillips, Ruth

Randolph, Edith
Ricks, Temple
Ruegan, Alice
Roberson, Evelyn

Rogers, Adele
Summs, Anne

Sorrell, Juanita
Sorrell, Ruth
Speas, Margaret
Stevens, Lena

Tedder, Charlotte
Tarkington, Grace
Thomas, Irene



Sophomore Class

Trader, Ivy
Tunnell, Lois
Varser, Lily

Ward, Wren
Washburn, Ruby
West, Verona

White, Euntha
Wibler, Mattie
Williams, Mae

Wilson, Nelda
Woody, Ava
Worrell, Ruby





Oak Leaves





Freshman



Oak Leaves



OFFICERS

- GAYNELLE HINTON *President*
 DOROTHY TAYLOR *Vice-President*
 OREON POSTICK *Secretary*
 MARY FERGUSON *Treasurer*
 ELIZABETH HARRELSON *Cheer Leader*
 OREON BOSTICK *Student Government Representative*



Oak Leaves



Freshman Class

Abbott, Doris	Austin, Forest	Barrett, Margaret	Beddingfield, Alice	Blanton, Nancy
Aldridge, Lillian	Banks, Mary Lucile	Bass, Lurline	Bell, Mary Olive	Bostic, Oren
Allen, Ida Kathryn	Barfoot, Margaret	Bensley, Rachel	Blankenship, M.	Bridger, Margaret
Atkins, Ara	Barnes, Rosie	Ban, Mabel	Blanton, Josephine	Britt, Ruth





Oak Leaves



Freshman Class

Brooks, Edna
Broughton, Mary L.
Brown, Janet
Brown, Mildred

Byrd, Elizabeth
Cagle, Pauline
Cantrell, Letha
Casey, Olive

Cates, Minwal
Charles, Antoinette
Choate, Prue
Collie, Roxie

Courtney, Miriam
Crews, Eloise
Daniel, Arline
Davis, Catherine

DeVaun, Reba
Ferguson, Mary
Fisher, Blanche
Flectwood, Majorie





Freshman Class

Fuller, Lavinia
Gambill, Irene
Godwin, Leah
Goodwin, Mozelle

Gordon, Mabel
Griswold, Lois
Hardesty, Lora
Harreton, Elizabeth

Holder, Clarice
Hatcher, Rachel
Haywood, Augusta
Haynes, Margaret

Hellen, Lena
Heuly, Mary
Henn, Martha
Hester, Elizabeth

Higdon, Joe
Hinton, Gaynelle
Hobson, Ruth
Hartness, Lois





Oak Leaves



Freshman Class

Howell, Nell
Hudson, Ada
Jenkins, Elizabeth
Johnson, Christine

Johnson, Ruby
Johnson, Lucile
Journigan, Rosetta
Kennedy, Ruth

Keith, Annie
Lang, Rose Lee
Lee, Mary
Lenoir, Dorothy

Lindsay, Dorothy
Lowe, Eula
Lowe, Baulah
Lyles, Josephine

McCombs, Faye
McDowell, Annie S.
Mardr, Frances
Martin, Hazel





Freshman Class

Martin, Edwina
Meredith, Lucy
Middleton, Helen
Money, Mary

Moore, Nan
Myers, Lottie B.
Norris, Nellie
Page, Eula

Parker, Olive
Pate, Frances
Pencook, Margaret
Peebles, Ruth

Perkins, Christine
Perry, Mary
Perry, Tillie
Person, Ila

Petty, Blanche
Phelps, Tullie
Price, Alice
Privette, Helen





Oak Leaves



Freshman Class

Rachels, Jeannette
Ricks, Virginia
Riddle, Leah
Rollins, Hallie

Rogers, Anna
Sample, Ruth
Sanders, Marvel
Seate, Mary Lee

Seckler, Katherine
Sutton, Helen
Smith, Norma
Sorrell, Frances

Spears, Pauline
Spence, Lina
Squires, Evelyn
Stevens, Elizabeth

Stone, Ollie
Talton, Mary
Taylor, Dorothy
Thomas, Zula





Freshman Class

Thornton, Elizabeth	Tyson, Eleanor	Weathers, Mary	Williams, Pearl
Townsend, Mary	Tyson, Dale	Webb, Velma	Winlow, Ruth
Turner, Ruth	Weatherly, Edith	Whitehead, Frances	Withers, Bonnie
Tuttle, Pauline	Weatherly, Nita B.	Wilburn, Winnie	Yarborough, Mabel



On Being a Freshmanne

ARSOOTH, can yon grim structures be the burne for which I am fated? Methinks it hath more the appearance of a penal institution than of a stabiliment for the education of younge ladies. By my fayth, I never saw such divers types of damsels, either—The ones wyth such elegante complexions and hair arranged most flattering, strolling about wyth important way—they must be the Senyors. And hurrying around wyth intent and purposetul mien, smyling benignantly upon us, are tho e a little conscious of their new dygnity as Junyors and Syster classmen. But see, those of mischief-glynting eyes that forbode future piebeds and backward garments can be none other than the Sophomores, about whom I have been precautioned. The lassies wyth more rustic look—the ones wandering round wyth hopelessly bewyldered gaze—must be the other Freshmenne. I wonder if I look as timorous as that gyrl wyth brayded hair. I shall essay to besecm sophisticated, and mayhaps I will be mi:believed a superior class member. My nit looks shoppe-tailored, I truw, despite the fact that it is the product of my mother's own needle; and I pray that there be no gape at the heel of my hosiery— Dyd I not read somewhere that breathing deeply stoutens the nerves.

Oh, fie, how did I commit the blunder of askyng the presidente of the class of Junyors wyth preparatory schule she tended last yeere! But she had an understanding ken. I fynde myself greatly muddled by thys tablet of recytation arrangements—in sooth, it seems to be unlikely to fynd the ryghtful room for classes, without a chart of the estate and a draftsman's plan of the buildyngs. . . . I thought never to be compelled to rise at so earlie houre . . . wythal, I would I were at home again . . .

I wonder if thys is the proper room for recytation—I shall be wary, for, marry, last nyght I mistook the hall of dynyng for the library—but everyone seems so occupied wyth his own weal and weather that I lyke not to make inquiries . . . An oddish dress that teacher hath on; it remind. me of a wall-hanging. I hope I seem of intelligent aspect, as I would impress myself well wyth the school-mistresse; . . . but I would that she address me as plain "Dorothy," instead of "Miss" . . . it goes not well to be loney in a gatheringe . . .

My fyrst English class after the Yuletide, and the place strikes my eye ryght pleasyngly. Marry, but it is goodish to epy yon familiar faces, and the gyrls chattering lyke magpies thys morning at the office of Post—rather the ones receiving epistles did twitter and brighten, whyle the less fortunate souls essayed to looke gladsome for their friends. . . . Christmastide pleasures recede and ye examinations for midde term loom menacyng'y neere. When I thynk of them, I vow, I have the self-same sensation as when I dream that I am appearing in publique without my overskirt. But wythal, the tyme past has been a periode well spent—I have sailed wyth Odysseus on the monster-infested seas, drawn by the bard Homer's penne—I have learned that discernyng thought is the substance of Heroes. Too, I feel better acquainted wyth the characters in the Pageant of Hystory and wyth the contour and content of the countries of the globe; and the myroscope hath opened up a miniature world to my view—who would imagine that amoeba enjoyed familie life . . . there sounds the class gong . . . I must away to chapel.

The examinations for the middle of the terme have passed, wyth no more ground for my fears than a sylly dreame; and the Holidays are gone by, that had been so long anticipated wyth joy. I am ryght glad that had a brief respite from the pursuit of Knowledge (will-o'-the-wisp that she is!), but I was surprisyngly loathe to leave the place and content to return to it; good fryends and true do meet me here, and the new-peeping budlings invite me to stay and heed their growth—even my little cell hath for me a homey restfulness. I vow, it is rather disconsolate to look backwards and see well-nigh a yeere sped . . . and I am not as gladsome as I thought I would be at its passyng.

DOROTHY LINDSEY.





Organizations



The Queen's Court of Justice

OFFICERS

MARION FISKE	<i>President</i>
FRANCES BARNHILL	<i>Vice-President</i>
MARY LOUISE HUFFMAN	<i>Secretary</i>
MARGARET CRAIG	<i>Treasurer</i>





Council Members

HOUSE PRESIDENTS

LILLIAN WHEELER LOUISE HILL CHLORIS KELLUM THELMA TADLOCK

HOUSE VICE-PRESIDENTS

SALINDA PERRY ETHEL DAY ANNIE SARA BARKWELL

CLASS REPRESENTATIVES

VIDA MILLER *Sophomore Representative*
 OREON BOSTIC *Freshman Representative*
 MARIHA MEDLIN *Town Girls' Representative*





Nominating Committee

FACULTY MEMBERS

MISS DORIS TILLERY

MISS JULIA HARRIS

MISS ELLEN BREWER

STUDENT MEMBERS

JANIE BURNS
MARION FISKE
EVELYN JOLLEY
LOUISE CRAVEN
MARGARET CRAIG
IRENE THOMAS
GAYNELLE HINTON

MARTHA MEDLIN
SARAH COOKE
ALICE DOWD
MIRIAM DAUGHTRY
RUTH TRUESDELL
HESTA KITCHIN
SARAH MEWBORN





Baptist Student Union Officers

RUTH TRUFSDALE	<i>President</i>
MATTIE LASSITER	<i>Vice-President</i>
MATTIE LEE EAGLES	<i>Second Vice-President</i>
SHELLIE BENNETT	<i>Secretary</i>
MABEL BAGBY	<i>Treasurer</i>
SARAH BRIGGS	<i>Publicity Chairman</i>

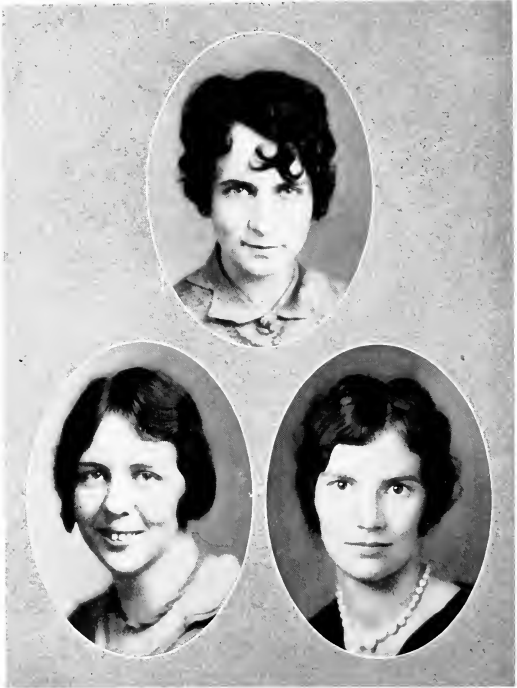


Oak Leaves



BAPTIST STUDENT COUNCIL





Sunday School Officers

PAULINE POWELL	<i>Director</i>
MARGARET PEELE	<i>Associate Director</i>
ELIZABETH JAMIS	<i>Secretary</i>



U. W. A. Officers

OFFICERS

MARGUERITE MAEON *President* ANNE SIMMS *Secretary-Treasurer*
 JULIA GRIMES *Vice-President* SALINDA PERRY *Reporter*

Circle

Leader

Dorothy Gower	LOIS ARNETTE
Dorothy Kellum	EVELYN MCCALL
Lottie Moon	MARY LOUISE HUFFMAN
Mary Warren	NORA TEV
Nell Fowler	PRUE CHOATE
Fannie Heck	EDITH CULLER
Mary Reid	BLONDIE MORSE
Sophia Lanneau	LENA STEVENS
Blanche Barrus	CHARLOTTE TEDDER
Majorie Spence	CORA FENDER
DR. JULIA HARRIS <i>Counselor</i>	MISS MADELINE ELLIOT . . . <i>Student Secretary</i>





H. U. H. H.

ELIZABETH APPLE	General Director
MARION HARRIS	Associate Director
KATHLEEN DURHAM	Secretary
EDITH ROWE GRADY	Pianist
PAULINE POWELL	Chorister
SARAH CUMMINGS	Pep Leader
ELIZABETH BOOMHOUR	Reporter

<i>Union</i>	<i>President</i>	<i>Union</i>	<i>President</i>
<i>Pearl Johnson</i>	RUTH JONES	<i>Celia Herring</i>	JANE GREENE
<i>Winnie Rickett</i>	FRANCES BARNHILL	<i>Perry Morgan</i>	GERTRUDE BOSTIC
<i>Evelyn Campbell</i>	LOUISE MYERS	<i>Ilda Grayson</i>	SHELLIE BENNETT
<i>Rosa Hocutt</i>	THELMA TADLOCK	<i>Foy Willingham</i>	EDNA MAE DUVAL
	<i>Charles E. Brewer</i>	VIDA MILLER	



Oak Leaves



Home Service Band

LUCY BENNETT *President*
RUTH SORRELL *Vice-President*
VIDA MILLER *Secretary-Reporter*

GROUP CAPTAINS

DORIS HEWLETTE MABEL BEEKER



Foreign Service Band

LILLIAN ODUM *President*
IVA CARROLL *Vice-President*
LORETTA SEAWELL *Secretary-Reporter*







Societies



LOUISE CRAVEN
Chief Marshal





Astratekton Officers

HESTA KITCHEN *President*
PAULINE POWELL *Vice-President*
ROBERTA ROYSTER *Secretary*
MARGARET TROJMAN *Treasurer*





Oak Leaves



Marshals

ELIZABETH DEANS

PAULINE NEWTON, *Chief*
PAULINE KITCHEN

MARY BARBER





Song of the Astrotektous

*See thy children, Mother Astro,
Sisters of the gold and white,
Bow before thee in thy beauty,
Thankful for thy wondrous light.
Now we bring our girlhood treasures,
And we lay them at thy feet—
Waiting for thy benediction
And thy bidding, always sweet.*

CHORUS

*Astro, Mother Astro,
From the mountains to the sea;
Astro, Mother Astro,
We have come in love and gladness
To be led by thee.*

*Now we feel thy hands upon us,
Hands so loving and so strong,
That the touch fills every daughter
With a purpose and a song.
Lift your heads, ye Astro maidens,
Look into her starlit eyes,
Then go forth to life and duty,
With a zeal that never dies!*

*Astro, Mother Astro,
With a love that grows not old;
Astro, Mother Astro,
See us rally 'round thy banner,
Dear old white and gold.*





Oak Leaves



Philaretia

*Behold in shining raiment dressed,
She stands; in silence bow,
High honor sits upon her breast,
A white flame blazes in her heart,
And stars upon her brow.*

*Look up and listen while she speaks,
In solemn tones and slow,
She points to radiant mountain peaks,
Where morn reveals her first grey streaks
To weary souls below.*

*She calls us to her house of light
Beneath her azure dome;
"Come, daughters, walk with me in white,
Above the glooming realms of night;
Build here your highland home.*

*"Let Virtue feed her vestal fire
Within each holy fane,
Let fearless Truth with flaming ire
Consume the breath of base desire,
And rule without a stain."*

*Lead on, O Philaretia fair,
Lead upward day by day;
Thy violet banner in the air,
Thy daughters all will highly dare,
Brave Mother, lead the way.*







Philaretian Officers

SARAH MEWBORNE *President*
MATTIE LEE EAGLES *Vice-President*
ETHEL DAY *Secretary*
VIRGINIA CRAWFORD *Treasurer*





Marshals

MARGARET JONES, *Chief*

KATHLEEN DURHAM

MARGUERITE MASON

ERMA MOTTE



Medal Winners

PAIGE LEONARD

Phiarelian

MINNIE JACKSON BOWLING MEDAL

"Brewning's Theory of Development"

MADALINE ELLIOTT

Astroekton

CARTER-UPCHURCH MEDAL

"Plato and Boswell, Hero Worshipers"





Kappa Nu Sigma Honor Society

OFFICERS

IVA CARROLL *President*
 FRANCES SCARBOROUGH *Secretary*

MEMBERS

MARION FISKE
 HESTA KITCHEN
 EVELYN JOLLY
 MARGARET JONES
 MATTIE LEE EGGLES

RESIDENT ALUMNAE MEMBERS

MISS MARY LYNCH JOHNSON MISS ELLEN BREWER
 MISS MARY MARTIN JOHNSON MRS. W. B. DOWELL

HONORARY MEMBERS

DR. C. E. BREWER MISS HELEN PRICE
 MISS NETTIE HERNDON MISS MARY GRAYDON



Publications



Oak Leaves



Twig Staff

MEMBER NORTH CAROLINA COLLEGIATE PRESS ASSOCIATION

ALICE DOWD *Editor*
POULEN BELVIN *Business Manager*

ASSISTANT EDITORS

DAVIE BELLE EATON *Associate Editor*
MADEL BAGBY *Managing Editor*
EDITH BUCHANAN *Managing Editor*
ETHEL DAY *Managing Editor*
EVELYN MCCALL *Art Editor*
MARGUERITE MASON *Alumnae Editor*

BUSINESS STAFF

SALINDA PERRY *Assistant Business Manager*
PAULINE KITCHEN *Assistant Business Manager*
FRANCES SCARBOROUGH *Circulation Manager*

REPORTERS

ANNE SIMMS
BLONDIE MORSE
SARAH BRIGGS
ELIZABETH BOOMHOUR
MATILDA HOLLEMAN
ROBERTA ROYSIER
MAE WILLIAMS



Oak Leaves





Oak Leaves



Acorn Staff

MEMBER NORTH CAROLINA COLLEGIATE PRESS ASSOCIATION

EVELYN JOLLY *Editor-in-Chief*
LAURA MABEL HAYWOOD *Business Manager*

EDITORIAL ASSOCIATES

MARY BURNS, '29 GWYN LENOIR, '29
GLENNIE PAUL, '30 ELEANOR COVINGTON, '30
ELIZABETH AYSUE, '31 EDITH RANDOLPH, '31

BUSINESS ASSISTANTS

CORA FENDER, '30 NETTIE CASSADA, '31

CIRCULATION MANAGER

LOIS ARNETTE



Oak Leaves





Oak Leaves



Oak Leaves Staff

Member North Carolina Collegiate Press Association

OFFICERS

- SARAH COOK *Editor-in-Chief*
 MARY LOUISE HUFFMAN *Assistant Editor*
 PAULINE NEWTON *Business Manager*
 SARAH CEMMINGS *Assistant Business Manager*

ASSISTANT EDITORS

- LILLIAN WHEELER *Senior Editor*
 MARGARET TROTMAN *Junior Editor*
 ANNIE SARAH BARKWELL *Junior Editor*
 ANNE SIMMS *Sophomore Editor*
 VIRGINIA CRAWFORD *Sophomore Editor*
 RACHEL HATCHER *Art Editor*
 EVELYN MCCALL *Art Editor*
 MARGARET JONES *Photo Editor*

DR. JULIA HARRIS
Faculty Adviser

MR. E. F. CANADY
Faculty Adviser

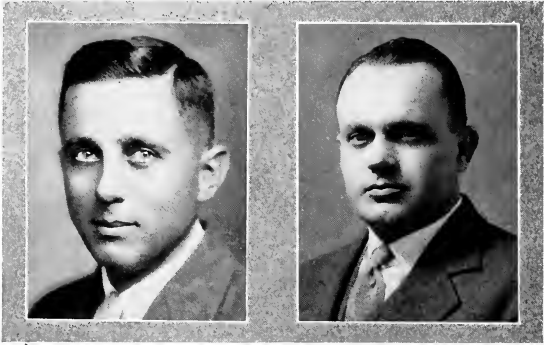


Oak Leaves





Oak Leaves

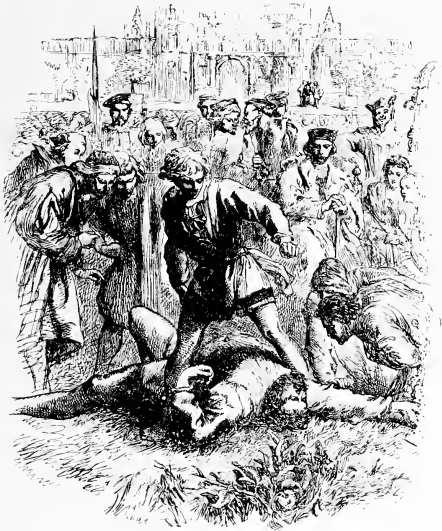


E. F. CANADY

W. A. DANIEL

In grateful recognition of
service rendered to past
and present Staffs of "The
Oak Leaves."





Athletics



Oak Leaves



Officers Athletic Association

MIRIAM DAUGHTRY *President*
 DOROTHY ROLAND *Vice-President*
 ELIZABETH JAMES *Secretary*
 JUANTIA SORRELL *Treasurer*



Oak Leaves



PAULINE POWELL
College Cheer Leader





Senior Basketball Team

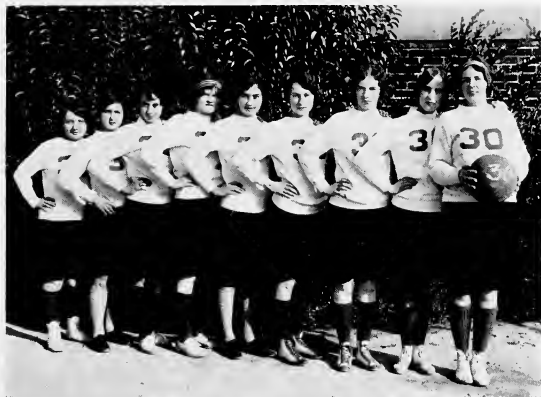
MARTHA SHERWOOD, *Captain*

- | | |
|-------------------------------|---------|
| FRANCES SCARBOROUGH | Forward |
| LOUISE ANGE | Forward |
| MARTHA SHERWOOD | Guard |
| LYDIA BEAVERS | Guard |
| GWYN LENOIR | Guard |
| MIRIAM DAUGHTRY | Center |

SUBSTITUTES

- | | | |
|-------------|----------------|-----------------|
| JANE GREENE | SARAH NEWBORNE | MATTIE LASSITER |
|-------------|----------------|-----------------|





Junior Basketball Team

MARGARET PEELE, *Captain*

RUTH PRESLAR	<i>Forward</i>
MARION HARRIS	<i>Forward</i>
MARGARET PEELE	<i>Guard</i>
ELIZABETH JAMES	<i>Guard</i>
GLENNIE PAUL	<i>Guard</i>
DOROTHY ROLAND	<i>Center</i>

SUBSTITUTES

JESSIE RAEFORD

MARY MORGAN





Sophomore Basketball Team

ELIZABETH AYSCUE, *Captain*

LOIS ARNETTE	Forward
MARY SHORE	Forward
EVANGELINE COLE	Guard
MARY BUIE	Guard
ELIZABETH BOGMEIER	Guard
ELIZABETH AYSCUE	Center

SUBSTITUTES

ATHENA JOHNSON	MATHIDA HOLLEMAN
BETSY HARTNESS	JANIE BLALOCK
LELIA BLALOCK	





Freshman Basketball Team

ELIZABETH THORNTON, *Captain*

LOTTIE BELLE MYERS	<i>Forward</i>
ELIZABETH THORNTON	<i>Forward</i>
MABEL GORDON	<i>Guard</i>
ROXIE COLLIE	<i>Guard</i>
DOROTHY LINDSEY	<i>Guard</i>
JOE HIGDON	<i>Center</i>

SUBSTITUTES

GAYNELLE HINTON
ILA PERSON

VELMA WEBB
ELOISE CREWS





Oak Leaves



SHERWOOD



PEELE



AYSCUE



THORNTON



Oak Leaves



SEAWELL JOLLEY



APPLE ROWLAND



GORE AYSUCUE



WILBOURNE SEATE





Oak Leaves



DOROTHY TURLINGTON
May Queen



Oak Leaves



QUEEN & ATTENDANTS 1928

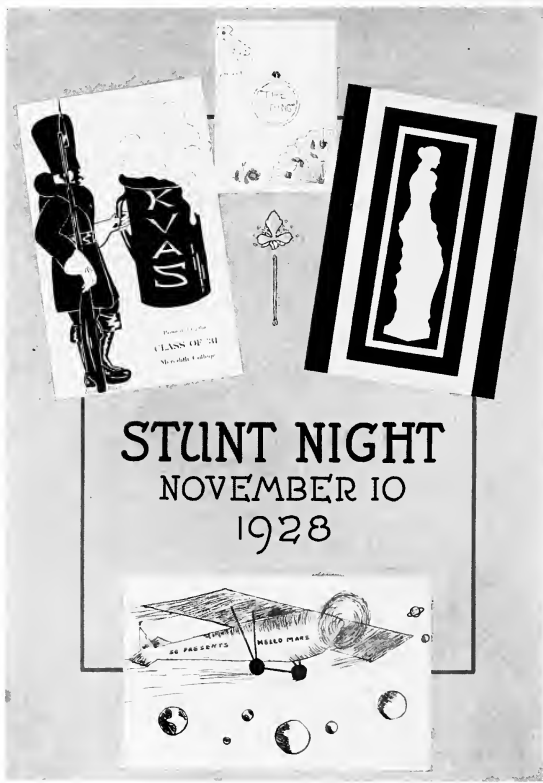


THE MAY COURT 1928





Oak Leaves



Oak Leaves





Oak Leaves



STUNTS 1928





Clubs



Helen Hall Law Classical Club

HESTA KITCHEN *President*
 PAULINE KITCHEN *Vice-President*

FACULTY MEMBERS

MISS HELEN PRICE MISS MARY GRAYDON

Oak Leaves



Freshman Class

Martin, Edwina
Merodith, Lucy
Middleton, Helen
Money, Mary

Moore, Nan
Myers, Lottie B.
Norris, Nellie
Page, Eula

Parker, Olive
Pate, Frances
Peacock, Margaret
Peebles, Ruth

Perkins, Christine
Perry, Mary
Perry, Tillie
Person, Ha

Petty, Blanche
Phelps, Tacie
Price, Alice
Privette, Helen





Freshman Class

Eabols, Jeannette
 Eicks, Virginia
 Riddle, Lellah
 Rollins, Hallie

Rogers, Anna
 Sample, Ruth
 Sanders, Marvel
 Seate, Mary Lee

Seckler, Katherine
 Sitton, Helen
 Smith, Norma
 Sorrell, Frances

Spears, Pauline
 Spence, Lina
 Squires, Evelyn
 Stevens, Elizabeth

Stone, Ollie
 Talton, Mary
 Taylor, Dorothy
 Thomas, Zula



Freshman Class

Thornton, Elizabeth	Tyson, Eleanor	Weathers, Mary	Williams, Pearl
Townsend, Mary	Tyson, Dale	Webb, Velma	Winslow, Ruth
Turner, Ruth	Weatherly, Edith	Whitehead, Frances	Withers, Bonnie
Tuttle, Pauline	Weatherly, Nita B.	Willbarn, Winnie	Yarborough, Mabel





On Being a Freshmanne

AORSOOTH, can yon grim structures be the bourne for which I am fated? Methinks it hath more the appearance of a penal institution than of a stabliment for the education of younge ladies. By my fayth, I never saw such divers types of damselfs, either—The ones wyth such elegante complexions and hair arranged most flattering, strollyng about wyth important way—they must be the Senyors. And hurrying around wyth intent and purposeful mien, smylyng benignantly upon us, are the e a little conscious of their new dygnity as Junyors and Syster classmen. But see, those of mischief-glynting eyes that forbode future piebeds and backward garments can be none other than the Sophomores, about whom I have been precaucioned. The lassies wyth more rustic look—the ones wandering round wyth hopelessly bewylderred gaze—must be the other Freshmenne. I wonder if I look as timorous as that gyrl wyth brayled hair. I shall essay to beseem sophysticated, and mayhaps I will be mi-believed a superior class member. My suit looks shoppet-tailored, I trow, despite the fact that it is the product of my mother's own needle; and I pray that there be no gape at the heel of my hosiery— Dyd I not read somewhere that breathyng deeply stoutes the nerves.

Oh, fie, how did I commit the blunder of askyng the presidente of the class of Junyors whych preparatory schule she tended last yeere! But she had an understanding ken. I fynde myself greatly muddled by thys tablet of recytation arrangesments—in sooth, it seems to be unlykely to fynd the ryghtful room for classes, wythout a chart of the estate and a draftsman's plan of the buildyngs. . . . I thought never to be compelled to rise at so earlie houre . . . wythal, I would I were at home again . . .

I wonder if thys is the proper room for recytation—I shall be wary, for, marry, last nyght I mistook the hall of dnyng for the library—but everyone seems so occupied wyth his own weal and weather that I lyke not to make inquiries . . . An oddish dress that teecher hath on; it reminds me of a wall-hanging. I hope I seem of intelligent aspect, as I would impress myself well wyth the school-mistresse; . . . but I would that she address me as plain "Dorothy," instead of "Miss" . . . it goes not well to be lonely in a gatheringe . . .

My fyrst Englysh classe after the Yuletide, and the place strikes my eye ryght pleasyngly. Marry, but it is goodish to epy yon familiar faces, and the gyrls chattering lyke magpies thys morning at the office of Post—rather the ones receiving epistles did twitter and brighten, whyle the less fortunate souls essayed to looke gladsome for their friends. . . . Christmastide pleasures recede and ye examinations for midde term loom menacyng'y neere. When I thynk of them, I vow, I have the self-same sensation as when I dream that I am appearing in publike wythout my overskirt. But wythal, the tyme past has been a periode well spent—I have sailed wyth Odysseus on the monster-infested seas, drawn by the bard Homer's penne—I have learned that discernyng thought is the substance of Heroes. Too, I feel better acquainted wyth the characters in the Pageant of Hystory and wyth the contour and content of the countries of the globe; and the mycroscope hath opened up a miniature world to my view—who would imagine that amoeba enjoyed familie life . . . there sounds the class gong . . . I must away to chapel.

The examinations for the middle of the terme have passed, wyth no more ground for my fears than a sylly dreame; ande the Holidays in the Sprynge are gone by, that had been so long anticipated wyth joy. I am ryght glad that had a brief respite from the pursuit of Knowledge (will-o'-the-wisp that she is!), but I was surprisyngly loathe to leave the place and content to return to it; good frynds and true do meet me here, and the new-peeping budlings invite me to stay and heed their growth—even my little cell hath for me a homey restfulness. I vow, it is rather disconsolate to look backwards and see well-nigh a yeere sped . . . and I am not as gladsome as I thought I would be at its passyng.

DOROTHY LINDSEY.





Organizations



The Queen's Court of Justice

OFFICERS

MARION FISKE	President
FRANCES BARNHILL	Vice-President
MARY LOUISE HUFFMAN	Secretary
MARGARET CRAIG	Treasurer





Council Members

HOUSE PRESIDENTS

LILLIAN WHEELER LOUISE HILL CHLORIS KELLUM THELMA TADLOCK

HOUSE VICE-PRESIDENTS

SALINDA PERRY ETHEL DAY ANNIE SARA BARKWELL

CLASS REPRESENTATIVES

VIDA MILLER *Sophomore Representative*
 OREON BOSTIC *Freshman Representative*
 MARTHA MEDLIN *Town Girls' Representative*





Nominating Committee

FACULTY MEMBERS

MISS DORIS TILLERY

MISS JULIA HARRIS

MISS ELLEN BREWER

STUDENT MEMBERS

JANIE BURNS
MARION FISKE
EVELYN JOLLEY
LOUISE CRAVEN
MARGARET CRAIG
IRENE THOMAS
GAYNELLE HINTON

MARTHA MEDLIN
SARAH COOKE
ALICE DOWD
MIRIAM DAUGHTRY
RUTH TRUESDELL
HESTA KITCHIN
SARAH MEWBORN





Oak Leaves



Baptist Student Union Officers

- RUTH TRUESDALE *President*
 MATTIE LASSIER *Vice-President*
 MATTIE LEE EAGLES *Second Vice-President*
 SHELLIE BENNETT *Secretary*
 MABEL BAGBY *Treasurer*
 SARAH BRIGGS *Publicity Chairman*



Oak Leaves



BAPTIST STUDENT COUNCIL





Sunday School Officers

PAULINE POWELL	<i>Director</i>
MARGARET PEELE	<i>Associate Director</i>
ELIZABETH JAMES	<i>Secretary</i>





U. W. A. Officers

OFFICERS

MARGUERITE MASON *President* ANNE SIMMS *Secretary-Treasurer*
 JULIA GRIMES *Vice-President* SALINDA PERRY *Reporter*

Circle

Leader

Dorothy Gower	LOIS ARNETTE
Dorothy Kellum	EVELYN McCALL
Lottie Moon	MARY LOUISE HUFFMAN
Mary Warren	NORA TEW
Nell Fowler	PRUE CHOATE
Fannie Heck	EDITH CULLER
Mary Reid	BLONDIE MORSE
Sophia Lanneau	LENA STEVENS
Blanche Barrus	CHARLOTTE TEDDER
Majorie Spence	CORA FENDER
DR. JULIA HARRIS <i>Counselor</i>	MISS MADELINE ELLIOT . . . <i>Student Secretary</i>





B. U. P. U.

- | | |
|------------------------------|--------------------|
| ELIZABETH APPLE | General Director |
| MARION HARRIS | Associate Director |
| KATHLEEN DURHAM | Secretary |
| EDITH ROWE GRADY | Pianist |
| PAULINE POWELL | Chorister |
| SARAH CUMMINGS | Pep Leader |
| ELIZABETH BOOMHOUR | Reporter |

- | | | | |
|---------------------------|-----------------------------|--------------------------|------------------|
| <i>Union</i> | <i>President</i> | <i>Union</i> | <i>President</i> |
| Pearl Johnson | RUTH JONES | Celia Herring | JANE GREENE |
| Winnie Rickett | FRANCES BARNHILL | Perry Morgan | GERTRUDE BOSTIC |
| Evelyn Campbell | LOUISE MYERS | Alda Grayson | SHELLIE BENNETT |
| Rosa Hocutt | THELMA TADLOCK | Foy Willingham | EDNA MAE DUVAL |
| | Charles E. Brewer | | VIDA MILLER |



Oak Leaves



Home Service Band

LUCY BENNETT *President*
RUTH SORRELL *Vice-President*
VIDA MILLER *Secretary-Reporter*

GROUP CAPTAINS

DORIS HEWLETT MADEL BEEKER



Foreign Service Band

LILLIAN ODUM *President*
IVA CARROLL *Vice-President*
LORETTA SEAWELL *Secretary-Reporter*







Societies



LOUISE CRAVEN
Chief Marshal



Features

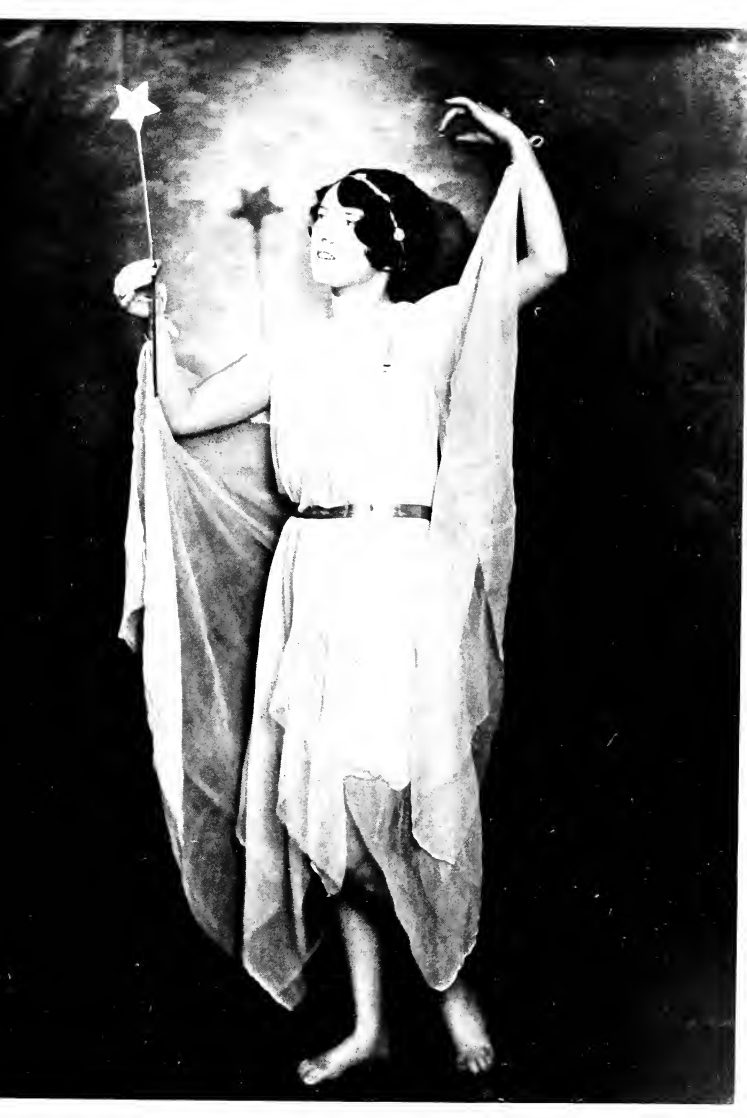
Superlatives

Hermione	Marion Fiske
The Ideal	
Perdita	Pauline Newton
The Beautiful	
Ariel	Pauline Powell
The Gracious	
Titania	Roberta Royster
The Dainty	
Beatrice	Edith Rowe Grady
The Witty	
Viola	Janie Burns
The Charming	
Rosalind	Margaret Craig
The Versatile	
Portia	Mary Burns
The Wise	



















Oak Leaves



E
A
S
T
I
C
E
A
D



1
9
2
9



Oak Leaves





Oak Leaves



FOR THE MOON



FOR THE FRIEND

LADIES
IN
WAITING



FOR THE
BUS



FOR THE
CLASS





IN AND
OUT OF
COURT



Cap and Bells

Cap and Bells

POINS. (*Reads*) John Falstaff, knight—Every man must know that, as oft as he has occasion to name himself. Even like those that are kin to the king; for they never prick their finger, but they say, 'There is some of the King's blood spilt!' 'How comes that,' say he, that takes upon him not to conceive: the answer is as ready as a borrower's cap; 'I am the king's poor cousin, sir.'

* * *

'Jack Falstaff, with my familiars; John, with my brothers and sisters; and Sir John, with all Europe.'

* * *

FALSTAFF: Whew! A plague light upon you all! Give me my horse, you rogues! Give me my horse, and be hanged.

PRINCE HENRY: Peace, ye fat-guts! Lie down; lay thine ear close to the ground, and list if thou canst hear the tread of travellers.

FAL.: Have you any levers to lift me up again, being down? 'Sblood, I'll not bear mine own flesh so far afoot again, for all the coin in thy father's exchequer. What a plague mean ye to colt me thus?

* * *

P. HEN.: Thou liest, thou are not colted, thou art uncolted.

FAL.: I prithee, good Prince Hal, help me to my horse, good king's son.

P. HEN.: Out, you rogue! Shall I be your ostler?

FAL.: Go, hang thyself in thine own heir-apparent garters! If I be ta'en, I'll peach for this. An I have not ballads made on you all, and sung to filthy tunes, let a cup of sack be my poison: When a jest is so forward, and afoot too,—I hate it!

* * *

PRINCE HENRY: Didst thou never see Titan kiss a dish of butter (pitiful hearted Titan) that melted at the sweet tale of the sun? If thou didst, then behold that compound.

FALSTAFF: You rogue, here's lime in this sack too. There is nothing but roguery to be found in villainous man: Yet a coward is worse than a cup of sack with lime in it: a villainous coward.—Go thy ways, old Jack; die when thou wilt, if manhood, good manhood, be not forgot upon the face of the earth, then am I a shotten herring. There live not three good men unchanged in England; and one of them is fat, and grows old: God help the while; a bad world, I say! I would I were a weaver; I could sing psalms or any thing; A plague of all cowards, I say still.



FALSTAFF: If I be not ashamed of my soldiers I am a souced gurnet. There's but a shirt and a half in all my Company; and the half-shirt is two napkins tacked together, and thrown over the shoulders like a herald's coat without sleeves; and the shirt, to say the truth, stolen from my host at Saint Alban's, or the red-nose inn-keeper of Daventry: But that's all one; they'll find linen enough on every hedge.

* * *

PRINCE HENRY: Whose fellows are these that come after?

FALSTAFF: Mine, Hal, mine.

P. HEN.: I did never see such pitiful rascals.

FAL.: Tut, tut; good enough to toss' food for powder, food for powder; they'll fill a pit as well as better; tush, man, mortal men, mortal men.

WEST.: Ay, but, Sir John, methinks, they are exceeding poor and bare; too beggarly.

FAL.: 'Faith, for their poerty, I know not where they had that: and for their bareness, I am sure they never learned that of me.

P. HENRY: No, I'll be sworn; unless you call three fingers on the ribs, bare. But, sirrah, make haste: Percy is already in the field.

* * *

FALSTAFF: *Away*, you scullion! you rampallian! you fustilarian! I'll tickle your catastrophe!

* * *

FALSTAFF: No, I'll be sworn; I make as good use of it as many a man doth of a death's head, or a memento mori: I never see thy face but I think upon hell-fire, and Dives that lived in purple; for there he is in his robes, burning, burning. If thou wert any way given to virtue, I would swear by thy face; my oath should be, By this fire; but thou art altogether given over; and wert indeed, but for the light in thy face, the son of utter darkness. When thou rann'st up Gadshill in the night to catch my horse, if I did not think thou hadst been an ignis fatuus, or a ball of wildfire, there's no purchase in money. O, thou art a perpetual triumph, an everlasting bonfire-light! Thou hast saved me a thousand marks in links and torches, walking with thee in the night twixt tavern and tavern; but that sack that thou hast drunk me would have bought me lights as good cheap, at the dearest chandler's in Europe. I have maintained thut salamander of yours with fire, any time this two and thirty years; Heaven reward me for it!

Cap and Bells

A grocer says that some folks who buy on time don't know when time leaves off and eternity begins.

* * *

Ex-photographer (who has taken up highway robbery): "Hands up, chin a little higher, look in the end of the gun and smile, please."

* * *

Voice from the Eleventh Floor: "Smatter down there? Have you no key?"

Noisy one on the Pavement: "Gotta key all right but wouldja jussason throw down a few keyholes?"



Young Dobbs: "I want to try on that suit in the window."

Assistant: "Sorry, sir, but you will have to use the dressing room."

* * *

"Is that a diamond?"

"Sure, it's a dime'un."

* * *

"How did you keep your donation a secret?"

"I sent in an anonymous check."

* * *

Teacher: "What is a geyser?"

Pupil: "A waterfall going up."

*On a day—alack the day!—
'Twas in the merry month of May—
I spied a maiden passing fair
Playing in the swanton air.
Through the passage of her mind
Teaching all unbid did wind;
Faculty were sore distressed,
Feared their labors were not blessed.
Alas, the maid did not react,
All attempts left her intact—
So after four long years of toil
She shuffled off this urban coil
And went again out to the farm—
With her diploma under her arm!*

* * *

*All that glitters is not gold.
Often have you heard that told.
Many a maiden brave and bold
Wears hair that in a store was sold
Or else that when her friends behold
Her gleaming locks, which once of old
Were raven, do within grow cold
Lest they remember. She will scold
And tell them as they should be told.
Though all that glitters is not gold,
Peroxide serves—and is cheaper sold!*

A peaceful family once took a trip abroad. They found eating very difficult after the third day at sea—all except little Willie, who delighted in tormenting his seasick mother. Finally his mother spoke up, "Father, I wi-wi-wish you'd speak to Willie."

Father stirred feebly, gulped a couple of times, hung his head, and said, "Howdy, Willie."

* * *

She: "Papa says you have more money than you have brains."

He: "Ha! Shows what an ass he is. I'm broke."

She: "Yes, Papa added that you were."

* * *

Captain: "All hands on deck! The ship is leaking!"

Voice from the hold: "Aw! Put a pan under it and come to bed."

* * *

"And how is yer son doin' at collich, Ole?"

"Me and Ma is sure proud, Hiram; the dean wrote and said he was delinquent in all of his classes. Ain't he smart?"

Cap and Bells

Quince. Well, it shall be so. But there is two hard things; that is, to bring the moon-light into a chamber: for, you know, Pyramus and Thisby meet by moon-light

Snug. Doth the moon shine that night we play our p ay?

Bot. A calendar, a calendar! look in the almanac; find out moon-shine, find out moon-shine.

Quin. Yes, it doth shine that night.

Bot. Why, then, may you leave a casement of the great chamber-window, where we play, open; and the moon may shine in at the casement?

Quin. Ay; or else one must come in with a bush of thorns and a lantern, and say, he comes to disfigure, or to present, the person of moonshine. Then there is another thing: we must have a wall in the great chamber; for Pyramus and Thisby says the story, did talk through the chink of a wall.

Snug. You can never bring in a wall.—What say you, Bottom?

Bot. Some man or other must present wall; and let him have some plaster, or some lome, or some rough-cast about him, to signify wall; and let him hold his fingers thus, and through that cranny shall Pyramus and Thisby whisper.

Quin. If that may be, then all is well. Come, sit down, every mother's son, and rehearse your parts. Pyramus, you begin: when you have spoken your speech, enter into that brake; and so every one according to his cue.

—“*Midsummer Night's Dream.*”

D. Pedro. I'll tell thee how Beatrice praised thy wit the other day: I said, thou hadst a fine wit; 'True,' says she, 'a fine little one;' 'No,' said I, 'a great wit;' 'Right,' says she, 'a great gross one;' 'Nay,' said I,

'a good wit;' 'Just,' said she, 'it hurts nobody;' 'Nay,' said I, 'the gentleman is wise;' 'Certain,' said she, 'a wise gentleman;' 'Nay,' said I, 'he hath the tongues;' 'That I believe,' said she, 'for he swore a thing to me on Monday night, which he forswore on Tuesday morning; there's a double tongue; there's two tongues. Thus did she, an hour together, trans-shape thy particular virtues; yet, at last, she concluded with a sigh, thou wast the properest man in Italy.

—“*Much Ado About Nothing.*”

Re-enter Hortensio, with his head broken.

Bap. How now, my friend? why dost thou look so pale?

Hor. For fear, I promise you, if I look pale.

Bap. What, will my daughter prove a good musician?

Hor. I think, she'll sooner prove a soldier; Iron may hold with her, but never lutes.

Bap. Why, then, thou canst not break her to the lute?

Hor. Why, no; for she hath broke the lute to me. I did but tell her she mistook her frets, And bow'd her hand to teach her fingering; When, with a most impatient devilish spirit, 'Frets, call you these?' quoth she: 'I'll fume with them:' And, with that word, she struck me on the head, And through the instrument my pate made way; And there I stood amazed for a while, As on a pillory, looking through the lute; While she did call me,—rascal fiddler, And twangling Jack; with twenty such vile terms, As she had studied to misuse me so.

—“*Taming of the Shrew.*”

William. Which he, sir?

Tuochstone. He, sir, that must marry this woman: Therefore, you, clown, abandon, which is in the vulgar, leave, the society, which in the boorish is, company, of this female, which in the common is, woman, which together is, abandon the society of this female; or, clown, thou perishest; or, to thy better understanding, diest; or to wit, I kill thee, make thee away, translate thy life into death, thy liberty into bondage: I will deal in poison with thee, or in bastinado, or in steel; I will bandy with thee in faction; I will o'er-run thee with policy; I will kill thee a hundred and fifty ways; therefore tremble, and depart.

Aud. Do, good William.

Will. God rest you merry, sir. [Exit.

—“*As You Like It.*”





The Public Square

Oak Leaves



TIFFANY & CO.

JEWELRY SILVERWARE STATIONERY

Superior in Quality
Moderate in Price

MAIL INQUIRIES RECEIVE PROMPT ATTENTION

FIFTH AVENUE & 37TH STREET - NEW YORK





Oak Leaves



"Styles of Today With a Touch of Tomorrow"

TEACHEYS

CORRECT APPAREL FOR WOMAN
AND MISS

127 FAYETTEVILLE STREET

RALEIGH, N. C.

HOTEL SIR WALTER

CAROLINA'S LARGEST AND BEST HOTEL

350 ROOMS—350 BATHS

Where the Girls and Their Parents Are Always Welcome

EAT

PINE STATE ICE CREAM

FOR HEALTH

"FRESH CREAM ICE CREAM"

PHONE 3910, 3911



Oak Leaves



FALLON'S FLOWERS

Are All Grown in Raleigh

CUT FLOWERS, BLOOMING PLANTS, CORSAGES
RECITAL FLOWERS AND FLORAL DESIGNS

ARTISTIC DECORATIONS DONE BY
TRAINED EXPERTS

PHONE 4070

J. J. FALLON CO., Inc.

"WE GROW THE FLOWERS WE SELL"

College Students Are Always
Welcome at Our Store

Make It Your Headquarters
AGENTS FOR

HUYLER'S AND HOLLINGSWORTH
FINE CANDIES

Boone-Iseley Drug Co.

The Ladies Shop

Fine Millinery

136 FAYETTEVILLE STREET

RALEIGH, N. C.

Flowers, Bags and Scarfs

THOMPSON ELECTRICAL COMPANY

Electrical Supplies and Appliances

20 WEST HARGETT STREET

PHONE 370

RALEIGH, N. C.





Oak Leaves



We Extend to You a Cordial Invitation to
Inspect Our New Things

Special Dresses, \$19.50
Coats, Ensembles, Dressy Sports Wear
Knox Hats

EQUEL'S STYLE SHOP, Inc.

117½ FAYETTEVILLE STREET

RALEIGH, N. C.

THE ELECTRIC BUTTON

Stepping through countless generations, the mythical force which performs magical wonders for the hero of the Arabian Nights, is found in the wall switch of every modern home, industrial establishment and business enterprise.

This power today moves mountains with the ease that it whips an egg. There is hardly a task left that cannot be fulfilled completely, more quickly, and at a less cost by the use of electric power.

From the energy controlled by the switch on your wall you can light your home, cook your meals, refrigerate your food, sweep your rugs, wash and iron your clothes, pump your water and put a permanent wave in your hair.

And this power, coming to you over copper wires, reflects the untiring energy that is maintained that you may have service.

CAROLINA
Power & Light Company



Oak Leaves



WILSON'S COFFEE SHOP

Best 35c Meals in Raleigh

Salisbury Street
RALEIGH, NORTH CAROLINA

College Clothes FOR COLLEGE GIRLS

The Shop of Original Modes
LUCIELLE
112 FAYETTEVILLE ST.

SOUTHWESTERN BAPTIST THEOLOGICAL SEMINARY

FORT WORTH, TEXAS
WANTS

Students from Meredith College to enroll in the Seminary after completing college courses. Next session will open September 23rd. Summer school will begin June 3rd.

Make Arrangements to Attend
L. R. SCARBOROUGH, A.B., D.D., LL.D.
President

One Price, \$6.00 MORE WORTH CINDERELLA SHOE STORE

113 FAYETTEVILLE STREET
RALEIGH, N. C.

COMPLIMENTS OF

T. H. BRIGGS & SONS, Inc.

"Carolina's Oldest Wholesale and Retail Hardware House"

Established 1865

PHONE No. 45

RALEIGH, N. C.

GUNN'S

READY-TO-WEAR STORE

Where You Find the Newest Styles in Coats, Suits, Dresses, and Millinery
at Reasonable Prices

WE SOLICIT YOUR PATRONAGE





TAYLOR'S

"The Show Place of the Carolinas"

TO MEREDITH STUDENTS

IF YOU WILL COMPARE PRICES, QUALITY AND
STYLE AT TAYLOR'S WITH OTHER PLACES
YOU WILL BUY AT

TAYLOR'S

J. C. BRANTLEY
Druggist

Agent for

ELIZABETH ARDEN'S TOILET
PREPARATIONS

Meet Your Friend at Our Fountain

If We Were Cheer
Leaders!

We could shout to the utmost of
our vociferous capacity telling
you the delightfulness of
our

Drinks and Candies

MAKE OUR STORE
YOUR STORE

CALIFORNIA
FRUIT STORE

The Rendezvous

PHONE 36

PATRONIZE
OUR
ADVERTISERS





MEREDITH COLLEGE

RALEIGH, N. C.

A Standard College
For Young Women

Offers Courses of Study Leading to the
B.A. and B.M. Degrees and
to Diploma in Art



For Catalogue or Further Information, Write

CHARLES E. BREWER, *President*

RALEIGH, N. C.





COMPLIMENTS OF
THE CAPITAL PRINTING COMPANY

School and College Printers

CORNER HARGETT AND WILMINGTON STREETS
PHONE 13 51 RALEIGH, N. C.

GEORGE MARSH COMPANY

(INCORPORATED)

WHOLESALE GROCERS

PHONES 633 AND 634 310-16 S. HARRINGTON STREET RALEIGH, N. C.
BLOOMSBURY FOOD PRODUCTS

WARNER BROTHERS

Designers and Builders of

Fine Cemetery Memorials of Granite, Marble and Bronze

HILLSBORO ROAD RALEIGH, NORTH CAROLINA
(Adjoining Meredith College)

"Our Work is Done for Those Who Love and Who Remember"

GIVE
OUR
ADVERTISERS
YOUR
PATRONAGE



Oak Leaves



Carolina's
Largest
Photographic
Studio

SIDDELL STUDIO

RALEIGH, NORTH CAROLINA



*OFFICIAL
PHOTOGRAPHERS*

for

OAK LEAVES





Oak Leaves



Fountain Supplies, Fancy Candy and Specialties

We Are Exclusive Distributors for
Dixie Individual Drinking Cups

GARLAND C. NORRIS & COMPANY

Grocers and Confectioners

Wholesale Only

ALWAYS THE NEWEST IN FOOTWEAR

AT

ROSCOE-GRIFFIN SHOE CO.

PATRONIZE OUR

ADVERTISERS



Oak Leaves



The Annual
with
PERSONALITY
Unusual Beauty
and Dignity; the Reflector
of the Spirit and Ideals of
Your School is obtained
through the Services of

The
Bush Krebs Co.
INCORPORATED
ARTISTS ~ ENGRAVERS
LOUISVILLE Ky





Oak Leaves



YE ADVERTISERS OF THE BOOKE



TIFFANY & CO.

TEACHEYS

HOTEL SIR WALTER

PINE STATE

J. J. FALLON CO., INC.

THE LADIES SHOP

EQUELS STYLE SHOP, INC.

BOON-ISLEY DRUG CO.

THOMPSON ELECTRICAL CO.

CAROLINA POWER & LIGHT CO.

WILSON BROS.

LUCIELLE SHOP

ROSCOE-GRIFFIN SHOE CO.

SOUTHWESTERN BAPTIST
THEOLOGICAL SEMINARY

CINDERELLA SHOE SHOP

BRIGGS HARDWARE CO.

GUNNS

TAYLOR'S

J. C. BRANTLEY, Druggist

CALIFORNIA FRUIT STORE

MEREDITH COLLEGE

CAPITOL PRINTING CO.

GEORGE MARSH CO.

WARNER BROS.

GARLAND C. NORRIS CO.



YE PHOTOGRAPHER : SIDDELL

YE ENGRAVER : BUSH-KREBS CO.

YE PRINTER : BENSON PRINTING CO.



THIS BOOK PRINTED BY BENSON

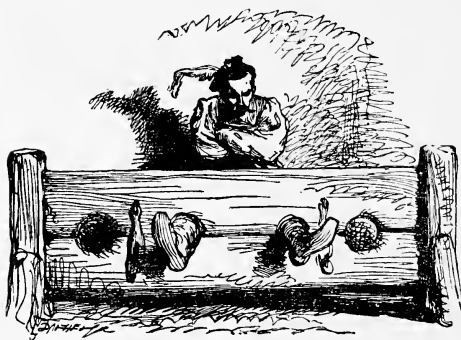


LARGEST COLLEGE ANNUAL
PUBLISHERS IN THE WORLD

HIGHEST QUALITY WORKMANSHIP
SUPERIOR EXTENSIVE SERVICE



COLLEGE ANNUAL HEADQUARTERS



Finis

Oak Leaves



Autographs





Oak Leaves

Autographs







