

CARLYLE
CAMPBELL
LIBRARY

Meredith College
Raleigh, NC 27607-5298



Ex |
Libris



COPYRIGHT
NINETEEN HUNDRED THIRTY-THREE

•

MARGARET MORING BRIGGS
EDITOR-IN-CHIEF

GWENDOLYN CROWDER
BUSINESS MANAGER

AK LEAVES

VOLUME
THIRTY

Published by
the Students
of

Meredith
College

Raleigh, N. C.

CARLYLE CAMPBELL LIBRARY
MEREDITH COLLEGE



FOREWORD

•

To record the progress and
achievements of the year,
to portray the impressions
of the spirit of our campus,
and above all to instill
within each of you a
greater love for

ALMA MATER

these are the aims of this,
The 1933

OAK LEAVES

•

CONTENTS

•

BOOK ONE
THE COLLEGE

≡
BOOK TWO
THE CLASSES

≡
BOOK THREE
THE ORGANIZATIONS

≡
BOOK FOUR
THE FEATURES

•





DEDICATION

TO

MR. ERNEST F. CANADY

Whose active interest and capable supervision through eight years have helped make possible the financial success of this publication, with sincere appreciation we do dedicate this thirtieth volume
of the
OAK LEAVES





In Memoriam

•

Dr. George Watkins

October 8, 1932

Mrs. Kate Perry Beddingfield

Ex-'07

April 24, 1932

Mrs. Eulalia Huntley Hackney

Ex-'02

May 10, 1932

Mrs. Frances Cherry Batchelor

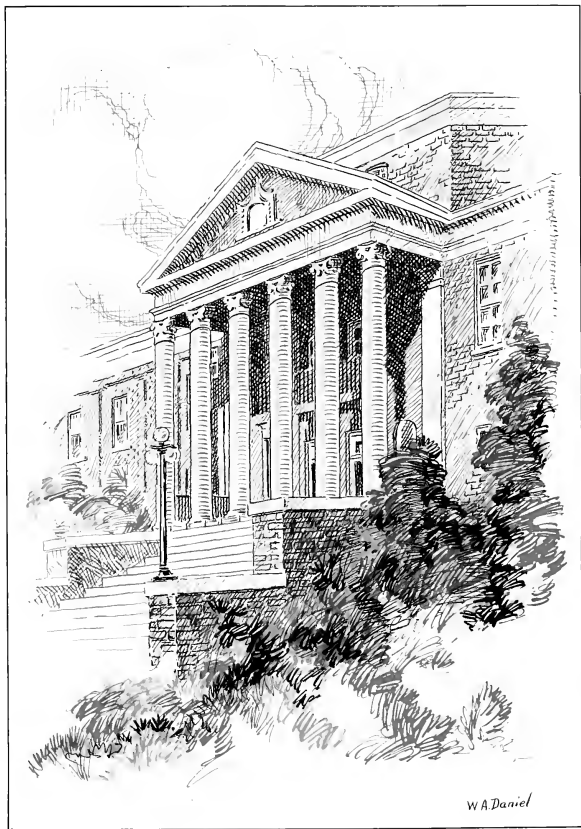
'24

July 3, 1932

THE COLLEGE

A COLLEGE may be a proposition of difficult tasks to the ignorant, a gatherer of old-fashioned ideas to the supercilious, an opportunity for marriage to the wall-flower, a place for conducting gossip for the loquacious, a location for breaking rules for the unlawful, and an institute for insulting remarks for the dissatisfied. A college may be all these, but our college is a school of learning for those who would learn. " » » » »

Administration Building » » »





THE FACULTY



Charles E. Brewer, A.M., Ph.D., LL.D.
President



Dr. J. Rufus Hunter
President of Board of Trustees



J. Gregory Boomhour, A.B., A.M.
Dean



Miss Caroline Robinson Biggers, A.B.
Dean of Women

Officers of Administration



FULLER BROUGHTON HAMRICK, A.B.
Bursar



GERTRUDE ROYSTER SORRELL
Director of Physical Education



MARGARET FORGEUS, A.B.
Librarian



ELVA HARTNESS
Assistant Dean of Women



ETHEL EVANGELINE ENGLISH, B.S., A.M.
*Freshman Adviser; Instructor in
Education and Geography*



MAE FRANCES GRIMMER
Alumnae Secretary



MARY LUCILLE KNIGHT, A.B.
Religious Secretary



LATTIE RHODES
Secretary to the President



ANNE MCCANLESS
Secretary to the Bursar



MARY FRANCES WELCH, B.S.
Dietitian



ANNIE LEE WHITE
House Director

NORA KELLY
Nurse

•
Faculty

Arts and Sciences

LEMUEL ELMER McMILLAN FREEMAN
A.B., A.M., B.D., TH.D.
Professor of Religion

ISSAC MORTON MERCER
A.M., TH.M., D.D.
Assistant Professor of Religion

JULIA HAMLET HARRIS
PH.B., A.M., PH.D.
Professor of English

MARY LYNCH JOHNSON
A.B., A.M., PH.D.
Associate Professor of English

MARY JAMES SPRULL
A.B., A.M.
Assistant Professor of English

CAROLYN ARNOLD PEACOCK
A.B., A.M.
Instructor in English

HELEN PRICE
A.B., PH.D.
Professor of Latin and Greek

MARY LOUISE PORTER
PH.B., A.M., PH.D.
Associate Professor of Modern Languages

ETHEL DAY
A.B.
Instructor in French

SAMUEL GAYLE RILEY
A.B., A.M.
Professor of History and Economics



Faculty

Arts and Sciences



NETTIE SOUTHWORTH HERNDON
A.B., A.M.
Assistant Professor of History



LILLIAN PARKER WALLACE
A.B., M.S.
Assistant Professor of History



ALICE BARNWELL KEITH
B.S., M.S.
Assistant Professor of History

J. GREGORY BOOMHOUR
A.B., A.M.
Professor of Physics



LULA GAINES WINSTON
B.S., PH.D.
Professor of Chemistry

MARY YARBROUGH
A.B., A.M.
Assistant Professor of Chemistry



LENA AMELIA BARBER
B.S., A.B., M.S.
Professor of Biology

ANNIE MITCHELL BROWNLEE
A.B., A.M.
Assistant Professor of Biology



ERNEST F. CANADY
A.B., A.M.
Professor of Mathematics

DORIS KATHERINE TILLERY
A.B.
Instructor in Mathematics



BUNYAN YATES TYNER
A.B., A.M.
Acting Professor of Education

Faculty

Arts and Sciences

ELLEN DOZIER BREWER
A.B., B.S., A.M.
Professor of Home Economics



JENNIE M. HANYEN
B.S., A.M.
Associate Professor of Home Economics



Faculty of Music

LESLIE P. SPELMAN
A.M., MUS.B., A.A.G.O.
Professor of Music



MAY CRAWFORD
Associate Professor of Piano

CHARLOTTE ELIZABETH ARMSTRONG
Associate Professor of Violin



ETHEL M. ROWLAND
Associate Professor of Voice

AILEEN McMILLAN
MUS.B.
Acting Assistant Professor of Piano



VIRGINIA BRANCH
B.M.
Instructor in Piano

ALVERDA ROSEL
Instructor in Violon-cello

Faculty of Fine Arts

IDA ISABELLA POTEAT
Professor of Art



MARY PAUL TILLERY
Associate Professor of Art



Faculty*

CATHERINE ALLEN, A.B., A.M.
Professor of Modern Languages

ELIZABETH DELIA DIXON CARROLL, M.D.
Professor of Physiology; College Physician

†FLORENCE M. HOAGLAND, A.B., A.M.
Assistant Professor of Psychology and Philosophy

WILLIAM ARTHUR POTTER
Lecturer in Public School Music

MARGARET HIGSMITH BROWN, B.M.
Lecturer in Public School Music

Student Assistants

Assistant to the Dictitian
ANNIE KEITH

Assistant in Physiology
MARY LOUISE JOHNSON

Assistants in Physical Education
MARTHA ANNIS ABERNETHY
HELEN DOZIER

Assistants in the Library
MARY C. SHEARIN
MARTHA VICCELLIO
NANCY VICCELLIO
GRACE LAWRENCE

Assistants in Biology
MELBA HUNT
HELEN SEARS
PEARL ROBERTSON

Assistants in Chemistry
DOROTHY MERRITT
VIRGINIA GARNETT

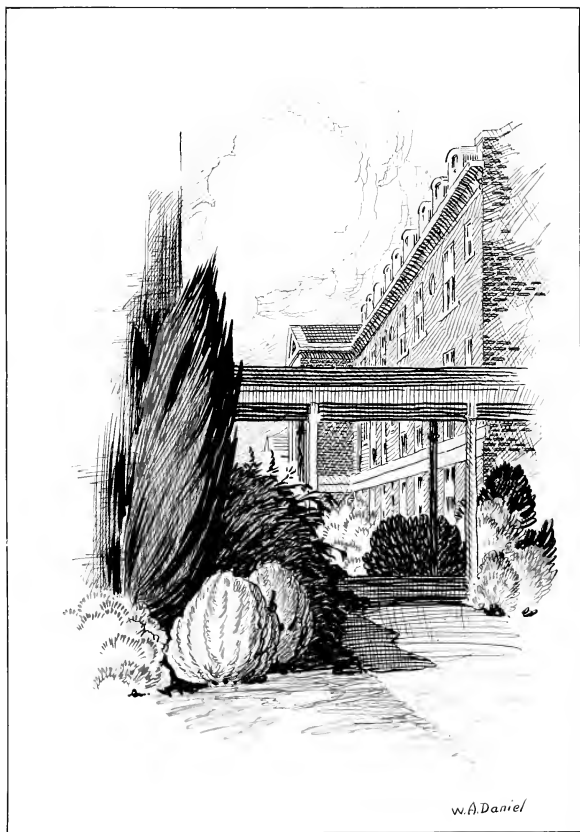
LILLIAN BELL JENKINS
MEREDITH JOHNSON
MARY RUFFIN
ELBERTA FOSTER

*Faculty whose pictures do not appear in the foregoing pages.
†On leave of absence, 1932-1933.

THE CLASSES

THE classes of a college may consist of almost any number from two to four, but our classes are ones with four sections. In make-up, the students probably differ a shade, but as a whole they blend rather well. In temperament, they never become heated in arguments. But whatever our classes may be—whether frivolous and gay, serious and grave—you must admit they are "classy".

Jones Hall » » » » »



W.A. Daniel



THE SENIORS

Senior Class



ANNETTE DONAVANT

SENIOR CLASS



OFFICERS

- ANNETTE DONAVANT *President*
AGNES MOORE *Vice-President*
MARTHA VICCELLIO *Secretary-Treasurer*

Senior Class



MARTHA ANNIS ABERNETHY

RALEIGH, N. C.

A.B.

Philaretian

Class President, 1; Glee Club, 1, 2, 3, 4; Dramatic Club, 1, 2, 3, 4; Barber Biology Club, 1; Granddaughters' Club, 2, 3, 4; French Club, 1; College Cheer Leader, 2, 3; Class Cheer Leader, 2, 3; Cheer Leader Philaretian Society, 2, 3, 4; B. Y. P. U. Officer, 2, 3, 4; Treasurer Athletic Association, 2; Band, 2; Honor Roll, 2; Student Government Council, 3; OAK LEAVES Staff, 3; Student Assistant in Physical Education, 3, 4; College Choir, 4; Hockey, 1, 2, 3, 4; Basketball, 1, 2, 3, 4; Captain, 1; Track, 1, 2; Tennis, 1, 2, 3, 4; News Bureau, 4; Nominating Committee, 1, 4; President Athletic Association, 4.

MARY ALBION AKERS

STUART, VA.

B.M.

Astrotekton

College Choir, 1, 2, 3, 4; Vice-President Virginia Club, 1; Class Treasurer, 3; Glee Club, 4; Treasurer Glee Club, 4; Business Manager Glee Club, 4; House President Jones Hall, 4; Chief Marshal Astrotekton Society, 4.

Senior Class



KATE ALLISON

SYLVA, N. C.

B.S.

Astrotekton

Mars Hill College, 1, 2; Associate Director B. Y. P. U., 3; W. C. T. C. Summer School, 3; Secretary Baptist Student Union, 4; Vice-President Mars Hill Club, 3; President State B. S. U. Convention, 4; Hockey, 4; Basketball, 4.

MILDRED AMBURN

BOONVILLE, N. C.

A.B.

Astrotekton

Town Girls' Club, 1; Alliance Francaise, 1, 2; Home Economics Club, 2, 3, 4.



EDYTHE BAGBY

RALEIGH, N. C.

A.B.

Philaretian

May Queen Attendant, 2; Marshal Philaretian Society, 3; Alliance Francaise, 2; Town Girls' Club, 3, 4; International Relations Club, 4; League of Women Voters, 4.

PAULINE BARBER

MOUNT AIRY, N. C.

A.B.

Philaretian

B. Y. P. U. Officer, 1, 2, 3; Sunday School Officer, 1, 2, 3, 4; Alliance Francaise, 1, 2; Wake Forest Summer School, 3; Home Economics Club, 3, 4.

Senior Class



HENRIETTA PAULINE BARNES

RALEIGH, N. C.

B.M.

Philaretian

Secretary Sunday School Class, 1; College Choir, 1, 2, 3, 4; League of Women Voters, 2; Alliance Francaise, 1, 2, 3; Vice-President Class, 2, 3; Business Manager *Twig*, 3; Music Proctor, 4; President Philaretian Society, 4; Nominating Committee, 4.

HELEN ROGERS BENNETT

APEX, N. C.

A.B.

Astrotekton

Alliance Francaise, 1; Barber Biology Club, 1; B. Y. P. U. Officer, 1; Hockey, 1, 2, 3, 4; Hockey Varsity, 1; Basketball Squad, 2, 3, 4; Manager Hockey Team, 3; League of Women Voters, 2, 3; Granddaughters' Club, 2, 3, 4; College Band and Orchestra, 2, 3; General Secretary B. Y. P. U., 3, 4; Dean's Assistant, 3; Wake Forest Summer School, 3; Student Government Council, 4.

Senior Class



RACHEL DUCKETT BIGGS

LUMBERTON, N. C.

A.B.

Astrotekton

Nominating Committee, 3, 4; Little Theatre Dramatic Club, 1, 2, 3, 4; Class President, 3; President Astrotekton Society, 4; Class Historian, 4; Colton English Club, 4.

NANCY BLANTON

MARION, N. C.

A.B.

Astrotekton

Alliance Francaise, 1, 2; B. Y. P. U. Officer, 1, 2, 3; League of Women Voters, 3, 4; Secretary of League of Women Voters, 4; Home Economics Club, 2, 3, 4; Vice-President Home Economics Club, 3; President Sunday School Class, 2; Wake Forest Summer School, 3; Hockey Squad, 2; House President Stringfield Hall, 4; Official Chaperon, 4.

Senior Class

.....



MIRIAM ELIZABETH BRADY

BENSON, N. C.

A.B.

Astrotekton

B. Y. P. U. President, 1; Class Treasurer, 2; Sunday School President, 2; Hockey, 1, 2, 4; Basketball, 1, 2, 3, 4; Assistant Sunday School Director, 3; Alliance Francaise, 3, 4; Le Cercle Francais, 1, 2, 3, 4; Secretary Astrotekton Society, 4; League of Women Voters, 4.

MARGARET MORING BRIGGS

RALEIGH, N. C.

A.B.

Philaretian

Class Treasurer, 1; Basketball, 2; Hockey, 2; Class President, 2; *Twig* Reporter, 2; Marshal Philaretian Society, 2; Nominating Committee, 2, 4; Secretary Student Government, 3; Photograph Editor OAK LEAVES, 3; Editor-in-Chief OAK LEAVES, 4; President Kappa Nu Sigma Honor Society, 4; Granddaughters' Club, 2, 3, 4; Honor Roll, 1, 2, 3; B. Y. P. U. Officer, 1, 2, 3; Town Girls' Club, 4.

Senior Class



JOSEPHINE L. BROADWELL

FUQUAY SPRINGS, N. C.

A.B.

Astroekton

Hockey Team, 1, 2; Basketball, 1; Home Economics Club, 1, 2, 3, 4; Class Cheer Leader, 1; Alliance Francaise, 1, 2; B. Y. P. U. Officer, 1.

MAE CAMPBELL

DANVILLE, VA.

A.B.

Astroekton

Virginia Club, 1, 4; President Sunday School Class, 1; Barber Biology Club, 2; B. Y. P. U. Officer, 2; International Relations Club, 2, 3, 4; International Relations Club Reporter, 2; Secretary-Treasurer International Relations Club, 3; Vice-President International Relations Club, 4; Colton English Club, 3, 4; Alliance Francaise, 1, 2; Y. W. A. Circle Leader, 3; *Twig* Reporter, 2; Managing Editor *Twig*, 3; Editor-in-Chief *Twig*, 4; League of Women Voters, 4; Nominating Committee, 4; Reading Honors, 1, 3; Gym Letter, 2, 3.

Senior Class



MARTHA ELIZABETH CASTLEBURY

RALEIGH, N. C.

A.B.

Philaretian

Assistant Business Manager *Acorn*, 3; International Relations Club, 3, 4; Colton English Club, 3, 4; President Town Girls' Club, 4; Editor Handbook, 4; Business Manager *Acorn*, 4; President International Relations Club, 4.

MARY EMMA CHAMBERS

WARSAW, N. C.

A.B.

Philaretian

Duke University, 1; Campbell College, 2; Wake Forest Summer School, 2; B. S. U. Council, 2, 3; Secretary State Student Volunteer Union, 3, 4.

Senior Class



SALLIE ELIZABETH COUNCIL

RALEIGH, N. C.

A.B.

Philaretian

Classical Club, 1, 2; B. Y. P. U. Officer, 1, 2; Honor Roll, 1, 2; Barber Biology Club, 1, 2, 3; Barber Biology Club Reporter, 1; Secretary-Treasurer Barber Biology Club, 2; Vice-President Barber Biology Club, 3; Reading Honors, 1; Gym Letter, 2; Alliance Francaise, 2; Little Theatre Dramatic Club, 2, 3, 4; Reporter Little Theatre Dramatic Club, 2, 3; Granddaughters' Club, 2, 3, 4; International Relations Club, 3, 4; League of Women Voters, 4; Colton English Club, 3, 4; Town Girls' Club, 3, 4; *Twig* Reporter, 2; Managing Editor *Twig*, 3; Associate Editor *Twig*, 4.

FLORENCE WATSON CRUTCHFIELD

DURHAM, N. C.

Art

Astroctton

K. K. K., 1, 2, 3, 4; B. Y. P. U., 1; Officer Sunday School, 1; Wake Forest Summer School, 2, 3; League of Women Voters, 4.

Senior Class

.....



ANNETTE HASELTINE DONAVANT

GREENSBORO, N. C.

J.B.

Philaretian

College Choir, 1; B. Y. P. U. Officer, 1, 2; Secretary Class, 1; OAK LEAVES Staff, 2; Y. W. A. Circle Leader, 2; Vice-President Sunday School, 2; Assistant Business Manager *Acorn*, 3; Class Secretary, 3; Director of Sunday School, 3; Nominating Committee, 4; Class President, 4.

HELEN ADELIA DOZIER

KOKURA, JAPAN

B.M.

Philaretian

Brenau College, 1; Alliance Francaise, 1, 2, 3, 4; Service Band, 2, 3, 4; President Sunday School Class, 2; Sunday School Officer, 3; College Choir, 2, 3, 4; Granddaughters' Club, 2, 3, 4; Gymnasium Assistant, 2, 3, 4; B. Y. P. U., 2, 3, 4; Y. W. A., 2, 3, 4; Honor Roll, 3; Wake Forest Summer School, 3; B. S. U. Council, 3, 4; President Service Band, 3, 4; Official Chaperon, 4.



BERTIE ESTELLE EARP

SELMÁ, N. C.

B.M.

Philaretian

College Choir, 1, 2, 3, 4; Orchestra, 3, 4; U. N. C. Summer School, 3;
Officer B. Y. P. U., 2; Associate Director B. Y. P. U., 4.

MARY EDNA GILLIS

CANTON, N. C.

A.B.

Philaretian

Colton English Club, 3, 4; Le Cercle Francais, 3, 4; Alliance Francaise,
1, 2, 3, 4; League of Women Voters, 3, 4.

Senior Class



MOZELLE GOODWIN

RALEIGH, N. C.

A.B.

Astrotekton

Town Girls' Club, 1, 2, 3, 4; Alliance Francaise, 1; Glee Club, 2; Classical Club, 2; College Choir, 2, 3, 4; Colton English Club, 3, 4.

VIRGINIA ISELEY GREEN

RALEIGH, N. C.

A.B.

Astrotekton

Varsity Basketball, 1, 2, 3; Varsity Hockey, 2, 3; Varsity Track, 1; Home Economics Club, 2, 3, 4; Alliance Francaise, 1, 2; Barber Biology Club, 1; B. Y. P. U. Officer, 2; Captain Basketball, 2; Junior Athletic Coach, 3; Wake Forest Summer School 3; Town Girls' Club, 4.

Senior Class



ANNIE MILES HARRIS

INEZ, N. C.

A.B.

Astrotektion

Louisburg College, 1, 2; Granddaughters' Club, 3, 4; Wake Forest Summer School, 3.

FRANCES HARRIS

ALBEMARLE, N. C.

A.B.

Philaretian

Alliance Francaise, 1, 2; Officer B. Y. P. U., 1, 2; Varsity Hockey Team, 2, 3; Manager Hockey Team, 3; Basketball, 2, 3, 4; Treasurer Baptist Student Union, 3; Second Vice-President Baptist Student Union, 4; Vice-President Student Government Association, 4.

Senior Class



MATTIE ELIZABETH HARRIS

SEABOARD, N. C.

A.B.

Astroctkon

Secretary-Treasurer Kappa Nu Sigma Honor Society, 4; Secretary Sunday School, 3; Colton English Club, 3, 4; Honor Roll, 1, 2, 3; League of Women Voters, 4; B. Y. P. U. Officer, 1, 2, 3; B. Y. P. U., 1, 2, 3, 4.

CATHERINE ANNE HAWKINS

CLIFFSIDE, N. C.

A.B.

Astroctkon

Boiling Springs College, 1, 2; Varsity Basketball, 3; English Club, 3; Basketball, 3, 4; Hockey, 4.



ERNESTINE CURTIS HAYES

AHOSKIE, N. C.

A.B.

Philaretian

B. Y. P. U., 1, 2; Alliance Francaise, 1, 2, 3, 4; Le Cercle Francais,
4; Duke Summer School, 3; Official Chaperon, 4.

SARA ELIZABETH HERRING

DILLON, S. C.

B.M.

Astrocton

College Choir, 1, 2, 3, 4; B. Y. P. U., 1, 2; Secretary South Carolina
Club, 2; President South Carolina Club, 4; Orchestra, 3.

Senior Class



SUSAN BRADSHER HESTER

ROXBORO, N. C.

A.B.

Philaretian

B. Y. P. U. Officer, 1, 3; Classical Club, 3, 4; Marshal Philaretian Society, 4.

LULA BELLE HIGHSMITH

RALEIGH, N. C.

A.B.

Philaretian

Peace Junior College, 1, 2; Vice-President Town Girls' Club, 4; Editor-in-Chief *Acorn*, 4; International Relations Club, 4; College Choir, 4; Colton English Club, 3, 4; Alliance Francaise, 3.



MARY RUTH HIPPS

CANTON, N. C.

A.B.

Philarettian

Barber Biology Club, 3, 4; Biology Assistant, 3; Wake Forest Summer School, 2, 3; League of Women Voters, 3, 4; Alliance Francaise, 1.

ELIZABETH KNOX HOOD

GASTONIA, N. C.

Art

Astrotekton

Alliance Francaise, 1, 2; K. K. K., 1, 2, 3, 4; Archery, 1, 2; Assistant Art Editor OAK LEAVES, 2; May Court Attendant, 3; U. N. C. Summer School, 3; Judge in State Picture Memory Contest, 3; League of Women Voters, 4; Marshal Astrotekton Society, 4.

Senior Class



SUE HORD

KINGS MOUNTAIN, N. C.

A.B.

Astrotekton

B. Y. P. U., 1, 2, 3, 4; B. Y. P. U. Officer, 2, 4; Cleveland County Club, 1, 2; Barber Biology Club, 2; Colton English Club, 3, 4; League of Women Voters, 3, 4; N. C. C. W. Summer School, 3.

MARY LEE HOWELL

CONCORD, N. C.

A.B.

Philaretian

Barber Biology Club, 2, 3, 4; Home Economics Club, 2, 3, 4; Alliance Francaise, 3; League of Women Voters, 3, 4; Basketball, 1; Hockey, 1, 2, 3; Varsity Hockey, 1.

Senior Class



IRIS HUMPHREY

KINSTON, N. C.

A.B.

Astrotekton

Classical Club, 1, 2, 3, 4; Le Cercle Francais, 3, 4; Officer B. Y. P. U., 2; Alliance Francaise, 1, 2, 3, 4.

ELEANOR LOUISE HUNT

APEX, N. C.

B.M.

Astrotekton

Alliance Francaise, 1; Manager Basketball Team, 1; *Twig* Staff, 2; Hockey, 2; Band, 2, 3; Orchestra, 2, 3, 4; League of Women Voters, 2, 3; Music Proctor, 3, 4; Secretary Music Department, 3, 4; Honor Roll, 1, 2, 3; B. Y. P. U. Officer, 3, 4; Y. W. A. Circle Leader, 4.

Senior Class



MELBA CLEO HUNT

A.B.

APEX, N. C.

Astrotektion

Alliance Francaise, 1; Band, 2; College Choir, 2; Barber Biology Club, 1, 2, 3, 4; Secretary Barber Biology Club, 3; President Barber Biology Club, 4; President Sunday School Class, 3; League of Women Voters, 2, 3, 4; President of League of Women Voters, 3; Biology Assistant, 3, 4; Honor Roll, 3, 4; B. Y. P. U. Officer, 3, 4; B-Hive Committee, 4; Nominating Committee, 4; President of Baptist Student Union, 4.

MARY LOUISE JOHNSON

A.B.

RALEIGH, N. C.

Philaretian

Town Girls' Club, 1, 2, 3, 4; Secretary-Treasurer Town Girls' Club, 3; Home Economics Club, 3, 4; Physiology Assistant, 4.

Senior Class



ANNIE CARMEN KEITH

APEX, N. C.

A.B.

Astrotekton

Assistant in Meredith Club, 2, 3; Assistant to Dietitian, 4, 5; Honor Roll, 4.

SARAH MAJEL KELLY

PINEVILLE, KY.

B.S.

Astrotekton

Georgetown College, 1, 2; Alpha Chi of Sigma Kappa Sorority.

Senior Class



MINNA GASTON LE GRAND

SHELBY, N. C.

A.B.

Philaretian

Peace Junior College, 1, 2; Queens-Chicora College, 3; Kappa Delta Sorority.

HAZEL VIRGINIA MARTIN

RALEIGH, N. C.

B.M.

Philaretian

Glee Club, 1, 2, 3, 4; B. Y. P. U. Officer, 1, 2, 3, 4; Sunday School Chorister, 2, 3; President Sunday School Class, 1; Alliance Francaise, 1, 2; Chorister General B. Y. P. U., 4; President Glee Club, 4.

Senior Class



JESSIE KING MARTIN

LEXINGTON, N. C.

A.B.

Philaretian

Salem College, 1; Alliance Francaise, 2, 3, 4; Le Cercle Francais, 3, 4; B. Y. P. U. Officer, 2; Granddaughters' Club, 2, 3, 4; Secretary Philaretian Society, 3, 4; N. C. C. W. Summer School, 3; Senior Editor OAK LEAVES, 4; League of Women Voters, 4.

FRANCES BURNS MAYNARD

RALEIGH, N. C.

A.B.

Philaretian

Ruth Livermon Scholarship, 2; Class Editor *Acorn*, 3, 4; Kappa Nu Sigma Honor Society, 4; Honor Roll, 1, 2, 3; Town Girls' Club, 1, 2, 3, 4; Le Cercle Francais, 3, 4; President Colton English Club, 4.

Senior Class



NANCY RUSSELL McDANIEL

SOOCHOW, CHINA

A.B.

Philaretian

Student Government Council, 1; B-Hive Committee, 1, 2, 3, 4; Vice-President Y. W. A., 3; President B. Y. P. U., 2; Dramatic Club, 2, 3, 4; *Acorn* Staff, 2, 3, 4; Chief Marshal Philaretian Society, 4.

AGNES WATSON MOORE

RALEIGH, N. C.

A.B.

Philaretian

N. C. State College, 1, 2; Home Economics Club, 3, 4; President Home Economics Club, 4; Vice-President Class, 4.



NORMA LEE PHELPS

COLERAINE, N. C.

A.B.

Astrotekton

B. Y. P. U., 1, 2; Bertie County Club, 1, 2; Vice-President Foreign Service Band, 2; Home Economics Club, 1, 2, 3, 4; Vice-President Home Economics Club, 4; Honor Roll, 2, 3.

MARGUERITE EUGENIA PRESLAR

CONCORD, N. C.

B.M.

Philaretian

B. Y. P. U. Officer, 1, 2; Hockey Team, 2; President Sunday School Class, 3; Student Government Council, 3; College Choir, 1, 2, 3, 4; Orchestra, 3, 4; Manager Music Store, 4.

Senior Class



ALYNE REICH
WINSTON-SALEM, N. C.

A.B.

Astroekton

Salem College, 1, 2; Le Cercle Francais, 3, 4; Alliance Francaise, 3, 4; B. Y. P. U. Officer, 3; Classical Club, 3, 4; Secretary-Treasurer Classical Club, 4; Vice-President Y. W. A., 4; Official Chaperon, 4; N. C. C. W. Summer School, 3; Hockey, 4; League of Women Voters, 4.

KATHLEEN ELIZABETH RIDDLE
ST. PAULS, N. C.

A.B.

Astroekton

Campbell College, 1, 2; Barber Biology Club, 3, 4; Wake Forest Summer School, 2; Campbell College Club, 3, 4.

Senior Class



GRACE IONE SALE

RALEIGH, N. C.

A.B.

Philaretian

Town Girls' Club, 1, 2, 3, 4; Alliance Francaise, 1, 2.

MARTHA LAURA SALISBURY

SCOTLAND NECK, N. C.

A.B.

Astrotekton

B. Y. P. U., 1, 3, 4; B. Y. P. U. Officer, 1; *Twig* Staff, 2; Alliance Francaise, 1, 2, 3; French Club, 3; Colton English Club, 3, 4; Treasurer Colton English Club, 3; Granddaughters' Club, 2, 3, 4; Treasurer Granddaughters' Club, 2; President Granddaughters' Club, 4; International Relations Club, 4; Honor Roll, 1, 3; President League of Women Voters, 4.

Senior Class



MARY CAROLYN SHEARIN

ROCKY MOUNT, N. C.

A.B.

Astrotekton

Alliance Francaise, 1, 2; Hockey, 2; Astrotekton Marshal, 2; B. Y. P. U. Officer, 2, 3; Treasurer Student Government Association, 3; Colton English Club, 3, 4; Secretary Colton English Club, 3; Official Chaperon, 4; Nominating Committee, 4; President Student Government Association, 4.

MARY LOUISE SMITH

BURLINGTON, N. C.

B.M.

Astrotekton

College Choir, 1, 2, 3, 4; B. Y. P. U. Officer, 2; Wake Forest Summer School, 3.

Senior Class



MARY FRANCES SNEAD

NEWPORT NEWS, VA.

Art

Astrotekton

William and Mary College; President Virginia Club, 1; K. K. K., 1, 2, 3, 4; Marshal Astrotekton Society, 3; May Court Attendant, 3; Judge in State Picture Memory Contest, 3; Chief College Marshal, 4; Nominating Committee, 4; Colton English Club, 4; College Social Committee, 4; League of Women Voters, 4.

MILDRED ELIZABETH TAYLOR

SNOW HILL, N. C.

A.B.

Philaretian

Barber Biology Club, 1; B. Y. P. U. Officer, 1, 2, 3, 4; Hockey Team, 2; College Band, 2; Home Economics Club, 2, 4; League of Women Voters, 2, 3; Junior Editor OAK LEAVES, 3; Dean's Assistant, 3, 4; Official Chaperon, 4.

Senior Class



KATHARINE THIEM

RALEIGH, N. C.

B.S.

Philaretian

Saint Mary's School, 1, 2; Town Girls' Club, 3, 4.

MARTHA ELIZABETH VICCELLIO

CHATHAM, VA.

A.B.

Philaretian

Virginia Club, 1; Dramatic Club, 1, 2, 3, 4; Classical Club, 1, 2, 3, 4; Treasurer Philaretian Society, 2; Business Manager Dramatic Club, 3; Treasurer Classical Club, 3; Vice-President Dramatic Club, 4; Vice-President Classical Club, 4; Vice-President Kappa Nu Sigma Honor Society, 4; Class Treasurer, 4; Student Government Council, 4; House President Vann Hall, 4; Alliance Francaise, 1, 2, 3, 4.



ANNA LOUISE WHIMS
WAKE FOREST, N. C.

A.B.

Astrotekton

Wake Forest Summer School, 3; Colton English Club, 3, 4; League
of Women Voters, 4.

Eternity



*All eternity is rushing in my soul,
For I feel the strength and weakness
Of the men in ages past
Whose shadows lie across my path;
And I hear the tears and laughter
Of these million unborn souls
Whose shadows falling at my feet
Mingle with those shadows of the past—Eternity,
All eternity is rushing in my soul
And I cry aloud to God, "Oh, who am I?"
And the earth gives back my cry, "Oh, who am I?"*

Nancy McDaniel.

On Writing A Class History



PSHAW!! Why do people insist on class histories being written anyway? Everybody always says the same old things. Pat Abernethy was freshman class president, Margaret Briggs sophomore class president, Rachel Biggs junior class president, and Annette Donavant senior class president. We sang the traditional Odd Spirit songs, yelled the Odd Spirit yells, gave and attended the required number of parties, were welcomed by our big sisters, and welcomed our little sisters in turn. Who is interested in hearing things like that? I'd like to tell people a few things they don't usually hear about classes, about our class in particular.

For instance, most people know that our mascot is the rooster, but how many know why? Chaucer's Chauntecleer is a good old bird, but we chose our mascot before we had made the acquaintance of that resplendent gentleman. It was like this. One night our freshman year the quiet which is always supposed to exist after light-bell was shattered by queer calls, which sounded like the crowings of roosters. The disturbance came chiefly from that always silent freshman hall. For some obscure reason the nightly crowing incurred a great deal of displeasure. And so it was that we chose the rooster for our mascot.

And I wonder how many students know what our campus is really like. No one appreciates its beauties until she crawls around under classroom buildings knocking her head against rafters and brushing cobwebs out of her eyes and mouth while searching for the crook, as we did when we were "jolly juniors." More than anything else the Junior-Senior Banquet is usually associated with the junior year. Incidentally, we associate it with that year too. We couldn't forget that struggle over finances, those days of making menus and place-cards, those hours of draping vines over rafters and of propping up wobbly pines in the dining room if we tried a million years.

And while I'm speaking of preparations, I wonder how many people who see the sophomores carrying the daisy chain down into the grove ever think about the practicing which goes on for weeks before that day. I'll never forget those cold spring mornings when we got up early and went marching around the buildings carrying ropes on our shoulders. I can hear the comments made by people in the dormitories and windows flying down as faculty and students were awakened by our melodious voices. And when we made the daisy chain itself! I have visions of girls and girls and girls picking daisies and daisies and more daisies in a meadow at sunrise. I also remember stained hands, black finger nails, and aching backs—mostly backs. What price daisy chains!

And now that we're seniors. Sh— Gently draw the curtain on our private life as we want to keep the respect of the courteous door-holders, if possible.

But to return to what I said before, why write histories of any kind? Isn't it the height of futility to write the history of a class which is just approaching commencement?



THE JUNIORS

Little Sisters



For the new student the first days of college are full of the tumult of life readjusting itself. There are books to be obtained, schedules to be straightened out, parties to be attended. The freshman is caught in the whirl of new activities. Those first days scarcely leave one time to think, so full are they of new friends and new occupations.

Yet, in all this confusion and bustle the new student becomes aware of an unseen spirit that is quietly but insistently revealing itself; gradually she comes to realize that there is something about the College that can not be interpreted as a mere obtaining of books and the attending of classes and parties. As Newman says, there is an intangible something that broods over every college and gives it its own life and atmosphere—something that is a product of all the generations of students who have been there.

Here at Meredith there is a spirit which is such a part of our lives. And there are traditions here which are a part of this moving spirit, customs, which are more tangible and concrete than the spirit itself. Among these are traditions peculiar to the Junior Class alone. The hunt for the crook, the wearing of the junior coat, the Junior-Senior Banquet, the big sister custom—these are all traditions which are associated especially with the Junior Class.

The most important of these is the big sister tradition. This, it seems, developed gradually and naturally along with the College itself. In the very earliest days the juniors adopted the freshmen, protecting them especially from the attacks of the much-feared sophomores. Under the guardianship of the juniors the freshmen organized and elected their officers. This relationship existed, at first, between the two classes, not between individuals, but even then there was a strong feeling between the two classes. We find accounts of the big sisters helping their little sisters to organize, of the little sisters entertaining their big sisters, of the little sisters carrying a daisy chain when their big sisters graduated. After a while the members of the Junior Class adopted individual little sisters, thus creating a more personal band between the two classes. In this way the tradition has come to us today.

The traditions of our College are very dear to us. They have come to us from the first Meredith girls and have been cherished by all those who followed them. We want to see them perpetuated. As big sisters we feel that it is especially our privilege to preserve them. We want to help our little sisters learn these traditions and the spirit back of them. This is the duty of big sisters—to transmit to the new classes all the old customs which have grown up in the life of Meredith girls, to teach them to love and cherish them. As they come to know and love the spirit of Meredith, they will cherish it even as we do, and in their turn hand it down to the little sisters of the future.



VIRGINIA GARNETT

You have deserved
High commendation, true applause and love.
—As You Like It.

JUNIOR CLASS



OFFICERS

VIRGINIA GARNETT	<i>President</i>
KATHARINE DAVIS	<i>Vice-President</i>
ELIZA BRIGGS	<i>Secretary</i>
MIRIAM WILSON	<i>Treasurer</i>

Junior Class



BLANCHE ALLEN

Thy cheeks
Blush for pure shame to counterfeit our roses.
—*Henry VI.*

KATHLEEN AMMONS

She is all happy as the fairest of all.
—*Pericles.*



MARY GILMER ANDREWS

How likes she my discourse?
—*The Two Gentlemen of Verona.*

DIXIE LEE BALE

Things won are done; joy's soul lies in the
doing.
—*Troilus and Cressida.*



JEWEL BALLENTINE

I like not the humor of lying.
—*The Merry Wives of Windsor.*

ESTHER BARHAM

Pray thee, take pain
To allay with some cold drops of modesty
Thy skipping spirit.
—*The Merchant of Venice.*



EVELYN BARKER

I like thy wit well, in good faith.
—*Hamlet.*

ELIZABETH BAUCUM

Do you like this haste?
—*Romeo and Juliet.*



ELEANOR BEDDINGFIELD

In faith, lady, you have a merry heart.
—*Much Ado About Nothing.*

RUTH BIRD

Yet, to supply the ripe wants of my friend
I'll break a custom.
—*The Merchant of Venice.*

Junior Class

KATHERINE BLALOCK

O for breath to utter what is like thee!
—*I Henry II*.

ELIZA BRIGGS

Pleasure and action make the hours seem short.
—*Othello*.

AMIORETTE BYRD

My chief care
Is to come fairly off from the great debts.
—*Love's Labour's Lost*.

GRACE CARR

Society—saith the text—is the happiness of life.
—*Love's Labour's Lost*.

STELLA SHERRILL COULTER

She taketh most delight
In music.
—*The Taming of the Shrew*.

MARY CREATH

'Tis known, I ever have studied physic.
—*Pericles*.

GWENDOLYN CROWDER

And fair she is, if that mine eyes be true.
—*The Merchant of Venice*.

MARY FLORENCE CUMMINGS

Indu'd with intellectual sense and soul.
—*The Comedy of Errors*.

KATHERINE DAVIS

Dost thou love pictures? We will fetch the
straight
Adonis painted by a running brook.
—*The Taming of the Shrew*.

MAGDALYN DAVIS

Would now like him, now loathe him.
—*As You Like It*.



Junior Class



MARTHA DAVIS
A light heart lives long.
—*Love's Labour's Lost.*

MILDRED DEWEESE
And her sunny locks
Hang on her temp'es like a golden fleece.
—*The Merchant of Venice.*



HELEN DOBSON
I'll not be tied to hours nor 'pointed times,
But learn my lessons as I please myself.
—*The Taming of the Shrew.*

ANN EARLY
Silence is the perfectest herald of joy.
—*Much Ado About Nothing.*



MARGARET SHIELDS EVERETT
Let me be that I am, and seek not to alter me.
—*Much Ado About Nothing.*

CATHERINE FARRIS
In sooth, I know not why I am so sad.
—*The Merchant of Venice.*



VIRGINIA FARRIS
Present mirth hath present laughter.
—*Twelfth Night.*

ELIZABETH FRYE
Will't please you eat?
—*Titus Andronicus.*



GERALDINE GADDY
Out of question, you were born in a merry hour.
—*Much Ado About Nothing.*

RUBY GARNER
My ears were never better fed
With such delightful pleasing harmony.
—*Pericles.*

Junior Class

ALICE GILLIAM

Happiness counts thee in her best array.
—*Romco and Juliet*.

FRANCES GRAY

Your choice agrees with mine; I like that well.
—*Pericles*.

MARGARET HESTER

You are too young, too happy, and too good.
—*All's W'ell That Ends W'ell*.

BETSY HOCUTT

If your mind dislike anything, obey it.
—*Hamlet*.

LOUISE HOCUTT

Nor hast thou pleasure to be cross in talk.
—*The Taming of the Shrew*.

LENA HONEYCUTT

How dost thou like this tune?
—*Twelfth Night*.

M. STEWART HOWARD

I would have peace and quietness.
—*Troilus and Cressida*.

GRACE LAWRENCE

I am not bound to please thee with my answers.
—*The Merchant of Venice*.

ELIZABETH LE GRAND

I am full of pleasure; let us be jocund.
—*The Tempest*.

DORIS LINEBERRY

So you walk softly and look sweetly.
—*Much Ado About Nothing*.



Junior Class



ADELAIDE LOCKHART
How did this argument begin?
—*Love's Labour's Lost.*

SALLIE LOVELACE
Love all, trust a few, do harm to none.
—*All's Well That Ends Well.*



MARY DECIE LUTHER
Love thyself last; cherish those hearts that hate
thee.
—*Henry VIII.*

VIRGINIA MANN
I will not go today;
No, nor tomorrow, nor till I please myself.
—*The Taming of the Shrew.*



RUTH MCCOURRY
I am a woodland fellow, sir, that always loved
a great fire.
—*All's Well That Ends Well.*

FRANCES MCMANUS
Old fashions please me best.
—*The Taming of the Shrew.*



EMILY MILLER
I love not many words.
No more than a fish loves water.
—*All's Well That Ends Well.*

CORA MINOR
How I have ever loved the life removed.
—*Measure for Measure.*



VIOLA MITCHELL
I would be loathe to cast away my speech.
—*Twelfth Night.*

ISABEL ROBESON MORGAN
Give me worship and quietness;
I like it better than a dangerous honor.
—*3 Henry VI.*

Junior Class

MARY LOIS PARKER

No profit grows where is no pleasure ta'en.
—*The Taming of the Shrew.*

ANNIE VEE POWELL

One fair daughter, and no more
The which he loved passing well.
—*Hamlet.*

SLEDGE RICKS

She is of so free, so kind, so apt, so blessed a
disposition,
—*Othello.*

PAULINE ROBERTSON

To be merry best becomes you.
—*Much Ado About Nothing.*

RUTH ROBERTSON

Cupid himself would blush
To see me thus transformed to a boy.
—*The Merchant of Venice.*

ELEANOR ROZAR

And those things do best please me
That befall preposterously.
—*A Midsummer Night's Dream.*

DONA MAUDE SHOUSE

I thank my stars I am happy.
—*Twelfth Night.*

JEAN SIMPSON

I like your silence: it the more shows off
Your wonder.
—*The Winter's Tale.*

MIRIAM TATEM

Think of me as you please.
—*Twelfth Night.*

LOUISE THOMAS

Draw near
And list what with our council we have done.
—*Richard II.*



Junior Class



VARA LEE THORNTON

I love the sport well.

—*The Merry Wives of Windsor.*

MARGARET TILGHMAN

How like you the young German?

—*The Merchant of Venice.*



LOUISE TURLINGTON

Of a cheerful look, a pleasing eye and a most noble carriage.

—*Henry II.*

SARAH ELIZABETH VERNON

I would be friends with you and have your love.

—*Henry VI.*



NANCYE BLAIR VICCELLO

I like this place,
And willingly could waste my time in it.

—*As You Like It.*

MARGUERITE WARREN

She will sing the song that pleaseth you.

—*Henry II.*



ZELLA WASHBURN

Come, draw this curtain, and let's see your picture.

—*Troilus and Cressida.*

MIRIAM WILSON

I would have peace and quietness.

—*Troilus and Cressida.*



CAROLYN WRAY

I love a ballad in print, a life, for then we are sure they are true.

—*The Winter's Tale.*

ELLA LEE YATES

Love no man in good earnest.

—*As You Like It.*



THE SOPHOMORES

Sayings of a Soph



Recently, because of a burning desire to know just why those of us engaged for our second year in a college curriculum are given the appellation *sophomore*, I traced the word to its source. I was bitterly chagrined to discover that it was formed from the Greek words *sophos*, meaning wise, and *mos*, meaning foolish. According to the opinion of several of my learned associates the meaning derived from these sources is only partially correct, the latter part being untrue as well as inappropriate. In our youth we were foolish perhaps, if a free, impetuous abandon which we have been told was quite charming, may be termed foolish; but from these, our embryo selves have emerged calm, efficient women. As we look back upon the naïve, unawakened children who were enrolled here over a year ago, the realization of our great progress and advancement is brought home to us with a clear force. Perhaps the term could have applied to us then with all accuracy, but in our present state of enlightenment it is inappropriate, irrelevant. By our patient industry and deep penetration we have reached the state of profound erudition to which we aspired long ago.

It is from this standpoint we resent the untrue title *foolish*, and we say this with the utmost modesty and humility. Our wisdom is proverbial. No one denies that our mental faculties have been highly developed, and we could say quite truthfully that our present state is more nearly ideal than that of any other group upon the campus. This is not a bombastic statement uttered with an assumed magisterial air of a pompous opinionated individual, but is the opinion of scholars. The younger groups are aspiring to reach our state; the older have passed on and are looking back. Theirs is the deplorable realization that the ideal mental and physical state is past, and in their endeavor to recapture the transitory existence which they have left behind, they become foolish. Their actions are by turns puerile and sophisticated. We feel no animosity towards them. We can witness their agony with lament, but have no means of affording consolation to the sufferers. They have met Fate, the inexorable and implacable, and the consequent alterations are unavoidable for them.

The prolific soil of our minds was sowed and our poise and polished ease are but the issuing harvest. The germ of perfection which, according to Shelley, is in everyone's heart, has blossomed forth in beauteous flowers. We will not deny that this harvest has been unusually copious, for false modesty is a quality we have no pretensions of claiming, and it would be a mere dissipation of time to exert ourselves further in rehearsing to you the numerous points in which we differ from others. By the acclamations expressed by you, the public, I know that you are aware of them already. This gratuitous testimony of approbation and countenance, indicating the love and respect which is our reward for meritorious conduct is met with gracious acknowledgment of the same.



CATHERINE MOSELEY

SOPHOMORE CLASS



OFFICERS

- CATHERINE MOSELEY *President*
- MARY ALLYN LEWIS *Vice-President*
- REBA PARKER *Secretary*
- ELBERTA FOSTER *Treasurer*

Sophomore Class



FRANCES ALDERMAN

ALICE ANDREWS

MARY ELIZABETH ARMBRUSTER



CORNELIA ATKINS

FRANCES AYCOCK

DORIS BAILEY



EVELYN BALLANCE

ELIZABETH BARKER

ELIZABETH BIZZELL



MABEL BOWLING

ELIZABETH BRANTLEY

ALICE ROSY BRYAN



NORINE BUTLER

ELIZABETH COPPEDGE

LOUISE CORRELL



EVELYN WOODY CRUTCHFIELD

MARION EDWARDS

ESTELLE FARRIS

Sophomore Class

HAZEL FAULKNER

ERMA FISHER

ELBERTA FOSTER



EVELYN FOWLER

HILDA FULLER

CHARLOTTE GAMMAGE



CAROLINE GARRISON

MARGARET GREEN

SARA HARRILL



RUTH HARRISON

MARY LEE HILLIARD

LILLIAN BELL JENKINS



MEREDITH JOHNSON

GENOLA KOONTZ

ALMA KEF



JEAN LASSITER

ELEANOR LAWRENCE

ELIZABETH LEE



Sophomore Class



MARY ALLYN LEWIS

ELEANOR LILLEY

LOUISE MARTIN



MARGARET MOORE

MILDRED E. MOORE

MILDRED MOORE



RUTH MORGAN

THELMA MUSSINAN

LORETTA NICHOLS



MARY CARTER NOOE

VIRGINIA NORWOOD

VIRGINIA OVERSTREET



JANE PARKER

REBA PARKER

RUTH PENDER



INEZ POE

ELIZABETH POPLIN

KATHRYN PRIVOTT

Sophomore Class

PEARL ROBERTSON

VIRGINIA ROGERS

MARY RUFFIN



VIRGINIA M. SCOTT

HELEN SEARS

KATHLEEN SEARS



BERTHA MAE STROUD

MARGARET SUGGS

ELIZABETH TATEM



RUTH TUCKER

JOSEPHINE TURNER

MARY LAURA VAUGHN



MARtha WALLACE

MYRTLE WATKINS

STUART WEATHERSPOON



MEREDITH WHITAKER

MARY WILSON

WILLENE YOST





SENIOR AND SOPHOMORE STUNTS



THE FRESHMEN

We Like Being Freshmen



This business of being a freshman is fun! Pardon us if we seem to defy the long-established tradition of the College that a freshman's life is an unhappy one. The idea may seem revolutionary, but we mean what we say. We are not just being cheerful martyrs or anything of the sort, either. Last year in high school we had to be dignified; now we can relax, be ourselves and let other people uphold the reverend tradition, and do we like it? Well, I think so; what do you think?

Let seniors be blasé, juniors superior, and sophomores wise, to their hearts' content. We are satisfied to be those little rays of sunshine commonly called freshmen. Who wants to be dignified, anyway? Why should you like people to think you know everything? They are bound to find out the truth some day, and then what does it profit you? We have no reputation to carry on, and we don't care a birdseed about being looked up to. As a freshman said the other day, "People expect us to be dumb. Why disappoint them?" We haven't learned *l'art de bien dire*; we have no *savoir faire*; but we know plenty and the half about *joie de vivre*. Believe you us.

Of course, there are certain things that the upper classmen do expect us to do, such as to be polite and humble when they are around. But that doesn't bother us. As a matter of fact, we like to open doors and hold them open; it is such a pleasant feeling to have somebody grateful to us for once. On the other hand, just think of everything the upper classmen do for us; such, for instance, as giving us parties, teas, and picnics. What could be more fun than being "rushed" by a club or society. This joining a club is no bed of roses, though, as we jolly well found out. Those wily initiators annoyed us somewhat, but what is a little grease, hot water, dirt, and suffering among friends? It amounts to nothing at all, my dear, just nothing at all. (You'd better take that last statement with a grain of salt, not at its face value.)

Some cynical person has said that college is the place where you have to go to find out there is nothing in it. My dear sir, we beg to contradict. We had dreamed of coming to college for many years, and at last our dreams are being realized—we're here! It's even better than we thought, and there's a very good reason. We, as freshmen, have almost all the pleasure but very few of the responsibilities of college students. The fate of the world doesn't rest on our shoulders as yet. We have an excuse for being carefree and lazy. We're freshmen, and we know when we are well off. However, according to Elbert Hubbard, we are not so dumb, after all, for "an ignoramus is one who flatters himself that he is educated." We know we are not educated, therefore we are not ignoramuses.

P.S. If we didn't like being freshmen, we wouldn't tell anybody.



ANNIE MAE TAYLOR

FRESHMAN CLASS



OFFICERS

- ANNIE MAE TAYLOR *President*
SUSAN E. SLOAN *Vice-President*
LILLIAN UHER *Secretary-Treasurer*



Freshman Class

Top row: CHRISTINE ADAMS, NANCY ALLEN, ELFANOR S. ANDREWS, MARGARET ANDREWS,
ELIZABETH AUSTIN, NINA BINDER.

Second row: SONORA BLAND, HAZEL BOSWELL, ANN BRADSHER, FLAVAL M. BULLARD, MARGARET
BULLINGTON, ALFRIEDA BURNHAM.

Third row: FRANCES CALLOWAY, ONIE CAMPBELL, MARIE CAPPS, HENRIETTA CASTLEBURY, JANE
CAIES, MARY LOUISE CHAMBLEE.

Fourth row: MARY ELIZABETH CHEEK, NOVELLE CHEEK, RACHEL COWAN, MARY BYNUM DARK,
ELIZABETH DAVIDSON, BEVERLY DAVIS.



Freshman Class

Top row: MARGARET DAVIS, HESTER DENSLOW, DOROTHY DOCKERY, JEWEL DUCKWORTH, MILDRED EATON, GENEVIEVE FALES.

Second row: ISABELLE MIRIAM FREID, BERTHA MAE FUTRELLE, MELBA GASKINS, AGNES GENTRY, MARJORIE GREGORY, RENA PEARL HAMILTON.

Third row: LOUISE HELSABECK, MARY HILL, CHARLOTTE HODGES, KATHERINE HUDMON, JOSEPHINE HUDSON, ELIZABETH JACOBS.

Fourth row: KATHLEEN JOHNSON, MARY ELIZABETH JONES, MARGARET KNOWLES, VIRGINIA LAMBERT, ESTHER LANIER, MARY ELIZABETH LAWSON.



Freshman Class

Top row: EDITH LEVINE, KATHERINE LILES, GLADYS LUPER, SARAH ANN MARTIN, EDNA McCOLLUM, MARY BELLE McMURRAY.

Second row: MINNIE RUTH McNEILL, RUTH MORGAN, FRANCES MORRIS, WILHELMINA MORRISON, VIRGINIA MOSS, NARCISSE ANN NORMAN.

Third row: VIRGINIA OGLETREE, HELEN FRANCES PARKER, LUCILLE PARKER, EDNA LEE PEGRAM, MARTHA REDMON, MARTHA ANN RILEY.

Fourth row: HELEN RIVERS, VIRGINIA ROLLINS, NORMA ROSE, ISABEL ROSS, ELIZABETH RUARK, HELEN RUFFIN.



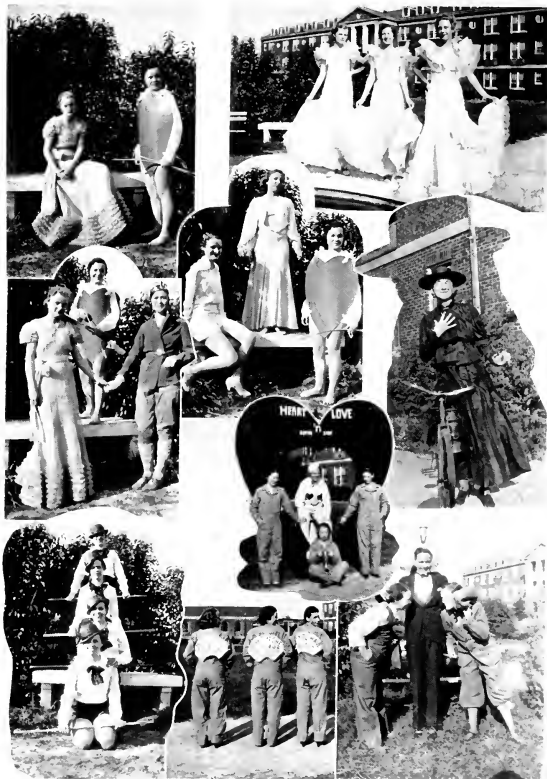
Freshman Class

Top row: BETTY SALISBURY, KATY SAMS, MARY ROSELLE SPARS, MARY SECREST, FAY MEMORY SHIELDS.

Second row: SUSAN SLOAN, ELEASE SMITH, MARGIE STALLINGS, JANE CAROL TANNER, EDNA TAYLOR, VIRGINIA MAE TISSUE.

Third row: MARY ALICE TREADWELL, IRENE TUTHILL, LILLIAN JEAN UHER, HAZEL WADE, KATHERINE WAKEFIELD, RUTH ALICE WARD.

Fourth row: MINNIE WARNER, GENEVIEVE WARREN, MAEBELLE WHEELER, HILDA WILLIAMS, IONE ELIZABETH WILLIAMSON.



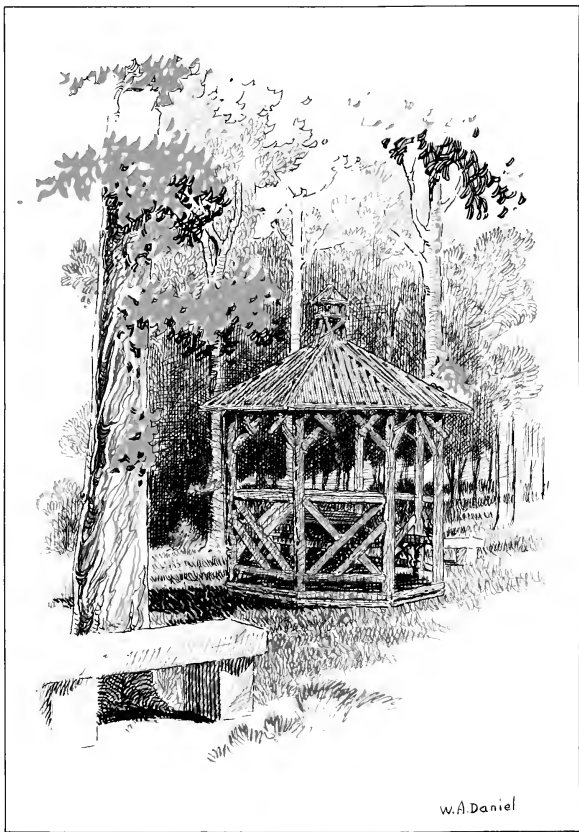
JUNIOR AND FRESHMAN STUNTS

• THE • **ORGANIZATIONS**

OUR organizations are the Student Government, the Baptist Student Union, the staffs of the various publications, the clubs, the two literary societies, and the Athletic Association. Of course divisions of organizations are important, presiding officers are necessary, but the chief composition of organizations is willing cooperative girls, and of this we have fifty-seven varieties. » » »



Summer House » » » »





Shearin, Harris,
Thomas, Byrd.

Student Government

OFFICERS

MARY C. SHEARIN *President*
FRANCES HARRIS *Vice-President*
LOUISE THOMAS *Secretary*
AMORETTE BYRD *Treasurer*



Akers, Blanton, Bennett,
Viccellio, Garnett, Thornton,
McManus, Moore, Allen.

Council Members

HOUSE PRESIDENTS

MARY AKERS

NANCY BLANTON

HELEN BENNETT

MARTHA VICCELLIO

HOUSE VICE-PRESIDENTS

VIRGINIA GARNETT

VARA LEE THORNTON

FRANCES MCMANUS

CLASS REPRESENTATIVES

MILDRED K. MOORE

NANCY ALLEN



Shearin, Biggs, Barnes, Briggs,
Highsmith, Campbell, Hunt, Sneed, Abernethy,
Donavant, Garnett, Moseley, Taylor, Castlebury,
Biggers, Branch, English, Harris.

Nominating Committee

STUDENT MEMBERS

MARY C. SHEARIN
RACHEL BIGGS
PAULINE BARNES
MARGARET BRIGGS
LULA BELLE HIGHSMITH

MAE CAMPBELL
MELBA HUNT
MARY FRANCES SNEAD
PAT ABERNETHY

ANNETTE DONAVANT
VIRGINIA GARNETT
CATHERINE MOSELEY
ANNIE MAE TAYLOR
MARTHA CASTLEBURY

FACULTY MEMBERS

MISS CAROLINE BIGGERS
MISS VIRGINIA BRANCH

MISS ETHEL ENGLISH
DR. JULIA HARRIS



Hunt, Chabers, Harris, Allison,
Blalock, Miller, Vernon, Warren,
Byrd, Dozier, Luther, Knight.

Baptist Student Council

Baptist Student Union

OFFICERS

MELBA HUNT	<i>President</i>
MAMIE CHAMBERS	<i>First Vice-President</i>
FRANCES HARRIS	<i>Second Vice-President</i>
KATE ALLISON	<i>Secretary</i>
KATHERINE BLALOCK	<i>Treasurer</i>
EMILY MILLER	<i>Publicity Director</i>

B. Y. P. U.

SARAH ELIZABETH VERNON	<i>Director</i>
BERTIE EARP	<i>Associate Director</i>
HELEN BENNETT	<i>Secretary</i>
MILDRED MOORE	<i>Pianist</i>
HAZEL MARTIN	<i>Chorister</i>
ELIZABETH POPLIN	<i>Prep Leader</i>
LOUISE CORRELL	<i>Reporter</i>

Y. W. A.

MARGUERITE WARREN	<i>President</i>
ALYNE REICH	<i>Vice-President</i>
MARY FLORENCE CUMMINGS	<i>Secretary</i>
ANN EARLY	<i>Publicity Chairman</i>

SUNDAY SCHOOL

AMORETTE BYRD	<i>Director</i>
JEWEL BALLENTINE	<i>Assistant Director</i>
ELEANOR LAWRENCE	<i>Secretary</i>

SERVICE BAND

HELEN DOZIER	<i>Leader</i>
RUTH TUCKER	<i>Assistant Leader</i>
MYRTLE MURRAY	<i>Secretary</i>



Luther, Canady, Hunt,
McDaniel, Cummings, Lee.

Beehive Committee

- | | |
|----------------------------------|---------------------------------|
| MARY DEECIE LUTHER | <i>Manager</i> |
| MR. CANADY | <i>Faculty Adviser</i> |
| MELBA HUNT | <i>B. S. U. Representative</i> |
| NANCY MCDANIEL | <i>Chairman</i> |
| MARY FLORENCE CUMMINGS | <i>Secretary</i> |
| ELIZABETH LEE | <i>Sophomore Representative</i> |



THE PUBLICATIONS



Highsmith, Castlebury.

Acorn Staff

LULA BELLE HIGHSMITH	<i>Editor-in-Chief</i>
MARTHA CASTLEBURY	<i>Business Manager</i>
NANCY McDANIEL	<i>Senior Editor</i>
FRANCES MAYNARD	<i>Senior Editor</i>
EVELYN BARKER	<i>Junior Editor</i>
GRACE LAWRENCE	<i>Junior Editor</i>
LOUISE CORRELL	<i>Sophomore Editor</i>
INEZ POE	<i>Sophomore Editor</i>
ELBERTA FOSTER	<i>Art Editor</i>
ELIZABETH LEE	<i>Music Editor</i>
VIRGINIA GARNETT	<i>Science Editor</i>
VIRGINIA FARRIS	<i>Assistant Business Manager</i>
LOUISE MARTIN	<i>Assistant Business Manager</i>
LORETTA NICHOLS	<i>Circulation Manager</i>
MEREDITH JOHNSON	<i>Circulation Manager</i>



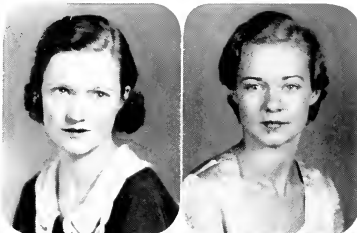
McDaniel, Maynard,
Barker, Lawrence, Correll, Poe,
Foster, Lee, Garnett, Farris,
Martin, Nichols, Johnson.



Briggs, Crowder.

Oak Leaves Staff

MARGARET BRIGGS	<i>Editor-in-Chief</i>
GWENDOLYN CROWDER	<i>Business Manager</i>
EVELYN BARKER	<i>Associate Editor</i>
GRACE CARR	<i>Advertising Manager</i>
MARY ALLYN LEWIS	<i>Assistant Advertising Manager</i>
ELIZABETH POPLIN	<i>Photograph Editor</i>
KATHARINE DAVIS	<i>Art Editor</i>
JESSIE K. MARTIN	<i>Senior Editor</i>
MARGARET TILGHMAN	<i>Junior Editor</i>
VIRGINIA OVERSTREET	<i>Sophomore Editor</i>



Barker, Carr,
Lewis, Poplin, Davis,
Martin, Tilghman, Overstreet.



Campbell, Briggs.

Twig Staff

MAE CAMPBELL	<i>Editor-in-Chief</i>
ELIZA BRIGGS	<i>Business Manager</i>
SALLIE COUNCIL	<i>Associate Editor</i>
DOROTHY MERRITT	<i>Associate Editor</i>
MARY FLORENCE CUMMINGS	<i>Managing Editor</i>
NANCYE VICCELLIO	<i>Managing Editor</i>
EMILY MILLER	<i>Managing Editor</i>
MARY LOIS PARKER	<i>Assistant Business Manager</i>
CORNELIA ATKINS	<i>Assistant Business Manager</i>

REPORTERS

LOUISE CORRELL
ELBERTA FOSTER

JANE PARKER
VIRGINIA SCOTT

MARY ALLYN LEWIS
MARY LAURA VAUGHN



Cousol, Merritt,
Cummings, Viecchio, Miller, Parker, M. L.
Atkins, Correll, Foster, Parker, J.
Scott, Lewis, Vaughn.

In preparing this volume of the OAK LEAVES for publication, the editors have received help from many sources. We wish to thank the Benson Printing Co., the Jahn and Ollier Engraving Co., and the Dunbar and Daniel Studio for their helpful co-operation and willing service in the preparation of the book. In particular, we wish to thank Mr. W. A. Daniel of the Benson Printing Co. for contributing the beautiful sketches which appear on our four main book divisions. To Miss Harris and Mr. Canady we owe a large debt of gratitude for their expert advice and assistance. Finally, we wish to express our appreciation to the Lewis Sporting Goods Store, to the Milburnie Riding Academy, and to Ellisburgs for properties which they so generously put at our disposal for the making of the feature pictures.



THE CLUBS



Briggs, Viccello, M., McDaniel,
Viccello, N., Atkins, Biggs, Foster, Garnett,
Lee, Miller, Poplin, Scott.



The Little Theatre

OFFICERS

ELIZA BRIGGS	<i>President</i>
MARTHA VICCELLIO	<i>Vice-President</i>
NANCY MCDANIEL	<i>Secretary</i>
NANCYE VICCELLIO	<i>Treasurer</i>

MEMBERS

CORNELIA ATKINS	ELIZABETH LEE
RACHEL BIGGS	EMILY MILLER
ELBERTA FOSTER	ELIZABETH POPLIN
VIRGINIA GARNETT	VIRGINIA SCOTT

FACULTY MEMBERS

DR. JULIA HARRIS
DR. MARY LYNCH JOHNSON



Castlebury, Campbell, Fisher, Bagby, Barker,
Briggs, Council, Farris, Gammage, Garnett,
Simpson, Highsmith, Miller, Salisbury, Vernon.

International Relations Club

OFFICERS

- | | |
|-------------------------------|----------------------------|
| MARTHA CASTLEBURY | <i>President</i> |
| MAE CAMPBELL | <i>Vice-President</i> |
| ERMA FISHER | <i>Secretary-Treasurer</i> |
| MISS NETTIE HERNDON | <i>Faculty Adviser</i> |

MEMBERS

- | | |
|-------------------|------------------------|
| EDYTHE BAGBY | VIRGINIA GARNETT |
| EVELYN BARKER | LULA BELLE HIGHSMITH |
| ELIZA BRIGGS | EMILY MILLER |
| SALLIE COUNCIL | MARTHA SALISBURY |
| VIRGINIA FARRIS | JEAN SIMPSON |
| CHARLOTTE GAMMAGE | SARAH ELIZABETH VERNON |





Merritt, Viccello, M., Reich, Poe, Tilghman, Bradshaw,
Hester, Humphrey, Morgan, Rivers, Rose,
Sears, Tanner, Vaughn, Vernon, Viccello, N., Wray.

Classical Club

OFFICERS

DOROTHY MERRITT	<i>President</i>
MARTHA VICCELLO	<i>Vice-President</i>
ALYNE REICH	<i>Secretary-Treasurer</i>
INEZ POE	<i>Reporter</i>
MARGARET TILGHMAN	<i>Program Chairman</i>

MEMBERS

KATRINA BEASLEY	NORMA ROSE
ANNE BRADSHAW	KATHLEEN SEARS
SUE HESTER	JANE CARROLL TANNER
IRIS HUMPHREY	MARY LAURA VAUGHN
ISABEL MORGAN	SARAH ELIZABETH VERNON
HELEN RIVERS	NANCYE VICCELLO
	CAROLYN WRAY

FACULTY MEMBER

DR. HELEN PRICE



Moore, Phelps, Ricks, Barber, Blanton, Bird, Castibury,
Chambers, Davis, B., Davis, M., Edwards, Frye, Gaddy,
Hocutt, Lawrence, McCollum, Morgan, Mullis, Stallings, Yost.

Home Economics Club

OFFICERS

AGNES MOORE *President*
 NORMA LEE PHELPS *Vice-President*
 SLEDGE RICKS *Secretary*

MEMBERS

PAULINE BARBER	GERALDINE GADDY
NANCY BLANTON	BETSY HOCUTT
RUTH BIRD	PAULINE JACOBS
HENRIETTA CASTLEBURY	ELEANOR LAWRENCE
MAMIE CHAMBERS	EDNA ERLE MCCOLLUM
BEVERLY DAVIS	RUTH MORGAN
MAGDALYN DAVIS	HATTIE MULLIS
MARION EDWARDS	MARGIE STALLINGS
ELIZABETH FRYE	PAULINE WILKERSON

WILLENE YOST

FACULTY MEMBERS

MISS ELLEN BREWER
 MISS JENNIE HANYAN





Salisbury, Powell, Abernethy, Alderman, Allen, Baucum, Beddingfield,
 Bennett, Bland, Bowling, Briggs, Bryan, Chambers, Check, Council, Davis, B.
 Davis, K., Davis, M., Davis, M., Dozier, Everett, Fuller, Garrison, Harris, Johnson,
 Lassiter, Lovelace, Martin, J., Martin, L., Martin, S., Mosley, Nooe, Parker, H., Parker, M. L.
 Privott, Ricks, Riley, Shields, Vernon, Vaughn, Weathers.



Meredith Granddaughters' Club

OFFICERS

MARtha SALISBURY *President*
 ANNIE VEE POWELL *Secretary*

ADDITIONAL MEMBERS

DOROTHY DAVIS LAURA MATTHEWS
 KATHERINE HICKS HELEN MELTON
 SUSIE MAE PORTER
 GLADYS RICKS



Salisbury, Blanton, Allen, Amburn, Ammons, Austin, Barham, Barker, Bizzell, Blalock, Brady, Broadwell, Campbell, Crutchfield, Cummings, Davis, Early, Everett, Gaddy, Garnett, Grey, Harris, F., Harris, E., Hayes, Hester, M., Hester, S., Hood, Ford, Howell, Hunt, Lovelace, Martin, McCoutry, Mullis, Powell, Reich, Rollins, Rose, Rozar, Sale, Secrest, Simpson, Sloan, Shend, Thomas, Vernon, Weatherspoon, Wilson, Yates.

Student League of Voters

OFFICERS

MARTHA SALISEURY *President*
 NANCY BLANTON *Secretary*

ADDITIONAL MEMBERS

SUSIE MAE PORTER
 MILDRED TAYLOR





Castlebury, M., Rutlin, M., Armbruster Bagby, Bailey, Beddingfield, Bird, Brantley, Briggs, Castlebury, H., Cates, Charible, Church, Dark, Davis, M., Farris, C., Farris, V., Fuller, Goodwin, Green, M., Green, V., Hiebsmith, Honeycutt, Johnson, Jones, Lilly, Maynard, Merritt, McMurray, Morgan, Norwood, Fago, Pegrum, Pender, Rivers, Robertson, Rutlin, H., Sale, Tilghman, Thiem, Wade, Wakefield, Wallace, Wenchers.



Town Girls' Club

OFFICERS

MARTHA CASTLEBURY *President*
 MARION VINSON *Secretary*
 MARY RUFFIN *Social Director*

ADDITIONAL MEMBERS

KATRINA BEASLFY	MARY LOU PILAND
BEE COTNER	GLADYS RICKS
DOROTHY DAVIS	LOIS SILVER
DOROTHY FINLATOR	MILDRED SORRELL
ANNIE LAURIE GLASS	VIOLET SPENCE
FRANCES JONES	VIRGINIA SPENCE
SALLIE MITCHNER	GRACE TALTON
BESSIE NARRON	ROCKIE LEE TAYLOR
LUCY MAE PERRY	VERITAS WILLIAMS
DOROTHY PHILLIPS	NELL YORK



Glee Club

OFFICERS

- | | |
|------------------------------|--------------------|
| HAZEL MARTIN | <i>President</i> |
| MARY AKERS | <i>Treasurer</i> |
| LOUISE CORRELL | <i>Accompanist</i> |
| MISS ETHEL ROWLAND | <i>Director</i> |

MEMBERS

- | | |
|------------------|-------------------|
| CATHERINE FARRIS | ELIZABETH LEE |
| VIRGINIA FARRIS | RUTH HARRISON |
| LUNA JACKSON | JOSEPHINE ARNETTE |
| HILDA FULLER | MABEL MARTIN |
| MILDRED MOORE | PAT ABERNETHY |
| MINNIE WARNER | FRANCES MORRIS |
| FRANCES CALLOWAY | MARGUERITE WARREN |
| LOUISE MARTIN | GENEVIEVE FALES |



South Carolina Club

SARAH HERRING *President*
 MILDRED MOORE *Vice-President*
 ELLA LEE YATES *Secretary-Treasurer*

CHRISTINE ADAMS
 FRANCES ALDERMAN
 ALFREIDA BURNHAM
 ONIE CAMPBELL

MARION EDWARDS
 CATHERINE HAYES
 ELIZABETH LEE
 EDITH LEVINE
 MARY ALICE TREADWELL



Herring, Moore, Yates
 Adams, Alderman, Burnham
 Campbell, Edwards, Hayes
 Lee, Levine, Treadwell



Barber Biology Club

OFFICERS

MELBA HUNT *President*
 EVELYN BYRD *Vice-President*
 ESTHER BARHAM *Secretary-Treasurer*

MEMBERS

CHRISTINE ADAMS
 ALICE ANDREWS
 MARGARET ANDREWS
 CORNELIA ATKINS
 ELIZABETH AUSTIN
 ANN BRADSHIER
 EVELYN CRUTCHFIELD
 DOROTHY DOCKERY
 ELBERTA FOSTER

LOUISE HELSABECK
 RUTH HIPPS
 CORA MINOR
 TED MUSSINAN
 JANE PARKER
 PEARL ROBERTSON
 ELEANOR ROZAR
 HELEN SEARS
 BERTHA MAE STROUD

HILDA WILLIAMS

Hunt, Byrd
 Barham, Adams, Andrews, A., Andrews, M.
 Atkins, Austin, Crutchfield, Dockery
 Foster, Helsabeck, Hipps, Minor
 Mussinan, Parker, Robertson, Rozar
 Sears, Stroud, Williams

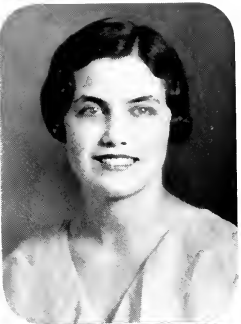


THE SOCIETIES



MARY FRANCES SNEAD, *College Marshal*





BARNES
MARTIN

VICCELLIO
LEE

Philaretian Officers

- PAULINE BARNES *President*
- NANCY VICCELLIO *Vice-President*
- JESSIE KING MARTIN *Secretary*
- ELIZABETH LEE *Treasurer*



*Philaretian
Marshals*

NANCY McDANIEL, *Chief*
SUE HESTER
GWENDOLYN CROWDER
LOUISE MARTIN

Philaretia



*Behold in shining raiment dressed,
She stands; in silence bow.
High honor sits upon her breast;
A white flame blazes in her breast.
And stars upon her brow.*

*Look up and listen while she speaks,
In solemn tones and slow.
She points to radiant mountain peaks,
Where morn reveals her first grey streaks,
To weary souls below.*

*She calls us to her house of light
Beneath her azure dome;
"Come, daughters, walk with me in white
Above the glooming realms of night;
Build here your highland home.*

*"Let Virtue feed her vestal fire
Within each holy fane.
Let fearless Truth with flaming ire
Consume the breath of base desire,
And rule without a stain."*

*Lead on, O Philaretia fair,
Lead upward day by day;
Thy violet banner in the air,
Thy daughters all will highly dare;
Brave mother, lead the way.*



BURGESS



HENLEY

Society Essay Medal Winners

ELVA BURGESS

Astrotekton

Carter-Upchurch Medal
"Humanities and Art in Life"

MARY HENLEY

Philaretian

Minnie Jackson Bowling Medal
"Forgotten Tragedies"





BIGGS
BRADY

DAVIS
CARR

Astrotekton Officers

- RACHEL BIGGS *President*
- KATHARINE DAVIS *Vice-President*
- MIRIAM BRADY *Secretary*
- GRACE CARR *Treasurer*



*Astrotekton
Marshals*

MARY AKERS, *Chief*
ELIZABETH KNOX HOOD
MARY BESS VAN LANDINGHAM
STUART WEATHERSPOON

Song of the Astrotektons



*See thy children, Mother Astro,
Sisters of the gold and white
Bow before thee in thy beauty,
Thankful for thy wondrous light.
Now we bring our girlhood treasures,
And we lay them at thy feet—
Waiting for thy benediction
And thy bidding, always sweet.
Astro, Mother Astro,
From the mountains to the sea;
Astro, Mother Astro,
We have come in love and gladness to be led by thee.
Now we feel thy bands upon us,
Hands so loving and so strong,
That the touch fills every daughter
With a purpose and a song.
Lift your heads, ye Astro maidens,
Look into her starlit eyes,
Then go forth to life and duty,
With a zeal that never dies!
Astro, Mother Astro,
With a love that grows not old;
Astro, Mother Astro,
See us rally 'round thy banner,
Dear old white and gold.*



Briggs, Viccello, Harris, Merritt, Maynard,
Brewer, Day, Herndon, Johnson, Price.

Kappa Nu Sigma Honor Society

- MARGARET BRIGGS *President*
 MARTHA VICCELLO *Vice-President*
 ELIZABETH HARRIS *Secretary-Treasurer*
 DOROTHY MERRITT *Reporter*
 FRANCES MAYNARD

FACULTY MEMBERS

- | | |
|----------------------|------------------------|
| MISS CATHERINE ALLEN | MISS NETTIE HERNDON |
| MISS ELLEN BREWER | DR. MARY LYNCH JOHNSON |
| MISS ETHEL DAY | DR. HELEN PRICE |



THE ATHLETICS



Abernethy, Thornton, Lewis, Scott.

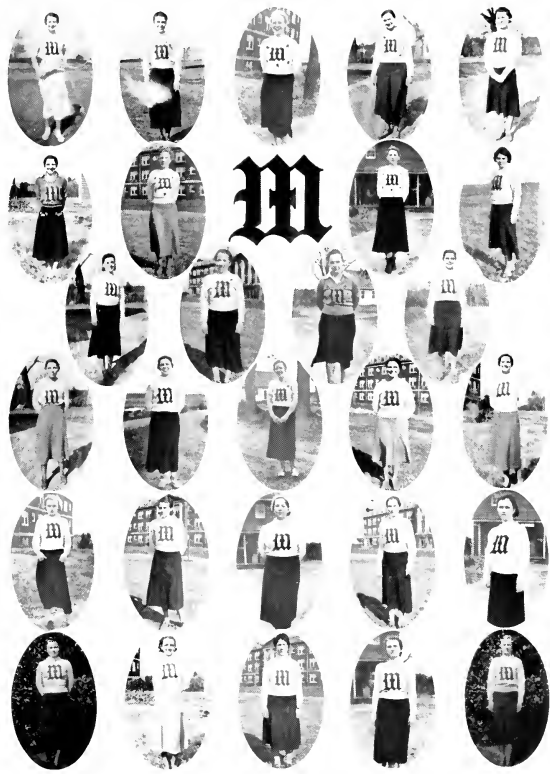
Athletic Association

OFFICERS

PAT ABERNETHY	<i>President</i>
VARA LEE THORNTON	<i>Vice-President</i>
MARY ALLYN LEWIS	<i>Secretary</i>
VIRGINIA SCOTT	<i>Treasurer</i>

It has been the purpose of the A. A., for the past year, not only to foster a greater and more vigorous interest in athletics for the sake of class honor, but also to build up a more militant spirit of sportsmanship and love of sport for sports' sake. It has also been our aim to include more and more of the members of the student body in the activities of the association. In these purposes, we believe we have had some degree of success. There were over a hundred girls—one-third of the resident students—out for hockey and basketball, and an even greater number took part in tennis tournaments. A smaller but representative group engaged in the other sports.


In the fight for the possession of the hockey and basketball cups, a splendid spirit has been displayed, and competition has been strong from start to finish. The winners of the other tournaments have been equally hard pressed. A great deal of athletic prowess has been displayed—from that of little Mildred Eaton, who won the stick presented to the best freshman hockey player, to that of the habitual winners of varsity positions. It is with great interest that we look forward to commencement and the announcement of the awarding of the Victory Trophy to Meredith's Best All-Round Sport.



Wearers of the "M"

Josephine Ainette, '34; Frances Harris, '33; Martha Davis, '31; Virginia Green, '33; Vera Lee Thornton, '34; Eleanor Rozar, '34; Katharine Davis, '34; Ruth McCourry, '34; Mary Lee Howell, '33; Catherine Hawkins, '33; Ella Lee Yates, '34; Pat Abernethy, '33; Katharine Libs, '36; Mary Allyn Lewis, '35; Dorothy Dockery, '36; Virginia Garnett, '34; Marionette Warren, '34; Flavel Bullard, '36; Hazel Roswell, '36; Mildred Eaton, '36; Virginia Scott, '35; Helen Bennett, '33; Catherine Hayes, '34; Henrietta Castlebury, '36; Louise Hilsbeck, '36; Undine Weeks, '35; Mae Marshallum, '35; Grace Carr, '34.

Varsity Hockey



"Kitten" Boswell, '36, plays like a streak of greased lightning, and is an accurate passer on the run.

Undine Weeks, '35, is a fine and dependable goalie and difficult to get by.

Henrietta Castlebury, '36, is one of the fastest halfbacks on the campus. She tackles and passes with deadly accuracy.

Ella Lee Yates, '34, is one of the best defensive players on the campus. A lot of the success of the championship Junior team is due to her.

"Pat" Abernethy, '33, plays a steady, dependable game and is equally good at offensive and defensive.

"Kat" Davis, '34, is a defensive star. Only those who have tried to put a ball past her can fully appreciate the thoroughness with which she tackles.

Ruth McCourry, '34, is a mainstay on the Junior team and one of the best on the defensive.

Martha Davis, '34, is one of the best of the offensive stars, directing the play by accurate passing and rapid dribbling.

Vara Lee Thornton, '34, specializes in getting down the field to receive passes. Her ability in this line made her invaluable to her team.

Eleanor Rozar, '34, is about the fastest wing Meredith has produced.

Mildred Eaton, '36, is outstanding for her versatility. She plays any position with equal facility.

Virginia Scott, '35, has been the main cog in the Soph defense for two years.

Mae Marshburn, '35, plays a flashy, dependable game and seems all over the field at once.

"Speck" Harris, '33, has her own particular way of stopping a ball, but one seldom gets past her.

"Tecky" Hayes, '34, plays a steady, dependable game and is a bear on the defensive.

Varsity Basketball

"Kat" Davis, '34, plays a beautiful game and can always give her guard plenty of trouble.

Virginia Scott, '35, sticks like glue and is one of the most troublesome guards on the campus.

Henrietta Castlebury, '36, simply can't be beaten when it comes to sticking on the ball. Her passing, dribbling, and speed make her the outstanding guard of the season.

Ella Lee Yates, '34, is a fast and accurate forward and is terribly hard to stop.

"Kat" Hawkins, '33, certainly lives up to her name. She is one of the best ball hawks there is, and her guarding is hard to beat.

Ruth McCourry, '34, that jack-rabbit mountaineer, seems all over the court at once. She's a deadly center.

Dorothy Dockery, '36, is one of the fastest and cleanest guards on the campus. "Doppy" is hard to beat for general all-round ability and sticking-plaster guarding.

Flaval Bullard, '36, has proved a mainstay to her team. We have yet to see a forward she can't bottle up.

Mary Allyn Lewis, '35, is a fine all-round player and passes with deadly accuracy. She leads the Soph offense.

Louise Helsabeck, '36, has saved the day for the Freshmen on many an occasion with her famous back-bend. Fast, light on her feet, easy-going, it is extremely difficult for guards to stop her.

Mae Marshburn, '35, is the best of the Soph defense. She plays hard and clean and is death to forwards.

"Kat" Liles, '36, is as game a p'ayer as we have ever seen. Her all-round ability and splendid spirit made her an excellent leader for the Frosh.

"Pat" Abernethy, '33, a good passer and a clean player, has led the Senior offense for four years.

"Ginny" Garnett, '34, a fast and troublesome guard, has been the leader of the Junior defense for three years. "Ginny" is hard to beat.





SENIOR HOCKEY TEAM

Left to right: Virginia Green, "Pat" Abernethy, "Cat" Hawkins, "Stoek" Harris (Manager), Eleanor Hunt, Mary C. Shearin, Mary Lee Howell.
 *Kate Allison, Miriam Brady, Alysie Reich, Nancy Blanton, Helen Bennett, Martha Vicedillo.



SOPHOMORE HOCKEY TEAM

Kneeling: "Nick" Nichols, Mary Allyn Lewis, Ruth Tucker, "Bill" Yost, Mae Marshburn (Manager).
 Standing: Luna Jackson, Ruth Harrison, "Jo" Turner, "Blitz" Strand, Uelma Weeks.
 *Virginia Scott, Bebe Parker, Mary Carter Nowe, Betsy Blizzell, Mildred Satterfield, Mary G. Smith.

*—Members of the team not appearing in the picture.



JUNIOR HOCKEY TEAM

Left to right: Ruth McCourry, Kathleen Gilliland, "Kat" Davis (Manager), "Ginny" Garnett, Vara Lee Thornton, Marguerite Warren, Ella Lee Yates, Eleanor Rozar, "Tocky" Hayes
*Martha Davis, Mary Creach, "Peg" Le Grand, Zella Washburn, Amorette Byrd, Betsy Hocutt.



FRESHMAN HOCKEY TEAM

Kneeling: Edith Levine, Frances Morris, Hazel Boswell, Martha Ann Riley, Mildred Eaton, Henrietta Castlebury, "Eric" Adams
Standing: "Ginny" Rollins, "Lib" Uher (Manager), "Kat" Libes, Lucile Parker, "Lib" Ruark, Virginia Lambert,
*Senora Bland, Nina Binder.

*—Members of the team not appearing in the picture.



SENIOR BASKETBALL TEAM

Kneeling: Virginia Green, "Cat" Hawkins (Manager), "Spook" Harris
 Standing: Helen Bennett, Eleanor Hunt, "Pat" Abernethy, Mary C' Shearin, Mary Lee Howell
 *Kathleen Biddle, Miriam Brady,



SOPHOMORE BASKETBALL TEAM

Seated: Evelyn Fowler, Mae Marshburn, Norine Butler
 Kneeling: Candice Weeks, Mary Allen Lewis, Virginia Roberts, Luma Jackson (Manager)
 *Virginia Scott

*—Members of the team not appearing in the picture.



JUNIOR BASKETBALL TEAM

Standing: Eleanor Rozar, Ella Lee Yates, "Ginny" Garnett, Ruth McCourry (Manager), "Kat" Davis,
Vera Lee Thornton, Marguerite Warren
Seated: "Tecky" Hayes

*Miriam Wilson, Louise Hocutt, Alice Gilham, Amorette Byrd, "Jo" Arnette, Mary Lois Parker.



FRESHMAN BASKETBALL TEAM

Seated: Flaval Bullard, Hazel Boswell, "Kat" Liles (Manager), Frances Parker, Helen Melton,
Mildred Eaton.

Kneeling: Edith Levine, "Ginny" Rollins, Katy Sams, Margaret Knowles, Pauline Covington,
Elease Smith.

*Marjorie Gregory, Pauline Wilkerson.

*—Members of the team not appearing in the picture.



Champions All

Mildred Eaton won the hockey stick given by the Junior Class to the most outstanding Freshman hockey player. Eaton's sportsmanship and all-round ability won her this coveted honor.

"Kat" Davis—Just before sending the discus for a ride.

Martha Davis broke the Meredith record for the javelin throw.

"Alley up! little Rosie," Rozar reaches for a high one.

The gang gets the jump on the pistol.

McCourry won the victory trophy for 1932—awarded to the best all-round athlete on the campus.

No, this isn't a Bolshevik bomb-throwing contest. It's only **Pat** heaving the shot for a hefty distance.

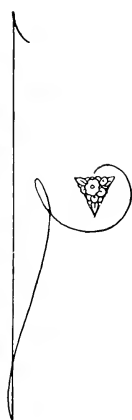
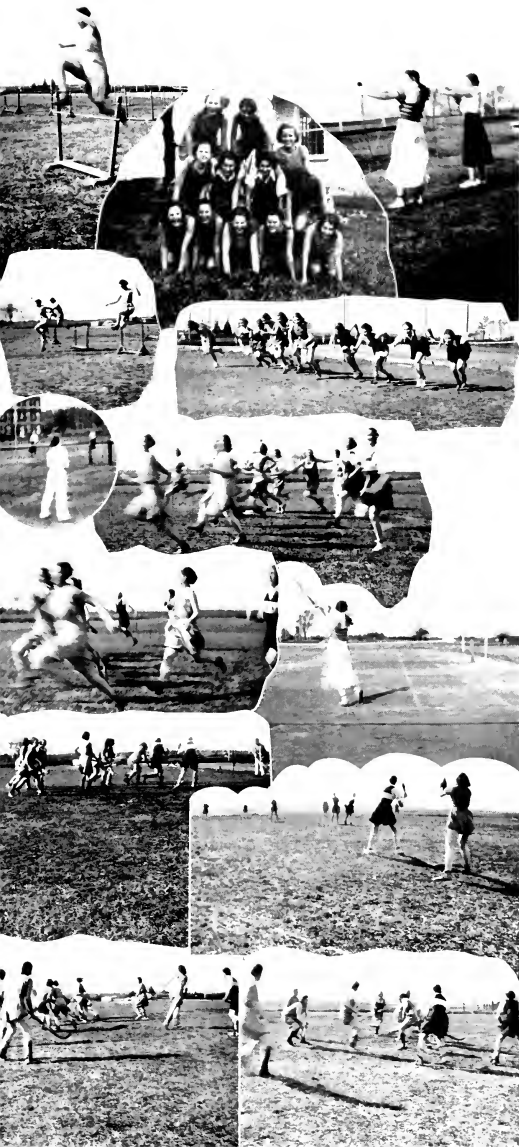
"Jo" Arnette, singles champion for 1932.

"Kat" Davis and Ruth McCourry, doubles champions for 1932.

McCourry clears the bar for a record. **Lil Uher** scores a bull's-eye to start things moving with a bang.

Bennett up—**Eaton** behind the bat—Let's go!





Minor Sports

Speed—and plenty of it—has characterized all the sports this year. In hockey, basketball, baseball, tennis, and track, the play has been fast and furious.

More power to you, kids!



EMILY MILLER
College Cheer Leader

Meredith Loyalty Song

*Rah, rah, rah, it's Meredith for me!
Rah, rah, rah, we'll ever loyal be!
We'll keep on striving through our college
days*

*To serve her and to spread her fame always,
Rah, rah, rah, we'll carry on for her!
Rah, rah, rah, our efforts she will spur!
Where'er we go we'll sing her praise—*

MEREDITH, HIP, HIP, HOORAY!

—PAT ABERNETHY, '33.

Hearts Are Loyal

*Hearts are loyal, love is true,
When we lift our praise to you,
Come every heart and come every hand,
Cheer the best college in the land.*

CHORUS

*Oh, Hi, Hi, Hi, we're all together,
Hi, Hi, Hi, Hi, nothing can sever
Hearts that adore you, hearts that uphold you.
Here's a ringing cheer for you, our Meredith!*

—MARY LEE, '32.

THE FEATURES

To feature the features is not difficult, for the beauties in this section were chosen for their beautiful features, the senior superlatives, for their superlative features, and snapshots for their snappy features. In fact, we hope you will find this entire section a novel and astounding feature, if you can feature doing so! » » »

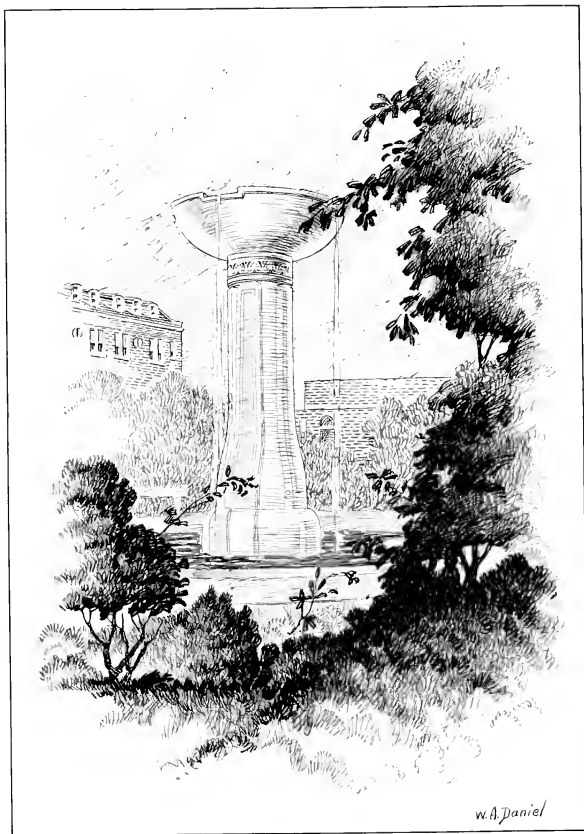


The Fountain

» » » »



LA FOUNTAIN



w.A. Daniel

THE 1933
OAK LEAVES



PRESENTS THE FOUR CLASS BEAUTIES
SELECTED BY O. MAX GARDNER,
GOVERNOR OF NORTH CAROLINA
1929-1933, SUPERLATIVES ELECTED
FROM THE SENIOR CLASS, AND
OTHER FEATURES REPRESENTA-
TIVE OF COLLEGE LIFE.





MARY FRANCES SNEAD, BEAUTY • SENIOR



GWENDOLYN CROWDER, BEAUTY • JUNIOR



MABEL STUART WEATHERSPOON, BEAUTY • SOPHOMORE



EDNA TAYLOR, BEAUTY • FRESHMAN



MARY C. SHEARIN • MISS MEREDITH



MARY ALBION AKERS • STYLE



PAT ABERNETHY • SPORT



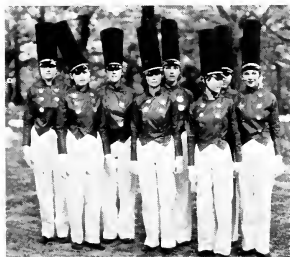
RACHEL BIGGS • CUTE



NELLIE NORRIS • MAY QUEEN, 1932

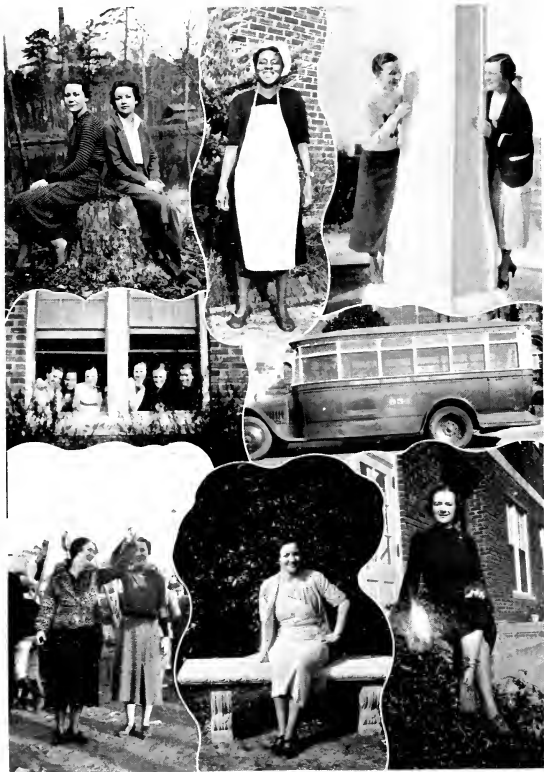


The May Day Court, which gathered in the Meredith grove in 1932, consisted of the following people: NELLIE NORRIS, *Queen*; MINWAL CATES, *Maid of Honor*; MARGARET BARRETT and HARRIET MARDRE, *Senior Attendants*; MARY FRANCES SNEAD and ELIZABETH KNOX HOOD, *Junior Attendants*; MARY LOIS PARKER and MARTHA WALLACE, *Sophomore Attendants*; VIRGINIA ROGERS and PEARL ROBERTSON, *Freshman Attendants*; BETSY HUGGINS, *Mascot*, and EMILY MILLER, *Jester*.

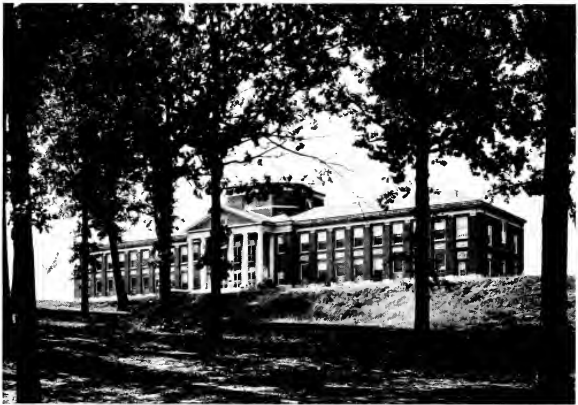




HERE AND THERE—



ABOUT OUR CAMPUS





Alma Mater



*We salute thee, Alma Mater, we salute thee with a song;
At thy feet our loyal hearts their tribute lay;
We had waited for thy coming, in the darkness waited long,
Ere the morning star proclaimed thy natal day.*

*Thou hast come through tribulation, and thy robe is clean
and white!*

*Thou art fairer than the summer in its bloom.
Thou art born unto a kingdom, and thy crown is all of light;
Thou shalt smile away the shadow and the gloom.*

*In thy paths the fields shall blossom, and the desert shall re-
joice.*

*In the wilderness a living fountain spring;
For the blind shall see thy beauty, and the deaf shall hear
thy voice,
And the silent tongues their high hosannas sing.*

*Where the rhododendron blushes on the burly mountain's
breast,*

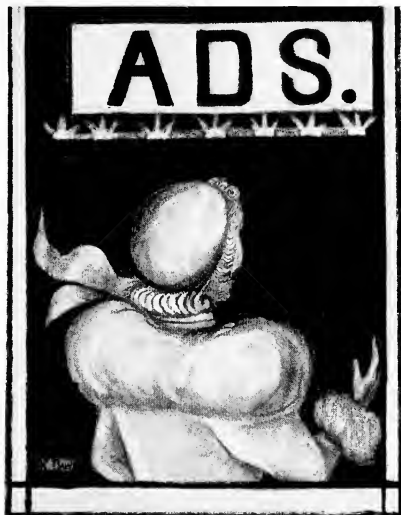
*In the midland where the wild deer love to roam,
Where the water-lily slumbers, while the cypress guards its
rest,*

Lo! Thy sunny land of promise and thy home.

*Where the sons of Carolina taught a nation to be free,
And her daughters taught their brothers to be brave;
O'er a land of peaceful plenty, from the highlands to the sea,
May thy banner, Alma Mater, ever wave!*

THE

ADS.



TAYLOR'S
"The Show Place of the Carolina's"
TO MEREDITH STUDENTS
If You Will Compare Prices, Quality, and Style at Taylor's With
Other Places, You Will Buy At
TAYLOR'S

Compliments of
T. H. BRIGGS AND SONS, Inc.
*"Carolina's Oldest Wholesale and
Retail Hardware House"*
Established 1865 RALEIGH, N. C. Phone Number 45

PATENTS, TOILETRIES, PRESCRIPTIONS
Eckerd's
"Creator of Reasonable Drug Prices"
Carrying a Complete Cosmetic Line of D'ORSAY—Paris
Soda Fountain and Luncheonette

EDWARDS AND BROUGHTON COMPANY
Congratulates the Students of Meredith on the Competency of the
OAK LEAVES STAFF
and Wishes the Publication Much Success
EDWARDS AND BROUGHTON COMPANY
"Complete Annual Service" RALEIGH, N. C.

Compliments of
HUDSON-BELK COMPANY
OUTFITTERS FOR MEREDITH
STUDENTS

Central Carolina's Largest Department Store



*Quick Relief
For
Headaches, Colds
Neuralgia and
Other Aches and
Pains*

**GARLAND C. NORRIS
AND COMPANY**

Distributors Raleigh, N. C.

Insist On
DIXIES

*For Your Health's
Sake*



**GARLAND
C. NORRIS AND CO.**
Distributors

MANGEL'S
DRESSES, UNDERWEAR
SWEATERS, SKIRTS
HOSIERY

124 FAYETTEVILLE ST.

**BYNUM PRINTING
COMPANY**

BETTER PRINTING

Phones 692, 693

119 W. Hargett Street
RALEIGH, NORTH CAROLINA

JEANS

*Smart Shop for
Smart Women*

118 FAYETTEVILLE ST.

"I really don't see where we can put
up this political speaker for the night."

"Don't worry—he always brings his
own bunk."

* * *

First: "Shall we join the ladies?"

Second: "What's the matter—are
they coming apart?"

The Shop of Original Modes
LUCIELLE

Town Home of Meredith

STATE DRUG STORE

Phone 169

Prescriptions Our Specialty

We Carry At All Times an Assortment of Rouges, Lipsticks, and Face Powders.

Bring Us Your Film Negatives For Printing

AGENT FOR SIDDELL

**DR. A. G. SPINGLER
DR. G. C. HODGENS**
Optometrists

17 West Hargett Street
RALEIGH, N. C.

Ground Floor, Odd Fellows Building
*We Duplicate Broken Lenses and
Make All Kinds of Optical
Repairs.*

**FRATERNITY, COLLEGE AND
CLASS JEWELRY**

Commencement Announcements and
Invitations

Jeweler to the Senior Class and Societies
of Meredith College

L. G. Balfour Company

Manufacturing Jewelers and Stationers

Attleboro, Massachusetts



"Raleigh's Smartest Shop"

126 Fayetteville Street
Raleigh, N. C.

Smith: "So you're setting your boy up in the bakery business?"

Jones: "Yes, he's so keen for dough and such a swell loafer that I'm sure he'll rise in the business."

* * *

"Is that good soup?"

"Sure, fourteen carrot."

J. C. BRANTLEY

Druggist

Agent for Elizabeth Arden's
Toilet Preparations

Meet Your Friends At Our Fountain

Homemakers of Tomorrow

Graduation is one step further toward the ultimate goal of every young woman—an efficient homemaker.

A college education has placed you in a position to plan intelligently. To assist you in carrying out those plans efficiently, economically and quickly is womankind's most versatile servant—ELECTRICITY.

Instantly—as quickly as the thought that calls it—electricity springs into service at the snap of a switch. It performs every household task, yet shows no sign of fatigue. Best of all, its benefits may be enjoyed at a cost so low that pennies will pay for its service.



*CAROLINA POWER &
LIGHT COMPANY*

THE PHOTOGRAPHS IN
THIS ANNUAL

WERE MADE BY

DUNBAR & DANIEL

Incorporated

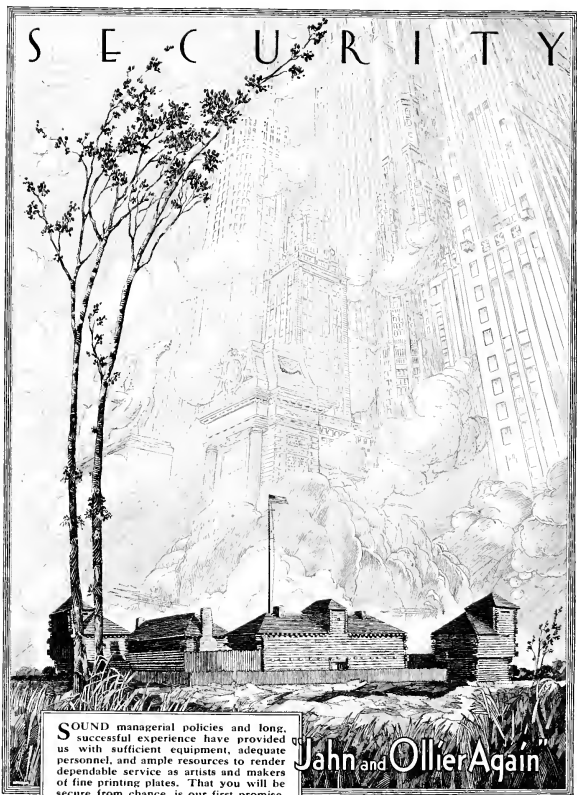
132 FAYETTEVILLE STREET

RALEIGH, N. C.

*Largest College Annual Photographers
in the South*



FINE PORTRAITS
PROMPT SERVICE



SOUND managerial policies and long, successful experience have provided us with sufficient equipment, adequate personnel, and ample resources to render dependable service as artists and makers of fine printing plates. That you will be secure from chance, is our first promise.

JAHN & OLLIER ENGRAVING CO.
817 West Washington Blvd., - Chicago, Illinois

"Jahn and Ollier Again"

In the foreground - Ft. Dearborn re-erected in Grant Park on Chicago's lake front. Illustration by Jahn & Ollier Art Studios.

THIS BOOK PRINTED BY.....



THE
WORLD'S
LARGEST
PUBLISHERS
OF
COLLEGE
ANNUALS



COLLEGE ANNUAL HEADQUARTERS

Highest Quality Workmanship Superior Extensive Service



