



Carlyle Manly
Goldsboro, N.C.
Meredith College
1933-34



CARLYLE
CAMPBELL
LIBRARY

Meredith College
Raleigh, NC 27607-5298

G L O R Y F Y I N G T H E



E X
I
L I B R I S

C O L L E G E A N N U A L

FOREWORD

ZEIGFIELD HAS GLORIFIED
THE AMERICAN GIRL IN
HIS "FOLLIES" SO WE
PROPOSE TO GLORIFY
THE AMERICAN ANNUAL
IN THESE PAGES—"OUR
FOLLIES." * * * *

CONTENTS

BOOK ONE ❁ THE COLLEGE
OAK LEAVES OF MEREDITH COLLEGE

BOOK TWO ❁ THE CLASSES
Y'S AND OTHER Y'S OF CONVERSE COLLEGE

BOOK THREE ❁ THE ORGANIZATIONS
ENTRE NOUS OF HOWARD COLLEGE

BOOK FOUR ❁ THE FEATURES
LA REVUE OF BIRMINGHAM-SOUTHERN COLLEGE

BOOK FIVE ❁ THE ADVERTISEMENTS
LEST-WE-FORGET OF UNION COLLEGE

Alma Mater



*We salute thee, Alma Mater, we salute thee with a song;
At thy feet our loyal hearts their tribute lay;
We had waited for thy coming, in the darkness waited long,
Ere the morning star proclaimed thy natal day.*

*Thou hast come through tribulation, and thy robe is clean and white!
Thou art fairer than the summer in its bloom,
Thou art born unto a kingdom, and thy crown is all of light;
Thou shalt smile away the shadow and the gloom.*

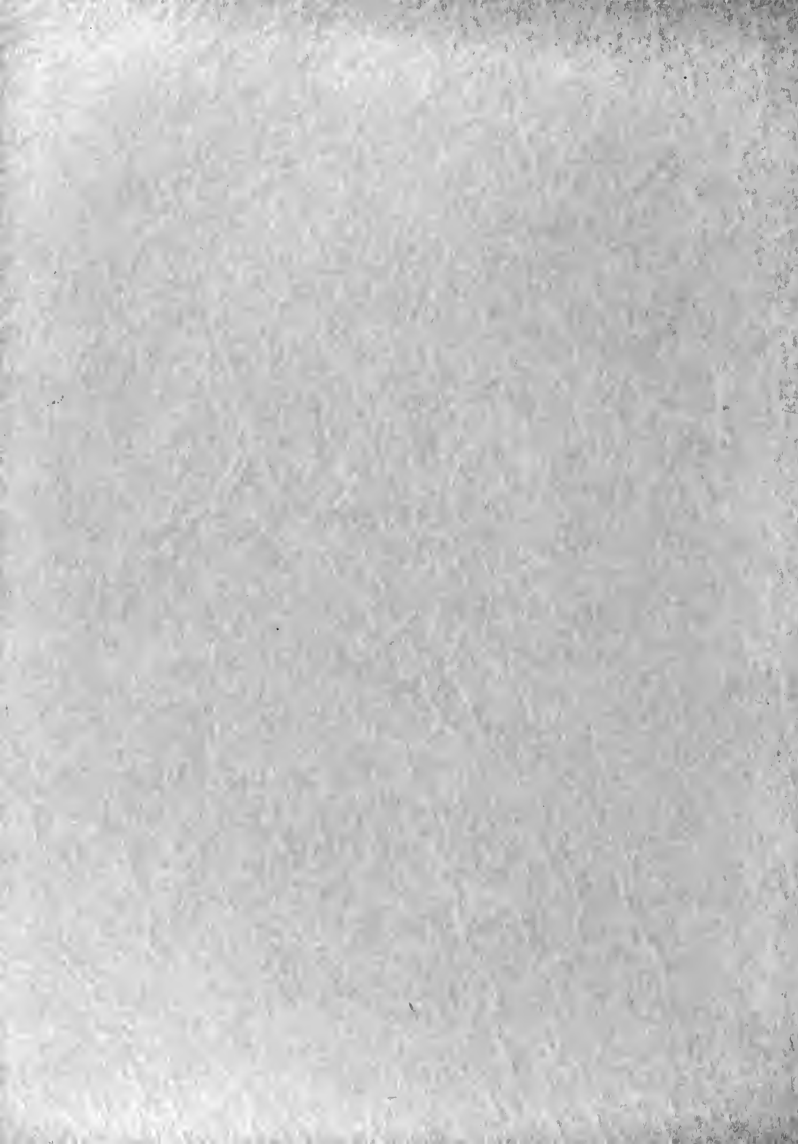
*In thy paths the fields shall blossom, and the desert shall rejoice.
In the wilderness a living fountain spring:
For the blind shall see thy beauty, and the deaf shall hear thy voice,
And the silent tongues their high hosannas sing.*

*Where the rhododendron blushes on the burly mountain's breast.
In the midland where the wild deer love to roam,
Where the water-lily slumbers, while the cypress guards its rest,
Lo! Thy sunny land of promise and thy home.*

*Where the sons of Carolina taught a nation to be free,
And her daughters taught their brothers to be brave!
O'er a land of peaceful plenty, from the highlands to the sea,
May thy banner, Alma Mater, ever wave!*



T H E C O L L E G E





SIGHTS † AND † INSIGHTS
SALEM COLLEGE, WINSTON-SALEM, N. C.

V I E W S



•
*View of
the Fountain*
•

M E R E D I T H C O L L E G E

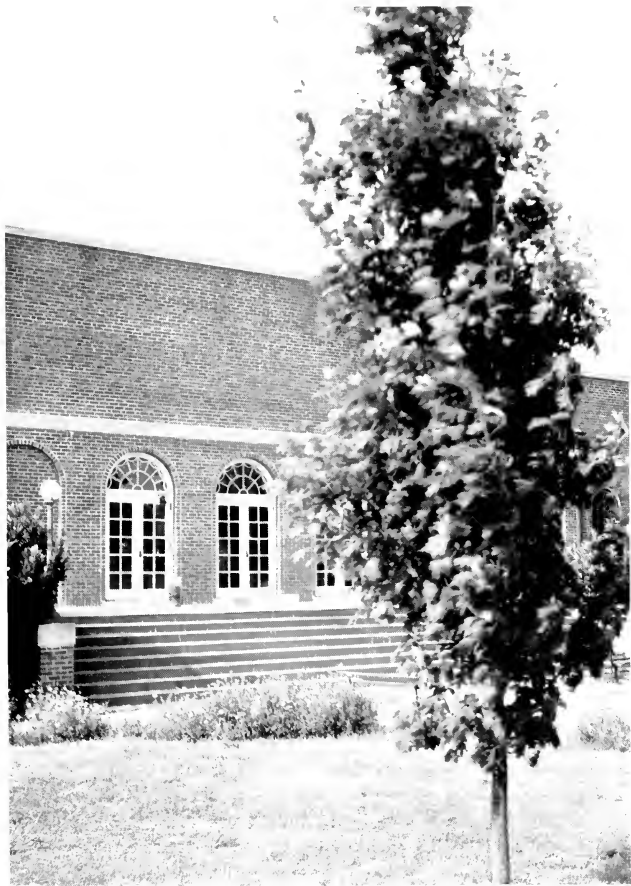


•
*View Through
An Arch*
•

T H E O A K L E A V E S



•
*View of
the Columns*
•



•
*View of
the Dining
Room*
•

T H E O A K L E A V E S



•
*View of
the Steps*
•



•
*A Side of
One of the
Buildings*
•

T H E O A K L E A V E S



•
Above:
The B-Hive
•

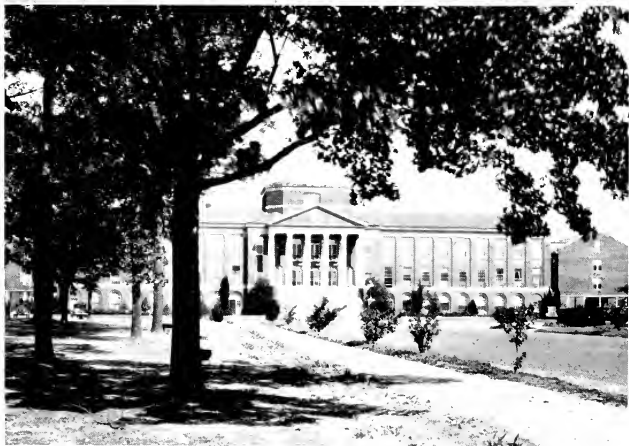


•
Below:
Oak Leaves
at Meredith
•

M E R E D I T H C O L L E G E



•
Above:
Where friends
meet
•



•
Below:
The front
of the
Main Building
•

LOUISIANA COLLEGE

ALEXANDRIA, LOUISIANA



Alma Mater

1. LOCATION:

*Where the Louisiana Pine Tree,
Spreads its mighty arms;
Stands our own dear Alma Mater,
Blessed with Heaven's charms.*

2. VOCATION:

*Christian knowledge e'er bestowing,
'Till eternity;
With the light of truth still glowing,
On her brow so free.*

3. INSPIRATION:

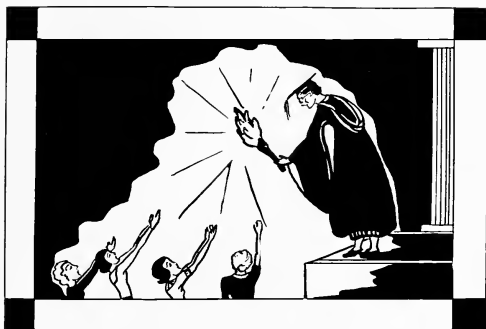
*Ever onward, Sons and Daughters,
Lest thy light shall fail;
Be thy watch word through the battle,
Alma Mater, Hail!*

4. RESOLVE:

*Never shall thy children shame thee,
Never I owe shall fail;
Young and old we give thee promise,
Alma Mater, Hail!*

CHORUS:

*Louisiana, Louisiana,
Louisiana, Louisiana;
We will never cease to love thee,
Alma Mater, hail to thee!*



P I N E / / K N O T
LOUISIANA COLLEGE, ALEXANDRIA, LA.

THE FACULTY



CHARLES E. BREWER, A.M., Ph.D., LL.D.

President



DR. J. RUFUS HUNTER
President Board of Trustees



J. GREGORY BOMHOUR, A.B., A.M.

Dean



MISS CAROLINE ROBINSON BIGGERS, A.B.
Dean of Women

FACULTY

OFFICERS OF ADMINISTRATION



FLORENCE MARIAN HOAGLAND, A.B., A.M., PH.D.
Assistant Dean of Women
Assistant Professor of Psychology and Philosophy



FULLER BROUGHTON HAMRICK, A.B.
Bursar

GERIKUDE ROYSTER SORRELL
Director of Physical Education



MARGARET FORGEUS, A.B.
Librarian

ETHEL EVANGELINE ENGLISH, B.S., A.M.
Freshman Advisor
Instructor in Education and Geography



MAE FRANCES GRIMMER
Secretary Alumnae Association

MARY LUCILE KNIGHT, A.B.
Student Secretary

LATTIE RHODES
Secretary to the President



ANNE MCCASLESS
Secretary to the Bursar

MARY FRANCES WELSH, B.S.
Dietitian

OFFICERS OF ADMINISTRATION

ANNIE LEE WHITE
House Director



NORA KELLY, R. N.
College Nurse

ANNIE KEITH, A.B.
Assistant Dietitian



DEPARTMENT OF ARTS AND SCIENCES

LEMUEL ELMER McMILLIAN FREEMAN
A.B., A.M., E.D., TH.D.
Professor of Religion



J. GREGORY BOOMHOUR, A.B., A.M.
Professor of Physics

ERNEST F. CANADY, A.B., A.M.
Professor of Mathematics



SAMUEL GAYLE RILEY, A.B., A.M.
Professor of History

LULA GAINES WINSTON, B.S., PH.D.
Professor of Chemistry



JULIA HAMLET HARRIS, PH.B., A.M., PH.D.
Professor of English

LENA AMELIA BARBER, B.S., A.B., M.S.
Professor of Biology



DEPARTMENT OF ARTS AND
SCIENCE
(Continued)

ELLEN DOZIER BREWER, A.B., B.S., A.M.
Professor of Home Economics



HELEN PRICE, A.B., PH.D.
Professor of Latin and Greek

BUNYAN YATES TYNER, A.B., A.M.
Professor of Education



MARY LYNCH JOHNSON, A.B., A.M., PH.D.
Assistant Professor of English

MARY LOUISE PORTER, PH.B., A.M., PH.D.
Associate Professor of Modern Languages



JENNIE M. HANYEN, B.S., A.M.
Associate Professor of Home Economics

NETTIE SOUTHWORTH HERNDON, A.B., A.M.
Assistant Professor of History



LILLIAN PARKER WALLACE, A.B., A.M.
Assistant Professor of History

ISAAC MORTON MERCER, A.M., TH.M., D.D.
Assistant Professor of Religion

MARY JAMES SPRUILL, A.B., A.M.
Assistant Professor of English

M E R E D I T H C O L L E G E

DEPARTMENT OF ARTS AND SCIENCES

(Continued)

MARY YARBROUGH, A.B., A.M.
Assistant Professor of Chemistry



ALICE BARNWALL KEITH, B.S., M.S.
Assistant Professor of History



ELIZABETH BOOMHOUR, A.B., A.M.
Assistant Professor of Biology



DORIS KATHERINE TILLERY, A.B.
Instructor in Mathematics

CAROLYN ARNOLD PEACOCK, A.B., A.M.
Instructor in English



ETHEL DAY, A.B.
Instructor in French

MELBA HUNT, A.B.
Instructor in Biology

MARY HENLY, A.B.
Instructor in German

DEPARTMENT OF MUSIC

LESLIE P. SPELMAN, A.M., MUS.B., F.A.G.O.
Professor of Music

MAY CRAWFORD
Associate Professor of Piano





FACULTY
DEPARTMENT OF MUSIC

CHARLOTTE ELIZABETH ARMSTRONG
Associate Professor of Violin

ETHEL M. ROWLAND
Associate Professor of Voice

AILEEN McMILLAN, MUS.B.
Acting Assistant Professor of Piano

VIRGINIA BRANCH, B.M.
Instructor in Piano

ALVERDA ROSEL
Instructor in Violin-cello



DEPARTMENT OF ART

IDA ISABELLA POTEAT
Professor of Art

MARY PAUL TILLERY
Associate Professor of Art

ELIZABETH DELIA DIXON CARROLL, M.D.*
Professor of Physiology; College Physician

CATHERINE ALLEN, A.B., A.M.*
Professor of Modern Languages

MARGARET HIGHSMITH BROWN, B.M.*
Lecturer in Public School Music



*Faculty members whose pictures do not appear in the ANNUAL.

STUDENT ASSISTANTS

ASSISTANTS IN CHEMISTRY

VIRGINIA GARNETT MEREDITH JOHNSON

ASSISTANTS IN BIOLOGY

HELEN SEARS PEARL ROBERTSON
ELISABETH DAVIDSON

ASSISTANTS IN THE LIBRARY

MARY CHANDLER MARY RUFFIN
DOROTHY DOCKERY GRACE LAWRENCE
SUSAN EMMA SLOAN NANCY VICCELLIO
NORMA ROSE ELIZABETH AUSTIN
CAROLINE GARRISON

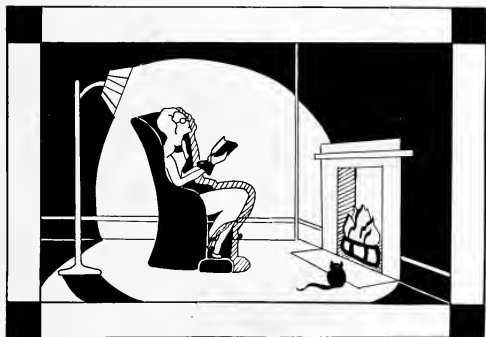
ASSISTANTS IN PHYSICAL EDUCATION

MARGUERITE WARREN JOSEPHINE TURNER



T H E C L A S S E S





T H E / / S P I N S T E R
H O L L I N S C O L L E G E , H O L L I N S , V I R G I N I A

T H E S E N I O R S



LAWSON HENRY LOWRANCE III
Class Mascot
[SON MARTHA (DAVIS) LOWRANCE, EX-'34]

SENIOR CLASS
OFFICERS



KATHERINE DAVIS, *President*



MR. J. NEAL DAVIS
Senior Voucher

- KATHARINE DAVIS *President*
ELEANOR ROZAR *Vice-President*
MAGDALYN DAVIS *Secretary*
JEAN SIMPSON *Treasurer*

T H E O A K L E A V E S



B l a n c h e A l l e n

CARY, NORTH CAROLINA

B.S.

Philaretian

Alliance Francaise, 1, 2; Town Girls' Club, 1, 2, 3, 4.

J o s e p h i n e A r n e t t e

RALEIGH, NORTH CAROLINA

B.M.

Philaretian

Choir, 1, 2, 3; Glee Club, 2, 3, 4; President Glee Club, 4; Hockey, 1, 4; Basketball, 1, 2, 3, 4;
Tennis, 1, 2, 3, 4; Singles Championship in Tennis, 2.



M a r y G i l m e r A n d r e w s

MARION, MARYLAND

A.B.

Astrotecton

B. Y. P. U.; Y. W. A.

K a t h l e e n A m m o n s

MARS HILL, NORTH CAROLINA

A.B.

Astrotecton

Mars Hill College, 1, 2; Mars Hill Club, 3, 4; Secretary Mars Hill Club, 4; Choir, 3, 4; Student League of Women Voters, 3, 4; Officer B. Y. P. U., 3; Y. W. A.



P a u l i n e B a i l e y

BURNSVILLE, NORTH CAROLINA

A.B.

Astroctkon

Home Economics Club, 1, 2, 4; Barber Biology Club, ;2 Gym Letter, 2; B. Y. P. U., 3, 4.

D i x i e L e e B a l e

CANMER, KENTUCKY

A.B.

Philaretian

Randolph-Macon Woman's College, 1, 2; Western Kentucky Summer School, 2; B. Y. P. U. Officer, 3; President Sunday School Class, 3; Service Band, 3, 4; Honor Roll, 3; Colton English Club, 3, 4; President Colton English Club, 4; News Bureau, 3, 4; Y. W. A. President, 4; Official Chaperon, 4.



J e w e l l B a l l e n t i n e

FUQUAY SPRINGS, NORTH CAROLINA

A.B.

Astrotekton

Alliance Francaise, 1, 2; Officer B. Y. P. U., 1, 2; Sunday School Class President, 2; Assistant Sunday School Director, 3; Student League of Women Voters, 3; Reading Honors, 4; Stunt, 2, 3.

E s t h e r W i n i f r e d B a r h a m

SELMA, NORTH CAROLINA

A.B.

Philaretian

Alliance Francaise, 1; B. Y. P. U., 1, 3, 4; Y. W. A., 2, 4; Barber Biology Club, 2, 3, 4; Secretary Barber Biology Club, 3; Student League of Women Voters, 3; Reading Honors, 3; Gym Letter, 1, 2, 3.



E v e l y n B a r k e r

LEAKSVILLE, NORTH CAROLINA

A.B.

Philaretian

Alliance Francaise, 1; Gym Letter, 2; Sophomore Editor of *The Acorn*, 2; Junior Editor of *The Acorn*, Associate Editor, OAK LEAVES, 3; Editor-in-Chief, OAK LEAVES; Assistant Head of News Bureau, 3, 4; Stunt Committee, 2, 3, 4; Colton English Club, 3, 4; International Relations Club, 3, 4; Student League of Women Voters, 3, 4; Reporter Student League of Women Voters, 3; Class Superlative, 4; Nominating Committee, 4; Honor Roll, 2, 3, 4.

C l a i r e B e n t h a l l

WOODLAND, NORTH CAROLINA

A.B.

Astrrotekton

Alliance Francaise, 1; Wake Forest Summer School, 3; College Band, 1, 2; Treasurer Astrrotekton Literary Society, 4; Maid of Honor in May Court, 4.



Eleanor Wilson Beddingfield

MILLBROOK, NORTH CAROLINA

A.B.

Astrotekton

Choir, 1, 2, 3; Granddaughters' Club, 1, 2, 3, 4; Town Girls' Club, 1, 2, 3, 4; Home Economics Club, 4.

M a r g a r e t R u t h B i r d

RALEIGH, NORTH CAROLINA

A.B.

Philaretian

Alliance Francaise, 1; Choir, 1, 2; Town Girls' Club, 1, 2, 3, 4; President Town Girls' Club, 4; Home Economics Club, 3, 4; Reporter for Home Economics Club, 3, 4; Class Superlative, 4.



K a t h e r i n e O ' B r i a n B l a l o c k

OXFORD, NORTH CAROLINA

A.B.

Astroekton

Alliance Française, 1; B. Y. P. U., 1, 2, 3, 4; Student League of Women Voters, 3, 4; B. S. U. Council, 3, 4; Treasurer B. S. U., 3; Sunday School Director, 4; Choir, 3; Kappa Nu Sigma Honor Society, 4; Official Chaperon, 4.

E l i z a B r i g g s

RALEIGH, NORTH CAROLINA

A.B.

Philaretian

Alliance Française, 1; Stunt Committee, 1, 2, 3, 4; Assistant Business Manager *Tzig*, 2; Treasurer Philaretia Literary Society, 2; Little Theatre Dramatic Club, 2, 3, 4; President Little Theatre, 3; Business Manager *Tzig*, 3; Secretary Class, 3; International Relations Club, 3, 4; Vice-President Student Division North Carolina Conference of Social Workers, 3; President, 4; Nominating Committee, 4; Class Superlative, 4; President of Philaretian Literary Society, 4.



A m o r e t t e C a r o l y n B y r d

HAMLET, NORTH CAROLINA

A.B.

Astrotekton

Alliance Francaise, 1; B. Y. P. U. President, 2; Student Government Council, 2; Class Basketball, 2, 3; Treasurer Student Government Council, 3; B. S. U. Council, 3; Director of Sunday School, 3; Y. W. A. Circle, 4; Nominating Committee, 4; College Marshal, 4; Delegate to N. S. F. A., 3; Student League of Women Voters, 4.

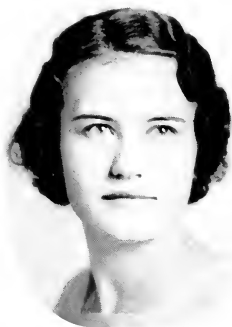
G r a c e L u c i l e C a r r

WASHINGTON, DISTRICT OF COLUMBIA

A.B.

Astrotekton

Varsity Hockey Team, 1; Class Basketball, 1; Class Treasurer, 2; Treasurer Astrotekton Literary Society, 3; Advertising Manager OAK LEAVES, 3; President Astrotekton Literary Society, 4; Nominating Committee, 4.



H a z e l E l i z a b e t h C o p p e d g e

WAKE FOREST, NORTH CAROLINA

B.S.

Philaretia

Alliance Francaise, 1; Town Girls' Club, 1; Student League of Women Voters, 3; Wake Forest Summer School, 1, 2, 3.

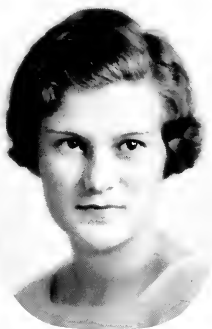
B e e C o r n e r

RALEIGH, NORTH CAROLINA

A.B.

Astrotekton

N. C. State College, 1; N. C. State Summer School, 1, 2; Home Economics Club, 3, 4; Town Girls' Club, 3, 4; Orchestra, 3, 4.



M a r y A t k i n s o n C r e a t h

WOODSDALE, NORTH CAROLINA

A.B.

Philaretian

Averett College, 1, 2; Class Hockey, 3, 4; Varsity Hockey, 4; Sunday School Officer, 3; President Sunday School Class, 4; B. Y. P. U. Officer, 3, 4; Y. W. A., 3, 4; Barber Biology Club, 3, 4.

G w e n d o l y n C r o w d e r

RALEIGH, NORTH CAROLINA

A.B.

Philaretian

Class President, 1; May Day Attendant, 1; Nominating Committee, 1; Stunt Committee, 1, 2; Alliance Francaise, 1; Society Marshal, 2, 3; Assistant Advertising Manager OAK LEAVES, 2; Business Manager OAK LEAVES, 3, 4; Chief Marshal Philaretian Literary Society, 4; International Relations Club, 4; Class Superlative, 4.



M a r y F l o r e n c e C u m m i n g s

REIDSVILLE, NORTH CAROLINA

A.B.

Astrotekton

Alliance Francaise, 1; Student League of Women Voters, 3; Secretary Y. W. A., 3; *Twig* Staff, 2; Managing Editor *Twig*, 4; B-Hive Committee, 1, 2, 3, 4; Secretary B-Hive Committee, 3; Chairman, 4; House President, 4; Kappa Nu Sigma Honor Society, 3, 4; Vice-President Honor Society, 4.

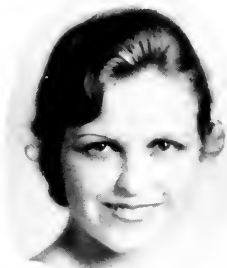
D o r o t h y D a v i s

WAKE FOREST NORTH CAROLINA

A.B.

Astrotekton

College Choir, 1; Town Girls' Club, 2, 3; Alliance Francaise, 1, 2, 3; Granddaughters' Club, 1, 2, 3, 4; Barber Biology Club, 2; Wake Forest Summer School, 2, 3.



K a t h a r i n e E l i s e D a v i s

WINSTON-SALEM, NORTH CAROLINA

Art

Astrotekton

Class Cheer Leader, 1; Varsity Hockey Team, 1, 2, 3, 4; Varsity Basketball Team, 1, 3, 4; Track Team, 1, 2, 4; Tennis, 1, 2, 3, 4; Varsity Tennis, 1, 2; Tennis Doubles Championship, 1, 2; Granddaughters' Club, 1, 2, 3, 4; Stunt Committee, 1, 2, 3, 4; Secretary Athletic Association, 2; Vice-President Class, 2, 3; Vice-President Astrotekton Literary Society, 3; Art Editor OAK LEAVES; Student League of Women Voters, 2, 3; Vice-President Student League of Women Voters, 3; May Day Attendant, 3; Nominating Committee, 4; Class President, 4.

M a g d a l y n D a v i s

WILMINGTON, NORTH CAROLINA

A.B.

Philaretian

Alliance Francais, 1; Officer B. Y. P. U., 1; Home Economics Club, 3, 4; Granddaughters' Club, 1, 2, 3, 4; Secretary Class, 4; Vice-President Philaretian Literary Society, 4; Stunt, 3, 4.



Mildred Elizabeth DeWeese

SALISBURY, NORTH CAROLINA

A.B.

Astratekton

Mars Hill College, 1, 2; Wake Forest Summer School, 3; President Mars Hill Club, 3; Sunday School Officer, 3; Student League of Women Voters, 4; Class Basketball, 4.

Helen Elizabeth Dobson

WILMINGTON, NORTH CAROLINA

B.S.

Philaretian

Alliance Francaise, 1; College Choir, 1, 2, 3, 4; Y. W. A., 1, 2, 3, 4; B. Y. P. U., 1, 2, 3, 4; B. Y. P. U. Officer, 1, 2, 3; General B. Y. P. U. Reporter, 4; Sunday School Class Officer, 2; Student League of Women Voters, 4; News Bureau, 3, 4; Manager Music Store, 4; *Twig* Staff, 4; Colton English Club, 3, 4; House President, 4; Chaperon, 4.

M E R E D I T H C O L L E G E



A n n E a r l y

WINDSOR, NORTH CAROLINA

A.B.

Philaretian

Bertie County Club, 1; Alliance Francaise, 1; B. Y. P. U. Officer, 1, 2, 4; Publicity Director
Y. W. A., 3; Student League of Women Voters, 3, 4.

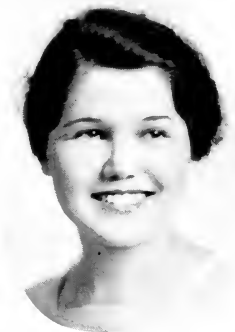
M a r g a r e t S h i e l d s E v e r e t t

GREENVILLE, NORTH CAROLINA

A.B.

Astrocton

Grandaughters' Club, 1, 2, 3, 4; B. Y. P. U. Officer, 1, 2, 3; Student League of Women Voters,
3, 4; Sunday School Class President, 4; Vice-President Grandaughters' Club, 4; Official
Chaperon, 4.



C a t h e r i n e F a r r i s

RALEIGH, NORTH CAROLINA

A.B.

Philaretian

Alliance Francaise, 1, 2; Town Girls' Club, 1, 2, 3, 4; Choir, 1, 2, 3, 4; N. C. State Summer School, 2; Glee Club, 1, 2, 3, 4; Treasurer Glee Club, 4; International Relations Club, 4; Colton English Club, 4; Student League of Women Voters, 4; Scribblers Club, 4; Editor Handbook, 4.

V i r g i n i a P e a r l F a r r i s

RALEIGH, NORTH CAROLINA

A.B.

Philaretian

Choir, 1, 2, 3, 4; Town Girls' Club, 1, 2, 3, 4; Alliance Francaise, 1, 2, 3; French Play, 2; Stunt Committee, 2; N. C. State Summer School, 2; Student League of Women Voters, 2, 4; Le Cercle Francais, 3; International Relations Club, 3, 4; Glee Club, 3, 4; Colton English Club, 3, 4; Assistant Business Manager *Acorn*, 3, 4; Vice-President Town Girls' Club.



G e r a l d i n e G a d d y

ALBEMARLE, NORTH CAROLINA

A.B.

Philaretian

Alliance Francaise, 1; Home Economics Club, 1, 2, 3, 4; Reporter State Home Economics Association, 2; Band, 2; Orchestra, 2, 3; Reporter Home Economics Club, 3; Student League of Women Voters, 3, 4; Vice-President Home Economics Club, 4; Colton English Club, 4.

R u b y G a r n e r

NEWFORT, NORTH CAROLINA

B.S.

Astroekton

Choir, 1, 2, 3, 4; Alliance Francaise, 1.



V i r g i n i a G a r n e t t

SACRAMENTO, CALIFORNIA

A.B.

Astroctkon

Honor Roll, 1; Alliance Francaise, 1; Class Treasurer, 1; Class Basketball, 1, 2, 3, 4; Varsity Basketball, 1, 2, 3, 4; Manager Basketball, 2; Stunt Committee, 1, 2, 3, 4; Vice-President Class, 2; Acting President Class, 2; Class Hockey, 2, 3, 4; Gym Letter, 2; Little Theatre Dramatic Club, 2, 3, 4; Y. W. A. Circle Leader, 2; B. Y. P. U. Reporter, 2; International Relations Club, 2, 3, 4; Class Editor *Acorn*, 2; Nominating Committee, 2, 3, 4; President College Department First Baptist Church, 3; Class President, 3; Science Editor *Acorn*, 3; Student League of Women Voters, 3, 4; Student Assistant in Chemistry, 3, 4; Colton English Club, 4; Official Chaperon, 4; Class Superlative, 4; Secretary State Student Government Association, 4; Student Government Council, 3; President Student Government Association, 4.

K a t h l e e n G i l l e l a n d

STATESVILLE, NORTH CAROLINA

A.B.

Philartian

Mars Hill College, 1, 2; Barber Biology Club, 3; President Sunday School Class, 3; B. Y. P. U. Officer, 3; Class Hockey, 3, 4; Vice-President Service Band, 4; President Mars Hill Club, 4.



A l i c e G i l l i a m

STATESVILLE, NORTH CAROLINA

A.B.

Astrotekton

Mitchell College, 1; Basketball, 3, 4.

F r a n c e s P a u l i n e G r a y

LA GRANGE, NORTH CAROLINA

A.B.

Philaretian

Twig Reporter, 1, 2; Alliance Francaise, 1, 2, 3, 4; Secretary Sunday School Class, 1; B. Y. P. U. Officer, 1; French Play, 2; Stunt Committee, 2; Le Cercle Francaise, 3, 4; Student League of Women Voters, 4; Kappa Nu Sigma Honor Society, 4.



M a r y C a t h e r i n e H a y e s

MULLINS, SOUTH CAROLINA

A.B.

Philarettian

South Carolina Club, 1, 2, 3, 4; Student League of Women Voters, 1, 2, 3, 4; Y. W. A., 1, 2, 3, 4;
B. Y. P. U., 1, 2, 3, 4; Varsity Hockey, 3; Vice-President South Carolina Club, 4; Secretary-
Treasurer Student League of Women Voters, 4.

M a r g a r e t B u r t o n H e s t e r

ROXBORO, NORTH CAROLINA

A.B.

Philarettian

Student League of Women Voters.



K a t h a r i n e B y r d H i c k s

ROCKY MOUNT, NORTH CAROLINA

A.B.

Astroekton

Brenau College, 1; Granddaughters' Club, 3; Student League of Women Voters, 3, 4; Wake Forest Summer School, 3; Circle Leader Y. W. A., 3; President B. Y. P. U. Group 3; Vice-President Astroekton Society, 4.

B e t s y H o c u t t

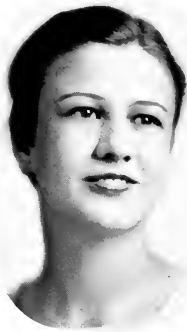
BURGAW, NORTH CAROLINA

A.B.

Philaretian

Campbell College, 1, 2; Wake Forest Summer School, 3; Campbell College Club, 3, 4; Home Economics Club, 3, 4.

T H E O A K L E A V E S



L o u i s e H o c u t t

BURGAW, NORTH CAROLINA

A.B.

Philaretian

Campbell College, 1, 2; Barber Biology Club, 3; Basketball, 3; Campbell College Club, 3, 4;
Assistant Director Sunday School, 4.

L e n a M a r t h a H o n e y c u t t

RALEIGH, NORTH CAROLINA

B.S.

Philaretian

Choir, 1, 2, 3, 4; Town Girls' Club, 1, 2, 3, 4; Wake Forest Summer School, 2; N. C. State
Summer School, 3; Marshal Philaretian Society, 4.



M i l d r e d S t e w a r t H o w a r d

ROSEBORO, NORTH CAROLINA

A.B.

Philarectian

Pineland Junior College, 1, 2; B. Y. P. U., 1, 2, 3, 4; Y. W. A., 3, 4.

V i r g i n i a H u d s o n

CASCADE, VIRGINIA

A.B.

Philarectian

Averett College, 1; Alliance Francaise, 2; Wake Forest Summer School, 2, 3; Barber Biology Club, 2, 3, 4.

T H E O A K L E A V E S



J a n e I r v i n

SHELBY, NORTH CAROLINA

B.S.

Astrotekton

Boiling Springs, 1; Wake Forest Summer School, 3; Student League of Women Voters, 4.

G r a c e E. L a w r e n c e

APEX, NORTH CAROLINA

A.B.

Philaretian

B. Y. P. U. Officer, 1; Y. W. A. Circle Leader, 2; *Twig* Reporter, 2; Student Assistant in Psychology, 3; Colton English Club, 3, 4; Secretary Colton English Club, 3; Junior Editor *Acorn*, 3; Editor-in-Chief of *Acorn*, 4; Student League of Women Voters, 4; Sunday School Officer, 3, 4; Nominating Committee, 4; Chairman Scribblers' Club, 4.



E l i z a b e t h L e G r a n d

SHELBY, NORTH CAROLINA

A.B.

Astrotekton

Peace Junior College, 1, 2; Stunt Committee, 3, 4; Hockey, 3, 4; College Cheer Leader, 4;
International Relations Club, 4; Little Theatre Dramatic Club, 4; Art Editor OAK LEAVES, 4;
Student League of Women Voters, 4; K. K. Klub, 3, 4; Astrotekton Cheer Leader, 4.

D o r i s L i n e b e r r y

RALEIGH, NORTH CAROLINA

A.B.

Astrotekton

Town Girls' Club, 1, 2, 3, 4; Alliance Francaise, 1, 2.

T H E O A K L E A V E S



I r e n e L i t t l e

RALEIGH, NORTH CAROLINA

A.B.

Astroctkon

Peace Junior College, 1, 2; Colton English Club, 3, 4; International Relations Club, 3, 4.

A d e l a i d e L o c k h a r t

DURHAM, NORTH CAROLINA

A.B.

Astroctkon

B. Y. P. U., 1, 2; B. Y. P. U. Union Officer, 1; Y. W. A., 3; Barber Biology Club, 3, 4.



S a l l i e B a r k s d a l e L o v e l a c e

PINETOPS, NORTH CAROLINA

A.B.

Philaretian

Granddaughters' Club, 1, 2, 3, 4; B. Y. P. U. Officer, 3; Student League of Women Voters, 3, 4;
Official Chaperon, 4.

M a r y D e c i e L u t h e r

APEX, NORTH CAROLINA

B.S.

Philaretian

Alliance Francaise, 1; Choir, 1, 2, 3, 4; B-Hive Manager, 2, 3; Orchestra, 3; Sunday School
Officer, 3.



R u t h M c C o u r r y

DAYBOOK, NORTH CAROLINA

A.B.

Astrackton

Alliance Francaise, 1, 2; B. Y. P. U. Officer, 1, 3; Student League of Women Voters, 1, 2, 3, 4; Varsity Track, 1, 3, 4; Varsity Basketball, 2, 3, 4; Varsity Tennis, 2; Varsity Hockey, 3, 4; Manager Basketball, 3; President Athletic Association, 4; Nominating Committee, 4.

F r a n c e s N o v e n e M c M a n u s

GIBSON, NORTH CAROLINA

A.B.

Philaretian

B. Y. P. U., 1, 2, 3, 4; Sunday School Class Officer, 2; Vice House President Stringfield Hall, 3; Colton English Club, 3, 4; Student League of Women Voters, 4; House President Stringfield Hall, 4; Student Government Council, 3, 4; Official Chaperon, 4.



V i r g i n i a D a r e M a n n

RALEIGH, NORTH CAROLINA

A.B.

Philaretian

Peace Junior College, 1, 2; Barber Biology Club, 3, 4.

E m i l y G r a h a m M i l l e r

RALEIGH, NORTH CAROLINA

A.B.

Astrotekton

Twig Staff, 1, 2, 3, 4; Reporter *Twig*, 1, 2; Managing Editor *Twig*, 3; Associate Editor *Twig*, 4; Little Theatre Dramatic Club, 2, 3, 4; President Little Theatre, 4; Business Manager *Acorn*, 4; International Relations Club, 3, 4; Student League of Women Voters, 4; College Cheer Leader, 3; Class Cheer Leader, 2, 3, 4; Chaplain Astrotekton Society, 4; Stunt Committee, 1, 2, 3, 4; B. S. U. Council, 2, 3; Publicity Director B. S. U., 2, 3; B. Y. P. U. Officer, 1, 2, 3.

T H E O A K L E A V E S



C o r a M i n o r

WINSTON-SALEM, NORTH CAROLINA

A.B.

Philaretian

Wingate Junior College, 1, 2; Y. W. A., 3, 4; B. Y. P. U., 3, 4; B. Y. P. U. Officer, 4; Barber
Biology Club, 3, 4; Home Economics Club, 3, 4.

V i o l a M a r g a r e t M i t c h e l l

YOUNGVILLE, NORTH CAROLINA

A.B.

Astroekton

Duke University, 1; Wake Forest Summer School; B. Y. P. U. Officer, 3; Town Girls' Club, 4.



S a l l i e M i t c h i n e r

GARNER, NORTH CAROLINA

A.B.

Philaretian

W. C. U. N. C., 1; Town Girls' Club, 2, 3, 4; Alliance Francaise, 3; Home Economics Club, 4.

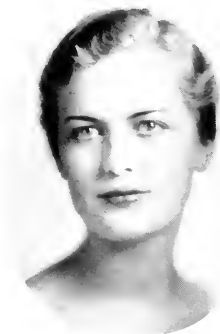
H a t t i e M u l l i s

MORGANTON, NORTH CAROLINA

A.B.

Astroctton

Secretary Y. W. A., 2; Home Economics Club, 2, 3, 4; Student League of Women Voters, 3, 4;
Sunday School President, 3.



M a r y L o i s P a r k e r

WOODLAND, NORTH CAROLINA

A.B.

Astrotekton

Twig Reporter, 1; Class Secretary, 2; May Day Attendant, 2; Granddaughters' Club, 1, 2, 3, 4; President Pearl Johnson B. Y. P. U., 3; Assistant Business Manager *Twig*, 3; Chief Marshal Astrotekton Society, 4; Colton English Club, 3, 4; May Queen, 4.

E s t h e r M i l d r e d P e r r y

WINGATE, NORTH CAROLINA

A.B.

Philartian

Wingate Junior College, 1, 2; Appalachian State Teachers' College, 3; B. Y. P. U., 4; Y. W. A., 4.



G r a c e P h e l p s

MOCKSVILLE, NORTH CAROLINA

B.S.

Philaretian

Pineland College, 1; W. M. U. Training School, 3; Mary Warren Y. W. A. Circle Leader, 4;
Service Band, 4; Home Economics Club, 4; Scribblers' Club, 4.

A n n i e V e e P o w e l l

MIDDLESEX, NORTH CAROLINA

A.B.

Astrotecton

Alliance Francaise, 1, 2; Granddaughters' Club, 1, 2, 3, 4; Secretary-Treasurer Granddaughters'
Club, 3; Sunday School Officer, 1, 2; Student League of Women Voters, 3, 4.

T H E O A K L E A V E S



S l e d g e R i c k s

WHITAKERS, NORTH CAROLINA

A.B.

Astrotckton

Biology Club, 1; Home Economics Club, 1, 2, 3, 4; Secretary Home Economics Club, 3; President Home Economics Club, 4; Granddaughters' Club,

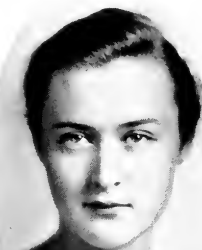
R u t h R o b e r t s o n

KNIGHTDALE, NORTH CAROLINA

A.B.

Astrotckton

Mars Hall College, 1, 2; B. Y. P. U. Officer, 3; Barber Biology Club, 3, 4; Student League of Women Voters, 4.



E l e a n o r R o z a r

RALEIGH, NORTH CAROLINA

A.B.

Astrotekton

Alliance Francaise, 1; Archery, 1; Track, 1, 4; Gym Letter, 1, 2; Hockey, 1, 2, 3, 4; B. Y. P. U., 1, 2, 3, 4; Basketball, 2, 3, 4; Varsity Hockey, 3; Barber Biology Club, 2, 3, 4; Vice-President Barber Biology Club, 4; Student League of Women Voters, 3, 4; Manager Hockey Team, 4; Class Vice-President, 4.

J e a n S i m p s o n

MADISON, NORTH CAROLINA

A.B.

Astrotekton

Colton English Club, 3, 4; Student League of Women Voters, 3, 4; International Relations Club, 3; President International Relations Club, 4; Class Treasurer, 4; Kappa Nu Sigma Honor Society, 4; Stunt Committee, 4.

T H E O A K L E A V E S



Mildred Vernon Sorrell

CARY, NORTH CAROLINA

B.M.

Mars Hill College, 1, 2; Town Girls' Club, 3, 4; Choir, 3, 4.

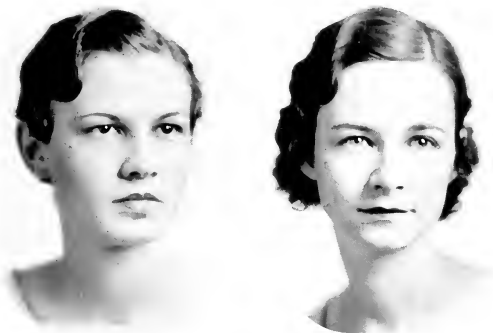
Grace Talton

CLAYTON, NORTH CAROLINA

B.M.

Astroekton

W. C. U. N. C., 1, 2; Choir, 4; Town Girls' Club, 3, 4.



L o u i s e T h o m a s

RAMSEUR, NORTH CAROLINA

B.M.

Astrotekton

Choir, 1, 2, 3, 4; Orchestra, 1, 2; Band, 1, 2; Secretary Student Government Association, 3;
Student League of Women Voters, 3, 4; Glee Club, 4.

M i r i a m T a t e m

REIDSVILLE, NORTH CAROLINA

A.B.

Astrotekton

Alliance Francaise, 1; Home Economics Club, 4; Student League of Women Voters, 4.



V a r a L e e T h o r n t o n

DUNN, NORTH CAROLINA

A.B.

Astrotekton

Hockey, 1, 2, 3, 4; Varsity Hockey, 1, 2, 3; Basketball, 1, 2, 3, 4; Varsity Basketball, 2; Track, 1, 3, 4; Varsity Track, 2; Treasurer Athletic Association, 2; Vice-President Athletic Association, 3; Athletic Council, 2, 3, 4; President Sunday School Class, 2, 3; Vice-President Sunday School Department, 3, 4; Alliance Française, 2; B. Y. P. U. Officer, 1, 2, 3; Vice House President, 3; Student Government Council, 3; Treasurer B. S. U., 4; B. S. U. Council; Student League of Women Voters, 4; Official Chaperon, 4.

M a r g a r e t M e r c e r T i l g h m a n

RALEIGH, NORTH CAROLINA

A.B.

Astrotekton

Alliance Française, 1; Helen Hull Law Classical Club, 1, 2, 3, 4; Program Chairman Classical Club, 3; Junior Editor OAK LEAVES, 3; Colton English Club, 3, 4; President Classical Club, 4; Senior Editor OAK LEAVES, 4; Managing Editor *Twig*, 4; Secretary-Treasurer Kappa Nu Sigma Honor Society, 4.



L o u i s e T u r l i n g t o n

SALEMURG, NORTH CAROLINA

B.S.

Astrotekton

Pineland Junior College, 1, 2.

M a r y E l i z a b e t h V a n L a n d i n g h a m

SCOTLAND NECK, NORTH CAROLINA

A.B.

Astrotekton

Alliance Francaise, 1; May Day Attendant, 1; Home Economics Club, 1, 4; Sophomore Editor
OAK LEAVES, 2; Astrotekton Marshal, 3, 4; Tennis, 1, 2, 3, 4.



S a r a h E l i z a b e t h V e r n o n

BURLINGTON, NORTH CAROLINA

A.B.

Astrotekton

Alliance Francaise, 1; Granddaughters' Club, 1, 2, 3, 4; Orchestra, 1, 2; Helen Hull Law Classical Club, 2, 3, 4; B. Y. P. U. Officer, 1; Colton English Club, 3, 4; Reading Honors, 1, 2, 3, 4; Student League of Women Voters, 3, 4; News Bureau, 3; General Director B. Y. P. U., 3; B. S. U. Council, 3, 4; Astrotekton Society Critic, 4; International Relations Club, 3, 4; First Vice-President B. S. U., 4; Vice-President Student Government Association, 4.

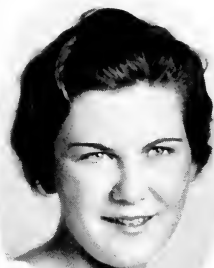
N a n c y e B l a i r V i c c e l l i o

CHATHAM, VIRGINIA

A.B.

Philaretian

Choir, 1; Freshman Play, 1; Helen Hull Law Classical Club, 1, 2, 3, 4; *Twig* Reporter, 2; Y. W. A. Reporter, 2; Circulation Manager of *The Acorn*, 2; Little Theatre, 2, 3, 4; Treasurer of Little Theatre, 3; Secretary of Little Theatre, 4; Library Assistant, 2, 3, 4; Managing Editor of the *Twig*, 3; Vice-President of the Philaretian Literary Society; Colton English Club, 3, 4; President of the College Department of First Baptist Church, 3, 4; Editor of the *Twig*, 4; Nominating Committee, 4; President of the Kappa Nu Sigma Honor Society, 4.



M a r i a n V i n s o n

RALEIGH, NORTH CAROLINA

A.B.

Philactian

Secretary-Treasurer of Day Students, 3; Choir, 2, 3; Day Students' Club, 1, 2, 3, 4; Business Manager of Handbook, 4; Colton English Club, 3, 4; Director of News Bureau, 3, 4; State College Summer School, 2; Wake Forest Summer School, 3.

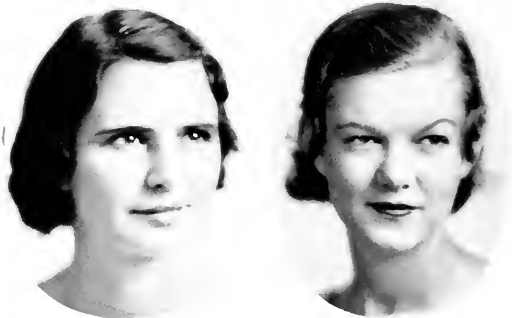
M a r t h a W a l l a c e

CLAYTON, NORTH CAROLINA

A.B.

Astrotekton

University Summer School, 2; N. C. C. W. Summer School, 3; May Day Attendant, 2; Vice-President of the International Relations Club, 4; Student League of Women Voters; Town Girls' Club, 3; Alliance Francaise.



E l l a M a r g u e r i t e W a r r e n

DUNN, NORTH CAROLINA

B.S.

Astrotekton

Choir, 1, 2, 3, 4; Glee Club, 2, 3, 4; Hockey Team, 1, 2, 3, 4; Class Basketball, 1, 2, 3; Track, 1, 2, 3; Home Economics Club, 1; President of the B. Y. P. U., 2; President of the Y. W. A., 3; Meredith Trio, 3, 4; B. S. U. Council, 3, 4; Student League of Women Voters, 4; Bee-Hive Committee, 4; Nominating Committee, 4; President of the Baptist Student Union, 4.

Z e l l a h W a s h b u r n

KINGSTON, JAMAICA, BRITISH WEST INDIES

A.B.

Astrotekton

Peace Junior College, 1, 2; K. K. Klub, 3, 4; May Day Attendant, 3; Scribblers' Club, 4; Photo Editor of the OAK LEAVES, 4.



M i r r i a m W i l s o n

DURHAM, NORTH CAROLINA

A.B.

Philaretian

Alliance Francais; B. Y. P. U. President, 3; Class Treasurer, 3; B. S. U. Council, Secretary, 4; Class Basketball, 1, 2, 3, 4; Student League of Women Voters, 3, 4; Service Band, 4; Sunday School Class Officer, 4; Official Chaperon, 4.

C a r o l y n L a M a r W r a y

GASTONIA, NORTH CAROLINA

A.B.

Philaretian

Class Secretary, 1; Helen Hull Law Classical Club, 1, 2, 3, 4; Alliance Francaise, 1, 2, 3; News Bureau, 3; Treasurer Colton English Club, 3, 4; Le Cercle Francaise, 3; Senior Editor *Acorn*, 4; Reporter Kappa Nu Sigma Honor Society, 4; Official Chaperon, 4.



H a z e l W a g n e r

TROUTMAN, NORTH CAROLINA

B.S.

Astrotekton

Wingate Junior College, 1, 2; Appalachian Summer School, '33.

E l l a L e e Y a t e s

LANDRUM, SOUTH CAROLINA

A.B.

Astrotekton

Alliance Francaise, 1; College Band, 1, 2; Hockey, 1, 2, 3, 4; Manager Hockey Team, 2; Basketball, 1, 2, 3, 4; Track, 1, 2; Tennis, 1, 2; South Carolina Club, 1, 2, 3, 4; Orchestra, 2; Choir, 2; Secretary-Treasurer South Carolina Club, 2; Y. W. A. Circle Leader, 3; Student League of Women Voters, 3, 4; President Student League of Women Voters, 4; B. S. U. Council, 4; Second Vice-President B. S. U. Council, 4.

PICTORIAL REVIEW OF CLASS OF '34'

"Hockey
CHAMPS"
ALICE
STRATTON
MGR.

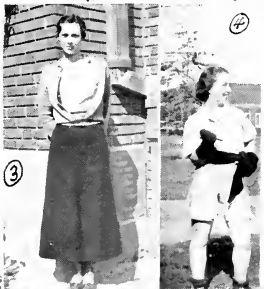


Hockey Championship, '30-'31. Alice Stratton, Manager.

1. Basketball Championship, '30-'31. Martha Davis, Manager.
2. Track Championship, '30-'31. Ruth McCourry, Manager and Individual Champion.

TENNIS SINGLES - ALICE STRATTON
TENNIS DOUBLES - ALICE STRATTON
AND KATHARINE DAVIS

3. Tennis Doubles Championship, '30-'31. Alice Stratton and Katharine Davis.
4. Second Honor in Stunt Night. Gwennie Crowder, Class President.
5. Freshman Party for Big Sisters — Spring, '31. Pirate.
6. Best All Around Athlete at Meredith, '30-'31. Won by Martha Davis.
7. Tennis Doubles Championship, '30-'31. Kat Davis.
8. Helped Big Sisters hunt for "Crook."



PICTORIAL REVIEW OF CLASS OF '34"



1. Hockey Championship, '31-'32. Ella Lee Yates, Manager.
2. Basketball Championship, '31-'32. Virginia Garnett, Mgr.
3. Party for State and Wake Forest, '32. Began Tradition of wearing Green Stockings for Even Classes. Virginia Garnett, Acting President.
4. First Place in Stunt Night, '32. Martha Davis, Class President.
5. Suffered Defeat in Basketball for the first time, Entire Class in mourning.
6. Tennis Single Champion, '32. Won by Josephine Arnette.
7. and 8. Tennis Doubles Champions, '32. Won by Kat Davis and Pinkey McCourry.
9. Best All Around Athlete at Meredith, '31-'32. Won by Pinkey McCourry.



PICTORIAL REVIEW OF CLASS OF '34'



1. First Place in Stunt Night, '33. Virginia Garnett, Class President. Annual Junior-Senior Banquet. Virginia Garnett, Presiding.

2. Hockey Championship, '32-'33. Katharine Davis, Manager.



3. Prison Party for Little Sisters honoring Annie Mae Taylor, Freshman President.

4. Crook found by Junior Class for First time in nearly twenty years. Found by Hattie Mullis, Junior, and Norma Rose, Freshman.

5. Won first Octagon Coupon Contest with 23,000 coupons. Virginia Garnett, President.



1. Annual Party for Freshmen. Showing true dignity of Seniors.

2. First Place in Annual Stunt Night, '33-'34. Katharine Davis, Class President.

3. Hockey Championship, '33-'34. Eleanor Rozar, Manager. (This made the fourth consecutive time.)

4. Art Prize at State Fair. Won by Katharine Davis, '34.



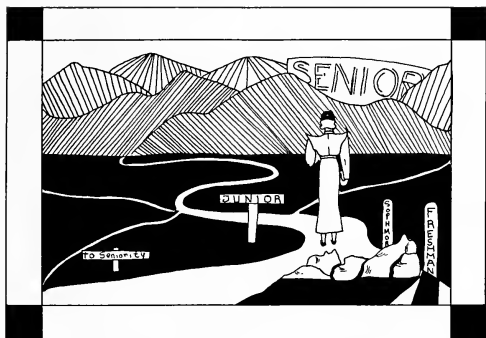
COKER COLLEGE

HARTSVILLE, SOUTH CAROLINA



Alma Mater

*To Alma Mater's praise we sing,
In lofty strains of glad delight;
Our hearts of love and reverence bring
To worship at her shrine of light.
Beneath the blue of Southern skies
A land of hope and prospects bright,
We build the future of our lives
On Alma Mater's truth and right.*



THE / / MILESTONE
COKER COLLEGE, HARTSVILLE, S. C.

THE JUNIORS



ELIZABETH LEE, *President*

"And still they gazed and still the wonder grew,
That one small head could carry all she knew."

- ELIZABETH LEE *President*
- CORNELIA ATKINS *Vice-President*
- HAZEL FAULKNER *Secretary*
- PEARL ROBERTSON *Treasurer*



JUNIOR CLASS OFFICERS



MR. T. O. LEE
Junior Voucher

JUNIOR CLASS

ELIZABETH ADAMS
*She is true to her work,
 Nothing will she shirk.*



FRANCES ALDERMAN
*Here we have good nature and good sense;
 What more can be said in her defense?*

CORNELIA ATKINS
*You can always find her true and just,
 Love her? Why of course we must.*



DORIS BAILEY
*She is just naturally wise,
 Why can't we all be likewise?*

EVELYN BALANCE
*What she is we know not,
 And she doesn't care a lot.*



EDITH BOWDEN
*And fair she is,
 This pretty miss.*

MINNIE BROOKS
*She loves the sports well,
 What else we can't tell.*



ALICE BRYAN
*A girl of few words and square,
 All things with you she'll share.*



JUNIOR CLASS

(Continued)

NORINE BUTLER

*Honor lies in honest toil,
Work she doesn't think will soil.*

VERNIE CABINESS

*She's full of quiet and of peace,
With her all noisy words will cease.*



MARGARET CAUDLE

*Precious things are done up small,
We're glad she came to us last fall.*

SARAH COLEMAN

*In person she is very nice,
Just a bit of Paradise.*



ESSIE CAMPBELL COOPER

*She's so merry and so free,
She won't be sad for you or me.*

LOUISE CORRELL

*All her friendships are so true,
And her falsities are few.*



EVELYN CRUTCHFIELD

*To Evelyn Crutchfield—
She doesn't need a new deal.*

DOROTHY DENT

*Common sense is better than learning,
And can be had with the earning.*

JUNIOR CLASS

(Continued)

NELL DODSON

*Silence is the herald of joy,
Much more fun than being coy.*

MARIAN EDWARDS

*Her lessons she always knows,
Yet she has no open foes.*

GARNETT EIGHME

*She always has innumerable joys,
As well as scores and scores of boys.*

LUCILE EVANS

*Her motto is "Peace, be still,"
Linked with an indomitable will.*

ESTELLE FARRIS

*To be merry is her quest,
That is why we like her best.*

HAZEL FAULKNER

*She hasn't a worry, hasn't a care,
And where there's joy, she's right there.*

MAMIE LOU FORNEY

*She's quiet and she's full of fun,
Yet never tiring when day is done.*

ELBERTA FOSTER

*Her sense of humor is quite complete,
She'll make a hit with all she'll meet.*



JUNIOR CLASS

(Continued)



EVELYN FOWLER

*On the basketball court she's a whizz,
And not amiss when it comes to a quiz.*

SARAH FOX

*She will love you and be friends,
And if she's wrong she'll make amends.*



CHARLOTTE GAMMAGE

*She has mild manners and a gentle heart,
We like for her to take our part.*

MARGARET GREEN

*She's very happy and she's kind,
We'll always keep her in our mind.*



CAROLINE HAYNES

*To say she has sense is no lie,
To that we all will testify.*

MARY LEE HILLARD

*If it's play or if it's working,
You'll never find Mary Lee shirking.*



JESSIE HOLCOMB

*Her gentle speech and modest ways,
Lead others to account her praise.*

MOZELLE HORTON

*Here's to Mozelle—
We wish her well.*

FLORA HUFFMAN

*If you could only see her sewing,
You'd know she's certainly worth the knowing.*

JUNIOR CLASS

(Continued)

LUNA JACKSON

*Her sunny smile and cheerful air,
It would be the envy of a millionaire.*



ALMA KEE

*With never a worry and never a care,
Just dislike her—if you dare.*

GENOLA KOONTZ

*She's very slender and very dark,
And always ready for a lark.*



JEAN LASSITER

*She has a most attractive face,
Can catch boys in any place.*

MAE LEDFORD

*Try to cross her—you just try it,
If she thinks she's right, she'll stick by it.*



ELEANOR LILLEY

*She cares not what you think of her,
Within herself she's quite secure.*

MIRIAM McCARTER

*Where there is no pleasure taken,
She is indeed forsaken.*



MARY MCCLEAN

*Pleasure and action make the hours seem shorter,
So in busy places she likes to loiter.*

WILLIE MAE MANGUM

*In a merry hour she was born,
She's joyous from night till morn.*



JUNIOR CLASS



MAE MARSHBURN
*She's independent and full of fun,
Quite an athlete—liked by everyone.*



LOUISE MARTIN
*She's little and she's dainty—quite a pretty thing,
And would you believe it—she certainly can sing.*



MABEL MARTIN
*She's headed for an opera star,
As a singer she'll go far.*



LAURA MATTHEWS
*She doesn't rush with a dangerous speed,
Yet when she speaks we'll all take heed.*



MILDRED E. MOORE
*If you just say, "Play us a tune,"
You'll hear some music mighty soon.*



MIRIAM MOHN
*Just let me be what I am,
I'll never get you in a jam.*



LOIS MORGAN
*With her brown eyes,
She looks very wise.*



RUTH MORGAN
*Upon her word you can depend,
That's why she makes a worthwhile friend.*



CATHERINE MOSELEY
*A smile for all, a greeting glad,
And I think I've never seen her mad.*

JUNIOR CLASS

THELMA MUSSINAN

*Truly she's the friend for me,
Because she's joyous constantly.*

LORETTA NICHOLS

*She has a will all her own,
The most determined girl we've known.*

VIRGINIA NORWOOD

*We confess we don't know much about her,
Yet when it comes to opinions, we never doubt
her.*

JANE PARKER

*Jane's the sort of girl we love,
We think she's a bit of "heaven above."*

REBA PARKER

*We always know Reba will be right there,
Even for hard work she doesn't care.*

LOUISE PASCHALL

*She came to us from another place,
And we like her smiling face.*

JANICE PAUL

*To have both skill and modesty,
Is what appeals to you and me.*

RUTH PENDER

*A jolly soul and a merry heart,
Always ready to do her part.*

INEZ POE

*"A maiden calm, serene and shy,
Always with a book hard by."*



JUNIOR CLASS



ELIZABETH POPLIN

*We know that she's a girl worth while,
For even in trouble, she can smile.*

KATHRYN PRIVOTT

*"Love all, trust few, do harm to none,"
This is her motto till set of sun.*



GRACE ROBBINS

*She'll be frank and she'll be true,
She will not do wrong by you.*

PEARL ROBERTSON

*She is lovely and she's sweet,
And best of all she's always neat.*



MABEL SHAVER

*Mabel has a lovely smile.
She seems to make our life worth while.*

RUAME SQUIRES

*She'll turn out to be a poet,
Don't know why—I just know it.*



VIRGINIA STAPLES

*"Society," saith the text, "is the happiness of life."
With this training, she'll make an excellent wife.*

BERTHA MAE STROUD

*You'll always find her true and just,
A girl whom all will love and trust.*

HELEN SURRETT

*To Helen Surratt,
The boys take off their hats.*

JUNIOR CLASS

MADGE THOMAS

*She doesn't talk, she speaks in deeds,
It'll use her for our direst needs.*

RUTH TUCKER

*Look over my past and tell,
If I have done my duty well.*

ELIZABETH DIXON TURLINGTON

*I'm happy, I'm merry, I dance,
And capture the boys at a glance.*

JOSEPHINE TURNER

*"Far may we search before we find
A friend so noble and so kind."*

ELIZABETH UNDERWOOD

*Since I am so full of pleasure,
I would dance with you a measure.*

STUART WEATHERSPOON

*For Stuart Weatherspoon
We predict a honeymoon.*

MEREDITH WHITAKER

*Be friends with me, and let's have fun,
For you'll be constant till day is done.*

MARTHA WILLIAMS

*She'll be true, come what may,
You may count on her any day.*

WILLENE YOST

*Of Willene Yost, we'd like to boast,
She's welcome here at any post.*

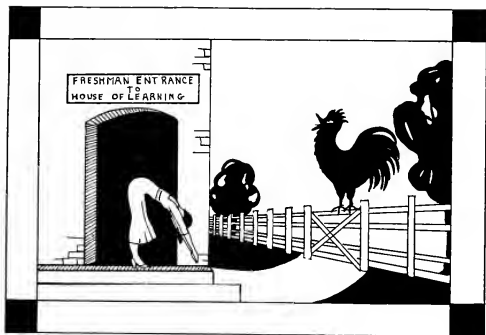


DUKE UNIVERSITY
DURHAM, NORTH CAROLINA



Alma Mater

*Dear Old Duke, thy name we sing
To thee our voices raise—we'll raise,
To thee our anthems ring
In everlasting praise
And tho' on life's broad sea
Our fates may far us bear
We'll ever turn to thee,
Our Alma Mater dear.*



THE / / CHANTICLEER
DUKE UNIVERSITY, DURHAM, N. C.

SOPHOMORES



ANN BRADSHER, *President*

- ANN BRADSHER *President*
FRANCES CALLOWAY *Vice-President*
NORMA ROSE *Secretary*
KATHERINE LILES *Treasurer*



SOPHOMORE CLASS
OFFICERS



DR. W. A. BRADSHER
Sophomore Voucher
Died Sept. 17, 1924.

SOPHOMORE CLASS

CHRISTINE ADAMS



NANCY ALLEN

JANIE ALLGOOD

ELEANOR ANDREWS

ELIZABETH AUSTIN

ELIZABETH BARKER

MAYELLE BARKER

NINA BINDER

SONORA BLAND

FRANCES CALLOWAY

HENRIETTA CASTLEBURY

MARY CHANDLER

NOVELLE CHEEK

RACHEL COWAN

ELISABETH DAVIDSON

MARGARET DAVIS





SOPHOMORE CLASS

HESTER DENSLOW

CHRISTINE DERBY

DOROTHY DOCKERY

MILDRED EATON

BERTHA FUTRELL

CAROLINE GARRISON

AGNES GENTRY

GENE GILLESPIE

MARY GROVES

RENA PEARL HAMILTON

LOUISE HELSABECK

CHARLOTTE HODGES

KATHERINE HUDMON

JOSEPHINE HUDSON

ELIZABETH JACOBS

FRANCES JONES

MARY ELIZABETH JONES

SOPHOMORE CLASS

MARGARET KNOWLES

VIRGINIA LAMBERT



ESTHER MAE LANIER

MARY ELIZABETH LAWSON

KATHERINE LILES



MINNIE RUTH McNEILL

MARGARET MOORE

FRANCES MORRIS



HELEN MORTON

VIRGINIA OGLETREE

HELEN FRANCES PARKER



LUCILE PARKER

EDNA LEE PEGRAM

PAULINE PERRY



MARTHA ANN RILEY

HELEN RIVERS

VIRGINIA ROLLINS



SOPHOMORE CLASS



NORMA ROSE

ISABEL ROSS

ALICE RUBENSTEIN

FLORENCE SAINT

BETTY SALISBURY

KATY SAMS

ROSELLE SEARS

MARY COVINGTON SECREST

SUSAN EMMA SLOAN

FAY MEMORY SHIELDS

MARJORIE STALLINGS

HELEN GRAY TOLAR

IRENE TUTHILL

DOROTHY TYSON

RUTH ALICE WARD

HILDA WILLIAMS

MARYBELLE WHEELER

IN MEMORIAM



GENEVIEVE FALLS

MEMBER OF THE CLASS OF THIRTY-SIX
WHO DIED WHILE A STUDENT AT
MEREDITH COLLEGE

• 1933 •

WAKE FOREST COLLEGE

WAKE FOREST, NORTH CAROLINA



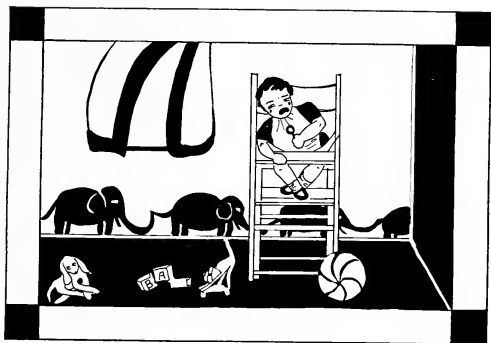
Alma Mater

*Dear old Wake Forest,
Thine is a noble name;
Thine is a glorious fame,
Constant and true.*

*We give thee of our praise,
Adore thine ancient days,
Sing thee our humble lays,
Mother so dear.*

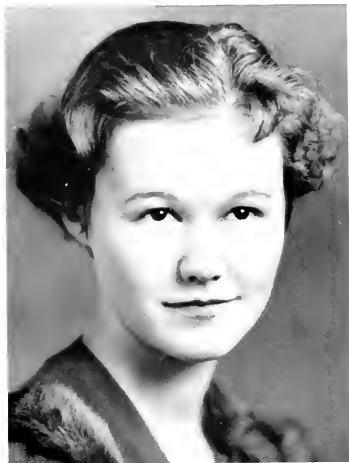
*Dear old Wake Forest,
Majestic thy name to cheer:
Be thou our guardian near,
Fore'er and aye.*

*We bow before thy shrine,
Thy brow with bays entwine,
All honor now be thine,
Mother, today.*



T H E ♪ ♪ H O W L E R
WAKE FOREST COLLEGE, WAKE FOREST, N. C.

F R E S H M E N



DOROTHY HODGIN, *President*

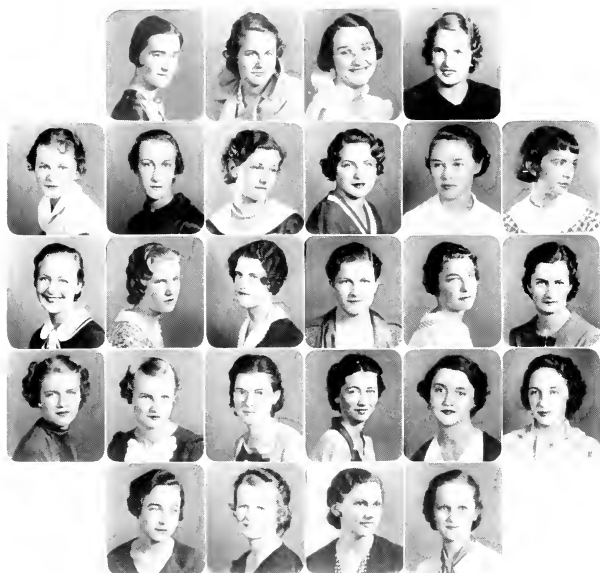
FRESHMAN CLASS OFFICERS



- DOROTHY HODGIN *President*
- SUE BREWER *Vice-President*
- KATE COVINGTON *Secretary*
- RUTH SAUNDERS *Treasurer*



MR. R. W. HODGIN
Freshman Foucher



FRESHMAN CLASS

JANE ABERNETHY
 RUTH RAY ABERNETHY
 LOIS ADAMS
 ELLEN ALDERMEN

PHYLLIS ALEXANDER
 LISETTE ALLGOOD
 ELEANOR AYDLETT
 JULIA BANADYGA
 RUBY BARRITT
 FRANCES BASS

MARGARET BENTON
 IDA LEE BERGMAN
 FLORA KATE BETHEA
 SARAH ELIZABETH BIGGS
 AGNES BLANCHARD
 MARGARET BLANCHARD

SADIE LEIGH BLOUNT
 HAZEL BOSWELL
 CARRIE BOWERS
 SUE BREWER
 VIVIAN BRIDGLER
 DOROTHY DEAN BROWNE

ELLA BROWN
 FRANCES BROWN
 CATHERINE CANADY
 MARY FORT CARROLL



FRESHMAN CLASS

ALDYTH CORRELL
 EDLEE CATES
 LUCILE CATES
 MARY ELIZABETH CHAMPION

NELL CHOATE
 TRANNIE YATES COBURN
 GAYNELLE COLLINS
 JEAN COOPER
 KATE COVINGTON
 CYNTHIA COWAN

ISLA MAE COWARD
 OLIVE DAME
 BEVERLY DAVIS
 LUCILE DAVIS
 PAULINE DAVIS
 RUSILA DAVIS

ELEANOR EDWARDS
 CELIA ELLIS
 ANNIE LOUISE FARRIS
 MARGARET E. GREENE

LOUISE DERBY
 CATHERINE DOCKERY
 MARY ELIZABETH DOBSON
 ELEANOR EARLY
 ELSIE EARP
 FRANCES EBBS

M E R E D I T H C O L L E G E



FRESHMAN CLASS

SARAH GRIFFIN
 MARY ELIZABETH HARRIS
 FRANCES HARRIS
 SUDIE HAWES

BETTY HAYWOOD
 HELEN HILLIARD
 FAITH HITE
 ETTA MAE HOLDING
 ANABEL HOLLOWELL
 LUCINDA HOOD

HELEN HUFFMAN
 LULA MAE JACKSON
 ELIZABETH JOHNSON
 NATALIE JOHNSON
 MARTHA JOSEY
 MARTHA JOYNER

GWEN KESTER
 BETTY KING
 MARGARET KRAMER
 ROSE LEE
 RACHEL LEONARD
 MARY ELIZABETH LEWIS

EVELYN LEWIS
 DOROTHY LOWDERMILK
 GLADYS LUPER
 CORINNE MANLEY



FRESHMAN CLASS

KATHERINE MARTIN
 ELOISE McCORKLE
 MARGERY MCKAUGHAN
 MARY FAYE McMILLAN

MARY J. McMILLAN
 VIRGINIA MEIGGS
 MARTHA MESSENGER
 ELIZABETH MONEY
 PEGGY MOODY
 DORIS MOON

WILHELMINA MORRISON
 MILDRED NORVELLE
 MAYALINE NYE
 LUCY MAE PERRY
 DOROTHY PERRY
 ELLA RUTH PERRY

MARTHA KYLE PITTMAN
 FLORENCE PITTMAN
 FRANCES PITTMAN
 GRACE PORTER
 ZUDIE POWELL
 DOROTHY PREVOST

RUTH PRIVOTT
 VIRGINIA REYNOLDS
 GRACE RIGGS
 HELEN ROBERTS



FRESHMAN CLASS

ALMA LEE RONEY
 SUSAN RUDISILL
 HELEN RUFFIN
 ETHEL RUSSELL

MARGARET SALE
 KATHLEEN SAUNDERS
 RUTH SAUNDERS
 MARY FLORENCE SAWYER
 ZITA SAWYER
 RUTH SEARS

KATHARINE SHUFORD
 HELEN SLOAN
 RUTH SMITH
 MARY BRICE SUMMERLIN
 PAULINE FILLEY
 MARGARET TINGEN

MARGARET TYSON
 MARIAN WALLACE
 MARY CATHREN WALTERS
 IDA LEANE WARREN
 ESTHER WATERS
 ALYNE WATKINS

VERITAS WILLIAMS
 ADDIE BELLE WILSON
 MARGERY WILSON
 MATTIE YOW



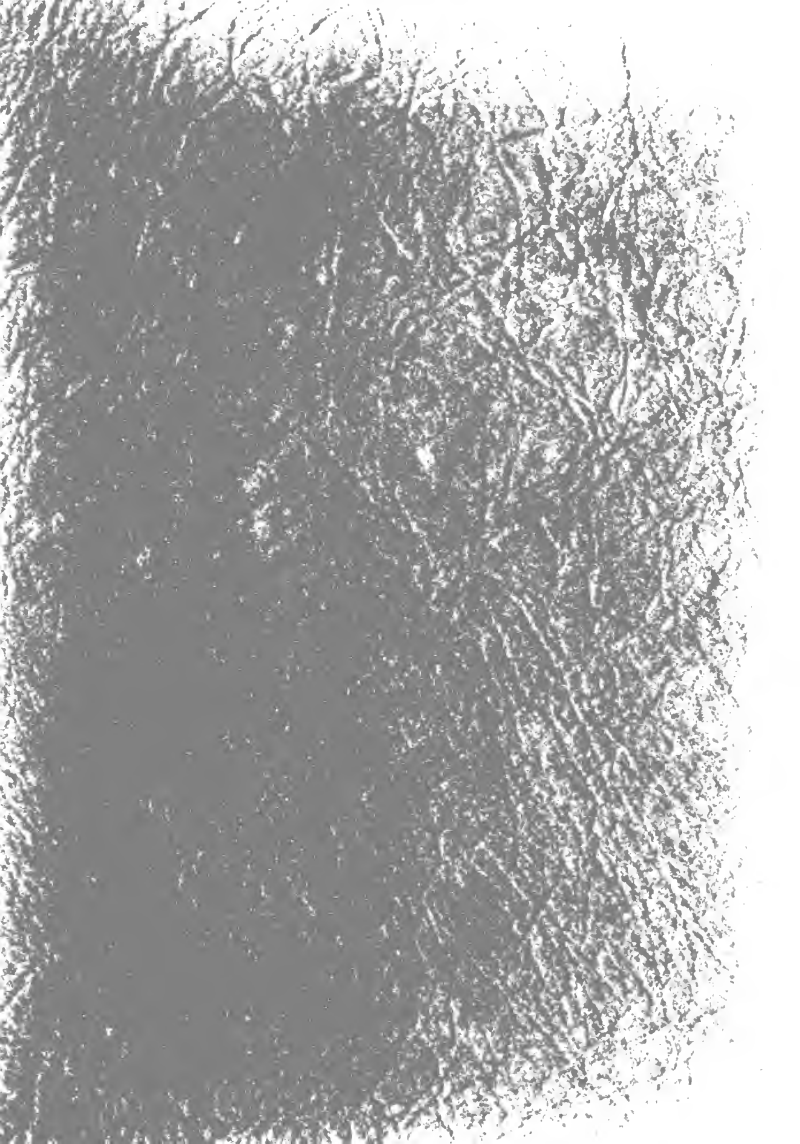
GENERAL STUNT SNAPS





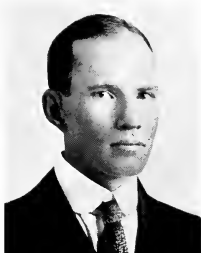
ORGANIZATIONS







VIRGINIA GARNETT
President



MR. DAVID THOMSON GARNETT
Student Government Foucher
Died December 25, 1926.





STUDENT GOVERNMENT ASSOCIATION

SARAH ELIZABETH VERNON *Vice-President*
 ELIZABETH POPLIN *Secretary*
 REBA PARKER *Treasurer*

MEMBERS

House Presidents

MARY FLORENCE CUMMINGS HELEN DOBSON FRANCES McMANUS

Vice-Presidents

CHARLOTTE GAMMAGE ELIZABETH LEE LORITTA NICHOLS

Class Representatives

CHRISTINE ADAMS *Sophomore* MARY FAY McMILLAN *Freshman*

M E R E D I T H C O L L E G E

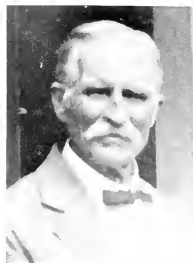


NOMINATING COMMITTEE

VIRGINIA GARNETT
GRACE CARR
ELIZA BRIGGS
EVELYN BARKER

GRACE LAWRENCE
NANCYE VICCELLO
MARGUERITE WARREN
AMORETTE BYRD
RUTH McCOURRY
KATHARINE DAVIS

ELIZABETH LEE
ANN BRADSHIR
DOROTHY HOJGIN
RUTH BIRD



MR. R. M. WARREN
B. S. U. Foucher

BAPTIST STUDENT COUNCIL

WARREN
VERNON
YATES
WILSON
THORNTON
CALLOWAY

STROUD
BALE
ROBERTSON
BLALOCK
TUCKER
KNIGHT

BAPTIST STUDENT COUNCIL

OFFICERS

MARGUERITE WARREN	<i>President</i>
SARAH ELIZABETH VERNON	<i>Vice-President</i>
ELLA LEE YATES	<i>Second Vice-President</i>
MIRIAM WILSON	<i>Secretary</i>
VARA LEE THORNTON	<i>Treasurer</i>
FRANCES CALLOWAY	<i>Publicity Director</i>

B. Y. P. U.

BERTHA MAE STROUD	<i>Director</i>
MARY CHANDLER	<i>Associate Director</i>
MAE MARSHBURN	<i>Secretary</i>
HELEN DOBSON	<i>Reporter</i>
MILDRED MOORE	<i>Pianist</i>
MARGARET WHITTINGTON	<i>Chorister</i>

Y. W. A.

DIXIE LEE BALE	<i>President</i>
JOSEPHINE TURNER	<i>Vice-President</i>
VIRGINIA LAMBERT	<i>Secretary</i>
VIRGINIA ROLLINS	<i>Publicity Chairman</i>

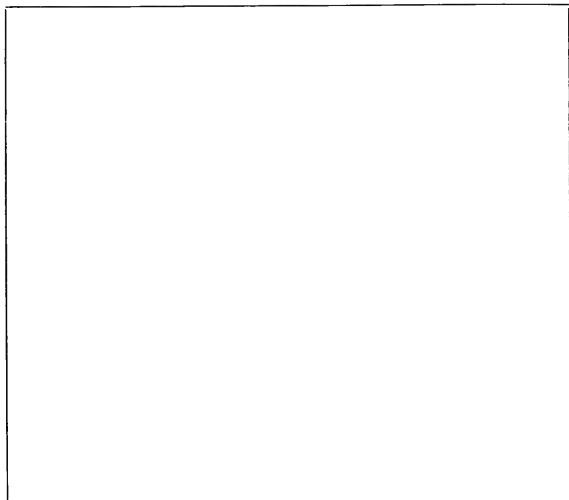
SERVICE BAND

PEARL ROBERTSON	<i>President</i>
KATHLEEN GILLELAND	<i>Vice-President</i>
MARY G. SMITH	<i>Secretary</i>
MISS LUCILLE KNIGHT	<i>Student Secretary</i>



BEE HIVE COMMITTEE

- RUTH TUCKER *Manager*
 MR. E. F. CANADY *Faculty Advisor*
 MARGUERITE WARREN *B. S. U. Representative*
 MARY FLORENCE CUMMINGS *Chairman*
 ELIZABETH LEF *Secretary*
 ANN BRADSHIER *Sophomore Representative*



*THE CAMPUS CLUB

VIRGINIA GARNETT

DICK TURLINGTON

GRACE CARR

MIRIAM McCARTER

ZELLAH WASHBURN

EDITH LEVINE

CATHERINE HUDMON

FRANCES GOLDBERG

RENA PEARL HAMILTON

JESSICA CREECH

*Because of Campus these girls were unable to have pictures made.

BETHEL WOMEN'S COLLEGE

HOPKINSVILLE, KENTUCKY



Alma Mater

*Praise the name of dear old Bethel,
Let your voices ring!
Praise the name of dear old Bethel,
To her we'll gladly sing,
O'er the land of old Kentucky
Waves the Gold and Blue.
To our dear old Alma Mater
Our hearts are ever true.*



T H E / / / S C R O L L
BETHEL WOMAN'S COLLEGE, HOPKINSVILLE, KY.

PUBLICATIONS



OAK LEAVES



- EVELYN BARKER *Editor-in-Chief*
- GWENDOLYN CROWDER *Business Manager*
- PEARL ROBERTSON *Associate Editor*
- MARGARET TILGHMAN *Senior Editor*
- BERTHA MAE STROUD *Junior Editor*
- LOUISE HELSBECK *Sophomore Editor*
- ZELLA WASHBURN *Photo Editor*
- KATHERINE MOSELEY *Photo Editor*
- PEG LEGRAND *Art Editor*
- CHARLOTTE GAMMAGE *Assistant Business Manager*
- GARNETT EIGHME *Advertising Manager*
- FRANCIS CALLOWAY *Assistant Advertising Manager*
- MR. T. H. BARKER *"Oak Leaves" Foucher*
- MR. JIM HOLLOWAY *"Oak Leaves" Foucher*



OAK LEAVES STAFF

Robertson, Tighman, Stroud, Helsabek
Washburn, Mosley, LeGrand, Gammage
Egline, Calloway



ACORN

GRACE LAWRENCE *Editor-in-Chief*
 EMILY MILLER *Business Manager*
 CAROLYN WRAY *Senior Editor*



MR. H. L. LAWRENCE
Acorn Foucher

ISABEL MORGAN *Senior Editor*
 INEZ POE *Junior Editor*
 ELEANOR LILLY *Junior Editor*
 ELIZABETH AUSHIN *Sophomore Editor*
 NINA BINDER *Sophomore Editor*
 MILDRED MOORE *Music Editor*
 HESTER DENSLOW *Science Editor*
 ELBERTA FOSTER *Art Editor*
 VIRGINIA FARRIS *Assistant Business Manager*
 LOUISE MARTIN *Assistant Business Manager*
 LUCILE PARKER *Circulation Staff*
 HELEN RIVERS *Circulation Staff*

M E R E D I T H C O L L E G E



ACORN STAFF

Wray, Morgan
Poe, Lilly, Austin, Binder
Denslow, Moore, Foster, Farris
Martin, Parker, Rivers



TWIG

NANCY VICCELLIO *Editor-in-Chief*
 CORNELIA ATKINS *Business Manager*
 EMILY MILLER *Associate Editor*



MR. ASA VICCELLIO
Twig Foucher

MARY FLORENCE CUMMINGS *Associate Editor*
 MARGARET TILGHMAN *Managing Editor*
 LOUISE CORRELL *Managing Editor*
 NORMA ROSE *Managing Editor*
 MARY LOIS PARKER *Assistant Business Manager*
 SONORA BLAND *Assistant Business Manager*
 PAULINE PERRY *Staff Typist*

REPORTERS

HELEN DOBSON	NELL CHOATE
ELIZABETH AUSTIN	MARGARET DAVIS
HENRIETTA CASTLEBURY	MARGARET CAUDLE
DOROTHY DOCKERY	LILLIAN PHILLIPS
KATE COVINGTON	

M E R E D I T H C O L L E G E



TWIG STAFF

Miller, Cummings
Titshman, Correll, Rose, Farker, Bland
Perry, Dobson, Austin, Castlebury, Dockery
Choate, Davis, Cawille
Philips, Covington

JUDSON COLLEGE

MARION, ALABAMA



Alma Mater

*Mother Judson, Alma Mater,
We have seen thy gracious light,
Like a beacon on the hill-top
Burning brightly through the night,
Guiding, cheering by its radiance,
Shining far o'er land and sea,
Mother Judson, Alma Mater,
We would aye be led by thee.*

*Mother Judson, Alma Mater,
We have heard thy summons clear
Like a bugle call to battle
Waking echoes far and near;
Calling us to high endeavor,
Lofty thought and noble deed,
Mother Judson, Alma Mater,
We would aye thy summons heed.*

*Mother Judson, Alma Mater,
We would win life's glorious fight,
We, like thee, would live for service,
Like thee send forth blessed light,
Gaining courage in the presence,
Strength to fight the battle through.
Mother Judson, Alma Mater,
We would aye be conquerors too.*



THE CONVERSATIONALIST
JUDSON COLLEGE, MARION, ALABAMA

C L U B S

INTERNATIONAL
RELATIONS
CLUB

Officers

MISS NETTIE HERNDON
Faculty Advisor

JEAN SIMPSON
President

MARTHA WALLACE
Vice-President

CHARLOTTE GAMMAGE
Secretary-Treasurer

Members

EVELYN BARKER

ANN BRADSHER

ELIZA BRIGGS

GWENDOLYN CROWDER

CATHERINE FARRIS

VIRGINIA FARRIS

VIRGINIA GARNETT

IRENE LITTLE

PEG LE GRAND

EMILY MILLER

SARAH ELIZABETH VERNON

*GRACE ROBBINS



*—Picture does not appear
in group.



STUDENT LEAGUE OF WOMEN VOTERS

Officers

ELLA LEE YATES
President

FRANCES GRAY
Vice-President

CATHERINE HAYES
Secretary and Treasurer

MISS ALICE KEITH
Faculty Advisor

Members

CHRISTINE ADAMS	KATHERINE HICKS
KATHLEEN AMMONS	KATHERINE HUDSON
CORNELIA ATKINS	JOSEPHINE HUDSON
DORIS BAILEY	JANE IRVIN
ELIZABETH BARKER	GENOLA KOONTZ
EVELYN BARKER	GRACE LAWRENCE
JEWELL BALLENTINE	SALLIE LOVELACE
KATHERINE BLALOCK	RUTH McCOURRY
AMORETTE BYRD	FRANCES McMANUS
ELIZABETH COPPEDGE	MARIE MITCHNER
KATHARINE DAVIS	WILHELMINA MORRISON
HELEN DOBSON	VIRGINIA NORWOOD
NELL DODSON	LILLIAN PHILLIPS
ANN EARLY	ANNIE VEE POWELL
ELEANOR EARLY	RUTH ROBERTSON
MARGARET S. EVERETT	ELEANOR ROZAR
CATHERINE FARRIS	JEAN SIMPSON
VIRGINIA FARRIS	MIRIAM TATEM
EVELYN FOWLER	LOUISE THOMAS
BERNHA FUTRELL	VARA LEE THORNTON
GERALDINE GADDY	SARA E. VERNON
VIRGINIA GARNETT	MARTHA WALLACE
RENA P. HAMILTON	MARGUERITE WARREN
MARGARET HESTER	STUART WEATHERSPOON
BETTY HAYWOOD	MIRIAM WILSON

T H E O A K L E A V E S

GRANDDAUGHTERS' CLUB

Officers of the Granddaughters' Club

MARY LOIS PARKER
President

MARGARET SHIELDS EVERETT
Vice-President

MARTHA ANN RILEY
Secretary and Treasurer

MEMBERS

RUTH ABERNETHY	LOUISE DERBY
ELIZABETH ADAMS	MARGARET SHIELDS EVERETT
ELLEN ALDERMAN	CAROLINE GARRISON
FRANCES ALDERMAN	KATHRYN HICKS
RUBY BARRETT	LUCINDA HOOD
SONORA BLAND	JEAN LASSITER
VIVIAN BRIDGER	SALLIE LOVELACE
DOROTHY DEAN BROWN	LOUISE MARTIN
MINNIE BROOKS	MARY FAY McMILLAN
ALICE BRYAN	HELEN MORTON
NANCY BUNN	KATHERINE MOSELEY
CATHERINE CANADY	HELEN FRANCES PARKER
NOVELLE CHEEK	ELLA RUTH PERRY
TRANNIE YATES COBURN	GRACE PORTER
ESSIE COOPER	KATHERINE PRIVOTT
BEVERLY DAVIS	RUTH PRIVOTT
DOROTHY DAVIS	ANNIE VEE POWELL
KATHRYN DAVIS	LEDGE RICKS
LUCILE DAVIS	E. D. TURLINGTON
MAGDALYN DAVIS	ELIZABETH UNDERWOOD
MARGARET DAVIS	SARA ELIZABETH VERNON
CHRISTINE DERBY	MATHE YOW



Members Whose Pictures Do Not Appear

NANCY ALLEN	HELEN MELTON
ANNE ELIZABETH BAUCOM	HELEN SEARS
MEREDITH JOHNSON	RUTH SEARS
SARAH ANNE MARTIN	FAY MEMORY SHIELDS
LAURA MATTHEWS	RUAMIE SQUIRES

TOWN GIRLS' CLUB

Officers

RUTH BIRD
President

VIRGINIA FARRIS
Vice-President

HENRIETTA CASTLEBURY
Secretary-Treasurer

Members

BLANCHE ALLEN
MARGARET BENTON
AGNES BLANCHARD
BEE COYNER
JEAN COOPER
CELIA ELLIS
ELEANOR EDWARDS
CATHERINE FARRIS
ANNA LOUISE FARRIS
MARGARET GREEN
LENA HONEYCUTT
ELIZABETH JOHNSON
MARY ELIZABETH JONES
ELIZABETH LEWIS
ELEANOR LILLEY
MABEL MARTIN
PEGGY MOODY
ELSIE PEGRAM
LUCY MAE PERRY
RUTH PENDER
ALICE RUBENSTEIN
HELEN RIVERS
MILDRED SORRELL
BETTY SALISBURY
FLORENCE NELLE SAINT
GRACE TALTON
MARGARET TILGHMAN
VERITAS WILLIAMS



HOME ECONOMICS CLUB

Officers

SLEDGE RICKS *President*
 GERALDINE GADBY *Vice-President*
 WILHENE YOST *Secretary-Treasurer*
 MISS ELLEN BREWER *Faculty Adviser*
 MISS JENNE HANSEN *Faculty Adviser*

Members

Elizabeth Adams	Margery McKaughan
Frances Bass	Cora Minor
Ruth Bird	Margaret Moore
Sonora Bland	Ruth Morgan
Henrietta Castlebury	Hattie Mullis
Bee Cotner	Helen Frances Parker
Magdalen Davis	Florence Pittman
Catherine Dockery	Grace Phelps
Elsie Earp	Alma Lee Roney
Mary Elizabeth Harris	Fay Memory Shields
Betsy Hocutt	Ruth Smith
Lucinda Hood	Miriam Tatem
Josephine Hudson	Irene Tuthill
Flora Huttman	Mary B. Van Landingham
Elizabeth Jacobs	Meredith Whitaker



Ricks, Gadby
 Yost, Adams, Bass, Bird
 Bland, Castlebury, Cotner, Davis
 Dockery, Earp, Harris, Hocutt
 Hood, Hudson, Huttman, Jacobs
 McKaughan, Minor, Moore, Morgan
 Mullis, Parker, Pittman, Phelps
 Roney, Shields, Smith, Tatem
 Tuthill, Van Landingham, Whitaker



THE LITTLE THEATRE

EMILY MILLER *President*
 ELIZABETH POPLIN *Vice-President*
 NANCY VICCELLIO *Secretary*
 CORNELIA ATKINS *Treasurer*

Eliza Briggs
 Elberta Foster
 Virginia Garnett

Associate Members

Katie Sams
 Annie Mae Taylor

Faculty Members

Dr. Florence Hoagland
 Dr. Mary Lynch Johnson

Peg Le Grand
 Elizabeth Lee
 Susan Emma Sloan

Miller, Poplin
 Viccellio, Atkins, Briggs, Foster, Garnett
 Le Grand, Lee, Sloan, Sams
 Taylor, Hoagland, Johnson
 Hatris, English

SOUTH CAROLINA CLUB

Officers

FRANCES ALDERMAN *President*
 CATHERINE HAYES *Vice-President*
 ELIZABETH LEE *Secretary*
 ELLA LEE YATES *Treasurer*
 CHRISTINE ADAMS *Reporter*

Members

Ellen Alderman Gene Gillespie
 Flora Kate Bethea Mildred E. Moore
 Kate Covington Grace Osburn
 Marion Edwards Mary B. Summerlin
 Dorothy Tyson
 Margaret Tyson



F. Alderman, Hayes, Lee
 Yates, Adams, E. Alderman
 Bethea, Covington, Edwards
 Gillespie, M. E. Moore, Osburn,
 Summerlin, D. Tyson, M. Tyson

KAPPA NU SIGMA HONOR SOCIETY

NANCY VICCELLIO *President*
 MARY FLORENCE CUMMINGS *Vice-President*
 MARGARET TILGHMAN *Secretary*
 CAROLYN WRAY *Reporter*

Katherine Blalock Isabel Morgan
 Frances Gray Jean Simpson

Faculty Members

Miss Catherine Allen Miss Nettie Herndon
 Miss Ellen Brewer Miss Mary L. Johnson
 Miss Ethel Day Miss Helen Price



Viccellio, Cummings, Tilghman
 Wray, Blalock, Gray
 Morgan, Simpson, Brewer, Day
 Herndon, Johnson, Price



GLEE CLUB

Officers

MISS ETHEL M. ROWLAND
Director

JOSEPHINE ARNETTE
President

CATHERINE FARRIS
Secretary-Treasurer

FRANCES CALLOWAY
Librarian

LOUISE CORRELL
Accompanist

Members

LOUISE MARTIN
MABEL MARTIN
RACHEL LEONARD
MARION WALLACE
MARGARET TYSON
VIRGINIA FARRIS

LUNA JACKSON
ELIZABETH LEE
ELIZABETH UNDERWOOD
FRANCES MORRIS
LOUISE THOMAS

LILLIAN PHILLIPS
MARGUERITE WARREN
MILDRED MOORE
CATHERINE MARTIN
ISABEL ROSS
ANNA LOUISE FARRIS



M E R E D I T H C O L L E G E

THE BARBER BIOLOGY CLUB

OFFICERS

PEARL ROBERTSON
President

ELEANOR ROZAR
Vice-President

ELISABETH DAVIDSON
Secretary

MISS LENA A. BARBER
Faculty Advisor

MEMBERS

CHRISTINE ADAMS
CORNELIA ATKINS
ELIZABETH AUSTIN
ELEANOR ANDREWS
ESTHER BARHAM
ELIZABETH BARKER
ANN BRADSHIER
NORINE BUTLER
NOVELLE CHEEK
MARY CREATH
MARY CHANDLER
EVELYN CRUTCHFIELD
MARGARET DAVIS
DOROTHY DOCKERY
MILDRED EATON
ELBERTA FOSTER
LOUISE HELSABECK
CHARLOTTE HODGES
JOSEPHINE HULSON
VIRGINIA HUDSON
LOUISE HOCUTT
MARGARET KNOWLES
ADELAIDE LOCKHART
VIRGINIA MANN
THELMA MUSSINAN
VIRGINIA NORWOOD
JANE PARKER
RUTH ROBERTSON
BERTHA MAE STROUD



Robertson, Rozar, Davidson
Adams, Atkins, Austin, Andrews, Barham, Barker
Bradshier, Butler, Cheek, Creath, Chandler, Crutchfield
Davis, Dockery, Eaton, Foster, Helsabeck, Hodges
Hudson, V. Hudson, Hocutt, Knowles, Lockhart, Mann
Mussinan, Norwood, Parker, Robertson, Stroud

MISSISSIPPI COLLEGE
CLINTON, MISSISSIPPI



Alma Mater

*Fairest of all is our dear Mississippi,
Rising in state as the crest of a hill,
Staunch as a rock is our dear Alma Mater,
Round her so noble our hopes ever live.
When in the future our hearts may be yearning
For the bright scenes of our dear college youth,
Back to the portals our memories turning,
Clear gleams thy beacon of virtue and truth.
M. C. we hail thee, our dear Mississippi,
Queen of our hearts, no foe shall alarm,
Faithful and loyal thy children will ever
Cherish thy mem'ry, acknowledge thy charm.*



T H E ✓ ✓ T R I B E S M A N
MISSISSIPPI COLLEGE, CLINTON, MISSISSIPPI

S O C I E T I E S

T H E O A K L E A V E S



AMORETTE BYRD, *College Marshal*





ASTROTEKTON OFFICERS

GRACE CARR *President*
 KATHERINE BYRD HICKS *Vice-President*
 CATHERINE MOSELEY *Secretary*
 CLAIRE BENTHALL *Treasurer*
 MR. ARTHUR CARR—Died June, 1933—*Astrotekton Voucher*



ASTROTEKTON
MARSHALS

MARY LOIS PARKER

Chief

MARY BESS VAN LANDINGHAM

STUART WEATHERSPOON

HAZEL BOSWELL



Song of the *Astrotektons*

•

*See thy children, Mother Astro,
 Sisters of the gold and white,
 Bow before thee in thy beauty,
 Thankful for thy wondrous light.
 Now we bring our girlhood treasures,
 And we lay them at thy feet—
 Waiting for thy benediction
 And thy bidding, always sweet.
 Astro, Mother Astro,
 From the mountains to the sea;
 Astro, Mother Astro,
 We have come in love and gladness to be led by thee.
 Now we feel thy hands upon us,
 Hands so loving and so strong,
 That the touch fills every daughter
 With a purpose and a song.
 Lift your heads, ye Astro maidens,
 Look into her starlit eyes,
 Then go forth to life and duty,
 With a zeal that never dies!
 Astro, Mother Astro,
 With a love that grows not old;
 Astro, Mother Astro,
 See us rally 'round thy banner,
 Dear old white and gold.*



SOCIETY ESSAY MEDALS WINNERS

MARTHA ANNIS ABERNETHY

Philaretian

MINNIE JACKSON BOWLING MEDAL

"Retribution In Hawthorne's 'Scarlet Letter' and Dante's 'Divina Commedia'"

DOROTHY MERRITT

Astrotekton

CARTER-UPCHURCH MEDAL

"Socrates, The Hero as Philosopher"





PHILARETIAN OFFICERS

- ELIZA BRIGGS *President*
 MAGDALYN DAVIS *Vice-President*
 DOROTHY DOCKERY *Secretary*
 FRANCES CALLOWAY *Treasurer*
 MR. WILLIS G. BRIGGS—*Philaretian Foucher*



PHILARETIAN
MARSHALS

GWENDOLYN CROWDER

Chief

LENA HONEYCUTT

ELIZABETH BARKER

ELISABETH DAVIDSON



Philaretia



*Behold in shining raiment dressed,
She stands; in silence bow.
High honor sits upon her breast;
A white flame blazes in her breast,
And stars upon her brow.*

*Look up and listen while she speaks,
In solemn tones and slow.
She points to radiant mountain peaks,
Where morn reveals her first gray streaks
To weary souls below.*

*She calls us to her house of light
Beneath her azure dome;
"Come, daughters, walk with me in white
Above the glooming realms of night;
Build here your highland home.*

*"Let virtue feed her vestal fire
Within each holy fane.
Let fearless Truth with flaming ire
Consume the breath of base desire,
And rule without a stain."*

*Lead on, O Philaretia fair,
Lead upward day by day;
Thy violet banner in the air,
Thy daughters all will highly dare;
Brave mother, lead the way.*

STATE TEACHERS' COLLEGE

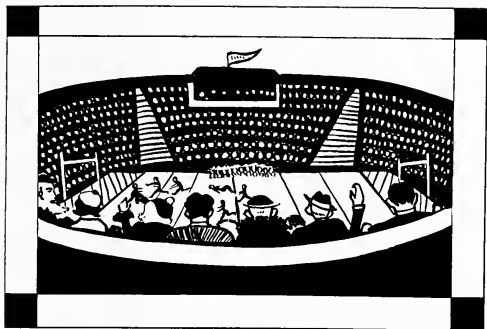
FREDERICKSBURG, VIRGINIA



Alma Mater

*All hail, Alma Mater, Dear Mother, to thee,
Thy daughters true, faithful and loyal will be.
Thy gentle instruction, thy influence so sweet
Will go with them always—a guide to their feet.
Thy loving protection, thy nurturing care,
Would lead them to cherish things lovely and fair.
All hail, Alma Mater, Dear Mother, to thee,
Thy daughters true, faithful and loyal will be.*

*Thy halls and arcades with their calm, classic air,
Thy campus with blossom perennially fair,
Thy trees and thy fountain, thy vine-covered walls,
Will live in their memory, whatever befalls.
Though far from thy care and protection they roam,
They still hold thee dear, as a well beloved home.
All hail, Alma Mater, Dear Mother, to thee,
Thy daughters true, faithful and loyal will be.*



THE / / BATTLEFIELD
STATE TEACHER'S, FREDERICKSBURG, VA.

ATHLETICS



MRS. GERTRUDE ROYSTER SORRELL

Athletic Director

For this year the Athletic Association has tried to plan the activities so that as many of the girls on the campus as possible would be included, thus stimulating a stronger interest in the class teams, varsity teams, and individual ability. At the beginning of the school year a point system was introduced to endeavor to raise the value of the monogram and to hold the girls' interest over a greater length of time. This system also encourages the girls to go out for some of the other sports that before were considered too strenuous. The records kept under the point system show an increased average attendance for each major sport. Nearly one hundred girls came out for the hockey and basketball season.

A large number of girls that did not go out for any of the winter sports went out for tennis and track in the spring.

Wholesome competition has existed from the beginning to the end in the struggle for the possession of the hockey and basketball cups to say nothing of the class spirit shown in preparation for the annual stunt night sponsored by the Association. Individual ability, as well as group cooperation, is recognized by presenting the girl with her monogram when she has earned one thousand points. Also, a hockey stick is given by the Junior class to the best all-round hockey player. Martha Messenger received the stick this year. Then for the first time at commencement small loving cups are to be presented to the girls winning the tennis championship in singles and doubles. At this time also the Victory Trophy is to be awarded to Meredith's All-Round Sport.



McCOURRY



Mr. McCOURRY

ATHLETIC ASSOCIATION

OFFICERS

- RUTH McCOURRY *President*
- MR. E. McCOURRY *Athletic Association Foucher*
- MAE MARSHBURN *Vice-President*
- KATHERINE LILES *Secretary*
- DOROTHY DOCKERY *Treasurer*



MARSHBURN



LILES



DOCKERY



MONOGRAM CLUB

Kneeling: Catherine Hayes, '34; Eleanor Rozar, '34; Mildred Eaton, '26; Louise Hetschbeck, '36; Hazel Boswell, '36; Ella Lee Yates, '34.
Standing: Dorothy Deekery, '26; Undine Weeks, '25; Katherine Lales, '36; Margnerite Warren, '34; Virginia Garnett, '34; Vara Lee Thornton, '34; Ruth McCourry, '34; Mae Marshburn, '25; Katharine Davis, '34; Josephine Arnette, '34.



AWARD TO BEST ALL-ROUND ATHLETE WINNERS

"Dot" ROWLAND '30, MARTHA DAVIS '31, RUTH MCCOURRY '32, "PAT" ABERNETHY '33

*Picture not available.

M E R E D I T H C O L L E G E



PEG LE GRAND, *College Cheer Leader*



VARSITY BASKETBALL SQUAD

KATHLEEN RIDDLE, '33
Forward

"GINNY" GARNETT, '34
Guard

"KAT" DAVIS, '34
Forward

MAE MARSHBURN, '35
Guard

KATHERINE LIEFS, '36
Forward

KATHERINE HAWKINS, '33
Guard

"PINKY" MCCOURRY, '34
Forward

ELVAI BULLARD, '36
Guard

LOUISE HELSABECK, '36
Forward

DOROTHY DOCKERY, '36
Guard

PAULINE COVINGTON, '36
Forward

"ETHE" CASTLEBURY, '36
Guard





VARSITY HOCKEY SQUAD

MARY CREAM, '34
Halfback

MILDRED EATON, '36
Halfback

MARY F. MACMILLAN, '37
Halfback

MARTHA MESSENGER, '37
Center

KATHERINE LILES, '36
Inner

OLIVE DAME, '37
W'ing

"PINKY" DAVIS, '37
W'ing

LUCILLE DAVIS, '37
Center Half

LUNA JACKSON, '35
Fullback

"KAT" DAVIS, '34
Halfback

RUTH MCCURRY, '34
Fullback

VARA LEF THORNTON, '34
Center

NANCY BUNN, '36
Inner

ELEANOR ROZAR, '34
W'ing

CHARLOTTE GAMMAGE, '35
Center Half

UNDINE WEEKS, '35
Goal Guard





SENIOR HOCKEY TEAM

Front row: Marguerite Warren, "Stumpy" Yates, "Tecky" Hayes, Vara Lee Thornton, Mary Creath.
Seated: Eleanor Bozar (Manager).
Back row: Amorette Byrd, Miriam Wilson, "Gimny" Garnett, "Kat" Davis, "Pinky" McCourry.



SOPHOMORE HOCKEY TEAM

Left to right: Mildred Eaton (Manager), "Kitten" Boswell, Louise Helsbeck, "Crie" Adams, Virginia Lambert, "Gimny" Rollins, Mary Chandler, "Kat" Liles, Gene Gillespie, Nancy Bunn.



JUNIOR HOCKEY TEAM

Kneeling: Ruth Tucker, "Bill" Yost, Mildred Satterfield, Gladys Freeman, Margaret Caudle, "Lib" Lee, Charlotte Gammage, "Ja" Turner, "Nick" Nichols, Mae Marshall, Uudine Weeks.



FRESHMAN HOCKEY TEAM

Kneeling: Betty King, Ruby Pearson, "Dot" Perry, Ella Ruth Perry, Martha Messenger (Manager), "Gwen" Kester, "Finky" Davis, Ruby Barrett, Natalie Johnson, Mary Fay MacMillan, Susan Rudisill, Zita Sawyer, Mary Fort Carroll, Margaret Sale, Lucille Davis, Mary "Lib" Dobson, Faith Hite, Olive Dame, Mary Florence Sawyer, Ruth Abernethy.



SENIOR BASKETBALL TEAM

Left to right: Ella Lee Yates, Eleanor Rozar, Marguerite Warren, Vera Lee Thornton, Mary Creath, "Gunny" Garnett, Louise Hocutt, Louise Turlington, Amorette Byrd, "Pinky" McConry, "Kat" Davis, Miriam Wilson (Manager).



SOPHOMORE BASKETBALL TEAM

Seated: Louise Heisbeck (Manager).
 Standing: "Kitten" Boswell, Eleanor Andrews, Marjorie Gregory, Mildred Eaton, Nancy Bunn, "Kat" Liles, "Doppy" Dockery, Mary Roselle Sears.



JUNIOR BASKETBALL TEAM

Kneeling: Ruth Tucker, Evelyn Fowler, Mae Marshburn, Undine Weeks (Manager), Mildred Satterfield, Gladys Freeman "Lab" Lee.
 Standing: Lois Moran, "Mut" McCarter, Luna Jackson, Verne Cabaniss, Mamie Lou Fournay.



FRESHMAN BASKETBALL TEAM

Front row: Frances Pittman, Martha Messenger, Sarah Griffin, Margaret Sale (Manager), Florence Pittman, Zita Sawyer, "Pinky" Davis.
 Back row: Margaret Blanchard, "Dot" Lowdermilk, Ruby Pearson, Lucille Davis, Mary "Lab" Dubson, Mary Florence Sawyer, Aylene Watkins, Ruth Privott.

MINOR SPORTS



MARTHA MESSENGER

ALL-ROUND HOCKEY PLAYER



SMILES GO BEFORE A FALL



TRACK IS HERE!

GAMMAGE PUTS THEM OUT ON FIRST BASE



"KAT" DAVIS SET FOR A RECORD THROW



"REPORTER" DOBSON GETS THE HIGH SPOTS OF THE GAME



"LIL" UHER DOUBLES CHAMPIONS - 1933



"LIL" UHER - SINGLES CHAMP 1933



ROZAR COVERS GROUND



POWER AND TIMING MAKE THE JAVELIN GO FOR A RIDE

FOUR HORSEMEN OF FRESHMAN CLASS





INDIVIDUAL TRACK CHAMPION - 1933

"BERT" FOSTER



GET READY FOR A

HOME RUN



ON THE DEFENSIVE



HURRY UP!



MAKING TRACKS FOR A RECORD

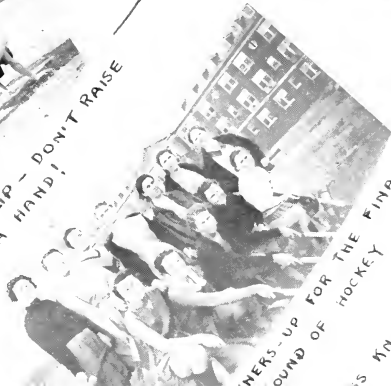


HEADS OR FEET?

ON YOUR TOES - DON'T LET ANY



DON'T SLIP - DON'T RAISE A HAND!



WARMERS-UP FOR THE FINAL ROUND OF HOCKEY

THIS KNIGHT - HOCKEY CH



T H E O A K L E A V E S

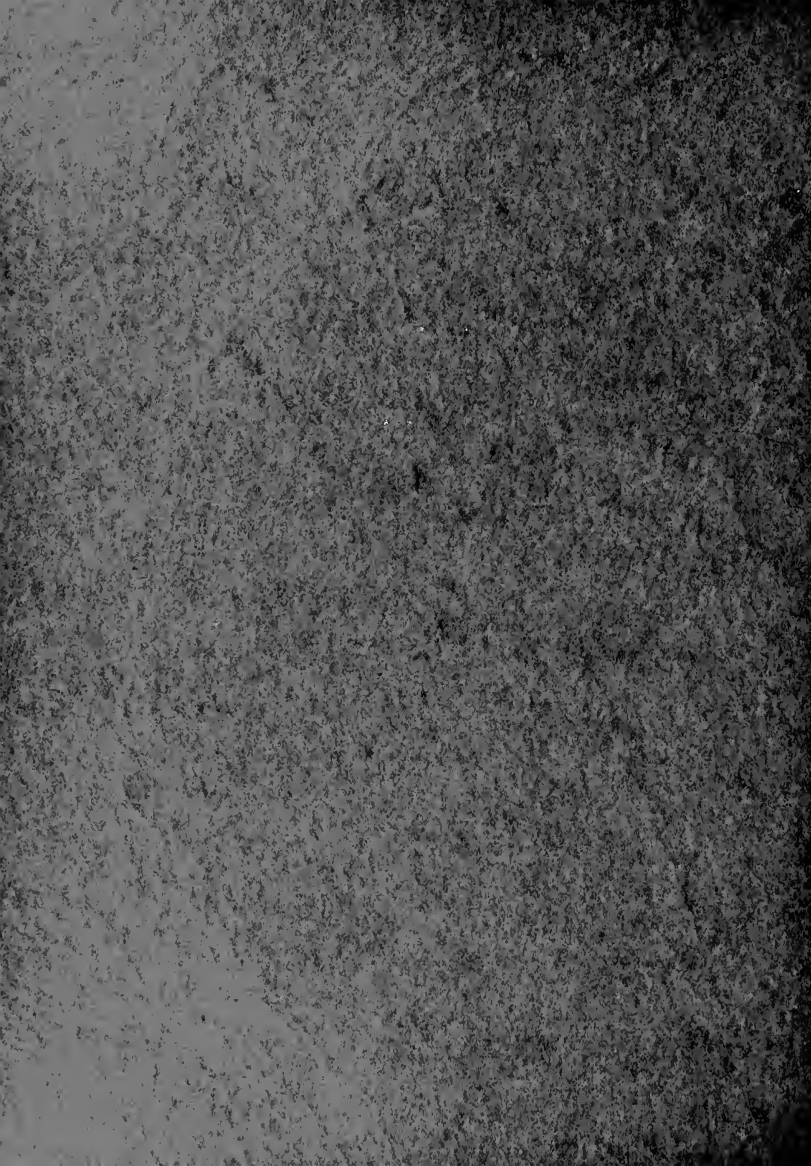
*It is pleasant to have a suitable partner
for each occasion. Here we present, from
the Senior class, companions of whom
we are sure you will approve.*

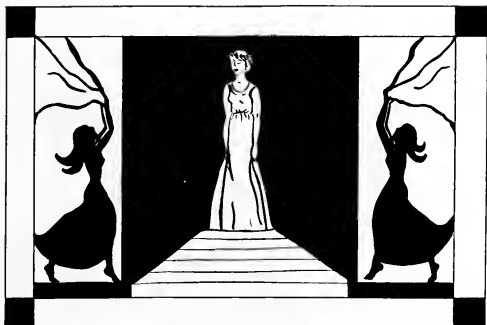
*—Dresses were furnished by Ellisberg's, Fayetteville Street, Raleigh.



T H E F E A T U R E S







T H E / / / L A U R E L
M A R S H I L L C O L L E G E , M A R S H I L L , N . C .

SUPERLATIVES



TO A HOUSE PARTY , , CUTEST

Mary Bess Van Landingham



TO A FOOTBALL GAME ✓ ✓ BEST ATHLETE

Katharine Davis



FOR A RIDE ✓ ✓ BEST ALL-ROUND TOWN STUDENT

Ruth Bird



TO THE LIBRARY , , MOST INTELLECTUAL

Evelyn Barker



TO A DANCE , , MOST BEAUTIFUL

Gwendolyn Crowder



TO A TEA , , MOST STYLISH

Grace Carr



TO A MASQUERADE ✓ MOST ORIGINAL

Eliza Briggs



TO THE ALTAR ✦ ✦ MISS MEREDITH

Virginia Garnett

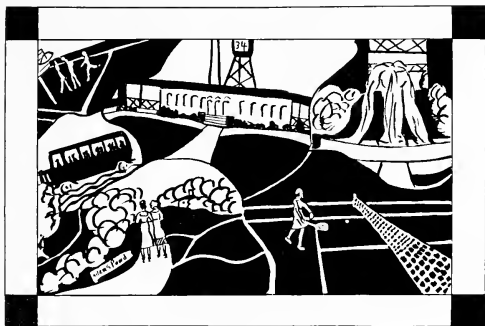
HAMPDEN-SYDNEY COLLEGE

HAMPDEN-SYDNEY, VIRGINIA



Alma Mater

*Here's to old Hampden-Sydney
The Garnet and the Gray,
And the team of tried heroes
Who defend her name today,
Our old Alma Mater
We'll e'er be true to thee,
For we'll spread with song and story
The fame of H. S. C.*



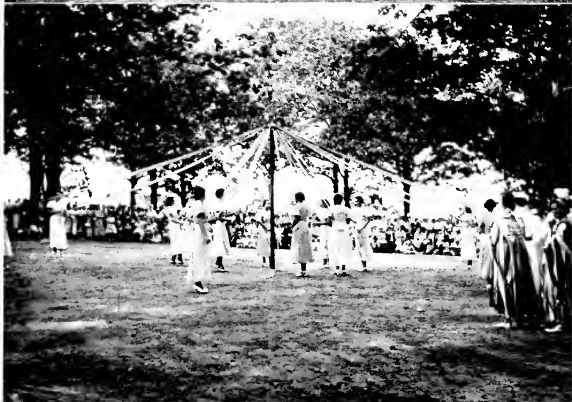
THE √ √ KALEIDOSCOPE
HAMPDEN-SYDNEY COLLEGE, HAMPDEN-SYDNEY, VA.

S N A P S



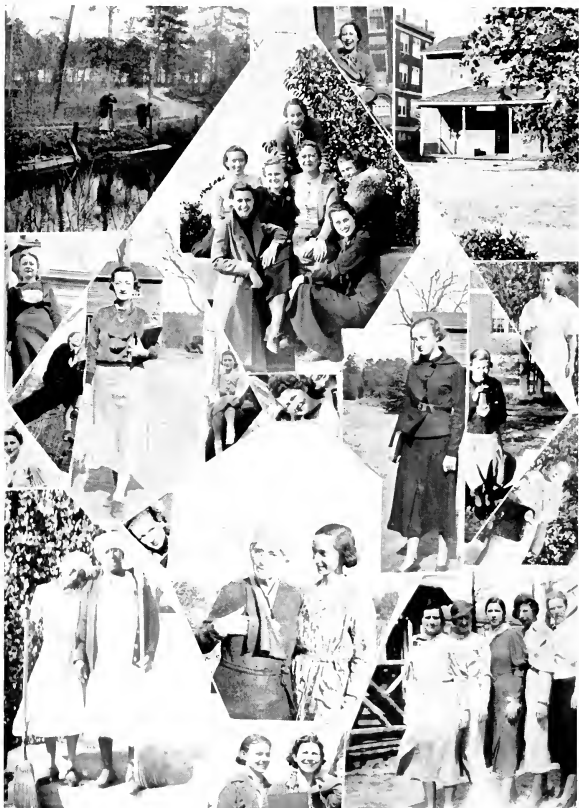
May Queen—1933, MARGARET BRIGGS

M E R E D I T H C O L L E G E



The 1933 May Court consisted of the following people: Jessie Martin and Mary C. Sherrin—Maids of Honor; Kate Allison and Abye Reih—Senior Attendants; Katharine Davis and Zella Washburn—Junior Attendants; Cornelia Atkins and Sara Harrell—Sophomore Attendants; Elisabeth Davidson and Edna Taylor—Freshman Attendants; Rufus A. Hunter, Jr., Mascot, and Emily Miller, Jester.

T H E O A K L E A V E S



S O M E S N A

M E R E D I T H C O L L E G E



P P Y G A L S

UNION UNIVERSITY

JACKSON, TENNESSEE



Alma Mater

*Alma Mater, our affections cling to thee,
Faithful and loyal may we ever be.
May our Master's Watch care
O'er us one and all extend,
Till again in Union
Heart and voice we blend.*

*Dear Alma Mater, hear thy offspring's plighted vow!
Firm and truer may we be than now.
Memory fondly lingers,
Calling back departed days;
Every task grows lighter
As we sing thy praise.*

*Loved Alma Mater, o'er us shed scholastic light,
E'en as we wander from thy halls tonight;
And though years divide us,
And in distant lands we roam,
Oft in dreams we'll gather
'Round our "home, Sweet Home."*

CHORUS

*Union, dearest Union,
Yes, we'll sing thy spreading fame!
Union, dearest Union,
Honored be thy name.*



ADVERTISEMENTS



Congratulations, Graduates of Meredith!

We hope that you will ever cherish the high ideals instilled into you at Meredith. . . . Your college has given you a glorious heritage. . . . May you live your life so that future graduates will be as proud as you are today.

HUDSON-BELK COMPANY
RALEIGH'S LARGEST DEPARTMENT STORE

COMPLIMENTS OF
T. H. Briggs and Sons
Incorporated

*"Carolina's Oldest Wholesale and
Retail Hardware House"*

Established 1865 Phone Number 45
RALEIGH, N. C.

JEANS
SMART SHOP FOR
SMART WOMEN

118 FAYETTEVILLE STREET

MANGEL'S
Dresses, Underwear
Sweaters, Skirts, Hosiery

124 Fayetteville St.

**BYNUM PRINTING
COMPANY**

Better Printing

Phone 692, 693

119 W. Hargett Street
RALEIGH, NORTH CAROLINA

The Shop of Original Modes

LUCIELLE
TOWN HOME OF MEREDITH

PATENTS, TOILETRIES, PRESCRIPTIONS

ECKERD'S

"Creator of Reasonable Drug Prices"

Carrying a Complete Cosmetic Line of *D'Orsay*—Paris
Soda Fountain and Luncheonette

TAYLOR'S

The Show Place of the Carolinas Offers the Faculty and
Students of Meredith College a Store Unsurpassed in the South

TAYLOR'S

With Fifteen Departments, Sells Practically Everything Desired—Usually Showing the New
Things First. Prices Are Always Guaranteed.

Pine State Creamery Co.

Pasteurized Dairy Products

Fancy Ice Cream for All Occasions

Drink Milk for Health

Raleigh, N. C.

Phone 3910

J. J. FALLON CO.

Incorporated

FLORISTS

203 FAYETTEVILLE ST.

Raleigh, N. C.

Phone 4070

"We Grow the Flowers We Sell"

EDWARDS AND BROUGHTON COMPANY

*Congratulates the Students of Meredith on the
Competency of the*

OAK LEAVES STAFF

—and wishes the publication much success

EDWARDS AND BROUGHTON COMPANY

"Complete Annual Service"

RALEIGH, N. C.

LOOKING TO THE FUTURE

When you entered upon your college career as a student at Meredith you did so in accordance with a definite plan you had fixed for your future. Each year has marked another step toward the realization of your ambition; and now that you have completed your course of training you will go forth to enjoy the rewards which are yours for having achieved your purpose.

A still greater pleasure awaits you—that of building a happy home. That, too, will be achieved step by step, and, in the final analysis, an all-electric home will be the reward.



**CAROLINA POWER &
LIGHT COMPANY**

THE PHOTOGRAPHS IN
THIS ANNUAL

WERE MADE BY

DUNBAR & DANIEL

Incorporated

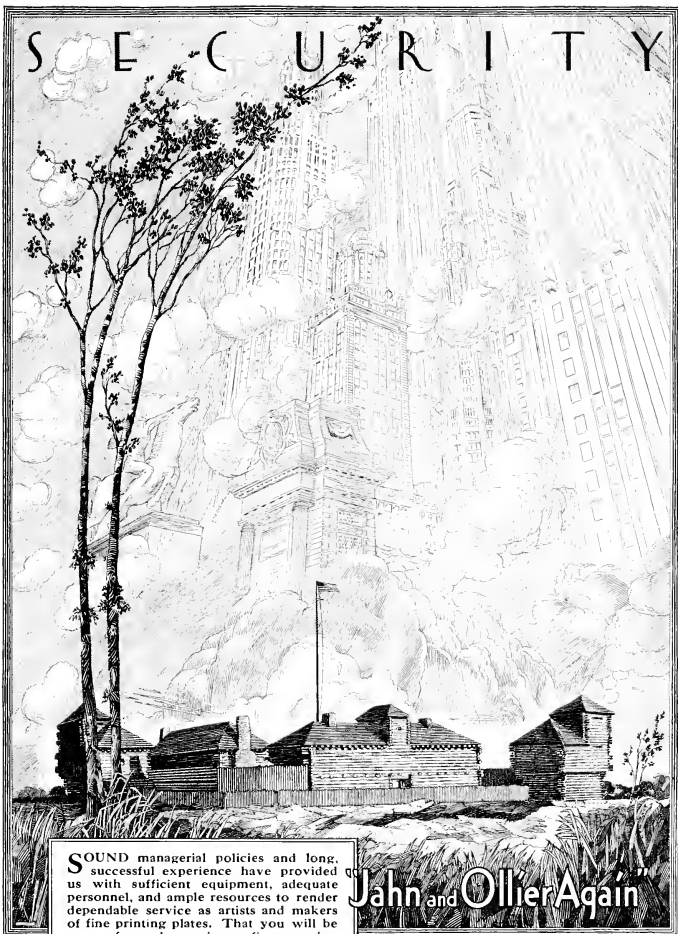
132 Fayetteville Street

RALEIGH, NORTH CAROLINA

FINE PORTRAITS
PROMPT SERVICE

*The Largest College
Annual Photographers in the South*

S E C U R I T Y



SOUND managerial policies and long, successful experience have provided us with sufficient equipment, adequate personnel, and ample resources to render dependable service as artists and makers of fine printing plates. That you will be secure from chance, is our first promise.

JAHN & OLLIER ENGRAVING CO.
817 West Washington Blvd., - Chicago, Illinois

"Jahn and Ollier Again"

In the foreground - Ft. Dearborn re-erected
in Grant Park on Chicago's lake front.
Illustration by Jahn & Ollier Art Studios.

THIS BOOK PRINTED BY.....



THE
WORLD'S
LARGEST
PUBLISHERS
OF
COLLEGE
ANNUALS



COLLEGE ANNUAL HEADQUARTERS

Highest Quality Workmanship Superior Extensive Service





THINGS WE WANTED IN THE ANNUAL



Life-sized pictures of the Annual Staff, the Faculty Advisors and those who so kindly loaned us typewriters for getting out the publication.

A tenth-of-an-inch picture of all our critics.

Each girl's name engraved in gold on her Annual.
Each student's picture lovely beyond compare, and in color.

Some notion of the sleepless nights spent over the Annual, and especially the night it came out.

Two or three twenty-dollar bills left as book marks.

No mistakes.

An ad to fill up this space.









