

CARLYLE CAMPBELL LIBRARY

CLASS

A  
376.R

BOOK

M54V  
1936

ACCESSION

90220

MEREDITH COLLEGE  
RALEIGH, N. C.

205-D



CARLYLE  
CAMPBELL  
LIBRARY

Meredith College  
Raleigh, NC 27607-5298



EX-LIBRIS



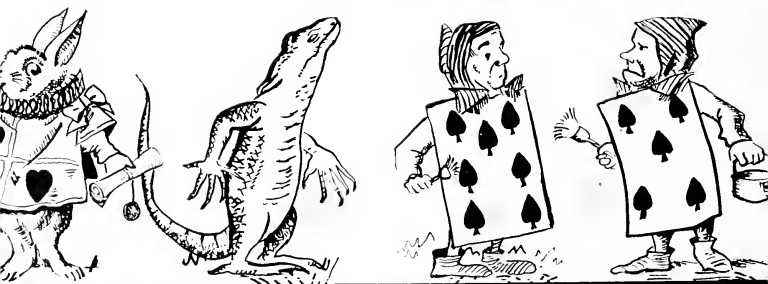
OAK LEAVES  
1936

NORMA ROSE  
EDITOR-IN-CHIEF

≈

HENRIETTA CASTLEBURY  
BUSINESS MANAGER

*The*



# Oak Leaves

1 9 3 6

VOLUME THIRTY-THREE

PUBLISHED BY THE STUDENTS OF

MEREDITH  
COLLEGE

RALEIGH, NORTH CAROLINA



90228

CARLYLE CAMPBELL LIBRARY  
MEREDITH COLLEGE

To the Faculty, "who once during every college generation put away their academic manners and clothing, don quaint attire, and present for the entertainment of the students 'Alice in Wonderland'," we dedicate this 1936 volume of the "Oak Leaves" in loving appreciation for the inspiration and knowledge which they as teachers and as friends have imparted to us.

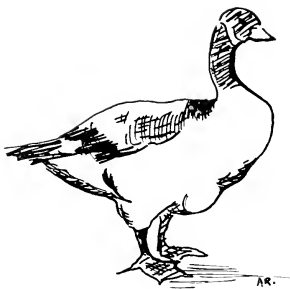






# EDICATION





F

*F*aculty and student, work and play, college and campus, traditional and new, each has its place in a Meredith year book. We seek in this volume to bind these into a unified record of the year's progress and a memorandum of school life through "Alice in Wonderland," a fantasy ever dear to Meredith students.



# FOREWORD



## CONTENTS

THE COLLEGE  
THE CLASSES  
ORGANIZATIONS  
THE FEATURES





# C O L L E G E

A CAMPUS OF INCREASING BEAUTY, A  
FACULTY OF INSPIRING PERSONALITIES, A  
STUDENT BODY OF THE BEST OF TODAY'S  
YOUTH, BLENDED WITH A SPIRIT OF LOVE  
AND COMRADESHIP INTO OUR ALMA

MATER.

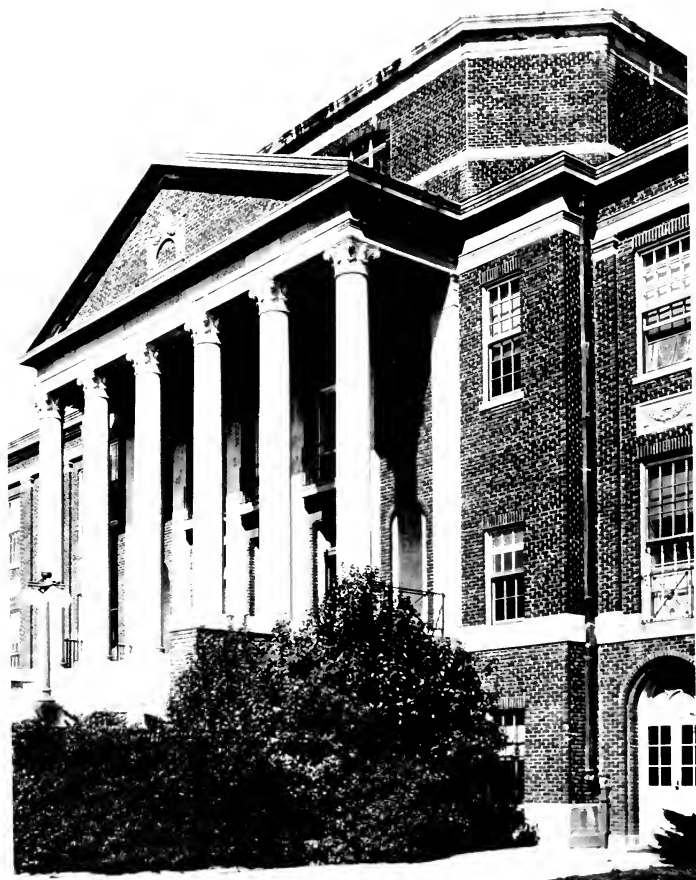




V I E W S



*"She raised herself on tiptoe and peeped over  
the edge of the mushroom."*

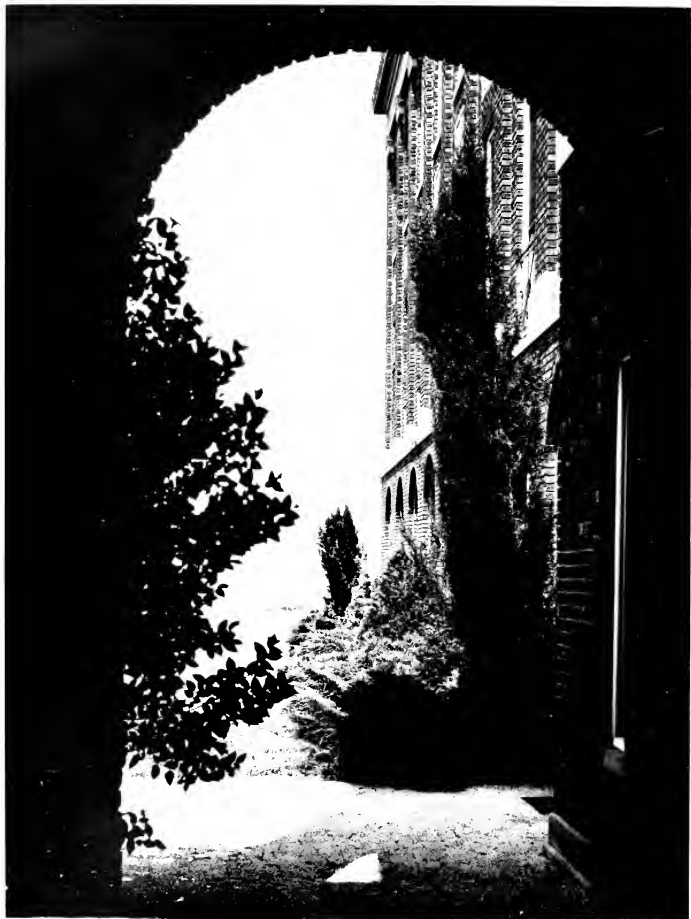


**Johnson Hall**





**The Library Porch**



**View Through the Arch**



**The Fountain**



**The Summer House**



**The Grove**



CHARLES E. BREWER, A.M., PH.D., LL.D.  
*President*



DR. J. RUFUS HUNTER  
*President Board of Trustees*



J. GREGORY BOOMHOUR, A.B., A.M.  
*Dean*





MISS CAROLINE ROBINSON BIGGERS, A.B.  
*Dean of Women*

## FACULTY

### OFFICERS OF ADMINISTRATION

HAZEL RUTH CLARK, B.S., M.A.  
*Assistant Dean of Women*

ETHEL EVANGELINE ENGLISH, B.S., M.A.  
*Freshman Adviser; Assistant Professor in Geography and Education*

FULLER BROUGHTON HAMRICK, A.B.  
*Bursar*

MARGARET FORGEUS, A.B.  
*Librarian*

MAE FRANCES GRIMMER  
*Secretary Alumnae Association*

MARGUERITE MASON, A.B.  
*Student Secretary*

LATTIE RHODES  
*Secretary to the President*

ANNE McCANLESS BUTLIF  
*Secretary to the Bursar and Treasurer*

JESSIE LOIS MORGAN, A.B.  
*Secretary to the Bursar*

MARY FRANCES WELCH, B.S.  
*Dietitian*

ANNIE LEE WHITE  
*House Director*

NORA KELLY, R.N.  
*Nurse*

ANNIE KEITH, A.B.  
*Assistant Dietitian*



Hazel Ruth Clark  
Margaret Forgeus  
Lattie Rhodes  
Mary Frances Welch

Ethel Evangeline English  
Mae Frances Grimmer  
Anne McCanless Butler  
Annie Lee White

Fuller Broughton Hamrick  
Marguerite Mason  
Jessie Lois Morgan  
Nora Kelly



Annie Keith  
Ernest F. Canaday  
Julia Hamlet Harris  
Helen Price

Lemuel Elmer McM. Freeman  
Samuel Gayle Riley  
Lena Amelia Barber  
Bunyan Yates Tyner

J. Gregory Boomhour  
Lula Gaines Winston  
Ellen Dozier Brewer  
Florence Marian Hoagland

## FACULTY

### DEPARTMENT OF ARTS AND SCIENCES

LEMUEL ELMER McMILLAN FREEMAN,  
A.B., A.M., B.D., Th.D.  
*Professor of Religion*

J. GREGORY BOOMHOUR, A.B., A.M.  
*Professor of Physics*

ERNEST F. CANADAY, A.B., A.M.  
*Professor of Mathematics*

SAMUEL GAYLE RILEY, A.B., A.M.  
*Professor of History*

LULA GAINES WINSTON, B.S., Ph.D.  
*Professor of Chemistry*

JULIA HAMLET HARRIS, Ph.B., A.M., Ph.D.  
*Professor of English*

LENA AMELIA BARBER, B.S., A.B., M.S.  
*Professor of Biology*

ELLEN DOZIER BREWER, A.B., B.S., A.M.  
*Professor of Home Economics*

HELEN PRICE, A.B., Ph.D.  
*Professor of Latin and Greek*

BUNYAN YATES TYNER, A.B., A.M.  
*Professor of Education*

FLORENCE MARIAN HOAGLAND, A.B., A.M.,  
Ph.D.  
*Professor of Psychology and Philo-  
sophy*

# FACULTY

## DEPARTMENT OF ARTS AND SCIENCES

NETTIE SOUTHWORTH HERNDON, A.B., A.M.  
*Professor of Economics and Sociology*

GERTRUDE ROYSTER SORRELL  
*Director of Physical Education*

MARY LYNCH JOHNSON, A.B., A.M., Ph.D.  
*Associate Professor of English*

MARY LOUISE PORTER, Ph.B., A.M., Ph.D.  
*Associate Professor of Modern Languages*

JENNIE M. HANSEN, B.S., A.M.  
*Associate Professor of Home Economics*

ISAAC MORTON MERCER, A.M., Th.M., D.D.  
*Associate Professor of Religion*

LILLIAN PARKER WALLACE, A.B., M.S.  
*Assistant Professor of History*

MARY JAMES SPRULL, A.B., A.M.  
*Assistant Professor of English*

MARY YARBROUGH, A.B., A.M.  
*Assistant Professor of Chemistry*

ALICE BARNWELL KEITH, B.S., M.S.  
*Assistant Professor of History*

MARLAN WARNER, B.S.  
*Assistant Director of Physical Education*

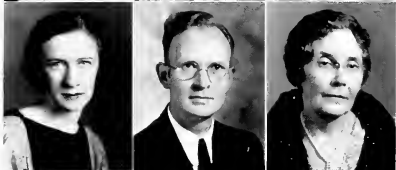
DORIS KATHERINE TILLERY, A.B., A.M.  
*Instructor in Mathematics*



Nettie Southworth Herndon  
Mary Louise Porter  
Lillian Parker Wallace  
Alice Barnwell Keith

Gertrude Royster Sorrell  
Jennie M. Hansen  
Mary James Sprull  
Marian Warner

Mary Lynch Johnson  
Isaac Morton Mercer  
Mary Yarbrough  
Doris Katherine Tillery



Elizabeth Sophia Foster  
Melba Cleo Hunt  
Mary Paul Tillery  
Charlotte Elizabeth Armstrong

Ethel Kathryn Day  
Carolyn Wray  
Leslie P. Spelman  
Ethel M. Rowland

Elizabeth Gregory Boomhour  
Ida Isabella Potent  
May Crawford  
Aileen McMillan

## FACULTY

### DEPARTMENT OF ARTS AND SCIENCES

ELIZABETH SOPHIA FOSTER, A.B., A.M.  
*Instructor in English*

ETHEL KATHRYN DAY, A.B., A.M.  
*Instructor in French*

ELIZABETH GREGORY BOOMHOUR, A.B.,  
A.M.  
*Instructor in Biology*

MELBA CLEO HUNT, A.B.  
*Instructor in Biology*

CAROLYN WRAY, A.B.  
*Instructor in Latin and Psychology*

### DEPARTMENT OF ART

IDA ISABELLA POTENT  
*Professor of Art*

MARY PAUL TILLERY  
*Associate Professor of Art*

### DEPARTMENT OF MUSIC

LESLIE P. SPELMAN, A.M., B.A., F.A.  
G.O.  
*Professor of Music*

MAY CRAWFORD  
*Associate Professor of Piano*

CHARLOTTE ELIZABETH ARMSTRONG  
*Associate Professor of Violin*

ETHEL M. ROWLAND  
*Associate Professor of Voice*

AILEEN McMILLAN, B.Mus.  
*Acting Assistant Professor of Piano*



## DEPARTMENT OF MUSIC

RAGNA MARGRETHE OLTENSEN, B.A., B.  
Mus.Ed.

*Assistant Professor of Public School  
Music*

PAULINE WAGAR, B.Mus., M.Mus.

*Assistant Professor of Cello and  
Theory*

MARY PHILGRIW LEE, B.Mus.

*Instructor in Piano*

## †FACULTY

CATHERINE ALLEN, A.B., A.M.

*Professor of Modern Languages*

MARY HENLEY, A.B.

*Instructor in Modern Languages*

BESSIE EVANS LANE, A.B., M.D.

*Professor of Physiology; College  
Physician*

\*VIRGINIA BRANCH, B.Mus.

*Instructor in Piano*

†Pictures do not appear in Annual.

\*Away on leave of absence.



# C L A S S E S



SENIORS, JUNIORS, SOPHOMORES, AND FRESHMEN, THE FOUR CLASSES, THROWN TOGETHER INTO A DELIGHTFUL MELEE OF AMBITIOUS AND ENTHUSIASTIC COLLEGE GIRLS KNOWN AS OUR STUDENT BODY.





# S E N I O R S



*"Mine is a long and sad tail."*

NANCY ANN RAMSEY  
Class Mascot



We feel sure that Nancy Ann will always be a success in whatever she undertakes. Why? Because she has made such a success as mascot of our class. We like to think that it was at least partly due to her presence that we won the Stunt Cup. What more could a mascot do for her class!



SONORA BLAND  
President

## C L A S S O F F I C E R S

---

SONORA BLAND	President
HILDA WILLIAMS	Vice-President
MINNIE RUTH MCNEILL	Secretary
HELEN FRANCES PARKER	Treasurer



CHRISTINE VIRGINIA ADAMS

M'CALL, S. C.

A.B.

*Astrotekton*

President Astrotekton Society, 4; Critic, 3; Business Manager *Acorn*, 3; Publicity Director Athletic Association, 3; Manager Horseback Riding, 4; Hockey, 1, 2, 3, 4; Varsity, 4; Basketball, 1, 2, 3, 4; Student Council, 2; Nominating Committee, 4; South Carolina Girls' Club, 1, 2, 3; Barber Biology Club, 1, 2, 3, 4; B. Y. P. U. Officer, 1, 2, 3; Sunday School Officer, 1, 4; Y. W. A., 1, 2, 3, 4; Officer, 3.

NANCY CHAMBERS ALLEN

WADESBORO, N. C.

A.B.

*Astrotekton*

Student Council, 1, 3, 4; Vice-President Student Body, 4; Honor Roll, 3; Home Economics Club, 2, 3, 4; Secretary, 3; Silver Shield, 3, 4; Granddaughters' Club, 1, 2, 3, 4; Class Superlative, 4; Stunt, 2, 3, 4; College Representative to N. S. F. A., 3; Official Chaperon, 4.

Nancy is loved and admired by everyone who knows her. She is a loyal friend.





JANIE MILDRED ALLGOOD

B.S.

ROXBORO, N. C.

*Astrotckton*

Choir, 2, 3, 4.

In spite of the fact that music has occupied much of Janie's time and attention, she has managed to mingle in many phases of our college life. Her dependable, cheerful, and attractive personality has made for her within our class a place that no other could fill. She is an all-round good classmate and a true friend.

ALICE ELIZABETH ANDREWS

MORGANTON, N. C.

*Astrotckton*

A.B.

Davenport College, 1; Barber Biology Club, 2; Town Girls' Club, 3, 4.

Whether in the classroom or on the campus, Alice is known and recognized as an outstanding student. Her ability and participation in many phases of student activity mark her as a well-balanced and congenial classmate. She deserves success in whatever she undertakes.





DOROTHY ANDREWS

A.B.

MARION, MARYLAND

*Philactian*

Pineland Junior College, 1, 2.

Sociable, energetic, and capable, a classmate of whom we are proud. Reserved? No, not when you really know her, for although she is reserved in a crowd, she has that sunny disposition and optimistic attitude that make her a real friend among friends. "Dot" has been with us only two years, but we wonder how we ever got along without her.

ELEANOR SOUTHER ANDREWS

A.B.

CLAYTON, N. C.

*Astrotekton*

Basketball, 1, 2, 3, 4; Barber Biology Club, 2, 3, 4; Vice-President, 3; Class Secretary, 3; Stunt, 2, 3, 4; Tennis, 1, 2, 3, 4.

Eleanor is recognized on our campus as a girl outstanding in many respects. Her devotion to duty, sincerity in application, innate ability, and friendly disposition have made her a classmate for whom we have every hope of success in later life.





ANNIE MAE BANKS

A.B.

RALEIGH, N. C.

*Philartian*

Saint Mary's Junior College, 1, 2; Town Girls' Club, 3, 4; K. K. Klub, 4.

Annie Mae is by nature quiet and reserved. Consideration for others, friendliness, dignity, grace and bigness of heart—these are her virtues. Despite the fact that she has lived in the city during her college career, she has a large number of friends on the campus.

NINA KINCAID BINDER

MOUNT AIRY, N. C.

A.B.

*Philartian*

Class Hockey, 1, 2; Y. W. A., 1, 2, 3; B. Y. P. U. Officer, 1, 2, 3; Barber Biology Club, 1, 2, 3; Honor Roll, 1, 2, 3; Stunt Committee, 2, 3, 4; Class Editor *Acorn*, 2, 3; Associate Editor, 4; Colton English Club, 3, 4; Golf Letter, 3; Manager Swimming, 3; Executive Board Athletic Association, 3; Student Council, 4; Classical Club, 4; Kappa Nu Sigma, 4; Alliance Française, 1, 2, 3, 4; President, 4.





SONORA MOORE BLAND

GOLDSBORO, N. C.

A.B.

*Philaretian*

B. Y. P. U., 1, 2, 3; Officer, 2; Y. W. A., 1, 2, 3, 4; Hockey, 1; Granddaughters' Club, 1, 2, 3, 4; President, 3; Stunt, 1, 3; Home Economics Club, 1, 2, 3, 4; Assistant Business Manager *Twig*, 2; Business Manager, 3; Class Vice-President, 3; Nominating Committee, 4; Class Superlative, 4; Class President, 4; Sunday School Officer, 3; Honor Roll, 3; Needle-Work Guild, 4; K. K. Klub, 4.

MARGARET BODIFORD

MAXTON, N. C.

*Philaretian*

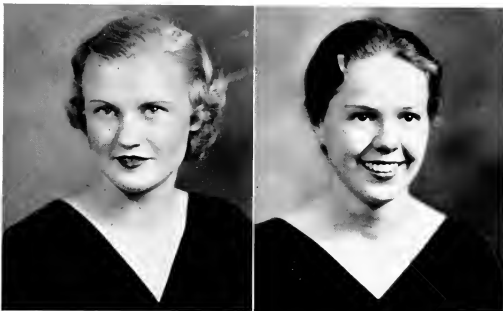
A.B.

Presbyterian Junior College, 1; Flora MacDonald College, 2; Home Economics Club, 3, 4; Y. W. A., 3, 4; B. Y. P. U., 3, 4; Vice-President 4; Wake Forest Summer School, 3.

Quiet, unassuming, and modest in manner, Margaret is loved by all who know her. She is always steady and reliable, and her disposition is ideal. Whatever she does you may be sure she does it well.







HAZEL BOSWELL

BURLINGTON, N. C.

A.B.

*Astrotekton*

Marshal Astrotekton Society, 2; Hockey, 1, 2; Varsity Hockey, 1; Tennis, 1, 2, 3, 4; Doubles Tennis Champion, 1; Y. W. A. Circle Leader, 2; General B. Y. P. U. Officer, 4; Basketball, 1, 2, 3, 4; Choir, 2, 3, 4; Glee Club, 4; College Cheer Leader, 4.

Whether working or playing "Kitten" does all with a vim that speaks of success. Her good nature has been indispensable to us.

ANN TORIAN BRADSHER

ROXBORO, N. C.

A.B.

*Philaretian*

International Relations Club, 2, 3, 4; Classical Club, 1, 2, 3, 4; Class President, 2; Nominating Committee, 2, 3, 4; Honor Roll, 2, 3; Secretary Student Council, 3; Silver Shield, 3, 4; College Representative to N. S. F. A., 3; Secretary N. C. S. F., 4; Little Theater, 2, 3, 4; Y. W. A. Circle Leader, 2; President Student Body, 4; Class Superlative, 4; Classified in *Who's Who Among Students in American Colleges and Universities*.





MARY ANN BREWER

PITTSBORO, N. C.

A.B.

*Philaretian*

W. C. U. N. C., 1, 2; Summer School, 2; Town Girls' Club, 3, 4;  
Wake Forest Summer School, 3.

A smile that is always in evidence is a most welcome addition to any college campus, and that is the reason Mary Ann is so welcome at Meredith. She is so altogether charming that her presence is in constant demand. Such popularity must be deserved.

BLANCHE BUFFALOE

GARNER, N. C.

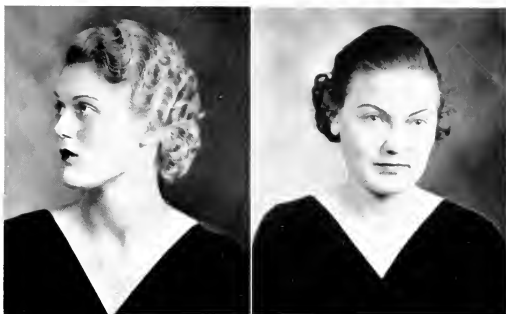
A.B.

*Philaretian*

Peace Junior College, 1, 2; Wake Forest Summer School, 3; Town  
Girls' Club, 3, 4.

We haven't known Blanche very long, but two years have been enough for us to realize that she is a valuable addition to the class. In her quiet and unassuming way she does her work and does it well. Her ready smile and cheerful disposition have won for her many friends among the students.





NANCY ELIZABETH BUNN

A.B.

RALEIGH, N. C.

*Philaretian*

Stratford College, 1; Secretary Philaretian Society, 3; Granddaughters' Club, 2, 3, 4; Tennis, 2, 3, 4; Monogram Club, 3, 4; Executive Board Athletic Association, 2, 3, 4; Captain Basketball, 3; Basketball, 2, 3, 4; Hockey, 2, 3, 4; Glee Club, 3; Little Theater, 2, 3, 4.

"Bunn" is a most versatile young lady. Her outstanding ability in studies, in athletics, and in dramatics speak for a well-rounded personality.

INA MAE BYRD

B.S.

BUNNLEVEL, N. C.

*Philaretian*

Campbell College, 1, 2; B. Y. P. U. Officer, 3, 4; Choir, 3, 4; Colton English Club, 3; Sunday School Officer, 3, 4; Y. W. A., 3, 4; Glee Club, 4.

We can't hold it against Ina Mae that she didn't start off at Meredith with us, for she has made up for that since her coming. Loyal, dependable, capable, and talented, she has been a valuable addition to our "Class of '36."





FRANCES CALLOWAY

CONCORD, N. C.

B.S.

*Philaretian*

Treasurer Philaretian Society, 2; OAK LEAVES Staff, 2; Vice-President Class, 2; Treasurer Student Council, 3; Vice-President State B. S. U., 2, 3; *Acorn* Staff, 3; B. S. U. Council, 2, 3, 4; Choir, 1, 2, 3, 4; Glee Club, 1, 2, 3, 4; B-Hive Committee, 4; Nominating Committee, 4; Little Theater, 3, 4; President B. S. U., 4; Silver Shield, 3, 4; Classified in *Who's Who Among Students in American Colleges and Universities*.

HENRIETTA VICTOR CASTLEBURY

RALEIGH, N. C.

A.B.

*Philaretian*

Day Students' Club, 1, 2, 3, 4; Secretary-Treasurer, 2; Home Economics Club, 1, 2, 3, 4; President, 3; Class Basketball, 1, 2, 3, 4; Varsity Basketball, 1, 3; Class Hockey, 1, 2, 3, 4; Varsity Hockey, 1; *Twig* Staff, 2; Business Manager OAK LEAVES, 3, 4; Silver Shield, 3, 4; Secretary, 4; Barber Biology Club, 1; President N. C. State Student Home Economics Club, 4; Monogram Club, 1, 2, 3, 4; Student Assistant in Physiology, 4.





MARY CHANDLER

DURHAM, N. C.

A.B.

*Astrotekton*

*Twig* Staff, 1; B. Y. P. U. Officer, 1; President, 3; Associate Director, 2; Chaplain *Astrotekton* Society, 3; International Relations Club, 3, 4; Secretary, 4; Class Hockey, 1, 2, 3, 4; Barber Biology Club, 2, 3, 4; B. S. U. Council, 4; Sunday School Director, 4.

Mary's constant smile, ready wit, and cheery greeting will be greatly missed on the campus next year.

NOVELLE CHIEK

DURHAM, N. C.

A.B.

*Astrotekton*

Granddaughters' Club, 1, 2, 3, 4; Stunt, 1, 2; Student League of Women Voters, 4; Barber Biology Club, 1, 2, 3, 4; Colton English Club, 3, 4.

As a student she is among the best; as a friend she is dependable and trustworthy; as a girl she is admired by all with whom she comes in contact. By her classmates she will be remembered always.





CLARA ELIZABETH COLVARD

A.B.

REDDILS RIVER, N. C.

*Philaretian*

Mars Hill College, 1, 2; B. Y. P. U. Officer, 3, 4; Y. W. A. Officer, 3, 4; Mars Hill Club, 3; Colton English Club, 3; Mars Hill Summer School, 3.

We consider it a lucky break for us that Clara came to us after leaving Mars Hill. Naturally, we would feel this way, because Clara would be an asset to any college. She doesn't talk much, but when she does she always has something of real value to say.

SALLIE PAULINE COVINGTON

A.B.

HOFFMAN, N. C.

*Astrakton*

Wake Forest Summer School, 3; B. Y. P. U., 1, 2, 3, 4; Officer, 1, 2, 3, 4; Y. W. A., 1, 2, 3, 4; Class Basketball, 1, 2, 3, 4; Varsity Basketball, 1; Hockey, 1, 2, 3, 4; Tennis, 1, 2, 3, 4; Gym Letter, 2; Alliance Française, 1; Barber Biology Club, 1.

Pauline is another of those girls whose friendly smile and ever-ready desire to help others have helped to make our college career brighter and more successful.





DOROTHY CRUTCHFIELD

A.B.

ALBEMARLE, N. C.

*Philartian*

Mars Hill College, 1, 2; Y. W. A., 3, 4; B. Y. P. U. Officer, 3; Sunday School Officer, 3; World Fellowship Group, 3, 4; Director B. Y. P. U., 4; B. S. U. Council, 4.

A capable leader, a willing worker, a true friend—that gives you a little idea of the kind of classmate "Dot" has been. We are sure that her friendly disposition and her willingness to help will bring her success.

MARY BYNUM DARK

A.B.

LOUISBURG, N. C.

*Philartian*

Town Girls' Club 1; Campbell College, 2; Wake Forest Summer School, 2; Choir, 3, 4; Glee Club, 4; B. Y. P. U., 3, 4; President, 4; Y. W. A., 3; Service Band, 3; Sunday School Officer, 3, 4; Barber Biology Club, 3, 4; Alliance Francaise, 4; Student Council, 4; Official Chaperon, 4.

Indifferent to her honors and efficient in every phase of activity in which she participates, Bynum has proved to us her worth.





ELISABETH DAVIDSON

RALEIGH, N. C.

A.B.

*Philaretian*

Vice-President Sunday School Class, 4; B. Y. P. U., 1, 2; Barber Biology Club, 1, 2, 3, 4; Secretary, 2; May Day Attendant, 1; Maid of Honor to May Queen, 3; Philaretian Marshal, 2; International Relations Club, 3, 4; Little Theater, 3, 4; Stunt, 1, 2, 3, 4; Assistant in Biology, 2, 3, 4; Chief Marshal, 4; Class Superlative, 4; Nominating Committee, 4; Kappa Nu Sigma, 3, 4; Vice-President, 4; Honor Roll, 1, 2, 3.

BEVERLY FALES DAVIS

WILMINGTON, N. C.

A.B.

*Philaretian*

B. Y. P. U., 1; Home Economics Club, 1; Granddaughters' Club, 1, 2, 3, 4; Wake Forest Summer School, 2, 3.

Beneath her happy, amiable, carefree air and her broad, joyous smile, "Bev" carries a depth and seriousness that goes far in accounting for her record and her popularity on our campus. She is another of those well-balanced personalities of our class.







DOROTHY GOODWIN DENT

RALEIGH, N. C.

A.B.

*Philaretian*

Peace Junior College, 1, 2.

*Petite* is the word that best describes her. Sweetness and charm bound together by the sunniest smile one can imagine—that's "Dotty." We are glad that she is to graduate with us, for our class would not have been complete without her. One must know her to appreciate her charming personality which has won for her many friends.

DOROTHY DOCKERY

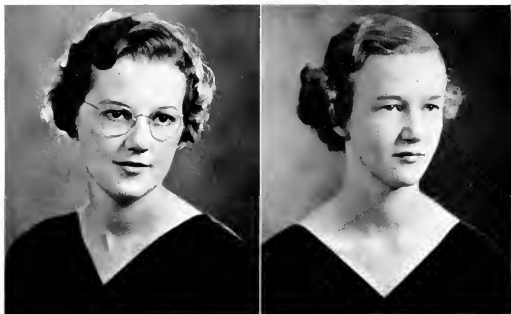
MT. GILEAD, N. C.

A.B.

*Philaretian*

*Twig* Staff, 2, 3; Second Vice-President B. S. U., 3; B. Y. P. U. 1, 2, 3; President, 2; Y. W. A., 2, 3; Colton English Club, 3, 4; International Relations Club, 3, 4; President, 4; Honor Roll, 1, 2, 3; Varsity Basketball, 1, 2, 3, 4; May Day Attendant, 3; Kappa Nu Sigma, 3, 4; Barber Biology Club, 1, 2; Nominating Committee, 4; Class Superlative, 4; Stunt, 1, 2, 3, 4; Secretary Philaretian Society, 2; President, 4; Treasurer Athletic Association, 2.





MABEL VIRGINIA EAKES

OXFORD, N. C.

A.B.

*Astroctkon*

Campbell College, 1, 2; B. Y. P. U., 3; Y. W. A., 3, 4; Sunday School Officer, 3; Colton English Club, 3, 4; Dean's Assistant, 3, 4.

Mabel's quiet reserve has caused much of her work to go uncredited, yet those who know will testify that she is always willing and dependable. An earnest student and a true friend, she will be greatly missed on the Meredith campus next year.

MIRIAM EARLY

WINSTON-SALEM, N. C.

A.B.

*Philaretian*

Mars Hill Junior College, 1, 2; Vice-President Y. W. A., 3; Sunday School Officer, 3; B. Y. P. U. Officer, 3, 4; World Fellowship Group, 3, 4; Granddaughters' Club, 3, 4; Honor Roll, 3; B. S. U. Officer, 4; B. S. U. Council, 4.

Miriam's two years with us have been two years of activity and service. Her achievements speak of her worth.





MILDRED EATON

CHARLOTTE, N. C.

A.B.

*Philartian*

Class Hockey, 1, 2, 3, 4; Class Basketball, 1, 2, 3, 4; Track, 1, 2; Minor Sports, 1, 2, 3, 4; Varsity Hockey, 1, 2, 3, 4; Varsity Basketball, 2, 3, 4; Barber Biology Club, 1, 2, 3, 4; Winner of Hockey Stick, 1; Winner of Lewis Trophy, 3; Biology Assistant, 3, 4; Secretary Sunday School Class, 2; President Sunday Schol Class, 3; B. Y. P. U., 1, 2, 3, 4; Y. W. A., 1, 2, 3, 4; Manager Minor Sports, 3; Manager Class Hockey, 2, 3, 4; Class Stunt, 2, 3, 4; Monogram Club, 1, 2, 3, 4.

DOROTHY FINLATOR

A.B.

RALEIGH, N. C.

*Astroekton*

K. K. Klub, 4; Town Girls' Club, 1, 2, 3, 4; Assistant Business Manager *Icon*, 4; Archery Club, 4.

Living in town has not meant that "Dot" would not be known and appreciated on the campus. Conservative and well-balanced might describe "Dot" for those who don't know her so well, but those who do would add that friendliness, and a sense of humor make her a favorite among students and faculty.





IDA POWELL FULLER

LOUISBURG, N. C.

A.B.

*Astrolecton*

Louisburg College, 1, 2; Town Girls, Club, 3; Choir, 4; Colton English Club, 4; B. Y. P. U. Officer, 4; Sunday School Officer, 4; Y. W. A., 4.

Ida is another of the Louisburg College girls who have made good with us. She has acquired quite a large number of friends. Her perseverance, industriousness and conscientiousness spell but one thing—success.

BERTHA MAE FUTRELLE

HENDERSON, N. C.

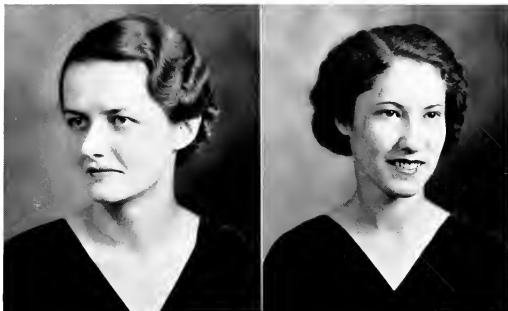
A.B.

*Philaretian*

Choir, 1, 2, 3, 4; B. Y. P. U., 1, 2, 3, 4; B. Y. P. U. Officer, 2, 3; Y. W. A., 1, 2, 3, 4; Service Band, 4; Student League of Women Voters, 2, 3, 4; President Student League of Women Voters, 4; B-Hive, 3; Manager B-Hive, 4; B. S. U. Council, 4.

Bertha is a girl of upright character, ready for work, ready for fun, and ever loyal to the "B-Hive."





MELBA CLYDE GASKINS

SPRING HOPE, N. C.

A.B.

*.Astrotokton*

Barber Biology Club, 1, 2, 3, 4; Reporter, 3; Vice-President, 4; B. Y. P. U. Officer, 3; Y. W. A. Officer, 3, 4.

We don't hear much from Melba; we hear more of her. Her quiet reserve and her faithfulness to books, to work, and to friends make her one of the "stand-bys" of the class. A girl of her ability and earnestness deserves much credit.

MARJORIE ALDA GREGORY

ANGIER, N. C.

A.B.

*.Astrotokton*

Alliance Française, 1, 2; Barber Biology Club, 1, 2; Basketball, 1, 2, 3, 4; B. Y. P. U. Officer, 3, 4; International Relations Club, 4.

Marjorie seems never to worry about anything very long. Her good humor and genialty are reflected in her work and extra activities. She has been a valuable asset to our class.





RENA PEARL HAMILTON

A.B.

MOREHEAD CITY, N. C.

*Astrobleton*

B. Y. P. U., 1; Y. W. A., 1; Stunt, 1, 4; Student League of Women Voters, 2; Senior Marshal, 4; K. K. Klub, 4; Campus Club, 2; Needle-Work Guild, 4.

Rena has her good times—there's no doubt about that—but she always manages to find time somewhere for those academic duties that have to be attended to. With her good nature and genial spirit she's bound to succeed.

ANNIE LOUISE HELSABECK

KING, N. C.

A.B.

*Astrobleton*

Barber Biology Club, 1, 2, 3, 4; Home Economics Club, 2, 3, 4; President, 4; Varsity Basketball, 1, 2, 3, 4; Varsity Hockey, 1, 2, 3; Vice-President A. A., 3; Manager Hiking, 4; OAK LEAVES Staff, 2; Associate Editor OAK LEAVES, 3; Student Government Council, 4; Granddaughters' Club, 1, 2, 3, 4; President, 4; Monogram Club, 1, 2, 3, 4; Honor Roll, 2, 3; Wake Forest Summer School, 2.





MARGARET HINES

MANITO, N. C.

A.B.

*Philaretian*

Mars Hill Junior College, 1, 2; Choir, 3, 4; Glee Club, 3, 4; International Relations Club, 3, 4; Y. W. A. Officer, 3.

Even though Margaret has spent much time with her music, she always finds time to take part in other activities of the college. She is not only conscientious, but also proficient in all she does. The "Class of '36" wouldn't have been complete without her.

ELIZABETH JACOBS

SCOTTSBORO, ALA.

A.B.

*Philaretian*

Home Economics Club, 1, 2, 3, 4; Student Government Council, 3; Honor Roll, 1; University of Tennessee Summer School, 3.

A conscientious worker, a far-sighted thinker, a loyal friend, "Beth" is one of our finest girls. Whatever she does, she does it well, whether it be class work or just being a friend. Her ability and her perseverance make her a class asset.



OAK LEAF  
10



FRANCES JONES

A.B.

APEX, N. C.

*Philaretian*

Town Girls' Club, 1; B. Y. P. U., 2, 3, 4; Y. W. A., 2, 3, 4; Home Economics Club, 2; Class Stunt, 3; Honor Roll, 3; Barber Biology Club, 3, 4; Marshal Philaretian Society, 3; May Day Attendant, 3; Student Assistant in Chemistry, 3, 4; Official Chaperon, 4.

"Lovely to look at"—that's Frances, and she is equally "delightful to know." Her versatility is revealed in her list of honors and achievements.

MARGARET BRIGHT KNOWLES

MOUNT OLIVE, N. C.

A.B.

*Astrotekton*

Barber Biology Club, 2, 3, 4; Basketball, 1, 2, 3, 4; B. Y. P. U., 1, 2; Y. W. A., 3; Golf, 3, 4; Stunt, 1, 2, 3, 4; K. K. Klub, 4

Light-hearted and enthusiastic, Margaret is ever an enjoyable companion—one who is able to make a sad occasion less sad, and a happy occasion more happy. She has a charming personality which grows upon one the longer one knows her.







VIRGINIA LEAH LAMBERT

ASHEBORO, N. C.

A.B.

*Philaretian*

Sunday School Officer, 1, 2, 3; B. Y. P. U. Officer, 1, 2, 3; Y. W. A. Secretary, 2; Physical Education Assistant, 2; Hockey Team, 1, 2, 3, 4; Track, 1, 2; Choir, 1, 2, 3, 4; Y. W. A. Officer, 1, 2, 3, 4; Glee Club, 4; Meredith Octet, 4.

Virginia is another of those girls who have music in their fingers. She plays the piano and she sings with equal charm.

ESTHER MAE LANIER

WALLACE, N. C.

*Philaretian*

B.S.

Choir, 1, 2, 3, 4; Secretary Choir, 4; B. Y. P. U. Officer, 3, 4; Sunday School Officer, 3, 4; Y. W. A., 3, 4; Class Basketball, 1, 4; Stunt, 2; Music Proctor, 3, 4.

During her four years with us at Meredith, Esther Mae has gained many friends. If she continues in her music the way she has begun, we predict great success for her in the teaching field.





MARY ELIZABETH LAWSON

SOUTH BOSTON, VA.

A.B.

*Philaretian*

Y. W. A., 1; B. Y. P. U. Officer, 1, 2; K. K. Klub, 1, 2, 3, 4; Publicity  
Chairman B. S. U.

Mary "Lib's" diminutiveness has not at all affected her talents. She is a student who has participated in many phases of college life and been successful in them all. Dependable, willing, cheerful, and generous, she has truly been an asset to the "Class of '36."

EDITH LEVINE

ESTILL, S. C.

A.B.

*Philaretian*

Hockey, 1, 3; S. C. Club, 1, 2, 3, 4; Mars Hill College, 1, 2; Wake  
Forest Summer School, 2.

Edith is the kind of girl who takes things as they come and never seems to have a care about them. She possesses whatever it is of that undefinable something that goes so far toward making friends and achieving success in life.





KATHERINE LILES

GOLDSBORO, N. C.

A.B.

*Astroekton*

Sunday School Officer, 1, 2, 3; B. Y. P. U. Officer, 1, 2, 3; Y. W. A. Circle Leader, 3; Secretary Athletic Association, 2; Class Treasurer, 2; Secretary Astroekton Society, 3; Choir, 1, 2, 3, 4; Varsity Basketball, 1, 2, 3, 4; Class Captain, 1; General Manager, 3; Varsity Hockey, 2, 3, 4; International Relations Club, 3, 4; President Athletic Association, 4; Nominating Committee, 4; Stunt, 1, 2, 3, 4; Class Superlative, 4; Monogram Club, 1, 2, 3, 4.

MAE MARSHBANKS

BUCIE'S CREEK, N. C.

A.B.

*Astroekton*

Campbell College, 1, 2; Choir, 3, 4; B. Y. P. U., 3, 4; Officer, 3; Y. W. A., 3, 4; Baseball Team, 3; Barber Biology Club, 3, 4; Glee Club, 3, 4; Treasurer, 4; General Manager Baseball, 4; Class Hockey, 4; Student Council, 4; Class Stunt, 4; Executive Board Athletic Association, 4; Meredith Octet, 4.

We've learned to love Mae during the two years she's been with us, and we hate to part with her.





MINNIE RUTH McNEILL

ELKIN, N. C.

A.B.

*Philaretian*

Independent Reading, 1; B. Y. P. U. Officer, 1, 2, 3, 4; Y. W. A. Circle Leader, 4; Class Secretary, 4; K. K. Klub, 3, 4; Secretary Student League of Women Voters, 4; Stunt, 2, 3.

The ability to make friends is a gift of "Mac's" which she uses to advantage as the host of friends which she leaves behind her testifies.

Whatever she does, she is sure to do well.

HELEN MELTON

HENDERSONVILLE, N. C.

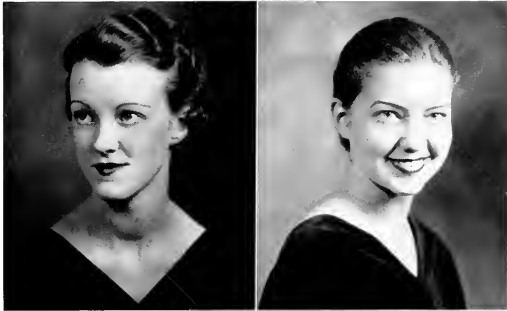
A.B.

*Philaretian*

Classical Club, 2, 3, 4; Colton English Club, 2, 3, 4; Service Band, 1, 2, 3, 4; B. Y. P. U., 1, 2, 3, 4; President, 4.

Helen is dignified—there is no denying this, but those who know her find that she likes fun and a good time, too. Her grades prove that she takes her work seriously and is a well-rounded student. We predict success for her.





RUTH RICKS MORGAN

SPRING HOPE, N. C.

A.B.

*Astrotecton*

She is a capable, clever, well-poised and has that sense of humor and joy of living that make her an ideal friend and classmate. Add to her native ability, a will to work, an optimistic attitude, and a friendly outlook on all things and all people—then you have the attributes that make her an indispensable member of the "Class of '36."

IRA FRANCES MORRIS

STATESVILLE, N. C.

*Astrotecton*

A.B.

B. Y. P. U., 1, 2, 3, 4; Officer, 3; Choir, 1, 2, 3, 4; Vice-President  
Choir, 4; Glee Club, 1, 2, 3, 4; Class Hockey, 1; K. K. Klub, 4;  
Mars Hill Summer School, 3; Stunt, 1, 2, 3, 4.

With friendship in her glance, a lilt in her walk and music in her soul, Frances has endeared herself to every girl on the campus. Her sincerity and her ever-present smile have made her a most popular senior.





FRANCES CHRISTINE ODUM

COATS, N. C.

A.B.

*Astrotekton*

Campbell College, 1, 2; Wake Forest Summer School, 2, 3; Granddaughters' Club, 3, 4; B. Y. P. U., 3, 4; Y. W. A., 3, 4; Home Economics Club, 4; Student League of Women Voters, 4.

Sincere, earnest, capable, and persevering, these are Christine's qualities and she has proved them all in her work and play on our campus.

Her host of friends testify to her genial personality.

VIRGINIA COMPTON OGLETREE

ROANOKE RAPIDS, N. C.

A.B.

*Astrotekton*

Barber Biology Club, 2, 3, 4; General Secretary Sunday School, 4; Y. W. A., 1, 2, 3, 4; Stunt, 2; B. Y. P. U. Officer, 1, 2, 3, 4.

Few possess more desirable personal traits than Virginia. A genial good nature, ready assistance to help her friends in any difficulty, and a fun-loving disposition characterize her. She has made a host of friends who will regret her departure.





ELIZABETH RICHARDSON PARK

RALEIGH, N. C.

A.B.

*Philaretian*

Peace Junior College, 1, 2; Chief Marshal Philaretian Society, 4;  
Advertising Manager OAK LEAVES, 4; Little Theatre, 4.

Despite the fact that she lives in town and has only been with us two years, "E" takes an unusual interest in campus activities. She is always dependable, and her grades are sufficient proof of her ability as a student.

HELEN FRANCES PARKER

A.B.

WOODLAND, N. C.

*Astroekton*

B. Y. P. U. 1, 2; Y. W. A., 1, 2, 3, 4; Grauddaughters' Club, 1, 2, 3, 4; Home Economics Club, 1, 2, 3, 4; OAK LEAVES Staff, 3, 4; Official Chaperon, 4; Class Treasurer, 4; Stunt, 1, 2; Needle-Work Guild, 4; K. K. Klub, 4.

If you want a dependable, lovable, sincere and understanding per-on, "H. F." qualifies. And always call on her when you want an excellent chaperon.





LUCILLE PARKER

MARION, N. C.

A.B.

*Philaretian*

Circulation Manager *Acorn*, 2; *Acorn* Staff, 3; Editor *Acorn*, 4; Honor Roll, 3; Little Theater, 3, 4; Silver Shield, 3, 4; President, 4; Dean's Assistant, 3, 4; Class Superlative, 4; Nominating Committee, 4; Stunt Committee, 3, 4; Stunt, 2, 3; Hockey Team, 1, 2; Classified in *Who's Who Among Students in American Colleges and Universities*; Home Economics Club, 1, 2, 3.

MILDRED DELL PATTERSON

ELM CITY, N. C.

A.B.

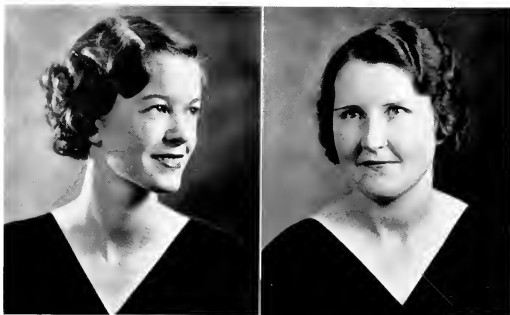
*Astrocton*

Louisburg College, 1, 3; Y. W. A., 3; K. K. Klub, 4.

Sparkling and appealing charm and radiant loveliness—that's Mildred. We hope that she will always take life as calmly as she has taken her college career and will continue to be happy. She is loved and admired by all who have come in contact with her.







EDNA LEE PEGRAM

RALEIGH, N. C.

A.B.

*Astrobleton*

Day Students' Club, 1, 2, 3, 4; Vice-President, 4; Little Theater, 3, 4; Kappa Nu Sigma, 4; Reporter, 4; Editor *College Handbook*, 4.

Practical in her thought, straight-forward in her purpose, faithful to her books, and even more so to her friends, Edna Lee is well prepared to gain whatever she may desire in life.

VIOLET GENEVIEVE PENNY

CHALYBEATE, N. C.

A.B.

*Philaretian*

Campbell College, 1, 2; Colton English Club, 3, 4; Alliance Française, 4; B. Y. P. U., 4; Officer, 4.

Violet has proved herself both capable and dependable since entering our class in her junior year. Not too serious and not too gay, she believes in a happy medium. Her active interest in campus activities make her a valuable member of the class.





JESSIE MAE PERRY

WINGATE, N. C.

A.B.

*Philaretian*

Wingate Junior College, 1, 2.

When we think of Jessie Mae, we think of peace, quietness, restfulness, and friendliness all combined. During the two years she has been here we have learned that she is a real friend. She is an all-round girl and will make the world better everywhere she goes. Truly, to know her is to love her.

LUCY MAE PERRY

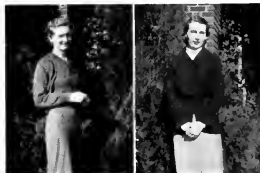
MILLBROOK, N. C.

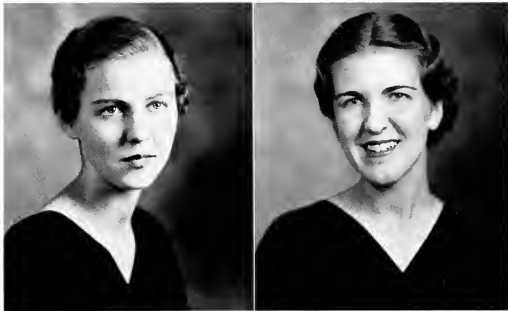
A.B.

*Astrotekton*

Day Students' Club, 1, 2, 3, 4; Home Economics Club, 3, 4; Vice-President, 4; Archery, 4; Alliance Française, 1; Student League of Women Voters, 4.

So quiet and unassuming is Lucy Mae that few at Meredith have known her intimately. She embodies real and genuine refinement and a warm friendliness which make for her a winning personality.





MARY PAULINE PERRY

A.B.

WINSTON-SALEM, N. C.

*Philaretian*

Barber Biology Club, 1; B. Y. P. U., 1, 2, 3, 4; Associate Director, 4; *Twig* Staff, 1, 2, 3, 4; Editor, 4; Colton English Club, 3, 4; Classical Club, 4; Little Theatre, 3, 4; President, 4; Kappa Nu Sigma, 4; Secretary-Treasurer, 4; Student Assistant in Psychology, 3, 4; Nominating Committee, 4; Classified in *Who's Who Among Students in American Colleges and Universities*.

"Polly's" achievements speak of her worth. She is an asset to any group.

ALMA HAWKINS REID

WINSTON-SALEM, N. C.

A.B.

*Astrotekohn*

Mars Hill College, 1, 2; Choir, 3, 4; B. Y. P. U., 3, 4; Y. W. A., 3, 4.

There is something about Alma's friendly smile which causes one to like her at once, and there is something about her charming personality which causes one to keep on liking her. Small wonder that she has so many friends. Charm, wit, and a good sense of humor place her in constant demand.





MARTHA ANN RILEY

MANHASSET, L. I., N. Y.

A.B.

*Philaretian*

Granddaughters' Club, 1, 2, 3, 4; Secretary, 2; Vice-President, 4; Home Economics Club, 3, 4; Delegate to National Home Economics Convention, 2; Barber Biology Club, 2, 3, 4; Vice-President Philaretian Society, 3; Little Theatre, 2, 3, 4; Stunt Committee, 2, 3; President Needle-Work Guild, 4; B. Y. P. U., 1, 2; Y. W. A., 2, 3, 4; Honor Roll, 3; Class Hockey, 1, 2; Needle-Work Guild, 4; K. K. Klub.

VIRGINIA HELEN RIVERS

NEW BERN, N. C.

A.B.

*Philaretian*

Circulation Manager *Jcorn*, 2; Vice-President Town Girls' Club, 3; Vice-President Classical Club, 4; Town Girls' Club, 1, 2, 3; Classical Club, 1, 2, 3, 4; Colton English Club, 4; B. Y. P. U. Officer, 4; Y. W. A., 4.

As a student, among the best; as a worker, among the most dependable; as a friend, among the truest. No wonder we are proud that Helen is a member of our class.





ELIZABETH WATSON RODWELL

WARRENTON, S. C.

A.B.

*Astrotekton*

Louisburg College, 2; Wake Forest Summer School, 3; Colton English Club, 3, 4; K. K. Klub, 3, 4; Official Chaperon, 4.

Art seems to be "Lib's" special talent and field of interest, but she hasn't been so tied up in that that she couldn't find time for other activities. She works at whatever is assigned to her with the will that speaks for success.

VIRGINIA ROLLINS

ALEXANDRIA, VA.

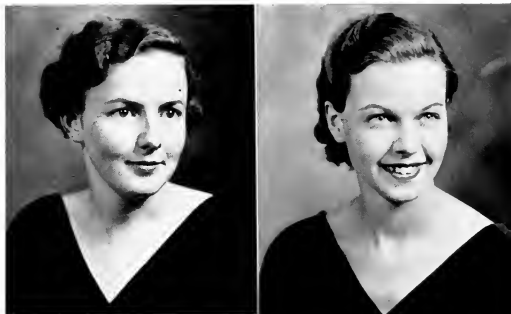
A.B.

*Astrotekton*

Publicity Chairman Y. W. A., 2; B. S. U. Secretary, 3; B. S. U. First Vice-President, 4; Gym Letter, 1; Class Hockey, 1, 2, 3.

"Ginny" is an earnest student, a likable girl, and a sincere friend. Versatile, too, we would say, for she manages to take part in all academic, religious, and athletic activities and make a success in each of the fields.





NORMA VIRGINIA ROSE

WADESBORO, N. C.

A.B.

*Astrotekton*

Classical Club, 2, 3, 4; Colton English Club, 2, 3, 4; Little Theatre, 3, 4; Class Secretary, 2; Managing Editor *Twig*, 2; Associate Editor *Twig*, 3; Class President, 3; Kappa Nu Sigma, 3, 4; President, 4; Silver Shield, 3, 4; Editor OAK LEAVES, 4; Library Assistant, 2, 3, 4; Class Superlative, 4; Classified in *Who's Who Among Students in American Colleges and Universities*.

ISABEL LAMBERT ROSS

A.B.

NASHVILLE, N. C.

*Astrotekton*

*Twig* Staff, 1; B. Y. P. U., 1; Glee Club, 2, 3, 4; Golf, 2; Stunt, 1, 2, 3, 4; Honor Roll, 3; *Astrotekton* Marshal, 3; Chief Marshal, 4; Assistant Business Manager *Twig*, 4; Class Superlative, 4; K. K. Klub, 4.

"Issy's" happy-go-lucky smile and her vivacious "yeah man" have helped to make "'36" what it is. She is one of the class without whom we just couldn't get along.





ALICE RUBENSTEIN

RALEIGH, N. C.

A.B.

*Philaretian*

Mississippi State Teacher's College, 1; Peace Junior College, 2; Town Girls' Club, 2, 3, 4; K. K. Klub, 3, 4; Student League of Women Voters, 3; Art Editor OAK LEAVES, 4.

We're glad that Alice decided to settle down and finish here at Meredith, after her various campus "ramblings." She's one of the favored few who possess real talent along the art line.

HELEN LOUISE RUFFIN

RALEIGH, N. C.

A.B.

*Philaretian*

Town Girls' Club, 1, 2, 3, 4; President, 4; K. K. Klub, 4; Nominating Committee, 4; Wake Forest Summer School, 3.

What more could a dormitory student ask than to know one day student who is always willing to give her a ride to town? Well, Helen is that day student. That one trait has gained for her a great popularity, as have her many other assets.





KATY SAMS

MARSHALL, N. C.

A. B.

*Philaretian*

Classical Club, 1, 2, 3, 4; Program Director, 2, 3; President, 4; Little Theatre, 2, 3, 4; Secretary, 3; Vice-President, 4; Secretary Sunday School Class, 1; Colton English Club, 3, 4; Treasurer, 3; Vice-President, 4; OAK LEAVES Staff, 3, 4; Campus Council, 4; Basketball, 1; Honor Roll, 1, 2, 3; Barber Biology Club, 1, 2; Kappa Nu Sigma, 3, 4.

"Kete" is one of the best in the "Class of '36." Her honors prove her versatility.

MARY ROSELLE SEARS

MORRISVILLE, N. C.

A. B.

*Philaretian*

Barber Biology Club, 1, 2, 3, 4; Home Economics Club, 3, 4; Class Basketball, 1, 2, 3, 4.

Mary Roselle is one of those girls who always stays busy. No wonder. She is one of those girls who can always be depended on to do whatever is to be done. She is always ready to help, be it work or play.

The number of her friends testify to her true worth.







FAY MEMORY SHIELDS

SCOTLAND NECK, N. C.

A.B.

*Astrotekton*

B. Y. P. U., 1, 2, 3; Y. W. A., 1, 2, 3, 4; Granddaughters' Club, 1, 2, 3, 4; Home Economics Club, 1; Vice-President Granddaughters' Club, 3; Vice-President Astrotekton Society, 3; Stunt, 2, 3, 4; Honor Roll, 3; Barber Biology Club, 1, 2, 3, 4; K. K. Klub, 4.

Song and dance seem all important to "F. M.," but she somehow manages to keep up with all, her books included.

DOROTHY MAE SHIPMAN

RALEIGH, N. C.

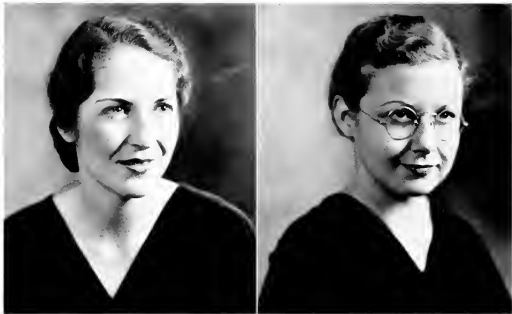
A.B.

*Philaretian*

Mars Hill College, 1, 2; Day Students' Club, 3, 4; Mars Hill Club, 3; Meredith-Wake Forest Summer School, 3.

"Dot" is one of those enthusiastic girls who believes in working while she works and playing while she plays. She's the kind of girl that one likes to have around, for she always manages to see the bright side of even the darkest situation.





SUSAN EMMA SLOAN

A.B.

MORGANTON, N. C.

*Astroekton*

Little Theatre, 1, 2, 3, 4; Class Vice-President, 1; Colton English Club, 2, 3, 4; Secretary, 3; President, 4; Classical Club, 3, 4; Barber Biology Club, 1, 2; Class Superlative, 4; Stunt, 2, 3, 4; President Sunday School Class, 2; Student League of Women Voters, 1; Assistant Business Manager OAK LEAVES, 3; Honor Roll, 1, 2, 3; Library Assistant, 2.

As student, leader, worker, and friend "Emma" has proved her ability, versatility, and talent.



MARGIE RUTH STALLINGS

DURHAM, N. C.

A.B.

*Astroekton*

Home Economics Club, 1, 2, 3, 4; Barber Biology Club, 3, 4.

Margie is one of those girls who entered with the "Class of '36" and stayed with it four years. While working and studying these years at Meredith she has made many friends. We predict great things for her in the future, and wish for her the realization of her most cherished dreams.





ANNIE MAE TAYLOR

OXFORD, N. C.

A.B.

*Astrotekton*

Class President, 1; Nominating Committee, 1; Choir, 1, 2, 3, 4; Y. W. A. Officer, 2; B. Y. P. U. Officer, 2, 3; Sunday School Officer, 1, 2, 3; Little Theatre, 1, 2, 3, 4; Class Hockey, 2, 3, 4; Basketball, 1, 2, 3, 4; Glee Club, 3, 4; President, 4; President Y. W. A., 4.

"Mom's" ready smile and friendly personality have made for her in the hearts of her classmates a place that none other could hold.

HELEN GRAY TOLAR

RENNERT, N. C.

A.B.

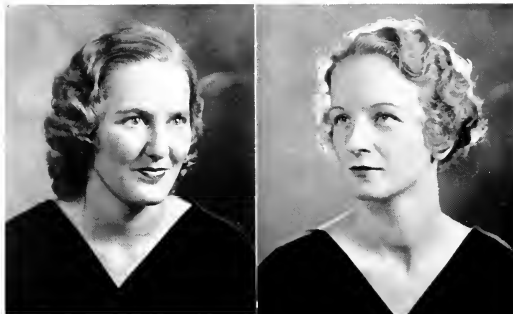
*Philaretian*

Flora MacDonald College, 1; B. Y. P. U., 2, 3; Y. W. A., 2, 3; Wake Forest Summer School, 2, 3.

Helen Gray was a little late in coming to join with the "'36-ers," but she has made up for that by entering with such enthusiasm into our work and play. Chemistry labs seems to hold special attraction for her, a fact which spells intellect, patience, and perseverance.



OAK LEAVES  
1937



IRENE TUTHILL

JAMAICA, N. Y.

A.B.

*Philaretian*

May Queen Attendant, 2; Assistant Business Manager *Twig*, 3; Marshal Philaretian Society, 4; Home Economics Club, 1, 2, 3, 4.

Vivacious! That's "Tut." After knowing her we can account for her numerous friends on the campus. Charming and endowed with a sense of humor, loyal and trustworthy, ready for work and play, small wonder that she is a favorite.

DOROTHY OLIVIA TYSON

GEORGETOWN, S. C.

A.B.

*Astrotekton*

Queen's Chicora College, 1.

A cheerful disposition, a sunny smile, a helpful nature, pep, originality, and ability. These we could wish for "Dot," but these she already has. Entering our class as a Sophomore, she quickly made her way into our work, our play, and our hearts. She's the kind of girl that makes us wish that we had many more like her.





RUTH ALICE WARD

ELIZABETH CITY, N. C.

A.B.

*Astrotekton*

B. Y. P. U., 1, 2, 3; Y. W. A., 1, 2, 3; Sunday School Officer, 3; Barber Biology Club, 2, 3, 4; Colton English Club, 2, 3, 4; Student Assistant in Chemistry, 3, 4; Honor Roll, 1; Stunt, 3.

"Gracie's" personality and ability have made her a classmate admired and loved by all. A sharp intellect, a charming and vivacious personality, and a happy-go-lucky air are her characteristics.

IDA LEANE WARREN

SPRING HOPE, N. C.

A.B.

*Philarectian*

B. Y. P. U., 1; Y. W. A., 1, 2; *Twig* Staff, 2; OAK LEAVES Staff, 3; Wake Forest College Summer School, 1, 2, 3.

The fact that Ida Leane is finishing in three years is proof of her ability as a student. The host of her friends is proof of her popularity. Her achievements are proof of her versatility. "'35's" loss was "'36's" gain.





FLOSSIE MAVIS WHITLEY

SEI MA, N. C.

A.B.

*Philartian*

B. Y. P. U., 1, 2, 3, 4; Y. W. A., 1, 2, 3, 4; Wake Forest Summer School, 1, 2; Home Economics Club, 4; Alliance Française, 2, 3.

Naturally of a quiet and reserved nature, Flossie seems to take things as they come. But when one penetrates to her inward nature, one finds there a wonderfully likeable disposition and qualities of true friendship and worth.

HILDA WILLIAMS

LXINGTON, N. C.

A.B.

*Astrojektion*

Class Secretary, 3; Class Vice-President, 4; Assistant to the Bursar, 2, 3, 4; B. Y. P. U. Officer, 1, 2, 3; Y. W. A. Officer, 4; International Relations Club, 3, 4; Barber Biology Club, 1, 2, 3, 4; Sunday School Officer, 1, 2, 3; Stunt, 1, 2, 4.

Hilda's interests have been many and varied, yet to each she has contributed something of real worth. Her willing and cooperative spirit has meant much to "'36."





MARTHA WILLIAMS

A.B. INDIAN TRAIL, N. C. *Astrobleton*

Wingate Junior College, 1, 2; Barber Biology Club, 3, 4; B. Y. P. U., 3, 4; Y. W. A., 3, 4; B. Y. P. U. Officer, 3, 4; Sunday School Officer, 3.

Martha came to us from Wingate Junior College in her junior year. Adapting herself to campus life easily and readily, she settled down to work and has made herself a classmate who is of real value to us. We wish her success.

RACHEL WILLIAMS

WINGATE, N. C.

*Philaretian*

A.B.

Wingate Junior College, 1, 2; Appalachian State Teachers College, 3.

We are sorry Rachel has not been with us longer, but we are glad we have had the opportunity of knowing her this last year. It did not take her long to win her way to our hearts with her winsome personality. Anyone who can major in math and keep such a happy smile is certain of success.



# **IN MEMORIAM**

▪

## **AGNES TAYLOR GENTRY**

OF LILLINGTON, NORTH CAROLINA  
MEMBER OF THE CLASS OF THIRTY-  
SIX; WHOSE LOVE AND DEVOTION  
FOR MEREDITH COLLEGE WILL EVER  
BE REMEMBERED

**1935**

▪



# J U N I O R S



*"I'm older than you and must know better."*



RUBY BARRETT  
President

## C L A S S O F F I C E R S

---

RUBY BARRETT

*President*

LUCILLE DAVIS

*Vice-President*

MARGARET KRAMER

*Secretary*

DOROTHY DEANE BROWN

*Treasurer*



# JUNIORS

RUTH ABERNETHY

*The eyes of a dreamer,  
The soul of a poet.*

PHYLLIS ALEXANDER

*The fascination of amber eyes and vibrant  
colors.*

LISETTE ALLGOOD

*As calm as willows in summer twilight.*

MARGARET ANDREWS

*Portrait of a quiet maiden sitting by a  
forest pool.*

RUBY BARRETT

*An elfin leader in a fairy ring.*

MARY ALICE BATSON

*The sure power of low clouds over blue  
water.*

ANNA ELIZABETH BAUCOM

*A nature as bustling and as interesting as  
traffic in a city.*

FLORA KATE BETHEA

*A personality as bracing as a walk among  
fallen leaves.*

MARGARET BLANCHARD

*The quietness of breezes in a pine cathed-  
ral.*

SADIE LEIGH BLOUNT

*Vivacious as gay-colored chintz flecked  
with sunlight.*

# JUNIORS

## CARRIE POWERS

*The sturdiness of Irish linen and old-fashioned tatting.*

## SUE BREWER

*Pearls among fields of black velvet.*

## DOROTHY DEANE BROWN

*The softness of turquoise velvet in moonlight.*

## MARGARET BULLARD

*Eyes as shiny black as onyx,  
Reflecting a deep intellect.*

## EFFIE RAY CALHOUN

*To her is the simplicity of porcelain and  
the quietness of twilight.*

## CATHERINE CANADY

*Dark-eyed Spanish girls,  
Red mantillos, the sound of castanets.*

## MARY FORT CARROLL

*As charming as the grace of slender fingers  
in gold hair.*

## EDLEE CATES

*The golden sunlight in her hair—  
It's sparkling rays in her personality.*

## LUCILLE CATES

*The sturdiness of a Puritan maid on a  
New England Sunday.*

## NELL CHOATE

*A study of rich greens and browns—  
All flecked with gold.*



# JUNIORS



KATE COVINGTON

*The piquant face of a brownie  
Peeping from a Jack-in-the-pulpit.*



ISLA MAE COWARD

*Dependable as a pioneer woman of early  
history.*



MILDRED CROWDER

*The charm of an old Mexican turquoise  
and silver.*



RUTH DAUGHERTY

*As restful as the quiet greenness of out-  
stretched meadows.*



PAULINE DAVIS

*The delightful whizz of tennis racquets,  
The youthfulness of white anklets.*



EDNA FRANCES DAWKINS

*The dashing spirit of a "laughing cavalier."*

NELLIE RAY DAWSON

*The youthful charm of tweed skirts and  
sport sweaters.*

ELEANOR EARLY

*A meadow in summer—  
With humming bees and butterflies.*

ELEANOR EDWARDS

*As noble as sunlight through a stained  
glass window.*

CELIA ELLIS

*Dainty maderia linen and shining silver.*

# JUNIORS

## MARTHA MAE GLAZENER

*A crystal-clear intelligence  
Combined with an earnestness of purpose.*

## ALICE GOODMAN

*A nature as pungent as the odor of nar-  
cissus in a closed room.*

## SARAH GRIFFIN

*A personality in shades of red—  
carmine, vermilion, Chinese.*

## KATHLEEN HAMRICK

*The charm of tea-time with white hands  
hovering over a silver urn.*

## FRANCES HARRIS

*California poppies in wheat fields.*

## HELEN HILLIARD

*As friendly as crackling fires on frosty  
winter evenings.*

## LAURA MAE HILLIARD

*The splendor of service—  
The satisfaction of work well done.*

## FAITH HITE

*The sophistication of a figure in jodphurs  
against a stone mantel.*

## AMELIA HODGES

*As amazingly lovely as a sunset of Max-  
field Parrish blue.*

## DOROTHY HODGIN

*The gaiety of nasturtiums in copper bowls.*





# JUNIORS

LOUISE HOLLAND

*Sunlight shining on a lawn  
Dotted with dandelions.*



ANNABELLE HOLLOWELL

*As charming as daffodils in a blue glazed  
bowl.*



PEARL HUFFMAN

*The charm of mits of lace  
And old-fashioned parasols.*



RUBY FAIRE JAMES

*Plantation days with sweet maids in crino-  
line.*



ELIZABETH JOHNSON

*Charming as a blue and gray vase in pur-  
ple shadows.*



NATALIE JOHNSON

*Vibrant as gardenias on red transparent  
velvet.*



MARTHA JOSEY

*The smartness of tweeds worn with small  
pert hats.*



MARTHA JOYNER

*The smartness of gold jewelry against  
brown velvet.*

GWENDOLYN KESTER

*The charm of a child star-gazing.*

BETTY KICHLINE

*A brook of amber water in a russet wood.*

# JUNIORS

ETHEL KNOTT

*An intellect clear and deep as a mountain spring.*

MARGARET KRAMER

*To her belongs the wonderful combination of a sparkling wit and a clear mind.*

ROSE LEE

*As vibrant as a branch of red berries in a black glazed vase.*

RACHEL LEONARD

*All the loveliness of a Chopin prelude.*

MARGARET LEWIS

*White clouds reflected in still blue water.*

DOROTHY LOWDERMILK

*A personality as vibrant and rich as Rachmaninoff's Prelude.*

MARGERY McKAUGHAN

*A lawn, the light of Japanese lanterns, Laughter, party dresses.*

ELIZABETH McKNIGHT

*The steadiness of a bare-armed peasant girl who sings at her work.*

MARY FAY MacMILLAN

*The spirit of jade—  
Exciting and lovely.*

MARY JOHNSON MacMILLAN

*Embodiment of the spirit of Puck—  
Gaiety and wit.*







# J U N I O R S

KATHERINE MALLOY

*White satin and emeralds by candlelight.*



CORINE MANLEY

*The smartness of brown velvet and a gold scarf.*



KATHERINE MARTIN

*A nature as unfathomable as black water flecked with silver.*



DOROTHY MEIGGS

*Sparkling eyes behind a feathered fan.*



MARTHA MESSENGER

*The freshness of the out-of-doors  
With the gaiety of autumn maple leaves.*

SALLIE MITCHELL

*As friendly as an old house full of memories.*



PEGGY MOODY

*Pots of pink tulips against blue gingham curtains.*

RUTH NOWELL

*Youth silhouetted against the sky with eyes on the stars.*

MATALINE NYE

*The daintiness of ruffled organdie and a lacy picture hat.*

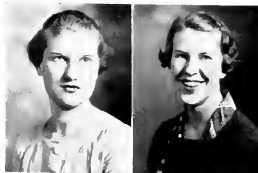
ELLA RUTH PERRY

*Teacups and yellow roses in a laughter-filled room.*

# JUNIORS

## VIRGINIA PHELPS

*Old china, a lace cloth, and white tapers.*



## FLORENCE PITTMAN

*As gay as the robin's song  
Sung to the blue sky above.*



## FRANCES PITTMAN

*A personality as gay as the spirit of a  
carnival.*



## MARTHA KYLE PITTMAN

*A nature as stimulating as a bright Scotch  
plaid.*

## GRACE PORTER

*A quiet harmony as of blue and white  
Wedgewood.*



## DOROTHY PREVOST

*Gray eyes, black hair, and a Chinese red  
scarf.*

## RUTH PRIVOTT

*As true as an ideal.  
As cheerful as a Dorothy Parker jingle.*



## VIRGINIA REYNOLDS

*One glance tells of the mysteries hidden  
in books.*

## ADA LEE RIVERS

*Bouyant as the gusty winds of March  
whipping around street corners.*

## SUSAN RUDISILL

*As gay as red pompoms and toy balloons.*

# JUNIORS



GLADYS SANDLIN

*A blue crock full of gingerbread cookies.*



RUTH SANDERS

*A nature of laughter, friedliness, and wit.*



MARY FLORENCE SAWYER

*Crisp white aprons and the song of one happily at work.*



ZITA SAWYER

*Crisp blue linen and starched piqué.*



RUTH SEARS

*The quietness of rain pattering on tin roofs.*



LUCILLE SHEARON

*As tall and straight as a Lombardy poplar.*



KATHERINE SHUFORD

*The poise and charm of the perfect hostess.*

RUTH SMITH

*As graceful as fleur-de-lis against a rock wall.*

GAYNELLE SORRELL

*A noise maiden—  
Fearless and mysterious.*

HELEN SUTTON

*The atmosphere created by minuets, hoop-skirts and powdered hair.*

# JUNIORS

EVELYN SUTTON

*A nature quiet and sweet as a blue woolen shawl by candlelight.*

CLARICE SWAIN

*The splendor of figures in white administering aid.*

VIDA THOMPSON

*Golden-centered white lilies on a dark pool.*

MARIAN WALLACE

*Smiling lips, a beret, and bright colored scarfs.*

MARY CATHERINE WALTERS

*A mind second only to her friendliness.*

DOROTHY WASHBURN

*The earnestness of a school-girl eager for her books.*

VERITAS WILLIAMS

*As wonderful as the stories wrapped about antique furniture.*

ADDIE BELLE WILSON

*The calmness of a summer dawn combined with the wistfulness of a child.*



# SOPHOMORES



*"She was wondering whether the pleasure of making a daisy chain would be worth the trouble of getting up and picking the daisies."*

AVE



MIRVINE GARRETT  
President

## C L A S S O F F I C E R S

.....

MIRVINE GARRETT	President
BETTY CLAIRE JENNINGS	Vice-President
LOUISE DANIEL	Secretary
HARRIET ROSE	Treasurer

# SOPHOMORES

JANE ABERNETHY

CATHERINE ALDRIDGE

LOIS AVANT

MARY BANKS

HAZEL BASS

WALDINE BASS

EDITH BAUCOM

MARY ELIZABETH BELL

EMILY BETHUNE

GRACE BETTS

MARGARET BINGHAM

EMILY BRADSHER

EVELYN BRITT

NANNIE MARGARET BROWN

ALICE BRUTON

VIVIAN BUFFALOE

MAEBELLE BURKETT

AGNES CALE

# SOPHOMORES

ELEANOR CANNON

MARIE CARROLL

MARGARET LOVE CLARK

VIRGINIA COMBS

LOUISE COPELAND

FRANCES GARRIS

LOUISE DANIEL

JEAN DAVIS

MILDRED DAVIS

NORMA LEE DAWSON

ELIZABETH ELLIOT

DOROTHY FOSTER

FLORA FOWLER

VIRGINIA GAMBILL

MIRVINE GARRETT

KATHERINE COVINGTON

MARGARET GRAYSON

LILLIAN GUPTON





# SOPHOMORES



MADLINE HALL

ADELAIDE HARRIS

DOROTHY HAYWOOD

NONIE HERRING

IRENE HERRING

DOROTHY HORNE

JOCELYN HOUSE

DOROTHY HOWARD

LILLIAN HUGHES

MARY E. JENKINS

BETTY CLAIRE JENNINGS

ETHEL JONES

MARGARET LANIER

WILLA MAE LEE

DONNA LEHMAN

JEAN LIGHTFOOT

SADIE MASSEY

RUTH MCLEAN

# SOPHOMORES

ELSIE MILLER

EVELYN MILLS

MARY FRANCES MILLS

WILBA MILLS

ELEANOR MOORE

JEAN MORTON

ELIZABETH NANNEY

ERNESTINE NEIGHBORS

HAZEL NEVILLE

JENNIE REID NEWBY

MARGARET NEWLIN

MARGARET O'BRIAN

ANNIE LAURIE OVERTON

CAROLYN PARKER

BETTY PARKER

MARY LEIGH PARNELLE

RUBY PEARSON

KILTON PEELE



# SOPHOMORES



VIRGINIA PENNY

LILLIAN POE

LOUISE POPE

ANNE POTEAT

NANCY POWELL

KATHLEEN REFCE

GRACE RIGGS

HARRIET ROSE

JUNE FAY SEWELL

MARGARET SEYMOUR

ELIZABETH SHAW

MARGARET SHEPHERD

MARY STEWART

KATE MILLS SUITER

# SOPHOMORES

FRANCES TATUM

MARGARET ANN THOMAS

FRANCES TODD

MARTHA TURLINGTON

ANNIE VANNOY

LILLIAN WALL

MARGARET WEATHERSPOON

CHARLOTTE WESTER

HELEN WHITEHURST

MARY CLAYTON WYCHE

MATTIE YOW

MARJORIE WILSON

MARY ELIZABETH YORK



# F R E S H M E N



*"You don't know much, and that's a fact."*



MARY HERRING  
President

## CLASS OFFICERS

---

MARY HERRING	President
CATHERINE JOHNSON	Vice-President
LETTIE HAMLETT	Secretary
JANET AIKMAN	Treasurer



# FRESHMEN

JANET AIKMAN

JANE ALLEN

MILDRED ANDREWS

NELL BAKER

NELLIE BALL

FRANCES BATCHELOR

RELIEU BAUCOM

BARBARA BEHRMAN

LOUISE BIGGS

LOUISE BOLUS

SWANNANOA BRANCH

LUCILLE BRANNON

CORINE BRINKLEY

MILDRED BRITT

ANNIE RUTH BRUTON

DOROTHY BYRUM

ELIZABETH CASE

EVFLYN CHESSON

MARY KATE COLLIER

MARJORIE COLLINS

FRANKIE COOPER

DOROTHY CORBETT

ANNIE ELIZABETH COWARD

DOROTHY CRAWFORD

ALTA CRITCHER

MILDRED ANN CRITCHER

JUNE CROW

JESSIE CURRIN

MARGARET DENMARK

PAULINE DICKERSON

# FRESHMEN

LUCILLE DOWELL

HILDA EARP

RUTH ELLIOT

MARY FEREBEE

MARGARET FISHEL

MARJORIE FLANAGAN

MINNIE ANNA FORNEY

EDITH FREEMAN

JEAN FREEMAN

LOLA FREEMAN

HELEN GARVEY

MARY GAVIN

ROXANNA GENTRY

NINA GILBERT

JUANITA GLOSSON

LETTIE HAMLETT

OLIVE HAMRICK

MARY GRACE HAYNES

MILDRED CLARK HARRIS

MARY HERRING

THOMASINE HERRING

MARGARET HOLLAND

CLEO HOLLOWAY

EDITH HONEYCUTT

CHARITY HOWELL

ELIZABETH HOWELL

JOYCE HOWELL

LUCILLE HOWELL

RUTH HUTCHINS

ANNA LEE JOHNSON







# FRESHMEN

- BLANCHE JOHNSON  
 CATHERINE JOHNSON  
 LOIS JOHNSON  
 HELEN JONES  
 KATHERINE KALMAR  
  
 EVELYN KING  
 BRUCE KITCHIN  
 MARY EDDIS KLUTZ  
 ALICE LAROQUE  
 EVELYN LEVINE  
  
 MARY JANE LINDLEY  
 BETTY LYON  
 EDNA MARTIN  
 MARY MARTIN  
 KATHLEEN MIDGETT  
  
 ANNE MILLS  
 FRANCES MOHORNE  
 GERTRUDE MOORE  
 ANNIE MURRAY  
 ELEANOR MYERS  
  
 MARGARET NICHOLS  
 MARJORIE PEARCE  
 CHARLOTTE PEEBLES  
 KATHERINE PITTMAN  
 LUCILLE POE  
  
 DOROTHY POLLOCK  
 FRANCES PRICE  
 SALLY B. PRIVETTE  
 MARTHA RASBERRY  
 JULIA REDDICK

LEAVE

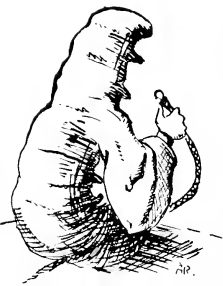
# FRESHMEN

- DOROTHY REICH  
 CLAIRE RENFROW  
 LUCY ROGERS  
 VIRGINIA ROGERS  
 DOROTHY SEARS
- RACHEL SENTER  
 ALICE SHELLEY  
 LUCILE SHIPLEY  
 CAROLYN SPEARS  
 PAULINE STROUD
- MILDRED SUTTON  
 MARIE THARRINGTON  
 ANNIE LEE TIPPETT  
 MARGARET TUCKER  
 MARY MATTHIS TURNER
- GERALDINE TUTTLE  
 LOUISE VANN  
 VIRGINIA VAUGHAN  
 THERESA WALL  
 KATHERYN WARD
- MARY LEE WATKINS  
 GEORGIA WHITE  
 MARY LOU WILLETS  
 DORIS WILLEY  
 EVELYN WILLIAMS
- DOROTHY WILLSON  
 MAUDE ELIZABETH WILSON  
 MAURINE WINFREE  
 JANE WOLFE  
 MARTHA WOODRUFF





# ORGANIZATIONS



ENTHUSIASM COUPLED WITH A WILL TO  
WORK AND LEADERSHIP COUPLED WITH  
CO-OPERATION MAKE OUR PUBLICA-  
TIONS, CLUBS, COUNCILS, SOCIETIES, AND  
BOARDS, ORGANIZATIONS OF WHICH  
WE ARE PROUD.





ANN BRADSHER

*President*

## STUDENT GOVERNMENT ASSOCIATION

Our student government, based on the honor system, means "all the Meredith girls, with a real Meredith sense of honor, working together to make Meredith the best college possible." The organization encourages loyalty to all groups, promptness in all duties, and a spirit of love and friendship among the girls. The success of all organizations on the campus depends on the attitude of the students toward the Student Government Association.

## STUDENT GOVERNMENT ASSOCIATION

NANCY ALLEN . . . . . *Vice-President*  
 SUE BREWER . . . . . *Secretary*  
 CATHERINE CANADAY . . . . . *Treasurer*

LOUISE HELSABECK  
*House President*

NINA BINDER  
*House President*

MARY BYNUM DARK  
*House President*

MAE MARSHBANKS  
*House President*

RUBY BARRFIT  
*House Vice-President*

FLORA KATE BETHEA  
*House Vice-President*

MARTHA KYLE PITTMAN  
*House Vice-President*

\*MARGARET SALE  
*House Vice-President*

MARGARET LOVE CLARK  
*Sophomore Representative*

ANNIE ELIZABETH COWARD  
*Freshman Representative*



\*Picture does not appear in Annual.



## NOMINATING COMMITTEE

ANN BRADSHER

FRANCES CALLOWAY

KATHERINE LILES

DOROTHY DOCKERY

CHRISTINE ADAMS

ELISABETH DAVIDSON

NORMA ROSE

LUCILLE PARKER

PAULINE PERRY

SONORA BLAND

RUBY BARRETT

MIRVINE GARRETT

MARY HERRING

HELEN RUFFIN

FRANCES CALLOWAY  
*President*

VIRGINIA ROLLINS  
*First Vice-President*

MATALINE NYE  
*Second Vice-President*

MIRIAM EARLY  
*Third Vice-President*

RACHEL LEONARD  
*Secretary*

RUTH ABERNEIHY  
*Treasurer*

MARY E. LAWSON  
*Poster Chairman*

CAROLYN PARKER  
*Reporter*

BETTY KICHLINE  
*Day Student Representative*

DOROTHY CRUTCHFIELD  
*B. T. U. Director*

ANNIE MAE TAYLOR  
*President of Y. W. A.*

MARY FAY MACMILLAN  
*President of World Fellowship Group*

BERTHA FUTRELLE  
*Manager of B-Hive*

MARY CHANDLER  
*Sunday School Director*

MISS MARGUERITE MASON  
*Student Secretary*

MISS MARY LEE  
*Faculty Sponsor*

DR. E. M. POTEAT  
*Council Pastor*



B A P T I S T   S T U D E N T   U N I O N





MR. E. F. CANADAY  
*Faculty Advisor*

BERTHA FUTRELLE  
*Manager*



ANN BRADSHER  
*Chairman*

FLORA KATE BETHEA  
*Junior Representative*



ADELAIDE HARRIS  
*Sophomore Representative*

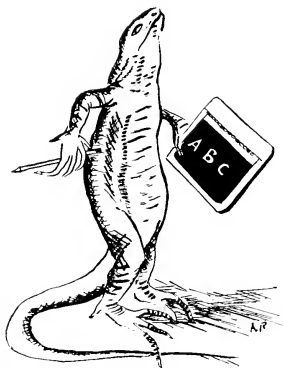
FRANCES CALLOWAY  
*Council Representative*

T H E B - H I V E C O M M I T T E E

AK LE



# PUBLICATIONS



*"They set to work diligently to write  
out a history of the accident."*



## OAK LEAVES

NORMA ROSE . . . . . *Editor-in-Chief*  
 HENRIETTA CASLEBURY . . . . . *Business Manager*



### STAFF

MARGARET KRAMER . . . . . *Associate Editor*  
 HELEN FRANCES PARKER . . . . . *Senior Editor*  
 KATHERINE MARTIN . . . . . *Junior Editor*  
 DOROTHY HORNE . . . . . *Sophomore Editor*  
 KATY SAMS . . . . . *Photograph Editor*  
 FAITH HITE . . . . . *Photograph Editor*  
 IDA LEANE WARREN . . . . . *Typist*  
 ALICE RUBENSTEIN . . . . . *Art Editor*  
 DOROTHY PREVOST . . . . . *Assistant Business Manager*  
 ELIZABETH PARK . . . . . *Advertising Manager*  
 CATHERINE CANADAY . . . . . *Assistant Advertising Manager*

JULIA H. HARRIS  
*Faculty Advisor*

ERNEST F. CANADAY  
*Faculty Advisor*



KRAMER  
PARKER



MARTIN  
HORNE  
SAMS



HITE  
WARREN  
RUBENSTEIN



PREVOST  
PARK  
CANADAY

## ACORN STAFF

LUCILLE PARKER . . . . . *Editor-in-Chief*  
 SUSAN RUDISILL . . . . . *Business Manager*



NINA BINDER . . . . . *Associate Editor*  
 ANNABELLE HOLLOWELL . . . . . *Junior Editor*  
 MARY FAY MACMILLAN . . . . . *Junior Editor*  
 MIRVINE GARRETT . . . . . *Sophomore Editor*  
 ANNE POFEAT . . . . . *Sophomore Editor*  
 ELEANOR EDWARDS . . . . . *Science Editor*  
 RUTH NOWELL . . . . . *Music Editor*  
 MARTHA MESSENGER . . . . . *Exchange Editor*  
 LILLIAN WALL . . . . . *Typist*  
 SADIE MASSEY . . . . . *Art Editor*  
 NANCY POWELL . . . . . *Assistant Business Manager*  
 DOROTHY FINLATOR . . . . . *Assistant Business Manager*

MARY LYNCH JOHNSON  
*Faculty Advisor*



BINDER  
HOLLOWELL  
MACMILLAN

GARRETT  
POTEAT  
EDWARDS

NOWELL  
MESSENGER  
WALL

MASSEY  
POWELL  
FINLATOR

AK 7

LEAV

## TWIG STAFF

PAULINE PERRY . . . . . *Editor-in-Chief*  
 MARY FORT CARROLL . . . . . *Business Manager*



KATHERINE SHUFORD . . . . . *Associate Editor*  
 MARTHA MESSENGER . . . . . *Managing Editor*  
 FRANCES PITTMAN . . . . . *Managing Editor*  
 MARY JOHNSON MACMILLAN . . . . . *Managing Editor*  
 ELIZABETH BULLARD . . . . . *Typist*  
 CATHERINE JOHNSON . . . . . *Typist*  
 HELEN HILLIARD . . . . . *Art Editor*

### REPORTERS

KATE COVINGTON	CHARLOTTE WESTER
ETHEL KNOTT	LILLIAN POE
ADELAIDE HARRIS	FRANCES TATUM
GRACE BETTS	EDNA FRANCES DAWKINS
MARY FAY MACMILLAN	DOROTHY LOWDERMILK

ISABEL ROSS . . . . . *Assistant Business Manager*  
 KATE MILLS SUTER . . . . . *Assistant Business Manager*



SAMUEL G. RILEY  
*Faculty Advisor*



SHUFORD  
 MESSENGER  
 PITTMAN  
 MACMILLAN

JOHNSON  
 HILLIARD  
 COVINGTON  
 KNOTT

HARRIS  
 BETTS  
 MACMILLAN  
 WESTER

POE  
 TATUM  
 DAWKINS  
 LOWDERMILK

ROSS  
 SUITOR

PAK



C L U B S



*"Oh dear! Oh dear!  
I shall be too late."*

## COLTON ENGLISH CLUB

SUSAN EMMA SLOAN  
*President*

KATY SAMS  
*Vice-President*

FRANCES PITTMAN  
*Secretary*

ANNABELLE HOLLOWELL  
*Publicity Chairman*



Catherine Aldridge  
Ruby Barrett  
Mary Alice Batson  
Grace Betts  
Nina Binsler  
Narcine Margaret Brown  
Margaret Bullard  
Catherine Canada  
Marie Carroll  
Eilsee Carey  
Novelle Cheek  
Kate Covington  
Mildred Davis

Dorothy Dockery  
Mabel Eakes  
Eleanor Edwards  
Ida Fuller  
Mervine Garrett  
Martha Mae Glazener  
Alice Goodman  
Laura Mae Hilliard  
Ruby Faite James  
Margaret Johnson  
Mary Louise Johnson  
Gwendolyn Kester  
Betty Kickline

Erhel Knott  
Rose Lee  
Mary Fay MacMillan  
Corinne Manley  
Katherine Martin  
Helen Melton  
Elizabeth Nattney  
Carolyn Parker  
Pauline Perry  
Martha K. Pittman  
Grace Porter  
Dorothy Prevost  
Virginia Reynolds

Helen Rivers  
Elizabeth Rodwell  
Norma Rose  
Susan Rudisill  
Katherine Shuford  
Gwynelle Sorrell  
Ruth Alice Ward  
Dorothy Washburn  
Mary Catherine Walters  
Dr. Julia H. Harris  
Dr. Mary L. Johnson  
Miss Mary J. Spruill  
Miss Elizabeth Foster



## LITTLE THEATER DRAMATIC CLUB

PAULINE PERRY  
*President*

KATY SAMS  
*Vice-President*

KATE COVINGTON  
*Secretary*

MIRVINE GARRETT  
*Treasurer*

Margaret Andrews  
Ruby Barrett  
Ann Bradsher  
Nancy Bunn  
Elizabeth Davidson  
Edna Frances Dawkins  
Faith Hite  
Annabelle Hollowell

Margaret Kramer  
Mary Fay MacMillan  
Lucille Parker  
Frances Pittman  
Norma Rose  
Susan Emma Sloan  
Annie Mae Taylor  
Jean Davis

Pauline Davis  
Frances Calloway  
Katherine Martin  
Grace Porter  
Martha Ann Riley  
Susie Saunders  
Charlotte Wester  
Edna Lee Pegram

Dr. Florence Hoagland  
Dr. Mav L. Johnson  
Dr. Julia Harris  
Miss Ethel English  
Dr. Helen Price  
Miss Mary Tilley  
Miss Mary Lee



## HELEN HULL LAW CLASSICAL CLUB

KATY SAMS  
*President*

HELEN RIVERS  
*Vice-President*

LILLIAN POE  
*Secretary-Treasurer*

Barbara Behman  
Nina Binder  
Ann Bradsher  
Emily Bradsher  
Swannanoa Branch  
Margaret Bullard  
Catherine Canaday  
Marie Carroll  
Mildred Crowder

Eleanor Edwards  
Helen Edwards  
Alice Goodman  
Elizabeth Henley  
Helen Hilliard  
Fath Hite  
Natalie Johnson  
Mary E. Jones  
Betty Kichline

Rose Lee  
Rachel Leonard  
Mary Johnson MacMillan  
Katherine Martin  
Helen Melton  
Ernestine Neighbors  
Pauline Perry  
Nancy Powell  
Norma Rose

Harriet Rose  
June Fay Sewell  
Susan Emma Sloan  
Kate Mills Suter  
Mary C. Walters  
Kathryn Ward  
Mary C. Wyche  
Dr. Helen Price  
Miss Caroline Wray

## K. K. KLUB

HARRIET ROSE  
*President*

ALICE BRUTON  
*Secretary*



Sonora Bland  
Nannie M. Brown  
Effie R. Calhoun  
Louise Copeland  
Louise Daniel  
Jean Davis

Dorothy Dockery  
Helen Hilliard  
Margaret Hines  
Dorothy Horne  
Mary E. Lawson  
Minnie R. McNeill

Sadie Massey  
Frances Morris  
Margaret Nichols  
Helen F. Parker  
Alice Rubenstein  
Fay M. Shields

Mary M. Stewart  
Miss Ida Potear  
Miss Mary Tilley  
Miss Marian Warner  
Miss Carolyn Wray

## STUDENT LEAGUE OF WOMEN VOTERS

BERTHA FUTRELLE  
*President*

MINNIE RUTH McNEILL  
*Secretary-Treasurer*



Flora Kate Bethea  
Emily Bethune  
Dorothy Deane Brown  
Novelle Cheek  
Grace Neal Cashwell  
Martha Glazener

Margaret Hines  
Amelia Hodges  
Locetyn House  
Emily Hoye  
Ethel Knott

Rose Lee  
Katherine Malloy  
Sallie Matris  
Mary Johnson MacMillan  
Ernestine Neighbors

Evelyn Rose  
Kathleen Reece  
Marjorie Wilson  
Helen Sutton  
Addie Belle Wilson  
Miss Alice Keith



## INTERNATIONAL RELATIONS CLUB

DOROTHY DOCKERY  
*President*

RUBY BARRETT  
*Vice-President*

MARY CHANDLER  
*Secretary-Treasurer*

Margaret Andrews  
Ann Bradsher  
Elizabeth Davidson  
Margaret Hines

Annabelle Hollowell  
Margaret Kramer  
Katherine Liles  
Katherine Martin  
Frances Pittman

Ann Poteat  
Katherine Stuford  
Hilda Williams  
Miss Nettie Heinden



## BARBER BIOLOGY CLUB

DOROTHY HODGIN  
*President*

MELBA GASKINS  
*Vice-President*

LUCILLE CATES  
*Secretary*

Christin Adams  
Eleanor Andrews  
Carolyn Aydlett  
Anna E. Baucum  
Flora Kate Bethae  
Mary Banks  
Nannie M. Brown  
Carrie Bowers  
Mary Chandler  
Catherine Canada  
Novelle Cheek

Elisabeth Davidson  
Mildred Davis  
Brynum Dark  
Mildred Eaton  
Flora Fowler  
Madeline Hall  
Pearl Huffman  
Dorothy Horne  
Frances Jones  
Gwendolyn Kester  
Ethel Knott

Margaret Kramer  
Mae Marshbanks  
Mataline Nve  
Elizabeth Nanner  
Virginia Ogletree  
Grace Porter  
Martha Ann Riley  
Susan Rudnall  
Fay M. Shields  
Katherine Shuford  
Margaret Shepherd

Roselle Sears  
Margie Stallings  
Frances Tatum  
Frances Todd  
Annie Vannov  
Hilda Williams  
Ruth Alice Ward  
Mary C. Walters  
Martha Williams  
Miss Lena Barber  
Miss Melba Hunt

## HOME ECONOMICS CLUB



LOUISE HELSABECK  
*President*

MARGARET ANDREWS  
*Secretary-Treasurer*

Nancy Allen  
Mildred Averette  
Sonora Bland  
Henrietta Castlebury  
Norma Lee Dawson  
Elsie Earp  
Celia Ellis

Ella Sue Gravitt  
Margaret Grayson  
Mary E. Jenkins  
Elizabeth Johnson  
Ruth McLean  
Christiane Odum  
Helen Frances Parker

Lucy Mae Perry  
Florence Pittman  
Ruby Pearson  
Martha Ann Riley  
Mary F. Sawyer  
Ruth Smith  
Marjorie Stallings

Flossie Whitley  
Ruth Daughtery, *Associate*  
Sallie Mitchell, *Associate*  
Lucille Shearon, *Associate*  
Miss Eilon Brewer  
Miss Jennie Haney

## GRAND- DAUGHTERS CLUB

LOUISE HELSABECK  
*President*



Ruby Abernethy  
Ruby Barrett  
Annie Elizabeth Baucom  
Edith Baucom  
Relieu Baucom  
Sonora Bland  
Annie Ruth Bruton  
Elizabeth Case  
Novelle Check  
Beverly Davis

Jean Davis  
Lucille Davis  
Miriam Early  
Elizabeth Elliot  
Elizabeth Guy  
Madeline Hall  
Olive Hamrick  
Mary Grace Hanes  
Anna Harrington  
Dorothy Hodjan

Elizabeth Jackson  
Catherine Johnson  
Bruce Kitchen  
Mary Fay MacMillan  
Mae Marshbanks  
Mary Martin  
Helen Melton  
Gertrude Moore  
Frances Olive  
Helen Frances Parker

Ella Ruth Perry  
Grace Potter  
Ruth Puyott  
Martha Ann Riley  
Dorothy Seas  
Ruth Sears  
Lucille Shearon  
Fay Memory Shields  
Lillian Wall



## TOWN GIRLS' CLUB

HELEN RUFFIN  
*President*

Alice Andrews  
Margaret Andrews  
Nellie Ball  
Annie Mae Banks  
Grace Betts  
Swannanoa Branch  
Mary Ann Brewer  
Blanche Buffalo  
Elizabeth Bullard  
Margaret Bullard  
Dorothy Byrum  
Marze Carroll  
Henrietta Castlebury  
Virginia Combs  
Elizabeth Crabtree  
Lucille Dowell  
Halburton Emory

Dorothy Finlator  
Alice Goodman  
Lillian Gupton  
Nina Hackney  
Helen Halverson  
Olive Hamrick  
Helen Heathberly  
Rose Heatherly  
Elizabeth Henlev  
Laura Mae Hilliard  
Elizabeth Jackson  
Anna Lee Johnson  
Elizabeth Johnson  
Ethel Jones  
Mary Elizabeth Jones  
Marjorie Jordan

Betty Kiehline  
Willa Mae Lee  
Donna Lehman  
Margaret Lewis  
Jean Lightfoot  
Martha McClung  
Elizabeth McKnight  
Nellie Mettrev  
Elizabeth Moody  
Ruth Nowell  
Elizabeth Park  
Marjorie Pearce  
Ruby Pearson  
Edna Lee Pegram  
Virginia Penny  
Lucy Mae Perry

Virginia Phelps  
Alice Poe  
Nina Belle Ray  
Nancy Ruddle  
Alice Rubenstein  
Rachel Senter  
June Sewell  
Margaret Seymour  
Dorothy Shipman  
Anna Somerville  
Gaynelle Sorrell  
Annie Lee Tippet  
Marian Wallace  
Mary Lee Watkins  
Evelyn Williams  
Veritas Williams  
Mary Elizabeth York





## KAPPA NU SIGMA HONOR SOCIETY

NORMA ROSE . . . . . *President*      ELISABETH DAVIDSON . . . . . *Vice-President*  
 PAULINE PERRY . . . . . *Secretary-Treasurer*

NINA BINDER  
 DOROTHY DOCKERY  
 EDNA LEE PEGRAM  
 KATY SAMS

MISS ELIZABETH BOOMHOUR  
 MISS ELLEN BREWER  
 MISS ETHEL DAY

MISS NETTIE HERNDON  
 DR. MARY L. JOHNSON  
 MISS MARGUERITE MASON  
 DR. HELEN PRICE



## SILVER SHIELD HONOR SOCIETY

LUCILLE PARKER . . . . . *President*      FRANCES CALLOWAY . . . . . *Vice-President*

NANCY ALLEN  
 ANN BRADSHAW

HENRIETTA CASTLEBURY . *Secretary-Treasurer*  
 NORMA ROSE

RUBY BARRETT, *Associate*  
 RUTH ABERNETHY, *Associate*



## THE COLLEGE CHOIR

### OFFICERS

MATALINE NYE . . . . . *President*      ESTHER MAE LANIER . . . . . *Secretary*  
 FRANCES MORRIS . . . . . *Vice-President*      DOROTHY LOWDERMILK . . . . . *Treasurer*  
 L. P. SPELMAN . . . . . *Director*

JANIE ALLGOOD  
 LISETTE ALGOOD  
 EMILY BETHUNE  
 HAZEL BOSWELL  
 EVELYN BRITT  
 INA MAE BYRD  
 FRANCES CALLOWAY  
 ELIZABETH CASE  
 GRACE NEAL CASHWELL  
 MARGARET LOVE CLARK  
 MILDRED CLARK  
 KATHERINE COVINGTON  
 LOUISE DANIEL  
 MARY BYNUM DARK  
 JEAN DAVIS  
 LUCILLE DAVIS  
 IDA FULLER  
 BERTHA MAE FUTRELLE  
 MARY GAVIN  
 MARTHA GLAZENER  
 OLIVE HAMRICK

MARY GRACE HANES  
 IRENE HERRING  
 MARGARET HINES  
 JOCELYN HOUSE  
 ELIZABETH HOWELL  
 RUTH HUTCHINS  
 CATHERINE JOHNSON  
 NATALIE JOHNSON  
 JANIE KEITH  
 VIRGINIA LAMBERT  
 ESTHER MAE LANIER  
 MARGARET LANIER  
 KATHERINE LILES  
 DOROTHY LOWOERMILK  
 MAE MARSHBANKS  
 DOROTHY MEIGGS  
 PEGGY MOODY  
 FRANCES MORRIS  
 ELEANOR MYERS  
 ELIZABETH NANNEY  
 RUTH NOWELL  
 MATALINE NYE

MARGARET O'BRIAN  
 ANNIE LAURIE OVERTON  
 BETTY PARKER  
 CAROLYN PARKER  
 MARY LEIGH PARNELLE  
 KATHERINE PITTMAN  
 DOROTHY POLLOCK  
 ANN POTEAT  
 ALMA REID  
 VIRGINIA ROGERS  
 LUCILE SHIPLEY  
 CAROLYN SPEARS  
 PAULYNE STROUD  
 MARY BRICE SUMMERLIN  
 MILDRED SUTTON  
 ANNIE MAE TAYLOR  
 MARGIE THOMAS  
 MARTHA TURLINGTON  
 MARY MATTHIS TURNER  
 DORIS WILLEY  
 EVELYN WILLIAMS



## GLEE CLUB

### OFFICERS

ANNIE MAE TAYLOR . . . . . *President*  
 JEAN DAVIS . . . . . *Vice-President*  
 MAE MARSHBANKS . . . . . *Secretary-Treasurer*  
 RUTH NOWELL . . . . . *Pianist*  
 KATHERINE MARTIN . . . . . *Librarian*  
 MISS ETHEL ROWLAND . . . . . *Director*

EMILY BETHUNE  
 HAZEL BOSWELL  
 INA MAE BYRD  
 FRANCES CALLOWAY  
 LOUISE DANIEL  
 MARY BYNUM DARK  
 JEAN DAVIS  
 LUCILLE DAVIS  
 MARGARET HINES  
 CATHERINE JOHNSON  
 VIRGINIA LAMBERT

RACHEL LEONARD  
 DOROTHY LOWDERMILK  
 MAE MARSHBANKS  
 KATHERINE MARTIN  
 FRANCES MORRIS  
 RUTH NOWELL  
 MATALINE NYE  
 MARGARET O'BRIAN  
 ISABEL ROSS  
 ANNIE MAE TAYLOR  
 MARION WALLACE

AK 7



# S O C I E T I E S



*"I hadn't quite finished my tea."*



## ASTROTEKTON LITERARY SOCIETY

### OFFICERS

- CHRISTINE ADAMS . . . . . *President*  
 MARGARET KRAMER . . . . . *Vice-President*  
 MARGERY MCKAUGHAN . . . . . *Secretary*  
 NATALIE JOHNSON . . . . . *Treasurer*





ISABEL ROSS  
*Chief*



RENA PEARL HAMILTON  
*Senior Marshal*



KATHERINE MALLOY  
*Junior Marshal*



JEAN DAVIS  
*Sophomore Marshal*

## ASTROTEKTON MARSHALS

AK 1

LEAV



*Elisabeth Davidson*

COLLEGE MARSHAL





## PHILARETIAN LITERARY SOCIETY

### OFFICERS

- DOROTHY DOCKERY . . . . . *President*  
KATHERINE MARTIN . . . . . *Vice-President*  
KATE COVINGTON . . . . . *Secretary*  
CAROLYN PARKER . . . . . *Treasurer*



ELIZABETH PARK  
*Chief*

IRENE TUTHILL  
*Senior Marshal*



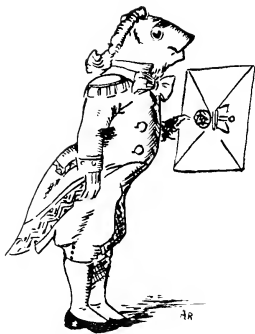
FAITH HITE  
*Junior Marshal*

HAZEL BASS  
*Sophomore Marshal*



PHILARETIAN MARSHALS

# ATHLETICS



*"From the Queen: An invitation to the Duchess to play croquet."*



MAE MARSHBURN, Winner  
of

### VICTOR TROPHY

Presented by the Athletic Board to the student who has contributed most to athletics through proficiency, sportsmanship, and versatility in the field.

1935



HAZEL BOSWELL

### COLLEGE CHEER LEADER



# ATHLETIC ASSOCIATION

KATHERINE LILES  
*President*

WITH Katherine Liles as president, the Woman's Athletic Association contributed in a large measure to the happiness, health, and well-being of the Meredith girl of 1935-'36. Keeping before it the objective of reaching each and every girl, the A. A. enlarged its program of athletics, sponsored parties and social events, presented motion pictures of campus life and educational films, and secured speakers with messages of interest for the students.

The primary project before the A. A. this year was the long-contemplated swimming pool. With the cooperation of the Alumnae Association, the students, and friends of the college, the plans were definitely formed and the campaign for funds was launched.

Stunt Day was inaugurated last fall, and the whole afternoon before Stunt Night was devoted to interclass and alumnae athletic contests, a polio race, and singing contests. As a consequence of the success of this undertaking, a whole day was set aside for next year's program.

## ATHLETIC BOARD



KATHERINE LILES  
*President*  
MARTHA MESSENGER  
*Vice-President*  
HARRIET ROSE  
*Secretary*  
KATE MILLS SUITER  
*Treasurer*

RUTH ABERNETHY  
CHRISTINE ADAMS  
MAE MARSHBANKS  
FRANCES PITMAN  
NANCY BUNN  
MARGARET KRAMER  
RUTH PRIVOTT  
NELL CHOATE  
LOUISE HELSABECK  
DOROTHY PREVOST  
PAULINE DAVIS





MRS. SORRELL  
Director of Athletics

### HOCKEY

MARTHA MESSENGER, *Manager*

The great amount of interest in hockey this year can best be shown by the fact that 82 girls came out, and that 32 of these won their points for attending 60% of the practices.

### RIDING

CHRISTINE ADAMS, *Manager*

Although a new sport on our campus this year, horseback riding soon enlisted a group of staunch followers, who took to the trails whenever weather permitted.

### BASKETBALL

NANCY BUNN, *Manager*

The ever-popular major sport took many forms this year—intramural teams in addition to the usual class teams and honorary varsity. Dorn teams were worked up by members of the Sophomore and Junior Class teams.

### TENNIS

NELL CHOMIE, *Manager*

This branch of the athletic program was active in both fall and spring. Individual lessons were given to many students. The fall and spring tournaments aroused keen interest and close competition.

### GOLF

PAULINE DAVIS, *Manager*

Golf gained a hold on the student life this year. Instruction was given to those desiring it during the fall. During the spring term many girls journeyed to the links to test and display their skill.





MISS WARNER  
Assistant Director of Athletics

### SWIMMING

DOROTHY PREVOST, *Manager*

Although still having to do their swimming in off-campus pools, Meredith girls are looking ahead with pride to the swimming pool that will some day be their own.

### ARCHERY

RUTH ABERNETHY, *Manager*

Archery was another sport which ran throughout the year, weather permitting. Instruction was given to many who had never before raised a bow. Ruth Abernethy was the competent instructor.

### BASEBALL

MAE MARSHBANKS, *Manager*

The bats, balls and gloves were sure harbingers of spring on the campus this year. The first real spring days brought them into evidence, where they have enjoyed prominence since. Baseball held its place as a favorite minor sport.

### SOCCER

FRANCES PITTMAN, *Manager*

Soccer proved itself a favorite sport during this, its second year on the campus. Practice games brought out many enthusiasts and the competitive games created no little excitement among contestants as well as spectators.

### HIKING

LOUISE HELSABECK, *Manager*

Hiking became a particularly popular sport in the spring when the A. A. secured a cabin and cooking utensils to be put at the disposal of the hikers. The call to the high-road was answered by many enthusiasts.

### MINOR SPORTS

RUTH PRIVOTT, *Manager*

New bicycles, additional ping-pong equipment, croquet, and volleyball all extended the field of minor sports in 1935-36. Minor sports particularly came to the forefront on such occasions as Stunt Day and May Day.



# BASKETBALL CHAMPIONS

The Sophomore Class, winner of the Basketball Cup for the 1935 season, wrested the championship title from the Senior Class, who had held a hitherto undefeated record for three successive years. In one round of interclass games, the Sophomores defeated the Juniors and Seniors and tied the Freshmen. Good sportsmanship and cooperation characterized their play.



WILBA MILLS  
Captain



## CHAMPIONSHIP TEAM

- WILBA MILLS
- CORA LEE MILLS
- FRANNIE OLIVE
- HARRIET ROSE
- MARGIE THOMAS
- JEAN DAVIS
- VIVIAN BUFFALO
- ANNIE L. OVERTON
- MARGARET SEYMOUR
- DOROTHY HAYWOOD

# VARSITY BASKETBALL



## VARSITY TEAM

- WILBA MILLS
- DOROTHY DOCKFRY
- MARGARET SEYMOUR
- KATHERINE LILES
- PAULINE DAVIS
- SALLIE B. PRIVETTE
- NANCY BUNN
- RELIEU BAUCOM
- CHARLOTTE PEEBLES
- RUBY PEARSON
- DOROTHY HAYWOOD





# HOCKEY CHAMPIONS

The Hockey Cup for the 1935 season was also awarded to the Sophomore Class, who proved victorious in the interclass tournament. In addition to this honor, the Sophomores furnished six members of the Varsity Hockey Team and sent three representatives on the defense team which competed in the Duke Play Day.



HARRIET ROSE  
Captain



## CHAMPIONSHIP TEAM

KILTON PEELE  
HARRIET ROSE  
ERNESTINE NEIGHBORS  
ELEANOR RODWELL  
WILBA MILLS  
FRANCES OLIVE  
MARGARET SEYMOUR  
JEAN DAVIS  
CORA LEE MILLS  
VIVIAN BUFFALO  
MARGIE THOMAS



## VARSITY HOCKEY



## VARSITY TEAM

KATHERINE LILES  
KILTON PEELE  
ELEANOR RODWELL  
PAULINE DAVIS  
MARTHA MESSENGER  
JEAN DAVIS  
HARRIET ROSE  
CORA LEE MILLS  
WILBA MILLS  
NANCY BUNN  
SALLIE B. PRIVETTE  
DOROTHY WILSON  
CATHERINE CANADAY



FAITH HITE  
Winner of Tennis Tournament  
1935



### MONOGRAM CLUB

KATHERINE LILES  
DOROTHY DOCKERY

MARTHA MESSENGER    NANCY BUNN  
LOUISE HELSABECK    HAZEL BOSWELL

PAULINE COVINGTON  
\*HENRIETTA CASTLEBURY  
\*MILDRED EATON

\*Picture does not appear in group.



# FEATURES



WE PRESENT AS OUR FEATURES OUR SUPER-  
LATIVES, CHOSEN FOR THEIR INDIVID-  
UAL DISTINCTION AND OUR SNAPSHOTS,  
CHOSEN FOR WHATEVER OF INTEREST  
THEY MAY HOLD CONCERNING OUR  
COLLEGE DAYS.



# SUPERLATIVES



*"At this moment they called out,  
"The Queen! The Queen!"*



*Lucille Parker*

WITTIEST



*Isabel Ross*

CUTEST

OAK LEAVES  
1936

19-  
OAK LEAV



*Sonora Bland*

MOST POPULAR





*Dorothy Dockery*  
MOST VERSATILE

OAK LEAF  
1936



*Katherine Liles*

MOST ATHLETIC



*Norma Rose*

MOST INTELLECTUAL

OAK LEAVES  
1934



*Susan Emma Sloan*

MOST ORIGINAL



*Nancy Allen*  
MOST STYLISH

193  
OAK LEAVES



*Elisabeth Davidson*

MOST BEAUTIFUL



*Henrietta Castlebury*

BEST ALL-ROUND TOWN STUDENT

OAK LEAVES  
1936



*Ann Bradsher*

MISS MEREDITH



# MEREDITH EVENTS



*"She was getting used to  
queer things happening."*



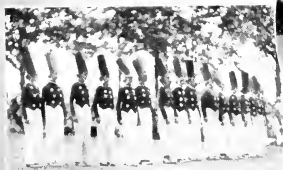
*May Queen*  
1935

*Margaret*  
*Davis*





*May Day*  
1935





*May Day*  
1935



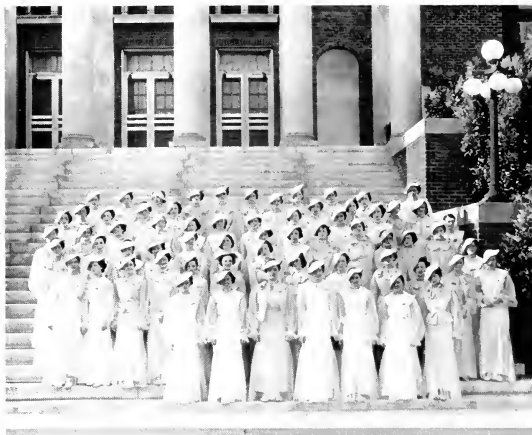


❧

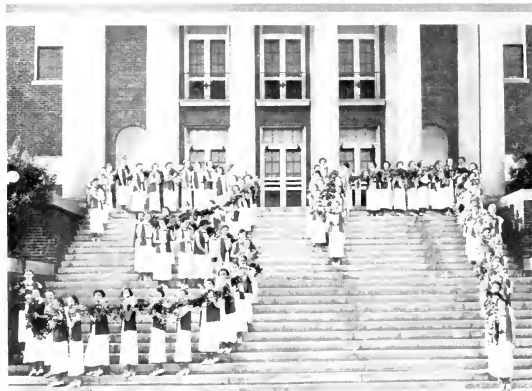
*May Day*  
1935

❧





*Commencement  
1935*





❧

*Commencement*  
1935



❧





*Senior Stunt*  
*Sophomore*  
*Stunt*







*Junior Stunt*  
*Freshman*  
*Stunt*





*Here and  
There*





*On the  
Campus*



# ACKNOWLEDGMENTS



The Editor and the Business Manager wish to thank:

The staff of the OAK LEAVES for their cooperation and assistance.

Miss Julia H. Harris of our faculty for her aid in compiling the manuscript.

Mr. E. F. Canaday of our faculty for his interest and counsel in financial matters.

Mr. M. F. Dunbar of Dunbar and Daniel Studio for his efficiency in handling our photography.

Mr. M. L. Glover of Lynchburg Engraving Company and Mr. W. A. Daniel of Benson Printing Company for their assistance and continuous efforts in planning and producing the book.



# OUR FRIENDS



*"And this is very important."*

## LOOKING TO THE FUTURE

When you entered upon your college career as a student at Meredith you did so in accordance with a definite plan you had fixed for your future. Each year has marked another step toward the realization of your ambition; and now that you have completed your course of training you will go forth to enjoy the rewards which are yours for having achieved your purpose.

A still greater pleasure awaits you—that of building a happy home. That, too, will be achieved step by step, and, in the final analysis, an all-electric home will be the reward.



CAROLINA POWER &  
LIGHT COMPANY

## ELLISBURG'S

*"Raleigh's Smartest  
Shop"*

SMART CLOTHES FOR THE  
COLLEGE MISS

WELCOME

Faculty and Students

to  
**Poole's Beauty Shoppe**

Raleigh's Permanent  
Wave Center

Phone 3165

7 W. Hargett St.

Raleigh Building

## J. J. FALLON CO.

Incorporated

**FLORISTS**

203 FAYETTEVILLE ST.

Raleigh, N. C.

Phone 4070

*"We Grow the Flowers We Sell"*

COMPLIMENTS

OF

State, Palace and  
Capital Theatres

*The Finest in Entertainment*

PATENTS, TOILETRIES  
PRESCRIPTIONS

## ECKERD'S

*"Creator of Reasonable Drug  
Prices"*

Carrying a Complete  
Cosmetic Line of *D'Orsay*—  
Paris

Soda Fountain and Luncheonette

## TAYLOR'S

The Show Place of the Carolinas

Offers the Faculty and Students of  
Meredith College a Store Unsur-  
passed in the South



## TAYLOR'S

With Fifteen Departments, Sells Prac-  
tically Everything Desired — Usually  
Showing the New Things First. Prices  
Are Always Guaranteed.

Don't Fail to See **THE NEW SHOES**  
Which We Are Receiving Daily  
WE HAVE JUST THE STYLE THAT YOU ARE LOOKING FOR  
**POLLOCK'S**  
Incorporated  
122 FAYETTEVILLE STREET

**WALGREEN DRUG STORES**

200 FAYETTEVILLE

*Offer the Most Complete Line of Fine Cosmetics in Raleigh*

ALSO

DRUGS

SUNDRIES

EXCELLENT FOUNTAIN SERVICE

**Pine State Creamery Co.**

*Pasteurized Dairy Products*

Fancy Ice Cream for All Occasions

*Drink Milk for Health*

Raleigh, N. C.

Phone 3910

COMPLIMENTS

**T. H. Briggs and Sons**  
Incorporated

*"Carolina's Oldest Wholesale and  
Retail Hardware House"*

Established 1865

Phone Number 45

RALEIGH, N. C.

*We Hope  
You Will Always  
Remember*

**BOON ISELEY'S**

**JEANS**

*Smart Shop for Smart  
Women*

118 FAYETTEVILLE STREET



## GREEN GRILL

*"A Good Place to Eat"*

324 South Salisbury Street

Phone 3422

RALEIGH, NORTH CAROLINA

## DE SHAZO'S

School of Beauty Culture

127 Fayetteville Street

Phone 2153

RALEIGH, NORTH CAROLINA

## BRANTLEY & SON DRUG CO.

*"Reliable"*

Phone 14

Masonic Temple Bldg.

Raleigh, N. C.

## GOODMAN'S

*Smart Clothes at Reasonable  
Prices*

200 S. Wilmington Street

## MANGEL'S

Dresses, Underwear  
Sweaters, Skirts, Hosiery

124 Fayetteville Street

## JOB P. WYATT & SONS COMPANY

RALEIGH, N. C.

HARDWARE—SEEDS  
FARM IMPLEMENTS

PATRONIZE  
OUR  
ADVERTISERS

THE PHOTOGRAPHS IN  
THIS ANNUAL

*WERE MADE BY*

**DUNBAR & DANIELS**

*Incorporated*

132 Fayetteville Street

RALEIGH, NORTH CAROLINA

---

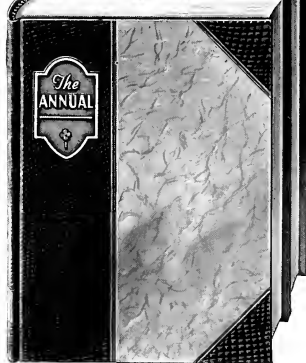
*FINE PORTRAITS  
PROMPT SERVICE*

---

*The Largest College Annual Photographers  
in the South*

# Experience

LYNCHBURG ENGRAVED ANNUALS ARE  
BUILT UPON YEARS OF EXPERIENCE  
AS SPECIALISTS IN THE FIELD OF  
SCHOOL PUBLICATIONS



IN successfully fulfilling the requirements of the modern College Annual Staff we have combined a comprehensive and systematic servicing program with that high standard of quality so essential in the production of fine yearbooks. Lynchburg engraved annuals are built by an organization specializing on school annuals exclusively, thereby assuring each staff of the personal and intelligent assistance so necessary in the planning and designing of a truly satisfactory book.

**LYNCHBURG  
ENGRAVING  
· COMPANY ·**

LYNCHBURG · VIRGINIA

*Builders of Better Annuals*

THIS BOOK PRINTED BY.....



THE  
WORLD'S  
LARGEST  
PUBLISHERS  
OF  
COLLEGE  
ANNUALS



**COLLEGE ANNUAL HEADQUARTERS**

*Highest Quality Workmanship Superior Extensive Service*









