

1

9

3

7



OAK LEAVES

MEREDITH COLLEGE LIBRARY  
RALEIGH, N. C.

CLASS  
378

BOOK  
M54  
V. 34

ACCESSION  
20834



CARLYLE  
CAMPBELL  
LIBRARY

Meredith College  
Raleigh, NC 27607-5298

**CARLYLE CAMPBELL LIBRARY**

**CLASS**

A  
376.8

**BOOK**

M54V  
1937

**ACCESSION**

20834

**MEREDITH COLLEGE**  
RALEIGH, N. C.





THE LEAVES OF THE GLOBE

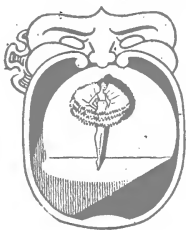
MEREDITH COLLEGE LIBRARY  
RALEIGH, N. C.

*The*  
OAK LEAVES  
NINETEEN THIRTY-SEVEN  
VOLUME THIRTY-FOUR

PUBLISHED BY THE STUDENTS OF  
MEREDITH COLLEGE  
RALEIGH, NORTH CAROLINA



CARLYLE CAMPBELL LIBRARY  
MEREDITH COLLEGE



**FOREWORD** Night and day,  
winter and summer, each of us plays a  
part in Life's eternal drama. In the pages  
of this book we seek to unfold the record  
of one year of this drama at Meredith—a  
year of work and play to be kept for all  
time in the memory of Meredith Students.





STRINGFIELD HALL

20834



FLORENCE MARIAN HOAGLAND

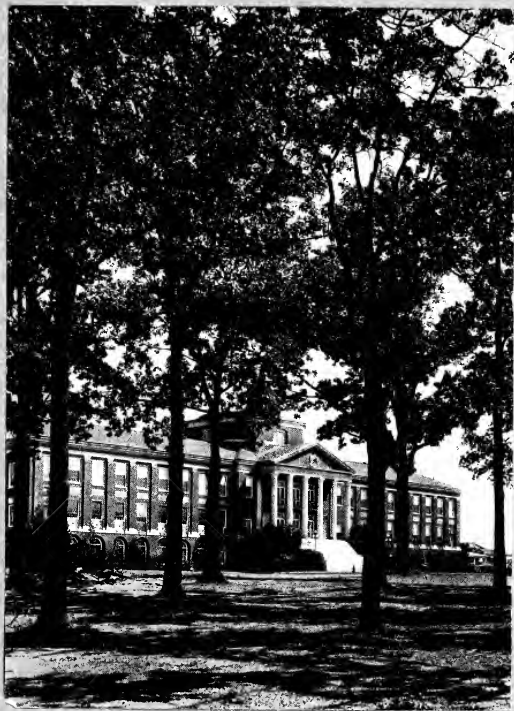


DEDICATION To express appreciation for what she has accomplished for the students of Meredith College during her years on our campus, we dedicate this 1937 volume of the "Oak Leaves" to FLORENCE MARIAN HOAGLAND



# THE THEATRE

The scene of this annual drama is quite naturally The Theatre — a theatre whose stage is the campus, whose properties are dormitories and classrooms, and whose producers are the Faculty.



THE ADMINISTRATION BUILDING FROM THE GROVE







*Charles E. Brewer*

A. M., Ph. D., LL. D.

The President



*J. Gregory Boomhout*

A.B., A.M.

The Dean





*Mary Susan Steele*

A.B., A.M., Ph.D.

Dean of Women



F A C U L T Y



OFFICERS OF  
ADMINISTRATION



HAZEL RUTH CLARK, B.S., A.M.  
*Assistant Dean of Women*

ETHEL EVANGELINE ENGLISH, B.S., M.A.  
*Freshman Advisor; Assistant Professor in Geography and Education*

FULLER BROUGHTON HAMRICK, A.B.  
*Bursar*

MARGARET FORGEUS, A.B.  
*Librarian*

MAE FRANCES GRIMMER  
*Secretary Alumnae Association*

LUCILLE JOHNSON, B.Mus.  
*Registrar*

MILDRED KICHLINE, A.B.  
*Religious Secretary*

LOIS BYRD, A.B.  
*Director of News Bureau*

LATTIE RHODES  
*Secretary to the President*

ANNE McCANLESS BUTLER  
*Secretary to the Bursar and Treasurer*

JESSIE LOIS MORGAN, A.B.  
*Secretary to the Bursar*

MARY FRANCES WELCH, B.S.  
*Dietitian*

F A C U L T Y

ANNIE LEE WHITE  
*House Director*

NORA KELLY, R.N.  
*Nurse*

ANNIE KEITH, A.B.  
*Assistant Dietitian*

OFFICERS OF  
ADMINISTRATION

DEPARTMENT OF  
ARTS AND SCIENCES

LEMUEL ELMER McMILLAN FREEMAN,  
A.B., A.M., B.D., Th.D.  
*Professor of Religion*

J. GREGORY BOOMHOUR, A.B., A.M.  
*Professor of Physics*

ERNEST F. CANADAY, A.B., A.M.  
*Professor of Mathematics*

SAMUEL GAYLE RILEY, A.B., A.M.  
*Professor of History*

LULA GAINES WINSTON, B.S., Ph.D.  
*Professor of Chemistry*

JULIA HAMLETT HARRIS, Ph.B., A.M., Ph.D.  
*Professor of English*

LENA AMELIA BARBER, B.S., A.B., M.S.  
*Professor of Biology*

ELLEN DOZIER BREWER, A.B., B.S., A.M.  
*Professor of Home Economics*

HELEN PRICE, A.B., Ph.D.  
*Professor of Latin and Greek*



# F A C U L T Y

## DEPARTMENT OF ARTS AND SCIENCES

BUNYAN YALES TYNER, A.B., A.M.  
*Professor of Education*

BESSIE EVANS LANE, A.B., M.D.  
*Professor of Physiology; College  
Physician*

NETTIE SOUTHWORTH HERNDON, A.B., M.A.  
*Professor of Economics and Sociology*

EDGAR H. HENDERSON, A.B., A.M., Ph.D.  
*Professor of Psychology and  
Philosophy*

GERTRUDE ROYSTER SORRELL  
*Director of Physical Education*

MARY LYNCH JOHNSON, A.B., A.M., Ph.D.  
*Associate Professor of English*

MARY LOUISE PORTER, Ph.B., A.M., Ph.D.  
*Associate Professor of Modern  
Languages*

JENNIE M. HANYEN, B.S., A.M.  
*Associate Professor of Home  
Economics*

ISAAC MORTON MERCER, M.A., Th.M., D.D.  
*Associate Professor of Religion*

LILLIAN PARKER WALLACE, A.B., M.S.  
*Assistant Professor of History*

MARY JAMES SPRUILL, A.B., A.M.  
*Assistant Professor of English*

MARY YARBROUGH, A.B., A.M.  
*Assistant Professor of Chemistry*



F A C U L T Y

ALICE BARNWELL KEITH, B.S., M.S.  
*Assistant Professor of History*

ETHEL EVANGELINE ENGLISH, B.S., A.M.  
*Assistant Professor in Education  
and Geography.*

MARIAN WARNER, B.S.  
*Mission Director Physical Edu-  
cation*

DORIS KATHERINE TILLERY, A.B.  
*Instructor in Mathematics*

ETHEL KATHRYN DAY, A.B., A.M.  
*Instructor in French*

ELIZABETH GREGORY BOOMHOUR,  
A.B., A.M.  
*Instructor in Biology*

MELBA CLEO HUNT, A.B.  
*Instructor in Biology*

CAROLYN WRAY, A.B.  
*Instructor in Psychology and Latin*

LOUISE LANHAM, B.A., M.A., Ph.D.  
*Instructor in English*

MARY HENLEY, A.B.  
*Instructor in Modern Languages*

GUSSIE ROSE RIDDLE LIST, A.B.  
*Instructor in Dramatics*

DEPARTMENT  
OF ART

IDA ISABELLA POTENT  
*Professor of Art*

MARY PAUL TILLERY  
*Associate Professor of Art*

DEPARTMENT OF  
ARTS AND SCIENCES



THE 937 OAK LEAVES  
F A C U L T Y

DEPARTMENT  
OF MUSIC

LESLIE P. SPELMAN, A.M., Bac.Mus.,  
F.A.G.O.  
*Professor of Music*

MAY CRAWFORD  
*Associate Professor of Piano*

EIHEL M. ROWLAND  
*Associate Professor of Voice*

EDGAR H. ALDEN, B.Mus.  
*Associate Professor of Violin*

AILEEN McMILLAN, B.Mus.  
*Acting Assistant Professor of  
Piano*

RAGNA MARGRETHE OTTERSEN, B.A.,  
B.Mus.Ed.  
*Assistant Professor of Public School  
Music*

PAULINE WAGAR, B.Mus., M.Mus.  
*Assistant Professor of Cello and  
Theory*

VIRGINIA BRANCH, B.Mus.  
*Instructor in Piano*

Faculty Members Whose Pictures Do  
Not Appear in Annual

CATHERINE ALLEN, A.B., A.M.  
*Professor of Modern Languages*

ANNIE BROWNLEE LAY, A.B., M.A.  
*Instructor in Biology*





# THE CAST

There is no dearth of actresses for roles in this pictorial drama of our college life. Here is The Cast—a cast of Seniors, Juniors, Sophomores and Freshmen. » » » »



VIEW THROUGH THE ARCHES





FRANCES PITTMAN  
PRESIDENT

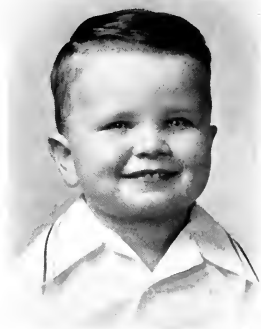
OFFICERS

FRANCES PITTMAN  
PRESIDENT

MARGERY MCKAUGHAN  
VICE-PRESIDENT

RUTH SAUNDERS  
SECRETARY

KATE COVINGTON  
TREASURER



KENNETH VAN HOWARD  
MASCOT

Senior Class



RUTH RAY ABERNETHY

RALEIGH, N. C.

A.B., Art

*Philareitian*

Gym Letter, 1; Independent Reading, 2; Choir, 1, 2; B. S. U. Council, Poster Chairman, 2; Treasurer, 3; First Vice-President, 4; Athletic Association Board, 3; Archery Manager, 3; Glee Club, 4; Little Theatre, 3, 4; Chairman of Staging, 4; Art Editor of *Twig*, 4; Silver Shield, 3, 4; President, 4; Stunt, 1, 2, 3, 4; Needlework Guild, 3, 4; Director, 4; Granddaughters' Club, 1, 2, 3, 4; K. K. Klub, 2; Class Hockey, 1, 3; B. S. U. Octette, 3, 4.



MARION LISETTE ALLGOOD

ROXBORO, N. C.

B.S., Piano

*Astrotekton*

Choir, 1, 2, 3, 4; Classical Club, 1, 2, 3, 4.



MARGARET LAND ANDREWS

RALEIGH, N. C.

A.B., Home Economics *Philatelian*

Barber Biology Club, 1; Town Girls' Club, 2, 3; Home Economics Club, 2, 3, 4; Secretary-Treasurer, 3; President, 4; International Relations Club, 2, 3, 4; Vice-President, 4; Little Theatre, 2, 3, 4; Secretary, 4; Freshman Counselor, 4.



RUBY MCKAY BARRETT

LAURINBURG, N. C.

A.B., History *Astroekton*

*Twig* Staff, 2; B. T. U., 1, 2; Y. W. A., 1, 2, 3, 4; Sunday School Officer, 3; Class Hockey, 1, 2, 3, 4; Varsity Hockey, 2; Granddaughters' Club, 1, 2, 3, 4; Secretary, 2; International Relations Club, 2, 3, 4; Vice-President, 3; Colton English Club, 3, 4; Little Theatre, 3, 4; Silver Shield, 3, 4; Kappa Nu Sigma, 4; Stunt, 2, 3, 4; Stunt Committee, 2, 3, 4; Chairman, 3; Class President, 3; Official Chaperon, 4; Needlework Guild, 3, 4; Class Superlative, 4; Nominating Committee, 3, 4; Chairman, 4; Campus Council, 3, 4; Chairman, 4; Student Council, 2, 3, 4; President Student Body, 4; Classified in *Who's Who Among Students in American Colleges and Universities*.





MARY ALICE BATSON

BURGAW, N. C.

A.B., History *.Astrotekton*

Campbell College, 1, 2; Y. W. A., 3, 4; B. T. U. Officer, 3, 4; Colton English Club, 3, 4.



ANNA ELIZABETH BAUCUM

APEX, N. C.

A.B., Education *.Philaretian*

B. T. U., 1, 2, 3, 4; Officer, 1, 3; Y. W. A., 1, 2, 3, 4; Granddaughters' Club, 1, 2, 3, 4; Barber Biology Club, 1, 2, 3, 4; Alliance Francaise, 1, 2; Basketball, 1, 2; Baseball, 3; Stunt, 3; B. S. U., 3, 4; B-Hive Committee, 3, 4; Manager, 4.





FLORA KATE BETHEA

LATTA, S. C.

A.B., History

*Astrocton*

Barber Biology Club, 1, 2, 3, 4; Y. W. A., 1, 2, 3; B. T. U., 1; Alliance Francaise, 1; B-Hive Committee, 1, 2, 3, 4; South Carolina Club, 1, 2; Student League of Women Voters, 3, 4; President, 4; Stunt, 2, 3, 4; Little Theatre, 3, 4; Student Council, 3, 4; Vice-President, 4; Vice-President Silver Shield, 4; Official Chaperon, 4; Needlework Guild, 4.



MARGARET ELIZABETH BLANCHARD

ROSE HILL, N. C.

A.B., Art

*Philaretian*

B. T. U., 1, 2, 3, 4; Publicity Chairman, 4; Art Editor *Acorn*, 2; Barber Biology Club, 1, 2; K. K. Klub, 3; Stunt Committee, 4; Classical Club, 4; Trophy for Gym Attendance, 3.





CARRIE BOWERS

LITTLETON, N. C.

A.B., Mathematics *Philaretian*

Alliance Francaise, 1, 2; Y. W. A., 1, 2, 3, 4;  
B. T. U., 3, 4; Barber Biology Club, 3, 4;  
Secretary, 4; Needlework Guild, 4.



SUE HOUSTON BREWER

WAKE FOREST, N. C.

A.B., History *Astrotekton*

Barber Biology Club, 1; Class Vice-President, 1;  
Class President, 2; Stunt Committee, 2, 3; Chair-  
man, 2; Nominating Committee, 2, 4; Secretary  
Student Council, 3; Wake Forest Summer  
School, 2, 3; May Day Attendant, 3; Silver  
Shield, 4; President Astrotekton Society, 4;  
Needlework Guild Treasurer, 3; Director, 4;  
Classified in *Who's Who Among Students in  
American Colleges and Universities.*



DOROTHY DEANE BROWNE

AHOSKIE, N. C.

A.B., Mathematics *Astroctkon*

B. T. U., 1; Assistant Business Manager *Acorn*, 2; Granddaughters' Club, 1, 2, 3, 4; Stunt, 1, 2, 3; Student League of Women Voters, 3, 4; Class Treasurer, 3; Barber Biology Club, 4; College Marshall, 4; Nominating Committee, 4; Needlework Guild, 3, 4.



MARGARET LLOYD BULLARD

RALEIGH, N. C.

A.B., English *Philaretian*

Alliance Francaise, 1, 2; Classical Club, 1, 2, 3, 4; Colton English Club, 3, 4; Town Girls' Club, 1, 2, 3; Granddaughters' Club, 1, 2, 3, 4; Editor Student Handbook, 4; B. T. U. Officer, 4.





EFFIE RAYE CALHOUN

KINSTON, N. C.

A.B., Art *Istrotekton*

K. K. Klub, 1, 2, 3, 4; Recorder, 4; Art Editor *Acorn*, 4; Stunt, 2, 3, 4; Needlework Guild, 4.



SUSAN CATHERINE CANADY

KINSTON, N. C.

A.B., Latin *Philaretian*

Circulation Manager *Acorn*, 2; May Day Attendant, 2; B. T. U., 1, 4; Y. W. A., 1, 2, 3, 4; Assistant Advertising Manager OAK LEAVES, 3; Class Hockey, 1, 2, 3, 4; Basketball, 3; Golf, 3, 4; Class Manager, 4; Classical Club, 1, 2, 3, 4; Secretary-Treasurer 2; President, 4; Barber Biology Club, 1, 2, 3, 4; Alliance Francaise, 1, 2, 3; Colton English Club, 1, 2, 3, 4; Little Theatre, 3, 4; Treasurer Student Council, 3; Needlework Guild, 4; Stunt, 2, 4; Student-Faculty Advisory Council, 3; President Philaretian Society, 4; Nominating Committee, 4; Class Superlative, 4.



MARY FORT CARROLL

WILSON, N. C.

A.B., History

*Astrotekton*

B. T. U., 1; Sunday School Officer, 1; Basketball, 1, 2, 3, 4; Varsity, 3; Class Treasurer, 2; Tennis, 2, 4; Class Captain, 2; Assistant Business Manager *Twig*, 2; Business Manager, 3; Alliance Francaise, 1, 2, 3, 4; Student League of Women Voters, 4; Colton English Club, 4; Stunt, 4.



GRACE NEAL CASWELL

LAURINBURG, N. C.

A.B., History

*Astrotekton*

Flora Macdonald College, 1; Choir, 2, 3, 4; B. T. U., 2; Y. W. A., 2, 3, 4; Stunt, 2; Wake Forest Summer School, 3; Student League of Women Voters, 2, 3; Needlework Guild, 4; Barber Biology Club, 4.





MARY EDLEE CATES

BURLINGTON, N. C.

A.B., English

*Astrotekton*

B. T. U. 1; *Twig* Reporter, 2; Alliance Francaise, 1, 2; Wake Forest Summer School, 3; Colton English Club, 4; Classical Club, 4; Needlework Guild, 4; Student League of Women Voters, 4.



ESTHER LUCILE CATES

MEBANE, N. C.

A.B., Mathematics

*Philaretian*

Alliance Francaise, 1; Gym Letter, 2; B. T. U., 1, 2, 3, 4; Officer, 4; Y. W. A., 1, 3; Barber Biology Club, 1, 2, 3, 4; Secretary, 3; *Acorn* Staff, 4.



NELL CHOATE

SALISBURY, N. C.

A.B., Education

*Astrotekon*

Alliance Francaise, 1, 2; *Twig* Reporter, 1; Class Vice-President, 2; Tennis, 1, 2, 3, 4; Manager, 3; Captain, 4; Golf, 3, 4; OAK LEAVES Staff, 4; Basketball, 2, 3, 4; Hockey, 4; Riding Club, 3, 4; Vice-President Astrotekon Society, 4; Student League of Women Voters, 4; Needlework Guild, 4; Monogram Club, 4.



KATE COVINGTON

CHERAW, S. C.

A.B., English

*Philaretian*

Barber Biology Club, 1; Alliance Francaise, 1; Class Secretary, 1; Class Treasurer, 4; Little Theatre, 1, 2, 3, 4; Secretary, 3; Vice-President, 4; *Twig* Staff, 1, 2, 3, 4; *Acorn* Staff, 4; South Carolina Club, 1, 2; Stunt Committee, 1, 3, 4; Stunt, 2, 4; B. S. U. Council, 2; B. T. U. Officer, 1, 2, 3; Sunday School Officer, 1, 2, 3; Secretary Philaretian Society, 3; Y. W. A. Officer, 1, 3; News Bureau, 3; Colton English Club, 2, 3, 4; Student League of Women Voters, 4; Independent Reading, 1, 2, 3; Needlework Guild, 3, 4; Class Superlative, 4.





ISLA MAE COWARD

OXFORD, N. C.

A.B., Economics

*Philaretian*

Alliance Francaise, 1; Gym Letter, 1, 2; Wake  
Forest Summer School, 3; B. S. U., 1, 2, 3, 4;  
B. T. U., 3, 4.



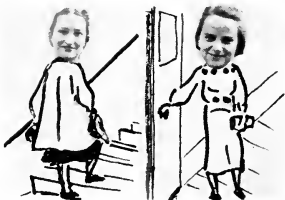
ELIZABETH GILBERT CRABTREE

RALEIGH, N. C.

A.B., Education

*Philaretian*

Peace Junior College, 1, 2.





MILDRED HAWTHORNE CROWDER

HIGH POINT, N. C.

A.B., Sociology *Astratekton*

High Point College, 1, 2; Classical Club, 3, 4;  
K. K. Klub, 3, 4; B. T. U. Officer, 3, 4; Stu-  
dent Council, 4.



RUTH ELEANOR DAUGHERTY

DANVILLE, KY.

A.B., Home Economics *Philarctian*

Centre College, 1, 2; Alliance Francaise, 3;  
Home Economics Club, 3, 4; Y. W. A., 3, 4;  
Secretary, 4; B. T. U., 3, 4; Needlework  
Guild, 4.





PAULINE DAVIS

WINSTON-SALEM, N. C.

A.B., Education *Astrotekton*

B. T. U., 1; Sunday School Officer, 2; Astrotekton Marshal, 2; Class Hockey, 1, 2, 3, 4; Captain, 4; Basketball, 1, 2, 3, 4; Varsity, 3; Golf, 2, 3, 4; Manager, 2, 3; Monogram Club, 3, 4; President, 4; Stunt, 1, 3; Athletic Association Board, 2, 3, 4; Tennis, 4; Baseball, 1, 2, 3; Varsity Hockey, 1, 2, 3, 4; Student League of Women Voters, 4; Little Theatre, 3, 4; Needlework Guild, 4.



EDNA FRANCES DAWKINS

MORGANTON, N. C.

A.B., Sociology *Astrotekton*

Rutherford College, 1; Stunt, 3; *Taxig* Staff, 2, 3; Little Theatre, 2, 3, 4; Vice-President, 3; President, 4; Y. W. A., 3; President, 4; International Relations Club, 4; Official Chaperon, 4.



ELEANOR EARLY

WINDSOR, N. C.

A.B., Education

*Philaretian*

Student League of Women Voters, 1, 2; B. T. U. Officer, 1, 2, 3; Stunt, 2; Wake Forest Summer School, 3.



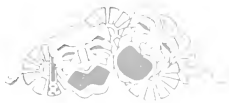
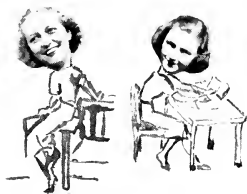
ELEANOR EDWARDS

CARY, N. C.

A.B., English

*Philaretian*

Classical Club, 3, 4; Program Director, 4; Alliance Francaise, 1, 2, 3, 4; Colton English Club, 3, 4; Science Editor *Acorn*, 2, 3; *Taxig* Staff, 3; Managing Editor, 4; Official Chaperon, 4; Kappa Nu Sigma, 3, 4; President, 4.





CELIA BLAND ELLIS

STAR, N. C.

A.B., Home Economics *Philaretian*

Town Girls' Club, 1; Home Economics Club, 1, 2, 3, 4; B. T. U. Officer, 2; Y. W. A., 2, 3.



MARTHA MAE GLAZENER

CHILlicothe, OHIO

A.B., History *Philaretian*

Mars Hill College, 1, 2; Choir, 3; Y. W. A. Officer, 3; B. T. U. Officer, 3, 4; Sunday School Officer, 3, 4; Secretary Student League of Women Voters, 4.



ALICE MARIAN GOODMAN

RALEIGH, N. C.

A.B., Latin

*Philaretian*

Alliance Francaise, 1, 2; Classical Club, 1, 2, 3, 4; Colton English Club, 3, 4; Le Cercle Francaise, 4; Town Girls' Club, 1, 2, 3, 4; Kappa Nu Sigma, 3, 4; Secretary-Treasurer, 4; Day Student Representative Campus Council, 4.



MARY WINSTON GREENE

RALEIGH, N. C.

A.B., Sociology

*Philaretian*

Campbell College, 1, 2; Town Girls' Club, 3; Granddaughters' Club, 4; B. T. U., 4; Y. W. A., 4.





SARAH HOWERTON GRIFFIN

PITTSBORO, N. C.

A.B., History *Astrotekton*

Basketball, 1, 2; Wake Forest Summer School, 3;  
B. T. U., 1, 2, 3, 4; Stunt, 3, 4.



FRANCES HARRIS

ELIZABETH CITY, N. C.

A.B., Chemistry *Philaretian*

Baseball Team, 2; Sunday School Officer, 3;  
B. T. U., 1, 2, 3; Y. W. A., 2, 3; Tennis  
Team, 4; Needlework Guild, 4.



TEMPIE HELEN HEATHERLEY

RALEIGH, N. C.

A.B., Religion

*Philaretian*

Town Girls' Club, 1, 2, 3, 4; Colton English Club, 4.



HELEN MONTAGUE HILLIARD

SCOTLAND NECK, N. C.

A.B., Art

*Astronetkon*

B. T. U., Officer, 1, 2; Feature Editor *Twig*, 2; Art Editor, 2, 3; Assistant Business Manager, 4; K. K. Klub, 2, 3; Classical Club, 2, 3; Stunt, 1, 2, 3, 4; Official Chaperon, 4; Student League of Women Voters, 4.





AMELIA HODGES

CADES, S. C.

A.B., Education *Astrotekton*

Coker College, 1; South Carolina Club, 2; B. T. U., 2; Y. W. A., 2; Student League of Women Voters, 3; Wake Forest Summer School, 3; Needlework Guild, 3.



EDNA LOUISE HOLLAND

SALEMBURG, N. C.

A.B., Education *Astrotekton*

Pineland College, 1, 2; Wake Forest Summer School, 3; B. T. U., 3, 4; Officer, 3; Y. W. A., 3, 4; Needlework Guild, 4.





ANNABELLE HOLLOWELL

ELIZABETH CITY, N. C.

A.B., English

*Astroctekton*

Alliance Francaise, 1; B. T. U., 1; Independent Reading, 1, 2, 3; Sunday School Officer, 2; Colton English Club, 2, 3, 4; Reporter, 3; Little Theatre, 2, 3, 4; Stage Manager, 3; News Bureau, 3; Stunt Committee, 2, 3, 4; Library Assistant, 2, 3; Stunt, 2, 3; Le Cercle Francais, 3, 4; International Relations Club, 3, 4; Class Editor *Acorn*, 2, 3; Editor *Acorn*, 4; Nominating Committee, 4; Needlework Guild, 4; Secretary-Treasurer Silver Shield, 4; Class Superlative, 4.



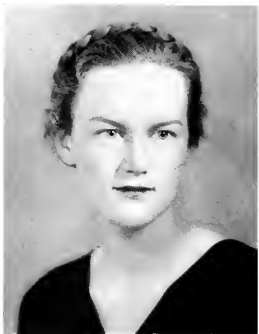
MARY HELEN HUFFMAN

DREXEL, N. C.

A.B., Education

*Philaretian*





PEARL TROGDON HUFFMAN

MORGANTON, N. C.

A.B., Biology *Astrotekton*

Barber Biology Club, 3, 3, 4; President, 4; Class Manager Horseback Riding, 4; Little Theatre, 4.



RUBY FAIRE JAMES

OAKBORO, N. C.

A.B., English *Philaretian*

Wingate Junior College, 1, 2; B. T. U. Officer, 3, 4; Y. W. A., 3; President, 4; Colton English Club, 3, 4; Alliance Francaise, 3, 4; Official Chaperon, 4.



ELIZABETH JOHNSON

RALEIGH, N. C.

A.B., Home Economics *Astrotekton*

Town Girls' Club, 1, 2, 3, 4; Vice-President, 4;  
Home Economics Club, 2, 3, 4; Reporter, 3;  
Business Manager College Handbook, 3.



NATALIE CLARE JOHNSON

MOREHEAD CITY, N. C.

A.B., History *Astrotekton*

May Day Attendant, 1; Class Hockey, 1, 2, 3,  
4; Y. W. A., 3, 4; Classical Club, 3, 4; Treas-  
urer Astrotekton Society, 3; Wake Forest Sum-  
mer School, 3; Stunt, 2, 3; Choir, 2, 3; Glee  
Club, 4; Astrotekton Marshal, 4; Minor Sports,  
1, 2, 3, 4; Needlework Guild, 3, 4.





MARJORIE BEASLEY JORDAN

CARY, N. C.

A.B., Education *Astroctkon*

East Carolina Teachers' College, 1, 2; Mars Hill  
Summer School, 3; Town Girls' Club, 3, 4.



MARTHA ANDERSON JOSEY

TARBORO, N. C.

A.B., History *Philaretian*

Basketball, 1; Hockey, 3; Advertising Manager  
OAK LEAVES, 4; Philaretian Marshal, 4; Barber  
Biology Club, 4.



MARTHA HALES JOYNER

ROCKY MOUNT, N. C.

A.B., Economics *Astrotekton*

Alliance Francaise, 1, 2; Needlework Guild, 3, 4; Student League of Women Voters, 4.

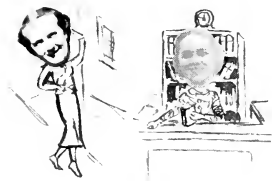


GWENDOLYN ELIZABETH KESTER

WILMINGTON, N. C.

A.B., History *Philaretian*

Class Hockey, 1; Stunt Committee, 1; Stunt, 2; Sunday School Officer, 1, 4; General Secretary of Sunday School Department, 1; B. T. U. Officer, 1, 2; Barber Biology Club, 3, 4; Colton English Club, 3, 4; Library Assistant, 2, 3, 4; Needlework Guild, 3, 4; Y. W. A., 2, 3, 4; Student League of Women Voters, 4.





### BETTY KICHLINE

RALEIGH, N. C.

A.B., Latin

*Philaretian*

Alliance Francaise, 1, 2; Town Girls' Club, 1, 2, 3; B. S. U. Council, 3, 4; Classical Club, 1, 2, 3, 4; Reporter, 4; Colton English Club, 1, 2, 3, 4; Reporter, 4; Day Student Representative on Campus Council, 3; Student Council, 4; Assistant Business Manager *Acorn*, 4; Typist, 4; B. T. U. Officer, 4; Stunt, 4; B. S. U. Octette, 3, 4.



### ETHEL LILLIE KNOTT

OXFORD, N. C.

A.B., History

*Philaretian*

Queens-Chicora College, 1; Barber Biology Club, 2, 3; Colton English Club, 2, 3, 4; Student League of Women Voters, 3, 4; *Twiny* Staff, 2, 3, 4; B. T. U., 2, 3; Y. W. A., 2, 3; B. S. U. Council, 4; World Fellowship Group, 2, 4; President, 4; Vice-President Kappa Nu Sigma, 4; Official Chaperon, 4.



MARGARET DAVIS KRAMER

ELIZABETH CITY, N. C.

A.B., Chemistry *Astrotekton*

B. T. U., 1, 2; Sunday School Officer, 2; Golf, 2; News Bureau, 1, 2, 3; Little Theatre, 1, 2, 3, 4; Treasurer, 2; Business Manager, 3; Stunt Committee, 1, 2, 3, 4; Stunt, 1, 2, 3, 4; *Twig* Staff, 2, 3; Class Secretary, 3; Associate Editor OAK LEAVES, 3; Editor, 4; International Relations Club, 2, 3, 4; Athletic Association Board, 3; Kappa Nu Sigma, 3, 4; Reporter, 4; Vice-President Astrotekton Society, 3; Student Assistant in Chemistry, 3, 4; Nominating Committee, 4; Class Superlative, 4; Classified in *Who's Who Among Students in American Colleges and Universities*.



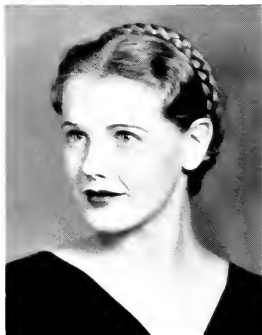
ROSE LEE

KINNSON, N. C.

A.B., History *Astrotekton*

Sunday School Officer, 1, 2; B. T. U. Officer, 1, 2, 3, 4; Departmental Sunday School Officer, 3; Y. W. A. Officer, 3; Wake Forest Summer School, 3; Colton English Club, 3, 4; Student League of Women Voters, 3, 4; Vice-President, 4; Classical Club, 2, 3, 4; Gym Letter, 2, 3; Needlework Guild, 3, 4.





RACHEL LEONARD

HARBIN, MANCHURIA

A.B., Religion

*Astroekton*

Stunt, 1; Town Girls' Club, 1, 2; B. T. U., 3, 4; Y. W. A., 3, 4; World Fellowship Group, 3, 4; Choir, 1, 2, 4; Vice-President, 4; K. K. Klub, 3, 4; B. S. U. Council, 1, 2, 3, 4; Classical Club, 3; B. S. U. Octette, 3, 4; College Trio, 3, 4; Needlework Guild Director, 4; Glee Club, 1, 2, 3, 4; Sunday School Officer, 2, 4.



MARGARET LANE LEWIS

RALEIGH, N. C.

A.B., Education

*Philaretian*

Peace Junior College, 1, 2; Town Girls' Club, 3, 4.





DOROTHY LOWDERMILK

VALDESE, N. C.

B.S., Piano

*Philarettian*

Choir, 1, 2, 3, 4; Treasurer, 3, 4; Glee Club, 2, 3, 4; Librarian, 2; Vice-President, 4; B. T. U., 1, 2, 3, 4; Pianist, 3; Y. W. A., 1, 2, 3, 4; Basketball, 1; *Twig* Staff, 3, 4; Managing Editor, 4; B. S. U. Council, 4.



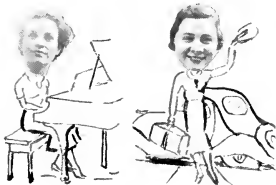
MARGERY DAVIS MCKAUGHAN

WAKE FOREST, N. C.

A.B., Sociology

*Astrotekton*

Home Economics Club, 1, 2; Sunday School Officer, 1; B. T. U., 1, 2, 3, 4; Y. W. A., 2, 3, 4; Wake Forest Summer School, 2; Stunt, 3; Needlework Guild, 3, 4; Secretary Astrotekton Society, 3; Class Vice-President, 4.





ANNIE ELIZABETH MCKNIGHT

RALEIGH, N. C.

A.B., Chemistry *Philaretian*

Town Girls' Club, 1, 2, 3, 4; Student Assistant in Chemistry, 3, 4; Mars Hill Summer School, 3.



MARY FAY McMILLAN

SOOCHOW, CHINA

A.B., English *Astrotekton*

Student Council, 1; Stunt, 1; Athletic Association Board, 3, 4; Varsity Tennis, 1, 2, 3, 4; Manager, 3; Class Hockey, 1, 2, 3, 4; Varsity Hockey, 1, 2; Class Hockey, 1, 2, 3, 4; B. S. U. Council, 3; Granddaughters' Club, 1, 2, 3, 4; World Fellowship Group, 1, 2, 3; President, 3; International Relations Club, 3, 4; President, 4; Colton English Club, 3, 4; Vice-President, 4; Needlework Guild, 3, 4; President, 4; Silver Shield, 4; Astrotekton Essay Medal, 3; Little Theatre, 2, 3, 4; *Twig* Staff, 3, 4; *Acorn* Staff, 2, 3, 4; Associate Editor, 4; Classical Club, 4.



MARY JOHNSON MACMILLAN

THOMASVILLE, N. C.

A.B., History

*Astrotekton*

Alliance Francaise, 1; Reading Honors, 1; B. T. U., 1; Stunt Committee, 1, 2, 3, 4; Y. W. A., 2, 3, 4; *Twig* Reporter, 2; Managing Editor, 3; Associate Editor, 4; Student League of Women Voters, 3, 4; Reporter, 4; Sunday School Officer, 3; Classical Club, 3, 4; Little Theatre, 3, 4; News Bureau, 3; Colton English Club, 4; Class Editor *Acorn*, 4; Needlework Guild Director, 4; Class Superlative, 4.



KATHERINE YANCEY MALLOY

YANCEYVILLE, N. C.

A.B., History

*Astrotekton*

University of Richmond, 1; Golf, 2, 3, 4; Riding Club, 2, 3, 4; B. T. U., 2, 3, 4; May Day Attendant, 3; Needlework Guild, 4; Student League of Women Voters, 3, 4; *Astrotekton* Marshal, 3; Chief Marshal, 4.





CORINE MANLY

GOLDSBORO, N. C.

A.B., English *Philaretian*

Alliance Francaise, 1, 2; B. T. U., 1, 2; Y. W. A., 1, 2; Colton English Club, 2, 3, 4; Le Cercle Francaise, 3, 4; Wake Forest Summer School, 3; Student League of Women Voters, 4.



MARY KATHERINE MARTIN

RALEIGH, N. C.

A.B., History *Philaretian*

News Bureau, 1; B. T. U. Officer, 2; Sunday School Officer, 2; Stunt, 1, 2, 3; Glee Club, 1, 2, 3; Librarian, 3; Library Assistant, 2, 3; International Relations Club, 3; Little Theatre, 1, 2, 3; Vice-President Philaretian Society, 3; Colton English Club, 2, 3; Class Editor OAK LEAVES, 3, 4.



DOROTHY MEIGS

PAGELAND, S. C.

B.S., Public School Music *Philaretian*

Wingate Junior College, 1, 2; Mars Hill Summer School, 3; B. T. U. Officer, 3; Sunday School Officer, 4; Y. W. A., 3, 4; Choir, 3, 4.



MARTHA MESSENGER

PORT WASHINGTON, N. Y.

A.B., French *Philaretian*

Winner of Hockey Stick, 1; Le Cercle Francaise, 3, 4; President, 4; Classical Club, 2, 3; Colton English Club, 4; Monogram Club, 2, 3, 4; Little Theatre, 3, 4; *Twig* Typist, 1; Exchange Editor, 2; Managing Editor, 3; *Acorn* Exchange Editor, 3; Nominating Committee, 4; Class Superlative, 4; Athletic Association Board, 2, 3, 4; Baseball Manager, 2; Hockey Manager, 3; Vice-President Athletic Association, 3; President, 4; Class Hockey, 1, 2, 3, 4; Manager, 1; Varsity, 1, 2, 3; Class Basketball, 1, 2, 3, 4; Varsity, 1, 2, 3; Tennis, 1, 2, 3, 4; Riding Club, 3, 4; Baseball, 2, 3, 4; Swimming, 3; Trophy for Gym Attendance, 3.





SALLIE D. MITCHELL

KITTRELL, N. C.

A.B., Home Economics *Philaretian*

Louisburg College, 1, 2; Wake Forest Summer School, 3; Home Economics Club, 3, 4; Basketball, 3, 4; Baseball, 3, 4; Hockey, 4; Y. W. A., 3; B. T. U., 3, 4.



RUBY LEE MODLIN

WARRENTON, N. C.

A.B., History *Philaretian*

Chowan College, 1, 2; Wake Forest Summer School, 1, 2, 3; B. T. U. Officer, 4; Colton English Club, 4; World Fellowship Group, 4; Y. W. A., 4.



RUTH ANNE NOWELL

CARY, N. C.

B.S., Piano *Philarettian*

Town Girls' Club, 1, 2, 3; Representative to Freshman Class, 1; Music Editor *Icon*, 2; Glee Club Accompanist, 3; Choir, 1, 2, 3, 4.



MATALINE FRANCES NYE

LUMBERTON, N. C.

A.B., History *Astroekton*

Alliance Francaise, 1, 2; Barber Biology Club, 1, 2, 3, 4; B. T. U., 1, 2, 4; Officer, 1, 2; Y. W. A., 1, 2, 3, 4; Officer, 2; B. S. U., Council, 3, 4; B. S. U. Octette, 3, 4; B. S. U. Vice-President, 3; President, 4; B-Hive Committee, 4; World Fellowship Group, 3, 4; Choir, 1, 2, 3, 4; President, 3; K. K. Klub, 3; Wake Forest Summer School, 2; Class Hockey, 2, 3, 4; Riding Club, 3, 4; Glee Club, 2, 3, 4; Nominating Committee, 4; Needlework Guild, 3, 4; Little Theatre, 3, 4; International Relations Club, 3, 4; Stunt, 2, 4; Class Superlative, 4; Classified in *Who's Who Among Students in American Colleges and Universities.*





RUBY SEARS PEARSON

APEX, N. C.

A.B., Home Economics *Astrotexkon*

Class Basketball, 1, 2, 3; Varsity Basketball, 1, 2, 3; Captain, 2; Class Hockey, 1, 2, 3; Varsity Hockey, 2; Secretary Athletic Association, 2; Home Economics Club, 1, 2, 3, 4; Town Girls' Club, 3, 4; Barber Biology Club, 2; Monogram Club, 3, 4.



ELLA RUTH PERRY

COLERAIN, N. C.

A.B., Primary Education and Art *Philaretian*

Hockey Team, 1, 2; B. T. U., 1, 2; Choir, 2; Granddaughters' Club, 1, 2, 3, 4; K. K. Klub, 4; Student League of Women Voters, 3, 4; Y. W. A., 1, 2, 3; Art Director Y. W. A., 3; Sunday School Officer, 3, 4; Needlework Guild, 4; B. S. U. Council, 4; Chief Philaretian Marshal, 4.





VIRGINIA DILLON PHELPS

RALEIGH, N. C.

A.B., Home Economics *Philaretian*

Town Girls' Club, 1, 2, 3, 4; Home Economics Club, 3, 4.



FLORENCE PITTMAN

SCOTLAND NECK, N. C.

A.B., Home Economics *Astroekton*

Home Economics Club, 1, 2, 3, 4; Secretary, 2; Vice-President, 4; Barber Biology Club, 2; Stunt, 4.





FRANCES VIRGINIA PITTMAN

KINSTON, N. C.

A.B., English

*Philaretian*

Alliance Francaise, 1; Scribblers' Club, 1; Library Assistant, 2, 3, 4; Reading Honors, 1, 2, 3; Le Cercle Francaise, 3; Stunt, 2, 3; Stunt Committee, 2, 4; Chairman, 4; Sunday School Officer, 3; Little Theatre, 2, 3, 4; Colton English Club, 3, 4; Secretary-Treasurer, 3; International Relations Club, 3, 4; News Bureau, 3; Managing Editor *Twig*, 3; Associate Editor, 4; Soccer, 2, 3; Soccer Manager, 3; Athletic Association Board, 3; Tennis, 1, 2, 3, 4; Class Manager, 2; Basketball, 1, 2, 3, 4; Class Captain, 2; Varsity Basketball, 2; Baseball, 2, 3; Monogram Club, 4; Class President, 4; Class Superlative, 4; Nominating Committee, 4; Campus Council, 4; Needlework Guild, 4.



MARTHA KYLE PITTMAN

FAIRMONT, N. C.

A.B., English

*Philaretian*

Alliance Francaise, 1, 2; Y. W. A., 1, 2, 3, 4; B. T. U., 1, 2, 3, 4; Student Council, 3; Le Cercle Francaise, 3, 4; Colton English Club, 2, 3, 4.



GRACE VICTORIA PORTER

ROCKINGHAM, N. C.

A.B., English

*Astrotiekton*

B. T. U., 1, 2; Officer, 1; Y. W. A., 1, 2, 4; Officer, 2, 4; Barber Biology Club, 1, 2, 3, 4; Secretary, 2; Colton English Club, 2, 3, 4; Stunt, 1, 2, 4; Needlework Guild, 3, 4; Alliance Francaise, 3, 4; Little Theatre, 2, 3, 4; Sunday School Officer, 3; Student League of Women Voters, 4; Official Chaperon, 4; Granddaughters' Club, 1, 2, 3, 4.



DOROTHY MILTON PREVOST

RALEIGH, N. C.

A.B., English

*Philaretian*

Class Secretary, 2; Colton English Club, 2, 3, 4; Barber Biology Club, 2, 3, 4; Athletic Association Board, 3; Swimming Manager, 3; Assistant Business Manager OAK LEAVES, 3; Business Manager OAK LEAVES, 4; Stunt, 4.





RUTH EUZELIA PRIVOTT

EDENTON, N. C.

A.B., History *Astrocton*

Stunt, 2; Athletic Association Board, 2, 3; Basketball, 1, 2, 3, 4; Granddaughters' Club, 1, 2, 3, 4; Sunday School Officer, 3; B. T. U. Officer, 2; OAK LEAVES Staff, 3.



VIRGINIA REYNOLDS

RALEIGH, N. C.

A.B., English *Philarettian*

Alliance Francaise, 1; Stunt Committee, 1, 2; B. T. U. Officer, 1, 2; K. K. Klub, 3, 4; Colton English Club, 3, 4; Student League of Women Voters, 4; *Twig* Staff, 4; *Acorn* Staff, 4; Needlework Guild, 4.



SUSAN PITTARD RUDISILL

GREENWOOD, S. C.

A.B., Education *Astroekton*

Assistant Business Manager *Acorn*, 1, 2; Business Manager, 3; Class Hockey, 1, 2; Stunt, 1, 2, 3; Sunday School Officer, 1, 2, 3; Y. W. A., 1, 2, 3, 4; Officer, 2; B. T. U., 1, 2, 3, 4; Officer, 2; Choir, 2; Barber Biology Club, 2, 3, 4; South Carolina Club, 1, 2, 3, 4; K. K. Klub, 3, 4; Colton English Club, 2, 3, 4; President, 4; Student League of Women Voters, 4; Riding Club, 4; Little Theatre, 3, 4; Needlework Guild, 4; World Fellowship Group, 4.



ADA LEE RIVERS

CHESTERFIELD, S. C.

A.B., History *Astroekton*

Limestone College, 1; South Carolina Club, 2; Student League of Women Voters, 4; B. T. U., 2, 3; Y. W. A., 2, 3, 4; Needlework Guild, 3, 4.





RUTH SAUNDERS

REIDSVILLE, N. C.

A.B., Sociology *Astrotekton*

Alliance Francaise, 1, 2; Class Treasurer, 1; Stunt, 2; Sergeant-at-Arms of Astrotekton Society, 3; Class Secretary, 4; Little Theatre, 1, 2, 3, 4; Needlework Guild, 3, 4; B. T. U., 1, 2, 3, 4; Y. W. A., 1, 2, 3, 4; Class Superlative, 4; Student League of Women Voters, 4.



MARY FLORENCE SAWYER

ELIZABETH CITY, N. C.

A.B., Home Economics *Astrotekton*

Alliance Francaise, 1; Basketball, 1, 2, 3, 4; B. T. U. Officer, 1, 2, 3, 4; Wake Forest Summer School, 3; Home Economics Club, 1, 2, 3, 4; Hockey, 1, 3; Needlework Guild, 4.



ZITA SAWYER

ELIZABETH CITY, N. C.

A.B., Science

*Astrojektion*

B. T. U. Officer, 1, 2, 3; Basketball, 1, 2, 4;  
Hockey, 1, 2; Tennis, 4; Needlework Guild, 4;  
Barber Biology Club, 1, 2, 3, 4.



RUTH ELIZABETH SEARS

APEX, N. C.

A.B., Education

*Philartian*

Alliance Francaise, 1, 2; Basketball, 1; B. T. U.,  
1, 2, 3, 4; Officer, 1, 2, 3; Y. W. A., 1, 2, 3, 4;  
Grandaughters' Club, 1, 2, 3, 4; Barber Biology  
Club, 1, 2, 3, 4; Vice-President, 4; Baseball, 3;  
Hockey, 4; Varsity Hockey, 4; Student Assistant  
in Physiology, 4.





LUCILLE ELIZABETH SHEARON

BUNN, N. C.

A.B., Home Economics *Philaretian*

Louisburg Junior College, 1, 2; Wake Forest Summer School, 3; Student League of Women Voters, 3; Granddaughters' Club, 3, 4; Home Economics Club, 3, 4; Officer, 4; B. T. U. Officer, 3, 4; Y. W. A., 3, 4; Official Chaperon, 4.



KATHERINE WEBB SHUFORD

LEXINGTON, N. C.

A.B., General Science *Astroekton*

Twig Staff, 2, 3, 4; Editor, 4; Stunt Committee, 2, 3, 4; Colton English Club, 3, 4; International Relations Club, 3, 4; Barber Biology Club, 2, 3, 4; Nominating Committee, 4; Kappa Nu Sigma, 4; Little Theatre, 4.





RUTH BARNES SMITH

GOLDSBORO, N. C.

A.B., Home Economics *Astrocton*

Gym Letter, 1; Home Economics Club, 1, 2, 3, 4;  
Wake Forest Summer School, 3; Y. W. A., 1, 2,  
3, 4; B. T. U., 1, 2, 3, 4; Barber Biology Club,  
1, 2, 3, 4.



MATTIE STINSON

GOLDSTON, N. C.

A.B., Science *Philaretian*

Campbell College, 1, 2, 3; Wake Forest Summer  
School, 3; Sunday School Officer, 4.





CLARICE SWAIN

WINNABOW, N. C.

A.B., Education *Philanthropist*

Wingate Junior College, 1, 2; Choir, 3; B. T. U. Officer, 2, 3; Y. W. A., 3, 4.



VIDA ELLEN THOMPSON

FAIRMONT, N. C.

A.B., Education *Astrologer*

Campbell College, 1, 2; Wake Forest Summer School, 3; B. T. U. Officer, 3; Y. W. A., 3; Needlework Guild, 3.



MARY CATHREN WALTERS

OXFORD, N. C.

A.B., French

*Philaretian*

Gym Letter, 2; B. T. U., 1, 2, 3, 4; Y. W. A., 1, 2, 3; Classical Club, 3, 4; Colton English Club, 3, 4; Barber Biology Club, 3, 4; Alliance Francaise, 1, 2, 3, 4; Vice-President, 4; Kappa Nu Sigma, 4.



DOROTHY WASHBURN

SHELBY, N. C.

A.B., English

*Astratekton*

Boiling Springs Junior College, 1, 2; B. T. U. Officer, 3, 4; Colton English Club, 3, 4; Library Assistant, 3, 4.





VERITAS CHRISTOBEL WILLIAMS

RALEIGH, N. C.

A.B., Primary Education *Astrotekton*

B. T. U., 3; Town Girls' Club, 1, 2, 3, 4; Home Economics Club, 1, 2, 3, 4.

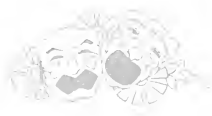


ADDIE BELLE WILSON

DOVER, N. C.

A.B., Art *Philaretian*

Y. W. A., 1; Sunday School Officer, 2, 3, 4; Reading Honors, 2, 3; Alliance Francaise, 1, 2, 3; Orchestra, 3; Tennis, 2; B. T. U., 1, 2; Stunt, 2, 3; K. K. Klub, 2, 3, 4; Student League of Women Voters, 3, 4; Poster Chairman, 3.





MARGARET O'BRIAN  
PRESIDENT

OFFICERS

MARGARET O'BRIAN  
PRESIDENT

HARRIET ROSE  
VICE-PRESIDENT

FRANCES TATUM  
SECRETARY

HAZEL BASS  
TREASURER

•

J u n i o r C l a s s

# JUNIORS



BETSYE ADAMS

LILESVILLE, N. C. *Astrotekton*  
Gray, white cosmos, Angora kittens.

KATHRYN ALDRIDGE

LA GRANGE, N. C. *Philaretian*  
Violets, early dawn, white linen.



FRANCES SCOTTIE ANDREWS

BURLINGTON, N. C. *Astrotekton*  
Kindergartens, sapphires, Juliet caps.

HAZEL BASS

FARMVILLE, N. C. *Philaretian*  
Fairy princesses, brocade, tiara.



WALDINE BASS

LUCAMA, N. C. *Philaretian*  
Birches, elfenfolk, leaf caps.

EDITH TYNER BAUCUM

WAYNESVILLE, N. C. *Philaretian*  
Yellow smocks, a violincello, sun parlors.



MARY ELIZABETH BELL

WASHINGTON, N. C. *Astrotekton*  
Elizabethan portraits, old lace, grandfather clocks.

EMILY BETHUNE

BUNN LEVEL, N. C. *Astrotekton*  
Bands, flags flying, tramping feet.



GRACE BETTS

RALEIGH, N. C. *Philaretian*  
Leather-bound books, sheepskin rugs, English prints.

EMILY BRADSHER

ROXBORO, N. C. *Philaretian*  
Gay wool scarfs, drifting snow, sleigh bells.

# JUNIORS

EVELYN BRITT

ST. PAULS, N. C.

*Philaretian*

A music-filled fairyland, starry nights,  
snowdrops.



LUCY LEE BROWN

GIBSON, N. C.

*Astrotekton*

Mustard-yellow, palms, Egyptian jew-  
els.



NANNIE MARGARET BROWN

WARRENTON, N. C.

*Astrotekton*

Curls piled high, feather fans, tortoise  
shell combs.



ALICE BRUTON

MT. GILEAD, N. C.

*Philaretian*

Toy horns, hobbyhorses, tiny sneezes.



VIVIAN BUFFALO

GARNER, N. C.

*Philaretian*

Red sweaters, twinkling eyes, laughter.



ELIZABETH BULLARD

RALEIGH, N. C.

*Philaretian*

Tulip sketches, palettes, smocks.

MAEBELLE BURKETT

KELFORD, N. C.

*Astrotekton*

Chintz, cross-stitch samplers, ladder-  
back chairs.

MARGARET LOVE CLARKE

MONROE, GA.

*Astrotekton*

Bent bows, speeding arrows, chic suits.

MILDRED CLARKE

KNOXVILLE, TENN.

*Astrotekton*

Gypsy songs, bonfires, harvest moons.

VIRGINIA COMBS

RALEIGH, N. C.

*Astrotekton*

Daffodils, clear pools, brown linen.

# JUNIORS



LOUISE COPELAND  
WOODLAND, N. C. *Astroekton*  
Cherry blossoms, blue velvet, Chinese lanterns.

KATHERINE COVINGTON  
THOMASVILLE, N. C. *Astroekton*  
Blue skies, singing birds, infectious happiness.



MAMIE LOUISE DANIEL  
PLEASANT HILL, N. C. *Astroekton*  
Blue and silver, fluted chimes, tea tables.

RUTH DAUGHTERY  
GOLDSBORO, N. C. *Philaretian*  
Tripping feet, whispering trees, spring breezes.



MILDRED DAVIS  
PENDLETON, N. C. *Astroekton*  
Oaks, crimson zinnias, pioneers.

NORMA LEE DAWSON  
WILMINGTON, N. C. *Philaretian*  
Gesturing hands, cuckoo clocks, a mouse hunt.



MABEL DIX  
RANDLEMAN, N. C. *Philaretian*  
Silent rivers, silvery birches, summer twilight.

IRENE DIXON  
KINGS MOUNTAIN, N. C. *Astroekton*  
Rickrack braid, navy blue, white collars.



HELEN EDWARDS  
FUQUAY SPRINGS, N. C. *Astroekton*  
Black net, red roses, crystal chandeliers.

ELIZABETH ELLIOT  
EDENTON, N. C. *Philaretian*  
English gardens, lace doilies, lavender.



# JUNIORS

DOROTHY FOSTER

LOUISBURG, N. C.

*Astrotekton*

Holly wreaths, roaring fires, happy voices.

FLORA FOWLER

TABOR CITY, N. C.

*Astrotekton*

Hurrying feet, toy drums, windy days.

MIRVINE GARRETT

GREENSBORO, N. C.

*Astrotekton*

Dark green forests, challenging cliffs, silver loving cups.

FRANCES GARRIS

PIKESVILLE, N. C.

*Astrotekton*

Blue organdy, sweet peas, seed pearls.

ELLA SUE GRAVITE

ROXBORO, N. C.

*Astrotekton*

Quaker maids, fir trees, mountain crags.

MARGARET GRAYSON

HIGH POINT, N. C.

*Astrotekton*

Cameos, midnight, ivory.

HELEN HALL

MOULTRIE, GA.

*Astrotekton*

Jodphurs, racing hounds, leafy trails.

MADELINE HALL

WOODSDALE, N. C.

*Philaretian*

Nurse caps, quiet halls, hushed voices.

KATHLEEN HAMRICK

SHELBY, N. C.

*Philaretian*

Amber butterflies, maple furniture, deerlets.

ADELAIDE HARRIS

NORWOOD, N. C.

Everblooming roses, Beethoven Symphony, libraries.



## JUNIORS



DOROTHY HAYWOOD

CANDOR, N. C.

*Philaretian*

Dancing flames, campfire songs, copper kettles.

ELIZABETH HENLEY

RALEIGH, N. C.

*Philaretian*

Bookshops, lighted study windows, subtle wit.



IRENE HERRING

MT. OLIVE, N. C.

*Astrotekton*

Tweeds, wooden buttons, scarlet maples.

NONIE HERRING

KINSTON, N. C.

*Philaretian*

Brown velvet, nasturtiums, tinkling ornaments.



DOROTHY HORNE

WILSON, N. C.

*Astrotekton*

Red cellophane, confetti, swirling taffeta.

JOCELYN HOUSE

ZEBULON, N. C.

*Astrotekton*

Choir robes, candlelight, nimble fingers.



DOROTHY HOWARD

WELDON, N. C.

*Astrotekton*

A clown, a bicycle race, a rag doll.

KATHLEEN JOHNSON

FAIRMONT, N. C.

*Philaretian*

Gray spires, quiet pools, dusk.



MARGARET LANIER

WALLACE, N. C.

*Philaretian*

Pale green wool, pink larkspur, white flannel.

WILLA MAE LEE

CARY, N. C.

*Philaretian*

Brass andirons, pewter, low ceilings.

# JUNIORS

**JEAN LIGHTFOOT**

RALEIGH, N. C.

*Philaretian*

Ivy-covered buildings, tall bookcases, flickering firelight.



**RUTH McLEAN**

BARTOW, FLA.

*Philaretian*

Sail boats, sea gulls, orange groves.



**IRIS MASSEY**

ZEBULON, N. C.

*Astrotekton*

Swagger suits, frosty mornings, red dabliss.



**SADIE MASSEY**

SMITHFIELD, N. C.

*Astrotekton*

A guitar, white slacks, a sailor cap.



**ELSIE MILLER**

WINSTON-SALEM, N. C.

*Philaretian*

Ragged robins, dotted swiss, pink lamp shades.



**MARY FRANCES MILLS**

DURHAM, N. C.

*Astrotekton*

Friendly gardens, tiny fountains, cozy nooks.

**WILBA MILLS**

APEX, N. C.

*Astrotekton*

Monograms, white sweaters, ebony.

**PEGGY MOODY**

RALEIGH, N. C.

*Philaretian*

Sea castles, ferns, driftwood fires.

**JEAN MORTON**

ROXBORO, N. C.

*Philaretian*

Tapering fingers, tilted hats, slender feathers.

**JANE NADING**

WINSTON-SALEM, N. C.

*Philaretian*

A girl scout, bright kerchiefs, clear glances.

# JUNIORS



ELIZABETH NANNEY  
MT. GILEAD, N. C. *Philaretian*  
Hair bows, ruffles, curls.



ERNESTINE NEIGHBORS  
DUNN, N. C. *Astrotekton*  
Pastel blues, light furs, make-up boxes.



JENNIE REID NEWBY  
THOMASVILLE, N. C. *Astrotekton*  
Off-the-face hats, fascinating fingers,  
swaying poplars.



MARGARET O'BRIAN  
ASHEBORO, N. C. *Astrotekton*  
Feathery clouds, snowflakes, gardenias.



FRANCES OLIVE  
APEX, N. C. *Philaretian*  
Hockey games, wind-blown hair, whirl-  
ing leaves.



CAROLYN PARKER  
FLORENCE, S. C. *Philaretian*  
Tiny hands, sparkling teeth, dinner  
rings.

ELIZABETH PARKER  
MARION, N. C. *Philaretian*  
Pink picture hats, music boxes, a min-  
uet.

MARY LEIGH PARNELLE  
PARKTON, N. C. *Astrotekton*  
Operas, orchids, chromium.

KILTON PEELE  
GOLDSBORO, N. C. *Philaretian*  
Parades, Halloween horns, carnivals.

VIRGINIA PENNY  
CARY, N. C. *Philaretian*  
Odd tables, bric-a-brac, what-nots.

## J U N I O R S

## LILLIAN POE

OXFORD, N. C.

*Philaretian*

Toy soldiers, silver buttons, drills.

## ANNE POTEAT

SHANGHAI, CHINA

*Astrotekton*

Oriental trinkets, embroidered jackets, scented temples.

## NANCY POWELL

WINSTON-SALEM, N. C.

*Astrotekton*

Football games, college pennants, weekend bags.

## KATHLEEN REECE

ELKIN, N. C.

*Philaretian*

Gray fur, picture lockets, dreaming eyes.

## HARRIET ROSE

WADESBORO, N. C.

*Astrotekton*

Flashing armor, sunlit heights, blue banners.

## ELEANOR RUSS

BENSON, N. C.

*Philaretian*

Scotch plaids, tams, a memory-filled room.

## JUNE FAY SEWELL

RALEIGH, N. C.

*Philaretian*

Yellow chrysanthemums, swinging gates, winding paths.

## MARGARET SHEPHERD

WELDON, N. C.

*Astrotekton*

Mickey mouse stories, music books, tiny veils.

## EUNICE SHIELDS

MURPHY, N. C.

*Astrotekton*

Waterfalls, rhododendron, bridle paths.

## LAKIE STEPHENS

BOARDMAN, N. C.

*Philaretian*

Satin coverlets, fairy stories, rainbow mists.



# JUNIORS



MARY STEWART

FAYETTEVILLE, N. C. *Philaretian*  
Art galleries, antique shops, rosemary.

MARGARET STRICKLAND

LOUISBURG, N. C. *Philaretian*  
Stone fortresses, evergreens, patchwork quilts.



KATE MILLS SUITER

SCOTLAND NECK, N. C. *Astrotekton*  
Long mirrors, deep rugs, white leather.

FRANCES TATUM

FAYETTEVILLE, N. C. *Philaretian*  
Efficient fingers, research laboratories, serene skies.



HELEN TAYLOR

EVERETS, N. C. *Astrotekton*  
Spanish shawls, moonlit balconies, autumn leaves.

FRANCES TODD

ROXBORO, N. C. *Philaretian*  
Quiet footsteps, white uniforms, squirrels.



MARGARET TURNER

HENDERSON, N. C. *Astrotekton*  
A china doll, ruffled vanity tables, powder puffs.

ANNIE VANNOY

NORTH WILKESBORO, N. C. *Philaretian*  
Placed curls, satin and lace, gold lame.



ANNIE HURDLE WALKER

BURLINGTON, N. C. *Astrotekton*  
Suede jackets, a collegiate manner, a light heart.

MARGARET WEATHERSPOON

RALEIGH, N. C. *Astrotekton*  
A make-believe duchess, questioning eyebrows, animated glances.

# JUNIORS

**CHARLOTTE WESTER**

HENDERSON, N. C. *Astratekton*  
 Beach umbrellas, surf boards, ocean-scented breezes,



**HELEN WHITEHURST**

MT. OLIVE, N. C. *Astratekton*  
 Fluffy yarns, knitting needles, a surprising voice.



**EVA WICKER**

LILLINGTON, N. C. *Philaretian*  
 Honeysuckle-covered gates, crescent moons, whippoorwills,

**SARAH LOU WILLIAMSON**

ELIZABETHTOWN, N. C. *Astratekton*  
 A halo of dark hair, poinsettias, metallic fabric.



**MARJORIE WILSON**

WINSTON-SALEM, N. C. *Astratekton*  
 Ermine, roof gardens, Venetian blinds.

**MARY CLAYTON WYCHE**

HALLSBORO, N. C. *Philaretian*  
 Pink and white checks, toy shops, peach blossoms,



**RUTH YATES**

APEX, N. C. *Philaretian*  
 Joyous hymns, sunlit cathedral windows, warm shadows.

**JANE YELVERTON**

RALEIGH, N. C. *Astratekton*  
 Pledge dances, drum majors, megaphones



**MARY ELIZABETH YORK**

CARY, N. C. *Philaretian*  
 Sunshine, canaries, bubbling brooks.

**MATTIE YOW**

LEMON SPRINGS, N. C. *Astratekton*  
 Gray seas, Monday mornings, rustling leaves.







JANET AIKMAN  
PRESIDENT

OFFICERS

JANET AIKMAN  
PRESIDENT

RUTH HUTCHINS  
VICE-PRESIDENT

JEAN FREEMAN  
SECRETARY

BARBARA BEHRMAN  
TREASURER

•

Sophomore Class

# SOPHOMORES



JANET AIKMAN

BERYL AMMONS

LOIS AVANT



BARBARA BEHRMAN

LOUISE BIGGS

LOUISE BOLUS



LUCILLE BRANNON

MILDRED BRITT

DOROTHY BYRUM



ELIZABETH CASE

SADA LOUISE CLARKE

MARY KATE COLLIER



ANNIE ELIZABETH COWARD

DOROTHY CRAWFORD

ALTA CRICHTER



MILDRED ANN CRITCHER

JESSIE CURRIN

HATTIE PARKER FISH

# SOPHOMORES

MINNIE ANNA FORNEY

EDITH HOLMES FREEMAN

FRANCES JEAN FREEMAN

HELEN GARVEY

MARY GAVIN

NINA ELIZABETH GILBERT

LETTIE HAMLETT

OLIVE HAMRICK

MILDRED CLARK HARRIS

MARY HERRING

MARGARET HOLLAND

ELIZABETH HOWELL

LILLIAN HOWELL

RUTH HUTCHINS

MARGARET ISENHOUR

ANNA LEE JOHNSON

BLANCHE JOHNSON

CATHERINE JOHNSON



# SOPHOMORES



HELEN JONES

LUCILLE JONES

KATHERINE KALMAR



BRUCE KITCHIN

EVELYN LEVINE

MARY JANE LINDLEY



BETTY LYON

MARY ELIZABETH MCINTOSH

EDNA MARTIN



MARY MARTIN

KATHLEEN MIDGETT

ANNE MILLS



MARJORIE PEARCE

CHARLOTTE PEEBLES

LUCILLE POE



MARTHA RASBERRY

JULIA REDDICK

DOROTHY REICH

# SOPHOMORES

LUCY ROGERS

DOROTHY ROUSE

LESTER SALLEY

ANNA ELIZABETH SPENCE

PAULINE STROUD

MARIE THARRINGTON

GERALDINE TUTTLE

LOUISE VANN

VIRGINIA VAUGHAN

THERESA WALL

MARY LEA WATKINS

GEORGLA WHITE

DOROTHY WILLSON



*In Memoriam*



**MRS. ELLA PERRY HARRIS**

February, 1937



**ANNIE MAE TAYLOR**

March, 1937



**MRS. ELLEN H. E. PRICE**

March, 1937



LESSIE SCHOLTZ  
PRESIDENT

OFFICERS

LESSIE SCHOLTZ  
PRESIDENT

DOROTHY GREEN  
VICE-PRESIDENT

EDNA EARLE COGGINS  
SECRETARY

ELLA EDDINS  
TREASURER

•

Freshman Class



# FRESHMEN

- CAROLYN ANDREWS  
 ELOISE AVERETTE  
 WILMA BADGETT  
 MINETTA BARILETT  
 FRANCES BAICHELOR  
 BETTY BEEBE  
 DOROTHY BELL  
 FRANCES BENNET  
 LOUISE BENNET  
 OLIVE BENNET  
 NORA BINDER  
 NANCY BREWER  
 EVELYN BROCK  
 MARY LOU BROWNING  
 SARAH MOORE BRYANT  
 MARY BELL BULLOCK  
 CORA BURNS  
 DOROTHY BUTLER  
 EDITH CAMPBELL  
 MEREDITH CAMPBELL  
 HELEN CANADAY  
 KATHLEEN CASHWELL  
 MARGARET JANE CHILDS  
 EDNA EARLE COGGINS  
 SARAH COLE  
 BERNICE COLLINS  
 LOUISE CONNER  
 MARGARET COOPER  
 MARY VIRGINIA COUNCIL  
 CAROLYN CRITCHER



# FRESHMEN

FRIEDA CULBERISON

LOUISE M. DANIEL

FANNIE DARBV

TULLA DAVIS

BEDE DICKENSON

ELLA EDDINS

ELIZABETH EVERETT

MARY ELIZABETH FERGUSON

GERIRUDE FOSTER

JUANITA FOSTER

MARJORIE FREEMAN

REGINA FROST

ELIZABETH FUSSELL

MARY FRANCES FUIRELL

MARY ELIZABETH GARDNER

IRIS ROSE GIBSON

BILLIE GINN

MADGE GLAZENER

MARY VIRGINIA GLENN

DOROTHY GREEN

MATTIE GREEN

LOUISE HAMRICK

EDITH HARRELL

EVELYN HOLYFIELD

BETTY PHILLIPS HARRIS

SARA HASSON

MARY MILLER HEFFNER

DIXIE HELMS

REBECCA HELSABECK

CAROLYN HENDERSON



# FRESHMEN



ELIZABETH HIGHTOWER  
 CARIHNE HOELL  
 JESSAMINE HOLDER  
 TIFLO HARRELL  
 LOUISE HORNE



CARROLL HOWARD  
 NAOMI HURLEY  
 ELISE ISAACSON  
 REBECCA ISENHOUR  
 KATHLEEN JACKSON



LOUISE JOHNSON  
 EVELYN LANE  
 FRANCES LANIER  
 EVELYN LASSITER  
 MIRIAM LEAVITT



ELIZABETH LEGRAND  
 GLADYS MAE LILES  
 ANNIE WELSH LONG  
 MARTHA MCBRAYER  
 VIRGINIA MCCULLERS



MARJORIE MCFAYDEN  
 CORNELIA MCKAUGHAN  
 DORIS MACNEILL  
 MARY ALICE MANNING  
 EVELYN MARSHBURN



MARJORIE MONTGOMERY  
 MAXINE MORGAN  
 AMY KATHERINE MYERS  
 DOLLY MYERS  
 ELEANOR MYERS

# FRESHMEN

LUCY NEWELL

UNA NORMAN

SARAH OLIVE

MARY LEE OLIVER

DOROTHY OSBORNE

EUNICE OUTLAW

ANNIE MAE PARRISH

CHRISTINE PATE

VIRGINIA PEELE

WANDA PHILLIPS

BETTY PICKFORD

CHARLOTTE PILLEY

SARAH POPE

ANNA ELIZABETH POWELL

BEISSY SHAW PRUETT

EUNICE QUINN

HANNAH REECE

GERALDINE ROBBINS

FRANCES ROSS

KATHLEEN ROYSER

ZYLPHIA RUFFIN

MAUDE SAWYER

LESSIE SCHOLTZ

MARY LANIER SEGRAVES

RACHEL SENIER

REBECCA SHANKS

JOSEPHINE SMITH

MARGARET SMITH

AILEEN SNOW

VIRGINIA SPEER





# FRESHMEN

FRANCES SPILMAN

HILDA STROUD

EDNA MAE SUTTON

LEE ANN TAYLOR

ANNIE LEE TIPPETT

ELLEN TROGDEN

VIRGINIA TROSTEL

MARY JOHNSON TURNER

MARY FRANCES VAN HOY

BETTY VERNON

LEONORA WALL

SADIE MARTIN WALL

ELIZABETH WALSTON

LOIS MAE WARD

MARY CARL WARLICK

JANE WASHBURN

VIRGINIA LEE WATSON

SARAH ELIZABETH WHISNANT

BEIRNE WILEY

EUNICE MARGARET WILLIAMS

JEAN WILLIAMS

MADLINE WILLIAMS

MARY ESTHER WILLIAMS

NELLIE WILLIAMS

DORIS WILLY

MAUDE ELIZABETH WILSON

# THE GUILDS

In every theatre there are organizations which work together to release the major productions of the group. We are proud to present The Guilds, who work in harmony to produce this college drama.



THE FOUNTAIN





## STUDENT GOVERNMENT ASSOCIATION

•



RUBY BARRETT  
*President*

•  
•

It is the policy of The Student Government Association at Meredith to make every member of the student body feel her personal responsibility in working with others for the success of all. Each girl is on her honor to do what she feels is best for the college and its members. The organization of Student Government covers all groups on the campus and attempts to unify them by fostering cooperation in all matters, promptness to any duty, a willingness to work as well as play, and a sense of loyalty to the individual groups as well as the whole body which they go to comprise. In doing this each girl is made to feel her part in the entire group as well as in one of its parts. Student Government means "all Meredith girls, with a real Meredith sense of honor, working together to make Meredith the best college possible"; so with this purpose in view, Student Government functions to promote a spirit of honesty in all dealings, and of love and friendship among all.

## STUDENT GOVERNMENT ASSOCIATION

FLORA KATE BETHEA . . . . . *Vice-President*  
 MIRVINE GARRETT . . . . . *Secretary*  
 MARGARET LOVE CLARKE . . . . . *Treasurer*



MILDRED CROWDER  
*House President*

BETTY KICHLINE  
*House President*

NANNIE MARGARET BROWN  
*House President*

BLANCHE JOHNSON  
*House President*

CHARLOTTE WESTER  
*House Vice-President*

EMILY BRADSHER  
*House Vice-President*

HAZEL BASS  
*House Vice-President*

HARRIET ROSE  
*House Vice-President*

MAEBELLE BURKETT  
*House Vice-President*

RUTH MCLEAN  
*House Vice-President*

MAXINE MORGAN  
*Freshman Representative*

## NOMINATING COMMITTEE

RUBY BARRETT

MATALINE NYE

MARTHA MESSENGER

CATHERINE CANADAY

SUE BREWER

DOROTHY BROWNE

MARGARET KRAMER

ANNABELLE HOLLOWELL

KATHERINE SHUFORD

FRANCES PITTMAN

MARGARET O'BRIAN

JANET AIKMAN

LESSIE SCHOLTZ

\*MARIAN WALLACE

\*Picture does not appear in Annual.





## BAPTIST STUDENT UNION

MATALINE NYE  
*President*

RUTH ABERNETHY  
*First Vice-President*

LOUISE DANIEL  
*Second Vice-President*

CAROLYN PARKER  
*Third Vice-President*

RACHEL LEONARD  
*Secretary*

KATHRYN ALDRIDGE  
*Treasurer*

ELLA RUTH PERRY  
*Poster Chairman*

MARY JANE LINDLEY  
*Reporter*

\*LUCILLE DOWELL  
*Day Student Representative*

DOROTHY WASHBURN  
*B. T. U. Director*

EDNA F. DAWKINS  
*President Y. W. .A.*

ETHEL KNOTT  
*President World Fellowship*

ANNA E. BAUCOM  
*Manager of B-Hive*

ELIZABETH NANNEY  
*Sunday School Director*

DOROTHY LOWDERMILK  
*Music Director*

MISS MILDRED KICHLINE  
*Student Secretary*

MISS HAZEL CLARK  
*Faculty Sponsor*

DR. AND MRS. CARL TOWNSEND  
*Advisors*

\*Picture does not appear in Annual.



ANNA ELIZABETH BAUCOM  
*Manager*



MR. E. F. CANADAY  
*Faculty Advisor*

## THE B-HIVE COMMITTEE

### MEMBERS

FLORA KATE BETHEA . . . . .	<i>Chairman</i>
ADELAIDE HARRIS . . . . .	<i>Junior Representative</i>
SADA LOUISE CLARKE . . . . .	<i>Sophomore Representative</i>
EDNA EARLE COGGINS . . . . .	<i>Freshman Representative</i>
MATALINE NYE . . . . .	<i>Council Representative</i>

BETHEA, HARRIS, CLARKE, COGGINS, NYE





MARGARET KRAMER  
*Editor*



JULIA H. HARRIS  
*Faculty Advisor*

# O a k L e a v e s

•  
THE  
STAFF  
•

- KATHERINE MARTIN . . . . . *Senior Editor*
- ADELAIDE HARRIS . . . . . *Junior Editor*
- BARBARA BEHRMAN . . . . . *Sophomore Editor*
- NELL CHOATE . . . . . *Photograph Editor*
- ELIZABETH PARKER . . . . . *Photograph Editor*
- MARGARET FISCHER . . . . . *Typist*
- ELIZABETH BULLARD . . . . . *Typist*
- DOROTHY HORNE . . . . . *Art Editor*
- MARY ELIZABETH YORK . . . . . *Asst. Business Manager*
- MARTHA JOSEY . . . . . *Advertising Manager*
- ANNIE ELIZABETH COWARD . . . . . *Asst. Advertising Mgr.*



CHARLOTTE WESTER  
*Associate Editor*



DOROTHY PREVOST  
*Business Manager*



ERNEST F. CANADAY  
*Faculty Advisor*

O a k L e a v e s



Martin, Harris, Behman, Choate, Parker  
Bullard, Horne, York, Josey, Coward



ANNABELLE HOLLOWELL  
*Editor*



NANCY POWELL  
*Business Manager*

# The Acorn

•  
THE  
STAFF  
•



MARY FAY McMILLAN  
*Associate Editor*

- KATE COVINGTON . . . . . *Senior Editor*
- MARY JOHNSON MACMILLAN . . . . . *Senior Editor*
- ANNE POTEAT . . . . . *Junior Editor*
- MIRVINE GARRETT . . . . . *Junior Editor*
- CATHERINE JOHNSON . . . . . *Sophomore Editor*
- MILDRED ANN CRITCHER . . . . . *Sophomore Editor*
- EFFIE RAY CALHOUN . . . . . *Art Editor*
- LUCILLE CATES . . . . . *Exchange Editor*
- VIRGINIA REYNOLDS . . . . . *Book Reviews*
- BETTY LYON . . . . . *Typist*
- BETTY KICHLINE . . . . . *Typist*
- CAROLYN AYDLETT . . . . . *Asst. Business Manager*
- MARY HERRING . . . . . *Asst. Business Manager*
- BETTY KICHLINE . . . . . *Asst. Business Manager*





MARY LYNCH JOHNSON  
*Faculty Advisor*

The ACORN is the literary publication of the college. Its purpose is to encourage and record creative writing by the students.

# T h e A c o r n



COVINGTON  
MACMILLAN  
POTEAT  
GARRETT



JOHNSON  
CRITCHER  
CALHOUN  
CATES



REYNOLDS  
LYON  
KICHLINE  
HERRING



KATHERINE SHUFORD  
*Editor*



KATE MILLS SUTTER  
*Business Manager*

# T h e T w i g



FRANCES PITMAN  
MARY JOHNSON MACMILLAN  
*Associate Editors*

## THE STAFF

ELEANOR EDWARDS . . . . .	<i>Managing Editor</i>
FRANCES TATUM . . . . .	<i>Managing Editor</i>
DOROTHY LOWDERMILK . . . . .	<i>Managing Editor</i>
RUTH PURVIS . . . . .	<i>Typist</i>
EVELYN LASSITER . . . . .	<i>Typist</i>
RUTH ABERNETHY . . . . .	<i>Art Editor</i>
KALE COVINGTON . . . . .	<i>Feature Editor</i>
HELEN HILLIARD . . . . .	<i>Assistant Business Manager</i>
MARY JANE LINDLEY . . . . .	<i>Assistant Business Manager</i>

## REPORTERS

EIHEL KNOTT	MARGARET GRAYSON
LILLIAN POE	MILDRED ANN CRITCHER
VIRGINIA REYNOLDS	ANNIE ELIZABETH COWARD
MINETTA BARTLETT	JEAN LIGHTFOOT
DOROTHY GREEN	JANE YELVERTON

MARY STEWART



SAMUEL G. RILEY  
*Faculty Advisor*

The Twig is the official organ of the student body, reflecting student opinion, and maintaining a contact with the alumnae.

T h e T w i g



EDWARDS  
TATUM  
LOWDERMILK  
LASSITER  
ABERNETHY

COVINGTON  
HILLIARD  
LINDLEY  
KNOTT  
POE

REYNOLDS  
GRAYSON  
CRITCHER  
COWARD  
BARTLETT

GREEN  
LIGHTFOOT  
YELVERTON  
STEWART



## COLTON ENGLISH CLUB

### OFFICERS

SUSAN RUDISILL  
*President*  
MARY FAY McMILLAN  
*Vice-President*  
ELIZABETH NANNEY  
*Secretary*  
BETTY KICHLINE  
*Publicity Director*

Kathryn Aldridge  
Ruby Barrett  
Grace Betts  
Emily Bradsher  
Nannie Margaret Brown  
Elizabeth Bullard  
Margaret Bullard  
Catherine Canady  
Mary Foug Carroll  
Kate Covington  
Katherine Covington  
Mildred Ann Critcher  
Mildred Davis  
Eleanor Edwards  
Haliburton Emory  
Jean Freeman  
Mervine Garrett  
Frances Garris

Helen Heatherly  
Elizabeth Henley  
Annabelle Hollowell  
Dorothy Howard  
Ruby Faire James  
Betty Kichline  
Ethel Knott  
Mary Martin  
Katherine Martin  
Corinne Manley  
Mary Fay McMillan  
Mary Johnson MacMillan  
Jean Morten  
Ruby Lee Modlin  
Elizabeth Nanney  
Carolyn Parker  
Frances Pittman  
Grace Potter

Anne Poteat  
Dorothy Prevost  
Julia Reddick  
Virginia Reynolds  
Eleanor Russ  
Margaret Sile  
June Fay Sewell  
Margaret Shepherd  
Ann Elizabeth Spence  
Margaret Strickland  
Annie Hurdle Walker  
Mary Cathren Walkers  
Charlotte Wester  
Mary Clayton Wyche  
Dr. Julia H. Harris  
Dr. Mary Lynch Johnson  
Miss Mary J. Spruill  
Dr. Louise Lanham



## LITTLE THEATER DRAMATIC CLUB

### OFFICERS

EDNA F. DAWKINS  
*President*  
KATE COVINGTON  
*Vice-President*  
MARGARET ANDREWS  
*Secretary*  
CHARLOTTE WESTER  
*Treasurer*  
MIRVINE GARRETT  
*Business Manager*

Ruth Abernethy  
Margaret Andrews  
Ruby Barrett  
Flora Kate Berhea  
Catherine Canady  
Kate Covington  
Anne Elizabeth Coward  
Pauline Davis  
Mildred Davis  
Edna Frances Dawkins  
Minnie Anna Forney

Mervine Garrett  
Letty Hamlett  
Annabelle Hollowell  
Dorothy Horne  
Pearl Huffman  
Margaret Kramer  
Mary Fay McMillan  
Mary Johnson MacMillan  
Martha Messenger  
Mataline Nye  
Carolyn Parker  
Frances Pittman  
Anne Poteat

Grace Porter  
Susan Rudisill  
Susie Saunders  
Katherine Shuford  
Charlotte Wester  
Mrs. Harold List  
Dr. Mary L. Johnson  
Dr. Helen Price  
Dr. Julia H. Harris  
Miss Mary Tillery  
Miss Ethel English

## HELEN HULL LAW CLASSICAL CLUB

### OFFICERS

CATHERINE CANADY  
*President*  
JUNE FAY SEWELL  
*Vice-President*  
KATE MILLS SUITER  
*Secretary-Treasurer*



Kathryn Aldridge  
Luette Algood  
Grace Betts  
Margaret Blanchard  
Margaret Bullard  
Emily Bradsher  
Catherine Canady  
Edlee Cates  
Virginia Council  
Mildred Crowder

Frieda Culbertson  
Eleanor Edwards  
Helen Edwards  
Haliburton Emory  
Alice Goodman  
Dorothy Green  
Olive Hamrick  
Elizabeth Henley  
Carolyn Henderson  
Betty Kichline  
Rose Lee  
Doris MacNeil  
Mary Johnson MacMillan  
Mary Fay McMillan

Ernestine Neighbors  
Joy Parker  
Lillian Poe  
June Fay Sewell  
Mary Stewart  
Kate Mills Suiter  
Mary Cathren Walters  
Virginia Watson  
Mary Clayton Wyche  
Dr. Helen Price

## K. K. KLUB

### OFFICERS

HARRIET ROSE  
*President*  
ALICE BRUTON  
*Vice-President*  
EFFIE RAYE CALHOUN  
*Secretary-Treasurer*  
DOROTHY HORNE  
*Program Committee  
Chairman*



Ruth Abernethy  
Waldine Bass  
Mary E. Bell  
Margaret Blanchard  
Alice Bruton  
Effie Raye Calhoun  
Louise Copeland

Margaret L. Clark  
Mervine Garrett  
Dorothy Horne  
Katherine Kalmar  
Sadie Massey  
Mary Fay McMillan  
Margaret O'Brian  
Sarah Olive  
Ella Ruth Petty  
Lucille Poe  
Virginia Reynolds

Harriet Rose  
Susan Rudisill  
Mary Stewart  
Mary Johnson Turner  
Addie Bell Wilson  
Miss Ida Potat  
Miss Mary Tillery



## STUDENT LEAGUE OF WOMEN VOTERS

### OFFICERS

FLORA KATE BEIHEA  
*President*

ROSE LEE  
*Vice-President*

MARTHA M. GLAZENER  
*Secretary-Treasurer*

Flora Kate Beihea  
Mary Fort Carroll  
Kate Covington  
Pauline Davis  
Martha Mae Glazener  
Helen Hilliard

Ethel Knott  
Rose Lee  
Katherine Malloy  
Mary Fay McMillan  
Mary Johnson MacMillan  
Ernestine Neighbors  
Ella Ruth Perry  
Grace Porter  
Kathleen Reece  
Virginia Reynolds  
Ada Lee Rivers

Helen Sutton  
Ruth Saunders  
Addie Belle Wilson  
Marjerie Wilson  
Maurine Winfree  
Miss Alice Keith



## INTERNA- TIONAL RELATIONS CLUB

### OFFICERS

MARY FAY McMILLAN  
*President*

MARGARET ANDREWS  
*Vice-President*

ANNE POTEAT  
*Secretary-Treasurer*

Kathryn Aldridge  
Margaret Andrews  
Ruby Barrett  
Margaret Love Clark

Annie Elizabeth Coward  
Edna Frances Dawkins  
Maryvne Garrett  
Alice Goodman  
Annabelle Hollowell  
Margaret Kramer  
Mary Fay McMillan  
Mataline Nye

Frances Fittman  
Anne Poteat  
Katherine Shuford  
Miss Nettie Herndon

## BARBER BIOLOGY CLUB

### OFFICERS

PEARL HUFFMAN  
*President*  
RUTH SEARS  
*Vice-President*  
CARRIE BOWERS  
*Secretary*



Carolyn Aydlett  
Anna E. Baucom  
Flora Kate Berthea  
Nannie Margaret Brown  
Carrie Bowers  
Lucille Cates  
Catherine Canady  
Margaret L. Clark  
Sada L. Clark  
Mildred Davis  
Minnie Anna Fornev  
Flora Fowler

Madeline Hall  
Elizabeth Henley  
Pearl Huffman  
Dorothy Horne  
Helen Jones  
Katherine Kalmar  
Gwendolyn Kester  
Ethel Knott  
Matsaline Nye  
Elizabeth Nanney  
Charlotte Peebles  
Lucille Poe  
Grace Porter  
Ruth Purvis  
Susan Rudisill

Katherine Shuford  
Margaret Shepherd  
Dorothy Sears  
Ruth Sears  
Frances Tatum  
Frances Todd  
Annie Vannoy  
Mary Cathren Walters  
Mary Elizabeth Bell  
Miss Lena Barber  
Miss Melba Hunt  
Miss Elizabeth Boomhour

## HOME ECONOMICS CLUB

### OFFICERS

MARGARET ANDREWS  
*President*  
FLORENCE PITTMAN  
*Vice-President*  
LUCILLE SHEARON  
*Secretary*  
ETHEL JONES  
*Treasurer*



Janet Atkman  
Margaret Andrews  
Mildred Averette  
Anna Bostwick  
Helen Canaday  
Mary Kate Collier  
Norma Lee Dawson  
Ruth Daugherty  
Elsie Easp  
Ceha Ellis  
Gertrude Foster  
Margaret Grayson

Ella Sue Gravitte  
Beryl Green  
Clark Hattis  
Elizabeth Johnson  
Ethel Jones  
Bruce Kitchin  
Edna Martin  
Ruth McLean  
Sallie Mitchell  
Christine Odum  
Ruby Pearson  
Virginia Phelps

Florence Pittman  
Eunice Brooks Quinn  
Mary Florence Sawyer  
Lucille Shearon  
Mary Smith  
Emily Thompson  
Margaret Turner  
Margaret Williams  
Veritas Williams  
Miss Ellen Brewer  
Miss Jennie Hanyon



## GRAND-DAUGHTERS CLUB

### OFFICERS

KATHERINE COVINGTON  
*President*  
AGNES CALE  
*Vice-President*  
CATHERINE JOHNSON  
*Secretary-Treasurer*

Ruth Abernethy  
Betsy Adams  
Ruby Barrett  
Anna Elizabeth Baucom  
Edith Baucom  
Relieu Baucom  
Dorothy D. Brown  
Elizabeth Bullard  
Margaret Bullard  
Agnes Cale  
Catherine Canady  
Elizabeth Case  
Virginia Combs  
Virginia Council  
Katherine Covington  
Elizabeth Elliot

Elizabeth Everett  
Margie Freeman  
Frances Garriss  
Iris Rose Gibson  
Mary Winston Greene  
Madeline Hall  
Olive Hamrick  
Rebecca Helsabeck  
Catherine Johnson  
Bruce Kitchin  
May Marshbanks  
Mary Martin  
Margie McFadyen  
Jean Morton  
Mary Fay McMillan  
Frances Olive

Dorothy Osborne  
Eunice Outlaw  
Ella Ruth Perry  
Virginia Phelps  
Ruth Privott  
Grace Porter  
Ruth Sears  
Margaret Seymour  
Lucille Shearon  
Marie Tharrington  
Virginia Trostel  
Annie H. Walker  
Lenora Wall  
Sadie Martin Wall  
Mattie Yow



## TOWN GIRLS CLUB

### OFFICERS

MARIAN WALLACE  
*President*  
ELIZABETH JOHNSON  
*Vice-President*  
JUNE FAY SEWELL  
*Secretary-Treasurer*

Margaret Andrews  
Nellie Bill  
Frances Bennett  
Olive Bennett  
Grace Betts  
Dorothy Brum  
Mimi Caffery  
Helen Canaday  
Meredith Campbell  
Dorothy Coble  
Eva Corner  
Lucy Mary East

Laura Mae Hilliard  
Elizabeth Johnson  
Ethel Jones  
Marjorie Jordan  
Willie Mae Lee  
Mary Elizabeth McIntosh  
Elizabeth McKnight  
Edna Osburn  
Margie Pearce  
Anna Mae Porter  
Linda Riddle  
Nancy Riddle  
Rachel Senter  
June Fay Sewell

Anna Sommerville  
Naomi Sommerville  
Verda Sommerville  
Eleanor Span  
Catherine Stephens  
Annie Lee Tippet  
Marian Wallace  
Mary Lea Watkins  
Veritas Williams  
Rosanna Winston  
Mary Elizabeth York  
Miss Ethel English



## KAPPA NU SIGMA HONOR SOCIETY

ELEANOR EDWARDS  
*President*  
ETHEL KNOTT  
*Vice-President*  
ALICE GOODMAN  
*Secretary-Treasurer*



RUBY BARRETT  
MARGARET KRAMER  
KATHERINE SHUFORD

MARY CATHERN WALTERS  
MISS ELIZABETH BOOMHOUR  
MISS ELLEN BREWER  
MISS ETHEL DAY  
MISS NETTIE HERNDON

DR. MARY L. JOHNSON  
DR. HELEN PRICE  
DR. MARY SUSAN STEELE  
\*DR. BESSIE EVANS LANE

## SILVER SHIELD HONOR SOCIETY

RUTH ABERNETHY  
*President*  
FLORA KATE BETHEA  
*Vice-President*  
ANNABELLE HOLLOWELL  
*Secretary-Treasurer*



RUBY BARRETT  
ANNE POTEAT, *Associate*

SUE BREWER

MARY FAY McMILLAN  
MIRVINE GARRETT, *Associate*

MARY CHANDLER, '36, tapped in March, 1936  
DOROTHY DOCKERY, '36, tapped in March, 1936

\*Picture does not appear in annual.



## COLLEGE CHOIR

### OFFICERS

LOUISE DANIEL	.....	<i>President</i>
RACHEL LEONARD	.....	<i>Vice-President</i>
MARGARET LANIER	.....	<i>Secretary and Librarian</i>
DOROTHY LOWDERMILK	.....	<i>Treasurer</i>
LESLIE P. SPELMAN	.....	<i>Director</i>
RAGNA OTTERSEN and EDGAR A. ALDEN		
<i>Assistant Conductors</i>		

Lisette Allgood  
 Nancy Barbee  
 Emily Bethune  
 Evelyn Britt  
 Sarah Bryant  
 Dorothy Butler  
 Elizabeth Case  
 Grace N. Cashwell  
 Margaret L. Clark  
 Edna Earl Coggins  
 Sara Cole  
 Margaret J. Childs  
 Louise Conner  
 Katherine Covington  
 Carolyn Critcher

Virginia Council  
 Louise Daniel  
 Ruth Daughtery  
 Mabel Dix  
 Elizabeth Everett  
 Gean Frost  
 Olive Hamrick  
 Rebecca Helsabeck  
 Irene Herring  
 Jessamine Holder  
 Mary Jo Holtz  
 Jocelyn House  
 Elizabeth Howell  
 Catherine Johnson  
 Kathleen Johnson  
 Frances Lanier

Margaret Lanier  
 Willa Mae Lee  
 Rachel Leonard  
 Dorothy Lowdermilk  
 Gladys Liles  
 Dorothy Metgs  
 Peggy Moody  
 Elizabeth Nannoy  
 Ruth Nowell  
 Mataline Nye  
 Margaret O'Brian  
 Eunice Outlaw  
 Carolyn Parker  
 Elizabeth Parker  
 Mary L. Parnell  
 Sarah Pope

Anne Poteat  
 Frances Ross  
 Pauline Stroud  
 Mary B. Summerlin  
 Lee Anne Taylor  
 Margie Thomas  
 Mary M. Turner  
 Mary F. VanHoy  
 Annie H. Walker  
 Elizabeth Walston  
 Marian Wallace  
 Jane Washburn  
 Eva Wicker  
 Bernie Wiley  
 Evalyn Williams



## GLEE CLUB

### OFFICERS

MAY MARSHBANKS . . . . . *President*

DOROTHY LOWDERMILK . . . . . *Vice-President*

MARIAN WALLACE . . . . . *Secretary-Treasurer*

EVELYN BRITT . . . . . *Accompanist*

EMILY BETHUNE . . . . . *Librarian*

MISS ETHEL ROWLAND . . . . . *Director*

RUTH ABERNETHY

EMILY BETHUNE

ELIZABETH CASE

LOUISE DANIEL

MARY GAVIN

CATHERINE JOHNSON

KATHLEEN JOHNSON

NATALIE JOHNSON

RACHEL LEONARD

DOROTHY LOWDERMILK

MAY MARSHBANKS

MARIALINE NYE

MARGARET O'BRIAN

CAROLYN PARKER

MARY LEIGH PARKELL

PAULINE STROUD

MARIAN WALLACE

MARY ESTHER WILLIAMS





# Societies



ASTROTEKTON LITERARY SOCIETY

OFFICERS

SUE BREWER

NELL CHOATE

MARGARET GRAYSON

LOUISE COPELAND

*President*

*Vice-President*

*Secretary*

*Treasurer*

# ASTROTEKTON MARSHALS



- KATHERINE MALLOY . . . . . *Chief*
- NATALIE JOHNSON . . . . . *Senior Marshal*
- KATE MILLS SUITER . . . . . *Junior Marshal*
- GERALDINE TUTTLE . . . . . *Sophomore Marshal*





## PHILARETIAN LITERARY SOCIETY

### OFFICERS

CATHERINE CANADY

CAROLYN PARKER

MARY STEWART

LILLIAN POE

*President*

*Vice-President*

*Secretary*

*Treasurer*



# PHILARETIAN MARSHALS



- PEGGY PERRY ..... *Chief*  
 MARTHA JOSEY ..... *Senior Marshal*  
 LOIS AVANT ..... *Junior Marshal*  
 MARY HERRING ..... *Sophomore Marshal*





*Dorothy Deane Browne*

COLLEGE MARSHALL



# Athletics



MARGIE THOMAS  
*College Cheer Leader*



GERTRUDE ROYSTER SORRELL  
*Director of Athletics*  
MARIAN WARNER  
*Assistant Director of Athletics*



KATHERINE LILES  
Winner of the Victor Trophy for 1936, presented by the Athletic Board to the student who has contributed most to athletics through proficiency, sportsmanship, and versatility in the field.



MARTHA MESSENGER  
*President*

# The ATHLETIC ASSOCIATION

The building of an adequate athletic field was the major project to which the Athletic Association devoted its efforts in 1936-1937. Careful budgeting of the Association's expenses, generous gifts from friends of the college, and the proceeds from a successful Stunt Night may make it possible for the field to be ready by the fall of 1937. The completion of this project will open many possibilities for the expansion of the athletic and recreational program.

The third annual Stunt Day was held on November

14, the afternoon preceding Stunt Night. Alumnae were notified by letters, newspaper publicity, posters, and radio announcements; and their response was gratifying. Stunt Day was a true Homecoming. Beginning with the Parade and Palio, the afternoon was filled with a program of varied activity, culminating in the class song contest. In the evening the Athletic Association entertained at dinner in honor of the returning A. A. Presidents of former years. The climax of the day was Stunt Night itself.

## THE ATHLETIC BOARD



Betty Lyon, Martha Messenger, Harriet Rose, Sada Louise Clarke, Eleanor Rodwell, Margie Thomas, Wilba Mills, Charlotte Wester, Geraldine Tuttle, Ruth Hutchins, Dorothy Crawford, Pauline Davis, Blanche Johnson, Mirvne Garrett, Betty Parker, Charlotte Peebles, Rebecca Helsabeck, Fannie Darby

## ARCHERY

RUTH HUTCHINS, *Manager*

Archery this year became one of the most popular of minor sports. Many students actively participated in and enjoyed the sport.

## BASEBALL

CHARLOTTE PEEBLES, *Manager*

During the spring of '37, baseball became a much enjoyed major sport at Meredith. The classes responded at the beginning of the season with eager and lasting enthusiasm.

## TENNIS

DOROTHY CRAWFORD, *Manager*

This year, especially during the individual and class tournaments, the classes showed much interest in tennis. Individual and group instruction was given, and tennis became a leading campus activity.

## RIDING

BLANCHE JOHNSON, *Manager*

Riding proved itself a well-liked sport during its second year on the campus. Many of the students heartily supported the sport.

## HIKING

MIRVINE GARRETT, *Manager*

Our hikes—accompanied by many hot dogs and steaks—have been quite attractive to girls both athletic and non-athletic, and their frequency attests to their popularity.

## GOLF

MARGIE THOMAS, *Manager*

Although golf is usually a minor sport here, the keen interest shown by students taking golf instruction given by a pro proves that it is taking its place in campus activities.



Johnson, Crawford, Thomas  
Hutchins, Garrett, Peebles





Darby, Tuttle  
Rodwell, McMillan, Wester



### SOCCER

GERALDINE TUTTLE, *Manager*

Occupying the mid-winter season from the close of the hockey season to the opening of the basketball season, soccer gained both in support and in participants.

### SCOUT TROOP

FANNIE DARBY, *Manager*

Sponsored by the A. A. Board, a scout troop of Raleigh girls took an active part in Stunt Day and during the year took instruction in several sports on the campus.

### MINOR SPORTS

ELEANOR RODWELL, *Manager*

Augmented by a new badminton set given by the Alumnae, minor sports have known a wide popularity this year. On Stunt Day these sports added many student enthusiasts.

### SWIMMING

CHARLOTTE, WESTER, *Manager*

Courses in swimming and life saving were given this year to Meredith Students by State Students. Although we haven't our pool, we haven't given up hope for one yet.

### SOCIAL ACTIVITIES

MARY FAY McMILLAN, *Manager*

The A. A. sponsored three freshmen "mixers" or "get-togethers" with State College this past winter. These Saturday night frolics proved more successful this year than ever before.





## CHAMPIONSHIP TEAM

Wilba Mills  
Dorothy Hayward  
Mirvine Garrett  
Iris Massey  
Betty Parker  
Mary E. Bell  
Jean Morton  
Lakie Stephens  
Eleanor Rodwell  
Irene Dixon  
Dorothy Foster  
Ruth McLean  
Harriet Rose  
Frances Tatum  
Cora Lee Mills  
Margaret Seymour



## VARSITY TEAM

Rebecca Isenhour  
Charlotte Peebles  
Dorothy Hayward  
Wilba Mills  
Dorothy Willson  
Margaret Seymour  
Annie Mae Parrish  
Betty Lyon  
Rebecca Helsabeck  
Dixie Helms  
Mary Fort Carroll  
Sallie Mitchell

# THE BASKETBALL SEASON

Basketball is still growing—growing to such an extent that nearly a fourth of the student body took an active part in the sport this year. And those who didn't play were enthusiastic supporters of the teams. Although the class teams were very evenly matched, the Juniors managed to come out victorious, thereby holding their championship for another year. The hall team tournament which was inaugurated last year was held again this year, and added excitement and interest to every night of basketball. Two new features were added to the regular routine of the sport: the intercollegiate game with Carolina Co-eds and the game between our varsities. On the whole, Basketball enjoyed a very successful season.

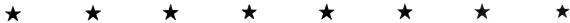


WILBA MILLS  
*Manager*





HARRIET ROSE  
Manager



# THE HOCKEY SEASON

With that rah-rah spirit and plenty of enthusiasm, seventy-three students rallied to the hockey whistle this year. After steady practices and hard fought games, the Junior class team, with Anne Poteat as captain, couldn't be downed, and so came out on top in class competition; while games by the varsity team with St. Mary's College students and Duke University students added much to our regular program. The lively Freshman Team was led by Aileen Snow, who was awarded the hockey stick by the Junior Class for her outstanding playing and interest in the sport. We hated to see the end of hockey season and the putting aside until another year of a sport which we so much enjoy, but with hopes for a new field by the next year, we feel that we'll take part in and enjoy even more the season next year.

## CHAMPIONSHIP TEAM

- Harriet Rose
- Betty Parker
- Dorothy Haywood
- Frances Olive
- Murvine Garrett
- Eleanor Rodwell
- Jane Yelverton
- Dorothy Howard
- Wilba Mills
- Vivian Buffaloe
- Margaret Shephard
- Anne Poteat, captain
- Ernestine Neighbors
- Kilton Peele



## VARSITY TEAM

- Betty Lyon
- Charlotte Peebles
- Edna Martin
- Dorothy Haywood
- Dorothy Willson
- Wilba Mills
- Ruth Sears
- Murvine Garrett
- Ernestine Neighbors
- Kilton Peele
- Vivian Buffaloe
- Cora Lee Mills
- Eleanor Spain
- Pauline Davis
- Eleanor Rodwell
- Anne Poteat
- Harriet Rose
- Martha Messenger
- Aileen Snow
- Nell Chote





## MONOGRAM CLUB

Harnet Rose  
 Pauline Davis, President  
 Martha Messenger  
 Eleanor Rodwell  
 Frances Olive  
 Cora Lee Mills  
 Nell Choate  
 Frances Pitman  
 Wilba Mills  
 Vivian Buffalo  
 Kitton Peele  
 Ruby Pearson

## VARSITY TENNIS

Dorothy Crawford  
 Mary Fay McMillan  
 Dorothy Wilson  
 Nell Choate  
 Kate Mills Suiter  
 Ella Eddins

## MONOGRAM CLUB



## VARSITY TENNIS



FAITH HITE  
 Winner Tennis Trophy  
 1936



# THE STARS

For leading roles in our play we suggest the Superlatives, accompanied by the Sponsors, and furnished with a backdrop of snapshots of campus activities which are dear to the heart of every Meredith Student.



A VIEW OF THE ADMINISTRATION BUILDING



*Mary Johnson Mac Millan*

Most Original *Kate Covington*





*Katherine Malloy*

Most Stylish





# Catherine Canady

Most Beautiful





*Ruth Saunders*

Wittiest

# Margaret Kramer

Most Versatile





*Frances Pittman*

Most Popular

*Mataline Aye*

Cutest





*Margaret Andrews*

Best All-round Town Student

*Annabelle Hollowell*

Most Intellectual





*Martha Messenger*

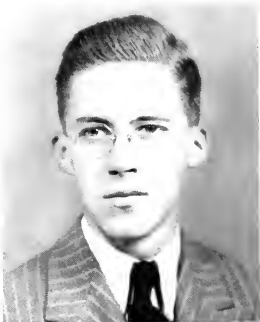
Most Athletic



*Ruby Barrett*

Miss Meredith





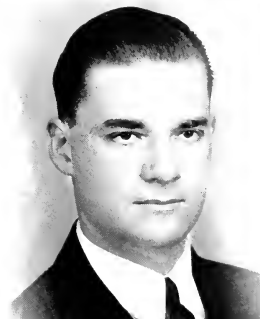
**CHARLES BARRETT**

Sponsor for  
THE STUDENT GOVERNMENT  
ASSOCIATION



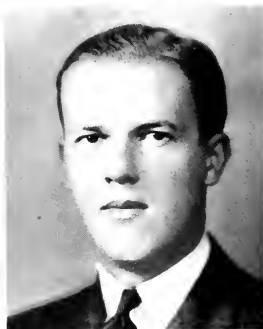
**CHARLES NYE**

Sponsor for  
THE BAPTIST STUDENT  
UNION



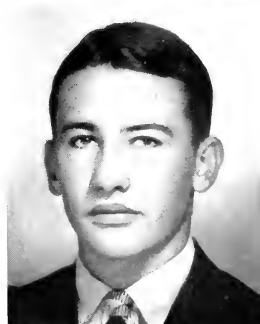
**OLIVER MESSENGER**

Sponsor for  
THE ATHLETIC  
ASSOCIATION



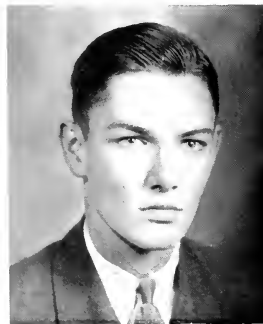
**RAYMOND POLLOCK**

Sponsor for  
THE PHI SOCIETY



**WAIT BREWER, JR.**

Sponsor for  
THE ASTRO SOCIETY



**ADLAI OLIVER, JR.**

Sponsor for  
THE OAK LEAVES

**GRAHAM HOLLOWELL**

Sponsor for  
THE ACORN



**WILLIAM ARNEY**

Sponsor for  
THE TWIG



**WOODY PITTMAN**

Sponsor for  
THE SENIOR CLASS



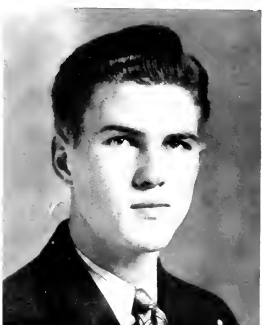
**RAY O'BRIAN**

Sponsor for  
THE JUNIOR CLASS



**GEORGE CURRIER**

Sponsor for  
THE SOPHOMORE CLASS



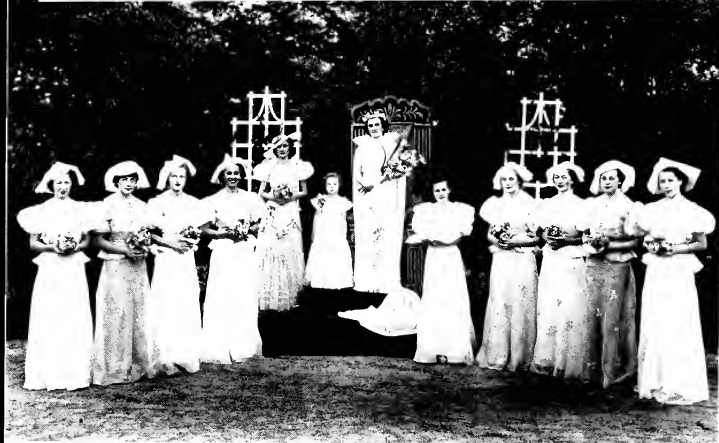
**WHITTEN W. SCHOLTZ, JR.**

Sponsor for  
THE FRESHMAN CLASS

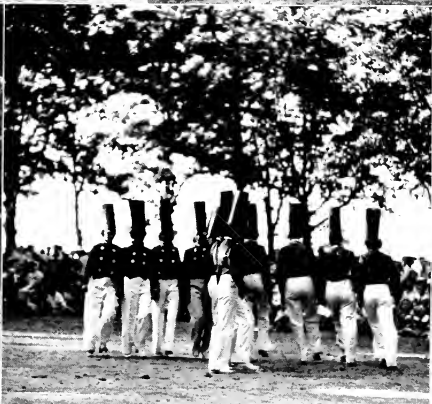


•  
MAY  
QUEEN  
1936  
•

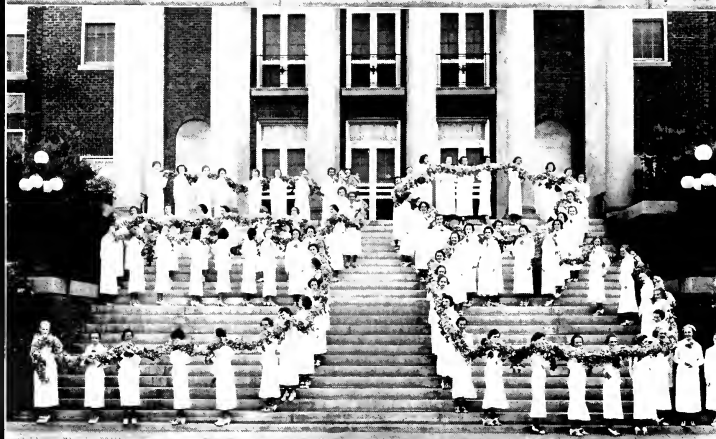
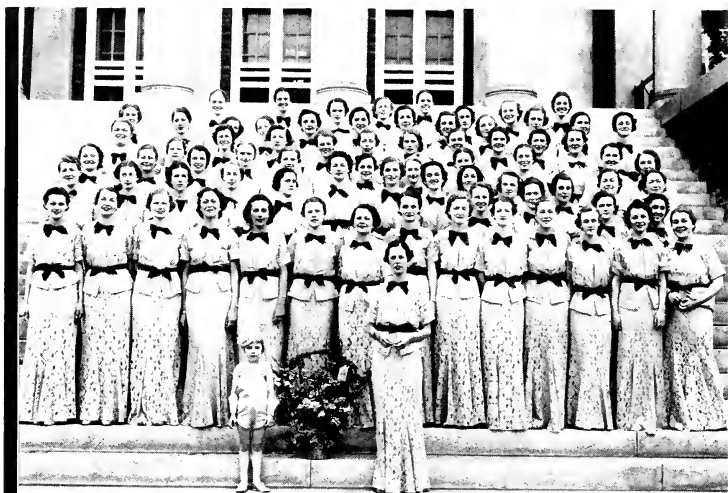
*Elizabeth Davidson*







# COMMENCEMENT

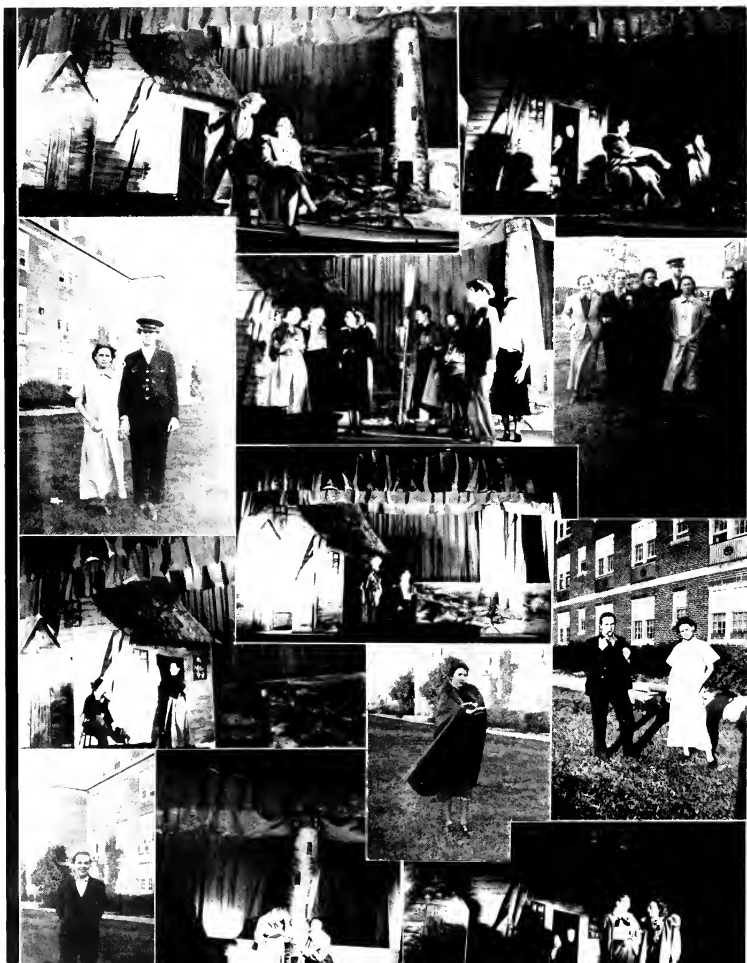




# IN THIRTY-SIX



# Senior-Sophomore Stunt



# Junior-Freshman Stunt



# CAMPUS » » » » »



« « « HIGHLIGHTS



# ACKNOWLEDGMENTS



A weary Editor and an harassed Business Manager wish to thank:

The staff of the OAK LEAVES for their most loyal coöperation in every instance.

Miss Julia Harris of the faculty for her aid and counsel in arranging and editing manuscript.

Mr. E. F. Canaday of the faculty for his very valuable advice in financial matters.

Mr. M. F. Dunbar and the staff of Dunbar and Daniel Studio for efficiency in handling the photography.

Mr. M. L. Glover of the Lynchburg Engraving Company, and Mr. W. A. Daniel and Mr. Robert G. Benson of the Benson Printing Company for their assistance and ceaseless efforts in planning and finally producing the 1937 OAK LEAVES.

Is it a fact, or have I dreamt it, that by means of electricity the world of matter has become a great nerve, vibrating thousands of miles in a breathless point of time? Rather, the round globe is a vast head, a brain, instinct with intelligence; or shall we say it is itself a thought, and no longer the substance which we dreamed it.

—Nathaniel Hawthorne.

THE TEMPO of progress in the electrical industry has been increasingly rapid. Constant improvement in the generation, distribution and utilization of electricity has marked the swift passing of the years. Utility engineers and appliance manufacturers have brought about vast improvements in the familiar applications of electricity in the home and industry. New and ingenious applications, in constant development, serve to widen its field of usefulness. Today, electricity, long accepted as the ideal servant, is bringing new economies in time, fuel and power to the myriad processes it serves. Through its use in the home, in commercial establishments and in industry, new heights of comforts and efficiency are being reached.

## CAROLINA POWER AND LIGHT COMPANY

*NOW*

*Cheap Electricity Is*

*CHEAPER*

*STILL!*

## POLLOCK, INC.

When You Want the *Newest Creations in Foot Wear*  
Come to *Pollock's*

THE STORE OF INDIVIDUALITY AND  
COURTEOUS SERVICE

*We Appreciate Your Patronage*

122 Fayetteville Street

## BOYLAN-PEARCE,

*Incorporated*

*"Raleigh's Shopping  
Center"*

## GREEN GRILL

*Take Your "7:30's" Here*

## BRANTLEY & SON DRUG CO.

*Representative for*

ELIZABETH ARDEN  
COSMETICS

MASONIC TEMPLE BUILDING

## J. J. FALLON CO.

*Incorporated*

**FLORISTS**

*"We Grow The Flowers We Sell"*

203 FAYETTEVILLE ST.

## HUDSON BELK COMPANY

*The Home of Better Values*

We appreciate your patronage and stand ready  
to serve you in any way possible



GREETINGS  
FROM  
WAKE THEATRE

JEANS  
*Smart Shop for Smart  
Women*

118 FAYETTEVILLE STREET

MANGEL'S  
Dresses, Hosiery, Underwear  
Sweaters, Skirts

124 FAYETTEVILLE STREET

RALEIGH BEAUTY  
SHOP

*All Work Guaranteed*

109 1-2 FAYETTEVILLE STREET

BOON-ISELEY  
DRUG CO.

*The Meredith Girls'*  
*Drug Store*

COSMETICS  
DRUGS  
SUNDRIES

*Excellent Fountain Service*

118 FAYETTEVILLE STREET

TAYLOR'S

*The Show Place of the Carolinas*

Offers the Faculty and Students of  
Meredith College a Store Unsur-  
passed in the South



With Fifteen Departments, Sells  
Practically Everything Desired—  
Usually Showing the New Things  
First. Prices Are Always  
Guaranteed.

PATENT MEDICINES

COSMETICS

PRESCRIPTIONS

*The Largest Drug Store in the City*

## ECKERD'S

*"Creators of Reasonable Drug Prices"*

Exclusive Representatives in Raleigh for LOUPAY  
Approved COSMETICS

Fountain and Luncheonette Service

222 Fayetteville St.

### ELLISBERG'S

*"Raleigh's Smartest Shop"*

Smart Clothes for the  
College Miss

126 FAYETTEVILLE STREET

### JOB P. WYATT & SONS CO.

HARDWARE, SEEDS,  
FARM IMPLEMENTS

325 AND 327 S. WILMINGTON ST.

PATRONIZE OUR  
ADVERTISERS

THE  
PHOTOGRAPHS

IN THIS ANNUAL,  
WERE MADE BY

Dunbar & Daniel  
Studio

134½ Fayetteville Street

Raleigh, North Carolina



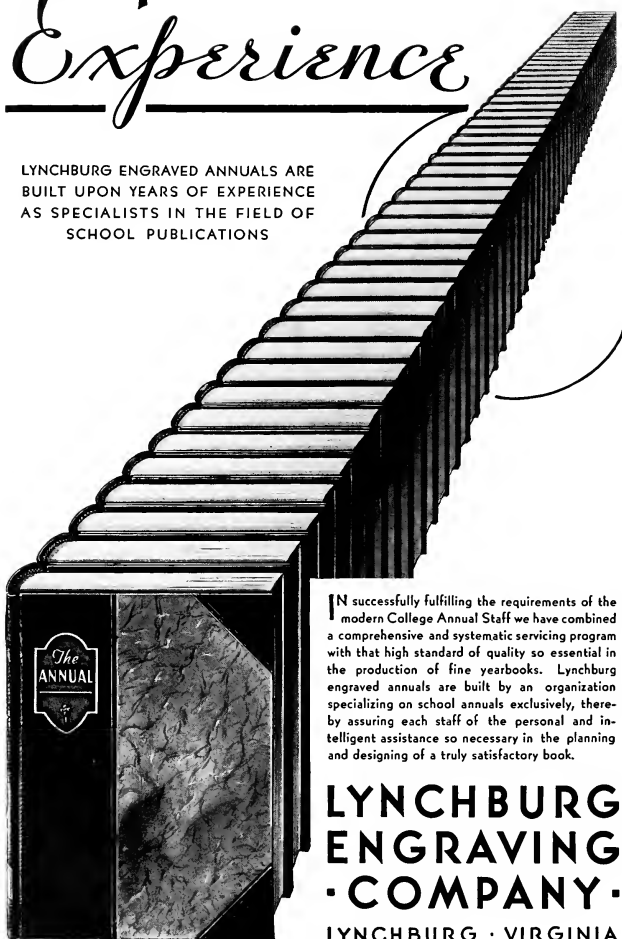
FINE PORTRAITS  
PROMPT SERVICE



Largest College Annual  
Photographers In The South

# Experience

LYNCHBURG ENGRAVED ANNUALS ARE  
BUILT UPON YEARS OF EXPERIENCE  
AS SPECIALISTS IN THE FIELD OF  
SCHOOL PUBLICATIONS



IN successfully fulfilling the requirements of the modern College Annual Staff we have combined a comprehensive and systematic servicing program with that high standard of quality so essential in the production of fine yearbooks. Lynchburg engraved annuals are built by an organization specializing on school annuals exclusively, thereby assuring each staff of the personal and intelligent assistance so necessary in the planning and designing of a truly satisfactory book.

**LYNCHBURG  
ENGRAVING  
· COMPANY ·**

LYNCHBURG · VIRGINIA

*Builders of Better Annuals*

**World's Largest Publishers**

THIS BOOK DESIGNED AND PRINTED BY

*Benson*

PRINTING COMPANY ☆ NASHVILLE

**of College Annuals**















