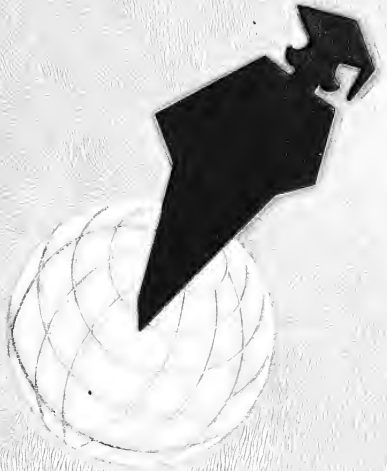


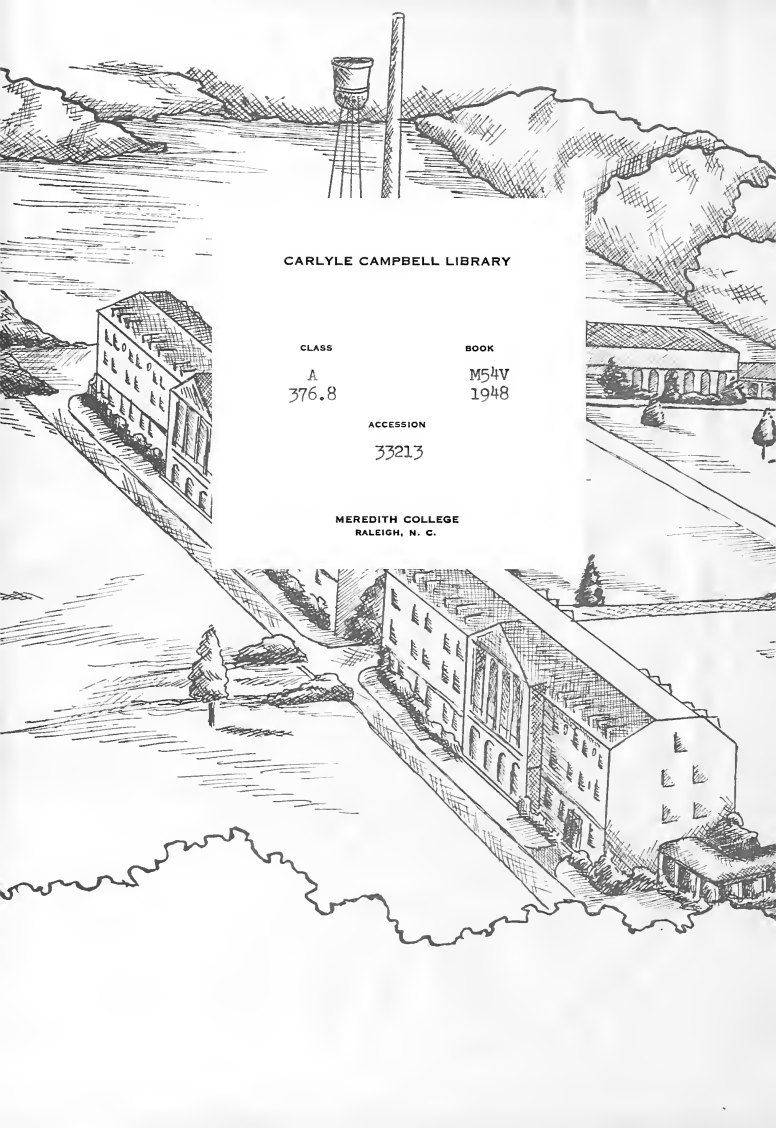
1948

OAK

LEAVES



LIBRARY



CARLYLE CAMPBELL LIBRARY

CLASS

A
376.8

BOOK

M54V
1948

ACCESSION

33213

MEREDITH COLLEGE
RALEIGH, N. C.



CARLYLE
CAMPBELL
LIBRARY

Meredith College
Raleigh, NC 27607-5298

M. WILLIAMS

Digitized by the Internet Archive
in 2010 with funding from
University of North Carolina at Chapel Hill

<http://www.archive.org/details/oakleaves1948bapt>

This 1948 Oak Leaves was produced by the Student Body of Meredith College under the supervision of VIRGINIA CAMPBELL, *Editor*, MARIE SNELLING, *Business Manager*. It was printed on Oxford Enamel paper, using Monotype Baskerville type by Edwards & Broughton Company of Raleigh, North Carolina. Engravings were by the Lynchburg Engraving Company, Lynchburg, Virginia and photography by Waller and Smith, Raleigh, Dr. Harry E. Cooper, and students of Meredith College.



"WE BUILD OUR SCHOOL ON THEE, O LORD"

THE 1948 OAK LEAVES

*A Pictorial Story of a
year in the life of
Meredith College*

“THE WONDROUS STORY OF
HAPPY COLLEGE DAYS THAT MEAN SO MUCH
TO EACH OF US”



Meredith College Library
Raleigh, N. C.

Published by

THE STUDENTS OF MEREDITH COLLEGE
Raleigh, North Carolina



DEDICATION

711
WITH deep and loving gratitude for the inestimable contribution in inspiration and guidance he has made to each of us, the staff of the OAK LEAVES dedicates this 1943 edition to our President, Dr. Carlyle Campbell.

FOREWORD



“*W*E salute thee, Alma Mater, we salute thee with a song”. . . . In this, your 1948 OAK LEAVES, you will find memories of the past year at Meredith tied together with lines from our school songs. May these pages keep forever before you the “happy college days that mean so much to each of us.”



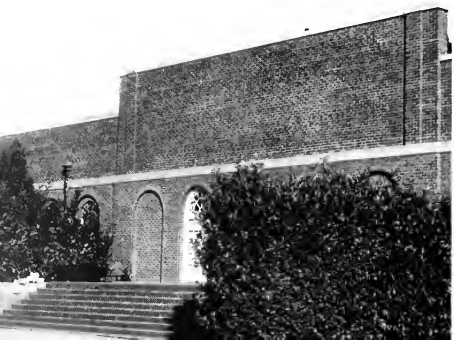
3 3213

“Lo, Thy Sunny Land of Promise”



VIEWS







"We Work Together in Thy Sight"



ADMINISTRATION

BOARD OF TRUSTEES

Leroy Martin, Raleigh.....	President
Mrs. J. S. Farmer, Raleigh.....	Vice President
Zeno Martin, Raleigh.....	Secretary

Terms Expire 1948

Z. M. Caveness.....	Raleigh
C. T. Council.....	Durham
Mrs. J. S. Farmer.....	Raleigh
Mrs. R. C. Josey, Jr.....	Scotland Neck
J. Y. Joyner.....	La Grange
LeRoy Martin.....	Raleigh

Terms Expire 1949

Carroll Abbott.....	Elizabeth City
W. R. Chambers.....	Marion
Mrs. Walter Clark.....	Asheville
R. G. Deyton.....	Raleigh
Carl G. McCraw.....	Charlotte
E. W. Yates.....	Raleigh

Terms Expire 1950

Mrs. H. M. Baker.....	Lumberton
O. Max Gardner, Jr.....	Shelby
Robert L. Humber.....	Greenville
Broadus E. Jones.....	Raleigh
Mrs. Mary P. Lethco.....	Charlotte
L. E. Spikes.....	Burlington

Terms Expire 1951

Howard J. Ford.....	Elkin
J. Rufus Hunter.....	Raleigh
Jack M. Kesler.....	Winston-Salem
Thos. P. Pruitt.....	Hickory
Mrs. Cooper E. Taylor.....	Raleigh
H. Pat Taylor.....	Wadesboro



TO MEREDITH COLLEGE STUDENTS:

This edition of the OAK LEAVES is properly cherished as a reminder of friends, experiences, and activities that make memorable our life at Meredith this year. May it, also, serve through coming years to remind us of the bases on which our happiness and worthy achievement must depend.

My kindest personal regards and best wishes for you always and in all ways.

Carlyle Campbell

President



CHARLES WATSON BURTS, PH.D.
Dean



ANNA MAY BAKER, A.M.
Dean of Women



ZENO MARTIN, A.B.
Bursar and Treasurer

FACULTY

ANCIENT LANGUAGES

PRICE, HELEN, Ph.D.
Professor



ART

REYNOLDS, DOUGLAS W., B.F.A.
Associate Professor

REAM, MARY, A.M.
Instructor



BIOLOGY

YARBROUGH, JOHN A., Ph.D.
Professor

PARKER, HELEN, A.M.
Instructor

GREGORY, MARGARET, Ph.D.
Instructor



FACULTY

BUSINESS

OPHAM, ESTELLE, Ph.D.
Professor

LIS, MABEL, A.M.
Instructor



CHEMISTRY, PHYSICS

ARBROUGH, MARY, Ph.D.
Professor

OLLINS, HELEN JO, M.S.
Instructor



EDUCATION

TYNER, BUNYAN Y., A.M.
Professor

DORSETT, HARRY K., A.M.
Assistant Professor

BELL, LILA, M.Ed.
Instructor

FACULTY

ENGLISH

HARRIS, JULIA H., Ph.D.
Professor

JOHNSON, MARY LYNCH,
Ph.D., *Professor*

LANHAM, LOUISE, Ph.D.
Assistant Professor

ROSE, NORMA, Ph.D.
Assistant Professor

HILDERMAN, CATHERINE,
A.B., *Instructor in English and
Speech*

PRYOR, AINSIE,
Part-time Instructor in Speech



HISTORY

WALLACE, LILLIAN P., Ph.D.
Associate Professor

KEITH, ALICE B., Ph.D.
Associate Professor

LEMMON, SARAH, A.M.
Assistant Professor



HOME ECONOMICS

BREWER, ELLEN, A.M.
Professor

HANYEN, JENNIE, A.M.
Associate Professor

FACULTY

MATHEMATICS

CANADAY, ERNEST F., Ph.D.
Professor



MODERN LANGUAGES

McALISTER, QUENTIN O.,
Ph.D., *Professor*; NEBLETT,
LUCY ANN, A.M., *Assistant
Professor*; FREUND, SUSANNE,
Ph.D., *Instructor*; ROLLINGS,
GRACE, A.M., *Instructor*.



MUSIC

COOPER, HARRY E., Mus.D.,
F.A.G.O., *Professor*; PRATT,
STUART, Mus.M., *Professor*;
DONLEY, BEATRICE, B.M.,
Associate Professor; WILMOT,
DAVID, A.M., *Assistant Pro-
fessor*; ROSENBERGER, RACH-
EL, M.Mus., *Instructor*; ASH-
LEY, HELEN, M.Mus., *In-
structor*; WELLS, CYNTHIA,
M.S., *Instructor*; WOODMAN,
RUTH, A.M., *Instructor*.





RELIGION

McLAIN, RALPH E., Ph.D., *Professor*; FREEMAN, L. E. M., Th.D., *Professor*; CURRIN, BILLIE RUTH, A.M., *Instructor*.



SOCIOLOGY, ECONOMICS

PARKER, CLYDE, Ph.D., *Professor*; SMITH, ANNA GREEN, A.M., *Assistant Professor*; SYRON, LESLIE, A.M., *Instructor*.

FACULTY

PHYSICAL EDUCATION

PETERSON, DORIS, A.M., *Associate Professor*; DUGGER, DOT, A.B., *Assistant Professor*; BOGGESS, ELAINE, B.S., *Instructor*; CUNNINGHAM, PHYLLIS, B.S., *Instructor*.



PSYCHOLOGY, PHILOSOPHY

McGURDY, HAROLD G., Ph.D., *Professor*.

ADMINISTRATIVE STAFF



Left to right: GRANT, LILLIAN, A.M., Assistant Dean of Women; MARSH, VERA, Registrar; GRIMMER, MAE, A.B., Alumnae Secretary; BAITY, HAZEL, A.B. in L.S., Librarian; GREENE, JANE, A.B. in L.S., Assistant Librarian; LANE, BESSIE, M.D., College Physician; BARNETTE, MYRTLE, R.N., Nurse; TEAGUE, JANET, Assistant Nurse; EGERTON, MARY, House Director; COOPER, AGNES, A.B., Director of Publicity; RHODES, LATTIE, Secretary to the President; RUTLEDGE, MABEL, A.B., Secretary to the Dean of Women.

Not pictured: HIGGS, LUCILLE, B.S. in L.S., Assistant Librarian; CURRIN, BILLIE RUTH, A.M., Director of Religious Activities; COHOON, J. A., Dining Room Steward; WATTS, LULU, Dining Room Hostess; HEWETT, THELMA, B.S., Assistant Dining Room Hostess; COVINGTON,

ESTHER, Assistant House Director; EDWARDS, FRED J., Superintendent of Buildings and Grounds; JERNIGAN, JEAN, B.S., Secretary to the Dean; DAVIS, VIRGINIA, Stenographer; TANEY, GRACE BROWN, B.S., Secretary to the Bursar; FLEMING, JULIA, A.B., Cashier and Secretary; PAREN, KATHLEEN, Bookkeeper.

“At Thy Feet, Our Loyal Hearts Their Tribute Lay”



CLASSES



1948

THE SENIOR CLASS



MARY BETH THOMAS
President

MARY BETH THOMAS *President*
 SUSAN FLEMING *Vice President*
 RUTH HALL *Secretary*
 ELIZABETH HARDISON *Treasurer*
 DR. LILLIAN PARKER WALLACE *Sponsor*

Perhaps one of the highest aspirations of a college freshman class is to be dubbed with that most distinguished title, "senior." Such were the aspirations of our gawky, merry class four years ago when we stormed Meredith as the largest class in the history of the college. Despite the size of the class, we vigorous freshman had the largest percentage of our class attending Palio, and so were given the choice seats in the auditorium for Stunt Night. Other highlights of that first year were the breakfast the "Little Sisters" gave their "Big Sisters" and the entertaining freshman play, "The Bad Penny." As sophomores we put over a frolicsome barn dance with hay, and blue jeans, and a number of good-looking men to add to the occasion. None of us will forget Class Day of that year, the early morning expedition among the daisies, and the subsequent thrill of bearing a long, white daisy chain across the Meredith campus. Stepping into the shoes of "Big Sister," we played hostess to the transfer students at a coffee and again welcomed the new girls at a delightful "Big Sister-Little Sister" party. Swarming down as honey-bees from the Bee Hive, we carried off second place in Palio. Our stunt, "On Wings of Wonder," brought top honors. The year was climaxed in the spring by the Junior-Senior Banquet, "Mexican Moon-Glow." And now we have lived through that promised year of college adulthood, the senior year. We won second place on Stunt Night for our hilarious "Fish Story." The class has busied itself with responsibilities as campus leaders, learning to put into practice the experience gained through the struggles, defeats, and victories of the years just past.



Thomas, Fleming, Hall, Hardison



LETHA LORENE ADAMS
Charleston, S. C.

Ph *History*
Y.W.A. 1, 2, 3, 4; Freeman Religion
Club 3, 4; Student League of Women
Voters; Reporter, 4; I.R.C. 4.



FRANCES ELIZABETH ALEXANDER
Goldsboro, N. C.

Astro *English*
B.S.U. Council; Honorary Member 4;
Program Chairman 3; *Acorn*, Class
Editor 2, Editor 4; *Twig*, Feature Editor
3; Colton English Club 2, 3, 4; Publicity
Chairman 3; Little Theatre 3, 4;
Choir 1; Glee Club 2, 3; Silver Shield
3, 4; Kappa Nu Sigma 3, 4; Sigma Pi
Alpha 3, 4; Alpha Psi Omega 4; May
Court Attendant 1; *Who's Who* 4;
Dean's List.



JEANNE STEWART ARTHUR
Portsmouth, Virginia

Astro *Chemistry*
Barber Science Club 3, 4; Sociology
Club 4.



FAYE OLIVER BAKER

Raeford, N. C.

Phi *Sociology*

Freshman Counselor 3; Sociology Club 3, 4; Education Club 4; Folk Dance Club 2, 3; Choir 3, 4; Wake Forest Summer School 3.

REBECCA SUTHERLAND BALLENTINE

Raleigh, N. C.

Astro *History*

Class Cheerleader 1; Little Theater Pledge 1, 2, 3, 4; Modern Dance Club 1, 2; Student League of Women Voters 3, 4; I.R.C. 2; Sociology Club 2; Alpha Rho Tau 4; Choir 4; Maid of Honor 4.

MARGARET ANN BEAL

Richmond, Virginia

Phi *History*

Acorn Art Editor 3; I.R.C. 3, 4; President, Summer School 3; CCUN Chairman, 4; Little Theater 4; Meredith Summer School 2, 3; University of North Carolina Summer School 3.



JEAN BECKMAN
Farmville, N. C.

Phi *Public School Music*
Society Sergeant-of-Arms 4; MacDowell Music Club 1, 2, 3, 4; Education Club 4; Glee Club 2, 4; Choir 1, 2 4; Meredith Summer School 3, A. A. Representative; Wake Forest Summer School 2.



EDITH MAE BOGER
Mocksville, N. C.

Astro *Education*
Mars Hill 1, 2; Y.W.A. Secretary 4; Education Club 3, 4.

ALTHEA CHRISTINE BORDEAUX
Wallace, N. C.

Phi *Sociology*
Freshman Counselor 2; Y.W.A. Hall Chairman 2; Society Vice President 3; Little Theatre 2, 3, 4; Alpha Psi Omega 3, 4; Sociology Club 3, Treasurer 4; I.R.C. 4; May Court Attendant 4.





E. JEAN BRADLEY
Belmont, N. C.

Astro

Art

A.A. Board 2 (Publicity); *Acorn*, Managing Editor 3, Art Editor 2, 4; *Twig*, Columnist 3, Associate Editor 4; Little Theater Pledge 1, Member 2, 3, 4; Creative Rhythms Club 1, 2; Colton English Club 2; Alpha Rho Tau 1, 2, Vice President 4; Education Club 4; Superlative 4.



REBECCA DORA BRITT
Lumberton, N. C.

Phi

Education

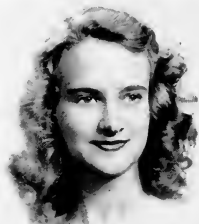
Freeman Religion Club 1, 2; Education Club 3, 4; Sociology Club 2, 4; Wake Forest Summer School 2.

ELIZABETH JEAN BRYAN
Hamlet, N. C.

Phi

Education

Y.W.A. 1, 2, 3, 4; Colton English Club 3; Education Club 3, 4.



MARGARET MCLEOD BUNN
Lexington, N. C.

Astro *Education*

Y.W.A. 1, 4; Greater Council 4; Little Theater Pledge 1, 2, 3, 4; Education Club 2, 3, Vice President 4; Choir 2; Appalachian State Teachers College Summer School 3.



EDITH ADELAIDE CAMP
Waynesville, N. C.

Astro *Sociology*

Twig Assistant Business Manager 3; OAK LEAVES Business Staff 3; *Acorn* Business Staff 3; Little Theater 1, 2, 3, 4, Secretary 2, President 4; Colton English Club 3, Publicity Chairman 4; Sociology Club 2, 3, 4; Alpha Psi Omega 3, 4; Nominating Committee 4; Dean's List.

CATHERINE MCLEAN CAMPBELL
Buie's Creek, N. C.

Astro *Home Economics*

Campbell College 1, 2; Student Government Council 4; Y.W.A. 3, 4; OAK LEAVES Senior Business Manager; Home Economics Club 3, 4; Sociology Club 3; I.R.C. 3, Vice President 4; Little Theater Pledge 4; Choir 3; Librarian 4.





VIRGINIA LEE CAMPBELL

Raleigh, N. C.

Astro

Piano

Student Government Representative 1; Freshman Counselor 2; Society Marshal 3; OAK LEAVES Sophomore Business Manager, Business Manager 3, Editor 4; Little Theater 1, 2, 3, 4; MacDowell Music Club 4; Choir 1, 2, 3; Glee Club 1, 2, Vice President 3, President and Accompanist 4; Alpha Psi Omega 3, 4; Nominating Committee 4; *Who's Who*; Dean's List.



DORIS OLIVIA CARROLL

Charlotte, N. C.

Astro

Education

Freshman Counselor 2; Class Treasurer 1; Astro Society Treasurer 2; Vice President 4; OAK LEAVES Senior Editor; Granddaughters' Club 1, 2, 3, President 4; Little Theater Pledge 1, 2, 3, 4; Education Club 3, Publicity Chairman 4; Choir 1, 2; Glee Club 1, 2, 3, Vice President 4.



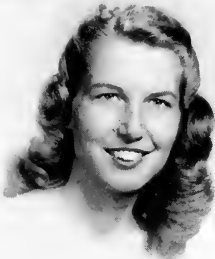
DORIS COCHRANE CASEY

North Wilkesboro, N. C.

Astro

History

Student League of Women Voters 4; I.R.C. 1, 2, 3, President 4; Glee Club 3; Appalachian State Teachers College Summer School 3.



BARBARA SHELLSMITH COTTON
Raleigh, N. C.

Phi *Religion*

Student Government Council 4;
Y.W.A. Program Chairman 2; *Acorn*
Junior Editor; *Twig* Reporter 2, Man-
aging Editor 3, Associate Editor 4;
Helen Hull Law Classical Club 1,
Secretary-Treasurer 2; Colton English
Club 1, 2, 3; Freeman Religion Club
3, 4, Publicity Chairman 3.



BETTY WINSTON COX
Durham, N. C.

Phi *Sociology*

Y.W.A. 1, 2; Sociology Club 2, 3, 4;
Little Theater Pledge 2, 3, 4; Folk
Dance Club 2; I.R.C. 4; Student
League of Women Voters 4.

MARY FRANCES CRAIG
Lincolnton, N. C.

Phi *Education*

Y.W.A. 1, 2, 3; Sergeant at Arms, Phi
Society 2; Monogram Club 3, 4; Bas-
ketball 1, 2, 3, 4; Hockey 1, 2; Edu-
cation Club 3, 4; Little Theater 1, 2,
3, 4; Choir 1, 2, 3, 4; Alpha Psi Omega
3, 4; Alpha Rho Tau 4; Lenoir Rhyne
Summer School 1, 2, 3.





CHRISTINE OLIVER CREECH
Smithfield, N. C.

Phi *Public School Music*

Student Government Council 4; Freshman Counselor 3; Sergeant at Arms, Phi Society 3; *Twig* Music Editor 3, Photo Editor 4; MacDowell Music Club 1, Secretary-Treasurer 2, Reporter 3, 4; Education Club 4; Glee Club 2, 3, 4; Choir 1, 2, 3, 4; Librarian 3; Wake Forest Summer School 3.



NANCY POOLE CREECH
Washington, D. C.

Astro *Art*

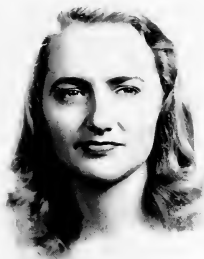
B.S.U. Publicity Manager 2; *Acorn* Assistant Art Editor 2, 3; Creative Rhythms 1, 2; Alpha Rho Tau 1, 2, 3, 4; Granddaughters' Club 1, 2, 3, 4; Secretary 3; Education Club 4; Little Theater Pledge 1, 2, 3, 4.

EVELYN STARLING CRUMPLER
Rocky Mount, N. C.

Phi *Piano*

Transfer Counselor 3; Y.W.A. Missions Chairman 3; MacDowell Music Club 3, 4, Vice President 3; Meredith Summer School 3.





RACHEL CATHEY DANIELS
Skyland, N. C.

Astro *Mathematics*

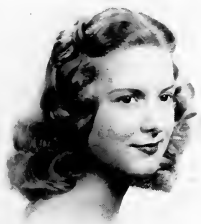
Bob Jones University 1; Asheville-Biltmore College 2; University of North Carolina Woman's College 3.



RUBY JEWELL DAVIDSON
Statesville, N. C.

English

Mars Hill College 1, 2; Colton English Club 4; Mathematics Club 4; Davidson College Summer School 3.



MARION BETTY DAVIS
Yadkinville, N. C.

Astro *Education*

Society Marshal 4; OAK LEAVES Senior Business Manager; Education Club 3, Treasurer 4; Glee Club 2, 3; May Court Attendant 3; Superlative 4; Meredith Summer School 3, Student Government Council.



STELLA RUTH ELLER
Statesville, N. C.

Astro *Religion*

Gardner-Webb Junior College 1, 2;
Y.W.A. Hall Program Chairman 3;
Y.W.A. Hall Community Mission's
Chairman 4; Little Theatre Pledge 3;
Freeman Religion Club 3, 4.

ELIZABETH JAMES EMORY
Northside, N. C.

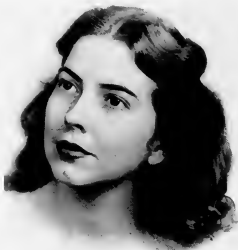
Astro *Spanish*

Colton English Club 3, 4; Sigma Pi
Alpha 3, 4.

MARY DELL FALES
Wilmington, N. C.

Phi *Education*

Choir 1; Tommorrow's Business Women
2; Student League of Women
Voters 2, 4; Equitation Group 3, 4;
I.R.C. 2; Education Club 3, 4; College
Marshal 4; May Queen 4.



HELEN FRANCES FINCH
Mount Airy, N. C.

Phi Home Economics

Y.W.A. 1, 2, 3; Home Economics Club 1, 2, 3; Chairman of Programs and Decorations 4; MacDowell Music Club 2.



SARAH BAGLEY FLEMING
Pikeville, N. C.

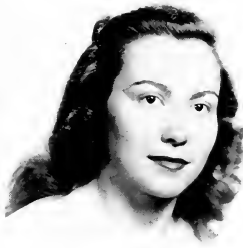
Phi Biology

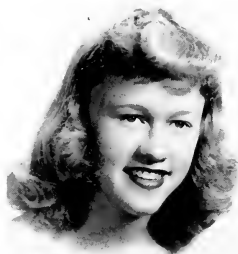
Freshman Counselor 2; Y.W.A. 1, 2; Social Chairman on A.A. Board 4; OAK LEAVES Junior Business Manager; Barber Science Club 2, 3, 4; Folk Dance Club 1, 2, 3, 4; Choir 1, 2, 3, 4; Librarian 2; Little Theater Pledge 1, 2, 3, 4; Superlative.

SUSAN BEST FLEMING
Pikeville, N. C.

Phi Biology

Freshman Counselor 2; Y.W.A. 1, 2, 3, 4; Social Chairman 2; Class Health Chairman 2; Class Vice President 4; Barber Science Club 2, 3, Vice President 4; Choir 1, 2, 3, 4; Librarian 2, President 4; Folk Dance Club 1, 2, 3, 4; Little Theatre Pledge 3, 4; Superlative.





BETTY JEAN FOX
Statesville, N. C.

Astro

Sociology Club 1, 2, 3, 4.

Sociology



KATHRYN PARKER FRYE
Lexington, N. C.

Astro

Freshman Counselor 3; Class Secretary 2; Vice President 3; Society Secretary 3; Alpha Rho Tau 2; Sociology Club 2, 3; Vice President 4; Little Theatre Pledge 2, 3, 4; Dean's List.

Sociology

MARGARET GARNER
Winston-Salem, N. C.

Phi

Mathematics

Greater B.S.U. Council 1, 3; Y.W.A. 1, 2, 3, 4; Math Club 2, 3, 4; Sociology Club 4; Little Theatre Pledge 2, 3; Member 4.



CAROLYN ANN GAY

Jackson, N. C.

Astro

Education

Education Club 2, 3, 4; MacDowell Music Club 3, 4; Sociology Club 4; Little Theatre Pledge 3, 4; Alpha Rho Tau 4; Meredith Summer School 1, 3.



STENNETT GRAHAM

Proctorville, N. C.

Phi

Education

Y.W.A. Circle Leader 1, 4; Education Club 4; Religion Club 4; Orchestra 1, 2; Wake Forest Summer School 1.

MARY GRAVELY

Woodsdale, N. C.

Phi

History

Y.W.A. 1, 2, 3, 4; Freeman Religion Club 3, 4; International Relations Club 4; Student League of Women Voters 4; Sigma Pi Alpha; Meredith Summer School 1, 3; W.C.U.N.C. Summer School 2.





KATHRYN ANN GRIFFIN
Monroe, N. C.

Astro

Sociology

Sociology Club 2, 3, 4; Education
Club 3, 4; Lenoir Rhyne Summer
School 2, 3.



CHARLOTTE HAIGHT
Wagner, S. C.

Astro

Sociology



THELMA LUCILLE HAIGLER
Monroe, N. C.

Phi

Public School Music

Choir 1, 2, 3, 4; MacDowell Music
Club 1, 2, 3, 4; Education Club 4;
Wingate College Summer School 2;
Meredith Summer School 3.



ARLENE GARNETT HALL
Roxboro, N. C.

Astro *Education*
Averett College 1, 2; Sociology Club
3, 4; Education Club 3, 4; I.R.C. 4.



RUTH HALL
Lillington, N. C.

Astro *Home Economics*
Y.W.A. 1, 2, 3, 4; A.A. Board 2, 3, 4;
Class Secretary 4; Society Marshal 2;
Chief Marshal 4; *Twig* reporter 1, 2,
Associate Editor 3; OAK LEAVES typist
3; Granddaughters's Club 1, 2, 3, 4,
Treasurer 2; Home Economics Club
1, 2, 3, 4; Alpha Rho Tau 1, 2, 4;
Folk Dance Club 3, 4; Little Theatre
Pledge 1, 2, Member 3, 4.



LOIS LOUISE HAMRICK
Mooresboro, N. C.

Phi *Religion*
Gardner-Webb Junior College 1, 2;
Freeman Religion Club 3, 4; Colton
English Club 3.



ELIZABETH HARDISON
Goldsboro, N. C.

Astro

Biology

Student Government Council 3; Class Treasurer 4; Barber Science Club 2; Treasurer 3; President 4; Choir 2; Kappa Nu Sigma 3; Secretary-Treasurer 4; Student League of Women Voters 4; Little Theatre Pledge 2, 3, 4; Dean's List.



LOIS ELIZABETH HARMON
McBee, S. C.

Astro

Sociology

A.A. Publicity Co-Chairman 3; Society President 4; *Twig* Editorial Staff 4; Freeman Religion Club 2, 3; Barber Science Club 2; Folk Dance Club 1, 2, 3, 4; Monogram Club 3, 4; Sociology Club 3, 4; Little Theatre Pledge 1, 2, Member 3, 4; Alpha Rho Tau 4; Nominating Committee 4; Alpha Psi Omega 4; Superlative 4; Meredith Summer School 1; B.S.U. Council.

ROSE MARIE HARMON
Franklin, N. C.

Astro

Chemistry

Monogram Club 3, 4; Barber Science Club 2, 3, 4; Little Theatre Pledge 3, 4





DORIS ALBERTA HARRIS
Raleigh, N. C.

Phi *English*

Non-resident Students Second Vice President 2, President 4; B.S.U. Treasurer 3; Helen Hull Law Classical Club 1, Program Chairman 2, Vice President 3; Freeman Religion Club, 2, Secretary 3; Colton English Club 3, President 4; Glee Club 2; May Court Attendant 2; Superlative; Dean's List.



EARLINE RACHEL HARRIS
Drexel, N. C.

Phi *Business*

Mars Hill 1, 2; Y.W.A. Circle Chairman 4; Choir 3, 4.



ELEANOR JANE ANDREWS HEWITT
Pittsboro, N. C.

Phi *Sociology*

A.A. Board 3; Alpha Psi Omega 3, 4; Little Theatre 1, 2, 3, 4; Sociology Club 2, 3, 4; I.R.C. 4; Granddaughters' Club 1, 2, 3, 4.



JESSICA ROSELIND HOLLOMAN

Ahoskie, N. C.

Astro

Sociology

Student Government 2; Sociology Club 2, 3, 4; Little Theatre Pledge 1, 2, 3, Member 4; I.R.C. 3, 4; Superlative; University of North Carolina Summer School 3.

LOU ELLA HOOTS

Winston-Salem, N. C.

Phi

Education

Mars Hill College 1, 2; Education Club 4; Choir 4; Glee Club 4; May Court 3; Superlative 4.

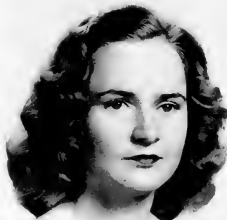
MILDRED GLENN HOYLE

Henderson, N. C.

Astro

Sociology

Y.W.A. Circle Leader 3; Freshman Representative 1; Tennis Manager 4; Basketball Varsity 1; Hockey Varsity 2, 3; Sociology Club 3, 4; Education Club 3.



ANNA HUNGERFORD WILSON
Raleigh, N. C.

Phi *Business*

Meredith Summer School 3; University
of North Carolina Summer School 3.



NELL ELIZABETH HUNTER
Raleigh, N. C.

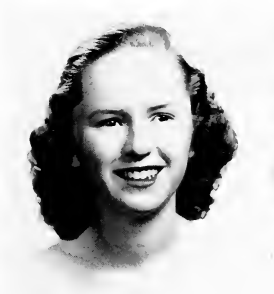
Phi *Sociology*

Mars Hill College 1, 2; Transfer Coun-
selor 4; B.S.U. Treasurer 4; Freeman
Religion Club 3, 4; Sociology Club 3,
4; Sigma Pi Alpha 3, 4.

IVA HURST
Pittsboro, N. C.

Phi *Home Economics*

Y.W.A. 1, 2; Home Economics Club
1, 2, 3, President 4; Choir 4; Education
Club 4.

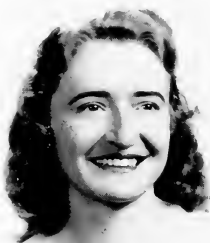




SHIRLEY REVA HURWITZ
Raleigh, N. C.

Phi *English*

Student Government Council; Non-resident Student First Vice President 3; Third Vice President 4; *Twig* Reporter 4; Meredith Representative on Hillel Council 3; Colton English Club Vice President 4; Dean's List.



KATHLEEN ISBELL
Winchester, Tenn.

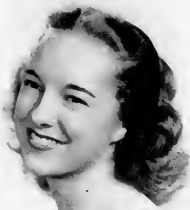
Phi *Spanish*

Y.W.A. 1, 2, 3, 4; Education Club 4; I.R.C. 4; Sigma Pi Alpha 3, 4; Meredith Summer School 3.

BARBARA ANN JOHNSON
Benson, N. C.

Phi *Public School Music*

Freshman Counselor 2, 3; A.A. Board 3; Student Health Chairman 4; Society Marshal 2; Chief Marshal 4; OAK LEAVES Junior Editor 3; *Twig* Music Editor 4; Granddaughters' Club 1, 2, 3, 4; Folk Dance Club 1, 2, President 3; Education Club 4; Monogram Club 4; MacDowell Music Club 4; Choir 1, 2, 3, 4; Glee Club 4; Superlative 4; Wake Forest Summer School 3.



DORIS JOHNSON
Angier, N. C.

Astro

Art

Mars Hill College 1, 2; Catawba College Summer School; *Acorn* Managing Editor 4; Alpha Rho Tau Secretary-Treasurer 4.



FRANCES IDA JONES
Goldsboro, N. C.

Astro

Religion

Freeman Religion Club 3, 4; MacDowell Music Club 2, 3; Helen Hull Law Classical Club 2, 3; Little Theatre Pledge 4; Dean's List.

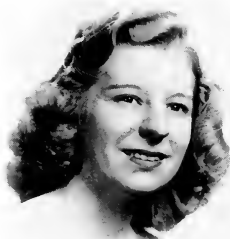
LOUVENE JORDAN
Winston-Salem, N. C.

Phi

English

Mars Hill College 1, 2; B.S.U Second Vice President 3; Phi Society, President 4; Colton English Club 3, 4; Freeman Religion Club 3; Little Theatre Pledge 4.





MARY FRANCES KEENE
Dunn, N. C.

Astro

Business

OAK LEAVES Business Staff; Little Theatre Vice President 4; Tomorrow's Business Women, President 4; Student League of Women Voters 4; Folk Dance Club 4; Alpha Psi Omega 3, 4; Dean's List.



MARJORIE MINOR KING
Portsmouth, Virginia

Astro

English

Norfolk Division William and Mary-V.P.I. 1, 2; Colton English Club 3, 4; Little Theatre 3, 4.



NORMA MARIE KINLAW
Lumberton, N. C.

Astro

Business

Y.W.A. 1, 2, 3, 4; Hall Devotional Chairman 2; Circle Leader 4; *Twig* Circulation Manager 4; Tomorrow's Business Women, Pledge 2, Member 3, 4; Secretary-Treasurer 3.



CAROLYN BENTON KNIGHT
Madison, N. C.

Astro *Home Economics*

Y.W.A. Program Chairman 2; A.A. Board 3; Home Economics Club 1, 2, 3, 4; Little Theatre 4; Sociology Club 4.



EDITH ELOISE LANCASTER
Bolivia, N. C.

Astro *Biology*

A.A. Board 3, 4; Barber Science Club 2, 3, 4; Folk Dance Club 3, 4; Little Theatre Pledge 4.

FRANCES MARIE LAND
Burlington, N. C.

Astro *Business*

Folk Dance Club 1, 2, 3, 4; OAK LEAVES Photography Editor 4; *Acorn* Assistant Business Manager 4; Education Club 4; Tomorrow's Business Women Program Chairman 4.





ANNA HOLMES LEWIS
Rosehill, N. C.

Astro *Education*

Education Club 3, Secretary 4; Choir
4; Meredith Summer School 3.



MARTHA MEREDITH LILES
Goldsboro, N. C.

Astro *Sociology*

Student Government Representative 2;
Freshman Counselor 2, 3; A.A. Board
(Swimming Manager) 4; Class Secretary
1; Sociology Club 3, 4; Choir 4.

SARAH MARGARET LONG
Germanton, N. C.

Phi *Chemistry*

Mars Hill College 1, 2; Barber Science
Club 3, 4; Granddaughters' Club 3,
4; Education Club 4.





HIAWATHA JEAN LUPO
Tabor City, N. C.

Astro *Sociology*
Sociology Club 3, Secretary 4; Choir 4.



BENNIE LEE MCGOUGAN
Lumber Bridge, N. C.

Phi *Sociology*
Sociology Club 3, 4; Education Club
4; Wake Forest Summer School 3.



ANNALEAN MCLAMB
Benson, N. C.

Phi *Business*
Class Vice President 1; Freshman
Counselor 2; OAK LEAVES Typist 3;
Tomorrow's Business Women 3, 4;
Program Chairman 3; Folk Dance
Club 2, 3; Sociology Club 3, 4; Uni-
versity of North Carolina Summer
School 3.



PATRICIA RUTH MCNIEL
North Wilkesboro, N. C.

Phi *Sociology*
Y.W.A. 1; Glee Club 3, 4; Sociology
Club 3, 4; Meredith Summer School 3.

EMMA MAE MCPHERSON
Norfolk, Virginia

Astro *English*
Y.W.A. President 4; Campbell 1, 2;
Transfer Counselor 4; I.R.C. 3, 4;
Colton English Club 3, 4; Freeman
Religion Club 4; Little Theatre Pledge
4; Dean's List.

GERALDINE BURGISS MANGUM
Raleigh, N. C.

Astro *Home Economics*
Mars Hill College 1, 2; Home Eco-
nomics Club 3, 4; Dean's List.



CAROL MARTIN
Raleigh, N. C.

Astro

Sociology



NANCY JO MASSEY
Cary, N. C.

Phi

Voice and Public School Music

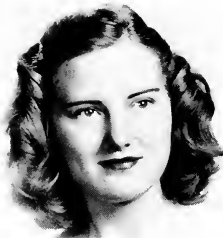
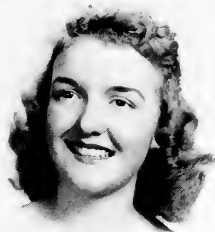
Choir 1, 2, 3, 4; Glee Club 2, 3, 4;
MacDowell Music Club 4; Education
Club 4; Meredith Summer School 3.

GRACE GLORIA MAYER
Memphis, Tennessee

Phi

English

B.S.U. Council, President 4; Y.W.A.
1, 2, 3, 4; A.A. Board 3; Basketball 1,
2, 3, 4; Varsity 1, 2; *Acorn* 2, 3; Colton
English Club 2, 3, 4; Freeman Rel-
igion Club 2, 3, 4; Choir 1, 3, 4; Silver
Shield, Associate Member 3; Vice
President 4; Kappa Nu Sigma 4; Mono-
gram Club 4; Nominating Committee
4; *Who's Who*; Dean's List.





SARA JANE MIDDLETON
Winston-Salem, N. C.

Astro

Biology

A.A. Board 2, 3, 4; Hockey Varsity 1, 2, 3, 4; Softball Varsity 2, 3; Tennis 3; Barber Science Club 2, 3, 4; Student League of Women Voters 3, President 4; I.R.C. 3, 4; Little Theatre Pledge 2, 3, 4; Monogram Club 2, 3, 4.



MARY LOUISE MILLIKEN
Siler City, N. C.

Astro

English

Twig Reporter 1, 2, Associate Editor 3; Granddaughters' Club; Colton English Club; Choir 1, 2; Glee Club 1, 2, Secretary-Treasurer 2.

DORIS MARIE MITCHNER
Clayton, N. C.

Astro

Home Economics

Greater B.S.U. Council 3; Home Economics Club 1, 2, 3, 4; Social Chairman 3, Vice President 4; Sociology Club 4; Wake Forest Summer School 2.



MATHA JEAN MODLIN

Rich Square, N. C.

Astro *Public School Music*

Campbell College 1, 2; MacDowell Music Club 3, 4; Choir 3, 4; Meredith Summer School 3.



FLORENCE RUSHING MOORE

Graham, N. C.

Astro

Art

MARGARET GLENN MOORE

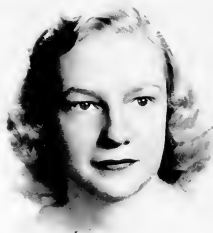
Columbia, S. C.

Astro

Education

Y.W.A. 1, 2, 3, 4; OAK LEAVES Staff, Sophomore Editor; *Twig* Staff, Business Manager 3, Editor 4; Sociology Club 2; Education Club 2, 3, 4; Colton English Club 3, 4; Folk Dance Club 3; Little Theatre Pledge 1, 2, Member 3, 4; Alpha Psi Omega 3, 4; Silver Shield 4; Nominating Committee 4; Dean's List.





MARGARET ELLIS MORRIS
Durham N. C.

Phi *Education*

Mars Hill College 1, 2; Y.W.A. 3;
Education Club 4; MacDowell Music
Club 4; Glee Club 4.



HARRIET ROBERTA NEESE
Lexington, N. C.

Astro *Chemistry*

A.A. Treasurer 2, Vice President 3,
President 4; Barber Science Club 3,
Vice President 4; Kappa Nu Sigma 4;
Silver Shield 4; *Who's Who*; Dean's
List.



DORIS JEAN NICHOLS
Earl, N. C.

Phi *Mathematics*

Math Club 2, 3, 4; Secretary-Treasurer
3; Barber Science Club 4; Education
Club 4; MacDowell Music Club 2;
Sigma Pi Alpha 3, 4; Kappa Nu Sigma
4, Vice President 4; Little Theatre
Pledge 4; Dean's List.



MARGARET HELEN NORVILLE
Richmond, Virginia

Phi *Mathematics*
Little Theatre Pledge 2, 3, 4; Math Club 2, 4; Sociology Club 3, 4; Barber Science Club 3, 4; Assistant Manager Bee Hive 2, 3; Meredith Summer School B.S.U. Council 2; University of Richmond Summer School 3.



OCTAVIA JEAN OLIVE
Ellerbe, N. C.

Astro *Business*
Y.W.A. 1, 2, 3, 4; Hall Secretary 2; *Twig* Staff 2; *Acorn* Staff 3; Tomorrow's Business Women 3, 4; I.R.C. 4.

JEAN FRANCES OUTLAW
Elizabeth City, N. C.

Astro *Art*
Alpha Rho Tau 1, 4; Little Theatre 4; MacDowell Music Club 2; Sociology Club; Wake Forest Summer School 1; Meredith Summer School 2, 3.



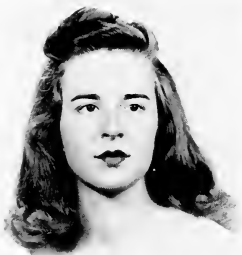


BARBARA SMITH PECK
Lancaster, Pennsylvania

Astro

English

Connecticut College for Women 1,
2, 3; Colton English Club 4.



MARCELENE SIMMONS PENNY
Raleigh, N. C.

Astro

Mathematics

Y.W.A. First Vice President 1; Bee
Hive Manager 2, 3; Canaday Mathe-
matics Club 1, 2, 3, 4; Vice President 2;
Helen Hull Law Classical Club 1, 2,
3, 4; Barber Science Club 1, 2, 3, 4.

MIRIAM GERTRUDE POWELL
Henderson, N. C.

Astro

Education

W.C.U.N.C. 1; Education Club 3, 4;
Granddaughters' Club 3, 4; Little
Theatre Pledge 3, 4.





NELL GRAY PROCTOR
Rocky Mount, N. C.

Phi *Religion*

Freeman Religion Club 2, 3, 4.



NAOMI GERTRUDE PUGH
Camden, N. C.

Astro *Biology*

B.S.U. Council 3; World Fellowship 2, President 3; A.A. Board 4; College Cheerleader 4; Basketball Varsity 2, 3; Hockey Varsity 3, 4; Soccer Varsity 4; Class Cheerleader 2, 3; Choir 1; Little Theatre Pledge 1, 2, Member 3, 4; Barber Science Club 2, 3, 4; Y.W.A. 1, 2, 3, 4; I.R.C. 3; Student League of Women Voters 4; Monogram Club 2, 3, 4; Folk Dance Club 3, 4; Superlative; Wake Forest Summer School 2.



MARY ALICE RIDDLE
Raleigh, N. C.

Phi *Mathematics*



EMILY WILLIAMS ROBERTSON
Long Island, New York

Astro

Education

Y.W.A. Program Chairman 3; Y.W.A.
Circle Publicity Chairman 4; Y.W.A.
1, 2, 3, 4; Freeman Religion Club 2;
Education Club 4.

CARRIE ELIZABETH ROUSE
Seven Springs, N. C.

Phi

Sociology

Y.W.A. 2, 3, 4; I.R.C. 2, 3, 4; Educa-
tion Club 4; Sociology Club 2, 3, 4.

LAURA JANE SANDERS
Four Oaks, N. C.

Phi

Mathematics

Education Club 3, 4; Canaday Mathe-
matics Club 3, 4; Secretary-Treasurer
4; Dean's List.



EMILY JEAN SCHNEDL

Raleigh, N. C.

Phi *Religion*

Queens College 1, 2; Freeman Religion Club 3, 4.



RUTH BRADLEY SEARS

Morrisville, N. C.

Phi *Home Economics*

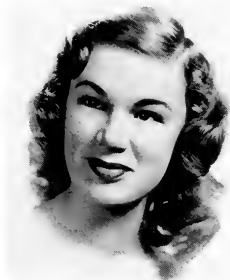
Education Club 3; Home Economics Club 1, 2, 3, Secretary 4; Dean's List.

ILA RUTH SHERRON

Wake Forest, N. C.

Phi *Sociology*

Barber Science Club 2; Sociology Club 2, 3, 4.





MARY FRANCES SIMPSON
Stocksdale, N. C.

Phi *Public School Music*

Choir 2, 3, 4; MacDowell Music Club
4; Education Club 4; W. C. U. N. C.
Summer School 3.



DOROTHY LOU SINGLETON
Raleigh, N. C.

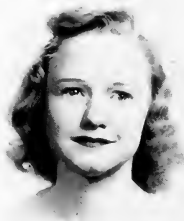
Astro *Social Studies*

Student Government Council 4; Class
President 3; Sociology Club 2, 3, 4;
Reporter 3; I.R.C. 3, 4; Student League
of Women Voters 3, 4; Education Club
2; Little Theatre Pledge 2; Member 3,
4; Kappa Nu Sigma 3, 4; President 4;
Superlative; *Who's Who*; U.N.C. Sum-
mer School 3; Dean's List.

SARAH ELLEN SKINNER
Mount Gilead, N. C.

Phi *Business*

OAK LEAVES Photographic Editor 4;
Acorn Assistant Business Manager 4;
Home Economics Club 2, 3, 4, Secretary
3; Tomorrow's Business Women 4;
Dean's List.



NANCY FORRESTINE SNIDER
Spencer, N. C.

Astro *Public School Music*

Mars Hill College 1, 2; MacDowell Music Club 3, 4; Choir 3, 4; Catawba College Summer School 3.



EDITH ANN STEPHENSON
Pendleton, N. C.

Phi *History*

B.S.U. Council; B.T.U. Director 3, Enlistment Vice President 4; Y.W.A. 1, 2, 3, 4; Monogram Club 3, 4; Basketball 1, 2, 3; Badminton 1, 2; Class Secretary 3; Society Treasurer 3; Society Marshal 4; Colton English Club 3, 4; Creative Rhythms Club 2; I.R.C. 4; Little Theatre Pledge 2, 3; Member 4.

JOY BLAKE STILLWELL
Sylva, N. C.

Astro *Public School Music*

Student Government Council 3, 4; MacDowell Music Club 1, 2; Vice President 3, President 4; Glee Club 2, 3, 4; Choir 1, 2, 3, 4; Little Theatre Pledge 2, 4; Merdith Summer School 2; W.C.T.C. Summer School 3; Dean's List.





RUTH E. SUMMERLIN
Chalybeate Springs, N. C.

Phi

Religion

Y.W.A. 1, 2, 3, 4; Hall Program Chair-
man 2, Vice President 3, Social Chair-
man 4; Freeman Religion 1, 2, 3, 4;
Colton English Club 3.



DOROTHY ELIZABETH TAYLOR
Raleigh, N. C.

Astro

Sociology

Sociology Club 3, 4; Equitation Club
3; University of North Carolina Sum-
mer School 3.



MARGARET ELOISE THOMAS
Raleigh, N. C.

Phi

Business

Mars Hill College 1, 2; Tomorrow's
Business Women 3, 4; Choir 4.

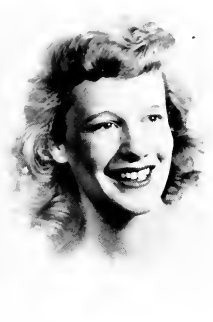


MARY BETH THOMAS
Asheville, N. C.

Astro

Art

Class President 4; Class Vice President 2; *Acorn* Associate Art Editor 4; Alpha Rho Tau 4; Folk Dance Club 2, 3, 4; Choir 1, 2; Superlative; *Who's Who*; Kappa Nu Sigma 4; Dean's List.

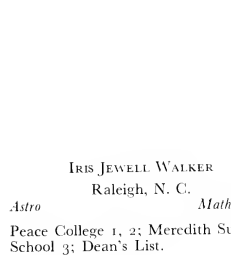


EDNA FRANCES THOMPSON
Silver Spring, Maryland

Astro

History

Student Government Secretary 3, President 4; B.S.U. Council, Second Vice President 2; Badminton Champion 3; Class President 1; I.R.C. 3, 4; Folk Dance Club 1, 2, 3, 4; Monogram Club 3, 4; Little Theatre 2, 3, 4; Nominating Committee, 1, 4; Alpha Psi Omega 3, 4; Silver Shield; Kappa Nu Sigma; Superlative; *Who's Who*; Dean's List.



IRIS JEWELL WALKER
Raleigh, N. C.

Astro

Mathematics

Peace College 1, 2; Meredith Summer School 3; Dean's List.

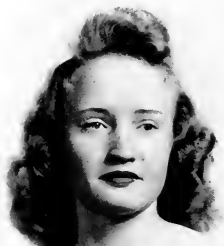


ELIZABETH ANN WALLIS
Harrisburg, Illinois

Astro

English

Student Government Council 3, 4; Chief Counselor 4; Nominating Committee, Chairman 4; Y.W.A. 1, 2, 3, 4; *Acorn* Business Manager 3; Colton English Club 3, 4; Little Theatre Pledge 3, 4; Freeman Religion Club 2; Choir 1; Folk Dance Club 3; Helen Hull Law Classical Club 1, 2.



RUTH GREENE WALTON
Raleigh, N. C.

Phi

Business

Greater B.S.U. Council 3; *Acorn* Staff 4; Tomorrow's Business Women 3, 4; Sigma Pi Alpha 2, 3, 4; Meredith Summer School 3.

CARRIE FRANCES WARD
Mount Olive, N. C.

Astro

Religion

Folk Dance Club 1, 2, 3, 4; Helen Hull Classical Club 1; Freeman Religion Club 3, President 4; Canaday Mathematics Club 1.

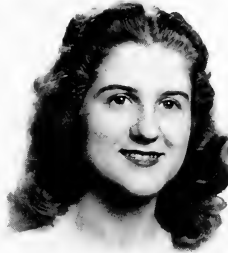




MARY VIRGINIA WARREN
Charlotte, N. C.

Phi Home Economics

Student Government Council; Treasurer 3; Vice President 4; Y.W.A. 3; Class President 2; Society Marshal 3; Glee Club 3, 4; Choir 1; Little Theatre 2, 3, 4; Alpha Psi Omega 4; Silver Shield President 4; Barber Science Club 2, 3, 4; Home Economics Club 1, 2, 3, 4; I.R.C. 4; *Who's Who*; Wake Forest Summer School 3; Dean's List.



JOLENE BETSEY WEATHERS
Rolesville, N. C.

Astro Home Economics

Y.W.A. 4; A.A. Board 4; Folk Dance Club 1, 2, 3, President 4; Monogram Club 4; Basketball 3, 4; Granddaughters' Club 1, 2, 3, 4; Home Economics Club 1, 2, 3, 4; Reporter 2; Education Club 3, 4; Sigma Pi Alpha; Treasurer 3, President 4; Kappa Nu Sigma 4; Meredith College Summer School 3; Dean's List.



RUBY GAYLE WELLS
Rose Hill, N. C.

Astro Home Economics

Student Government Council 4; Y.W.A. Circle Leader 1, 3; Class Treasurer 3; Little Theatre Pledge 1, 2, 3, Member 4; Home Economics Club 1, 2, 3, 4; Treasurer 2; Education Club 3, 4; MacDowell Music Club 3; Folk Dance Club 2, 3; Silver Shield Secretary-Treasurer 4; Dean's List; Wake Forest Summer School 3.



MARY EVELYN WEST
Raleigh, N. C.

Astro *Religion*

Mars Hill 1, 2; Freshman Counselor
4; Freeman Religion Club 3, 4; Dean's
List.

MARGARET GIBBS WESTMORELAND
Marion, N. C.

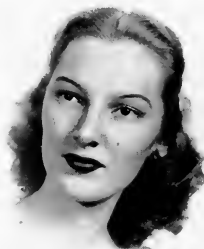
Astro *Business*

OAK LEAVES Business Staff 4; *Twig*
Business Staff 4; Tomorrow's Business
Women 2, 3, Vice President 4; Glee
Club 3; Librarian 4; Alpha Rho Tau
4; Equitation Club 2; University of
North Carolina Summer School 3.

GENEVA JO WHITE
Henderson, N. C.

Astro *English*

Mars Hill College 1, 2; Y.W.A. 3, 4;
Greater B.S.U. Council; Colton Eng-
lish Club 3, 4, Secretary-Treasurer 3;
Little Theatre 3, 4; Freeman Religion
Club 3; Granddaughters' Club 3, 4;
Sociology Club 3; Student League of
Women Voters 4; Choir 3; Alpha Rho
Tau 4; Folk Dance Club 4; I.R.C. 3,
4, Secretary-Treasurer 4; University
of North Carolina Summer School 3.



ALICE GREY WILLIAMS

Autryville, N. C.

Astro

English

Campbell College 1, 2; World Fellowship 4; Education Club 4; Colton English Club 3, 4.



JEAN MADDREY WILSON

Seaboard, N. C.

Astro

Education

Y.W.A.; Education Club 1, 2; Social Chairman 3, President 4; Equitation Club 2, 3; Alpha Rho Tau 1, 2; MacDowell Music Club 3; Sociology Club 4; Little Theatre Pledge 4; Wake Forest Summer School 1.

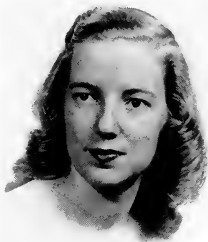
CATHERINE JANE WISHART

Shelburne Falls, Massachusetts

Astro

Chemistry

Little Theatre 3, 4; Secretary 3; Barber Science Club 4; Meredith Summer School 2; Student Government Council Secretary.





FRANKIE DORIS WITHERSPOON
Rockingham, N. C.

Astro

Mathematics

Freshman Counselor 3; Y.W.A. 1, 2, 3, 4; A.A. Board 2, 3, 4; Secretary 2; *Acorn* Business Staff 2, 3; Monogram Club 3, President 4; Hockey Varsity 1; Softball 3; Championship 3; Folk Dance Club 2.



ZELLA DEW WOODY
Henderson, N. C.

Phi

Religion

B.S.U. Council 2; Vice President Summer School; Y.W.A. Circle Leader 3, 4; House Council; Bee Hive; Religion Club 1, 2, 3, 4.

EDNA KATHERINE WYATT
Sylacauga, Alabama

Phi

Sociology

Birmingham-Southern College 1; Transfer Counselor 3; B.S.U. Arrangements Chairman 3; Program Chairman 4; OAK LEAVES Sophomore Business Manager 3; Sociology Club 2, 3, President 4; Freeman Religion Club 2, 3; Little Theatre Pledge 2; Member 3, 4; I.R.C. 4; Meredith Summer School 3; B.S.U. Council President 4; Dean's List.





ELIZABETH BYRD ZIMMERMAN

Welcome, N. C.

Astro

Voice

Bob Jones College 1; Choir 3, 4; Glee Club 3, 4; MacDowell Music Club 4; Equitation Club 3; Meredith Summer School 2, 3.

MOLLIE ANDERSON FEARING

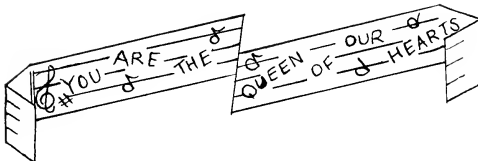
Roanoke Island, N. C.

Astro

Psychology, Philosophy

Student League of Women Voters 4; Colton English Club 3, 4; Sociology Club 3, 4; Alpha Rho Tau 4; Dean's List; Meredith Summer School 2.

Not pictured: Sunshine Bellamy, Aileen Cain Briley, Rosa Deans, Mary McCoy, Lillian Swinson, Oliveira Warren.





ELLA MAY SHIRLEY
President

THE JUNIOR CLASS

ELLA MAY SHIRLEY..... *President*
MAXINE BISSETTE..... *Vice President*
EUNICE ANDREWS..... *Secretary*
MARIANNA WORTH..... *Treasurer*
MISS MARY YARBROUGH..... *Sponsor*

light of the year, the Junior-Senior Banquet.

The first real job the juniors undertook for the activities of the year was that of assisting with orientation week. The coffee, our first public function, helped to unify the class and to build the wonderful spirit which was seen during Palio. We won the Palio banner as advocates of "Peace and One World." Early in the first semester came the Big-Sister-Little-Sister Party, and in April the high-
The juniors, like the "forty-niners" before them, have their eyes on a goal, the senior year at Meredith.



Bissette, Andrews, Worth, Shirley

ADAMS, ELLA
Bunnlevel, N. C.

Phi

ALLEN, MARTHA
Rockingham, N. C.

Astro

ANDREWS, EUNICE
Fuquay Springs, N. C.

Phi

ASHCRAFT, HARRIET
Charlotte, N. C.

Phi

BISSETTE, MAXINE
Spring Hope, N. C.

Phi

BOWEN, MARY
Henderson, N. C.

Astro

BOYKIN, ANNE
Raleigh, N. C.

Phi

BRADLEY, EUGENIA
Jonesboro, N. C.

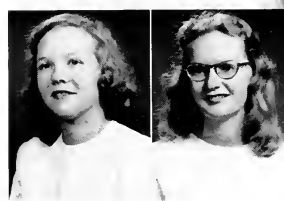
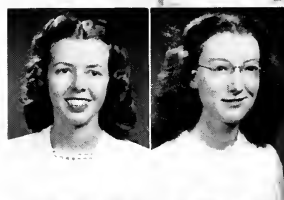
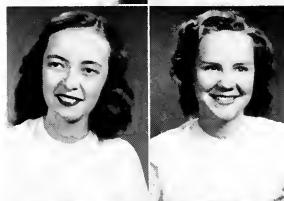
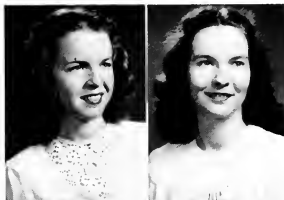
Astro

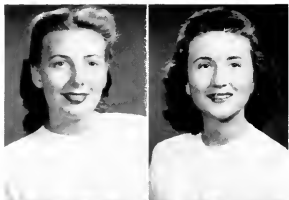
BRITT, RITA
Durham, N. C.

Astro

BROOKS, BETTY
Charlotte, N. C.

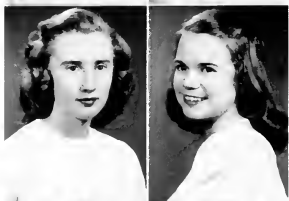
Phi





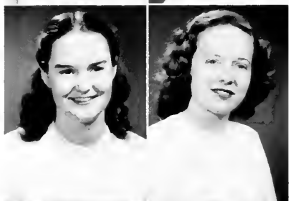
BROWN, GRACE *Astro*
Murfreesboro, N. C.

BULLARD, MARGUERITE *Phi*
Stedman, N. C.



BULLARD, MILDRED *Phi*
Chadbourne, N. C.

BUTTS, LELA *Astro*
Angier, N. C.



BYRD, MELBA *Phi*
Lumberton, N. C.

CARPENTER, MARY FRANCES *Phi*
Marietta, Ohio



CARR, HELEN *Astro*
Plymouth, N. C.

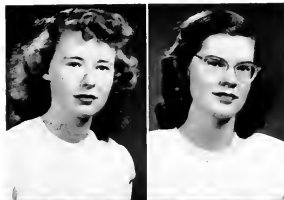
CHERRY, ELIZABETH *Astro*
Rich Square, N. C.



CLEMMONS, OPAL *Phi*
Myrtle Beach, S. C.

CLINARD, MADELYN *Astro*
Winston-Salem, N. C.

COLVARD, ELIZABETH *Astro*
Star, N. C.



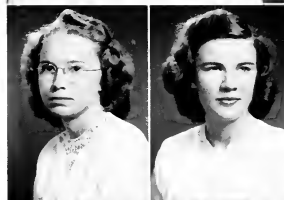
CONE, PAULINE *Astro*
Middlesex, N. C.

COOPER, EDITH *Phi*
Falcon, N. C.



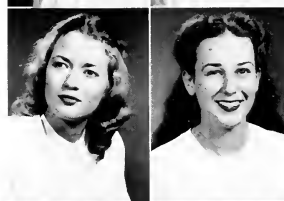
CORBETT, ELSIE *Astro*
Wilmington, N. C.

COVINGTON, IRENE *Astro*
Rockingham, N. C.



CREECH, MAGDALENE *Astro*
Wilson, N. C.

CULLER, MARY LOU *Astro*
High Point, N. C.



CURRIN, MRS. LUCY HALL ARNOLD
Raleigh, N. C.

DANFORD, BETHEA *Astro*
Bolivia, N. C.



DANIEL, JEAN *Astro*
Raleigh, N. C.



DAVIS, MARTHA
Hyattsville, Md. *Astro*

DAVIS, SARAH
Inez, N. C. *Astro*



DAWKINS, MARY LOU
Mt. Gilead, N. C. *Astro*

DEAN, ROSEMARY
Louisburg, N. C. *Astro*



DEATON, ANNE
Hoffman, N. C. *Astro*

DICKENS, JEANNE
Delray Beach, Fla. *Astro*



DUNN, CHRISTINE
Kannapolis, N. C. *Phi*

DUPREE, BLANCHE
Southern Pines, N. C. *Astro*

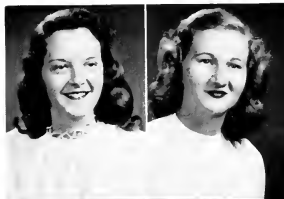


EDWARDS, EVA KITCHIN
Scotland Neck, N. C. *Astro*

ELLINGTON, HAZEL
Kittrell, N. C. *Phi*

FEREBEE, JEAN
Shawboro, N. C.

Astro



FLEMING, JEAN
Middleburg, N. C.

Astro



FRANCIS, BARBARA
Waynesville, N. C.

Astro

FRITTS, MRS. LOUISE
Raleigh, N. C.

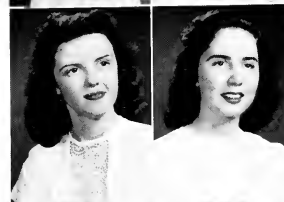


GADDY, JEAN
Raleigh, N. C.

Astro

GADDY, LILLIAN
Raleigh, N. C.

Astro



GEROCK, VIRGINIA
Maysville, N. C.

Astro

GRAHAM, SUSAN
Enfield, N. C.

Astro

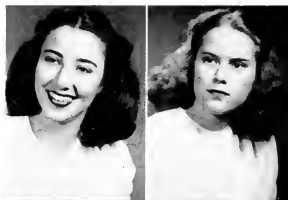


GREEN, ESTHER
St. Petersburg, Fla.

Astro

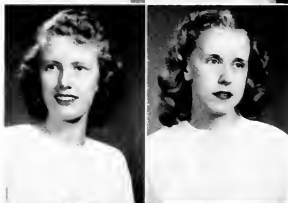
GRIFFIN, JANE
Woodland, N. C.

Astro



HALL, NANCY *Phi*
Oxford, N. C.

HANNON, RUTH *Astro*
Moncure, N. C.



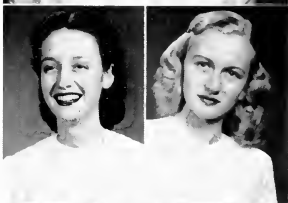
HARRELL, JOYCE *Phi*
Edenton, N. C.

HARRELL, VICTORIA *Astro*
Burgaw, N. C.



HARRINGTON, PHYLLIS *Astro*
Portsmouth, Va.

HART, BILLIE *Astro*
Salemberg, N. C.



HEFNER, BETTY *Astro*
Greer, S. C.

HIGHFILL, LENA GLENN *Astro*
Winston-Salem, N. C.



HODGES, EVELYN *Astro*
Washington, N. C.

HOLLIS, FRANCES *Phi*
Laurinburg, N. C.

HOOKS, MARTHA *Astro*
 Dublin, Ga.



HUFFMAN, FRANCES *Phi*
 Drexel, N. C.

HUFHAM, MARY EITA *Astro*
 Morehead City, N. C.



HUMPHREY, MARY *Astro*
 Wilmington, N. C.

HUNT, MARY *Phi*
 Oxford, N. C.



JARVIS, SUE *Astro*
 Hickory, N. C.

JOHNSON, BETTY JEAN *Astro*
 Lillington, N. C.



JOHNSON, LAURIS *Astro*
 Raleigh, N. C.

JOHNSON, LESLIE *Astro*
 Nesmith, S. C.



JOHNSON, OSEE MAC *Phi*
 Enfield, N. C.



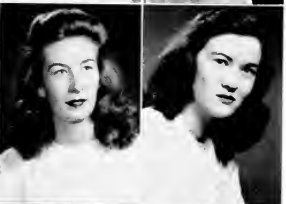
KNOTT, JACKIE
Clayton, N. C. *Astro*

LAMB, MARGARET
Whiteville, N. C. *Phi*



LANGSTON, POLLYANNA
Four Oaks, N. C. *Phi*

LASSITER, ANNE
Lasker, N. C. *Astro*



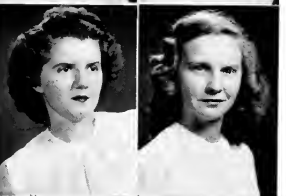
LASSITER, JANE
Raleigh, N. C. *Astro*

LEE, DORIS
Raleigh, N. C. *Astro*



LEWIS, JANE
Carthage, N. C.

LEWIS, KATHERINE
Mt. Olive, N. C. *Astro*



LITTLEJOHN, HARRIETTE
Greer, S. C. *Phi*

LOCKAMY, ELEANOR
Jacksonville, N. C. *Astro*

LYNN, BECKY
Greer, S. C.

Phi



McLAMB, JEAN
Clinton, N. C.

Phi

McLAWHORN, DAPHNE
Winterville, N. C.

Astro

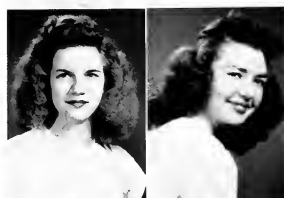


McWILLIAMS, DOROTHY
Norfolk, Va.

Astro

MAUNEY, OREA
Shelby, N. C.

Astro



MILLER, JERRY
Raleigh, N. C.

Phi

MITCHELL, PEGGY
Asheboro, N. C.

Phi



MIZELLE, MARIANNA
Newport, N. C.

Astro

MOORE, FRANCES
Garner, N. C.

Astro



MOORE, JOYCE
Morganton, N. C.

Astro



MORRIS, HARRIET *Astro*
Jackson, N. C.

MORRIS, MARIANNA *Phi*
Fremont, N. C.



MURRAY, DOROTHY *Astro*
Cary, N. C.

NEAL, NATALIE *Phi*
Raleigh, N. C.



NEWBOLD, JENNIE LOU *Phi*
Elizabeth City, N. C.

OATFIELD, MRS. LILY
Raleigh, N. C.



OGLESBY, IDALIA *Astro*
Hamilton, N. C.

PADGETT, SARAH *Phi*
Washington, D. C.



PARKER, NELL *Astro*
Enfield, N. C.

PATRICK, DOROTHY *Phi*
Charlotte, N. C.

PATRICK, PEGGY
Washington, D. C.

Astro



PERRY, KATHERINE
Wingate, N. C.

Astro

PITMAN, BETTY JO
Barnesville, N. C.

Astro

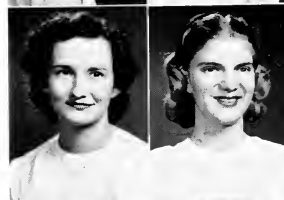


POWELL, SHIRLEY
Norfolk, Va.

Astro

POWERS, JUDY
Wallace, N. C.

Phi



PRESSLY, MARY LOU
Raleigh, N. C.

Astro

RICHARDSON, CAROLYN
Seagrove, N. C.

Astro



ROBERSON, BROWNIE
Washington, N. C.

Astro

RUPPELT, BESS
Charlotte, N. C.

Phi



SADLER, DOROTHY
Anderson, S. C.

Astro



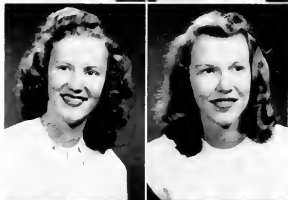
SAWYER, MARY LOU *Phi*
Toms River, N. J.

SCARBOROUGH, IRIS *Phi*
Mount Gilead, N. C.



SEAGROVE, JEAN *Phi*
Clinton, N. C.

SHIRLEY, ELLA MAY *Phi*
Weldon, N. C.



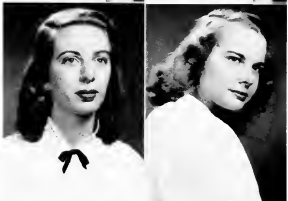
SHUFFLER, LOIS *Phi*
Raleigh, N. C.

SINCLAIR, BETTY *Phi*
East Flat Rock, N. C.



SMITH, FRANCES *Astro*
Gastonia, N. C.

SMITH, HELEN *Phi*
Gaffney, S. C.



SMITH, MARGARET HOPE *Astro*
New Bern, N. C.

SNELLING, MARIE *Phi*
Charlotte, N. C.

AKE, REBECCA
Shelby, N. C.

Astro



SPERLING, MABEL
Cherryville, N. C.

Astro

RUILL, FRANCES
Plymouth, N. C.

Astro



STOWE, ANNE
Goldsboro, N. C.

Astro

ROUD, JEAN
Kinston, N. C.

Astro



SWANSON, BARBARA
Pilot Mountain, N. C.

Astro

VARINGEN, DOROTHY
Albemarle, N. C.

Phi

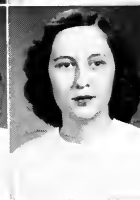


TAYLOR, MARIE
Raleigh, N. C.

Phi

THOMAS, ELOISE
Weldon, N. C.

Phi



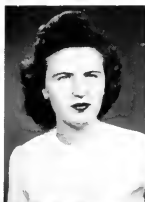
THOMASSON, DORIS
Bryson City, N. C.

Astro



TONGUE, ANNE
Raleigh, N. C. *Astro*

VINSON, JOYCE
Clayton, N. C. *Astro*



WALL, MARJORIE
Pee Dee, N. C. *Astro*

WALLS, FRANCES
Apex, N. C. *Phi*



WALSTON, APPIE
Roxobel, N. C. *Astro*

WARD, FRANCES
High Point, N. C. *Astro*



WESTON, ELIZABETH
Warrenton, N. C. *Astro*

WHITE, DOROTHY
Hertford, N. C. *Astro*



WILLIAMS, JOYCE
Whiteville, N. C. *Astro*

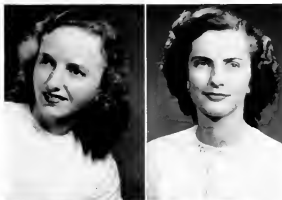
WILLIAMS, MARJORIE
Miami, Fla. *Phi*

WILLIAMSON, DORIS
Buffalo Junction, Va.

Astro

WILSON, JEAN
Boone, N. C.

Astro



WILSON, MARIE
Raleigh, N. C.

Astro

WILSON, MARJORIE
Rural Hall, N. C.

Astro

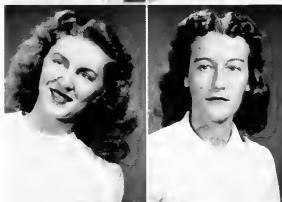


WOODARD, GWENDOLYN
Raleigh, N. C.

Phi

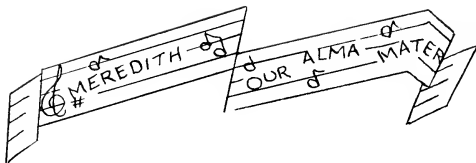
WORTH, MARIANNA
Indian Head, Md.

Phi



YARBROUGH, ROSE MARIE
Burlington, N. C.

Phi





ELIZABETH JONES
President

THE SOPHOMORE CLASS

- ELIZABETH JONES..... *President*
- EMILY POOL..... *Vice President*
- BETSY ANN MORGAN..... *Secretary*
- ALICE TUTTLE..... *Treasurer*
- MISS ALICE KEITH..... *Sponsor*

Meredith never has seen and probably never will see again a class like ours, the class of '50. Even though small in size, we have proved our ability by winning Stunt with "And There Shall Be No Night." And let's not forget our Palio "Bookworms." Remember those green worms with black legs? Even though we didn't achieve a victory at Palio, our class participation was in higher per-

centage than that of any other class. As the first semester progressed, the sophomores, one by one, five to be exact, paid visits of various duration to Rex Hospital. Our president and vice president were among the unfortunates, and each of the remaining forty-five held her breath and queried, "Who'll be next?" Spring work on, highlighted by Easter vacation, May Day, and "Soph Day Off." Wherever we go every member of the Sophomore Class will remember, nostalgically, the many things that made the year '47-'48 a truly remarkable one.



Morgan, Jones, Pool, Tuttle



First row, left to right:

BENNETT, NAOMI; BUTLER, BARBARA; CHILDRESS, DOROTHY; CONCHA, DORIS; COVINGTON, CAROLYN;
DOBBINS, MARY LOU.

Second row:

ELLIOTT, ADDIE; FITZGERALD, WINNIE; GOLDSTON, ELLEN; GREENE, GLADYS; HALL, MARGARET
ANNE; HARMON, JUNE.

Third row:

HARRIS, LAVERNE; HAWES, ELBA RAYE; HOCKADAY, OTLEY; HOLDFORD, ELIZABETH; JONES,
ELIZABETH; JOSEY, ANN.

Fourth row:

KENNEDY, JOYCE; LEATHERMAN, MARGUERITE; MCDANIEL, JANE; MAYTON, MINA; MEADOWS,
FRANCES LEIGH; MILLER, ANNETTE.

Fifth row:

MILLS, BETSY; MOORE, BETTY; MOORE, GAZELLE; MORGAN, BETSY ANN; NARRON, IMOGENE;
PAGE, SUE.



First row, left to right:

PARKER, SHIRLEY; PERRY, KATHLEEN; PHILLIPS, MARGARET; POOL, EMILY; POPE, SARA; RENNER, ALICE.

Second row:

ROSY, MARY; SNIDER, VIRGINIA LEE; SNOW, JOSEPHINE; STACY, EMILY; SUGG, ELEANOR; TAYLOR, SALY.

Third row:

TUTTLE, ALICE; TYSINGER, BETTY JO; VALLAS, ROXIE; WILLIAMS, FRANCES; WILLIAMSON, CHRISTINE; WILSON, GWEN.

Fourth row:

WILSON, BERTHA; WOODBURY, JOYCE; WOOTEN, ANN; ZULALIAN, ELIZABETH.







MARJORIE JOYNER
President

THE FRESHMAN CLASS

MARJORIE JOYNER *President*
CATHERINE CARPENTER *Vice President*
JOAN MEADOWS *Secretary*
BETTY PROFFITT *Treasurer*
MISS DORIS PETERSON *Sponsor*

Through laughter, much "straining" brainwork, and even a few tears, we have finally emerged from being lowly freshmen.

Ever since our first day together here at Meredith, there has come a binding class spirit which has helped us to enjoy all the experiences we've shared—getting over our homesickness—playing pranks just after light bell (our favorite hour of the night)—winning second place in Palio by freezing in doughnut costumes—slaving over our class stunt on inflation—doing

research work by trying to find chaperones—looking forward to weekends and HOME!—learning to face the disappointment of an empty mailbox—gaining higher knowledge often while sitting on a cold, hard floor—lifting our voices at vespers and family altar—taking the shock of six-weeks' grades—getting interested in State College—looking forward to more fun next year when we're together once more, as sophomores!



Joyner, Carpenter, Meadows, Proffitt

ALLEN, DOROTHY
ALMOND, FRANCES
ALTMAN, FRANCES
ATKINS, JEANETTE



AUSBON, BETSY
BABB, LOTTIE MARGARET
BAILEY, JOYCE
BAKER, PHYLLIS



BARDEN, EVELYN
BACHELOR, BEVERLY
BENBOW, PEGGY
BIGGS, EVELYN



BLACKMAN, PATRICIA
BOGGS, BETH
BONE, SHIRLEY
BONNVILLE, RONIE



BORDEAUX, DAPHNE
BOWEN, MARY
BRADLEY, DEBBIE
BRAMBLE, JENNETTE



BRANSCOMB, BETTY
BRANTLEY, ANNIE PEARL
BREWER, HELEN
BRITT, LOUISE



BROOKENS, RUTH
BURCH, JANE
CARPENTER, CATHERINE
CARTER, ERLENE



CLARK, SARAH BURTON
COMPTON, BETTIE
CRITCHER, ANNE
CURRIN, SYLVIA

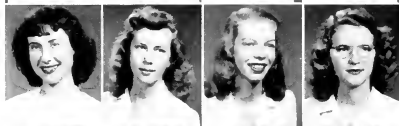




CUTHRELL, MILDRED
CUTTS, DOROTHY
FOUCHE, ANNE
DEAN, BETTY LOU



DEANE, KATHLEEN
DEBNAM, JANET
DENNIS, BARBARA
DEVANE, MARY



ELLIOTT, MILLICENT
EMORY, PATSY
ESTRIDGE, FRANCES ANNE
EZZELL, LUCILLE



FAGAN, NORMA
DAVIS, LYDIA
GILBERT, FLORA
GOODWIN, MARY ANN



GRAVES, VERDIE
GRESHAM, INA
GRIFFIN, RUTH
GUPTON, LE GRACE



HALL, BETTY ANN
HAMILTON, AUDREY
HARE, MARTHA
HARRELL, ALICE



HEFNER, NANCY
HELMS, DOROTHY
HENRY, ZANE
HENRY, VIRGINIA



HICKS, LEIGH
HODGES, HOPE
HOOTEN, FLEDA
HORD, MARY BETH

HOUGH, EMMA LEE
HOUSE, EMMA
JOHNSON, DOROTHY
JONES, VIRGINIA



JORDAN, BETSY
JOSEY, MARY BLAND
JOYNER, MARJORIE
KESSELRING, PHYLLIS



KINKEAD, MARCINE
KIRKLEY, LORENA
KNAPP, SHEILA
KNOTT, REBECCA



KNOTT, ROSALIND
LANCASTER, FRANCES
LEACH, MARGARET
McARTHUR, LAMARIE



McLELLAND, SARAH
McRACKAN, ANNE
MASON, JOANNE
MASSEY, CAROLYN



MATTHEWS, STELLA
MATTOX, VIRGINIA
MEADOWS, JOAN
MELVIN, ANN



MILES, JANE
MILLS, MARILYN
MIMS, KATHRYNE
MORGAN, ANNIE DRAKE



MORGAN, JACKIE
MORTON, ANNE MARIE
MURRELL, PEGGY
NEWBERN, SARAH JANE





OLIVE, JEAN
PARKER, CAROL
PEARSON, BARBARA
PENNY, BETTY



PERRY, JAMIE LEE
PITTARD, JOANNA
POPE, DELL
RAINES, BETTIE LOVE



REID, JANE
RHYNE, GENE
ROBERTS, JANET
ROBINSON, LOIS



ROGERS, BETTY LOU
ROWLAND, ELIZABETH
SAPP, JESSIE
SAUNDERS, ELAINE



SHERRILL, ANNE
SHINGLETON, LOUISE
SHULER, BETTY JANE
SHULL, LOIS



SIMMONS, LOIS
SMITH, BILLIE
SMITH, MARTHA
SNIDER, MARY LOUISE



STEPHENS, DOROTHY
STEVENS, DEETER
STOUGH, MARTHA
STRAUGHAN, REBECCA



STROUP, LUCY
SWANN, MARGARET
TAYLOR, JEAN
TERRELL, DORIS

COLAN, MARJORIE
 TODD, BARBARA
 TYNDALL, MONA
 UTLEY, MARY JANE



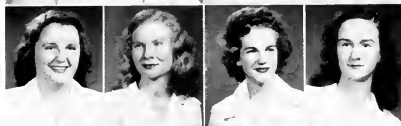
WALKER, HELEN
 WALKER, MARGARET
 WALKER, NANCY
 WALSTON, DONNA



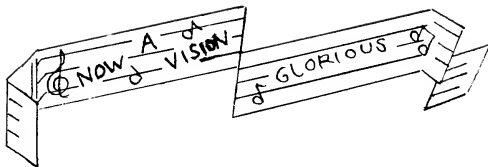
VARE, MARILYNN
 WASHBURN, MARGARET
 WHIGHARD, BETTY
 WHITE, PEGGY



VICKER, ELISE
 WILSON, EVELYN
 WILSON, LENORA
 WINSTON, MARION



YATES, BETTIE
 YELVERTON, DAPHNE
 YOUNG, MAE JO



SUMMER SCHOOL

What the girls in the student body of the Meredith College Summer School lacked in numbers they made up for in spirit, as they participated in many varied activities for six brief weeks last summer.

With the social activities under the able supervision of Miss Doris Peterson, the students and the faculty members played almost as much as they studied. At the beginning of the session, the Social Committee held a picnic at the Chimney. This function was followed by a campus sing, and still later by a scavenger hunt (Mr. Martin still hasn't found a hydrangea leaf!).

Under the supervision of the Baptist Student Union, vespers were held each Wednesday evening at the Chimney, accompanied by a faint chiming of the bells from the State College Tower. We went to the Negro Tubercular Sanatorium one afternoon, taking the patients gifts and singing and visiting with them.

The social life enabled us to meet students from other colleges. The Baptist Student Union Councils of Meredith and State College sponsored a wiener roast at Pullen Park. A Roundtable Discussion Group met weekly to discuss current problems with Turkish,





Norwegian, and Indian as well as other students participating.

From a variety of activities and opportunities, we derived a great many more benefits than the mere completion of six hours credit. It

was a six weeks wholesomely and pleasantly spent in study, play, and social and spiritual fellowship. Graduating Seniors: Letha Bullock, Florine Evans, Marguerite George, Esther Hollowell, Betty Linney, Marie Mason, Margaret Spiro, Joyce Thomas.



Student Government Council members

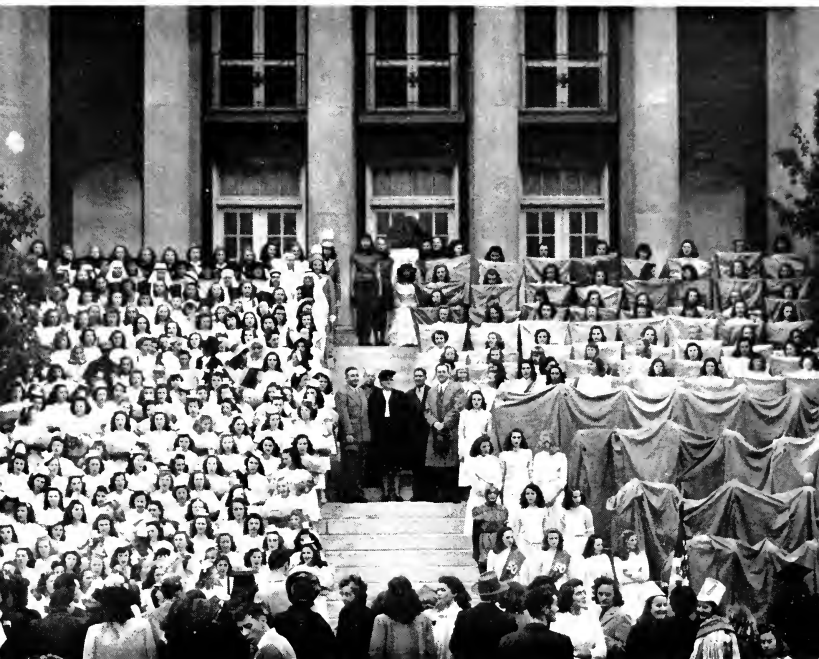


BSU Council

“Happy College Days That Mean So Much to Each of Us”



ACTIVITIES



Palio is the name of a medieval festival held annually since about 1560 in Siena, Italy. It is called "Palio" from the word for the banner given as the prize for a horse race between wards of the city. The custom of celebrating Palio at Meredith College was begun in 1935 by Miss Marian Warner, of the Physical Education Department, and Miss Ida Poteat, of the Art Department. Since that time, it has been an annual college event. Palio includes a colorful outdoor contest between classes, a parade, a horse race, singing, and much jolly nonsense. To the winning class, which this year was the Junior Class, is presented a special Meredith Palio banner, a gift of Dr. Helen Price, of the Department of Ancient Languages.

STUDENT GOVERNMENT ASSOCIATION



The Student Government Association is composed of the entire Student Body with its executive power vested in the Student Council, whose twenty-six members are elected annually. Closely associated with the student Council are the Advisory Committee, consisting of the Dean of Women and two faculty members chosen by the Council; and the Faculty Committee on Student Government, consisting of the Academic Dean, the Dean of Women, and three faculty members selected by the faculty.

Student Government endeavors to encourage cooperation, loyalty to the college, and a spirit of love and friendship among students. To learn to apply successfully the principals of honor and unselfishness to community life and to participate constructively in the administration of the government are goals of the broader education which Student Government sets for each student.

STUDENT COUNCIL

EDNA FRANCES THOMPSON,
MARY VIRGINIA WARREN.

President
Vice President
ELIZABETH ANN WALLIS,

BARBARA SWANSON,
JEAN GADDDY
Chief Counselor

Secretary
Treasurer



JONES HALL: Gayle Wells, *President*; Opal Clemmons, Eleanor Lockamy, Christine Creech, *Vice Presidents*.
 FAIRCLOTH HALL: Dorothy Singleton, *President*; Sue Jarvis, Joy Stillwell, Mary Frances Carpenter, *Vice Presidents*.
 STRINGFIELD HALL: Catherine Campbell, *President*; Carolyn Richardson, Magdalene Creech, Dorothy Swaringen, *Vice Presidents*.
 VANN HALL: Lena Glenn Highfill, *Acting President*; Billie Hart, Margaret Long, *Vice Presidents*.
 NON-RESIDENT STUDENTS: Doris Harris, *President*; Jerry Miller, *First Vice President*; LaVerne Harris, *Second Vice President*; Shirley Hurwitz, *Third Vice President*.
 SOPHOMORE REPRESENTATIVES: Frances Leigh Meadows, Gazelle Moore.
 FRESHMAN REPRESENTATIVE: Peggy Benbow.

FRESHMAN AND TRANSFER COUNSELORS

Because the College is eager to help all new students to become better acquainted with Meredith College life, students are carefully selected from the upper classes to serve as counselors for these new students. Members of the College staff assist the Counselors in an advisory capacity. It is the duty of each counselor to strive throughout the entire year to create in the new student a feeling, a belonging, to develop an understanding and appreciation of the College rules and regulations, and to counsel the individual student whenever necessary and advisable.



ANN WALLIS
Chief Counselor



COUNSELORS: Harriet Ashcraft, Anne Boykin, Rita Britt, Mary Frances Carpenter, Opal Clemons, Mary Lou Dawkins, Winnie Fitzgerald, Margaret Hall, Lena Glenn Highfill, Nell Hunter, Sue Jarvis, Elizabeth Jones, Frances Meadows, Shirley Parker, Carolyn Richardson, Mary Lou Sawyer, Dot Swaringen, Mary Evelyn West, Doris Williamson, Marianna Worth. TRANSFER COUNSELORS: Virginia Gerock, Emma McPherson, Jennie Lou Newbold, Miss Lillian Grant, *Adviser*.

BAPTIST STUDENT UNION



GLORIA MAYER
President

The B.S.U. has but one goal: God predominant in the life of each student at Meredith. An Executive Council elected by the student body meets weekly to make plans to effect this end. Groups meet in Sunday School, Training Union, Vespers, and Fellowship Hours to strengthen commitments to this purpose. For one week each year, chapel talks, seminars, and class-room discussions, led by competent ministers of the Christian religion, direct the attention of the entire college to the desired goal. This program we call Religious Emphasis Week or Religious Focus Week. In all its activities throughout the year, the B.S.U. strives to bring the students to a positive happy approach to life, to a point of understanding in which God, as known through Christ, is recognized as the primal impulse for creative campus living.



B. S. U. COUNCIL

OFFICERS

GLORIA MAVER	<i>President</i>
EDITH STEPHENSON	<i>First Vice President</i>
BETTY BROOKS	<i>Second Vice President</i>
MARJORIE WILSON	<i>Third Vice President</i>
EDITH COOPER	<i>Secretary</i>
NELL HUNTER	<i>Treasurer</i>
RITA BRITT	<i>Sunday School Director</i>
HARRIETTE LITTLEJOHN	<i>Training Union Director</i>
EMMA McPIERSON	<i>Y.W.A. President</i>
KATHERINE WYATT	<i>Program Chairman</i>
KATHERINE LEWIS	<i>Music Director</i>
BETTY MOORE	<i>Publicity Artist</i>
JUDY POWERS	<i>Publicity Editor</i>
BETSY ANN MORGAN	<i>Arrangements Chairman</i>
MISS BILLIE RUTH CURRIN	<i>Director of Religious Activities</i>



This ceremony unites the New Student with the Church.



The Council takes a rest during their Pre-School Planning Conference

ASTROTEKTON



LOIS HARMON
President

LOIS HARMON	<i>President</i>
DORIS CARROLL	<i>Vice President</i>
BETTY JEAN JOHNSON	<i>Secretary</i>
ALICE TUTTLE	<i>Treasurer</i>
GAZELLE MOORE	<i>Sergeant-at-Arms</i>
MISS PHYLLIS CUNNINGHAM	<i>Sponsor</i>

"See thy children, Mother Astro, Sisters of the Gold and White" singing to the freshmen in September, hiking to Allen's Pond for a gay picnic, pleading during Rush Week, screaming through initiation, planning the lovely Astro wedding, triumphing on Decision Day, laughing at the Valentine Party with their King and Queen of Hearts, listening to poetry or seeing a movie at a monthly meeting, practicing the annual play, installing new officers, and voicing their motto on Society Night, "He builds too low who builds beneath the stars." Active, exciting, beneficial—an Astro year of "hitching your wagon to a star" brings '48 to June, "waiting for thy benediction and thy bidding always sweet."



CARROLL, JOHNSON, MISS CUNNINGHAM, HARMON, TUTTLE





PHILARETIAN

During Rush Week, all Phis don their purple sweaters and eagerly hurry here and there over the campus arranging details for the big Phi bonfire, for food, for songs, and for other entertainment with which to "rush" the new students into the Phi Society. Then at the dawning of each day, they brave the cold morning air to sing lustily to the slumbering students. The Phis serve the rushees at breakfast and lunch, with added entertainment at dinner. They end the day by invading rooms at bedtime, carrying Phido bears and food for "Phi" thought. A candle-light service and Decision Day end the week. Throughout, however, each Phi maintains a spirit of sincerity and friendliness, for in her heart is the Phi motto, which inspires the best in young womanhood—"Plain Living and High Thinking." There is much fun and fellowship shared in the regular meetings, in the parties, in practicing for the Phi play, and on Society Night. Each Phi joins in singing with sincerity, "Lead on, O Philaretia air, Lead upward day by day."



LOUVENE JORDAN

President



HARRIET ASHGRAFT
Secretary

LOUVENE JORDAN
President

MARIE SNELLING
Vice President

JEAN BECKMAN
Sergeant-at-Arms

ELAINE BOGGS
Sponsor

WINNIE FITZGERALD
Treasurer





PHI MARSHALS

BARBARA JOHNSON

EDITH STEPHENSON

EUNICE ANDREWS

DORIS CONCHA



ASTRO MARSHALS

MICKEY GRADY

JEANNE DICKENS

BETTY DAVIS

RUTH HALL

THE ACORN

Almost every member of an *Acorn* staff leaves her station with pleasant and some rather amusing memories, these latter taking on their ridiculous aspects only after being mellowed by age. There are often discouraging events or circumstances that cause considerable tribulation before the publication of an admirable literary magazine is possible. There are times when, to the editor's dismay, she finds that there is not a usable short story on the campus. Hence, the editor herself must produce the manuscript, and furthermore, it must be a good one. Then there are the times when the business manager realizes that positively no one is in the least interested in advertising through our magazine, and that she, with a deadline slapping her in the face, must rack her brain desperately for either a new approach or a new firm to approach. Indeed, each staff member has her troubles, but there is always a reward waiting if she meets and comes through her problems courageously. Only a journalist knows the satisfaction of placing into the hands of his reader a publication that has been created out of brain and brawn of both himself and fellow writers and workers, a publication that maintains high standards of skill and content. These are the values cherished by the staff of the *Acorn*.



FRANCES ALEXANDER, *Editor*
ANNE BOYKIN, *Business Manager*





EDITORIAL STAFF

FRANCES ALEXANDER *Editor*
 DORIS LEE *Assistant Editor*
 DORIS JOHNSON *Managing Editor*
 JEAN BRADLEY *Art Editor*
 MARY BETH THOMAS *Assistant Art Editor*
 ESTHER GREEN, MARY HUMPHREY *Senior Editors*

DR. MARY LYNCH JOHNSON *Faculty Adviser*

IRIS SCARBOROUGH,
 MAGDALENE CREECH *Junior Editors*
 LAVERNE HARRIS,
 SALLY LOU TAYLOR *Sophomore Editors*

BUSINESS STAFF

ANNE BOYKIN *Business Manager*
 FRANCES LAND, ELLEN SKINNER,
 LILLIAN GADDY *Asst. Bus. Managers*
 HAZEL ELLINGTON, RUTH GREENE WALTON,
 EVELYN HODGES *Typists*

THE TWIG

"Newspaper of the Students of Meredith College." Monday meetings . . . Friday deadlines . . . Saturday make-up . . . Wednesday proofing . . . Friday publication . . . Monday meetings . . . Such is the never-ending, two-week cycle of events for the members of the *Twig* staff. It's smooth—that is, except when we are forced to rush madly to the printers to cut a detailed account of a lecture which was cancelled after the *Twig* had gone to press; except when our most important patron firm decides to discontinue all advertising, including that in the *Twig*; except when a picture is lost on its way to the engraver, and a blank space in the dummy sheet stares us in the face until a substitute is found deep in the recesses of someone's album! That's all in a day's work for us, though, and is counteracted by the thrill we get from seeing each issue roll off the press ready for distribution, by the excitement of plans being made for a special edition, by the press convention in the spring and aspirations for a Journalism Club on the campus.

Each day is packed with action and suspense for the editors, the reporters, and the business staff of the *Twig*, who strive to cover every phase of campus activity with news and feature stories, editorial material, and pictures, so that a representative, clear-cut view of Meredith life, its activity, and its opinion, may be presented and recorded.



MARGARET MOORE, *Editor*
LILLIAN GADDY, *Business Manager*





EDITORIAL STAFF

MARGARET MOORE	<i>Editor</i>	LAVERNE HARRIS	<i>Alumnae Editor</i>
MAXINE BISSETTE	<i>Managing Editor</i>	MARY LOUISE MILLIKEN	<i>Exchange Editor</i>
BARBARA SHELLSMITH COTTON	<i>Associate Editor</i>	BETTY JEAN JOHNSON	<i>Sports Editor</i>
JEAN BRADLEY	<i>Associate Editor</i>	BARBARA JOHNSON	<i>Music Editor</i>
DORIS LEE	<i>Feature Editor</i>	JANE LASSITER	<i>Columnist</i>
CHRISTINE CREECH	<i>Photo Editor</i>		

Reporters: Ella Mae Shirley, Mary Lou Dawkins, Doris Concha, Shirley Hurwitz, Emily Pool, Magdalene Creech, Nancy Walker, Marjorie Joyner, Frances Lancaster, Beth Boggs, Rosalind Knott, Lois Harmon, and Janet Debnam.

Typists: Margaret Westmoreland, Doris Concha, Elva Gresham, Becky Lynn.

BUSINESS STAFF

LILLIAN GADDY	<i>Business Manager</i>
JERRY MILLER	<i>Advertising Manager</i>
MARIE KINLAW	<i>Circulation Manager</i>

Members of Business Staff: Marianna Worth, Jane McDaniel, Marie Wilson, Anne Tongue.

DR. HAROLD G. MCCURDY	<i>Faculty Adviser</i>	DR. HARRY E. COOPER	<i>Photographer</i>
---------------------------------	------------------------	-------------------------------	---------------------

THE OAK LEAVES

An editor's job is not an easy one, nor is there any rest for the business manager of a publication. Do you think the editor enjoyed having all those announcements made in chapel, changing picture schedules because the weather wouldn't cooperate, spending Christmas and mid-year holidays mailing pictures to the engraver, and forcing the associate editor to write copy in February about the activities of March, April, and May? And the business manager had the thankless job of sending out bills, collecting our fifty cents for club pictures, robbing the seniors of seven dollars for space fees, putting pressure on the Raleigh merchants for ads, and most important paying for all the editor spent. No, ours was no life of ease; but for all the time and effort which went into the publication of this issue of the OAK LEAVES, the staff has, in turn, the satisfaction of knowing that we have contributed to each girl at Meredith something lasting and worthwhile. We hope you like it!



VIRGINIA CAMPBELL, *Editor*
MARIE SNELLING, *Business Manager*





EDITORIAL STAFF

VIRGINIA CAMPBELL *Editor*
 ESTHER GREEN *Associate Editor*
 DORIS CARROLL *Senior Editor*
 JANE LASSITER *Junior Editor*

WINNIE FITZGERALD *Sophomore Editor*
 BETTY ANN HALL *Freshman Editor*
 FRANCES LAND
 ELLEN SKINNER *Photographic Editors*
 MARJORIE WILLIAMS *Art Editor*

DR. JULIA H. HARRIS *Editorial Adviser*

DR. E. F. CANADAY *Business Adviser*

BUSINESS STAFF

MARIE SNELLING *Business Manager*
 CATHERINE CAMPBELL
 BETTY DAVIS *Senior Business Managers*
 VICTORIA HARRELL,
 REBECCA SPAKE *Junior Business Managers*

GAZELLE MOORE, ROXIE
 VALLAS *Sophomore Business Managers*
 MARY FRANCES KEENE
 MARGARET WESTMORELAND *Typists*

MEREDITH LITTLE THEATRE

MARY FRANCES KEENE *Vice President*

SALLY LOU TAYLOR *Secretary*

GAZELLE MOORE *Treasurer*

AINSLIE PRYOR *Adviser*

The Little Theatre is an organization which affords an opportunity for experience in dramatic activities, such as directing, writing, acting, costuming, and staging. In the fall, the students participate in "Stunt Night," a program presenting original skits produced by each class. Two major productions are given by the Little Theatre, one in the fall and one in the spring. Early in the second semester the Little Theatre sponsors the Society and Freshman Class plays. The winning Society play receives the Little Theatre cup and is also entered in the Dramatic Festival in Chapel Hill. This year we were fortunate in being able to sponsor a professional group, The Barter Theatre of Virginia, in two productions: "The Importance of Being Ernest," and "The Barretts of Wimpole Street." Through active participation in Little Theatre productions, students receive points which entitle them to membership in this organization.



EDITH CAMP

President

Active members: Christine Bordeaux, Edith Camp, Pauline Cone, Elsie Corbett, Doris Carroll, Lois Harmon, Mary Humphrey, Mary Frances Keene, Majorie King, Betty Moore, Gazelle Moore, Margaret Moore, Naomi Pugh, Dot Singleton, Dot Swaringen, Sally Lou Taylor, Frances Thompson, Mary Virginia Warren, Christine Williamson, Doris Williamson, Cathie Wishart, Edith Stephenson, Daphne McLawhorn.



EDUCATION CLUB



JEAN MADDREY WILSON.....	<i>President</i>	BETTY DAVIS.....	<i>Treasurer</i>
MARGARET BUNN.....	<i>Vice President</i>	MARY DELL FALES.....	<i>Social Treasurer</i>
ANNA HOLMES LEWIS.....	<i>Secretary</i>	DORIS CARROLL.....	<i>Reporter</i>

Sponsors: B. Y. Tyner, Harry K. Dorsett, Lila Bell

Striving toward the raising of standards of education is not "all work and no play," as is proved by the Meredith College Education Club. In this club there is a social life and fellowship enjoyed by all who are trying to become better acquainted with the aims, objectives, and accomplishments of modern education. The club is known for its large membership, which is open to those taking courses in education.

MEMBERS

Harriet Ashcraft, Faye Baker, Jean Beckman, Edith Boger, Eugenia Bradley, Jean Bradley, Aileen Cain Briley, Becky Britt, Grace Brown, Jean Bryan, Margaret Bunn, Lela Butts, Melba Byrd, Doris Carroll, Meredith Cash, Elizabeth Cherry, Madelyn Clinard, Mary Frances Craig, Magdalene Creech, Nancy Creech, Mary Lou Culler, Betty Davis, Sara Davis, Christine Dunn, Eva Kitehin Edwards, Mary Dell Fales, Jean Ferebee, Jean Gaddy, Carolyn Gay, Virginia Groock, Stennette Graham, Kathryn Griffin, Thelma Haigler, Arlene Hall, Ruth Hannon, Phyllis Harrington, Evelyn Hodges, Lou Ella Hoots, Frances Huffman, Louise Hunt, Iva Hurst, Kathleen Isbell, Barbara Johnson, Frances Land, Anne Lassiter, Anna Lewis, Margaret Long, Nancy Jo Massey, Orea Mauney, Bennie McGougan, Betsy Mills, Peggy Mitchell, Martha Jean Modlin, Joyce Moore, Margaret Moore, Harriet Morris, Margaret Morris, Doris Nichols, Jean Olive, Nell Parker, Margaret Phillips, Betty Jo Pitman, Miriam Powell, Mary Lou Pressly, Brownie Robertson, Emily Robertson, Carrie Rouse, Dorothy Sadler, Jane Sanders, Mrs. Carrie Wright Sasser, Jean Seagrove, Frances Simpson, Margaret Hope Smith, Marie Snelling, Mabel Sperling, Mildred Eloise Thomas, Jolene Weathers, Gayle Wells, Lib Weston, Dorothy White, Alice Williams, Joyce Williams, Jean Maddrey Wilson.

STUDENT LEAGUE OF WOMEN VOTERS

OFFICERS

JANE MIDDLETON	<i>President</i>	HAZEL WILLIAMSON	<i>Secretary</i>
ROSEMARY DEAN	<i>Vice President</i>	LORENE ADAMS	<i>Reporter</i>
DR. ALICE KEITH		<i>Sponsor</i>	

The Student League of Women Voters has been an active organization on the Meredith campus since 1930. The Club has as its aim the making of intelligent voters and enlightened citizens of its members. This year in the study of federal and state government, the club has had such prominent speakers as Mr. Thad Eure, Secretary of State in North Carolina, and Mr. W. C. Harris, a local authority on country government. One of the objectives has been to help in reorganizing the Student Legislature, which previously was held each year in Raleigh at the Capitol. The new Student Legislative Council met at Meredith on March 6 for a very important "planning" meeting.

Membership is not limited; the club is making an effort to interest all students in beginning to study and understand our nation's government, leaders, and policies.

MEMBERS

Lorene Adams, Becky Ballentine, Doris Casey, Pauline Cone, Elsie Corbett, Betty Cox, Betty Lou Dean, Rosemary Dean, Mary Dell Fales, Mollie Fearing, Mary Gravely, Elizabeth Hardison, June Harmon, Martha Hooks, Polly Langston, Daphne McLawhorn, Jane Middleton, Marianna Mizelle, Betty Moore, Harriet Morris, Shirley Powell, Naomi Pugh, Iris Scarborough, Dorothy Singleton, Eloise Thomas, Frances Thompson, Genie Jo White, Hazel Williamson, Betty Yates.



INTERNATIONAL RELATIONS CLUB

OFFICERS

DORIS CASEY	<i>President</i>	ELEANOR LOCKAMY	<i>Program Chairman</i>
CATHERINE CAMPBELL	<i>Vice President</i>	CARRIE ROUSE	<i>Librarian</i>
GENIE JO WHITE	<i>Secretary-Treasurer</i>	MRS. LILLIAN PARKER WALLACE	<i>Sponsor</i>

The International Relations Club, under the auspices of the Carnegie Endowment for International Peace, was organized to promote a better understanding of world affairs, to inspire and maintain an interest in international problems, and to promote friendly relations with people of other nationalities. The Collegiate Council for the United Nations, which has as its aim the promotion of an understanding of the United Nations, works as a cooperating committee under the International Relations Club.

MEMBERS

Lorene Adams, Ann Beal, Christine Bordeaux, Ann Boykin, Catherine Campbell, Catherine Carpenter, Doris Casey, Elsie Corbett, Betty Cox, Mary Lou Culler, Martha Debnam, Christine Dunn, Blanch DuPree, Barbara Francis, Mickey Grady, Mary Gravely, Elva Gresham, Arlene Hall, Margaret Hare, June Harmon, Ronnie Holloman, Martha Hooks, Frances Huffman, Kathleen Ishell, Sheila Knapp, Pollyanna Langston, Ann Lassiter, Jane Lassiter, Mitchell Lee, Eleanor Lockamy, Daphne McLawhorn, Emma McPherson, Jane Middleton, Marilyn Mills, Betsy Ann Morgan, Harriet Morris, Jean Olive, Betty Jo Pitman, Shirley Powell, Bobbie Richardson, Carrie Rouse, Ella May Shirley, Dorothy Singleton, Virginia Snider, Edith Stephenson, Barbara Swanson, Sally Lou Taylor, Eloise Thomas, Frances Thompson, Joy Vinson, Mary Virginia Warren, Geneva Jo White, Christine Williamson, Gwendolyn Woodard, Katherine Wyatt, Elizabeth Zulalian.



CANADAY MATH CLUB



OFFICERS

VICTORIA HARRELL.....	<i>President</i>	JANE SANDERS.....	<i>Secretary-Treasurer</i>
REBECCA SPAKE.....	<i>Vice President</i>	DORIS WILLIAMSON.....	<i>Reporter</i>
DR. E. F. CANADAY.....		<i>Sponsor</i>	

MEMBERS

Rita Britt, Jewell Davidson, Mary Lou Dawkins, Margaret Garner, Ellen Goldston, Victoria Harrell, Doris Nichols, Helen Norville, Marcelene Simmons Penny, Jane Sanders, Brownie Roberson, Rebecca Spake, Eleanor Sugg, Frankie Ward, Doris Williamson.

The Canaday Mathematics Club, one of the youngest clubs on the campus, was organized to give students interested in mathematics a knowledge of its application in vocations and in leisure-time activities. At the regular monthly meetings guest speakers give information about the use of mathematics in their occupations and about the places in industry where mathematicians are needed. At other times Dr. Canaday, our sponsor, or one of the students, shows the members interesting uses of mathematics in entertainment. Students who have completed six hours in college mathematics are eligible for full membership; those who have completed three hours are eligible for associate membership.

BARBER SCIENCE CLUB



OFFICERS

ELIZABETH HARDISON	<i>President</i>	MARIANNA WORTH	<i>Treasurer</i>
SUSAN FLEMING	<i>Vice President</i>	ELLA MAY SHIRLEY	<i>Reporter</i>
MARTHA HOOKS	<i>Secretary</i>	MISS MARY YARBROUGH,	
		MRS. HELEN COLLINS	<i>Sponsors</i>

MEMBERS

Eunice Andrews, Maxine Bisette, Doris Concha, Rosa Deans, Sarah Fleming, Susan Fleming, Elizabeth Hardison, Rose Marie Harmon, Martha Hooks, Osce Mac Johnson, Jackie Knott, Eloise Lancaster, Jane Lewis, Margaret Long, Jane Middleton, Harriet Neese, Doris Nichols, Helen Norville, Marcelene Penny, Naomi Pugh, Edythe Reinhardt, Mary Riddle, Mary Lou Sawyer, Ella May Shirley, Barbara Swanson, Doris Thomasson, Mary Virginia Warren, Gwen Wilson, Cathie Wishart, Marianna Worth.

The Barber Science Club includes all students majoring in biology and chemistry or having a related field or an elective in science. The purpose of the club is to create throughout the student body a greater interest in science.

FREEMAN RELIGION CLUB



OFFICERS

FRANCES WARD	<i>President</i>	WINNIE FITZGERALD	<i>Secretary</i>
JUDY POWERS	<i>Vice President</i>	MARJORIE WILSON	<i>Treasurer</i>
DR. RALPH E. McLAIN	<i>Sponsor</i>		

MEMBERS

Adams, Altman, Batchelor, Bone, L. Britt, Clemmons, Colvard, Cooper, Covington, Critcher, Deaton, Eller, Fitzgerald, Gravely, Green, M. Hall, Hamrick, Hicks, Hollis, Hooten, Hough, Hunter, D. Johnson, F. Jones, Joyner, Rebecca and Rosaline Knott, Lamb, Littlejohn, Lupo, Mlayer, McCoy, McPherson, McRackan, Meador, F. Meadows, Maynard, Morgan, Olgren, Padgett, Page, C. Parker, J. Parker, Patrick, Powers, Proctor, Proffitt, Saunders, Schnedl, Straughan, Summerlin, J. Taylor, Tyndall, Vinson, H. Walker, D. Walston, Ward, Ware, West, B. Wilson, E. Wilson, M. Wilson, Woody, Yelverton.

The Hindus have a four-line proverb:

The wall said to the nail, "What have I done
That through me thy sharp tooth thou dost run?"
The nail replied, "Poor fool! What do I know?
Ask him who beats my head with many a blow!"

The author of this proverb recognized that the universe is so constructed that God is constantly making impact on man, and man universally is making some kind of response. The relationship that is formed as man responds to the approaches of God is the essence of religion. Since religion does not exist among all men and is essential to life, the Freeman Religion Club attempts to investigate that phenomenon and its any outworkings into life.

Naturally the range included by the evidences of religion in life are broad, and for that reason there is wide variety in the subjects chosen for programs. For example, the programs may center in presenting opportunities for student summer work, in relating religion to community enterprises, or in considering current controversial issues in religion.

In presenting these programs, it is hoped that the student will wake up to the need of the world for religion and be shaken out of a state of complacency. We encourage membership among all students interested in religion, but don't come saying, "This won't change me or my thinking any, will it?" IT WILL!

COLTON ENGLISH CLUB

OFFICERS

DORIS HARRIS	<i>President</i>	EDITH CAMP	<i>Publicity Chairman</i>
SHIRLEY HURWITZ	<i>Vice President</i>	JANIE NANCE	<i>Browsing Room Chairman</i>
FRANCES MOORE	<i>Secretary-Treasurer</i>	MISS HARRIS, MISS JOHNSON, MISS LANHAM, MISS ROSE, MISS HILDERMAN	<i>Faculty Sponsors</i>

MEMBERS

Ella Adams, Frances Alexander, Maxine Bissette, Eugenia Bradley, Betty Brooks, Edith Camp, Opal Clemmons, Pauline Cone, Magdalene Creech, Jewell Davidson, Blanche DuPre, Elizabeth Emory, Kathryn Floyd, Eva Kitchin Edwards, Esther Green, Victoria Harrell, Doris Harris, LaVerne Harris, Mary Humphrey, Shirley Hurwitz, Osece Mac Johnson, Marjorie King, Margaret Lamb, Jane Lassiter, Harriette Littlejohn, Glonia Mayer, Emma McPherson, Betty Moore, Frances Moore, Margaret Moore, Janie Nance, Barbara Peck (Mrs.), Emily Pool, Bess Ruppelt, Betty Sue Sinclair, Mabel Sperling, Edith Stephenson, Dorothy Swaringen, Ann Wallis, Frances Ward, Christine Williamson, Geneva Jo White.

Even though the English language, both in its written and its spoken form, is one of the most vital factors in our everyday lives, too often it is interred between the pages of a textbook, and moulders there. The members of the Colton English Club seek to make meaningful the English language and literature of both past and present, and to relate the classroom study to the workaday world. At their meetings in the Browsing Room are presented the writings of the members, book reviews, readings, and talks on various topics of interest. For the benefit of the Richard B. Harrison Library, the club sponsored during the year Dr. Hubert Poteat in a reading of "Green Pastures," as well as a book drive and a chapel program of members' poetry, the latter to the tuneful accompaniment of a January downpour.



TOMORROW'S BUSINESS WOMEN

OFFICERS

MARY FRANCES KEENE	<i>President</i>	FRANCES LAND	<i>Program Chairman</i>
MARGARET WESTMORELAND	<i>Vice President</i>	ANNE BOYKIN	<i>Reporter</i>
MARIE WILSON	<i>Secretary-Treasurer</i>	MABEL ELLIS, ESTELLE L. POPHAM	<i>Sponsors</i>

Is it a man? Is it a plane? Is it Superman? Why, no! It's our president, "MF" Keene, in a hurry to see that things are in line for the meeting. On looking a second time it, might be Maggie Westmoreland eagerly reminding everyone to be on hand for that first Thursday meeting. However, it could be Fran Land, our program chairman, dashing to meet the buyer from Belks', the secretary to the president of Carolina Trailways, or any one of the other interesting personalities appearing on our year's program. No one should be too surprised to discover it to be Treasurer Marie Wilson getting her report in, or Reporter Anne Boykin trying to meet a deadline. Could it be Ellen Skinner running to the P. O. with letters for the graduates? If it were December, then we could assume that it was Ruth Walton loaded with Christmas tree ornaments on her way to the S&W for the party for the Raleigh alumnae business majors. All the Tomorrow's Business Women have been SUPERWOMEN this year, but that's what it takes to develop those qualities which are needed for success in the business world.

Sophomores are invited to attend all meetings and become pledges the second semester. Membership is open to all junior and senior business majors who consider themselves to be TOMORROW'S BUSINESS WOMEN.

MEMBERS

Anne Boykin, Hazel Ellington, Louise Fritts, Lillian Gaddy, Earline Harris, Evelyn Hodges, Anna Hungerford, Louise Hunt, Lauris Johnson, Mary Frances Keene, Marie Kinlaw, Frances Land, Becky Lynn, Annalean McLamb, Jean Olive, Barbara Richardson, Ellen Skinner, Eloise Thomas, Margaret Westmoreland, Elizabeth Weston, Marie Wilson, Ruth Greene Walton, Lena Glenn Highfill.

PLEDGES

Ellen Goldston, Betty Grayson, Elva Gresham, Imogene Narron, Margaret Phillips, Eleanor Sugg, Betty Jo Tysinger, Naomi Bennett.



BEE HIVE



Snelling, Hoots, Sugg, Boggs, Humphrey

OFFICERS

LOU ELLA HOOTS.....	<i>Senior Representative</i>	BETH BOGGS.....	<i>Freshman Representative</i>
MARIE SNELLING.....	<i>Junior Representative</i>	MARY HUMPHREY.....	<i>Bee Hive Manager</i>
ELEANOR SUGG.....	<i>Sophomore Representative</i>	GLORIA MAYER.....	<i>B.S.U. Representative</i>
DR. E. F. CANADAY.....	<i>Faculty Sponsor</i>		

One of the most popular spots on the campus is the Meredith Supply Store, better known to all the girls as the Bee Hive. At almost any time during the day groups of girls may be found there sipping a coke, munching a candy bar, or just rehashing the latest bit of campus gossip.

As a result of its popularity, the Bee Hive is able to give a share of its profits every year to the Baptist Student Union; also, it uses a certain portion of its profits to pay for some project which will be a benefit to the student body.

ALPHA RHO TAU

OFFICERS

JEANNE DICKENS *President* DORIS JOHNSON *Secretary-Treasurer*
JEAN BRADLEY *Vice President* DOUGLAS REYNOLDS, MARY REAM *Sponsors*

The Alpha Rho Tau endeavors to stimulate in students of art a response to all phases of the art world and to make it possible for them to acquire a better understanding of commercial art, portrait painting, mediums, sculpturing, and history of art. We welcome those with creative ability or those without, for the purpose of our club is to encourage those in whom there stirs an art interest. All students who have at any time had an art course may be admitted to the club.

MEMBERS

Becky Ballentine, Sunshine Bellamy, Jean Bradley, Mary Frances Craig, Nancy Creech, Jeanne Dickens, Mary Dell Fales, Mollie Fearing, LeGrace Gupton, Ruth Hall, Lois Harmon, Nancy Heffner, Virginia Henry, Doris Johnson, Marjorie Joyner, Betty Moore, Florence Moore, Jean Outlaw, Mary Beth Thomas, Donna Walston, Frankie Ward, Margaret Westmoreland, Genie Jo White, Marjorie Williams.



MACDOWELL MUSIC CLUB

JOY STILLWELL *President* FRANCES SMITH *Vice President*
FRANCES SPRUILL *Secretary-Treasurer*

MEMBERS

Dorothy Allen, Jean Beckman, Virginia Campbell, Opal Clemmons, Bettie Compton, Evelyn Crumpler, Christine Creech, Ann Critcher, Kathy Deane, Jean Fleming, Carolyn Gay, Ruth Griffin, Susan Graham, Thelma Haigler, Joyce Harrell, Billie Hart, Bobbie Johnson, Eleanor Lockamy, Nancy Jo Massey, Margaret Morris, Martha J. Modlin, Jean Olive, Dell Pope, Mrs. Carrie W. Sasser, Frances Simpson, Frances Smith, Frances Spruill, Joy Stillwell, Elizabeth Stillwell, Jane Stroup, Forrestine Snider, Margaret Walker, Marion Winston, Jean Wilson, Elizabeth Zulalian, Elizabeth Zimmerman.

Do you know what music criticism really is and what it involves? Are you interested in public school music and the openings in this field? If your answer is "yes" to these questions, the MacDowell Music Club is your club. Not only music majors, but anyone interested may join.

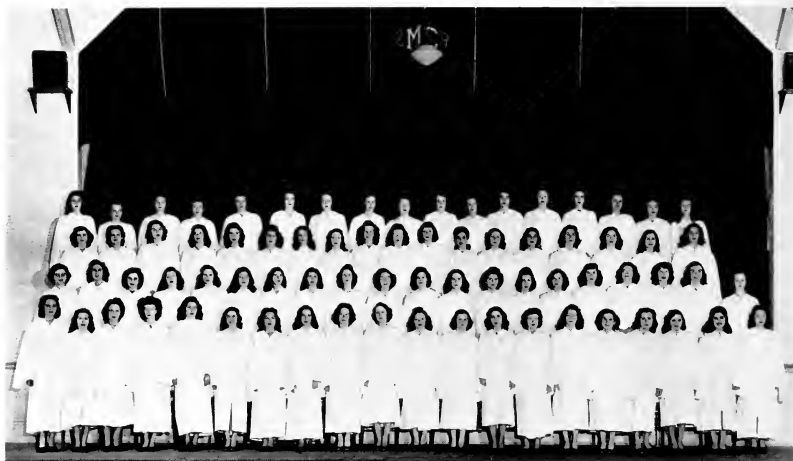
Our programs include informal talks, lectures, and demonstration lectures, as well as studies of composers and their music. Several parties are given throughout the year—the Christmas party being the main event. All who heard Mr. David Wilmot, voice and critic teacher of Meredith, were impressed by his belief in the value of a teacher of public school music and encouraged to investigate the different fields. Mr. Russell Broughton, head of the Department of Music at St. Mary's College and music critic for the *Raleigh Times*, assured us of the need for better and more sincere Music Criticism. A most revealing demonstration lecture was given by Mr. Delton Creech of the State School for the Blind. With his models and a piano, he showed us just how the piano actually produces tones. A trip into the organ loft with Dr. Harry Cooper, head of the Music Department at Meredith, as guide, helped us all to understand the why's and how's of organ tones.

Dr. Benjamin Swalin, conductor of the North Carolina Symphony Orchestra, gave us the very valuable story of the Symphony Orchestra and its plans for the future. Other guest speakers included Miss Hattie S. Parrott, State Supervisor of Public School Music; Mrs. Adeline McCall, chairman of Children's Division of the North Carolina Symphony Orchestra, and Mr. Frederick Stanley Smith, Supervisor of Music in Raleigh City Schools.

The MacDowell Music Club is a member of the North Carolina Federation of Music Clubs.



THE CHOIR



SUSAN FLEMING	<i>President</i>	CATHERINE CAMPBELL,
DOROTHY PATRICK	<i>Vice President</i>	BETSY ANN MORGAN
JEAN DANIEL	<i>Secretary</i>	BILLIE HART
		<i>Co-Librarians</i>
		<i>Accompanist</i>
	DR. HARRY E. COOPER	<i>Director</i>

The white-robed angels that make up the choir have a delightful as well as profitable class under the able direction of Dr. Harry E. Cooper. They have many and varied "singspirations" to remember—the extra practices that were necessary for those big programs, and the programs themselves. Two of these were given in conjunction with the N. C. State Glee Club in Christmas concerts. Several programs were presented over WPTF. The choir also appeared in programs on Founders Day, during Religious Focus Week, and during Commencement Week. Although some of the extra practices elicited groans from several, the witticisms of the conductor kept the whole group in a most happy frame of mind. The results of their efforts provided joy and inspiration to the members as well as to their audiences.

MEMBERS

M. Allen, Baker, Beckman, Brooks, Butler, C. Campbell, Carr, Childress, Clemmons, Clinard, Cooper, Craig, Creech, Daniel, Davis, Dean, J. Fleming, Sarah and Susan Fleming, Eller, Elliott, Fitzgerald, Graham, Haigler, N. Hall, Han- non, Harrell, Harrington, E. Harris, Hart, B. Hefner, Hoots, Hurst, Jarvis, B. Johnson, B. J. Johnson, Kennedy, King, Lamb, Lewis, Liles, Littlejohn, Lockamy, Lupo, Lynn, McLamb, Massey, Mayer, F. L. Meadows, Modlin, G. Moore, Morgan, Morris, Newbold, Nichols, Padgett, N. Parker, Patrick, Pittard, Russell, Scarborough, Simpson, F. Snider, J. Stillwell, Stowe, E. Thomas, Varn, Ward, J. Williams, J. Wilson, Yarbrough, Zimmerman, Zulalian.

GLEE CLUB



VIRGINIA CAMPBELL	<i>President</i>	JENNIE LOU NEWBOLD, MARGARET	
DORIS CARROLL	<i>Vice President</i>	WESTMORELAND	<i>Co-Librarians</i>
KATHERINE LEWIS	<i>Secretary-Treasurer</i>	VIRGINIA CAMPBELL	<i>Accompanist</i>
BEATRICE DONLEY	<i>Director</i>		

First Sopranos: Bordeaux, Carroll, Creech, Hall, Massey, Newbold, Pittard, Smith, Stowe, Warren, Wilson, Zimmerman. *Second Sopranos:* Babb, Beckman, Bowman, Elliott, Fagan, Hine, Johnson, Lewis, Pope, Stillwell E., Stillwell J. *Altos:* Brookens, Graves, Hoots, Jarvis, McNeil, Melvin, Morris, Patrick, Shingleton, Snow, Thornton, Walker, Westmoreland, Whichard.

Where could you find a group of girls as interested in high artistic achievement as in the Glee Club? Don't let anyone tell you that the only requirement is the ability to carry a tune and read notes on the staff. You have to know that C sharp and D flat are the same pitch. And you mustn't be disturbed if the time changes from 3-8 to 3-4 and back again in the same song. What a time Miss Donley had teaching us Holst's "Summer."

We sang everything from Bizet's "Agnus Dei" to a novel arrangement of "Turkey in the Straw," but the favorite seemed to be "Floods of Spring" by Rachmaninoff. The entire Glee Club got a peculiar sort of pleasure from watching the accompanist's tortured expression when she played this number.

During Religious Focus Week, we sang at one of the services. Demands for out-of-town concerts increased, and we fulfilled as many as possible. We gave programs for various civic organizations and presented a radio broadcast. Our spring concert convinced us that it had been a year well-spent.

HOME ECONOMICS CLUB

IVA HURST	<i>President</i>	MARIANNA MORRIS	<i>Treasurer</i>
DORIS MITCHINER	<i>Vice President</i>	ROSEMARY DEAN	<i>Reporter</i>
RUTH SEARS	<i>Secretary</i>	MISS ELLEN BREWER, MISS JENNIE HANYEN	<i>Sponsors</i>

With the Betty Lamp as its symbol, the Home Economics Club attempts to make its members more conscious of the opportunities for service in this field. To this end they have tried to join hands with the larger groups of which they are a part, and this year have had student delegates at the American Home Economics Association meeting in St. Louis, and at regional and district meetings in Greenville, S. C., and in Greenville, N. C. Their programs have attempted to develop professional consciousness, and broaden their sympathies for the needs of other homes. Their activities have included such varied projects as the packing of Christmas boxes for children in Europe and entertaining at tea the senior home economics students in the Raleigh high schools. Incidentally, they have had a lot of fun in the glow of that Betty Lamp!

MEMBERS

Mildred Bullard, Marguerite Bullard, Mary Frances Carpenter, Catherine Campbell, Bethea Danford, Sara Davis, Rosemary Dean, Helen Finch, Virginia Gerock, Ruth Hall, Mary Etta Hufham, Iva Hurst, Leslie Johnson, Carolyn Knight, Jane Lewis, Jane McDaniel, Jean McLamb, Geraldine Mangum, Doris Mitchiner, Geraldine Miller, Marianna Mizelle, Marianna Morris, Mary Rosy, Ruth Sears, Jean Stroud, Lillian Swinson, Mary Virginia Warren, Jolene Weathers, Gayle Wells, Frances Williams, Hazel Williamson, Ann Wooten.



SOCIOLOGY CLUB

KATHERINE WYATT.....	<i>President</i>	CHRISTINE BORDEAUX.....	<i>Treasurer</i>
KATHRYN PARKER FRYE.....	<i>Vice President</i>	BARBARA FRANCIS.....	<i>Reporter</i>
HIAWATHA LUPO.....	<i>Secretary</i>	DR. ANNA G. SMITH.....	<i>Sponsors</i>

All students who are taking courses in sociology or economics are eligible for membership in the Sociology Club. The club promotes the study of current sociological problems through monthly discussions led by outstanding leaders in the field of sociology who are located in our area. It serves as a channel for student participation in related local and state organizations and provides a clearing house for vocational information concerning the field of social work. The club serves, too, as a means for promoting a closer and more personal relationship between the students and the faculty members. The club looks forward to the annual picnic given each spring by the newly elected officers.

The programs this year have centered in the topic, "Community Functions." Dr. Selz Mayo, Professor of Rural Sociology at N. C. State College, spoke on health problems in a North Carolina county; Dr. Harold Meyer, Professor of Sociology at U. N. C., discussed recreation in the community; Dr. John Gillin, Professor of Cultural Anthropology at U. N. C., described a community in Central America; Dr. Harold Trigg, President of Shaw University, outlined the role of the Negro in the modern community; Dr. Gordon Blackwell, Director of the Institute for Research in Social Science at U. N. C., talked on community planning; and Miss Merib Mossman, Professor of Sociology at W.C.U.N.C., spoke on women in the field of sociology. Other discussions were led by Dr. Arthur Frink, Dr. Katherine Jocher, and Dr. Howard Odum, all from the Department of Sociology of U. N. C.

MEMBERS

Jean Arthur, Faye Baker, Sunshine Bellamy, Rita Britt, Christine Bordaues, Mary Bowen, Melba Byrd, Edith Camp, Madelyn Clinard, Elizabeth Colvard, Christine Dunn, Eva Kitchin Edwards, Barbara Francis, Betty Fox, Katherine P. Frye, Margaret Garner, Katherine Griffin, Margaret Hall, June Harmon, Lois Harmon, Mildred Hoyle, Nell Hunter, Betty Jean Johnson, Dorothy Johnson, Carolyn Knight, Polly Langston, Meredith Liles, Hiawatha Lupo, Bennie McGougan, Annalean McLamb, Pat McNeil, Jean Maddrey, Carol Martin, Orea Mauney, Peggy Mitchell, Doris Mitchiner, Florence Moore, Imogene Narron, Bobbie Richardson, Carrie Rouse, Ila Sherron, Ann Stowe, Barbara Swanson, Elizabeth Taylor, Rose Marie Yarbrough, Frances Williams, Katherine Wyatt, Betsy Ann Morgan, Joyce Vinson, Margaret Lamb, Pauline Cone, Margaret Phillips.



GRANDDAUGHTERS CLUB



DORIS CARROLL	<i>President</i>	CHRISTINE WILLIAMSON	<i>Treasurer</i>
JENNIE LOU NEWBOLD	<i>Vice President</i>	ANN JOSEY, EMILY POOL	<i>Co-Chairmen of Needlework Guild</i>
KATHERINE LEWIS	<i>Secretary</i>		
		MISS MAE GRIMMER	<i>Sponsor</i>

MEMBERS

Shirley Bone, Doris Carroll, Sarah Burton Clark, Nancy Creech, Lydia Davis, Addie Elliott, Jean Gaddy, Nancy Hall, Ruth Hall, Betty Hedgepeth, Eleanor Andrews Hewitt, Barbara Johnson, Katherine Lewis, Margaret Long, Ann Rackan, Mary Louise Milliken, Jennie Lou Newbold, Jean Olive, Barbara Pearson, Kathleen Perry, Betty Jo Pitman, Emily Pool, Miriam Powell, Frances Ricks, Bess Ruppelt, Dorothy Sadler, Louise Shingleton, Doris Thomasson, Jolene Weathers, Geneva Jo White, Betty Jo Whichard, Christine Williamson, Gwendolyn Wilson, Marie Wilson, Rose Marie Yarbrough, Daphne Yelverton.

"Unique Distinction." That's the motto of the Granddaughters Club. It was so designated by Miss Ida Poteat, head of the Art Department from 1899 to 1940, because the club is composed of only those girls whose mothers or grandmothers came to Meredith. As an annual project the club sponsors the Needlework Guild Drive on the campus. Also, one of the objectives is to have a mother-daughter luncheon or dinner sometime during the year. What a wonderful time we have listening to tales of Meredith "then and now!" The club was organized for the promotion of closer friendship between the "granddaughters" and the alumnae.

NOMINATING COMMITTEE

MEMBERS OF NOMINATING COMMITTEE

ANN WALLIS *Chief Counselor*
 FRANCES THOMPSON... *Student Government President*
 GLORIA MAYER... *Baptist Student Union President*
 HARRIET NEESE... *Athletic Association President*
 LOUVENE JORDAN... *Phi President*
 LOIS HARMON... *Astro President*
 EDITH CAMP... *Little Theatre President*
 MARY DELL FALES... *College Marshal*

VIRGINIA CAMPBELL... *Editor of OAK LEAVES*
 MARGARET MOORE... *Editor of TWIG*
 FRANCES ALEXANDER... *Editor of ACORN*
 MARY BETH THOMAS... *Senior Class President*
 ELLA MAY SHIRLEY... *Junior Class President*
 ELIZABETH JONES... *Sophomore Class President*
 MARJORIE JOYNER... *Freshman Class President*
 DORIS HARRIS... *President of Non-resident Students*

Advisers

MISS ANNA MAY BAKER
 MISS DORIS PETERSON

MISS JULIA HARRIS
 MISS ALICE KEITH

With the exception of the officers of classes, the Nominating Committee nominates all candidates for the campus offices that carry twenty or more points. Not all nominations, however, are made by this committee, for after their nominees are posted, other nominees may be added the day before the election by a petition from a specified number of students. The Committee also appoints the officials who preside over all elections.

The Chief Counselor is the Chairman of the Nominating Committee. Other members are the presidents of major organizations, the editors-in-chief of the publications, the college marshal, the Dean of Women, and three faculty members chosen by the Committee.



“Rah, Rah, Rah, It’s Meredith for Me”





ATHLETIC ASSOCIATION

HARRIET NEESE *President*
 MARTHA DAVIS *Vice President*
 DORIS CONCHA *Secretary*
 SHIRLEY PARKER *Treasurer*

The Meredith College Athletic Association is a campus-wide organization, whose purpose is to promote for all students an interest in an acquisition of skills in wholesome leisure time activities, to organize and administer a varied and interesting athletic program, and to stimulate a spirit of fellowship and comradeship through participation and competition.

To carry out its purpose, the Athletic Association offers to all students competition in seasonal sports, presents awards to the members of the varsity teams selected for each sport, and sponsors the following all-college projects: Paho, Stunt Night, Spring Dance Concert, Faculty-Student Play Day, Posture Week, Annual Corn Huskin' Bee, and May Day.

Comprising the Board of the Athletic Association are twenty-five student members. Miss Doris Peterson, Director of the Department of Health and Physical Education, serves as the adviser for the association and is assisted by Miss Phyllis Cunningham, Instructor of Health and Physical Education.



HARRIET NEESE
President



A.1. Board: Liles, Hall, Parker, Davis, Neese, Concha, Weathers, Dickens, Barbara Johnson, Sarah Fleming, Middleton, Hoyle, Narron, Lancaster, Butts, Bellamy, Betty Jean Johnson, Carpenter, Pugh, Witherspoon, Miss Elaine Bog-gess, Miss Doris Peterson, Miss Phyllis Cunningham.



Margaret Hope Smith, Peggy Patrick, Mildred Hoyle, Jolene Weathers, Jane Middleton, Mary Frances Craig, Eunice Andrews, Marty Davis, Betty Jean Johnson, Barbara Johnson, Naomi Pugh, Lois Harmon, Mary McCoy, Ann Josey Marianna Morris, Sunshine Bellamy, Eloise Lancaster, Frances Thompson, Jean Witherspoon, President; Gloria Mayer, Harriet Neese.



MONOGRAM CLUB

ATHLETIC TROPHY

On Society Night, the Athletic Association Board presents the Meredith All-Round Athletic Trophy to the student who has contributed most to athletics through sportsmanship, service to the association, character, teamwork, and proficiency and versatility in athletics. In 1947, this trophy was presented to Jean Griffith.



VARSITY HOCKEY



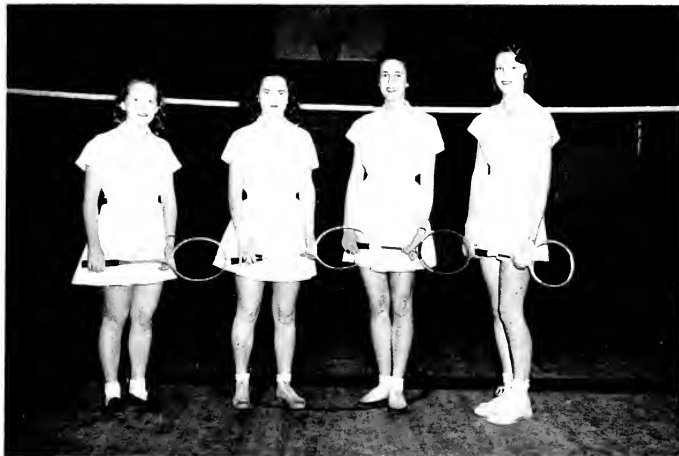
VARSITY SOCCER



VARSITY BASKETBALL



TENNIS



BADMINTON



ARCHERY



STUDENT-FACULTY PLAY DAY 1947

Remember the surprise victory of the students
over the faculty in the softball game?



CORNHUSKING BEE

You guess who these cornhuskers are!

FOLK DANCE GROUP



The Folk Dance Group is sponsored by the Athletic Association, with Miss Doris Peterson as director. The purpose of this group is to produce authentic dances in concert form and to train girls for demonstration and for the teaching of folk dances to community and school groups. Membership is limited to advanced dancers of any college class. The group ranges from thirty-two to forty-eight in number, with Jolene Weathers as manager.



EQUITATION

“For The Blind Shall See Thy Beauty”



FEATURES





Mary Dell Fales

COLLEGE MARSHAL



Frances Thompson

MISS MEREDITH

MOST POPULAR

Lois Harmon



FRIENDLIEST

Sarah and Susan Fleming





Mary Beth Thomas

MOST VERSATILE



Jean Bradley

MOST ORIGINAL



Barbara Johnson

CUTEST

MOST STYLISH

Betty Davis



WITTIEST

Eleanor Hewitt and Roselind Holloman





Naomi Pugh

MOST ATHLETIC



Dorothy Singleton

MOST INTELLECTUAL



Doris Harris

BEST ALL ROUND TOWN STUDENT



Lou Ella Hoots

MOST ATTRACTIVE



Rebecca Ballentine

Maid of Honor

Mary Dell Fales

May Queen

1948 MAY QUEEN AND MAID OF HONOR

Senior Attendants:
Christine Bordeaux
Florence Moore



MAY COURT

Junior Attendants:
Jane Lassiter
Jean Ferebee



Sophomore Attendants:
Virginia Bowman
Gladys Greene



Freshman Attendants:
Daphne Bordeaux
Dorothy Cutts

Jetta Funderburk

May Queen

Esther Hooker

Maid of Honor

1947 MAY QUEEN AND MAID OF HONOR

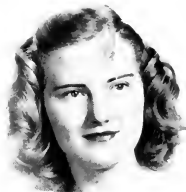




1947 MAY DAY



WHO'S WHO



FRANCES ALEXANDER
Editor, AGORN

VIRGINIA CAMPBELL
Editor, OAK LEAVES

GLORIA MAYER
President, B.S.U.

HARRIET NEESE
President, A.I.

DOROTHY SINGLETON
*President, Kappa Xi Sigma
President, Faircloth Dormitory*

MARY BETH THOMAS
President, Senior Class

FRANCES THOMPSON
President, Student Government

MARY VIRGINIA WARREN
*Vice President, Student Government
President, Silver Shield*

KAPPA NU SIGMA



DOROTHY SINGLETON	<i>President</i>
DORIS NICHOLS	<i>Vice President</i>
ELIZABETH HARDISON	<i>Secretary-Treasurer</i>
ROSA DEANS	<i>Reporter</i>
MISS HELEN PRICE	<i>Sponsor</i>

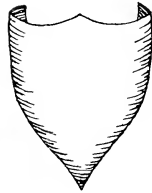
MEMBERS

Frances Alexander, Rosa Deans, Elizabeth Hardison, Mary Humphrey, Gloria Mayer, Harriet Neese, Doris Nichols, Julia Powers, Dorothy Singleton, Mary Beth Thomas, Frances Thompson, Jolene Weathers.

Beauty, intelligence, and sound mindedness are the three qualities for which Kappa Nu Sigma stands; it is the aim of the society that these qualities, all of which are embodied in scholarship, should be upheld by its members. Organized in 1923, the Kappa Nu Sigma Honor Society is composed of those students who have maintained a high scholastic standing over a period of at least two years. The leading events sponsored by the society this year have been a fall lecture which was delivered by Dr. Lodwick Hartley from State College, and the annual spring banquet and lecture. The lecturer this year was the Honorable Rhys J. Davies of Great Britain.



THE SILVER SHIELD



- MARY VIRGINIA WARREN, *President*
- GLORIA MAYER, *Vice President*
- GAYLE WELLS, *Secretary*

SPONSORS

Dr. L. E. M. Freeman, Dr. Julia H. Harris

MEMBERS

Mary Virginia Warren, Gloria Mayer, Gayle Wells, Frances Alexander, Frances Thompson, Margaret Moore, Harriet Neese, Catherine Campbell, Virginia Campbell.

ASSOCIATE MEMBERS

Marjorie Wilson, Barbara Swanson

The Silver Shield, an honorary leadership society, has been active in Meredith student life since its organization in 1935. The purpose of the Silver Shield is to promote and encourage the best that Meredith has to offer. Membership is limited to nine students and two associate members, who are chosen by the members of the society, with the approval of the faculty, from the rising and present senior classes. In the choice of members, the Silver Shield honors those who have been selected for their Christian characters, constructive leadership, scholarship, and service to the school.

ALPHA PSI OMEGA



Margaret Moore, Edith Camp, Mary Humphrey, Virginia Campbell, Frances Thompson, Mary Frances Craig.

Not pictured: Frances Alexander, Christine Bordeaux, Elsie Corbett, President; Eleanor Andrews Hewitt, Jennie Lou Newbold, Sally Lou Taylor.

Organized in 1938, the Eta Nu chapter of Alpha Psi Omega was the first national honorary society on the Meredith campus. The society recognizes Little Theatre members who have earned at least fifty points.

SIGMA PI ALPHA



JOLENE WEATHERS *President* LILLIAN GADDY *Secretary*
 ANNE BOYKIN *Vice President* EMILY POOL *Treasurer*
 DR. QUENTIN OLIVER McALLISTER *Sponsor*

MEMBERS

Frances Alexander, Anne Boykin, Marguerite Bullard, Opal Clemmons, Irene Covington, Rosemary Dean, Elizabeth Emory, Lillian Gaddy, Susan Graham, Mary Gravely, Billie Hart, Frances Hollis, Mary Humphrey, Nell Hunter, Kathleen Isbell, Anne Lassiter, Katherine Lewis, Catherine Elizabeth Moore, Jean McLamb, Doris Nichols, Emily Pool, Marie Snelling, Eloise Thomas, Ruth Greene Walton, Jolene Weathers.

The Phi Kappa Chapter of Sigma Pi Alpha, national honorary modern language fraternity, seeks to recognize outstanding achievement in one or more foreign languages and to encourage active interest in the development of better international understanding. Each meeting of the group offers a pleasant social contact with new ideas, manners, and products characteristic of foreign areas under consideration.

Only students of high scholastic achievement who show an unusual interest in language are eligible. Honorary members and faculty members are admitted to the group because of knowledge and interests acquired through residence abroad or through travel.

"AS WE LOOK BACK..."



The dignitaries are caught unaware.

Edith Stephenson hands Peggy Murrell that long-awaited cup of punch.

Yes, it was a pretty good year—all things considered. The very first of the year was largely devoted to standing in long lines—or so it seemed to the new students, who declared they stood in every last one. And then they took tests designed for no other purpose than to make one feel like a moron, first class. But everyone got a thrill out of meeting new people, going to chapel for the first time, and being entertained to within an inch of her existence. It seemed as though every organization gave a party for the new students. The most memorable—without meaning to slight anyone—probably was the B.S.U. Family Party at the Chimney.

After the formal opening, and once the familiar old grind of classes had begun, there was the further excitement of Rush Week. It was so hard to decide which society to pick, and for the old girls there was the excitement of waiting to see which society would win. During the week when programs and parties were being given, and such delicacies as ice cream bars and lemonade delivered to the rushees' rooms at bedtime, it seemed to be a draw. In the end, however, Astro won. Miss Cunningham was well rewarded for her exploit in connection with the water tower.

The A.A., with customary energy—it must be awful to be on the A.A. and have to be energetic—sponsored the annual Corn-Husking Party. Everyone turned out in informal (i. e. hillbilly) style, stuffed down a wonderful dinner, and could consequently barely gallop through the square dancing and various corn-fed competitions which followed. It was most enlightening to see the faculty members perform. Dr. Harris, to the further glory of the English Department, did awfully



The Astros entertain the new students with their impressive wedding ceremony.



Phis exhibit the latest in fashions.



The Phis line up on Decision Day to welcome all their new members.



Marty and Peggy gladly masquerade to win the new girls over to Mother Astro.

well with her chicken calling, and Dr. Campbell was really professional in the hog-juring line.

And then there was Palio. It was a great day for the juniors, whose theme of "Peace and the UN" won them the banner. Everyone but the Arabs nearly froze to death, but it was worth it. The Junior Class also carried the field in bicycle and horse races. In fact, the juniors are a very smart bunch. (pd. ad.) Because they had been vainly trying for four years, the seniors were allowed to win



Everyone seems to be enjoying herself tremendously at the Cornhusking Bee.



Those smart Juniors . . . bet they didn't know they were going to win.



Some of the faculty—well, they do look familiar—lead the procession.

the original song competition. The sophomores, billing themselves as book-worms (ha!) had the largest percentage of attendance, and had reserved seats in the Diamond Horseshoe at Stunt. In spite of sniffles, with which Miss Barnette had no sympathy, the day of Palio was one worth living.



Fran reigns over Palio.



The BSU Convention draws a large group of Meredith girls.



"Join-the-Church Sunday" finds these new students at the First Baptist Church.

Stunt?—oh, yes, Stunt. *More* fun. The sophs, not content with having their seats reserved, walked off with the shiny cup after staging a dramatic little thriller—which was very good theatre, really—"There Shall Be No Night." The seniors were at sea under the sea, with their Pun-ny Story. The things some people will laugh at! The freshmen and juniors were topical, dealing with inflation and the animals' UN at Lake Flop in Havoc Hollow, respectively—but not very respectfully. (The graduating class will please pardon the pun.) The audience had a few difficulties, between the dry ice the sophs used for a fog effect, and the popping of the balloons which the frosh handed out with their programs.

On a more serious tone was Founders' Day. It was more than a half-holiday; for the seniors in their caps and gowns, and the chapel program itself, all pointed up a solemn and festive occasion.

In the short breathing spell before Thanksgiving, the juniors gave their little sisters a party. "Big sisters, yes, our big sisters, that great Junior Class (thank you, thank you) gave us a humdinger of a party." Each girl was escorted to the party by her big sister, and on walking into Astro Hall, which was decorated with crepe



No wonder State had such a successful football season with a good-looking fan like Jeanne Dickens.



One of our favorite sports.



What's a little cold weather — it's almost Christmas, and we feel like singing.

paper streamers in fall colors, was confronted by a welcome sight—couples dancing—girls, that is! After a demonstration of the latest “jitt,” and bubble-gum blowing—courtesy of Nancy Hall, a master of the art—we were further culturally uplifted by hillbilly trios and the drama, Indian style. Food followed, of course.

And then, Thanksgiving! For some it was a long and glorious weekend; for others, a brief but wonderful visit, and even for those who stayed, it was a very different day, with a stupendous turkey dinner in the middle.

In the short, excited time between Thanksgiving and Christmas, the ministers of the Raleigh churches were entertained at dinner and coffee, as a small token of appreciation from the girls to whom their churches are a home away from home, trite as that may sound. Join-the-Church Sunday assumed a real significance.

And suddenly it was Christmas. It didn't quite seem possible, but all at once it was there, and the faculty cards hung up on the string, and it was the best night of all—the gala night before going home, when everyone stayed up, and the hardest went out into the dark and chill to carol. That happy time made it seem almost



Ol' Man Winter finally arrives.



That cake from home makes studying for exams so much easier.



Gran'ma's is a favorite spot, right?

like a Christmas out of Dickens. And then the last class was over, and the campus was quite deserted, and it was really Christmas.

The few—too few—weeks after Christmas are best quietly forgotten. It was a mad, mad whirl, and exams, and there was one semester and half the year gone.

The events of the second semester—which began with a bang with the Great Snow—are quite overshadowed by graduation. There was Religious Focus Week, of course, and it can't be overestimated in its positive value in focusing intelligent thought on religious problems, and on religion in daily life. Something was going on every minute of that week.

The recitals, too (faculty and student) and society plays. The freshman play we must mention in a sentence all to itself. . . . Guest recitals, and lectures, and the Folk Dance concert mustn't be forgotten. And then those wonderful picnics given by the organizations. Food! (Don't we ever stop thinking of food?) And the parties the frosh and sophs had! So much seemed to be happening all the time second semester; it's hard to make anything but little pieces out of it. Second



These girls received their coveted diplomas at mid-year.



Some folks are just lucky, that's all.

semester is just too much for the human constitution. We have that on authority from the Biology Department.

The biggest thing for the seniors and juniors—especially the juniors, who had to foot the bill—was the Junior-Senior, complete with soft lights, music, food—and dates, real live ones. The freshmen and sophomores have something to look forward to.

Before that was Easter, and a good thing it came, too. Being worked to death is a horrible way to die.

And after, was the May Day celebration, with the glamorous May Queen and her bevy of attendants. (Well, that's what they call 'em in the society columns.) The weather? Ha! Surprise!

Society Night and Class Day and rewards and then—

Graduation! The seniors just turned on the steam cock and ripped around all over the place in the maddest frenzy until one decided it might be easier on the previously mentioned constitution, or what was left of it, to graduate midterm. But



They'll never make the bid, unless Lorena gets rid of that gum.



With graduation approaching, we like to remember last year's commencement address by Senator Judd and the excellent singing by the choir; this occasion was made especially significant by the presence of the late Josephus Daniels.

they seemed to think it was all pretty wonderful just the same. After the exams, when the shouting and tumult had simmered down to a subdued roar, and it was actually the big day, and they marched up in their gowns, and received that little piece of paper, we could see what they meant.

But the year was far more than just these events. It was football games and basketball games. It was the Hut, and meetings, and the Bee-Hive. It was things like the counsel groups, and the bull sessions—yes, and even the classes. The small things—Wilmont—and Gran'ma's—town, and Allen's Pond. Bigger things—BSU convention—student meetings—Little Theatre and Civic Music. It was the post office, the library, the dining hall, chapel. Things like the publications, games, packages. It was church and family altar, and vespers—YWA and BTU—unexpected surprises like the pep rally on the library steps when the faculties of the various colleges were meeting in Astro Hall. "Angel Farm" on the water tower—and weekends which seemed just a few minutes long. It was everything all put together—and a little more added to it, somehow.

E. C. G.



"All this, and 'Angel Farm,' too"

Compliments of

PINE STATE
CREAMERY



DAIRY PRODUCTS
ICE CREAM



Job P. Wyatt & Sons Co.



HARDWARE
SEEDS
FARM IMPLEMENTS



325-331 South Wilmington Street

W. H. KING DRUG CO.
WHOLESALE DRUGGISTS

RALEIGH, N. C.



*"The House of Friendly and
Dependable Service"*



Manufacturers of

PAGE'S CRU-MO

MARTIN MILLWORK COMPANY

RALEIGH, N. C.

*Jean's
of Raleigh*

FIRST in FASHIONS
in the Carolinas

Compliments

THOMAS H. BRIGGS & SONS, INC.

HARDWARE, BUILDERS' SUPPLIES, SPORTING GOODS
PAINTS, GLASS, ELECTRICAL APPLIANCES

215 S. Salisbury Street

RALEIGH, N. C.

220 Fayetteville Street

MOTHER
and
DAUGHTER
FASHIONS

... Highlight every
Campus Activity ...

IN RALEIGH IT'S



FASHIONS

Insurance Building



**Raleigh's
Smartest Shop**



126 Fayetteville Street
Raleigh, N. C.

We
Appreciate
Your
Patronage

... During the school year just
ending — and look forward
to serving you again during
the coming year.

Hudson-Belk
"EASTERN CAROLINA'S LARGEST"

NATIONALLY KNOWN
COSMETICS

You Can Always Find at

E F I R D ' S

"ELIZABETH ARDEN"
"COTY" "YARDLEY"
"EVENING IN PARIS"



EFIRD'S DEPARTMENT STORE
208 Fayetteville Street Raleigh, N. C.

J. J. FALLON CO., Inc.
Florists



205 Fayetteville Street
RALEIGH, N. C.

News From Reddy to Brand New
Graduates



A happy occasion . . . graduation. Careers to plan — a future to look forward to and favorite friends to recall . . . excitingly fashioned into a sentimental package on this — your day of days.

We hope that in the years to come you will not forget Reddy Kilowatt, the little zig-zag fellow who represents the electrical industry and who does so much for you *electrically*.

CAROLINA POWER & LIGHT COMPANY

ANY BOOK IN PRINT
Can Be Secured Through
THE BAPTIST BOOK STORE
121 West Hargett Street
Raleigh, N. C.

ADLER'S in Raleigh Feature

CASUALS

By JOYCE

CALIFORNIA

One of the many new spring styles is the TURNABOUT PUP
In Melon, Ice Blue, or Lime Summer Suede . . . a trim pump that sets the pace.

All Joyce say Joyce.

"QUITE A BIT DIFFERENT"
"QUITE A BIT BETTER"



ALEX PARKER'S
PARKER HOUSE RESTAURANT
PARKERTERIA

Complete Business Training in

- ★ Business Administration and Higher Accounting
- ★ Senior Accounting
- ★ Junior Accounting
- ★ Executive Secretarial Course
- ★ Secretarial Course
- ★ Stenographic Course

HARDBARGER BUSINESS COLLEGE

Hardbarger Building

Raleigh, North Carolina

WEAVER TEXTILE COMPANY

Decorative Fabrics and Home Furnishings

Raleigh, N. C.

304 Glenwood Avenue

Phone 2-2446

Students'
Accident Expense Reimbursement Coverage

Approved by Meredith College

This plan reimburses the parents for all medical expense, such as X-rays; hospital bills; nurses', physicians', and surgeons' fees; laboratory costs; medicines; etc., which may result from an accident in which the student is involved during the entire school year up to FIVE HUNDRED DOLLARS (\$500) for EACH ACCIDENT.

The protection is effective from two days prior to the opening school date until two days after school closes. Thus, in addition to being protected during the actual school term, the majority of students will also be protected while traveling to school at the commencement of the term, and while returning to their homes at the end of the school year.

The plan covers all accidents (including sports) whether sustained at school, home, or while traveling between school and home.

LIMITATIONS: No reimbursement is made for: dental treatment (except injuries to sound, unfilled natural teeth); eyeglasses or prescriptions therefor, or equipment for corrective treatment of sight; disability due to war or due to air travel except as a passenger on a regular scheduled flight of an incorporated air transport company. Applications will be sent to you by the College.

	School Year	Calendar Year
Female Students	\$5.00	\$6.50

CHAMBLEE INSURANCE AGENCY : Raleigh, N. C.

"CREATORS OF REASONABLE DRUG PRICES"

E C K E R D ' S
DRUG STORE

222 Fayetteville Street

BYNUM PRINTING COMPANY

RALEIGH, N. C.

BIBLICAL RECORDER

Weekly Paper of North Carolina Baptists

Raleigh, N. C.

PRESENT CIRCULATION, MORE THAN 44,000

Should be in every Baptist home in the State.

"The only means of promoting all Baptist work in every home every week."

DILLON SUPPLY COMPANY

Raleigh

Durham

Rocky Mount

Goldsboro



THREE STORES IN RALEIGH : West Hargett - Sir Walter - State College

Perfect Protection

OCCIDENTAL LIFE INSURANCE COMPANY

Home Office

RALEIGH, NORTH CAROLINA

FUTURE HOMEMAKERS

WILL DO WELL TO REMEMBER THAT
ADEQUATE LIFE INSURANCE
IS A NECESSITY IN THE FAMILY PROGRAM



DURHAM LIFE INSURANCE COMPANY *"We Protect The Family"*

Home Office : Raleigh, N. C.

Local Offices in North Carolina, South Carolina, and Virginia

PAKULA'S DELICATESSEN

"An Eating Place of Refinement"

•
Imported and Domestic Foods
Sandwiches a Specialty

•
102 Glenwood Avenue
Raleigh, N. C.

FOR HER GIFT



Sold By

Capital Printing Co.

110 W. Hargett Street

Dial 8316

Raleigh, N. C.

BROGDEN PRODUCE COMPANY, INC.

Wholesale

FRUIT AND PRODUCE

409-415 WEST MARTIN STREET



COMPLIMENTS

OF A

FRIEND

Waller & Smith
Photographers

OFFICIAL PHOTOGRAPHERS

--- for ---

THE OAK LEAVES

12 E. Hargett St.

Raleigh, N. C.



Designers and engravers of
the South's finest school
publications



LYNCHBURG, VIRGINIA

Meredith College Library
Raleigh, N. C.

Raleigh, N. C.

OUR TEACHERS MOLD



OUR NATION'S FUTURE

Yes, teachers are vitally important to you, and to every good citizen—yet today, as you well know, there are far from enough fully *qualified* teachers in our schools. What can you do to help solve the serious school-teacher shortage?

YOU CAN DO THIS!

First: Check up on educational conditions in your local schools. **Second:** Work with civic groups and school boards seeking to improve teachers' working and living conditions. The joint effort of forward-looking citizens can and must save this situation—for the sake of our children and our country.

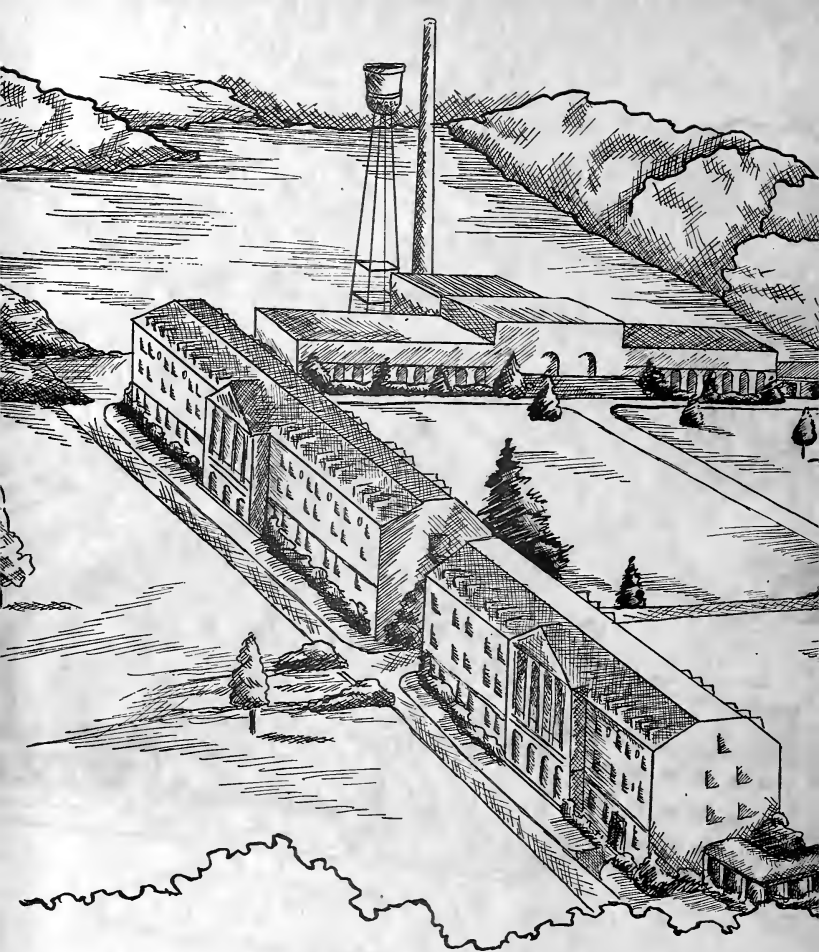
Printed as a public service by

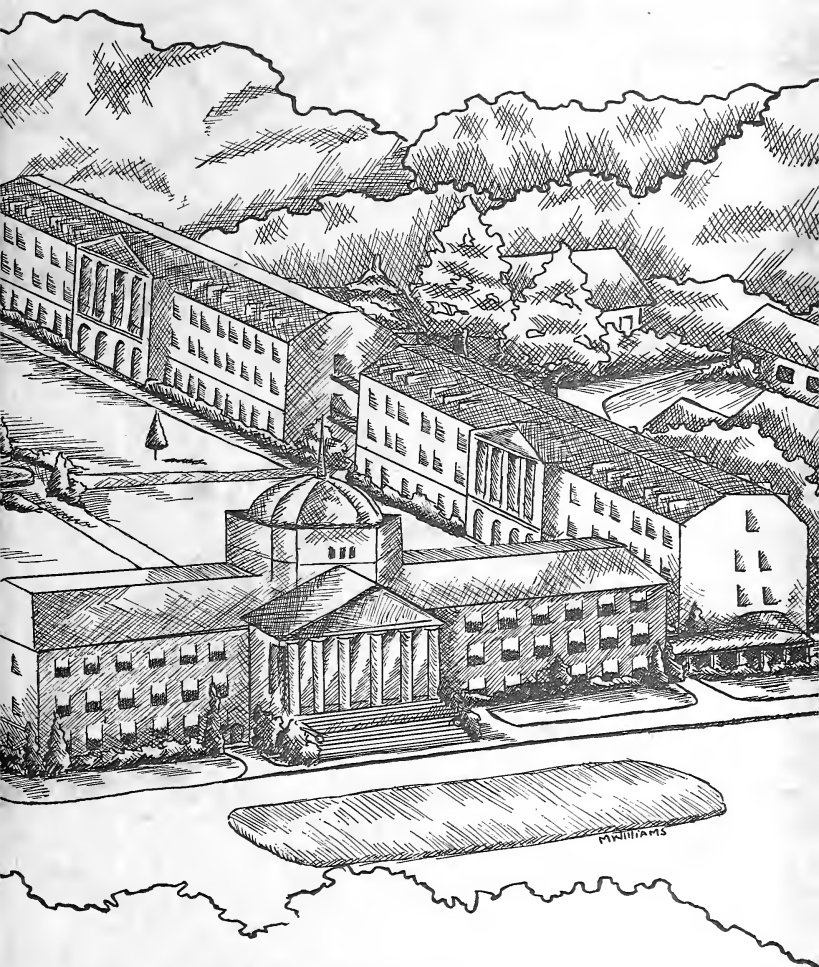
EDWARDS & BROUGHTON COMPANY

Printers : Stationers : Lithographers : Engravers

Raleigh, North Carolina







M. WILLIAMS

