

OAK LEAVES

DR. ERNEST F. CANADAY



CARLYLE
CAMPBELL
LIBRARY

Meredith College
Raleigh, NC 27607-5298



3

3

3

3

—



Angie Presents . . .



1950 Oak Leaves

JOSEPHINE SNOW, *Editor*

BETTY ANN HALL, *Business Manager*

THIS BOOK WAS PRINTED BY EDWARDS AND BROUGHTON OF RALEIGH, NORTH CAROLINA. THE PAPER USED WAS WARREN'S LUSTRO AND THE TYPE BASKERVILLE. ENGRAVINGS WERE MADE BY THE LYNCHBURG ENGRAVING COMPANY OF VIRGINIA; THE ART WORK WAS DONE BY THE STUDENTS OF MEREDITH COLLEGE UNDER THE DIRECTION OF DONNA WALSTON, AND THE PHOTOGRAPHY BY FRANCIS LAVERGNE JOHNSON OF CHAPEL HILL, HARRY E. COOPER, AND BY MEREDITH STUDENTS AND FACULTY.



CARLYLE CAMPBELL LIBRARY
MEREDITH COLLEGE





Dedication



Because of her genuine intellect, because of her sincere friendliness, because of her kindly patience in showing us “a more excellent way,” we gratefully dedicate this, the 1950 OAK LEAVES, to

Dr. Julia Hamlet Harris

Foreword

At our fiftieth anniversary last fall Meredith College had an especial guest—Meredith's own guardian angel. Angie descended on us for the purpose of attending our anniversary celebration, but she was so delighted with life on our campus that we had little trouble persuading her to stay the entire year. She was a pert little miss, getting into everything, joining in all our activities—so we coaxed her to be the junior editor of the 1950 OAK LEAVES. We hope she will be as close to you as she has been to us who have worked with her. It has been a good year and there is no one better than Angie to tell us about it . . .





Contents



She Sees . . .





. . . places to work—

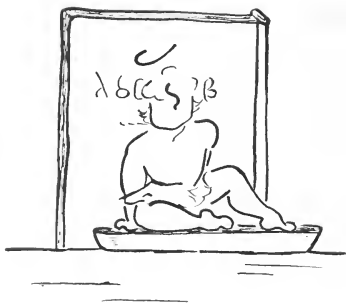




... live

... play





She was proud to meet our . . .

Faculty



$$\begin{aligned} \cos \alpha &= \frac{\text{adj}}{\text{hyp}} = \frac{OB}{OA} = \frac{OB}{1} = OB \\ \sin \alpha &= \frac{\text{opp}}{\text{hyp}} = \frac{AB}{OA} = \frac{AB}{1} = AB \\ 1 + \tan^2 \alpha &= \sec^2 \alpha \\ 1 + \cot^2 \alpha &= \csc^2 \alpha \end{aligned}$$



To Meredith College Students:

This issue of OAK LEAVES arouses our immediate interest because it serves to "bind up the testimony" of happy fellowship and worthy achievement in this college year. Through the years to come its appeal will steadily increase if it proves to be not our epitaph but a prophetic chapter in the texts of our lives.

My kindest personal regards and best wishes for each of you.

CORDIALLY YOURS,

A handwritten signature in cursive script that reads "Carlyle Campbell".

CARLYLE CAMPBELL
President

LEISHMAN A. PEACOCK,
Ph.D.
Dean

As members of the class of 1950 you will cherish the distinction of being the first to use the new auditorium at commencement. I add personal good wishes for the years ahead to greetings from the entire faculty and staff.

L. A. PEACOCK



LILLIAN GRANT, A.M.
Dean of Women

The OAK LEAVES, with its pictorial records of many happy hours, plays a valuable and indispensable part in our lives at Meredith. I count it a rare privilege to be a part of Meredith life and wish for each of you that its influence may serve as a sustaining challenge.

LILLIAN GRANT



ZENO MARTIN, A.B.
Bursar and Treasurer

It has been a pleasure for me to share some of your problems and experiences during your college days.

ZENO MARTIN



Board of Trustees

H. Pat Taylor, *President* Wadesboro
Beth Carroll Taylor, *Vice-President* Raleigh
Zeno Martin, *Secretary-Treasurer* Raleigh

TERMS EXPIRE 1950

Annie Ruth Caldwell Baker Lumberton
O. Max Gardner, Jr. Shelby
Robert L. Humber Greenville
Broadus E. Jones Raleigh
Mary P. Lethco Charlotte
L. E. Spikes Burlington

TERMS EXPIRE 1951

Howard J. Ford Elkin
J. Rufus Hunter Raleigh
Jack M. Kesler Winston-Salem
Winnie Rickett Pearce Durham
Thos. P. Pruitt Hickory
Beth Carroll Taylor Raleigh
H. Pat Taylor Wadesboro

TERMS EXPIRE 1952

Claude U. Broach Charlotte
Maude Davis Bunn Raleigh
H. M. Roland Wilmington
James B. Turner Laurinburg
W. H. Weatherspoon Raleigh
Eph Whisenhunt Clayton

TERMS EXPIRE 1953

Everett Johnson Britt Lumberton
Commodore Thomas Council Durham
Foy Johnson Farmer Raleigh
Grace Olive Lane Asheville
L. M. Massey Zebulon
Alfred J. Smith Goldsboro



ENGLISH

Harris, Julia H., Ph.D., *Professor*; Johnson, Mary Lynch, Ph.D., *Professor*; Lanham, Louise, Ph.D., *Assistant Professor*; Rose, Norma, Ph.D., *Assistant Professor*; Murphy, Delphine, Ph.D., *Instructor*.

SOCIOLOGY AND ECONOMICS

Parker, Clyde N., Ph.D., *Professor*; Syron, Leslie, W., A.M., *Instructor*; Johnson, Betty S., A.B., *Instructor*.

RELIGION

McLain, Ralph E., Ph.D., *Professor*; Crook, Roger H., Th.D., *Associate Professor*; Currin, Billie Ruth, A.M., *Instructor*.



CHEMISTRY AND PHYSICS

Yarbrough, Mary, Ph.D., *Professor*;
Collins, Helen Jo, M.S., *Instructor*.



MUSIC

Cooper, Harry E., Mus. D., *Professor*;
Pratt, Stuart, Mus. M., *Professor*;
Donley, Beatrice, B.M., *Associate Professor*;
Wilmot, David L., A.M., *Assistant Professor*;
Rosenberger, Rachel, Mus. M., *Assistant Professor*;
Ashley, Helen E., Mus. M., *Instructor*;
Woodman, Ruth S., A.M., *Instructor*;
Hamrick, Martha, Mus. M., *Instructor*.

PSYCHOLOGY AND PHILOSOPHY

Park, Dorothy G., Ph.D., *Associate Professor*.

EDUCATION

Tyner, Bunyan Y., A.M., *Professor*;
Dorsett, Harry K., A.M., *Assistant Professor*;
Bell, Lila, M. Ed., *Assistant Professor*.



HISTORY

Wallace, Lillian Parker, Ph.D., *Professor*; Keith, Alice B., Ph.D., *Associate Professor*; *Lemmon, Sarah McC., A.M., *Assistant Professor*; **Farmer, Fannie Memory, A.M., *Acting Instructor*.

* On leave, 1949-50

** Appointment for 1949-50

MODERN LANGUAGES

McAllister, Quentin Oliver, Ph.D., *Professor*; Neblett, Lucy Ann, A.M., *Assistant Professor*; Freund, Susanne H., Ph.D., *Assistant Professor*; *Huckabee, Elizabeth R., A.B., *Instructor*; **Ivie, Edith J., A.B., *Acting Instructor*.

* On leave, first semester, 1949-50

** Appointment, for first semester, 1949-50



HOME ECONOMICS

Brewer, Ellen D., A.M., *Professor*;
Hanyen, Jennie M., A.M., *Associate Professor*.

ANCIENT LANGUAGES

Price, Helen, Ph.D., *Professor*.





BUSINESS

Hill, Martha F., A.M., *Assistant Professor*; Gregory, Margaret H., A.M., *Instructor*.

BIOLOGY

Yarbrough, John A., Ph.D., *Professor*; Kelman, Helen P., A.M., *Instructor*.

ART

Reynolds, Douglas W., B.F.A., *Associate Professor*; Ream, Mary A., A.M., *Instructor*.



MATHEMATICS

Canady, Ernest F., Ph.D., *Professor*.





HEALTH AND PHYSICAL EDUCATION

Peterson, Doris, A.M., *Associate Professor*; Cunningham, Phyllis, A.M., *Instructor*; Carey, Margaret, B.S., *Instructor*; Hitt, Miriam T., *Assistant*.



LIBRARY

Baity, Hazel, A.B. in L.S., *Librarian*; Greene, Jane, A.B. in L.S., *Assistant Librarian*; Harris, Doris H., A.B., *Assistant in the Library*.



HEALTH SERVICE

Lane, Bessie Evans, A.B., M.D., *College Physician*; Barnette, Myrtle, R.N., *Nurse*; Teague, Janet, R.N., *Assistant Nurse*.



Marsh, Vera Tart, *Registrar*; Thomas, Joy M.,
Stenographer, Dean and Registrar.

Preston, A.M., LL.D., *Director of Public Relations*;
Reid, Elizabeth D., A.B., *Publicity Director.*



Smith, Lois, B.S., *Steward*; Watts, Lulu B., *Dining
Room Hostess*; Rhyne, Janet, B.S., *Assistant Steward.*

Swain, Anne, B.S., *Bookkeeper-Secretary to the Bursar*; Gwyer, Betty L., *Cashier and Secretary*; English, Elizabeth W., *Secretary, Alumnae Association.*



Pratt, Edith G., A.M., *Assistant Dean of Women*; Grimmer, Mae, A.B., *Secretary of Alumnae Association.*



Simmons, Harry, *Maintenance Supervisor.*



Rhodes, Lattie, *Secretary to the President*; Barnette, Ruth W., *Secretary to the Dean*; Yeager, Betty Jean, A.B., *Secretary to the Dean of Women.*



The Mind of The Faculty

Who knows the mind of the faculty? Not the members of the faculty — if we except those who will speak only “when no dogs bark,” those who have never broken the seal of the ideas signed in their novitiate. *Requiescant in pace!* In his essay, “The Ideal Teacher,” George Herbert Palmer says, “Harvard College pays me for doing what I would gladly pay it to let me do,” a sentiment more common among teachers than trustees suspect. Perhaps we “gladly teach” because of the necessity of meeting changes, because of the necessity of realizing principles in a world of change. In our miniature community it would be easy to live on the exhilaration of change, content — nay, delighted — not to have “to step in the same river twice;” it would be easy to set up a centre of rest in our affections and convictions. But the effort to establish a centre of rest in, and in spite of, the changes of a changed universe, to reconcile “perfect energy and repose” makes teaching the most difficult — and the most joyful of all professions. *Orare est laborare.*





She enjoyed being a member of our . . .

Classes

FROG DISSECTION





Exam hangover

Daisies picked at dawn



A successful quest for a "golden
fleece"

Pigs is Pigs!



Senior Class

OFFICERS

ALICE GORDON TUTTLE
President

LAVERNE HARRIS
Vice-President

MARJORIE TRIPPEER
Secretary

ANNETTE MILLER
Treasurer

ALICE KEITH
Sponsor



ALICE GORDON TUTTLE
President

Graduation is one of those unexpected phenomena; for three and a half years it remains tucked away safely in the far distant future, and then without sufficient warning, it jumps suddenly from the calendar, a reality.

Crowded into the four years are many happy memories that are to be preserved. Among these are recollections of the Freshman Year, the first rung on the ladder that will end with a sheepskin. That was the year almost all of North Carolina put in a twelfth grade and we began with only eighty-eight members. Palio fell on Sadie Hawkins Day and our class dressed as Daisy Mae, Lena the Hyena, and other Al Capp characters. Upon our return for the Sophomore Year, we began to find our niches and work toward chosen goals, managing in the meantime to win the stunt cup with an original skit, "There Shall Be No Night." As juniors we saw a year with a purpose, a working to achieve honors and responsibilities that come with being a senior. Again we succeeded at Stunt with our "Foul Play." In the spring we gave an Oriental Junior-Senior and managed to balance our budget as well.

At last we came to our Senior Year, a culmination of all that preceded. With only sixty four members, of whom twenty six were original members, we won Palio and achieved a second rating at Stunt. Four years have rushed by and a variety of experiences will be remembered with mixed emotions.

The value of a diploma cannot be told completely. It is something of the four years of study, of making friends, of cooperation with others and, in short, of a preparation for emerging from the small college world into a fuller life. The class of '50 graduates confident that as a class and as individual members, we have contributed much to our Alma Mater and received much from her.



Annette, Trip, Bunny, and A. G.—our officers.

MARY ANN BEALE

Raleigh, N. C.

Phi Sociology

Woman's College of the University of North Carolina 1, 2; Meredith College 3, 4; Sociology Club 3, 4, Vice-President 4; Sunday School Officer 4.



NAOMI LORRAINE BENNETT

Conetoe, N. C.

Phi Business

Little Theatre Pledge 3, 4; Student League of Women Voters 3, 4; Tomorrow's Business Women 3, 4.



CHARLOTTE MAE BOWMAN

Boone's Mill, Va.

Astro Piano

S. G. Council, Summer School; B.S.U. Council 3; Nominating Committee 4; Astro Society President 4; International Relations Club 3; Little Theatre Pledge 1, 2, 3; Little Theatre 4; McDowell Music Club 1, 2, 3; Student League of Women Voters 4; Equitation Club 4; Sigma Alpha Iota 3, 4, Vice-President 3, President 4; World Fellowship 1, 2; Choir 1, 2, 3, 4, Accompanist 4; Glee Club 2, 3, Accompanist 3.

Meredith College

The 1950 Oak Leaves

VIRGINIA PAIGE BOWMAN

Boone's Mill, Va.

Astro Religion

Roanoke College 1; Meredith College 2, 3, 4 B.S.U. Council 3; A.A. Board Softball Manager 3, Social Chairman 4; Astro Society, Marshal 3, Chief Marshal 4; Freeman Religion Club 2, 3; Y.W.A. Circle Leader 3, Social Chairman 4; Greater B.S.U. Council 3, 4; Choir 4; May Court 2; Superlative.



ANNE LOUISE BROWN

Raleigh, N. C.

Phi Primary Education

Peace College 1, 2; Meredith College 3, 4; Education Club 3, 4; Dean's List 3.



DOROTHY MAE CHILDRESS

Raleigh, N. C.

Astro Education

S. G. Council 4; Astro Society Marshal 4; "Bee Hive" Committee 3, Chairman 4; Education Club 3, Vice-President 4; Y.W.A. 1; Sunday School Officer 1; B.T.U. Officer 1; Greater B.S.U. Council 1; House Council 4; Choir 2, 3, Vice-President 4; Folk Dance Club 3, 4; May Court 1; Superlative.

Meredith College

DORIS EMILY CONCHA

Amityville, New York

Phi Mathematics

A. A. Board Freshman Representative 1, Secretary 2, President 4; Nominating Committee 4; Phi Society Marshal 2; *Twig* Staff Typist 1, Reporter 2; Class Treasurer 1; Alpha Psi Omega 4; Colton English Club 3, 4; Little Theatre 3, 4; Canaday Mathematics Club 3, 4; Monogram Club 3, 4; Equitation Club 1, 2, 3; Folk Dance Club 3, 4; Hockey Varsity 3; Helen Hull Law Classical Club 1; May Court 4.



ESTHER CAROLYN COVINGTON

Rockingham, N. C.

Phi Religion

S. G. Council 3; Counsellor 3; *Twig* Staff 4; Freeman Religion Club 1; Little Theatre Pledge; World Fellowship 1, 2; Sunday School Officer 2; B.T.U. Officer 1, 2, 3; Folk Dance Club 3, 4.



JEAN E. DAUGHTRIDGE

Rocky Mount, N. C.

Phi Sociology

Mars Hill College 1, 2; Meredith College 3, 4; B.S.U. Council 4; Freeman Religion Club 3, 4; Sociology Club 3, 4; Y.W.A. 3, 4; President 4; Sunday School Officer 3; Greater B.S.U. Council 3, 4.





NANCY RUTH DUCKWORTH

Arlington, Va.

Phi Home Economics

Bridgewater College 1, 2; Meredith College 3, 4; B.S.U. Council 4; Home Economics Club 3, 4; Y.W.A. 3, 4; Sunday School Officer 4; Greater B.S.U. Council 4.

BETSY ANNE EDWARDS

Raleigh, N. C.

Astro Primary Education

Peace College 1, 2; Meredith College 3, 4; Education Club 3, 4.



ADDIE S. ELLIOTT

Huntsville, Ala.

Phi Voice

S. G. Council 4; Granddaughters' Club 1, 2, 3, 4; McDowell Music Club 1, 2; Equitation Club 1; Y.W.A. 2; House Council 4; Choir 1, 2, 3, 4; Glee Club 2, 3, 4; College Cheerleader 4; Band 4.



WINNIE MAY FITZGERALD

Gretna, Va.

Phi

Religion

S. G. Council, Treasurer 3; Chief Counsellor 4; Silver Shield 3; President 4; Nominating Committee 4; Freshman Counsellor 2, 3; Chief Counsellor 4; Phi Society Treasurer 2; OAK LEAVES Class Editor 2; Class Secretary 1; Freeman Religion Club 2, 3, 4; Secretary 2; Sociology Club 3, 4; Education Club 4; Y.W.A. 1, 2; Greater B.S.U. Council 2; House Council 2; Choir 3, 4; Superlative.



ANITA THOMAS FREEMAN

Gates, N. C.

Astro

Sociology

Campbell College 1, 2; Meredith College 3, 4; Education Club 3, 4; Freeman Religion Club 3; Sociology Club 3, 4.



POLLYANNA GIBBS

Raleigh, N. C.

Phi

English

Mars Hill College 1, 2; Meredith College 3, 4; B.S.U. Council 4; Colton English Club 3, 4; Secretary-Treasurer 4; Freeman Religion Club 4; Y.W.A. 4; Sunday School Officer 4; B.T.U. Officer 3, 4.

Meredith College

The 1950 Oak Leaves

ELLEN LOUISE GOLDSTON

Astro Vernal, Utah Business

OAK LEAVES Junior Editor 3, Associate Editor 4; *Acorn* Staff, Typist 3; *Twig* Staff Typist 3; Class Treasurer 3; Kappa Nu Sigma 3, Secretary-Treasurer 4; Little Theatre Pledge; Canaday Mathematics Club 2, Reporter 3, President 4; Tomorrow's Business Women 2, 3, 4; Y.W.A. 2; Dean's List 1, 2, 3, 4; Superlative.



KATHERINE C. GRAHAM

Phi Hopewell, Va. Sociology

Averett Junior College 1, 2; Meredith College 3, 4; International Relations Club Secretary-Treasurer 4; Sociology Club 3, 4.



GLADYS IRENE GREENE

Raleigh, N. C. Primary Education

Education Club 3, President 4; Home Economics Club 1; May Court 2.

Meredith College



JUNE ELIZABETH HARMON

Ahoskie, N. C.

Phi Sociology

International Relations Club 2, 3, 4;
Little Theatre Pledge; Sociology Club
2, 3, President 4; Student League of
Women Voters 2, 3, 4; Y.W.A. 2, 3;
Folk Dance Club 3.

LAVERNE HARRIS

Cary, N. C.

Phi History

S. G. Council 2; Nominating Com-
mittee 3; Phi Society Marshal 4; *Acorn*
Staff Class Editor 2, 4; *Twig* Staff
Columnist 1, Fashion Editor 2, 3;
Class President 3, Vice-President 4;
Colton English Club 2, 3; Interna-
tional Relations Club 3, Vice-Presi-
dent 4; Little Theatre Pledge 4;
Equitation Club 2; May Court 4;
Superlative.



ROBERTA M. HOLCOMBE

St. Petersburg, Fla.

Astro Biology

St. Petersburg Junior College 1, 2;
Meredith College 3, 4; Colton English
Club 3; Freeman Religion Club 4;
McDowell Music Club 3; Equitation
Club 3; Glee Club 3, 4; Barber Science
Club 3, 4; Social Chairman 4.





MARY ELIZABETH HOLDFOLD

Wilson, N. C.

Phi Sociology

Phi Society Secretary 3, Chief Marshal 4; OAK LEAVES Business Staff 3, 4; Freeman Religion Club 1, 2; Sigma Pi Alpha 2; Sociology Club 4; Student League of Women Voters 4; Y.W.A. 2; Sunday School Officer 2; May Court 3, May Queen 4.

VIVIAN ORLENA JAMERSON

Pensacola, N. C.

Phi Organ

Mars Hill College 1, 2; Meredith College 3, 4; Equitation Club 3; Y.W.A. 3, 4; Sunday School Officer 3; B.T.U. Officer 3; Greater B.S.U. Council 3; Choir 3, President 4; Folk Dance Club 4.



GLADYS LASSITER JOHNSON

Four Oaks, N. C.

Phi Home Economics

Campbell College 1, 2; Meredith College 3, 4; Home Economics Club 2.



HANNAH ELIZABETH JONES

Arlington, Va.

Phi Chemistry

S. G. Council Secretary 3, Vice-President 4; Nominating Committee 2; Freshman Counsellor 2; Class President 2; International Relations Club 1; Little Theatre Pledge; Sunday School Officer 1.



MARGUERITE LEATHERMAN

Lincolnton, N. C.

Phi Religion

S. G. Council 3; Silver Shield 3, Vice-President 4; Nominating Committee 4; Phi Society Pianist 1, 2, Vice-President 3, President 4; Education Club 3; Freeman Religion Club 2, 3, 4; Little Theatre Pledge 1; Sociology Club 3, 4, Reporter 3; World Fellowship 1, 2; Y.W.A. Vice-President 2; Sunday School Officer 1; B.T.U. Officer 1; Greater B.S.U. Council 2; House Council 1, 2, 3; May Court 3; Superlative.



HELEN JANE McDANIEL

Raleigh, N. C.

Phi Home Economics

Twig Business Staff 1, Business Manager 3, 4; Home Economics Club 1, 2, 3, Reporter 4; Little Theatre Pledge 4; Sunday School Officer 1, 2, 3; B.T.U. Officer 1, 3; Day Student House Council 1.



Meredith College

The 1950 Oak Leaves

ELIZABETH MINA MACHEN

Greenville, S. C.

Phi Education

Furman University 1, 2; Meredith College 3, 4; OAK LEAVES Photograph Manager 4; Alpha Rho Tau 3; Education Club 3, 4; Little Theatre Pledge 3, Little Theatre 4; Equitation Club 3; Y.W.A. 3; Greater B.S.U. Council 3, 4; Glee Club 3, 4.



BARBARA COLE MARSHALL

Okmudgee, Okla.

Phi Art

Oklahoma University 1, 2; Meredith College 3, 4; Alpha Rho Tau 3, President 4; Colton English Club 3.



MINA CHARLOTTE MAYTON

Durham, N. C.

Astro Primary Education

Education Club 3, 4; Sociology Club 4.

Meredith College



FRANCES LEIGH MEADOWS

Kernersville, N. C.

Phi Religion

S. G. Council 2, 4; Freshman Counselor 2, 3; Education Club 3, 4; Freeman Religion Club 1, 2, 3, 4; Little Theatre 4; Y.W.A. 1; Sunday School Officer 1, 2; B.T.U. Officer 1; Choir 2, 3, 4; Folk Dance Club 3, 4.

MELLIE ANNETTE MILLER

New Bern, N. C.

Astro Sociology

S. G. Council Summer School 3; B.S.U. Council Honorary Member 4; *Twig* Advertising Manager 4; Class Treasurer 4; Education Club 3, 4; International Relations Club 4; Sociology Club 2, 3, 4; Y.W.A. 3; B.T.U. Officer 1; Greater B.S.U. Council 1, 3, 4.



BETSY MARIE MILLS

Concord, N. C.

Phi Education

S. G. Council 4; Education Club 2, 3, 4; Little Theatre Pledge 3, 4; Sociology Club 2, 4; Student League of Women Voters 3, 4; Y.W.A. 2, 3; Sunday School Officer 2; House Council 4; Folk Dance Club 3, 4.





FRANCES CAROLYN MOORE

Reidsville, N. C.

Astro

Home Economics

Woman's College of the University of North Carolina 1, 2; Meredith College 3, 4; S. G. Council 4; Home Economics Club 3, 4; International Relations Club 3, 4; Little Theatre Pledge 3, 4; House Council 4.

CATHERINE E. MOORE

Myrtle Beach, S. C.

Phi

Art

B.S.U. Council 2, 3; Silver Shield Secretary-Treasurer 4; *Acorn* Assistant Art Editor 3, Editor 4; *Twig* Staff 2; Class Vice-President 3; Alpha Psi Omega 3, Vice-President 4; Alpha Rho Tau 3, 4; Colton English Club 2, 3, 4; Little Theatre 2, 3, 4; Student League of Women Voters 2; Equitation Club 3; Y.W.A. 2, 3; Palio Band 1, 2; Dean's List 2, 3, 4; Superlative; *Who's Who in American Colleges and Universities*, 4.



GAZELLE HUDGINS MOORE

Gwynns Island, Va.

Astro

Organ

S. G. Council 2; Nominating Committee 4; Freshman Counsellor 3; Astro Society Sergeant-at-Arms 2; OAK LEAVES Sophomore Business Manager 2; Alpha Psi Omega 4; Little Theatre Pledge 1, Little Theatre 3, President 4; Sigma Alpha Iota 3, 4; Choir 2, 3, 4.



BETSY ANN MORGAN

Benson, N. C.

Phi

Religion

B.S.U. Council 2, 3, President 4; Silver Shield 4; Nominating Committee 4; Class Secretary 2; Education Club 3, 4; Freeman Religion Club 1, 2, 3, 4; International Relations Club 2, 3; Little Theatre Pledge; Sigma Pi Alpha 3, 4; Sociology Club 2, 3, 4; Y.W.A. 1, 2, 3, 4; Sunday School Officer 2; B.T.U. Officer 1, 2; House Council 1; Folk Dance Club 2, 3, Dean's List 1, 2, 3, 4; *Who's Who in American Colleges and Universities.*



ANN IMOGENE NARRON

Middlesex, N. C.

Phi

Business

A. A. Board Soccer Manager 2, 4; Education Club 3, 4; Little Theatre Pledge; Sociology Club 2; Tomorrow's Business Women 2, Treasurer 3, President 4; Soccer Varsity 3, Hockey Varsity 1, 2; Superlative.



MARY SUE PAGE

Rome, Ga.

Phi

Religion

Twig Staff, Sports Column 3, Exchange Editor 4; Colton English Club 4; Freeman Religion Club 1, 2, Treasurer 3, President 4; International Relations Club 1, 4; Little Theatre 3, 4; Equitation Club 1; B.T.U. Officer 1.



Meredith College

The 1950 Oak Leaves

KATHLEEN HICKS PERRY

Raleigh, N. C.

Astro Biology

Education Club 4; Granddaughters' Club 1, 2, 3, 4; Barber Science Club 3, 4



EMILY SPEIGHT POOL

Greenville, S. C.

Phi English

S. G. Council Freshman Representative 1, President 4; B.S.U. 3; Silver Shield 4; Nominating Committee 4; *Twig* Staff Reporter 1, 2; Student Chairman for Religious Emphasis Week 3; Class Vice-President 2; Colton English Club 2, 3, 4; Granddaughters' Club 1, 2, 3, 4; Co-Chairman Needlework Guild 2; Little Theatre 1, 2, 3, 4; Sigma Pi Alpha 1, 2, 3, 4; Treasurer 2; Student League of Women Voters 2, 3, 4; Interim Council for Student Legislature 4; Sunday School Officer 1; Glee Club 3, 4; Dean's List 1, 3; Superlative; *Who's Who in American Colleges and Universities*.



ELSIE VANN ROBERTS

Raleigh, N. C.

Astro Biology

Santa Ana College 1, 2; Meredith College 3, 4; Barber Science Club 3, 4; Alpha Rho Tau 3, 4.



Meredith College



JOSEPHINE FIDELIA SNOW

Raleigh, N. C.

Astro English

Agnes Scott College 1; Meredith College 2, 3, 4; Silver Shield 4; Nominating Committee 4; OAK LEAVES Business Manager 3, Editor 4; Colton English Club 3, 4; Kappa Nu Sigma 3, President 4; Sigma Pi Alpha 3, 4; Glee Club 2, 3, 4, Secretary 3, President 4; Maid of Honor in May Court 4; Dean's List 2, 3, 4; Vocal Ensemble 2, 3, 4; *Who's Who in American Colleges and Universities*.

EMILY MILDRED STACY

Washington, D. C.

Astro Biology

Freeman Religion Club 1; Little Theatre Pledge; Sigma Pi Alpha 3, President 4; Equitation Club 2; Y.W.A. 1, 2; Sunday School Officer 2; Choir 3, 4; Barber Science Club 3, President 4.



MARTHA LOU STEPHENSON

Pendleton, N. C.

Astro English

A. A. Board Treasurer 2; *Twig* Staff 2; Colton English Club 2, 3, 4; Monogram Club 4; Softball Varsity 3; Basketball Varsity 2, 3.





ROSE ROBERSON STEWART

Huddleston, Va.

Phi

Piano

Mars Hill College 1, 2; Meredith College 3, 4; McDowell Music Club 3; Y.W.A. 3; Choir 3, 4; Palio Band 4.

MYRA RUTH STONE

Raleigh, N. C.

Astro

Business

Peace College 1, 2; Meredith College 3, 4; S. G. Council 4; OAK LEAVES Business Staff 4; Tomorrow's Business Women 3, 4; Program Chairman 4.



SALLY LOU TAYLOR

Portsmouth, Va.

Phi

English

Nominating Committee 4; *Acorn* Staff Class Editor 2, 3; *Twig* Make-Up Editor 3, Editor 4; Alpha Psi Omega 1, 2, 3, 4, President 4; Colton English Club 2, 3, 4, Vice-President 3; Little Theatre 1, 2, 3, 4, Secretary 2; Helen Hull Law Classical Club 1, 2; Folk Dance Club 3, 4.



MARJORIE ANN TRIPPEER

Roanoke, Va.

Astro Sociology

Roanoke College 1; Meredith College
2, 3, 4; Freshman Counsellor 3; Class
Secretary 4; Freeman Religion Club
3; Y.W.A. 2, 3, 4. Vice-President 4;
Hockey Varsity 3.



ALICE GORDON TUTTLE

Hamlet, N. C.

Astro Chemistry

Nominating Committee 4; Astro
Society Treasurer 2; Class Treasurer
2, President 4; Barber Science Club
2, 3, 4.



ROXANNE GEORGE VALLAS

Raleigh, N. C.

Astro Art

Home Economics Club 4; Alpha Rho
Tau 3, 4; Sigma Pi Alpha 2, 3, 4; Vice-
President of Day Students 3, President
4; OAK LEAVES Staff 4; Superlative 4.



Meredith College

The 1950 Oak Leaves

HELEN LEE WILHELM

Sparrows Point, Md.

Phi Sociology

Averett College 1, 2; Meredith College
3, 4; Freeman Religion Club 3, 4;
Little Theatre Pledge 3, 4; Sociology
Club 3, 4; Y.W.A. 3, 4; B.T.U. Officer
3; Glee Club 3; Palio Band 4.



FRANCES LORENA WILLIAMS

Waynesville, N. C.

Phi Home Economics

Acorn Art Editor 4; Alpha Rho Tau
3, 4; Colton English Club 2; Home
Economics Club 1, 2, 3, 4, President 4;
Little Theatre Pledge 3, 4; Sociology
Club 3.



MARY CHRISTINE WILLIAMSON

Chadbourn, N. C.

Astro History

Acorn Staff 3; Alpha Psi Omega 3, 4;
Colton English Club 2, 3, 4, Publicity
Chairman 2; Freeman Religion Club
1; Granddaughters' Club 1, 2, 3, 4,
Treasurer 2, Secretary 3, President 4;
International Relations Club 1, 2, 3, 4,
Program Chairman 3, President 4;
Little Theatre 1, 2, 3, 4; Sigma Pi
Alpha 2, 3, 4; Student League of
Women Voters 3; Equitation Club 1;
Dean's List 3, 4.

Meredith College



HAZEL MARIE WILLIAMSON

Durham, N. C.

Phi Home Economics

Nominating Committee 4; Phi Society Marshal 3; Home Economics Club 1, 2, 3, 4; Student League of Women Voters 1, 2, 3, 4, Secretary-Treasurer 2, Vice-President 3, President 4; May Court 1; College Marshal 4.

BERTHA EVANS WILSON

Henderson, N. C.

Astro English

S. G. Council 3; *Acorn* Business Staff 3, Associate Editor 4; OAK LEAVES Class Editor 4; Class Secretary 3; Colton English Club Secretary-Treasurer 3, President 4; Education Club 4; Freeman Religion Club 2, 3; McDowell Music Club 1, 2; Y.W.A. 1, General Secretary 2; Greater B.S.U. Council 2, House Council 3; Choir 4; Palio Band 1, 2, 3, 4; Dean's List 2, 3, 4.



ANNIE GWENDOLYN WILSON

Churchville, Va.

Phi Biology

Granddaughters' Club 1, 2, 3, 4; Little Theatre Pledge 3, 4; Y.W.A. 1; Barber Science Club 2, 3, 4; Soccer Varsity 1.





ANN McRAE WOOTEN

Chadbourn, N. C.

Astro

Home Economics

Woman's College of the University of North Carolina 1; Meredith College 2, 3, 4; Home Economics Club 2, 3, 4; Little Theatre Pledge 4.

EMILY LOUISE YARBROUGH

Roxboro, N. C.

Phi

Religion

Mars Hill College 1, 2; Meredith College 3, 4; A. A. Board, Basketball Manager 3; Freeman Religion Club 2; Y. W. A. 4; Softball Varsity 3; Superlative.



ELIZABETH ZULALIAN

Brookline, Mass.

Phi

Piano

Alpha Psi Omega 3, 4; Little Theatre 3, 4; Secretary 3; Little Theatre Pledge 1, 2; McDowell Music Club 1, 2, 3, 4; Equitation Club 1, 2, 3; Choir 2, 3, 4; Folk Dance Club 4; House Council 4.



Snaps



Meredith College



Hall proctors like Fran often need the help of their freshmen.



Three wonderful years down—one to go.



In Palio we were South Americans.



Beverly and Jean—Big Sister-Little Sister—since Orientation Week.

Junior Class

OFFICERS

BETTY JANE HEDGEPEETH
President

NANCY WALKER
Vice-President

SANDRA MOORE
Secretary

JULIA PARKER
Treasurer

MARY YARBROUGH
Sponsor



BETTY JANE HEDGEPEETH
President

Some of us arrived on campus a whole week early this fall, just to prove that we were finally juniors and entitled to the privilege of hailing freshmen and transfers. We really struggled that first week trying to connect oft-written names with unfamiliar faces.

But Orientation Week was only the beginning of our Junior Year. In bright columns of "Good Neighbors" we marched into second place at Padio. And it was on Stunt Night that we presented our cherry-red version of *Going Down*.

The newest juniors were welcomed into our midst at the coffee for transfers. And later, Astro Hall was filled to the brim with "big and little sisters" having their traditional party. Yet it was the spring with our Junior-Senior Banquet, that brought the class ingenuity to the forefront.

The year was one of new responsibilities, new ideas, and the welcome assurance that our Junior Year would not be our last at Meredith.



Julia, Nancy, Hedge, and Sandra lead the rising seniors.

Juniors



DOROTHY ALLEN
Astro
Cherryville, N. C.

FRANCES ALMOND
Phi
Salisbury, N. C.



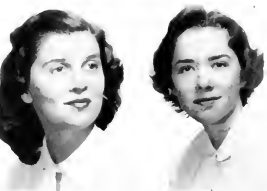
FRANCES ALTMAN
Astro
Dunn, N. C.

JEANETTE ATKINS
Phi
Cary, N. C.



BETSY AUSBON
Astro
Tarboro, N. C.

JOYCE BAILEY
Astro
Plymouth, N. C.



EVELYN BARDEN
Astro
Rose Hill, N. C.

BARRY BAREFOOT
Astro
Angier, N. C.



ANITA BARRETT
Phi
Mars Hill, N. C.

BEVERLY BATCHELOR
Astro
Nashville, N. C.

Juniors

PEGGY BENBOW

Phi

Winston-Salem, N. C.

JANE BIGGS

Phi

Florence, S. C.



CAROLYN BIZZELLE

Phi

Seven Springs, N. C.

BETH BOGGS

Phi

College Park, Ga.



EILEEN BONE

Phi

Rocky Mount, N. C.

SHIRLEY BONE

Phi

Nashville, N. C.



DAPHNE BORDEAUX

Phi

Wallace, N. C.

MARY ELIZABETH BOWEN

Astro

Asheville, N. C.



JENNETT BRAMBLE

Phi

Fayetteville, N. C.

ANNIE PEARL BRANTLEY

Phi

Spring Hope, N. C.



Juniors

BOBBY BREWER
Astro
Roseboro, N. C.



LOUISE BRITT
Phi
Elizabethtown, N. C.

HELEN BRUNSON
Phi
Florence, S. C.



JANE EARL BURCH
Phi
Charlotte, N. C.

GRACE BURNHAM
Astro
Asheville, N. C.



BETSY CAMPBELL
Astro
Burr's Creek, N. C.

SUE CONLEY
Astro
Franklin, N. C.



NANCY COOK
Phi
Clemmons, N. C.

ELEANOR COTHMAN
Phi
Raleigh, N. C.



BETTY CRAWFORD
Phi
Raleigh, N. C.

Juniors



CAROLYN CROOK

Phi

Albemarle, N. C.

SYLVIA CURRIN

Phi

Oxford, N. C.



DOROTHY CUTTS

Phi

Oxford, N. C.

LYDIA DAVIS

Astro

Rock Hill, S. C.



BETTY LOU DEAN

Astro

Louisburg, N. C.

BARBARA DENNIS

Phi

Durham, N. C.



CAROLYN DIXON

Phi

Reidsville, N. C.

RITA EDWARDS

Astro

Greer, S. C.



MILLICENT ELLIOT

Astro

Amityville, N. Y.

PATSY EMORY

Astro

Northside, N. C.

Juniors



FRANCES ANN ESTRIDGE

Astro

Florence, S. C.

NORMA FAGAN

Astro

Jamesville, N. C.



ANNE FOCHE

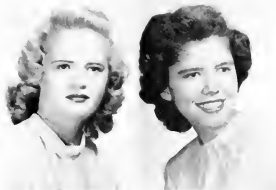
Astro

Rock Hill, S. C.

RACHEL FUNDERBURK

Astro

Chesterfield, S. C.



ELAINE FUTRELL

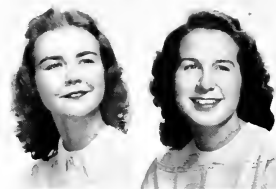
Astro

Murfreesboro, N. C.

BETSY GOLDSTON

Astro

Raleigh, N. C.



MARY ANN GOODWIN

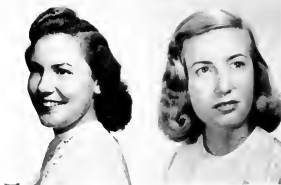
Astro

Atlanta, Ga.

INA GRESHAM

Astro

Chinquapin, N. C.



MARGOT GRIMES

Astro

Charlotte, N. C.

LEGRACE GUPTON

Astro

Raleigh, N. C.

Juniors

BETTY ANN HALL
Astro
Winston-Salem, N. C.

ELAINE HANCOCK
Astro
Siler City, N. C.



MARTHA HARE
Astro
Holly Springs, N. C.

ALICE HARRELL
Astro
Tarboro, N. C.



BETTY JANE HEDGEPEETH
Astro
Bound Brook, N. J.

NANCY HEFNER
Astro
Greer, S. C.



DOROTHY HELMS
Astro
Raleigh, N. C.

VIRGINIA HENRY
Phi
Hendersonville, N. C.



ANNA LEIGH HICKS
Astro
Henderson, N. C.

LAURICE HLASS
Phi
Palestine



Juniors

HOPE HODGES
Astro
Washington, N. C.



INEZ HOLLAND
Phi
Salemberg, N. C.

BETH HORD
Astro
King's Mountain, N. C.



EMMA LEE HOUGH
Astro
Charlotte, N. C.

JUANITA HUBBARD
Phi
Charlotte, N. C.



LINDA HUDSPETH
Phi
Winston-Salem, N. C.

MARGARET JAMES
Phi
Waynesville, N. C.



BETSY JOHNSON
Astro
Angier, N. C.

VIRGINIA JONES
Phi
Norfolk, Va.



MARY PLAND JOSEY
Astro
Tarboro, N. C.

Juniors



MARJORIE JOYNER
Astro
Winston-Salem, N. C.



ROSE MARIE KILLINGER
Astro
Marion, Va.



MARCINE KINKEAD
Astro
Rocky Mount, N. C.



SHEILA KNAPP
Phi
Washington, D. C.



REBECCA KNOTT
Phi
Oxford, N. C.



ROSALIND KNOTT
Phi
Oxford, N. C.



EMILIA KUTSCHINSKI
Phi
Raleigh, N. C.



KATHERINE LATTA
Phi
Bunlevel, N. C.



PATRICIA LAWRENCE
Phi
Raleigh, N. C.



MARGARET LEACH
Astro
Kinston, N. C.

Juniors



MATTIE LOU LEE
Phi
Willow Springs, N. C.

ANN McRACKAN
Phi
Southport, N. C.



MACLYN MACKIE
Phi
Granite Falls, N. C.

JOANNE MASON
Phi
Portsmouth, Va.



CAROLYN MASSEY
Astro
Zebulon, N. C.

STELLA MATTHEWS
Phi
Nashville, N. C.



LITA MAULDIN
Phi
Charlotte, N. C.

VIRGINIA MERRITT
Astro
Chapel Hill, N. C.



BETSY MILES
Astro
Raleigh, N. C.

MARILYN MILLS
Astro
Charlotte, N. C.

Juniors

KATHRYN MIMS
Astro
Raleigh, N. C.

VERTIE MITCHELL
Phi
Durham, N. C.



SANDRA MOORE
Astro
Florence, S. C.

ANNIE DRAKE MORGAN
Phi
Spring Hope, N. C.



ANNE MARIE MORTON
Astro
Raleigh, N. C.

MARGARET MULLICAN
Astro
Norfolk, Va.



TOMMIE MURRAY
Phi
Canton, N. C.

SARAH JANE NEWBERN
Astro
Ahoskie, N. C.



FAYE NICHOLS
Phi
Wilmington, N. C.

MARTHA NORMAN
Phi
Cherry Lane, N. C.



Juniors

HELEN NORWOOD
Astro
Holly Springs, N. C.

JEAN OLIVE
Astro
Southern Pines, N. C.

CAROL PARKER
Astro
Winston-Salem, N. C.

JULIA PARKER
Astro
Norfolk, Va.

BARBARA PEARSON
Phi
Elizabeth City, N. C.

ELLEN PEELER
Astro
Belwood, N. C.

BETTY PENNY
Astro
Laurinburg, N. C.

JAMIE PERRY
Phi
Pelham, N. C.

GLYNN PHILLIPS
Phi
Cary, N. C.

SARAH KATHERINE PHILLIPS
Phi
Gastonia, N. C.



Juniors



JOANNA PITTARD
Phi
Oxford, N. C.

BETTY PROFFITT
Phi
High Point, N. C.



NELL RANKIN
Phi
Raleigh, N. C.

LURENE RANSONE
Phi
Enfield, N. C.



JANE REID
Astro
Asheville, N. C.

REBECCA RICE
Phi
Hillsboro, N. C.



JANET ROBERTS
Phi
Gastonia, N. C.

PATRICIA ROBERTE
Astro
Lenoir, N. C.



PRYOR RODWELL
Astro
Norlina, N. C.

BETTY LOU ROGERS
Phi
Creedmoor, N. C.

Juniors



MARILYN ROSSER
Astro
Raleigh, N. C.

ELAINE SAUNDERS
Astro
Reidsville, N. C.



LOLITA SAUNDERS
Astro
Reidsville, N. C.

GRAHAM SCOTT
Phi
Haw River, N. C.



EUVA SENTELLE
Phi
Etowah, N. C.

BETTY JEAN SHULER
Astro
Orangeburg, S. C.



BILLIE SMITH
Astro
Pilot Mountain, N. C.

FRANCES SMITH
Phi
Gastonia, N. C.



MARGUERITE SMITH
Phi
Fairmont, N. C.

MARTHA SUE SMITH
Astro
New Hill, N. C.

Juniors

CRYSTAL STANLEY

Astro

Ash, N. C.

BECKY STEVENS

Astro

Raleigh, N. C.



FERNE STOFFER

Astro

Raleigh, N. C.

MARTHA STOUGH

Astro

Raleigh, N. C.



JANE STROUP

Phi

Cherryville, N. C.

MARGARET SWANN

Astro

Madison, N. C.



JEAN TAYLOR

Astro

Raleigh, N. C.

PEGGY THORNTON

Astro

Florence, S. C.



BARBARA TODD

Astro

Raleigh, N. C.

MARJORIE TOLAN

Phi

Belhaven, N. C.



Juniors

BETTIE TOLSON
Phi
Henderson, N. C.



VELMA TROTT
Phi
Richlands, N. C.

MARY JANE UTLEY
Astro
Greer, S. C.



ROSALYN VARN
Astro
Walterboro, S. C.

LOUISE WADE
Astro
Dunn, N. C.



HELEN WALKER
Phi
Sparta, N. C.

NANCY WALKER
Phi
Hendersonville, N. C.



DONNA WALSTON
Phi
Barberton, Ohio

MARGARET WASHBURN
Astro
High Point, N. C.



META MAE WILLIAMS
Phi
Kinston, N. C.

Juniors



EVELYN WILSON
Phi
Raleigh, N. C.

MARCELLA WINN
Phi
Martinville, Va.



MARIAN WINSTON
Astro
Nelson, Va.

MARY WRIGHT
Phi
Greensboro, N. C.



BETTY YATES
Phi
Rockingham, N. C.

DAPHNE YELVERTON
Phi
Fountain, N. C.



Caught in the act—Why, Madam President!



The Sophs have a queen in the May Court



Good advertising

It was a good try—and we did win Stunt



Sophomore Class

OFFICERS

JEAN MILLER
President

SALLY MASSEY
Vice-President

JANET TATUM
Secretary

MARY EVELYN BROWN
Treasurer

MARGARET CAREY
Sponsor



JEAN MILLER
President

Onward, onward we march along our way as the class of '52. This was the Sophomore Year. As counsellors we had our hand in Orientation Week; we danced to "Where, O Where Is My Little Nellie," at the Corn Huskin' Bee; we were very lady-like southern belles at Palio and walked off with first place in Stunt. Christmas caroling and after-midnight parties ushered in the holidays. Next came exams and then, miraculously, a clean slate. In the merry months of spring we sent our beauties to the May Court and watched the grass grow green—it was a sure sign of summer! June brought graduation to our "big sisters" and in final tribute we gladly carried their daisy-chain on class day.



Jean, Sally, Janet, and Mary Evelyn led their class in a successful year.

Sophomores



Adcock, Lynette, Oxford, N. C.
 Atkins, Dorie Ann, Raleigh, N. C.
 Bales, Patsy Ruth, Asheville, N. C.
 Ballentine, Carolyn Alston, Fayetteville,
 N. C.



Barker, Shirley Sealey, Portsmouth, Va.
 Bolling, Betsy Ruth, High Point, N. C.
 Bone, Barbara Cecile, Nashville, N. C.
 Boone, Emily Parker, Jackson, N. C.



Bostic, Nellie Marie, Cliffside, N. C.
 Britt, Molly Jeanette, Fairmont, N. C.
 Brown, Mary Evelyn, Wallace, N. C.
 Brown, Allene, Asheboro, N. C.



Buckner, Virginia Dean, Asheville, N. C.
 Bunn, Polly Sue, Emporia, Va.
 Cannady, Anne Carter, Oxford, N. C.
 Carlton, Frances, Kinston, N. C.



Carr, Fannie, Rocky Mount, N. C.
 Castelloe, Emily Burden, Aulander, N. C.
 Champion, Doris Anne, Shelby, N. C.
 Cheek, Nancy Ann, Chapel Hill, N. C.



Chriscoe, Kathleen, Ashboro, N. C.
 Clark, Sally Sue, Mount Holly, N. C.
 Cowan, Jessie Van, Windsor, N. C.
 Cox, Barbara Jean, Galax, Va.



Creech, Kathryn Anne, Four Oaks, N. C.
 Creef, Jacqueline Marie, Norfolk, Va.
 Davenport, Roberta, Alexandria, Va.
 Day, Bernice, Murfreesboro, N. C.

Sophomores

Deal, Jane, Gastonia, N. C.

Dixon, Rachel, Cameron, N. C.

Edwards, Marie Louise, Portsmouth, Va.

Farrior, Asha, Wallace, N. C.

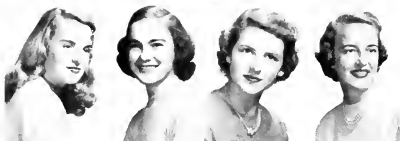


Fisher, Dorothy, Charlotte, N. C.

Fitzgerald, Frances Sue, Gretna, Va.

Frye, Mary Faith, Orlando, Fla.

Gardner, Janette, Durham, N. C.



Haight, Dorothy Irene, Washington, D. C.

Hart, Dorothy Grey, Salemburg, N. C.

Hilliard, Geneva Nevelle, Greensboro, N. C.

Holland, Martha Jean, Caroleen, N. C.



Hollis, Anne, Laurinburg, N. C.

Holt, Velma Elizabeth, Princeton, N. C.

Horn, Louise, Shelby, N. C.

Jackson, Julia Josephine, Goldsboro, N. C.



Johnson, Frances, Ayden, N. C.

Johnson, Jean Causey, Four Oaks, N. C.

Joyner, Jeanette Whitfield, Asheville, N. C.

King, Francene, Norfolk, Va.



King, Leatrice Elizabeth, Richlands, N. C.

Kinlaw, Carlene, Lumberton, N. C.

Leatherwood, Helen Ann, Bryson City, N. C.

Leinbach, Margaret, New Bern, N. C.



Liddy, Lucy Ann, Washington, D. C.

Luther, Jane Carter, Raleigh, N. C.

Mason, Jean, Newport, N. C.

Massey, Sally, Raleigh, N. C.



Sophomores



Miller, Dott, Ahoskie, N. C.

Miller, Jean Annette, Burlington, N. C.

Morton, Jane, New Bern, N. C.

Morton, Zeta Elizabeth, Jacksonville, N. C.



Murray, Norma Lee, Burgaw, N. C.

Murphy, Jane Webb, Asheville, N. C.

Neighbors, Joan, Benson, N. C.

Palmer, Mary Ann, Jacksonville, Fla.



Parker, Honore Mayme, Raleigh, N. C.

Perry, Dorothy Ann, Norfolk, Va.

Phillips, Evelyn, Jacksonville, N. C.

Poole, Peggy Jeanne, Clayton, N. C.



Poole, Rosalyn Lucille, Dunn, N. C.

Presson, Julia, Charlotte, N. C.

Pritchett, Lois Odell, Fredricksburg, Va.

Ray, Irma, Raeford, N. C.



Roberson, Lane, Washington, N. C.

Robinson, Martha Suzanne, Fayetteville, N. C.

Rodwell, Lydia Virginia, Charlotte, N. C.

Royal, Matel, Roseboro, N. C.



Schettler, Barbara Carol, Morristown, Tenn.

Simmons, Ruth Ann, Martinsville, Va.

Simpson, Mildred Wallace, Beaufort, N. C.

Slate, Betty Jane, Burlington, N. C.



Smith, Alice Rebecca, Gastonia, N. C.

Smith, Betty Jo, High Point, N. C.

Spiers, Patsy, Tarboro, N. C.

Stallings, Barbara Elaine, Louisburg, N. C.

Sophomores

Staton, Jerry, Scotland Neck, N. C.

Swindell, Dawn Ann, Washington, N. C.

Tatum, Janet, Cooleemee, N. C.

Taylor, Elizabeth, Chochwinity, N. C.

Thomas, Dorothy Elizabeth, Leaksville,
N. C.

Wallace, Evelyn Madelon, Rockingham,
N. C.

Ward, Mary Cecile, Bladenboro, N. C.

Westbrook, Mary Ann, Dunn, N. C.

White, Mary Faye, Whiteville, N. C.

Whitfield, Angerlane, Rocky Mount, N. C.

Williams, Elsie, Fredericksburg, Va.



Not Pictured:

Ballenger, Barbara Ann; Britt, Lucille; Crawford, Betty Roberts; Holland, Margaret McClure; Nance, Ernestine; Oliver, Delores Louise; Rice, Julia Rebecca; Shaw, Mary Jo; Waldrop, Virginia Penn.



Coke machines and Bendixes!

Best dressed at the Ball!



Someone stole their lollypops!

Wha' Hoppen?!



Freshman Class

OFFICERS

PAT SMATHERS

President

NANCY HOUSE

Vice-President

DOT BROWN

Secretary

PAT DULA

Treasurer

DORIS PETERSON

Sponsor



PAT SMATHERS
President

At last it's over—the entrance exams, the confusing days of Orientation Week, the looking forward to week-ends and home, the disappointment of no mail, the first nerve-racking examinations, and the mad rush for chaperones on Saturdays and Sundays. From the first days here at Meredith, we have shared with one another class spirit, laughter, and last but not least, classwork. The prizes we won at the Corn Huskin' Bee, the winning of third place in Palio with our cokes and washing machines, and our breakfast for our big sisters have brought us together as one—the class of '53.

We reflect with pride upon the part of our life at Meredith which is completed and we cast eager glances to the future which we hope to share as sophomores, juniors, and seniors.



Nancy, Pat Smathers, Dot, and Pat Dula are looking forward to three more years.

Freshmen



Adams, Nancy Elizabeth, Henderson, N. C.
Allred, Betty Jean, South Boston, Va.
Andrews, Frances Marie, Graham, N. C.
Andrews, Patsy Ruth, Raleigh, N. C.



Archer, Mary Alice, Franklin, N. C.
Autry, Verla Grace, Stedman, N. C.
Bartsch, Barbara Rae, High Point, N. C.
Baucom, Ann Elizabeth, Wilmington, N. C.



Beddingfield, Gene Dale, Norfolk, Va.
Benner, Glyndora, Carthage, N. C.
Blalock, Olive Grace, Kinston, N. C.
Bland, Millie LiAnne, Vidalia, Ga.



Bonnaville, Susan Patricia, Norfolk, Va.
Bowden, Penina Slaven, Kinston, N. C.
Boyd, Betty Kem, Keysville, Va.
Brabble, Lucy Eleanor, Oriental, N. C.



Bradley, Edith Josephine, Scotland Neck,
N. C.
Brady, Erma Carolyn, Raleigh, N. C.
Brigman, Dorothy Evelyn, Rowland, N. C.
Brinson, Hilda Gray, Magnolia, N. C.



Britt, Julia Catherine, Clinton, N. C.
Brown, Dorothy Dora, Clinton, N. C.
Brown, Ethel Joyce, Elizabeth City, N. C.
Brown, Martha O'Neil, Shelby, N. C.



Brownlow, Willie Bell, Winston-Salem, N. C.
Bruton, Ann, Mount Gilead, N. C.
Buening, Adele Anne, Charlotte, N. C.
Bumgarner, Mary Elizabeth, Goldsboro,
N. C.



Camp, Peggy Ann, Waynesville, N. C.
Cannady, Melrose, Bunnlevel, N. C.
Cannady, Elizabeth Anne, Richlands, N. C.
Carter, Jeanne Bailey, Kinston, N. C.

Freshmen

Casey, Mary Ann, North Wilkesboro, N. C.
 Cash, Elizabeth Ann, Louisburg, N. C.
 Castevens, Helen Beth, Shelby, N. C.
 Cate, Martha Jane, Chapel Hill, N. C.



Caudle, Sarah Louise, Aberdeen, N. C.
 Caveness, Nancy Ann, Raleigh, N. C.
 Cliatt, Shirley Elizabeth, Myrtle Beach, S. C.
 Cole, Mary Joe, Whiteville, N. C.



Cole, Ruth Jeannette, Fayetteville, N. C.
 Covington, Joyce Kathryn, Rockingham,
 N. C.



Coxe, Sarah, Wagram, N. C.

Craven, Ruth McKenzie, Charlotte, N. C.

Currin, Mary Rose, Oxford, N. C.

Davidson, Jeanette Barbara, High Point,
 N. C.



Dawson, Beverly Janne, Charlotte, N. C.

Dickinson, Helen Frances, Ulah, N. C.

Dula, Jean Bradley, Kipling, N. C.

Dula, Pat Dean, Durham, N. C.

Eacho, Barbara Ann, Raleigh, N. C.

Earp, Betty Lou, Raleigh, N. C.



Edge, Mary Rebecca, Aberdeen, N. C.

Estes, Mary Berry, Chase City, Va.

Finklea, Betty Jean, Pamplico, S. C.

Fisher, Catherine, Elizabethtown, N. C.



Fisher, Johnny Mae, Concord, N. C.

Fisher, Mary Ida, Concord, N. C.

Foote, Virginia May, Asheville, N. C.

Francis, Bessie Sue, Waynesville, N. C.



Fretz, Eloise Lillian, Raleigh, N. C.

Garnett, Lillian Inez, Lake Worth, Fla.

Godwin, Mary Ann, Ahoskie, N. C.

Hall, Barbara Ruth, Norfolk, Va.



Freshmen



Hamrick, Elizabeth Ann, Shelby, N. C.
 Harder, Lois Maybelle, Fredericksberg, Va.
 Hart, Allen Wilkinson, Waynesville, N. C.
 Henson, Helen Carthage, Carthage, N. C.



Heonis, Mary Alice, Raleigh, N. C.
 Highsmith, Betty Ann, Jacksonville, N. C.
 Horton, Mary Ann, Fountain, N. C.
 House, Nancy Elizabeth, Asheboro, N. C.



Howard, Holly L., Fayetteville, N. C.
 Hudson, Betsy Ann, Clinton, N. C.
 Hunt, Rose Marilyn, Forest City, N. C.
 Ipoeh, Juanita Florence, Erned, N. C.



James, Virginia Catherine, Waynesville,
 N. C.
 Joyner, Kathryn Estelle, Louisburg, N. C.
 King, Evelyn Cole, Seagrove, N. C.
 Kistler, Nancy Lee, Charlotte, N. C.



Lamb, Frances Jeanette, Garland, N. C.
 Lancaster, Frances Ann, Rocky Mount, N. C.
 Langley, Joan Gordon, Lynchburg, Va.
 Langston, Frances Jane, Four Oaks, N. C.



Langston, Margaret Rose, Winterville, N. C.
 LaRue, Jo Anne, Raleigh, N. C.
 Leonard, Betsy Jean, Louisburg, N. C.
 Leonard, Jean Ellen, Louisburg, N. C.



Leopard, Jeannette Alice, Waynesville, N. C.
 Maddrey, Emma Jean, Seaboard, N. C.
 Massengill, Peggy Ann, Benson, N. C.
 Melvin, Sally McKay, Fayetteville, N. C.



Midgette, Beulah Anne, Kinston, N. C.
 Mizelle, Billie Louise, Charlotte, N. C.
 Mizelle, Janice Irene, Windsor, N. C.
 Moore, Patricia Anne, Turkey, N. C.

Freshmen

Moore, Mary Constance, Myrtle Beach, S. C.
Moore, Judy Pamela, Charlotte, N. C.
McGugan, Louise Annete, Cordele, Ga.
McLamb, Doris Jean, Benson, N. C.



Nottingham, Phyllis, Exmore, Va.
O'Quinn, Anne Howe, Lillington, N. C.
Page, Vernell, Fairmont, N. C.
Parker, Jewel Florence, Goldsboro, N. C.



Parker, Lucy Virginia, Lasker, N. C.
Partin, Virginia Ann, Chadbourn, N. C.
Pendergraft, Patricia Ann, Waynesboro, Va.
Perry, Doris Marie, Elizabeth City, N. C.



Rhodes, Myra Joyce, Rocky Point, N. C.
Rogers, Mary Jane, Nichols, N. C.
Rooks, Eunice Marie, Watha, N. C.
Royer, May Ellyn, Bishopville, S. C.



Sanderson, Betty Jane, Calypso, N. C.
Savage, Mary June, Council, N. C.
Seagrove, Ann Soughty, Clinton, N. C.
Shields, Betty Lou, Scotland Neck, N. C.



Smathers, Pat Karyne, Canton, N. C.
Smith, Irma Louise, Fremont, N. C.
Smith, Sarah Lee, Whitakers, N. C.
Smith, Sara Lynn, Asheville, N. C.



Snell, Gwen, Charlotte, N. C.
Sparrow, Verona Gray, Deep Run, N. C.
Stainback, Doris Ann, Henderson, N. C.
Stallings, Elma Janet, Fayetteville, N. C.



Stallings, Beulah Venetea, Jamesville, N. C.
Stanfield, Mary Kathryn, Nashville, N. C.
Stell, Dorothy Wiggins, Wake Forest, N. C.
Stephenson, Daphne, Raleigh, N. C.



Freshmen



Stevens, Eloira Carolyn, Raleigh, N. C.
 Stone, Marjorie Ann, Morehead City, N. C.
 Stott, Martha Ellen, Whiteville, N. C.
 Stough, Shirley, Raleigh, N. C.



Tate, Mary Louise, Salisbury, N. C.
 Tatum, Nancy Ann, Chinagrove, N. C.
 Taylor, Charlotte, Raleigh, N. C.
 Thomas, Camille Anne, Wilmington, N. C.



Thomas, Norma Kathleen, Bryson City, N. C.
 Thomas, Sarah Elizabeth, Roxboro, N. C.
 Turner, Camille Anne, Raleigh, N. C.
 Upchurch, Patsy Ruth, Mooresville, N. C.



Vaughn, Patricia, Tarboro, N. C.
 Waller, Lois Estelle, Mount Olive, N. C.
 Webb, Lois Irvin, Morehead City, N. C.
 Welch, Betty Jo, Washington, D. C.



Wells, Lucy Ellen, Rose Hill, N. C.
 West, Barbara Hill, Hendersonville, N. C.
 Westmoreland, Ellen, Thomasville, N. C.
 Wicker, Rebecca, Sanford, N. C.



Wiggins, Charlotte Isabel, Dudley, N. C.
 Williams, Doril Elaine, Rocky Mount, N. C.
 Williams, Meta Mae, Kinston, N. C.
 Willoughby, Janice Elma, Ahsokie, N. C.



Winslow, Harriet Ann, Scotland Neck, N. C.
 Whitehurst, Annabella, Elizabeth City, N. C.
 Wrenn, Margie Jean, Siler City, N. C.
 Won, Blanche Oi How, Honolulu, TH



Wood, Celia Jean, Troy, N. C.
 Woodward, Jo Ann, Shelby, N. C.





*She found innumerable
opportunities offered in our . . .*

Activities



Student Government Association



EMILY POOL
President

Student Government at Meredith is more than just "student government." By the experience of self-governing in all phases of college life the members of the Association are encouraged to attach to everyday living a high sense of responsibility which will transcend dormitory and class regulations and provide better citizens for the world. The Student Government Council, which is composed of twenty-six members, elected by popular vote and representing all non-resident as well as resident students, works with a Faculty Advisory Committee and the Faculty Committee on Student Government. The main task and ideal of the Student Council is not merely that of governing, but it strives to maintain a well-rounded college life and to uphold the Christian standards of Meredith.



Student Government Council

Freshman and Transfer Counsellors

"What shall I do now that I'm here?" Many a freshman or transfer wonders how to go about starting a new life in a new environment. The duty of the counsellor is to aid her group of new students throughout the year in facing problems and developing wholesome attitudes toward college life. Then comes the problem of meeting new, interesting people—boys, for instance. The counsellors hold "open house" in the hut on Sunday afternoons. Between church and B. T. U. the new girl rushes down to the hut and finds a State College boy just waiting for her.

Meetings of each group are held every month. Discussions on manners, traditions, the honor code, and numerous other topics are held. The counsellors are all eager to know their girls and to help them in every possible way.



WINNIE FITZGERALD
Chief Counsellor



Freshman and Transfer Counsellors

Day Student Officers

RONIE VALLAS
President

BETSY GOLDSTON
1st Vice-President

BARBARA BALLENGER
2nd Vice-President

MYRA RUTH STONE
3rd Vice-President

A lovely year, don't you think? We Day Students do. We got what is commonly known as a "large charge" from the little things—Monday morning conferences on what happened on the previous weekend; endless bridge games; the inevitable "sacksuhsaniches" at lunch; the occasional splurge trip to Roy's if we could persuade the bus driver to take us to the gate free; being proud that four of us won first prizes in the student art exhibit—nothing really world-shaking, but just the same we get a sort of glow when we think about the past year. This year we can glow even more than usual, because the century wasn't the only thing that turned—so did the Day Student rooms. Somebody (probably Santa Clause) saw to it that over the Christmas holidays the rooms got a new coat of paint, a new couch, more chairs, and glory be, four new lamps. Come up to see the transformation yourself any time; we'll be glad to see you.



Day Student Officers

Nominating Committee

WINNIE MAY FITZGERALD.....*Chief Counsellor*
 EMILY POOL.....*S. G. A. President*
 BETSY ANN MORGAN.....*B. S. U. President*
 DORIS CONCHA.....*A. A. President*
 MARGUERITE LEATHERMAN.....*Phi President*
 CHARLOTTE BOWMAN.....*Astro President*
 GAZELLE MOORE.....*Little Theatre President*
 JOSEPHINE SNOW.....*OAK LEAVES Editor*

SALLY LOU TAYLOR.....*Twig Editor*
 BETTY MOORE.....*Acorn Editor*
 ALICE GORDON TUTTLE.....*Senior Class President*
 BETTY JANE HEDGEPEITH.....*Junior Class President*
 JEAN MILLER.....*Sophomore Class President*
 PAT SMATHERS.....*Freshman Class President*
 ROXANNE VALLAS.....*Non-resident Student President*
 HAZEL WILLIAMSON.....*College Marshal*

The system of elections at Meredith is directed by the Nominating Committee, a group representing presidents of the major organizations and classes, editors-in-chief of the publications, the college marshal, and Dean of Women, and three faculty members chosen by the committee. Nominations for campus offices, with the exception of class offices, are submitted to this group for final selection, and all officials for holding elections are appointed by the committee, of which the Chief Counsellor is the chairman.

The Nominating Committee endeavors to aid in the conducting of fair and democratic campaigns through the use of stunts, bulletin boards, and posters. At all times the qualifications of the candidates are considered of utmost importance.



Baptist Student Union



BETSY ANN MORGAN
President

"It's swinging a pick-ax with no purpose that makes a prison."

Realizing the significance of purpose in one's life and plan, the Baptist Student Union has chosen for its theme this year:

"Let this mind be in you, which was also in Christ Jesus: . . . who made himself of no reputation, and took upon him the form of a servant and was made in the likeness of men": Philippians 2:5-7.

This theme expresses our purpose. We have tried to keep it ever before us in the activities and various phases of the B. S. U. program for the year: vespers, family altar, Campus B. S. U. meetings, mission activities, workshops, parties, retreats, and conventions. This purpose is the spirit that breathes through the B. S. U. and makes its activities vital and worthwhile; it is the spirit of Christ, who lived to show us God and his purpose for us. When our hearts are set in this one direction and we see the

campus-wide—world-wide—scope of the spirit which motivates the work of the B. S. U., we *must* become a part of it and give our time, our money, and ourselves. May we as Christians always proclaim:

"We are all one body,
Tho' from east and west;
We would serve the Master;
Put us to the test.

Thus with hearts united,
Sin we shall subdue
With His love unflinching,
Spirit of B. S. U."



B. S. U. Council

B.S.U. Staff

BETSY ANN MORGAN
President

CAROLYN MASSEY
1st Vice-President

FAYE NICHOLS
2nd Vice-President

EMMA LEE HOUGH
3rd Vice-President

JERRY STATON
Secretary

ROSALIND KNOT
Treasurer

JEAN DAUGHTRIDGE
F.W.A. President

ELAINE SAUNDERS
Sunday School Director

EVELYN WILSON
Training Union Director

BEVERLY BATCHELOR
Publicity Editor

NANCY DUCKWORTH
Publicity Artist

BARBARA BONE
Music Chairman

DORIS BARNETTE
Arrangements Chairman

POLLYANNA GIBBS
Program Chairman

REV. F. O. MIXON
Pastor Adviser



MISS BILLY RUTH CURRIN
Adviser



Astrotekton



CHARLOTTE BOWMAN
President



"Carry your bags?" "Did you remember to bring your toothbrush?" "You say you live on third Stringfield? Oh, but I love to climb stairs." The Astro Red Cap Service ushered in another class of freshmen as well as another year of fellowship under the yellow and white banner of the Astro Society.

Rush Week began with a kick-off, with Miss Cunningham doing the honors. Throughout the week surprises kept springing up—the big pep rally on Johnson Hall steps, with Carolina, Duke, Wake Forest, and State participating; the prophecy of gods and goddesses to the new students; the freak show in the court bringing gales of laughter; the fearful sign in the skies turning out to be a mighty airship dropping tokens of love and words of wisdom; the chorus girls livening up the dining hall at dinner time; the atmosphere produced at the Le Cafe Boheme party; the picnic at Allen's Pond. All of these activities came to a climax on Decision Day when it was announced that the Astros were victorious!!!!

Throughout the year monthly programs have been presented with the idea of getting more and more student participation in the activities of the society. In all that is done, the Astro Society continues in the attempt to grasp the meaning found in the motto, "He builds too low who builds beneath the stars."

CHARLOTTE BOWMAN.....*President*
MARY BLAND JOSEY.....*Vice-President*
FRANCES ANNE ESTRIDGE.....*Secretary*

JEAN TAYLOR.....*Treasurer*
JANE LUTHER.....*Sergeant-at-Arms*
PHYLLIS CUNNINGHAM.....*Adviser*



Philaretian

"Be a Phi! Be a Phi!" "Put Phi colors in your heart." "She's the sweetheart of all the Phis." The words of these songs are indicative of the Philaretia spirit and activities, particularly during Rush Week. They echoed back and forth across the court as the loyal lovers of Phido rushed on their way to the hut for the bonfire, invited brother Phis from Wake Forest to sing and perform magic in the dining hall, gave out favors at night, or formed the Phi heart in the court. The climax of rushing, characterized by fun, stirring incidents, and work, was the candlelight service around the fountain. Later, there was a lull while members climbed step-ladders to drape lavender and white crepe paper in the dining hall, gathered Phi bears for the tables, and dug up lavender sweaters to lend to the new students.

After Decision Day, there were even more Phis to share in the programs at the regular meetings, in the presentation of a Christmas play, in the fun at the Christmas party, and in the work of giving the play on Society Night. These members maintained a spirit of friendship and love, having deeply implanted in their hearts the Phi motto, "Plain living and high thinking." And always, they rejoice in singing the song that they love best:

"Lead on, O Philaretia fair,
Lead upward day by day."



MARGUERITE LEATHERMAN
President



MARGUERITE LEATHERMAN..... *President*
ANNE McRACKEN..... *Vice-President*
SYLVIA CURRIN..... *Secretary*

BARBARA BONE..... *Treasurer*
BARBARA COX..... *Sergeant-at-Arms*
LUCY ANN NEBLETT..... *Adviser*





Phi Marshals

ELIZABETH HOLDFORD . . .
LAVERNE HARRIS

..Chief Marshal
Senior Marshal

BETTY YATES
ASHA FARNIOR

Junior Marshal
Sophomore Marshal



Astro Marshals

VIRGINIA BOWMAN,
DOROTHY CHILDRESS,

Chief Marshal
Senior Marshal

JUNE SHORT,
PEGGY POOLE,

Junior Marshal
Sophomore Marshal

The Oak Leaves



JOSEPHINE SNOW, *Editor*
BETTY ANN HALL, *Business Manager*

Scraps of paper with typewriting on them; a jumble of pictures of various persons and groups or of campus scenes—these are the raw materials that the staff put together to make a finished product—the 1950 edition of the OAK LEAVES.

There were times when the staff seemed to have nothing to do; then, suddenly, there would seem to be more work than the staff could ever accomplish. Finally, the material had all been checked, okayed, and neatly typed. Then, it was out of our hands and in the hands of the engraver and of the printer. It came back in the form of pages which had to be proofread. After the proofreading, the staff knew that soon the finished OAK LEAVES would be ready for distribution.

At last the day, for which we had worked and waited so long, finally came; and the OAK LEAVES, with all its perfections and imperfections, was delivered to the student body. We, the staff of the 1950 OAK LEAVES, are justly proud of this book, and we hope that it will long remind you of happy days at Meredith.

Editorial Staff



EDITORIAL STAFF

JOSEPHINE SNOW.....	<i>Editor</i>
ELLEN GOLDSTON.....	<i>Associate Editor</i>
ELIZABETH MACHEN.....	<i>Photographic Editor</i>
ROSALIND POOLE.....	<i>Photographic Editor</i>
BERTHA WILSON.....	<i>Senior Class Editor</i>
PEGGY BENBOW.....	<i>Junior Class Editor</i>
MARIE EDWARDS.....	<i>Sophomore Class Editor</i>
SALLY SMITH.....	<i>Freshman Class Editor</i>
DONNA WALSTON.....	<i>Art Editor</i>
JEANETTE ATKINS.....	<i>Typist</i>

BUSINESS STAFF

BETTY ANN HALL.....	<i>Business Manager</i>
ELIZABETH HOLDFORD.....	<i>Senior Assistant</i>
MYRA STONE.....	<i>Senior Assistant</i>
FRANCES ALTMAN.....	<i>Junior Assistant</i>
BETSY AUSBON.....	<i>Junior Assistant</i>
BECKY SMITH.....	<i>Sophomore Assistant</i>
ROSALIND POOLE.....	<i>Sophomore Assistant</i>



Business Staff





SALLY LOU TAYLOR, *Editor*
JANE MCDANIEL, *Business Manager*

The life of a newspaper worker has never been easy, and when the worker happens to be doing all her work extracurricularly, the burden is almost too much to carry. However, the staff of *The Twig* this year has done what at times seemed impossible, and they have done it in such a way as to carry forward *The Twig's* tradition of "only the best."

The Twig

"There will be an important meeting of *The Twig* Staff in the Publication Room Monday night at seven." The announcement was as simple as that, but o-o-oh what followed? Some people are under the impression that what takes place in an atom is miraculous, but they should just be on hand to see what happens in that little dimly lit room on first Jones. The series of events that takes place there every other week would put any atom and its nuclear fission to shame.

Don't misunderstand! This isn't a complaint. The job is done now, and all of us can sit down and look back over the whole year's work and smile at all the things that we wept over. We can laugh at the trips to the printer's in the rain and at the fact that our news was sometimes a day old because the papers didn't arrive on the day of the dateline. Tears flowed like April showers then, but ah, memories.

Editorial Staff



EDITORIAL STAFF

SALLY LOU TAYLOR..... *Editor*
NANCY WALKER..... *Managing Editor*
BARBARA SCHEITTLER..... *Feature Editor*
NANCY HEFNER..... *Art Editor*
FRANCES ALTMAN..... *Alumnae Editor*
JOANNE MASON..... *Music Editor*
LOIS HARDER..... *Sports Editor*
SHIRLEY BONE..... *Photo Editor*
BETTY LOU ROGERS..... *Fashion Editor*
CAROLYN COVINGTON..... *Columnist*
SUE PAGE..... *Exchange Editor*

Reporters—Micky Bowen, LeGrace Gupton,
Mary Jane Utley, Marie Edwards, Sarah
Jane Newbern, Patsy Spiers, Dot Haight,
Rosalind Knott, Rebecca Knott, Anne Creech.

Typists—Anne Fouche, Carolyn Crook, Joyce
Bailey.

BUSINESS STAFF

JANE MCDANIEL..... *Business Manager*
ANNETTE MILLER..... *Advertising Manager*
SUE SMITH..... *Circulation Manager*

Members of Business Staff—Martha Hare, Jane
Luther, Dwan Swindell.



Business Staff



The Acorn



BETTY MOORE, *Editor*

BARBARA TODD, *Business Manager*

Whether it was fall, winter, or spring outside, the *Acorn* has duly recorded student opinions and thoughts, both on the seasons of the year and on other subjects which came to their minds. "Literary magazine" is the term given to this publication, but often the editor had to push a little to encourage Meredith students to make the description fit—or maybe the contributors were just shy about seeing their work in black-and-white for all the world to gaze upon.

Whatever the method of getting the poems, essays, short stories, and sundry creations into print, the end accomplished, that of publishing each bi-monthly issue of the *Acorn*, seems to have well-justified the means. The task of going around the vicious circle of assignments, typing, make-up, ads, and proofing was not always easy, but everyone from the editor and business manager on down seems to have lived through the grind—despite dire predictions to the contrary when the going was rough.

Looking back over the year's issues, the *Acorn* staff hopes that it has produced a work which has with a moderate degree of success reflected student opinion and given enjoyment to *Acorn* readers; and if it has occasionally stirred up serious thought, none of the hard work that went into these issues will be regretted.

Editorial Staff



EDITORIAL STAFF

BETTY MOORE.....*Editor*
BERTHA WILSON.....*Assistant Editor*
FRANCES WILLIAMS.....*Art Editor*
SALLY CLARKE.....*Assistant Art Editor*
LaVerne Harris, Joyce Bailey, Nancy Walker,
Nancy Cheek, Cecile Ward.....*Class Editors*

BUSINESS STAFF

BARBARA TODD.....*Business Manager*
PATSY EMORY, HELEN WALKER
.....*Assistant Business Managers*
SALLY MASSEY.....*Circulation Manager*
DAPHNE BORDEAUX, PEGGY THORNTON...*Typists*



Business Staff



Little Theatre



GAZELLE MOORE
President



The show must and does go on, as actors and crew, technicians and public relations committees find their niche and give the public a production, finished to detail. We've discovered that there are endless possibilities in all of us and that our fellow-students can be depended upon in any eventuality.

This year, the major productions were the all-time classic, *Our Town* by Thornton Wilder, in the fall, and, in the spring, a medieval morality play *Everyman*, which we proudly presented in an exterior setting.

Besides our regular meetings, we held workshops in the various fields of theatre art for those incurably inculcated with grease-paint, and formed a speech choir which entertained in chapel and at other meetings. The Little Theatre also sponsored the three one-act plays presented by the two societies and the Freshman Class.

Little Theatre membership is open to all students who earn twenty-five points by participation in the activities of the organization.



Education Club

Students today—teachers tomorrow. The Education Club, one of the largest on the Meredith campus, helps to bridge the gap between life as a student and experience as a teacher. In the fall the Education Club was reorganized by its officers and sponsors. To make the club meaningful and helpful to its members, we have included programs on visual aid in education, lectures on mental health in schools, and reports on such subjects as the White House Conference. Of course, there was our annual Christmas party for the children of Methodist Orphanage; this year the club entertained twenty-six boys and girls by presenting a program of nursery rhymes, group singing, story telling, and refreshments. Always in our year of work we have tried to supply for each other the hints and aids that will make Meredith's students better teachers tomorrow.



Meredith Student League of Women Voters

Because Meredith students are among the future voters, law-makers, and office-holders of the United States, the Student League of Women Voters was organized on the campus in 1930 to encourage its members to become more intelligent in affairs of local and national interest.

Each year, Meredith participates in the Student Legislature held at the Capitol. Our Student League of Women Voters has its big day at this time, for it is the duty of the organization to draft a bill to be presented for passage by the Legislature. This year, the Student League drafted a bill to put jailers on a permanent salary basis.

This and the other activities of the Student League offer practical experience in the realm of politics for students who are the voters of the future.



International Relations Club



What was the top news story this month? What happened in the United States? In the world?

The members of the International Relations Club are very much interested in these questions as they believe that an understanding of yesterday and today will prepare them for the events of tomorrow. They believe that understanding and friendship with all peoples will break tensions and wear down the barriers which cause so many problems.

To gain this understanding, the International Relations Club has, at its monthly meetings, speakers who have some knowledge of a current situation. They welcome as friends members of all nations and races.

The International Relations Club seeks to promote the unity of mankind, and they have made a good beginning on the Meredith campus.



Canaday Math Club

A trip to the State College Statistics Laboratory, or to the Duke University Mathematics Laboratory; a discussion on how geometry can be made interesting and fun to students—these are some of the activities of the Canaday Mathematics Club when they get together for their monthly meetings.

The math majors have also found that there is fun in mathematics. After the business of the club is finished, they rack their brains to figure out mathematical riddles or to prove that two plus two does not equal five, even though Dr. Canaday has a proof that it does.

Members say that it is worth being a math major to be able to join the Canaday Mathematics Club.

Barber Science Club

Atom bombs?? Electrons . . . Protons . . . Neutrons??? Well, maybe! Honestly, though, we don't make atom bombs, nor do we break down the Uranium atom, nor do we attempt to build atomic piles, but we do discuss these and many other topics in the hope of broadening our knowledge of the advancing scientific world around us.

What do you know about viruses and germs and the like? Early in the year several student members reported on the latest developments in these fields. Did you know that the soil gives us some of the most potent medicines that we use today? Or did you know that experimenters are now raising animals in a germless world?

Then one program was dedicated to learning about water systems, their supply and purification. In December the club sponsored a trip to the Morehead Planetarium at Chapel Hill to hear Dr. Marshall's "Star of Bethlehem." Several outside speakers addressed the club during the spring semester. We also secured a very interesting film concerning the petroleum industry.

Did someone mention Beaufort? Yes, Beaufort, North Carolina, brings back memories. For two consecutive years the club, composed of all science majors and those taking elective courses in science, planned a wonderful week-end trip to the marine laboratories in Beaufort.

The future of this club is like the future of science—full of untold potentialities.



Freeman Religion Club

Although the Freeman Religion Club is limited to Meredith students, the club is keenly aware that it is an inseparable part of a world-wide Christian youth interest. The members seek to become growingly conscious of this fellowship through programs that give a better understanding of religion in many ages and areas.

Representative programs for this year included: an outdoor supper meeting at Dr. McLain's with Arnold Nash, an English scholar, leading a discussion on "The Growth and Significance of Student Christian Work around the World"; a film on the 1949 Christian Youth Meeting in Europe; a vivid presentation of the life and work of Albert Schweitzer by Dr. McNeill Poteat; and a joint meeting with the International Relations Club with Dr. and Mrs. Sherwood Eddy leading a discussion on related political and Christian problems.



Colton English Club



The purpose of the Colton English Club is to arouse and maintain interest in phases of literature and composition not provided for in the curriculum. In developing our theme for 1949-1950, "Literature and the Other Arts," we have been ably assisted by members of the faculty: Miss Peterson gave a talk on American Folk Ballads; Miss Rosenberger, on "Literature and the Opera;" Miss Murphy directed the speech choir in a charming recital; and Dr. Preston delighted us with an informal talk at our annual dinner meeting.

In December a few sophomores, chosen for special interest or achievement in the field of English, were elected to membership in the club. In the second semester plans for the maintenance of the Julia Hamlet Harris Browsing Room, which is sponsored by the Club, were discussed and adopted.



Tomorrow's Business Women

Getting and keeping a job requires more than a knowledge of how to operate machines efficiently and how to obey orders. One must know how to dress for the job and how to act—at all times! This is the reason Myra Stone, the program chairman, chose "Appearance and Etiquette on the Job" as the theme of our programs for the year. To carry out this theme we had fashion skits, etiquette programs, a film about secretaries, and visits from graduates.

Among her other duties as vice president, Carolyn Crook attended to the providing of refreshments at our meetings, while Peggy Thornton reminded us about our dues, and Ann Fouche reported our activities to the paper. Joyce Bailey kept the records of the meetings, over which Imogene Narron presided.

We are looking forward to tomorrow.



Bee Hive



There's nothing better than food when you're hungry, and there's no place on the Meredith campus so handy as our "Bee-Hive." The purpose of the Bee-Hive is to please and serve the students by supplying a varied choice in snacks, school supplies, and even "beauty-aids" such as lipstick, cologne and the like. Some of the additions to the stocklist for the year '49-'50 are scrapbooks, sweaters, and "get well" cards! Who knows? If it's the desire of the student body, we may be selling television sets this time next year!



Alpha Rho Tau

You don't even have to own a paint-spattered smock or a black beret to be a member of the Alpha Rho Tau. Just a sincere interest in any phase of the art world is our only requirement for membership.

One month's meeting is spent in figure sketching; the next month might bring a fellow artist to share his ideas with us. Trips to the State Art Gallery and to other places of interest to the art world are sponsored. Not to be overlooked are the stimulating discussions on topics varying from esthetic ideals to Van Gogh's use of color. Everyone has a chance to share his views and see them in comparison with those of other aspiring young geniuses of the art world.

The informality of the Alpha Rho Tau creates an atmosphere of congeniality felt by all who share its fellowship.



Granddaughters' Club



We take pride in being styled the "junior alumnae" of Meredith. Since Meredith is the Alma Mater of our mothers, we were born into this club and are, therefore, the granddaughters of Meredith.

During the year, the Granddaughters' Club carries on several undertakings as the members strive to reach their objective—that of promoting a feeling of closeness between Meredith and the alumnae. This year these included the sponsorship of the Needlework Guild on the campus and special projects such as the "family tree." This Meredith family tree illustrates the kinship of the alumnae and the students as its branches are composed of those members of the same family who have attended Meredith.

Other activities included after-dinner coffees and the spring Mother-Daughter Luncheon, all of which helped to promote the feeling of closeness between Meredith, her daughters, and her granddaughters.



Home Economics Club



“Creation supplies us with just two kinds of things: necessities and extras.” Necessities we get in our regular classes; extras we get in our Home Economics Club.

In our programs this year we found “life’s extras” through guest speakers, exhibits, demonstrations, and films covering some of the cultural phases of homemaking.

Of course, we could not forget one of life’s most valuable extras—friends. By corresponding with girls in our “adopted” school in Germany we have found new friends. By attending state and province workshops we meet both old and new. We hope our club is adding spice to our home economics program on the campus.



Sociology Club

When Alexander Pope wrote, "The proper study of mankind is man," he didn't know that some centuries later Meredith's Sociology Club would be motivated by the same opinion. Believing that not all the study should be textbookish, the club has this year concentrated on the portion of mankind in our own state. Speakers have described North Carolina's varied governmental departments which serve its citizens. The club, too, has tried to serve mankind a bit by providing entertainment for county home residents. A Christmas dinner and a May picnic emphasize the "social" as well as the "ology."





Hoof-Print Club

Where are all of the members of the Hoof-Print Club going? To their new club house, of course, to brew a pot of coffee before starting on a supper ride or an early morning ride. This new club house, with curtains at the windows, pillows in the chairs, a rug painted on the floor, and—we hope—knotty pine on the walls, is the scene of meetings at which plans for the gymkhana and the horse show, and changes in the constitution are discussed by Meredith's horse-lovers. That all of this talk leads to action is evidenced by the fact that the riders lead the Palio Parade up the drive on homecoming day. If you see some horses silhouetted against the sky, you can be sure it is the Hoof-Print Club, led by their sponsor, Mrs. Miriam Hitt, cantering off for a wonderful ride over the trails and paths that take them through the woods and into the meadows.



Choir

The white-robed angels, under the capable direction of Dr. Cooper, this year gained inspiration as they performed in the new auditorium. The choir has a varied list of programs to tuck away in its memory book. They appeared on a program for the Baptist State Convention, and performed during Religious Focus Week and Commencement Week. Two of the highlights of this year's work were the Christmas Carol Festival held at the Memorial Auditorium in collaboration with different choirs in Raleigh, and the Christmas concert, of which a portion was later recorded by WPTF to be heard on Christmas morning. In the spring several concerts were presented over WPTF. Through Dr. Cooper's interpretation of music the choir's diminuendos and crescendos were able to excite and soothe, leaving the audience calm or trembling but forever—remembering.

Glee Club

Meredith's Glee Club is one of the most active organizations on the campus. In addition to our two rehearsals a week, we have given selections during Religious Emphasis Week and programs at various civic clubs in the city. Our tour in the spring of 1949 to Wilmington, New Bern, Kinston, and points east was such a success that the spring of 1950 saw us again packed on the bus for an extended tour of the state. It was work—learning the German for the Brahms' "Liebeslieder Waltzes," working to make the altos balance the sopranos, memorizing feverishly for our Glee Club exams—but when it was all over and when the tour and spring concert were behind us, all of us knew we had found the effort rewarding and the experience one to remember.



McDowell Music Club

The membership of the MacDowell Music Club is not limited to music majors but is open to any Meredith student. Bettie Compton, president, and Mr. Pratt, sponsor, make the music club one of the most active on the campus. At its meetings the members either discuss current events in the music world, which might include the review of a future concert and the listening to recordings, or display their own talents in vocal and instrumental performances. A future Madame Curie or Kirsten Flagstad could find much to interest and to entertain her in the MacDowell Music Club.



Sigma Alpha Iota

The youngest organization on the campus is the Beta Zeta Chapter of Sigma Alpha Iota, a national professional music fraternity for women. Members of the organization are music majors chosen by the local chapter upon faculty recommendation, for excellence in scholarship, musical ability, and vital interest in music.

Under the sponsorship of Miss Rachel Rosenberger the chapter seeks to increase interest in musical activities by the participation of the members in public performances on and off campus and by the sponsoring of concerts of visiting artists. The music store on the campus is owned and run by the fraternity.

Because Sigma Alpha Iota is a national organization, its members have the opportunity for wide social and professional contacts and for active interest in musical projects of broad scope.

The patronesses of the Beta Zeta Chapter are Dr. Lillian Parker Wallace, Mrs. Harry E. Cooper, and Mrs. Carlyle Campbell.



Vocal Ensemble



Sopranos

Jean Olive
Jean Miller
Betty Jo Smith
Barbara Bone

Second Sopranos

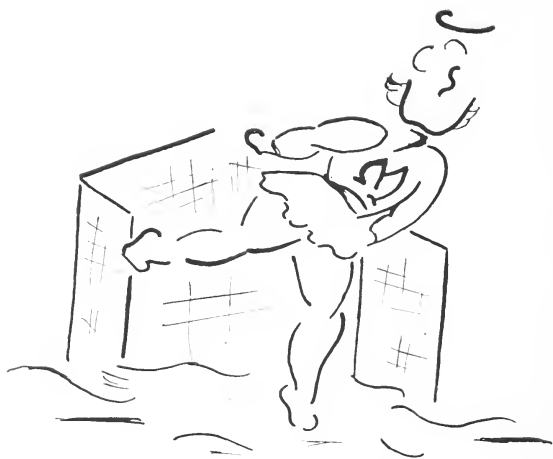
Nellie Bostic
Addie Elliot
Jackie Creef
Jane Stroup
Barbara Cox

Altos

Cora Lee Sawyer
Jane Slate
Josephine Snow
Mary Faye White
Frances Johnson

Joanne Mason, *Accompanist*

The vocal ensemble, Meredith's musical emissaries, have learned variety is the spice of life. They have sung secular or sacred numbers in many different types of programs—our fiftieth anniversary celebration, the Christmas banquet, folk dance concerts, the Baptist State Convention, banquets of civic clubs, church worship, chapel—in all, carrying the influence of Meredith to various points in the city and state.



She went all out for our program of . . .

Athletics



Athletic Association

"Respectfully submitted" an orthodox closing for those hectic preparations and informal sessions listed so precisely in a secretary's minutes. A hundred little mishaps—they were calamities then now almost forgotten. Flashbacks of the smoky Crabtree week-end; a real "back to the farmer" movement at the Corn Huskin' Bee; pride in a superlative Palio; Stunt Night in the new auditorium; caroling with Christmas cheer and cold noses; the straightening-up during Posture Week; the charm of May Day; a Faculty-Student Playday full of fun and laughter. We remember the relief found in play; the evidences of good sportsmanship; applauding the folk dancers, the creative rhythms group, the body mechanics group at Chapel Hill.

Nor shall we forget those who labored without glory and stood behind it all—the "They also served's" who worked over mimeograph machines and typewriters, over the organizing and the follow-ups. We tried new skills, learned new sports and, most important—had fun!

It was hard work, fraught with frustration and occasional spurts of anger; yet in retrospect the year stands as a proud and successful example of group co-operation, another firm support for an important future.



DORIS CONCHA
President

Athletic Association Board

Doris Concha, *President*; Hope Hodges, *Vice-President*; Sue Fitzgerald, *Secretary*; Sally Massey, *Treasurer*; Janet Tatum, *Hockey Mgr.*; Jean Johnson, *Basketball Mgr.*; Imogene Nairon, *Sportball Mgr.*; Jean Taylor, *Badminton Mgr.*; Mary B. Josey, *Tennis Mgr.*; Marilyn Mills, *Individual Sports Mgr.*; Cora Lee Taylor, *Archery Mgr.*; Martha Hare, *Folk Dance Mgr.*; Patsy Spiers, *Equestrian Mgr.*; Peggy Thornton, *Swimming Mgr.*; Donna Walston, Shirley Bone, *Publicity Chairman*; Bettie Yates, *Health Chairman*; Virginia Bowman, *Social Chairman*; Doris Peterson, *Faculty Sponsor*; Phyllis Cunningham, *Faculty Ad-*



MEMBERS

Anne Canaday, Doris Concha, Sue Fitzgerald, Hope Hodges, Sally Massey, Anne Drake Morgan, Faye Nichols, Petty Jean Shuler, Martha Lou Stephenson.



Monogram Club

The Meredith College Monogram Club is an honorary organization composed of those girls who have earned 1,000 points through participation in the various activities sponsored by the Athletic Association. The purpose is not to encourage sporadic displays of athletic prowess, but rather to promote all-round interest in healthful recreation on the Meredith campus. The points necessary for entrance into the Monogram Club are earned by a genuine interest in play and a display of good sportsmanship. Any girl here, if she has the honest enthusiasm necessary, can earn her Monogram.

FRESHMAN HOCKEY STICK WINNER

Jean Dula proudly displays the coveted hockey stick.



ATHLETIC TROPHY

Peggy Patriuk was the winner of the 1948-49 Athletic Trophy.





Field Hockey Varsity

Speed Ball Varsity





Outstanding Basketball Players 1948-1949
Softball Varsity 1949





The Folk

Tennis

Bee Josey returns a fast ball while Evelyn Baden looks on.



Badminton

Carolyn Massey and Jean Taylor play a fast game of badminton.





Dance Group

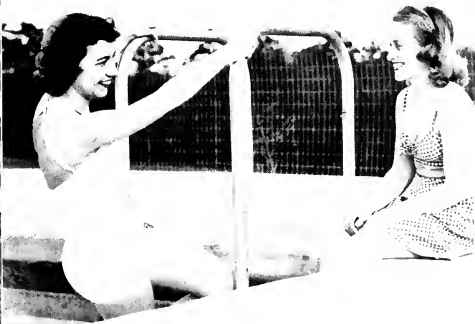
Archery

Betty Penny and Billie Smith are aiming for a bulls-eye.



Swimming

Peggy Thornton and Jane Reid rest from life-guarding chores.





*She was proud of the honors
and the memories that
make up our . . .*

Features





HAZEL WILLIAMSON

College Marshal



EMILY POOL

Miss Meredith

Most Popular

MARGUERITE LEATHERMAN



Friendliest

WINNIE FITZGERALD





BETTY MOORE

Most Versatile



BUNNY HARRIS

Most Original



CHARLOTTE BOWMAN

Cutest

Wittiest

LOUISE YARBROUGH



Most Attractive

DOROTHY CHILDRESS





VIRGINIA BOWMAN

Most Stylish



ELLEN GOLDSTON

Most Intellectual



IMOGENE NARRON

Most Athletic



ROXANNE VALLAS

Best All 'Round Town Student



JOSEPHINE SNOW
Maid of Honor

ELIZABETH HOLDFORD
May Queen

May Queen and Maid of Honor—1950



LAVERNE HARRIS
DORIS CONCHA
Senior Representatives

DOROTHY FISHER
POLLY SUE BUNN
Sophomore Representatives

*May
Court*

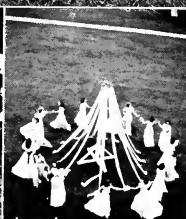
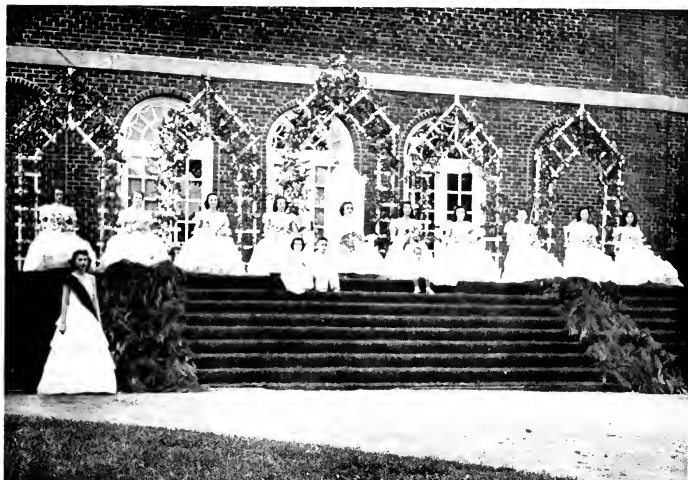
MAGLYN MACKIE
MARGUERITE SMITH
Junior Representatives

DAPHNE STEPHENSON
WILLIE BROWNLOW
Freshman Representatives

May Queen and Maid of Honor—1949

JEANNE DICKENS
May Queen

EDITH COOPER
Maid of Honor



Palio and Stunt Snaps



Who's Who



BETTY MOORE

EMILY POOL

BETSY ANN MORGAN

JOSEPHINE SNOW



OFFICERS

- WINNIE MAY FITZGERALD
President
- MARGUERITE LEATHERMAN
Vice-President
- BETTY MOORE
Secretary-Treasurer

MEMBERS

- WINNIE MAY FITZGERALD
- MARJORIE JOYNER
Associate
- MARGUERITE LEATHERMAN
- CAROLYN MASSEY
Associate
- BETTY MOORE
- BETSY ANN MORGAN
- EMILY POOL
- JOSEPHINE SNOW



Silver Shield

Moving on our campus is a spirit which desires for the students at Meredith the highest in creative living. This is the spirit that characterizes the Silver Shield, the honorary leadership society, as it seeks to create right attitudes and to promote devotion to the ideals of Meredith. Membership is limited to nine senior members, seven of whom are chosen in the spring of the junior year and two in the spring of the senior year. Two associate members are chosen every fall from the junior class. A genuine Christian concern for others as it relates itself to campus life, a dedication to the Christian purpose which gives Meredith meaning, together with attainments in scholarship are the criteria by which students are elected to membership in the Silver Shield.

ELLEN GOLDSTON
Secretary-Treasurer

JOSEPHINE SNOW
President



Kappa Nu Sigma

Kappa Nu Sigma Honor Society takes its name from three Greek words—*Kallos*, *Nous*, *Sophia*—meaning beauty, soundmindedness, and intelligence. These words characterize the kind of scholarship that Kappa Nu Sigma has tried to further on the Meredith campus. Those students who have achieved a high scholastic standing over a period of two years make up the membership of this society. An annual lecture and banquet honoring the two juniors who have met the qualifications of membership is sponsored by the society. This year our lecturer was Dr. Charles B. Shaw, Librarian at Swarthmore College. In the spring the society awards to the freshman having the highest scholastic standing a scholarship for the following year.

Alpha Psi Omega

The Alpha Psi Omega represents perhaps a whole picture of the total of enthusiastic work for the Meredith dramatic productions. It is the honorary dramatics fraternity, which honors Little Theatre members who have earned fifty or more points. The members are those who have tried the heavy greasepaint, acted a few extra lines, hammered a few extra nails, painted an extra flat or two; they finally have been recognized and thus they are the ones who, as Alpha Psi Omega members, continue to work along with the Little Theatre, showing that the interest in playmaking is a growing proposition at Meredith.

Members: Mickey Bowen, Doris Concha, Betty Moore, Gazelle Moore, Dickie Phillips, Sally Lou Taylor, Elizabeth Zulalian



Sigma Pi Alpha

Guten Morgen! Buenos días! Bonjour! These greetings are all common at the meetings of the Phi Kappa Chapter of Sigma Pi Alpha, national honorary modern language fraternity. This fraternity seeks to recognize those who are known for their scholarship and interest in modern languages, and also to develop greater interest among other students. The meetings of Sigma Pi Alpha provide information of various foreign countries through lectures and parties. Those who have acquired interest in foreign countries through travel or reading may be invited to become honorary members.





History

To chronicle a year at Meredith would produce, indeed, a "strange eventful history." Of course it was just a year, one year. But in spite of the college calendar, our class schedule cards, and our own patterns of interests, we must agree with Mr. Ralph McGill who told us on Founders' Day, "We believe, we hope, we plan, but we do not know." Of this past year, the part we did not know then was probably to be the best of the year, perhaps for some, the worst. The history here is an outline. You may complete it.

The year, as always, began with freshmen. We who knew, managed to mind our own business and maintain an oblique observation of the class of '54, all at the same time. The burden of being categorical they bore very well, on occasions even looking away. They also discovered that the necessity of standing in lines made stuff for talk equal to that on the split-personality of the weather. They learned a great deal. They sensed, I think, that, although upperclass interest in them was definitely friendly, it was becoming tinged—either yellow or purple. For while they dwelt in the bewilderment of tests for which they did not have to study, with classes that apparently were not concerned with grades, and with streams of parties for their entertainment, Maggie and Charlotte were gathering troops for the siege.

Rush Week had to wait a little. For in the meantime Meredith had a birthday and a new auditorium to christen. The occasion was as big as the cake the Home Ec Department had made for Meredith, and on the morning of September 27 the guests came. In front of the big green doors the alumnae waited, the faculty members and speakers in ceremonial garb, and finally, the huddle of Seniors, self-conscious in unaccustomed caps and gowns. The celebration of Meredith's golden anniversary began. The sensation we felt in that auditorium was as new as the building itself. The gentle shuffling of feet was only reminiscent of the creaking noises one could have heard in the old auditorium. Perhaps for a moment we missed them.

We thought not only of that old building but of old Meredith, of names we had heard before, of names we had not heard before, finally of new Meredith, as we listened to Dr. Mary



Lynch Johnson tell the story of the people who gave us Meredith. And we hoped to keep the charge of Senator Frank Graham to make that Founders' Day a "re-dedication of Meredith to its creative part in seeking to make a world in which all people, under God, can live, work, and dream their dreams of a better day of freedom and peace." Mr. McGill of the *Atlanta Constitution* concluded the important day reminding us that our responsibility extended also to part of the nation in which we lived, to the Southland, needy for people who care.

And then our thoughts shifted again. The Rush Week attack overwhelmed us. Weary Astros gathered the freshmen at Allen's Pond, in all hilarity. And on a rainy night the Phis packed them in the Hut for the annual bonfire. The dew-bedraggled groups singing under sleepy windows grew larger each day. We "rushed them in the morning," they "rushed them in the night." Finally, when Rush Week loomed too large to bear, Friday night called time. Phis and Astros set up separate camps at either end of the dining hall, cheerfully, but with admirable restraint, fortifying each with balloons and crepe paper (and Phido bears) for the Saturday morning surrender. The uncertainty arising from the apparently equal division of new yellows and purples at breakfast was finally dispelled when the important freshmen had been cheered into the new auditorium. The grapevine sent the count out to the line of old members: Astros, 118; Phis, 113.

After that event we let the year go along, carrying with it the hockey season, speedball, football (elsewhere), the Corn Huskin' Bee (when will we all learn to pick up paw-paws?), and another bus-load to the B.S.U. Convention, this time in Winston-Salem, but we stopped short for Palio and Stunt. It was the year for the seniors to win; the dark hours of marching and stumbling around the basement of the new auditorium paid off for Jason, his ship and his Grecians, in spite of the juniors' "Good Neighbor Policy" and clicking castanets, in spite of the sophomore "Belles" and the Coke machines and Bendixes of the freshmen. And to this day, by the way, somebody can be heard ever so often striding to class, humming, "Here are the Coke ma-a-chines. . . ."

Stunt gave the new auditorium its theatrical debut. All members of the casts, as well as the stage crews, demonstrated and tested completely the delightfully elaborate lighting system. And backstage none of the producers of the stunts were forced to rub elbows. In fact, nobody got in anybody's way. The freshmen, still mindful of the birthday year, called up Meredith of the past. The winning sophomores set up a woodland fantasy on stage; the juniors—ah, those juniors—plunged the stage into the murky darkness of Hell, while

the seniors managed to move an Egyptian temple on stage for a discovery of a lost mummy (the mummy caused almost as much excitement before Stunt, when it reposed before the window in the auditorium basement). The Little Theatre produced Thornton Wilder's *Our Town*, and set the Student Body to worrying about the lack of scenery. In the spring, by the way, they tried something new again, and presented an outdoor production of *Everyman*.

At any rate Thanksgiving came on time, although it somehow coincided with Christmas (Raleigh held its Christmas parade the day after and the stores were ready for Christmas shoppers.) The new choral group set the Thanksgiving spirit in chapel one day, a spirit that we could scarcely have been prevented from having. And then those holidays went the way holidays do go.

Christmas caroling comes but once a year, with the formal dinner, the big dining hall Christmas tree, and "Jingle Bells" to the accompaniment of improvised water glass bells. On the Friday night before the day we went home, we bundled into buses and sang all the way from Meredith to the Governor's Mansion and back.

Christmas, sleeping late, home folks, New Year's Eve, all vanished and we were on this side of forty-nine. We counted the new rings, the new fraternity pins, the amount of home work we did over the holidays, and pretty soon were settled in the library, in the art labs, the science labs, in the music





building, or in our rooms playing bridge; in short, we did all those things we had been doing all along. Exams appeared, a slight threat that loomed larger with each new assignment. About the time the Creative Rhythmics Group gave its concert we discovered that we had reached the last chapters of our books, and we resigned ourselves to that mad frenzy which we often call studying. Then exams were over; we didn't really fool ourselves, and the results were not unexpected.

Spring eventually followed exams, although it had been showing itself off and on all year. With it came basketball, the softball season, the Folk Dance Concert, Religious Focus Week, vespers held outside, and of course, Faculty-Student Play Day. Who would forget Play Day, a leisurely and springy occasion, the day when one always plays tennis, ping pong, volley ball, softball, croquet, checkers, and bridge, when one only intended to play croquet, checkers, and bridge. And then there's the day after Play Day when a faculty member is heard to admit that he was still aware of that dash to third base the afternoon before. And we felt a little worn ourselves, whether we did or did not say so, and were a little too conscious of a sunburned nose.



One event followed another but we mustn't forget that school was continuing along with them, and that they depended on that fact. The music majors seemed to disappear completely into the music building, and then one day the graduating recitals began, followed by art exhibits and so on. The societies had their plays; somewhere on the way Easter came, and spring holidays. There was school still, term papers (the freshmen tried their first, of course), labs all afternoon, class reports, library assignments and books to be read. But May appeared, and we had May Day. The high school students came to visit, but without being inhospitable, one must say that they were overshadowed by the importance of the day, the queen, her attendants, and other entertainments (these last included activities by the sophomores, who began singing to the queen at seven o'clock that morning, who arranged the throne for the queen, and finally sang several more times before the day ended; by the dance groups; and of course by the riders who gave their annual horse show).

We knew when May came that school was about to end, the finality of that ending depending on our academic classification. And the final events to accompany the last bit of school were also on the way again. We had exams, and finally, commencement. Commencement involved the Glee Club Concert, Society Night, Class Day (oh yes, the sophomores arose ver-r-y early again, this time to make the daisy chain for their "big sisters") and at last, graduating exercises.

What more can one say about the year? Should one mention the sunset on one side of the campus, or the sunrise on the other side (or how many people see it rise?), the telephone calls, the parents who are so very happy to have you at home, whom you are rather happy about, too; the discovery that



the paper you sat up all night doing was due next Friday instead of this Wednesday; the fact that State did or did not win that basketball game; Sunday dinners; church; scrambled eggs and bacon in the kitchenette, lukewarm Nescafe; the breath-of-spring that started to bloom about Christmas—one would say too much.

The things we didn't expect to happen; the things we hoped would happen, even if they didn't, the days we walked from our room to the arts building and back, or skidded into the cafeteria just before the door closed; the hundreds of pencils we have lost and sharpened; the notebook paper we have wasted; the number of times we walked across the floor in front of the post office; our tiny, used student bank book; the number of times we didn't get "A" on room check (dust under beds)—all these would tell the story of the year better.

Then, again, there is the new auditorium, not too complete, not too old to be old enough for us to know it, new enough to be exciting. Perhaps the auditorium and the year are alike.

C.E.M.



Advertisements



W. H. KING DRUG CO.
WHOLESALE DRUGGISTS

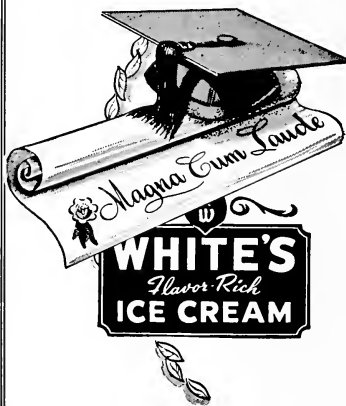
RALEIGH, N. C.



*"The House of Friendly and
Dependable Service"*



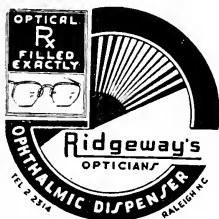
MANUFACTURERS OF
PAGE'S CRU-MO



We
Appreciate
Your
Patronage

... During the school year just
ending — and look forward to
serving you again during the
coming year.

Hudson-Belk
"EASTERN CAROLINA'S LARGEST"



BOYLAN-PEARCE

Raleigh's Shopping Center

NATIONALLY KNOWN
COSMETICS

You Can Always Find at

EFIRD'S

"ELIZABETH ARDEN"

"COTY"

"YARDLEY"

"EVENING IN PARIS"



EFIRD'S DEPARTMENT STORE

208 Fayetteville Street

Raleigh, N. C.

**HOTEL
CAROLINA**



Raleigh, N. C.

Compliments of
N. C. THEATRES, INC.

Operators of
AMBASSADOR : STATE : PALACE : CAPITOL : TOWER
AND VARSITY THEATRES

JOB P. WYATT & SONS CO.

•
HARDWARE
SEEDS
FARM IMPLEMENTS

•
325-331 South Wilmington Street

BYNUM PRINTING COMPANY

RALEIGH, N. C.

"CREATORS OF REASONABLE DRUG PRICES"

ECKERD'S

DRUG STORE

222 Fayetteville Street

Ellisberg's

*Raleigh's
Smartest Shop*



126 Fayetteville Street

RALEIGH, N. C.

Adler's of Raleigh

*For Women Who Love
Elegance in Footwear*



JOYCE

*For
Casuals*

DELMANTTES

*by Delman
For
Dress Wear*

PERFECT PROTECTION

OCCIDENTAL LIFE INSURANCE COMPANY

Home Office

RALEIGH, NORTH CAROLINA

J. J. FALLON CO., INC.
FLORISTS



205 Fayetteville Street
RALEIGH, N. C.

Jean's
of Raleigh
First in Fashions
in the Carolinas

Compliments
of
ROYAL BAKING COMPANY



Bakers of BAMBY BREAD

WILMONT CLEANERS

DEPENDABLE DRY CLEANING

3015 Hillsboro

Phone 2-2071

Raleigh, N. C.

MARTIN MILLWORK COMPANY

RALEIGH, N. C.

NORTH CAROLINA EQUIPMENT COMPANY

Construction, Industrial and Logging Equipment
Contractors' and Municipal Supplies
"International Diesel Power"

RALEIGH :- WILMINGTON :- GUILFORD
CHARLOTTE :- ASHEVILLE

ALWAYS YOUR PAL . . .

Reddy Kilowatt (your electric service) has helped you through good lighting, food preservation, radio, and in countless ways through your school days. In the years to come he will continue to be your pal. Whether you enter the professions or business or become a housewife he will always be at your side to make your work easier, increase your ability to produce, and to make your home more comfortable and convenient. You can depend on it.



CAROLINA POWER & LIGHT COMPANY

HOOD-GARDNER
HOTEL SUPPLY CORP.

CHARLOTTE, N. C.

EQUIPMENT AND SUPPLIES
for the
PREPARATION AND SERVICE
OF FOOD

CHINA - GLASS - SILVER



JOHN CALDWELL, *Manager*
2214 Circle Drive
RALEIGH, N. C.
Phone 2-4554

JANTZEN
Beachwear

Gloriously Colorful
Extremely Alluring

... at ...

Lewis
OF RALEIGH

112 W. Hargett Street

MOTHER
and
DAUGHTER
FASHIONS

... *Highlight every*
Campus Activity ...



INSURANCE BUILDING

Compliments

of

TAYLOR FOOD
COMPANY



Raleigh, N. C.

BROGDEN PRODUCE COMPANY, INC.



Wholesale

FRUIT AND PRODUCE



409-415 WEST MARTIN STREET

Guy Taylor Co.

CONGRATULATIONS...to the women of
the Class of 1950

It has been a pleasure to have served
many of you during your years at
Meredith. It is our hope to merit your
patronage throughout the coming years



BUILDERS DREAMS

THE OAK LEAVES STAFF
and the
EDWARDS & BROUGHTON
COMPANY
Cooperated to produce this Annual.

•
Letter Press and Lithographed
Annuals produced in our
plant in Raleigh.

•
WRITE FOR OUR
ANNUAL REPRESENTATIVE
TO CALL AT YOUR SCHOOL.

•
EDWARDS & BROUGHTON
COMPANY

Established in 1871



Designers and engravers of
the South's finest school
publications



LYNCHBURG, VIRGINIA

You cannot patent it *or copyright it*

You cannot install it *like a piece of machinery*

You cannot accurately measure it *or the lack of it.*

Yet it is your most important consideration when you choose
your Yearbook Photographer

IT IS —

“KNOWING HOW”

EXPERIENCE . . .

is the one thing that will meet the unusual emergency with the comforting statement — “We know just what to do — we’ve been through this before.”

Our complete organization offers you this background of experience in creative photography and consultation on all problems relating to Yearbook Photography.

It costs nothing to talk it over with us.

ZECCA STUDIOS

of

1634 WALNUT STREET, PHILADELPHIA 3, PA.

For Information Call or Write:

FRANCIS LAVERGNE JOHNSON

Post Office Box 878

Telephone 6362

CHAPEL HILL, N. C.

AUTOGRAPHS

AUTOGRAPHS

AUTOGRAPHS

AUTOGRAPHS





Handwritten text in a cursive script, possibly a name or a short phrase.



Handwritten text in a cursive script, continuing the design or message on the left side.

Handwritten text in a cursive script, part of the decorative or informational content on the left.

Handwritten text in a cursive script, forming the bottom part of the decorative or informational content on the left side.

A single horizontal line drawn at the bottom of the page, possibly a signature or a decorative element.

