



MEREDITH
COLLEGE

Oak Leaves
1954

COLLEGE LIBRARY

CARLYLE CAMPBELL LIBRARY

CLASS

A
376.8

BOOK

M54V
1954

ACCESSION

37695

MEREDITH COLLEGE
RALEIGH, N. C.



CARLYLE
CAMPBELL
LIBRARY

Meredith College
Raleigh, NC 27607-5298

Digitized by the Internet Archive
in 2010 with funding from
University of North Carolina at Chapel Hill

<http://www.archive.org/details/oakleaves1954bapt>

★
★
★
T
H
E
1
9
5
4



OAK LEAVES

THE YEARBOOK OF MEREDITH COLLEGE

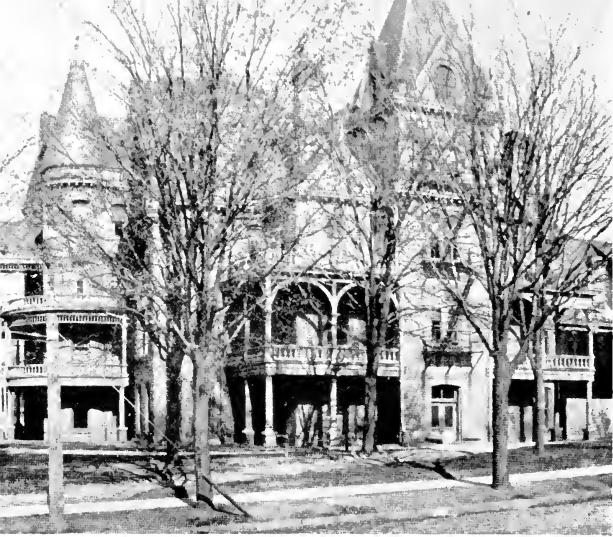
PEGGY JO DALRYMPLE
Editor

PATTY MELVIN
Business Manager

This book was printed by Edwards & Broughton of Raleigh, North Carolina. Engravings were made by the Lynchburg Engraving Company of Virginia. The art work was done by Dorothy White, and the photography by the Waller and Smith Studios of Raleigh, and Harry E. Cooper.

CARLYLE CAMPBELL LIBRARY
MEREDITH COLLEGE

R
A
L
E
I
G
H
•
N
C
★
★
★



The Enduring Past



The Ever-Meaningful Present

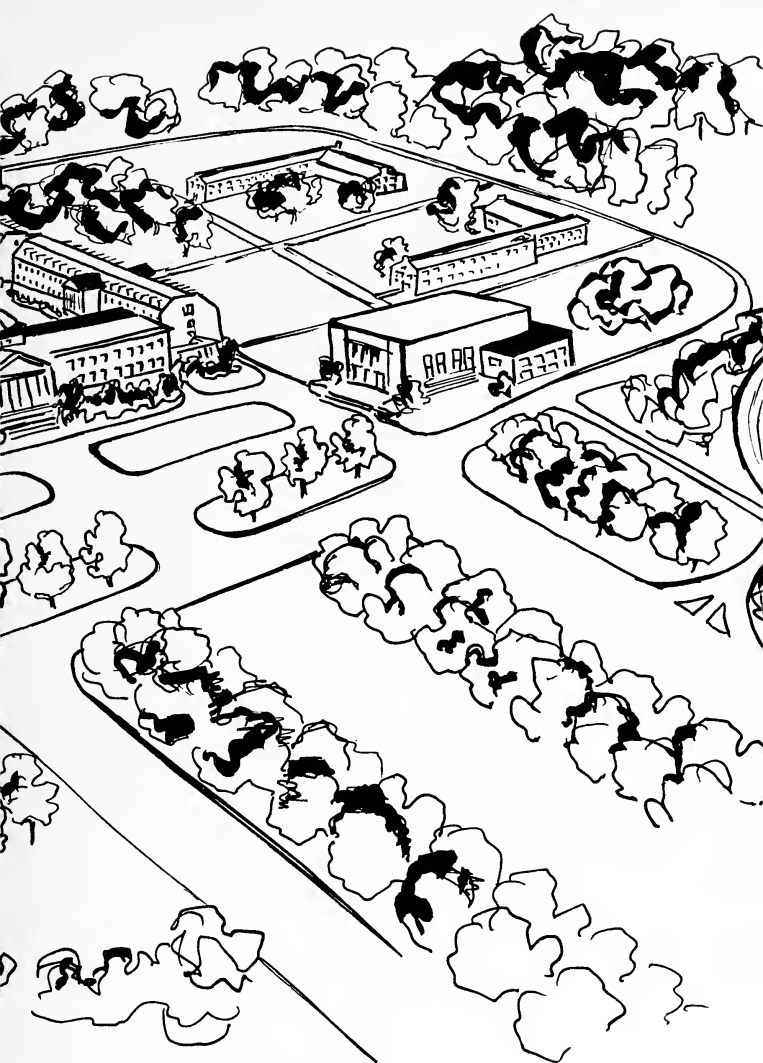


★ ★ ★ ★

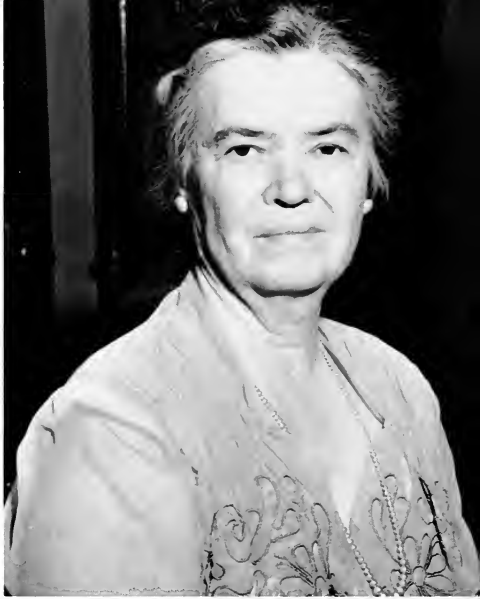
37695



THE CHALLENGE



ING FUTURE



DEDICATION

Because of her unaltered love for Meredith,
her quiet and smiling service, we dedicate the
1954 volume of our OAK LEAVES to Dr. Louise
Lanham.

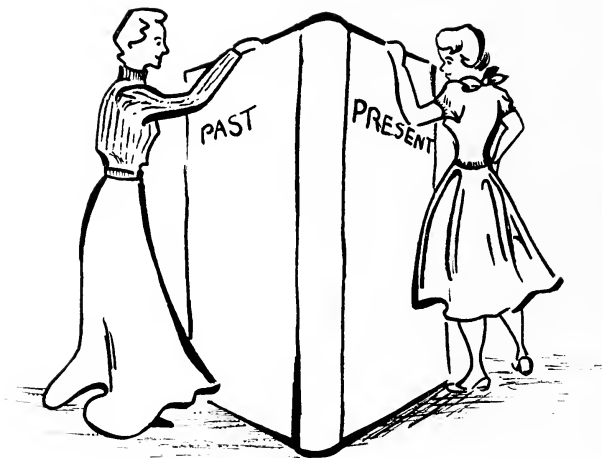


In Memoriam



In memory of Mr. Zeno Martin, bursar at
Meredith College from 1943 to September 1,
1953,

A man who was a friend,
Who in work and play
Enriched the lives of all he touched.



FOREWORD

Past, present, future—these three words describe our lives. Through this medium, the 1954 OAK LEAVES, we hope to present some sketches of the enduring past, some aspects of the ever-meaningful present, and a brief look at the challenging future.

contents

- FACULTY

- CLASSES

- ORGANIZATIONS

- CLUBS

- FEATURES



★ ★ ★ ★ ★ ★ ★ ★ ★ ★ ★ ★ ★ ★ ★ ★



★ ★ ★ FACULTY ★ ★ ★ ★ ★

BOARD OF TRUSTEES

Carlton S. Prickett, *President* Burlington
 Alva L. James, *Vice-President* Elkin
 V.H. Belcher, *Secretary-Treasurer* Raleigh

Terms Expire 1954

Madeline May Allen Troy
 W. R. Coleman Rocky Mount
 R. Elmore Earp Selma
 J. B. Eford Charlotte
 Lydia Josey Kitchin Scotland Neck
 C. Gordon Maddrey Ahoskie
 E. McNeill Poteat Raleigh

Terms Expire 1955

Annie Sarah B. Abbott Elizabeth City
 L. N. Bagnal Winston-Salem
 R. T. Howerton Lincolnton
 Wm. T. Joyner Raleigh
 Ione K. Knight Madison
 Carlton S. Prickett Burlington
 J. D. Wilkins Greensboro

Terms Expire 1956

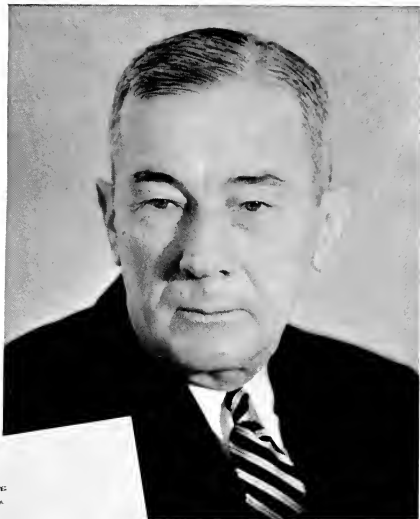
Claudilene S. Bone Nashville
 Lidie P. Freeman Wilmington
 Lloyd Griffin Edenton
 Alva L. James Elkin
 William C. Lassiter Raleigh
 H. Pat Taylor Wadesboro
 D. J. Thurston, Jr. Wilson

Terms Expire 1957

W. H. Weatherspoon Raleigh
 Eph Whisenhunt Clayton
 LeRoy Martin Raleigh
 Maude D. Bunn Raleigh
 J. M. Kesler Winston-Salem
 Randolph Gregory Wilmington

Executive Committee

Lloyd Griffin, <i>Chairman</i>	E. McNeill Poteat
Wm. T. Joyner, <i>Vice-Chairman</i>	Carlton S. Prickett
Maude D. Bunn	LeRoy Martin
R. Elmore Earp	W. H. Weatherspoon
William C. Lassiter	Eph Whisenhunt



MEREDITH COLLEGE
RALEIGH, NORTH CAROLINA

December 9, 1953

OFFICE OF THE PRESIDENT

To Meredith College Students:

The current academic year has been for all of you, I trust, a year of genuine happiness and substantial achievement. You will therefore cherish this edition of the Oak Leaves as a reminder of the friends, the activities, and the aspirations that made it so. May it also serve to date the beginning of even richer experiences in the years to follow.

Cordially yours,


Jarlyle Campbell
President

ADMINISTRATION



LEISHMAN A. PEACOCK, Ph.D.
Dean of the College

LOUISE FLEMING, A.M.
Dean of Students



V. H. BELCHER, B.S.
Business Manager

ADMINISTRATION

MRS. NAOMI BEAMON

Secretary to the Dean

MRS. AGNES DEVINEY

Bursar's Office

MISS JANE GREENE

Assistant Librarian



MISS MATTIE GREEN

Nurse

MISS MAE GRIMMER

Alumnae Secretary

MISS MARY BLAND JOSEY

Asst. in Dep. of Public Relations



MRS. VERA T. MARSH

Registrar

MRS. AGNES MAYES

House Director

MRS. LAUREL PERRY

Bursar's Office



MRS. LOIS RENFROW

Secretary to President

DR. WILLIAM SENTER

College Physician

MRS. CAROLYN SPELL

Secretary to Registrar



MRS. MARILYN UPCHURCH

Assistant Librarian

MISS BETTY VANCE

Nurse

MRS. C. M. WHILDEN

Assistant to House Director



MISS EDITH ZINN

Assistant Dean of Students



FACULTY

ART DEPARTMENT



This is a department which intrigues all of us. The gallery with its exhibits, the bulletin boards with their creations from Art Education—these check our pace as we dash to or from class. Memories are connected with this department, whether they be of a headhunter's mask or a lyric in pastels.

DOUGLAS REYNOLDS, B.F.A.; CHESTER COLSON, A.M.

BUSINESS DEPARTMENT

Here is the gateway to the world of commerce. Students in this department learn about many of the phases of their broad field. In the professional club, Tomorrow's Business Women, they learn firsthand through such projects as a trip to see the inside story of Miller and Rhoads, the large Richmond department store.



MARTHA F. HILL, A.M.; RUTH B. ROBINSON



EDUCATION DEPARTMENT

Many of us at Meredith take courses here. They are, as any learning experience should be, quite meaningful. In fact they are almost unforgettable. Won't you always remember Mr. Dorsett's current events discussions, Mr. Tyner's perfect posture, and the excursions to the surrounding schools with Miss Bell? Student teachers can yet get chills as they think of their all-day teaching. This is one of our outstanding departments.



BUNYAN Y. TYNER, A.M.; HARRY K. DORSETT, A.M.; LILA BELL, M.Ed.

FACULTY



ENGLISH DEPARTMENT

Here everyone of us is affected, and each remembers time spent here; for the experiences and the growth stimulated are lasting in importance and effect. Conferences, book teas, and plays are a part of this department's wide scope.

MARY LYNCH JOHNSON, Ph.D.; LOUISE LANHAM, Ph.D.;
NORMA ROSE, Ph.D.; EVELYN DA PARMA, A.B.; MAMIE
HAFNER, M.A.

HEALTH AND PHYSICAL EDUCATION DEPARTMENT

Remember "Toe, heel, toe, and away you go?" We weren't going back to childhood games, just learning a new folk-dance step. The trips taken by Miss Peterson and the Folk Dance Club were great fun; and of course preparation for May Day was wonderful. The varsity teams and their intramural games will also be remembered.

DORIS PETERSON, A.M.; PHYLLIS CUNNINGHAM, A.M.; HELENA
WILLIAMS, B.S.; MARY MACKAY.



FACULTY

HISTORY AND SOCIAL SCIENCE DEPARTMENT

This is a large department and all of us have had some contact with it. Remember history notebooks and collateral, geography maps, and sociology collateral? And of course Dr. Tilley's dreams and Mr. Wendt's jokes could not be forgotten.



LILLIAN P. WALLACE, Ph.D.; ALICE B. KEITH, Ph.D.; SARAH M. LEMMON, Ph.D.; LESLIE W. SYRON, Ph.D.; ETHEL TILLEY, Ph.D.; ROBERT L. WENDT, A.M.; SHIRLEY STRICKLAND, A.M.

HOME ECONOMICS DEPARTMENT

A delightful aroma greets you as you approach the rear of the Science Building. A laboratory group studying foods must be making a practical and probably delicious experiment. Senior majors in this department climax their college work by applying it during a month's residence in the practice house.

ELLEN BREWER, A.M.; JENNIE M. HANYEN, A.M.



FACULTY

LANGUAGE DEPARTMENT

French, German, Spanish, or Roman, we felt like natives after our courses, whether we could speak like them or not. Clubs representing the various language groups highlighted the courses. Songs, dances, and games representative of the country under study enliven classes.

QUENTIN O. McALLISTER, Ph.D.; SUZANNE D. FREUND, Ph.D.; LUCY ANN NEBLETT, A.M.; SHIRLEY WHITAKER, A.M.; MARGARET C. MARTIN, A.M.



MUSIC DEPARTMENT

Listen to those noises! All the music majors must be practicing simultaneously. But isn't it wonderful to have our fine auditorium in use? As the old one was razed this fall, we were grateful for this well-equipped and well-built structure.

HARRY E. COOPER, Mus.D., F.A.G.O.; BEATRICE DONLEY, B.M.; FORRESTINE WHITAKER, A.M.; EDWIN K. BLANCHARD, M.Mus. Lit.; PHYLLIS WEYER, M.Mus.; SUZANNE ANWORTHY, A.M.; STUART PRATT, Mus.M.; JOHN O'STEEN, M.Mus.



FACULTY



NATURAL AND PHYSICAL SCIENCES DEPARTMENT

Here in our minds' eye and ear, we will always retain the memory of the white slips foreboding a Biology "pop," the aroma of a chemistry experiment on sulphur, or the boom of Dr. Canaday's "Erase." A varied department of varied memories.



MARY YARBROUGH, Ph.D.; HELEN JO COLLINS, M.S.; JOHN A. YARBROUGH, Ph.D.; ROBERT N. TULLOCH, M.S.; ERNEST F. CANADAY, Ph.D.



RELIGION DEPARTMENT

Another department with experiences for all of us is this one. Dr. Mac's jokes and maps, and Dr. Crook's "pops" and discussion sessions make lasting impressions. Remember the B.S.U. trips with Miss Garner, the Christmas chapel program with the Crook family on the stage, and the sunrise Easter service! These were high spots in an eventful year.



RALPH E. McLAIN, Ph.D.; ROGER H. CROOK, Th.D.; MAXINE GARNER, Ph.D.

LOOK FAMILIAR?







★ ★ ★ ★ ★ CLASSES ★ ★ ★ ★ ★

HISTORY OF THE SENIOR CLASS

You walk slowly, vaguely aware of the tassel tickling your cheek. The moving rhythm seemingly carries you down the aisle . . . “a seat between each . . . not too fast now . . . hope my cap is straight.” People and more people, yet not one face can you distinguish. Daring not to turn your head you search almost desperately for Mom and Dad . . . “Well old gal, this is it!” You sit. Someone speaks. But you? Your thoughts are a million miles across the last four years. Remember that first day . . . meeting all those new people. . . finding new friends and wondering with awe just what the next four years would bring. Those first classes . . . books and more books . . . papers and more papers . . . Palio . . . (and we won that Sophomore year . . . Bells we were!) . . . the Corn Huskin’ Bee . . . and the graduation of our big sisters . . . picking daisies and serenading, and our Junior year, watching with awe once again as the Seniors went through the year . . . wondering if the next year we could even begin to take their place. May Day and sun bathing at the swimming pool . . . lazy spring afternoons and hen parties . . . and now, these days are past and Meredith—every inch covered with happiness—is a part of our past. . . We have covered four college years—we are the seniors. You stand . . . names are called . . . you listen . . . and suddenly you feel bound with loyalty and devotion to each name—each face—and for all the girls before you who must yet walk down this same aisle . . . bound by memories and faces . . . bound by sadness, yet anticipating the years to come, you, a Meredith Senior, accepting with your diploma the responsibility to continue living and teaching as you have been taught. You walk out . . . back up the aisle and out into the sunlight—no longer a Senior, but a college graduate.





SENIOR CLASS OFFICERS

CAROLINE JACKSON *President*

BONNY MORGAN *Vice-President*

LAVERNE BELL *Secretary*

DORIS PAGE *Treasurer*



Meredith College

BLANCHE ALLEN ALDRIDGE

Kinston, N. C.

Phi

Business

French Club 1, 2; A.A. Board, Soccer Manager 2; Hockey Varsity 2, 3; Soccer Varsity 2, 3; Softball Varsity 2, 3; Monogram Club 2, 3, 4; Folk Dance Club 2, 3; Tyner Education Club 3, 4; Y.W.A. Hall Chairman 2, 3; Committee of 100 3; Tomorrow's Business Women 3, 4; Student Government Council, Vice-President of Vann 3, President of Stringfield 4; Nominating Committee 4.

DORIS IRENE ALLEN

Smithfield, N. C.

Phi

Religion

Freeman Religion Club 1, 2, 3, 4; Chorus 1, 2, 3, 4; Counselor 2; B.S.U. Council, Secretary 2, Third Vice-President 3, President 4; German Club 3; Committee of 100 3; Chairman Religious Emphasis Week 3; Silver Shield, President 4; Nominating Committee 4; *Who's Who*; Dean's List.

NANCY MIRIAM ALLEN

Cherryville, N. C.

Phi

Chemistry

Stunt 1; German Club 1, 2, Secretary-Treasurer 2; Astro Secretary 2; Barber Science Club 2, 3, 4; Canaday Math Club 2, 3, 4; Chorus 3; Class President 3; Dean's List.

JACQUELYN NELL AMMONS

Mars Hill, N. C.

Phi

Public School Music

Mars Hill College: Glee Club 1, 2; Orpheon Club 1, 2, Secretary 1, Vice-President, President 2; Clio Literary Society, Meredith: Chorus 3, 4; Tyner Education Club 3; Folk Dance Club 3, 4; M.E.N.C. 4.



Class of Fifty-four



MELBA FRANCES BARBOUR
Willow Springs, N. C.

Astro
Barber Science Club 2, 3, 4, Treasurer 4; Chorus
2; Colton English Club 2; German Club 1, 2, Vice-
President 2; Y.W.A. 1, 2, 3, 4.

Biology



MARJORIE ANNE BARNES
Smithfield, N. C.

Phi
May Court 1; Phi Marshal 1; Chorus 1, 2, 3, 4,
Secretary 3; Folk Dance Club 1, 2, 3, 4; Y.W.A.
1, 2, 3, 4; B.S.U. Council, Music Chairman 2, Second
Vice-President 3; MacDowell Music Club 2, 3, 4;
S.A.I. 2, 3, 4, Vice-President 3, President 4;
M.T.N.A. 3, 4; College Marshal 4; Nominating
Committee 4.

Piano

NELLIE RUTH BARNES
Charlotte, N. C.

Phi
Committee of 100 1; Freeman Religion Club 1; Phi
Literary Award 1; Y.W.A. 1, 2, 3, 4, Hall Secretary
3; Palio Award 2; Playhouse 2, 3, 4; Student Govern-
ment Council, Sophomore Representative 2, Vice-
President of Vann 3, President of Vann 4; Stunt
Script 3; Kappa Nu Sigma 4, Vice-President;
Student League of Women Voters 4; *Who's Who*;
Dean's List.

History

MYRA JEAN BATTEN
Micro, N. C.

Phi
Chorus 2, 3; Freeman Religion Club 1, 3, 4, Vice-
President 4; German Club 1, 2, 3, President 3;
Organ Class President 4; S.A.I. 2, 3, 4, Program
Chairman 3, Vice-President 4; Y.W.A. 1, 2, 3, 4,
Music Chairman 2, Vice-President 3; Dean's List

Organ



Meredith College



CHERRIE BARNES BEDDINGFIELD
Clayton, N. C.

Astro

Education

Freeman Religion Club 1; Spanish Club 1, 2; Colton English Club 2, 3; Counselor 2, 3; Tyner Education Club 3, 4; Student Government Council, Vice-President of Stringfield 3, President of Faircloth 4; Dean's List.



FLORENCE LAVERNE BELL
Pittsboro, N. C.

Astro

Education

Mars Hill College: Archery Club 1, 2; Basketball Club 1, 2; M-Blem Club 1, 2, President 2; Sunday School Officer 2; W.A.A. 2; Superlative; Clio Literary Society, Meredith: Basketball Varsity 3; Hoopprint Club 3, 4, Treasurer 4; Tyner Education Club 3, 4, Treasurer 4; A.A. Board, Basketball Manager 4; Playhouse 4; Class Secretary 4; Y.W.A. 4; Dean's List.

JUNE CAROLYN BELTON
Mount Airy, N. C.

Phi

Biology

French Club 1, 2; Committee of 100 1, 2, 3; Folk Dance Club 1, 2, 3, 4; Playhouse 1, 2, 3, 4, Treasurer 4; Y.W.A. 1, 2, 3, 4; A.A. Board, Soccer Manager 3; May Court 3; Soccer Varsity 3; Barber Science Club 3, 4; Tyner Education Club 3, 4; Chorus 4; Monogram Club 4; Nominating Committee 4; Phi President 4; Social Standards Committee 4.

SARA ANN BLALOCK
Lucama, N. C.

Astro

Voice and Public School Music



Class of Fifty-four



PATSY SETZER BLAND
Greensboro, N. C.

Astro
Class Secretary 1; Folk Dance Club 1, 2, 3, 4; Playhouse 1, 2, 3, 4; Stunt 1; Y.W.A. 1, 2, 3, 4; Class President 2; Colton English Club 2, 3; Nominating Committee 2, 4; Alpha Psi Omega 3, 4; Silver Shield 3, 4; Student Government Council, Secretary 3, President 4; Tyner Religion Club 3, 4; Superlative; Dean's List.

Education



ANNE LORETTA BRIGGS
Leasburg, N. C.

Phi
Mars Hill College: Nonpareil Literary Society; Dean's List. Meredith: Y.W.A. 3, 4; Tyner Education Club 4.

Education

JOANNE WEATHERS BROWN
Southport, N. C.

Phi
Hoofprint Club 1; Spanish Club 1; Playhouse 1, 2, 3, 4; May Court 2; Y.W.A. 2, 3; Committee of 100 3; Sextet 3; Stunt 3; Freeman Religion Club 3, 4; Chorus 3, 4; President 4; Triple Trio 4; May Queen 4; Phi Chief Marshal 4; Superlative.

Religion

NANCY FRANKLIN BROWN
Wilkesboro, N. C.

Phi
Y.W.A. 1, 2, 3, 4, Devotional Chairman 3; Colton English Club 2; Chorus 2, 4; International Relations Club 2, 4; *Twig* Staff 2, 3, 4; Psi Chi Club 3; Freeman Religion Club 3, 4; Playhouse 3, 4; Student League of Women Voters 3, 4; Student Government Council, Vice-President of Vann 4; Kappa Nu Sigma 4, Secretary-Treasurer.

Religion





Meredith College

THEA ANN BURGESS
Pinetops, N. C.

Astro

PATRICIA ANN BYRD
Mamers, N. C.

Biology

Phi

Education

Campbell College: Chorus 1, 2, Secretary 2; Dramatics Club 1, 2, Secretary 2; Y.W.A. 1, 2; B.S.U. Executive Council 2; College Marshal 2; Epsilon Pi Eta Honor Society 2; May Queen 2; *Pine Burr* Annual Staff, Co-Editor 2; Superlative. Meredith: Freeman Religion Club 3, 4; Tyner Education Club 3, 4; Y.W.A. 3, 4, Program Chairman 4; Dean's List.

VIVIAN ANN BYRD
Bunnlevel, N. C.

Phi

English

Campbell College: College Marshal 1; Student Government Representative 1; Y.W.A. 1, 2; B.S.U. Executive Council 2; Epsilon Pi Eta Honor Society 2; Superlative. Meredith: Stunt 3; Colton English Club 3, 4; Y.W.A. 3, 4, Hall Leader 3; *Twig* Staff 4, Assistant Editor.

BEULAH CAMERON
Cary, N. C.

Education





MISS MEREDITH

Patricia Bland



Meredith College

NORMA JANE CAMPBELL
Fieldale, Va.

Astro

Religion

Madison College: Glee Club 1; Y.W.C.A. Cabinet 1.
Meredith: Chorus 2, 4; Committee of 100 2, 3;
Freeman Religion Club 2, 3, 4, Social Chairman;
Y.W.A. 2, 3, 4, Hall Chairman 2; Summer School
Student Government Council 3; B.S.U. Council,
Treasurer 3, Second Vice-President 4; Tyner Edu-
cation Club 3, 4; International Relations Club 4;
May Court 4; *Who's Who*.

ANNE CARROLL CARTER
Reidsville, N. C.

Phi

Education

Mars Hill College: Volunteers for Christ 1, 2;
Y.W.A. 1, 2; Dramateers 2; Folk Dance Club 2;
Glee Club 2; Science Honor Club 2; Sunday School
Officer 2; B.T.U. President 2; Clio Literary Society.
Meredith: Y.W.A. 3, 4; Tyner Education Club 4.

BETTY KATHRYN CARTER
Reidsville, N. C.

Astro

Education

Colton English Club 2; Tyner Education Club 3, 4.

RUTH MOORE CHAMPION
Raleigh, N. C.

Astro

Religion

Astro Council 1; Canterbury Club 1, 2, 3, 4—
Regional Canterbury Commission 2, 3, 4, Secre-
tary 3, Delegate-at-Large 4; National Canterbury
Association Delegate 3; A.A. Board 2; Hockey
Varsity 1, 2, 3, 4; Speedball Varsity 2; Soccer
Varsity 3; Softball Varsity 3; Monogram Club 2, 3, 4.



Class of Fifty-four



MARY ANN CHANDLER
Burlington, N. C.

Phi *Education*
Stunt Cast 1, 2, Chairman Program Committee 3, 4; Y.W.A. 1, 2, 3, 4, Hall Chairman 2; Counselor 2, 3; Committee of 100 3; Student Government Council, Vice-President of Stringfield 3, Chief Counselor 4; Tyner Education Club 3, 4; Nominating Committee 4; Superlative; *H'ho's W'ho*; Dean's List.



ANNE JOHNSON CLARK
Varina, N. C.

Phi *Mathematics*
Class Secretary 2; Canaday Math Club 2, 3, 4, Reporter 3; Sigma Pi Alpha 2, 3; Barber Science Club 3, 4, Vice-President 3; Chorus 3, 4; Student Government Council, Vice-President of Faircloth 3, Council Vice-President 4; Tyner Education Club 3, 4; Silver Shield 4; *H'ho's W'ho*; Dean's List.

JANE PURDY CONDREY
Enfield, N. C.

Phi *Education*
Committee of 100 1; Freeman Religion Club 1; House Council 1; Y.W.A. 1, 2, 3, 4, Devotional Vice-President 4; Folk Dance Club 2, 3; Chorus 2, 3, 4; MacDowell Music Club 2, 3, 4, Vice-President 4; International Relations Club 2, 3, 4, Secretary 4; Playhouse 3, 4; Tyner Education Club 3, 4; *Twig* Staff 4.

VIRGINIA BROOKS CORBETT
Fayetteville, N. C.

Astro *History*





Meredith College

ELIZABETH JEANNETTE CRENSHAW
Spartanburg, S. C.

Astro
Astro Marshal 2, Chief Marshal 4; May Court 2,
Maid of Honor 4; Counselor 2, 3; Playhouse 2, 3, 4;
Tomorrow's Business Women 3, 4; A.A. Board
4; *Acorn* Staff 4.

Business

IRMA JEAN CURRY
Anniston, Ala.

Astro
Jacksonville State College. Meredith: Folk Dance
Club 2, 3, 4; Canaday Math Club 3; Spanish
Club 3; Barber Science Club 3, 4.

Chemistry

LUETTA JANE CUTTS
Stovall, N. C.

Phi
Folk Dance Club 3, 4; Tyner Education Club 3, 4.

Education

SARAH MAY DALE
Homeville, Va.

Phi
Freeman Religion Club 1, 2; Home Economics
Club 1, 2, 3, 4; Y.W.A. 1, 2, 3, 4; Colton English
Club 2; Counselor 2; Playhouse 2, 3, 4.

Home Economics





MOST POPULAR

Ann Lovell



Meredith College

PEGGY JO DALRYMPLE
Raleigh, N. C.

Phi French Club 1, 2; Colton English Club 2, 3; Tomorrow's Business Women 2, 3, 4, Treasurer 3; Registrar for Elections 3; OAK LEAVES Staff 3, Editor 4; Playhouse 3, 4; Nominating Committee 4; Dean's List.

Business

SALLY COOPER DEAN
Louisburg, N. C.

Astro Hoofprint Club 1, 2, 3, 4, Secretary 1, 2, President 3, 4; Spanish Club 1, 2; Horsemanship Award 3; A.A. Board 3, 4; Tyner Education Club 3, 4; Dean's List.

Education

SYLVIA TOLAR DEANS
St. Pauls, N. C.

Phi Committee of 100 1, 2, 3; Y.W.A. 1, 2, 3, 4; Colton English Club 2; B.S.U. Council 2, 3, 4; Freeman Religion Club 2, 3, 4; Tyner Education Club 3; Chorus 4; International Relations Club 4.

Religion

BARBARA JEAN DICKENS
Mount Gilead, N. C.

Astro Freeman Religion Club 1; Y.W.A. 1, 2, 3, 4; Junior-Senior Banquet Committee 3; Stunt Committee 3; Tyner Education Club 3, 4; *Acorn* Staff 4.

Education



Class of Fifty-four



RUTH LENNON DOWELL
Boardman, N. C.

Astro
Mars Hill College: B.T.U. President; Orpheon Club; Volunteers for Christ; Nonpareil Literary Society; Y.W.A. Meredith: Chorus 2; Sociology Club 2; German Club 2, 3; Student League of Women Voters 3; Tyner Education Club 3, 4; "Mrs." Club 4.

Education

ANN BURWELL DRAUGHON
Whitakers, N. C.

Astro
Spanish Club 1; Y.W.A. 1, 2, 3, 4; Folk Dance Club 3; Tyner Education Club 3, 4, Secretary 4.

Education

PATRICIA JEAN EBERHART
Raleigh, N. C.

Astro
Astro Council 2; Vice-President of Day Students 2; Counselor 2; *Twig* Staff 3; Colton English Club 3, 4, President 4; Oak Leaves Staff 4; Playhouse 4, Cast of "As You Like It."

English

CORNELIA ANNE EDWARDS
Charleston, S. C.

Astro
Mars Hill College: Spanish Club 2; Nonpareil Literary Society 2. Meredith: Canaday Math Club 3, 4.

Mathematics





Meredith College

MARGARET LARUE EDWARDS
Raleigh, N. C.

Phi
Tyner Education Club 4.

Education

SARA ELIZABETH EDWARDS
Savannah, Ga.

Astro
Greensboro College 3; Irving Society; Art Club; Church Choir; United Daughters of the Confederacy. Meredith: French Club 1; Modern Dance Group 1; B.S.U. Council, Episcopal Church Representative 2; Canterbury Club 1, 2, 4, Secretary 2; *Acorn* Staff 4.

Art

ALYCE MARIE EPLEY
Valdese, N. C.

Phi
Chorus 1, 2, 3, 4; Y.W.A. 1, 2, 3, 4; Colton English Club 2; Sociology Club 2; *Twig* Staff 2, 3; Folk Dance Club 2, 3, 4; Chairman Junior-Senior Banquet 3; Junior Guide 3; *Phi* Vice-President 3; Playhouse 3, 4; Tomorrow's Business Women 3, 4, Program Chairman 4; Student League of Women Voters 3, 4; N.C. State Student Legislature 3, 4, Registrar 4; Interim Council S.S.L. 3, 4; OAK LEAVES Staff, Associate Editor 4; Dean's List.

Business

RUTH GALLOWAY
Supply, N. C.

Phi
Y.W.A. 1, 2, 3, 4, Hall Chairman 1, Hall Secretary 4; Canaday Math Club 2, 3, 4; International Relations Club 3; Chorus 4; Student League of Women Voters 4.

Mathematics





FRIENDLIEST

Alstine Salter



Meredith College

BETTY LEE GARDNER
Angier, N. C.

Astro
Hoofprint Club 1, 2, 3, Publicity Chairman 3;
Y.W.A. 1, 2, 3, 4, Hall Chairman 1; Spanish Club
2; Tyner Education Club 4.

Art

LOU ELLEN GARDNER
Pinetops, N. C.

Astro
French Club 1; Y.W.A. 1, 2, 3, 4, Hall Secretary
1; Colton English Club 3; Folk Dance Club 3; Tyner
Education Club 3, 4; Freeman Religion Club 4;
International Relations Club 4; House Council
4; Student Government Council, President of
Brewer 4; Dean's List.

Education

SHIRLEY ANNE GRAHAM
Windsor, N. C.

Astro
Home Economics Club 1, 2, 3, 4; Spanish Club 1, 2,
President 2; Hoofprint Club 2, 3, 4, Secretary 3;
May Court 3; Tyner Education Club 4; Astro
Marshal 4.

Home Economics

MILDRED IVANS GREEN
Tarboro, N. C.

Astro
Home Economics Club 1, 2, 3, 4, Chairman Social
Committee 3, Chairman Scrap-Book Committee 4;
Colton English Club 2, 3; Folk Dance Club 2, 3;
Playhouse 2, 3, 4, Chairman Props Committee
3, Chairman Costumes Committee 4; Junior-Senior
Banquet Committee 3; Student Government As-
sociation, Vice-President of Vann 4; Dean's List.

Home Economics



Class of Fifty-four



BETTY ANN GRIFFIN
Marshville, N. C.

Phi

History



MARY JOCILE GRIFFIN
Red Oak, N. C.

Phi

Home Economics

Y.W.A. 1, 2, 3, 4; Spanish Club 2; Sigma Pi Alpha 2, 3; Home Economics Club 2, 3, 4; Chorus 3; Summer School Student Government Council 3; Barber Science Club 3, 4, Secretary 4; Hoofprint Club 3, 4; Playhouse 3, 4, Treasurer 4; Tyner Education Club 4; Dean's List.

CAROLYN WALLACE HALL
Carthage, N. C.

Astro

Voice and Public School Music

Granddaughters' Club 1, 2, 3, 4; German Club; Chorus 2, 3, 4; Sextet 3; Triple Trio 4; Tyner Education Club 3, 4; MacDowell Music Club 4; M.E.N.C. 4.

SONNYA CHRISTINE HAMILTON
Walterboro, S. C.

Astro

Histroy

International Relations Club; Sigma Pi Alpha.





Meredith College

DOROTHY ESTELLE HAMPTON

Winston-Salem, N. C.

Astro

History

Y.W.A. 1, 2, 3, 4, Hall Chairman 1; Colton English Club; Chorus 2, 4; Meredith Ensemble; B.S.U. Council, Publicity Chairman 2, Church Representative 3, B.T.U. Representative 4; International Relations Club 3, 4, Vice-President 3; N.C. International Relations Club, Secretary 4; Playhouse 4; Cast of "As You Like It."

STATHA ZOE HARMON

Bessemer City, N. C.

Phi

Education

Mars Hill College: B.T.U. Officer 1, 2; Co-Chairman Mission Council 2; Volunteers for Christ 1, 2, Officer 2; Y.T.C. 1, 2; Y.W.A. 1, 2; Clio Literary Society. Meredith: Y.W.A. 3, 4, Hall Chairman 3, 4; Chorus 4; Tyner Education Club 4.

REBECCA WOMBLE HAYNES

Raleigh, N. C.

Astro

Education

Spanish Club 1, 2; Wesley Foundation Council and Board 1; Counselor 2; Tyner Education Club 4; Dean's List.

PATSY CAROLINE HINSON

Lancaster, S. C.

Phi

English

Mars Hill College: Clio Literary Society. Meredith: Colton English Club 3, 4; Y.W.A. 3, 4; Tyner Education Club 4.





BEST ALL-ROUND TOWN STUDENT
Jacqueline Norris



Meredith College

NELLIE BLANCHE HODGE

Raleigh, N. C.

Phi

Religion

Freeman Religion Club 1, 2, 3, 4; Treasurer 4; Y.W.A. 1, 2, 3, 4, Community Missions Chairman 4; Committee of 100 3; Psi Chi Club 4.

ELIZABETH IRENE HUNTER

Cary, N. C.

Phi

Business

Committee of 100 2; French Club 2; Y.W.A. 2; Tomorrow's Business Women 2, 3, 4; Folk Dance Club 3; Junior Guide 3; Junior-Senior Banquet Committee 3; Student League of Women Voters 3; Psi Chi Club 3, 4; Kappa Nu Sigma 4; Sigma Pi Alpha 4, Secretary 4; *Twig* Staff 4.

ANN WARD IPOCK

New Bern, N. C.

Astro

Business

Spanish Club 1, 2, 3; Granddaughters' Club 1, 2, 3, 4, President 4; Sigma Pi Alpha 1, 2, 3, 4; Playhouse 2, 3; *Twig* Staff 2, 3; Colton English Club 2, 3, 4; Folk Dance Club 3; Tomorrow's Business Women 3, 4, President 4; Tyner Education Club 3, 4; Dean's List.

CAROLINE LUPO JACKSON

Tabor City, N. C.

Phi

Spanish

Stunt 1, 2; Spanish Club 1, 2, 3, 4, President 3; Y.W.A. 2, 3, 4, Hall Secretary 2; A.A. Board, Swimming Manager 3; Class Secretary 3; Sigma Pi Alpha 3, 4; Class President 4; Chorus 4; Freeman Religion Club 4; Nominating Committee 4; Phi Sergeant-at-Arms 3; Social Standards Committee 4; Tyner Education Club 4.



Class of Fifty-four



DORIS BLAIR JAMES
Marshville, N. C.

Phi
Wingate Jr. College: B.S.U. Executive Council 2; Masque and Wig Club 2, 3, Drama Productions; O'Henry Society 2, Secretary-Treasurer 2, Sponsor 2; Student Government Council, President of Stewart 2; Volunteer Band 2, Vice-President 2; W.K. Club 2, President 2; Y.W.A. 2, Vice-President 2; Miss Wingate of 1952. Meredith: Y.W.A. Circle Leader 3; Freeman Religion Club 3, 4; Psi Chi Club 4.

Religion



NANCY McMILLAN JOHNSON
Tarboro, N. C.

Astro
Granddaughters' Club 1, 2, 3, 4, Secretary 2; Hoofprint Club 1, 2, 3, 4, President 2, Treasurer 3; A.A. Board, Riding Manager 2; Tomorrow's Business Women 2, 3, 4, Vice-President 4; Chorus 3, 4; Social Standards Committee 3, 4; *Acorn* Staff, Business Manager 4.

Business

MELISSA MATTHEWS JONES
Laurinburg, N. C.

Phi
Sigma Pi Alpha 1; Granddaughters' Club 1, 2, 3, 4; Counselor 2, 3; Folk Dance Club 3; International Relations Club 3; Colton English Club 3, 4, Vice-President 4; Kappa Nu Sigma 3, 4; Dean's List.

English

JEAN JOURNIGAN JOYNER
Henderson, N. C.

Phi
German Club 1, 2; Chorus 2, 3, 4; Canaday Math Club 2, 3; International Relations Club 3; Student League of Women Voters 3, 4, Publicity Chairman 3, President 4; N.C. State Student Legislature 3, 4; Interim Council S.S.L. 3, 4; Dean's List.

History





Meredith College

EDNA GENEVERETTE KEENE
Mt. Olive, N. C.

Astro

Education

East Carolina College: Home Economics Club 1; W.A.A. 1, 2; Education Club 2. Meredith: Basketball Varsity 3, Captain; Chorus 3; Playhouse 3, 4; Tyner Education Club 4.

PEGGY SHERARD KIRBY
Charlotte, N. C.

Astro

Sociology

ANNE KIRKMAN
Raleigh, N. C.

Astro

Education

DORIS KNOTT
Knightdale, N. C.

Phi

History

French Club 1; Granddaughters' Club 1, 2, 3, 4, Reporter 2, Vice-President 3; Y.W.A. 1, 2, 3, 4, Circle Leader 1; Sigma Pi Alpha 2, 3, 4, Secretary 3; Freeman Religion Club 3; International Relations Club 3, 4; Student League of Women Voters 3, 4, Secretary-Treasurer 3; N.C. State Student Legislature 3, 4.





WITTIEST

Mary Thorp



Meredith College

DOROTHY KNOTT
Knightdale, N. C.

Phi
French Club 1; Granddaughters' Club 1, 2, 3, 4; Y.W.A. 1, 2, 3, 4, Hall Secretary 4; Canaday Math Club 2, 3, 4, President 3, Social Chairman 4; Phi Treasurer 3; Barber Science Club 3, 4.

Mathematics

BETTY AILEEN LANE
Greensboro, N. C.

Astro
Alpha Rho Tau 1; Spanish Club 1; Palio Costume Committee 1, 2; Stunt Costume Committee 1, 3; Counselor 2; Sociology Club 2, 3; A.A. Board, Archery Manager 2, Hockey Manager 3; Y.W.A. 2, 3, 4; Astro Marshal 3; Barber Science Club 3, 4; Folk Dance Club 3; Psi Chi Club 3; Astro President 4; Nominating Committee 4; Social Standards Committee 4.

Chemistry

MARJORIE ANN LANE
Selma, N. C.

Phi
MacDowell Music Club 1; Y.W.A. 1, 2, 3, Hall Secretary 2; Barber Science Club 2; Freeman Religion Club 2, 3, 4, Secretary 2; Tyner Education Club 3, 4; Canaday Math Club 4; Dean's List.

Religion

SARA JOHANNA LANGDON
Monroe, N. C.

Phi
Education



Class of Fifty-four



PATTIE MARIE LOFTIN
Weaverville, N. C.

Astro Hoofprint Club 1; International Relations Club 1, 2, 3, 4, Publicity Chairman 3, Vice-President 4; Colton English Club 2; Sociology Club 2, 3; Student League of Women Voters 3; A.A. Board, College Health Chairman 4; Dean's List.

History



ARDELIA ANN LOVELL
Clinton, N. C.

Astro A.A. Board, Freshman Representative 1, Secretary 2, Monogram Club President 3, A.A. Board President 4; Monogram Club 2, 3, 4; Soccer Varsity 1, 2; Hockey Varsity 1, 2, 3, 4; Softball Varsity 1, 3; Basketball Varsity 2, 3; Best-All-Round Athlete 2; Stunt 1; Colton English Club 2; Spanish Club 2; Tyner Education Club 3, 4; Nominating Committee 4; Superlative; Dean's List.

Education

NANCY CAROLYN MCGINNIS
Ellenboro, N. C.

Phi Home Economics Club 1, 2, 3; Spanish Club 1, 2, 3, Treasurer 3; Tyner Education Club 2; Y.W.A. 1, 2, 3; Dean's List.

Home Economics

KATHRYN DORIS McMILLAN
Fayetteville, N. C.

Phi Palio Costume Committee Chairman 1; Stunt Costume Committee Chairman 2, Props Committee 3; Committee of 100 2; Colton English Club 2, 3, 4; Playhouse 2, 3, 4; Y.W.A. 2, 3, 4; B.S.U. Council, Church Representative 3; Class Treasurer 3; Student Government Council, Vice-President of Faircloth 4; Treasurer of Religious Focus Week 3; Tyner Education Club 3, 4, Vice-President 4; House Council 4.

Education





Meredith College

CATHERINE THOMSON McRACKAN
Southport, N. C.

Phi
Spanish Club 1; Granddaughters' Club 1, 2, 3, 4, Reporter 3; Y.W.A. 2, 3, 4; Soccer Varsity 2; Speedball Varsity 3; Hockey Varsity 3, 4; Monogram Club 3, 4; Tyner Education Club 3, 4; A.A. Board, Hockey Manager 4; Psi Chi Club 4; Dean's List.

Education

REBECCA DOUGLAS McRACKAN
Southport, N. C.

Phi
Spanish Club 1; Granddaughters' Club 1, 2, 3, 4, Secretary 3; Y.W.A. 2, 3, 4; Soccer Varsity 2; Speedball Varsity 3; Hockey Varsity 3, 4; Monogram Club 3, 4; Tyner Education Club 3, 4; A.A. Board, Individual Sports Manager 4; Psi Chi Club 4; Dean's List.

Education

MARY GORDON MAXWELL
High Point, N. C.

Phi
Freeman Religion Club 1, 2, 3, 4, Vice-President 3; Granddaughters' Club 1, 2, 3, 4; Student Government Council, Freshman Representative 1, Vice-President of Brewer 4; Y.W.A. 1, 2, 3, 4, Vice-President 2; Counselor 2, 3, 4; Committee of 100 3; Dean's List.

Religion

BETTY ANN MILLER
Florence, S. C.

Phi
Y.W.A. 1; Palio Committee 1; German Club 1, 2; Chorus 2, 3, 4, Accompanist 4; Folk Dance Club 2, 3, 4; S.A.I. 2, 3, 4; *Twig* Staff 3; Manager S.A.I. Music Store 3, 4; Organ Class Program Chairman 4.

Organ





MOST INTELLECTUAL Phyllis Tribble



Meredith College

ANNE CAROL MOORE

Raleigh, N. C.

Astro

OAK LEAVES Staff 1, 2, 3, 4; Sigma Pi Alpha 1, 2, 3, 4, Treasurer 3; Spanish 1, 2; Colton English Club 2; Tomorrow's Business Women 2, 3, 4; Y.W.A. 3, 4; *Acorn* Staff, Assistant Editor 4; Dean's List.

Business

BONNY LYNN MORGAN

Benson, N. C.

Phi

Chorus 1: Folk Dance Club 1, 2, 3, 4; Y.W.A. 1, 2, 3, 4; Counselor 2, 3; A.A. Board 2, 3, 4; Soccer Varsity 2; Hockey Varsity 2, 4; Monogram Club 2, 3, 4, Vice-President 4; Barber Science Club 2, 3, 4; Hoofprint Club 2, 3, 4; Playhouse 2, 3, 4; Class Vice-President 4; Silver Shield 4, Vice-President 4; Superlative; *Who's Who*; Dean's List.

Biology

DOROTHY TAYLOR MORGAN

Raleigh, N. C.

Phi

Y.W.A. 1, 2, 3, Hall Officer 3; Freeman Religion Club 2, 3; Tyner Education Club 3, 4.

Education

ELIZABETH ANNE MORGAN

Colonial Beach, Va.

Phi

Home Economics Club 1, 2; Playhouse 1, 2, 3, 4, Vice-President 3, President 4; Sigma Pi Alpha 1, 2, 3, 4, President 3; *Twig* Staff 1, 2, Associate Editor 2; Y.W.A. 1, 2, 3; Committee of 100 2, Counselor 2, 3; Folk Dance Club 2, 3; Barber Science Club 2, 3, 4; Nominating Committee 4; Dean's List.

Chemistry



Class of Fifty-four



LUCY KATE MORRISON
Roseboro, N. C.

Astro
Basketball 1; Hockey 1; Spanish Club 1, 2, 3; Colton English Club 2; Sociology Club 2, 3, 4; Folk Dance Club 3, 4.

Sociology



JEAN EVONNE MORTON
Jacksonville, N. C.

Phi
Spanish Club 1, 2, 3, 4, Secretary 4; Y.W.A. 1, 2, 3, 4; Colton English Club 2; Stunt 2; "Wes Ral Presby" Staff, Editor 2; Junior Guide 3; Sigma Pi Alpha 3, 4, Treasurer 4; Tyner Education Club 3, 4; OAK LEAVES Staff 4; Dean's List.

Spanish

FREIDA MAXCINE MOSS
Aberdeen, N. C.

Phi
Gardner Webb College: B.S.U. Council 2; International Relations Club 2; Marshal 2; Y.W.A. 1, 2. Meredith: Y.W.A. 3, 4; Tyner Education Club 4.

Education

JACQUELYN ANN NORRIS
Raleigh, N. C.

Phi
German Club 1; Committee of 100 1, 2, 3; Freeman Religion Club 1, 2, 3, 4; Counselor 2; Colton English Club 2, 3; Y.W.A. 3, Program Chairman 3; Student Government Council, 1st Vice-President of Day Students 3, President of Day Students 4; Psi Chi Club 3, 4, Secretary 3; Chorus 4; Nominating Committee 4; Superlative; Dean's List.

Religion





Meredith College

PATRICIA DAVIS O'QUINN
Lillington, N. C.

Phi
Granddaughters' Club 1, 2, 3, 4; Spanish Club 2;
Home Economics Club 2, 3, 4; Tyner Education
Club 2, 3, 4, Social Chairman 4.

Home Economics

LORETTE HOBBS OGLESBY
Hamilton, N. C.

Astro
Freeman Religion Club 1; *Twig* Staff 1, 2, 3, 4,
Editor 4; Y.W.A. 1, 2, 3, 4; Stunt Script Committee
2; Colton English Club 2, 3, 4, Publicity Chairman
3; A.A. Board 3; Hoo!print Club 3, 4; Playhouse 3, 4;
Psi Chi Club 3, 4; Tyner Education Club 3, 4;
Nominating Committee 4; Silver Shield 4.

English

BETTY LOU OLIVE
Apex, N. C.

Phi
German Club 1, 2; Y.W.A. 1, 2, 3, 4, Hall Chairman
3; Chorus 2, 3; S.A.I. 2, 3, 4; B.S.U. Council 4;
Freeman Religion Club 4.

Organ

BETTY ROSE OWENS
Whiteville, N. C.

Phi
Mars Hill College: Y.W.A. 1, 2; Sunday School
Officer 2; Clio Literary Society, Meredith: Tyner
Education Club 3, 4; Y. W.A. 3, 4.

Education





MOST ATHLETIC Jean Pace



Meredith College

JEAN SHIRLEY PACE
Millbrook, N. C.

Phi
Playhouse 1, 2, 3, 4; Colton English Club 2; Alpha Psi Omega 2, 3, Treasurer 4; Barber Science Club 2, 3, 4, Treasurer 3, 4; A.A. Board 2, 3, Vice-President 4; Monogram Club 2, 3, 4; Soccer Varsity 1, 2, 3; Softball Varsity 1, 2, 3; Hockey Varsity 2, 3, 4; Best-All-Round Athlete 3; Superlative; Dean's List.

Biology

FALLIE DORIS PAGE
Morrisville, N. C.

Phi
Spanish Club 1, 2, Secretary 2; Granddaughters' Club 1, 2, 3, 4; Y.W.A. 1, 2, 3, 4, Hall Secretary 3; Tyner Education Club 3, 4; Class Treasurer 4.

Education

BETTY LOU PASCHALL
Durham, N. C.

Phi
Mars Hill College: B.T.U. Officer 1, 2; Glee Club 1, 2; Sunday School Officer 1, 2; Y.W.A. 1, 2; Cheerleader 2; M-Blem Club 2; Clio Literary Society, Officer 2. Meredith: Freeman Religion Club 3, 4; Y.W.A. 3, 4; Chorus 4; Folk Dance Club 4.

Religion

HAZEL RAE PHILLIPS
Scotland Neck, N. C.

Phi
Y.W.A. 1, 2, 3, 4, Hall Chairman 3; Tomorrow's Business Women 3, 4; Tyner Education Club 3, 4; Student League of Women Voters 4; Dean's List.

Business



Class of Fifty-four



FLORENCE ELIZABETH POWERS

Cerro Gordo, N. C.

Astro

Education

Campbell College: Basketball 1, 2; Chorus 1, 2; Spanish Club 1, 2; Y.W.A. 1, 2; Dramatics 2; Women's House Council. Meredith: Y.W.A. 3, 4; Tyner Education Club 4.

DOROTHY LUCILLE PRICKET

Burlington, N. C.

Phi

Religion

Home Economics Club 1, 2; Y.W.A. 1, 2, 3, 4, Circle Program Chairman 1, Campus Program Chairman 2, President 4; Colton English Club 2; OAK LEAVES Staff 2; Committee of 100 2, 3; Counselor 2, 3; Freeman Religion Club 2, 3, 4, Publicity Chairman 3; Tyner Education Club 2, 3, 4; B.S.U. Council, Program Chairman 3, Y.W.A. President 4; Chorus 4.

BARBARA ANNE PROPST

Charlotte, N. C.

Astro

Education

Stunt Committee 1; Folk Dance Club 1, 2, 3, 4; Spanish Club 2; Chorus 2, 3, 4; Junior Guide 3; Twig Staff 3, 4, Business Manager 4.

MARGARET ANN QUAY

Harrisburg, N. C.

Astro

Mathematics

Spanish Club 1, 2; Canaday Math Club 2, 3, 4, Vice-President 3, Reporter 4; Barber Science Club 3, 4; Student Government Council, Vice-President of Faircloth 4.





Meredith College

JULIA THERESA RAYNOR

Aoskie, N. C.

Astro

Biology

Y.W.A.; Freeman Religion Club; Tyner Education Club; Playhouse, Committee Chairman 3; Barber Science Club, President 4; *Targ* Staff, Chorus 3.

BARBARA JONES REDDEN

Liberty, N. C.

Phi

Education

Wake Forest College 1, 2, Meredith; Tyner Education Club 3, 4, President 4; Dean's List.

MARY BRYAN REID

Whitakers, N. C.

Phi

Voice

German Club 1, 2; Folk Dance Club 2, 3; Chorus 2, 3, 4, Librarian 3, Vice-President 4; MacDowell Music Club 2, 3, 4, President 4; Y.W.A. 2, 3, 4; Committee of 100 3; Stunt Committee 3; Sextet 3; Phi Sergeant-at-Arms 4; Triple Trio 4.

MARTHA ALICE RENFRO

Wendell, N. C.

Phi

Chemistry

Hoofprint Club 1; French Club 1, 2; Colton English Club 2; Phi Treasurer 2; Counselor 3; Stunt Committee 3; Barber Science Club 3, 4, Reporter 3, Vice-President 4; Phi Marshal 4; Student Government Council, Vice-President of Faircloth 4.





MOST ORIGINAL

Charleen Swanzey



Meredith College

BARBARA ANN RICE
Rocky Mount, N. C.

Phi
Stunt Committee 1, 2, 3; Chorus 2, 3, 4; Folk Dance Club 2, 3, 4; *Twig* Staff 2, 3, 4; Junior Guide 3; Rush Week Chairman 3; *Acorn* Staff 3, 4; Colton English Club 3, 4; Browsing Room Chairman 3, Vice-President 4; Playhouse 3, 4; Tyner Education Club 3, 4.

English

DOROTHY JEAN ROBERTSON
Union Mills, N. C.

Phi
Gardner Webb College: International Relations Club 1; Glee Club 1, 2; Literary Club 1, 2; Woman's Athletic Program 1, 2; Y.W.A. 1, 2; Choir 2; Dramatics Club 2; Mental Hygiene Society 2. Meredith: Tyner Education Club 3, 4; Y.W.A. 2, 3, Hall Chairman 4.

Education

MARY ROSE RUMMAGE
Albemarle, N. C.

Phi
MacDowell Music Club 1, 2, 3, 4; Y.W.A. 1, 2, 3, 4, Council 3; Folk Dance Club 2, 3; M.T.N.A. 3; M.E.N.C. 4.

Public School Music

ALSTINE FAY SALTER
Bass River, Mass.

Astro
Class President 1; Committee of 100 1; Nominating Committee 1; German Club 2, 3; Student Government Council, Sophomore Representative 2, Treasurer 3; Monogram Club 2, 3, 4, President 4; Folk Dance Club 3; International Relations Club 3; Sigma Pi Alpha 3, 4, Vice-President 3; Soccer Varsity 1, 2; Hockey Varsity 4; Softball Varsity 1, 2, 3; Freeman Religion Club 4; Superlative.

History



Class of Fifty-four



BETTY JOYCE SANDERLIN
Windsor, N. C.

Phi
French Club 1, 2; Y.W.A. 1, 2, 3, 4; Chorus 2, 3, 4;
S.A.I. 2, 3, 4, Treasurer 3; Freeman Religion Club 4.

Piano



CELIA CAROLYN SAWYER
Elizabeth City, N. C.

Phi
Freeman Religion Club 1; Spanish Club 1; Cheer-
leader 2; Stunt Cast 3; Tyner Education Club 3, 4;
Chorus 4.

Education

JEANNETTE SCOTT
Wilmington, N. C.

Phi
Granddaughters' Club 1, 2, 3, 4; Y.W.A. 1, 2, 3, 4,
Council 3; Canaday Math Club 2, 3, 4, Secretary-
Treasurer 3, President 4; Junior Guide 3; Barber
Science Club 3, 4; B.S.U. Council 4.

Mathematics

BETTY LOUISE SMITH
Holland, Va.

Astro
Chowan College: Class Vice-President 1; *Chowanoka*
Editor 1; Women's Judiciary Secretary 1, Meredith:
Chorus 2; *Twig* Staff 3; Sociology Club 3, 4, Presi-
dent 4; Counselor 4; Psi Chi Club 4; Kappa Nu
Sigma 4; Dean's List.

Sociology





Meredith College

ELIZABETH MARSHALL SMITH

Bladenboro, N. C.

Astro

Education

Mars Hill College: Glee Club 2; Nonpareil Literary Society. Meredith: Chorus 3, 4; Y.W.A. 3, 4, Hall Chairman 4; Tyner Education Club 4.

ALICE JOHNSON SPELL

Clinton, N. C.

Phi

Religion

Y.W.A. 1, 2, 3; Colton English Club 2, 3; Freeman Religion Club 2, 3; Student Government Council, Vice-President of Brewer 3.

MARY OLIVE SPIVEY

Wilson, N. C.

Astro

Education

International Relations Club 1, 2, 3, 4, Librarian 1; Spanish Club 1, 2; Y.W.A. 1, 2, Devotional Chairman 1; Tyner Education Club 3, 4, Publicity Chairman 4; A.A. Board, Badminton Manager 4.

MARY LOUISE STEPHENS

Garner, N. C.

Phi

Education





MOST VERSATILE

Bonny Morgan



Meredith College

MARGELEE STEWART
Lillington, N. C.

Phi Basketball 1; Stunt Cast 1; Freeman Religion Club 1, 2, 3, 4; Y.W.A. 1, 2, 3, 4, Hall Chairman 1; International Relations Club 2; Phi Chaplain 2; *Twig* Staff 2; Folk Dance Club 2, 3; Chorus 2, 3, 4; Playhouse 2, 3, 4; Tyner Education Club 3, 4; Colton English Club 4.

MARY BROOKS STONE
Shelby, N. C.

Astro Palio Committee 1; Spanish Club 1, 2; Playhouse 2, 3; Counselor 2, 4; Sociology Club 2, 3, 4; Astro Secretary 3; Y.W.A. 3; Student Government Council, Vice-President of Stringfield 3; Psi Chi Club 3, 4; A.A. Board, Tennis Manager 4.

SALLIE KAY SUGG
Snow Hill, N. C.

Astro East Carolina College: Y.W.C.A. 1. Meredith: French Club 2, 3; Tyner Education Club 3, 4; Wesley Foundation Secretary 3, Dorm Organization 3, 4, Paper Staff 3, 4, Vice-President 4; Y.W.A. 2, 3, 4.

FRANCES CHARLEEN SWANZEY
Charlotte, N. C.

Astro Astro Sergeant-at-Arms 2, Vice-President 3; Chorus 2; *Acorn* Staff 2, 3, 4; Colton English Club 2, 3, 4; Playhouse 2, 3, 4; Class Vice-President 3; Stunt Cast 4; Alpha Psi Omega 3, 4; Tyner Education Club 4; Superlative; Dean's List.



Class of Fifty-four



CHARLOTTE VANCE TAYLOR

Raleigh, N. C.

Astro *Histry*
Spanish Club 1, 2; Vice-President of Day Students
2, 3; *Twig* Staff 3; Colton English Club 4; Inter-
national Relations Club 4; Tyner Education Club 4.

EVELYN WAUGH TAYLOR

Astro *Home Economics*
W.C.U.N.C.: 4-H Club 1, 2, Vice-President 2;
Home Economics Club 1, 2; Alethian Society.
Meredith: Home Economics Club 3, 4, President
4; "Mrs." Club 3, 4, Treasurer 3; Colton English
Club 4; Tyner Education Club 4; May Court 4;
Dean's List.

BOBBYE MARIE TEACHEY

Rose Hill, N. C.

Phi *Education*

JANE WILLIAMSON TEAGUE

Clinton, N. C.

Astro *Home Economics*
Freshman Hockey Stick 1; Spanish Club 1; Y.W.A.
1, 2, 3; Hockey Varsity 1, 2, 3; Home Economics
Club 1, 2, 3, 4; Committee of 100, Treasurer 2;
Counselor 2; A.A. Board, Treasurer 2, Vice-President
3; Folk Dance Club 2, 3; Monogram Club 2, 3, 4;
Hoofprint Club 3; Home Economics Province III,
Vice-President 3; Student Government Council
Social Standards Chairman 4; *Who's Who*.





Meredith College

ANNE RUTH THAMES
Star, N. C.

Phi
Mars Hill College: International Relations Club 1, 2; Sunday School Officer 2; Y.T.C. 1, 2, Vice-President 2; Clio Literary Society, Literary Critic 2. Meredith: Tyner Education Club 4; Y.W.A. 4.

Education

MARY EUGENIA THORP
Oxford, N. C.

Astro
Peacc College: Sigma Phi Kappa 1, 2; Phi Theta Kappa Honorary Society 2; International Relations Club 2; *Lotus* Staff 2; Papyrus Club 2; Honor Roll. Meredith: Tyner Education Club 3, 4; Superlative.

Education

AUDREY GARRIS TODD
Raleigh, N. C.

Phi

Education

EVA MARGARET TOWNSEND
Fair Bluff, N. C.

Phi

Campbell College: *Creek Pebbles* Staff 1; B.S.U. Council 2; Choir, Accompanist 2; House Council 2; Epsilon Pi Eta Honor Society 2; May Court 2; Spanish Club, Vice-President 2; Superlative; Dean's List. Meredith: Sigma Pi Alpha 3, 4, Vice-President 4; Spanish Club 3, 4, President 4; Tyner Education Club 4.





CUTEST

Mary Ann Chandler



Meredith College

PHYLLIS LOU TRIBBLE
Richmond, Va.

Astro

Religion

Freeman Religion Club 1, 2, 3, 4; Y.W.A. 1, 2, 3, 4, Devotional Chairman 2; Class Treasurer 2; Folk Dance Club 2, 3; Colton English Club 2, 3, 4; Committee of 100 3; Kappa Nu Sigma 3, 4, President 4; B.S.U. Council, Program Chairman 4; International Relations Club 4; Superlative; Dean's List.

JEAN WEBB TROGDEN
Asheboro, N. C.

Astro

Home Economics

Lees-McRae College 1, 2, Meredith: Home Club 3, 4; "Mrs." Club 3, 4, President 4; Dean's List.

MARY ELLEN UPCHURCH
Durham, N. C.

Astro

Education

Spanish Club 1, 2, Vice-President 2; Y.W.A. 1, 2, 3, 4; Colton English Club 2; International Relations Club 2; Student Government Council, Vice-President of Faircloth 3; Tyner Education Club 3, 4.

MARY JANE WARRICK
Smithfield, N. C.

Phi

Public School Music

Chorus 1, 2, 3, 4, Secretary 4; Folk Dance Club 1, 2, 3, 4; Committee of 100 2; Counselor 2; Y.W.A. 3; MacDowell Music Club 2, 3, 4; M.T.N.A. 3, 4; Summer School Student Government Council 3, 4; M.E.N.C.; OAK LEAVES Staff 4.



Class of Fifty-four



KATHERINE EVANGELINE WAYNICK
Weldon, N. C.

Astro
Playhouse 1, 2, 3, 4; *Twig* Staff 2; International Relations Club 2, 3; Sociology Club 2, 3, 4; Spanish Club 3; Stunt Cast 3; *Acorn* Staff 4; Alpha Psi Omega 4; Psi Chi Club 4, Vice-President; Dean's List.

Sociology



CELIA TOWNSEND WELLS
Florence, S. C.

Astro
Acorn Staff, Editor 4; Kappa Nu Sigma 4; Dean's List.

English

SHIRLEY WEST
Currituck, N. C.

Astro
Stunt Committee 1; Folk Dance Club 1, 2, 3; Home Economics Club 1, 2, 3, 4, Secretary 3, Vice-President 4; Playhouse 1, 2, 3, 4, Reporter 2; Colton English Club 2; Sociology Club 2; *Twig* Staff 2, 3, 4; Counselor 3; Alpha Psi Omega 3, 4, President 4.

Home Economics

BARBARA DEE WHITE
Washington, D. C.

Phi
Y.W.A. 1, Hall Chairman 1; Freeman Religion Club 1, 2, 3; Colton English Club 2; International Relations Club 2, 3, 4, President 3; N.C. International Relations Club, President 4; Raleigh International Relations Club 2, 3, 4; OAK LEAVES Staff 3; Student League of Women Voters 3, 4; *Twig* Staff 3, 4.

History





Meredith College

BERNICE LUCRETIA WHITE
Hobbsville, N. C.

Phi Y.W.A. 1, 2, 3, 4; French Club 2; Chorus 2, 3; MacDowell Music Club 3, 4; M.T.N.A. 3, 4; *Sociology* Sociology Club 4.

DOROTHY ELIZABETH WHITE
Fayetteville, N. C.

Phi French Club 1, 2, 3; Stunt Committee 2, 3; Folk Dance Club 2, 3, 4; Co-Chairman 4; Committee of 100 3; Y.W.A. 3; Tyner Education Club 3, 4; A.A. Board 4; Barber Science Club 4; International Relations Club 4; MacDowell Music Club 4; OAK LEAVES Staff 4. *Art*

REBECCA WICKER
Sanford, N. C.

Phi Spanish Club 1, 2; Sigma Pi Alpha 2, 3, 4; Student League of Women Voters 2, 3, 4; Y.W.A. 2, 3, 4, Hall Secretary 4; N.C. State Student Legislature 4; Tyner Education Club 4; Dean's List. *Education*

MARY RUTH WILLCOX
Enfield, N. C.

Astro Freeman Religion Club 1, 2, 3, 4, President 4; German Club 1, 2; Y.W.A. 1, 2, 3, 4, Council 2, 3, 4; B.S.U. Council 2; Chorus 2, 3, 4; Folk Dance Club 3. *Religion*





MOST ATTRACTIVE

Joanne Brown



Meredith College

DELORIS ANN WILLIAMS
Charlotte, N. C.

Phi
Y.W.A. 1, 2, 3, 4; Spanish Club 2; Tyner Education
Club 3, 4; Student League of Women Voters 4.

Education

JANIS ELIZABETH WITHERINGTON
Vanceboro, N. C.

Phi
Home Economics Club 1, 2; Y.W.A. 1, 2, 3, 4;
Barber Science Club 2, 3, 4; Folk Dance Club 3, 4.

Chemistry

LILLIAN ELIZABETH WOOTEN
Princeton, N. C.

Astro
Stunt Cast 1; Hoofprint Club 1, 2, Treasurer 2;
Colton English Club 3; Sociology Club 3, 4, Vice-
President 4; Tyner Education Club 4.

Sociology





COLLEGE MARSHAL Marjorie Barnes

THE SILVER SHIELD



ALLEN



BLAND



CLARK



MORGAN



CHANDLER



OGLESBY

DORIS ALLEN

President

BONNY MORGAN

Vice-President

MARY ANN CHANDLER *Secretary-Treasurer*

The Silver Shield is the honorary leadership society on our campus that seeks to develop a well-rounded student life at Meredith. It strives in various ways to further the ideals of this well-rounded life in its emphasis on meaningful Christian living, a high standard of honor, and co-operation in the student community.

Each year the Society recognizes girls from the Junior and Senior classes who have proved themselves outstanding in constructive leadership, Christian character, and scholarship.

KAPPA NU SIGMA



JONES



TRIBBLE



BARNES



SMITH

KNΣ



HUNTER



WELLS



BROWN

PHYLLIS TRIBBLE *President*

NANCY BROWN *Secretary-Treasurer*

RUTH BARNES *Vice-President*

CELIA WELLS *Reporter*

Kallos, Nous, Sophia—beauty, sound-mindedness, and intelligence are the Greek words from which Kappa Nu Sigma Honor Society takes its name. Only those students who have achieved a high scholastic standing over a period of two years are elected to membership. Kappa Nu Sigma encourages intellectual pursuits by sponsoring a chapel speaker, an annual spring banquet and lecture, and by awarding the Helen Price Scholarship to the freshman having the highest scholastic standing in her class.

WHO'S WHO



ALLEN



CHANDLER



TEAGUE



CLARK



CAMPBELL



MORGAN



BLAND



BARNES

DAYS TO REMEMBER



HISTORY OF THE JUNIOR CLASS

It came as a shock to most of us this sudden and delightful realization that we were juniors with two whole years of college behind us. As juniors we had unlimited privileges, chaperone duties and even little sisters. We especially enjoyed planning for and attending the Junior-Senior Banquet. Such a thrill we got walking down to the dining hall under the gaze of envious under-classmen. As the end of the year came, and we were running for prominent offices and having first choice of rooms, we realized distinctly that there was only one year left. And we were practically seniors.





JUNIOR CLASS OFFICERS

REBECCA CALLOWAY *President*

SANDRA PETERSON *Vice-President*

BETTY BALL *Secretary*

ANNE JANE BARBREY *Treasurer*



First row:

ADAMS, ANNIE INEZ, *Astro*
Raleigh, N. C.

ALLEN, DESSIE JOAN, *Phi*
Lincolnton, N. C.

ALLEN, PATRICIA ANNE, *Phi*
Rockingham, N. C.

ALLEN, RUTH JEANNE, *Phi*
Credmoor, N. C.

Second row:

ANDREWS, BARBARA MARTIN
Pittsboro, N. C. *Astro*

BAILEY, JOYCE ANN, *Phi*
Benson, N. C.

BALL, BETTY JOAN, *Phi*
Scotland Neck, N. C.

BARBOUR, JENNIE RUTH, *Astro*
Dunn, N. C.

Meredith College

Class of 1955

First row:

BARBREY, ANNE JANE, *Astro*
Clinton, N. C.

BARNHARDT, PHOEBE JEAN, *Astro*
Concord, N. C.

BARNHARDT, REBECCA, *Astro*
New Bern, N. C.

BATEMAN, BILLIE BLANTON, *Astro*
Tarboro, N. C.

Second row:

BELL, MARY LOU, *Phi*
Rocky Mount, N. C.

BENNETT, PEGGY ROSS, *Phi*
Raleigh, N. C.

BEST, ELIZABETH ANN, *Astro*
Goldsboro, N. C.

BOONE, EVELYN CAROLE, *Phi*
Scotland Neck, N. C.





First row:

BOWMAN, BARBARA ANNE, *Astro*
Raleigh, N. C.

BRADSHAW, JETTIE REA, *Phi*
Gastonia, N. C.

BRISTOL, MYRA CLARISSA, *Astro*
Edisto Beach, S. C.

BROCK, JOSEPHINE BOND, *Phi*
Conway, S. C.

Second row:

BROWN, GERALDINE DEVAN, *Phi*
Fort Mill, S. C.

BRUNSON, MARGARET RUTH
Florence, S. C. *Astro*

BUNN, CLARA RAY, *Phi*
Raleigh, N. C.

BURNS, CRISTEL LOIS, *Astro*
Raleigh, N. C.

Meredith College

Class of 1955

First row:

BURNS, JOYCE ANNE
Raleigh, N. C.

CADLE, MARY LOIS, *Phi*
Apex, N. C.

CALLAWAY, REBECCA ANNE, *Phi*
Concord, N. C.

CANNADY, MARGARET FRANCES
Phi
Richlands, N. C.

Second row:

CASHWELL, VERONICA ANN, *Phi*
Parkersburg, N. C.

CAUDLE, ANNETTE, *Astro*
Peachland, N. C.

CAUSEY, JOYCE ANNE, *Astro*
Tarboro, N. C.

CHAPPELL, EMMA LOU, *Astro*
Fuquay Springs, N. C.





First row:

CLEMMONS, HAZEL KATHLEEN
Supply, N. C. *Phi*

COLBY, HELEN EILEEN, *Phi*
Charlotte, N. C.

COLLINS, MARY JANE, *Astro*
Nashville, N. C.

COOPER, CHARLOTTE EDITH,
Laurinburg, N. C. *Astro*

Second row:

COTTRELL, RUTH ERNESTINE, *Phi*
Lenoir, N. C.

CURRIN, KATIE LEE, *Phi*
Roxboro, N. C.

DAVIS, ROSALIND GRIGGS, *Phi*
Red Springs, N. C.

DELBRIDGE, MARY ELIZABETH
Spring Hope, N. C. *Astro*

Meredith College

Class of 1955

First row:

DICKENS, MARY COBB, *Astro*
Nashville, N. C.

DOHERTY, NANCY ELLEN, *Astro*
Chinquapin, N. C.

DOWELL, PATRICIA BURNETT
Raleigh, N. C. *Astro*

DRAKE, SALLY LINN, *Phi*
Washington, D. C.

Second row:

EDGE, MARGARET LOUISE, *Phi*
Aberdeen, N. C.

FARQUHARSON, BENNIE BRYAN
Washington, N. C. *Phi*

FITZGERALD, GERTRUDE, *Phi*
Gretna, Va.

FORBES, WILMA JEAN, *Astro*
Morrisville, N. C.





First row:

GORE, KATHRYN FANNETTE, *Phi*
Raeford, N. C.

GRIFFIN, LOU ANN, *Astro*
Shawboro, N. C.

HALL, NANCY MAE, *Phi*
Woodsdale, N. C.

HALSTEAD, OVETA JUNE, *Astro*
Durham, N. C.

Second row:

HAMRICK, GALENA ANN, *Astro*
Boiling Springs, N. C.

HAMRICK, JOYCE ANN, *Phi*
Winston-Salem, N. C.

HINSON, VERNON LEE, *Astro*
Fair Bluff, N. C.

HORNE, ANNE GRETHE, *Phi*
Denmark

Meredith College

Class of 1955

First row:

HUNEYCUTT, ESTELLE JANETTE
Oaksboro, N. C. *Phi*

HUNT, DOROTHY ELIZABETH
Kinston, N. C. *Astro*

INGRAM, MARGARET McNEIL
Lilesville, N. C. *Phi*

JONES, MARYANN CLEO, *Astro*
Garner, N. C.

Second row:

KIME, VIRGINIA HOPE, *Astro*
Raleigh, N. C.

KING, REBA RAYE, *Astro*
Fayetteville, N. C.

LANCASTER, JANE ELIZABETH, *Phi*
Raleigh, N. C.

LEACH, DOROTHY FAYE, *Astro*
Raleigh, N. C.





First row:

LEARY, LILLIAN WEBB, *Astro*
Edenton, N. C.

MCARTHUR, MARGARET MARSH
Astro
Fayetteville, N. C.

MCCALL, MARTHA LOUISE, *Phi*
Lenoir, N. C.

MCLEAN, MARGARET OPHELIA
Phi
Maxton, N. C.

Second row:

MCLEAN, BEATRICE SHIRLEY, *Phi*
Maxton, N. C.

MAHLER, CYNTHIA ANNE, *Astro*
Tarboro, N. C.

MANGUM, SARAH GENE, *Astro*
Stem, N. C.

MARTIN, MARY EARLINE, *Phi*
Eagle Springs, N. C.

Meredith College

Class of 1955

First row:

MAYTON, GLADYS DAPHINE, *Phi*
Durham, N. C.

MELVIN, LELA MAE, *Phi*
Kerr, N. C.

MELVIN, PATTY RAY, *Phi*
Harrells, N. C.

MOORE, DORA ELLEN, *Astro*
Belmont, N. C.

Second row:

MOORE, MARY DARE, *Astro*
Salisbury, N. C.

MUMFORD, VIRGINIA ANNE, *Phi*
Raleigh, N. C.

PATTERSON, FRANCES JEAN, *Astro*
Kenansville, N. C.

PEELER, BESS LENORA, *Astro*
Raleigh, N. C.





First row:

PETERSON, SANDRA JEAN, *Phi*
Clinton, N. C.

PICKARD, DOROTHY FRANCES, *Phi*
Liberty, N. C.

RANDALL, MARY GLENN, *Astro*
Raleigh, N. C.

RIDDICK, LULA CAROLYN, *Astro*
New Bern, N. C.

Second row:

ROYSTER, MARY LOUISE, *Astro*
Shelby, N. C.

RUCKER, EMMA SUE, *Astro*
Shelby, N. C.

RUPPELT, NINA FRANCES, *Phi*
Charlotte, N. C.

SCARBOROUGH, LEAH OLIVE, *Phi*
Mt. Gilead, N. C.

Meredith College

Class of 1955

First row:

SHEETS, CLARA JEAN, *Astro*
Lexington, N. C.

SIMMONS, MARY ALICE, *Phi*
Roseboro, N. C.

SMITH, GLADYS ANDREWS, *Phi*
Raleigh, N. C.

SMITH, MARGARET LOUISE, *Phi*
Charlotte, N. C.

Second row:

SMITHWICK, VELMA DWAINNE, *Phi*
Ponzer, N. C.

SNEEDEN, EFFIE IRENE, *Phi*
Wilmington, N. C.

SPENCE, SARA JANE, *Phi*
Greensboro, N. C.

STANLEY, VIVIAN DELORES, *Phi*
Clarendon, N. C.





First row:

STAPLES, LORNA LEE, *Phi*
Belcross, N. C.

STEPHENS, JOYCE LYNN, *Phi*
Whiteville, N. C.

STOWE, MARJORIE, *Phi*
Wake Forest, N. C.

SWISHER, DOROTHY ANN, *Phi*
Southern Pines, N. C.

TRIPLETT, GWYN OLIVIA
Lenoir, N. C.

Second row:

TYSON, ANNA RUTHE, *Phi*
Farmville, N. C.

UPCHURCH, REBEKAH WILLIAMS
Astro
Raleigh, N. C.

WIGGS, HORTENSE, *Astro*
Smithfield, N. C.

WILLIAMS, LOIS ANN, *Phi*
Clarendon, N. C.

WOOD, CAROLYN MARIE, *Phi*
Troy, N. C.

Meredith College

THE HONORED JUNIORS



Last November, these two honored juniors, Rebecca Calloway and Ruth Jean Allen, were tapped into one of the most outstanding organizations here on the campus, The Silver Shield. Each fall The Silver Shield taps those members of the junior class who have been selected to become associate members of the organization.

HISTORY OF THE SOPHOMORE CLASS

As we sat working on the daisy chain, we thought back over the fun we had had our sophomore year. It was quite an experience to come back early to help the incoming freshmen struggle through the Orientation Week program which we had already conquered. We got right to work rushing the new students, each of us working loyally for her own society. A lot of work and a lot of play kept us busy all year—even though many of us did take time out to get ourselves pinned or engaged. We will never forget May Day—the hard work decorating the court and the fun serenading Joanne. Then graduation rolled around and we were together for the last time our sophomore year weaving the daisies we had picked into a tremendous chain to carry for our graduating big sisters. Now with only two more years to go, our own graduation doesn't seem like such a complete miracle. We have reached the half-way mark, and our college days are slipping happily from realities to memories.





SOPHOMORE CLASS OFFICERS

MARY JON GERALD	<i>President</i>
MARGARET LAYNE	<i>Vice-President</i>
MARY LOUISE CORNWALL	<i>Secretary</i>
ELLEN SCOFIELD	<i>Treasurer</i>



Andrews, Harriett Ladd, Raleigh, N. C.; Andrews, Sandra Joan, Bonlee, N. C.; Atkins, Catherine Mercer, Albemarle, N. C.; Austin, Anne, Clayton, N. C.



Aycock, Phyllis Dale, Concord, N. C.; Bagley, Carol Anne, Raleigh, N. C.; Barwick, Ann, Clinton, N. C.; Bissette, Sarah Gertrude, Spring Hope, N. C.



Blackmon, Betty Jean, Lumberton, N. C.; Blanton, Frances Delores, Shelby, N. C.; Blowe, Joan Claire, Weldon, N. C.; Booth, Janis, Shawboro, N. C.



Bowen, Patricia Ann, Henderson, N. C.; Brantley, Barbara, Spring Hope, N. C.; Britt, Ruby Niva, Lumberton, N. C.; Bryant, Amorette Jane, Woodland, N. C.



Bullock, Lorrenne Yvonne, Delco, N. C.; Bunn, Bettie Lou, Pikeville, N. C.; Calhoun, Mary Lillian, Kernersville, N. C.; Carpenter, Nancy Elizabeth, Charlotte, N. C.



Caspari, Sherry Jayne, Lake Ronkonkama, Long Island, N. Y.; Chandler, Eleanor Kathryn, Ramseur, N. C.; Colston, Mary Frances, Nashville, N. C.; Cooper, Edna Earle, Cary, N. C.

Meredith College

Cornwell, Mary Louise, Morganton, N. C.; DaParma, Delores, Raleigh, N. C.; Darden, Peggy Wayne, Plymouth, N. C.; Daughtry, Doris Grey, Raleigh, N. C.



Davis, Harriette Suzanne, Seven Springs, N. C.; Deloatch, Betty Jean, Roanoke Rapids, N. C.; Dial, Ruth Elaine, Pembroke, N. C.; Dickens, Barbara Ann, Louisburg, N. C.



Doster, Myra Cochran, Raleigh, N. C.; Drake, Nancy Ellen, Washington, D. C.; English, Margaret Anne, Cary, N. C.; Everett, Carole Linda, Charlotte, N. C.



Flanagan, Winnie Jean, Sigourney, Iowa; Freeze, June Marlene, Concord, N. C.; Frye, Helen Ernestine, Saltville, Va; Gantt, Phyllis Raye, Wadesboro, N. C.



Garrett, Caroline Knight, Durham, N. C.; Gerald, Mary John, Wendell, N. C.; Grant, Laurel Maxine, Marshville, N. C.; Haislip, Cynthia Lynette, Oak City, N. C.



Hampe, Neil, Mooresville, N. C.; Helmick, Pat, Taylors, N. C.; Hicks, Jean Roddey, Charlotte, N. C.; Holland, Mildred, Pacolet Mills, S. C.



Class of 1956



House, Patricia Louise, Roanoke Rapids, N. C.; Jackson, Frances Priscilla, Clinton, N. C.; James, Derlie Deane, Roanoke Rapids, N. C.; Jernigan, Margaret Jo, Tabor City, N. C.

Johnson, Barbara Jean, Jacksonville, N. C.; Johnson, Barbara Kay, Middlesex, N. C.; Johnson, Kay Ann, Kinston, N. C.; Jones, Elizabeth Lindler, Asheville, N. C.

Jones, Joyce Ann, Warsaw, N. C.; Keen, Constance Loree, Mt. Olive, N. C.; Kimbrell, Millicent Nell, Charlotte, N. C.; Kiser, Mary Elizabeth, Fork, N. C.

Knight, Miram McIntosh, Cheraw, S. C.; Lambert, Helen Jane, Albemarle, N. C.; Layne, Bessie Margaret, Ca-Vel, N. C.; Lee, Pansy Mac, Norwood, N. C.

Lee, Virginia Carolyn, Polkton, N. C.; Liles, Patricia Grey, Raleigh, N. C.; McArthur, Marilyn, Winterville, N. C.; McCosley, Kay Monica, Morehead City, N. C.

McDonald, Lucy Margaret, Erwin, N. C.; McRoy, Maxine, Tarboro, N. C.; McWhorter, Van Lee, Bethel, N. C.; Matthews, Kathleen Mickie, Raleigh, N. C.

Meredith College

May, Phyllis, Spring Hope, N. C.;
Merritt, Iris, Chapel Hill, N. C.;
Middleton, Chloe Anne, Winston-
Salem, N. C.; Miller, Janet Bent-
hall, Rich Square, N. C.



Moncrief, Frances Mae, Washing-
ton, D. C.; Moore, Trudi, Rocking-
ham, N. C.; Morris, Virginia Anne,
Henderson, N. C.; Moss, Mary
Lou, Hoffman, N. C.



Myers, Rovilla, Thomasville, N. C.;
Nye, Lenora, Fairmont, N. C.; Out-
land, Gwendolyn Sawyer, Raleigh,
N. C.; Outlaw, Sarah West, Ken-
ansville, N. C.



Page, Rachel, Clarkton, N. C.;
Parker, Frances, Pollocksville, N. C.;
Parr, Anne Channing, Washington,
Penn.; Patterson, Patti York, Lib-
erty, N. C.



Peele, Lois Florette, Roxobel, N. C.;
Pierce, Rose Ellen, Madison, N. C.;
Pinner, Mary Jo, Tabor City,
N. C.; Poole, Shirley Clyde, Raleigh,
N. C.



Puckett, Jean Elizabeth, Raleigh,
N. C.; Rand, Betty, Garner, N. C.;
Reece, Nancy Carroll, Mt. Airy,
N. C.; Richardson, Polly Ann,
Kenly, N. C.



Class of 1956



Ricks, Judith Daniel, Roanoke Rapids, N. C.; Riley, Patricia Ann, Lynchburg, Va.; Roberts, Sara Sue, Shelby, N. C.; Rogers, Betty Lee, Charlotte, N. C.



Russell, Jacqueline Elaine, Washington, N. C.; Scofield, Mary Ellen, Richmond, Va.; Seay, Mary Susan, Leaksville, N. C.; Shepard, Lois, Warwick, Va.



Sink, Jane Kirksey, Lexington, N. C.; Small, Alpha Alethia, Edenton, N. C.; Smith, Annice Marie, Jacksonville, N. C.; Smith, Betty Esther, Hendersonville, N. C.



Smith, Charlene, Ayden, N. C.; Smith, Dorothy Elizabeth, Raleigh, N. C.; Southworth, Barbara Ann, Culpeper, Va.; Spoon, Shirley Marie, Charlotte, N. C.



Stockstill, Barbara Jean, Raleigh, N. C.; Stockton, Martha Ann, Franklin, N. C.; Strawn, Thera Ann, Wilmington, N. C.; Stuckland, Marv Jo, Wilson, N. C.



Taylor, La Rue, Snow Hill, N. C.; Taylor, Mary Brooks, Whitakers, N. C.; Taylor, Shirley Bell, Denbeigh, Va.; Taylor, Verna Mae, Faison, N. C.

Meredith College

Thompson, Mary Ann, Roanoke Rapids, N. C.; Thore, Marjorie, Pilot Mountain, N. C.; Trexler, Marion Nell, Morristown, Tenn.; Tuck, Regina Ann, Reidsville, N. C.



Tucker, Margaret Ann, Cleveland, Ohio; Turlington, Sharon Lind, Lillington, N. C.; Turnage, Rachel Ann, Charlotte, N. C.; Vance, Elizabeth Baird, Macon, Ga.



Vann, June Hope, Washington, N. C.; Weeks, Leah Jean, Whitakers, N. C.; Wehunt, Elizabeth, Cherryville, N. C.; Whisenhunt, Adair, Clayton, N. C.



White, Shirley Ann, Washington, D. C.; Whittington, Martha, Florence, S. C.; Williams, Virginia Blanche, New Bern, N. C.; Wilson, Cathryn Sue, Rural Hall, N. C.



Woodall, Constance Lee, Greer, S. C.; Workman, Mary Jo, Salisbury, N. C.



Class of 1956

HISTORY OF THE FRESHMAN CLASS

Eagerly, we as freshmen, entered upon a year that was to begin a wholly new life for us. Our self-confidence, however, was badly shaken by the great number of students, the entrance tests, the rules (one slip and S. G. came crashing down on our heads!), and the huge amount of studying that loomed before us. Two consoling factors brought us through the crisis—that others before us had managed to accomplish the said feat, and that all two hundred of us were in the same boat. Many new friends were made in our ranks, and together we experienced the highlights of a Meredith College year: Decision Day, the Big Sister—Little Sister party, the Corn Husking Bee, our first weekend at home, State fraternity rush parties (Weren't those pins gorgeous?), the Christmas caroling and hall parties, exams, Stunt Night, and May Day celebration. At the end of the year, we found that we had regained our self-confidence and could look back over this first year with a modest amount of pride and satisfaction.





FRESHMAN CLASS OFFICERS

BARBARA JEAN DEANS *President*

SUSAN WALKER *Vice-President*

NANCY YOUNG *Secretary*

MARY EDNA GRIMES *Treasurer*



First row, left to right:

Abernathy, Julia Isadora, Shelby, N. C.; Adcock, Julia Ann, Oxford, N. C.; Adkins, Jane Kearns, Draper, N. C.; Anthony, Frances Ann, Gastonia, N. C.; Atkinson, Lucy Meade, McKenney, Va.; Austin, Mary Ann, Sanford, N. C.; Ayscue, Hazel Gray, Henderson, N. C.

Second row:

Baker, Judith Gay, Kinston, N. C.; Ballard, Joyce Raye, Wadesboro, N. C.; Barbrey, Lyde White, Clinton, N. C.; Barefoot, Loretta Jean, Asheville, N. C.; Batchelor, Lester Jean, Sharpsburg, N. C.; Beam, Shirley, Cherryville, N. C.; Boone, Betty Jane, Jackson, N. C.

Third row:

Braswell, Mary Ann, Rocky Mount, N. C.; Bright, Mary Kathryn, Whiteville, N. C.; Brown, Catherine, Goldsboro, N. C.; Brown, Edna Fay, Raleigh, N. C.; Brown, Mary Jo, Concord, N. C.; Browne, Eileen, Tarboro, N. C.; Bullock, Betsy Clarice, Fairmont, N. C.

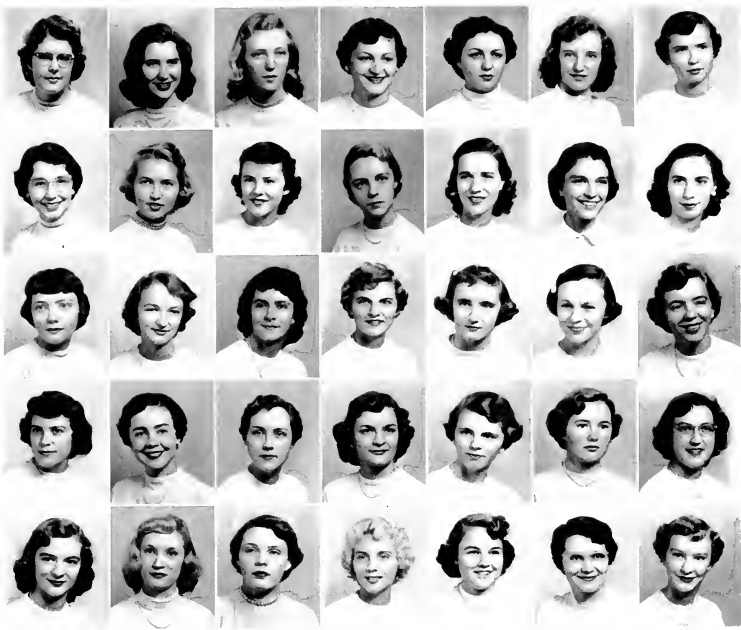
Fourth row:

Bunting, Nancy Bunn, Nashville, N. C.; Burrus, Wanda Dale, Manns Harbor, N. C.; Butts, Judith Ann, Delray Beach, Florida; Capps, Virginia Ann, Rocky Mount, N. C.; Churchill, Barbara Lee, Varina, N. C.; Clark, Eleanor, Varina, N. C.; Clark, Frances Jane, Fuquay Springs, N. C.

Fifth row:

Clay, Parripleigh Bobbitt, Rocky Mount, N. C.; Clayton, Mildred Lee, Bunnlevel, N. C.; Cline, Josephine Rand, Raleigh, N. C.; Coble, Nancy Ann, Kannapolis, N. C.; Cochrane, Nancy Lee, Candler, N. C.; Codas, Bessie, Henderson, N. C.; Cole, Anne, Pinetops, N. C.

Meredith College



First row, left to right:

Cole, Mary Katherine, Wilmington, N. C.; Cooke, Carol Phillips, Raleigh, N. C.; Cooper, Alice Caroline, Raleigh, N. C.; Cooper, Mary Helen, Louisburg, N. C.; Corbett, Patricia Jean, Kenly, N. C.; Corbett, Virginia Janette, Middlesex, N. C.; Corn, Jacklyn Annette, High Point, N. C.

Second row:

Corzine, Nancy Carolyn, Charlotte, N. C.; Cozart, Barbara June, Greenville, N. C.; Crawford, Sarah Jeanette, Raleigh, N. C.; Culberson, Eliza Lee, Raleigh, N. C.; Davis, Bettie Jean, Norlina, N. C.; Deans, Barbara Jean, Wilson, N. C.; Dobson, Berta Lois, Snow Hill, N. C.

Third row:

Draughon, Patricia Ann, Clinton, N. C.; Eason, Nancy Lee, Monroe, N. C.; Ennis, Peggy Anne, Morrisville, N. C.; Everton, Patricia Ann, Columbia, N. C.; Ferguson, Sue Rose, Long Island, N. Y.; Flowers, Kitty Cline, Kinston, N. C.; Floyd, Mrs. Constance, Lumberton, N. C.

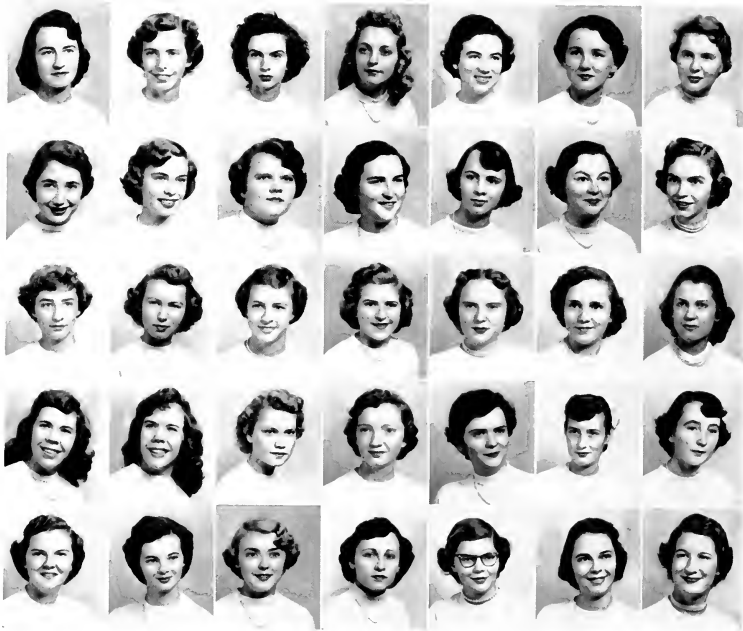
Fourth row:

Floyd, Virginia Evelyn, Raleigh, N. C.; Fulcher, Janet, Rocky Mount, N. C.; Fuleher, Joyce Elizabeth, Asheboro, N. C.; Gilson, Joanne Thelma, Fayetteville, N. C.; Gooch, Erlene, Durham, N. C.; Gossett, Annette Joy, Gastonia, N. C.; Grealish, Sammy Jeanne, Shelby, N. C.

Fifth row:

Greene, Marylin Letitia, Albemarle, N. C.; Griffith, Angela Estelle, Raleigh, N. C.; Grigg, Patsy Lynn, Gastonia, N. C.; Grimes, Mary Edna, Smithfield, N. C.; Guthrie, Julia Annette, Morehead City, N. C.; Hanes, Patricia Ann, Gastonia, N. C.; Hare, Jean, Holly Springs, N. C.

Class of 1957



First row, left to right:

Harris, Shirley Ann, Enfield, N. C.; Harvey, Jane Marilyn, Raleigh, N. C.; Harwell, Nancy Carolynne, Kinston, N. C.; Hatcher, Dorcas, Gaffney, S. C.; Herndon, Joyce, Apex, N. C.; Hiatt, Anita Paige, Winston-Salem, N. C.; Holt, Katherine, Greensboro, N. C.

Second row:

Honeycutt, Ann Southerland, Mount Olive, N. C.; Horrell, Marcia, Atkinson, N. C.; House, Harriette Ann, Greenville, S. C.; Jackson, Marjorie, Dunn, N. C.; Jackson, Patricia Ray, Raleigh, N. C.; Johnson, Edith Brewer, Raleigh, N. C.; Johnson, Elladene, Erwin, N. C.

Third row:

Johnson, Emily Fay, Angier, N. C.; Jones, Jo Ann, Kinston, N. C.; Jones, Margaret Sue, Rocky Mount, N. C.; Jordan, Shirley Jean, Mount Olive, N. C.; Joyner, Videau, Farmville, N. C.; Kerley, Mary Frances, Kittrell, N. C.; Kiff, Betty Jo, Ahoskie, N. C.

Fourth row:

Kimrey, Janie Lou, Norwood, N. C.; Kimrey, Nancy Leigh, Norwood, N. C.; Kinkead, Dorothy Myrl, Rocky Mount, N. C.; Knight, Lynda Ruth, Columbia, N. C.; Knight, Mildred Rebecca, Raleigh, N. C.; Laine, Carolyn Ann, Morehead, N. C.; Lassiter, Ann Elizabeth, Plymouth, N. C.

Fifth row:

Lawrence, Sara Gorham, Tarboro, N. C.; Lawson, Shirley Anne, Salisbury, N. C.; Lay, Martha Anne, Huntersville, N. C.; Lee, Annette, Arapahoe, N. C.; Lee, Sara Cornelia, Greenville, N. C.; Little, Jacqueline Louise, Ayden, N. C.; Lloyd, Betsy Carol, Raleigh, N. C.

Meredith College



First row, left to right:

Lowmer, Shirley Lee, Fayetteville, N. C.; Lowery, Corinne Little, Wingate, N. C.; McDonald, Katherine, Raeford, N. C.; McLamb, Sarah Elizabeth, Newton Grove, N. C.; Maddrey, Edna Wendolyn, Raleigh, N. C.; Marshall, Kathryn, Asheville, N. C.; Martin, Sara Ann, Swannanoa, N. C.

Second row:

Mattocks, Barbara Ellen, Maysville, N. C.; Mayo, Ann Lee, Plymouth, N. C.; Miles, Rebekah Anne, Burlington, N. C.; Miller, Frances, Rich Square, N. C.; Mitchiner, Joyce Ann, Henderson, N. C.; Morris, Delores Diane, Creswell, N. C.; Munch, Emily, Cary, N. C.

Third row:

Nelms, Jocelyn, Nashville, N. C.; Newberry, Mary Alice, Raleigh, N. C.; Newman, Emily Florence, Wilmington, N. C.; Newsom, Mary Virginia, Salisbury, N. C.; Newton, Shirley Faye, Burlington, N. C.; Owens, Wilma Grace, Fountain, N. C.; Page, Nancy Lee, Lakeview, S. C.

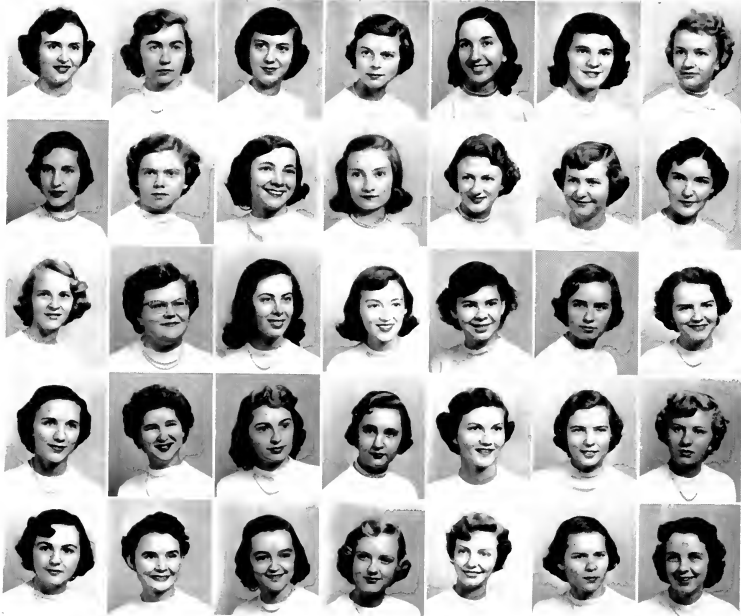
Fourth row:

Palmer, Eleanor Anne, Raleigh, N. C.; Paschal, Dorothy Eugenia, Siler City, N. C.; Pearce, Lois Faye, Manteo, N. C.; Peele, Lillian Marie, Williamston, N. C.; Penny, Alma Ann, Raleigh, N. C.; Peoples, Peggy Joyce, Statesville, N. C.; Pickelsimer, Alyce Moore, Leaksville, N. C.

Fifth row:

Pierce, Alma Lou, Wendell, N. C.; Pond, Lois Lee, Lynchburg, Va.; Pope, Lula Ann, Wadesboro, N. C.; Proctor, Rae Vernell, Rocky Mount, N. C.; Ransone, Annie, Enfield, N. C.; Raynor, Libby, Dunn, N. C.; Reep, Marlene Norrita, Raleigh, N. C.

Class of 1957



First row, left to right:

Roberson, Sarah Elizabeth, Williamston, N. C.; Roberts, Martha Ann, Lumberton, N. C.; Rowand, Beverly Mace, Morristown, Tenn.; Saunders, Carolyn Jeannette, Willow Springs, N. C.; Sawyer, Rebecca Jo, Kelford, N. C.; Sawyer, Willa Faye, Belcross, N. C.; Schanck, Sylvia Ann, Long Branch, N. J.

Second row:

Selley, Jo Ann, Cherryville, N. C.; Shelton, Elizabeth Anne, Swan Quarter, N. C.; Shutt, Mamie Alice, Roanoke Rapids, N. C.; Simons, Donnie Honeycutt, Hartsville, S. C.; Smith, Betty Ann, Zebulon, N. C.; Smith, Betty Frances, Fuquay Springs, N. C.; Smith, Rebecca Ann, New Hill, N. C.

Third row:

Spell, Faye Brown, Roseboro, N. C.; Stallings, Barbara Ruth, Durham, N. C.; Stanley, Barbara Leigh, Four Oaks, N. C.; Stewart, Margaret Ann, High Point, N. C.; Strayhorn, Carolyn Louise, Hillsboro, N. C.; Sullivan, Iris Faye, Roanoke Rapids, N. C.; Swann, Patty Sue, Madison, N. C.

Fourth row:

Thompson, Percy Ann, Pikeville, N. C.; Timberlake, Jo Ann, Greenville, N. C.; Tunstall, Anne Stephenson, Raleigh, N. C.; Tuttle, Peggy Jane, Charlotte, N. C.; Wells, Betsy Carter, Elm City, N. C.; Wheeler, Mattie Faye, Raleigh, N. C.; Widenhouse, Kate Gibson, Midland, N. C.

Fifth row:

Wilder, Jo Ann, Wendell, N. C.; Williams, Jo Ellen, Monroe, N. C.; Williams, Peggy Jo, Black Mountain, N. C.; Wooten, Verna Hodges, Kinston, N. C.; Worth, Ada Lou, Warwick, Va.; Yarrow, Bobbie Ann, Gastonia, N. C.; Young, Nancy Morgan, Henderson, N. C.

Meredith College

IS THAT YOU?







★ ★ ORGANIZATIONS ★ ★ ★



STUDENT GOVERNMENT COUNCIL

The Student Government Association of Meredith College is an organization of which every student is a member. With its goal as democratic self-government, the Association attempts integration of all campus life, working always toward understanding and cooperation.

When it is time for freshmen to arrive in the fall, council members are already on campus—full of enthusiastic welcome and helpful guidance. Through handbook classes, informal gatherings, teas, and open houses the new student is given her first introduction to community living on the college campus. During Orientation this year the council members served for the first time as guides for the week's activities.

The council brings the ideas and the problems of the students to the meeting each Monday night. The student body is always invited to participate and to voice suggestions, not only at this session, but also during office hours and House Council meetings which precede the regular meeting time. Through joint meetings with the Faculty Committee on Student Government a clear understanding of student problems and a close working harmony between faculty and students have been maintained.

To work with the Social Standards Chairman, a Social Standards Committee was organized last spring. It is made up of the Class Presidents, the Society Presidents, and Class Representatives. Through this committee a more extensive social education program has been established. Emphasis has been placed on the best social conduct both on and off the campus.

To develop thinking, participating citizens who are loyal to the democratic way of harmonious living, and to encourage the application of the principles of the Honor Code in each individual in order to make the Christian spirit of love and friendship uppermost at Meredith—these are aims of our student government.



BAPTIST STUDENT UNION

Each month of the 1953-54 college year emphasized some application of the theme of the year, "Our Calling as Christians," a focus for the efforts and plans of the Baptist Student Union. From September through May, Christian calling was interpreted as a demand on each member "to make a good beginning," "to understand our faith," "to live in community," "to live as world citizens," "to live in the fellowship of the church," "to worship," "to be worthy of friendship," "to dedicate our work life," and "to give as we have received." Vespers, chapel programs, a library display table, intercollegiate discussions, and open worship at council meetings had these imperatives for starting points.

Participation in the Convention in the autumn and in the Planning Conference in the spring gave insight into state-wide goals. Identification with the local church gave an understanding of Baptist principles and resources. Inclusion of all who make up the Meredith community gave each student some sense of the universal Christian fellowship. A new intercollegiate, interracial project began in November. Response to the new LISTEN venture in the ministry of giving gave promise of a growing sense of stewardship. Study, worship, parties, and action all helped to show the relevance of Christianity to the choices of the believer whose vocation is that of learner.



THE NOMINATING COMMITTEE

Burning great quantities of midnight oil, the Nominating Committee works carefully and conscientiously to nominate candidates for all campus organizations, except the clubs, the four classes, and the three honor societies.

The Chief Counselor is the chairman of the Nominating Committee. Other members are the presidents of major organizations, the editors-in-chief of the publications, and the College Marshal. Two faculty members, representatives from the classes, and the Dean of Students participate in the work, but do not vote.

It is the constant endeavor of the Nominating Committee to aid in the conducting of fair and democratic campaigns. The qualifications of the candidates are at all times considered of utmost importance.



FRESHMAN AND TRANSFER COUNSELORS

The new and exciting life a college freshman steps into is quite wonderful, but this challenging experience sometimes proves to be quite bewildering. The counseling program is set up to help the new students meet and overcome any discouragement that might prevail that first year.

We hope to help to make possible for each new student a rich and meaningful four years, thus making the college experience a happy memory. We seek to accomplish these ends by being on hand to greet the girls and guiding them through Orientation Week. The program continues throughout the year with personal visits and individual concern, academic counseling, and monthly meetings centered around meaningful topics. Our discussions include Meredith traditions, manner of dress on and off campus, study habits, and parliamentary procedure.

It is our desire to help each new student recognize and make her own the academic ideals, Christian principles, and fun and friendliness that symbolize Meredith.

MARY ANN CHANDLER
Chief Counselor



DAY STUDENTS

JACQUELINE NORRIS.....	<i>President</i>
DOROTHY HUNT.....	<i>First Vice-President</i>
BETTY SMITH.....	<i>Second Vice-President</i>
JEAN PUCKETT.....	<i>Third Vice-President</i>

As the Day Students look back on this, another year at Meredith, we are happy to reflect upon days of pleasant memories together. At the outset we found our furniture freshly painted and new draperies welcoming us to another year with friends old and new. Seventy strong we moved upon a new venture for the fall semester—that is, a Day Student assembly program to be given for the faculty and resident students. Never shall we forget the handsome Indian braves from among our number, as well as the palefaces, whom Dr. Campbell, incidentally, preferred to all the redskins. The approaching Christmas holidays brought us forth in full strength as we joined the resident students for the annual Christmas caroling tour throughout the city of Raleigh. In the wee hours of the morning, as we gathered in the Hut, there was still a festive spirit glowing in the sleepy eyes of those who were trying to keep the home fires burning. (It was co-o-o-ld!!) As the spring semester brought the realization that another school year was coming to a close all too quickly, we returned once more to the beloved Hut to hold an open house for the faculty and resident students. Then we came to ask ourselves the question: "What has this year meant to us here at Meredith?" The answer came freely; we have tried to give more of ourselves to Meredith, and she has blessed us as only an Alma Mater can.



ATHLETIC ASSOCIATION

Each student at Meredith is a member of the Athletic Association. The A.A. Board is elected to organize and co-ordinate all the extracurricular athletic and recreational activities of the campus. In organizing sports we hope that many students are learning lessons in good health and sportsmanship and are acquiring a playing knowledge of various sports. Awards are given at the end of each season to the outstanding players, and trophies are presented on Society Night to the best-all-around athlete and to the girl who has contributed most to equitation.

Throughout the year the A.A. sponsors many activities which foster creativeness and sportsmanship. Among these are Stunt, Faculty-Student Playday, The Corn Husking Bee, Christmas caroling, the Folk Dance concert, Horse shows, and May Day. We are advised by the faculty of the Department of Health and Physical Education, Doris Peterson, Phyllis Cunningham, Helena Williams, and Mary Mackay. Under the auspices of the A.A., the Folk Dance Club, Monogram Club, and the Hoof Print Club function separately with their own sets of officers.

As a co-ordinating group the Athletic Association works to provide fun, foster sportsmanship, and make available to each girl recreational activities to fit her need.



ANN LOVELL
President



MARY EDNA GRIMES
Freshman Hockey Stick



LOREE KEEN
Most Valuable Basketball Player

A. A. AWARDS

SALLY DEAN
Horsemanship



JEAN PACE
Best-All-Round Athlete





MORGAN



MANAGER
CATHERINE
MCRACKEN

MCRACKEN, C.



MCRACKEN, R.



SALTER



LOVELL



CHAMPION



PACE



VANCE



STRICKLAND



ALLEN



MARTIN

HOCKEY

VOLLEYBALL



PACE



BURNS



MANAGER
KAY JOHNSON



GRIMES



LOVELL



KINCAID



MARTIN



BELL



MANAGER - BONNY MORGAN



KEEN



BAILEY



LOVELL



JOHNSON

BASKETBALL 1953

SOFTBALL 1953



PACE

MANAGER
JEAN PACE



ALDRIDGE



SALTER



LOVELL



HALL



CHAMPION



BURNS



MONOGRAM CLUB

ALSTINE SALTER, *President*

FOLK DANCE CLUB

DOROTHY WHITE, PATRICIA HOUSE, *Managers*





TENNIS
MARY BROOKS STONE



GOLF
LIB CRENSHAW



INDIVIDUAL SPORTS
REBECCA McRACKEN



BADMINTON
MARY OLIVE SPIVEY



ARCHERY
ANN CASHWELL



SWIMMING
NANCY REESE

MANAGERS

HOOF PRINT CLUB

SALLY DEAN, *President*





MEREDITH COLLEGE PLAYHOUSE

OFFICERS

BETH MORGAN	<i>President</i>	ANNE JANE BARBREY	<i>Secretary</i>
MARY COBB DICKENS	<i>Vice-President</i>	MARY JO GRIFFIN	<i>Treasurer</i>

The Playhouse, wishing to bring some of the best drama to Meredith during 1953-1954, sponsored the Barter Theatre in Eugene O'Neill's "Ah, Wilderness!" and in Shakespeare's "Two Gentlemen of Verona." The Carolina Playmakers also came over with the delightful comedy, "On Borrowed Time."

The fun and hard work which went into our own production of "As You Like It" will never be forgotten by its all-girl cast. With the end of this fall production, each new drama enthusiast who had participated either backstage or in the glory of the footlights was welcomed into full membership in the Playhouse. Immediately everyone began to look forward to the spring production which would give each girl additional points toward membership in Alpha Psi Omega, the national honorary dramatics fraternity, the final goal of all Playhouse members.



ASTROTEKTON SOCIETY

BETTY LANE *President* MILLICENT KIMBRELL *Secretary*
MIMI ROYSTER *Vice-President* KAY MCCOSLEY *Treasurer*
MARJORIE THORE *Sergeant-at-Arms*

Our motto, "He builds too low who builds beneath the stars," is the true inspiration of our society. It has been evident in every phase of our activities this year.

Rush Week was a tense and wonderful week for us all with Allen's Pond, the pep rally, and the Mardi Gras as the highlights. What fun we had! But that was only the beginning.

Not only have there been socials, such as the open house, the spaghetti supper, and wonderful meetings, but each girl has helped through such deeds as playing Santa Claus to the children at St. Agnes' Hospital and in the epileptic ward at State Hospital.

With this co-operation our society will live in the minds and hearts of all of us forever.



PHILARETIA SOCIETY

CAROLYN BELTON *President* NANCY REECE *Secretary*
 DOROTHY SWISHER *Vice-President* ANN CASHEWLL *Treasurer*
 MARY BRYAN REID *Sergeant-at-Arms*

This year in the Phi society we discovered the heritage we had received in our name, Philaretia. It is derived from two Greek words—"philos," loving, and "areta," any excellence of person or property, mostly virtue of thought, feeling, or action. This inheritance is a challenge to each Phi. We strove in our pre-Rush Week and Rush Week activities to maintain an excellence of thought, feeling, and action.

To introduce the new students to the Phi's our fashion show featured lovely clothes modeled by representatives from each class; and the Bonfire entertained by means of the talents of various Phi's. During Rush Week there were the usual early morning serenades, beds made, and favors. The Phi Supper Club was a big hit, particularly our Phi song sung as a solo. It had both beauty and a great deal of meaning for those of us who love the Phi's. There were Phi Juice, Purple Locks, telegrams, Dr. Milton, candlelight serenades, and visiting, all done with a great deal of enthusiasm and spirit. Decision Day passed with a victory for the Astros, but some wonderful new girls for the Phi's.

The year passed with meetings, parties, more fashion shows, and varied other activities with the standard of excellence ever striven for.

May the love of all that is good and fine inspire Phi's present and future as it has inspired those of us who leave our society and Meredith.

THE ACORN



The *Acorn* is the Meredith College literary magazine published quarterly. The editors seek to provoke and utilize the best of the stories, essays, verse, and drawings produced by the students.

EDITORIAL STAFF

CELIA WELLS *Editor*

CHARLEEN SWANZEY *Art Editor*

ANNE MOORE *Assistant Editor*

BOBBYE RICE, SUSIE RUCKER, JEAN
FORBES, MARGARET TUCKER, CAROL
BAGLEY *Class Editors*

BUSINESS STAFF

NANCY JOHNSON *Business Manager*

LIB CRENSHAW, BARBARA JEAN
DICKENS *Typists*

KATHERINE WAYNICK
Circulation Manager

DR. MARY LYNCH JOHNSON
Faculty Adviser



THE OAK LEAVES



The OAK LEAVES is your yearbook, and we, the staff, want to thank you for your interest and assistance in helping us produce this 1954 edition.

It is our hope that you will think of this yearbook as representative of your days here at Meredith, for in it we have tried to portray the many personalities, organizations, and activities with which you were connected and which you will always want to remember.

EDITORIAL STAFF

PEGGY JO DALRYMPLE *Editor*

ALYCE EPLEY *Assistant Editor*

DOROTHY WHITE *Art Editor*

ANNE MOORE, PATRICIA EBERHART
Senior Editors

BETTY BALL, JEAN FORBES, JOYCE
CAUSEY *Junior Editors*

CONNIE WOODALL, BARBARA
BRANTLEY *Sophomore Editors*

PEGGY JO WILLIAMS, LULA ANN POPE
Freshman Editors

BUSINESS STAFF

PATTY MELVIN *Business Manager*

JEAN MORTON, BECKY BARNHARDT,
JANE SPENCE, MARGARET LAYNE,
MARGARET INGRAM . . *Advertising Staff*



THE TWIG



The *Twig*, published every two weeks, is the campus newspaper. It offers a coverage of future and past happenings, interesting features, an opportunity for expressing individual student and faculty opinions, and training in journalism for its staff members.

Any capable student with an interest in journalism and a willingness to work may become a staff member. The *Twig* is a member of the Associated Collegiate Press, and its editor attended the national convention and short course in Chicago this year. Delegates from the staff also attended the State Collegiate Press Association

LORETTE OGLESBY *Editor*

VIVIAN BYRD *Associate Editor*

NANCY BROWN, BARBE WHITE
Managing Editors

KIRKSEY SINK *Feature Editor*

SALLY DRAKE *Art Editor*

LEAH SCARBOROUGH *Music Editor*

NANCY HALL *Sports Editor*

JANICE WITHERINGTON, BOBBYE RICE
Photo Editors

MARGARET ANN ENGLISH, SHIRLEY
 WEST *Columnists*

NANCY REESE, NANCY DRAKE, MARY
 FRANCES COLSTON, MARY JO PINNER,
 LYNETTE HAISLIP, TRUDY FITZ-
 GERALD, ANN PARR, NANCY CAR-
 PENTER, DOROTHY ELIZABETH SMITH,
 JEANNE GREALISH, JOYCE HERNDON
Reporters

BETTY HUNTER, chief; THERESA RAY-
 NOR, MARY LIB DELBRIDGE, JANE
 CONDREY, ANNETTE CAUDLE *Typists*

DR. NORMA ROSE *Faculty Sponsor*

BUSINESS STAFF

BARBARA PROPST *Business Manager*

PEGGY BENNETT *Advertising Manager*

KAY McCOSLEY *Circulation Manager*

JUNE VANN, FRANCES MONCRIEF, LUCY
 MACDONALD, MARY LOUISE CORN-
 WELL, ANNE JANE BARBREY, JO ANNE
 SELLEY, SARA MARTIN, JUDY BAKER,
 JOYCE BALLARD *Advertising Staff*







GRANDDAUGHTERS' CLUB

ANN IPOCK *President*

JOAN BLOWE *Treasurer*

RUTH JEANNE ALLEN . . *Vice-President*

MARGARET TUCKER *Reporter*

MARY JO PINNER *Secretary*

JODY STRICKLAND, FLORETTE PEELE
Co-Chairman of Needlework Guild

The members of the Granddaughters' Club are special people. Theirs is the privilege of coming to Meredith with traditions handed down by their mothers or grandmothers who attended Meredith. In co-operation with the Needlework Guild the club sponsors collection of clothes or contributions to buy clothes for needy children.

The members of the Mrs. Club are the lucky ones who have found their Mr. Right and are keeping up with him in the education field. It seems that the modern trend is toward a combination of marriage and college. Our members vary from students' wives and professors' wives to teachers renewing their certificates. We lead double lives; going to classes, keeping up with homework, keeping house, some caring for tiny tots, and in general, keeping up with the Mr. Right. It's fun and we love it.

MRS. CLUB





FREEMAN RELIGION CLUB

MARY RUTH WILLCOX	<i>President</i>	VELMA SMITHWICK	<i>Secretary</i>
JEAN BATTEN	<i>Vice-President</i>	EFFIE SNEEDEN	<i>Publicity Chairman</i>
BLANCHE HODGE	<i>Treasurer</i>	JO BOND BROCK	<i>Social Chairman</i>
ELLEN SCOFIELD	<i>Arrangements Chairman</i>		

The Freeman Religion Club's purpose is to study problems, techniques and current trends in the field of religion. Special guests and students contribute to these undertakings. Members of the club are those who major in religion or have related work in the field.

BARBARA JONES REDDEN <i>President</i>	ANN DRAUGHAN <i>Secretary</i>
DORIS McMILLAN <i>Vice-President</i>	LAVERNE BELL <i>Treasurer</i>
PAT O'QUINN <i>Social Chairman</i>	

The Tyner Education Club, one of the largest clubs on our campus, seeks to bridge the gap between life as a student and experience as a teacher. The purpose of the club is to acquaint the student of education with aims, objectives, accomplishments, and materials of modern education so as to create in the future teacher a desire to raise the standards of modern education. Our prospective teachers enjoy this opportunity to participate in club activities, which are directed toward building more informed and well-rounded teachers.

Mr. Tyner, who was head of the Education Department for many years, retired last fall. The members of the Education Club felt they would like to name the club in honor of Mr. Tyner; this year, therefore, we are happy to be known as the Tyner Education Club.

We have had many interesting programs this year. Some of the topics were "Teachers for North Carolina," "Negro Education in North Carolina," and "Emotional Differences in Children." As always, one of the highlights of the year was the Christmas party for the children at the Methodist Orphanage. The Children's Literature class presented our program based on "The Night Before Christmas."

TYNER EDUCATION CLUB





INTERNATIONAL RELATIONS CLUB

MARGARET MCARTHUR *President* JANE CONDREY *Secretary*
 PAT LOFTIN *Vice-President* PEGGY BENNETT *Treasurer*

The International Relations Club attempts to develop the interest of its members in world affairs by increasing their knowledge and helping them to understand more fully other peoples and cultures, and events of international importance. These objectives are attained by means of student panels, guest speakers, films, and exchange programs with similar clubs of other schools.

This year we enjoyed entertaining foreign students from other schools at a party in their honor.

The North Carolina International Relations Clubs organization kept us in touch with other active clubs throughout the state. The annual meeting in the spring was a highlight of the year's program. This year's president and secretary of the state organization were members of our club here at Meredith.

The final meeting of the year was the annual picnic with the Student League of Women Voters.

Under the able guidance of our sponsor, Dr. Lillian Parker Wallace, we have had another successful year in international relations.

JEAN JOURNIGAN JOYNER . . . *President* ANNE JANE BARBREY . . *Vice-President*

BETTY GRIFFIN *Secretary-Treasurer*

The Meredith Student League of Women Voters is a student organization to encourage an intelligent interest in local and national affairs and to help each member become a better citizen. Membership in the Student League is open to all members of Meredith College interested in becoming better citizens. Representatives of this group are chosen to represent the college at the North Carolina State Student Legislature which usually meets in Raleigh.

STUDENT LEAGUE OF WOMEN VOTERS





MENC

MARY JANE WARRICK *President*

The Meredith Chapter of the Music Educators National Conference is composed of girls who are student teaching or planning a teaching career in the field of music education. The purpose of this chapter is to help train the students in the teaching field. The chapter meets once a week to further its purpose by discussing and considering the ideas and problems in the teaching of music.

This year the MENC has sponsored several panel discussions at which authorities in this field of teaching have been guest speakers. Another one of our important projects was observation in our field in other cities. The chapter carried on this year's activities under the enthusiastic guidance of Miss Forrestine Whitaker.

MARY BRYAN REID *President*

ADAIR WHISENHUNT

Secretary-Treasurer

JANE CONDREY *Vice-President*

KAY McCOSLEY *Social Chairman*

PHOEBE BARNHARDT *Publicity*

JETTIE REA BRADSHAW

Sergeant-at-Arms

The McDowell Music Club has as its goal for the year to broaden our knowledge not only in the field of music, but in the whole field of art. Membership is open to any Meredith student who is interested in music and in the promotion of music, not only on our campus, but outside as well. We hope through our meetings to gain a firm background for a musical future. The club is a member of the North Carolina Federation of Music Clubs and associated with the Music Teachers' National Association.

McDOWELL MUSIC CLUB





CANADAY MATHEMATICS CLUB

JEANNETIE SCOTT *President* JOYCE CAUSEY *Secretary-Treasurer*
ELEANOR CHANDLER . . . *Vice-President* DOROTHY KNOT *Social Chairman*
ANN QUAY *Reporter*

The purpose of the Canaday Mathematics Club is to promote interest in mathematics and to provide information on current applications. Informative discussions on positions available for mathematics majors and on mathematics in other lands stimulate personal initiative. Some time is also spent in working out mathematical puzzles and problems to add to the enjoyment of the club. Meetings are not limited to such as studying the use of the telescope, visiting the Morehead Planetarium, and visiting the statistical laboratory. So to be sure of angles of fun and friendship ties to infinity, come to Arts 14.

SARA LANGDON *President*

LOIS SHEPHERD . . . *Secretary-Treasurer*

MARGARET ANN ENGLISH
Vice-President

FRANCES MONCRIEF *Reporter*

If you have envied the people who speak the beautiful and powerful German, you may join the favored ones by taking a course in German. This will be your passport to enter the German Club which was organized in 1950.

The club has German Folk dances, sings German songs, plays games, and hears talks by well-informed people. There is a wonderful Christmas party given each year; at that time members of the club celebrate Christmas as the Germans do.

GERMAN CLUB





FRENCH CLUB

PAT HOUSE	<i>President</i>	LEAH WEEKS	<i>Secretary-Treasurer</i>
JOYCE STEPHENS	<i>Vice-President</i>	ANNETTE LEE	<i>Publicity Director</i>

The French Club is an organization open to all students who take French and who wish to obtain a better understanding of the French people and an appreciation of French literature. The club members enjoy French movies, singing French songs, and playing French games. Guest speakers create additional interest by telling of the customs, contributions, and literature of the French people.

EVA TOWNSEND *President* JEAN MORTON *Secretary*
MARJORIE STOWE *Vice-President* NANCY MCGINNIS *Treasurer*

· *La Tertulia* Spanish Club was organized in September 1950, with the purpose of promoting interest in the Spanish-speaking countries and peoples. Our club is composed of girls who have taken, or are taking, Spanish. Monthly programs, Halloween and Christmas parties, and the Spring Fiesta give us personal contact with, and understanding of, our Spanish neighbors.

LA TERTULIA SPANISH CLUB





SOCIOLOGY CLUB

BETTY LOUISE SMITH *President* FRANCES PICKARD *Secretary-Treasurer*
LILLIAN WOOTEN *Vice-President* FRANCES MONCRIEF *Reporter*

The aim of the Meredith Sociology Club is to give to its members the opportunity to learn more about people by studying them, by working with them, and by hearing experts explain human behavior. Membership is composed of students who have majors or related fields in sociology.

The club's project for this year was working with residents of the Wake County Home and trying to bring some new interest into their lives.

PAT EBERHART	<i>President</i>	MARGARET TUCKER	<i>Secretary-Treasurer</i>
MELISSA JONES	<i>Vice-President</i>	SANDRA PETERSON	<i>Reporter</i>
LOUISE EDGE <i>Broesing Room Chairman</i>			

The Colton English Club chose as its theme for the year "Contemporary Writers." The club year opened with a survey of the modern writers and proceeded to special subjects such as "the stream of consciousness" and "symbolism." At one meeting students read their works, and at another faculty members contributed their writings. During the first semester the club had as its project sending to Korea New Testaments translated into Korean.

The Colton English Club also sponsored four "Book Teas," the last of which was a Scottish Tea.

COLTON ENGLISH CLUB





PSI CHI CLUB

BESS PEELER *President* JOYCE CAUSEY *Secretary*
KITTY WAYNICK *Vice-President* GWEN TRIPLETT *Treasurer*

The Psi Chi Club was organized on the campus in the spring of 1950 with the purpose of promoting interest in the field of psychology, helping students in the development of well-rounded personalities, and providing avenues of contact with public and private institutions. Programs during the year included outside speakers, movies, student projects, and visits to observe the application of psychology. The membership of the club consists of students who have had three hours of psychology.

THERESA RAYNOR *President* MARY JO GRIFFIN *Secretary*
BOOTS Y RENFRO *Vice-President* MELBA BARBOUR *Treasurer*
THEA BURGESS *Reporter*

If your knowledge of a camera is meager indeed, or if you have never peered at a live starfish, the Barber Science Club can offer you new experiences.

During the year we hear talks by outside speakers and by our own students, which acquaint us with late developments in science. We also take pictures and develop them in our own darkroom. We enjoy a party at Christmas and in the spring, a picture honoring the members of the club who are seniors. Field trips have included a visit to the Planaterium at Chapel Hill and tours of the hospital and of the medical school and research building at Duke University.

In the spring we look forward to the trip to the Duke University Marine Laboratory at Beaufort, North Carolina, where we collect and photograph such marine plants and animals as green and red seaweed, ghost crabs, and large jellyfish.

Members of the club are majors in science and those who elect advanced science courses. Through its varied activities the club endeavors to give its members a better knowledge and understanding of their environment.

BARBER SCIENCE CLUB





TOMORROW'S BUSINESS WOMEN

ANN IPOCK	<i>President</i>	MIMI ROYSTER	<i>Treasurer</i>
NANCY JOHNSON	<i>Vice-President</i>	ALYCE EPLEY	<i>Program Chairman</i>
JANE SPENCE	<i>Secretary</i>	MYRA BRISTOL	<i>Reporter</i>
<i>ANN ADAMS Assistant Program Chairman</i>			

Are you one of the girls whose dainty fingers can fly over typewriter keys or solve the mysteries of shorthand and bookkeeping? Do you dream of being a success in the business world? If your answer to these questions is yes, then this club is for you.

Tomorrow's Business Women was organized in the fall of 1943. Its members are juniors and seniors majoring or taking electives in business. Its aim is to stimulate interest in business education and business administration.

JOANNE BROWN *President* MARY JANE WARRICK *Secretary*
MARY BRYAN REID . . . *Vice-President* KATTIE LEE CURRIN *Treasurer*
BETTY MILLER, KATIE LEE CURRIN *Accompanists*

Singing in a spirit of friendship and enjoyment, the Meredith College Chorus has enjoyed another successful year. The group of seventy voices embodies representatives from every major field on the campus.

The chorus made special appearances during the year on Founder's Day; at Campbell College; in the traditional Christmas concert when we presented Britten's *Ceremony of Carols*; and in the annual Spring concert. Small ensembles from the chorus sang on many occasions, among which was the State Baptist Convention in Greensboro. These occasions and others, such as our visit to the Governor's mansion for Christmas pictures, are a few of the "remember when's" that we hold so dear.

MEREDITH COLLEGE CHORUS



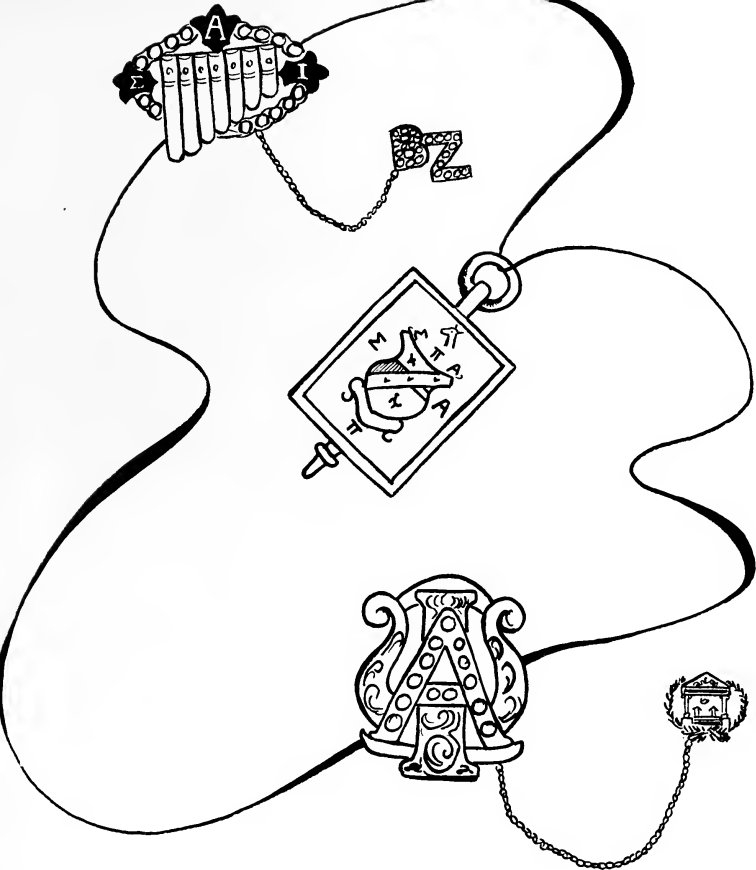


HOME ECONOMICS CLUB

EVELYN TAYLOR *President* JOAN ALLEN *Secretary*
SHIRLEY WEST *Vice-President* LELA MELVIN *Treasurer*

Aware of their future responsibilities to the home and community as homemakers of career women, the club has chosen "Foot Steps to the Future" as its theme for the year. Throughout the year monthly meetings, including panel discussions on gracious living, talks from civic-minded homemakers on vocations and the importance of religion in the home, and projects by the club for needy families have interpreted and illustrated this theme and sought better to equip the members for future roles.

The Meredith College Home Economics Club was organized in 1922 and is affiliated with the North Carolina Home Economics Association and the American Home Economics Association. Members of the club consist of Home Economics students and those interested through related fields and activities.



★ ★ ★ HONORARIES ★ ★ ★ ★ ★



ALPH PSI OMEGA

SHIRLEY WEST *President*

For those who love the theater and its activities, Alpha Psi Omega is the fraternity that recognizes their hopes and desires and puts them into a closer relationship with the stage. Membership in the Zeta Nu Chapter of the fraternity here on our campus is based on fifty points awarded for work on campus productions, either on stage or backstage.



SIGMA ALPHA IOTA

MARJORIE BARNES	<i>President</i>	LEAH SCARBOROUGH	<i>Treasurer</i>
JEAN BATTEN	<i>Vice-President</i>	HORTENSE WIGGS	<i>Chaplain</i>
JETTIE REA BRADSHAW	<i>Secretary</i>	KATIE LEE CURRIN	<i>Program Chairman</i>
MARY DARE MOORE	<i>Sergeant-at-Arms</i>		

“Vita brevis, ars longa:” life is short, but art is long. Sigma Alpha Iota is a national professional music fraternity for women. Members of our chapter, Beta Zeta, are music majors, chosen upon faculty recommendation for high character, scholarship, and musical ability. Presenting capable musicians to the public, participating in public performances, and operating the music store are a few of our many activities. The fraternity offers its members social and professional contacts which aid them in enjoying a broader field of music.



SIGMA PI ALPHA

JOYCE STEPHENS.....	<i>President</i>	BETTY HUNTER.....	<i>Secretary</i>
EVA TOWNSEND.....	<i>Vice-President</i>	JEAN MORTON.....	<i>Treasurer</i>
SALLY DRAKE.....	<i>Publicity</i>		

All peoples of the world are now neighbors, and for this reason it is more important for us to learn foreign languages than it has ever been before. The Phi Kappa Chapter of Sigma Pi Alpha, national honorary modern language fraternity seeks to stimulate an interest in and bring about a better understanding between foreign countries and ours.

Membership is determined by scholastic achievement and interest in foreign languages. With the desire to further this interest, Sigma Pi Alpha sponsors lectures, meetings, and parties as a means of better acquainting its members with life and customs in other lands.

CLUB ACTIVITIES







★ ★ ★ ★ FEATURES ★ ★ ★ ★ ★



JOANNE BROWN

May Queen

Maid of Honor

ELIZABETH CRENSHAW





Senior Attendants

JANE CAMPBELL

EVELYN TAYLOR

Junior Attendants

JO BOND BROCK

DOROTHY SWISHER





Sophomore Attendants

IRIS MERRITT

PATRICIA RILEY

Freshman Attendants

SALLY ROBERSON

JANET FULCHER





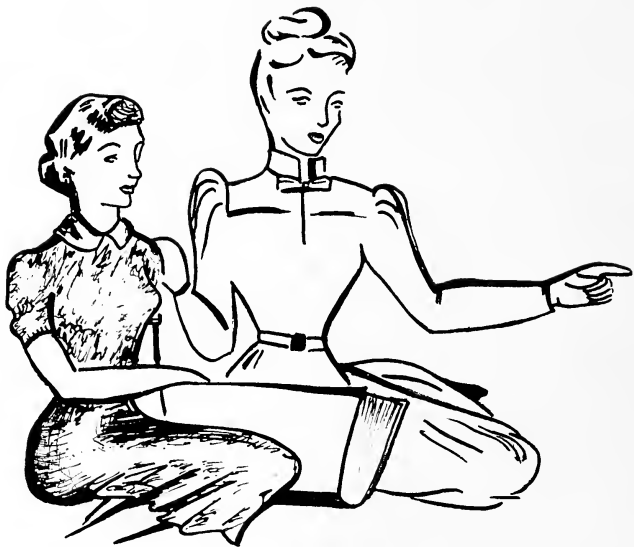
Astrotekton Marshals

Janet Fulcher, Pat Riley, Carolyn Riddick, Shirley Graham, Lib Crenshaw



Philaretia Marshals

Dorothy Paschal, Pat Helmick, Jane Spence, Bootsy Renfro, Joanne Brown



THE HOPE-FILLED FUTURE



Autographs



★ ★ OUR ADVERTISERS ★ ★ ★

BROGDEN PRODUCE CO., INC.



WHOLESALE
FRUIT AND PRODUCE

Since 1905



RALEIGH, NORTH CAROLINA

up
going
curtain

Grey-Taylor Co.

Wardrobe Varieties

- ★ Different Fashions
- ★ Young Flattery
- ★ Clothes to fit the Season and Occasion

CHAMBLEE INSURANCE AGENCY

711 Insurance Building
RALEIGH, N. C.



"Complete Insurance Service"



WE WRITE YOUR STUDENT'S
ACCIDENT INSURANCE

JOB P. WYATT & SONS CO.

Established 1881

**HARDWARE
FARM EQUIPMENT
SEEDS :- PLANTS :- BULBS**



325-331 S. Wilmington Street

RALEIGH, N. C.

Meredith College holds a warm place in our hearts as some of our very favorite customers . . . and so to you. Hudson-Belk wishes sincere congratulations and the best of luck for the future.



**HUDSON-BELK
COMPANY**



RALEIGH, NORTH CAROLINA

College Students

Consider a career in Life Insurance. We need trained actuaries, mathematicians, claim adjusters, underwriters salesmen, editors, personnel workers, bookkeepers, secretaries, stenographers, investment record keepers and young people familiar with mortgage loan work. Can you qualify?



**OCCIDENTAL
Life Insurance Company**

Home Office : Raleigh, North Carolina

**W. H. KING
DRUG COMPANY**

WHOLESALE DRUGGISTS

Raleigh, N. C.



For Safe and Dependable
Service Shop at Your
Neighborhood Drug
Store

De Soto

Plymouth



**RAWLS MOTOR
COMPANY**



Raleigh, N. C.



De Soto

Plymouth

Mitchell's

Hair Styling
Salon

B. R. MITCHELL

Phones: 4-2543 - 4-2544

Air Conditioned

529 Hillsboro Street
RALEIGH, N. C.

ADLER'S of RALEIGH

For Women Who Love Elegance in Footwear

FEATURING

Delmonettes—Styled by Delma
Penaljo Wedges, Deb Pumps and Flats
Red Cross Shoes

In Our Budget Department

Shoes by American Girl — Sport Shoes by
Sandlers of Boston — Cover Girl Flats — The
Clinic Shoe.

Two Stores

Downtown, Fayetteville St. Cameron Village

*Compliments
of*



BRIGGS HARDWARE

*Compliments
of*

N. C. THEATRES, INC.

Operating the
AMBASSADOR

CAPITOL
VARSITY
TOWER THEATRES

*Jean's
of Raleigh*

*Hofbrau
Restaurant*

Famous Continental Foods

Phone 5878
Cameron Village
RALEIGH, NORTH CAROLINA

Compliments
of



MOTHER & DAUGHTER
STORES, INC.



Compliments
of

RALEIGH
LAUNDRY



PINE STATE

MILK



ICE CREAM



RALEIGH, N. C.

Miriam's

Cameron Village

Raleigh, North Carolina

STEPHENSON MUSIC CO.

- ★ RADIOS
- ★ STEINWAY PIANOS
- ★ HAMMOND ORGANS
- ★ SHEET MUSIC
- ★ RECORDS

Visit Us at Our New Store in Cameron Village

*Compliments
of*

HONEYCUTT FRUIT & PRODUCE CO.

WHOLESALE ONLY
PHONES 5817 - 5818

Halifax Street
At S.A.L. Team Tracks
Raleigh, N. C.

GUY L. HONEYCUTT
President
W. DOWD HONEYCUTT
Sec. & Treas.

Boylan-Fearce

**EFIRD'S
Department Store**

A GOOD PLACE TO SHOP

- In Person
- By Phone
- By Mail

Compliments

of

A Friend

Food Service Equipment and Utensils

(CHOOSE HOOS)

JOHN HOOS COMPANY OF N. C., INC.

Raleigh, N. C.

Jack Caldwell, District Representative

Compliments of

FINCH'S DRIVE-IN, INC.

401 W. Peace Street

**PATRONIZE
OUR ADVERTISERS**



BUILDERS DREAMS

THE ANNUAL STAFF
and the
EDWARDS & BROUGHTON
COMPANY

Cooperated to produce this Annual.

Printed or Lithographed Annuals
produced in our plant in
Raleigh.

Finest Quality
Engraved Commencement Invitations
Engraved Visiting Cards
Engraved and Lithographed
DIPLOMAS

Write for Samples and Prices

EDWARDS & BROUGHTON
COMPANY

Established in 1871
RALEIGH, NORTH CAROLINA

THE SIX KEY WORDS TO SUCCESS ARE

"FIND A NEED AND FILL IT"

OUR SIX WORDS TO SUCCESS ARE

***"ALWAYS REMEMBER
TO STOP AT ROYS"***

•

ROY'S DRIVE IN RESTAURANTS

Hillsboro Road

Durham Highway

RALEIGH, N. C.

AUTOGRAPHS

