

# OAK LEAVES



---

1955

CARLYLE CAMPBELL LIBRARY

CLASS  
A  
376.8

BOOK  
M54V  
1955

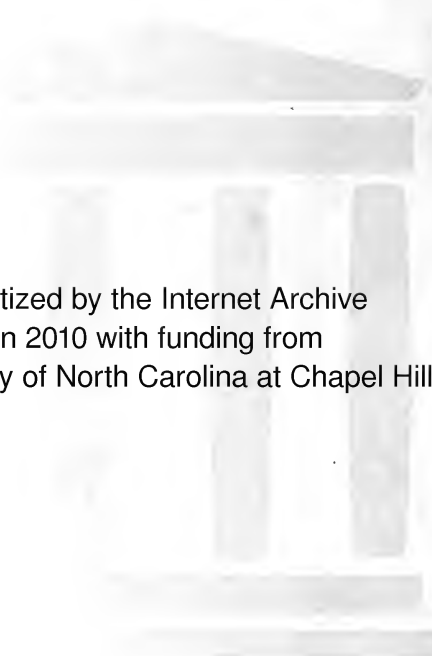
ACCESSION  
91668

MEREDITH COLLEGE  
RALEIGH, N. C.



CARLYLE  
CAMPBELL  
LIBRARY

Meredith College  
Raleigh, NC 27607-5298



Digitized by the Internet Archive  
in 2010 with funding from  
University of North Carolina at Chapel Hill

<http://www.archive.org/details/oakleaves1955bapt>



*The 1955*  
**OAK LEAVES**

*The Yearbook of Meredith College  
Raleigh, North Carolina*

**CARLYLE CAMPBELL LIBRARY  
MEREDITH COLLEGE**

BETTY JOAN BALL, *Editor*

CONNIE WOODALL, *Business Manager*





THE OVER-ALL



FAMILIAR SIGHT

91668

## DEDICATION

As a teacher, with love; a counselor, with understanding; and a friend, with compassion, she has served Meredith. It is with gratitude, admiration, and affection that we dedicate this 1955 volume of our OAK LEAVES to MISS LILA BELL.







MISS LILA BELL

# FOREWORD

Those who have known Meredith will never forget her! But to keep those memories ever as bright and clear as in the year they took form, we offer the 1955 OAK LEAVES, a volume of familiar sights.

## CONTENTS



*Faculty* 7



*Classes* 19



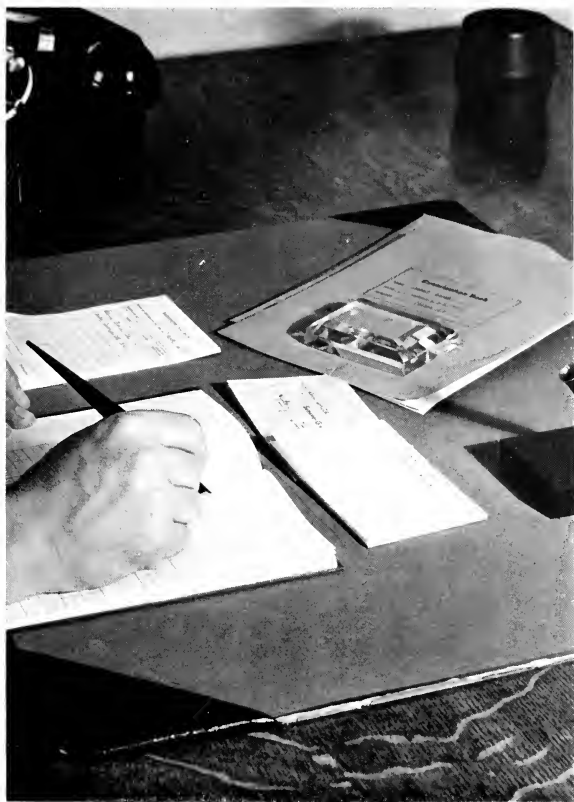
*Organizations and Clubs* 97



*Honoraries* 137



*Features* 141



F  
A  
C  
U  
L  
T  
Y

# BOARD OF TRUSTEES

Carlton S. Prickett, <i>President</i> . . . . .	Burlington
Ione K. Knight, <i>Vice-President</i> . . . . .	Madison
V. Howard Belcher, <i>Secretary-Treasurer</i> . . . . .	Raleigh

## TERMS EXPIRE 1955

Annie Sarah B. Abbott . . . . .	Elizabeth City
L. N. Bagnal . . . . .	Winston-Salem
R. T. Howerton . . . . .	Lincolnton
Wm. T. Joyner . . . . .	Raleigh
Ione K. Knight . . . . .	Madison
Carlton S. Prickett . . . . .	Burlington
J. D. Wilkins, Sr. . . . .	Greensboro

## TERMS EXPIRE 1956

Claudilene S. Bone . . . . .	Nashville
Lloyd Griffin . . . . .	Edenton
Alva L. James . . . . .	Elkin
Wm. C. Lassiter . . . . .	Raleigh
Gladys E. McNeill . . . . .	North Wilkesboro
H. Pat Taylor . . . . .	Wadesboro
D. J. Thurston, Jr. . . . .	Wilson

## TERMS EXPIRE 1957

Maude D. Bunn . . . . .	Raleigh
C. T. Council, Sr. . . . .	Durham
Randolph Gregory . . . . .	Wilmington
J. M. Kesler . . . . .	Winston-Salem
LeRoy Martin . . . . .	Raleigh
W. H. Weatherspoon . . . . .	Raleigh
Eph Whisenhunt . . . . .	Clayton

## TERMS EXPIRE 1958

C. M. Abernathy . . . . .	Lenoir
Raymond A. Bryan . . . . .	Goldsboro
Beulah L. Clark . . . . .	Asheville
Foy J. Farmer . . . . .	Raleigh
W. W. Finlator . . . . .	Elizabeth City
L. M. Massey . . . . .	Zebulon

## EXECUTIVE COMMITTEE

Lloyd Griffin, <i>Chairman</i>	LeRoy Martin
Wm. T. Joyner, <i>Vice-Chairman</i>	W. H. Weatherspoon
Maude D. Bunn, <i>Secretary</i>	L. M. Massey
Foy J. Farmer	Carlton S. Prickett
Wm. C. Lassiter	Eph Whisenhunt



To Meredith College Students:

We are immediately interested in this edition of the OAK LEAVES as an authentic record of scenes, activities, and organizations with which we are now happily identified. It is, we believe, a worthy summary of worthy achievement and worth-while experiences, a Book of Remembrance for years to come.

But we must regard the year not as achievement but as progress, and this record not as epitaph but as prophecy. My abiding wish is that "You shall see greater things than these."

Cordially yours,  
Carlyle Campbell  
President

# ADMINISTRATION

LEISHMAN A. PEACOCK, Ph.D.  
*Dean of the College*



LOUISE FLEMING, A.M.  
*Dean of Students*



V. H. BELCHER, B.S.  
*Business Manager*



# ADMINISTRATION



FIRST ROW: Miss Madge Aycock, *Assistant Dean of Students*; Mrs. Naomi Beamon, *Secretary to the Dean*; Mrs. Martha George, *Assistant to Librarian*; Miss Jane Greene, *Assistant Librarian*; Miss Mae Grimmer, *Alumnae Secretary*.

SECOND ROW: Miss Doris Hauser, *Nurse*; Mrs. Dru M. Hinsley, *Manager of the Student Store*; Miss Mary Bland Josey, *Assistant in Department of Public Relations*; Miss Martha Lamb, *Nurse*; Mrs. Ann C. McGuire, *Secretary to Registrar*.

THIRD ROW: Mrs. Vera T. Marsh, *Registrar*; Mrs. Agnes Mayes, *House Director*; Mrs. Faye Orders, *Bookkeeper*; Mrs. Lois Renfrow, *Secretary to President*; Dr. William Senter, *College Physician*.

FOURTH ROW: Mrs. Marilyn Upchurch, *Secretary, Alumnae Office*; Mrs. C. M. Whilden, *Assistant to House Director*; Miss Betty Jean Yeager, *Secretary to Dean of Students*.

# FACULTY



DOUGLAS REYNOLDS, B.F.A.; LOYCE WHITE, M.F.A.

## ART DEPARTMENT

We remember . . . the displays in the hall of creations by the art classes . . . mobiles hanging from the ceiling . . . the gallery exhibits of local and "foreign" talent . . . the cartoons on the bulletin board . . . the art lab, always occupied by aspiring Picassos . . . the strains of "mood" music penetrating every room in the building . . . the campus peppered with budding artists seeking to capture the beauty around them.

## BUSINESS DEPARTMENT

We remember . . . the rhythmic clatter of typewriters . . . Saturday mornings spent in office practice . . . the machines mysterious to the novice—calculator and dictaphone . . . practical experience in the Raleigh offices . . . pages filled with symbols which were a source of wonder to the "outsider."



LOIS FRAZIER, M.S.; RUTH B. ROBINSON, B.S.



W. V. BADGER, Ed.D.; HARRY K. DORSETT, A.M.; LILA BELL, M.Ed.

## EDUCATION DEPARTMENT

We remember . . . posters and murals in the classroom . . . marionettes and clay figures . . . the "child lit." nook . . . printing on the blackboards . . . student teaching and the inevitable observation . . . group games in the court . . . motivation . . . teachers' meetings.



# FACULTY



## ENGLISH DEPARTMENT

We remember . . . footnotes and note cards . . . the soft murmur in lunch lines to the rhythm of "When that Aprile . . ." . . . coffee served with informal talk at the book teas . . . anxious looks outside the conference door . . . diagrams . . . booklists . . . cartoons from *Punch* . . . the gallery of literary giants.

MARY LYNCH JOHNSON, Ph.D.; NORMA ROSE, Ph.D.; MAMIE HAFNER, M.A.; SALLY WILLS HOLLAND, M.A., EVELYN DAPARMA, A.B.

## HEALTH AND PHYSICAL EDUCATION DEPARTMENT

We remember . . . hockey practice on West Campus . . . colorful costumes and rhythmic movements at the dance concert . . . swimming meets and intercollegiate games . . . students limping out of modern dance class . . . breakfast rides and horse shows . . . freshmen poring over vitamin charts and pictures of the endocrine glands.

CLAIRE I. WEIGT, Ed.D.; PHYLLIS CUNNINGHAM, A.M.; HELENA WILLIAMS, B.S.; MARY MACKAY.



# FACULTY



## HISTORY AND SOCIAL SCIENCE DEPARTMENTS

We remember . . . the ever-fresh displays of pictures . . . collateral notebooks on the shelf . . . Raisin's inquisitive face . . . outline maps and colored pencils . . . *Wall Street Journal* . . . visits to the County Home . . . white rats and mazes . . . rumors . . . incipient philosophers lost in contemplation.

LILLIAN P. WALLACE, Ph.D.; ALICE B. KEITH, Ph.D.; SARAH M. LEMMON, Ph.D.; LESLIE W. SYRON, Ph.D.; LUKE M. SMITH, Ph.D.; ROBERT N. HOWELL, Ph.D.; ETHEL TILLEY, Ph.D.; DORIS HOWELL, M.S.

## HOME ECONOMICS DEPARTMENT

We remember . . . the smell of home-cooked food in the Science Building . . . fashion shows . . . ruffled curtains and potted plants . . . posters in the hall on styles, manners, calories . . . practice house . . . prospective brides puzzling over recipes.



ELLEN BREWER, A.M.; JENNIE M. HANYEN, A.M.

# FACULTY



QUENTIN O. McALLISTER, Ph.D.; SUZANNE D. FREUND, Ph.D.; LUCY ANN NEBLETT, A.M.; ELIZABETH R. HUCKABEE, A.M.; MARGARET C. MARTIN, A.M.

## LANGUAGE DEPARTMENT (above)

We remember . . . verb forms and dictionaries . . . the strains of "Noche de Paz" and "Stille Nacht" mingling in the hall . . . meetings with foreign students at which conversations and gestures flew . . . Roman parties and piñatas . . . colorful posters of many countries.

## MUSIC DEPARTMENT (below)

We remember . . . Thursday afternoon recitals . . . batons and pitch pipes . . . theory students composing and laboring over diminished sevenths . . . proud parents and friends at graduation recitals . . . tonettes and keyboard models . . . the mixture of sounds issuing from the practice rooms . . . the ticking of the metronome . . . the cow bell announcing the end of the hour.



First row, left to right: HARRY E. COOPER, Mus.D., F.A.G.O.; BEATRICE DONLEY, B.M.; EDWIN K. BLANCHARD, M.Mus. Lit.; PHYLLIS W. GARRISS, M.Mus. Second row: SUZANNE AXWORTHY, A.M.; STUART PRATT, Mus.M.; JOHN O'STEEN, M.Mus.; JEAN SWANSON, M.Mus.

# FACULTY



## NATURAL AND PHYSICAL SCIENCES DEPARTMENT

We remember . . . whole classes at the board and the sonorous command, "Erase!" . . . microscopes and frogs' legs . . . movies in Science 16 . . . Bunsen burners and wash bottles . . . looks of amazement when a red solution suddenly became colorless . . . weights suspended from each other by the power of electromagnetism . . . formulas, equations, and Latin terms.

MARY YARBROUGH, Ph.D.; HELEN JO COLLINS, M.S.; JOHN A. YARBROUGH, Ph.D.; EDWARD M. LOWRY, Ph.D.; ERNEST F. CANADAY, Ph.D.

## RELIGION DEPARTMENT

We remember . . . cryptic diagrams on the blackboard . . . assignment sheets . . . "puphid" remarks flying fast and furious . . . discussion groups . . . notations in red ink . . . international suppers . . . the Fertile Crescent . . . our Hebrew-Christian tradition and ultimate point of reference.



RALPH E. McLAIN, Ph.D.; ROGER H. CROOK, Th.D.; MAXINE GARNER, Ph.D.

# Familiar Sights of the Faculty



# Not-so-familiar Sights of the Faculty





C  
L  
A  
S  
S  
E  
S

---

---

# History of the Senior Class

We came . . . we saw . . . we conquered (?). We can hardly believe that it was just four years ago that we entered the portals of Meredith. Now as we walk down the aisle . . . we remember so many big occasions and . . . so many little ones. Remember the first day of meeting all the other “green freshmen.” . . . Once we stood in awe of the august seniors . . . now we are the seniors . . . honestly, we don’t feel a bit different. Can we ever forget the happy days here? We went through our trials and tribulations. Now we only seem to recall the gay times . . . Palio . . . the Corn Huskin’ Bee . . . Stunt Night . . . Society Decision Day . . . Chorus concerts . . . so many things. How about the “extra curricular activities”? The contest to see who could get the deepest tan every spring . . . the “gab sessions” . . . parading walk on a spring afternoon . . . Roy’s . . . bridge marathons . . . now we have gotten down the aisle . . . let’s hear the speaker . . . as interesting as he is . . . can we keep from thinking . . . some of us will never see each other again . . . but, again we may bump into some classmate on the street in some unknown town. Some of us will teach or work together during the next year—who can tell? The graduation speech is over . . . once we said we would throw our caps up in the air, but now . . . a mixture of sadness and gladness enters our hearts. . . . As we leave, we spot our parents, they give us a wink . . . we have succeeded . . . what the future holds . . . we know not. . . .







## SENIOR CLASS

JOYCE CAUSEY

*President*

DOT HUNT

*Secretary*

EFFIE SNEEDEN

*Vice-President*

ANNETTE CAUDLE

*Treasurer*

*Class Colors*

RAINBOW COLORS

# Class of 1955



ANNIE INEZ ADAMS  
Raleigh, N. C.

*Astro*  
Tomorrow's Business Women's Club 3, 4, Assistant Program Chairman 3; Tyner Education Club 3, 4; *Acorn* Staff, Business Manager 4.

*Business*



PATRICIA ANNE ALLEN  
Rockingham, N. C.

*Phi*  
Hoofprint Club 1; Spanish Club 1, 2; Counselor 2; Committee of 100 1; Education Club 3, 4; Freeman Religion Club 1; *Twig* Staff 4; Playhouse 1, 2, 3, 4, Secretary 4; Y.W.A. 1, 2; Tomorrow's Business Women's Club 3, 4; Folk Dance Group 3; Alpha Psi Omega 4.

*Business*



RUTH JEANNE ALLEN  
Creedmoor, N. C.

*Phi*  
A.A. Board, Secretary 2, Treasurer 3, President 4; Hockey Varsity 2, 3, 4; Basketball 3; Soccer 2; Monogram Club 3, 4; Y.W.A. 1, 2, 3, 4; *Twig* Staff 2; Committee of 100 3; Spanish Club 1, 2; Tyner Education Club 3, 4; Granddaughters' Club; Needlework Guild 2, Vice-President 3; Student League 2, 3, 4, Nominating Committee 4; Silver Shield 3, 4, President 4; Superlative; *Who's Who*, Dean's List.

*Education*



# Meredith College

BARBARA MARTIN ANDREWS  
Pittsboro, N. C.

*Astro*  
Colton English Club 3, 4, Reporter 4; Granddaughters' Club 1, 2, 3, 4; Sigma Pi Alpha 2, 3, 4; Stunt Committee 2, 3; Stunt Cast 3.

*English*

MARY HUNEYCUTT ASKEW  
Raleigh, N. C.

*Astro*  
W.C.U.N.C. 1: Althean Society; Meredith Mrs. Club 3, 4, Secretary 3, Treasurer 4; *T.eig* Staff 3; Counselor 3.

*Primary Education*



JOYCE BAILEY  
Benson, N. C.

*Phi*  
Playhouse 1, 2, 3, 4; A.A. Board 4; Monogram Club 1, 2, 3, 4, President 4; Basketball Varsity 1, 2, 3, 4; Hockey 2, 3, 4; Soccer 2; Softball 3; Tyner Education Club 3, 4; Spanish Club 1; Hoof Print Club 3; Colton English Club 4; Phi Marshal 4; Superlative; Stunt 3; Meredith Summer School.

*Education*

BETTY JOAN BALL  
Scotland Neck, N. C.

*Phi*  
French Club 1, 2; Student League of Women Voters 1, 2; Committee of 100 1; Playhouse 1, 2, 3, 4; Tyner Education Club 2, 3, 4; Y.W.A. 2, 3, 4; *Acorn* Staff 2; Helen Price Scholarship 1; Class Officer 3; OAK LEAVES Staff, Class Editor 2, 3, Editor-in-Chief 4; Kappa Nu Sigma 3, 4, President 4; *Who's Who* 4; Superlative; Nominating Committee 4; Alpha Psi Omega 4; Greater B.S.U. Council 4; Dean's List.

*Primary Education*



# Class of 1955



JENNIE RUTH BARBOUR  
Dunn, N. C.

*Astro*

Vice-President of Class 1; Campbell College 2, Campbell College Chorus 2; Cheerleader 2; Superlative 2; May Court 2; Tyner Education Club 3, 4; Y.W.A. 1, 3, 4; Hall Leader 1, 4; Greater B.S.U. Council 4; Superlative 4; Freeman Religion Club 1; Meredith College Chorus 3, 4; Intercollegiate Council Rep. 3, 4; Student League 4; Stunt Committee 3.

*Education*

ANNE JANE BARBREY  
Clinton, N. C.

*Astro*

Cheerleader 1; Stunt 1, 2, 3; Spanish Club 1, 2, 3, 4; Westminster Fellowship 1, 2, 3; Secretary 2; Treasurer of Class 3; Playhouse 1, 2, 3, 4; Secretary 3; President 4; Student League 2, 3, 4; Vice-President 3; International Relations Club 3, 4; Nominating Committee 4; *Twig* Staff 3; Alpha Psi Omega 4.

*History*



PHOEBE JEAN BARNHARDT  
Concord, N. C.

*Astro*

Salem College 1; Class President 1; Student Government Council 1; *Salemite* Reporter 1, 2; Social Standards Committee 1; May Court 1; Meredith Counselor 2; German Club 2; MacDowell Music Club 2, 3, 4; Social Chairman 4; S.A.J. 3, 4; Sergeant-at-Arms 4; Stunt Cast 3; Colledge Marshal 4; Silver Shield 4; May Queen 4; *Who's Who*; Dean's List.

*Organ*



REBECCA BARNHARDT  
New Bern, N. C.

*Astro*

Stunt Committee 1, 2, 3, 4; Granddaughters' Club; French Club 1, 2, 3; Vice-President Stringfield 3; A.A. Board Social Chairman 4; Astro Senior Marshal 4; Tyner Education Club 3, 4; President 4.

*Education*

MISS MEREDITH

Becky Calloway



# Class of 1955



BILLIE BLANTON BATEMAN  
Tarboro, N. C.

*Astro*  
Spanish Club 1, 2; Y.W.A. 2, 3; Summer School 3; Tyner Education Club 3, 4. *Primary Education*



MARY LOU BELL  
Rocky Mount, N. C.

*Astro*  
Y.W.A. 1, 2; Sextet 2, 3; Triple Trio 2, 3, 4; M.T.N.A. 3; Hoofprint Club 3; Chorus Librarian 3; MacDowell Music Club 1, 2, 3, 4. *Voice and Public School Music*



PEGGY ROSS BENNETT  
Raleigh, N. C.

*Phi*  
Y.W.A. 1, 2, 3, 4; Council 3, 4, Publicity Chairman 3, Vice-President 4; *Tyner* Business Staff 1, 2, 3, Advertising Manager 3; Stunt Committee 2, 3; Playhouse 2, 3, 4; International Relations Club 2, 3, Treasurer 3; Student League of Women Voters 2, 3, 4; Tyner Education Club 3, 4; A.A. Board 4, Publicity Chairman. *Education*



ELIZABETH ANN BEST  
Goldsboro, N. C.

*Astro*  
Stunt Committee 1; Stunt Cast 3; French Club 1; Y.W.A. 2, 3; Tyner Education Club 3, 4; Colton English Club 4. *Education*



MOST ATHLETIC

Joyce Bailey

# Class of 1955



EVELYN CAROLE BOONE  
Scotland Neck, N. C.

*Phi*  
*Twig* Staff 1; French Club 1, 2, 3; Colton English Club 3, 4, Secretary-Treasurer 4; Education Club 3, 4; Sigma Pi Alpha 3, 4. *English*

JETTIE REA BRADSHAW  
Gastonia, N. C.

*Phi*  
*Piano and Public School Music*  
French Club 1, 2; Stunt 1; Colton English Club 2; Chorus 2; MacDowell Music Club 1, 2, 3, 4, Sergeant-at-Arms 3; Sigma Alpha Iota 2, 3, 4, Pledge President 2, Secretary 3, 4; Sigma Pi Alpha 2, 3, 4; Tyner Education Club 4; M.F.N.A. 2, 3, 4; M.E.N.C. 4; Y.W.A. 1, 2, 3; Dean's List.



MYRA CLARISSA BRISTOL  
Edisto Beach, S. C.

*Astro*  
Stunt Cast 1, 2, 3; Spanish Club 1, 2; Tomorrow's Business Women 3, 4, Reporter 3; *Twig* Staff. *Business*



JO BOND BROCK  
Conway, S. C.

*Phi*  
*Primary Education*  
Y.W.A. 1, 2, 3, Circle Leader 1; Colton English Club 2; Freeman Religion Club 3, 4, Social Chairman 3; Committee of 100 2, 3; Chorus 2, 3, 4, Librarian 4; Triple Trio 3, 4; Phi Chaplain 3; Phi Chief Marshal 4; MacDowell Music Club 4; Tyner Education Club 4; May Court 3; Greater B.S.U. Council 4.





# Meredith College

MARGARET RUTH BRUNSON  
Florence, S. C.

*Astro* Spanish Club 1, 2; Tyner Education Club 3, 4; A.A. Board 3, 4; May Court 1; Folk Dance Club 3; Dean's List.

CRISTEL BURNS  
Siler City, N. C.

*Home Economics*

Elon College 1; Commercial Club 1; Class Secretary-Treasurer 1; Christian Association Council 1; Meredith 2, 3, 4; Home Economics Club 2, 3, 4; Wesley Foundation Council 4.



JOYCE ANNE BURNS  
Siler City, N. C.

*Astro* Softball Varsity 1, 2, 3; Volleyball Varsity 3; Soccer Varsity 2; A.A. Board 2, 3; Tennis Manager 2; Softball Manager 3; Student Government Council 4; Nominating Committee 4; Day Student President 4; Monogram Club 2, 3, 4; Latin Club 4; Barber Science Club 2, 3, 4; Superlative; Dean's List.

*Biology*



MARY LOIS CADLE  
Apex, N. C.

*Phi* German Club 1, 2, Vice-President 2, Counselor 2; Sigma Alpha Iota 2, 3, 4, Chaplain 4; MacDowell Music Club 3, 4, Vice-President 4; Greater B.S.U. Council 4.

*Piano*

# Class of 1955



REBECCA ANNE CALLOWAY  
Concord, N. C.

*Phi*

Vice-President Class 1; Palio 1; *Twig* Staff 1, 2; Playhouse 1, 2, 3, 4, Student Director 2; Committee of 100 1, 3; Colton English Club 2, 3; Secretary Phi Society 2; A.A. Board 2; Stunt 2; Nominating Committee 2, 3, 4; Social Standards Committee 3; Class President 3; Student Government Council President 4; Phi Scholarship 1; Silver Shield 3, 4; Superlative: *Who's Who*; Alpha Psi Omega 4.

*English*

EDNA FRANCES CARR  
Plymouth, N. C.

*Astro*

M.T.N.A. 2; MacDowell Music Club 1, 2; Stunt 1, 2, 3; Chorus 2, 3, 4; Tomorrow's Business Women 3, President 4; *Twig* Staff 4.

*Business*



JOYCE ANNE CAUSEY  
Tarboro, N. C.

*Astro*

Y.W.A. 1, 2; Canaday Math Club 2, 3, Secretary-Treasurer 3; Stunt 2, 3; OAK LEAVES Staff 3; Psi Chi Club 3, 4, Secretary 3; Social Standards Committee 4; Point System Committee 4; Sociology Club 3, 4; Student League of Women Voters 4; Class President 4; Nominating Committee 4; Dean's List.

*Sociology*



ANNETTE CAUDLE  
Peachland, N. C.

*Astro*

Spanish Club 1, 2; Y.W.A. 1, 2, 3; Wingate Junior College Summer School; *Twig* Staff 2, 3; Stunt 3; Tyner Education Club 4; *Acorn* Staff 4; OAK LEAVES Staff 4; Tomorrow's Business Women 3, 4, Program Chairman 4; Class Treasurer 4.

*Business*



# MOST ATTRACTIVE

Mary Elizabeth Delbridge



# Class of 1955



EMMA LOU CHAPPELL

Fuquay Springs, N. C.

*Astro*

Mars Hill 1, 2; Home Economics Club Vice-President; Science Club; W.A.A. Council; M-Blem Club; Clio Literary Society; Dorm Historian; Meredith Home Economics Club Social Chairman; Y.W.A.

*Home Economics*

HAZEL KATHLEEN CLEMMONS

Supply, N. C.

*Phi*

Y.W.A. 1, 2, 3; Spanish Club 1, 2; Folk Dance Club 3; Chorus 3; Tyner Education Club 4; OAK LEAVES Staff 4; *Twig* Staff 4, Advertising Manager 4; Tomorrow's Business Women's Club 3, 4, Vice-President 4.

*Business*



JANE LOVINGOOD COLLINS

Asheville, N. C.

*Astro*

W.C.U.N.C. 1, 2; Dikean Society; Dorm Social Committee 1; Junior Dance Group 1; Twirler's Club, Secretary 1, President 2; Recreation Association Cabinet 2; Promenader's Club 2; Meredith Education Club 3, Secretary 4; Mrs. Club, Secretary, President 4; Superlative; May Court; Dean's List.

*Primary Education*



BLANCHE BONNER CORRELL

Laurinburg, N. C.

*Astro*

St. Mary's College; Altar Guild 1, 2; Canterbury Club 1, 2, Granddaughter's Club 1, 2, Vice-President 2; Senior Christmas Pageant 2; Hall Counselor 2; Hall Council 2; Choir 1, 2; *Belles* Staff 1, 2; *Stage Coach* Staff 1, 2; Chapel Server 2; Orchesis 2; Meredith; Education Club 3, 4.

*Primary Education*





BEST-ALL-ROUND  
TOWN STUDENT

Joyce Burns

# Class of 1955



ERNESTINE COTTRELL  
Lenoir, N. C.

*Phi*

Counselor 2, 3; A.A. Board 2; Sigma Pi Alpha 1, 2; Spanish Club 1; Colton English Club 1; Granddaughters' Club 1, 2, 3, 4; Psi Chi Club 3; Y.W.A. 1, 2, 4; Stunt 2, 3; Summer School 2; Phi President 4; Nominating Committee 4; Superlative: *Who's Who*; Kappa Nu Sigma 3, 4; Dean's List.

*Art*



KATIE LEE CURRIN  
Roxboro, N. C.

*Phi*

B.S.U. Council, Music Chairman 3, First Vice-President 4; Y.W.A. 1, 2, 3, 4; Summer School 3, 4; Sigma Alpha Iota 2, 3, 4; Program Chairman 3, 4; MacDowell Music Club 2, 3, 4; M.T.N.A. 2, 3, 4; Chorus 2, 3, 4, Accompanist, Treasurer 3, President 4; Triple-Trio 3, 4; M.E.N.C. 4; French Club 1, 2, Secretary-Treasurer 2; Education Club 4.

*Piano-Public School Music*



ROSALIND GRIGGS DAVIS  
Red Springs, N. C.

*Phi*

Mars Hill 1, 2; Y.W.A. 1, 2; Sunday School Officer 2; Glee Club 1, 2; Accompanist Boy's Glee Club 2; Clio Literary Society; Meredith Freeman Religion Club 3, 4; Chorus 3, 4; Y.W.A. 3, 4; Presbyterian College Summer School, Wake Forest College Summer School.

*Religion*



MARY ELIZABETH DELBRIDGE  
Spring Hope, N. C.

*Astro*

Spanish Club 1, 2; Y.W.A. 1, 2, 3, 4; Tomorrow's Business Women 3, 4; May Court 1; *Twig* Staff 3, 4, Chief Typist 4; Folk Dance Club 1, 2, 3; Superlative.

*Business*

# Meredith College

NANCY ELLEN DOHERTY  
Chinquapin, N. C.

*Astro*  
Class President 1; Student Government Representative 2, Secretary 3; Dormitory President 4; MacDowell Music Club 4; Tyner Education Club 4.



PAT DOWELL  
Raleigh, N. C.

*Astro*  
Mercer 1, 2; Mercer Players; Girls Athletic Association; Y.W.A.; Meredith; Granddaughters' Club 3, 4; Counselor; Colton English Club President 4; *Twig* Staff 4, Assistant Editor 4; Dean's List.

*English*



SALLY LYNN DRAKE  
Washington, D. C.

*Phi*  
Spanish Club 2, 3, 4; Folk Dance Club 3, 4; Modern Dance Club 4; *Twig* Staff 3, 4, Art Editor 3, 4; OAK LEAVES Art Editor 4; Freeman Religion Club 4; Sigma Pi Alpha 3, 4, Publicity Chairman 3, 4; MacDowell Music Club 4; Y.W.A. 1, 2; Playhouse 3, 4.

*Art*



JOYCE STEPHENS ENDO  
Whiteville, N. C.

*Phi*  
French Club 1, 2, 3, President 2, Vice-President 3; *Twig* Staff 2; Sigma Pi Alpha 2, 3, 4, President 3; Y.W.A. 1, 2, 3; Colton English Club 2, 3, 4; Tyner Education Club 4; Mrs. Club 4.

*English*

# Class of 1955



BENNIE BRYAN FARQUHARSON  
Washington, N. C.

*Phi*

*History*

Salem College 1; Swimming Staff; Y.W.C.A. Council; Mars Hill 2; Bank, Basketball; Swimming; Meredith; Hoof Print Club 2, 3; Sociology Club 2; Playhouse 3, 4; Tyner Education Club 3; I.R.C. 2, 3, 4.

GERTRUDE FITZGERALD  
Gretna, Va.

*Phi*

*English*

Lynchburg College 1; S.C.A. 1; Meredith Y.W.A. 2, 3, 4; Colton English Club 4; *Twig* Staff 3; *Acorn*, Assistant Editor 4; Chorus 3; B.S.U. Council 3, 4, Arrangements Chairman 3; Devotional Vice-President 4.



JEAN FORBES  
Morrisville, N. C.

*Astro*

*English*

OAK LEAVES Staff 3; *Acorn* Staff 3, 4, Editor 4; Sigma Pi Alpha; Dean's List.



LOIS ANN WILLIAMS GERALD  
Whiteville, N. C.

*Phi*

*Home Economics*

Home Economics Club 1, 2, 3, 4; Y.W.A. 1, 2, 3; Tyner Education Club 3; Playhouse 2; Monogram Club 4; Spanish Club 1, 2.





CUTEST

Jane Collins



# Class of 1955



MARY JON GERALD  
Wendell, N. C.

*Phi*  
Stunt 1, 2; Y.W.A. 1, 2, 3; Spanish Club 1; Tomorrow's Business Women 2, 3; Student League 2, 3; State Student Legislature 2, 3; A.A. Board 3; Class President 2; Social Standards Committee 2; Nominating Committee 2; Counselor 3; *Twig* Staff 3; Dance Club 1, 2, 3; Summer School 1, 2, 3; Playhouse 1, 2; Education Club 3; Dean's List.

*Business*

KATHRYN FANNETTE GORE  
Racford, N. C.

*Phi*  
Peace College 1, 2; Sigma Phi Kappa Society 1, 2; Choir 1; Art Club 1; Annual Staff 1; May Day 1, 2; Athletic Council 1, 2; I.R.C. 1, 2; Papyrus Club Vice-President 1, President 2; S.C.A. 1, Secretary 2; Student Council 2; Stunt Night 1, 2; Class Testator 2; Class Marshal 2; Outstanding Senior 2; Meredith Education Club 3, 4; Granddaughters' Club 3, 4.

*Primary Education*



LOU ANN GRIFFIN  
Shawboro, N. C.

*Astro*  
French Club 1, 2; May Court 2; Maid of Honor 4; Tyner Education Club 3, 4; Sigma Pi Alpha 2, 3, 4; W.C.U.N.C. Summer School; Gardner Webb Summer School.

*Education*



NANCY HALL  
Roxboro, N. C.

*Phi*  
*Twig* Staff 1, 2, 3, Sports Editor 3; Sigma Pi Alpha 2, 3, 4; French Club 1, 2; Granddaughters' Club 1, 2, 3, 4; Psi Chi Club 3, Vice-President 4; Sociology Club 2, 3, 4; Monogram Club 3, 4; Y.W.A. 1, 2; A.A. Board 2, 3, 4, Publicity Chairman, Vice-President 4; Softball Varsity 1, 2; Committee of 100 1; Point System Committee 4.

*Sociology*





FRIENDLIEST

Effie Sneed

# Class of 1955



OVEDA JUNE HALSTEAD  
Raleigh, N. C.

*Astro*

Peace College 1, 2; Choir 2; Phi Theta Kappa 1, 2, Vice-President 2; Sigma Pi Alpha 1, 2, President 2; Secretary Day Student Council 2; Honor Roll 1, 2; Papyrus Club 2; Meredith Home Economics Club 3, 4; Folk Dance Club 3.

*Chemistry*

GALENA ANN HAMRICK  
Boiling Springs, N. C.

*Astro*

Y.W.A. 1, 2, 3, 4; Palio Queen 1; Meredith Playhouse 2, 3, 4; Spanish Club 2, 3; Tyner Education Club 2, 3, 4; Stunt 2; Meredith Summer School Student Government; Summer School; Gardner-Webb, Wake Forest.

*Education*



JOYCE ANN HAMRICK  
Winston-Salem, N. C.

*Phi*

Gardner-Webb Junior College 1, 2; English Club 3, 4, Social Chairman 4; Freeman Religion Club 3, 4; Play House 3, 4; Alpha Psi Omega 3, 4; Y.W.A. 3, 4; B.S.U. Council 4.

*English*



ESTELLE JANETTE HUNEYCUTT  
Oakboro, N. C.

*Phi*

Wingate Junior College 1, 2; Gate Editor 2; Class Vice-President 2; Y.W.A. 1, 2; B.S.U. Council 2; O. Henry Society 1, 2; Basketball 1, 2; Masque and Wig Club 1, 2; W.K. Club 2; Delta Psi Omega President 2; Meredith Colton English Club 3, 4; Y.W.A. 3, 4; I.R.C. 3, 4; Education Club 3, 4; B.S.U. Council 4, Playhouse 3, 4; *Teag* Staff 4.

*English*



# Meredith College

DOROTHY ELIZABETH HUNT

Kinston, N. C.

*Astro*

French Club 1, 2; Stunt 1, 2, 3; I.R.C. 1, 2, 3, 4; Day Students, Third Vice-President 2, Vice-President 3; Counselor 2; Tyner Education Club 3, 4; Summer School 3; Student League of Women Voters 3, 4; President 4; Student Legislature 3, 4; Class Secretary 4; Chorus 1; Hoofprint Club 3.

*Education*



MARGARET INGRAM

Lilesville, N. C.

*Phi*

Granddaughters' Club 1, 2, 3, 4, Program Chairman 3, President 4; Y.W.A. 1, 2, 3, 4; Tyner Education Club 3, 4; OAK LEAVES Business Staff 3, 4; Spanish Club 1, 2.

*Education*



SYLVIA JENKINS

Maysville, N. C.

*Astro*

Spanish Club 2; Y.W.A. 2; Colton English Club 3, 4; Education Club 4.

*English*



MARYANN CLEO JONES

Garner, N. C.

*Astro*

Mars Hill College 1; Home Economics Club 1, 2, 3, 4; Y.W.A. 1; Day Student 2, 3; Education Club 4; Home Economics Club Secretary 4.

*Home Economics*

# Class of 1955



VIRGINIA HOPE KIME  
Raleigh, N. C.

*Astro*

*Home Economics*

W.C.U.N.C. 1; Proctor; Dikean Society; Meredith Home Economics Club 2, 3, 4; President 4; Granddaughters' Club 2, 3, 4; Sigma Pi Alpha 2, 3, 4; Dean's List.

REBA RAMONA KING  
Fayetteville, N. C.

*Astro*

*Mathematics*

Peace College 1, 2; Class President 1, 2; Student Government Council 1, 2, Vice-President 2; S.C.A. 1, 2; Treasurer 2; Art Club 1, Secretary-Treasurer 1; I.R.C. 1, 2; Phi Theta Kappa, President 2; Sigma Pi Alpha, Vice-President 2; Miss Peace 2; Sigma Phi Kappa Literary Society 1, 2; Honor Roll 1, 2; Meredith Mathematics Club 3, 4; Tyner Education Club 4; Student Government Council 4; Vann President 4.



JANE ELIZABETH LANCASTER  
Raleigh, N. C.

*Phi*

*Education*

W.C.U.N.C. 1; Althian Society; Dorm Social Committee; Meredith Tyner Education Club 3, 4; Price Latin Club 4; President; Y.W.A. 4.



DOROTHY FAYE LEACH  
Burlington, N. C.

*Astro*

*Education*

Mars Hill 1, 2; Volunteers for Christ 1, 2; Meredith 3, 4; Education Club 3, 4.

# MOST INTELLECTUAL

Betty Joan Ball



# Class of 1955



LILLIAN LEARY

Edenton, N. C.

*Astro*

Granddaughters' Club 1, 2, 3, 4; French Club 1; Y.W.A. 2, 3; Summer School 2, 3, Hall Proctor 3; Folk Dance Club 2, 3, 4; Chorus 2; Tyner Education Club 3, 4.

*Education*

MARGARET McARTHUR

Fayetteville, N. C.

*Astro*

Granddaughters' Club 1; Folk Dance Club 2, 3; Education Club 3, 4; I.R.C. 1, 2, 3, 4, President 3, Vice-President 4; Student League of Women Voters 3, 4, Vice-President 4; French Club 1.

*History*



MARTHA LOUISE McCALL

Lenoir, N. C.

*Phi*

Mars Hill Junior College 1, 2; Dormitory President 2; Women's Student Secretary 2; College Marshal 2; International Relations Club 2, Vice-President 2; Superlative 2; Y.W.A. 1, 2, 3, 4; Archery Club 1; Swimming Club 2; M-Blem Club 2; Nonpareil Literary Society 1, 2; Meredith; Tyner Education Club 3, 4, Vice-President 4; Spanish Club 3; Sigma Pi Alpha 4; OAK LEAVES Staff 4; Dean's List.

*Education*



BEATRICE SHIRLEY McLEAN

Manton, N. C.

*Phi*

B.S.U. Executive Council, Arrangements Chairman 2, Third Vice-President 3, President 4; Y.W.A. 1, 2, 3, 4; Freeman Religion Club 1, 2, 3, 4, Secretary 2; Colton English Club 4; Stunt 1, *Twig* Staff 1; Phi Chaplain 2; Chorus 4; Committee of 100 1, 2; Chairman of Religious Focus Week 3; Silver Shield; Nominating Committee 4; *Who's Who*; Dean's List.

*Religion*







MOST ORIGINAL Ernestine Cottrell

# Class of 1955



MARGARET OPHELIA McLEAN

Maxton, N. C.

*Phi*

Committee of 100 2; Y.W.A. 1, 2, 3, 4, Council 3, 4, Hall Chairman 3, Secretary 4; *Twig* Staff 4; Greater B.S.U. Council 4; Tomorrow's Business Women 3, 4, Treasurer 4; *Acorn* Staff 4.

*Business*

CYNTHIA ANNE MAHLER

Tarboro, N. C.

*Astro*

Spanish Club 1, 2; Tyner Education Club 3, 4; Dean's List.

*Education*



SARAH GENE MANGUM

Stem, N. C.

*Astro*

Y.W.A. 1, 2, 3, 4; Tyner Education Club 3, 4; *Twig* Staff 2; Stunt Committee 2; *Patio* 1; Dean's List.

*Education*



MARY EARLINE MARTIN

Eagle Springs, N. C.

*Phi*

Home Economics Club 1, 2, 3, 4; Spanish Club 1, 2; Y.W.A. 1, 2, 3; Tyner Education Club 3, 4; Hockey Varsity 3; Volley Ball Varsity 3; A.A. Board 4; Monogram Club 4; *Phi* Sergeant-at-Arms 4; Y.D.C. First Vice-President 4.

*Home Economics*



# Meredith College

GLADYS DAPHNE MAYTON  
Durham, N. C.

*Phi*  
Y.W.A. 1, 2, 3, 4; Spanish Club 1, 2; Tyner Education Club 2, 3, 4, Treasurer 4; Stunt Committee 2; Palio 1; Summer School 2; Student Government Council, Vice-President of Faircloth 4; Dean's List.

*Education*



LELA MAE MELVIN  
Harrells, N. C.

*Phi*  
Home Economics Club 1, 2, 3, 4, Treasurer 3; Y.W.A. 1, 2, 3, 4, Council 3; B.S.U. Council 4; Education Club 3, 4; Social Chairman 4; Freeman Religion Club 3, 4, Social Chairman 4; Hoofprint Club 1, 2, 3, 4; Student League of Women Voters 2, 3; Granddaughters' Club 1, 2, 3, 4; French Club 1, 2; Palio 1; Committee of 100 3.

*Home Economics*



PATTY RAY MELVIN  
Harrells, N. C.

*Phi*  
Home Economics Club 1, 2, 3, 4, Reporter 2, State Student Workshop 3; Freeman Religion Club 3, 4; OAK LEAVES Business Manager 3; Hoofprint Club 2, 3; Tyner Education Club 3, 4; Arrangements Chairman, Religious Focus Week 2; Playhouse 2; Student Government Council, Vice-President of Faircloth 4; Kappa Nu Sigma, Secretary-Treasurer 4; Dean's List.

*Home Economics*



ELLEN MOORE  
Belmont, N. C.

*Asso*  
Student Government Council, Treasurer 3, Vice-President 4; B.S.U. Council, Publicity Editor 2; Sophomore Class Vice-President; Colton English Club 2, 3, 4; Tyner Education Club 3, 4; .icorn Staff 4; Dean's List.

*English*

# Class of 1955



MARY DARE MOORE  
Salisbury, N. C.

*Astro*

Stunt 1, 2, 3; Counselor 2; Class Treasurer 2; Astro Marshal 2; M.T.N.A. 2; Y.W.A. 1, 2; MacDowell Music Club 2, 3, 4; Chorus 2, 3, Librarian 3; S.A.I. 2, 3, 4, Sergeant-at-Arms 3, Editor 4; Student Government Council, Vice-President of Stringfield 3, Vice-President of Brewer 4; Dean's List.

*Piano*

VIRGINIA ANNE MUMFORD  
Raleigh, N. C.

*Phi*

Mars Hill College 1, 2; Clio Literary Society, Marshal 2; Scriblerus English Club; Home Economics Club 1, 2; President 2, Y.W.A. Treasurer 2; Dean's List, Meredith Home Economics Club 3, 4; Vice-President 4; Granddaughters' Club 3, 4, Vice-President 4; Chorus, 3; Tynar Education Club 4; State B.S.U. Choir 3, 4; Greater B.S.U. Council 4; Dean's List.

*Home Economics*



SARAH ANN PATE  
New Bern, N. C.

*Astro*

Sociology Club 2, 3, 4, Treasurer 3; Chorus 2, 4; Y.W.A. 1, 2, 3, 4; Twig Staff 2; Monogram Club 4.

*Sociology*



FRANCES PATTERSON  
Kenansville, N. C.

*Astro*

Spanish Club 1, 2; Home Economics Club 2, 3, 4; Social Chairman 4; I.R.C. 4.

*Home Economics*



MOST POPULAR

Susie Rucker



# Class of 1955



BESS LENORA PEELER  
Raleigh, N. C.

*Astro*

*Psychology*

Heidelberg College 1; Band; S.C.A. 1; *Kilikilik* Staff 1; Woman's Recreational Association 1; Basketball Varsity 1; Exeter University 2; Orchestra 2; Student Christian Movement 2; Meredith Psi Chi Club 3, 4, President 3; *Twig* Staff 3, 4, Editor 4; Y.W.A. 3, 4; I.R.C. 3, 4; Nominating Committee 4; *Who's Who*; Dean's List.

SANDRA JEAN PETERSON  
Clinton, N. C.

*Phi*

*English*

B.S.U. Council 2, 3, Secretary 2, Tabernacle Representative 3; Colton English Club 2, 3, 4, Reporter 3; Vice-President of Junior Class; Counselor 2, 3; Student Government Council 4, Chief Counselor 4; Folk Dance Club 2, 3; Nominating Committee 3, 4, Chairman 4; Silver Shield 4; *Who's Who* 4; Committee of 100 2; Education Club 4; Dean's List.



FRANCES PICKARD  
Liberty, N. C.

*Phi*

*Sociology*

Pfeiffer Junior College 1, 2; Alpha Pi Epsilon 1, 2, Treasurer 2; Home Economics Club, Vice-President 2; Chorus 1; Dean's List 1, 2; Sociology Club 3, 4, Secretary 3; Alpha Kappa Delta 3, 4; Freeman Religion Club 3; Y.W.A. 3, 4; Dean's List.

CAROLYN MARIE WOOD PLOWMAN  
Troy, N. C.

*Phi*

*Home Economics*

Home Economics Club 1, 2, 3, 4; Barber Science Club 3, 4; Spanish Club 1, 2; Granddaughters' Club 1, 2, Treasurer 2; Sigma Pi Alpha 2, 3, 4; Kappa Nu Sigma 3, 4; Summer School Wake Forest 3; Dean's List.





MOST VERSATILE

Ruth Jeanne Allen

# Class of 1955



MARY GLENN RANDALL

Raleigh, N. C.

*Astro*

W.C.U.N.C. 1, 2; Cornelian Society 1, 2; Home Economics Club 1, 2; Recreation Association 1, 2; Westminster Fellowship 1, 2; Cosmopolitan Club 1, Social Committee 2; Promenader's Club 2; Meredith 3, 4; Tyner Education Club 3, 4.

*Education*

CAROLYN RIDDICK

New Bern, N. C.

*Astro*

Y.W.A. 1, 2; French Club 1, 2; Stunt 1, 2, 3; Astrotekton Marshal 3, Chief Marshal 4; Counselor 3; Social Standards Committee 2, 4; Tyner Education Club 3, 4; Colton English Club 2; Folk Dance Club 2; *Twig* Staff 2; Dean's List.

*Education*



MARY LOUISE ROYSTER

Shelby, N. C.

*Astro*

Astro Council 1, Vice-President 3; Stunt 1, 2; Tomorrow's Business Women 2, 3, 4, Treasurer 3; Spanish Club 1, 2; *Twig* Staff 4; Counselor 3, 4; Chief Fire Warden 4; Summer School Student Government President 3; Student League of Women Voters 4.

*Business*



SUSIE RUCKER

Shelby, N. C.

*Astro*

Y.W.A. 1, 2, Hall Chairman 1; Stunt 1, 2, 3; Chorus 1, 2, 3, 4, Librarian 3; Astrotekton Treasurer 2, President 4; Counselor 2; Colton English Club 2; *Acorn* Staff, Class Editor 2, 3; Tyner Education Club 3, 4; Music Director 4; Student Government Council, Springfield Vice-President 3; Nominating Committee 4, Superlative 4.

*Education*





# Meredith College

NINA FRANCES RUPPELT  
Charlotte, N. C.

*Phi* Mars Hill 1, 2; Dormitory Secretary 2; President of Women's Student Council 2; Clio Literary Society, Vice-President, President 2; Superlative 2; Literature Committee, Religious Focus Week; Y.W.A. 1, 2; Meredith 3, 4; Spanish Club 3; Sociology Club 3, 4, President 4; Committee of 100 3; Student Government Council, Vice-President Brewer; Alpha Kappa Delta Sociological Fraternity 4; Dean's List.

*Sociology*



LEAH OLIVE SCARBOROUGH  
Mount Gilead, N. C.

*Phi* MacDowell Music Club 1, 2, 3, 4, Secretary-Treasurer 2; Chorus 2, 3; Tyner Education Club 4; Summer School 1, 2, 3, 4; M.E.N.C. 4; *Twig* Staff 2, 3, 4; Music Editor 3, 4; Independent Reading Award 1; Sigma Alpha Iota 2, 3, 4, Treasurer 3, 4; National Piano Playing Auditions 3; Kappa Nu Sigma 3, 4, Vice-President 4; Dean's List.

*Piano and Music Education*



JEAN SHEETS  
Lexington, N. C.

*Astro*

Mars Hill College 1, 2; M-Blem Club 1, 2; W.A.A. 1, 2, Recorder 2; Basketball Club 1, 2; Secretary Nonpareil Literary Society 2; Meredith; Tyner Education Club 3, 4; Y.W.A. Hall Chairman 3.

*Education*



MARY ALICE SIMMONS  
Roseboro, N. C.

*Phi*

Hoofprint Club 1, 2, 3, 4; Spanish Club 1, 2; Education Club 3, 4; Stunt 2, 3.

*Art*

# Class of 1955



GLADYS ANDREWS SMITH  
Fuquay Springs, N. C.

*Phi*

Y.W.A. 1, 2, 3; Colton English Club 2; French Club 1, 2; Freeman Religion Club 3; Chorus 1, 2; MacDowell Music Club 1, 2; Mrs. Club 4.

*Religion*

MARGARET LOUISE SMITH  
Charlotte, N. C.

*Phi*

French Club 1, 2, Publicity Chairman 2; Y.W.A. 1, 2; Colton English Club 3, 4; Tomorrow's Business Women 2, 3, 4; Playhouse 3, 4, Production 3; Committee of 100 2; *Twig* Business Manager 4.

*Business*



VELMA SMITHWICK  
Ponzer, N. C.



*Phi*

Freeman Religion Club 2, 3, 4, Secretary 3; Y.W.A. 3, 4; Hall Program Chairman 3; Colton English Club 4; Student Government Council 4, President of Stringfield 4; Tyner Education Club 4; Dean's List.

*Education*

EFFIE IRENE SNEEDEN  
Wilmington, N. C.

*Phi*

Religion Club 1, 2, 3, 4, Publicity Chairman 3, President 4; Spanish Club 1, 2; Committee of 100 1, 2, 3, Chairman 3; Student League 3; Y.W.A. 1, 2, 3, 4; Education Club 4; Stunt 3; Vice-President of Brewer 3, Student Government Council 3; OAK LEAVES Staff, Class Editor 4; Class Vice-President 4; Nominating Committee 4; Senior Superlative; Wake Forest Summer School 2; Dean's List.

*Religion*

WITTIEST

Jennie Barbour



# Class of 1955



VIVIAN DELORES STANLEY

Clarendon, N. C.

*Phi*

*Home Economics*

Home Economics Club 1, 2, 3, 4; Chairman Ways and Means Committee 4; Tyner Education Club 3, 4; Spanish Club 1, 2; Y.W.A. 1, 2, 3, 4, Hall Program Chairman 1.

LORNA LEE STAPLES

Belcross, N. C.

*Phi*

*Education*

Counselor 2, 3; Education Club 3, 4; Stunt 2.



MARJORIE STOWE

Rolesville, N. C.

*Phi*

*Education*

Spanish Club, Treasurer 2, Vice-President 3; Tyner Education Club 3, 4; Y.W.A. 1, 2, 3, 4; Religious Focus Week Committee; Student Government Council, President of Faircloth 4.

JUNE CAROLYN THOMAS

Raleigh, N. C.

*Phi*

*Business*

Tomorrow's Business Women 3, 4; Tyner Education Club 3, 4.





COLLEGE MARSHAL

Phoebe Barnhardt

# Class of 1955



ANNE TUNSTALL  
High Point, N. C.

*English*

Mars Hill 1, 2; Glee Club 1, 2; Band 1; Orchestra 1, 2; Clio Literary Society 1, 2; Hiking Club 1, 2; B.S.U. Council, Devotional Vice-President 1; N. C. State College 3, 4; Co-ed Club 3, 4; B.S.U. Council 3, 4; Meredith 4, 5; Tyner Education Club 4, 5; Colton English Club 4, 5, Vice-President 5; B.S.U. Council 4, 5; Y.W.A. President 5,

ANNA RUTHE TYSON  
Farmville, N. C.

*Phi*

*Chemistry*

French Club 1, 2, Vice-President 2; Counselor 2; A.A. Board 1, Treasurer 2; Barber Science Club 2, 3, 4, President 4; Folk Dance Club 3; Colton English Club 4; Y.W.A. 1; Stunt 1, 2, 3; Student Government Council, Stringfield Vice-President 4; Chorus 2, 3, 4; Cheerleader 1; Monogram Club 4.



JUNE HOPE VANN  
Washington, N. C.

*Astro*

*Sociology*

Y.W.A. 1, 2, 3; Spanish Club 1, 2; Sociology Club 1, 2, 3; Astro Marshal, Social Standards Committee 1, 2, 3, Chairman 3; *Twig* Staff 2; Counselor 2; B.S.U. Council 2; Tyner Education Club 3; Sigma Pi Alpha 3; Freeman Religion Club 3, Student Government Council 3; May Court 3; Dean's List.



GERALDINE BROWN VAUGHAN  
Fort Mill, S. C.

*Phi*

*Religion*

Mars Hill College; Scriblerus Honor Society 2; May Court 2; B.S.U. Council 2, 3; Y.W.A. 1, 2, 3, Council 3; Freeman Religion Club 3; Chorus 3; Mrs. Club 4.



# Meredith College

REBEKAH UPCHURCH WAY  
Raleigh, N. C.

*Astro*

*Education*

Spanish Club 1; Education Club 3, 4; Mrs. Club 4, Secretary; Summer School 2, 3; Chorus 2; Dean's List.



HORTENSE WIGGS  
Smithfield, N. C.

*Astro*

*Piano*

MacDowell Music Club 1, 2, 3, 4; German Club 1, 2; Counselor 2, M.T.N.A. 2, 3, 4; Chorus 2, 4; Y.W.A. 1, 2; Sigma Alpha Iota 2, 3, 4; Chaplain 3; President 4; Co-Program Chairman Organ Class 3; Student Guild of Organists 3, 4; Dean's List.





*Ballenray*



*Barnhardt*



*Peterson*



*McLinn*



*Allen*

## SILVER SHIELD

RUTH JEANNE ALLEN . . . . .	<i>President</i>	SANDRA PETERSON . . . . .	<i>Vice-President</i>
PHOEBE BARNHARDT . . . . .	<i>Secretary-Treasurer</i>		

On our Meredith campus, Silver Shield is the honorary leadership society. It is devoted to the ideal of promoting a well-rounded student life through developing a high type of Christian activity, furthering an understanding between faculty and students, setting a high standard of honor and co-operation in the student body, making the honor system a real force on our campus, perpetuating the ideals and traditions of Meredith, and recognizing each year from the rising senior class girls who have proved themselves outstanding in these respects.

The society uses the bases of constructive leadership, Christian character, and scholarship in recognizing seniors and juniors as members.





*Bettrell*



*Ball*



*Scarborough*



*Melvin*



*Flourman*

## KAPPA NU SIGMA

BETTY BALL.....	<i>President</i>	LEAH SCARBOROUGH.....	<i>Vice-President</i>
		PATTY MELVIN.....	<i>Secretary-Treasurer</i>

*Kallos, Nous, Sophia*—meaning *beauty, sound-mindedness, and intelligence*—are the Greek words from which Kappa Nu Sigma Honor Society takes its name. Only those students who have achieved a high scholastic standing over a period of two years are elected to membership. Kappa Nu Sigma has as its object the encouraging and rewarding of good scholarship at Meredith College by sponsoring a chapel speaker, an annual spring banquet, and a lecture, and by awarding the Helen Price Scholarship to the freshman having the highest scholastic standing in her class.



*McLean*



*Feiler*



*Peterson*



*Durabacht*



*Calloway*



*Allen*



*Bottrell*



*Dull*

WHO'S WHO IN AMERICAN  
COLLEGES AND UNIVERSITIES

# Sights of Seniors to Remember



## History of the Junior Class

Third-year girls! Upperclassmen! The perfect year of college! Just ask any junior. New responsibilities and new privileges combined to make school more exciting than before. We had little sisters, the Junior-Senior Banquet to plan, and class rings to order. We now feel well on our way towards graduation day, full of hope for the future and of determination to make dreams come true.





## JUNIOR CLASS

BARBARA BRANTLEY  
*President*

BETTY DELOATCH  
*Secretary*

CATHY ATKINS  
*Vice-President*

MICKEY KIMBRELL  
*Treasurer*

*Class Colors*  
PURPLE AND GOLD

## Class of 1956



ANDREWS, HARRIETT LADD, *Astro*

ANDREWS, SANDRA JOAN, *Phi*



ATKINS, CATHERINE MERCER, *Phi*

AUSTIN, ANNE, *Astro*



BAGLEY, CAROLE, *Astro*

BAGLEY, MARTHA LAVERNE, *Astro*



BISETTE, SARAH GERTRUDE, *Phi*

BLACKMON, BETTY JEAN, *Astro*

*Meredith College*

BLANTON, FRANCES DELORES, *Astro*



BOOTH, JANIS MARIE, *Astro*

BOWEN, PATRICIA ANN, *Astro*



BRANTLEY, BARBARA, *Phi*

BRIDGERS, LINDA FAYE, *Phi*



BRIDGES, NORMA FAYE, *Phi*

BRITT, RUBY NINA, *Phi*



BRYANT, AMORETTE JANE, *Astro*

# Class of 1956



BULLOCK, LORRENE YVONNE, *Phi*

BUTTS, BETTY ANN, *Astro*



CALHOUN, MARY LILLIAN, *Phi*

CASPARI, SHERRY-JAYNE, *Astro*



CANNADY, MARGARET FRANCES, *Phi*

CHANDLER, ELEANOR KATHRYN,  
*Astro*



COLSTON, MARY FRANCES, *Phi*

COOPER, CHARLOTTE EDITH, *Astro*



*Meredith College*

COOPER, JEAN CRYSTAL, *Phi*



CURTISS, CAROLYN JOY, *Phi*

DARDEN, PEGGY WAYNE, *Astro*



DAUGHTRY, DORIS GREY, *Astro*

DAVIS, HARIETT SUZANNE, *Astro*



DELOATCH, BETTY JEAN, *Phi*

DENNIS, JANICE EARLE, *Phi*



DIAL, RUTH ELAINE, *Astro*

*Class of 1956*



DICKENS, BARBARA ANN, *Phi*

DODSON, JANET GAYNOR, *Phi*



DRAKE, NANCY ELLEN, *Astro*

ENGLISH, MARGARET ANN, *Phi*



FARRIS, BILLYE W., *Astro*

FRANKLIN, ALICE FAYE, *Astro*



FREEZE, JUNE MARLENE, *Astro*

FRYE, HELEN ERNESTINE, *Phi*

*Meredith College*

GARRETT, CAROLINE KNIGHT, *Phi*



GRANT, LAUREL MAXINE, *Astro*



HAISLIP, CYNTHIA LYNETTE, *Phi*



HAMPE, MARY NEIL, *Astro*



HARVEY, MILDRED HOLLAND, *Phi*



HICKS, JEAN RODDY, *Astro*



HUTCHINSON, CAROLYN GALE, *Phi*



JACKSON, FRANCES PRISCILLA, *Astro*



## Class of 1956



JENERETTE, ROBERTA, *Phi*

JERNIGAN, MARGARET JO, *Phi*



JOHNSON, BARBARA KAY, *Astro*

JOHNSON, KAY ANN, *Phi*



JONES, ELIZABETH LINDLER, *Astro*

JONES, JOYCE ANN, *Astro*



KEEN, CONSTANCE LOREE, *Astro*

KIMBRELL, MILLICENT NELL, *Astro*

*Meredith College*

KISER, MARY ELIZABETH, *Astro*



KNIGHT, MIRIAM, *Phi*

LAMBERT, HELEN JANE, *Phi*



LAYNE, BESSIE MARGARET, *Phi*

LILES, PATRICIA GRAY, *Astro*



LOVING, PATSY ANN, *Phi*

MCARTHUR, MARILYN, *Phi*



MCCOSLEY, KAY MONICA, *Astro*

*Class of 1956*



MCGAHA, DORIS FERGUSON, *Astro*

McROY, MAXINE, *Astro*



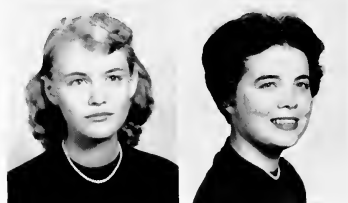
MATTHEWS, KATHLEEN MICKIE, *Astro*

MATTHEWS, FRANCES ELIZABETH  
*Astro*



MERRITT, IRIS MARIE, *Astro*

MIDDLETON, CHLOE ANNE, *Astro*



MOORE, TRUDIE, *Astro*

MORRIS, VIRGINIA ANN, *Astro*

*Meredith College*

MOSS, MARY LOU, *Astro*

MYERS, ROVILLA, *Phi*



NYE, LEONORA, *Phi*

OUTLAW, SARAH WEST, *Phi*



OVERTON, VIOLET OSBORNE, *Phi*

PARKER, FRANCES, *Astro*



PARR, ANNE CHANNING, *Phi*

PIERCE, ROSE ELLEN, *Phi*



# Class of 1956



PINNER, MARY JO, *Astro*

POOLE, SHIRLEY CLYDE, *Astro*



PUCKETT, JEAN ELIZABETH, *Astro*

REECE, NANCY CARROLL, *Phi*



RICHARDSON, POLLY ANN, *Astro*

RILEY, PATRICIA ANN, *Astro*



RIVERS, ELIZABETH NELL, *Phi*

SAIKKOLA, HELI MARJATTA, *Astro*



*Meredith College*

SCOFIELD, MARY ELLEN, *Phi*



SELLERS, BARBARA JANETTE, *Astro*

SIMMONS, GERALDINE DARE, *Phi*



SMALL, ALPHIA ALETHIA, *Astro*

SMITH, ANNICE MARIE, *Phi*



SMITH, BETTY ESTHER, *Phi*

SMITH, CHARLENE, *Phi*



SMITH, DOROTHY ELIZABETH, *Astro*

# Class of 1956



SMITH, LORINE FAYE, *Phi*

SOUTHWORTH, BARBARA ANN, *Phi*



SPERLING, MARGARET RUTH, *Astro*

SPOON, SHIRLEY MARIE, *Phi*



STYLES, ERMA LEE, *Phi*

SWAIN, ANNIE MARGARET, *Astro*



TAYLOR, LARUE, *Astro*

TAYLOR, MARY BROOKS, *Astro*

*Meredith College*

TAYLOR, SHIRLEY BELL, *Astro*



THOMPSON, SARAH ELLEN, *Phi*

THORE, MARJORIE ESTELLE, *Astro*



TIPPETT, BETSY MOLLETTE, *Astro*

TOUNGER, SUE SEAY, *Astro*



TRAMMEL, REBECCA ANN, *Astro*

TURLINGTON, SHARON LINDA, *Phi*



TURNAGE, RACHEL ANN, *Phi*

# Class of 1956



VANCE, ELIZABETH BAIRD, *Phi*

VERBYLA, ELAINE VIVIAN, *Astro*



WEHUNT, ELIZABETH ANN, *Phi*

WISENHUNT, EDITH ADAIR, *Astro*



WHITE, SARAH MELINDA, *Astro*

WHITE, SHIRLEY ANN, *Phi*



WHITTINGTON, MARTHA LOUISE, *Astro*

WILLIAMS, VIRGINIA BLANCHE, *Astro*

*Meredith College*

WILSON, KATHRYN SUE, *Astro*



WOODALL, CONSTANCE LEE, *Phi*

WOODWORTH, PATRICIA SPIVEY, *Astro*

WOOTEN, MARJORIE LORRAINE  
*Astro*



YATES, CATHERINE ELAINE, *Phi*



## History of the Sophomore Class

At the beginning of the year we could hardly believe we were finally sophomores, and we are having to adjust to the idea that before long we will be the junior class. Where did the time go? We spent many precious minutes rushing the freshmen for our societies. This made us feel important. We will always remember May Day, and especially the two lovely girls who represented our class. We are going to miss all of our big sisters very much. We have been too busy to see the months slip away, and here we are—making the daisy chain for their graduation and reaching the mid-point of our college days. Already we are remembering the past as well as dreaming of the future.





## SOPHOMORE CLASS

BARBARA CHURCHILL

*President*

BARBARA STANLEY

*Secretary*

GWEN MADDREY

*Vice-President*

BETSY WELLS

*Treasurer*

*Class Colors*

BLUE AND WHITE

## Class of 1957



*First row, left to right:* Abernethy, Julia Isadora; Anthony, Frances Ann; Atkinson, Lucy Meade; Ayscue, Hazel Gray; Barlow, Letha Julene; Batchelor, Lester Jean.

*Second row:* Braswell, Mary Ann; Bright, Mary Kathryn; Browne, Dorothy Eileen; Brown, Mary Jo; Buffaloe, Meredith Ann; Bunting, Nancy Bunn.

*Third row:* Burrus, Wanda; Capps, Virginia Ann; Churchill, Barbara Lee; Civils, Zeela Frances; Clark, Auriba Eleanor; Clark, Frances Jane.

*Fourth row:* Clay, Parrieleigh Bobbitt; Clayton, Mildred Lee; Cline, Josephine; Cockrane, Nancy Lee; Codas, Bessie Theo; Cole, Anne.



## Meredith College

*First row, left to right:* Cole, Mary Catherine; Cooke, Carol Phillips; Cooper, Alice; Corbett, Patricia Jean; Corbett, Virginia Janette; Corn, Jacklyn Annette.

*Second row:* Corzine, Nancy Carolyn; Crawford, Sarah Jeanette; Culberson, Eliza; Davis, Bettie Jean; Dawkins, Janice Anne; Deans, Barbara Jean.

*Third row:* Dobson, Berta Lois; Dover, Dorothy Esther; Evans, Edna Scott; Fulcher, Janet; Gibson Thelma Joanne; Gill, Jean.

*Fourth row:* Gossett, Annette Joy; Grainger, Eva Elizabeth; Grealish, Sammy Jean; Green, Marilyn Letitia; Griffith, Angela Estelle; Griggs, Patricia.



## Class of 1957



*First row, left to right:* Grimes, Mary Edna; Guthrie, Julia Annette; Hamrick, Sarah Lee; Hanes, Patricia Anne; Harris, Shirley Anne; Harton, Aurelia Elizabeth.

*Second row:* Harvey, Jane Marilyn; Harwell, Nancy Carolynne; Hatcher, Peggy Anne; Henline, Shirley Marie; Herndon, Joyce Wilson; Hiatt, Anita Paige.

*Third row:* Holland, Peggy Whitaker; Holt, Margaret Katherine; Horrell, Marcia Dewey; House, Harriette Ann; Jackson, Marjorie Lore; Jobe, Mary Anne.

*Fourth row:* Johnson, Edith Brewer; Johnson, Elladine Marie; Johnson, Emily Fay; Johnson, Maude; Jones, Diana Gail; Jones, Jo Ann.

## Meredith College

*First row, left to right:* Jordan, Shirley Jean; Joyner, Evelyn Videau; Kerley, Mary Frances; Kiff, Bettye Jo; Kinkead, Dorothy Myrl; Knight, Lynda Ruth.

*Second row:* Knight, Mildred Rebecca; Laine, Carolyn Ann; Lawrence, Sara Gouhan; Lay, Anne; Lee, Annette; Lee, Sara Cornelia.

*Third row:* Little, Jacqueline Louise; Lloyd, Betsy Carol; Lowery, Corinne Little; McDonald, Cathy; McLamb, Sarah; Maddrey, Edna Gwendolyn.

*Fourth row:* Marshall, Mathilda Kathryn; Mastellare, Martha; Mattocks, Barbara Ellen; Miles, Rebekah Anne; Morris, Dolores Diane; Nelms, Jocelyn.



## Class of 1957



*First row, left to right:* Newman, Emily Florence; Newsom, Mary Virginia; Knock, Bette Alice; Owens, Wilma Grace; Page, Nancy; Palmer, Eleanor Ann.

*Second row:* Peele, Lillian Marie; Peoples, Peggy Joyce; Picklesimer, Alyce Moore; Pierce, Alma Lou; Pond, Lois Lee; Ransome, Annie Luther.

*Third row:* Reep, Marlene Norrita; Roberson, Sarah Elizabeth; Roberts, Martha Ann; Rowand, Beverly Mace; Saunders, Carolyn Jeannette; Sawyer, Willa Faye.

*Fourth row:* Schanck, Sylvia; Selley, Jo Ann; Shelton, Elizabeth Anne; Shutt, Mamie Alice; Simons, Donnie Honeycutt; Smith, Betty Frances.

## Meredith College

*First row, left to right:* Smith, Betty Anne; Smith, Becky Jo; Stallings, Barbara; Stanley, Barbara Leigh; Stewart, Margaret Ann; Strayhorn, Carolyn Louise.

*Second row:* Sullivan, Iris Faye; Swann, Patty Sue; Timberlake, Jo Ann; Thompson, Mary Ann; Thompson, Percy Ann; Tong, Jeanne Tsung-sing.

*Third row:* Walker, Susan Leah; Ward, Carlotta Gail; Wells, Betty Lou; Wells, Betsy Carter; Wheeler, Mattie Faye; Widenhouse, Kate Gibson.

*Fourth row:* Williams, Jo Ellen; Williams, Peggy Jo; Wooten, Verna Hodges; Worth, Ada Lou; Yarbrough, Bobbie Ann; Young, Nancy Morgan.



# History of the Freshman Class

We, the members of the freshman class, embarked September 8, 1954, on a voyage of higher learning. Not knowing exactly what route to take on our voyage, we launched into the deep. Looking around us, we saw other freshmen who were taking the same voyage. On our trip we have encountered many rough waves such as Orientation Week and mid-semester and final exams. As we look back upon our freshman year, however, we discover that we had some smooth sailing, including Decision Day, our first week end home, the Big Sister-Little Sister Party, the Corn Huskin' Bee, dates from State, Christmas caroling, Stunt Night, and May Day week end. At the end of our voyage as freshmen, we can look back and see the progress and accomplishments which have been made; and we have come one fourth of our college trip. Spiritually and mentally we have become more mature, for we are learning to love every day of living at Meredith.





## FRESHMAN CLASS

MARGARET CREECH  
*President*

ANNE HOWARD  
*Secretary*

BETTY KELLUM  
*Vice-President*

LOUISE MOORE  
*Treasurer*

*Class Colors*  
GREEN AND WHITE



*First row, left to right:* Adams, Lena Margaret; Allen, Marcia Jeannine; Atcheson, Carol West; Balfour, Shelia Mary; Ballance, Esther Anne; Barger, Janice Aileen; Barnes, Patricia Gale.

*Second row:* Barnhill, June Elizabeth; Earrett, Patricia Ann; Bass, Madaline Thomasine; Baxter, Emma Elizabeth; Bennett, Carol Marilyn; Benson, Becky Jo; Bestedt, Marylyn Oline.

*Third row:* Blackman, Sylvia Louise; Bone, Martha Louise; Bone, Peggy Jo; Bowden, Mary Eleanor; Bowman, Patricia Ann; Boyles, Marjorie Anne; Bradshaw, Barbara Ann.

*Fourth row:* Bramlett, Martha Ellen; Brewer, Clara Glenn; Bridgers, Gertrude Carolyn; Bright, Shirley Roe; Browning, Barbara Jordan; Burgess, Melva Virginia; Byrne, Virginia Dare.

*Fifth row:* Cagle, Lela Mae; Carter, Alice Lou; Carter, Patricia Register; Caspari, Dale Verna; Caudell, Sylvia May; Chandler, Ada Fay; Cook, Shirley Kathryn.

## *Meredith College*



# Class of 1958

*First row, left to right:* Corbett, Lynn; Cotton, Mabel Aswalt; Creech, Margaret Leigh; Crook, Sally Cansler; Cummings, Kay Caroline; Current, Molly Lysbeth; Davis, Sara Jean.

*Second row:* Dempsey, Miriam Delores; Derrick, Mary Catherine; Drake, Lois Jean; DuRant, Eunice Lee; Eddins, Glenda Jane; Eddins, Katie Joyce; Ellington, Barbara Lee.

*Third row:* Enloe, Virginia Ann; Eves, Joanne Elizabeth; Farris, Margaret Anita; Fasul, Martha Steve; Ferguson, Mary Ruth; Ferrell, Martha Joel; Forehand, Becky Baker.

*Fourth row:* Formyduval, Avis Fay; Fowler, Martha Lynn; Fulp, Mary Frances; Garrell, Patricia Anne; Gilbert, Emily Anne; Gilliam, Peggy Marie; Godwin, Margaret Joan.

*Fifth row:* Greene, Betsy Carol; Greene, Patricia Anne; Gregory, Patricia Anne; Grigg, Linda Jane; Grimm, Margaret; Hall, Jacquelyn Ann; Hardie, Nancy Ruth.





*First row, left to right:* Hardison, Janet Sue; Hartsell, Pamela Rose; Hazelwood, Barbara Ann; Herring, Joyce Marie; Hicks, Mary Elizabeth; Hinson, Nell Rose; Horton, Mona Fay.

*Second row:* Howard, Anne Elizabeth; Huckaby, Sarah Hope; Hudgins, Katherine Belle; Hudson, Clara Lucille; Huskey, Lula Osteen; Hutchinson, Linda Carol; Ingram, Juanite Sparks.

*Third row:* Jackson, Olavia Faye; James, Molly Marvin; Jansen, Mary Claire; Jenkins, Elsie Janet; Johnson, Ernestine Elizabeth; Johnson, Katie Frances; Johnson, Kay Elizabeth.

*Fourth row:* Jones, Lula Mae; Jones, Virginia Lee; Joyner, Nancy Carol; Joyner, Peggy Elaine; Kee, Annie Laurie; Kellum, Betty Carol; Kendrick, Rebecca Inez.

*Fifth row:* King, Lucretia Tillman; Knott, Bettye Sue; Lane, Betsy Carole; Laughter, June Ellen; Lee, Mary Lou; Lesniak, Hazel Comer; Liles, Peggy Joyce.

*Meredith College*

# Class of 1958

*First row, left to right:* Lindsey, Bettye; Livingston, Christine Sarah; Lowder, Carolyn Rosseau; Lundy, Miriam; Lutz, Margie Jane; McIntyre, Martha Ellen; McKinley, Donna Ray.

*Second row:* McLeod, Paula Cathryne; Marley, Rebecca Ann; Matthews, Ava Larue; Maynard, Amanda Jane; Melton, Dora Sue; Meredith, Barbara Lee; Mewborn, Peggye.

*Third row:* Mitchell, Margaret Elaine; Moore, Helen Irene; Moore Louise Mildred; Morris, Vivian Yvonne; Morriss, Joan Elizabeth; Moss, Susan Lee; Mott, Margaret Gertrude.

*Fourth row:* Munn, Faye Virginia; Murray, Rebecca Jean; Myers, Hilda Ree; Myrick, Nancy Marie; Nesbitt, Barbara Ann; Newton, Sally Stephanie; Oliver, Mary Frances.

*Fifth row:* Oliver, Ruth Atkinson; Parham, Geraldine Ruth; Park, Marilyn Clair; Patterson, Sharon Lynne; Perkins, Nancy Carol; Perry, Alvis Lawrence; Phillips, Betty Jean.





*First row, left to right:* Phillips, Bonnie Sue; Pinner, Shirley Anna; Purvis, Betty Ann; Reed, Imogene Daisy; Reid, Roberta Lee; Richardson, Janice Louise; Robinson, Sue Frances.

*Second row:* Skillman, Joyce Williams; Slate, Margaret Elizabeth; Smith, Linda Warren; Snipes, Barbara Lou; Southerland, Martha Ann; Stafford, Frances Moseley; Stallings, Virginia Anne.

*Third row:* Stamper, Mary Ann; Stephenson, Norma Faye; Stocks, Myrna Loy; Stone, Virginia Ann; Stonell, Carolyn Rudd; Strickland, Thelma; Strother, Shirley Sue.

*Fourth row:* Stroud, Dorothy Carol; Stroud, Mary Katherine; Strum, Marilyn Elizabeth; Swanson, Elizabeth Ann; Swindler, Susie Juanita; Thomas, Margaret Lane; Thompson, Audrey Olive.

*Fifth row:* Thompson, Barbara Ann; Wallace, Nancy Finch; Watkins, Patricia Pratt; Wellons, Jancey Lane; Whedbee, Ruth Carole; Whisnant, Nancy Elizabeth; White, Kay Smith.

*Sixth row:* Williams, Betty Jane; Williams, Cornelia Ann; Williams, Sarah Ellen; Willoughby, Ida Charlene; Wilson, Betty Rose; Winstead, Lou White; Wishart, Heather Elinor.

*Seventh row:* Wooten, Doris Irene; Yancey, Peggy Anne; Yates, Jackie Faye.



O  
R  
G  
A  
N  
I  
Z  
A  
T  
I  
O  
N

A N D C L U B S



## THE ATHLETIC ASSOCIATION

The Meredith College Athletic Association, with membership of the entire student body, is organized and directed by the A.A. Board, consisting of managers of various sports and activities. The Board is advised by Dr. Weigt, Miss Cunningham, Miss Williams, and Miss Mackay, the faculty of the Department of Health and Physical Education.

As a co-operating group the Athletic Association has as its aim the promotion of interest and skills in various sports and campus activities. Awards are given at the close of each season to players who have been outstanding in ability and sportsmanship.

Throughout the year varied campus-wide activities, which foster the originality of Meredith girls, are sponsored by the A.A. Among these are Playday, the Corn Huskin' Bee, Christmas Caroling, Good Posture Week, the Horse show, and May Day.



FRESHMAN HOCKEY  
STICK  
DALE CASPARI



HORSEMANSHIP  
BETTY JEAN BLACKMON



CORN HUSKIN' BEE WINNERS



MYERS



BRYANT



YATES



VANCE



BAILEY



ALLEN



CASPARI



HOUSE



BUNTING



GRIMES



KEE

# HOCKEY

# VOLLEYBALL







LOVELL



BAILEY



ALLEN



BELL



KEEN



MAY



JOHNSON

# BASKETBALL

# SOFTBALL



KINKEAD



CODAS



SHUTT



PACE



LOVELL



BAILEY



MARTIN



BURNS



ALDRIDGE



HOOFPRIINT CLUB

DANCE GROUP





SPORTS MANAGERS

MONOGRAM CLUB





## STUDENT GOVERNMENT COUNCIL

The Student Government Association of Meredith College is an organization of which every student is a member. With its goal as democratic self-government, the Association attempts integration of all campus life, working always toward understanding and co-operation.

When it is time for freshmen to arrive in the fall, Student Government Council members are already on campus to offer enthusiastic welcome and helpful guidance. Through hand-book classes, informal gatherings, teas and open houses the new student is given her first introduction to community living on the college campus. For the past two years Council members have served as guides for the week of orientation.

The Council brings the ideas and problems of the students to the meeting each Monday night. The student body is always invited to participate and to voice suggestions, not only during this session, but also during office hours and House Council meetings, which precede the regular Student Government Council meetings. Through joint meetings with the Faculty Committee on Student Government, a clear understanding of student problems and a close working harmony between faculty and students have been maintained.

To work with the Social Standards Chairman, a Social Standards Committee was organized in the spring of '53. It is made up of the class presidents, the society presidents, and class representatives. Through this committee a more extensive social education program has been established. Emphasis has been placed on the best social conduct both on and off the campus.

To develop thinking, participating citizens who are loyal to the democratic way of harmonious living and to encourage the application of the principles of the Honor Code in each individual in order to make the Christian spirit of love and friendship uppermost at Meredith—these are aims of our student government.

# BAPTIST STUDENT UNION

An agency of the state-wide and south-wide council of the Baptist denomination and at the same time the co-ordinating group for Christian student work at the college, the Baptist Student Union at Meredith College is made up of all those who take part in any of its many varieties of activities. Through it, there is opportunity for study, worship, and action in fellowship with young men and women from other colleges and universities.

Organizational responsibility is borne by an executive council elected in campus-wide elections; the B.S.U. office in first floor Faircloth, almost always open to all comers, serves as headquarters. In membership, in the purpose of translating into attitude and action the truth of the Christian faith, in appreciating and appropriating the special values for Christian growth inherent in this particular college situation, in outreach to believing and learning communities of differing backgrounds, the B.S.U. is not confined to any group or place. Its program is effective as its purposes are shared and undergirded in the common life of which it is only a part.

Through study, group and individual worship, leadership training, through the ministry of giving, and through co-operation with others who ponder the meaning of the human adventure, the B.S.U. seeks to serve the college and the larger community which the college serves.





## ASTROTEKTON SOCIETY

SUSIE RUCKER . . . . .	<i>President</i>	ELIZA CULBERSON . . . . .	<i>Secretary</i>
ELIZABETH JONES . . . . .	<i>Vice-President</i>	NANCY CORZINE . . . . .	<i>Treasurer</i>
ANNETTE LEE . . . . . <i>Sergeant-at-Arms</i>			

From our name Astrotekton (*astro* meaning *star*, *tektion* meaning *builder*) is derived the true inspiration of our society, that is our motto, "He builds too low who builds beneath the stars." This inspiration has been manifest in every phase of our activities this year.

Rush Week, with all its tenseness, was a wonderful week, with the picnic at Allen's Pond, the Pep Rally, and the magnificent Mardi Gras as highlights of our memories. It was fun for all of us, but the fun was just beginning.

There were the overnight parties in the hut, the spaghetti supper, the night club; but these were merely a part. In each Astro's heart the warmth and thrill of playing Santa Claus to the children at St. Agnes Hospital will always stay.

Our society and its wondrous light will live in the minds and hearts of the sisters of the Gold and White forever.



## THE PHILARETIA SOCIETY

ERNESTINE COTTRELL . . . . .	<i>President</i>	MARCIA HORRELL . . . . .	<i>Secretary</i>
NANCY REECE . . . . .	<i>Vice-President</i>	ELEANOR CLARK . . . . .	<i>Treasurer</i>
EARLINE MARTIN . . . . . <i>Sergeant-at-Arms</i>			

This year the Phi society has endeavored to maintain an excellence of thought, feeling, and action not only in the various Rush Week activities in the fall but also in all campus matters throughout the year.

"Welcome" signs and Phido, the mascot, were on hand to greet the freshmen when they arrived last fall. To introduce the new students to the Phis, the fashion show preceding Rush Week featured lovely clothes modeled by representatives from each class; and at the bonfire students were entertained by means of the talents of various Phis. Rush Week was packed full of many activities. Besides the usual early morning serenades, bed making, and favors, there was the Phi Supper Club, which was well received, particularly when the Phi song was sung as a solo. The meaning of this beautiful song inspired a zeal which was evident in the candlelight serenades and visiting and which came to a grand climax on Decision Day.

The year has been a very eventful one—with meetings, parties, more fashion shows, and varied other activities with the standard of excellence ever striven for. Old and new students alike have enjoyed participating in society activities this year.

May our motto, "Plain Living and High Thinking," serve those who stay as well as it has served those who leave our society and Meredith.



## FRESHMAN AND TRANSFER COUNSELORS

College freshmen step into a challenging new world when they enter Meredith, a world of newness and excitement. The counseling program is designed to help the new students meet and overcome any discouragement or problems that they may face.

It is the ever-present desire of each counselor and each adviser to help guide the new students into the rich and meaningful experiences that will remain as happy memories of college years. In striving toward these ends, counselors are on hand to greet the freshmen and transfer students and guide them through Orientation Week. The program continues throughout the year with personal visits, individual concern, academic counseling, and monthly meetings. Discussions are held on such topics as study habits, extra-curricular activities, and Meredith traditions.

It is believed that each student should learn to recognize and set up her own academic ideals, Christian principles, and social standards befitting a Meredith girl.





## NOMINATING COMMITTEE

It is the difficult but vital task of the Nominating Committee to nominate candidates for all campus organizations, except the clubs, the four classes, and the three honor societies.

The Chief Counselor is the chairman of the Nominating Committee. The presidents of major organizations, the editors-in-chief of the publications, and the college marshal compose the rest of the committee. Two faculty members, representatives from the classes, and the dean of students participate in the proceedings but do not vote.

The ever-present aim of the Nominating Committee is to aid in the conducting of fair and democratic campaigns and elections. Qualifications of the candidates are at all times considered to be vitally important.



## DAY STUDENTS

JOYCE BURNS . . . . . *President*      FAYE WHEELER . *Second Vice-President*  
BETTY SMITH . . . . *First Vice-President*      MARLENE REEP . *Third Vice-President*

The day students of Meredith College! Just the name itself brings a flood of ideas and memories. We remember the excitement of registering as freshmen, the hard grind of classes that quickly followed . . . but we loved it. . . . There were those perpetual bridge games at lunch when we all sardined into the "second day student's room" to eat our sandwiches. . . . We think of the way we rushed to catch the bus and then whisked by the Johnson Hall bulletin board for the latest word on when-who-met-where. . . . This hurry, hurry to class along the gravel path to disappear down the long hall in Arts or in Science. . . . We offered sympathetic smiles to the resident students when they complained of that deadline for return after dates, for we loved to pretend that we just NEVER had to be in before the wee hours of the morn. . . . Hah! We glowed with gay spirit as we joined the resident students for the annual Christmas caroling tour of Raleigh. . . . Later those crazy presents we got from our beloved schoolmates along with hot chocolate and cookies made us forget the coldness of that night spent in the hut. . . . We declared our majors, then worried over arranging all those required courses. . . . Playday! Again we competed as a unit for honors by playing, playing, playing. Throughout the year we tried to give more of ourselves to Meredith. We day students of Meredith College cherish these memories of another college year.



## MEREDITH COLLEGE PLAYHOUSE

ANNE JANE BARBREY . . . . . *President*

PATRICIA ANNE ALLEN . . . . . *Secretary*

MARY KISER . . . . . *Vice-President*

ROVILLA MYERS . . . . . *Treasurer*

It is the goal of the Playhouse to bring to our Meredith stage the best in dramatic entertainment. During the fall of 1954 the Playhouse produced James Barrie's delightful comedy, *Quality Street*. The play was a success in every sense of the word, but it was destined to be that from the start, for each Playhouse member put his heart into the production.

With the end of this fall production, each new drama enthusiast who had participated either backstage or in the glory of the footlights was welcomed into full membership in the Playhouse.

Immediately everyone began to look forward to the spring production which would give each girl additional points toward membership in Alpha Psi Omega, the national honorary dramatics fraternity, the goal of all Playhouse members.



## THE ACORN

*The Acorn* is Meredith's literary magazine. It is made up of the hopes, dreams, and beliefs of Meredith girls.

This year *The Acorn* has sponsored contests to promote interest. Without interest it can be nothing for it is by the students and for them.

### EDITORIAL STAFF

JEAN FORBES  
*Editor*

ANN CASHWELL  
*Art Editor*

TRUDY FITZGERALD  
*Assistant Editor*

KATHLEEN MATTHEWS  
MARGARET ENGLISH  
SALLIE ROBERSON  
ELIZA CULBERSON  
*Class Editors*

### BUSINESS STAFF

ANN ADAMS  
*Business Manager*

ELLEN MOORE  
*Circulation Manager*

OPHELIA MCLEAN  
ANNETTE CAUDLE  
*Typists*



STAFF AT WORK



## THE OAK LEAVES

The staff of the 1955 OAK LEAVES have worked diligently in trying to give to you Meredith Angels a book which you will cherish through the years as a symbol of this year spent at Meredith. Our theme is "Familiar Sights." What could be more familiar in May than to see girls looking at their yearbooks which have just come off the press? As you look at the book from cover to cover, which is done in our school colors this year, you will see sights and faces which fit into our memories of Meredith.

We, both editor and staff, hope that you will enjoy this book and will think of it as a small momento of the past year spent at Meredith.

### EDITORIAL STAFF

BETTY JOAN BALL  
*Editor*

LOUISE McCALL  
EFFIE SNEEDEN  
BEBE CORRELL  
*Senior Editors*

ANNE PARR  
VIRGINIA MORRIS  
*Junior Editors*

BARBARA STANLEY  
JEANNE GREALISH  
*Sophomore Editors*

ANNIE LAURIE KEE  
PAM HARTZELL  
*Freshman Editors*

SALLY DRAKE  
*Art Editor*

PEGGY JO WILLIAMS  
*Photography Editor*

MAMIE HAFNER  
DR. ERNEST F. CANADAY  
*Faculty Sponsors*

### BUSINESS STAFF

CONNIE WOODALL  
*Business Manager*

ANNETTE CAUDLE  
KATHLEEN CLEMMONS  
*Typists*

MARGARET INGRAM  
MAXINE McROY  
MARTHA ANNE ROBERTS  
CATHY ATKINS  
JANET FULCHER  
SUSIE WALKER  
*Assistants*



STAFF DOING MORE WORK



# THE TWIG

*The Twig*, the college newspaper, is a permanent record of all that happens at Meredith. It offers a coverage of future and past happenings, interesting features, an opportunity for expressing student and faculty opinions, and training in journalism for its staff members.

Any capable student with an interest in journalism and a willingness to work may become a staff member. *The Twig* is a member of the Associated Collegiate Press and is published every two weeks.

## EDITORIAL STAFF

BESS PEELER  
*Editor*

PAT DOWELL  
*Associate Editor*

BARBARA SELLERS  
*Managing Editor*

BARBARA SNIPES  
*Feature Editor*

SALLY DRAKE  
*Art Editor*

LEAH SCARBOROUGH  
*Music Editor*

MARY JON GERALD  
*Sports Editor*

VIRGINIA MORRIS  
*Photo Editor*

MARGARET ANN ENGLISH  
PAT ALLEN  
*Columnists*

*Reporters:* JOYCE HERNDON, BARBARA STANLEY, ANNE TUNSTALL, JANETTE HONEYCUTT, MARJORIE JACKSON, DELORES BLANTON, JULIA ABERNETHY, JO ANNE SELLY, PATSY BARRETT, NANCY DOHERTY.

*Typists:* MARY LIB DELBRIDGE, chief; FRANCES CARR, ANNE MIDDLETON, JOYCE JONES, MIMI ROYSTER, MYRA BRISTOL, OPHELIA McLEAN.

*Faculty sponsor:* DR. NORMA ROSE.

## BUSINESS STAFF

PEGGY SMITH  
*Business Manager*

KITTY HOLT  
MAXINE GRANT  
*Circulation Managers*

KATHLEEN CLEMMONS  
*Advertising Manager*

*Advertising staff:* JOAN ALLEN, MAMIE ALICE SHUTT, NANCY CORZINE, ANNIE RANSOME, BETTY ANN SMITH, BECKY MILES, ALMA LOU PIERCE, LOIS POND.





AN EXCEEDINGLY BUSY STAFF



## TYNER EDUCATION CLUB

REBECCA BARNHARDT . . . . . *President*      JANE COLLINS . . . . . *Secretary*  
LOUISE MCCALL . . . . . *Vice-President*      DAPHINE MAYTON . . . . . *Treasurer*  
LELA MELVIN . . . . . *Social Chairman*

The Tyner Education Club is comprised of girls majoring in education or having education as their related field. This is the largest club on campus, having a total of 90 girls as members. Various programs of an educational nature are given at the monthly meetings. The annual Christmas party, given for the Methodist Orphanage children, is one of the highlights of the year.

# FREEMAN RELIGION CLUB

EFFIE SNEEDEN . . . . . *President*      JO ELLEN WILLIAMS . . . . . *Treasurer*  
NANCY DRAKE . . . . . *Vice-President*      SUZANNE DAVIS . . . *Publicity Chairman*  
ROSE PIERCE . . . . . *Secretary*      LELA MELVIN *Refreshments Chairman*  
LOIS DOBSON . *Arrangements Chairman*

The Freeman Religion Club is composed of religion majors and other students who elect courses in religion. The group is interested in promoting the club's purpose of studying the problems, current trends, and techniques in the field of religion. Guest speakers have aroused additional interest and enthusiasm, which aid in broadening the student's insights and understanding of religion.





## GRANDDAUGHTERS' CLUB

MARGARET INGRAM . . . . . *President*      DONNIE SIMMONS . . . . . *Secretary*

VIRGINIA MUMFORD . . . *Vice-President*      EDITH JOHNSON . . . . . *Treasurer*

CAROLYN STRAYHORN, ELIZA CULBERSON  
*Co-Chairmen of Needlework Guild*

The members of the Granddaughters' Club are special people. Theirs is the privilege of coming to Meredith with traditions handed down by their mothers or grandmothers who attended Meredith. In co-operation with the Needlework Guild the club sponsors collection of clothes or contributions to buy clothes for needy children.

# THE MRS. CLUB

JANE LOVINGOOD COLLINS. *President*

BECKY UPCHURCH WAY

*Recording Secretary*

MYRA COCHRANE DOSTER

*Vice-President*

JO ANN WILDER

*Corresponding Secretary*

MARY HONEYCUTT ASKEW, *Treasurer*

The Mrs. Club is comprised of married girls on campus who have combined marriage and housekeeping with a college education. The club has programs to help a busy wife and also socials to keep the couples in touch with each other.





## McDOWELL MUSIC CLUB

ADAIR WHISENHUNT . . . . . *President*      ANN ANTHONY . . . . *Secretary-Treasurer*

MARY LOIS CADLE . . . . *Vice-President*      ANNETTE LEE . . . . *Publicity Chairman*

PHOEBE BARNHARDT *Social Chairman*

The McDowell Music Club strives every year to aid its members in acquiring an added knowledge of music and of other arts as well.

The programs include facts concerning different periods of music with examples of the music of the period given.

Membership is open to any Meredith student who is interested in music and its promotion.

The McDowell Music Club is not only a member of the North Carolina Federation of Music Clubs, but also is associated with the Music Teachers' National Association.

## TRIPLE TRIO

Singing together in a spirit of joy is a characteristic of these nine girls. The Triple Trio is composed of members of the Meredith College Chorus. This group has represented Meredith at such functions as meetings of the Kiwanis and Lions Club, the A.A.U.W., and the Methodist Men's Class, and the Annual Banquet of the Chamber of Commerce. The Triple Trio has also enjoyed singing on television over both the Raleigh and Chapel Hill stations.

We also remember the group as they sang in our dining room on several occasions, among which was our Christmas dinner. The Triple Trio is under the direction of Miss Beatrice Donley.





## INTERNATIONAL RELATIONS CLUB

SHIRLEY WHITE . . . . . *President*

CAROLYN REID . . . . . *Secretary*

MARGARET McARTHUR  
*Vice-President*

DOROTHY SMITH . . . . . *Treasurer*

In an ever-shrinking world it is of vital importance that citizens of the world become intimately acquainted with its affairs. By means of student panels, guest speakers, films, and exchange programs, the members of the International Relations Club sought to attain this goal.

This club is affiliated with the active clubs in all parts of the state. The annual state meeting was a high point in the year's activity.

Under the able guidance of the club's sponsor, Dr. Lillian Parker Wallace, students at Meredith have made another year's progress in international relations.



# STUDENT LEAGUE OF WOMEN VOTERS

DOT HUNT.....*President*      PAT BOWEN.....*Secretary-Treasurer*

The Meredith Student League of Women Voters encourages an intelligent interest in local and national affairs. Its purpose is to help each member become a better and more active citizen. Members of this group are chosen to represent the college at the North Carolina State Student Legislature.





## THE PRICE LATIN CLUB

JANE LANCASTER . . . . . *President*      JANE MAYNARD . . . . . *Secretary*  
 BETTY ANN SMITH . . . . *Vice-President*      JODY GIBSON . . . . . *Treasurer*

*If elegance still proceedeth and English pens maintain that stream [of new words] we have of late observed to flow from many, we shall within a few years be fain to learn Latin to understand English.*

—SIR THOMAS BROWNE.

Although Latin is not the language of any country today, it is widely used in science, medicine, and law. Latin lives in our English and Romance languages. One can find many reminders of it in our books, newspapers, and magazines and in many public buildings. The Price Latin Club, a new organization on our campus, seeks to foster interest in Latin and the classics and to relate them to modern-day living. All students who are enrolled in Latin courses or who have had at least one year of Latin at Meredith College are eligible for membership. Lectures, meetings, and parties are sponsored by the Price Latin Club.

# LA TERTULIA SPANISH CLUB

SUE SEAY TOUNGER . . . . . *President*      BEVERLY ROWAND . . . . . *Secretary*  
WILMA OWENS . . . . . *Vice-President*      SHARON PATTERSON . . . . . *Treasurer*  
MARTHA FERRELL . . . *Social Chairman*

La Tertulia Spanish Club is open to all students who are taking, or have taken, courses in Spanish. The aim of the club is to promote interest in the Spanish-speaking countries and their peoples. The monthly meetings, the Christmas social, and the Spring Fiesta bring us in contact with, and give us a better understanding of, our Spanish neighbors.





## GERMAN CLUB

MARJORIE THORE.....*President*      MARJORIE JACKSON.....*Secretary*  
TRUDI MOORE.....*Vice-President*      MARILYN GREEN.....*Reporter*

Those who have envied the people who speak the beautiful and powerful German may join the favored ones by taking a course in German. This course will be a passport to enter the German Club, which was organized in 1950.

The club sings German songs, plays games, and hears talks by well-informed people. Each Christmas there is a wonderful party given; at that time members of the club celebrate Christmas as the Germans do. At the last meeting of the school year, the club members enjoyed a dinner cooked by members and given in honor of German students from neighboring schools.

# CANADAY MATHEMATICS CLUB

BARBARA JOHNSON . . . . . *President*

JEANNETTE SAUNDERS

*Social Chairman*

MARY JO PINNER . . . . . *Vice-President*

ELEANOR CHANDLER . *Secy.-Treasurer*

MARTHA ANN ROBERTS . . . . . *Reporter*

The purpose of the Canaday Mathematics Club is to promote interest in mathematics and to provide information on its current application. Informative discussions on positions available for mathematics majors and on mathematics in other lands stimulate personal initiative. Time spent in working out mathematical puzzles and problems adds greatly to the enjoyment of the club meetings. These meetings also include such things as visiting the planetarium at Chapel Hill and touring the statistical laboratory. There were angles of fun and friendship ties to infinity to be had in Arts 14.





## COLTON ENGLISH CLUB

PAT DOWELL . . . . . <i>President</i>	EVELYN BOONE . . . <i>Secretary-Treasurer</i>
JANETTE HUNEYCUTT, ANNE TUNSTALL . . . . . <i>Vice-Presidents</i>	BARBARA ANDREWS . . . . . <i>Reporter</i>
	JOYCE HAMRICK . . . . . <i>Social Chairman</i>

For students with a deep interest in the broad field of English, the Colton English Club has sought this year as in years before to give stimulation and opportunity for self-realization. Student and faculty works were heard at meetings, as were selections from classic and modern writers. Among the year's most popular functions were the Book Teas.

# SOCIOLOGY CLUB

NINA RUPPELT . . . . . *President*      VIRGINIA MORRIS . . . . . *Secretary*  
SUE WILSON . . . . . *Vice-President*      LIBBY WEHUNT . . . . . *Treasurer*

The Meredith Sociology Club is an organization composed of those students who are majoring in sociology, who have a related field in sociology, or who express a sincere interest in the field. In the monthly meetings there are programs on social issues of interest and concern to all. By listening to experts in the various fields of sociology and social work, and by group discussions, members endeavor to gain a better understanding of society and the vocational opportunities that lie in the field.

At monthly visits to the Wake County Home club members provide something in the line of entertainment, such as showing movies or singing with the people who live there.





## BARBER SCIENCE CLUB

RUTH TYSON.....*President*      CAROLYN LEE.....*Vice-President*

HELEN FRYE.....*Treasurer*

To a student whose knowledge of the out-of-doors is meager indeed, who has never peered at a live starfish, the Barber Science Club can offer new experiences.

During the year members hear talks by outside speakers and by Meredith faculty and students, which acquaint them with nature and with late developments in science. Club members enjoy parties at Christmas and in the spring, and we sponsored a picture honoring the members of the club who are seniors. Field trips have included a visit to the planetarium at Chapel Hill and tours of the hospital and of the medical school and research building at Duke University.

In the spring we look forward to the trip to the Duke University Marine Laboratory at Beaufort, North Carolina, where we collect such marine plants and animals as green and red seaweed, ghost crabs, and large jellyfish.

Members of the club are majors in science and those who elect advanced science courses. Through its varied activities the club endeavors to give its members a better knowledge and understanding of their environment.



# PSI CHI CLUB

MILLIE HARVEY . . . . . *President*      ELLADENE JOHNSON . . . . . *Secretary*  
KATHRYN BRIGHT . . . . . *Vice-President*      TRUDI MOORE . . . . . *Treasurer*

Any student who has a genuine interest in psychology and is taking or has taken courses in psychology has all the requirements for membership in the Psi Chi Club. The purpose of this organization is to promote interest in psychology and to provide information on its current application. During programs for the year, the members of the club have heard outside speakers and student speakers and have played psychological games.





## HOME ECONOMICS CLUB

VIRGINIA KIME.....*President*      CLEO JONES.....*Secretary*  
VIRGINIA MUMFORD ...*Vice-President*      SARAH OUTLAW.....*Treasurer*  
JOYCE HERNDON.....*Reporter*

Because the homes of today are building tomorrow's world, our theme for the year, "Our Homes—the Keys to World Understanding," is a timely and universal one. During the year, "Family Life in India," "Christmas in Other Lands," "Homes in Italy," and "A Visit to Japan" were programs which enlarged our world scope.

The Meredith College Home Economics Club was organized in 1922 and is affiliated with the North Carolina Home Economics Association and the American Home Economics Association. Members of the club are home economics students and those interested through related fields and activities.

# MEREDITH COLLEGE CHORUS

KATIE LEE CURRIN . . . . . *President*

NANCY REECE . . . . . *Treasurer*

KAY McCOSLEY . . . . . *Vice-President*

NANCY DOHERTY, JO BOND  
BROCK . . . . . *Librarians*

MARJORIE THORE . . . . . *Secretary*

MARGARET ANNE ENGLISH  
*Accompanist*

Singing in a spirit of friendship and enjoyment, the Meredith College Chorus has enjoyed another very successful year. The group of sixty voices embodies representatives from every major field on the campus. The chorus made special appearances during the year on Founder's Day, in the traditional Christmas concert when we presented Brahms' "Cradle Song of the Virgin" in German with violin accompaniment, and in the annual spring concert. Small ensembles from the chorus sang on many occasions.





## TOMORROW'S BUSINESS WOMEN

FRANCES CARR . . . . . *President*

OPHELIA McLEAN . . . . . *Treasurer*

KATHLEEN CLEMMONS . *Vice-President*

POLLY RICHARDSON . . . . . *Reporter*

ALPHIA SMALL . . . . . *Secretary*

ANNETTE CAUDLE . *Program Chairman*

Tomorrow's Business Women, organized in the fall of 1943, seeks to promote and to encourage interest in business education and to develop those qualities which are needed for success in the business world. Membership is limited to any junior or senior who is majoring in business or who is taking an elective in business. Sophomores who are majoring in business may become pledges.

This year the programs have helped members to see how to apply many of the fundamental principles which they have learned. The programs have enabled club members to keep in contact with the latest happenings in the business world.



H  
O  
N  
O  
R  
A  
R  
I  
E  
S

---

---



## SIGMA PI ALPHA

ANNE PARR . . . . .	<i>President</i>	MARJORIE THORE . . . . .	<i>Secretary</i>
ELLEN SCOFIELD . . . . .	<i>Vice-President</i>	SALLY ROBERSON . . . . .	<i>Treasurer</i>
		SALLY DRAKE . . . . .	<i>Publicity</i>

All peoples of the world are now neighbors, and for this reason it is more important than it has ever been before for students to learn foreign languages. The Phi Kappa Chapter of Sigma Pi Alpha, national honorary modern language fraternity, seeks to stimulate an interest in and to bring about a better understanding between foreign countries and ours.

Membership is determined by scholastic achievement and interest in foreign languages. With the desire to further this interest, Sigma Pi Alpha sponsors lectures, meetings, and parties as a means of better acquainting its members with life and customs in other lands.



## SIGMA ALPHA IOTA

HORTENSE WIGGS . . . . . *President*

JETTIE REA BRADSHAW . . . . . *Secretary*

SHIRLEY TAYLOR . . . . . *Vice-President*

LEAH SCARBOROUGH . . . . . *Treasurer*

“Ars longa, vita brevis”: art is long, life is short. Sigma Alpha Iota is a national professional music fraternity for women. Members of our chapter, Beta Zeta, are music majors chosen upon faculty recommendation for high character, scholarship, and musical ability. Presenting capable musicians to the public, participating in public performances, and operating the music store are a few of the organization’s many activities. The fraternity offers its members social and professional contacts which aid them in enjoying a broader field of music.



## ALPHA PSI OMEGA

JOYCE HAMRICK . . . . . *President*

Alpha Psi Omega, national honorary dramatics fraternity, recognizes the desires and achievements of those who love the theater and its activities and draws them into closer relationship with the stage. Membership is based on the quality and hours of work done on and off stage in campus productions. Fifty points gained by such work qualify one for membership. The Meredith Chapter of Alpha Psi is Eta Nu.





F  
E  
A  
T  
U  
R  
E  
S

---

---



May Queen

PHOEBE BARNHARDT



Maid of Honor

LOU ANN GRIFFIN



Senior Attendants

JUNE VANN  
JANE COLLINS



JEAN PUCKETT  
SHERRY-JAYNE CASPARI

## Junior Attendants



Sophomore Attendants

DIANA JONES  
MARY EDNA GRIMES



MIRIAM DEMPSEY  
MARTHA FASUL

## Freshman Attendants



## ASTROTEKTON MARSHALS

Anne Middleton, Inez Kendrick, Carolyn Riddick, Lucy Meade Atkinson, Becky Barnhardt.





## PHILARETIA MARSHALS

Libby Wehunt, Pat Gregory, Jo Bond Brock, Barbara Stanley, Joyce Bailey.

# More Sights to Remember



## A Last Familiar Sight



“That familiar indefinable lump in the chest . . . the going away lump . . . leaving . . . any place that you had made with difficulty and affection your home . . . in fact simply going away.”

May, finals, graduation . . . Goodbyes, and going away . . . To a summer job, to camp, to Europe . . . To a long, leisurely loaf at home . . . To a summer school, to a permanent job . . . Leaving what we have made our home . . . during our unbelonging years . . . With difficulty? For some of us, yes . . . But finally with affection . . . And so the “going away lump” . . . Because we are leaving the familiar:

The seniors’ first walk down the aisle in caps and gowns,

The strange characters that came out October 31 to tell tall tales and shuck corn.

The week the snows came,

The Faculty-Student Playday (Can’t anyone beat Dr. Canaday?)

The crowning of Phoebe as queen of the May Court,

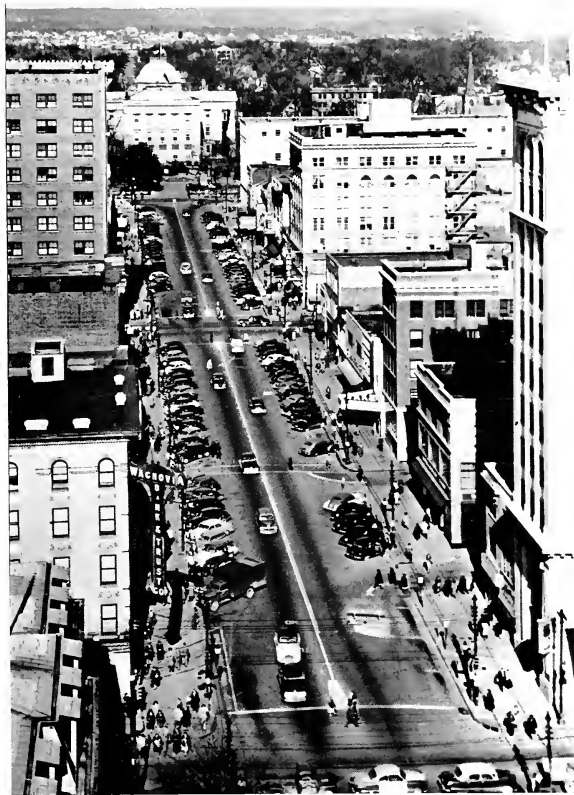
And the little things—ants and food from home, bits of plaster in the bathtub, dorm card mistakes, the 4:00 post office rush, room check (D for Coke bottles, B for dust), late night secret-sharing, pennants on the wall, 11:02—one call down, early breakfast for student teachers, and “Best Wishes To You.” . . .

These things we grumbled about or laughed or got excited for . . . But now we will carry them all away . . . As memories—with the rough edges faded away.

SANDRA PETERSON

The engraving in this 1955 OAK LEAVES was executed by the Lynchburg Engraving Company of Lynchburg, Virginia, and the printing and binding by the Edwards & Broughton Company of Raleigh. The art is the product of Sally Lynn Drake, Meredith College, class of '55. The photography was done by Smith Studio of Raleigh.

To all of these the staff extends sincere appreciation for their helpfulness, and to the Lynchburg Engraving Company and the Edwards & Broughton Company, we extend special thanks for their graciousness in waiving their right to advertising pages to enable the staff to keep within its budget.



A  
D  
V  
E  
R  
T  
I  
S  
E  
R  
S

# STUDENT DIRECTORY

- Abernethy, Julia Isadora, 726 W. Graham St. Shely  
 Adams, Annie Inez, 5304 Center St. Raleigh  
 Adams, Lena Margaret, Box No. 82. Four Oaks  
 Allen, Dessie Joan, Rt. 3. Lincoln  
 Allen, Marcia Jeannine, 225 Spring St. Hamlet  
 Allen, Patricia Anne, 231 South Randolph St. Raleigh  
 Rockingham  
 Allen, Ruth Jeanne, Rt. 1. Creedmoor  
 Andrews, Barbara Martin. Pittsboro  
 Andrews, Harriett Ladd, T2C Cameron Ct. Apts. Raleigh  
 Andrews, Sandra Joan, Box 1. Bonlea  
 Anthony, Frances Ann, 1203 Belvedere St. Gastonia  
 Arnold, Ray Upchurch, 127 Hudson St. Raleigh  
 Askew, Mary Huneycutt, 112 1/2 Berkshire Rd. Raleigh  
 Atheson, Carol West, 2317 Fernwood Dr. Greensboro  
 Atkins, Catherine Mercer, 214 N. 4th St. Albemarle  
 Atkinson, Lucy Meade, Rt. 2. McKenney, Va.  
 Austin, Anne, Fayetteville St. Clayton  
 Ayscue, Hazel Gray, Rt. 1. Henderson  
 Bagley, Carol Anne, 1808 Arlington St. Raleigh  
 Bagley, Martha LaVerne, 1808 Arlington St. Raleigh  
 Bailey, Joyce Ann, Rt. 1. Benson  
 Balfour, Sheila Mary. Lumber Bridge  
 Ball, Betty Joan, 701 N. Church St. Scotland Neck  
 Ballance, Esther Anne, Rt. 1. Fremont  
 Banner, Alvia Kayne, 1201 Cornwallis Dr. Greensboro  
 Barbour, Jennie Ruth, Woodlawn Dr. Dunn  
 Barbrey, Anne Jane, Box 345. Clinton  
 Barger, Janice Aileen, 213 Pennton Ave. Lenoir  
 Barlow, Letha Julene, Rt. 1, Box 211. N. Wilkesboro  
 Barnes, Patricia Gail. Corinth  
 Barnhardt, Phoebe Jean, 184 Washington Lane Concord  
 Barnhardt, Rebecca, 1404 Spencer Ave. New Bern  
 Barnhill, June Elizabeth, Box 446. Greenville  
 Barrett, Patricia Ann, 1203 Grace St. Wilmington  
 Bass, Madaline Thomasine. Halifax  
 Batchelor, Lester Jean. Sharpshurg  
 Bateman, Billie Blanton, 210 Johnston St. Tarboro  
 Baxter, Emma Elizabeth, 814 Carolina Ave. Gastonia  
 Beam, Shirley Mae, Box 604. Cherryville  
 Bell, Mary Lou, Rt. 1. Rocky Mount  
 Bennett, Carol Marilyn, 2413 E. 5th St. Charlotte  
 Bennett, Peggy Ross, 1819 Glenwood Ave. Raleigh  
 Benson, Becky Jo, 717 Lockland Ave. Winston-Salem  
 Best, Elizabeth Ann, 708 E. Mulberry St. Goldsboro  
 Bestedt, Marilyn Olive, 303 Oak St. Greenville  
 Bissette, Sarah Gertrude, Rt. 1. Spring Hope  
 Blackman, Agnes Jacqueline. Benson  
 Blackmon, Betty Jean, 509 E. 13th St. Lumberton  
 Blackmon, Sylvia Louise, 401 Kinsey St. Raleigh  
 Blanton, Frances Delores, 306 Clegg St. Shely  
 Bone, Martha Louise, 910 S. Main St. Laurinburg  
 Bone, Peggy Jo, 314 First St. Nashville  
 Boone, Evelyn Carole, 130 E. 10th St. Scotland Neck  
 Booth, Janis Marie. Shawboro  
 Bowden, Mary Eleanor, Rt. 1. Teachey  
 Bowen, Patricia Ann, Rt. 1. Henderson  
 Bowman, Patricia Ann, Rt. 2, Box 463. Kannapolis  
 Boyles, Marjorie Ann, 700 Ferndale Dr. High Point  
 Bradshaw, Barbara Ann, 505 Park Ave. Ayden  
 Bradshaw, Jettie Rea, 2104 Twin Ave. Gastonia  
 Bramlett, Martha Ellen, 17 Katherine Pl. Asheville  
 Brandley, Barbara. Spring Hope  
 Braswell, Mary Ann, 418 Western Ave. Rocky Mt.  
 Brewer, Clara Glenn, 1102 Harp St. Raleigh  
 Bridgers, Gertrude Carolyn, 35 Mt. Vernon Cr. Asheville  
 Bridgers, Linda Faye, Gannon Ave. Sevilun  
 Bridges, Norma Faye, Rt. 2. Wendell  
 Bright, Mary Katherine, Rt. 1. Whiteville  
 Bright, Shirley Mae, Rt. 1. Whiteville  
 Bristol, Myra Clarissa. Edisto Beach, S. C.  
 Britt, Ruby Nina, Rt. 2. Lumberton  
 Brock, Jo Bond, 1002 Sixth Ave. Conway, S. C.  
 Brooks, Patricia Glenn, 633-C Daniels St. Raleigh  
 Brown, Mary Jo, Rt. 4. Concord  
 Browne, Dorothy Eileen, 303 N. Howard Cr. Tarboro  
 Browning, Barbara Jordan, 322 Grove Pk. Burlington  
 Brunson, Margaret Ruth, 1400 King Ave. Florence, S. C.  
 Bryant, Amorette Jane, Rt. 1. Woodland  
 Buffalo, Meredith Ann, Rt. 3. Raleigh  
 Bullock, Lorraine Yvonne. Delco  
 Bunn, Clara Ray, 1826 Glenwood Ave. Raleigh  
 Bunting, Nancy Bunn, Rt. 1. Nashville  
 Burgess, Melba Virginia, 208 N. Boundary. Lenoir  
 Burns, Cristel Lois, 519 Gardner St. Raleigh  
 Burns, Joyce Anne, 519 Gardner St. Raleigh  
 Burrus, Wanda Dale. Manns Harbor  
 Butts, Betty Ann. Buies Creek  
 Byrne, Virginia Dare, 422 S. Hawthorne Rd. Winston-Salem  
 Cadle, Mary Lois, Box 182. Apex  
 Cagle, Lela Mae, 216 Myers. Raleigh  
 Calhoun, Mary Lillian, 117 Jefferson St. Kernersville  
 Calloway, Rebecca Anne, 481 Harris St. Concord  
 Cameron, Beulah Bradley, Rt. 1. Cary  
 Canipe, Nora Elizabeth, 328 5th Ave. S. E. Hickory  
 Cannady, Margaret Frances. Richland  
 Capps, Virginia Ann, Rt. 3. Rocky Mt.  
 Carr, Edna Frances, Box 641. Plymouth  
 Carter, Alice Lou, Southerland St. Wallace  
 Carter, Patricia Register, R.F.D. 2. Wallace  
 Cashwell, Veronica Ann, Rt. 1. Parkersburg  
 Caspari, Anne Elizabeth, Apt. 17A, Verville. Raleigh

Meredith College students hold a warm place in our hearts as some of our very favorite customers . . . and so to you, Hudson-Belk wishes sincere congratulations and the best of luck for the future.

## HUDSON-BELK COMPANY

RALEIGH, NORTH CAROLINA



*Jean's  
of Raleigh*

### ADLER'S of RALEIGH

*For Women Who Love Elegance in Footwear*

#### FEATURING

Delmonettes—Styled by Delma  
Penaljo Wedges, Deb Pumps and Flats  
Red Cross Shoes

In Our Budget Department  
Shoes by American Girl — Sport Shoes by  
Sanders of Boston — Cover Girl Flats — The  
Clinic Shoe.

#### Two Stores

Downtown, Fayetteville St.    Cameron Village

### The Five Southern Baptist Convention Seminaries

invite you to higher training for  
SUPERIOR CHRISTIAN LEADERSHIP  
SOUTHERN BAPTIST  
THEOLOGICAL SEMINARY  
Louisville, Ky., Duke K. McCall, Pres.  
SOUTHWESTERN BAPTIST  
THEOLOGICAL SEMINARY  
Ft. Worth, Tex., J. Howard Williams, Pres.  
NEW ORLEANS BAPTIST  
THEOLOGICAL SEMINARY  
New Orleans, La., Roland Q. Leavell, Pres.  
GOLDEN GATE BAPTIST  
THEOLOGICAL SEMINARY  
Berkeley, Calif., Harold K. Graves, Pres.  
SOUTHEASTERN BAPTIST  
THEOLOGICAL SEMINARY  
Wake Forest, N. C., Sydnor L. Stealey, Pres.

*"A call to preach is a call to prepare"*

Caspari, Dale Verna, Ocean Avenue  
Ronkonkoma, N. Y.

Caspari, Sherry-Jayne, Ocean Avenue  
Ronkonkoma, N. Y.

Caudle, Annette, Rt. 1..... Peachland

Caudell, Sylvia May, Graham St..... Wallace

Causey, Joyce Anne, 1206 St. Patrick St..... Tarboro

Chandler, Ada Fay, Rt. 1..... Morrisville

Chandler, Eleanor Kathryn, 209 Virginia Ave.  
Asheboro

Chappell, Emma Lou, Rt. 1..... Fuquay Springs

Civils, Zella Frances, 300 Wilson Ave..... Kinston

Churchill, Barbara Lee, Box 116, Rt. 1..... Varina

Clark, Aurilea Eleanor..... Varina

Clark, Frances Jane..... Fuquay Springs

Clay, Parrieleigh Bobbitt, Englewood..... Rocky Mt.

Clayton, Mildred Lee, Rt. 1..... Bunnlevel

Clemmons, Hazel Kathleen..... Supply

Cline, Josephine Rand, Rt. 2, Poole Rd..... Raleigh

Cochrane, Nancy Lee, Rt. 2..... Candler

Codas, Bessie Theo, 409 Young St..... Henderson

Cole, Anne Crute, Box 125..... Pinetops

Cole, Mary Catherine, 163 Colonial Dr. Wilmington

Collins, Jane Lovingood, B-3-B Cameron Ct. Apts.  
Raleigh

Colston, Mary Frances, Rt. 2..... Nashville

Cook, Shirley Kathryn, 303 Linwood Ave..... Goldsboro

Cooke, A. Carol, 3411 1/2 Hillsboro St..... Raleigh

Cooper, Alice Carolina, 3 Henderson St..... Raleigh

Cooper, Charlotte Edith, 702 S. Main St. Laurinburg

Cooper, Jean Crystal, 222 E. Spring St..... Rocky Mt.

Corbett, Lynn, 609 Castle Hayne Rd. Wilmington

Corbett, Patricia Jean, Box 684..... Kenly

Corbett, Virginia Janette..... Middlesex

Corn, Jacklyn Annette..... High Point

Correll, Blanche Bonner, 206 W. Church St.  
Laurinburg

Corzine, Nancy Carolyn, 1723 Kensington Dr.  
Charlotte

Cotten, Mabel Oswalt, 611 Circle Dr.  
Fuquay Springs

Cottrell, Ruth Ernestine, W. College Ave..... Lenoir

Crawford, Gail Hill, 500 Whitaker Mill Rd. Raleigh

Crawford, Sarah Jeanette, 506 E. Franklin. Raleigh

Creech, Margaret Leigh, Box 163..... Four Oaks

Crook, Sally Cansler, 240 N. 4th St..... Albemarle

Culberson, Eliza Lee, 1623 Canterbury Rd..... Raleigh

Cummings, Kay Carolina, 839 Lee St..... Asheboro

Current, Molly Lysbeth, 1510 Jackson Rd. Gastonia

Curran, Katie Lee, 210 S. Charles St..... Roxboro

Curtiss, Carolyn Joy, 268 Hillside..... Asheville

Darden, Peggy Wayne, 443 Jefferson St..... Plymouth

Daughtry, Doris Grey..... Faison

Davis, Bettie Jean, Box 136..... Norlina

Davis, Harriette Suzanne, Rt. 1..... Seven Springs

Davis, Rosalind Griggs, S. Main St..... Red Springs

Davis, Sara Jean, 2718 St. Mary's St..... Raleigh

Dawkins, Janice Anne, 26 Bagwell Ave..... Raleigh

Deans, Barbara Jean, 1200 W. Kenan St..... Wilson

Delbridge, Mary Elizabeth..... Spring Hope

Deloatch, Betty Jean, 1221 Hamilton St.  
Roanoke Rapids

Dempsey, Miriam Delores, Commerce..... Aulander

Dennis, Janice Earle, Rt. 2, Box 614..... Kannapolis

Derriek, Mary Catherine, Rt. 6, Box 614..... Charlotte

Dial, Ruth Elaine, Box 153..... Pembroke

Dickens, Barbara Ann, Rt. 2..... Louisburg

Dobson, Berta Lois, Box 146..... Snow Hill

Dodson, Janet Gaynor, 1912 Third St..... Durham

Doherty, Nancy Ellen..... Chinquapin

Doster, Myra Cochran, No. 4, 120 Cox Ave..... Raleigh

Dover, Dorothy Esther..... Shelby

Dowell, Patricia Burnett, 1614 Park Dr..... Raleigh

Drake, Lois Jean, 4901 Potomac Ave., N. W.  
Washington, D. C.

Drake, Nancy Ellen, 4901 Potomac Ave., N. W.  
Washington 7, D. C.

Drake, Sally Linn, 4901 Potomac Ave., N. W.  
Washington 7, D. C.

Draughon, Patricia Ann, Rt. 5..... Clinton

DuRant, Eunice Lee, 253 S. McQueen St.  
Florence, S. C.

Eddins, Glenda Jane, 705 Smith St..... Claxton, Ga.

Eddins, Katie Joyce, Rt. 3..... Zebulon

Ellington, Barbara Lee, 513 Bridges St. High Point

English, Margaret Anne, Box 53..... Cary

Enloe, Virginia Ann, Rt. 1..... Hendersonville

Evans, Edna Scott, 203 Chesterfield Ave.  
Lancaster, S. C.

Everhart, Sally Lou, Box 501..... Swepsonville

Eves, Joanne Elizabeth, Rt. 4..... Elizabeth City

Farquharsen, Bennie Bryan, 1911 River Rd.  
Washington

Farris, Billye W., State College Sta., Box 5531  
Raleigh

Farris, Margaret Anita, 1205 Crescent Ave. Gastonia

Fasul, Martha Steve, 205 Dobbin Ave..... Fayetteville

Ferguson, Mary Ruth, 2615 Wake Forest Rd.  
Durham

Ferrell, Martha Joel, 1533 W. First St.  
Winston-Salem

Fitzgerald, Gertrude E..... Gretna, Va.

Forbes, Wilma Jean..... Morrisville

Forehand, Betty Baker..... Colerain

Formyduval, Avis..... Ash

Fowler, Martha Lynn, 3608 Kirby Dr..... Greensboro

Franklin, Alice Faye, Box 157, Rt. 1. Lillington

Freeze, June Marlene, 447 Harris St..... Concord

Frye, Helen Ernestine, P.O. Box 415..... Saltville, Va.

Fulcher, Janet Deloris, 400 S. Taylor St., Rocky Mt.

Fulp, Mary Frances..... Lewisville

Garrell, Patricia Anne, Highland Ridge Rd., Rt. 6  
Raleigh

Garrett, Carolina Knight, 1006 Buchanan Blvd.  
Durham

Gerald, Mary Jon, Box 374..... Wendell

Gibson, Thelma Joanne, 136 John St..... Fayetteville



THE PORTRAITS IN THIS  
YEARBOOK WERE MADE BY

**SMITH STUDIO**  
PHOTOGRAPHERS

*Official Portrait Photographers*

*For the "1955 Oak Leaves"*



12 E. Hargett Street

RALEIGH, N. C.

Gilbert, Emily Anne, 2020 Pender Ave. Wilmington  
Gilliam, Peggy Marie, 716 Brookstown Ave.

Winston-Salem

Godwin, Margaret Joan, Box 590 ..... Dunn  
Gore, K. Fannette, Magnolia St. .... Racford  
Gossett, Annette Joy, Box 979 ..... Gastonia  
Grainger, Eva Elizabeth, Rt. 1, Box 122, Nichols, S. C.  
Grant, Laurel Maxine, P.O. Box 35. Marshville  
Grealish, Sammy Jeanne, Box 603. .... Shelby  
Greene, Betsy Carol, P.O. Box 370. .... Sanford  
Greene, Marilyn Letitia, 211 Wilson St. .... Albemarle  
Greene, Patricia Anne, Box 222. .... Cliffside  
Gregory, Patricia Anne. .... Benson  
Griffin, Lou Ann. .... Shawboro  
Griffith, Angela Estelle, 605 E. Franklin. .... Raleigh  
Grigg, Linda Jane, 117 Oak Dale St. .... Gastonia  
Grigg, Patsy Lynn, 506 S. Chestnut. .... Gastonia  
Grimes, Mary Edna, 230 Rose St. .... Smithfield  
Grimm, Margaret, Box 297. .... Carthage  
Guthrie, Julia Annette, 909 Shepard St.

Morehead City

Haislip, Cynthia Lynette, R.F.D. 1. .... Oak City  
Hall, Jacquelyn Ann, 405 E. Highland Ave. Kinston  
Hall, Nancy Mae, Box 466. .... Roxboro  
Halstead, Oveda June, 503 N. Person St. .... Raleigh  
Hampe, Mary Neil, Woodmore Dr. .... Mooresville  
Hamrick, Galena Ann, Box 266. .... Boiling Springs  
Hamrick, Joyce Ann, 180 Park Blvd. Winston-Salem  
Hamrick, Sarah Lee, 216 Washington Ave.

Besmer City

Hanes, Patricia Ann, 1621 Poston Cr. Gastonia  
Hardie, Nancy Ruth, Rt. 1, Box 230. .... Clarendon  
Hardison, Janet Sue, Box 74. .... Arapahoe  
Harris, Shirley Ann, Rt. 1. .... Enfield  
Hartson, Aurelia Elizabeth, Rt. 6. .... Raleigh  
Hartsell, Pamela Rose, 15 Miller Ave. .... Concord  
Harvey, Jane Marilyn, Rt. 5. .... Raleigh  
Harvey, Mildred Holland, 2 Victor Pk.

Pacolet Mills, S. C.

Harwell, Nancy Carolynne, 2418 Luidea Ave.

Kinston

Hazcher, Peggy Ennis, Rt. 1. .... Morrisville  
Hazelwood, Barbara Ann, 801 Maple St. .... Weldon  
Henline, Shirley Marie, 15 Melrose Ave. .... Asheville  
Herndon, Joyce Wilson, Box 248. .... Apex  
Herring, Joyce Marie, Rt. 3. .... Snow Hill  
Hiatt, Anita Paige, 311 Banner Ave. .... Winston-Salem  
Hicks, Jean Roddey, 2121 Chatham Ave. .... Charlotte  
Hicks, Mary Elizabeth, 1012 Buffalo St. .... Shelby  
Hinson, Nell Rose. .... Fair Bluff  
Holland, Peggy Whitaker, 502 Colleton Rd. .... Raleigh  
Holt, Margaret Katherine, 704 Cypress Rd.

Greensboro

Honeycutt, Ann Southerland, 105 E. College St.  
Mt. Olive  
Harrell, Marcia Dewey. .... Atkinson  
Horton, Mona Fay, Rt. 4. .... Zebulon  
House, Harriette Ann, 803 Carthage St. .... Sanford  
Howard, Anne Elizabeth, 886 Arbor Lane. .... Concord

Huckaby, Sarah Hope, 915 Merrimon Ave. Asheville  
Hudgins, Katherine Belle, 1119 N. Bynum St. Wilson  
Hudson, Clara Lucille, Rt. 11, Elkhardt Lane

Richmond, Va.

Huneycutt, Estelle Janett, Rt. 1. .... Okaboro  
Hunt, Dorothy Elizabeth, 1204 N. Queen St. Kinston  
Hunter, Nancy Spruill, 325 Academy St. .... Cary  
Husky, Lula Osteen, Rt. 2. .... Ellenboro  
Hutchinson, Carolyn Gail, Rt. 2. .... N. Wilkesboro  
Hutchinson, Linda Carol, Rt. 1. .... Polkton  
Ingram, Juanita Sparks, 14 Park Ave. .... Wadesboro  
Ingram, Margaret McNeill. .... Lilesville  
Jackson, Frances Priscilla, Cooper Dr. .... Clinton  
Jackson, Marjorie Love, Rt. 1. .... Dunn  
Jackson, Olavia Faye, Rt. 1. .... Autryville  
Jackson, Patricia Ray, 2101 Reaves Dr. .... Raleigh  
James, Molly Marvin. .... Chinquapin  
Jansen, Mary Claire, 652 N. E. 19th Ave.  
Ft. Lauderdale, Fla.

Jenerette, Thelma Roberta. .... Tabor City

Jenkins, Elsie Janet, 2606 Philip St. Winston-Salem  
Jenkins, Sylvia. .... Maysville  
Jernigan, Margaret, Box 184. .... Tabor City  
Jobe, Mary Anne, 110 Harrison Ave. .... Raleigh  
Johnson, Barbara Jean, 517 New River Dr.

Jacksonville

Johnson, Barbara Kay, Box 553. .... Middlesex  
Johnson, Edith Brewer, 130 New Bern Ave. .... Raleigh  
Johnson, Elladene Marie, Rt. 5. .... Dunn  
Johnson, Emily Fay. .... Angier  
Johnson, Ernestine Elizabeth, Rt. 3. .... Wadesboro  
Johnson, Joan Deland, Rt. 2. .... Benson  
Johnson, Katie Frances, Rt. 2. .... Benson  
Johnson, Kay Ann, 212 E. Caswell St. .... Kinston  
Johnson, Kay Elizabeth, Rt. 2. .... Clinton  
Johnson, Maude Paddison, 901 Main St. .... Tarboro  
Jones, Diana Gail, 278 Liberty Dr. .... Thomasville  
Jones, Elizabeth Lindler, 55 Lindin Ave. .... Asheville  
Jones, Jo Ann, 1417 N. Queen St. .... Kinston  
Jones, Joyce Anne, Box 384. .... Warsaw  
Jones, Lula Mae, Box 35. .... Pink Hill  
Jones, Maryann Cleo, Box 393. .... Garner  
Jones, Virginia Lee, 412 N. East St. .... Raleigh  
Jordan, Shirley Jean, Rt. 3. .... Mt. Olive  
Joyner, Evelyn Videau, 303 N. Main St. .... Farmville  
Joyner, Nancy Carol, 132 Edwin Pl. .... Asheville  
Joyner, Peggy Elaine. .... Rich Square

Kee, Annie Laurie, Box 221. .... Manteo  
Keen, Constance Loree. .... Mt. Olive  
Kellum, Betty Carol, 1802 Park Ave. .... New Bern  
Kendrick, Rebecca Inez, 3645 N. Front St.  
Harrisburg, Pa.

Kerley, Mary Frances. .... Kittrell  
Kiff, Betty Jo, 111 Rhue St. .... Ahoskie  
Kimbrell, Millicent Nell, 341 Hillside Ave. Charlotte  
Kime, Virginia, 2717 Vanderbilt Ave. .... Raleigh  
King, Lucretia Tillman, Rt. 3, Box 316. .... Fayetteville  
King, Reba Raye, Rt.3, Box 316. .... Fayetteville

# **BROGDEN PRODUCE CO., INC.**

WHOLESALE  
FRUIT AND PRODUCE

*Since 1905*

RALEIGH, NORTH CAROLINA

# **JOB P. WYATT & SONS CO.**

*Established 1881*

HARDWARE  
FARM EQUIPMENT  
SEEDS :- PLANTS :- BULBS

325-331 S. Wilmington Street

RALEIGH, N. C.

Kinkead, Dorothy, Box 166, Tarboro Highway  
Rocky Mount

Kiser, Mary Elizabeth ..... Fork

Knight, Lynda Ruth ..... Columbia

Knight, Mildred Rebecca, 515 Gardner St. . . . Raleigh

Knight, Miriam McIntosh. . . . Cheraw, S. C.

Knott, Bettye Sue, Horner Heights ..... Oxford

Laine, Carolyn Ann, 1100 Arendell St.  
Morehead City

Lambert, Helen Jane, Rt. 4 ..... Albemarle

Lancaster, Jane Elizabeth, 402 S. Boylan Ave.  
Raleigh

Lane, Betsy Carole, 807 Lee ..... Asheboro

Laughter, June Ellen, Rt. 1 ..... Hendersonville

Lawrence, Sara Gorham, Rt. 2 ..... Tarboro

Lay, Martha Anne, Box 222 ..... Huntersville

Layne, Bessie Margaret ..... Ca-Vel

Leach, Dorothy Faye, 213 Polk St., Apt. 3 ..... Raleigh

Lee, Mary Lou ..... Four Oaks

Lee, Sara Cornelia, Falkland Heights ..... Greenville

Lee, Carolyn, Rt. 2 ..... Polkton

Lesniak, Hazel Comer, Box 153 ..... Lake Waccamaw

Liles, Patricia Gray, 225 Furches ..... Raleigh

Liles, Peggy Joyce, Rt. 1 ..... Bailey

Lindsey, Bettye, 809 S. W. 9th Ave.  
Ft. Lauderdale, Fla.

Little, Jackie Louise, 506 Snow Hill St. .... Ayden

Livingston, Christine Sarah, 702 Regester Ave.  
Baltimore 12, Md.

Lloyd, Betsy Carol, 2703 Mayview Rd. .... Raleigh

Loving, Patsy Ann, 855 Pine St. .... Danville, Va.

Lowder, Carolyn Rousseau, 714 Arlington St.  
Rocky Mount

Lowery, Corinne Little ..... Wingate

Lundy, Miriam, 1311 Third Ave. .... Conway, S. C.

Lutz, Margie Jane, 909 Elizabeth Rd. .... Shelby

McArthur, Margaret Marsh, 715 Glenwood Dr.  
Fayetteville

McArthur, Marilyn ..... Winterville

McCall, Martha Louise, 314 Highland Ave. .... Lenoir

McCosley, Kay Monica, 518 Johnson St. .... New Bern

McDonald, Katherine, 303 Central Ave. .... Raeford

McDonald, Lucy Margaret, 205 East St. .... Erwin

McGaha, Doris Ferguson, Rt. 1 ..... Brevard

McIntyre, Martha Ellen, 825 W. Elm ..... Shelby

McKinley, Donna Ray, P.O. Box 403 ..... Washington

McLamb, Sarah Elizabeth, Rt. 2, Box 105  
Newton Grove

McLean, Beatrice Shirley, Rt. 1 ..... Maxton

McLean, Margaret Ophelia, Rt. 1 ..... Maxton

McLeod, Paula Cathryne, 3285 Pink St. . . . Cherryville

McRoy, Maxine, 208 Cromwell Ave. .... Tarboro

McWhorter, Van Lee ..... Bethel

Maddrey, Edna Gwendolyn, 2815 Mayview Rd.  
Raleigh

Mahler, Cynthia Ann, 912 Main St. .... Tarboro

Mangum, Sarah Gene ..... Stem

Marley, Rebecca Ann ..... Lumber Bridge

Marshall, M. Kathryn, 4 Farrwood ..... Asheville

Martin, Mary Earline ..... Eagle Springs

Mastellari, Martha Elizabeth, 51st 22  
Panama, Panama

Matthews, Ava Larue, Rt. 2 ..... Angier

Matthews, Frances Elizabeth ..... Buies Creek

Matthews, Kathleen Michie, 1421 Brooks Ave.  
Raleigh

Mattocks, Barbara Ellen, 216 1st and 3rd ..... Maysville

Maynard, Amanda Jane, Rt. 1 ..... Cary

Mayton, Gladys Daphne, Rt. 5 ..... Durham

Melton, Dora Sue, 304 S. Main ..... Henderson, Ky.

Melvin, Lela Mae ..... Harrells

Melvin, Patty Ray ..... Harrells

Meredith, Barbara Lee, Rt. 3, Box 50  
Fredericksburg, Va.

Merritt, Iris Marie, 1108 Pittsboro Rd. . . . Chapel Hill

Mewborn, Peggy, 208 Princess St. .... Goldsboro

Middleton, Chloe Anne, Box 555 ..... Winston-Salem

Miles, Rebekah Anne, 412 Alamance Rd. . . . Burlington

Miller, Frances, Main St. .... Rich Square

Mitchell, Margaret Elaine, 1718 1/2 Hillsboro St.  
Raleigh

Moore, Dora Ellen, 614 S. Main St. .... Belmont

Moore, Helen Irene, 700 Roundtree Ave. .... Kinston

Moore, Joan, 400 N. Green St. .... Wadesboro

Moore, Louise Mildred, 700 Roundtree Ave. .... Kinston

Moore, Mary Dare, 827 S. Main St. .... Salisbury

Moore, Trudi, Box 330 ..... Rockingham

Morris, Dolores Diane, Rt. 1 ..... Creswell

Morris, Virginia Ann, 223 Gholson Ave. . . . Henderson

Morris, Vivian Yvonne, 321 Jackson Pk. Rd.  
Kannapolis

Morriss, Joan Elizabeth, 87 Tacoma Cr. . . . Asheville

Moss, Mary Lou ..... Hoffman

Moss, Susan Lee, 100 S. Gaston St. .... Kings Mountain

Mott, Margaret Gertrude, Box 506 ..... Mooresville

Mumford, Virginia Anne, 712 Brooks Ave. .... Raleigh

Munn, Faye Virginia, Rt. 1 ..... Tar Heel

Murray, Rebecca Jean, 1307 Wake Forest Rd.  
Raleigh

Myers, Carol Roxilla, Rt. 1, Box 187 ..... Thomasville

Myers, Hilda Ree, Rt. 1 ..... Thomasville

Myrick, Nancy Marie, Rt. 1 ..... Ellerbe

Nelms, Jocelyn ..... Nashville

Nesbitt, Barbara Ann, Box 574 ..... Black Mountain

Newman, Emily Florence, 1922 Market St.  
Wilmington

Newson, Mary Virginia, 220 Confederate Ave.  
Salisbury

Newton, Sally Stephana ..... Kenansville

Nock, Bette Alice, 461 W. Park ..... Cary

Nye, Lenora, Rt. 2 ..... Fairmont

Oldham, Barbara Sue, Carthage, Box 518 ..... Sanford

Oliver, Mary Frances, 702 N. Madison St. . . . Whiteville

Oliver, Ruth Atkinson, Rt. 3 ..... Carthage

Osborne, Mary June, Rt. 4 ..... Durham

*Compliments*

*of*

**MOTHER & DAUGHTER  
STORES, INC.**

**W. H. KING  
DRUG COMPANY  
WHOLESALE DRUGGISTS**

**Raleigh, N. C.**

For Safe and Dependable Service Shop  
at Your Neighborhood Drug Store

Food Service Equipment and Utensils  
(CHOOSE HOOS)

**JOHN HOOS COMPANY OF N. C., INC.**

Raleigh, N. C.

Jack Caldwell, District Representative

*Compliments*

*of*

**RALEIGH  
LAUNDRY**

**CHAMBLEE  
INSURANCE  
AGENCY**

711 Insurance Building

**RALEIGH, N. C.**

---

***"Complete Insurance Service"***

---

**WE WRITE YOUR STUDENTS  
ACCIDENT INSURANCE**

Outlaw, Sarah West. . . . . Kenansville  
 Overton, Violet Osborne, Rt. 2. . . . . Oxford  
 Owens, Wilma Grace. . . . . Fountain  
 Page, Nancy Lee. . . . . Lake View, S. C.  
 Palmer, Eleanor Ann, 3401 Hillsboro St. . . . . Raleigh  
 Parham, Geraldine Ruth. . . . . Robbins  
 Park, Marilyn Claire, 100 Homewood Dr. . . . .  
     Greensboro  
 Parker, Frances. . . . . Pollocksville  
 Parr, Anne Channing, 223 E. Beau St. . . . .  
     Washington, Pa.  
 Pate, Sarah Ann, R.F.D. 2. . . . . New Bern  
 Patterson, Frances Jean. . . . . Kenansville  
 Patterson, Sharon Lynne, 2105 Queens Rd. . . . .  
     West Charlotte  
 Peele Lillian Marie, 919 Washington St. . . . . Williamston  
 Peele, Lois Florette, Box 554. . . . . Roxobel  
 Peeler, Bess Lenora, State School for Blind. . . . . Raleigh  
 Peoples, Peggy Joyce, 553 Ridgeway Ave. . . . . Statesville  
 Perkins, Nancy Carol, Rt. 2. . . . . Roxboro  
 Peterson, Sandra Jean, Rt. 2. . . . . Clinton  
 Perry, Alvis Lawrence, Rt. 1. . . . . Hobbsville  
 Phillips, Betty Jean, Rt. 2. . . . . Scotland Neck  
 Phillips, Bonnie Sue, Rt. 1. . . . . Palmyra  
 Pickard, Dorothy Frances, Rt. 2. . . . . Liberty  
 Pickelsimer, Alyce Moore, 321 Moir St. . . . . Leaksville  
 Pierce, Alma Lou, Rt. 2. . . . . Wendell  
 Pierce, Rose Ellen, 203 Highway St. . . . . Madison  
 Pinner, Mary Jo, Box 337. . . . . Tabor City  
 Pinner, Shirley Ann, 2209 Klien Rd. . . . . Wilmington  
 Pond, Lois Lee, 1419 Early St. . . . . Lynchburg, Va.  
 Poole, Barbara Louise, 1312 Dixie Trail. . . . . Raleigh  
 Poole, Shirley Clyde, 1628 Dixie Trail. . . . . Raleigh  
 Pope, Lula Ann, 217 Rose Terrace. . . . . Wadesboro  
 Puckett, Jean Elizabeth, 1813 Ridley St. . . . . Raleigh  
 Purvis, Betty Ann, 645 Kent St. . . . . Charlotte  
 Randall, Mary Glenn, Rt. 6. . . . . Raleigh  
 Ransome, Annie Luther, Burnette Ave. . . . . Enfield  
 Reece, Nancy Carroll, 329 W. Pine St. . . . . Mt. Airy  
 Reed, Imogene Daisy, Rt. 5. . . . . Winston-Salem  
 Reep, Marlene Norrita, 9 N. Bloodworth St. . . . . Raleigh  
 Reid, Cynthia Carolyn, 307 S. Broad St. . . . . Gastonia  
 Reid, Roberta Lee, 515 Spring St. . . . . Hamlet  
 Richardson, Janice Louise, 123 S. Court St. . . . .  
     Luray, Va.  
 Richardson, Polly Ann. . . . . Keny  
 Riddick, L. Carolyn, 409 Ave. C. . . . . New Bern  
 Riley, Patricia Ann, 3801 Nicholas St. . . . .  
     Lynchburg, Va.  
 Rivers, Elizabeth Nelle, 205 E. Faris Rd. . . . .  
     Greenville, S. C.  
 Roberson, Sarah Elizabeth, 926 W. Main St. . . . .  
     Williamston  
 Roberts, Martha Ann, 1209 Walnut. . . . . Lumberton  
 Robinson, Sue Frances, 225 Forest Rd. . . . . Raleigh  
 Rowand, Beverly Mace, Fairmont Ave. . . . .  
     Morristown, Tenn.  
 Royster, Nancy Louise, 413 Washington. . . . . Shelby  
 Rucker, Susie, 509 W. Graham St. . . . . Shelby  
 Ruppelt, Nina Frances, 2205 Commonwealth Ave. . . . .  
     Charlotte  
 Saikkola, Heli Marjatta, Koskelantie 23 E. 34 . . . . .  
     Helsinki, Finland  
 Saunders, Carolyn Jeannette, Rt. 1. . . . . Willow Springs  
 Sawyer, Rebecca Jo. . . . . Kelford  
 Sawyer, Willa Faye. . . . . Belcross  
 Scarborough, Leah Olive, Rt. 2, Box 116. Mt. Gilead  
 Schanck, Sylvia Ann, 1247 Eatantown Blvd. . . . .  
     Long Branch, N. J.  
 Scofield, Mary Ellen, 5001 W. Seminary Ave. . . . .  
     Richmond, Va.  
 Seay, May Susan, 314 Glovenia. . . . . Leaksville  
 Sellers, Barbara Janette, Box 145. . . . . Cherryville  
 Selly, Jo Ann, Box 694. . . . . Cherryville  
 Sheets, Clara Jean, Rt. 6. . . . . Lexington  
 Shelton, Elizabeth Anne. . . . . Swan Quarter  
 Shutt, Mamie Alice, 922 Hamilton St. . . . .  
     Roanoke Rapids  
 Simmons, Geraldine Dare, Rt. 1. . . . . Candor  
 Simmons, Mary Alice, Box 164. . . . . Roseboro  
 Simmons, Donnie Honeycutt, 1103 Third St. . . . .  
     Hartsville, S. C.  
 Skillman, Joyce Williams, 8-Wilburn Rd. . . . . Asheville  
 Slate, Margaret Elizabeth, 100 Brandley Cr. . . . .  
     High Point  
 Small, Alpha Alethia, Rt. 3. . . . . Edenton  
 Smith, Annice Marie, 413 Bordeaux St. . . . . Jacksonville  
 Smith, Betty Ann. . . . . Zebulon  
 Smith, Betty Esther, 105 Hall St. . . . . Hendersonville  
 Smith, Betty Frances, Rt. 2. . . . . Fuquay Springs  
 Smith, Charlene. . . . . Ayden  
 Smith, Dorothy Elizabeth, 2808 Barmettler. . . . . Raleigh  
 Smith, Gladys Andrews, 711 Daniels St. . . . . Raleigh  
 Smith, Linda Warren, 95 Linden Ave. . . . . Asheville  
 Smith, Lorine Faye, Rt. 2. . . . . Louisburg  
 Smith, Margaret Louise, 404 Ideal Way Ext. . . . .  
     Charlotte  
 Smith, Rebecca Ann, Rt. 1. . . . . New Hill  
 Smithwick, Velma Dwaime. . . . . Ponger  
 Sneed, Effie Irene, 4925 Oleander Dr. . . . . Wilmington  
 Snipes, Barbara Lou, 202 S. McKay Ave. . . . . Dunn  
 Southland, Martha Ann, Rt. 2. . . . . Rose Hill  
 Southworth, Barbara Ann, Box 244. . . . . Culpeper, Va.  
 Sperring, Margaret Ruth. . . . . Waco  
 Spoon, Shirley Marie, 416 Beaumont Ave. . . . .  
     Charlotte 4  
 Stafford, Frances Moseley, 3601 Kirby Drive . . . . .  
     Greensboro  
 Stallings, Barbara Ruth, 1817 S. Miami Blvd . . . . .  
     Durham  
 Stallings, Virginia Anne, 209 Worthington. . . . . Shelby  
 Stamper, Mary Ann, 1204 Country Club Dr. . . . .  
     Greensboro  
 Stanley, Barbara Leigh. . . . . Four Oaks  
 Stanley, Vivian Delores. . . . . Clarendon  
 Staples, Lorna Lee. . . . . Belcross  
 Stephens, Joyce Lynn, Box 383. . . . . Whiteville  
 Stephenson, Norma Faye. . . . . Willow Springs

*Compliments of*

## FINCH'S DRIVE IN

Restaurant - Drive-In - Cafeteria

401 W. Peace Street

## STEPHENSON MUSIC CO.

- ★ RADIOS
- ★ STEINWAY PIANOS
- ★ HAMMOND ORGANS
- ★ SHEET MUSIC
- ★ RECORDS

*Visit Us at Our New Store in Cameron Village*

*Anywhere... anytime...  
Coca-Cola is  
so refreshing*



BOTTLED UNDER AUTHORITY OF THE COCA-COLA COMPANY BY

De Soto

Plymouth

## RAWLS MOTOR COMPANY

Raleigh, N. C.

De Soto

Plymouth

Stewart, Margaret Ann, 943 East Ave. High Point  
 Stocks, Myrna Loy, Rt. 1 Nakina  
 Stone, Virginia Ann, 1826 Elizabeth Ave. Winston-Salem  
 Stonnell, Carolyn Rudd. Cumberland, Va.  
 Stowe, Marjorie, Rt. 2 Wake Forest  
 Strayhorn, Carolyn Louise, Box 136 Hillsboro  
 Strickland, Thelma, Rt. 1, Box 114 Cerro Gordo  
 Strother, Shirley Sue, P.O. Box 224 Louisburg  
 Stroud, Dorothy Carol, P.O. Box 144 Pink Hill  
 Stroud, Mary Katherine, 230 S. Main St. Wake Forest  
 Strum, Marilyn Elizabeth, 421 Miller St. Winston-Salem  
 Styles, Erma Lee, Rt. 2 Burnsville  
 Sullivan, Iris Faye, 1104 Franklin St. Roanoke Rapids  
 Swain, Annie Margaret, 1814 Oberlin Rd. Raleigh  
 Swann, Patty Sue, Box 327 Madison  
 Swanson, Elizabeth Ann, 304 S. 14th St. Morehead City  
 Swindler, Susie Juanita, 244 W. Kingston Ave. Charlotte  
 Taylor, LaRue Snow Hill  
 Taylor, Mary Brooks Whitakers  
 Taylor, Shirley Bell Denhigh, Va.  
 Thomas, June Carolyn, 712 Holden St. Raleigh  
 Thomas, Margaret Lane, 813 Raleigh Rd. Wilson  
 Thompson, Audrey Olive, 411 Rollins Ave. Hamlet  
 Thompson, Barbara Ann, Rt. 5, Box 216 Goldsboro  
 Thompson, Mary Ann, 707 Hamilton St. Roanoke Rapids  
 Thompson, Percy Ann, Box 44 Pikeville  
 Thompson, Sarah Ellen, 1704 Center Rd. Raleigh  
 Thore, Marjorie Estelle Pilot Mountain  
 Timberlake, Jo Ann, 1300 Charles St. Greenville  
 Tippett, Betsy Molette, 1212 Wilmer Anniston, Ala.  
 Tong, Jeanne, 6-B Boscombe Road Singapore 15, Malaya  
 Trammel, Rebecca Ann, Box 45 Burnsville  
 Tunstall, Anne Warrington, 324 Woodrow Ave. High Point  
 Turlington, Sharon Lind, Box 428 Lillington  
 Turnage, F. Sue, 609 N. McKay Dunn  
 Turnage, Rachel Ann, 8101 Wesley Hts. Charlotte  
 Tyson, Anna Ruthie, 209 E. Church St. Farmville  
 Vance, (Betty) Elizabeth Baird, 1571 College St. Macon Ga.,  
 Vann, June Hope, Box 484 Washington  
 Vaughan, Mrs. Geraldine Brown, 114 Park Ave. Raleigh  
 Apt. 5  
 Verbyla, Elaine V., 205 Beall St. Lenoir  
 Walker, Gertrude Covington, 201 Duncan St. Raleigh  
 Walker, Susan Leah, 2715 Wrightsville Ave. Wilmington  
 Wallace, Nancy Finch, U-6 Raleigh Apts. Raleigh  
 Ward, Carlotta Gail, A-3 Wilmont Apts., 3200 Hillsboro, Raleigh  
 Watkins, Patricia Pratt, Box 341 Clarksville, Va. Way, Rebekah Upchurch, 1931 Alexander Rd. Raleigh  
 Wehunt, Elizabeth Ann, Rt. 2 Cherryville  
 Wellons, Janney Lane, 610 Meriwether Lane Kinston  
 Wells, Betsy Carter, Box 395 Elm City  
 Wells, Betty Lou, Rt. 1 Watha  
 Whedbee, Ruth Carole, 216 North St. Ahoskie  
 Wheeler, Mattie Faye, 402 Hargett St. Raleigh  
 Whisenhunt, Edith Adair Clayton  
 Whisnant, Nancy Elizabeth, 439 8th St., N. W. Hickory  
 White, Kay Smith, 509 N. Menden Hall Greensboro  
 White, Sarah Malinda, Rt. 1 Chadbourn  
 White, Shirley Ann, 2106 F. St., Apt. 206 Washington 7, D. C.  
 Whittier, Sarah Lincoln, 2718 Everett Ave. Raleigh  
 Whittington, Martha Louise, 620 Evans St. Florence, S. C.  
 Widenhouse, Kate Gibson Midland  
 Wiggs, Hortense, 109 E. Johnston St. Smithfield  
 Wilder, Joe Ann, Box 414 Wendell  
 Williams, Betty Jane, Rt. 5 Kinston  
 Williams, Cornelia Ann, 9 Miller Ave. Concord  
 Williams, Jo Ellen, 715 S. Hayne St. Monroe  
 Williams, Lois Ann, 603 N. Lee St. Whiteville  
 Williams, Peggy Jo, 300 Montreat Rd. Black Mountain  
 Williams, Sarah Ellen Taber City  
 Williams, Virginia Blanche, 215 S. Front St. New Bern  
 Willoughby, Ida Charlene, 425 Academy St. Ahoskie  
 Wilson, Betty Rose, Rt. 1 Louisburg  
 Wilson, Kathryn Sue Rural Hall  
 Winstead, Lou White, 302 Greene St. Greenville  
 Wishart, Heather Elinor, 96 Bridge St. Shelburne Falls, Mass.  
 Wood, Carolyn Marie, Box 417 Troy  
 Woodall, Constance Lee, 118 Vandiventer Dr. Greer, S. C.  
 Woodworth, Patricia Spivey, 306 East "E" St. Erwin  
 Wooten, Doris Irene, 2323 Sink St. Winston-Salem  
 Wooten, Majorie Lorraine Macclesfield  
 Wooten, Verna Hodges, 1003 West Rd. Kinston  
 Worth, Ada Lou, 9506 River Rd. Warwick, Va.  
 Yancey, Peggy Anne Buffalo Junction, Va.  
 Yarbrough, Bobbie Ann, 813 E. 3rd Ave. Gastonia  
 Yates, Catherine Elaine, P.O. Box 175 Pittsboro  
 Yates, Jackie Faye, Barbour St. Clayton  
 Young, Nancy Morgan, 1841 N. Garnett St. Henderson









