

THE OAK

1927









THE OAK

NINETEEN HUNDRED TWENTY-SEVEN

Volume Five



PUBLISHED BY THE
SENIOR CLASS OF LOUISBURG COLLEGE
LOUISBURG, N. C.

DEDICATION

TO

OUR FATHERS

WE, THE SENIOR CLASS OF '27,
DEDICATE THIS, THE FIFTH VOL-
UME OF THE "OAK" TO OUR
FATHERS, WHO HAVE EXPRESSED
THEIR LOVE AND HOPES FOR US
IN THEIR WILLING SACRIFICE,
NOT ONLY OF MATERIAL THINGS
BUT ALSO OF THINGS OF GREAT-
ER VALUE, IN ORDER THAT WE,
THEIR UNDESERVING DAUGH-
TERS, MIGHT HAVE EVERY OPPOR-
TUNITY FOR BETTERING OUR
LIVES. MAY WE NEVER FAIL THEM,
BUT ALWAYS LIVE UP TO THEIR
IDEALS OF WHAT IS GOOD, TRUE,
AND ALTOGETHER WOMANLY.



FOREWORD



WE, THE ANNUAL STAFF, SUBMIT
TO YOU THIS VOLUME OF THE
"OAK," HOPING THAT AS THE
MURMUR OF OUR GRAND OLD
OAK TREES WILL SOUND THRU
THE CENTURIES, THE MURMUR
OF MEMORIES STIRRED AND PER-
PETUATED BY THIS VOLUME OF
THE "OAK," MAY NEVER CEASE
TO SOUND IN OUR HEARTS. WE
HAVE TRIED TO PUT INTO TAN-
GIBLE FORM THE SPIRIT OF OUR
ALMA MATER, AND WE HOPE
THAT THE PICTURE HAS
BEEN PAINTED IN TRUE
AND REALISTIC
COLORS.






Table of Contents



Book I
THE COLLEGE

Book II
CLASSES

Book III
ORGANIZATIONS

Book IV
FEATURES

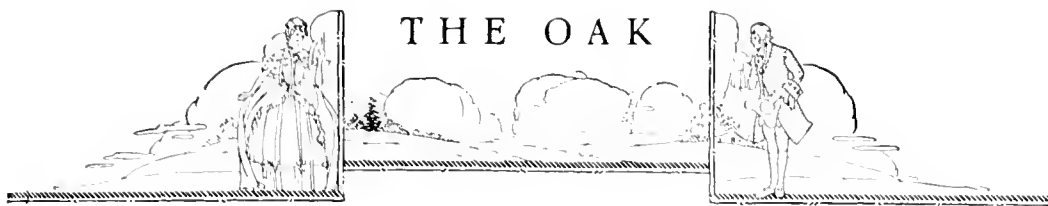
Book V
FRATERNITIES

Book VI
ADVERTISING AND HUMOR



THE COLLEGE





College History

IN THOSE troubled years which followed the American Revolution, there were very few schools in the South, and little or no desire for them. But in 1786 the General Assembly of North Carolina met and appointed fifteen men of Franklin county, who were to form the Franklin Academy. Major Brickell gave the land; and the first building, a two-story wooden structure, was erected across the street from where the college now stands. Its first president was Matthew Dickinson, a worthy man, and a graduate of Yale. He resigned after serving three years, and was succeeded by Mr. Bobbitt.

In 1802 the female department was added with a fee of only \$16.00 per year, under the supervision of Miss Partridge. She soon married Mr. Bobbitt, and under their guidance the college made an enviable name for itself.

Thus for many years Louisburg College struggled on, its sole hall of learning being an old two-story wooden building which is now called the Annex, until in 1857 the Main Building was erected and formally opened.

Mr. Southgate safely guided our Alma Mater through the Civil War, and the end of conflict found her standing unharmed, her majestic pillars raised in triumph to the sky. Days of trouble followed. At times it seemed as if she must truly fail. Prospects were dark indeed when she almost passed into the hands of a race other than our own color. But fate willed it otherwise, and Louisburg continued unmolested on the path of female education.

The year 1891 marked another important milestone in the history of our college, for it was during that year that she was deeded over to our own Washington Duke, whose son, Benjamin Duke, gave Louisburg into the care of the North Carolina Conference at the death of his father in 1907.

It was after the conference took charge that the Davis Memorial building was erected, and modern heating devices were installed.

In 1915 Louisburg entered into her own when she took her rank among the first Junior Colleges of the South, pronounced and recognized as such by the General Board of Education.

Louisburg College has had a glorious past, but a still more glorious future awaits her if our dreams and labor bear fruit. In 1922 the Board of Trustees was extremely fortunate in securing Mr. A. W. Mohn for the presidency of Louisburg College. In years to come it will be impossible to think of the college without thinking of Mr. Mohn, for it was he who not only dreamed dreams of a greater college, but realized them. In 1917 there were only Main and Davis Buildings. Today, 1927, thanks to Mr. Mohn, there are many additional improvements. In 1924, West Wing was completed, and Main Building was completely remodeled inside. In 1926 Wright Memorial Dormitory, a building donated by our benefactor, Mr. R. W. Wright, in





memory of his sister, who was a student at Louisburg, was completed. This year Franklin County Building, a perpetual monument in brick and mortar to the Franklin County people who responded so gallantly to the call of Greater Louisburg, is under construction; and hopes are high for the beginning of our Fine Arts Building, to be placed down the hill opposite Wright Building. It is our dream, our hope, our prayer that 1937 will see the absolute completion of the stupendous program being enacted for our college. When our plans are completed, the college will cover twice the area she now does. There will be a chapel and Fine Arts Building, which will correspond in position to Wright Building. Just back of Main Building the Gymnasium and Infirmary will be erected. Also, oh, joy to the teachers, there will be teacher's cottages scattered about the campus! Just back of the Gymnasium and Infirmary there will be Tennis Courts, a track field, and modernly planned and equipped grounds for women's athletics.

This dream of our greater Alma Mater is no longer just a dream, but it has developed into a state of reality, for campaigns are being conducted for the acquisition of funds to insure the realization of this dream. Education is ever a prime factor in the welfare of a nation. The people of the South and of North Carolina are waking to this fact. Louisburg College, as she will be ten years from now, will be the result of this awakening, and the fruit of our dreams, labors, hopes and prayers.

O Louisburg, we honor your past, love your present, and hope for your future! May your record of Christian Education never diminish, and as the years roll over your head, may they bring you only greater honor and glory!



THE OAK



A. W. MOHN, *President*



S. P. BELLIS, *Dean*





Faculty

ALMA BIZZELL

Professor of Mathematics

Salem College, A.B.; Graduate Work at Duke University and Columbia University.



GRACE DIETZ

School of Business

N. W. State Teachers College, B.S.



RUTH E. FRENCH

Professor of Piano

Morningside College, A.B.; New England Conservatory, B.M.



GWENN L. GILBERT

Professor of Violin and Voice

Oberlin Conservatory, B.M.



Faculty



BESSIE AVA GUTHRIE

Professor of History

Gilford College, A. B.; Haverford, M. A.; University of North Carolina, one term; Columbia University, one term.



MAE BAKER KNIGHT

Dietician

Graduate, Chicago School of Nursing; Special Work, St. Thomas Hospital, Nashville, Tenn.; Special Work, George Peabody College.



ELIZABETH MADDUX

Home Economics and Science

George Peabody College for Teachers, B. S.; Graduate Work, George Peabody, two terms.



STELLA J. MOHN

Director of Music; Voice

Heidelberg Conservatory, Ohio Wesleyan University, B. L.; American Conservatory of Music; Special Student with Carlo Maro; Karleton Hackett, Chicago, Ill.; Special Work with John Finley Williamson, Director of Westminster Choir.





Faculty

MARY ALICE RAMSEY
Secretary and Registrar

ELVA SHEEK
School of Art

Graduate, Greensboro College; New York School of Fine and Applied Arts, two terms; Private Lessons Summer 1926 with M. Mason, New York.

ETHEL MAE SUGG
Trained Nurse

Graduate Trained Nurse, James Walker Memorial Hospital, Wilmington, N. C.

RUTH D. WHITEHEAD
School of Expression

Graduate, Granada College; Graduate School of Expression, Boston; Special Work in Dramatics, Columbia University, two terms.



Faculty



LOUISE WOODS
Professor of Latin

Hood College, A.B.; Columbia University, one term



MYRA L. YANCEY
Professor of Modern Languages

University of Illinois, A.B.; Ohio State University, M.A.; Colorado College, one term; New Mexico State Teachers' College, one term.

LILLY LETTON
Professor of English

Millsborough College, A.B.; Vanderbilt University; University of Tennessee, nine terms; Chautauqua Institution.

EDWARD L. BEST
Education

University of North Carolina.

LILLIAN ROSELAND
Professor of Piano and Organ

Gierlin Conservatory, B.M.; Graduate Student of School of Platform Showmanship, Kansas City, Mo.; Graduate Student of Madame Gregg and Dr. G. W. Andrews; Pupil of Mme. Herrensmidt and Isador Philipp, Paris, France; Diploma of Execution, Paris Conservatoire.

JOHNNIE MAE WOODWARD
School of Business

Graduate, School of Business and School of Music, Sue Bennett Memorial School.





"The Oak" Staff

MARJORIE JOHNSTON
Editor-in-Chief

MONTEE B. MOYLE
Business Manager

BESSIE AVA GUTHRIE
Staff Adviser





"The Oak" Staff

PATTY MOORE
Art Editor

LILLIAN WYCHE HOWELL
Literary Editor

BETTY HERRING
Junior Representative

LUCILLE TAYLOR
Advertising Manager

ALICE POYNER
Athletic Editor



Southampton, N. C.



THE CLASSES



THE OAK

THE CECIL W. ROBBINS LIBRARY
Louisburg College
Louisburg, N. C. 27549





JOHN HOLDEN, *Senior Mascot*

Senior Class

Colors: Gold and White

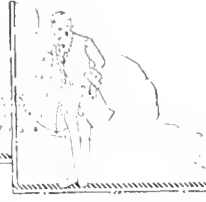
Flower: Daisy

Motto: "Dig"

Class Honors

JAY WILLIAMS	<i>Historian</i>
FRANCES WOODLIFF	<i>Song</i>
LYNSAY STUDDERT	<i>Prophet</i>
FRANCES STANION	<i>Testator</i>
MARGARET NEWBERN	<i>Poem</i>





Senior Class Officers

- FRANCIS WOODLIFF *President*
- LILLIAN WYCHE HOWELL *Vice-President*
- MATT EXUM *Secretary*
- JAY WILLIAMS *Treasurer*

CLASS TEACHERS

- MISS ALMA BIZZELL MRS. A. W. MOHN
- MISS ELVA SHEEK





Senior Class

LILLIAN WYCHE HOWELL

Δ I K

GOLDSBORO, N. C.

Sea Gull Literary Society, '25-'26-'27; Y. W. C. A., '26-'27; Dramatic Club, '26-'27; Secretary and Treasurer, Dramatic Club, '27; Tennis Club, '26; Hikers Club, '26; Franklin County Club, '25; Commencement Marshal, '26; Literary Editor of "The Oak," '27; Vice-President Senior Class, '27.

Lillian Howell, the niece of our dearly beloved friend and trustee, known to all the college girls as "Uncle Frank," has been a part of Louisburg and Louisburg College for a number of years. It is with regret that we see her leave us. So many things can be said of Lillian, as she is prominent in every phase of campus life, that we are at a loss where to start. On the class, in the Dramatic Club, in our devotional life, on the tennis court, we find Lillian among the leaders.

*"Breakfasts in bed; walking the big heart;
moods; romance."*

FRANCES PARKER WOODLIFF

Δ I K

HENDERSON, N. C.

Northern Literary Society, '25-'26-'27; Y. W. C. A., '25-'26-'27; Tennis Club, '25; Dramatic Club, '25; Orchestra, '25; Treasurer, Sophomore Class, '25; Sophomore Cheer Leader, '25; Y. W. C. A. Secretary, '26; Secretary, Student Council, '26; President, Senior Class, '27.

Poets sing of inspiration! If the Senior Class was made up of poets, we would all sing of our inspiration—Frances. Indeed, her calm and unruffled capability in the face of sometimes seemingly impossible propositions, is an example to the rest of us in facing our everyday tasks. Her determination is only equaled by her success. If she will, she will, you may depend on't; if she won't, she won't, so there's an end on't. Here's to the Senior's beloved President!

*"Snow on a mountain peak; neat notebooks
ready to be handed in; conscientiousness."*



Senior Class

JEMIMA LEE WILLIAMS

Σ Δ Θ

KIRKLE, N. C.

North Carolina Literary Society, '24-'25-'26-'27; Y. W. C. A., '24-'26-'27; Basketball, '24-'25; Tennis Club, '24-'26; Hikers Club, '24-'26; President, Spanish Club, '27; President, Freshman Class, '24; President, Person County Club, '26; Treasurer, Junior Class, '26; Treasurer, Senior Class, '27; Teachers' Daughters' Club, '24-'25-'26; Sisters' Club, '24; Chief Marshal, '26; Dramatic Club, '24-'25-'26-'27; May Queen, '26.

Beauty, grace and charm certainly form the requisites of a queen. Since Jay has all these, and more, we think that Louisburg College girls could not have made a more suitable choice for their first May Queen. Jay is beautiful, not only in form, but in character. Her constant efforts to help her companions in any way possible have endeared her to the whole school.

"Bits of fairy laughter; the tinkle of silver bells; a bed of pansies."

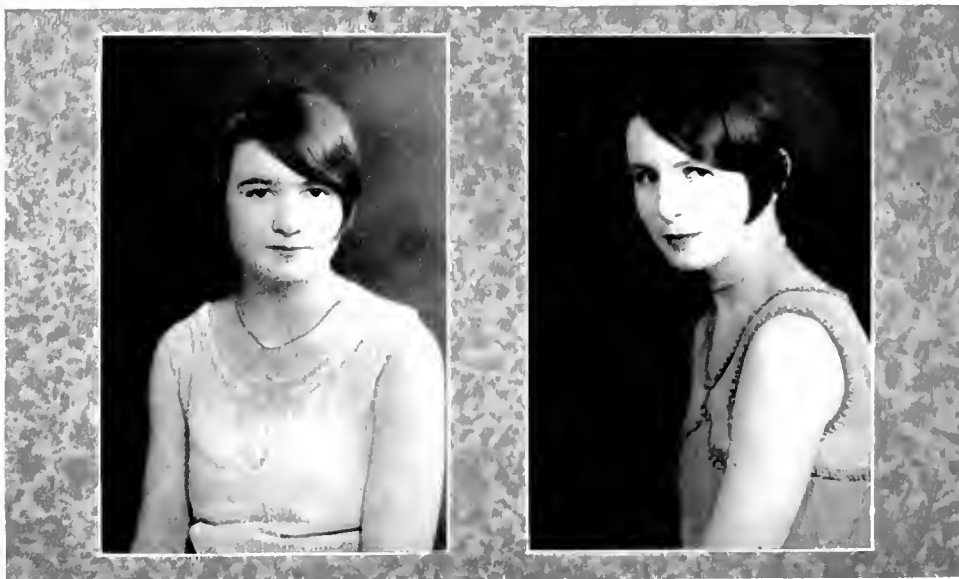
WINCY ZILLAH BLAKENY

CHARLOTTE, N. C.

Sea Gull Literary Society, '26-'27; Secretary, Sea Gull Literary Society, '27; Y. W. C. A., '26-'27; Tennis Club, '26-'27; Hikers Club, '26-'27; Spanish Club, '27; White Cat Club, '27; Secretary, White Cat Club, '27.

Since Wincy is one of the smallest members of the Senior Class, we sometimes wonder where she keeps her vast amount of knowledge stored away. She is always ready with an answer to any question that she may be asked. She has the power of reasoning that seems denied to others, and when she does not know a thing she at once sets herself to the task of learning. Wincy is often called "innocent." Her very expression portrays the sweet and child-like part of her character. Her cheery "Hello" often casts a ray of sunshine in the heart of some lonely girl.

"Violets; rosewood; a tinkling brook;"



Senior Class

MARY ELIZABETH DAVIS

RALEIGH, N. C.

Northern Literary Society, '26-'27; Y. W. C. A., '26-'27; Vice-President, Northern Society, '27; Hikers Club, '26; Glee Club, '25.

Giggle, giggle, jump and wiggle,
Ways, the most contrary;
Filled with sweetness, vim and fleetness—
That's our little Mary!

Sweet, beguiling, ever smiling—
That's her type of being;
Always giving joy to living,
Sending trouble fleeing.

Though our parting now is starting,
We shall ever love her;
In our praying we are saying,
"Angels, watch above her."

"Jumping jack; rubber ball; shadows dancing in the sun; bits of sunshine peeping through the leaves; Aunt Sally."

FRANCES YELVERTON

FREMONT, N. C.

Northern Literary Society, '26-'27; Y. W. C. A., '26-'27; Home Economics Club, '26-'27; Hikers Club, '26.

No word of ours, no stroke of pen
Can justice do for her;
For when she's near, our wordings then
Become a senseless blur.

These years have given her a place
That others daren't take;
Within our hearts her friendly face
Will e'er its dwelling make.

Old Louisburg's long ancient halls
Have never known her peer;
Though now the hour of parting falls,
Our memories hold her near.

"Chic; poise of manner; stiffly starched collars and cuffs; friendliness."



Senior Class

CORNELIA ELIZABETH FRIZZELL

Σ Δ Θ

SNOW HILL, N. C.

Northan Literary Society, '26-'27; Vice-President, Northan Literary Society, '27; Tennis Club, '26-'27; Hikers Club, '26-'27; Business Manager, Hikers Club, '27; Y. W. C. A., '26; Dramatic Club, '26-'27; Basketball Team, '26-'27.

Here's a person of an unusual type—one who knows how to act on any occasion. Habits of culture and refinement have taught her the solution of her problems. She works zealously, yet work does not bother her when she wants to play a little. Wherever found, she will be a happy, care-free person who makes her classmates smile and forget the trials of life. The Athletic Association will miss her, the society will miss her; her friends will miss her, and the College will miss her. Beauty is not what brings success; it is personality and character.

"Gingham dress; rag doll; jam on the pantry shelf; elves and laughing sprites."

NINA ADELAIDE DUKE

Α Ω Φ

JACKSON, N. C.

Northan Literary Society, '26-'27; Hikers Club, '26-'27; Baptist Club, '26; Spanish Club, '27.

Adelaide's quiet spoken friendliness has won for her a lasting friendship of the entire student body. She has a congenial, jolly personality and always meets everyone with a smile—a smile that might win the love of any man. Men, however, are the least of her thoughts; so we are expecting her to have a career of her own. Adelaide is often seen walking around carrying a book, and talking about how much work she has to do. She always does her best, too. We are proud to claim Adelaide as a class-mate, and we wish her success in everything she does.

"Still water; Indian summer weather; Milky Way on a winter night."



Senior Class

EMMA LOUISE JOYNER

Α Ω Φ

JACKSON, N. C.

Northan Literary Society, '26-'27; Y. W. C. A., '26; Hikers Club, '26; Home Economics Club, '26-'27.

"Lou" is so quiet and reserved that one may pass her many times before realizing how rare and sweet are her tender ways. But like a modest flower growing among its green leaves, the perfume of her sweet spirit slowly spreads about her. Always loyal to the old class of '27; always ready to stand by a pal in distress; always measuring up perfectly for "Every day's most quiet need." No one ever tears that Lou will fail us.

"Gentle Southern breezes; æstaria on a trellis; curling irons."

RUBY ONETA DAIL

BOOKERION, N. C.

Sea Gull Literary Society, '26-'27; Y. W. C. A., '26; Hikers Club, '26; Tennis Club, '26; President, Student Government.

Although Ruby doesn't talk much, what she says is always to the point. There are a few women left in the world who can always mind their own business, and here is one of those found on our campus. She possesses many characteristics that are too numerous to name, but if one is very interested, ask "Buck." He can tell. Even if student government duties occupy thought and time, there's enough space left in her heart to listen to a friend's appeal, especially that of one firm and true; good-hearted and sincere; honest and loyal; and a sport in all of college activities, we find Ruby a person whom all students on the campus know.

"Flying fingers; practicing; black and white ivory keys; student government meetings."



Senior Class

EULA SCOTT PURNELL

Σ Δ Θ

RALEIGH, N. C.

So. Girl Literary Society, '26-'27; President Dramatic Club, '27; Stage Manager, Dramatic Club, '26; Omega Psi, '26; Junior quartette, '26; Glee Club, '27; Senior quartette, '27; Basketball, '27.

Not a dual personality; not a Cesario and Viola in one; nor even a Rosalinde and Ganymede; but more is found in Eula. She can play a Portia and plead for mercy till you grant her cause at any cost. She can love as Ophelia and fade like a lovely flower; or she can assume the passionate bravery of Juliet, and die in a tomb for her love, unafraid; she can clasp death to her heart as did Cleopatra, and wait its coming with calmness and serenity. Indeed we look for her appearance on the real stage of life as an event that will reflect honor and even fame on the class of '27!

"A strain of waltz music; play rehearsals; Charlie; telegrams."

MIRIAM LUCILLE TAYLOR

Σ Δ Θ

RACHELOR, N. C.

Northan Literary Society, '24-'25-'26-'27; Y. W. C. A., '24; Secretary, Freshman Class, '24; Sisters Club, '24; Dramatic Club, '24-'25; Glee Club, '25; Basketball Team, '25; Hikers Club, '27-'26-'27; Business Manager, Hikers Club, '26; President, Hikers Club, '25; Tennis Club, '26-'27; Secretary, Tennis Club, '26; President, Tennis Club, '27; Secretary, Junior Class, '26; Omega Psi, '26; Commencement Marshal, '26; Advertising Manager of "The Oak."

When one thinks of truth and kindness, one always thinks of Lucille. She is always ready to help. Such a kindly way she has, surely, if in after years, the halls of old Louisburg College could reproduce the calls of those in distress to "Cille," they would re-echo with her name above all others. And just one deep look in to her clear, brown, honest eyes makes us all believe her, no matter what our question may have been. First in fun, first in friendship, first in fine purpose to do her best, Lucille.

"Silver candle sticks; lace shawl; blue sky, grey ocean."



Senior Class

ANNE LYNDSAY STUDDERT

Σ Δ Θ

RALEIGH, N. C.

Northan Literary Society, '26-'27; Hikers Club, '26-'27; Tennis Club, '26-'27; Dramatic Club, '26-'27; Spanish Club, '27.

If we only had more girls like Lyndsay here, our school in general would be greatly elevated. Her ideals have no end. She has her wagon hitched to a star and she will be very likely to reach her goal, considering the excellent qualities which she possesses. Lyndsay never shirks her duty, and she has meant much to her class. She has many friends who are expecting to hear great things of her in future life.

"Mystery; blackest night; Lady Macbeth."

CATHERINE CORDELLAH THOMAS

MAYSVILLE, N. C.

Sea Gift Literary Society, '26-'27; Y. W. C. A., '26-'27; Home Economics Club, '26-'27.

Catherine sees the bright side of every condition, and makes trouble appear small and insignificant. Her good humor often helps to drive the blues away and a person very soon joins in the fun and forgets worry when in her presence. Her friends predict for her a great future, but they can't tell exactly what her life's work will be. However, as she is taking a Home Economics course, and as her daily letter is postmarked Wake Forest—well—you know, we wonder. But so would you.

"Big, fat letters; eternal good cheer; caramel fudge."



Senior Class

INEZ MYRTLE CHADWICK
GLOUCESTER, N. C.

Sea Gift Literary Society, '26-'27; Y. W. C. A.
'26-'27.

Inez is one of those cheerful persons with never a frown on her cheery countenance, who makes life pleasant for everyone. Inez is studious, but she manages to find time for school activities. That fine, clean sportsmanship which she manifests in everything she does, shines forth in her studies and in her student life. Inez, you are true blue!

"The roar of the surf; white beaches and gleaming sands; marsh land."

EUNICE THERESA BUTTS
Σ Δ Θ
MOUNT OLIVE, N. C.

Home Economics Club, '26-'27; Northan Society,
'26-'27.

Eunice is lovable, and for this reason she is loved by all. She is a favorite among the teachers as well as among the students, for she is very ambitious and studious; and exceedingly talented in the musical world. Pep? Just call on Eunice when attacked by a severe case of the blues, and suddenly as if by magic all worries are forgotten. She is the same to everybody and at all times. Yes, true blue—that's Eunice.

"Chewing gum; lolly pops; feasts; a Ford coupe."



Senior Class

LUCY CLIFTON BODDIE

LOUISBURG, N. C.

She is known to her friends as "Cush," and lucky is the girl who has earned the right to call her that. Cush quite often makes us marvel at the almost inexhaustible capacity of her brain for storing knowledge. She is quite a neat housekeeper, for she keeps her facts arranged in perfect order—never jumbled; and on examination day she brings them out for an airing. And then—oh! how we envy Cush!

*"The sweet, solemn silence of the hills; clear
spring water; wood fern."*

GRACE LEELA WINDLEY

Α Ω Φ

SWAN QUARTER, N. C.

Northan Literary Society, '26-'27, Hikers Club,
'26; Tennis Club, '26; Y. W. C. A., '26-'27.

Do you remember the story of the ugly duckling that became a beautiful swan? We don't know if Grace was an ugly duckling, but we do know that she came to us from Swan's Quarter, and that we only need to look at her, and say that Swan's Quarter must be a desirable location. We have heard, too, of the swan's song. Grace doesn't always find life a sweet song, especially when that song must be transcribed into french phonetics. Nevertheless she has acquired a certain french manner of making pretty speeches that has won her many friends.

*"Balls of grandmother's day; a pink rose in
fair hair; trailing arbutus; swans."*



Senior Class

MARY ISABELLE WEST

WARSAW, N. C.

Sea Girt Literary Society, '26-'27; Treasurer Sea Girt Literary Society, '27; Y. W. C. A., '26; White Cat Club, '27; Tennis Club, '26; Spanish Club, '27.

Isabelle, with her dark eyes and hair and the soft glow of color in her cheeks, never tries to call attention to herself. She is more concerned with the welfare of her classmates than her own. Always she is trying in some simple, kindly way to help another. She is always working faithfully, always living loyally. If there's ever a question of the real rewards of life, they'll surely go to her, for the reward of the faithful is certain.

"Psychology class; sunny Spain; raven's wing."

BERTA LILLIAN JONES

NASHVILLE, N. C.

Northem Literary Society, '26-'27; Y. W. C. A., '26-'27; Ukulele Club, '27.

Here's to the girl who works and works and keeps smiling in the face of it all. She makes good marks on her subjects, and is always ready to try anything to help Louisburg College. She is quiet and unassuming, but she has proved one of the most loyal students of the Senior Class. One would have to go a long way to find a truer and better friend than—"Bert."

"Moonlight on a frozen lake; deep snow-laden forests of fir trees."



Senior Class

EVA BELLE BOBBITT

Α Ω Φ

MACON, N. C.

Northern Literary Society, '26-'27; Y. W. C. A., '26-'27; Tennis Club, '26; Hikors Club, '26; Junior Quartette, '26; Basketball Team, '26-'27; Glee Club, '27; Vice-President, Glee Club, '27.

Perhaps Eva Belle could never be accused of having quantity—quantity of size—but no one can deny that she has quality. It is evinced in her school work, in her social life, in her student activities; in fact, in everything with which Eva Belle is concerned. In trying to say something of her, one feels keenly the inadequacy of mere words; so—if you want a true friend, a lively pal and a serious companion all in one, seek Eva Belle.

"The soft glow of an open fire; a big comfortable divan; a shaded rose lamp."

MARTHA BAGLEY YELVERTON

Σ Δ Θ

STANTONSBURG, N. C.

Northern Literary Society, '26-'27; Tennis Club, '26; Hikors Club, '28

"Men, men! How I adore them!" She is a lively energetic girl, who is always optimistic. At school, she always knows her lessons—however, she does not believe in studying too hard. Perhaps, we don't all know Martha Bagley as well as we would like; but among those whom she has chosen for her companions, she is certainly popular. As one of our beloved school chums, we wish her a life of success.

"Green velvet; opalescent skies; moonstones."



Senior Class

MABEL FRANCES BRADSHER

HURDLE MILLS, N. C.

Nathan Literary Society, '26-'27; Person County Club, '26; Y. W. C. A., '26-'27.

Mabel hails from Person County. She entered College here in 1925 and since then she has won for herself many friends by her kindly attitude toward everyone and everything. She is a good example of "persistence" and with this quality, we know her reward will be worth while. But we must not forget that she is a devoted lover of "Home Sweet Home," and we are sure that she will fill her place there.

"A stick of peppermint candy; toy balloon; fun and dimples."

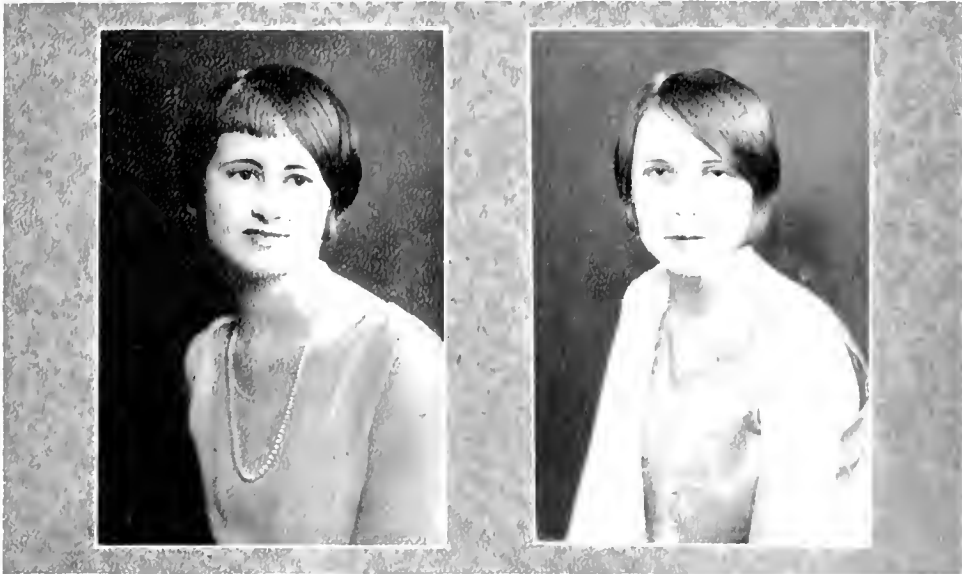
MARY FRANCES RESPESS

MIDDLETOWN, N. C.

Nathan Literary Society, '24-'25-'26-'27; Y. W. C. A., '25-'26; Dramatic Club, '24-'25.

If luck doesn't go your way, it's hard luck. Sweetness personified! That's Mary Frances, as long as luck is going her way. But when it goes some other way she "weeps alone." Accommodating? She's always ready to lend her last nickel or to go up the street. She's a good loser as well as a good winner. If she flunks an exam she keeps on trying. Really she's a right good pal.

"Great open plains; cold starlight; the sound of horses' hoofs galloping over a frozen trail."



Senior Class

CLYDE JOHNSON
MILWAUKEE, W. I.

Sea Girt Literary Society, '26-'27; Y. W. O. A., '26-'27; Treasurer, Y. W. O. A., '25; Tennis Club, '27; Spanish Club, '27.

Clyde's cheertful disposition and ever ready smile added to being an excellent student make her a very popular and attractive Senior. We are wondering if she will twirl traffic in a bungalow or be a long-nosed "lady in waiting" school marm? But we know that she will be a success in either one.

"Patience; unselfishness; stickability; generosity; Captain Lawrence."

MARGARET ELIZABETH CREDDI
A. O. P.
SCRANTON, N. C.

Northern Literary Society, '26-'27; Y. W. O. A., '26-'27; DOKers Club, '26; Tennis Club, '26; Dramatic Club, '26.

Just the barest acquaintanceship with Margaret is needed to feel her charm. There's just something about her that is irresistible. She draws people to her without the least bit of effort on her part—even her worst enemies, if she has any, cannot deny her personal magnetism. Margaret believes in being hospitable and she loves companionship. She is always having guests at her home, or cavorting around in his car.

"Chrysler roadster; bright lights; roof gardens."



Senior Class

ANNIE BRAME WOODS

Σ Δ Θ

ROXBORO, N. C.

Sea Girt Literary Society, '26-'27; Tennis Club, '26; Hikers Club, '26; Dramatic Club, '26-'27; Secretary of Spanish Club, '27; Vice-President of Person County Club, '26.

Anne's personality is such that she makes friends easily—much to her credit. Her favorite pastime is sleeping, for she had much rather dream about her work than do it; but she has always managed to maintain a good standing. We were afraid once that Anne was going to leave us and launch her boat on the Sea of Matrimony, but now we think she has determined to be a school marm for one year at least. We are for you, Anne, throughout life.

"Pale moonlight on the river; romance; yellow butterflies."

ALLEEN MAY

YOUNGVILLE, N. C.

Sea Girt Literary Society, '27; Baptist Club, '27; Dramatic Club, '26; Y. W. C. A., '26.

Alleen has made many friends during her two years at Louisburg College, and she has done it in such a quiet easy going manner that we all wonder how she manages to do it. To any one who is capable of appreciating the reality of genuine character, the friendship of Alleen will be a treasure. Alleen says that she is going to be a school teacher, but even school teachers are susceptible to the darts of Cupid, you know! We know that even as Alleen is now leaving many friends, she will always find them wherever she goes.

"Suffragette meetings; seriousness; ancient volumes of leather-bound books."



Senior Class

MILDRED DORIS HANCOCK
WILMINGTON, N. C.

Northern Literary Society, '26-'27; Y. W. C. A., '26-'27; Dramatic Club, '26-'27; Hikers' Club, '26; Tennis Club, '26; Vice-President, Spanish Club, '27.

Petite? Yes, but in size only, for Doris holds an especially large place in our hearts. Each small task assigned to her receives great consideration and we find her always equal to the necessary needs. Versatile? Yes, for outside of being near the head of all her classes, does she not hold us spell-bound with that certain quality in her voice that one thrills to as at the plucking of a 'cello string? Beloved? Certainly! For she believes that the only way to have a friend is to be one.

"The quiet solemnity of a church; the beauty of the sun shining through the stained glass windows; the soft tones of an organ."

LINA ELIZABETH WILSON
DURHAM, N. C.

Sea Gift Literary Society, '26-'27; President, Sea Gift Literary Society, '27; Y. W. C. A., '26

Only once in a while is a college fortunate enough to own a girl like Lina. She is truly one of the "best all around" girls in the class or on the campus. She has ability, she has dignity and she has charm. You can depend on her to take her place wherever and whenever she is called upon, for she is both reliable and prepared. She plays, she sings, she talks and she has won distinction as a leader. You'll find her taking part in all phases of outdoor life, too. Her host of friends who love her dearly, wish for Lina all that the gods decree to bestow on a lovely woman.

"Strawberry patch; straw hat; long hikes; the woods in autumn."



Senior Class

MARIE ELIZABETH HESTER

HURDLE MILLS, N. C.

Sea Girt Literary Society, '26-'27; Y. W. C. A., '26-'27; Person County Club, '26; Hikers Club, '27.

Marie's smiling face and unintentionally witty remarks always keep us in a good humor. Although her studies employ a large part of her time, she is always ready to stop and tell a joke. Marie is a good-natured, congenial, carefree girl, who has made many friends here, and we are sure she will continue to make them throughout life.

"A field of green clover; geranium; pumpkin pie."

NANNIE ELIZABETH FIELDS

KINSTON, N. C.

Norham Literary Society, '26-'27, Y. W. C. A., '27.

When Nannie breezed into the Davis Building, she brought with her a radiant countenance which helped to cheer up and make bright all the corners of the beloved hall. Her gentle, unselfish influence immediately won for her a place in our hearts. She has been a diligent student, yet not a book-worm. She has found time throughout her college career for the religious, social and literary activities of the school. We found Nannie to be friendly toward others and ambitious for herself. Sometimes she is moody, sometimes joyful, but she always stands for the things that are true and altogether lovely.

"Song of a brown thrush; little brown bare-legged girl sitting on top of a rail fence; fields and fields of golden wheat."



Senior Class

FRANCES SLANTON
ELIZABETH CITY, N. C.

Sea Gilt Literary Society, '26-'27; Y. W. C. A., '27; Hikers Club, '26; President, Junior Class, '26; Critic, Sea Gilt Literary Society, '26; Vice-President, Sea Gilt Literary Society, '27.

Our Frances of the sweet smile and the pretty curly hair, is one of those lucky girls who is loved by everybody. Not only this, but her record in college is one of which anyone would be justly proud. We all feel ourselves richer and better for having known and worked with this girl. We feel sure that her perseverance, her good, clear mind, and her managing ability will carry her to the end of the rainbow.

"Closed dining hall; home; coffee for breakfast; white cottage with roses."

MINNIE LANCASTER
LOUISBURG, N. C.

Home Economics Club, '26-'27; President, Home Economics Club, '26; Franklin County Club, '26.

Visit Minnie Lancaster's home, talk with her interesting mother, eat a meal there, and then you will know why she is interested in Home Economics. Beyond making her grades in school, helping to prepare wholesome food for the family, and assisting in the housework, she is interested in all kinds of sports, and especially those which tend to develop one physically. She is friendly, pretty and attractive, and will make the man lucky enough to win her, a charming and lovely wife.

"Flash of a bright red roadster; lipstick; common sense; hail fellows well met."



Senior Class

ANNIE DAVIS NOBLE

DEEP RUN, N. C.

Sea Girt Literary Society, '27, Y. W. C. A., '27.

Not only is she Noble by name but of character as well. Annie is quiet, gentle and steadfast. She is faithful to her studies and faithful to her friends. She was a school mistress before she came to us this year, but according to the interest she takes in Home Economics, we think that she will make some home a very good mistress. When the Class of '27 has left its Alma Mater, we will remember Annie by her loyalty and by her pleasant smile.

"Shining cooking utensils; school-marm; English themes."

LELA JANE FLETCHER

WEST END, N. C.

Y. W. C. A., '26; Tennis Club, '26; Sea Girt Literary, '26-'27; Senior Representative to Student Council, '27; Home Economics Club, '26-'27.

For two years now, Janie has been one of us; always her quiet, sincere self. Steadily she has forged ahead in our student ranks, proving that real worth, even when unassuming will establish its own value. She studies fearfully; but her keen sense of humor keeps her from ever becoming a grind. She is one of us. She holds the respect of the student body, of the faculty, and of her own pals especially.

"Osage Indian Queen; heavy red draperies; sewing baskets."



Senior Class

SALLIE MAY ALPHIN

Δ I K

MOUNT OLIVE, N. C.

Norham Literary Society, '26-'27; Art Club, '26; Tennis Club, '26-'27; Hikors Club, '26-'27.

Who can resist Sallie May and her lovely smile? She is always happy, and by her cheertful disposition she scatters joy into the lives of all. Sallie May showed much talent in the field of art and many wonder why she dropped it; but the ones who know her intimately believe that she desires a more domestic life.

"Old-fashioned flower garden; pink picture hat; butterfly wings."

MAE GREEN

Δ I K

THOMASVILLE, N. C.

Norham Literary Society, '26-'27; Tennis Club, '26; Hikors Club, '26-'27; Home Economics Club, '26-'27; Omega Pi, '26.

We may live without poetry, music and art,
We may live without conscience, and without
heart;

We may live without friends, we may live
without books,

But civilized man cannot live without cooks.

This seems to be Mae's philosophy of life, since she is specializing in cooking. Judging from the many dates which Mae has, Home Economics will in the near future be her vocation instead of her avocation.

"White cottage; dimity curtains; a rose trellis."



Senior Class

MONTEE BODDIE MOYLE

Δ I K

LILLINGTON, N. C.

Sea Girt Literary Society, '26-'27; Y. W. C. A., '26-'27; Tennis Club, '26-'27; Critic of Sea Girt Literary Society, '27; Business Manager of "Oak," '27.

It has been said that if you want a thing done to do it yourself. THE OAK says that if you want a thing done well, leave it to M. Moyle, business manager. This honor that the Senior Class has given to Montee expresses in a small way what we all think of her. We predict a happy, useful life for Montee, for where ever she may be she is capability itself. Besides her glorious hair and eyes, her truthfulness is her chief virtue and charm.

"Jazz music, a sparkling cup of wine; sun shining on water."

MARJORIE ELLSWORTH JOHNSTON

Δ I K

SMITHFIELD, N. C.

Sea Girt Literary Society, '26-'27; Y. W. C. A., '26; Tennis Club, '26; Hikors Club, '26; Omega Pi, '26; Junior Representative to "Oak," '26; Editor-in-Chief, "Oak," '27.

There is just one and only one Marjorie, and we are proud that she belongs to us (?) The minute she set foot on our campus two years ago, her attractiveness and the quaint charm of her personality won the hearts of all the Louishurg College girls, both old and new. She is still the same Marjorie and we think that no one could have made so efficient an editor of our annual. Her hobbies are typewriters and old hats.

"Mignonette; old-fashioned charm; afternoon tea; real lace; coca-cola."



Senior Class

MINNIE MAE BEAMAN

Σ Δ Ο

SNOW HILL, N. C.

Sea Girt Literary Society, '26-'27; Y. W. O. A., '26; Tennis Club, '26; Hikers Club, '26; Home Economics Club, '26.

Is Minnie Mae a sport? I'll say she is; and the best friend anyone can have. She laughs with the crowd, sighs with the crowd and weeps with the crowd; for Minnie Mae is incurably sympathetic. When there is mischief brewing she is always on hand, for she is quite a pastmaster at mischief-making. No expedition of fun or frolic would be complete without our Minnie Mae. We love you, Minnie Mae, what more need be said?

"A flash of white teeth; the sudden swirl of short skirts; two slim legs disappearing around the corner of the hall."

PEARL PANTON

MILWAUKEE, N. C.

Sea Girt Literary Society, '26-'27; Y. W. O. A., '26-'27; House Proctor, '27; Basketball, '27.

She is always dignified and quiet, watching for a time to serve another. The task may be great or small, but when Pearl sets her hands to it we know it will be done well. Who is it? Pearl, you say? Surely we haven't another half so rare. For fun and frolic she is our right hand man. We predict for her a prosperous future in whatever line she may follow.

"'Light bell, girls'; class spirit; dependability; readiness for fun."



Senior Class

MARGARET ELIZABETH NUMBERN

Σ Δ Θ

POWELL'S POINT, N. C.

Northem Literary Society, '25-'26-'27; Secretary, Freshman Class, '25; Freshman Class Representative, Student Council, '25; Glee Club, '25-'27; Secretary, Northem Literary Society, '27; Vice-President, Junior Class, '26; Omega Pi, '26; Assistant Cheer Leader, '26; Cheer Leader, '27; Commencement Marshal, '26.

Margaret is cheer leader of the college as well as of the Senior Class, and surely no mistake was made when she was elected to this "dignified office." One cannot withstand her contagious pep and enthusiasm. Margaret has been with us three years and we must admit that the future of Louisburg College looks dark without her. By her ever willing help and sunny smile she has won the hearts of all Louisburg College girls.

"Gray fur coat; sport model roadster; small black turban."

ALICE RIVERS POYNER

Σ Δ Θ

MOYOCK, N. C.

Northem Literary Society, '26-'27; Y. W. C. A., '27; Captain, Basketball Team, '26-'27; Hikers Club, '26-'27; Secretary, Hikers Club, '27; Omega Pi, '26; Glee Club, '27; President, Northem Literary Society, '27; Athletic Editor, "Oak," '27.

Alice was voted versatile, and indeed, she is one of the most well rounded girls of the class. She is efficient in her class work, indispensable for a real jolly good time, and capable in the work of school organizations and athletics and activities. Where ever there is work to be done by an efficient person, Alice is always called on. She has never failed her friends, her school, or her class. Isn't that recommendation enough?

"Dance hall; swimming parties; basketball games."



Senior Class

MARGARET McLEOD

LINDEN, N. C.

Sea Gift Literary Society, '26-'27; Y. W. C. A., '27; Hikers Club, '26-'27; Basketball, '27; Tennis Club, '26-'27; Spanish Club, '27; Joke Editor of "Oak," '27.

Margaret is like a tempestuous Scotch wind sometimes blowing over fields of purple heather. Only it's roaring up and down the halls she goes when things get too quiet and threaten dread monotony. She drives away the blues; and if you are ever homesick or pessimistic, crook your finger at Margaret and hear her laugh and laugh and laugh! Yet with it all, who pushes to the front when test time comes? Margaret, who helps a lot of others along that thorny way. Yes, Margaret.

"Court jester; circus days; fool's cap; a refreshing breeze."

LOUISE ELIZABETH THOMPSON

ROXBORO, N. C.

Northern Literary Society, '26-'27; Y. W. C. A., '27; Treasurer, Person County Club, '26; Hikers Club, '26; Tennis Club, '26; Treasurer, Spanish Club, '27.

If you are afraid of germs, avoid Elizabeth, for her laugh is infection, her happiness contagious and her cheerfulness incurable. Despite two years of the most rigorous treatments of morning walk, gymnasium and Latin classes, no remedy has proved effective in depressing Elizabeth's spirits. Now as she goes out from Louisburg College, we hope for the best in her case, although she has been pronounced a hopeless optimist.

"Snow; sleigh-bells; holly; Christmas trees; mistletoe."



Senior Class

VERNA EVANGELINE MAXWELL

FALCON, N. C.

Sea Girt Literary Society, '27; Y. W. C. A., '27; White Cat Club, '27.

Verna is a broad-visioned girl and often sees things ahead in life that others are too frivolous to see. Even older members of the class often go to her when in trouble and she is frank enough to give helpful advice without causing hard feelings. Confidence may be placed in her, for everyone knows that she can guard the secrets of others. She is always ready to make good use of her Senior privileges, especially the shopping ones, from the amount of time spent at "Hicks."

"Grocery store; down town; Saturday night dates; "Bill."

VERA GLADYS USREY

CHADBOURN, N. C.

Sea Girt Literary Society, '26-'27; Y. W. C. A., '26-'27, President; Y. W. C. A., '27; Life Service Band, '26-'27; Y. W. C. A. Representative to Student Council, '27.

Vera's most lovable characteristics are cheerfulness and friendliness. She is a good student and a willing worker; and in her two years with us, she has proven that she is thoroughly capable. She takes with her all the dignity of the class, and yet when the right time comes, she proves a wonderful sport. She is a girl that we like for herself alone. She announces through her actions the fine, true fibre of her character.

"Early Puritans; little gray bonnet; a New England conscience."



Senior Class

NANCY NETTLES TAYLOR

Α Ω Φ

WILMINGTON, N. C.

Northan Literary Society, '27; Y. W. U. A., '27; Spanish Club, '27

In a little love song of Burns, he said that "Nothing could resist my Nancy." Who would want to resist our Nancy when "To see her is to love her"? She has the beauty and the personality that have won and will continue to win for her a superabundance of friends. We all love her because she is lovable. Could we ask for a better reason? When we know Nancy, the first impression of loveliness is not dimmed; rather it is increased. Her wit, her attractiveness and her natural sincerity delight those that know her and inspire others to want to know her better. She is and will always be irresistible.

"For-get-me-nots; silver linings to a dark cloud; old-fashioned maiden."

BLANCHE BENSON

NASHVILLE, N. C.

Northan Literary Society, '26-'27; Home Economics Club, '26-'27; Secretary and Treasurer, Home Economics Club, '26; Vice-President, Home Economics Club, '27.

Good-natured and generous, jolly and clever; her tongue, like a brooklet, goes on forever. If curiosity kills the cat then Blanche will have need of an extra supply of lives beyond the original nine. A wee bit of gossip now and then keeps her in a state of worry. Besides her wit and good humor, she is an excellent student, and a good sport. We see interesting developments connected with a bus awaiting her this summer.

"Ha' ha'; He! he'; Giggle, giggle; Twinkle, twinkle."



Senior Class

MAMIE JAMES BLUE

HOFFMAN, N. C.

Neathan Literary Society, '27; Y. W. C., A
'27; Hikers Club, '27.

"James" has a great desire to travel, and especially to visit points in South Carolina and in the Hawaiian Islands. She is small in stature, but not in ambition. She plans to complete her course at Duke, and we are sure that she will succeed in anything she undertakes.

"Blue skies; romantic travels; an old Southern mammy."

NONA HERRING

CLINION, N. C.

Sea Gift Literary Society, '27; Hikers Club, '27;
Spanish Club, '27.

You would never suppose little Nona to be a Senior, but she is—and very much of one! One minute she is worrying dreadfully over mathematics; the next, she is laughing gaily over some passing remark. She is, in other words, an adorable mixture of seriousness and fun. There is determination, too, in this small package; and we foresee that it will carry her far on any path that she may choose. We leave her here, wishing her a life full of "dreams come true."

"April showers; note books; College Humor."



Senior Class

AUDREY ANN MIDYETTE

ORIENTAL, N. C.

Northern Literary Society, '26-'27; Y. W. C. A., '26; Hikers Club, '26; White Cat Club, '27; Spanish Club, '27; Vice-President, Art Club, '26; Treasurer, White Cat Club, '27.

Audrey of the artistic touch! Audrey of the nimble fingers! Audrey of the month of June—bugs as well as roses! Audrey, who is a friend to everyone and everything! Audrey, who is dainty and fair! The girl with the golden hair! Well, that is our Audrey Midyette.

"Paint brush; canvas; smeared colors; artist's smock."

RUTH HARMS WATSON

SWAN QUARIER, N. C.

Northern Literary Society, '26-'27; Y. W. C. A., '26-'27; Hikers Club, '26-'27.

Ruth is "not like other girls." A little more modest than the average, a little plumper, a little rosier, and a little more good-natured. We all envy Ruth her lovely blue eyes. Ruth seems to have taken for herself the old motto: "Slow but sure." Perhaps she doesn't try to be quite so swift in her studies, but she gets there just the same; and after all, isn't that the goal?

"Soft, fluffy kitten; eyes twinkling with fun; Smart Set."



Senior Class

ALICE NORADA HUNT

Σ Δ Θ

OXFORD, N. C.

Neithan Literary Society, '27; Hikers' Club, '27.

It seems so useless to try to say something about Alice, for she is so distinctly—Alice. The thing which suits somebody else is not appropriate for her. We can only say that we think she is deserving of every praise. She is one of our new Seniors, but we feel that we have known her as long as the others. It is also useless to say that she has won a place in our hearts, for she could not be Alice and still do otherwise. Good luck!

"Midnight feasts; good times galore; fraternity dances."

GEORGIA COGGIN

MILWAUKEE, N. C.

Sea Cliff Literary Society, '26-'27; Y. W. C. A., '26-'27; Tennis Club, '26-'27; Spanish Club, '27; House Proctor, '27.

The fact that Georgia likes school teachers is not proof that she will be an old-maid teacher, because she is lively enough to share in our fun when it is time for play. Just because she does not tell everybody her thoughts is not any reason that she cannot be a good friend and sport, but it takes a long acquaintance to know Georgia as she really is. All her teachers find that Georgia never comes to class without preparing her lesson; and during her two years at college, no member of the class has done her duty more willingly.

"A bright, sunny school room; pastel shades; masculine teachers."



Senior Class

DOROTHY GARDNER

Δ I K

GRILLON, N. C.

Sea Gift Literary Society, '26-'27; Hikers Club, '26-'27; Tennis Club, '26-'27; Omega Psi, '26.

Fun, frolic and Virginia are certainly Dorothy's companions. For surely the mischievous gleam in her large brown eyes is only a reflection of her heart. Football is her hobby, especially when they "Buck." That reminds me—Dot is a wonder when it comes to doing the "Buck and Wing" dance. Surely, this had something to do with the contest in which she was voted our most graceful Senior.

"Bubbles; silver dancing slippers; French heels."

VIRGINIA TODD

Δ I K

LABOR, N. C.

Sea Gift Literary Society, '26-'27; Tennis Club, '27; Spanish Club, '27; Home Economics Club, '26-'27; Basketball, '26.

"That all the world is but a stage, we have heard from lips of sage. Many the jolly actors here bring much happiness and cheer. Their mission is only to beguile; and bring to lips and heart a smile." Surely this quotation must be Virginia's motto. By her unusual wit and good cheer Virginia has won the hearts of all the L. C. girls. We think every school should have a Virginia Todd enrolled, as no student body is complete without a girl like our "Gin." She is the best remedy we can offer for homesickness.

"Spanish shawl; red rose; black cat; ukulele."



Senior Class

MATT EXUM

Δ I K

SNOW HILL, N. C.

Sea Gull Literary Society, '26-'27, Treasurer, Hikers Club, '26, Tennis Club, '26-'27, Dramatic Club, '26, Omega Psi, '26, Secretary, Senior Class, '27, Spanish Club, '27.

From the quaint old town of Snow Hill, Matt reflects in her bearing the race from which she sprang. Attractive, modest, capable—an all-round good sport who can do almost anything to which she turns her mind or hand. The gods favored our Matt in their distribution of beauty, for she is one of the rare girls who are pretty without aid from any drug store. Her winsome smile is given as graciously as that of a queen's bestowed upon her subjects.

"A classic oil painting; gentility; instinctive good breeding."



Senior Class Poem

We go forth, as other comrades,
With our eyes fixed on the future;
And our hearts go forth with gladness,
Tho' our past must lie behind us,
Be it blotted or perfected.

Though we've blundered in our efforts,
Though we've faltered in our fancies,
We go gladly toward that future;
Bid farewell to Alma Mater,
To our blessed Foster Mother.

At her quest, we lift the curtain,
Stage the play that she's indicted;
All shall see our source of knowledge,
Understand our hearts made purer
By her standards and her teachings.

All shall see what she has taught us,
Do you think we can be worthy,
Worthy to be called her children—
Children of this famous mother,
Bound by love to one another?

Though we're leaving, we're remaining
Loyal to thy daily precepts;
Loyal to thy sacred teachings;
Loyal to thy noble calling,
Louisburg, our Alma Mater.

Bless us, mother, as we leave thee;
Breathe into us noble purpose;
Breathe into us high devotion;
Make us lovely incarnations
Of thy spirit, great and holy!

—M. E. N.





Class Prophecy

All day long I had sought amusement, at first one thing and then another. Finally, I decided I would go to the Gypsy camp and ask the fortune genii to tell me of my classmates. A woman dressed in many colors gave me a crystal ball to look in. At first I could see nothing; and then dimly, I could discern the great columns of my Alma Mater. Slowly the picture faded and there stood Frances Woodlieff, our class president. She had her violin in her hand. I tried to speak to her, but could not, as she was talking so hard to some man about the concert that was to be given that evening. She was the company's violinist; Grace Windly was the soloist; Eva Belle Bobbit was the dancer; Anne Woods the reader; while May Green was the one whom they all loved, for she made their costumes and prepared their meals.

This scene changed, and I noticed a sign that read, "Excellent School—Special Training in Math and Spanish." The door opened, and I saw Dorothy Gardner and Lucille Taylor seated at a desk. A mischievous boy stood before them with tears in his eyes. Lucille quieted the child, while Dorothy said in a firm voice, "No matter what the offense, no one is to be campused at this school." The door opened, and two women entered. One of them held a Math book. She was professor of Algebra and was none other than Audrey Midyette. I was so surprised. The other was Elizabeth Thompson, the Spanish teacher. My wonder knew no bounds. I turned the ball again, and there stood Blanche Benson, Janie Fletcher, and Frances Yelverton, presiding over a well-kept kitchen in a modern training camp. I was not a bit surprised, for all of them had been excellent sports and great admirers of the men back at L. C. Suddenly this scene shifted, and there was a court room. I peered closer into the glass and recognized the judge to be Marie Hester. It seemed that the case on trial was this: Two women had stolen the hearts of two men and refused to give them back. The guilty were Sallie Mae Alphin and Minnie Mae Beaman. Their lawyer was Cornelia Frizzell. She pled their case nobly, and won a victory for her classmates. I turned the crystal rather suddenly, and who did I see but Jay Williams and Natt Exum. They were placing in the attractive windows of a small shop a poster that read, "All who desire to learn the secrets of beauty—patronize us." They are wealthy by now, I suppose. Gradually the picture faded, and I turned the glass.

The scene which I saw next took place in a beautiful church. I saw several girls dressed in wedding garments, and upon gazing hard at the crystal, I could discern quite plainly, Ruby Dail, Lucy Clifton Boddie, Marjorie Johnston and Montee Moyle. In front of them stood Mildred Edwards. They had followed her example. In a minute the minister came out to talk to them, and I was much surprised to see that it was Lillian Howell. I turned the glass and saw Alice Averitt, a ballet dancer, giving lessons to Hazel Mann, Isabelle West and Lina Wilson. They were to tour Europe that fall. Margaret Newbern was treasurer of the band, and Eunice Butts was pianist. As I peered at the glass, Alice Poyner, Eula Purnell and Margaret McLeod appeared. They were making a tour of the West and with them were Martha Bagley Yelverton and Virginia Todd. Five vagabonds! As happy and carefree as ever.

The next scene was quite beautiful. Flowers were everywhere. I looked closely and there were Verna Maxwell, Frances Stanton, Vera Usrey and Catherine Thomas, all classmates of mine. They told me that they were in the florist business and that they were sending lavender and white flowers to every member of our class. I thought it was sweet of them; but I remembered that they had always been thoughtful girls. Another turn of the ball, and I could see Adelaide Johnson, Allene May and Minnie Lancaster. All queens of the school room. Miss Guthrie and Mr. Best had not taught in vain, for they were three successful teachers. When the pupils of these three illustrious teachers were homeward bound, they were taken in large, comfortable trucks





driven by Nancy Taylor, Pearl Panton, Mary Frances Respass and Margaret Credle. They explained that they had taken this job in order to train for the Charlotte races, in which they competed each year. Why, what in the world was that? Yes, it certainly was a car load of brick, but what in the world were Mabel Bradsher, Inez Chadwick and Ruth Watson doing unloading them? I could only guess that they were building a gymnasium, so that the poor girls would not freeze to death while Miss Whitehead called the roll. Just then, Annie Noble came up in a big car to take them to dinner. From her appearance, I presumed that Annie had married a rich man.

This scene vanished, and I saw Lucille Lawrence, Winey Blakeney, Mamie James Blue and Clyde Johnson trimming hats for the faculty. I noticed that all these brims came down in front, and supposed the reason for that was that they did not want the faculty to see everything that the girls did. Next I saw a tent pitched by a small stream in the woods. I looked closely and there were Nannie Field, Berta Jones and Louise Joyner. They were out and out suffragists and the reason for their present encampment was the desire to use the freedom they had gained since graduation from Louisburg. But while pondering the situation, three women dressed in blue coat suits, with clubs in their hands came up. These policewomen were Dori Hancock and, yes, Georgia Coggin. They were checking up on the girls of '27 to see that they were where they should be.

I turned the glass slowly, but all was gone. Tired, but extremely happy, I handed the crystal back to the fortune teller, and left. I went away with the heart of a girl graduate, delighted at the success of my classmates.



Senior Class Song

*Years, happy years,
 That pass so quickly by;
 Two happy years at dear L. C.
 After we left old High—
 Days full of work, so real and true;
 Days full of laughter, yet oft times blue;
 But in spite of it all we've all come thru;
 And we're here with a smile 'midst the tears.*

*Chums, dear old chums,
 Today we gather here
 To say good-bye in the same old way
 As they said it to us last year.
 Perhaps you wish that you were we,
 Saying farewell to old L. C.
 Yet after all we'll n'er forget
 The happy days with you we spent.*

*Alma Mater, Alma Mater,
 To you we'll ever be true;
 As one by one the years glide by,
 Our hearts will ever turn to you.
 For, mother dear, we'll ever try
 To bring more honor to thy name;
 As you have shown us every one
 The way to honor and to fame.*

*Years, future years,
 That hold so much for us,
 Quite eager now we wait for you,
 Here on the threshold of our life.
 Days full of work, so real and true,
 Days full of joy, yet oft times blue—
 In spite of all we've all come thru,
 And wait we here with smiles for you.*

—F. P. W.





Class History

A FOUR years ago, though it hardly seems four weeks ago, thirteen trembling girls entered Louisburg College, and haltingly announced themselves as Freshmen. We were truly Freshmen, and although our number was considered unlucky, it did not prove so. We immediately organized our class, choosing for our motto, "Green but growing"; and we have grown! That year might be called a very successful one, even though we did no specific thing to be recorded on our page of history. We managed to pay off our annual debt and we always stood ready to help our sister class, the Juniors.

The next year, seven of our class returned, feeling very sophisticated. Two of the seven had joined the class of '26, but eight new girls were added to our list. This gave us thirteen on roll again, but we were too educated to be superstitious. Elizabeth Huggins was elected president, and Miss Nell Woods, class teacher. They were faithful leaders, and after having sold many gallons of ice cream during the year, we were free from all financial worries at the end.

Last year, four Sophomores returned, proud of the fact that we were really college girls. We were also proud to know that we were no longer a small band of thirteen, but a large class of one hundred and twenty girls. Many of this number belonged to the Commercial Department, but they were claimed as Juniors. Frances Stanton, one of our new members, was elected president, and Misses Nell and Louise Woods class teachers. These very diligent workers helped to make last year a noted one in our history. The three events which took place during the year, and the three which proved to be so very successful, were the Junior Circus, the Junior Follies and the victory over the Seniors in basketball on Thanksgiving day. It was wonderful to feel that we were a step ahead of the Seniors, though we were taken down when they received their diplomas in May. We watched them fervently, our hearts swelling with pride when we realized that our day was very near.

Can it be possible that we are Seniors? We are feeling not altogether as we thought we would feel. Our happiness is mingled with a few tears, and we wish that somehow we could be Seniors next year instead of this year. Fifty-three of our Juniors came back, and six new girls were added to the list. Frances Woodlieff has served as a most efficient president, and our class advisors, Miss Bizzell, Miss Sheek and Mrs. Mohn, have proved to be very substantial crutches on which we often lean.

This year we have had the pleasure of taking part in the dedication of the Pattie Julia Wright Memorial Dormitory, given by Mr. Richard Wright. The dedication services took place on November the twenty-third, a day that we shall never forget. In December we gave a bazaar which was a great financial success. Among the entertainments which we put on was a Gypsy Carnival staged on the campus. It was quite picturesque and different from anything that had ever been given before. Frances Kaspar Lawson, popular American soprano, gave a concert in the College Music Hall in the spring under the auspices of our class.

Now we present our motto and our work at the portals of Louisburg College.





Last Will and Testament

STATE OF NORTH CAROLINA
COUNTY OF FRANKLIN
CITY OF LOUISBURG
LOUISBURG COLLEGE

We, the Senior Class of Louisburg College, having been declared sound in mind and memory, and fully realizing that our time in said College is nearly expired, do hereby make our Last Will and Testament, bequeathing all our worldly possessions to the rightful heirs.

SECTION I

Article 1. To our parents we give a promise to endeavor to make our lives beautiful and useful with the preparation that they have made it possible for us to receive.

Article 2. To the faculty we leave our deepest gratitude for the untiring efforts they have made to help us in every way; and we give them credit for the best that our lives shall yield in the future.

Article 3. To our Alma Mater we pledge at all times, our loyalty, our devotion, and our service in return for the high ideals with which she has endowed us.

SECTION II

Article 1. To our little sisters, we bequeath the fulfillment of the possibility of Greater Louisburg College; the new buildings to be erected, with the esplanade leading from the monument to the main building, the automobile thoroughfares and the various avenues of future advancement.

Article 2. To the class of '28, we give the pleasure and privilege of occupying the new class rooms and especially of enjoying the new library.

Article 3. To all the classes which follow us, we give the task of keeping sacred the spirit of our Alma Mater, and to hold high her standards and sacred traditions which have come to us unstained from the records of Old Louisburg College.

SECTION III

Article 1. To Mr. Mohn, we bequeath a student body who can sing "Alma Mater" with all the vehemence and enthusiasm which he so ardently desires.

Article 2. To Miss Bizzell, we will a class that can intelligently master college algebra.

Article 3. To Miss Betts, we will a group of girls who are not given to the excessive use of rouge and lipstick, and who do not walk the dead line while cars are parked near the monument.

SECTION IV

To our benefactor, Mr. Richard Wright, we leave our undying gratitude for his generous gifts to our beloved college; and we pledge to him, so far as we are able, our best efforts to fulfill his ideal of noble womanhood.

SECTION V

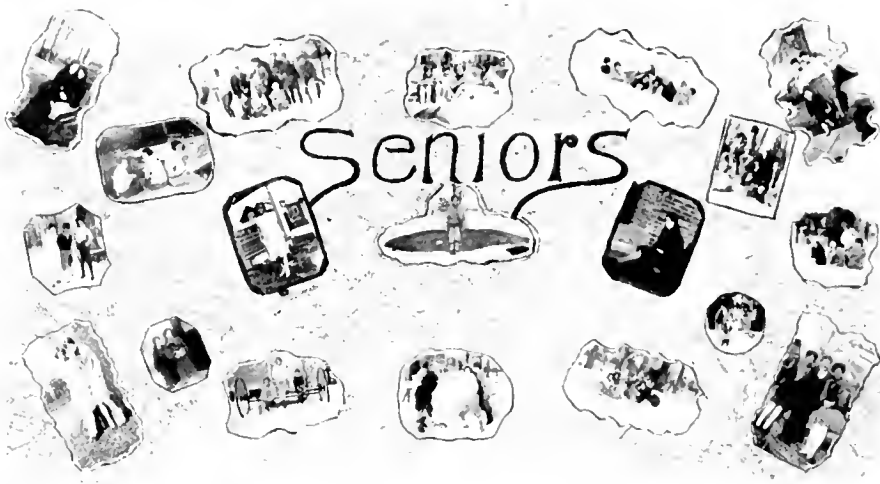
To this will, we, the Senior Class of Twenty-seven, set our seal and signature this twenty-fifth day of May, one thousand nine hundred and twenty-seven

Signed: CLASS OF TWENTY-SEVEN.

Testator: FRANCES STANTON.

Witnesses: CLASS OF 1929.





Commercial Seniors

DORIS BARBER
Middlesex, N. C.

JANIE BARKER
Semora, N. C.

JUANITA BRUTON
Jackson Springs, N. C.

LEONORA CARAWAN
Northen, N. C.

LILLIE CROCKER
Selma, N. C.

DOROTHY DICKENS
Zebulon, N. C.

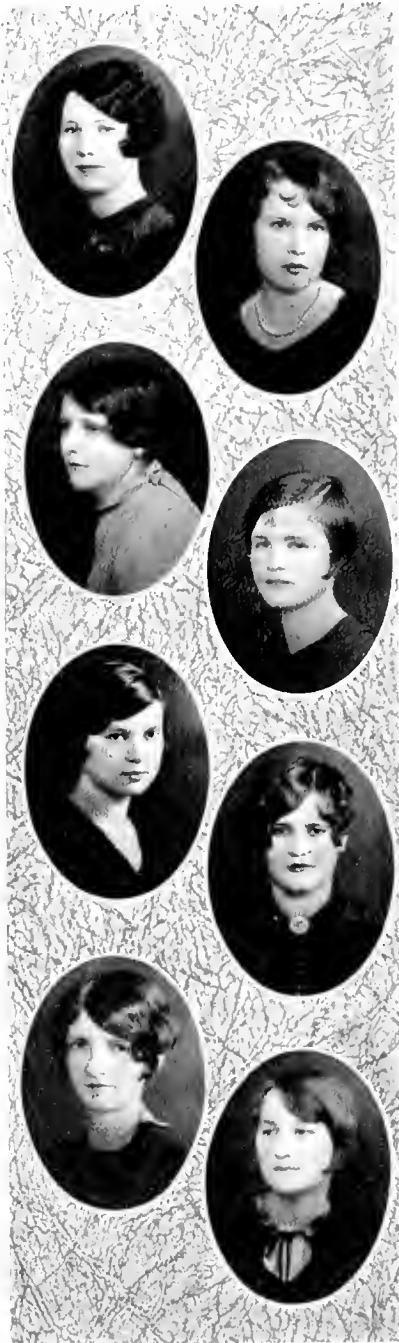
MADGE DURHAM
Raleigh, N. C.

NELLIE FARMER
Raleigh, N. C.





Commercial Seniors



MARGARET GOLDSTON
Goldston, N. C.

MARGARET GRAHAM
La Grange, N. C.

LOUISE GRIFFIN
Louisburg, N. C.

MATTIE HARRELL
Pine Tops, N. C.

MAE HEATH
Ayden, N. C.

MARGARET HILL
Louisburg, N. C.

BEULAH LANCASTER
Louisburg, N. C.

HELEN LANGSTON
Kinston, N. C.



Commercial Seniors

ELIZABETH MATTHEWS
Tarboro, N. C.

SYBL MCGOWAN
Oxford, N. C.

CHARITY MOORE
Walstonburg, N. C.

EFFIE OWENS
Fayetteville, N. C.

MARY ALICE PARKS
La Grange, N. C.

EDITH PINKHAM
Washington, N. C.

ELIZABETH PLEASANTS
Aberdeen, N. C.

ANNIE MAE RAMSEY
Starkville, Miss.





Commercial Seniors



DORA SHACKLEFORD
Walstonburg, N. C.

HELEN SMITH
Belhaven, N. C.

ROSA STELLE
Rockingham, N. C.

JOSEPHINE STREET
Newbern, N. C.

LOUISE SWANN
Raleigh, N. C.

ELIZABETH THOMAS
Jonesboro, N. C.

THELMA WATERS
Newbern, N. C.

HELEN WEAVER
Aberdeen, N. C.





JUNIORS





MARY JANE McIVER, *Junior Class Mascot*

Junior Class Poem

"THAT'S MY DAD"

When I was a baby upon his knee
He taught me how to give thanks to thee;
How to be loyal and true and kind,
How the Golden Rule ever to mind—
That's my Dad!

Then when I budded, blossomed and grew,
He still stuck to me; and I always knew
That if I sinned, as long as I live,
Me, he would always and always forgive—
That's my Dad!

God, give every girl a Dad like mine;
One who is gentle, forgiving and fine,
One who knows well his girl's weak way,
One who will keep her from going astray—
That's my Dad!

A man strong of heart as well as of mind,
A man who knows how to be wonderfully kind,
A man who trusts you through thick and thin,
A spirit to guide you and save you from sin—
That's my Dad!

—M. C.





Junior Class Officers

- EVELYN HARRISON *President*
- MINNIE PERRY *Vice-President*
- CHRISTINE DODD *Secretary*
- IVA JINETTE *Treasurer*

CLASS ADVISERS

- MISS LOUISE WOOD
- MISS BESSIE AVA GUTHRIE





Junior Class



MAXWELL ALLEN
Louisburg, N. C.



MILDRED ANDREWS
Harner, S. C.



CLOYCE ASHLEY
Fairmont, N. C.



MYRTLE BARROW
La Grange, N. C.



PATTIE BEASLEY
Louisburg, N. C.



WILMA BLAKE
Stedman, N. C.



IILEEN BOWLING
Henderson, N. C.



LUCILLE BRADY
Moncure, N. C.



Junior Class

ALICE BLACKSTONE
Windsor, N. C.

KATHLEEN BROWN
Pinebluffs, N. C.

SUSIE BRUTON
Wadeville, N. C.

MARGARET BRYAN
La Grange, N. C.

CATHERINE BULLUCK
Creedmoor, N. C.

ALICE CAMERON
Kinston, N. C.

LETA CASHWELL
Maxton, N. C.

MARY CREDLE
Washington, N. C.





Junior Class

LESSIE DAVIS
Marshallbury, N. C.

UMA MAE DICKENS
Louisburg, N. C.

CHRISTINE DODD
Four Oaks, N. C.

MIRIAM EDGERTON
Kenley, N. C.

HELEN FAULKNER
Kinston, N. C.

GRACE FIELDS
La Grange, N. C.

MARY SUSAN FULLER
Louisburg, N. C.

ELIZABETH FUSSEL
Stedman, N. C.





Junior Class

LOUISE GARDNER
Dunn, N. C.

FRANCES GODWIN
Kenley, N. C.

MAE GOODEN
Elizabethtown, N. C.

ADRIANNA GRANT
Nesmith, N. C.

MYRTLE GREENE
Gates, N. C.

EASTER MAE GRIFFIN
Pinctops, N. C.

MYRTICE GUPTON
Littleton, N. C.

EVELYN HANCOCK
Wilmington, N. C.





Junior Class



EVELYN HARRISON
Williamston, N. C.

CAROLINE HAYES
Gates, N. C.

FLORINE HAYMAN
Spring Hope, N. C.

BETTIE HERRING
Clinton, N. C.

BLANCHE HOCKADAY
Thelma, N. C.

ELLEN HUGHES
Jackson, N. C.

MARY INGRAM
Mount Gilead, N. C.

ESSIE JERNIGAN
Jackson, N. C.



Junior Class

BESS JONES
Beaufort, N. C.

HAZEL KIRKMAN
Fayetteboro, N. C.

LOUISE KIRKMAN
Lumberton, N. C.

MARIAN LANGLEY
Oriental, N. C.

SADIE LEWIS
Rex, N. C.

REBECCA LILES
Littleton, N. C.

LILLIAN MADRY
Conoco, N. C.

RUBY McDADE
Hillsboro, N. C.





Junior Class

EULA MITCHELL
Snow Hill, N. C.

GLENNIE MOORE
Stantonsburg, N. C.

PATTIE LYON MOORE
St. Petersburg, Fla.

PAULINE MUNNS
Maxton, N. C.

MILDRED MUSE
Oriental, N. C.

RUBY NEAL
Lucana, N. C.

MAUDE NEWBERN
Olds, N. C.

MARY NEWBERN
Powell's Point, N. C.





Junior Class

VIVIAN NEWELL
Scotland Neck, N. C.

ISABELLE PARKER
Wade, N. C.

MELBA PARKER
Wade, N. C.

RUBY PEAKE
Oxford, N. C.

MAE PLATT
Wilmington, N. C.

NANNIE PERRY
Louisburg, N. C.

MINNIE PERRY
Durant's Neck, N. C.

MARGARET POWELL
Savage, N. C.





Junior Class



FRANCES RAGAN
Youngsville, N. C.

MARY LECKIE READ
Palmer Springs, Va.

FRANCES REAVES
Mt. Olive, N. C.

MASON RICKS
Rocky Mount, N. C.

THELMA RICHARDS
Scranton, N. C.

DORIS ROGERS
Creedmoor, N. C.

FRANCES ROGERS
Creedmoor, N. C.

FRANCES SCARBOROUGH
Hoffman, N. C.





Junior Class

VELMA SENTER
Kipling, N. C.



MIRIAM SHAVENDER
Pantaga, N. C.

VIRGINIA SLOANF
Wallace, N. C.



MARY SPENCE
Goldshoro, N. C.

GLADYS SUTTON
Faison, N. C.



ESTELE THOMAS
Jackson Springs, N. C.

LUCIE THOMPSON
Creedmoor, N. C.



LALLA THOMPSON
Macon, N. C.





Junior Class

PAULINE THORNTON
Goldsboro, N. C.

HELEN TYSON
Stantonsbury, N. C.

MARY VANN
Clinton, N. C.

NANNIE WALLER
Kinston, N. C.

MYRTLE WATSON
Straits, N. C.

RUBY WHEELLESS
Spring Hope, N. C.

ANNETTE WHITFIELD
Creedmoor, N. C.

ETHEL WHITEHURST
Straits, N. C.





Junior Class

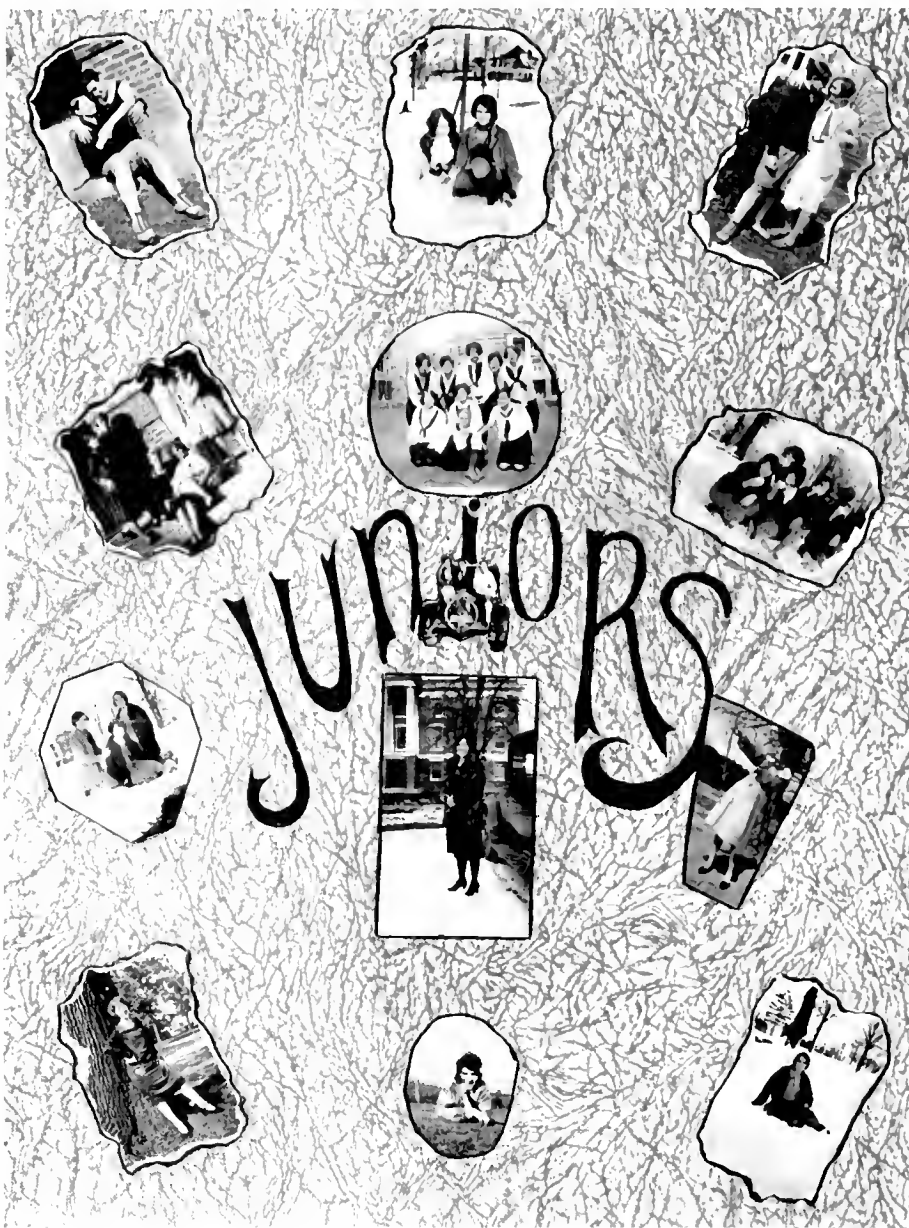
ELIZABETH WILKINSON
Goldsboro, N. C.

EULA WILLIAMSON
Raleigh, N. C.

RUBY WORTHINGTON
Kinston, N. C.

KIMIKO YAMINISHI
Awazi, Japan





ACADEMY





Sophomore Class

Colors: Red and Gold

Flower: Red Rose

Motto: "Let nothing discourage you; never give up."

OFFICERS

ELEANOR PHIPPS *President*
 RACHEL CREECH *Vice-President*
 ELIZA BLACKSTONE *Secretary*
 NAOMI DICKENS *Treasurer*
 MISS LILLIAN ROSELAND *Class Teacher*

SOPHOMORE ROLL

CLYDE SUTTON	ELEANOR PHIPPS	NELL AYCOCK	LUCY THOMAS
	LUCY KING	LUCILLE DAVIS	
	ELIZA BLACKSTONE	NAOMI DICKEN	
	RACHEL CREECH	VIRGIE SHELFIELD	
	GLADYS NEWBURN	SARAH STACK	
	JEANNIE TINGLE	ETHEL PUGH	
	BELLY MOHN	MELBA LONGFELLOW	
		VIRGINIA RICKS	





Freshman Class

Color: Pink and Lavender

Flower: Sweet Pea

Motto: B2

OFFICERS

- GRACE PERSON *President*
- MYRILE McIVER *Vice-President*
- LOUISE STUBBINS *Treasurer*
- DOROTHY KNOWLES *Secretary*
- MISS GWENN GILBERT *Class Teacher*

FRESHMAN ROLL

- | | |
|------------------|------------------|
| GRACE PERSON | ELIZABETH BARKER |
| DOROTHY KNOWLES | ESTELLE WOODRUFF |
| MARGARET WILDER | ETHEL JONES |
| ELIZABETH HARPER | MYRILE McIVER |
| LOUISE STUBBINS | |







ORGANIZATIONS





Student Government

OFFICERS

RUBY DAIL	<i>President</i>
NANNIE WALLER	<i>Vice-President</i>
EVELYN HARRISON	<i>Secretary</i>
NAOMI DICKENS	<i>Treasurer</i>
PEARL PANSON	<i>House Proctor of Mann</i>
GEORGIA COGGINS	<i>House Proctor of Wright</i>
VERA USREY	<i>Y. W. C. A. Representative</i>
JANIE FLETCHER	<i>Senior Representative</i>
IVA JINETTE	<i>Junior Representative</i>
CLYDE SUTTON	<i>Sophomore Representative</i>





Y. W. C. A. Cabinet

OFFICERS

VERA USREY	<i>President</i>
MARY DAVIS	<i>Vice-President</i>
IVA JINETTE	<i>Secretary</i>
CLYDE JOHNSON	<i>Treasurer</i>
JEANNIE TINGLE	<i>Undergraduate Representative</i>
ETHEL SUGG	<i>World Fellowship Worker</i>





Art Club

OFFICERS

MARY INGRAM *President*
AUDREY MIDYETTE *Secretary and Treasurer*

ROLL

- | | |
|----------------------|----------------------|
| PATTY MOORE | GRACE PERSON |
| GLENNIE MOORE | JOSEPHINE STREET |
| MARY FRANCES RESPESP | STUART DAVIS |
| MYRILE BARROW | MRS. M. S. DAVIS |
| LUCILLE LAWRENCE | MISS R. D. WHITTHEAD |
| MARY INGRAM | ALICE BLACKSTONE |
| SALLIE MAE ALPHIN | RUBY NEAL |
| AUDREY MIDYETTE | SARAH SLACK |





Sea Gift Literary Society

LINA WILSON *President* WINCEY BEARNTY *Secretary*
 FRANCIS STANTON *Vice-President* ISABELLE WEST *Treasurer*
 MONIE MOYLE *Critic*

MEMBERS

- | | | | |
|-------------------|-------------------|-------------------|------------------|
| ALICE AVERILL | NELLIE FARMER | LOUISE KIRKMAN | ANNIE MAE RAMSEY |
| NANCY BALDWIN | WILMA FLEMING | SADIE LEWIS | MERCILLA REAMS |
| JANIE BARKER | JANIE FLETCHER | RUBY LILES | FRANCES REAVES |
| MINNIE MAE BEAMAN | ELIZABETH FUSSELL | MELLIE LONGFELLOW | MARY LECKIE REID |
| WILMA BLAKE | DOROTHY GARDNER | VERNA MAXWELL | VERGIE SHIFFIELD |
| ALICE BLACKSTONE | KATHERINE GIBSON | SYBIL MCGOWAN | VIRGINIA SLOAN |
| WINCEY BLAKENEY | FRANCES GODWIN | MYRTLE McIVER | LOUISE STUBBINS |
| JEFF BOWLING | MARGARET GOLDSTON | MARGARET McLEOD | FRANCES STANTON |
| LUCILLE BRADY | MAE GOODEN | EULA MITCHELL | JEANNIE TINGLE |
| SUSIE BRUTON | MARGARET GRAHAM | MONIE MOYLE | CATHERINE THOMAS |
| ALICE CAMERON | DOROTHY GRAHAM | MILDRED MUSE | ESTELLE THOMAS |
| INEZ CHADWICK | MYRTLE GREEN | GLADYS NEWBERN | LILA THOMPSON |
| LETA CASHWELL | DORIS HARDEE | ANNIE NOBLE | HELEN TYSON |
| ADELE COBB | LANCE HARRINGTON | PEARL PANTON | VERA USREY |
| GEORGIA COGGIN | CAROLINE HAYES | MARY ALICE PARKS | MYRTLE WATSON |
| RACHEL CREECH | FLORINE HAYMAN | MELBA PARKER | ISABELLE WEST |
| RUBY DAIL | MAE HEATH | ISABELLE PARKER | RUBY WHELESS |
| LESIE DAVIS | NONA HERRING | RUBY PEAKE | ETHEL WHITEHURST |
| LUCILLE DAVIS | MARIE HESTER | GRACE PERSON | EULA WILLIAMSON |
| DOROTHY DICKENS | LILLIAN HOWELL | EDITH PINKHAM | LINA WILSON |
| MADGE DURHAM | ESSIE JERNIGAN | ELEANOR PHIPPS | ESTELLE WOODRUFF |
| HELEN EVANS | CLAYDE JOHNSON | EULA PURNELL | ANNE WOODS |
| MATT EXUM | MARJORIE JOHNSTON | FRANCES RAGAN | KIMIKO YAMANISI |



THE OAK



Neithan Literary Society

ALICE POYNER *President*
 CORNELIA FRIZZELL *Vice-President*
 MARGARET NEWBERN *Secretary*
 MINNIE PERRY *Treasurer*

MEMBERS

SAMM MAE ALPHIN	NANNIE WALLER	LILLIE CROCKER	MARY NEWBERN
MYRTLE BARROW	MARGARET RICKS	EVA DILDEY	MARGARET NEWBERN
EVA BELLE BOBBITT	NANNIE FIELDS	IRIS DUNCAN	MAI DE NEWBERN
BLANCHE BENSON	HAZEL MANN	UNA MAE DICKENS	ELIZABETH WILKINSON
MABEL BRADSHAW	LUCILLE TAYLOR	HELEN FAULKNER	HELEN WEAVER
ELIZA BLACKSTONE	JAY WILLIAMS	RUBY WORTHINGTON	RUBY NEAL
MARGARET CREDIT	PAULIE MOORE	GRACE FIELDS	EFFIE OWEN
NAOME DICKENS	MARY DAVIS	MARY SUSAN FULLER	MARGARET POWELL
ADELAIDE DUKE	MAE GREEN	LOUISE GARDNER	MAE PLATT
MIRIAM EDGERION	BERIA JONES	MYRTICE GUPION	ELIZABETH PLEASANTS
ADRIANNA GRANT	ELIZABETH BARKER	EVELYN HANCOCK	DORIS ROGERS
EVELYN HARRISON	VIRGINIA RICKS	MATTIE HARREL	VELMA SENTER
DORIS HANCOCK	ETHEL PUGH	BETTIE HERRIN	MIRIAM SHAVENDAR
MARY INGRAM	SARAH SLACK	BLANCHE HOCKADAY	JOSEPHINE STREET
LOUISE JOYNER	NELL AYCOCK	ELLEN HUGHES	FRANCES SCARBORO
HELEN LANGSTON	LUCY KING	ALICE HUNT	LOUISE SWAN
AUDREY MIDYETTE	CLYDE SUTTON	BESS JONES	MARY SPENCE
MASON RICKS	DOROTHY KNOWLES	HAZEL KIRKMAN	ROSIE STEELE
FRANCES RESPASS	CLOYCE ASHLEY	MARION LANGLEY	DORA SHACKLEFORD
LYNDAY SPUDDERT	MARGARET BRYAN	LILLIAN MADREY	LUCY THOMPSON
PAULINE THORNTON	KATHERYN BULLOCK	CHARITY MOORE	NANCY TAYLOR
RUTH WATSON	DORIS BARRER	GLENNE MOORE	GLADYS SUTTON
GRACE WINDLEY	MAMIE JAMES BLUF	ELIZABETH MATTHEWS	MARY VANN
FRANCES WOODLIFF	JUANITA BRULON	RUBY MCDADE	THELMA WATERS
FRANCES YELVERTON	LEONORA CARAWAN	PAULINE MUNNS	ANNETTE WHITFIELD
MARTHA B. YELVERTON	MARY CREDLE	VIVIAN NEWELL	FRANCES ROGERS
			THELMA RICHARDS





Dramatic Club

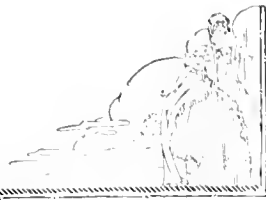
OFFICERS

- EULA PURNELL *President*
- RUBY McDADE *Vice-President*
- LILLIAN HOWELL *Secretary and Treasurer*

ROLL

- | | | |
|-----------------------|------------------|---------------------|
| ADIE COBB | BETTY MOHN | LYNSAY STUDDERT |
| MARY CREDLE | RUBY McDADE | FRANCES SEANTON |
| LESSIE DAVIS | GLADYS NEWBERN | ELIZABETH WILKINSON |
| MIRIAM EDGERTON | EULA PURNELL | EULA WILLIAMSON |
| KATHERINE GIBSON | MARY ALICE PARKS | JAY WILLIAMS |
| LILLIAN WYCHIE HOWELL | MARY LECKIE REID | ANNE WOODS |
| DORIS HANCOCK | ANNIE MAE RAMSEY | MARTHA B. YELVERTON |
| | CLYDE SUTTON | |





La Sociedad Espanola

OFFICERS

JAY WILLIAMS *President*
 DORIS HANCOCK *Vice-President*
 ANNE WOODS *Secretary*
 ELIZABETH THOMPSON *Treasurer*

ROLL

ALICE AVERITT
 MARY NEWBERN
 MARGARET BRYAN
 CLYDE JOHNSON
 ISABELLE WEST
 LYNSAY SPUDERT
 NONA HERRING
 GEORGIA COGGIN

DORIS HANCOCK
 NANCY TAYLOR
 ADELAIDE DUKE
 WINCY BLAKINBY
 MINNIE MAE BEAMAN
 ANNE WOODS
 GLADYS SUTTON
 MAE PLATT
 ELIZABETH THOMPSON

JAY WILLIAMS
 VIVIAN NEWELL
 MATT EXUM
 MARIHA B. YELVERTON
 FLORINE HAYMAN
 EVELYN HANCOCK
 AUDREY MIDYETTE
 ANNETTE WILKFIELD





White Cat Club

OFFICERS

BETTY HERRING *President*
 WINCEY BLAKENEY *Secretary*
 AUDREY MIDYETTE *Treasurer*
 ISABELLE WEST *Business Manager*

Favorite Pastime: "Walking the Deadline"

Motto: "When pleasure and duty clash, let duty go smash"

Colors: Blue and White

Flower: Forget-Me-Not

MEMBERS

DORIS BARBOUR "Bobs"	LILLIAN MADREY "Mad"
WILMA BLAKE "Billy"	ELIZABETH MATTHEWS "Lib"
WINCEY BLAKENEY "Babe"	AUDREY MIDYETTE "Honeybabe"
ALICE CAMERON "Kammie"	VELMA SENTER "Sinner"
ELIZABETH FUSSELL "Peggy"	DORA SHACKLEFORD "Shackle-ford"
BETTY HERRING "Bet"	VIRGINIA SLOAN "Gin"
VERNA MAXWELL "Max"	GLADYS SUTTON "Glad"
ISABELLE WEST "Bill"	





Tennis Club

OFFICERS

LUCILLE TAYLOR *President*
 NAOMI DICKENS *Secretary and Treasurer*

ROLL

MARY INGRAM
 NAOMI DICKENS
 GEORGIA COGGIN
 CLYDE SUTTON
 PAULINE THORNTON
 LYNDSEY STUDDERT
 LUCILLE TAYLOR
 CORNELIA FRIZZELL
 LUCY THOMPSON
 MARTHA B. YELVERTON
 MARY VANN
 GRACE FIELDS

ISABELLE WEST
 RACHEL CREECH
 CLYDE JOHNSON
 PATTY MOORE
 MONTEE MOYLE
 LILLIAN HOWELL
 FRANCES WOODLIFF
 WINCY BLAKENEY
 WILMA FLEMING
 HELEN TYSON
 MARGARET POWELL
 JOSEPHINE STREET

MINNIE MAE BEAMAN
 VIRGINIA TODD
 LUCY KING
 ILEEN BOWLING
 SARAH BURNS
 LEONORA CARAWAN
 CHRISTINE DODD
 MIRIAM EDGERTON
 FRANCES GODWIN
 SYBL MCGOWAN
 MARGARET MCLEOD
 ELEANOR PHIPPS





Hikers Club

OFFICERS

LUCILLE TAYLOR *President*
 ALICE POYNER *Secretary*
 CORNELIA FRIZZELL *Manager*

ROLL

MARY VANN
 VIRGINIA RICKS
 FRANCES SCARBOROUGH
 LOUISE JOYNER
 MARGARET BRYAN
 LILIAN MADRY
 BILL FLEMING
 CHARITY MOORE
 MARIAN LANGLEY
 LYNDSAY STUDDERT
 PATTY MOORE
 GLENNIE MOORE
 MARGARET GOLDSTON
 CHRISTINE DODD
 ALICE BLACKSTONE
 EASIER MAE GRIFFIN
 BESS JONES
 NAOMI DICKENS

RACHEL CREECH
 JO STREET
 BERTA JONES
 THELMA WATERS
 VIVIAN NEWELL
 CAROLYN HAYES
 CORNELIA FRIZZELL
 MARGARET MCLEOD
 REBECCA LYLES
 KATHERINE BROWN
 LUCILLE TAYLOR
 DOROTHY KNOWLES
 RUBY MCDADE
 PAULINE THORNTON
 MARY NEWBERN
 ISABELLE WEST
 MILDRED MUSE
 NONA HERRING

PAULINE MUNNS
 ADELAIDE DUKE
 MASON RICKS
 MYRTLE GREEN
 GRACE FIELDS
 MARGARET POWELL
 HILDA SNOW
 MARGARET GRAHAM
 SYBIL MCGOWAN
 EVA DILDY
 ALICE HUNT
 ESTELLE WOODRUFF
 KATHRYN BULLOCK
 DORIS ROGERS
 VIRGIE SHEFFIELD
 LUCY THOMPSON
 EVELYN HARRISON
 ALICE POYNER





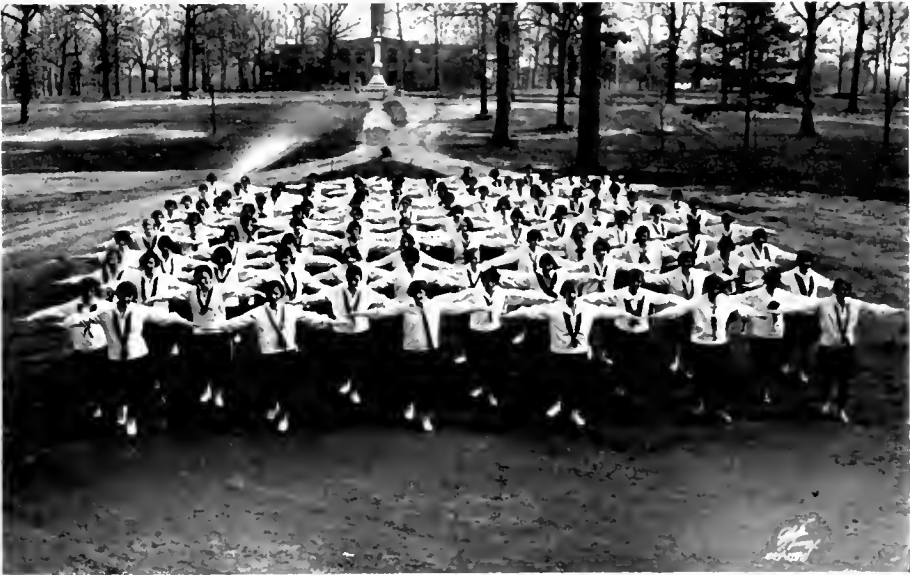
SENIOR BASKETBALL TEAM

ALICE POYNER, *Captain*; CORNELIA FRIZZELL, MARGARET McLUOD, LUCY KING, EVA BELLE BOBBIT, NAOMI DICKENS, PEARL PANTON, EULA PURNELL



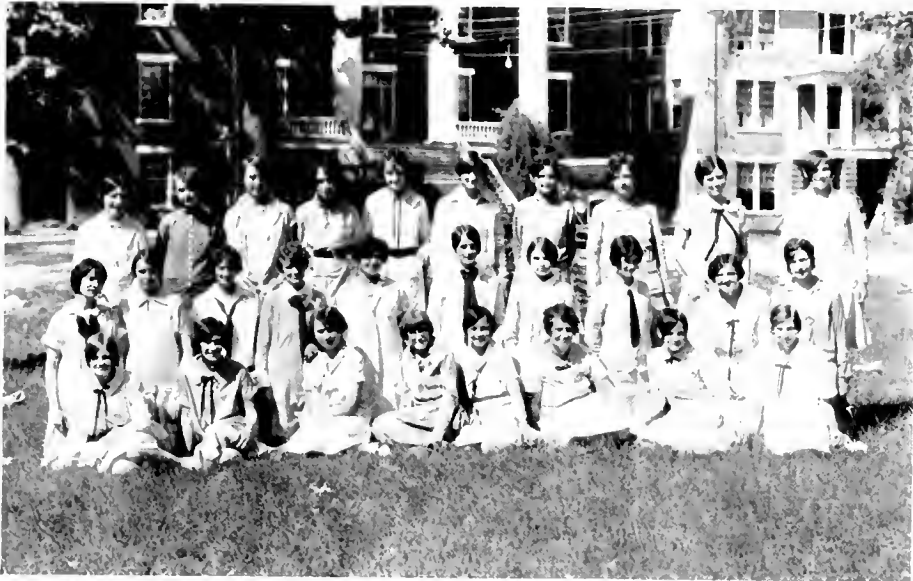
JUNIOR BASKETBALL TEAM

IKY CARAWAN, *Captain*; MARIAN LANGLEY, MARGARET GOLDSTON, RUBY WHIFFESS, MIRIAM EDGERTON, BLESS JONES, EVELYN HARRISON, BILL FLEMING, VELMA SENTER



THE GYM CLASS





Home Economics Club

OFFICERS

MINNIE LANCASTER *President*
 BLANCHE BENSON *Vice-President*
 PAULINE THORNTON *Secretary and Treasurer*

ROLL

BLANCHE BENSON
 ALICE BLACKSTONE
 EUNICE BUTTS
 LESSIE DAVIS
 CHRISTINE DODD
 NAOMI DICKENS
 JANIE FLETCHER
 MARY SUSAN FULLER
 ADRIANNA GRANT
 BLANCHE HOCKADAY

MAE GREENE
 LOUISE JOYNER
 MINNIE LANCASTER
 ISABEL PARKER
 MARGARET FORLAW
 MINNIE PERRY
 LOUISE STUBBINS
 VELMA SENTER
 JOE STREET
 CATHERINE THOMAS

PAULINE THORNTON
 RUBY WHEELLESS
 NANNIE WALLER
 ETHEL WHITEHURST
 FRANCES YELVERTON
 LUCILLE DAVIS
 GRACE PERSON
 ANNIE NOBLE
 VIRGINIA TODD
 MAE GOODEN





THE OAK



College Quartet

RACHEL CREECH

First Soprano and Pianist

MARY INGRAM
Second Soprano

EULA PURNELL

Second Alto and Reader

EVA BELLE BOBBITT
First Alto

Louisburg College Glee Club

NAOMI DICKENS *President*
EVA BELLE BOBBITT *Vice-President*

NANCY BALDWIN
EVA BELLE BOBBITT
ALICE CAMERON
RACHEL CREECH
MARY CREDLE
MARY DAVIS
NAOMI DICKENS
ELIZABETH FUSSELL

NANNIE FIELDS
FRANCES GODWIN
MARY INGRAM
DOROTHY KNOWLES
REBIE LILES
BESS JONES
BETTY MOHN
RUBY McDADE
GLADYS NEWBERN

BESS JONES *Secretary*
CLYDE SUTTON *Treasurer*

MARY NEWBERN
ALICE POYNER
ELEANOR PHIPPS
ETHEL PUGH
MARGARET RICKS
VELMA SENTER
CLYDE SUTTON
LOUISE SWANN
JUANITA BRUTON

SARAH STACK
LUCY THOMPSON
LUCILLE TAYLOR
NANCY TAYLOR
PAULINE THORNTON
EULA PURNELL
THELMA WATERS
LUCILLE LAWRENCE

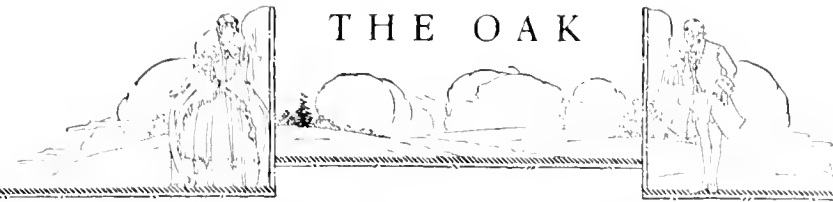




FEATURES



THE OAK



Beauty, MATT EXUM



THE OAK



Grace, DOROTHY GARDNER



THE OAK



Charm, LUCILLE TAYLOR

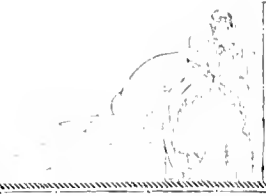




Culture, FRANCIS WOODLIFF



THE OAK



Originality, Lillian Wycher Howell.



THE OAK



Sportsmanship, LINA WILSON



THE OAK



Forsality, ALICE POYNER



THE OAK



Wisdom, LUCY CLIFTON BODDIE



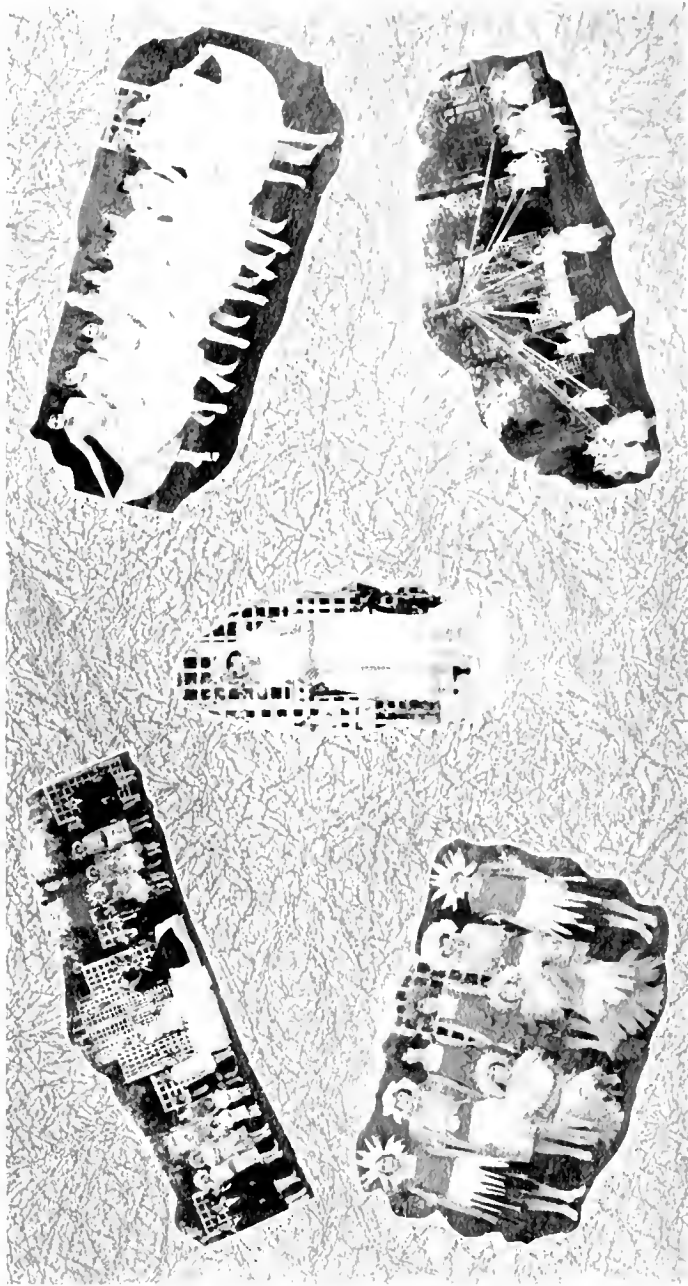
THE OAK



JAY WILLIAMS, *May Queen of 1926*

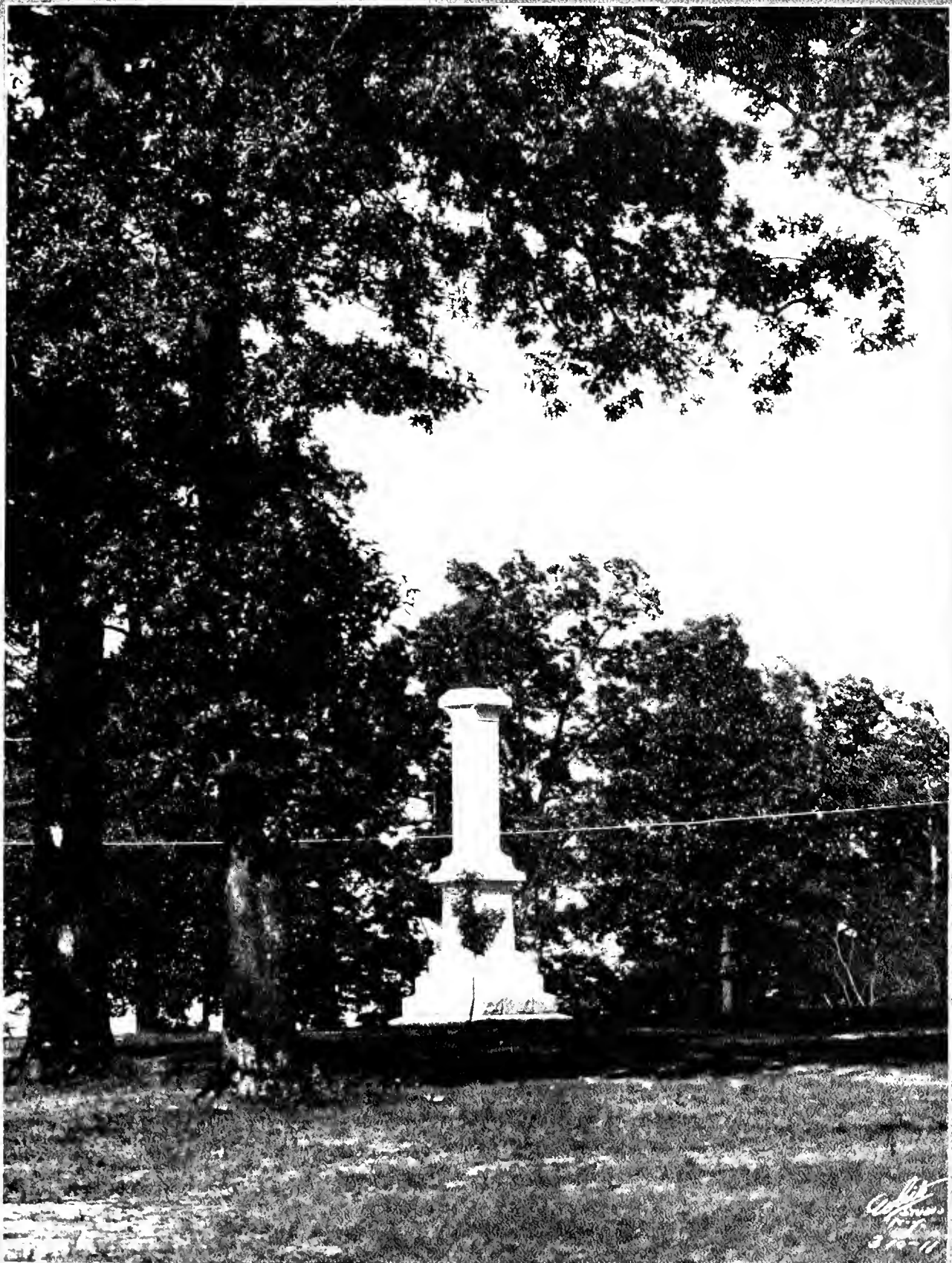


THE OAK



MAY DAY SCENES

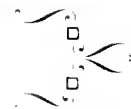


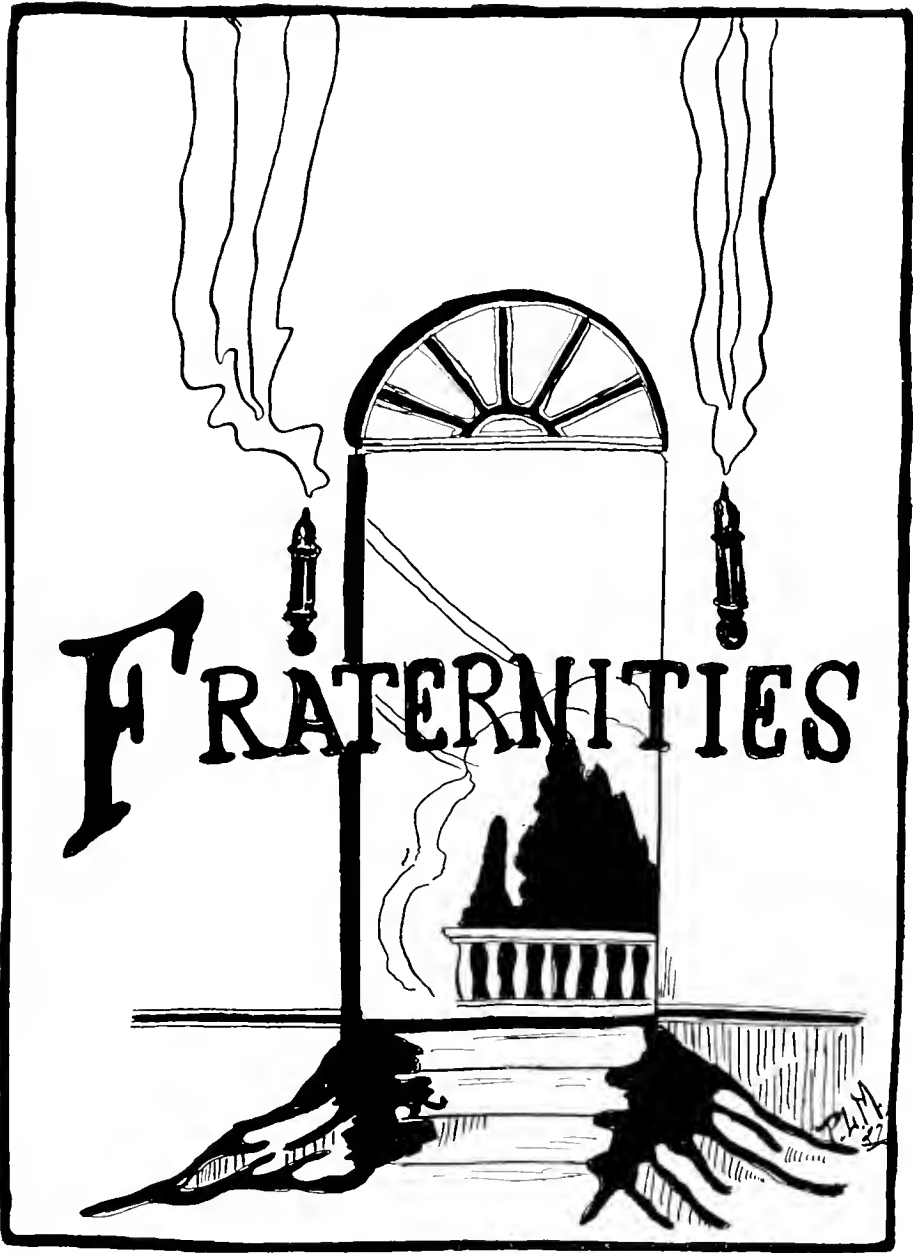


W. H. ...
1911
3-7-11



FRATERNITIES





THE OAK





THE OAK

Delta Iota Kappa

North Carolina Alpha Chapter

Founded Louisburg College 1921

Colors: Purple and White

Flower: Palmer Violet

SORORES IN FACULTATE

ALMA BIZZELL

RUTHIE D. WHITEHEAD

ELVA SIEFK

SORORES IN COLLEGIO

Class of 1927

MARJORIE JOHNSTON

VIRGINIA TODD

LILLIAN HOWELL

DOROTHY GARDNER

MONTEE MOYLE

SALLIE MAE ALPHIN

FRANCES WOODLIEFF

MAE GREEN

MATT EXUM

Class of 1928

MIRIAM EDGERTON

DORIS HARDEF

LETA CASHWELL

ESSIE JERNIGAN

MINNIE PERRY

FRANCES GOWIN

Class of 1929

RACHEL CREECH

PLEDGES

MYRTLE MCIVER

GRACE PERSON

CLYDE SUTTON



THE OAK





Sigma Delta Theta

North Carolina Alpha Chapter

Founded Louisburg College 1923

Colors: Emerald Green and Pearl White

Flower: White Rose

SORORES IN FACULTATE

MRS. A. W. MOHN

MRS. BAKER KNIGHT

SORORES IN COLLEGIO

Class of 1927

MINNIE MAE BEAMAN

EULA PURNELL

EUNICE BUTTS

LANDSAY STUDDERT

CORNELIA FRIZZELL

LUCILLE TAYLOR

ALICE HUNT

JAY WILLIAMS

MARGARET NEWBERN

ANNE WOODS

ALICE POYNER

MARTHA B. YELVERTON

Class of 1928

MARGARET BRYAN

RUBY McDADE

EVELYN HARRISON

MARY NEWBERN

LOUISE KIRKMAN

PAULINE THORNTON

Class of 1929

NAOMI DICKENS

GLADYS NEWBERN

Class of 1930

BETTY MOHN

Commercial Students

ROSA STEEL

JOE STREET

MARY INGRAM

THELMA WAITERS

PLEDGES

MAUDE NEWBERN

FRANCES REAVES



THE OAK





THE OAK

Alpha Omega Phi

North Carolina Alpha Chapter

Founded Louisburg College 1926

Colors: Red and White

Flower: White Rose

SORORES IN FACULTATE

MYRA LOIS YANCEY

ELIZABETH MADDUX

SORORES IN COLLEGIO

Class of 1927

HAZEL MANN

GRACE WINDLEY

ADELAIDE DUKE

EVA BELLE BOBBITT

LOUISE JOYNER

NANCY TAYLOR

MARGARET CREDLE

Class of 1928

MARY CREDLE

HELEN SMITH

LUCY THOMPSON

RUTH VOLIVA

MIRIAM SHAVENDAR

VELMA SENTER

BETTY HERRING

FRANCES SCARBOROUGH

MARGARET POWELL

BESS JONES

PATTIE LYON MOORE

LOUISE SWAN

Class of 1929

VIRGINIA RICKS





Women's Fraternities

IT IS OUR firm belief that the college fraternity is an institution which is greatly beneficial to the girls within its bounds. It surrounds its young women with a more homelike atmosphere than they would otherwise enjoy. It embodies not only social life, but an earnest endeavor to increase loyalty toward God, the faculty, the student body, and toward self. The fraternity furnishes a strong and lasting link to college life. It is a chain by which the bonds of friendship are strengthened by the bonds of sisterhood.

We have three fraternities at Louisburg—the Delta Iota Kappa, the Sigma Delta Theta, and the Alpha Omega Phi. These fraternities are made up of groups of congenial girls who have chosen to form themselves into secret organizations. They work together, play together, and the spirit of sisterly love exists among them, guiding them to the higher, nobler life.





TRACK



P.M.
EM





Jokes

A Freshman went to hades once,
A few more things to learn;
Old Satan sent him back again,
He was too green to burn.

Dot: "Are late hours good for one?"
Buck: "No, but they are good for two."

Jay: "Miss Whitehead, can a person be punished for a thing he has not done?"
Miss Whitehead: "Of course not."
Jay: "Well, I haven't done my memory work yet."

Frances: "Eunice, did you read where a man went for two years without taking a bath?"
Eunice: "No, I don't read dirty jokes."

Sarah: "Oh, guess what I did. I made a hundred on two subjects."
Ethel: "How did you rate that?"
Sarah: "Just fifty on each."

Myrtle: "Mellie, how many subjects did you flunk?"
Mellie: "You mean how many did I pass?"

Lucille: "Connie, how do you like to go to the Y. W. C. A.?"
Connie: "All I want is a chance to go to the Y. M. C. A."

Mary D. (discussing her date): "If F. B. comes tonight, I just can't see him."
Eva Belle: "No, Mary, you will be sick."

Student: "I am at the very door of flunking. Won't you help me?"
Teacher: "Yes, my dear. I will push you through."

Miss Guthrie was discussing an Education lesson one day, and asked Jay Williams how she liked picture shows and books. The reply was: "I don't like them. I like the real stuff!"

One day in math class Dot Gardner picked up Miss Bizzel's grade book, thinking that it was her college algebra. When Miss Bizzel asked her to put it down, Dot said: "It is blue just like my book." To which Miss Bizzel replied, "That book is blue because it has such poor grades in it."

Mae: "What would happen if Miss Sheek's hair turned black?"
Sallie Mae: "She would have black hair, of course."

While Matt Exam (the prettiest girl) is posing for the front page of the American, Margaret McLeod is posing for the Whiz-bang.

Wincy: "At the end of this year I shall have had ten years of foreign languages. Then I'll be a-a-a-a . . ."
Mimmie Mae: "I'd be a lunatic."

Margaret: "There is one thing sure. I did not fall for any boys Christmas."
Mellie: "No, but you stumped your toe several times."

Eula Purnell went to her room. She did not want to study, but she knew she ought to. Finally she decided to flip a coin to see whether she would study or not. These were her terms: "Heads, I go to the show; tails, I go to bed; edge, I study."

Miss Betts: "Good night, girls. Remember, when I take the light that there will be an angel with you."

Girls: "Couldn't you take the angel and leave the light?"

Miss Betts asked one of her students to make a rhyme. After a moment's hesitation, the student said:
"It's snowing as hard as it can;
Virginia Todd wants James Cooper for her man."

Martha: "Lucy rides two miles a day for her complexion."

Blanche: "Oh, is the drug store that far away?"

Miss Guthrie: "Use a sentence containing 'disposition.'"

Dot Knowles (doubling up her fists): "Jack Dempsey fights in dis position."

The history teacher was explaining to the class one day that some day we shall talk through the air without wires. One of the pupils said, "Won't it be funny to have an operator tell you that the air is busy?"





1802

1927

LOUISBURG COLLEGE

A Junior College for young women with a standard preparatory course of four years. Property of North Carolina Conference.

Faculty of specially trained, consecrated Christian teachers.

Health record unsurpassed. Social life carefully guarded. Home-like atmosphere. Athletics.

In addition to the regular college courses, Classical and Literary, attention is called to the departments of Art, Business, Education, Expression, Home Economics, Music (Piano, Voice, Violin, Theory, etc.), and Religious Education.

Rates as Low as Consistent With Good Service

For Further Information Write

A. W. MOHN, *President*

LOUISBURG, N. C.

Send for Free Catalog and Book of Views

LOUISBURG, N. C.

"A Good Town to Live In"

Good schools and churches for over a hundred years. The town owns its own electric lighting, water and sewerage systems and operates them for the benefit of its citizens.

The principal streets are paved with sheet asphalt. Good roads lead north, south, east and west. Recent public improvements include:

25% increase in paved streets

20% increase in paved sidewalks

25% increase in water mains

20% increase in sewerage system

Modern Disposal Plant for Sewerage System

Entirely new filter plant affording ample supply of clear and sparkling drinking water.

We Invite Correspondence and Interviews with Home Seekers

CHAMBER OF COMMERCE

S. P. BODDIE, *President*

THE LOUISBURG KIWANIS CLUB

E. L. BEST, *President*





DUKE UNIVERSITY

Provides Increased Facilities for the Education
of Young Women

Special Courses for Teachers in Summer Sessions
and Regular Term

For Catalog and Information Address

R. L. FLOWERS

DUKE UNIVERSITY

DURHAM, N. C.

GREENSBORO COLLEGE

Greensboro College is a member of the Association of
Colleges and Secondary Schools of the Southern States.

Chartered 1838. Confers the degree of A.B. in the
Literary Department and B.M. in the Music Department.

In addition to the regular classical course, special atten-
tion is called to the departments of Home Economics, Ex-
pression, Art (including Industrial and Commercial Art),
Education, Sunday School Teacher Training, Piano Peda-
gogy, and to the complete School of Music.

For Further Information Apply to

SAMUEL B. TURRENTINE

President

GREENSBORO, N. C.





HEADQUARTERS FOR

Fancy Groceries, Candies, Fruits, School Stationery and
Cigarettes, Electrical Equipment, Radios and Acces-
sories, Glass Cut to Measure, Household Paints,
Floor Polishes, Mops and Brushes

*Also Seal Brand, that Superlative Coffee,
Which is Electrically Ground
as Bought*

L. P. HICKS

LOUISBURG, N. C.

Meet Me at

THE RENDEZVOUS

Sandwiches
Confectioneries
Cigarettes
Cigars
Drinks

L. E. SCOGGIN

Druggist and Pharmacist

Whitman's Chocolates, Toilet
Articles, Cigars, Cigar-
ettes, Tobaccos

Girls, Buy Your Coco-Colas at

"SCOGGIN'S"

Telephone No. 310





L. KLINE & CO.
INCORPORATED

LOUISBURG, N. C.

DAVID HARRIS & COMPANY

We Welcome All College Girls

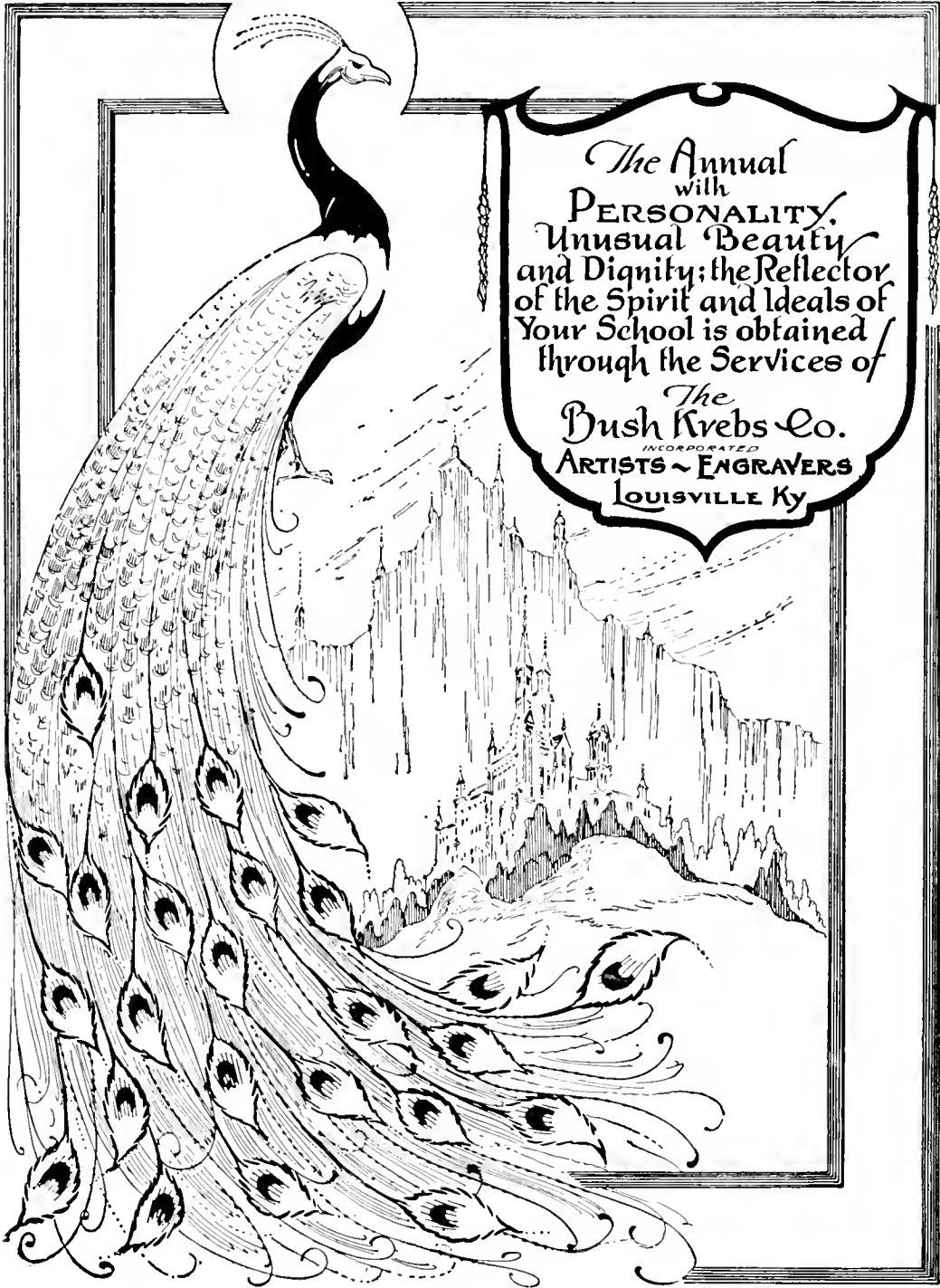
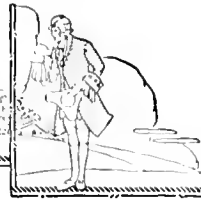
*Newest Styles and Creations
in Ready-to-Wear*

DAVID HARRIS & COMPANY

"We Welcome You"



THE OAK



The Annual
with
PERSONALITY.
Unusual Beauty
and Dignity; the Reflector
of the Spirit and Ideals of
Your School is obtained
through the Services of

The
Bush Krebs Co.
INCORPORATED
ARTISTS ~ ENGRAVERS
LOUISVILLE Ky





LOOK!
WATCH!
LISTEN!
CASH! CASH! CASH!

*Ready money is your best friend,
Which you know is true.
The amount you spend and the amount you save
Determines what you can do.
Save as much as you can spare,
For the future may have demands.
You will then be free from care,
With your money in our strong hands.*

THE FARMERS AND MERCHANTS BANK

LOUISBURG, N. C.

THE SPOT CASH COMPANY

(INCORPORATED)

LOUISBURG, N. C.

Merchandise

Live Stock

Fertilizers

“Pay Cash and Pay Less”





All of the "Crew" of the
BODDIE DRUG COMPANY, Inc.
LOUISBURG, N. C.

Appreciate Your Patronage

BILL PERRY

SPENCER MATHEWS

S. P. BODDIE

THE FRANKLIN TIMES

A. F. JOHNSON, *Editor*

LOUISBURG, N. C.

Franklin County's Popular "Home Paper"
Established 1870

Read by Almost Everybody—Always Lucid. Read it and
Keep in Touch with Franklin County Affairs

Only \$1.50 Per Year

An Advertising Medium That Gets Results
Try It and Profit Like Others





ROSE'S
5-10-25c STORE

A Real Up-to-the-Minute Dime Store

We Appreciate Your Business to
the Extent of Giving You
the Very Best There is
of Service and
Merchandise

QUALITY QUANTITY
SATISFACTION

W. E. WHITE
FURNITURE
COMPANY

Phones: Day, 90 Night, 230

Main Street
Louisburg, North Carolina

C. T. STOKES

Cotton Buyer

—

Dealer in
High Grade Fertilizers

—

Phone 274
LOUISBURG, N. C.

*Eat at Home—Away From
Home at*

TUCKER HOTEL
AND CAFE

H. A. HODGE, Prop.
LOUISBURG, N. C.

College Jewelry
Expert Watch and Jewelry
Repairing
Records *Gift Shop*

Stamps Jewelry
Store
Phone 336



THIS BOOK PRINTED BY BENSON



LARGEST COLLEGE ANNUAL
PUBLISHERS IN THE WORLD

HIGHEST QUALITY WORKMANSHIP
SUPERIOR EXTENSIVE SERVICE



COLLEGE ANNUAL HEADQUARTERS



Gifts

For Any Occasion Can be Found at

THE GIFT SHOP

(White Furniture Co.)

LUCY ALLEN WHITE, *Mgr.*

L. C. Graduate, '25



DR. H. G. PERRY

BEN T. HOLDEN

Attorney and Counsellor at Law

LOUISBURG, N. C.

A. W. PERSON

Cotton Broker

Phone 256-8

DR. A. H. FLEMING

**PATRONIZE
OUR
ADVERTISERS**



THE OAK



IT WONT BELONG NOW





To Remind You

That - Thank Heavens !! Stoner!!
No more worry of whether this or
that will get to the printer's time -
Monte B. Moyle

That - My hours of midnight
tail are over!! Praise
Allah!!! If I'm not
grey-headed or bald-headed,
it isn't the fault of
this precious Annual!
Lillian Hyde Howell

That - That we have
spent hours of toil and
gallons of sweat and
Our arm has been to
please - if we have
not succeeded, you
must bear with us.
Our minds are weary -
Our tempers short!
Pat.









