

THE

DAK

1938

THE OAK



Volume
1938

Published by
SENIOR CLASS LOUISBURG COLLEGE
Louisburg, North Carolina



Dedication

In evidence of the high esteem in which he is held and as an expression of our appreciation for his ever present interest, and aid readily given, we dedicate this the Nineteen Hundred

Thirty-eight Volume of,

THE OAK

TO

PRESIDENT D. E. EARNHARDT

Contents

I

THE COLLEGE

II

CLASSES

III

ORGANIZATIONS

IV

FEATURES

V

JOKES AND ADS

The Foreword

When the county of Franklin was formed in 1779 three commissioners were appointed to locate the county seat and provide for the needs of the town and county. They purchased one hundred acres at the "Fords of the Tar," and here has developed the town of Louisburg. These were wise men in that they at once made provision for the education of youth. On the elevation overlooking the "Fords" and surrounding country twenty-six acres of land were reserved for school purposes. The principal street of the city now divides the lot into halves, one of which became the property of the city schools. The other was secured by the Louisburg Female College Corporation, now Louisburg College. In 1779 a suitable building was erected and "Franklin Academy for Males and Females" started on its career of usefulness under the guiding hand of Matthew Dickerson, the maternal uncle of David Dudley Field. The charter was granted in 1786, but a few years later it was thought best to separate the male and female departments, and in 1802 the "Louisburg Female Seminary" was chartered. The school has had all the struggles incident to private and unendowed institutions, but at no time has its service to the commonwealth been small.

In 1855 the people of Louisburg realized that the Louisburg Female Seminary could not meet the demands of the time; that the time had arrived when young women should be given higher educational advantages. To meet this demand a joint-stock company was organized and chartered by the Legislature under the name of the "Louisburg Female College Company," the object of which was to establish a college of high standard for young women. Two years later the new college opened as a private enterprise.

In 1891 the property came into the hands of the greathearted Washington Duke, and was held by him for the education of North Carolina women during the remainder of his natural life. In 1907, on the death of Mr. Duke, the property was given to the North Carolina Methodist Conference by his son, Benjamin Duke. In 1908 the college property was accepted by a Board of Trustees, acting under the authority of the Conference. In September 1931, Louisburg College became a coeducational institution, thus doubling its possibility of service.

IN MEMORIAM

WILLIAM EDGAR WHITE, SR.

June 30, 1874-February 1, 1938

Louisburg College has been operating as a school for a hundred and fifty years. During that time people of rare character and genius have been associated with the College and the College community. They have made their contribution here and have, for the most part, moved to another world and passed into the traditions of the College.

There has never been a more loyal soul connected with Louisburg College than Mr. W. E. White. Even before he served as a member of the Board of Trustees, he was generally known as one of the best friends that this cause had. On February 1, 1938 Mr. White crossed the border line and took up citizenship in heaven. He was a man of simple and kind heart. Louisburg College is richer for his friendship and loyalty. We join the whole community in mourning the loss of one of the best men that the community has produced.

THE COLLEGE



FIRST BUILDING

BOARD OF TRUSTEES

Officers

*MR. W. E. WHITE.....*President*
MR. E. H. MALONE.....*Secretary*

Executive Committee

REV. A. P. BRANTLEY
MR. E. H. MALONE MR. T. B. UPCHURCH, JR.
MR. W. E. WHITE, *ex officio*

Members of Board

TERM EXPIRES 1938

Mr. W. L. Knight.....Weldon
Mr. W. E. White.....Louisburg
Rev. W. V. McRae.....Hamlet

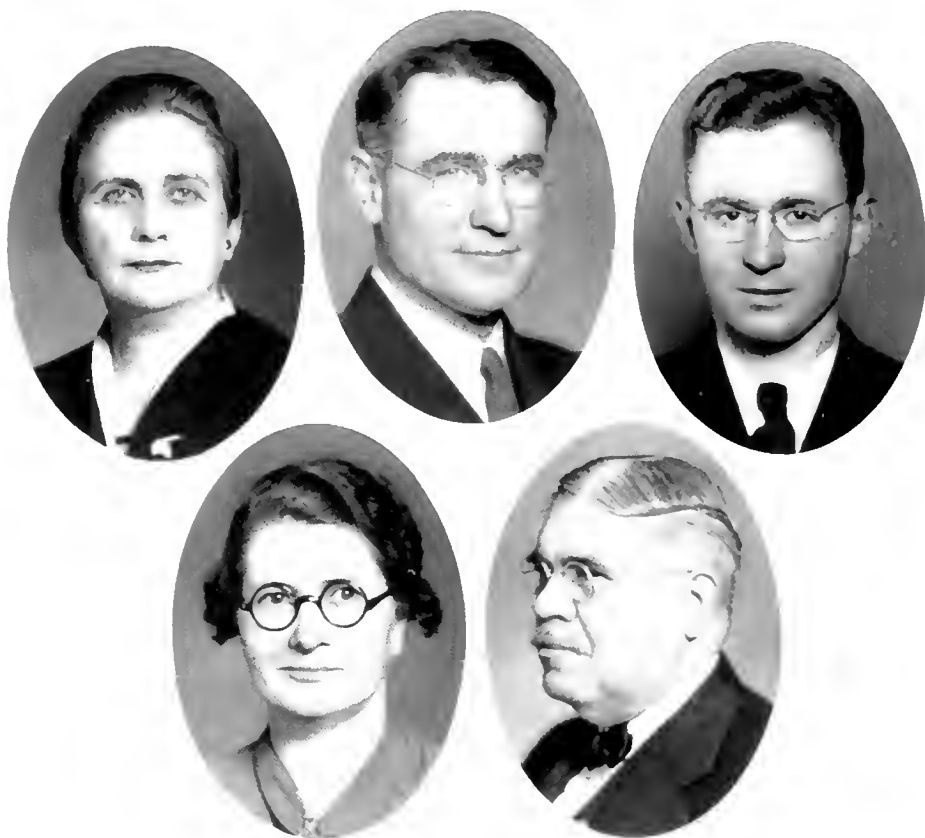
TERM EXPIRES 1939

Dr. W. K. Greene.....Durham
Rev. A. P. Brantley.....Chapel Hill
Mr. T. B. Upchurch, Jr.....Racford

TERM EXPIRES 1940

Rev. W. A. Cade.....Wilmington
Rev. E. L. Hillman.....New Bern
Mr. E. H. Malone.....Louisburg

* Died February 1, 1938.



FACULTY

D. E. EARNHARDT, A.B., M.A.

President

A.B., Rutherford College; M.A., Trinity College; Duke University

LULA MAE STIPE, A.B.

Dean of Women—Religious Education

A.B., Salem College; University of North Carolina; Columbia University

BESSYE BROWN BRADSHAW

A.B., B.S., M.A.

Commercial Science

A.B., and B.S., Chicora College; M.A., Converse College; Winthrop College; Woman's College of the University of North Carolina; Columbia University; University of Virginia

EDWARD VERNON PEELE

A.B., M.A.

Dean of College—English

A.B., Wofford College; M.A., Wofford College; Emory University; Duke University

THOMAS CICERO AMICK

L.I., A.B., M.A., Ph.D.

Mathematics

L.I., George Peabody College for Teachers; A.B. and M.A., University of North Carolina; Ph.D., Central University; University of Chicago; University of Virginia



FACULTY

NELLIE TIPTON MOON, A.B.

Home Economics

A.B., University of Wichita; College for Emporia; Kansas State Agricultural College; Wichita Business College

ISAAC DEANE MOON

A.B., B.Mus., M.A.

Music, Psychology

A.B., Asbury College; B.Mus., Asbury College; A. M., University of Kentucky; Pupil, Frank A. Power, Herbert Miller, Herman Devries, Don Beddoe

JAMES THOMAS PATRICK, B.S.

Industrial Arts

B.S., North Carolina State College; Oswego Normal School

GEORGE M. OLIVER

A.B., M.S.

Natural Sciences

A.B., University of North Carolina; M.S., University of North Carolina; North Carolina State College

VIRGINIA PEYATT, A.B.

Spoken English, and Dramatic Art

A.B., Greensboro College; Wake Forest College; University of North Carolina



NIGHT SCENE—ADMINISTRATION BUILDING



FRANKLIN COUNTY DORMITORY

CLASSES



CAMPUS VIEW ABOUT 1912



MARY EVELYN AYSSET, B.S.

Kittrell, N. C.

*"There is no road to success
But through a clear strong purpose."*

Home Economics Club 1, President 1; Girl's Student Council 2, House President 2; Hiking Club 1; Choral Club 1, 2; Dramatic Club 2.

BERTHA E. BARBOUR, COMMERCE

Beaufort, N. C.

*"Her eyes were fair, and very fair,
Her beauty made me glad."*

May Court 1; May Queen 2; Senior Superlative 2.



RUSSELL SNOWDEN BARDEN, B.S.

Goldsboro, N. C.

*"Industrious wisdom often dath prevent
What lazy folly thinks inevitable."*

Y.M.C.A. 1; Industrial Arts Club 1; Band 1, 2.

ALMA MARIE BASS, COMMERCE

Eureka, N. C.

*"You're teasing; won't you hush,
When you see how easily I blush?"*

Y.W.C.A. 2.



WINIFRED LEE BAUM, COMMERCE

Swan Quarter, N. C.

*"Your beauty, dear lady, may dispose of your person as
pleaseth you best."*

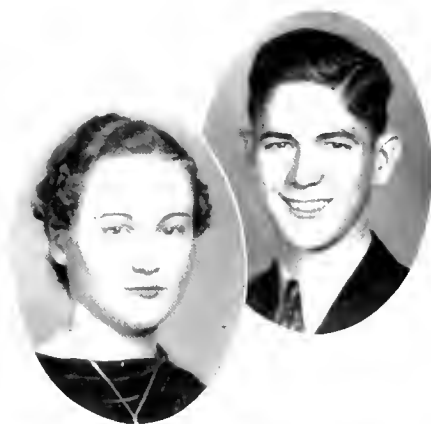
Choral Club 1, 2; Dramatic Club 1; May Court 2.

MARGARET ANNA BECTON, COMMERCE

Stantonsburg, N. C.

*"A good disposition helps one to
Climb to great heights."*

Hiking Club 1; Choral Club 1.



WALTER FRANKLIN COMER, A.B.
Dobson, N. C.

"Oh, why should life all labor be!"

Y.M.C.A. 1, 2; French Club 2; Debating Club 2,
Vice President 2; Dramatic Club 2; Gospel Band 1, 2;
Basketball 2; Monogram Club 2.

MARGARET HELEN CORBETT, A.B.
Middlesex, N. C.

*"Speech is silver,
Silence is golden."*

Y.W.C.A. 1, 2, Secretary 2; Dramatic Club 1, 2;
Debating Club 1; French Club 2; Hiking Club 1.



ELSIE ELIZABETH CORBITT, B.S.
Gatesville, N. C.

*"Her glossy hair was clustered o'er a brow
Bright with intelligence and fair and smooth."*

Hiking Club 1; French Club 2; Senior Superlative 2.

GERTRUDE EDITH CRABTREE, B.S.
Bahama, N. C.

"She'll find a way."

Home Economics Club 1; Y.W.C.A. 1, 2, Vice President
2; Girl's Student Council 2; Senior Class Representative
2; French Club 2.



SUE BLANCHE CRISP, B.S.
Oak City, N. C.

"Hang sorrow, care will kill a cat."

Home Economics Club 1; Dramatic Club 1; Hiking Club
1; Choral Club 1; French Club 2; Archery Club 1.

ENOCH DANA DICKENS, JR., A.B.
Halifax, N. C.

*"Ready for anything, be it work or play,
An all around fellow in every way."*

Dramatic Club 1, 2; Debating Club 2; Choral Club 1;
Y.M.C.A. 1, 2; THE OAK Staff 2, Advertising Manager 2.

ETNICE FRANCES EDWARDS, A.B.
Battleboro, N. C.

*"The secret to success
Is constancy to purpose."*

Y.W.C.A. 1, 2; French Club 2; Hiking Club 1



JOHN LEE EDWARDS, B.S.
Stantonsburg, N. C.

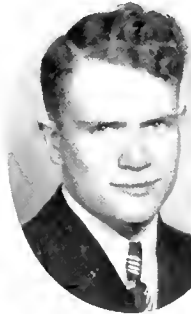
"He is a jolly, good fellow."

Y.M.C.A. 1, 2; Dramatic Club 2; Debating Club 2;
Choral Club 1; Senior Superlative 2.

ROBERT CURRIE ELKINS, A.B.
Clarkton, N. C.

*"His fingers moved nimbly over
The ivory floor."*

Y.M.C.A. 1, 2; Gospel Band 1, 2, Secretary-Treasurer 1;
Debating Club 1, 2; Dramatic Club 1; Ministerial Association 2.



VETA ETNICE EPPS, A.B.
Aberdeen, N. C.

"Quiet, steadfast, and justful."

Y.W.C.A. 1, 2; Dramatic Club 1, 2; Choral Club 1;
French Club 2; Hiking Club 1.

MARY FRANCES EWING, A.B.
Ellerbe, N. C.

"Whose small body lodged a mighty mind."

Y.W.C.A. 1, 2; Dramatic Club 2; French Club 2;
Hiking Club 1; Girl's Student Council 2, Treasurer 2.



SARA ELIZABETH FOUTZ, A.B.
Moyock, N. C.

"She has a voice of gladness and a smile of joy."

Y.W.C.A. 1, 2; THE OAK Staff 2, Sports Editor 2; Girl's
Student Council 1, 2, Vice President 2; Dramatic Club
1, 2, Vice President 2; French Club 2; Band, 1, 2;
Hiking Club 1; Choral Club 1, 2; Pianist 2; Senior
Superlative 2.



JOHN ALVIN GARRIS, B.S.

Nichols, S. C.

"And he is well content."

Football Manager 2; Basketball Manager 2; Boxing Manager 2; Monogram Club 2.

IBA S. GIBBS, A.B.

Columbia, N. C.

*"In duty faithful
In study persistent
In honor clear."*

William and Mary College 1; French Club 2.



EDITH HARRIS, A.B.

Louisburg, N. C.

*"She was a phantom of delight when
First she gleamed upon my sight."*

Town Girls Club 1, 2; Dramatic Club 2; French Club 2; May Court 2.

LILLIAN MARIAN JOHNSON, A.B.

Holly Springs, N. C.

*"She is rather quiet and unassuming
An asset to our campus."*

French Club 2, President 2; Dramatic Club 2; Senior Class Vice President; Hiking Club 1; May Court 1, 2; Senior Superlative 2; THE OAK Staff 2, Feature Editor 2.



OLIVE WINIFRED HINMAN, COMMERCE

Warsaw, N. C.

*"Woman, so amiable in herself is never so amiable as
when she is useful."*

Choral Club 1, 2; Band 1, 2; Dramatic Club 1.

NORMA DEAN JONES, A.B.

New Bern, N. C.

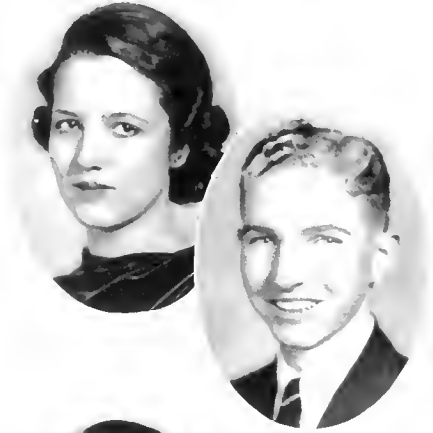
*"What sweet delight
A quiet life affords."*

Saint Mary's College 1; Y W C.A. 2; May Court 2.

SARA SCOTT JOYNER, A.B.
Wilson, N. C.

*"Life is but a span,
We take out only what we put in."*

Y.W.C.A. 1, 2; French Club 2; Dramatic Club 1, 2;
Choral Club 1; Hiking Club 1.



LEON ARTHUR JUSTICE, A.B.
Jacksonville, N. C.

*"Life has no blessing
Like a prudent friend,
He is always ready
To offer a helping hand."*

Y.M.C.A. 1, 2; Gospel Band 1, 2; French Club 2;
Tennis Club 1, 2.

MARJORIE BYRD KELLY, COMMERCE
Hamlet, N. C.

"Her modesty is a candle to thy merit."

Choral Club 2; Dramatic Club 2; Y.W.C.A. 2; De-
bating Club 2.



RUBY BLANCHE KING, COMMERCE
Littleton, N. C.

*"If she ever had an evil thought
She never spoke an evil word."*

RUTH KNIGHT, A.B.
Aulander, N. C.

"A woman's natural quality is to attract."

Home Economics Club 1; Dramatic Club 1; Choral
Club 1; French Club 2; Hiking Club 1; Archery Club 1.



W. ALAN KNIGHT, A.B.
Goldsboro, N. C.

"Roll on, world; and I'll roll with you."

Y.M.C.A. 1, 2; Gospel Band 1, 2; French Club 2;
THE OAK Staff 2, Photographic Editor 2.



BRUCE LANE, A.B.

Dover, N. C.

*"Man is nothing but a slave,
From his cradle to his grave."*

Y.M.C.A. 1.

J. MALCOLM LEWIS, A.B.

Parkton, N. C.

*"He gives the best he has to life
Life in return will smile upon him."*

THE OAK 2, Make-up Editor 2; Gospel Band 2.



KATHERINE PARRISH LEWIS, A.B.

Enfield, N. C.

"Make hay while the sun shines."

Choral Club 1; Dramatic Club 1, 2; French Club 2;
Treasurer 2; Y.W.C.A. 1, 2; Hiking Club 1; Girl's Stu-
dent Council 2, President 2.

MARY LEE McDADE

Hillsboro, N. C.

*"Be good, sweet maid, and let who run be clever;
Do noble things not dream them."*

Y.W.C.A. 1, 2; Girl's Student Council 2; Senior Super-
lative 2; Maid of Honor, May Court 2.



ROSE KEARNEY MALONE, A.B.

Louisburg, N. C.

*"If you have knowledge let
Others light their candles at it."*

Choral Club 1, 2; Town Girl's Club 1, 2; Dramatic
Club 2; French Club 2.

DAISY MADATH MANESS, A.B.

Hemp, N. C.

*"All glory comes
To those who patiently work."*

Y.W.C.A. 1, 2; Dramatic Club 2; French Club 2.

LYNDA MARIE MAY, COMMERCE
Whitakers, N. C.

"Sweet and sincere all through the year."

Y.W.C.A. 1, 2; Hiking Club.



WILLIAM TRACY MEDLIN, JR., A.B.
Raleigh, N. C.

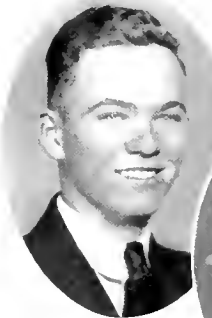
"Few men pursue the ministry with true dignity."

Y.M.C.A. 1, 2, Vice President 1; Gospel Band 1, 2; Ministerial Association 2, President 2; THE OAK Staff 2, Editor-in-Chief 2; Debating Club 1, President 1.

CHARLES HENRY MERCER, A.B.
Lumberton, N. C.

"A faithful friend is a strong defense."

Y.M.C.A. 1, 2; Gospel Band 1, 2, President 2; Ministerial Association 2, Secretary 2.



GRACE NEWELL, B.S.
Goldsboro, N. C.

*"Ever ready to find the comical
Yet in purpose a strong intent
To win the highest and best."*

Girls' Student Council 2, Secretary 2; Band 1, 2; Choral Club 1, 2; French Club 2; Home Economics Club 1, 2, Vice President 1; Y.W.C.A. 1, 2; THE OAK Staff 2, Literary Editor 2.

FRANCES VIRGINIA PERGERSON, A.B.
Louisburg, N. C.

"I have made my work my recreation."

Glee Club 2; Town Girl's Club 1, 2.



ELIZABETH PERSON, A.B.
Louisburg, N. C.

*"The beautiful are never desolate;
For someone always loves them—God or man."*

Girls' Student Council 2; Town Girl's Club 1, 2, President 2; German Club 2, Vice President 2; THE OAK Staff 2, Assistant Editor 2.

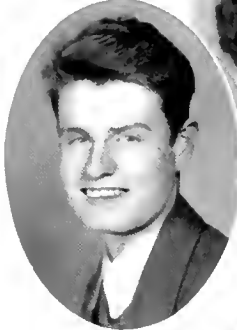


MARY FRANCES PERSON, A.B.

Louisburg, N. C.

*"The world stands out on either side
No wider than the heart is wide."*

Choral Club 1; French Club 2; Y.W.C.A. 1, 2, Treasurer 2; Hiking Club 1; Dramatic Club 1, 2; Band 1, 2.

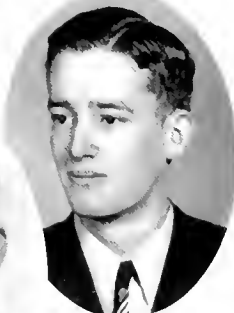


FREDERICK BURNHAM PRICE, A.B.

Whitakers, N. C.

"Generally speaking, he is generally speaking."

Choral Club 1, 2; Gospel Band 1, 2; Y.M.C.A. 1, 2, Pianist 1, 2; French Club 2.

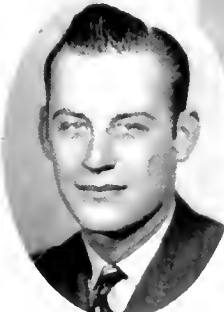


ROLAND WILLIAM RAINSWATER, JR., A.B.

Robertell, N. C.

"The smile that won't wear off."

Y.M.C.A. 1, 2, President 2; Gospel Band 1, 2, President 1; Ministerial Association 2; Debating Club 2, President 2; Men's Student Council 2; Senior Class President 2.



BEN O. ROBINSON, COMMERCE

Weldon, N. C.

*"I'll be merry and I'll be free
I'll be sad for nobody."*

Football 1; Basketball 1, 2; Monogram Club 1, 2; Senior Superlative 2.



CHARLES WESLEY ROUNTREE, B.S.

Suffolk, Va.

"He'll find a way."

Boxing 1; Monogram Club 1; Senior Superlative 2; Men's Student Council 2, Vice President 2.



JAMES THURMAN SHAW, A.B.

Macon, N. C.

"In a quiet and unassuming manner he goes about his task."

French Club 2; Y.M.C.A. 1.

LEROY SHEARIS, A.B.
Halifax, N. C.

*"Early to bed and early to rise,
Would spoil the fun of a lotta guys."*



SOPHIA SPIVEY, A.B.
Louisburg, N. C.

*"The sun itself has scarcely been more diligent than I
Dramatic Club 1; Debating Club 1, 2; French Club 2;
Archery Club 1; Town Girl's Club 1, 2."*



ALVIN NEEDHAM STAPLES, COMMERCE
Old Trap, N. C.

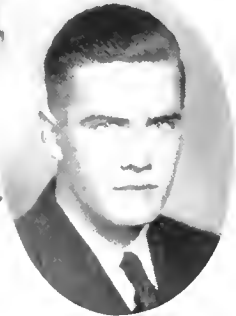
"You never could define his real thought."



HENRY C. STOKES, COMMERCE
Hertford, N. C.

*"Athletic—yet not tough
He always stops to consider others
A regular fellow whom we shall miss."*

Football 1, 2; Monogram Club 1, 2, Secretary 2; Base-
ball 1, 2; Basketball Publicity Manager 2; Senior
Superlative 2.



ADDIE MAE STRICKLAND, COMMERCE
Warsaw, N. C.

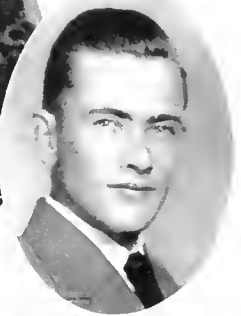
*"A smile for all, a greeting glad, an amiable, jolly way
she has."*

Band 1, 2; Senior Superlative 2; May Court 2.



JAMES PAUL STROUD, B.S.
Nichols, S. C.

*"In every rank
Both great and small
It is industry that
Supports us all."*





RUSSELL SWINDELL, A.B.

Swan Quarter, N. C.

"I shall always be the happiest person under the sun."

BETHANY VON CANON, A.B.

West End, N. C.

*"There is no genius in life
Like the genius of energy and activity."*

Y.W.C.A. 1, 2, President 2; Hiking Club 1; Choral Club 1, 2; Dramatic Club 1, 2, President 2; French Club 2; Girl's Student Council 2.



DANIEL EVANS WALKER, A.B.

Southport, N. C.

*"The stature tells not of the man,
He is little—yet big."*

Y.M.C.A. 1, 2; Tennis Club 1, 2; Gospel Band 1, 2; Debating Club 1; Dramatic Club 2; French Club 2; THE OAK Staff 2, Literary Editor 2; Senior Class Secretary-Treasurer.

GLADYS JOSEPHINE WALTERS, A.B.

Wakulla, N. C.

"Her voice, though seldom heard, is quiet."

French Club 2; Choral Club 1; Home Economics Club 1; Dramatic Club 1.



HELEN BELLE WARREN, COMMERCE

Faison, N. C.

*"She reserves her energy for all good things
Which she may chance to meet."*

ALVIN BEDFORD WATSON, B.S.

Fayetteville, N. C.

"Ever looking forward."

Y.M.C.A. 2.

DAVID WHITEHURST WATSON, A.B.
Southport, N. C.

"Take it easy, have your fun."

Y.M.C.A. 1, 2; French Club 2, Vice President 2; Basketball 1, 2, Captain 2; Debating Club 1, 2; Dramatic Club 2; Gospel Band 1, 2; Monogram Club 1, 2; Tennis Club 1, 2; Senior Superlative; THE OAK Staff 2, Sports Editor 2.



MARGARET WESTBROOK, COMMERCE
Newton Grove, N. C.

*"A woman must stand erect,
Not be kept erect by others."*

ELLIS WARNER WILLIAMSON, A.B.
Raleigh, N. C.

*"Intellect, talent and genius,
Like murder
Will out."*

Director of Band 1, 2; Dramatic Club 1, 2, Secretary 1; French Club 2; Choral Club 1, 2, Secretary 1; Y.M.C.A. 1; Junior Class President 1.



EVERETTE S. WINSTEAD, A.B.
Louisburg, N. C.

*"Politeness is good nature,
Regulated by good sense."*

CLASS POEM

Knowledge? 'Tis a gift giv'n by God Himself
 To those who wander through thy halls,
 O, Alma Mater. And it makes
 Us glad to say, "We've heard thy calls."

In the dim and far hereafter,
 Rememb'ring all the lessons sought
 From books, may we recall to mind—
 Success must come through deed plus thought.

Alma Mater, beloved College,
 What future shall be ours to gaze
 Upon, when each has gone his way?
 What of the paths we'll have to blaze?

Yet, why give we our deepest cares
 To worries such as these? Our best
 Is all that's asked; and helped by God
 And thee, we're bound to meet the test!

VETA EPPS, *Class Poet.*

ALMA MATER

Tune: Haydn's "Anstria"

Alma Mater, shelt'ring college,
 Thou hast been our guiding friend,
 From thy fount of flowing knowledge
 We would drink until the end.
 Be thy children's inspiration,
 Glowing light, to cheer and guide,
 Stand, Old College, Alma Mater,
 Through the changing years abide.

Greater love and veneration
 Be thy portion, Mother dear,
 May each coming generation
 Bring rich gifts thy heart to cheer,
 Till thy stalwart columns heavenward
 Cease to point the Way of Life,
 Stand, Old College, Alma Mater,
 Through the changing years abide.

Dedicated to Louisburg College by the class of 1915.

SENIOR CLASS PROPHECY

It was on a beautiful and peaceful evening in the spring of '58, when I received a telephone call, urgently requesting that I come immediately to the Greater Hotel Plaza. The caller was unknown to me as was his message, and so, I hastily dressed, jumped into my Lincoln Zephyr and in less than thirty minutes, was entering the lobby of the hotel. On entering I noticed a large gathering of people, but paid little attention to them until I was firmly slapped on the back. I turned instantly and recognized the man as Roland W. Rainwater, classmate of mine in '38 at Louisburg. He informed me that it was he who had called and that the object of my presence was to complete the roll of the class of '38 for the Reunion Banquet. After greeting all of my old friends, we were ushered into the spacious and lavishly decorated dining room. We were served a most wonderful four course dinner including everything from "soup to nuts." The fellowship was, indeed, an inspiration to each member present, but the highlight of the evening came when the Secretary of the Class of '38, Dan Walker, was called upon to call the roll and read the location and occupation of each member of the class. This was extremely interesting, in that we had been scattered to the four corners of the earth, and many of us, knew nothing of our fellow-classmates. I will here give you Secretary Walker's Report:

<i>Name</i>	<i>Location</i>	<i>Occupation</i>
Mary Evelyn Ayscne	Havana, Cuba	Teaching Home Economics
Bertha E. Barbour	Beaufort, N. C.	Secretary to W. D. Caviness, M.D.
Russell Snowden Barden	Louisburg, N. C.	Industrial Arts Professor, L. C.
Alma Marie Bass	Eureka, N. C.	Farmer's Wife
Winifred Lee Baum	Durham, N. C.	Successfully Married to Wallace M.
Margaret Ann Becton	Snow Hill, N. C.	Wife of a Successful Merchant
Loyd Bell	Monroe, N. C.	Eastern Air Line Pilot
Ed Bray	New York City	Social Director, City of New York
James S. Bryan	Chicago, Ill.	Manager of Bryan Electric Corp.
Marion Buchanan	Dillon, S. C.	Wife of John Garris, Mayor of Dillon
Carroll Fleming Chauncey	New York City	Executive Auditor, F. W. Woolworth Co.
Frank Comer	Raleigh, N. C.	Chef, S&W Cafeterias
Margaret Corbett	Middlesex, N. C.	Grammar School Teacher
Elizabeth Corbitt	Greensboro, N. C.	Wife of Rountree, Pres. Acme Bookstore
Gertrude Crabtree	Louisburg, N. C.	Dietitian, Louisburg College
Blanche Crisp	Oak City, N. C.	County Home Demonstration Agent
Enoch Dickens	Norfolk, Va.	Advertising Manager D. Pender Stores
Emmie Edwards	Greensboro, N. C.	Head of Y.W.C.A.
John Lee Edwards	New York City	Head Electrician, Roxy Theater
Robert Elkins	Moscow, Russia	Missionary M. E. Church
Veta Epps	Aberdeen, N. C.	High School Teacher of Dramatics
Frances Ewing	Ellerbe, N. C.	Principal of Grammar School
Sara Foutz	Louisburg, N. C.	Dean of Women, Louisburg College
Ida Gibbs	Norfolk, Va.	Mt. Emporia Boarding House
Edith Harris	Southport, N. C.	Wife of Coach David Watson
Winnie Human	Louisburg, N. C.	Treasurer of L. C.

Lillian Johnson	New York City	Instructor in French, Columbia University
Norma Jones	Greensboro, N. C.	Proprietor of Elite Beauty Salon
Sara Joyner	Wilson, N. C.	Dramatic Arts Teacher
Leon Justice	Durham, N. C.	Tennis Coach, History Prof., Duke
Marjorie Kelly	Louisburg, N. C.	Director of Self Help, L. C.
Ruby King	Raleigh, N. C.	Teacher of Stenotypy
Ruth Knight	Paris, France	Costume Designer
Alan Knight	Philadelphia, Pa.	Vice President, Eastman Kodak Co.
Bruce Lane	Dover, N. C.	Prominent Farmer of Dover
Malcolm Lewis	Durham, N. C.	Chemist, Vick Chemical Co.
Katherine Lewis	Enfield, N. C.	Dietitian, Enfield High School
Mary Lee McDade	Louisburg, N. C.	Secretary to the President, L. C.
Rose Malone	New York City	Metropolitan Opera Soprano
Madath Maness	Hemp, N. C.	Instructor in Home Economics
Marie May	Raleigh, N. C.	Inst. in Shorthand, Kings Bus. College
W. T. Medlin, Jr.	Louisburg, N. C.	President of Louisburg College
Charles Mercer	Kinston, N. C.	Pastor, Queen St. Methodist Church
Grace Newell	Greensboro, N. C.	Professor of Home Economics, G. C.
Frances Pergerson	Louisburg, N. C.	History Teacher, Mills High School
Elizabeth Person	Charlotte, N. C.	Professor of German, Queens-Chicora
Frances Person	Halifax, N. C.	Wife of Mayor Enoch Dickens
Fred Price	Louisburg, N. C.	Professor of Voice, Louisburg College
R. W. Rainwater	Durham, N. C.	Pastor, Trinity M. E. Church, South
Ben Robinson	Raleigh, N. C.	Clerk of N. C. Supreme Court
James Shaw	Macon, N. C.	Prominent Attorney of Macon
Leroy Shearin	Rocky Mount, N. C.	Principal of Rocky Mount High School
Sophia Spivey	Chapel Hill, N. C.	Research Chemist, U. N. C.
Alvin Staples	Old Trap, N. C.	Prominent Potato Farmer of Old Trap
Henry Stokes	Elon, N. C.	Director of Athletics, Elon College
Addie Mae Strickland	Raleigh, N. C.	Stenotypist, Durham Life Ins. Co.
J. P. Stroud	Nichols, S. C.	Tobacco Farmer of Note
Russell Swindell	SwanQuarter, N. C.	Manager of Swindell's Dept. Store
Beth Von Canon	Louisburg, N. C.	Professor of English, Louisburg College
Dan Walker	Raleigh, N. C.	Secretary to State School Commission
Gladys Walters	New Bern, N. C.	Instructor in English, New Bern H. S.
Helen Warren	Faison, N. C.	Secretary to Town Board of Comm.
Buford Watson	Chicago, Ill.	Research Ass't, Northwestern Univ.
David Watson	Louisburg, N. C.	Coach at Louisburg College
Margaret Westbrook	Greensboro, N. C.	Sec. to Collector of Int. Revenue
Ellis Williamson	Radio City	Director of NBC Symphony Orchestra
Everette Winstead	Mexico City	Ambassador to Mexico from U. S. A.

As the last name was read I was aroused by a sharp flash of lightning. After rubbing my eyes I realized that this delightful event was but a dream. I resolved, however, to make this reunion come true, and with such an idea in mind, I sat down to begin writing to all of my classmates, extending them the idea of holding a reunion of the Class of '38.

(Signed) CARROLL CHAUNCEY, *Prophet.*

LAST WILL AND TESTAMENT

We, the Senior Class of Louisburg College, Louisburg, County of Franklin, State of North Carolina, being of supposedly sound mind, on this, the twenty-fourth day of May, in the year of our Lord, 1938, do hereby bequeath the following:

ARTICLE I

Section 1. To Louisburg College we leave our utmost devotion and loyalty.

Sec. 2. To the faculty as a whole we leave our deep appreciation for their efforts in guiding us safely through our years at Louisburg and the sincere hope that their task will be lighter henceforth.

ARTICLE II

Section 1. To the incoming Senior Class we leave as many Senior privileges as they can get and to the various members of the present Junior Class we bequeath more "Quality Points" than we were able to secure.

ARTICLE III

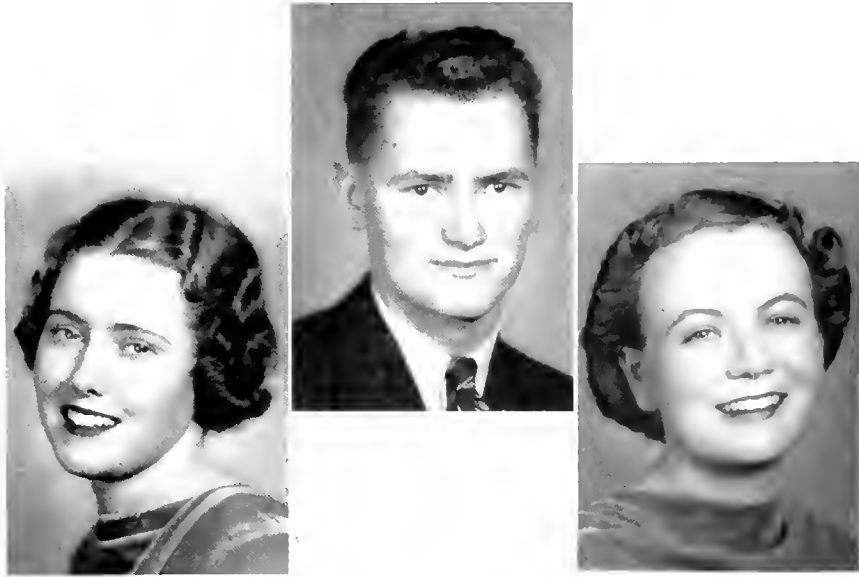
Section 1. To the following members of the faculty we wish to express our deepest appreciation and admiration:

1. To Miss Craig, Miss Peyatt, and Mr. Peele for this edition of THE OAK.
2. To Dr. Amick for his patience and kindness in helping all of us with our difficult problems in mathematics.
3. To Mrs. Uhler for all the help she has given us during our years at Louisburg.

ARTICLE IV

Section 1. Several members of the Senior Class wish to leave the following personal traits or possessions to various and undergraduates.

1. Bertha Barbour leaves her beauty to the one who deserves it most.
2. W. T. Medlin leaves his brilliant intellect to A. C. Edens.
3. Emice Edwards leaves her studiousness to Evelyn Earnhardt.
4. Grace Newell leaves her foolishness to Margaret Parrish.
5. David Watson leaves his ability to play basketball to Randolph Roper.
6. Katherine Lewis leaves her personality to Dannie Adams.
7. Enoch Dickens leaves his badge and flash light to the next night watchman.
8. Ellis Williamson leaves his position as Band leader to Eddie Willoughby.
9. Sara Foutz leaves her ability to play the piano to Susie Dunne.
10. Carroll Chauncey leaves his versatility to Colton Allen.
11. Lillian Johnson leaves her dramatic ability to Leelah Blanche Pittman.
12. Wallace and "Winnie" leave their place in the Social Hall to the next Romeo and Juliet.



JUNIOR CLASS OFFICERS

President.....WALLACE MANGUM

Vice President.....LAURA STUTTS *Secretary-Treasurer*...KATHLEEN ROUNTREE



Reading left to right, first row: Dannie Adams, Colton Allen, Helen Alphin, Lucy Anderson, Ruth Andrews, Richard Auger.
 Second row: Shirley Averett, Robert Bame, Margaret Barelift, Woodrow Barden, Charles Barker, Betty Bunn Beal.
 Third row: Alma Beeton, Julia Bell, Evelyn Berry, Mary Betha, Lyda Blake, Mary Blake.
 Fourth row: William Boone, William Bowers, Annie M. Braswell, Claude Brinn, Adrian Brown, Lillian Brown.
 Fifth row: Romadd Brown, Billy Bryan, Bonnie Lou Bullard, Elizabeth Bullard, Alyce Burke, Annie Lee Britt.
 Sixth row: Hubert Cameron, Mangum Carroll, Warren Carroll, Claude Chaffin, Ruth Champion, John Cochran.



Reading left to right, first row: Mildred Cole, Irma Conner, Margaret Cox, Ben Credle, Lucille Daniels, Frances Davenport.

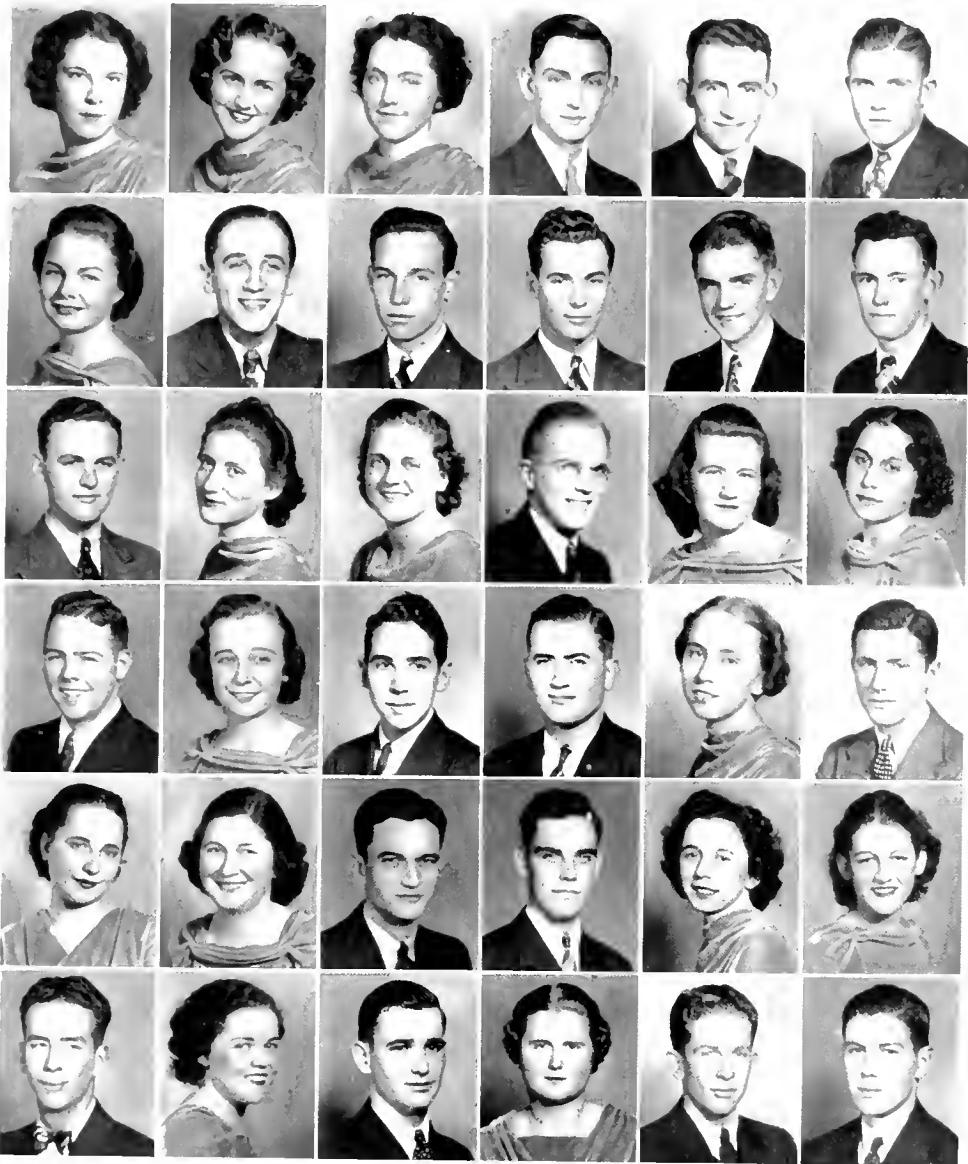
Second row: Effie Lee Davis, Katherine Davis, Edith Dixon, Hal Dixon, Susie Dunne, Evelyn Earnhardt.

Third row: Paul Easterling, A. C. Edens, Grover Edmonds, Mary Louise Edwards, Robert Edwards, Dorothy Ellis.

Fourth row: John Eure, Carolyn Farrar, George Fisher, Mary G. Flowers, Lawrence Fowler, Jane Fuller.

Fifth row: Elizabeth Fussell, Huldah Gentry, Ida Maria George, Milo Gibbs, Watson Gillis, Jacqueline Godwin.

Sixth row: Lell Gooch, Kathleen Goodwin, Bryan Gregory, Anna Lee Gregson, Horace Gurganus, Margaret Hardy.



Reading left to right, first row: June Hemphill, Martha Henderson, Julia Holloman, Grover Hollowell, Ivey Hooper, Tracy Hooper.
 Second row: Odom Hudgins, Manuel Idiaquez, Arch Ingram, Arthur Ingram, Jerry Ingram, Carl Johnson.
 Third row: Herbert Johnson, Grace Jones, Louise Jones, Walter Jones, Juanita Jordan, Maude Keaton.
 Fourth row: Linwood Keith, Dorothy Kennedy, John Kime, Edward Lamm, Josephine Lamm, Russell Lancaster.
 Fifth row: Barbara Lane, Lois Lane, Phifer Lancy, Boyce Lassiter, Margaret Lea, Sarah Leary.
 Sixth row: Theibert Leary, Luray Leonard, Rollin Lewis, Mary F. Lewter, Charles Litchfield, Mendall Long.



Reading left to right, first row: William Lynch, Jennie B. Lowdermilk, Reon Maness, Wallace Mangum, Meryl Massey, Ruth Matthews.

Second row: Harry McCless, Fulton McDaniel, D. B. McFayden, Holmes McKeithan, Lottie Meeder, Alan Midyette.

Third row: Milton Midgett, Edna Montgomery, Cliff Morris, Mildred Murray, James Norman, Selma Oden.

Fourth row: Margaret Parrish, Edgar Parker, William Parkin, Evelyn Patterson, Maurice Peacock, Robert Pearce.

Fifth row: Wilbur Pearson, Helen Person, Warren Pettaway, Lelah B. Pittman, Helen Polston, Farroll Price.



Reading left to right, first row: Frances Ray, Charles Reed, Robert Rhodes, Martha Rice, E. B. Roberts, Julius Rogers.

Second row: Kathleen Rountree, Edith Savage, Marie Sawyer, Frances Shaw, Frank Shaw, James Shaw.

Third row: Avis Shearon, Frances Smith, Jewel Smith, Alice Southerland, Mary Speed, Rose Speed.

Fourth row: Jack Spence, Eula G. Spivey, Rosalie Stainback, Winston Strond, Rosemary Stubbs, Thomas Stubbs.

Fifth row: Laura Stutts, Aldon Summerlin, Helen Sutton, Jimmy Strickland, Estelle Talley, Helen Taylor.



Reading left to right, first row: O. K. Taylor, Jack Temple, Margaret Trigg, Harold Troutman, Triloe Turlington, Jerry Tyndall.

Second row: Lawrence Vickers, Jean Von Cannon, Myrtle Walters, Blanche Warren, Sara Warren, Laura Wellons.

Third row: Henry West, Lottie Faye West, Billie White, Lillian White, Robert Whittemore, Charles Williamson.

Fourth row: Margaret Wilkins, Eddie Willoughby, Spencer Winberry, Gerald Wise, Kipling Wise, Sallie Wood.

Fifth row: Lorraine Worley, Bettie Young, Martha Parrott, Ruth Robinson.

ORGANIZATIONS



LOUISBURG COLLEGE ABOUT 1920



Read from left to right, first row: Assistant Editor-in-Chief, ELIZABETH PERSON; Junior Editor, MAURICE PEACOCK.

Second row: Assistant Business Manager, FRANK COMER; Junior Business Manager, MARY BETHEA; Photographic Editor, ALAN KNIGHT; Junior Photographic Editor, COLTON ALLAN; Literary Editor, GRACE NEWELL.

Third row: Literary Editor, DAN WALKER; Girls' Sports Editor, SARA FOLTZ; Boys' Sports Editor, DAVID WATSON; Advertising Editor, ENOCH DICKENS; Junior Advertising Editor, MARGARET PARRISH.

Fourth row: Feature Editor, LILLIAN JOHNSON; Make-up Editor, MALCOLM LEWIS; Stenographers, IRMA CONNER, SARA JOYSER, WINIFRED HINMAN.



MEN'S STUDENT GOVERNMENT

OFFICERS

CARROLL CHAUNCEY.....*President*
 CHARLES ROUNTREE.....*Vice President*
 LOYD BELL.....*Secretary*

MEMBERS

Loyd Bell	Wallace Mangum
Carroll Chauncey	Roland W. Rainwater
Hal Dixon	E. B. Roberts
Charles Rountree	



WOMEN'S STUDENT GOVERNMENT

OFFICERS

- KATHERINE LEWIS.....*President*
- SARA FOUTZ.....*Vice President*
- GRACE NEWELL.....*Secretary*
- FRANCES EWING.....*Treasurer*

MEMBERS

- | | |
|-------------------|-------------------|
| Evelyn Ayscuc | Mary Lee McDade |
| Gertrude Crabtree | Grace Newell |
| Frances Ewing | Elizabeth Person |
| Sara Foutz | Kathleen Rountree |
| Katherine Lewis | Rosemary Stubbs |
| | Bethany Von Canon |



LOUISBURG COLLEGE PLAYERS

Top row, left to right: Loyd Bell, Margaret Cox, Enoch Dickens, Evelyn Earnhardt, Lillian Johnson.

Bottom row, left to right: Sara Joyner, Ruth Knight, Rose Malone, Martha Rice, E. B. Roberts.



*DEBATING CLUB

R. W. RAINWATER, JR. *President*
 FRANK COMER *Vice President*
 CLAUDE CHAFFIN *Secretary-Treasurer*
 MARTHA HENDERSON *Publicity Agent*
 MISS VIRGINIA PEYATT *Adviser*

Robert Bame
 W. D. Caviness
 Claude Chaffin
 Frank Comer
 Enoch Dickens
 John Lee Edwards
 Robert Elkins
 Veta Epps

Martha Henderson
 Grover Hollowell
 Marjorie Kelly
 R. W. Rainwater, Jr.
 Sophia Spivey
 Jean Von Canon
 David Watson

* Entered North Carolina Junior College Debating Tournament, Catawba College, Salisbury, March 4 and 5, 1938.



Y. W. C. A.

BETHANY VON CANON.....*President*
 GERTRUDE CRABTREE.....*Vice President*
 MARGARET CORBETT.....*Secretary*
 FRANCES PERSON.....*Treasurer*

Evelyn Ayscue
 Margaret Barclift
 Alma Bass
 Betty Bunn Beal
 Mary Bethen
 Lillian Brown
 Bonnie Lou Bullard
 Elizabeth Bullard
 Mildred Cole
 Irma Comer
 Margaret Corbett
 Gertrude Crabtree

Blanche Crisp
 Lucille Daniels
 Katherine Davis
 Susie Dunne
 Evelyn Earnhardt
 Eunice Edwards
 Veta Epps
 Frances Ewing
 Sara Foutz
 Martha Henderson
 Odom Hudgins
 Sara Joyner

Marjorie Kelly
 Lois Lane
 Meryl Massey
 Mildred Murray
 Grace Newell
 Frances Person
 Kathleen Rountree
 Frances Smith
 Alice Southerland
 Bethany Von Canon
 Jean Von Canon
 Lottie Faye West



FRENCH CLUB

LILLIAN JOHNSON.....*President*
 DAVID WATSON.....*Vice President*
 EDNA MONTGOMERY.....*Secretary*
 KATHERINE LEWIS.....*Treasurer*

Colton Allen
 Evelyn Ayscuc
 Alma Beeton
 Bonnie Lou Bullard
 Frank Comer
 Irma Conner
 Elizabeth Corbitt
 Margaret Corbett
 Blanche Crisp
 Paul Easterling
 A. C. Edens
 Eunice Edwards
 Veta Epps
 Frances Ewing
 Sara Foutz

Watson Gillis
 Bryan Gregory
 Edith Harris
 Martha Henderson
 Grover Hollowell
 Lillian Johnson
 Sara Joyner
 Leon Justice
 Alan Knight
 Ruth Knight
 Josephine Laun
 Katherine Lewis
 Rose Malone
 Madath Maness
 Edna Montgomery
 Grace Newell

Frances Person
 Fred Price
 Sophia Spivey
 Helen Taylor
 Margaret Trigg
 Geraldine Tyndall
 Bethany Von Canon
 Jean Von Canon
 Dan Walker
 Gladys Walters
 Sara Warren
 David Watson
 Lottie Faye West
 Charles Williamson
 Ellis Williamson



GERMAN CLUB

MISS MARY FINCH.....*President*
ELIZABETH PERSON.....*Vice President*
BETTY BUNN BEAL.....*Secretary*

Loyd Bell
Martha Bethea
W. D. Caviness
Claude Chaffin
John Cochran
Edith Dixon
Robert Edwards

Mary Finch
Odom Hudgins
Carl Johnson
Allen Midyette
Elizabeth Person
Thomas Stubbs
Laura Stutts

Robert Whittemore



CHORAL CLUB

PROFESSOR I. D. MOON.....*Director*
SARA FOUTZ.....*Accompanist*

Ruth Andrews
Loyd Bell
Mary Bethea
Frances Davenport
Edith Dixon
Susie Dunne
A. C. Edens
Robert Edwards
Jane Fuller
Martha Henderson
Winifred Hinman
Maude Keaton
Linwood Keith

Marjorie Kelly
Barbara Lane
Luray Leonard
Rose Malone
Wallace Mangum
Meryle Massey
Grace Newell
Fred Price
Robert Rhodes
Jack Temple
Bethany Von Canon
Jean Von Canon
Ellis Williamson



HOME ECONOMICS CLUB

GERTRUDE CRABTREE.....*President*
IDA GIBBS.....*Vice President*
MARY EVELYN AYSUE.....*Secretary-Treasurer*
MRS. I. D. MOON.....*Adviser*

Evelyn Aysene
Alma Becton
Lillian Brown
Mildred Cole
Elizabeth Corbitt
Irma Conner
Gertrude Crabtree
Blanche Crisp
Lucille Daniels
Ida Gibbs

Kathleen Goodwin
Ruth Knight
Josephine Lamm
Reon Maness
Grace Newell
Elizabeth Person
Leelah Blanche Pittman
Laura Stuttts
Bethany Von Canon
Betty Young



MONOGRAM CLUB

PHIFER LANEX *President*
 ADRIAN BROWN *Vice President*
 HENRY STOKES *Secretary-Treasurer*
 COACH CAMERON *Adviser*

Loyd Bell
 Horace Brantley
 Claude Brim
 Adrian Brown
 Ronald Brown
 Jimmy Bryan
 Frank Comer
 Hal Dixon
 Grover Edmonds
 John Eure
 John Garris
 Watson Gillis
 Arch Ingram
 Arthur Ingram

Edward Lamm
 Phifer Laney
 Holmes McKeithan
 Edgar Parker
 Wilbur Pearson
 Farroll Price
 Ben Robinson
 Randolph Roper
 Jack Spence
 Henry Stokes
 Jack Temple
 Harold Troutman
 David Watson
 Henry West

THE OAK



HENRY STOKES-TACKLE



CLAUDECHAFFIN-TACKLE



JIMMY BRYAN-GUARD



EDWARD LAMM-GUARD



ROLLIN LEWIS-GUARD



EDGAR PARKER-CENTER



WILBUR PEARSON-GUARD



CLAUDE BRINN-FULLBACK



ADRIAN BROWN
HALFBACK



ARCH INGRAM-QUARTER BACK



DALTON WEST
QUARTER BACK



BEN ROBINSON-HALFBACK



WILLIAM LYNCH-HALFBACK



CARROLL CHAUNCEY
HALFBACK

CARLTON FOX-FULLBACK JAMES MACDANIEL-TACKLE
ARCHIE MACDANIEL-TACKLE HERBERT McLEAN-CENTER JAMES BAKER-CENTER GERALD WISE-HALFBACK



BOXING SQUAD

REVEREND W. M. WARREN *Coach*
 JOHN GARRIS *Manager*
 JOHN LEE EDWARDS *Manager*

115 lb. Class

A. C. Edens

125 lb. Class

Warren Carroll
 Jimmy Strickland

145 lb. Class

Winston Stroud
 John Lee Edwards

135 lb. Class

Richard Auger
 E. B. Roberts

155 lb. Class

Fulton McDaniel
 Sidney White



GIRLS' ATHLETICS



FAMILIAR SCENES

- | | | |
|----------------------|----------------------------------|-----------------------------|
| 1. "High Fly" | 9. What Next! | 17. Who Next? |
| 2. Fifer gets one | 10. Going my way? | 18. ????? |
| 3. Our Sketch Artist | 11. "Oh Yeah" | 19. "Trig" |
| 4. Pals | 12. Here she is Roper | 20. You got something there |
| 5. "Duty Workers" | 13. Now we are getting somewhere | 21. Thanks for a tree |
| 6. Chauncey | 14. Huh! Huh! Huh! What's this? | 22. Hold him cowboy |
| 7. Bryan | 15. C. Brimm | 23. Four of a kind |
| 8. Old Pals | 16. Danger, Look Out! | |



FAMILIAR SCENES

- | | | |
|---------------------------------|---------------------------------|-----------------------------|
| 1. Snow cream | 10. Three of a kind | 19. Mr. Oliver and Students |
| 2. Blanch and Gladys | 11. May day—1936-1937 | 20. Winter "Sports" |
| 3. The "spotted" one is the dog | 12. Ain't love grand | 21. Lone Star |
| 4. Guess Who? | 13. 1937 May Queen, Rita Vinson | 22. "Blanche" |
| 5. "Beth" | 14. Band Members three | 23. Her goat |
| 6. Old Reliable | 15. Cronies | 24. The Dirty Dozen |
| 7. Professor Kilby and his boys | 16. Proposing (He won) | 25. "Romeo and Juliet" |
| 8. No fudging | 17. Roommates—the two Boys | 26. Catch 'em Chauncey |
| 9. Nature's Products | 18. Familiar sight | |

FEATURES



PATTIE JULIA WRIGHT DORMITORY—1929



BEST LOOKING—COMMERCIAL DEPARTMENT

Bertha Barbour

Ben Robinson



POPULARITY—COMMERCIAL DEPARTMENT

Henry Stokes

Addie Mae Strickland



VERSATILITY—LITERARY DEPARTMENT

Elizabeth Corbitt

C. W. Rountree



VERSATILITY—COMMERCIAL DEPARTMENT

Mary Lee McDade

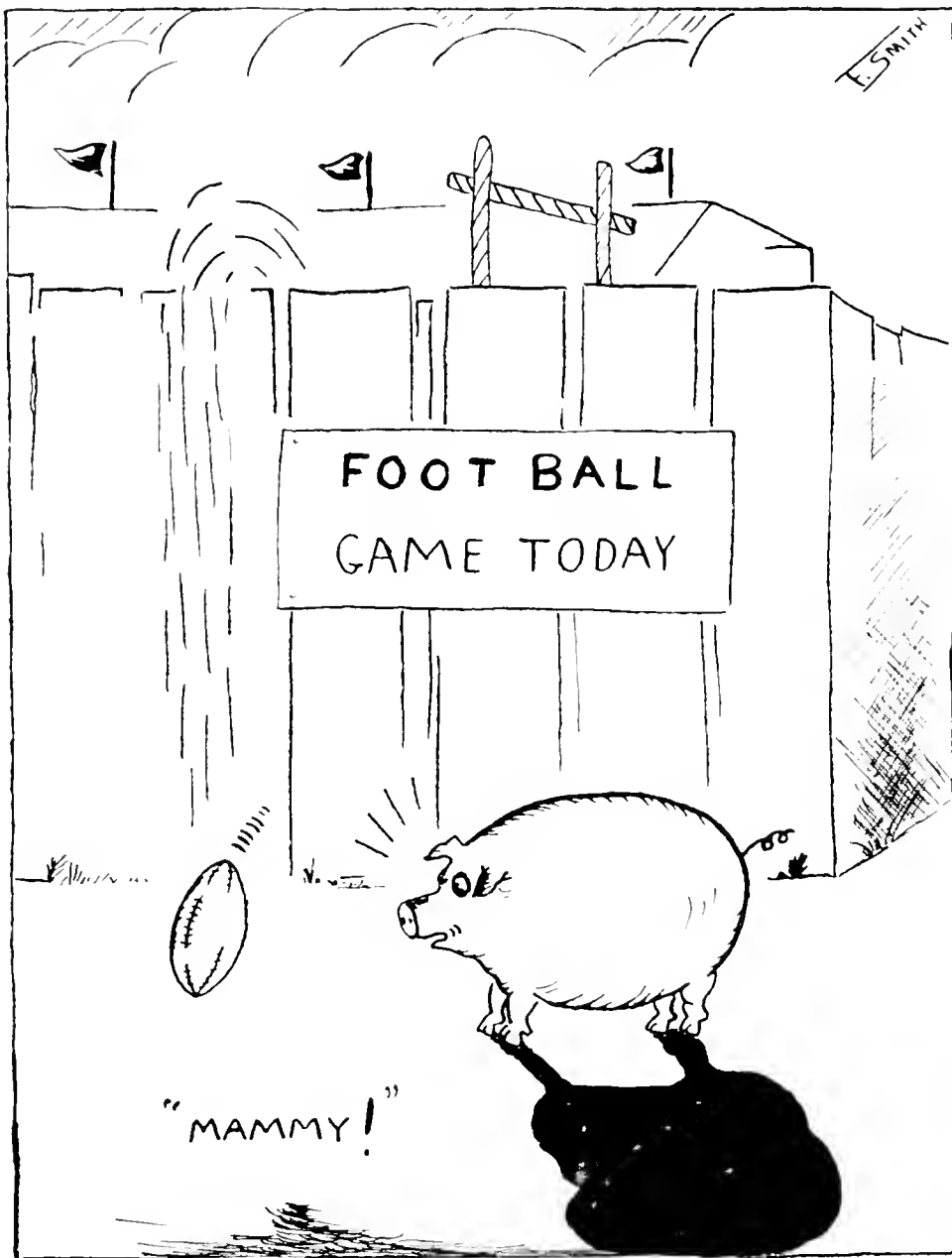
Carroll Chauncey

JOKES AND ADS



MAIN BUILDING

E. SMITH



Barbara Lane (On Algebra Test): Are you sure example seven is in the text?
Dr. Amick: Certainly, Miss Lane!
Barbara Lane: Well, I can't find it.

LOUISBURG COLLEGE

A SELF-HELP, CO-EDUCATIONAL
JUNIOR COLLEGE

OFFERS

AN EXCELLENT EQUIPMENT AT
REMARKABLY LOW RATES

**Rates from \$215.00 to \$225.00 a Year for Board,
Room, Tuition, and Regular Fees**

— Courses in —

LIBERAL ARTS, SCIENCE, HOME ECONOMICS,
BUSINESS, MUSIC, AGRICULTURE, AND
INDUSTRIAL ARTS

Write for Catalog to

D. E. EARNHARDT, President

LOUISBURG COLLEGE

LOUISBURG, N. C.

Dan Walker: Waiter, do you serve shrimps here?
Waiter: Yes, sir, we serve anybody.

K. P. (To visitor in the dining room): When you get to the tender part of that steak, it's the plate.

LOUISBURG, N. C.

— Is —

**RICH IN HISTORY, HEALTH, AND
HOSPITALITY**



There is not a more ideal residence in the world for a student than Louisburg. In Louisburg there exists at all times an atmosphere of quiet, culture, and refinement, that encourages study and accomplishment. Every material need of a student can be purchased in Louisburg at most reasonable prices, therefore it is an economic residence for students.



LOUISBURG SINCERELY WELCOMES EVERYONE
AT ALL TIMES



TOWN OF LOUISBURG

W. C. WEBB, Mayor

"Dinky" Bell: I'm thinking of asking some girl to marry me. What do you think of the idea?

Frances D.: It's a great idea, if you ask me.

"Does Ruth Robinson have her own way?"

"Does she? She writes in her diary a week ahead of time."

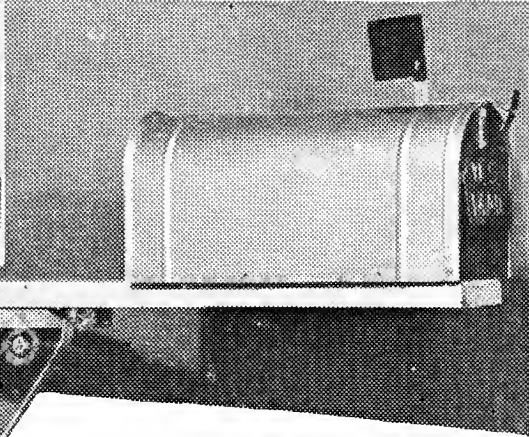
SPECIAL FOR LIVE WORKERS

Attractive Proposition for County Agents

A practical, ornamental, anti crash support, invented by W. C. Chauncey, who is a rural carrier. I have been in the rural service for thirty two years and I have had all kind of experiences with mail boxes and road drains. For the past two years I have had a good per cent of these supports on my route and they make it much easier for me to deliver my mail.



Sturdily constructed—arm projects out desired distance from post and swings to either side on metal track. Prevents Breakage if run into. Adds beauty to property and highway.



It protects and beautifies property on the Highway.
Highly endorsed by Highway Commission.

Patented Feb. 24, 1936

June 29, 1936

Subject: Mail Box Support
Mr. W. C. Chauncey,
Grifton, N. C.

Dear Mr. Chauncey:

I understand that you have secured a patent for a mail box support. In this connection I wish to state that I have inquired among our field engineers and have been informed that this mail box support is of material benefit to them on their road maintenance work in that it gives a better opportunity to machine the shoulders and ditches without interfering with the mail box support and makes it easy to mow the shoulders along hard surfaced pavements. This support also improves the general appearance of the highway due to the uniformity of the mail boxes along the road.

Very truly yours,
W. Vance Baise,
State Highway Engineer

Manufactured By

Chauncey Mail Box Support Co.

INCORPORATED

GRIFTON

:

NORTH CAROLINA

W. C. CHAUNCEY, President

W. I. BISSETTE, Vice President

RICHARD A. NELSON, Secretary and Treasurer

"Papa," said Ben Robinson, "What do they mean by College bred? Is it any different from any other kind of bread?"

"My son," said Mr. Robinson, "It's a four year's loaf."

Ruth C.: You remind me of the sea.

Jack Temple: Why? Because I'm wild, restless and romantic?

Ruth C.: No, because you make me sick.

H. R. CHESSON CANDY COMPANY

We'll Know Energy Food Cur Up Health

FRESH CLEAN MERCHANDISE

BEST WISHES

•

Your Downtown Meeting Place

•

BODDIE DRUG STORE

Tonkel's Dept. Store

**"Outfitters" for the
Entire Family**

Service Dry Cleaners

We Clean Everything But a
Guilty Conscience

Carroll C.: I know that I'm not much to look at.

Mary Lee McD.: Still, you'll be at work all day.

E. B. Roberts (In Chemistry): What's that smell?

Jerry Tyndall (Also in Chemistry Lab.): Fresh Air. Somebody opened the window.

Seven Oaks Dairy

P. G. and M. G. Smith, Props.

"Quality and Service"

Phone 419-8

Central Laundry Co.

"Quality and Service at a
Low Price"

— Phone 287 —

HENDERSON, N. C.

**Compliments of
THE
LOUISBURG THEATRE**

Cicero's Place

We Appreciate Your
Patronage

H. C. TAYLOR

Hardware & Furniture

"Price and Quality Right"

Dean Peele, calling the roll of the class before the game with Campbell: Answer to the roll-call-only once.

Professor Oliver: Odom what do you know about Nitrates?

Odom Hudgins: Why-er-I believe they are much cheaper than day rates.

BROGDEN PRODUCE COMPANY

WHOLESALE FRUIT AND PRODUCE

409-415 West Martin Street

Raleigh, N. C.

Local Phone 236-237

:

Long Distance 9901

COMPLIMENTS

OF

**HENDERSON
GROCERY
CO.**

It's to Your Interest to Consider

LOUISBURG COLLEGE

When Your Son or Daughter Goes
off to School

-- Also --

When You Need *Printing* Send Us
Your Next Order

If It's *Printing*
We Can Do It

Prices Consistent With Good
Printing

THE FRANKLIN TIMES

Home Town Paper Since 1870

An Advertising Medium Of Value

Phone 283-1

Louisburg, N. C.

AT HOME - AT SCHOOL - AT PLAY

ENJOY THE PAUSE THAT REFRESHES

DRINK

The Coca-Cola logo is written in its signature script font, with a small 'TRADE MARK' emblem above the 'C'.

IN BOTTLES

The CAPITAL COCA-COLA BOTTLING CO.

Mr. Spence: Well son, how are your grades?

Jack: They're under water.

Mr. Spence: What do you mean under water?

Jack: Below "C" level.

Mary Blake: Waiter there's a fly in my soup.
Waiter: Don't worry, he won't drink much.

IT'S OUR POLICY TO SERVE YOU BETTER

With the Finest of Foods
At the Most Economical Prices

PENDER FOOD STORES

**"Make Our Store
YOUR Store"**

WE WELCOME YOU

OWENS

5c to \$5.00 STORE

Aydlett Products Co.

Manufacturers of
DELICIOUS POTATO CHIPS
and SALTED PEANUTS

Elizabeth City : N. C.

Compliments of

DICK PARRISH

— **Jeweler** —

at —

HALL and HALL

"The Home of Better value"

Leggett's Dept. Store

HENDERSON, N. C.

— Phone 181 —

If purchases are not satisfactory
we will exchange or refund
your money

Parker's Tourist Home

Opposite College Campus
Louisburg-Henderson Highway

Reasonable Rates

Phone 226-1

Louisburg, N. C.

Compliments of

Thomas Grocery

Heavy and Fancy Groceries

Phone 4201

Louisburg, N. C.

Ed. Lamm: That girl over there said I was the best dancer on the floor.
Kathleen G.: Well, you go tell her you're the best dancer on my feet.

Roland Rainwater: Medlin, do you like women who talk or the other kind?
W. T. M.: What other kind?

FOR A FAST SMOOTH GAME

— USE —

GYM FLOOR FINISH

•

Puritan Chemical Company

ATLANTA ✦ GEORGIA

Compliments of

Geo. Marsh Company

Wholesale Grocers

Raleigh, N. C.

Fancy Canned Goods, Dried Fruits, etc.
Bloomsbury and Oxford Brands
Canned Vegetables

— Visit —

**Mrs. Beasley's Dining
Room**

Mother's Only Competitor

Louisburg, North Carolina

THE CAROLINA'S LARGEST PHOTOGRAPHIC STUDIO

SIDDELL STUDIO

RALEIGH, N. C.

Official Photographers **THE OAK**

Frances Ewing: What's the best exercise for reducing?

Gertrude C.: Just move the head slowly from right to left when offered a second helping.

Ben Robinson: Headwaiter, there's a fly in my soup.
Headwaiter Comer: What do you expect for a dime- Butterflies.

<p>D. T. Smithwick, D.D.S.</p> <p>Office Phone 2291 Residence 2201</p>	<p>James E. Fulghum, M.D.</p> <p>Office Phone 2111 Residence 2111</p>
<p>Drs. Perry & Wheless</p> <p>Office Phone 2571 Residence 257-2 257-3</p>	<p>W. C. PERRY, M.D.</p>
<p>Compliments</p> <p>W. L. LUMPKIN</p> <p>Attorney at Law</p>	<p>E H Malone - J E Malone</p> <p>Malone & Malone</p> <p>Attorneys and Counsellors at Law</p>
<p>Compliments of</p> <p>Dr. H. H. Johnson</p>	<p>M. Stuart Davis</p> <p>ARCHITECT</p> <p>Louisburg, N C</p>

Elizabeth C.: You had no business to kiss me!
"Trie" R.: It was no business; it was a pleasure.

Teacher: Arthur this theme on "Our Dog" is word for word like your brothers.
Arthur Ingram: Yes, you see, it's the same dog.

CAPITAL CAFE

FORMERLY BUSY BEE

When You're in Henderson Try Our
Sizzling Steaks and Sea Food

Our Motto

Good Food is Good Health

FIRST-CITIZENS BANK & TRUST COMPANY

LOUISBURG, N. C.

COMPLETE BANKING SERVICE

SEABOARD STORE COMPANY, INC.

LOUISBURG, N. C.

GROCERIES : HARDWARE
BUILDERS' SUPPLIES

John Garris: Why are you eating with your knife?
Mangum ("Jeep") Carroll: My fork leaks.

AUTOGRAPHS

