

THE OAK



1940

ALUMNI OFFICE COPY. PLEASE DO
NOT MISPLACE.

THE

OAK

THE SENIOR CLASS PUBLICATION
OF LOUISBURG COLLEGE
LOUISBURG, NORTH CAROLINA

JULIAN JOLLIFF, *Editor*
J. RANSOM BAIN, *Business Manager*

BOARD OF TRUSTEES

Officers

REV. W. A. CADE
President

MRS. GENEVIEVE PERRY
Secretary

Executive Committee

REV. A. P. BRANTLEY

MR. E. H. MALONE

COL. J. W. JENKINS

REV. W. A. CADE, *Ex Officio*

PRESIDENT WALTER PATTEN, *Ex Officio*

Members of Board

Term Expires 1940

REV. W. A. CADE, *Chairman*
Wilmington, N. C.

REV. LEON RUSSELL
Raleigh, N. C.

MR. E. H. MALONE
Louisburg, N. C.

MR. D. U. SANDLIN
Fayetteville, N. C.

Term Expires 1941

MR. W. A. KNIGHT
Weldon, N. C.

REV. W. V. McRAE
Fayetteville, N. C.

MR. J. W. JENKINS
Henderson, N. C.

MRS. FLOYD JOHNSON
Whiteville, N. C.

MR. ROSCOE FOREMAN
Elizabeth City, N. C.

Term Expires 1942

REV. A. P. BRANTLEY
Sanford, N. C.

MR. JAMES E. HILLMAN
Raleigh, N. C.

MR. T. B. UPCHURCH, JR.
Raeford, N. C.

MRS. GEORGE H. HUTAFF
Wilmington, N. C.

MR. T. A. PERSON
Greenville, N. C.



Alma Mater



DEDICATION

To Dean Lula May Stipe whom we esteem because of her sympathetic insight, her understanding, and the kindly interest that she has shown in those who have needed her counsel, the staff of THE 1940 OAK sincerely dedicates this book.

BOOK ONE . . . The College



ADMINISTRATION BUILDING



WALTER PATTEN, *President*. A.B., M.A., D.D.
A.B., D.D., Wesleyan University; M.A., University of N. C.

EDWARD VERNON PEELE, *Dean of Men*. A.B., M.A.
English. A.B., Wofford College; M.A., Wofford
College; Emory University; Duke University.

LULA MAY STIPE, *Dean of Women*. A.B. *Religion*.
A.B., Salem College; University of North Carolina;
Columbia University.

THOMAS CICERO AMICK, L.L., A.B., M.A., Ph.D.
Mathematics. L.L., George Peabody College for

Teachers; A.B. and M.A., University of North
Carolina; Ph.D., Central University; University
of Chicago; University of Virginia.

J. E. BYERLY, A.B. *Music*. A.B. in *Music*, University
of North Carolina; Eastman School of
Music of the University of Rochester.

JOHN L. CAMERON, A.B. *Director of Athletics*.
A.B., Elon College; Columbia University; University
of North Carolina.

STELLA H. CULPEPPER, R.N. *College Nurse*.

LYDIA DEYTON, A.B. *Dietitian*. A.B., Berea College.

MARGARET BOYDEN KILBY, A.B., M.A. *Registrar*.
Commercial Science. A.B., Asbury College;
M.A., University of Kentucky; George Peabody
College for Teachers; Miami-Jacobs Business
College; Columbia University.

FACULTY

V. ROBERT KILBY, A.B., M.A. *History*. A.B., Asbury
College; M.A., George Peabody College for
Teachers; University of Kentucky; Columbia
University.

ISAAC DEANE MOON, A.B., B.Mus., M.A. *Music*.
Psychology. A.B., Asbury College; B.Mus.,
Asbury College; M.A., University of Kentucky;
Bowling Green Business University.

NELLIE TIPTON MOON, A.B. *Home Economics*.
A.B., University of Wichita; College of
Emporia; Kansas State Agricultural College;
Wichita Business College.

GEORGE M. OLIVER, A.B., M.S. *Natural Sciences*.
A.B., University of North Carolina; M.S., University
of North Carolina; North Carolina State
College.

MARY ADAMS OLIVER, A.B. *Commercial Science*.
A.B., East Carolina Teachers College; Woman's
College, University of North Carolina.

ELIZABETH GERALDINE PARKER, A.B. *Commercial
Science*. A.B., Asbury College; B.Mus., Asbury.

JAMES THOMAS PATRICK, B.S. *Industrial Arts*.
B.S., North Carolina State College; Oswega
Normal School.

GENEVIEVE P. PERRY, *Treasurer*. Louisburg College;
Columbia College; Bowling Green University.

VIRGINIA PEYATT, A.B. *Spoken English and Dramatic
Art*. A.B., Greensboro College; Wake
Forest College; University of North Carolina.

JAMES GODFREY PHILLIPS, A.B., B.D. *Religious
Education*. A.B., Central College; B.D., Duke
University; Southern Methodist University.

PRESTON C. RAIFORD, B.S. *Mathematics*. B.S.,
State College.

RUTH ROGERS, B.S. *Physical Education for
Women*. B.S., Woman's College, University of
North Carolina.

LUTHER RAYMOND TAFF, A.B. *English*. A.B., University
of North Carolina; Howard College.

JOHN BURWELL WOODALL, A.B., M.A. *Foreign
Languages*. A.B., Duke University; M.A., Duke
University; Columbia University.

ELSA CRAIG YARBOROUGH, A.B., A.B. in L.S.
Librarian. A.B., University of North Carolina;
A.B. in L.S., University of North Carolina.





Student Body Officers

RICHARD AUGER
President

BORDEN MCCLEES
Treasurer

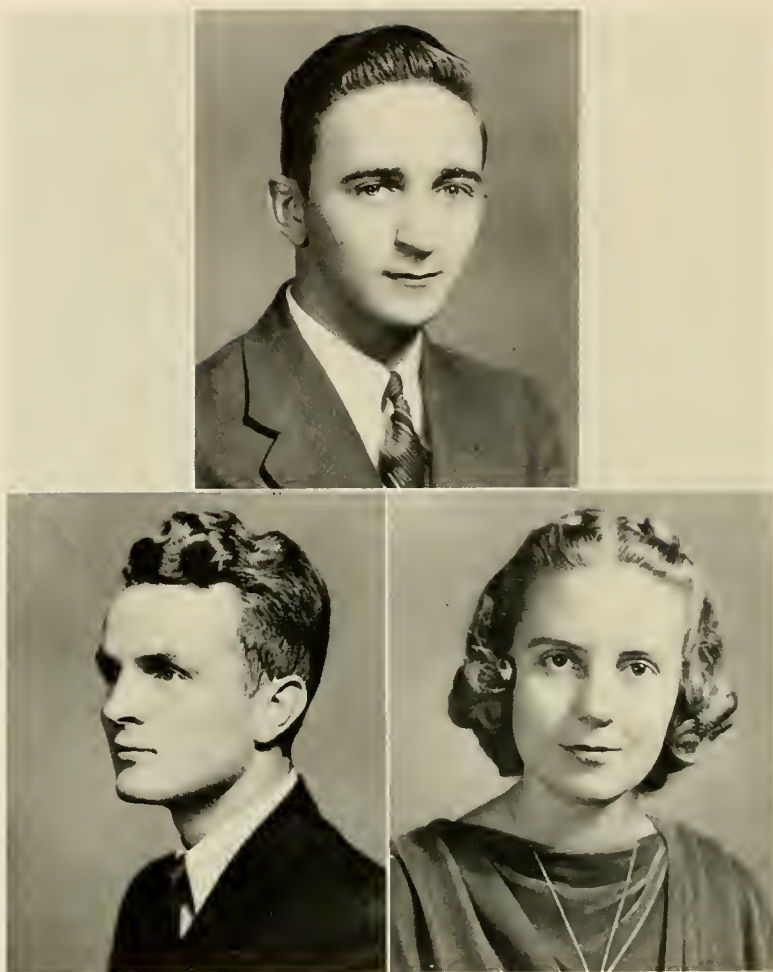
JANE FULLER
Vice-President

MAY DAVIS
Secretary



FRANKLIN BUILDING

BOOK TWO . . . The Classes



Senior Class Officers

JAMES SHAW
President

ROBERT WATERS
Vice-President

MARTHA WINDLEY
Secretary-Treasurer

Second Year Students

ABDALLA J. ABDALLA
Selma

Lively, ambitious, coöperative

Debating Club: Y.M.C.A.

DANNIE ADAMS
Marietta

Unassuming, persistent, conscientious

Y.W.C.A. 1, 2, 3.

ERCELL ADAMS
Goldsboro

Athletic, friendly, impulsive

Women's Athletic Association 1, 2; Basketball 1; Y.W.C.A. 1, 2; Dramatic Club 1, 2.

JEANETTE AMICK
Mebane

Cheerful, congenial, considerate

Y.W.C.A. 1, 2; Dramatic Club 1, 2.

SAMUEL ARRINGTON
Hollister

Talkative, frolicsome, neat

Players 1; Math Club 1, 2; Debating Club 1; Band 1; Dramatic Club 1, 2. Vice-President; Y.M.C.A. 1.

EMERSON ASBELL
Belvidere

"He is made of the best"

Math Club 2; Y.M.C.A. 1, 2.

MAE EDLA ASBELL
Belvidere

Pretty, refined, genteel

Y.W.C.A. 1, 2; Math Club 1, 2. Secretary 2; Women's Student Government 2. Treasurer 2; Phi Theta Kappa 2; May Court 2; Dramatic Club 2.

RICHARD AUGER
Whiteville

Sporty, different, cheerful

Y.M.C.A. 1, 2, 3; Gospel Band 1, 2. Vice-President 2; Orchestra 1, 2, 3; Men's Athletic Association 1, 2, 3. President 2; Boxing 1, 2. Coach 1, 2; Men's Student Government 2; President of Student Body 3.





Second Year Students

J. RANSOM BAIN, Four Oaks. *Indefatigable, cultured, sincere*

Phi Theta Kappa 1, 2, Treasurer 2; Beta Phi Gamma 2; Math Club 1, 2, Treasurer 1, President 2; Oak Staff 2, Business Manager 2.

JAMES BAKER, Raeford. *Nonchalant, quiet, trustworthy*
Math Club 2.

WOODROW BARDEN, Goldsboro. *Faithful, sober-minded, honest*
Debating Club; Men's Student Council 2, Secretary 2.

FORREST BARRETT, Franklinton. *Steady, ambitious, likable*

JULIA MAE BELL, Monroe. *Frolicsome, agreeable, talkative*
Y.W.C.A. 1, 2, 3; Math Club 1, 2, 3.

KATHLEEN BRITT, Fuquay Springs. *Gentle, self-reliant, casual*
Y.W.C.A. 1, 2; Home Economics Club 1, 2; Women's Athletic Association 2.

LOIS LEE BRITTON, Seaboard. *Animated, genteel, genuine*
Home Economics Club 1, 2; Dramatic Club 1, 2; Y.W.C.A. 1, 2.

FRANCES LUTTRELL BROWN, Gatesville. *Versatile, pleasant, genteel*
Y.W.C.A. 1, 2, President 2; Glee Club 1, 2; Dramatic Club 1, 2;
Players 1, 2; Math Club 1, 2, Secretary 1; Phi Theta Kappa 1, 2,
President 2; Women's Student Government 2.

MARY ELLA BULLOCK, Rowland. *Friendly, coöperative, industrious*
Home Economics Club 1, 2, Secretary-Treasurer 2; Dramatic Club 1, 2; Y.W.C.A. 1, 2.

SYLVIA BURNS, Siler City. *Industrious, sincere, thoughtful*
Glee Club 1, 2; Home Economics Club 1; Y.W.C.A. 2.

JAMES MILTON BUTLER, Lewiston. *Happy-go-lucky, animated, friendly*
Basketball 2; Baseball 2; Men's Athletic Association 1, 2; Y.M.C.A. 1;
Gospel Band; Superlative 2.

ALICE CAHILL, Winston-Salem. *Congenial, helpful, neat*
Players 1, 2; Dramatic Club 1, 2, Business Manager 2; Alpha Pi
Epsilon 2; Beta Phi Gamma 2, Treasurer 2; May Court 1, 2; News-
paper Staff 2; Annual Staff 1, 2; Y.W.C.A. 1, 2.

LOUISE CARTER, Woodland. *Coöperative, amiable, sincere*
Y.W.C.A. 1, 2, Vice-President 2; Woman's Student Government 2; Dramatic Club 1, 2.

VIVIAN CAYTON, Kinston. *Indifferent, friendly, jovial*
Players 1, 2; Glee Club 1, 2; Dramatic Club 1, 2; Y.W.C.A. 1, 2; Women's
Student Government 2, Secretary 2; Math Club 2.

MELBA CHAPPELL, Tyner. *Quiet, sincere, industrious*
Y.W.C.A. 2; Dramatic Club 2.

THELMA GREY CLARK, Virgilina, Va. *Ambitious, serious, conservative*
Y.W.C.A. 1, 2; Math Club 1, 2; Ministerial Association 2; Dramatic
Club 1, 2; Women's Athletic Association; Basketball 1; Debating
Club 1.



Second Year Students

WILLIAM T. CLIFTON, Louisburg. *Affectionate, good-natured, thoughtful*

EDGAR COMER, Dobson. *Argumentative, spontaneous, casual*
Y.M.C.A. 1, 2, President 2; Debating Club 1, 2; Dramatic Club 1, 2.

ROY COOPER, Sanford. *Contented, nonchalant, well-dressed*

LILLIAN COPE, Middlesex. *Ambitious, considerate, temperamental*
Women's Athletic Association 1, 2; Dramatic Club 1, 2; Newspaper
Staff 2; Phi Theta Kappa 2; Math Club 1, 2; Y.W.C.A. 1, 2; Players 2.

DOROTHY CORWIN, Ahuskie. *Reserved, studious, refined*

Phi Theta Kappa 1, 2; Y.W.C.A. 1, 2; Math Club 1, 2.

HILDA CORWIN, Ahuskie. *Reserved, studious, refined*

Phi Theta Kappa 1, 2; Y.W.C.A. 1, 2; Math Club 1, 2.

DOYEL COTTON, Red Springs. *Ambitious, musical, courteous*

Student Council 1; Boxing 1, 2; Men's Athletic Association 1, 2, Vice-
President 2; A Cappella Choir 1, 2, Business Manager 1, 2; Dramatic Club
1; Orchestra 1, 2.

DOROTHY COX, Greenville. *Quiet, industrious, faithful*

Y.W.C.A. 1, 2; Dramatic Club 1; Home Economics Club 1, 2.

HENRY CRANK, Elizabeth City. *Different, meditative, industrious*

Ministerial Association 2; Math Club 2.

EDITH CRIDLIN, Woodsdale. *Efficient, amiable, modest*

Y.W.C.A. 1, 2; Dramatic Club 2; Alpha Pi Epsilon 1, 2, Treasurer 2; A Cappella
Choir 2.

MANNING DANIEL, Oxford. *Dignified, dependable, accommodating*

Phi Theta Kappa 2; Men's Student Government 2; Glee Club 1, 2; Orchestra
2; Dramatic Club 1; Vice-President German Club.

CLIFFORD DEAN, Louisburg. *Reserved, good-natured, dependable*

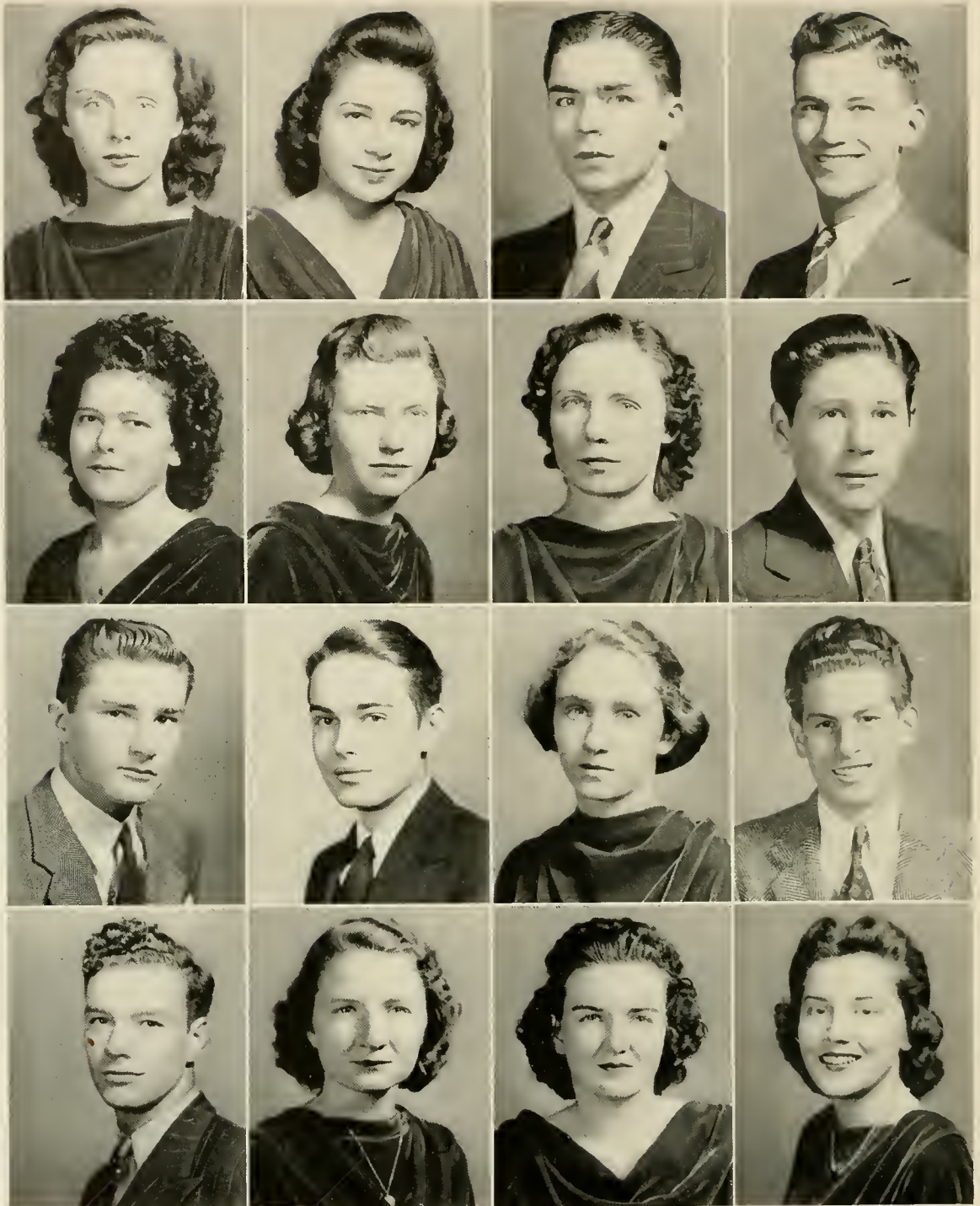
ROY DICKINSON, Beaufort. *Versatile, different, plucky*

JIMMY DURHAM, Durham. *Athletic, serious, well-dressed*

NELLIE SCOTT FEATHERSTON, Roxboro. *Efficient, good-natured, reliable*
Women's Athletic Association 2; Alpha Pi Epsilon 1, 2.

PAUL FREEMAN, Steeds. *Reticent, sincere, gentlemanly*

Boxing 1; Y.M.C.A. 1, 2; Baseball 2.



Second Year Students

JANE FULLER, Louisburg. *Vivacious, humorous, magnetic*

A Cappella Choir 1, 2; Women's Student Government 1.

LAURA E. GARDENER, Macon. *Indifferent, coquettish, attractive*

Y.W.C.A. 1, 2; Dramatic Club 1, 2.

MARTIN GARRETT, Columbia. *Friendly, obliging, trustworthy*

CHARLES GATES, Roxboro. *Handsome, refined, gentlemanly*

Y.M.C.A. 1, 2; Gospel Band 1; Math Club 2; President Boys' Sunday School Class.

ELIZABETH GAY, Jackson. *Reserved, sincere, conscientious*

Y.W.C.A. 1, 2; Home Economics Club 1, 2; Dramatic Club 1, 2.

MARGARET GOOCH, Louisburg. *Sincere, quiet, friendly*

Y.W.C.A. 1, 2; Math Club; Home Economics 1, 2.

VIRGINIA GRAY, Rocky Mount. *Serious, ambitious, reticent*

Y.W.C.A. 1, 2; Dramatic Club 1; Ministerial Association 1, 2.

WALLACE GRAY, Buxton. *Good natured, carefree, temperamental*

Men's Athletic Association 1, 2, Secretary 2; Gospel Band 1; Y.M.C.A. 1, 2; Boxing 1, 2.

JIMMY HALL, Sanford. *Athletic, genial, nonchalant*

JOHN LINDSAY HARRIS, Louisburg. *Intelligent, reserved, refined*

LUCILLE HARRIS, Wake Forest. *Quiet, industrious, coöperative*

Math Club 2.

PERCY HARRIS, Essex. *Animated, jovial, impulsive*

Y.M.C.A. 2; Math Club 2; Dramatic Club 1, 2.

EMMITTE HARRISON, Hamlet. *Handsome, impulsive, fair-minded*

Dramatic Club 1, 2; Glee Club 2; Annual Staff 1; Paper Staff 2; Men's Athletic Association 1, 2; Beta Phi Gamma 2, Vice-President 2; Y.M.C.A. 1, 2; Debating Club 1, 2; Math Club 1; Baseball Manager 1, 2.

JULIETTE HICKMAN, Sanford. *Poetic, reticent, reliable*

Y.W.C.A. 1, 2; Home Economics Club 1, 2.

CLAIRE HILL, Youngsville. *Refined, capable, cheerful*

Y.W.C.A. 1, 2; Home Economics Club 1, 2; A Cappella Choir 2.

MOLLIE HOFER, Gatesville. *Attractive, aloof, coquettish*

Dramatic Club 1, 2; Y.W.C.A. 1, 2.



Second Year Students

MARY MONDELLE HOLLEMAN, Roxboro. *Artistic, moody, talkative*
Y.W.C.A. 2; Dramatic Club 2; Women's Government 2.

LORRAINE HOOD, Mount Olive. *Coquettish, pleasant, patient*
Y.W.C.A. 1, 2; Ministerial Association 2; Dramatic Club 2.

RACHEL HOUSE, Knightdale. *Genteel, self-sufficient, level-headed*
Alpha Pi Epsilon 2; Women's Student Government 2.

JUANITA HURLEY, Seaboard. *Congenial, refined, attractive*
Home Economics Club 1, 2; Dramatic Club 1, 2; Glee Club 1, 2;
Ministerial Association 1, 2; Beta Phi Gamma 2; Y.W.C.A. 1, 2;
Orchestra 2; May Queen 2; Superlative 2; Newspaper Staff 2; An-
nual Staff 1, 2.

EDWARD JELKS, Southport. *Carefree, coöperative, gentlemanly*
Basketball 1, 2; Tennis 1, 2 (Assistant Coach); Men's Athletic Association 1, 2;
Y.M.C.A. 1.

JULIAN JOLLIFF, Gatesville. *Genteel, understanding, capable*
OAK Staff 1, 2, Junior Editor 1, Editor-in-Chief 2; Beta Phi Gamma 2, President
2; A Cappella Choir 1, 2; Math Club 1; Phi Theta Kappa 1; Men's Student
Government 1, 2, Vice-President 2; Y.M.C.A. 2; Chief Marshal 1.

BENTLEY JONES, Louisburg. *Loquacious, happy, humorous*

ED KIMBALL, Kenbridge, Virginia. *Humorous, individual, serious*
Y.M.C.A. 2; Men's Athletic Association 2; Baseball 2.

EDNA LANCE, Durham. *Unassuming, practical, genteel*
Y.W.C.A. 1, 2; Home Economics Club 1, 2; Women's Athletic Association 1, 2,
Secretary-Treasurer 2.

JEAN LINER, Hillsboro. *Athletic, congenial, casual*
Y.W.C.A. 1, 2; Dramatic Club 1, 2; Women's Athletic Association 2.

RUTH LYTLE, Raeford. *Frolicsome, conscientious, persevering*
Y.W.C.A. 1, 2; Alpha Pi Epsilon 2.

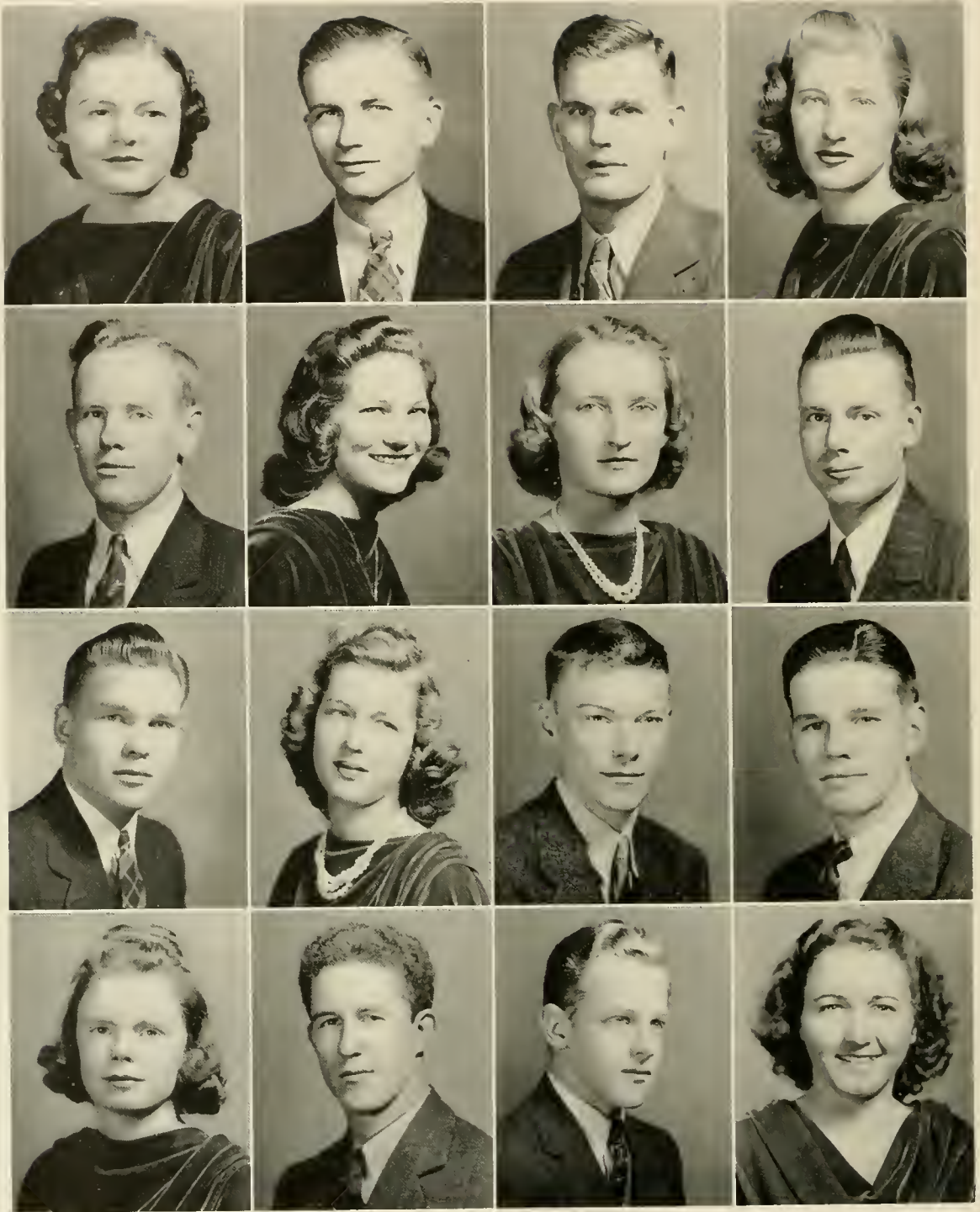
BORDEN MCCLEES, Columbia. *Gentlemanly, sincere, musical*
Orchestra 1, 2; Y.M.C.A. 1, 2; Gospel Band 1; Paper Staff 2; Glee
Club 2.

MARY THOMPSON McCORMICK, Rowland. *Resolute, individual, reticent*
Y.W.C.A. 1, 2; Women's Athletic Association 1, 2; Women's Student Government
1, 2, President 2; Basketball 1.

MATT MCDADE, Hillsboro. *Reserved, agreeable, reliable*
Gospel Band 1; Y.M.C.A. 1, 2; Phi Theta Kappa 1, 2, Vice-President 2; Dramatic
Club 1, 2; Math Club 1, 2, President 1; Paper Staff 2; Debating Club 1, 2;
Beta Phi Gamma 2.

MAVIS MCGOWAN, Greenville. *Modest, sincere, dependable*
Dramatic Club 1, 2; Y.W.C.A. 1, 2, Vice-President 2; Basketball 1.

KENNETH MCKEITHAN, Fayetteville. *Quiet, persevering, ambitious*
Gospel Band 1; Y.M.C.A. 1; Debating Club 1.



Second Year Students

EULA PEARL McLAMR, Clinton

Y.W.C.A. 1, 2; Dramatic Club 2; Home Economics Club 1, 2; Phi Theta Kappa 2.

JOHN McNEILL, Raeford. *Humorous, reserved, sincere*

WOODROW McNEILL, Broadway. *Self-sufficient, coöperative, ambitious*
Newspaper Staff 2.

ROSE MALONE, Louisburg. *Talented, refined, cultured*

WILLIS MARSHALL, Raleigh. *Friendly, animated, courteous*

A Cappella Choir 1, 2. Business Manager 1. President 2; Class President 1; Student Council 1; Math Club 2; Superlative 2.

SAVONNE MATTHEWS, Kipling. *Athletic, amiable, considerate*

Y.W.C.A. 1, 2; Dramatic Club 1, 2; May Court 2, Superlative 2; Women's Student Government.

HENRIETTA MEEKINS, Avon. *Dependable, wholesome, ambitious*

Y.M.C.A. 1, 2; A Cappella Choir 2; Math Club 2; Women's Athletic Association.

ELWOOD MINTZ, Shallotte. *Steady, gentlemanly, patient*

Gospel Band 1; Y.M.C.A. 1, 2, Vice President 2; Debating Club 1, 2.

HOWARD MITCHNER, Wilson Mills. *Friendly, irresponsible, accommodating*

HELEN MOORE, Goldsboro. *Attractive, likable, nonchalant*

Y.W.C.A. 1, 2; May Court 2.

CLIFF MORRIS, Wilmington. *Friendly, witty, accommodating*

Paper Staff 2; Y.M.C.A. 1, 2; Dramatic Club 2.

HAROLD MORRIS, Fayetteville. *Resourceful, accommodating, likable*

Beta Phi Gamma. Business Manager 2; Dramatic Club 1, 2; Gospel Band 1; Y.M.C.A. 1, 2; Paper Staff 2.

VIRGINIA MURPHY, Louisburg. *Ambitious, sincere, wholesome*

RICHARD NORVELL, Henderson. *Gentlemanly, ambitious, reliable*

Math Club 1, 2; Phi Theta Kappa 2; Boxing Club 1; Baseball 1, 2; Men's Student Council 1, 2, President 2.

FRED O'KEEF, Wilmington. *Different, sincere, conservative*

Annual Staff 2. Men's Student Government 2; Y.M.C.A. 1, 2.

SELMA ODEN, Hatteras. *Friendly, carefree, retiring*



Second Year Students

ROBERT PAGE, Wilmington. *Gentlemanly, accommodating, sincere*
Newspaper Staff 2, Assistant Business Manager 2; Annual Staff 2; Tennis Team 2;
Dramatic Club 2; Y.M.C.A. 2. Orchestra 2.

MINNIE LEE PARKER, Hobgood. *Reticent, unassuming, unaffected*
Math Club 2; Y.W.C.A. 1, 2.

HOWELL PERRY, Louisburg. *Conscientious, steady, courteous*
President Ministerial Association 2.

LEONARD PERRY, Louisburg. *Jovial, industrious, thoughtful*

DOROTHY PERSON, Louisburg. *Amiable, plucky, considerate*
Y.W.C.A. 1, 2; Phi Theta Kappa 1, 2; Math Club 1, 2; Dramatic Club 1, 2; Players 2.

EMMA PHILLIPS, Blackey, Kentucky. *Athletic, congenial, jocular*
Y.W.C.A. 1, 2.

CLARENCE PINNELL, Castalia. *Quiet, reserved, contented*

FRANK PINNELL, Castalia. *Calm, reticent, unconcerned*

CLARA POTTER, Raeford. *Patient, thoughtful, serious*
Y.W.C.A. 1, 2.

EMMA LEE PUGH, Oriental. *Retiring, restrained, conservative*
Y.W.C.A. 1, 2.

OSCAR BENJAMIN REEVES, Fayetteville. *Talkative, happy-go-lucky, argumen-
tative*

Debating Club 1, 2, President 2; Student Government 1; Tennis 2; Gospel
Band 1.

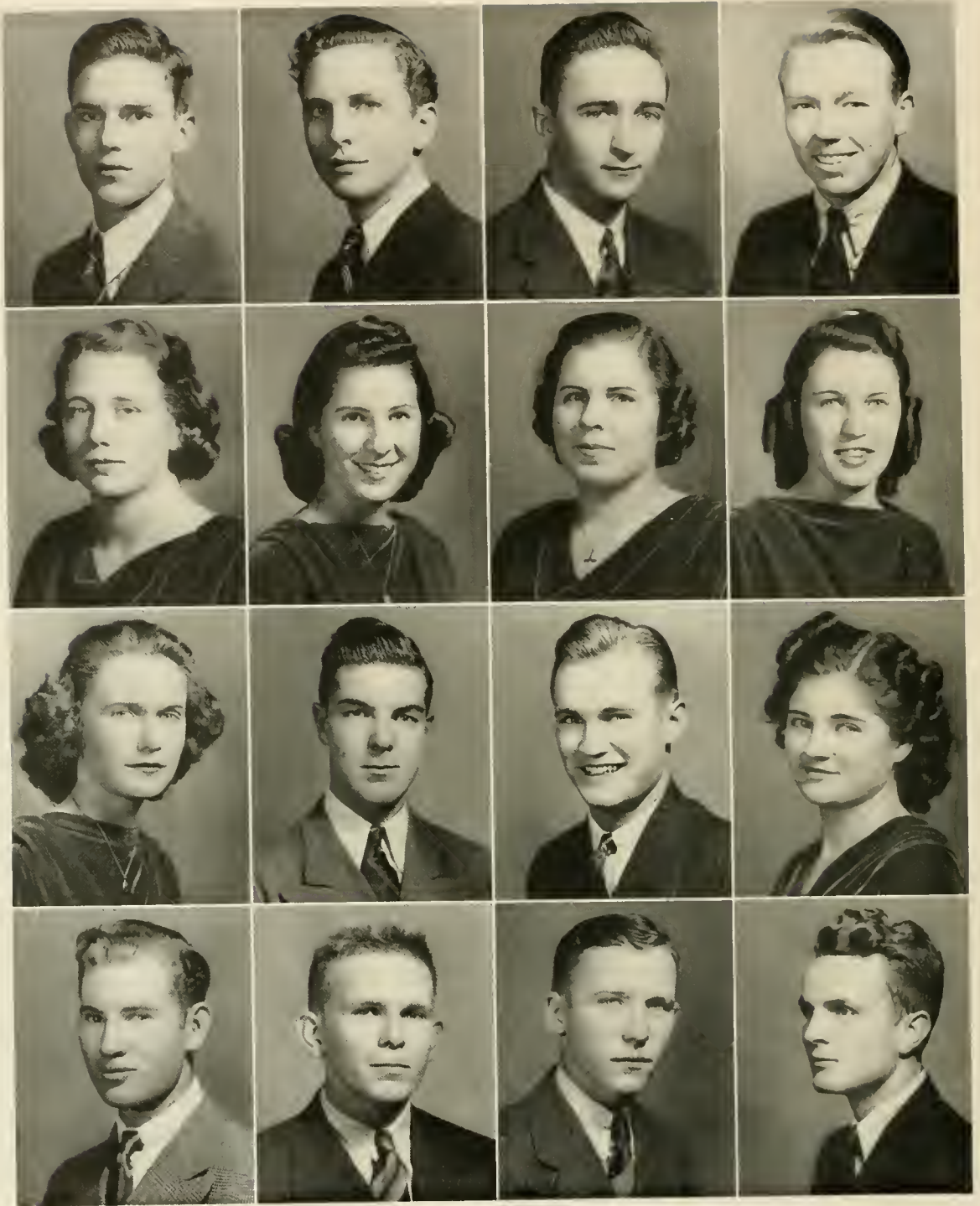
MARTHA BLANCHE RICE, Edfield
Players 1, 2; Dramatic Club 1, 2; Orchestra 1; Y.W.C.A. 1, 2.

DAN BRIGHT ROBERTSON, Jonesboro. *Sociable, accommodating, sincere*
Y.M.C.A. 1, 2; Gospel Band 1.

KATHERINE ROBERTSON, Hobgood. *Amiable, trustworthy, steady*
Women's Athletic Association 2.

SIDNEY ROPER, Englehard. *Well-read, ambitious, courteous*

AILEEN ROGERS, Wake Forest. *Ambitious, studious, genteel*
Home Economics Club 1, 2; Dramatic Club 1, 2; Y.W.C.A. 1, 2.



Second Year Students

CHARLES SCARBOROUGH, Mount Gilead. *Congenial, genteel, sincere*
Math Club 1, 2; Y.M.C.A. 2; Tennis 2; Baseball 2.

PEARCE SENTER, Kipling. *Loquacious, unconcerned, friendly*
Basketball 1; Baseball 1, 2; Y.M.C.A. 1, 2.

JAMES C. SHAW, Mebane. *Refined, reserved, accommodating*

JIM SHAW, Fayetteville. *Earnest, ambitious, practical*

LOUISE SHEARON, Bunn. *Industrious, patient, refined*
Home Economics Club 1, 2. President 2, Treasurer 1; Women's Athletic Association 2.

MARGARET SIMMONS, Sanford. *Attractive, coquettish, friendly*
Y.W.C.A. 1, 2; Glee Club 2; Class Secretary 1; May Court 1, 2; Marshal 1.

LIZZIE SMITH, Raleigh. *Sincere, trustworthy, genuine*

BLANCHE STOVALL, Stovall. *Restrained, thoughtful, friendly*
Y.W.C.A. 1, 2.

NELLIE SOUTHALL, Louisburg. *Modest, reliable, steady*

CLYDE STALLINGS, Morehead City. *Versatile, industrious, coöperative*
Y.M.C.A. 1, 2; Dramatic Club 1, 2. President 2; L. C. Players 1, 2; Debating Club 1; Newspaper Staff 2; Annual Staff 2; Beta Phi Gamma 2.

LESTER STALLINGS, Hobbsville. *Frank, handsome, trustworthy*
Dramatic Club 1, 2; Debating Club 1; Y.M.C.A. 1, 2; Louisburg College Players 1, 2.

LOUISE STALLINGS, Louisburg. *Restrained, dignified, impartial*
Y.W.C.A. 1, 2.

WINSTON STROUD, Nichols, South Carolina. *Agreeable, friendly, determined*
Boxing 1, 2; Monogram Club 1, 2; Y.M.C.A. 2.

THOMAS STUBBS, Plymouth. *Ambitious, dependable, sincere*

ROY THOMAS, Troy. *Boisterous, friendly, irresponsible*
Boxing 1, 2; Y.M.C.A. 2; Baseball 2.

ROBERT WATERS, Wilmington. *Fivacious, gentlemanly, thoughtful*
Men's Athletic Association 1, 2; Boxing 1; Beta Phi Gamma 2; Class Vice-President 2; Y.M.C.A. 2; Math Club 2; Paper Staff 2; Dramatic Club 2; Debating Club 2; Players 2.



Second Year Students

ALLEN WEST, Tuckahoe, New York. *Sincere, considerate, assiduous*
Math Club 1, 2; Y.M.C.A. 1, 2.

GRADIE WHEELER, Louisburg. *Intelligent, athletic, friendly*

MARION WHITE, Tyner. *Refined, sincere, conscientious*

Y.W.C.A. 1, 2; Women's Student Government 2; Vice-President 2; Glee Club 1, 2.

DOROTHY WILLIAMS, Monroe. *Indifferent, sociable, temperamental*

Y.W.C.A. 1, 2.

JOHN WILSON, Louisburg. *Refined, likable, sincere*

KATHLEEN WINBORNE, Woodsville. *Firacious, magnetic, considerate*

Newspaper Staff 2; Dramatic Club 1, 2; L. C. Players 2; Debating Club 2; Women's Athletic Association 1, 2; Chief Cheer Leader 2; A Cappella Choir 2; Y.W.C.A. 1, 2; May Court 2.

MARTHA WINDLEY, Bridgeton. *Restrained, well-bred, stately*

Alpha Pi Epsilon 1, 2; Secretary 2; Women's Athletic Association 1, 2; A Cappella Choir 2; Secretary of Class 2; Varsity Basketball Team 1; May Court 2.

KIPLING WISE, Stumpy Point. *Congenial, fair-minded, observant*

Baseball 1, 2; Men's Athletic Association 1, 2, 3; Manager Boxing Team 2; Math Club 2, 3; Treasurer 3; Publicity Manager of Basketball 3.

MARTHA YARBOROUGH, Louisburg. *Restrained, studious, ambitious*

President Town Girl's Club 2; Women's Student Government 2; Phi Theta Kappa 2; Vice-President German Club 2.

MITCHENER BANKS, Franklinton. *Industrious, modest, serious*

JOHN BADGER JOYNER, Louisburg. *Ambitious, determined, impulsive*

GEORGE STEARNS, Monroe. *Courteous, musical, serious*

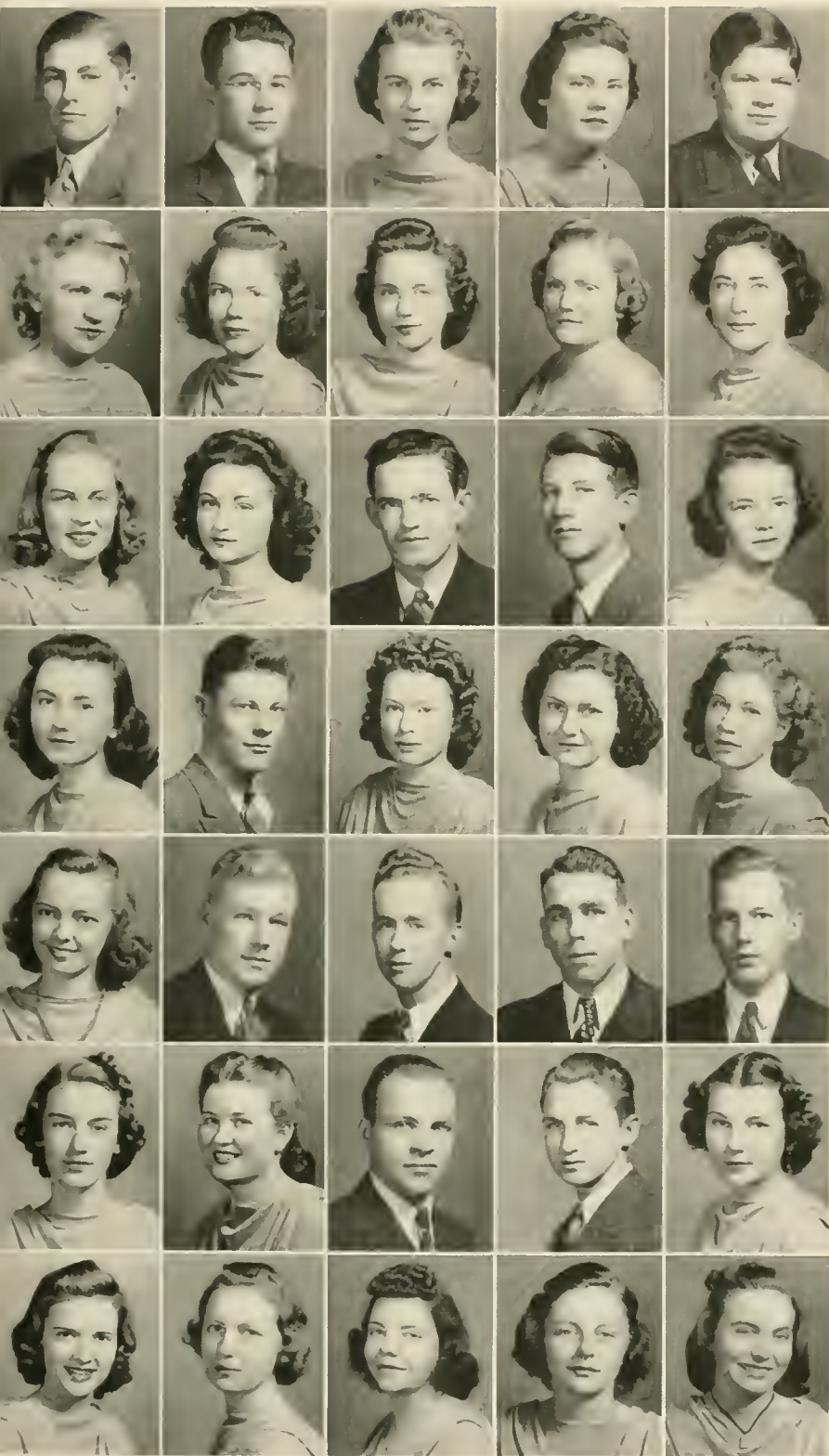


Junior Class Officers

ROBERT BARTHOLOMEW
President

JULIA KANNAN
Vice-President

ANN MORGAN
Secretary-Treasurer



First Year Students

Lewis Adams, Blounts Creek
 Warren Aldridge, Vanceboro
 Ella Rue Alford, Youngsville
 Anne Allen, Louisburg
 A. B. Allen, Franklinton

Mary Allsbrook, Scotland Neck
 Viola Alston, Louisburg
 Louise Averett, Oxford
 Hattie Edwards Avery, Cove City
 Laurel Ballard, Oriental

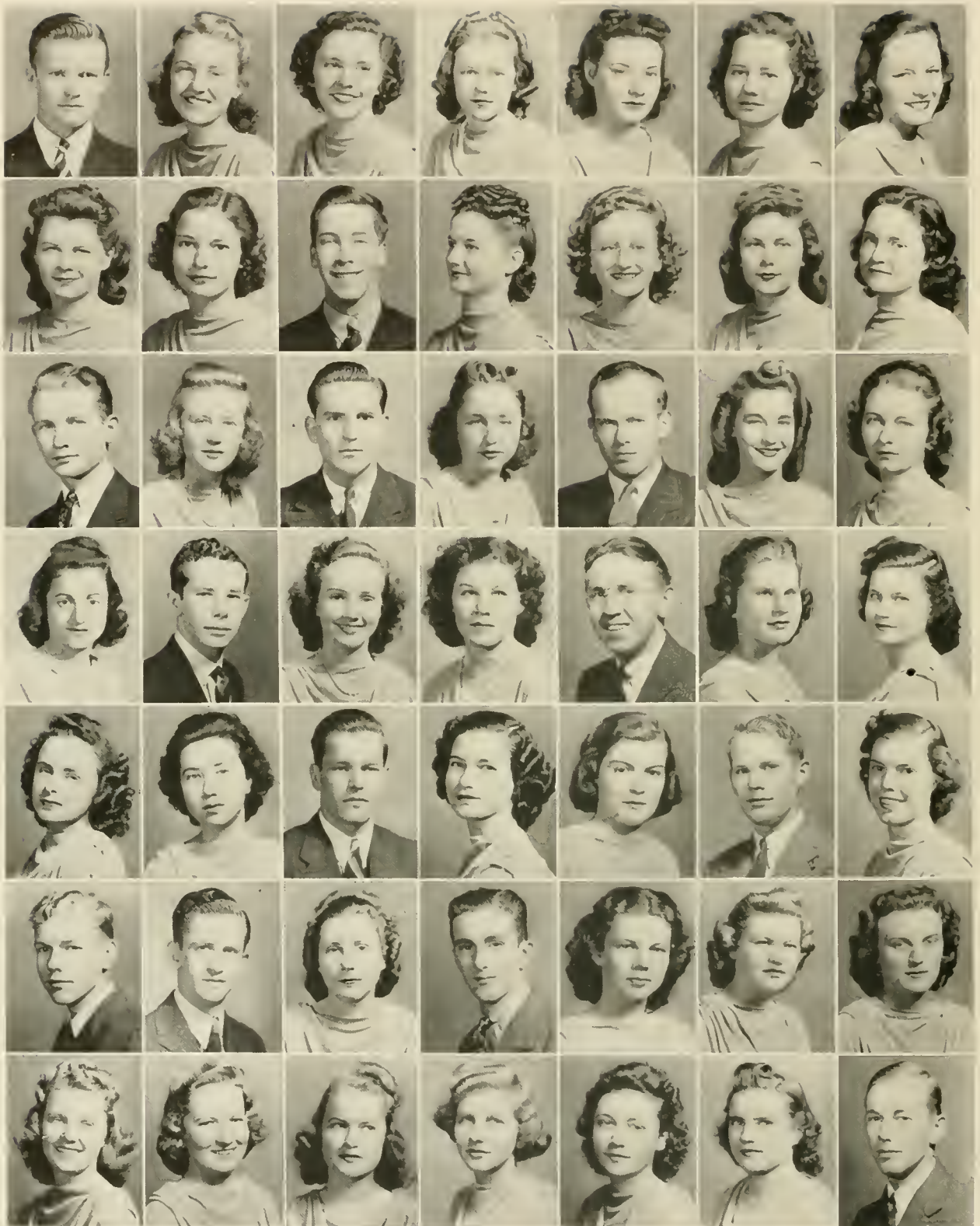
Hilda Barnes, Elm City
 Annie Bell Barrett, Rich Square
 Robert Bartholomew, Goldsboro
 John Belcher, Wilmington
 Josephine Brandon, Henderson

Martha Brower, Siler City
 Scott Brown, Zebulon
 Ruth Lois Brown, Rocky Mount
 Margaret White Byrum, Edenton
 Lora Foy Caddell, Jonesboro

Mildred Carter, University, Va.
 Philip Chamblee, Zebulon
 Robert Chambliss, Triplet, Va.
 Wallace Chandler, Mount Gilead
 Theodore Collins, Franklinton

May Davis, Louisburg
 Joyce Donerson, Dover
 Rupert Drake, Scotland Neck
 Clyde Dula, Durham
 Jewel Dennis, Louisburg

Dorothy Edge, Fayetteville
 Fannie Edmundson, Oriental
 Helen Eisenhart, Hamlet
 Elizabeth Egerton, Louisburg
 Genevieve Ellis, Clayton



First Year Students

First row:

Robert Ellis, Durham
Kathryn Foster, Louisburg
Rachel Fox, Roxboro
Betty Ann Fulghum, Kenly
Anna Kathryn Garrett, Southport
Edna Everette Gibbs, New Holland
Catherine Gillis, Raleigh

Second row:

Edna Gillis, Raleigh
Frances Gooch, Stem
William Gossard, Elizabeth City
Margaret Ruby Gore, Clinton
Myrtie Gresham, Oxford
Katherine Gunter, Sanford
Nell Gupton, Louisburg

Third row:

William Harrison, Old Trap
Susan Henly, Roxboro
Robert Hicks, Durham
Iris Murrell Hill, Deep Run
Jesse Johnson, Siler City
Louise Jordan, Roxboro
Helen T. Joyner, Rocky Mount

Fourth row:

Julia Kannan, Goldsboro
Ike Kearney, Franklinton
Martha Kearney, Franklinton
Edith Kelly, Hamlet
Wallace Keys, Washington, D. C.
Marguerite Kornegay, Warsaw
Mary Daly Kornegay, Warsaw

Fifth row:

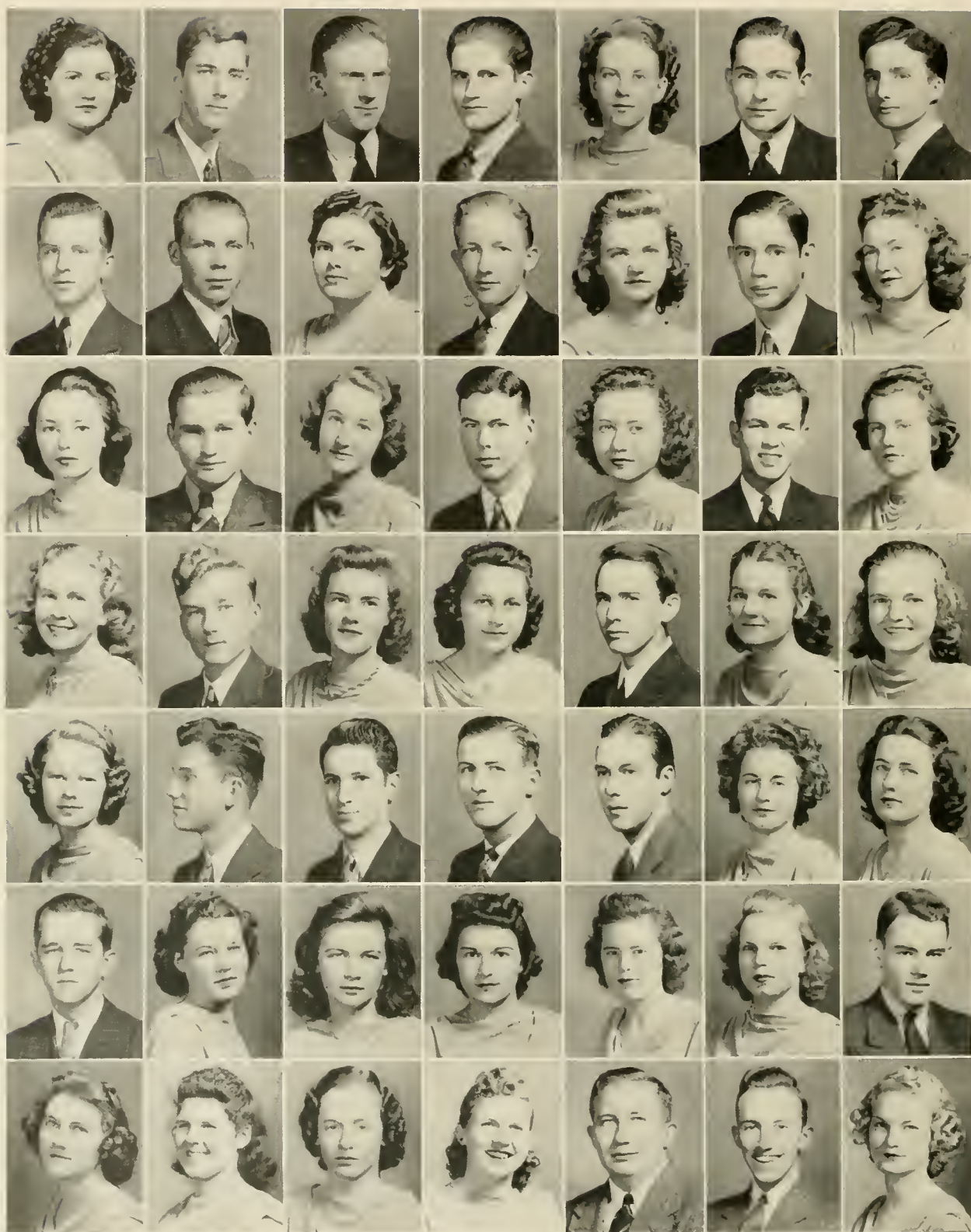
Doris Lane, Belvidere
Della Mae Lewis, Spring Hope
David Fairly Lindsay, Fayetteville
Dorothy Long, Engelhard
Vivian Inez Lupton, Whortonsville
William McArtan, Dunn
Allene McLawhorn, Ayden

Sixth row:

William Mann, Lake Landing
Roger Mann, Bunnlevel
Eleanor Mae Martin, Mount Olive
Haywood Martin, Rich Square
Ruby Grey Massenburg, Louisburg
Annie Otelia Meeder, Gatesville
Merian Hill Meekins, Avon

Seventh row:

Rebecca Midgette, Elizabeth City
Elizabeth Miller, Wilmington
Margaret Moore, Milton
Anne Morgan, Goldsboro
Doris Morgan, Hamlet
Doris Munford, Kinston
Henry C. Murden, Suffolk, Va.



First Year Students

First row:

Lucille Murphy, Galax, Va.
Frank Muth, Edenton
Joseph Newsome, Littleton
Geo. Reid Overman, Elizabeth City
Nancy Page, Hamlet
Benjamin Parrish, Smithfield
Sherwood Parrish, Four Oaks

Second row:

Stanley Patten, Swanseq, Mass.
Joe Perry, Dover
Nell Peterson, Parkersburg
Alton Petteway, Kinston
Edith Pittman, Wilmington
Roy Pitts, Elon College
Mildred Pope, Creedmoor

Third row:

Elaine Rand, Richlands
Isaac Reynolds, Columbia
Doris Rhodes, Fayetteville
Sam Rhodes, Jr., Raleigh
Margie Richards, Louisburg
Ralph Roe, Suffolk, Va.
Ernestine Rose, Nashville

Fourth row:

Wiley Sanders, Aydlett
William Sellers, Shallotte
G. Senecal, North Adams, Mass.
Mary Ellen Shaw, Mebane
Lloyd Sheep, Elizabeth City
Elizabeth Simmons, West End
Gloria Simpson, Vanceboro

Fifth row:

Iris Sly, Carolina Beach
Henry Smith, Wilmington
Oliver Smith, Goldsboro
Thomas Gordon Sorrell, Raleigh
William M. Spence, Suffolk, Va.
Marjorie Spivey, Jackson
Ruth Stallings, Hobbsville

Sixth row:

S. J. Starnes, Hookerton
Frances Steed, Four Oaks
Ellen Clark Stewart, Warrenton
Mary Lincoln Tart, Dunn
Sarah Elizabeth Turner, Kinston
Louise Turner, Speed
Samuel Tuten, Edward

Seventh row:

Mary Magdalene Tutor, Casma
Zeta Mae Tyndall, Mount Olive
Irene Vaughan, Rich Square
Fannie Mae Vaughan, Louisburg
Dee Wood Vinson, Goldsboro
William Waters, Wilmington
Jeanette Watkins, Stem

First Year Students



Margaret Watts, Southport

Martha Wehrenberg, Woodsdale

Billy Weldon, Henderson

Mary West, Dover

Rosa Ella White, Norlina

Matilda Whitley, Smithfield

Dorothy Wilder, Franklinton

Herbert Williams, Belvidere

William Earl Williams, Coats

George Wise, Stumpy Point

David Wood, Spring Hope

Everett Yancey, Norlina

BOOK THREE . . . Activities



WRIGHT DORMITORY





Ministerial Association

HOWELL PERRY
President

JUANITA HURLEY
Vice-President

VIRGINIA GRAY
Secretary-Treasurer

Members

Thelma Clark	Juanita Hurley
Henry Crank	Jesse Johnson
Virginia Gray	Howell Perry



Phi Theta Kappa

FRANCES LUTTRELL BROWN
President

MATT MCDADE
Vice-President

HILDA CORWIN
Secretary

J. RANSOM BAIN
Treasurer

DR. T. C. AMICK
Sponsor

Mae Edla Asbell

Members

Matt McDade

J. Ransom Bain

Eula Pearl McLamb

Frances Luttrell Brown

Manning Daniel

Nichard Norvell

Lois Brown

May Davis

Stanley Patten

Mildred Carter

Catherine Gillis

Dorothy Person

Lillian Cope

William Gossard

Genevieve Senecal

Dorothy Corwin

John Lindsay Harris

Lloyd Sheep

Hilda Corwin

Ruby Grey Massenburg

Martha Yarborough

This is an honorary scholarship and character fraternity of the junior colleges of America. This is the first scholarship fraternity to be organized at Louisburg College. Its members are chosen from the highest ranking students scholastically at the college. This fraternity has done much toward raising the morale of the students as well as the grades.



Alpha Pi Epsilon

NELLIE SCOTT FEATHERSTON
President

EDITH CRIDLIN
Treasurer

MARTHA WINDLEY
Secretary

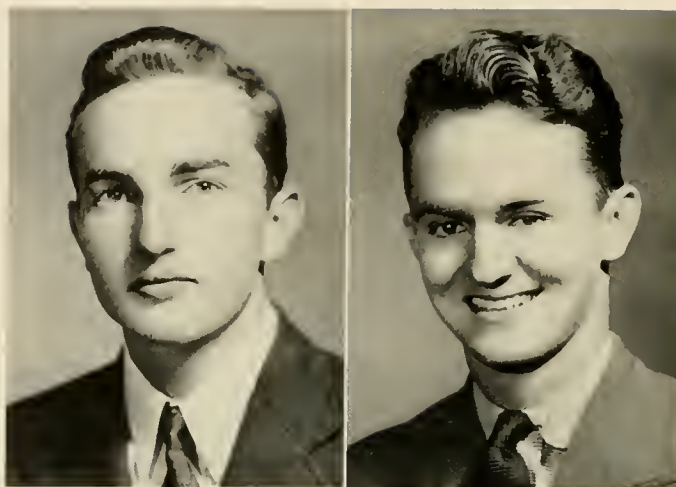
MRS. MARGARET BOYDEN KILBY
Sponsor

Alice Cahill
Edith Cridlin
Nellie Scott Featherston
Jane Fuller
Edna Gibbs
Edna Gillis
Frances Gooch

Members
Rachel House
Edith Kelly
Della Mae Lewis
Ruth Lytle
Bill McArtan

Rose Malone
Rebecca Midgette
Nancy Page
Ike Reynolds
Katherine Roberson
Louise Turner
Martha Windley

The Lambda Chapter of Alpha Pi Epsilon, a national honorary secretarial fraternity, was formed last year at Louisburg College. This is the first chapter that has been formed in the State of North Carolina. Membership is based upon high scholarship, pleasing personality, and good character.



The 1940 Oak Staff

JULIAN JOLIFF
Editor-in-Chief

J. RANSOM BAIN
Business Manager

We started out in the Fall to edit the book we now proudly present to you. We had splendid coöperation from the faculty, students, and all others concerned. They made the task an easy one, filled with adventure and valuable experience. They made a seemingly difficult struggle seem easy.

We sincerely hope that the 1940 edition of THE OAK has lived up to the expectations of the students and the faculty. It is a pleasure to give a summary of the activities of the past school year to those who have made our efforts a success.

We wish to extend a sincere expression of gratitude to the all faithful Faculty Advisers, without whose aid and suggestions the 1940 OAK would have been a failure. It is impossible to give them the just thanks that we owe them. Such thanks cannot be expressed on paper. Nevertheless, we give our most hearty thanks and sense of appreciation to Miss Virginia Peyatt and Mr. L. R. Taff, without whom we would not have been able to give you the type of book we think you deserve.

Again, we wish to thank everybody who helped in any way to make the book which is now yours, and we sincerely hope that next year's staff will be as fortunately endowed with an enthusiastic student body as we were this year.

The Oak Staff Members

HENRY MURDEN

Junior Editor

HENRY SMITH

Junior Business Manager

CLYDE STALLINGS

Advertising Manager

ROBERT PAGE

Advertising Manager

ALICE CAMILL

Feature Editor

JUANITA HURLEY

Literary Editor

ROBERT WATERS

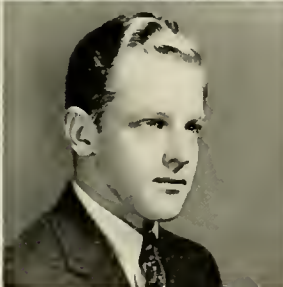
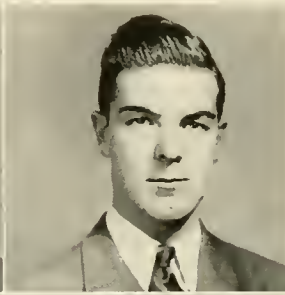
Sports Editor

FRED O'KEEF

Photographic Editor

ROBERT BARTHOLOMEW

Assistant Literary Editor





Men's Student Government

RICHARD NORVELL
President

JULIAN JOLLIFF
Vice-President

WOODROW BARDEN
Secretary

Members

Woodrow Barden
Manning Daniel
Julian Jolliff
Joe Newsome

Richard Norvell
Fred O'Keef
Stanley Patten
James Shaw

Women's Student Government

MARY THOMPSON MCCORMICK
President

VIVIAN CAYTON
Secretary

MARION WHITE
Vice-President

MAE EDLA ASBELL
Treasurer

Members

Mae Edla Asbell
Frances Luttrell Brown
Vivian Cayton
Louise Carter
Mondelle Holleman

Rachel House
Savonne Matthews
Mary Thompson McCormick
Gloria Simpson
Marian White

Martha Yarborough



A Cappella Choir

WILLIS MARSHALL
President

JANE FULLER
Secretary

MARGARET SIMMONS
Librarian

DOYEL COTTON
Business Manager

Members

A. B. Allen, Jr.
Richard Auger
Martha Brower
Frances Luttrell Brown
Sylvia Burns
Vivian Cayton
Theodore Collins
Doyel Cotton
Edith Cridlin
Manning Daniel
May Davis
Dorothy Edge
Kathryn Foster

Jane Fuller
William Gossard
Emmitte Harrison
Claire Hill
Juanita Hurley
Jesse Johnson
Julian Jolliff
Thelma Joyner
Edith Kelly
Wallace Keys
Rose Malone
Ruby Grey Massenburg
Willis Marshall

Haywood Martin
William McArtan
Borden McClees
Henrietta Meekins
Rebecca Midgette
Joe Newsome
William Sellers
Margaret Simmons
Henry Smith
George Stearns
Kathleen Winborne
Martha Windley
Marion White

Orchestra

JAMES E. BYERLY
Director

Saxophone Section

Thomas Wheelless
Billy Andrews

Borden McClees
Doyel Cotton

Brass Section

Martha Brower
Richard Auger

George Stearns
Bobby Andrews

Bass

John Belcher

Drums

Robert Pete Page

Piano

Manning Daniel

Vocal Trio

Kathryn Foster

Juanita Hurley

Margaret Simmons



Debating Club

BEN REEVES
President

MARGARET WHITE BYRUM
Vice-President

ROBERT BARTHOLOMEW
Secretary-Treasurer

Members

Robert Bartholomew
Margaret White Byrum
Ed Comer
Catherine Gillis
Myrtie Gresham

Emmitte Harrison
Martha Kearney
Kenneth McKeithan
Woodrow McNeill
Elwood Mintz

Ben Reeves
Katherine Roberson
Gene Senecal
Jim Shaw
Bobby Waters

Whispering Oak Staff

EMMITTE HARRISON
Editor-in-Chief

ROBERT BARTHOLOMEW
Associate Editor

BORDEN McCLEES
Make-up Editor

MATT MCDADE
News Editor

RUBY GREY MASSENBURG
Alumni Editor

RICHARD AUGER
Sports Editor

ROBERT PAGE
Assistant Business Manager

CLIFF MORRIS
School Editor

JUANITA HURLEY
Society Editor

HENRY MURDEN
Exchange Editor

CLYDE STALLINGS
Feature Editor

WOODROW MCNEILL
Business Manager

HENRY SMITH
Circulation Manager

WILLIAM MANN
Assistant Circulation Manager

Reporters

Alice Cahill
Lillian Cope

Harold Morris
Marjorie Spivey
Sidney Roper

Kathleen Winborne
Robert Waters

Faculty Advisers

Miss Virginia Peyatt

Mr. L. R. Taff



Y.M.C.A.

ED COMER, *President*

Joe Abdalla	Julian Jolliff	Alton Petteaway
Warren Aldridge	Wallace Keys	Dan Roberson
A. B. Allen	Bill Mann	Ralph Roe
Sam Arrington	Bill McArtan	Sidney Roper
Emerson Asbell	Borden McClees	Charles Scarborough
Robert Bartholomew	Matt McDade	Bill Sellers
Scott Brown	Kenneth McKeithan	Lloyd Sheep
Milton Butler	Elwood Mintz	Bill Spence
Robert Chambliss	Cliff Morris	Clyde Stallings
Theodore Collins	Harold Morris	Lester Stallings
Joe Comer	Henry Murden	Winston Stroud
Doyel Cotton	Joe Newsome	Roy Thomas
Paul Freeman	Dick Norvell	Dee Wood Vinson
Charles Gates	Fred O'Keef	Bill Waters
Billy Gossard	Reid Overman	Bobby Waters
Percy Harris	Pete Page	Billy Weldon
Emmitte Harrison	Ben Parrish	Allen West
William Harrison	Sherwood Parrish	Earl Williams
Eddie Jelks	Stanley Patten	David Wood
Jesse Johnson	Howell Perry	Everett Yancey

Y.W.C.A.

FRANCES BROWN, *President*

Dannie Adams	Edith Cridlin	Thelma Joyner	Mildred Pope
Ercell Adams	Joyce Donerson	Martha Kearney	Clara Potter
Mary Allsbrook	Dorothy Edge	Edith Kelly	Elaine Rand
Jay Amick	Nellie Featherston	Jean Liner	Doris Rhodes
Mae Edla Asbell	Kathryn Foster	Dorothy Long	Martha B. Rice
Louise Averett	Claire Fulcher	Inez Lupton	Katherine Robertson
Hattie Avery	Laura Gardner	Ruth Lytle	Aileen Rogers
Hilda Barnes	Elizabeth Gay	Eleanor Martin	Ernestine Rose
Margaret Boone	Edna Gibbs	Savonne Matthews	Gene Senecal
Kathleen Britt	Catherine Gillis	Mary T. McCormick	Gloria Simpson
Lois Lee Britton	Edna Gillis	Otelia Meeder	Marjorie Spivey
Martha Brower	Frances Gooch	Henrietta Meekins	Louise Stallings
Mary Ella Bullock	Margaret Gooch	Meriam Meekins	Ruth Stallings
Sylvia Burns	Virginia Gray	Mavis McGowan	Frances Steeds
Margaret Byrum	Myrtie Gresham	Rebecca Midgette	Louise Turner
Lora Foy Caddell	Ruby Gore	Eula Pearl McLamb	Magdaline Tutor
Alice Cahill	Katherine Gunter	Margaret Moore	Irene Vaughn
Louise Carter	Nell Gup-ton	Anne Morgan	Martha Wehrenberg
Vivian Cayton	Susan Henly	Doris Morgan	Margaret Watts
Thelma Clark	Mollie Hoffer	Doris Munford	Mary West
Lillian Cope	Mondelle Holleman	Nancy Page	Rosella White
Dorothy Corwin	Lorraine Hood	Minnie Lee Parker	Matilda Whitley
Hilda Corwin	Juanita Hurley	Edith Pittman	Kathleen Winborne
Dorothy Cox			Mattie Sue Winn



Beta Phi Gamma

JULIAN JOLLIFF

President

JUANITA HURLEY

Secretary

DEAN E. V. PEELE

Sponsor

EMMITTE HARRISON

Vice-President

ALICE CAHILL

Treasurer

Members

J. Ransom Bain
Alice Cahill
Emmitte Harrison
Juanita Hurley

Julian Jolliff
Matt McDade
Ruby Grey Massenburg

Harold Morris
Marjorie Spivey
Clyde Stallings
Robert Waters

Beta Phi Gamma is a national honorary journalistic fraternity, the Louisville College chapter being the Rho chapter. The charter members of Rho chapter are: Alice Cahill, Emmitte Harrison, Juanita Hurley, Julian Jolliff, and Harold Morris. The members of Rho chapter wish to express a very deep feeling of appreciation to Dean E. V. Peele, whose tireless efforts enabled them to have the privilege of becoming members of this organization.

Knights of Mathematics

J. RANSOM BAIN

President

MAE EDLA ASBELL

Secretary

DR. T. C. AMICK

Sponsor

HILDA CARWIN

Vice-President

KIPLING WISE

Treasurer

Members

Sam Arrington
Emerson Asbell
Mae Edla Asbell
J. Ransom Bain
James Baker
Forrest Barrett
Frances Luttrell Brown
Mildred Carter
Vivian Cayton
Thelma Clark
Lillian Cope
Dorothy Corwin
Hilda Corwin

Henry Crank
May Davis
Rachel Fox
Charles Gates
Margaret Gooch
John Lindsay Harris
Lucille Harris
Percy Harris
Emmitte Harrison
John B. Joyner
Julian Jolliff
Willis Marshall
Ruby Grey Massenburg
Henrietta Meekins

Lucille Murphy
Matthew McDade
Richard Norvell
Minnie Lee Parker
Stanley Patten
Dorothy Person
Ralph Roe
Charles Scarborough
Robert Waters
William Waters
Allen West
Mary West
Kipling Wise

Organized in the fall of 1938 as an honor society and admitting to membership only those making a grade of A in mathematics, this organization meets bi-weekly, and works to foster the study of mathematics and science.



Home Economics Club

LOUISE SHEARON

President

LOIS LEE BRITTON

Vice-President

MARY ELLA BULLOCK

Secretary-Treasurer

NELLIE TIPTON MOON

Sponsor

Members

Hattie Avery	Elizabeth Gay	Edna Lance	Louise Shearon
Kathleen Britt	Ruby Gore	Dorothy Long	Lizzie Smith
Lois Lee Britton	Myrtie Gresham	Eula Pearl McLamb	Ruth Stallings
Mary Ella Bullock	Lula Gup-ton	Doris Morgan	Mary Watkins
Sylvia Burns	Juliette Hickman	Virginia Murphy	Martha Wehrenberg
Margaret White Byrum	Claire Hill	Nell Peterson	Rosa Ella White
Dorothy Mae Cox	Juanita Hurley	Aileen Rogers	Matilda Whitley

Dramatic Club

CLYDE STALLINGS

President

SAM ARRINGTON

Vice-President

MATT MCDADE

Secretary-Treasurer

ALICE CAHILL

Business Manager

Members

Ercell Adams	Rachel Fox	Richard Norvell
Mary Allsbrook	Elizabeth Gay	Pete Page
Sam Arrington	Edna Gibbs	Dorothy Person
Mae Elda Asbell	Myrtie Gresham	Alton Petteway
Viola Alston	Percy Harris	Mickey Pope
Louise Averett	Emmitte Harrison	Clara Potter
Hilda Barnes	Lorraine Hood	Doris Rhodes
Robert Bartholomew	Juanita Hurley	Martha Blanche Rice
Judy Bell	Jean Liner	Katherine Robertson
Margaret Boone	Dorothy Long	Aileen Rogers
Lois Lee Britton	Ruby Grey Massenburg	Ernestine Rose
Frances Brown	Savonne Matthews	Wiley Sanders
Mary Ella Bullock	Bill McArtan	William Sellers
Margaret White Byrum	Matt McDade	Gene Senecal
Thelma Clark	Mavis McGowan	Mary Ellen Shaw
Alice Cahill	Eula Pearl McLamb	Nellie Southall
Louise Carter	Becky Midgette	Marjorie Spivey
Melba Chappell	Margaret Moore	Clyde Stallings
Theodore Collins	Cliff Morris	Lester Stallings
Lillian Cope	Harold Morris	Ruth Stallings
Edgar Comer	Elwood Mintz	Irene Vaughan
Edith Cridlin	Doris Munford	Bobby Waters
Nellie Scott Featherston	Henry Murden	Mary West
Peggy Ford		Kathleen Winborne

Louisburg College Players

Frances Luttrell Brown

Vivian Cayton

Lillian Cope

Laura E. Gardner

Emmitte Harrison

Martha Kearney

Cliff Morris

Martha Blanche Rice

Genevieve Senecal

Clyde Stallings

Lester Stallings

Kathleen Winborne





THROUGH THE TREES



Men's Athletic Association

RICHARD AUGER
President

DOYEL COTTON
Vice-President

WALLACE GRAY
Secretary-Treasurer

First row: Wallace Gray, Robert Waters, Eddie Jelks, Milton Butler, Kipling Wise, Jimmy Durham, Richard Auger.

Second row: Clyde Dula, Roy Thomas, Ike Kearney, Ed Kimball, Jimmy Hall, Pearce Senter, Doyel Cotton, Winston Stroud.

Third row: Joe Comer, Roy Cooper, Ralph Roe, Emmitte Harrison, Gradie Wheeler, Richard Norvell, Earl Williams, Coach Cameron, Warren Aldridge.



Women's Athletic Association

SAVONNE MATTHEWS
President

MARY THOMPSON MCCORMICK
Vice-President

EDNA LANCE
Secretary-Treasurer

Members

Ercell Adams
Kathleen Britt
Thelma Clark
Lillian Cope
Nellie Scott Featherston
Julia Kannan
Edna Lance
Jean Liner
Savonne Matthews

Mary Thompson McCormick
Edith Pittman
Mildred Pope
Katherine Robertson
Gene Senecal
Louise Shearon
Mary Lincoln Tart
Kathleen Winborne
Martha Windley

Basketball for 1940



JOHN L. CAMERON
Coach

The Scores

Louisburg	33	Goldsboro All-Stars	55
Louisburg	29	Atlantic Christian	45
Louisburg	27	Atlantic Christian	40
Louisburg	21	Elon College	57
Louisburg	21	Rocky Mount Y.M.C.A.	20
Louisburg	23	Oak Ridge	48
Louisburg	31	Wingate	30
Louisburg	31	Wingate	34
Louisburg	30	Oak Ridge	46
Louisburg	39	Campbell College	66
Louisburg	38	Chowan College	30
Louisburg	27	E.C.T.C.	83
Louisburg	25	Chowan College	17
Louisburg	29	Langley Field	40
Louisburg	24	Naval Apprentice	53
Louisburg	28	Naval Base	53
Louisburg	33	N. D. William and Mary	59
Louisburg	18	Textile Institute	41
Louisburg	64	Rocky Mount Y.M.C.A.	34

Managers

KIPLING WISE
JAMES DURHAM





BASKETBALL SQUAD

Ralph Roe

Milton Butler

Earl Williams

Gracie Wheeler

Roger Mann

Joe Comer

Clyde Dula

Ike Kearney

Robert Hicks

Roy Cooper

Pearce Senter

Eddie Jelks



Baseball

First row, left to right: Gradie Wheeler, Third base; Robert Hicks, Second base; Kipling Wise, Catcher; Jimmy Durham, Short stop; Roger Mann, First base.

Second row: Coach Cameron, Ed Kimball, Pitcher; Richard Norvell, Left field; Earl Williams, Center field; Clyde Dula, Right field; Jimmy Hall, Pitcher; Emmitte Harrison, Manager.

Scores of Games Already Played

Louisburg	1	Elon	4
Louisburg	1	Wofford	1
Louisburg	24	Chowan	6
Louisburg	3	E.C.T.C.	2
Louisburg	8	Carolina Frosh	10
Louisburg	2	Wingate	1
Louisburg	7	Wingate	6
Louisburg	16	Chowan	4
Louisburg	1	Duke Frosh	1



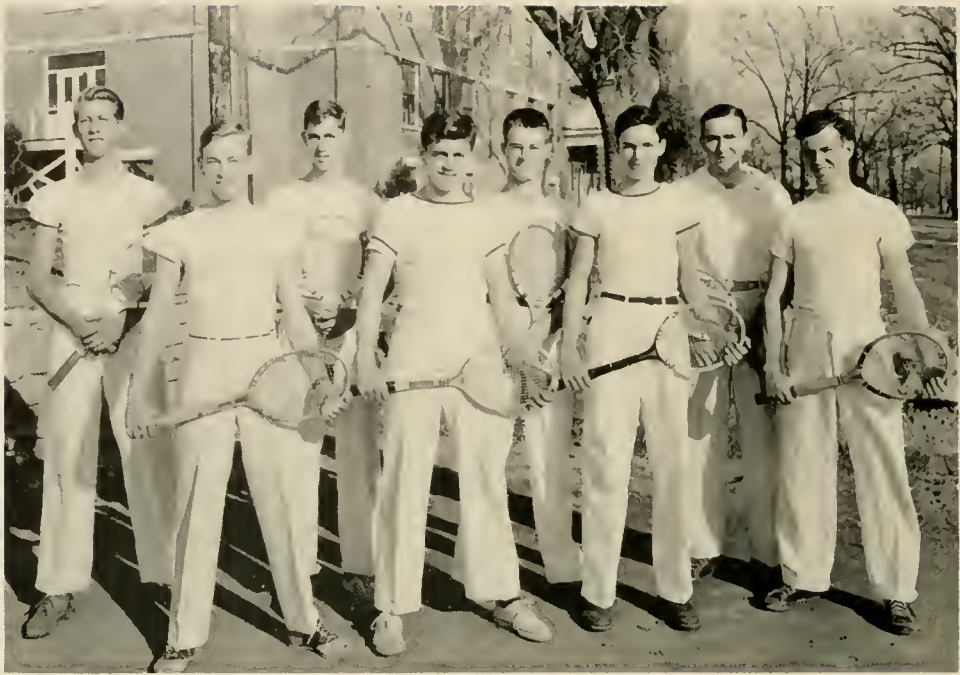
Baseball

Second Team

First row, left to right: Charles Scarborough, Left field: Henry Smith, Short stop: Woodrow McNeill, Pitcher: Roy Cooper, Pitcher: Gordon Sorrell, Catcher: Joe Perry, Pitcher: Pierce Senter, Second base: Milton Butler, First base: Paul Freeman, Pitcher: Ralph Roe, Third base: George Wise, Manager.

THE REMAINING SCHEDULE

<i>Date</i>	<i>Team</i>	<i>Location</i>
April 20.	Campbell	Buies Creek
April 24.	Oak Ridge	Oak Ridge
April 25.	Pfeiffer	Pfeiffer
May 1.	Duke Frosh	Durham
May 3.	Textile Inst.	Louisburg
May 4.	E.C.T.C.	Greenville
May 6.	A.C.C.	Wilson
May 10.	Pfeiffer	Louisburg
May 11.	A.C.C.	Louisburg
May 14.	Campbell	Louisburg



Tennis Team

First row: Henry Murden, Robert Page, Charles Scarborough, Ralph Roe.

Second row: John Belcher, Frank Muth, Eddie Jelks, Ben Reeves.



THE OLD OAKEN BUCKET

BOOK FOUR . . . Features



JUANITA HURLEY

Best Looking Girl



MILTON BUTLER

Best Looking Boy



SAVONNE MATTHEWS

Most Popular Girl



WILLIS MARSHALL

Most Popular Boy



FRANCES BROWN

Best All-Around Student



CLYDE STALLINGS

THE OAK'S Choice as *Most Versatile*



HERE AND THERE ON THE CAMPUS



SNAPSHOTS OF THE SNAPPY



SCENES FROM MAY DAY



PLAYERS IN ACTION



FUN AND FROLICS

LOUISBURG COLLEGE

Accredited by

The State Department of Education

North Carolina College Conference

University of North Carolina

Member of American Association of Junior Colleges

The following Courses of Instruction are offered:

The General Course

Terminal Courses:

Agricultural

Commercial

Preparatory Courses:

Agricultural

Ministerial

Nursing

Home Economics

Medical

Law

Music

Engineering

Speech Arts

Dental

Teaching

Pharmacy

Medical-Secretary

All Students granted privilege of earning \$50 of their expenses.

All kinds of student activities, intra-mural athletics, close personal direction and supervision of each individual student, superior spiritual atmosphere, healthful climate, moderate rates.

For Details, Write:

WALTER PATTEN, President : Louisburg, N. C.

LOUISBURG, N. C.

... IS ...

RICH IN HISTORY, HEALTH, AND
HOSPITALITY



There is not a more ideal place of residence in the world for a student than Louisburg. There exists here at all times an atmosphere of quiet, culture, and refinement, that encourages study and accomplishment. The material needs of every student can be purchased in Louisburg at most reasonable prices; therefore it is an economic and otherwise desirable home for students.

***Louisburg Sincerely Welcomes Everyone
At All Times***



TOWN OF LOUISBURG

W. C. WEBB, Mayor

WHITE'S Ice Cream

"There IS a difference"

BEST WISHES



Your Downtown Meeting Place



BODDIE DRUG STORE

H. R. CHESSON CANDY COMPANY

Well Known Energy Food Our Specialty

Fresh Clean Merchandise

Compliments of

"WIMPY"

and

THE LOUISBURG THEATRE

CAPITAL PRINTING CO.

Printers of College Publications

RALEIGH, N. C.

110 West Hargett Street

Phone 8315

At home - at school - at play

***The Pause That
Refreshes***

Drink

Coca-Cola

IN BOTTLES

**The Capital Coca-Cola
Bottling Co.**

HAZEL ROBERTSON

Florist

FLOWERS FOR ALL OCCASIONS

Louisburg, N. C.

City Barber Shop

**We Serve College and
Community Alike**

"IT PAYS TO LOOK WELL"

Aydlett Products Co.

Manufacturers of
DELICIOUS POTATO CHIPS
and
SALTED PEANUTS

Elizabeth City, N. C.

**DRS. PERRY and
HARTNESS**

PHYSICIANS AND SURGEONS

Compliments of

GEORGE MARSH CO.

WHOLESALE GROCERS

Raleigh, N. C.

*Fancy Canned Goods, Dried Fruits, etc.
Bloomsbury and Oxford Brands
Canned Vegetables*

Office Phone 287-1

Residence 287-2 : 287-3

ROSE'S 5-10-25c STORE

QUALITY : SERVICE
LOW PRICE

105 Stores to Serve You

R. W. Smithwick, Local Mgr.

Compliments of

G. M. BEAM

ATTORNEY AT LAW

**BROGDEN
PRODUCE
COMPANY**

Wholesale
Fruit and Produce

409-415 West Mortin Street
RALEIGH, N. C.

Local Phone 2-0567
Long Distance 901

M. STUART DAVIS



Architect



LOUISBURG, N. C.

Compliments of

DR. JAMES E. FULGHUM

CICERO'S

Soft Drinks Hot Dogs
Hamburgers

"The Students' Refreshing Center"

FOX'S



Louisburg's
Best Department Store



*Always First
with the
Smartest*

F. H. ALLEN

Cool Dealer

BETTER PREPARED THAN EVER
TO SERVE YOU

Service Dry Cleaners
and Shoe Shop

PHONE 446-1



*"We Clean Anything Except a
Guilty Conscience"*

FIRST-CITIZENS BANK & TRUST CO.

LOUISBURG, NORTH CAROLINA

COMPLETE BANKING SERVICE

DILLON SUPPLY COMPANY

RALEIGH, NORTH CAROLINA

HARDWARE

PLUMBING FIXTURES

THE HOME OF BETTER VALUES
LEGGETT'S DEPARTMENT STORE

LOUISBURG, NORTH CAROLINA

PHONE 3531

***The South's Leading Distributors of
Reliable Merchandise***

PATRONIZE
OUR
ADVERTISERS

SEVEN OAKS DAIRY

P. G. and M. G. Smith, Props.

"Quality and Service"

Phone 419-8

MRS. E. F. THOMAS


Telephone 493-1 Louisburg, N. C.

Local Representative of

HIBBERD'S, HENDERSON, N. C.


We Deliver Flowers Anywhere on Earth
By *Floral Telegraph Delivery*

"SAY IT WITH FLOWERS"



It's been a
real pleasure!

The personnel
and representatives
of the
Charlotte Engraving Co.



BUILDERS DREAMS

VISIONS created by the imagination precede the achievement of any really great accomplishment. The ability to weave the threads of imagination into the finished fabric is equally important.

It has been the privilege of the EDWARDS & BROUGHTON COMPANY to co-operate with the staff in creating their vision into material form.

Such coöperation is one of the "visions" which precede the building of a successful business, and is a part of the working policy of the EDWARDS & BROUGHTON COMPANY.

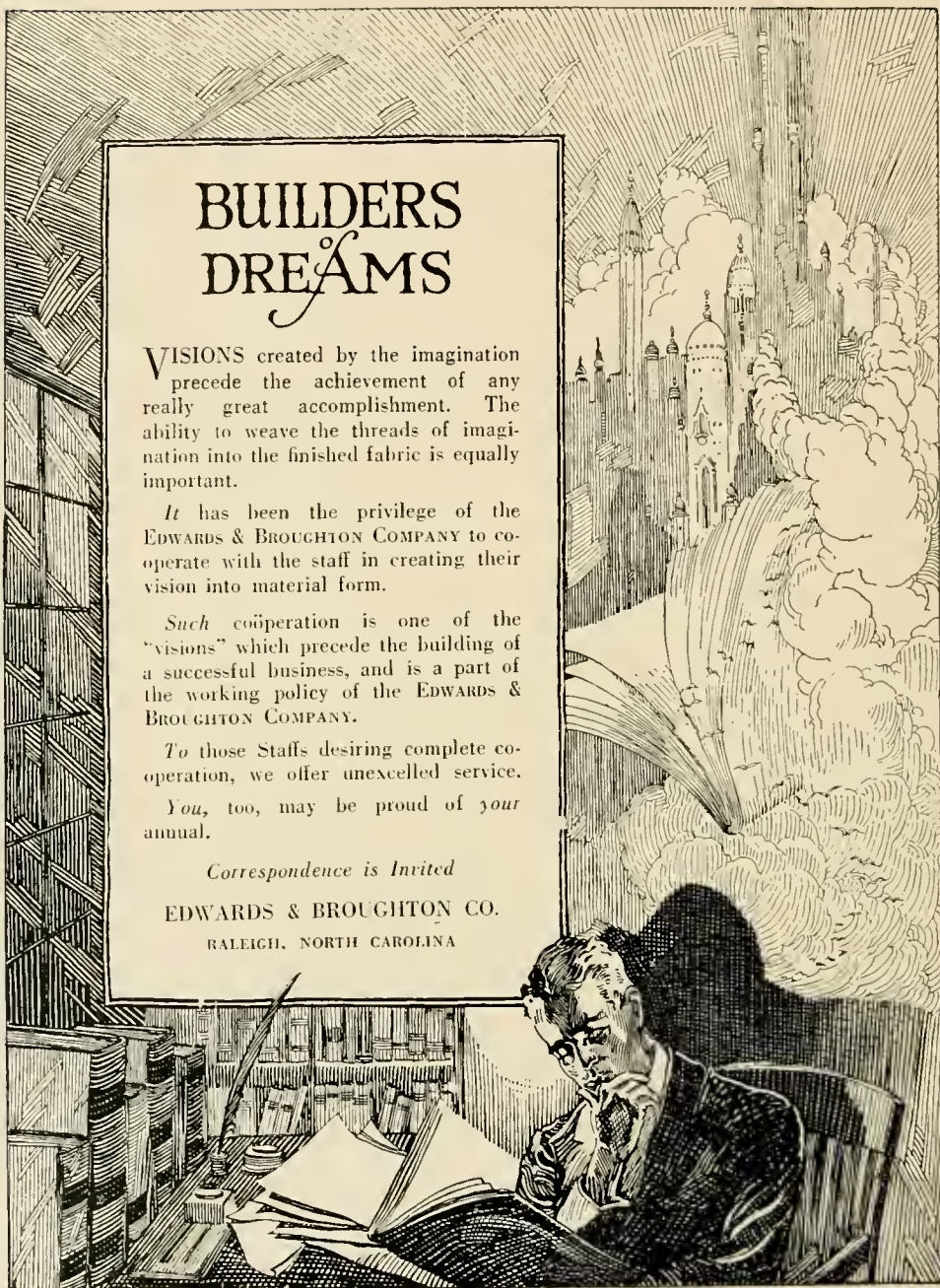
To those Staffs desiring complete co-operation, we offer unexcelled service.

You, too, may be proud of your annual.

Correspondence is Invited

EDWARDS & BROUGHTON CO.

RALEIGH, NORTH CAROLINA



ALUMNI OFFICE COPY. PLEASE DO

NOT MISPLACE

