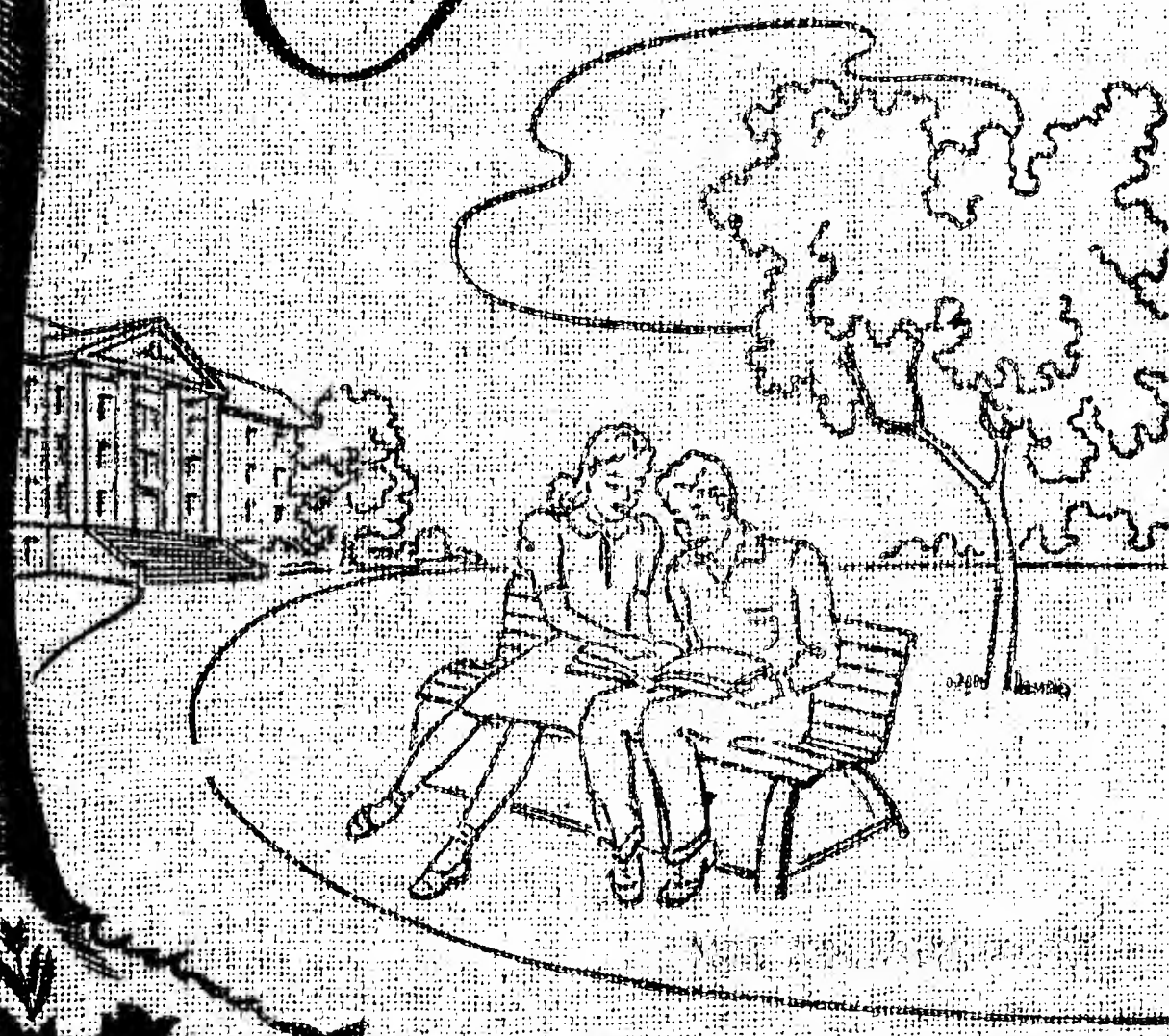


The Oak









THE CECIL W. ROBBINS LIBRARY
Louisburg College
Louisburg, N. C. 27549



*The
Oak*

*for
Nineteen Forty-one*

THE SENIOR CLASS PUBLICATION
OF LOUISBURG COLLEGE
LOUISBURG, NORTH CAROLINA

HENRY MURDEN
Editor

ROBERT PAGE
Business Manager

. . . to the straight and narrow.

Built in 1857— Hospital, Headquarters of General O. O. Howard in 1865—Private residence in the 80's—Partially destroyed by fire in December 1928—Now used for administrative offices, parlors, dormitory for girls.





“But let my due feet never fail,
To walk the studious cloister’s pale,
And love the high embowed roof,
With antique pillars massy proof. . . .”



This building stands as an expression of the confidence of the people of Franklin County.

FRANKLIN COUNTY
SCHOOL BOARD
1910

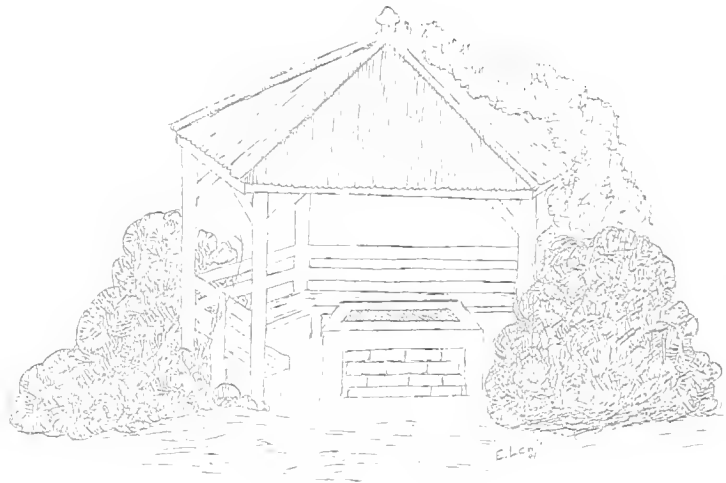


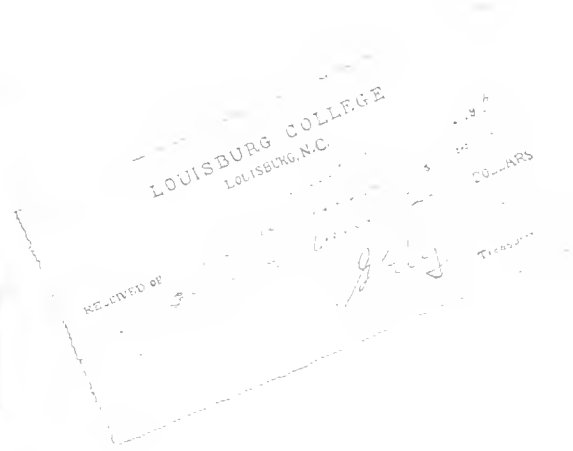
THE
FATTIE JULIA WHERRY
MEMORIAL DORMITORY
OF THE WORTH LINE
ERECTED IN 1906
BY
T. H. WHERRY
IN LOVING MEMORY OF
HIS GRANDDAUGHTER



... for a family which has played a vital part in the life of the college and community.

DAVIS DORMITORY





Dedication

To Mrs. Genevieve Perry to indicate our appreciation of her sterling qualities that are evidenced by her sincere manner, her fairmindedness, her ability as a business woman, and her zeal and enthusiasm about life and right living.





Administration

WALTER PATTEN, *President*, A.B., M.A.,
D.D., A.B., D.D., Wesleyan University;
M.A., University of North Carolina.

Board of Trustees

Officers

REV. W. A. CADE
President

MRS. GENEVIEVE PERRY
Secretary

Executive Committee

REV. A. P. BRANTLEY
MR. E. H. MALONE MR. T. B. UPCHURCH, JR.
REV. W. A. CADE, *ex officio*
President WALTER PATTEN, *ex officio*

Members of Board

Term Expires 1941

MR. W. A. KNIGHT REV. W. V. McRAE
Weldon, N. C. Fayetteville, N. C.
MR. J. W. JENKINS MRS. FLOYD JOHNSON
Henderson, N. C. Whiteville, N. C.

MR. ROSCOE FOREMAN
Elizabeth City, N. C.

Term Expires 1942

REV. A. P. BRANTLEY MR. JAMES E. HILLMAN
Sanford, N. C. Raleigh, N. C.
MR. T. B. UPCHURCH, JR. MRS. GEORGE H. HUTAFF
Raeford, N. C. Wilmington, N. C.

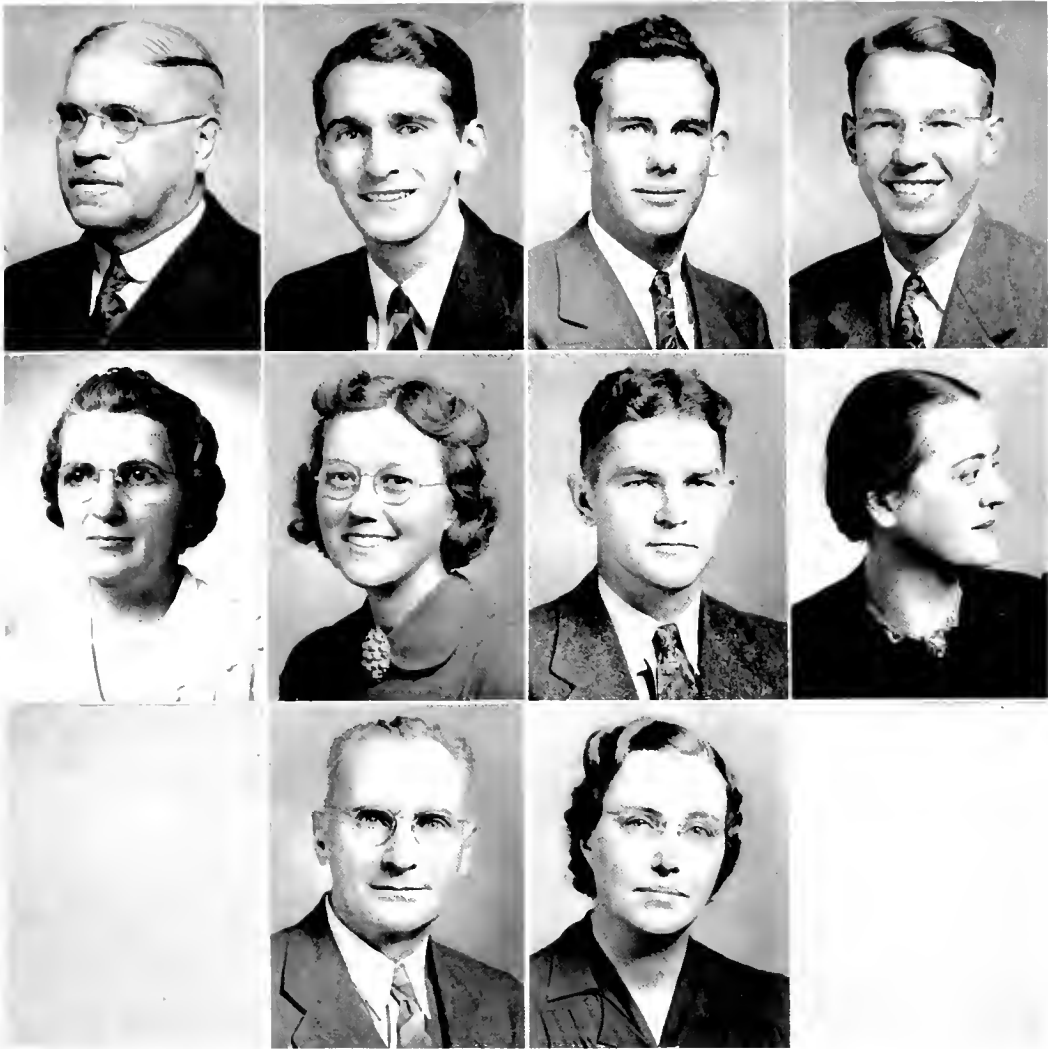
MR. T. A. PERSON
Greenville, N. C.

Term Expires 1943

REV. W. A. CADE, *Chairman* MR. E. H. MALONE
Wilmington, N. C. Louisburg, N. C.
REV. LEON RUSSELL MR. D. C. SANDLIN
New Bern, N. C. Fayetteville, N. C.

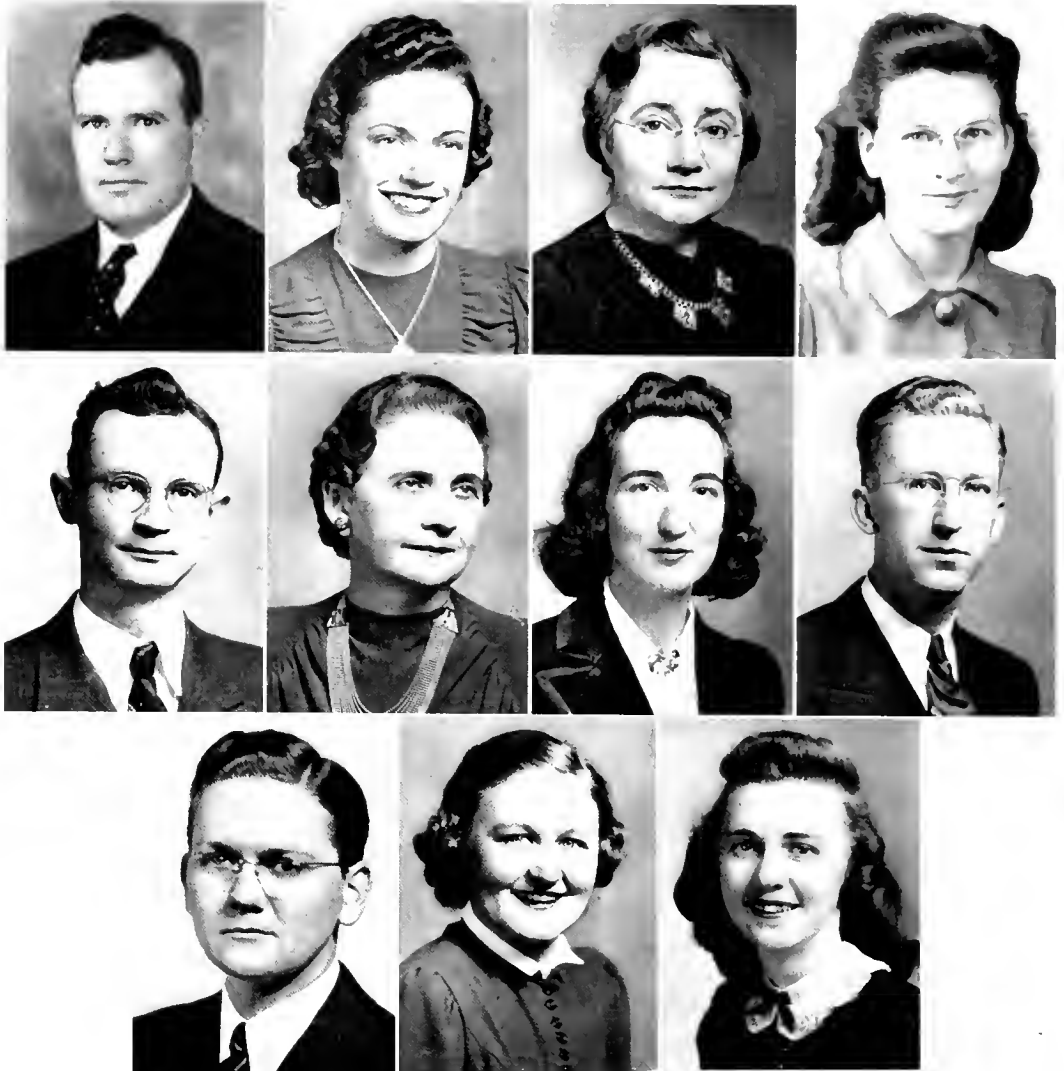
MR. FRED FEARING
Elizabeth City, N. C.

THE OAK OF LOUISBURG COLLEGE



Faculty

- THOMAS CICERO AMICK, L.L., A.B., M.A., Ph.D. *Mathematics*. L.L. George Peabody College for Teachers; A.B., M.A. University of North Carolina; Ph.D. Central University; University of Chicago; University of Virginia.
- J. E. BYERLY, A.B. *Music*. A. B. in Music, University of North Carolina; Eastman School of Music of the University of Rochester.
- JOHN L. CAMERON, A.B. *Director of Athletics*. A.B. Elon College; Columbia University; University of North Carolina.
- WILLARD H. CLATWORTHY, A.B., M.A. *Mathematics*. A.B. Berea; M.A. University of Kentucky.
- STELLA H. CULPEPPER, R.N. *College Nurse*, Bellevue Hospital.
- MARGARET BOYDEN KILBY, A.B., M.A. *Registrar, Commercial Science*. A.B. Asbury College; M.A. University of Kentucky; George Peabody College for Teachers; Miami-Jacobs Business College; Columbia University.
- V. ROBERT KILBY, A.B., M.A. *History*. A.B. Asbury College; M.A. George Peabody College for Teachers; University of Kentucky; Columbia University.
- ALICE KRAMER, B.S. *Physical Education*. B.S. Columbia University; Springfield College.
- ISAAC DEANE MOON, A.B., B.Mus., M.A. *Music, Psychology*. A.B. Asbury College; B.Mus. Asbury College; M.A. University of Kentucky; Bowling Green Business University.
- ROSE MARCOLE, A.B. *Commercial Subjects*. A.B. East Carolina Teachers College.
- NELLIE TIPTON MOON, A.B. *Home Economics*. A.B. University of Wichita; College of Emporia; Kansas State Agricultural College; Wichita Business College.



Faculty

- GEORGE M. OLIVER, *Acting Dean of Men*, A.B., M.S. *Natural Sciences*, A.B. University of North Carolina; M.S. University of North Carolina; North Carolina State College.
- MARY ADAMS OLIVER, A.B. *Commercial Science*, A.B. East Carolina Teachers College; Woman's College, University of North Carolina; University of North Carolina.
- GENEVIEVE P. PERRY, *Treasurer*, Louisburg College; Columbia College; Bowling Green University.
- VIRGINIA PETERS, B.S. *Dictionian*, B.S. Berea College.
- VIRGINIA PEYATT, A.B. *Spoken English and Dramatic Art*, A.B. Greensboro College; Wake Forest College; University of North Carolina.
- WILLIAM C. SHOPE, B.S. *Agriculture*, B.S. State College of North Carolina.
- LULA MAY STIPE, *Dean of Women*, A.B. *Religion*, A.B. Salem College; University of North Carolina; Columbia University.
- LUTHER RAYMOND TAFF, A.B. *English*, A.B. University of North Carolina; Howard College.
- JOHN BERVILLE WOODALL, A.B., M.A. *Foreign Languages*, A.B. Duke University; M.A. Duke University; Columbia University.
- EISA CRAIG YARBOROUGH, A.B., A.B. in L.S. *Librarian*, A.B. University of North Carolina; A.B. in L.S. University of North Carolina.
- ALICE CAHILL, *Secretary to the President*, Louisburg College.

Seniors



Senior Class Officers

RALPH ROE	President
JAMES DURHAM	Vice President
MARY ELLEN SHAW	Secretary
RACHEL FOX	Treasurer



Seniors

WARREN ALDRIDGE, Vanceboro, N. C. *Boisterous, talkative, boxer, friendly.* Y.M.C.A. 1, 2; Boxing 1; Men's Athletic Association 1, 2; Baseball 2; Dramatics 1, 2; Debating 1; International Relations Club 2.

VIOLA ALSTON, Louisburg, N. C. *Social whirl, Wake Forest, chatterbox.* Dramatic Club 1; Glee Club 2.

JEANETTE AMICK, Mebane, N. C. *"Jay," congenial, neat, movies.* Y.W.C.A. 1, 2, 3; Dramatic Club 1, 2.

LAUREL BALLARD, Oriental, N. C. *Efficient, postmistress, olive skin, speed typing.* Y.W.C.A. 1, 2; Alpha Pi Epsilon 2.

ROBERT BARTHOLOMEW, Goldsboro, N. C. *Argumentative, long hair, democratic, well-informed.* Y.M.C.A. 1, 2; Dramatic Club 1, 2, President 2; Debating Club 1, Secretary-Treasurer 1; Beta Phi Gamma 1, 2, Vice President 2; Assistant Literary Editor OAK 1; Associate Editor Newspaper 1, Exchange Editor 2; President of Freshman Class; International Relations Club 2, President 2.

SCOTT BROWN, Zebulon, N. C. *Cartoons, dilettante, pill-pusher, friendly.* Glee Club 1; Y.M.C.A. 1; Home Economics Club 2; Dramatic Club 1.

MARGARET WHITE BYRUM, Edenton, N. C. *May Queen, "Feathers," well-bred, curly-top.* May Queen 2; Y.W.C.A. 1, 2; Dramatic Club 1; Women's Student Government 2, Vice President 2; Home Economics Club 1, 2; Debating Club 1, Vice President 1; Glee Club 2.

MILDRED CARTER, University, Va. *Talkative eyes, chatterbox, dilettante.* Glee Club 2; Phi Theta Kappa 1, 2, Secretary 2; Math Club 1, 2.

PHILLIP CHAMBLEE, Zebulon, N. C. *Friendly, Dr. Kildare, prankish, accommodating.* Y.M.C.A. 1, 2; International Relations Club 2.

ROBERT CHAMBLISS, Triplet, Va. *Easy-going, sincere, cherubic.* Y.M.C.A. 1, 2; International Relations Club 2.

Seniors

WALLACE CHANDLER, Mt. Gilead, N. C. *Appreciative, idealistic, ambitious, hard-working.* Y.M.C.A. 1, 2; Dramatic Club 2; International Relations Club 2, Vice President 2.

THEODORE COLLINS, Franklinton, N. C. *Cultured, well-dressed, temperamental, Nelson Eddy.*

MAY DAVIS, Louisburg, N. C. *Poised, well-bred, "tops" in everything, art.* Phi Theta Kappa 1, 2, Vice President 2; Glee Club 1, 2; Math Club 1, 2; Beta Phi Gamma 2; Literary Editor OAK 2; Student Body Secretary 1.

JEWEL DENNIS, Louisburg, N. C. *Debonair, Home Economics, irresponsible.* Home Economics Club 2.

CLYDE D'LA, Durham, N. C. *Athletic, friendly, Uncle Bill.* Y.M.C.A. 1, 2; Basketball 1, 2; Baseball 1, 2; Men's Athletic Association 1, 2; Make-up Editor Newspaper 2.

JAMES DURHAM, Durham, N. C. *"Bull," well-groomed, short stop, idealistic.* Baseball 1, 2; Basketball Manager 1, 2; Sports Editor Newspaper 2; Advertising Manager OAK 2; Y.M.C.A. 1; Men's Athletic Association 1, 2, Secretary-Treasurer 2; Senior Class Officer, Vice President 2; Beta Phi Gamma 2.

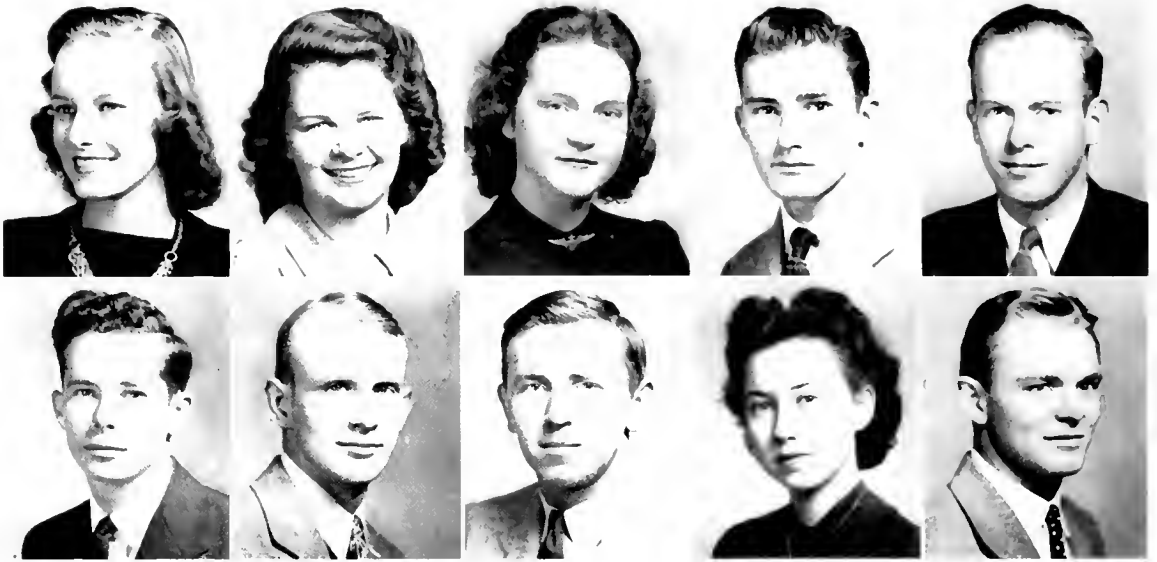
DOROTHY EDGE, Hope Mills, N. C. *Genuine, musical, beauty, charming.* Glee Club 1, 2; Secretary 2; Y.W.C.A. 1, 2; Dramatic Club 2; Superlative 2; May Court 2.

GENEVIEVE ELLIS, Clayton, N. C. *Attractive, temperamental, sparkling green eyes.* Y.W.C.A. 1, 2; Dramatic Club 2; May Court 2.

RACHEL FOX, Roxboro, N. C. *Attractive, ambitious, aloof, brown eyes.* Y.W.C.A. 1, 2, Vice President 2; Dramatic Club 1, 2; Math Club 1, 2, Vice President 2; Women's Student Government 2, Treasurer 2; Reporter Newspaper 2; Treasurer of Senior Class; Marshal 1; May Court 2.

ANNA K. GARRETT, Southport, N. C. *"A.K.," well-dressed, nonchalant, week-ends.* International Relations Club 2; Y.W.C.A. 1, 2.





Seniors

CATHERINE GILLIS, Raleigh, N. C. *Personality, gentility, "McClean."* Y.W.C.A. 1, 2; Dramatic Club 1, 2; Debating Club 1; Phi Theta Kappa 1, 2, President 2; Beta Phi Gamma 2; Editor-in-Chief Newspaper 2; Feature Editor of Oak 2; Math Club 2; International Relations Club 2, Secretary-Treasurer 2; May Court 1, 2; Superlative 2.

EDNA GILLIS, Raleigh, N. C. *Genial, efficient, accommodating, "South American Way."* Y.W.C.A. 1, 2; Alpha Pi Epsilon 1, 2, Secretary 2; Beta Phi Gamma 2; Society Editor Newspaper 2.

NELL GUPTON, Louisburg, N. C. *Friendly, interesting, ambitious, chocolate candy.*

JIMMIE HALL, Sanford, N. C. *"Cocky," south-paw, carefree, chummy.* Men's Athletic Association 1, 2; Baseball 1, 2.

JESSE JOHNSON, Siler City, N. C. *Red shoes, loquacious, hard-working, crooner.* Glee Club 1, 2; Ministerial Association 1; Christian Service Club 2.

IRE KEARNEY, Franklinton, N. C. *Genteel, sense of humor, reticent, fair-minded.* Basketball 1, 2; Men's Athletic Association 1, 2.

JOHN KENDIG, Cambridge, Va. *Sociable, good food, generous.*

WALLACE KEYS, Washington, D. C. *Moody, individual, gad-about.* Glee Club 1, 2; Y.M.C.A. 1, 2.

DELLA MAE LEWIS, Spring Hope, N. C. *Dexterous, pleasantly accommodating, resourceful, genteel.* Y.W.C.A. 1, 2; Alpha Pi Epsilon 1, 2, Reporter 2; Dramatic Club 2; Business Manager Newspaper 2.

GEORGE LUMPKIN, Raleigh, N. C. *Handsome, bike-commuter, cosmopolitan, smiles.* Phi Theta Kappa 2.

Seniors

BORDEN McCLEES, Columbia, N. C. "... tall, imperially slim, a gentleman from sole to crown." Y.M.C.A. 1, 2, 3; Orchestra 1, 2, 3; Gospel Band 1, 2; Make-up Editor Newspaper 2; Treasurer Student Body 2; May Court Escort 2, 3.

WILLIAM MANN, Lake Landing, N. C. *Courteous, cooperative, hearty laugh.* Y.M.C.A. 1, 2. President 2; Assistant Circulation Manager Newspaper 1.

WILLIS MARSHALL, Raleigh, N. C. "*Hail-felloe-well-met,*" *frer, accommodating.* Glee Club 1, 2, 3, Business Manager 1, President 2; Class President 1; Student Council 1; Math Club 2; Superlative 2.

ELEANOR MARTIN, Mt. Olive, N. C. *Earnest, studious, sweet-tempered, picture shows.* Y.W. C.A. 1, 2.

RUBY GREY MASSENBURG, Louisburg, N. C. *Pretty, colorful, animation, dramatics.* Phi Theta Kappa 1, 2, Corresponding Secretary 2; Beta Phi Gamma 1, 2, Secretary 2; Glee Club 1, 2; Dramatic Club 1, 2; Math Club 1, 2; Alumni Editor Newspaper 1; Assistant Advertising Manager OAK 2; Day Student's Club 2, President 2; Women's Student Government 2; May Court 1, 2.

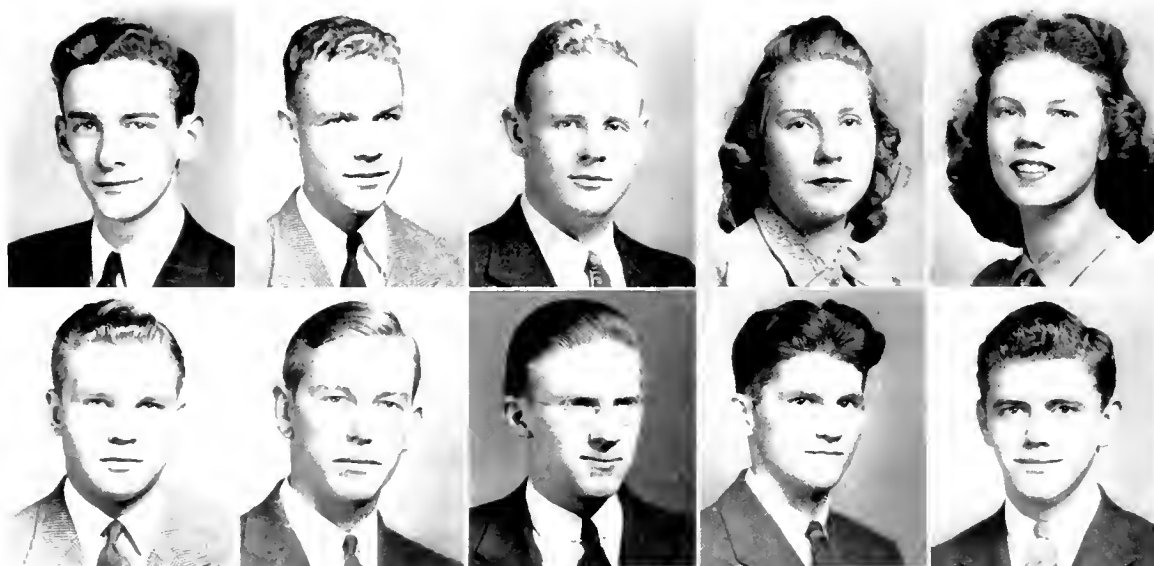
HOWARD MITCHNER, Wilsons Mills, N. C. *Happy-go-lucky, well-dressed, vitality.* Y.M.C.A. 1, 2.

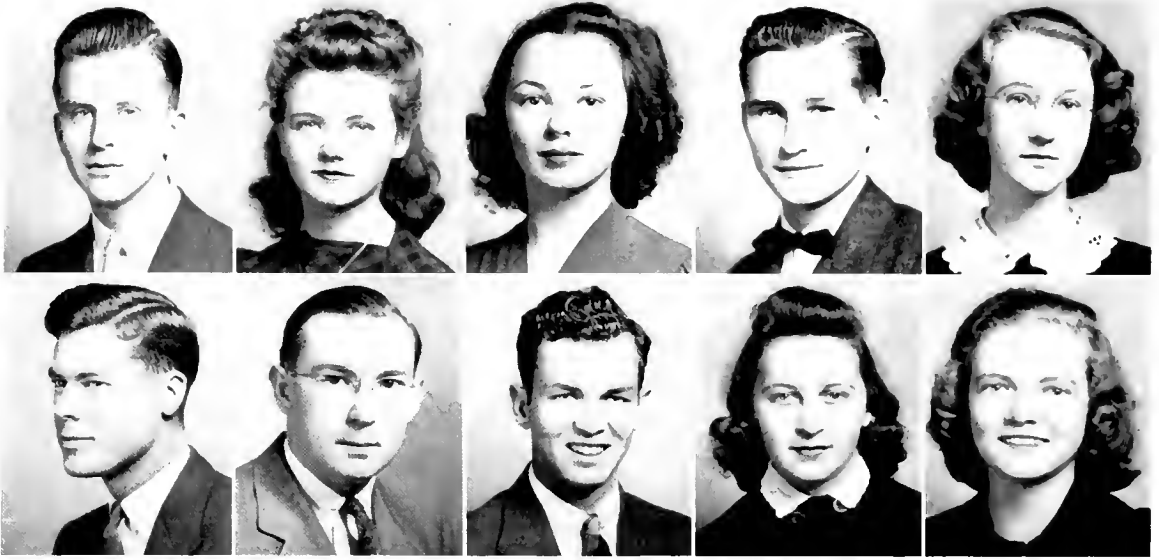
HENRY MURDEN, Suffolk, Va. *Considerate, gentlemanly, executive ability.* Junior Editor OAK 1; Editor-in-Chief OAK 2; Exchange Editor Newspaper 1; Associate Editor Newspaper 2; Men's Student Government, Vice President 2; Men's Athletic Association 1, 2, Vice President 2; Y.M.C.A. 1, 2, Vice President 2; Cheer Leader 1, 2; Head Cheer Leader 2; Beta Phi Gamma 1, 2, President 2; Tennis Team 1, 2; Superlative 2; Marshal 1; May Court Escort 2; Dramatic Club 1, 2.

JOSEPH P. NEWSOM, Littleton, N. C. *Conservative, conscientious, gentlemanly.* Men's Student Government 1, 2, President 2; Y.M.C.A. 1, 2; Glee Club 1, 2; Alpha Pi Epsilon 2, Treasurer 2; Beta Phi Gamma 2; Dramatic Club 1, 2, Treasurer 2; Alumni Editor Newspaper 2.

REID OVERMAN, Elizabeth City, N. C. *Ambitious, side-burns, reserved.*

ROBERT PAGE, Wilmington, N. C. "*Petc,*" *drummer, sociable, extra-curricular activities.* Y.M.C.A. 1, 2; Tennis Team 1, 2; Assistant Business Manager Newspaper 1; Assistant Advertising Manager OAK 1; Business Manager OAK 2; Men's Athletic Association 1, 2; Orchestra 1, 2; Dramatic Club 1; Escort to May Queen 1.





Seniors

STANLEY PATTEN, Louisburg, N. C. *Steady, dry wit, nightmares, studious.* Men's Student Government 1, 2; Y.M.C.A. 1, 2; Math Club 1, 2; Phi Theta Kappa 1, 2, Treasurer 2.

EDITH PITTMAN, Wilmington, N. C. *Attractive, amiable, lively, Raleigh week-ends.* Alpha Pi Epsilon 2; Women's Athletic Association 1; Y.W.C.A. 1, 2; Reporter Newspaper 2; May Court 2.

ELAINE RAND, Richlands, N. C. *Friendly, laughing eyes, coffee, moody, vivacious.* Y.W.C.A. 1, 2.

ISAAC REYNOLDS, Columbia, N. C. *Studious, efficient, argumentative.* Alpha Pi Epsilon 1, 2.

DORIS RHODES, Fayetteville, N. C. *Sincere, consecrated, intense, contemplative.* Women's Student Government 2; Christian Service Club 2, Secretary 2; Y.W.C.A. 1, 2, President 2; Phi Theta Kappa 2.

SAM RHODES, Raleigh, N. C. *Well-bred, smooth-running, handsome.* Y.M.C.A. 1, 2; International Relations Club 2; Marshal 1.

DAN BRIGHT ROBERTSON, Jonesboro, N. C. *Sociable, dependable, likable.* Y.M.C.A. 1, 2, 3; Dramatic Club 1, 2, 3; Gospel Band 1, 2.

RALPH ROE, Richmond, Va. *Athletic, versatile, haranguer, clever.* Y.M.C.A. 1, 2; Men's Athletic Association 1, 2; Glee Club 1; Basketball 1, 2; Baseball 1, 2; Math Club 1, 2; Phi Theta Kappa 2; Sports Editor OAK 2; International Relations Club 2; President of Senior Class.

MARY ELLEN SHAW, Mebane, N. C. *Lady-like, dainty, amiable.* Women's Student Government 2, Secretary 2; Glee Club 2; Dramatic Club 1, 2, Secretary 2; Y.W.C.A. 1, 2; Secretary of Senior Class 2.

GLORIA SIMPSON, Vanceboro, N. C. *Friendly, impulsive, pranks, food, blue.* Y.W.C.A. 1, 2; Dramatic Club 2; Women's Student Government 1, 2, President 2; Superlative 2; May Court, Maid of Honor 2.

Seniors

WILLIAM SPENCE, Suffolk, Va. *Reticent, broad-minded, Mr. Interlocutor.* Y.M.C.A. 1, 2; Manager Tennis Team 1; Manager Basketball 2; Men's Athletic Association 1, 2.

RUTH STALLINGS, Hobbsville, N. C. *Talkative, neat, practical, frank.* Home Economics Club 1, 2, President 2; Dramatic Club 1, 2; Y.W.C.A. 1, 2; May Court 2.

S. J. STARNES, Durham, N. C. *Idealistic, talented, "Stacy," popular.* Glee Club 1, 2; Orchestra 2; Y.M.C.A. 1; Superlative 2.

ELLEN STEWART, Warrenton, N. C. *Secretive, ribbons, humming bird.* Y.W.C.A. 1, 2.

LOUISE TURNER, Speed, N. C. *Capable, kind, witty, aspiring, pleasant voice.* Y.W.C.A. 1, 2; Alpha Pi Epsilon 1, 2; Dramatic Club 2; Women's Student Government 2.

SARAH TURNER, Kinston, N. C. *Jolly, sparkling eyes, day students, Fort Jackson.* Y.W.C.A. 1, 2; International Relations Club 2.

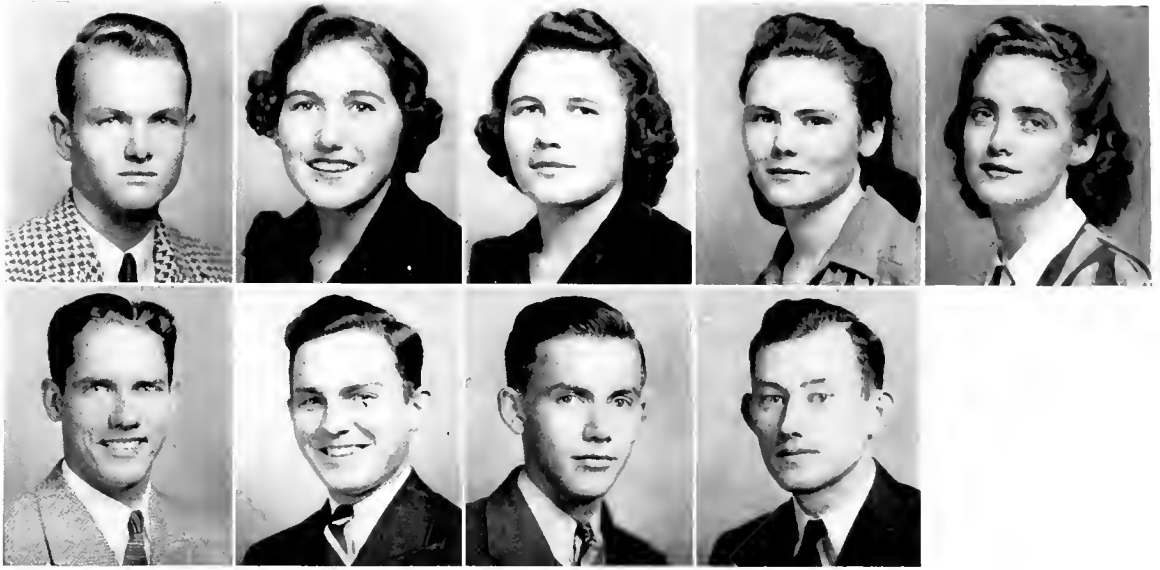
SAMUEL TUTEN, Edward, N. C. *Gentle, genuine, persevering.* Y.M.C.A. 1, 2; International Relations Club 2, President 2; Dramatic Club 2, Secretary 2; Men's Student Government 2; Math Club 2; Tennis Team 2.

MAGDALENE TUTOR, Casma, N. C. *Hard work, attractive, English.* Y.W.C.A. 1, 2; International Relations Club 2.

IRENE VAUGHAN, Rich Square, N. C. *Industrious, composed, well-liked, unbiased.* Y.W.C.A. 1, 2, Secretary 2; Dramatic Club 1, 2; Math Club 2; Home Economics Club 2, Vice President 2; Women's Student Government 2; Phi Theta Kappa 2.

MARTHA WEHREBERG, Woodsdale, N. C. *Secretary, college bus, neat, baby talk.* Y.W.C.A. 1, 2; Dramatic Club 2.





Seniors

BILLY WELDON, Henderson, N. C. *Sincere, amiable, stick-to-it-ive.*

MARY ELLEN WEST, Dover, N. C. *Enthusiasm for life, high standards, sincere.* Y.W.C.A. 1, 2; Treasurer 2; Dramatic Club 1, 2; Math Club 1, 2; Phi Theta Kappa 2.

ROSA ELLA WHITE, Norlina, N. C. *Genuine, pluggier, immaculate.* Y.W.C.A. 1, 2; Home Economics Club 1, 2.

MATILDA WHITLEY, Smithfield, N. C. *Naïve, domestic, coöperative.* Home Economics Club 1, 2; Y.W.C.A. 1, 2; Women's Student Government 2.

DOROTHY WILLIAMS, Mohroe, N. C. *Well-dressed, artistic, "Dummy."* Glee Club 1, 2; Y.W.C.A. 1, 2; Dramatic Club 2; International Relations Club 2.

EARL WILLIAMS, Coats, N. C. *Commuter, loyal, sports, ambitious.* Men's Athletic Association 1, 2; President 2; Basketball 1, 2; Baseball 1, 2; Y.M.C.A. 1.

CHARLES WILLIAMSON, Weldon, N. C. *Impulsive, intelligent, carefree, hep-cat.* Y.M.C.A. 1, 2; May Court Escort 3; Dramatic Club 1, 2; Gospel Band 1, 2.

ALVIN WOODARD, Whitakers, N. C. *Ambitious, talkative, mischievous.* Men's Athletic Association 1, 2; Basketball 1; Tennis Team 1, 2; Dramatic Club 1; Y.M.C.A. 1, 2; Baseball 1.

EVERETTE YANCEY, Norlina, N. C. *Industrious, dependable, thorough, courteous.*

First Year Students



Junior Class Officers

RODMAN LANCASTER	President
TROY BARRETT	Vice President
MARY BRYAN	Secretary
MARY McARTAN	Treasurer

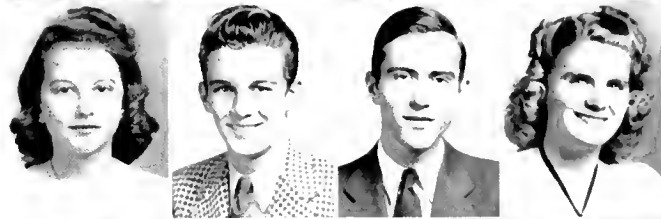
ADAMS, LELA, Blounts Creek
 ALDRIDGE, STELLA, Oriental
 ALLSBROOK, ROSALIE, Scotland Neck
 ALSTON, JENNIE, Louisburg



ALSTON, MEREDITH, Henderson
 AMICK, BILLIE, Graham
 AMICK, EDITH, Burlington
 ANDERSON, JACK, Belvidere



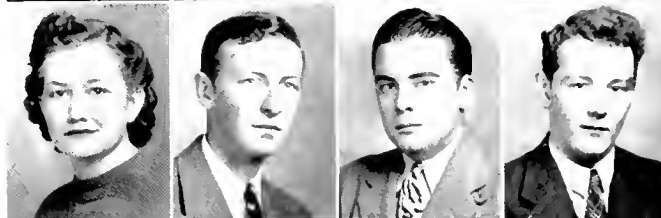
AUSTIN, MINNIE M., Hatteras
 AVERETTE, E. B., Oxford
 BAILEY, ROY, Fayetteville
 BALLANCE, AMELIA, Buxton



BARRETT, ANNIE SUE, Roxboro
 BARRETT, TROY, Fayetteville
 BASS, ELIZABETH, Goldsboro
 BASS, JAMES, Goldsboro



BASS, MARTHA, Goldsboro
 BELL, DON, Snowden
 BELL, JOHN, Faison
 BELL, MORRIS, Clinton



BOONE, EDITH, Nashville
 BOONE, LUDENA, Spring Hope
 BRANTLEY, LOUISE, Bailey
 BRASWELL, LOUISE, Goldsboro



BRASWELL, RUTH, Princeton
 BRITAIN, FURNEY, Dover
 BROOKS, PEGGY, Roxboro
 BROOME, LEMUEL, Aurora



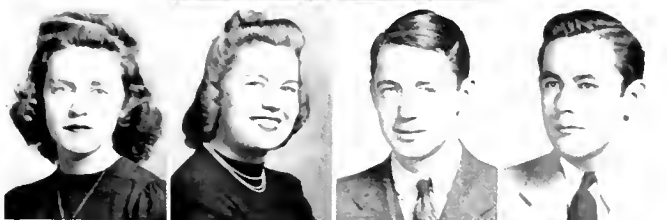
THE OAK OF LOUISBURG COLLEGE



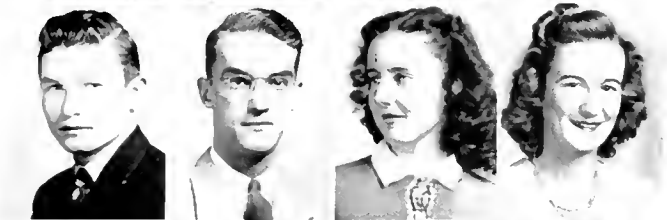
BRYAN, MARY, Wilmington
 BUDD, NEVA DELL, Siler City
 CARR, E. C., Farmville
 CARTER, LOUISE, Siler City



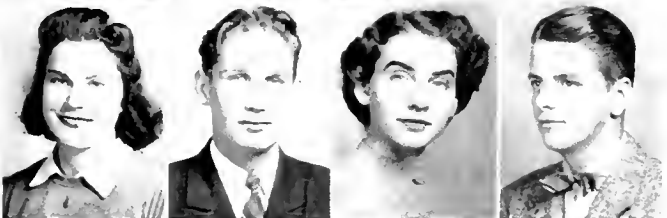
CASEY, ALICE, Edison
 CATLETTE, FRANKIE, Louisburg
 CLARK, BOBBY, Hamlet
 CLAY, CYNTHIA, Louisburg



COLLEY, MYRLE, Wilmington
 COLLINS, FRANCES, Gates
 CONLEY, WILBUR, Franklin
 COOPER, JOHN PAUL, Sanford



COX, JACK, Blounts Creek
 CRAIG, ARTHUR, Wilmington
 DARK, EMMA DELL, Pittsboro
 DAVIS, CAROLINE, Wilmington



DAVIS, KATE, Macon
 DAVIS, OSBORNE, Marshallberg
 DAVIS, SARAH, Louisburg
 DOWNEY, GERALD, Durham



EDMONDS, ROOKIE, Roanoke Rapids
 EDWARDS, WILBUR, Vass
 EGERTON, ELIZABETH, Louisburg
 EVERETT, MILDRED, Milledgeboro



FAGAN, WILLIAM, Dardens
 FEATHERSTON, JAMES, Roxboro
 FOSTER, LUTIE, Louisburg
 FOUST, BEN, Mt. Vernon Springs

THE CLASS OF LOUISBURG COLLEGE

FREEMAN, MARGARET, Louisburg
 GENTRY, HAZEL, Red Springs
 GRIFFIN, IRMA, Louisburg
 GRIFFIN, JAMES, Dover



GUPTON, ADDIE, Essex
 GUPTON, WILLIS, Hollister
 HALL, HELEN, Roxboro
 HAM, WALTER, Goldsboro



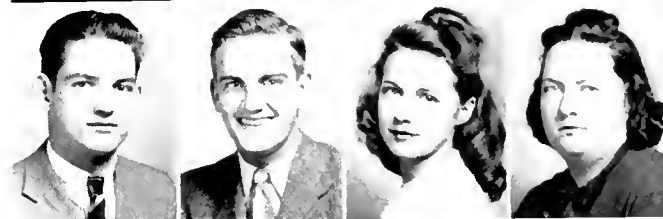
HARRIS, BETTY, Louisburg
 HARRIS, MYRTLE, Farmville
 HARVEY, DONALD, Cleveland, Ohio
 HAYES, NANCY, Louisburg



HAWKINS, MARINA ANN, Henderson
 HEDGEPEITH, VIRGINIA, Rocky Mount
 HERMAN, DOROTHY, Louisburg
 HODGINS, GENEVIEVE, Goldsboro



HOLLOMAN, ANDREW, Hookerton
 HOLLOWELL, BERNARD, Aurora
 HOLMES, MARGARET, Louisburg
 HORTON, SYBIL, Louisburg



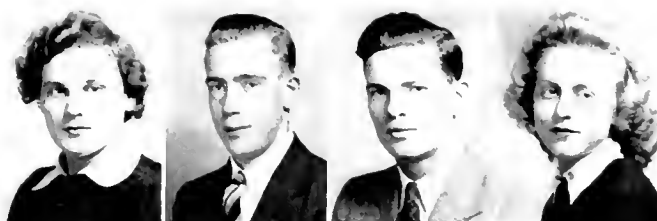
HOWARD, MILDRED, Louisburg
 HUBBARD, JOYCE, Elizabethtown
 HUDSON, ELIZABETH, Louisburg
 HUFF, H. T., Oxford



HUFF, JOHN, Vanceboro
 HUNT, JOE, Louisburg
 IPOCK, JAMES, Vanceboro
 JACKSON, IRENE, Lowgap



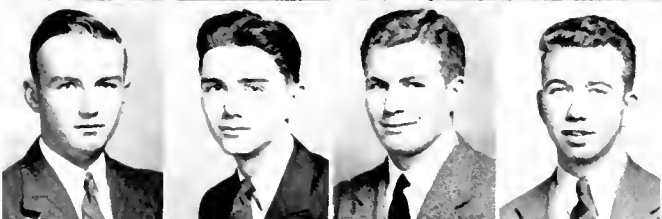
THE OAK OF LOUISBURG COLLEGE



JOHNSON, ELIZABETH, Louisburg
 JONES, NORWOOD, Clayton
 JONES, THORNTON, Sanford
 JORDAN, GAYNELLE, Mt. Olive



JOYNER, DOUGLAS, Louisburg
 KILPATRICK, HILDA, Snow Hill
 KING, WILLIAM, Wilmington
 KIRKPATRICK, NINA, Pembroke



KNOTT, JUDSON, Clarksville, Va.
 KORNEGAY, STREET, Warsaw
 LANCASTER, RODMAN, Vanceboro
 LAWS, COLONEL LAFAYETTE, Durham



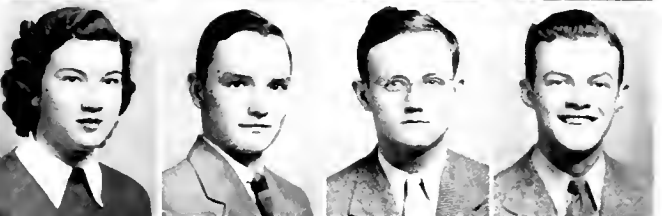
LENTZ, RENA, Raeford
 LEWIS, BEATRICE, Hobgood
 LEWIS, CATHERINE, Faison
 LEWIS, ELLA, Faison



LEWIS, MILDRED, Elizabethtown
 LITCHFIELD, PAULINE, Aurora
 LITTLE, RENA, Fayetteville
 LOFTIS, MARY ELIZABETH, Mebane



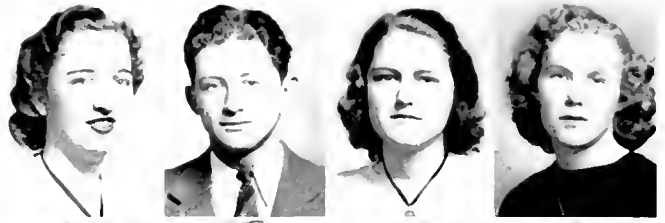
LOMAX, MARJORIE, Hamlet
 LOWE, EVELYN, Fayetteville
 LYTCH, LAURA, Laurinburg
 McARTAN, MARY, Dumm



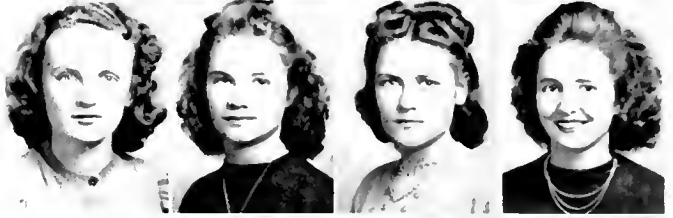
McDONALD, PEARL, Jackson Springs
 McDougald, HOWARD, Raeford
 McFARLAND, DAN, Asheville
 McLAMB, M. P., Clinton

THE CAN OF LOUISBURG COLLEGE

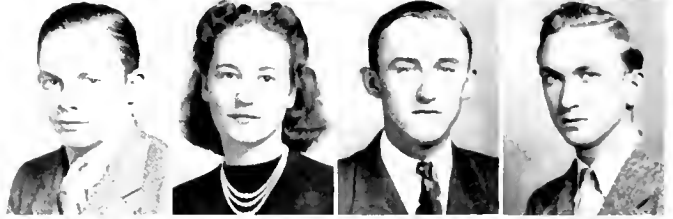
MCKINNON, JEAN, Mt. Gilead
 MAIDES, JOHN, Maysville
 MANNING, MARY FRANCES, Bailey
 MASON, LOUISE, Atlantic



MEEKINS, BROOKSIE, Avon
 MELTON, ELLEN, Garland
 MURPHY, JANE, Louisburg
 NELSON, LOUISE, Oriental



NICHOLS, ISHAM, Greenville
 ODUM, OLETA, Swainsboro
 PACE, DOUGLAS, Zebulon
 PAYNE, WILBUR, Stumpy Point



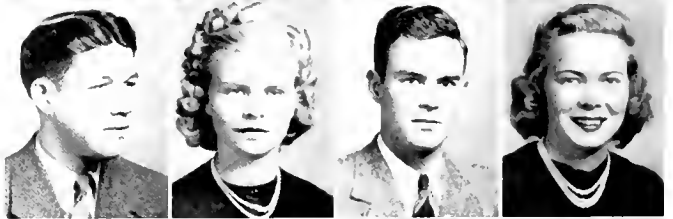
PERRY, JANE GRAY, Louisburg
 PHELPS, DORIS, Mcbane
 PICKERING, LOIS, Roxboro
 REDICT, JUANITA, Walstonburg



RICHARDSON, BOBBY, Jacksonville
 RICHARDSON, MARY FAY, Wilmington
 RIDDLE, MARY RUTH, Carthage
 RIDGEWAY, RICHARD, S. Boston, Va.



RIGGAN, HOWARD, Macon
 ROBERTS, SHIRLEY, Kinston
 ROBINSON, EDWIN, Vanceboro
 ROGERS, CATHERINE, Wilmington



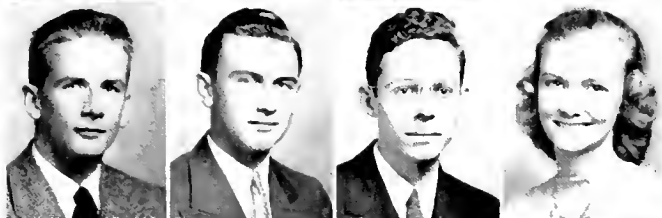
ROGERS, FRANCES, Calypso
 ROOKS, BLANCHIE LEE, Watha
 ROSSER, JANE, Fayetteville
 ROWE, RILEY, Aberdeen



THE OAK OF LOUISBURG COLLEGE



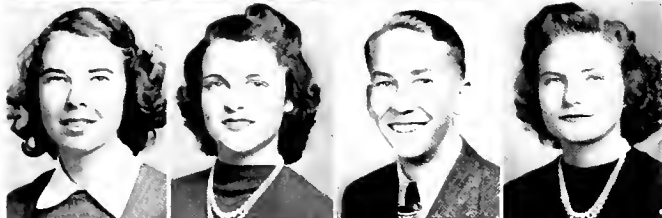
RUSSELL, MARGARET, W. Helena, Ark.
 SASSER, GEAN, Smithfield
 SCOTT, PAUL, Fair Bluff
 SCOTT, RUTH, Three Rivers, Mich



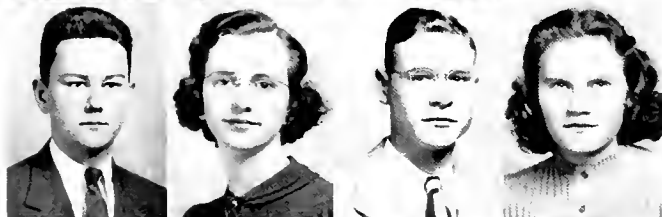
SELLARS, CARL, Mebane
 SMILEY, MELVIN, Macoh
 SMITH, EDWARD F., Fayetteville
 SMITH, HAZEL, Wilmington



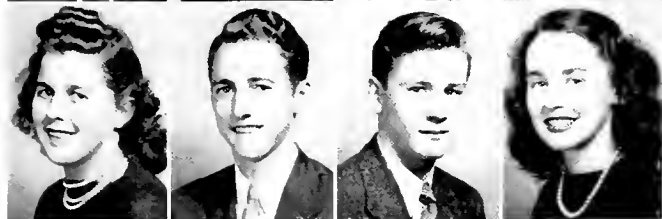
SMITH, LUCILLE, Seven Springs
 SMOAK, ALBERT, Aberdeen
 SPAIN, HILLERY, Durham
 SPIVEY, BETSY, Louisburg



SPIVEY, VIRGINIA, Louisburg
 SPRULL, NORMA, Oriental
 STALLINGS, CAMERON, Zebulon
 STRICKLAND, GLADYS, Warsaw



STROUD, HAYWOOD, Pink Hill
 SUTTON, ATTAWAH, Dudley
 SUTTON, LAMONT, Goldsboro
 SWINDELL, MARY E., Merritt



TAYLOR, AVA, Faison
 TAYLOR, HENRY, Whitakers
 TETTERTON, LOUIS, Aurora
 TERRELL, FRANCES, Buena Vista, Va



THOMPSON, GENE, Franklinton
 THOMPSON, SHIRLEY, Fairmont
 TURLINGTON, BETTY, Clinton
 VANDIFORD, BETTIE, Ayden

THE CAX OF LOUISBURG COLLEGE

VAGGHAN, FRED, Dolphin, Va.
WADDELL, RAYMOND, Fair Bluff
WATSON, DOROTHY, Rowland
WIGGINS, FRANCES, Louisburg



WIGGINS, MARGARET, Louisburg
WILDER, LA RUE, Zebulon
WILKINS, R. O., Burlington
WILLIAMS, IRA, Durham



WILLIAMS, VINCENT, Macon
WILLSON, JESSIE MARY, Roxboro
WINSLOW, JACK, Hertford
WOOTERS, JIMMY, Kinston



YOUNG, CHARLES, Louisburg



Organizations

Men's Student Government



Officers

JOSEPH NEWSOM, President; HENRY MURDEN, Vice president; STANLEY PATTEN, Secretary-treasurer.

Members: Stanley Patten, Samuel Tuten, Troy Barrett, Don Harvey, Hillery Spain.

The Men's Student Government of Louisburg College is maintained in order to establish an official form of government for the student activities, and to promote the general welfare of the student body.



The Women's Student Government

Members: Gloria Simpson, Louise Turner, Irene Vaughan, Matilda Whitley, Doris Rhodes, Margaret W. Byrum, Rachel Fox, Marina Ann Hawkins, Ruby Grey Massenburg, Mary E. Shaw.

GLORIA SIMPSON, President; MARGARET WHITE BYRUM, Vice president; MARY E. SHAW, Secretary; RACHEL FOX, Treasurer.



Christian Service Club

Members: Roy Bailey, Troy Barrett, Virginia Gray, Jesse Johnson, Beatrice Lewis, Jane Gray Perry, Doris Rhodes, Blanche Lee Rooks, Riley Rowe, Margaret Russell, Jane Sanderlin, Ruth Ellen Scott, Edward Smith, Dorothy Watson.

JESSE JOHNSON, President; TROY BARRETT, Vice president; DORIS RHODES, Secretary.



Phi Theta Kappa

Officers

CATHERINE GILLIS, *President*; MAY DAVIS, *Vice president*; MILDRED CARTER, *Recording Secretary*; RUBY GREY MASSENBURG, *Corresponding Secretary*; STANLEY PATTEN, *Treasurer*; DOCTOR AMICK, *Sponsor*.

Members: Ruth Braswell, Mildred Carter, May Davis, Sarah Davis, Catherine Gillis, Willis Gupton, Evelyn Lowe, George Lumpkin, Ruby Grey Massenburg, Stanley Patten, Doris Rhodes, Ralph Roe, Edward Smith, Virginia Spivey, Gene Thompson, Irene Vaughan, Mary West.

Phi Theta Kappa is an honorary scholastic fraternity of the junior colleges of the United States. The Gamma Upsilon Chapter of Louisburg College was chartered in 1939. The object of the society is to promote scholarship, to develop character, and to cultivate fellowship among the students.





Alpha Pi Epsilon

Officers

ALICE CAHILL, *President*; EDNA GILLIS, *Secretary*; JOE NEWSOM, *Treasurer*; DELLA MAE LEWIS, *Reporter*; MRS. KILBY, *Sponsor*.

Members: Laurel Ballard, Annie Sue Barrett, Alice Cahill, Caroline Davis, Osborne Davis, Edna Gillis, Helen Hall, Gaynelle Jordan, Beatrice Lewis, Della Mae Lewis, Joe Newsom, Lois Pickering, Edith Pittman, Isaac Reynolds, Jane Rosser, Louise Turner.

The Lambda Chapter of Alpha Pi Epsilon, a national honorary secretarial fraternity, was formed in 1938 at Louisburg College. This is the first chapter that was formed in the State of North Carolina. Membership is based upon high scholarship, pleasing personality, and good character.





Beta Phi Gamma

Officers

HENRY MURDEN, *President*; ROBERT BARTHOLOMEW, *Vice president*; RUBY GREY MASSENBURG, *Secretary*; L. R. TAFF, *Sponsor*.

Members: Roy Bailey, Robert Bartholomew, May Davis, Catherine Gillis, Edna Gillis, Ruby Grey Massenburg, Henry Murden, Joe Newsom.

The Rho Chapter of Beta Phi Gamma was organized at Louisburg College on January 15, 1940, and is affiliated with Alpha Phi Gamma, a national, co-educational, journalistic fraternity.

The principal purpose of this organization is to recognize individual ability and achievement in journalistic pursuits in Louisburg College; to serve and promote the welfare of the college through journalism; to establish a friendly relationship between the students and members of the profession; and to unite in a fraternity students interested in journalism.





A Cappella Choir

Officers

S. J. STARNES, President; HILLERY SPAIN, Business Manager; JENNIE C. ALSTON, Librarian; DOROTHY EDGE, Secretary.

Members: Jennie C. Alston, Viola Alston, James Bass, Morris Bell, Margaret White Byrum, Wilbur Conley, Arthur Craig, Emma Dell Dark, May Davis, Sarah Davis, Dorothy Edge, Elizabeth Egerton, James Featherston, Betty Harris, Joyce Hubbard, Jesse Johnson, Norwood Jones, William King, Mildred Lewis, Mary Lib Loftis, Pauline Litchfield, Dan McFarland, Willis Marshall, Ruby Grey Massenburg, Brooksie Meekins, Jane Murphy, Joe Newsom, Wilbur Payne, Jane Sanderlin, Gene Sasser, Ruth Scott, Mary Ellen Shaw, Hillery Spain, S. J. Starnes, Jean Strickland, Jessie Mary Willson.

The A Cappella Choir, organized three years ago, has given programs of sacred music in many leading Methodist churches throughout Eastern North Carolina. It presents a broadcast each year over WPTF in Raleigh.

The Choir was organized to develop and enlarge the musical training of those who show ability. As a distinctive organization of the college, its cultural value may be recognized by all.

The Orchestra

Members

Saxophones: Tommy Wheelless, Billy Andrews, Allie Walls, Borden McClees.

Trumpets: Bobby Andrews, Bill Fagan, Roy Bailey.

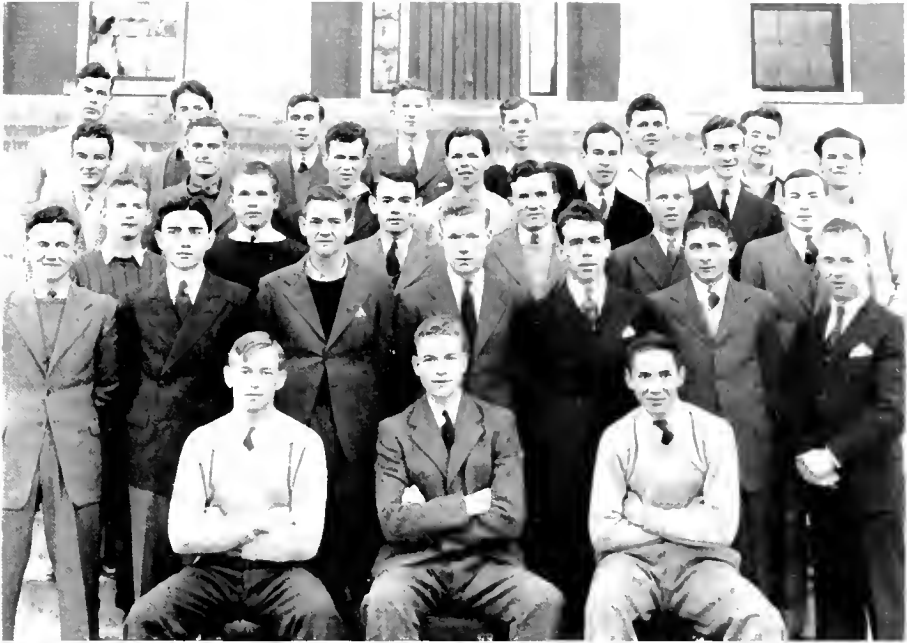
Trombones: Mr. Byerly, Arthur Craig.

Piano: S. J. Starnes.

Drums: Robert Page.

Bass: Harold Burt.

The Louisburg College Orchestra plays for social affairs at the college and throughout the state. It was organized in February 1939, by Professor James E. Byerly.



Young Men's Christian Association

Officers

WILLIAM MANN, *President*; HENRY MURDEN, *Vice president*; THORNTON JONES, *Secretary*; WILLIS GUPTON, *Treasurer*.

Members: Roy Bailey, Troy Barrett, Morris Bell, Phillip Chamblee, Robert Chambliss, Wallace Chandler, James Featherston, Ben Foust, Willis Gupton, Walter Ham, John Huff, Thornton Jones, Bill King, Robert Page, Jimmy Wooters, Bill Mann, Borden McClees, Henry Murden, Joseph Newsom, Dan B. Robertson, Edward Smith, Bill Spence, Samuel Tuten, Fred Vaughan, Jack Winslow, Colonel Laws, Howard Mitchiner, Sam Rhodes, Hillery Spain, Bernard Hollowell.

The Y.M.C.A. is the oldest men's organization on the campus, and its influence is steadily increasing. Its ideals are to develop Christian character, to promote social activities, and to provide a club to which all young men may belong.

Young Women's Christian Association

Officers

DORIS RHODES, *President*; RACHEL FOX, *Vice president*; MARY WEST, *Treasurer*; IRENE VAUGHAN, *Secretary*.

Members: Lela Adams, Mildred Lewis, Cynthia Clay, Ellen Stewart, Rosalie Allsbrook, Louise Nelson, Margaret Russell, Amelia Ballance, Magdalene Tutor, Frances Rogers, Caroline Davis, Mary Fay Richardson, Frances Terrell, Louise Turner, Beatrice Lewis, Shirley Thompson, Annie Sue Barrett, Mary McArtan, Lucille Smith, Hilda Kilpatrick, Joyce Hubbard, Nina Ruth Kirkpatrick, Pauline Litchfield, Della Mae Lewis, Ella Lewis, Catherine Lewis, Brooksie Meekins, Laura Lytch, Mary Lib Loftis, Emma Dell Dark, Ruth Braswell, Martha Bass, Peggy Brooks, Jessie Mary Willson, Mildred Everett, Gloria Simpson, Mary West, Dorothy Watson, Doris Rhodes, Kate Davis, Rosa Ella White, Norma Spruill, Catherine Gillis, Stella Aldridge, Margaret White Byrum, Edna Gillis, Genevieve Ellis, Bettie Pearl Vandiford, Pearl McDonald, Nell Gupton, Eleanor Martin, Elaine Rand, Louise Brantley, Marina Hawkins, Ava Taylor, Mary Ellen Shaw, Mary Frances Manning, Edith Pittman, Sarah Turner, Addie Gupton, Dorothy Edge, Rachel Fox, Myrle Colley, Jay Amick, Hazel Gentry, Oleta Odum, Frances Collins, Mary Bryan, Ellen Melton, Louise Braswell, Elizabeth Bass, Bobby Clark, Marjorie Lomax, Alice Casey, Myrtle Harris, Virginia Hedgepeth, Betsy Russell, Lucy Russell, Attawah Sutton, Genevieve Hodgkin, Billie Amick, Edith Amick, Blanche Lee Rooks, Minnie Margaret Austin, Gean Sasser, Gaynelle Jordan, Virginia Gray, Neva Dell Budd, Louise Carter, Ruth Stallings, Jean McKinnon, Juanita Redict, Ludema Boone, Ruth Scott, Betty Turlington, Matilda Whitley, Irene Vaughan, Louise Mason.

The Young Women's Christian Association of Louisburg College strives, by offering the students an organized means of devotion, service, and contribution to the relief of human suffering, to conserve and develop the religious life on the campus. Through its affiliation with the national Y.W.C.A., it enables each student to become a part of a great movement for world-wide Christian service.

Dramatic Club

Officers

ROBERT BARTHOLOMEW, *President*; MARY ELLEN SILAW, *Vice president*; SAM TUTEN, *Secretary*; JOE NEWSOM, *Business Manager*.

Members: Lela Adams, Rosa Lee Allsbrook, Warren Aldridge, Jack Anderson, Roy Bailey, Amelia Ballance, Annie Sue Barrett, Troy Barrett, James Bass, Robert Bartholomew, Scott Brown, Louise Braswell, Mary Bryan, Alice Casey, Wallace Chandler, Myrle Colley, Wilbur Conley, Emma Dell Dark, May Davis, Sarah Davis, Gerald Downey, Dorothy Edge, Ida Mae Edmonds, Genevieve Ellis, James Featherston, Rachel Fox, Catherine Gillis, Virginia Gray, Willis Gipton, Myrtle Harris, Jack Holloman, Dorothy Hopson, John Huff, Thornton Jones, Street Kornegay, Ella Lewis, Mildred Lewis, Della Mae Lewis, Pauline Litchfield, Marjorie Lomax, Evelyn Lowe, Bill Mann, Frances Manning, Ruby Grey Massenburg, Jean McKinnon, Brooksie Meckins, Henry Murden, Louise Nelson, Joe Newsom, Wilbur Payne, Stanley Patten, Dan Robertson, Katherine Rogers, Riley Rowe, Margaret Russell, Gene Sasser, Mary Ellen Shaw, Gloria Simpson, Hazel Smith, Hillery Spain, Norma Spruill, Ruth Stallings, Cameron Stallings, Gladys Strickland, Jean Strickland, Louis Tetterton, Louise Turner, Sam Tuten, Irene Vaughan, Martha Wehrenburg, Mary West, Dorothy Williams, Jack Winslow, Jimmy Wooters.

The purpose of the Dramatic Club is to foster an interest in dramatics and other cultural activities among the students.

Miss Virginia Peyatt, who is now on leave of absence, is the director of this group, and we would like to express our sincere appreciation of her inspirational leadership in the years gone by.

International Relations Club

Officers

SAM TUTEN, *President*; WALLACE CHANDLER, *Vice president*; LOUISE MASON, *Secretary and Treasurer*.

Members: Warren Aldridge, Lela Adams, Jay Amick, Roy Bailey, Troy Barrett, Martha Bass, Louise Brantley, Robert Chambliss, Wallace Chandler, Philip Chamblee, Frances Collins, Bobby Clark, Dorothy Edge, Mildred Everett, A. K. Garrett, Hazel Gentry, Sybil Horton, Pauline Litchfield, Louise Mason, Pearl McDonald, Dan McFarland, Jean McKinnon, Howard Mitchiner, Frances Rogers, Sam Rhodes, Ralph Roe, Albert Smoak, Norma Spruill, Gladys Strickland, Magdalene Tutor, Sarah Turner, Sam Tuten, Fred Vaughn, Alvin Woodard.

The International Relations Club, a non-partisan organization, promotes citizenship by giving the students a comprehensive understanding of domestic and foreign relations. This Club was organized in 1939. All students who are interested in current international events may become members.



Whispering Oak Staff

CATHERINE GILLIS, *Editor-in-Chief*; HENRY MURDEN, *Associate Editor*; ROY BAILEY, *School Editor*; CLYDE DULA, *Make-up Editor*; GENE HAM, *Humor and Feature Editor*; EDWARD SMITH, *News Editor*; ELLA LEWIS, *Art Editor*; JOSEPH NEWSOM, *Alumni Editor*; JAMES DURHAM, *Sports Editor*; ROBERT BARTHOLOMEW, *Exchange Editor*; EDNA GILLIS, *Society Editor*; DELLA MAE LEWIS, *Business Manager*; TROY BARRETT, *Assistant Business Manager*; JIMMY WOOTERS, *Circulation Manager*; JAMES FEATHERSTON, *Assistant Circulation Manager*; RACHEL FOX, *Reporter*; EDITH PITTMAN, *Reporter*; L. R. TAFF, *Adviser*.

The *Whispering Oak* is the bi-monthly publication of the students at Louisburg College. Students of journalism and others interested are given an opportunity to contribute.

Home Economics Club

Officers

RUTH STALLINGS, *President*; JANE MURPHY, *Secretary*; IRENE VAUGHAN, *Vice president*; SCOTT BROWN, *Reporter*; MRS. I. D. MOON, *Sponsor*.

Members: Jennie C. Alston, Cynthia Clay, Jewel Dennis, Margaret Holmes, Sybil Horton, Catherine Lewis, Ella Lewis, Jean McKinnon, Brooksie Meckins, Jane Murphy, Oleta Odum, Mary Fay Richardson, Shirley Roberts, Frances Rogers, Irene Vaughan, Margaret Wiggins, Jessie Mary Willson, Ruth Stallings, Margaret White Byrum, Matilda Whitley, Rosa Ella White, Scott Brown.

The Home Economics Club is an organization to develop the social and economic life of its members. Different types of entertainment are studied. The girls study about and prepare both refreshments and programs for various occasions.





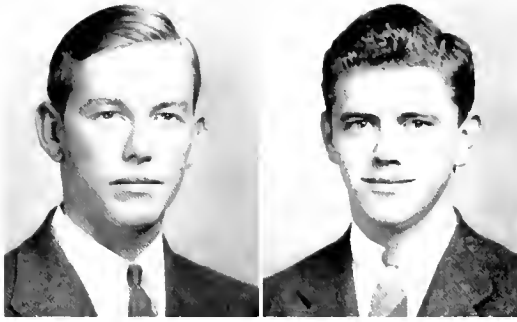
Men's Athletic Association

Officers

EARL WILLIAMS, *President*; HENRY MURDEN, *Vice president*; JAMES DURHAM, *Secretary-treasurer*.

Members: Warren Aldridge, Gerald Downey, Clyde Dula, James Durham, Jimmie Hall, Ike Kearney, Rodman Lancaster, Colonel Laws, Stronnie Lee, Henry Murden, Isham Nichols, Robert Page, Ralph Roe, Hillery Spain, Billy Spence, Henry Taylor, Earl Williams, Ira Williams, Alvin Woodard.

The Men's Athletic Association has just completed one of its most successful years. Its aim has been to promote better and cleaner athletics through this organization of our athletes. The enthusiasm and efforts set forth by its members, and Coach Cameron, have made this club one of which all are proud.



The Oak

HENRY CLIFTON MURDEN Wm. ROWF, PAGE, JR.
Editor-in-Chief Business Manager

We bring you another edition of the OAK. This book is the result of the fine co-operation of the staff, the faculty and the student body.

We hope that it is a kaleidoseopic picture of the campus life and activities at Louisburg College for 1940-41 so that it may always stand as a pleasant reminder of the time spent here.



Top row: Editorial Staff, left to right. Roy Bailey, Catherine Gillis, Ralph Roe, Caroline Davis, May Davis.

Bottom row: Business Staff, left to right. Morris Bell, James Durham, Ruby Grey Massenburg, Willis Gupton.



AS SEEN BY THE CAMERA

Athletics

Cheer Leaders



CARL SELLARS

CAROLINE DAVIS

HENRY MURDEN

HILLERY SPAIN

JENNIE ALSTON

MARJORIE LOMAX



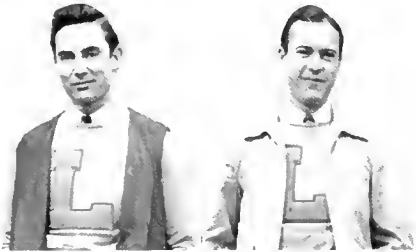
1. Ike Kearney; 2. Ira Williams; 3. Ralph Roe; 4. Rod Lancaster; 5. Clyde Dula; 6. Henry Taylor; 7. Gerald Downey; 8. Isham Nichols; 9. Edwin Robinson; 10. Strommie Lee.

Basketball

Although the record of the basketball Trojans of Louisburg College for the 1940-41 season cannot be considered as highly successful in the won and lost column, it can be called fair from an "insider's" point of view. The team was seriously handicapped by a late start and the decided lack of height of the candidates. Four lettermen, Earl Williams, Ralph Roe, Clyde Dula, and Ike Kearney, returned. These, with the addition of Rod Lancaster, Isham Nichols, Ira Williams, Henry Taylor, Gus Robinson, Strommie Lee, and Gerald Downey, promising freshmen, formed the squad that was soon developed into a hustling ball club, under the coaching and determination of Coach Cameron. The scoring for the season was led by Ralph Roe with 255 points who was followed by Clyde Dula and Isham Nichols with 100 points each.



Coach CAMERON



JAMES DURHAM AND BILLY SPENCE
Managers





Baseball

Baseball line-up:

Manager, Weldon.

Assistant, John Huff.

Catchers, Riggan, Nichols.

Pitchers, Hall, Laws, Pace, Aldridge.

First base, Dula.

Second base, Lee.

Short stop, Durham.

Third base, Vaughn.

Left field, Roe.

Center field, Foust.

Right field, Woodard.



Tennis Team

Pete Page, No. 1

Henry Murden, No. 2

Rod Lancaster, No. 3

Jimmy Wooters, No. 4

Bobby Richardson, No. 5

Carl Sellars, No. 6

Sam Tuten, No. 7





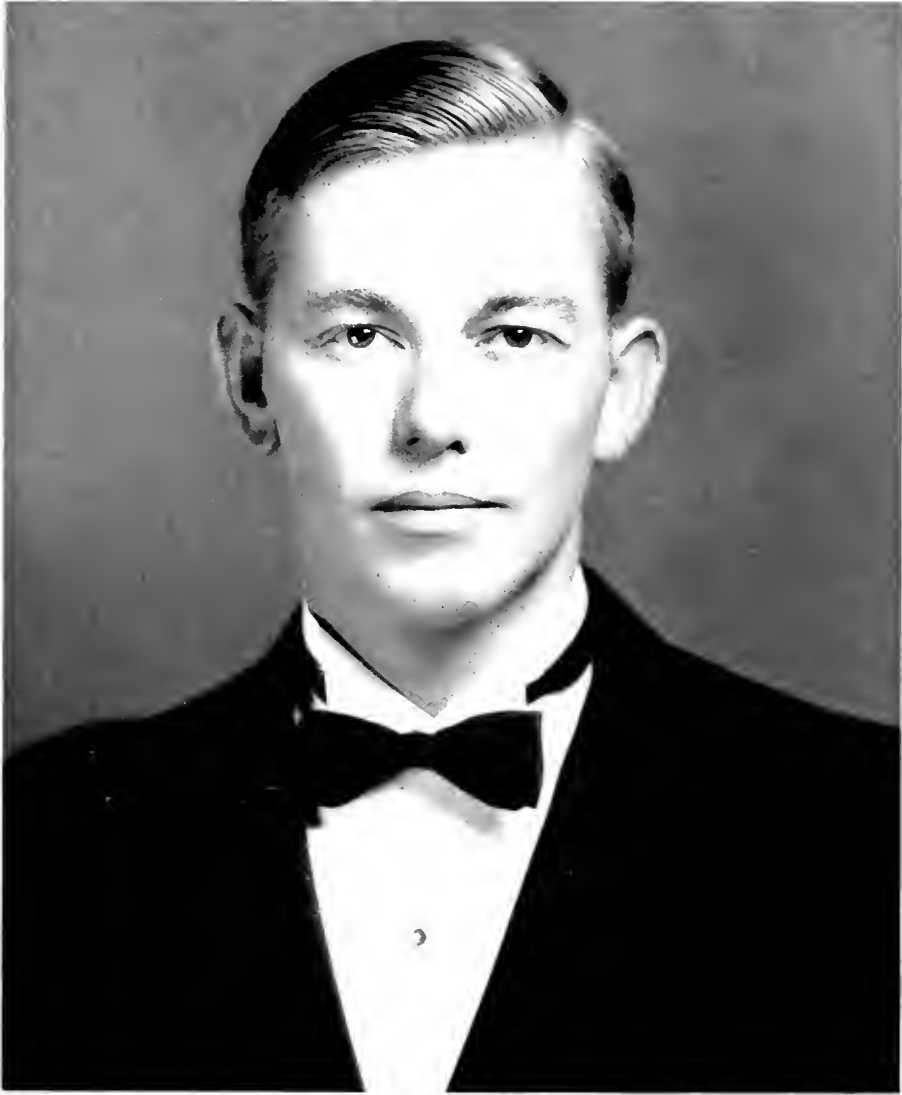
"STUDENT ACTIVITIES"

Features



Catherine Gillis

IDEAL STUDENT



Henry Murden

VERSATILITY



Gloria Simpson

BEST LIKED GIRL



S. J. Starnes

BEST LIKED BOY



Dorothy Edge

BEAUTY



Sam Rhodes

HANDSOME



*Scenes from
May Day*



HERE AND THERE

THE OAK OF LOUISBURG COLLEGE

Advertisements

NINETEEN HUNDRED AND FORTY-ONE

LOUISBURG COLLEGE

A Standard Junior College for Young Men and Women

Accredited by

The State Department of Education

North Carolina College Conference

University of North Carolina

Member of American Association of Junior Colleges

Offering Two Years Terminal Courses in

AGRICULTURE, COMMERCE, AND HOME MAKING

and

Course Leading to Degrees in Senior Colleges in

**AGRICULTURE, DENTISTRY, COMMERCE, ENGINEERING, HOME
ECONOMICS, LIBERAL ARTS, MEDICAL SECRETARY, MEDICAL
TECHNOLOGY, NURSING AND SCIENCE.**

A Labor Scholarship of \$60 Granted to Those Who Desire it.

All kinds of student activities, intramural athletics,
close personal direction and supervision of each indi-
vidual student, superior spiritual atmosphere, health-
ful climate, moderate rates.

For Details, Write:

WALTER PATTEN, President : Louisburg, N. C.

LOUISBURG, N. C.

... is ...

**RICH IN HISTORY, HEALTH, AND
HOSPITALITY**

There is not a more ideal place of residence in the world for a student than Louisburg. There exists here at all times an atmosphere of quiet, culture, and refinement, that encourages study and accomplishment. The material needs of every student can be purchased in Louisburg at most reasonable prices; therefore it is an economic and otherwise desirable home for students.

***Louisburg Sincerely Welcomes Everyone
At All Times***

TOWN OF LOUISBURG

W. C. WEBB, Mayor

BEST WISHES

Your Downtown Meeting Place

BODDIE DRUG STORE

WHITE'S
Ice Cream

★

"There **IS** a difference"

FIRST-CITIZENS BANK & TRUST CO.

LOUISBURG, NORTH CAROLINA

COMPLETE BANKING SERVICE

Member of F. D. I. C.

ALLEN SALES CO.



CHEVROLET AUTOMOBILES
and
TRUCKS

Louisburg, North Carolina

SEVEN OAKS DAIRY

P. G. and M. G. SMITH, Props.

"Quality and Service"

PHONE 419-8

The New Super-Speed

L. C. SMITH

Typewriter

"A Secretary's Dream Come True"

CORONA

THE ORIGINAL PERSONAL
PORTABLE TYPEWRITER

O. T. COLE

133 S. Salisbury Street

RALEIGH, N. C.

Aydlett Products Co.

Manufacturers of
DELICIOUS POTATO CHIPS

and

SALTED PEANUTS

Elizabeth City, N. C.

Compliments of

GEORGE MARSH CO.

WHOLESALE GROCERS

Raleigh, N. C.

Fancy Canned Goods. Dried Fruits, etc.

Bloomsbury and Oxford Brands

Canned Vegetables

THE HOME OF BETTER VALUES
LEGGETT'S DEPARTMENT STORE

LOUISBURG, NORTH CAROLINA

Phone 3531

***"The South's Leading Distributors of
Reliable Merchandise"***

MOON'S BILLIARD PARLOR
SOFT DRINKS, SANDWICHES, AND BILLIARDS

"Students Recreation Center"

NEXT TO ARMORY

LOUISBURG, N. C.

H. R. CHESSON CANDY COMPANY

Well Known Energy Food Our Specialty

Fresh Clean Merchandise

M. STUART DAVIS

Architect

LOUISBURG, N. C.

Compliments of

G. M. BEAM

ATTORNEY AT LAW

ROSE'S 5-10-25c STORE

*Quality : Service
Low Price*

105 Stores to Serve You

R. W. Smithwick, Local Manager

TEL.



357-1

**FULLER'S
ESSO SERVICE**

Opposite Post Office
Louisburg, N. C.

ONE STOP SERVICE

CICERO'S

Soft Drinks Hot Dogs
Hamburgers

"The Student's Refreshing Center"

FOX'S

Louisburg's
Best Department Store

***Always First
with the
Smartest***

Compliments of
"WIMPY"
and
THE LOUISBURG THEATRE

DR. HERBERT G. PERRY

—————
PHYSICIAN AND SURGEON

—————
Office Phone 287-1
Residence 287-2

Trade With
G. W. MURPHY & SON

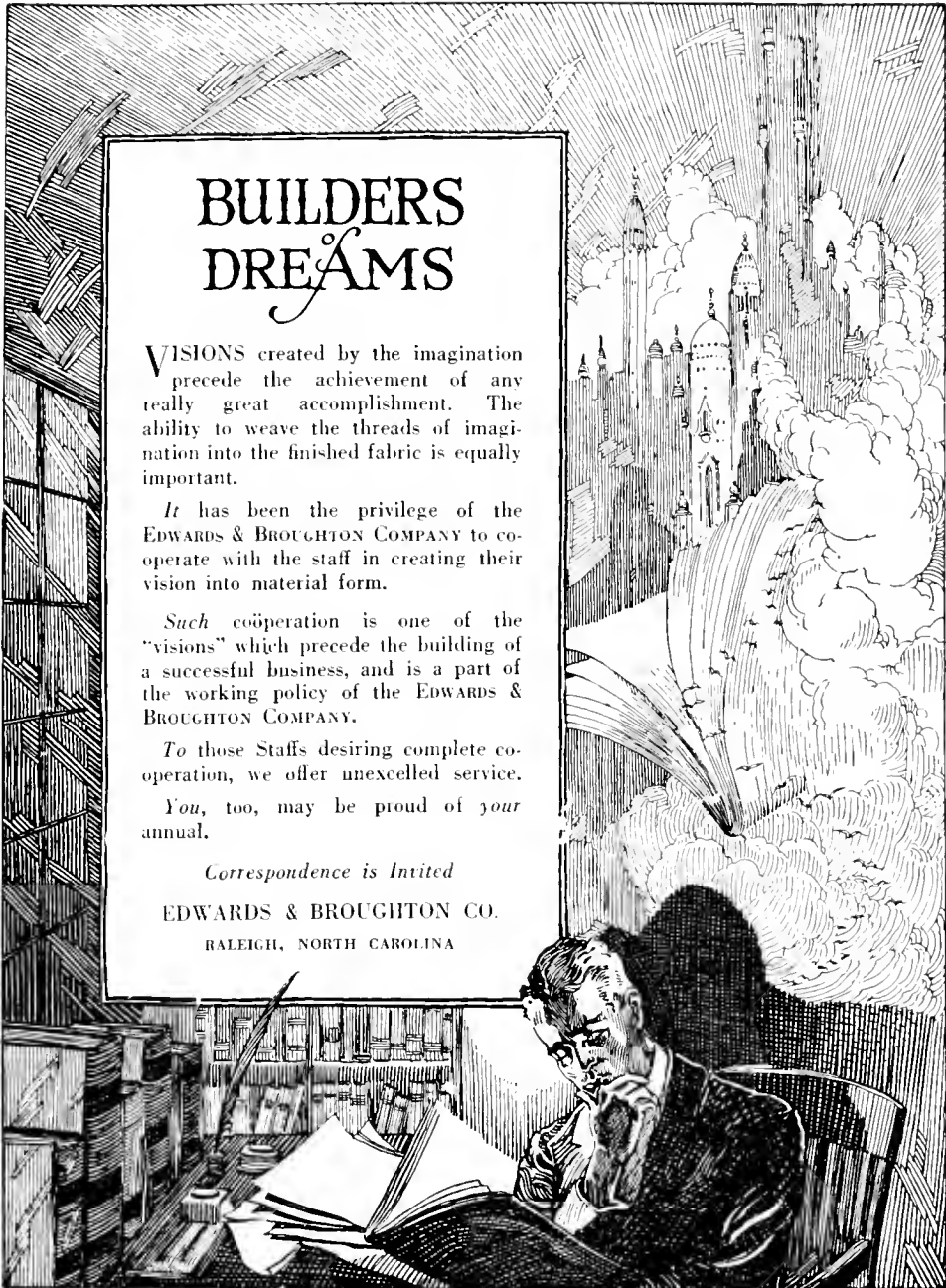
*Louisburg's Complete
Food Market*

EVERYTHING TO EAT
Phones 254-1 and 255-1

City Barber Shop

We Serve College and
Community Alike

"It Pays to Look Well"



BUILDERS DREAMS

VISIONS created by the imagination precede the achievement of any really great accomplishment. The ability to weave the threads of imagination into the finished fabric is equally important.

It has been the privilege of the EDWARDS & BROUGHTON COMPANY to cooperate with the staff in creating their vision into material form.

Such coöperation is one of the "visions" which precede the building of a successful business, and is a part of the working policy of the EDWARDS & BROUGHTON COMPANY.

To those Staffs desiring complete cooperation, we offer unexcelled service.

You, too, may be proud of your annual.

Correspondence is Invited

EDWARDS & BROUGHTON CO.
RALEIGH, NORTH CAROLINA

**BROGDEN
PRODUCE
COMPANY**

Wholesale
Fruit and Produce

409-415 West Martin Street

RALEIGH, N. C.

Local Phone 2-0567

Long Distance 901

At home - at school - at play

***The Pause That
Refreshes***

Drink

Coca-Cola

in Bottles

**The Capital Coca-Cola
Bottling Co.**

Capital Printing Co.

Printers of College Publications



PHONE 8315

110 West Hargett Street

RALEIGH, NORTH CAROLINA

Official Photographer
for

THE OAK

SIDDELL STUDIO

*Carolina's Portrait Photographers and
Pioneer Photo-Finishers*

126½ Fayetteville Street
RALEIGH, N. C.

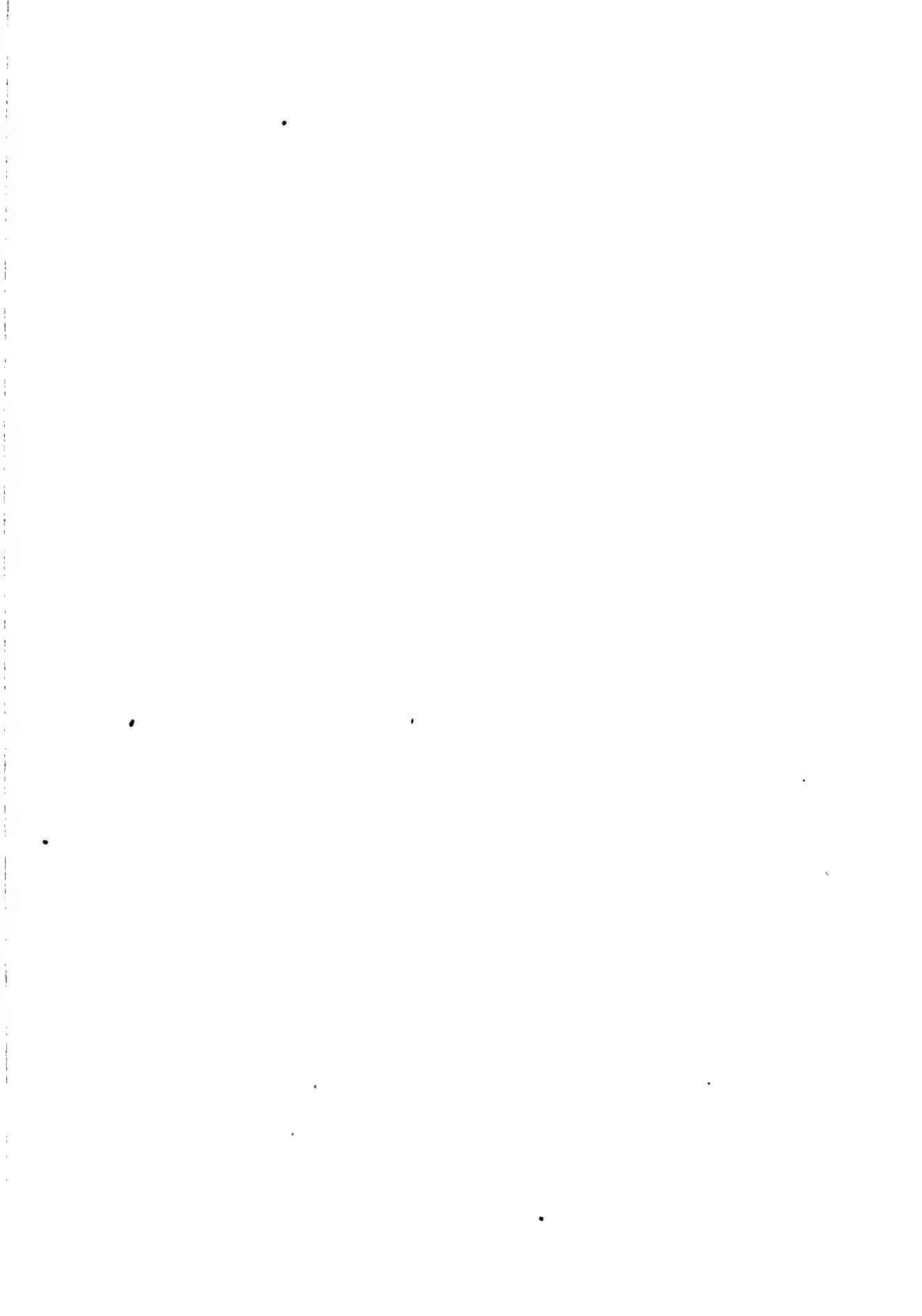
PATRONIZE

OUR

ADVERTISERS

Autographs

Autographs





THE CECIL W. ROBBINS LIBRARY
Louisburg College
Louisburg, N. C. 27549

