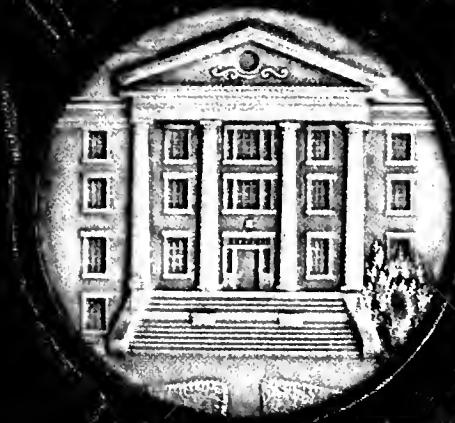


BOOK



1942

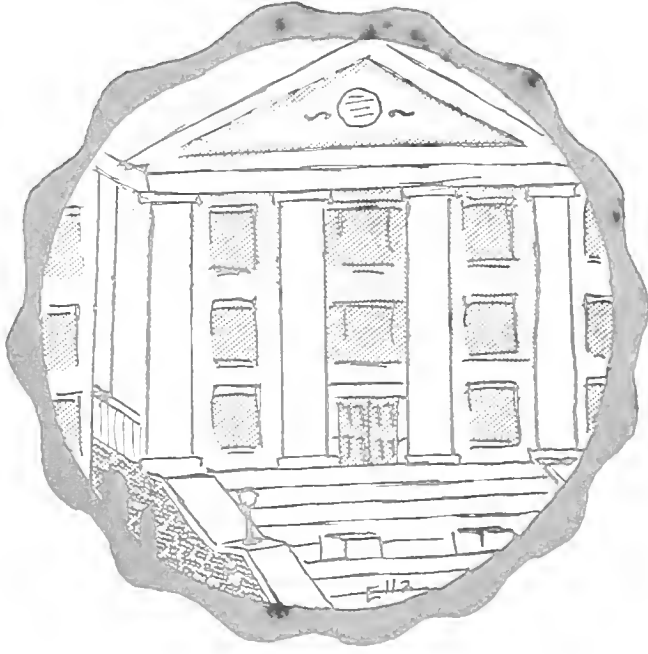






LESLIE W. ROBBINS LIBRARY  
Louisburg College  
Louisburg, N. C. 27549

# THE OAK



*Yearbook of*  
**LOUISBURG COLLEGE**  
**1787** **1942**

---

ROY BAILEY  
*Editor*

WILLIS GUPTON  
*Business Manager*

---

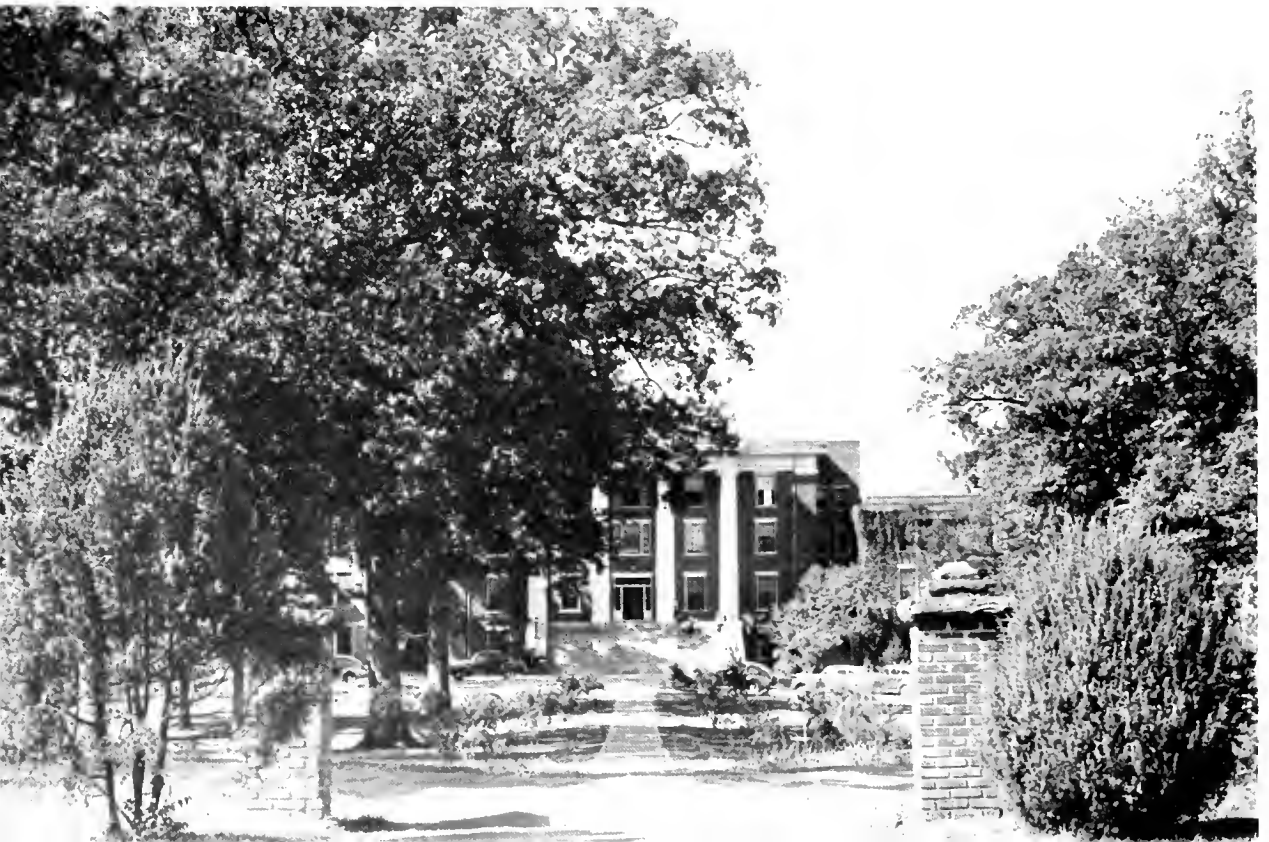


# F O R E W O R D

LOUISBURG COLLEGE stands today as noble evidence of the one hundred and fifty years of striving that have brought it to its present place of dignity—dignity crowned with the love of the many who have come to it from 1787 to 1912.

Through many difficulties the college has passed and will yet pass, but always it has emerged possessing the renewed capability of improving itself. Many wars it has survived, and yet another it faces—but today Alma Mater faces her future with the strength of experience.

In sacrifice, in patriotism, and in preparedness Louisburg stands ready, as in every American war since the Revolution, to give all that nobleness demands.





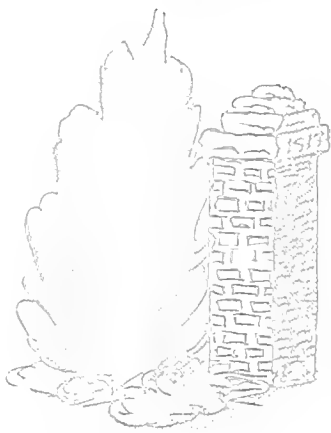
DAVIS

IN 1814 a frame building was erected as an addition to Franklin Academy, which at that time was a school for boys. Here all the old preceptors, with the exception of the first, Matthew Dickinson, held their classes. Franklin Academy was then a frame building on a hill about a quarter of a mile from Louisburg, a village of a few houses and two stores.





FRANKLIN



Through these portals  
pass those who seek . . .  
"To follow knowledge  
like a sinking star,  
Beyond the utmost bound  
of human thought."



"Comrades, leave me here a  
little, while 'as yet 'tis  
early morn:

Leave me here, and when you  
want me, sound upon the  
bugle horn."





To

LUTHER RAYMOND TAFF

*Dean, Friend, Soldier*

TO Dean Luther Raymond Taff this book is dedicated, in deepest appreciation of the qualities students search for in every teacher, and found in him: understanding and guidance.

Now he is in honorable service of his country: he has made the transition from dean and friend to friend and soldier. At Louisburg College his absence is deeply felt.

In appreciation of his four years of labor in behalf of the college and its students, this book is dedicated, to express this all-prevailing sentiment: that nothing can remove from Louisburg College the great gift of his understanding and guidance—his influence.

# ADMINISTRATION

"But when the bugles sounded war . . ."

This is a day of khaki and guns, things that have a special meaning for today. They represent plans and ambitions, hopes—perhaps lives—given up.

It is hard for a man to give up without bitterness what he has labored for, to wear khaki. It seems that a man would break with all he had made himself. But manliness is made of stronger fiber. It is a quality unstrained—a power of acclimation, of profiting from its circumstances, and retaining its noblest virtues in perverse situations.

It must indeed be a hard thing—and yet they do it every day. They do it at Louisburg College. One soldier's story proves it:

Less than a year ago he sat in his class office and worked with annuals and school papers, students and their themes and tests—all things he had sought for and had begun to attain—and then the bugles sounded.

Yes, they have done it at Louisburg, and tomorrow they will do it again. And the college, rich in memories, looks with fondness on those who go, for many a war year has it seen. Much does it know of the thing the world today now begins to recognize—that feeling in the heart concerning faith, honor, country, and God. Nobly, in days gone by, it knew khaki and guns—and sacrifice of those who went out from it in war years.

" . . . when the bugles sounded war  
They put their games away . . .  
 . . . . .  
They took the khaki and the gun  
Instead of cap and gown."



# BOARD OF TRUSTEES

REVEREND W. A. CADE, *President*

MRS. GENEVIEVE PERRY, *Secretary*

## EXECUTIVE COMMITTEE

REVEREND A. P. BRANTLEY

MR. E. H. MALONE

MR. T. B. UPCHURCH, JR.

REV. W. A. CADE, *ex officio*

PRES. WALTER PATTEN, *ex officio*

TERM EXPIRES 1942

REVEREND A. P. BRANTLEY, Sanford

DR. JAMES E. HILLMAN, Raleigh

MR. T. A. PERSON, Greenville

MR. T. B. UPCHURCH, Raeford

MRS. GEORGE H. HUFFA,

Wilmington

TERM EXPIRES 1943

REVEREND W. A. CADE, *Chairman*,  
Goldshoro

MR. FRUD FEARING, Elizabeth City

MR. E. H. MALONE, Louisburg

MR. LEON RUSSELL, New Bern

MR. D. J. SANDLIN, Fayetteville

TERM EXPIRES 1944

REVEREND R. W. BRADSHAW,

Durham

MR. ROSCOE FOREMAN, Elizabeth

City

MR. J. W. JENKINS, Henderson

MRS. FLOYD JOHNSON, Whiteville

REVEREND W. A. McRAL,

Fayetteville



WALTER PATTEN  
*President*

WALTER PATTEN, *President*  
A.B., D.D., Wesleyan University;  
M.A., University of North Carolina

GENEVIEVE P. PERRY, *Treasurer*  
Louisburg College; Columbia College; Bowling  
Green University

## ADMINISTRATION

Louisburg College has in Dr. Walter Patten and Mrs. Genevieve Perry two of the ablest and most enthusiastic workers it has ever known. During their years here they have handled great problems of college administration with admirable success. Truly they offer evidence that man can "shine in use."



GENEVIEVE P. PERRY  
*Treasurer*



Amick  
Crisp

Badalas  
Culpepper

Byerly  
Freeman

Cameron  
Hancock

Clatworthy  
Hudgins

## FACULTY

THOMAS CICERO AMICK. *Mathematics*. L.L., George Peabody College; A.B., M.A., University of North Carolina; Ph.D., Central University; University of Chicago; University of Virginia.

GEORGE E. BADALAS. *Natural Science*. A.B., University of North Carolina.

JAMES EDWIN BYERLY. *Music*. A.B. in Music, University of North Carolina; Eastman School of Music of the University of Rochester.

JOHN L. CAMERON. *Athletics*. A.B., Elon College; Columbia University; University of North Carolina.

WILLARD H. CLATWORTHY. *Mathematics and Science*. A.B., Berea College; M.A., University of Kentucky.

MARJORIE CRISP. *Physical Education*. B.S., Appalachian State Teachers College; George Peabody College.

STELLA H. CULPEPPER. *Home Nursing and First Aid*. R.N., Bellevue Hospital.

JOHN A. FREEMAN. *Natural Science*. B.A., M.S., Wake Forest College; University of North Carolina.

HAROLD B. HANCOCK. *Social Science*. A.B., Wesleyan University; M.A., Harvard University; University of Delaware; University of Virginia; University of Pennsylvania; University of North Carolina.

JULIA BROWN HUDGINS. *Commercial Science*. B.S., Woman's College of the University of North Carolina.



Kilby  
Shope

Merritt  
Stipe

Moon  
Taff

Moon  
Turner

Peyatt  
Yarborough

## FACULTY

MARGARET BOYDEN KILBY. *Commercial Science*. A.B., Asbury College; M.A., University of Kentucky; George Peabody College; Miami Jacobs Business College; Columbia University.

ROSE MARCIOLE. *Commercial Science*. A.B., East Carolina Teachers College.

RUTH WILLARD MERRITT. *English*. A.B., Duke University; M.A., Searritt College.

NELLIE TIPTON MOON. *Home Economics*. A.B., University of Wichita; College of Emporia; Kansas State Agricultural College; Wichita Business College.

ISAAC DEANE MOON. *Music and Psychology*. A.B., Asbury College; B.Mus., Asbury College; A.M., University of Kentucky; Pupil Frank A. Power, Herbert Miller, Herman Devries, Don Beddow; Bowling Green Business University.

VIRGINIA PEYATT. *Spoken English and Dramatic Art*. A.B., Greensboro College; Wake Forest College; University of North Carolina; Northwestern University.

WILLIAM IRVING SHOPE. *Agricultural Education*. B.S., North Carolina State College.

LULA MAY STIPE. *Religious Education*. A.B., Salem College; University of North Carolina; Columbia University.

LUTHER RAYMOND TAFF. *English*. A.B., University of North Carolina; Howard College.

LOUISE TURNER. *Secretary to the President*. Louisburg College.

JOHN BURWELL WOODALL. *Foreign Languages*. A.B., M.A., Duke University; Columbia University.

ELSA CRAIG YARBOROUGH. *Librarian*. A.B. and A.B. in L.S., University of North Carolina.



FRANCIS TERRELL, *President*; SARAH DAVIS, *Vice President*; WILLIS GUPON, *Secretary*;  
JIMMY WOOLERS, *Treasurer*.

## SENIORS

HERE are the seniors of Louisburg College, who for two years have been fighting little battles—battles which were steps and stages in the war of learning and of growing up.

Each maneuver of their forces had to be surveyed and pondered from the vantage ground of good judgment, and numerous enemy obstacles in the form of distractions had to be surmounted before their advances could be made. Their enemies were many; but their allies, the professors, aided them in determining their strategy. Their artillery and munitions they stored up within themselves in the small hours of the night, and fired it, volley after volley, at long mimeographed sheets and black boards covered with questions.

They broadened their field of maneuvers in outside activities; on holidays they reconnoitered to find their next approach.

After two years of active participation in battle they are given the terms of truce on their report cards and receive the final peace treaty on the morning of Monday, May 25, 1942.



# SENIORS



LEILA ADAMS, Blounts Creek  
*friendly, carefree, "slow-freight"*

Y.W.C.A. 1, 2; Dramatic Club 1, 2; Woman's Student Council, Treasurer 2; International Relations Club 1, 2; Women's Athletic Association, President 2.



JENNIE C. ALSTON, Louisburg  
*cov. quiet, "Cheer Leader"*

A Cappella Choir 1, 2, Librarian 1, Secretary 2; Home Economics Club 1, 2; Cheer Leader 1, 2.

VIOLA ALSTON, Louisburg

*"Wake Forest," loquacious, "brown eyes"*  
Women's Student Council, Day Student Representative 2; Dramatic Club 1; A Cappella Choir 2.

ROY BAILEY, Fayetteville

*surpassing, ambitious, "chemistry"*  
Y.M.C.A. 1, 2; Phi Theta Kappa 1, 2; Beta Phi Gamma 1, 2, President 2; Orchestra 1; Dramatic Club 1, 2; International Relations Club 1; *Whispering Oak*, School Editor 1; THE OAK 1, 2, Junior Editor 1, Editor-in-Chief 2; Christian Service Club 1.



ANNIE SLE BARRETT, Roxboro  
*efficient, versatile, sincere*

Alpha Pi Epsilon 1, 2; Y.W.C.A. 1; Dramatic Club 1.

TROY BARRETT, Fayetteville  
*enthusiastic, persistent, "cheers"*

Christian Service Club 1, 2; Phi Theta Kappa 2; Junior Class, Vice President 1; Y.M.C.A. 1, 2, Vice President 2; International Relations Club, Vice President 1; Cheer Leader 2; Men's Student Government 1; THE OAK, Photographic Editor 2.

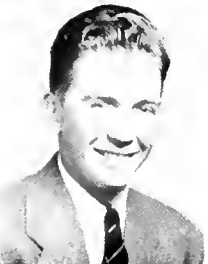


MORRIS BELL, Clinton

*reticent, easy-going, mild-mannered*  
THE OAK, Business Staff 1; A Cappella Choir 1; Y.M.C.A. 1.

RUTH BRASWELL, Princeton

*amiable, conscientious, capable*  
Women's Student Council 2; Y.W.C.A. 1, 2, President 2; Christian Service Club 1, 2, Vice President 2; Phi Theta Kappa 1, 2, Recording Secretary 2.



FIRNEY BRITTAIN, Dover  
*genial, roguish, "engaging smile"*

Y.M.C.A. 2; Basketball 2; Baseball 2.

PEGGY BROOKS, Roxboro

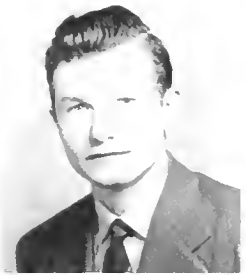
*reserved, docile, unassuming*  
Alpha Pi Epsilon 2; Y.W.C.A.



# LOUISBURG COLLEGE

MYRLI COLLY, Wilmington  
*capable, lazy, outspoken*

Woman's Student Council 2; Y.W.C.A. 1; Dramatic Club 1.



JACK COX, Blounts Creek  
*persevering, studious, solid*

Phi Theta Kappa 2; A Cappella Choir 2.

EMMA DELL DARK, Pittsboro  
*nitty, shy, attractive*

A Cappella Choir 1, 2; Y.W.C.A. 1; Dramatic Club 1; International Relations Club 2.



KATE DAVIS, Macon  
*charming, genuine, unbiased*

Alpha Pi Epsilon 2; Y.W.C.A. 1.

SARAH DAVIS, Louisburg  
*artistic, cultured, "tops"*

Phi Theta Kappa 1, 2, Corresponding Secretary 2; Beta Phi Gamma 2; A Cappella Choir 1, 2, President 2; Dramatic Club 1, 2; *Column* Staff 2; THE OAK, Literary Editor 2; Chief Marshal 1; May Court 1, 2; Superlative 2; Senior Class, Vice President 2.



JAMES FEATHERSTON, Roxboro  
*"poker," self-assured, "book store"*

Men's Student Council 2; A Cappella Choir 1; Y.M.C.A. 1; Dramatic Club 1; Circulation Manager of *Whispering Oak* 1.

WILLIS GUPTON, Hollister  
*"ladies man," capable, versatile*

Men's Student Government 2; Phi Theta Kappa 1, 2, President 2; Y.M.C.A., Treasurer 1; Dramatic Club 1, 2; International Relations Club 1; Beta Phi Gamma 2; THE OAK 1, 2, Assistant Business Manager 1, Business Manager 2; Senior Class, Secretary 2; Superlative 2.



BETTY HARRIS, Louisburg  
*efficient, dilettante, "chatterbox"*

MYRTLE HARRIS, Farmville  
*piquant, calm, serious*

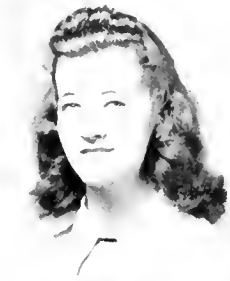
Women's Student Council 2; Dramatic Club 2; Y.W.C.A. 1, 2.



MARINA HAWKINS, Henderson  
*retiring, earnest, "Duke"*

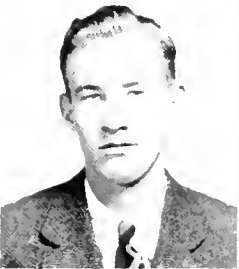
Women's Student Council 1, 2, President 2; Phi Theta Kappa 2; Y.W.C.A. 1, 2.

# SENIORS



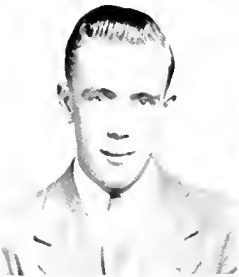
NANCY HAYES, Louisburg  
*talented, "boogie-woogie," quaint*  
Superlative 2.

ELIZABETH HUDSON, Louisburg  
*"convertibles," irresponsible, pretty*



HENRY TAYLOR HUFF, Oxford  
*solitary, ambitious, moody*  
Y.M.C.A. 2.

JANE PERRY INGRAM, Louisburg  
*married, pleasant, constant*  
Christian Service Club 1, 2.



NORWOOD JONES, Clayton  
*"Reverend Sam," honest, "jokes"*  
Christian Service Club 1; A Cappella Choir 1, 2.

GAYNELLE JORDAN, Mount Olive  
*temperamental, fetching, ingenuous*  
Alpha Pi Epsilon 1, 2; Y.W.C.A. 1; Dramatic  
Club 1, 2.



DOUGLAS JOYNER, Louisburg  
*industrious, air-minded, even-tempered*

HILDA KILPATRICK, Snow Hill  
*talkative, frankish, nonchalant*  
Y.W.C.A. 1.



NINA KIRKPATRICK, Pembroke  
*incorrigible, "will o' the wisp," doll-like*  
Y.W.C.A. 1.

STREET KORNEGAY, Warsaw  
*likable, solicitous, gentle*  
Dramatic Club 1; Y.M.C.A. 2; THE OAK, Busi-  
ness Staff 2.

# LOUISBURG COLLEGE

RODMAN LANCASTER, Vanceboro

*athletic, good looking, "genially-mean"*

Men's Athletic Association 1; Basketball Team 1, 2; Tennis Team 1; Junior Class, President 1.

BEATRICE LEWIS, Hobgood

*genuine, reliable, particular*

Alpha Pi Epsilon 1, 2; Secretary 2; Y.W.C.A. 1; Christian Service Club 1, 2; Women's Student Council, Vice-President 2.

ELLA LEWIS, Faison

*"red," talented, striking*

Y.W.C.A. 1; Dramatic Club 1; *Whispering Oak*, Art Editor 1; Home Economics Club 1, 2; Vice-President 2; Women's Student Council 2; *THE OAK*, Feature Editor 2.

PAULINE LITCHFIELD, Auora

*optimistic, kind, "scatterbrain"*

A Cappella Choir 1, 2; Dramatic Club 1; International Relations Club 1, 2; Y.W.C.A. 1, 2; Christian Service Club 2; Home Economics Club 2.

PEARL McDONALD, Jackson Springs

*quiet, diligent, reliable*

International Relations Club 1.

DANIEL McFARLAND, Salisbury

*sophisticated, "haranguer," "tenor"*

A Cappella Choir 1, 2; International Relations Club 1, 2; President 2.

JUAN MCKINNON, Mt. Gilead

*credulous, argumentative, frank*

Y.W.C.A. 1; Dramatic Club 1; Home Economics Club 1, 2; International Relations Club 1, 2; Vice-President-Business Manager 2.

JOHN MAIDES, Maysville

*independent, industrious, grip*

Men's Student Council 2; Christian Service Club 2; International Relations Club 2.

LOUISE MASON, Atlantic

*"sunshine," friendly, accommodating*

Y.W.C.A. 1; International Relations Club 1, 2; Secretary-Treasurer 1; Women's Student Council, Secretary 2.

RUBY GREY MASSENBURG, Louisburg

*plquant, colorful, magnetic*

Phi Theta Kappa 1, 2; Corresponding Secretary 2; Beta Phi Gamma 1, 2; Secretary 2; A Cappella Choir 1, 2; Dramatic Club 1, 2; Math Club 1, 2; *Whispering Oak*, Mumni Editor 1; *THE OAK*, Assistant Advertising Manager 2; Women's Student Government 2; May Court 1, 2; Alpha Pi Epsilon 3.

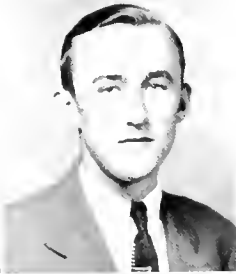


# SENIORS



BROOKSIE MELKINS, Avon  
*stately, collected, picturesque*  
A Cappella Choir 1, 2; Y.W.C.A. 1; Dramatic  
Club 1; Home Economics Club 1, 2.

JANE MURPHY, Louisburg  
*"debutante," well-dressed, "fraternity men"*  
A Cappella Choir 1; Home Economics Club 1, 2,  
President 2.



OLLIE ODUM SWANSBORO  
*neat, conscientious, gentle*  
Y.W.C.A. 1; Home Economics Club 1, 2.

DOUGLAS PAGE, Zebulon  
*"south-paw," "opey," clever*  
Phi Theta Kappa 2; Y.M.C.A. 2; Baseball Team  
1.



VIRGINIA PAXTON, Buena Vista, Va.  
*sophisticated, "Dentyne," sweet-tempered*  
Southern Seminary 1.

WILBUR PAYNE, Stumpy Point, N. C.  
Glee Club 1, 2; Business Manager 2; Christian  
Service Club 1, 2; Y.M.C.A. 2; International Re-  
lations Club 1, 2.



BOBBY RICHARDSON, Jacksonville  
*"Long," accommodating, carefree*  
Tennis Team.

RILEY ROWE, Aberdeen  
*earnest, frank, intelligent*  
Dramatic Club 1; Christian Service Club 1, 2,  
President 2; Phi Theta Kappa 2; International  
Relations Club 2.



JANE GREY SANDBERLIN, Council  
*gentle, cooperative, cheerful*  
International Relations Club; Business Manager  
2; Christian Service Club 1, 2; A Cappella Choir  
1, 2; Y.W.C.A.

GEAN SASSER, Smithfield  
*musical, temperamental, reserved*  
A Cappella Choir 1, 2; Y.W.C.A. 1; Dramatic  
Club 1, 2; President 2.

# LOUISBURG COLLEGE

ALBERT SMOOK, Alcedon  
*"smiles," bashful, easy-mannered*  
 International Relations Club 1.

WILLIAM SPENCE, Suffolk  
*aloof, polished, frank*  
 Men's Athletic Association 1; Manager Basketball  
 Team 1; Y.M.C.A. 1; Men's Student Council,  
 President 2.

VIRGINIA SPIVEY, Louisburg  
*"scientific mind," athletic, "O.K."*  
 Phi Theta Kappa 2; Marshal 1.

CAMERON STALLINGS, Zebulon  
*"tough girls," quiet, evasive*  
 Dramatic Club 1.

HAYWOOD STROUD, Pink Hill  
*studious, likable, witty*  
 Phi Theta Kappa 2.

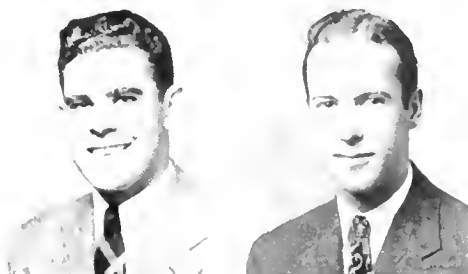
ATAWAH SUTTON, Dudley  
*retiring, shy, modest*  
 Y.W.C.A. 1, 2.

FRANCIS TERRILL, Buena Vista, Va.  
*pleasant, demure, poised*  
 Y.W.C.A. 1, 2; May Court 1, 2; Column 2;  
 Senior Class, President 2.

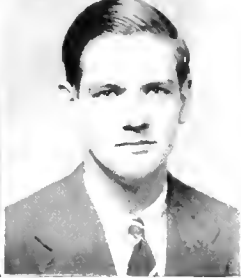
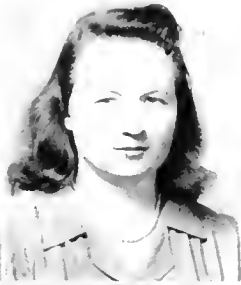
GENE THOMPSON, Franklinton  
*conscientious, ambitious, capable*  
 Phi Theta Kappa 1, 2, Vice President 2; Marshal  
 1.

SHIRLEY THOMPSON, Fairmont  
*artistic, friendly, mischievous*  
 Y.W.C.A. 1, 2; International Relations Club 2.

BETTIE VANDIFORD, Ayden  
*hardworking, sober-minded, meticulous*  
 Alpha Pi Epsilon 2.



# SENIORS



FRED VAUGHAN, Dolphin, Va.  
*taciturn, joxy, phlegmatic*  
Baseball 1, 2; Y.M.C.A. 1, 2.

DOROTHY WATSON, Rowland  
*"Hattie," solitary, fervent*  
Christian Service Club 1, 2; Beta Phi Gamma 2;  
*Columns* 2; International Relations Club 2;  
Y.W.C.A. 1, 2.

JESSIL MARY WILLSON, Roxboro  
*accommodating, genuine, serious*  
A Cappella Choir 1, 2; Home Economics Club 1,  
2; Y.W.C.A. 1, 2.

JIMMY WOOTERS, Kinston  
*"Jimmy Sue," draughty, well-liked*  
Y.M.C.A. 1; Dramatic Club 1, 2; Tennis Team  
1; Senior Class Officer, Treasurer 2; THE OAK,  
Sports Editor 2; Men's Student Council 2.

## NOT PHOTOGRAPHED

MARGARET WIGGINS, Louisburg  
*tranquil, steady, smiling*  
Home Economics Club 1, 2.

SYBIL HORTON, Louisburg  
*steady, good-natured, dependable*  
Home Economics Club 1, 2; International Rela-  
tions Club 1.



CLARKE STOKES, *President*; SARAH HUX, *Vice President*; SALLIE FRANCES WEAVER, *Secretary*;  
WILLIAM ANDREWS, *Treasurer*.

## JUNIOR CLASS

HERE are the Juniors of 1911-1912. They are those who have taken the first steps on the long march to learning. To them Louisburg College has yet its best to offer, though their first and fiercest battles they have already fought. By now they have learned to maneuver and have found their best allies. They have learned where to find their ammunition and have become familiar with the battle ground. It remains to them now to pass through the thick of the battle and prove themselves worthy of the final peace.



# JUNIORS

*First row, left to right:*

Stella Aldridge, Oriental; Maxine Alford, Elizabethtown; William Andrews, Louisburg; E. B. Averett, Oxford; Benjamin Barnes, Dolphin, Va.; Anna Catherine Barnette, Roxboro; Annie Laurie Barnette, Roxboro.

*Second row:*

Clarence Bass, Louisburg; Ellis Bedsworth, Marshallberg; Don Bell, Snowden; Jessie Boone, Graham; Louise Brantley, Bailey; Laura Brickhouse, Atlantic; Nancy Brooks, Roxboro.

*Third row:*

Rebecca Cade, Sanford; Juanita Cannon, Bolivia; Audrey Caudle, Henderson; Ethel Caviness, Siler City; Roy Chamblee, Zebulon; Joseph Chase, Eureka; Willie Mae Cherry, Washington.

*Fourth row:*

Hazel Clarke, Atlantic; Cynthia Clay, Louisburg; Margaret Clay, Louisburg; John Collins, South Boston, Va.; Horton Corwin, Ahsokie; Frances Cutchin, Whitakers; William Davis, Raeford.



# JUNIORS

*First row:*

Dorothy Davis, Engelhard; Eva Deanes, Murfreesboro; Marjorie Dickerson, Roxboro; Launa Dixon, Oriental; Annie Lee Dorsett, Sanford; Sue Dunham, White Oak; Martha Edgerton, Rosehill.

*Second row:*

Wilbur Edwards, Vass; Forrest Elliott, Nichols, S. C.; Melba Everett, Hamilton; William Fagan, Dardens; Hattie Faulkner, Louisburg; Mildred Faulkner, Smithfield; Gertrude Fearing, Elizabeth City.

*Third row:*

Ann Ford, Franklinton; Kathleen Foy, Trenton; Janice Frazier, Louisburg; Hattie Belle Gaddy, Sanford; Inez Gaines, Sanford; Thomas Gardner, Macon; Robert Gaskill, Sea Level.

*Fourth row:*

John Wesley Gentry, Roxboro; Kathryn Gillikin, Marshallberg; Lucille Gillikin, Smyrna; Joseph Glazebrook, Wakefield, Va.; Edwin Goodrich, Wakefield, Va.; Marguerite Greene, Oxford; James Grillin, Dover.





## JUNIORS

*First row:*

Wesley Griffin, Dover; Juanita Hall, Louisburg; Rebecca Hall, Durham; Eleanor Hampton, Coinjock; Lily Hancock, Richmond, Va.; Mary Frances Handley, Goldsboro; Pattie Hanes, Pine Hall.

*Second row:*

Dayton Hardwick, Louisburg; Jacqueline Harkins, Louisburg; Helen Harris, Louisburg; Lillian Harris, Farmville; Sue Margaret Harris, Oxford; W. D. Heath, Newport; Ira Helms, Scotland Neck.

*Third row:*

Ann Hinton, Clayton; Dorothy Hockaday, Roanoke Rapids; Zelda Holleman, Roxboro; Margaret Holmes, Louisburg; Jasper Hooper, Stumpy Point; McCoy Hooper, Stumpy Point; Mildred Howard, Louisburg.

*Fourth row:*

Sara Hux, Halifax; Sarah Ingram, Louisburg; McNeil Ipock, New Bern; Irma Jackson, Elizabeth City; Mary Jeffreys, Youngsville; Grace Johnson, Smithfield; Vera Johnson, Holly Springs.

# JUNIORS

*First row:*

Barbara Johnston, Wilmington; Kathryn Jones, Dunn; Thornton Jones, Sanford; Bernice Kennedy, Louisburg; Betty Lambert, Clayton; Shirley Lancaster, Goldsboro; Frances Lassiter, Spring Hope.

*Second row:*

Catherine Lewis, Faison; Marian Lewis, Faison; Mildred Lewis, Elizabethtown; Susan Litchfield, Aurora; Evelyn Jane Long, Roxboro; Hortense Lyles, Tarboro; Howard McDougald, Raeford.

*Third row:*

Ernestine McFarland, Louisburg; Lester McPhail, Tomahawk; Lucille McPherson, Elizabeth City; Janie Ray Manning, Tarboro; Carolyn Massey, Elizabeth City; Helen Mathews, Sanford; Rachel May, Nashville.

*Fourth row:*

Philip Meekins, Stumpy Point; Maida Moore, Marshallberg; Minnie Morse, Marshallberg; John Munn, Hertford; Lawrence Murphy, Wakefield, Va.; Mildred Newton, Raeford; Isham Nichols, Greenville.





## JUNIORS

*First row:*

J. E. Norris, Jr., Columbia; Hubert Owen, Elizabethtown; Rose Park, Manson; Steve Parrott, Kinston; Hubert Pearce, Louisburg; Marie Pearce, Louisburg; Hugh W. Perry, Louisburg.

*Second row:*

Burke Petty, Roxboro; Eleanor Phillips, Trenton; John Pollard, Tarboro; Maurice Powers, St. Pauls; Catherine Pridgen, Warsaw; Virginia Pritchard, Elizabeth City; Mozelle Privette, Wake Forest.

*Third row:*

Mary Ramsay, Charleston, S. C.; Connie Rhodes, Fayetteville; Richard Ridgeway, South Boston, Va.; Esther Roberson, William-son; Edwin Robinson, Vanceboro; Catherine Rogers, Wilmington; Nancy Rosser, Whitakers.

*Fourth row:*

Mary Safrit, Mount Gilead; Christine Shearin, Enfield; Melvin Smiley, Macon; William Smith, South Boston, Va.; Emma Sue Snell, Columbia; Elizabeth Spruill, Tarboro; Claude Stainback, Henderson.

# JUNIORS

*First row:*

Clarke Stokes, Hertford; Emma Strange, Louisburg; Martha Ann Stroud, Louisburg; Reginald Styron, Davis; Robert Summerlin, Rocky Mount; Naomi Swain, Plymouth; Laura Swindell, Oriental.

*Second row:*

Ava Taylor, Faison; Louis Tetterton, Aurora; Carl Tucker, South Boston, Va.; Marie Tyson, Vass; Frances Vaughan, Dolphin, Va.; Sallie Frances Weaver, Sanford; Mary Catherine Webb, Mebane.

*Third row:*

Marion Weeks, Stella; Elizabeth Westbrook, Raleigh; Thomas Wheeler, Durham; Grace Whitehurst, Conetoe; Muriel Whitehurst, South Mills; Edith Whitt, Roxboro; Sarah Wilder, Louisburg.

*Fourth row:*

Ada Williams, Swanquarter; Ira Williams, Durham; Katherine Williams, Arapahoe; Frances Williamson, Bolton; Emily Winn, Henderson; Jessica Womack, Selma; Kingsley Wood, Washington.





Raymond Woodard, Spring Hope; Kathleen Wooten, Grifton; Jeanette Wrenn, Roxboro; Mary Frances Yarboro, Roxboro.



# Organizations

AS a sideline to the real fight, some students branch off into other activities than the big maneuver. Pleasure and profit is derived them, and some individuals are decorated for their extra service.





## MEN'S STUDENT GOVERNMENT

COUNCIL: Bill Spence, *President*; Willis Gupton, *Secretary*; James Featherston, John Maides, Hubert Owen, Reginald Syron, James Wooters.



## WOMEN'S STUDENT GOVERNMENT

COUNCIL: Marina Hawkins, *President*; Beatrice Lewis, *Vice President*; Louise Mason, *Secretary*; Lela Adams, *Treasurer*; Ruth Braswell, Myrtle Colley, Annie Lee Dorsett, Myrtle Harris, Ella Lewis, Mary Ramsey.





## Y. W. C. A.

Ruth Braswell, *President*; Jessie Mary Wilson, *Secretary*; Kate Davis, *Treasurer*; Lela Adams, Annie Sue Barnett, Peggy Brooks, Myrle Colley, Emma Dell Dark, Myrtle Harris, Gaynelle Jordan, Hilda Kilpatrick, Beatrice Lewis, Louise Mason, Jean McKinnon, Brooksie Meekins, Jane Grey Sanderlin, Gean Sasser, Frances Terrell, Shirley Thompson, Dorothy Watson, Oleta Odum, Pauline Litchfield, Marina Ann Hawkins, Nina Ruth Kirkpatrick.



## Y. M. C. A.

Edwin Robinson, *President*; Troy Barrett, *Vice President*; Steve Parrott, *Secretary-Treasurer*; H. T. Huff, Norwood Jones, Albert Smoak, Fred Vaughan, Wilbur Payne, Bill Spence, Dan McFarland, Jimmy Wooters.

# Honorary

## PHI THETA KAPPA

Dr. Amick, *Adviser*; Gupton, *President*; Thompson, *Vice President*; Braswell, *Recording Secretary*; Davis, *Corresponding Secretary*; Smith, *Treasurer*; Bailey, Barrett, Corwin, Cox, Hawkins, Harris, Helms, Hux, Ipock, McFarland, Massenburg, Pace, Phillips, Rowe, Spivey, Stroud, Strowd, Whitehurst.



## ALPHA PI EPSILON

Mrs. Kilby, *Adviser*; Turner, *President*; Lewis, *Secretary*; Jordan, *Treasurer*; Barrett, Brooks, Cannon, Caudle, Davis, Gaines, Hancock, Ingram, Jones, Manning, Massenburg, Roberson, Shearin, Styron, Vandilford, Weaver.



## BETA PHI GAMMA

Bailey, *President*; Bass, Davis, Gentry, Gupton, Ipock, Lewis, Massenburg, Watson.



# Fraternities



Phi Theta Kappa, an honorary scholastic fraternity for Liberal Arts students, bears the same importance in a junior college as Phi Beta Kappa in a senior college. The Gamma Upsilon Chapter at Louisburg College was organized in 1939 under the sponsorship of Dr. Thomas C. Amick. Through its activities and requirements for membership Phi Theta Kappa seeks to promote scholarship, to develop character, and to cultivate fellowship among the members. At present there are twenty-two members in the Louisburg chapter.

Alpha Pi Epsilon is a national honorary secretarial fraternity. The Lambda Chapter at Louisburg College is the first chapter of the fraternity formed in the State of North Carolina. This chapter was formed in 1933 under the sponsorship of Mrs. V. R. Kilby and has been an active campus organization since that time. Membership in Alpha Pi Epsilon is based upon high scholarship, pleasing personality, and good character. At present there are nineteen members in the Louisburg chapter.



Beta Phi Gamma is a journalistic fraternity affiliated with Alpha Phi Gamma, national co-educational journalistic fraternity. The Louisburg College Rho Chapter was organized, with five charter members, on January 15, 1940, by Mr. Edward V. Peele, at that time head of the English Department. Members are chosen for their work with the college newspaper, the annual, and the publicity department of the college, with consideration to scholastic standing. The purpose of the organization is to recognize individual ability and achievement in journalistic pursuits in Louisburg College; to serve and promote the welfare of the college through journalism; and to unite in a fraternity, students interested in journalism. At present the Rho Chapter has nine members.





## INTERNATIONAL RELATIONS CLUB

Mr. Hancock, *Advisor*; McFarland, *President*; Barrett, *Vice President*; Strowd, *Secretary-Treasurer*; McKinnon, *Business Manager*; Adams, Cannon, Corwin, Dark, Davis, Foy, Handley, Helms, Hinton, Johnston, Lewis, Litchfield, Maides, Payne, Phillips, Rowe, Sanderlin, Thompson, Watson, Westbrook.



## DRAMATIC CLUB

Dot Hopson, *President*; Gean Sasser, *Vice President*; Gay Jordan, *Secretary*; Annie Lee Dorsett, *Business Manager*; Adams, Allord, Bailey, Barnette, Barnette, Barrett, Boone, Brawsell, Cherry, Colley, Cutchin, Dark, Elliott, Faulkner, Featherston, Gaines, Gaddy, Gentry, Gupton, Harris, Harris, Helms, Hodges, Holleman, Huff, Johnston, Jones, Lewis, Lewis, Litchfield, Long, Massenbug, McFarland, McKinnon, Norris, Parrott, Payne, Phillips, Ramsay, Rowe, Sanderlin, Stallings, Stokes, Swindell, Terrell, Tetterton, Thompson, Weaver, Westbrook, Whitehurst, Wilson.



## CHRISTIAN SERVICE CLUB

Rowe, *President*; Braswell, *Vice President*; Cannon, *Secretary*; Aldridge, Barrett, Caviness, Corwin, Dixon, Faulkner, Foy, Helms, Lewis, Litchfield, Maides, Merritt, Payne, Sanderlin, Smith, Swindell, Watson.



## A CAPPELLA CHOIR

Mr. Byerly, *Director*; Davis, *President*; Payne, *Business Manager*; Alston, *Secretary*; Alford, Andrews, Boone, Cade, Cherry, Cox, Dark, Harris, Hodges, Jeffreys, Johnson, Jones, Jones, Lancaster, Litchfield, McFarland, Massenbourg, Meekins, Newton, Norris, Owens, Powers, Sanderlin, Sasser, Smith, Snell, Winn, Wilson.

# COLUMNS

*Columns*, begun in the fall of 1941, is a publication under the supervision of the journalism class of Louisburg College. During this first year it has sought to provide a source of campus enjoyment, to furnish a medium of student expression, to offer an opportunity for practice in journalistic writing, and to lead campus thought.

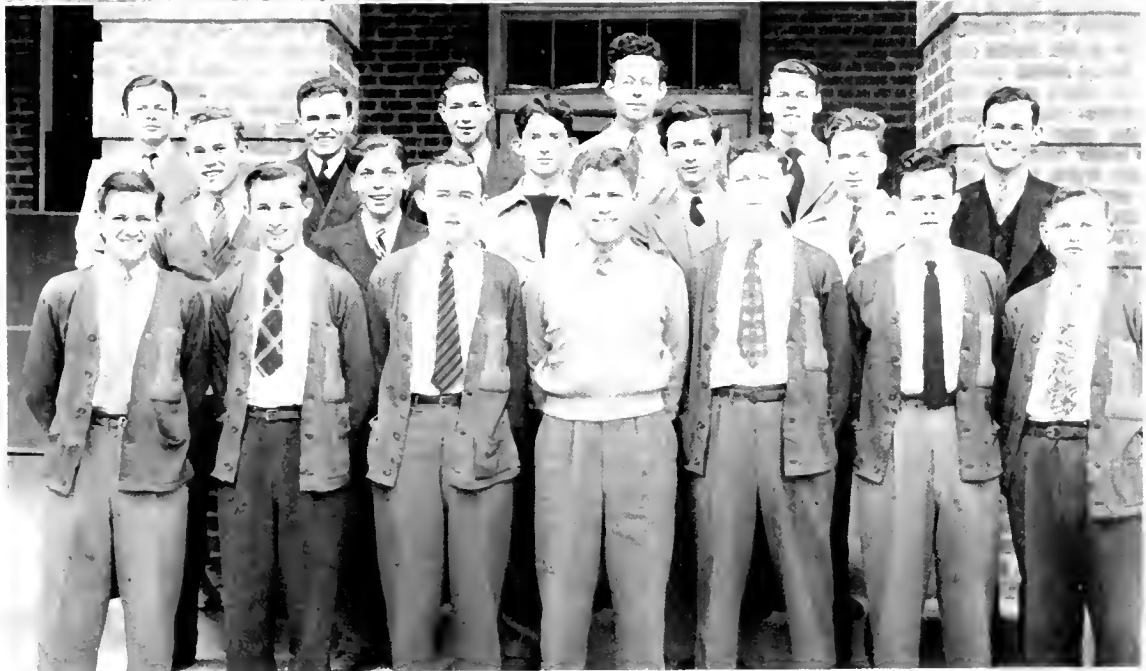
*Staff members* (rotated during the year): Clarence Bass, Sarah Davis, Wesley Gentry, Marian Lewis, Laura Swindell, Frances Terrell, Dorothy Watson.



## HOME ECONOMICS CLUB

Alston, Colley, Deanes, Dennis, Harris, Harris, Hinton, Horton, Lewis, Lewis, Litchfield, McKinnon, Meekins, Murphy, Odum, Phillips, Taylor, Wiggins, Willson.

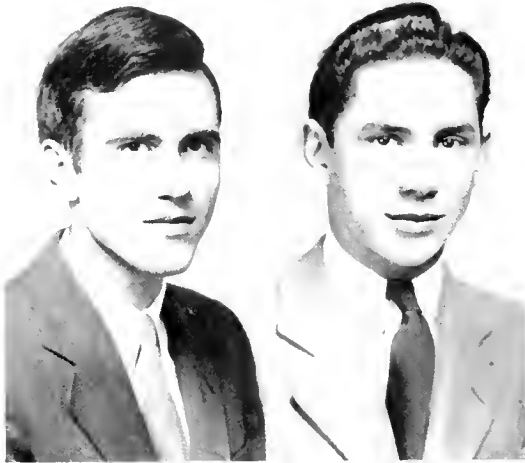
# GIRL'S ATHLETIC ASSOCIATION



# BOY'S MONOGRAM CLUB

*First row:* Wooters, Wheeler, Pace, Lancaster, Bell, Robinson, Williams. *Second row:* Hardwick, Owen, Featherston, Parrott, Brittain. *Coach:* Cameton. *Third row:* Nichols, Barrett, Perry, Smith, Stokes.





ROY BAILEY  
*Editor*

WILLIS GIPTON  
*Business Manager*

# The Oak

SARAH DAVIS . . . . . *Literary Editor*  
 SUE MARGARET HARRIS, *Assistant Literary Editor*  
 ELLA LEWIS . . . . . *Feature Editor*  
 MCNEIL IPOCK . . . . . *Junior Editor*  
 JIMMY WOOTERS . . . . . *Sports Editor*  
 TROY BARRETT . . . . . *Photographic Editor*  
 IRA HELMS . . . . . *Assistant Business Manager*  
 STREET KORNEGAY . . . . . *Typist*

This year, 1912, the new volume of THE OAK adopts a new theme—one rising from new circumstances in today's world. Our yearbook reflects the tenor of our times, the prevalent feeling of today—the wondering and uncertainty about the future. But even this uncertainty and transition we deem worthy to record, for it is the senior year that life has brought to us—a year that may prove epochal in our lives and in human history. In future years some volume of THE OAK will, we are confident, show a newer world—an era of progress and of peace.





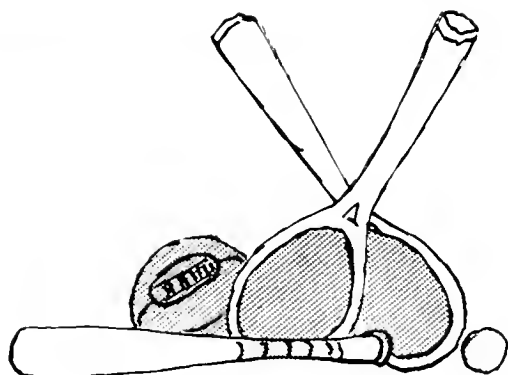
# Athletics

*Let's Go Trojans*

## CHEER LEADERS



Shirley Lancaster, Troy Barrett, Gertrude Fearing, Carolyn Massey, Steve Parrott, Jennie C. Alston.



We are proud of our Louisburg athletics. We like the sport-manship, the way the players play, the way they hold their heads high when the going gets tough; better still we like the characteristic way in which they conduct themselves off the field. Both boys and girls cultivate something more than just the skills of the game.

The girls' physical education is a varied and interesting intramural program. The classes are not just classes but are the backbone for tournaments, which are held in their seasons. There the girls learn added appreciation of other games that they watch from the side lines.

In the boys' intramurals the side lines add color to all our games. How the cheers go up as those Trojans of Louisburg go ahead in the closing minutes! Everybody just about goes wild, and that wad of gum—well, no centrifuge can decompose rubber any quicker. That gum is just chewed to nothing. The spirit makes everyone forget everything else but the game. Who can help getting behind a Louisburg team?—no matter whether it's winning or losing, we want to, for our teams have that unyielding fight that turns defeat into victory regardless of score boards.

Something else we like about our teams is that every boy or girl who goes out for a sport does so for the pure love of a game, nothing else. This motive gives the players and the students behind the players something inspiring. This feeling embedded deep within is the drive behind our athletics. So then, come on Trojans! on to victory!



*Coach CAMERON*



*Coach CRISP*





*First row: Owen, Lancaster, Nichols, Wheeler, Robinson, Hardwick, Williams. Second row: Coach Cameron, Brittain, Perry, Stokes, Wooters, Featherston.*

## BASKETBALL



# Girl's



**GIRL'S  
VARSITY  
BASKETBALL**



**TENNIS  
TEAM**



**VOLLEY  
BALL**

# Athletics



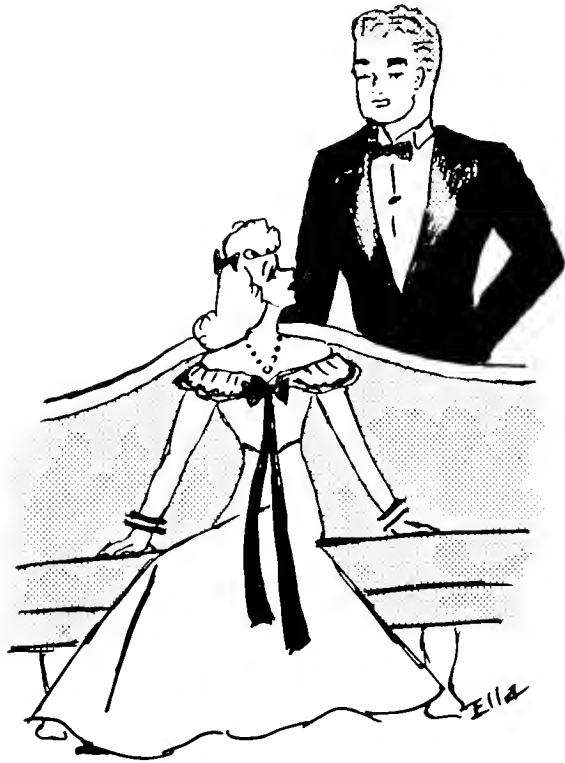
# BASEBALL



*First row: Jones, Hooper, Chase, Vaughan, Griffin, Griffin, Lancaster, Hooper. Second row: Corwin, Gaskill, Fagan, Bell, Coach Cameron, Huff, Barrett, Pollard.*

# Features

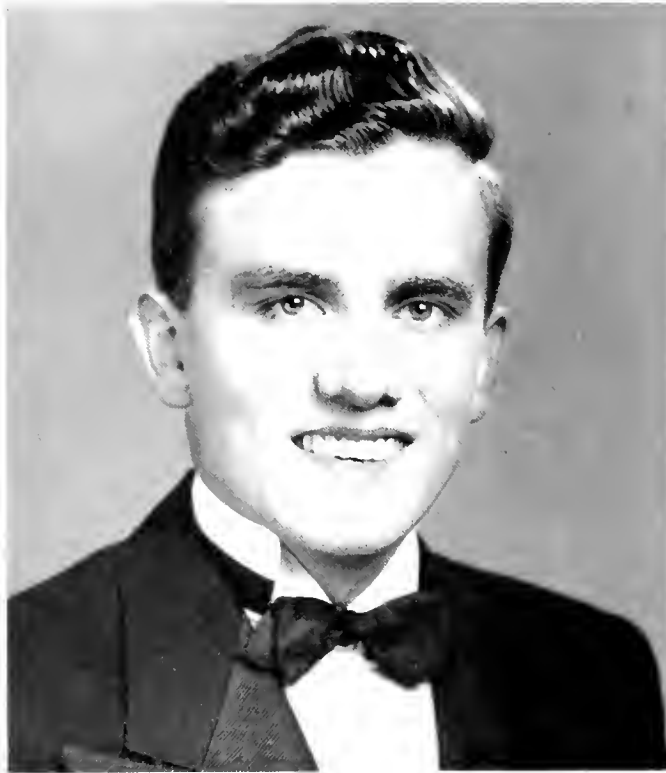
AMONG those participating in the maneuvers of college life, some scented extra territory and were cited for military honors and decorated by their fellow fighters. Their achievements are in varied fields, and their fellow privates decided which ones to reward.





*Ideal Student*

SARAH DAVIS



*Most Versatile*

TROY BARRETT



*Best Liked Boy*

WILLIS GUPTON



*Best Liked Girl*

LELA ADAMS





*Most Original*

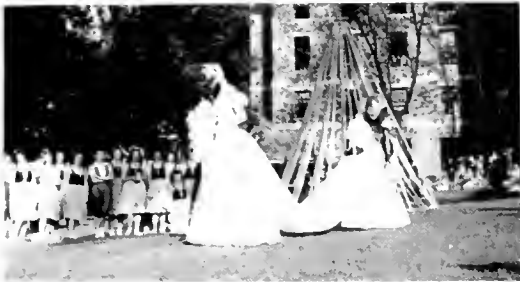
ELLA LEWIS



*Most Talented*

NANCY HAYES

# MAY DAY



# COURT



# Advertisements

# LOUISBURG COLLEGE

*A Standard Junior College for Young Men and Women  
of the  
North Carolina Methodist Conference*

Accredited by  
The State Department of Education  
North Carolina College Conference  
University of North Carolina

Member of American Association of Junior Colleges

**Offering Two Years Terminal Courses in  
COMMERCE AND HOME MAKING**

and

Course Leading to Degrees in Senior Colleges in  
AGRICULTURE, DENTISTRY, COMMERCE, ENGINEERING, HOME  
ECONOMICS, LIBERAL ARTS, MEDICAL SECRETARY, MEDICAL  
TECHNOLOGY, NURSING AND SCIENCE.

A Labor Scholarship of \$60 Granted to Those Who Desire it.

All kinds of student activities, intramural athletics,  
close personal direction and supervision of each indi-  
vidual student, superior spiritual atmosphere, health-  
ful climate, moderate rates.

For Details, Write:

**LOUISBURG COLLEGE : Louisburg, N. C.**

# LOUISBURG, N. C.

... IS ...

## RICH IN HISTORY, HEALTH, AND HOSPITALITY

---

There is not a more ideal place of residence in the world for a student than Louisburg. There exists here at all times an atmosphere of quiet, culture, and refinement, that encourages study and accomplishment. The material needs of every student can be purchased in Louisburg at most reasonable prices; therefore it is an economic and otherwise desirable home for students.

***Louisburg Sincerely Welcomes Everyone  
At All Times***

---

TOWN OF LOUISBURG

W. C. WEBB, Mayor

BEST WISHES

---

*Your Downtown Meeting Place*

---

BODDIE DRUG STORE

---

WHITE'S  
Ice Cream

■

"There IS a difference"



# FIRST-CITIZENS BANK & TRUST CO.

LOUISBURG, NORTH CAROLINA

**COMPLETE BANKING SERVICE**

Member of F. D. I. C.

*The Home of Better Values*

## LEGGETT'S Department Store

Louisburg, N. C.

Phone 3531

—  
“The South’s Leading  
Distributors of  
Reliable Merchandise”

## BROGDEN PRODUCE COMPANY

—  
*Wholesale*

**FRUIT and PRODUCE**

—  
409-415 West Martin Street

RALEIGH, N. C.

Local Phone 2-0567

Long Distance 901

*Compliments of*

## GEORGE MARSH CO.

WHOLESALE GROCERS

Raleigh, N. C.

*Fancy Canned Goods, Dried Fruits, etc.  
Bloomsbury and Oxford Brands  
Canned Vegetables*

## SEVEN OAKS DAIRY

P. G. and M. G. SMITH, Props.

“Quality and Service”

PHONE 419-8

*Compliments of*

***“A Smart Shop for Smart Women”***

# THE FASHION SHOPPE



*Always First with the Smartest*

**ROSE'S 5-10-25c STORE**

*Quality : Service  
Low Price*

105 Stores to Serve You

R. W. Smithwick, Local Manager

**Aydlett Products Co.**

Manufacturers of  
**DELICIOUS POTATO CHIPS**  
and  
**SALTED PEANUTS**  
Elizabeth City, N. C.

**M. STUART DAVIS**

—  
**Architect**  
—

LOUISBURG, N. C.

*Compliments of*

**“WIMPY”**

**FRANKIE, ROLAND, GLEN,  
JAMES, POPCORN**

*and*

**LOUISBURG THEATRE**

---

**MOON'S BILLIARD PARLOR**

**SOFE DRINKS, SANDWICHES, AND BILLIARDS**

*“Student's Recreation Center”*

NEXT TO ARMORY

LOUISBURG, N. C.

---

**H. R. CHESSON CANDY COMPANY**

*Well Known Energy Food Our Specialty*

**Fresh Clean Merchandise**

DR. HERBERT G. PERRY

PHYSICIAN AND SURGEON

Office Phone 287-1

Residence 287-2

*Trade With*  
**G. W. MURPHY & SON**  
*Louisburg's Complete  
Food Market*

EVERYTHING TO EAT  
Phones 254-1 and 255-1

**CITY BARBER SHOP**

We Serve College and  
Community Alike

*"It Pays to Look Well"*

# Capital Printing Co.

Printers of College Publications



PHONE 8315

110 West Hargett Street  
RALEIGH, NORTH CAROLINA

TEL.



357-1

**Fuller's Esso Service**

Opposite Post Office  
Louisburg, N. C.

**ONE STOP SERVICE**

**CORONA**

*The Original Personal  
Portable Typewriter*

**O. T. COLE**

133 S. Salisbury Street  
RALEIGH, N. C.

**CICERO'S**

*Soft Drinks      Hot Dogs*

*Hamburgers*

"The Student's Refreshing Center"

*Official Photographer  
for*

**THE OAK**

**SIDDELL STUDIO**

*Carolina's Portrait Photographers and  
Pioneer Photo-Finishers*

126½ Fayetteville Street  
RALEIGH, N. C.

**NOLAND COMPANY**

INCORPORATED

**PLUMBING, HEATING  
SUPPLIES**

**SHOW ROOM**

206 S. West Street, Raleigh, N. C.

Phone 5521

Compliments of

**C. A. WORKMAN**

RALEIGH, N. C.

Phone



## BUILDERS DREAMS

VISIONS created by the imagination precede the achievement of any really great accomplishment. The ability to weave the threads of imagination into the finished fabric is equally important.

It has been the privilege of the EDWARDS & BROUGHTON COMPANY to cooperate with the staff in creating their vision into material form.

Such coöperation is one of the "visions" which precede the building of a successful business, and is a part of the working policy of the EDWARDS & BROUGHTON COMPANY.

To those Staffs desiring complete co-operation, we offer unexcelled service.

You, too, may be proud of your annual.

*Correspondence is Invited*

EDWARDS & BROUGHTON CO.  
RALEIGH, NORTH CAROLINA

## AUTOGRAPHS

## AUTOGRAPHS



## AUTOGRAPHS

## AUTOGRAPHS

## AUTOGRAPHS

## AUTOGRAPHS





THE SECRETARY OF THE ARMY  
WASHINGTON, D. C.  
COMPTROLLER OF THE ARMY  
WASHINGTON, D. C.

