



The Oak
1944

ARCHIVES
THE CECIL W. ROBBINS LIBRARY
LOUISBURG COLLEGE
LOUISBURG, N.C. 27549

THE CECIL W. ROBBINS LIBRARY
Louisburg College
Louisburg, N. C. 27549

The Oak

1944

THE DAY-BY-DAY STORY OF THE STUDENTS OF
LOUISBURG COLLEGE, LOUISBURG, NORTH CAROLINA

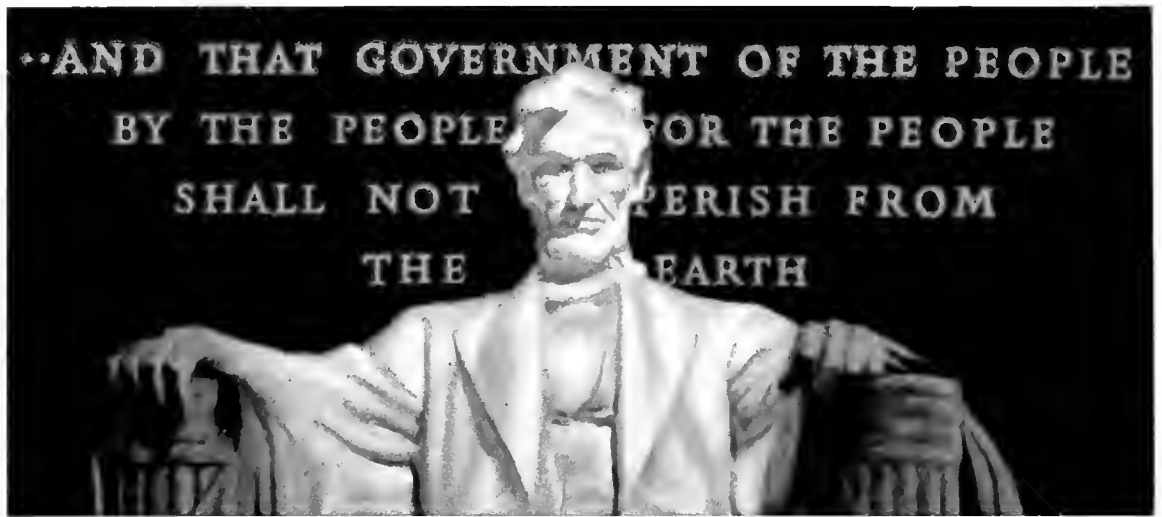
OSCAR FULLER
Editor (in U. S. Navy)

SHIRLEY SMITH
Literary Editor

LOIS ASBELL
Acting Editor

COLLEEN GILLIS
Business Manager





DEDICATION

To the students from Louisburg College who serve in the armed forces of our nation THE OAK of nineteen hundred forty-four is dedicated. "The world will little note, nor long remember, what we say here; but [we] can never forget what they did here. . . . The brave . . . living and dead, have consecrated [themselves] far above our poor power to add or detract." We honor those who render services so that freedom, justice, and right-living—

"Shall Not Perish From the Earth."

"[Some] took the khaki and the [blue],
Instead of cap and gown."

—Letts' "The Spires of Oxford."





“Yet all experience is an arch wherethrough gleams that untraveled world,
whose margin fades
Forever and forever when I move.”

—*Tennyson's "Ulysses."*



MAIN

"Stand, you stately columns!
 Let your glory ever
 increase;
 Let all who pass, your
 message read
 Of strength and love
 and peace."

Evelyn Smithwick's
 "Columns."

WRIGHT

"Oft in the stilly
 night,
 Ere S Lumber's
 chain has bound
 me,
 Fond Memory brings
 the light
 Of other days
 around me."

Thomas Moore's
 "Oft in the Stilly
 Night."

FRANKLIN

"But let my due feet never fail
 To walk the studious cloister's pale,"
 — *Milton's "H. Penseroso."*



Senior

IDEAL STUDENT

ANNIE LOUISE SHERLOCK



BEST SPORT

DOUGLAS BRYANT



MOST FRIENDLY

EDNA MOYE



Superlatives

BEST LIKED GIRL

LOIS ASBELL



BEST LIKED BOY

WILLIAM CORWIN



MOST ORIGINAL

BARBARA THORSON

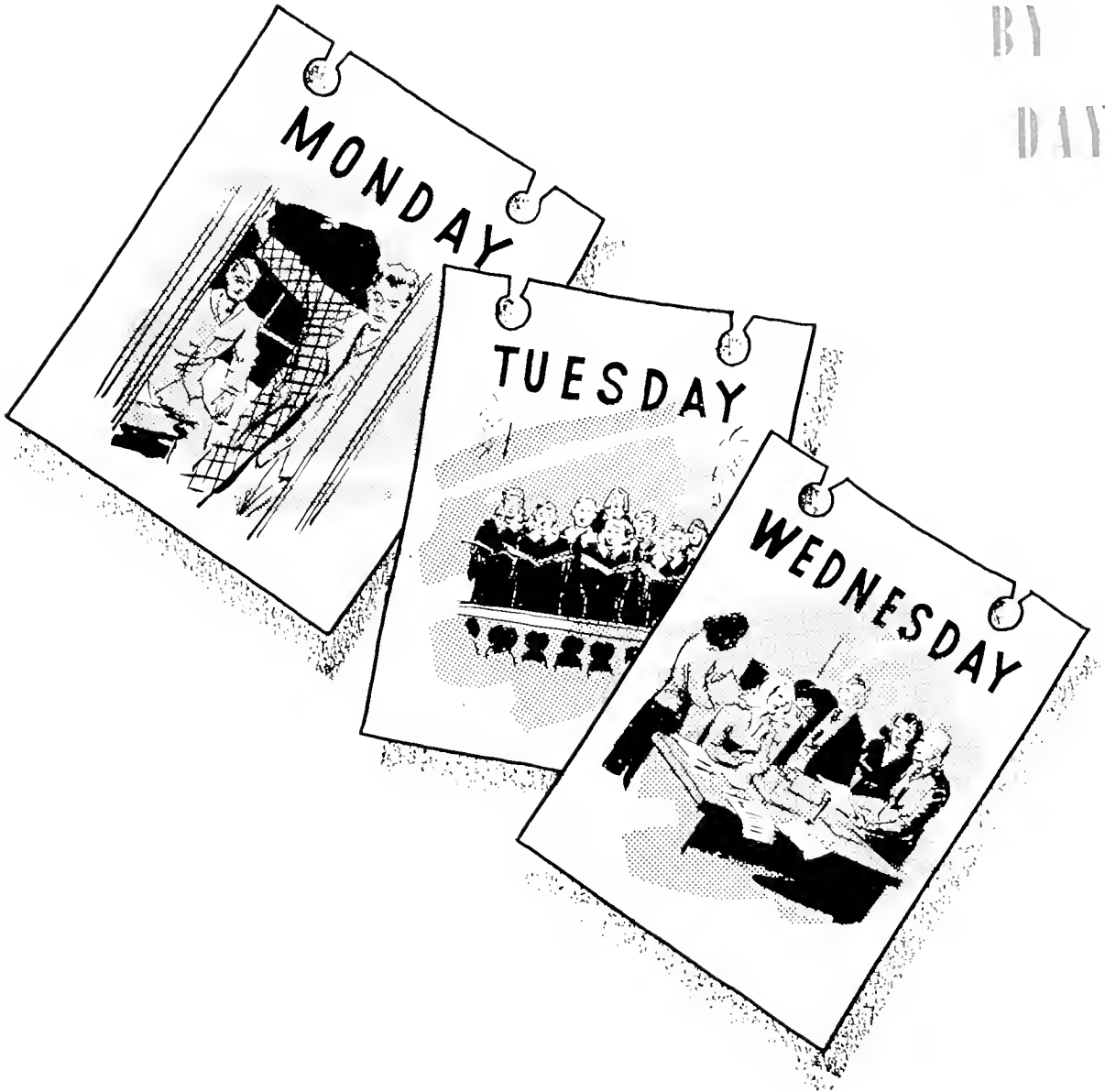


Louisburg

DAY

BY

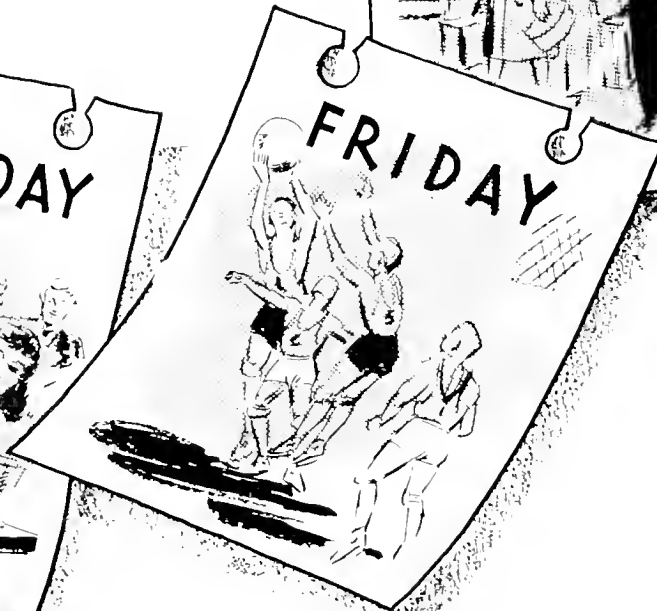
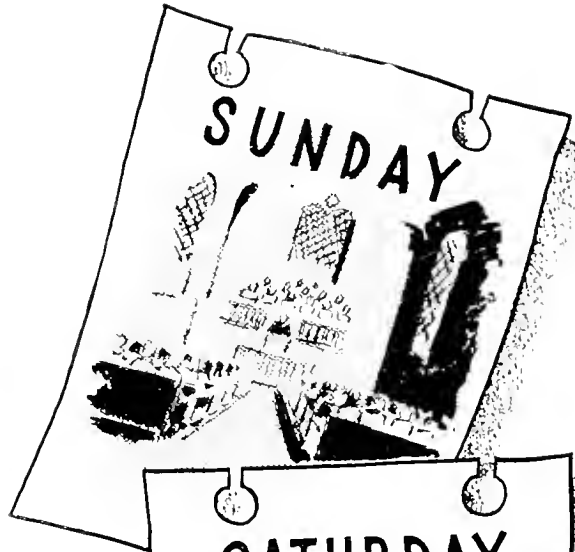
DAY

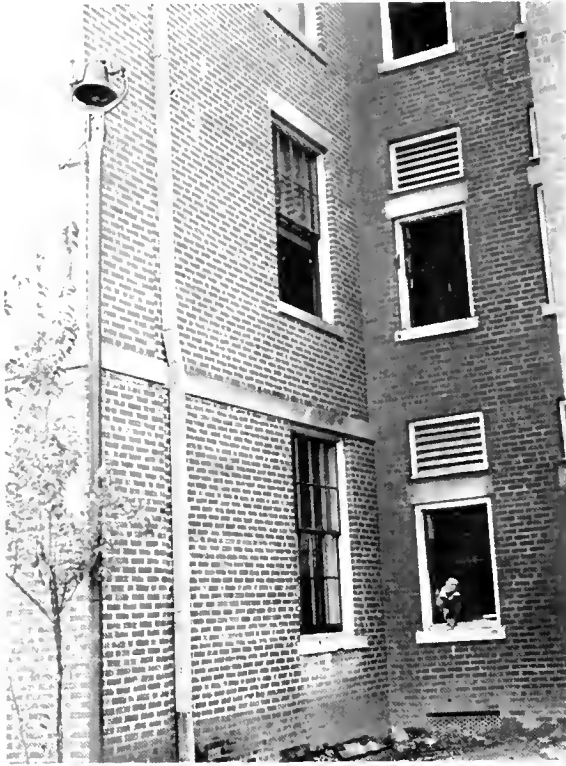


"The years go fast [in college].

The golden years and gay."

—*Letts*' "The Spires of Oxford."





Seven o'clock, Monday morning:
"Oh, for just one more hour's sleep!"
But there's no stopping Fred's bell.



COMES THE DAWN

IT'S MONDAY AGAIN



Thirty minutes later: a sleepy-eyed
huddle outside the dining hall -
An authentic picture of Monday
morning blues!

Just one last minute's glance at the
unprepared Monday lessons --
What becomes of those week-end hours
anyway?





Eleven o'clock is the dead line:
Then the English lit. class ready—
or present!
Is the quotation from *Beowulf* or
Browning?
Or could it be from Marlowe or
Milton?

Girls' phys. ed. class on the volleyball
court:
It's over the net!—but we didn't
return!
Oh, well, we'll try harder next time!



Here a bounce, there a bounce, every-
where a bounce!
These table-tennis champions deserve
their rank.



Beta Phi Gamma

Eight o'clock: This evening it's
a Beta Phi Gamma meeting—
initiation, then social hour.

There's nothing on this occasion
to suggest all those hours

On *Column* and *THE OAK*.



Mary Elizabeth Midyette, *President*; Ruth Pegram,
Secretary-Treasurer; Lois Asbell, Douglas Bryant,
Elizabeth Harris, Mary Lee Hodges, Joyce Meekins,
Mildred Parks, Shirley Smith, Barbara Thorson,
Charlotte Usher, Mary Strowd Ward, Robert Williford;
Associate Members: Miss Juan'ta Hurley, Miss Virginia
Peters.

Lights on after eleven
without cut
Breaking "Busy"
Undue noise

1 call down
1 call down
1 call down

Recognize these, girls?
Just a few of the Student Council's rules,
But they're some of the "musts"—
And not really so bad after all!

Woman's Student Council



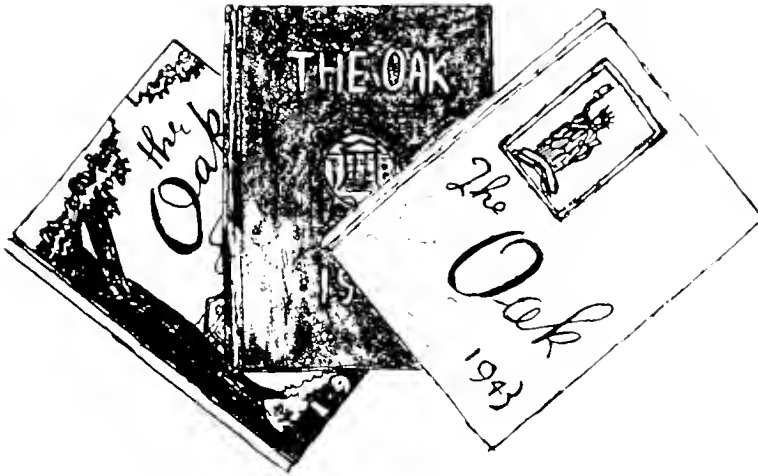
Sitting: Annic Louise Sherlock, *President*. *Standing, left to right*: Edna Moye,
Dorothy Harris, Mary Elizabeth Midyette, *Vice President*; Ruth Pegram, Agnes
Harris, *Secretary-Treasurer*.

TUESDAY

FINDS US UNDER WAY

Ten-thirty brings chapel hour.
What will it be?
A guest speaker? group sing? or faculty
speaker?
It's a part of college life,
And sometimes chapel is a real high light.





Where should the outlines for this picture go?
Should the superlatives be placed in the back?

Would that picture look better at a 15 angle?
Just a few questions that arise when the annual staff goes into action. A tradition we carry on.

Oak Staff



Lois Asbell, *Acting Editor*; Robert Earl Williford, *Junior Editor*; Shirley Smith, *Literary Editor*; Anne Whitehead, *Junior Literary Editor*; Colleen Gillis, *Business Manager*; Agnes Harris and Anne Goldston, *Advertising Managers*; Frances Spivey, *Feature Editor*, *Not pictured*; Oscar Fuller, *Editor (in absentia, U. S. Navy)*; Douglas Bryant, *Sports Editor (in absentia, U. S. Navy)*; Arnetta Joyner, *Art Editor*; Bob Brown, *Photographic Contributor*.

College Choir



OFFICERS: Vivian Creech, *President*; Colleen Gillis, *Vice-President*; Cornelia Bruome, *Secretary-Treasurer*.

Physical Education Club

Four o'clock Tuesday afternoon:
Time for glee club rehearsal!
"Do, re, mi, fa, so, la, te, do"—
Just tuning up!
But wait until the next concert.

Phys. Ed. Club: it's sponsored by Phys.
Ed. majors.

They're a lively group in various ways:
Sports, social affairs, May Day, and
what-have-you?

And Phys. Ed. Club is meeting tonight.



OFFICERS: Mary Goodwin, *President*; Doris Jean Rountree, *Vice-President*; Agnes Harris, *Secretary-Treasurer*.

Three cheers for the girls' bowling champion!
Though competition was keen, she came out victorious.
Requirements? Skill and love of a sport.



Not baseball! Not football!
It's Monogram Club initiation!!!
But kicking a ball surely looks easier
Than pushing a pecan around with one's nose!



The seven o'clock bell!
Now's the time for all students interested in drama to go to the Dramatic Club meeting.
Shall we give a comedy? or a tragedy from Shakespeare? or do we want to try a folk play?

Dramatic Club



OFFICERS: Colleen Gillis, *Acting President*; Talmadge Lancaster, *Acting Vice President*; Lois Asbell, *Secretary*; King Moore Willis, *Treasurer*. *Not pictured*: Eaton Holden, *President (in absentia, U. S. Army)*.

Phi Theta Kappa



MEMBERS: Oscar Fuller, *President (in absentia, U. S. Navy)*; Shirley Smith, *Acting President*; Barbara Thorson, *Acting Vice President*; Lois Asbell, *Recording Secretary*; Edna Moye, *Acting Corresponding Secretary*; Ruth Pegram, *Treasurer*; Fred Davis, W. S. Gardner, Anne Whitehurst, Marcelle King, Mary Strowd Ward, Mildred Parks, Marjorie Mann, Dorothy Kennedy, Elizabeth Harris, Charlotte Usher; Dr. Amick, *Sponsor*.

Phi Theta Kappa: national honorary scholastic fraternity.

It's not what the club does that especially counts,

But what had to be done for membership—

Because members are chosen for scholarship, citizenship, and social qualities.



WEDNESDAY

WE'RE HALFWAY THROUGH!

COLUMNS



Labor shortage!
But do the students mind?
They are doing their bit with rakes and
pitchforks,
And the leaves fly—
“Pestilence-stricken multitudes.”
These students make history for the
columns of *Columns*.

COLUMNS STAFF MEETING



What a hum of active
brains and hands!
They get tired, of course:
But ask them whether
they like it
And think the work
worthwhile:
Glue, scissors, ruler, lay-
out too!
“Front - page galley
proofs first!
Write add copy!
Get some ears!”
It's *Columns* staff at
work,
And the dummy's there.

STAFF: Eaton Holden, *Editor-in-Chief* (in absentia, U. S. Army); Mary Elizabeth Midyette, *Acting Editor-in-Chief*; Charlotte Usher, *Associate Editor*; Barbara Thorson, *Managing Editor*; Mildred Parks, *News Editor*; Marcelle King, Robert Williford, *Assistant News Editors*; Edna Moye, *Literary Editor*; Vivian Creech, Arnetta Joyner, *Feature Editors*; Elizabeth Harris, *Exchange Editor*; Lucy Lee Braxton, Fred Davis, *Sports Reporters*; Margaret Ann Hughes, Mary Frances Oakley, *Religious Reporters*; Virginia Ann Goldston, *Social Reporter*; Tilly Eakes, *Assistant Social Reporter*; Billy Lewis, Elizabeth Harris, *Business Managers*; Ruth Pegram, *Make-up Manager*; Mary Lee Hodges, Joyce Meekins, *Assistant Make-up Managers*; Bob Brown, *Photographic Manager*; Sarah Ball, Frances Merritt, Douglas Bryant, *Circulation Managers*; Daphne Winstead, Mary Strowd Ward, *Copy Readers*; Edmond Harrison, Anne Whitehead, *Proof Readers*; Marguerite Clement, Talmadge Lancaster, King Moore Willis, *Typists*.

Easy there! It's close!
Once more! 'Ray! a ringer!
You've guessed it: they're pitch-
ing horseshoes.



Ball 1, ball 2, it's a hit!
Who said girls couldn't play
softball?
Here's proof—our Girls' Soft-
ball Varsity.



Just daykeeping!
Here's our favorite who rings the
bell releasing us from those
long lectures—
Who announces telephone calls—
Who brings specials or news that
there's a visitor.

Commercial Club



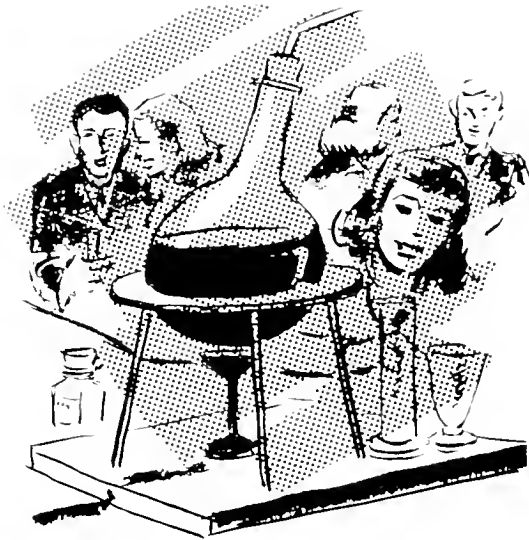
OFFICERS: (First semester), Jessica Womack, *President*; Virginia Floyd, *Vice President*; Eloise Leonard, *Secretary*; Annie Laurie Cowand, *Treasurer*. (Second semester), Dorothy Holder, *President*; Nancy Rollins, *Vice President*; Mildred Cox, *Secretary*; Jenny Warren, *Treasurer*; Mrs. Kilby, *Sponsor*.

The Commercial Club, sponsored by Alpha Pi Epsilon, meets. A commercial student?

Then probably a member who enjoys the club in its literary and social functions.

O-O-O-O, ice cream!



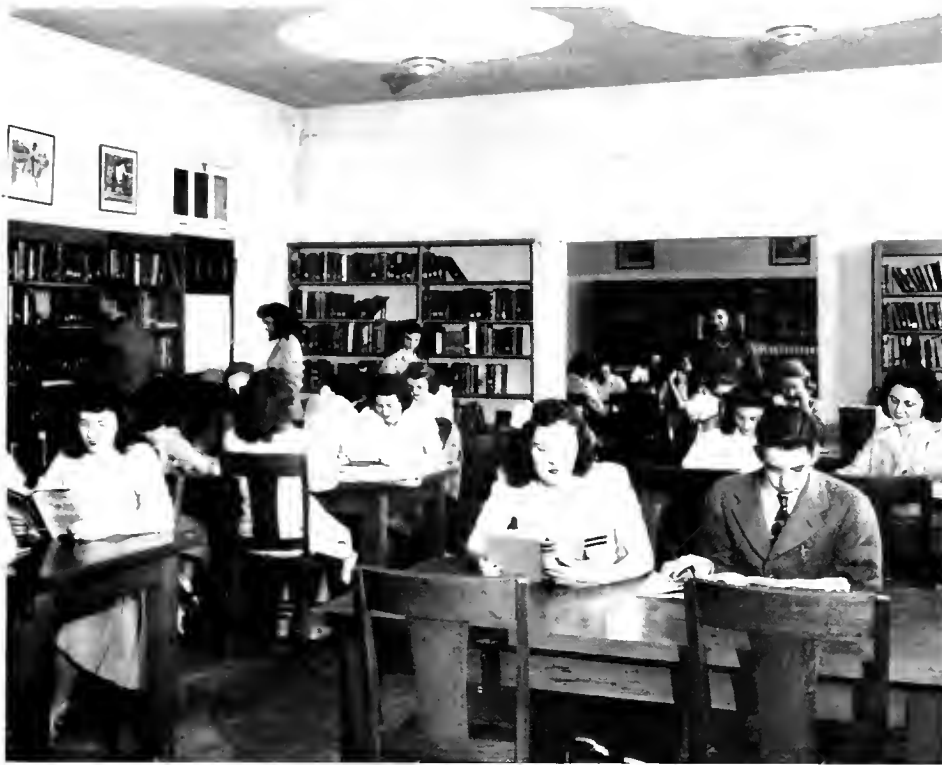


THURSDAY—AND ALL'S WELL

“Together: a, s, d, f, g, h, j, k, l;
Curve those fingers;
Work for control”—
It’s measureless miles beyond that old
hunt and peck.

Zoölogy laboratory:
Students are studying those little
animals that just aren’t there—
Without the microscope.





Current magazine? encyclopedias?
Fiction? Biography? essay? drama?
poetry?

In need of any of these?
Just a preview of what's to be found
in the library!

Ten-thirty bell! And that
little beehive across
from the postoffice
Solves the problem.

It's a bookstore, but it
means — i c e — cream,
candy bars, and drinks.



Central Religious Council



Fred Davis, Edmond Harrison, Mr. Kilby, Talmadge Lancaster, Josephine Lassiter, Joyce Meekins, Miss Merritt, Mary Elizabeth Midyette, Ruth Pegram, Miss Stipe, Anne Whitehead.

The Central Religious Council,

The one campus group that functions
regularly as a faculty-student group!
Theirs it is to sponsor any religious

activity needing sponsorship
And to seek to help other organizations
of the campus
To be of greater service.

“On your mark, get set, go!”

Track—a favorite sport
among the boys.

Run! fast!

Then leap! high!!

F o r a record - making
jump!!!



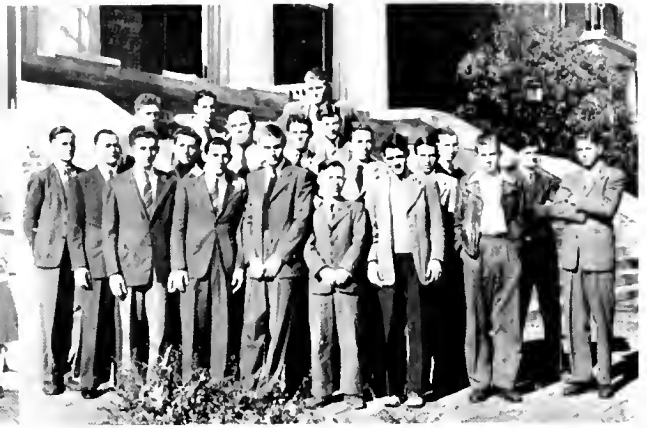
Y. W. C. A.



Ruth Pegram, *President*; Charlotte Usher, *Vice President*; Margaret Helms (first semester), Josephine Hight (second semester), *Secretary*; Molly Fearing (first semester), Cornelia Broome and Mary Chaney (second semester), *Treasurer*. **COMMITTEE CHAIRMEN:** Josephine Lassiter, *Worship Committee*; Joyce Meekins, *Community and Race Committee*; Lillie Mae Guplon, *World Fellowship Committee*; Vivian Creech, *Publicity Committee*; Ann Whitehead, *Membership and Meetings Committee*; Elizabeth White, *Music Committee*; Mary Strowd Ward, *Student Cultivation Committee*; Mary Goodwin, *Social Committee*.

Fred Davis, *President*; Harold Sherrill, *Vice President*; Robert Earl Williford, *Secretary*; Robert Guin, *Treasurer*. **COMMITTEE CHAIRMEN:** Edmond Harrison, *Worship Committee*; King Moore Willis, *World Fellowship and Race Relations Committee*; Talmadge Lancaster, *Publicity Committee*; Douglas Bryant, *Social Committee*.

Y. M. C. A.



Indian campfire, candlelight service,
 Five o'clock hot chocolate during exams,
 Christmas pageant, program on Chiangs
 of China, an out-of-town speaker, and
 the Valentine party—

Just a suggestion these are of the activi-
 ties of the Y.W.C.A.,

Shared, too, by the Y.M.

The Y.M.C.A. means help for body,
 mind, and spirit for the boys.

The number is small,

But their hundred per cent coöperation
 again and again in goals set

Make them surprisingly strong.

"Heart must be keener . . .

. . . as our band diminisheth."

"Wherefore art thou Romeo?"

"The play's the thing,"

As the Y's well knew at the Valen-
 tine party.

"The Courtin'," "An Old Sweet-
 heart of Mine,"

"Patterns," "How Do I Love
 Thee"—and more.

They're all romance, and all were
 there—

With Romeo and Juliet's balcony
 scene.



International Relations Club



OFFICERS: King Moore Willis, *President*; Margaret Ann Hughes, *Vice President*; Mary Lee Hodges, *Secretary-Treasurer*.

Presenting the I.R.C.! at a Friday evening meeting when Mr. Kilby is there, trying to keep himself out of the picture—
Maybe having double reactions, though, for the effort.

There sits the president declaring views from a made-up mind,
And there's the program chairman asking questions that show what numberless pages of reading can do
And starting after-meeting sessions.



FRIDAY

THE BEGINNING OF THE END



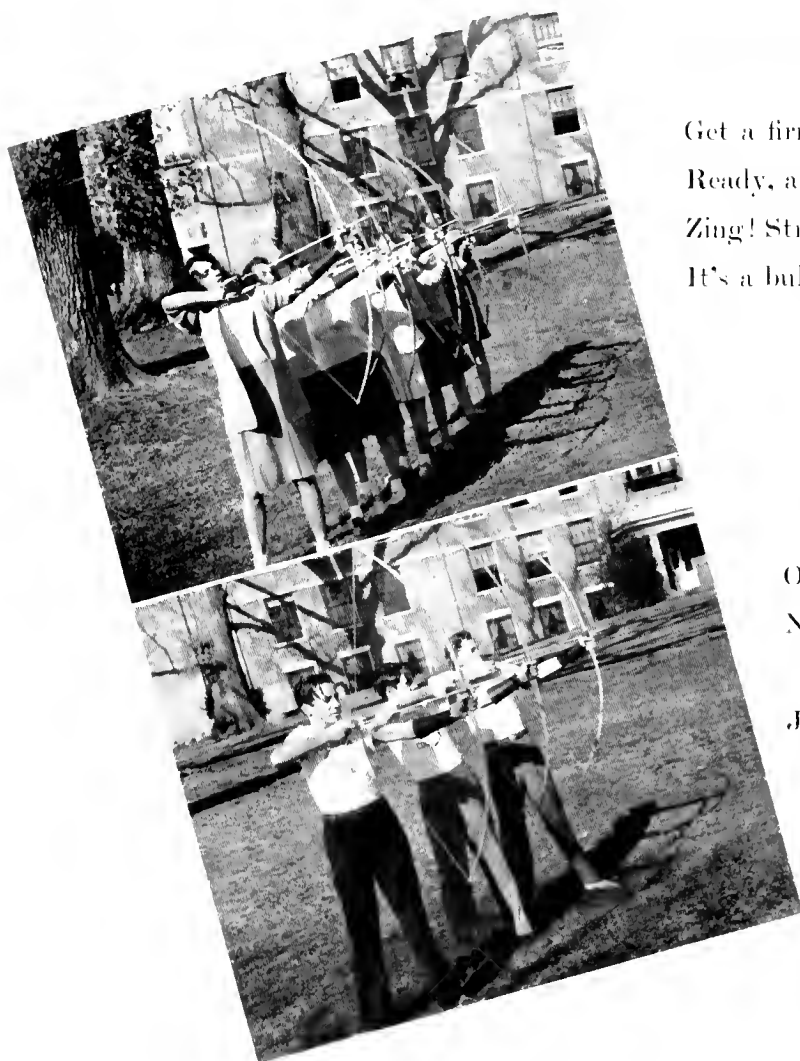
Three-fifteen: they're town bound.
First it's to Boddie's for a coke or a
milkshake;
Then off to see Wimpy's latest
show.

That goal-making is the crowning ambi-
tion of both teams.
But it takes good guarding too
And plenty of fast running.

Who'll prove victorious, the Purples or the
Golds?
And who's going to win the boys' game,
the Reds or the Blues?



Noontime at last!
And appetites that pay tribute to
menus!
Finally there's Miss Stipe's little
bell,
Followed by what?
"At four the Blue team will play
the Red team.
Come on out and yell for your side!"
"Don't forget the 'Y' meeting this
evening at seven.
Everybody come. There's an in-
teresting program in store."



Get a firm stance!
Ready, aim, shoot!
Zing! Straight flies the arrow.
It's a bull's eye!

Only the head towards, the target!
Now pull the string back to the
chin!
Just a few rules for improving
your archery techniques.



The monthly birthday dinner,
 One of our favorite events!
 Special menu; a seemingly endless
 variety of decorations:
 A celebration for all who're cele-
 brating birthdays this month!
 "Our birthday guests for this
 month": It's Miss Stipe introduc-
 ing them in her own original way.



The boys of Wright give a farewell
 dinner to
 One more of the boys
 Leaving to go into service.
 They're making the merrier now;
 a memory to be,
 Against the days that lie ahead.

Men's Student Council

This student
 government
 meeting:
 Not a court ses-
 sion, but a con-
 fession!
 It's a gentlemen's
 agreement that
 each do his
 part—or else—
 own up.
 Oh, yes, there're
 lapses now and
 then;
 But far more
 often there're
 harmonious liv-
 ing and *esprit*
de corps.



OFFICERS: Oscar Fuller, *President*; Douglas Bryant, *Vice President*; William Lewis, *Secretary-Treasurer*; Bob Brown, Fred Davis, Talmadge Lancaster, *Junior Members*. *Not pictured*: Bill Corwin, *Acting President*; King Moore Willis, *Acting Secretary-Treasurer*.



SATURDAY

OH, BOY!

A vine-covered wishing well,
An ideal little spot for reverie
And dreaming
And—well—wishful thinking!

Impatient glances in the direction from
which the bus must come
And all that luggage means this only:
Homeward bound for a week-end visit.



Alpha Pi Epsilon



Cheerio, Miss Crisp!



GIRLS' MONOGRAM CLUB



BOYS' MONOGRAM CLUB

OFFICERS (first semester), Barbara Thorson, *President*; Annie Louise Sherlock, *Secretary*; King Moore Willis, *Treasurer*; (second semester), Annie Louise Sherlock, *President*; Frances Spivey, *Vice President*; Patricia Tucker, *Secretary*; King Moore Willis, *Treasurer*; Mrs. Kilby, *Sponsor*.

MEMBERS: William Corwin, Beatrice Fuleher, Margaret Gooch, Mary Hudgins, Hope Price, Nannie Roberson, Nancy Rollins, Doris Suits, Louise Turner, Shirley Williams, Elva Young.

MEMBERS: Lucy Braton, Dorothy Casey, Mary Chaney, Dorothy Cotlran, Mary Goodwin, Lillie Mae Gup-ton, Mary Lee Hodges, Frances Merritt, Bettie Mintz, Doris Jean Rountree, Elva Spruill, Lois Spruill, Louise Spruill, Barbara Thorson.

MEMBERS: Gibson Strickland, Fred Davis, William Corwin. *Not pictured*: Douglas Bryant, *President*.

Alpha Pi Epsilon: national honorary secre-tarial fraternity.

Membership is based on scholarship, citi-zenship, and personality.

When Alpha Pi begins a task, whether it

It's true the Boys' Monogram Club existed before the Girls':

But the girls who have won those stiff five hundred points,

Yield nothing to the boys.

But setting examples that anyone could follow

be initiation, a party, sponsorship of the Commercial Club, or a homecoming banquet.

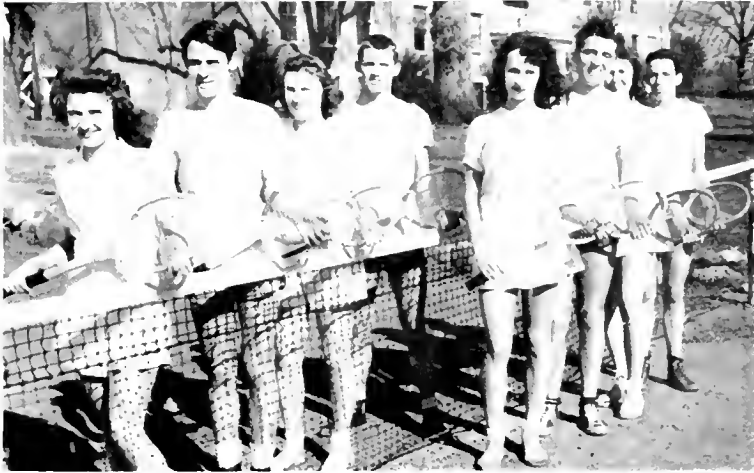
It is done—with real success
And much enjoyment.

Boys' Monogram Club:

Getting all those points would have seemed quite enough for membership,

But there was also that initiation day—and night.

(Those wearing the letter have survived it all.)



Ready? Serve!
Outside! Second!
An ace! backhand drive! deuce!
You've guessed it: a tennis game's on.

Ho hum! A Saturday in the infirmary!
Rows of beds, pink capsules, milk of
magnesia—
What a way to start a week-end!
But illness is no respecter of freedom for
fun.



ALMA MATER

(Tune: Haydn's "Austria")

Alma Mater, sheltering college,
Thou has been our guiding friend;
From thy fount of flowing knowledge
We would drink until the end.
Be thy children's inspiration,
Glowing light, to cheer and guide;
Stand, Old College, Alma Mater;
Through the changing years abide.

Greater love and veneration
Be thy portion, Mother dear;
May each coming generation
Bring rich gifts thy heart to cheer.
Till thy stalwart columns heavenward
Cease to point the way of life,
Stand, Old College, Alma Mater;
Through the changing years abide.
(Dedicated to Louisburg College by the class of 1915.)



We go to church.
It isn't wholly Sunday when we don't.
And it's a better Sunday when we do.



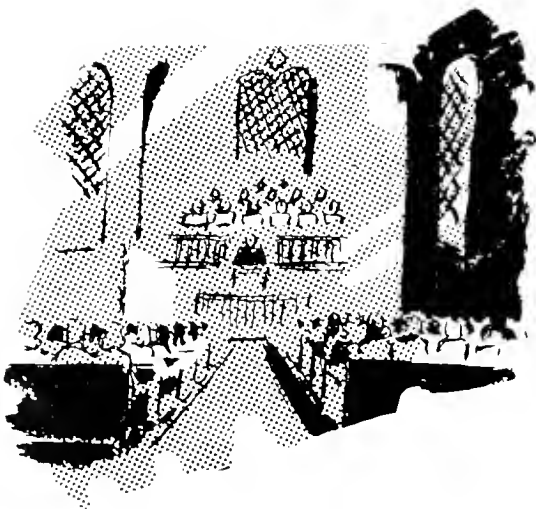
SUNDAY

AND

A

DIFFERENT

DAY





Co-leaders of the class: Mary Elizabeth Midyette and Fred Davis.

Sunday school, a co-ed religious group;
There's the student-led worship service,
then the class hour by Mr. Kilby.
Here views are broadened; and horizons,
lifted.



At nine o'clock at night the cell group
meets—
A faculty-student religious gathering,
spending quiet, prayerful times
And searching for the answer: "right"
or "wrong."



Walking to the farm—
It's a long hike, but who minds if it's to
gain points for a monogram?

Blue skies, sheltering trees, crisp breezes,
College friendships: these we will remember
on our Louisburg Campus.

Socializing hour: a favorite time of day,
Then students gather on the front steps,
Or stroll around the campus.

The social hall: as the name implies, the
center of social activities, a popular
campus rendezvous.

“When the moon lights up
Its dull red campfire through the trees,
And floats out, like a white balloon,
Into the blue cup of the night, borne by a
casual breeze. . . .”

—*John Gould Fletcher's*
“The Moon's Orchestra.”



“Upon the front, four lovely columns
Pointing straight into the sky,
Pointing upward to perfection—
A perfect symbol for the bold.”

—From “Ode to Louisburg.”

Written by a member of the class of 1942, who is
now in foreign service in the armed forces.

To these we owe thanks for many profitable WEEKS

ADMINISTRATION



DR. WALTER PATTEN, *President*
A.B., D.D., Wesleyan University
M.A., University of North Carolina

Founded four years after the close of the war for American independence, Louisburg College has lived through three wars and is dedicating itself to new tasks in the present one. Through varied labors of Dr. Patten and Mrs. Perry in two key positions of the college, yet greater heights in the educational field may lie ahead. We await the dawn when peace shall be restored, and youth again will have its opportunities for seeking knowledge and realizing developments.



MRS. GENEVIEVE P. PERRY, *Treasurer*
Louisburg College; Columbia College;
Bowling Green University

BOARD OF TRUSTEES

REVEREND W. A. CADE *President*
MR. E. H. MALONE *Secretary*
MRS. GENEVIEVE PERRY, *Acting Secretary*

Term Expires 1944

Reverend R. W. Bradshaw.....Greenville
Mr. Roscoe Foreman.....Elizabeth City
Mr. J. W. Jenkins.....Henderson
Mrs. Floyd Johnson.....Whiteville
Reverend W. V. McRae.....West Durham
Reverend H. E. Spence.....Durham
Mrs. W. C. Chadwick.....New Bern
Reverend M. W. Lawrence.....Mount Gilad

Term Expires 1945

Reverend A. P. Brantley.....Elizabeth City
Dr. James E. Hillman.....Raleigh
Mrs. George H. Hutaff.....Wilmington
Mrs. T. A. Person.....Greenville
Mr. T. B. Upchurch, Jr.....Raeford
Dr. E. W. Knight.....Chapel Hill
Mrs. M. G. Mann.....Raleigh
Mr. J. W. Hensdale.....Fayetteville

Term Expires 1946

Reverend W. A. Cade, Chairman....Goldshoro
Mr. Fred Fearing.....Elizabeth City
Mr. E. H. Malone.....Louisburg
Reverend Leon Russell.....New Bern
Mr. D. U. Sandlin.....Fayetteville
Mr. A. L. Burney.....Aberdeen
Mr. M. B. Smith.....Burlington
Mr. Nathan Johnson.....Dunn
Mrs. Tom Cooper.....Rocky Mount



Faculty

THOMAS CICERO AMICK, *Mathematics*.
 I.I., George Peabody College; A.B.,
 M.A., University of North Carolina;
 Ph.D., Central University; University of
 Chicago; University of Virginia.

MERIEL MARTIN BAGBY, *French*. A.B.,
 Georgetown College; M.A., George Pea-
 body College for Teachers; University of
 Michigan.

MARJORIE CRISP, *Director of Physical
 Education*. B.S., Appalachian State
 Teachers College; George Peabody College
 for Teachers.

STELLA H. CULPEPPER, *Nurse*. R.N.,
 Bellevue Hospital, New York.

EDWARD HILL DAVIS, *Bible*. A.B., Duke
 University.

FANNIE ROSA HARMON, *Science*. A.B.,
 M.A., University of Illinois; University
 of Minnesota; University of Virginia;
 Randolph-Macor Woman's College.

FORREST D. HEDDEN, *Minister, Louisburg
 Methodist Church*. A.B., Florida South-
 ern College; B.D., Duke University.

JULIA BROWN HUDGINS, *Commercial
 Science*. Louisburg College; B.S.,
 Woman's College of the University of
 North Carolina.

HELEN JONES JERNIGAN, *Piano*. Southern
 Conservatory of Music; Columbia Uni-
 versity.

MARGARET BOYDEN KILBY, *Commercial
 Science*. A.B., Asbury College; M.A.,
 University of Kentucky; George Peabody
 College for Teachers; Miami Business Col-
 lege; Columbia University; Blanton's
 Business College.

V. ROBERT KILBY, *Social Science*. A.B.,
 Asbury College; M.A., George Peabody
 College for Teachers; University of Ken-
 tucky; Columbia University.

VIVIAN McCALL, *Commercial Science*.
B.S., Woman's College of the University
of North Carolina.

RUTH WILLARD MERRITT, *English*. Lit-
tleton College; A.B., Duke University;
M.A., Scarritt College.

LARRYN GODBOLD MIZELL, *English and
Dramatic Art*. A.B., Alabama College;
M.A., University of North Carolina; Uni-
versity of Pennsylvania.

ISAAC DEANE MOON, *Music and Psy-
chology*. A.B., Asbury College; B.Mus.,
Asbury College; A.M., University of
Kentucky; Pupil, Frank A. Power,
Herbert Miller, Herman Devries, Dan
Beddow; Bowling Green Business Uni-
versity.

NELLIE TIPTON MOON, *Home Economics*.
A.B., University of Wichita; College of
Emporia; Kansas State Agricultural Col-
lege; Wichita Business College.

JEANNE OWEN, *Commercial Science*. B.S.,
Woman's College of the University of
North Carolina.

VIRGINIA PETERS, *Dictitian*. B.S., Berea
College.

LILA MAE STIPE, *Dean of Women*. A.B.,
Salem College; University of North
Carolina; Columbia University.

LOUISE TURNER, *Secretary to the Presi-
dent*. Louisburg College.

ELSA CRAIG YARBOROUGH, *Librarian*. A.B.,
University of North Carolina; A.B. in
L.S., University of North Carolina.

Faculty



SENIOR CLASS

LOIS ASBELL, Belvidere
poised, dependable, artistic

THE OAK 2, Acting Editor; Phi Theta Kappa 1, 2, Secretary 2; Dramatic Club 1, 2, Secretary 2; Beta Phi Gamma 2; Athletic Association 1, 2; Y.W.C.A. 1, 2; Choir 1; I.R.C. 1; May Court 2.

CELIA BARRETT, Roxboro
Arlington, neat, industrious

Women's Student Government 2, Secretary; Y.W.C.A. 1, 2; *Columns* 2, Typist; Commercial Club 2; Dramatic Club 1; Cell Group 1.

DOUGLAS BRYANT, Stedman
athletic, popular, deserving

Men's Student Government 2, Vice President; Monogram Club 1, 2, President 2; *Columns* 2, Circulation Manager; THE OAK 2, Sports Editor; Y.M.C.A. 1, 2; Beta Phi Gamma 2; Science Club 1.

MARGUERITE CLEMENT, Oxford
hardworking, athletic, obliging

Y.W.C.A. 1, 2; Athletic Association 1, 2; *Columns* 2, Typist; Commercial Club 2.

WILLIAM CORWIN, Ahsokic
happy-go-lucky, jovial, talkative

Men's Student Government 2, President; Y.M.C.A. 1, 2, Secretary-Treasurer 1; Monogram Club 2; Alpha Pi Epsilon 2; Acting Class Secretary 2.

ANNIE LAURIE COWARD, Powellsville
dramatic, gentle, steady

Y.W.C.A. 1, 2; Athletic Association 1, 2; Commercial Club 2, Treasurer; Dramatic Club 1, 2; Science Club 1.

OSCAR FULLER, Louisburg
Navy, ambitious, gentlemanly

Men's Student Government 2, President; THE OAK, Editor (*in absentia*) 2; Phi Theta Kappa 1, 2, President 2; Y.M.C.A. 1, 2; Athletic Association 1, 2; Monogram Club 2.

COLLEEN GILLIS, Raleigh
sociable, good-humored, unusual

Dramatic Club 1, 2, President 2; THE OAK 2, Business Manager; Choir 1, 2, Vice President 2; Class Secretary 2; Athletic Association 1, 2; Physical Education Club 2; Y.W.C.A. 2; May Court 2.

We Louisburg seniors of 1943-44 for two years have been fighting little battles—battles in quest of knowledge, of *savoir faire*, and of preparation for worthy living and service. Now our pathway is shadowed by a bigger battle, engulfing the whole world. We here dedicate ourselves "to the great task remaining before us"—that in the future all nations "shall have a new birth of freedom."



SENIOR CLASS



VIRGINIA ANNE GOLDSTON, Goldston
generous-natured, considerate, striking
THE OAK 2, Adv. Mgr.; *Columns* 2, Soc. Ed.;
Class V, Pres. 2; Dram. Club 2; Sc. Club 1;
Ath. Asso. 1, 2; Y.W.C.A. 1, 2; May Court 2.

AGNES HARRIS, Oxford
sterling, courteous, restrained
Women's S. C. 2; Y.W.C.A. 1, 2; Ath. Ass.
1, 2; Phys. Ed. Club 2; Monogram Club 2;
THE OAK 2, Advertising Manager.

ELIZABETH HARRIS, Norfolk, Va.
versatile, independent, moody
Y.W.C.A. 1, 2; Ath. Ass. 1, 2; Monogram
Club 1, 2; B Φ F 2; *Columns* 1, 2, Social
Reporter 1, Exchange Editor and Acting
Business Manager 2; Φ Θ K 2; I.R.C. 1, 2;
Dramatic Club 2; Choir 1, 2; May Court 2.

JOSEPHINE LASSITER, Four Oaks
changeable, musical, petite
Y.W.C.A. 1, 2; Ath. Ass. 1, 2; Dramatic Club
2; Central Religious Council 2; Choir 1, 2.

BILLY LEWIS, Hobgood
Navy, likable, reserved
Men's Student Council 2, Sec.-Treas.; Class
Treas. 2; Y.M.C.A. 1, 2; I.R.C. 2; *Columns*
2, Bus. Mgr.; THE OAK 2, Photographic Ed.
(in absentia).

MARY ELIZABETH MIDYETTE, Middleton
conscientious, sincere, radiant
Women's Student Council 2, V. Pres.; Y.W.
C.A. 1, 2; Ath. Ass. 1, 2; *Columns*, Assistant
Make-up Mgr. 1, Acting Ed. 2; B Φ Γ 1, 2,
Pres. 2; I.R.C. 1, 2; Dramatic Club 1, 2;
Central Relig. Council 2; Cell Group 1, 2.

EDNA MOYE, Goldsboro
painstaking, ingenuous, charming
Women's Student Council 1, 2; Y.W.C.A.
1, 2; Ath. Ass. 1, 2; *Columns* 2, Literary Ed.;
Φ Θ K 2, Cor. Sec.; Choir 1, 2; May Queen 2.

IDA MARIE PARKER, Eure
quiet, helpful, persevering
Y.W.C.A. 1, 2; Athletic Association 1, 2;
I.R.C. 2; Cell Group 1, 2.

RUTH PEGRAM, Winston-Salem
efficient, loyal, frank
W.S.C. 2; Y.W.C.A. 1, 2, Pres. 2; Ath. Ass.
1, 2; Phys. Ed. Club 2; Mono. Club 2;
Columns 1, 2, Sports Ed. 1, Make-up Mgr. 2;
Φ Θ K 2; B Φ K 1, 2, Sec.-Treas. 2; I.R.C. 2;
Relig. Council 2; Cell Group 1.

ANNIE LOUISE SHERLOCK, Elizabeth City
studious, capable, well-liked
W.S.C. 1, 2, Pres. 2; A H E 1, 2, Sec. 2,
Acting Pres. 2; Class Sec. 1; Y.W.C.A. 1, 2;
Ath. Ass. 1, 2; Com. Club 2; I.R.C. 1; May
Court 2.

SENIOR CLASS

SHIRLEY SMITH, Durham

intelligent, attractive, cultured

Phi Theta Kappa 1, President 2; Class President 2; Y.W.C.A. 1, 2; Athletic Association 1, 2; THE OAK 2, Literary Editor; Beta Phi Gamma 2; Dramatic Club 2; Science Club 1; Choir 1, 2; May Court 2.

FRANCES SPIVEY, Louisburg

vivacious, cute, magnetic

Alpha Pi Epsilon 2, Vice President; THE OAK 2, Feature Editor; Athletic Association 1; I.R.C. 1, Secretary.

BARBARA LOU THORSON, Elizabeth City

witty, creative, amiable

Alpha Pi Epsilon 1, 2, President 2; Phi Theta Kappa 2; Beta Phi Gamma 2; *Columns* 1, 2; Y.W.C.A. 1, 2; Athletic Association 1, 2.

PATRICIA TUCKER, Fentress, Va.

refined, trim, willing

W.C.U.N.C. 1; Y.W.C.A. 2; Athletic Association 2; Alpha Pi Epsilon 2, Acting Secretary; Commercial Club 2.

KING MOORE WILLIS, Sea Level

reliable, satisfied, "bookstore"

Men's Student Council 2, Secretary and Treasurer; Y.M.C.A. 1, 2; Athletic Association 1, 2; Alpha Pi Epsilon 1, 2, Treasurer 2; Commercial Club 2; I.R.C. 1, 2, President 2; Dramatic Club 2, Treasurer; *Columns* 2, Typist.

DAPHNE WINSTEAD, Elm City

accommodating, demure, different

Y.W.C.A. 1, 2; Athletic Association 1, 2; *Columns* 2; Commercial Club 2; I.R.C. 2; Dramatic Club 1, 2.

JESSICA WOMACK, Selma

sweet, reserved, wholesome

Y.W.C.A. 1, 2, 3, Pres. 2; Athletic Association 1, 2, 3; Women's Student Gov. 2; Commercial Club 3, Pres. I.R.C. 2; Dramatic Club 2; Central Religious Council 2.

KATHLEEN WOOTEN, Grifton

prankish, competent, thoughtful

Y.W.C.A. 1, 2, 3; Athletic Association 1, 2, 3; Commercial Club 3; I.R.C. 1, 2; Choir 3.

Not pictured:

DOROTHY HOLDER, Apex

mischievous, friendly, reserved

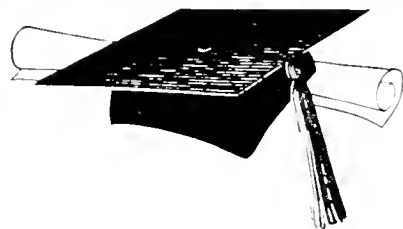
Y.W.C.A. 1, 2; Ath. Asso. 1, 2; Mono. 2; Com. Club 2.



EATON HOLDEN, Louisburg

Army, original, fun-loving

Class Pres. 1; *Columns* 1, 2, Bus. Mgr. 1, Ed. (*in absentia*, U. S. Army) 2; Φ Θ K 1, 2, Cor. Sec. 2; I.R.C. 1; B Θ F 1, 2; Dramatic Club 1, 2, Bus. Mgr. 1, Pres. (*in absentia*) 2; Winner of L. C. Scholarship 1.



Senior Class Officers



Shirley Smith, *President*; Anne Goldston, *Vice President*; Billy Lewis, *Treasurer*; Colleen Gillis, *Secretary*.

Junior Class Officers



Talmadge Lancaster, *Vice President*; Fred Davis, *President*; Elizabeth White, *Secretary*; Bob Brown, *Treasurer*.

JUNIOR CLASS

We are the juniors of 1943-1944. This year of college life at Louisburg has seen our disturbed world draw closer in upon us. Yet, hopefully, with eyes set upon the future, we "press toward the mark" of preparing ourselves to meet the demands of this changing world "dedicated . . . to the unfinished work which [others] have . . . so nobly advanced."

ROBERT ANDREWS, Louisburg

ZAIDA ARNOLD, Louisburg

CLARA LEE BAILEY, Durham



SARAH BALL, Burlington

MARGARET BARBOUR, Beaufort

SHIRLEY BARTHOLOMEW, Louisburg



EDWARD BOONE, Louisburg

DOVELLA BOWMAN, Liberty

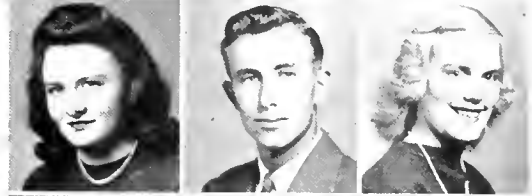
LUCY LEE BRANTON, Scotland Neck



CORNELIA BROOME, Aurora

BOB BROWN, Fayetteville

ALICE BULLOCK, Wilmington



SHIRLEY CARVER, Roxboro

DOROTHY CASEY, Dudley

KATHERINE CHAMPION, Fuquay Springs



MARY CHANEY, Roxboro

LENA CONYERS, Franklinton

DOROTHY COTHMAN, Rougemont



MILDRED COX, Ayden

VIVIAN CREECH, Smithfield

ALICE CURRIN, Oxford



JUNIOR CLASS



FRED DAVIS, Carthage
 HAZELEEN DAVIS, Louisburg
 BERNICE DIXON, Leasburg



MOHN DIXON, Elizabeth City
 TILLY FAKES, Varina
 FRANCES ANN EARLE, Louisburg



MARIE FAIRCLOTH, Chapel Hill
 MOLLIE FEARING, Mahteo
 WOODSON FEARING, Mahteo



VIRGINIA FLOYD, Ethier
 MARY FRANCES FOX, Liberty
 LYNWOOD FRAZIER, Virgilina, Va.



VERA FREEMAN, Louisburg
 MARY FRIZZELLE, Snow Hill
 BEATRICE FULCHER, Leasburg



W. S. GARDNER, Macon
 EVELYN ANNE GARRETT, Roxboro
 MARGARET GOOCH, Norlina



MARY GOODWIN, Edenton
 JANET GRIFFIN, Castalia
 ROBERT GUIN, Carthage



ELLEN GUNTER, Pittsboro
 LILLIE MAE GUPTON, Essex
 SARA AMERSON HAMMOND, Wilson

JUNIOR CLASS

JOSEPHINE HARDISON, Williamston
 DOROTHY HARRIS, Macon
 PRISCILLA HARRIS, Spring Hope



EDMOND HARRISON, Old Trap
 MARGARET HELMS, Wilmington
 JOSEPHINE HIGHT, Louisburg



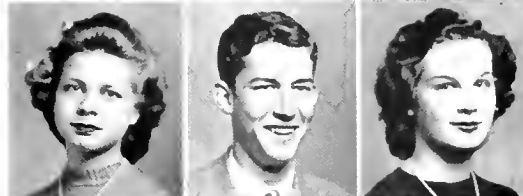
MELBA HILL, Lumberton
 MARY ELIZABETH HODGES, Washington
 MARY LEE HODGES, Belhaven



DWIGHT HOOPER, Stumpy Point
 MARY HUGGINS, Hobbsville
 MARGARET ANN HUGHES, Jackson



ARNETA JOYNER, Rocky Mount
 TOM KALE, Mcbane
 DOROTHY KENNEDY, Louisburg



MARCELLE KING, Fayetteville
 JEAN KIRBY, Roxboro
 DOROTHY LADD, Whitakers



TALMADGE LANCASTER, Lakedale
 ELOISE LEONARD, Castalia
 ERNESTINE MCFARLAND, Louisburg



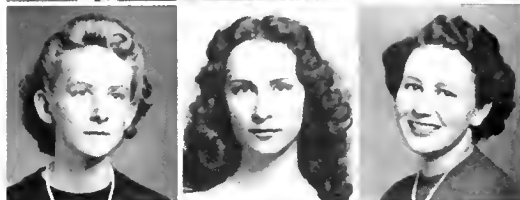
MARJORIE MANN, Pittsboro
 REBECCA MASHBURN, Star
 GRACE MATHIS, Durham



JUNIOR CLASS



HOYT MEDLIN, BUDD
 LOUISE MEDLIN, Castalia
 JOYCE MEEKINS, Norfolk, Va.



FRANCES MERRITT, Goldsboro
 BETTIE MINTZ, Wilmington
 ALLISON MOBLIN, Warrington



CAROLYN MOORE, Franklinton
 ANNA MAE MORTON, Knightdale
 EDNA EARLE NICHOLS, Washington



RENNIE NIXON, Norfolk, Va.
 MARY FRANCES OAKLEY, Morrisville
 LOUISE ODEN, Hatteras



SARTA OGLESBY, Morehead City
 MILDRED PARKS, Pittsboro
 EDGAR LEE PERRY, Louisburg



PAT PERRY, Goldsboro
 BETSY BLUE PERSON, Louisburg
 FRANCES POWELL, Vanceboro



W. S. POWERS, Lumberton
 HOPE PRICE, Mount Olive
 HERBERT REGAN, Lake Landing



JEANNETTE RICKS, Pantego
 NANNIE ROBERSON, Williamston
 NANCY ROLLINS, Durham

JUNIOR CLASS

DORIS JEAN ROUNTREE, Hobbsville
 FLORENCE SHEARIN, Louisburg
 MARIAM SHEARIN, Essex



HAROLD SHERRILL, Hickory
 AVALEE SIMMONS, Liberty
 MATTIE SNEAD, Garner



ELVA SPRULL, Oriental
 LOIS SPRULL, Oriental
 LOUISE SPRULL, Oriental



DORIS STRANGE, Louisburg
 GIBSON STRICKLAND, Durham
 PAULINE STRICKLAND, Louisburg



DORIS SUITS, Oak City
 MARGARET SUTTON, La Grange
 MARY LLOYD SUTTON, La Grange



WILBUR SUTTON, Newton Grove
 ELIZABETH TURNER, Elizabeth City
 CHARLOTTE USHER, Asheboro



ANNE WALLACE, Smithfield
 MARY STROWD WARD, Pittsboro
 JENNIE WARREN, Raeford



ELIZABETH WHITE, Holly Springs
 WILLIAM WHITE, Louisburg
 ANN WHITEHEAD, Enfield



JUNIOR CLASS



EARLINE WHITEHURST, Elizabeth City
MARGARET WILDER, Franklinton
ROBERT EARL WILLIFORD, Kelford

SHIRLEY WILLIAMS, Avon
LOLA WINDSOR, Dudley
HOBART WILSON, Spartanburg, S. C.

LEAH YANDLE, Jacksonville
ELVA YOUNG, Hallsboro
GEORGIA BASS, Middlesex

JUNE DENTON, Middlesex
GLORIA DEAN WILLIAMS, Louisburg

Not pictured: Doris Harris, Candor; Virginia Howard, Louisburg; Juanita Lewis, Louisburg; Virginia Taylor Stevenson, Garysburg.



Oscar Fuller, *Editor (in absentia, U. S. Navy)*; Lois Asbell, *Acting Editor*; Shirley Smith, *Literary Editor*; Colleen Gillis, *Business Manager*.

That's all folks!

We hope you like it!!!



LOUISBURG COLLEGE

A STANDARD JUNIOR COLLEGE FOR YOUNG MEN AND WOMEN
of the
NORTH CAROLINA METHODIST CONFERENCE

Accredited by

THE STATE DEPARTMENT OF EDUCATION
NORTH CAROLINA COLLEGE CONFERENCE
UNIVERSITY OF NORTH CAROLINA

OFFERING TWO YEARS TERMINAL COURSES IN
COMMERCE AND HOME MAKING

and

*Course Leading to Degrees in Senior Colleges, Agriculture, Dentistry,
Commerce, Engineering, Home Economics, Liberal Arts,
Medical Secretary, Medical Technology,
Nursing and Science.*

A Labor Scholarship of \$60 Granted to Those Who Desire it.

All Kinds of Student Activities, Intramural Athletics, Close Personal
Direction and Supervision of Each Individual Student, Superior
Spiritual Atmosphere, Healthful Climate,
Moderate Rates.

FOR DETAILS, WRITE:

LOUISBURG COLLEGE : Louisburg, N. C.

LOUISBURG, N. C.

... IS ...

**RICH IN HISTORY, HEALTH, AND
HOSPITALITY**



There is not a more ideal place of residence in the world for a student than Louisburg. There exists here at all times an atmosphere of quiet, culture, and refinement, that encourages study and accomplishment. The material needs of every student can be purchased in Louisburg at most reasonable prices; therefore it is an economic and otherwise desirable home for students.

**LOUISBURG SINCERELY WELCOMES EVERYONE
AT ALL TIMES**



TOWN OF LOUISBURG

W. C. WEBB, MAYOR

BEST WISHES



Your Downtown Meeting Place



BODDIE
DRUG STORE

FROM NOW UNTIL VICTORY THIS THEATRE'S
FIRST JOB IS THE SALE OF
WAR BONDS

SALES OF WAR BONDS THROUGH
JANUARY 31 — \$175,000



LOUISBURG THEATRE
"WIMPY AND THE GANG"

Compliments of
A SMART SHOP FOR SMART WOMEN

THE FASHION SHOPPE

"A Step Ahead in Styles

A Mile Ahead in Values"

FIRST-CITIZENS BANK & TRUST CO.
LOUISBURG, NORTH CAROLINA

Complete Banking Service

Member of Federal Deposit Insurance Corporation

H. R. CHESSON CANDY COMPANY
THE BEST IN CANDY, PEANUTS
AND SANDWICHES

LOUISBURG, NORTH CAROLINA

WHITE'S
ICE CREAM



"There IS a Difference"

DILLON SUPPLY CO.

RALEIGH : DURHAM

ROCKY MOUNT



INDUSTRIAL AND FARM MACHINERY

Wheless Sales Co.

Distributors

TEXACO - FIRESTONE

Phone 270-1

Noland Company

Incorporated

**PLUMBING, HEATING and
REFRIGERATION
SUPPLIES**

SHOW ROOM

206 South West Street

RALEIGH, N. C.

PHONE 5521

Trade With

G. W. Murphy & Son

LOUISBURG'S COMPLETE
FOOD MARKET

Everything to Eat

Phone 254-1 and 255-1

Rose's 5-10-25c Store

*Quality : Service
Low Price*

105 Stores to Serve You

R. W. SMITHWICK, *Local Manager*

THE HOME OF BETTER VALUES
Leggett's Department Store

Louisburg, North Carolina

PHONE 3531

*"The South's Leading Distributors
of Reliable Merchandise"*

BROGDEN
PRODUCE
COMPANY

•
FRESH FRUIT
and
PRODUCE

•
409-415 West Martin Street
RALEIGH, N. C.

Local Phone 2-0567
Long Distance 901

DR. HERBERT G. PERRY

•
PHYSICIAN
and
SURGEON

•
Office Phone 287-1

Residence 287-2

Everything for the School and College

Files : Desks : Chairs : Tables : Pens : Pencils : Inks
Mucilage : Gem Clips : Staples : Stapling Machines
Typewriter Ribbons : Carbon Paper : Duplicating Machines
Both Gelatin and Fluid Type : Binders : Indexes : Card Filing Boxes
Transfer Cases : Stenographers Note Books, Etc.

Capital Printing Co.

PRINTERS
FOR COLLEGE AND SCHOOL PAPERS
CATALOGS AND YEARBOOKS

DIAL 8316

110 WEST HARGETT STREET
RALEIGH, NORTH CAROLINA

MOON'S BILLIARD PARLOR

**SOFT DRINKS, SANDWICHES
AND BILLIARDS**

"Student's Recreation Center"

NEXT TO ARMORY : LOUISBURG, N. C.

Buy at the ESSO Sign
Telephone 357-1

Fullers Esso Service

"One Stop Service"

Opposite Postoffice : Louisburg, N. C.

OPA Tire Inspection Station No. 1

Compliments of

WHITE'S FUNERAL HOME

Louisburg, N. C.



DAY PHONE DIAL 301-1

NIGHT PHONE 215-1

MULLEN'S EXPERT SHOE REPAIRING

WORK DONE BY EXPERIENCED
CRAFTSMEN

We Appreciate Your Business

CICERO'S
SOFT DRINKS : HOT DOGS
HAMBURGERS



*"The Student's Refreshing
Center"*

Official Photographer for
THE OAK

SIDDELL STUDIO

Carolina's Portrait Photographers
and Pioneer Photo-Finishers

126½ Fayetteville Street
Raleigh, N. C.

Compliments of

**HOME
FURNITURE CO.**

Louisburg, N. C.

Phone 459-1

O. T. COLE

**L. C. SMITH and CORONA
TYPEWRITERS**

133 South Salisbury Street
Raleigh, N. C.

★ In a world perplexed with war those who have a firm belief in the power of right over might have the vision of the peace which is to come. The training of youth is therefore a major task.

*Congratulations to Louisburg College for its
splendid accomplishments.*

CAROLINA BAKING COMPANY

"Southern Bread and Cakes"

Compliments of
ECONOMY AUTO SUPPLY
Louisburg, N. C.

LOUISBURG SUPPLY CO.
J. B. TIMBERLAKE, JR., *President*
FEED : SEED : GENERAL SUPPLIES
LOUISBURG, N. C.

Tonkels Department Store
Shopping Center
Louisburg, N. C.

A. W. PERSON
Cotton Buyer
Louisburg, N. C.

Compliments of
Coca-Cola Bottling Co.
Coca-Cola

Compliments of
National Film Supply Co.
14 Glenwood Avenue
RALEIGH, N. C.

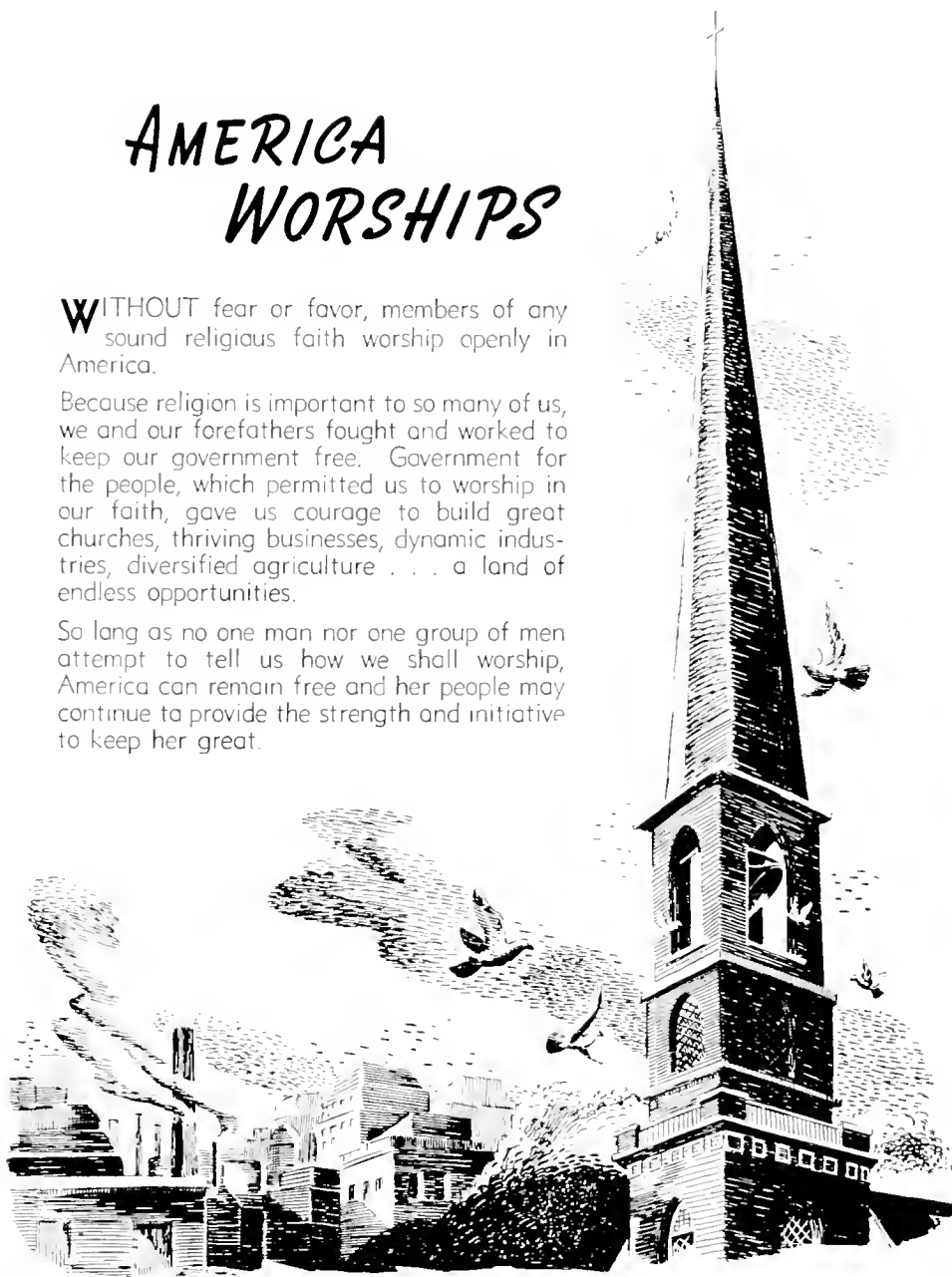
Compliments
of
A Friend

AMERICA WORSHIPS

WITHOUT fear or favor, members of any sound religious faith worship openly in America.

Because religion is important to so many of us, we and our forefathers fought and worked to keep our government free. Government for the people, which permitted us to worship in our faith, gave us courage to build great churches, thriving businesses, dynamic industries, diversified agriculture . . . a land of endless opportunities.

So long as no one man nor one group of men attempt to tell us how we shall worship, America can remain free and her people may continue to provide the strength and initiative to keep her great.



CAROLINA POWER & LIGHT COMPANY



CHARLOTTE ENGRAVING CO.

School Annual Engravers

Charlotte, North Carolina

BUILDERS DREAMS

VISIONS created by the imagination precede the achievement of any really great accomplishment. The ability to weave the threads of imagination into the finished fabric is equally important.

It has been the privilege of the EDWARDS & BROUGHTON COMPANY to cooperate with the staff in creating their vision into material form.

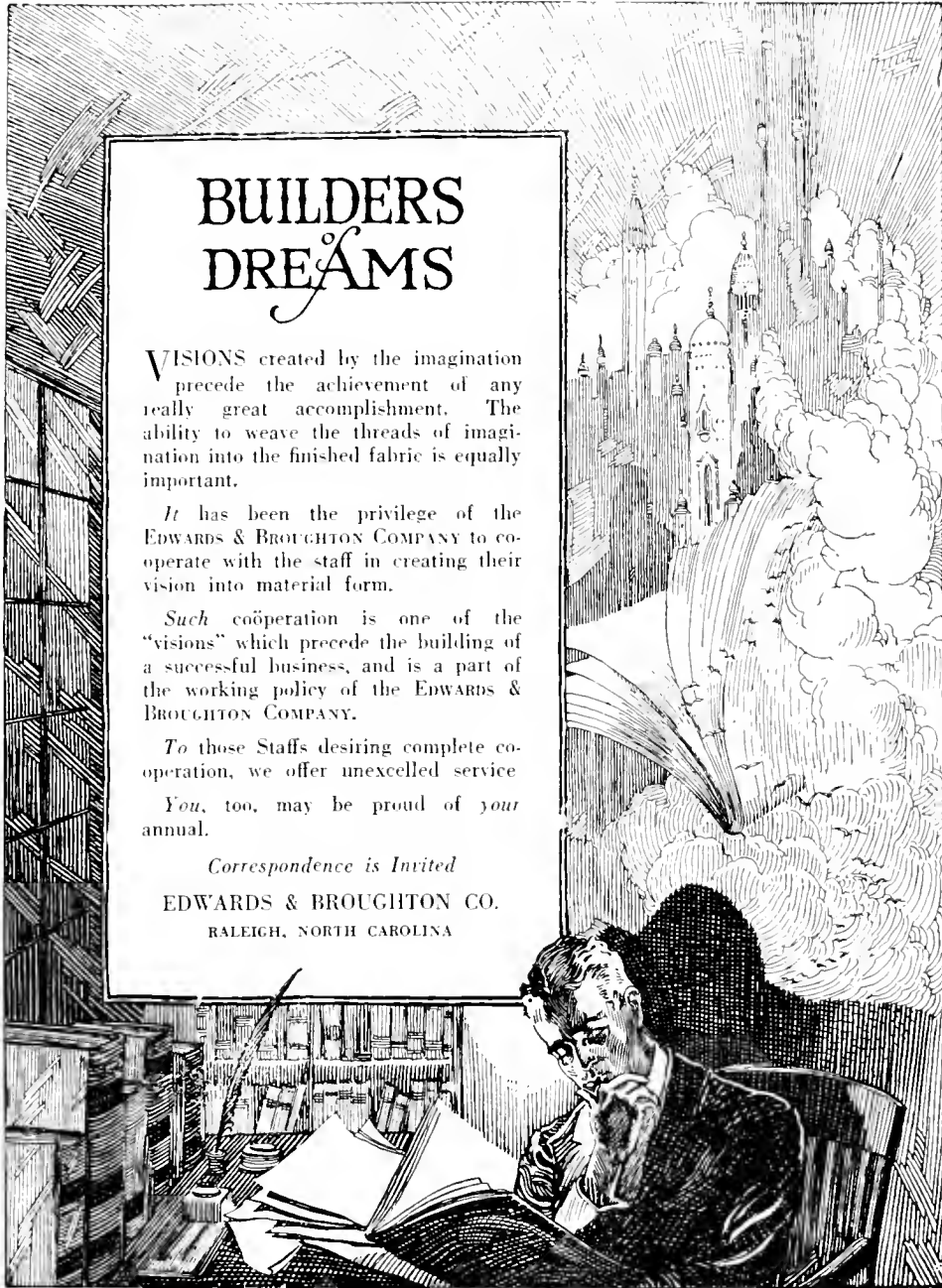
Such coöperation is one of the "visions" which precede the building of a successful business, and is a part of the working policy of the EDWARDS & BROUGHTON COMPANY.

To those Staffs desiring complete co-operation, we offer unexcelled service

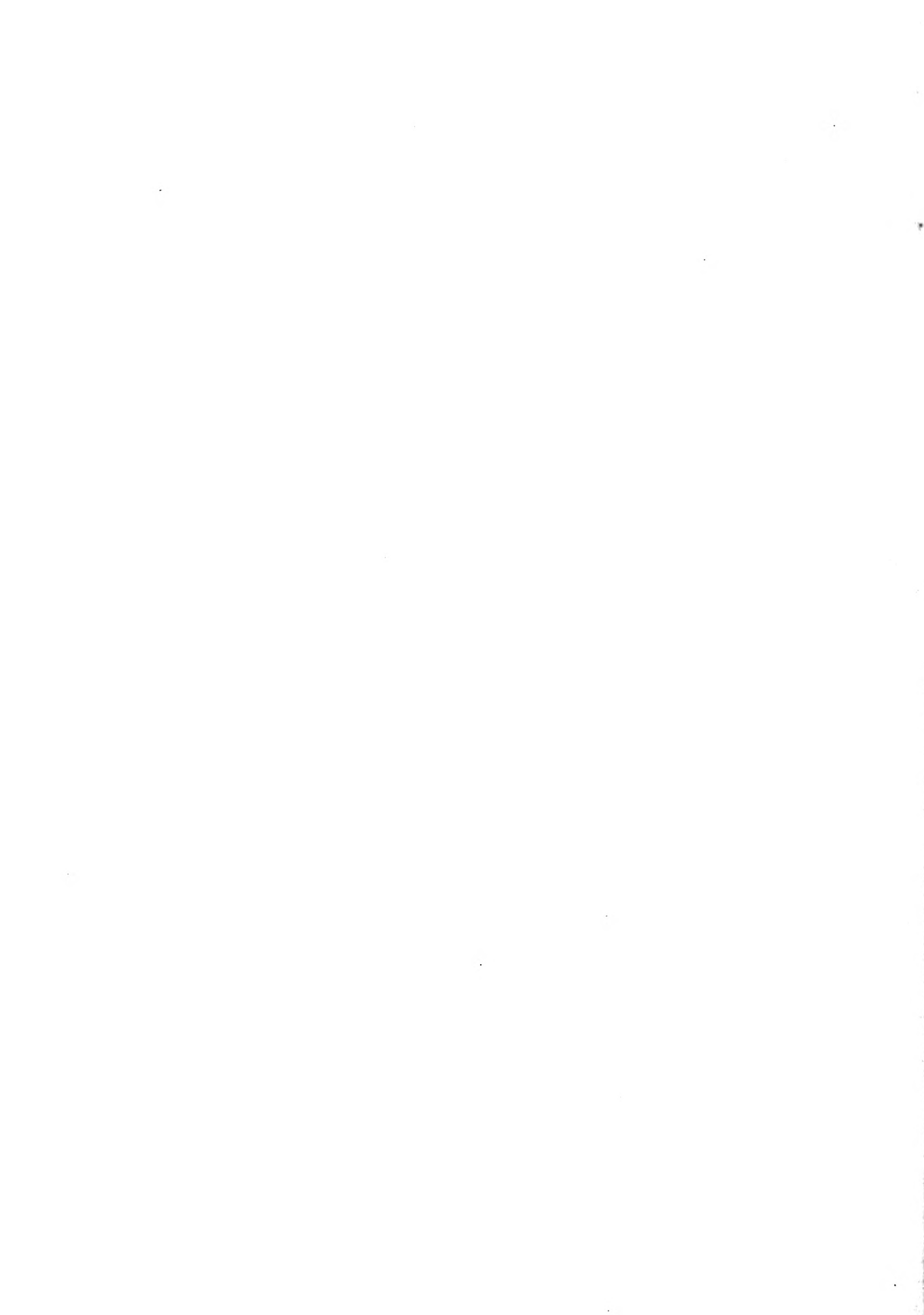
You, too, may be proud of your annual.

Correspondence is Invited

EDWARDS & BROUGHTON CO.
RALEIGH, NORTH CAROLINA



AUTOGRAPHS



THE CECIL W. ROBBINS LIBRARY
Louisburg College
Louisburg, N. C. 27549

