

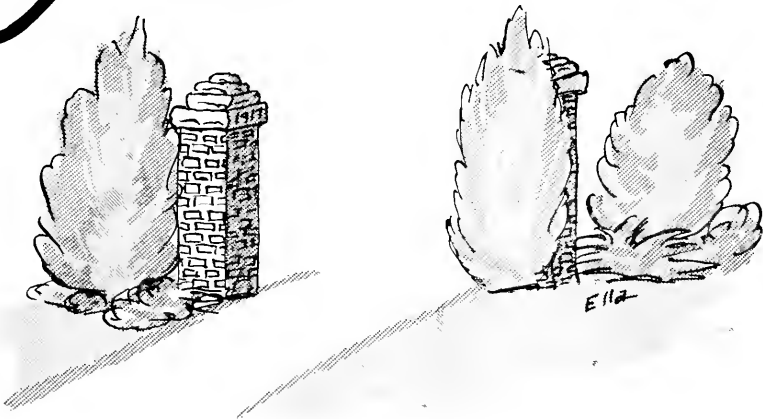
T
H
E
O
A
K



1 9 4 9

THE CECIL W. ROBBINS LIBRARY
Louisburg College
Louisburg, N. C. 27549

Presenting



The Oak 1949

Louisburg College
Louisburg, North Carolina





Daniel Wilbur Jones
Editor

Arthur H. Davis
Business Manager

Richard W. Griffin, III
Faculty Adviser

Foreword

THE OAK of 1949 is presented to you to serve as a reminder of your days here and to portray the college and student activities. We earnestly hope that it will serve now and in later years as a door through which you may enter to reminisce the experiences, the fun, and the life you have enjoyed at Louisburg.

CONTENTS

ADMINISTRATION AND FACULTY

CLASSES

ACTIVITIES

ATHLETICS

FEATURES

ADVERTISEMENTS

Dedication

Simplicity, humility, understanding—these words describe our beloved science teacher, Dr. Randolph. His dry wit and kindly humor always bring a smile or laugh to relieve the endless procession of chemical equations. In appreciation of his devotion to science, to education, to Louisburg College, and to humanity, we dedicate THE OAK for 1949 to DR. EDGAR EUGENE RANDOLPH.



EDGAR EUGENE RANDOLPH
A.B., M.A., Ph.D.



PRESIDENT SAMUEL M. HOLTON

Administration



LULA MAE STIPE
A.B.
Dean of Women



SCOTT BOYD
A.B., M.A.
Dean of Men



RUTH G. BOYD
Registrar



GENEVIEVE PERRY
Treasurer



AVRILLI KELLY MERRITT TARPEY I. MOON
 FOSTER N. MOON BLUMENFELD AMICK JOHNSON BOYD

Faculty

MIRIAM AVERITTE
 A.B., M.A.
Commercial Science

MARION A. KELLY
 A.B.
Commercial Science

RUTH W. MERRITT
 A.B., M.A.
English

BETTY W. TARPEY
 A.B., M.A.
English

ISSAC D. MOON
 A.B., B.Mus., M.A.
Fine Arts

SARAH E. FOSTER
 B.M.
Fine Arts

NELLIE T. MOON
 A.B.
Fine Arts

ANNA BLUMENFELD
 Ph.D.
Foreign Languages

THOMAS C. AMICK
 L.I., A.B., M.A., Ph.D.
Mathematics

ELIZABETH JOHNSON
 A.B., M.A.
Mathematics

SCOTT BOYD
 A.B., M.A.
Physical Education

ELOISE HILL
A.B.
Physical Education

EDGAR E. RANDOLPH
A.B., M.A., Ph.D.
Science

ETHEL B. FINSTER
A.B., M.A.
Science

RICHARD W. GRIFFIN, III
A.B., M.A.
Social Science

DAN S. BOWERS
A.B., B.D.
Social Science

LULA MAE STIPE
A.B.
Social Science

SARAH K. PATTEN
A.B.
Librarian

DORIS MILLNER
B.S.
Dietitian

EDITH G. BOONE
R.N.
College Nurse

NITA SINCLAIR
Assistant Dietitian

CHARLYE ARNETTE
A.A.
Secretary to the President

Faculty

STIPE HILL RANDOLPH FINSTER GRIFFIN BOWERS
PATTEN MILLNER BOONE SINCLAIR ARNETTE

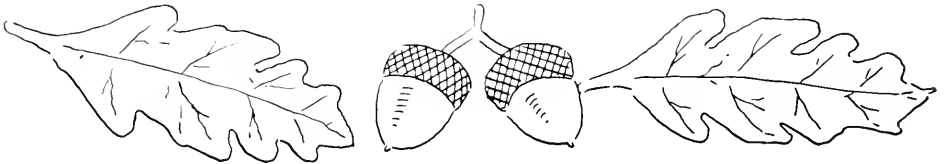


CAMPUS WINTER SCENE



CAMPUS SUMMER SCENE

Classes



SENIORS

First row, left to right:

WALTON N. BASS
Goldsboro

Y.M.C.A.; I.R.C.; President; Veterans' Club; Oak Staff; Phi Theta Kappa; Religious and Social Workers Club.

REUBEN W. BERRY
Swan Quarter

Commercial Club, President; *Columns*; Y.M.C.A., Treasurer.

ELMER DEAN BEST
Stumpy Point

I.R.C.; Religious and Social Workers Club; Dramatics Club; Y.M.C.A., President; Non Veteran's Club; Delta Psi Omega; Cheer Team; Student Council.

Second row:

ANNIE BELLE BLOUNT
Mackeys

Y.W.C.A.; Physical Education Club, Secretary-treasurer.

JOHNY W. BONEY
Raleigh

Jump Band.

EDITH G. BOONE
Nashville

Y.W.C.A.

BASS
BLOUNT



BERRY
BONEY



BEST
BOONE





BRADLEY
BRYANT

D. BRYAN
BURROW

L. BRYAN
BYRD

First row, left to right:

MARGARET ELIZABETH BRADLEY
Woodland

Y.W.C.A., Secretary; Glee Club; Physical Education Club; Religious and Social Workers Club, Secretary-Treasurer.

DAPHNE G. BRYAN
Raleigh

Delta Psi Omega, President; Dramatic Club; Commercial Club; Physical Education Club; Y.W.C.A.; Glee Club; OAK Staff.

LOUIS M. BRYAN
South Hill, Virginia

Veterans' Club; Y.M.C.A.; Dramatic Club; OAK Staff.

Second row:

EVERETT BRYANT
Pittsboro

Monogram Club, President; Men's Student Council.

CLARENCE C. BURROW
Troy

Baseball Team.

WILLIAM C. BYRD
Warsaw

I.R.C.; *Columns*; Religious and Social Workers Club, President; Y.M.C.A.

SENIORS

SENIORS

First row, left to right:

PAUL E. BYRUM
Edenton

Y.M.C.A.; Veterans' Club, Vice-President.

RAY DICKERSON CANNADY
Raleigh

Beta Phi Gamma; *Columns*; Student Council, President; Y.M.C.A.; Veterans' Club.

ERNEST R. CARTER
Powellsville

Y.M.C.A.; Veterans' Club; Student Council.

Second row:

RUTH CHANDLER
Roxboro

Alpha Pi Ipsilon, Vice-President; Y.W.C.A.; Physical Education Club.

MARIE CHOPLIN
Youngsville

Intramural football.

W. W. CLARKE, JR.
Hobbsville

Veterans' Club; Y.M.C.A.; Glee Club; I.R.C.; *Columns*; OAK Staff; Religious and Social Workers Club.

BYRUM
CHANDLER



CANNADY
CHOPLIN



CARTER
CLARKE





COLLINS
A. DAVIS

COPPING
W. DAVIS

COUGH
DAWSON

First row, left to right:

EDWIN E. COLLINS
Elizabethtown

Intramural Football; Veterans' Club.

TAYLOR R. COPPING
Washington, D.C.

Jump Band; Dramatic Club

LIDA MAE COUGH
Durham

Glee Club; Y.W.C.A.; Physical Education Club; Commercial Club; *Columns* Staff.

Second row:

ARTHUR H. DAVIS
Fayetteville

OAK Staff, Business Manager; Veterans' Club.

WILLIAM ROY DAVIS
Goldsboro

I.R.C.; Tennis Team.

ROSEMARY DAWSON
Wagram

Y.W.C.A., Secretary; Physical Education Club; Dramatic Club, Treasurer; Commercial Club; Delta Psi Omega, Treasurer; Alpha Pi Epsilon, Treasurer.

SENIORS

SENIORS

First row, left to right:

J.W. DICKENS
Nashville

Phi Theta Kappa; Intramural Softball.

GEORGE DOZIER
Nashville

Veterans' Club; Y.M.C.A.; Phi Theta
Kappa; I.R.C.

BURWELL A. EVANS
Tyner

Veterans' Club; Phi Theta Kappa, Vice-
President; Intramural Softball.

Second row:

INA M. EVANS
Tyner

Phi Theta Kappa, Secretary-Treasurer;
Delta Psi Omega.

JAMES E. ELLENOR
Abingdon, Virginia

Men's Student Council; Veterans' Club;
Columns: Y.M.C.A. Jump Band.

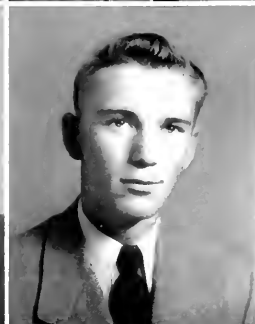
LOMIL FRANKLIN
Stem

Non-Veteran's Club.

DICKENS
J. EVANS

DOZIER
E. ELLENOR

B. EVANS
FRANKLIN





FRANSI
 GODWIN

FULLER
 GONZALEZ

GATTIS
 GUTHRIE

First row, left to right:

ORLANDO FRANSI
 Cardenas, Cuba

Commercial Club; Alpha Pi Epsilon,
 President; Non Veterans' Club; Y.M.C.A.

HUGH MAC FULLER
 Raleigh

Beta Phi Gamma, Vice-President; I.R.C.;
 Non Veterans' Club, President; Men's
 Student Government, Vice-President; *Col-
 umns*, Managing Editor; Y.M.C.A.; Oak
 Staff, Feature Editor; Intramural Soft-
 ball; Intramural Football, Manager.

JULIA ANNE GATTIS
 Raleigh

Peace College
 Y.W.C.A.; Oak Staff; Commercial Club,
 Vice-President; Physical Education Club;
 Dramatic Club.

Second row:

RAY W. GODWIN
 Kenly

Non Veterans' Club.

GILFREDO GONZALEZ
 Vertientes, Cuba

Monogram Club; Baseball Team; Non
 Veterans' Club; Basketball Team, Mana-
 ger.

SAM LONG GUTHRIE
 Wanchese

Columns, Editor; Beta Phi Gamma, Presi-
 dent; Y.M.C.A.

SENIORS

SENIORS

First row, left to right:

KARL M. HANCOCK
Durham

Second row:

JAMES R. HATCH
Aurora
Veterans' Club.

BETTY MARIE HARDWICK
Louisburg

I.R.C.; Y.W.C.A.

PERRY G. HAVSAER
Hickory

Senior Superlative

T.H. HARRIS
Siler City

Phi Theta Kappa; I.R.C.; Y.M.C.A.;
Columns, Managing Editor.

WORTH SLYMOUR HOLT
Apex

Phi Theta Kappa; Y.M.C.A.; I.R.C.

HANCOCK
HATCH

HARDWICK
HAVSAER

HARRIS
HOLT





HOOPER
P. JOHNSON

HUNT
A. JONES

C. JOHNSON
D. JONES

First row, left to right:

WILEY DWIGHT HOOPER
Stumpy Point

GERALD HUNT
Durham

Non Veterans' Club

CLARENCE ERWIN JOHNSON
Smithfield

Second row:

PAUL DANIEL JOHNSON, JR.
Benson
Non Veteran's Club, Vice-President.

ANNE JONES
Neuse

Y.W.C.A., Program Chairman; *Columns*;
OAK Staff, Associate Editor; Beta Phi
Gamma, Secretary-Treasurer; Phi Theta
Kappa, Reporter; I.R.C., Secretary-Treasurer; Religious and Social Workers
Club, Vice-President.

D. WILBUR JONES
Raleigh

Columns; Beta Phi Gamma; I.R.C.; OAK
Staff, Editor; Student Council, Secretary-
Treasurer; Non Veterans' Club.

SENIORS

SENIORS

First row, left to right:

ERLENE JORDAN
Goldsboro

Y.W.C.A.; I.R.C.; Glee Club; Women's Student Government, Treasurer; Physical Education Club; Religious and Social Workers Club.

SAMUEL W. LEBREW
Rich Square

Men's Student Government.

NEAL PATRICK MACARTHUR
Goldsboro

Dramatic Club; Veterans' Club.

JORDAN
McCLEES



Second row:

MARY McCLEES
Columbia

Y.W.C.A.

ZELMA MACI
Sanford

Women's Student Government, President; Alpha Pi Epsilon; Dramatic Club; Physical Education Club; Y.W.C.A.; Commercial Club.

JAMES HORACE MANESS
Fayetteville

Intramural Football.

LEBREW
MAGEE



MACARTHUR
MANESS





MANN
MARGOM

L. MANNING
MILES

T. MANNING
MITCHELL

First row, left to right:

SAMUEL C. MANN
Lillington

Men's Student Government; Monogram Club, Vice-President; Veterans' Club; Basketball Team.

LESSIE D. MANNING
Williamston

Y.W.C.A.; Physical Education Club; Commercial Club; Dramatic Club; Delta Psi Omega.

THELMA MANNING
Williamston

Y.W.C.A.; Physical Education Club; Commercial Club, Secretary; Women's Student Council, Secretary; Dramatic Club.

Second row:

EARL MARGOM
Kinston

Y.M.C.A.; Religious and Social Workers Club; Veterans' Club; Senior Class Officer, Secretary-Treasurer.

PERVIST M. MILES
Woodland

Veterans' Club; Monogram Club, Basketball Team.

WILLIAM P. MITCHELL
Trotville

Y.M.C.A.; Veterans' Club.

SENIORS

SENIORS

First row, left to right:

BEVERLY MOODY
Raleigh

Peace College.

MARY MOODY
Raleigh

Peace College.

CARROLL L. PAYNE
Stumpy Point

B. MOODY
PELLI



M. MOODY
PORTER



Second row:

DURWOOD B. PELL
Goldshoro

I.R.C.: *Columns*; Veterans' Club;
Y.M.C.A.; Dramatic Club.

FREDERIC JAMES PORTER
Plymouth

I.R.C.: Veterans' Club; Y.M.C.A.; In-
tramural Softball.

RALPH L. RAY
Fayetteville

I.R.C.: Veterans' Club; Y.M.C.A.

PAVSI
RAY





J. RICE
SANDERSON

L. RICE
SAWYER

RIVERS
SHAMBLEY

First row, left to right:

JULIUS C. RICE
Lumberton

Commercial Club; Y.M.C.A.; Dramatic
Club, *Columns*.

Second row:

ROBERT SANDERSON
Magnolia

Veterans' Club; Y.M.C.A.

LATTIE W. RICE
Lumberton

Commercial Club; I.R.C.; Y.M.C.A.

JOHN H. SAWYER
Bryson City

I.R.C.

JAMES H. RIVERS
Newport News, Virginia

MARVIN SHAMBLEY
Durham

Basketball Team.

SENIORS

SENIORS

First row, left to right:

MARTHA SHEARON
Wake Forest

Y.W.C.A., President; Glee Club; Religious and Social Workers Club; Phi Theta Kappa.

JOHN L. SMALL
Fair Bluff

Baseball Team.

FENNER N. SPIVEY
Louisburg

I.R.C.; Veterans' Club; Y.M.C.A.; Phi Theta Kappa, President.

Second row:

EDGAR A. STALLINGS
Youngsville

Baseball Team; Intramural Basketball.

WILLIAM F. SITTLE
Oak Harbor, Washington

Veterans' Club; Baseball Team; Intramural Football; Monogram Club, Secretary-Treasurer; Men's Student Government.

WILLIAM PAUL STEPHENSON, JR.
Benson

Baseball Team; Jump Band.

SHEARON
STALLINGS

SMALL
SITTLE

SPIVEY
STEPHENSON





J. STEWART
C. STRICKLAND

M. STEWART
J. STRICKLAND

STOUT
THOMAS

First row, left to right:

JOHN D. STEWART
Swansboro

Veterans' Club; Monogram Club; Y.M.
C.A.; *Columns*.

Second row:

CARL D. STRICKLAND
Fayetteville

I.R.C.; Y.M.C.A.; Religious and Social
Workers Club.

MILTON GRAHAM STEWART
Erwin

Phi Theta Kappa.

JAMES STRICKLAND
Spring Hope

NEIL TAYLOR STOUT
Star

Veterans' Club; *Columns*; Y.M.C.A.;
I.R.C.

JOSEPH E. THOMAS
Jonesboro

Basketball Team; Monogram Club.

SENIORS

SENIORS

First row, left to right:

HARRY TUCKER
Fair Bluff

Beta Phi Gamma, President; Alpha Pi Epsilon; Monogram Club; Non Veterans' Club; Baseball Team; Basketball Team; Commercial Club; *Columns*.

JENNIE TYSON
Lucama

Physical Education Club, Secretary; Y.W.C.A.; Glee Club; Women's Student Government.

JAMES E. UNDERWOOD
Youngsville

Columns; Non Veterans' Club.

Second row:

DONALD WALKER
Wallston, Mass.

CHARLES WATKINS
Durham

Non Veterans' Club, Secretary; Dramatic Club.

ROSGOE F. WHEELLESS
Rocky Mount

Veterans' Club.

TUCKER
WALKER

TYSON
WATKINS

UNDERWOOD
WHEELLESS





J. WHITE
WILDER

W. WHITE
L. WILLIAMS

WIGGINS
W. WILLIAMS

First row, left to right:

JOHN B. WHITE
Norlina

Veterans' Club.

Second row:

GLENN J. WILDER
Woodland

Monogram Club; Baseball Team.

WILLIAM A. WHITE
Hertford

LON R. WILLIAMS
Elizabethtown

Veterans' Club, President Dramatic Club;
OAK Staff.

GEORGE WIGGINS
Louisburg

WILTON H. WILLIAMS
Raleigh

Glee Club; Veterans' Club; OAK Staff,
Sports Editor.

SENIORS

SENIORS

First row, left to right:

WALTER LARRY WINBORNE
Scotland Neck

Commercial Club; Veterans' Club, Secretary; Monogram Club; Basketball, Football Team, Baseball; Dramatic Club; Oak Staff, Art Editor.

MARY ALICE WOODARD
Margarettsville

Y.W.C.A.; Religious and Social Workers Club; Physical Education Club; Women's Student Government; I.R.C.; Senior Superlative.

BETTY WORRELL
Newsoms, Virginia

Commercial Club; Physical Education Club; Y.W.C.A.; *Columns*; Oak Staff, Women's Sports Editor; Basketball Team, Softball Team.

Second row:

DAN WYNN
Jonesboro, Georgia

Veterans' Club; Y.M.C.A.; *Columns*; Senior Superlative.

OLIVIA MARLIN
East Bend

Glee Club, Vice-President; Y.W.C.A.; Physical Education Club; Sextette; Basketball Team; Softball Team; Oak Staff, Sports Editor; Cheerleader.

WINBORNE

WYNN

WOODARD

MARLIN

WORRELL



Senior Class Officers



EARL MARCOM
Secretary-Treasurer

DAN WYNN
President

ANNE JONES
Vice-President

Junior Class Officers



SAM GUNTER
President

VIVIAN PROCTOR
Secretary-Treasurer

ERNEST HOWELL
Vice-President

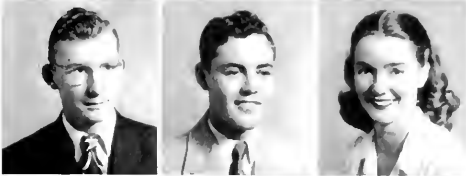
JUNIORS



ROBERT BRUCE AUSBORN, Kittrell
EDWARD ORICK BAGLEY, Raleigh
THEODORE J. BARRITT, JR., Skippers, Va.



JESSE G. BENNETT, JR., Morehead City
SUE ELLIS BENTON, Carolina Beach
ELEANOR RUTH BEST, Turkey



CONRAD BEAKI, Stedman
DOCK AMBROSE BRETT, Erwin
VIRGINIA BRILLMAN, Dover



ROBERT S. BRODIE, Inez
CLAIRE MAY BROOME, Charlotte
ROBERT HOUSTON BROOME, Raleigh



BILL BROTHERS, Elizabeth City
JANE BUCKNER, Far Rockaway, N. Y.
DAISY RHODES BYRD, Turkey



DONALD CAMERON, Raeford
JOSIAH T. CARTER, JR., Durham
WILLIE MAE CARTER, Louisburg



RUTH C. COGGINS, Moskie
MARY FRANCES COLEY, Stem
ZEIDA COOR, Goldsboro

JUNIORS

ALBERT G. COWART, Miami, Fla.

ANN CRAWFORD, Greenville

JEAN CRAWFORD, Greenville



GLENNER CULPEPPER, Elizabeth City

ALLIE LEE DAMERON, Durham

LEON EARL DAVENPORT, Elizabeth City



FRANCES DAVIS, Selma

GEORGE DAVIS, Louisburg

JANIE DICKERSON, Ca-Vel



SURRY DUNN, Scotland Neck

MARIE EDMONDSON, Tarboro

MARY RUTH EDWARDS, Godwin



ELTON ELLIOTT, Elizabeth City

AUDREY EPPS, Southern Pines

JOE FEATHERSTON, Roxboro



RICHARD H. FERRELL, Moyock

ROBERT E. FERRELL, Moyock

JOHN H. GAMBER, Fort Bragg



ERNEST PRESTON GASTER, JR., Sanford

ROBERT FRANCIS GAYMAN, Dillsburg, Pa.

JOSEPH W. GOODWIN, JR., Edenton



JUNIORS



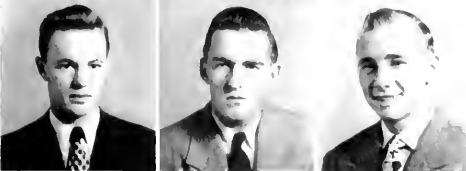
LAWRENCE A. GREEN, Creswell
 HAROLD GREGORY, Shawboro
 WILLIAM D. GRIFIN, Raleigh



SAM E. GUNTER, Raleigh
 VELMA HALL, Roxboro
 BETTY LOUISE HARGROVE, Durham



BOLIVER F. HARRIS, Spring Hope
 JOHN REYNOLDS HARRIS, Goldston
 BETTY JO HARTLEY, Durham



ECTOR PATTERSON HAYES, JR., Durham
 ROBERT CLARENCE HILL, Youngsville
 LENNON W. HOOPER, Stumpy Point



ROBERT JACKSON HUGHSON, Ahoskie
 PEGGY JEAN IVEY, Godwin
 DIXON BRAXTON JACKSON, Raleigh



RANDOLPH LEON JOHNSON, Arlington, Va.
 ROBERT EUGENE JOHNSON, Oriental
 HOWARD COLE JONES, Beaufort



THOMAS SHELTON LANGDON, Benson
 BARBARA JANE LEWIS, Henderson
 CHARLES F. LEWIS, JR., Carolina Beach

JUNIORS

MARTHA ANN LLAVIS, Red Oak
 W. J. LITTLE, JR., Concord
 HENRY L. McINLOSH, JR., Fayetteville



BOWEN MCKINNEY, McKinney, Ky.
 PEGGY JOYCE MANNING, Tarboro
 RACHAEL MODLIN, Ahoskie



GEORGE MURPHY, Louisburg
 MARY ELIZABETH PARAMORE,
 Chocowinity
 LILA W. PASCHAL, Sanford



THOMAS A. PATTERSON, Edwin
 DUFFY LEE PAUL, Morehead City
 IBRAHIM PENA, Encrucijada, Cuba



VIVIAN R. PERGERSON, Louisburg
 MARVIN M. PERKINSON, Noflind
 J. W. PERRY, JR., Zebulon



REBECCA ANN PERRY, Louisburg
 RICHARD M. POYNER, Moyock
 VIVIAN PROCTOR, Rocky Mount



JOHN L. PURYEAR, South Boston, Va.
 BYRAN W. RICHARDSON, Kealy
 PEGGY RIDAUGHT, Carolina Beach



JUNIORS



CHARLES A. ROYAL, JR., Salemburg
MERLE SASSER, Hallsboro
SPENCER SCOTT, Warrington



JAMES L. SCOTT, Dillwyn, Va.
BILLY B. SHOEWELL, Roxboro
GRADY K. SNYDER, Sanford



EDWIN STEWART, Broadway
COL. STRAIN, Fairmont
BETTY STROTHER, Louisburg



JAMES SUGG, New Beth
MERLE RAY SUMMERLIN, Mt. Olive
NICK THEODOSIUS, Franklin, Va.



LOUIS THORNTON, Fayetteville
JOHN TRULL, Sanford
JOHN B. WADELL, Fair Bluff



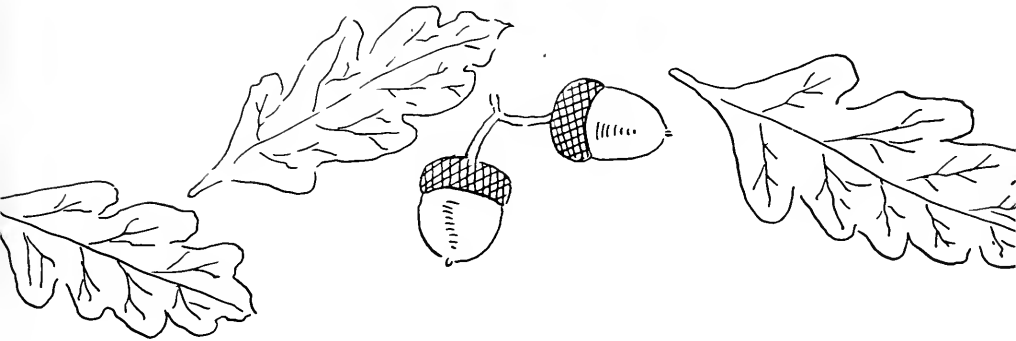
PATTIE JEAN WALTER, Kinston
CARL WILKINS, Lumberton
ELIZABETH CAROLINA WILLIS,
Morehead City



EVA RAE WILSON, Warrington
THERIT WINSTEAD, Leasburg
WILLIAM W. YOUNG, Kittrell

Not Pictured: Jack Cathey Anderson, Thomas B. Barbour, Samuel J. Cole, Thomas Sidney Hale, Lynwood Hall, David T. Hollinsworth, Ernest Lee Howell, John Henry Oldham, John R. Rowland, Adolphus B. Ussery, Jr.

Clubs and Organizations



Women's Student Council



Men's Student Council

Women's Student Council

ZELMA MACE	<i>President</i>
MARY WOODARD	<i>Vice-President</i>
FHELMA MANNING	<i>Secretary</i>
ERIENE JORDAN	<i>Treasurer</i>
JENNIE TYSON	<i>Senior Representative</i>

Men's Student Council

DICK CANNADY	<i>President</i>
MAG FULLER	<i>Vice-President</i>
WILBUR JONES	<i>Secretary-Treasurer</i>

Representatives: JIM FLEENOR, SAM LEHEW, SAM MANN, ERNEST CARTER, SAM GUNTER, THOMAS PATTERSON, MARVIN SHAMBLEY, EVERETT BRYANT, WILLIAM STEELE.

Men and Women Student Councils

The Men and Women Student Councils are the student's government. The purpose of these associations is to help in creating a friendly atmosphere which will make it easy to do the right thing and make it difficult to do wrong, and to work for the general happiness of the students of Louisburg College.



Delta Psi Omega



- DAPHNE BRYAN *President*
 ROSEMARY DAWSON *Secretary-Treasurer*
 MRS. TARPEY *Sponsor*

The newest honorary fraternity on the campus is the Delta Psi Omega, the Junior College division of the Alpha Psi Omega—a national dramatic fraternity. This organization is formed of students who have demonstrated their ability in dramatic art. To be eligible for membership, a student must have played a major role in one play or supporting roles in two plays; efficient work as stage hand or make-up artist is also acceptable.

Scenes from "As You Like It"



YWCA - YMCA



MARTHA SHEARON,

President YWCA

ELMER BEST,

President YMCA

The YWCA-YMCA seeks to serve the students on the campus through means of worship and recreation. Its threefold purpose is to administer to the needs of the body, mind, and soul, and by so doing, to create a Christian atmosphere on the campus and to train the students for future service to their Communities.

Glee Club



- JANIE DICKERSON *President*
PEGGY IVEY *Librarian*
OLIVIA MARTIN *Secretary-Treasurer*
MISS SARAH FOSTER *Director*

The Glee Club is composed of students possessing vocal talent. Membership, acquired through tryouts, is open to any student indicating a sincere interest in the study of vocal music.

Commercial Club



REUBEN BERRY	President
JULIA GATTIS	Secretary
PATTIE WALLER	Treasurer
THELMA MANNING	Program Chairman
MISS AVERITTE	Sponsor

The Commercial Club is a social and educational group organized for the benefit of commercial students. Membership is open to any student enrolled in the Commercial Department.

Alpha Pi Epsilon

ORLANDO FRANSL
 ROSI MARY DAWSON
 ZELMA MACE
 RUTH CHANDLER
 MRS. PERRY

President
Secretary
Treasurer
Chairman of Social Committee
Sponsor

The Alpha Pi Epsilon is the national honorary secretarial fraternity. To become a member, a student must be enrolled in the Commercial Department, make an average grade of B, and be elected unanimously by the members.



Beta Phi Gamma

HARRY TUCKER
 H. MAC FULLER
 ANNE JONES
 MISS RUTH MERRITT

President
Vice-President
Secretary-Treasurer
Sponsor

Beta Phi Gamma, the junior college branch of Alpha Phi Gamma, is the honorary journalistic fraternity. Members of the staffs of the college publications are eligible for membership, provided they are in the upper two-thirds of their class and show an active interest in journalism.

Columns



Columns began in the fall of 1941 as a publication under the supervision of the journalism class of Louisburg College. It has provided a source of campus enjoyment, furnished a medium of student expressions, offered opportunities in practicing journalistic writing, led the thoughts of campus leaders, and has and will continue to preserve a record of campus life.

SAM GUTHRIE
Editor

ROBERT GAYMAN
Associate Editor

T. H. HARRIS
Managing Editor

DUFFY PAUL
Assistant Editor

NEIL STOUT
News Editor

JAMES FLEENOR
Feature Editor

D. B. PEELE, ZEIDA COOR, EDWARD BAGLEY
News Reporters

J. W. PERRY, W. F. STEELE
Men's Sports

MARY RUTH EDWARDS
Women's Sports

VIVIAN PROCTER
Exchange Editor

DAN WYNN
Business Manager

THOMAS PATTERSON
Associate Business Manager

WILLIAM CLARKE
Photographer

REUBEN BERRY
Assistant Photographer

PEGGY MANNING
Proofreader

E. B. GENTRY
Copy reader

CLAIRE MAY BROOME
Make-up Manager

DAPHNE BRYAN, ROBERT JOHNSTON
JOHN STEWART

Circulation Managers

MILDRED PARKS BRYAN
Make-up Manager

MISS RUTH MERRITT
Faculty Adviser



Veterans' Club



LON WILLIAMS, *President*

PAUL BYRUM, *Vice-President*

DUSTY COLLINS, *Secretary*

ALLIE LEE DAMERON, *Treasurer*

LARRY WINBORNE, *Corresponding Secretary*

The William M. McFadden Memorial Club is composed of student veterans of World War II. The purpose of the club is to promote understanding and cooperation between the ex-servicemen and the school.

Non-Veterans' Club



CAMPUS SCENE

H. MAC FULLER

President

PAUL JOHNSON . . .

Vice-President

CHARLES WATKINS

Secretary

SPENCER SCOTT . . .

Treasurer

The Non-Veterans' Club has a three-fold purpose: to promote more and better entertainment for the student body; to promote better relations between students and faculty; to promote better school spirit.

International Relations Club

WALTON BASS
 JOHN SAWYER
 ANNE JONES
 MR. RICHARD GRIFFIN

President
 Vice-President
 Secretary-Treasurer
 Sponsor

The International Relations Club is organized and directed by the students of the college for the purpose of studying national and international problems of local, regional, and world interest. It also tries to create an interest in these problems and to show the students their responsibility in trying to help correct these problems.



Phi Theta Kappa

FENNER SPIVEY
 BURWELL EVANS
 INA EVANS
 ANNE JONES
 MISS ELIZABETH JOHNSON

President
 Vice-President
 Secretary-Treasurer
 Reporter
 Sponsor

Phi Theta Kappa is an honor fraternity of character, leadership, and scholarship. Students enrolled in the Liberal Arts Department who make an average of B or above are eligible for membership in this fraternity.

Religious Workers Club



CAMPUS SCENE.

BILL BYRD

President

MARGARET BRADLEY

Secretary-Treasurer

SILVARD BRODIE

Vice-President

D. A. BRILL

Co-Chairman of Social Committee

DAN BOWERS

Sponsor

The Religious Workers Club is a newly organized club of the students who are enrolled in Religious Education. The purpose of the club is to share ideals and fellowship and to serve the world in any way possible.

The Oak



STAFF

WILBUR JONES
Editor

ANNE JONES
Associate Editor

MAC FULLER
Feature Editor

C. F. LEWIS, JR.
Junior Editor

LARRY W NBORNE
Art Editor

BETTY HARGROVE, FRANCIS DAVIS
Assistant Art Editors

WILTON WILLIAMS
Men's Sports Editor

BETTY WORRELL
Women's Sports Editor

BILL CLARKE
Photographer

REUBEN BERRY
Photographer

ARTHUR DAVIS
Business Manager

ROBERT BROOME
Assistant Business Manager

L. W. HOOPER
Advertisement Manager

DAPHNE BRYAN, LOUIS BRYAN
JAMIE DICKERSON, BETTY JO HARTLEY
OLIVIA MARTIN, LON WILLIAMS
Advertising Staff

JULIA GATTIS, ZELDA COOR
PEGGY MANNING
Typist



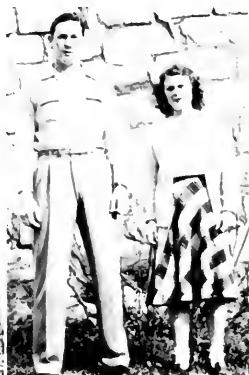
Arthur Davis, *Business Manager*; Mr. Griffin, *Adviser*; Wilbur Jones, *Editor*.



Senior Superlatives



ANNABELLE BLOUNT
DAN WYNN
Most Conscientious



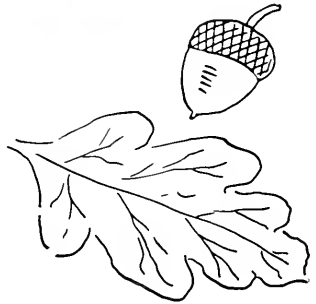
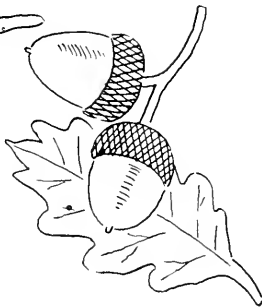
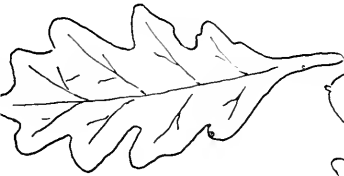
P. G. HAVANER
MARY WOODARD
Most Athletic



ZELMA MACE
ROSCOE WHEELLES
Most Versatile



Athletics



Girls Physical Education Club



MARY RUTH EDWARDS	<i>President</i>
FRANCES DAVIS	<i>Vice-President</i>
JENNY TYSON	<i>Secretary</i>
LILA PASCHAL	<i>Treasurer</i>
OLIVIA MARTIN	<i>Sports Head</i>
MISS ELOISE HILL	<i>Adviser</i>

Open not only to girls majoring in Physical Education, but to any girl sincerely interested in athletics, this club strives to promote interest and study in the field of sports.



Sports On the Campus

Action Shots





Cheerleaders

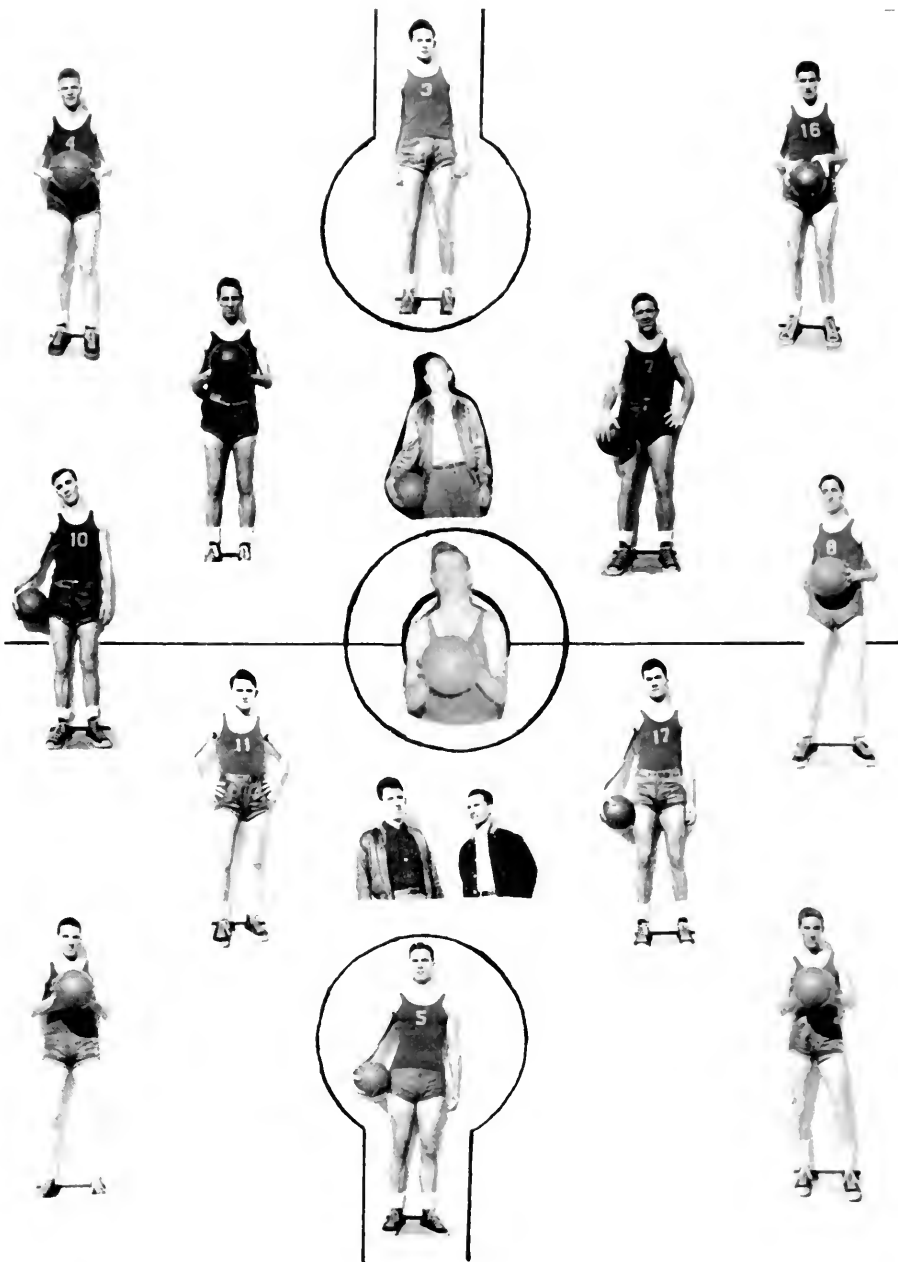


Monogram Club

EVERETT BRYANT	President
SAM MANN	Vice-President
L. F. STEELE	Secretary-Treasurer
SCOTT BOYD	Sponsor

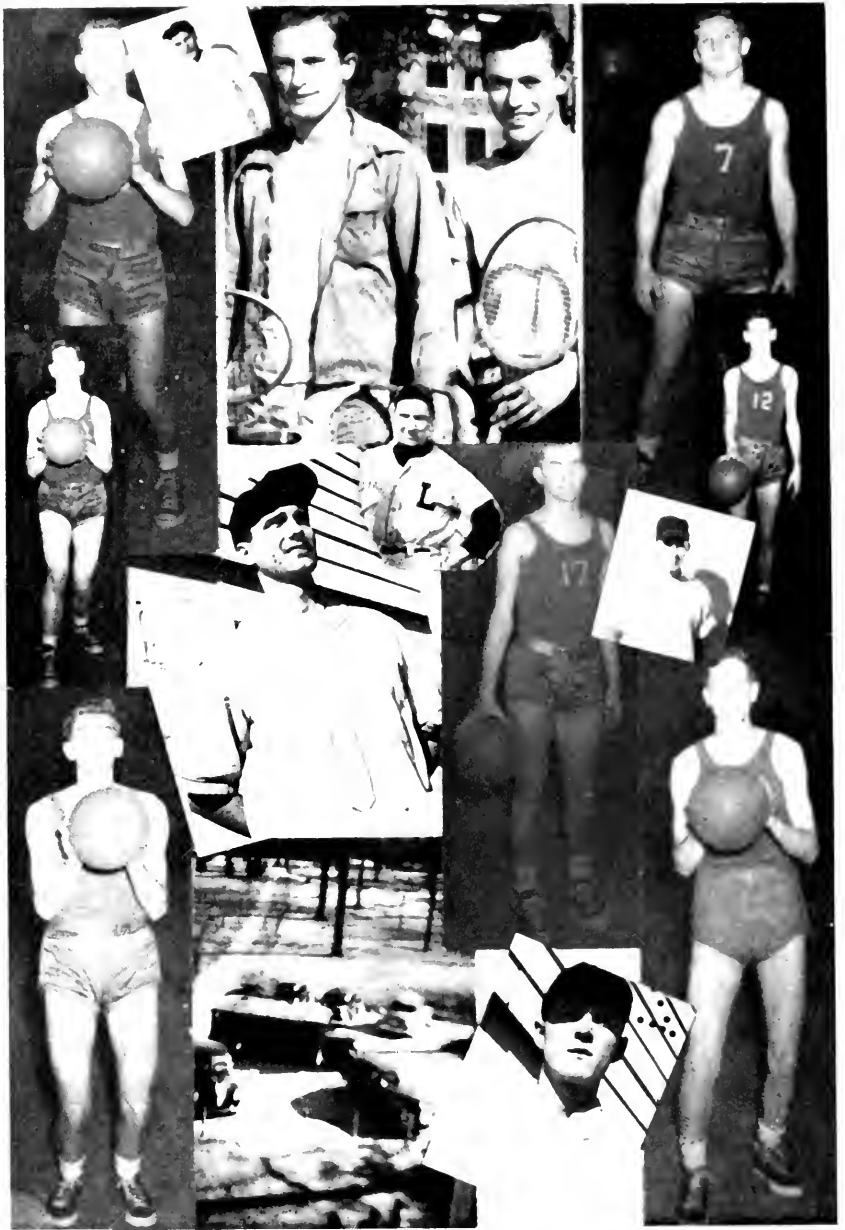
The Monogram Club is composed of men who have won a letter through participation in intercollegiate athletics. The aim of this group is to promote athletics and good sportsmanship.



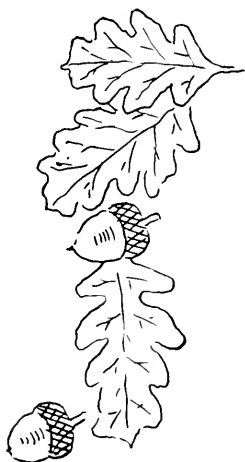


Intramural Sports





Features



Campus Leaders



Harry Tucker, Lon Williams, Wilbur Jones, Zelma Mace, Dick Cannady, Mae Fuller, Janie Dickerson, Mary Ruth Edwards, Sam Guthrie, Daphne Bryan, Dan Wynn, Martha Shearon, Orlando Fransi, Fenner Spivey, Bill Byrd, Everette Bryant, Reuben Berry, Elmer Best, Paul Stephenson, and Walton Bass.



1. Daydreaming. 2. Hard at work. 3. Interesting Subject. 4. Hard at work.
5. Looking pretty. 6. What kind of bottle?



1. Sack Time. 2. Resting up. 3. Early Bird. 4. Once in a while. 5. Gossip. 6. Aw Shucks!
 7. Cramming. 8. Visiting! 9. Sitting pretty. 10. Help from the teacher.



1. Before Louisburg. 2. After Louisburg. 3. Waiting for the verdict. 4. Sweet, Isn't he?
5. Sleeping beauty. 6. The Duel. 7. A ride, Please? 8. Exercise. 9. Hold still. 10. Ain't
life grand?



1. Parade in town. 2. Just for kicks. 3. Under guard. 4. Happy and sad. 5. Test today. 6. Making time. 7. Triple threat. 8. Two Rebs and a Yank. 9. No Spanish today. 10. All's well.



1. Girls only. 2. Listening. 3. Five points. 4. Hard day ahead. 5. Studying for finals. 6. The Thinker. 7. The sun is bright. 8. Animal? Vegetable? Mineral? 9. Eating time. 10. Off to class.



1. Isn't he sweet? 2. Big sister, Little sister. 3. In the city. 4. My Bow is best. 5. Smiling pretty. 6. Hold her tight. 7. Just Gabbing. 8. Got my cookies. 9. No, not what you think. 10. Just sack time.



1. Home life. 2. Help from the wife. 3. After the game. 4. Campfire rally. 5. Let's play Tennis. 6. Talking to the girls. 7. A campus beauty. 8. College float. 9. Whats this. 10. Just arriving.



1. Staff of THE OAK at work. 2. A rose among thorns. 3. It must be grand. 4. Thinking. 5. Gee whiz. 6. Home. 7. Genius at work. 8. Balcony boys. 9. Collee hour. 10. Let's socialize.

Advertisements



LOUISBURG COLLEGE

Under Control

NORTH CAROLINA METHODIST CONFERENCE

Accredited by

THE STATE DEPARTMENT OF EDUCATION
NORTH CAROLINA COLLEGE CONFERENCE
UNIVERSITY OF NORTH CAROLINA



OFFERING TWO YEARS TERMINAL COURSES

— in —

COMMERCIAL SCIENCE. MEDICAL SECRETARY,
RELIGIOUS AND SOCIAL SECRETARIES

— and —

Two-Year Preparatory Courses Leading to Degrees in Senior Colleges in
Engineering. Agriculture. Dentistry. Commerce.
Home Economics and Liberal Arts

A LABOR SCHOLARSHIP

Will be granted to those who need to earn part
of their college expense.



For Details Write

LOUISBURG COLLEGE : Louisburg, N. C.

CITY MOTOR COMPANY

DEPENDABLE USED CARS

RALEIGH, NORTH CAROLINA

*On your way to Raleigh Stop
in at the*

DRIVE IN GRILL

Louisburg Road
RALEIGH, N. C.

BU R G E R S - S H A K E S - S U N D A E S

FIRST-CITIZENS BANK

LOUISBURG, N. C.

At All Good Grocers

SUPER SOFT
B E L L
WHITE BREAD

It's Super Soft and Enriched

BEST WISHES

YOUR DOWNTOWN MEETING PLACE

**BODDIE
DRUG STORE**

LOUISBURG, NORTH CAROLINA

**WHITE'S
ICE CREAM**

THERE **IS** A DIFFERENCE

When —

“Knowledge is Proven”



More than fourteen years have passed since a small but determined group of farmers and agriculturists started out to prove that by cooperation the North Carolina farmer could make farming more profitable.

Since those early days nearly 80,000 farmers have joined in building for themselves an organization of service that saves for them thousands of dollars each year. The “Knowledge” at the beginning is “proven.”

Farmers Cooperative Exchange

CENTRAL OFFICE — RALEIGH, N. C.

WEBB'S Henderson Shoe Store

Shoes for the Entire Family

HENDERSON, N. C.

WESTERN AUTO ASSOCIATE STORE

Everything for the Auto



LOUISBURG, NORTH CAROLINA

HOME FURNITURE CO.

*Complete
Furnishings for the Home*



PHONE 459-1

FURNITURE
APPLIANCES



LOUISBURG, NORTH CAROLINA

PRUITT LUMBER CO.

WE OFFER YOU A COMPLETE
BUILDING SERVICE

Phone 433-1 East Nash Street
LOUISBURG, NORTH CAROLINA

BEST WISHES
to the
GUYS AND GALS

at
LOUISBURG COLLEGE

LOUISBURG THEATRE

**LIBERTY
WAREHOUSE**

HENDERSON, N. C.

=====
*Newest and Best Lighted
Warehouse in Town*

GOOD SALE
EVERY DAY

=====
G. T. ROBERTSON SONS
L. L. "RED" STURDIVANT

The Home of Better Values

**LEGGETT'S
DEPARTMENT STORE**

LOUISBURG, NORTH CAROLINA

=====
PHONE 3531
=====

*"The South's Leading Distributors of
Reliable Merchandise"*

LOUISBURG, N. C.

— is —

RICH IN HISTORY, HEALTH, AND HOSPITALITY

There is not a more ideal place of residence in the world for a student than Louisburg. There exists here at all times an atmosphere of quiet, culture, and refinement, that encourages study and accomplishment. The material needs of every student can be purchased in Louisburg at most reasonable prices; therefore, it is an economic and otherwise desirable home for students.

*Louisburg Sincerely Welcomes Everyone
At All Times*

TOWN OF LOUISBURG

W. C. WEBB, Mayor

STEEL

*Warehoused or Fabricated
From Stock*

STRUCTURAL
ORNAMENTAL
REINFORCING
PLATE WORK
BLACKSMITHING
WELDING
METAL BUILDING
SUPPLIES
CUTTING AND WELDING
SUPPLIES
METAL SASH, DOORS
AND DOOR BUMPS

PEDEN STEEL CO.

512 W. Hargett Dial 3323
RALEIGH, N. C.

HENDERSON GROCERY COMPANY

=====

WHOLESALE
GROCERS

=====

Henderson, N. C.

SCHOOL SUPPLIES

Loose Leaf Books : Zipper Cases
Fountain Pens : Dictionaries
Recordings and
Sheet Music



JAMES E. THIEM
Everything for the Office

Dial 2-2913
RALEIGH, N. C.

G. W. MURPHY & SON
LOUISBURG, N. C.

Dealers in
GROCERIES : MEATS
FEEDS : SEEDS

"Everything Good To Eat"

Your Patronage is Appreciated

FULLERS ESSO SERVICE

ESSO PRODUCTS : ATLAS
TIRES : BATTERIES
ACCESSORIES

(Opposite Post Office)
DIAL 357-1 LOUISBURG, N. C.

O'NEAL DRUG CO.

"Your Drug Store"

THE BEST OF EVERYTHING FOR YOU

SERVICE WITH A SMILE

Hollingsworth Candies

Prescriptions

LOUISBURG, NORTH CAROLINA

EVERYTHING for the School and College

Files : Desks : Chairs : Tables : Pens : Pencils : Inks
Mucilage : Gem Clips : Staples : Stapling Machines
Typewriter Ribbons : Carbon Paper : Duplicating
Machines : Both Gelatin and Fluid Type : Indexes
Transfer Cases : Card Filing Boxes
Stenographer's Notebooks, Etc.

CAPITAL PRINTING COMPANY

PRINTERS

*for College and School Papers
Catalogs and Yearbooks*

DIAL 3316

110 WEST HARGETT ST.

RALEIGH, NORTH CAROLINA

Does Your Homework Give You a Headache?

Do you get sleepy when you study at home? Do your eyes burn and does your interest wander? Sometimes does your homework give you a headache? Well, perhaps all that is wrong is the light you work by. Poor lighting can give you a headache with resulting nervousness. It can actually harm your eyes permanently.

Perhaps what you need is one of the new CERTIFIED study lamps displayed in the electric stores. They are designed by experts to give you the kind of light you need for home study. After all, there is no use doing homework the HARD way.

Carolina Power & Light Co.

WALLER and SMITH Photographers

Official Photographers

For

THE 1949 OAK

12 East Hargett Street

Phone 7703

RALEIGH

*Jean's
of Raleigh*

First in Fashions in the Carolinas

Compliments of

J. M. THOMPSON & CO.

RALEIGH, N. C.

Best Wishes

from the

AIR PORT GRILL

The Shopping Center
of Eastern Carolina

—
Ellis Stone

MAIN STREET

DURHAM, NORTH CAROLINA

CHESSON CANDY COMPANY

"Sweets that Repeat"

LOUISBURG, N. C.

PHONE 337-2

BEST IN CANDY, GUM, PEANUTS AND SANDWICHES

The Graphic Press, Inc.

Distinctive Printing is Economy

324 SOUTH BLOUNT STREET
RALEIGH, NORTH CAROLINA



THE ability to teach is a special gift. IF you enjoy working with children—make your decision now to join this honored profession. For "Our Teachers Mold Our Nation's Future," and America's future has need of you.

Printed as a public service by

EDWARDS & BROUGHTON
COMPANY

RALEIGH, N. C.

In Cooperation with the Advertising Council on Behalf of the
National Effort to Improve Our Schools

