









## ***THE 1953 OAK***

MARVIN JORDAN ..... *Editor*  
JANET BAILEY ..... *Assistant Editor*  
"TURK" MORRISSETTE ..... *Business Manager*  
ROBERT KENNEDY ..... *Art Editor*  
HOWARD POWELL, JR. .... *Photography*  
C. RAY PRUETTE ..... *Advisor*

## *FOREWORD*

In compiling the 1953 volume of the OAK, our purpose has been to present to you a pictorial record of the days that you spent in Louisburg College.

As the school is for the students alone, we feel that it is only fitting that you should be the theme of the book which records your year's activity.

Although the OAK does not tell the complete story, we hope that as you turn the pages, you will recall some of the happy times that you experienced as a student.

THE STAFF



E 28

LOUISBURG COLLEGE

OPENED IN 1867 ON THE  
SITE OF THE FRANKLIN  
ACADEMY CHARTERED 1767  
NOW A METHODIST JUNIOR  
COLLEGE COEDUCATIONAL

A woman in a long dress and hat stands to the left of the marker, looking towards it.

A man in a light-colored shirt and dark trousers stands to the right of the marker, pointing at the text.

## *DEDICATION*

A little man with a big personality: There's his unbounded energy; his glowing eagerness in discovering a new fact or truth; his sincere friendliness revealed by a smile in his voice, and a warm heart in his smile. Inside a huddle of us students on the hall, in the classroom, or elsewhere, over and again he may be found cheerfully sharing a new bit of humor or wit, enthusiastically reviewing yesterday's game, clearly explaining some especially difficult point of science, or earnestly discussing some question of the finer ideals of everyday living. Often we go to him for solving our disturbing, individual problems. We receive sometimes a word of explanation that makes the hard seem suddenly easy, sometimes an honest but unoffending analysis of our faults, sometimes a new courage to face the task ahead, but always the feeling that we have been with a friend. There is nothing too small to seem unimportant to him if it affects us and nothing too big for him to attempt if he feels he can help us. With all this he is ever the student and teacher of science who finds God in the world of matter and energy about which he teaches us as students.—These characteristics and more of their kind suggest our impression of the one to whom we affectionately and appreciatively dedicate The OAK of 1953.

C. RAY PRUETTE





# *This is My Louisburg*

by

FELTON B. PARKER  
CLASS OF 1951

. . . I remember each brick, each stone,  
Each towering oak, each May Queen's throne;  
Countless times the squirrels I've seen—  
Running, playing across the green;  
The yellow daffodils in spring;  
Fragrant memories these do bring  
Until the flowery dogwoods shed  
White tears of joy on earth's green bed.  
The nights grow warm and wet and dark—  
A campus bell and morning's lark;  
And then the time of day did fly,  
Leaving shadows in the sky;  
Then the moonlight gently fell,  
Gracefully draping the campus well  
In a silent silver blue,  
Giving life to all it knew.  
From the steps these things I saw:  
Beauty, Life, and Nature's Law.

.....  
As I entered my years were few—  
I remember classmates, faculty too.

.....  
Through the years my joys increase;  
My love for Louisburg can never cease.  
Here my friends and I shall meet;  
Years of happiness here we keep,  
And may the future generations find  
The happiness here that I've called mine,  
For this is my Louisburg.



ADMINISTRATION

# *PRESIDENT*



## *SAMUEL M. HOLTON*

THE OAK is a collection of some of your memories of your days at Louisburg College. May the 1953 OAK give you pleasure now and many happy hours in the years ahead.

Very cordially yours,  
SAMUEL M. HOLTON

# THE DEANS

MARY E. BETHEA  
DEAN OF WOMEN

*A. A., Louisburg College; A. B., Greensboro College; M. A., Scarritt College, Tennessee.*

"Life is not what we know and plan it to be, but what we trust in and dare to do", says Martin Niemoeller. As you leave here may your trust be in God, who will turn your dreams into hope, your lofty daring into fruition and make of your life a blessing to mankind.

MARY E. BETHEA

ALBERT G. COWART  
DEAN OF MEN

*A. A., Louisburg College; B. S., East Carolina College, Greenville, North Carolina.*

We shall all cherish this, our '53 OAK, as a pictorial record of our early college life, and record of a few of our memorable experiences. Through these experiences may the virtuous qualities we possess be loyally preserved as we strive faithfully to improve the others.

As we use the knowledge, fellowship and cooperation we have acquired at Louisburg College, may we all profit by our mistakes and continue to work to make our home, school, and community a better place in which to live, work, and play.

ALBERT G. COWART



# ADMINISTRATION



GENEVIEVE PELTZ PERRY

*Treasurer*

Louisburg College; Columbia College, Maryland; Bowling Green Business University, Kentucky.

PHYLLIS W. MCKEE

*College Nurse*

Woman's College, University of North Carolina; B. S. N., School of Nursing, Duke University.



ELSA CRAIG YARBOROUGH

*Librarian*

A. B., A. B. in L. S., University of North Carolina; Wake Forest College.

COLLINS BENNETT GRITTER

*Registrar*

B. S. in P. E., Woman's College, University of North Carolina.



LILA TAYLOR PEARCE

*Dietitian*

B. S. in H. E., University of North Carolina.

JOHN B. YORK

*Director of Public Relations and Coach*

B. S., Wake Forest College; University of North Carolina.

# FACULTY

THOMAS CICERO AMICK

L.I., George Peabody College; A.B., M.A., University of North Carolina; Ph.D., Central University; University of Chicago; University of Virginia.

ANN BLUMENFELD

*Foreign Languages*

M.A., Middlebury College, Vt.; Ph.D., Munich.



RUTH M. COOKE

*Physical Education*

B.S., University of North Carolina.

ETHEL B. FINSTER

*Science*

B.A., Ball State Teachers College; M.A., University of Michigan.



SARAH ELIZABETH FOSTER

*Music*

B.A., Greensboro College.

WILLIAM CARRINGTON GREYTER, JR.

*Social Sciences*

B.A., M.A., University of North Carolina.



# FACULTY



ELIZABETH JOHNSON

*Mathematics*

B.A., M.A., University of North Carolina.

ROBERT F. MCKEE

*Religious Education*

A.B., Ursinus College, Pa.; B.D., Divinity School, Duke University.



RUTH WILLARD MERRITT

*English*

B.A., Duke University; M.A., Scarritt College, Tenn.; Littleton College.

ISAAC DEANE MOON

*Psychology*

B.A., B. Mus., Asbury College; M.A., University of Kentucky.



ALLAN A. NORBERG

*Business*

B.A., Montclair Teachers College; University of Cincinnati.

C. RAY PRUETTE

*Chemistry and Physics*

B.A., M.A., East Carolina College.



CORNELIA SCHRUL

*Business*

B.A., University of Maine; M. A., Columbia University; New York University; Pierce Business School, Pa.



# STAFF



MRS. MALENA WARD POWELL  
*Assistant To The Dietitian*



MRS. OMEGA S. HALL  
*Housekeeper*



MR. NEILL L. HALL  
*Caretaker*

# *SENIOR CLASS*

PRESIDENT ..... Ben Price

VICE-PRESIDENT ..... Billy Merritt

SECRETARY ..... Hal Perry



PRICE

MERRITT

PERRY

# SENIORS

GEORGE WAYLON ADAMS  
*Four Oaks*



PHYLLIS ANN BAILEY  
*Louisburg*

Glee Club, 1, 2; Y.W.C.A., 1, 2; President, 2; *Columns* Staff, 1; Beta Phi Gamma, 1, 2; Delta Psi Omega, 1, 2; Dramatics Club, 1, 2; Sigma Pi Alpha, 1, 2.

MARVIN EUGENE BAUGH  
*Waverston*

Glee Club, 1; Y.M.C.A., 1, 2; Student Council, 1; Commercial Club, 1, 2; The OAK Staff, 2; *Columns* Staff, 1; Baseball, 1, 2; Dramatics Club, 1, 2; Alpha Pi Epsilon, 1, 2.



ROBERT EDGAR BECK  
*Northside*

Y.M.C.A., 1, 2; I.R.C., 1; Jr. Varsity Basketball, 1, 2; Spanish Club, 1.

NORMAN WASLEY BRICKHOUSE  
*Elizabeth City*

Y.M.C.A., 1, 2; Student Council, 2; Jr. Varsity Basketball, 1, 2; Baseball, 1, 2, Captain, 2; Monogram Club, 2; Social Committee, 2.



RALPH LEO BRIDGES  
*Sanford*

Y.M.C.A., 2; I.R.C., 1, 2, Secretary, 1; Varsity Basketball, 1, 2.

# SENIORS



PAUL GRAYSON BUNN  
*Graham*

Glee Club, 1; Y.M.C.A., 1, 2; *Columns* Staff, 1, 2, Editor-in-chief, 2; Phi Theta Kappa, 2, Secretary; Dramatics Club, 1, 2; French Club, 1, 2; Class Officer, 1, President; Sigma Pi Alpha, 2; Vice-President.

ROSALYN ESTELLE CREWS  
*Henderson*

Glee Club, 1, 2; Y.W.C.A., 1, 2; Commercial Club, 1, 2.



CHARLES EUGENE DICKERSON  
*Henderson*

Y.M.C.A., 1, 2; Phi Theta Kappa, 2; Dramatics Club, 2.

EDWIN DRIVER  
*Louisburg*

Glee Club, 1; Y.M.C.A., 1, 2; Student Council, 2, President; I.R.C., 1; *Columns* Staff, 2, Business Manager; Dramatics Club, 1, 2.



ROY LEE EARP  
*Angier*

Varsity Basketball, 1, 2; Baseball, 1; Monogram Club, 2.

MELVIN DOUGLAS EDWARDS  
*Louisburg*

Y.M.C.A., 1, 2; Student Council, 2, Secretary and Treasurer.

# SENIORS

EDDIE LEE ELKS

*Weldon*

Y.M.C.A., 1, 2; Varsity Basketball, 1, 2;  
Monogram Club, 2; French Club, 1;  
Sigma Pi Alpha, 1, 2.



JOSEPH LUTHER EUBANKS, JR.

*New Bern*

Y.M.C.A., 1, 2.

COY DARWIN EVANS

*Magnolia*

Y.M.C.A., 1, 2.



BETSY ANN EVERETTE

*Battleboro*

Y.W.C.A., 1, 2; Student Council, 2,  
Vice-President; Commercial Club, 1;  
Basketball, 2.

RILEY OSBORN GODLEY

*Sanford*

Glee Club, 1; Y.M.C.A., 1, 2.



JULIAN GONZALEZ

*Comaquee, Cuba*

Y.M.C.A., 1, 2; Commercial Club, 1, 2;  
Spanish Club, 1, 2.

# SENIORS



JOHN PERRY HARRIS  
*Macon*

Glee Club, 1; Y.M.C.A., 1, 2; I.R.C., 1; Phi Theta Kappa, 2, President; Dramatics Club, 1; French Club, 1, 2; Sigma Pi Alpha, 2; Secretary and Treasurer.

Laura Lynn Horton  
*Zebulon*

Glee Club, 1; Y.W.C.A., 1, 2; Student Council, 2, President; Basketball, 1; Dramatics Club, 1.



MARVIN LAWRENCE JORDAN  
*Weldon*

Y.M.C.A., 1, 2; Student Council, 2, Vice-President; The OAK Staff, 2, Editor-in-chief; *Columns* Staff, 1; Feature Editor; Beta Phi Gamma, 1, 2; Basketball Manager, Jr. Varsity, 1, Varsity, 2; Baseball, 1, 2; Dramatics Club, 1; Spanish Club, 1, 2.

JOHN FRANKLIN JOYNER  
*Vanceboro*

Glee Club, 1; Y.M.C.A., 1, 2; I.R.C., 1; Dramatics Club, 2; French Club, 1, 2; Sigma Pi Alpha, 2, President.



KENNETH OKER KEENE  
*Coats*

Y.M.C.A., 1, 2; Commercial Club, 1; *Columns* Staff, 1, 2; Baseball, 1.

ROBERT HENRY KENNEDY  
*Wilkesboro*

Glee Club, 1; Y.M.C.A., 1, 2, President, 2; Student Council, 2; The OAK Staff, 1, 2; Art Editor, 2; Jr. Varsity Basketball, 1, 2; May Court 1.

# SENIORS

RICHARD KLEVANSKY

*Reading, Pa.*

Y.M.C.A., 1, 2, Secretary-Treasurer, 2;  
Dramatics Club, 2; *Columns* Staff, 2.

JACK C. MAXWELL

*Fayetteville*

Y.M.C.A., 1, 2; Commercial Club, 1, 2.



JOSEPH EDWARD MCPHERSON

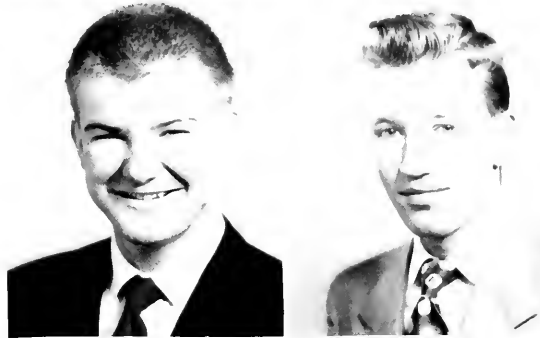
*Elizabeth City*

Commercial Club, 1; Dramatics Club, 2.

BILLY RAY MERRITT

*Magnolia*

Glee Club, 1; Y.M.C.A., 1, 2; Student  
Council, 2; Jr. Varsity Basketball, 1, 2;  
Class Officer, 2, Vice-President.



JOYCE PATRICIA MONK

*Hurdle Mills*

Y.W.C.A., 1, 2; Dramatics Club, 1, 2;  
President, 1; Class Officer, 1, Secretary;  
May Court, 1.

WIRGMAN MORRISSETTE, JR.

*Elizabeth City*

Y.M.C.A., 2; Student Council, 1; The  
OAK Staff, 2, Business Manager; Delta  
Psi Omega, 2; Dramatics Club, 1.



# SENIORS

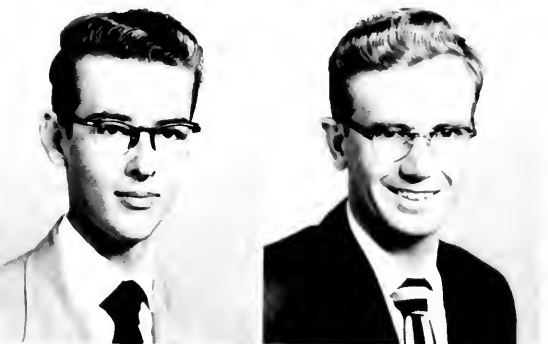


HAL CLIFTON PERRY  
*Zebulon*

Y.M.C.A., 1, 2; Jr. Varsity Basketball, 1;  
Baseball, 1, 2; Monogram Club, 2; Class  
Officer, 2, Secretary-Treasurer.

BEN LYON PRICE  
*Angier*

Y.M.C.A., 1, 2; Student Council, 1, 2;  
Varsity Basketball, 1, 2; Monogram Club 2;  
Class Officer, 2, President; May Court, 1,  
King.



DAVID JENKINS SCOTT  
*Warrenton*

Y.M.C.A., 1, 2; Dramatics Club, 2.

HARVEY LEE TIPPETT  
*Bahama*

Y.M.C.A., 1, 2; Jr. Varsity Basketball, 1, 2;  
Baseball, 1; Monogram Club, 2; Religious  
and Social Workers Club, 1.



HAYWOOD EDWIN USHER  
*Rose Hill*

Y.M.C.A., 1, 2; Commercial Club, 1, 2;  
Jr. Varsity Basketball, 2.



*ALPHA TO OMEGA*





## *Alma Mater*

Alma Mater, shelt'ring College,  
Thou has been our guiding friend.  
From thy fount of flowing knowledge  
We would drink until the end.  
Be thy children's inspiration,  
Glowing light to cheer and guide;  
Stand, old College, Alma Mater,  
Through the changing years abide.

Greater love and veneration  
Be thy portion, Mother dear;  
May each coming generation  
Bring rich gifts thy heart to cheer.  
Till thy stalwart columns heavenward  
Cease to point the way of life,  
Stand, old College, Alma Mater,  
Through the changing years abide.

# *JUNIOR CLASS*

PRESIDENT .....Robert Stainback

VICE-PRESIDENT.....Hubert Hodgkin

SECRETARY.....Jacqueline Farrow

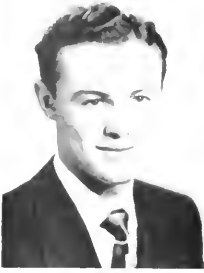


STAINBACK

FARROW

HODGIN

# JUNIORS



MAURICE ROBERT ADCOCK  
*Fuquay*

FRANCES MARY AUTRY  
*Aurysville*

JANET BAILEY  
*Louisburg*



SARAH FRANCES BAKER  
*Nashville*

WAYNE ERNEST BAKER  
*Zebulon*

JOSEPH GARDNER BARBOUR  
*Fuquay Springs*



IDALYNE MARGARET  
BATCHELOR  
*Spring Hope*

R. A. BAXLEY, JR.  
*Fayetteville*

KATHLEEN LOUISE BEDDARD  
*Ayden*



DALL DONALD BEDDINGFIELD  
*Zebulon*

RICHARD GLEN BLACKBURN  
*Ingold*

CARY BOYD  
*Henderson*

# JUNIORS

JAMES EDWARD BRADSHER  
*Clinton*



H. LENOX BRAMBLE, JR.  
*Fayetteville*



JACKSON PERRY BROOKS  
*Sanford*



HELEN ELIZABETH BROOME  
*Aurora*



BETTY LOU BROWN  
*Littleton*



GEORGE PHILIP BUNN  
*Castalia*



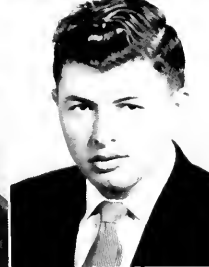
LUCY WHITE BURGESS  
*Belhaven*



JACKSON ROBERT BURNS  
*Sanford*



PAUL WILLIAMS CHILDERS  
*Louisburg*



CLARA BELLE COLLINS  
*Franklinton*



MALVINA CRAWFORD  
*Greenville*



LEONORA CLYDE CULBRETH  
*Fayetteville*



# JUNIORS



STEPHEN EVERETT  
DAVENPORT  
*Roanoke Rapids*

NANCY ANN DAVIS  
*Louisburg*

MARTHA ELEASE DAVIS  
*Marshallberg*



GERALD LEE DENNING  
*Angier*

ALICE LEA DENNIS  
*Louisburg*

FAYE ERNESTINE DILLARD  
*Macon*



DOROTHEA GREY DRAUGHON  
*Godwin*

CLEVELAND STRANGE DUKE, JR.  
*Washington*

AUBREY DONALD DUNSON  
*Durham*



ZARA CURTIS EZZELL  
*Rose Hill*

ELIZABETH JEAN FAIREY  
*Durham*

JACQUELINE JAY FARROW  
*Wates*

# JUNIORS

ROBERT JACKSON FRAZIER, JR.  
*Louisburg*



ADELE ELIZABETH GALES  
*Sanford*



BONNIE JEAN GREEN  
*Halifax*

RUTH MARIE GUPTON  
*Louisburg*



PEGGY JACKSON GUPTON  
*Louisburg*



FRANCES HALES  
*Aurysville*



IRENE SLEDGE HAMLET  
*Louisburg*



EVELYN RAE HARRIS  
*Tillery*



JULIAN WHELESS HARRIS  
*Spring Hope*



MARY ELIZABETH HASSELL  
*Washington*



IRENE HERRING  
*Rose Hill*



HUBERT HOWARD HODGIN  
*Wilmington*



# JUNIORS



DOROTHY ANN HOOD  
*Wendell*

FAYE ELAINE HUDSON  
*Louisburg*

MATTIE WILLIS HUNTER  
*Inez*



WILLIAM JOHN HURLEY  
*Littleton*

WINGATE MARTIN  
HUTCHINS  
*Durham*

ALLEN JOE IPOCK  
*New Bern*



CHARLES B. JOHNSON  
*New Bern*

DURWOOD JOHNSON  
*Four Oaks*

LEROY MIKE JOLLY  
*Chalburn*



TILLIE MAE KING  
*Roxboro*

TRYON DELANO LANCASTER  
*Fayetteville*

LAWRENCE LANE  
*Fuquay*



# JUNIORS

ANN EVINGTON LONG  
*Hurdle Mills*



JOHN DANIEL LONG  
*Louisburg*



THOMAS WELDON LUCAS  
*Roseboro*



ROBERT JONES MANGUM  
*Creedmoor*



ELIZABETH ANN MANN  
*Elizabeth City*



BOBBY GENE MANNING  
*Bethel*



SUE MANNING  
*Middlesex*



ELLEN MARKS  
*Cameron*



MARY LEE MASON  
*Atlantic*



JESSE WILLIAM MASSENGILL  
*Four Oaks*



LUVY JAMES MATTHIS  
*Clinton*



MAX ALLEN MATTHEWS  
*Angier*



# JUNIORS



EDWARD MILTON  
McDANIEL  
*Cote City*

RONALD G. MCGHEE  
*Franklinton*

DONALD HOVILL McINTYRE  
*Franklinton*



MARY ANN McLAMB  
*Roseboro*

ETTA CAROL MEARS  
*Raleigh*

GARY MORRIS  
*Atlantic*



JODIE KATHLEEN NEAL  
*Louisburg*

JOHNNY WILLIAM NELSON  
*Bethel*

RODNEY GAVIN NELSON  
*Atlantic*



FRANCES CAROLYN NORMAN  
*Elizabeth City*

BRAXTON R. OVERBY  
*Norlina*

MARTHA ANN PERDUE  
*Louisburg*

# JUNIORS

HOWARD PETERSON POWELL, JR.  
*Raleigh*

FREDERICK RANSOM  
*Clarkton*

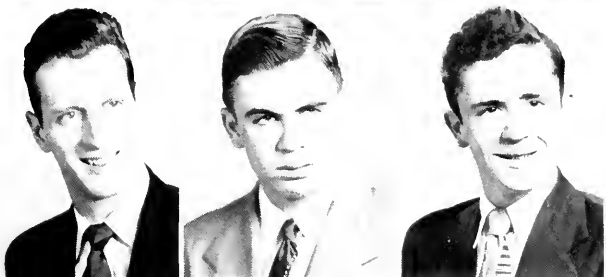
CARL BRYANT RICHARDSON, JR.  
*Louisburg*



WILLIAM T. SADLER  
*Roanoke Rapids*

GARY JOSH SCULL  
*Roseford*

ALLEN WINFORD SHEARIN  
*Littleton*



THOMAS SAMUEL SHUTT, JR.  
*Roanoke Rapids*

LORINE FAYE SMITH  
*Louisburg*

RUSSELL GAITHER SNIPES  
*Fuquay Springs*



ROBERT WILKINS STAINBACK  
*Littleton*

FAYE ALAWOISE STRICKLAND  
*Louisburg*

CHARLES WINSTON STROTHER  
*Louisburg*



# JUNIORS



WILLIAM STYRON  
*Roe*

ALICE FERN THARRINGTON  
*Louisburg*

ANNE WILLIAMS TUCKER  
*Norlina*



BETTY JOYCE TWISDALE  
*Halifax*

JIMMIE THOMAS VAUGHN  
*Coats*

LON HUGH WEST, JR.  
*Yadkinville*



DAVID GERALD WILLIAMS  
*Louisburg*

NELL WILLIAMS  
*Warrenton*

JAMES B. WINGATE  
*Ayden*



JIMMIE WOMBLE  
*Sanford*

EMMA JEAN WRENN  
*Louisburg*

JEANETTE YATES  
*Apex*

*GATEWAY TO*



*COLLEGE ACTIVITIES*



## *Women's Student Council*

LAURA LYNN HORTON  
*President*

BETSY EVERETTE  
*Vice-President*

ALAWOISE STRICKLAND  
*Secretary*

ELIZABETH BROOME  
*Treasurer*

### MEMBERS

*House President*.....Jacqueline Farrow  
*Junior Class Representative*.....Lucy Burgess  
*Day Student Representative*.....Janet Bailey  
*Honorary Member from Y.W.C.A.*.....Phyllis Bailey



## *Men's Student Council*

EDWIN DRIVER  
*President*

MARVIN JORDAN  
*Vice-President*

DOUGLAS EDWARDS  
*Secretary-Treasurer*  
(Not Shown)

### MEMBERS

*Junior Representatives*.....William Hurley, Hubert Hodgkin

*Honorary Member from Y.M.C.A.*.....Robert Kennedy

Not Shown

*Senior Representatives*.....Ben Price, Norman Brickhouse, Billy Merritt



## *Y Cabinet*

ROBERT KENNEDY  
*President, Y.M.C.A.*

PHYLLIS BAILEY  
*President, Y.W.C.A.*

*Left to right*—Kathleen Neal, Tryon Lancaster, Richard Klevansky, Harvey Tippet, Patricia Monk, Jacqueline Farrow, Bobby Beck, Mike Jolly, Janet Bailey, Robert Kennedy, Phyllis Bailey, David Scott, Ann Tucker, Betsy Everette, Douglas Edwards, Hubert Hodgkin, Jimmy Vaughn, Sue Manning.

It may be a quiet worship service on Thursday evening, a special Christmas program, listening to a visiting speaker, Sadie Hawkin's Day race, or many other happy and wholesome activities to suggest the varied functions of the YWCA and YMCA. The success is not only in the number of activities but in the almost one-hundred-percent membership and the extent of friendly cooperation.



# *Glee Club*

Appreciating the fine art of music and having a desire to learn to sing better are among the qualifications for being a member of the glee club; so it is another of the activities offering enjoyment together with beneficial training. Concerts are given on various occasions at the college and also off campus.

ALICE LEA DENNIS  
*President*

SUE MANNING  
*Vice-President*

BETTY LOU BROWN  
*Secretary-Treasurer*

MISS SARAH FOSTER  
*Director*

BONNIE GREEN  
*Accompanist*

*Left to right*—Mattie Hunter, Bonnie Green, Malvina Crawford, Lucy Burgess, Idalyne Batchelor, Phyllis Bailey, Ellen Marks, Ann Tucker, Elizabeth Broome, Frances Baker, Betty Lou Brown, Sue Manning, Martha Perdue, Jeanette Yates, Rosalyn Crews, Marie Gupton, Mary Hassell, Janet Bailey.





## *The Oak Staff*

MARVIN JORDAN  
*Editor*

TURK MORRISSETTE  
*Business Manager*



Today, after many hours of hard labor, toil and worry, we give you the 1953 OAK. When we started out back in the fall, our aim was to make the book the best one ever published in Louisburg College, but we have probably fallen short of our desire. Nevertheless, today the OAK is yours. You probably won't like it but we hope you will because we have done our best and have enjoyed doing it. We are proud of it.

To Mr. C. Ray Pruette, our advisor, we would like to express our deepest appreciation; for without his help the publication of the 1953 OAK would have been impossible. We would also like to thank Miss Ruth Merritt whose friendly cooperation and suggestive ideas have added greatly to the success of the book.

Member of the staff who should be recognized are: Howard Powell, *the photographer*; Bob Kennedy, *art editor and assistant business manager*; and Marvin Baugh, *typist*.

# Columns Staff

*Columns*, the college newspaper, has been published five times during the 1952-1953 college year. The first-semester issues were published by the regular staff of *Columns* with several members making outstanding contributions in their work.

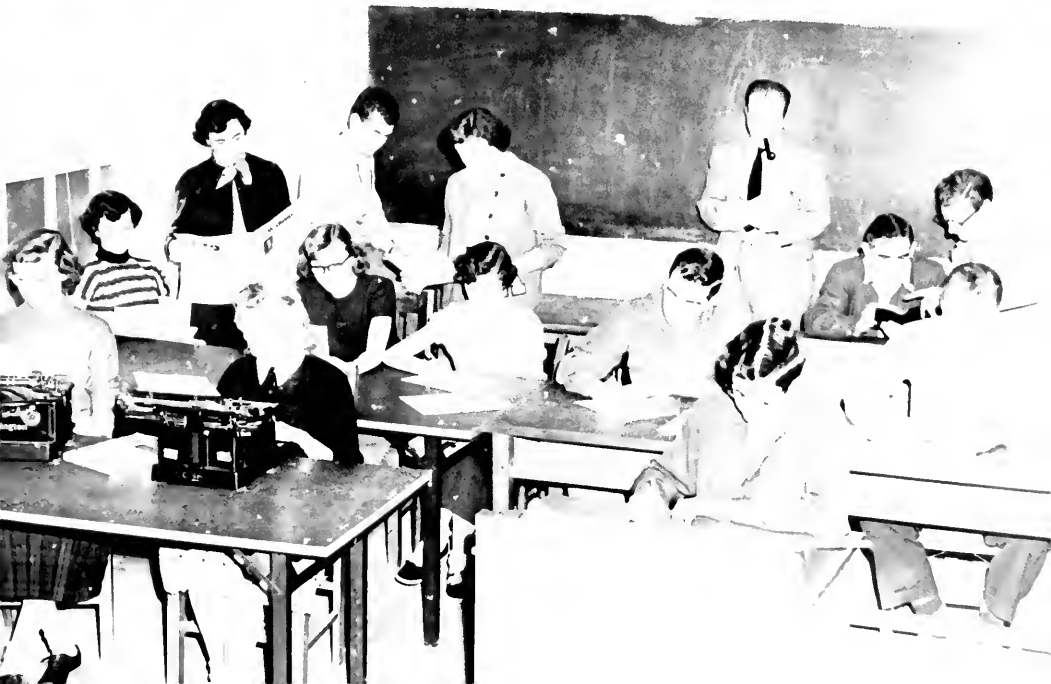
The second semester the work on the paper was as the year before, organized around a newspaper laboratory once a week, conducted this year by Mr. Allan Norberg. With this plan the publishing of the paper became a more efficient undertaking and a better means of learning newspaper work.

The paper has tried in its twelve years to uphold the high standards of Louisville; and this year the staff has tried to make the paper as friendly as possible so that it would truly be every student's paper.



PAUL BUNN  
*Editor*

EDWIN DRIVER  
*Business Manager*





## *Dramatics Club*

*Left to right—First row—Evellyn Rae Harris, Ann Mann, Clyde Culbreth, Jacqueline Farrow, Mary Hassell; Second row—Paul Bunn, Janet Bailey, Patricia Monk, Ann Long, Phyllis Bailey; Third row—John Joyner, Alice Lea Dennis, Robert Stainback, J. P. Harris; Fourth row—Bill Sadler, Sue Manning.*

Joan of Arc and Lover



Heard here and there concerning our January production of Dana Thomas's *Joan of Arc*:

*member of the cast:* "Yes, I did enjoy being in the play."

*students of the audience:* "She (Sue Manning as Joan of Arc) looked like an angel in the vision scene . . . Ed (Driver as Armand) was really good in his part—just wonderful, especially at the last . . . She (Sue as Joan in the prison scene) looked as if she were really about to be executed . . . It seemed to me as if each actor were living his role."

*local music teacher of the audience:* "It was the kind of play that those who saw will not forget."

Joan of Arc and French General





Joan of Arc  
with Peasants  
in Forest of Lorraine



Joan of Arc

before Charles VII

Joan of Arc  
with Prison Guards,  
Monk, and Lover





## *Commercial Club*

*Left to right—first row—Clyde Culbreth, Evelyn Rae Harris, Ann Long, Betty Lou Brown, Betty Twisdale; second row—Mattie Hunter, Mary Hassell, Lucy Burgess, Jean Fairey, Ann Tucker; third row—Robert Stainbeck, Janet Bailey, Ann Mann, Frances Norman, Marie Gupton, Dorothy Hood; fourth row—Sue Manning, Joe McPherson, Bonnie Green, Marvin Baugh.*

All students in the Business Department are eligible for membership to the Commercial Club. The purpose of this is to provide a means for social contacts within the department and to sponsor educational programs pertaining to secretarial and office practices.

# *Honorary*



# *Fraternities*

# Phi Theta Kappa



Left to right—John Perry Harris, *President*; Paul Grayson Bunn, *Secretary*; Charles Eugene Dickerson, *Treasurer*; R. A. Baxley, Jr., Alice Fern Tharrington, Thomas Weldon Lucas, John Franklin Joyner, Idalyne Margaret Batchelor, Alice Lea Dennis, Ben Lyon Price, Jacqueline Joy Farrow, Miss Elizabeth Johnson, *Sponsor*.

Phi Theta Kappa is a national character-scholarship fraternity corresponding in junior colleges to Phi Beta Kappa in senior colleges. The Gamma Upsilon Chapter was chartered and organized at Louisburg College fourteen years ago.

Those who receive bids for membership must stand in the upper ten per cent of their class and make a grade of 85 per cent or above and the proper number of quality pints.

The motto of the chapter is Scholarship, Character, Good Fellowship.



# Alpha Pi Epsilon



*Left to right*—Marvin Eugene Baugh, Evelyn Rae Harris, Ben Lyon Price, George Ellen Marks, Idalyne Margaret Batchelor, Robert Wilkins Stainback, Faye Elaine Hudson, George Phillip Bunn, Ann Williams Tucker, Mrs. Cornelia Schrul, *Sponsor*.

This is a national honorary fraternity open to students in the Commercial Department. Qualifications for membership in Alpha Pi Epsilon are outstanding personality, high rank in character, and an academic standing of B or better.

## Beta Phi Gamma



*Left to right—Marvin Lawrence Jordan, Phyllis Ann Bailey, Wirtgman Cason Morrisette, Marvin Eugene Baugh, Sue Manning, Robert Henery Kennedy, Helen Elizabeth Broome, Paul Grayson Bunn, Miss Ruth Merritt, Sponsor.*

Beta Phi Gamma is the national junior college honorary fraternity. The purpose is to recognize journalistic achievement and to promote an interest in journalistic endeavors.

The requirements for a bid are a C-average, a semester's active membership on the staff of a college publication, and an outstanding contribution in this activity.

## *Delta Psi Omega*



*Left to right*—Wigman Cason Morrisette, Sue Manning, Edwin Driver, Phyllis Ann Bailey, Joseph Edward McPherson, Miss Ruth Merritt, *Sponsor*.

Delta Psi Omega is a national honorary dramatic fraternity established to recognize any phase of student participation in college dramatic art and stagecraft. Those invited to join must have done outstanding work in acting, have written a play that has been produced, or have efficiently served in some phase of stage workmanship and in any case gained a C-average in scholarship.

The fraternity customarily helps in the sponsorship of play production.

## *Sigma Pi Alpha*



*Left to right—John Franklin Joyner, President; Paul Grayson Bunn, Vice-President; John Perry Harris, Secretary; Phyllis Ann Bailey, Marvin Lawrence Jordan, Alice Lea Dennis, Dr. Anne Blumenfield, Sponsor.*

Sigma Pi Alpha is the newest fraternity in Louisburg College, having been organized during the 1951-1952 school year. It is a national honorary language fraternity with the purpose of stimulating an interest in the language, background, customs, and people of foreign countries and to make a contribution towards establishing a better mutual understanding.

For a student to become a member of this fraternity, he must have a general academic average of not less than 80 per cent, a language average of not less than 85 per cent, and must be registered in a language course above the elementary level.



## *May Day, 1952*

JUNE TEW  
*Queen*

BEN PRICE  
*King*

VIVIAN MILLER  
*Maid of Honor*

TURK MORRISSETTE  
*Escort*

Jeanette Miller  
Jackie Hall  
Audrey Todd  
Barbara Forbes  
Pearl Grant  
Judy Perry  
Joyce Guthrie  
Rubie Riggan  
Margaret Jackson  
Patricia Monk

Bill Brogden  
Bill Chestnut  
Cliff Johnson  
Jimmy Willis  
Bob Kennedy  
Bryant Balkcum  
Charles Creekmore  
Willis Goodrum  
Jack Denning  
Thelbert Whitt

*May Queen, 1952*



*Miss June Tew*

*Maïd of Honor, 1952*



*Miss Vivian Miller*

# MAY DAY SCENES



Miss June Tew  
Mr. Ben Price



Miss Margaret Jackson  
Mr. Jack Denning

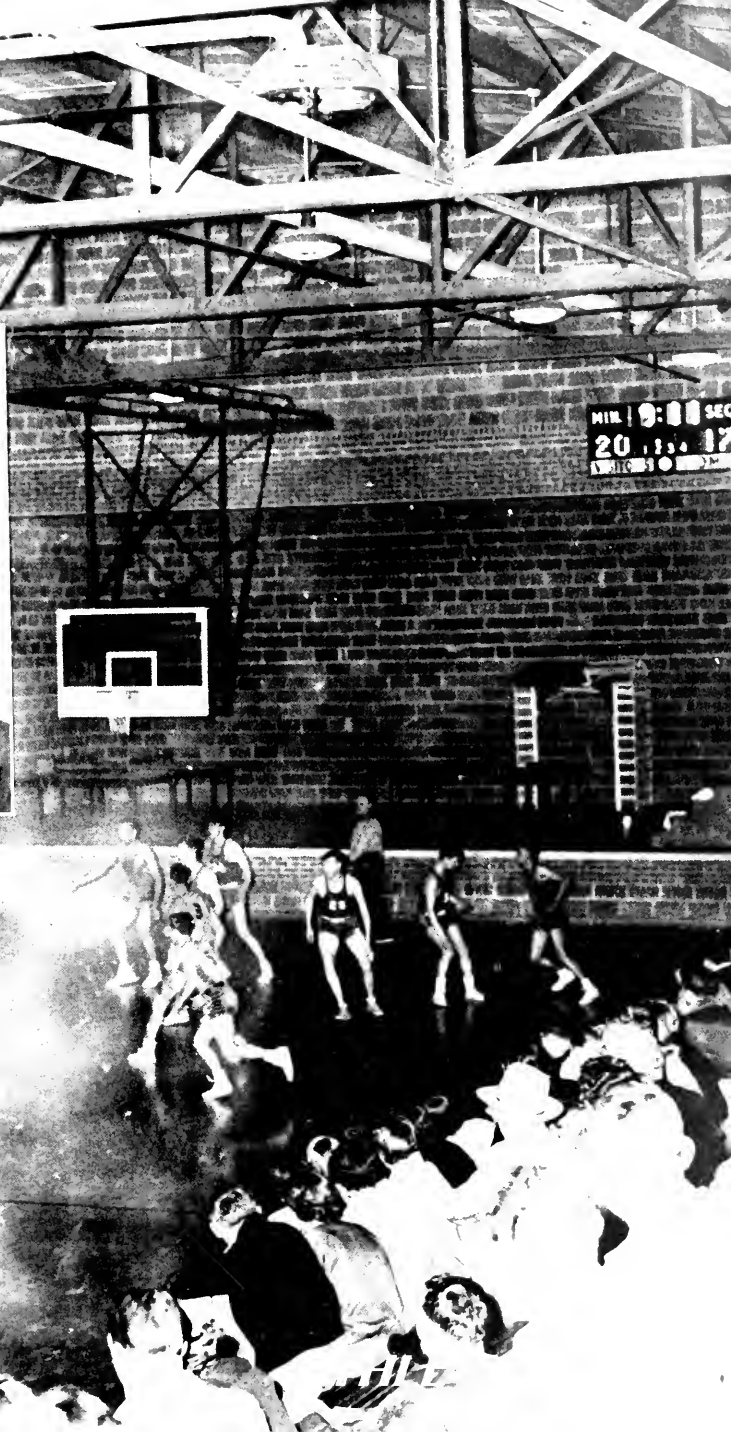
Miss Patricia Monk



Miss Audrey Todd









## *Girls' Basketball Team*

*Left to right—Miss Cook, Coach; Kathleen Neal, Betty Lou Brown, Frances Norman, Betsy Everette, Frances Baker, Jeanette Yates, Bonnie Green, Fern Tharrington, Malvina Crawford.*



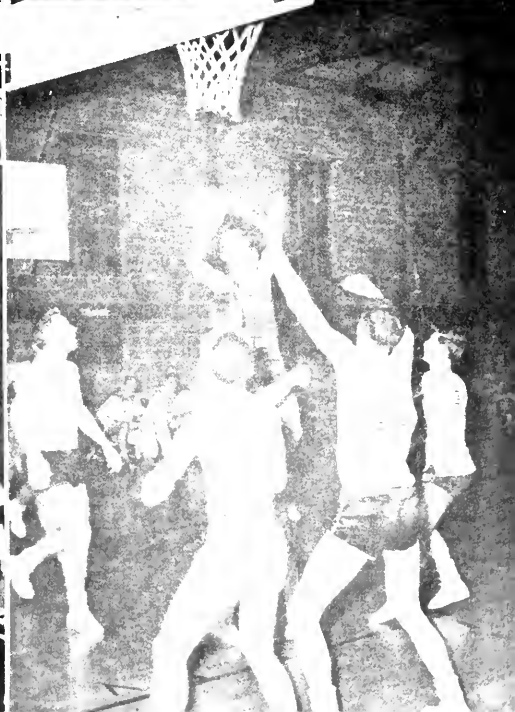


## *Boys' Basketball Team*

*Left to right—Coach John York, Ralph Bridges, Johnny Nelson, Tommy Shutt, Gardner Barbour, Jimmy Womble, Bobby Manning, Bobby Mangum, Roy Lee Earp, Eddie Lee Elks, Gary Morris, Max Matthews, Milton McDaniel, C. W. Strother, Billy Hurley, Ben Price, Marvin Jordan, Manager.*

### THE SCHEDULE

Nov. 25—Erwin Auditorium .....Here	Jan. 24—Charlotte .....There
Dec. 14—Chowan .....Here	Jan. 27—E. M. I. ....There
Dec. 6—A.C.C. JV's .....There	Jan. 30—Oak Ridge .....There
Dec. 12—P. J. C. ....Here	Jan. 31—Charlotte .....Here
Dec. 17—Wingate .....There	Feb. 3—Campbell .....There
Dec. 18—Pembroke .....There	Feb. 4—E. M. I. ....Here
Jan. 7—Pfciffer .....There	Feb. 7—Belmont Abbey .....Here
Jan. 9—Wilmington .....There	Feb. 9—Chowan .....There
Jan. 12—Campbell .....Here	Feb. 13—Wilmington .....Here
Jan. 17—Oak Ridge .....Here	Feb. 16—Wingate .....Here
Jan. 19—A. C. C. JV's.....Here	Feb. 17—Pfciffer .....Here
Jan. 21—Pembroke .....Here	Feb. 21—P. J. C. ....There
Jan. 23—Belmont Abbey .....There	





## *Junior Varsity*

*Front Row—Left to right—Coach Allan Norberg, Pete Frazier, Bobby Beck, Harvey Tippett, Billy Merritt, "Plug" Brickhouse, Joe Ipock; Back Row—Left to right—Hugo Hodgins, Robert Stainback, Steve Davenport, Bob Kennedy, and Garland Moore.*





## *Monogram Club*

*Left to right*—Billy Merritt, Roy Lee Earp, Norman Brickhouse, Eddie Lee Elks, Ben Price, Hal Perry, Ralph Bridges, Harvey Tippet, Bobby Beck.

The purpose of the Monogram Club is to develop and promote higher standards of athletic sportsmanship. Those eligible for membership must have revealed marked ability on the basketball court or on the baseball diamond and also have maintained a creditable scholastic average.

One of the most outstanding programs of the year is presented in the spring by the Monogram Club when it awards letters to new members.

# The 1952 Baseball Team



FLEMING  
GODWIN  
McPHAIL

BRICKHOUSE  
PERRY  
JORDAN

HALL  
NELSON  
AYSCUE



# The 1952 Baseball Team



BAUGH

TIPPETT

STONE

EARP

KING

OAKES

BAKER

KEENE

JOHN YORK, *Coach*

HARVEY JOHNSON, *Manager*

## THE SCORES

April 4—Chowan 3 .....L. C. 4 There  
 April 10—Oak Ridge 5.....L. C. 4 There  
 April 12—Oxford 13 .....L. C. 1 Here  
 April 14—Henderson 7.....L. C. 9 There  
 April 19—Campbell 4 .....L. C. 0 Here  
 April 23—E. M. I. 6.....L. C. 17 Here  
 April 30—Chowan 6 .....L. C. 13 Here

May 1—E. M. I. 8.....L. C. 9 There  
 May 5—P. J. C. 9.....L. C. 7 There  
 May 7—Oxford 15 .....L. C. 9 There  
 May 10—Henderson 2 .....L. C. 3 Here  
 May 16—P. J. C. 2.....L. C. 4 Here  
 May 17—Oak Ridge 9.....L. C. 2 Here  
 May 24—Campbell 4 .....L. C. 7 There

# *Campus Life at Louisburg*

Campus life at Louisburg to us, who love our college, seems much like an on-going experience, for even events of past campus days are often the vivid memories that seem about the current present.

There are—

Those sleepy trecks to the cafeteria at the last hectic moment before the eight o'clock class,

the morning chapel services where we listen to one of the town ministers or an out-of-town speaker,

those classes just before lunch hour when breakfast fades almost beyond a memory, then—the dash out of Franklin, books left scattered in every direction—next, that wait in line when every minute seems an hour—last, the servings, correctly balanced, every calorie, mineral, vitamin counted rightly—and yet, oh, how we long for Mom's cooking.

Why worry, though? There comes at one the charm of social times: a T. V. session there in Wright, or just those heart felt moments with "the one and only."

But all too soon the pleasure's over, for gym hour courses or that two-hour-long lab of chemistry or botany or zoo must come next.

At half past three, it's over though, and a squad may then go into action on the court or diamond or some may seek diversion at Boddies, O'Neals or at Wimpy's show.

There's dinner then—Oh, is it fish?—or maybe—just maybe steak with French fries with some favorite dessert.

Then for a whole hour of dancing while Johnny Ray cries away and Nat King Cole sings the blues. But alas, for at seven the dance ends. We are supposed to study then, but it sometimes turns out to be a bull session.

But study or not, we get hungry about nine thirty; so it's dope shop again with a chorus of—

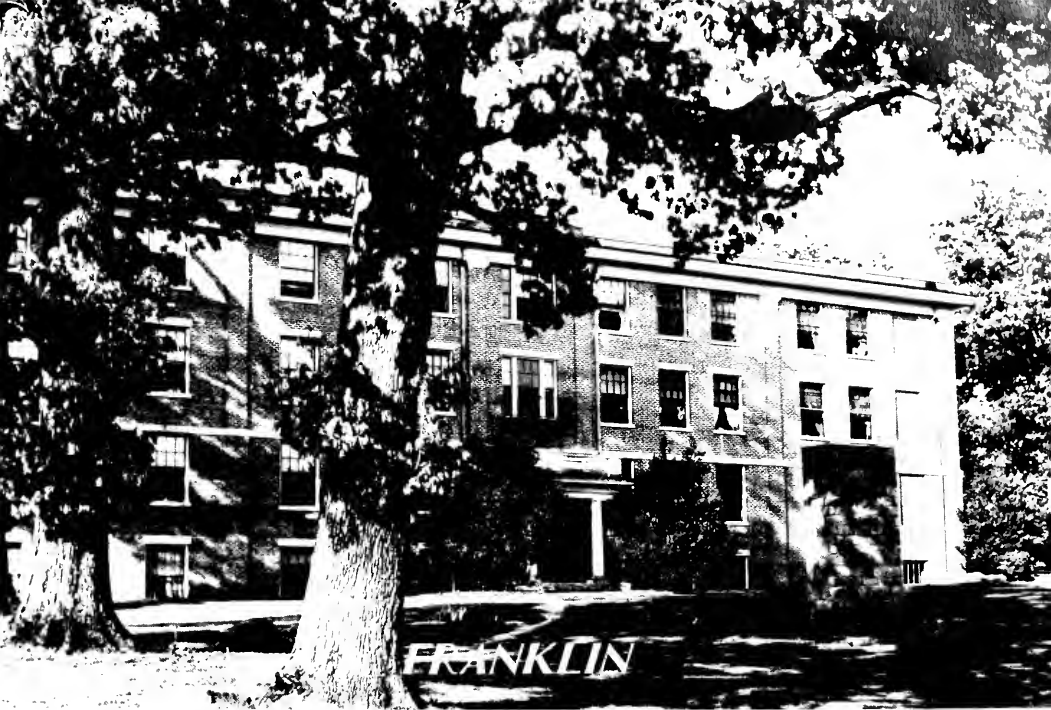
"Come on, hurry up and wait on me . . . Gimme a popcicle . . . a drum stick . . . a bag of 'tater chips . . . Got a ham sandwich?"

Then it's back to the room for a little more studying but how can we study while listening to "My Best to You" or a jam session across the hall?

Being unable to get in any more studying, we hit the sack thinking that maybe it won't matter anyway. After all, we can't get a pop quiz everyday, or can we? Not giving the matter any more thought, we drop off to sleep.

It's too bad we can't keep this up forever. We love our dear alma mater, but like all good things, our college days at Louisburg must come to an end. Through the years, we may travel far and wide or we may go only a few miles from here but wherever we go and whatever we do, we will always remember our

Campus Life At Louisburg.



*Where We Live, Work, and Play*



# Campus Life at Louisburg

1. "Aw . . . dry up!"

2. Tit-tat-toe???

3. "Now you listen here, gal!"

4. "Pass me the vinegar!"

5. The band of rebound.

6. "Here we are, boys!"

7. "Hit the deck!"

8. "Girls" (If you'll pardon the expression)

9. 'Ain't love grand?"



# Campus Life at Louisburg



1. "How did he get in the picture?"

2. Round and round we go!

3. The Goose and Gander.

4. "Going Someplace?"

5. Smoking guns

6. The Olympic chumps.

7. "Will you crank my engine?"

8. "I pronounce you man and two dollars, please."

9. Southern Comfort.

# Campus Life at Louisburg

1. Spanking the baby!

2. All dressed up and no place to go.

3. Silly dilly tilly

4. "Waiter, there's a fly in my soup!"

5. Hollywood talent scout?

6. A typical day at Pattie Julia.

7. "Oh, those silly things."

8. "Slide . . . slide!"

9. Who caught who?????





## *Campus Life at Louísbúrg*

1. What are you looking at?
2. Legs go, ladies.
3. Goodbye Joe, I gotta go—
4. A pickin' and a plunkin'
5. Hey, good lookin'
6. Pretty socks, my boy
7. Like this?
8. Pine cone pickers
9. Now, you tell one.
10. Three's a crowd.

# Campus Life at Louisburg

1. Want a bite?

2. Here's Tom, where are Dick and Harry?

3. Hail! Hail! The gang's all here.

4. Campus scenery

5. Pruette socks one.

6. Musical Trio

7. Oooooo Boy! Food.

8. After the ball is over.

9. Well?





# *Student Directory*

George W. Adams, Rt. 2, Four Oaks  
Frederick Adcock, 801 Hyde Park Ave., Durham  
Maurice R. Adcock, Fuquay  
Mary Autry, Rt. 1, Autryville  
Janet Bailey, Louisburg  
Phyllis Ann Bailey, Louisburg  
Wayne E. Baker, Rt. 3, Zebulon  
Frances Baker, Rt. 3, Nashville  
Gardner Barbour, Rt. 2, Fuquay Springs  
Idalyne Batchelor, Rt. 2, Spring Hope  
Marvin E. Baugh, Rt. 1, Box 27, Warrenton  
R. A. Baxley, Jr., 2002 Burnet Ave., Fayetteville  
Robert E. Beck, Northside  
Louise Beddard, Rt. 2, Box 328, Ayden  
Donald Beddingfield, Rt. 2, Zebulon  
Richard Glen Blackburn, Ingold  
Norman Perry Bobbitt, Rt. 3, Littleton  
James R. Booth, Nashville St., Nashville  
Edward Bradsher, Rt. 4, Box 82, Clinton  
Lenox Bramble, Rt. 3, Box 167, Fayetteville  
Norman Brickhouse, Parsonage St. Extd., Elizabeth City  
Ralph Bridges, Rt. 5, Sanford  
Jackson Perry Brooks, Rt. 8, J. H. S., Sanford  
Elizabeth Broome, Rt. 1, Aurora  
Betty Lou Brown, Rt. 2, Littleton  
Philip Bunn, Rt. 2, Castalia  
Paul Bunn, 407 Albright Ave., Graham  
Lucy Burgess, 325 E. Main St., Belhaven  
Robert Burns, 751 Carthage St., Sanford  
Paul Childers, Rt. 2, Louisburg  
Clara Collins, 212 Cheatham St., Franklinton  
Malvina Crawford, Rt. 1, Box 297, Greenville  
Rosalyn Crews, Rt. 3, Box 55, Henderson  
Clyde Culbreth, 309 B. St., Fayetteville  
Stephen Davenport, 819 Henry St., Roanoke Rapids  
Martha Eleise Davis, Marshallberg  
Nancy Ann Davis, Rt. 2, Louisburg  
Gerald Lee Denning, Rt. 2, Angier  
Alice Lea Dennis, Kenmore Ave., Louisburg  
Charles Eugene Dickerson, Rt. 1, Kittrell  
Faye Ernestine Dillard, Rt. 2, Macon  
Dorothea Grey Draughon, Godwin  
Cleveland S. Duke, Jr., 216 E. 3rd St., Washington  
Aubrey Donald Dunson, 905 Hyde Park Ave., Durham  
Roy Lee Earp, Box 565, Angier  
Melvin Douglas Edwards, Rt. 1, Louisburg  
Eddie Lee Eiks, 712 Maple St., Weldon  
Coy Darwin Evans, Magnolia  
Betsy Ann Everette, Box 471, Battleboro  
Joseph Luther Eubanks, Jr., 1501 Tryon Rd., New Bern  
Zara Curtis Ezzell, Rt. 2, Rose Hill  
Elizabeth Jean Fairey, 2107 Pershing St., Durham  
Jacqueline Joy Farrow, Waves  
Jerry Arnold Faulkner, Rt. 1, Henderson  
Robert J. Frazier, Jr., Rt. 1, Louisburg  
Adele Gales, Rt. 7, Jonesboro Heights, Sanford  
William Ernest Gill, Jr., Rt. 2, Box 200, Henderson  
Riley Godley, 102 Weatherspoon St., Sanford  
Julian Gonzalez, Louisburg College, Louisburg  
Bonnie Jean Green, Rt. 2, Halifax  
Mas. Raul Guerra, 580 W. 161st. St., App. 21, New York, N. Y.  
Leonard Franklin Gunn, Church Rd., Virginia  
Peggy Jackson Gupton, Rt. 2, Louisburg  
Ruth Marie Gupton, Rt. 2, Louisburg  
Frances Hales, Autryville  
Irene Sledge Hamlet, Rt. 2, Louisburg  
Moses Henry Hand, Hillsboro St., Raleigh  
Evelyn Rae Harris, Tillery  
John Perry Harris, Rt. 2, Box 97, Macon  
Julian Wheless Harris, Rt. 2, Spring Hope  
Mary Elizabeth Hassell, 316 Charlotte St., Washington  
Irene Herring, Rose Hill  
Hubert H. Hodgkin, 2724 Harrison St., Wilmington  
Dorothy Ann Hood, 3rd St., Wendell  
Laura Lynn Horton, Rt. 2, Zebulon  
Faye Elaine Hudson, Rt. 3, Louisburg  
Mattie Willis Hunter, Inez  
William John Hurley, Robersonville

# *Student Directory*

Wingate M. Hutchings, 1401 Virginia Ave., Durham  
Allen J. Ipock, Rt. 2, New Bern  
Charles B. Johnson, 1514 Rhems Ave., New Bern  
Durwood Johnson, Rt. 1, Four Oaks  
Jewel Johnson, Turkey  
Mary L. Johnson, 409 W. Noble St., Louisburg  
Leroy M. Jolly, Rt. 2, Box 95, Chadbourn  
Marvin L. Jordan, 207 Sycamore St., Weldon  
John F. Joyner, Rt. 2, Vanceboro  
Oker K. Keene, Coats  
Robert H. Kennedy, Cherry St., Wilkesboro  
Tillie M. King, 206 Broad St., Roxboro  
Richard Klevansky, 1615 Alsace Rd., Reading, Pa.  
D. B. Lancaster, College Apts., Louisburg  
Tryon D. Lancaster, 2004 Southern Ave., Fayetteville  
John C. LeMay, Rt. 3, Box 92, Henderson  
Ann E. Long, Hurdle Mills  
John D. Long, 602 N. Main St., Louisburg  
Thomas W. Lucas, Roseboro  
Edward M. McDaniel, Rt. 1, Cove City  
Ronald G. McGhee, 415 E. Green St., Franklinton  
Donald H. McIntyre, Box 42, Franklinton  
Mary A. McLamb, Rt. 2, Box 136, Roseboro  
Robert F. MacMillan, 310 Bradford Ave., Fayetteville  
Joseph E. McPherson, 731 Westover Blvd., Elizabeth City  
Robert J. Mangum, Fleming St., Creedmoor  
Elizabeth A. Mann, 907 Raleigh St., Elizabeth City  
Bobby G. Manning, Rt. 3, Bethel  
Sue Manning, Middlesex  
Ellen Marks, Rt. 2, Cameron  
Mary L. Mason, Atlantic  
Jesse W. Massengill, Rt. 1, Four Oaks  
Max A. Matthews, Angier  
Luvy J. Matthis, Rt. 4, Box 236, Clinton  
Jack C. Maxwell, 110 Virginia Ave., Fayetteville  
Etta C. Mears, Rt. 6, Raleigh  
Billy R. Merritt, Rt. 1, Magnolia  
Joyce P. Monk, Rt. 2, Hurdle Mills  
Garland G. Moore, 301 South Roanoke St., Scotland Neck  
Gary Morris, Atlantic  
Wigman C. Morrissette, Jr., 811 N. Rd. St., Elizabeth City  
Jodie K. Neal, Rt. 2, Louisburg  
Johnny W. Nelson, Rt. 1, Bethel  
Rodney G. Nelson, Atlantic  
Frances C. Norman, Rt. 3, Elizabeth City  
Braxton R. Overby, Norlina  
Mattha A. Perdue, Rt. 3, Louisburg  
Hal C. Perry, Zebulon  
Howard P. Powell, Jr., 228 W. Edenton St., Raleigh  
Ben L. Price, Angier  
Frederick Ransom, Rt. 2, Box 82, Clarkton  
Carl B. Richardson, Jr., Rt. 1, Louisburg  
Ralph L. Rogers, 1720 Newton Rd., Durham  
William T. Sadler, 802 Vance St., Roanoke Rapids  
David J. Scott, Rt. 1, Box 165, Warrenton  
Gary J. Scull, Rt. 1, Raeford  
Worth V. Shaw, Evergreen  
Allen W. Shearin, Rt. 2, Littleton  
Thomas S. Shutt, Jr., 922 Hamilton St., Roanoke Rapids  
Lorine F. Smith, Rt. 2, Louisburg  
Russell G. Snipes, Rt. 1, Fuquay Springs  
Robert W. Starnback, Box 24, Littleton  
Faye A. Strickland, Rt. 1, Louisburg  
Charles W. Strother, 704 S. Main St., Louisburg  
William Styron, Roe  
Thomas Sugg, Rt. 2, New Bern  
Alice F. Tharrington, Rt. 3, Louisburg  
Harvey L. Tippet, Rt. 1, Bahama  
Anne W. Tucker, Box 182, Norlina  
Betty J. Twisdale, Rt. 1, Box 9, Halifax  
Edwin H. Usher, Rt. 1, Rose Hill  
Thomas J. Vaughn, Coats  
Lon H. West, Jr., Box 137, Yadkinville  
David G. Williams, East Nash St., Louisburg  
James B. Wingate, 503 Ventors St., Ayden  
Jimmy Womble, Sanford  
Emma J. Wrenn, Louisburg  
Jeanette Yates, Apex

# LOUISBURG COLLEGE

*Under Control*

NORTH CAROLINA METHODIST CONFERENCE

*Accredited by*

THE STATE DEPARTMENT OF EDUCATION

NORTH CAROLINA COLLEGE CONFERENCE

UNIVERSITY OF NORTH CAROLINA

SOUTHERN ASSOCIATION OF COLLEGES AND SECONDARY SCHOOLS



OFFERING TWO YEARS TERMINAL COURSES

— *in* —

COMMERCIAL SCIENCE

RELIGIOUS AND SOCIAL SECRETARIES

— *and* —

Two-Year Preparatory Courses Leading to Degrees in Senior Colleges  
in Engineering, Agriculture, Dentistry, Commerce  
and Liberal Arts



*For Details Write*

LOUISBURG COLLEGE    --    Louisburg, N. C.

# LOUISBURG, NORTH CAROLINA

— is —

RICH IN HISTORY, HEALTH AND HOSPITALITY

There is not a more ideal place of residence in the world for a student than Louisburg. There exists here at all times an atmosphere of quiet, culture, and refinement, that encourages study and accomplishment. The material needs of every student can be purchased in Louisburg at most reasonable prices; therefore, it is an economic and otherwise desirable home for students.

*LOUISBURG SINCERELY WELCOMES EVERYONE AT ALL TIMES*

TOWN OF LOUISBURG

W. F. SHELTON, *Mayor*

---

## LITTLE RIVER ICE COMPANY

ICE and COAL

*Air Conditioned Ice Refrigerators*

*Water Coolers - Ice Cream*

*Freezers - Stokers - Stores*

LOUISBURG, N. C.

## FIRST-CITIZENS BANK



LOUISBURG, N. C.

---

COMPLIMENTS

**"CHICK" WILLIAMS**

LOUISBURG, N. C.

---

COMPLIMENTS

**G. W. MURPHY and Son**

*YOUR COMPLETE FOOD MARKET*

LOUISBURG, N. C.

**WALLER AND SMITH**



*PHOTOGRAPHERS*

*For*

THE 1953 OAK



12 EAST HARGETT STREET

Phone 7708

RALEIGH

*BEST WISHES*

*To The*

STUDENTS

*At*

LOUISBURG COLLEGE

*Louisburg Theatre*

BEST WISHES

*YOUR DOWNTOWN MEETING PLACE*



**BODDIE  
DRUG STORE**



LOUISBURG, NORTH CAROLINA

**SCOTT TOPPING**

*COUNTRY SAUSAGE*



PANTEGO, N. C.

D. E. WILLIAMS, Owner

**WILLIAMS FURNITURE CO.**

*FURNITURE, STOVES, and REFRIGERATORS*

220-222 N. Poindexter Street

ELIZABETH CITY, N. C.

Dial 5469

**QUALITY DRY CLEANERS**

Phone 5181

*For Quick and Dependable Service*

South Main Street

LOUISBURG, N. C.

**PRUITT LUMBER CO.**

*"BETTER HOMES FOR BETTER LIVING"*

Phone 433-1

East Nash Street

LOUISBURG, NORTH CAROLINA

**C. D. KENNY DIVISION**  
**Consolidated Grocers Corp.**

*MANUFACTURERS — IMPORTERS*  
*DISTRIBUTORS OF FOODS*

P. O. Box 1039

DANVILLE, VIRGINIA

*COMPLIMENTS OF*

**THE BAKERS OF BAMBY**

*BREAD and CAKES*

GOOD EATING — DAY AFTER DAY

ROYAL BAKING CO.      RALEIGH, N. C.

S P O N S O R

**BROGDEN PRODUCE CO.**

RALEIGH

**LEGGETT'S DEPARTMENT STORE**

*THE HOME OF BETTER VALUES*

LOUISBURG, N. C.

*THE SOUTH'S LEADING DISTRIBUTORS OF RELIABLE MERCHANDISE*

---

**GRIFFIN-THARRINGTON MOTOR COMPANY**

*FORD SALES AND SERVICE*

LOUISBURG, NORTH CAROLINA

---

*THE STUDENT'S FAVORITE*

**EARL'S DRIVE-IN**

*SOFT DRINKS — HAMBURGERS — HOT DOGS*

LOUISBURG, N. C.

---

**ROWE'S MEN'S SHOP**

*EVERYTHING TO WEAR FOR MEN AND STUDENTS*

LOUISBURG, N. C.

---

**KELLY'S GRILL**

*THE PLACE TO EAT*

*REGULAR MEALS AND SNACKS*

# O'Neal Drug Co.

*"YOUR DRUG STORE"*

THE BEST OF EVERYTHING FOR YOU

*SERVICE WITH A SMILE*

*HOLLINGSWORTH CANDIES*

*PRESCRIPTIONS*

LOUISBURG, NORTH CAROLINA

---

## **CHESSON CANDY COMPANY**

*"SWEETS THAT REPEAT"*

LOUISBURG, N. C.

Phone 337-2

*BEST IN CANDY, GUM, PEANUTS and SANDWICHES*

---

## **FLEMING'S FRUIT COMPANY**

*WHOLESALE*

Phone 8606 — 405 South Main Street

LOUISBURG, N. C.



**TUTTLE APPLIANCE CO.**

*"YOUR FRIGIDAIRE DEALER"*

*APPLIANCES — TELEVISION — PAINT*

LOUISBURG, NORTH CAROLINA

---

**LOUISBURG DRY CLEANERS**

SYKES & STOVALL, Proprietors

*PRESSING — CLEANING — ALTERING*

LOUISBURG, N. C.

---

**SEABOARD STORES**

INCORPORATED

*HARDWARE — BUILDING MATERIALS — FARM EQUIPMENT*

*SPORTING GOODS*

DIAL 441-1

LOUISBURG, N. C.

---

*BEST WISHES FROM*

**TONKEL'S**

*LOUISBURG'S MOST MODERN AIR-CONDITIONED DEPARTMENT STORE*

LOUISBURG, N. C.

---

**RUTH'S SHOP**

*LADIES' AND CHILDREN'S APPAREL*

LOUISBURG, N. C.

---

**ROWE CHEVROLET CO.**

AUTHORIZED

CHEVROLET DEALERS

Phone 314-1

B. T. & W. E. ROWE

LOUISBURG, N. C.

DURHAM BAKING COMPANY

*Made Rite*  
**is GOOD BREAD**

Phone 3-8641

DURHAM, NORTH CAROLINA

"GOVERNMENT INSPECTION FOR YOUR PROTECTION"



HAMS — BACON — SAUSAGE — BEEF

**FROSTY MORN MEATS, INC.**

KINSTON, N. C.

Phone 5101

**LADY BORDEN ICE CREAM**

*ELSIE SAYS  
IF IT'S BORDENS  
IT'S GOT TO BE  
GOOD*

Phone 5569

RALEIGH, N. C.



COMPLIMENTS

**CAROLINA BEDDING COMPANY**

CHARLOTTE, NORTH CAROLINA



THE CAPITAL COCA-COLA BOTTLING CO., INC.  
RALEIGH, NORTH CAROLINA

---

**GENERAL LAUNDRY AND CLEANERS**



WAKE FOREST, NORTH CAROLINA

---

COMPLIMENTS

OF

**CROSS POULTRY COMPANY**

DIAL 8013

RALEIGH, NORTH CAROLINA









