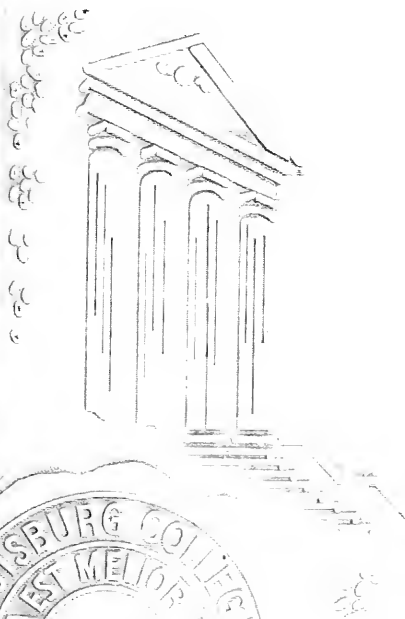
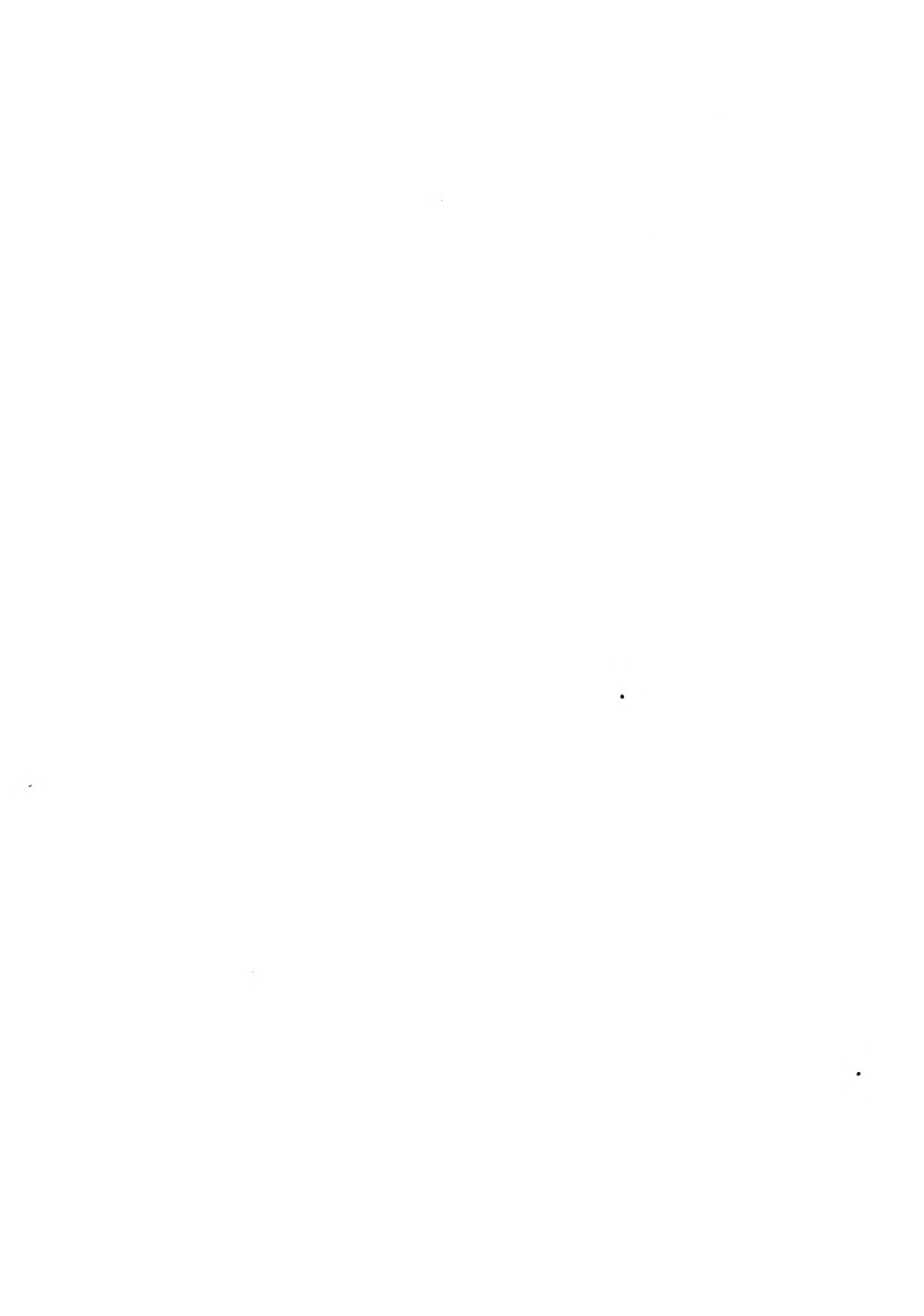


# THE OAK



1954









Published by  
The  
Sears & Roebuck  
Company  
Chicago, Ill.

## *Foreword*

To compile and present to you pictorially your life here at Louisburg is the task which we hope we have accomplished in the following pages.

The 1954 OAK is yours; and we hope that in years to come you will be able to read between the lines and discover your joys, your heartaches, and your experiences — your Louisburg.

*THE STAFF*

PATTIE JULIA WRIGHT MEMORIAL LIBRARY



# *Dedication*

When one begins to think of a dedication for her, they are limited to space and, therefore, could never be able to express everything that is due her.

Through her wonderful personality, her cordial smile and her unlimited abilities, many have been spurred on to higher aims.

In grateful appreciation for her relentless time and understanding in helping us with our individual problems, for her guidance in college activities, and for encouraging us to go forward and meet the demands of life but more than these, for just being at LOUISBURG that we might respect and admire her, we, with gratitude deep in the heart of each of us, dedicate this the 1954 OAK to—

MISS ELIZABETH JOHNSON





# Table Of Contents

*Administration* . . . . . Page 7

*Classes* . . . . . Page 13

Seniors  
Juniors

*Activities* . . . . . Page 35

Student Government  
Publications  
Clubs

*Honorary Fraternities* . . . . . Page 45

*May Day, 1953* . . . . . Page 51

*Athletics* . . . . . Page 55

Girls' Athletics  
Basketball  
Baseball

*Campus Life* . . . . . Page 65

*Advertisements* . . . . . Page 71

# *Administration*



# *President*



*Samuel M. Holton*

May the 1954 OAK, in the years to come, cause you to recall many happy memories of your days at Louisburg. As each of you contributed something to this issue of THE OAK, so each of you contributes a part in making Louisburg College.

*Very cordially yours,*

SAMUEL M. HOLTON

# The Deans



MARY E. BETHEA  
*Dean of Women*

A.A., Louisburg College; A.B., Greensboro College; M.A., Scarritt College, Tennessee.

To live in our day is a real privilege. Who knows but that we were chosen for such hours and challenges as these days present? Ours is a day for wisdom and courage to create change, a task to be accomplished only in the light of deep convictions about God and Man. Youth must lead through chaos to order and righteousness in our world.

*Mary E. Bethea*

ALBERT G. COWART  
*Dean of Men*

A.A., Louisburg College; B.S., M.A., East Carolina College, Greenville, North Carolina.

Education cannot be terminated at any point, as a line segment; but it will continue indefinitely. The very fact that you as students have begun your college career is evidence that you have developed within yourselves a desire for educational advancement.

We here at Louisburg are grateful for the opportunity to have worked with you, and assisted you, as you have striven toward the achievement of a worthy goal.

"Take fast hold of instruction; let her not go; keep her; for she is thy life." Proverbs 4:13.

*Albert G. Cowart*



# Administration



Genevieve Peltz Perry  
*Treasurer*

Louisburg College; Columbia College, Maryland; Bowling Green Business University, Kentucky.

Phyllis W. McKee  
*College Nurse*

Woman's College, University of North Carolina; B.S.N., School of Nursing, Duke University.

Elsa Craig Yarborough  
*Librarian*

A.B., A.B. in L.S., University of North Carolina; Wake Forest College.

Warren D. Couch  
*Registrar*

A.B., Piedmont College; M.A., University of Georgia.

Lila Taylor Pearce  
*Dietician*

B.S. in H.E., University of North Carolina.

John B. York  
*Director of Public Relations and Coach*

B.S., Wake Forest College; University of North Carolina.

# Faculty



Ann Blumenfeld  
*Foreign Languages*

M.A., Middlebury College, Vt.; Ph.D.,  
Munich.

Ruth M. Cooke  
*Physical Education*

B.S., University of North Carolina.

Ethel B. Finister  
*Science*

B.A., Ball State Teachers College;  
M.A., University of Michigan.

Sarah Elizabeth Foster  
*Music*

B.A., Greensboro College.

William Carrington Gretter, Jr.  
*Social Science*

B.A., M.A., University of North  
Carolina.

Adelaide Johnson  
*Business Education*

B.A., Wake Forest, M.Ed., Woman's  
College, University of North Carolina.

# Faculty



Elizabeth Johnson  
*Mathematics*

B.A., M.A., University of North Carolina.

James Frederick Jones  
*Business*

A.B., Elon College; M.A., East Carolina.

Robert F. McKee  
*Religious Education*

A.B., Ursinus College, Pa.; B.D., Divinity School, Duke University.

Ruth Willard Merritt  
*English*

B.A., Duke University; M.A., Scarritt College, Tenn.; Littleton College.

Isaac Deane Moon  
*Psychology*

B.A., B. Mus., Asbury College; M.A., University of Kentucky.

C. Ray Pruette  
*Chemistry and Physics*

B.A., M.A., East Carolina College



# Classes

SALT

PALETTE

EXACTON

WAVE

WAVE

WAVE

WAVE



# Seniors





Morris

Dennis

Childers

*Senior Class Officers*

*President* ..... Paul Childers

*Vice-President* ..... Gary Morris

*Secretary-Treasurer* ..... Alice Lea Dennis

# Seniors



FRED ADCOCK  
Durham

ROBT MAURICE ADCOCK  
Fuguay  
Y.M.C.A., 1, 2.

JANET BAILEY  
Louisburg  
Columns Staff, 1; Glee Club, 1, 2;  
Sextet, 2; May Court, 1; Student  
Council, 1; Dramatics Club, 1; Com-  
mercial Club, 1; Y.W.C.A., 1.

SARAH FRANCES BAKER  
Nashville

Y.W.C.A., 1, 2; Basketball, 1, 2; Com-  
mercial Club, 2; Glee Club, 1, 2;  
Secretary-Treasurer, 2.

GARDNER BARBOUR  
Fuguay Springs

Y.M.C.A., 1; Varsity Basketball, 1, 2;  
Baseball, 1; Monogram Club, 2.

R. A. BAXLEY, JR.  
Fayetteville

Phi Theta Kappa, 1, 2; Chief Marshal,  
1; Oak Staff, 2, Editor-in-Chief, 2;  
Y.M.C.A., 1, 2; Social Committee, 2;  
Science-Math Seminar, 1.

# Seniors



GLENN BLACKBUN

Ingold

Y.M.C.A., 1, 2; Commercial Club, 1, 2.

JAMES EDW. BRADSHER

Clinton

JACK BROOKS

Sanford

Y.M.C.A., 1, 2; Student Council, 2,  
Secretary and Treasurer; Business  
Manager, Oak, 2; Intramural Sports,  
1, 2.

HELEN ELIZ. BROOME

Aurora

Student Council, 1, 2, Treasurer, 1;  
Glee Club, 1, 2; Columns Staff, 1, 2,  
Editor, 2; Beta Phi Gamma, 1, 2; Phi  
Theta Kappa, 2; Y.W.C.A., 1, 2; Sex-  
tet, 2; Marshal, 1.

GEORGE PHILIP BUNN

Castalia

Alpha Pi Epsilon, 1, 2; Phi Theta  
Kappa, 2.

LUCY BURGESS

Bellhaven

Glee Club, 1, 2; Commercial Club, 1, 2,  
President, 1; Dramatics Club, 2;  
Y.W.C.A., 1, 2; Student Council, 1, 2,  
President, 2.

# Seniors



JACKSON ROBERT BURNS  
Sanford

JOE DAN BYRD  
Turkey  
Y.M.C.A., 2.

PAUL WM. CHILDERS  
Louisburg

ZELDA GREY COOR  
Goldsboro

Glee Club, 1, 2; Y.W.C.A., 1, 2; Alpha Pi Epsilon, 1; Beta Phi Gamma, 1, 2; Columns Staff, 1, 2, Religious Editor, 2.

ALICE LEA DENNIS  
Louisburg

Phi Theta Kappa, 1, 2, President, 2; Sigma Pi Alpha, 1, 2; Y.W.C.A., 1, 2, Chairman of Social Committee, 1; Glee Club, 1, 2, President, 1; Dramatics Club, 1; Science-Math Seminar, 1; Basketball, 2; Marshal, 1; May Court, 1.

FAYE E. DILLARD  
Macon

Y.W.C.A., 1, 2; Columns Staff, 1; Commercial Club, 1, 2.

# Seniors



AUBREY D. DUNSON  
Durham

Jr. Varsity Basketball, 1, 2; Y.M.C.A., 1; Intramural Sports, 1, 2; Homecoming King, 2.

JEAN E. FAIREY  
Durham

Commercial Club, 1, 2; Glee Club, 2; Y.M.C.A., 1, 2.

JACKIE FARROW  
Waves

Y.W.C.A., 1, 2, Committee Chairman, 1, Secretary, 2; Dramatics Club, 1; Sigma Phi Alpha, 1, 2, Program Chairman, 2; Phi Theta Kappa, 1, 2, Secretary, 2; Student Council, 1, 2, Vice-President; Class Secretary, 1; Marshal, 1.

JERRY A. FAULKNER  
Henderson

Baseball, 1, 2; Jr. Varsity Basketball, 2; Monogram Club, 2, Secretary-Treasurer; Basketball Manager, 1, 2.

ROBERT FRAZIER  
Louisburg

Jr. Varsity Basketball, 1, 2, Captain, 2; Dramatics Club, 2, President, 2; Commercial Club, 1, 2; Varsity Baseball, 1, 2.

RUTH MARIE GUPTON  
Louisburg

Glee Club, 1; Commercial Club, 1, 2; Y.W.C.A., 1, 2; Columns Staff, 1, Business Editor.

# Seniors



EVELYN RAE HARRIS

Tillery

Y.W.C.A., 1, 2; Student Council, 2, Secretary; Dramatics Club, 1, 2; Commercial Club, 1, 2; Oak Staff, 2, Typist; Alpha Pi Epsilon, 1, 2, Secretary and Treasurer, 1; Phi Theta Kappa, 2; May Court, 1.

JULIAN WHELESS HARRIS

Spring Hope

HUBERT H. HODGIN

Wilmington

Student Council, 1, 2; Y.M.C.A., 1; Jr. Varsity Basketball, 1, 2; Vice-President, Jr. Class.

MATTIE WILLIS HUNTER

Inez

Y.W.C.A., 1, 2, "Y" Cabinet, 2; Glee Club, 1; Columns Staff, 1; Oak Staff, 2, Art Editor; Dramatics Club, 1, 2; Commercial Club, 1, 2; Student Council, 2, Treasurer, 2.

CHAS. B. JOHNSON, JR.

New Bern

Intramural Sports, 1, 2; Y.M.C.A., 1.

JOE DURWOOD JOHNSON

Four Oaks

Y.M.C.A., 1, 2; Dramatics Club, 2; Jr. Varsity Manager, 1.



# Seniors



FORREST JOYNER  
Louisburg

TRYON D. LANCASTER  
Fayetteville

JOHN LE MAY  
Henderson

Y.M.C.A., 1, 2, "Y" Cabinet, 1;  
Columns 2, Business Manager; Dra-  
matics Club, 2.

WELDON LUCAS  
Roseboro

ROBERT JONES MANGUM  
Creedmore

ELIZABETH ANNE MANN  
Elizabeth City

Y.M.C.A., 2; Columns Staff, 2; Dra-  
matics Club 2; Phi Theta Kappa, 1, 2,  
Secretary, 2; Marshal, 1.

Monogram, 2; Y.M.C.A., 1; Varsity  
Basketball, 1, 2; Baseball 1, 2.

Y.W.C.A., 1, 2; Glee Club, 2; Columns  
Staff, 2; Dramatics, 1, President, 2;  
Commercial, 1, 2.

# Seniors



**BOBBY GENE MANNING**  
Bethel

Y.M.C.A., 1; Varsity Basketball, 1, 2;  
Monogram Club, 1; Commercial Club,  
1; Student Council, 2.

**SUE MANNING**  
Middlesex

Sextet, 1, 2; Phi Theta Kappa, 2;  
Delta Psi Omega, 1, 2; Beta Phi  
Gamma, 1, 2; Commercial Club, 1, 2;  
Glee Club, 1, 2, Vice-President, 1,  
President, 2; Dramatics Club, 1, 2.

**ELLEN MARKS**  
Cameron

Y.W.C.A., 1, 2, President, 2; Com-  
mercial Club, 1, 2; Columns Staff, 2;  
Alpha Pi Epsilon, 1, 2; Student Coun-  
cil, 2; Glee Club, 1, 2.

**JESSE WM. MASSENGILL**  
Four Oaks

Commercial Club, 1, 2; Glee Club, 2.

**DONALD H. McINTYRE**  
Franklinton

Y.M.C.A., 1, 2.

**GARY MORRIS**  
Atlantic

Y.M.C.A., 1; Varsity Basketball, 1, 2;  
Baseball, 1, 2; Monogram Club, 2,  
President, 2; Student Council, 2; Class  
Vice-President, 2.

# Seniors



JOHNNY WM. NELSON  
Bethel

Y.M.C.A., 1; Varsity Basketball, 1, 2;  
Baseball, 1, 2; Monogram Club, 2;  
Commercial Club, 1.

RODNEY NELSON  
Atlantic

Y.M.C.A., 1, 2; Dramatics Club, 2;  
Annual Staff, 1.

MARTHA ANN PERDUE  
Louisburg

Glee Club, 1, 2; Y.W.C.A., 1, 2; Dra-  
matics Club, 2.

FREDERICK RANSOM  
Evergreen

Baseball, 1, 2; Y.M.C.A., 1; Monogram  
Club, 2.

RALPH L. ROGERS  
Durham

Jr. Varsity Basketball, 1; Intramural  
Softball, 1, 2.

GARY JOSH SCULL  
Raeford

Y.M.C.A., 1, 2, Secretary 2.

# Seniors



ALLEN W. SHEARIN  
Littleton

Y.M.C.A., 1, 2; Dramatics Club, 2;  
Secretary, 2; Commercial Club, 1, 2;  
Glee Club, 2; Columns Staff, 2.

THOMAS S. SHUTT, JR.  
Roanoke Rapids

Y.W.C.A., 1, 2; May Court, 1; Baptist  
State Union, 2, President, 2.

ROBERT STAINBACK  
Littleton

Y.M.C.A., 1, 2, President, 2; Jr. Varsity  
Basketball, 1, 2; Commercial Club,  
1, 2; Alpha Pi Epsilon, 1, 2; Dramatics  
Club, 1, 2; Student Council, 2, Vice-  
President, 2.

CHARLES W. STROTHER  
Louisburg

WILLIAM STYRON  
Roe

# Seniors



ALICE F. THARRINGTON

Louisburg

Y.W.C.A., 1; Phi Theta Kappa, 1, 2,  
Vice-President, 2; Oak Staff, 1; Bas-  
ketball, 1, 2; May Court, 1.

JAMES WOMBLE

Sanford

Y.M.C.A., 1, 2; Monogram Club, 2;  
Varsity Basketball, 1; Jr. Varsity Bas-  
ketball, 2; Varsity Baseball, 2.

# Juniors





Bennett

Baker

Tyndall

Faulkner

## *Junior Class Officers*

*President* .....Richard Bennett

*Vice-President* .....Marilyn Baker

*Secretary* .....Elizabeth Tyndall

*Treasurer* .....Douglas Faulkner

# Juniors



CURTIS F. ADAMS  
*Angier*

WILLIAM EDW. ADAMS  
*Creedmoor*

JAMES EVANS ALFORD  
*Zebulon*

MARILYN BAKER  
*Belvidere*

GLENN W. BARNES  
*Four Oaks*

RICHARD H. BENNETT  
*Durham*

MARVIN G. BOBBITT  
*Durham*

JEAN FAYE BROWN  
*Selma*

M. S. BROWN  
*Bladenboro*

CHARLES A. BURNS  
*Sanford*

BONNIE LYNN CARNES  
*Hamlet*

JOSEPH L. CARRINGTON  
*Durham*



# *Juniors*



STEVE PAGE CHOATE  
*Southern Pines*

WILLIAM COLLINS  
*Franklinton*

PHYLLIS RAE DAVIS  
*Elizabeth City*

MARTHA DENTON  
*Wood*

BARBARA ANNE DRIVER  
*Louisburg*

CLAUDE G. ELLEN  
*Angier*

KATHERINE M. EWELL  
*New Bern*

DOUGLAS T. FAULKNER  
*Henderson*

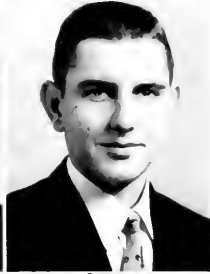
THURSTON U. FAULKNER  
*Henderson*

JUDITH ANNE FINCH  
*Bailey*

JO ELLEN FLOYD  
*Cerro Gordo*

RUSSELL W. FAZIER  
*Louisburg*

# Juniors



THOMAS W. FUSSELL  
*Rose Hill*

PATRICIA A. GEORGE  
*Raleigh*

BILLIE M. GREEN  
*Clayton*

JAMES M. GREGORY  
*Elizabeth City*

SHELDON HARE  
*Queens Village, New York*

WILLIAM HILL  
*Bunn*

KATIE SUE HOCUTT  
*Wendell*

ROBERT JENNINGS  
*Moyock*

CAROLYN JONES  
*Butner*

HERBERT D. JOYNER  
*Louisburg*

HAROLD T. LEARY  
*Durham*

ALICE MOZELLE LEE  
*Smithfield*

# Juniors



EDNA W. MAHLER  
*Four Oaks*

JEAN MASSENGILL  
*Four Oaks*

B. R. McCULLEN  
*Goldsboro*

RACHEL ANN MERRITT  
*Magnolia*

BILLY GENE MIDKIFF  
*Littleton*

MYRTLE J. MILLER  
*Elizabeth City*

LINOUS B. NANCE, JR.  
*Chadbourn*

RALPH T. NEVILS, JR.  
*Creedmoor*

MARGARET F. OGBURN  
*Angier*

BETTY SUE PARRISH  
*Louisburg*

CLAR. W. PEARCE, JR.  
*Butner*

CHARLES D. PETERSON  
*Clinton*

# Juniors



JANE WILSON POST  
*Louisburg*

WALTER M. POYNER  
*Moyock*

CATHERINE REGISTER  
*New Bern*

FORDHAM ANN RHEM  
*Kinston*

MARY A. RICHARDSON  
*Louisburg*

BOBBY LYNN RIDDLE  
*Sanford*

OLIVE ROSE ROGERS  
*Rose Hill*

MERLE R. ROYSTER  
*Virgilina, Va.*

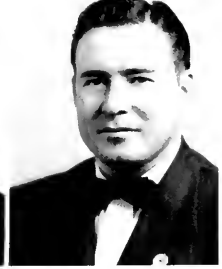
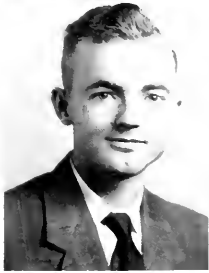
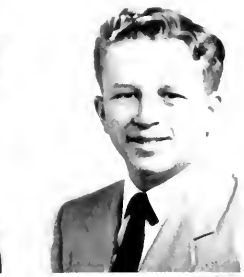
JOSEPH EDW. SADLER  
*Aurora*

JAMES B. SLAUGHTER  
*Angier*

CAROLE ANN SMITH  
*Sandusky, Ohio*

EDITH JEAN SMITH  
*Littleton*

# Juniors



T. B. SOUTHERLAND  
*Louisburg*

BETTY LOU SPRUILL  
*Creswell*

HARVEY STROTHER, JR.  
*Louisburg*

THOMAS C. STUART  
*Angier*

HORACE SUTTON  
*Ingold*

FRANCES LEE TAYLOR  
*Beaufort*

MASSILLA M. TUCKER  
*Greenville*

CARLTON K. TURNER  
*Elizabeth City*

MARY ELIZ. TYNDALL  
*Kinston*

SHIRLEY MAE TYSON  
*Wilson*

REID K. WILLIAMS  
*Edenton*

ERNEST R. WILLIAMSON  
*Chadbourn*

# Juniors



JOHN E. WOOD  
*Castalia*

CATHERINE WOODLIEF  
*Louisburg*

LEON WOODLIEF  
*Franklinton*

VIRGINIA C. WRIGHT  
*Franklinton*

ELIZABETH F. WYNNE  
*Wallace*

# *Activities*





*Women's Student Council*

LUCY BURGESS  
*President*

JACKIE FARROW  
*Vice-President*

RAE HARRIS  
*Secretary*

MATTIE HUNTER  
*Treasurer*

*House President*.....Libby Broome

*Junior Class Representative*.....Jean Brown

*Senior Class Representative*.....Sue Manning

*Honorary Member from Y. W. C. A.*.....Ellen Marks





*Men's Student Council*

PAUL CHILDERS  
*President*

ROBERT STAINBACK  
*Vice-President*

JACK BROOKS  
*Secretary-Treasurer*

*Junior Representatives*..... Billy Adams, J. B. Slaughter

*Senior Representatives*.. Hugo Hodgin, Gary Morris, Bobby Manning



## Oak Staff

*Editor*  
R. A. BAXLEY, JR.

JACK BROOKS  
*Business Manager*



*Seated, left to right:* Katie Hocutt, Typist; Rae Harris, Typist; Richard Bennett, Assistant Business Manager; Jack Brooks, Business Manager, Mr. Pruette, Adviser; R. A. Baxley, Editor; Jo Floyd, Assistant Editor; Mattie Hunter, Artist; Bobby Riddle, Artist.  
*Not Shown:* Catherine Register, Typist.



# Columns Staff

LIBBY BROOME  
*Editor*

TRYON LANCASTER  
*Business Manager*

*Seated, left to right:* Margaret Ogburn, Exchange Editor; Billie Green, Photographer; Carolyn Jones, Reporter; Bonnie Carnes, Typist; Anne Mann, Reporter; Zelda Coor, Religious Reporter; Catherine Woodlief, Assistant Editor; Libby Broome, Editor-in-Chief; Tryon Lancaster, Business Manager; Mr. J. F. Jones, Adviser. *Second Row:* Pete Frazier, Sports Editor; Ellen Marks, Reporter; David Peterson, Reporter; Weldon Lucas, Feature Writer; Faye Wynne, Make-up Editor; Shirley Tyson, Managing Editor; Patsy George, Feature Writer; Allen Shearin, Circulation Manager; Sheldon Hare, Assistant Sports Editor.





## *Y Cabinet*

ROBERT STAINBACK  
*President, Y. M. C. A.*

ELLEN MARKS  
*President, Y. W. C. A.*

*Left to right: Robert Stainback, Ellen Marks, Jackie Farrow, Josh Scull. Second row: Marvin Gregory, Billie Green, Lorine Smith, Marilyn Baker. Third row: James Alford, Mattie Hunter, Bobby Lynn Riddle, Weldon Lucas.*



## *Glee Club*

SUE MANNING  
*President*

MARVIN GREGORY  
*Vice-President*

FRANCES BAKER  
*Secretary-Treasurer*  
*Accompanist*

*First row, left to right: Carole Smith, Catherine Woodlief, Rose Rogers, Elizabeth Tyndall, Anne Mann, Zelda Coor. Second row: Martha Ann Perdue, Ray Williamson, Billie Green, Merle Royster, Faye Wynne, Frances Taylor, Catherine Register. Third row: Allen Shearin, Lucy Burgess, Jo Floyd, Bonnie Carnes, Miss Foster Ellen Marks, Ann Rhem, Betty Spruill. Fourth row: Judith Finch, Sue Manning, Bill Massingill, Katherine Ewell, Janet Bailey, Jane Post, Frances Baker, Kermit Williams, Marvin Gregory, James Alford.*



## *Dramatics Club*

*First row, left to right:* Pete Frazier, President; Allen Shearin, Secretary; Myrtle Miller, Reporter; Weldon Lucas, Treasurer. *Second Row:* Jo Floyd, Margaret Ogburn, Anne Mann, Merle Royster, Martha Perdue. *Third Row:* Rae Harris, Mattie Hunter, Bonnie Carnes, Lucy Burgess, Patsy George, Phyllis Davis. *Fourth row:* Miss Merritt, Adviser; Durwood Johnson, Sue Manning, Kermit Williams, Robert Stainback, B. R. McCullen.

The drama group at Louisburg, reflecting the growing American revival of Biblical drama, portrayed the Christmas story through a simple symphonic effect December 17. The episode of the Shepherds and the Wise Men, a tableau of the Nativity, backstage monologues and choric readings, instrumental and vocal music, with variety lighting and Biblical costuming—these elements all were parts of the performance. *Back to Bethlehem* was doubly a Scriptural presentation, the spoken parts being almost entirely in Biblical phrasing.

Thus the age-long story, made new again with each season and portrayal, was a major event of the 1953 pre-Christmas holiday season on the campus.



In Our Orientation Skit We Tell about Enjoyable Extracurriculars

JUNIOR GIRL: "... is there anything to do (in college) besides study and go to classes?"

JUNIOR BOY: "Something else, I hope, for even with all my assignments I'm sure I can't study all the time."

SENIOR BOY: "I think all of our activities and organizations are important."

JUNIOR BOY: "Yes, seems to me I'd like to join about half."

SENIOR GIRL: "That's just the point we have to watch carefully in order not to overemphasize extracurriculars."

SENIOR BOY: "You're right; but, when they are kept in their proper place, I think they are some of the most enjoyable of our college experiences."

We find a Joy in the More Serious Side, Too

"... The best part of our 'Alma Mater,' that about the 'stalwart columns' pointing 'the way of life.'"



## *Drama Adds zest*

Our Dramatics Club offers for those of the campus and the surrounding community both light and serious entertainment and for the producers variety, pleasure, and development. The club members, aided by other students, find pleasure and pride in experimenting with make-up, costuming, scenery, lighting, and properties and in uniting these efforts for total effect in the final performance.

At the beginning of this year some twenty of us seniors and two juniors presented a skit revealing to new students some of the work of our various college organizations, thus with orientation was begun the year's dramatic activity, and was illustrated our principle of dramatics as serving our campus life.

When preparations begin for any performance, from a skit to a three-act play, life for some of us takes on new interest and charm: there are those hurried dashes to the bulletin board to check rehearsal hours; mumblings around friends and roommates at odd hours to repeat lines of the script; experimentations with needles, hammers, paint brushes, light bulbs, grease paints; breathless arrivals at rehearsals with the hope of not being late; and the studied concentration of trying to speak the lines "trippingly on the tongue" and to "suit the action to the word, and the word to the action"—all of these, details in the experience of producing a play.

It's hard work, yes—but isn't it fun?



## *Commercial Club*

*First row, left to right:* Douglas Faulkner, Treasurer; Jean Massengill, Reporter; Katie Hocutt, Secretary; Billie Green, Vice-President; Bonnie Carnes, President; Miss Johnson, Adviser. *Second row:* Allen Shearin, Rose Rogers, Anne Mann, Edith Smith, Rae Harris, Lucy Burgess, Jean Fairey. *Third row:* Merle Royster, Fave Dillard, Alice Lee, Carolyn Jones, Edna Mahler, Betty Sue Parrish, Catherine Register, Charles Burns. *Fourth row:* Ellen Marks, Mattie Hunter, Marilyn Baker, Rachel Merritt, Jean Brown, Shirley Tyson, Marie Gupton, Betty Spruill, Kermit Williams. *Fifth row:* Mary Richardson, Janet Bailey, Phyllis Davis, Bill Massengill, Bobby Lynn Riddle, Judith Finch, Sue Manning, Pete Frazier, Robert Stainback.





*Honorary Fraternities*

# *Phi Theta Kappa*



Alice Lea Dennis, President; Fern Tharrington, Vice-President; Jackie Farrow, Secretary; Weldon Lucas, Treasurer; R. A. Baxley, Jr., Elizabeth Broome, Philip Bunn, Evelyn Rae Harris, Sue Manning, Miss Elizabeth Johnson, Sponsor.

Phi Theta Kappa is a national character-scholarship fraternity corresponding in junior colleges to Phi Beta Kappa in senior colleges. The Gamma Upsilon Chapter was chartered and organized at Louisburg College fifteen years ago.

Those who receive bids for membership must stand in the upper ten per cent of their class and make a grade of 85 per cent or above and the proper number of quality points.

The motto of the chapter is Scholarship, Character, Good Fellowship.

# *Alpha Pi Epsilon*



Robert Stainback, Vice-President; Evelyn Rae Harris, Secretary-Treasurer; Philip Bunn, Zelda Coor, Ellen Marks, Miss Adelaide Johnson, Sponsor.

This is a national honorary fraternity open to students in the Comemrcial Department. Qualifications for membership in Alpha Pi Epsilon are outstanding personality, high rank in character, and an academic standing of B or better.

# Beta Phi Gamma



*Left to right:* R. A. Baxley, Jr., Richard H. Bennett, Jack Brooks, Elizabeth Broome, Bonnie Carnes, Zelda Coor, Robert Frazier, Evelyn Rae Harris, Katie Sue Hocutt, Mattie Willis Hunter, Tryon Lancaster, Sue Manning, Ellen Marks, Bobby Lynn Riddle, Shirley Tyson, Catherine Woodlief, Miss Ruth Merritt, Sponsor.

Beta Phi Gamma is a national junior college honorary fraternity. The purpose is to recognize journalistic achievement and to promote an interest in journalistic endeavors.

The requirements for a bid are a C-average, a semester's active membership on the staff of a college publication, and an outstanding contribution in this activity.

## *Delta Psi Omega*

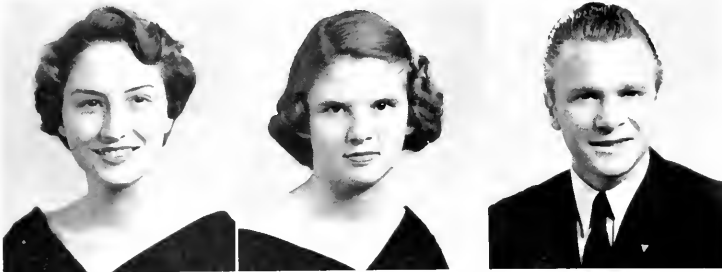


Sue Manning, Robert Stainback, Miss Ruth Merritt, Sponsor.

Delta Psi Omega is a national honorary dramatic fraternity established to recognize any phase of student participation in college dramatic art and stagecraft. Those invited to join must have done outstanding work in acting, have written a play that has been produced, or have efficiently served in some phase of stage workmanship and in any case gained a C average in scholarship.

The fraternity customarily helps in the sponsorship of play production.

## *Sigma Pi Alpha*



Alice Lea Dennis, Jackie Farrow, Thomas Shutt, Dr. Anne Blumenfeld, Sponsor.

Sigma Pi Alpha is the newest fraternity in Louisburg College, having been organized during the 1951-52 school year. It is a national honorary language fraternity with the purpose of stimulating an interest in the language, background, customs, and people of foreign countries and to make a contribution towards establishing a better mutual understanding.

For a student to become a member of this fraternity, he must have a general academic average of not less than 80 per cent, a language average of not less than 85 per cent, and must be registered in a language course above the elementary level.

*Some Other Members of the College Family*



MRS. MALENA WARD POWELL  
*Assistant to the Dietitian*



MRS. KATHERINE PARKS  
*Housekeeper*



MRS. A. G. COWART



MRS. W. CARRINGTON GRETER



MRS. I. D. MOON



*May Court, 1953*

LORINE SMITH  
*Queen*

JERRY WILLIAMS  
*Escort*

MARTHA DAVIS  
*Maid of Honor*

JULIAN GONZALEZ  
*Escort*

EVELYN RAE HARRIS  
BETTY LOU BROWN  
BETTY TWISDALE  
ALICE LEA DENNIS  
FERN THARRINGTON  
PATRICIA MONK  
JANET BAILEY  
MARY LEE MASON  
BONNIE GREEN  
SUE MANNING

R. A. BAXLEY, JR.  
RODNEY NELSON  
HUGH WEST  
C. W. STROTHER  
EDWIN DRIVER  
BILLY HURLEY  
WILLIAM SADLER  
HUGO HODGIN  
TURK MORRISSETTE  
ROBERT STAINBACK

*May Queen, 1953*



MISS LORINE SMITH



*Maid of Honor, 1953*



MISS MARTHA DAVIS

*May Day Scenes*



*Athletics*



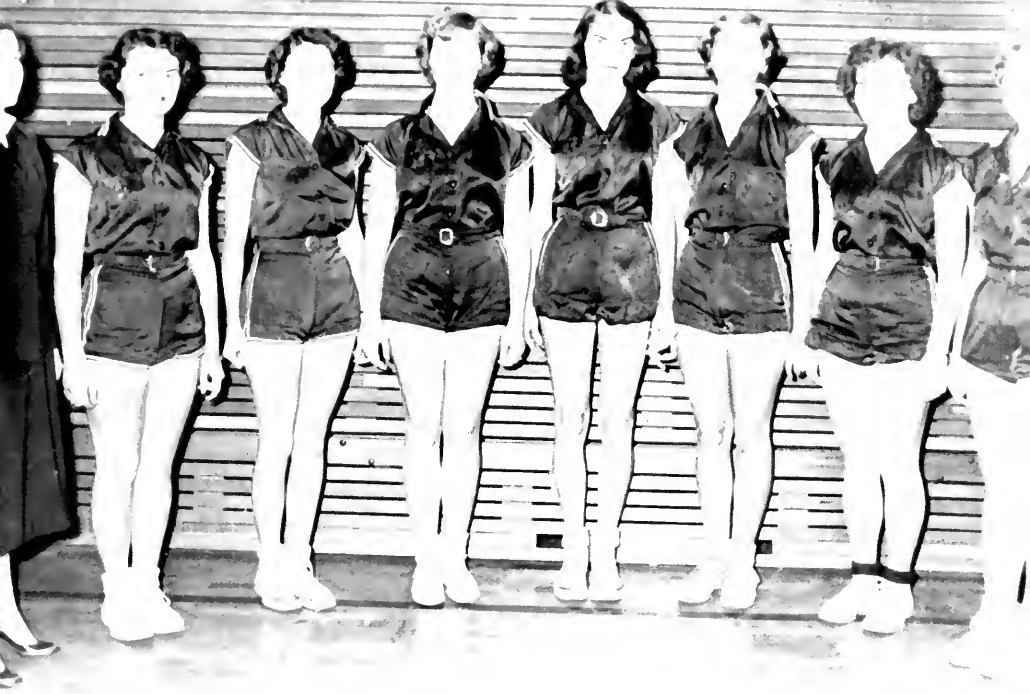
*The Coaches*



JOHN YORK  
*Varsity Basketball and Baseball*

RUTH COOKE  
*Girls Basketball*

JAMES F. JONES  
*Junior Varsity Basketball*



## *Girls' Basketball Team*

*Left to right:* Miss Cooke, Coach; Fern Tharrington, Alice Lea Dennis, Phyllis Davis, Jane Post, Katherine Ewell, Katie Hocutt, Jean Brown. *Not shown:* Francis Baker, Sue Parrish.







## *Varsity Basketball Team*

*Front row, left to right: Gardner Barbour, Bobby Manning, Gary Morris, C. W. Strother, Johnny Nelson, Bobby Mangum. Back row standing, left to right: Russell Frazier, Thurston Faulkner, Joe Carrington, Tommy Shutt, Joe Saddler; Coach John B. York.*

## *1953-54 Schedule*

Dec. 4—Charlotte ..... Here  
 Dec. 7—E. M. I. .... Here  
 Dec. 9—Campbell ..... Here  
 Dec. 12—Chowan ..... Here  
 Dec. 14—Pfeiffer ..... Here  
 Dec. 16—Pembroke ..... There  
 Dec. 17—Presbyterian ..... There  
 Jan. 7—High Point J. V.'s ..... There  
 Jan. 9—Campbell ..... There  
 Jan. 11—Wilmington ..... Here  
 Jan. 13—Chowan ..... There

Feb. 23—Oak Ridge ..... Here

Jan. 17—C.'s Ridge ..... There  
 Jan. 23—Pembroke ..... Here  
 Jan. 28—High Point J. V.'s ..... Here  
 Jan. 30—Pfeiffer ..... There  
 Feb. 4—Wingate ..... Here  
 Feb. 6—E. M. I. .... There  
 Feb. 11—Gardner Webb ..... There  
 Feb. 2—Charlotte ..... There  
 Feb. 16—Presbyterian ..... Here  
 Feb. 18—Wingate ..... There  
 Feb. 20—Wilmington ..... There







## *Junior Varsity*

*Front row, left to right: Pete Frazier, Charles Burns, Billy Adams, J. B. Slaughter, James Womble, "Wimpy" Pearce. Back row, left to right: Harold Leary, Jerry Faulkner, M. G. Bobbitt, Robert Stainback, Hugo Hodgkin, James F. Jones, Coach.*





### 1953 Lettermen

*Left to Right:* Garry Morris, Jerry Faulkner, James Womble, Gardner Barbour, Bobby Mangum, C. W. Strother, Pete Frazier. *Not shown:* Fred Ransom, Johnny Nelson.

### 1953 Scores

Chowan	15	.....	L. C.	14	Campbell	5	.....	L. C.	6
Oak Ridge	8	.....	L. C.	2	Chowan	4	.....	L. C.	19
Pfeiffer	0	.....	L. C.	5	Wingate	3	.....	L. C.	3
P. J. C.	4	.....	L. C.	8	E. M. I.	7	.....	L. C.	6
Pfeiffer	10	.....	L. C.	12	Campbell	13	.....	L. C.	2

1953 Baseball Team



TIPPETT

FAULKNER and WOMBLE

NELSON

PRICE

BRICKHOUSE

FRAZIER

PERRY

NELSON

PRICE



## *Monogram Club*

*Front row, left to right: Jimmy Womble, Bobby Manning, Fred Ransom, Robert Stainback, C. W. Strother, Pete Frazier. Back row, left to right: Mr. York, Coach; Tommy Shutt, Vice-President; Jerry Faulkner, Secretary-Treasurer; Gardner Barbour, Johnny Nelson, Bobby Mangum, Gary Morris, President.*

# Campus Life at Louisburg



"Name, Please."

We won it!

"Tell him I'll be down in a minute."

"Just follow me."

Waiting for someone?

"We're in for twenty-years."

"Wait, Don't shoot!"

No letter today.

"Ain't I Pretty?"

"Oh! Did you see that gown from Paris?"

# Campus Life at Louisburg



"Go kinda easy on the soda,"

"I don't care what Sam says."

"Where is the bunny?" "Give us a break . . . will you?"

"I bet you say that to all the girls."

"M-m-m, Ain't it good?"

". . . and after you went and promised me . . ."

"Kill da ref!"

"Oh boy! A dame!"

"Chocolate milk, Please."

# Campus Life at Louisburg



"Look at the birdie."      "Let's dance."      "And then what d'you think he did?"      "Help yourself."  
 "My goodness! She said that?"      "Get set, Go!"      "Oh! It's a crip."  
 "Sweet Ad-o-line . . ."      "Not bad—not bad at all."      "Is it serious, Doctor."

# Campus Life at Louisburg



Better pour me another

"F-o-o-d! F-o-o-d!"

"Ladies and Gents"

"Who is it?"

"Oh, my head . . ."

"Tell him I just left for China."

"Isn't it heavenly?"

"Y' don't think I'd do that?"

"I'll never learn this Comp."

"Good night ladies."



# Student Directory

Curtis Franklin Adams  
Angier, N. C.

William Edward Adams  
Box No. 1  
Creedmoor, N. C.

Frederick Dale Adcock  
801 Hyde Park Ave.  
Durham, N. C.

Robert Maurice Adcock  
Varina, N. C.

James Evans Alford  
Route No. 2  
Zebulon, N. C.

Mrs. W. H. Allen, Jr.  
Clifton Ave.  
Louisburg, N. C.

Janet Perdue Bailey  
Williamson St.  
Louisburg, N. C.

Sarah Frances Baker  
Route No. 3  
Nashville, N. C.

Marilyn Baker  
Route No. 1  
Belvidere, N. C.

Joseph Gardner Barbour  
Route No. 2  
Fuquay Springs, N. C.

Glenn Wesley Barnes  
Box 362  
Four Oaks, N. C.

Arch L. Bass, Jr.  
1004 Monmouth Ave.  
Durham, N. C.

R. A. Baxley, Jr.  
2002 Burnet Ave.  
Fayetteville, N. C.

Richard H. Bennett  
704 Holloway  
Durham, N. C.

Richard Glenn Blackburn  
Ingold, N. C.

Marvin G. Bobbitt  
819 Knox St.  
Durham, N. C.

James Edward Bradsher  
Route No. 4  
Clinton, N. C.

Jackson Perry Brooks  
Route No. 8, J H S  
Sanford, N. C.

Helen Elizabeth Broome  
Route No. 1  
Aurora, N. C.

Jean Faye Brown  
Route No. 3  
Selma, N. C.

George Philip Bunn  
Route No. 2  
Castalia, N. C.

Lucy White Burgess  
325 East Main St.  
Belhaven, N. C.

Charles Allen Burns  
Route No. 4  
Sanford, N. C.

Robert Burns  
701 Carthage St.  
Sanford, N. C.

Joe Dan Byrd  
Turkey, N. C.

Bonnie Lynn Carnes  
Route No. 1  
Hamlet, N. C.

Joseph L. Carrington  
1905 Edwin Road  
Durham, N. C.

William Paul Childers, Jr.  
Route No. 2  
Louisburg, N. C.

Steve Page Choate  
E. Delaware Ave.  
Southern Pines, N. C.

William F. Collins  
108 Lee St.  
Franklinton, N. C.

Zelda Grey Coor  
Route No. 5  
Goldsboro, N. C.

Phyllis Rae Davis  
1141 N. Road St.  
Elizabeth City, N. C.

Alice Lea Dennis  
E. Noble St.  
Louisburg, N. C.

Martha Denton  
Wood, N. C.

Faye Dillard  
Route No. 2  
Macon, N. C.

Barbara Driver  
Route No. 1  
Louisburg, N. C.

Donald Danson  
905 Hyde Park Ave.  
Durham, N. C.

Claude Gerald Ellen  
Box 303  
Angier, N. C.

Katherine May Ewell  
Route No. 2  
New Bern, N. C.

Jean Elizabeth Fairry  
2107 Pershing St.  
Durham, N. C.

Jacquelyne Joy Farrow  
Waves, N. C.

Douglas Faulkner  
Route No. 1  
Henderson, N. C.

Jerry Faulkner  
Route No. 1  
Henderson, N. C.

Thurston Upchurch Faulkner  
516 Clarke St.  
Henderson, N. C.

Judith Anne Finch  
Bailey, N. C.

Jo Ellen Floyd  
Cerro Gordo, N. C.

Robert Jackson Frazier, Jr.  
Route No. 1  
Louisburg, N. C.

Russell Wayne Frazier  
Route No. 1  
Louisburg, N. C.

Thomas Williams Fussell  
Rose Hill, N. C.

Billie Marlow Green  
Route No. 2  
Clayton, N. C.

James Marvin Gregory  
111 Casey St.  
Elizabeth City, N. C.

Marie Gupton  
Route No. 2  
Louisburg, N. C.

Sonya Innes Hagna  
Marion, N. C.

Sheldon Hare  
219-16 Peck Ave.  
Queens Vill., N. Y.

Evelyn Rae Harris  
Box 26  
Tillery, N. C.

Julian Wheless Harris  
Route No. 2  
Spring Hope, N. C.

William M. Hill, Jr.  
Route No. 1  
Louisburg, N. C.

Katie Sue Hocutt  
Route No. 1  
Wendell, N. C.

Howard Hubert Hodgkin  
2742 Harrison St.  
Wilmington, N. C.

Mattie Willis Hunter  
Inez, N. C.

Robert Jennings  
Moyock, N. C.

Charles B. Johnson, Jr.  
1514 Rhems Ave.  
New Bern, N. C.

Joe Durwood Johnson  
Route No. 1  
Four Oaks, N. C.

Carolyn Jones  
Box 594  
Butner, N. C.

Herbert David Joyner  
Route No. 1  
Louisburg, N. C.

Tyron Delano Lancaster  
2004 Southern Ave.  
Fayetteville, N. C.

Harold Thelbert Leary  
308 Edward St.  
Durham, N. C.

# Student Directory

- Alice Mozelle Lee  
Route No. 1  
Smithfield, N. C.
- John C. LeMay  
Route No. 3  
Henderson, N. C.
- John D. Long  
Route No. 3  
Enfield, N. C.
- Weldon Lucas  
Roseboro, N. C.
- B. R. McCullen  
Route No. 1  
Goldsboro, N. C.
- Donald Harrill McIntyre  
Box 42  
Franklinton, N. C.
- Edna Worley Mahler  
Route No. 2  
Four Oaks, N. C.
- Robert Jones Mangum  
Fleming St.  
Creedmoor, N. C.
- Elizabeth Anne Mann  
907 Raleigh St.  
Elizabeth City, N. C.
- Bobby Gene Manning  
Bethel, N. C.
- Sue Manning  
Middlesex, N. C.
- Ellen Marks  
Route No. 2  
Cameron, N. C.
- Jean Massengill  
Route No. 1  
Four Oaks, N. C.
- Jesse William Massengill  
Route No. 1  
Four Oaks, N. C.
- Rachel Ann Merritt  
Route No. 1  
Magnolia, N. C.
- Billy Gene Midkiff  
Box 364  
Littleton, N. C.
- Myrtle Jeanne Miller  
316 Pearl Street  
Elizabeth City, N. C.
- Gary Erwin Morris  
Atlantic, N. C.
- Beaman Nance, Jr.  
Chadbourn, N. C.
- Johnny W. Nelson  
Bethel, N. C.
- Rodney Nelson  
Atlantic, N. C.
- Ralph Thomas Nevils, Jr.  
148 Church St.  
Creedmoor, N. C.
- William Walker Noel  
Hargrove St.  
Henderson, N. C.
- Margaret F. Ogburn  
Route No. 1  
Angier, N. C.
- Rowena Gordon Pace  
Louisburg, N. C.
- Betty Sue Parrish  
Route No. 2  
Louisburg, N. C.
- William Hill Parrish  
1221 Tarboro St.  
Rocky Mount, N. C.
- Clarence Walter Pearce, Jr.  
State Hospital  
Butner, N. C.
- Martha Ann Perdue  
Route No. 3  
Louisburg, N. C.
- Charles David Peterson  
Route No. 2  
Clinton, N. C.
- Jane Wilson Post  
Route No. 1  
Louisburg, N. C.
- Walter M. Poyner  
Moyock, N. C.
- Frederick Ransom  
Route No. 2  
Clarkton, N. C.
- Catherine Register  
Route No. 2  
New Bern, N. C.
- Fordham Ann Rhem  
905 Hardee Road  
Kinston, N. C.
- Mary Ann Richardson  
Route No. 1  
Louisburg, N. C.
- Bobby Lynn Riddle  
Route No. 1  
Sanford, N. C.
- Olive Rose Rogers  
Route No. 1  
Rose Hill, N. C.
- Lee Ralph Rogers  
1720 Newton Road  
Durham, N. C.
- Merle Rebecca Royster  
Route No. 2  
Virgilina, Va.
- Joseph Edward Sadler  
Aurora, N. C.
- Gary Josh Scull  
Route No. 1  
Raeford, N. C.
- Allen Winford Shearlu  
Route No. 2  
Littleton, N. C.
- Thomas Samuel Shutt, Jr.  
922 Hamilton St.  
Roanoke Rapids, N. C.
- James Benjamin Slaughter  
Box 166  
Angier, N. C.
- Carole Ann Smith  
1128 Hill St.  
Rocky Mount, N. C.
- Edith Jean Smith  
Littleton, N. C.
- Lorine Smith  
Route No. 2  
Louisburg, N. C.
- Fasker Brooks Southerland  
Route No. 1  
Louisburg, N. C.
- Betty Lou Spruill  
Route No. 2  
Creswell, N. C.
- Robert Wilkins Stainback  
Box 24  
Littleton, N. C.
- Charles Winston Strother  
704 S. Main St.  
Louisburg, N. C.
- Harvey Strother, Jr.  
King St.  
Louisburg, N. C.
- Thomas Charles Stuart  
Route No. 2  
Angier, N. C.
- Herbert William Styron  
Cedar Island, N. C.
- Frances Lee Taylor  
Box 72  
Beaufort, N. C.
- Alice Fern Tharrington  
Route No. 3  
Louisburg, N. C.
- William Maurice Till, Jr.  
Route No. 1  
Louisburg, N. C.
- Massilla Margaret Tucker  
2313 South Dickerson Ave.  
Greenville, N. C.
- Carlton Kentwood Turner  
1718 Harrington Road  
Elizabeth City, N. C.
- Mary Elizabeth Tyndall  
Route No. 1  
Kinston, N. C.
- Shirley May Tyson  
Route No. 1  
Wilson, N. C.
- Floyd B. Walters, Jr.  
Box 245  
Louisburg, N. C.
- Ernest Ray Williamson  
Route No. 2  
Chadbourn, N. C.
- Reid Kermit Williams  
Route No. 3  
Edenton, N. C.
- James Floyd Womble  
Route No. 4  
Sanford, N. C.
- John E. Wood  
Box 516  
Castalia, N. C.
- Catherine Woodlief  
208 Cedar St.  
Louisburg, N. C.
- Leon Woodlief  
Box 1505  
Franklinton, N. C.
- Virginia Clara Wright  
8 Green St.  
Franklinton, N. C.
- Elizabeth Faye Wynne  
Wallace, N. C.

# LOUISBURG COLLEGE

*Under Control*

NORTH CAROLINA METHODIST CONFERENCE

*Accredited by*

THE STATE DEPARTMENT OF EDUCATION  
NORTH CAROLINA COLLEGE CONFERENCE  
UNIVERSITY OF NORTH CAROLINA  
SOUTHERN ASSOCIATION of COLLEGES and SECONDARY SCHOOLS  
THE UNIVERSITY SENATE OF THE METHODIST CHURCH



*Offering Two Years Terminal Courses*

— in —

COMMERCIAL SCIENCE  
RELIGIOUS AND SOCIAL SECRETARIES

— and —

Two-Year Preparatory Courses Leading to Degrees in Senior Colleges  
in Engineering, Agriculture, Dentistry, Commerce  
and Liberal Arts



*For Details Write*

LOUISBURG COLLEGE    :-:    Louisburg, N. C.

## ROWE CHEVROLET CO.

*Authorized Chevrolet Dealers*

Phone 314-1

B. T. & W. E. ROWE

LOUISBURG, N. C.

---

*The Student's Favorite*

## EARLE'S DRIVE-IN

Soft Drinks — Hamburgers — Hot Dogs

LOUISBURG, N. C.

---

## TUTTLE APPLIANCE CO.

*"Your Frigidaire Dealer"*

Appliances — Television — Paint

LOUISBURG, NORTH CAROLINA

---

## LOUISBURG DRY CLEANERS

SYKES & STOVALL, Proprietors

*Pressing — Cleaning — Altering*

LOUISBURG, N. C.

---

*Best Wishes from*

## TONKEL'S

Louisburg's Most Modern Air-Conditioned Department Store

LOUISBURG, N. C.

---

## H. C. TAYLOR

*Hardware and Furniture*

Sporting Goods, Model Airplanes, Etc.

LOUISBURG, N. C.

Phone 4231

# LOUISBURG, NORTH CAROLINA

— is —

*Rich in History, Health and Hospitality*

There is not a more ideal place of residence in the world for a student than Louisburg. There exists here at all times an atmosphere of quiet, culture and refinement, that encourages study and accomplishment. The material needs of every student can be purchased in Louisburg at most reasonable prices; therefore, it is an economic and otherwise desirable home for students.

*Louisburg Sincerely Welcome Everyone At All Times*

TOWN OF LOUISBURG

W. F. SHELTON, Mayor

WALLER AND SMITH



PHOTOGRAPHERS

*For*

THE 1954 OAK



12 EAST HARGETT STREET

Phone 7708

RALEIGH

*Best Wishes*

*To The*

STUDENTS

*At*

LOUISBURG COLLEGE

LOUISBURG THEATRE

*Best Wishes*

YOUR DOWNTOWN MEETING PLACE

**B O D D I E  
D R U G   S T O R E**

LOUISBURG, NORTH CAROLINA

---

D. E. WILLIAMS, Owner

**W I L L I A M S  
F U R N I T U R E   C O .**

*Furniture, Stoves and Refrigerators*

220-222 N. POINDEXTER STREET

ELIZABETH CITY, N. C.

Dial 5469

**PRUITT LUMBER CO.**

*"Better Homes for Better Living"*

Phone 433-1

EAST NASH STREET

LOUISBURG, NORTH CAROLINA

---

*Sponsor*

**B R O G D E N  
P R O D U C E   C O . ,   I N C .**

RALEIGH

## ROWE'S MEN'S SHOP

*Everything To Wear for Men and Students*

LOUISBURG, N. C.

---

*Complete Farm and Home Suppliers*

*Cash If You Have It, Credit If You Need It*

## JOHNSON COTTON COMPANY OF LOUISBURG, INC.

Refrigerators, Radios, Electric Pumps, Furniture,  
Tractors, Implements and Farm Supplies

---

## TOMMY HARRIS

*Distributor of*

PINE STATE DAIRY PRODUCTS

LOUISBURG, N. C.    --    Phone 8421

---

## QUALITY DRY CLEANERS & LAUNDRY SERVICE

Phone 5181

*For Quick and Dependable Service*

SOUTH MAIN STREET    --    Louisburg, N. C.

---

*Compliments*

## FOX'S DEPARTMENT STORE

LOUISBURG, N. C.

---

*Compliments*

## CAROLINA BEDDING COMPANY

CHARLOTTE, NORTH CAROLINA

## LEGGETT'S DEPARTMENT STORE

*The Home of Better Values*

LOUISBURG, N. C.

The South's Leading Distributors of Reliable Merchandise

---

## CHESSON CANDY COMPANY

*"Sweets That Repeat"*

LOUISBURG, N. C.

Phone 337-2

Best in Candy, Gum, Peanuts and Sandwiches

---

## FLEMING'S FRUIT COMPANY

*Wholesale*

Phone 8606 — 405 SOUTH MAIN STREET

LOUISBURG, N. C.

---

## GRIFFIN MOTOR COMPANY

*Ford Sales and Service*



LOUISBURG, NORTH CAROLINA



*Compliments of*



"Otto" the Orkin Man

**Orkin Exterminating Co.,**

World's Largest Pest Control Company

2-1317 ROCKY MOUNT

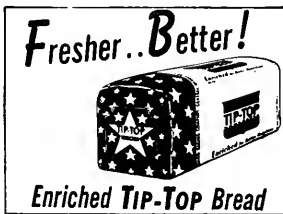
*Compliments*

**G. W. MURPHY  
and SON**

Your Complete Food Market

LOUISBURG, N. C.

**Ward Baking Company**



1912 SOUTH CHURCH STREET

ROCKY MOUNT, N. C.

**T H E**

**HENDERSON GROCERY**

*Distributors*

Kasco Feed

Melrose Flour

HENDERSON, N. C.

*Drink Coca-Cola*



THE CAPITAL COCA-COLA BOTTLING CO., INC.

RALEIGH, NORTH CAROLINA

*"Government Inspection for Your Protection"*



Hams — Bacon — Sausage — Beef

**FROSTY MORN MEATS, INC.**

KINSTON, N. C.

Phone 5101

*Compliments of*

**CROSS POULTRY COMPANY**

DIAL 8013

RALEIGH, NORTH CAROLINA

**LADY BORDEN ICE CREAM**

*Elsie Says  
If It's Borden's  
It's Got To Be  
Good*



Phone 5569

RALEIGH, N. C.

## O'NEAL DRUG CO.

*"Your Drug Store"*

The Best of Everything for You

*Service With A Smile*

Hollingsworth Candies - Prescriptions

LOUISBURG, NORTH CAROLINA

*Greetings and Best Wishes to*

LOUISBURG COLLEGE

Dendrow

Crozer

Roda

Lynco

Glenbrook

Hampton

## GENERAL COAL COMPANY

CHARLOTTE, NORTH CAROLINA

## FIRST-CITIZENS BANK

*Member Federal Deposit Insurance Corporation*

LOUISBURG, NORTH CAROLINA



PATRONIZE OUR ADVERTISERS



THEY BOOST US!



# H. G. ROEBUCK & SON

2140 AISQUITH STREET  
BALTIMORE, MARYLAND

☆ ☆ ☆ ☆ ☆ ☆ ☆ ☆

☆

☆

☆

☆

☆

☆

☆

☆

☆

☆

☆

☆ ☆ ☆ ☆ ☆ ☆ ☆ ☆ ☆ ☆ ☆ ☆



PRINTERS—LITHOGRAPHERS TO  
SCHOOLS AND COLLEGES EVERYWHERE

---

---

*Producers of*

YOUR 1954 YEARBOOK









THE  
UNIVERSITY OF  
CHICAGO  
PRESS